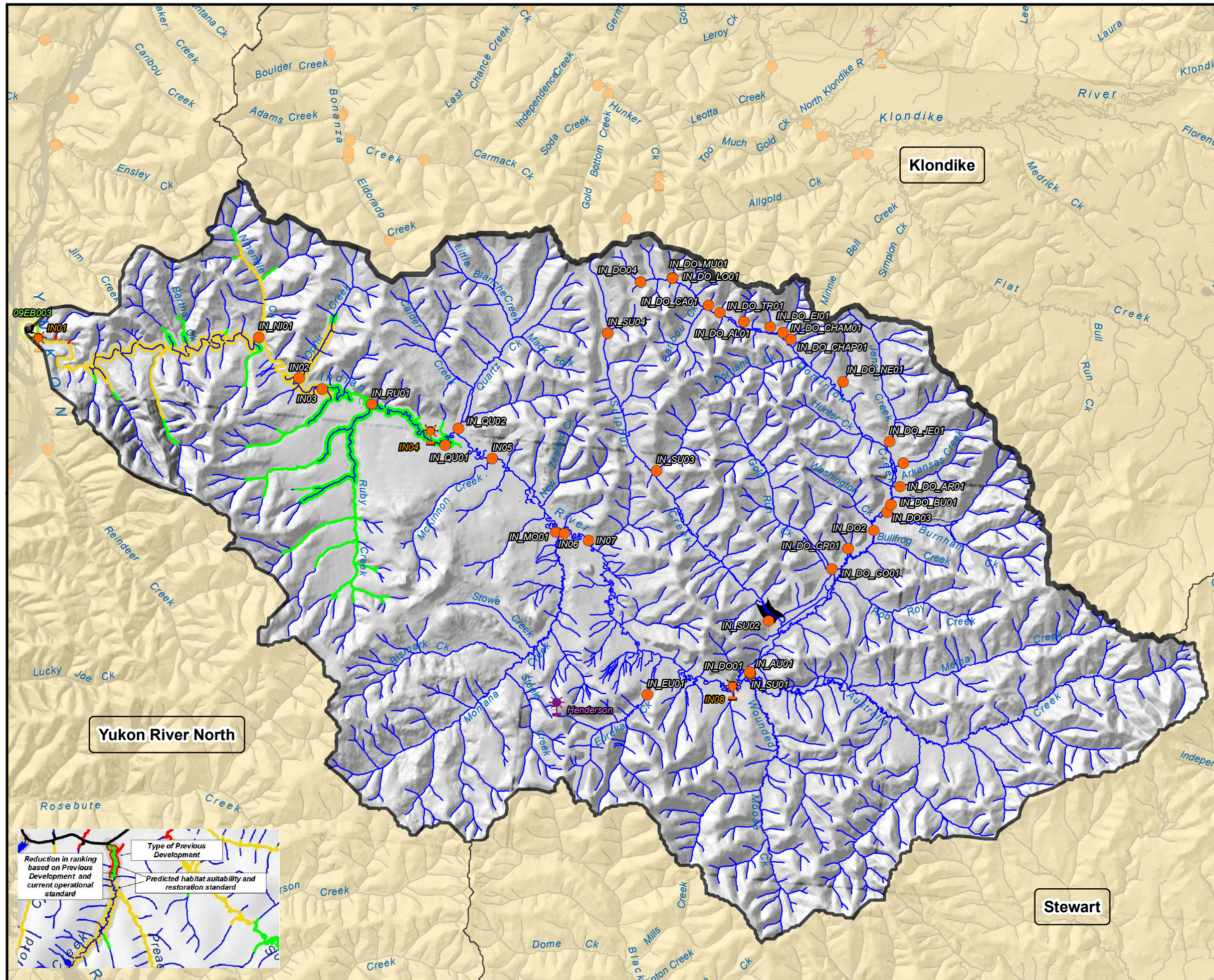


# Indian River Watershed Water Quality Objective Monitoring Sites 2017 (Category B)



### Monitoring Sites

- Energy, Mines and Resources Weather Station and Sampling Site
- Energy, Mines and Resources Sampling Site
- Water Survey of Canada Station
- Community Services Weather Station

### Stream Reach Classification

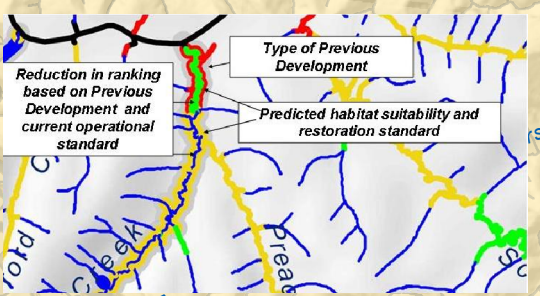
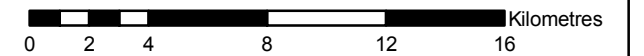
- Water Quality
- Low Suitability
- Moderate-Low Suitability
- Moderate-Moderate Suitability
- Moderate-High Suitability
- High Suitability
- Areas of Special Consideration (Ecological)
- Areas of Special Consideration (Cultural)

### Development

- Current
- Historical
- Extensive



This map is provided to depict the location of water quality and weather monitoring sites in relation to streams classified using the Yukon Habitat Suitability Model, and is not intended for any other use. Under no circumstances will the Government of Canada, or Yukon Government be liable to any person or business entity for any direct, indirect, special, incidental, consequential, or other damages based on any use of information contained on this map, including, without limitation, any lost profits, business interruption, or loss of information.



Stewart

Yukon River North

Klondike