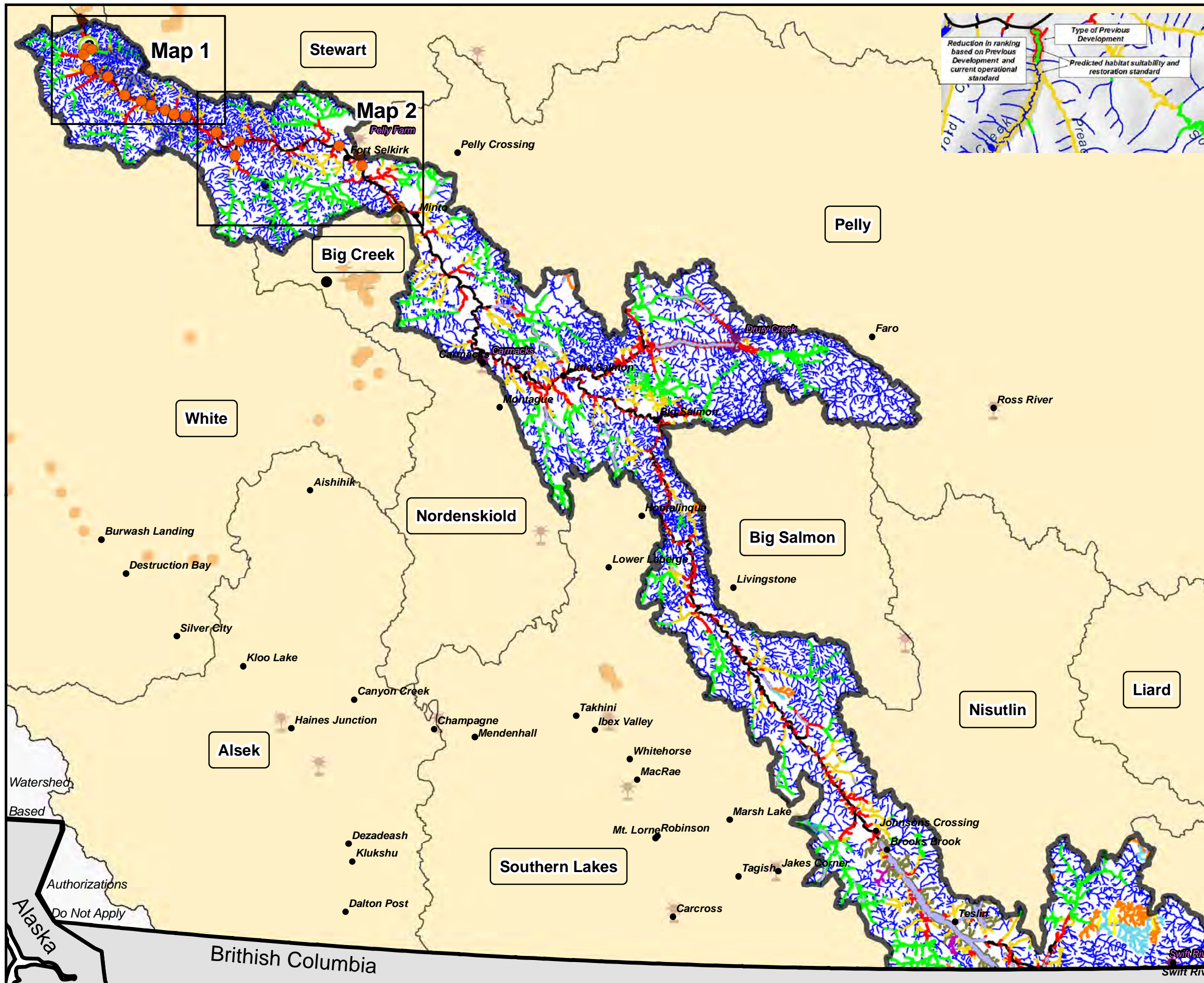


Yukon River South Watershed Water Quality Objective Monitoring Sites 2009 Overview (Category A)



Monitoring Sites

- Energy, Mines and Resources Weather Station and Sampling Site
- Energy, Mines and Resources Sampling Site
- Water Survey of Canada Station
- Community Services Weather Station

Stream Reach Classification

- Water Quality
- Freshwater Fisheries Production Zone
- Moderate-Low Suitability
- Moderate-Moderate Suitability
- Moderate-High Suitability
- Chinook Salmon Production
- Areas of Special Consideration (Ecological)
- Areas of Special Consideration (Cultural)

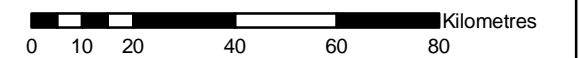
Development

- Current
- Historical
- Extensive

Tributary to Lake Score:

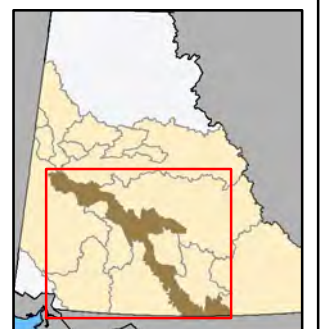
- Small Tributary to Small Lake Trout Lake
- Medium Tributary to Small Lake Trout Lake
- Large Tributary to Small Lake Trout Lake
- Small Tributary to Large Lake Trout Lake
- Medium Tributary to Large Lake Trout Lake
- Large Tributary to Large Lake Trout Lake
- Lakes

This map is provided to depict the location of water quality and weather monitoring sites in relation to streams classified using the Yukon Habitat Suitability Model, and is not intended for any other use. Under no circumstances will the Government of Canada, or Yukon Government be liable to any person or business entity for any direct, indirect, special, incidental, consequential, or other damages based on any use of information contained on this map, including, without limitation, any lost profits, business interruption, or loss of information.

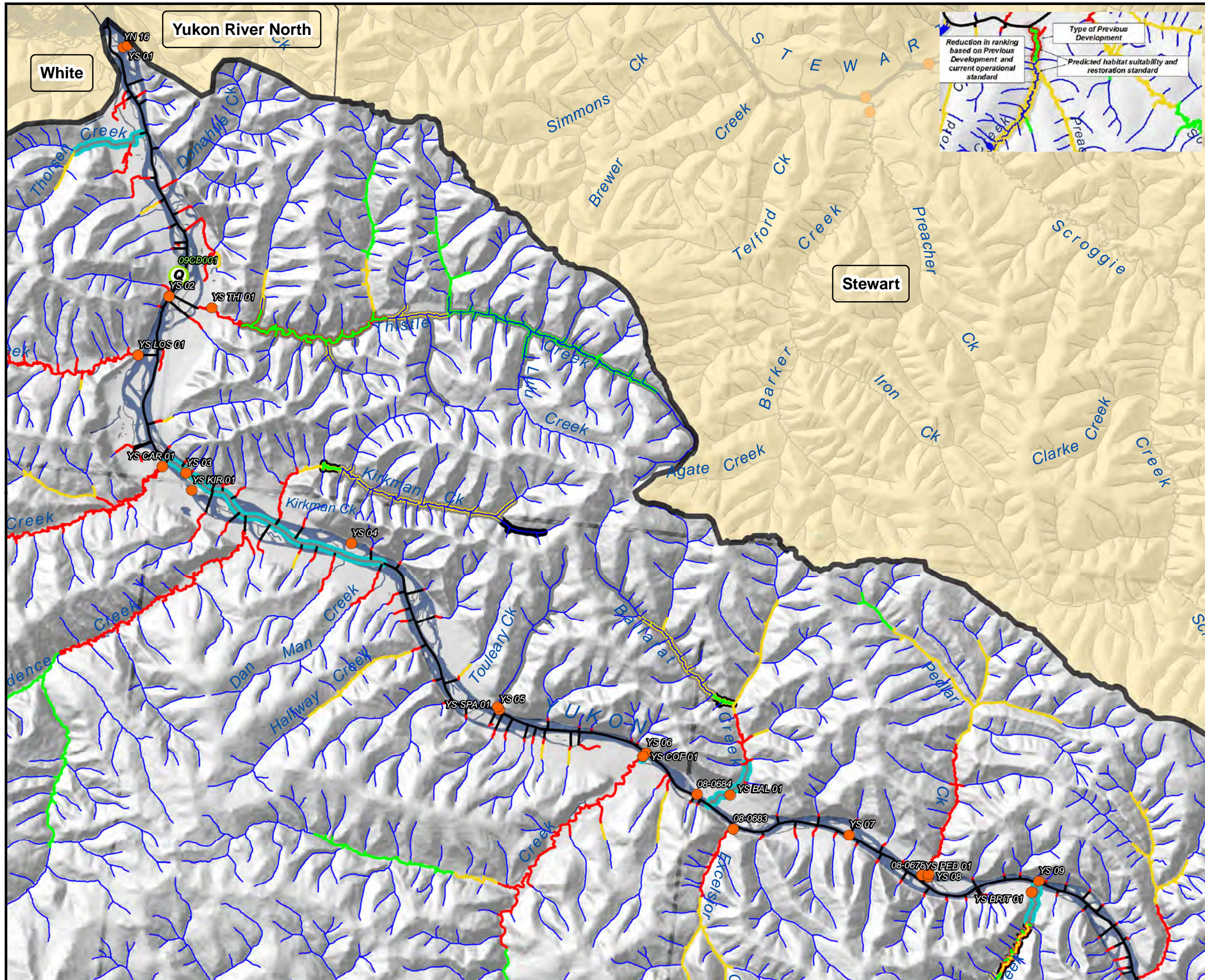


Yukon
Energy, Mines and Resources

YUKON
PLACER
SECRETARIAT



Yukon River South Watershed Water Quality Objective Monitoring Sites 2009 Map 1 (Category A)



Monitoring Sites

- Energy, Mines and Resources Weather Station and Sampling Site
- Energy, Mines and Resources Sampling Site
- Water Survey of Canada Station
- Community Services Weather Station

Stream Reach Classification

- Water Quality
- Freshwater Fisheries Production Zone
- Moderate-Low Suitability
- Moderate-Moderate Suitability
- Moderate-High Suitability
- Chinook Salmon Production
- Areas of Special Consideration (Ecological)
- Areas of Special Consideration (Cultural)



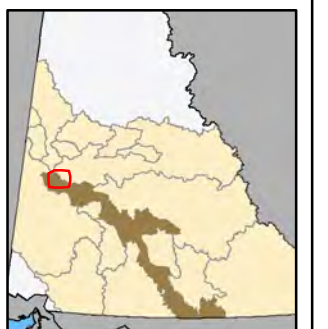
Development

- Current
- Historical
- Extensive

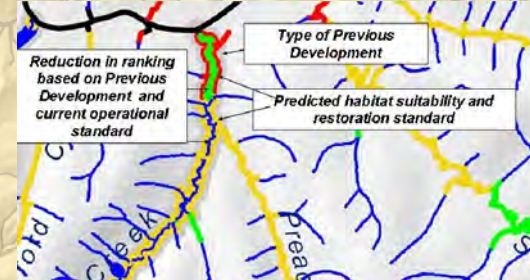
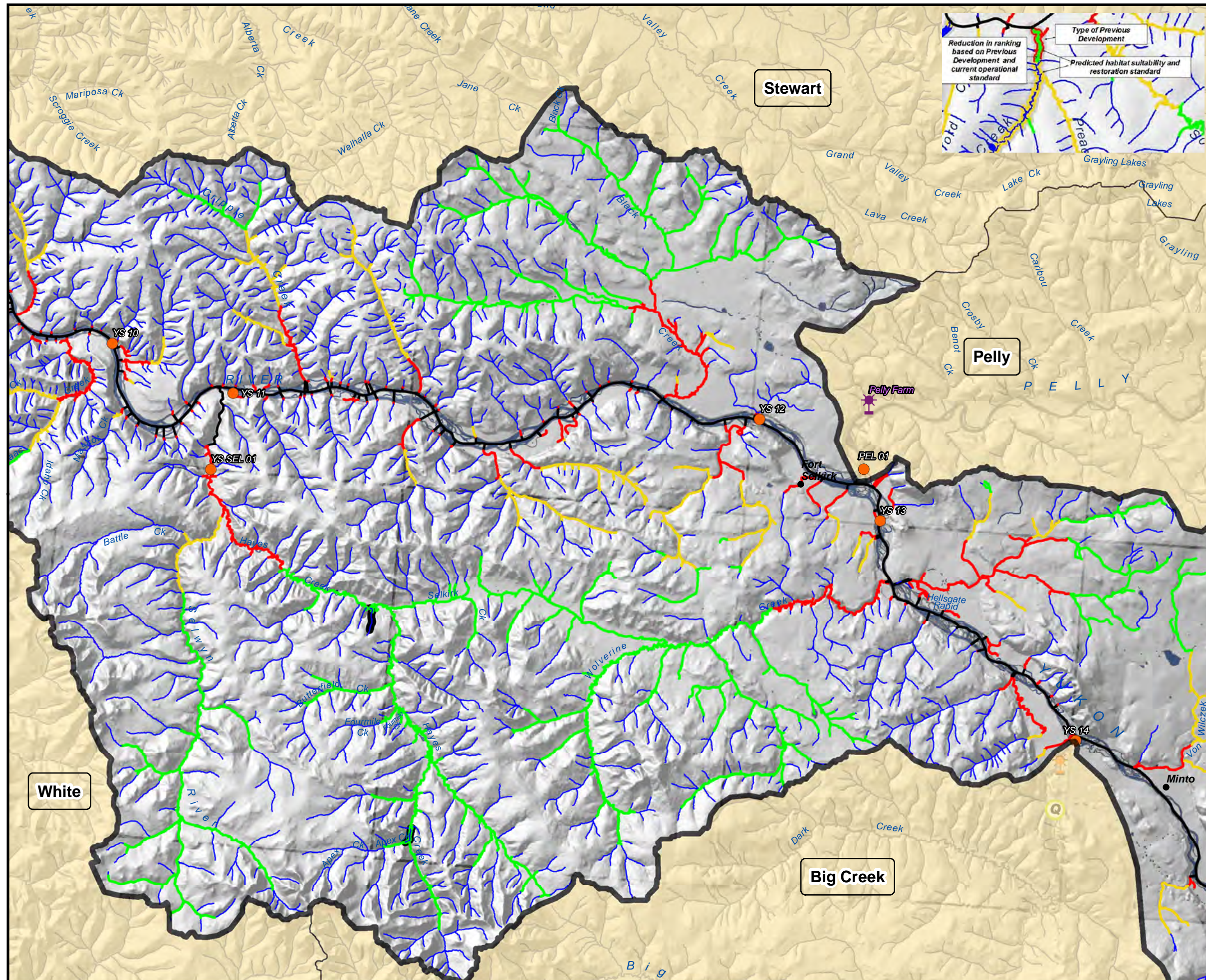
Tributary to Lake Score:

- Small Tributary to Small Lake Trout Lake
- Medium Tributary to Small Lake Trout Lake
- Large Tributary to Small Lake Trout Lake
- Small Tributary to Large Lake Trout Lake
- Medium Tributary to Large Lake Trout Lake
- Large Tributary to Large Lake Trout Lake
- Lakes

This map is provided to depict the location of water quality and weather monitoring sites in relation to streams classified using the Yukon Habitat Suitability Model, and is not intended for any other use. Under no circumstances will the Government of Canada, or Yukon Government be liable to any person or business entity for any direct, indirect, special, incidental, consequential, or other damages based on any use of information contained on this map, including, without limitation, any lost profits, business interruption, or loss of information.



Yukon River South Watershed Water Quality Objective Monitoring Sites 2009 Map 2 (Category A)



- Monitoring Sites**
- Energy, Mines and Resources Weather Station and Sampling Site
 - Energy, Mines and Resources Sampling Site
 - Water Survey of Canada Station
 - Community Services Weather Station
- Stream Reach Classification**
- Water Quality
 - Freshwater Fisheries Production Zone
 - Moderate-Low Suitability
 - Moderate-Moderate Suitability
 - Moderate-High Suitability
 - Chinook Salmon Production
 - Areas of Special Consideration (Ecological)
 - Areas of Special Consideration (Cultural)
- Development**
- Current
 - Historical
 - Extensive
- Tributary to Lake Score:**
- Small Tributary to Small Lake Trout Lake
 - Medium Tributary to Small Lake Trout Lake
 - Large Tributary to Small Lake Trout Lake
 - Small Tributary to Large Lake Trout Lake
 - Medium Tributary to Large Lake Trout Lake
 - Large Tributary to Large Lake Trout Lake
 - Lakes



This map is provided to depict the location of water quality and weather monitoring sites in relation to streams classified using the Yukon Habitat Suitability Model, and is not intended for any other use. Under no circumstances will the Government of Canada, or Yukon Government be liable to any person or business entity for any direct, indirect, special, incidental, consequential, or other damages based on any use of information contained on this map, including, without limitation, any lost profits, business interruption, or loss of information.

