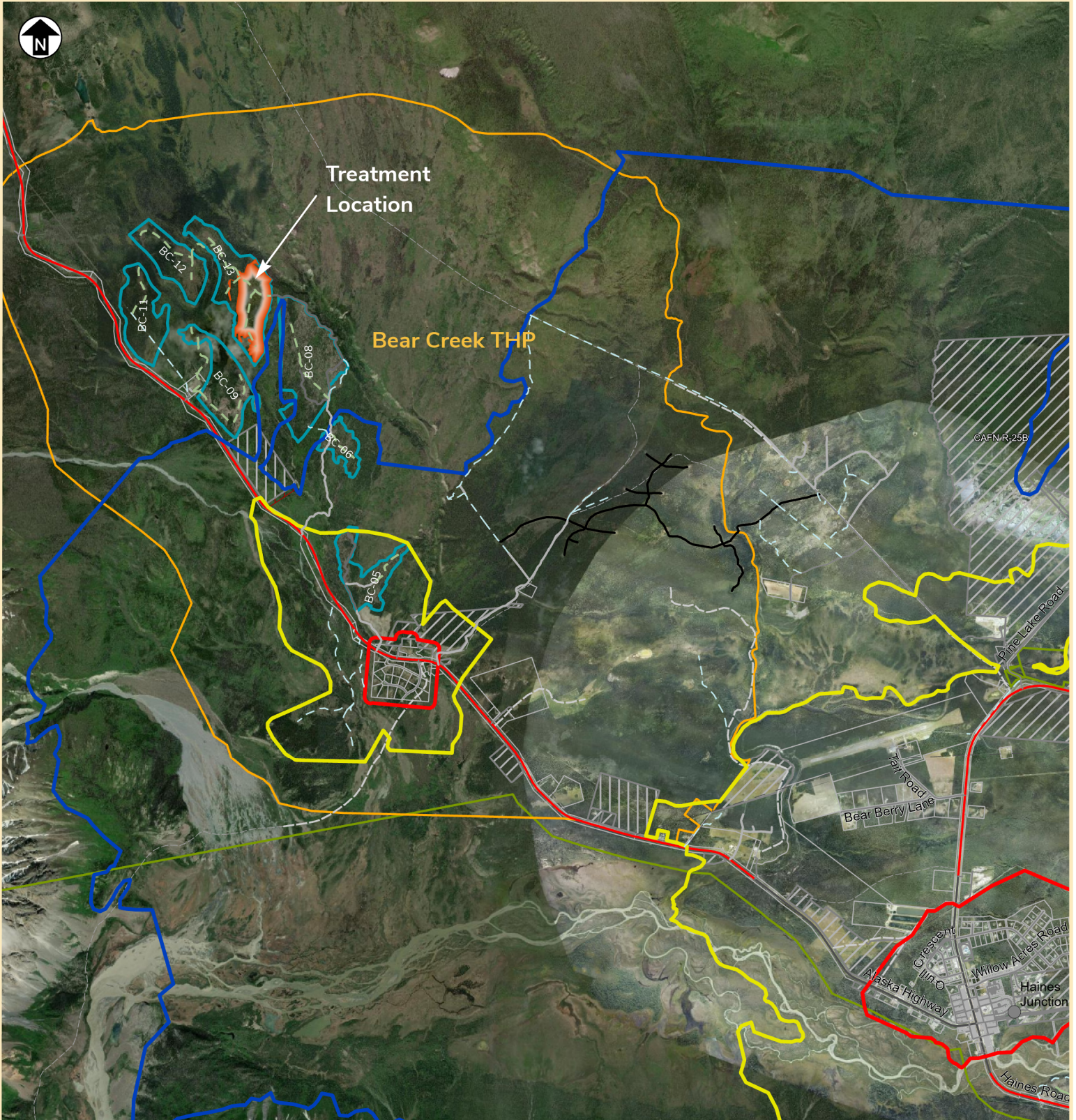
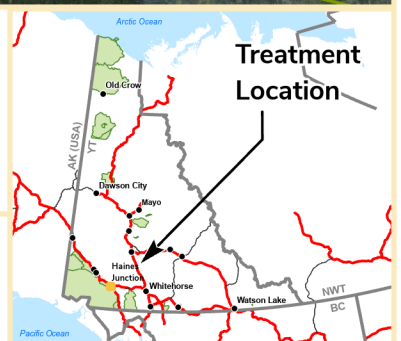


Bear Creek Silviculture Treatment Plan Area



- | | | |
|-----------------------|----------------------------------|----------------------------------|
| Treatment Location | First Nation Settlement Lands | Community Zone |
| Land Dispositions | A: Surface and Subsurface Rights | Interface Zone |
| Land Notations | B: Surface Rights | Landscape Zone |
| Surveyed Land Parcels | FS: Fee Simple | Forest Resource Road (Act) |
| Parks and Campgrounds | Forest Resource Roads - Historic | Forest Resource Access (Non Act) |
| | Forest Resource Roads - Retired | Public Access (Non Act) |



**Bear Creek
Silviculture Treatment
Operating Unit 13**

1:80,000
June 15, 2023

0 1
Kilometres

**Bear Creek, OU 13
Haines Junction**
FRMP: CATT
Yukon Albers Projection