



#705- 1030 W Georgia Street
Vancouver, British Columbia
Canada V6E 2Y3
Telephone: (604) 682-5474
Toll-free: 1-877-682-5474
Fax: (604) 682-5404
info@yukonzinc.com
www.yukonzinc.com

May 16, 2016

Mr. Robert Holmes
Director, Mineral Resources
Department of Energy, Mines and Resources
Box 2703, Whitehorse, Yukon, Y1A 2C6
By e-mail

Dear Mr.Holmes,

Re: Addendum to General Site Plant V2011-05 for Access Gate and Lower Site Road; Storage of reagents and construction of the U/G bulkheads

Further to your email of April 11, 2016, and pursuant to Section 6.2 of Quartz Mining License QML-0006, information is provided below regarding an addendum to General Site Plan (GSP) V2011-15 (August 2011).

The GSP omitted a site road that extends from the north-west edge of the mine site to Wolverine Lake. This road was previously used to access the exploration camp on the edge of Wolverine Lake, but has now transitioned to a minimally maintained road for access to environmental monitoring sites at and around Wolverine Lake. This road needs to be added to the GSP and is shown on the attached figure, and was described in the GSP in Table 2-3 as a "site road" on claims Foot 15, 16, 18, 20, and 180 - 182. This road will also be added to any future updates to the Reclamation and Closure Plan including appropriate closure activities and bonding requirements.

Yukon Zinc also wishes to clarify the access control previously described in Section 5.3.4 of the GSP. Section 5.3.4 describes three scenarios for access control: during mine operation, during temporary closure and following permanent closure. Access control during mine operation is by way of a gate at the beginning of the access road, just past the turn off from the Robert Campbell Highway. The proposed access control during temporary closure was to remove the gate at the highway and install a gate at km 13+025. Yukon Zinc has opted to maintain the gate at the highway during the temporary closure period, and therefore the gate at km 13+025 is not required. The purpose of the temporary closure access control gate location was to deny access to highway vehicles, all terrain vehicles and snow mobiles, and to deter hunting and recreational access to the Go Creek drainage system. The current location of the gate at the highway accomplishes those

objectives, and hence moving the gate is not required.

On the subject of reagents on site; YZC has now reached a provisional arrangement with JDS Silver to transfer the bulk of the reagents to Silvertip Mine for use there. However, this transfer is unlikely to take place until later in the season, once they have the reagent storage facilities constructed on site. As a consequence of this, it would be more environmentally acceptable to leave the reagents at Wolverine where they are in safe and secure storage until JDS Silver can take the reagents direct to site and not have to store them in their yard at Watson Lake. As a consequence we would like to request an extension to the storage time at the wolverine mine site until September of this year.

Finally, as you will be aware, we are intending to install underground plugs in the ramp and the raise this summer. As requested by EMR, please find attached a preliminary engineering design for the plugs completed by a Yukon accredited geotechnical engineer. This design will be refined at the point that underground access can be re-established and the sites of the plugs inspected in detail.

Please let me know if you have any questions on the above.

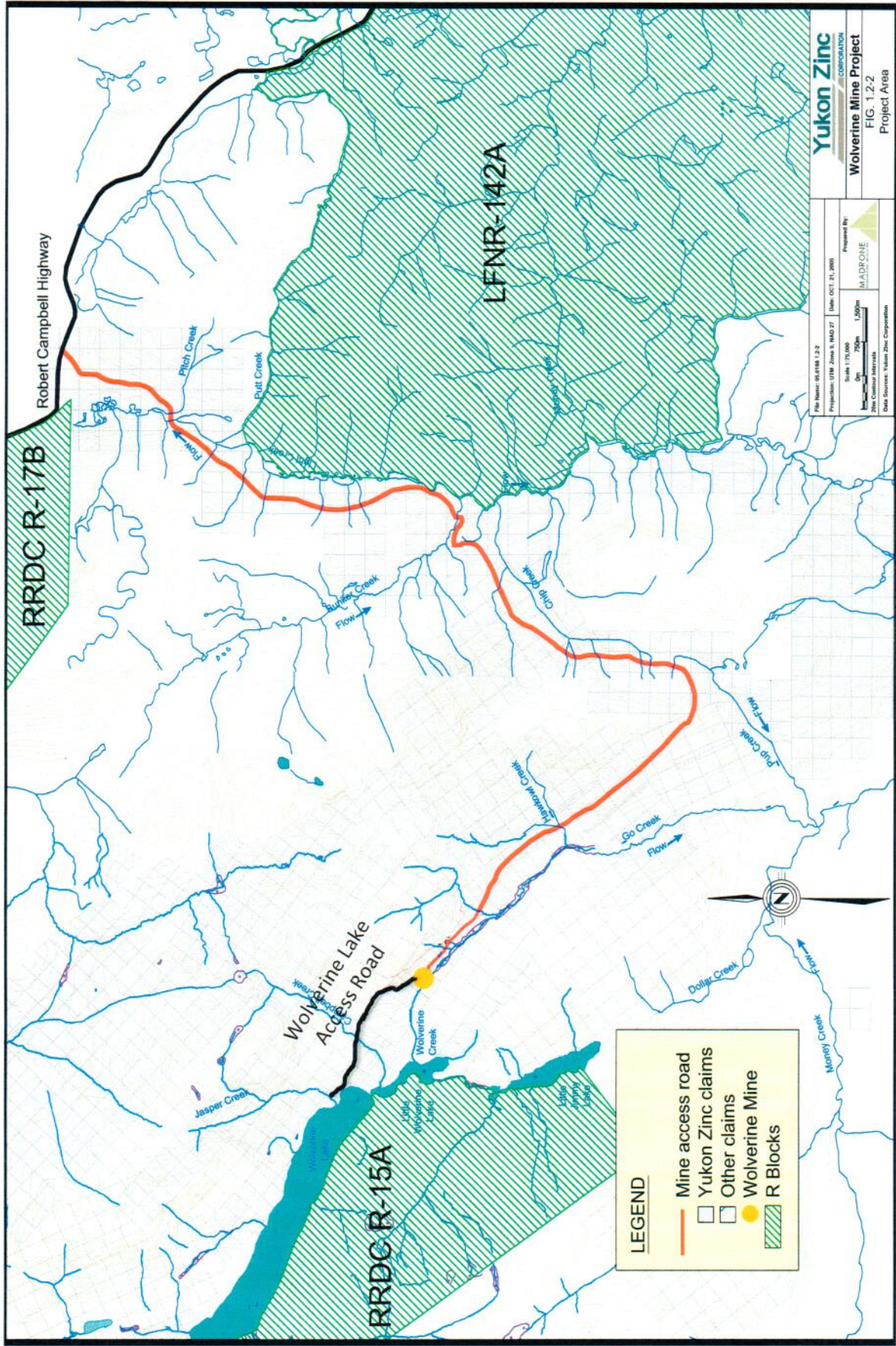
Sincerely,



Jing You Lu

CEO;

Yukon Zinc Corporation



Yukon Zinc CORPORATION
Wolverine Mine Project
 FIG. 1.2.2
 Project Area

File Name: 06/01/08 1.2.2
 Projection: UTM Zone 9, NAD 27 Date: OCT. 21, 2008
 Prepared By: MADPONE
 Scale: 1/75,000
 Date Created: 08/28/08
 Data Sources: Yukon Zinc Corporation