



## **Wolverine Project**

# **HERITAGE RESOURCE PROTECTION PLAN**

**VERSION 2007-01**

**Prepared by:  
Yukon Zinc Corporation  
Vancouver, British Columbia**

**In conjunction with:  
Ross River Dena Council  
Ross River, Yukon**

**November 2007**

## TABLE OF CONTENTS

<b>LIST OF FIGURES</b> .....	<b>I</b>
<b>LIST OF APPENDICES</b> .....	<b>I</b>
<b>1 INTRODUCTION AND PURPOSE</b> .....	<b>1</b>
1.1. PURPOSE.....	3
<b>2 HERITAGE RESOURCE PROTECTION POLICY</b> .....	<b>3</b>
<b>3 BACKGROUND</b> .....	<b>4</b>
3.1 ARCHAEOLOGICAL AND TRADITIONAL KNOWLEDGE REPORTS .....	4
3.2 SOCIOECONOMIC PARTICIPATION AGREEMENT .....	4
3.3 TRADITIONAL KNOWLEDGE PROTOCOL.....	5
<b>4 HERITAGE RESOURCE PROTECTION PLAN OBJECTIVES</b> .....	<b>5</b>
4.1 HERITAGE RESOURCE PROTECTION .....	5
4.2 COMPLIANCE WITH REGULATIONS AND LICENSE REQUIREMENTS .....	5
4.3 KASKA INVOLVEMENT.....	5
<b>5 HERITAGE RESOURCE FIELD GUIDELINES</b> .....	<b>6</b>
<b>6 REPORTING REQUIREMENTS</b> .....	<b>7</b>
<b>7 HERITAGE RESOURCE CONTACT LIST</b> .....	<b>8</b>
<b>8 CULTURAL AWARENESS TRAINING</b> .....	<b>9</b>
8.1 TRAINING SCHEDULE.....	9

## LIST OF FIGURES

FIGURE 1. LOCATION OF THE WOLVERINE PROJECT WITHIN THE KASKA NATION TRADITIONAL TERRITORY .....	2
FIGURE 2. YUKON ZINC CORPORATION HERITAGE RESOURCE PROTECTION POLICY .....	3
FIGURE 3. WHAT TO DO IF YOU ENCOUNTER A SUSPECTED HERITAGE SITE, OBJECT, OR ARTIFACT .....	6
FIGURE 4. REPORTING REQUIREMENTS FLOW .....	7

## LIST OF APPENDICES

APPENDIX A ROSS RIVER DENA COUNCIL – YUKON ZINC ACKNOWLEDGEMENT LETTER

## 1 INTRODUCTION AND PURPOSE

The Wolverine Project is an underground mining project to produce copper, lead and zinc concentrates. The Wolverine Project is located within the Finlayson District in the southeastern Yukon, approximately 280 km east of Whitehorse, 190 km northwest of Watson Lake and 135 km southeast of Ross River, near the headwaters of the Wolverine Lake watershed. The Finlayson area is within the Kaska Nation traditional territory (Figure 1).

The property, originally staked in 1973, was extensively explored over the past two decades. In June 2005, following receipt of a Type B Water Licence and Mining Land Use Permit, Yukon Zinc Corporation commenced a test mining program and detailed infill diamond drill program. The project includes operation of an underground mine with surface ramp access to produce 1400 t/d of mill feed ore. The mine site and industrial complex are located on a gentle sloping sub alpine rider in the pass between the Go Creek watershed to the south and the Wolverine Creek watershed to the north. The airstrip and tailings facility are situated near the headwaters of Go Creek.

In the Yukon, the Kaska Nation is comprised of the Ross River Dena Council (RRDC) and the Liard First Nation (LFN). The Kaska people, traditionally called the Kaska Dena, have lived on the land in their traditional territory since time immemorial. Through stories and legends, Kaska Elders teach of the intricate and inseparable relationship with the land. From early childhood, Elders teach respect for the land through Kaska traditional law, known as "aiee." The laws teach one how to conduct and respect themselves, others, and the land that sustains them. These teachings build and strengthen the ties between the Kaska, the land, the water, the plants, the animals, and the spirits of the Kaska Dena before them.

All areas of the territory are, through Kaska Dena custom, assigned along matrimonial lines to Kaska Dena who then steward those parts of the territory. The Wolverine Lake area is under the stewardship of a number of Nation members.

Wolverine Lake, known as Nougha Mene, is significant to the Kaska. It is a place one goes to rejuvenate the spirit, renew connections with the land, and practice long-standing traditions. The Kaska Dena know Nougha Mene as an area of bountiful wildlife, fish and plants. While the Wolverine area is commonly used for harvesting, gathering, and trapping, it is particularly important in lean years when wildlife is hard to find in other areas of the territory. At these times, community members came to Wolverine to harvest at special locations known to harbour wildlife. At these and other times, family and community members used Wolverine as a staging area for traveling to harvest throughout the territory. Kaska Dena set camps at and near Nougha Mene, and then followed traditional trails to Finlayson, Frances (Tu Cho) and other lakes. Often Elders remained at camps near Nougha Mene, even in winter. The Elders confidently sustained themselves by snaring small mammals and catching fish in Nougha Mene.

Kaska communities make decisions collectively. In the oral tradition, the community spends many hours discussing, understanding, and building consensus before making a decision. In the process, community members look to the past, to the present, to the future, and to their Elders for guidance. Decisions are made with an eye to leaving the land healthy and able to sustain many future generations.

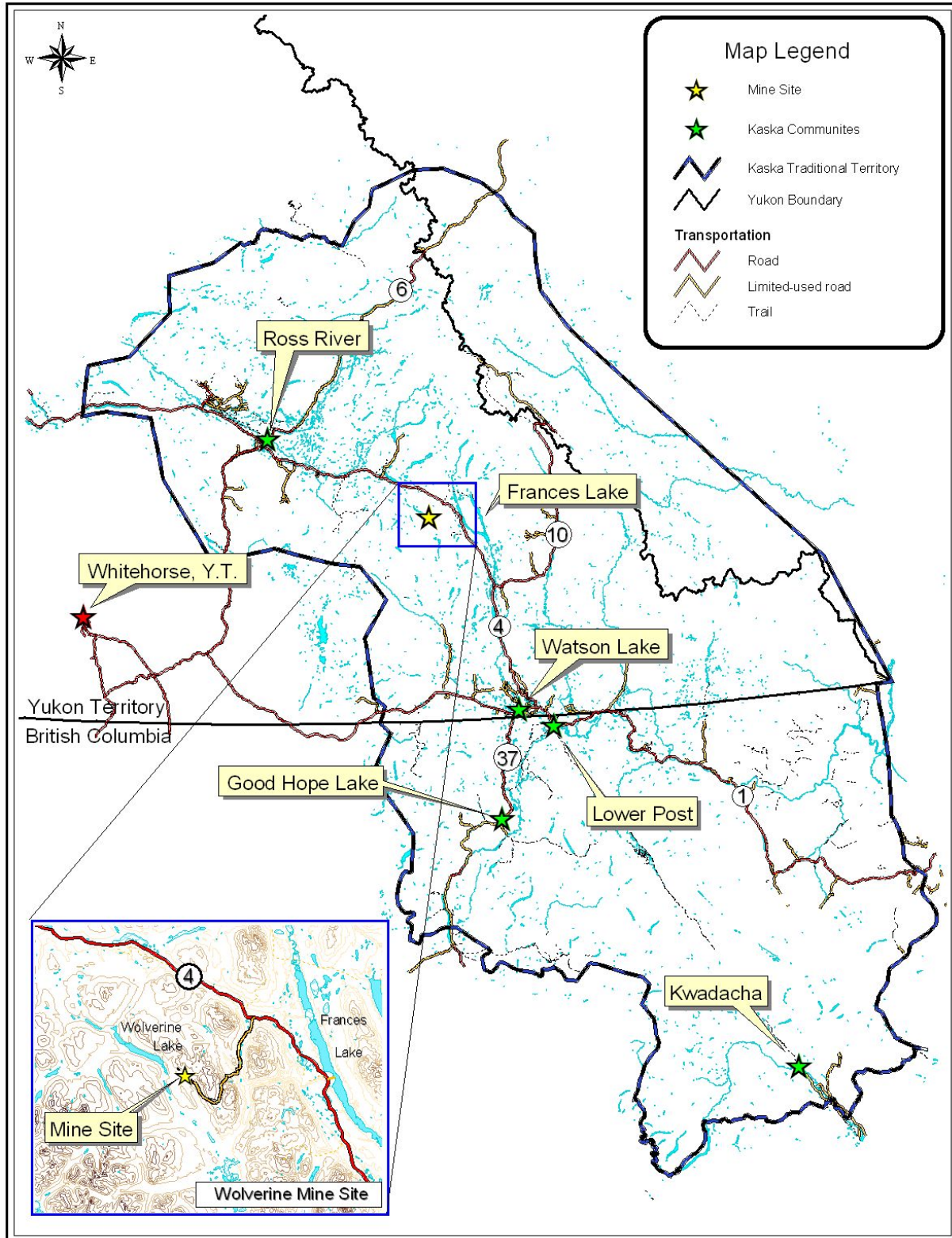


Figure 1. Location of the Wolverine Project within the Kaska Nation Traditional Territory

## 1.1. Purpose


Yukon Zinc Corporation (YZC) is required to submit a Heritage Resource Protection Plan to Yukon Energy, Mines and Resources as per Quartz Mining License QML-0006. The Plan is to include “a schedule for training all employees and contractor respecting its heritage awareness policy” as well as “a protocol for reporting and protection of historic objects and human remains discovered by the Licensee at or on the site.”

The purpose of this Plan is to fulfill these license requirements, meet expectations of the Kaska as described in the Socio-Economic Participation Agreement (SEPA) and Traditional Knowledge Protocol (TKP), as well as outline Yukon Zinc Corporation’s Heritage Resource Protection Policy. Further, if a heritage site is discovered, the implementation of the Heritage Resource Field Guidelines will ensure the YZC complies with the *Yukon Historic Resource Act* and the *Yukon Archaeological Sites Regulation*. Section 2 contains YZC’s Heritage Resource Protection Policy document.

This Plan was developed in conjunction with representatives of the RRDC and LFN out of respect for the intimate connection between the Kaska and the Wolverine Lake area and the commitments made to the Kaska in the SEPA and TKP documents (Appendix A). The Kaska will continue to be involved in the Project overall and specifically in the development of Yukon Zinc Corporation’s Cultural Awareness Training.

## 2 HERITAGE RESOURCE PROTECTION POLICY

Yukon Zinc Corporation’s Heritage Resource Protection Policy (Figure 2) is the basis for heritage resource protection at the Wolverine Project. This Policy and the contents of this Plan inform and guide Yukon Zinc staff decisions relating to heritage resources.

  
**Wolverine Project**  
**Heritage Resource Protection Policy**

Yukon Zinc Corporation recognizes the value that heritage resources have for the Kaska and Yukoners. Yukon Zinc is committed to protecting Yukon heritage and will comply with the *Yukon Historic Resource Act*, the *Yukon Archaeological Sites Regulation*, and agreements with the Kaska. Yukon Zinc is committed to building awareness and respect for heritage resources. To accomplish these objectives Yukon Zinc will:

- Develop a heritage resource protection plan
- Incorporate Kaska views and traditional knowledge in planning, development and operations
- Incorporate heritage resource protection into all activities
- Deliver heritage and cultural awareness training to our employees and contractors
- Maintain the confidentiality of Kaska traditional knowledge and heritage sites

**Figure 2. Yukon Zinc Corporation Heritage Resource Protection Policy**

The Kaska Dena are currently working with the Dena Keyah Institute to develop a Kaska Nation Heritage and Archaeology Policy. When the Kaska Heritage and Archaeology Policy is available in the future the HRPP and Yukon Zinc's Heritage Resource Protection Policy will be reviewed in the context of the new Kaska policy.

### 3 BACKGROUND

This section summarizes background information on the heritage resources work completed for the project to date and the heritage-related parts of the Kaska-Yukon Zinc agreements.

#### 3.1 Archaeological and Traditional Knowledge Reports

FMA (FMA Heritage Resources Consultants Inc. 2007)<sup>1</sup> completed an archaeological impact assessment of the area in 2006. The assessment included a literature search, helicopter fly-over, ground-truthing, and shovel testing to attempt to locate archaeological resources in areas of moderate to high archaeological potential. The assessment found that no previously recorded archaeological sites were in conflict with the Project area. No new archaeological sites were found within the Project footprint, including the access road.

The Kaska completed a traditional use assessment report (Ross River Dena Council 2006)<sup>2</sup>. This assessment included Kaska Elder interviews and mapping work. Elder interviews were conducted by the RRDC TK Coordinator from September to December, 2005, and a helicopter overview flight was conducted in October 2005. Ground truthing by land stewards representing the RRDC and LFN was conducted along the proposed road route in mid-June 2006. The assessment described traditional land use ranging from subsistence food gathering to social and spiritual use in the area. The traditional knowledge (TK) revealed that the Wolverine Lake area contains a complex of traditional trails, camps and spiritual areas interwoven with the life cycles of wildlife and fisheries resources the Kaska Dena have long relied on for food and spiritual sustenance.

In general, the mine site and access road lie in Kaska traditional land use areas. However, the only overlap with a specific known component is at one location along the access road where the road crosses a traditional trail.

Consistent with the TK Protocol, the report emphasizes keeping all traditional knowledge confidential. The report recommends further Elder interviews, and Kaska involvement in potential monitoring of future mine development.

#### 3.2 Socioeconomic Participation Agreement

In July 2005, Yukon Zinc Corporation signed a Socio-Economic Participation Agreement with the RRDC, on behalf of the Kaska Nation, that provides a basis for participation by all Kaska Nation members in project exploration and development activities. This includes the review of

---

<sup>1</sup> FMA Heritage Resources Consultants, *Archaeological Impact Assessment, Yukon Zinc Corporation, Wolverine Project, Final Report, Permit 05-09ASR*. Prepared for AXYS Environmental Consultants on behalf of Yukon Zinc Corporation, February 2007

<sup>2</sup> Ross River Dena Council, *Wolverine Project Traditional Knowledge Interviews September 2005 to December 2005*, final, confidential report. Prepared by Norman Sterriah, Ross River Dena Council Traditional Knowledge Coordinator. Prepared for Yukon Zinc Corporation. February 2006

environmental, social, and economic matters related to these activities as well as the environmental assessment, permitting, operation, mining and reclamation of the Wolverine Project. The SEPA includes conditions that support:

- Training and scholarships
- Employment
- Business opportunities
- Community support and development loans

### **3.3 Traditional Knowledge Protocol**

Yukon Zinc Corporation entered into a Traditional Knowledge (TK) Protocol Agreement with the RRDC in September 2005 to ensure that traditional knowledge was not compromised by ongoing or future project activities. The Protocol describes processes and provides assurance that:

- Kaska traditional knowledge remains confidential,
- Kaska traditional knowledge remains the property of the Kaska
- collection of Kaska traditional knowledge is ongoing
- Kaska traditional knowledge is incorporated in Project decisions
- Kaska involvement in the Project is ongoing.

## **4 HERITAGE RESOURCE PROTECTION PLAN OBJECTIVES**

Yukon Zinc Corporation's Heritage Resource Protection Policy will be the foundation for accomplishing heritage resource protection. The three objectives described in this Plan are:

- heritage resource protection
- compliance with regulations and licence requirements
- Kaska involvement

### **4.1 Heritage Resource Protection**

If a heritage resource is encountered, Yukon Zinc Corporation staff and contractors will use the Heritage Resource Field Guidelines to ensure compliance and an appropriate response that is consistent with the procedure developed with the Kaska. Through delivery of a Cultural Awareness Training program, Yukon Zinc Corporation staff and contractors will understand what heritage resources are, and they will become aware of the importance of heritage resources. Practical measures to help protect resources include controlling mine site access, and maintaining the confidentiality of known sites in the surrounding area.

### **4.2 Compliance with Regulations and License Requirements**

Implementation of this Plan and the Heritage Resource Field Guidelines will ensure that the requirements of the *Yukon Historic Resources Act* and *Yukon Archaeological Sites Regulations* are met. It is a requirement in the Yukon that historic (heritage) and archaeological sites not be disturbed or artifacts removed. If a new site is found, it must be reported as per Section 6 and Figure 4 and the Heritage Resource Field Guidelines.

### **4.3 Kaska Involvement**

Fulfilling the spirit of Yukon Zinc Corporation's Heritage Resource Protection Policy and meeting the SEPA, TKP, and Quartz License conditions are key to Project success. Kaska involvement supports this success. Accordingly, the Kaska will be involved in the Project overall, have been

involved in developing this Plan (see Appendix A), and will continue to be involved in development of other plans and training material, such as cultural awareness training. The Heritage Resource Field Guidelines require notification of the Kaska if a heritage resource is found.

## 5 HERITAGE RESOURCE FIELD GUIDELINES

The Heritage Resource Field Guidelines outline the steps to follow if a suspected heritage site or artifact is found near or within the Project area (Figure 3). By following the Guidelines, Yukon Zinc Corporation and employees will comply with the *Yukon Historic Resources Act* and *Yukon Archaeological Sites Regulations*.

According to the *Yukon Archaeological Sites Regulations*, an artifact is an object of archaeological or historical interest that is older than 45 years and that has been abandoned. It is against the law to remove an artifact from an archaeological or historical site without a permit.

An onsite Manager or the Environmental Coordinator will follow the procedure outlined in Figure 3. Reporting will be completed as per Figure 4.

**Heritage Resource Field Guideline**

IF you come upon evidence of past human occupation, such as:

- Brush or fish camps
- Cabins
- Caches, platforms and other subsistence features
- Trails and trail markers
- Arrow or spear points or stone flakes
- Early period tools
- Human remains

You must:

1. **STOP WORK IMMEDIATELY**
2. Notify your manager or the Environmental Coordinator as soon as possible
3. AVOID disturbing the site – you may have discovered an unrecorded heritage site.

### Figure 3. What to Do If You Encounter a Suspected Heritage Site, Object, or Artifact

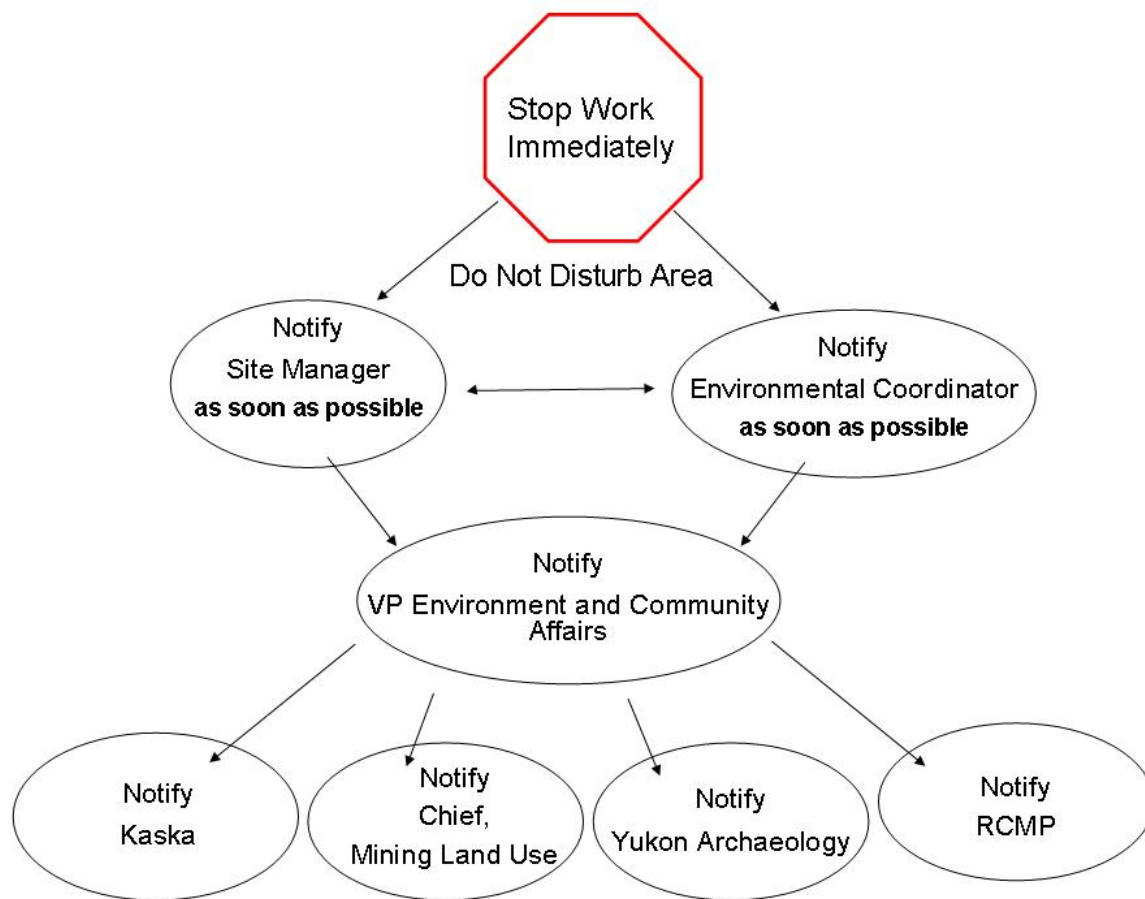
If the suspected historic resource is confirmed as a heritage resource or artifact by the Kaska and the Yukon Archaeology Program, the Kaska representatives may wish to contact and consult with other Kaska to decide upon a suitable course of action. If the course of action proposed has the potential to alter the historic character, or includes searching for or excavation of the resource, the Yukon Archaeology Branch will be contacted to determine how to meet regulatory requirements.



If human remains are discovered, the RCMP must be contacted. If the human remains are on Yukon Zinc Corporation claims, Yukon Zinc will work with the Kaska to ensure the remains are treated respectfully and repatriated, or otherwise addressed.

## 6 REPORTING REQUIREMENTS

If you find a suspected heritage site or feature, reporting as per Figure 4 is required. Section 7 provides contact information for agencies noted in the Reporting Flowchart.



**Figure 4. Reporting Requirements Flow**

The Site Manager or Environmental Coordinator will notify the VP, Environment and Community Affairs. The VP, Environment and Community Affairs will notify the Kaska Representative(s), Energy, Mines and Resources, and the Yukon Archaeology Program. The VP will also contact the RCMP, if necessary. The VP will follow-up with the Kaska Representative(s) and ensure that any further action needed is taken.

---

## 7 HERITAGE RESOURCE CONTACT LIST

### Yukon Zinc Corporation

Pamela Ladyman  
VP Environment and Community Affairs  
Phone: 604-682-5474, Ext. 246,  
Cell: 604-644-7655  
Fax: 604-682-5404  
E-mail: [pamelaladyman@yukonzinc.com](mailto:pamelaladyman@yukonzinc.com)

---

### Kaska Nation

#### Ross River Dena Council

Chief and Council  
Phone: 867-969-2278  
Fax: 867-969-2405

Testloa Smith, YESAA Coordinator  
Phone: 867-969-2097  
Fax: 867-969-2116  
E-mail: [rrdyesaa@northwestel.net](mailto:rrdyesaa@northwestel.net)

Norman Sterriah, TK Coordinator  
Phone: 867-969-2735  
E-mail: [sterriah@northwestel.net](mailto:sterriah@northwestel.net)

#### Liard First Nation

Chief and Council  
Phone: 867-536-5200  
Fax: 867-536-2332

Laurie Allen, Lands and Resources Director  
Phone: 867-536-2912  
Fax: 867-536-2109  
E-mail: [lallen@kaska.ca](mailto:lallen@kaska.ca)

---

### Energy, Mines and Resources

Bob Holmes - Director of Mineral Resources  
Phone: 867-667-3126  
Fax: 867-456-3899  
E-mail: [robert.holmes@gov.yk.ca](mailto:robert.holmes@gov.yk.ca)

---

### Yukon Archaeology

Ruth Gotthardt, Heritage Resources Unit, Department of Tourism and Culture  
Phone: 867-667-5983  
Fax: 867-667-5377  
E-mail: [Ruth.Gotthardt@gov.yk.ca](mailto:Ruth.Gotthardt@gov.yk.ca)

---

### RCMP (if human remains are suspected/discovered):

Ross River Detachment  
Corporal David Morin, Detachment Commander  
Phone: 1-867-969-5555  
E-mail: [david.g.morin@rcmp-grc.bc.ca](mailto:david.g.morin@rcmp-grc.bc.ca)

---

## **8 CULTURAL AWARENESS TRAINING**

Yukon Zinc Corporation will work with the Kaska Nation to develop a Cultural Awareness Training program. Training program content development will start in Fall 2007 and be complete in Spring 2008.

The Cultural Awareness training will include both heritage awareness and cultural awareness content. Cultural Awareness training will include subjects such as:

- Yukon First Nations' history
- Kaska history
- Kaska culture and worldview
- Kaska subsistence lifestyle and ties to the land
- Kaska relationship to the Wolverine Lake area
- Yukon Zinc Heritage Resource Protection Policy
- heritage and archaeology in the Yukon
- heritage-related legislation
- what is a historic resource?
- what is an archaeological site?
- why are historic resources important?
- what to do if you find a possible heritage resource, site or possible human remains?

There will be two components to the Cultural Awareness Training. The first component will be an orientation session. This session will be delivered to all employees and contractors when they are hired or contracted. The second component of the Cultural Awareness Training will be a Workshop. The orientation will be based on a summary of the contents of the Cultural Awareness Training Workshop. The Workshop sessions will be offered several times a year as required. It will be mandatory training for employees and contractors that are on contract or are staff for a longer period of time.

### **8.1 Training Schedule**

Training schedule will be as follows:

Newly hired staff or contractor (short-term – less than one year)

- Receives Orientation at point of hire.

Newly hired staff or contractor (long-term – more than one year)

- Receives Orientation at point of hire.
- Completes Workshop (Annually)

**Appendix A**

**Ross River Dena Council – Yukon Zinc Corporation  
Acknowledgement Letter**



To whom it may Concern;

**Re: Wolverine Project Heritage Resource Protection Plan**

This letter acknowledges that the Kaska Nation and Yukon Zinc Corporation collaboratively developed the Wolverine Project Heritage Resource Protection Plan. The Plan was developed between early July and October 2007.

The Kaska Nation and Yukon Zinc Corporation support this Plan and believe that through its implementation, heritage resources encountered during development and operation of the Wolverine Project will be protected.

Ross River Dena Council, on behalf of the Kaska, appointed a member to ensure Kaska input into the Plan. The Kaska representative met a number of times with Chief and Council, the TK Oversight Committee and Kaska Elders. The Kaska representative reviewed the products of this process with these groups and individuals and received their feedback. The feedback was incorporated into the Plan.

Yukon Zinc funded development of this Plan and thanks the Kaska for their participation and contributions. Collectively our work included:

- discussion and preparation of the Plan objectives
- preparation of the outline and draft Plans
- conference calls to review the draft Plans
- development of a Wolverine Project-Kaska territory map

The Kaska Nation and Yukon Zinc Corporation look forward to continuing our respectful relationship and working together to develop the Wolverine Project Cultural Awareness Training.

Respectfully;

A handwritten signature in blue ink, appearing to read "P. Ladyman", is written over a horizontal line.

Pamela Ladyman, VP Environment and  
Community Affairs, Yukon Zinc  
Date: Sept 27, 2007

A handwritten signature in blue ink, appearing to read "Jack Caesar", is written over a horizontal line.

Jack Caesar, Chief, Ross River Dena  
Council  
Date: Sept 25/07