



A NORTHAIR GROUP  
COMPANY  
SUITE 860 - 625 HOWE STREET •  
VANCOUVER, BC • V6C 2T6  
CANADA • TEL: (604) 687-7545 FAX:  
(604) 689-5041

September 10, 2007

Mr. Robert Holmes,  
Director, Mineral Recourses  
Energy Mines and Recourses  
Box 2703, Whitehorse Yukon, Y1A 2C6

Dear Sir:

**Re: QLM-0001 – Extension of Airstrip**

On behalf of Minto Explorations Ltd., I wish to provide the plans for the layout of the airstrip at the Minto Mine.

These facilities are required for the mining activities authorized in QML 9902 and QML-0001

Please do not hesitate to contact me if you have any questions.

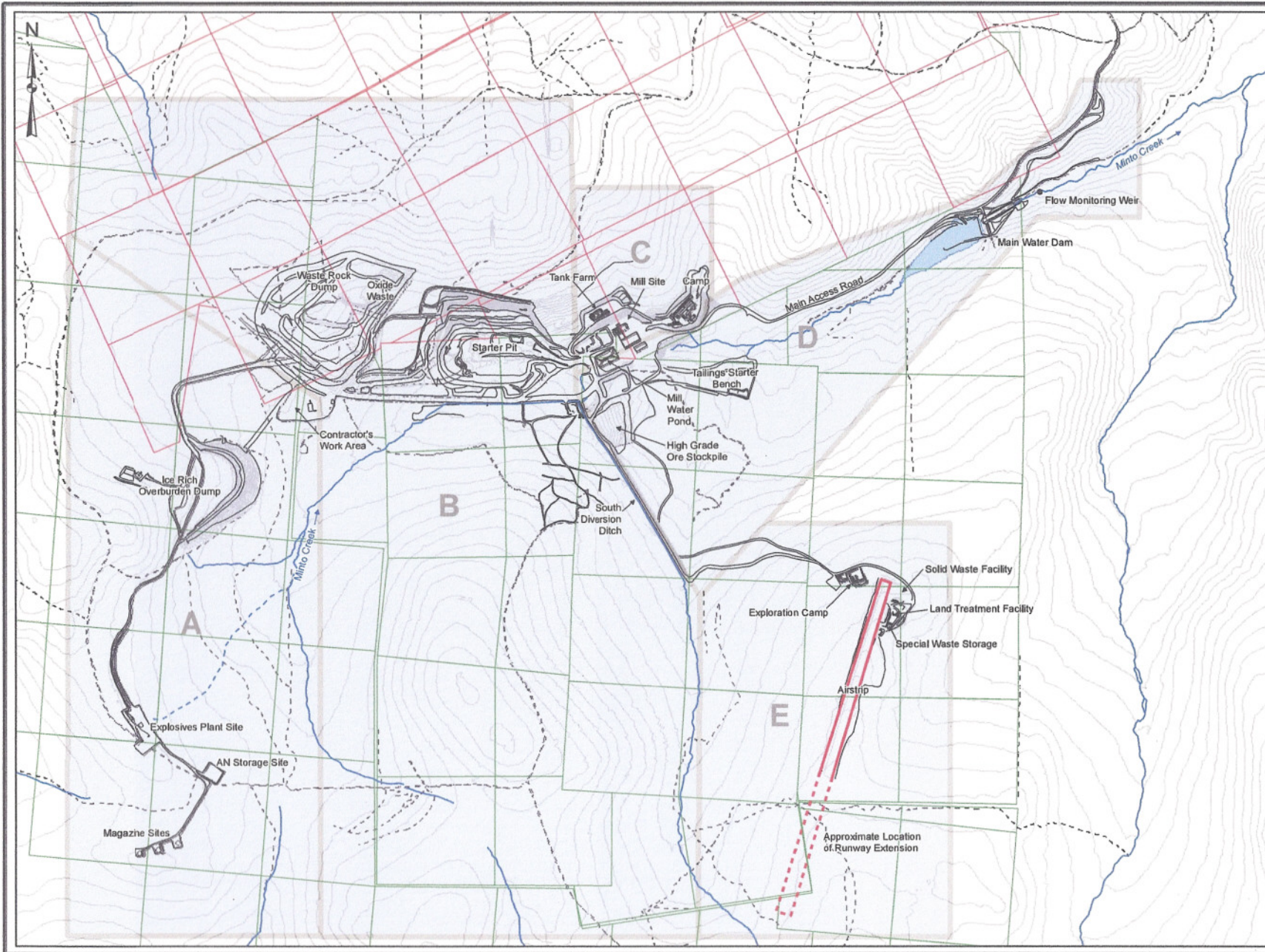
Sincerely,  
MINTO EXPLORATIONS LTD.

A handwritten signature in cursive script, appearing to read "William W. Dunn".

William W. Dunn, P. Eng.  
Manager, Regulatory & Corporate Affairs

cc: Darin Isaac, Chief SFN  
Beverly Brown, SFN Lands Dept.  
Glenna Southwick, Whitehorse Mining Recorder  
Arlene Kyle, A/Mine License Officer  
Steve Colp, CS&I Inspector

232



# Minto Mine Project



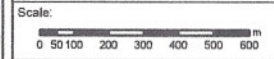
## Legend

- Access Road
- Exploration Road
- Contour
- Water Course
- Intermittent Water Course
- Water Body
- Minto Claim - DEF
- Minto Claim - MINTO
- Surface Lease
- Existing Runway
- Runway Extension (Approximate Location)

Projection: UTM Zone 8 NAD83  
 Units: Meters  
 NTS: 105/11  
 Basedata obtained from Yukon Engineering Services  
 Nov3\_05\_status\_plan.dwg and from Minto Mine  
 Site Map for Access, June 21, 2007.dxf

**Figure 1**

## Runway Extension



Drawn by: HD    Checked by: BD    Date: Sept. 2007  
 Doc File: D:\Projects\Minto\Access\AccessExtension\_South\AccessExtension.dwg