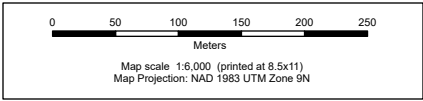
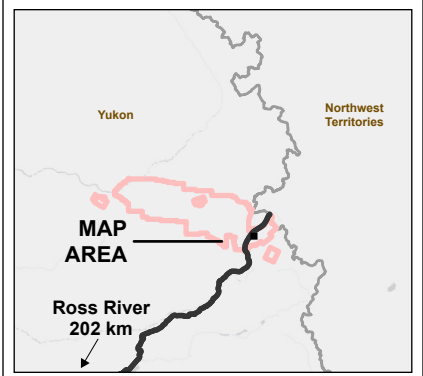


Fireweed Metals Corp. Mine Footprint - Tom Property

- Legend**
- Historic (closed) adit
 - Discharge Channel
 - North Canol Road
 - Active Site Road
 - Inactive Site Road
 - Fireweed Operational Area
 - Reclaimed Waste Rock Stockpiles
 - Camp Infrastructure
 - Project Boundary



Data Sources

- Inset Basemap, World Light Gray Canvas Base: Esri, © OpenStreetMap contributors, HERE, Garmin, USGS, EPA, NPS, NRCAN

Disclaimer
Fireweed Metals Corp. has made every effort to verify this map is free of errors. Since the map has been developed from a variety of digital data sources, it should not be relied upon for purposes that would require a greater level of accuracy.

Permit Number LQ00490a	Date: 2022-11-16
------------------------	------------------



Path: L:\PROJECT\2022\WH02\0355_FWZ_RegulatorySupport\2022\0355_FWZ_RegSupport.aprx