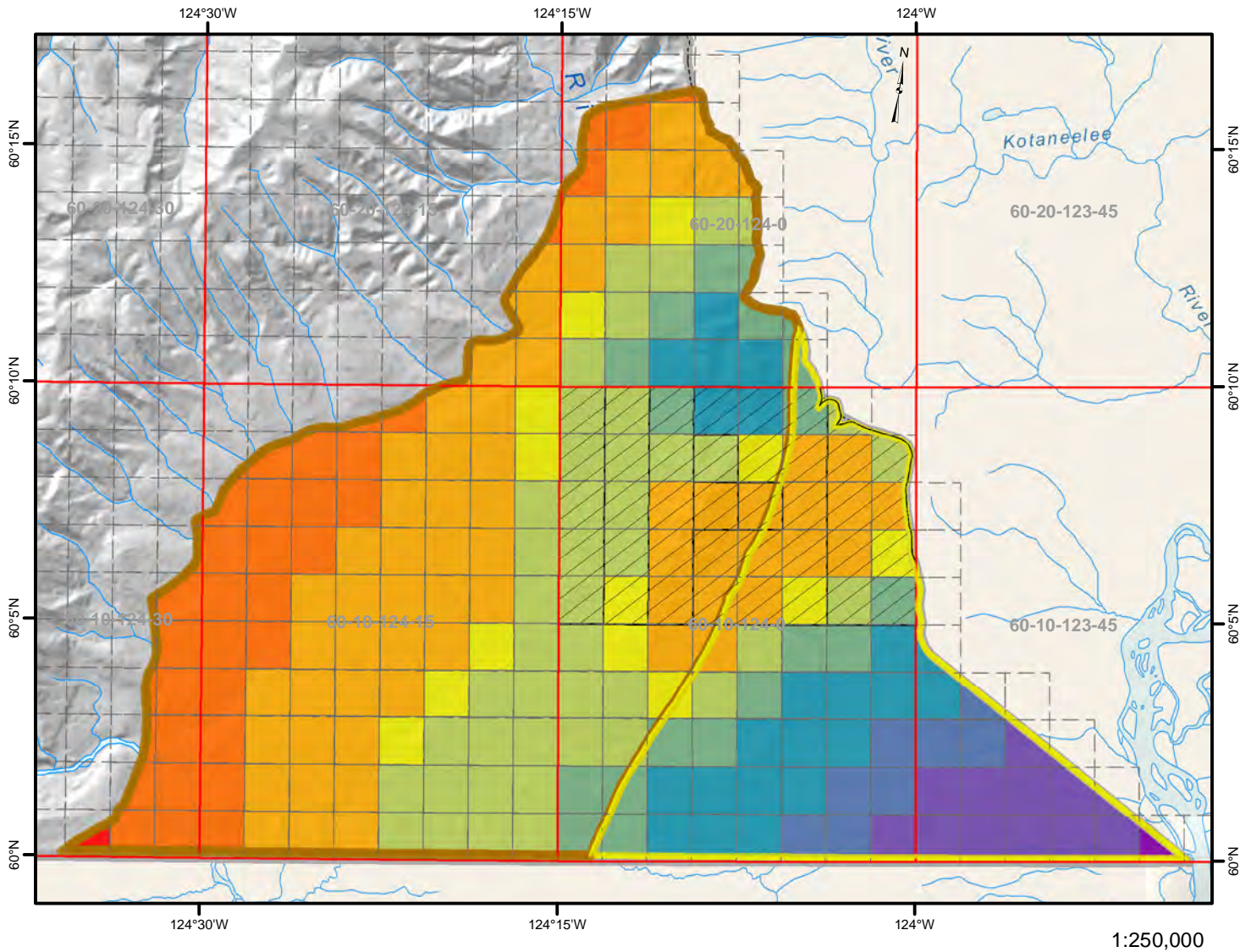
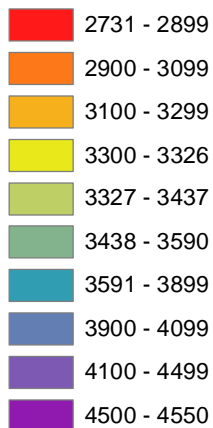


# Liard basin (Yukon) Resource Assessment Area Exshaw - Patry Shale - Average Depth



## Legend

### Exshaw-Patry- average depth, mTVD



- Oil and Gas Grid Area
- Oil and Gas Grid Section
- Active Oil and Gas Dispositions

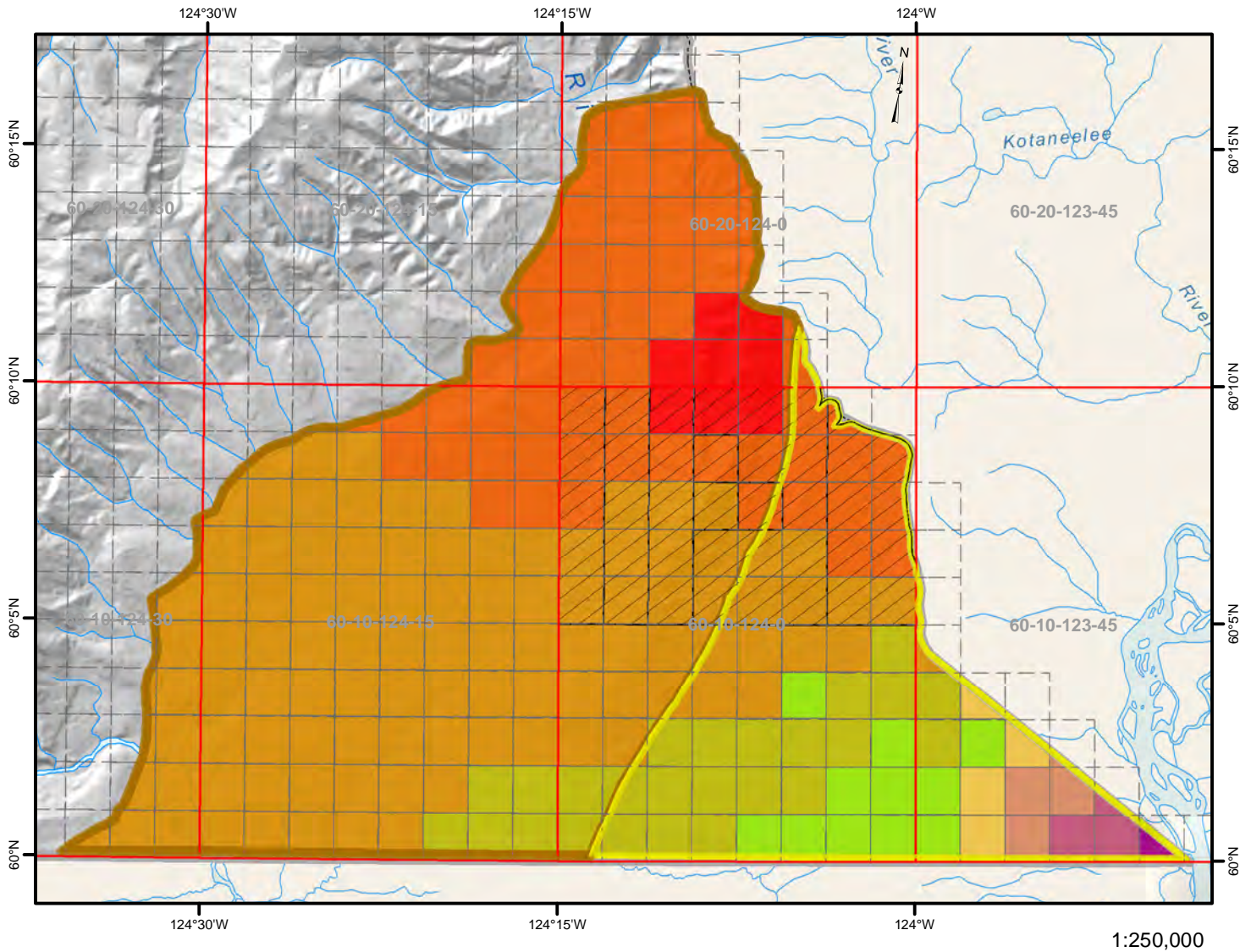
### Liard basin resource assessment area

- Undeformed
- Deformed

Gridded Yukon resource assessment parameters and volumes courtesy of the NEB



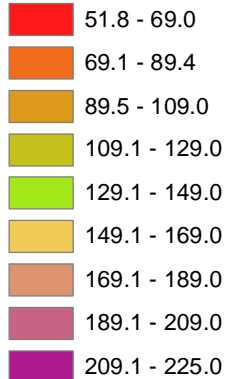
# Liard basin (Yukon) Resource Assessment Area Exshaw - Patry Shale - Average Net Pay



## Legend

### Exshaw-Patry- Average Net Pay

#### mTVD

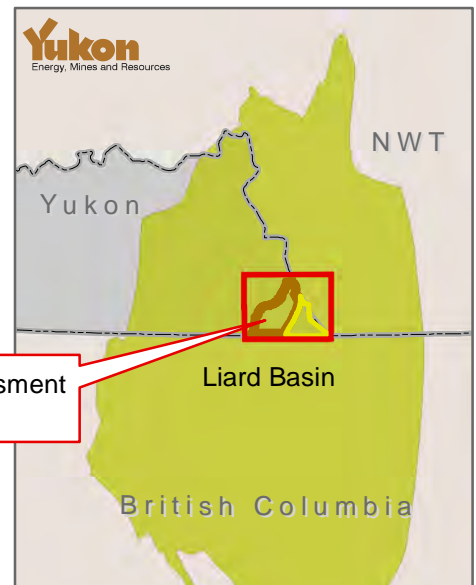


- Oil and Gas Grid Area
- Oil and Gas Grid Section
- Active Oil and Gas Dispositions

### Liard basin resource assessment area

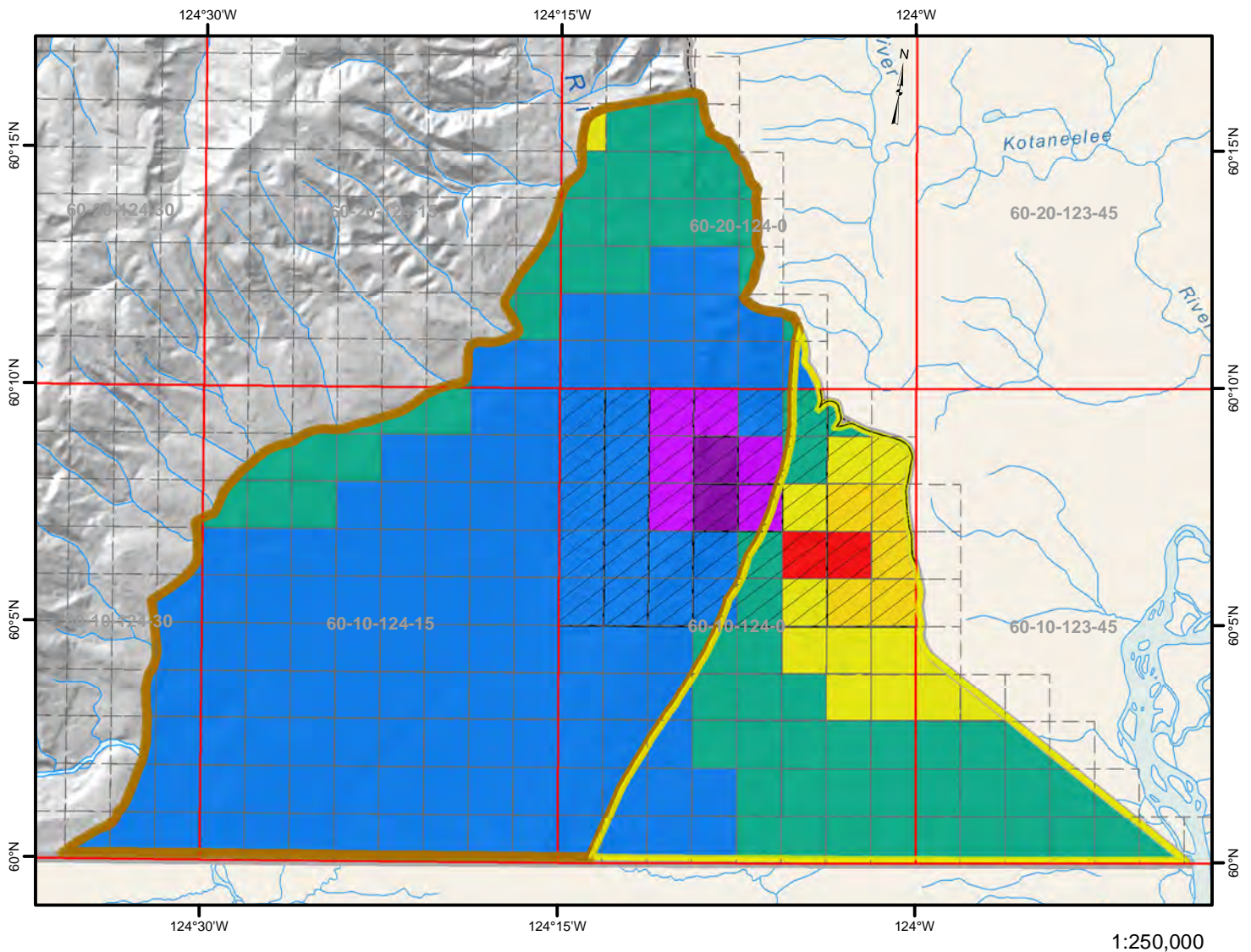
- Undeformed
- Deformed

Gridded Yukon resource assessment parameters and volumes courtesy of the NEB





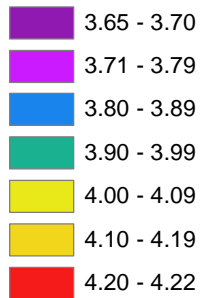
# Liard basin (Yukon) Resource Assessment Area Exshaw - Patry Shale - Average TOC



## Legend

### Exshaw-Patry- Average TOC

#### Wt. %

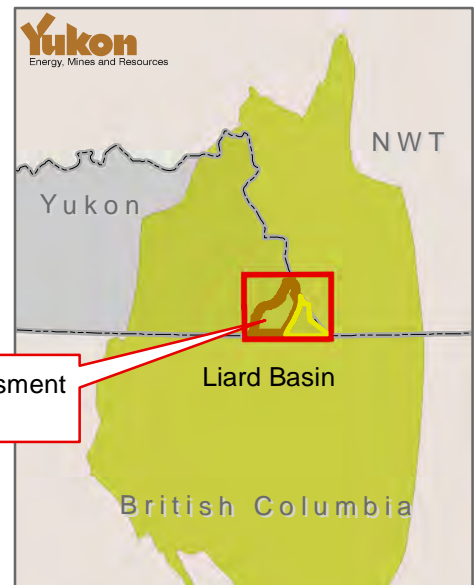


- Oil and Gas Grid Area
- Oil and Gas Grid Section
- Active Oil and Gas Dispositions

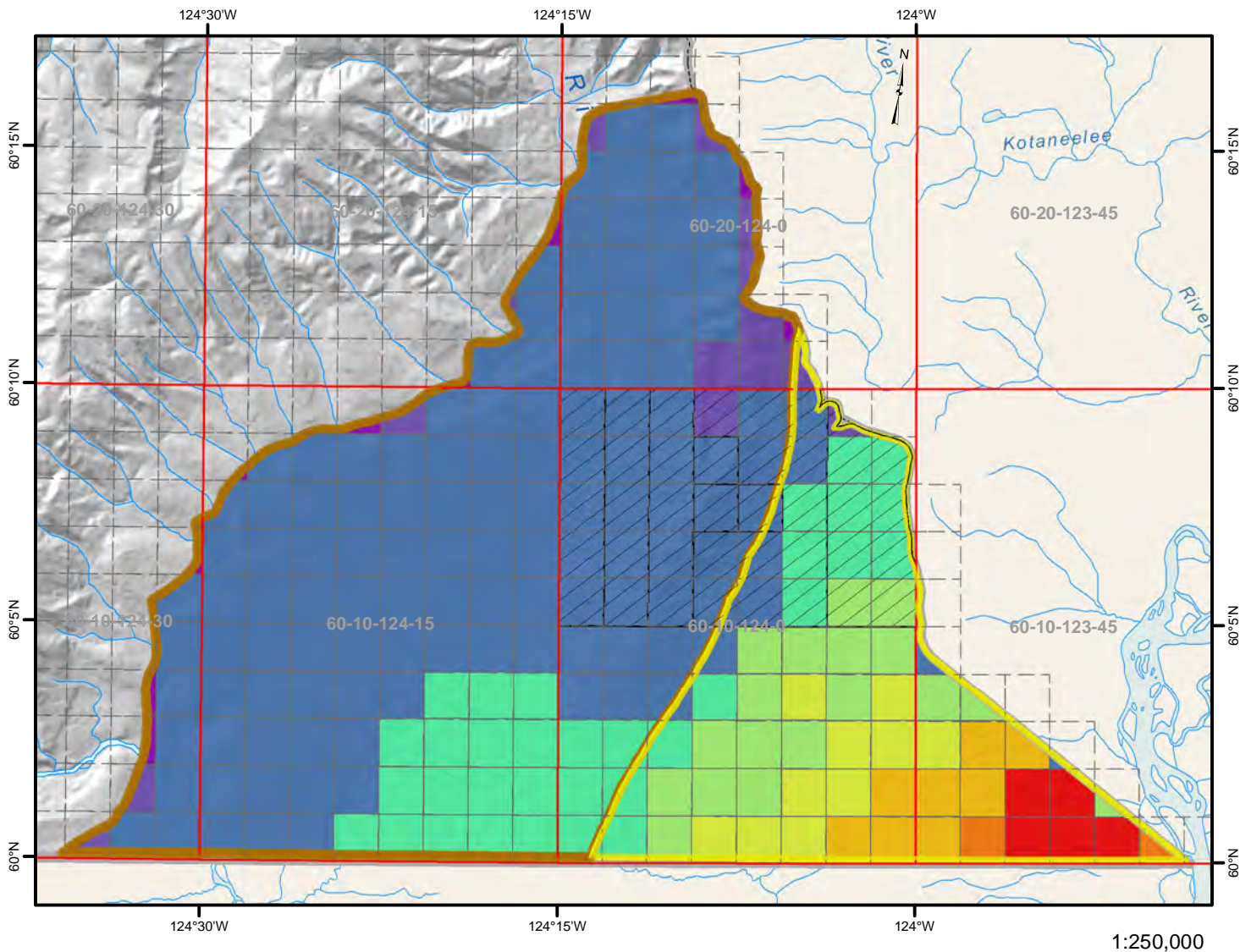
### Liard basin resource assessment area

- Undeformed
- Deformed

Gridded Yukon resource assessment parameters and volumes courtesy of the NEB



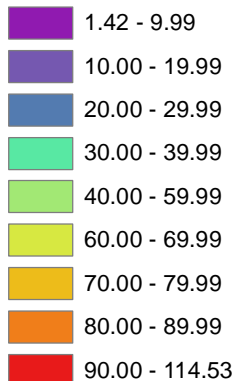
# Liard basin (Yukon) Resource Assessment Area Exshaw-Patry - Marketable P50 resource



## Legend

### Exshaw - Patry - Adjusted Marketable P50 resource

#### Bcf



- Oil and Gas Grid Area
  - Oil and Gas Grid Section
  - Active Oil and Gas Dispositions
- Liard basin resource assessment area**

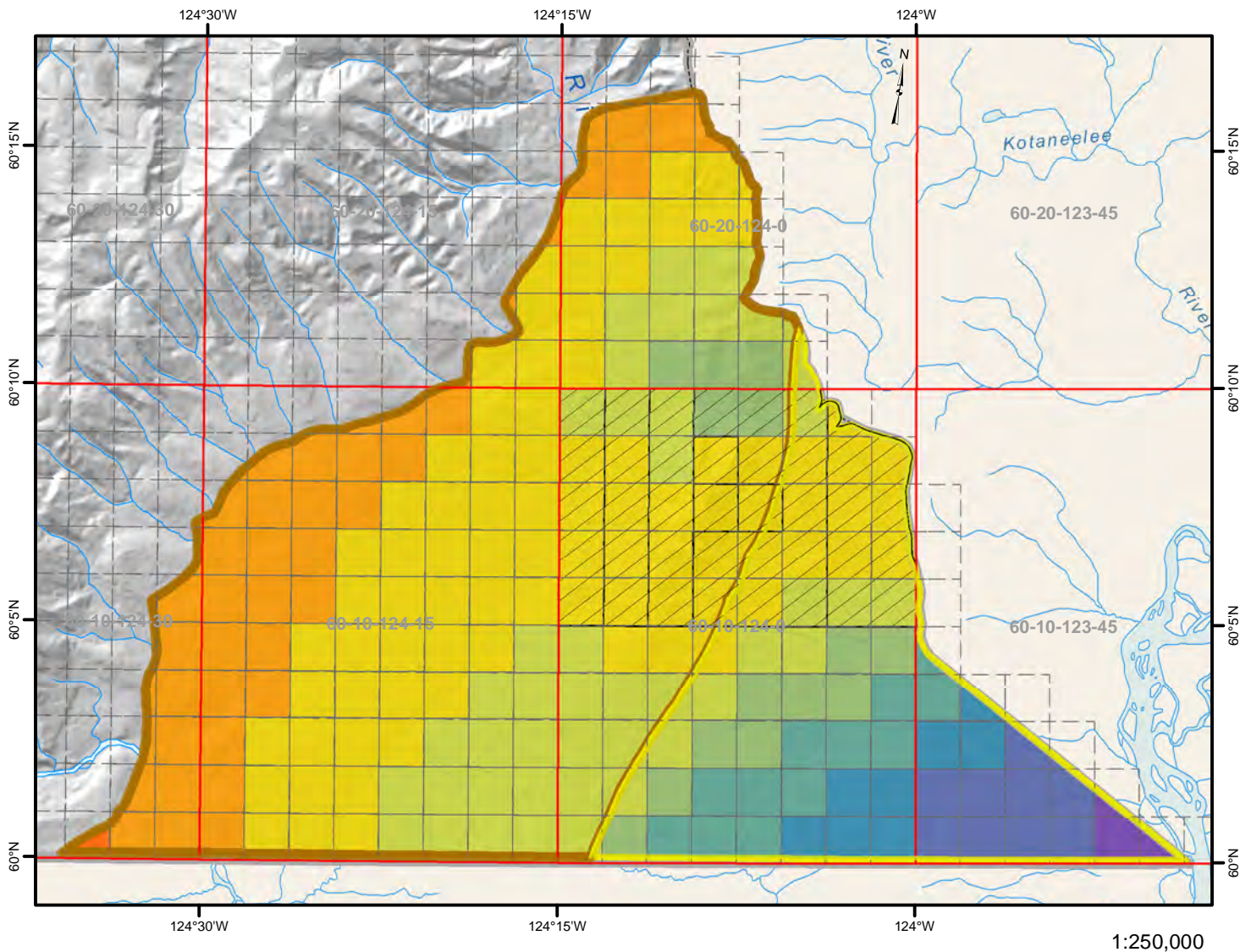
- Undeformed
- Deformed

Gridded Yukon resource assessment parameters and volumes courtesy of the NEB



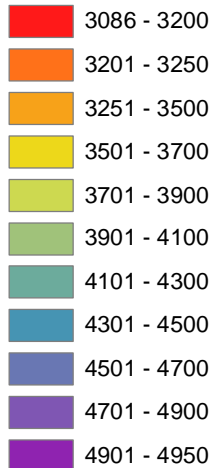


# Liard basin (Yukon) Resource Assessment Area Horn River Shale - Average Depth



## Legend

### Horn River - average depth, mTVD

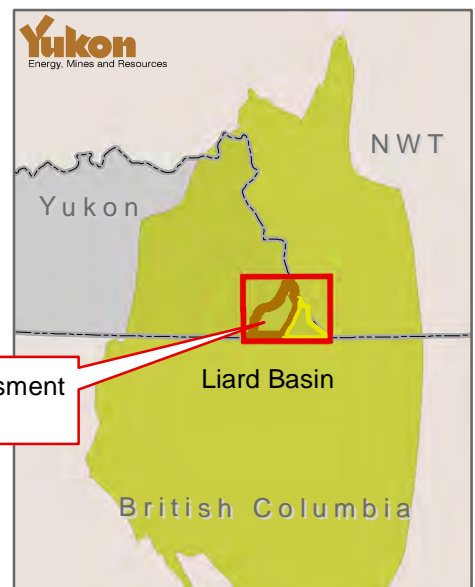


- Oil and Gas Grid Area
- Oil and Gas Grid Section
- Active Oil and Gas Dispositions

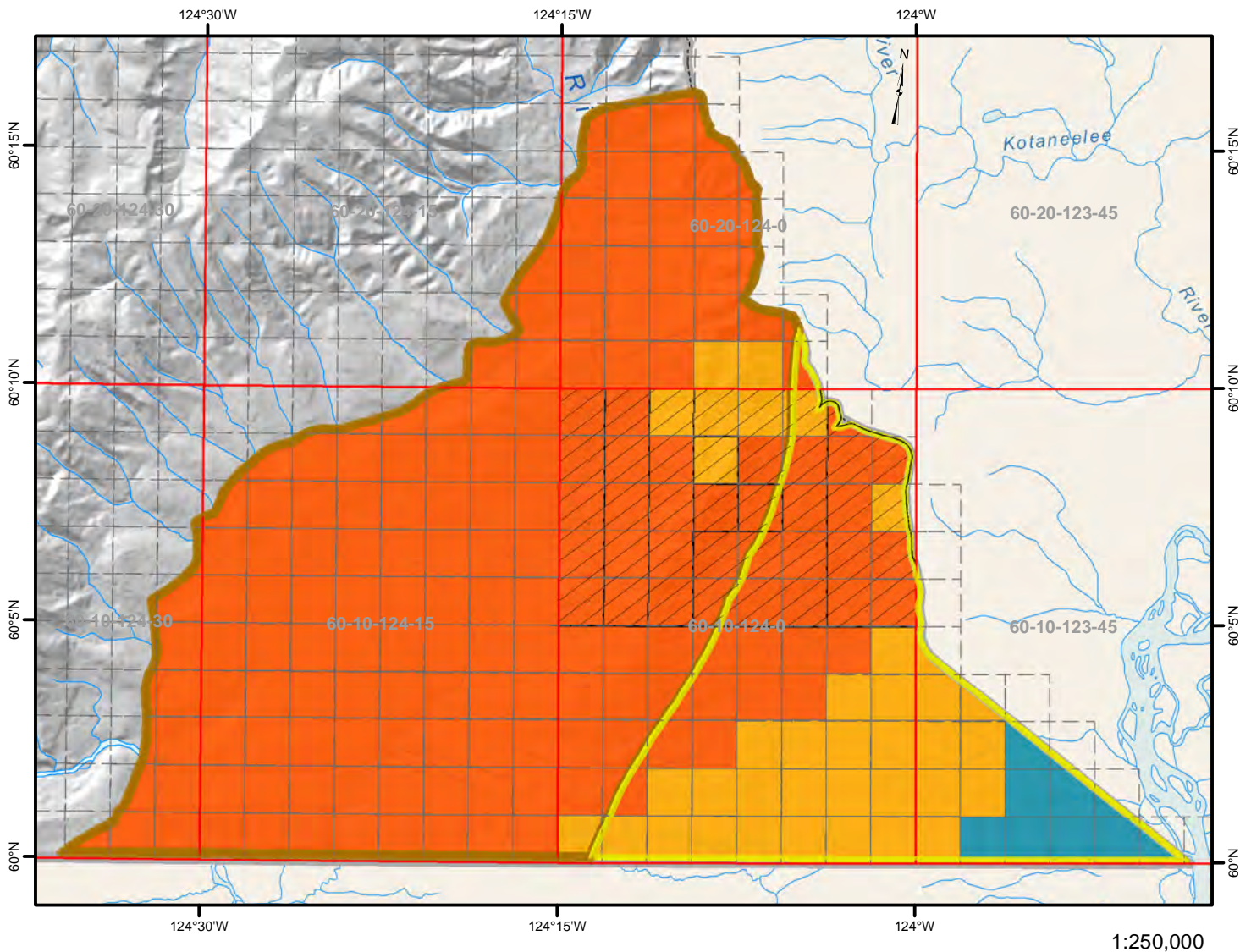
### Liard basin resource assessment area

- Undeformed
- Deformed

Gridded Yukon resource assessment parameters and volumes courtesy of the NEB



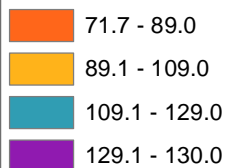
# Liard basin (Yukon) Resource Assessment Area Horn River shale - Average Net Pay



## Legend

### Horn River - Average Net Pay

#### mTVD



Oil and Gas Grid Area

Oil and Gas Grid Section

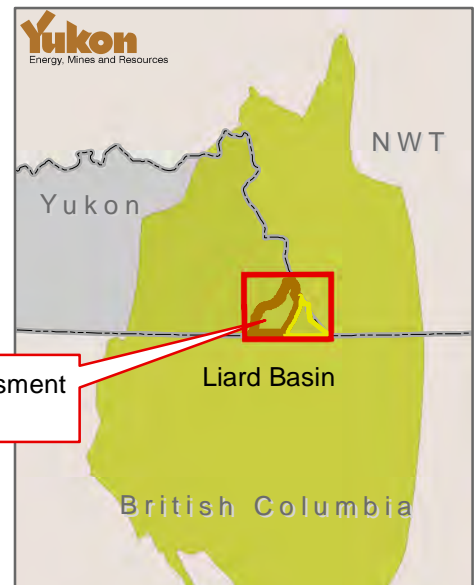
Active Oil and Gas Dispositions

### Liard basin resource assessment area

Undeformed

Deformed

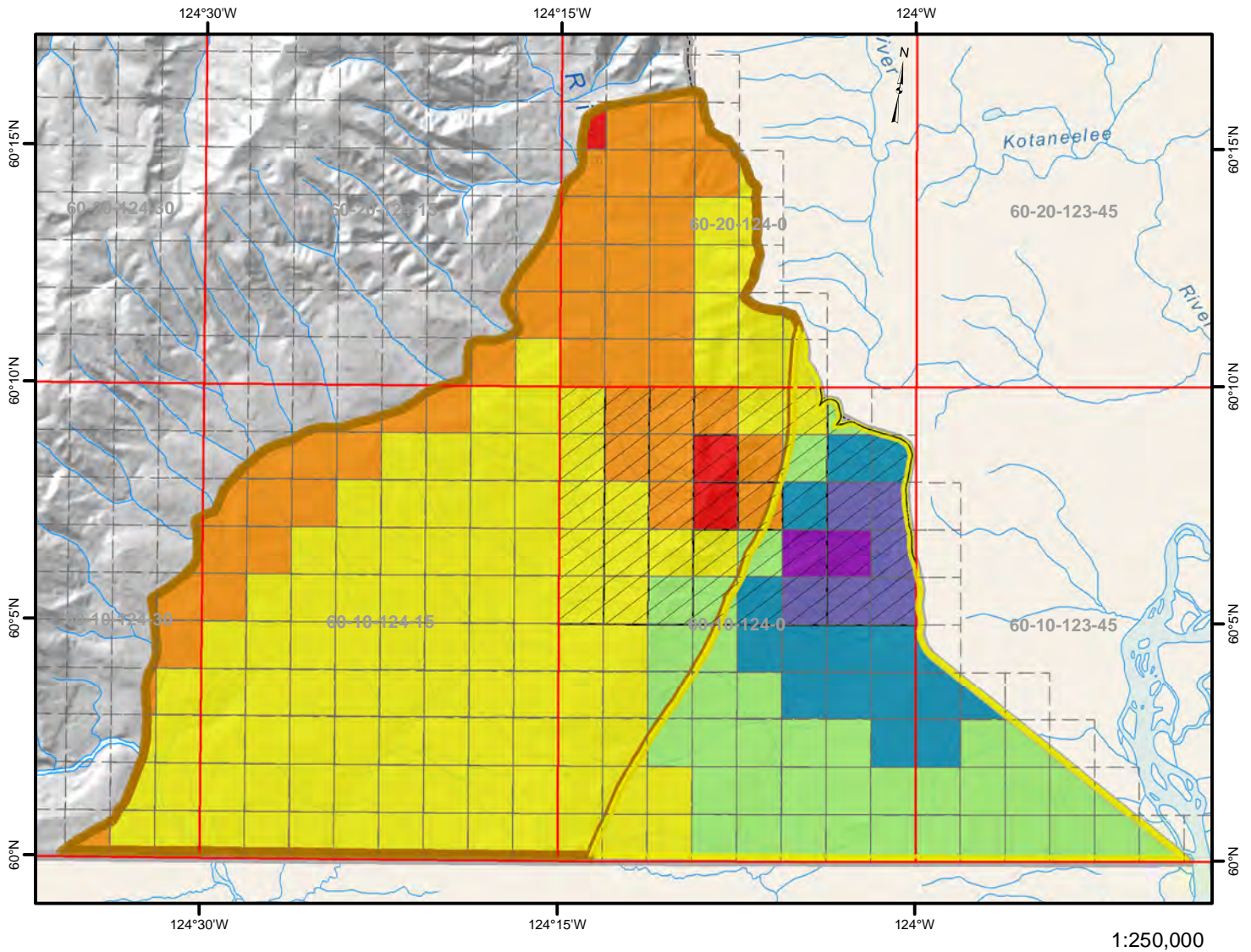
Gridded Yukon resource assessment parameters and volumes courtesy of the NEB



Resource Assessment Area



# Liard basin (Yukon) Resource Assessment Area Horn River Shale - Average TOC



## Legend

### Horn River - TOC

#### Wt. %

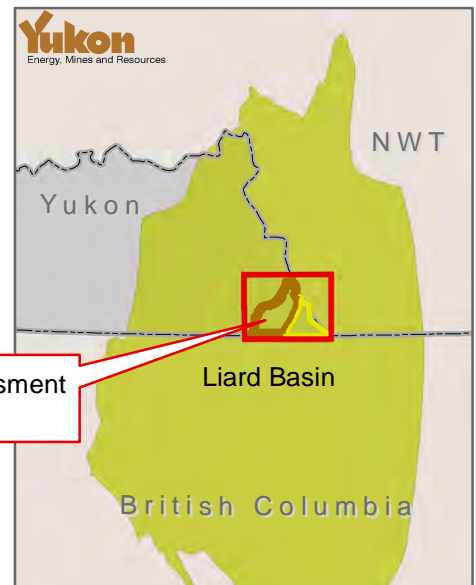


- Oil and Gas Grid Area
- Oil and Gas Grid Section
- Active Oil and Gas Dispositions

### Liard basin resource assessment area

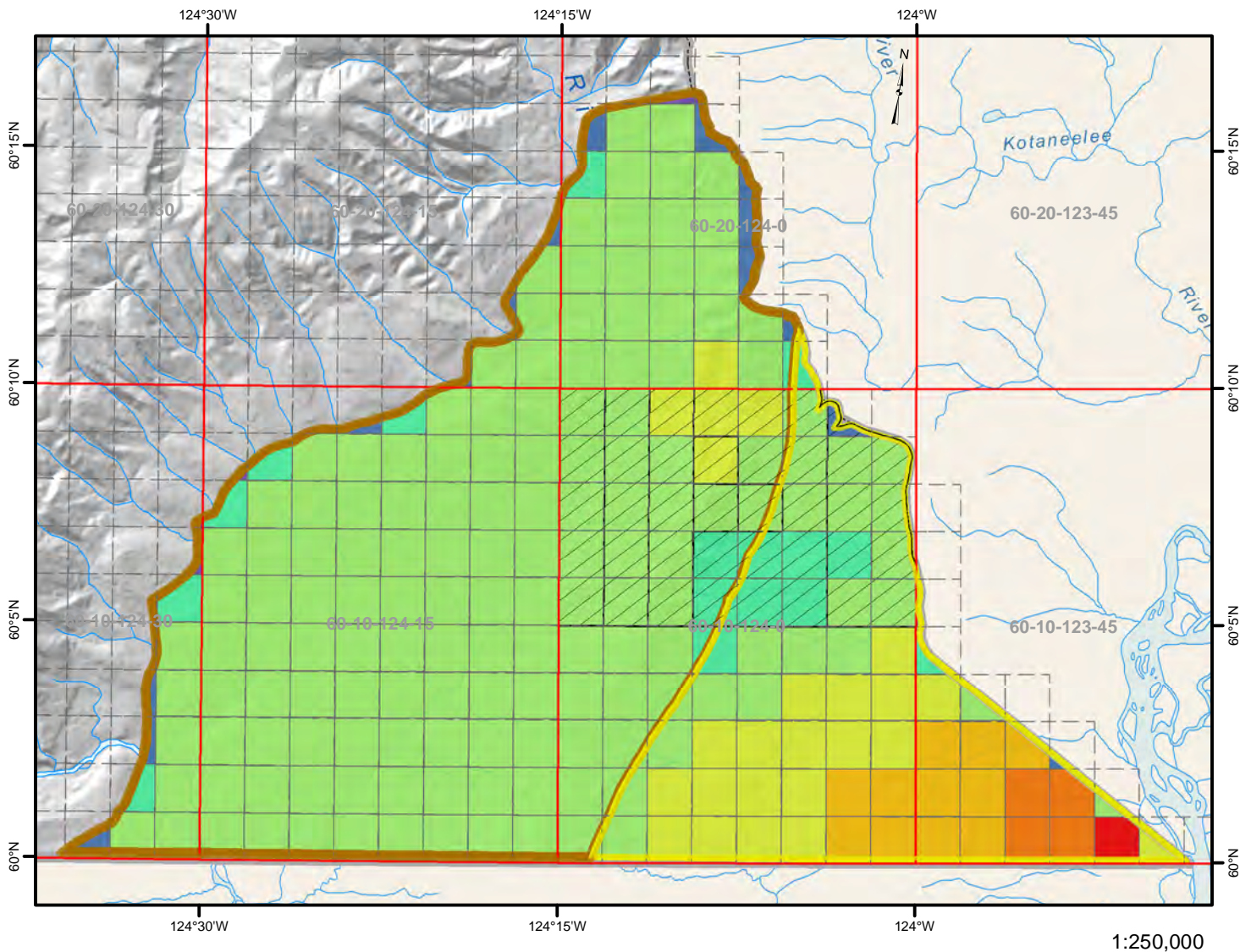
- Undeformed
- Deformed

Gridded Yukon resource assessment parameters and volumes courtesy of the NEB



Resource Assessment Area

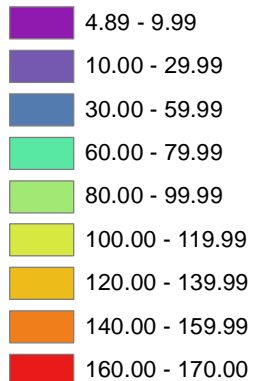
# Liard basin (Yukon) Resource Assessment Area Horn River shale -Dry GIP P50



## Legend

### Horn River - dry GIP P50 resource

#### Bcf



- Oil and Gas Grid Area
- Oil and Gas Grid Section
- Active Oil and Gas Dispositions

### Liard basin resource assessment area

- Undeformed
- Deformed

Gridded Yukon resource assessment parameters and volumes courtesy of the NEB

