



**Company:** DEVON CANADA CORPORATION  
**Well Name:** DEVON EAGLE PLAINS K-58  
**Field:** EAGLE PLAINS  
**County:** Yukon  
**Country:** Canada  
**Province:** YUKON

<b>FileName:</b> DEV631H.las <b>Data Presented by:</b> Schlumberger DataView	
<b>Location:</b> Unique Well ID: 300K586610136450 66 7' 34.8" N 300K586610136450 UWID 300K58661036450	<b>Section:</b> <b>Township:</b>
<b>Elevations:</b> Permanent Datum Elev: 599.299 M Permanent Datum: GROUND LEVEL Drilling Measured From: KELLY BUSHING Log Measured From: KELLY BUSHING	<b>Kelly Bushing:</b> 604.299 M <b>Drilling Floor:</b> 604.000 M <b>Ground/sea Floor:</b> 599.299 M <b>Height Above Datum:</b> 4.99999 M
<b>Acquisition Date:</b> 28-Mar-2005 <b>Run Number:</b> ONE <b>Depth Driller:</b> 1278.00 M <b>Depth Logger:</b> 1278.00 M <b>Top Log Interval:</b> 10.00 M <b>Bottom Log Interval:</b> 1272.50 M <b>Time Circ Stopped:</b> <b>Time Log at Bottom:</b> <b>Max Recorded Temp:</b> <b>Unit Number:</b> <b>Service Location:</b> <b>Recorded By:</b> <b>Witnessed By:</b>	<b>Bit Size:</b> 222.00 MM <b>from:</b> M <b>to:</b> 1278.00 M <b>Csg size:</b> Wt: <b>from:</b> to: <b>Casing Bottom Logger:</b> <b>Type Fluid in Hole:</b> <b>Dens:</b> Vis: <b>pH:</b> Fid Loss: 7.50 C3 <b>Sample Source:</b> <b>Rm:</b> @ <b>Rmf:</b> @ <b>Rmc:</b> @ <b>Borehole Salinity:</b>

SPONTANEOUS POTENTIAL (SP)

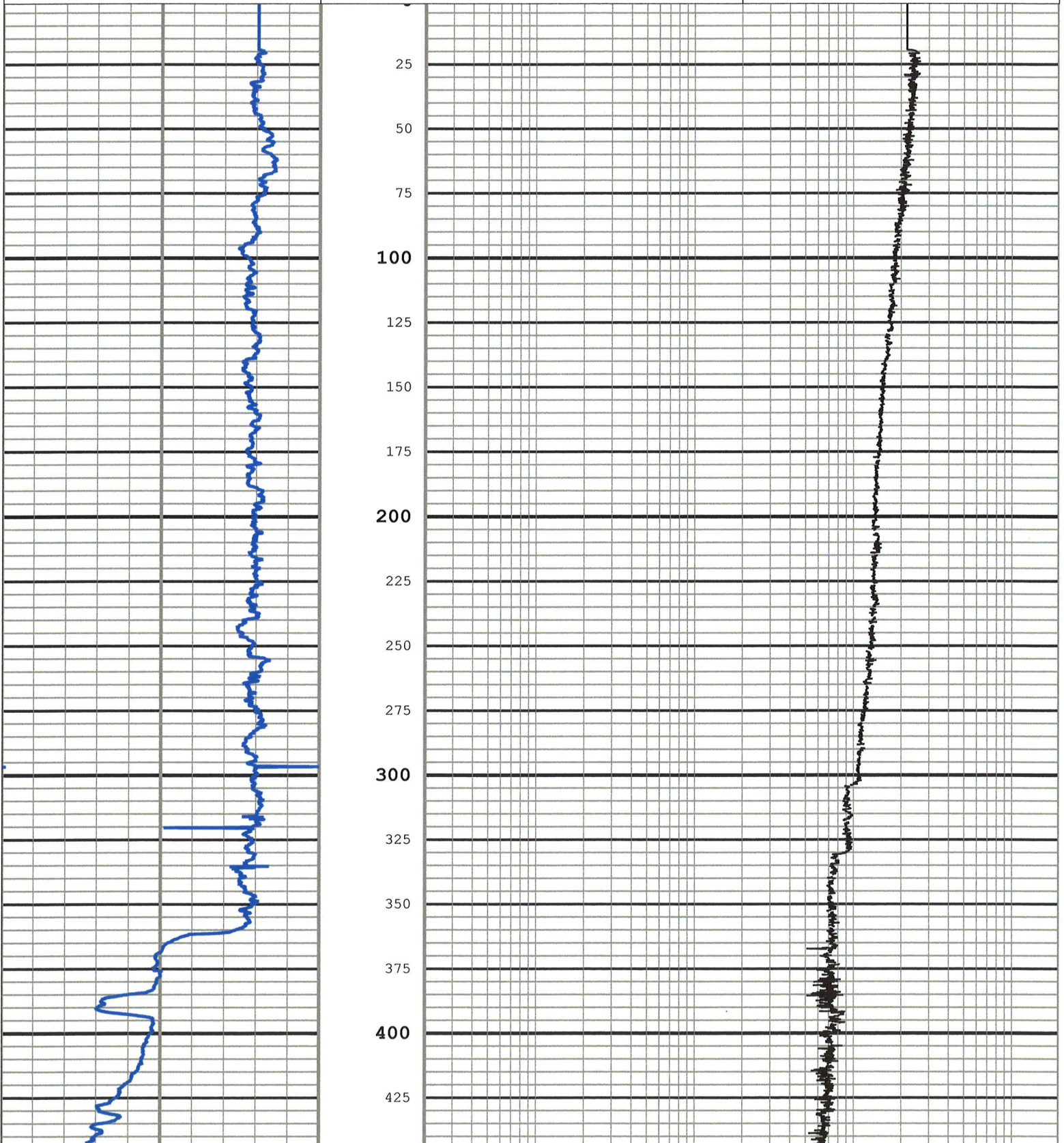
-160 MV 40

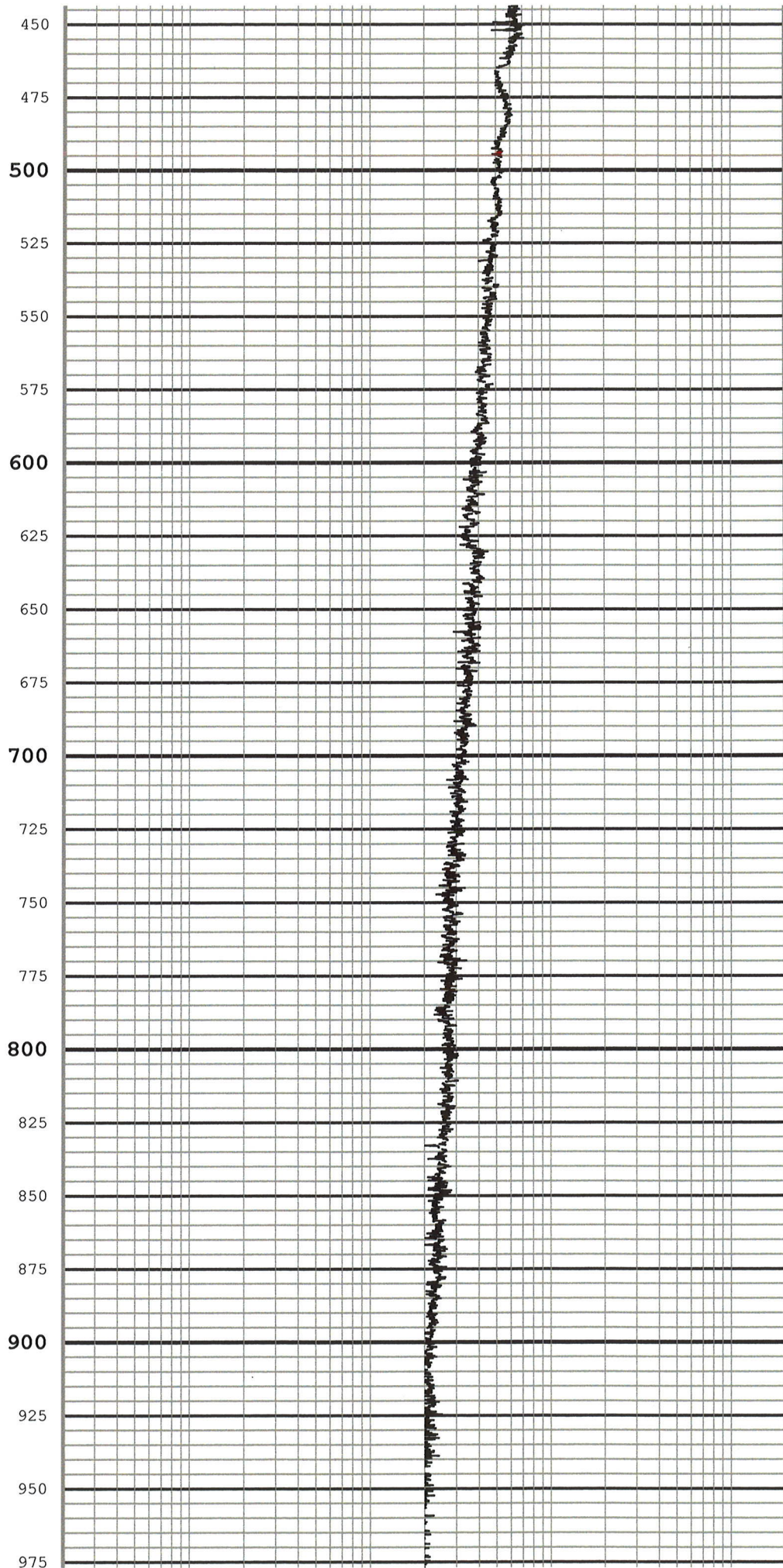
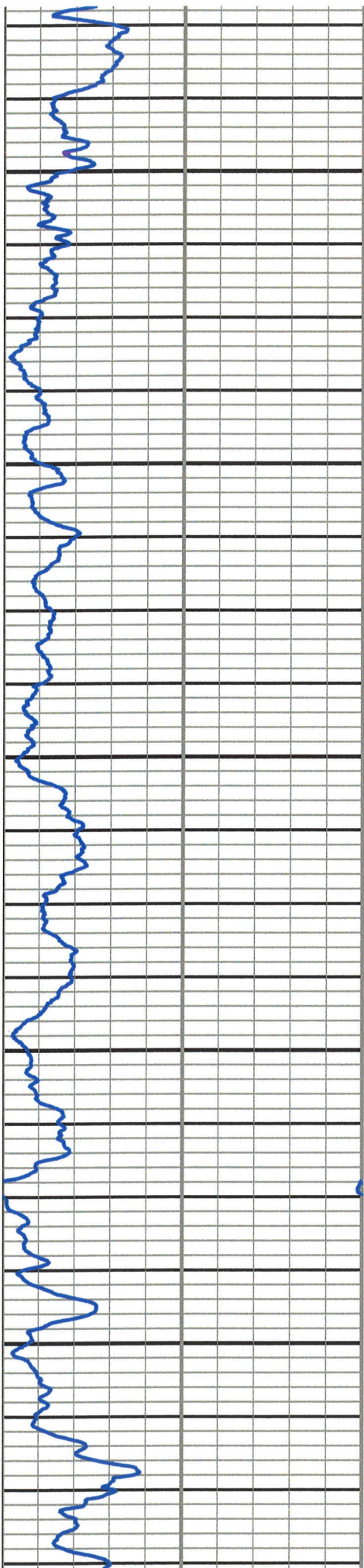
HRCC CAL. CALIPER SC (HCAL)

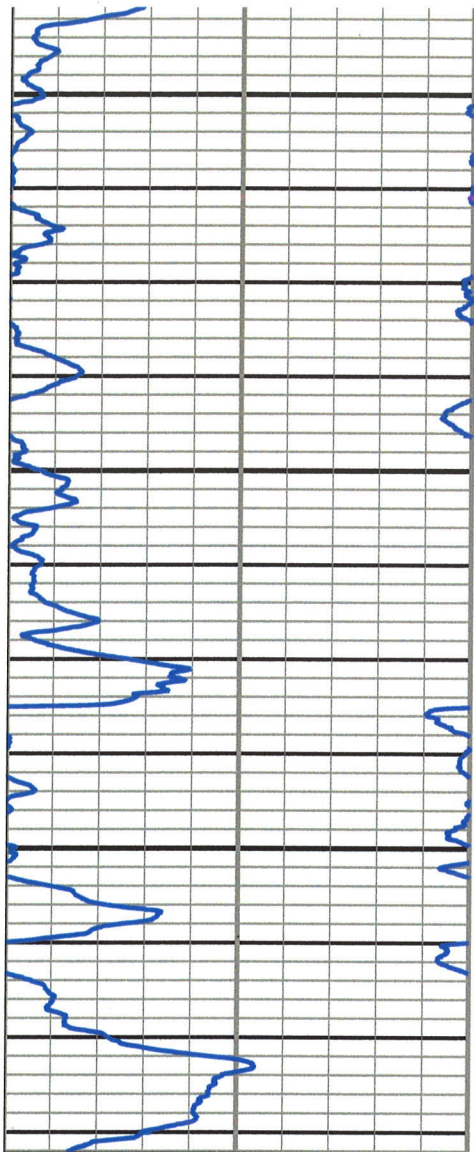
6 MM 16

CABLE TENSION (TENS)

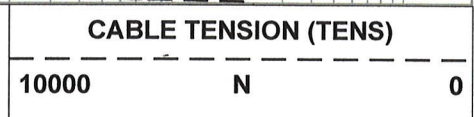
10000 N 0







1000  
1025  
1050  
1075  
1100  
1125  
1150  
1175  
1200  
1225  
1250  
1275



**HRCC CAL. CALIPER SC (HCAL)**  
 6                      MM                      16

---

**SPONTANEOUS POTENTIAL (SP)**  
 -160                      MV                      40

Format: Logrithmic Resistivity 3Track    Vertical Scale: 5cm per 100 meters    Creation Date: Thu, May 29, 2014, 11:27:48 AM