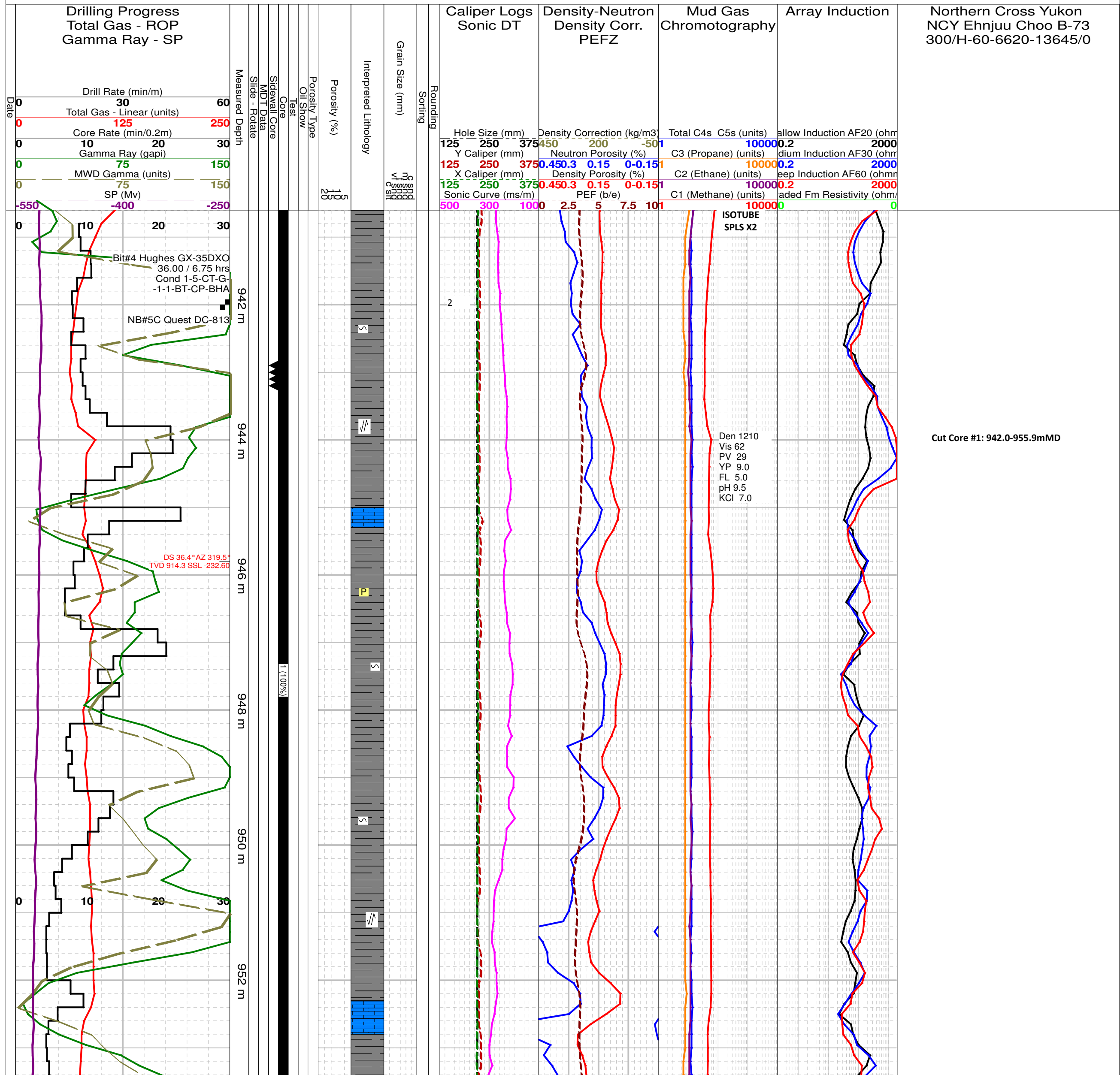
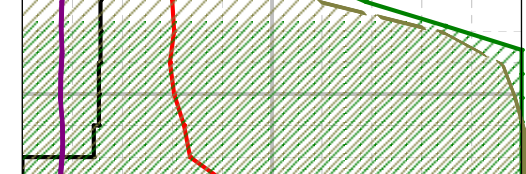


Expanded Core Log (1:48) May 6, 2013
Core #1 Interval: 940.60m to 954.52m Cut: 13.92m Recovered: 13.92m (100%)





954 m

SP (Mv)	-160	-35	90
MWD Gamma (units)	0	75	150
Gamma Ray (gapi)	0	75	150
Core Rate (min/0.2m)	0	10	20
Total Gas - Linear (units)	0	125	250
Drill Rate (min/m)	0	30	60

Drilling Progress
Total Gas - ROP
Gamma Ray - SP

Measured Depth

Slide - Rotate

MDT Data

Sidewall Core

Core

Test

Oil Show

Porosity Type

Porosity (%)

Interpreted Lithology

Grain Size (mm)

Sorting

Rounding

Caliper Logs

Sonic DT

Density-Neutron

Density Corr.

PEFZ

Mud Gas

Chromotography

Array Induction

Resistivity

AF60

AF30

AF20

Resistivity

Resistivity

Resistivity

Resistivity

Resistivity

Resistivity

Resistivity

Resistivity

Resistivity

Resistivity

Resistivity

Resistivity

Resistivity

Resistivity

Resistivity

Resistivity

Resistivity

Resistivity

Resistivity

Resistivity

Resistivity

Resistivity

Resistivity

Resistivity

Resistivity

Resistivity

Resistivity

Resistivity

Date

5

Grain Size (mm)

Rounding

Caliper Logs
Sonic DT

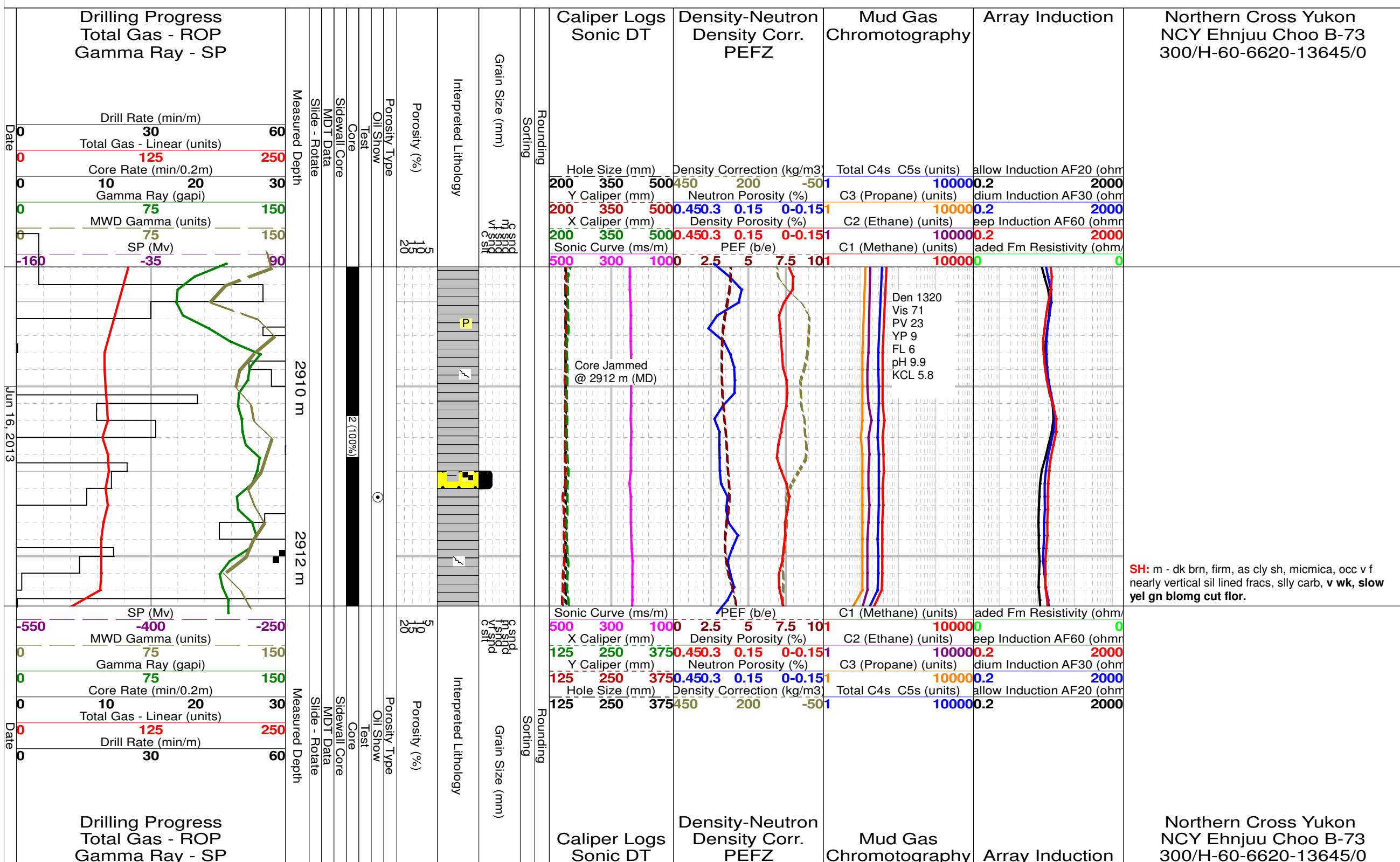
Density-Neutron
Density Corr.
PEFZ

Mud Gas
Chromotography

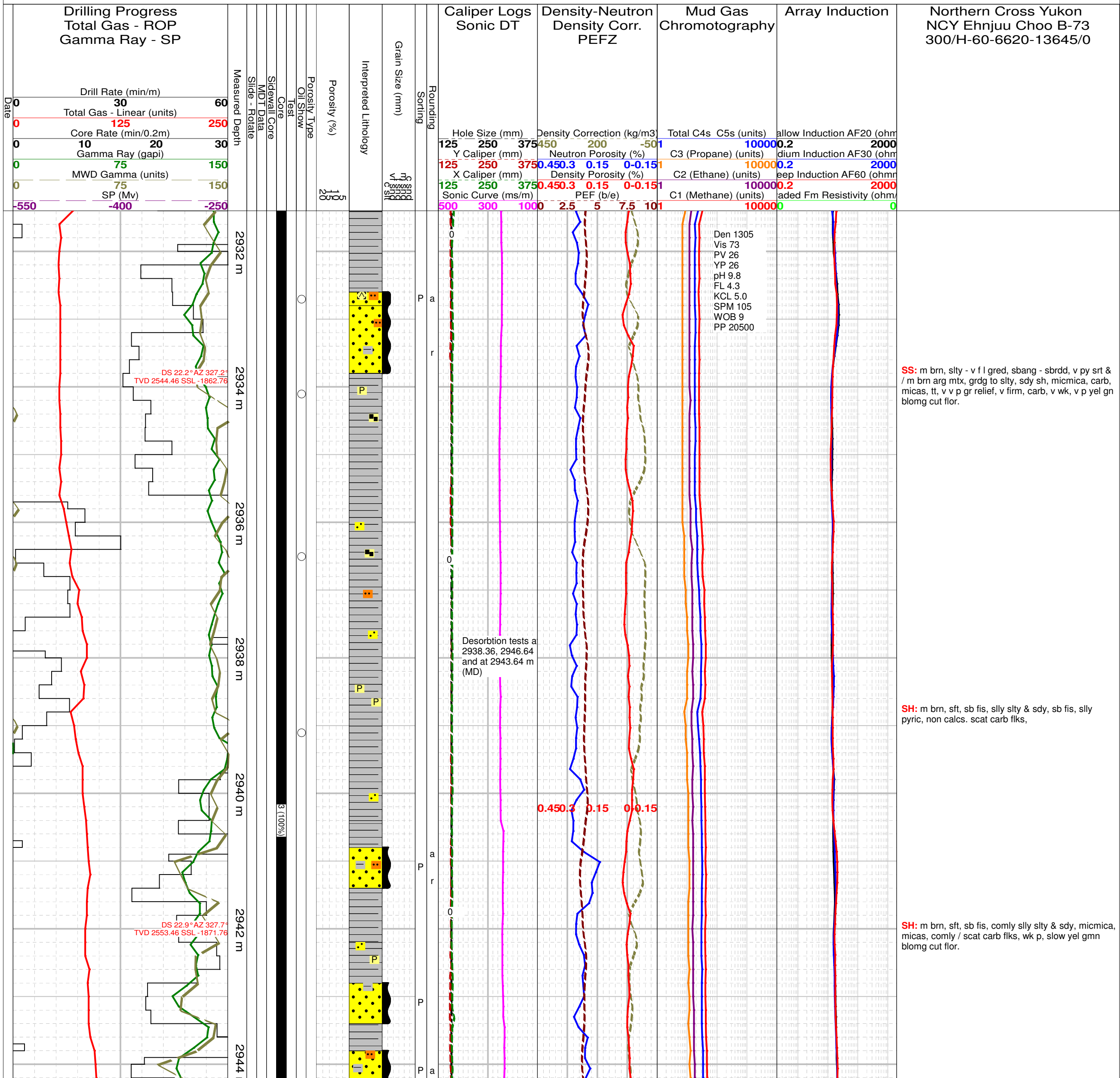
Array Induction

Northern Cross Yukon
NCY Ehnjuu Choo B-73
300/H-60-6620-13645/0

Expanded Core Log (1:48)
Core #2 Interval: 2908.59m to 2912.59m Cut: 4m Recovered: 4m (100%)



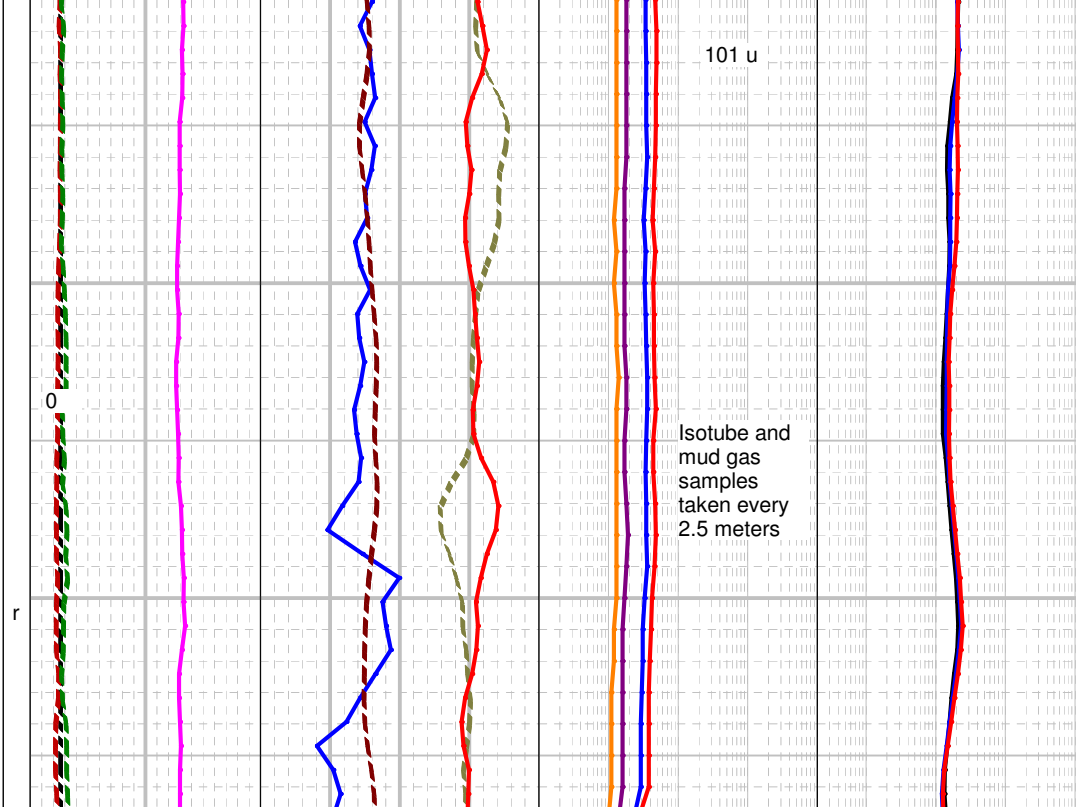
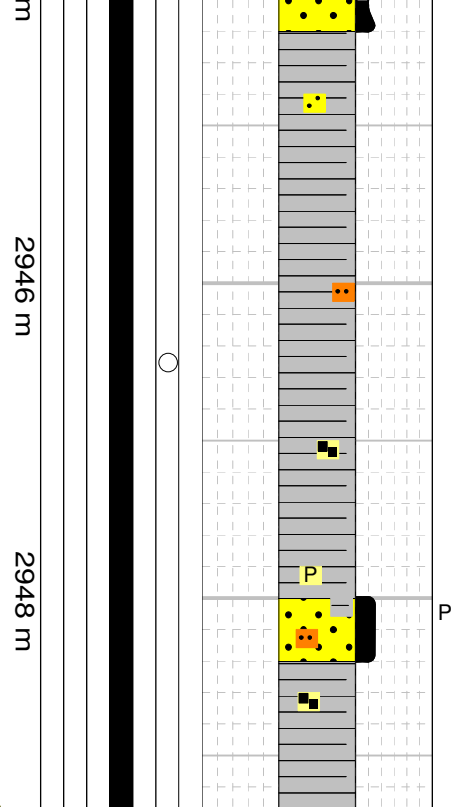
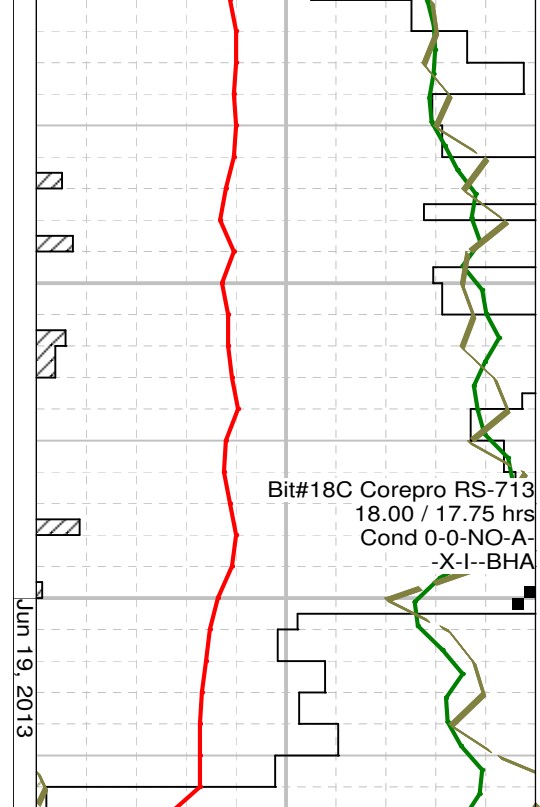
Expanded Core Log (1:48) Jun 18, 2013
Core #3 Interval: 2931.40m to 2949.40m Cut: 18m Recovered: 18m (100%)



SS: m brn, slty - v f l gred, sbang - sbrdd, v py srt & / m brn arg mtx, grdg to slty, sdy sh, micmica, carb, micas, tt, v v p gr relief, v firm, carb, v wk, v p yel gn blomg cut flor.

SH: m brn, sft, sb fis, slly slty & sdy, sb fis, slly pyric, non calcs. scat carb flks,

SH: m brn, sft, sb fis, comly slly slty & sdy, micmica, micas, comly / scat carb flks, wk p, slow yel gmn blomg cut flor.



SH: m - dk brn, sft, sb fis, micmica, sly pyric, as cly sh, scat carb flks.

SP (Mv)	-550	-400	-250
MWD Gamma (units)	0	75	150
Gamma Ray (gapi)	0	75	150
Core Rate (min/0.2m)	0	10	20
Total Gas - Linear (units)	0	125	250
Drill Rate (min/m)	0	30	60

Measured Depth	2946 m	2948 m
Sidewall Core		
MDT Data		
Slide - Rotate		
Core Test		
Oil Show		
Porosity Type		
Porosity (%)	5	15
Interpreted Lithology		
Grain Size (mm)		
Sorting		

Sonic Curve (ms/m)	500	300	1000	2.5	5	7.5	101	C1 (Methane) (units)	10000	0
X Caliper (mm)	125	250	375	0.450	0.3	0.15	0-0.15	C2 (Ethane) (units)	10000	0.2
Y Caliper (mm)	125	250	375	0.450	0.3	0.15	0-0.15	C3 (Propane) (units)	10000	0.2
Hole Size (mm)	125	250	375	450	200	-50	1	Total C4s C5s (units)	10000	0.2
Density Correction (kg/m3)								added Fm Resistivity (ohm)		2000

Deep Induction AF60 (ohm)	2000
Medium Induction AF30 (ohm)	2000
Shallow Induction AF20 (ohm)	2000

Drilling Progress
Total Gas - ROP
Gamma Ray - SP

Caliper Logs
Sonic DT

Density-Neutron
Density Corr.
PEFZ

Mud Gas
Chromotography

Array Induction

Northern Cross Yukon
NCY Ehnjuu Choo B-73
300/H-60-6620-13645/0