

# SCHLUMBERGER

## COMPLETION RECORD

SCHLUMBERGER OF CANADA

Calgary, Alberta

PROVINCE YUKON TERRITORY  
 FIELD WILDCAT  
 WELL PAN AM HOME SIGNAL CSP  
 A-1 KOTANEELEE YTPX-50  
 COMPANY PAN AMERICAN PETROLEUM CORPORATION

COMPANY PAN AMERICAN PETROLEUM CORPORATION  
 WELL PAN AM HOME SIGNAL CSP  
 FIELD WILDCAT  
 PROVINCE YUKON TERRITORY  
 LOCATION UNIT NP SECTION 50  
 GRID 60°10' 124°-0'  
 Permanent Datum GL Elev 1411.25  
 Log Measured From KB 14.25 Ft Above Perm. Datum  
 Other Services: ELEV KB 1490  
 GL 1471.25  
 CBF

### DEPTH CONTROL LOG

### PERFORATING RECORD

Date	20 AUG 63	Gun Type and Size	Shot Density	No. of Shots	Perforating Interval From To
First Reading	11.05				
Last Reading	113.0				
Feet Measured	156				
Depth Reached	11.14				
Bottom Driller					
Fluid Type	WATER				
Fluid Level	1300'				
Well Head Pressure					
Tuck No.					
Received By	DSU - A - ANDERSON	Size — Inches	Weight — Lbs.	From	To
Witness	RUKKLE		29	SURFACE	TP

### COLLAR LOCATION

### OTHER SERVICES

Casing	Tubing	Service	Type	Size	Depth
113 8.		Bridge Plug	CAST	3B	11490
1140 2.2		Production Packer			
114 2.2		Cement Retainer			
11499.5		DUMP BALLER	BAKER DUMPED 3 SAX CEMENT	2 7/8	11490
Tubing Bottom Sealing Nipple		Junk Basket Size	25		
		Gauge Ring Number	3R		

AV 76/8/63/05

### REMARK

#### PREVIOUS COMPLETION INFORMATION

Depth Control Log — Yes  No   
 Perforated — No  Yes  From \_\_\_\_\_ To \_\_\_\_\_  
 Bridge Plug Set at \_\_\_\_\_  
 Cement Retainer Set at \_\_\_\_\_  
 Production Packer Set at \_\_\_\_\_

### CASING COLLAR LOG

BEFORE SETTING BRIDGE PLUG

DEPTHS

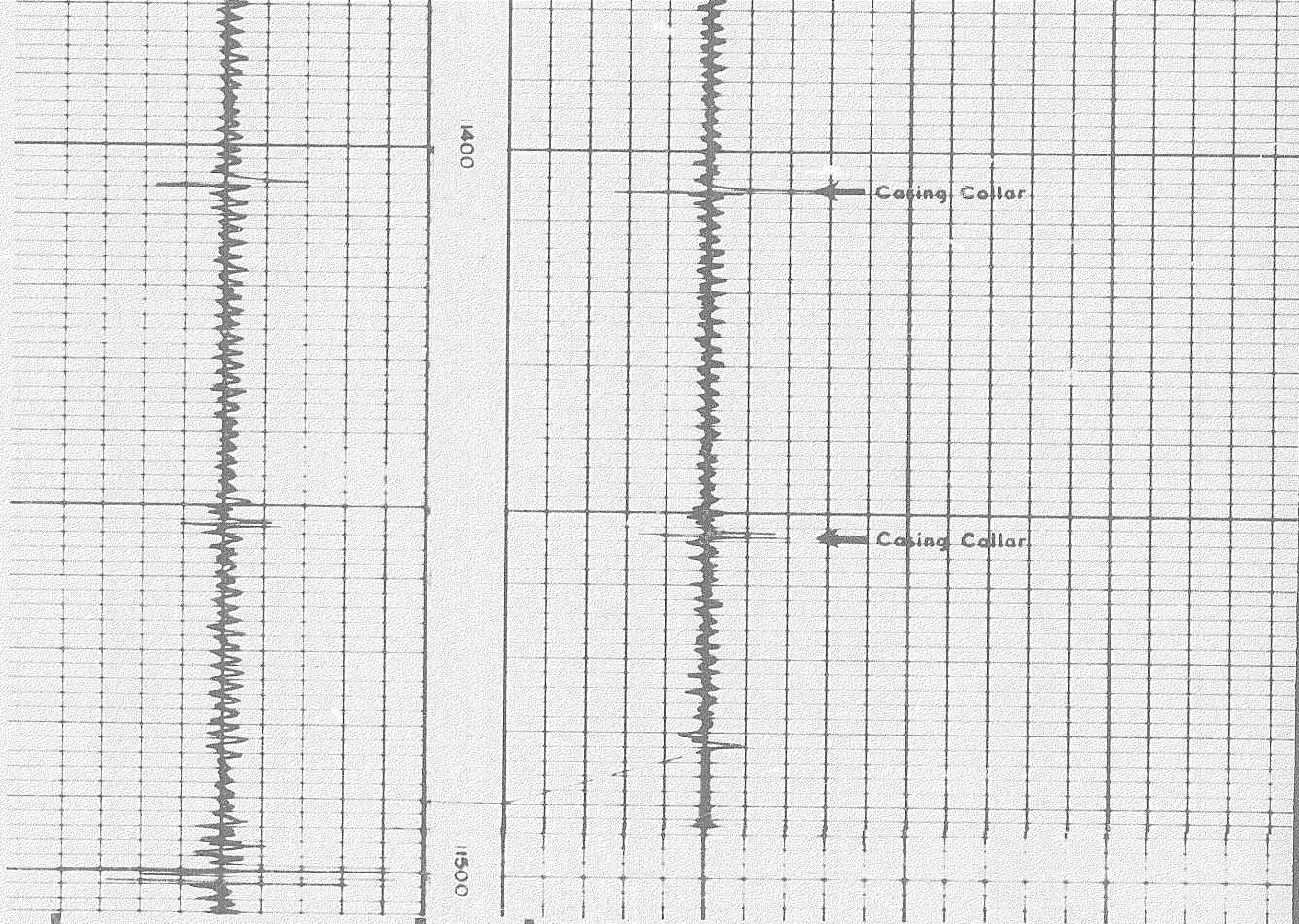
### CASING COLLAR LOG

AFTER SETTING BRIDGE PLUG

Casing Collar

Casing Collar

1400



CASING COLLAR LOG		DEPTH	CASING COLLAR LOG	
COMPANY	PAN AMERICAN PETROLEUM CORPORATION		Rm	-
			ft	-
			F SOC FR	11.06
			SOC TO	11.14
			DRLR TO	-
			BHT	-
			F Elev	-
WELL	PAN AM HOME SIGNAL CSP A; 1 KOTANELEE		KB	1490
	TP-0		GL	14.2
FIELD	WILDCAT		PROVINCE	YUKON TERRITORY
			CBF	-