

SCHLUMBERGER

COMPLETION RECORD

SCHLUMBERGER OF CANADA Calgary, Alberta

CORPORATION

COMPANY PAN AMERICAN PETROLEUM CORPORATION

WELL PAN AM BEAVER
YT-G01

FIELD BEAVER RIVER

PRVINCIE YUKON TERRITORIES

LOCATION 60° 10' N LAT
124° 15' W LONG

Other Services PPS-3

Permanent Datum GL Elev. 2600 ELEV KB 2615
Log Measured From KB 15 Ft. Above Perm. Datum GL 2600
CB:

CONTROL LOG PERFORATING RECORD

| | | | | | |
|-----------|-------------------|--------------|--------------|------------------|-------------|
| 27 MAY 59 | | | | | |
| 10845 | Gun Type and Size | Shot Density | No. of Shots | Perforating From | Interval To |
| 4800 | 3 3/8" | 1/2 FI | 27 | 10170 | 10220 |
| 6045 | HYPER JET | | | | |
| 10852 | | | | | |
| 10854 | | | | | |
| 10.6 MUD | | | | | |
| FULL | | | | | |

CASING RECORD

| | | | | |
|---------|---------------|---------------|------|-------|
| Nil | Size — inches | Weight — Lbs. | From | To |
| DSU-A 7 | 9 5/8" | 47# 43# 40# | SURF | 10904 |
| WAT | | | | |
| BOWNESS | | | | |

OTHER SERVICES

| Tubing | Service | Type | Size | Depth |
|--------|-------------------|--------------|------------|-------|
| | Bridge Plug | | | |
| | Production Packer | BAKER | 9 5/8" | |
| | Cement Retainer | | MOD "D" | |
| | | | 8 1/16" OD | |
| | Junk Basket Size | 25 | | |
| | Gauge Ring Number | 6-AA-8 7/16" | | |

9 JULY 69 BM CAL

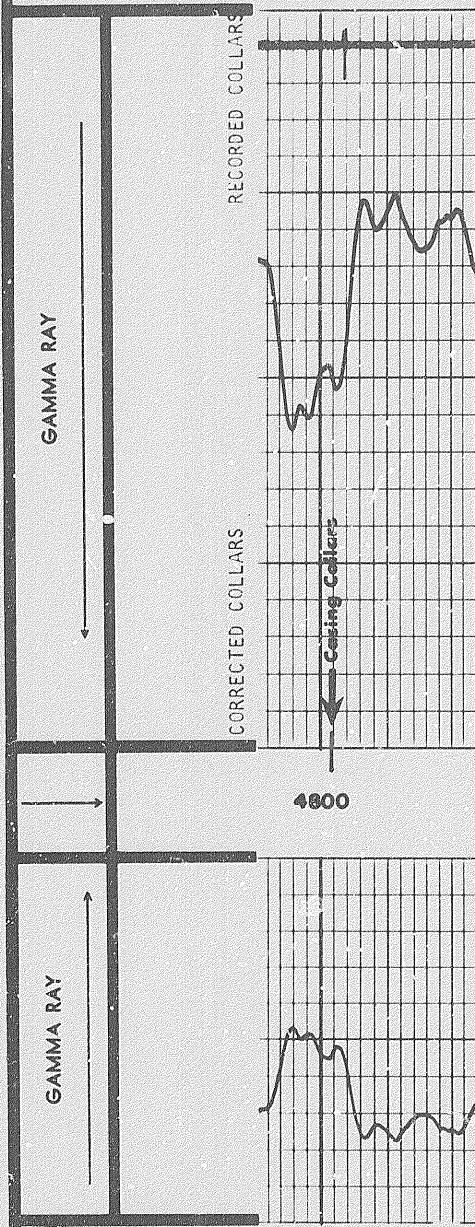
REMARKS

PREVIOUS COMPLETION INFORMATION

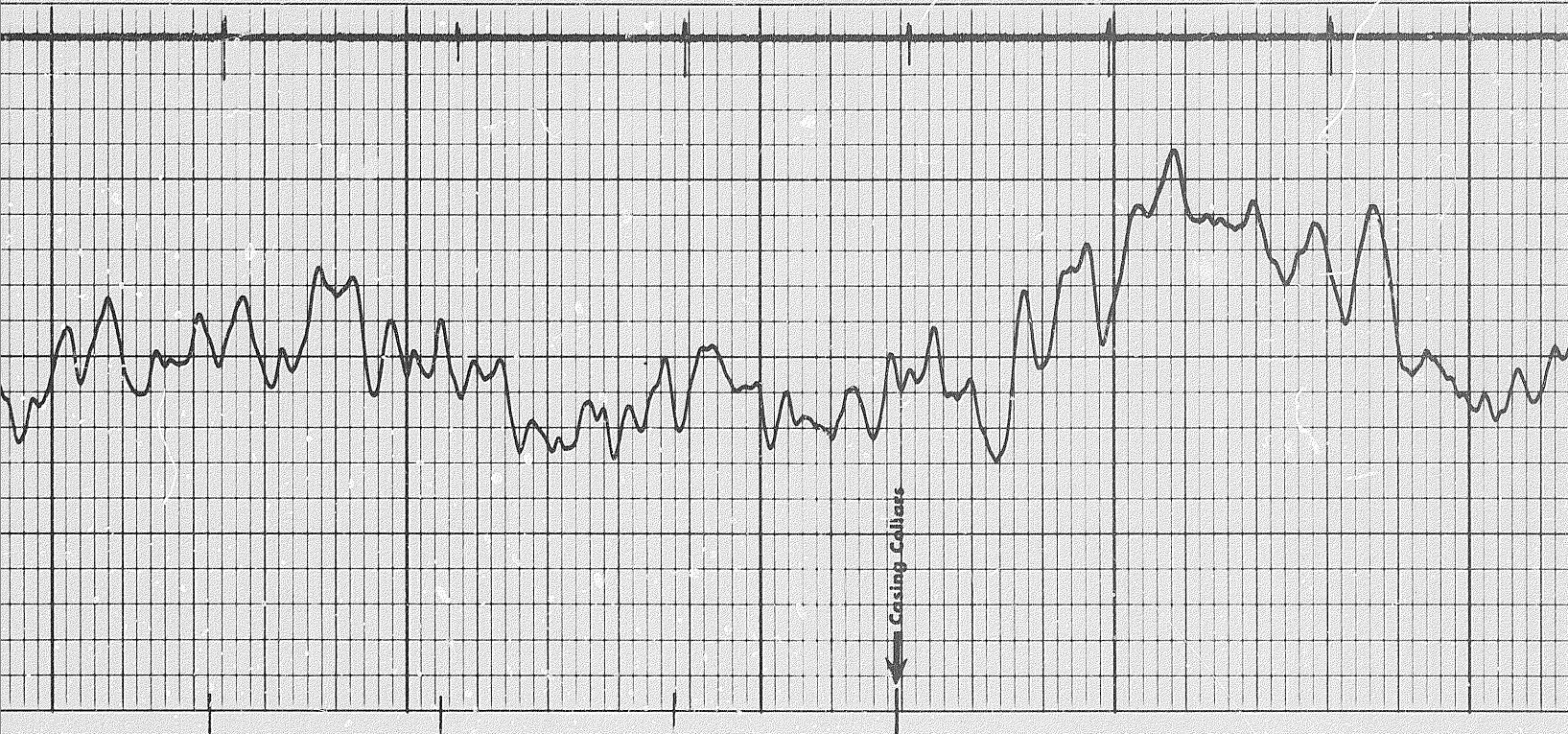
Depth Control Log — Yes No
Perforated — Yes No

Bridge Plug Set at _____ To _____
Production Packer Set at _____
Cement Retainer Set at _____

COLLARS RECORDED 2' DEEP
CORRECTED IN DEPTH TRACK

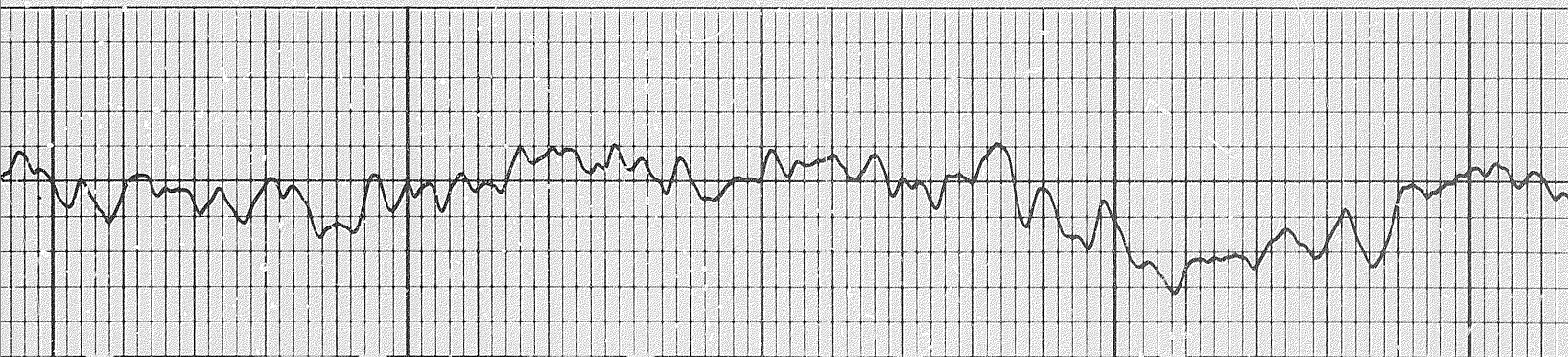


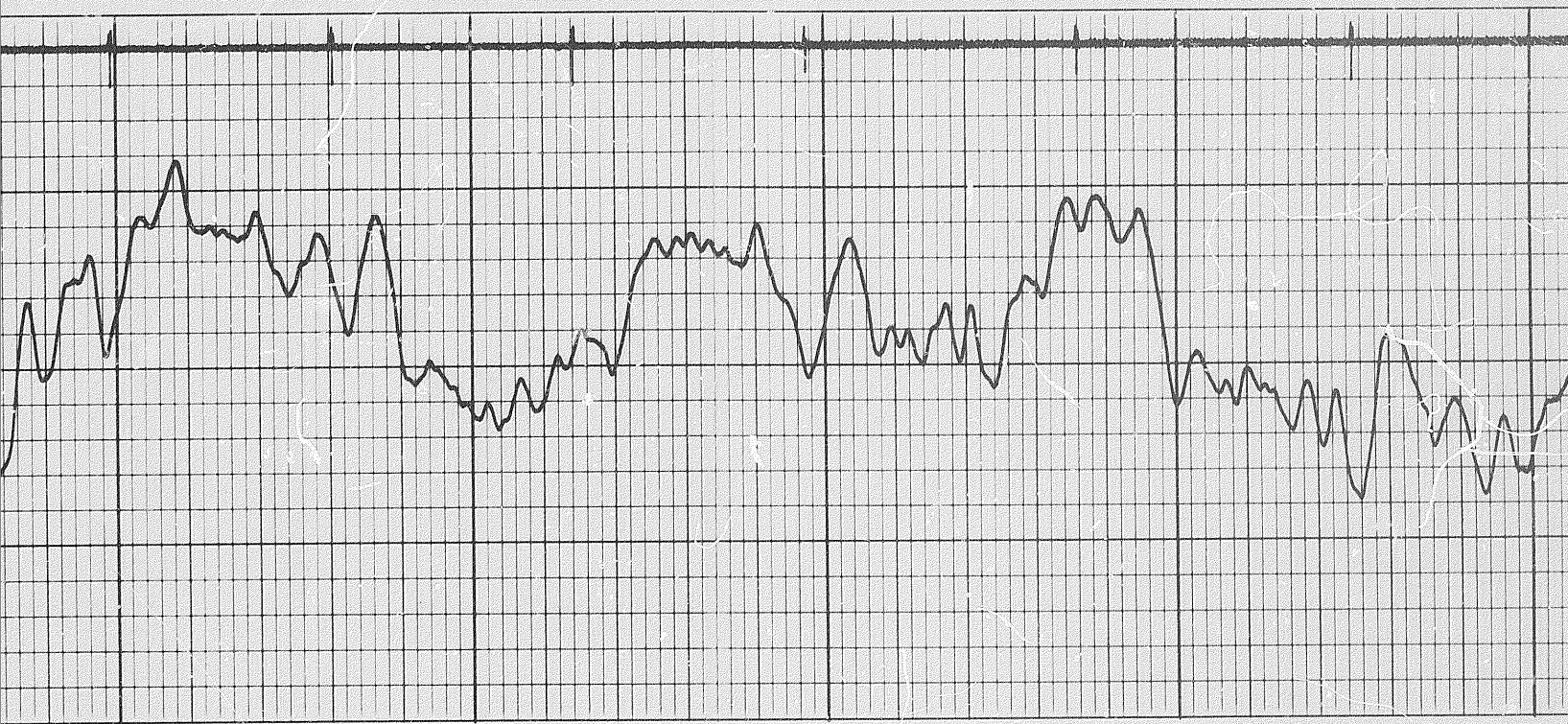
1 of



4900

5000

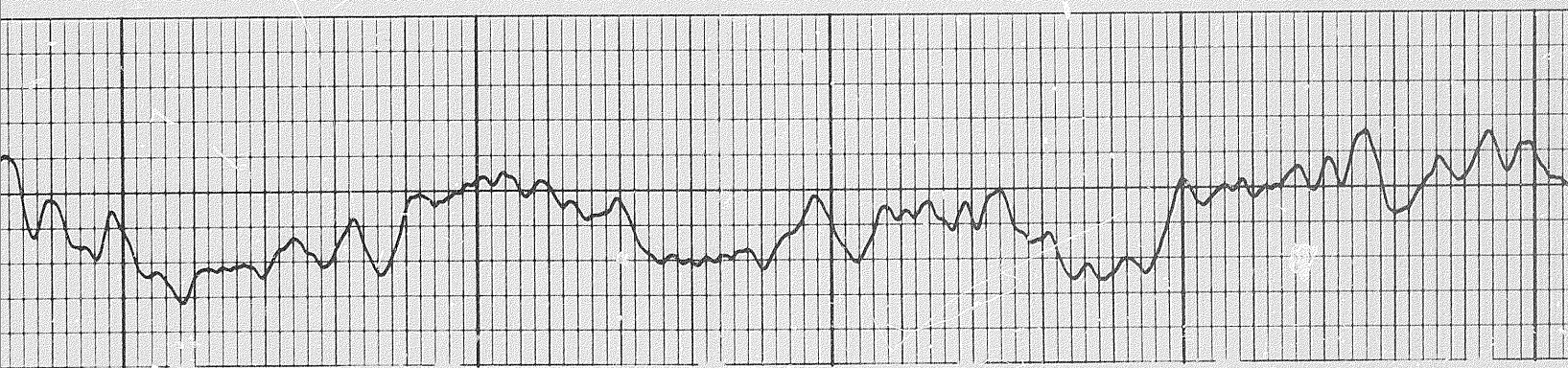


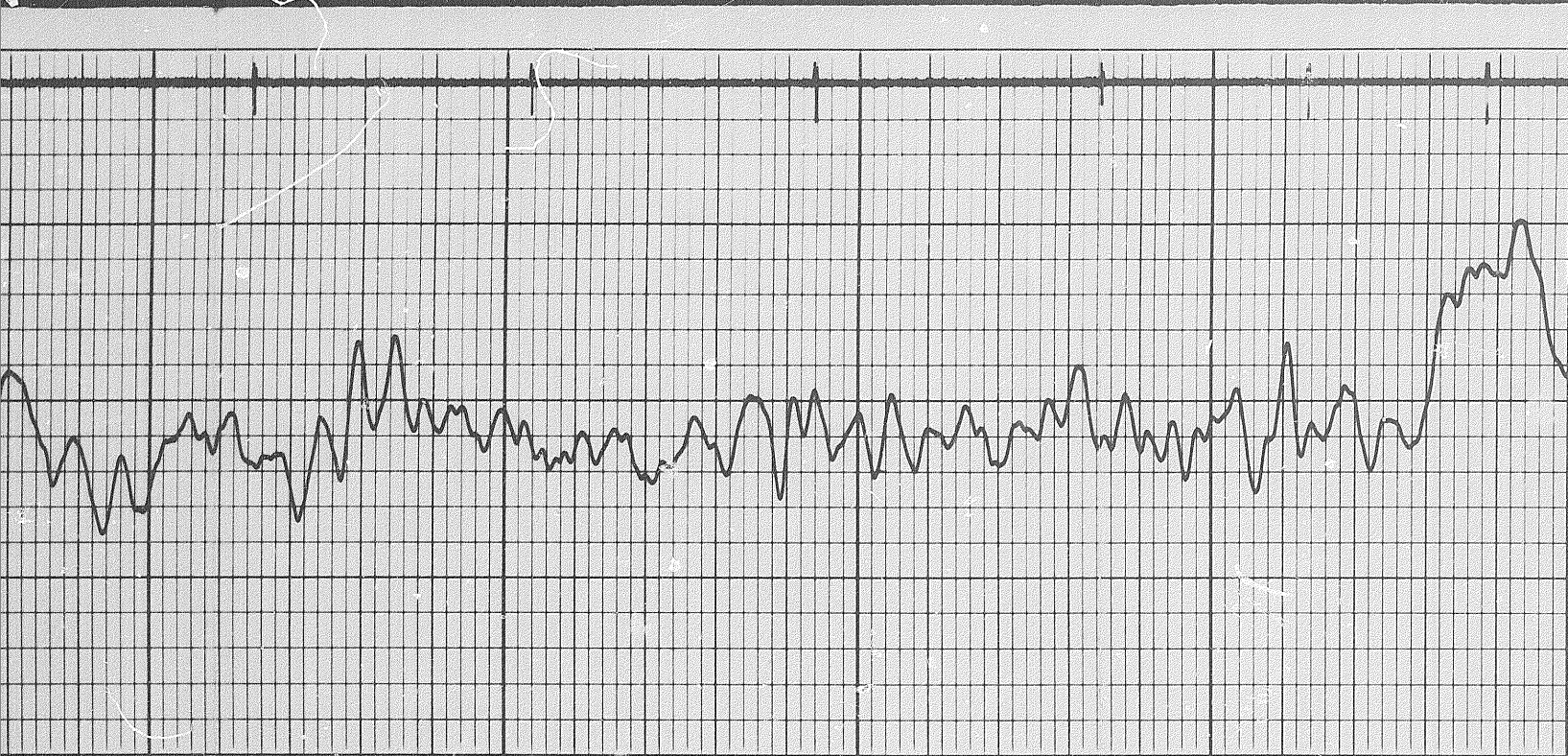


5000

5100

5200

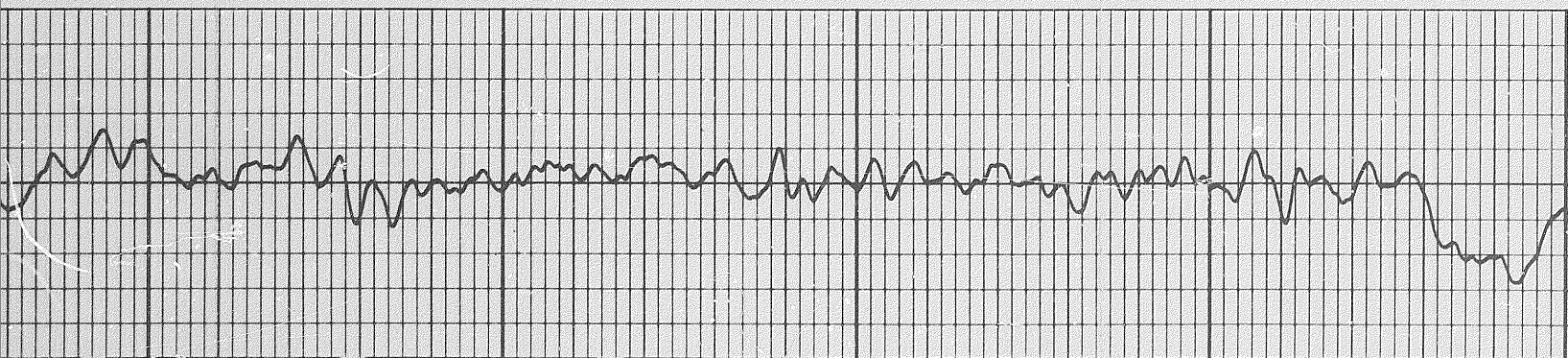




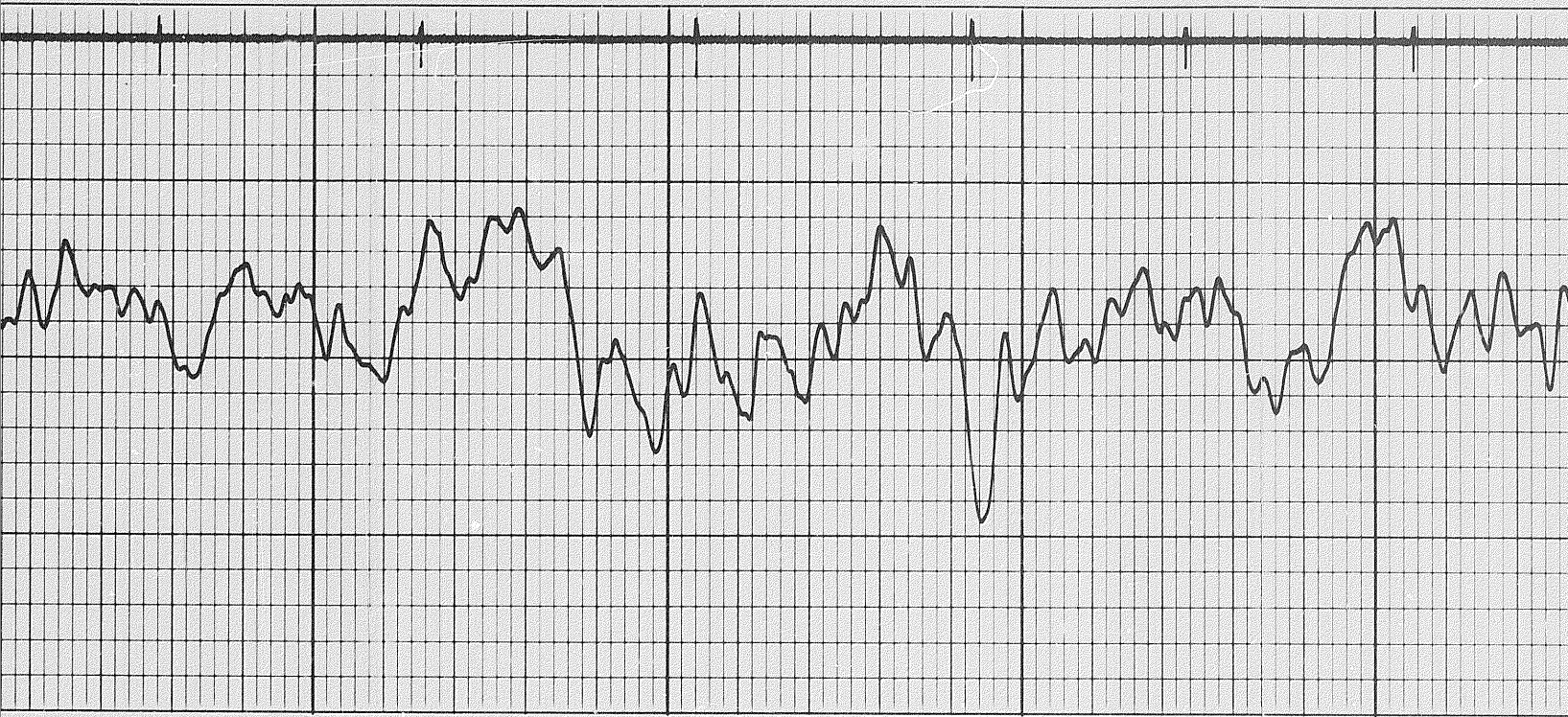
5200

5300

5400

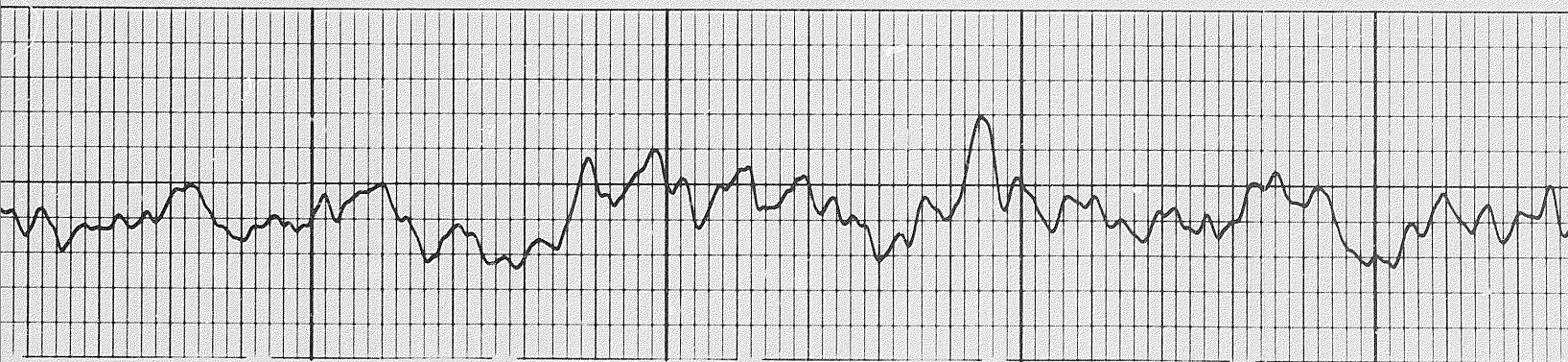


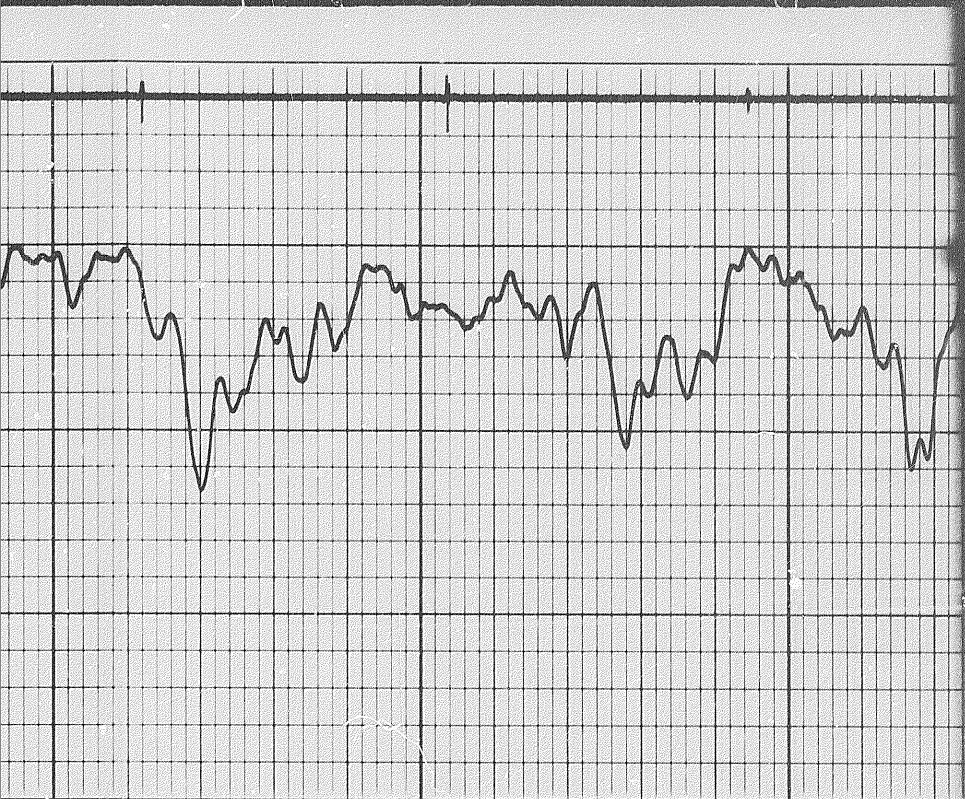
2 of



5500

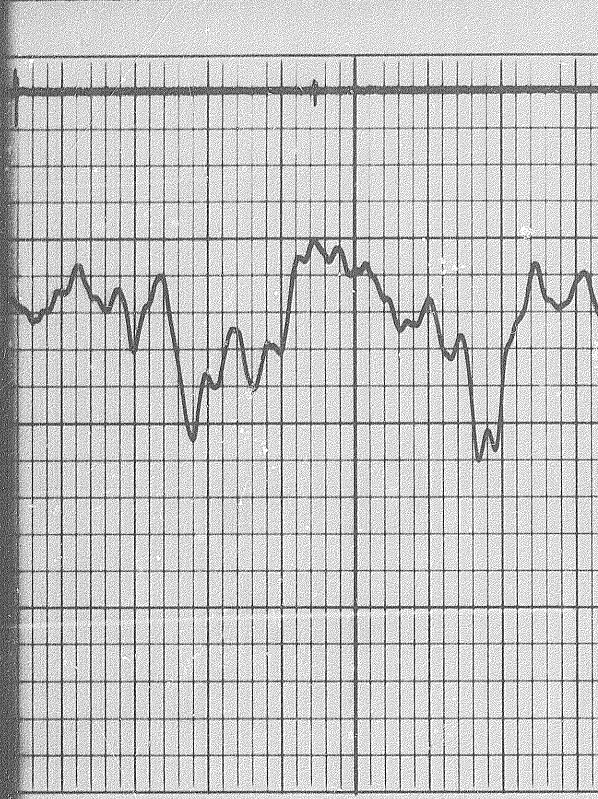
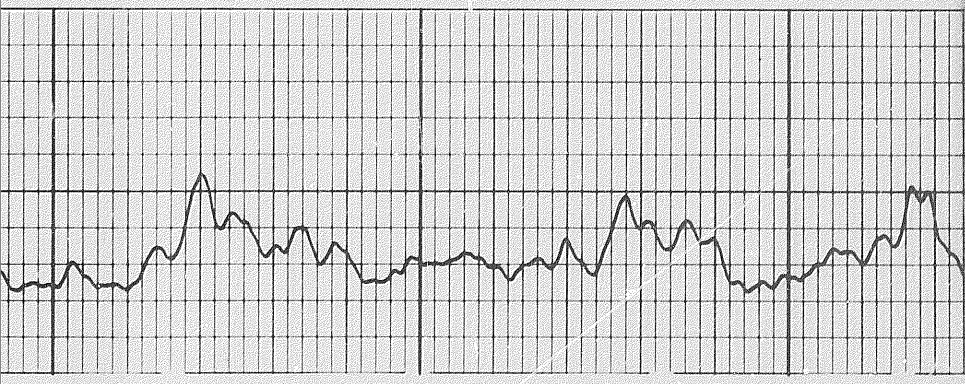
5600



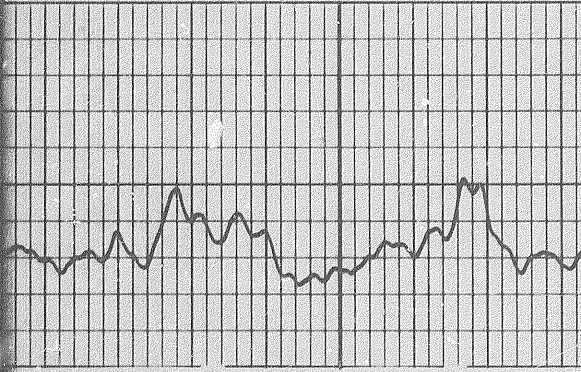


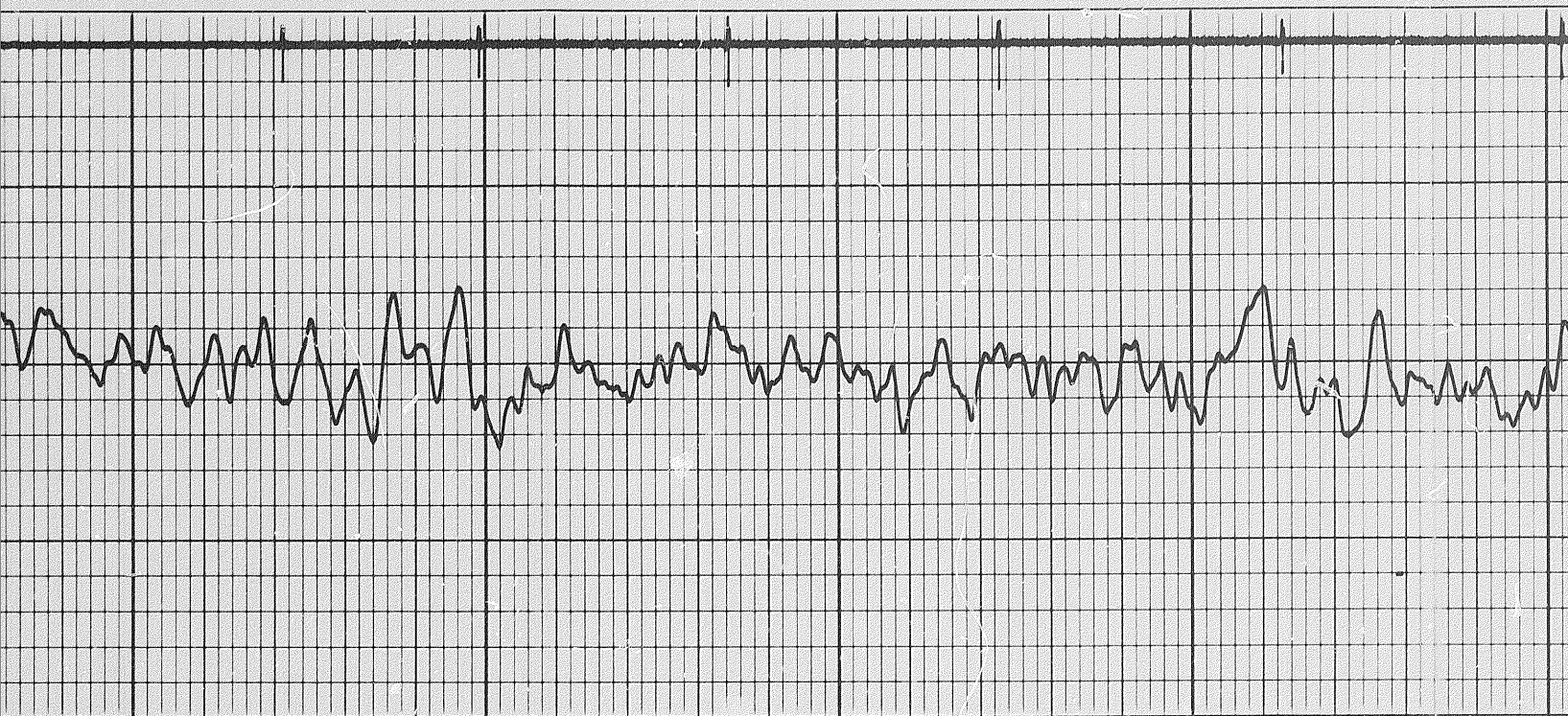
5700

5800



5800

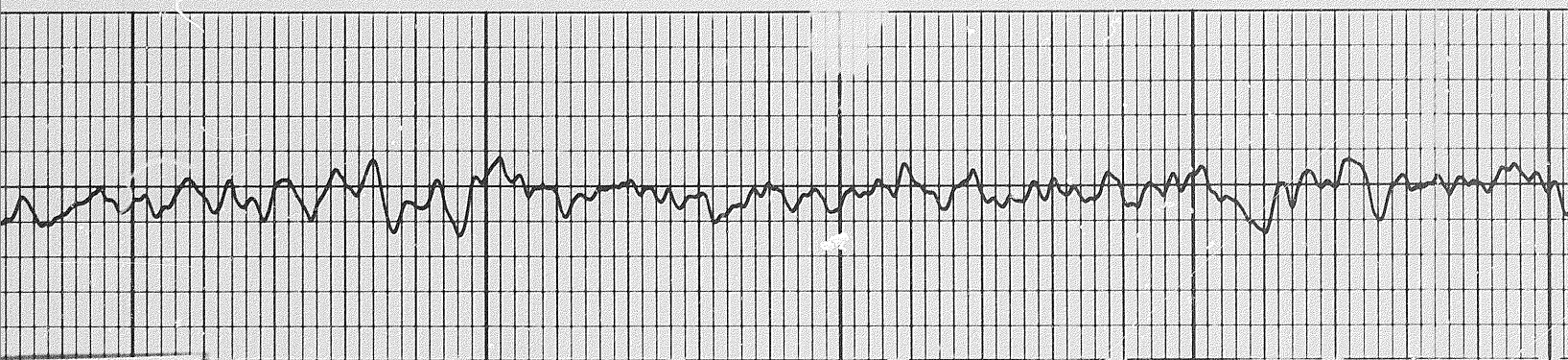




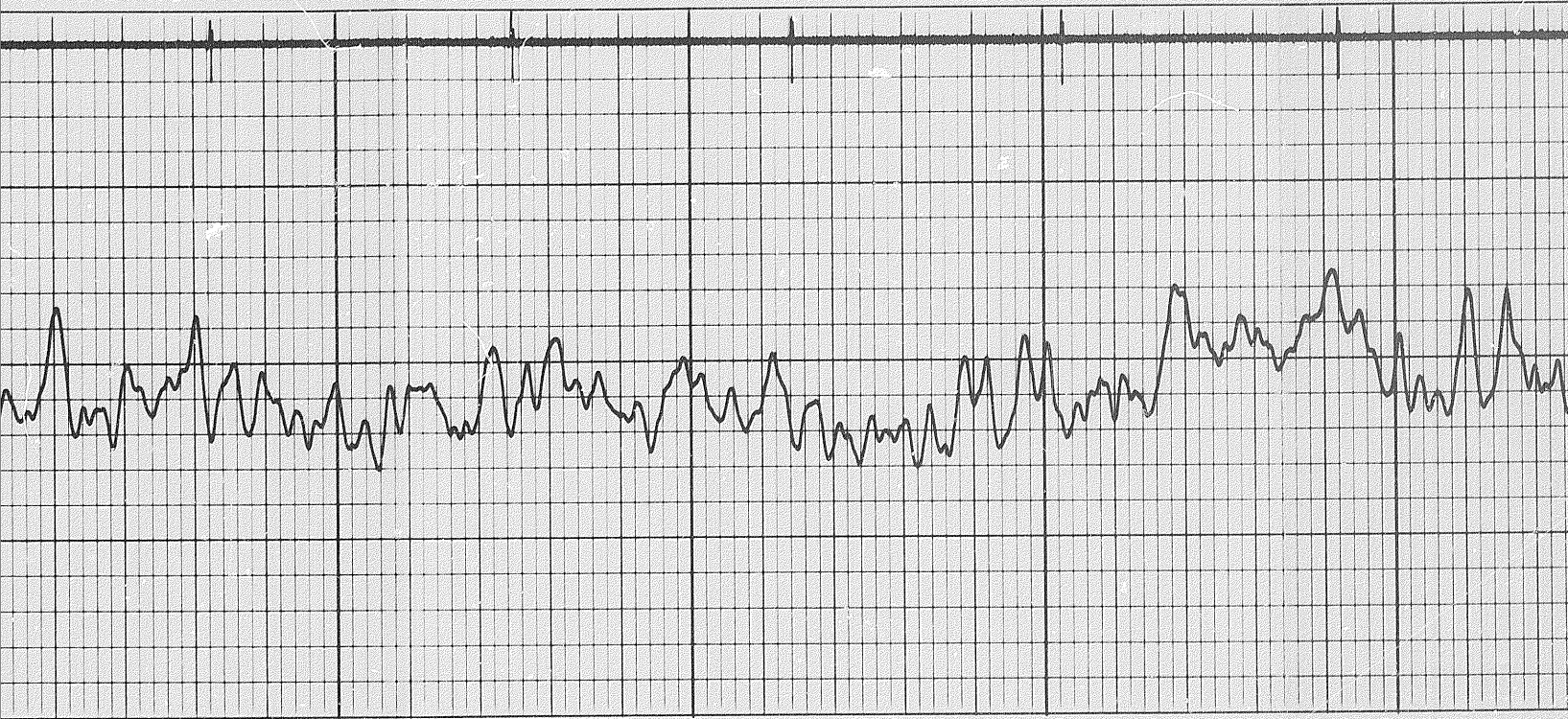
5900

6000

6100



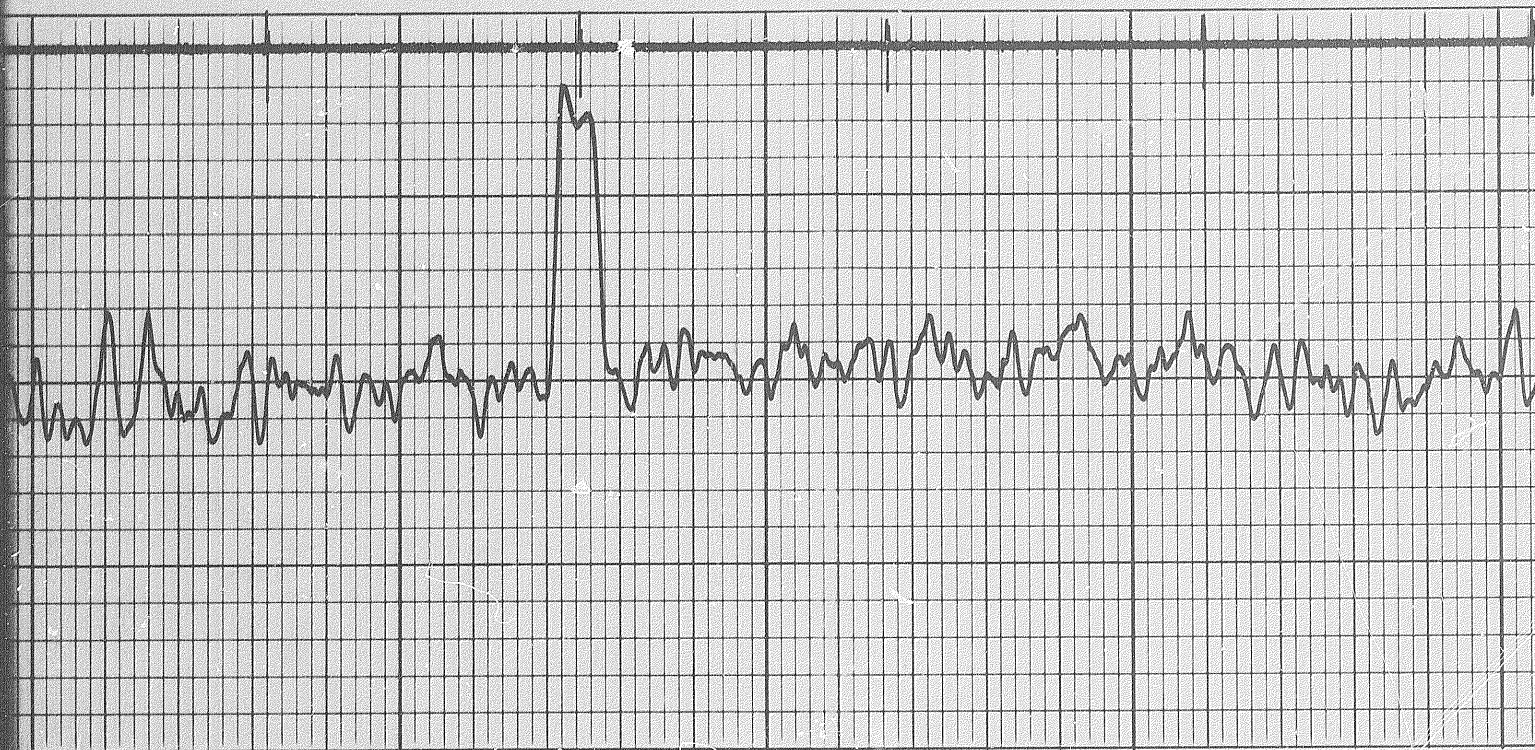
3 of



6200

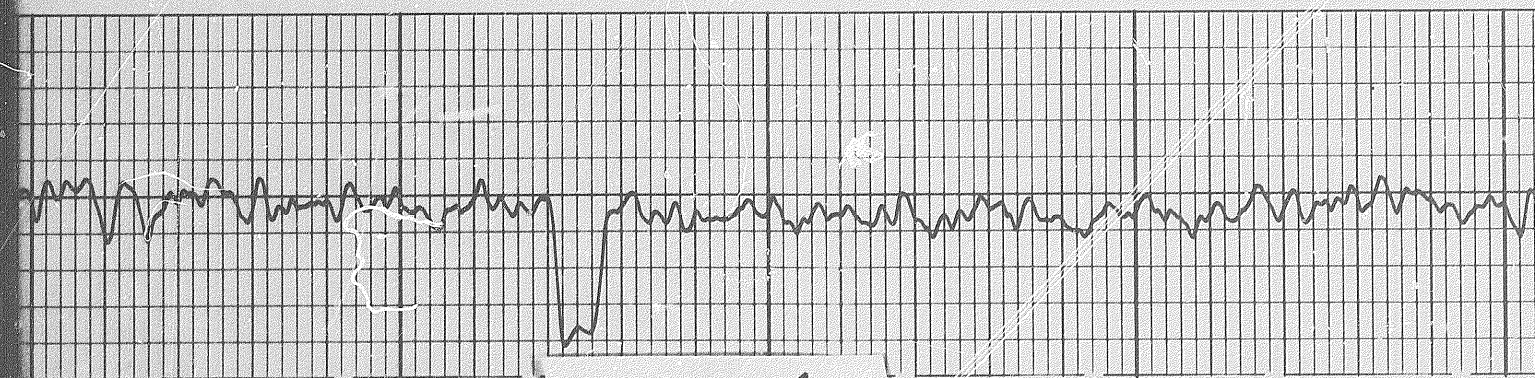
6300



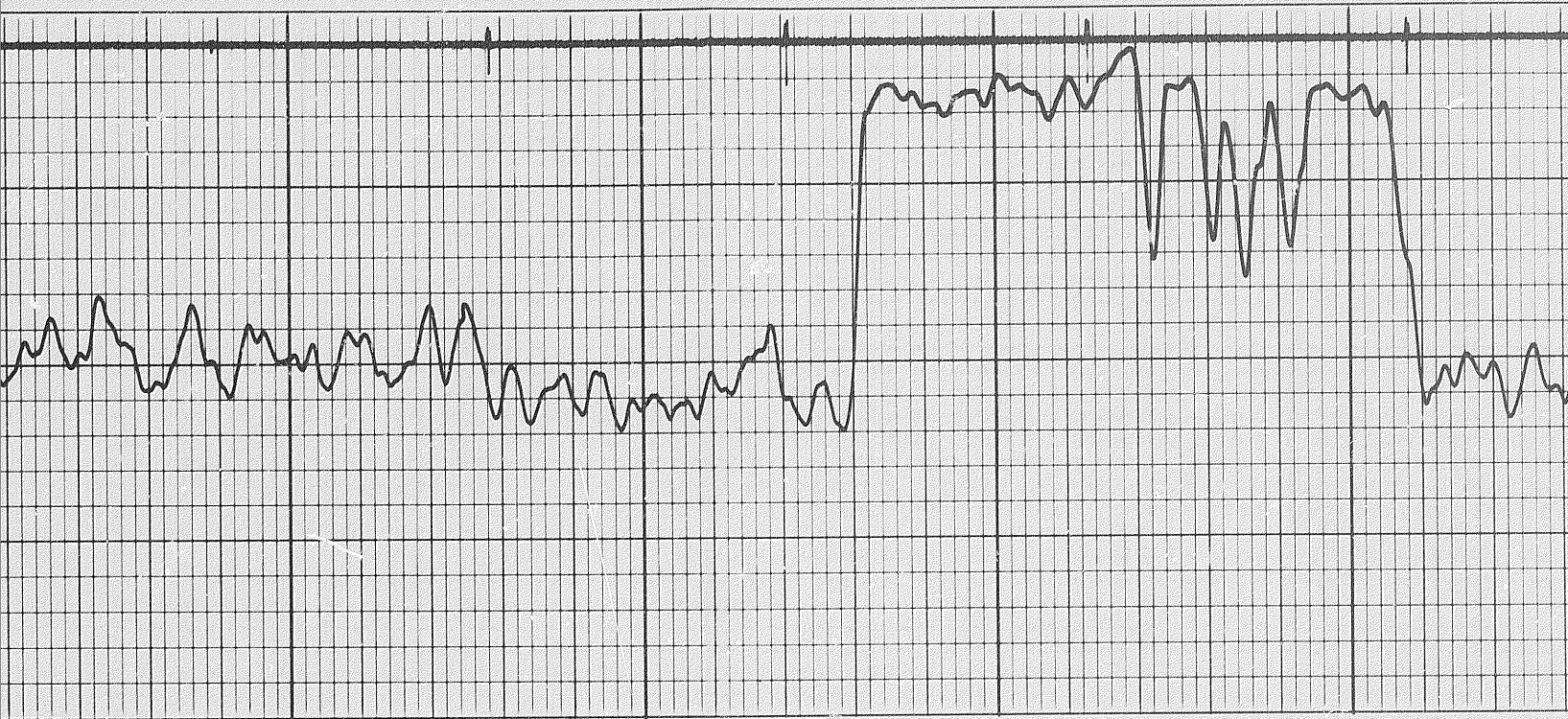


6400

6500



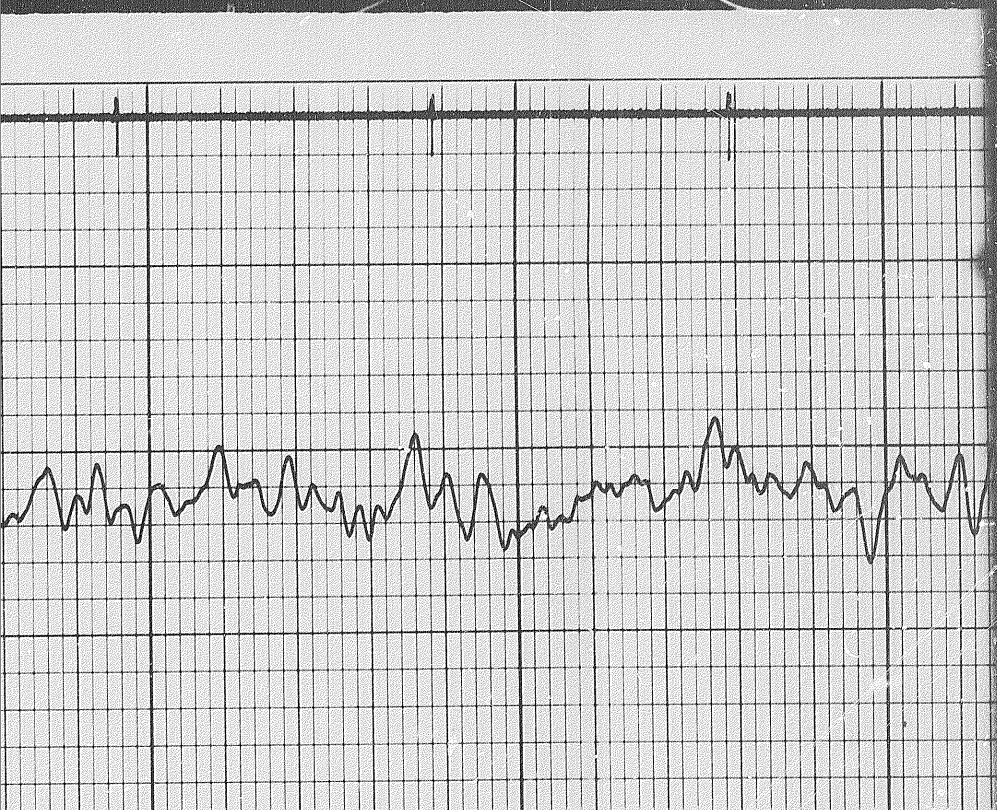
4 of



6700

6800



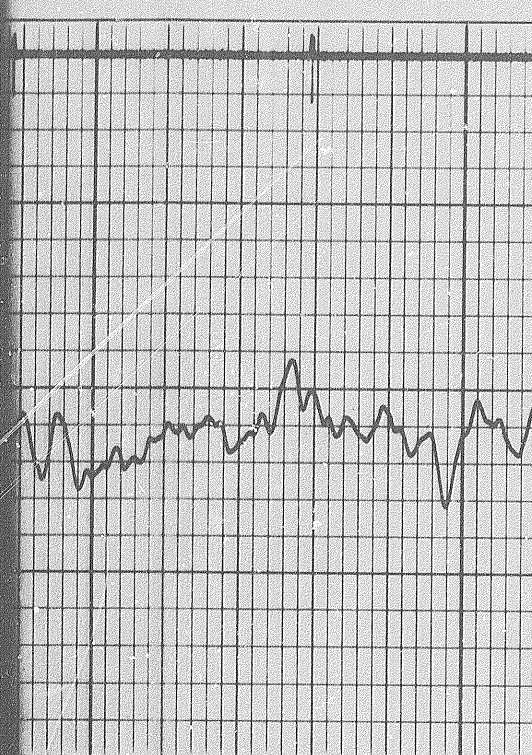


6900

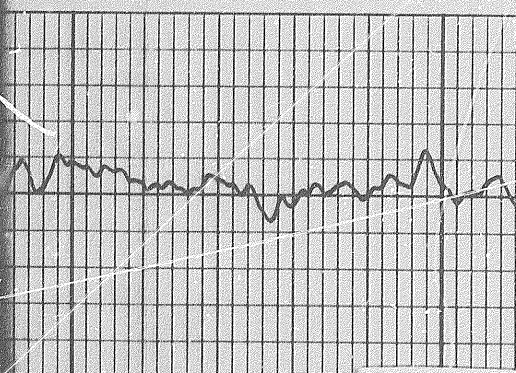
7000



V

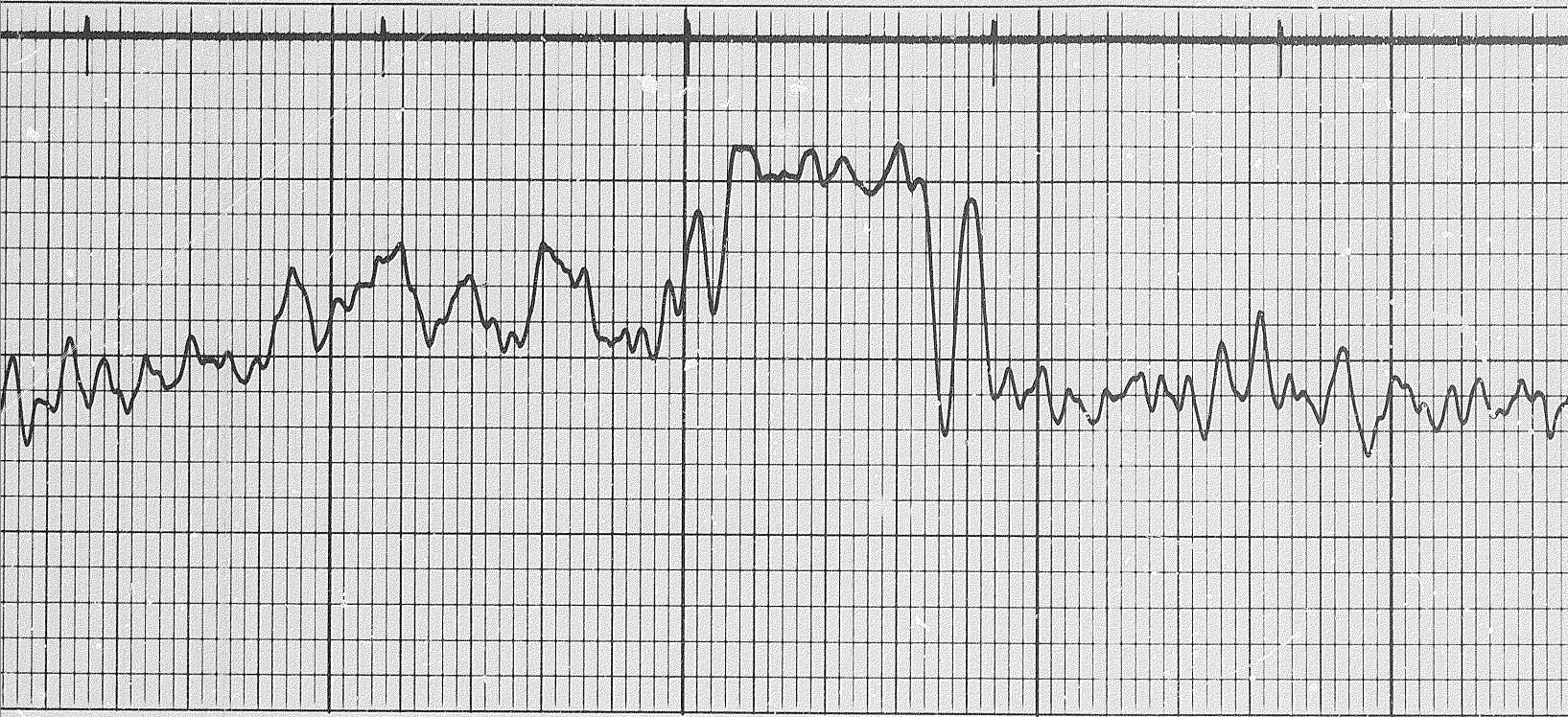


7000



V

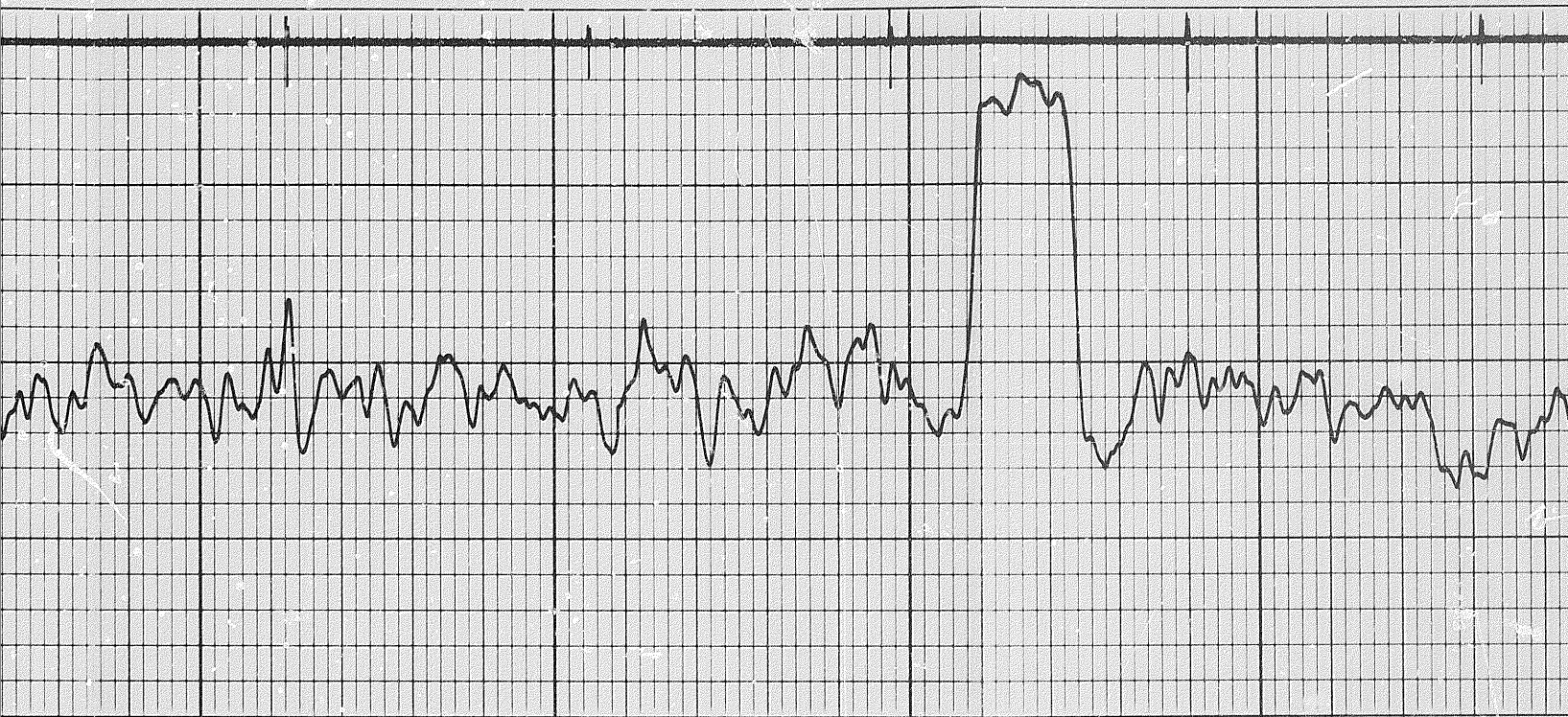
50



7100

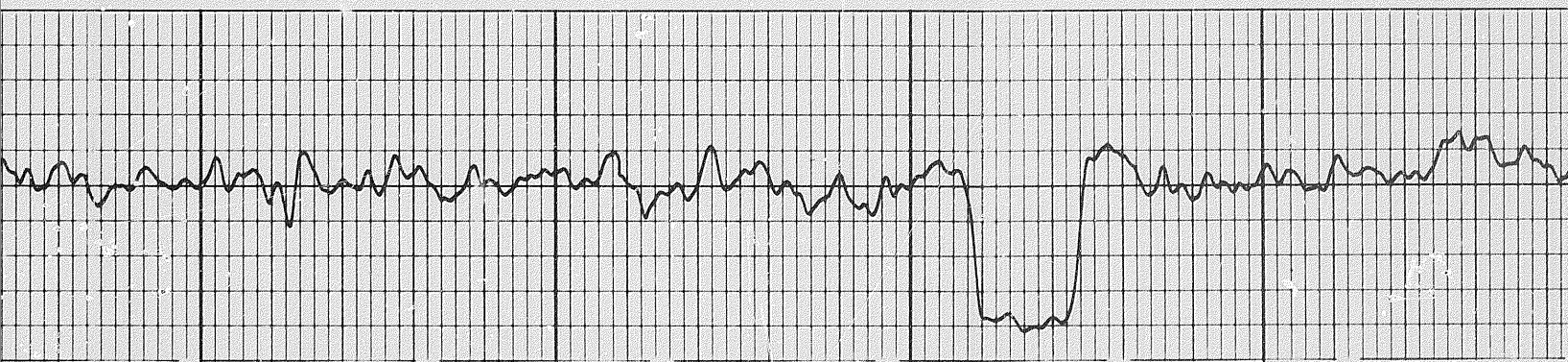
7200

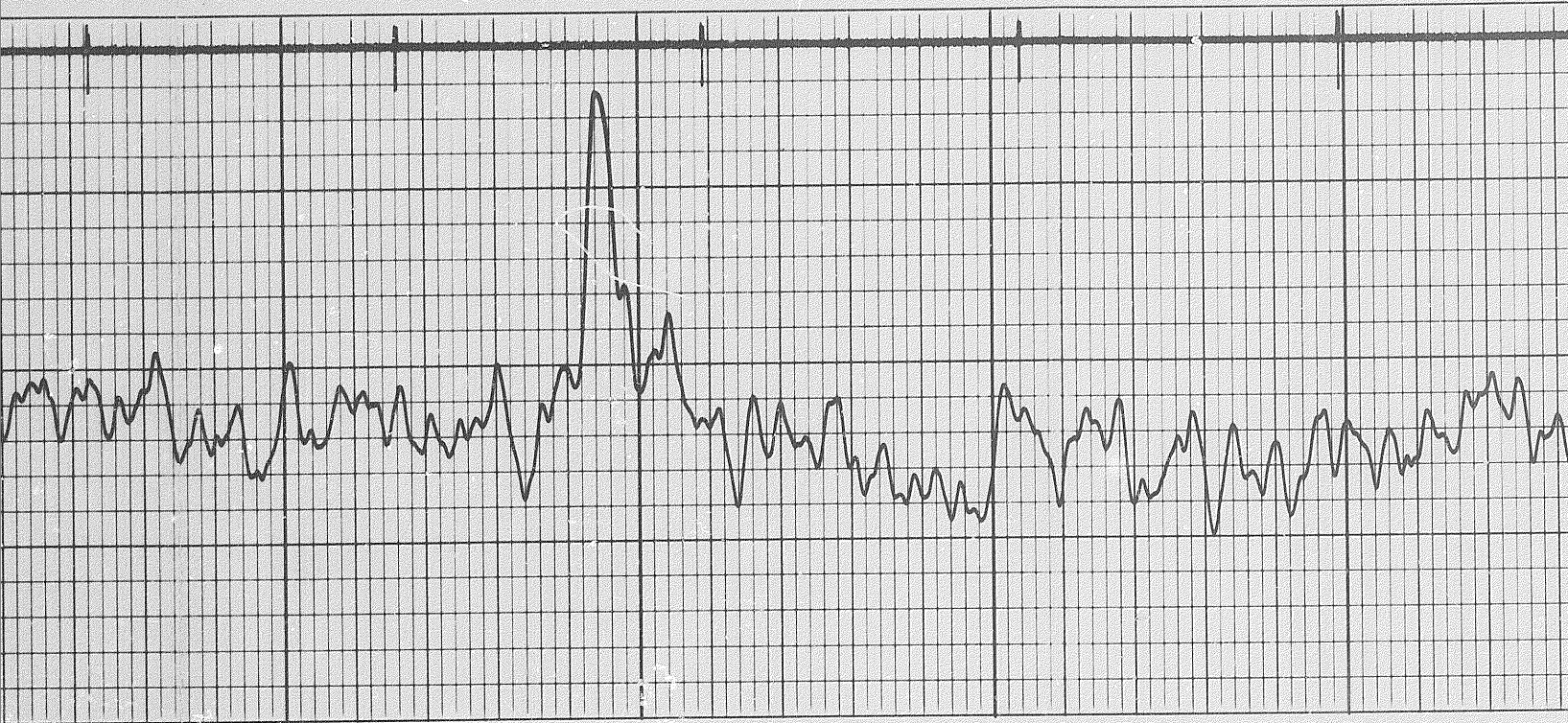




7400

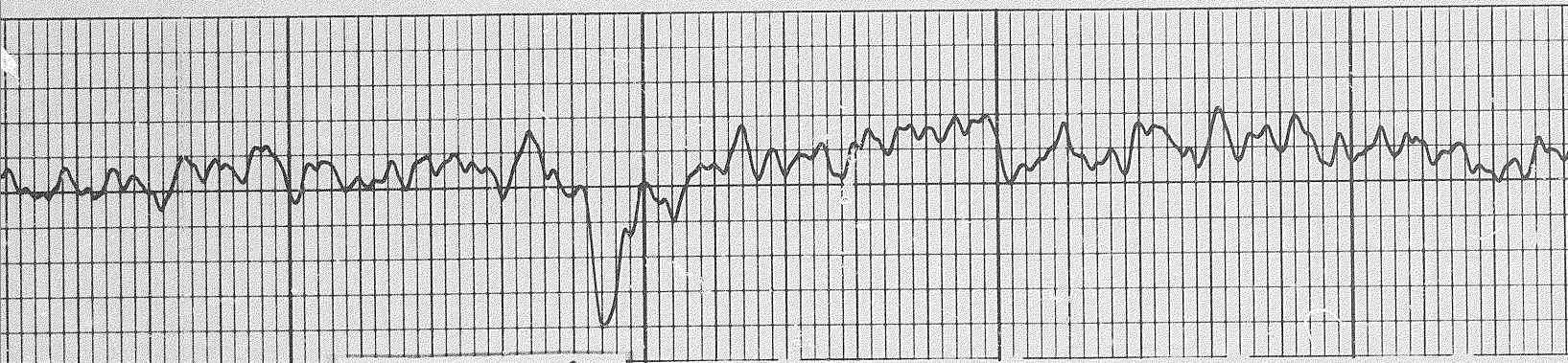
7500



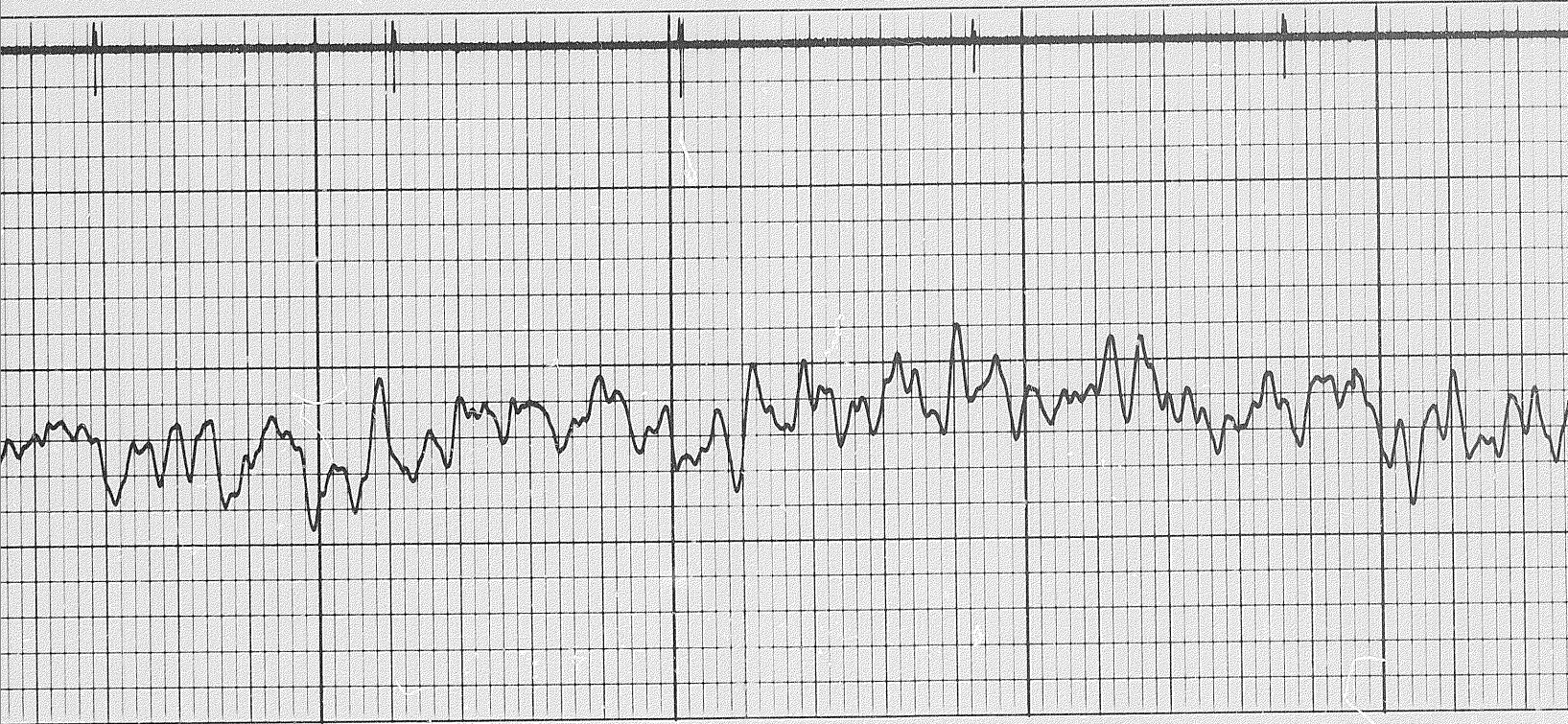


7600

7700

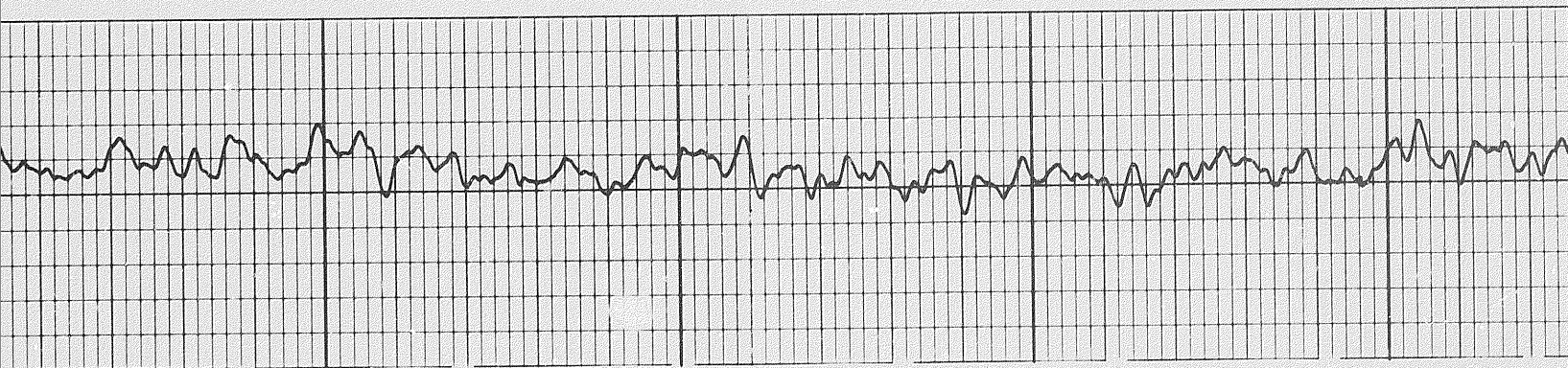


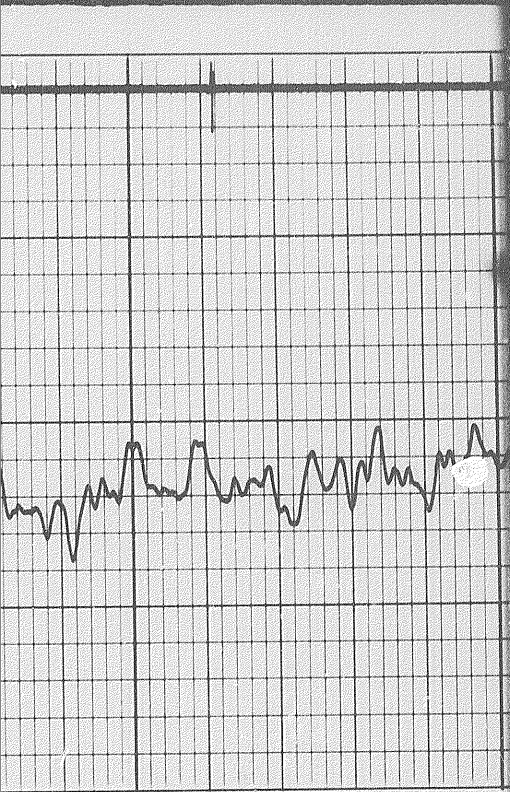
6 of



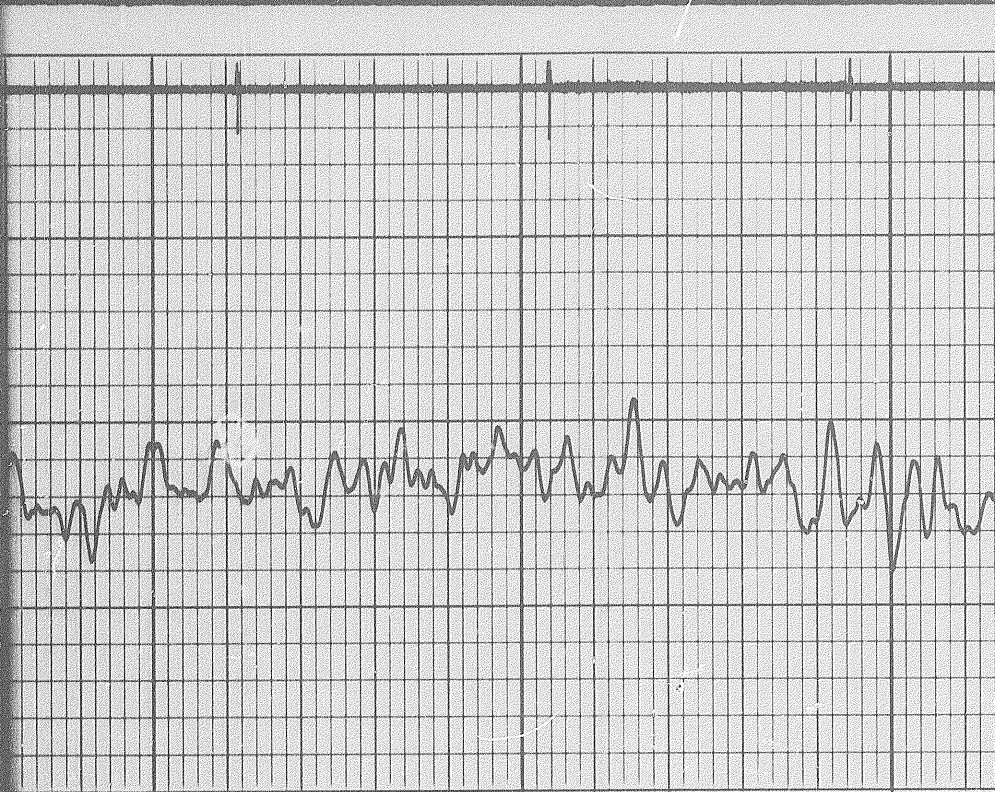
7900

8000

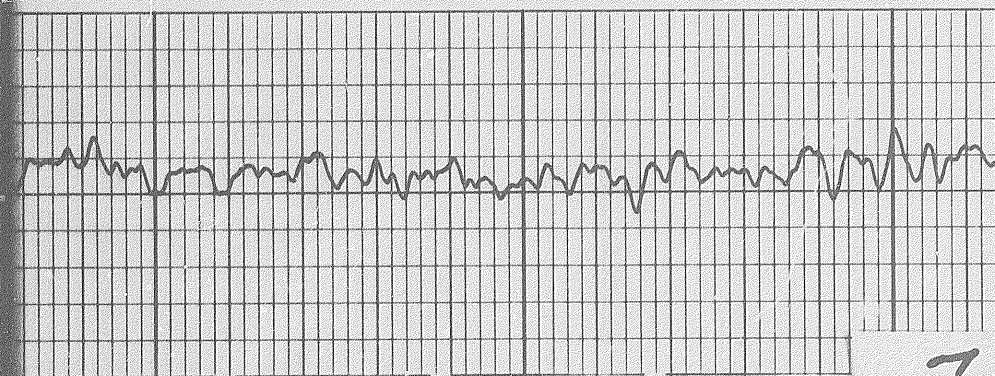
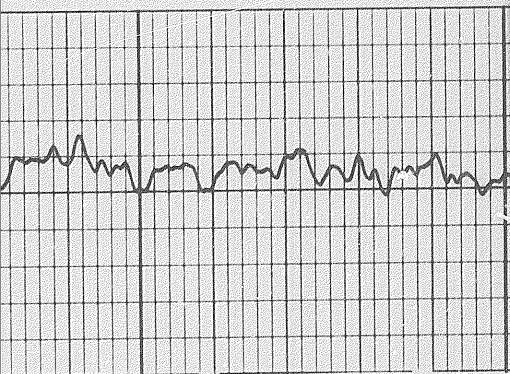




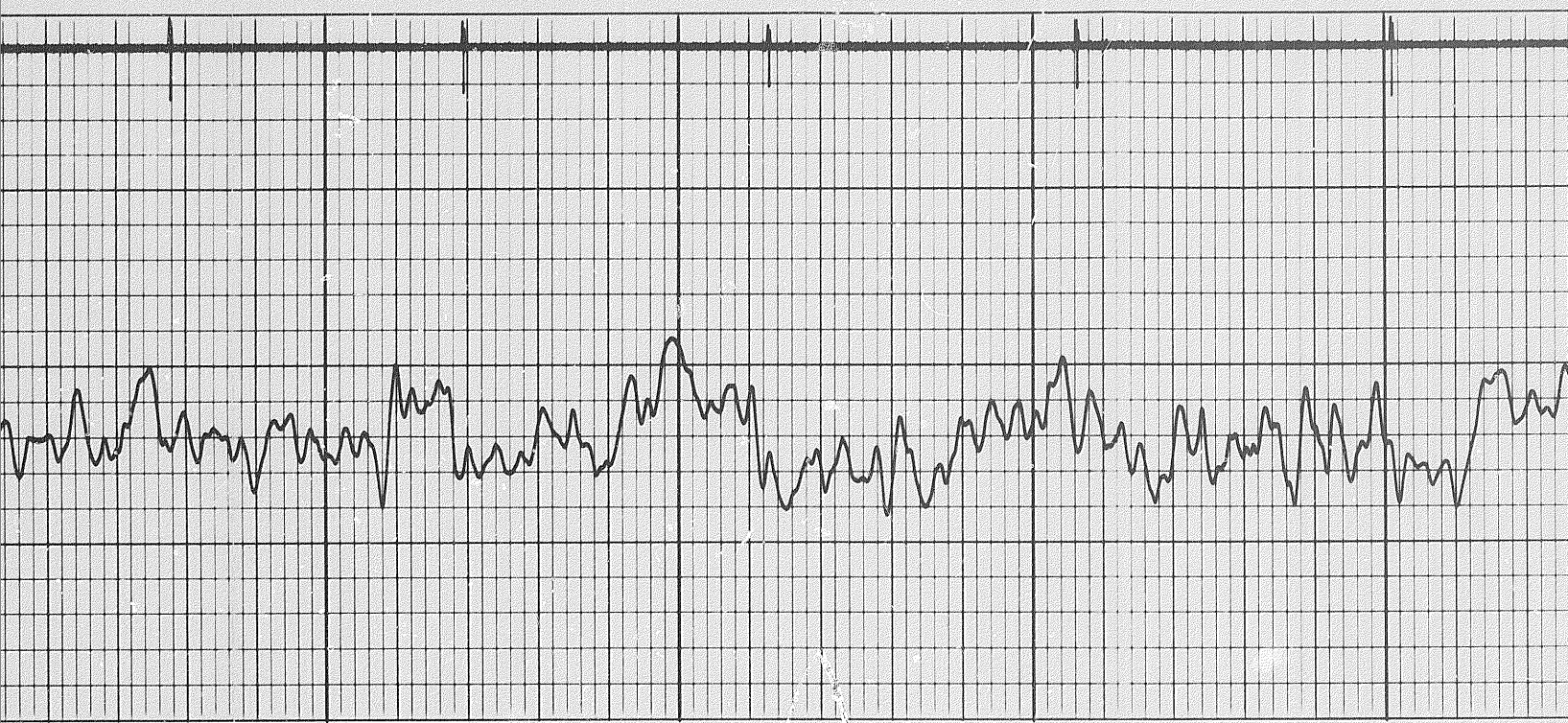
820



8200

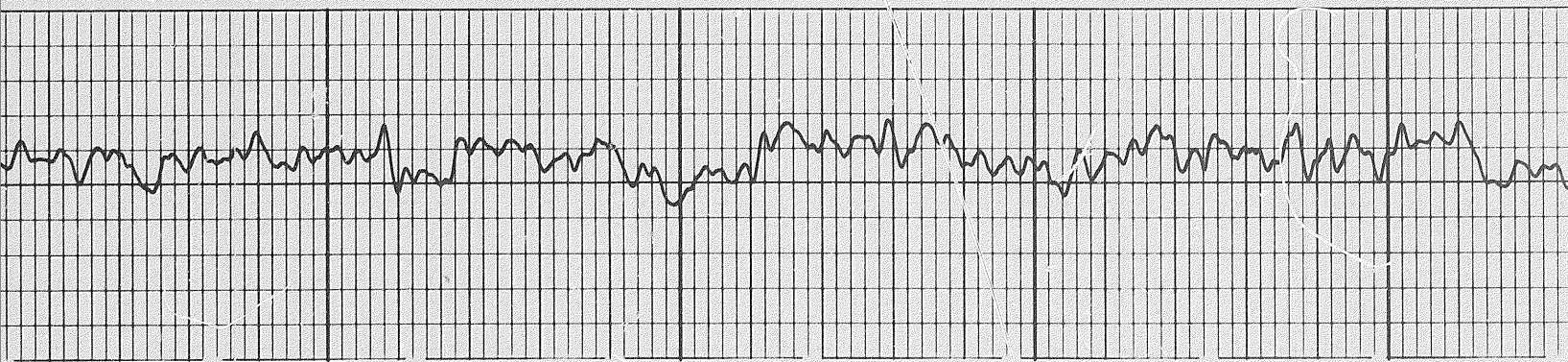


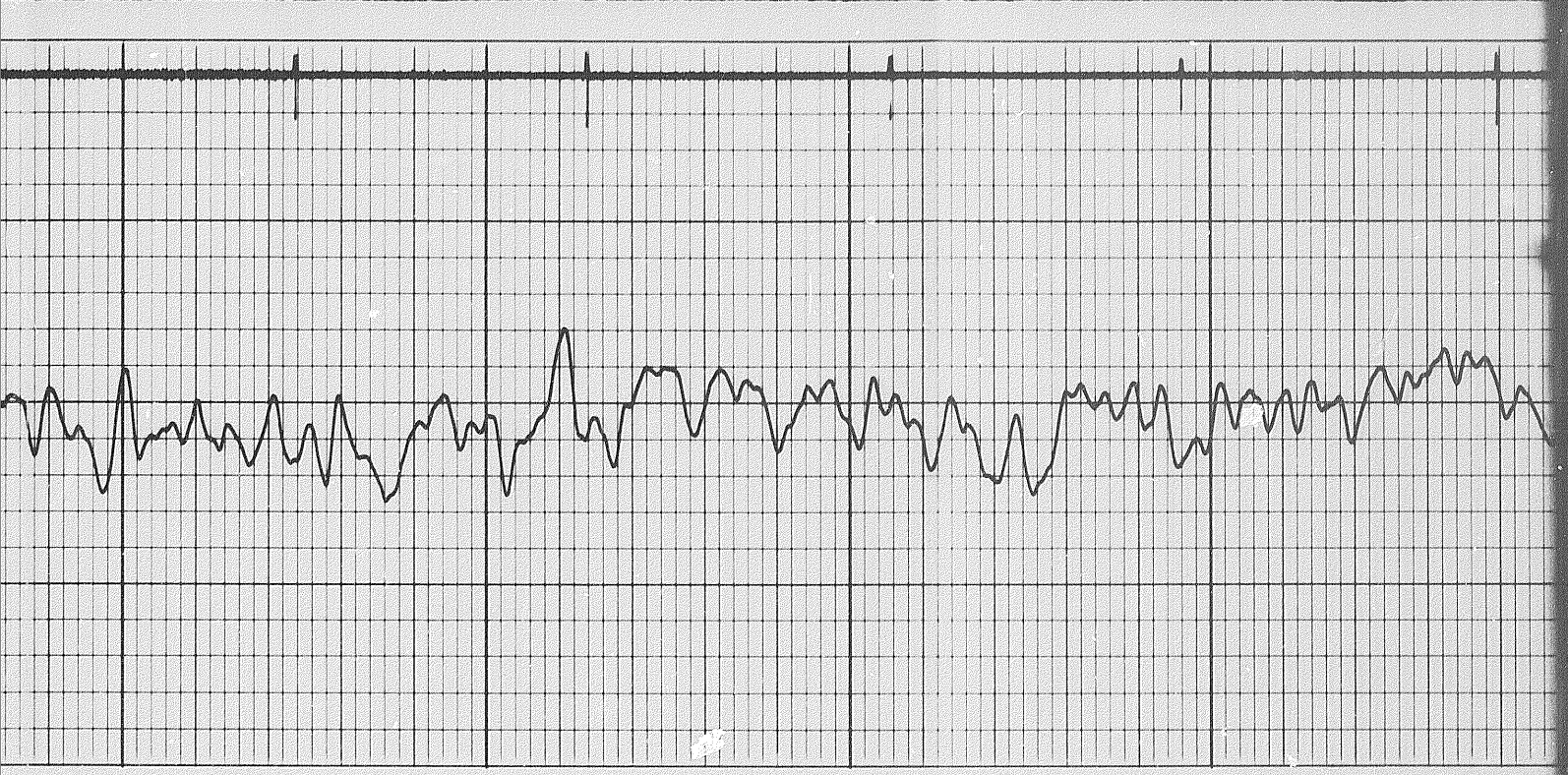
70



8400

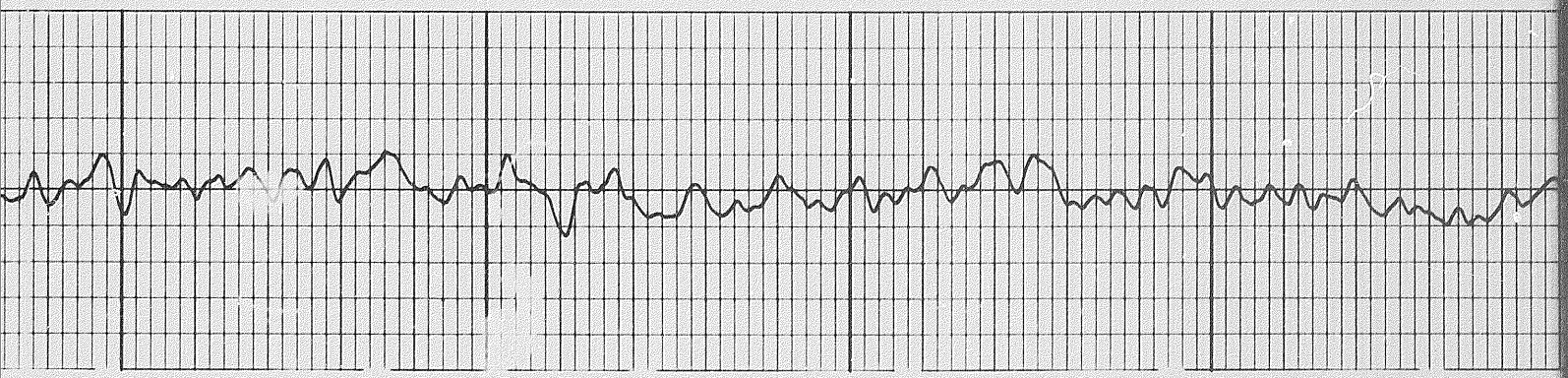
8500





8600

8700

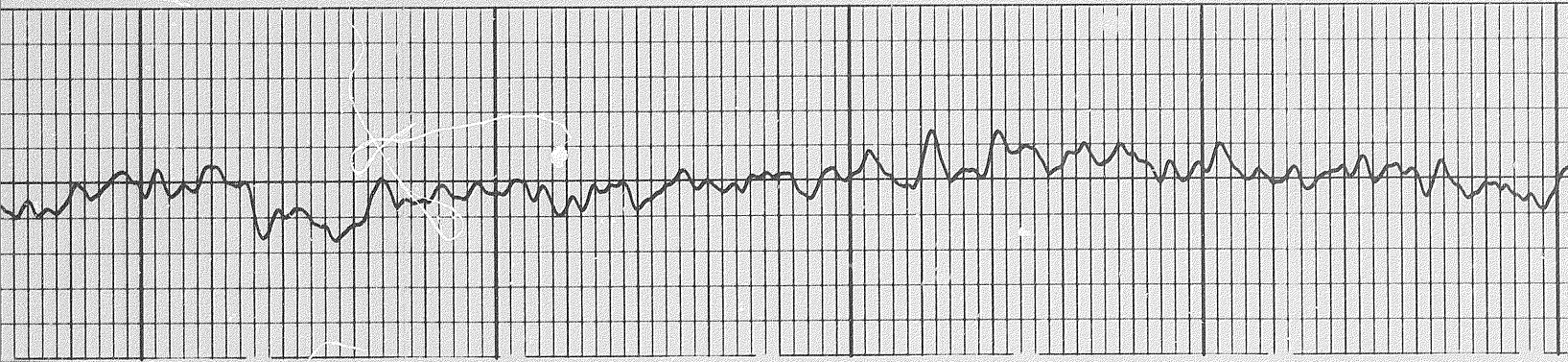




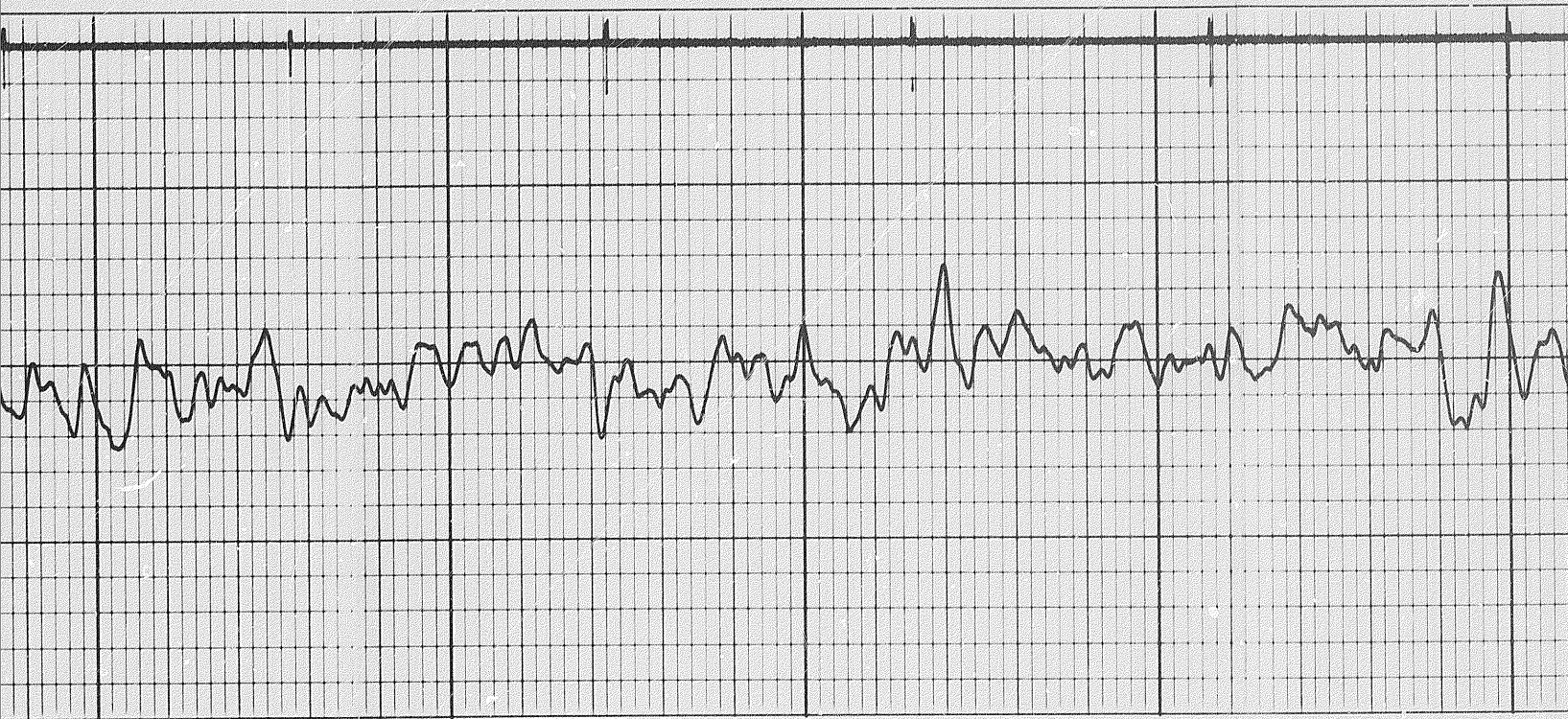
8800

8900

9000

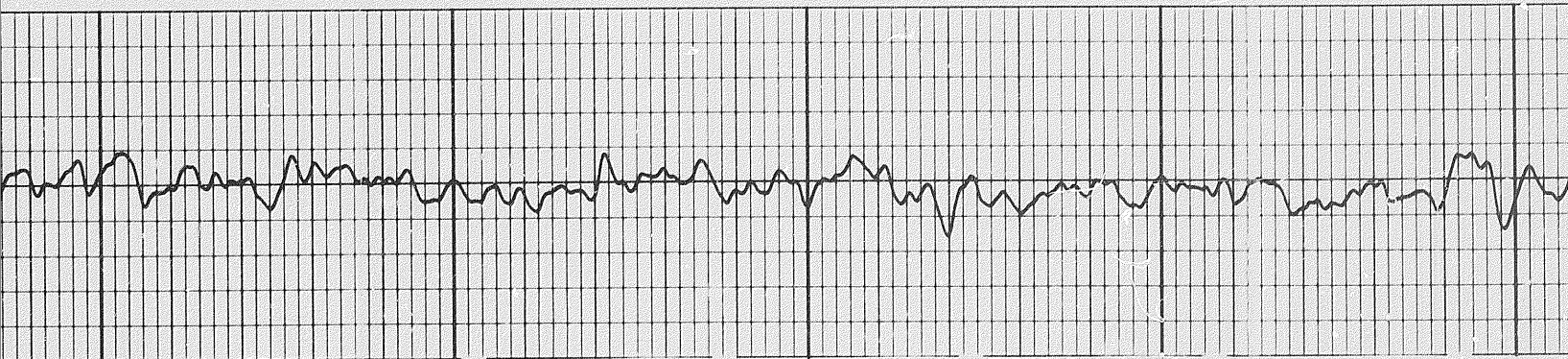


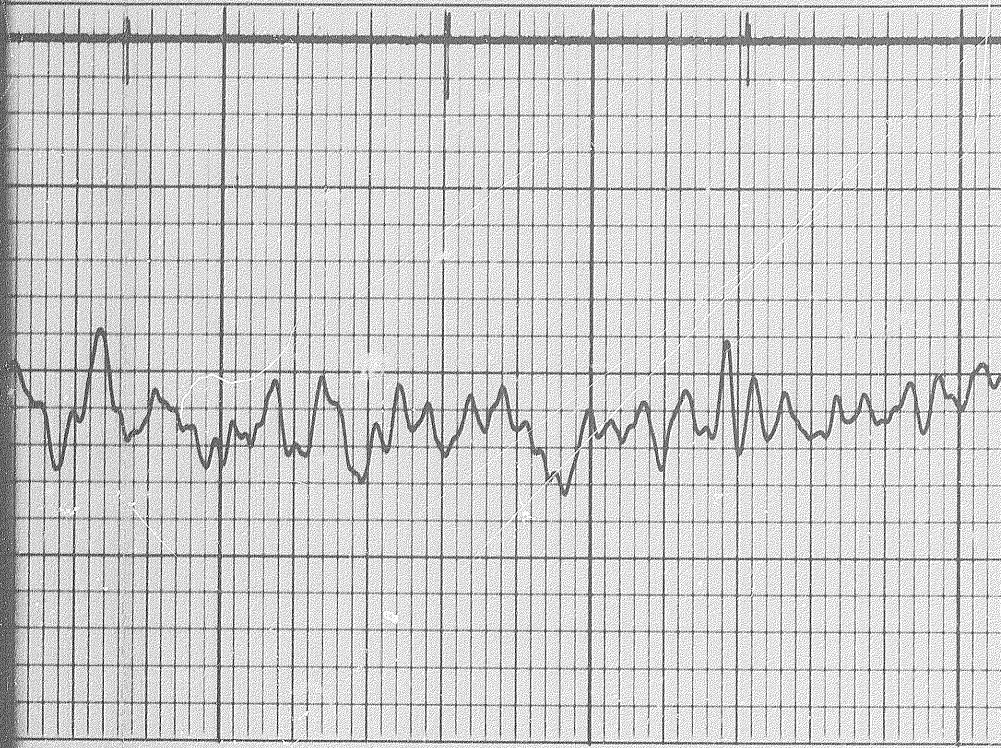
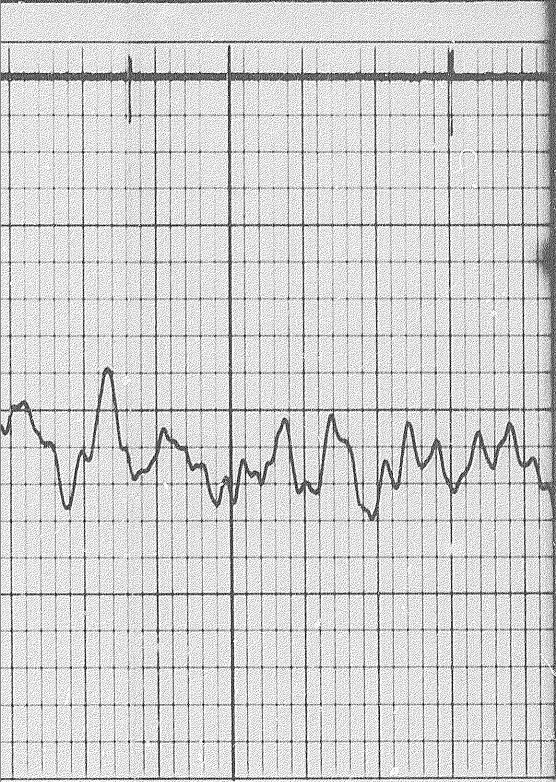
8 of



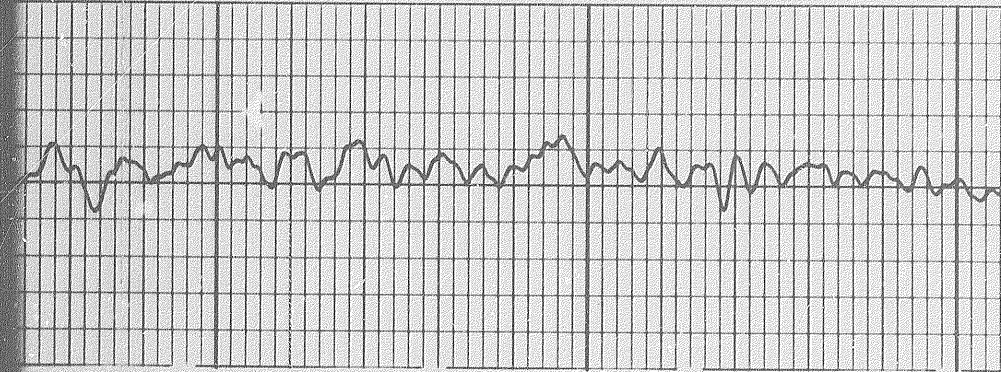
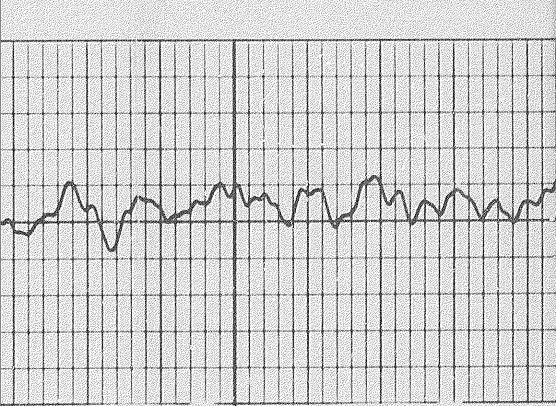
9100

9200

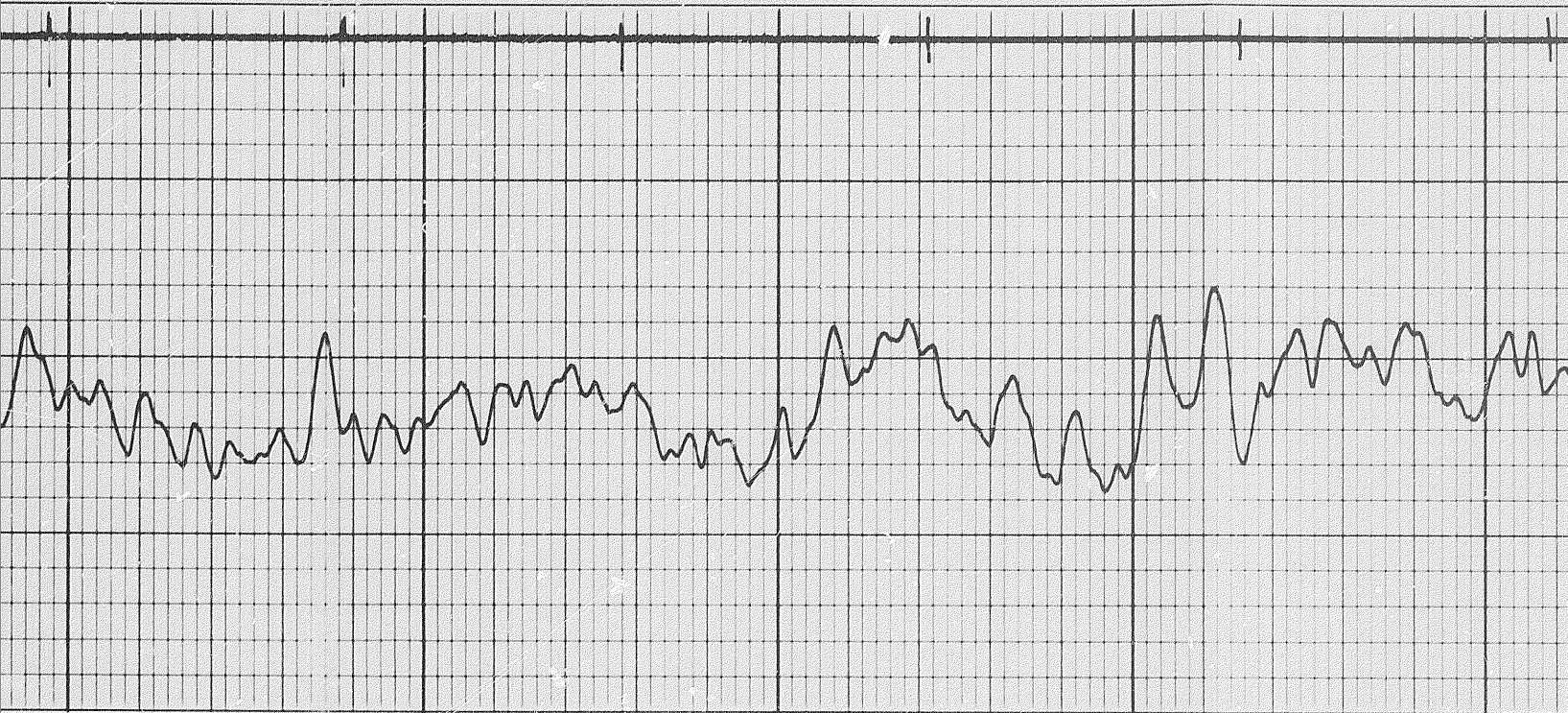




9400

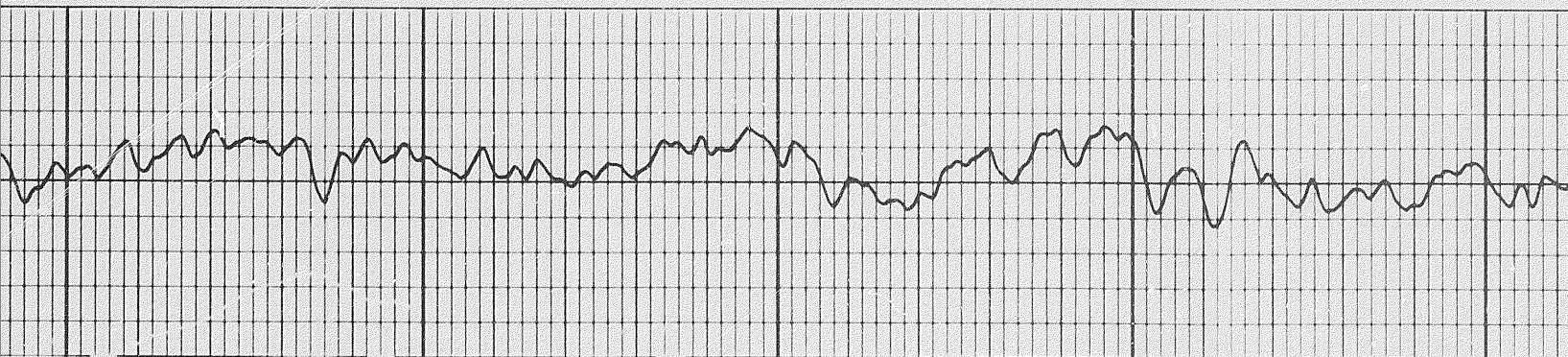


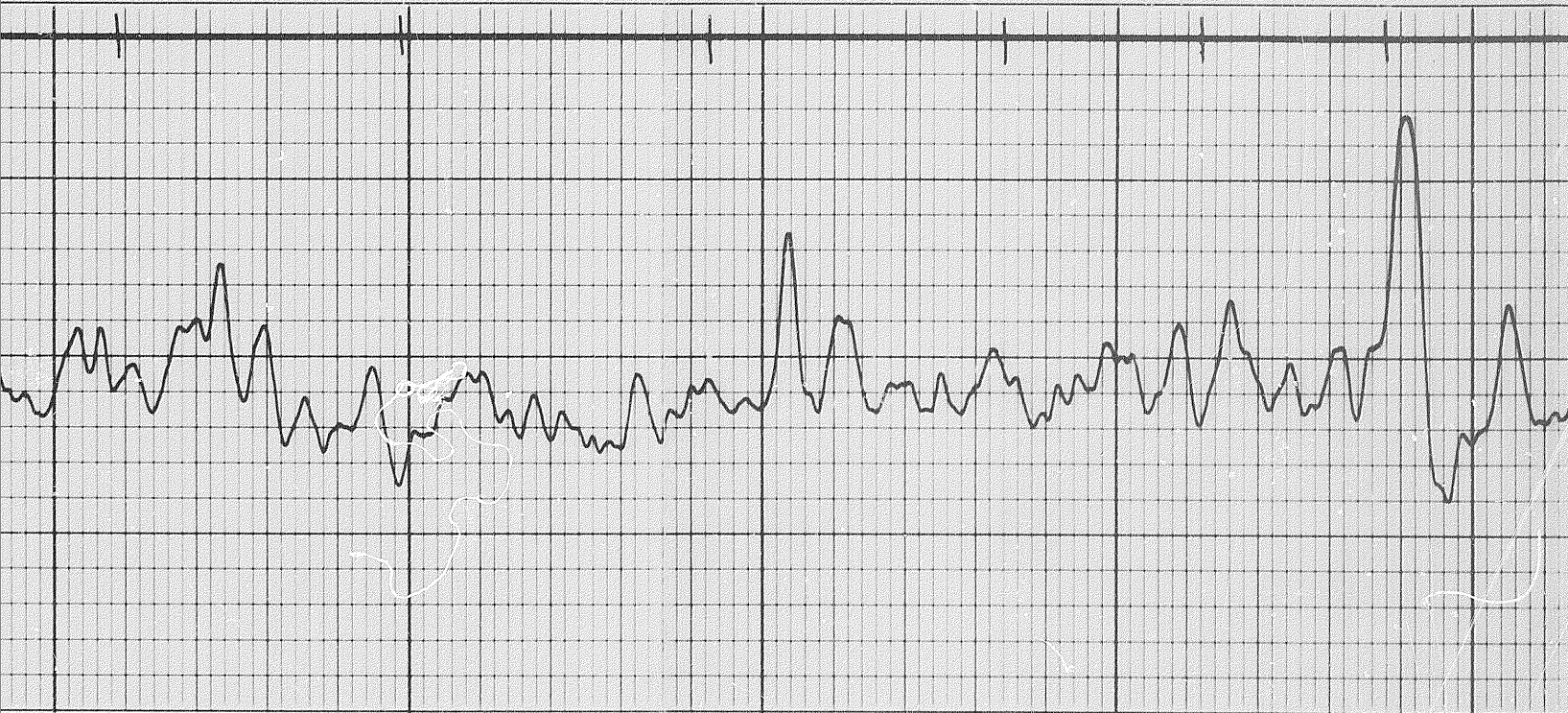
9 of



9600

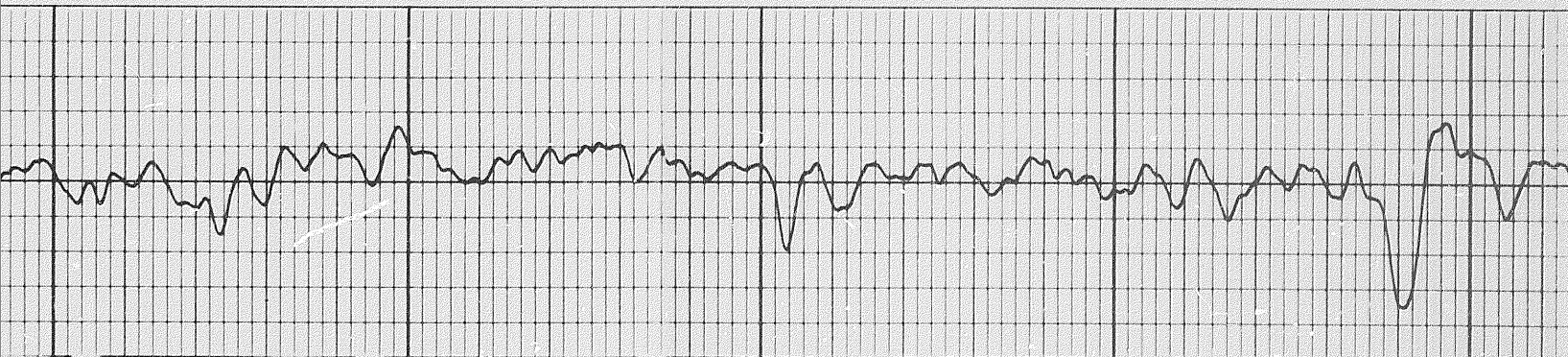
9700

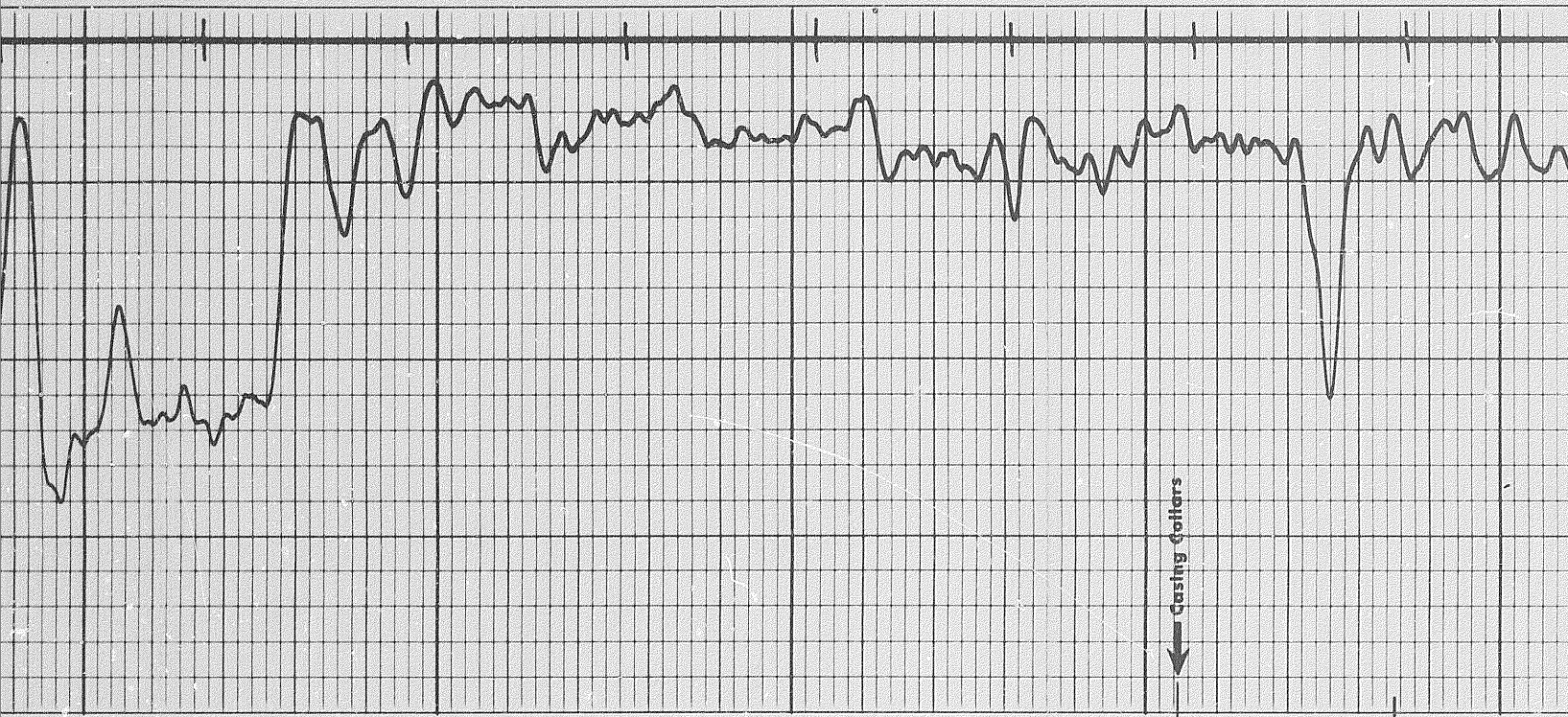




9800

9900

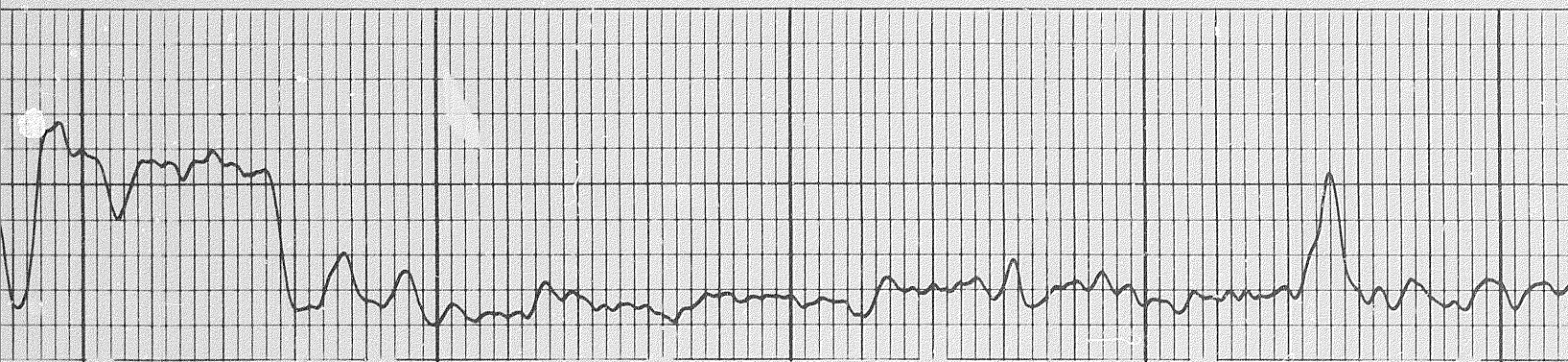




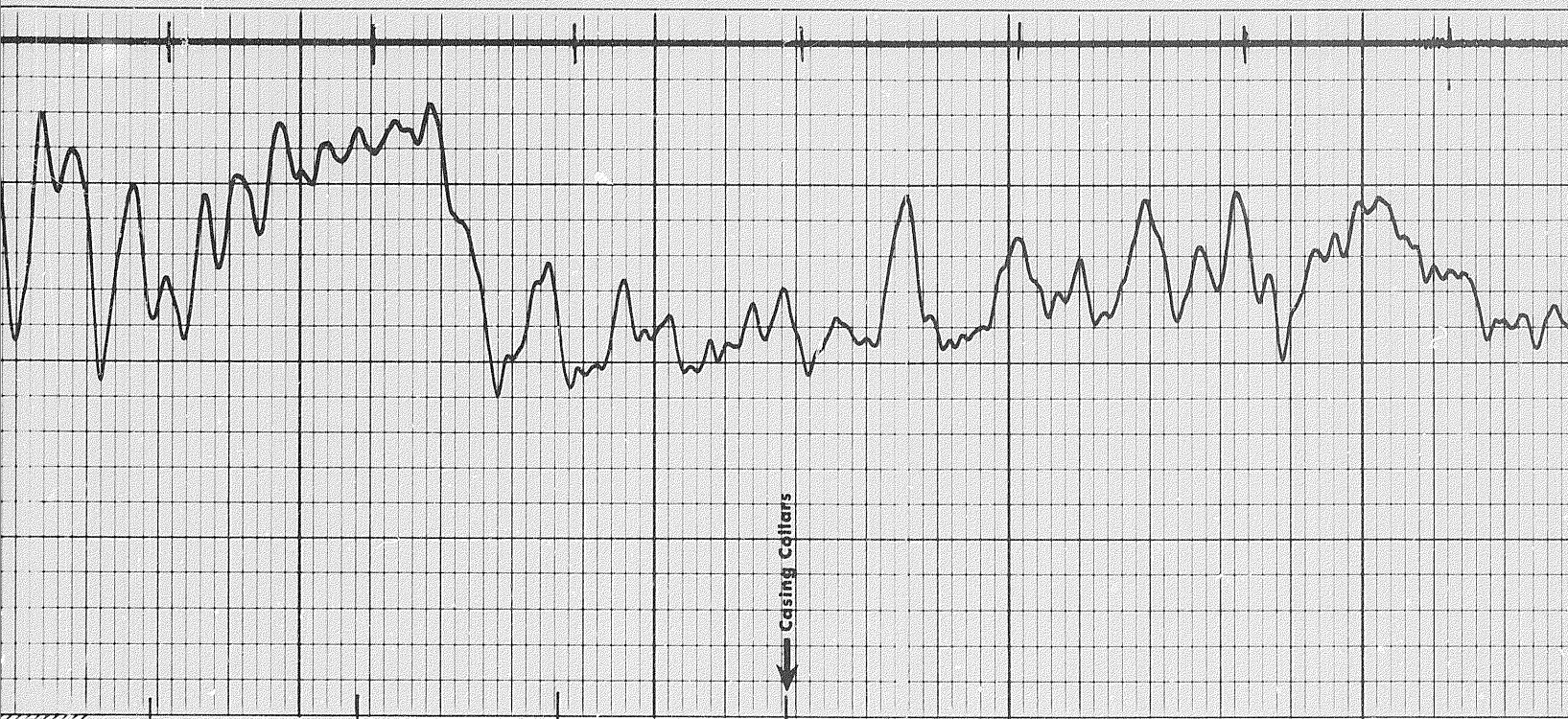
/0000

/0100

Casing Collars

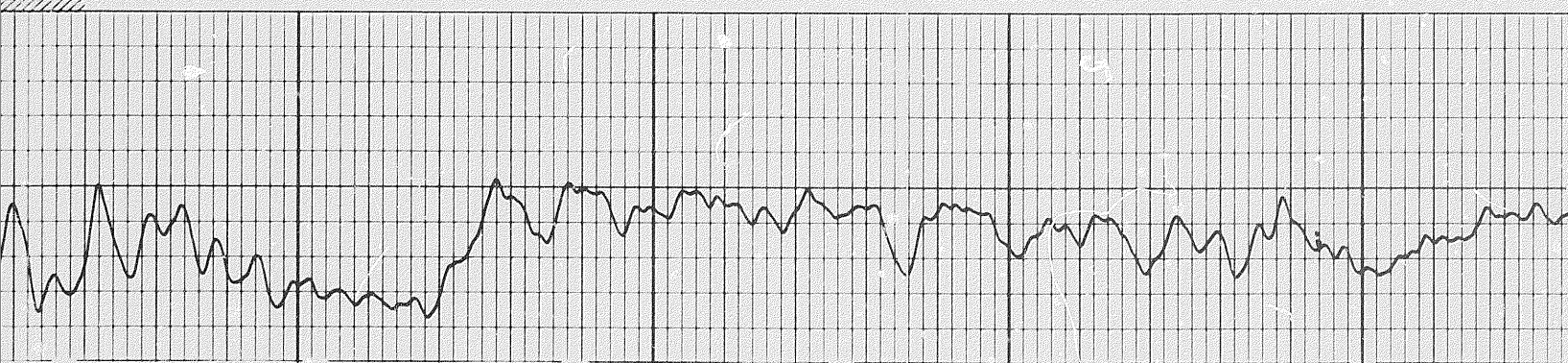


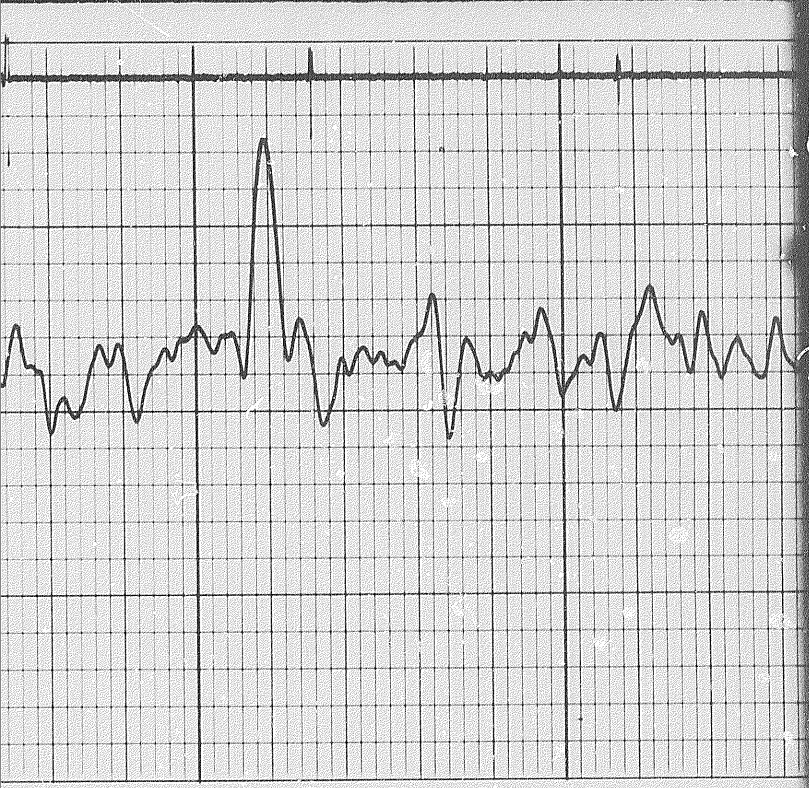
10 of



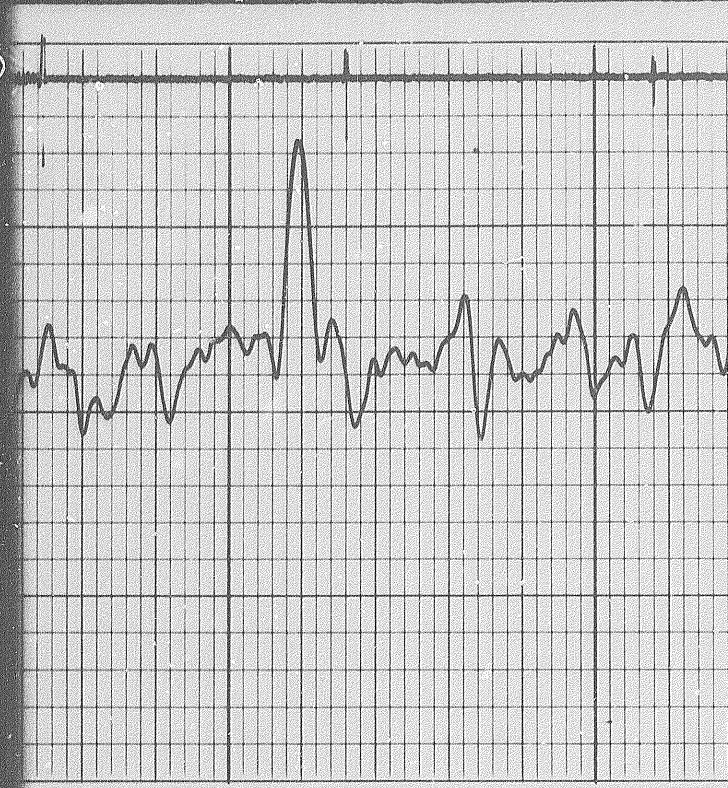
1030

1040

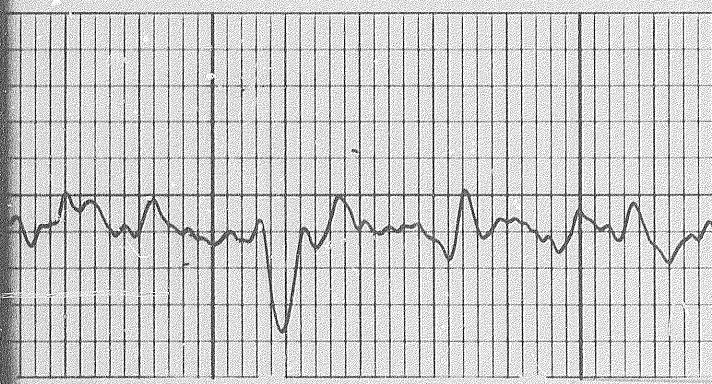
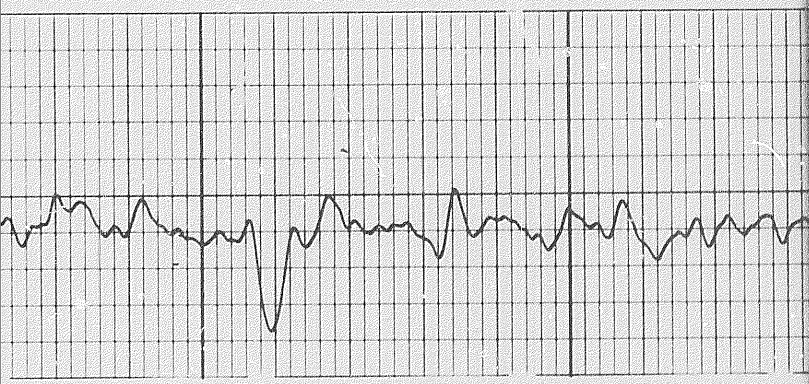




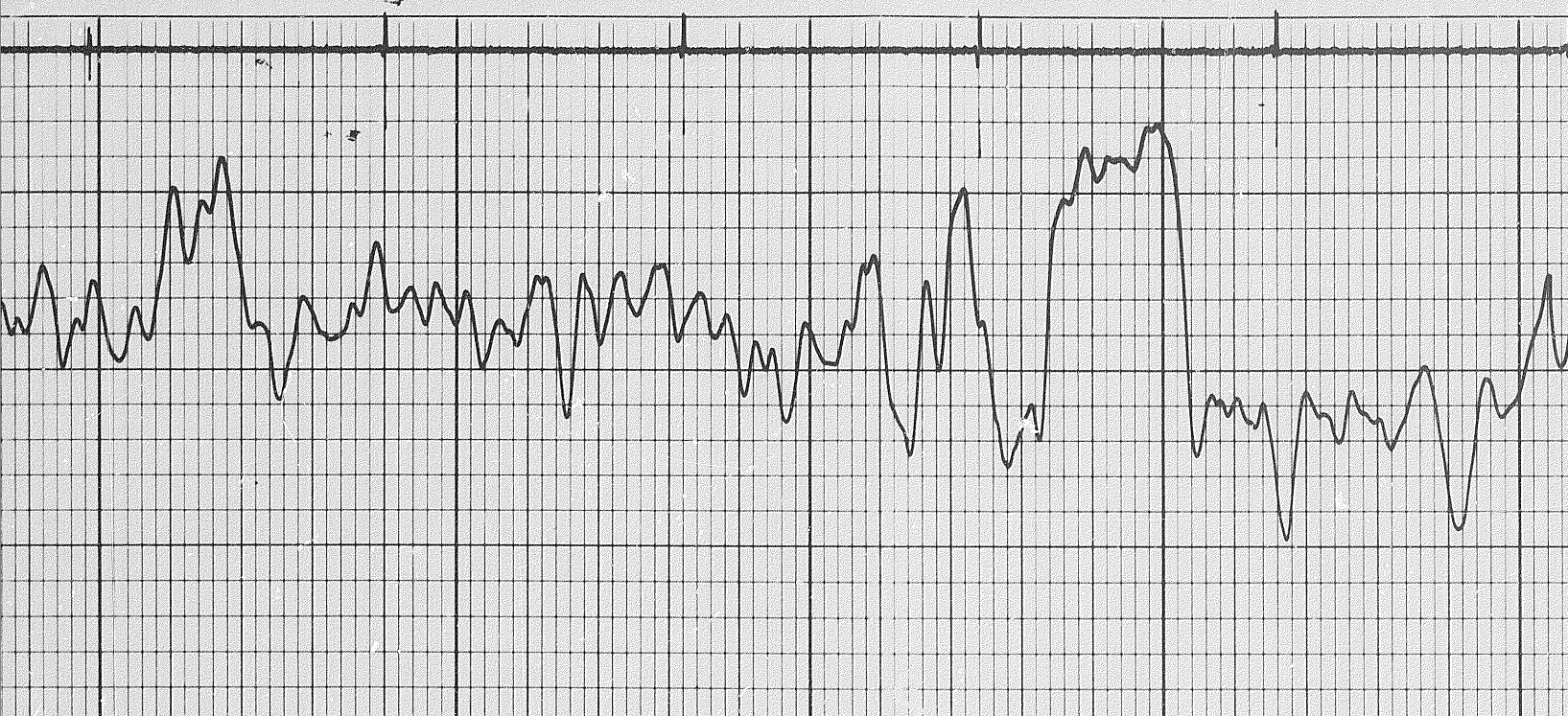
10500



10500



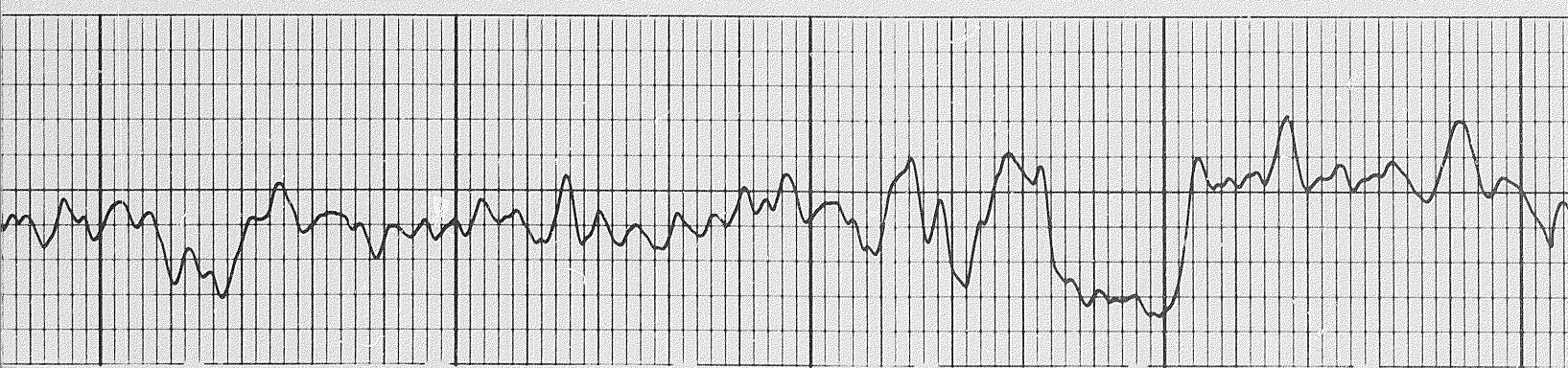
114



/0600

/0700

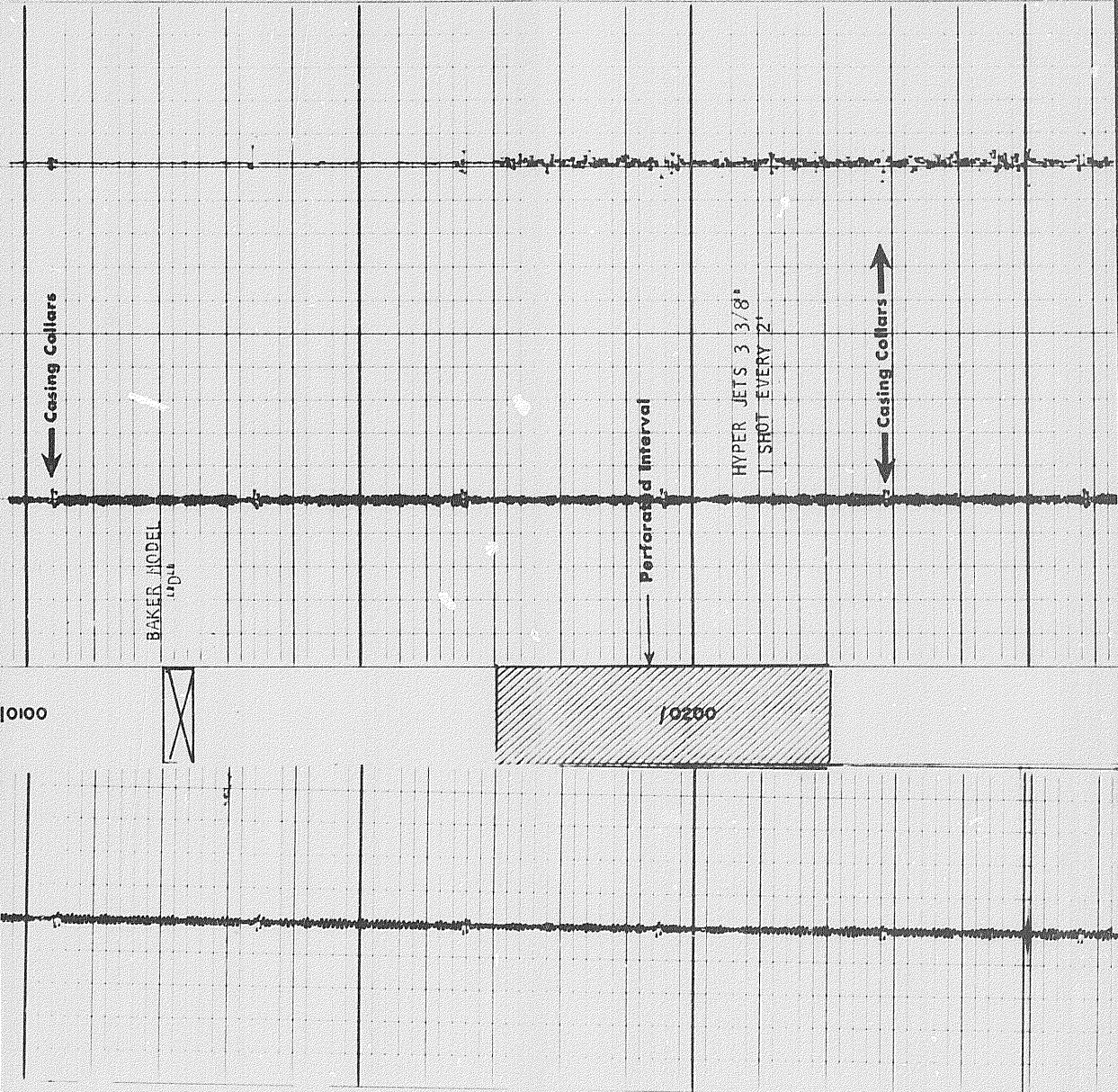
/0800



CASING COLLAR LOG
AFTER PERFORATION

CASING COLLAR LOG
BEFORE PERFORATION

DEPTHS



10100

10200

BAKER MODEL
4104

HYPER JETS 3 3/8"
1 SHOT EVERY 2'

← Casing Collars

Perforated Interval ↓

← Casing Collars

COMPANY PAN AMERICAN PETROLEUM CORPORATION

WELL PAN AM BEAVER RIVER YT-601

FIELD BEAVER RIVER PROVINCE YUKON TERRITORIES

