

SCHLUMBERGER

# DIRECTIONAL LOG

(COMPUTED)

SCHLUMBERGER OF CANADA Calgary, Alberta

COMPANY PAN AMERICAN PETROLEUM CORPORATION

WELL PAN AM BEAVER YTG-01

FIELD BEAVER RIVER

PROVINCE YUKON TERRITORIES

LOCATION	60° 10' NORTH LAT 124° 15' WEST LONG UNIT G	Other Services DIL, SLC-GR
Permanent Datum	GL Elev. 2600.3	ELEV. KB 2616.8
Log Measured From	KB .16.5 Ft. Above Perm. Datum	GL 2600.3 CBF

17 MAY 69		1 JULY 69		27 JULY 69	
ONE		TWO		THREE	
10853	13181			14624	
1201	10898				
9652	2283			3728	
10854	13184			14625	
10904	13291			14650	
1201	10898			10896	
1201	10904				
GEL CHEM		GEL CHEM		GEL CHEM	
10.8	58	8.8	58	8.9	58
7.6		8.0		8.5	
8.8		8.2		7.6	
@	F	4.79	@ 63 F	2.97	@ 63 F
@	F	1.12	@ 275 F	0.56	@ 309 F
@	F	@	@ F	2.57	@ 61 F
@	F	@	@ F	3.04	@ 64 F
12 1/4 "		8 1/2 "		8 1/2 "	
32° E		32° E		32° E	
100'		100'		100'	
MCKINNON & DUNFORD		MCKINNON & DUNFORD		DUNFORD	
6 HRS					
DSU-A 7 DC		DSU-A 7 DC		DSU-A 7 DC	
HEIBERT		ALEXANDER		BROWN	
BOWNESS		CARSTAIRS		DONDAR	

"Any directional computations made from the dipmeter log must be regarded as approximate only. This is because the dipmeter log indicates the orientation of the instrument itself rather than the direction and amount of the well drift. Therefore, we do not and cannot guarantee the accuracy of such directional computations, and we shall not be liable or responsible for any loss, costs, damages or expenses incurred or sustained that may result from any such computations."

REMARKS: RUN1 RUN2  
Panel DCP AA24  
Sonde RDS TB194  
Weight DCW  
Cartridge DCE AB315  
Cartridge DCM AB133  
Photoclinometer PC

BHT F Measured Hours After Circulation  
Continuous Directional Taken From CDM X Photoclinometer

FOR RUN ONE REFER TO CDM

Depth	Drift Angle	DEFLECTION		LATITUDE			DEPARTURE			COORDINATES				
		True Bearing	Horizontal Footage	True Vertical Depth	N	S	E	W	N	S	E	W		
1201	83	S 77° W	1.38	1201.00										
1300	77	S 82° W	1.22	1299.99										
1400	83	S 82° W	1.30	1399.98										

1 of



2400	1.9	S 40 W	1.57	2399.84	1.21	1.02	6.65	17.66
2500	1.1	S 42 W	1.82	2499.83	1.44	1.3	7.36	18.68
2600	1.2	S 52 W	2.09	2599.81	1.50	1.66	9.30	19.98
2700	1.2	S 44 W	2.09	2699.79	1.52	1.47	10.61	21.64
2800	1.3	S 57 W	2.27	2799.76	1.82	1.38	12.13	23.11
2900	1.3	S 57 W	2.27	2899.73	1.82	1.38	13.95	24.49
3000	1.3	S 32 W	2.27	2999.71	1.94	1.21	15.77	25.87
3100	1.3	S 37 W	2.27	3099.68	1.82	1.38	17.71	27.08
3200	1.4	S 42 W	2.44	3199.65	1.83	1.65	19.53	28.46
3300	1.4	S 42 W	2.44	3299.62	1.83	1.65	21.36	30.11
3400	1.4	S 65 W	2.44	3399.59	1.75	1.77	23.18	31.76
3500	1.5	S 52 W	2.27	3499.56	1.41	1.30	24.89	33.53
3600	1.7	S 52 W	2.66	3599.53	1.94	2.35	26.50	35.33
3700	1.3	S 52 W	3.14	3699.49	1.94	2.49	28.14	37.68
3800	2.0	S 54 W	3.49	3799.44	2.06	2.83	30.09	40.17
3900	2.2	S 57 W	3.84	3899.37	2.10	3.23	32.14	43.00
4000	2.4	S 62 W	4.19	3999.30	1.98	3.71	34.25	46.23
4100	3.3	S 62 W	5.76	4099.21	2.71	5.10	36.23	49.94
4200	3.3	S 52 W	6.63	4199.04	3.12	5.86	38.94	55.04
4300	3.6	S 70 W	6.26	4298.82	2.16	5.91	42.06	60.36
4400	3.7	S 60 W	6.45	4398.63	3.24	5.60	44.22	66.81
4500	3.8	S 42 W	6.63	4498.42	4.94	4.45	47.46	72.41
4600	3.7	S 38 W	6.45	4598.20	5.10	3.99	52.40	76.6
4700	3.5	S 42 W	5.76	4697.99	4.29	3.96	57.50	80.85
4800	3.6	S 52 W	6.26	4797.82	3.88	4.96	61.79	84.71
4900	3.9	S 60 W	6.80	4897.62	3.41	5.30	65.67	89.67
5000	3.8	S 42 W	6.63	4997.39	4.94	4.45	69.03	95.57
5100	4.0	S 52 W	6.7	5097.17	3.29	6.17	74.02	100.02
5200	4.0	S 62 W	6.7	5196.92	3.29	6.17	77.31	106.19
5300	3.8	S 42 W	5.23	5296.63	3.90	3.51	81.60	112.36
5400	1.5	S 32 W	2.62	5396.54	2.23	1.40	84.50	115.87
5500	1.5	S 18 E	1.59	5496.51	1.52	49	86.73	117.27











11500	5.5 S 70 W	9.59	11248.83	5.29	9.02	518.12	59.42
11400	5.8 WEST	10.11	11348.32	.00	10.12	518.12	59.30
11500	5.4 N 88 W	9.41	11447.87	.33	9.42	517.79	59.88
11600	5.0 N 88 W	8.71	11547.49	.30	8.72	517.49	59.16
11700	6.0 S 85 W	10.45	11646.94	.92	10.42	518.41	20.74
11750	5.8 S 72 W	5.05	11696.69	1.57	4.82	519.98	15.92
11800	8.5 S 62 W	7.39	11746.13	3.43	6.54	523.46	9.38
11850	12.0 S 72 W	10.39	11795.04	3.22	9.90	526.68	.52
11900	13.8 S 72 W	11.93	11843.60	3.70	11.35	530.38	11.87
11950	13.0 S 80 W	11.25	11892.31	1.96	11.09	532.34	22.96
12000	12.5 S 82 W	10.82	11941.13	1.52	10.73	533.86	33.89
12100	12.7 S 79 W	21.98	12038.68	4.21	21.59	538.07	55.28
12200	13.0 S 77 W	22.49	12136.12	5.07	21.93	543.14	71.21
12300	12.6 S 52 W	21.81	12233.71	13.44	17.20	545.53	94.11
12400	12.4 S 32 W	21.47	12331.37	18.22	11.39	574.80	105.80
12500	13.3 S 32 W	23.00	12428.69	19.52	14.20	594.32	118.00
12600	13.6 S 32 W	23.51	12525.88	19.95	12.47	614.27	130.47
12700	14.8 S 32 W	25.54	12622.57	21.67	13.55	635.94	144.02
12800	16.0 S 32 W	27.56	12718.69	23.38	14.62	659.32	158.64
12900	16.0 S 30 W	27.56	12814.82	25.88	13.80	683.20	172.44
13000	17.0 S 28 W	29.24	12910.45	25.83	13.74	709.03	186.18
13100	18.0 S 22 W	30.90	13005.55	26.66	11.59	737.69	197.77
13184	18.3 S 27 W	26.38	13085.30	23.51	11.99	761.20	209.76
13300	18.4 S 52 W	36.62	13195.37	21.55	26.87	783.75	231.63
13400	17.5 S 52 W	30.07	13290.74	18.53	23.71	808.28	262.34
13500	17.4 S 47 W	29.90	13386.16	20.40	21.80	822.68	294.22
13600	17.3 S 52 W	29.74	13481.64	18.32	23.44	841.00	307.66
13700	17.3 S 57 W	29.74	13577.11	16.21	24.95	857.21	332.61
13800	17.7 S 52 W	30.40	13672.38	18.73	3.97	875.94	356.58
13900	16.9 S 52 W	29.07	13768.06	17.91	22.92	893.85	379.50
14000	15.8 S 57 W	27.23	13864.23	14.84	22.85	918.69	402.35
14100	14.6 S 52 W	25.21	13961.05	15.53	19.87	944.22	422.22



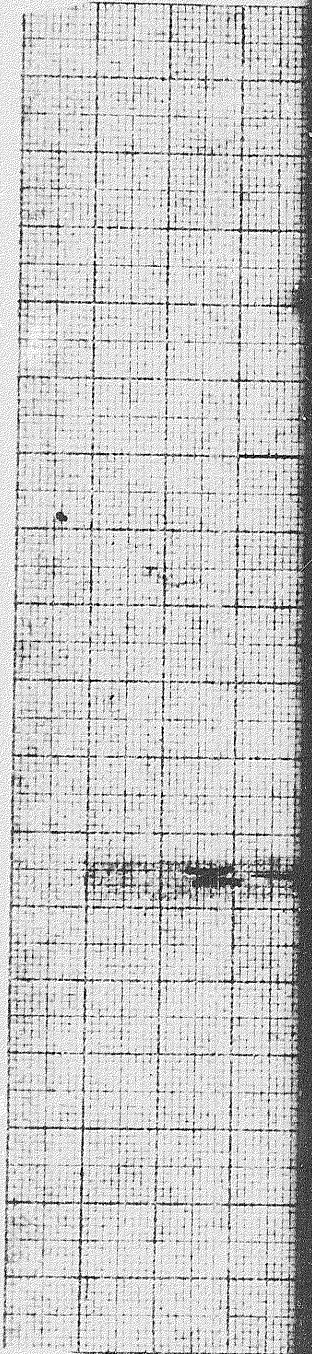
1001-90 S 27.39 W

POSITION OF BOTTOM OF HOLE

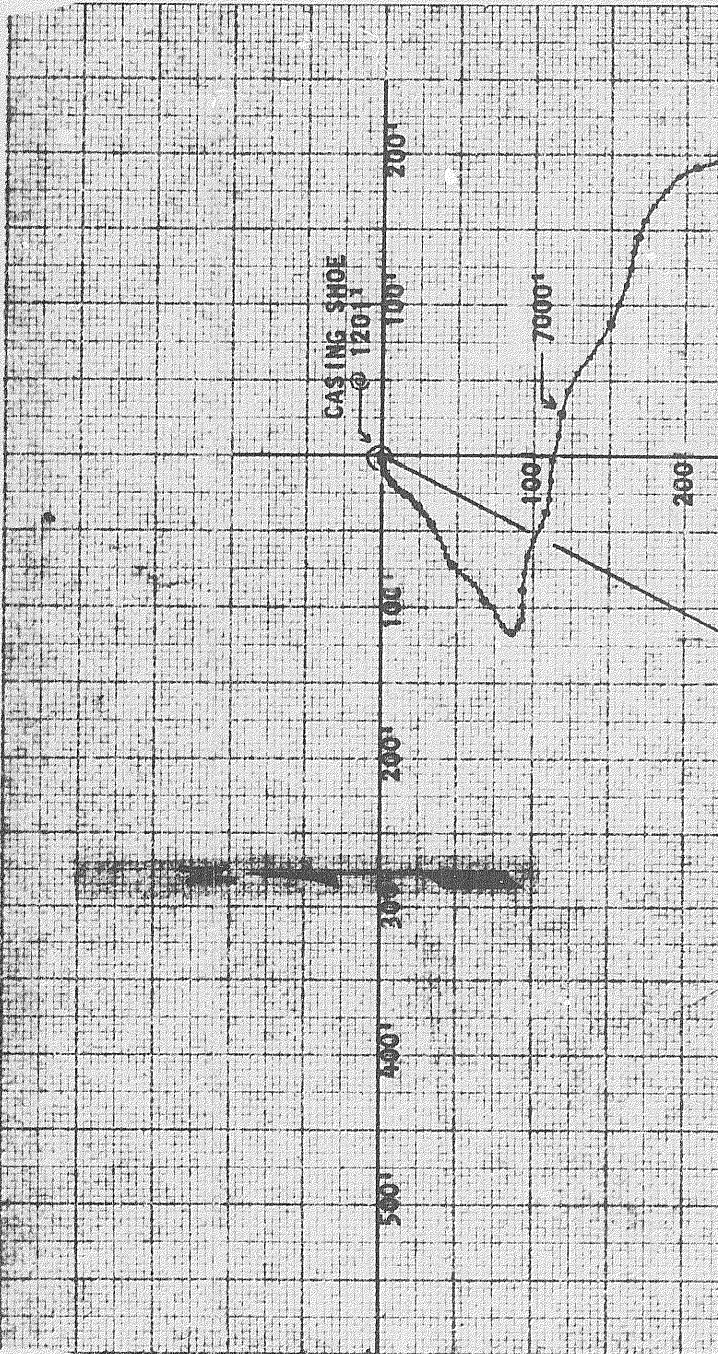
α 14625'

1" = 100'

IS 965.90' SOUTH AND 500.56' WEST  
OR IS 1087.93' SOUTH 27.39° WEST  
IN RELATION TO CASING SHOE @ 1201'



OR IS 1007.33' SOUTH 27.39° WEST  
IN RELATION TO CASING SHOE @ 1201'



CASING SHOE  
@ 1201'

500' 400' 300' 200' 100'

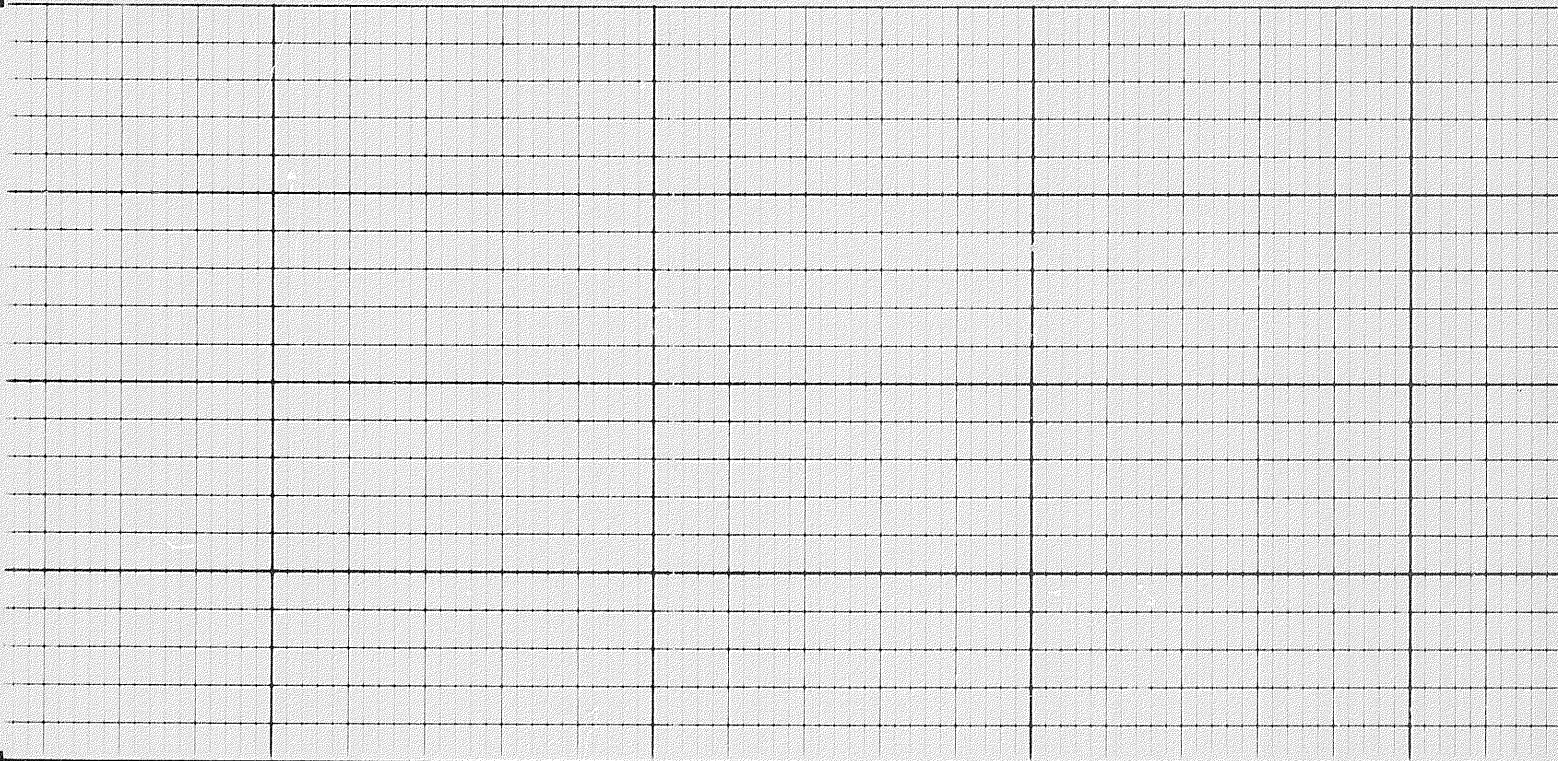
100' 7000'

200'





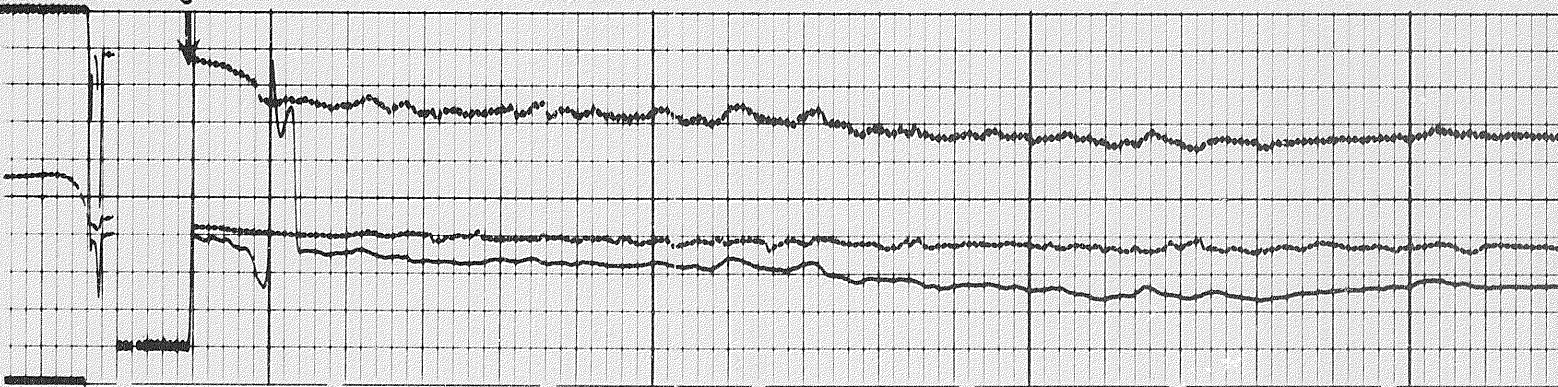




Casing

10900

11000

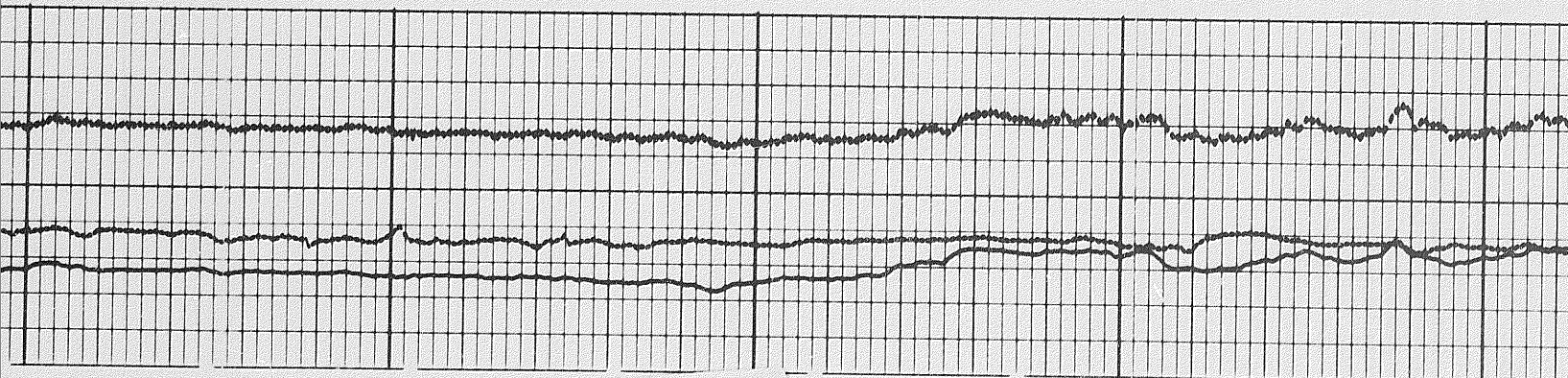






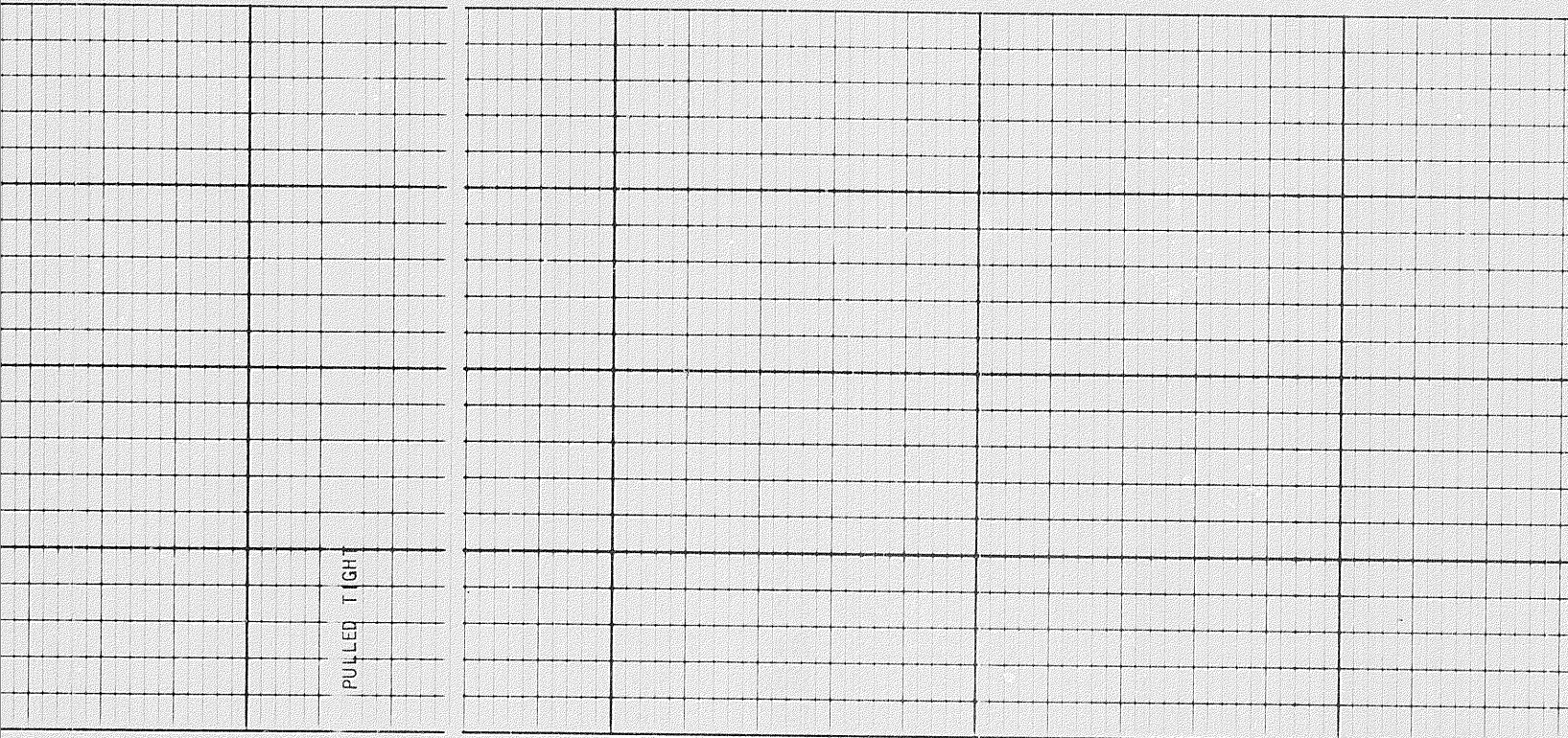
1100

1120



4 of

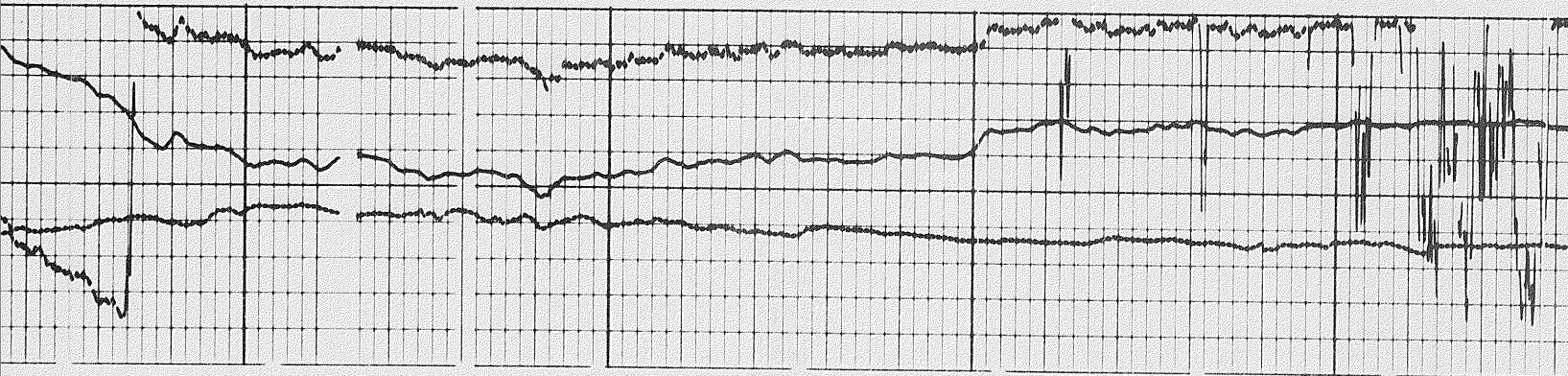




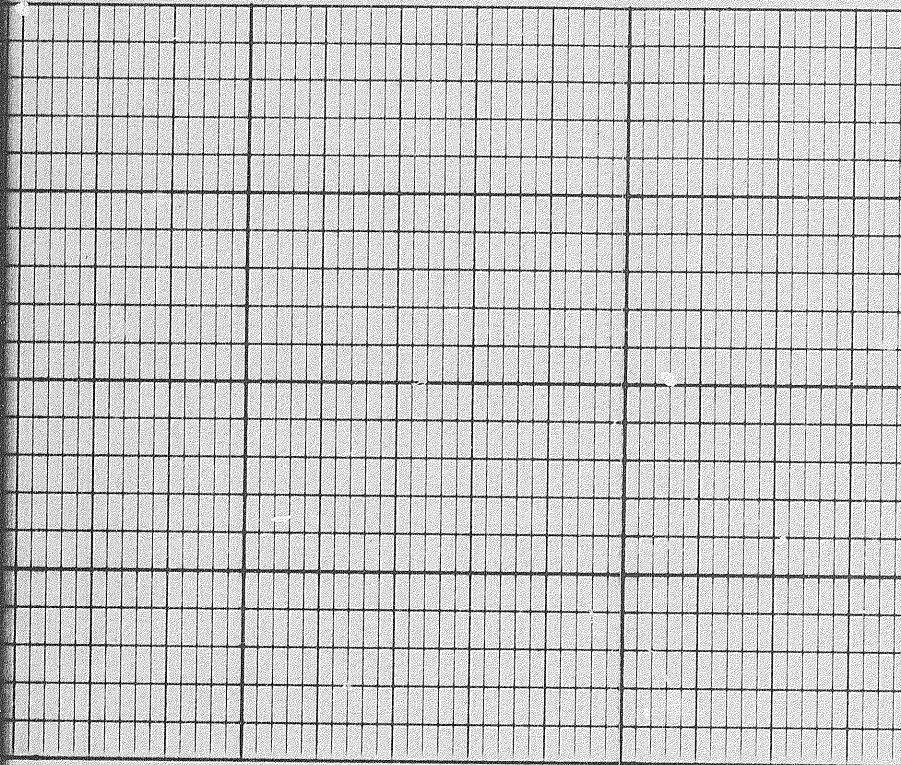
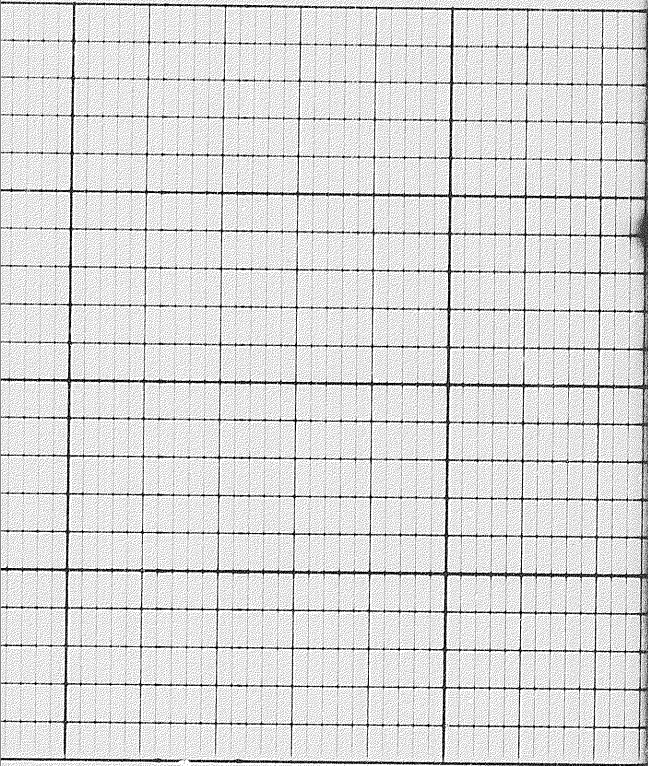
PULLED TIGHT

11400

11500







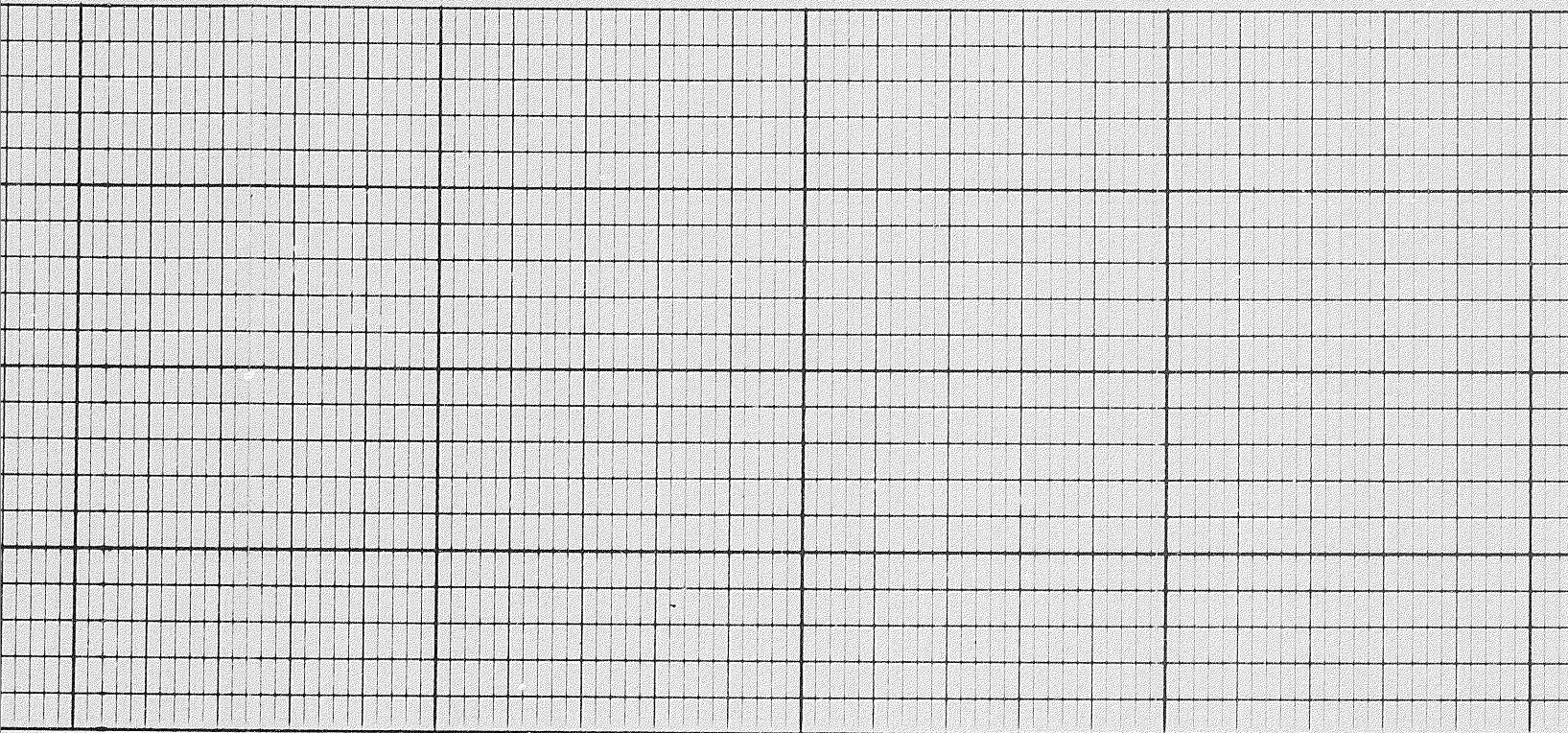
11600



11700



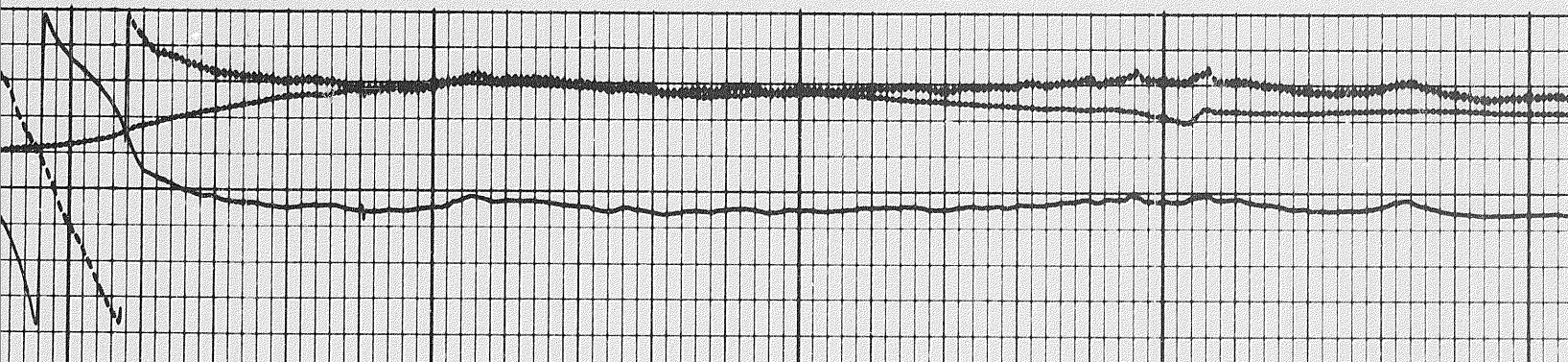




1100

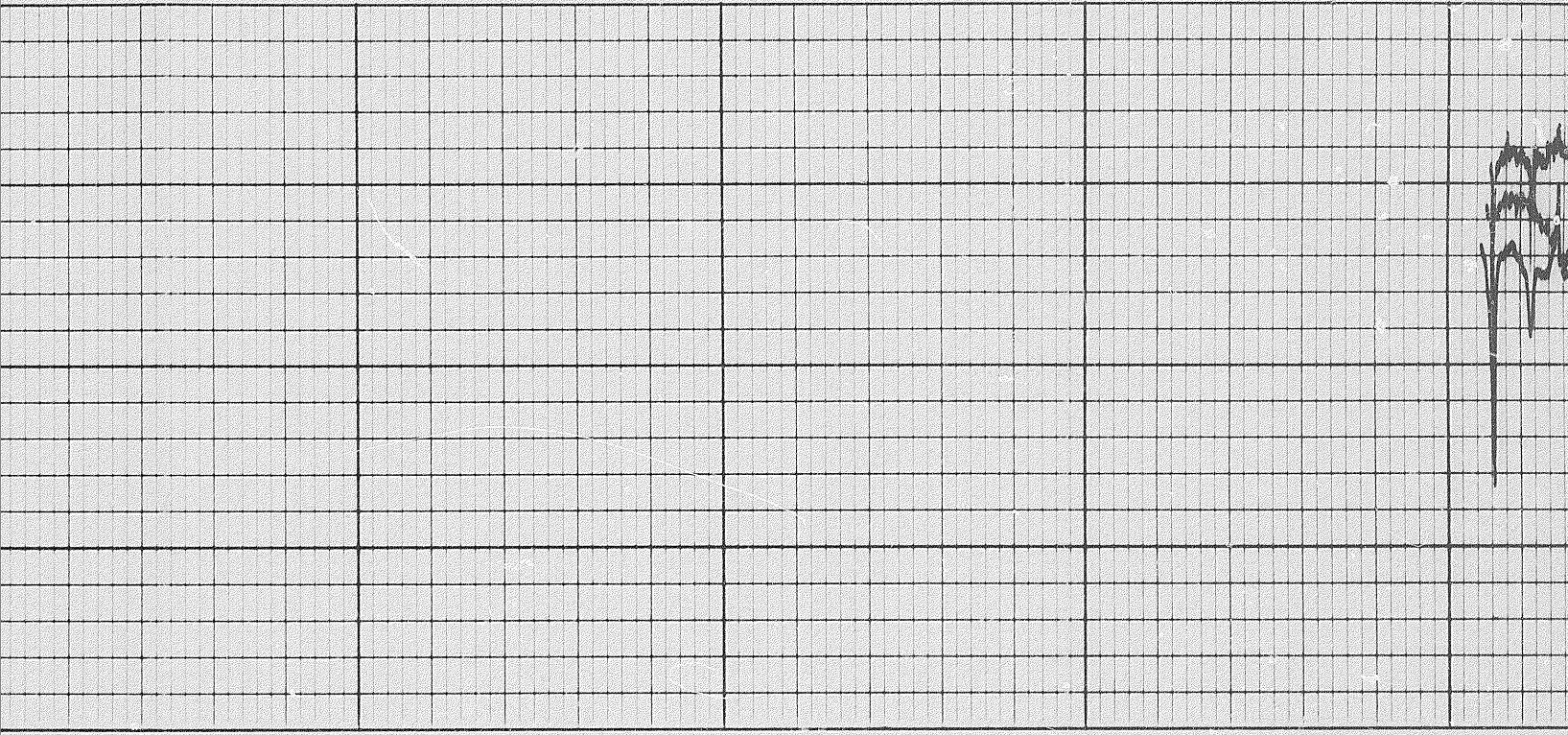
1150

1200



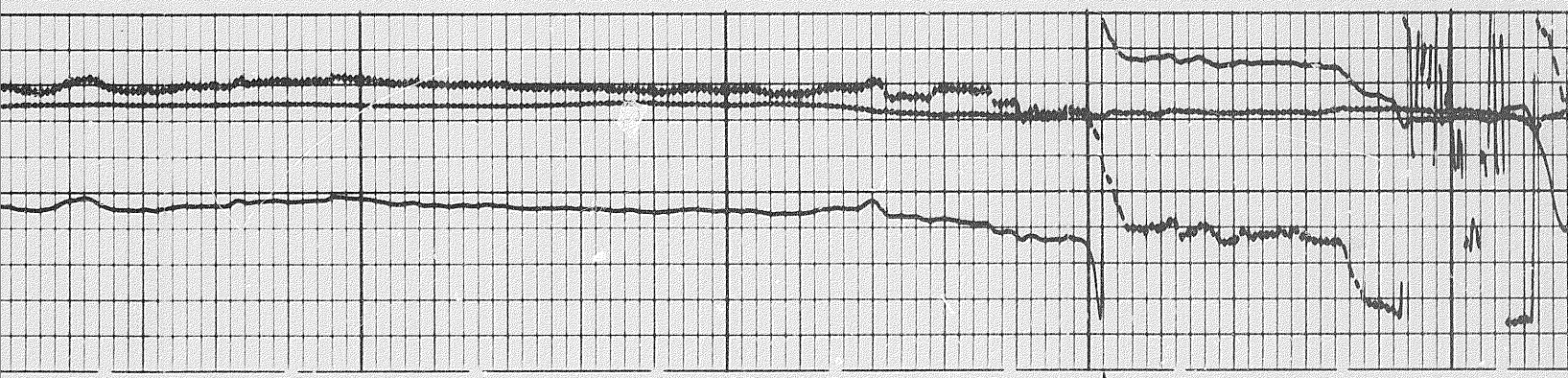


5

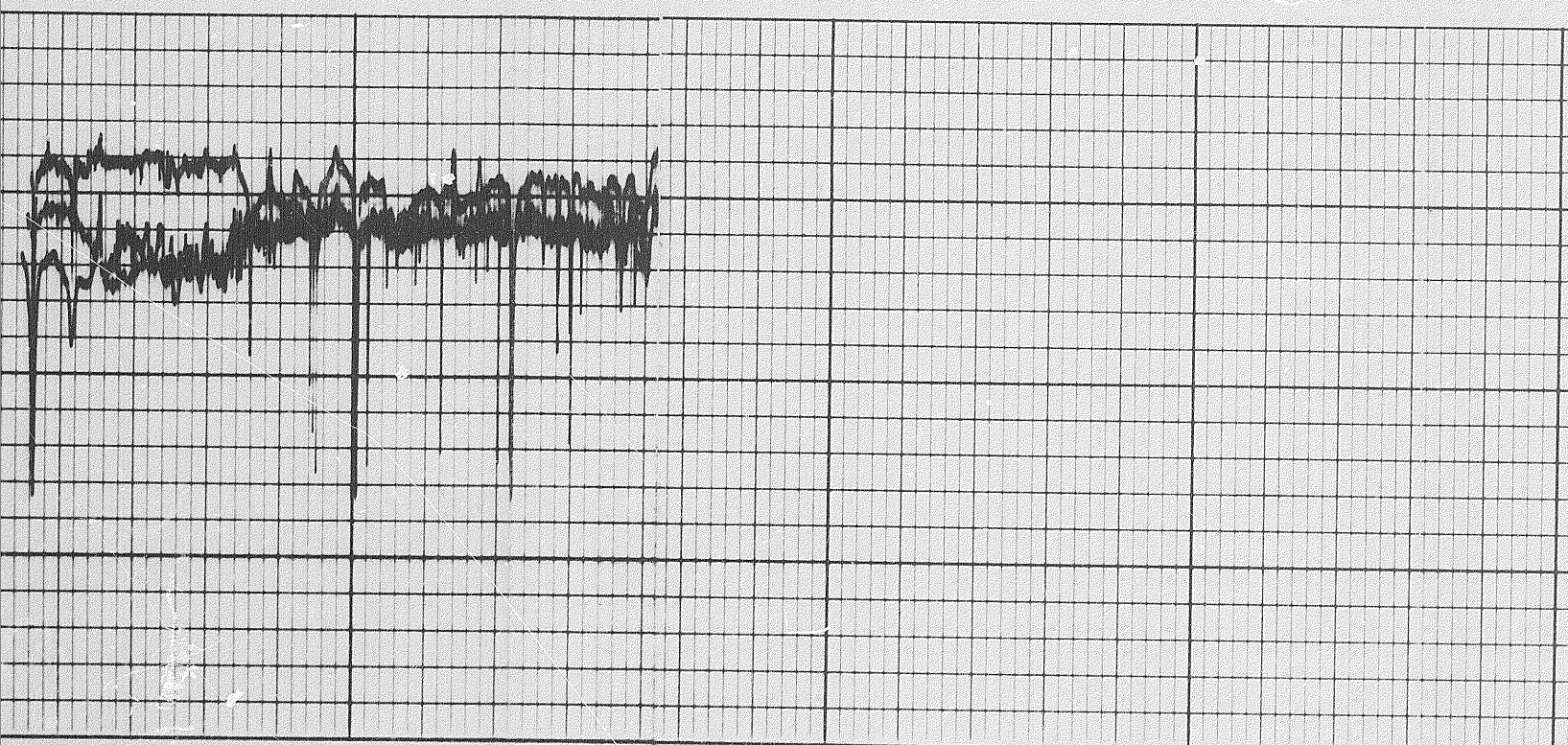


12100

12200



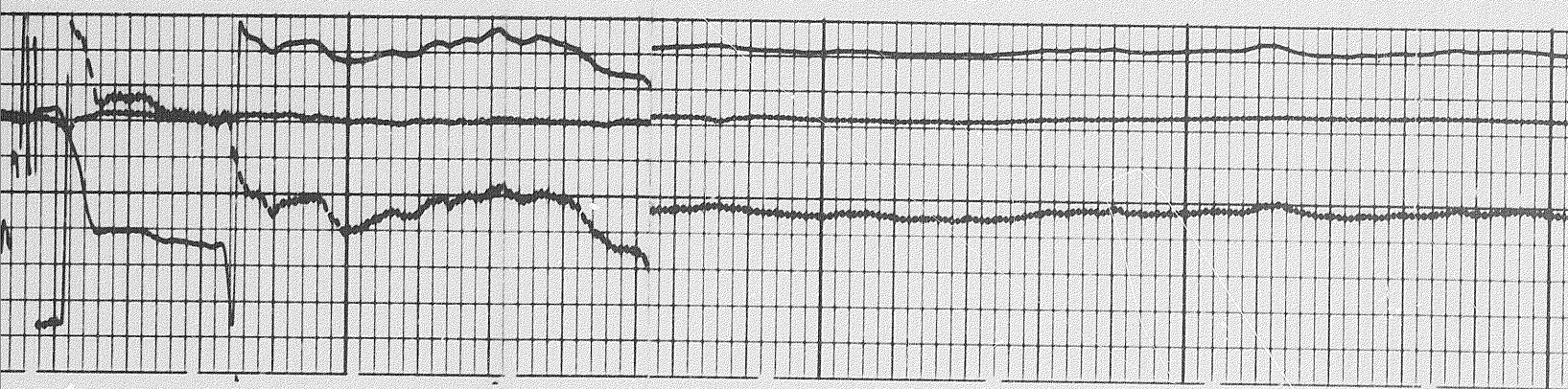




12300

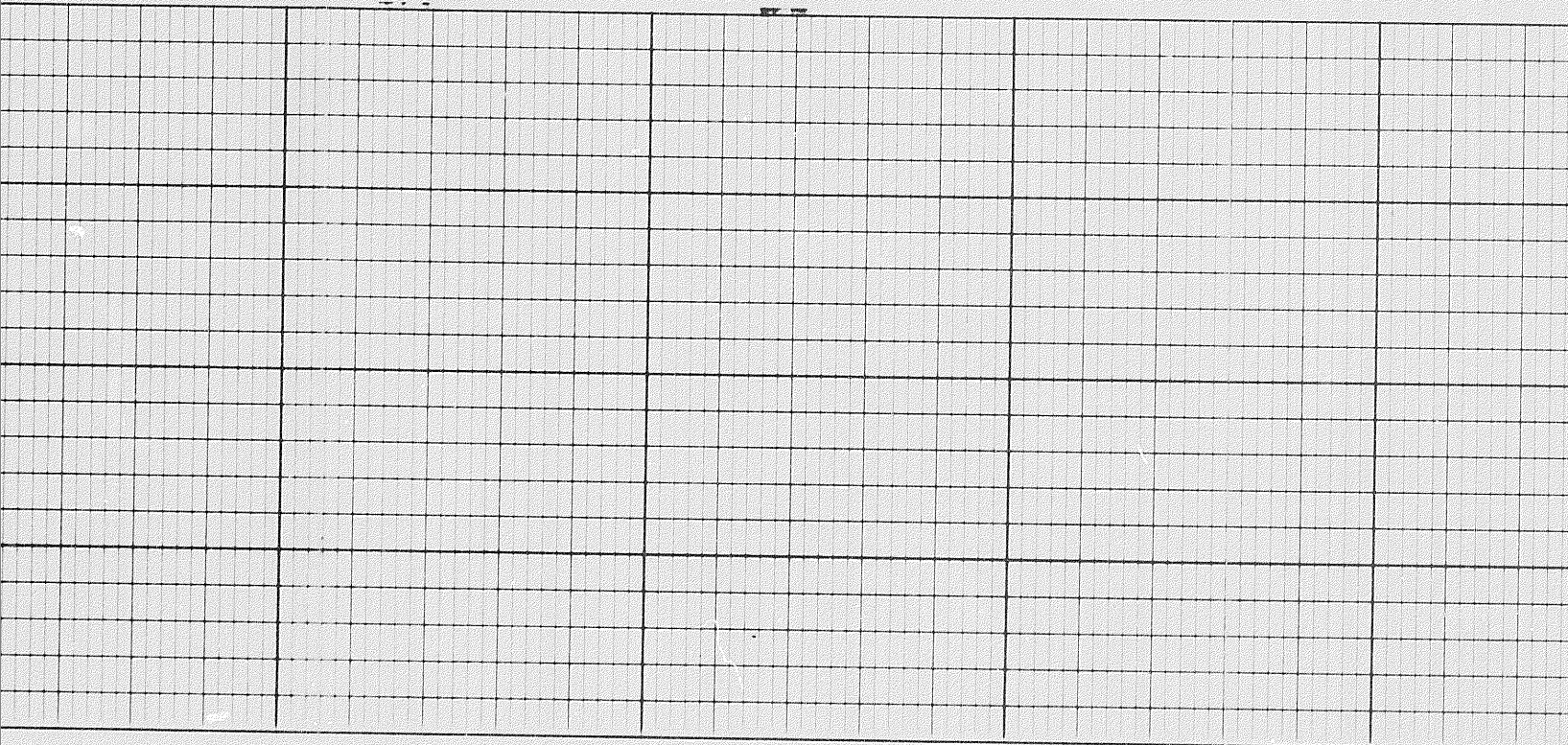
12000

12100



6 of





12200

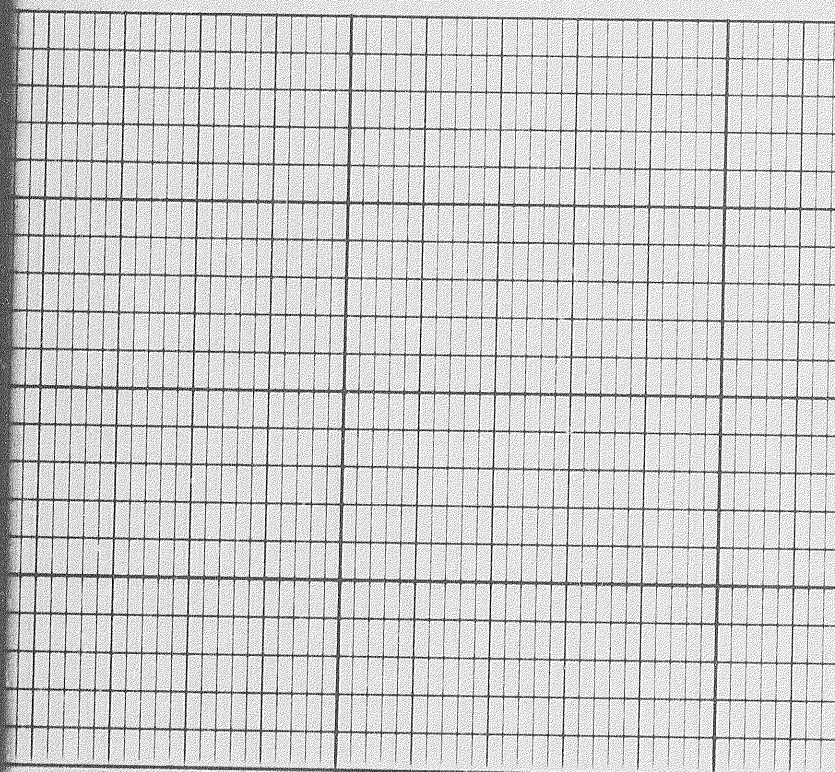
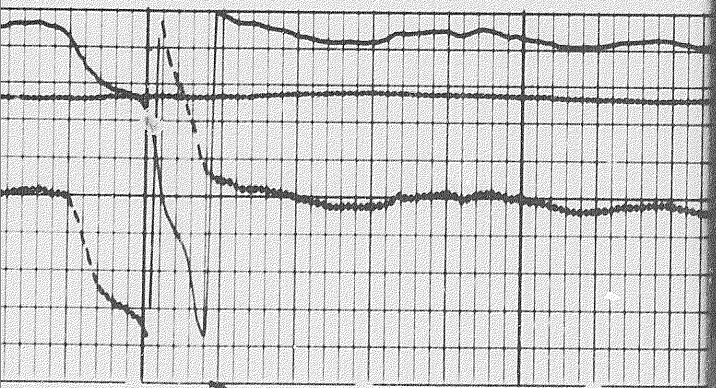
12300







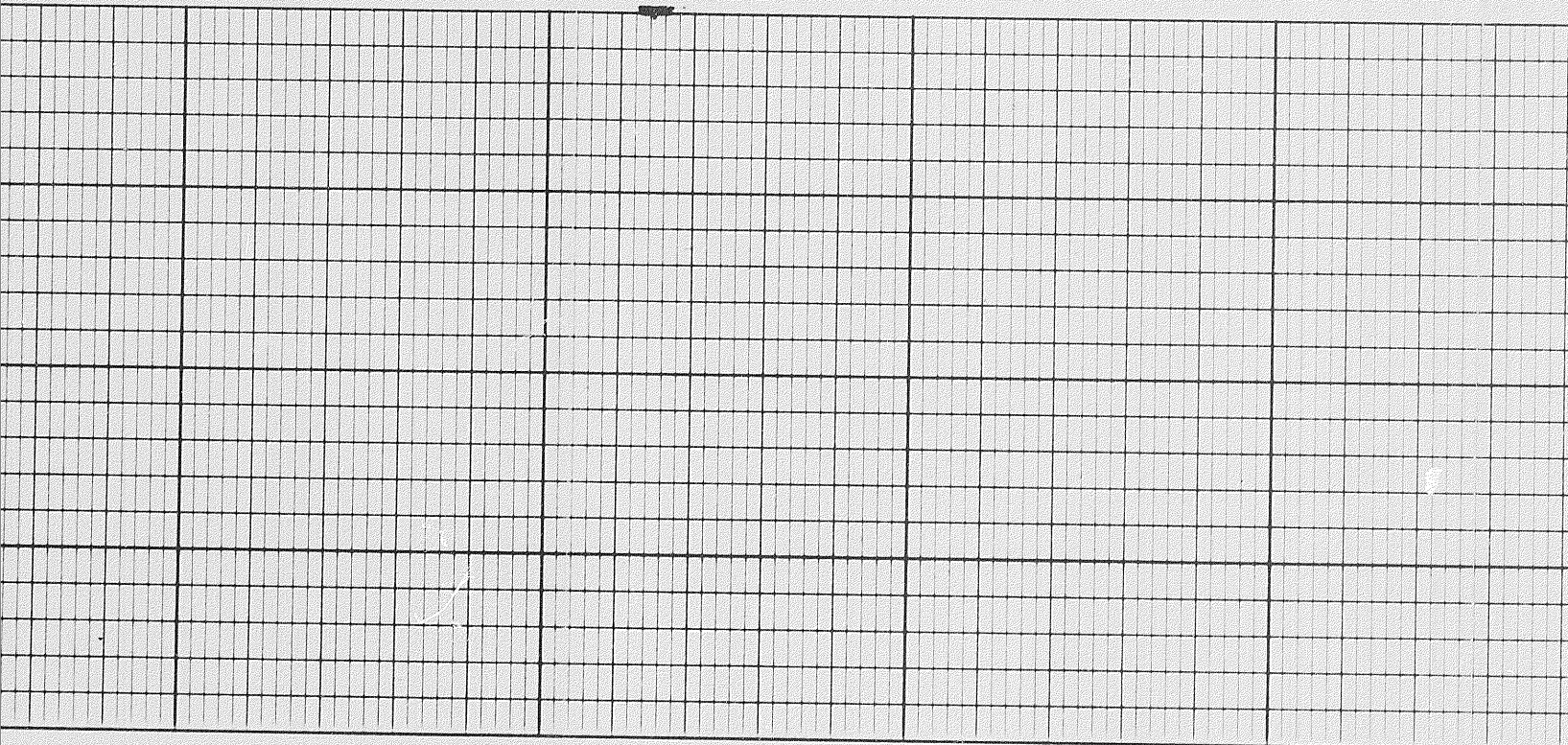
12500



12500

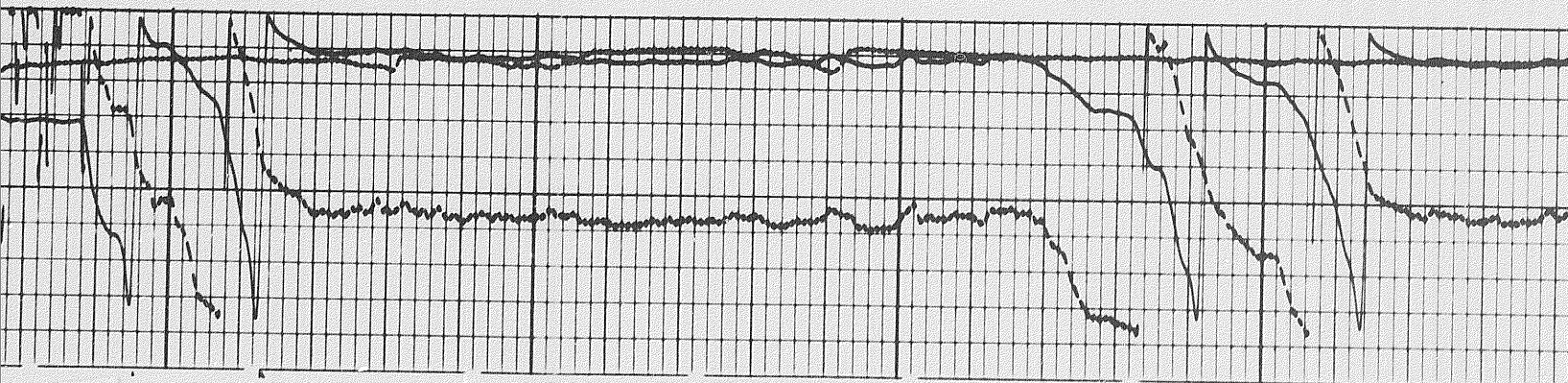






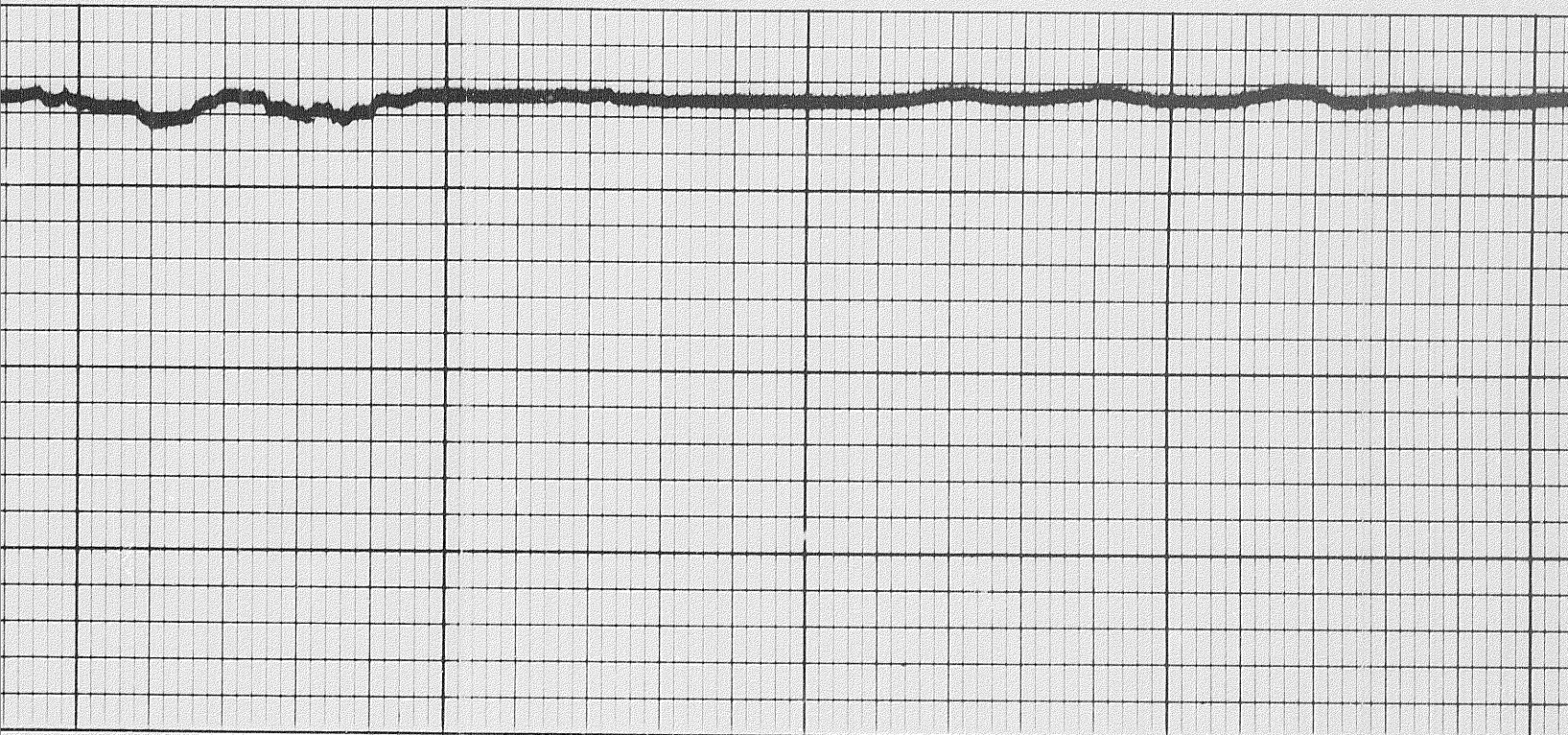
12700

12800



of





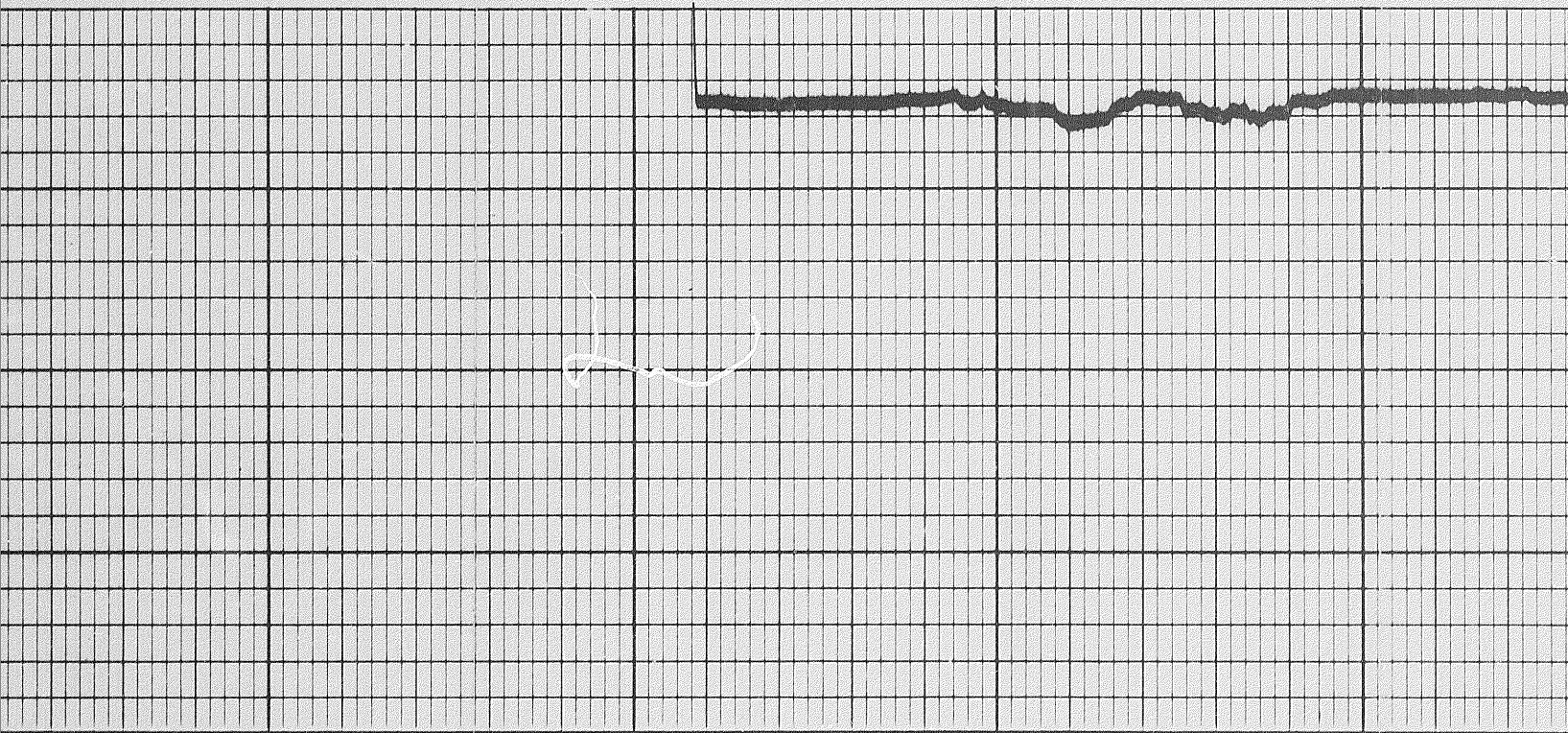
12900

13000

13100

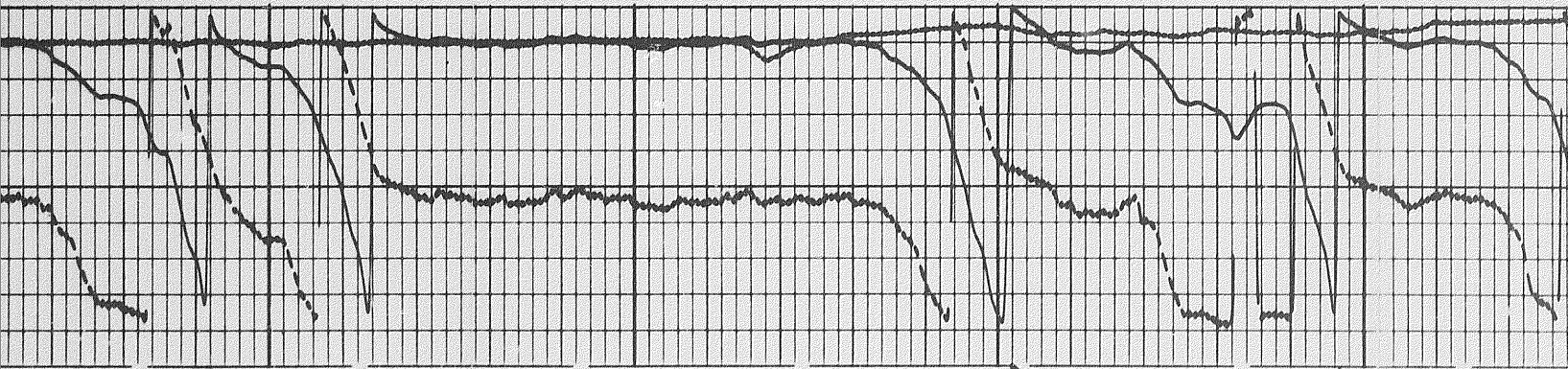






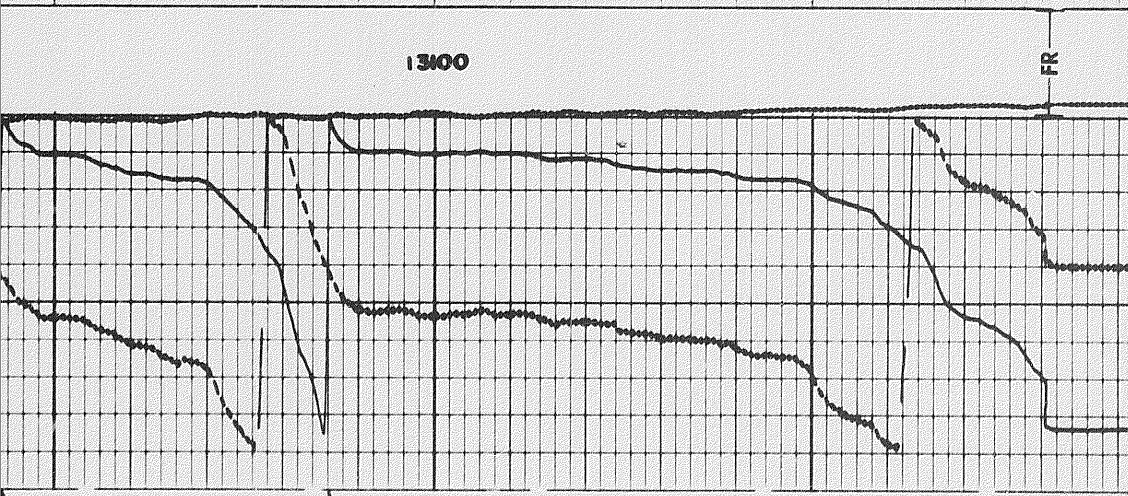
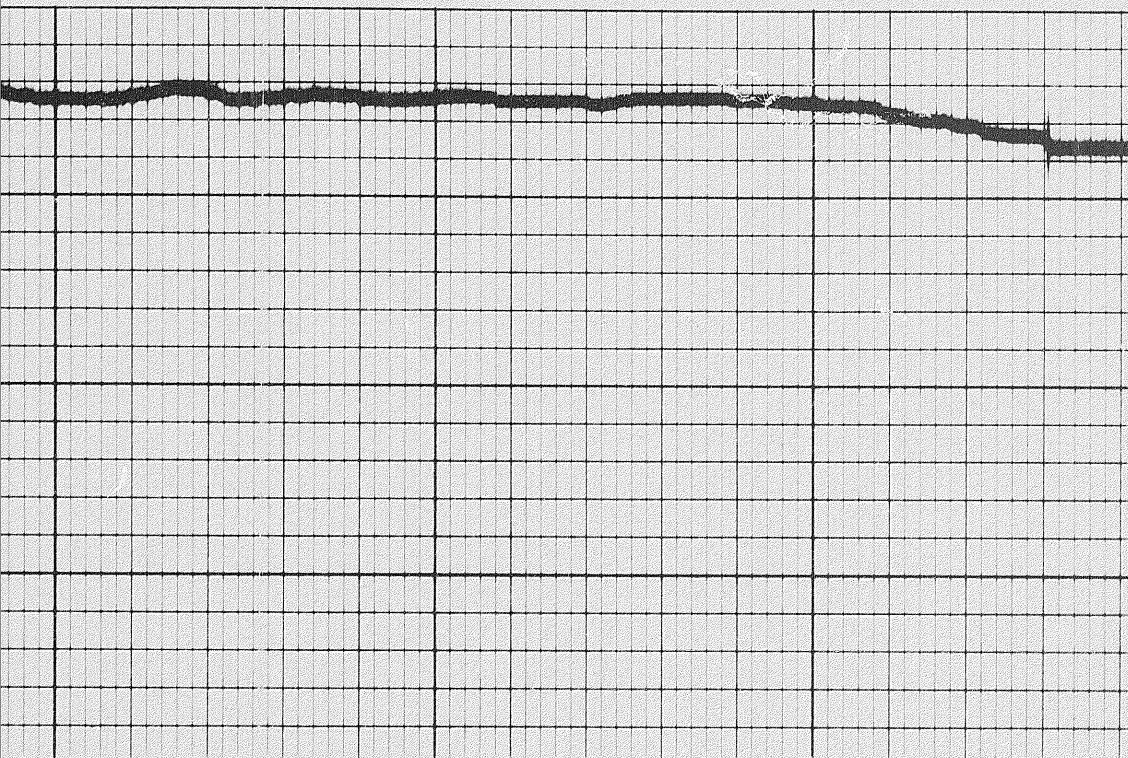
12800

12900



868





AZIMUTH NO. 1 ELECTRODE  
FROM MAGNETIC NORTH



RELATIVE BEARING

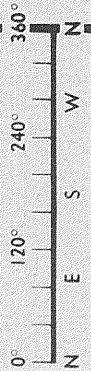


DEVIATION





AZIMUTH NO. 1 ELECTRODE  
FROM MAGNETIC NORTH



RELATIVE BEARING



DEVIATION



DEPTHS

ORIENTATION

COMPANY PAN AMERICAN PETROLEUM CORPORATION  
WELL PAN AM BEAVER YTC-01  
FIELD BEAVER CIVER  
LOCATION 60° 10' NORTH LAT 124° 15' WEST LONG PROVINCE YUKON TERRITORIES