

BERGER

COMPENSATED FORMATION DENSITY LOG

SCHLUMBERGER OF CANADA Calgary, Alberta

COMPANY PAN AMERICAN PETROLEUM CORPORATION

PAN AM BEAVER YT-G01

BEAVER RIVER

YUKON TERRITORIES

Other Services: TEMP, DIL, SNP, CBL, SLC-GR, A-SGR

Permanent Datum GL Elev. 2600.3
Measured From KB 16.5 Ft. Above Perm. Datum

ELEV: KB 2616.8
GL 2600.3
CBF

26 JULY 69					
ONE					
14602					
10895					
3707					
14604					
14650					
10895					
10904					
GEL CHEM					
.9	52				
8.5					
7.6					
97	63	°F	@	°F	°F
57	61	°F	@	°F	°F
54	328	°F	@	°F	°F
04	64	°F	@	°F	°F
8 1/2"					
16"					
PGT=D					
5 HRS					
DSJ-A-7 DC					
ALEXANDER					
BONDAR					

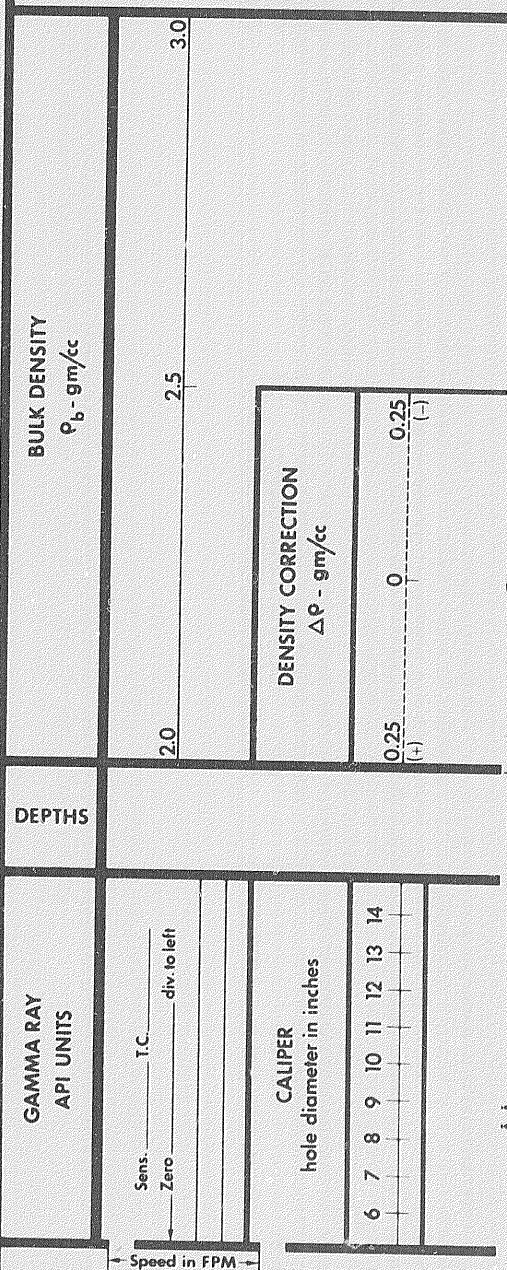
1 of

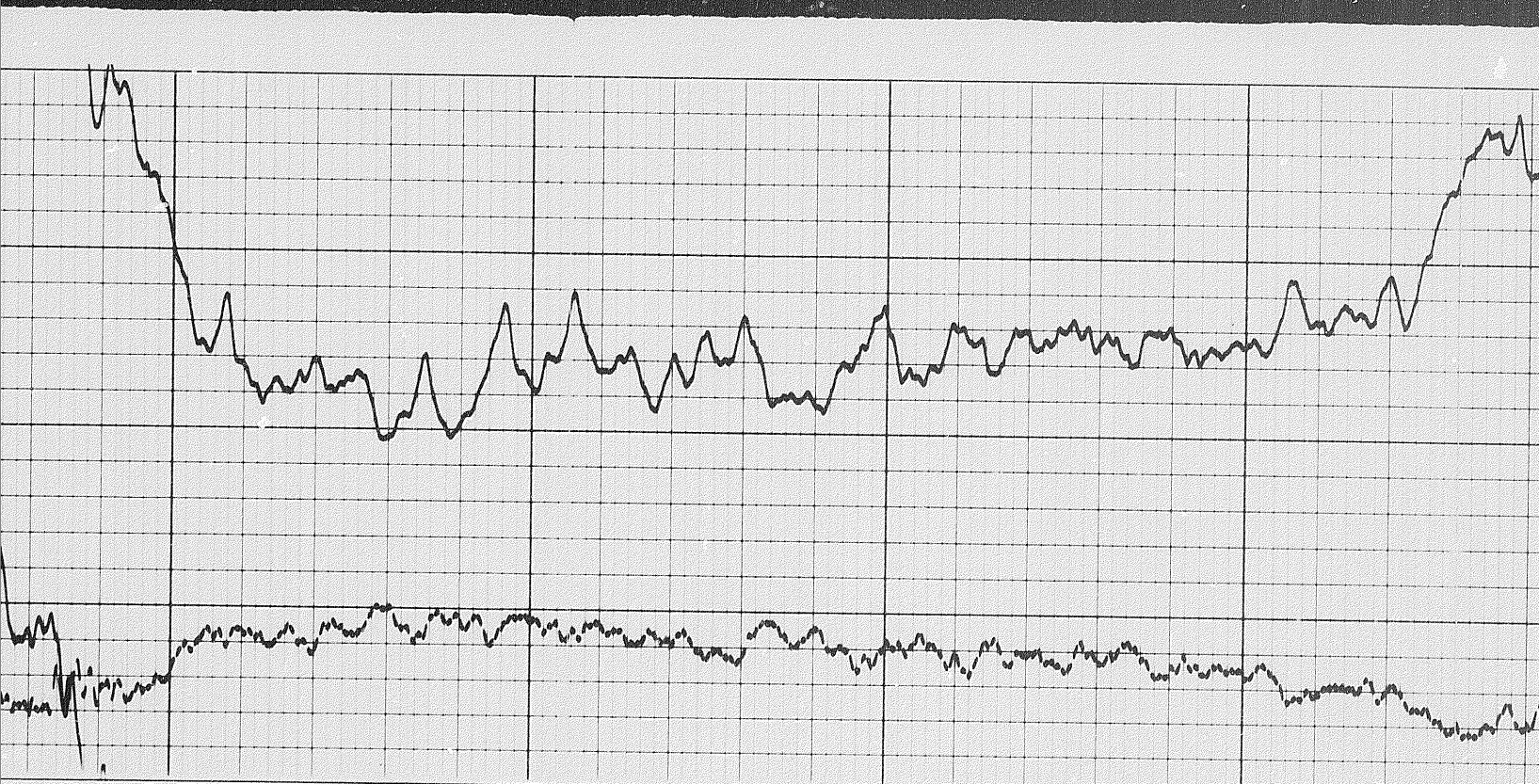
REMARKS: 21 AUG 69 SR CAL

Drilling Stopped : Circulation Stopped : Tool on Bottom : B.H.T. 328

Panel No. D346
 Cartridge No. E230
 Sonde No. D303
 Detector No.

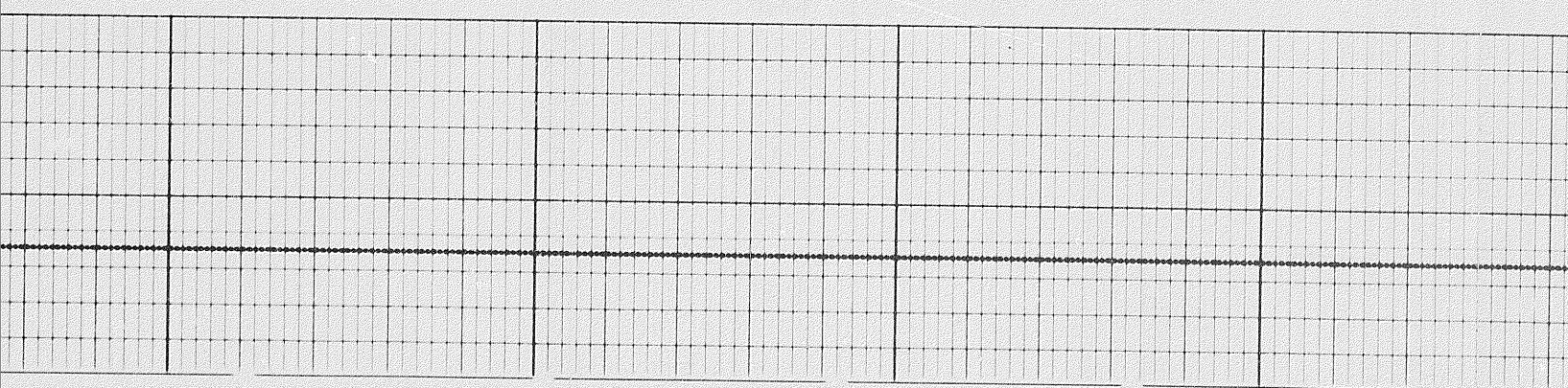
CALIBRATION: Background CPS Test Source CPS Galvanometer Deflection Div. Panel Sens. Tap for Cal.
 Gamma Ray

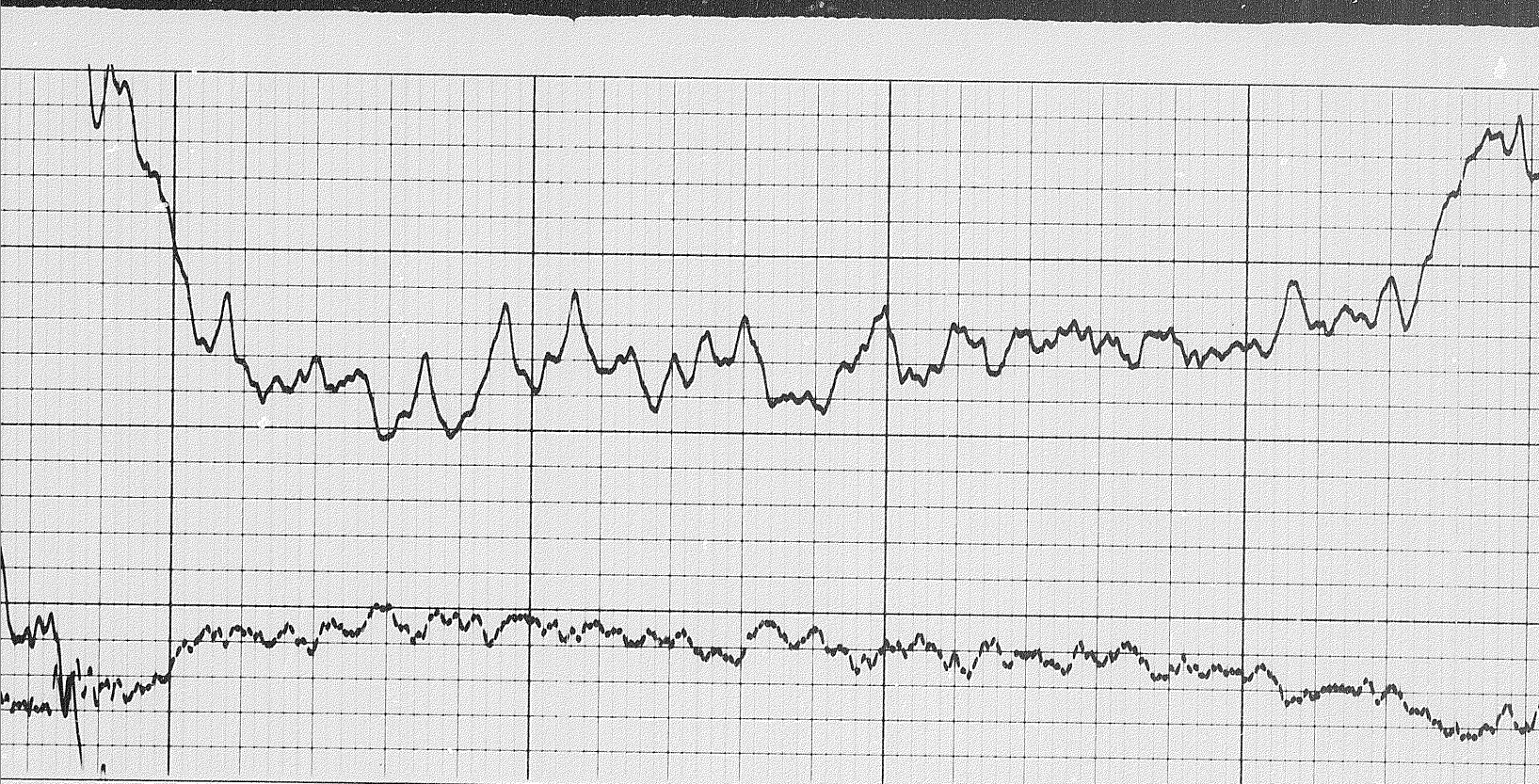




11000

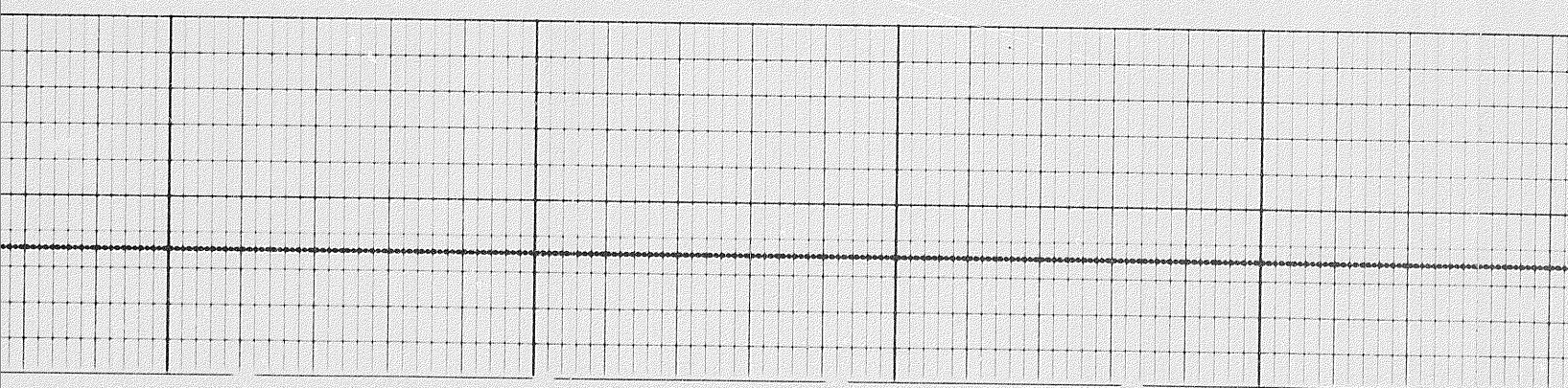
11100

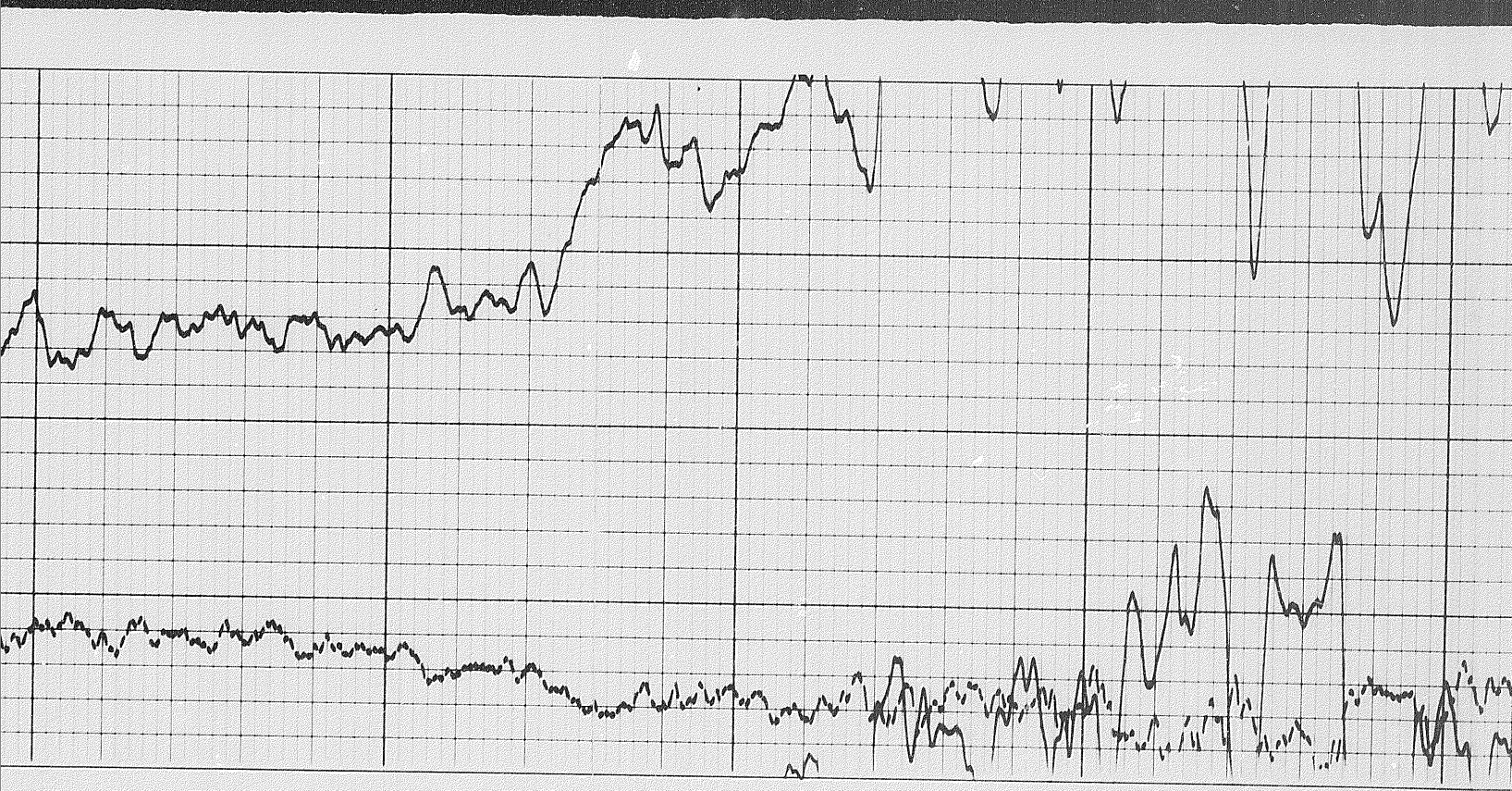




11000

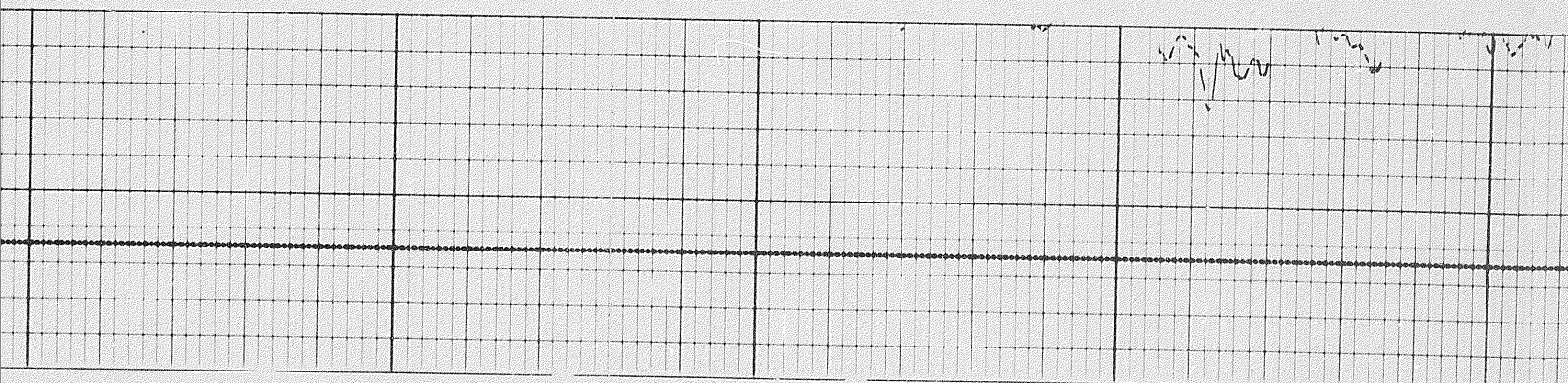
11100

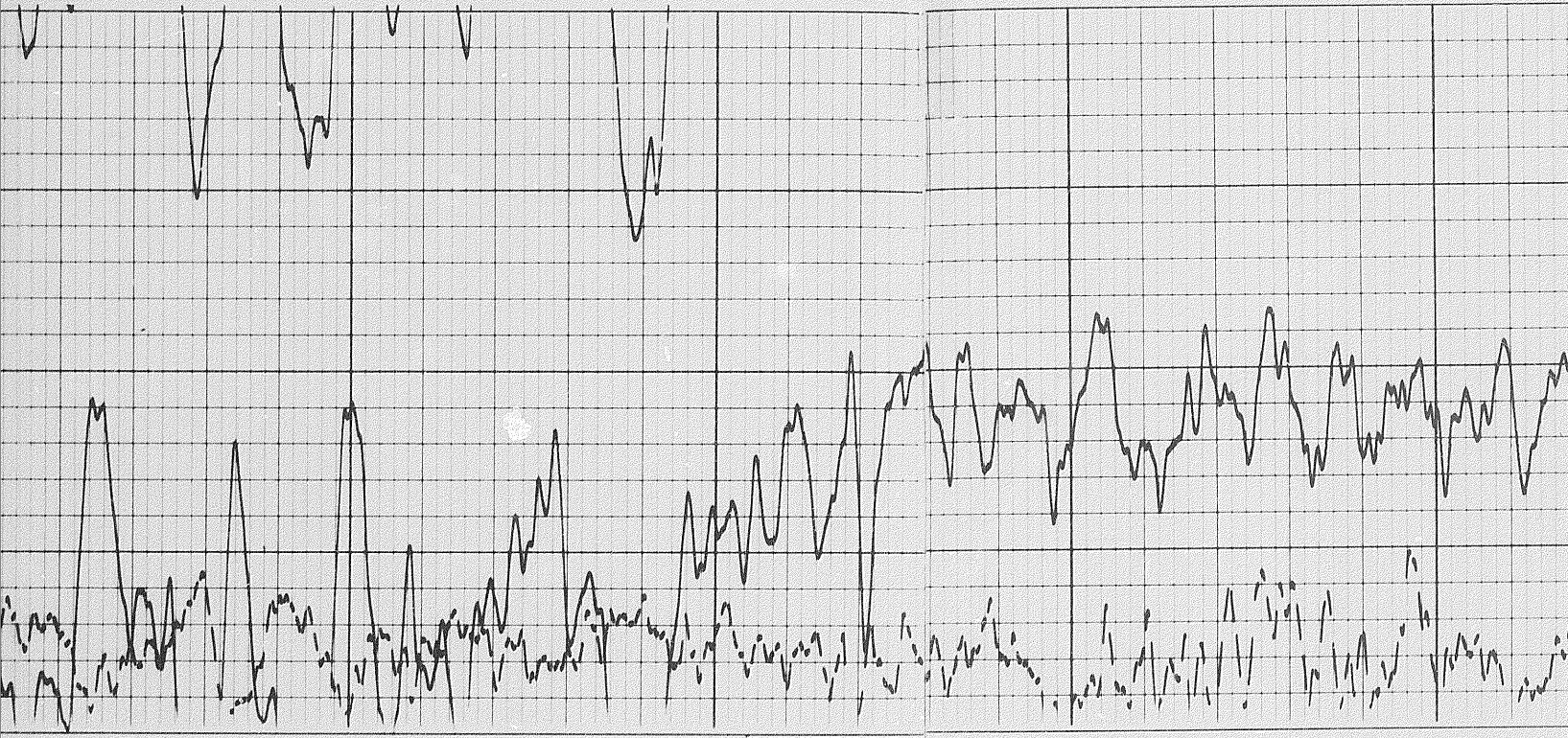




1100

11200



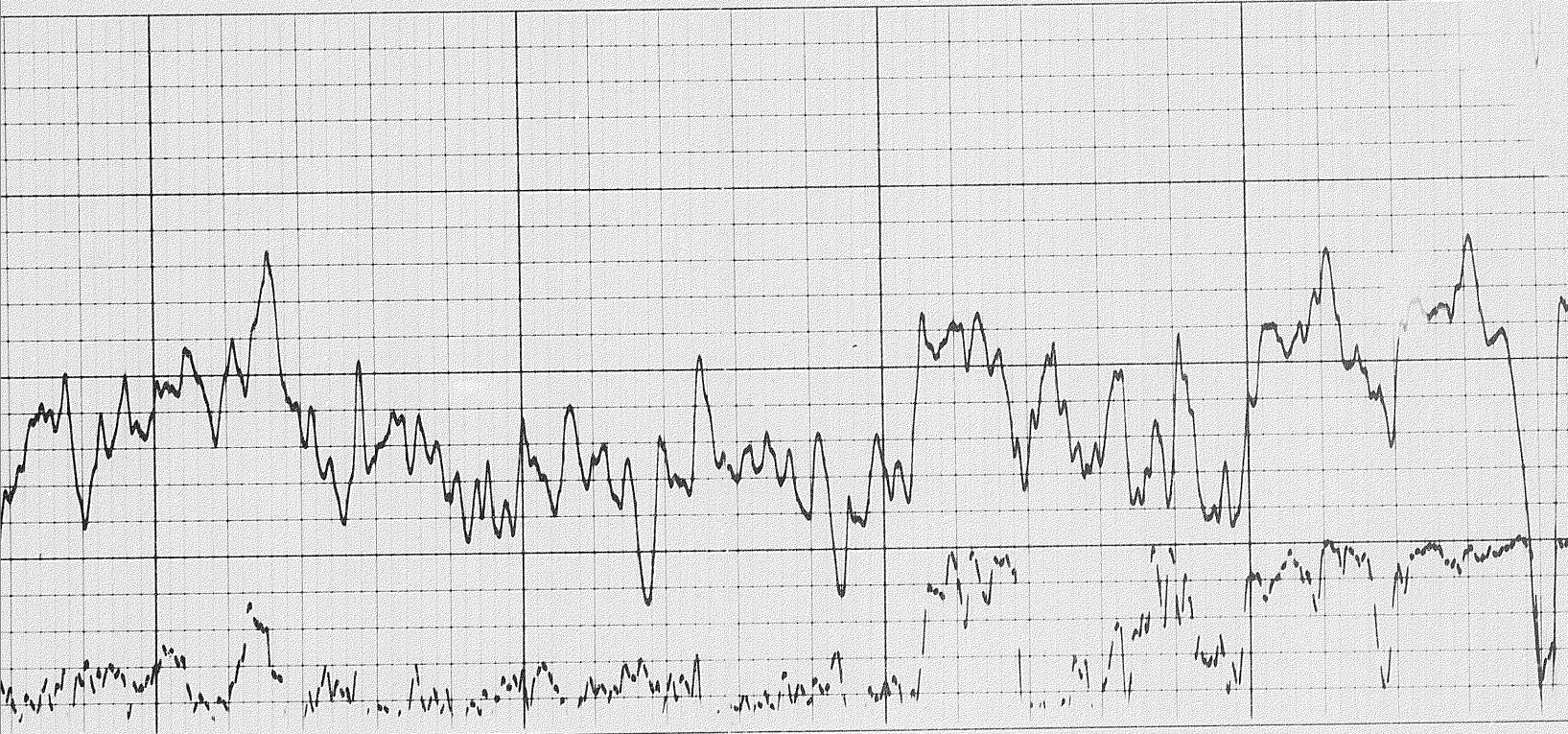


11300

11400

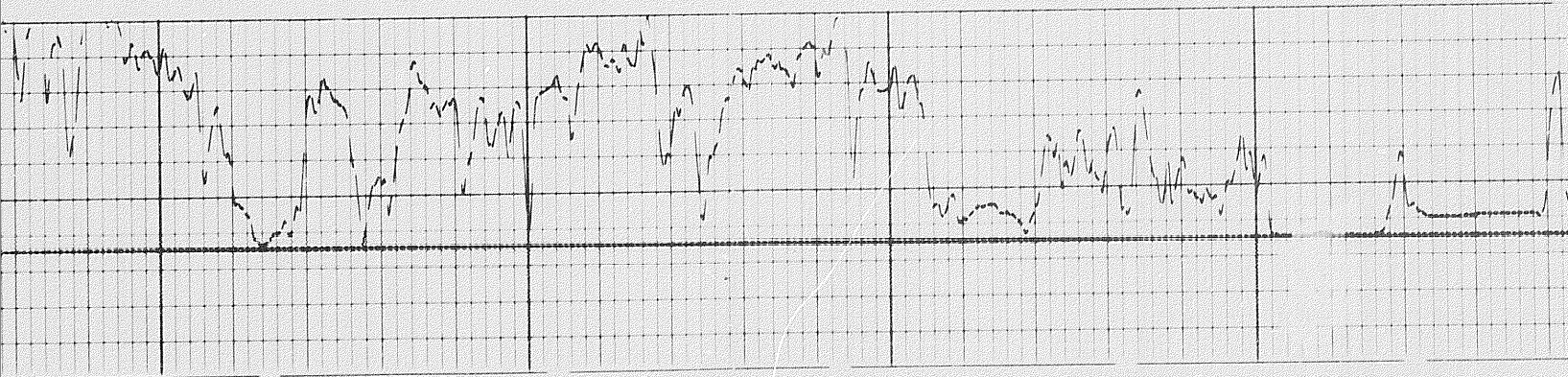


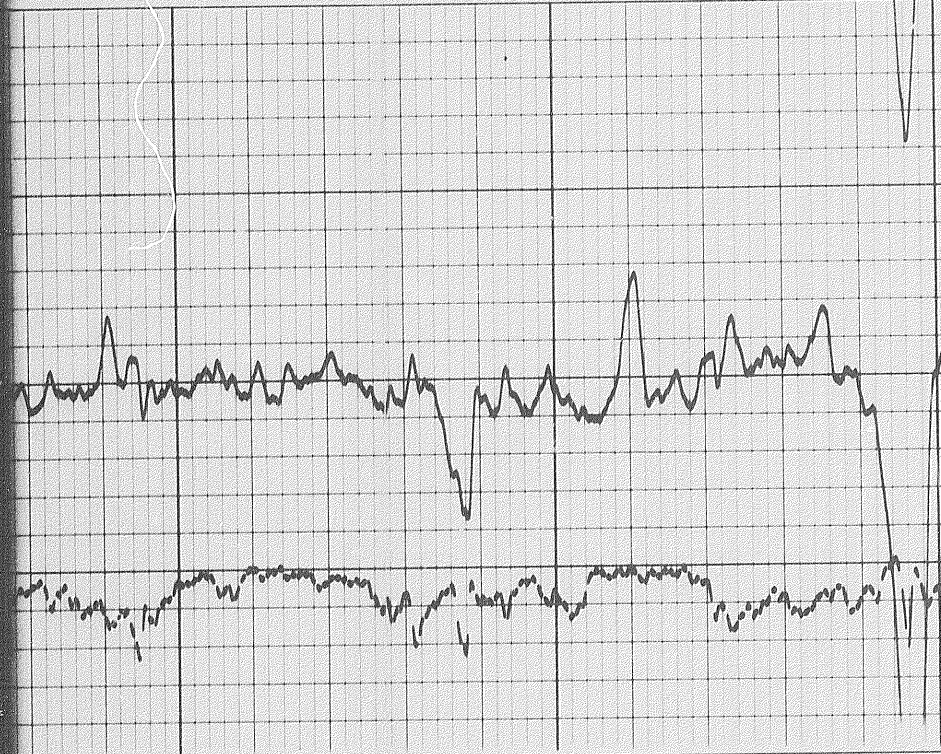
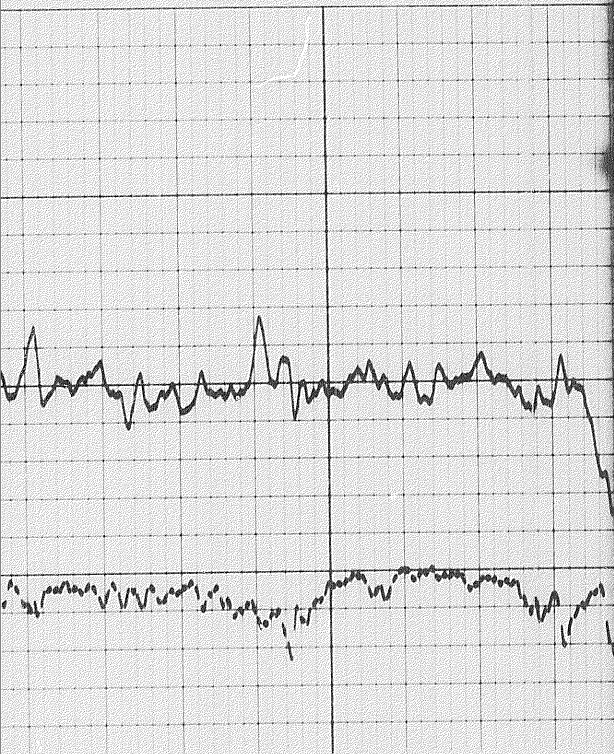
29



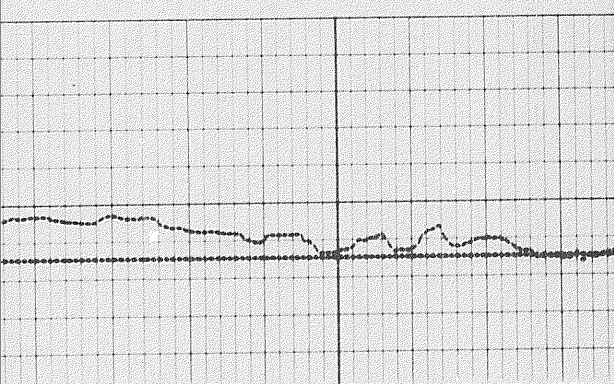
11600

11700





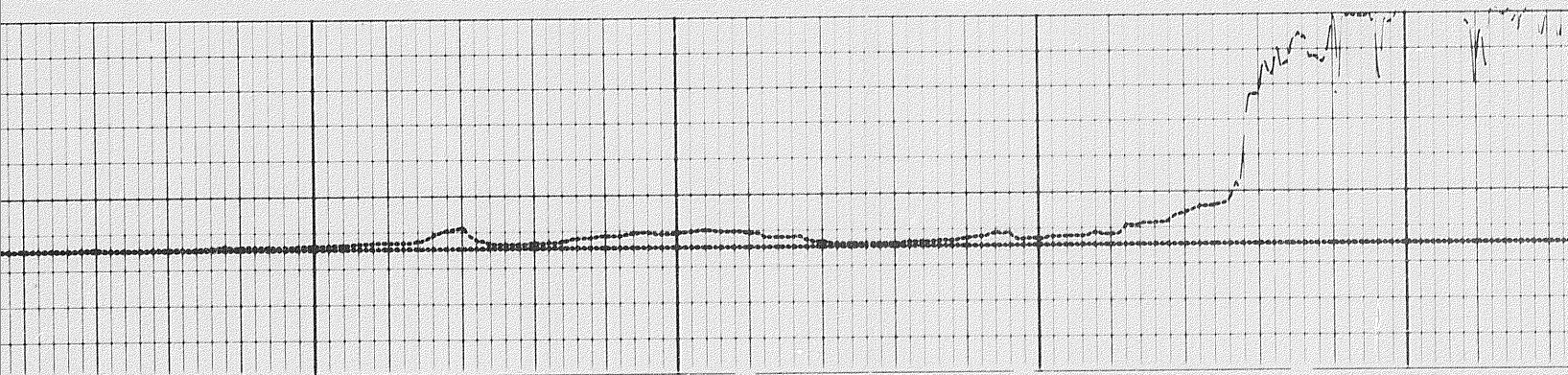
11900

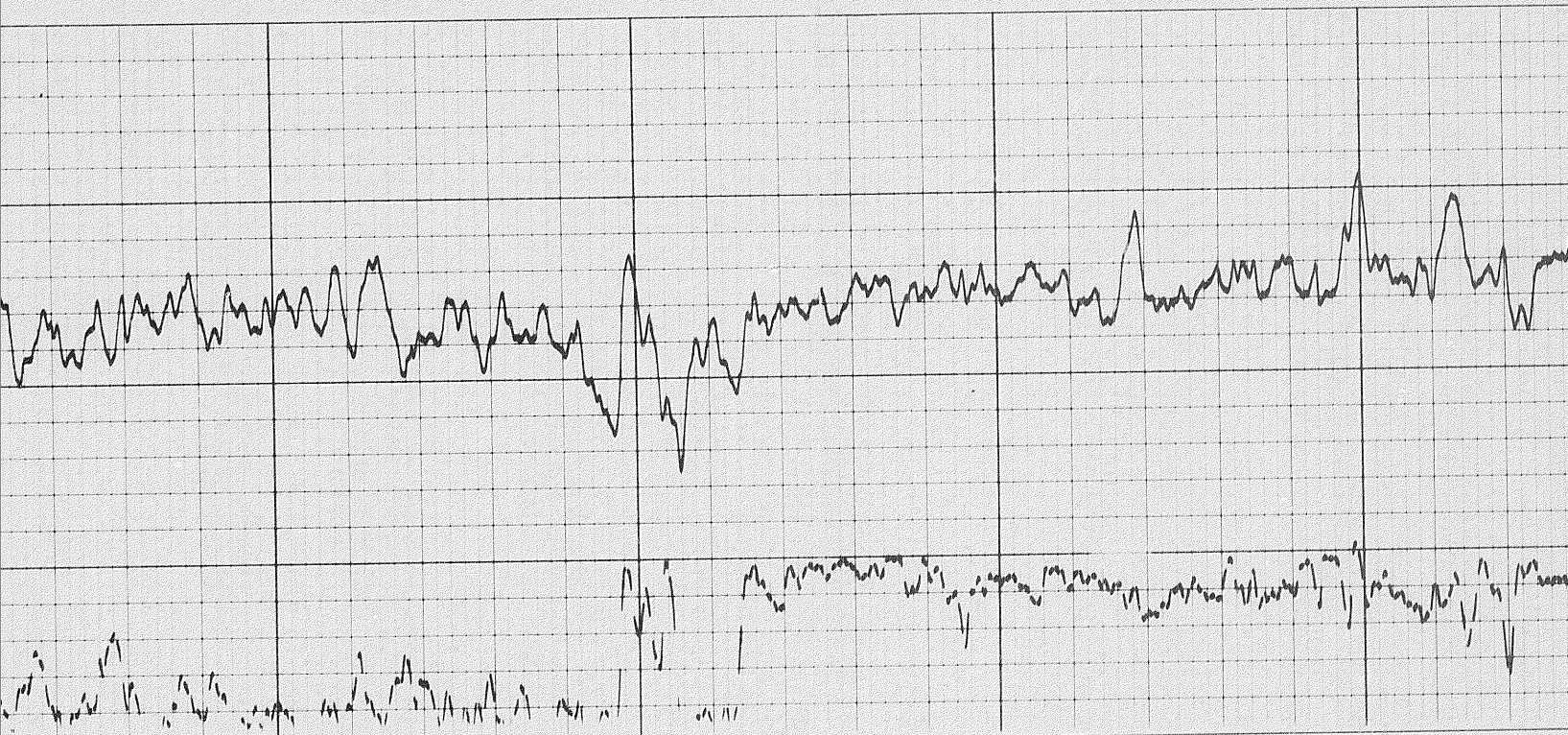




12100

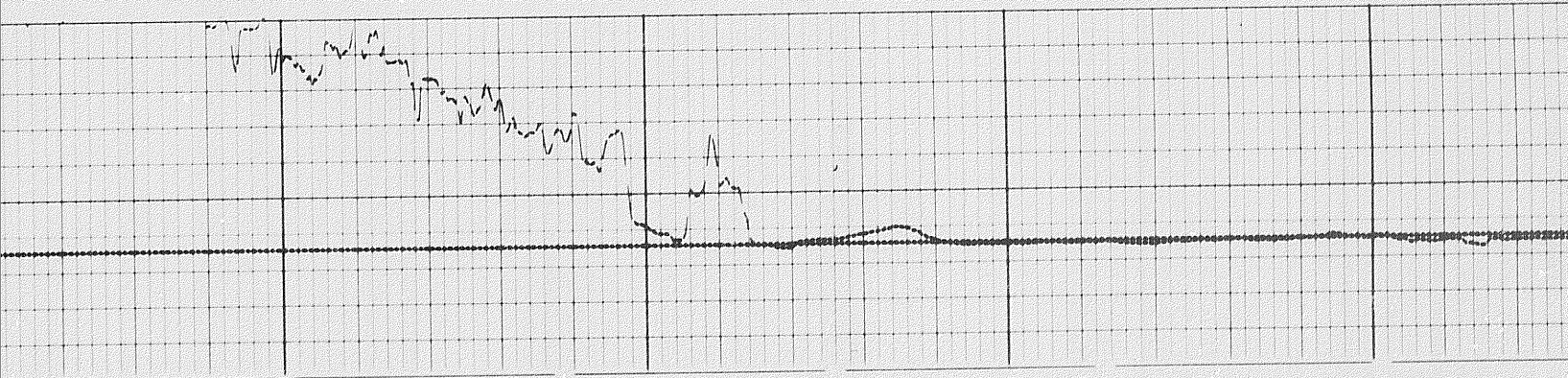
12200

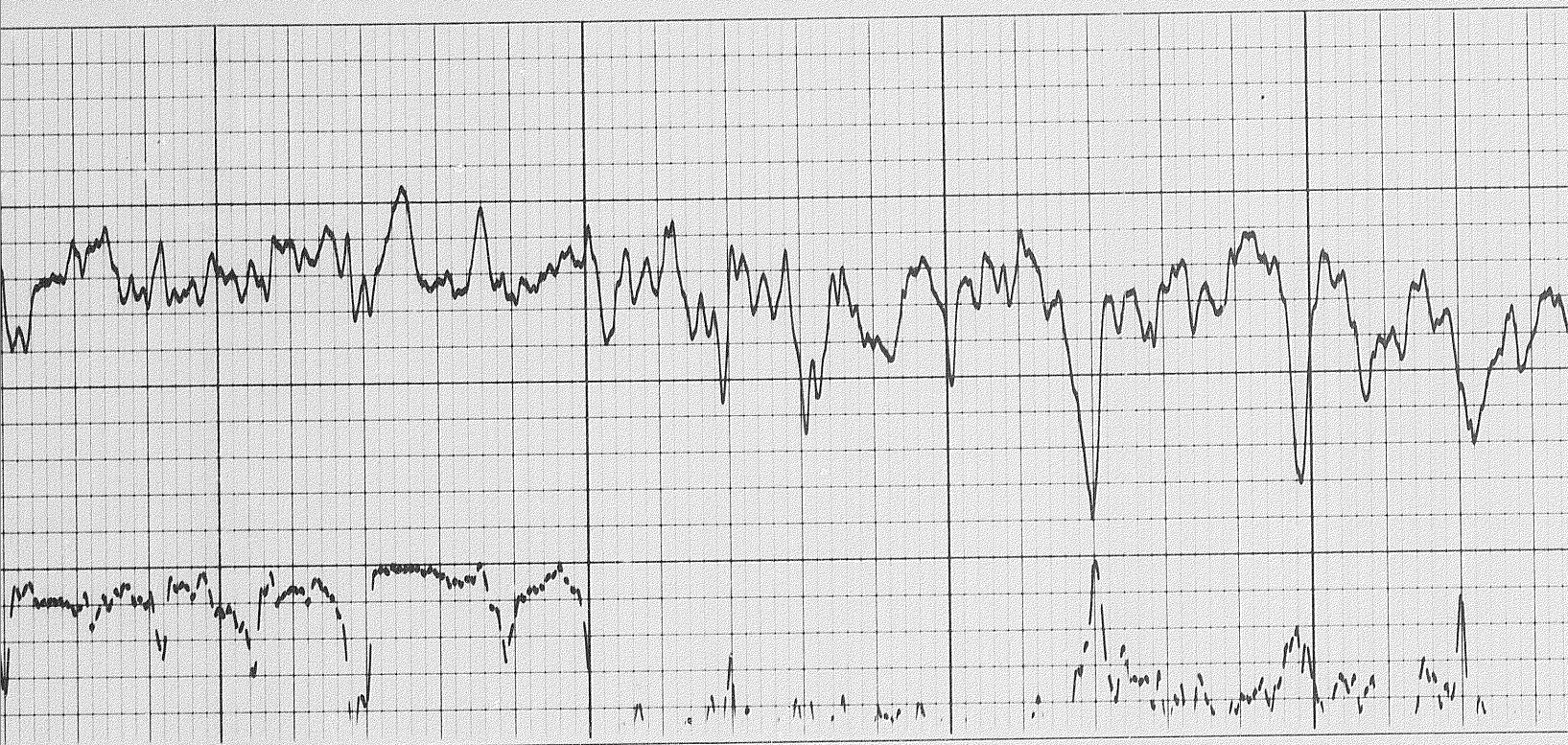




12300

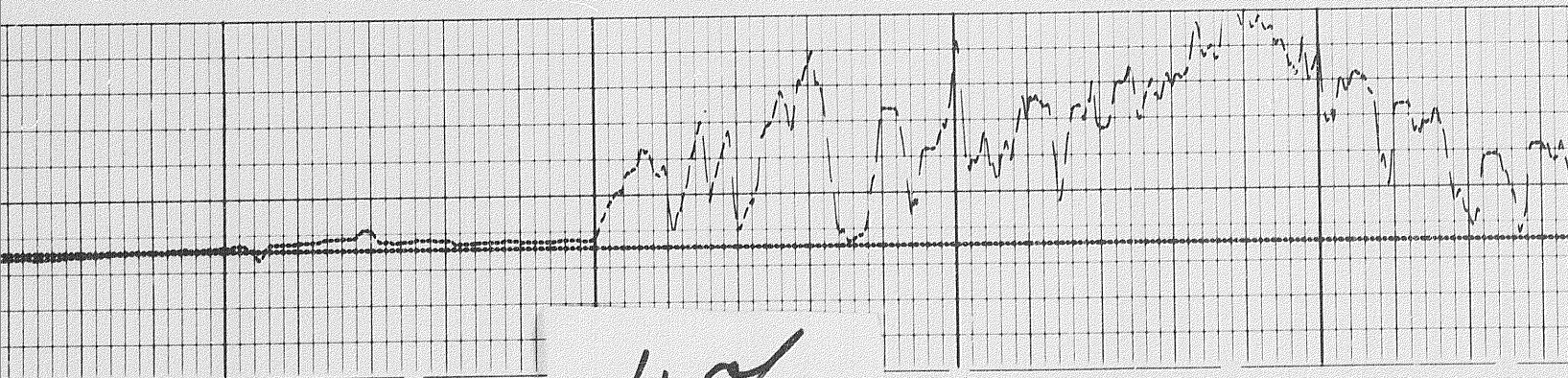
12400



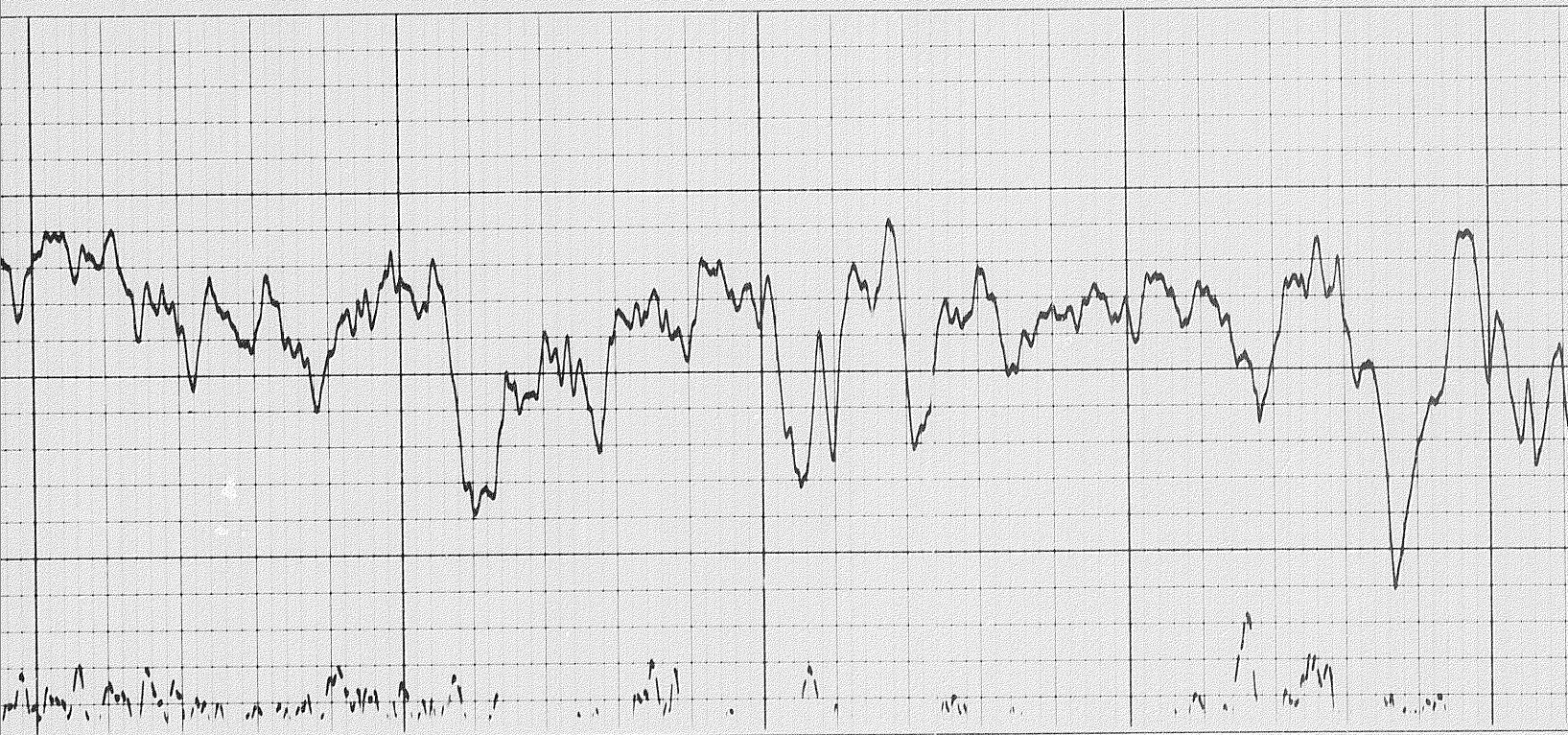


12500

12600



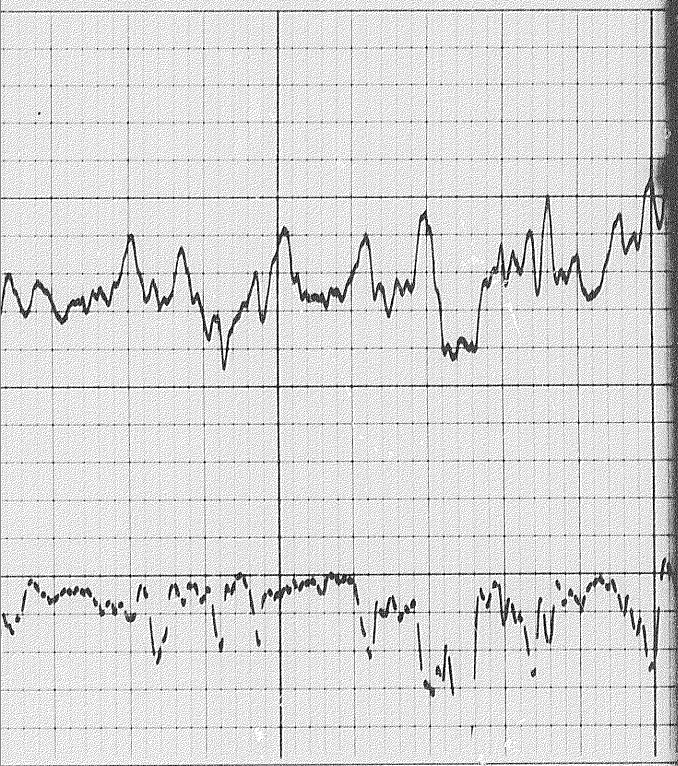
4 of



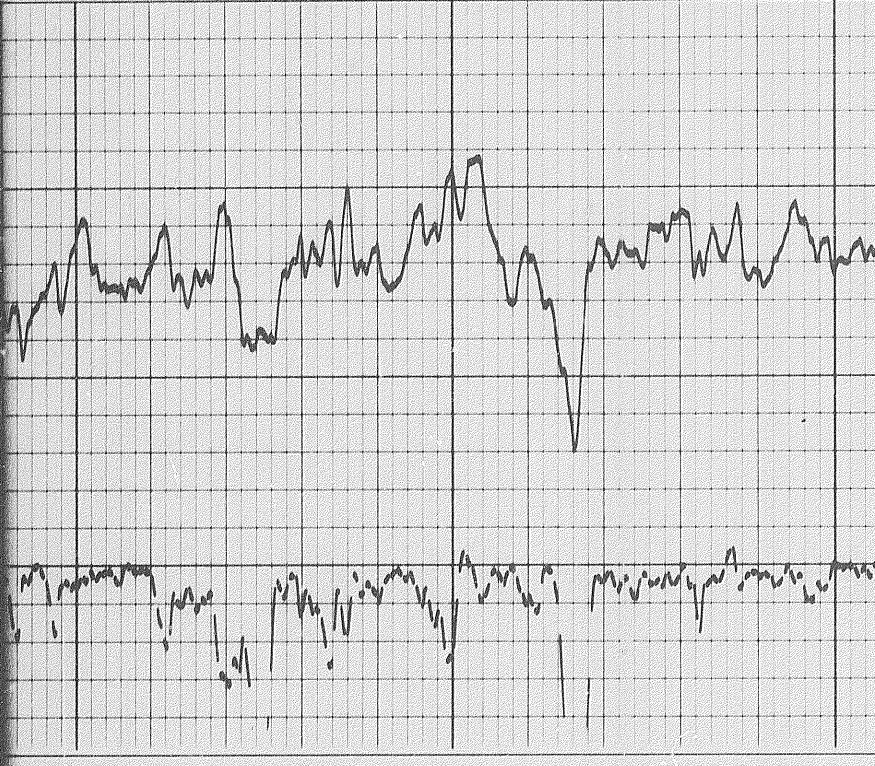
12800

12900



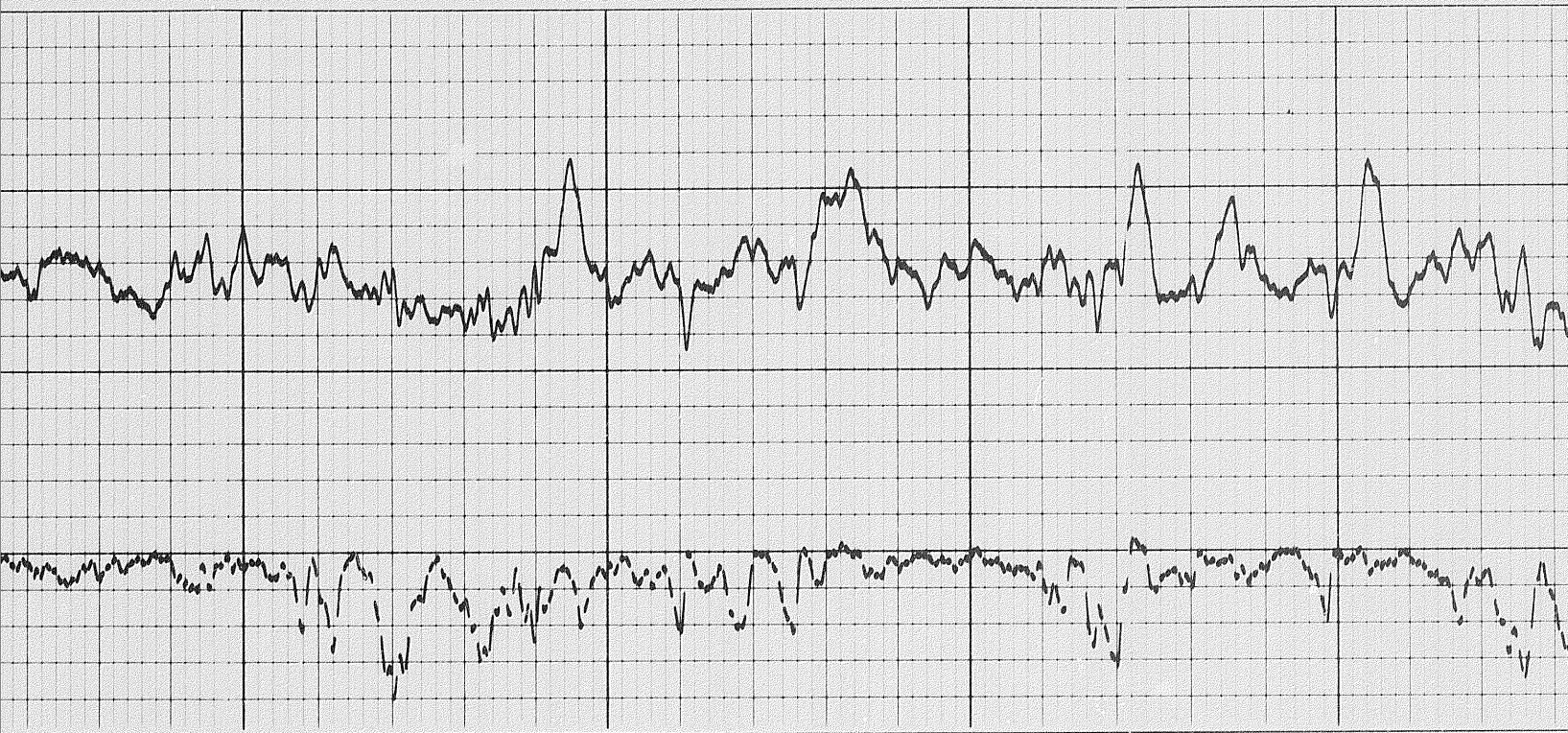


1310



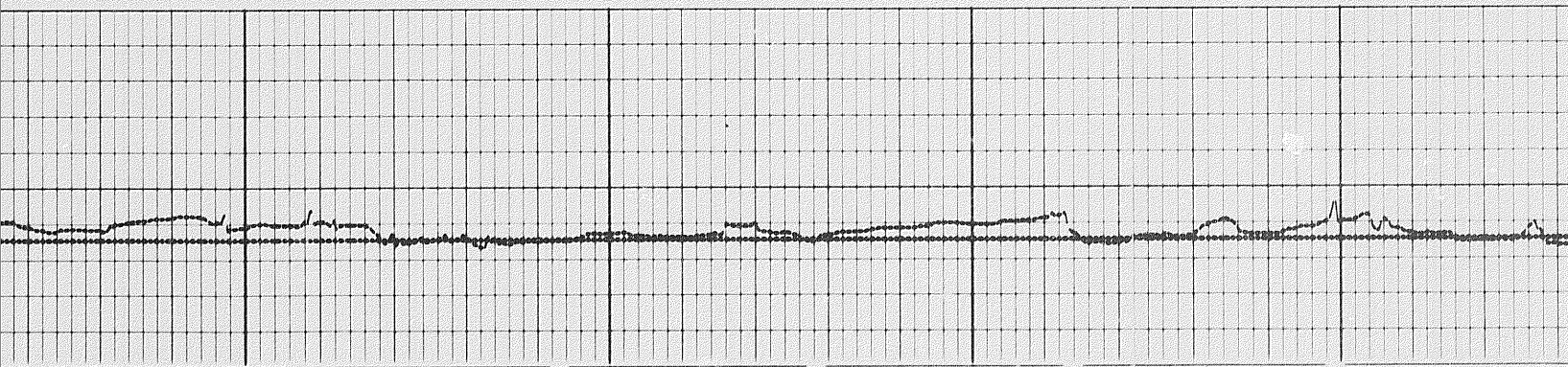
13100

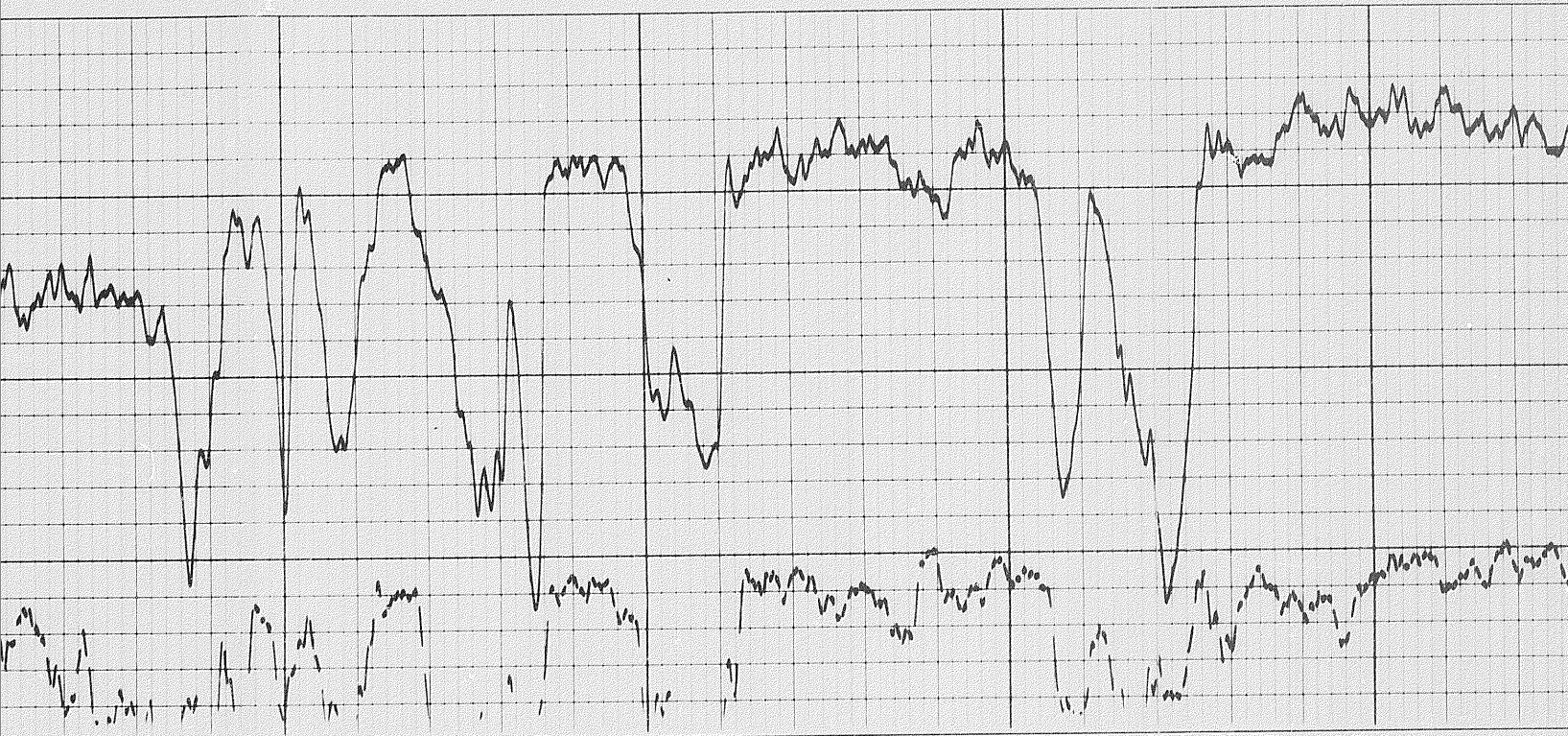




13300

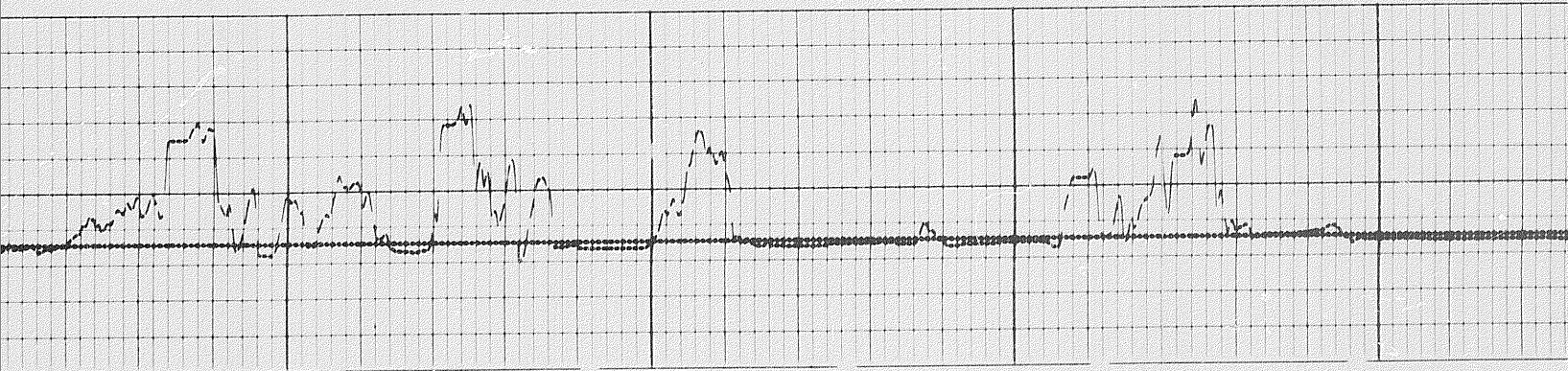
13400

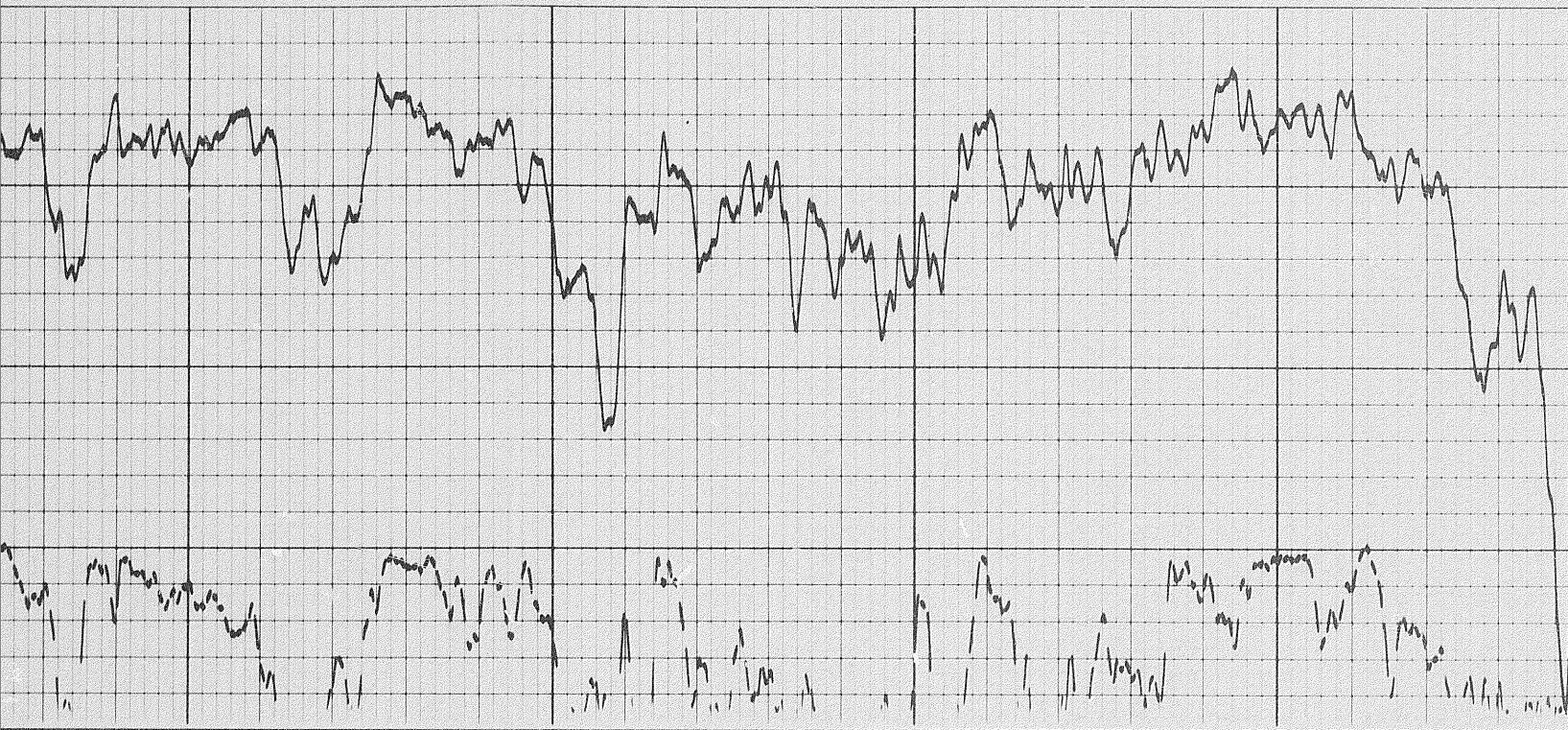




13500

13600

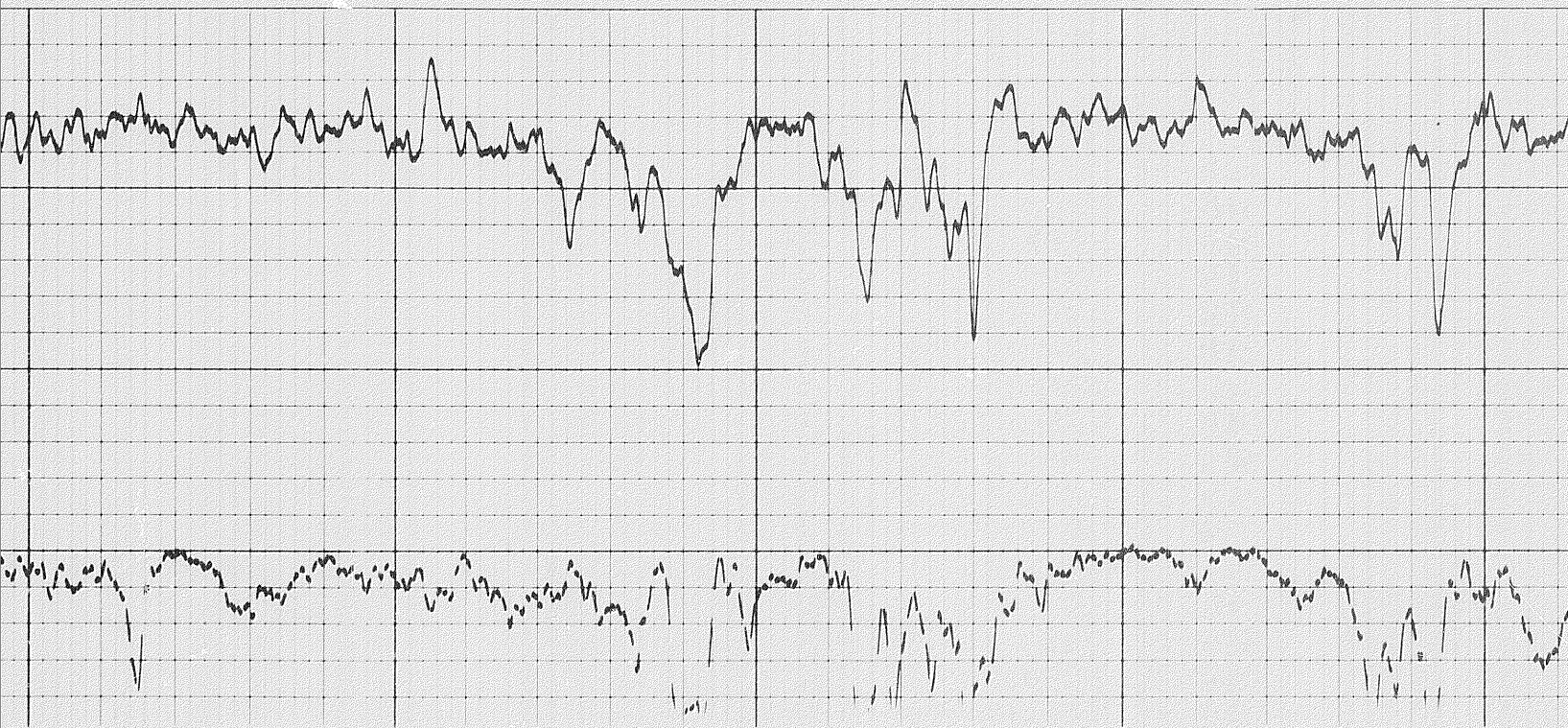




13700

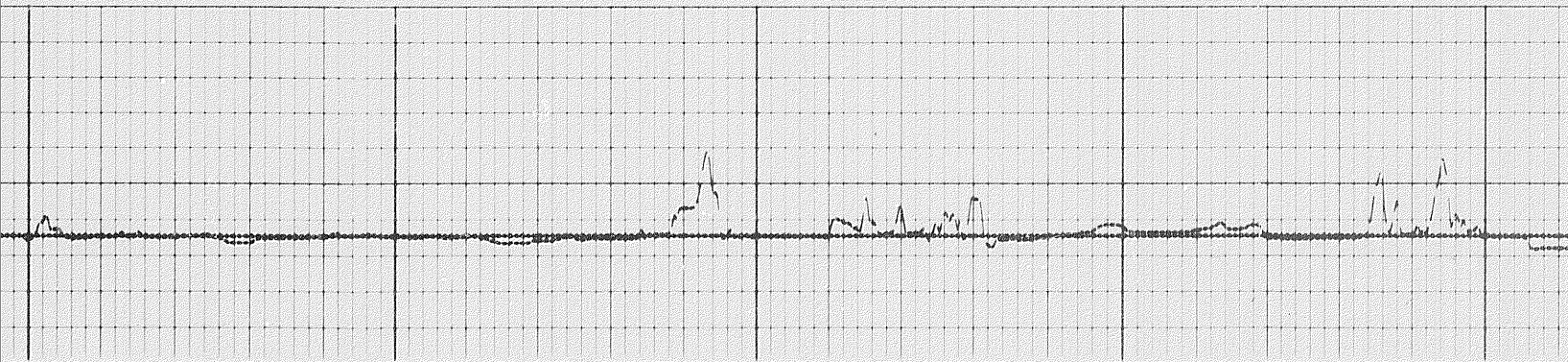
13800

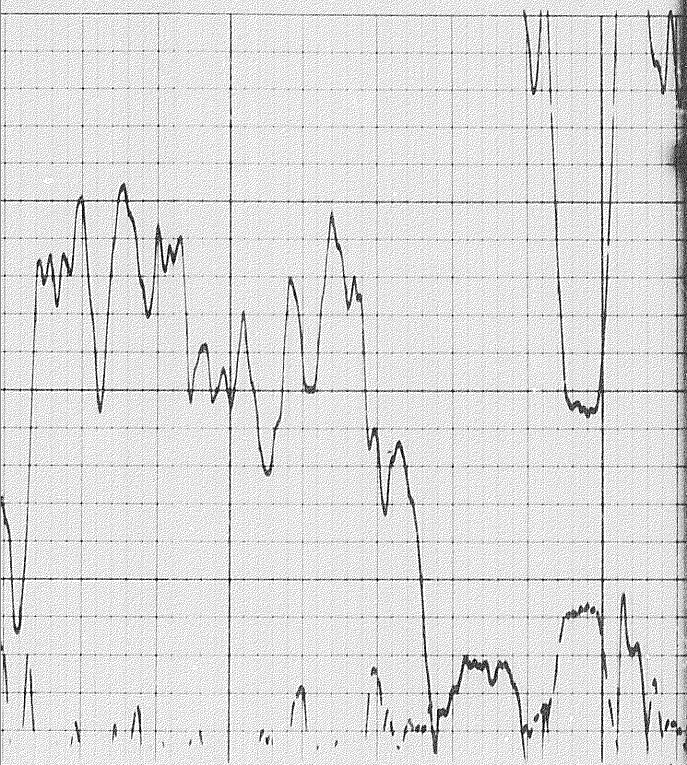
6 of



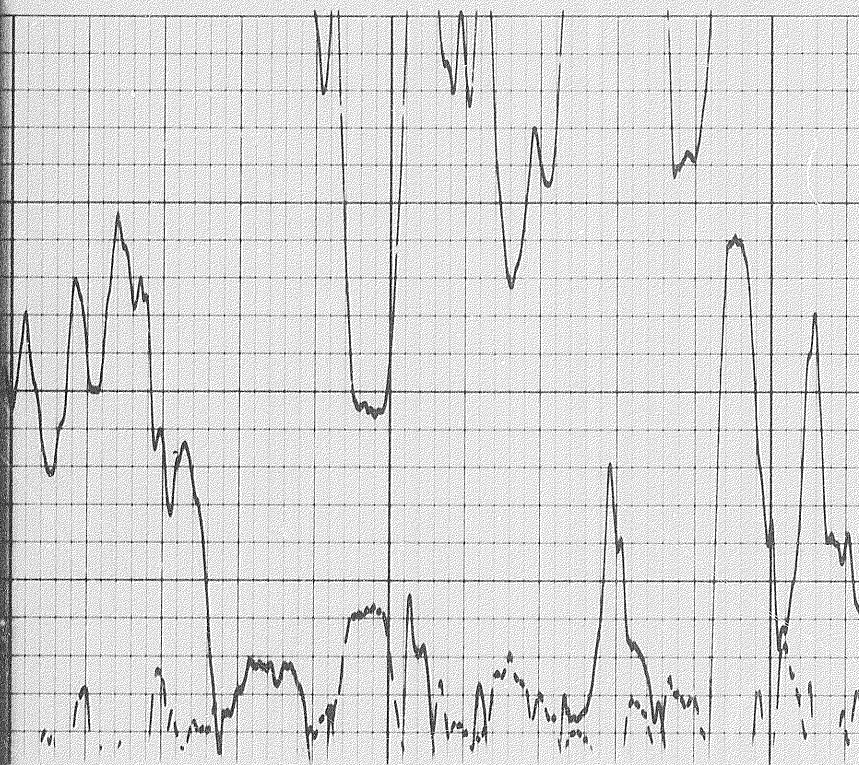
14000

14100

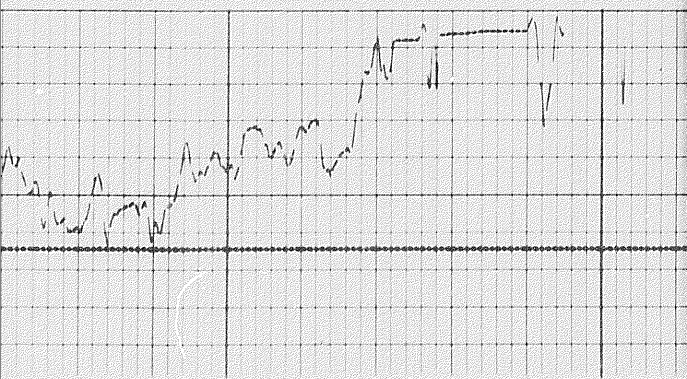




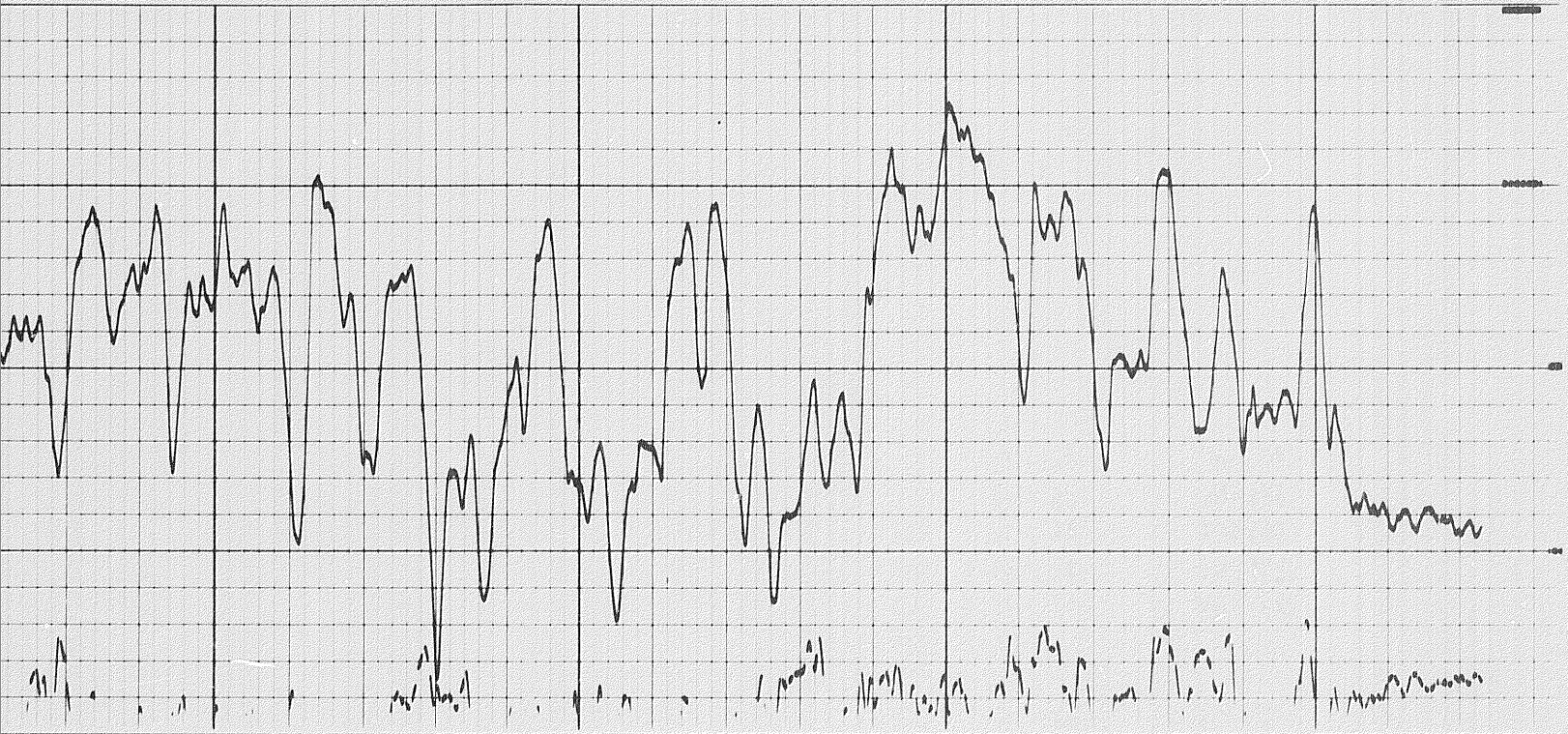
14300



14300

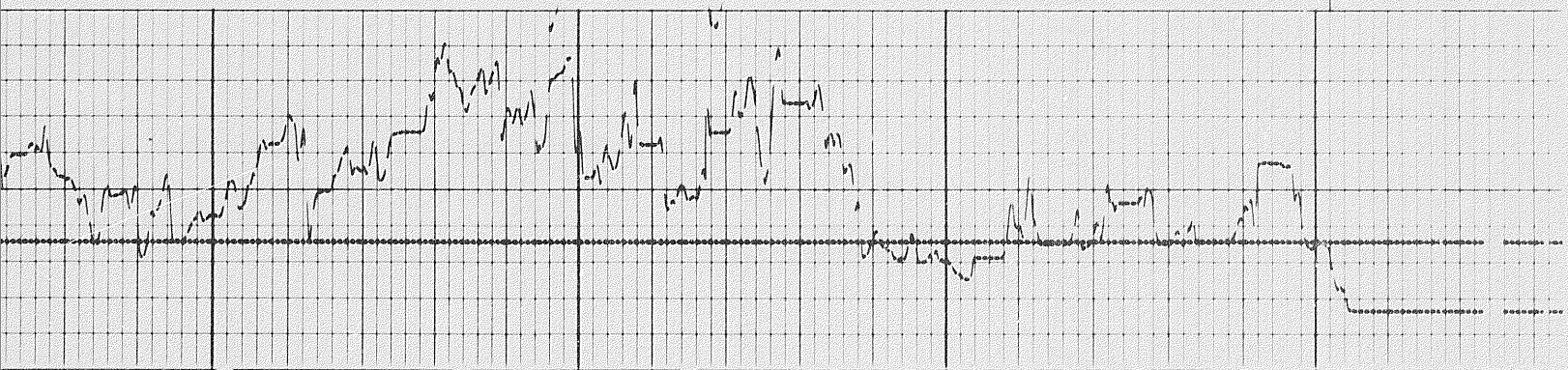


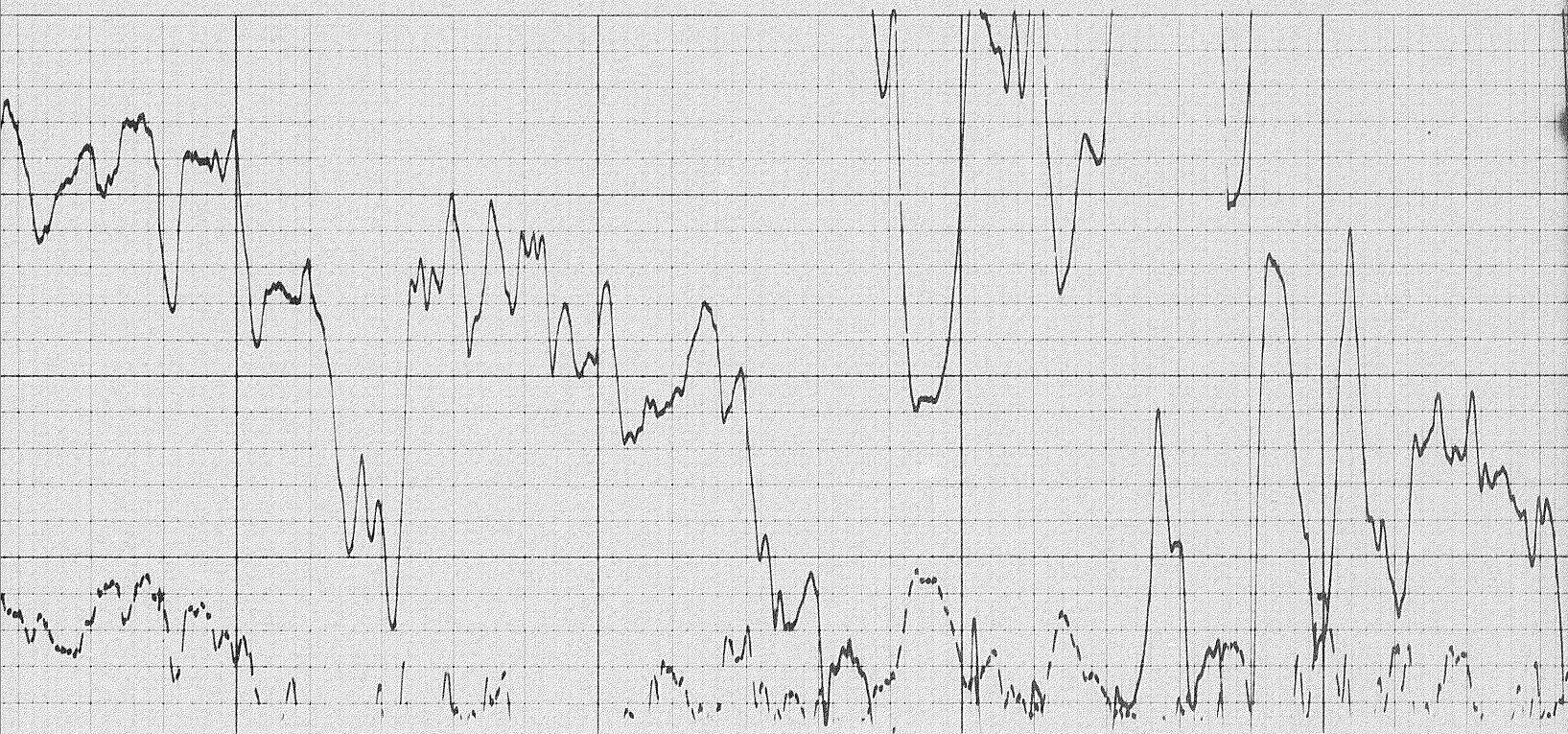
70f



1450

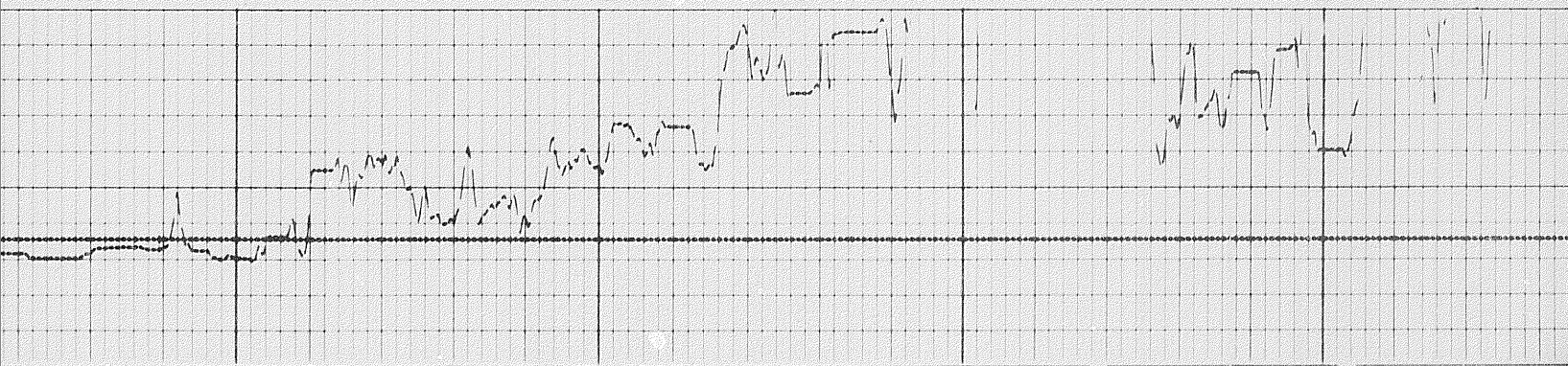
1460
PR

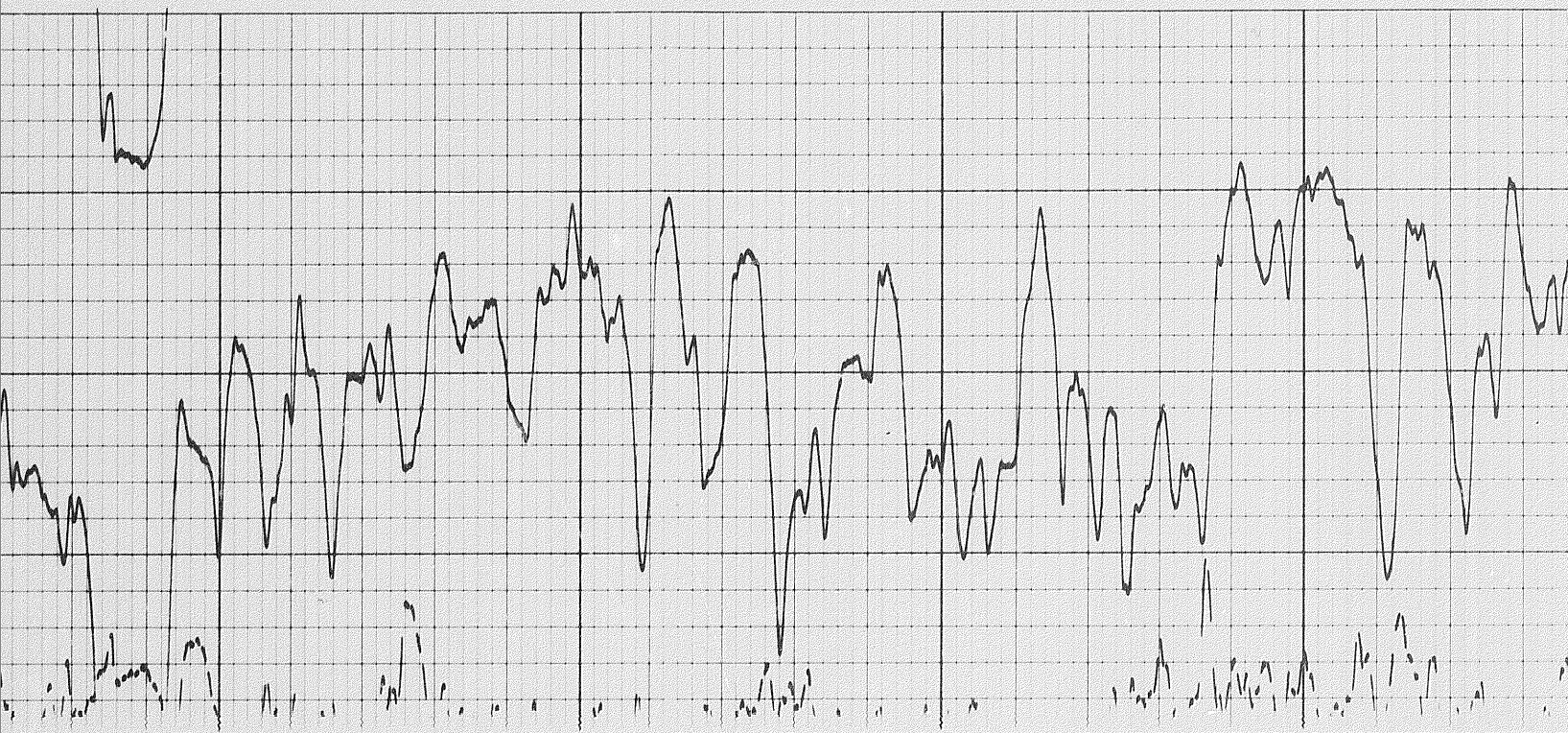




14200

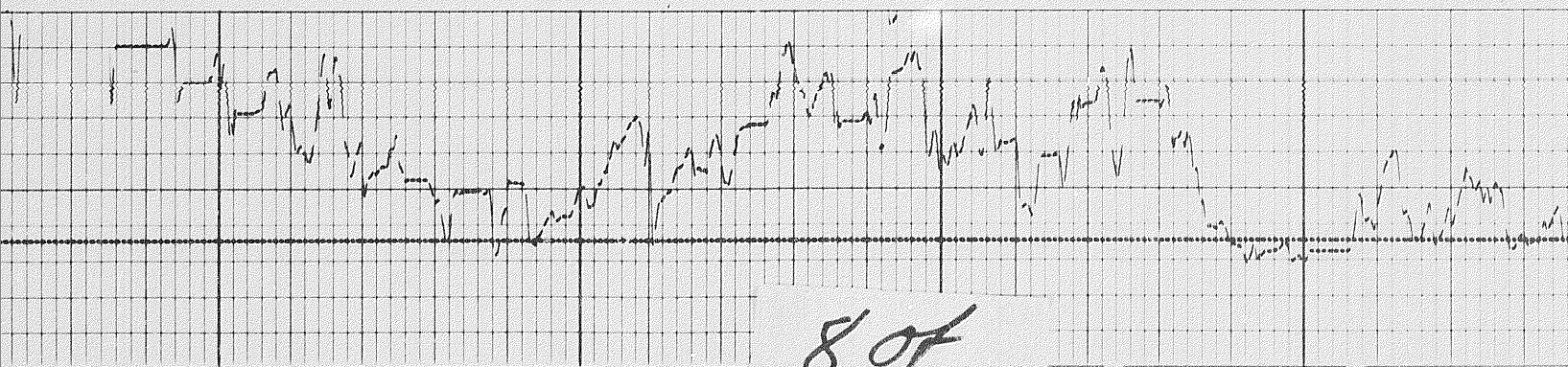
14300



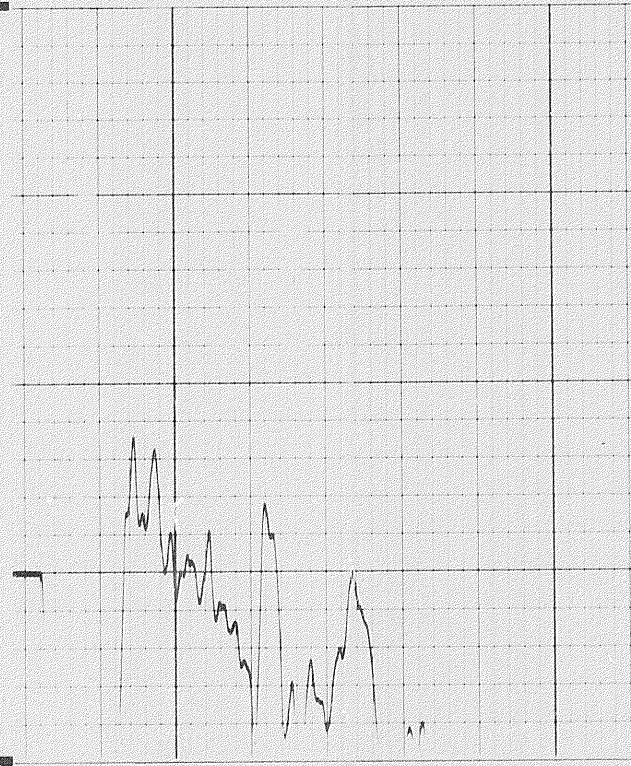
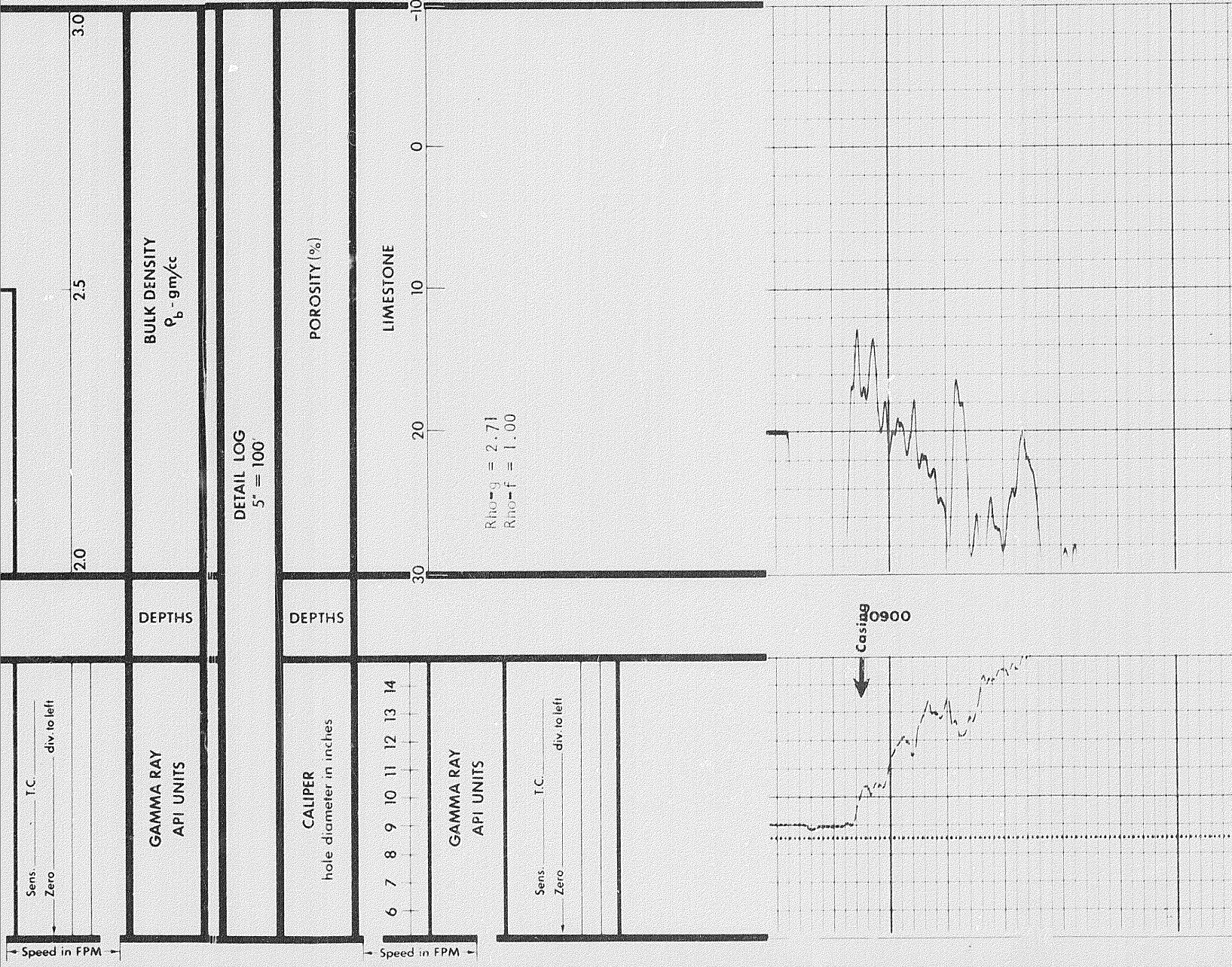


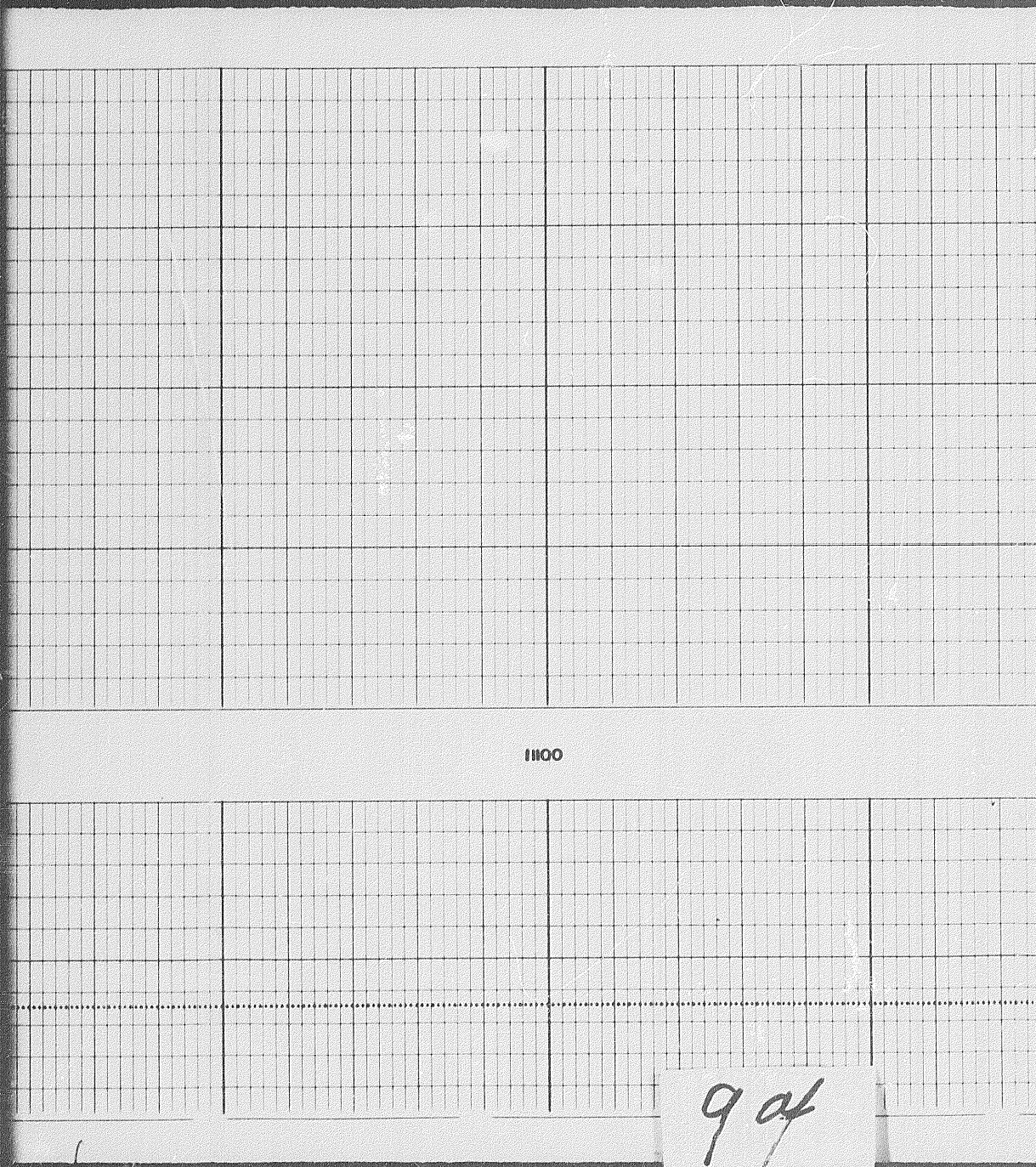
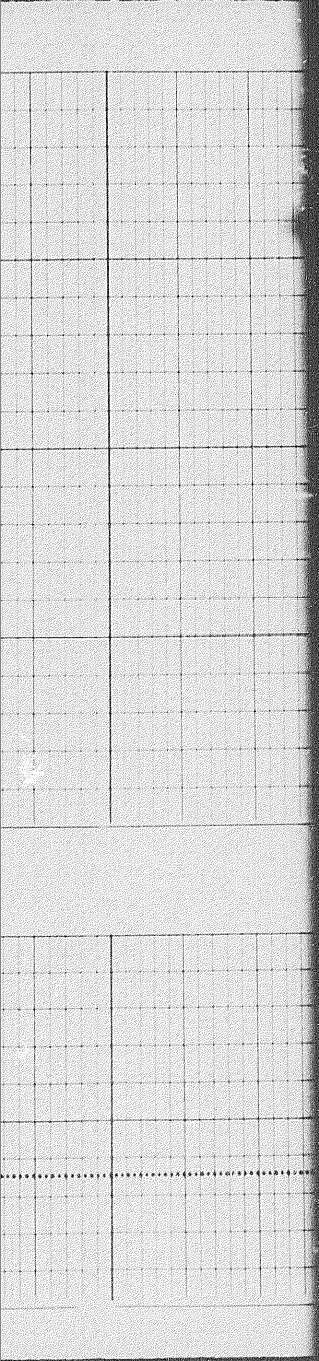
1440

1450



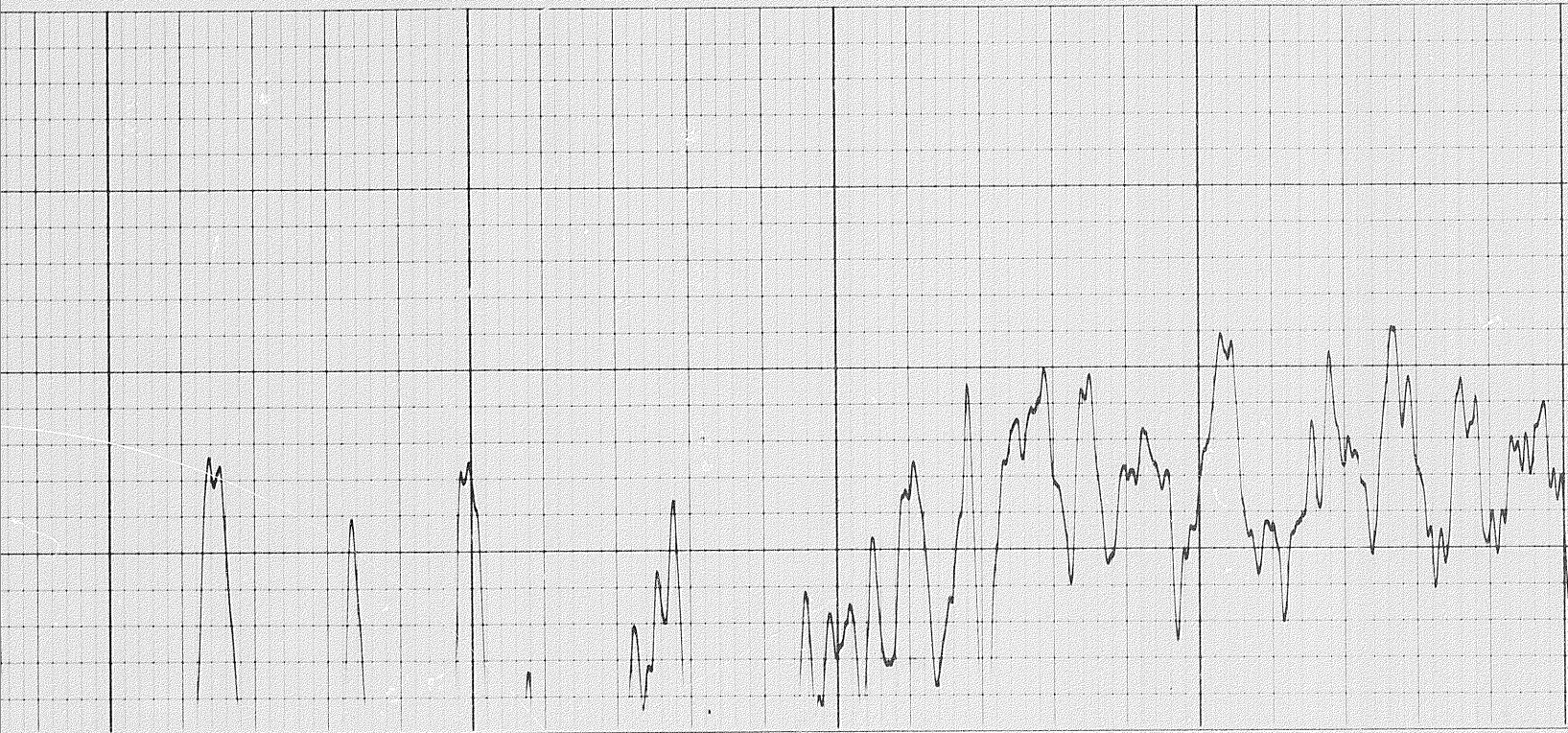
80f





1100

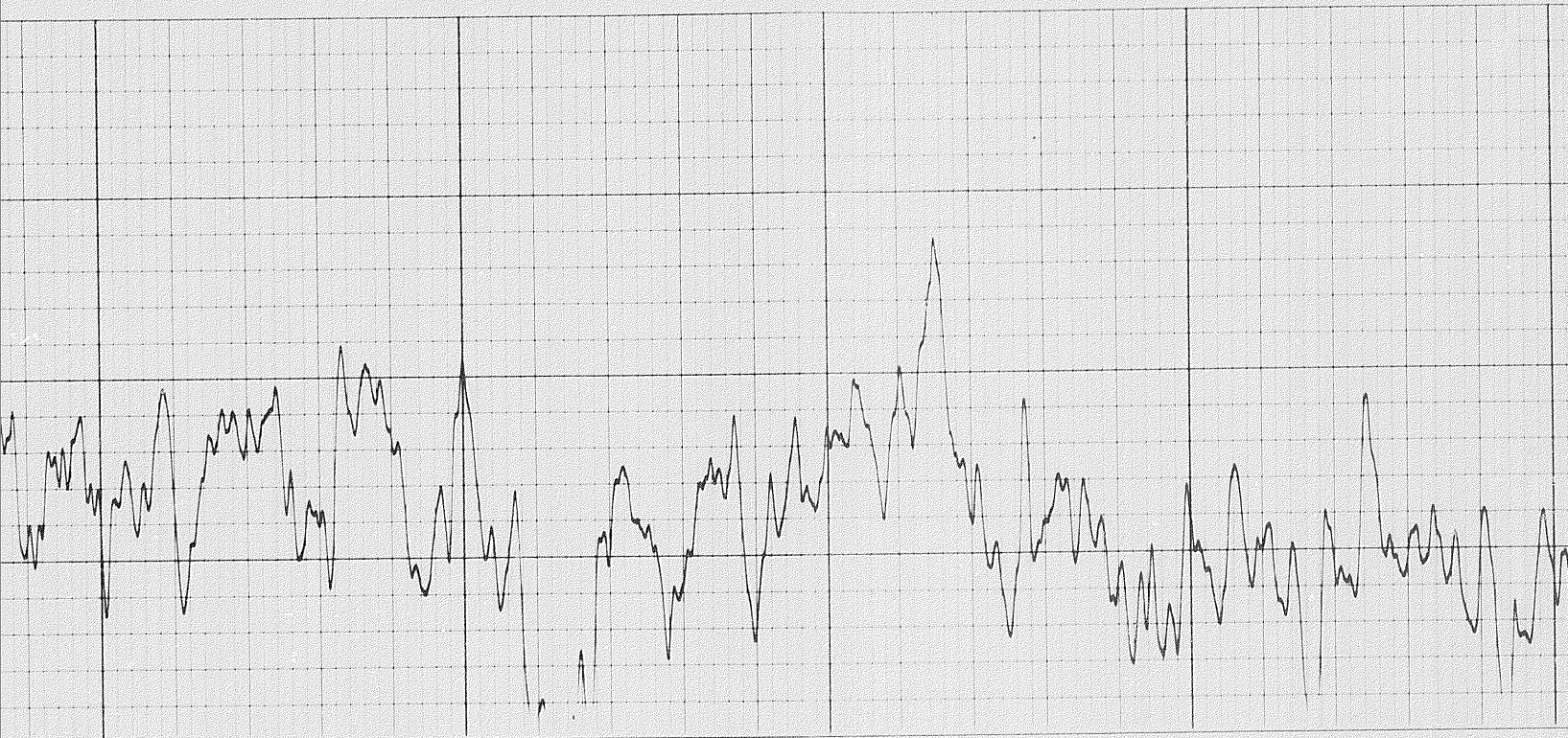
9 of



11300

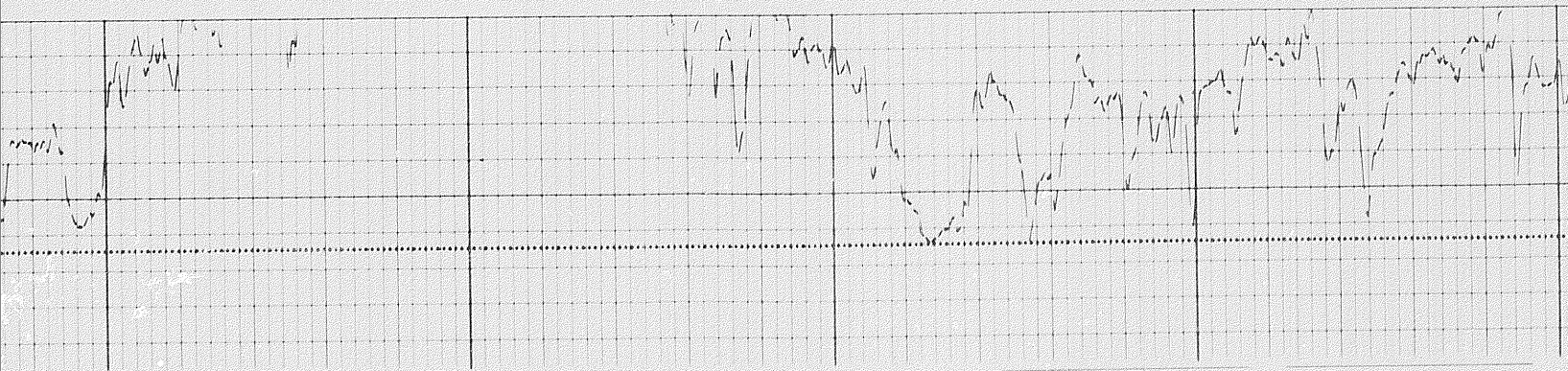
11400

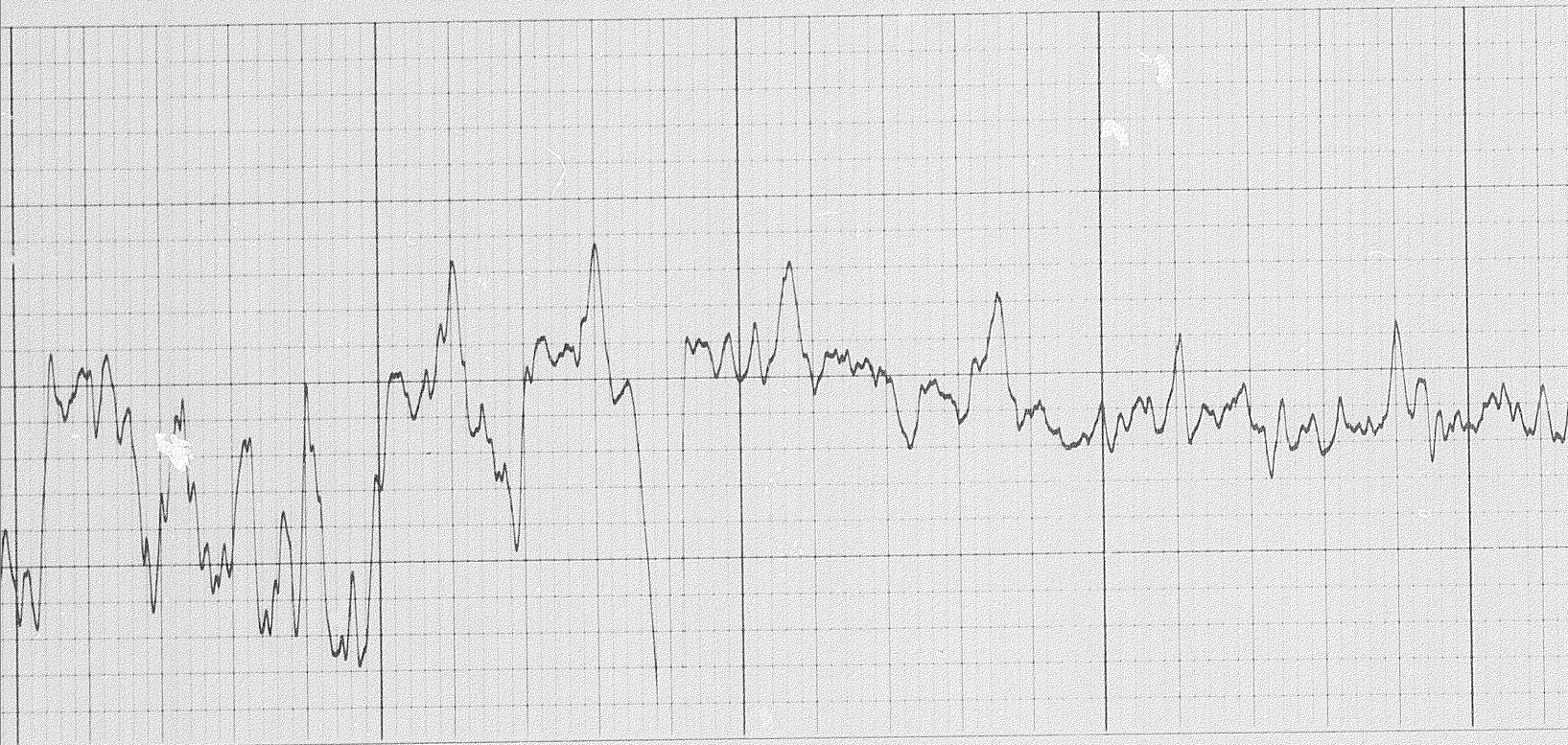




11500

11600



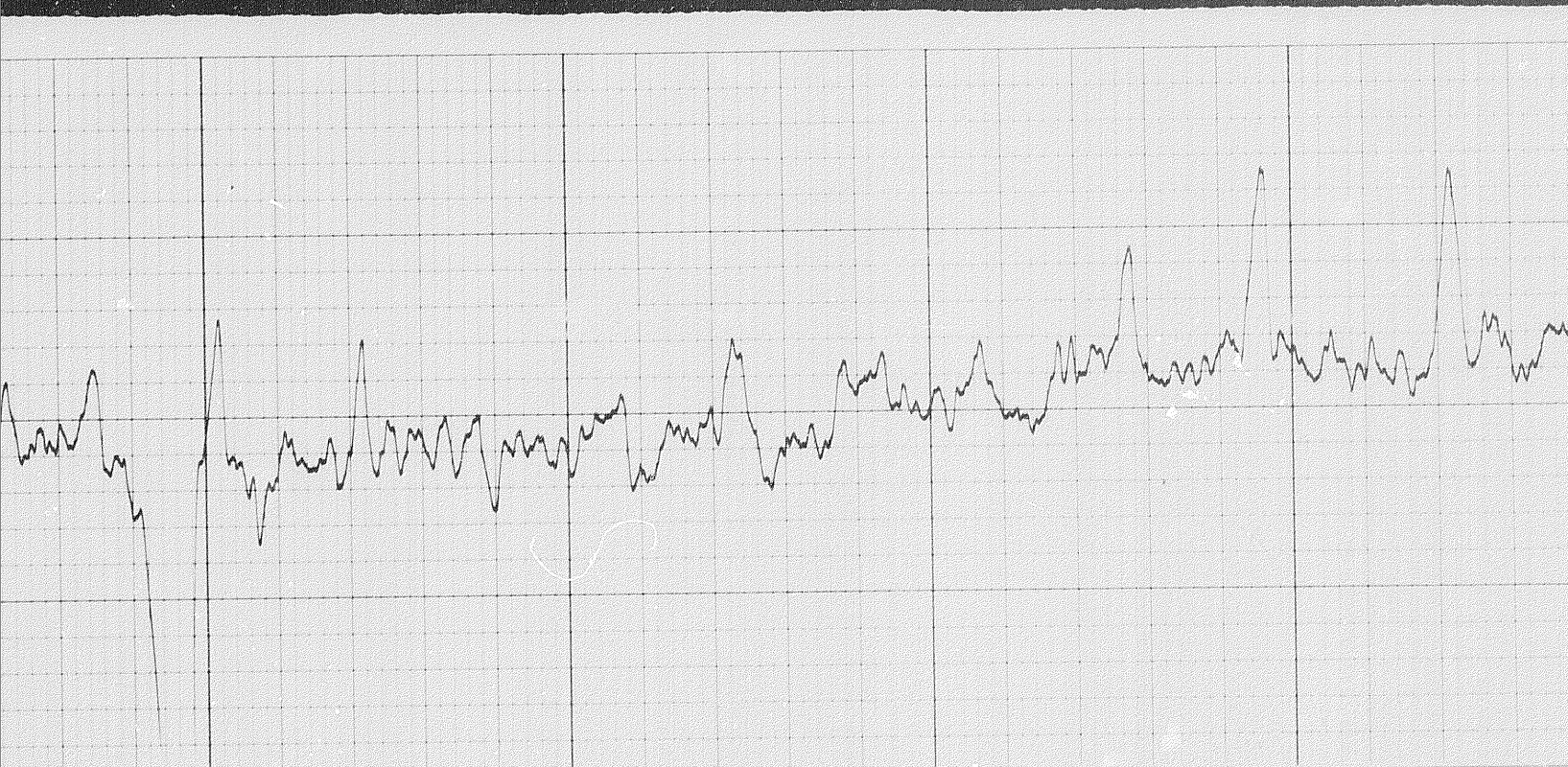


11700

11800

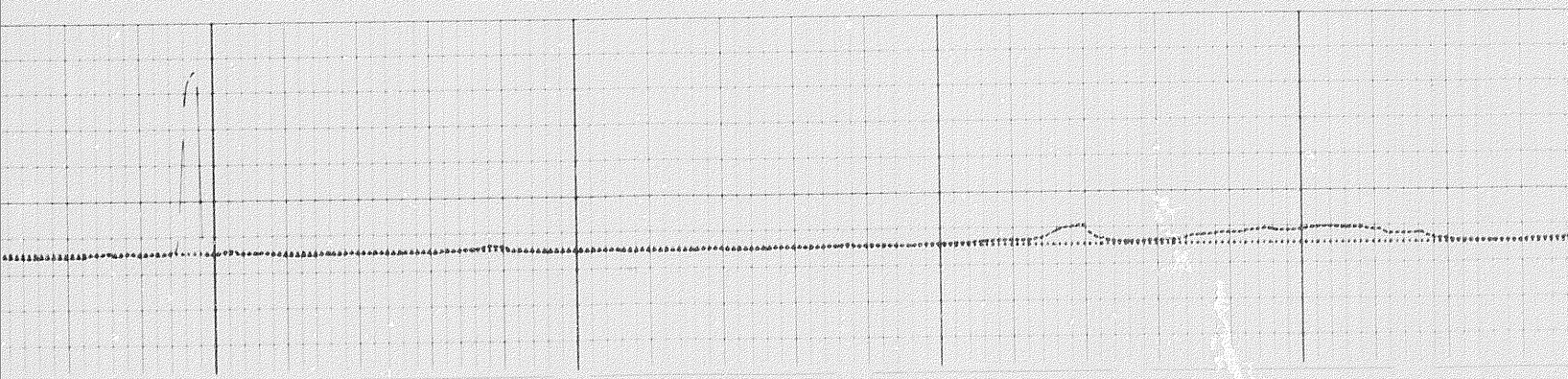


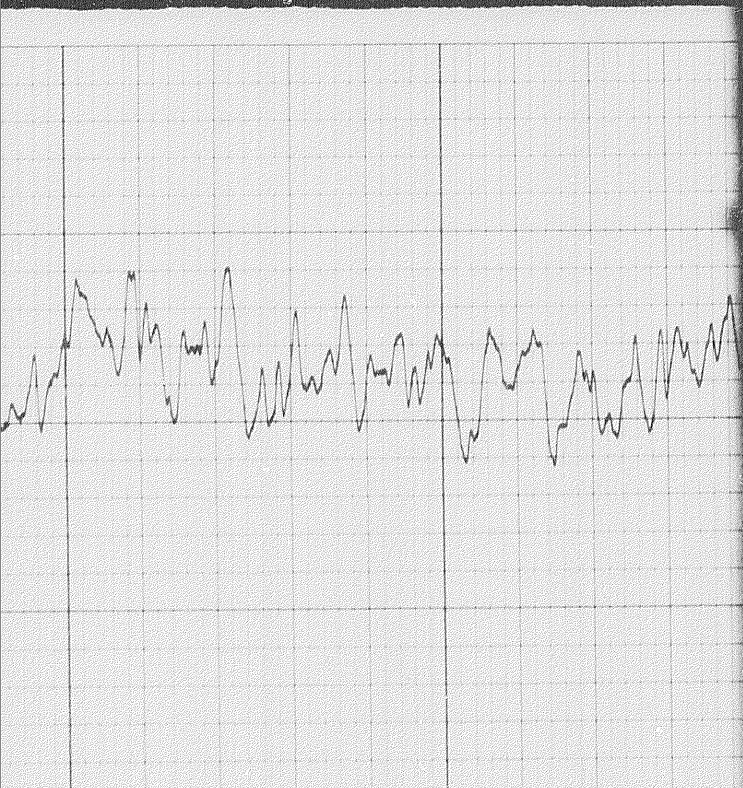
10 of



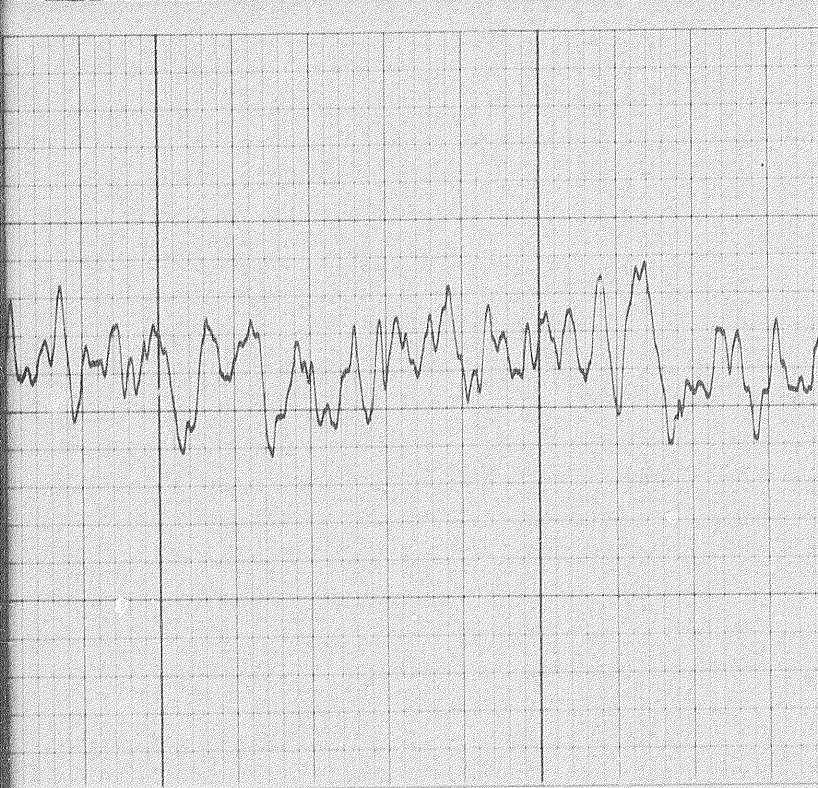
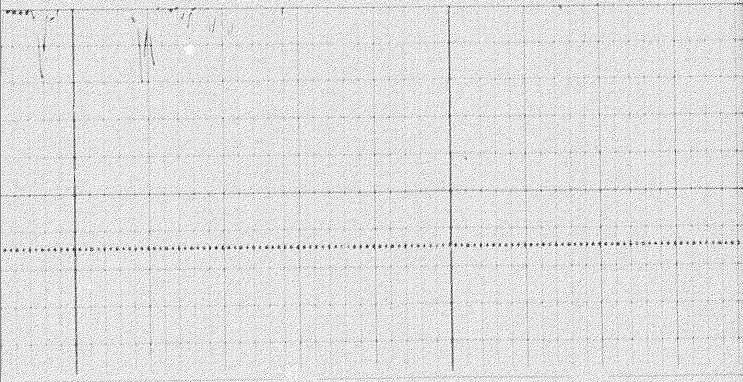
12000

12100

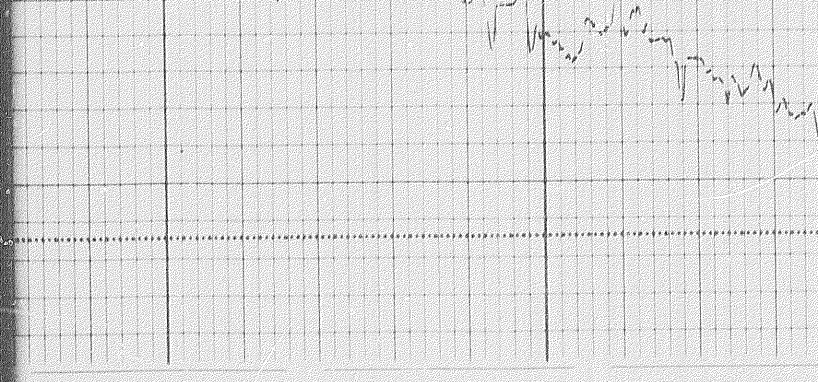


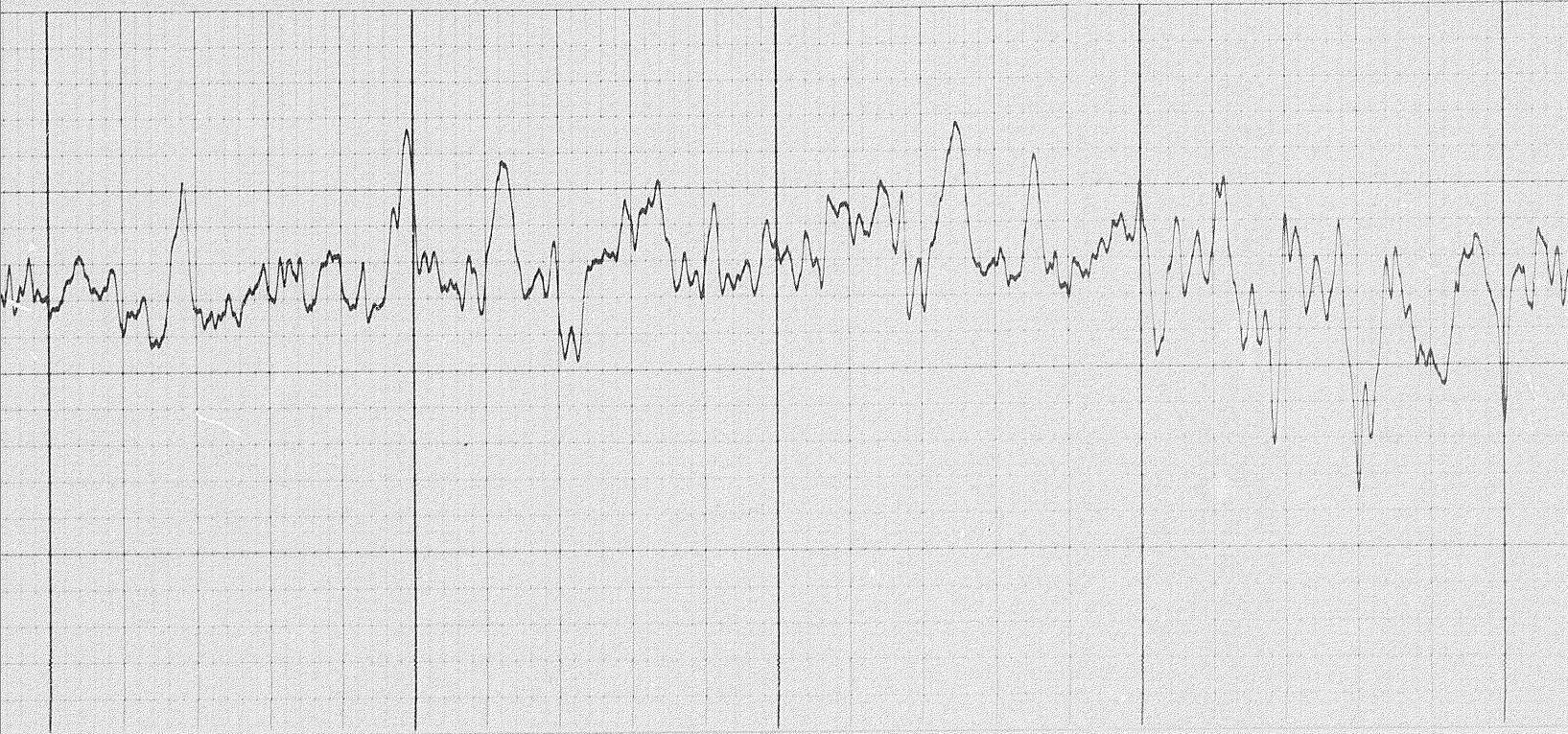


12200



12300



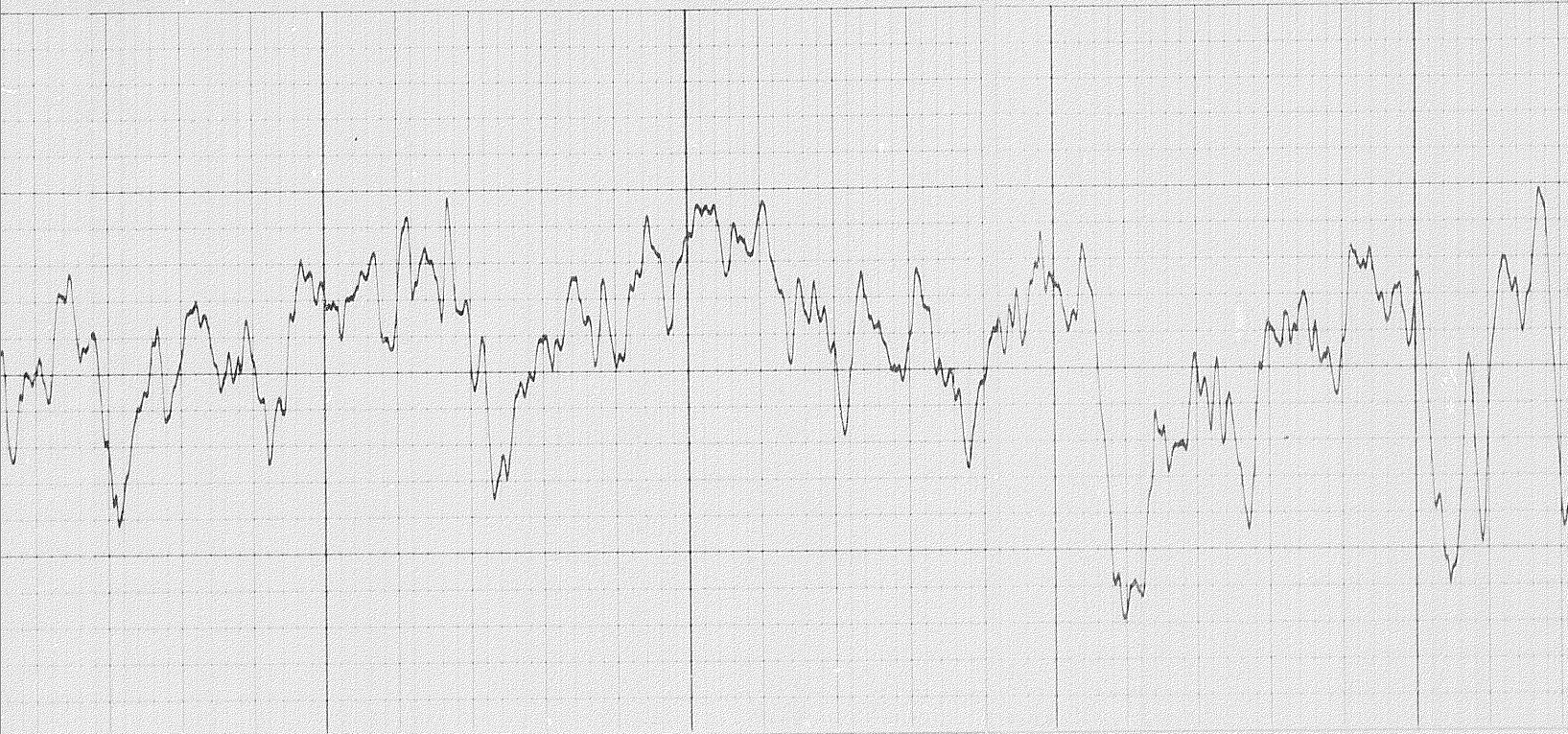


12400

12500

12600

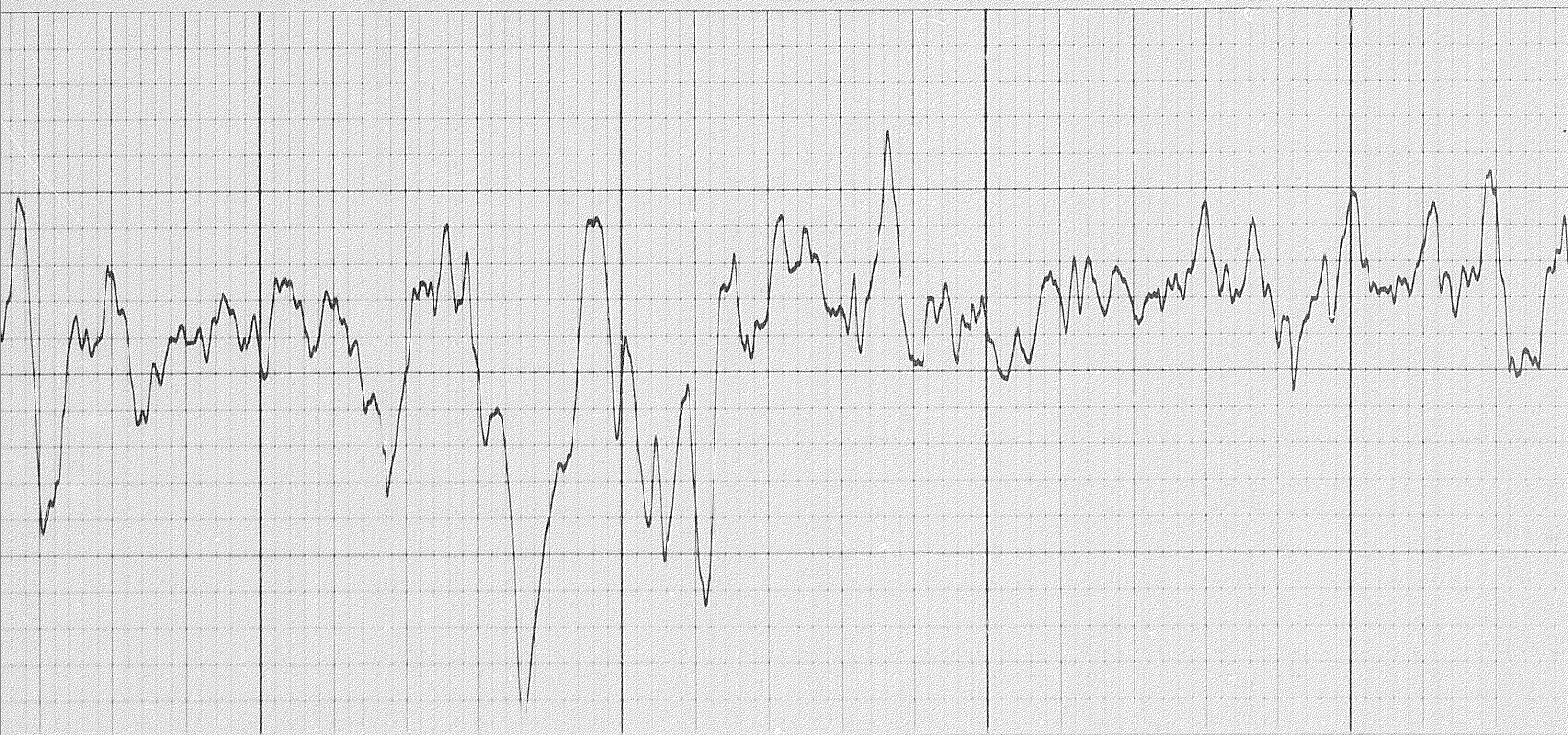




12700

12800



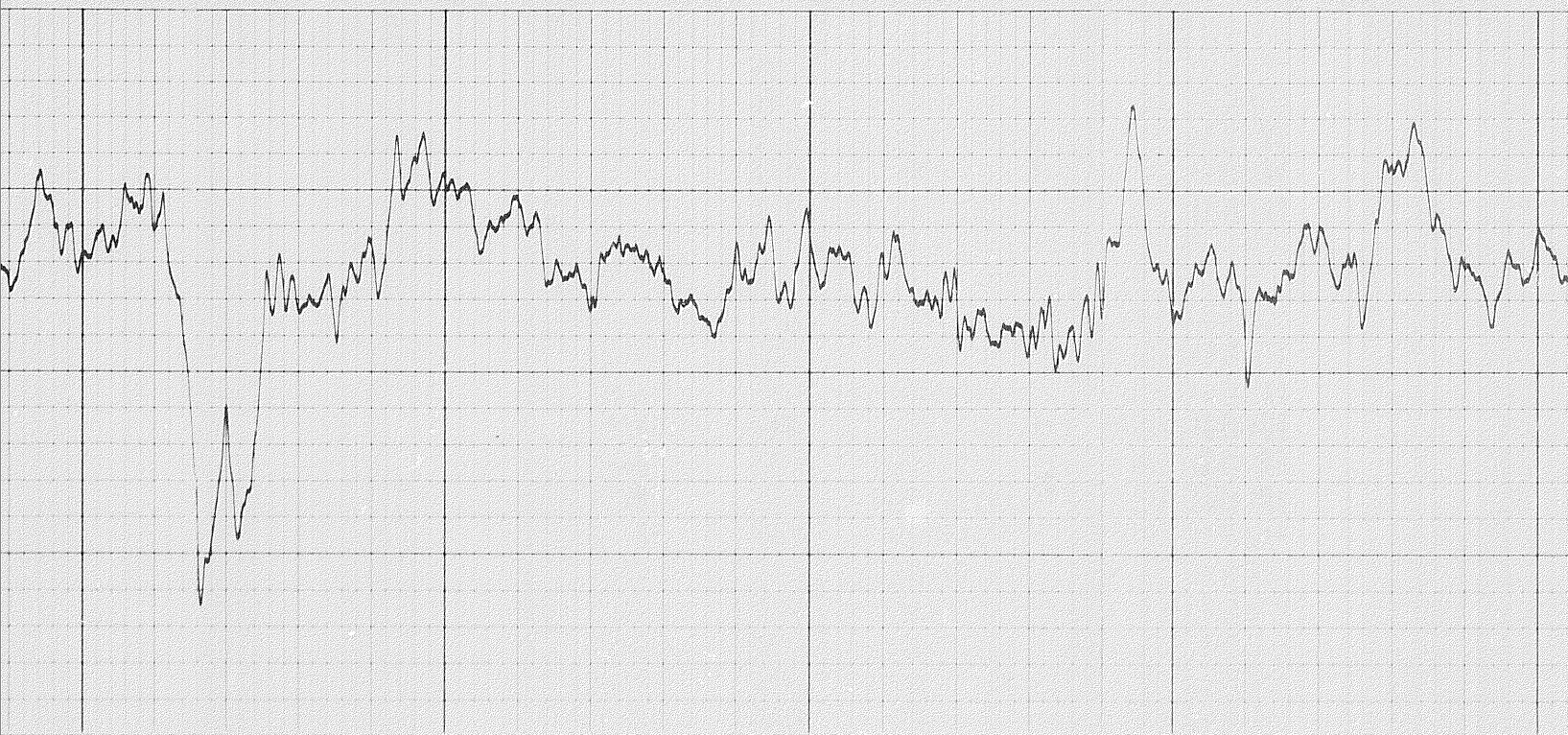


12900

13000



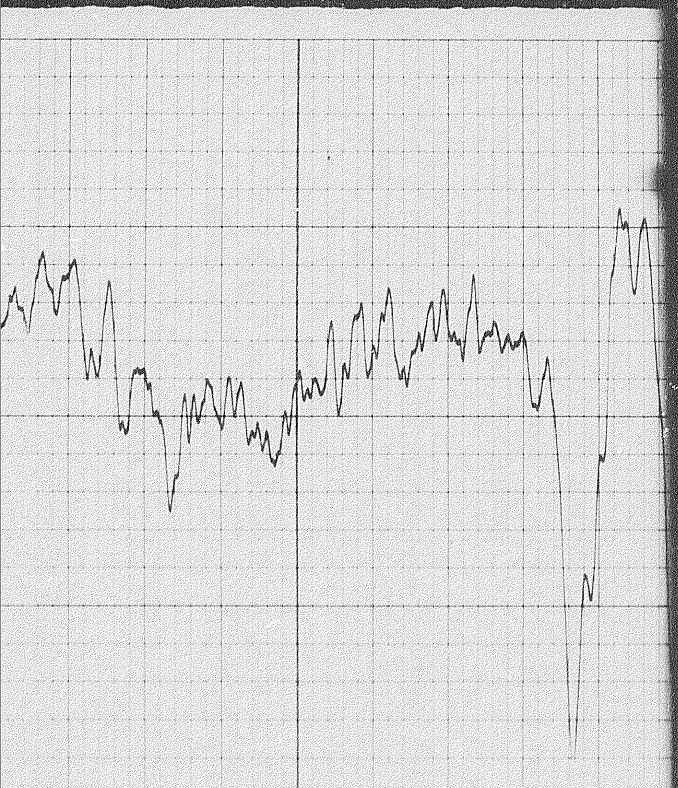
12 of



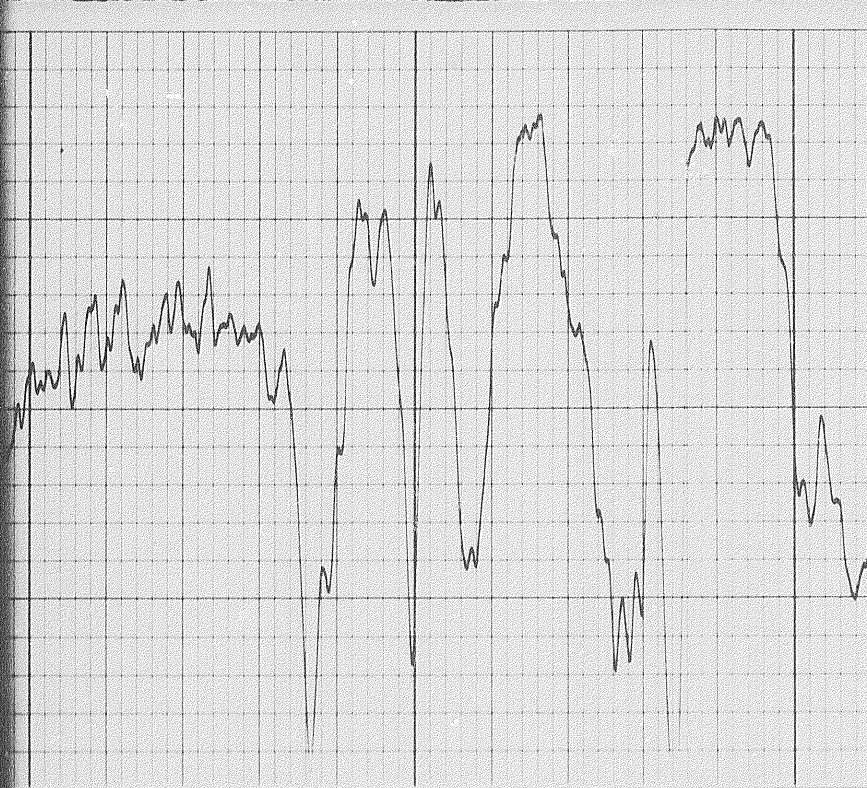
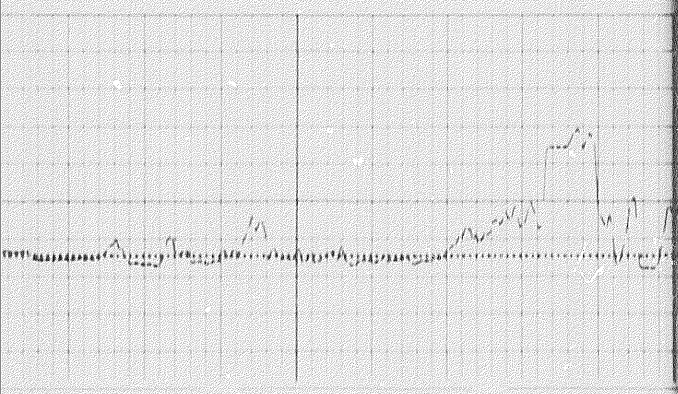
13200

13300



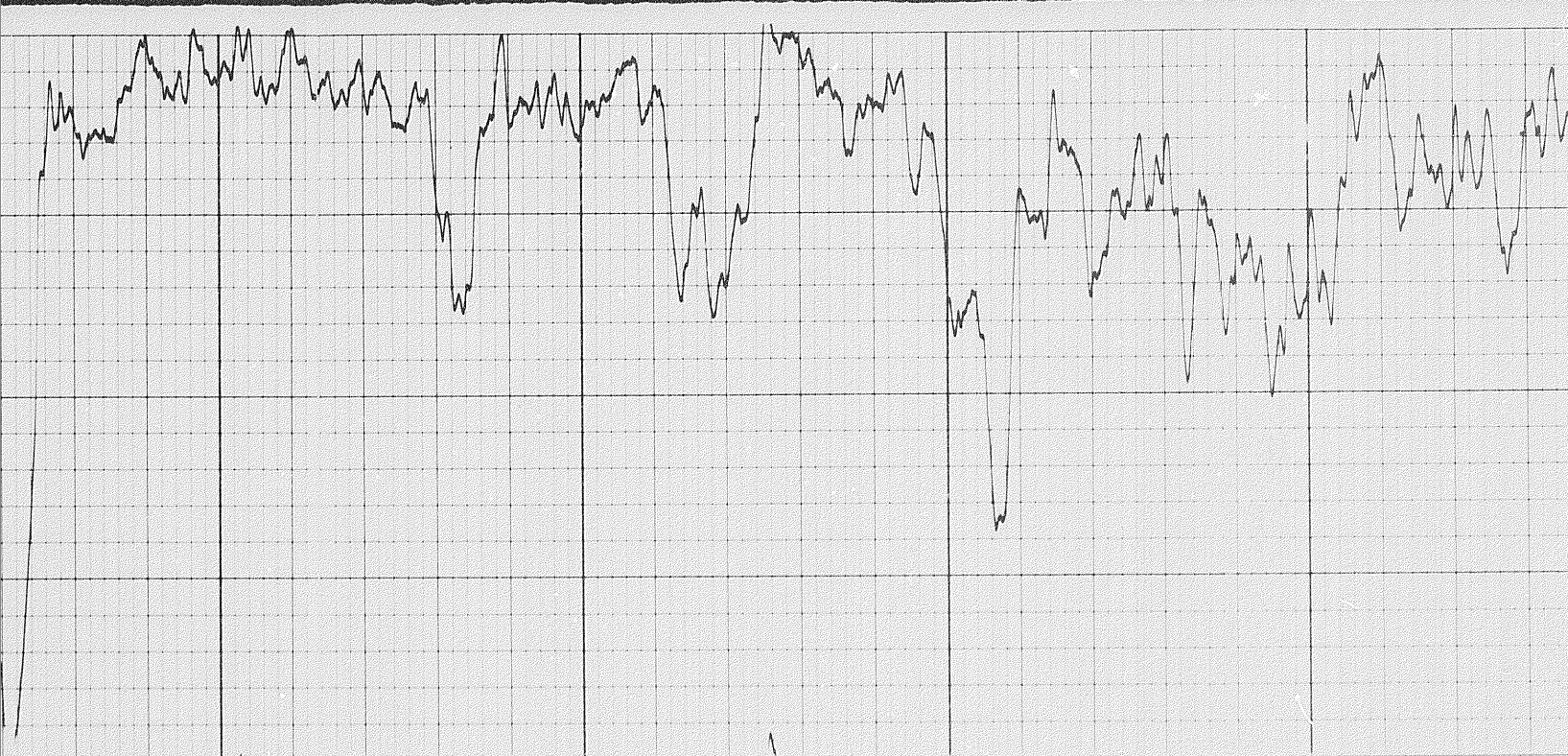


135



13500



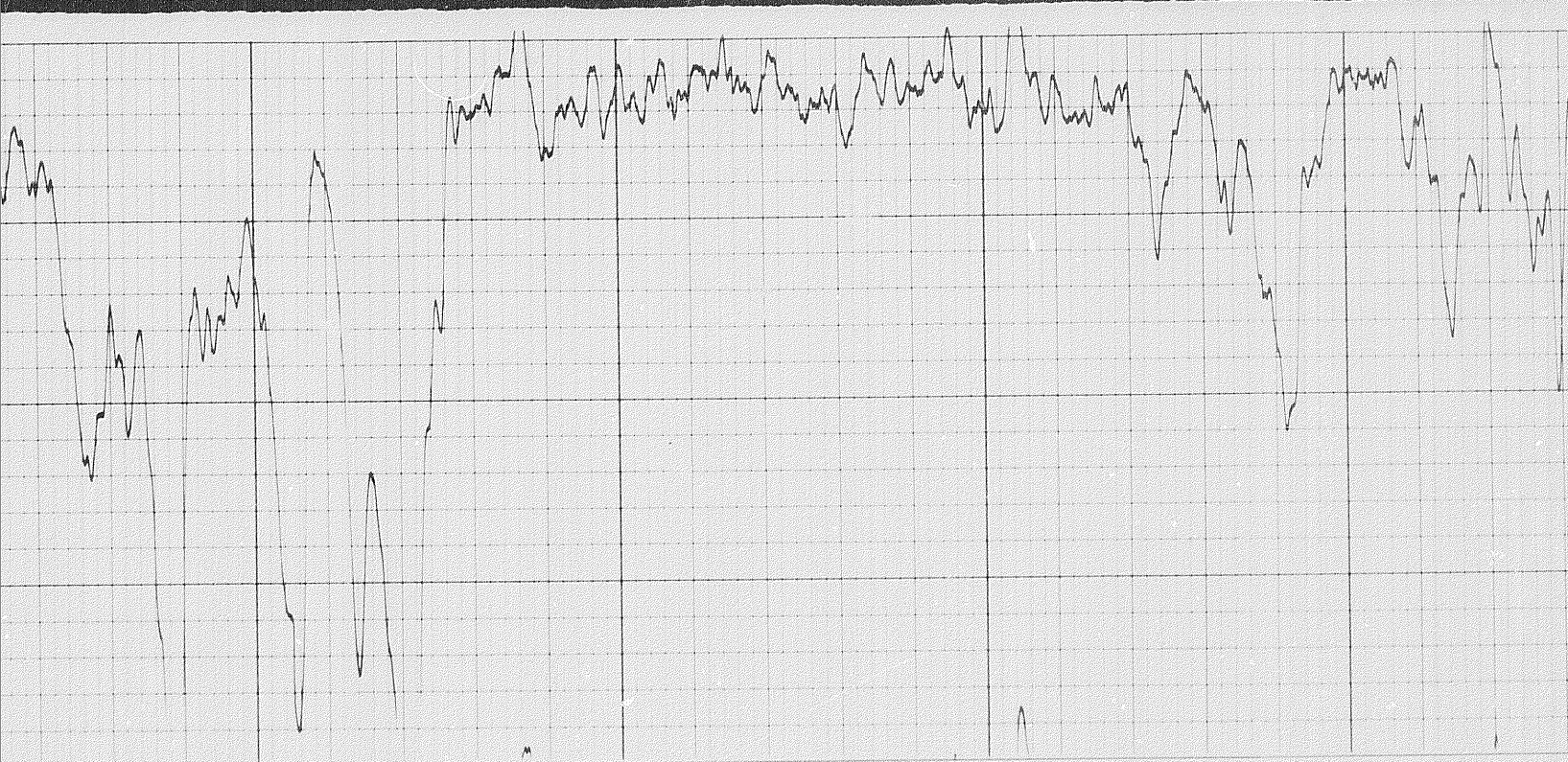


13700

13800

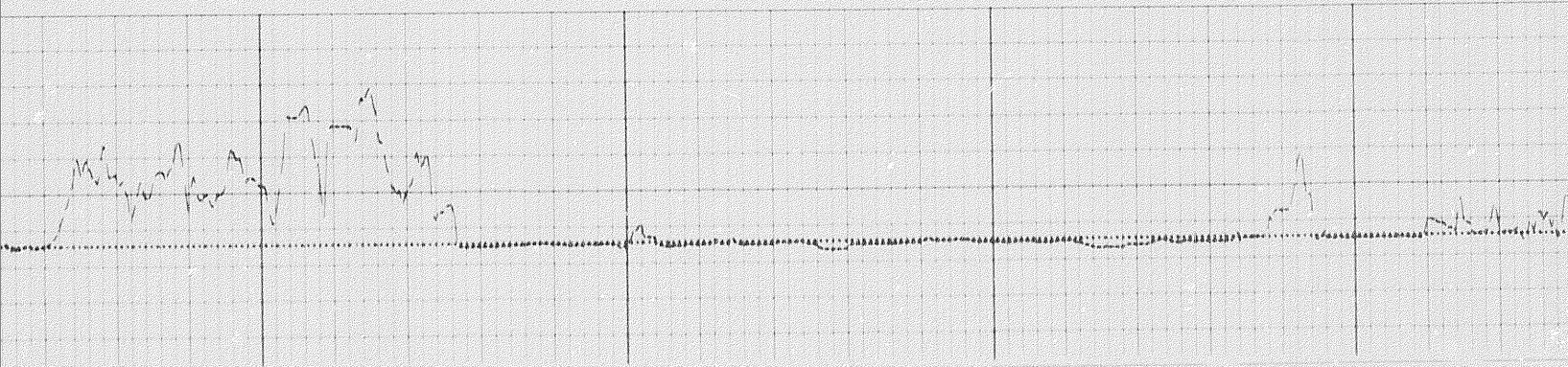


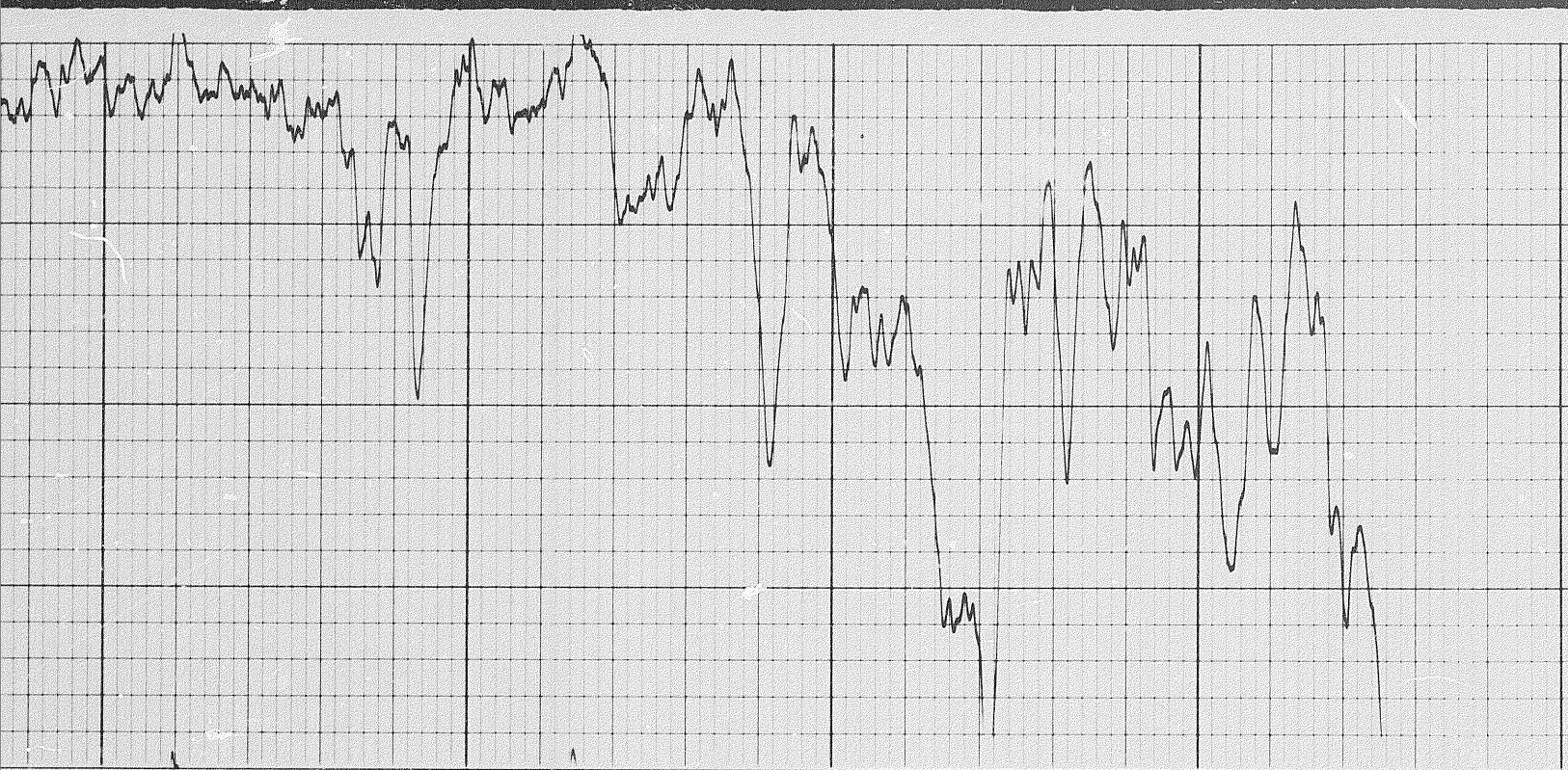
3 of



13900

14000



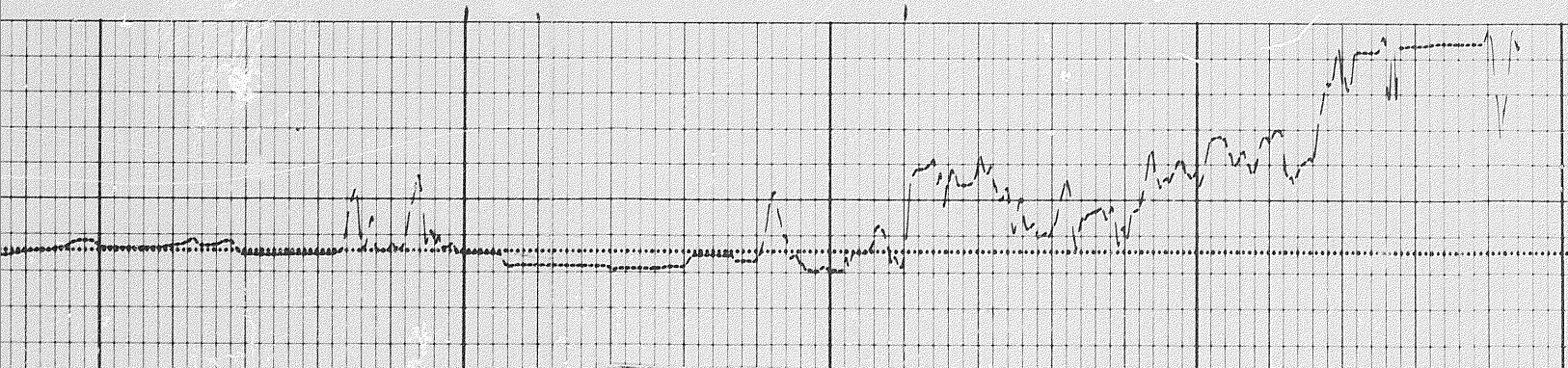


14100

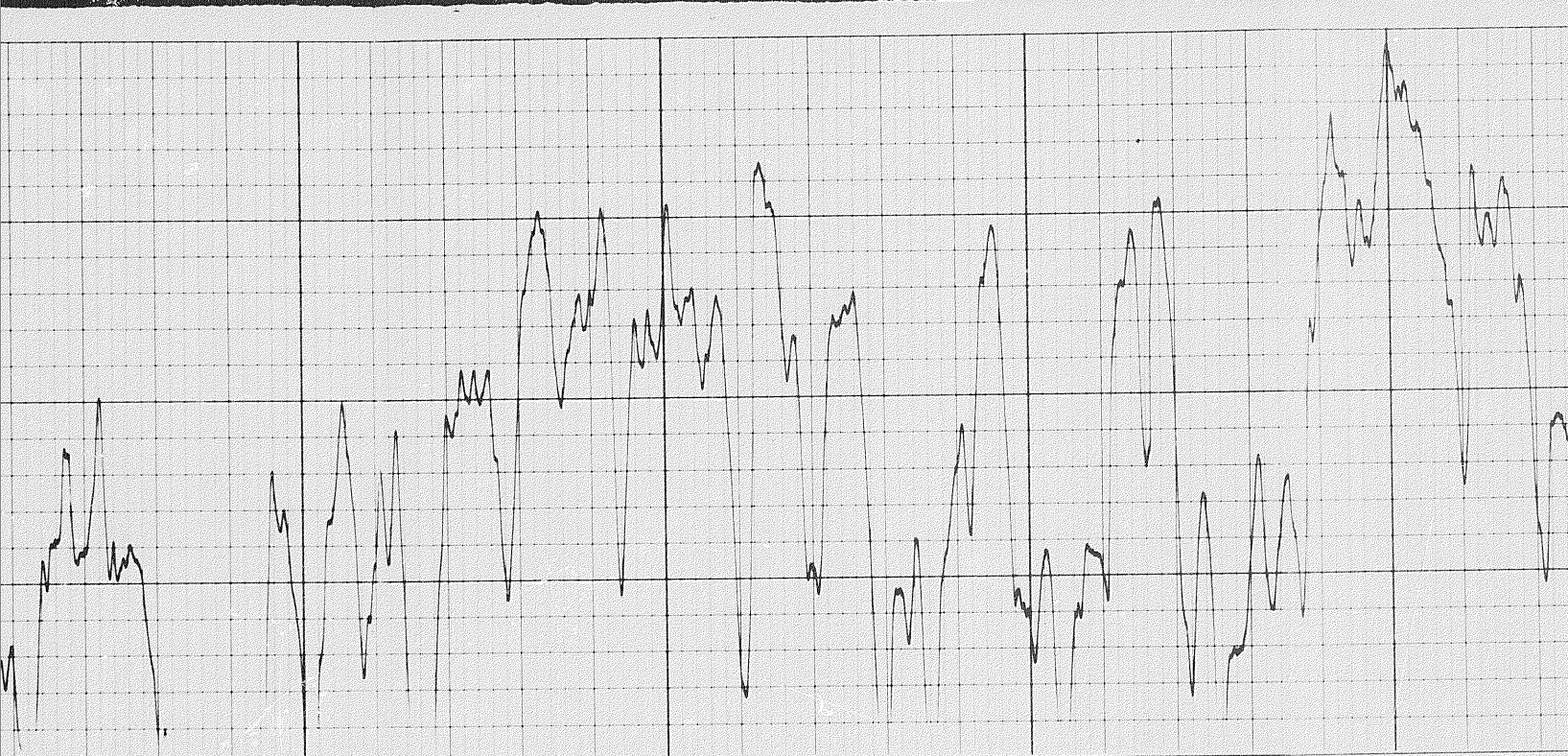
14150

14200

14300

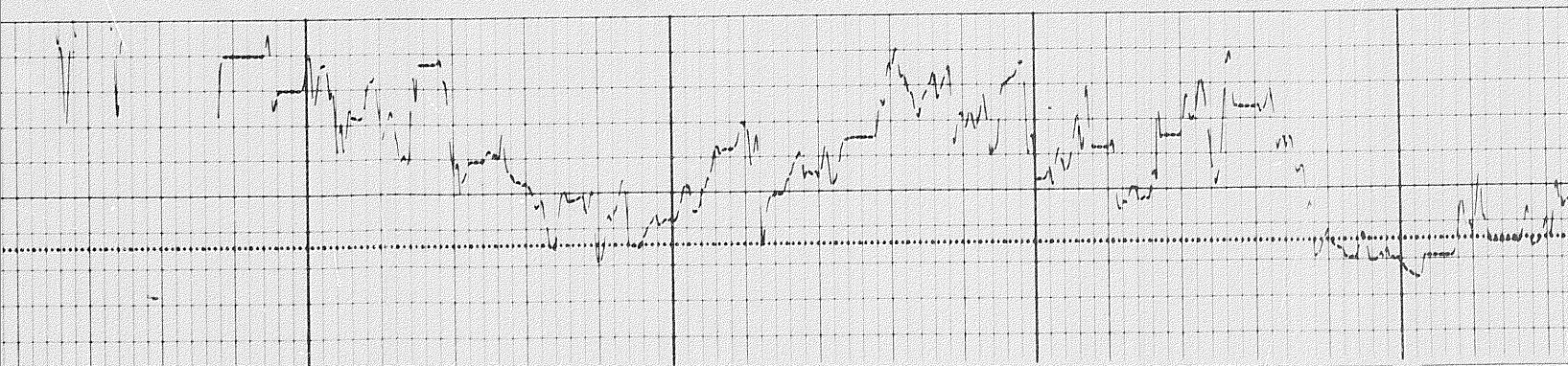


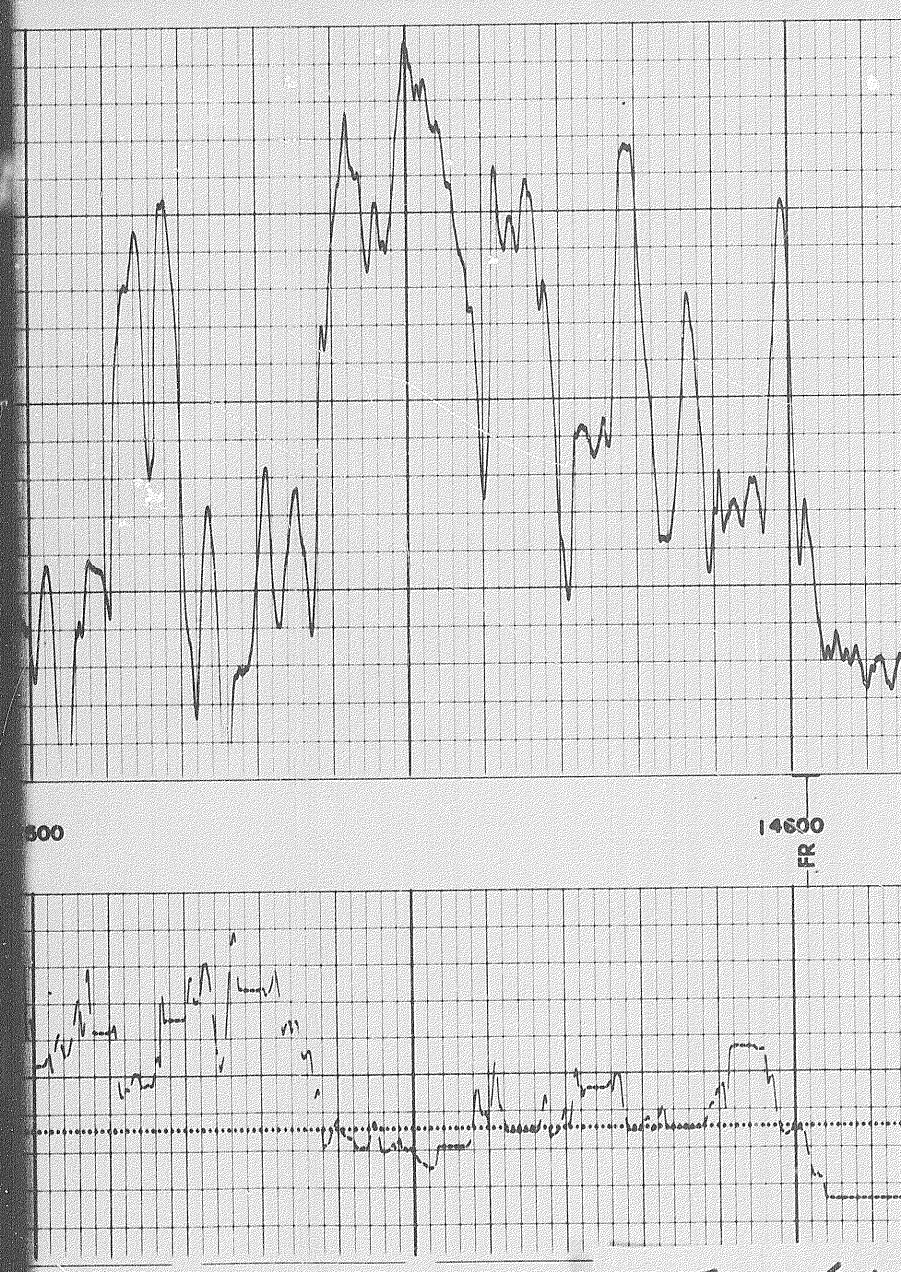
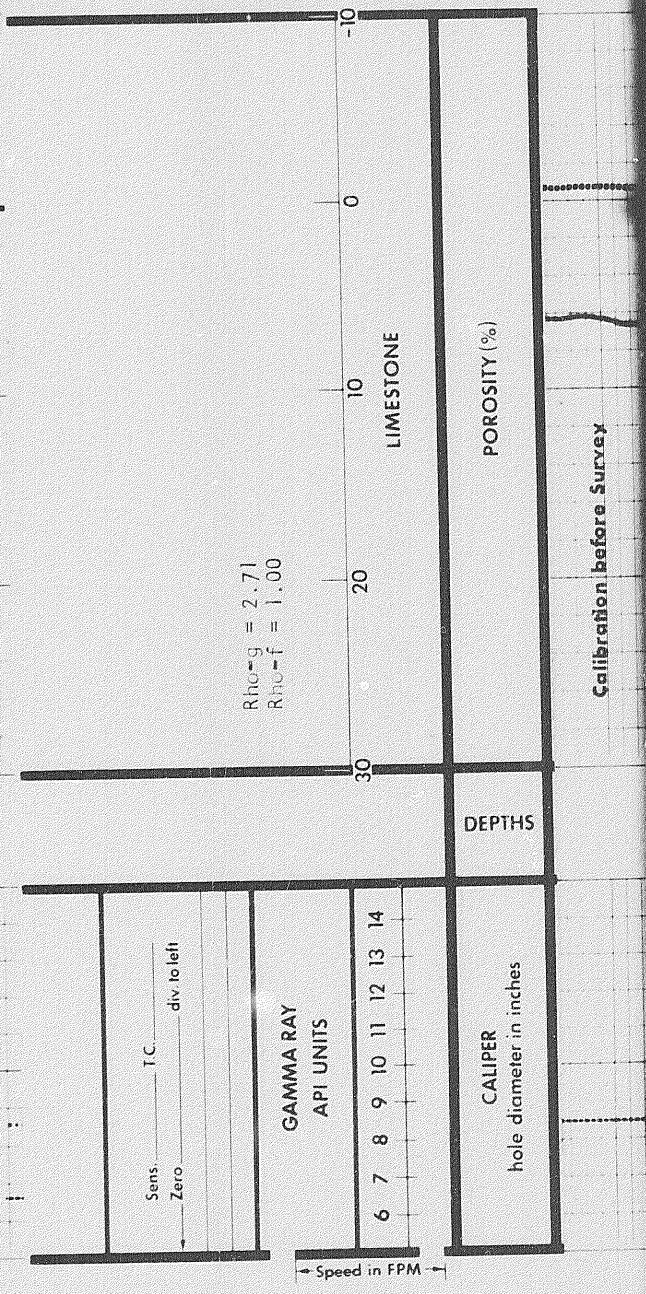
14 of



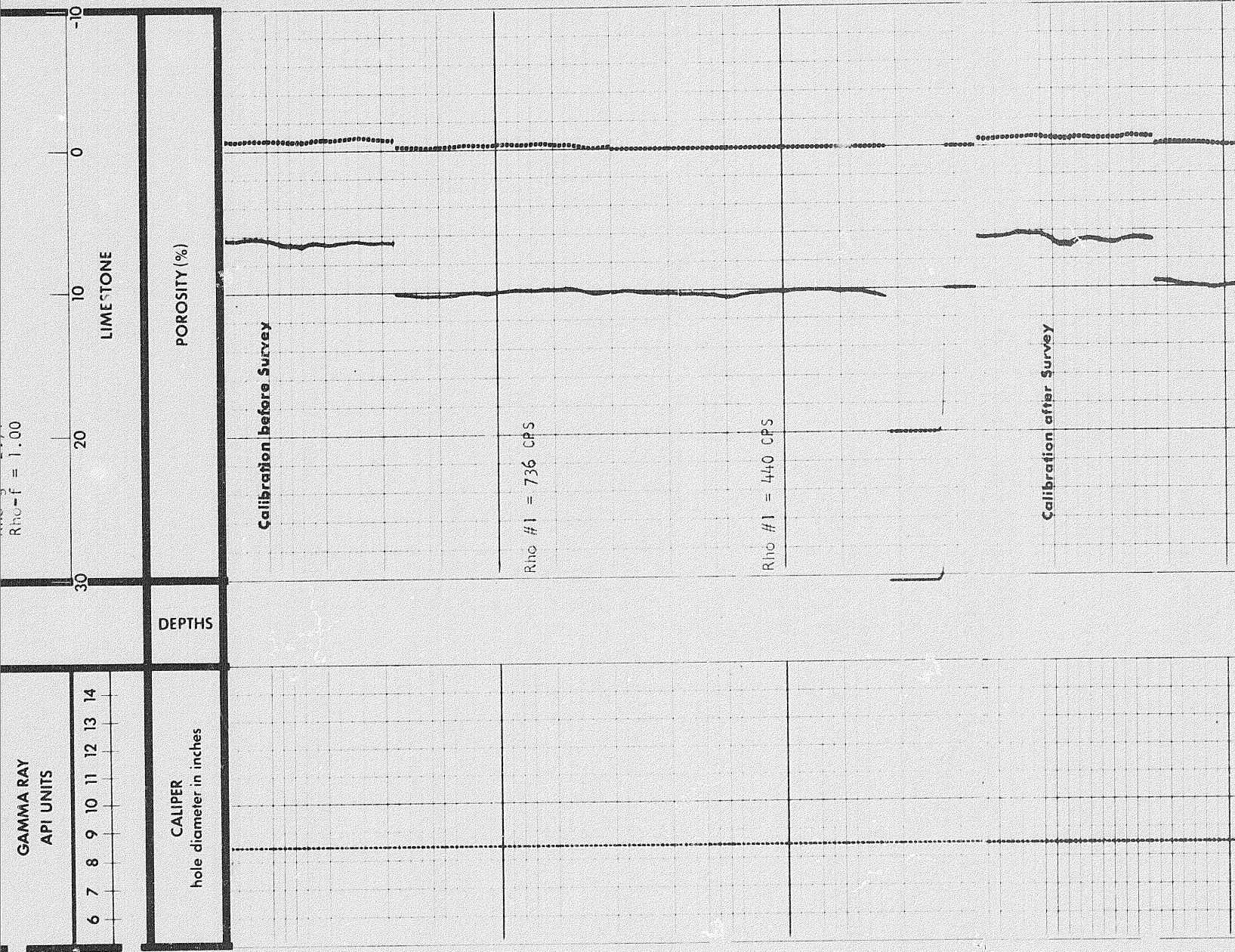
14400

14500





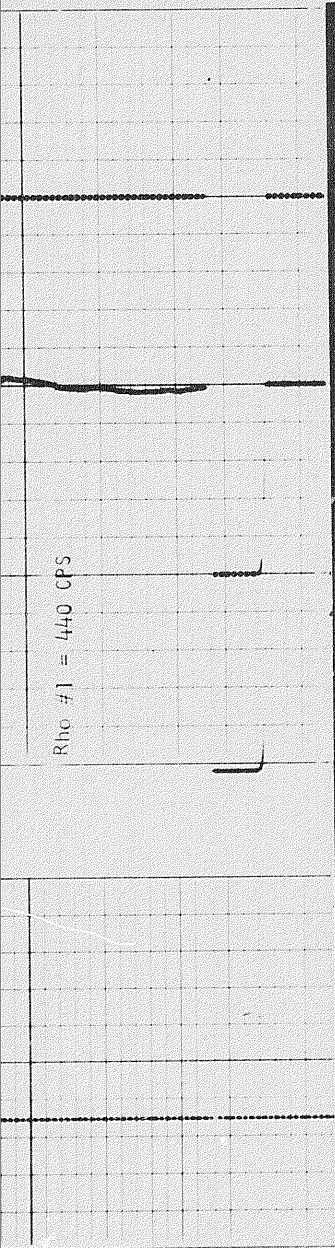
15 of 15



Rho-F = 1.00

10
0
10
20
30

← Speed in FPM →



COMPANY PAN AMERICAN PETROLEUM CORPORATION

WELL PAN AM BEAVER YT-G-01

FIELD BEAVER RIVER PROVINCE YUKON TERRITORIES

