

**SIDEWALL
NEUTRON POROSITY LOG**
SCHLUMBERGER OF CANADA Calgary Alberta

PROVINCE YUKON TERRITORIES
FIELD WILDCAT
WELL SOBC WM SHAEFFER CK
YT 0-22
COMPANY CHEVRON STANDARD LIMITED

COMPANY CHEVRON STANDARD LIMITED
WELL SOBC WM SHAEFFER CK
FIELD WILDCAT
PROVINCE YUKON TERRITORIES
LOCATION 61° 41' 54" N LAT
137° 19' 40" W LONG
Permanent Datum GL 1139
Elev. 1139
Log Measured From KB 16 Ft. Above Perm. Datum
Other Services:
SLC-GR, FDC-GR, IES
GRN, MLC, CAL, DII
ELEV: KB 1155
GL 1139
CAF

Date	28 APR 71
Run No.	ONE
First Reading	10373
Last Reading	8300
Feet Measured	2073
Depth Reached	10374
Bottom Driller	10373
Csg SOC	1200
Csg Driller	1201
Mud Nature	GEL
Dens. Visc.	11.1 365
Mud pH	10.0
Water Loss	5.0
Rms	RMKS 0 RMKS 0
Rinf	2.27 58
BHT	0.76 176
Rmc	2.54 60
ppm Cl	-
Bit Size	8 3/4"
Equipment Type	PGE-E
Op. Rig Time	3 HRS
Truck No.	OSU-C 108 REM
Recorded By	CHADDUCK
Witness	POLLARD

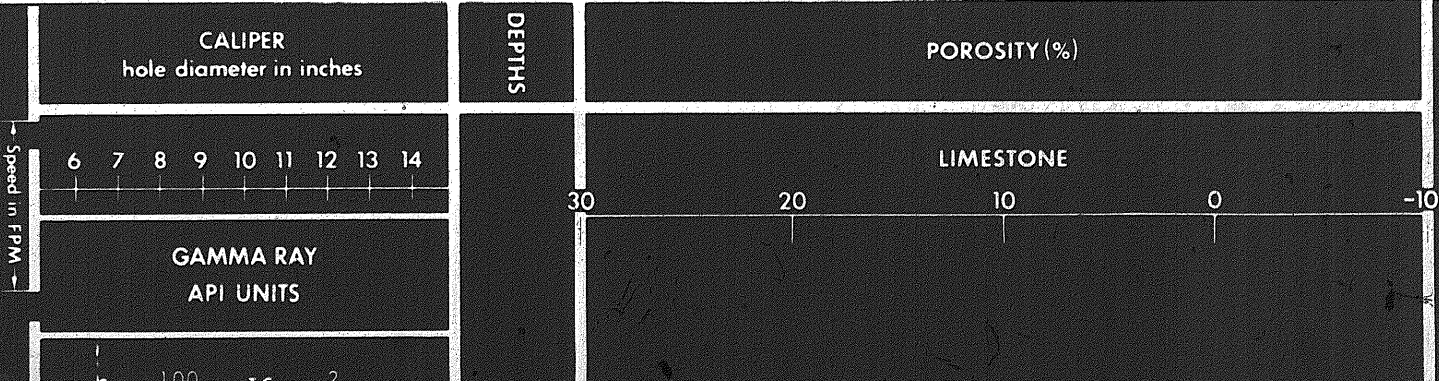
31 MAY 71 CAL CP

REMARKS _____ 1st Run Service Order # _____
Drilling Stopped 1600 / 27th : Circulation Stopped 0200 / 28th : Tool on Bottom 1830 / 28th : B.H.T. 176 °F

Panel No.	D 265	SLC-GR 16.5 HRS AFTER CIRCULATION
Cartridge No.	A 156	MUD SAMPLES: Rm #1 = 2.41 @ 64°F
Sonde No.	E 90	Rm #2 = 2.36 @ 64°F
Detector No.	A 231	Rm #3 = 2.42 @ 65°F
SFT-16 No.		

CALIBRATION: Gamma Ray				Neutron Environmental Cal.	
Background CPS	Test Source CPS	Galv. Deflection	Sens. Tap	Drawer In- CPS	Drawer Out- CPS
40	260	10	PGP-D	Before 430	250
Panel Settings: Function Former Temp. Comp. Setting T.C. Mud Wt./Salinity Comp. set as per recorded value				After 430	250
LIMESTONE LIQUID	170	2	from TD to 8300	Neutron Auxiliary Cal. - CPS	
			from to	Before	
			from to	After	

This interpretation represents our best judgment. Nevertheless since all interpretations are opinions based solely on inferences from electrical or other measurements, we cannot and do not guarantee the accuracy or correctness of any interpretation and shall not be liable or responsible for any loss, cost, damages, or expenses that may be incurred or sustained resulting from this or any other interpretation.



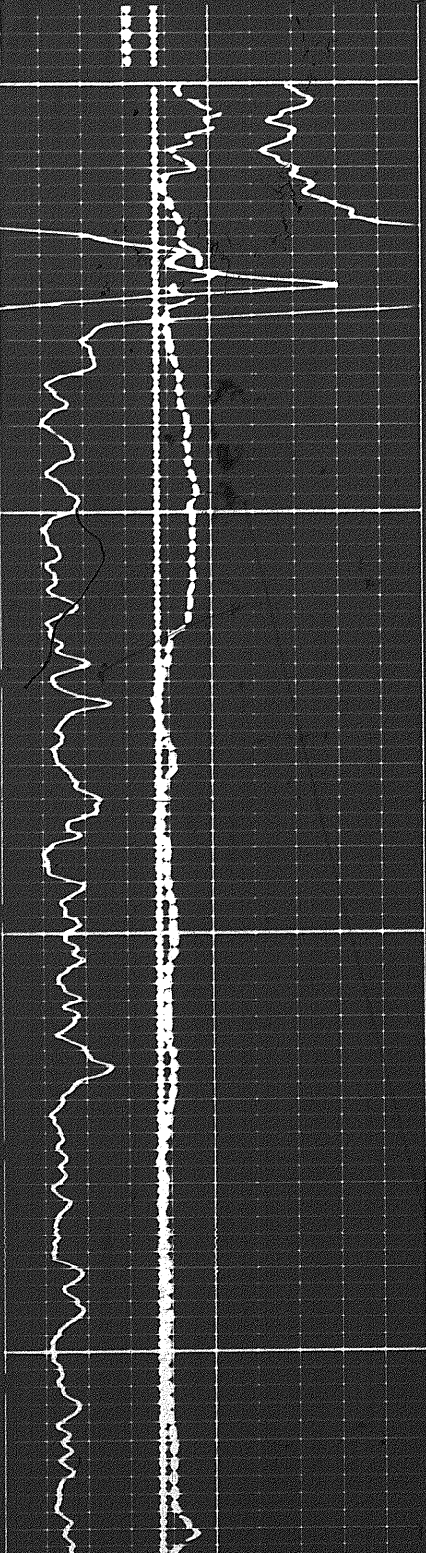
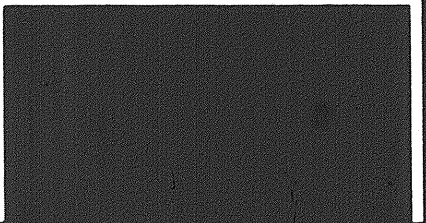
speed in FPM →

6 7 8 9 10 11 12 13 14

GAMMA RAY API UNITS

Sens.	100	T.C.	2
Zero	0	div. to left	
0		100	
100		200	

197

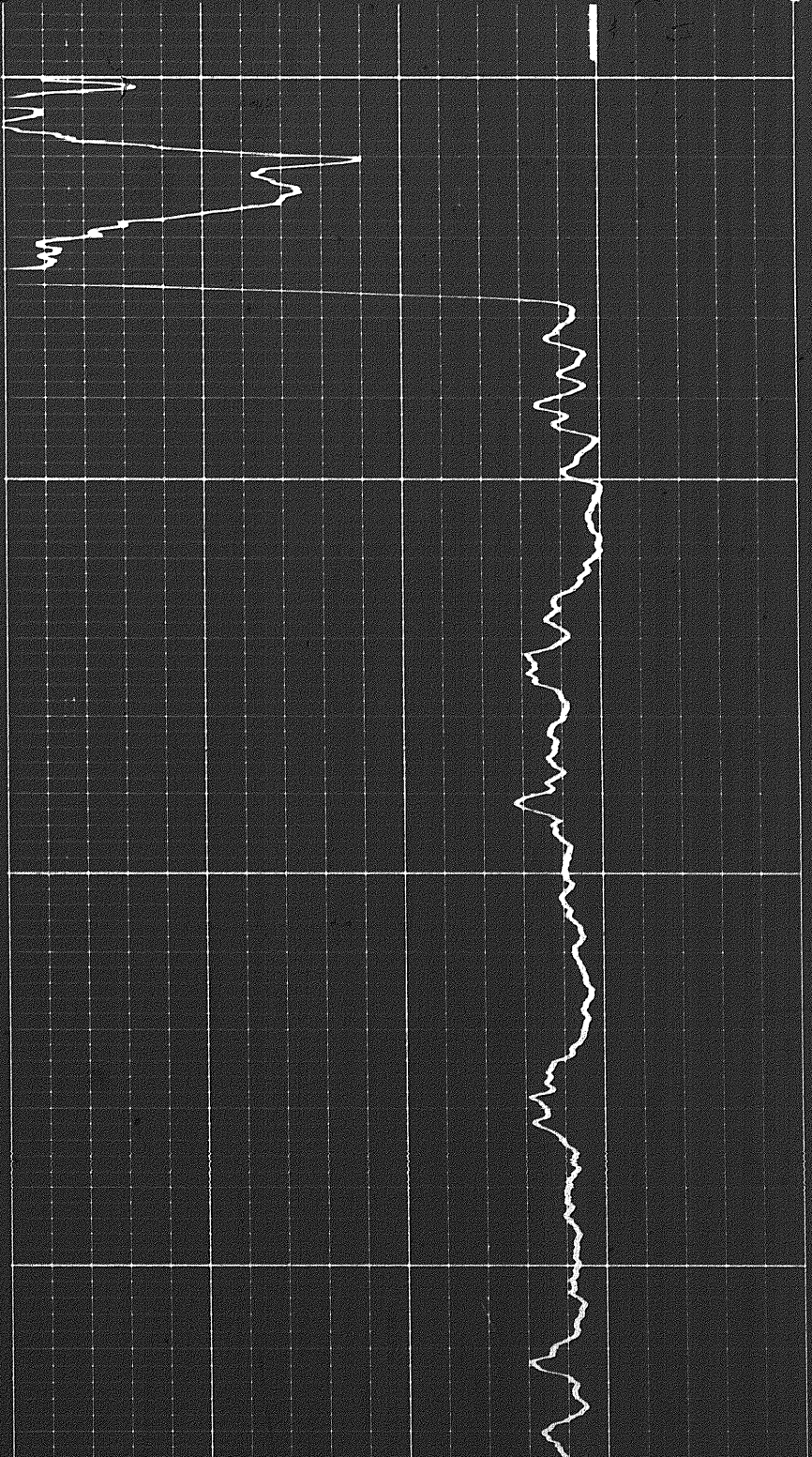


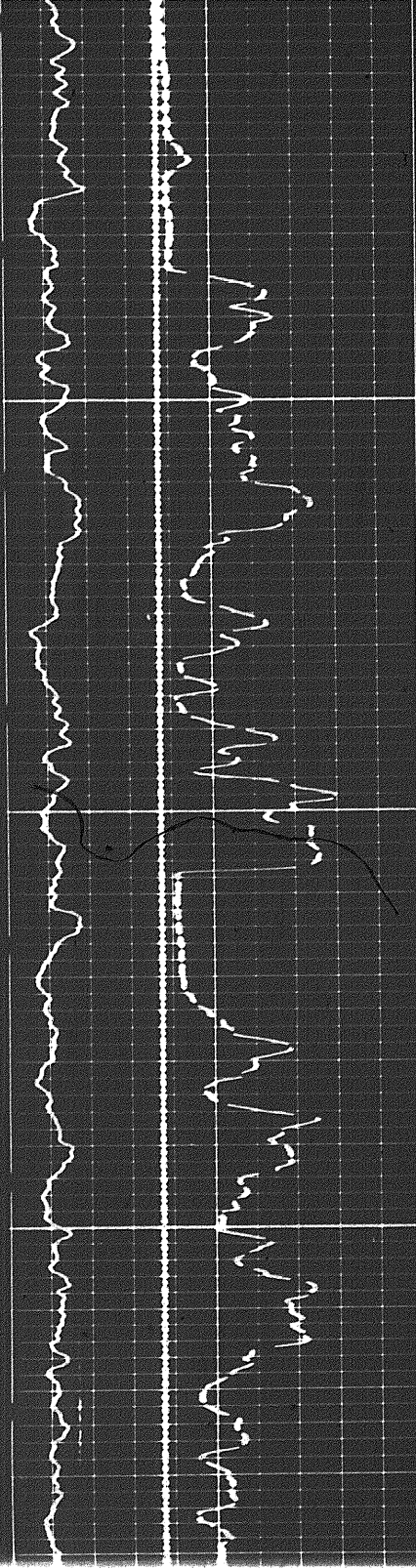
8300

8400

30 20 10 0 -10

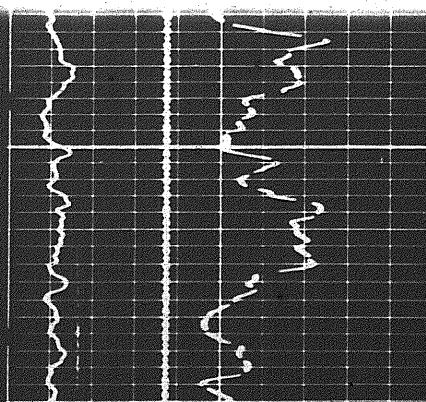
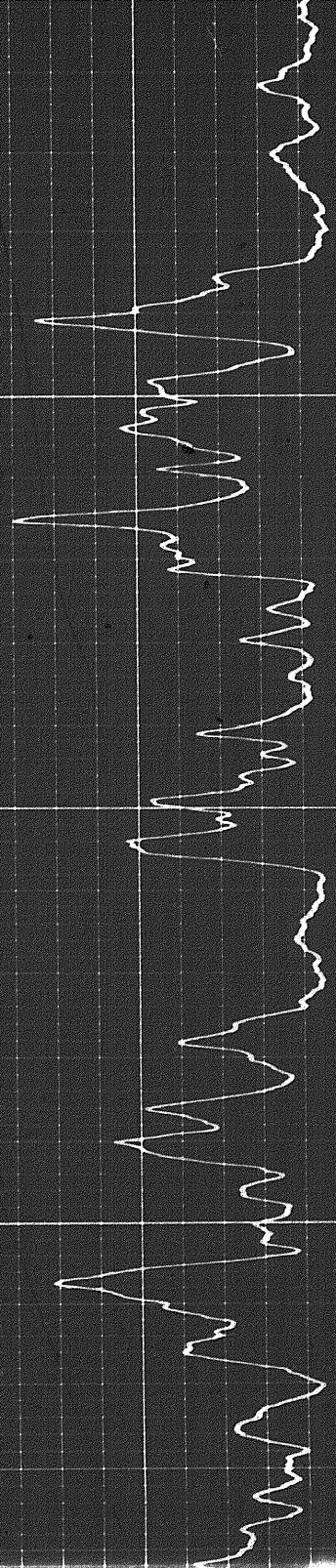
LIMESTONE



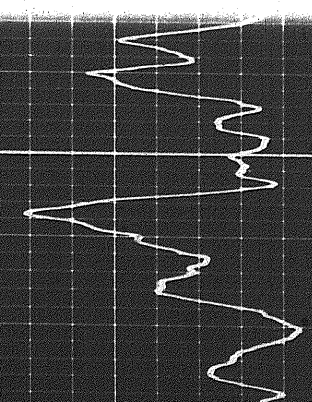


8500

0098

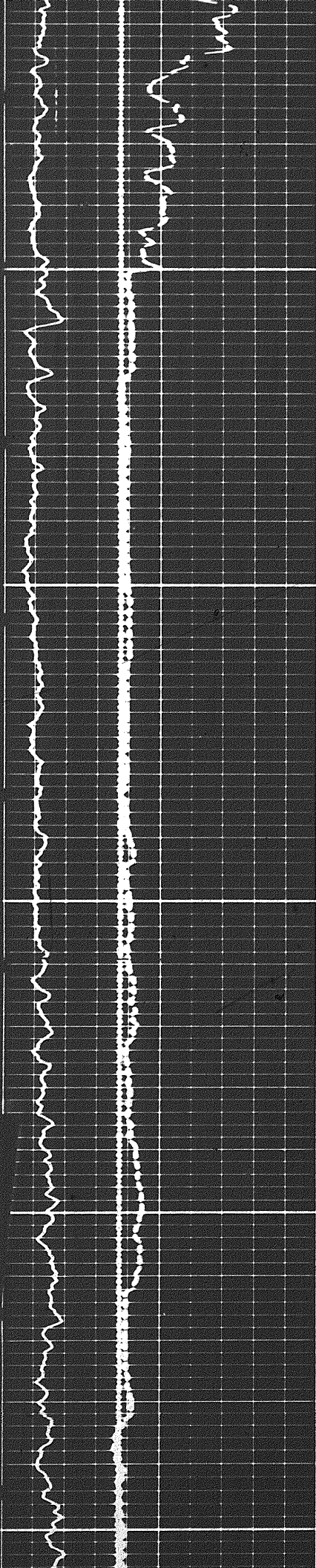


8600



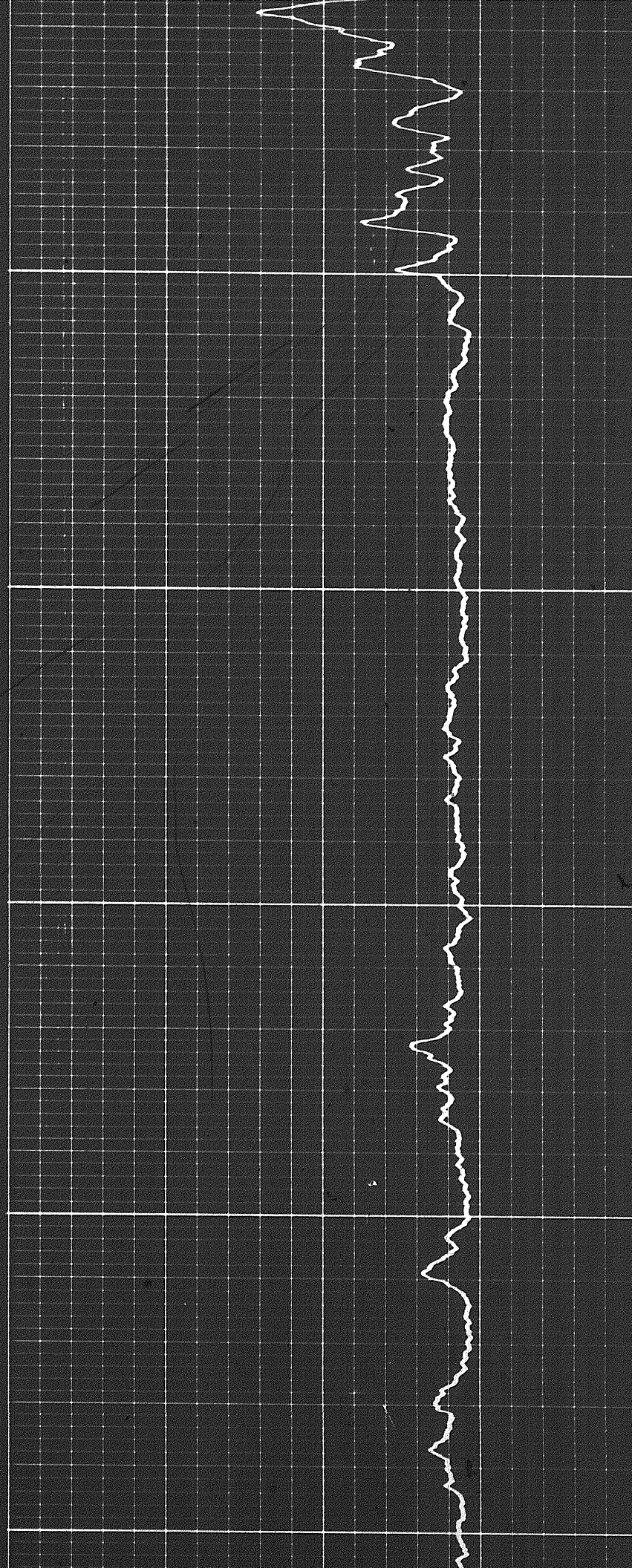
10

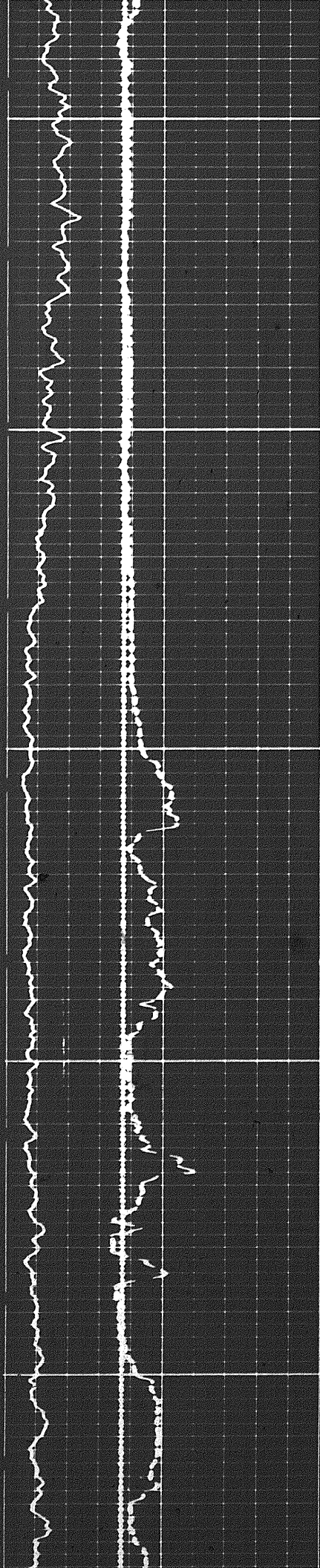
29



8700

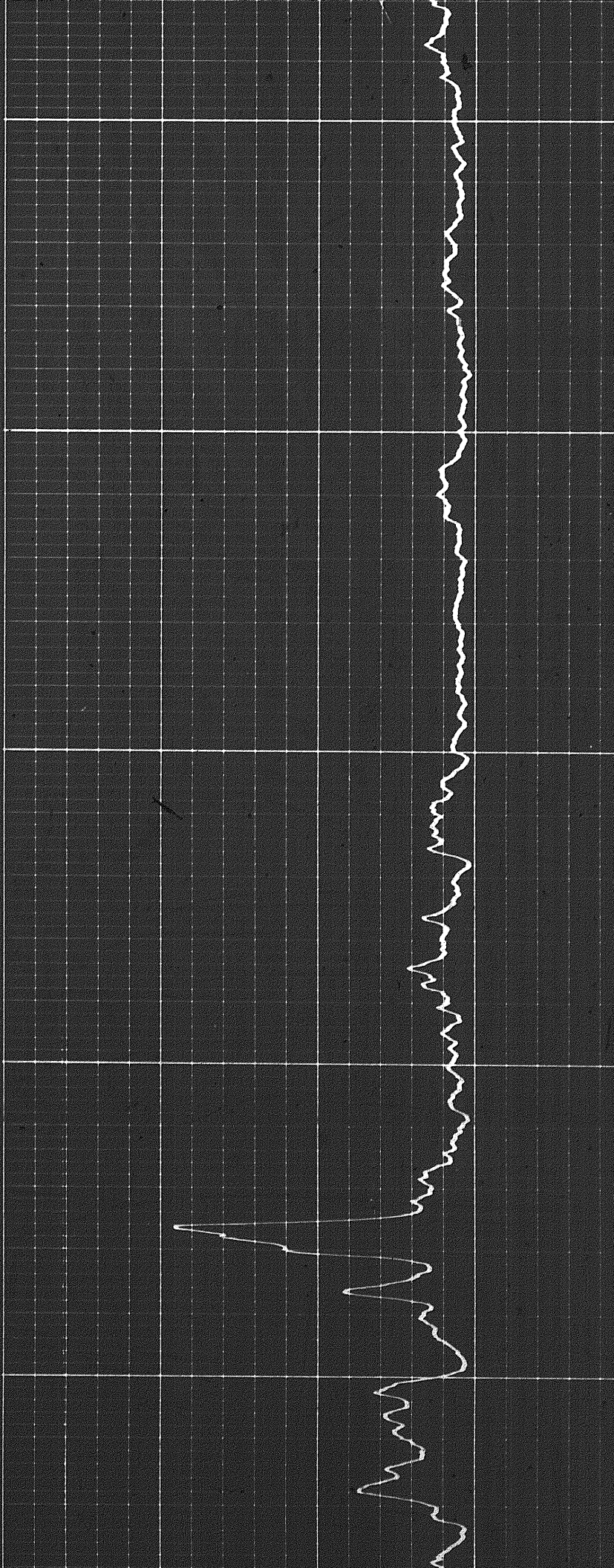
8800

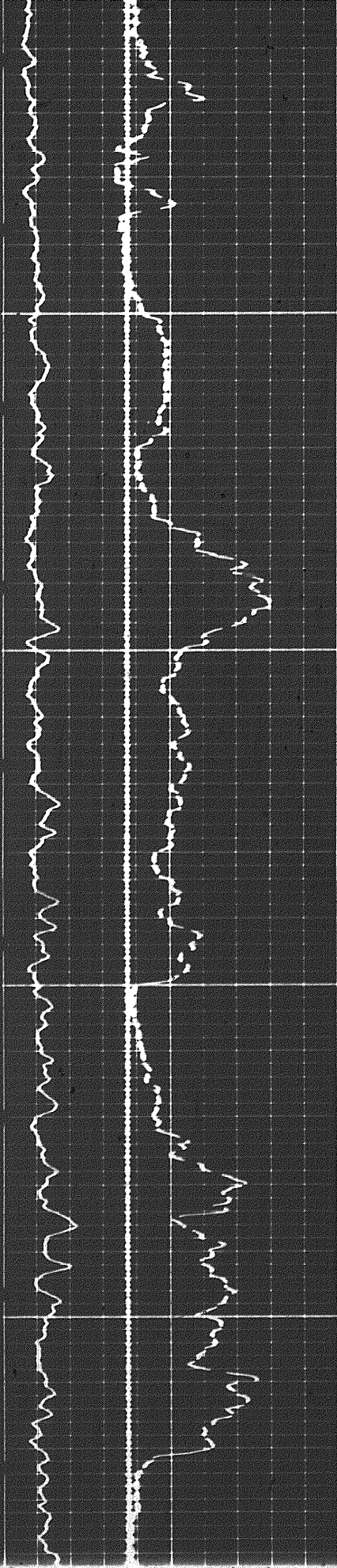




0058

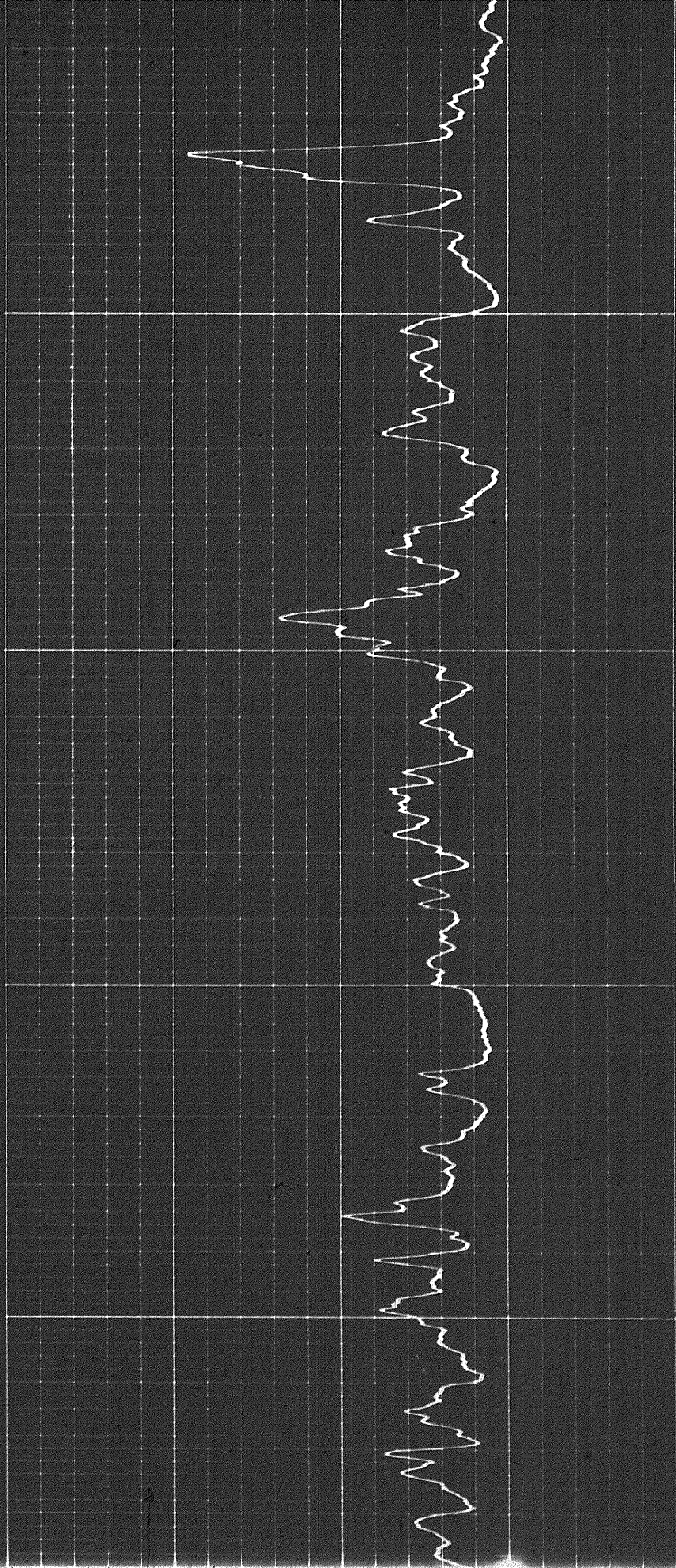
0005



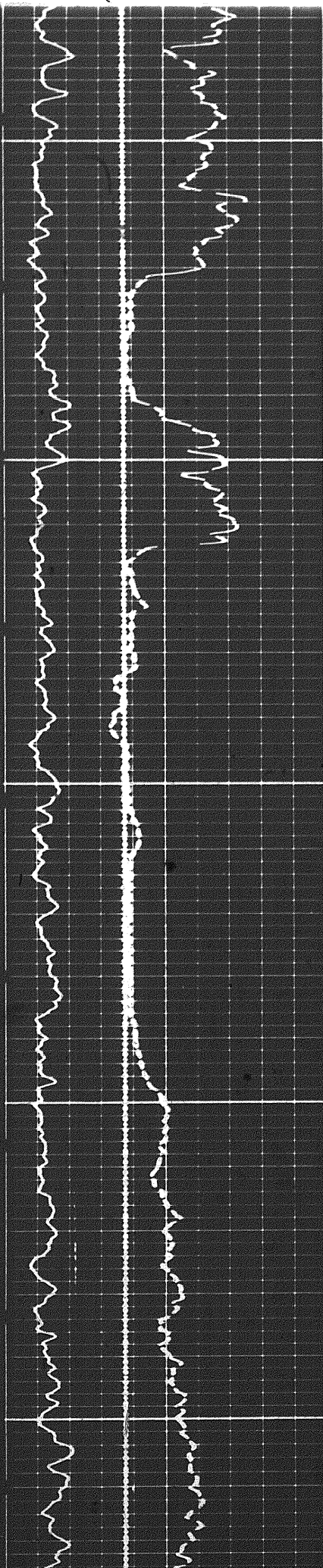


9100

9200



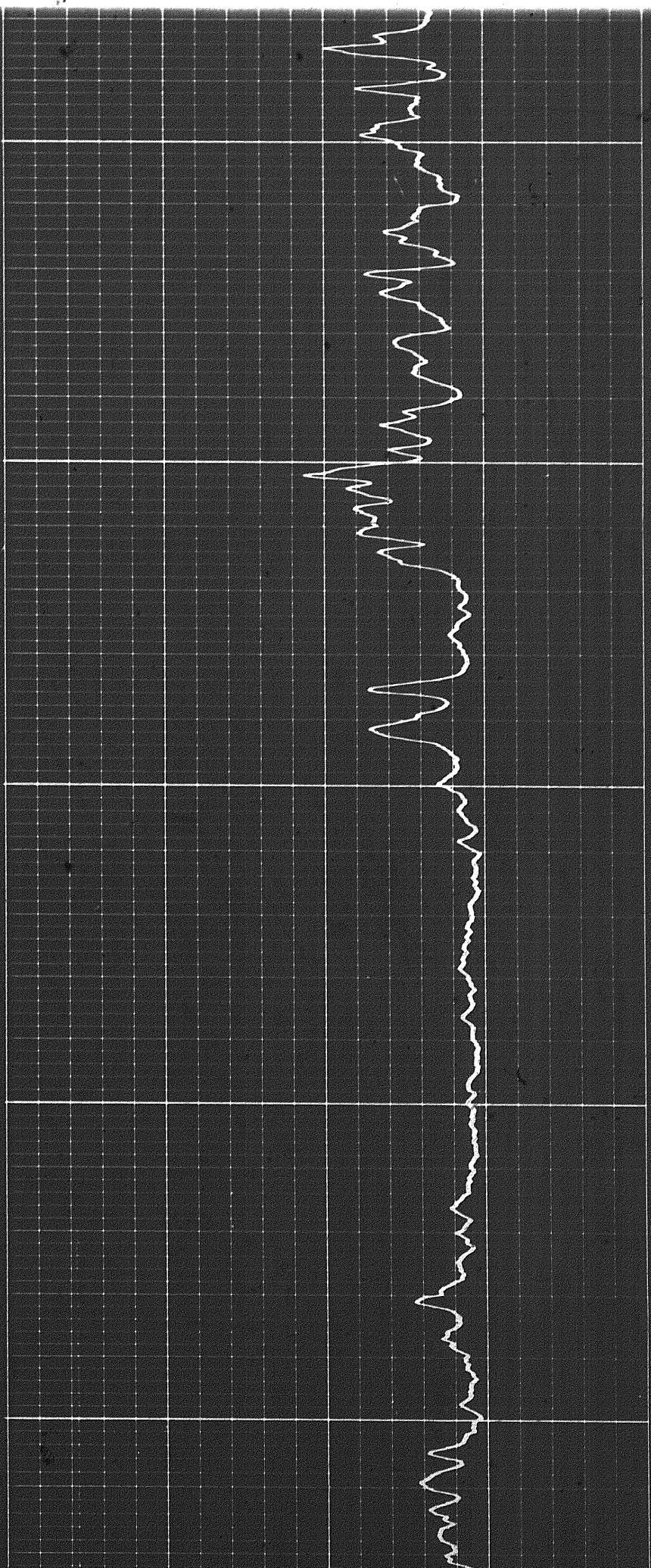
39

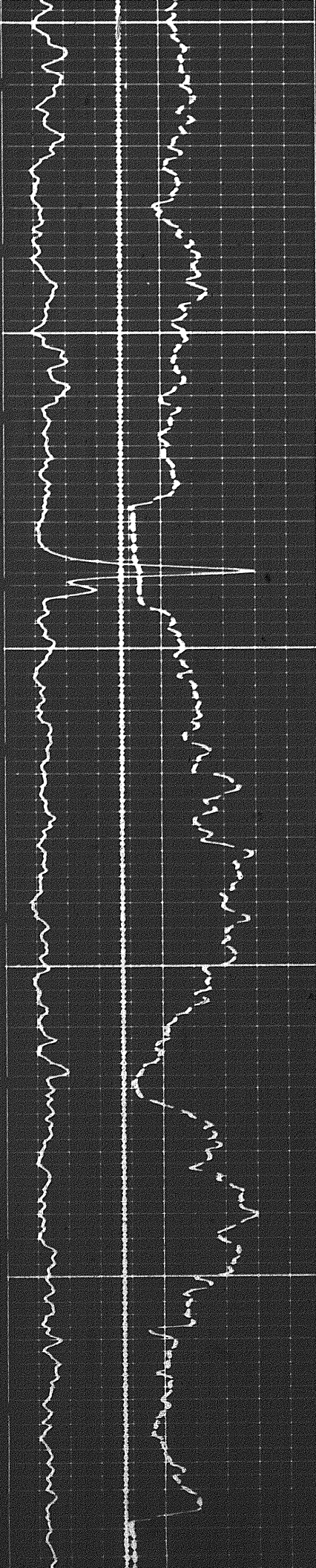


9200

9300

9400

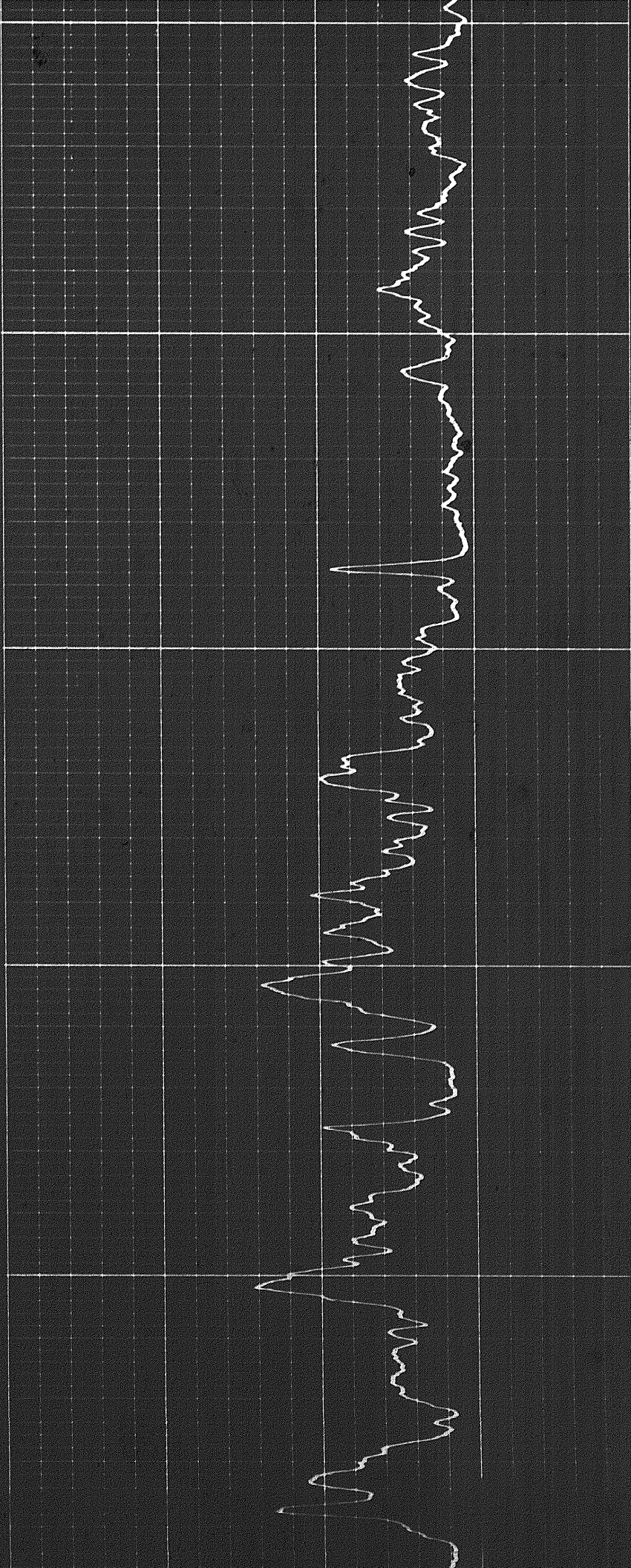


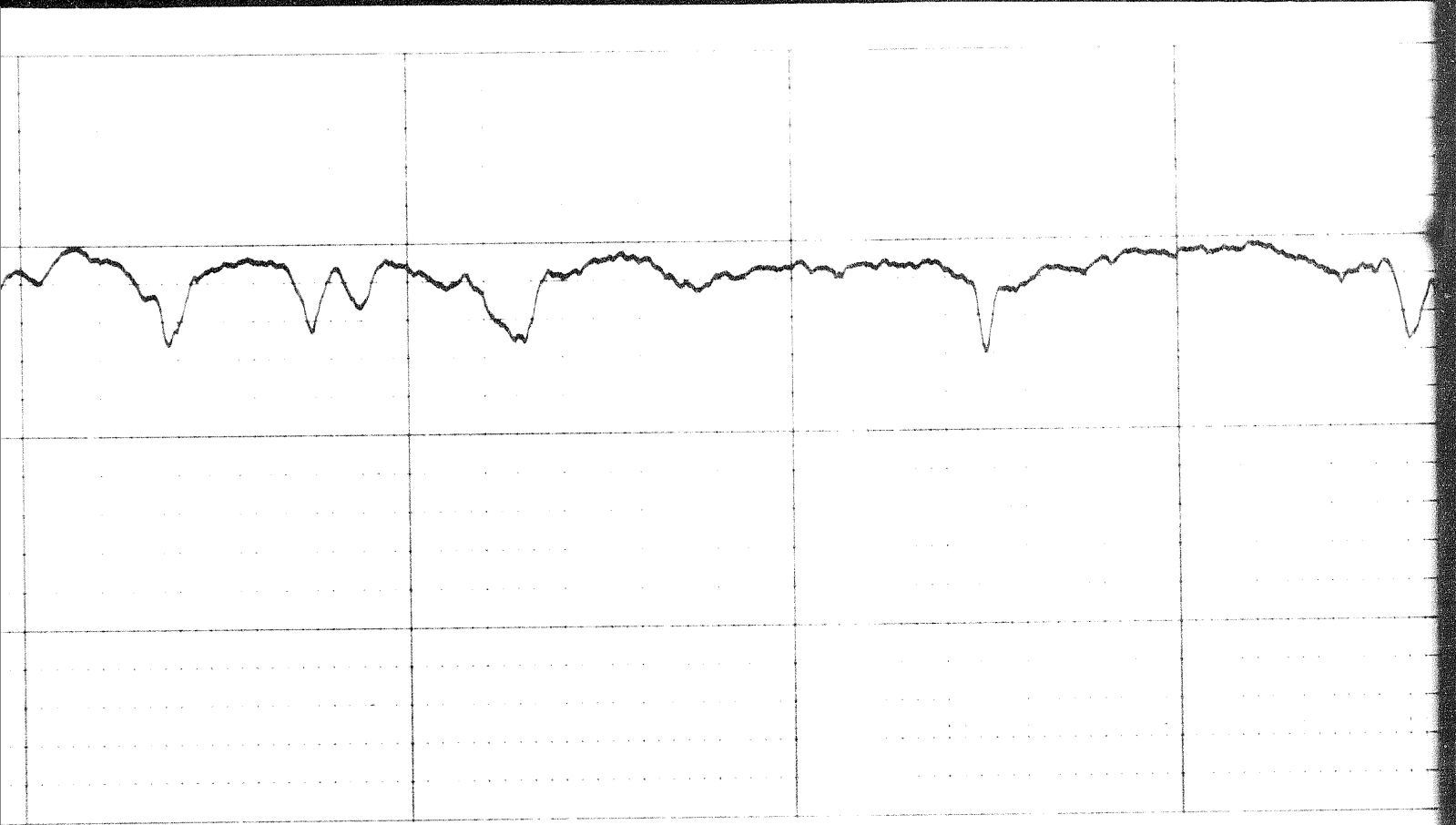


9400

9500

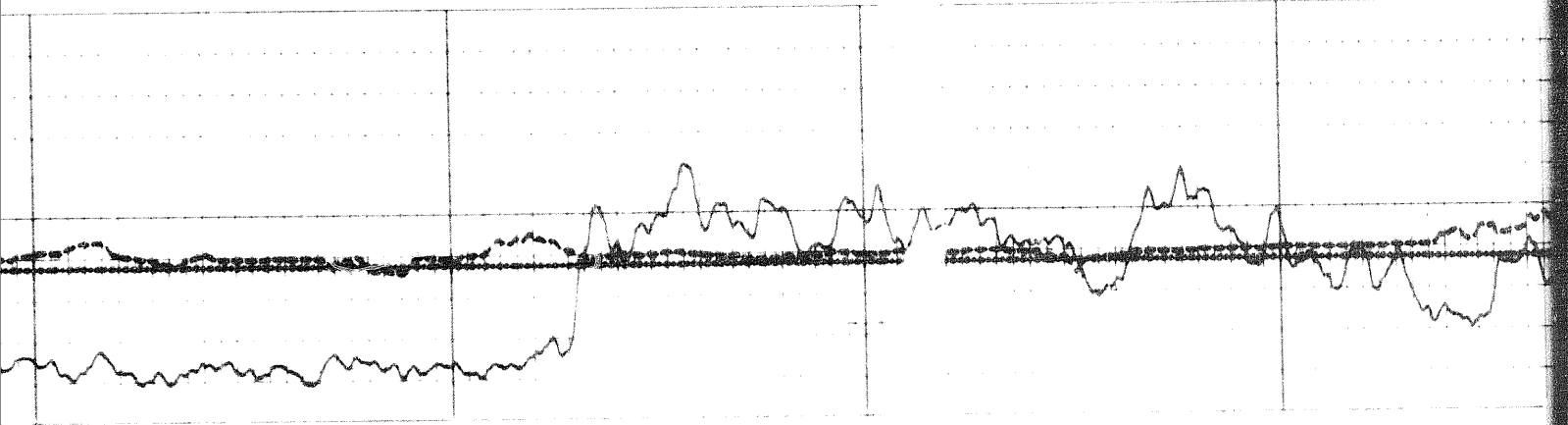
9600



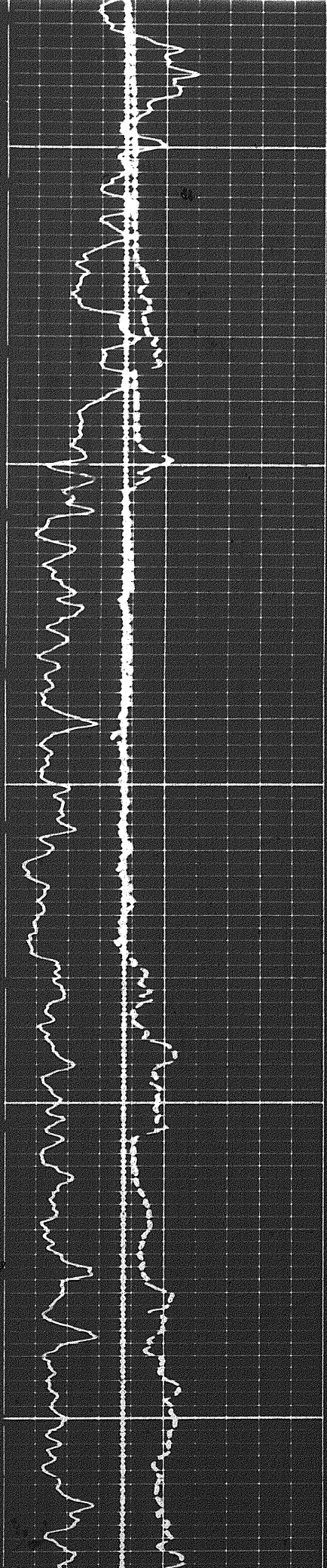


9700

9800



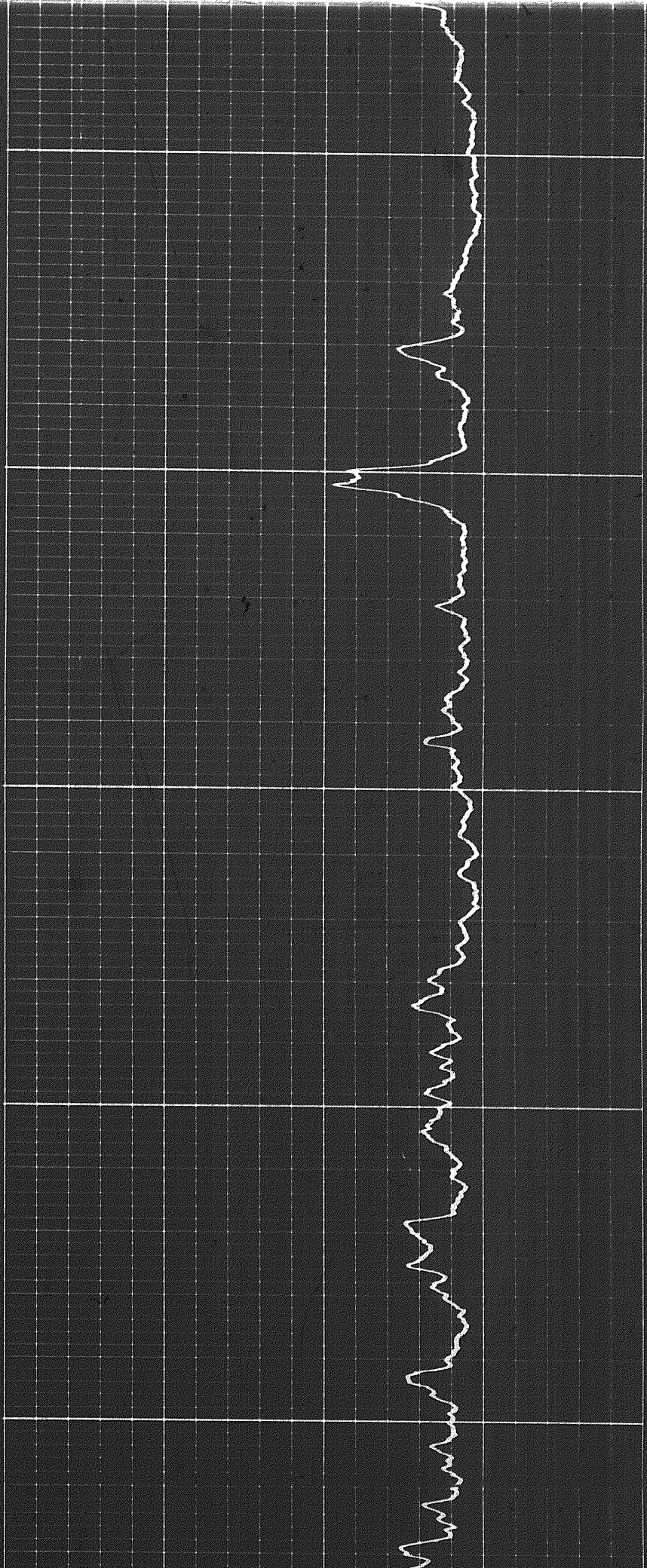
4 of

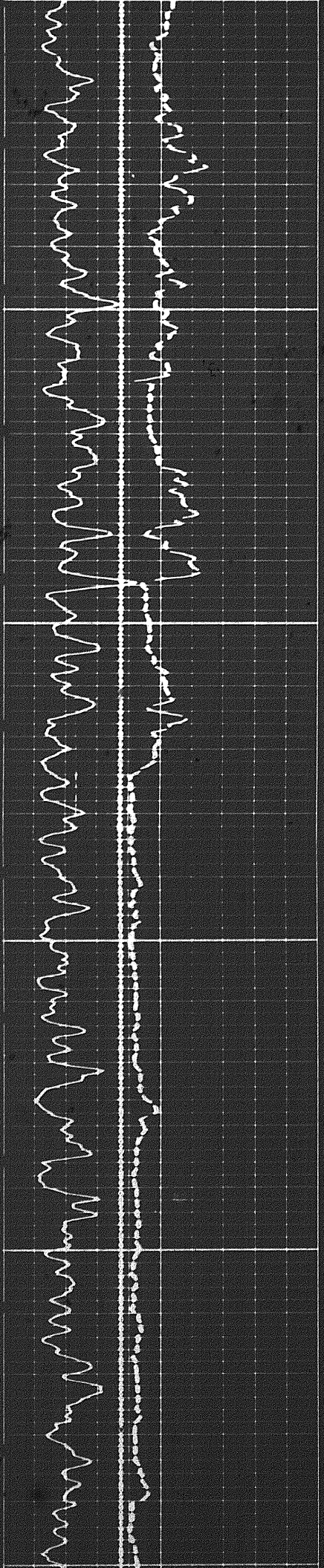


00001

0055

0086

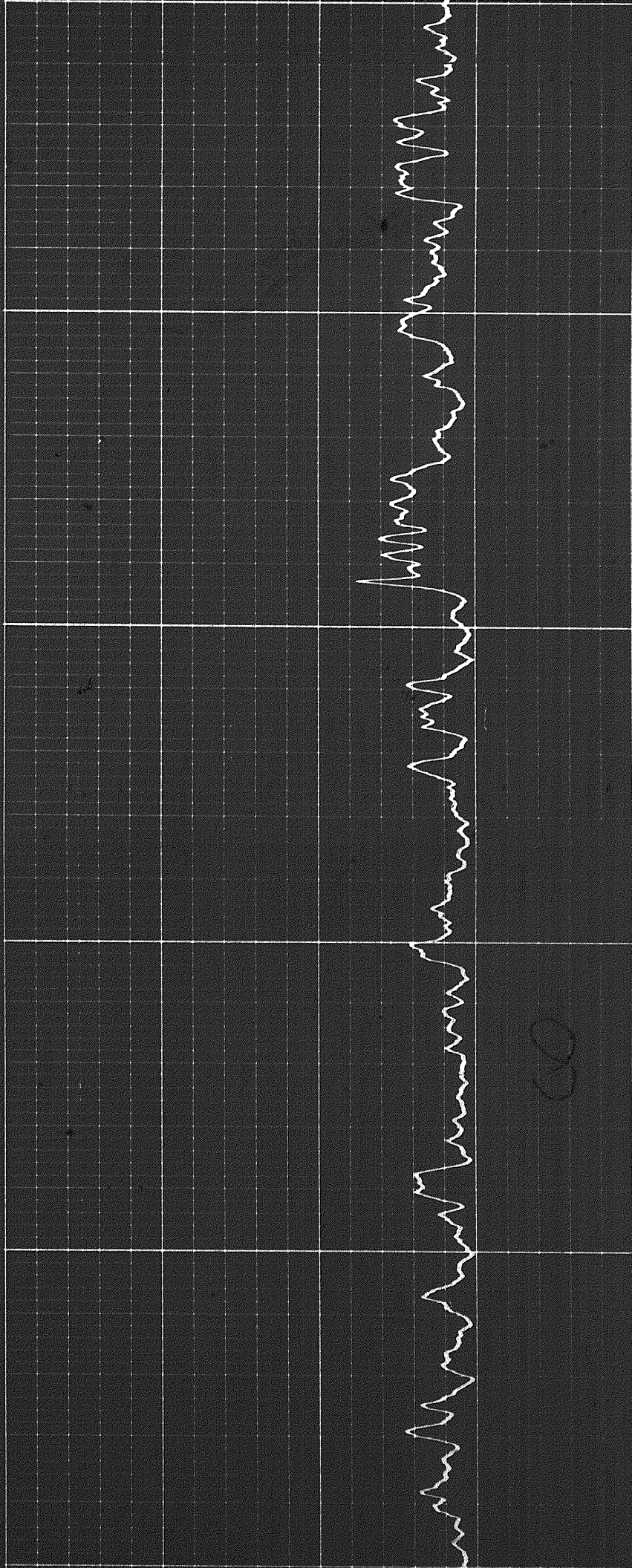


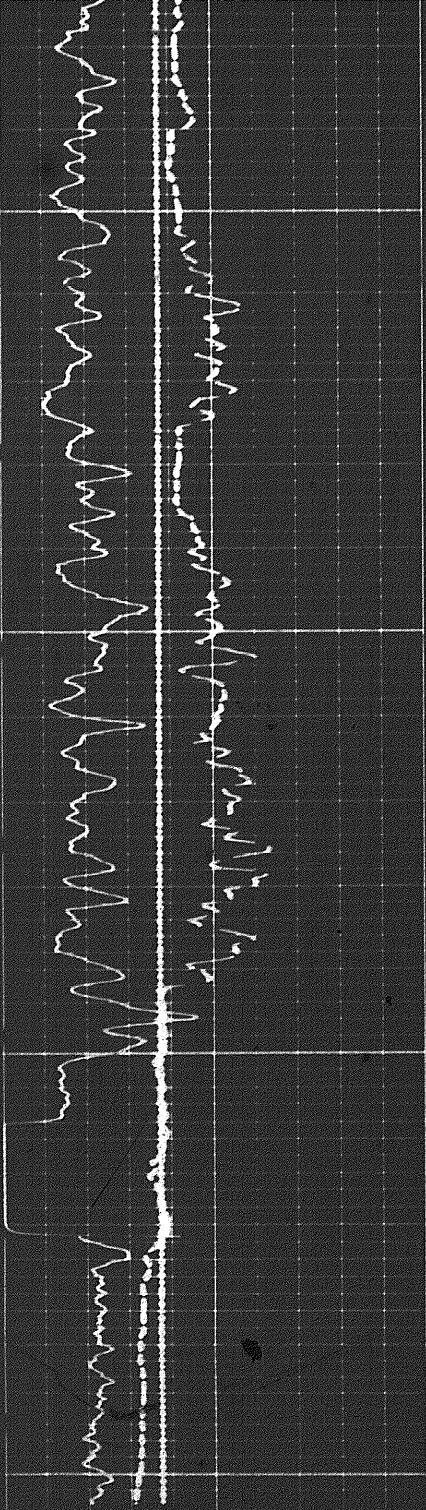


00

10100

10200

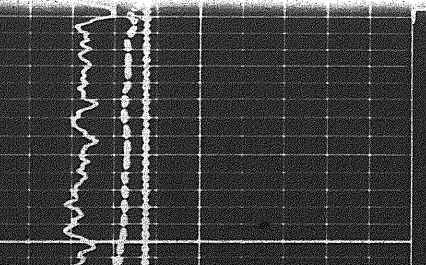
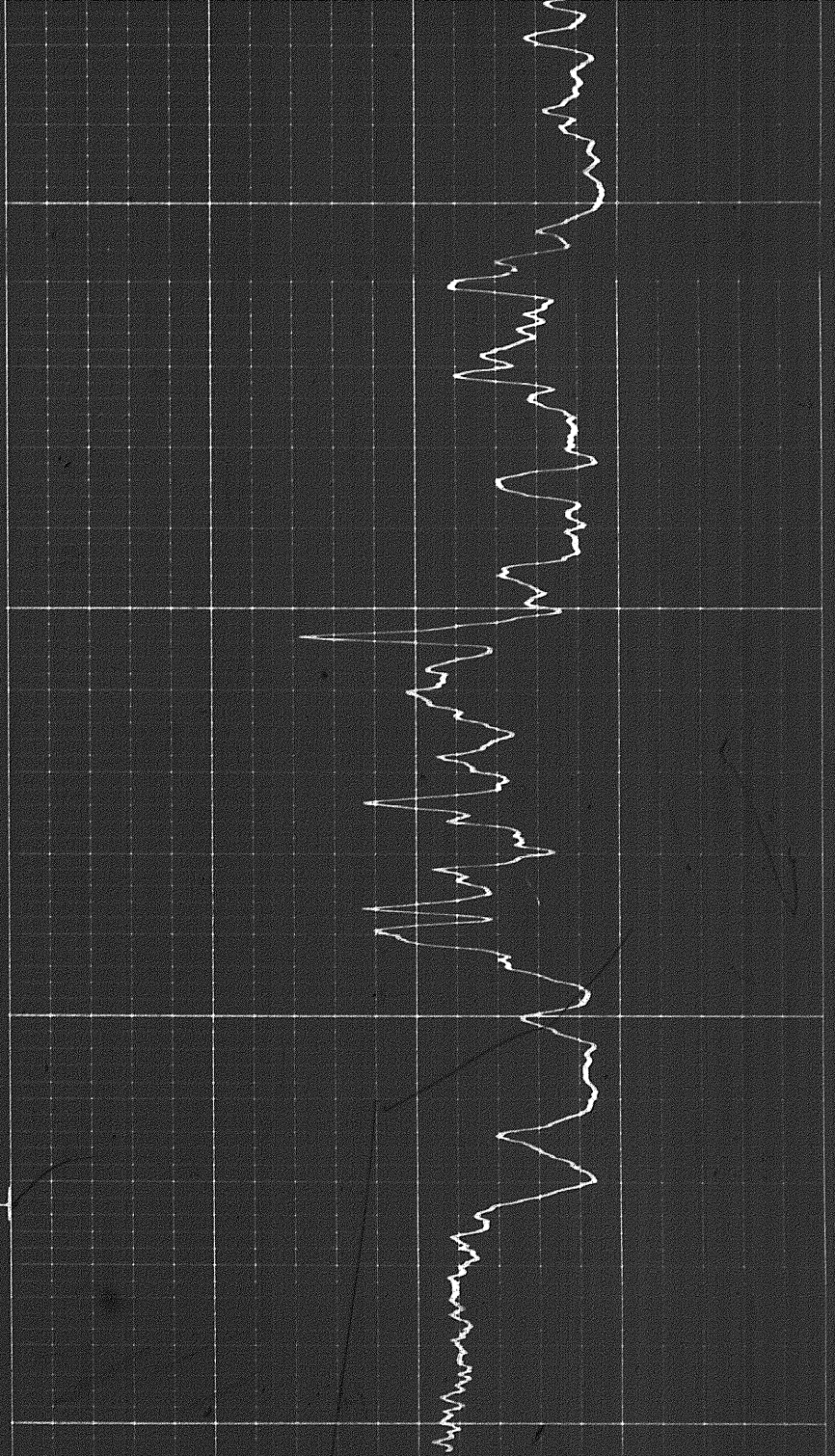




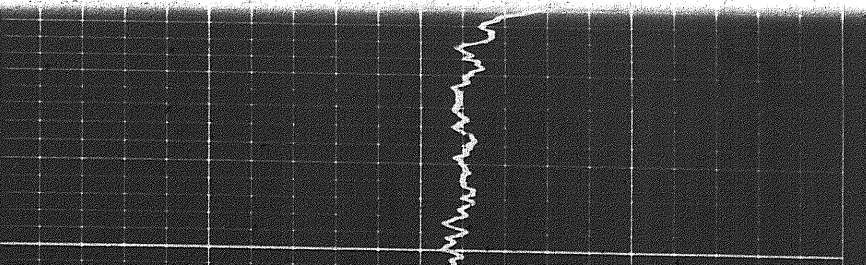
10300

FR

10400



10400



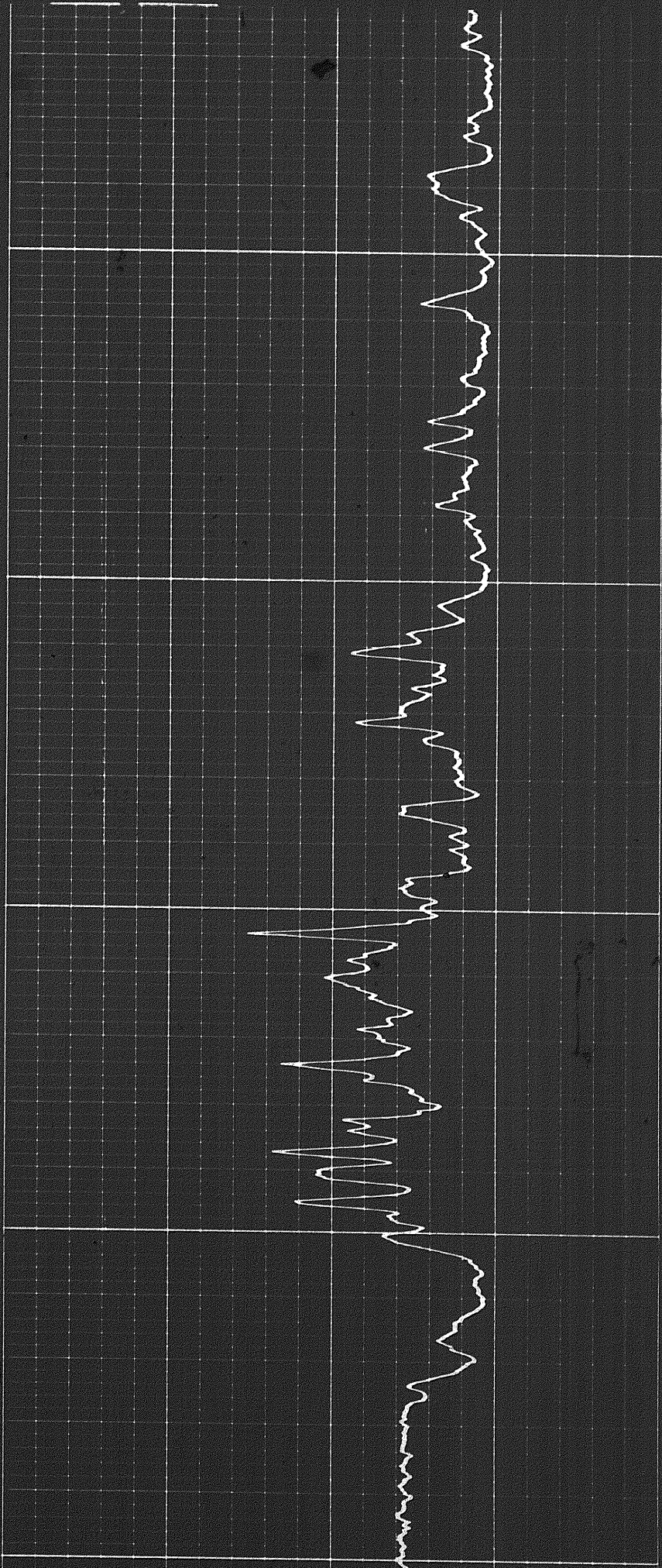
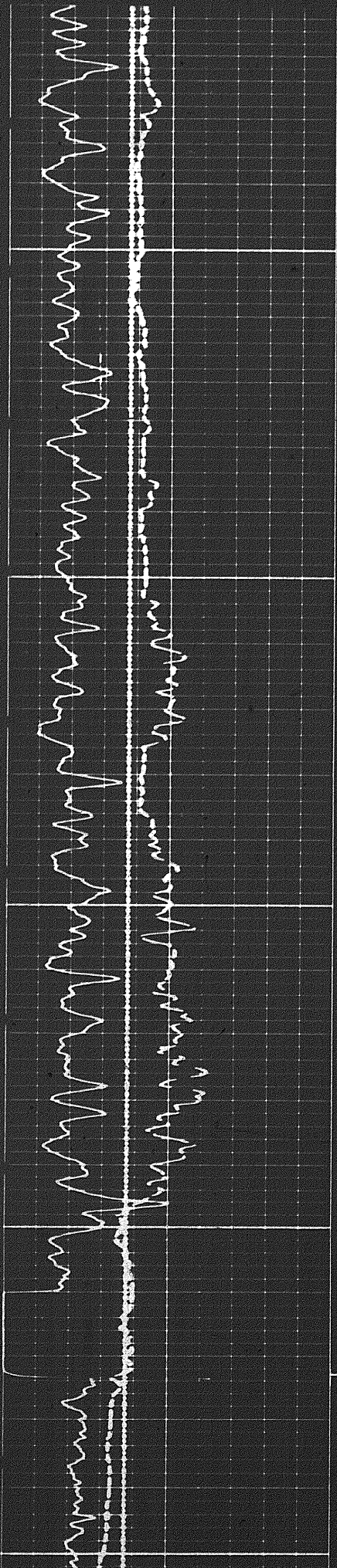
REPEAT SECTION

10200

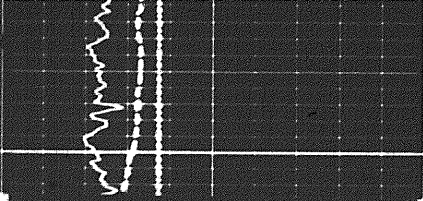
10300

R

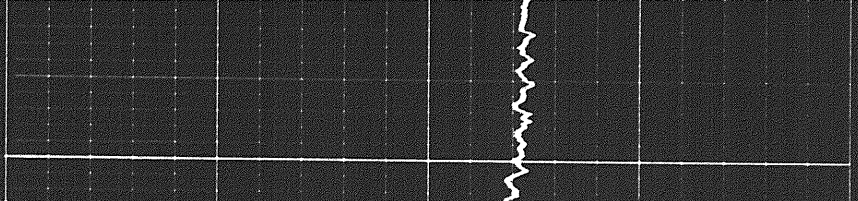
1040



5 of



10400



Sens 100 T.C. 2
Zero 0 div. to left
0 100
100 200

GAMMA RAY
API UNITS
6 7 8 9 10 11 12 13 14

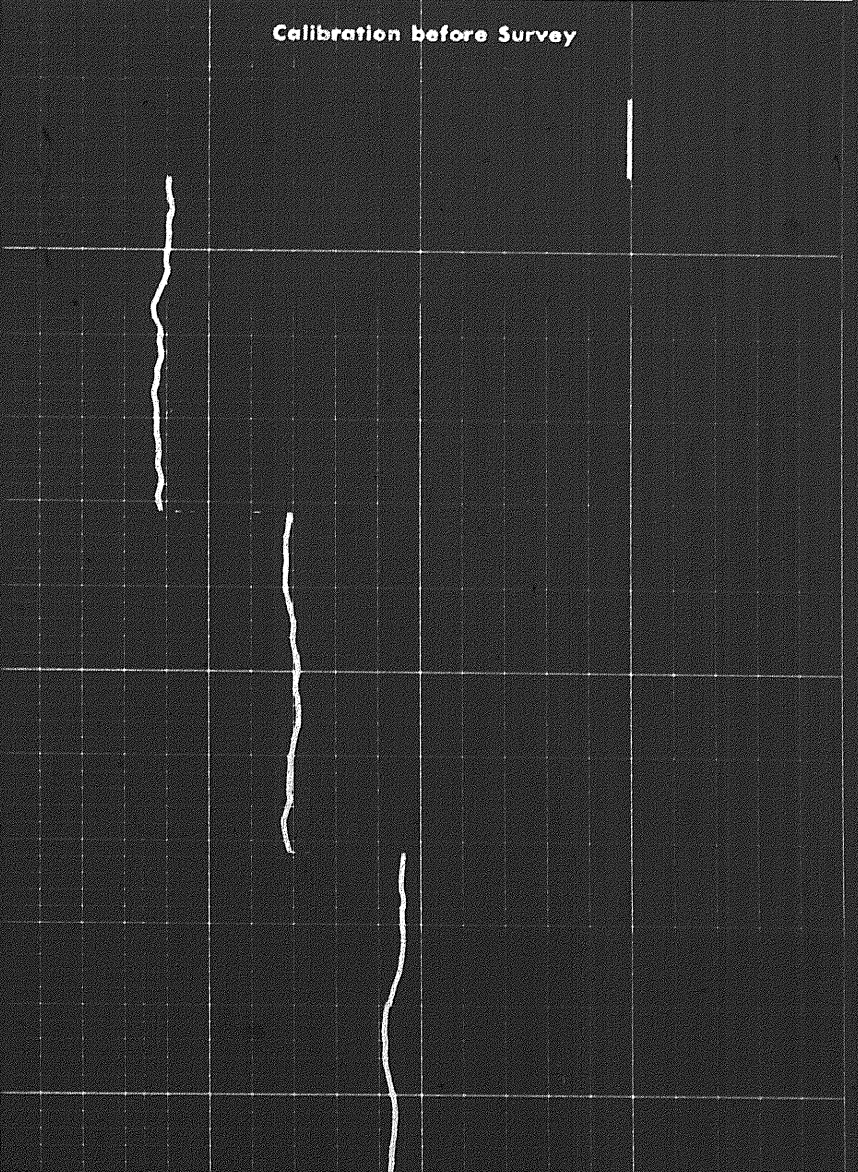
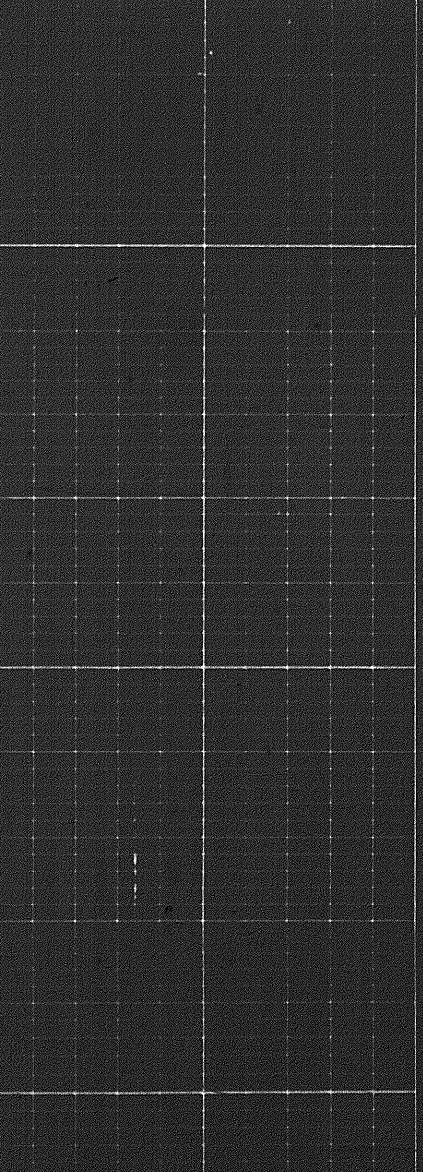
Speed in FPM

30 20 10 0 -10
LIMESTONE

CALIPER
hole diameter in inches

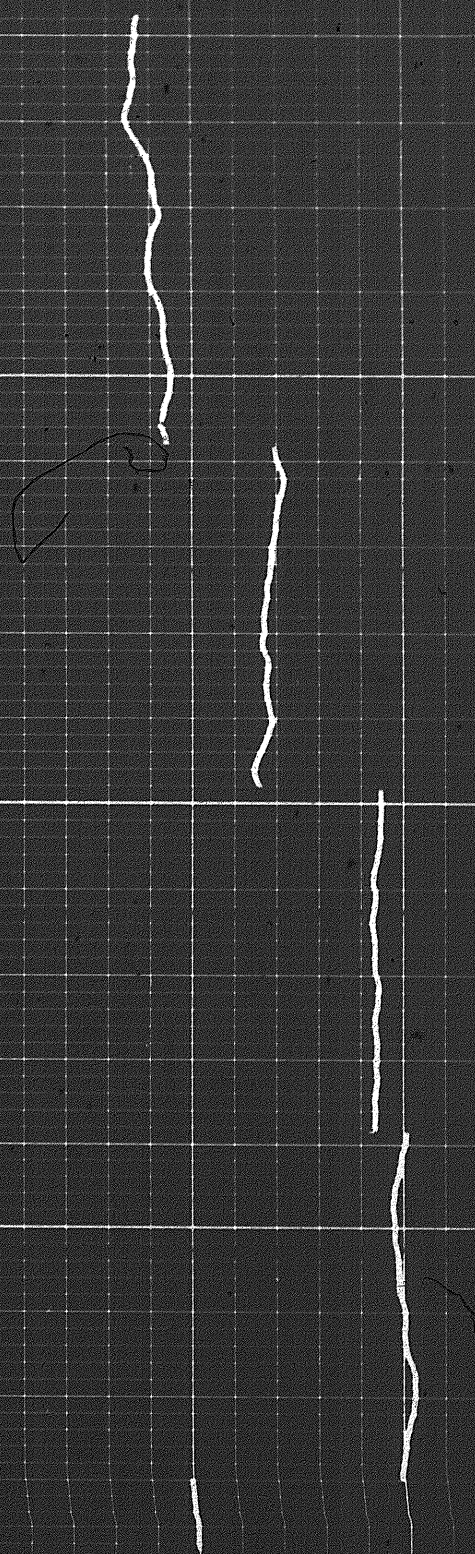
DEPTHS

POROSITY (%)



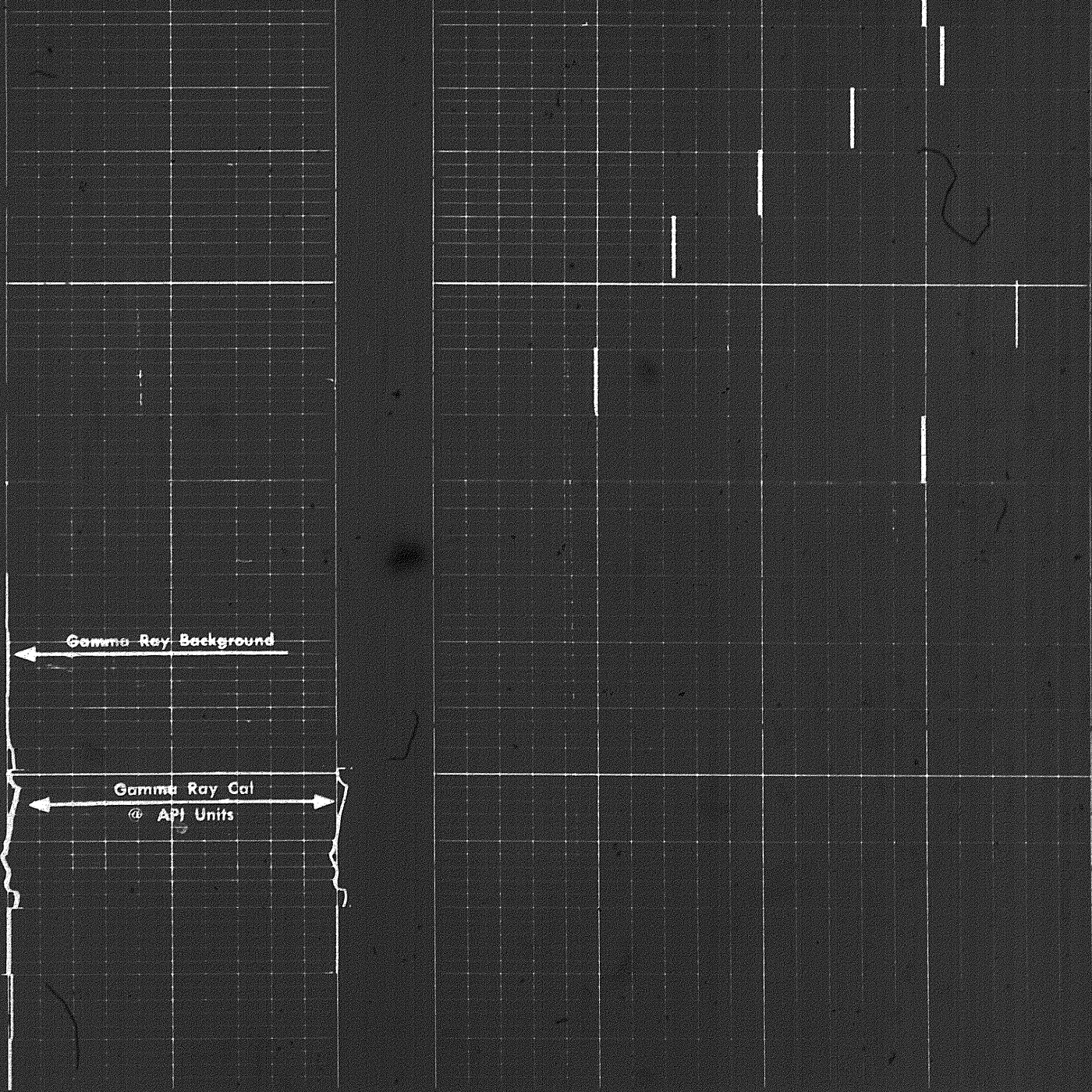
Calibration after Survey

Calibration after Survey



Test Panel

6 of



COMPANY CHEVRON STANDARD LIMITED

WELL 5080 WM SHAEFFER CK YT 0-22

FIELD WILBERT PROVINCE YUKON TERRITORIES

