

SCHLUMBERGER

FORMATION DENSITY LOG

COMPENSATED
 MEMBER OF CANADA
 CALGARY ALBERTA

PROVINCE YUKON TERRITORIES
 FIELD WILDCAT
 WELL SOBC WM E PORCUPINE YT
1-13
 COMPANY CHEVRON STANDARD LIMITED

COMPANY CHEVRON STANDARD LIMITED
 WELL SOBC WM E PORCUPINE YT
1-13
 FIELD WILDCAT
 PROVINCE YUKON TERRITORIES
 LOCATION 66° 02' 35" N LAT
137° 46' 58" W LONG
 Permanent Datum GL Elev. 1645
 Log Measured From KB 21 Ft. Above Perm. Datum
 Other Services: SIG-GR,
SFP-GR, IES, ML, DIL
CST, SRS
 ELEV: KB 1666
GL 1645
GR

Date	20 APR 71
Run No.	ONE
Pipe Branding	B901
Last Branding	RWKS
Foot Measured	2551
Depth Reached	8007
Bottom Depth	8094
Cg. SOC	796
Cg. Driller	799
Mud Nature	GEL CHEM
Dens. <u>Var.</u>	10.0
Wt. Loss	9.5
• Mud	3.30
• BHT	2.82
• Mud	3.40
• ppm - Cl	8
Bit Size	8 3/4"
Source to Detector	
Spacing	
Equipment Type	PGT-E
Op. Rig Time	4 HRS
Truck No.	OSU-C-108 REM
Recorded By	CHADDOCK
Witness	POLLARD

31 MAY 1971 CAL JP

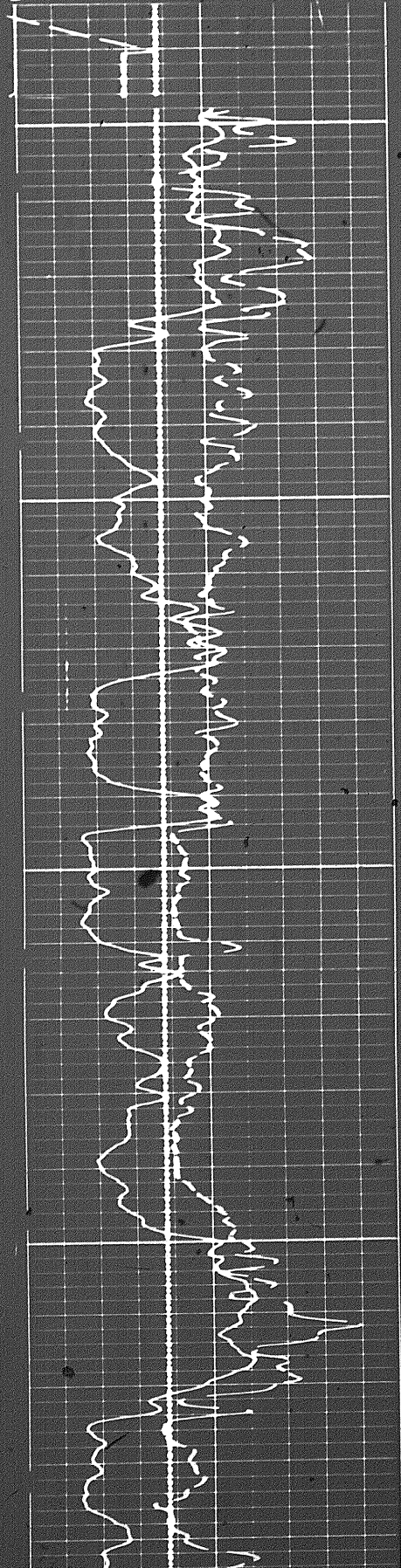
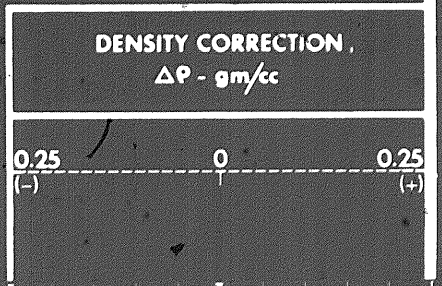
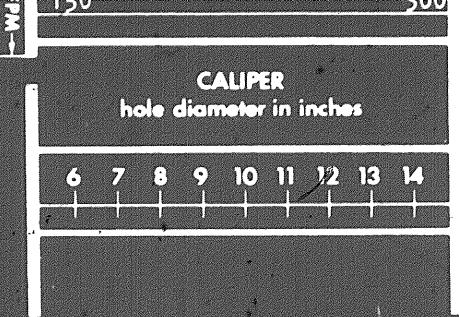
REMARKS
 Drilling Stopped 0730 / 19th : Circulation Stopped 1500 / 19th : Tool on Bottom 1500 / 20th : B.H.T. 155 °F

Panel No. D 265
 Cartridge No. A 156
 Sonde No. E 281
 Detector No. D 397
 BHT 155°F - 24 HRS AFTER CIRCULATION

CALIBRATION:	Background CPS	Test Source CPS	Galvanometer Deflection Div.	Panel Sens. Tap for Cal.
Gamma Ray	40	260	10.0	PGP-D

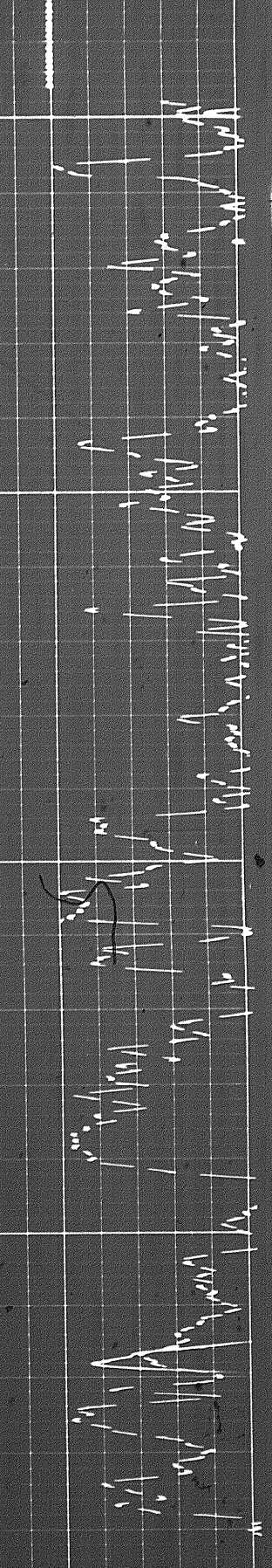
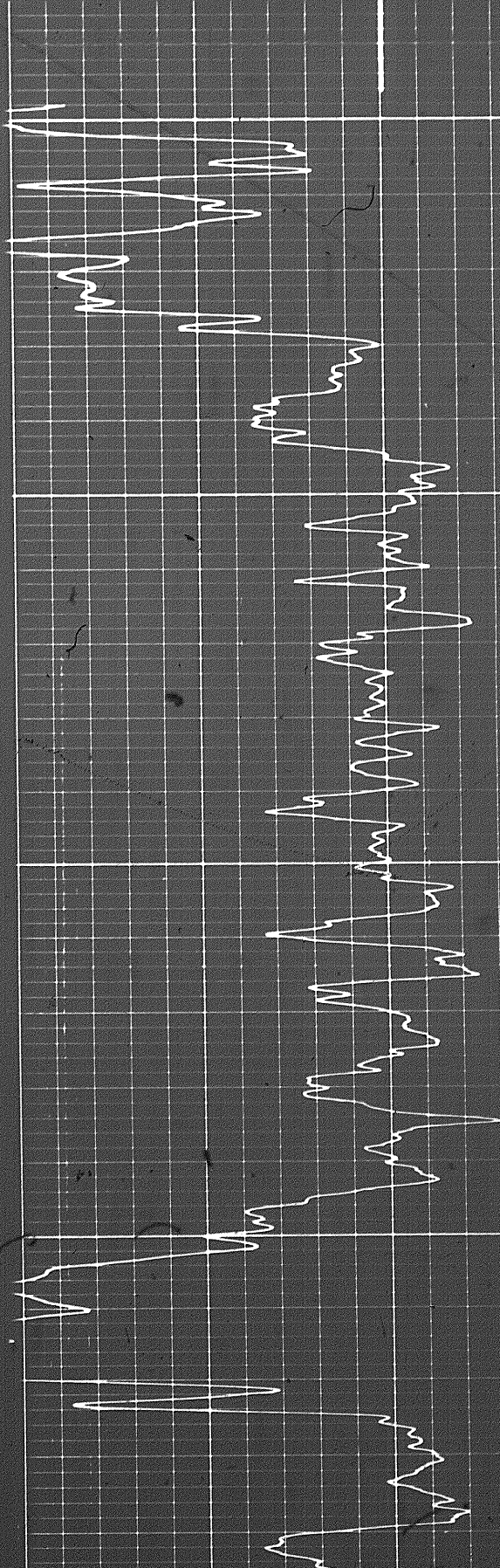
GAMMA RAY API UNITS Sens. 150 T.C. 2 Zero 0 div. to left 0 150 150 300 Speed in FPM	DEPTHS	BULK DENSITY ρ_b - gm/cc 2.0 2.5 3.0
		DENSITY CORRECTION $\Delta\rho$ - gm/cc 0.25 (-) 0 0.25 (+)
CALIPER hole diameter in inches 6 7 8 9 10 11 12 13 14		

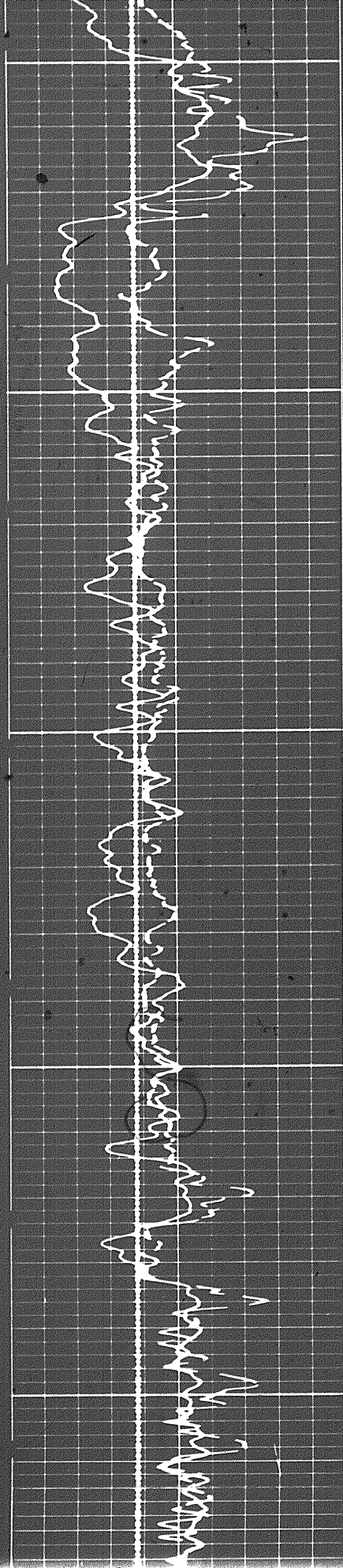
107



3600

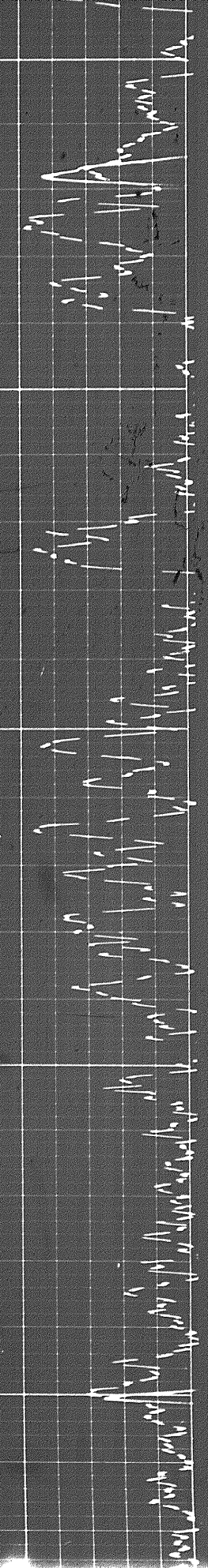
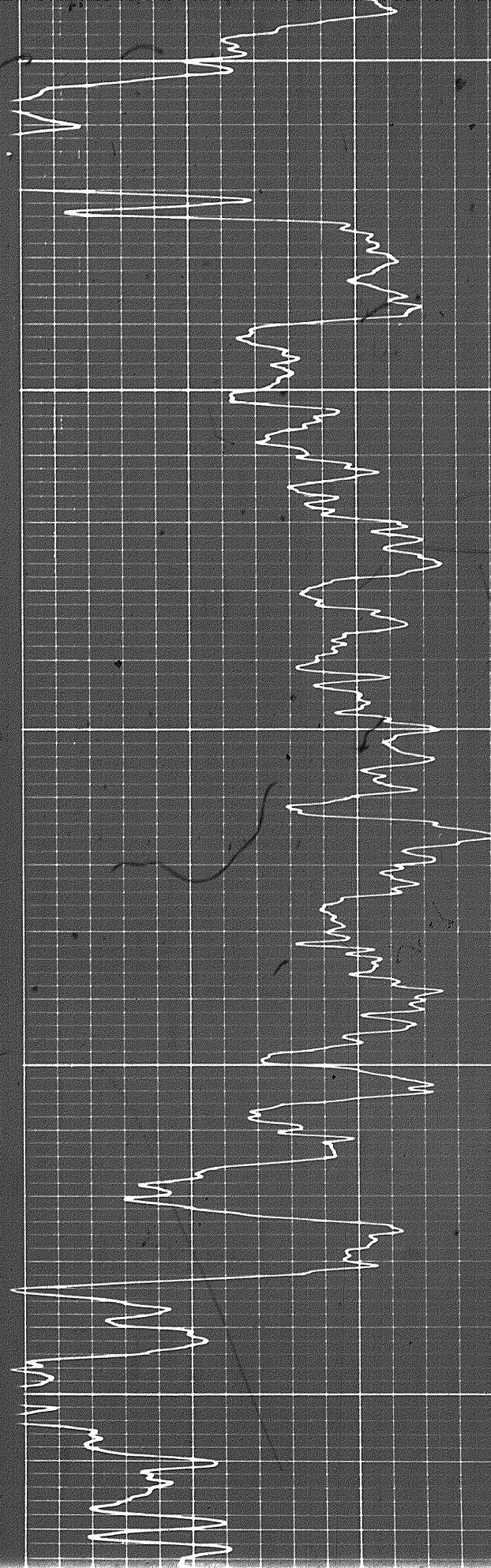
3700

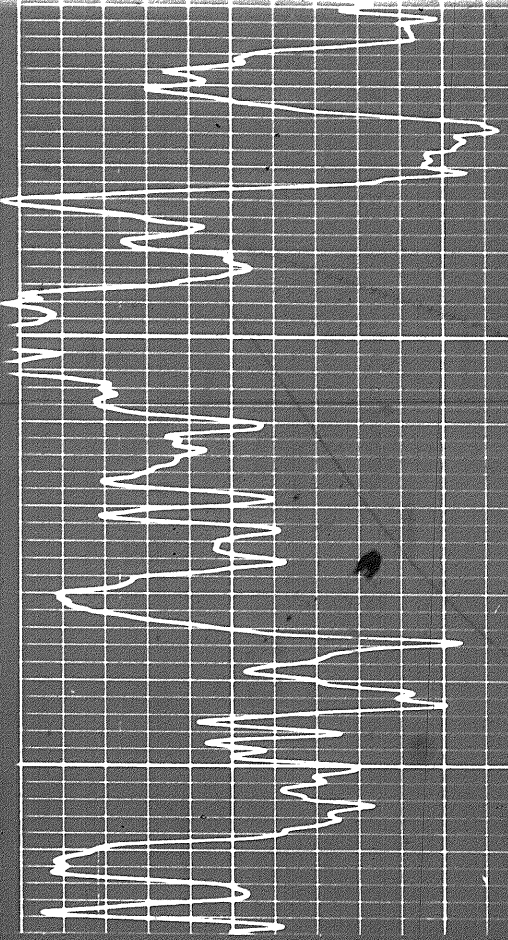
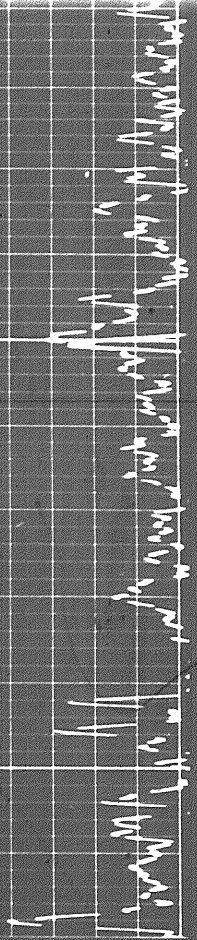




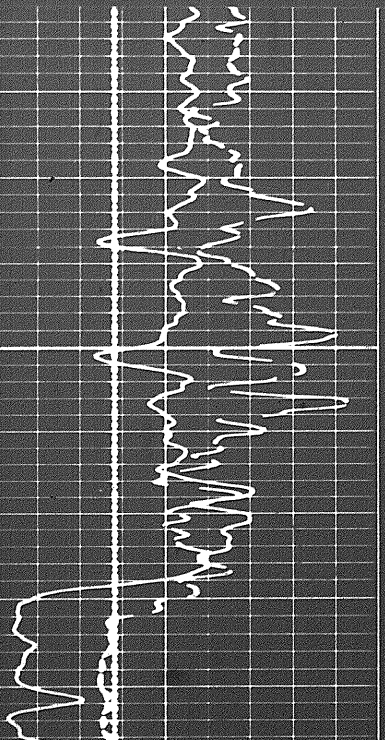
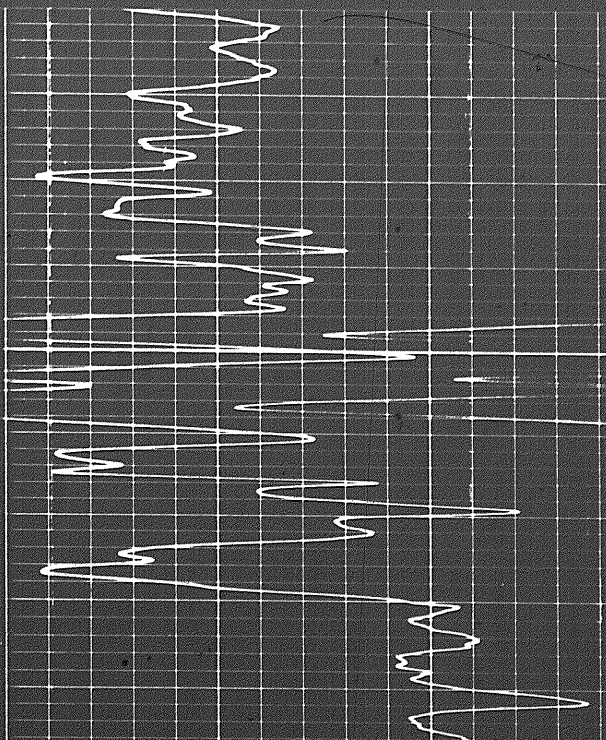
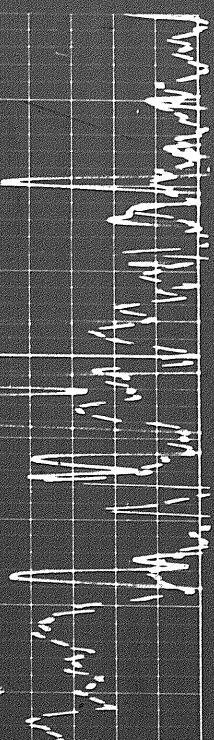
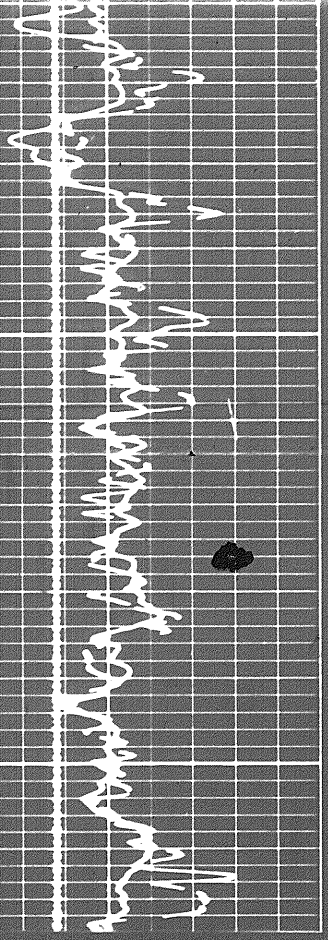
3800

3900

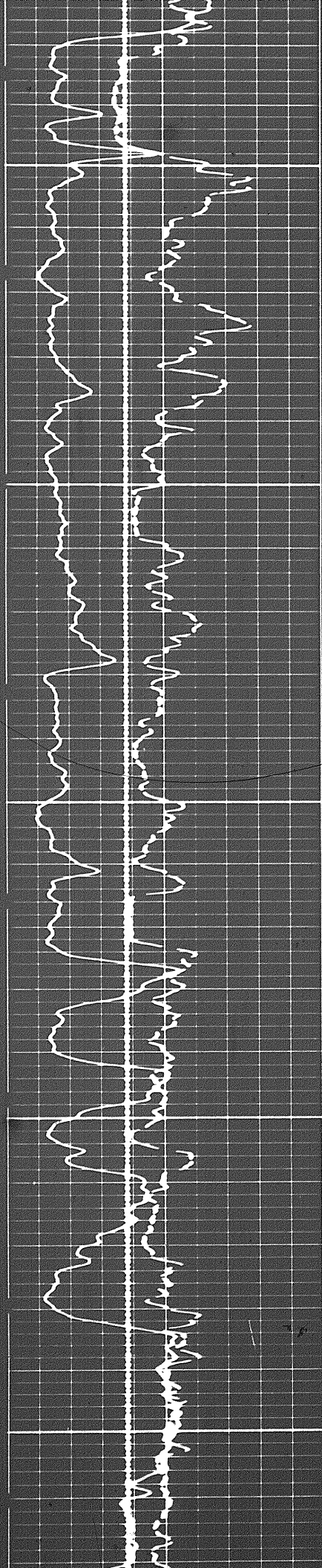




4000



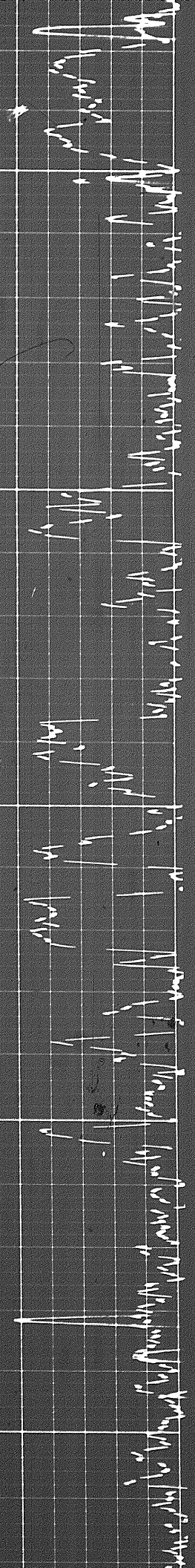
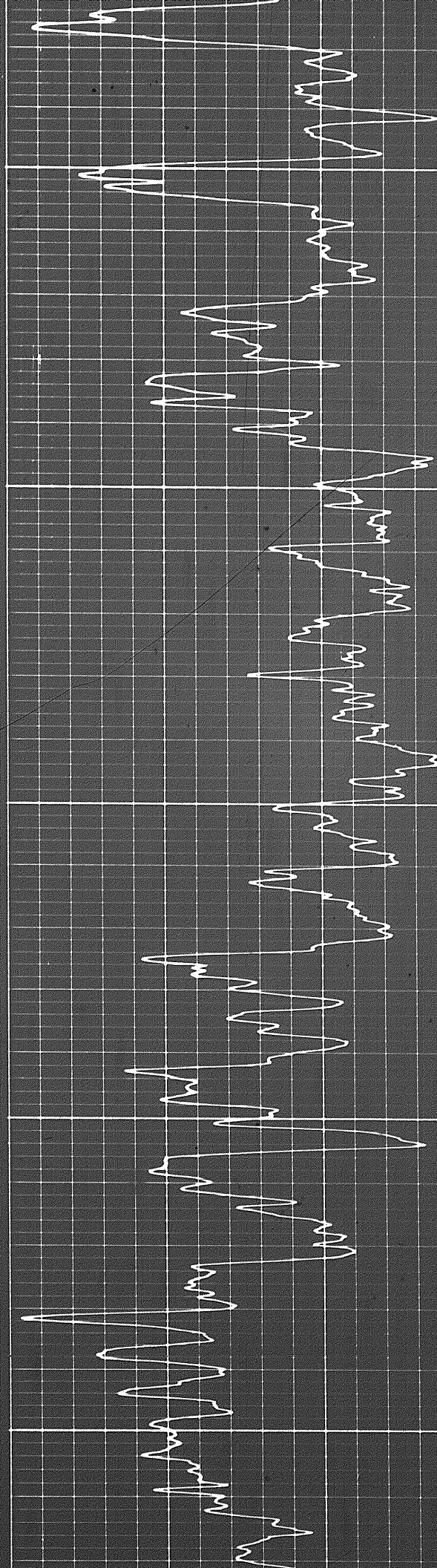
2 of



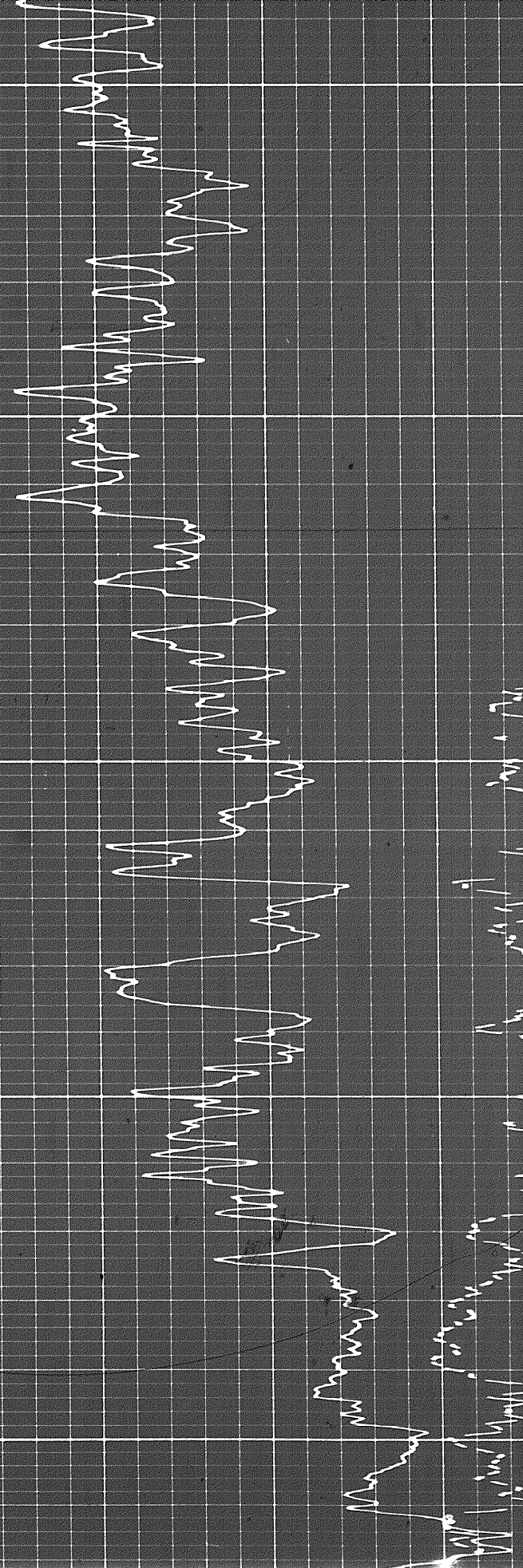
6000

6100

6200



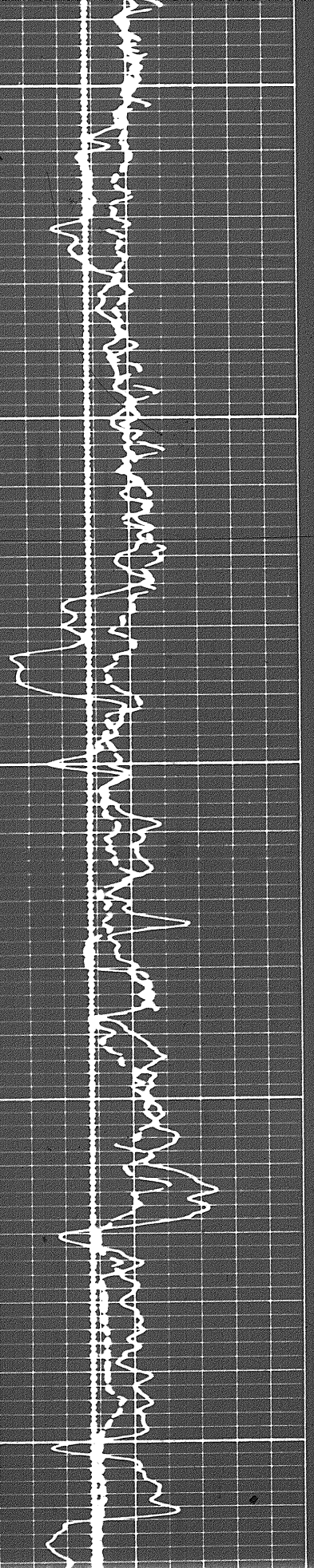
Handwritten notes at the top of the page, possibly describing the data or the instrument used.

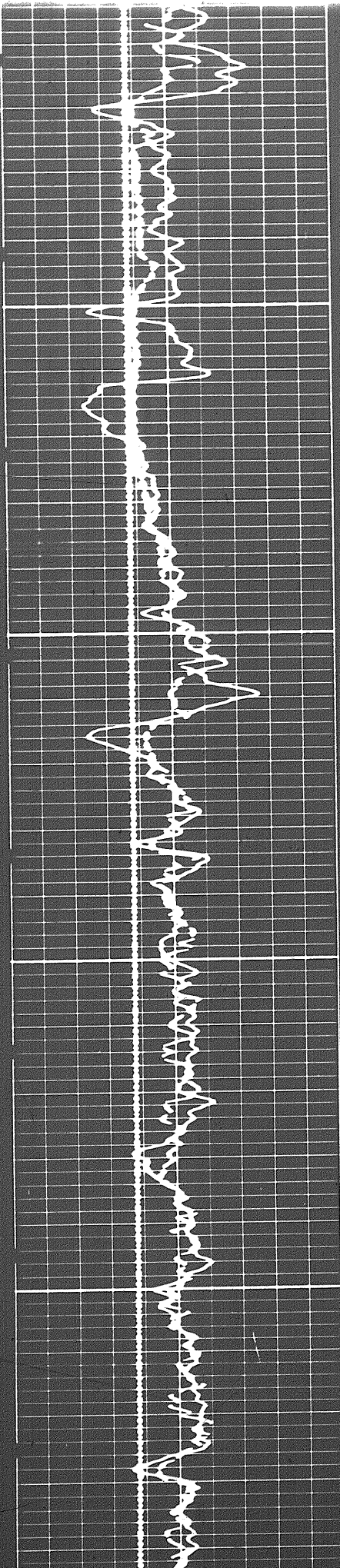


6200

6300

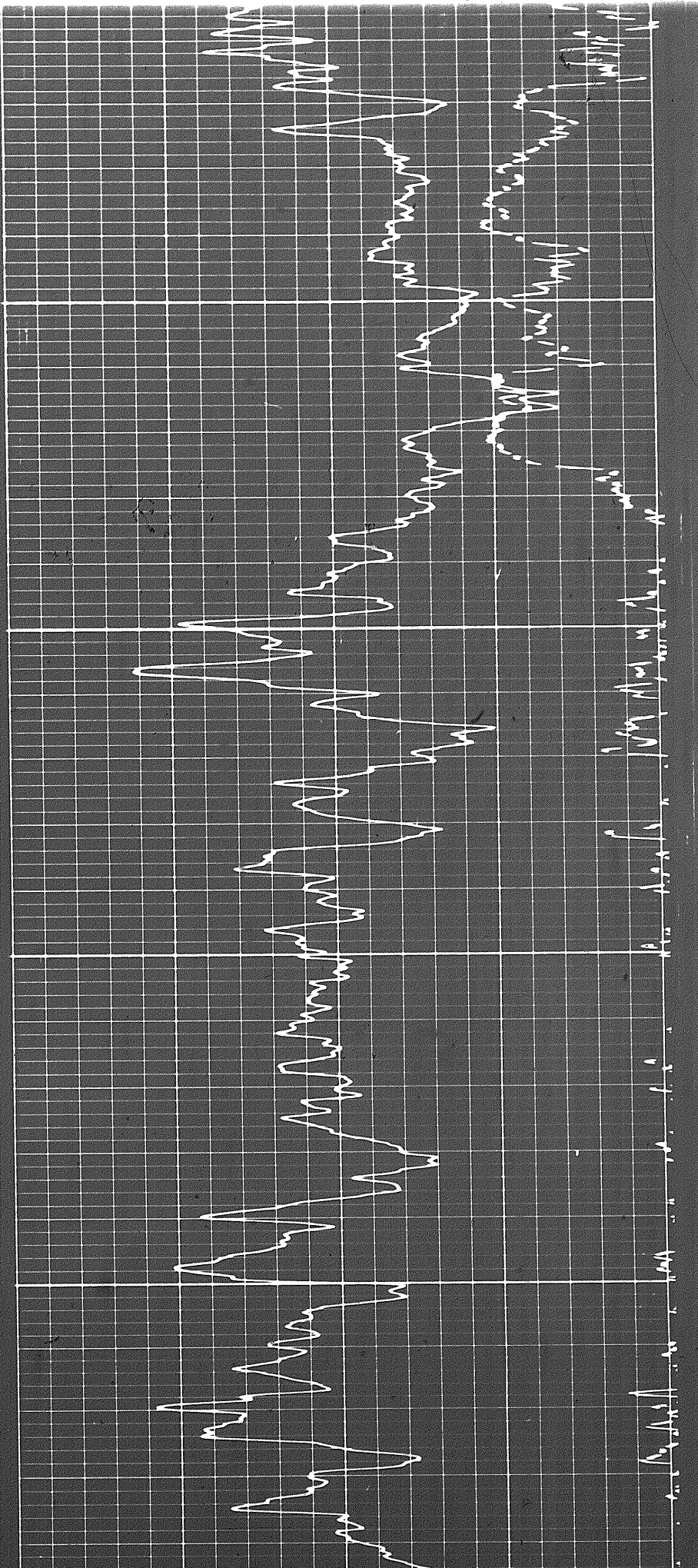
6400



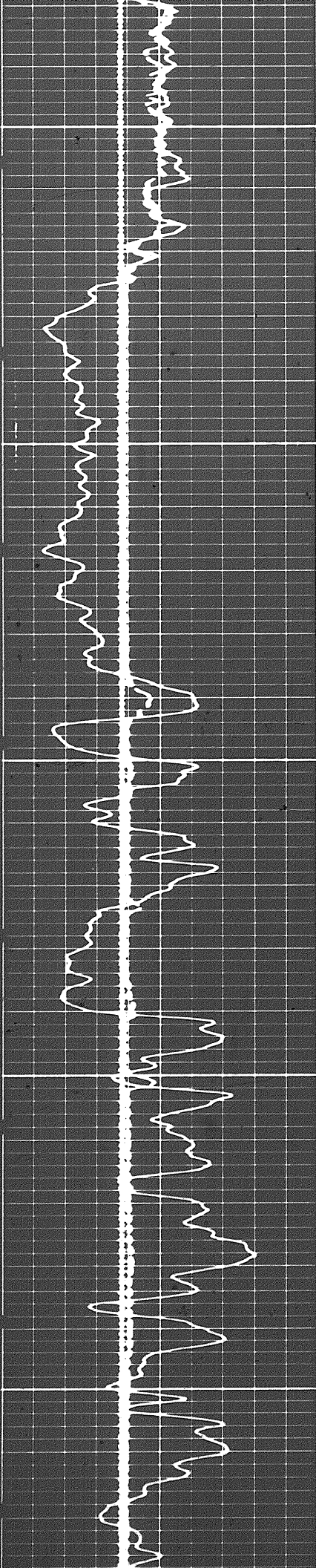


6400

6500



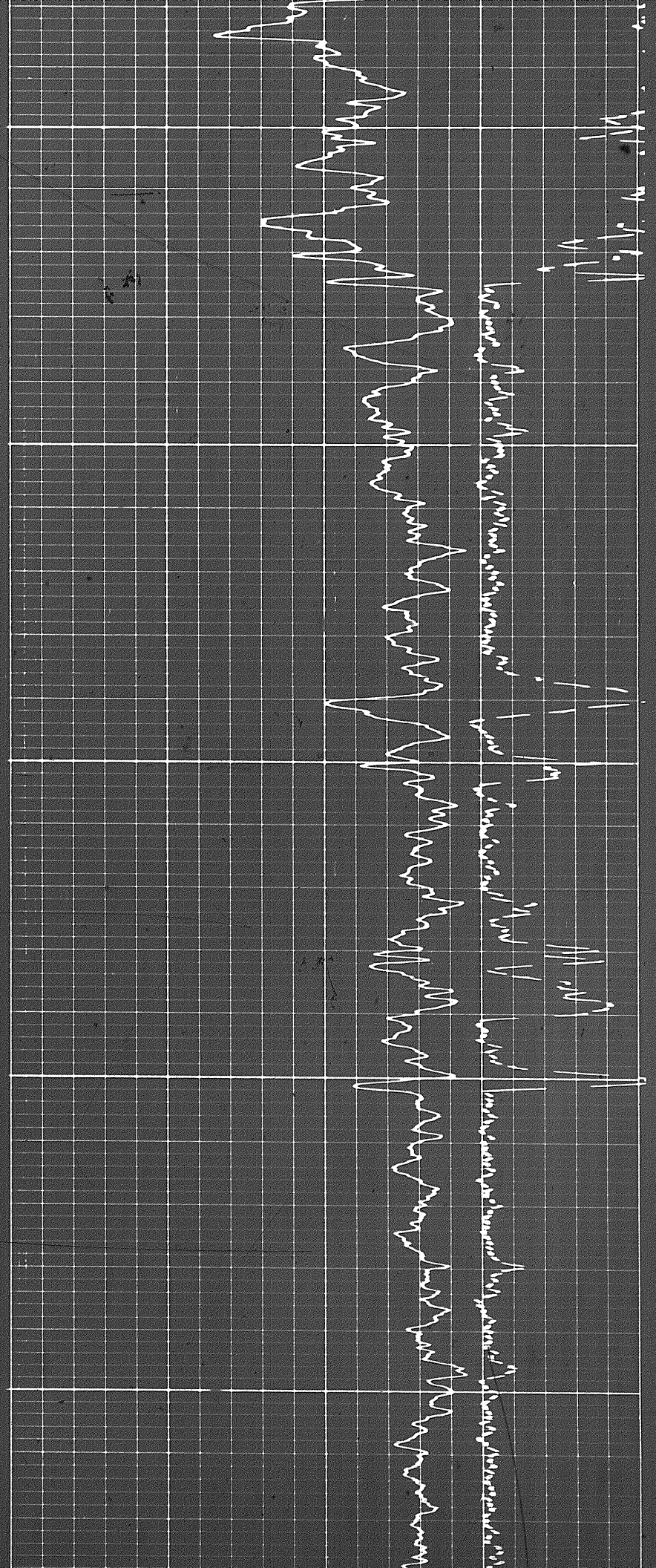
22



6600

6700

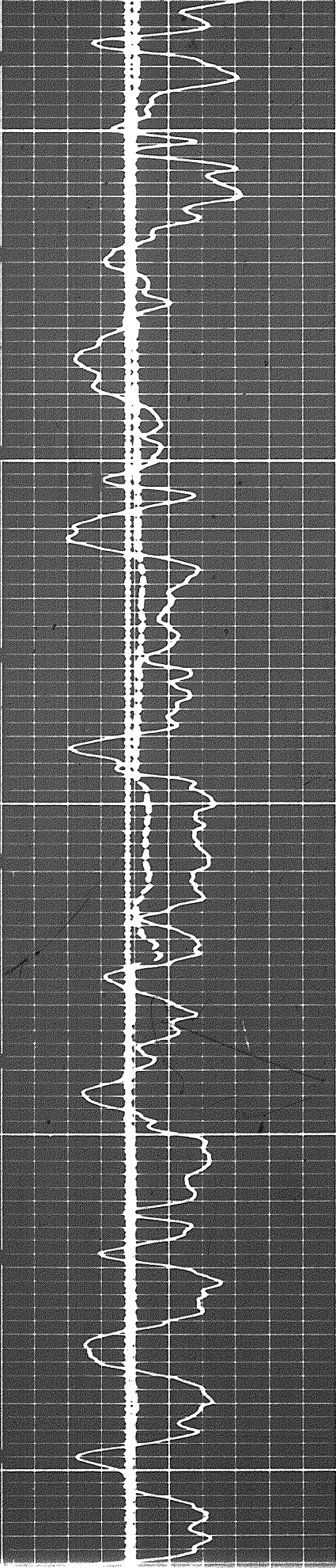
6800



ECG tracing showing a regular sinus rhythm. The heart rate is approximately 66-67 bpm. The tracing shows P waves, narrow QRS complexes, and T waves. The rhythm is sinus.

ECG tracing showing a regular sinus rhythm. The heart rate is approximately 66-67 bpm. The tracing shows P waves, narrow QRS complexes, and T waves. The rhythm is sinus.

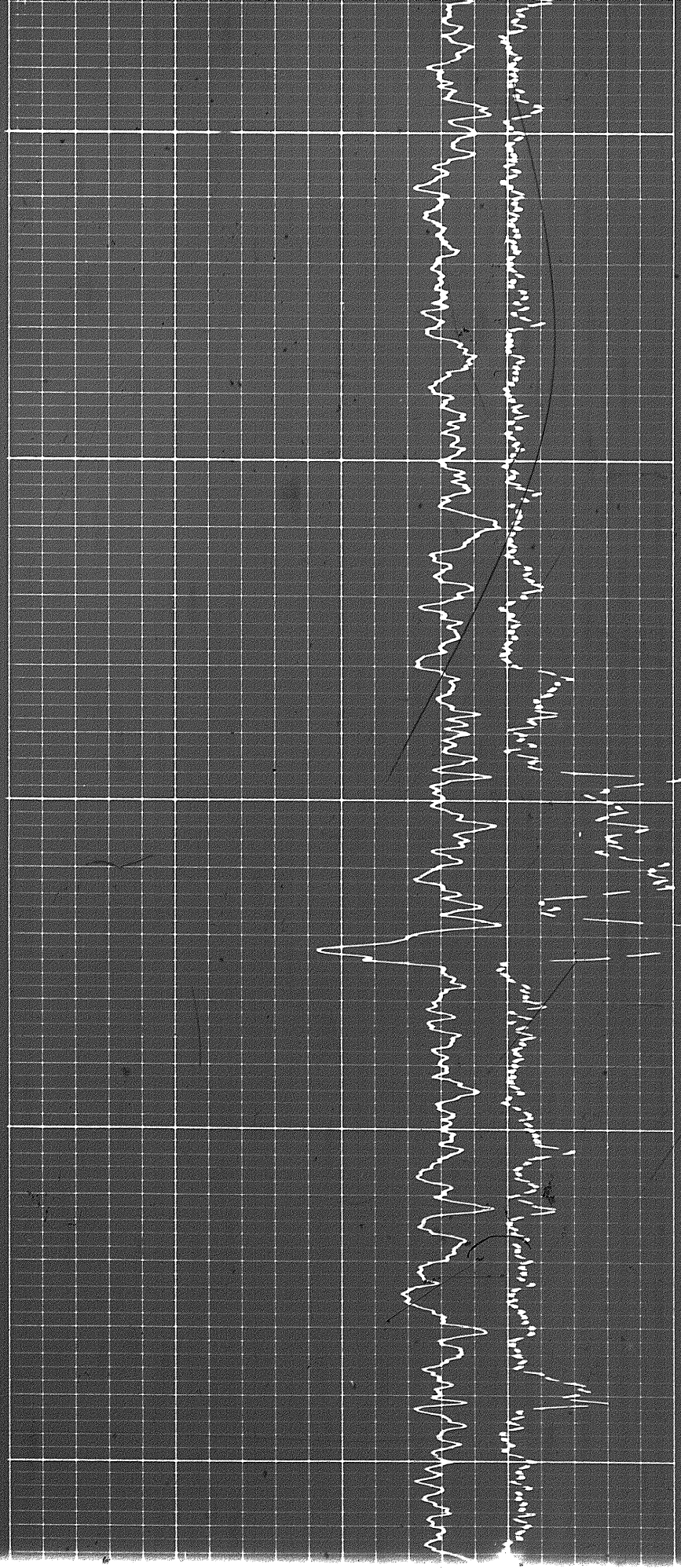
ECG tracing showing a regular sinus rhythm. The heart rate is approximately 66-67 bpm. The tracing shows P waves, narrow QRS complexes, and T waves. The rhythm is sinus.



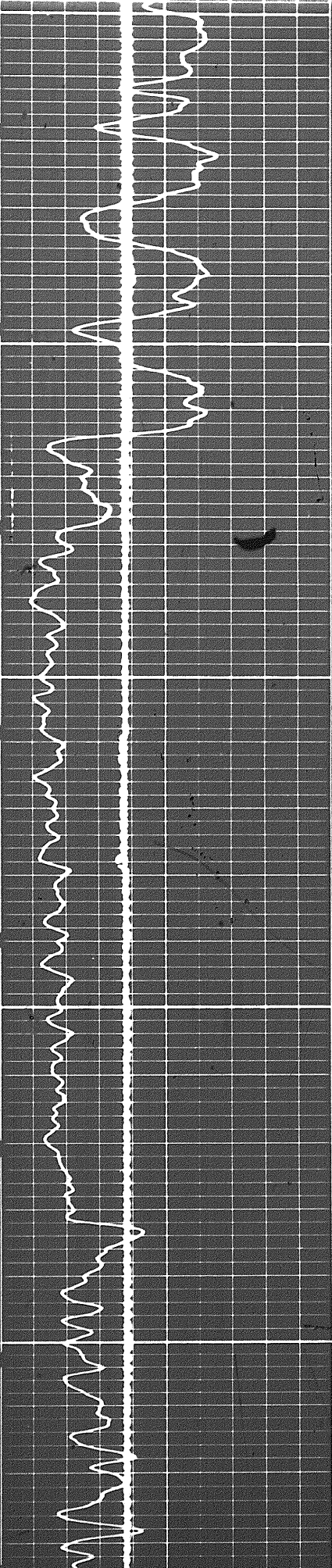
6000

6900

7000

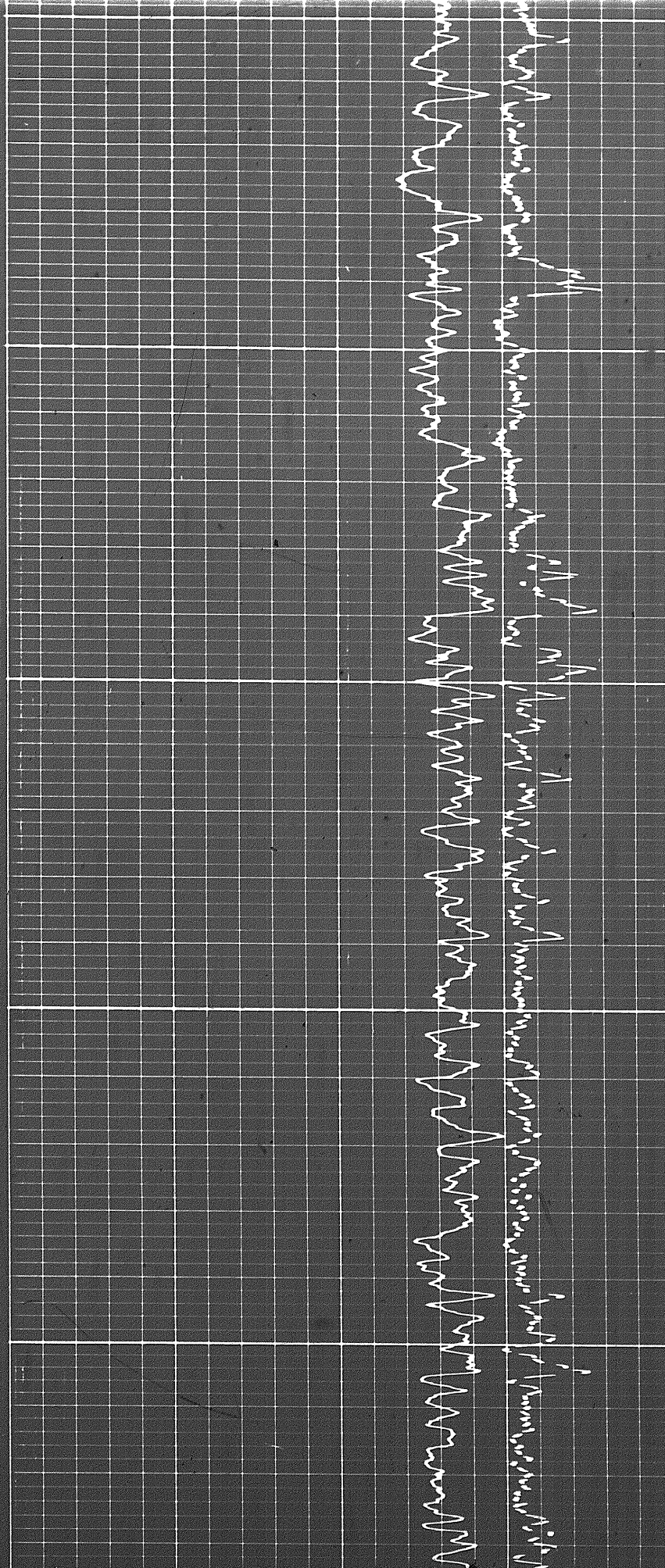


4 of

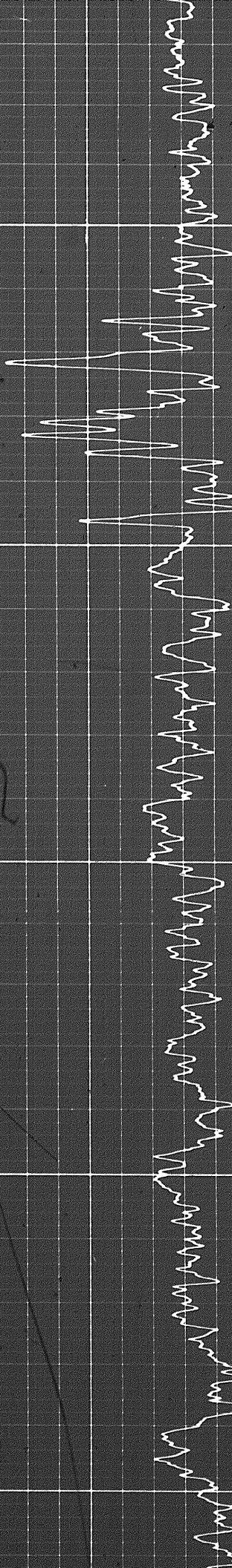


7000

7100



Handwritten notes in the top right corner, possibly including patient information or recording details.

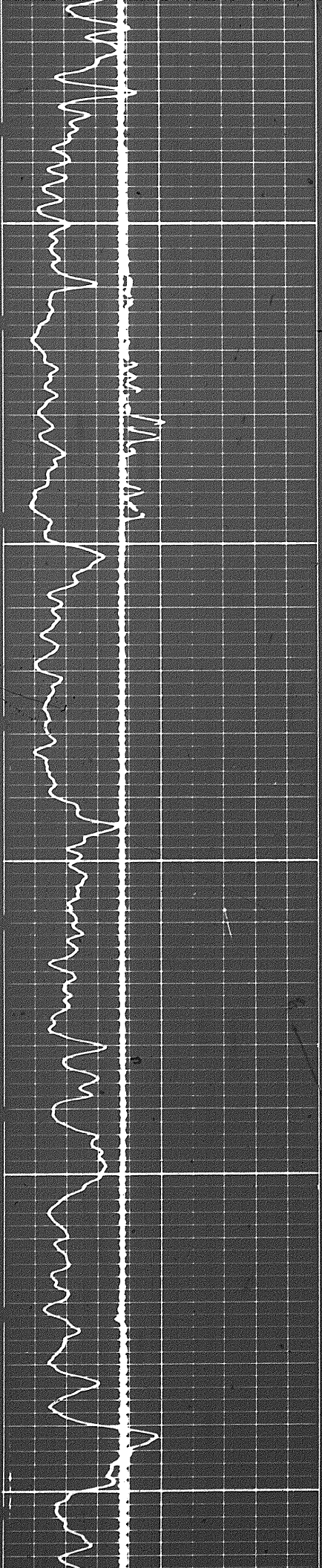


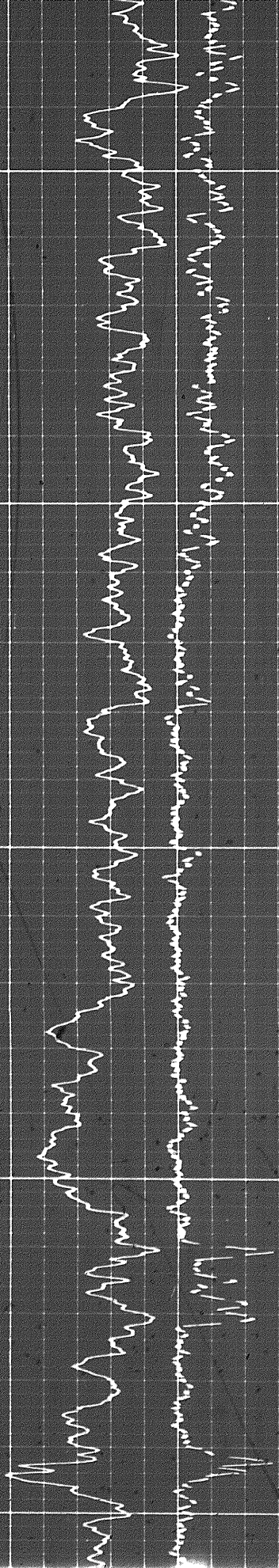
Handwritten letter 'D' in the center of the grid.

7200

7300

7400

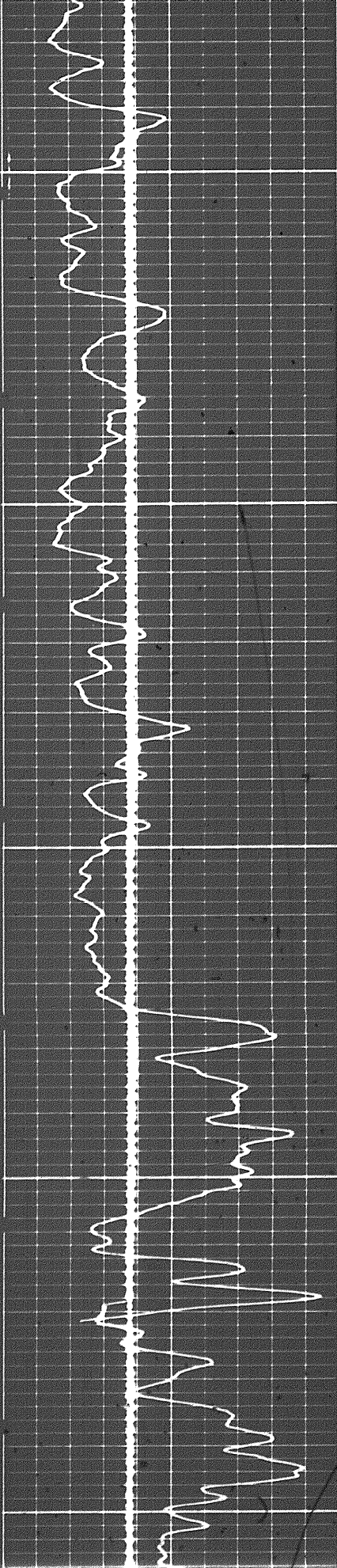




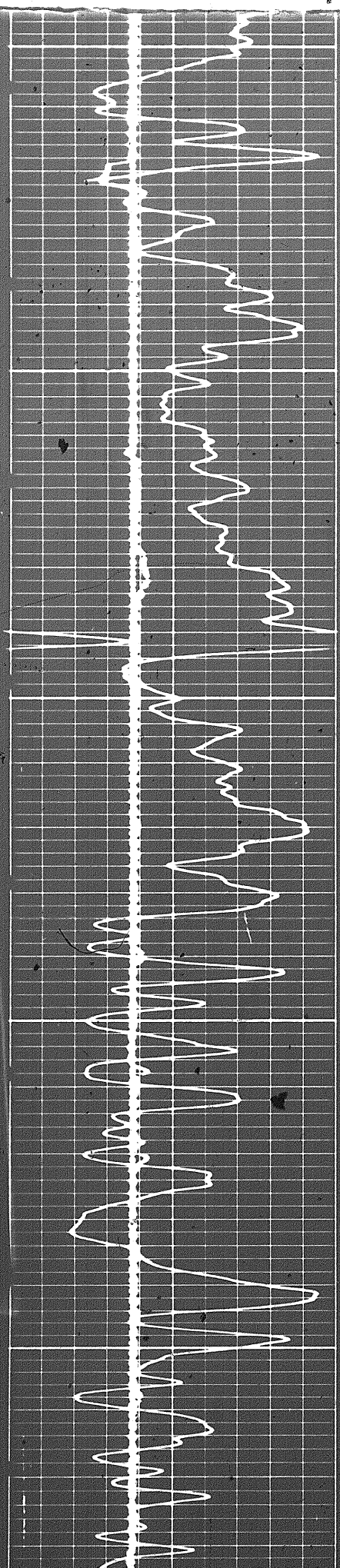
7400

7500

7600

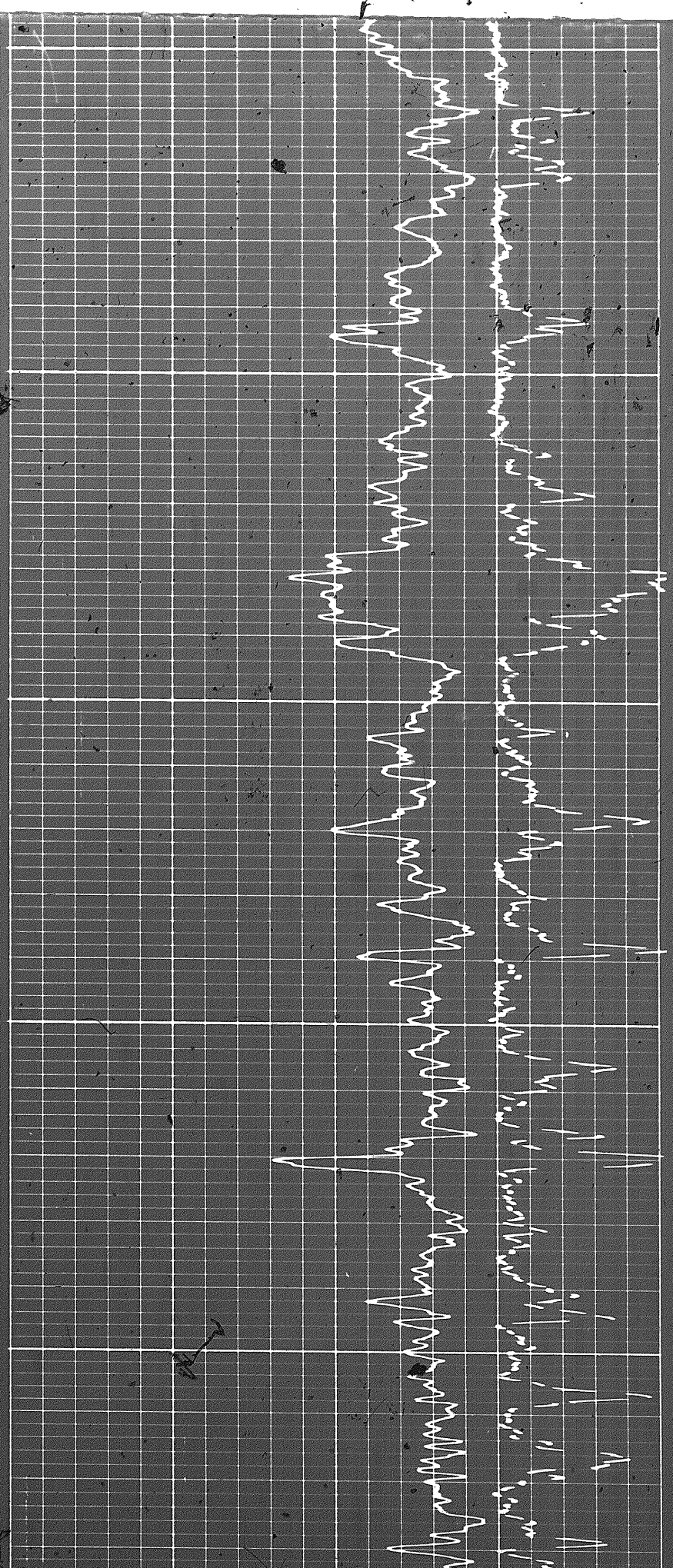


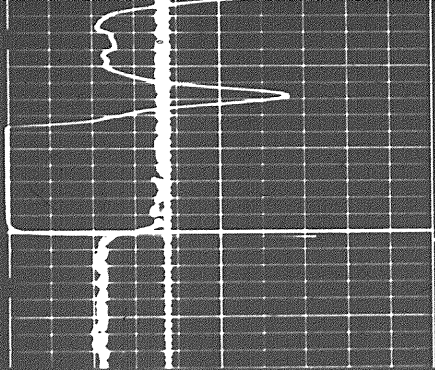
5 of



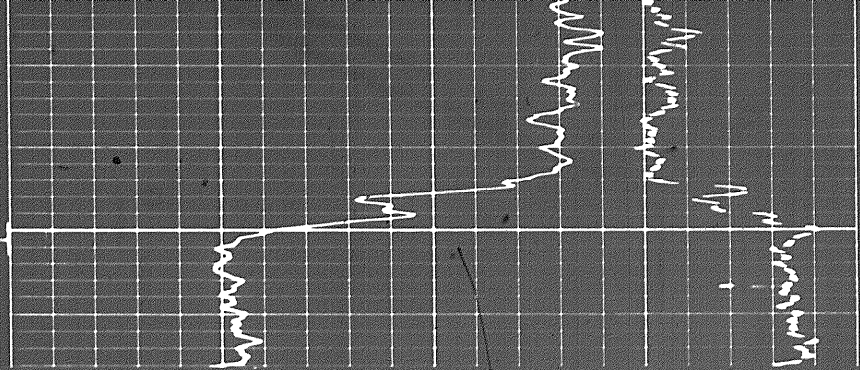
7600

7700

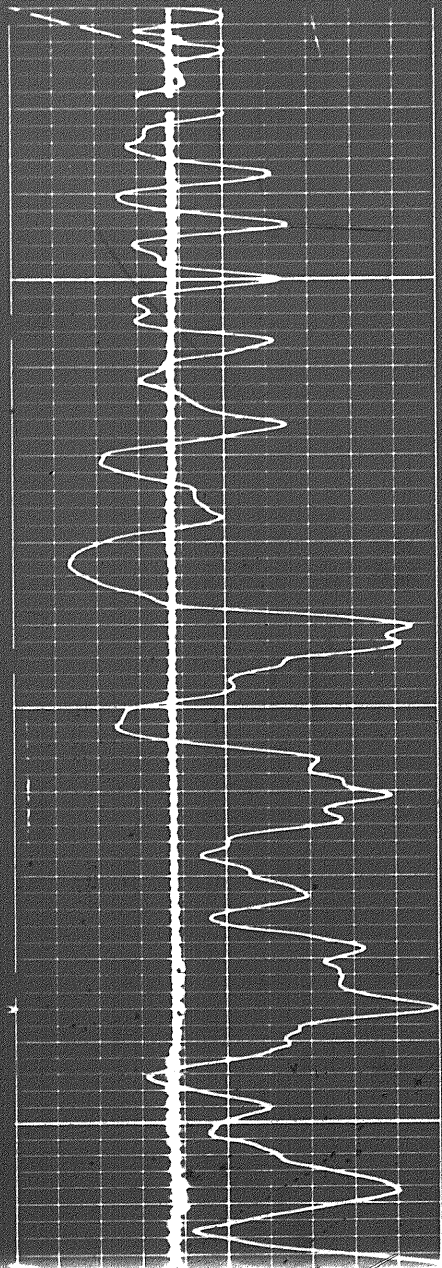




FR
0008

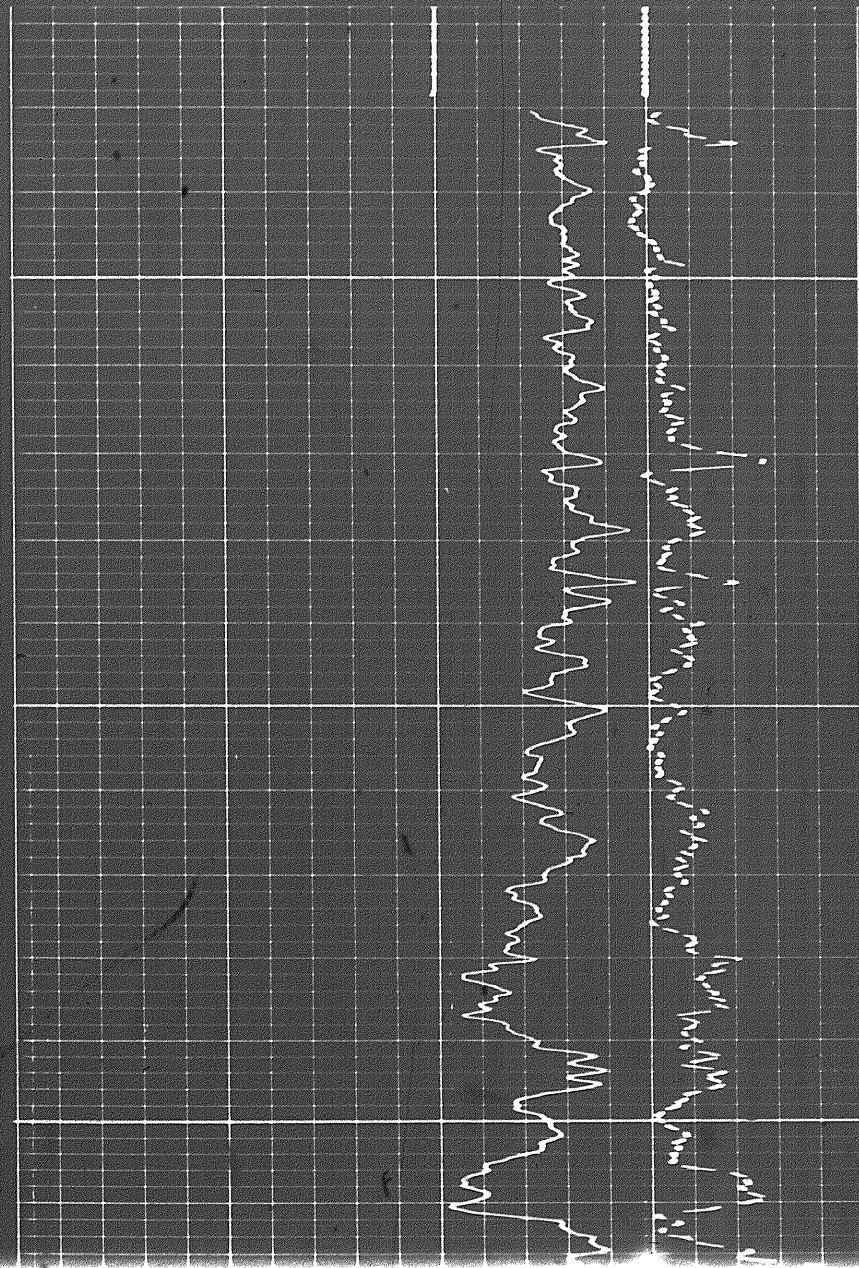


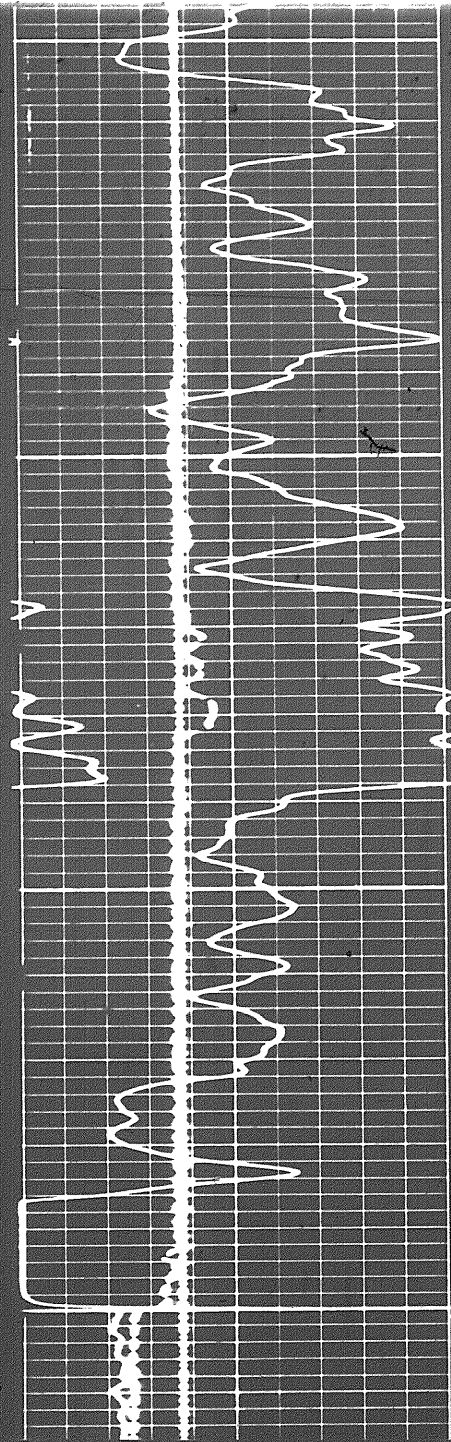
REPEAT SECTION



7800

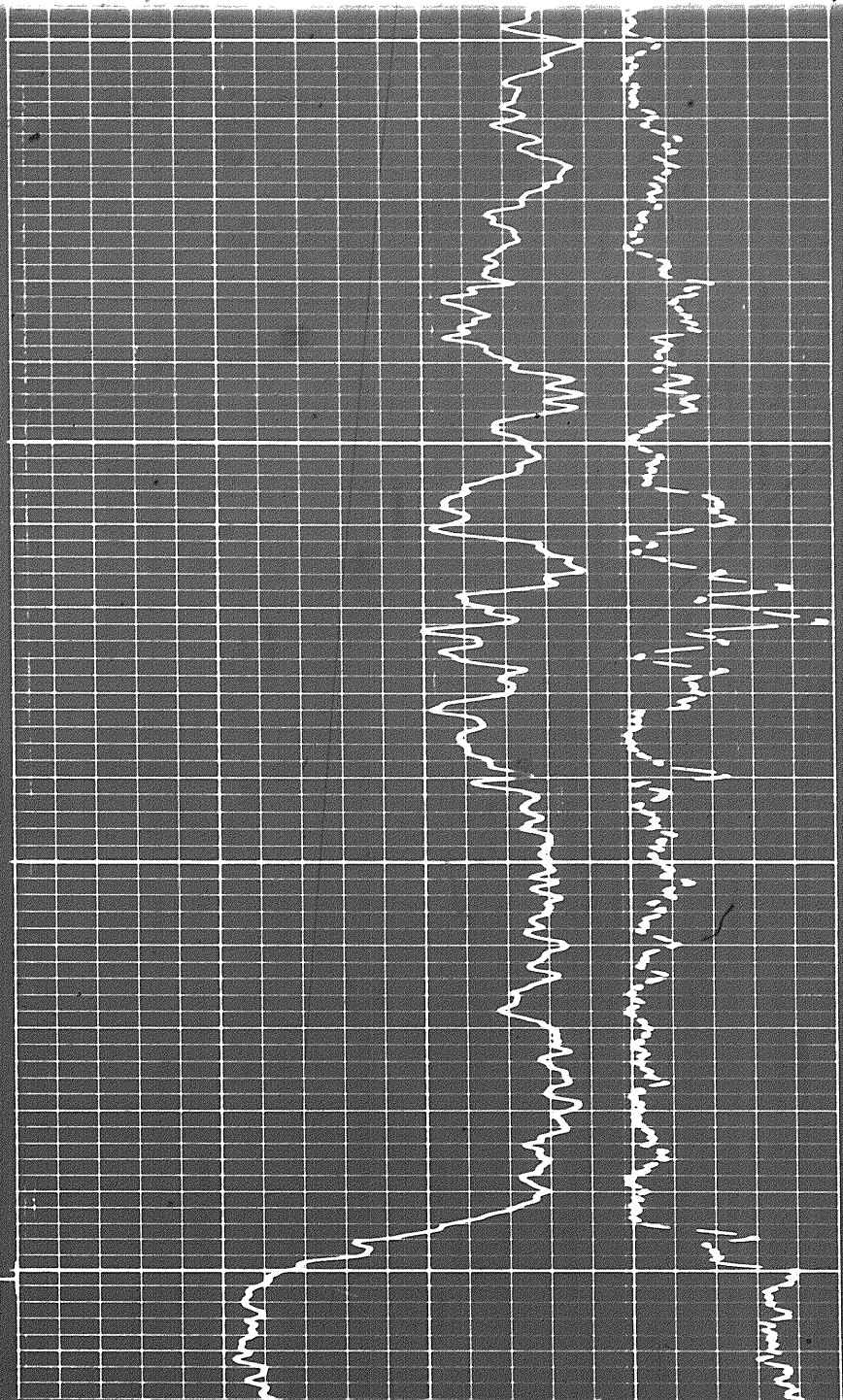
7900





7000

FR 800



6 7 8 9 10 11 12 13 14

CALIPER
hole diameter in inches

Sens. 150 T.C. 2
Zero 0 div. to left

0 150 150 300

Speed in FPM

(-) 0.25 0 0.25 (+)

DENSITY CORRECTION
 $\Delta\rho$ - gm/cc

2.0 2.5 3.0

GAMMA RAY
API UNITS

DEPTHS

BULK DENSITY
 ρ_b - gm/cc

150 300 2.0 2.5 3.0

GAMMA RAY
API UNITS

DEPTHS

BULK DENSITY
 $\rho_b - \text{gm/cc}$

DETAIL LOG
5' = 100'

CALIPER
hole diameter in inches

DEPTHS

POROSITY (%)

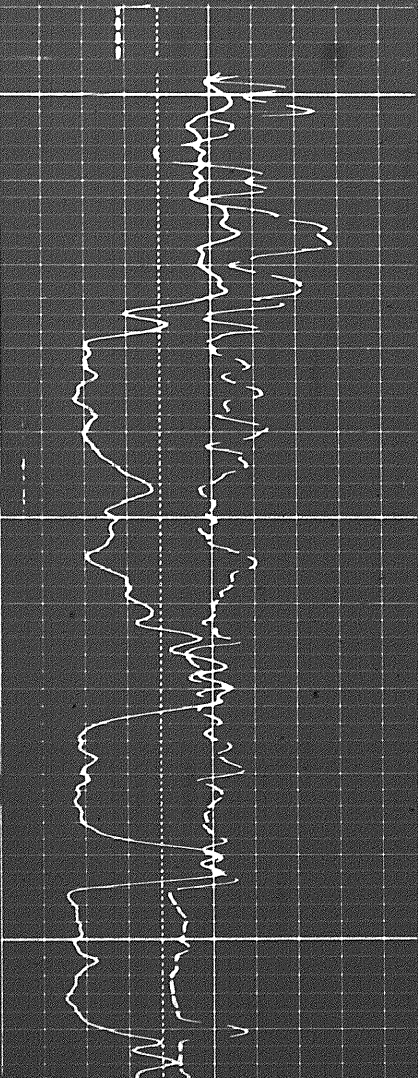
6 7 8 9 10 11 12 13 14

GAMMA RAY
API UNITS

Sens. 150 T.C. 2
Zero 0 div. to left 150
150 300

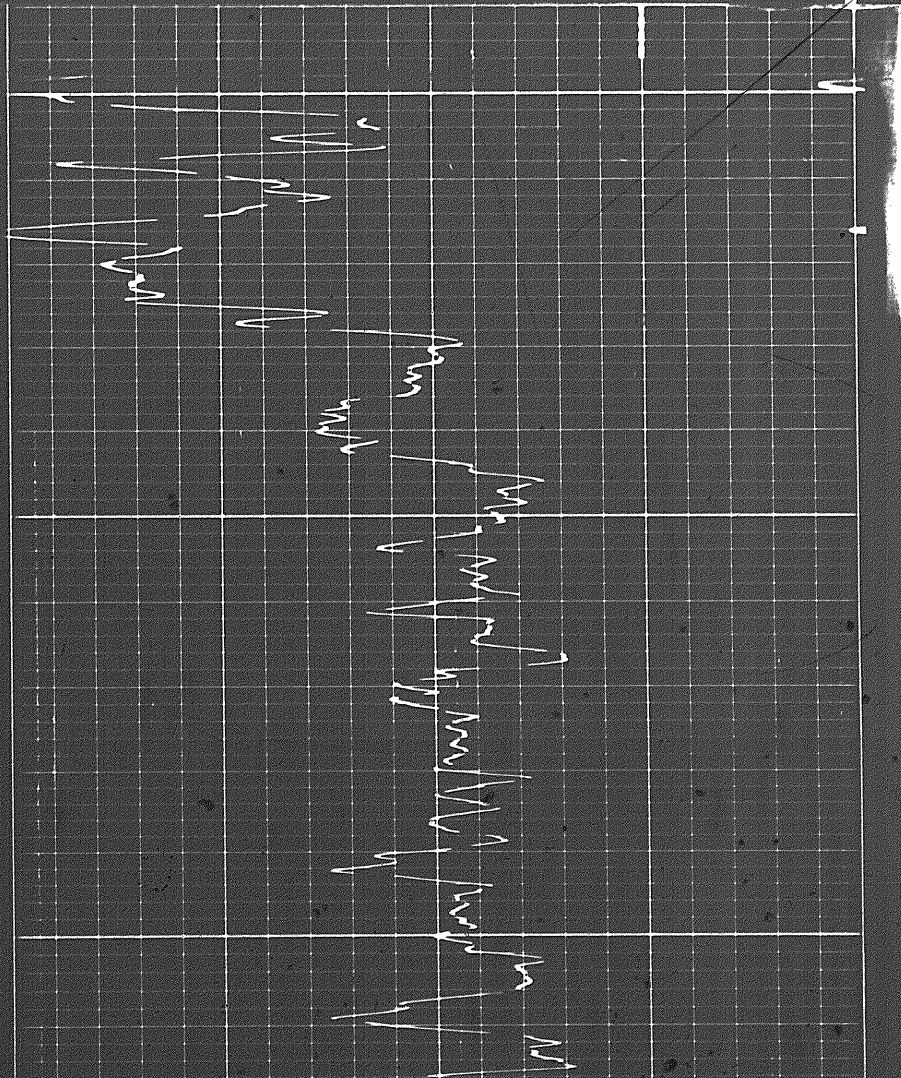
LIMESTONE
45 30 15 0 -15

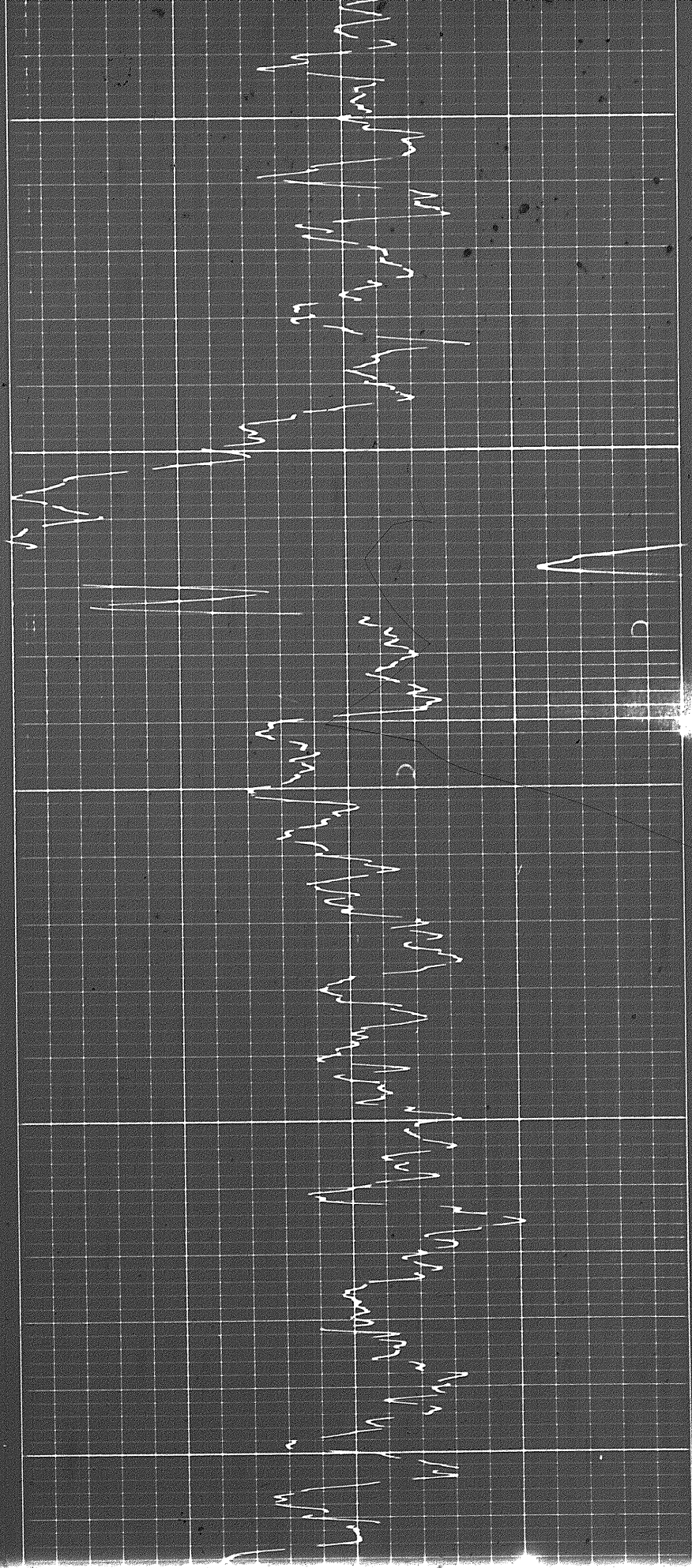
Rho-g = 2.71
Rho-f = 1.00



3600

3700

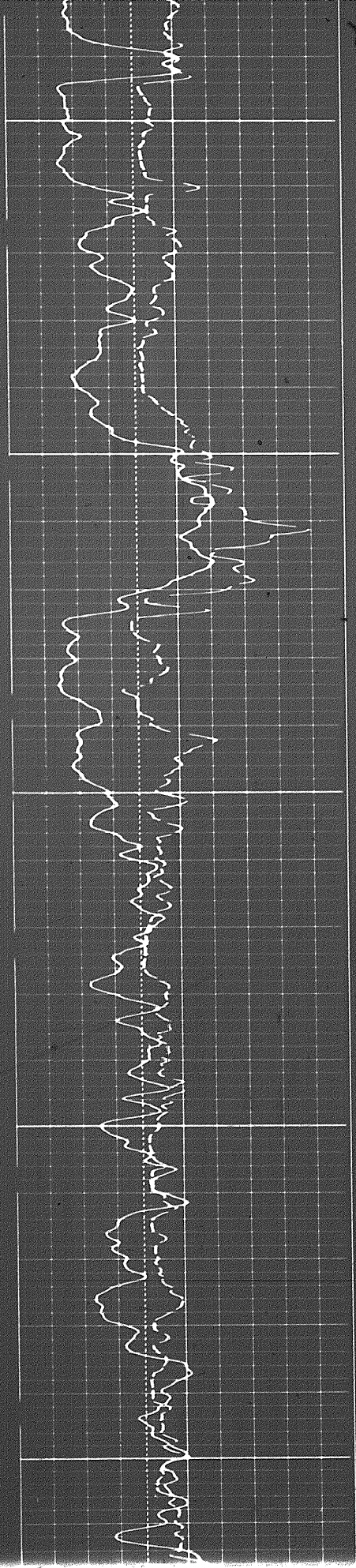




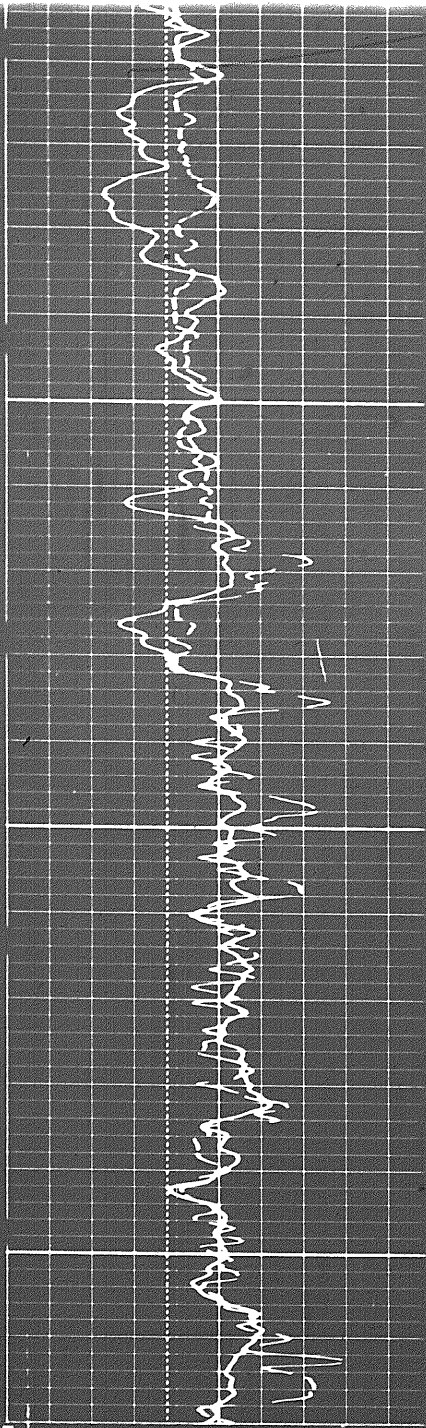
3700

3800

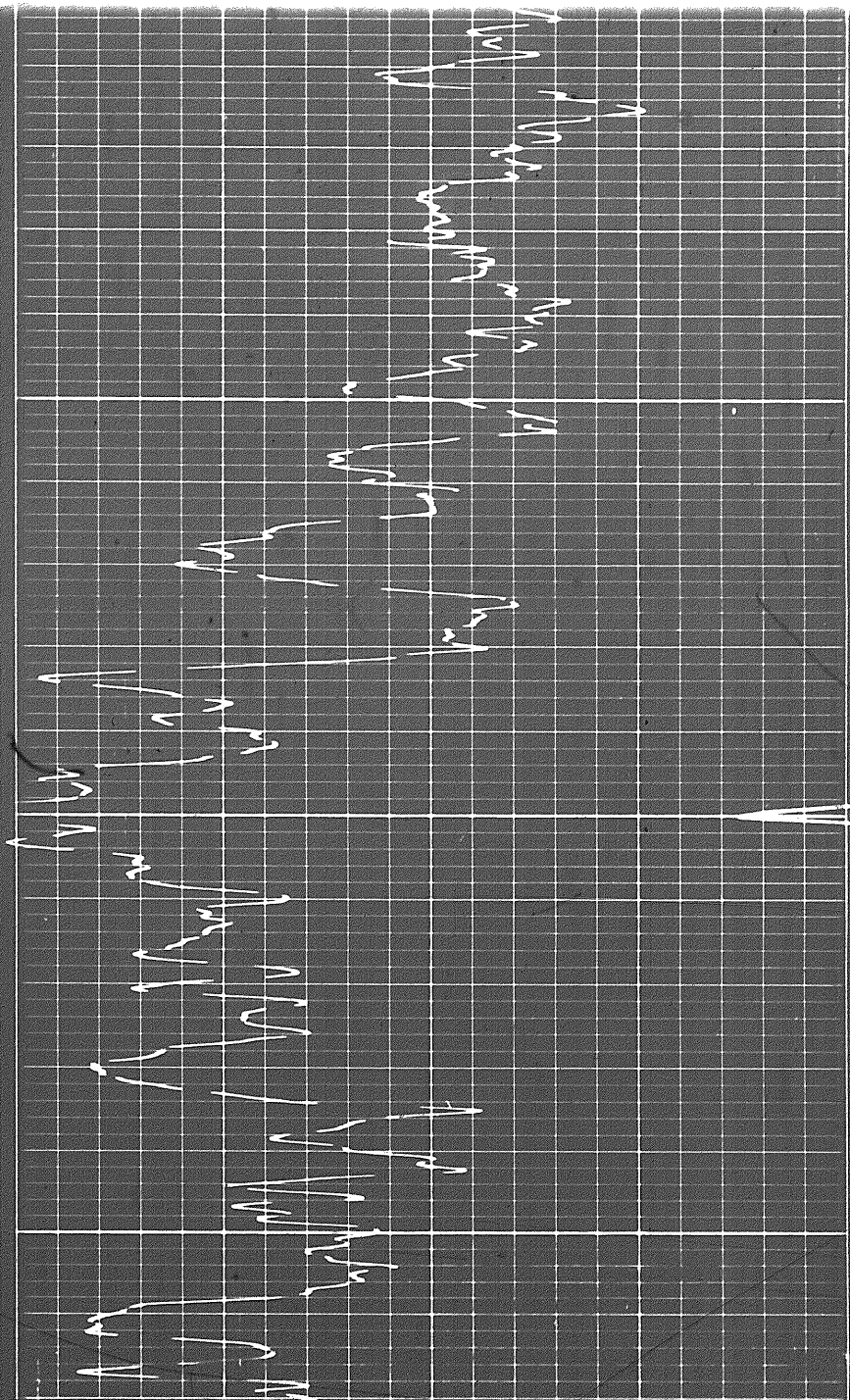
3900



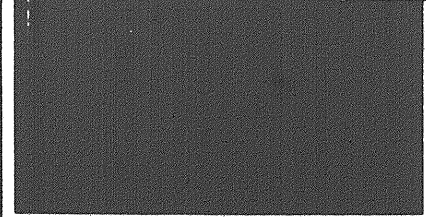
707



3900



4000

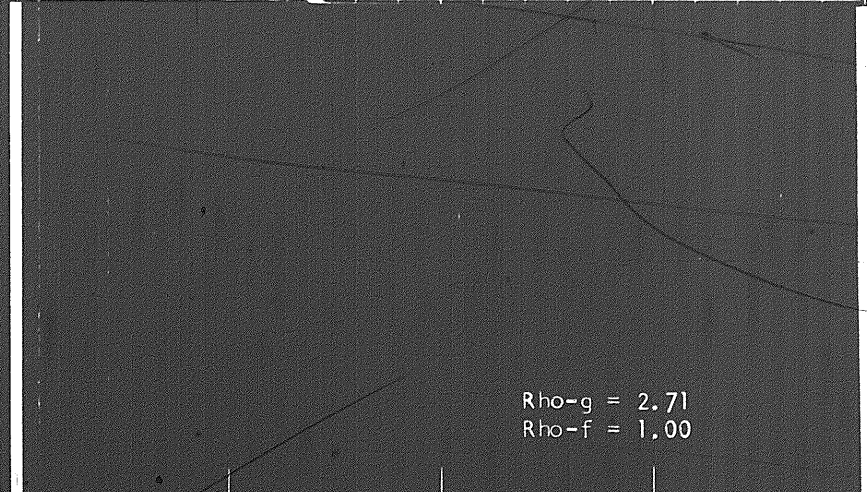


Sens. 150 T.C. 2
 Zero 0 div. to left
 0 150
 150 300

GAMMA RAY
API UNITS

Speed in FPS

6 7 8 9 10 11 12 13 14



Rho-g = 2.71
Rho-f = 1.00

45 30 15 0 -15

LIMESTONE

Speed in FPM

API UNITS

6 7 8 9 10 11 12 13 14

45 30 15 0 -15

LIMESTONE

CALIPER
hole diameter in inches

DEPTH

POROSITY (%)

DETAIL LOG
5' = 100'

CALIPER
hole diameter in inches

DEPTH

POROSITY (%)

Speed in FPM

6 7 8 9 10 11 12 13 14

GAMMA RAY
API UNITS

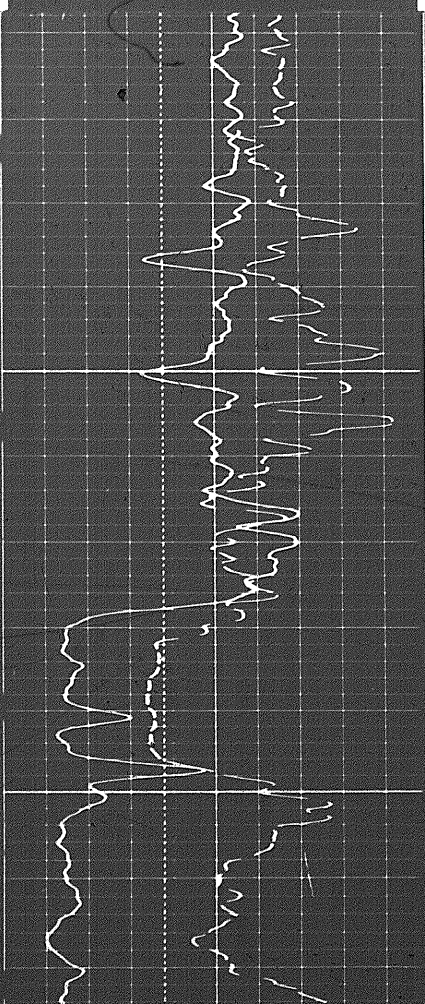
30 20 10 0 -10

LIMESTONE

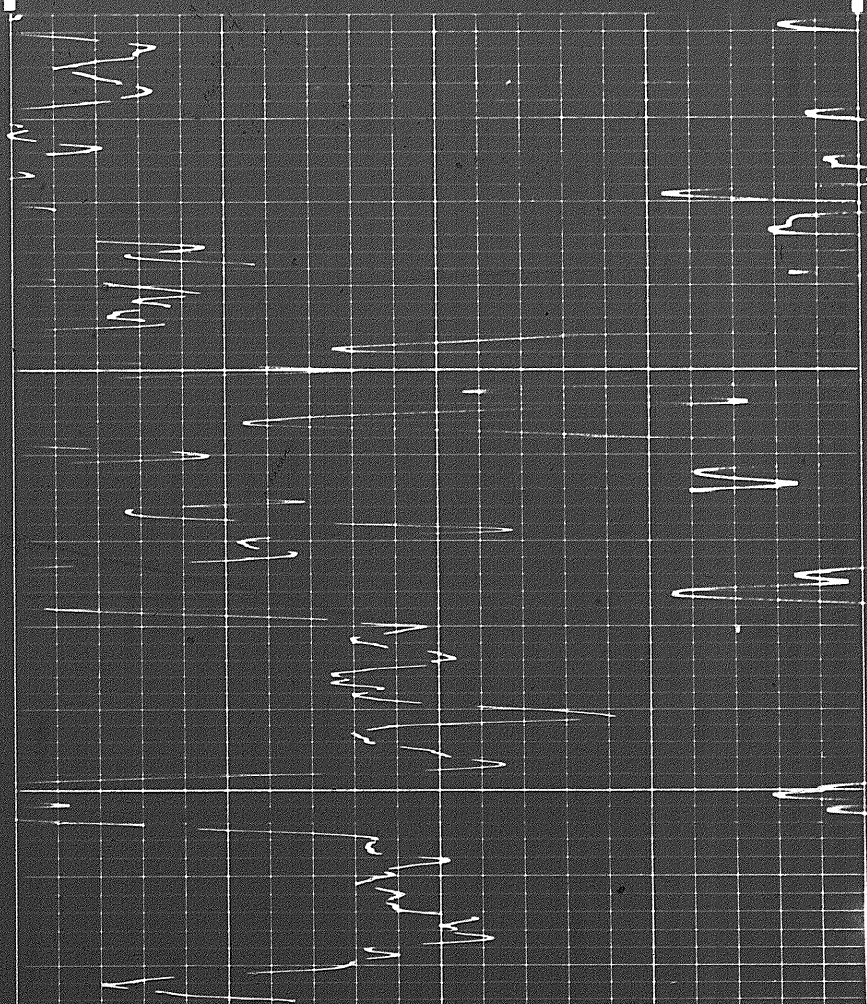
Rho-g = 2.71
Rho-f = 1.00

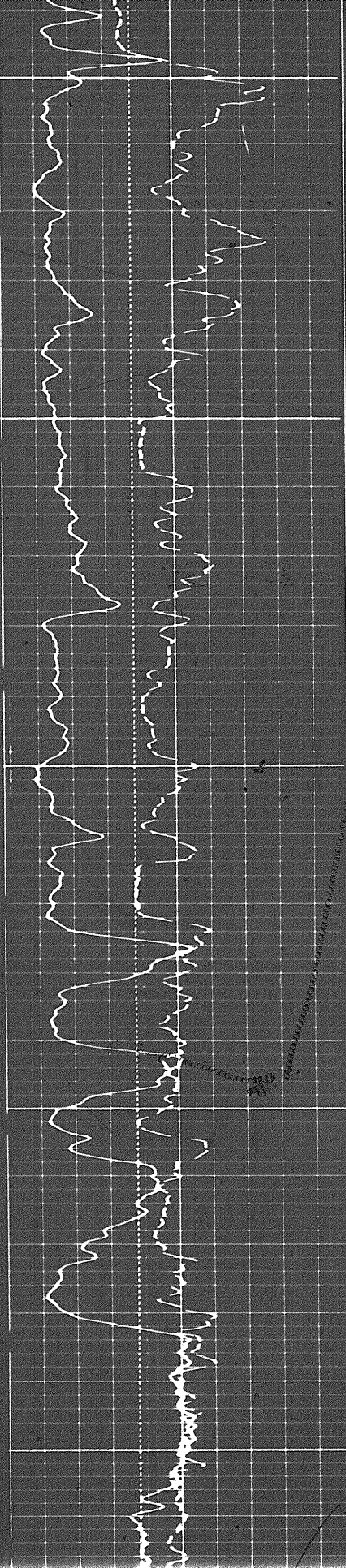
Sens. 150 T.C. 2
Zero 0 div. to left

0 150
150 300



6000

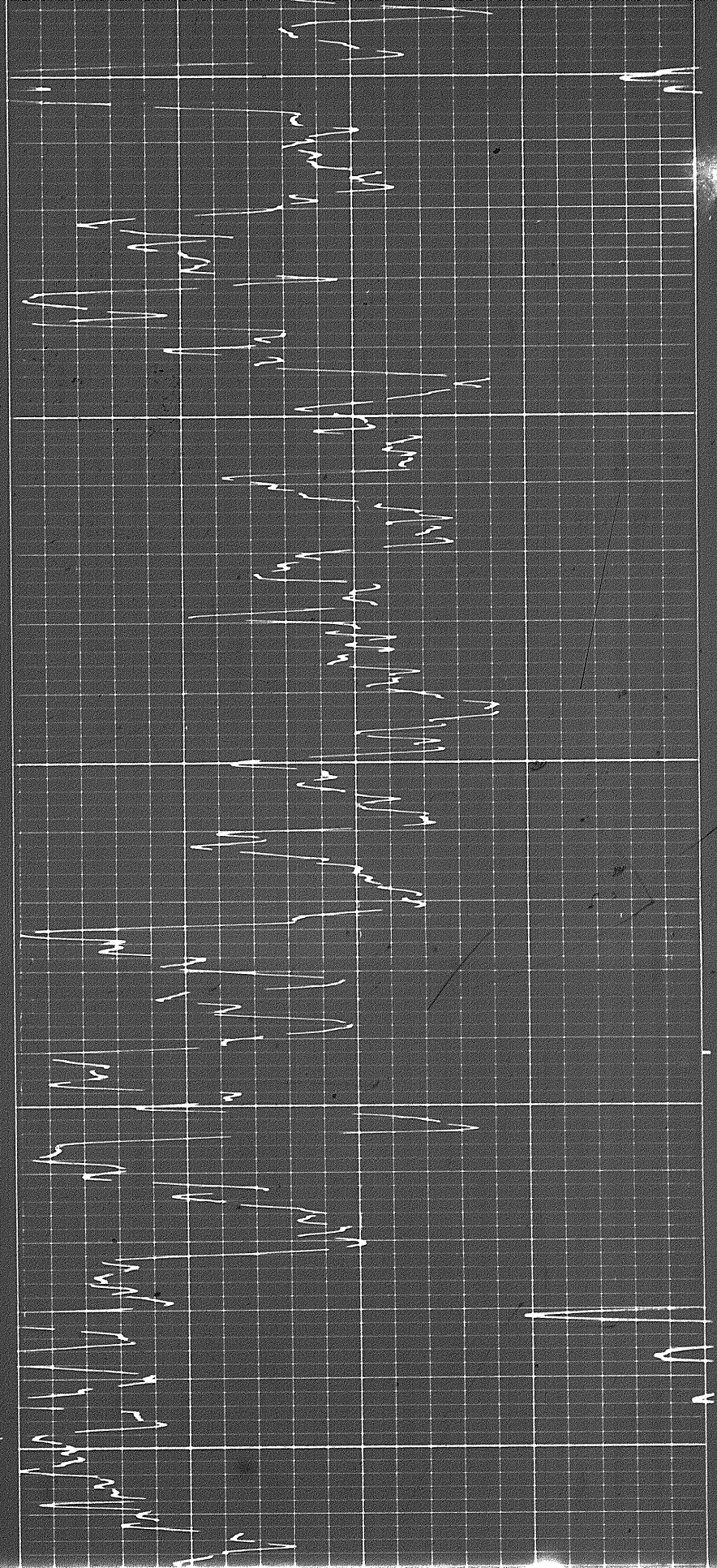




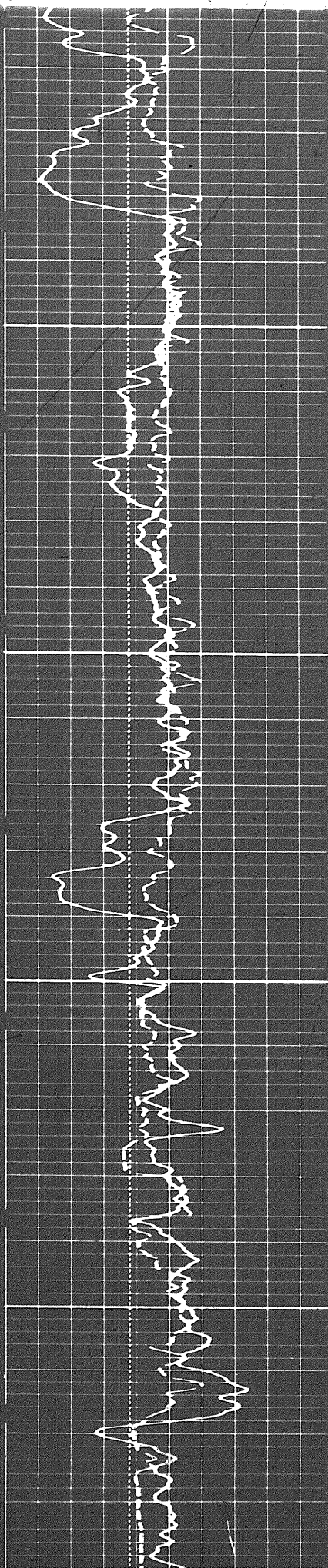
6000

6100

6200

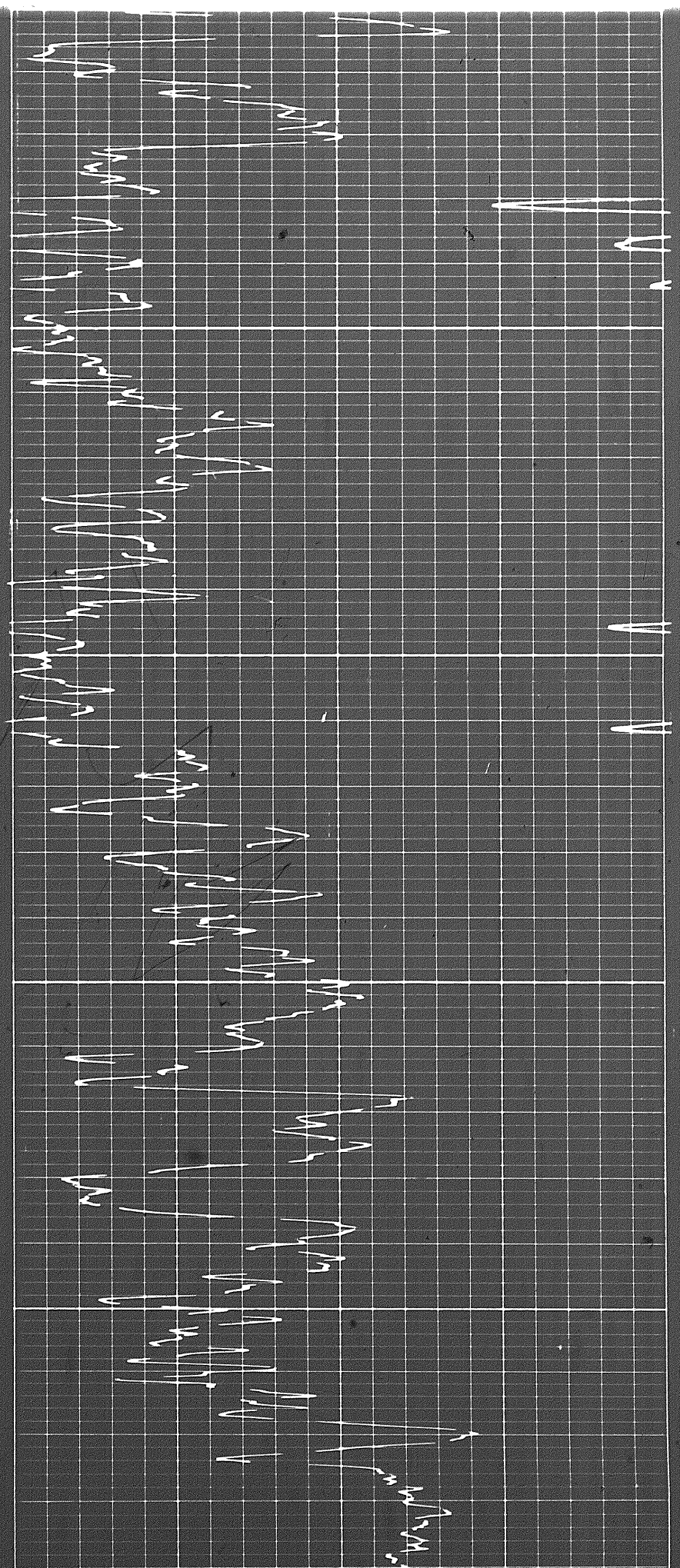


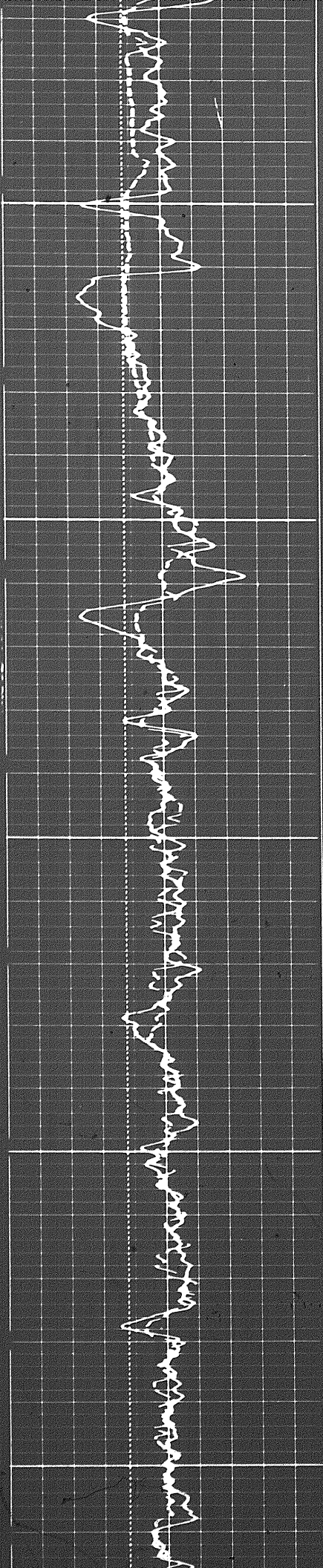
100



6200

6300

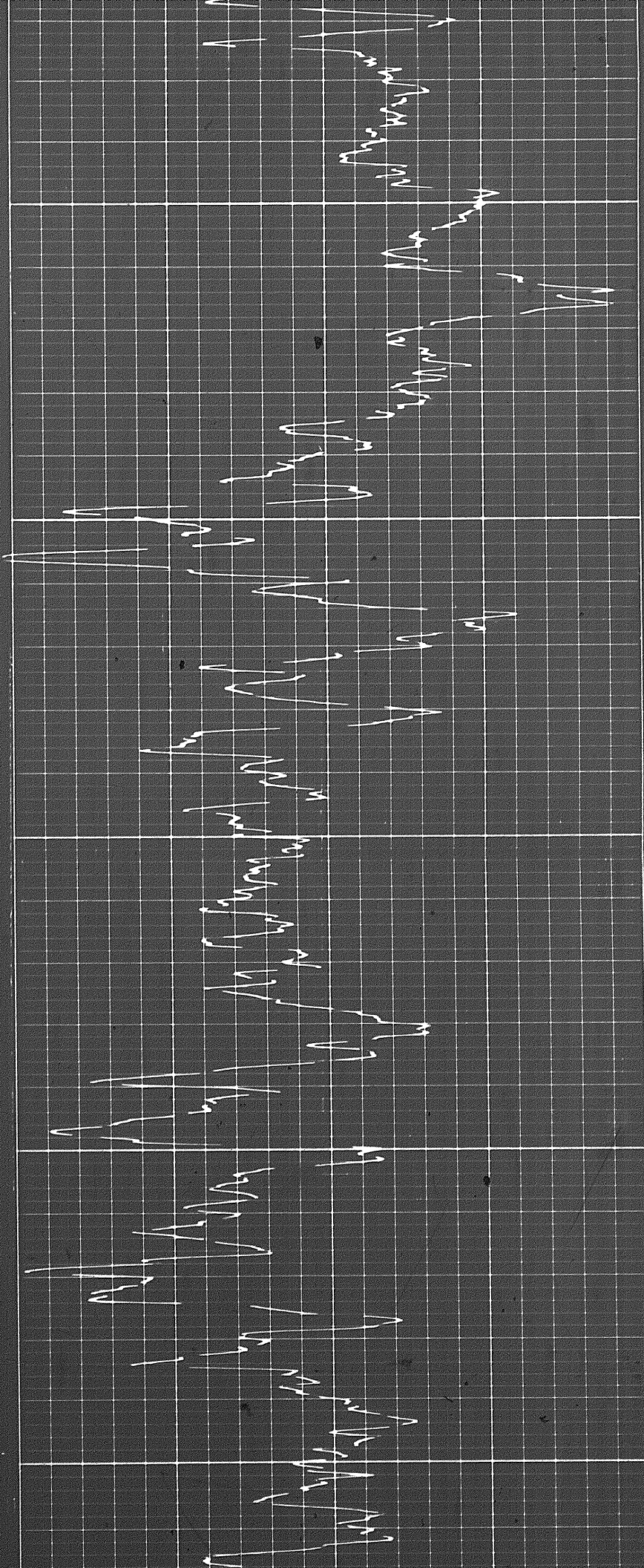


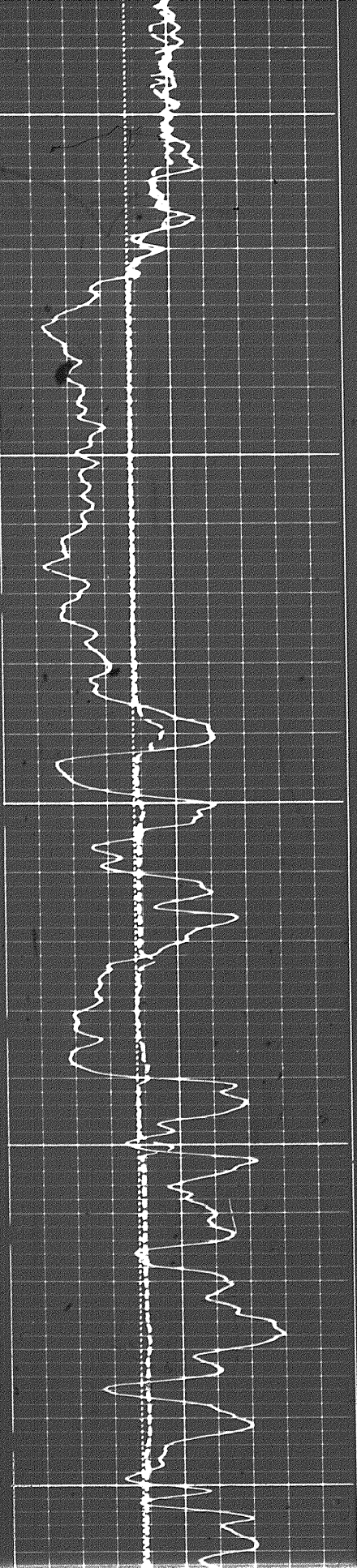


6400

6500

6600





0099

6700

6800

