

SCHLUMBERGER

INDUCTION ELECTRICAL LOG

MANAGER: ANA L. ...

PROVINCE YUKON TERRITORIES
 FIELD WILDCAT
 WELL SOBC WM E PORCUPINE YT
1-13
 COMPANY CHEVRON STANDARD LIMITED

COMPANY CHEVRON STANDARD LIMITED
 WELL SOBC WM E PORCUPINE YT
 FIELD WILDCAT
 PROVINCE YUKON TERRITORIES
 LOCATION 660 021 3511 N LAT
1370 461 5811 W LONG
 Permanent Datum GL Elev. 1645
 Log Measured From KB 21 Ft. Above Perm. Datum
 Other Services: SLC-GR
SNP-GR, FDC-GR, ML
DIL, GST, SRS
 ELEV: KB 1666
GL 1645
CR

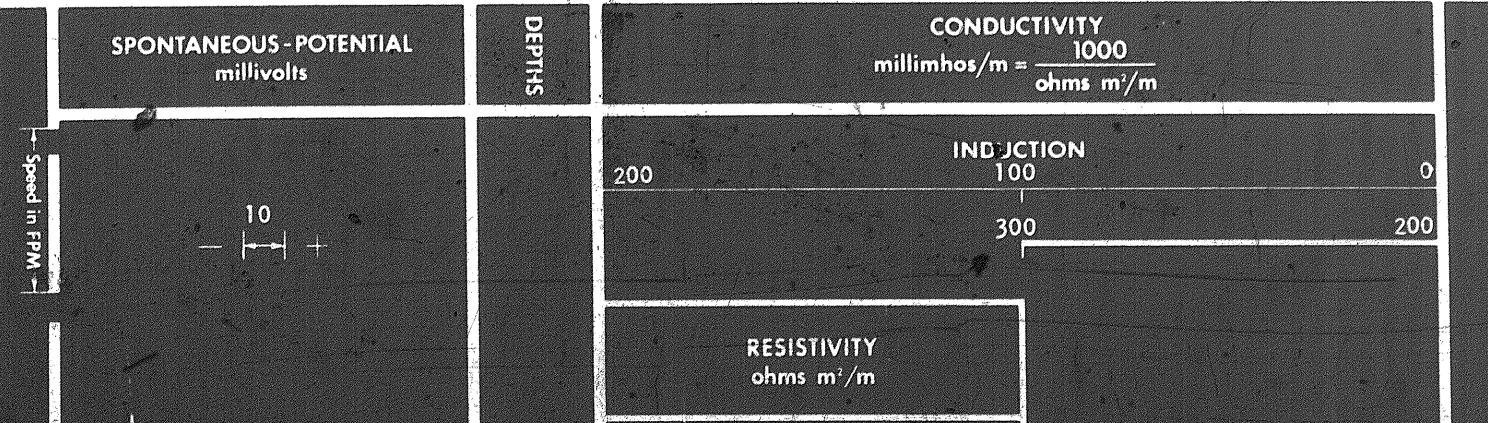
Date	14 FEB 71		
Rim No.	ONE		
First Reading	787		
Last Reading	70		
Feet Measured	717		
Depth Reached	788		
Bottom Order	804		
Cap SOC	70		
Cap Driller	65		
Mud Nature	GEL		
Dens. Visc.	8.8	50	
Mud pH	-		
Water Loss			
Res.			
• RHT			
Rm #	6.61	47	4
Rm #	5.28	47	4
Dr Stem	17 1/2"		
Spending - AM	16'		
-MM	34'-6"		
Ind. Type	6FF40		
Over Rig Time	2 HRS		
Truck No.	OSU-C-108, REH		
Recorded By	NICKERSON		
Witness	HANSEN & GLEITZ		

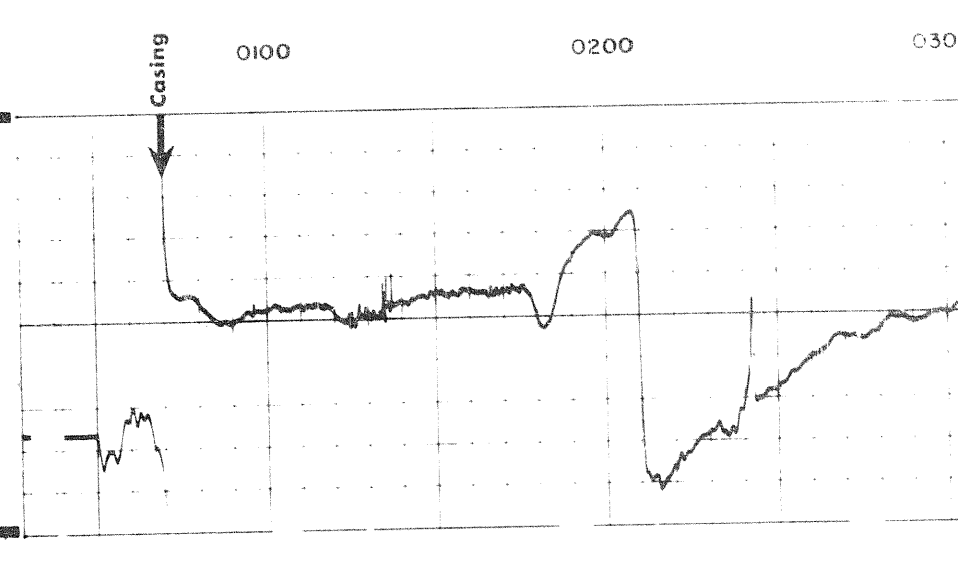
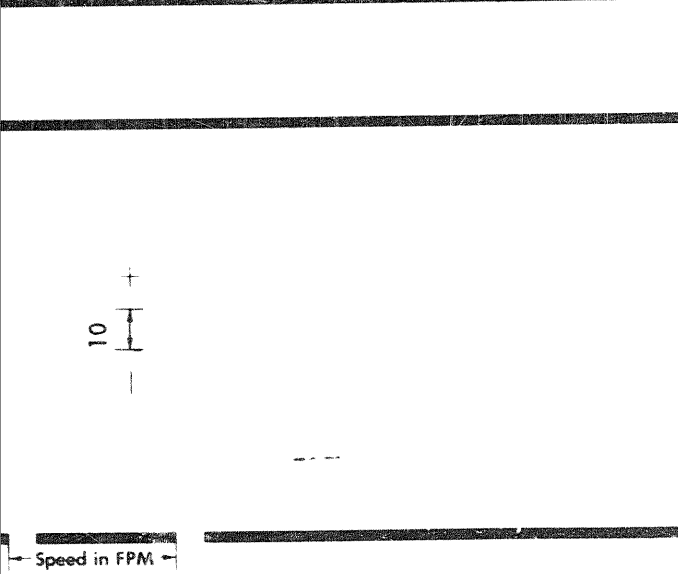
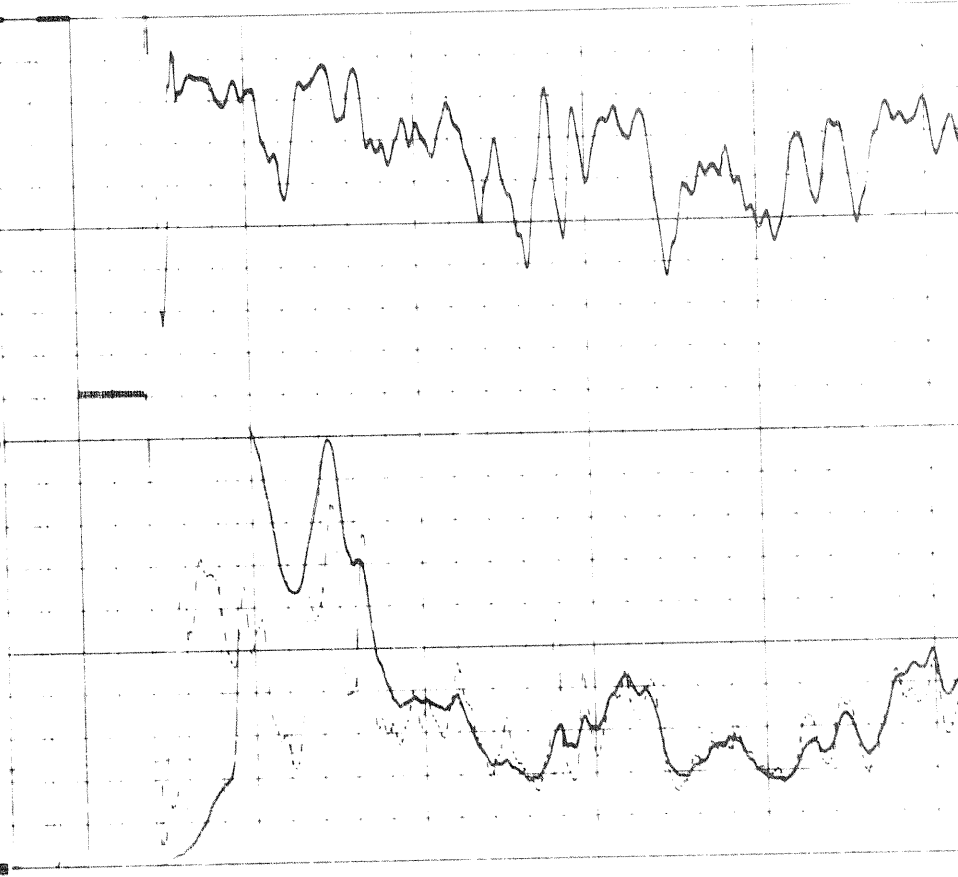
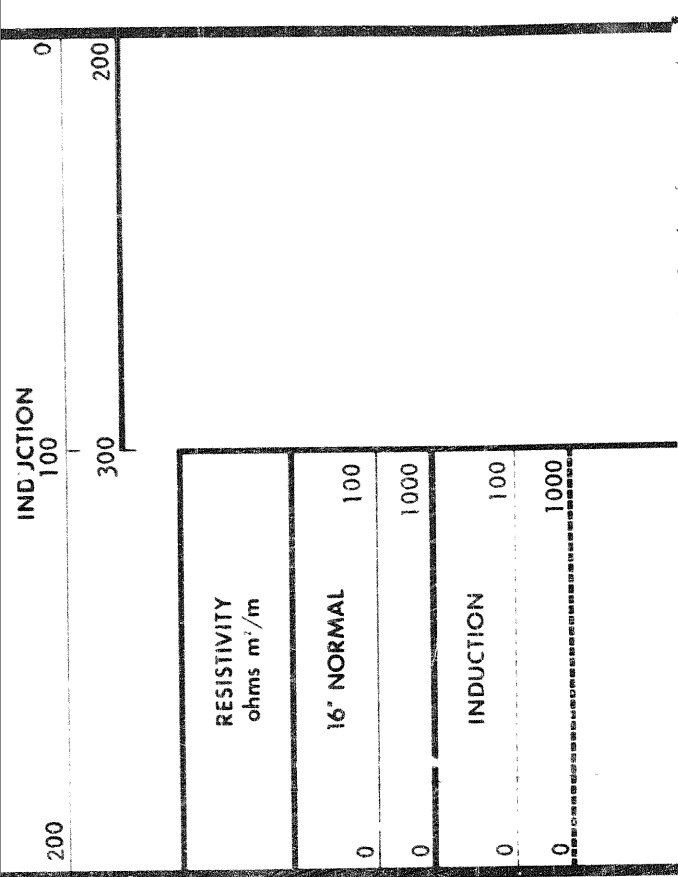
31 MAY 1971 CAL JP

REMARKS
 Drilling Stopped 1800 / 14th : Circulation Stopped 2000 / 14th : Tool on Bottom 0100 / 15th : 1st Run Service Order # 5692
 B.H.T. 88 ✓

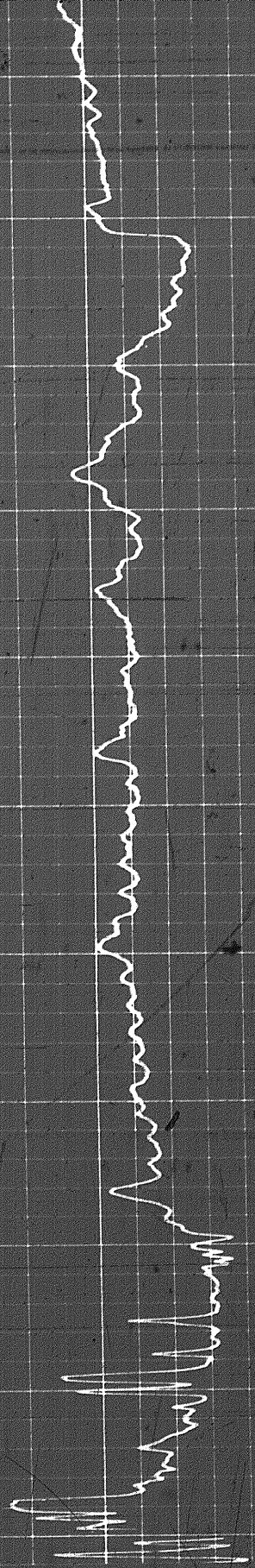
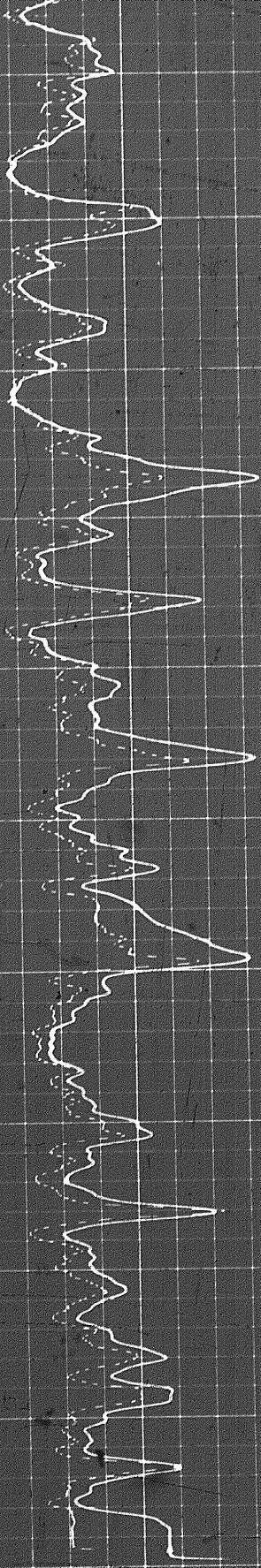
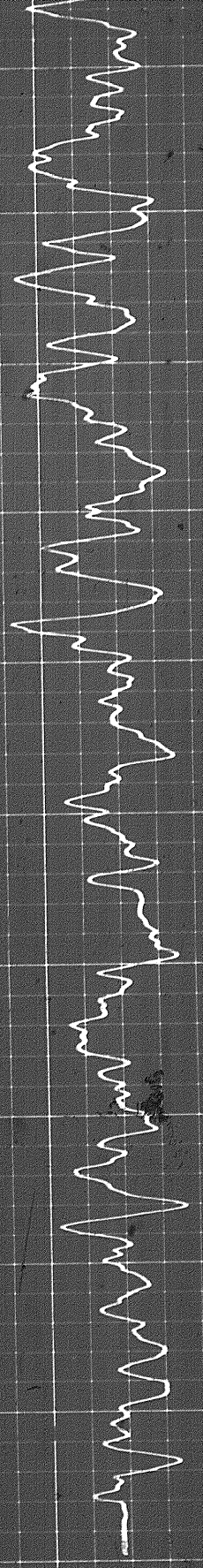
Stand Off - Inches 1.5
 Cartridge No. D 419
 Panel No. N 609
 Sonde No. M 752
 IAP-D No. MMP-B 223
 SBR 2

MUD SAMPLES: Rm #1 = 6.18 @ 51°F - 1900 / 14th
 Rm #2 = 6.17 @ 51°F - 1920 / 14th
 Rm #3 = 6.22 @ 50°F - 1940 / 14th



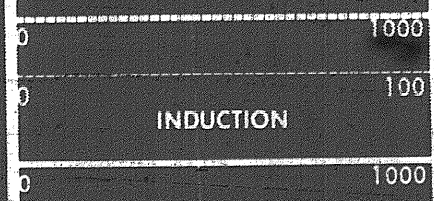


1 of



0300 0400 0500 0600 0700 0800

FR



INDUCTION	1000
16' NORMAL	100
RESISTIVITY ohms m ² /m	



INDUCTION	1000
16' NORMAL	100
RESISTIVITY ohms m ² /m	

INDUCTION	300
INDUCTION	100
INDUCTION	200
INDUCTION	0

CONDUCTIVITY millimhos/m = $\frac{1000}{\text{ohms m}^2/\text{m}}$

SPONTANEOUS - POTENTIAL millivolts	DEPTHS
---------------------------------------	--------

DETAIL LOG
5' = 100'

SPONTANEOUS - POTENTIAL millivolts	DEPTHS
---------------------------------------	--------

CONDUCTIVITY millimhos/m = $\frac{1000}{\text{ohms m}^2/\text{m}}$	INDUCTION
INDUCTION	100
INDUCTION	200
INDUCTION	0

Speed in FPM

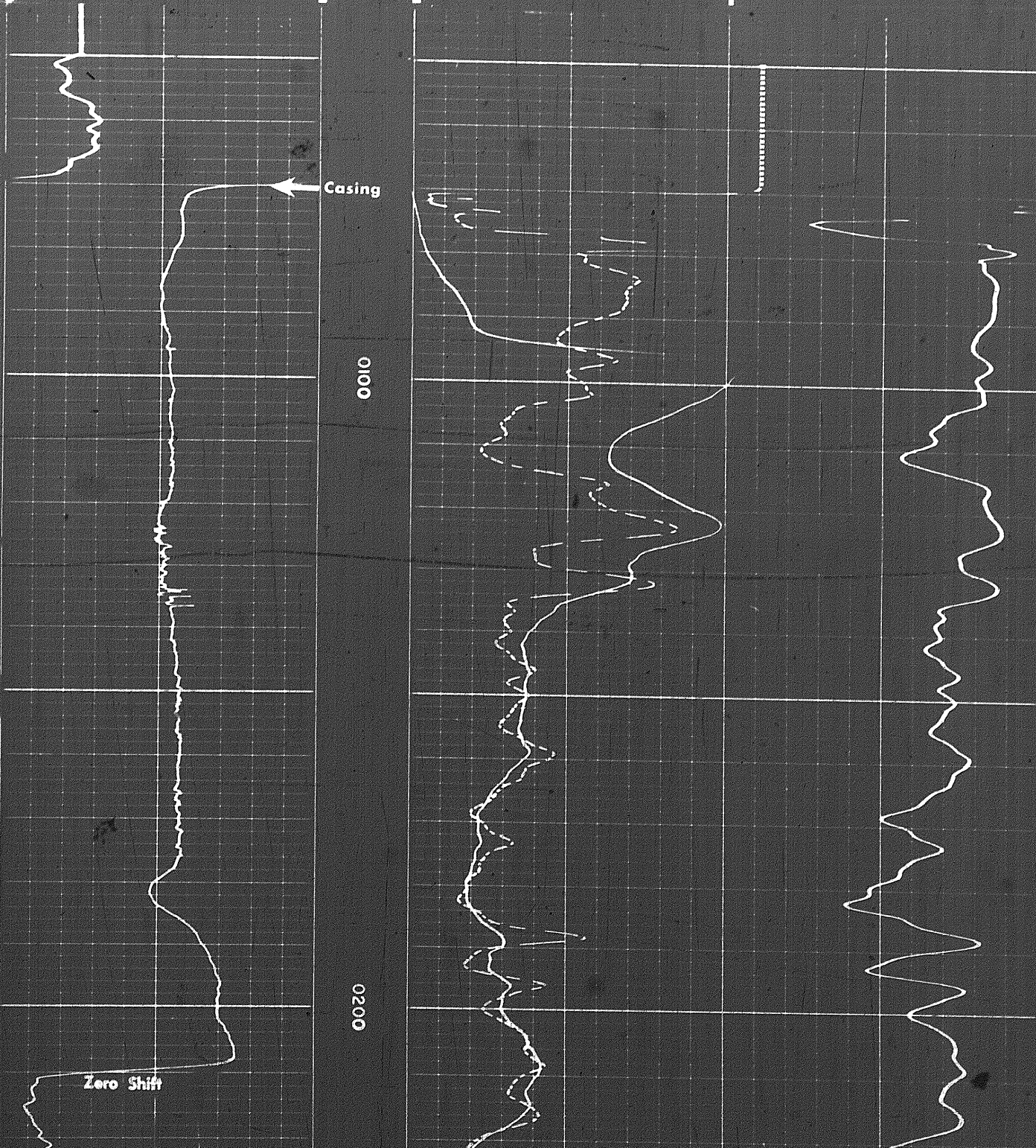
Speed

926

Wd
+
-

300
200

RESISTIVITY ohms m ² /m	
16" NORMAL	
0	100
0	1000
INDUCTION	
0	100
0	1000



Casing

0100

0200

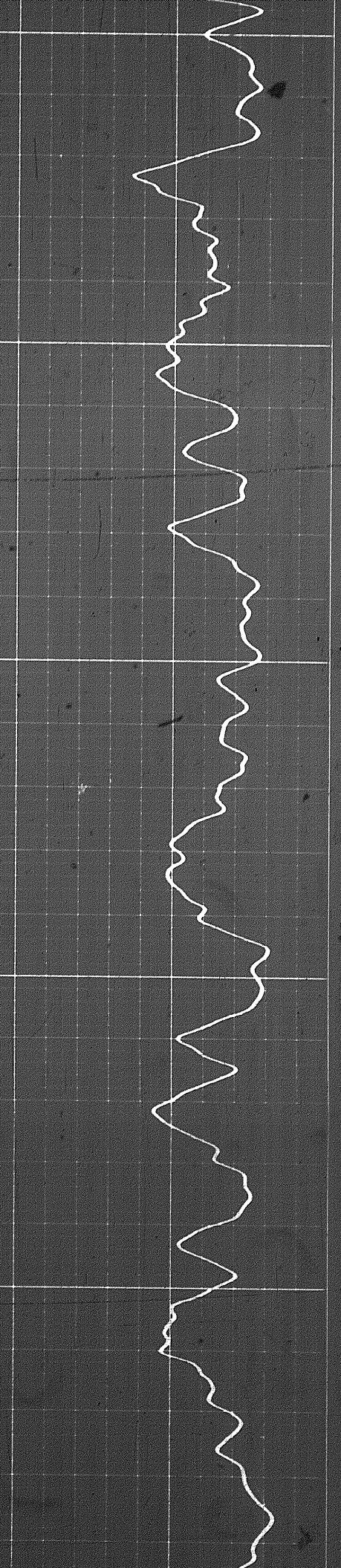
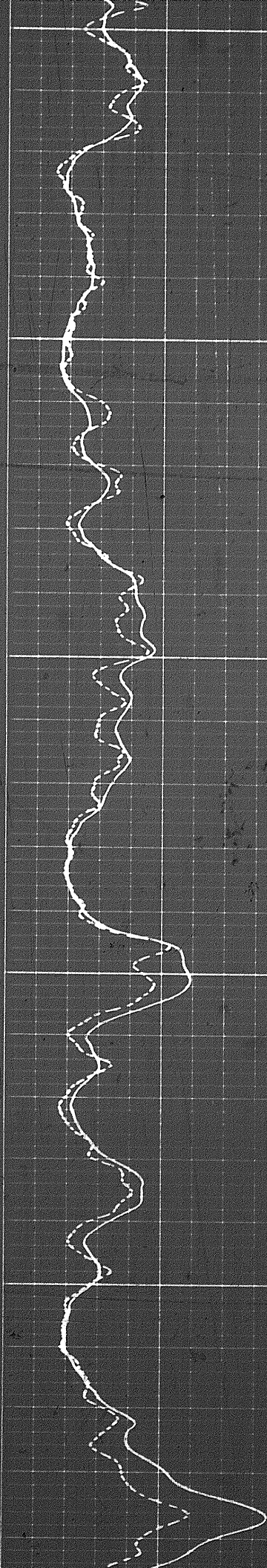
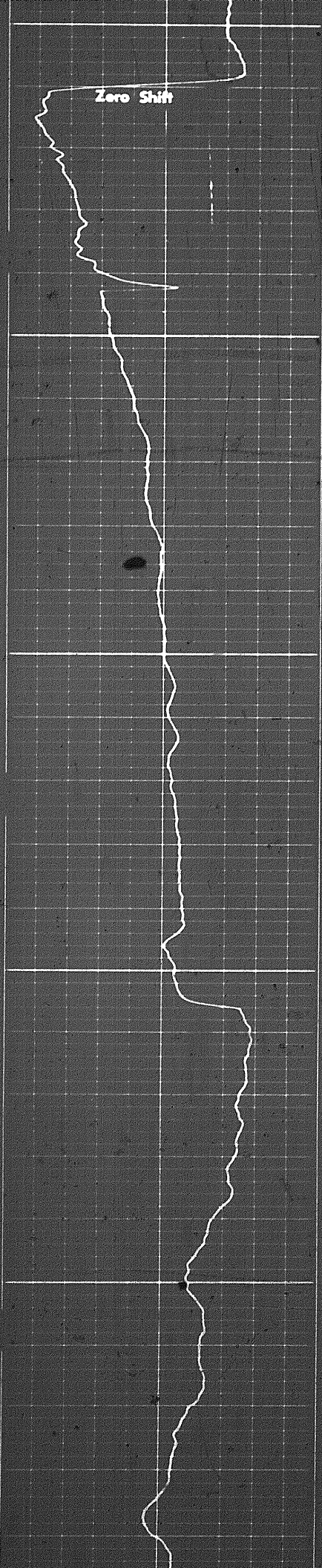
Zero Shift

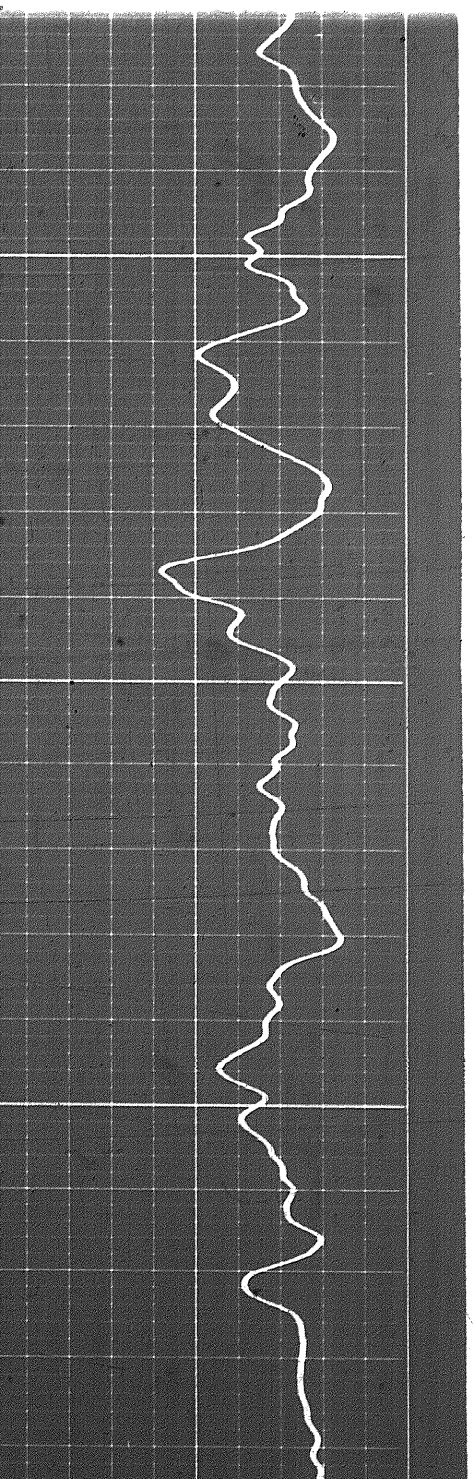
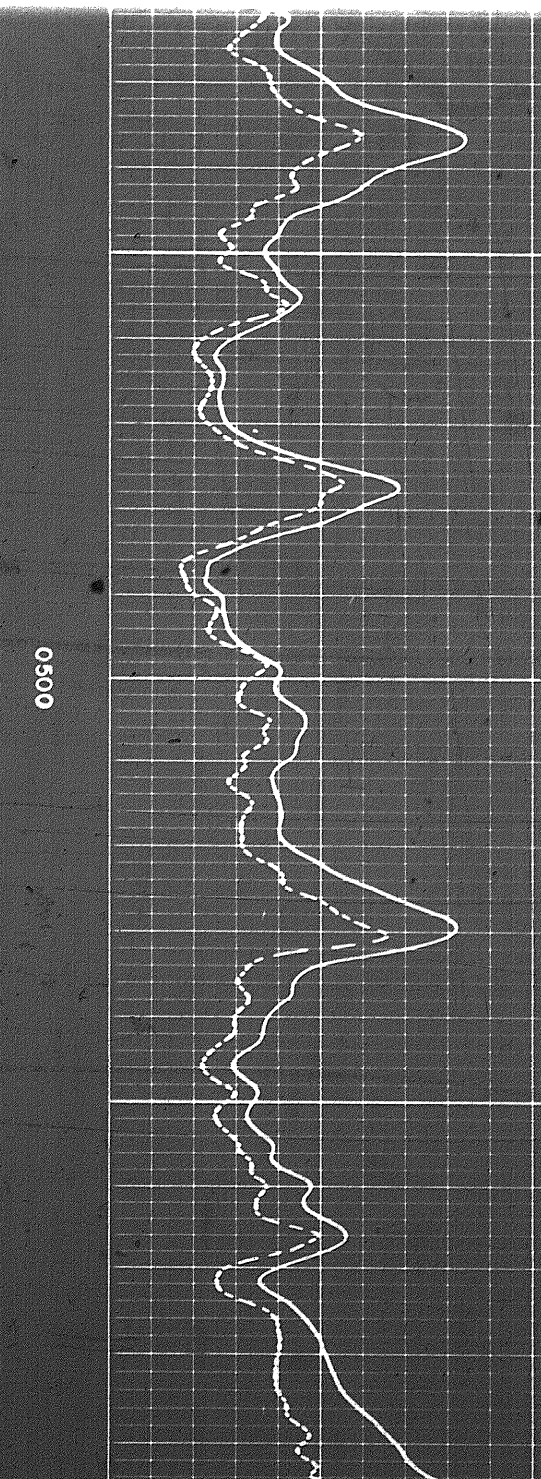
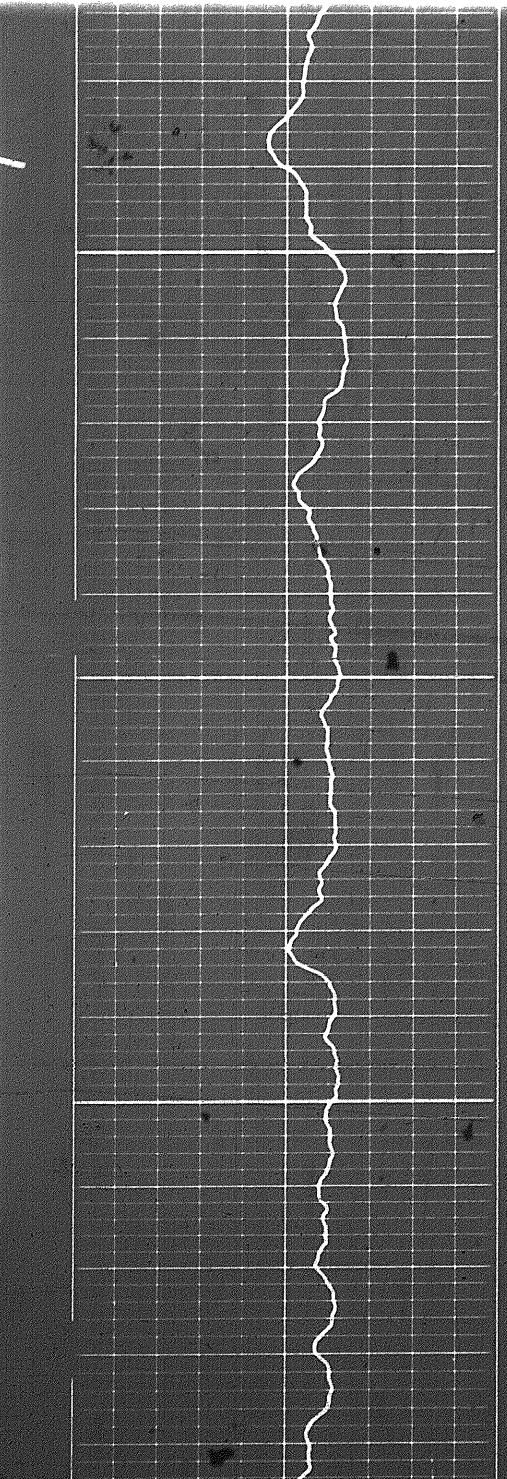
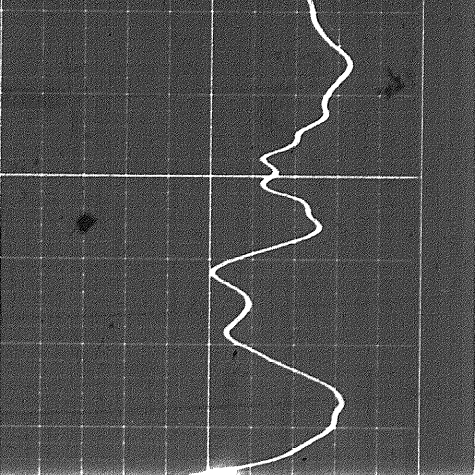
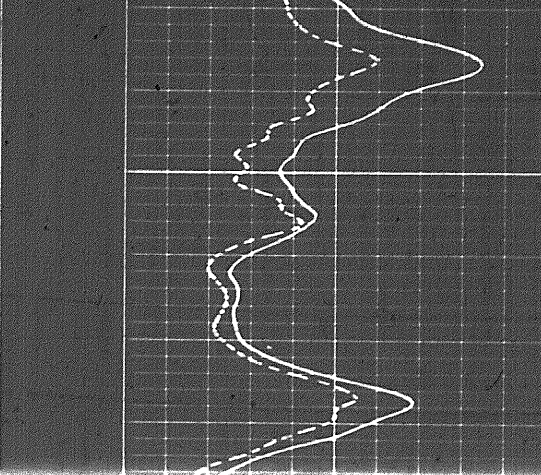
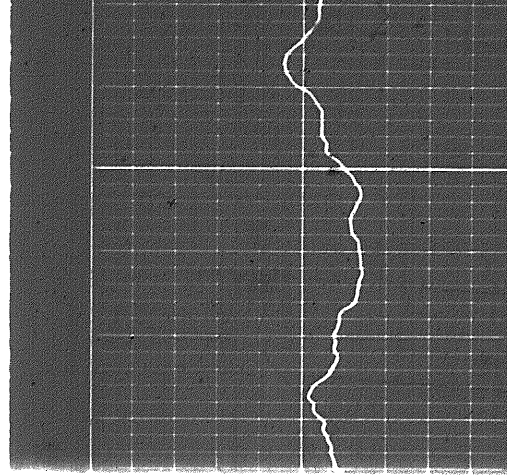
0200

Zero Shift

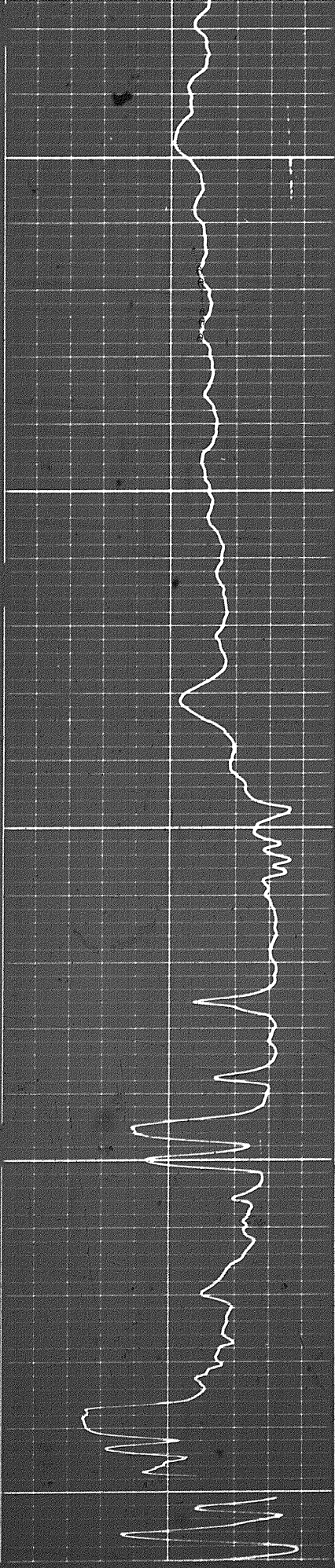
0300

0400





0500

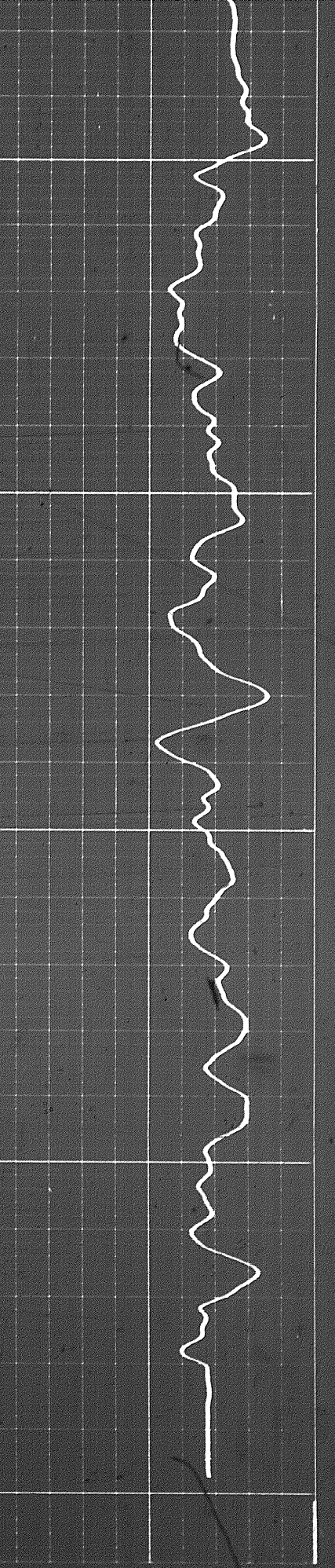
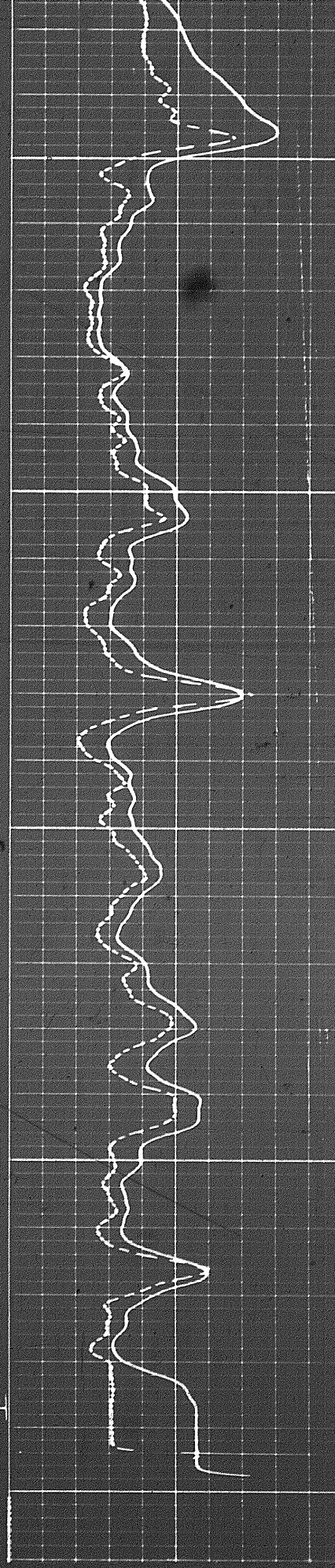


0680

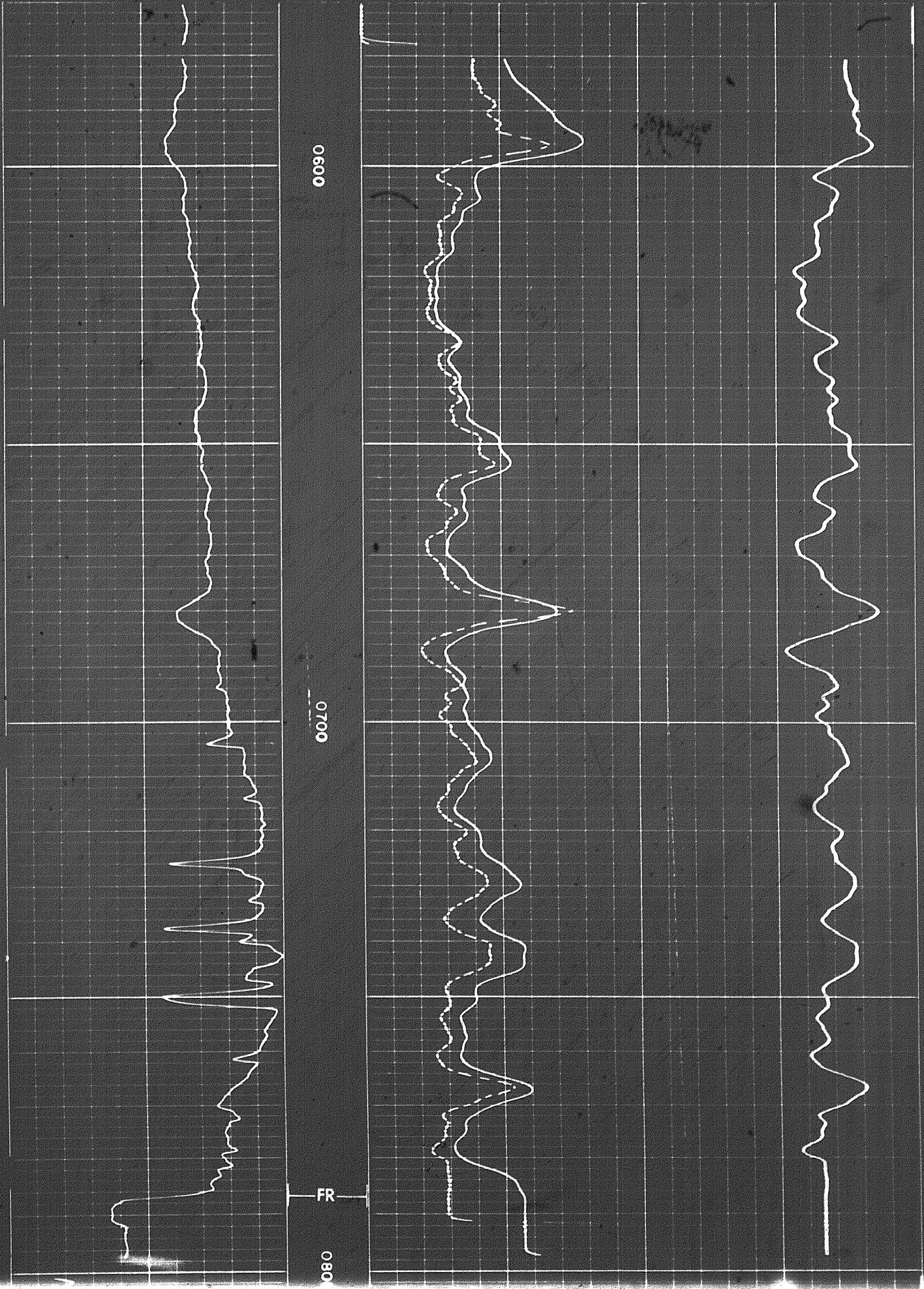
0700

FR

0080



REPEAT SECTION



0630

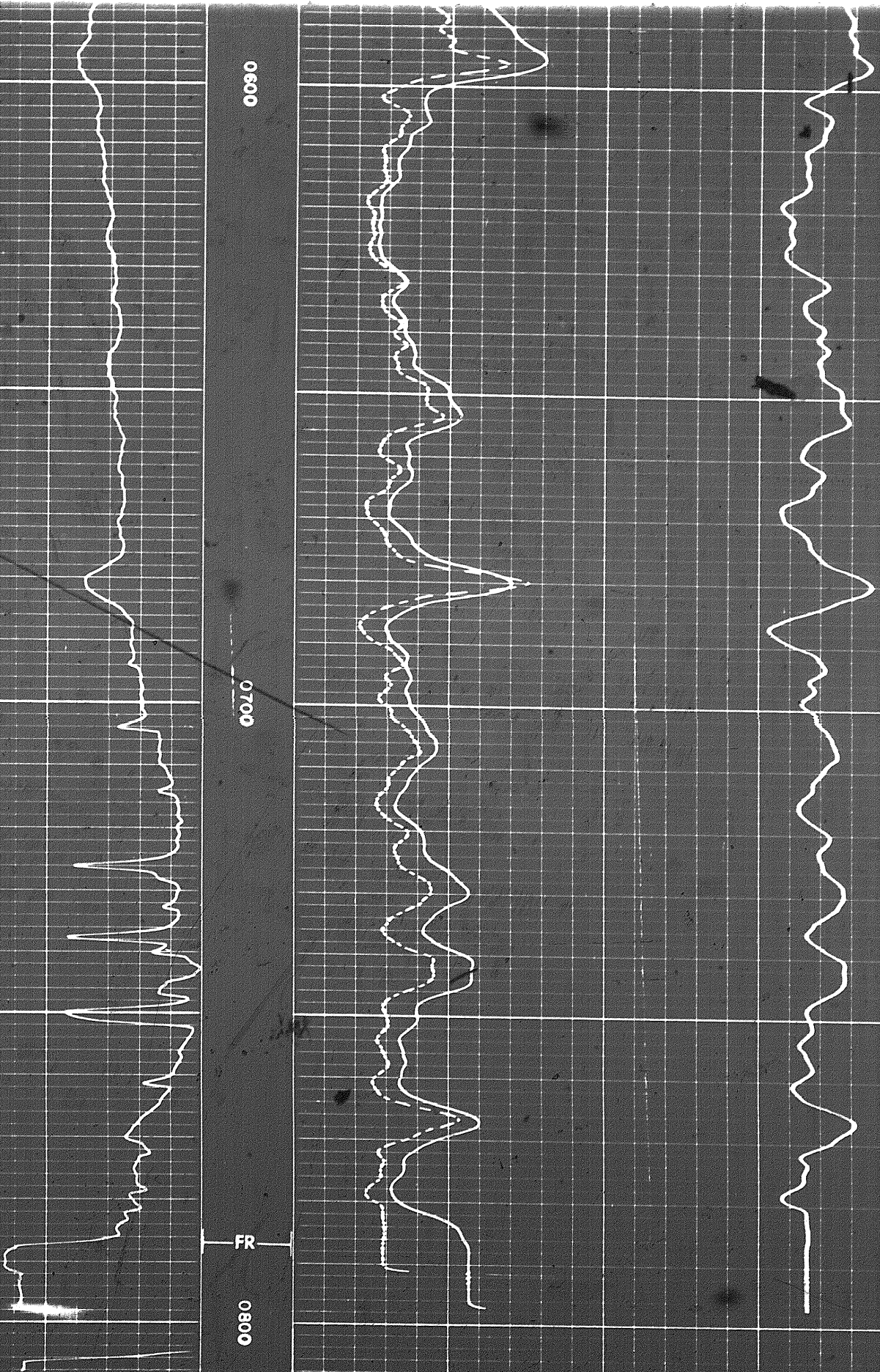
0700

FR

0080

0

1000



0 1000

0 100

INDUCTION

0 1000

0 100

16' NORMAL

RESISTIVITY
ohms m²/m

200 300 200

200 100 0
INDUCTION

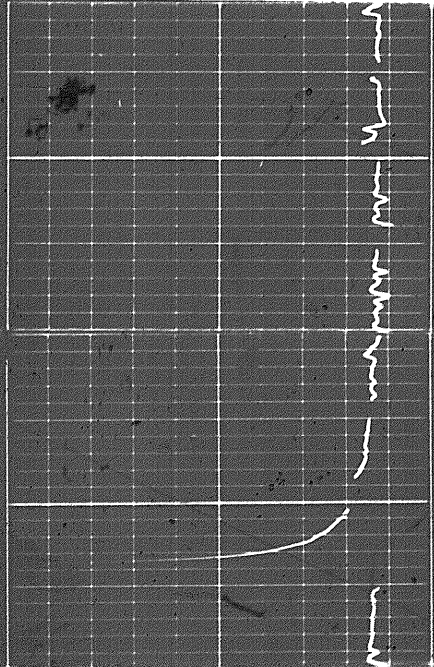
Speed in FPM



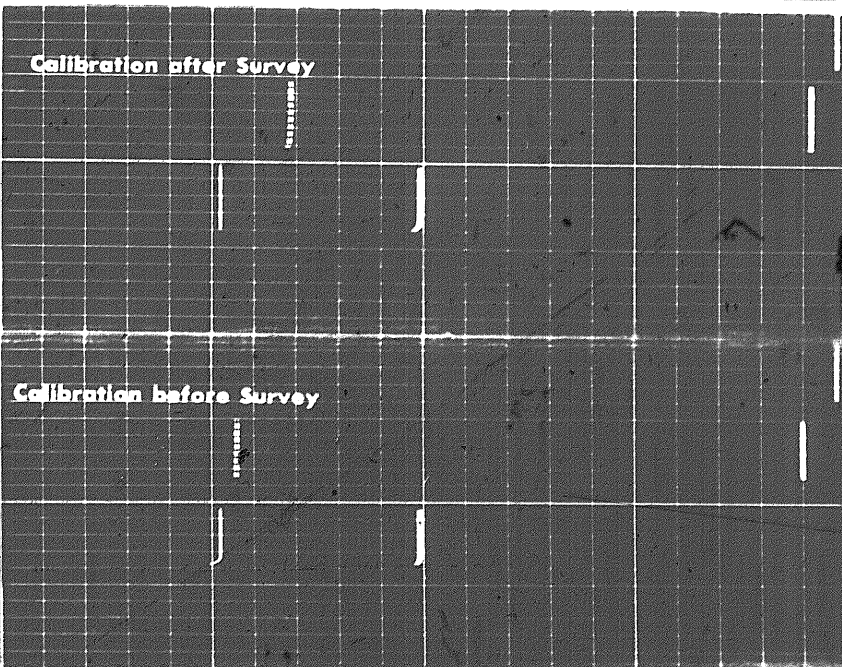
SPONTANEOUS-POTENTIAL
millivolts

DEPTHS

CONDUCTIVITY
millimhos/m = $\frac{1000}{\text{ohms m}^2/\text{m}}$



0400



COMPANY CHEVRON STANDARD LIMITED

WELL SOBC WM E PORCUPINE YT 1-13

FIELD WILDCAT PROVINCE YUKON TERRITORIES

