

SCHLUMBERGER

MICROLOG CALIPER
 SCHLUMBERGER OF CANADA Calgary Alberta

PROVINCE YUKON TERRITORIES
 FIELD WILDCAT
 WELL SOBIC WM E PORCUPINE YT
 1-13
 COMPANY CHEVRON STANDARD LIMITED

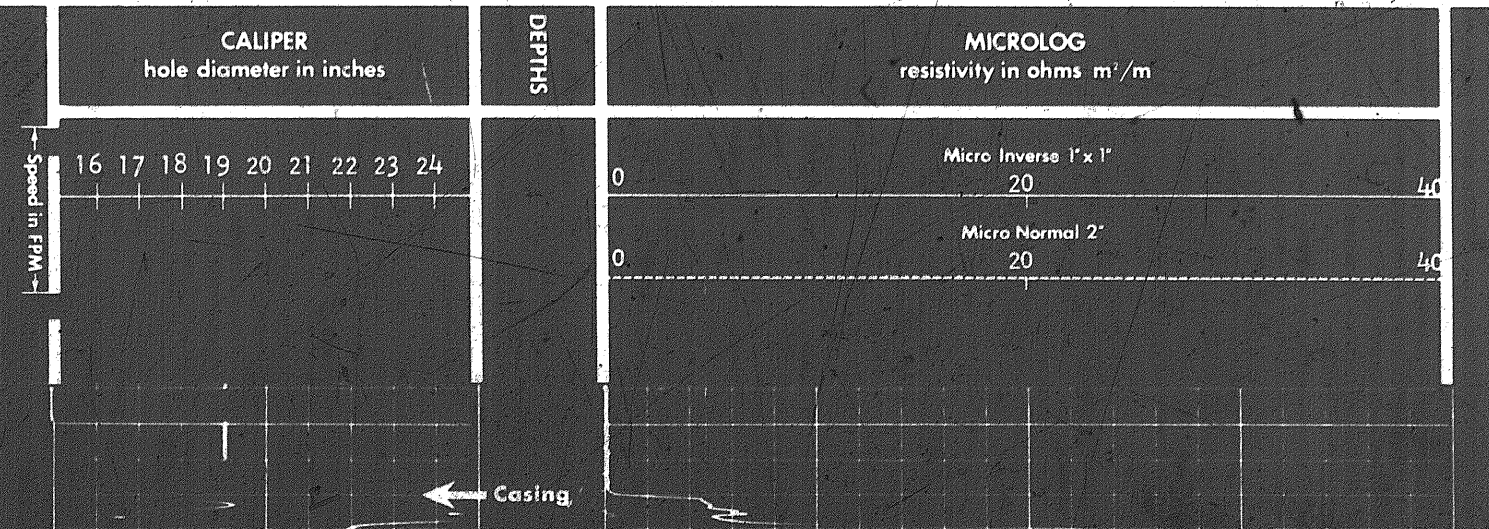
COMPANY CHEVRON STANDARD LIMITED
 WELL SOBIC WM E PORCUPINE YT
 1-13
 FIELD WILDCAT
 PROVINCE YUKON TERRITORIES
 LOCATION 66° 02' 35" N LAT
 137° 46' 58" W LONG
 Permanent Datum GL Elev. 1645
 Log Measured From KB 21 R. Above Perm. Datum
 Other Services: SLC-GR, SNP-GR, PDC-GR, IES, DIL, CST, SRS
 ELEV: KB 1666
 GL 1645
 CBF

Date	15 FEB 71
Run No.	ONE
First Reading	786
Last Reading	70
Feet Measured	716
Depth Reached	788
Bottom Depth	804
Csg. SOC	70
Csg. Driller	65
Mud Nature	GEL
Dens. Visc.	8.8 50
Mud pH	-
Water Loss	-
Res.	RHKS
• BHT	•
• Red	6.61 @ 47'
• Blue	5.28 @ 47'
• Black	17 17 21'
Mud Log:	
Run	5.5
Level	LOWER
Depth	700
Oper. Rig Time	2 HRS
Truck No.	OSU-C-108 REM
Recorded By	NICKERSON
Witness	HANSEN & GIETZ

31 MAY 1971 CAL JP

REMARKS
 Drilling Stopped 1800 / 14th : Circulation Stopped 2000 / 14th : Tool on Bottom 0500 / 14th : 1st Run Service Order # 5692
 B.H.T. 90'

MCP # A 13 MUD SAMPLES: Rm #1 = 6.18 @ 51°F - 1900 / 14th
 PMS # A X3 Rm #2 = 6.17 @ 51°F - 1920 / 14th
 Pad Type - Hydraulic Rm #3 = 6.22 @ 50°F - 1940 / 14th



Casing

0100

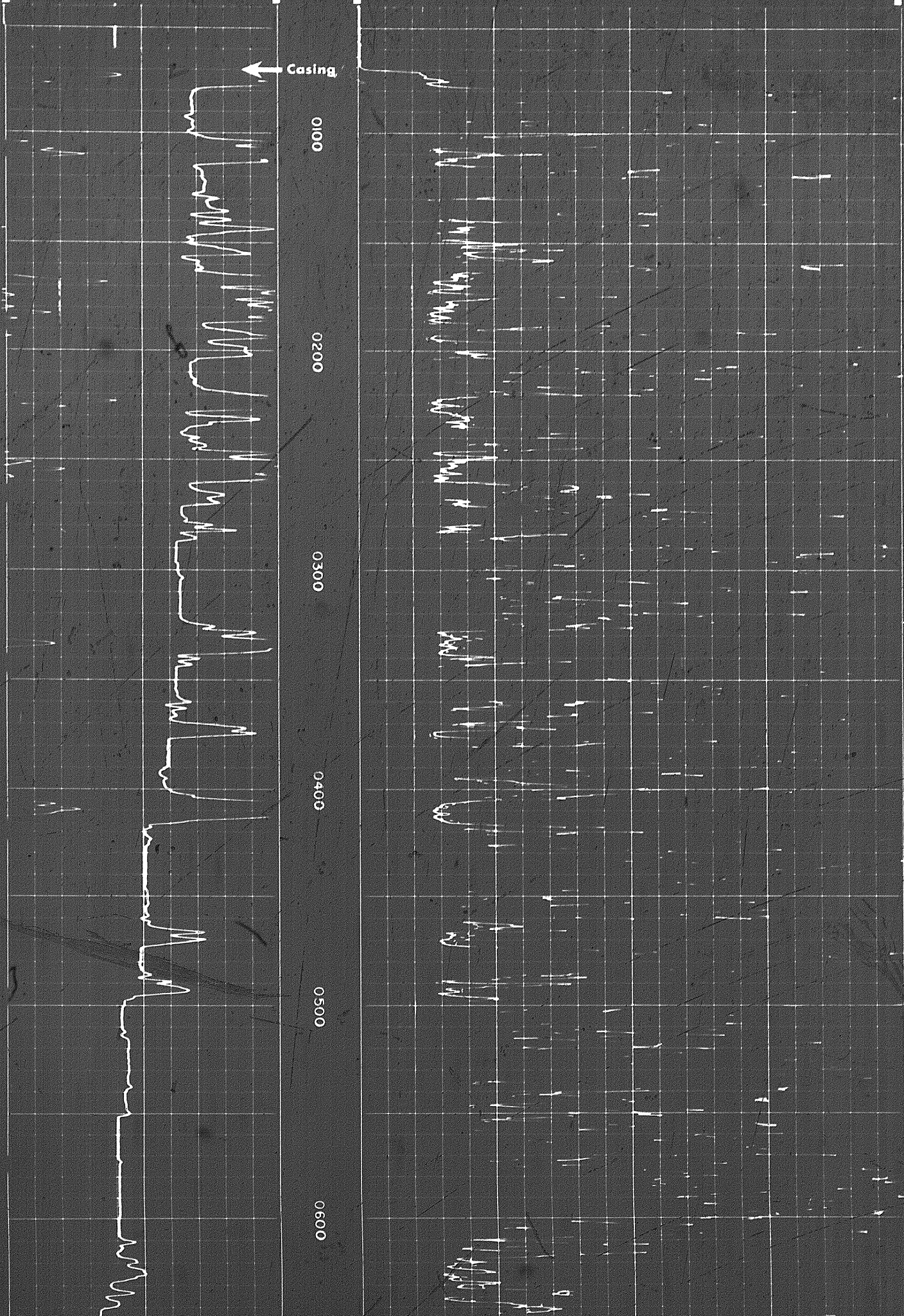
0200

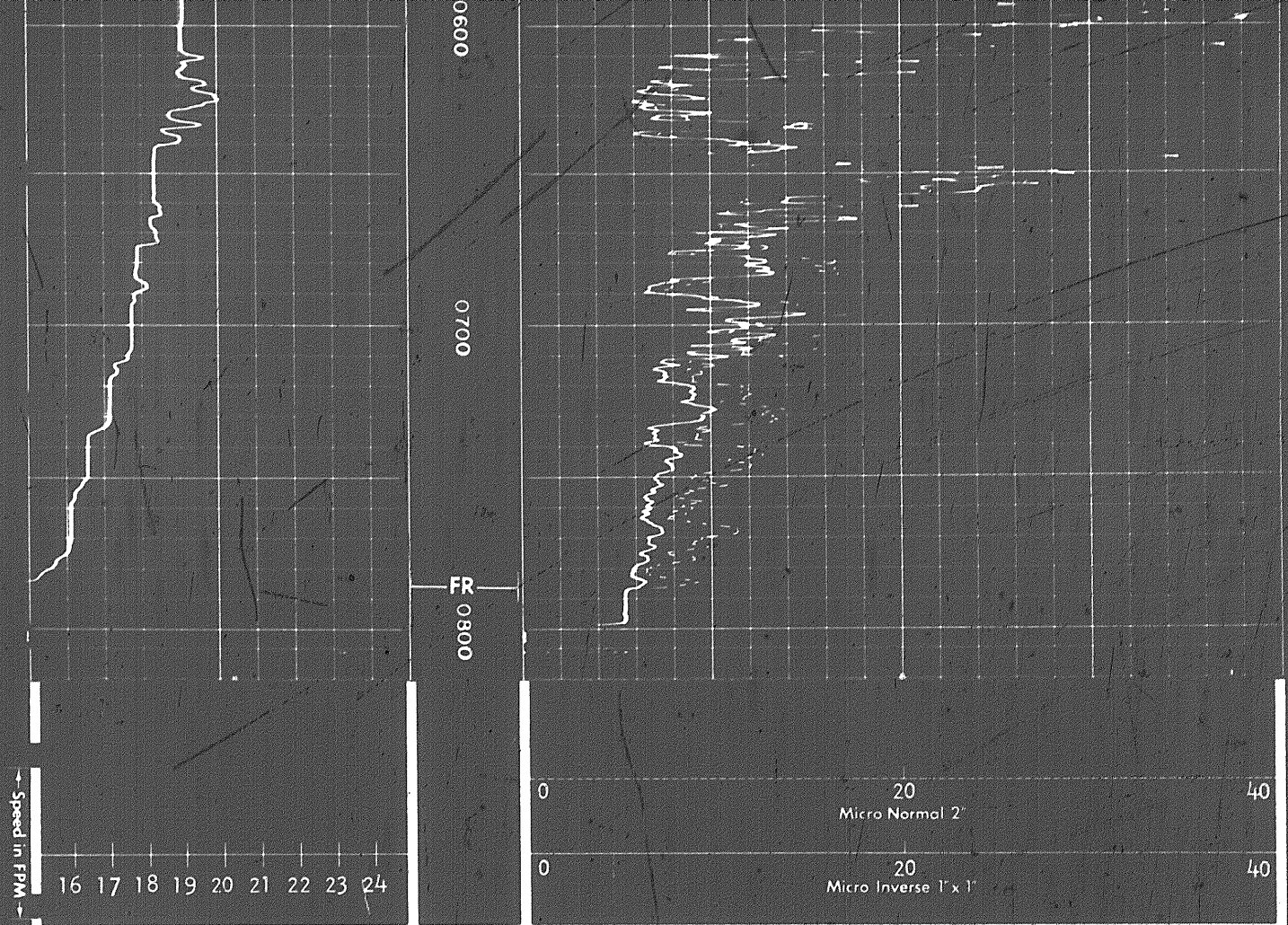
0300

0400

0500

0600

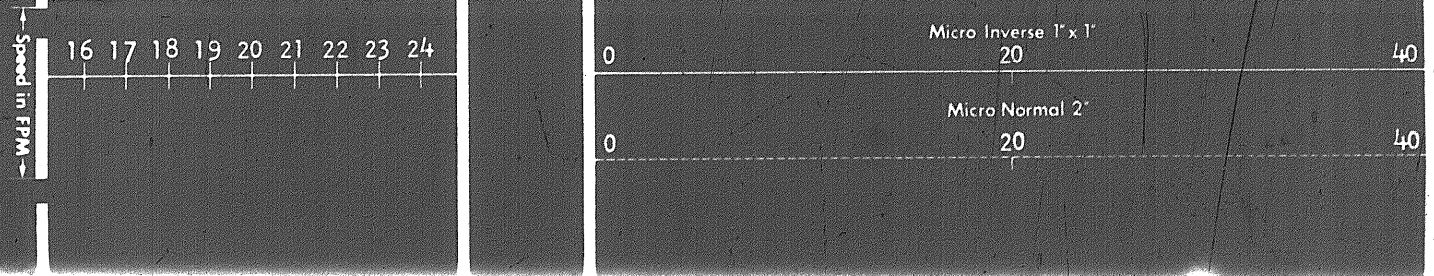




CALIPER hole diameter in inches	DEPTH	MICROLOG resistivity in ohms m /m
------------------------------------	-------	--------------------------------------

DETAIL LOG 5" = 100'

CALIPER hole diameter in inches	DEPTH	MICROLOG resistivity in ohms m /m
------------------------------------	-------	--------------------------------------



CALIPER hole diameter in inches	DEPTH	MICROLOG resistivity in ohms m ² /m
------------------------------------	-------	---

DETAIL LOG 5" = 100'

CALIPER hole diameter in inches	DEPTH	MICROLOG resistivity in ohms m ² /m
------------------------------------	-------	---

DETAIL LOG 5' = 100'

CALIPER
hole diameter in inches

DEPTHS

MICROLOG
resistivity in ohms m²/m

Speed in FPM

16 17 18 19 20 21 22 23 24

0

Micro Inverse 1' x 1'

40

0

Micro Normal 2'

20

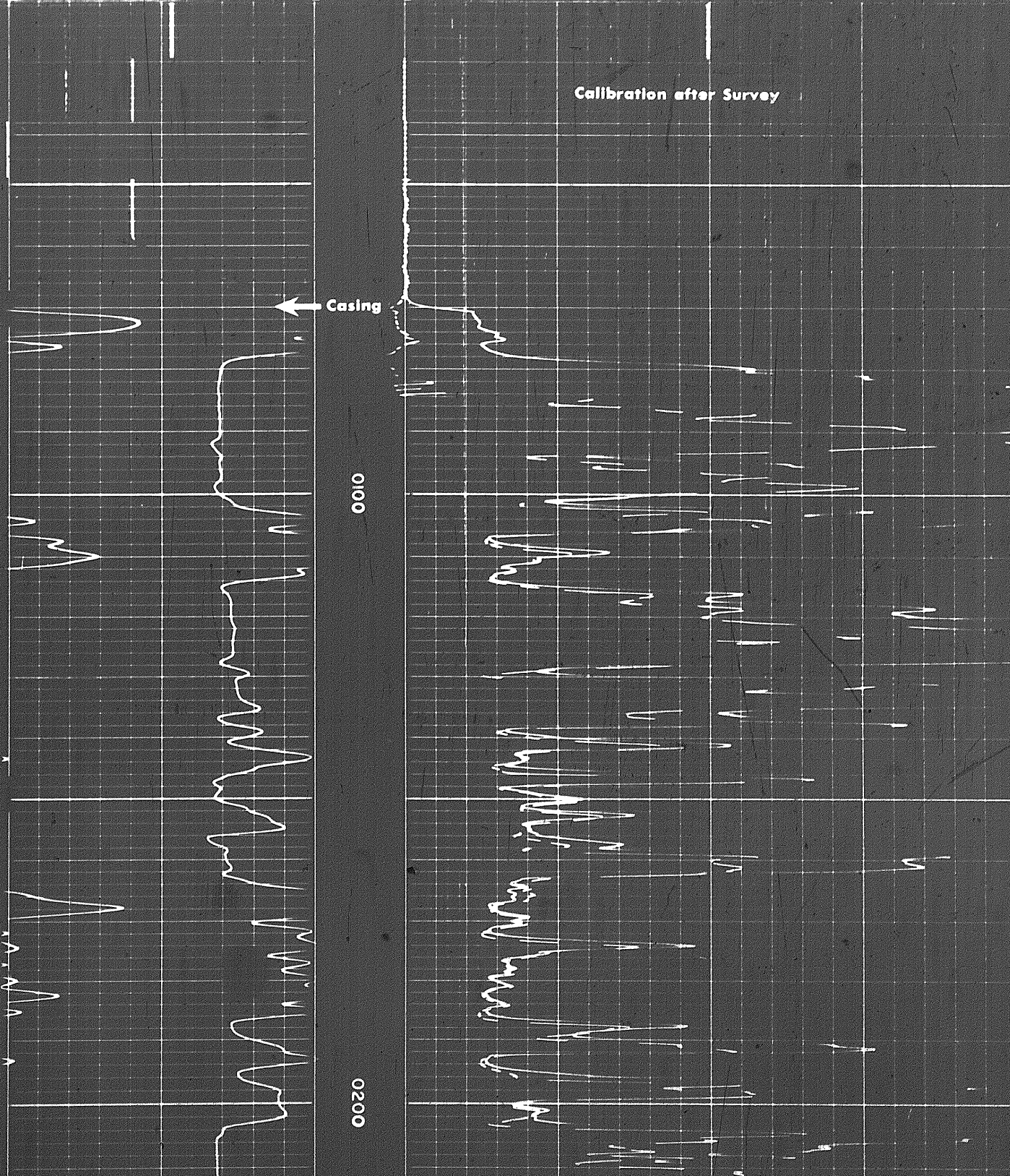
40

Calibration after Survey

Casing

0100

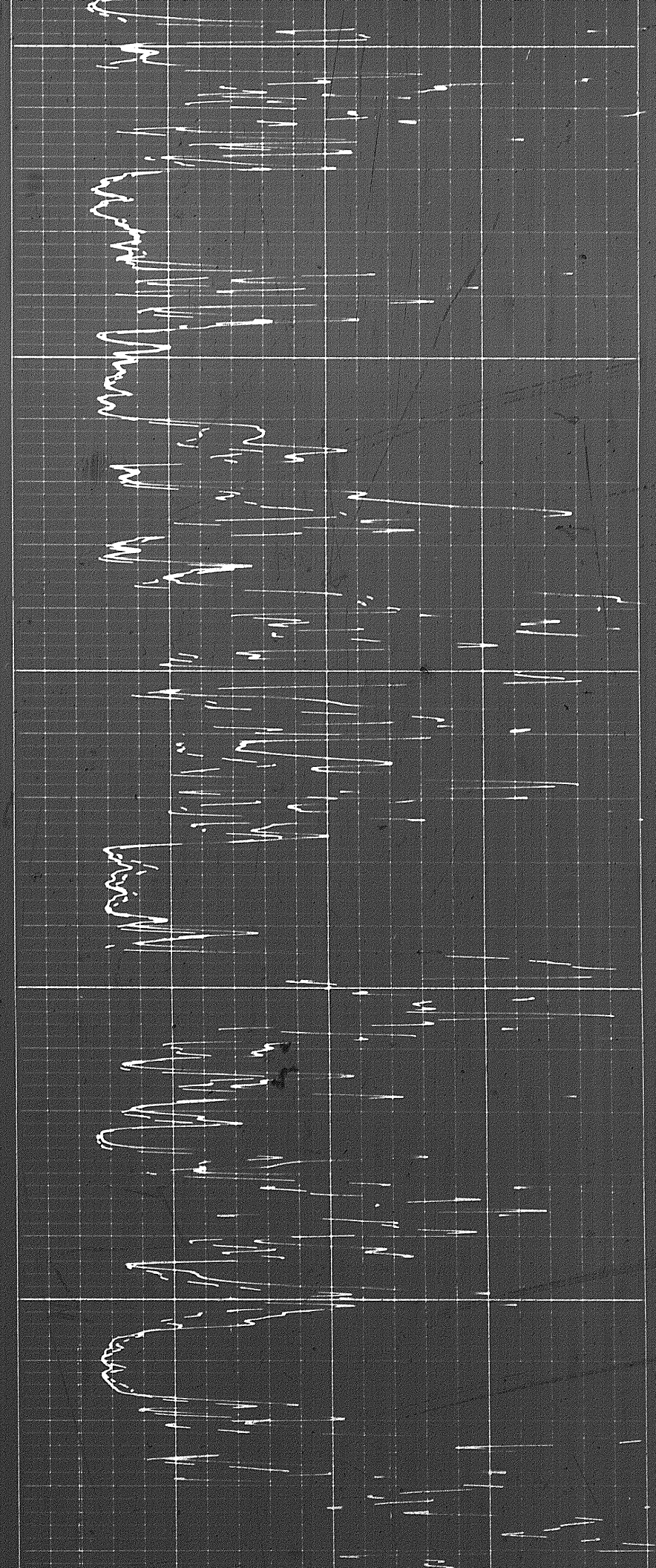
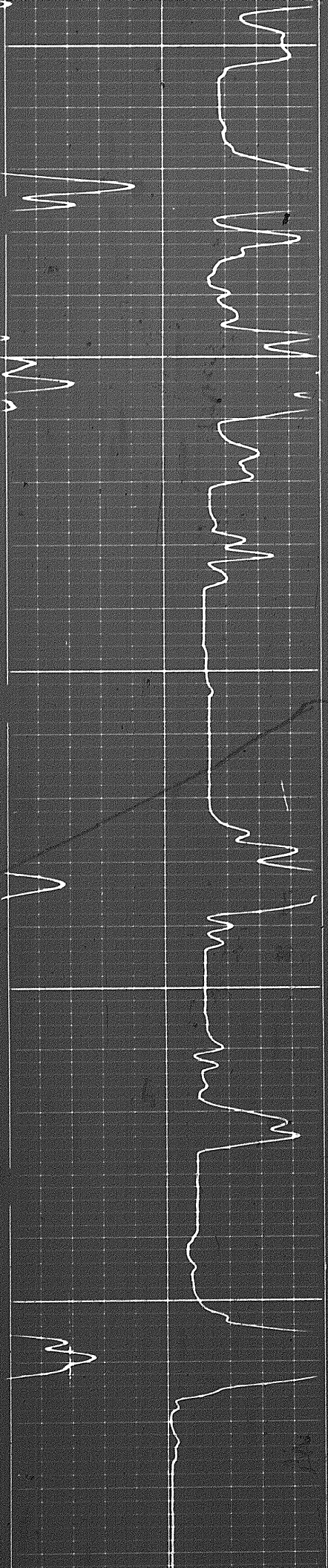
0200

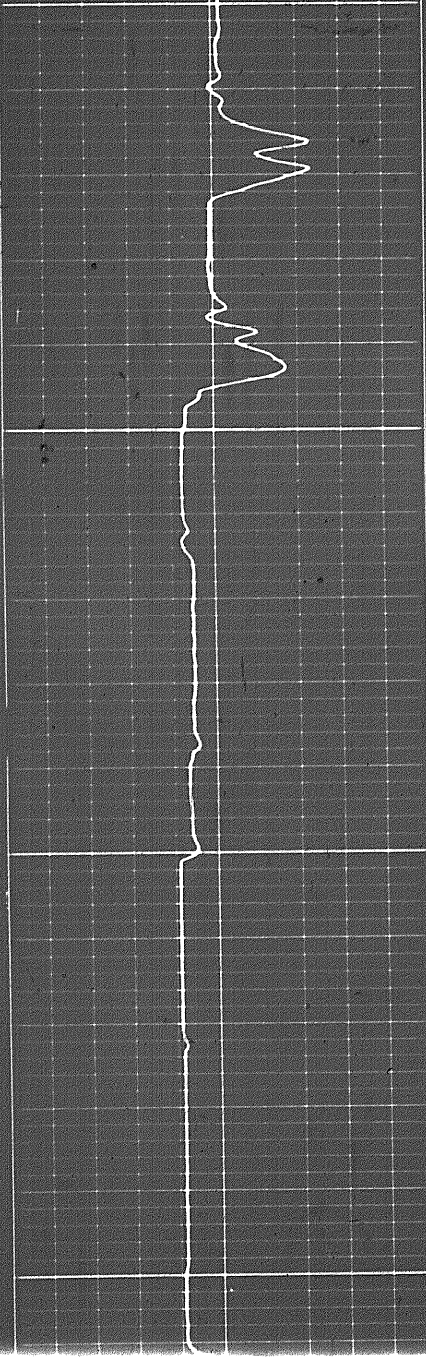


0200

0300

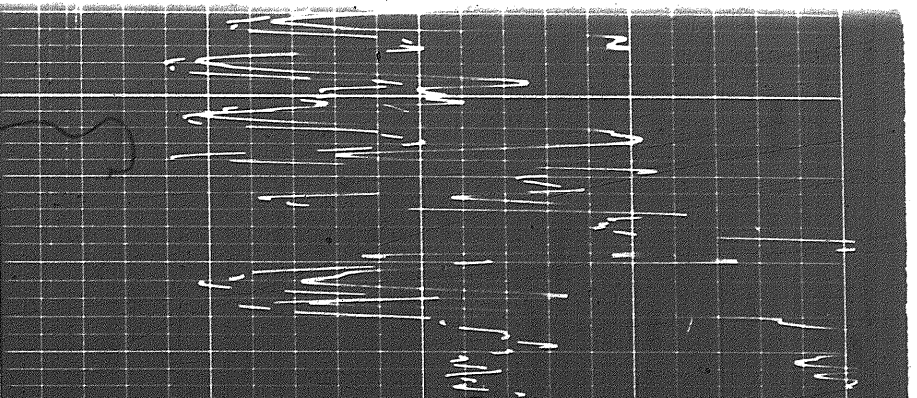
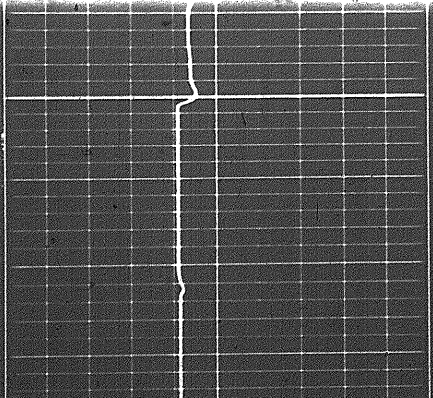
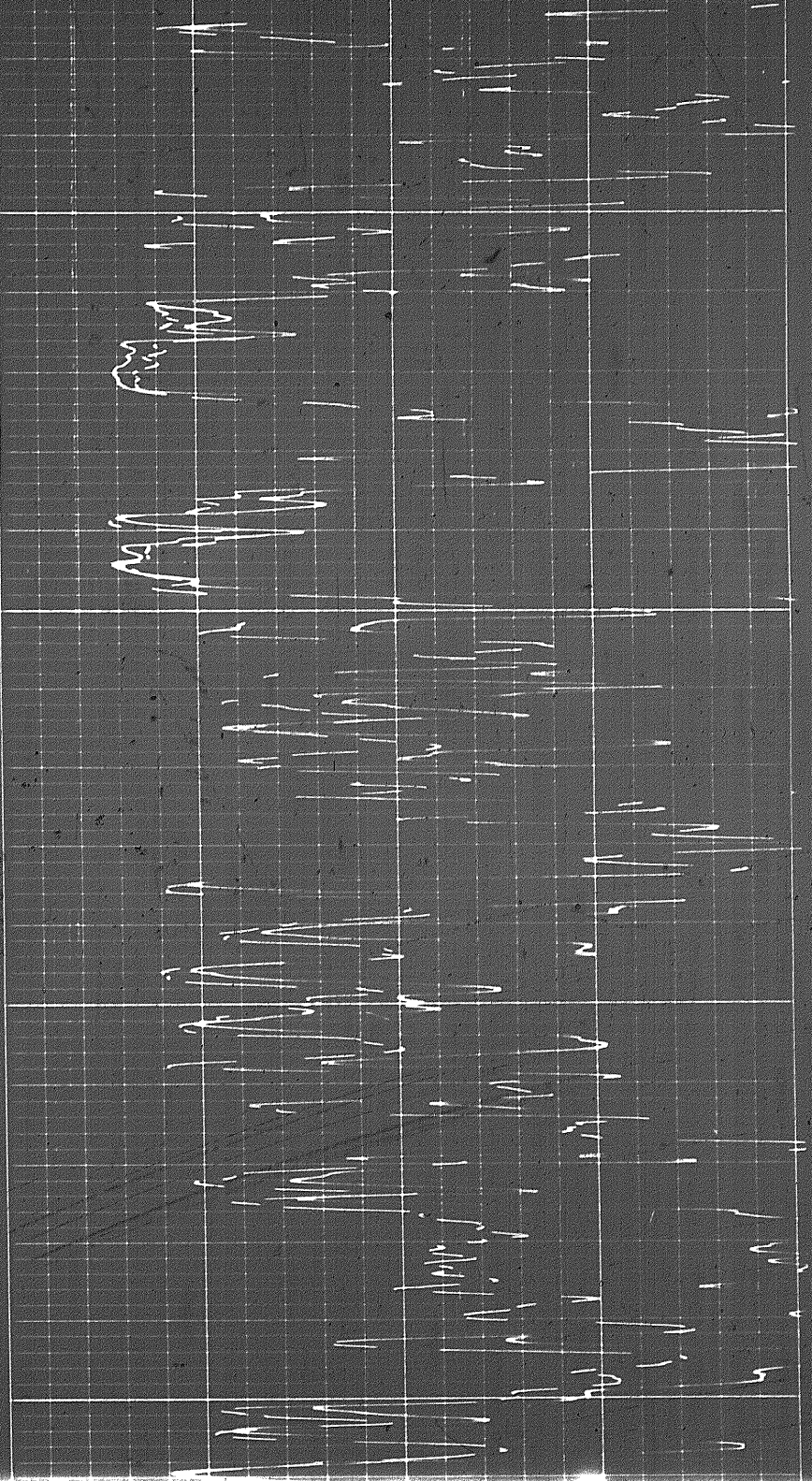
0400

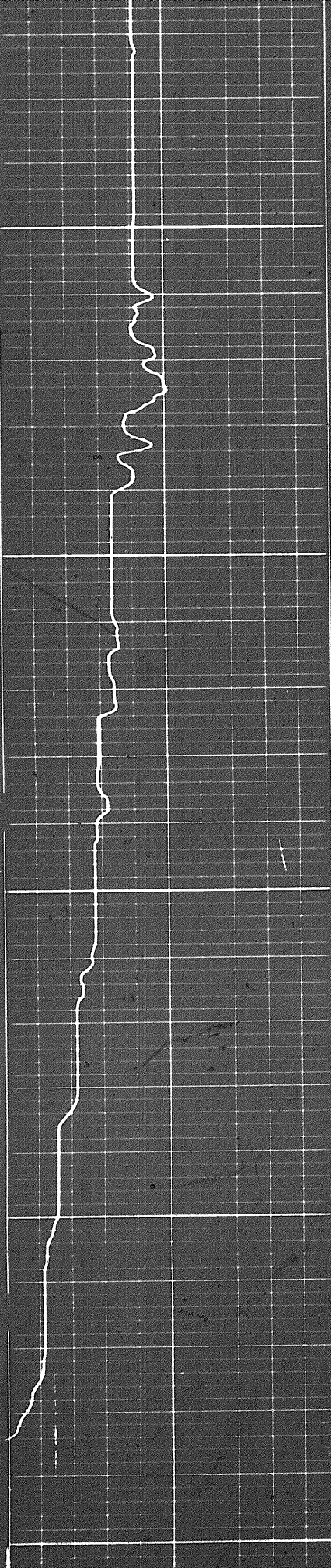




0500

0600



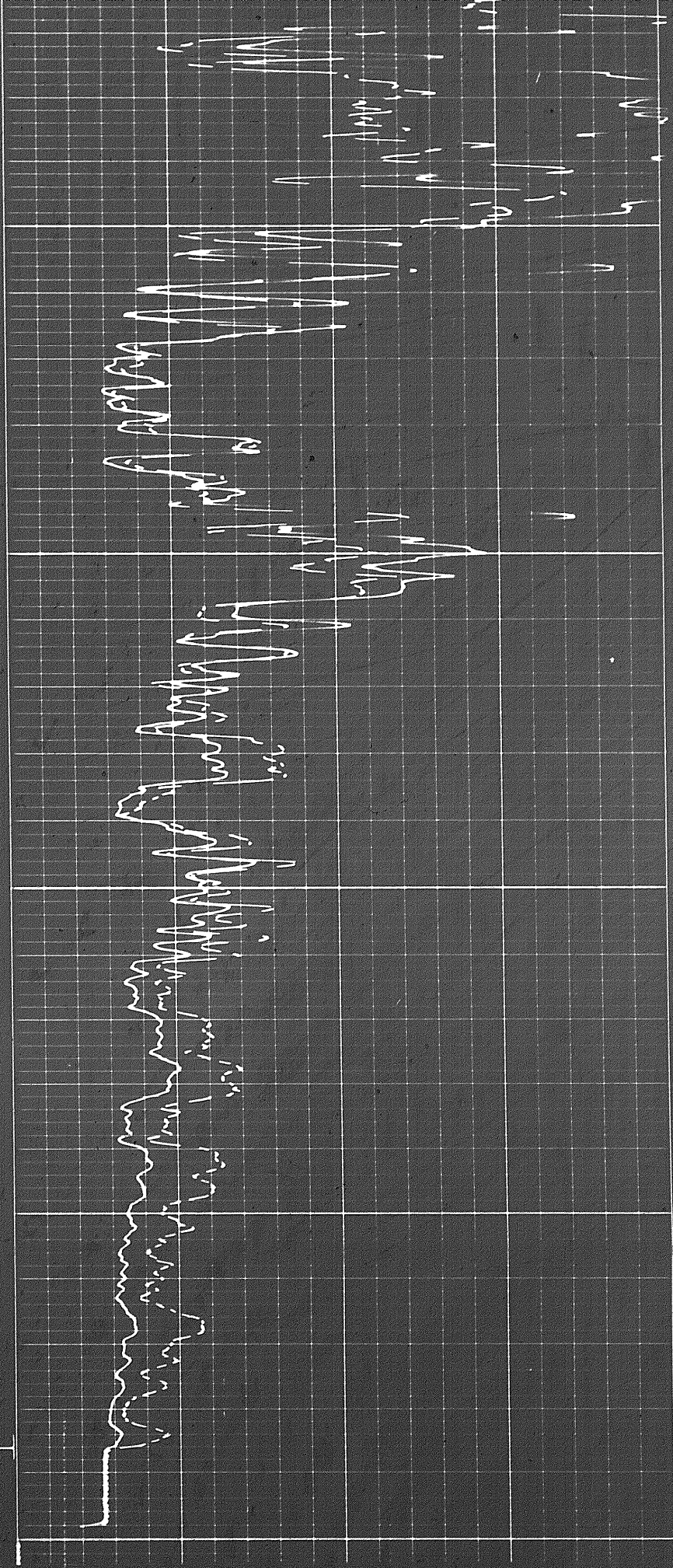


0600

0700

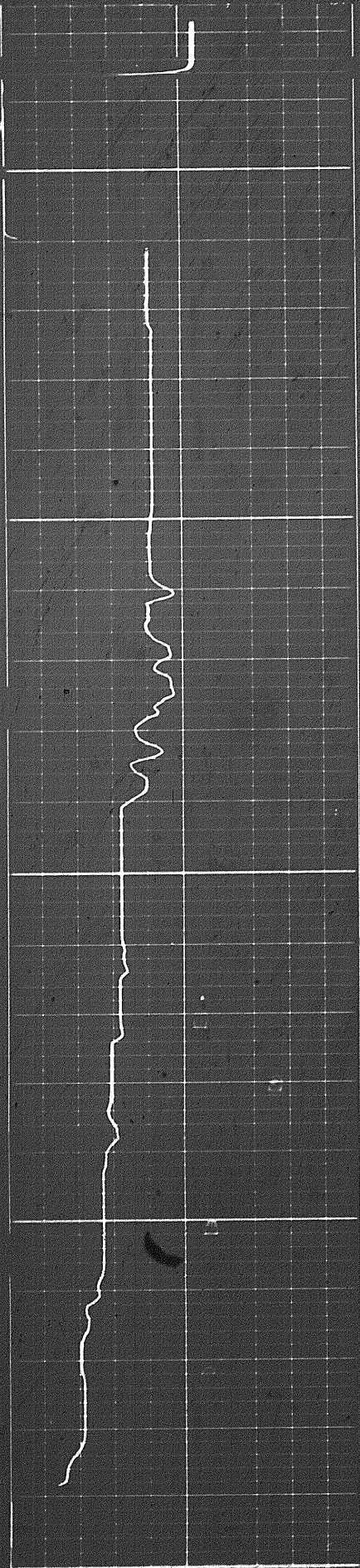
FR

0800



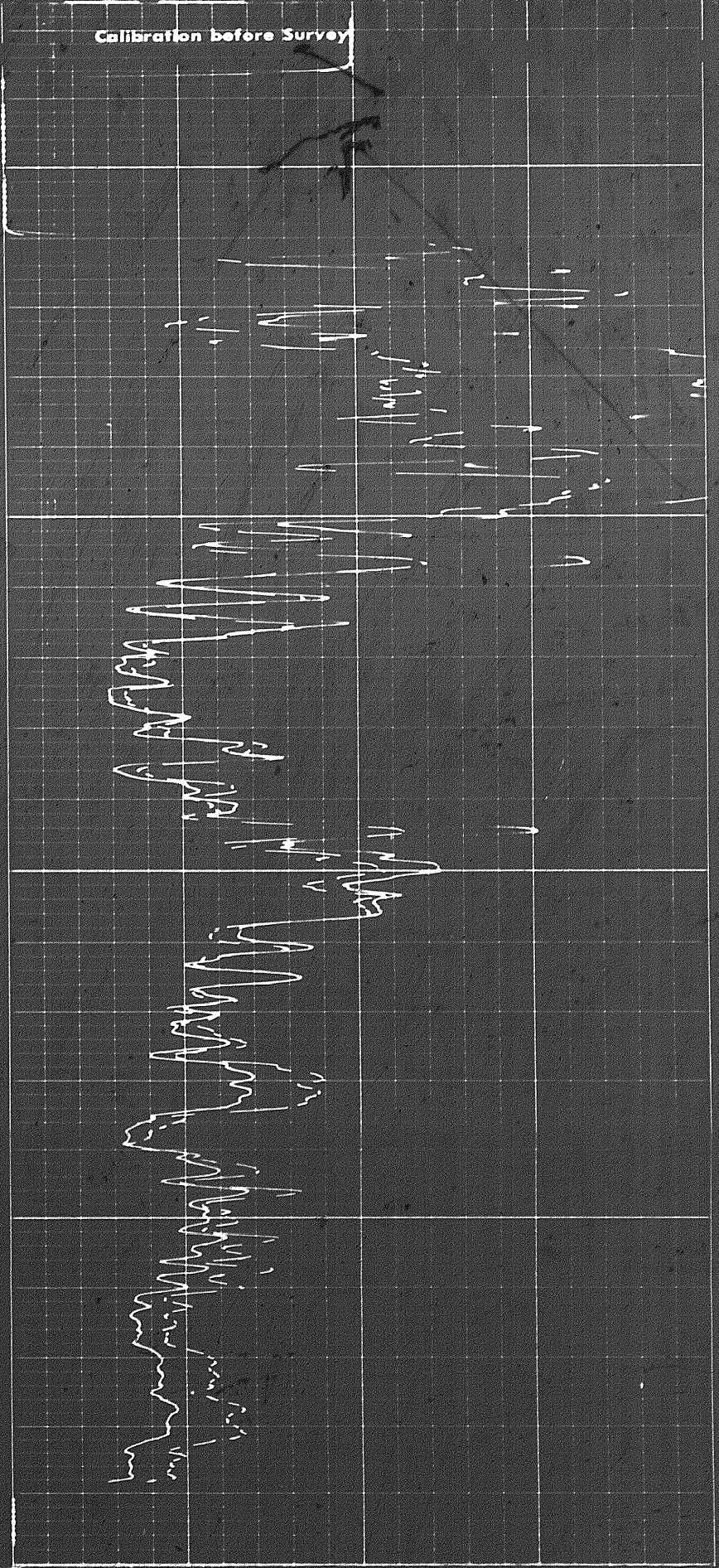
REPEAT SECTION

Calibration before Survey



0600

0700



0

20

40

sp

Speed in FPM

16 17 18 19 20 21 22 23 24

0

20
Micro Normal 2'

40

0

20
Micro Inverse 1' x 1'

40

CALIPER
hole diameter in inches

DEPTHS

MICROLOG
resistivity in ohms m /m

MUD LOG WITH SONDE COLLAPSED

Apparent Rm 5.5 Ω m /m
Depth 700 ft.

RESISTIVITY
ohms m /m

0

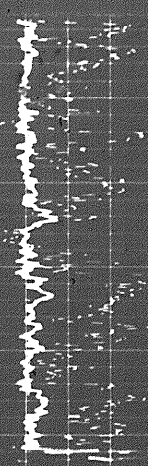
5

10

0700

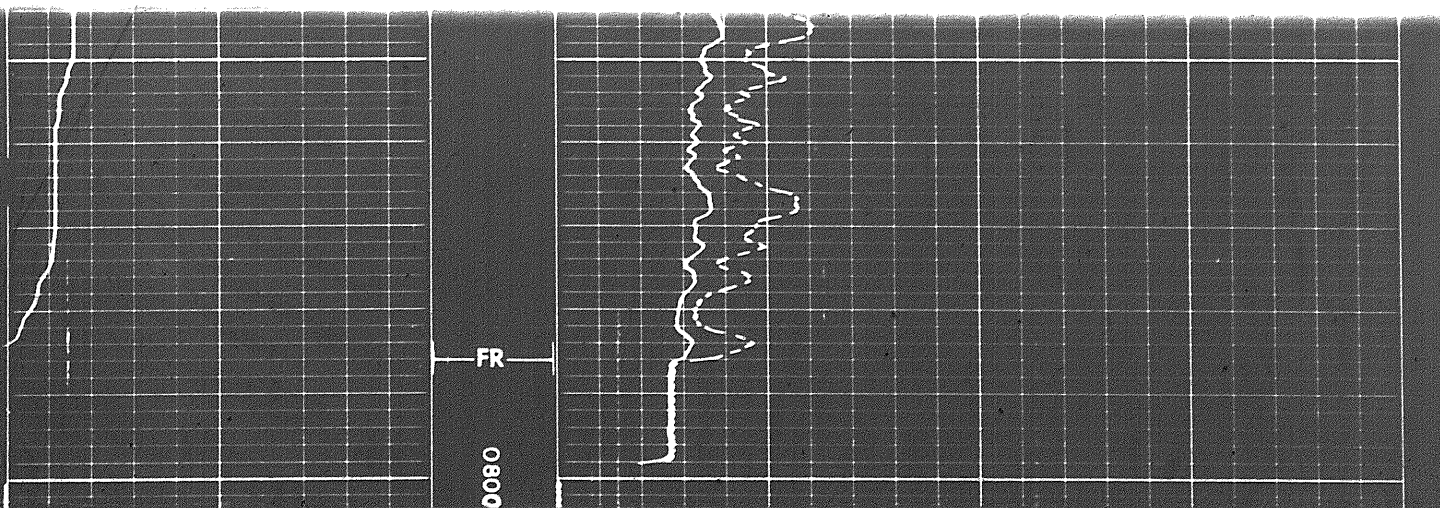
0600

0500



FR

0080

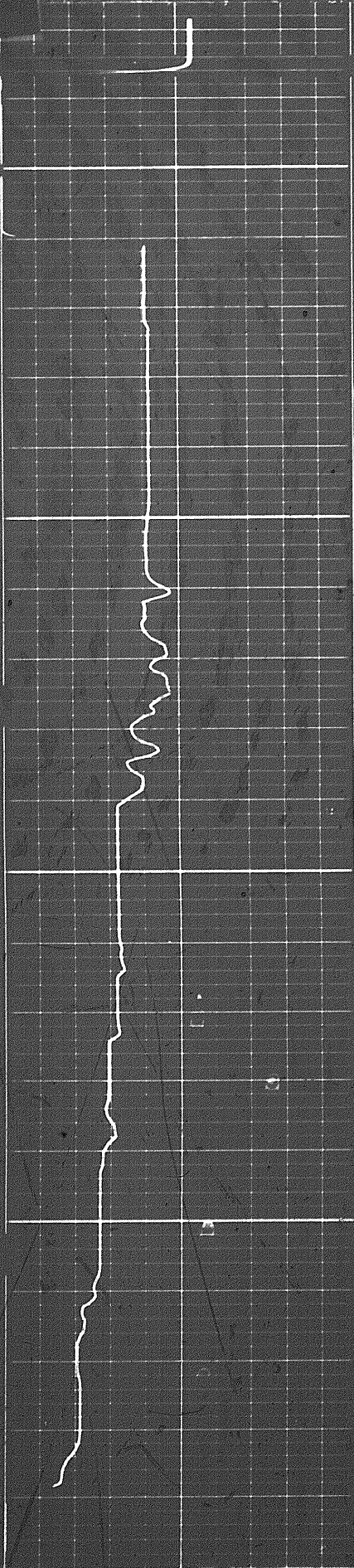


1707

74

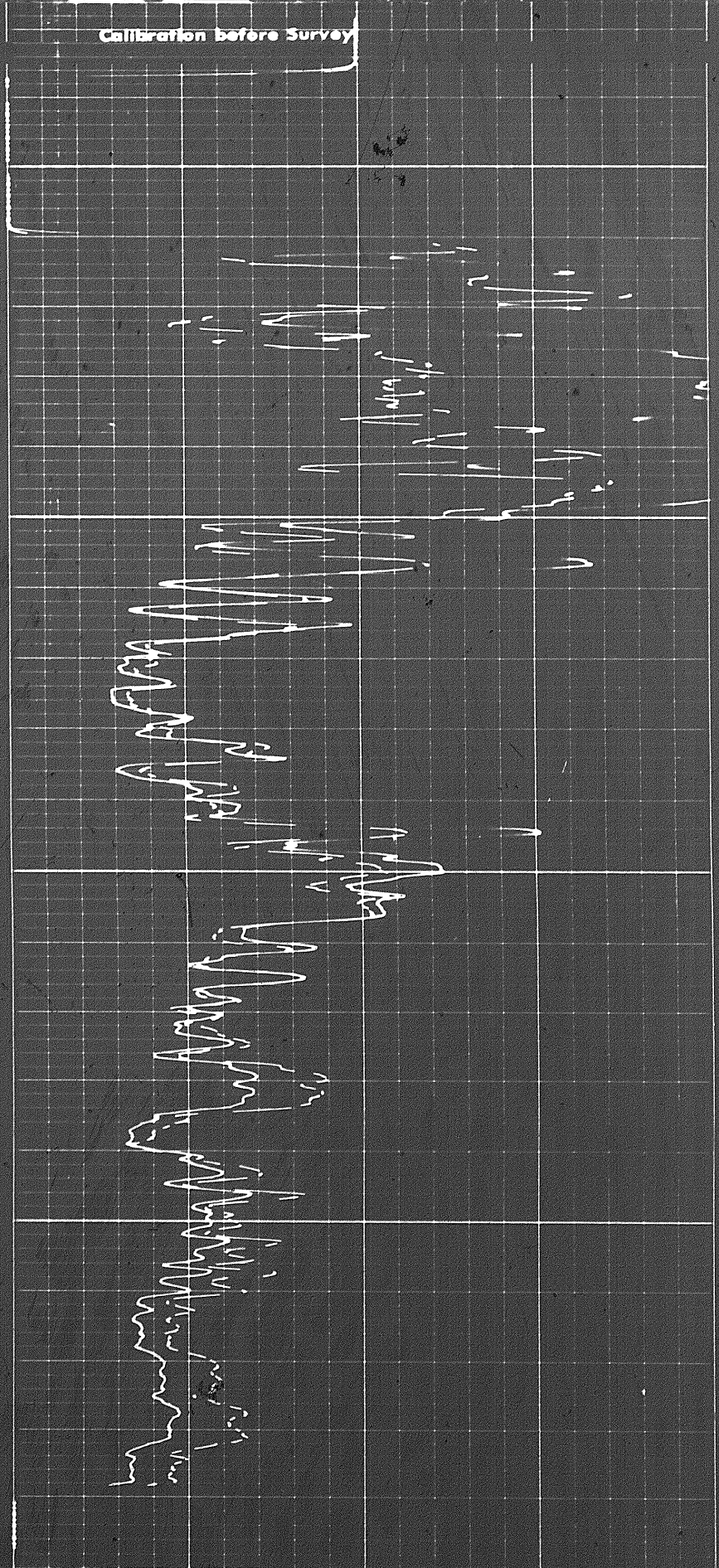
REPEAT SECTION

Calibration before Survey



0090

0700



5

0

20

5

Speed in Ft/m

16 17 18 19 20 21 22 23 24

0 20 40
Micro Normal 2"
0 20 40
Micro Inverse 1' x 1'

CALIPER
hole diameter in inches

DEPTHS

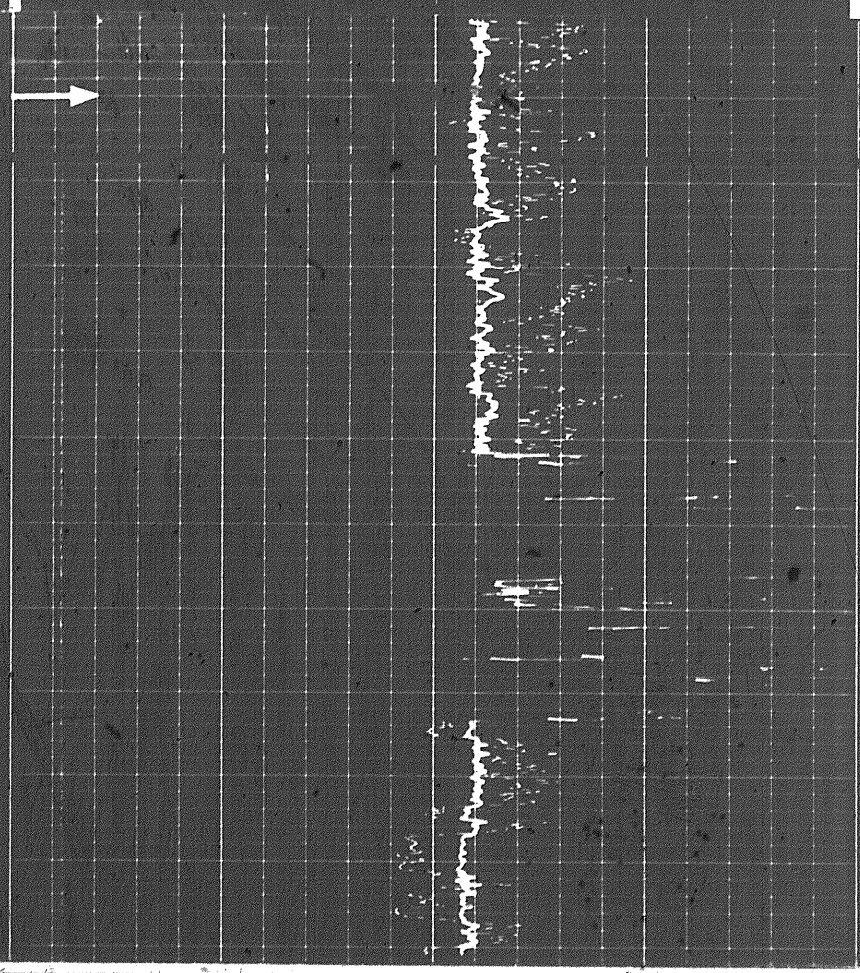
MICROLOG
resistivity in ohms m/m

MUD LOG WITH SONDE COLLAPSED

Apparent Rm 5.5 Ω m/m
Depth 700 ft.

RESISTIVITY
ohms m/m
0 5 10

0700
0600
0500
0400
0300
0200



COMPANY CHEVRON STANDARD LIMITED

WELL SOBC WM E PORCUPINE YT 1-13

FIELD WILDCAT PROVINCE YUKON TERRITORIES

