

SIDEWALL  
NEUTRON POROSITY LOG

PROVINCE YUKON TERRITORIES  
 FIELD WILDCAT  
 WELL SOBC WM E PORCUPINE YT  
 1-13  
 COMPANY CHEVRON STANDARD LIMITED

COMPANY CHEVRON STANDARD LIMITED  
 WELL SOBC WM E PORCUPINE YT  
 1-13  
 FIELD WILDCAT  
 PROVINCE YUKON TERRITORIES  
 LOCATION 66° 02' 35" N LAT  
 137° 46' 58" W LONG  
 Permanent Datum: GL Elev. 1645  
 Log Measured from: KB 21 Ft. Above Perm. Datum  
 Other Services: SLC-GR  
 FDC-GR, IES, ML, DIL  
 CST, SRS  
 ELEV: KB 1666  
 GL 1645  
 CMF

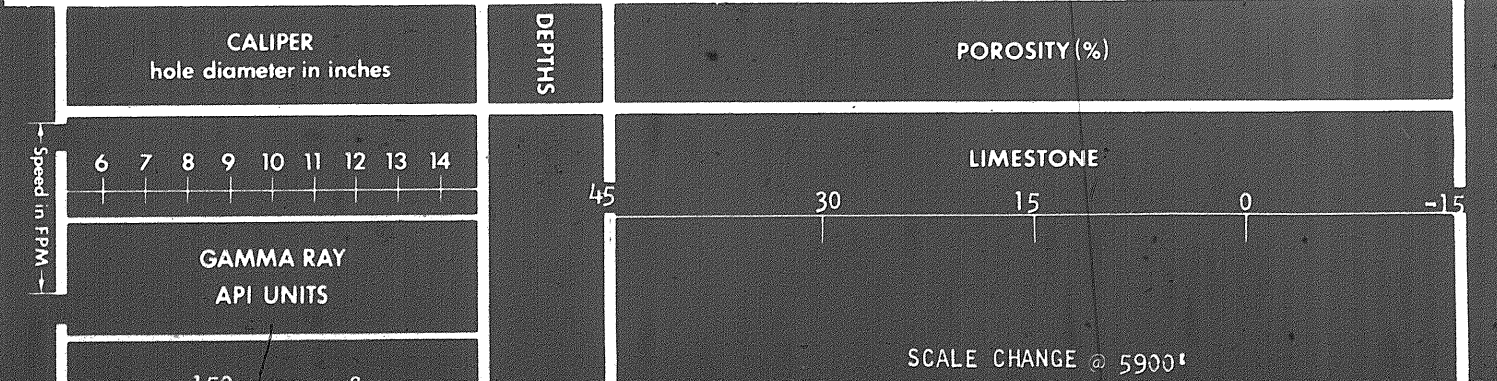
Date	20 APR 71
Run No.	ONE
First Reading	8001
Last Reading	RHTS
Feet Measured	251
Depth Reached	8002
Bottom Driller	8004
Cop. SOC	796
Cop. Driller	799
Mud Measure	GEL CHEM
Date	10.0 170
Wind	9.5
Water Loss	7.0
• Rec.	3.30 • 65
• Rec.	2.82 • 64
• BHT	1.06 • 152
• Rec.	3.40 • 64
• Open-Cl	
Bl. Size	8 3/4"
Equipment Type	PGT-E
Op. Rig Firm	4 HRS
Tool No.	OSU-C-108 REM
Recorded By	CHADDOCK
Witness	POLLARD

31 MAY 1971 CAL JP  
 REMARKS 1st Run Service Order #  
 Drilling Stopped 0730 / 19th : Circulation Stopped 1500 / 19th : Tool on Bottom 0500 / 20th : B.H.T. 152

Panel No. D 265 FDC & SNP OVERLAY ON BOTTOM OF MAIN LOG  
 Cartridge No. A 156  
 Sonde No. E 284  
 Detector No. A 231  
 SET-116

CALIBRATION: Gamma Ray				Neutron Environmental Cal.	
Background CPS	Test Source CPS	Galv. Deflection	Sens. Tap	Drawer In - CPS	Drawer Out - CPS
40	260	10.0	PGP-D	Before 410	245
Panel Settings: Function Former Temp. Comp. Setting T.C.				After 410	245
LIMESTONE LIQUID 150 2 from 8001 to 5950				Neutron Auxiliary Cal. - CPS	
				Before	
				After	

This interpretation represents our best judgment. Nevertheless since all interpretations are opinions based solely on inferences from electrical or other measurements, we cannot and do not guarantee the accuracy or correctness of any interpretation and shall not be liable or responsible for any loss, cost, damages, or expenses that may be incurred or sustained resulting from this or any other interpretation.



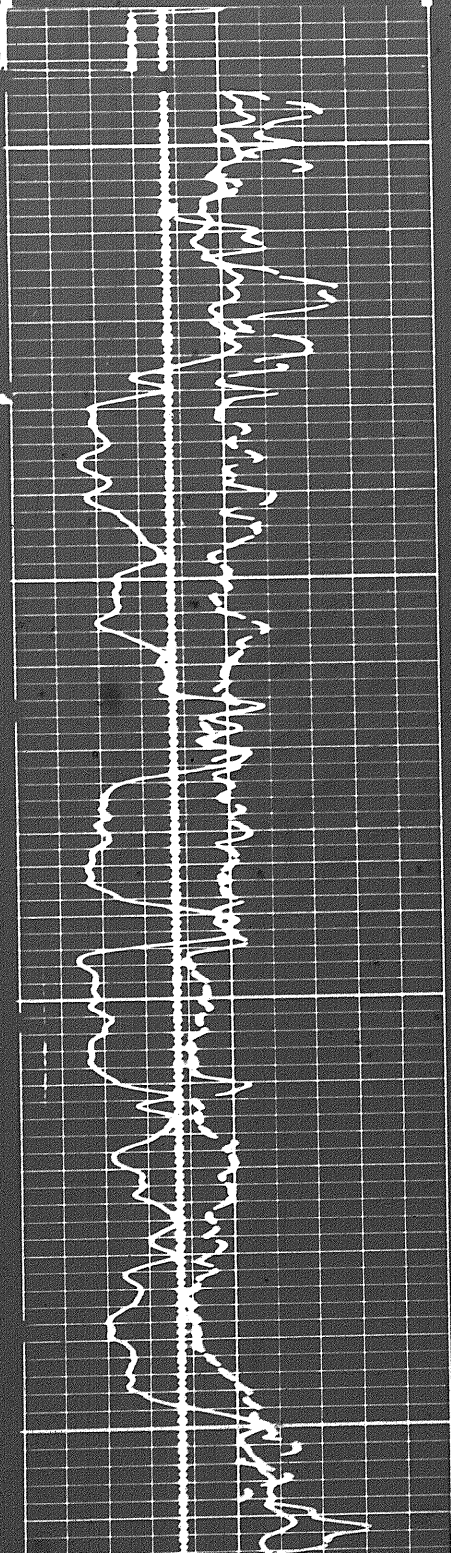
Speed in RPM →

6 7 8 9 10 11 12 13 14

GAMMA RAY  
API UNITS

Sens.	150	T.C.	2
Zero	0	div. to left	150
	150		300

19



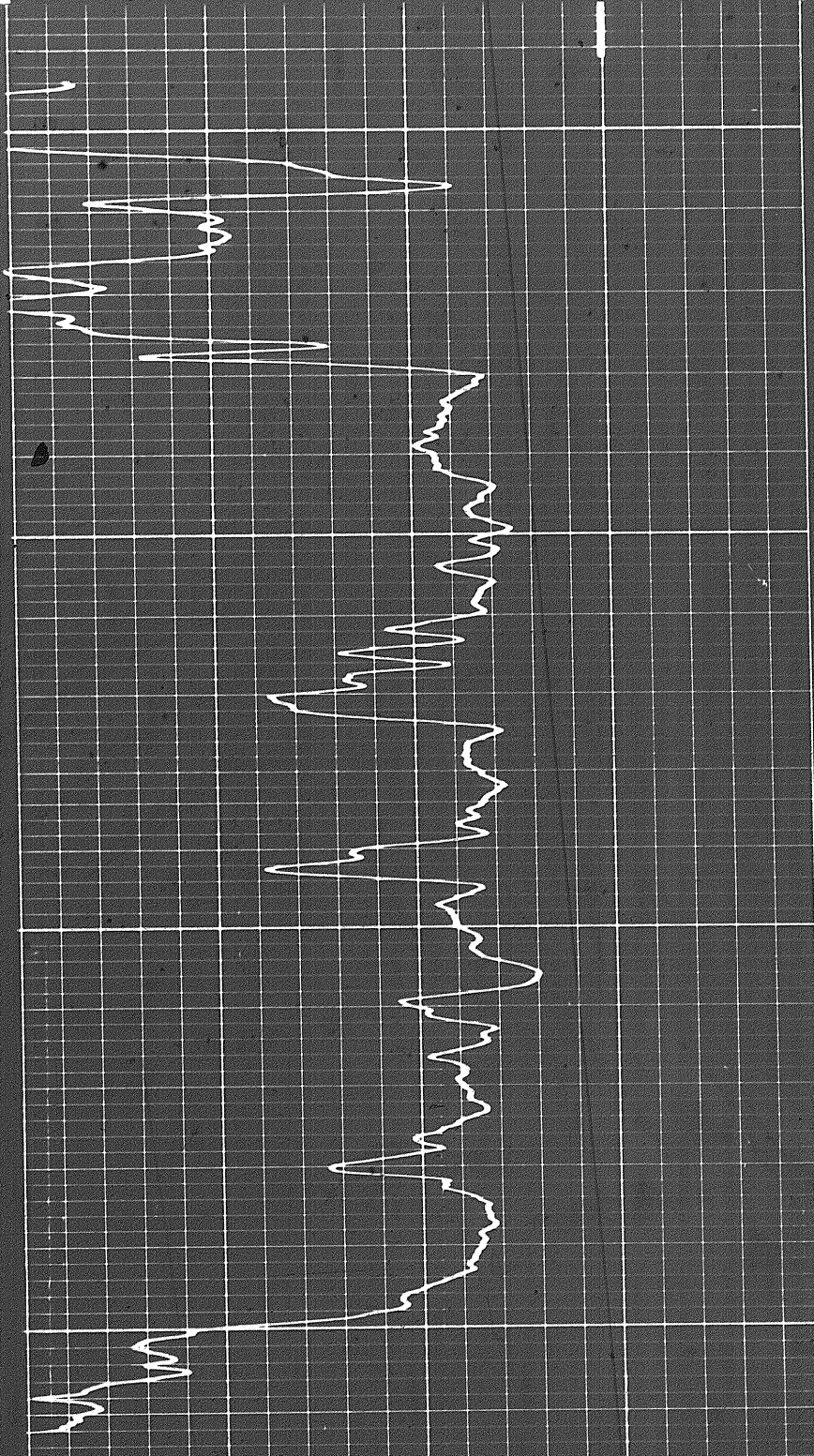
3600

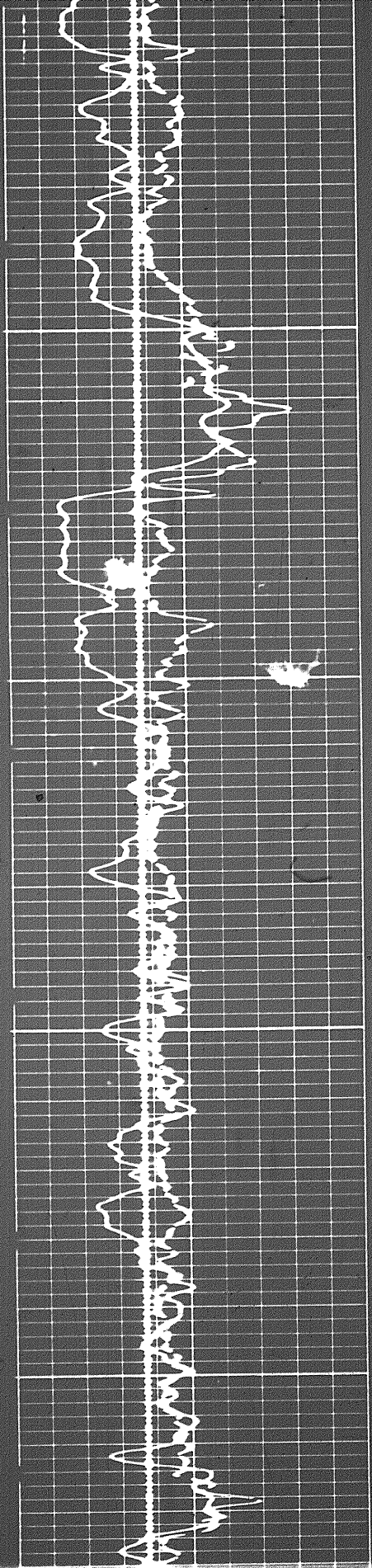
3700

LIMESTONE

45 30 15 0 -15

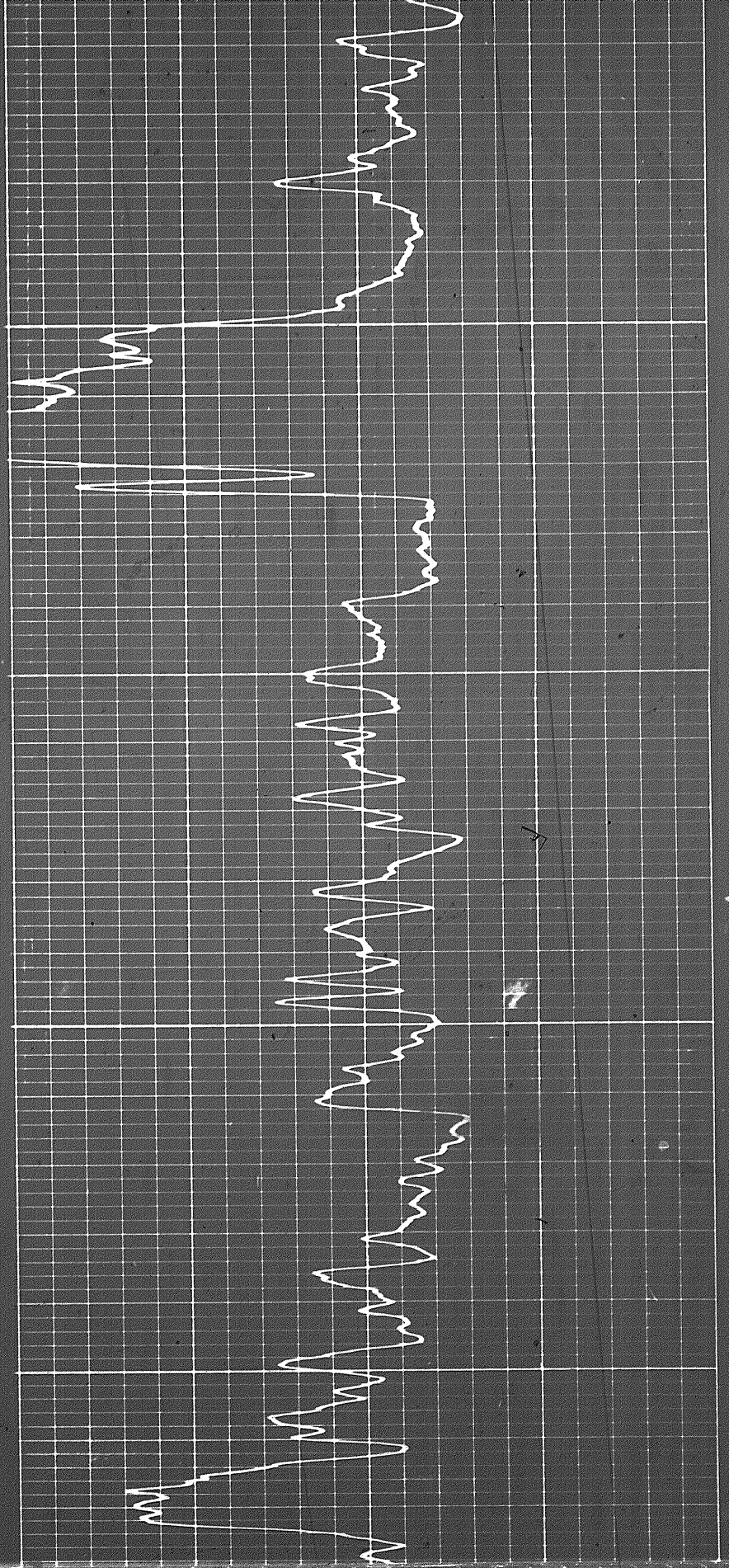
SCALE CHANGE @ 5900'



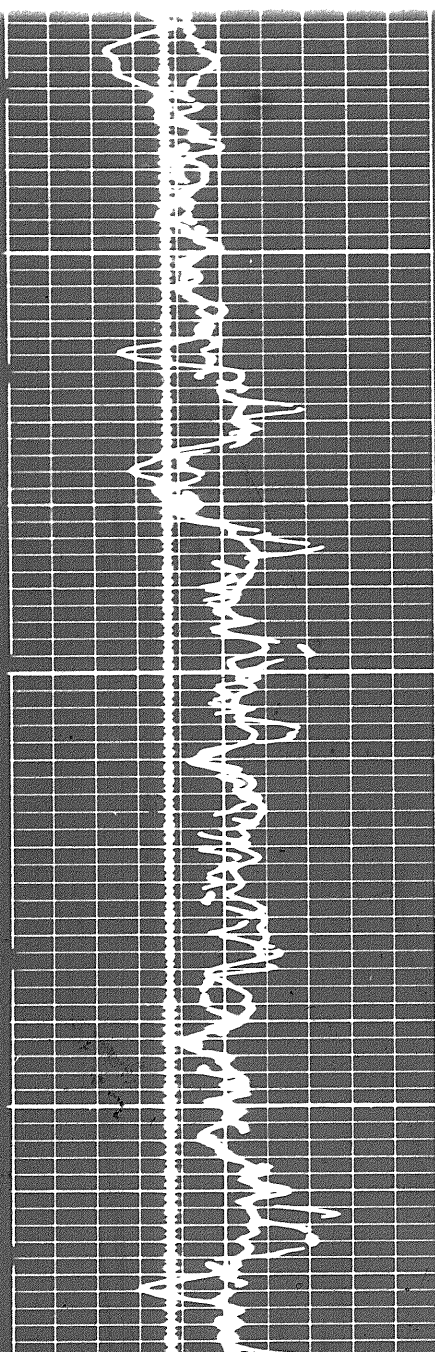


3800

3900

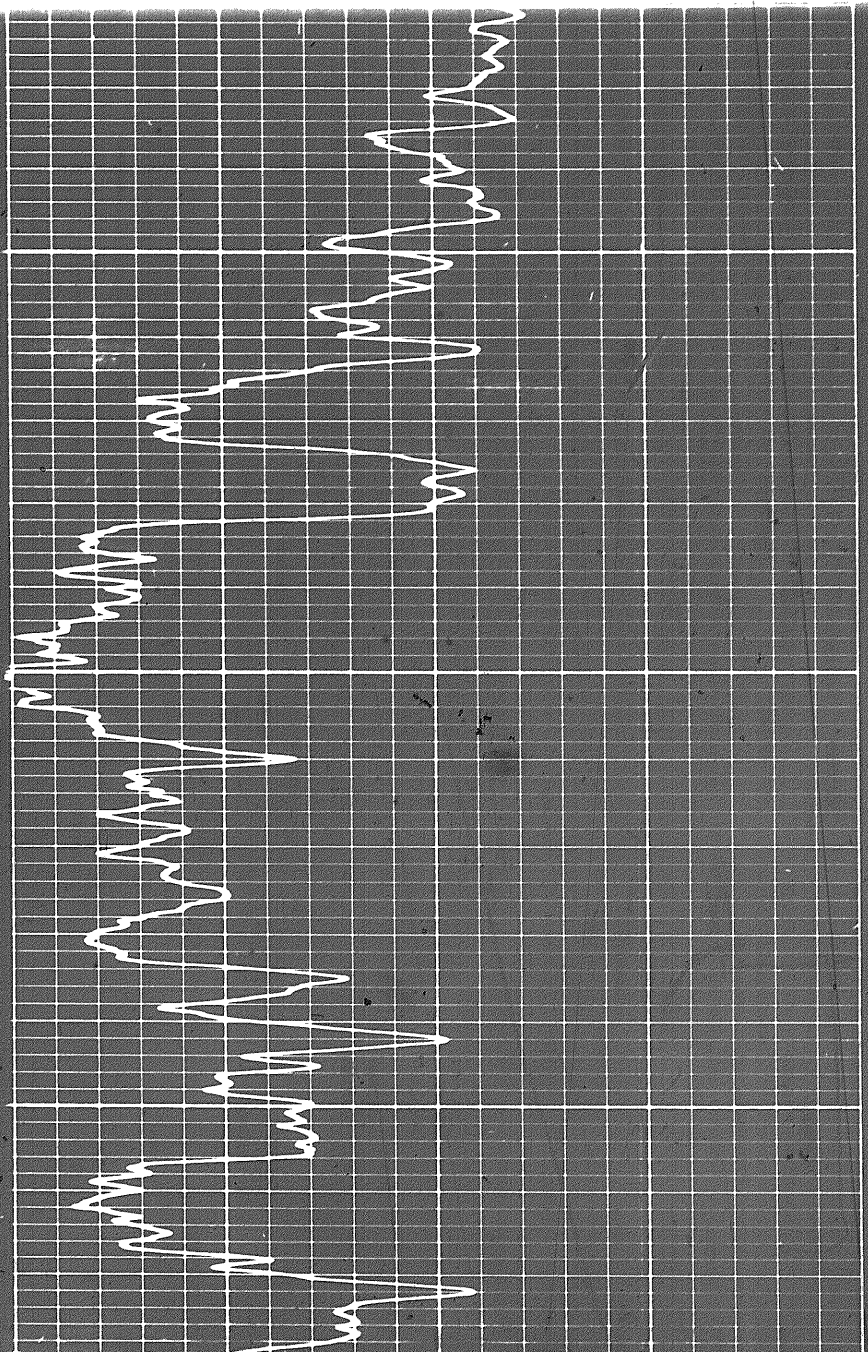


207



3800

4000



Sens. 150 T.C. 2  
 Zero 0 div. to left 150  
 150 300

GAMMA RAY  
API UNITS

6 7 8 9 10 11 12 13 14

45 30 15 0 -15

LIMESTONE

CALIPER  
hole diameter in inches

DEPTH

POROSITY (%)

Speed in FPM

Speed in FPM

6 7 8 9 10 11 12 13 14

45

30

15

0

-15

LIMESTONE

CALIPER  
hole diameter in inches

DEPTH

POROSITY (%)

DETAIL LOG  
5" = 100'

CALIPER  
hole diameter in inches

DEPTH

POROSITY (%)

6 7 8 9 10 11 12 13 14

Speed in FPM

GAMMA RAY  
API UNITS

30

20

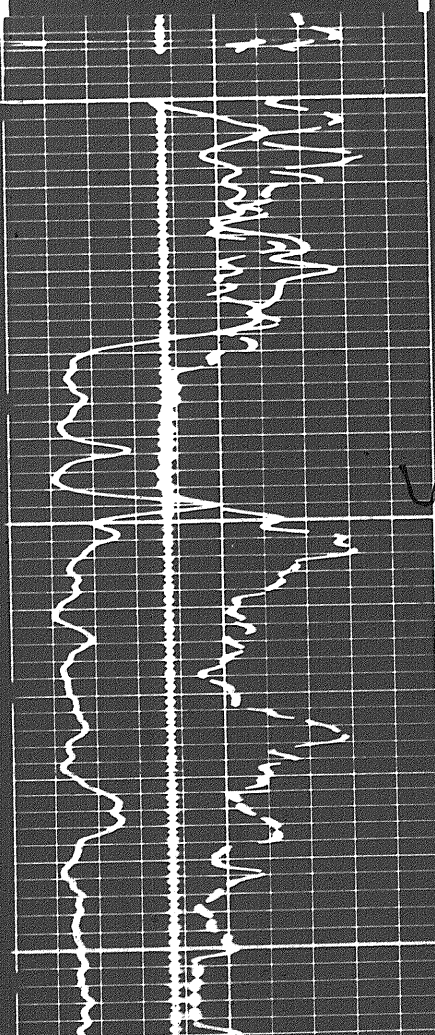
10

0

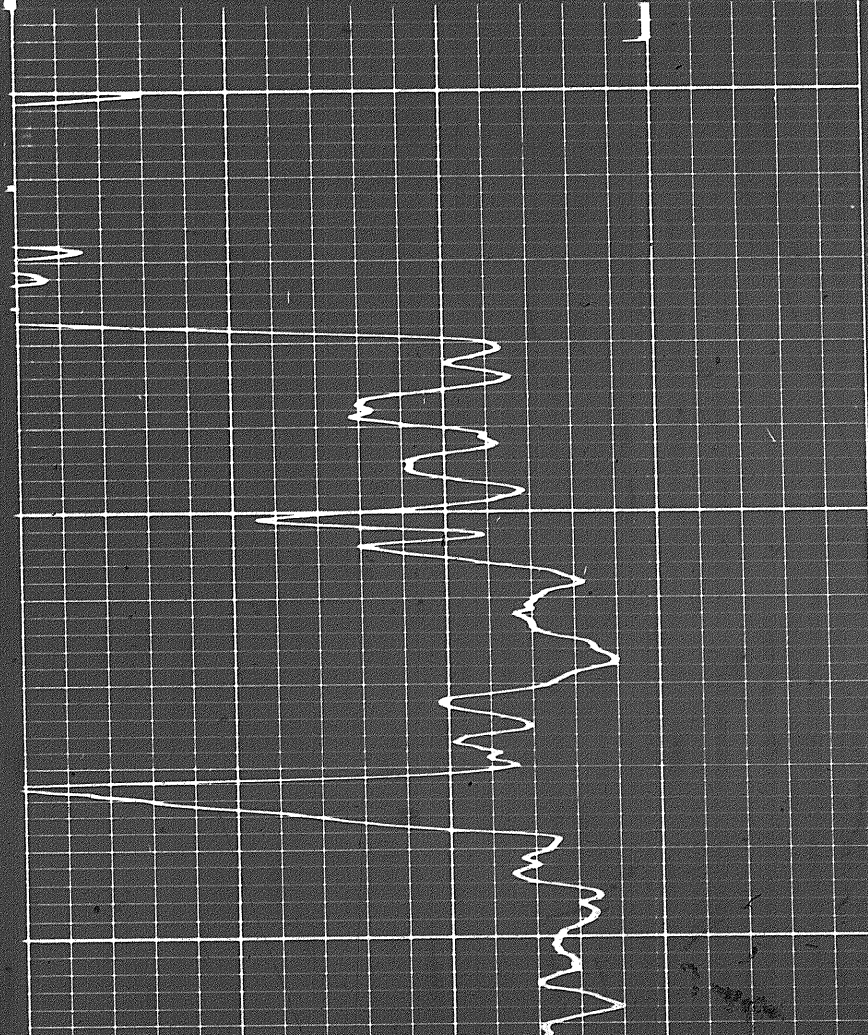
-10

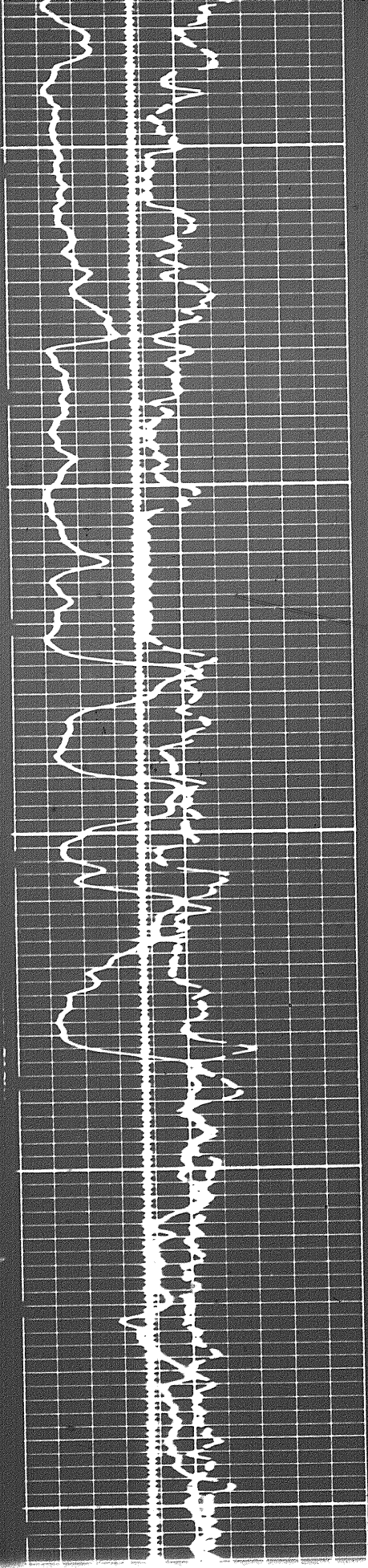
LIMESTONE

Sens.	150	T.C.	2
Zero	0	div. to left	150
	150		300



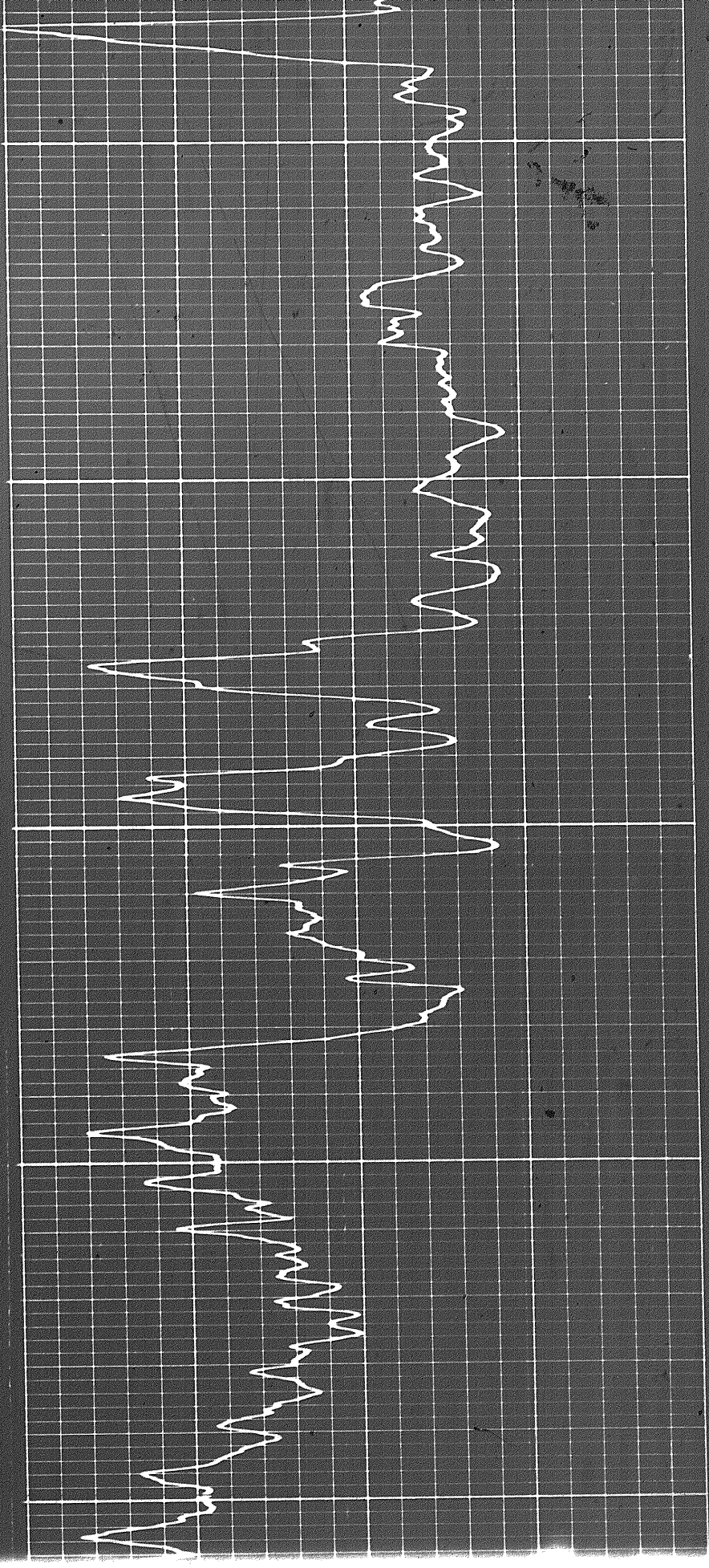
6000



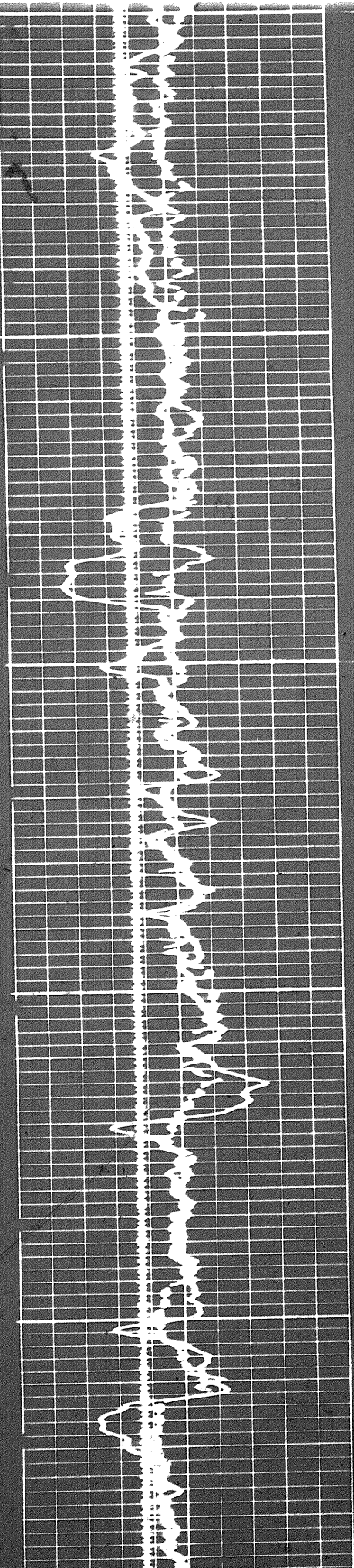


6079

6209

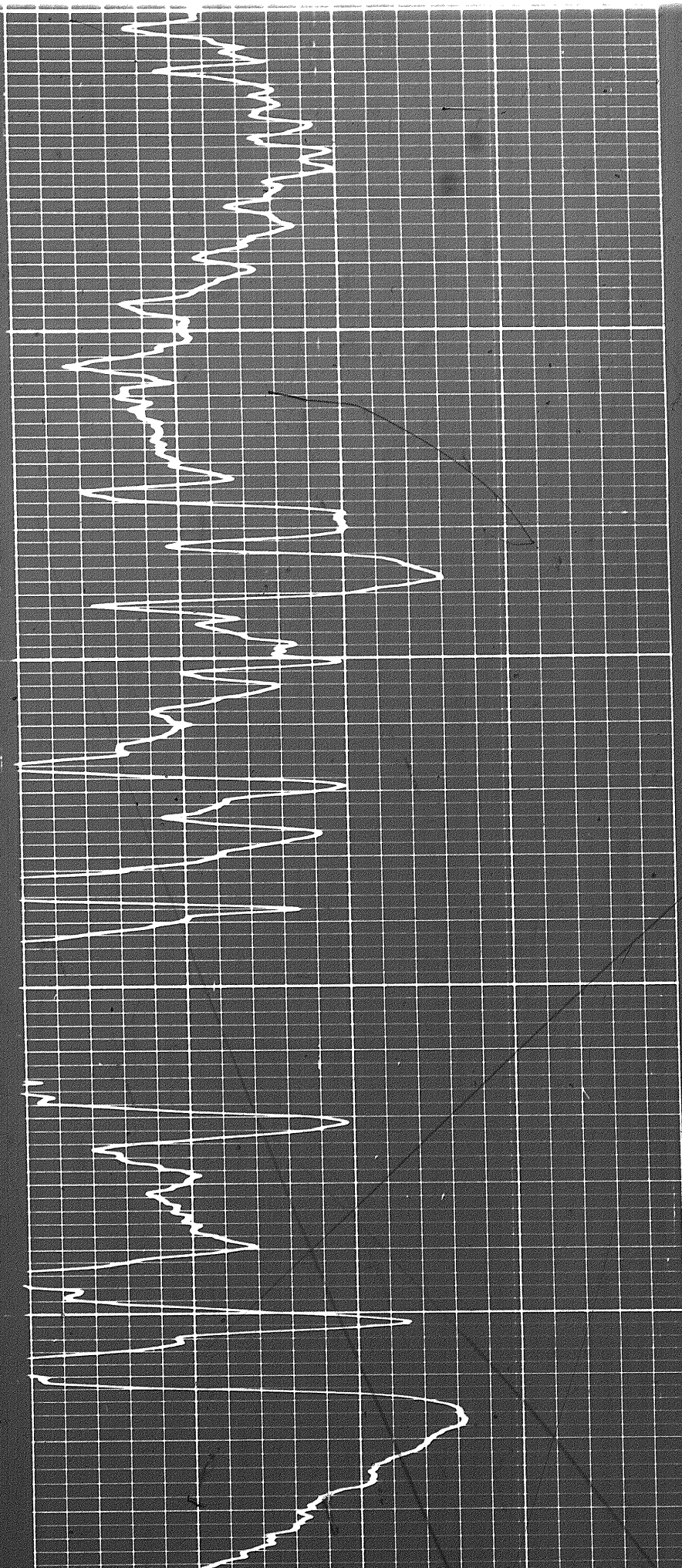


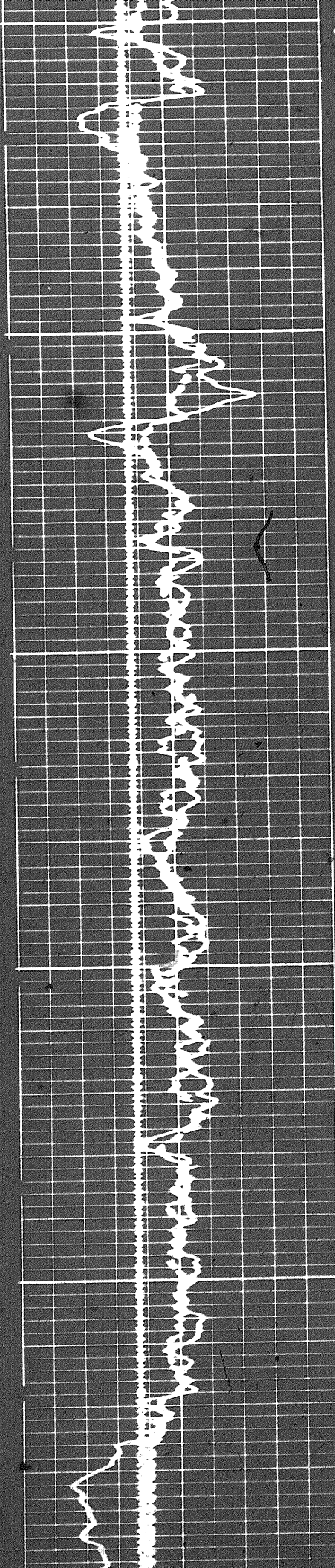
3A



3000

3000

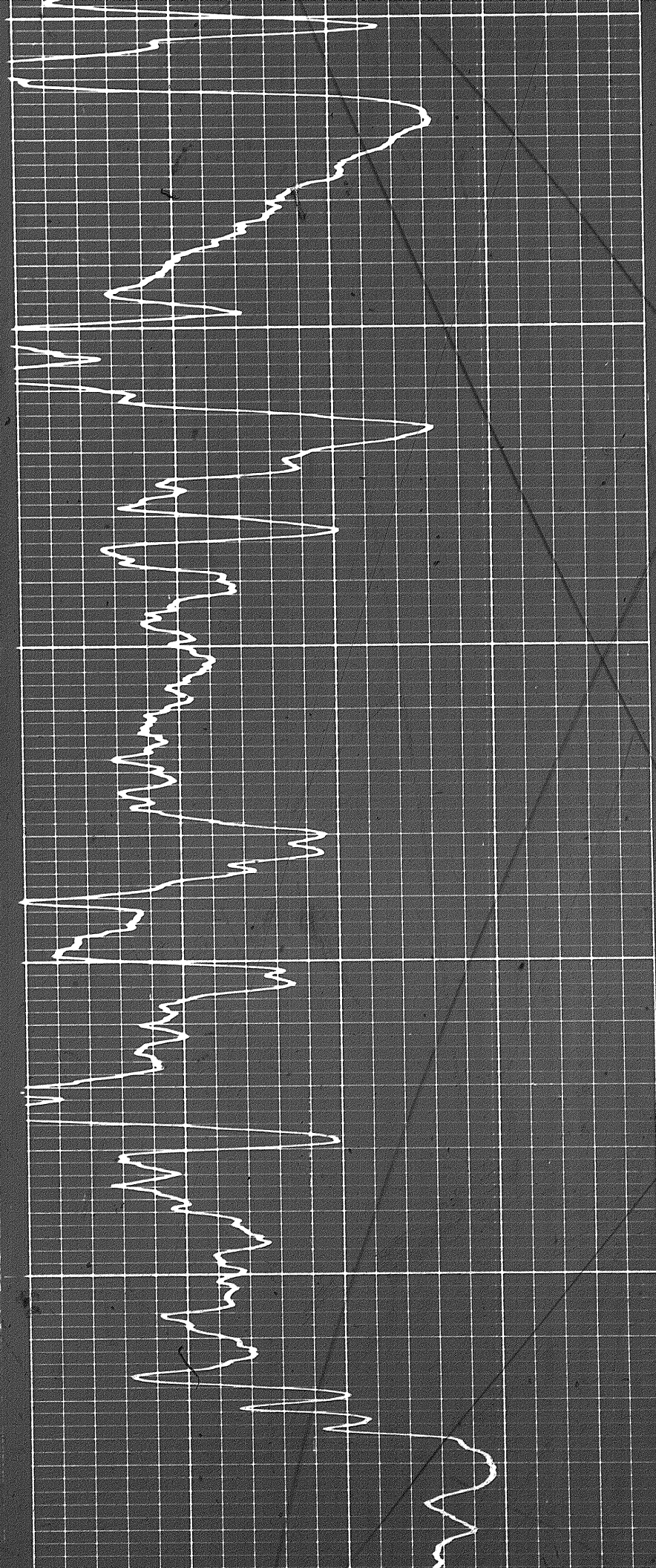




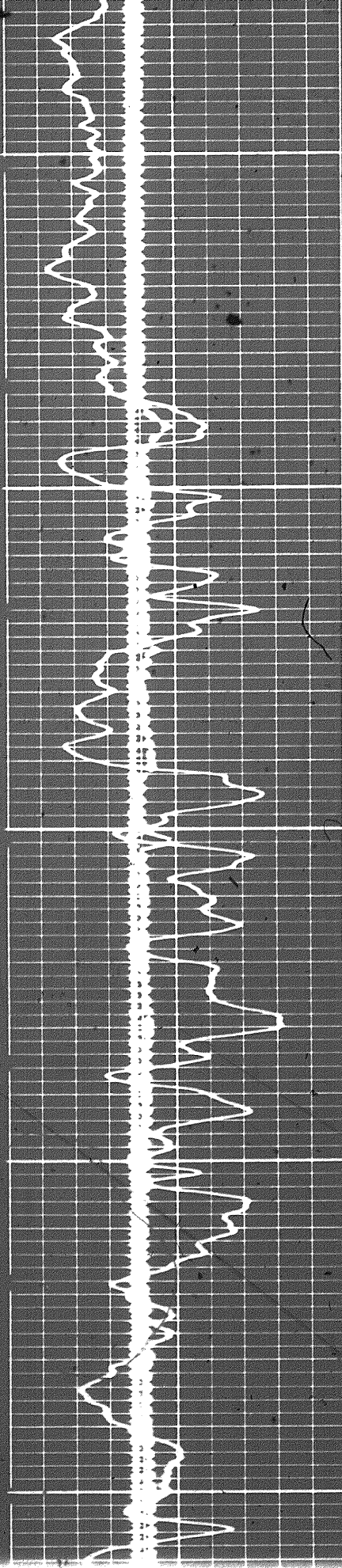
6600

6600

6600

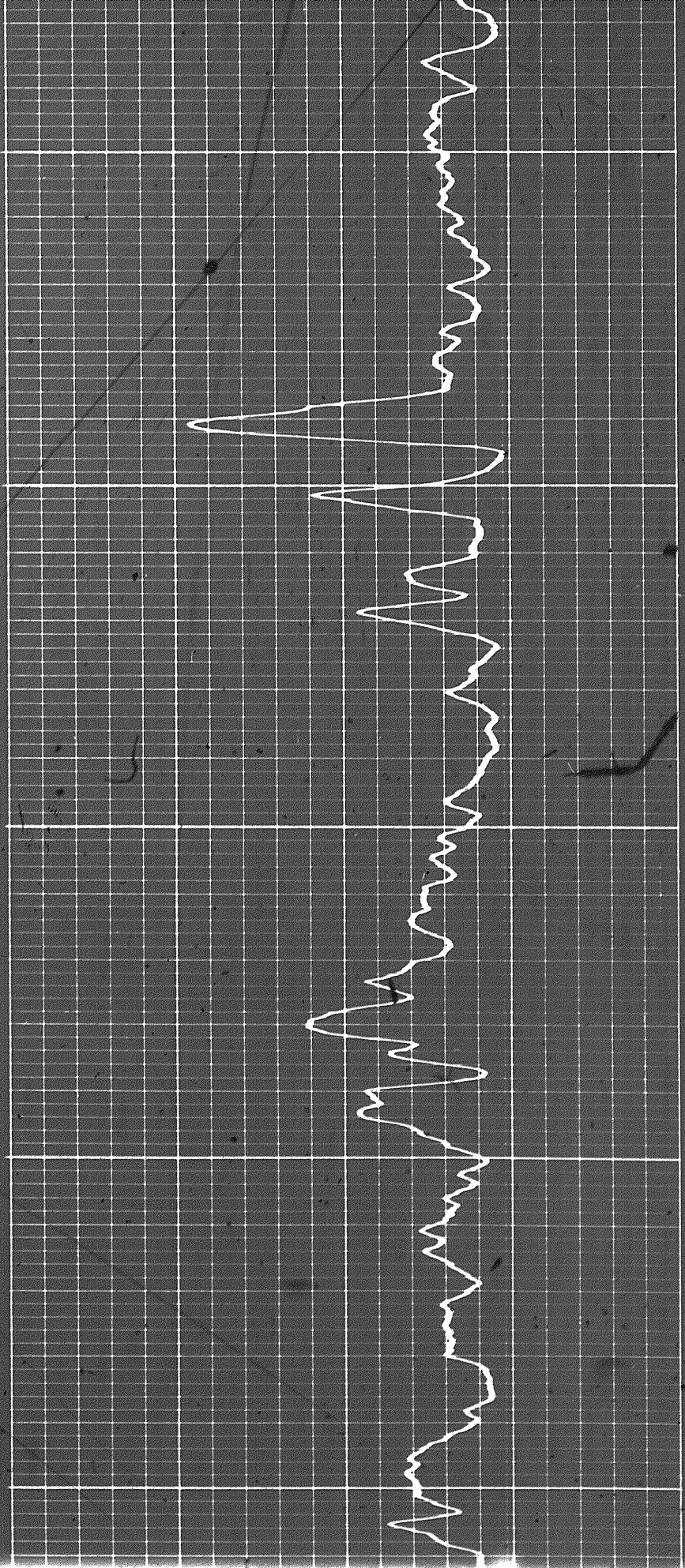




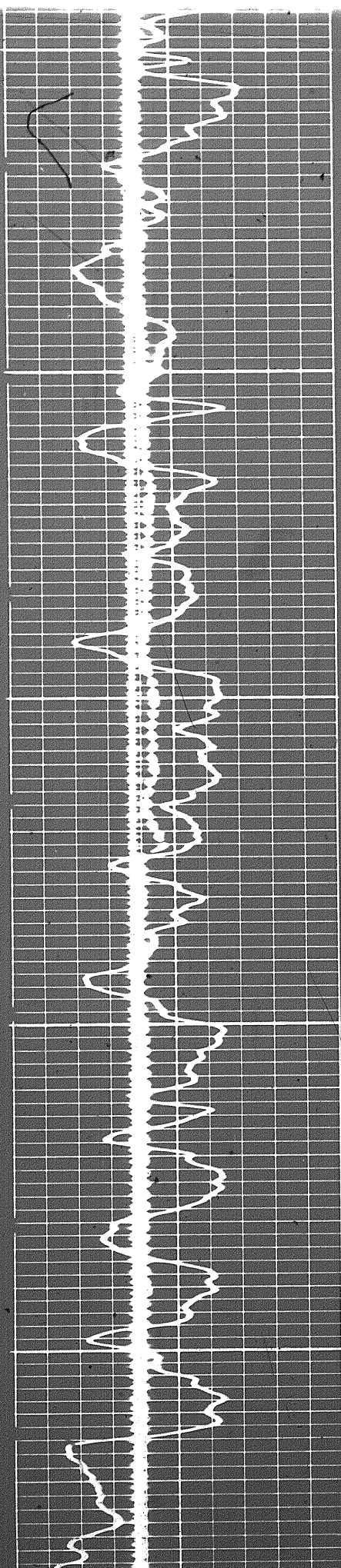


6700

6700



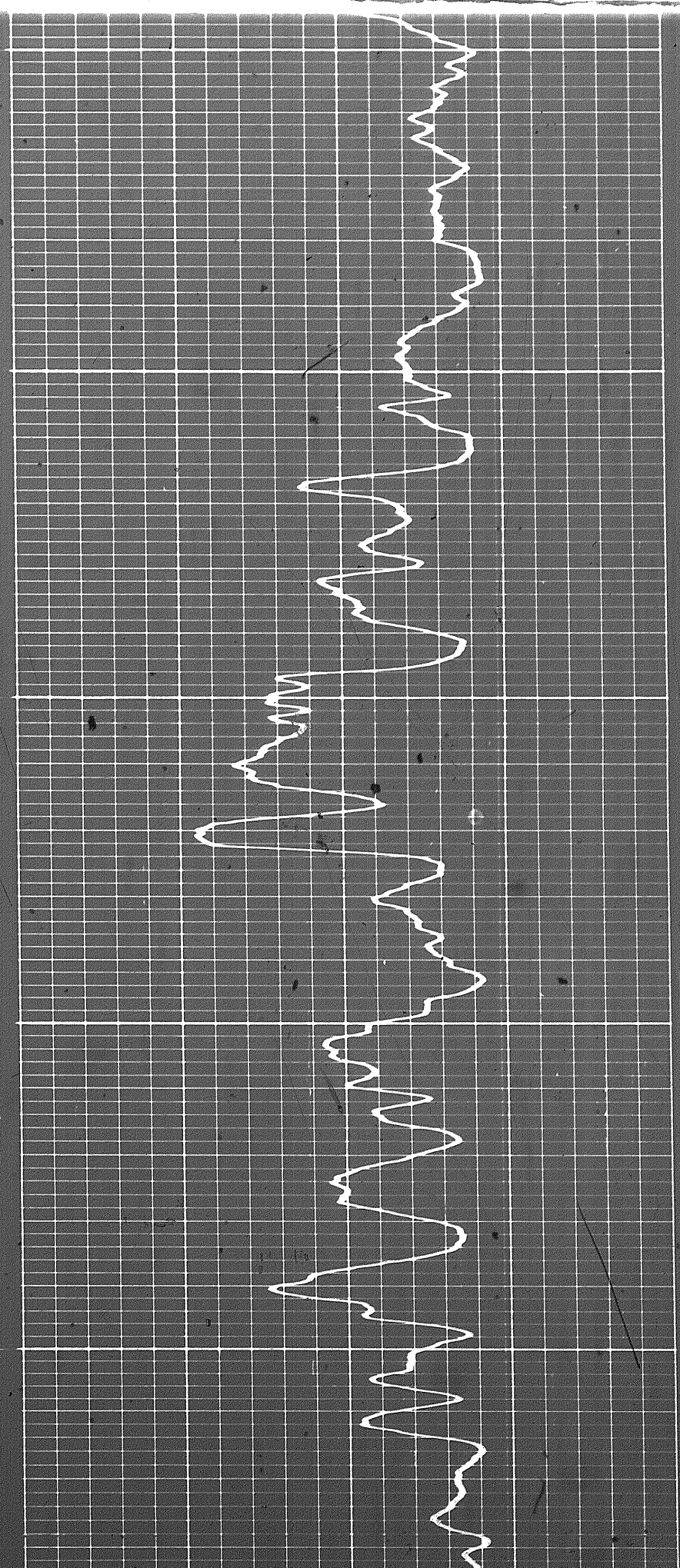
1011

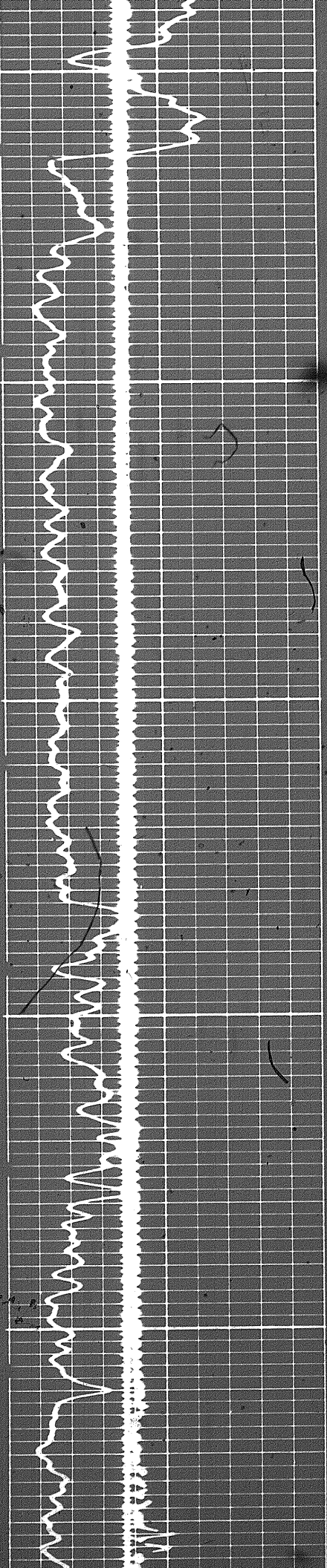


000

000

7000

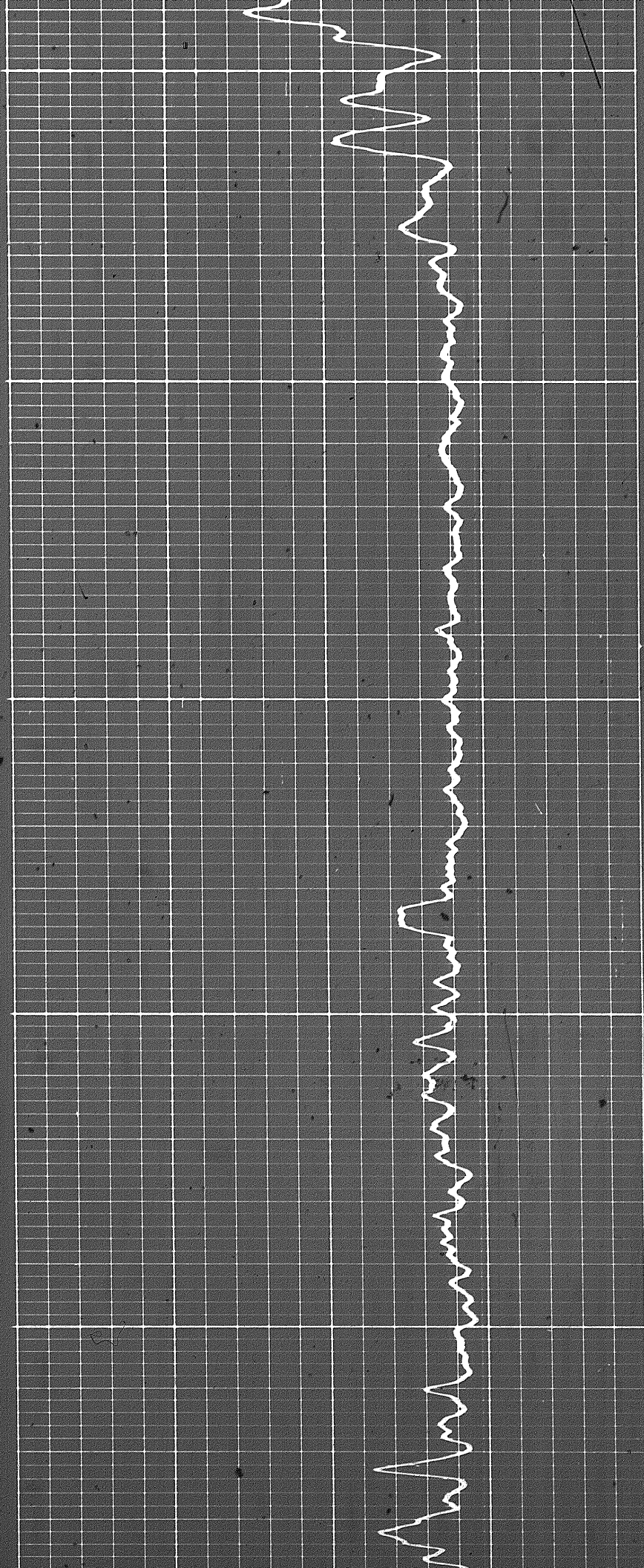


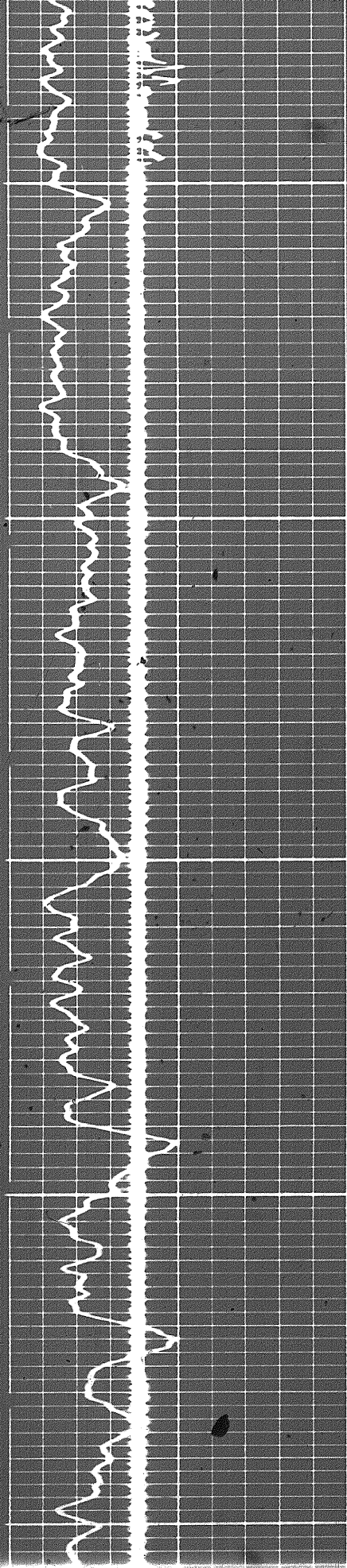


7000

7100

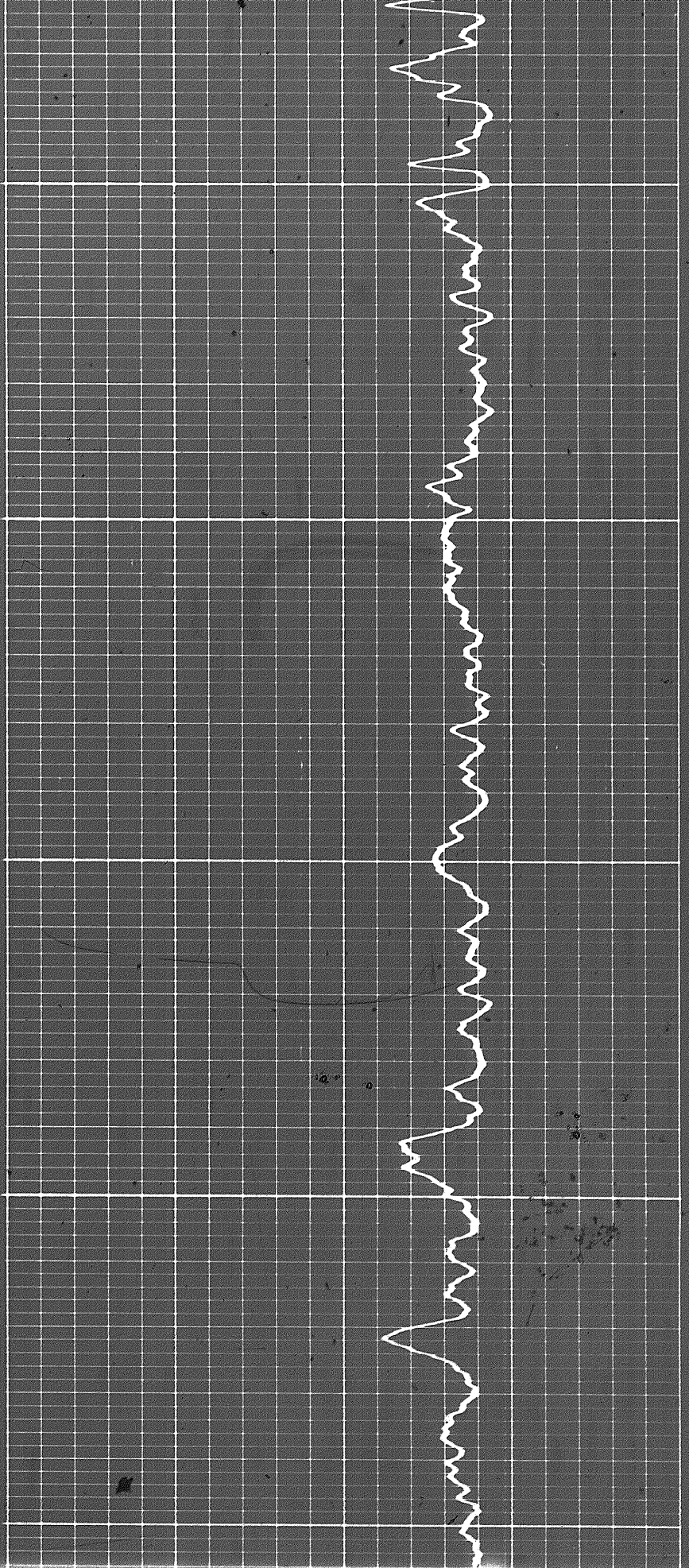
7200





730

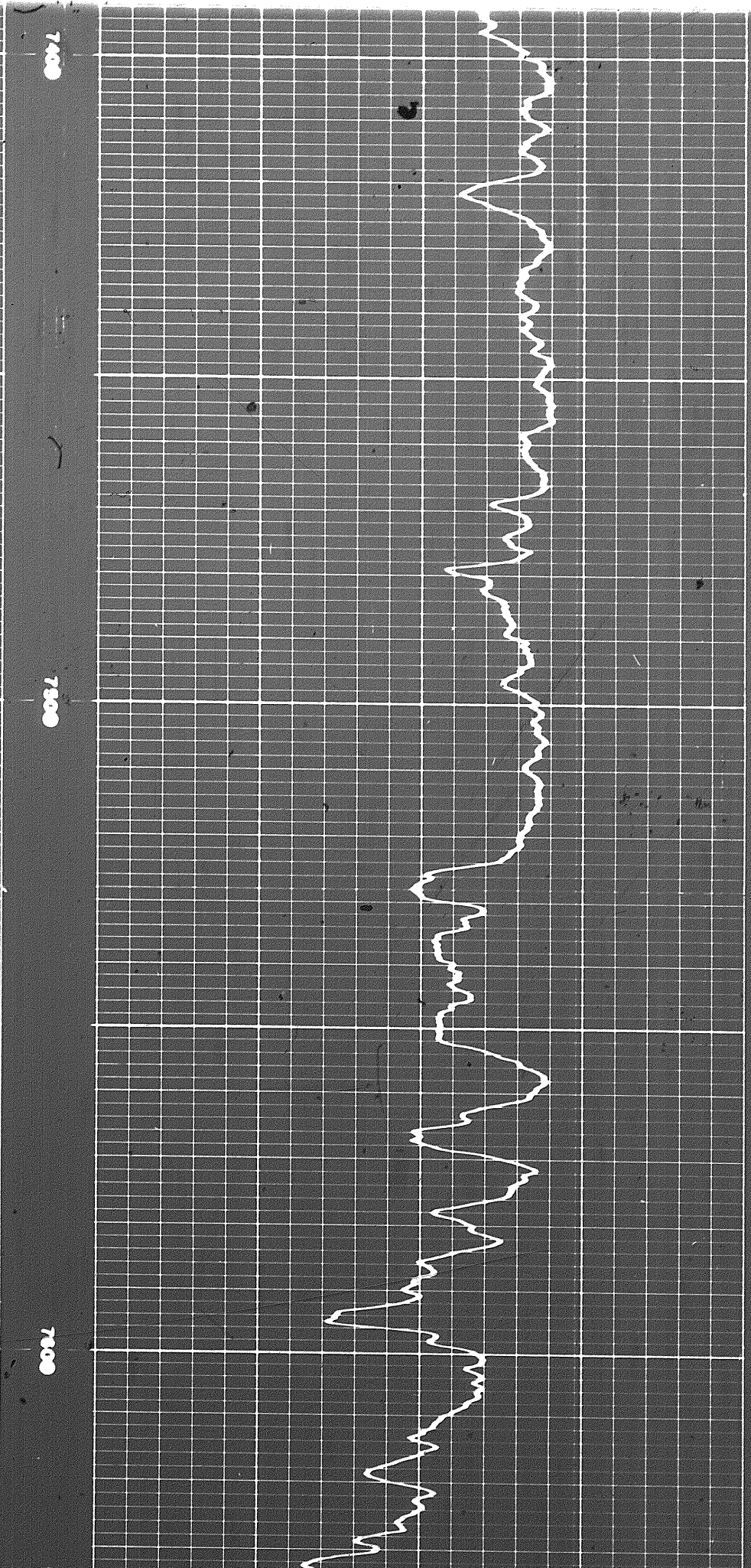
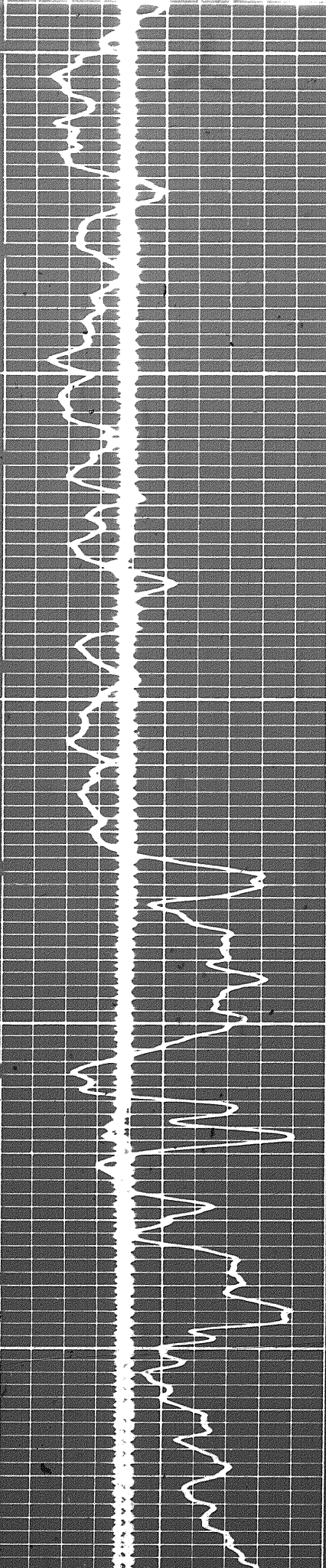
740

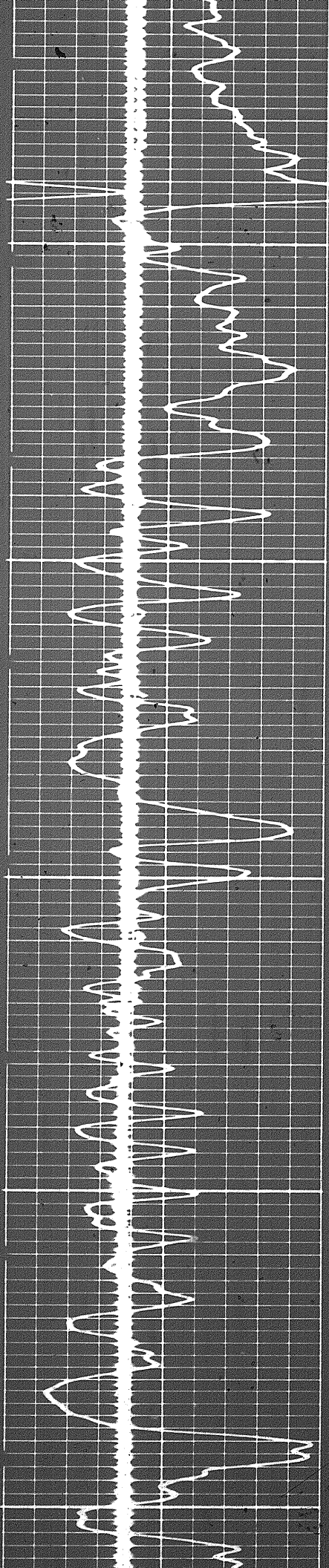


7400

7500

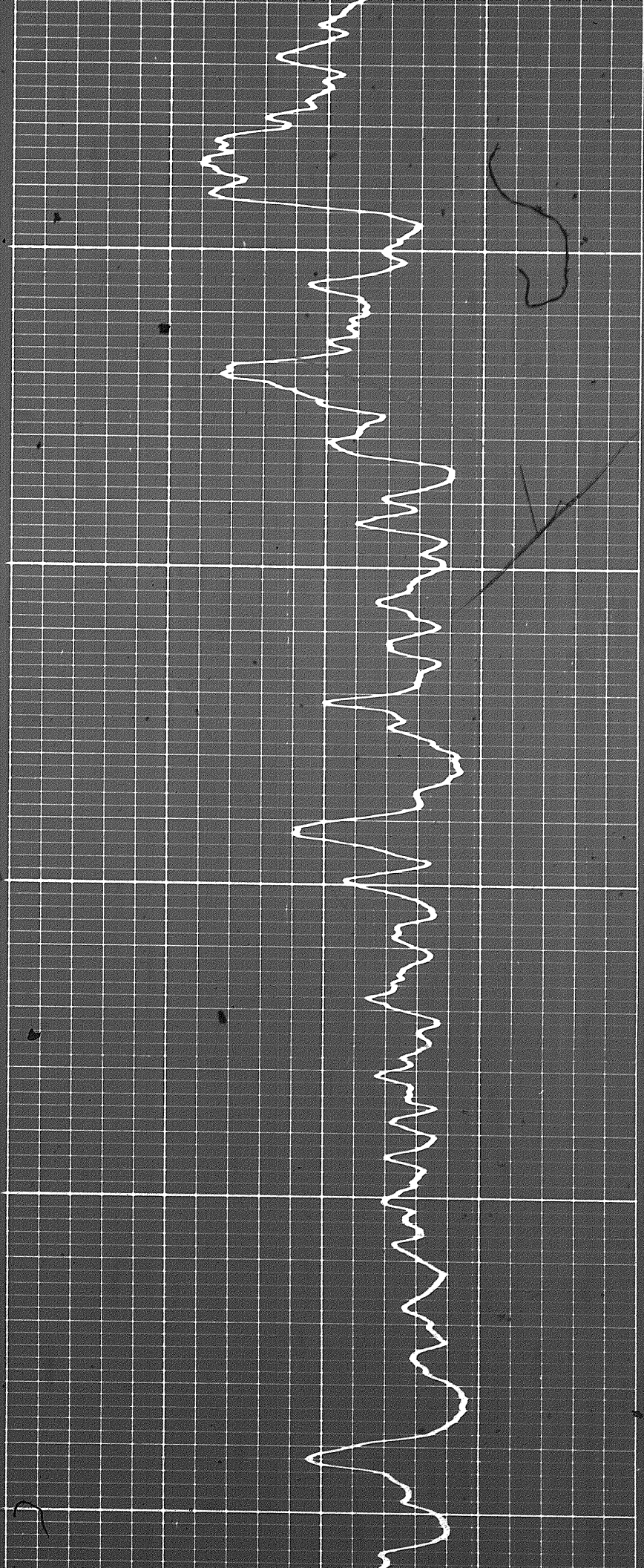
7600



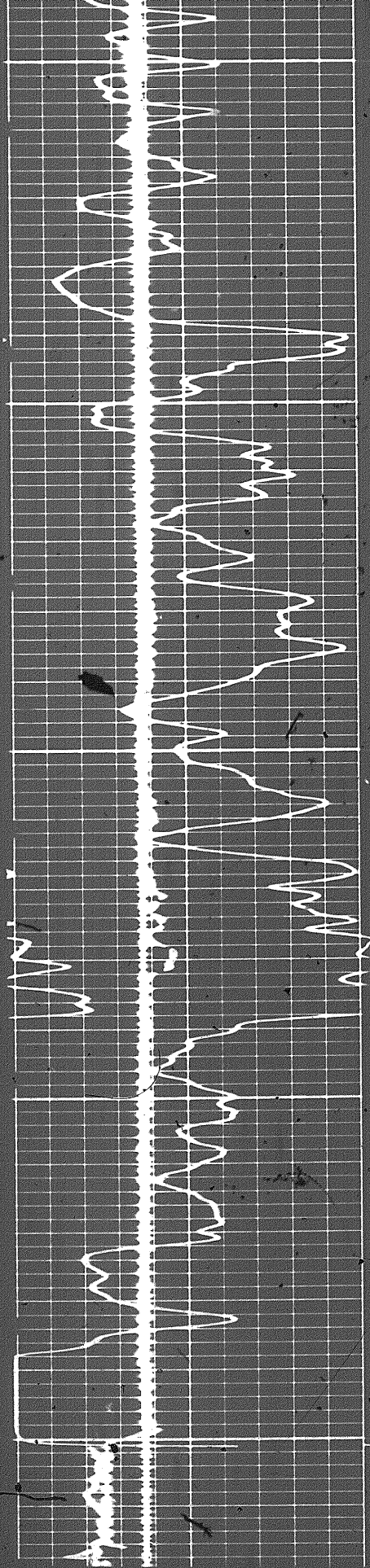


700

700



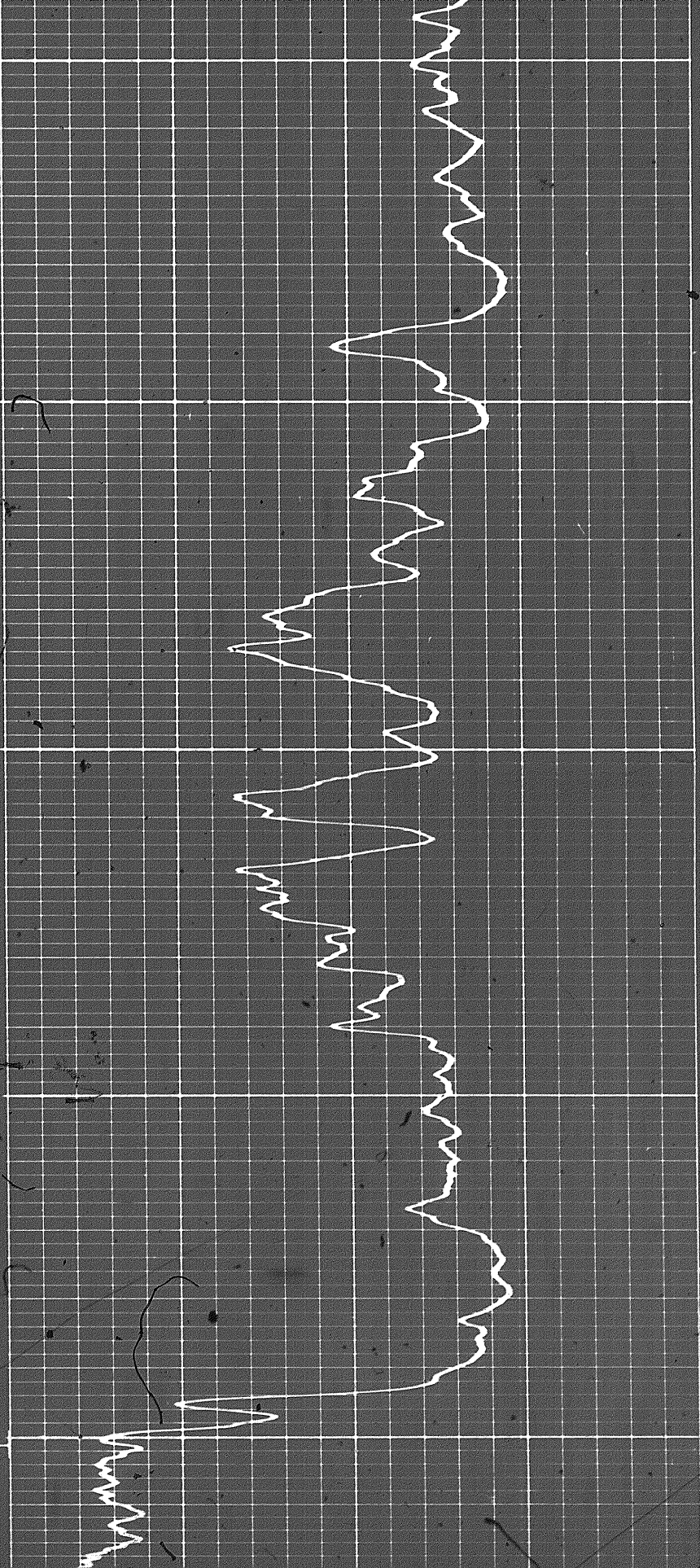
Handwritten scribble or signature.

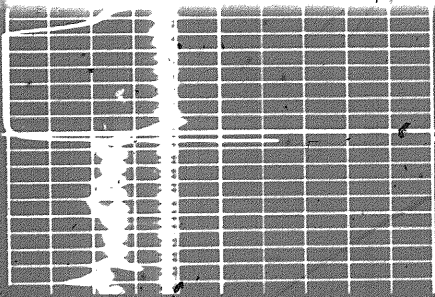


7000

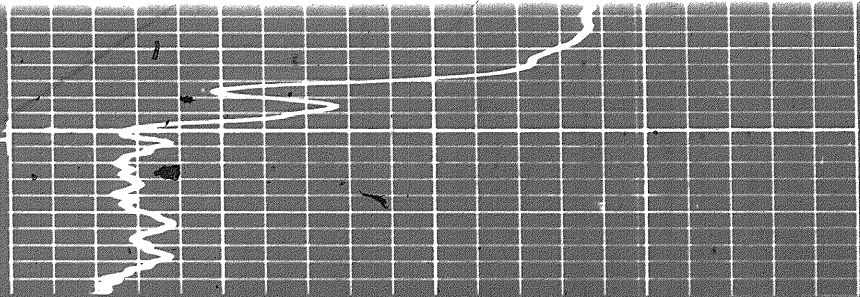
7000

FR 0008

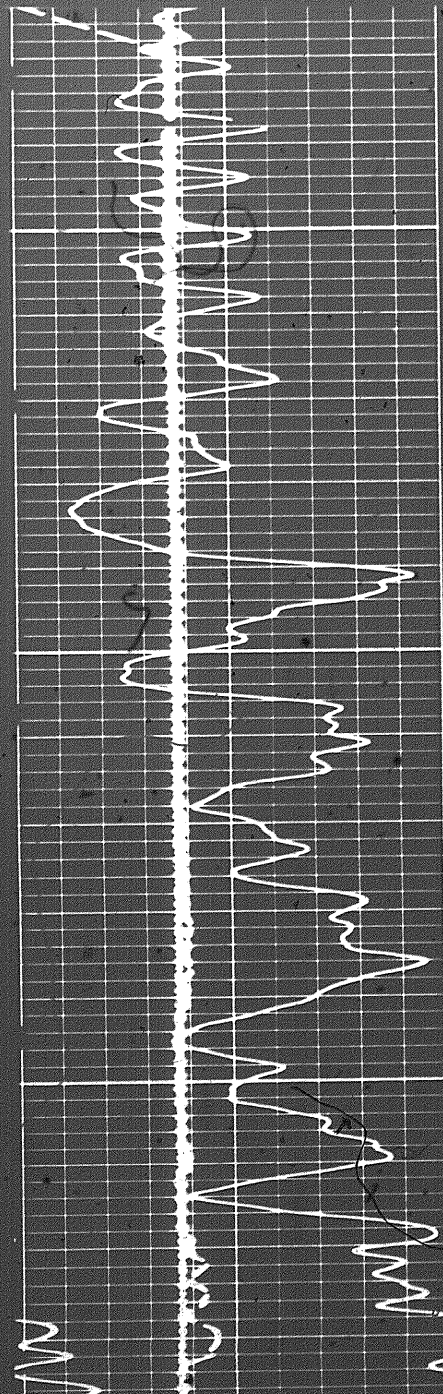




FR 0000

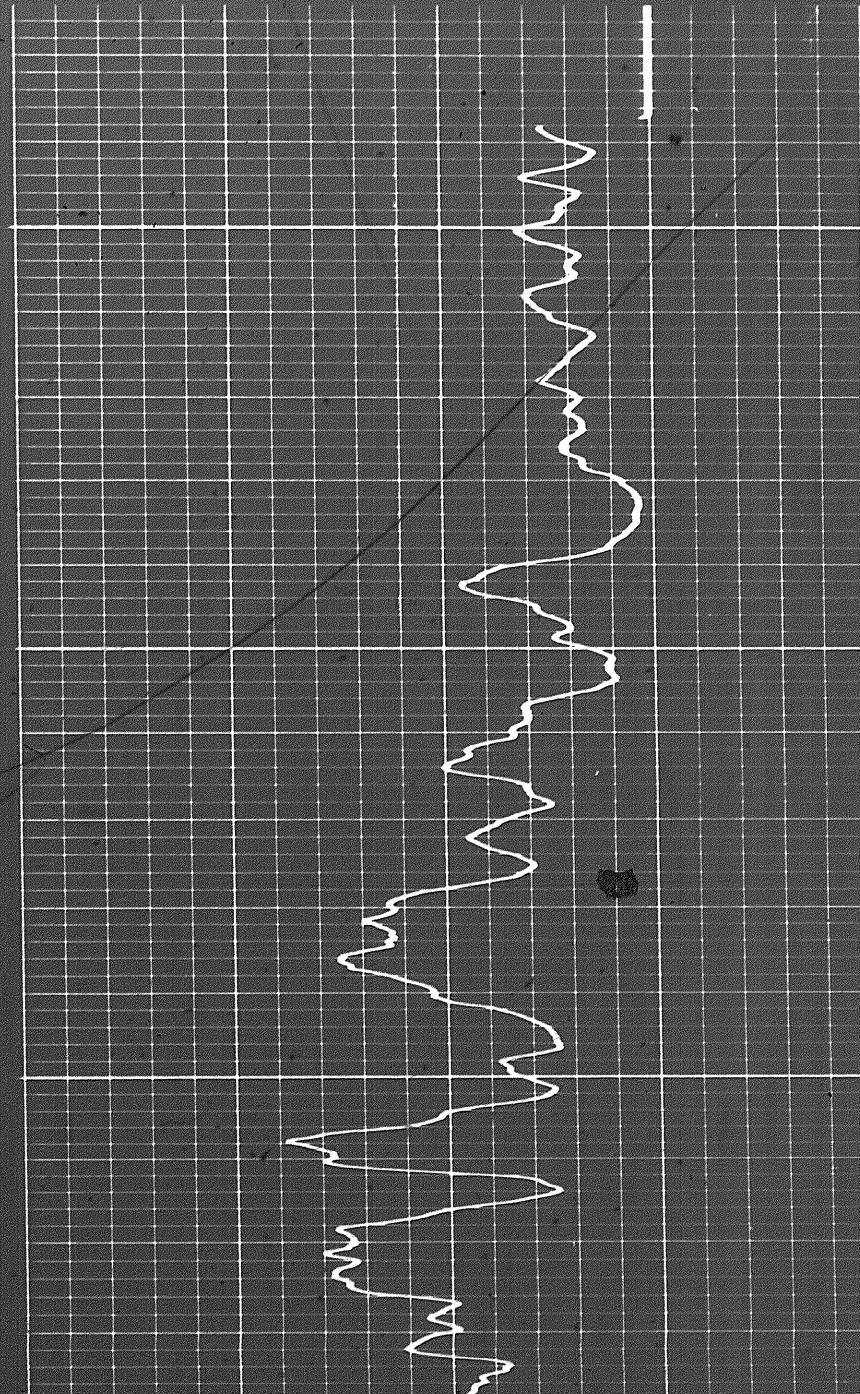


REPEAT SECTION

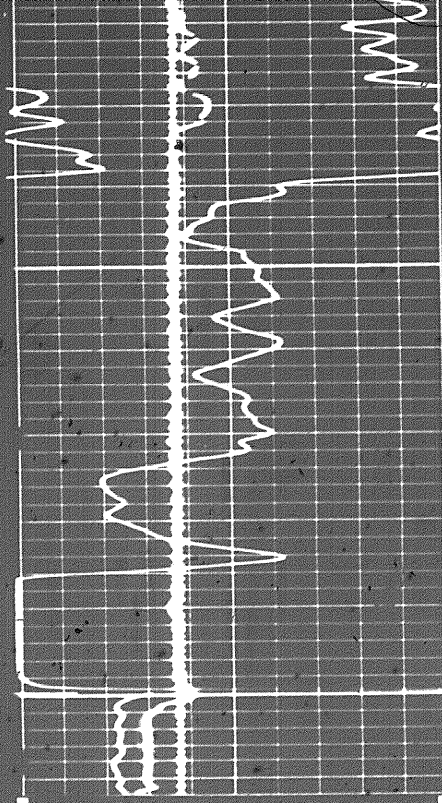


7000

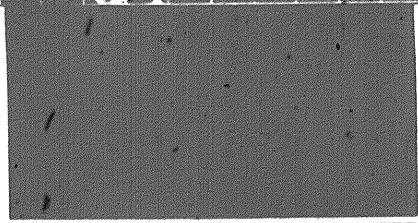
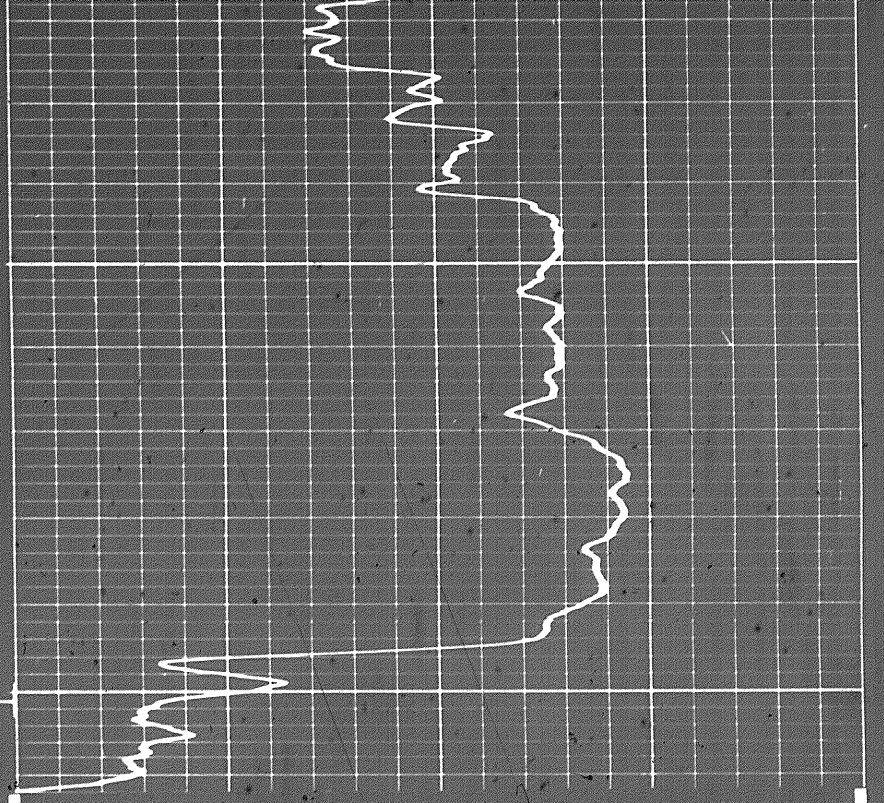
7300







FR 0000



Sens. 150 T.C. 2  
 Zero 0 div. to left 150  
 150 300

GAMMA RAY  
 API UNITS

6 7 8 9 10 11 12 13 14

Speed in FPM

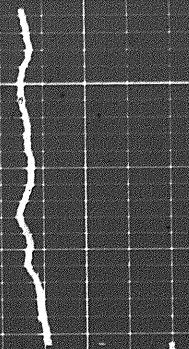
30 20 10 0 -10  
 LIMESTONE

CALIPER  
 hole diameter in inches

DEPTH

POROSITY (%)

Calibration after Survey



Calibration before Survey

Calibration before Survey

Calibration Before Survey

Test Panel

COMPANY CHEVRON STANDARD LIMITED

WELL SOBC WM E PORCUPINE YT 1-13

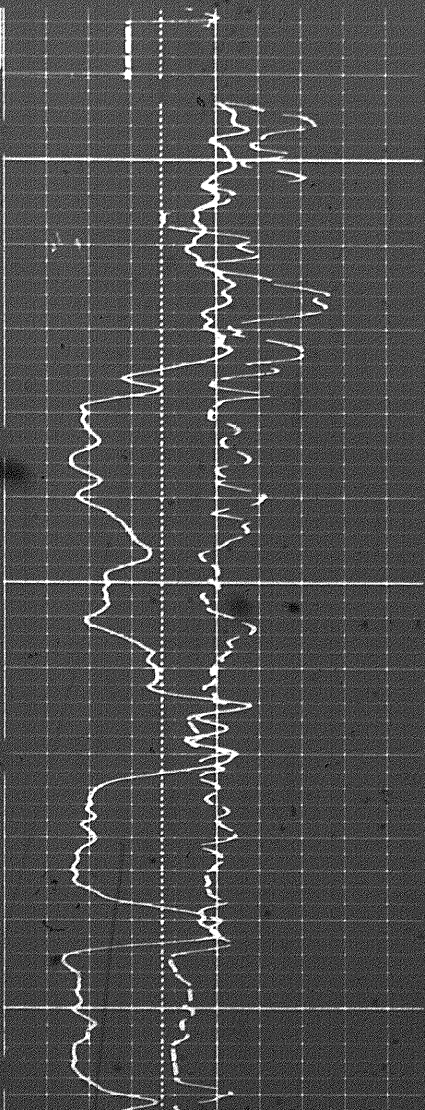
FIELD WILDCAT PROVINCE YUKON TERRITORIES



707

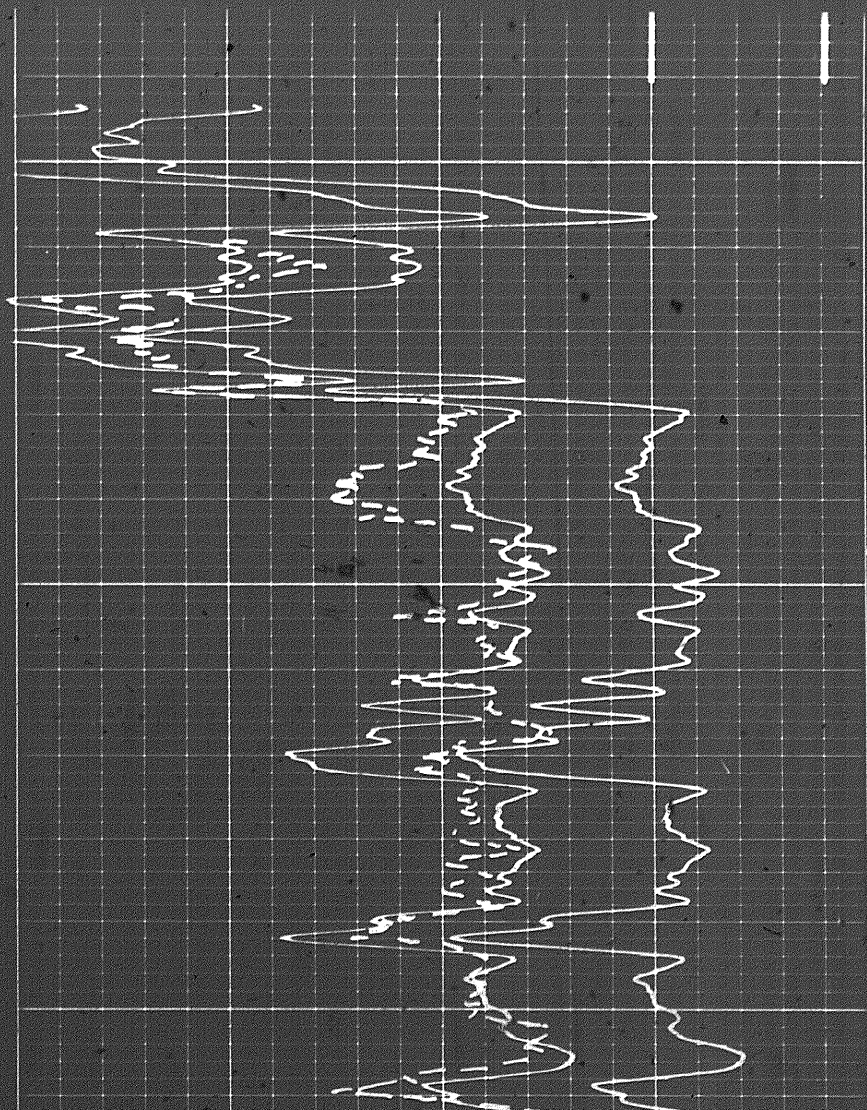
FIELD INTERPRETATION

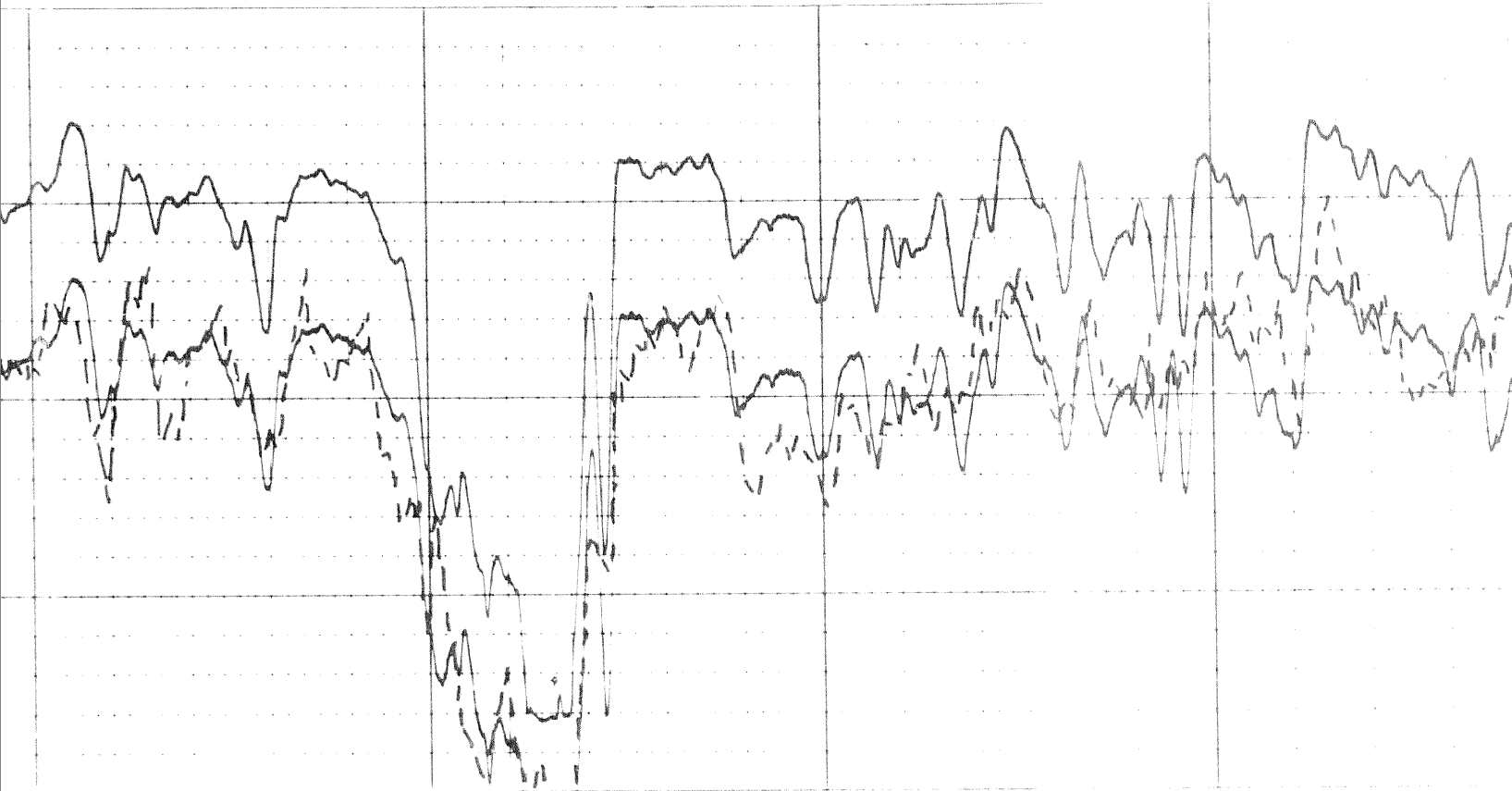
45 30 15 0 -15



3600

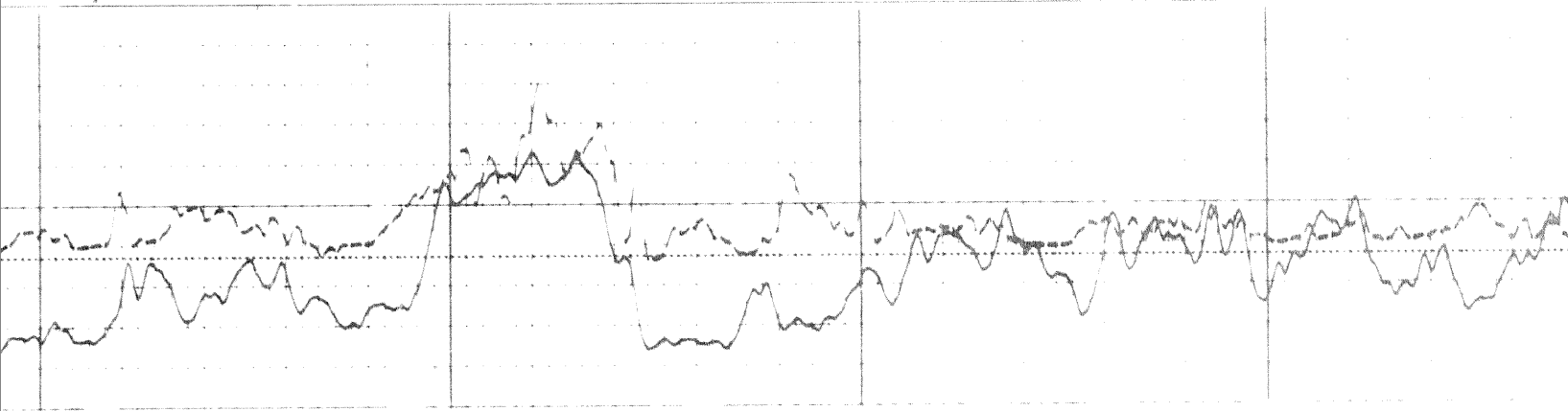
3700





3700

3800



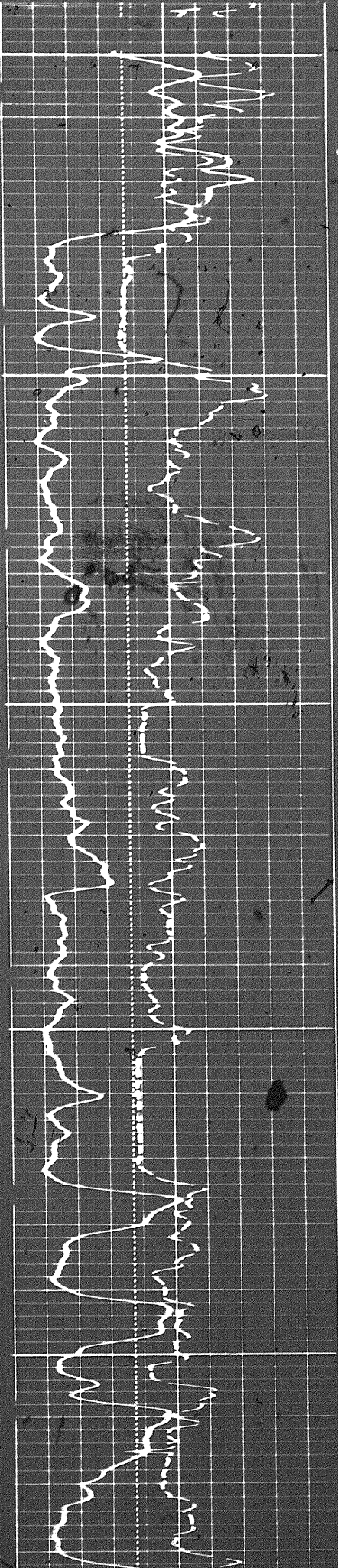
30

20

10

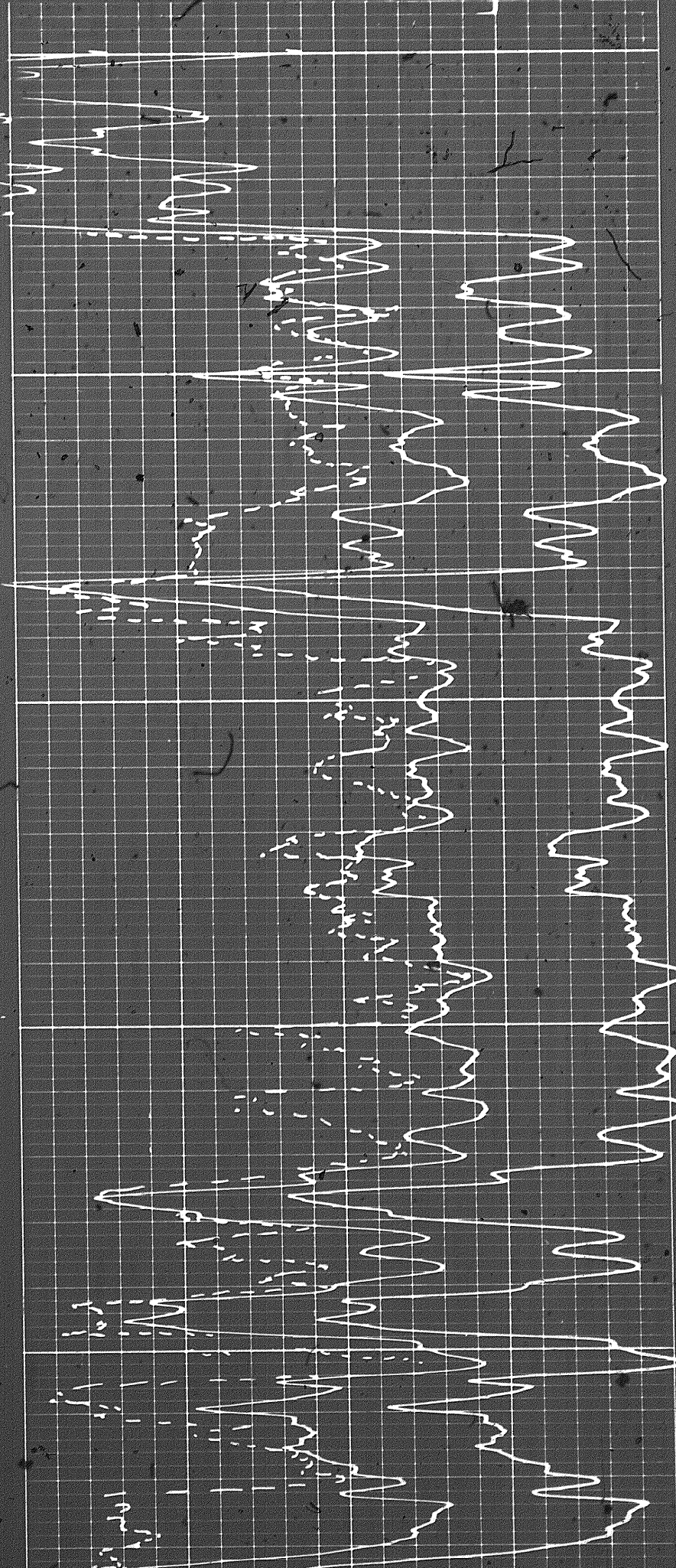
0

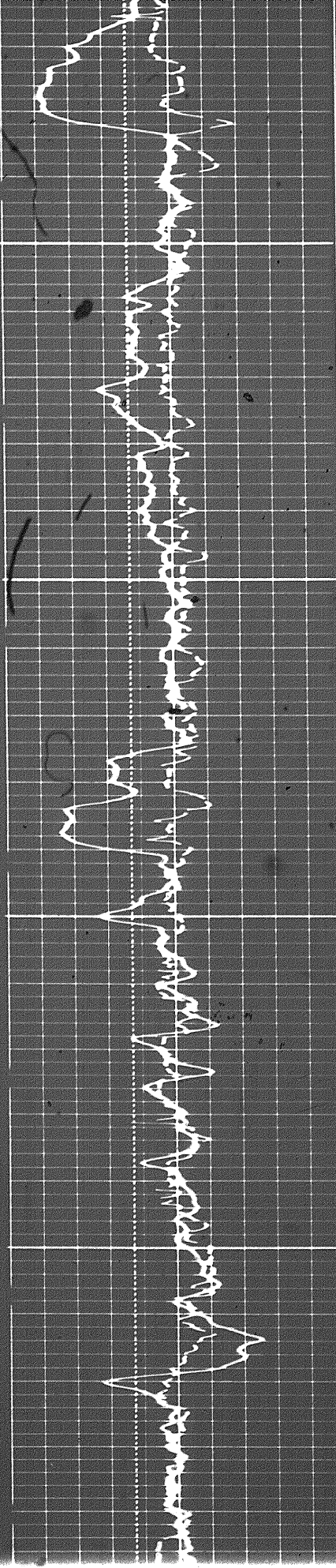
-10



0000

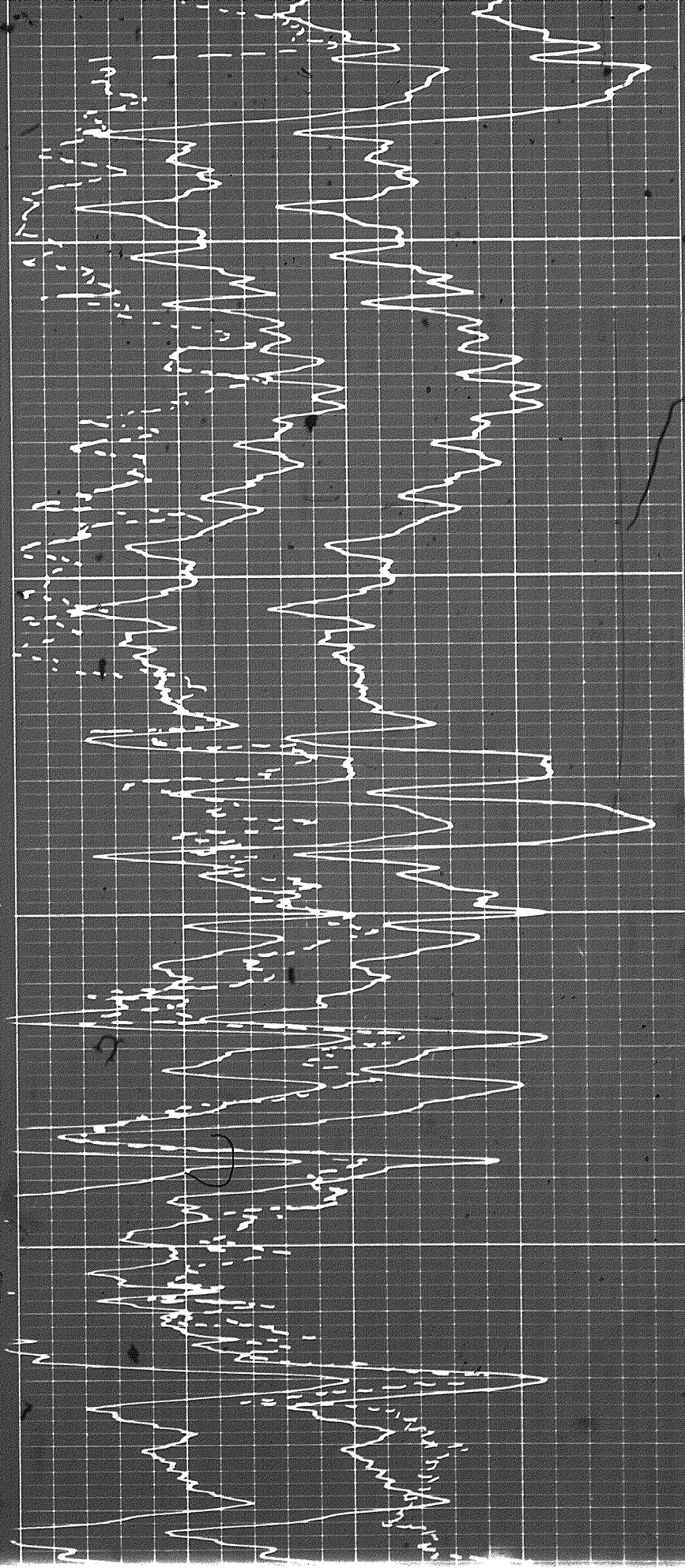
0009



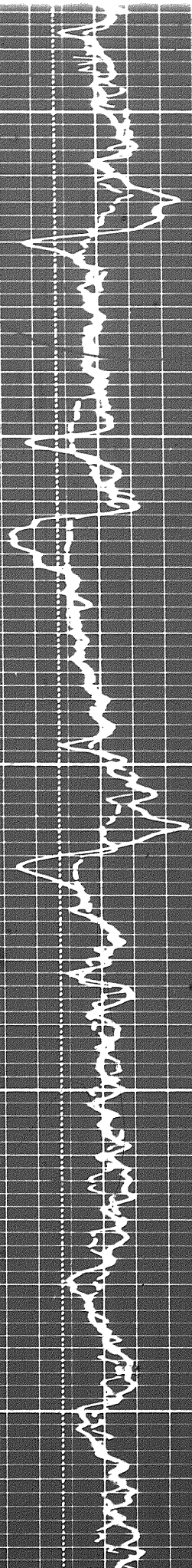


6200

6300

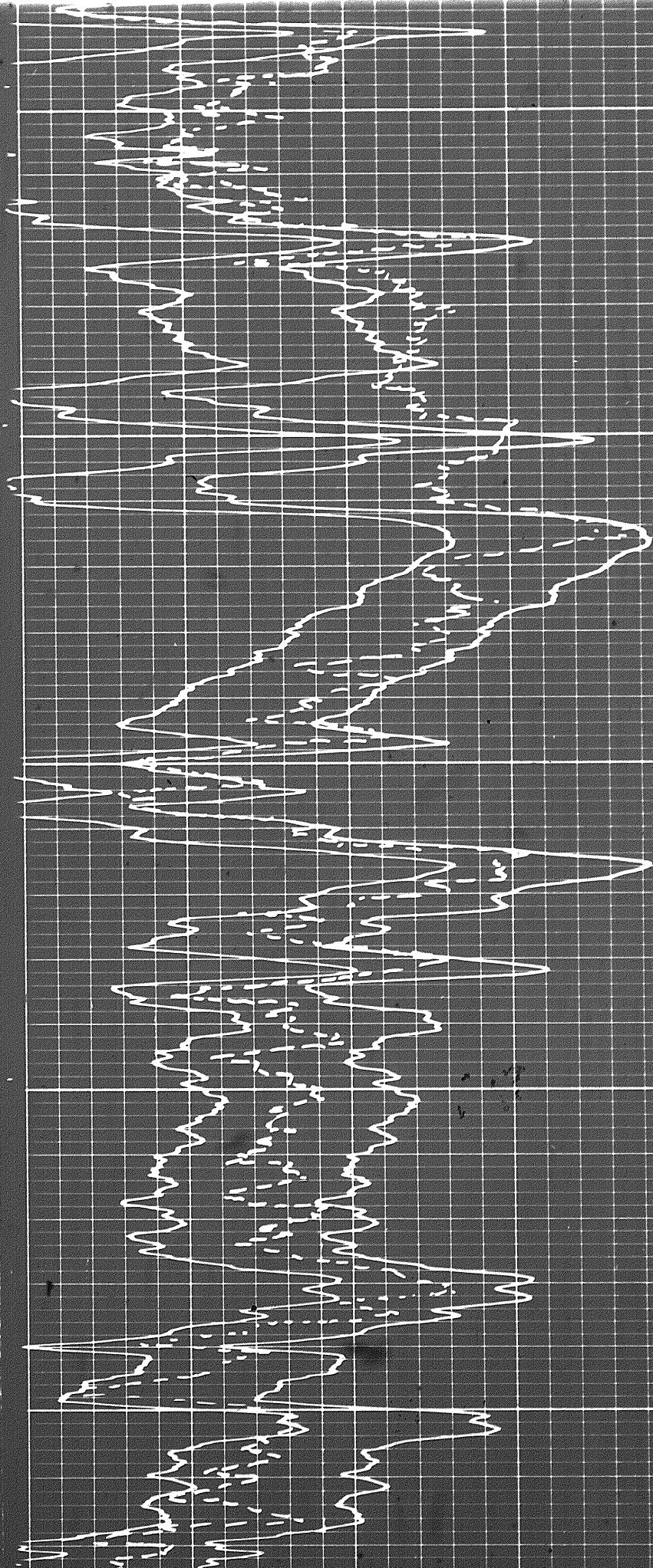


9a

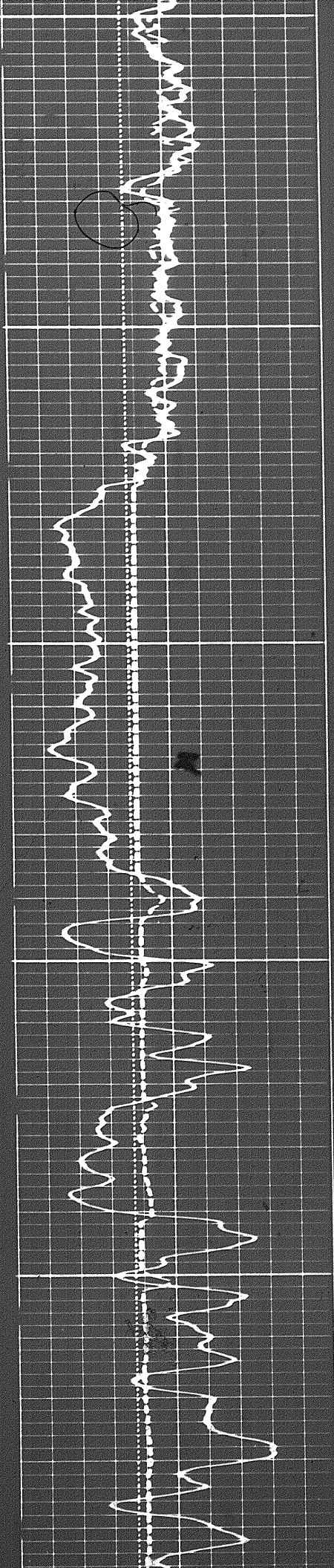


6400

6500

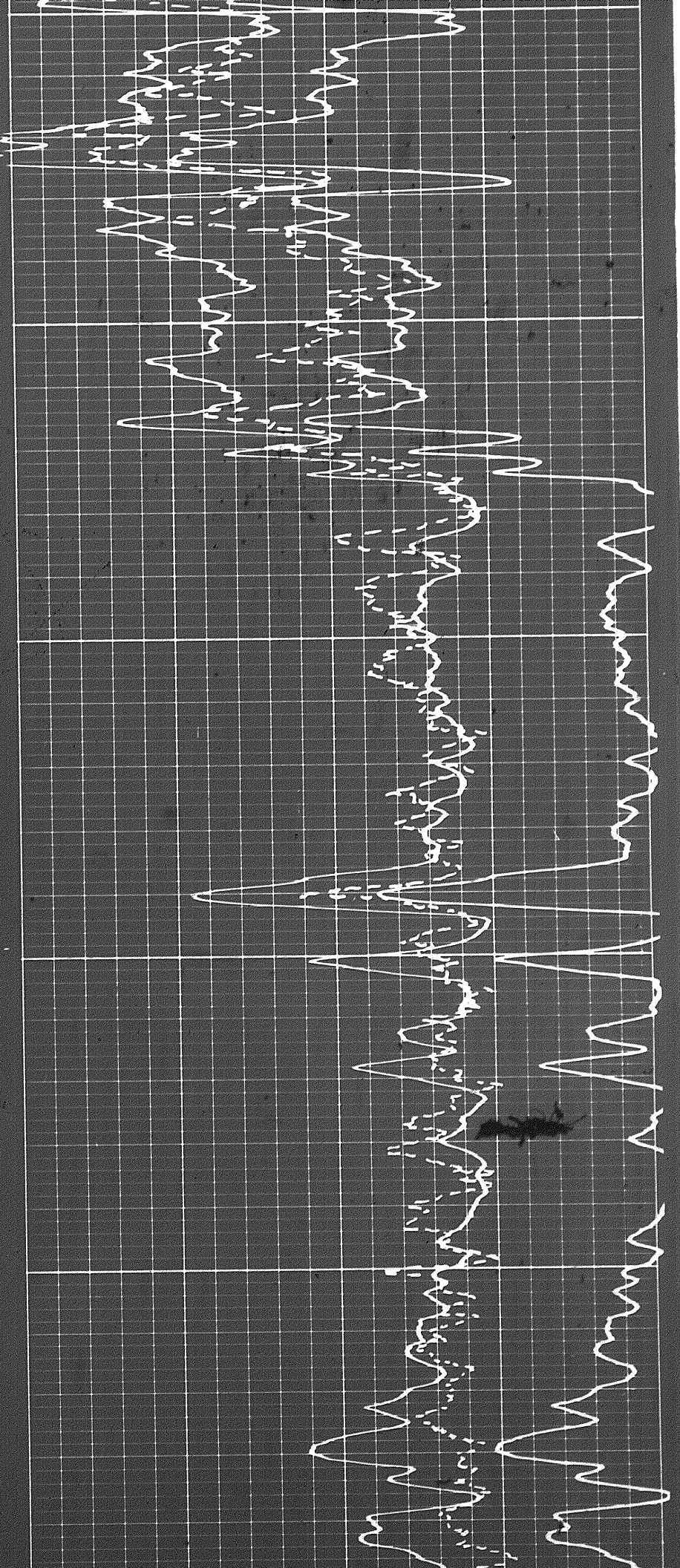


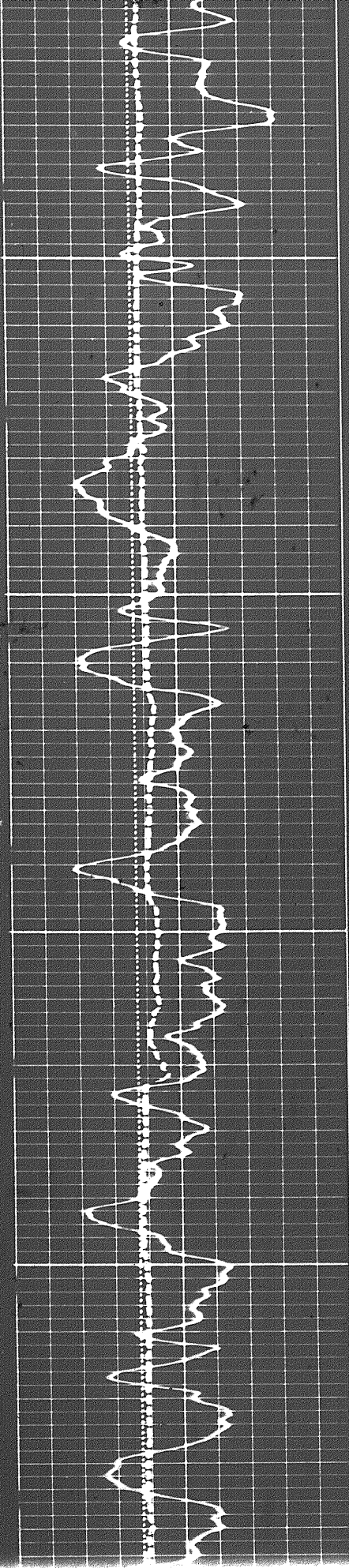




6000

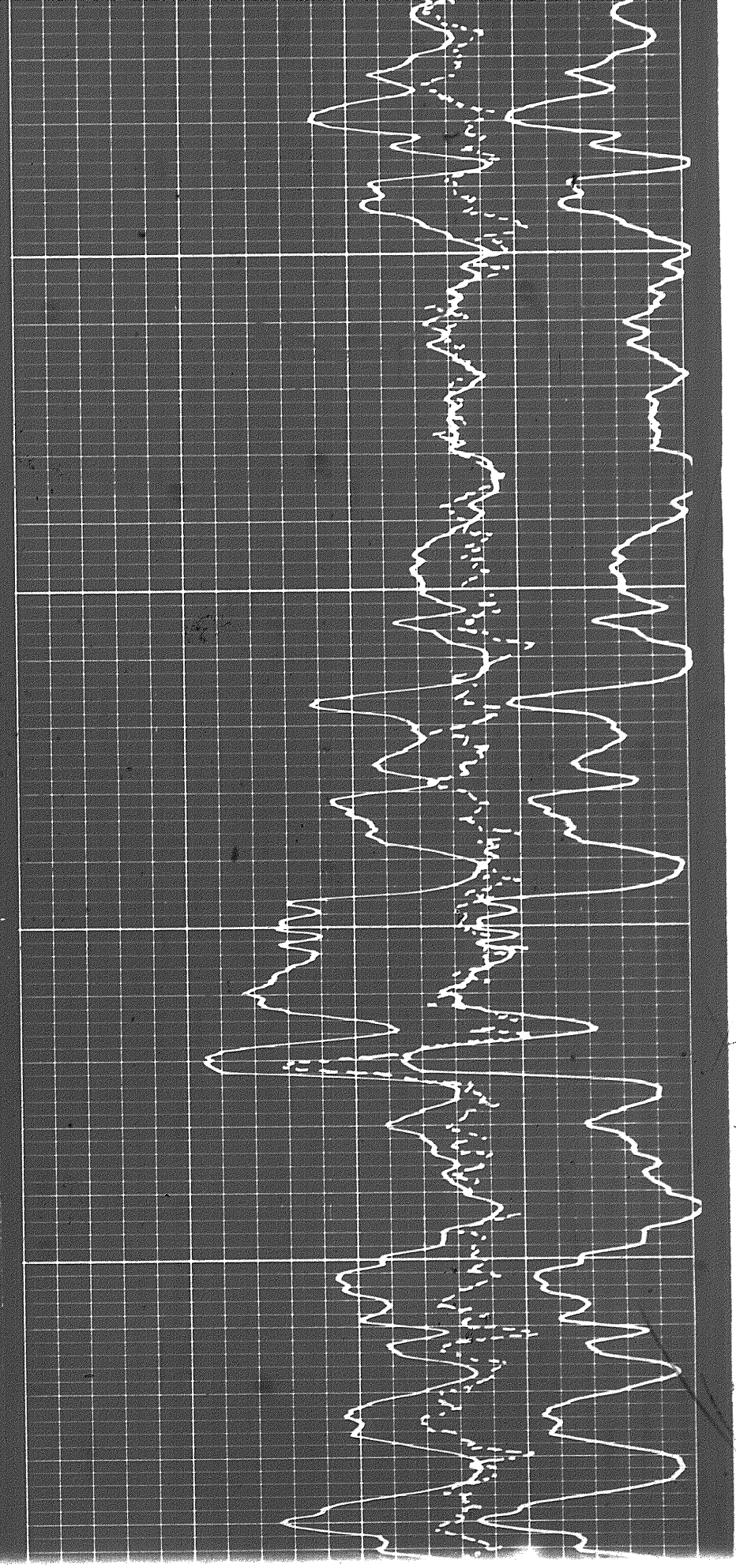
6700



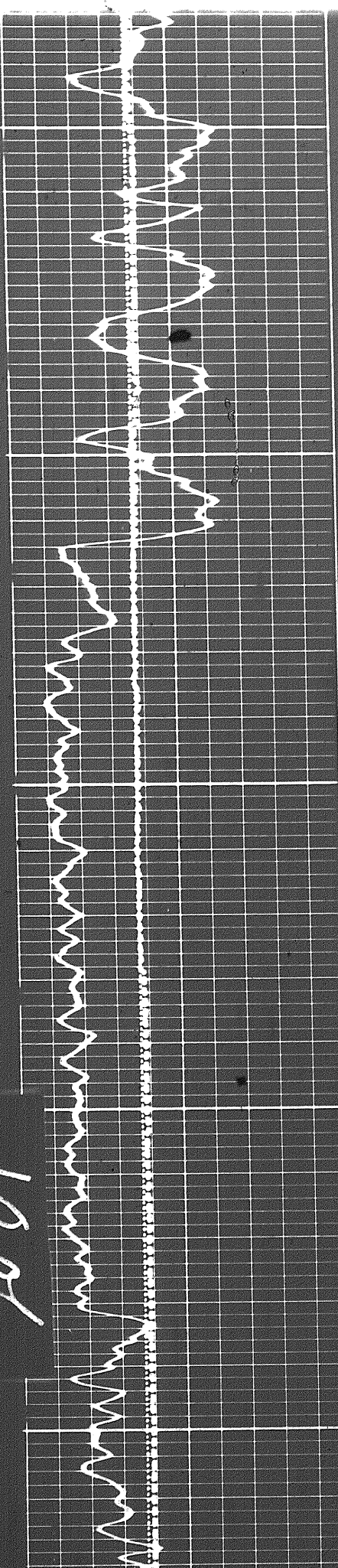


0009

6960

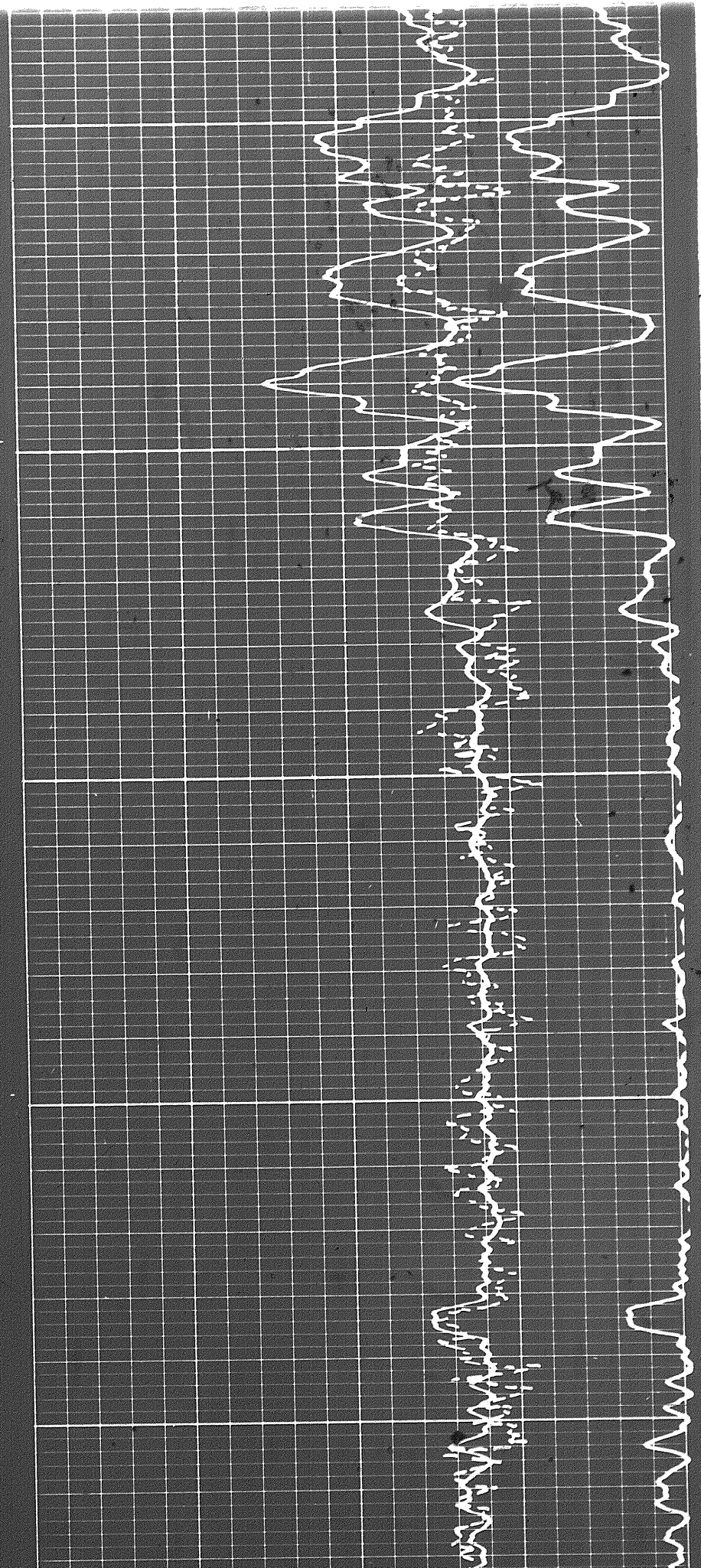


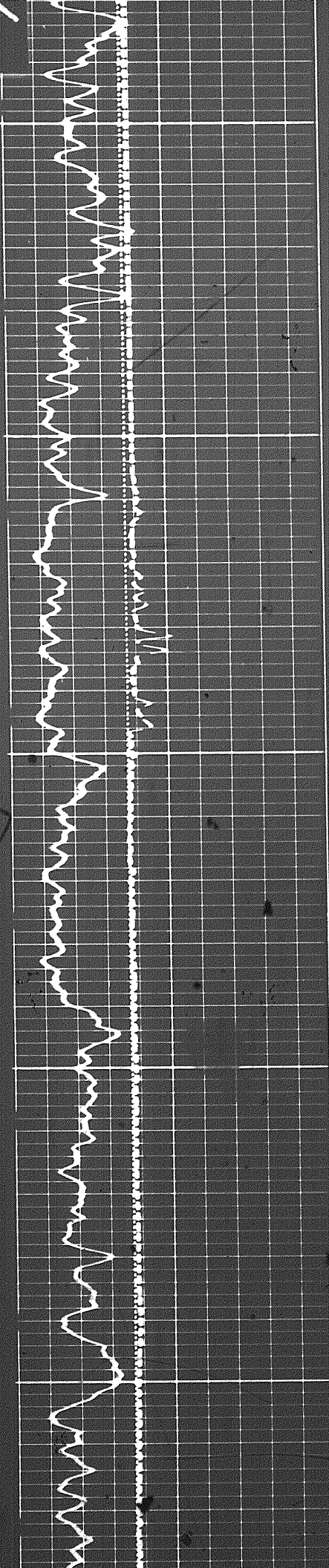
1001



7000

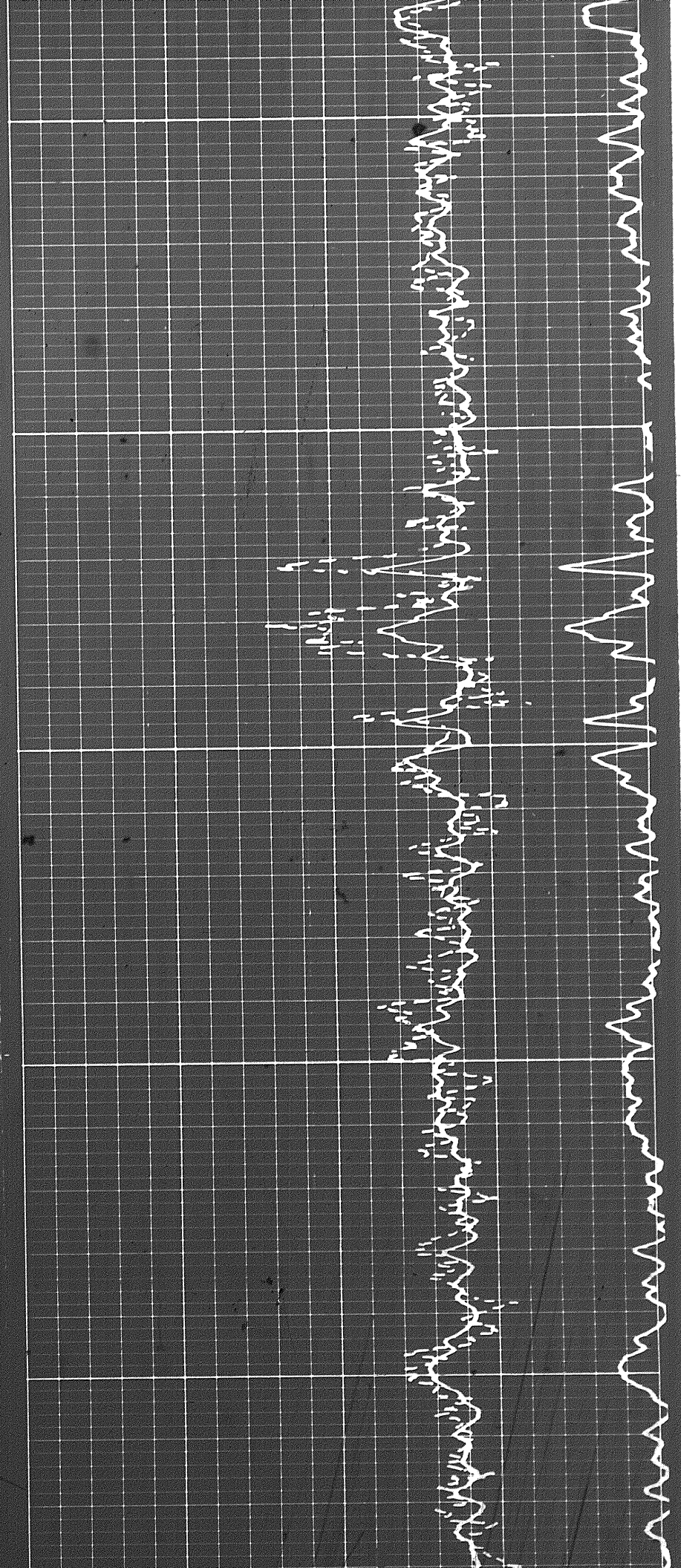
7100

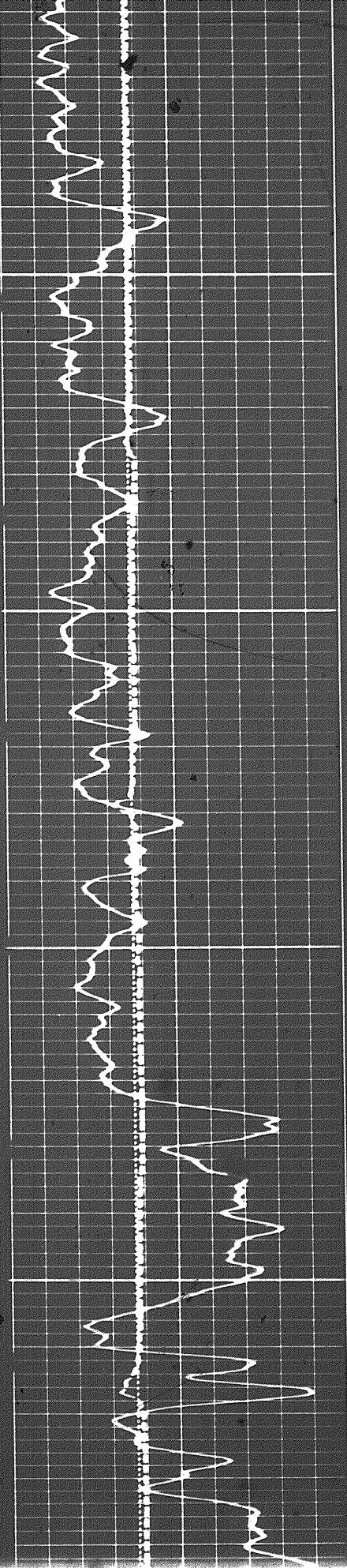




7200

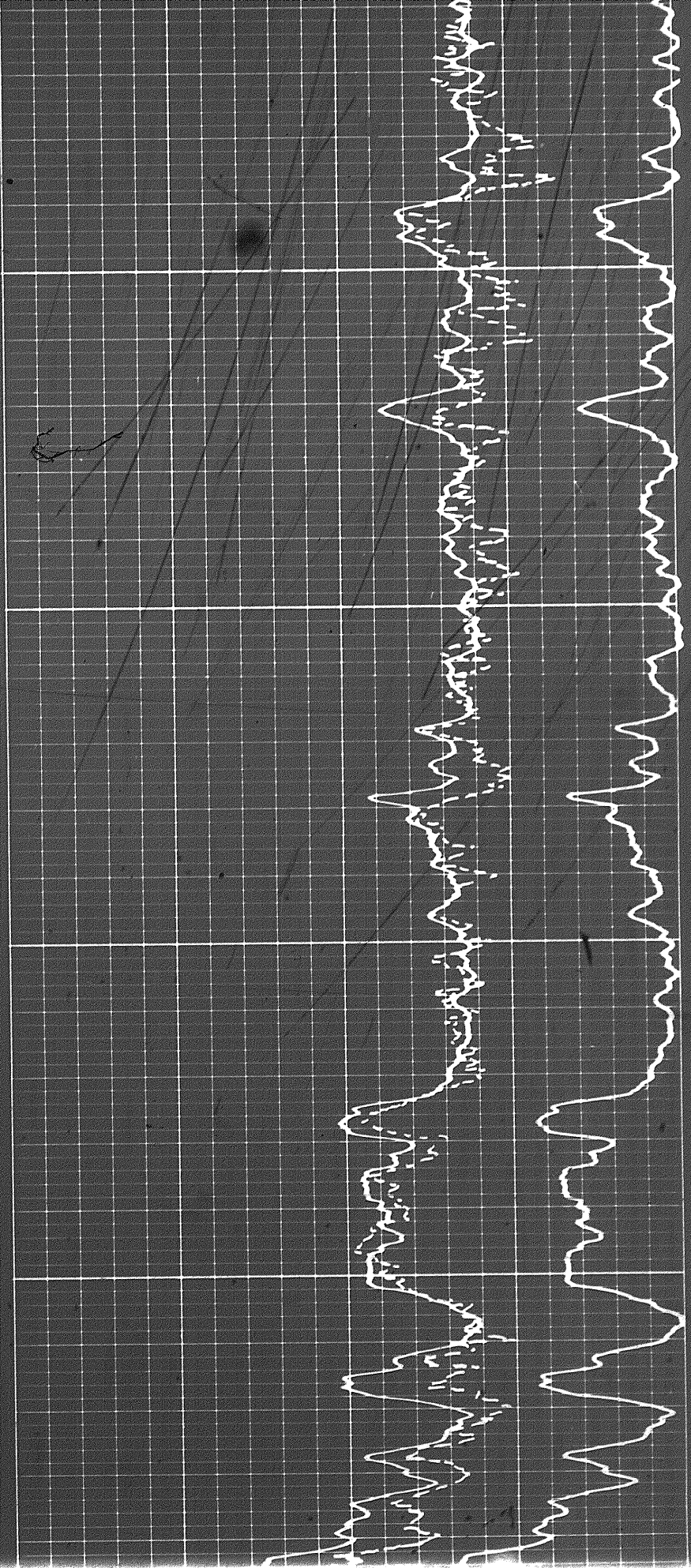
7300



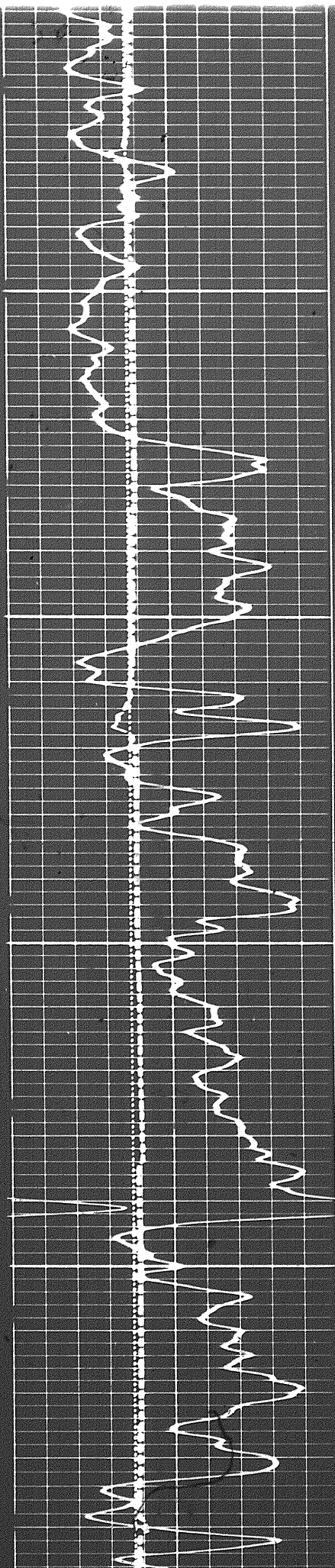


7400

7500

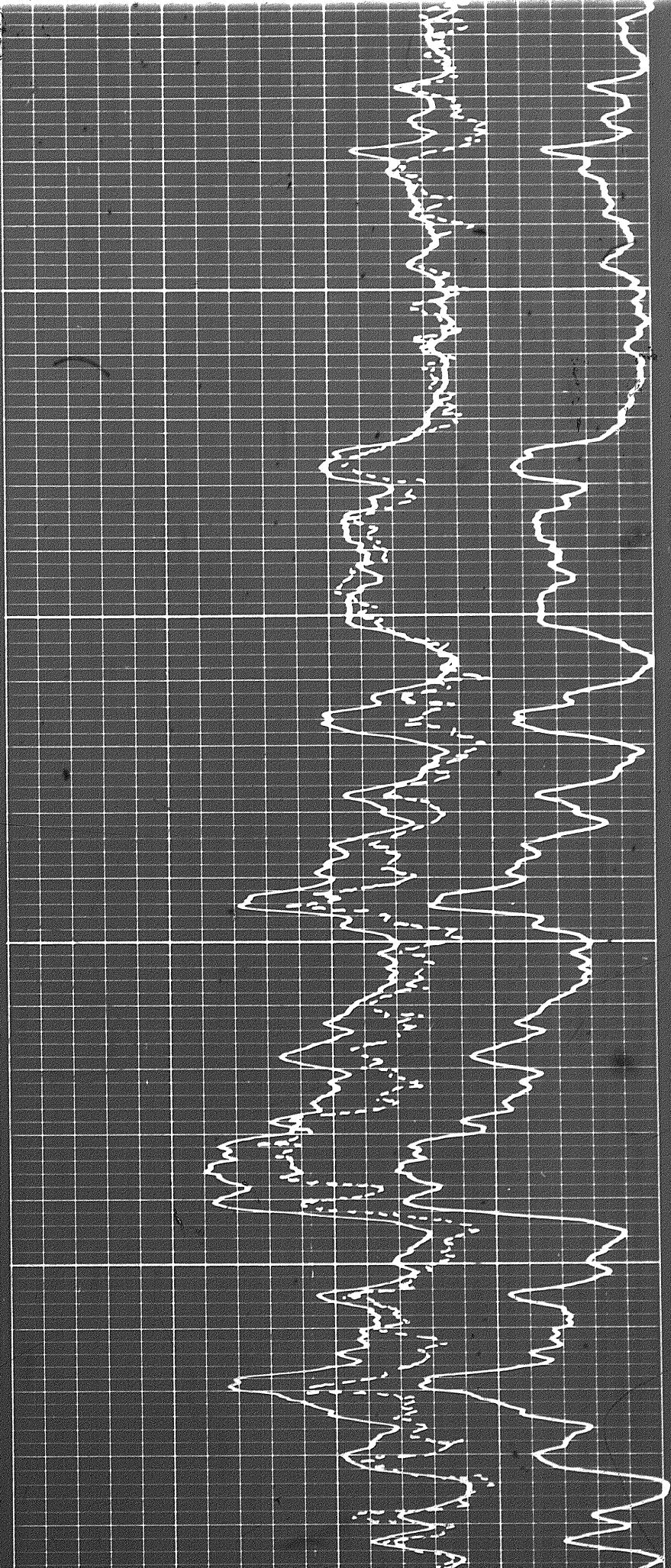


11/2/11



7500

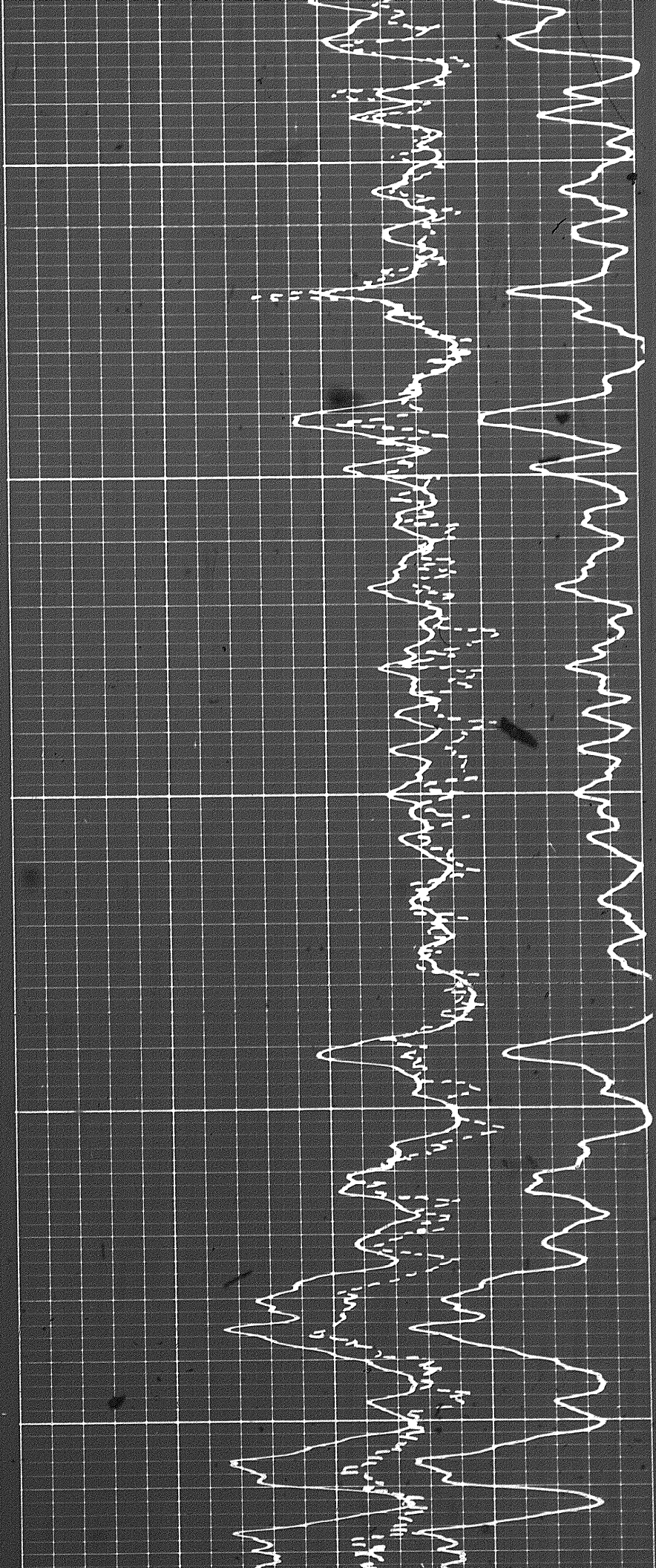
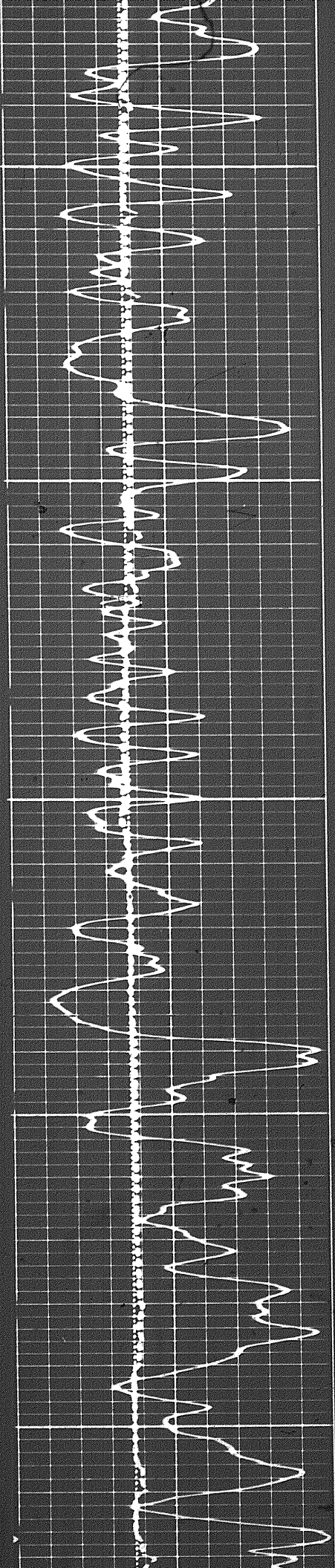
7500

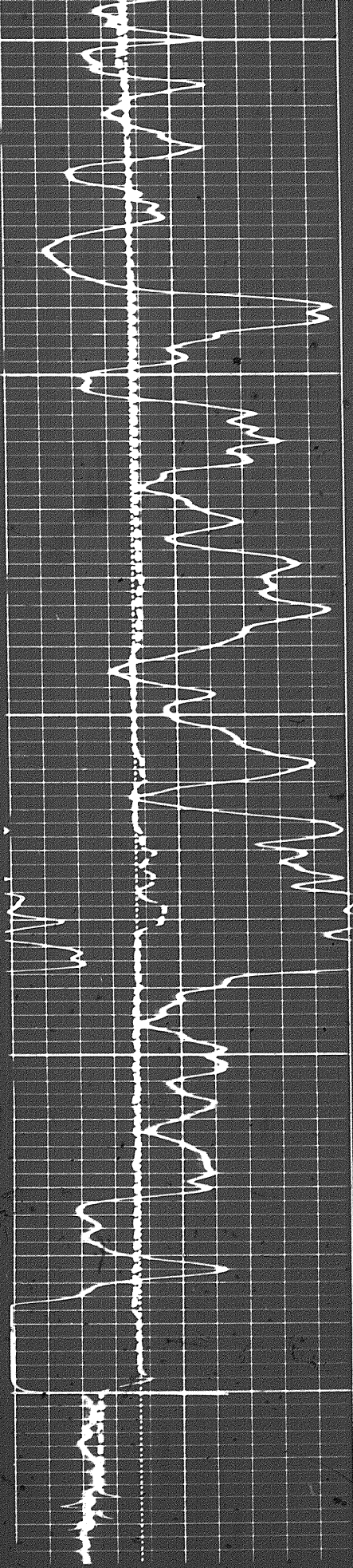


7700

7800

7900





7500

7900

FR

8000

