

SCHLUMBERGER

DUAL INDUCTION-LATEROLOG

SCHLUMBERGER OF CANADA Calgary Alberta

PROVINCE YUKON TERRITORIES
 FIELD WILDCAT
 WELL CHEVRON SOBC WM. W. PARKIN
 C-33
 COMPANY CHEVRON STANDARD LIMITED

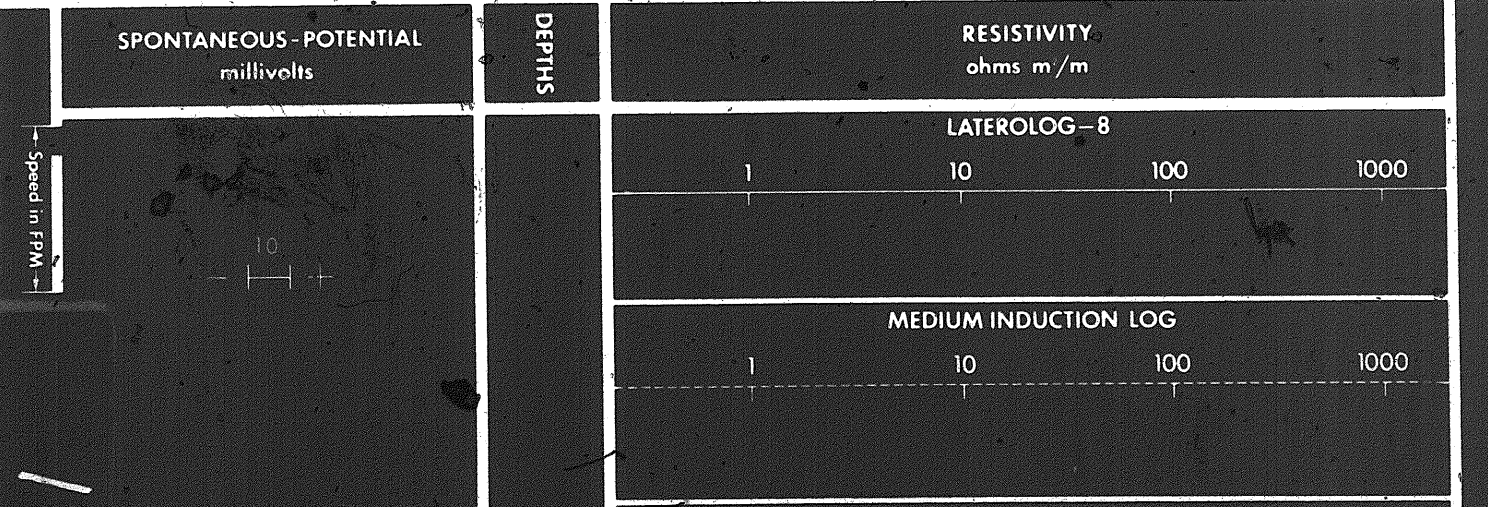
COMPANY CHEVRON STANDARD LIMITED
 WELL CHEVRON SOBC WM. W. PARKIN
 C-33
 FIELD WILDCAT
 PROVINCE YUKON TERRITORIES
 LOCATION 66° 12' 12" N LAT 137° 21' 01" W LONG
 Permanent Datum GL Elev. 1687.7
 Log Measured From KB 18.3 Ft. Above Perm. Datum
 Other Services: SLC-GR, SUP-GR, FDC-GR, CST
 ELEV. KB 1705.0
 CL 1687.7
 CBF

Date	9 JAN 72
Run No.	ONE
First Reading	4109
Last Reading	822
Feet Measured	3287
Depth Reached	4115
Bottom Driller	4123
Crg. SOC	824
Crg. Driller	823
Mud Feature	KEIZAN
Dens. Visc.	11.0 63
Mud pH	9.0
Water Loss	4.8
Res.	3.67 @ 84 of
Rinf.	3.40 @ 89 of
Rinc.	3.2 @ 95 of
Bit	4.95 @ 84 of
Source of Sample	CIRCULATED
Bit Size	8 3/4"
Over Rig Time	8 HRS
Truck No.	OSU-C 108 REM
Recorded By	WILSON
Witness	POLLARD

28 FEB 72 CAL CT

REMARKS
 Drilling Stopped 0700 / 9th : Circulation Stopped 1100 / 9th : Tool on Bottom 0500 / 11th : 1st Run Service Order # 7781 B.H.T. 97 °F

Stand Off =	1.5 inches
Cartridge No.	B 99
Panel No.	CB 158
Sonde No.	B 175
IAP-D No.	MMP-B 268
SBR	2



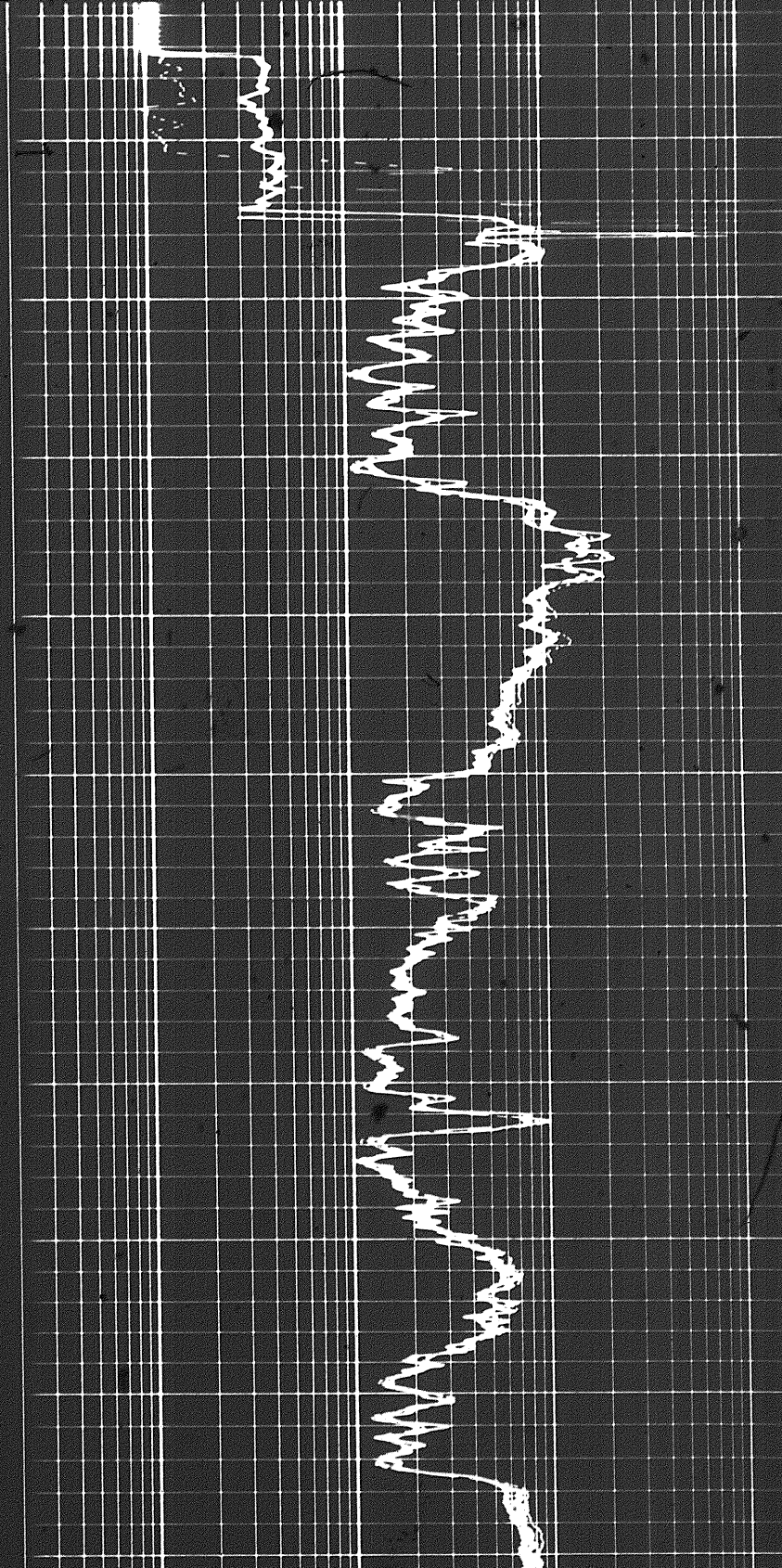
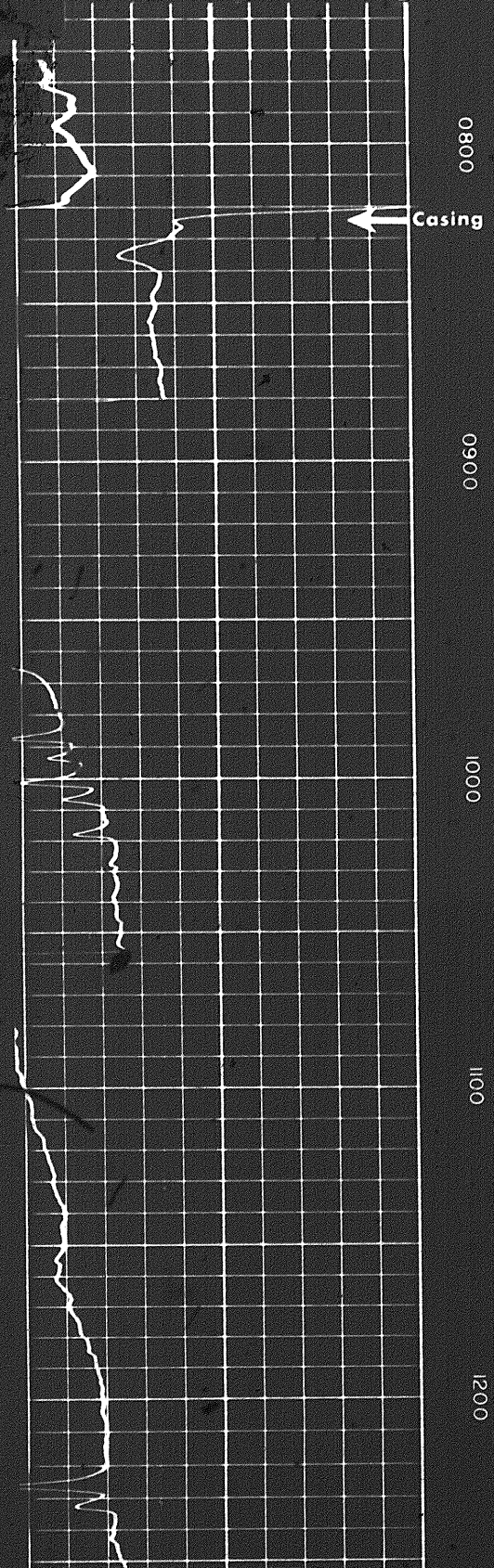
1 of

MEDIUM INDUCTION LOG

1 10 100 1000

DEEP INDUCTION LOG

1 10 100 1000



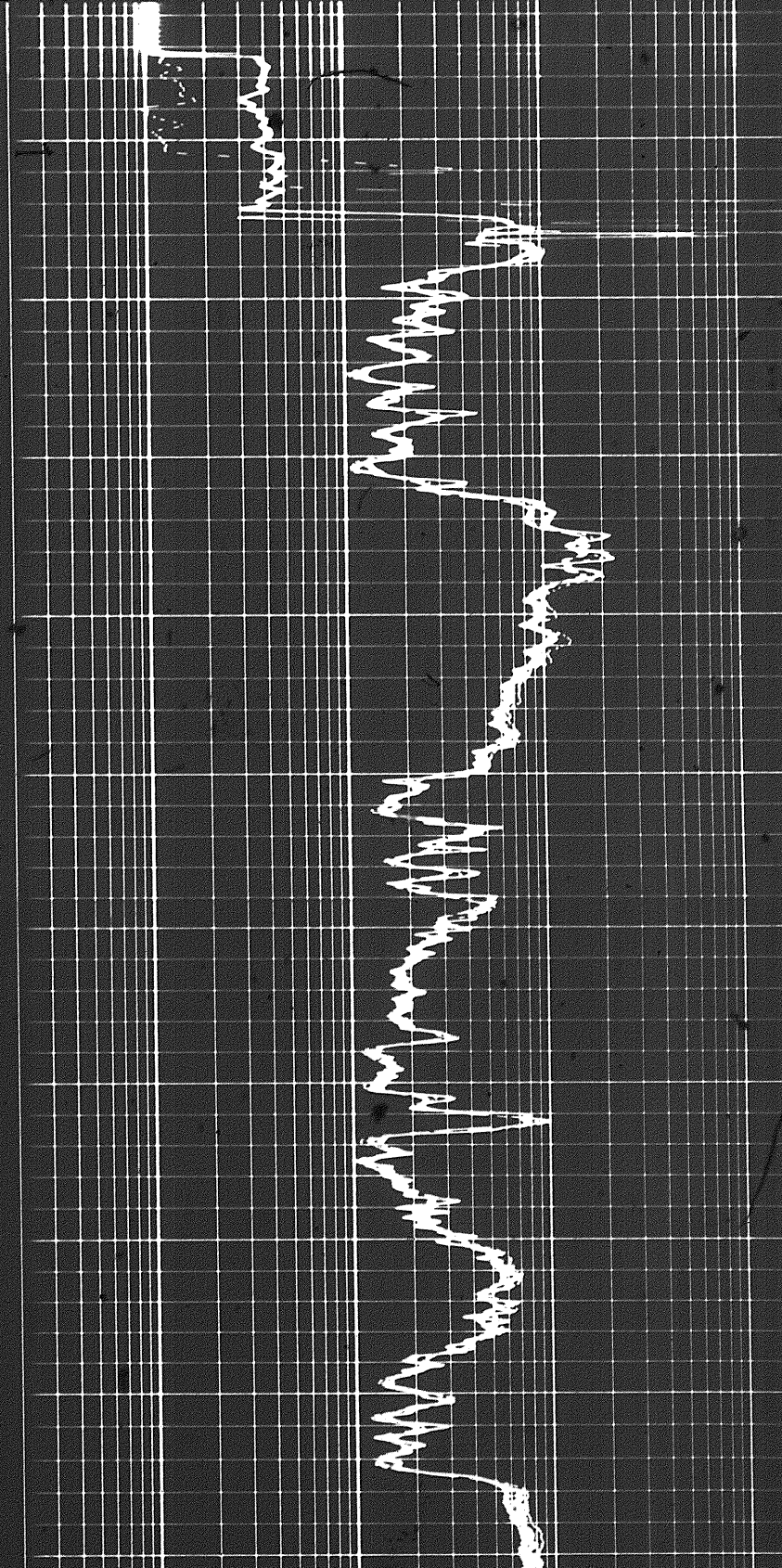
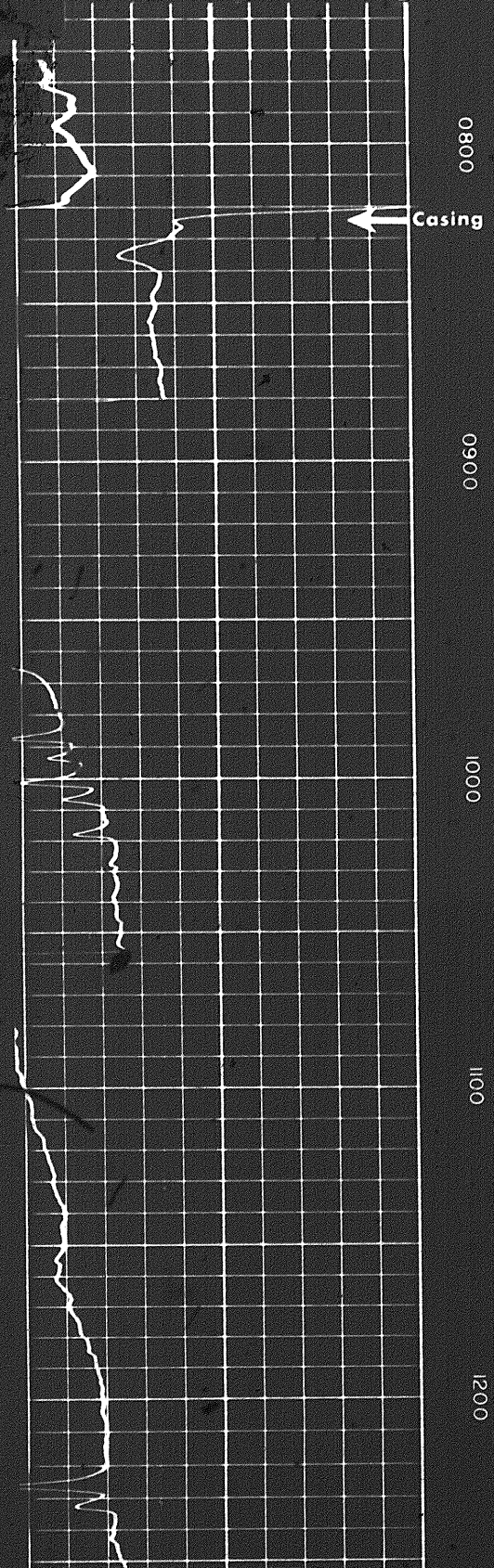
1 of

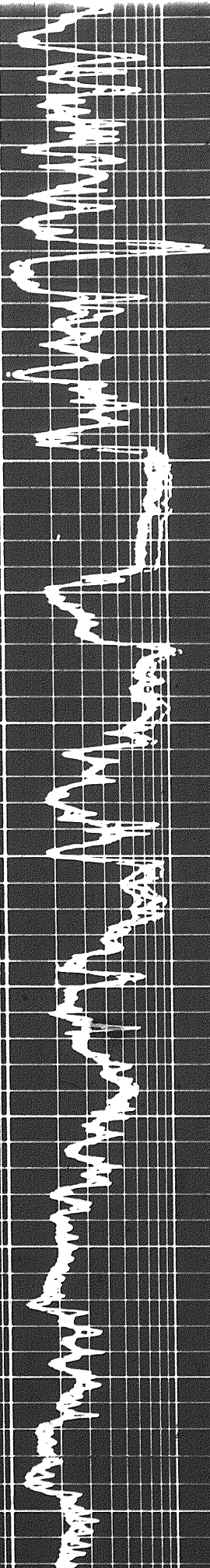
MEDIUM INDUCTION LOG

1 10 100 1000

DEEP INDUCTION LOG

1 10 100 1000





1500

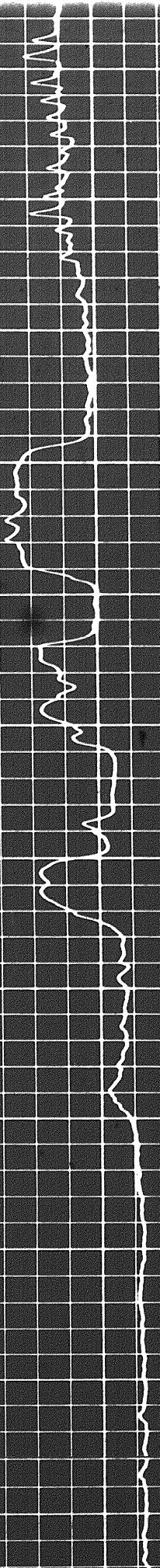
1600

1700

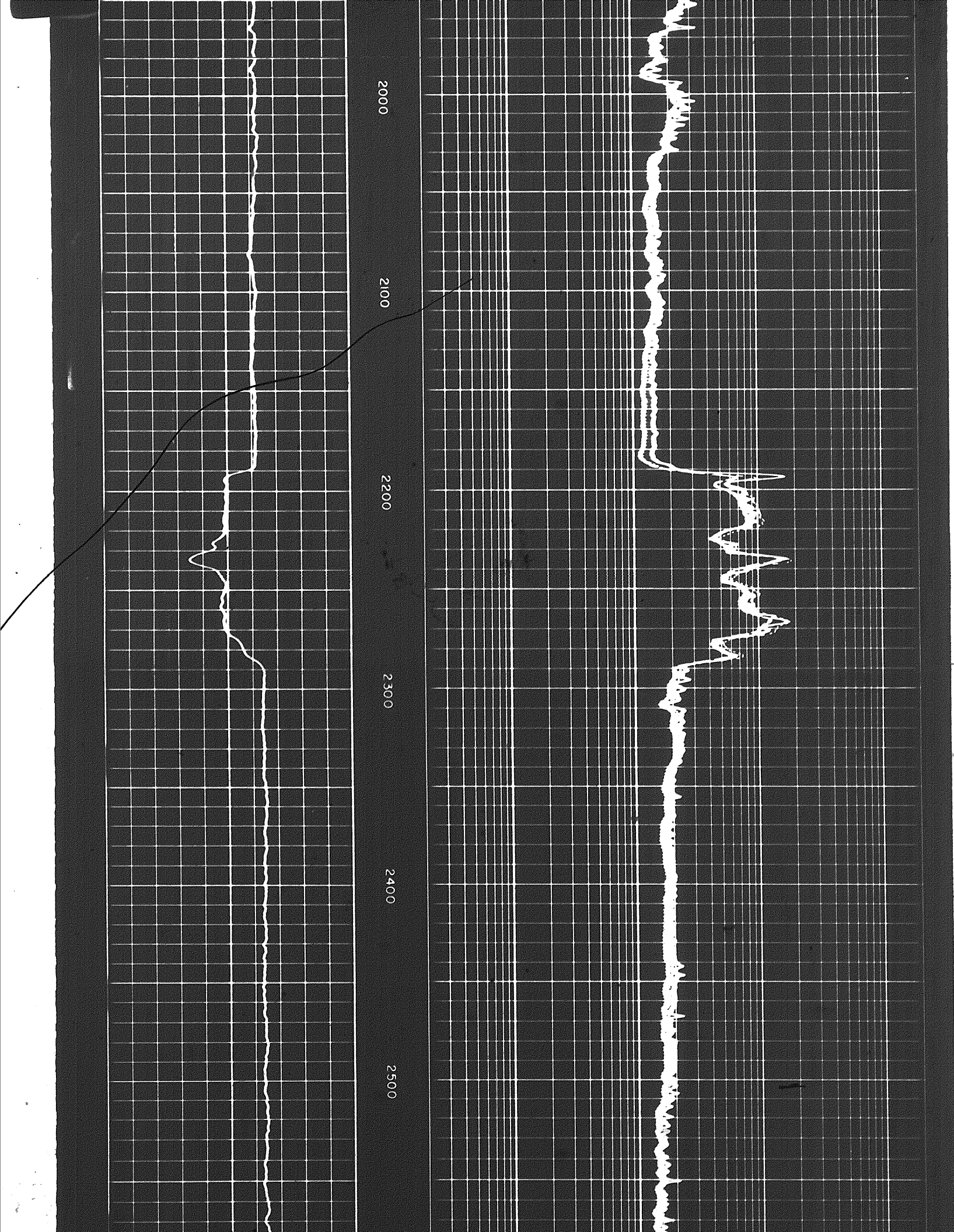
1800

1900

2000



2 of



2500

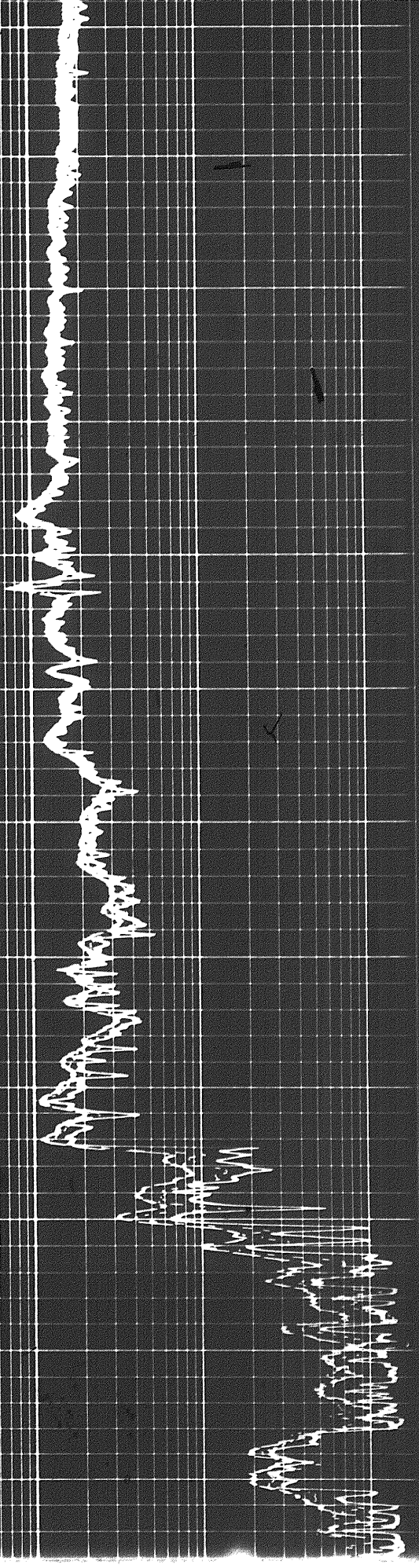
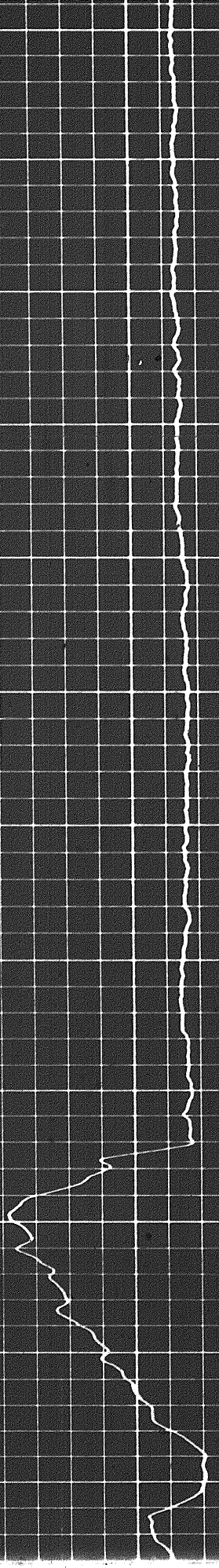
2600

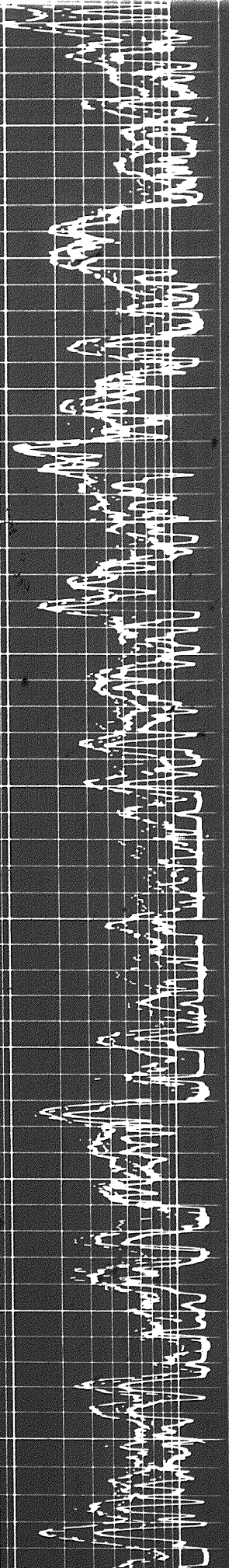
2700

2800

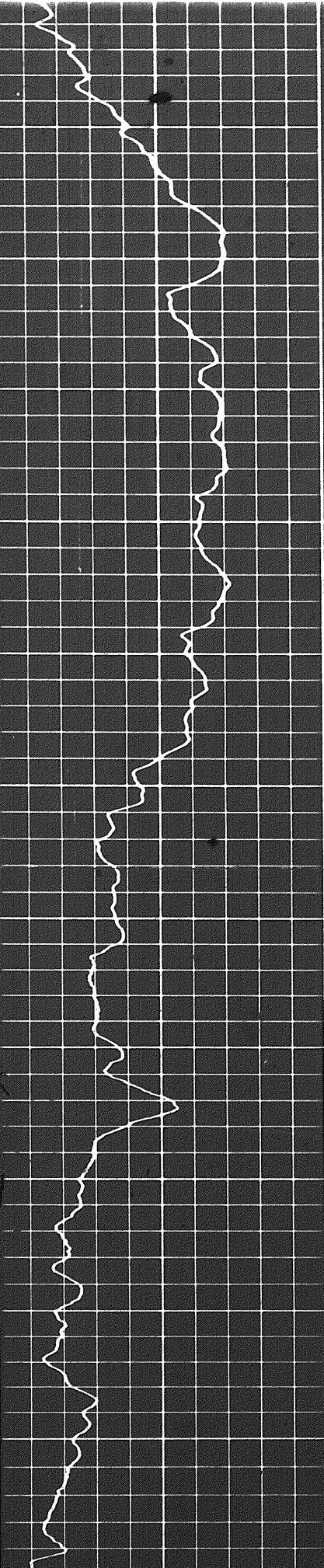
2900

3000

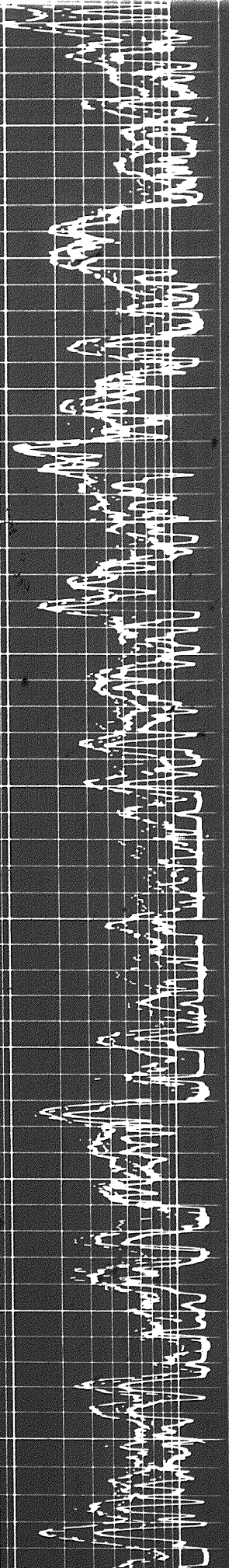




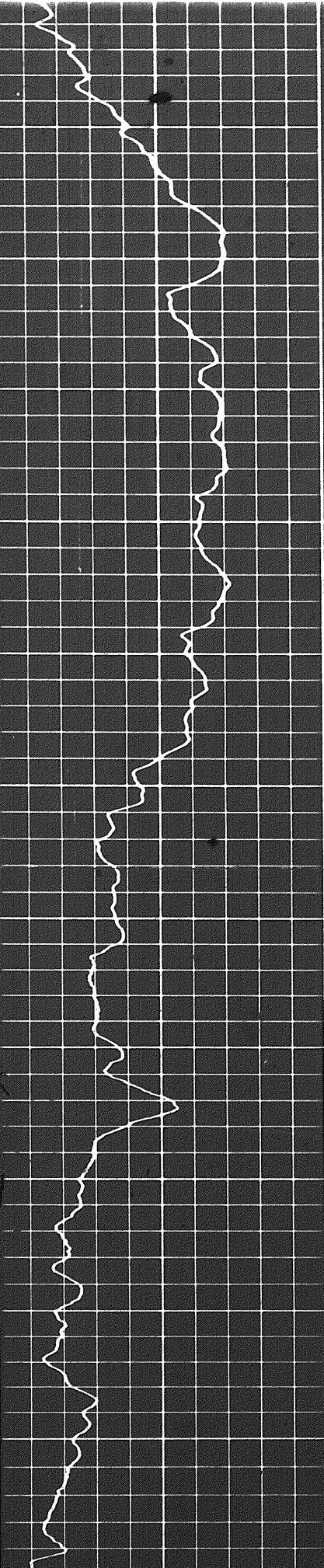
00 3000 3100 3200 3300 3400 3500



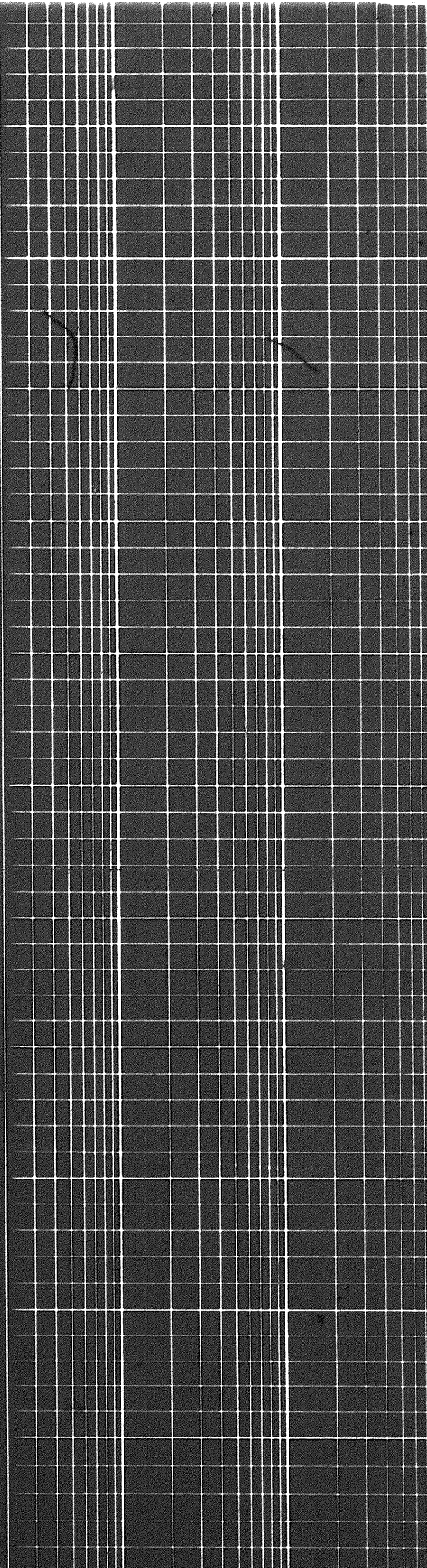
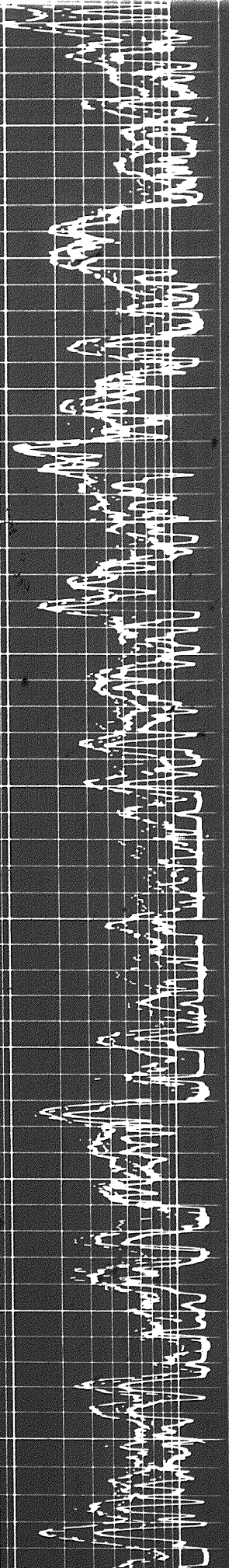
39



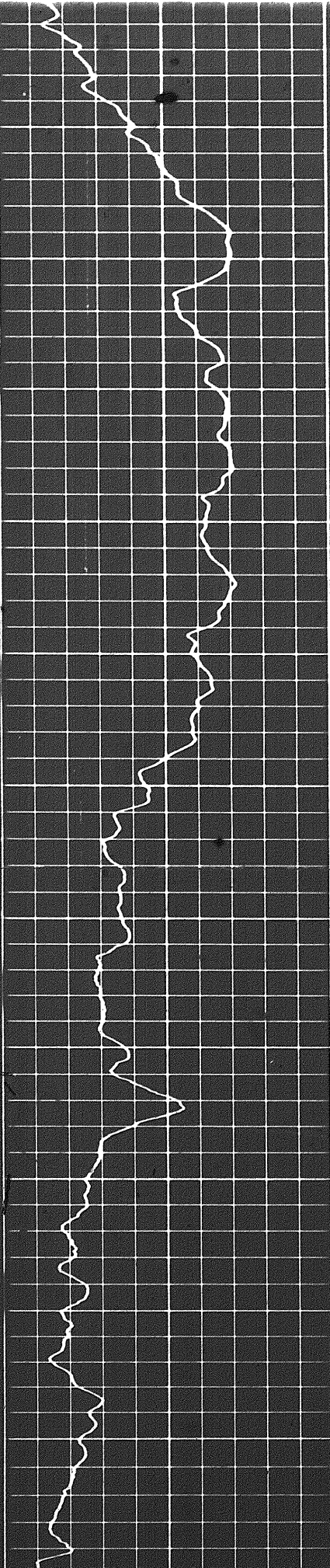
00 3000 3100 3200 3300 3400 3500



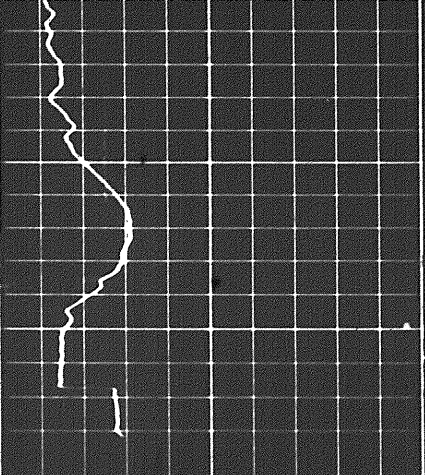
39



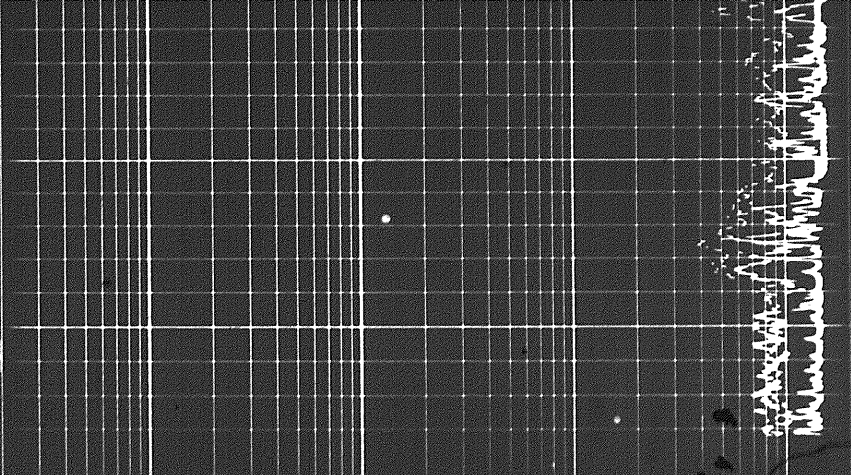
00 3000 3100 3200 3300 3400 3500



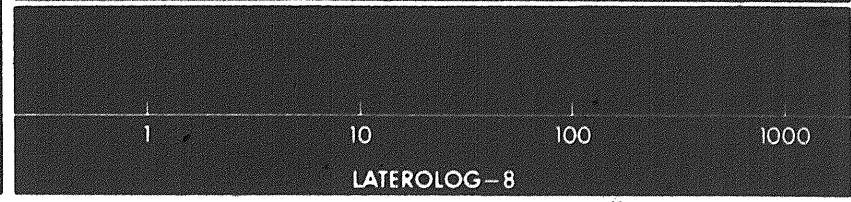
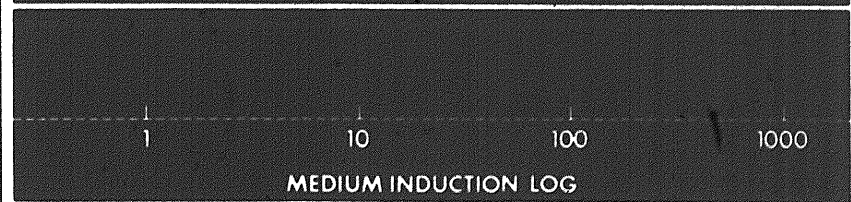
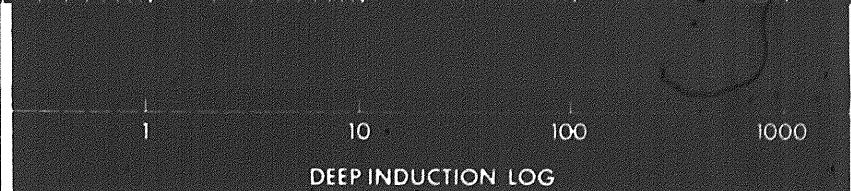
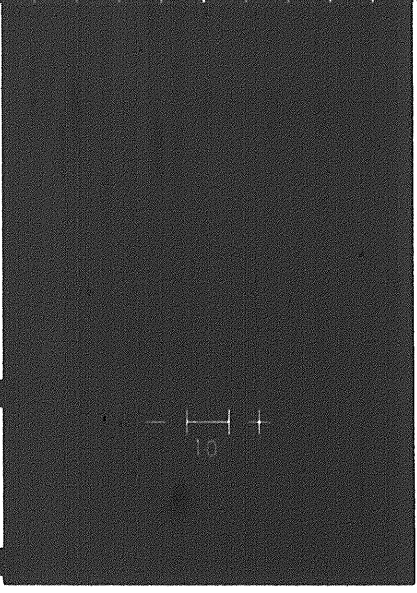
39



000
4100
FR



Speed in FPM



SPONTANEOUS - POTENTIAL
millivolts

DEPTHS

RESISTIVITY
ohms m/m

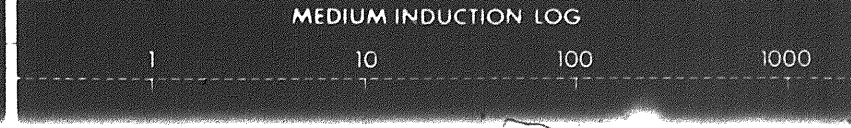
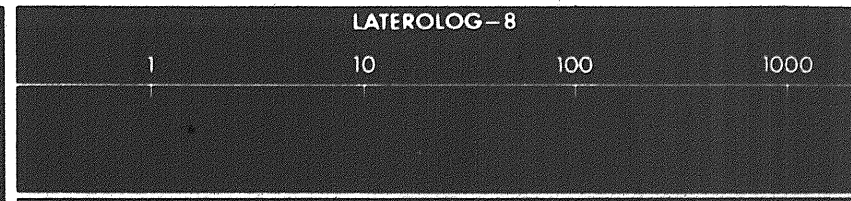
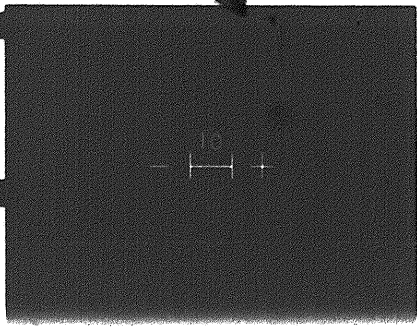
DETAIL LOG 5' = 100'

SPONTANEOUS - POTENTIAL
millivolts

DEPTHS

RESISTIVITY
ohms m/m

Speed in FPM

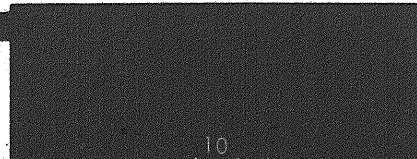


SPONTANEOUS - POTENTIAL
millivolts

DEPTHS

RESISTIVITY
ohms m/m

Speed in FPM



millivolts

SHIPS

ohms m/m

LATEROLOG-8

1

10

100

1000

MEDIUM INDUCTION LOG

1

10

100

1000

DEEP INDUCTION LOG

1

10

100

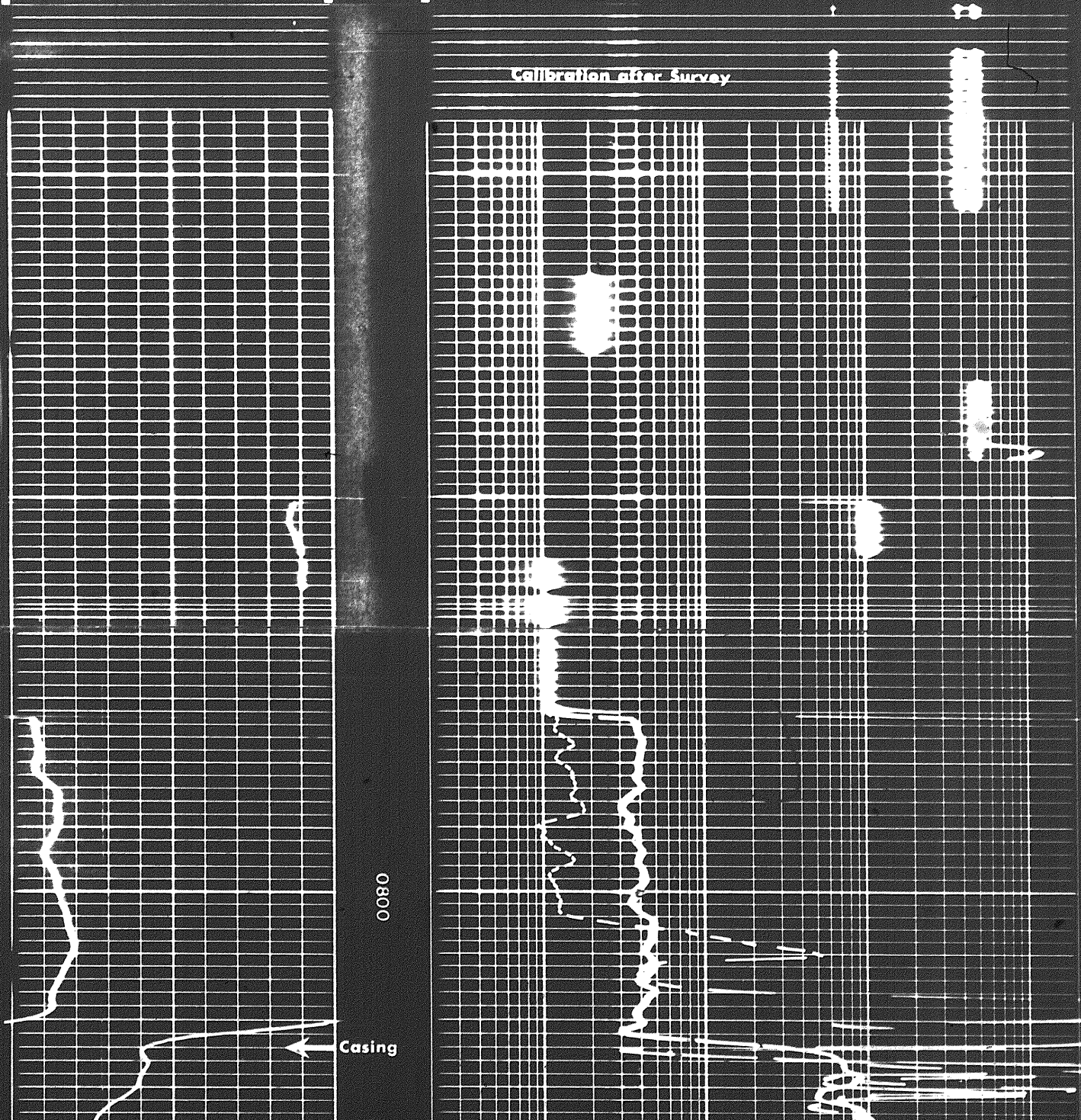
1000

Speed in FPM

10

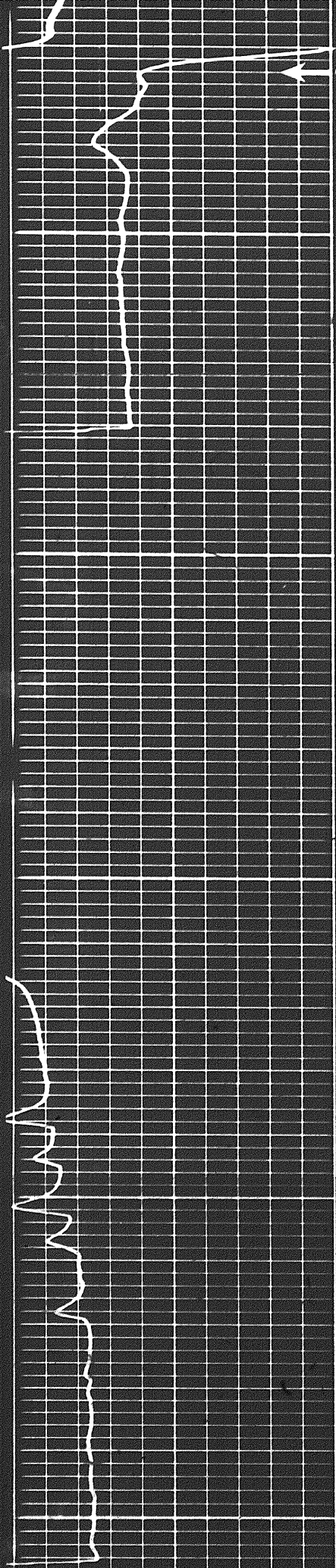
calibration after survey

4 of



0080

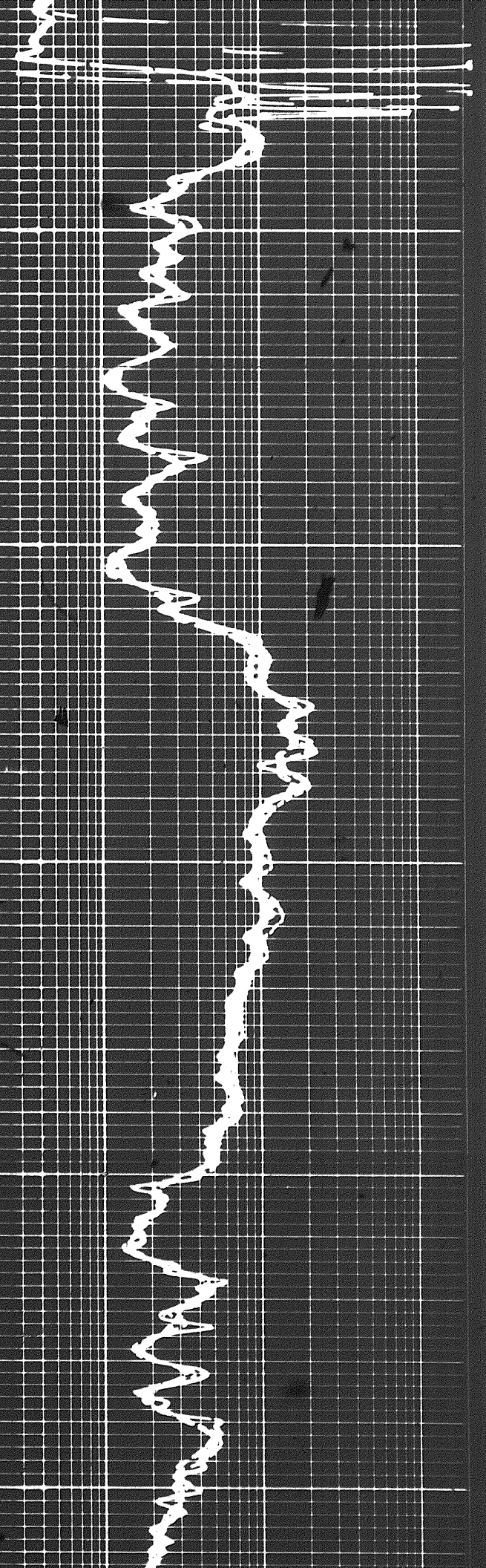
Casing

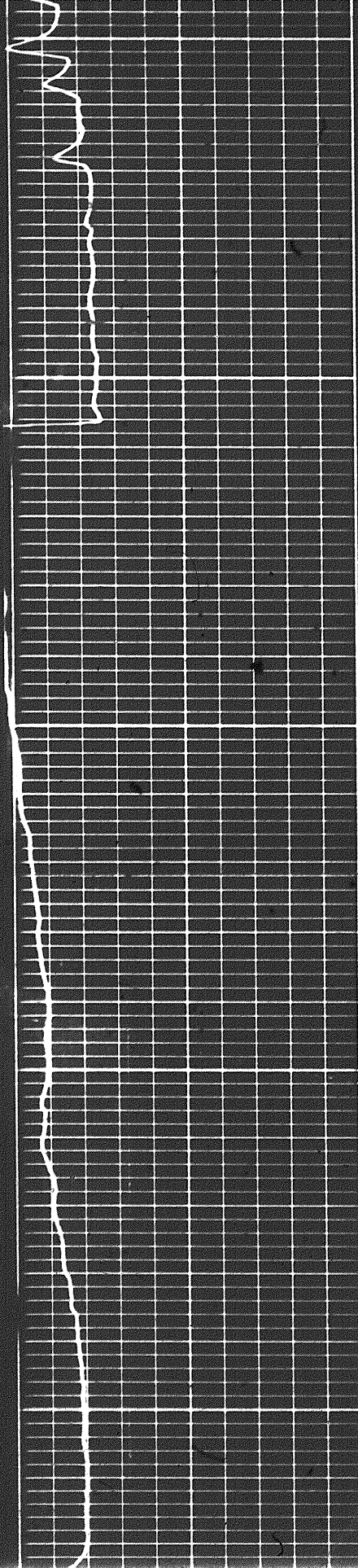


Casing

0060

0001

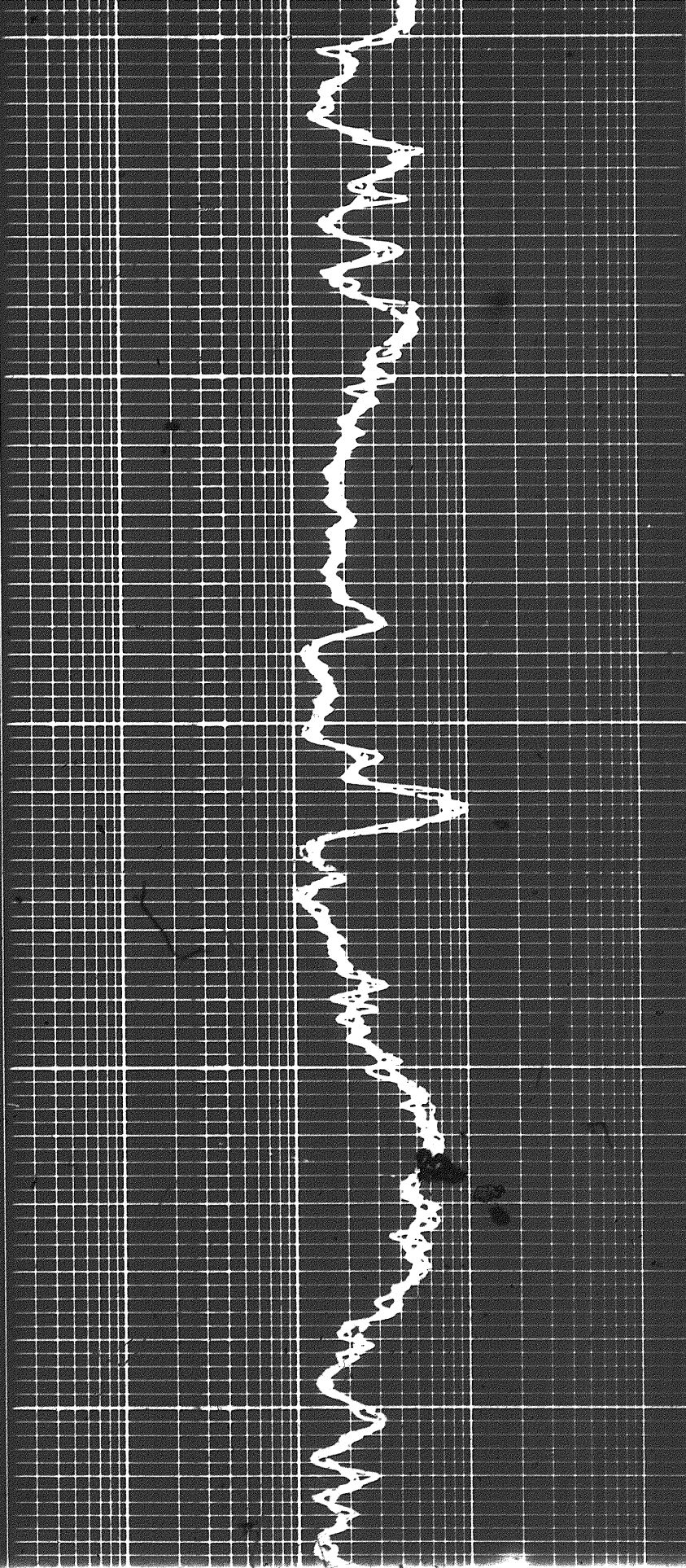




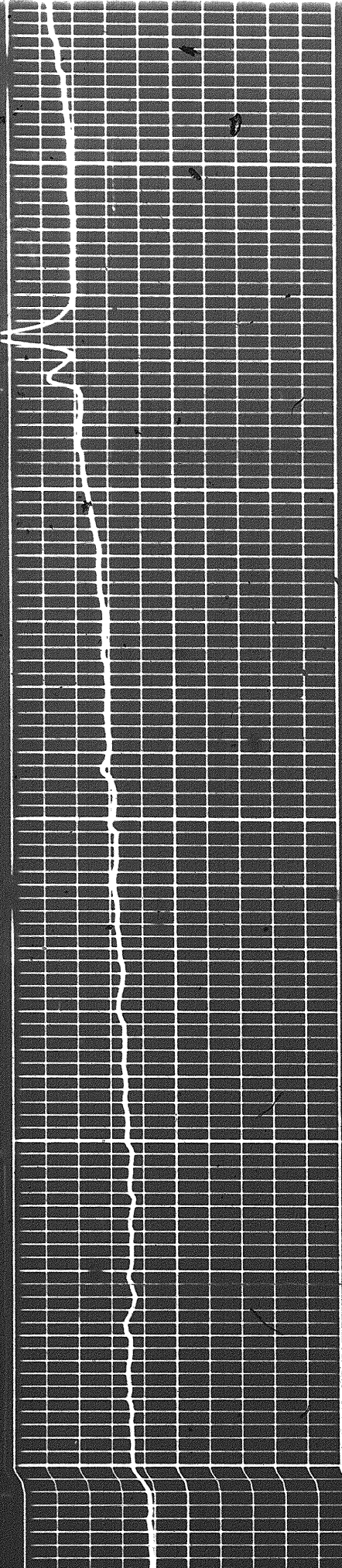
1000

1100

1200



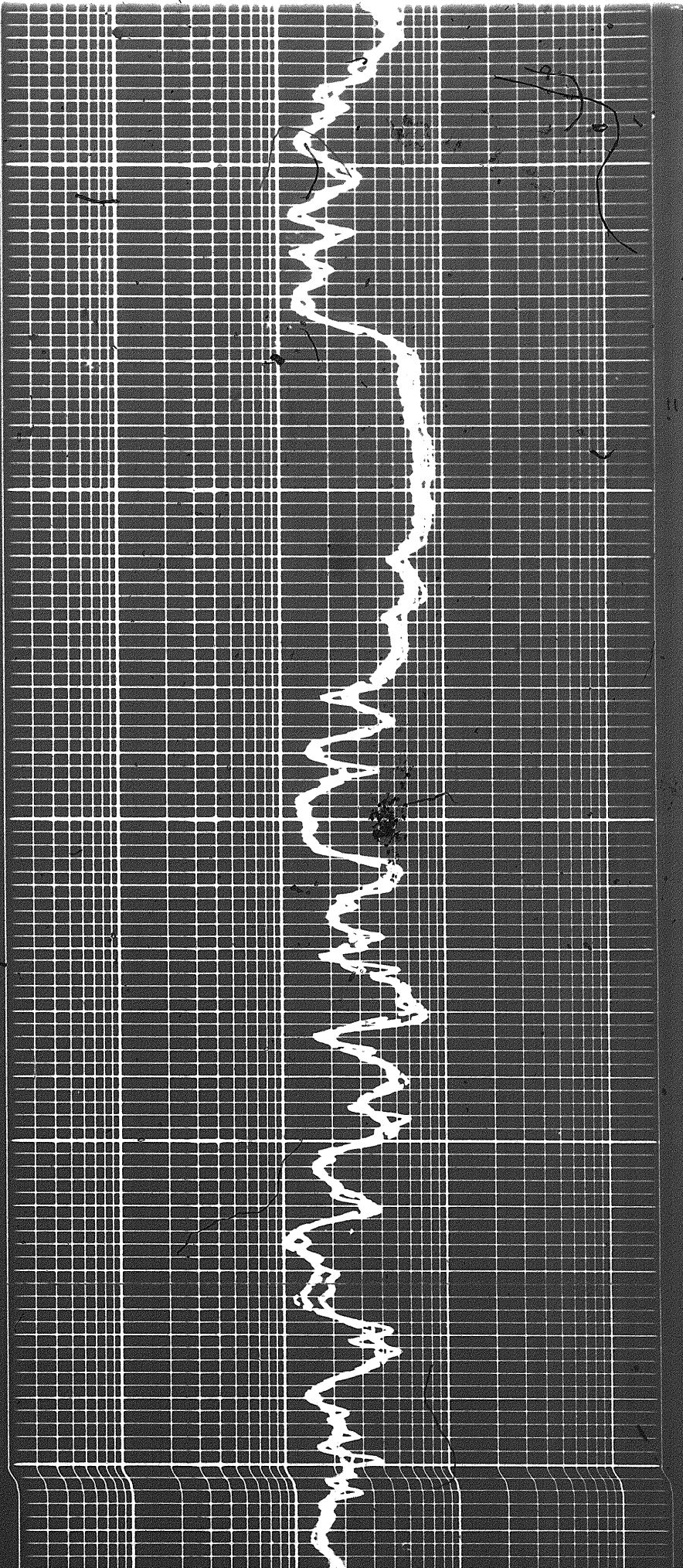
5 of

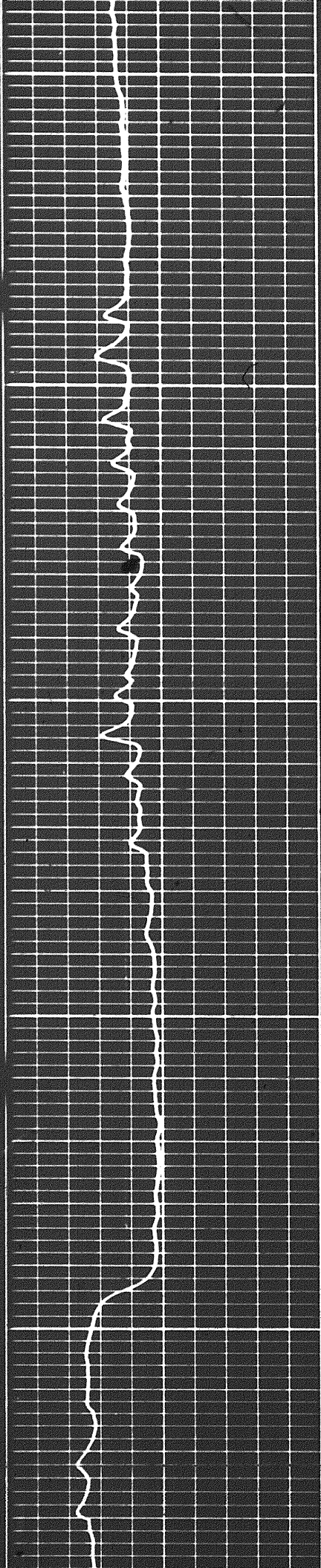


1200

1300

1400

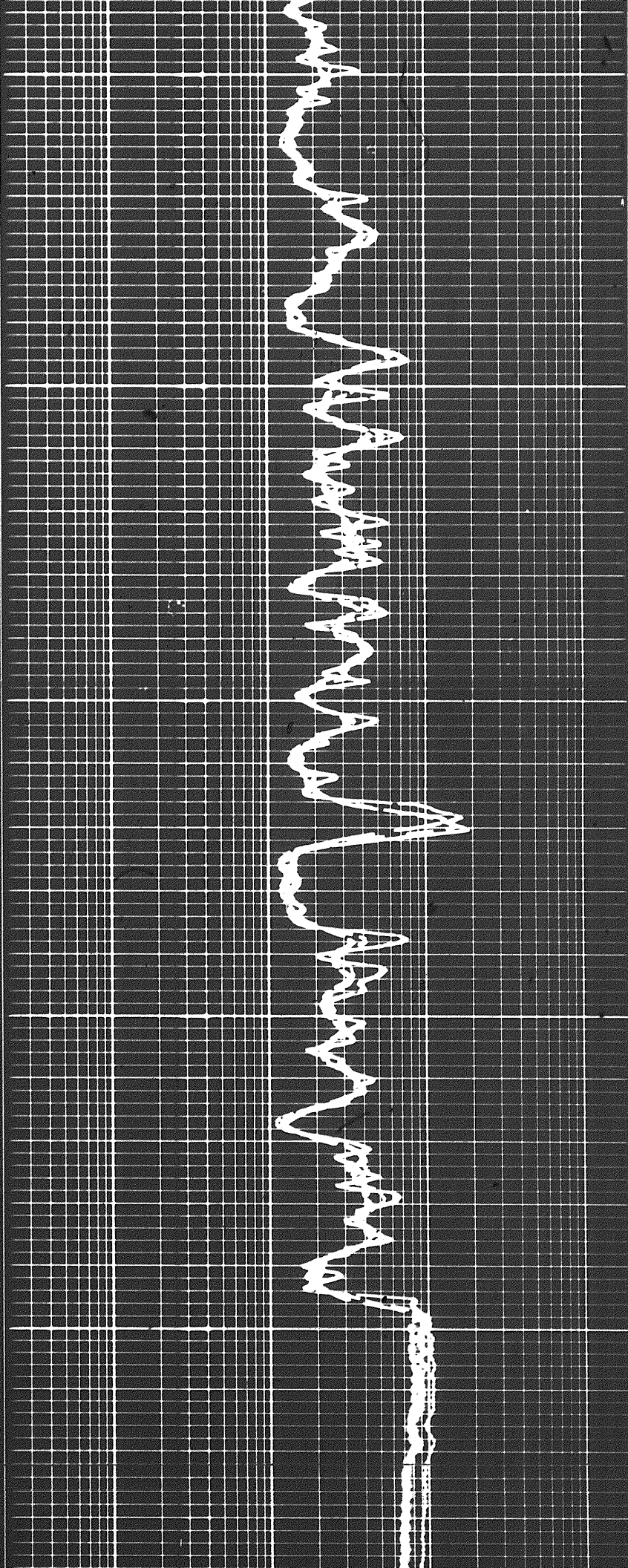


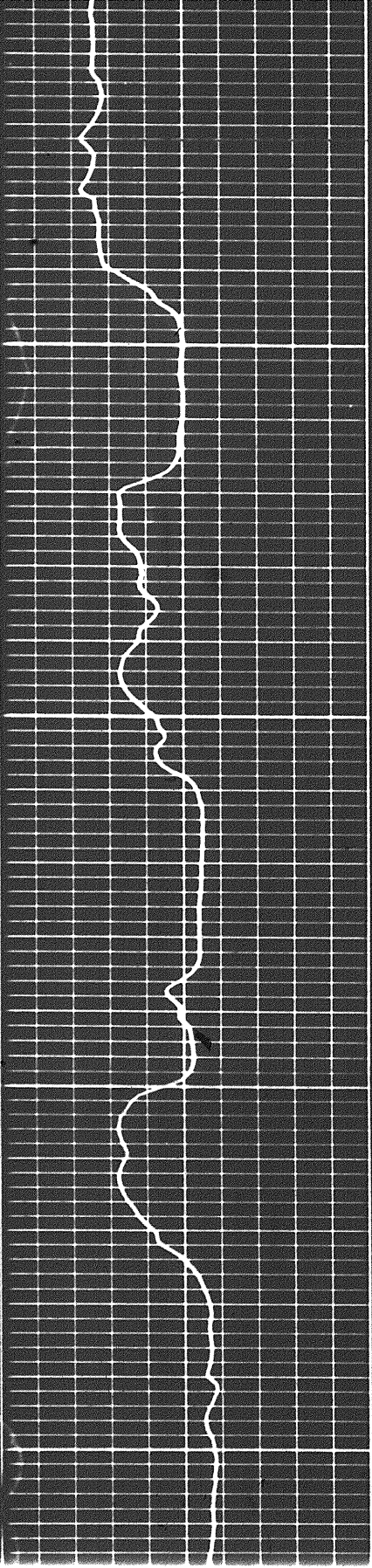


1400

1500

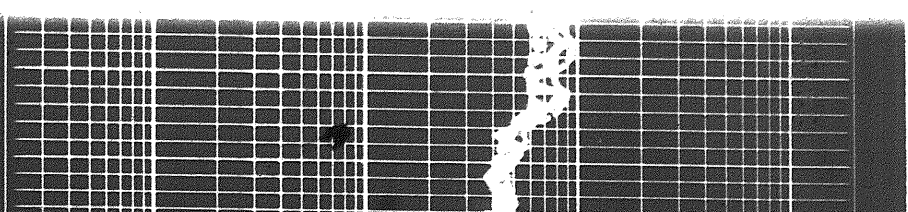
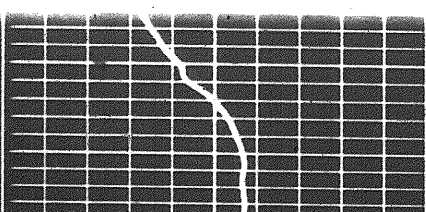
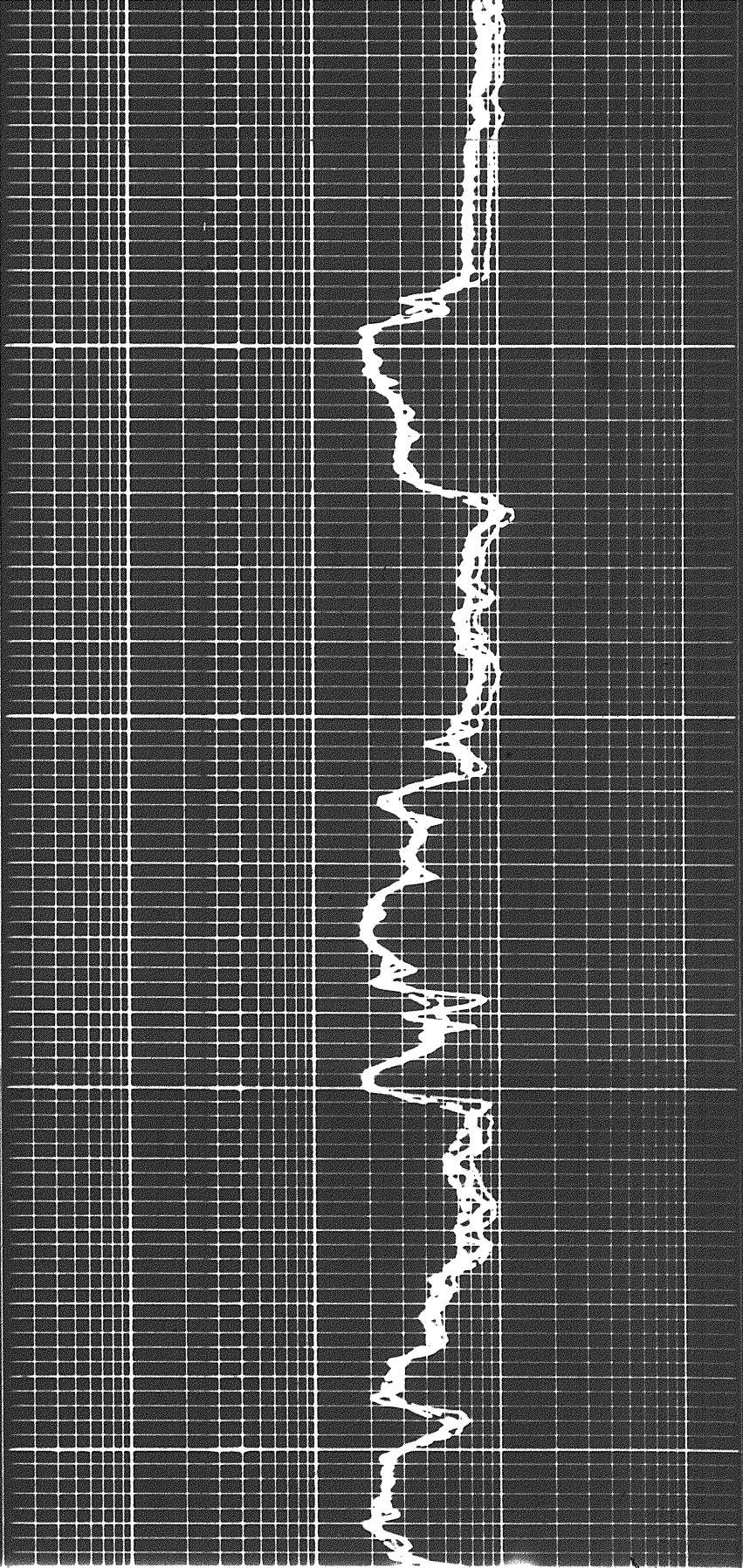
1600



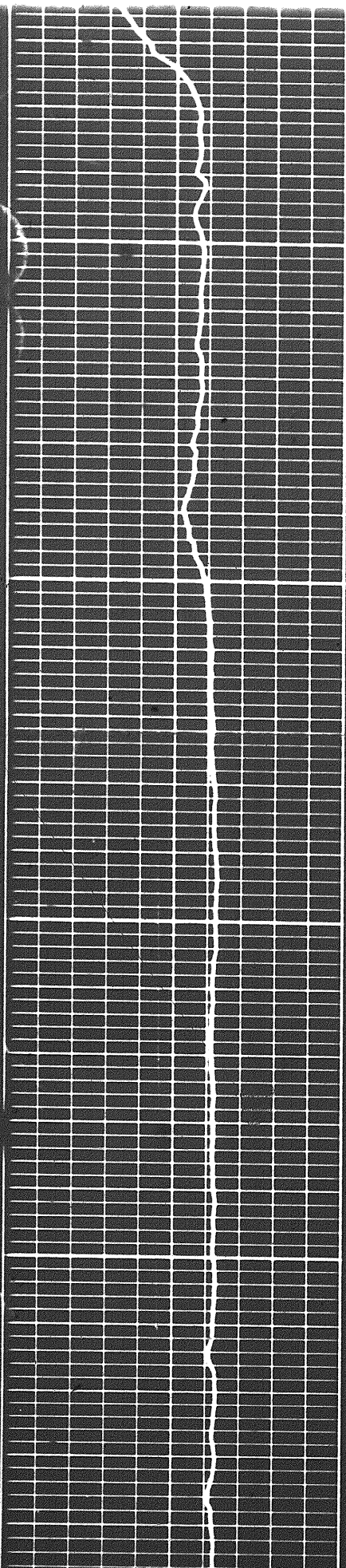


1700

1800



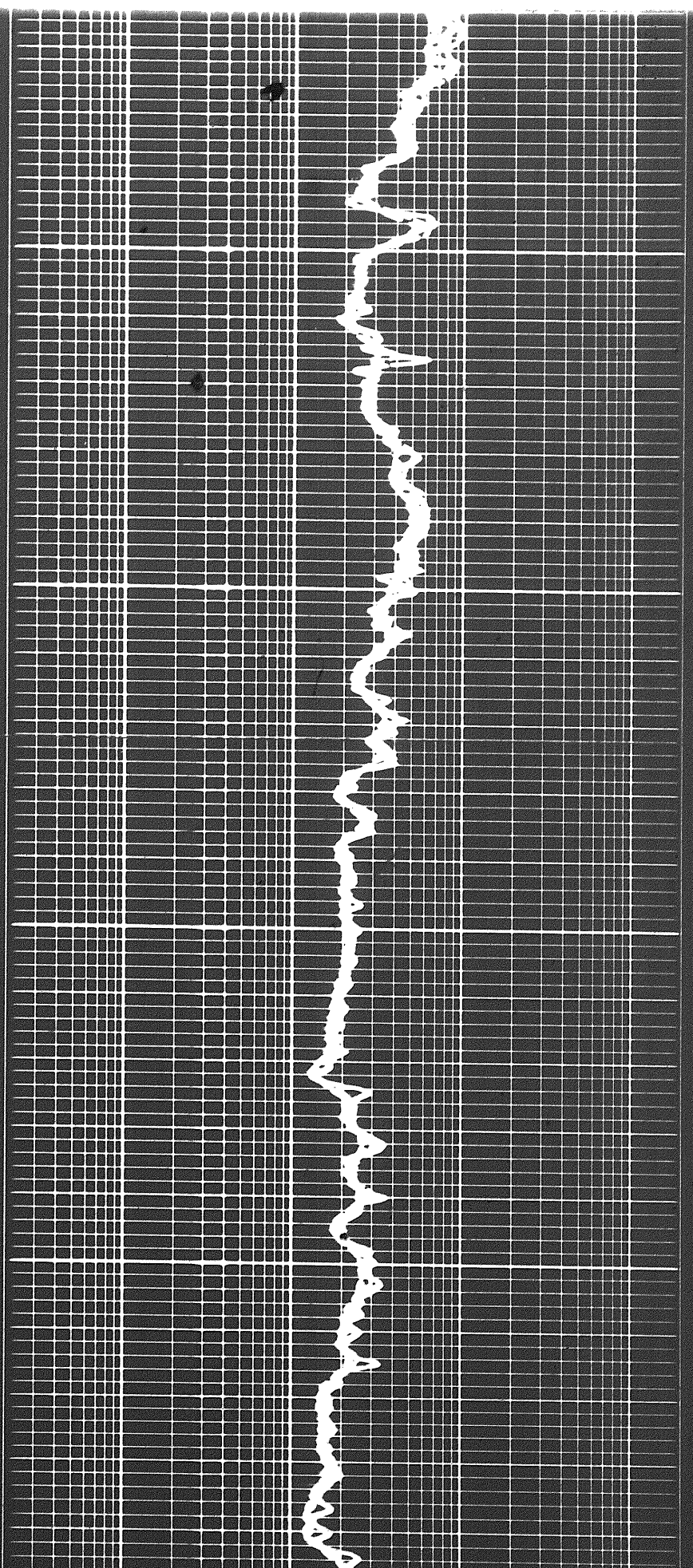
10 of

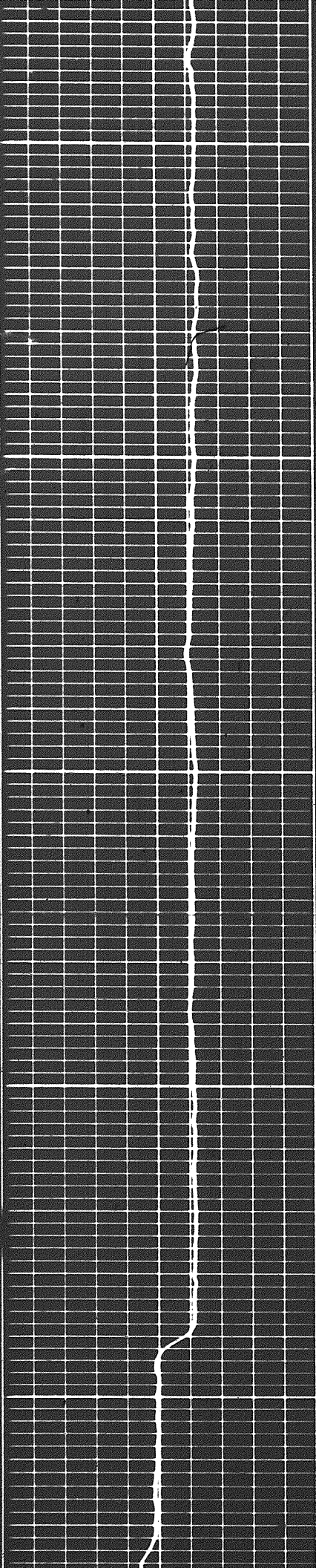


1800

1900

2000

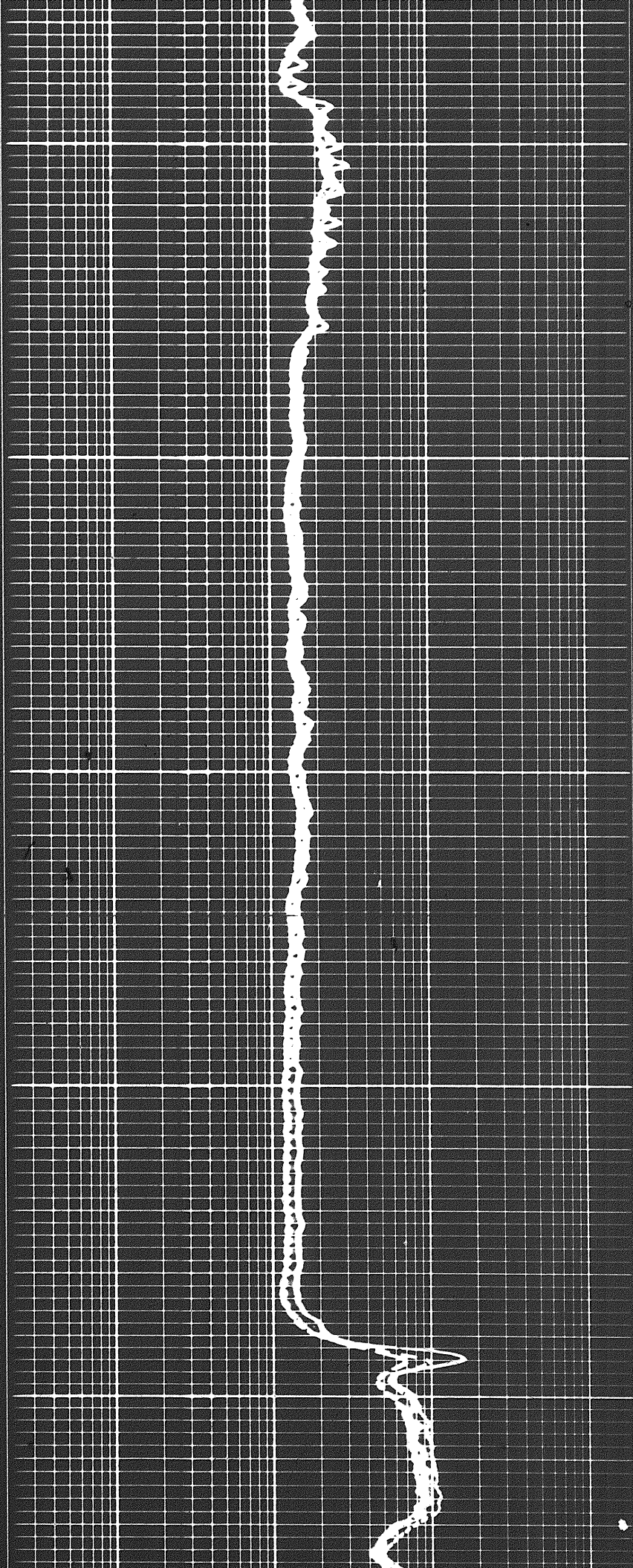




2000

2100

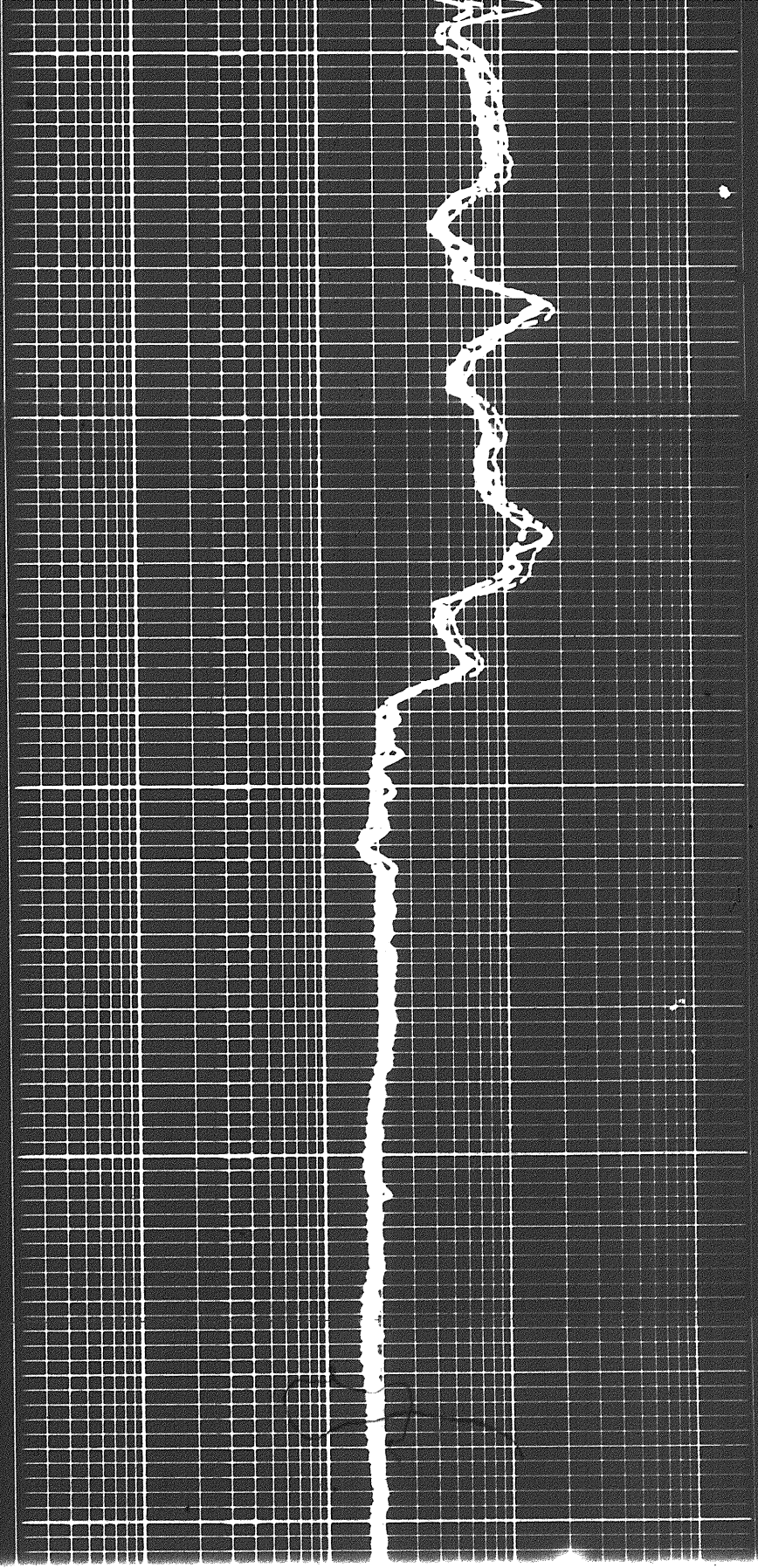
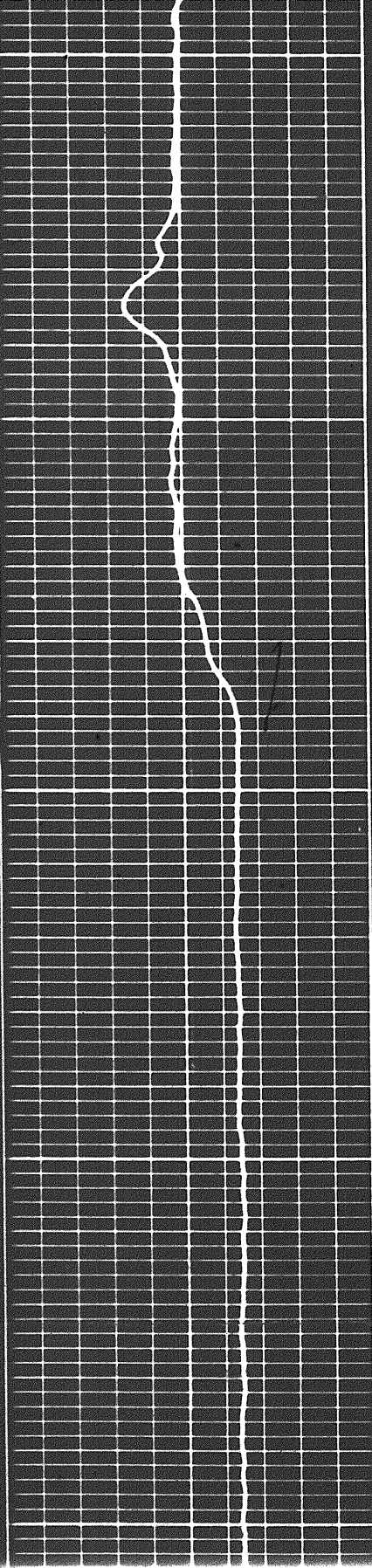
2200



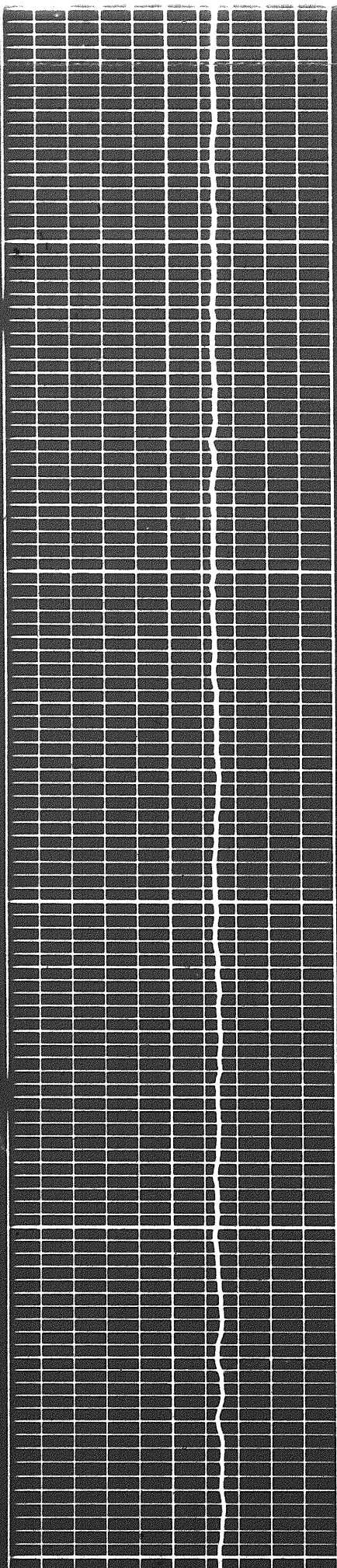
2200

2300

2400



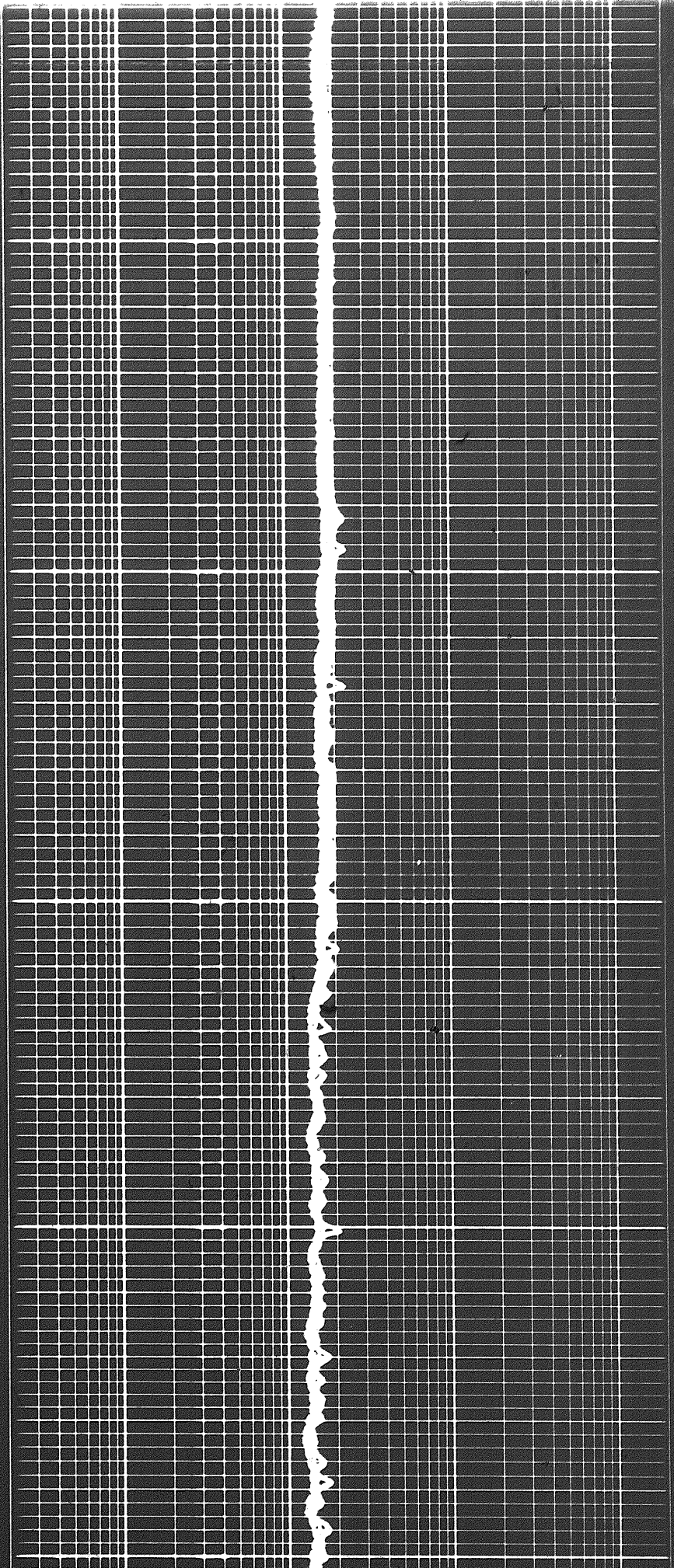
707



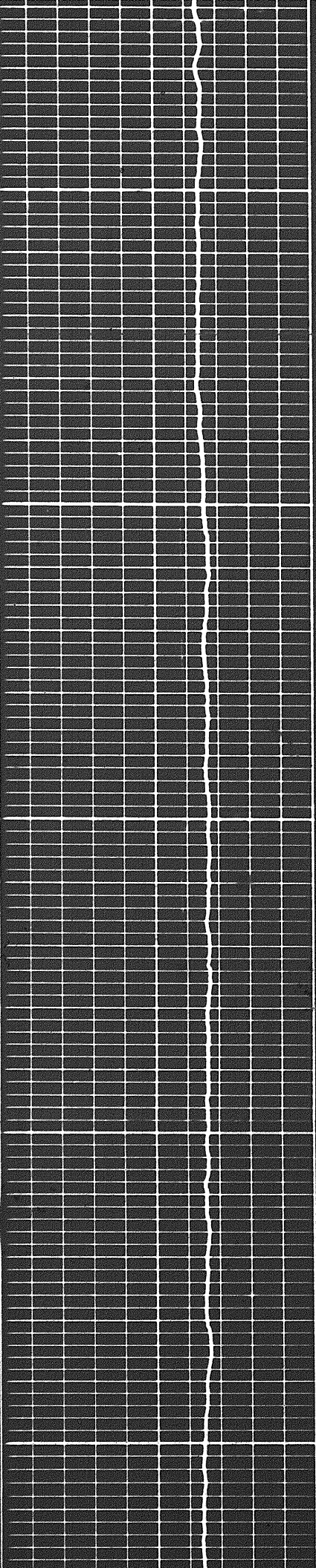
2400

2500

2600



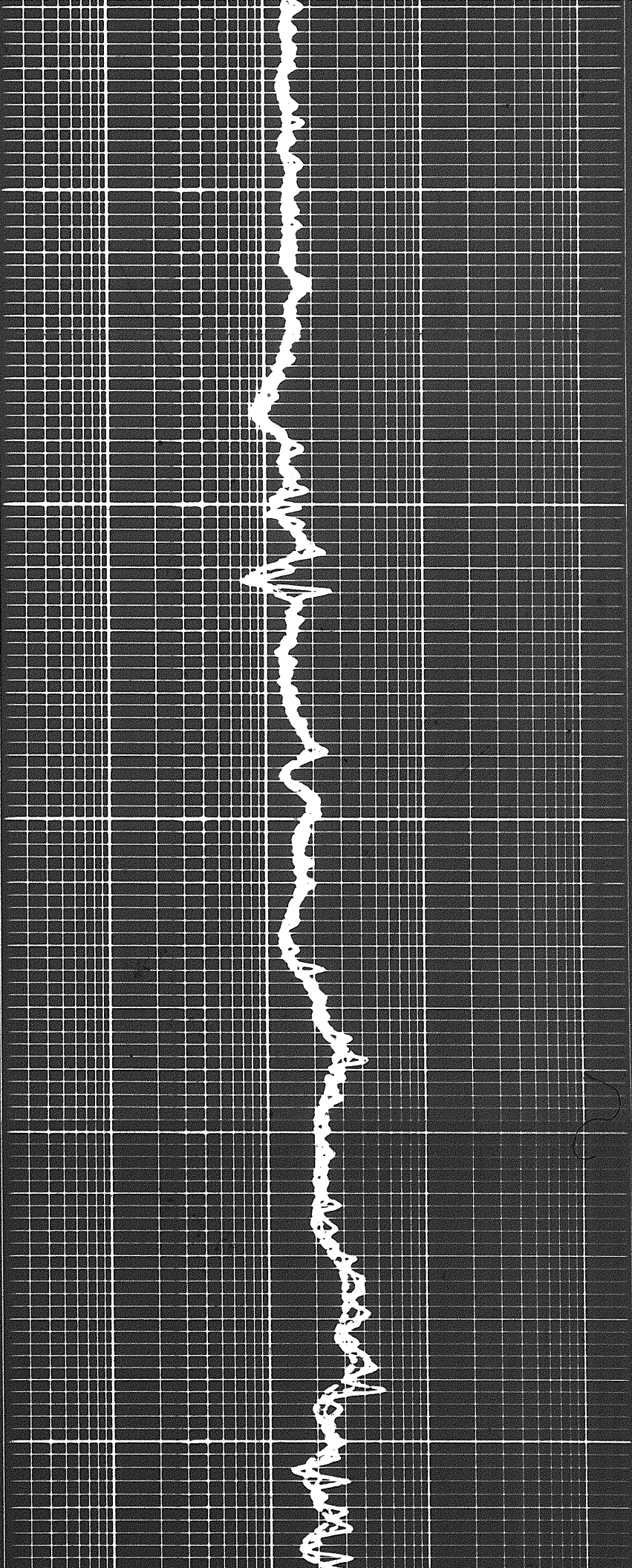
107



2600

2700

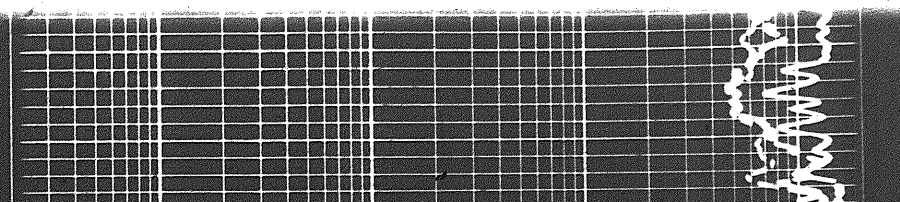
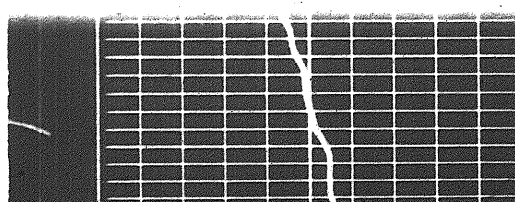
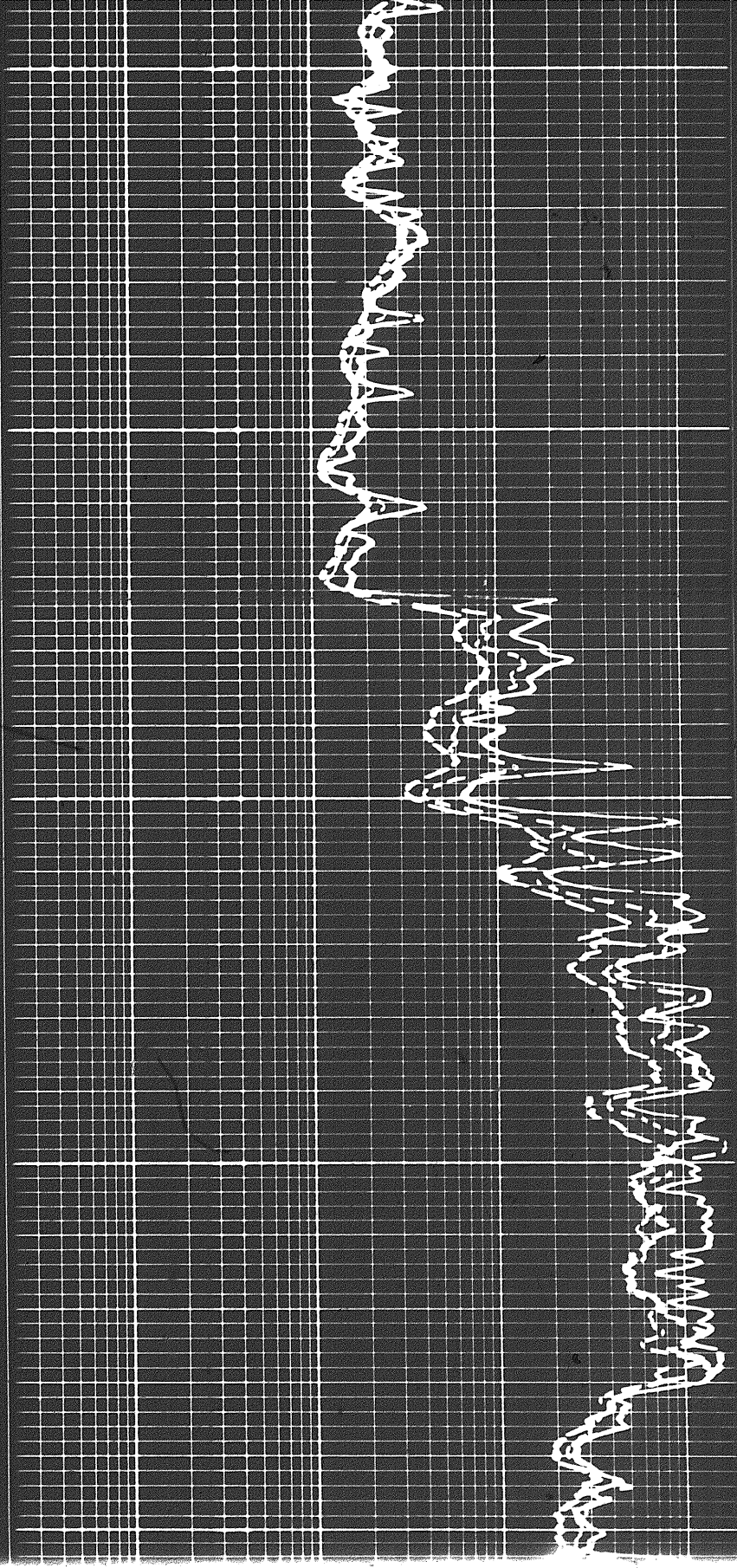
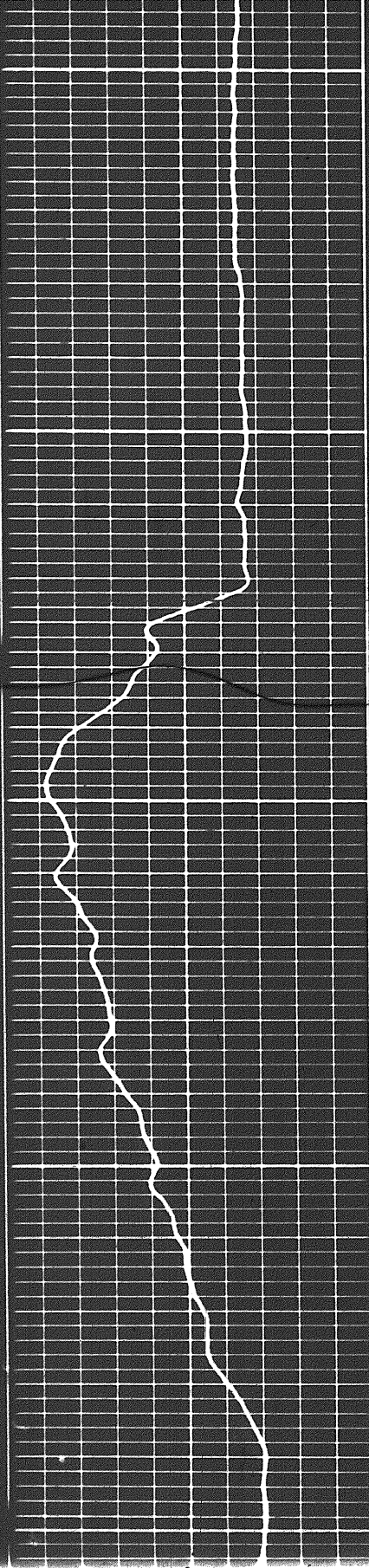
2800



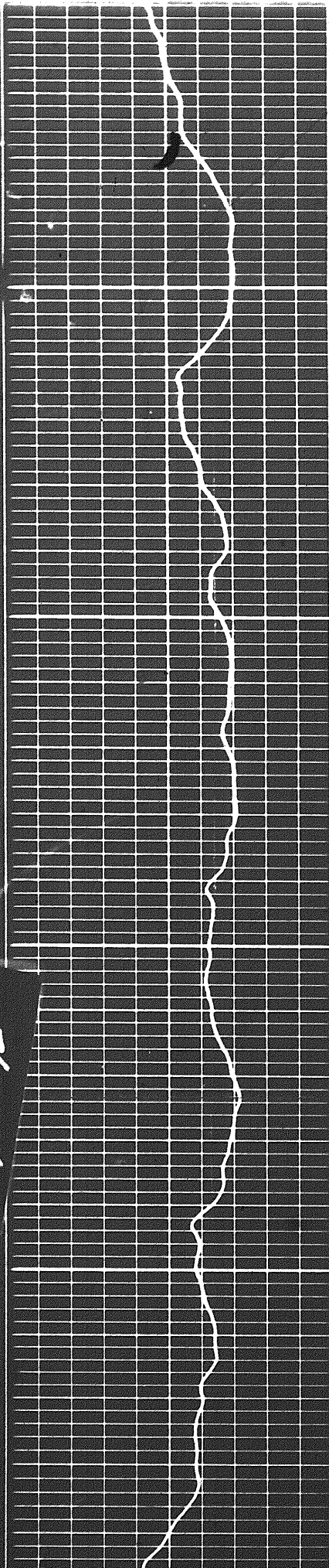
2800

2900

3000

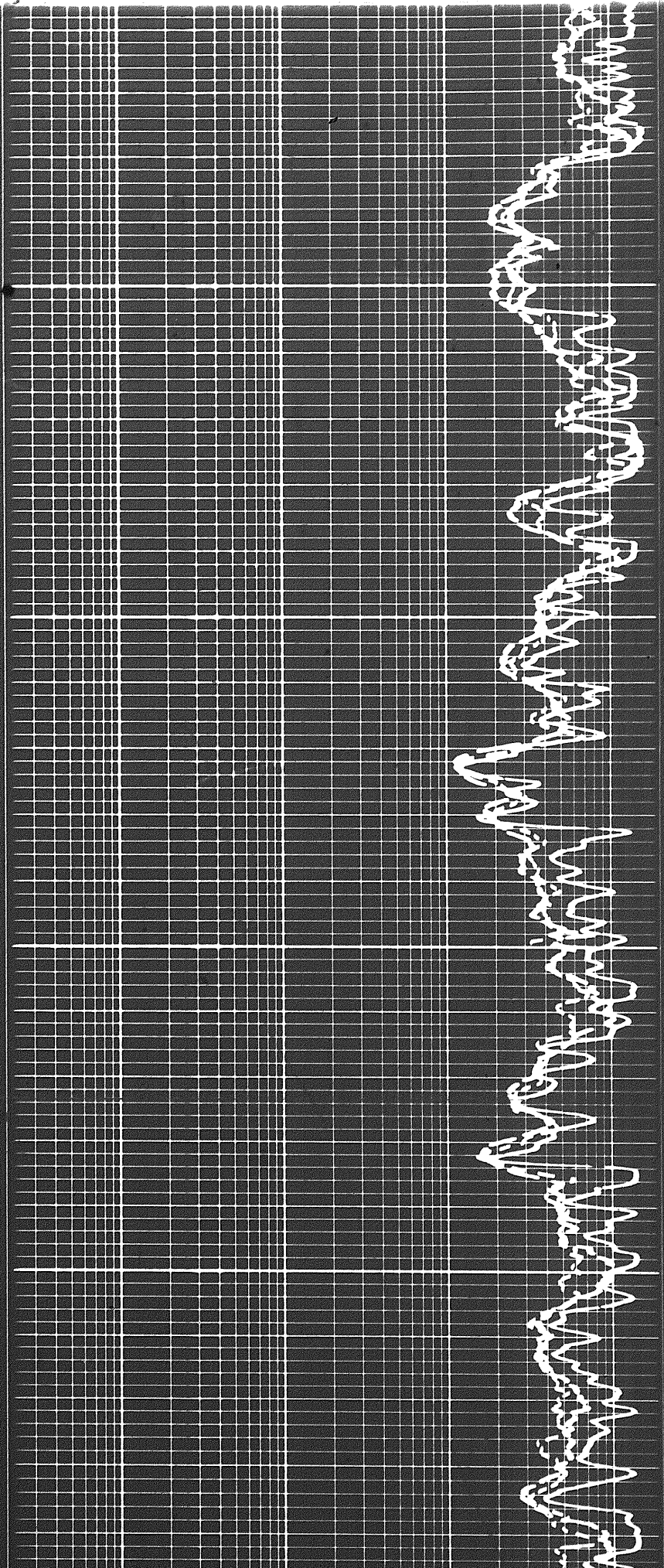


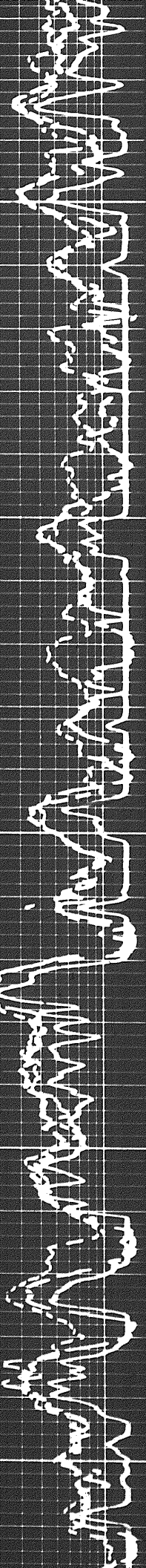
89



3000

3100

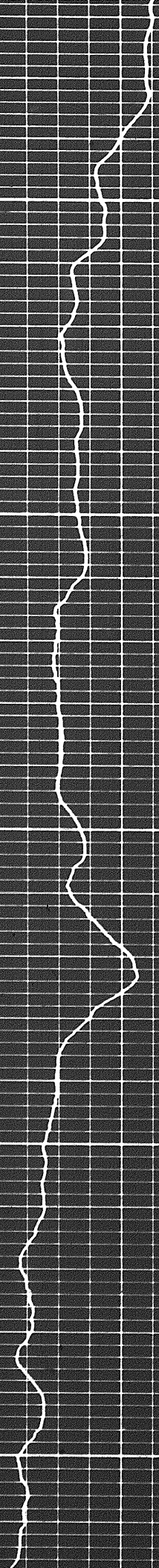


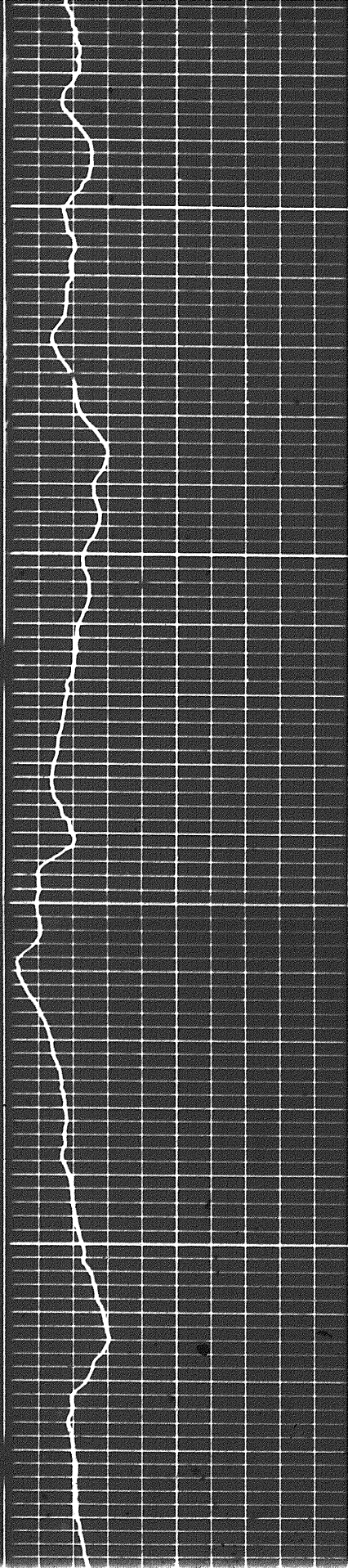


3200

3300

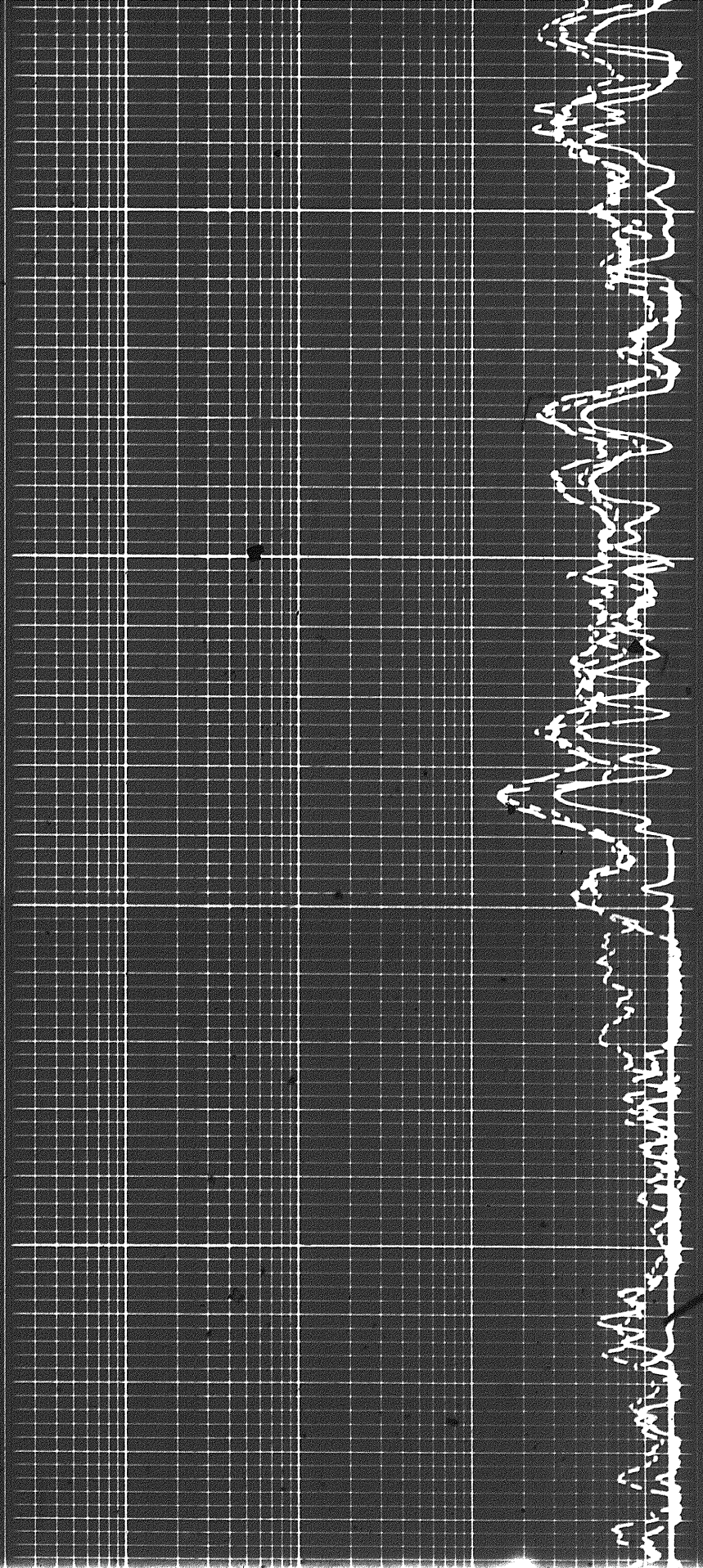
3400



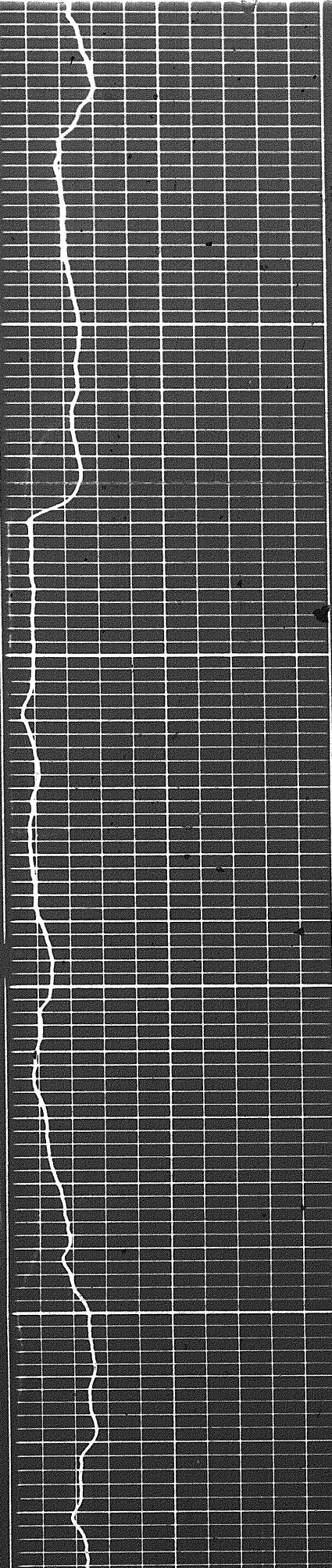


3400

3500

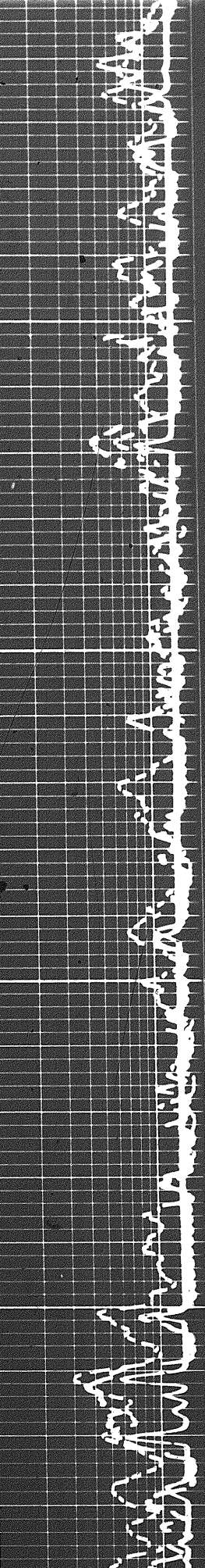
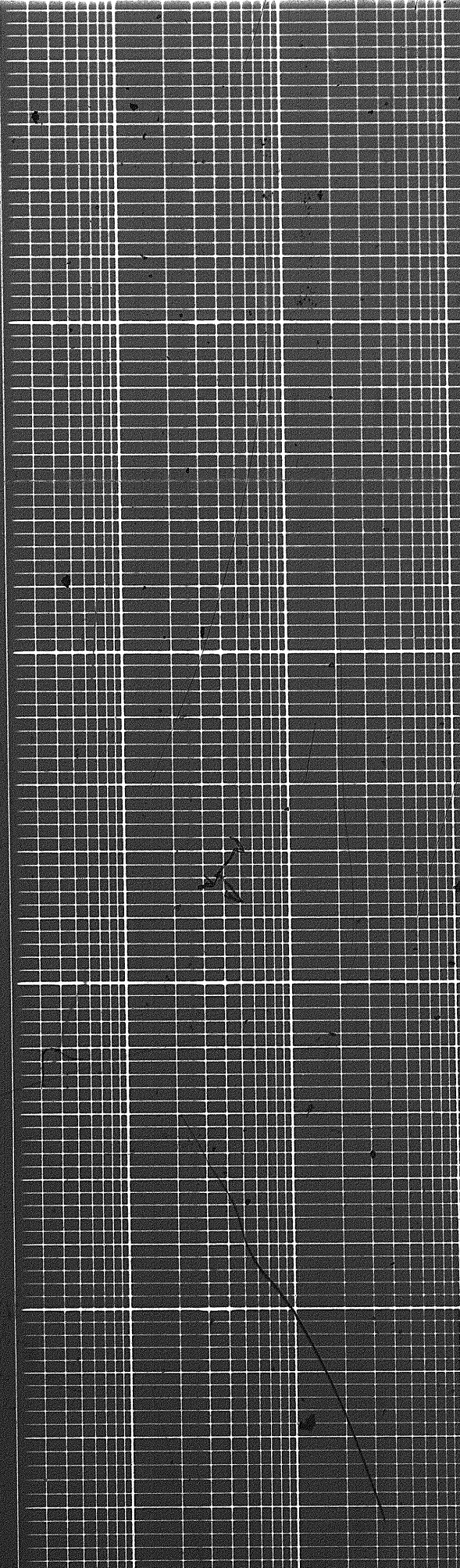


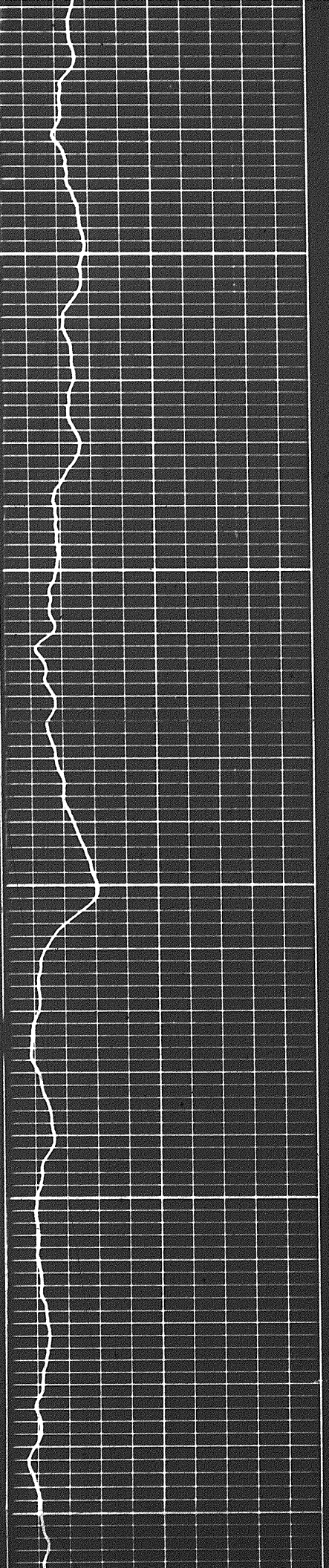
94



3600

3700

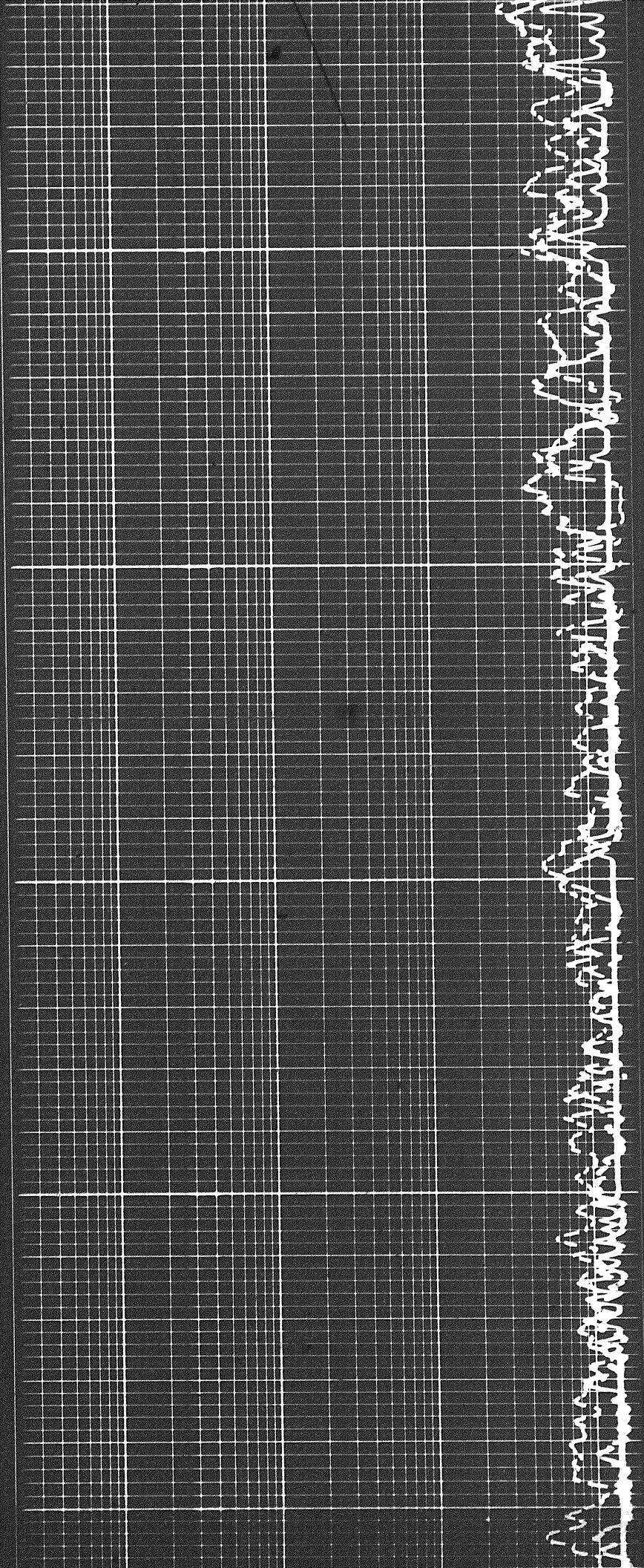


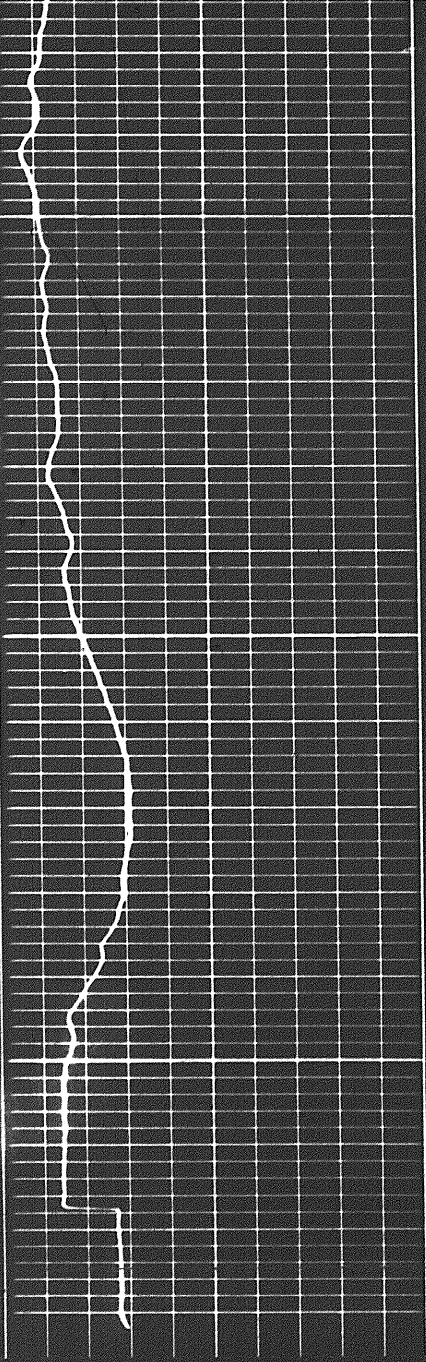


3800

3900

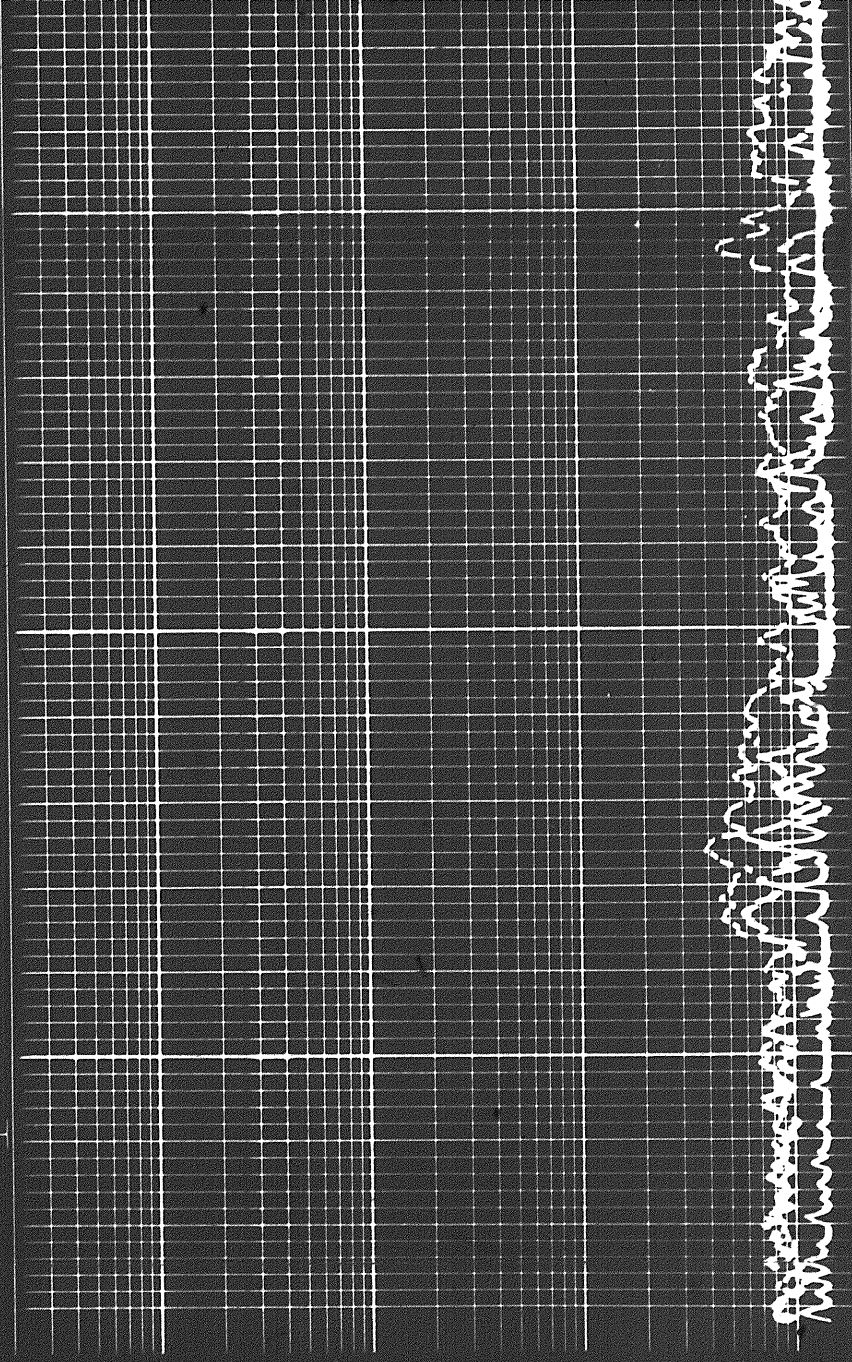
4000



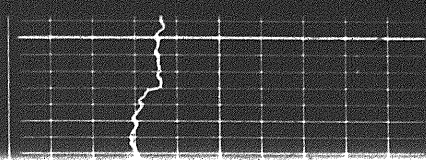


4000

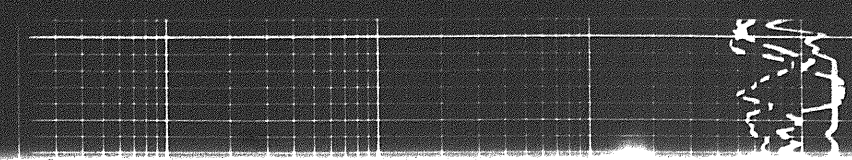
4100
FR



REPEAT SECTION

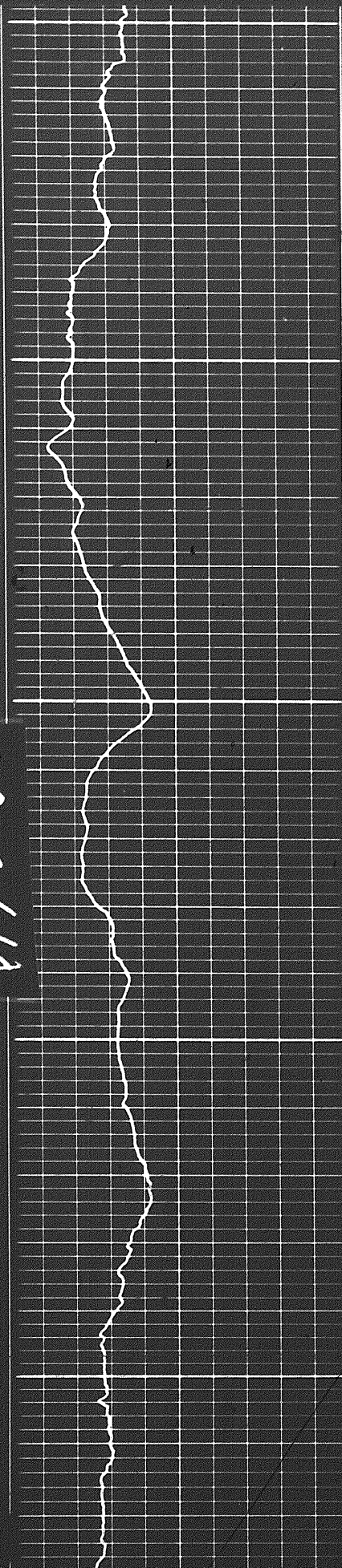


4800



REPEAT SECTION

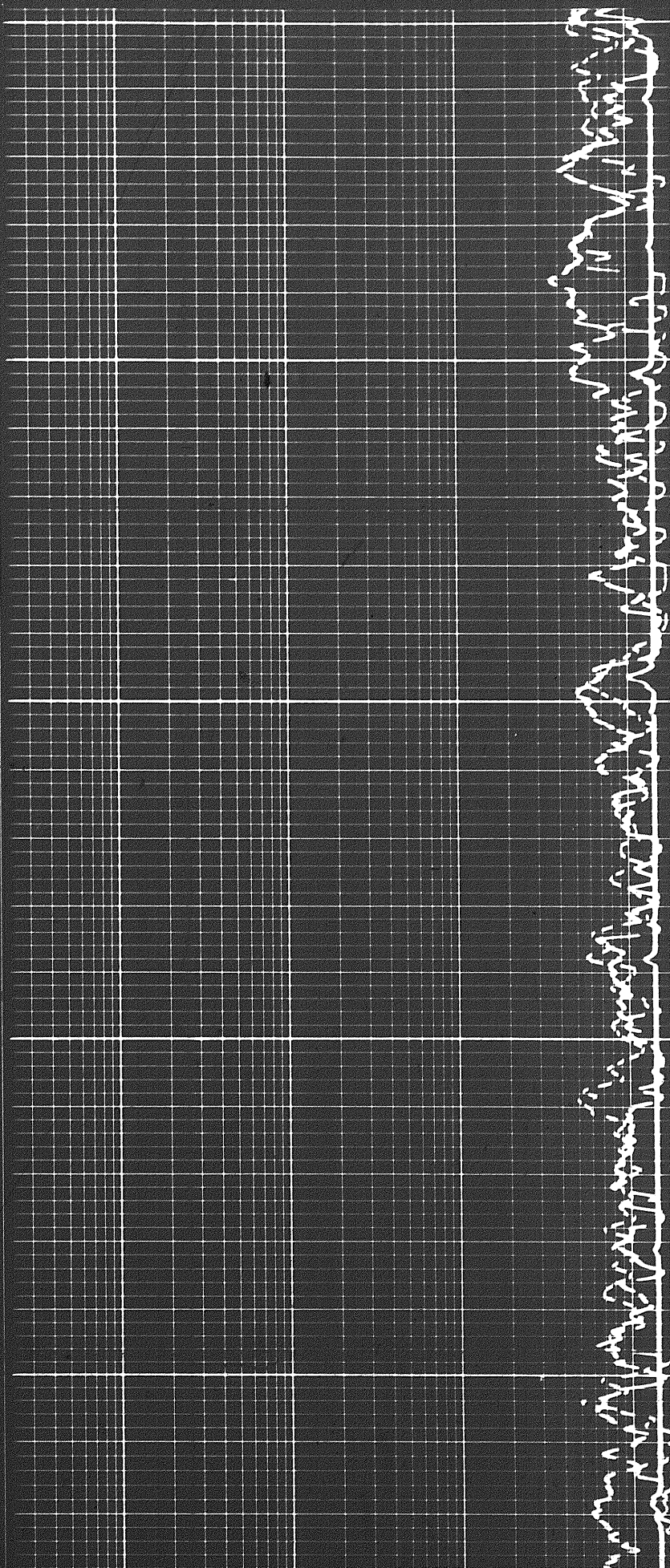
10 of 10

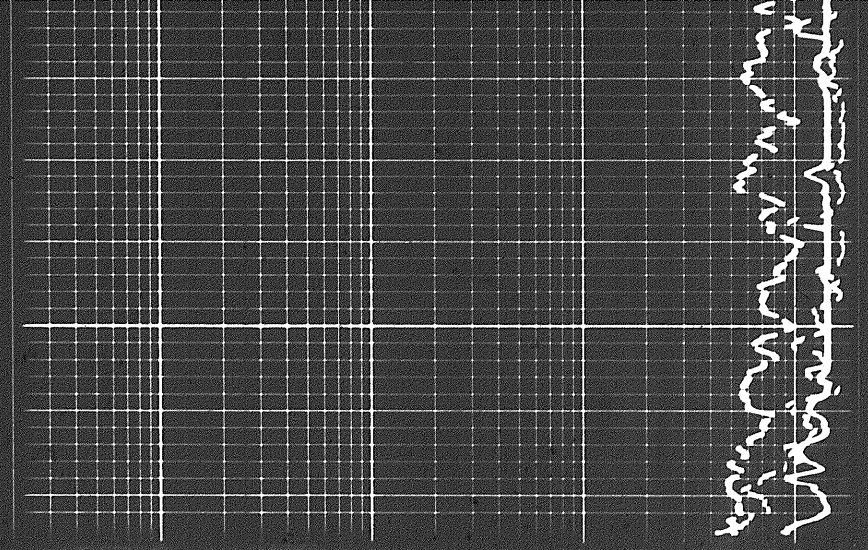
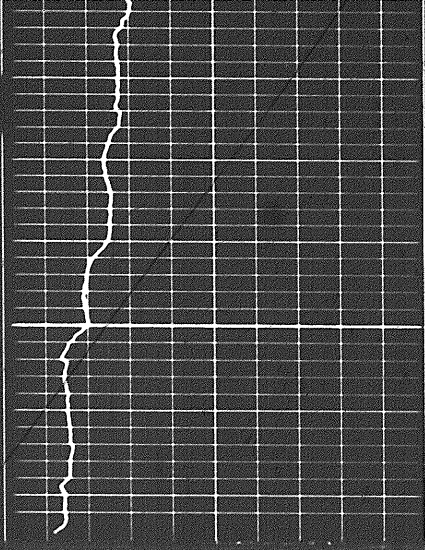


3800

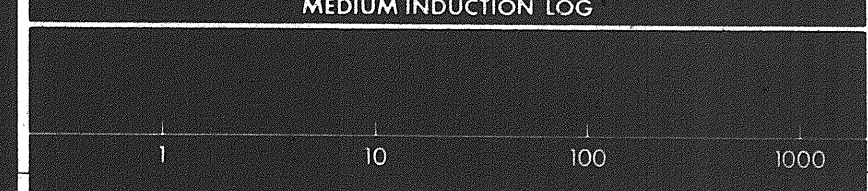
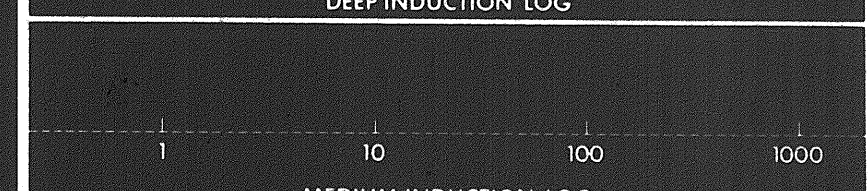
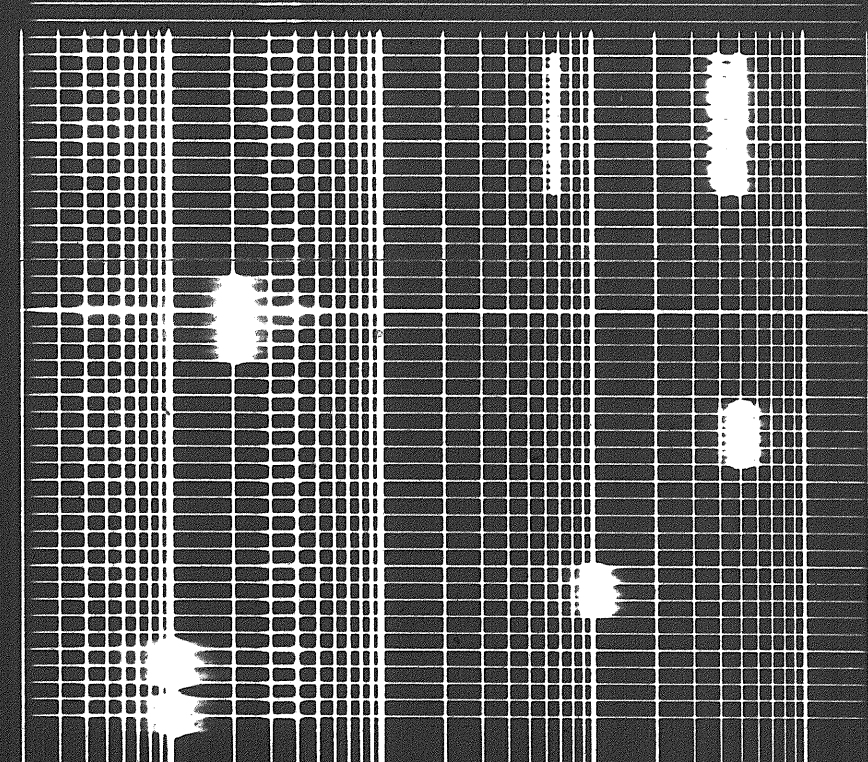
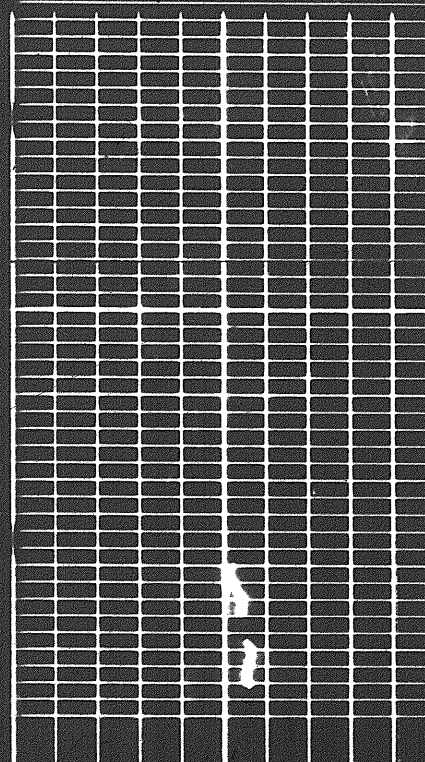
3900

4000





Calibration before Survey



Speed in FPM



SPONTANEOUS - POTENTIAL
millivolts

DEPTH

RESISTIVITY