

# SCHLUMBERGER

## FORMATION DENSITY LOG

COMPENSATED  
SCHLUMBERGER OF CANADA  
Calgary, Alberta

PROVINCE YUKON TERRITORIES  
FIELD WILDFIELD  
WELL C-63  
COMPANY CHEVRON STANDARD LIMITED

COMPANY CHEVRON STANDARD LIMITED  
WELL CHEVRON SOBC. W.M. W. PARKIN  
FIELD WILDFIELD  
PROVINCE YUKON TERRITORIES  
LOCATION 66 12° N 127° W CAT  
132 214 019 W LMC  
Permanent Datum \_\_\_\_\_ Elev. 1687.7  
Log Measured From \_\_\_\_\_ Ft. Above Perm. Datum  
ELEV. KB 1766.2  
GL 1697.7  
CBF \_\_\_\_\_  
Other Services: SLE-GR, SUP-GR, DTL, CST

Date	10 JAN 78
Run No.	ONE
First Reading	4111
Last Reading	823
Feet Measured	3288
Depth Reached	4123
Bottom Driller	823
Cgt. SOC	823
Cgt. Driller	823
Mud Nature	KELZAN
Dens. Visc	11.0
Mud pH	9.8
Water Loss	4.8
Res.	3.67 @ 84 of
Rml	3.40 @ 84 of
@ BHT	3.2 @ 93 of
Rmc	4.95 @ 84 of
ppm-Cl	1,200
Bit Size	8 3/4
Source to Detector	
Spacing	
Equipment Type	GAMMA-GAMMA
Op. Rig Time	8 HRS
Truck No.	OSU-C-105 RDM
Recorded By	WILSON
Witness	POLLARD

104

REMARKS  
Drilling Stopped 0700 / 0700 Circulation Stopped 100 / 100 Tool on Bottom 1st Run Service Order # 778 B.H.T. 93 °F

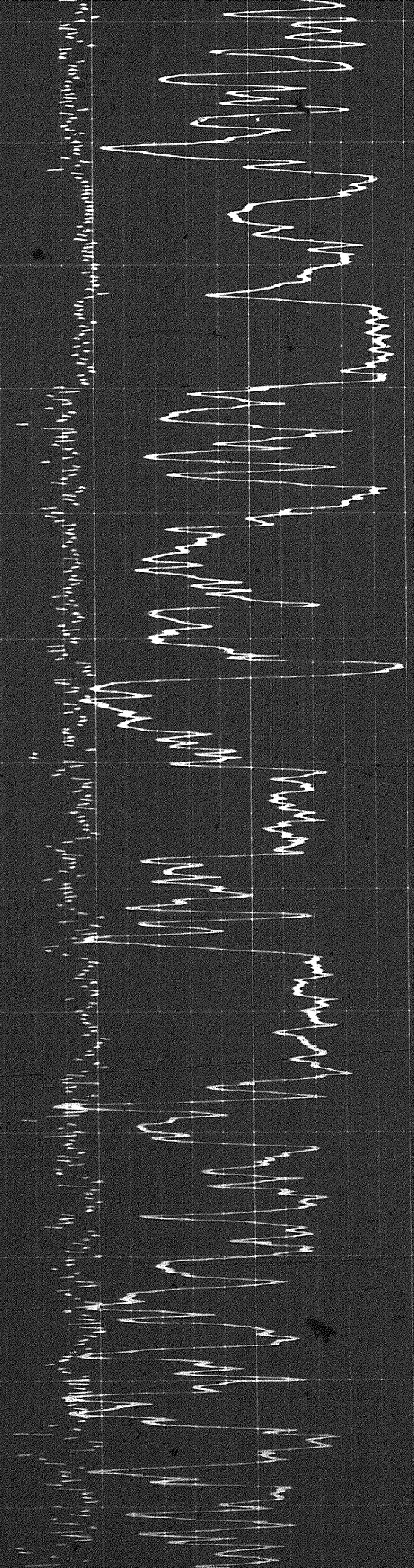
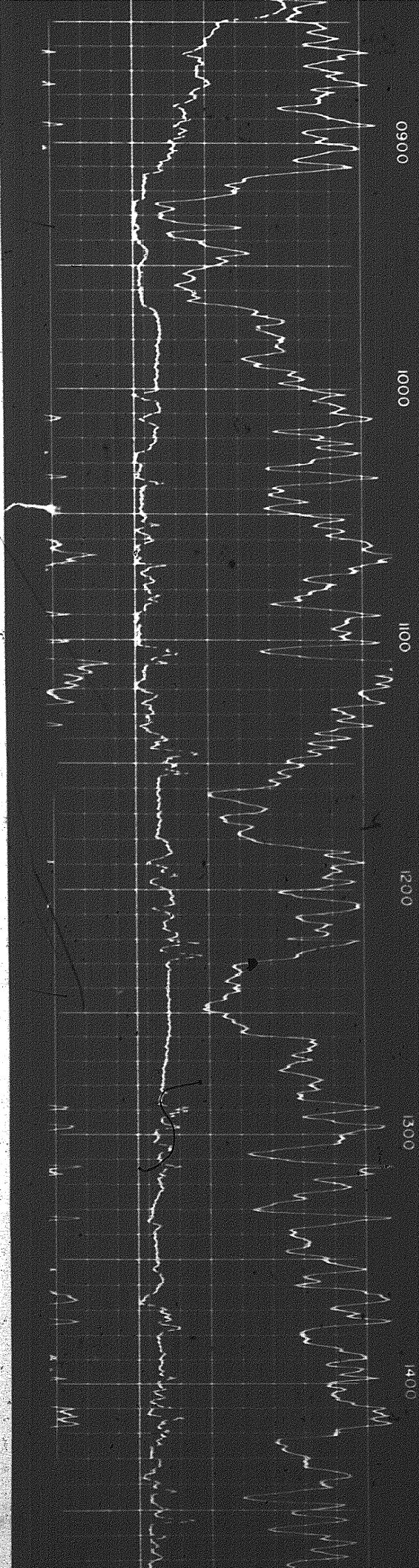
Panel No. EC 155  
Cartridge No. A 341  
Sonde No. F 80  
Detector No. D 494  
D 63

THIS LOG WAS REPRODUCED FROM DIGITAL MAGNETIC TAPE

CALIBRATION	Background CPS	Test Source CPS	Galvanometer Deflection Div.	Panel Sens. Tap for Cal.
Gamma Ray	60	420	10.0	100

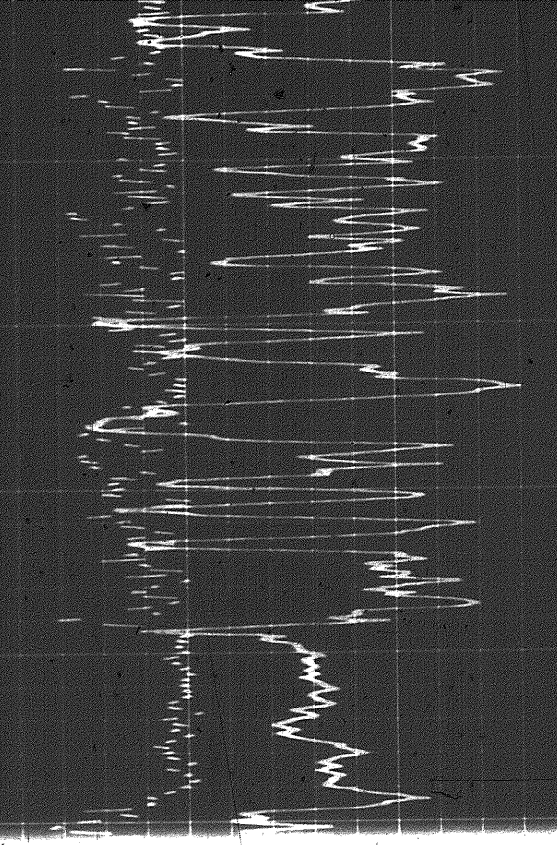
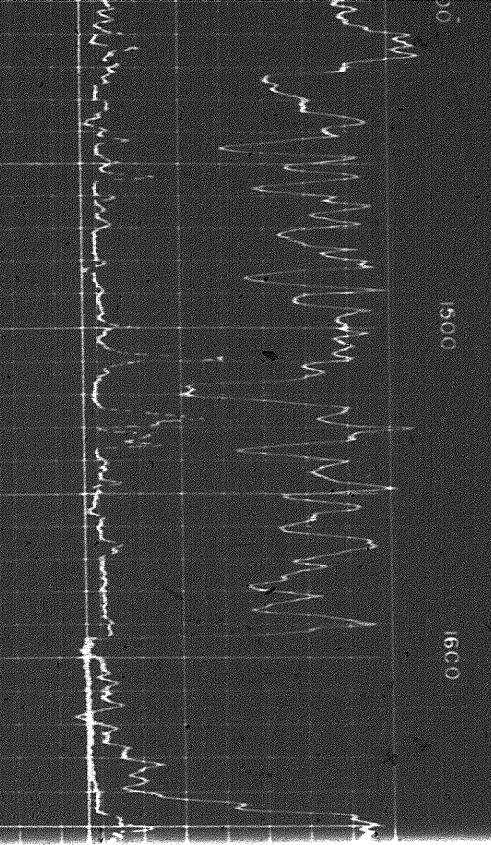
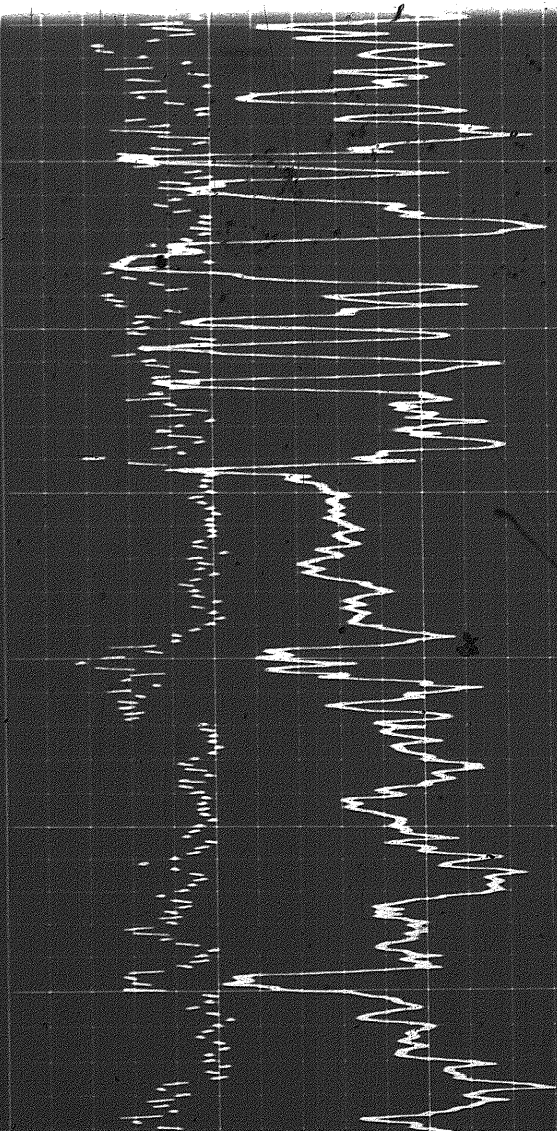
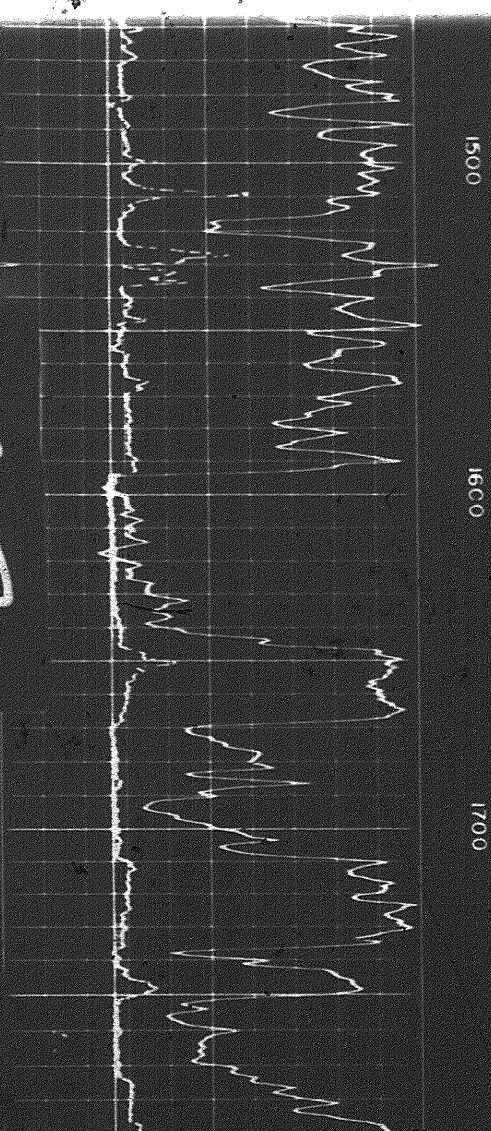
<p>GAMMA RAY API UNITS</p> <p>Sens. 100 T.C. 2 Zero 0 div. to left</p> <p>Speed in FPM →</p>	<p>DEPTHS</p>	<p>BULK DENSITY P<sub>b</sub> - gm/cc</p> <p>2.0 2.5 3.0</p>
		<p>DENSITY CORRECTION ΔP - gm/cc</p> <p>0.25 0 0.25 (+) (-)</p>
<p>CALIPER hole diameter in inches</p> <p>7 8 9 10 11 12 13 14 15</p>		

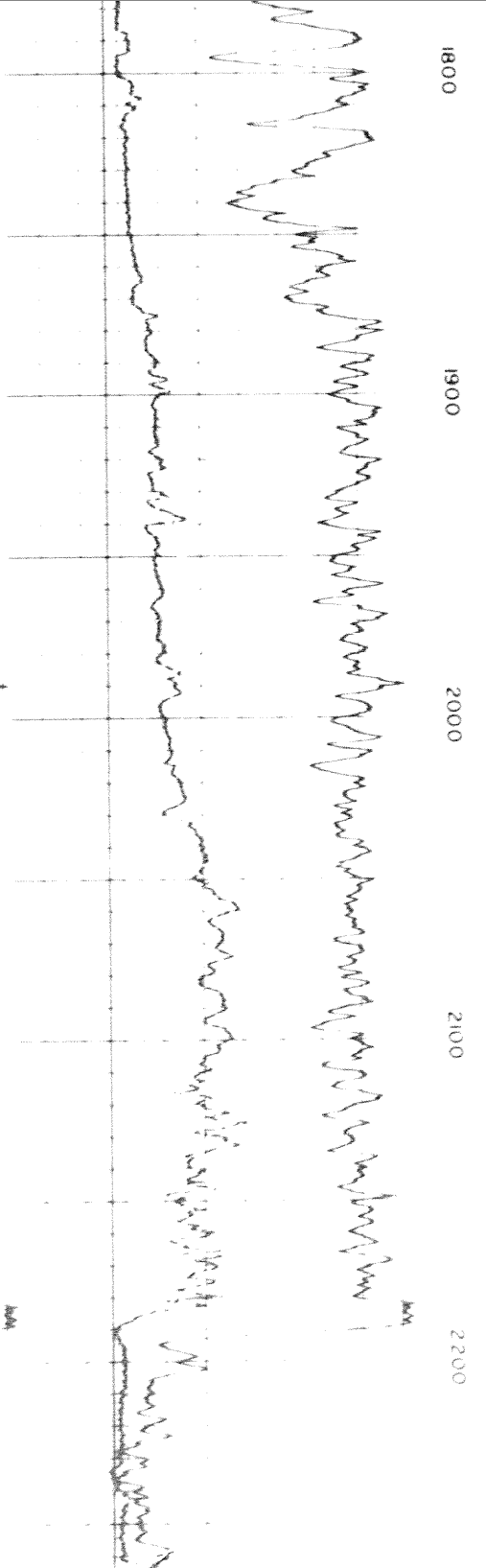
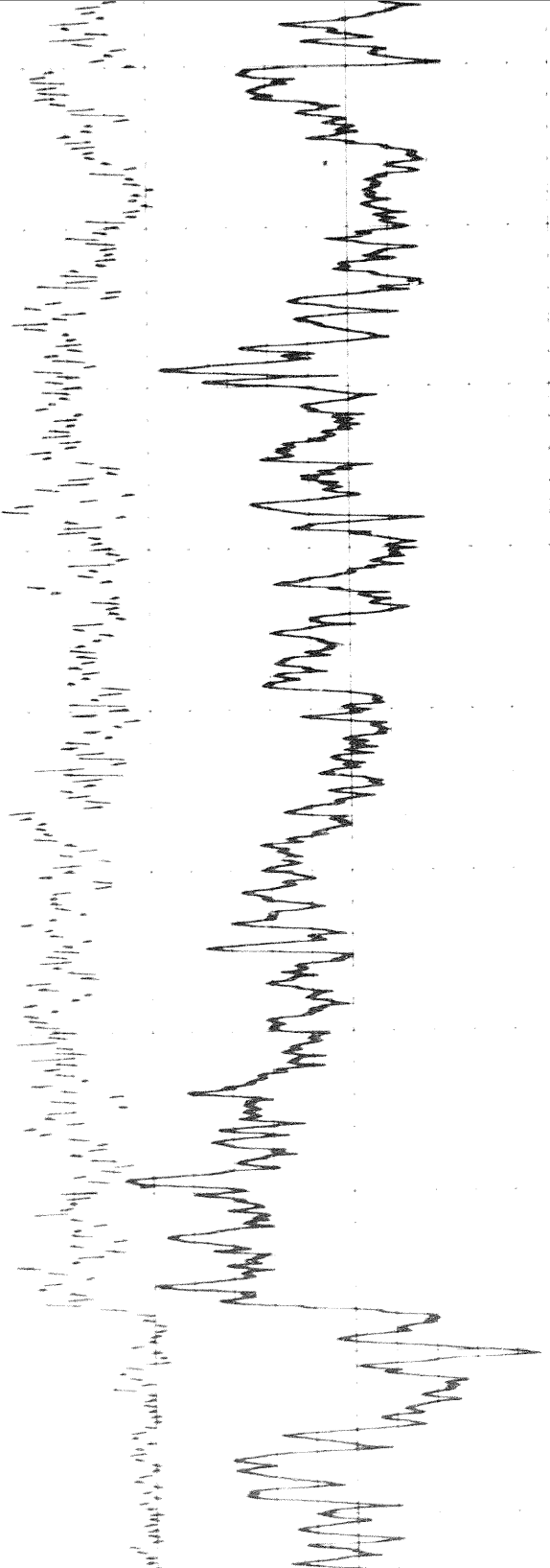




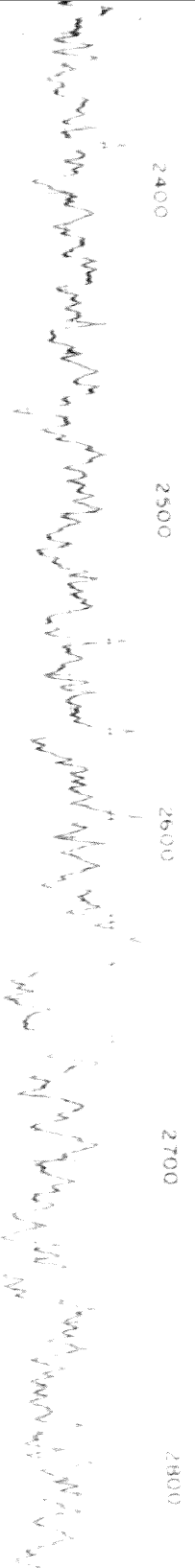
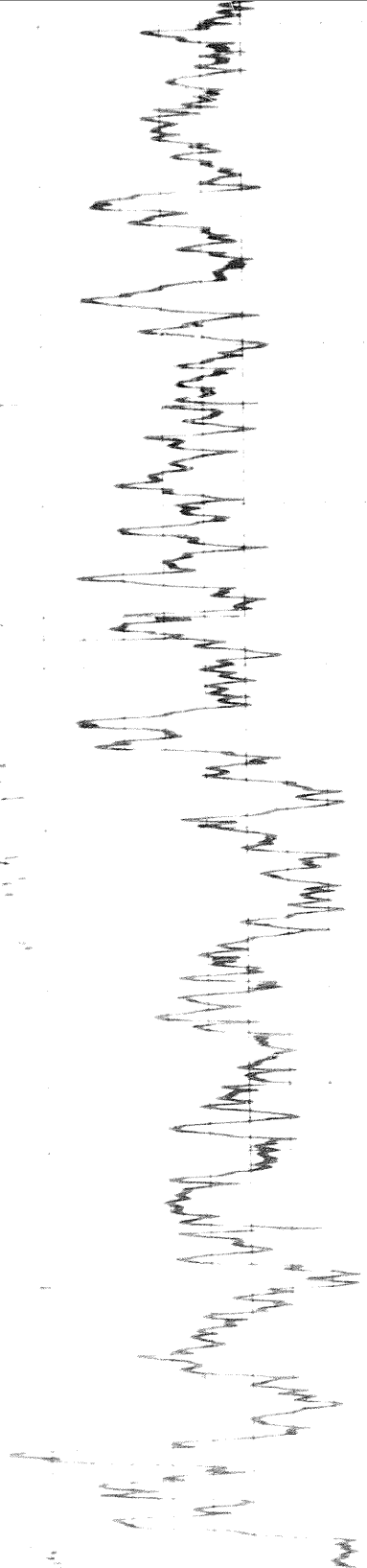


28









2400

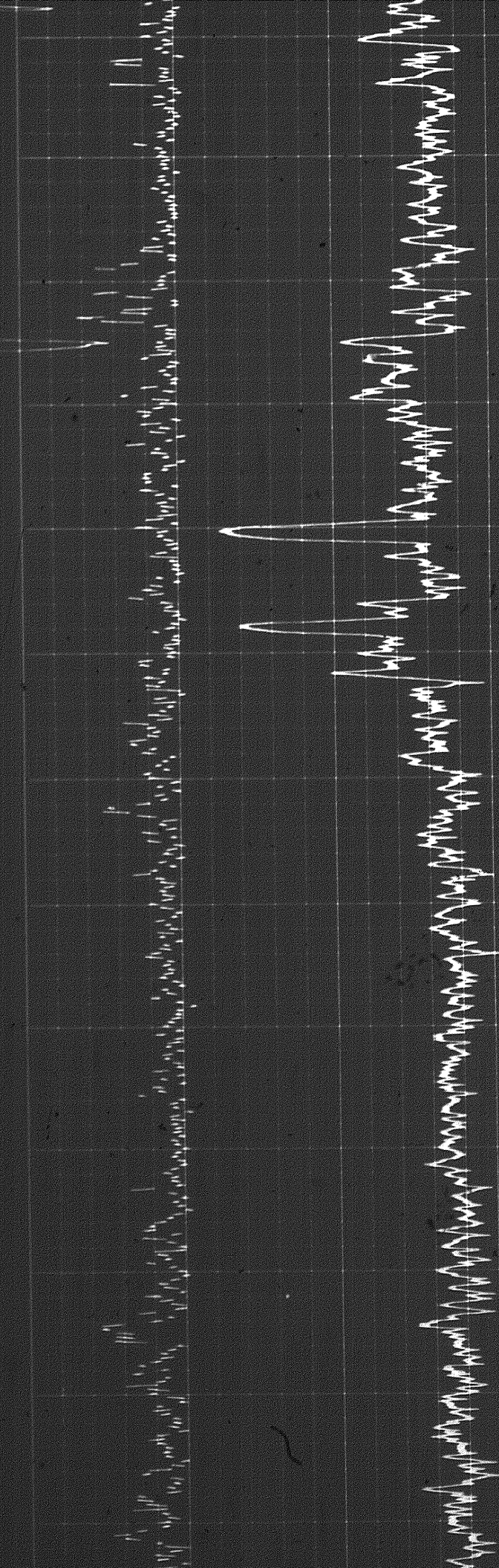
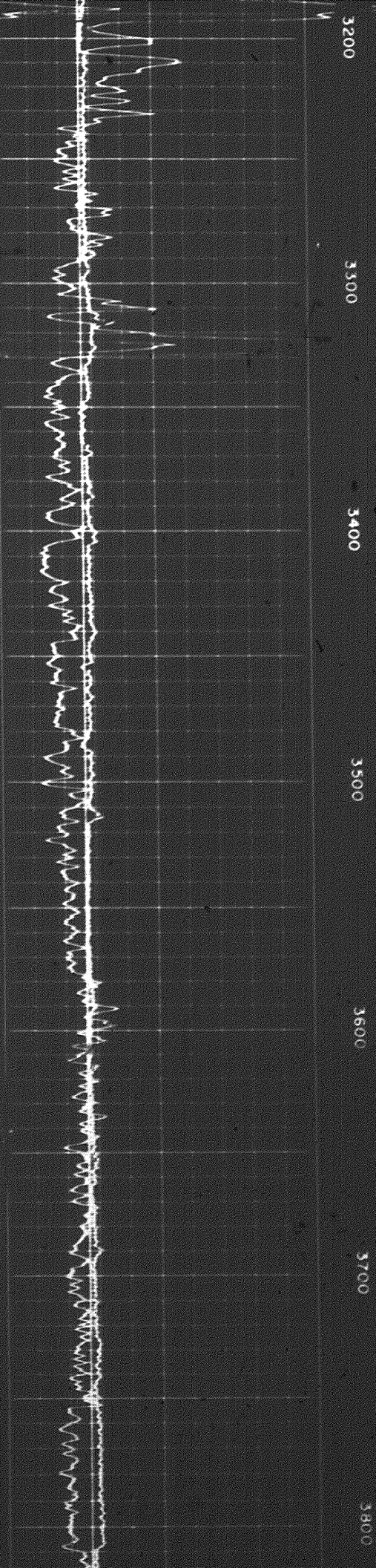
2500

2600

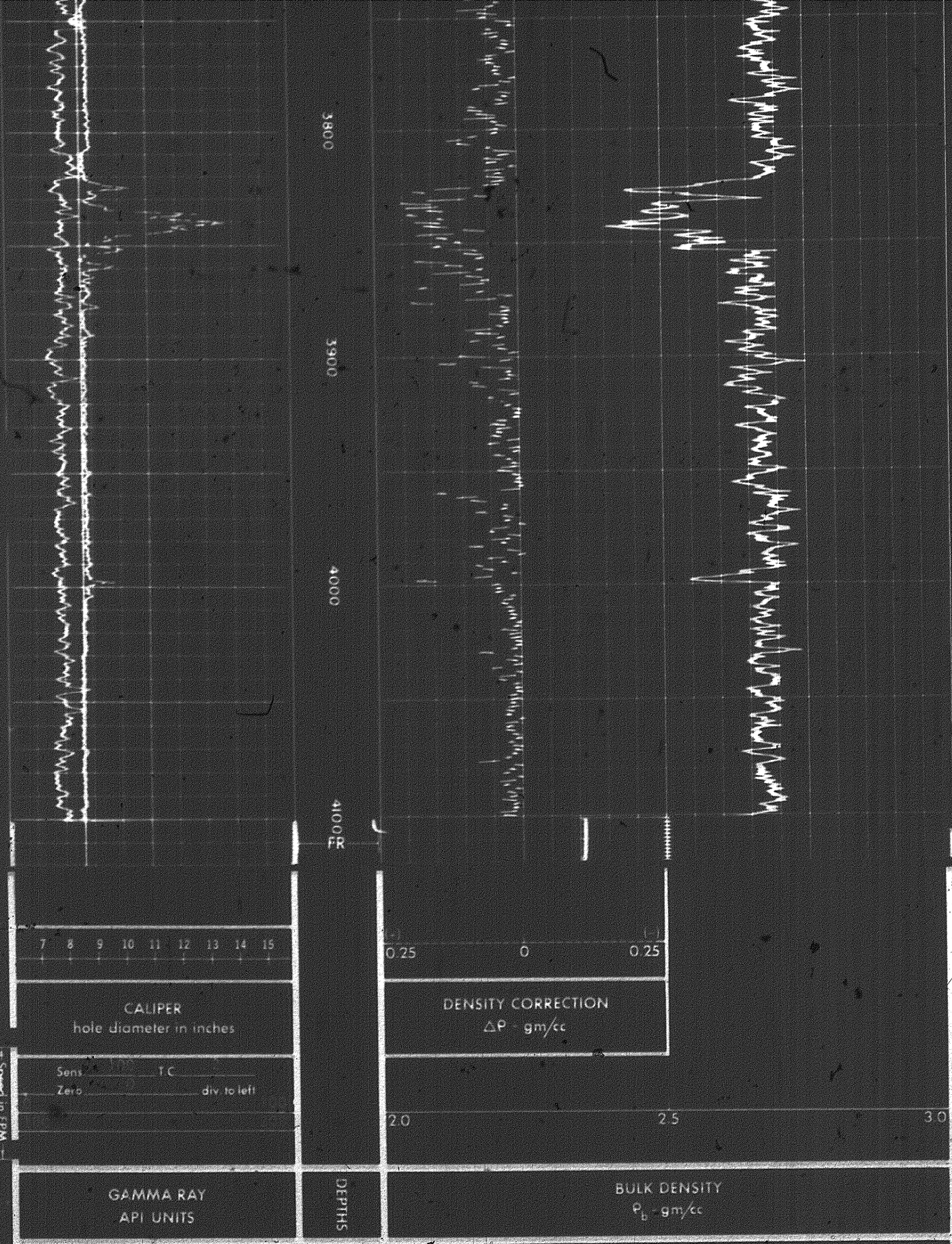
2700

2800









Speed in fpm

7 8 9 10 11 12 13 14 15

CALIPER  
hole diameter in inches

Sens TC  
Zero div to left

GAMMA RAY  
API UNITS

3800  
3900  
4000  
4100 R

0.25 0 0.25

DENSITY CORRECTION  
 $\Delta\rho$  - gm/cc

2.0 2.5 3.0

BULK DENSITY  
 $\rho_b$  - gm/cc

DETAIL LOG  
5" = 100'



49

7 8 9 10 11 12 13 14 15

CALIPER  
hole diameter in inches

Sens. 100 T.C. 2  
Zero 0 div. to left  
100 200

Speed in FPM

0.25 0 0.25

DENSITY CORRECTION  
 $\Delta\rho$  - gm/cc

2.0 2.5 3.0

GAMMA RAY  
API UNITS

DEPTHS

BULK DENSITY  
 $\rho_b$  - gm/cc

DETAIL LOG  
5" = 100'

GAMMA RAY  
API UNITS

DEPTHS

BULK DENSITY  
 $\rho_b$  - gm/cc

Sens. 100 T.C. 2  
Zero 0 div. to left  
100 200

Speed in FPM

2.0 2.5 3.0

45 15 15

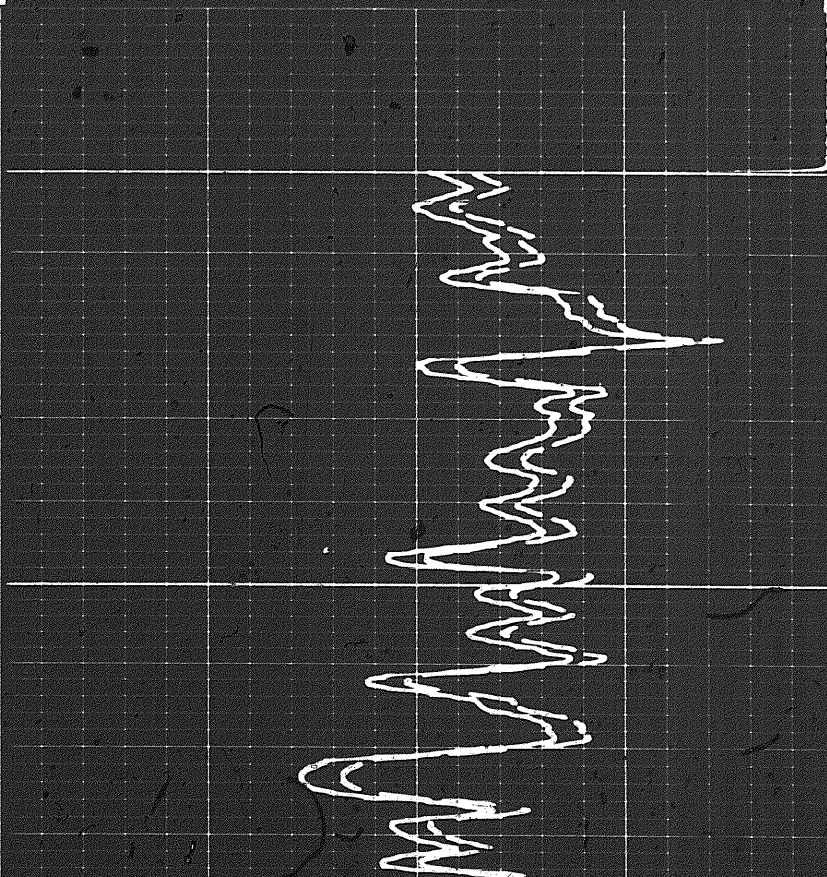
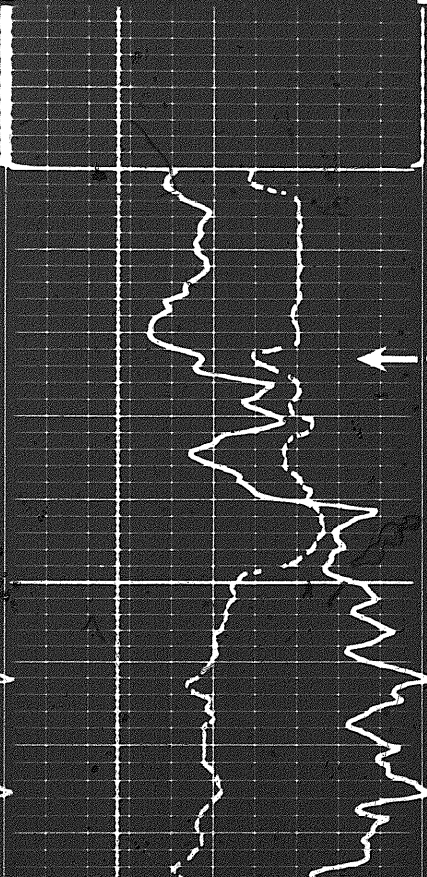
CALIPER  
hole diameter in inches

7 8 9 10 11 12 13 14 15

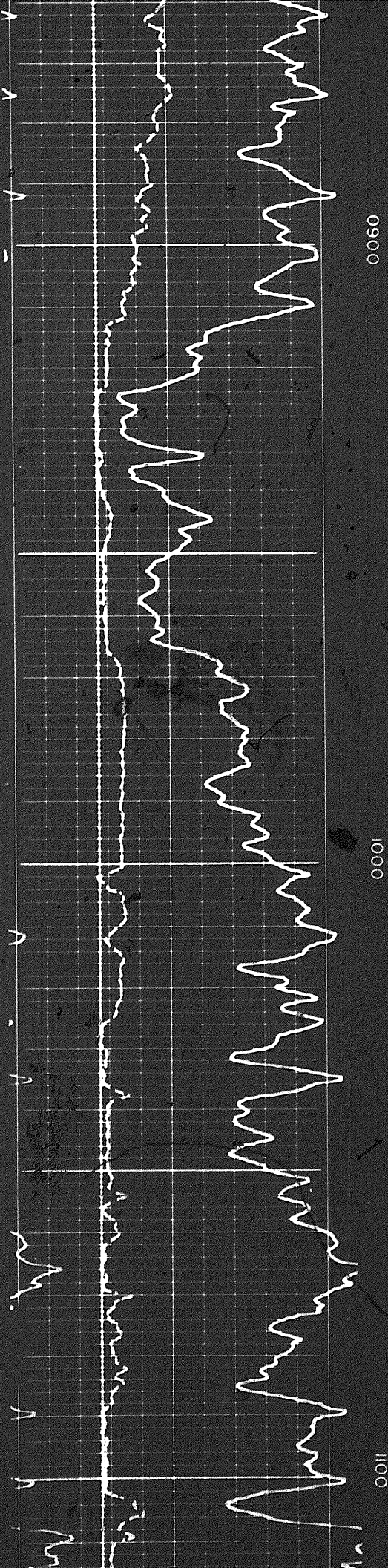
Rho-g = 2.71  
Rho-f = 1.00

0800

Casing



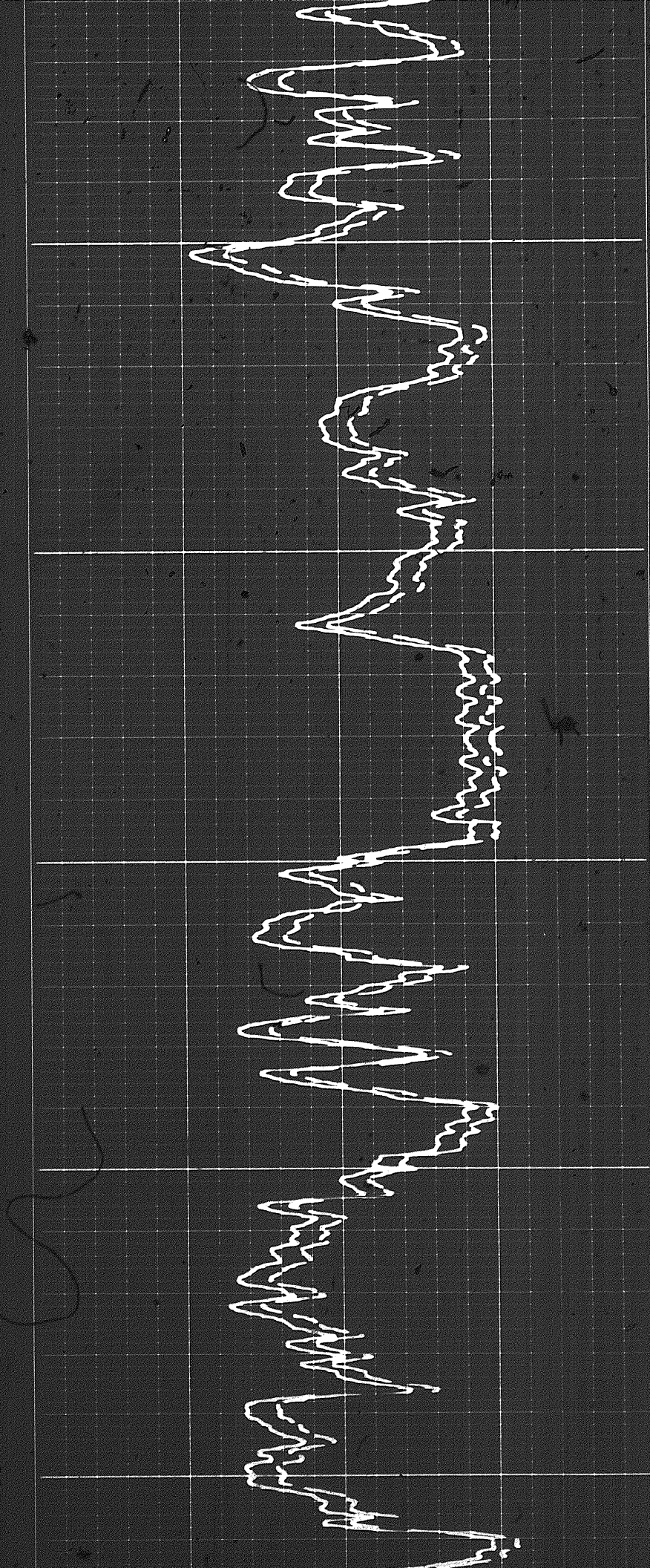




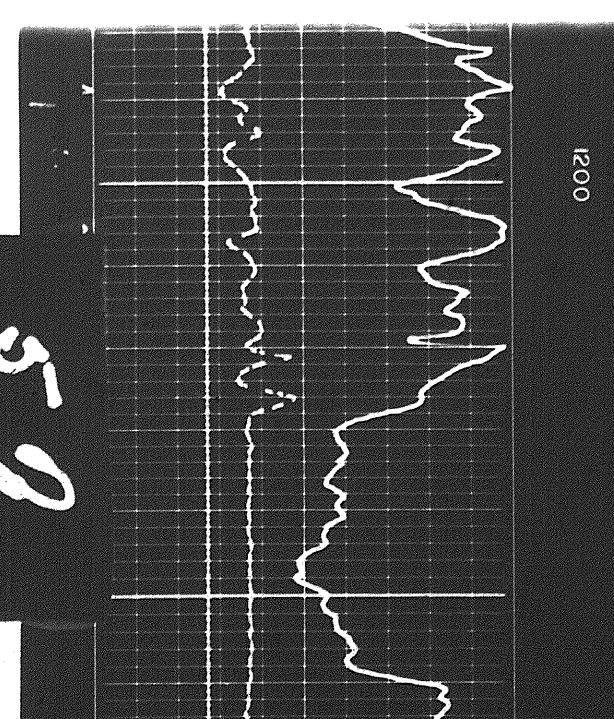
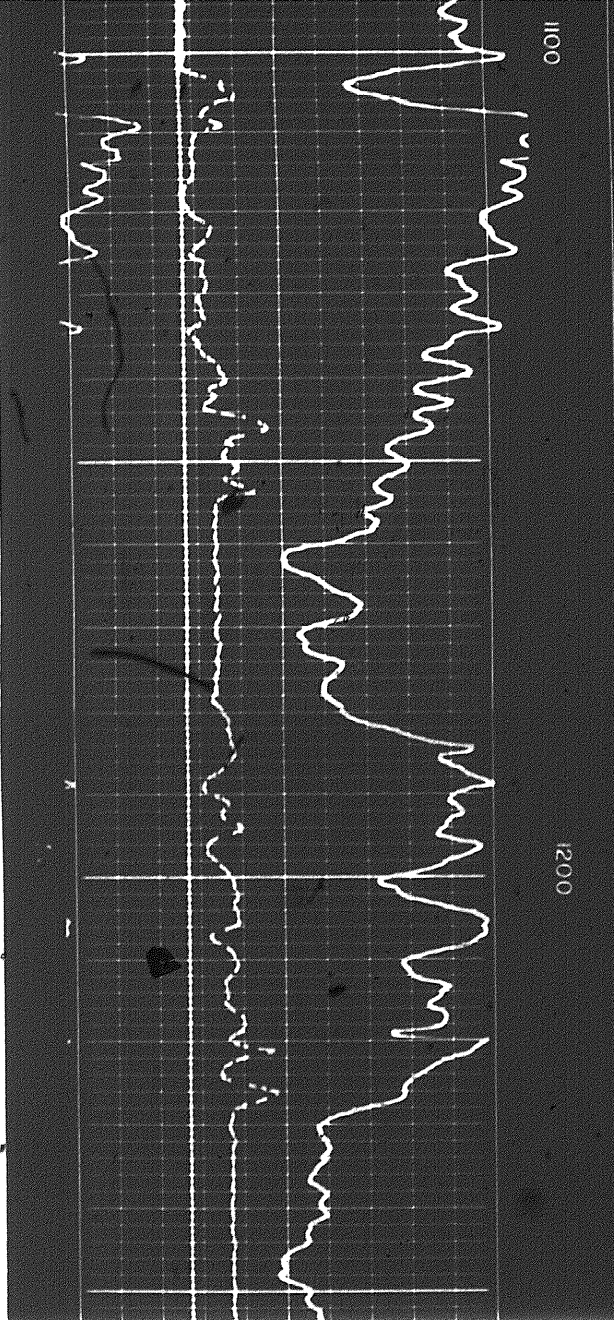
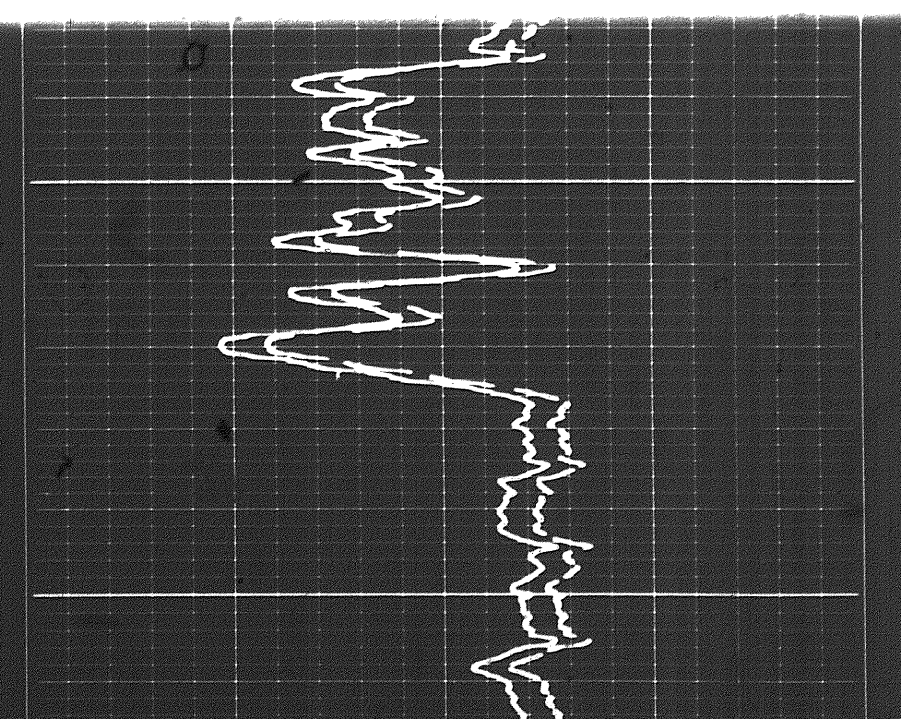
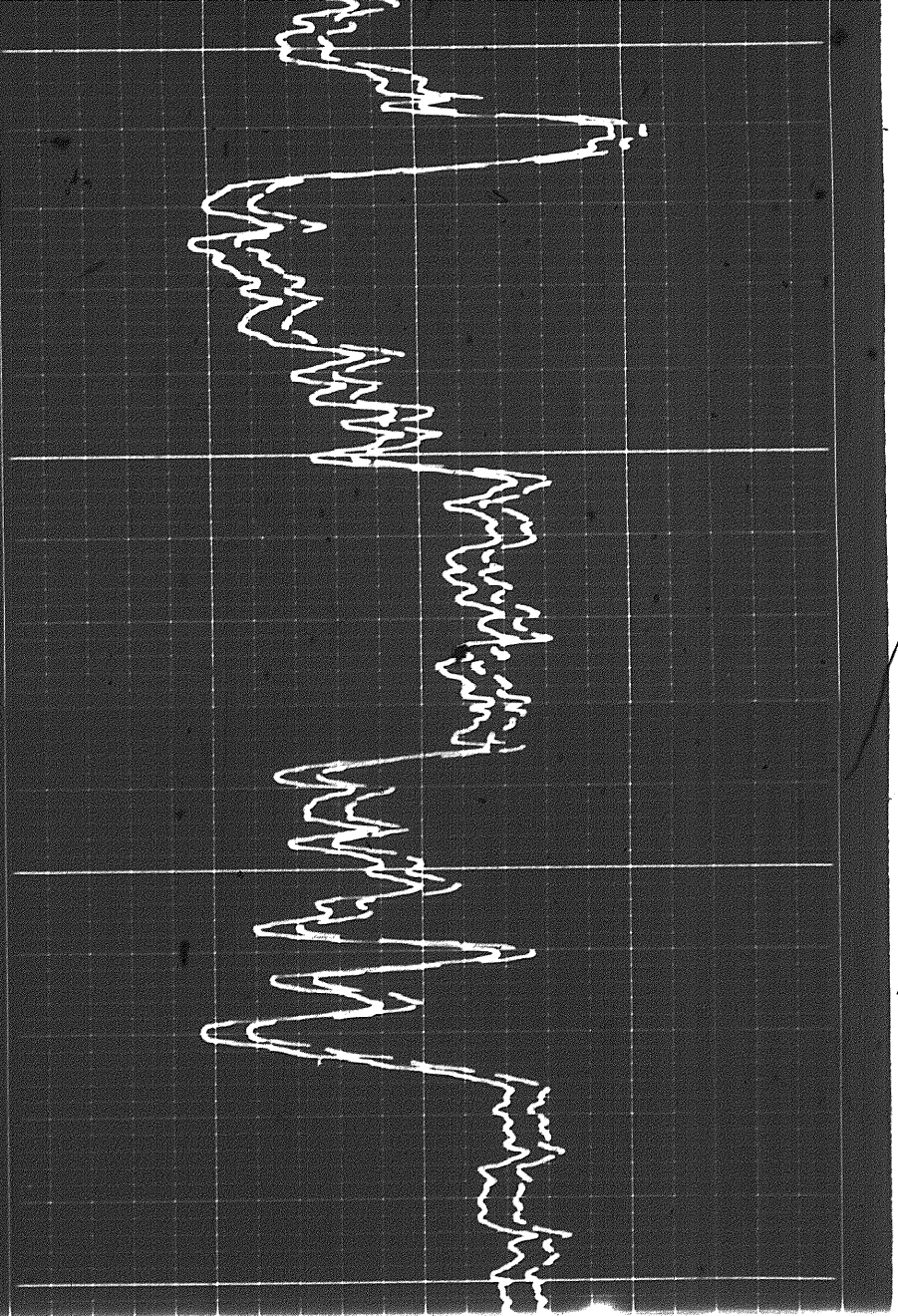
0900

1000

1100

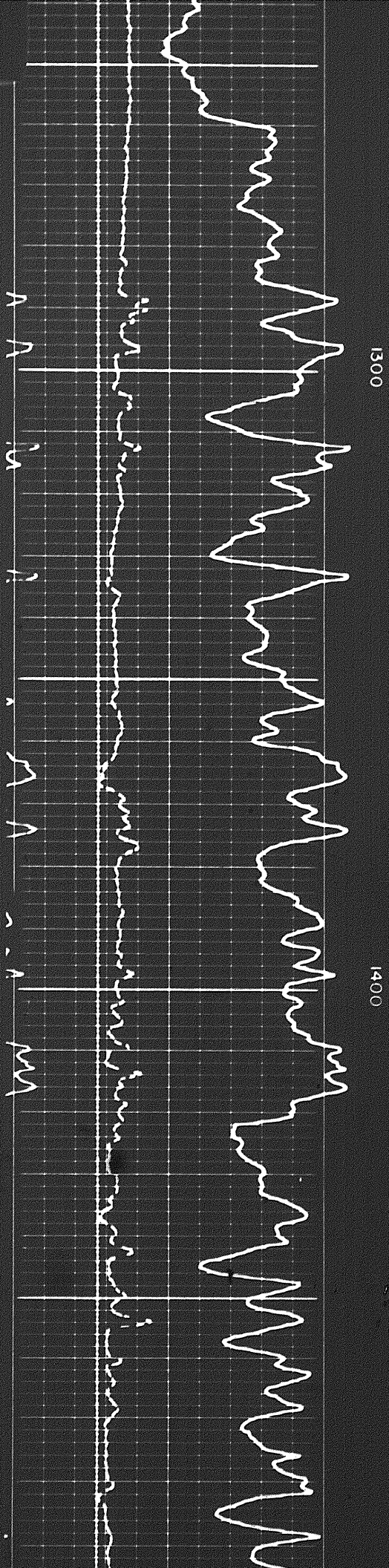
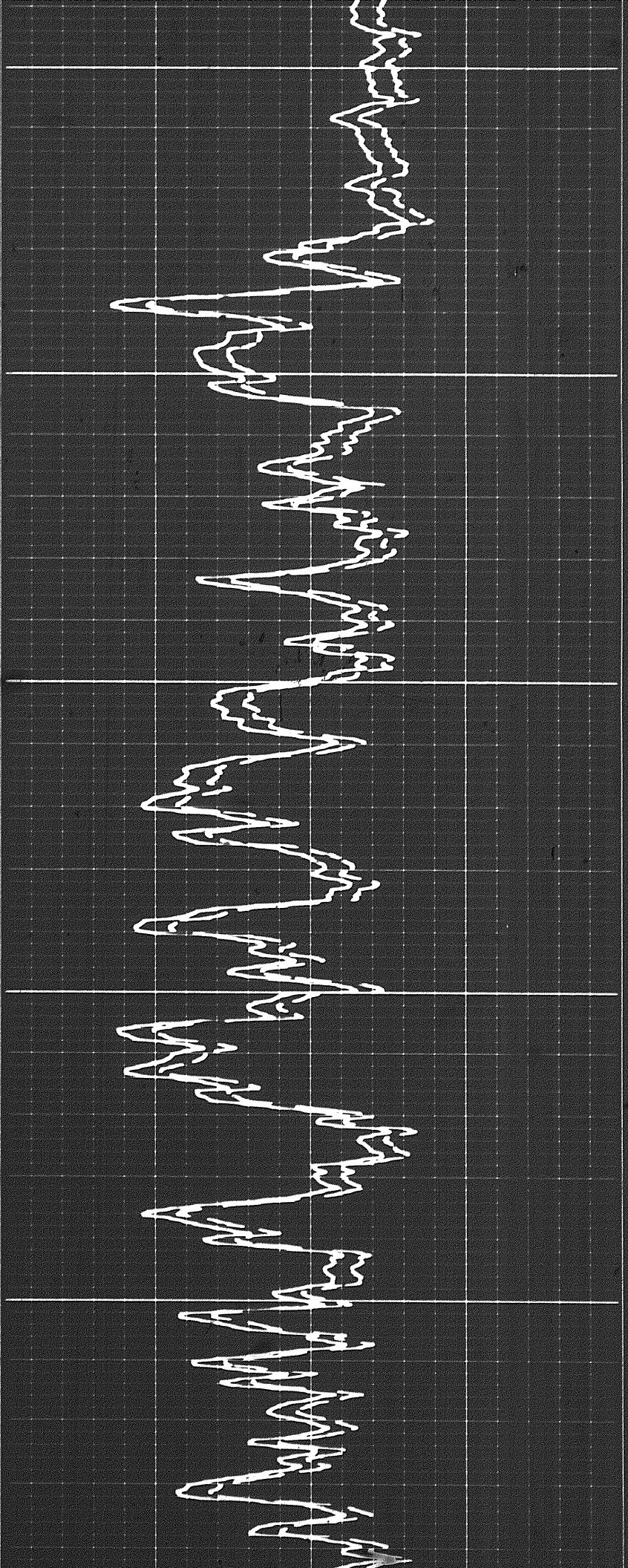




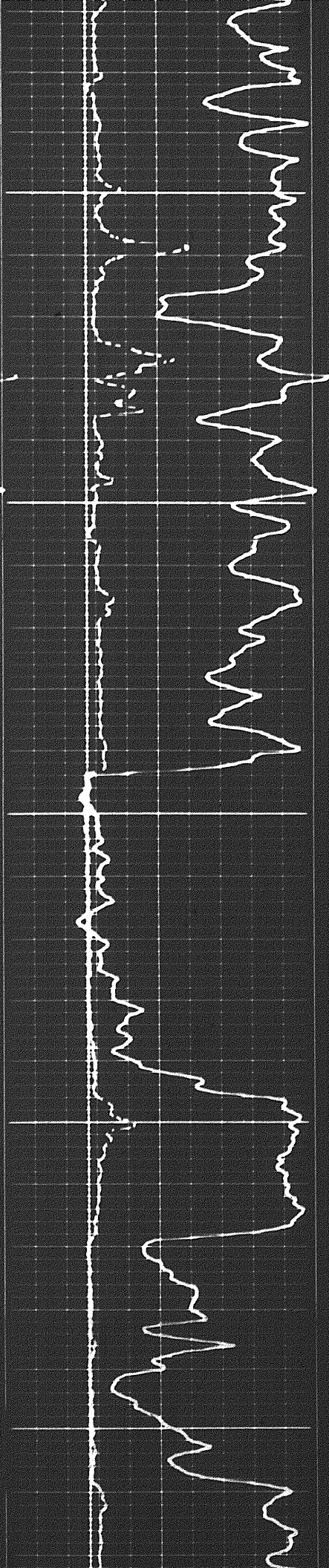


5-9





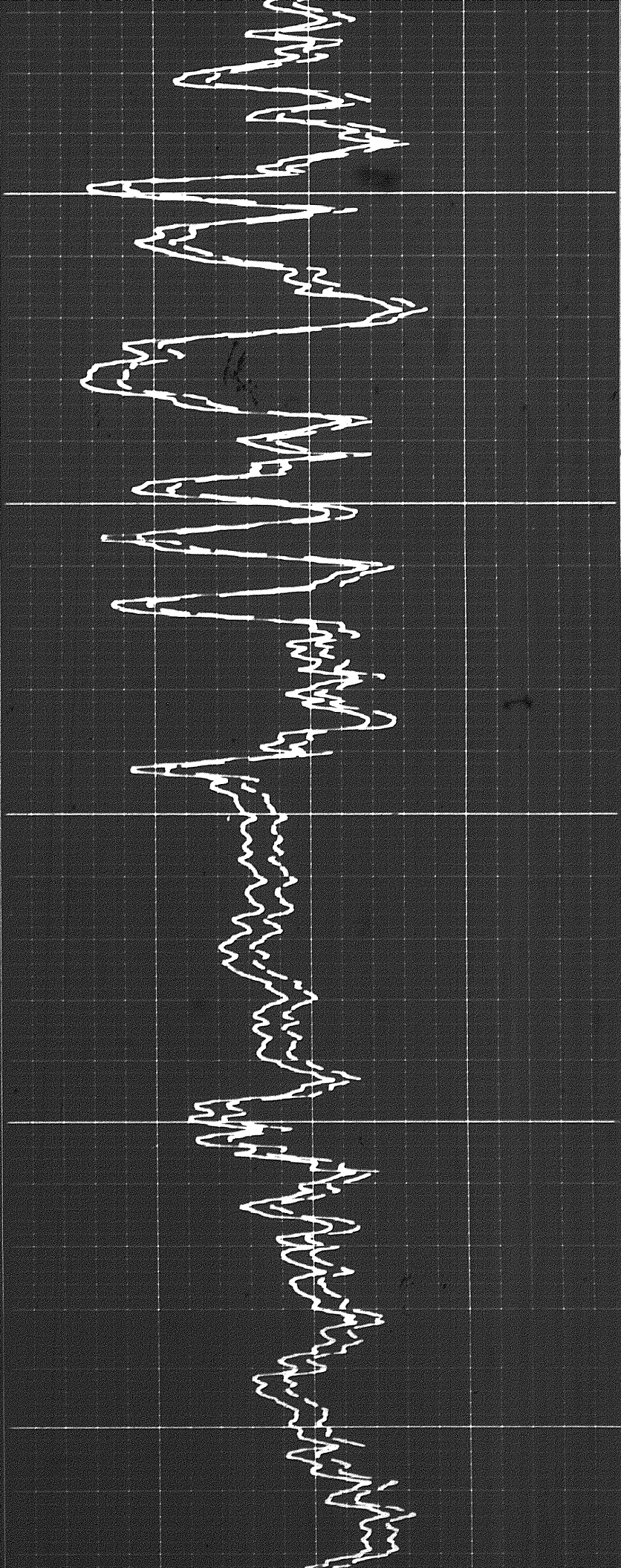




1500

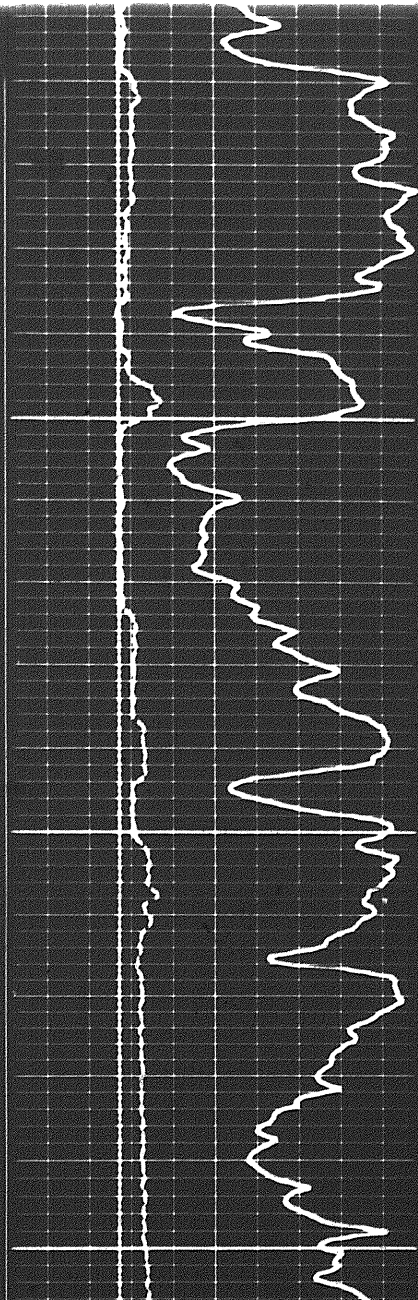
1600

1700



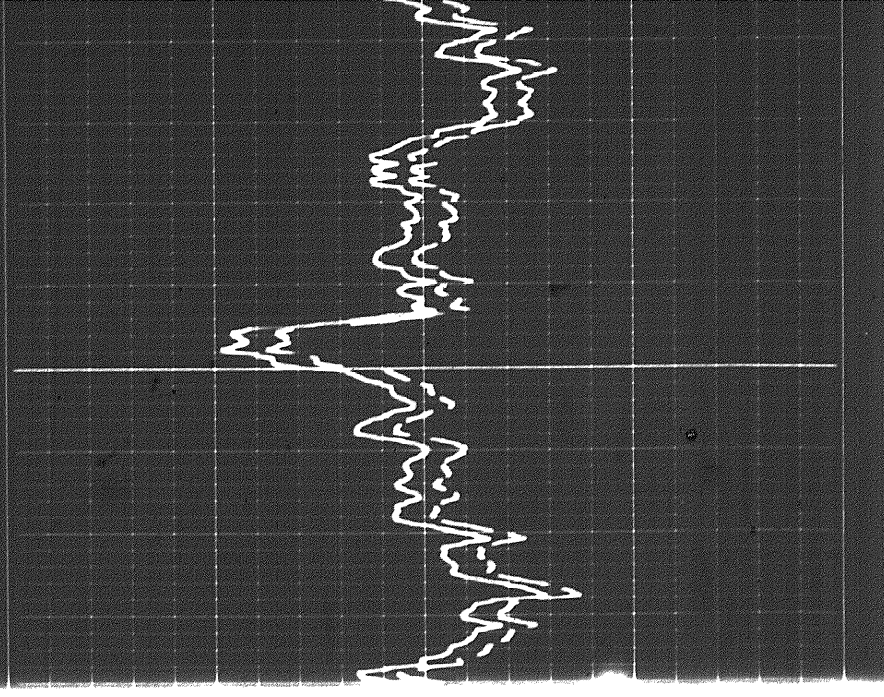
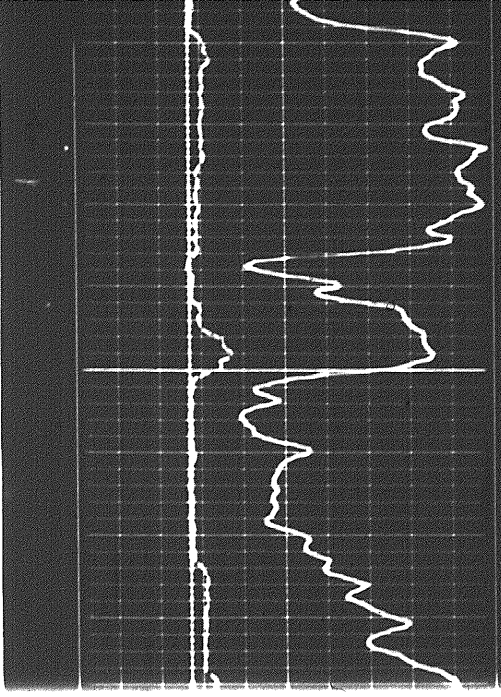
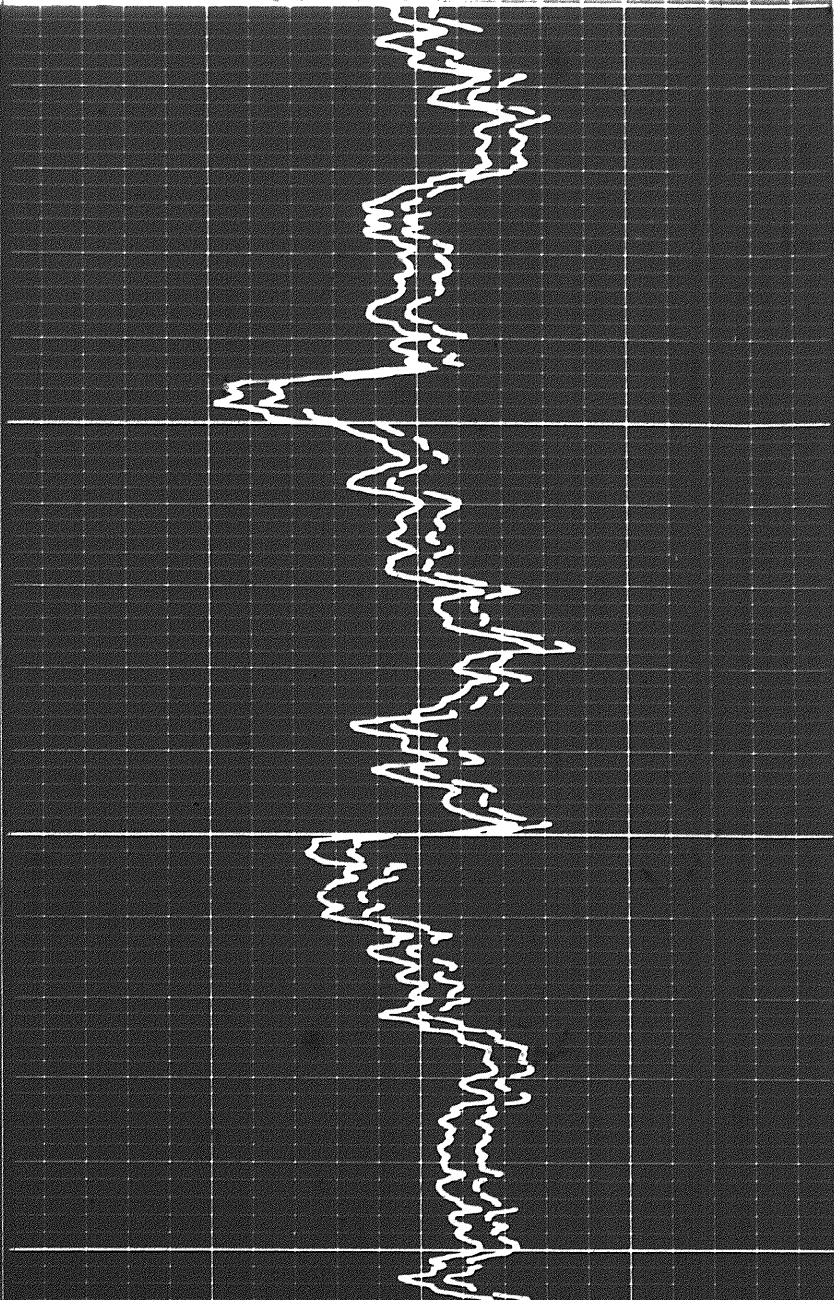


68

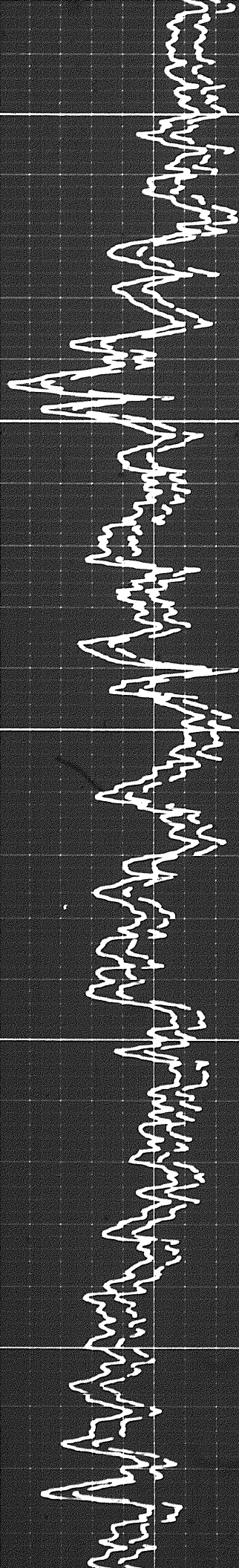


1800

0

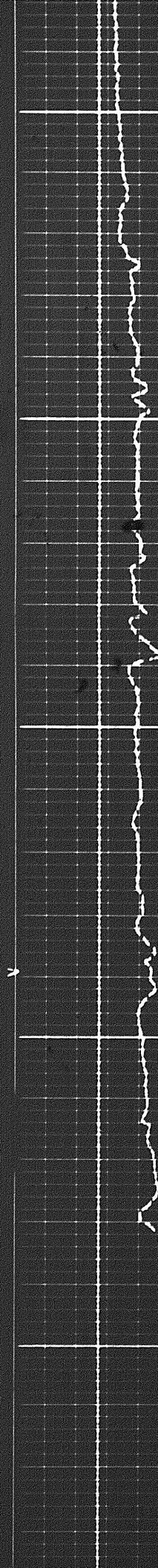
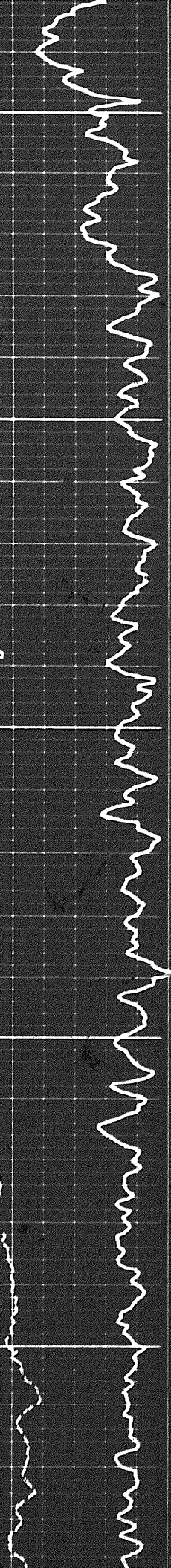




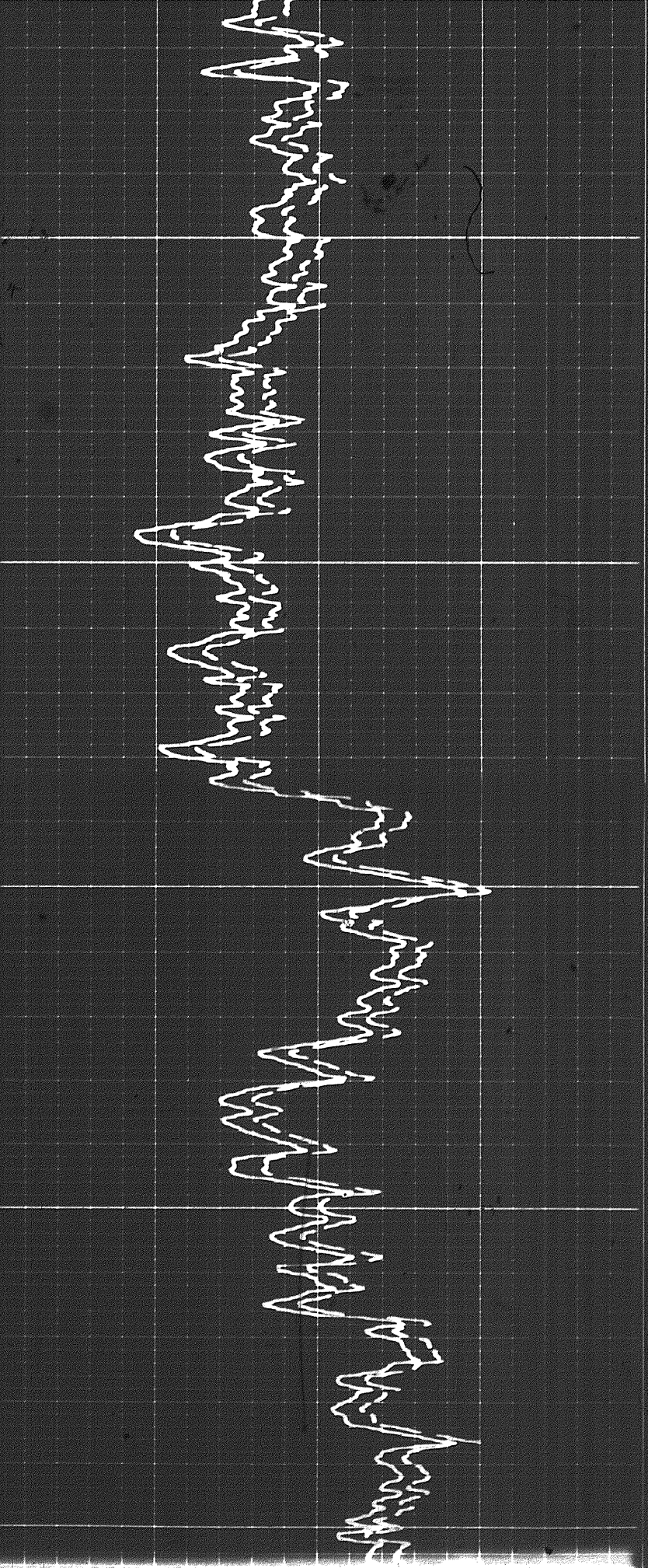


1900

2000



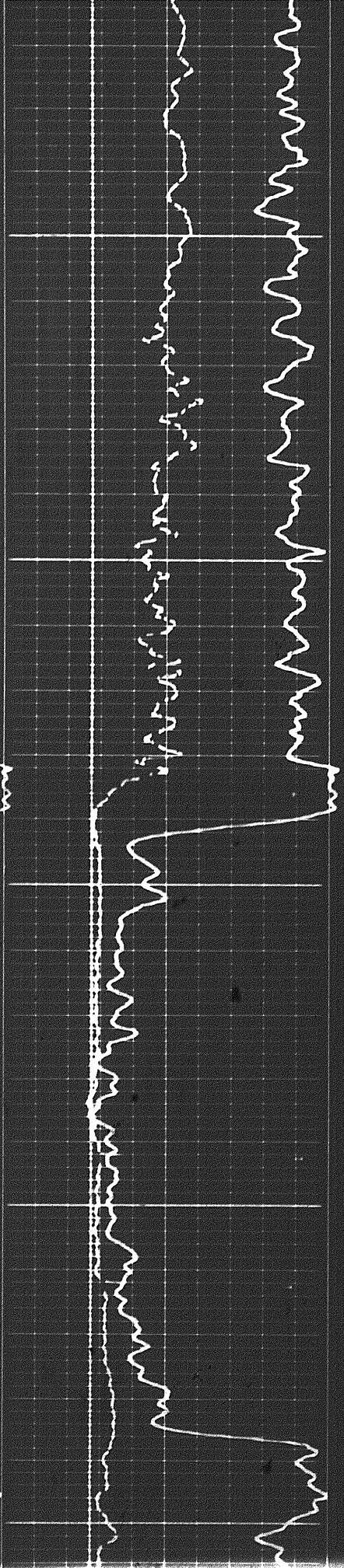




2100

2200

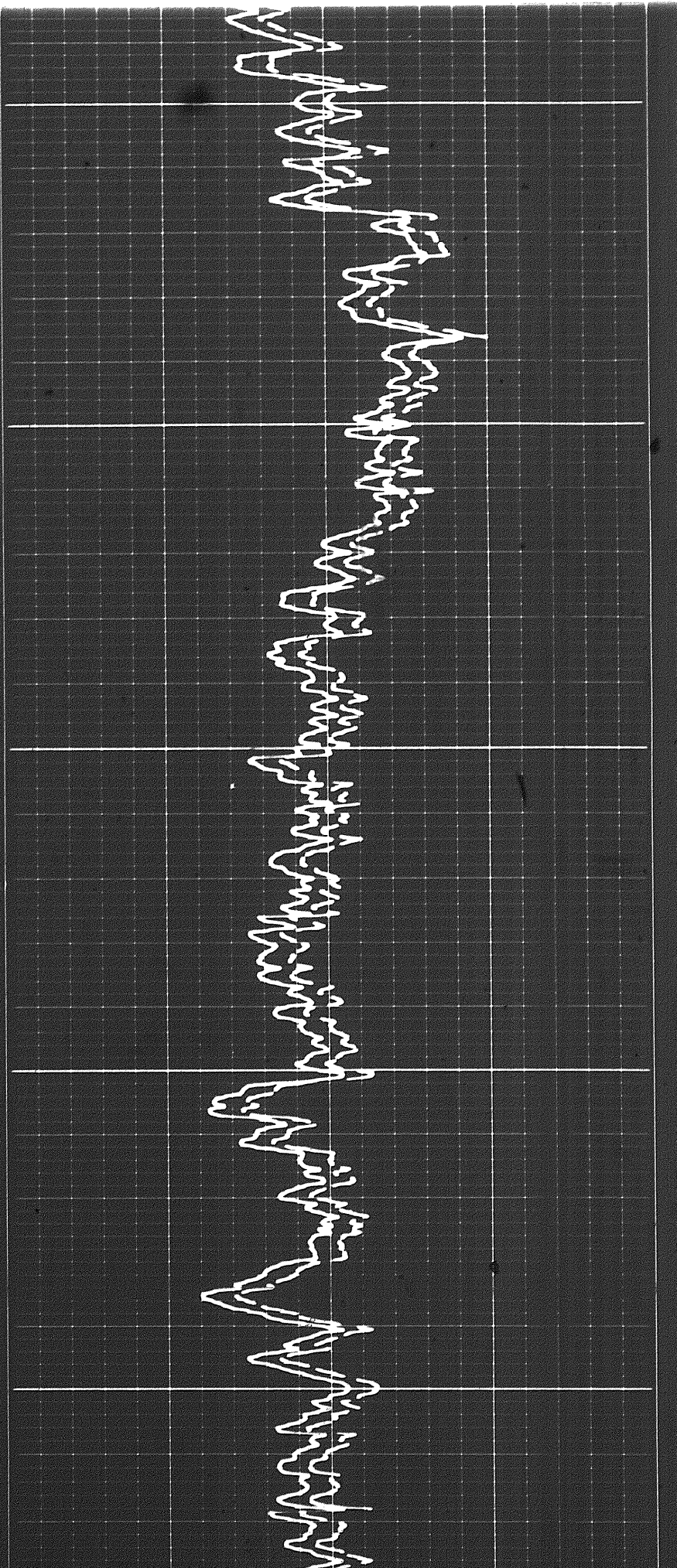
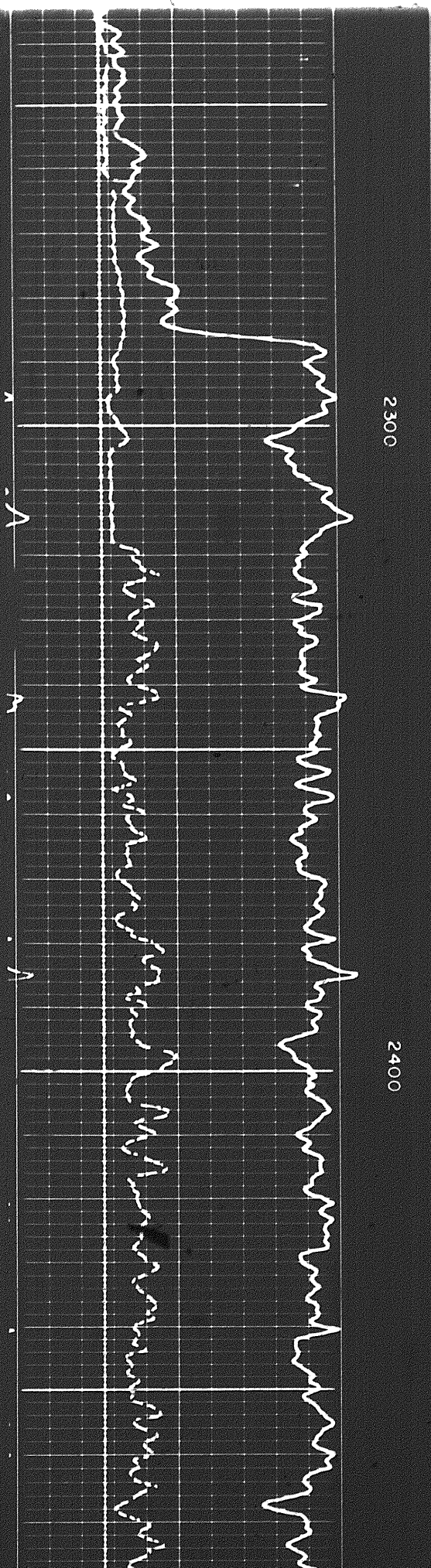
2300



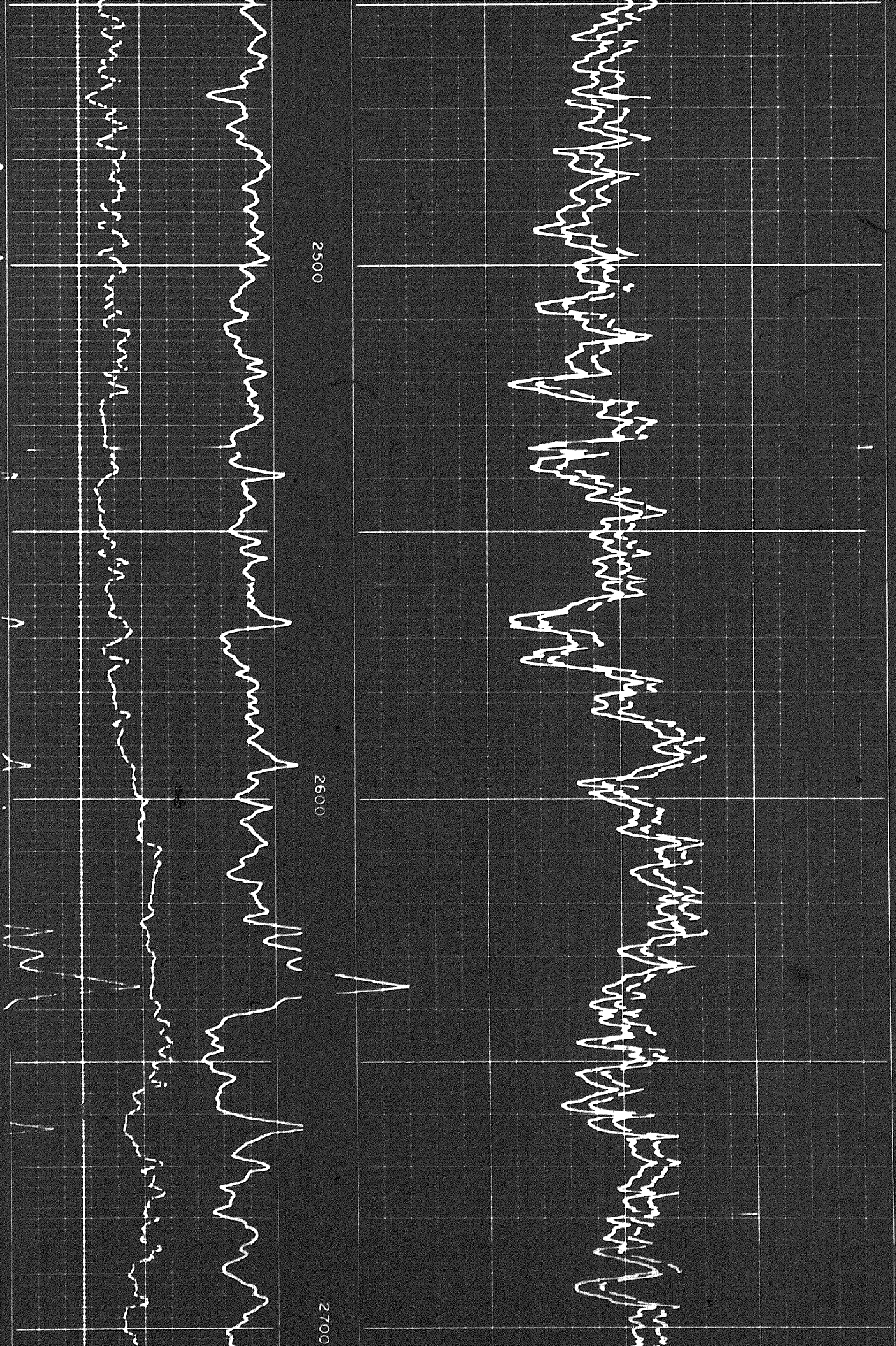
AP



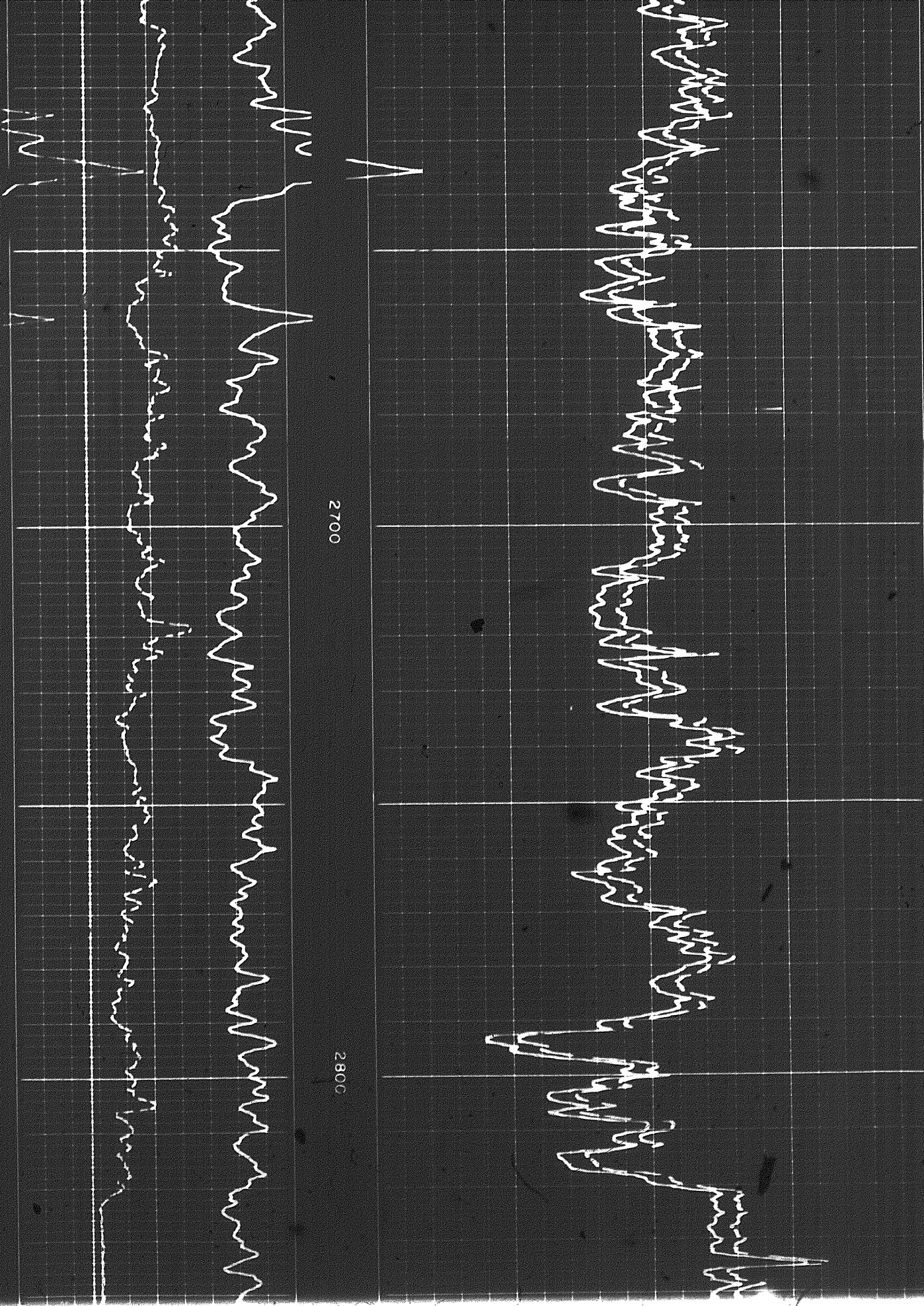
79





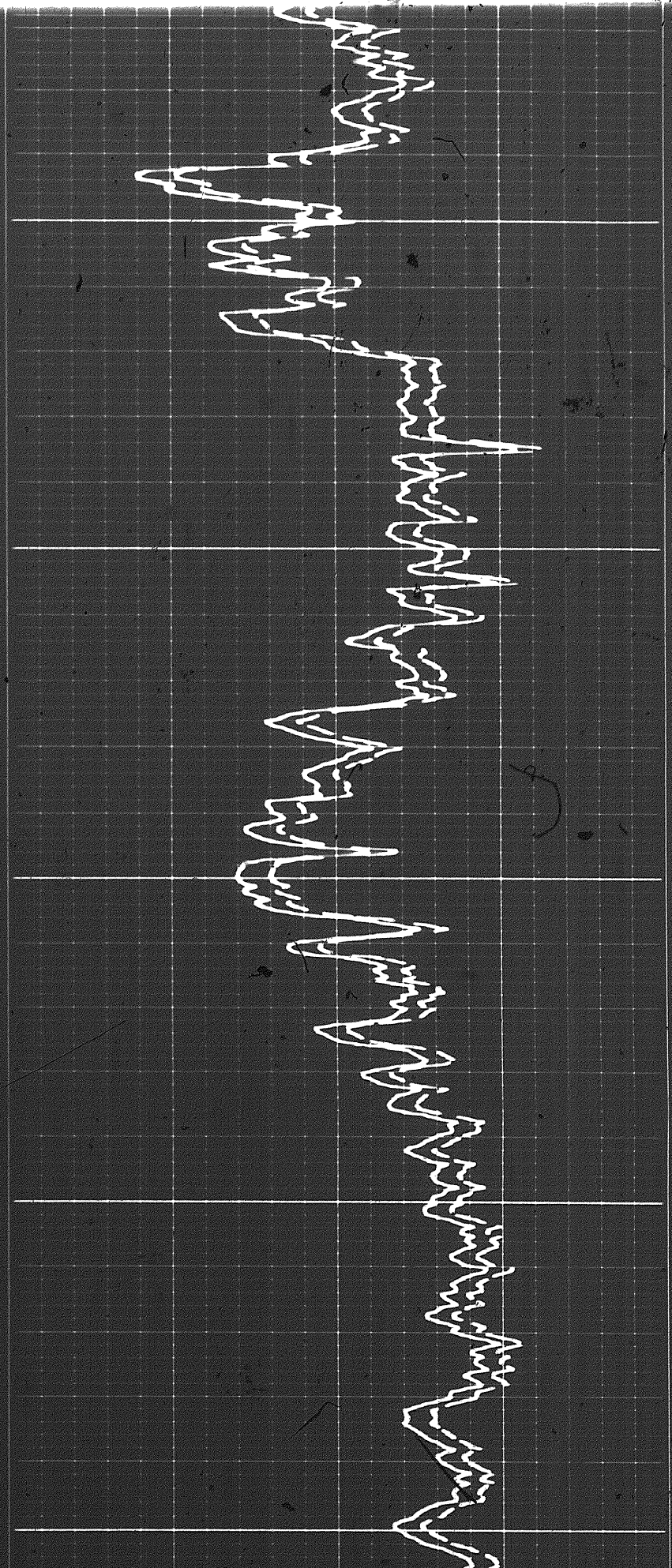
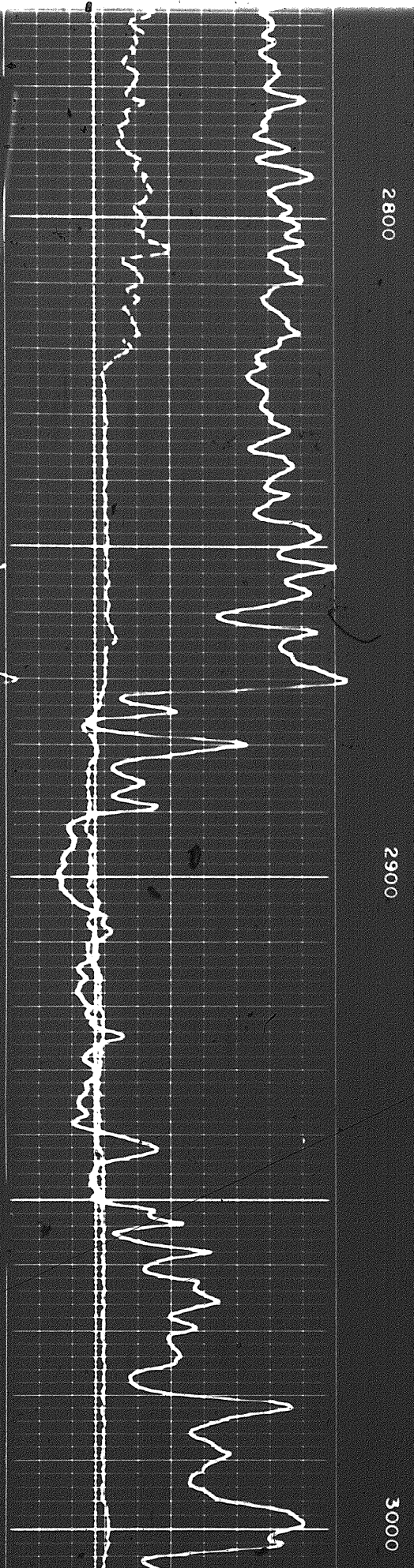




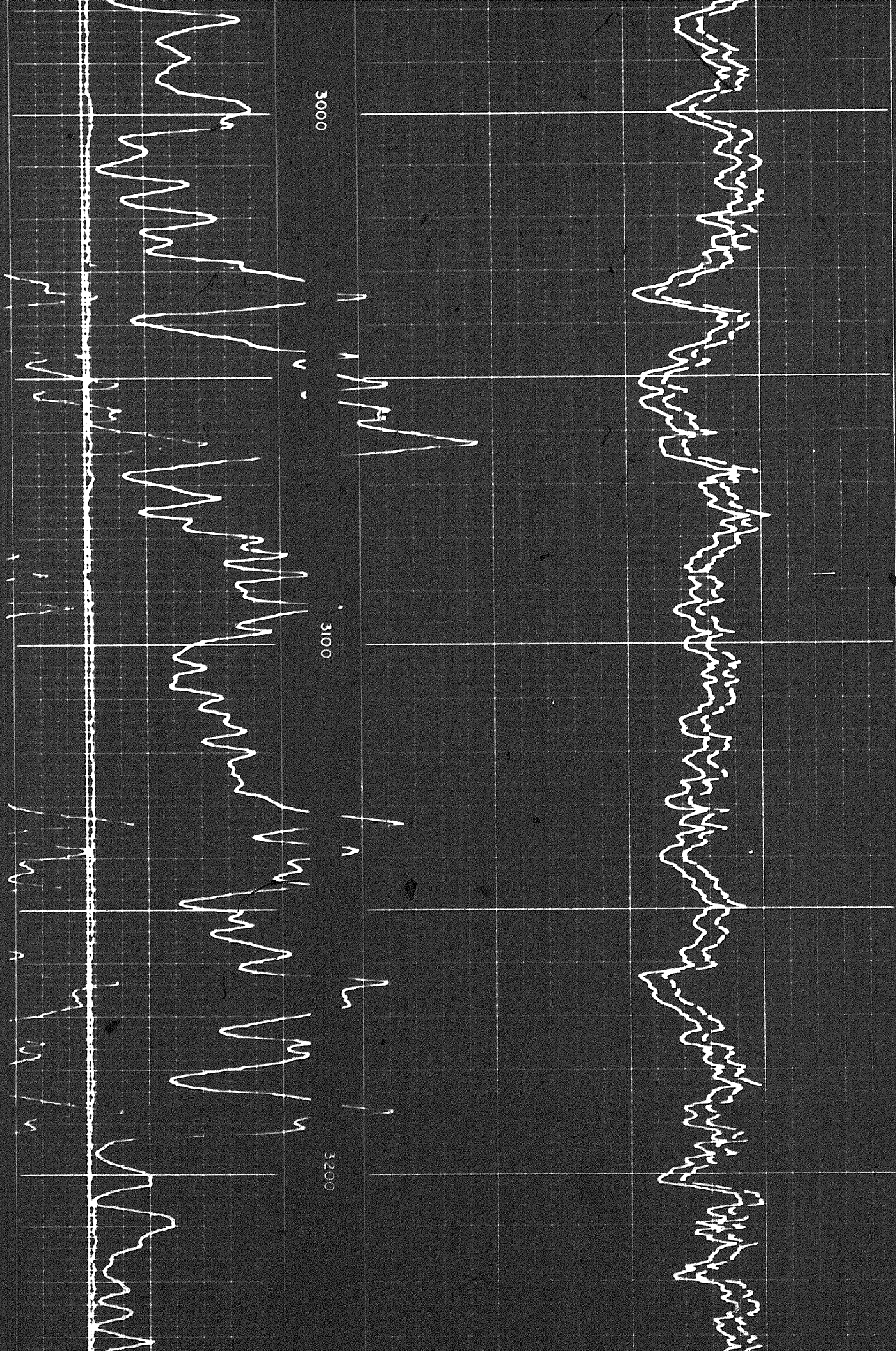




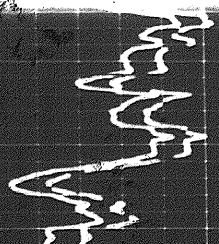
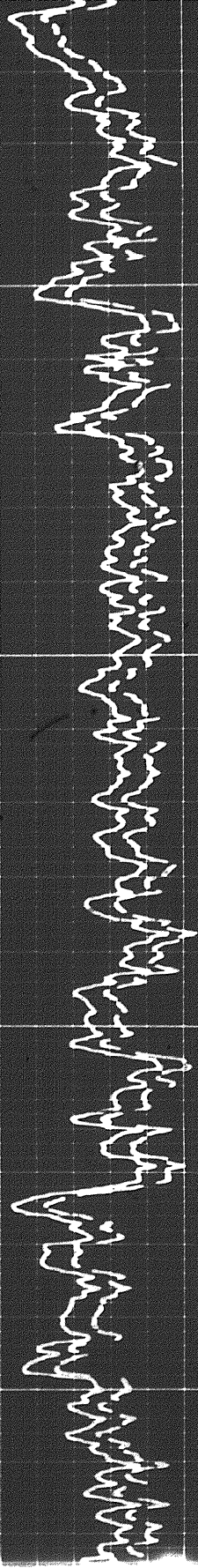
8 of





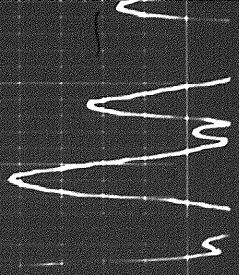






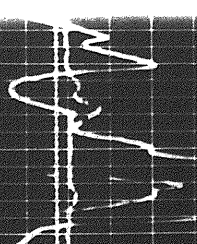
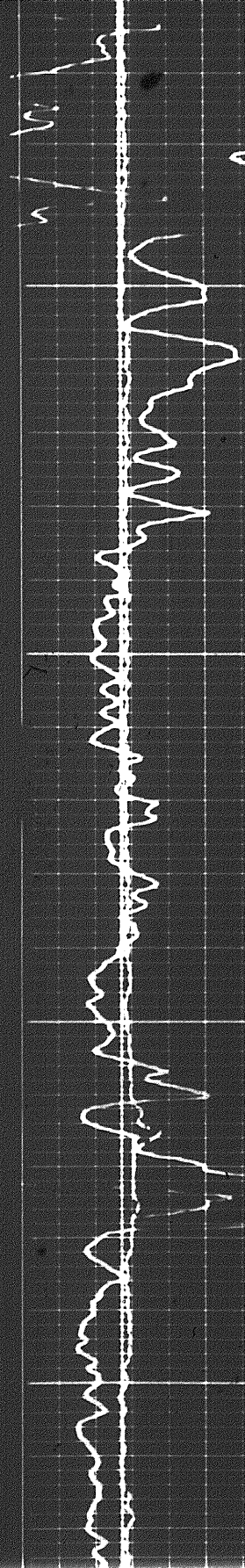
V1

3200



3300

V1





99

100

100

100

100

100

100

100

100

100

100

3400

3500

100

100

100

100

100

100

100

100

100

100

100

100

100

100

100

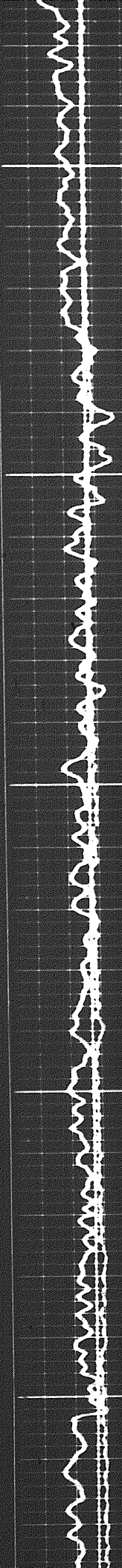
100



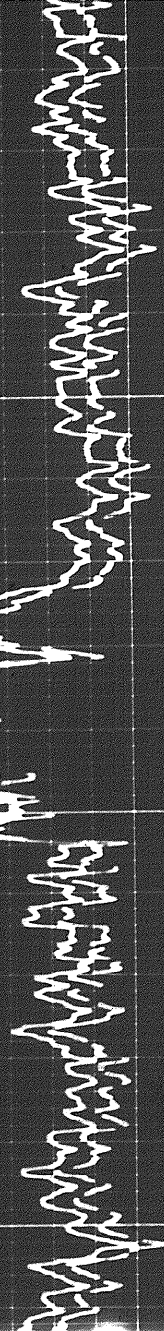


3600

3700

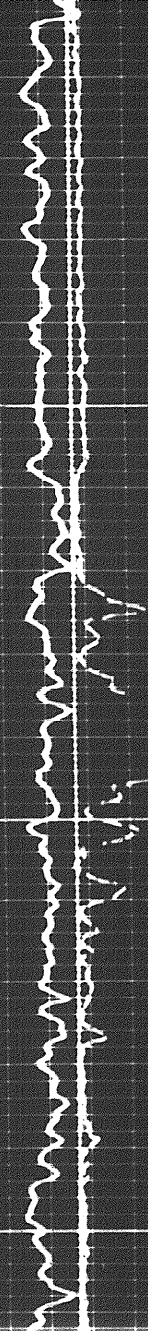




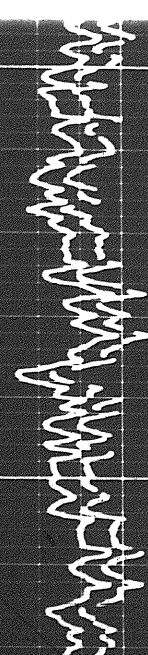


3800

3900

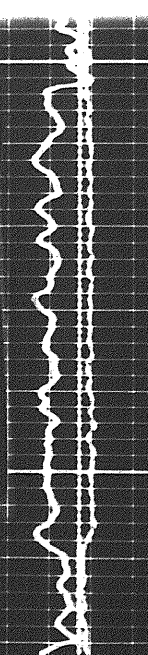


10/10

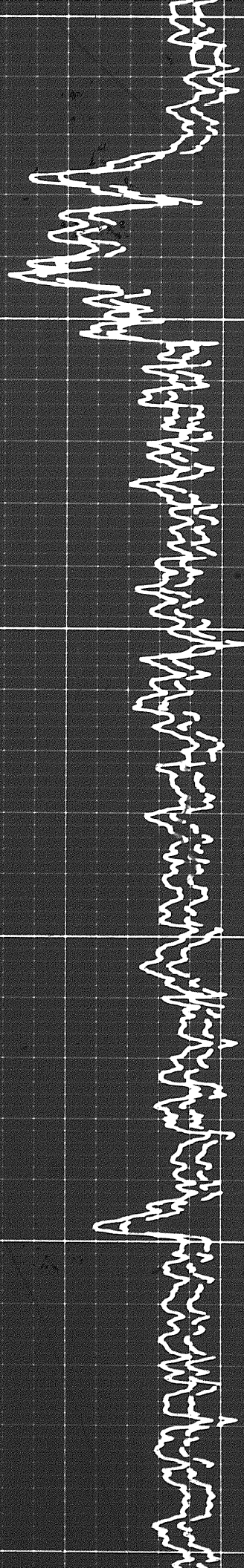


3800

10 of 10



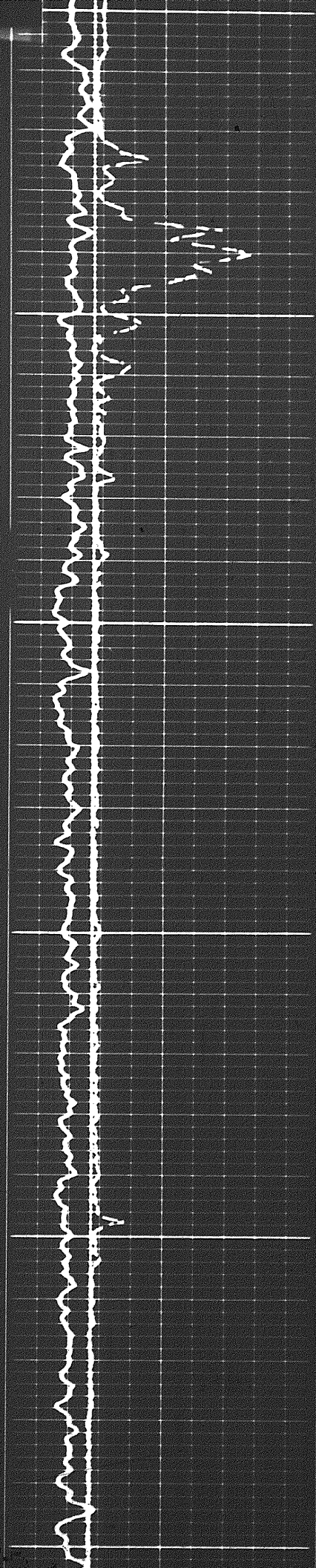




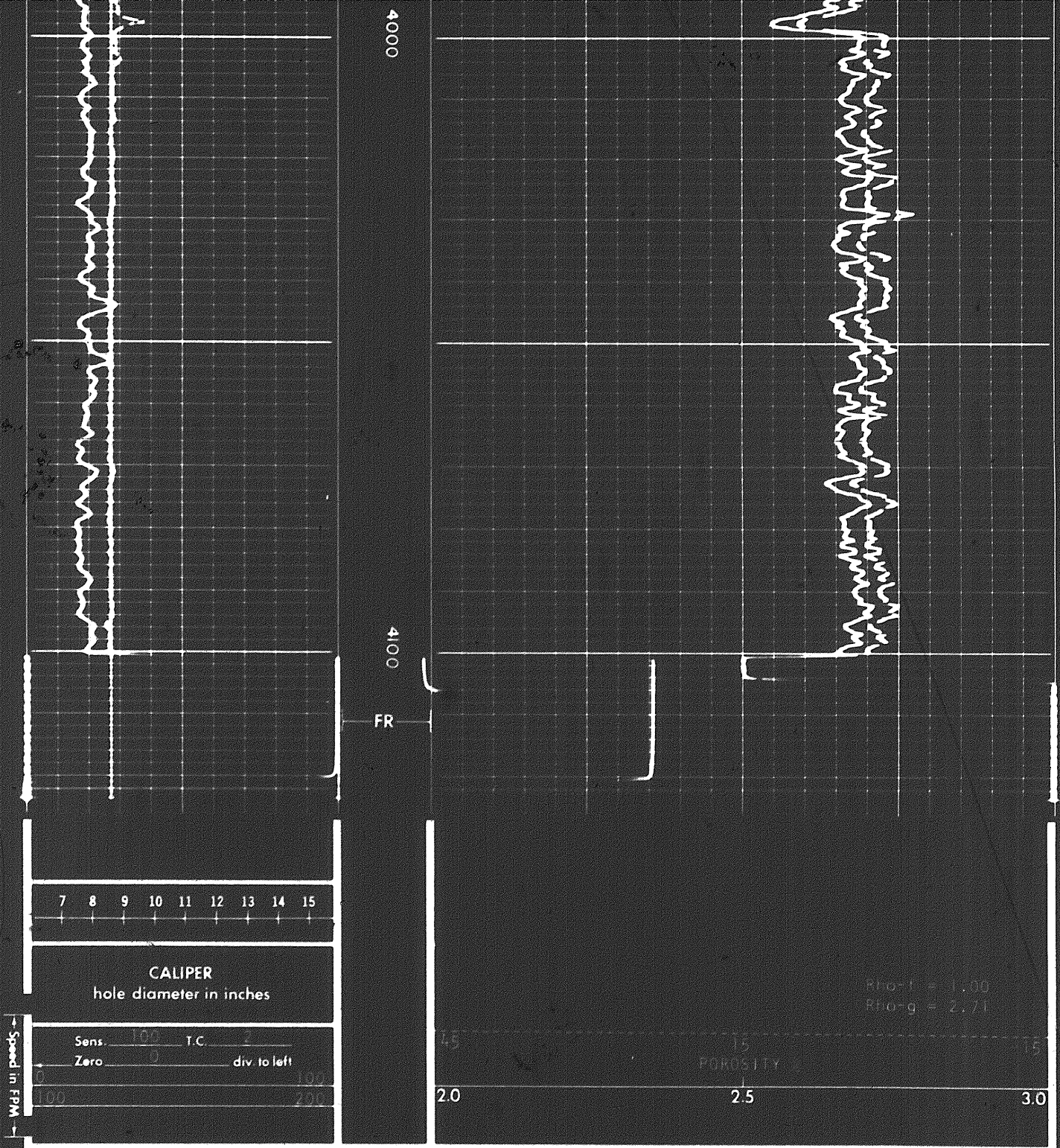
800

3900

4000







GAMMA RAY API UNITS      DEPTHS      BULK DENSITY  $\rho_b$  - gm/cc

COMPANY SLURBERG SERVICES LIMITED

WELL CHEVRON SUBC. WM. W. PARKIN D-33

FIELD WILDCAT PROVINCE YUKON TERRITORIES

