

SCHLUMBERGER

**SIDEWALL
NEUTRON POROSITY LOG**
SCHLUMBERGER OF CANADA Calgary Alberta

PROVINCE: YUKON TERRITORIES
FIELD: WILDCAT
WELL: CHEVRON SUBCANTONAL W. PACIFIC
0-33
COMPANY: CHEVRON STRONGHOLD LIMITED

COMPANY: _____
WELL: _____
FIELD: _____
PROVINCE: YUKON TERRITORIES
LOCATION: _____
Permanent Datum: _____ Elev: _____
Log Measured From: _____ Ft. Above Perm. Datum: _____
ELEV: KB _____
GL _____
CBF _____
Other Services: _____

Date	11 JAN 72		
Run No.	ONE		
First Reading	4110		
Last Reading	822		
Feet Measured	2010		
Depth Reached	4110		
Bottom Driller	4123		
Csg SOC	822		
Csg Driller	822		
Mud Nature	KETZAH		
Dens. Visc.	11.0	65	
Mud pH	9.0		
Water loss	4.8		
Res.	3.67	84	9F
Rnl	3.40	84	9F
BHT	2.2	97	9F
Rmc	1.95	84	9F
prim-Cl	1.200		
Bit Size	8 3/4"		
Equipment Type	BEI TRIPPER		
Op. Rig Time	7 HRS		
Truck No.	OSU-1108 REM		
Recorded By	JH SCH		
Witness	PHILAVEL		

1 of 4

REMARKS: _____ 1st Run Service Order # _____
Drilling Stopped _____; Circulation Stopped _____; Tool on Bottom _____; B.H.T. _____ °F

Panel No. _____
Cartridge No. _____
Sonde No. _____
Detector No. _____
SFT-116 No. _____

CALIBRATION: Gamma Ray				Neutron Environmental Cal.	
Background CPS	Test Source CPS	Galv. Deflection	Sens. Tap	Drawer In - CPS	Drawer Out - CPS
				Before	
				After	
Panel Settings: Function Former Temp. Comp. Setting T.C.				Mud Wt./Salinity Comp. set as per recorded value	
				Neutron Auxiliary Cal. - CPS	
				Before	
				After	

This interpretation represents our best judgment. Nevertheless since all interpretations are opinions based solely on inferences from electrical or other measurements, we cannot and do not guarantee the accuracy or correctness of any interpretation and shall not be liable or responsible for any loss, cost, damages, or expenses that may be incurred or sustained resulting from this or any other interpretation.

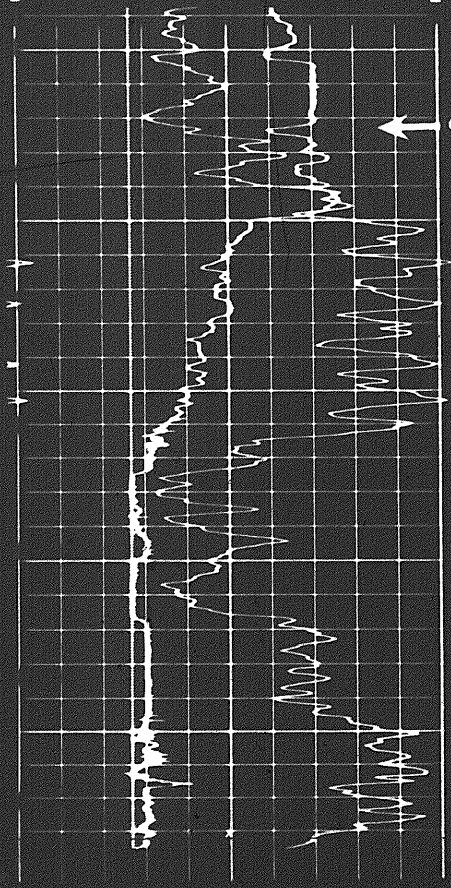
CALIPER hole diameter in inches	DEPTHS	POROSITY (%)
		LIMESTONE
GAMMA RAY API UNITS		
Speed in FPM	7 8 9 10 11 12 13 14 15	

Speed in FPM
7 8 9 10 11 12 13 14 15

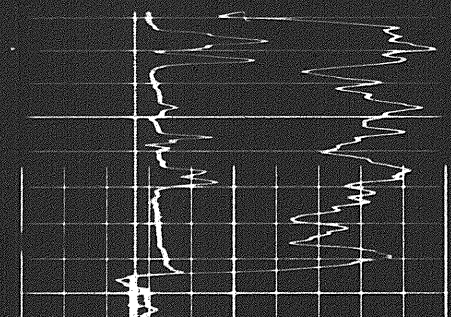
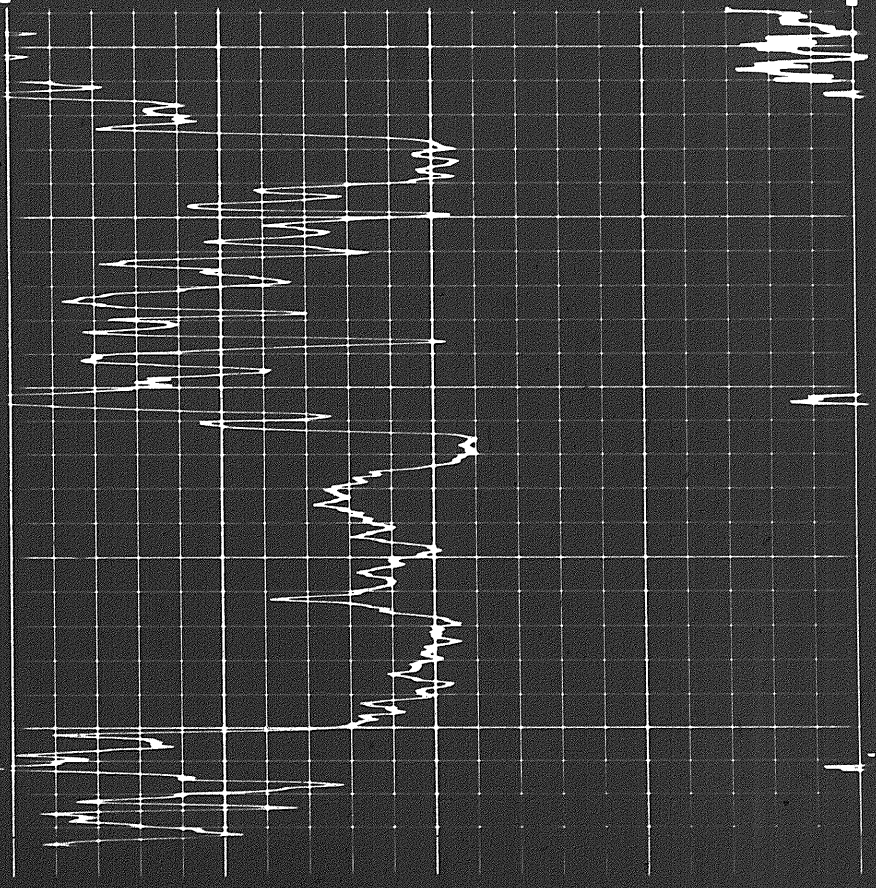
GAMMA RAY API UNITS

Sens _____ T.C. _____
Zero _____ div to left

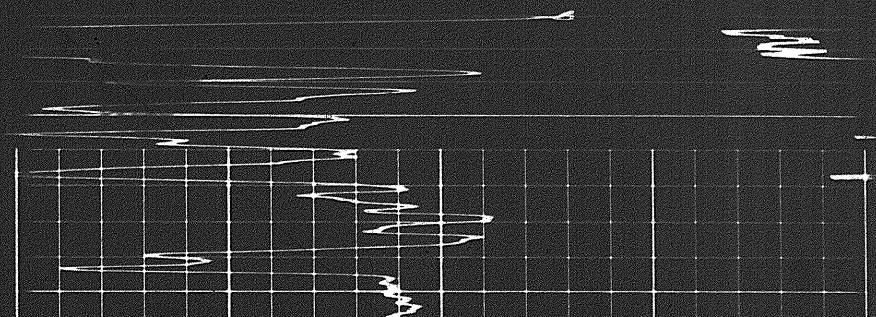
LIMESTONE

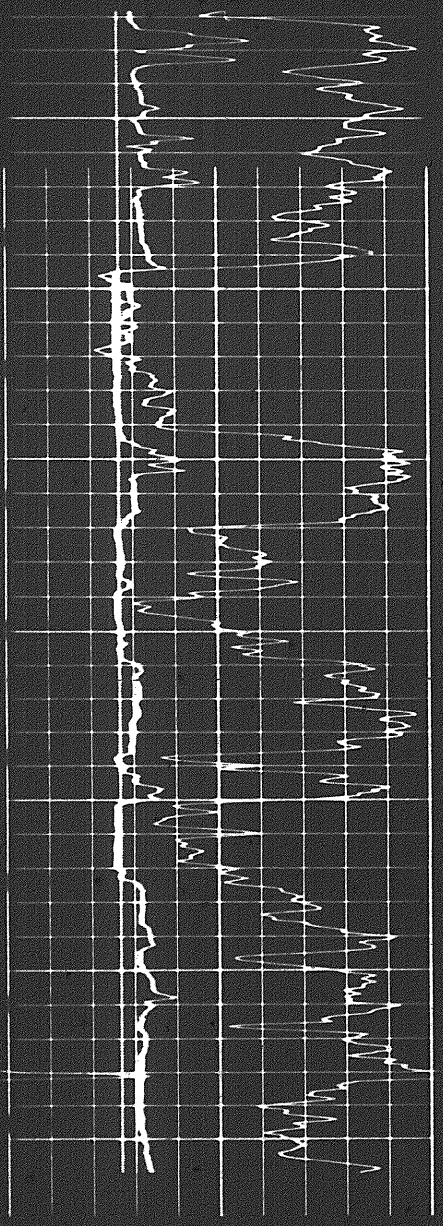


0080
0090
1000



1600

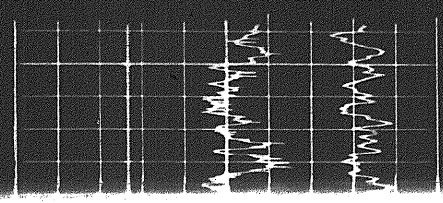
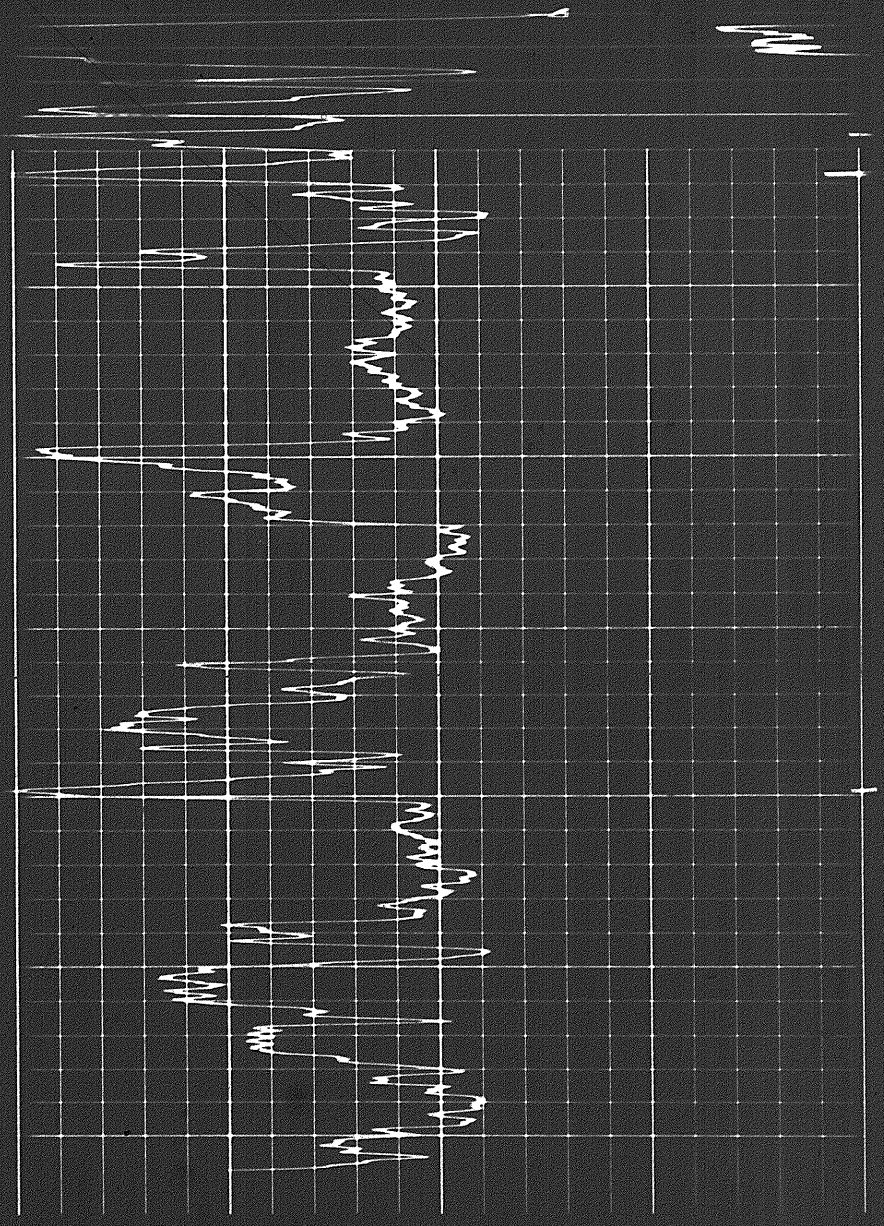




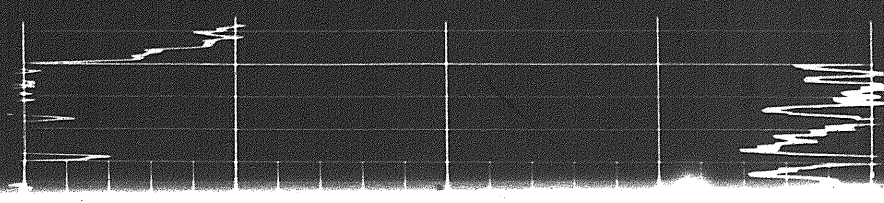
1600

1700

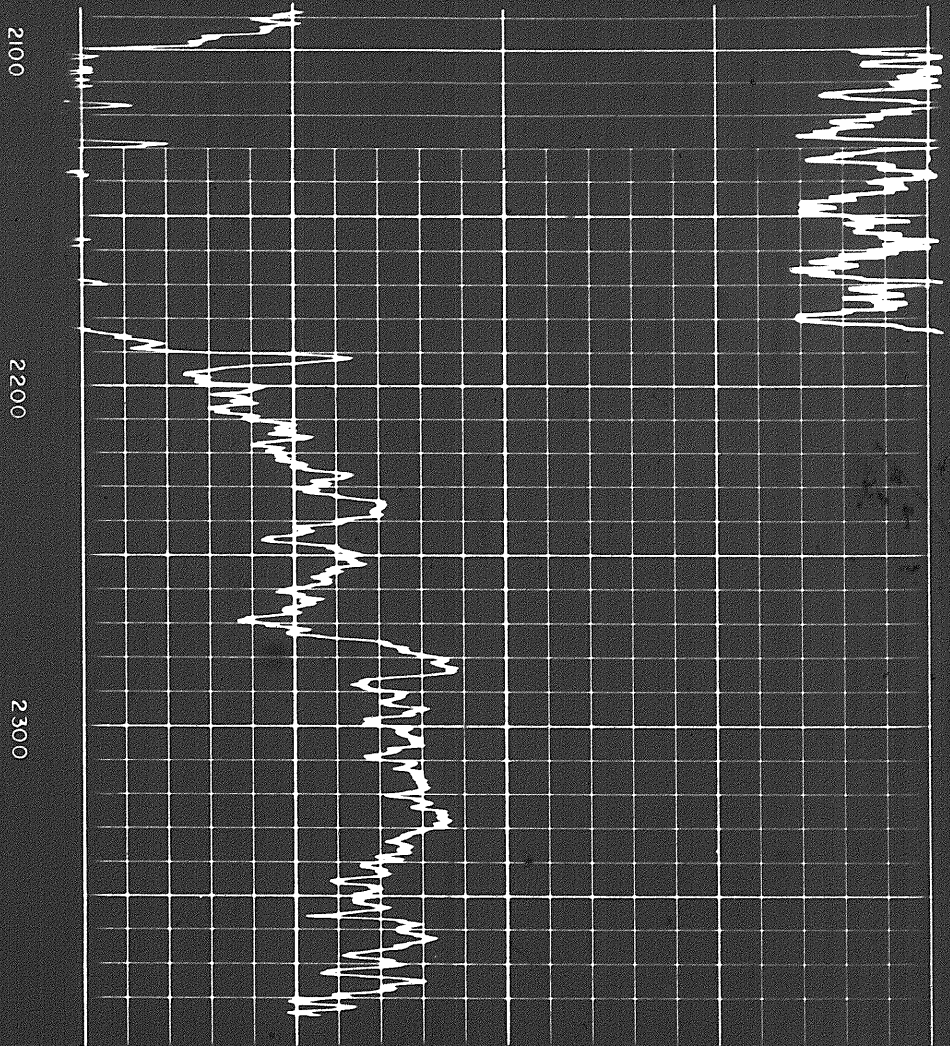
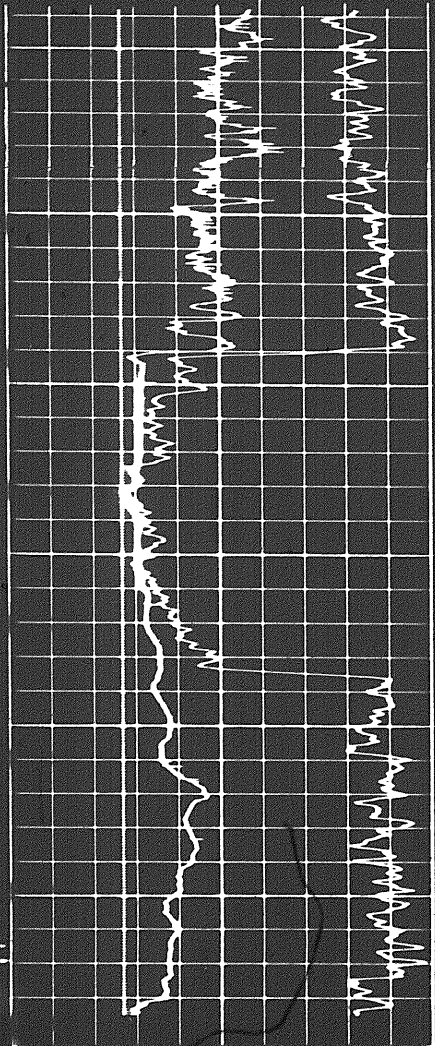
1800



2100



207



2100
2200
2300

Sens. 100 T.C. 2
Zero 0 div. to left

GAMMA RAY
API UNITS

7 8 9 10 11 12 13 14 15

Speed in FPM

CALIPER
hole diameter in inches

DEPTHS

LIMESTONE

POROSITY (%)

DETAIL LOG
= 100'

CALIPER
hole diameter in inches

DEPTHS

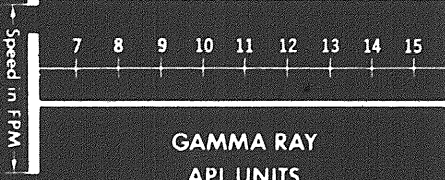
POROSITY (%)

DETAIL LOG
= 100'

CALIPER
hole diameter in inches

DEPTHS

POROSITY (%)

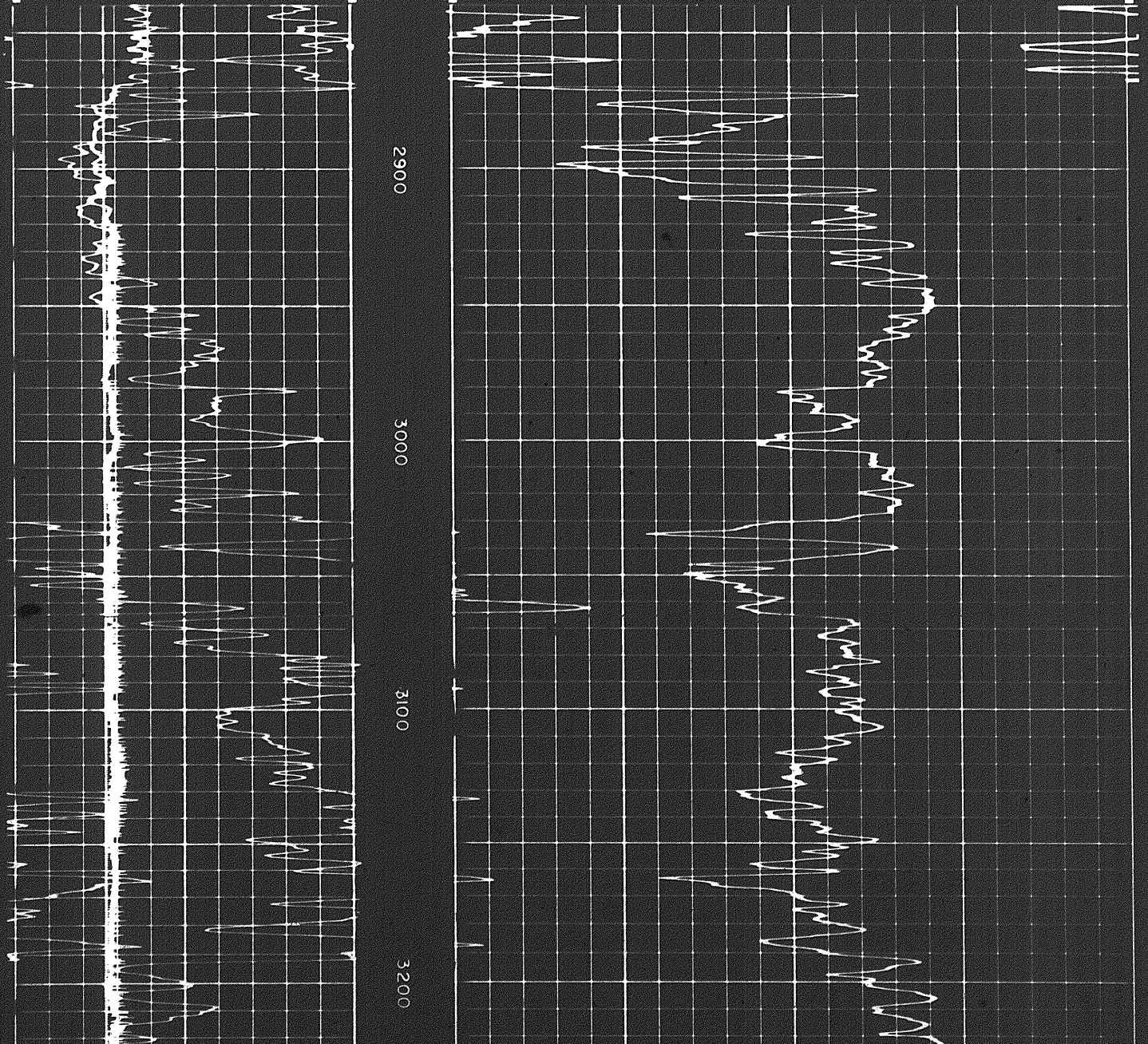


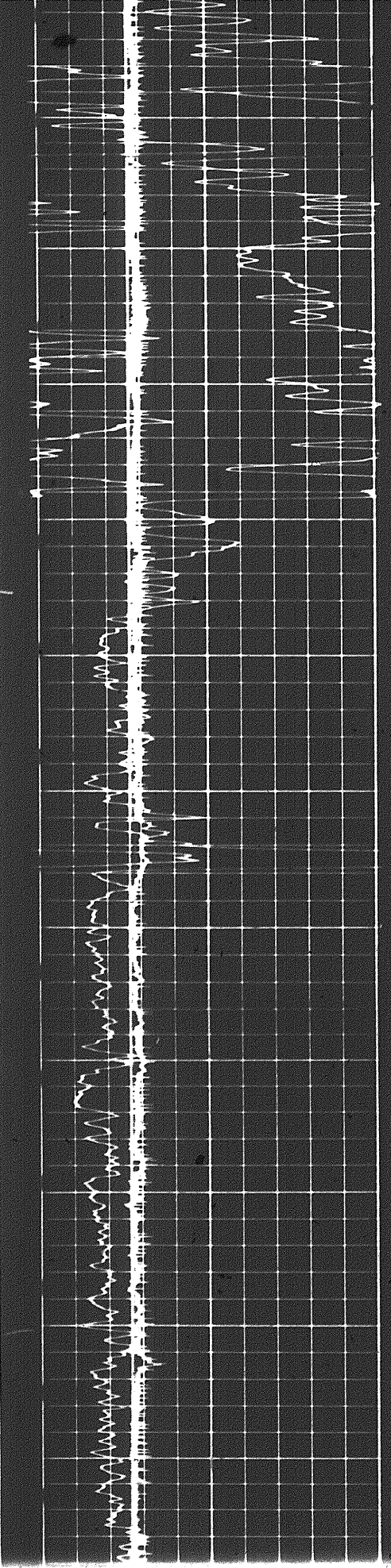
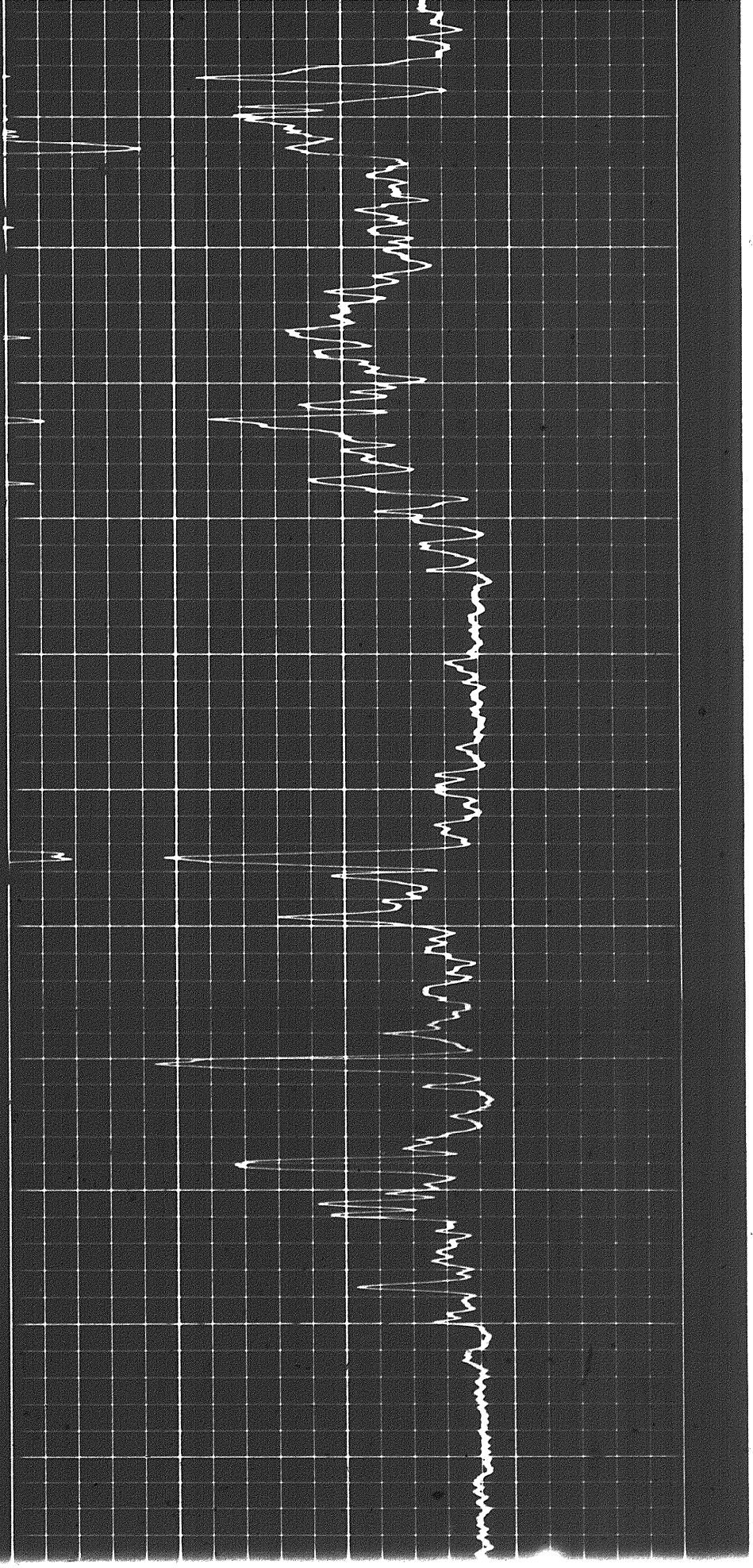
GAMMA RAY
API UNITS

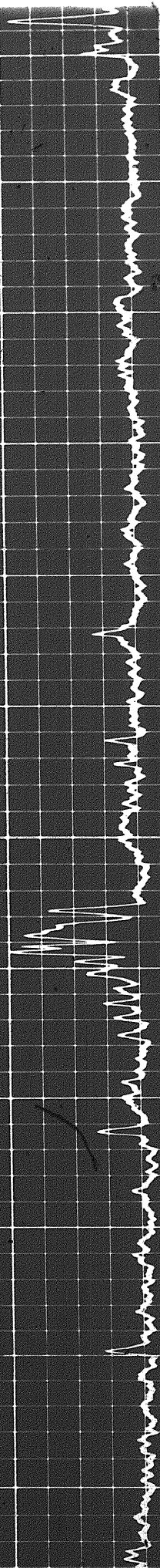
Sens T.C.
Zero div. to left

LIMESTONE

30 20 10 0 -10







3500

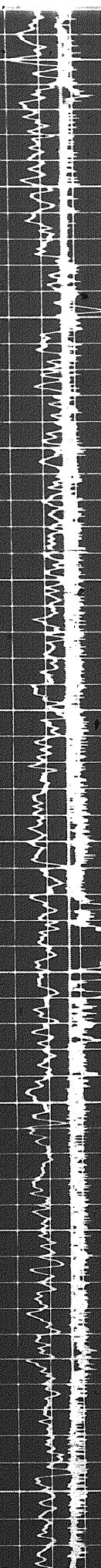
3600

3700

3800

3900

4000



307

4100

Sens. _____ T.C. _____
Zero _____ div to left

GAMMA RAY
API UNITS

7 8 9 10 11 12 13 14 15

30 20 10 0 -10

LIMESTONE

CALIPER
hole diameter in inches

DEPTH

POROSITY (%)

DETAIL LOG
5" = 100'

CALIPER
hole diameter in inches

DEPTH

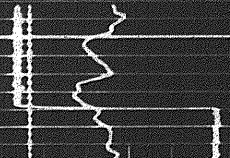
POROSITY (%)

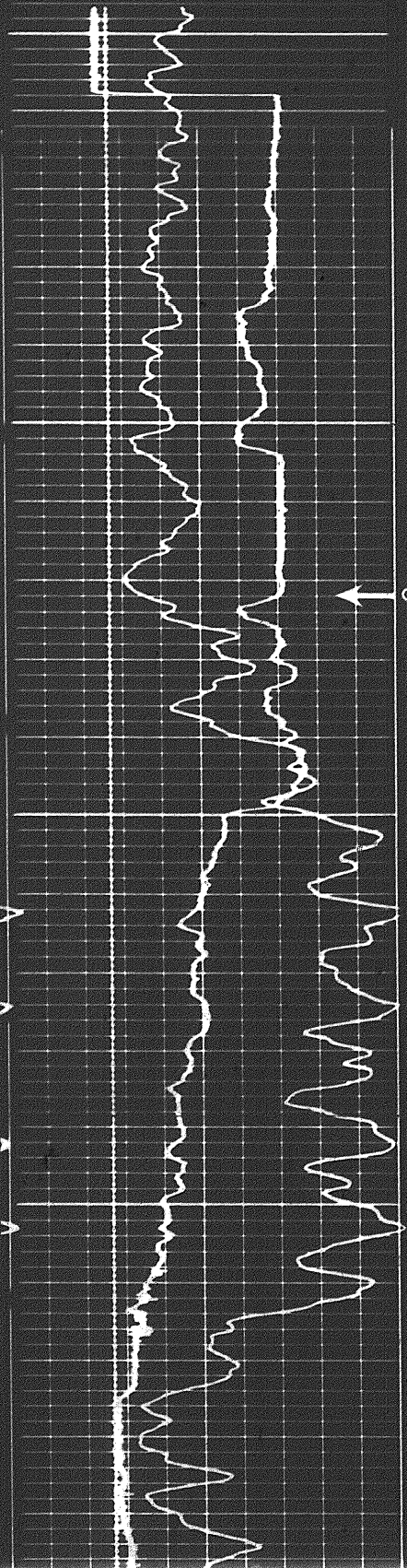
7 8 9 10 11 12 13 14 15

LIMESTONE

GAMMA RAY
API UNITS

Sens. _____ T.C. _____
Zero _____ div to left

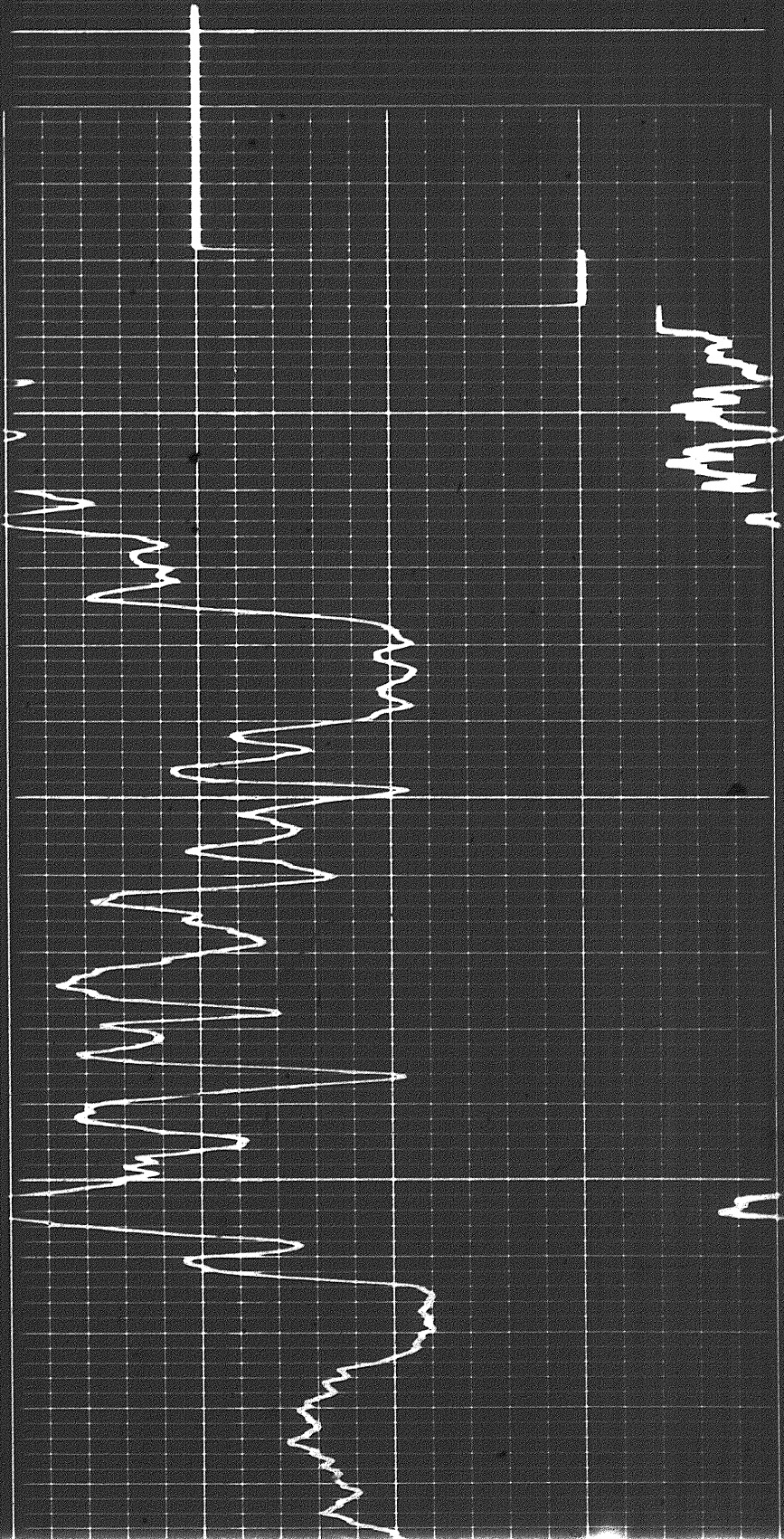




Casing

0080

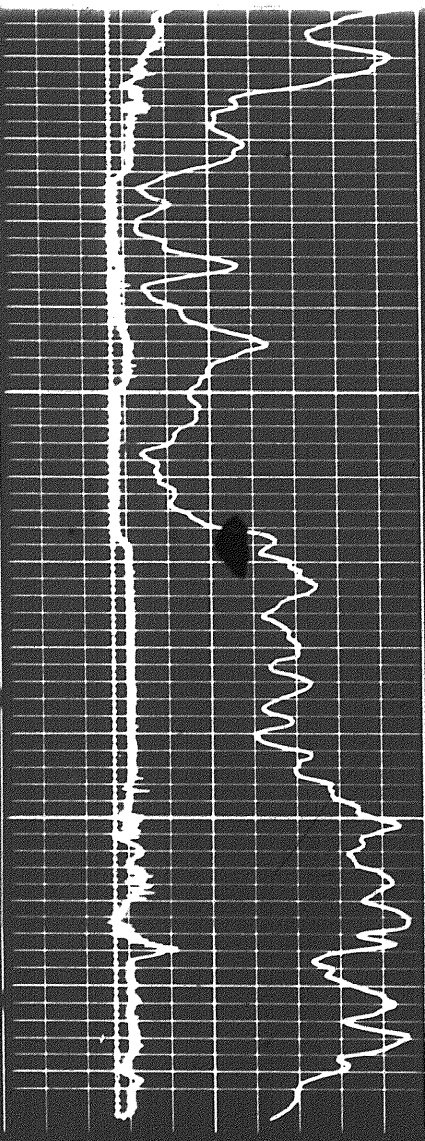
0060



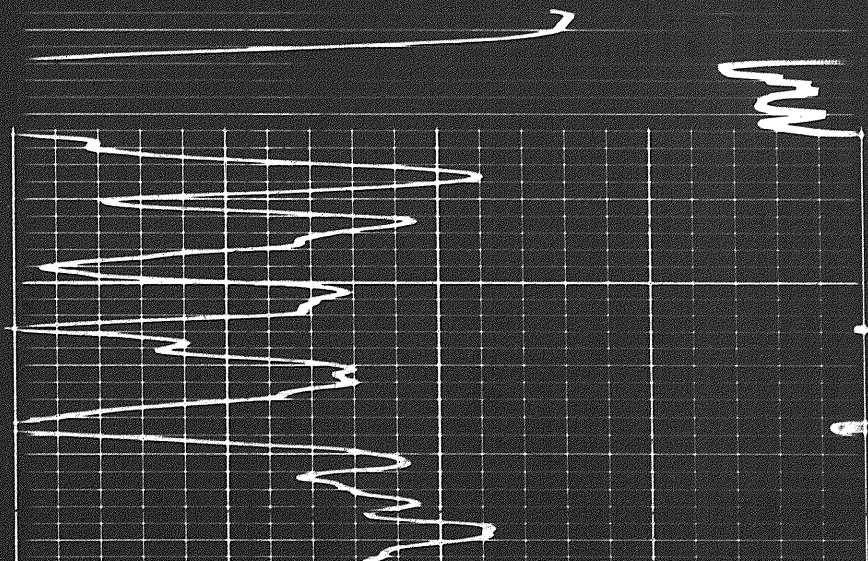
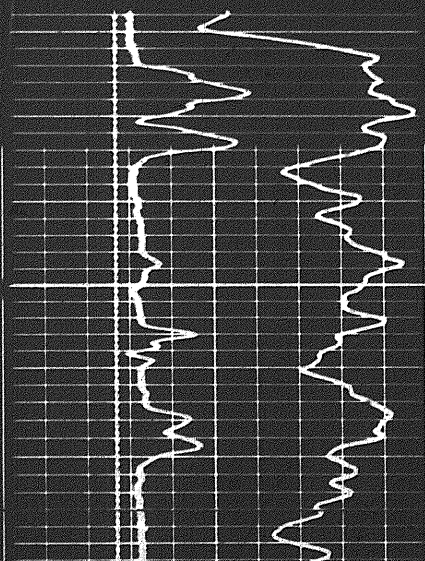
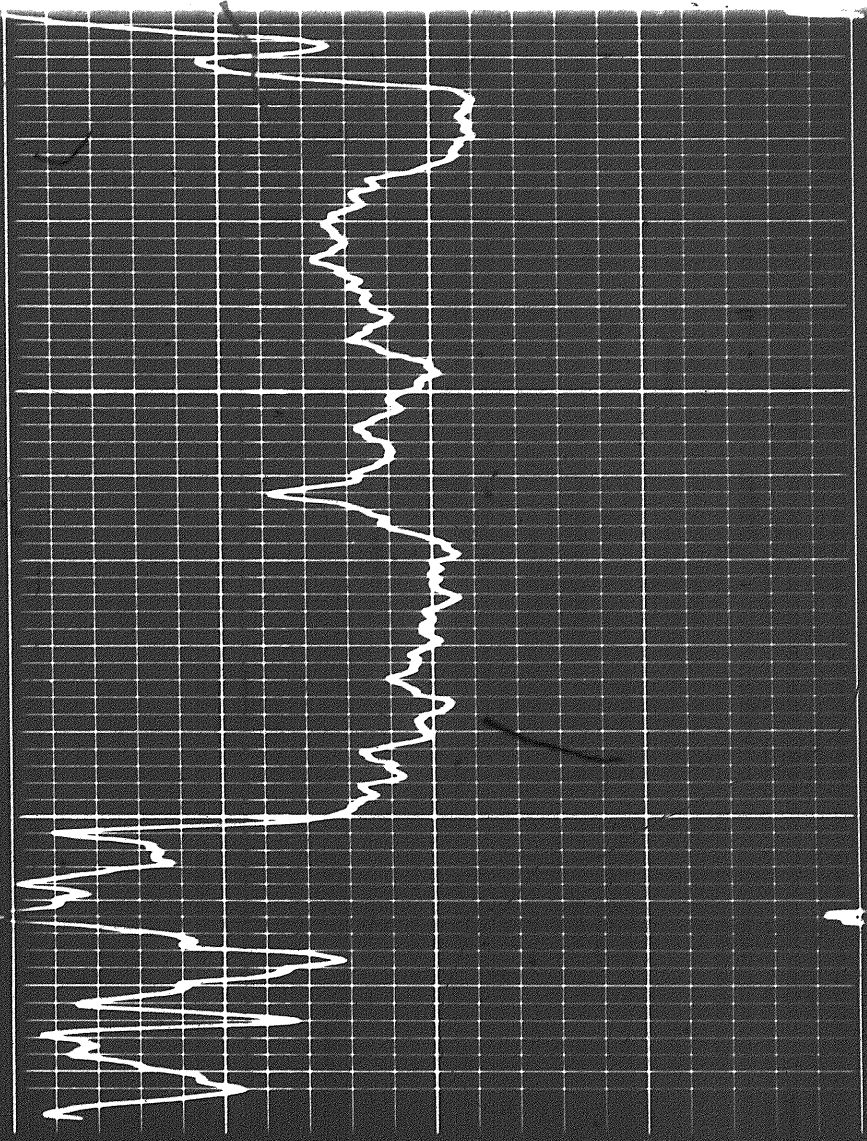
Handwritten scribble

Handwritten mark

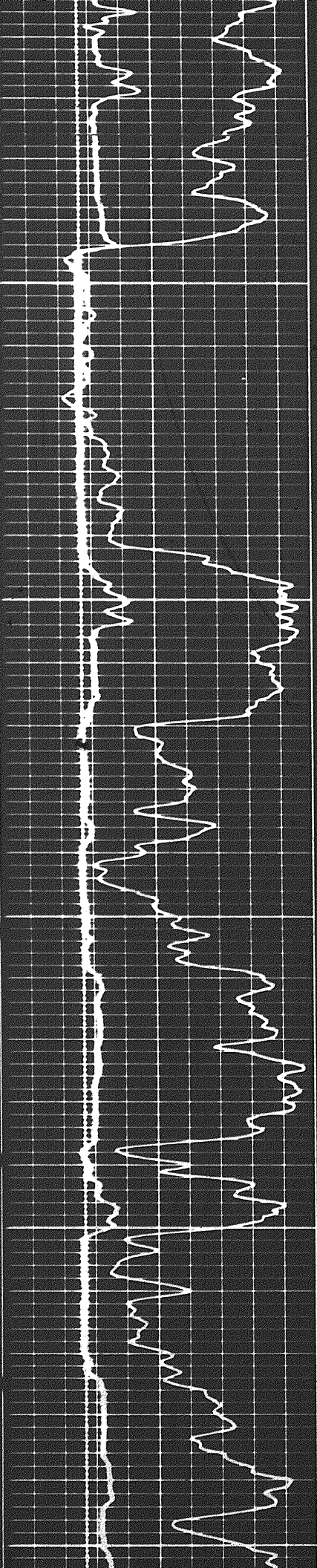
4-07



1000



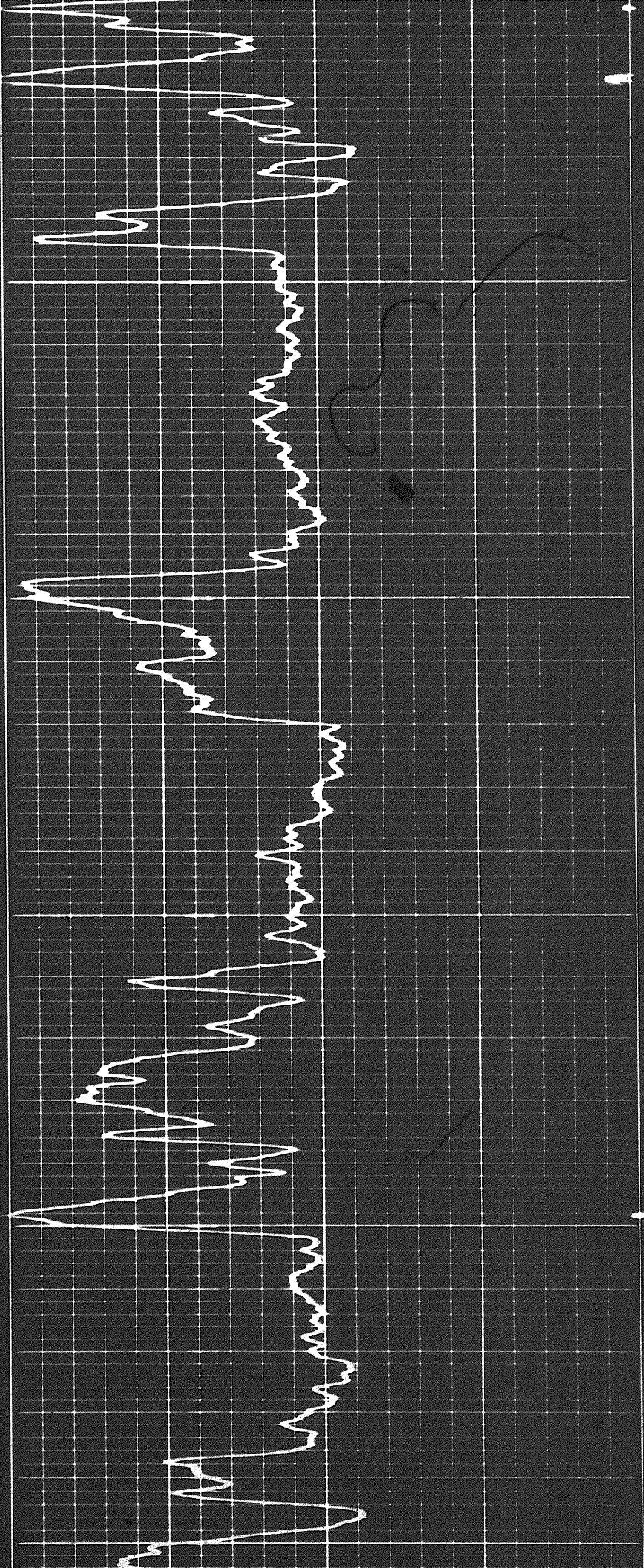
IV

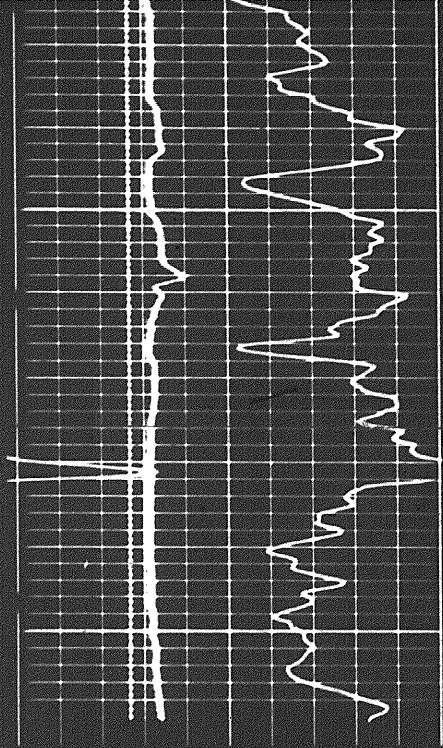


1600

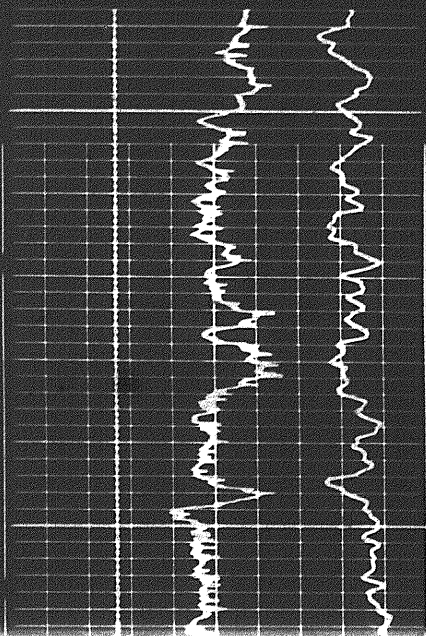
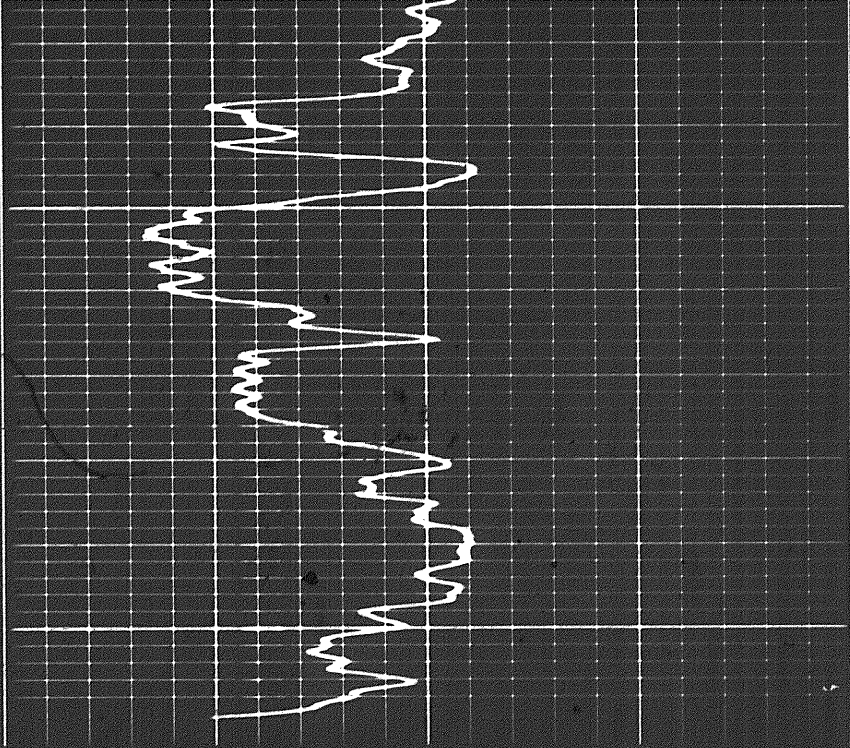
1700

1800

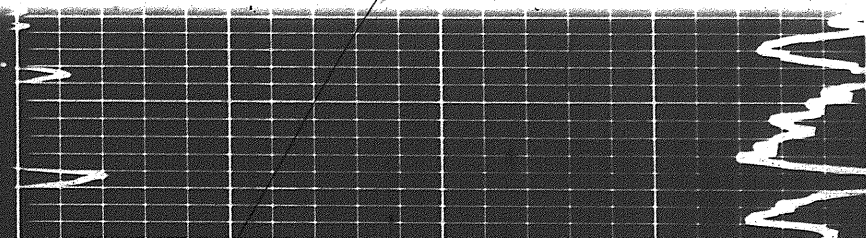
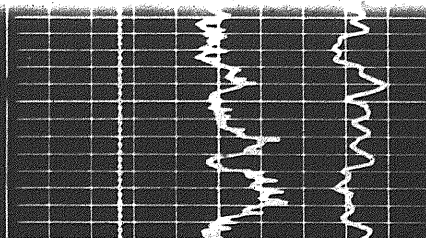
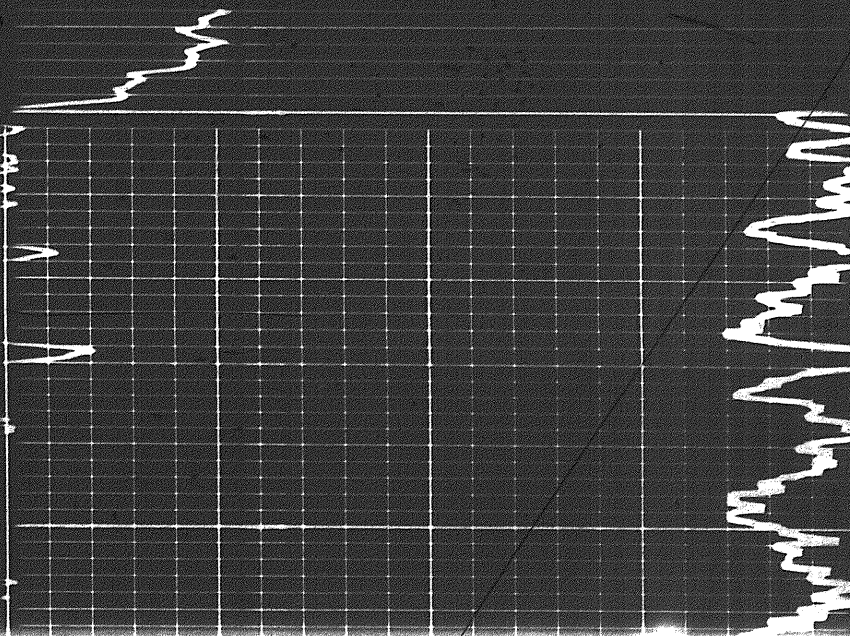




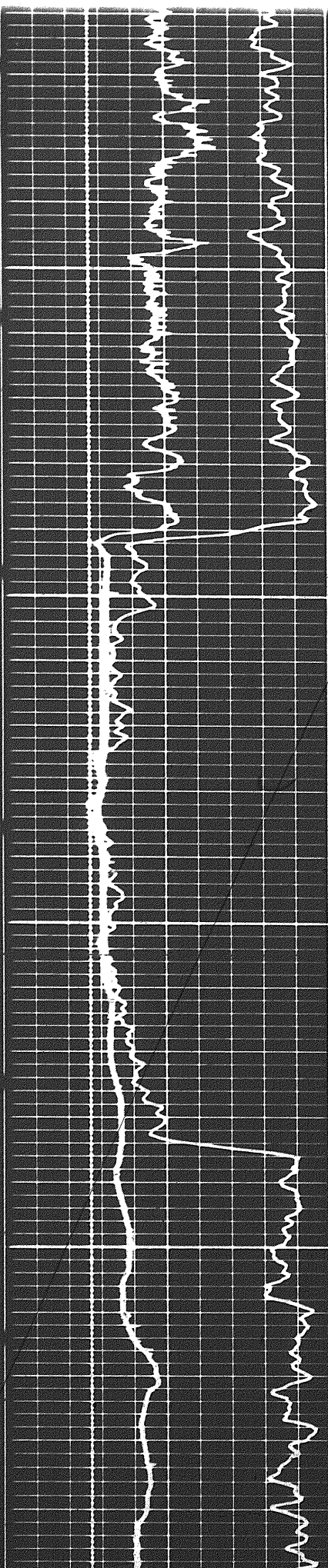
1800



2100

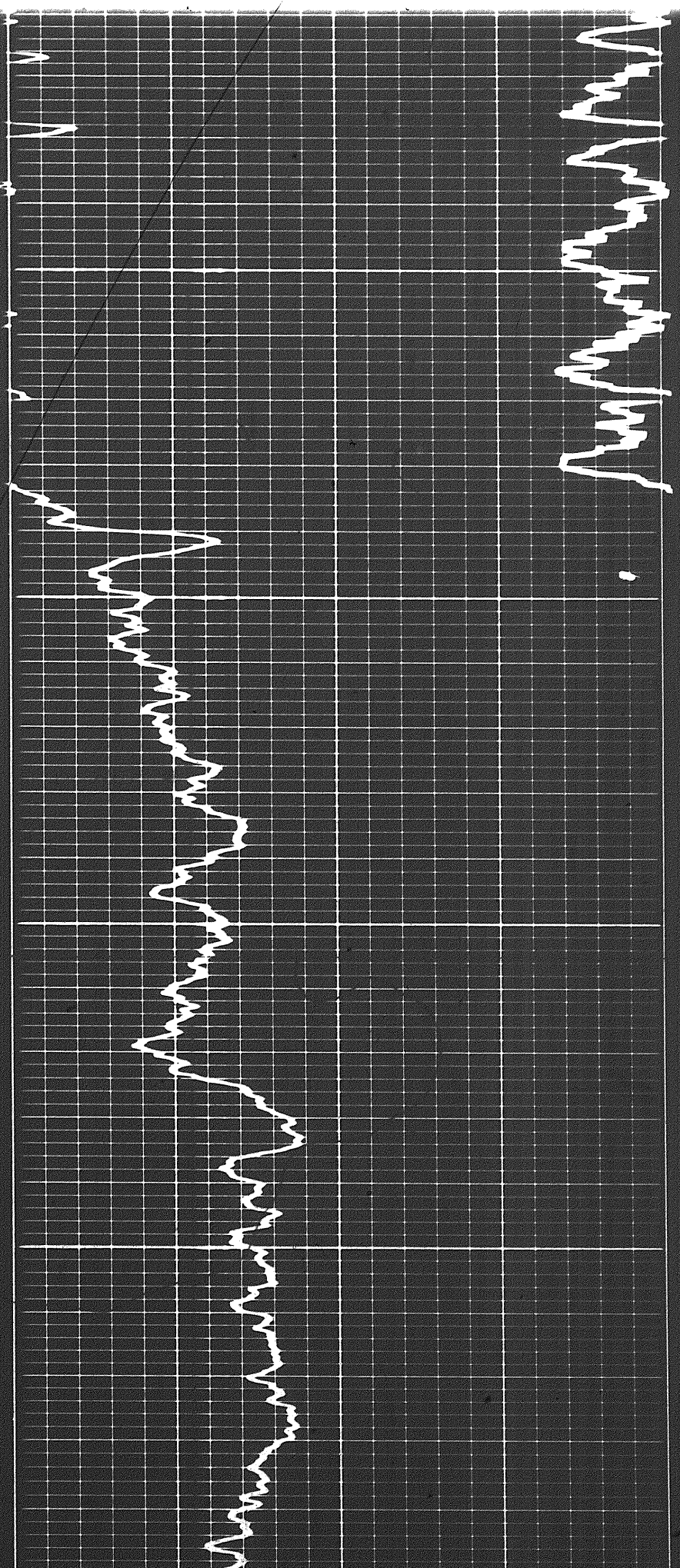


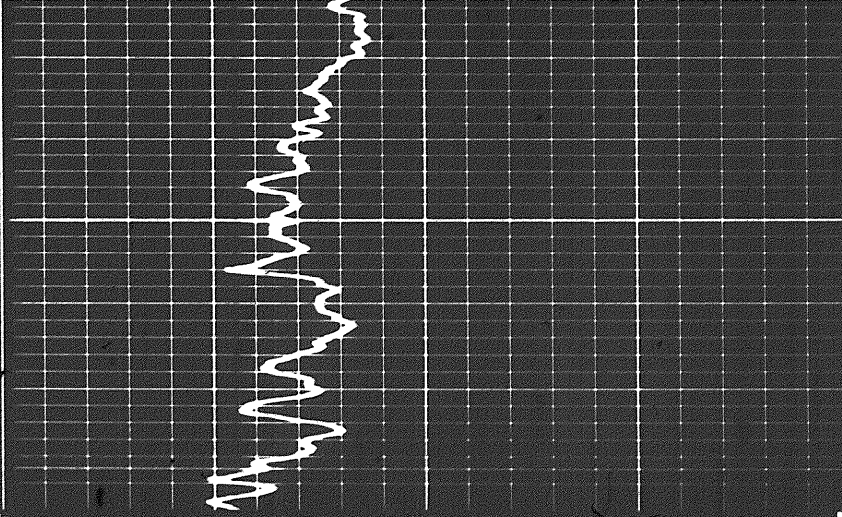
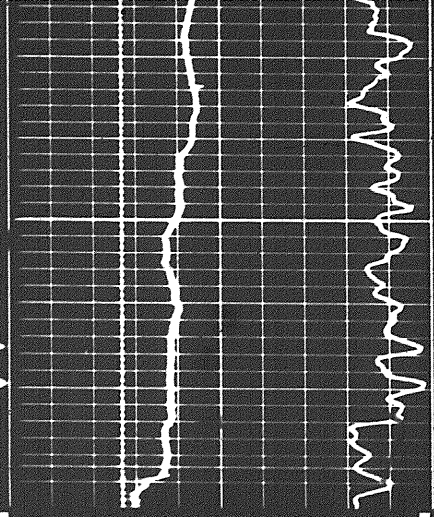
5 of



2200

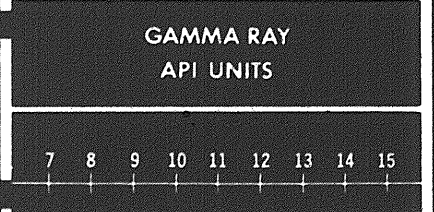
2300





Sens. 100 T.C. 2
 Zero 0 div. to left

GAMMA RAY
 API UNITS



CALIPER
 hole diameter in inches

DEPTHS

LIMESTONE

POROSITY (%)

DETAIL LOG
 5' = 100'

CALIPER
 hole diameter in inches

DEPTHS

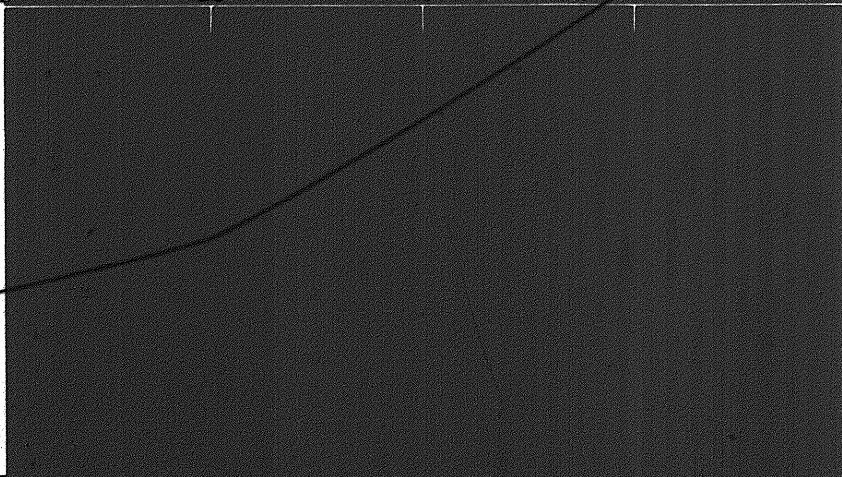
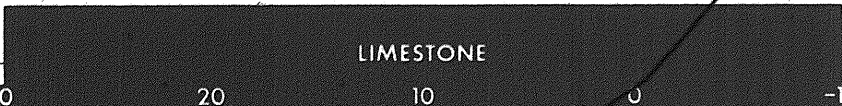
POROSITY (%)

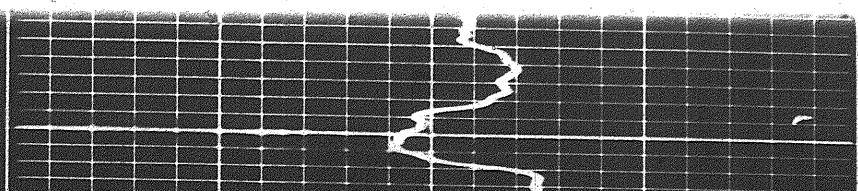
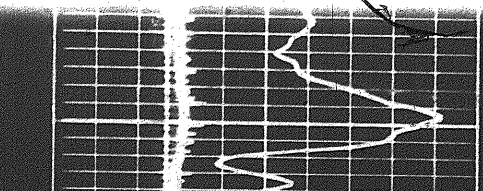
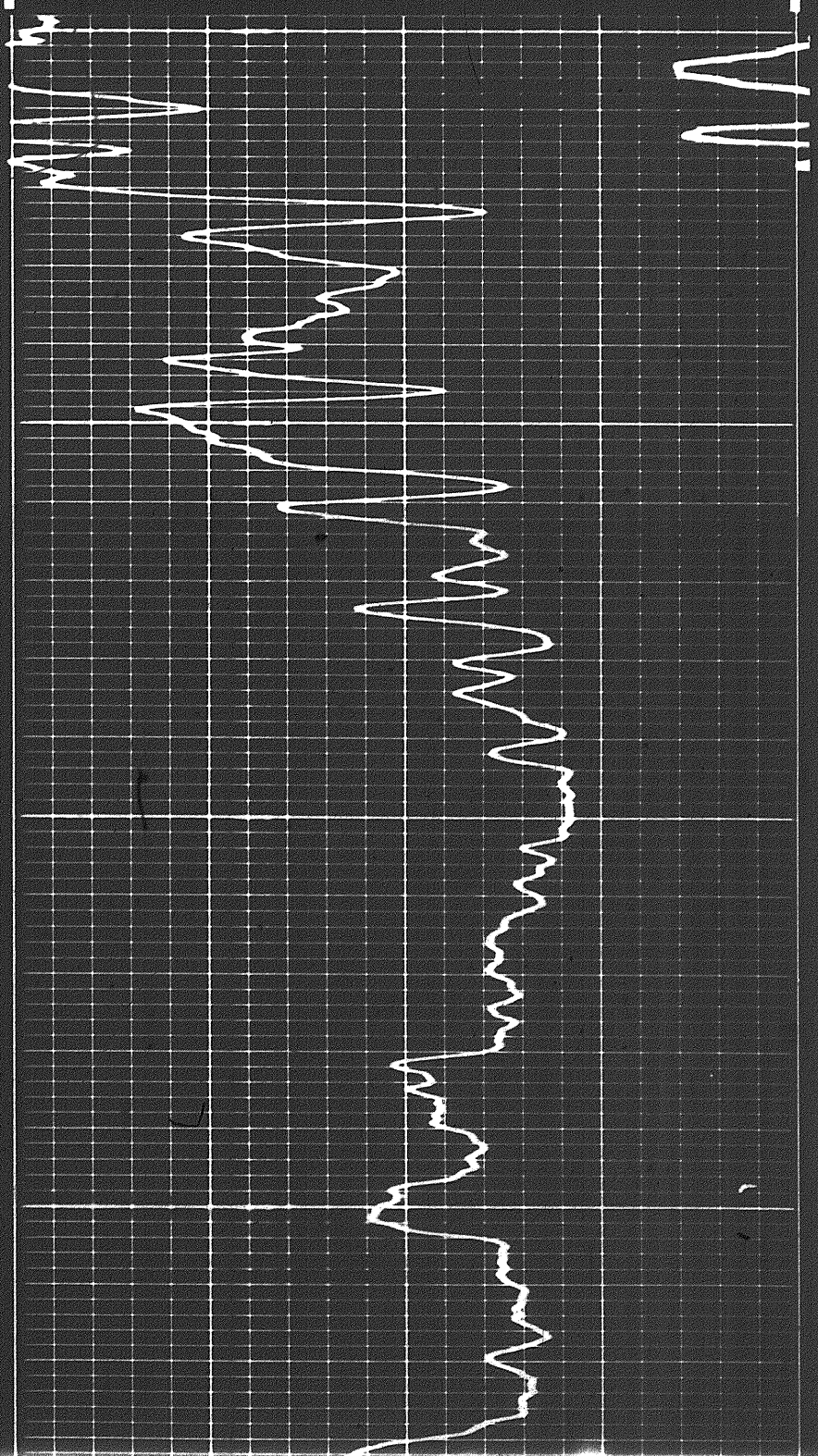
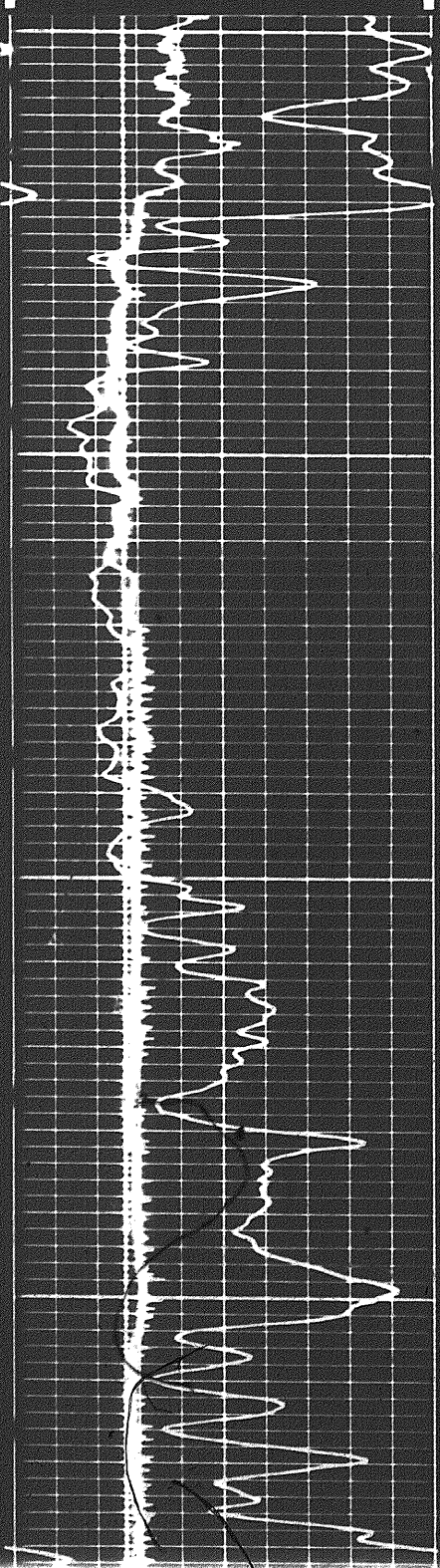


GAMMA RAY
 API UNITS

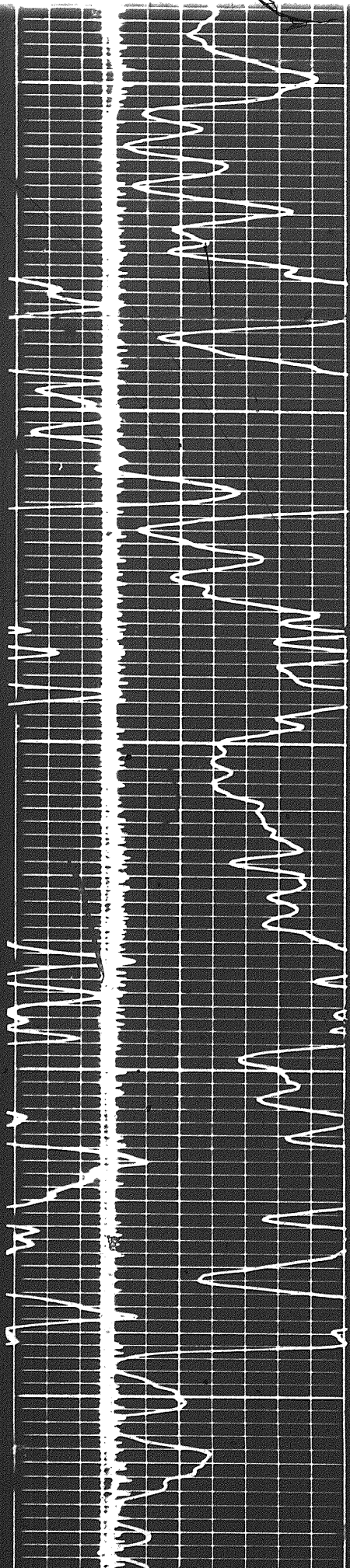
Sens. 100 T.C. 2
 Zero 0 div. to left

LIMESTONE





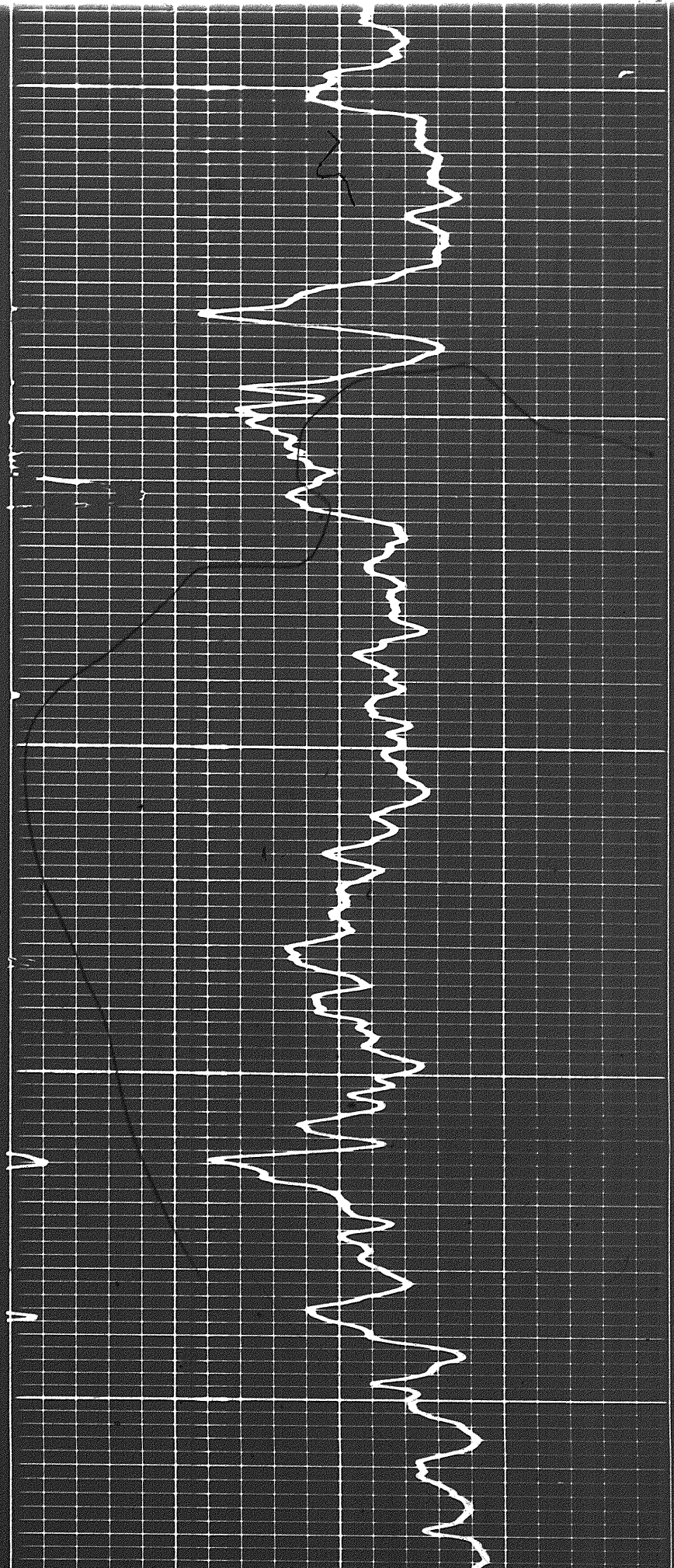
100

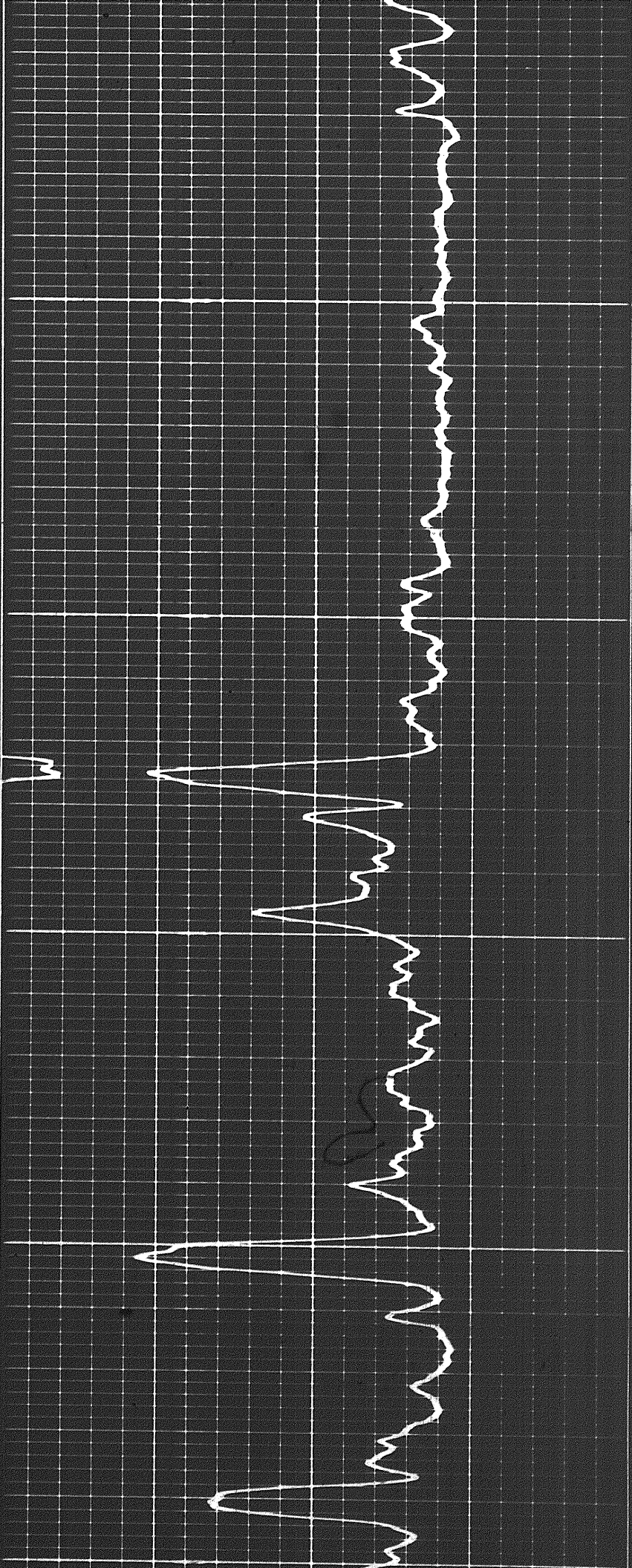


3000

3100

3200

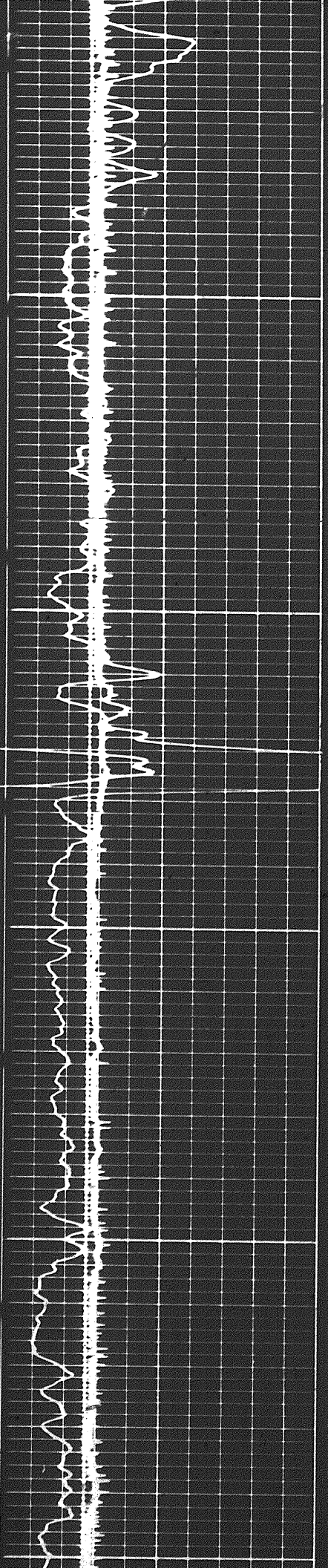




30

3300

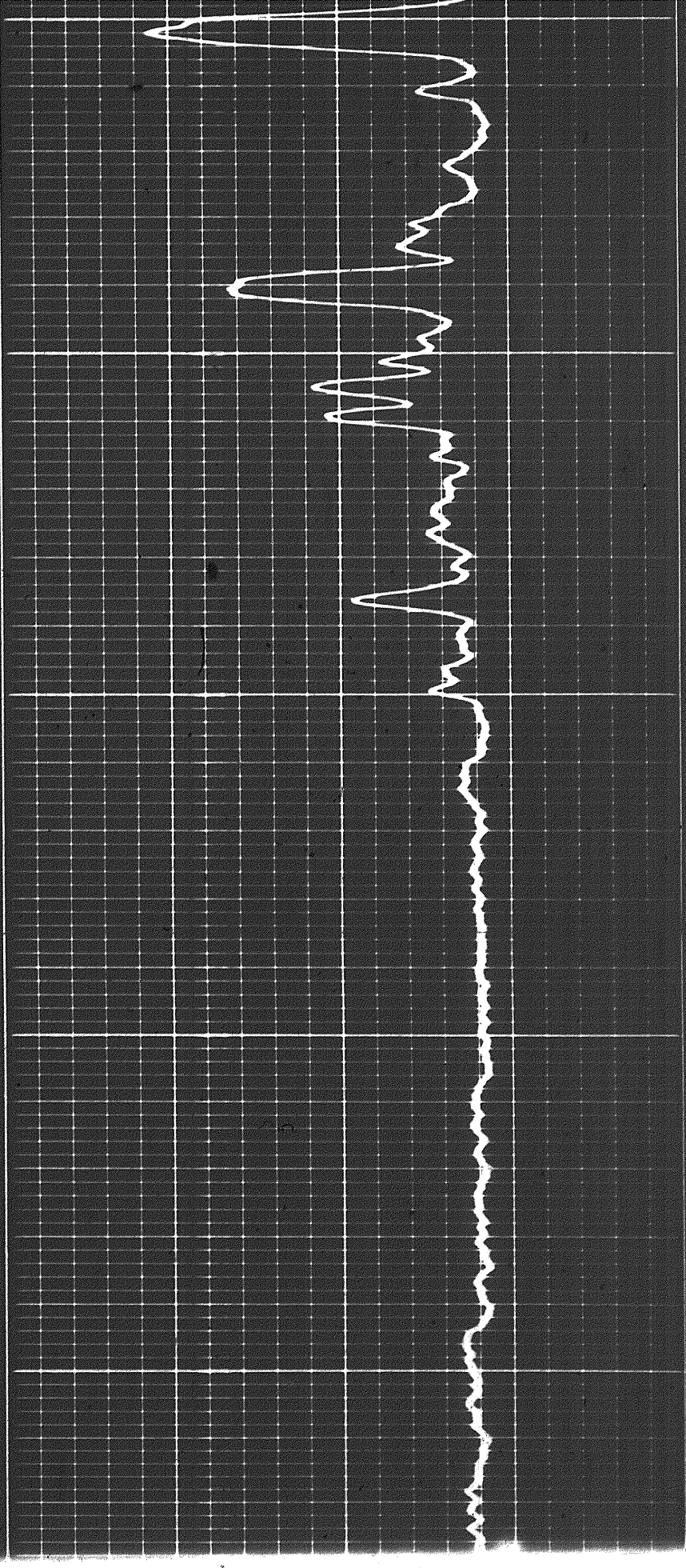
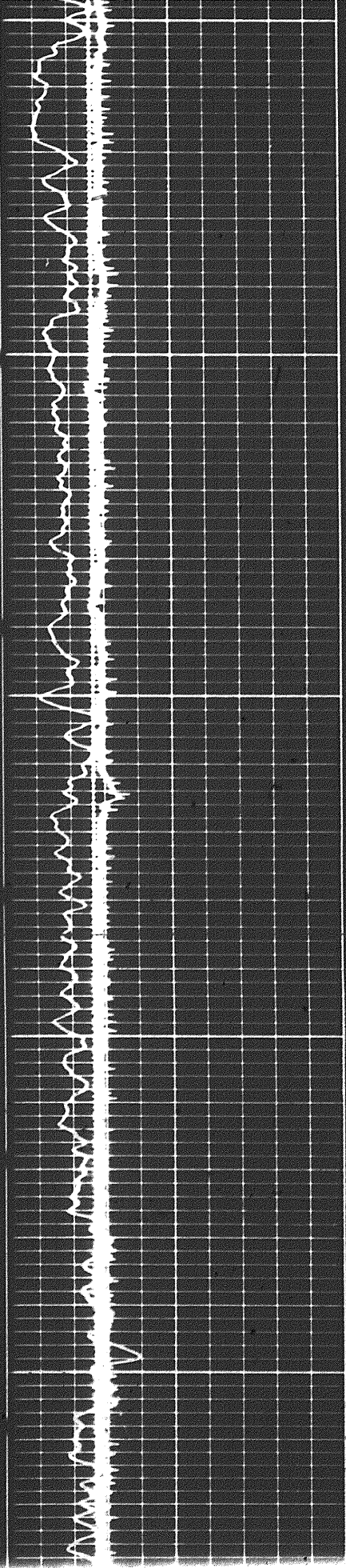
3400



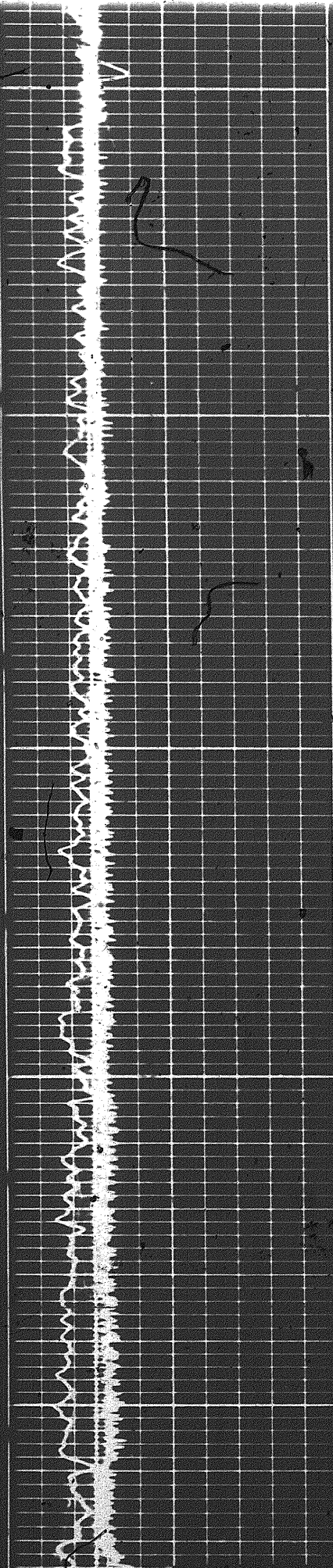
3400

3500

3600



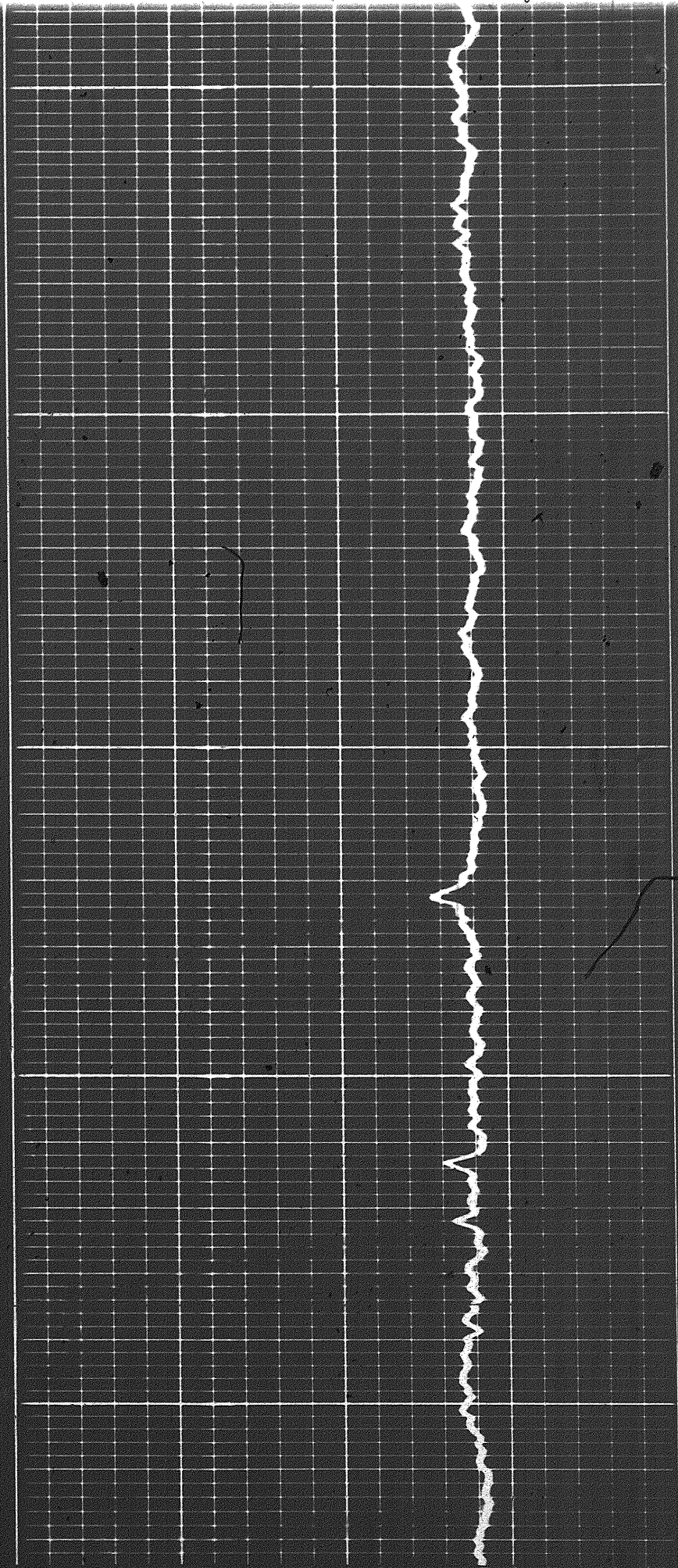
701



3600

3700

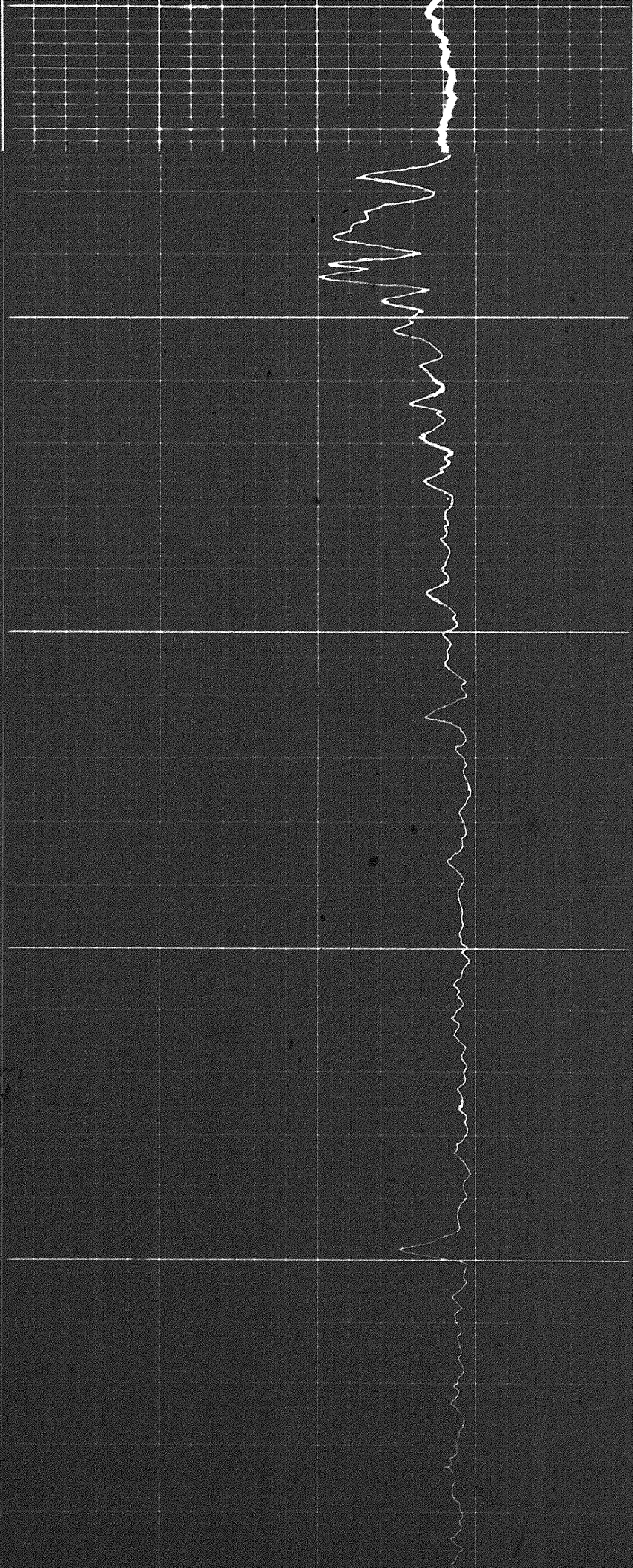
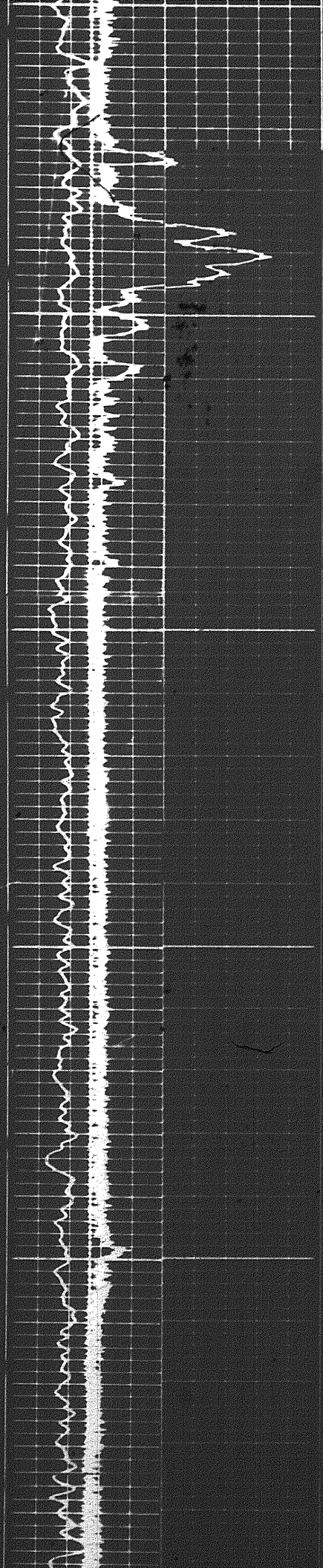
3800

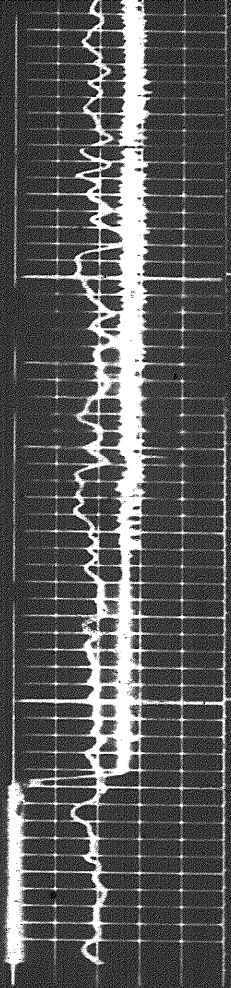


800

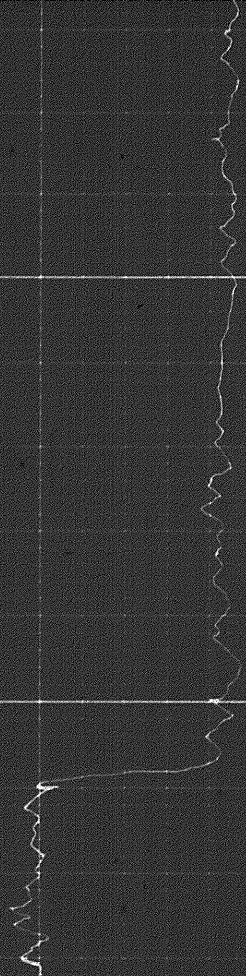
3900

4000

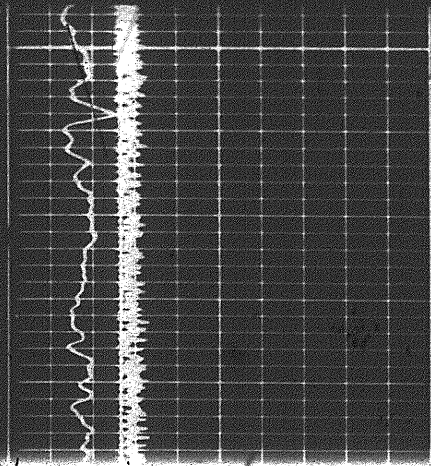




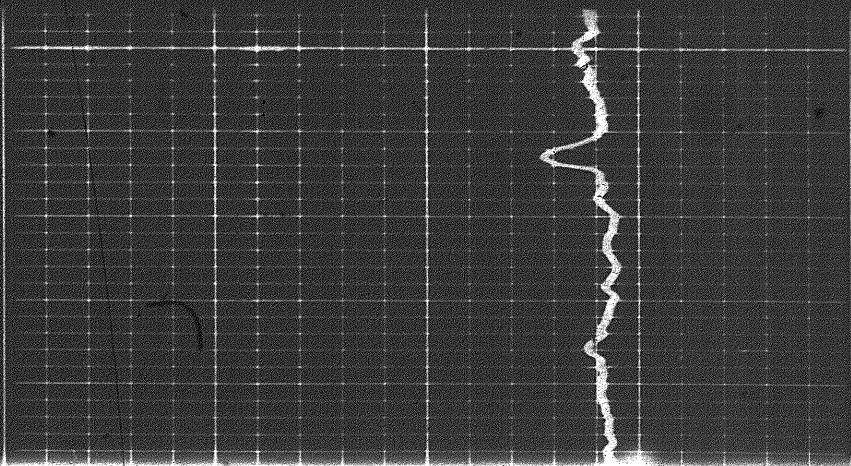
4100
FR



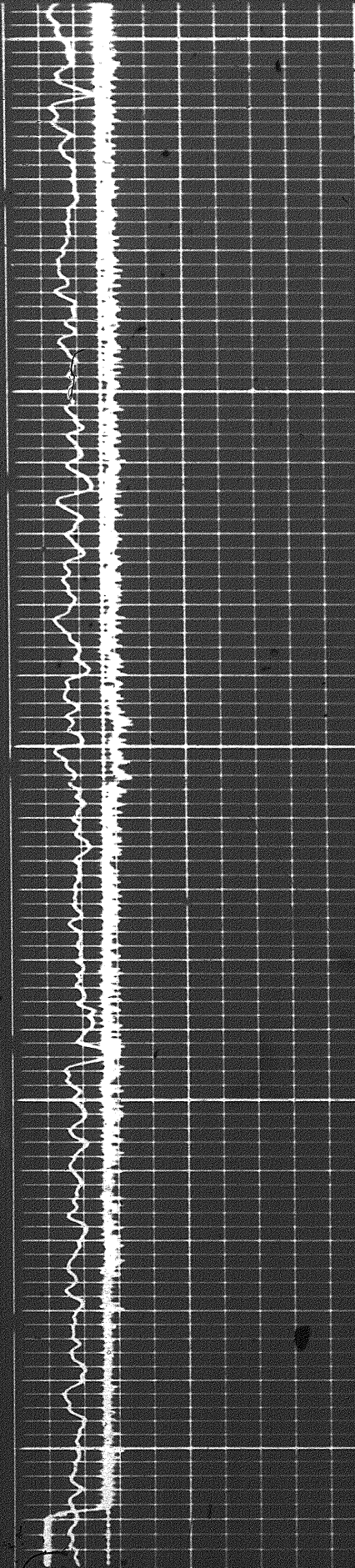
REPEAT SECTION



3900



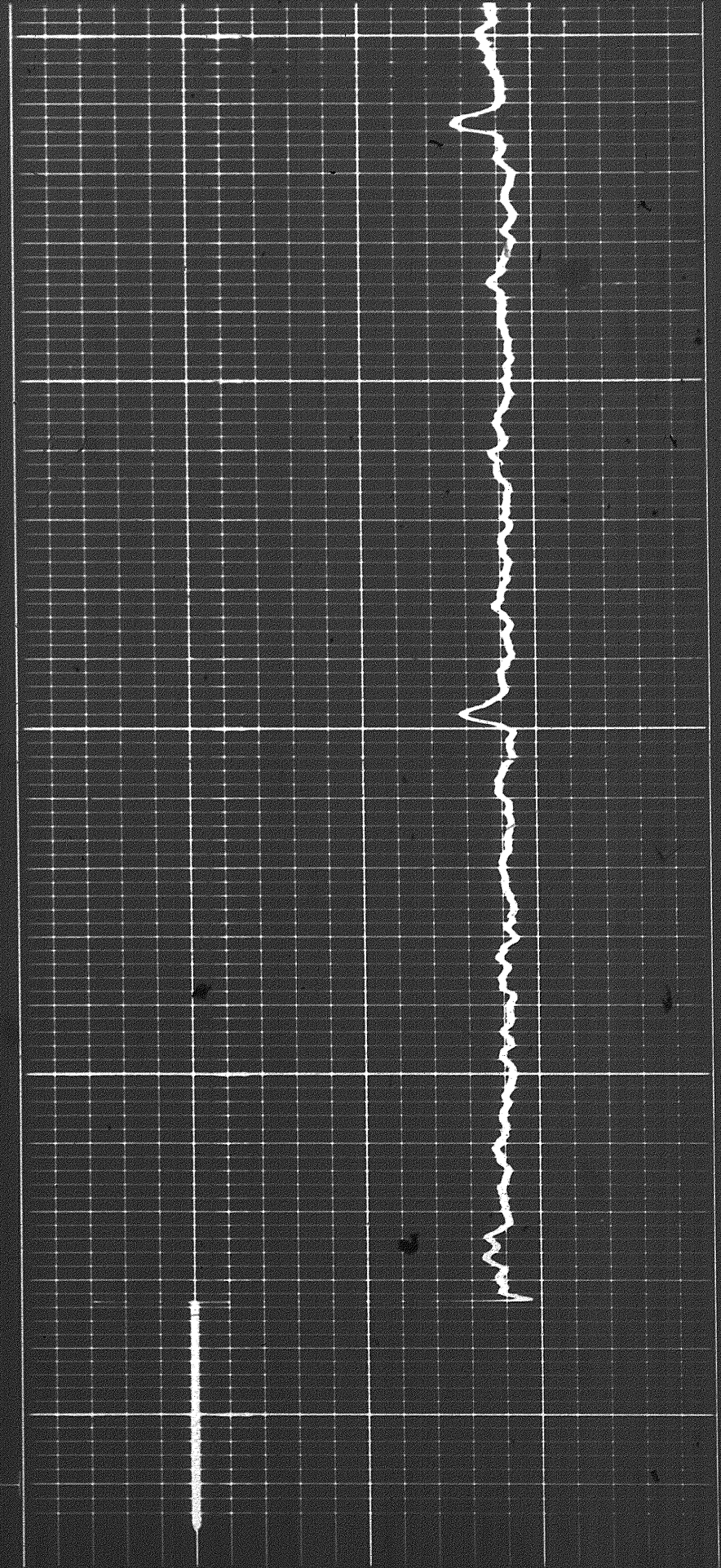
REPEAT SECTION



3900

4000

4100
FR



89

FR



Sens _____ T.C _____
 Zero _____ div. to left

GAMMA RAY
 API UNITS

30 20 10 0 -10

LIMESTONE

7 8 9 10 11 12 13 14 15

Speed in FPM

CALIPER
 hole diameter in inches

DEPTH

POROSITY (%)

Test Panel

Calibration before Survey

0010

0010

Calibration after Survey

FR

Sens. 100 T.C. 2
Zero 0 div. to left

Sens: 100 T.C. 2
Zero 0 div to left

GAMMA RAY
API UNITS

7 8 9 10 11 12 13 14 15

30 20 10 0 -10

LIMESTONE

CALIPER
hole diameter in inches

DEPTHS

POROSITY (%)

Test Panel

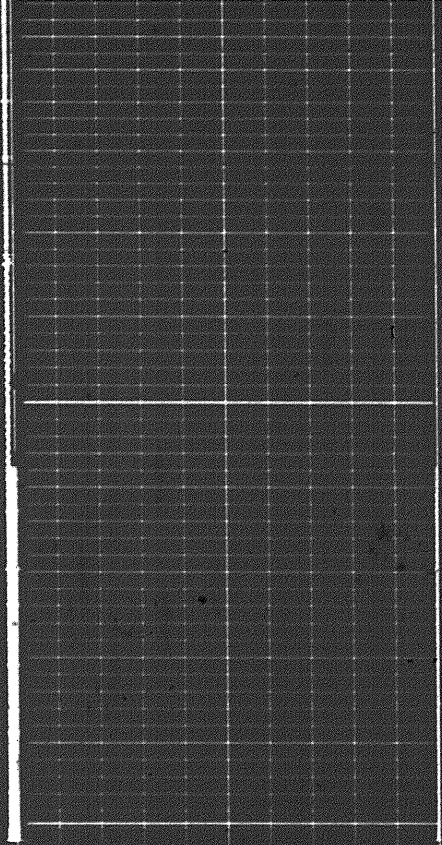
9900

Calibration before Survey

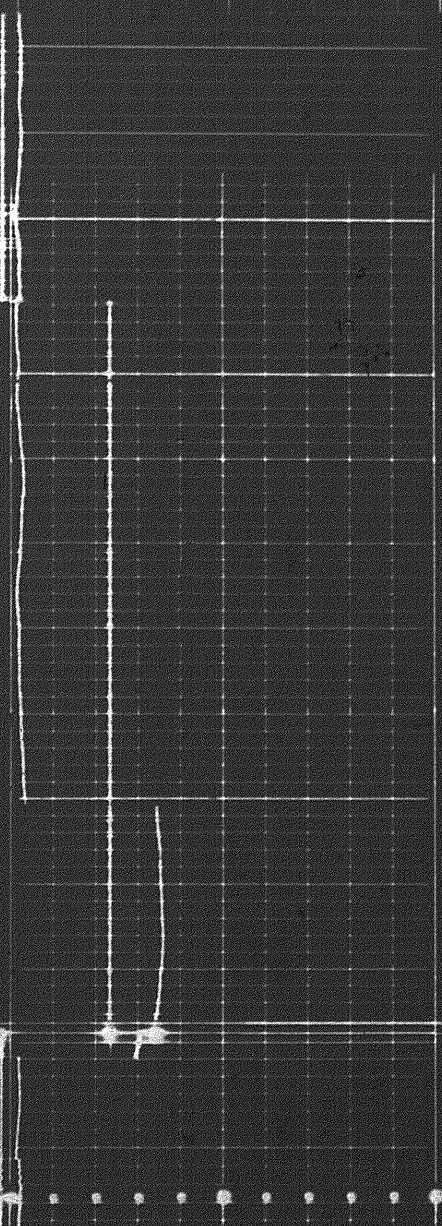
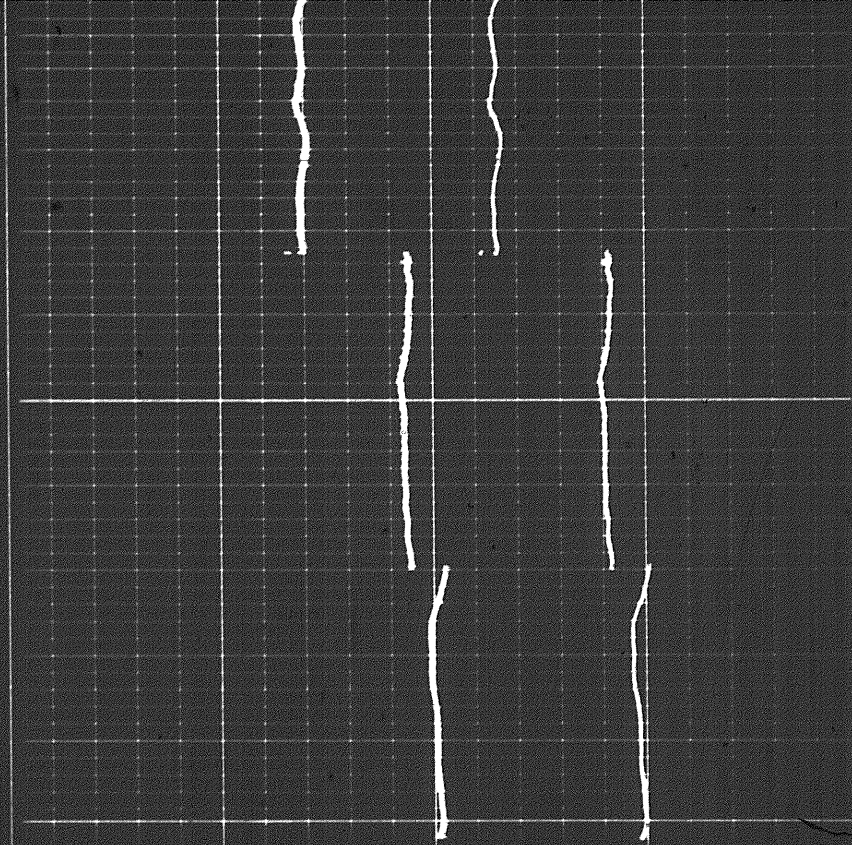
9900

6 to 9

Speed in FPM



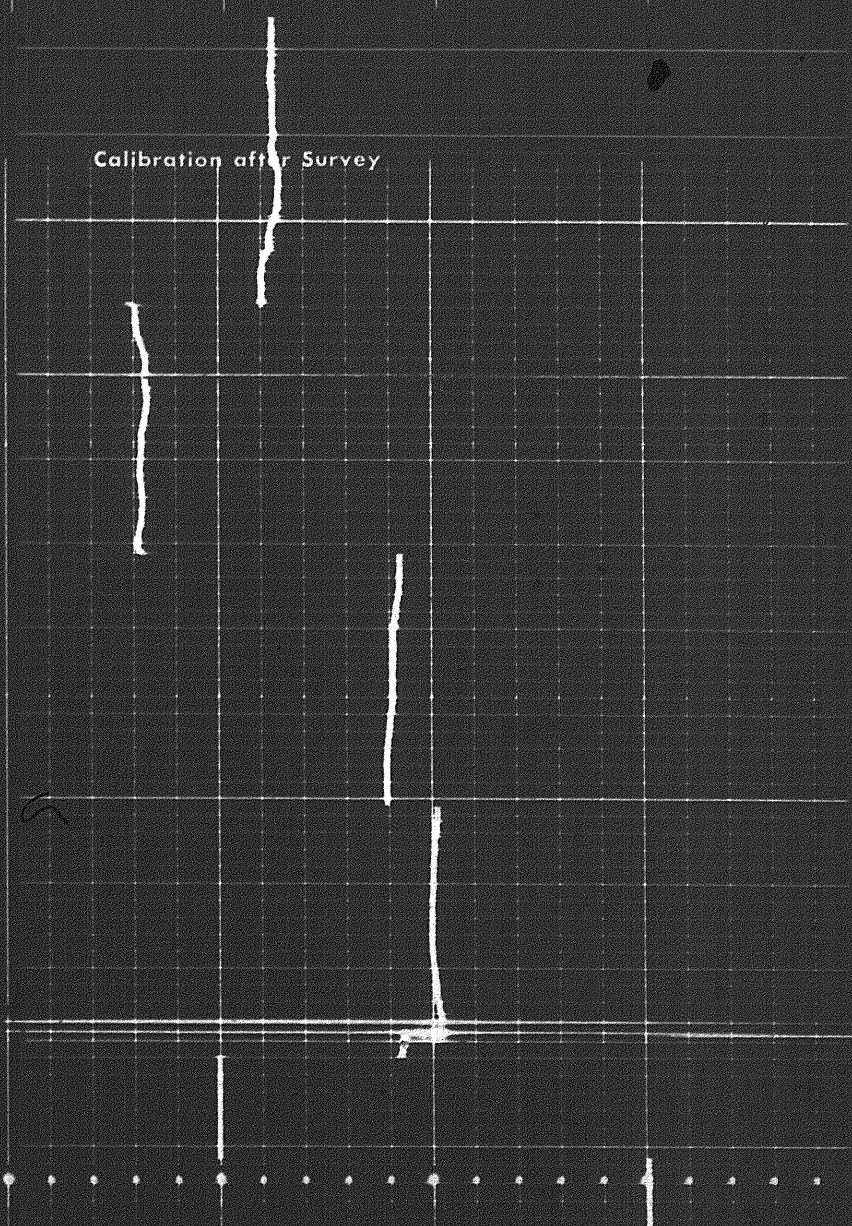
0000



0010

0010

Calibration after Survey



0000