



MICROLOG CALLIPER

PROVINCE YUKON TERRITORIES  
 FIELD WILDCAT  
 WELL CHEVRON SOBC WM N PARKIN  
 Y.T. D-61  
 COMPANY CHEVRON STANDARD LIMITED

19 MAY 72	ONE		
1202			
0			
1202			
1205			
1210			
146			
90			
GEL-BRUSH VALVE			
7.15	63	+	+
7.15	67	+	+
17 1/2"	12 3/4"	+	+

PROVINCE YUKON TERRITORIES  
 FIELD WILDCAT  
 WELL CHEVRON SOBC WM N PARKIN Y.T.  
 D-61  
 COMPANY CHEVRON STANDARD LIMITED

PROVINCE LOCATION YUKON TERRITORIES  
 66° 20' 12" N LAT  
 137° 13' 01" W LONG

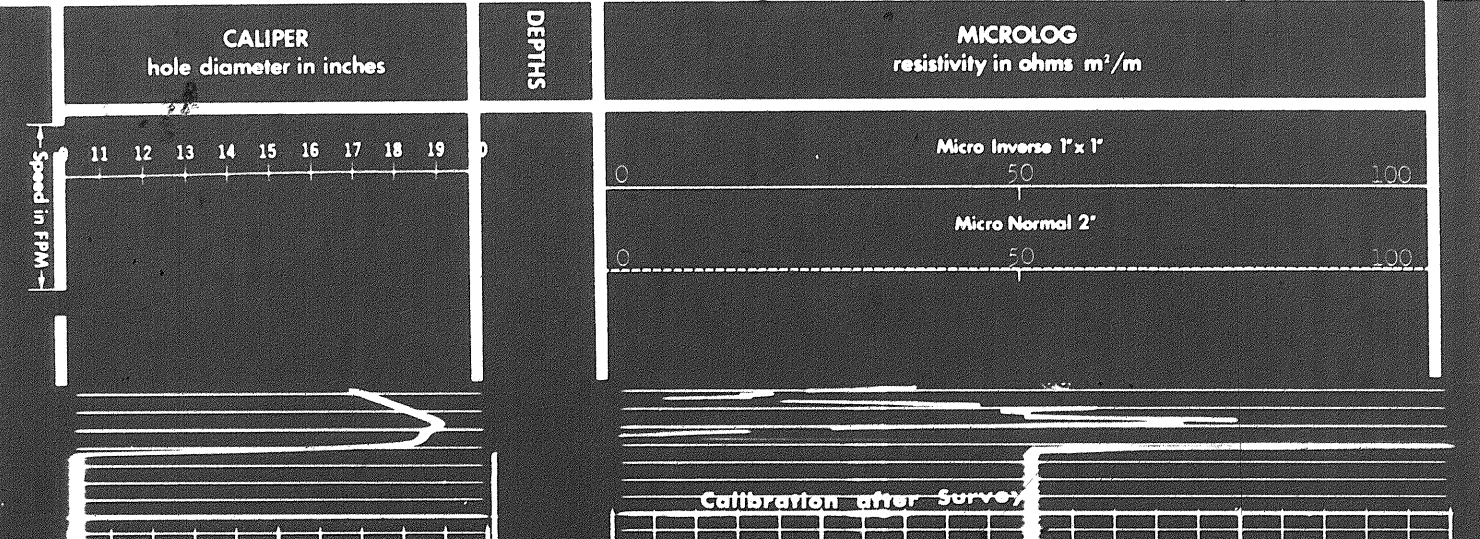
Permeant Datum: G.L. Elev. 1590  
 Log Measured from: KB, 15 ft Above Perm. Datum

Other Services: SLO-GR, FDC-GR, SMP, CST, DIT

ELEV: KB 1605  
 G.L. 1590  
 GR

REMARKS  
 Drilling Stopped 0130 / 19th : Circulation Stopped 0230 / 19th : Tool on Bottom 0230 / 19th : B.H.T. 7783

MCP #	MLP-A 17
PMS #	MLS-B 19
Pad Type - Hydraulic	MLH-A 16

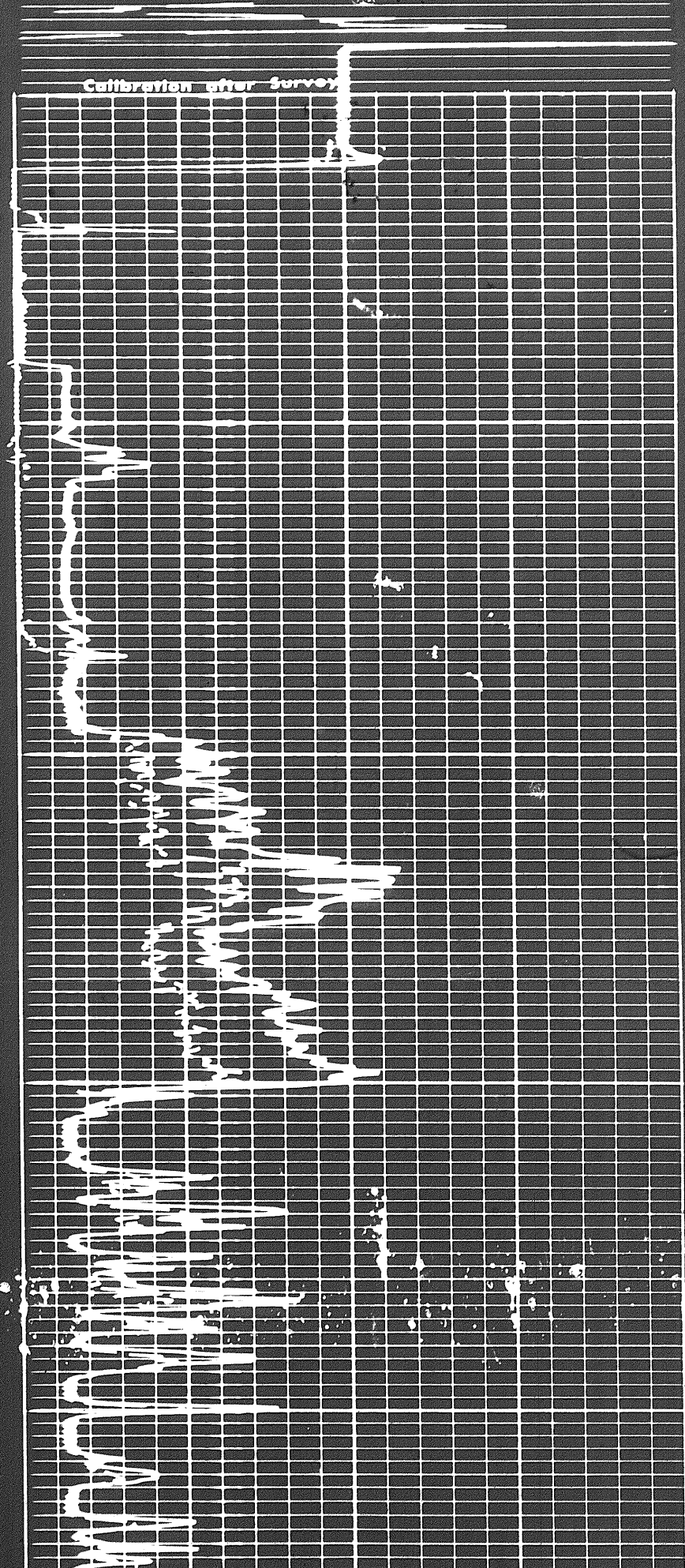
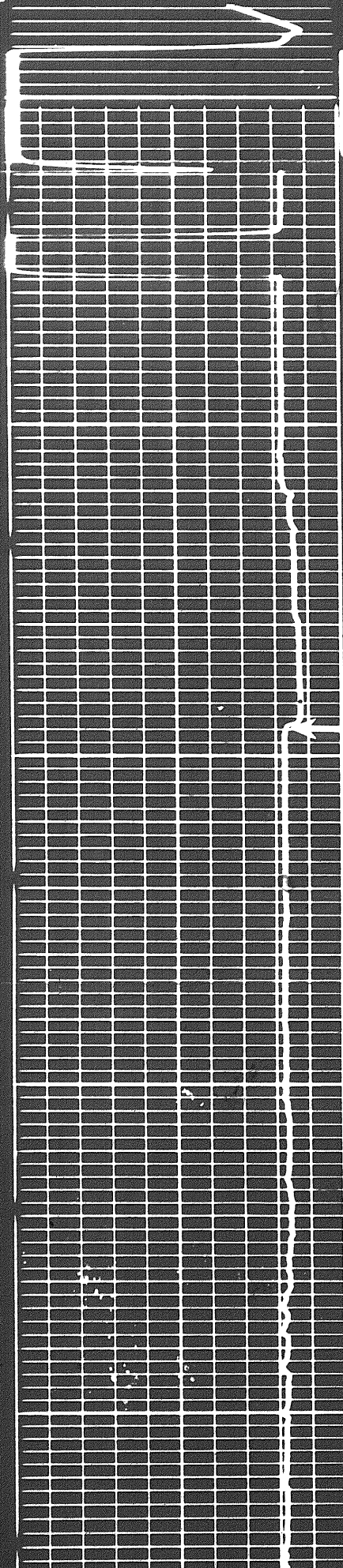


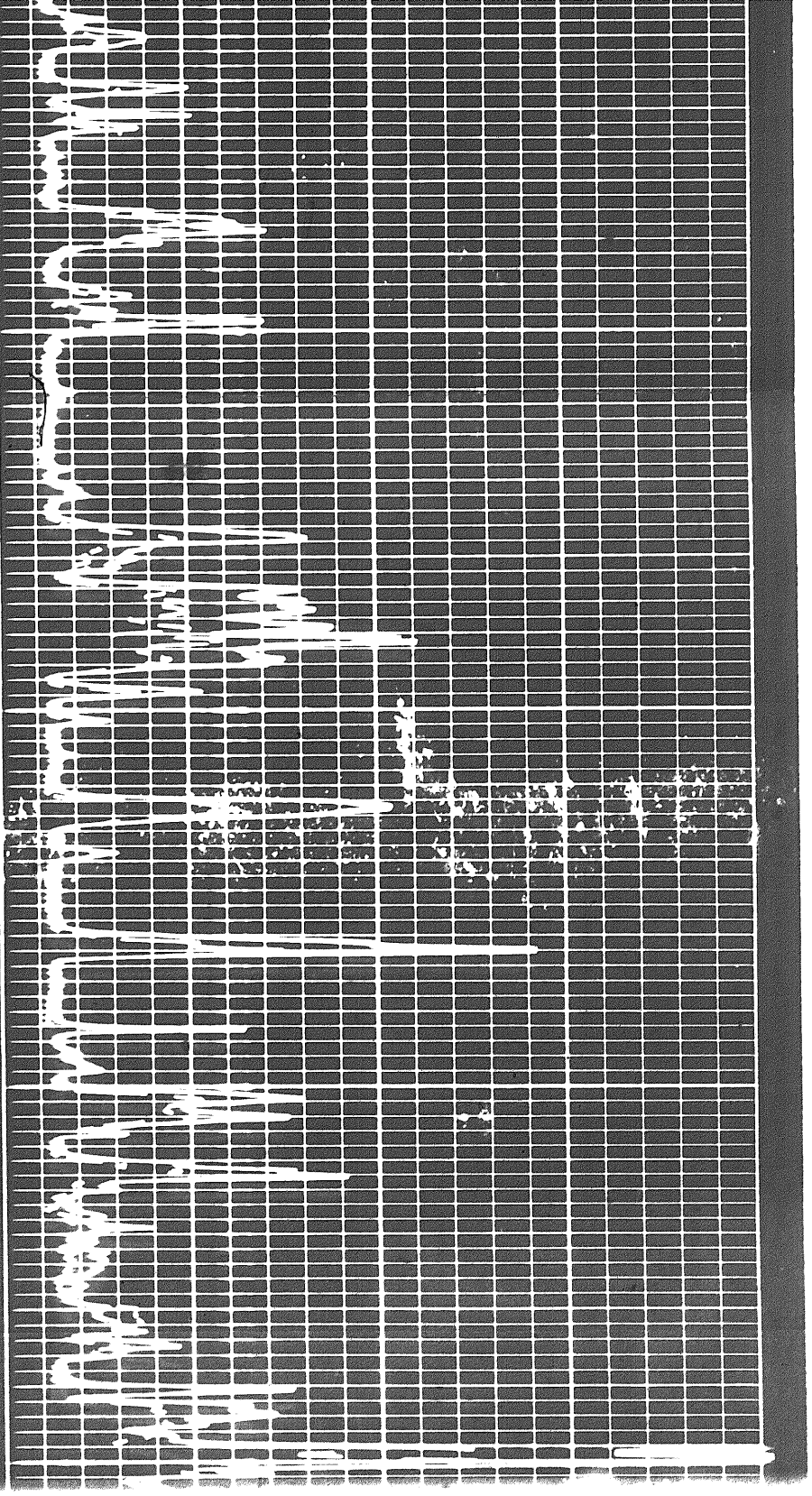
Calibration after Survey

0100

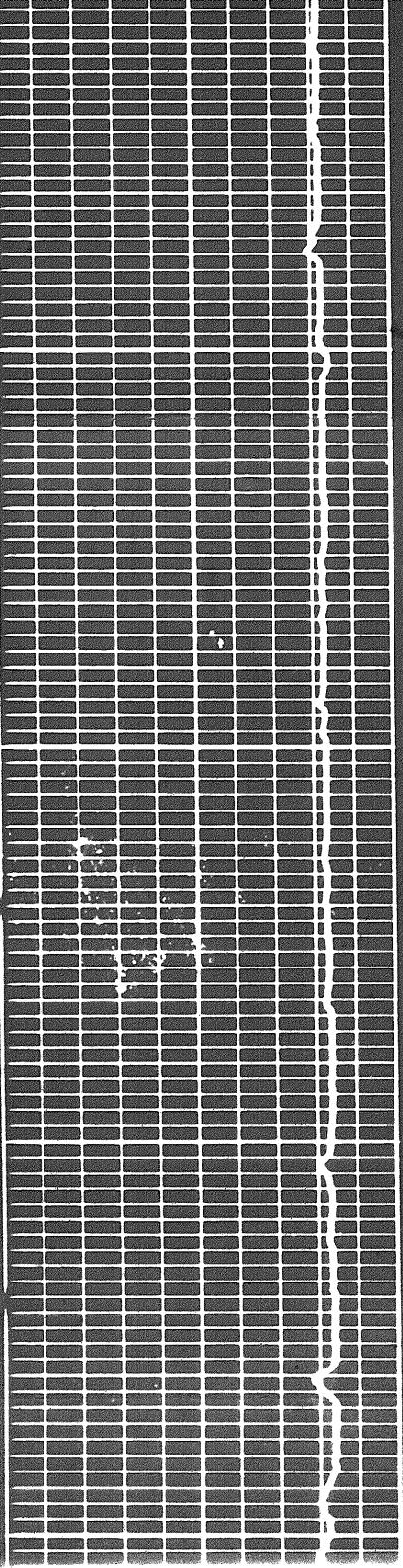
Casing

0200

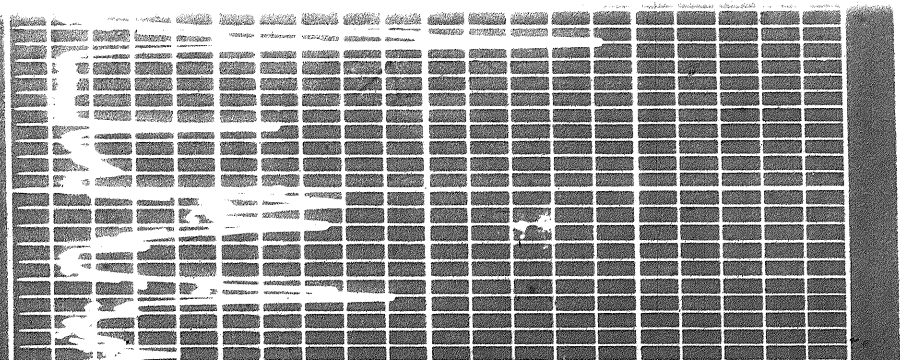




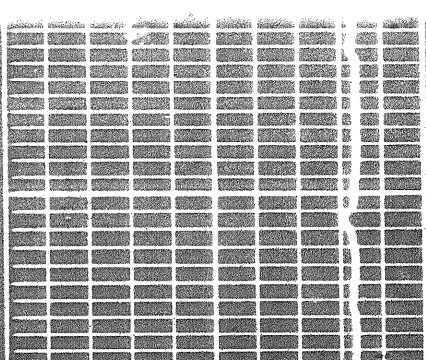
0300



0400



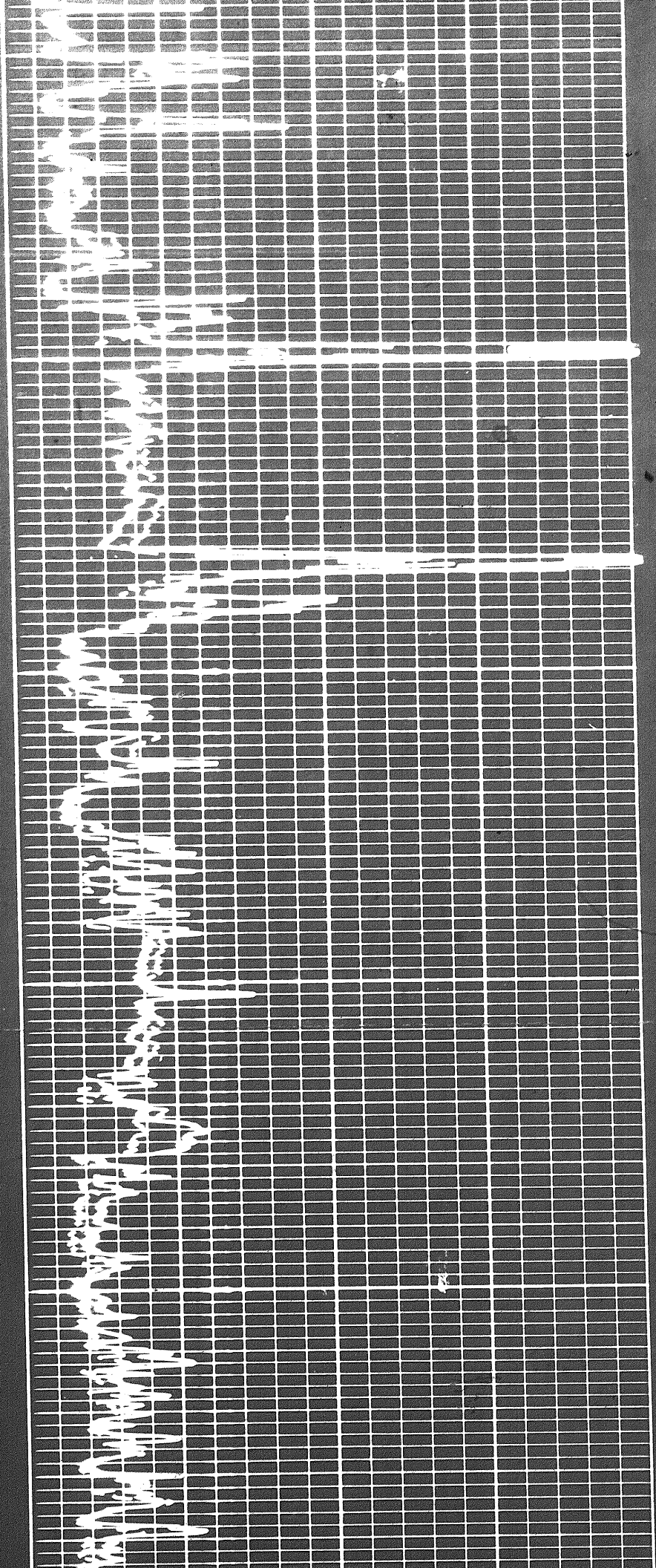
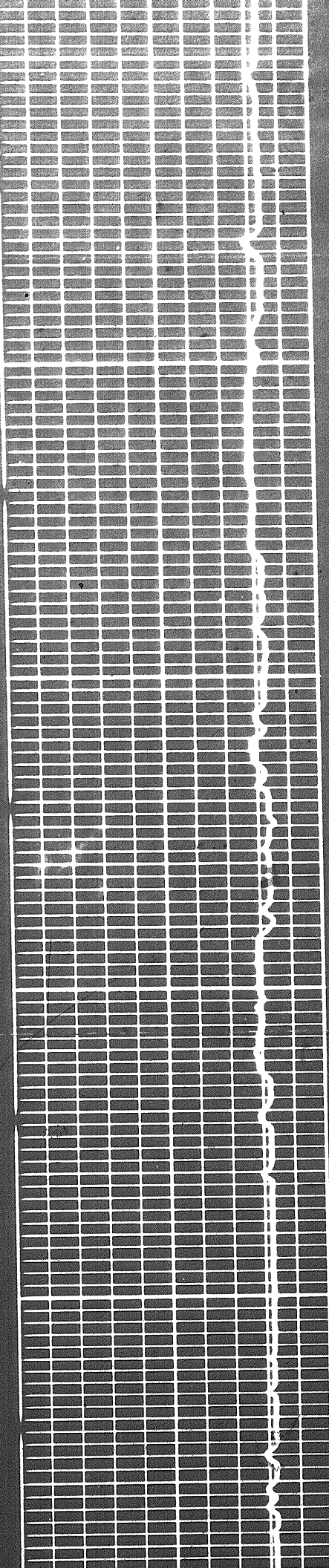
0400



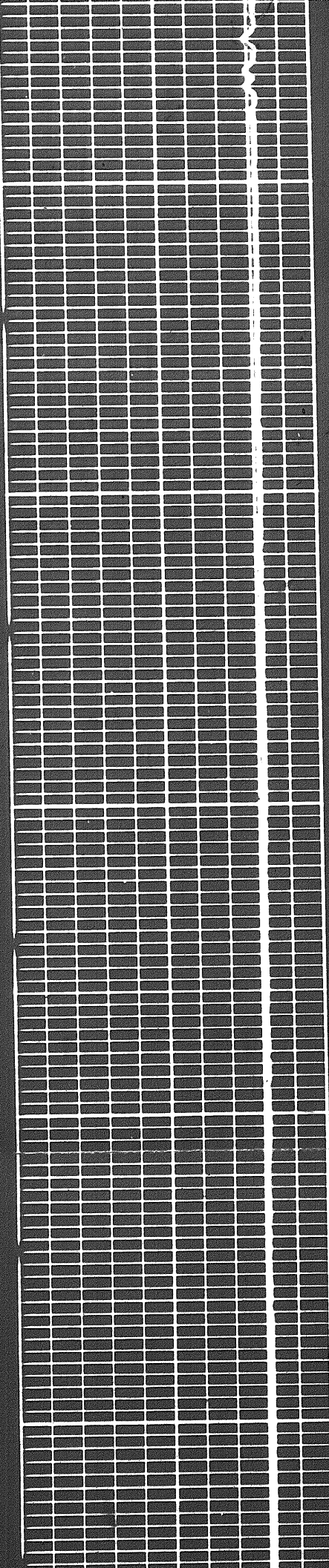
0400

0500

0600

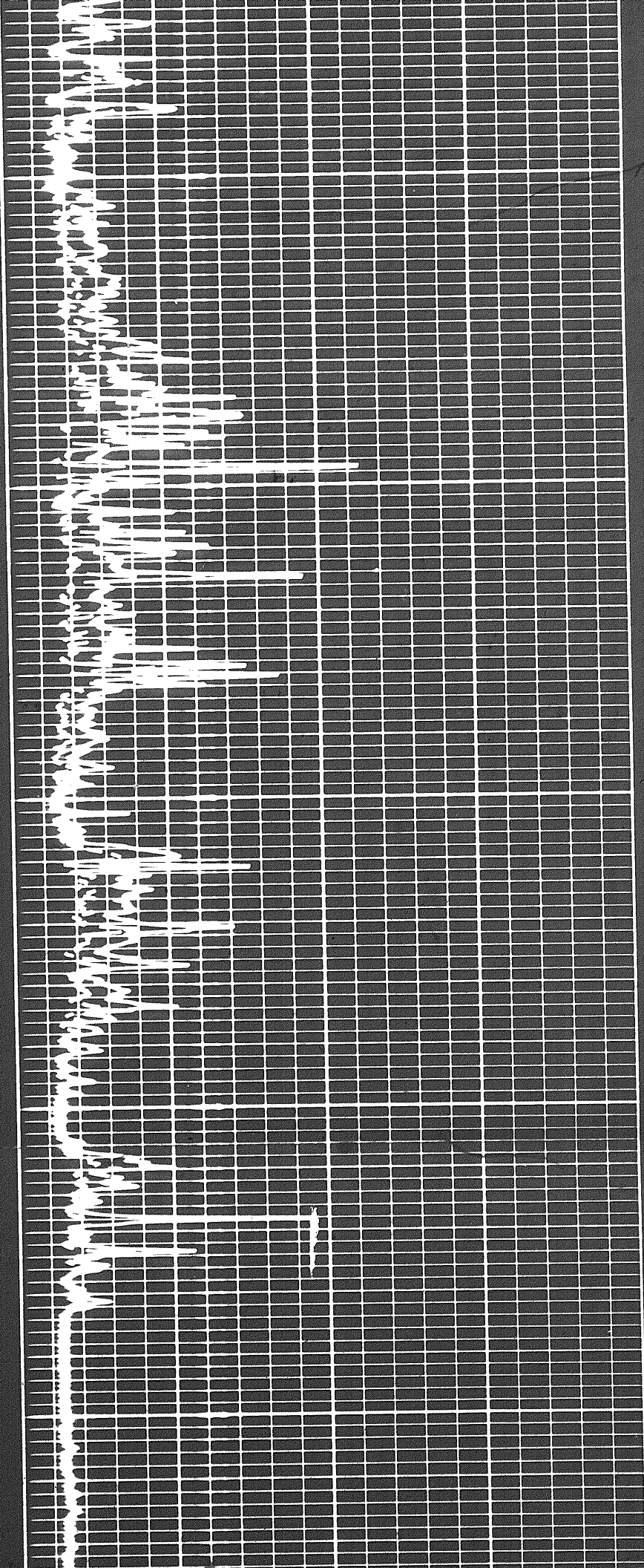


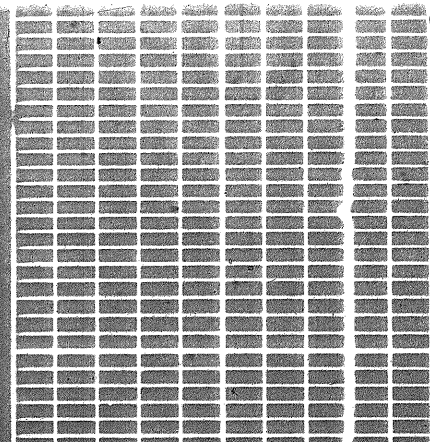
926



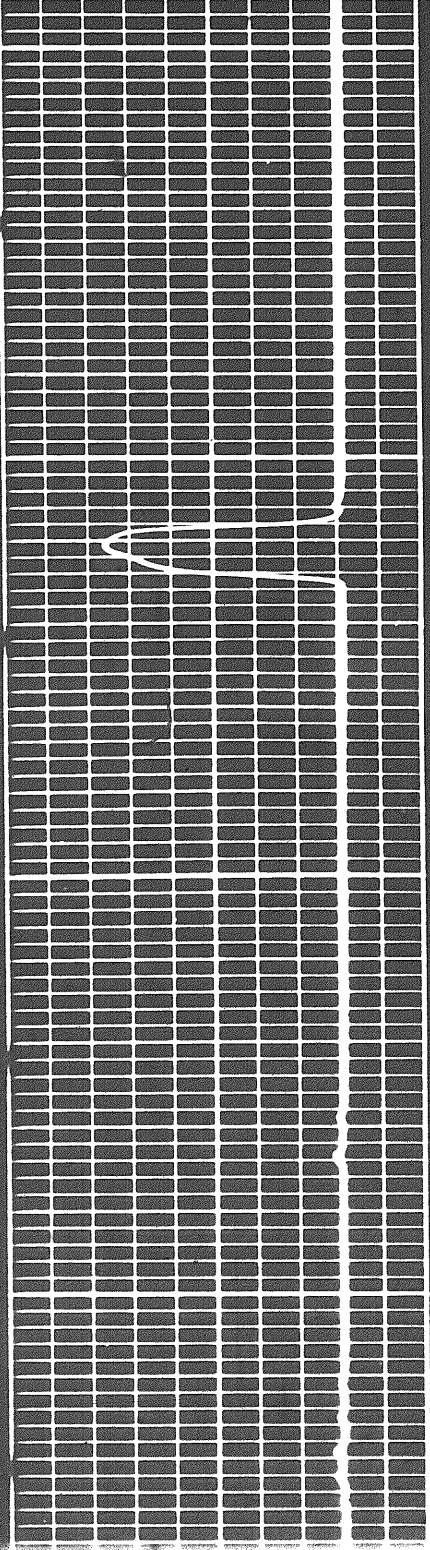
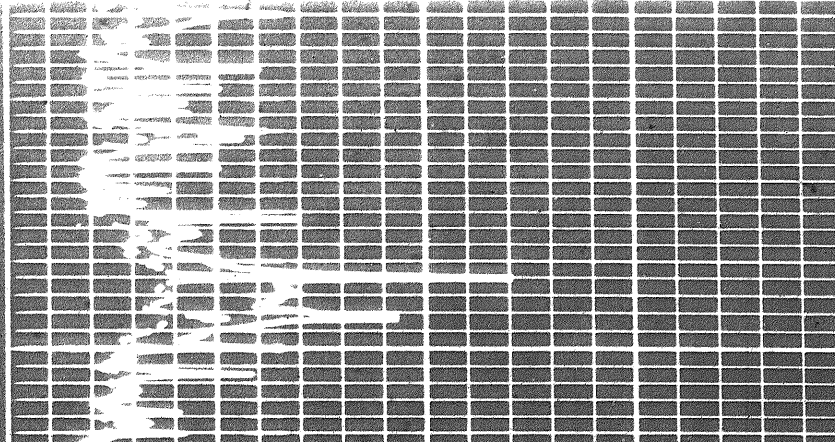
0700

0800



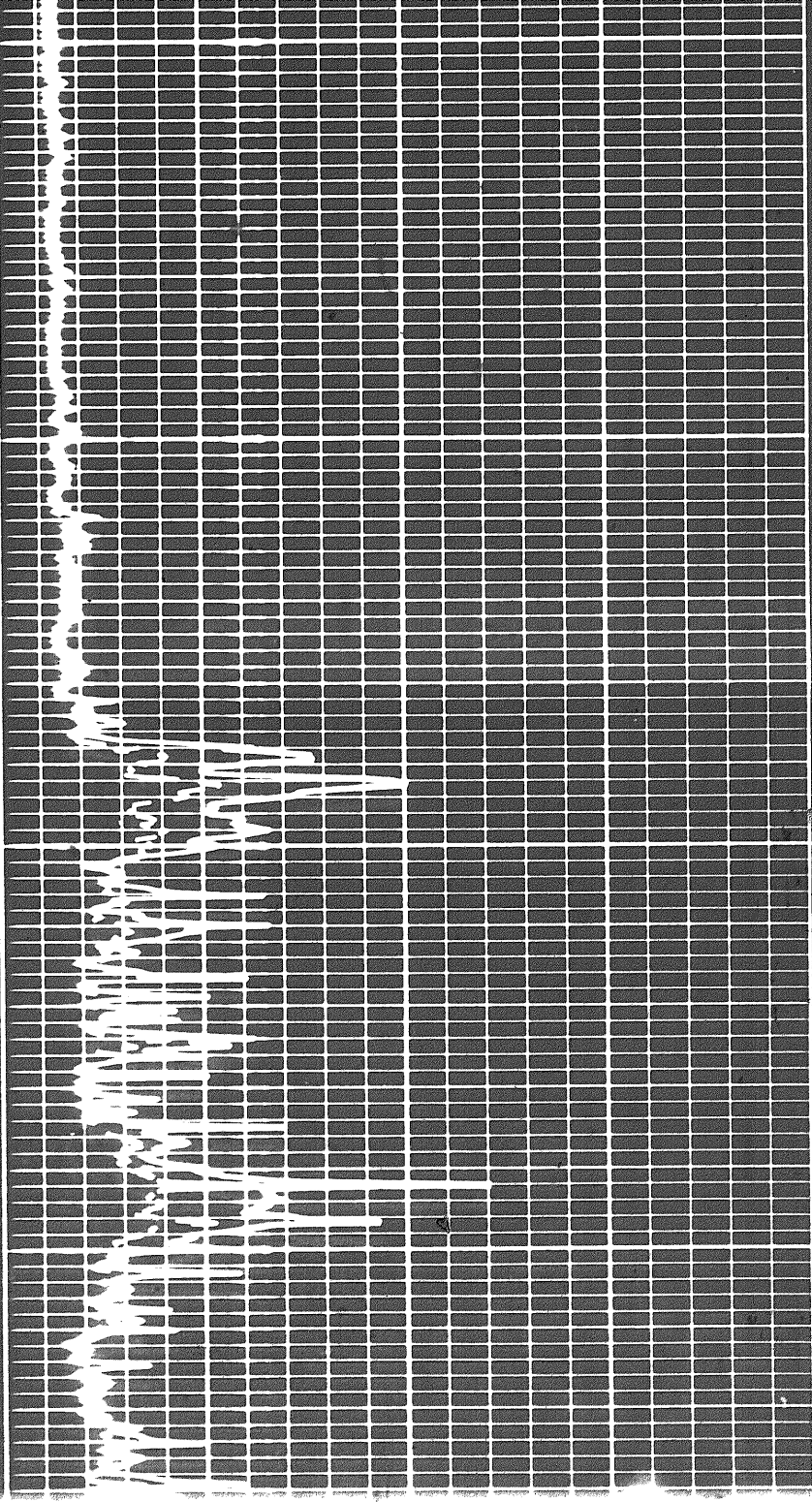


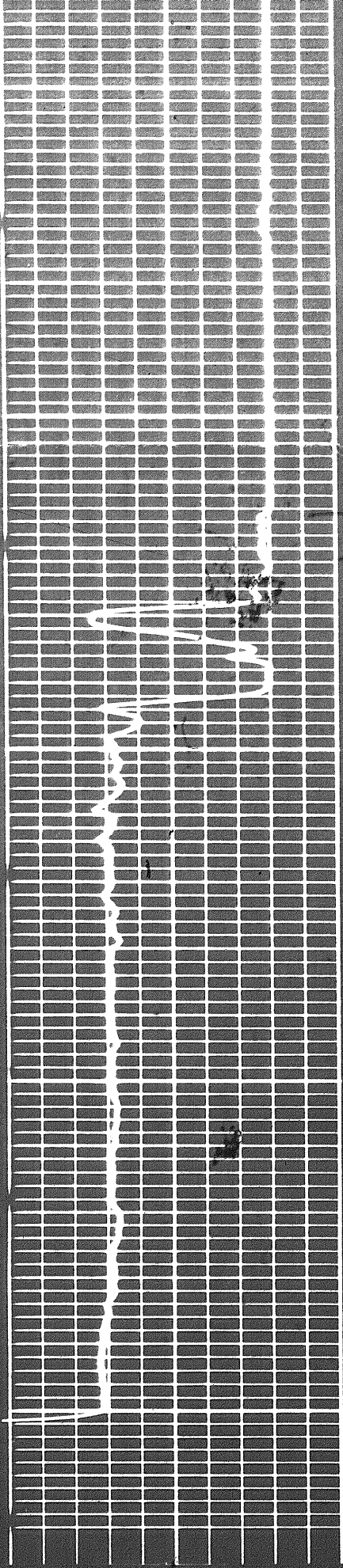
1000



1000

0060

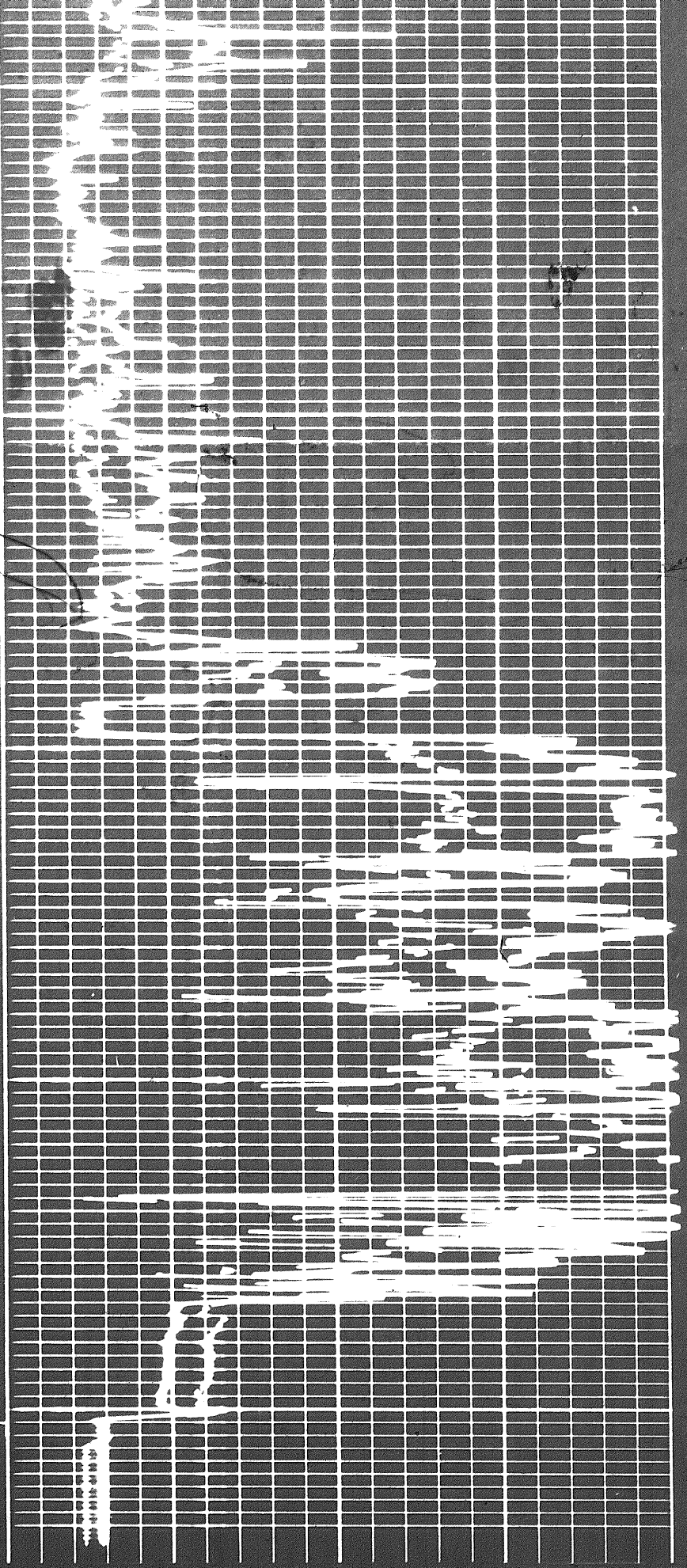




1000

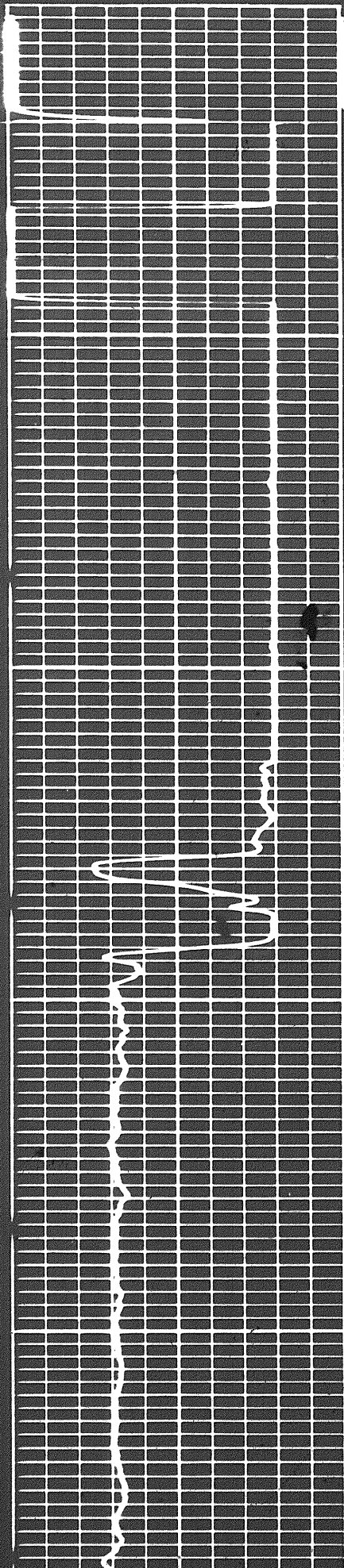
1000

FR 1200



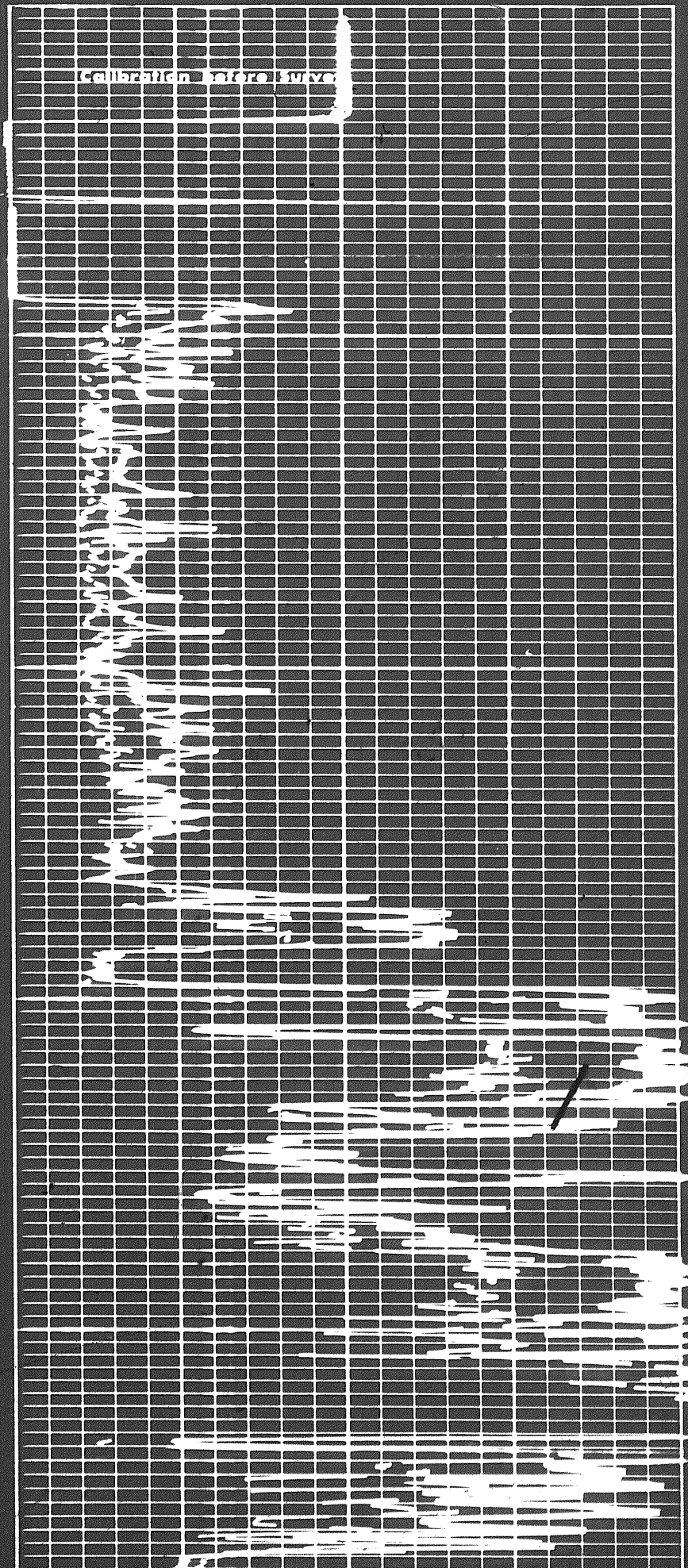
3 of

REPEAT SECTION



1000

1100





Speed in FPM

11 12 13 14 15 16 17 18 19

CALIPER  
hole diameter in inches

FR 1200

DEPTHS

1100

Micro Normal 2'

50  
Micro Inverse 1' x 1'

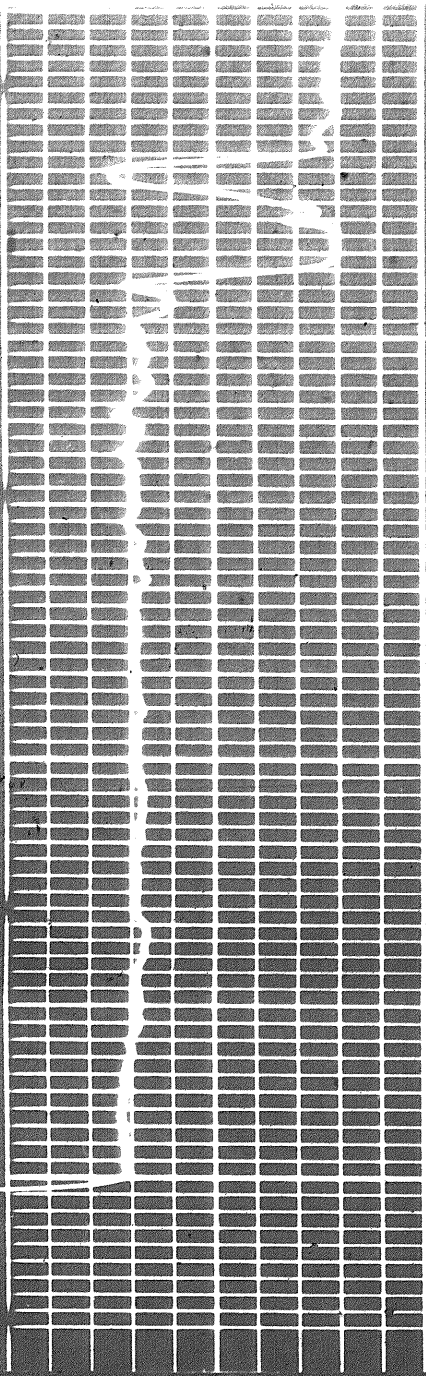
MICROLOG  
resistivity in ohms m<sup>2</sup>/m

COMPANY CHEVRON STANDARD LIMITED

WELL CHEVRON SOBC WM N PARKIN YT D-61

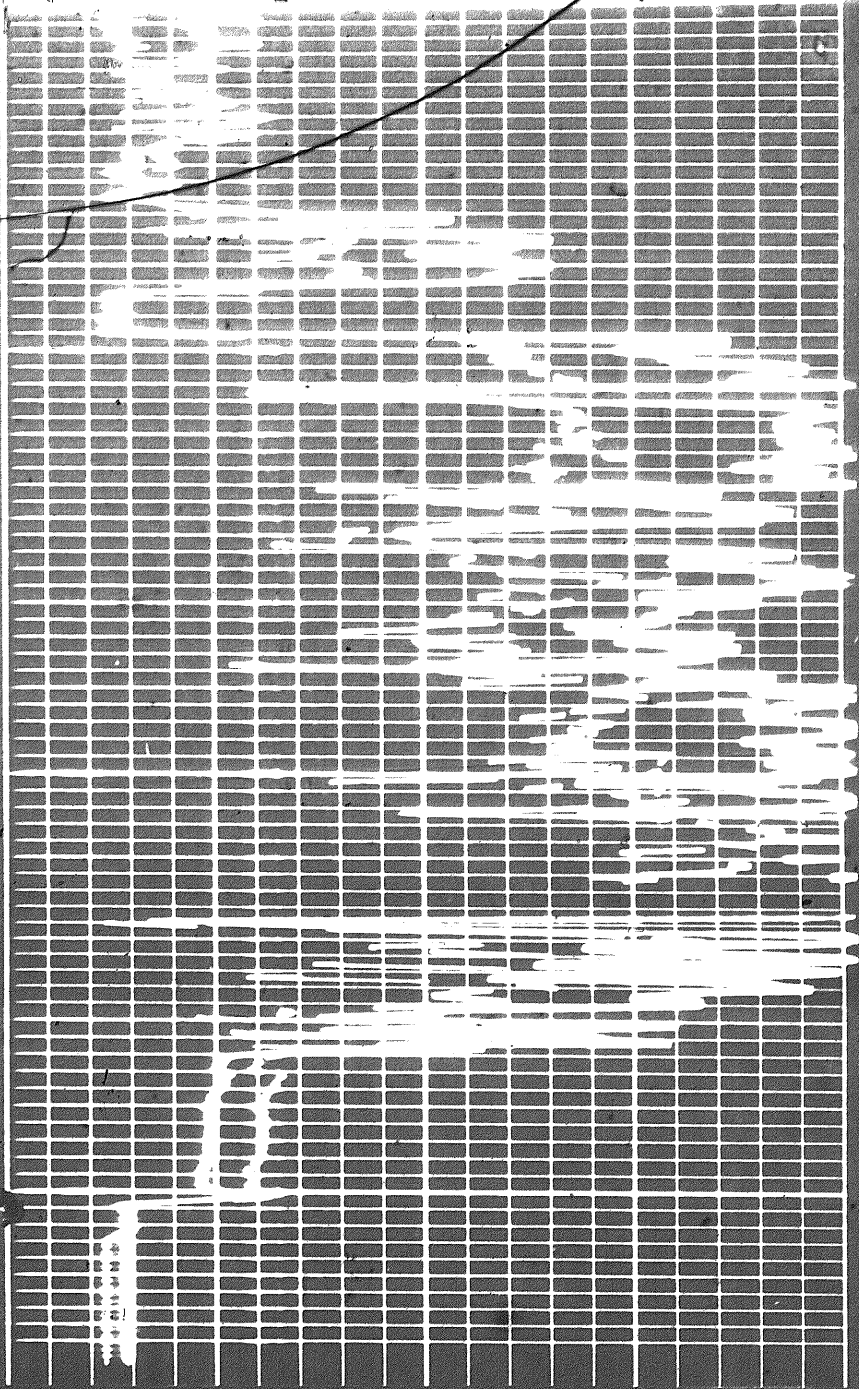
FIELD WILDCAT PROVINCE YUKON TERRITORIES

Schlumberger

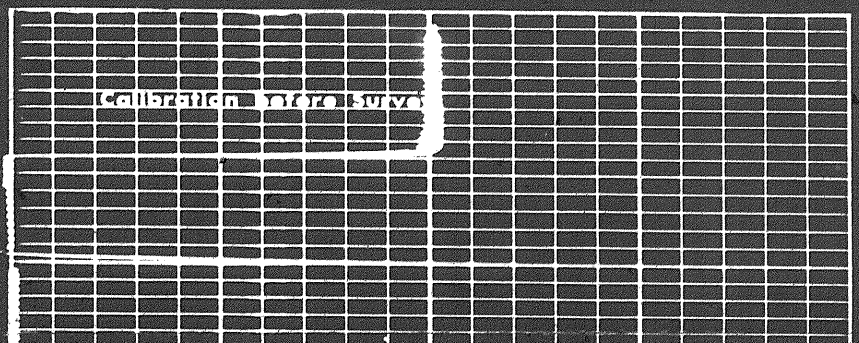
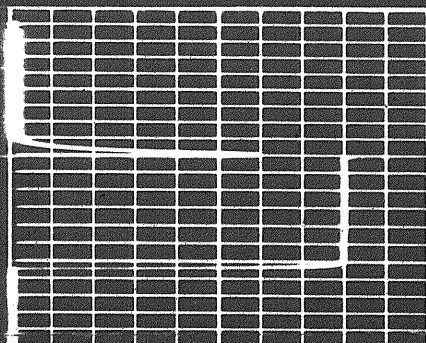


1000

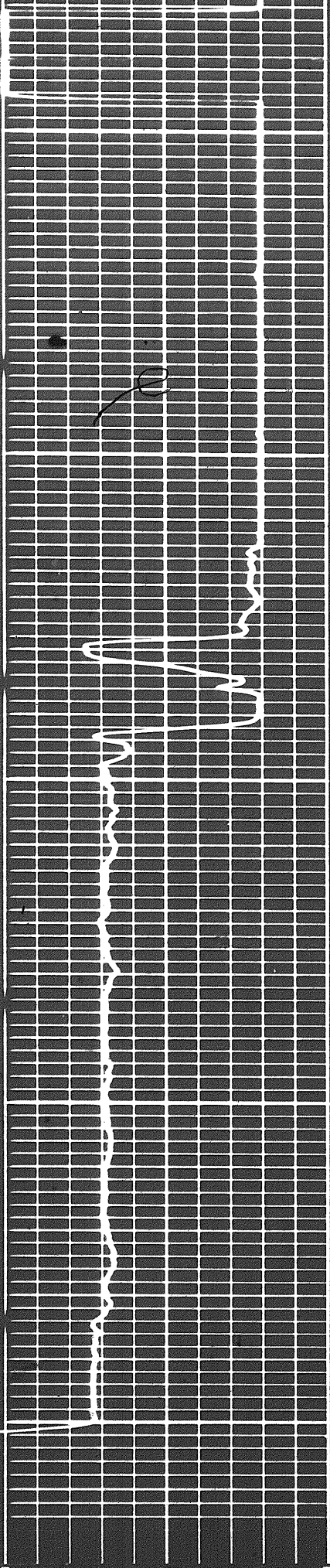
1200



REPEAT SECTION



Calibration Microarray

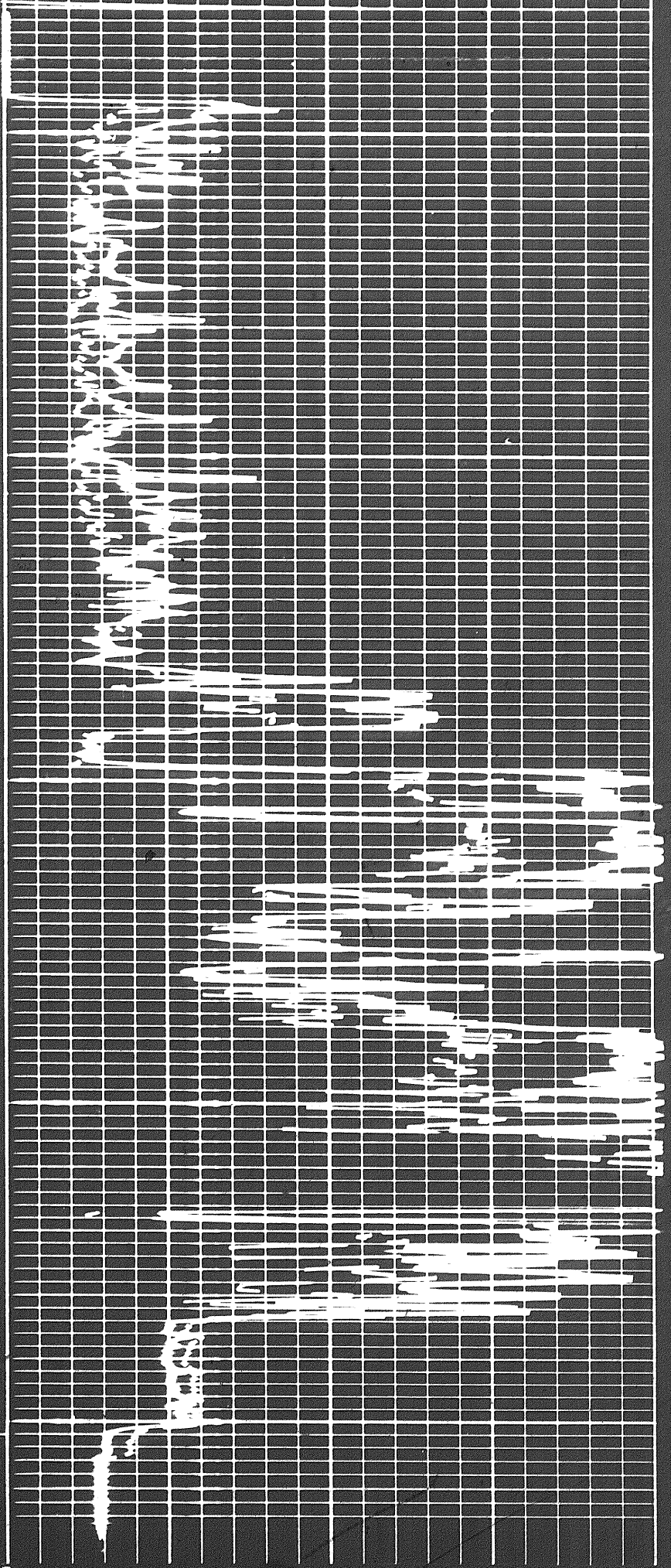


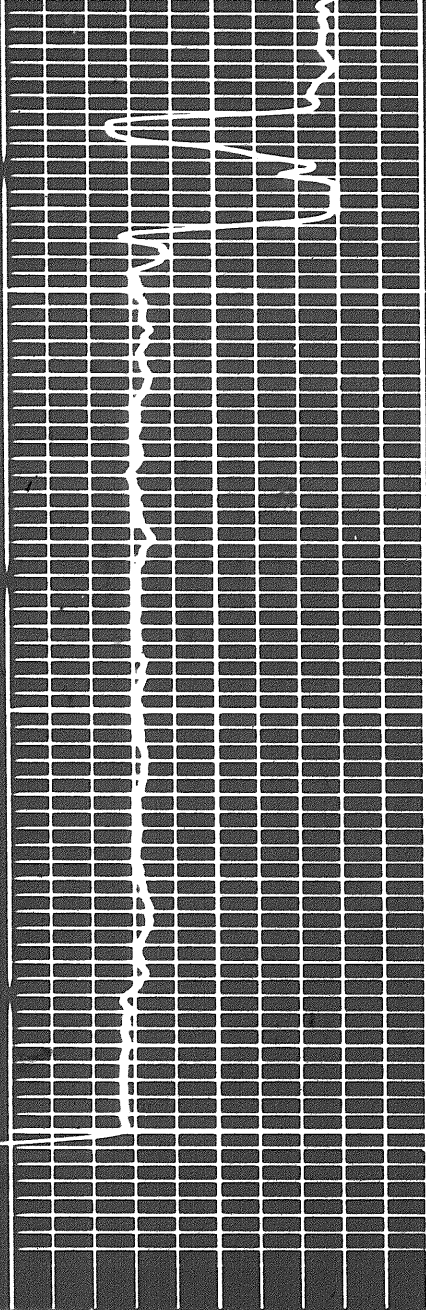
1000

1100

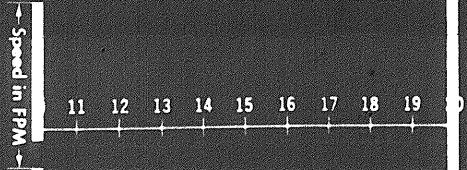
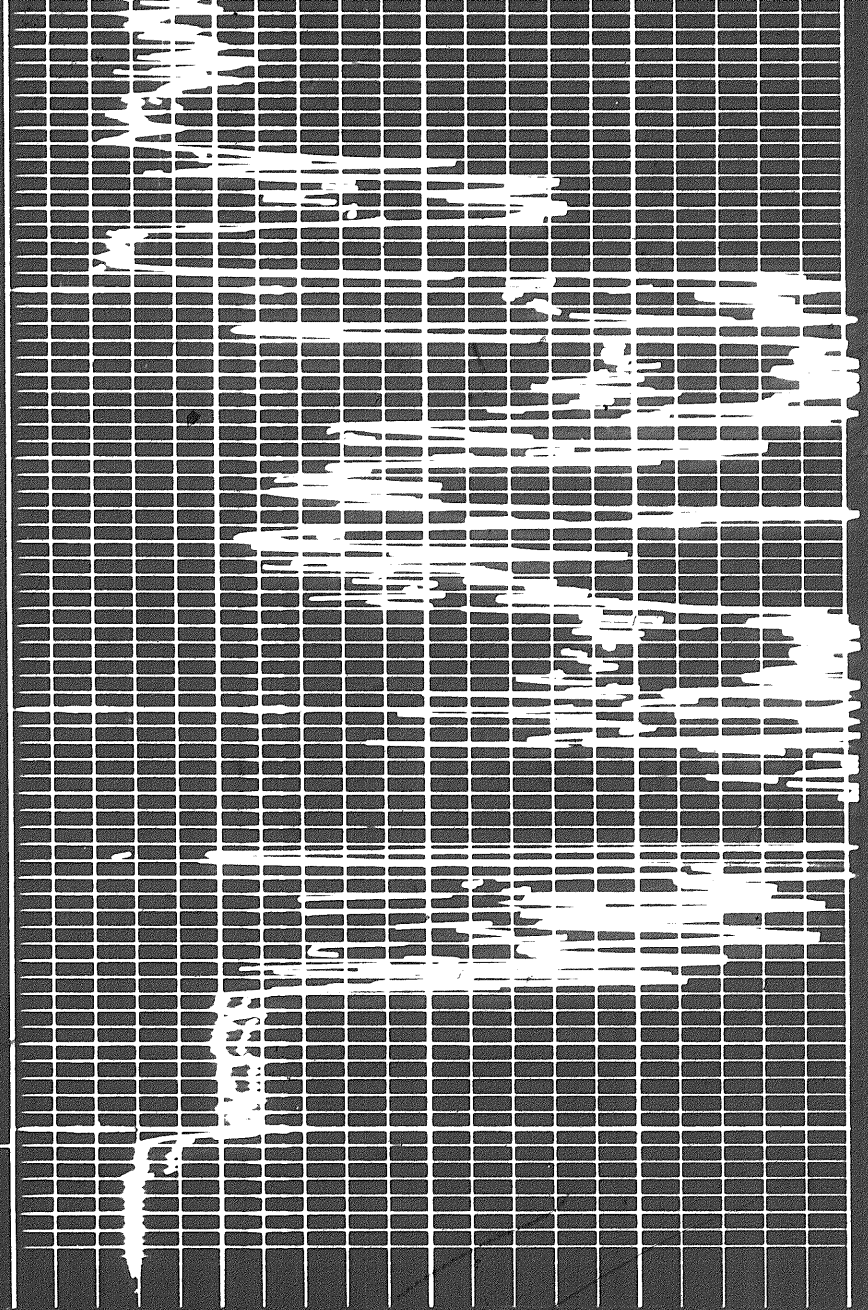
FR

1200





1100  
FR  
1200



**CALIPER**  
hole diameter in inches

**DEPTHS**

**MICROLOG**  
resistivity in ohms m<sup>2</sup>/m

**COMPANY** CHEVRON STANDARD LIMITED

**WELL** CHEVRON SOBC WM N PARKIN YT D-61

**FIELD** WILDCAT      **PROVINCE** YUKON TERRITORIES

