

COMPANY CHEVRON STANDARD LIMITED

WELL CHEVRON SOBC WM WHITEFISH Y.T. 1-05

FIELD WILDCAT PROVINCE YUKON TERRITORIES

Schlumberger

COMPANY		CHEVRON STANDARD LIMITED	
WELL		CHEVRON SOBC WM WHITEFISH	
FIELD		WILDCAT	
PROVINCE		YUKON TERRITORIES	
LOCATION		67° 04' 37" N LAT 137° 15' 25" W LONG	
Permanent Datum		GL	Elev 11
Log Measured From		KB	16 Ft. Above
<i>B. H. - 11225 + 3.5 h.c. - 1126</i>			
24 MAR 72			
4902	ONE		
859			
4043			
4910			
4916			
859			
859			
9.5	RMKS	115	
9.5			
8.2			
RMKS	@	%F	@
2.40	@	73 %F	@
	@	93 %F	@
5.64	@	73 %F	@
CIRCULATED FLOWLINE			
8 3/4"			
2 HRS			
OSU-C 108 REM			
CHADDOCK			
LINKE & COLLIER			



Casing

0900

1000

1100

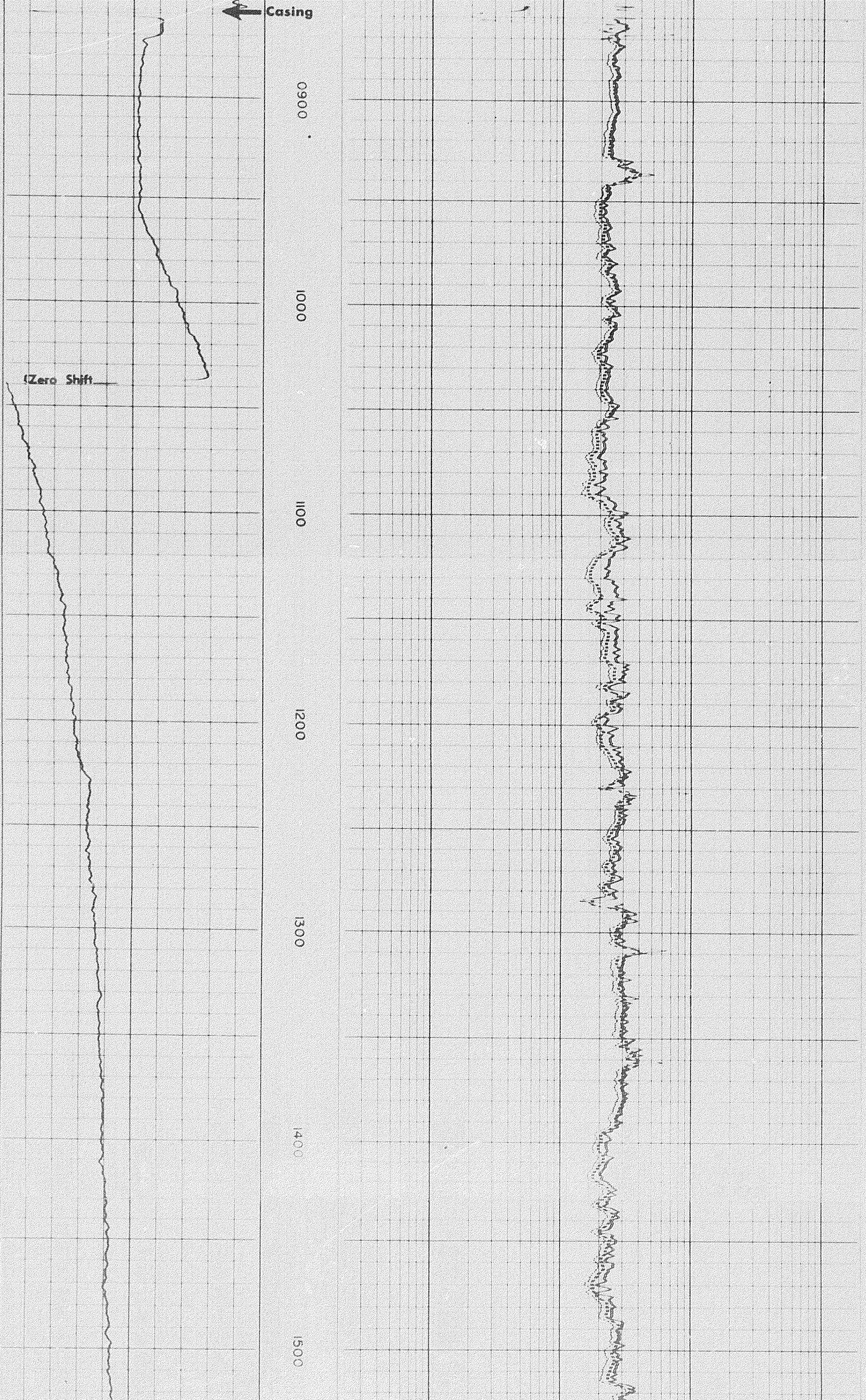
1200

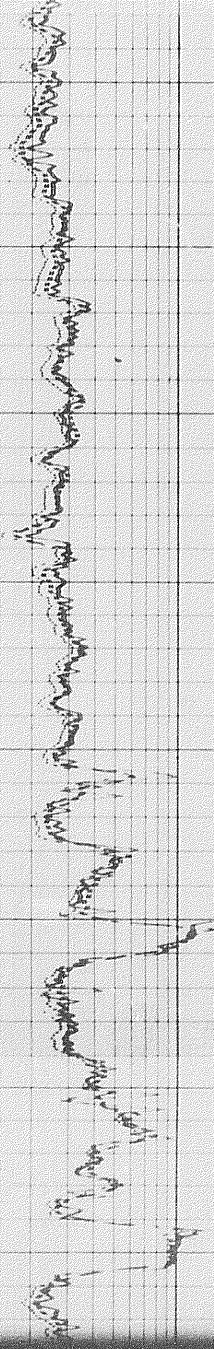
1300

1400

1500

(Zero Shift



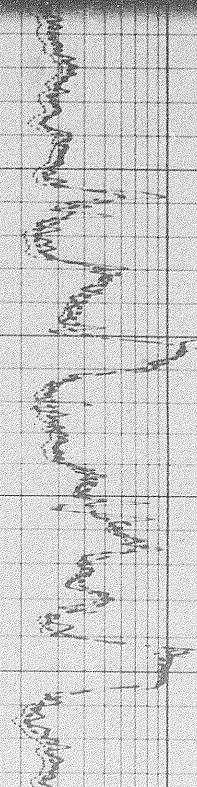


1500

1600

1700

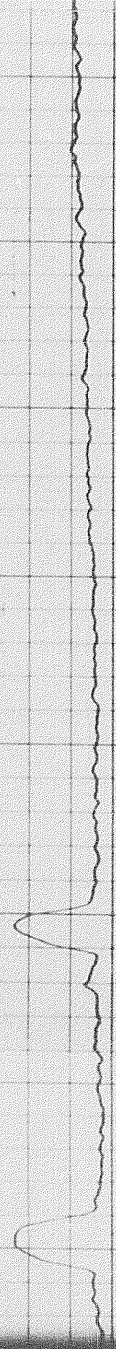
1800

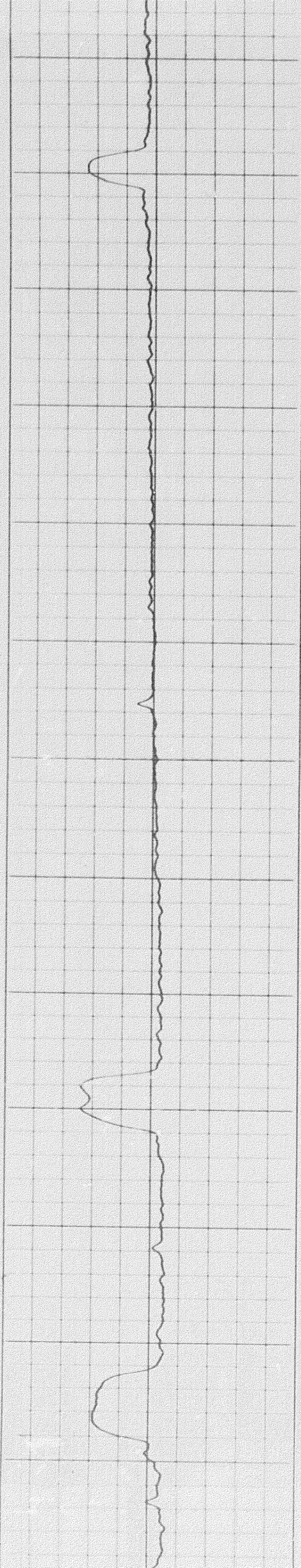


0

1700

1800





1800

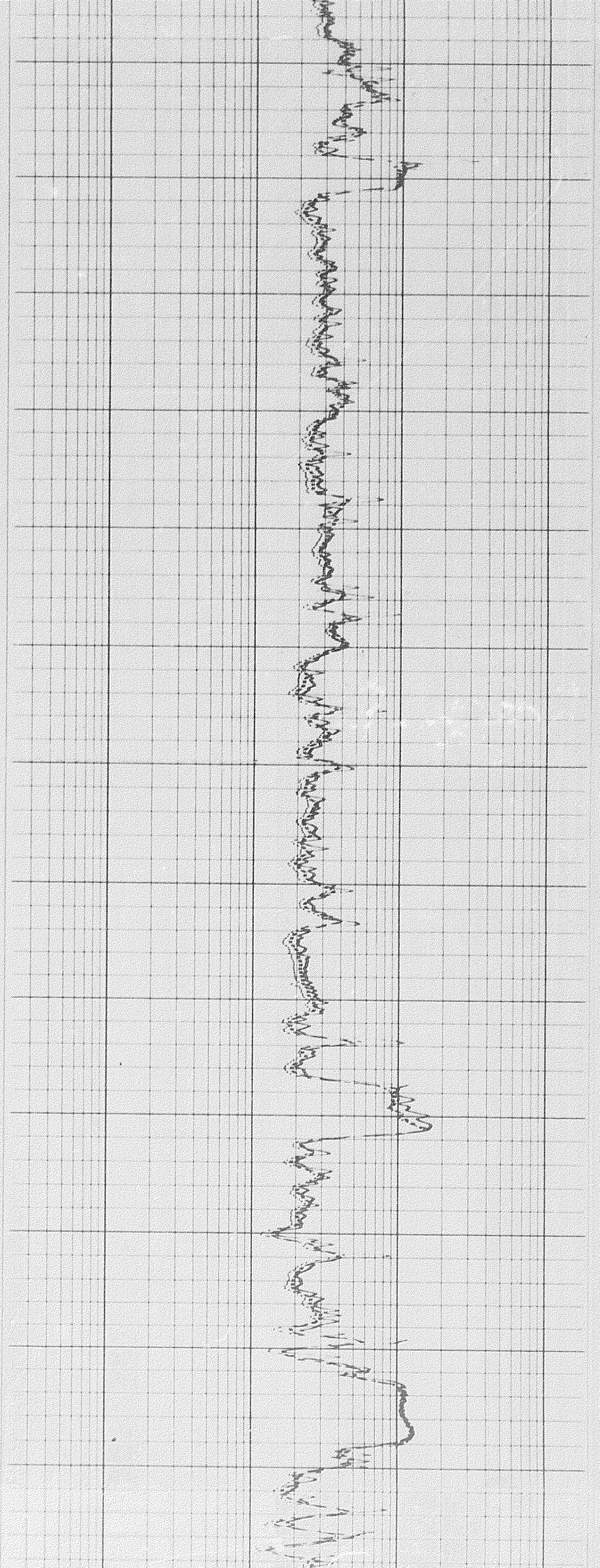
1900

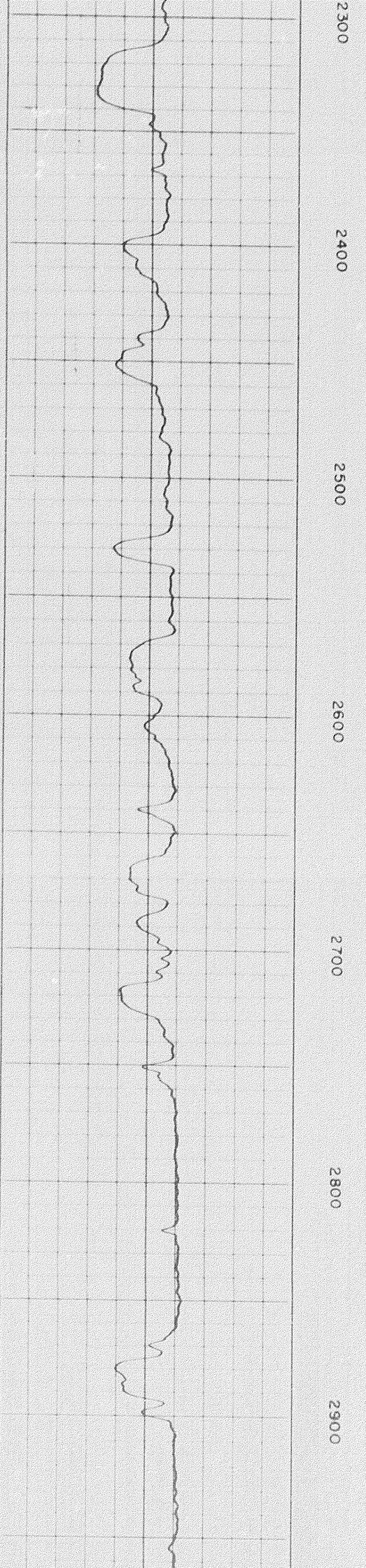
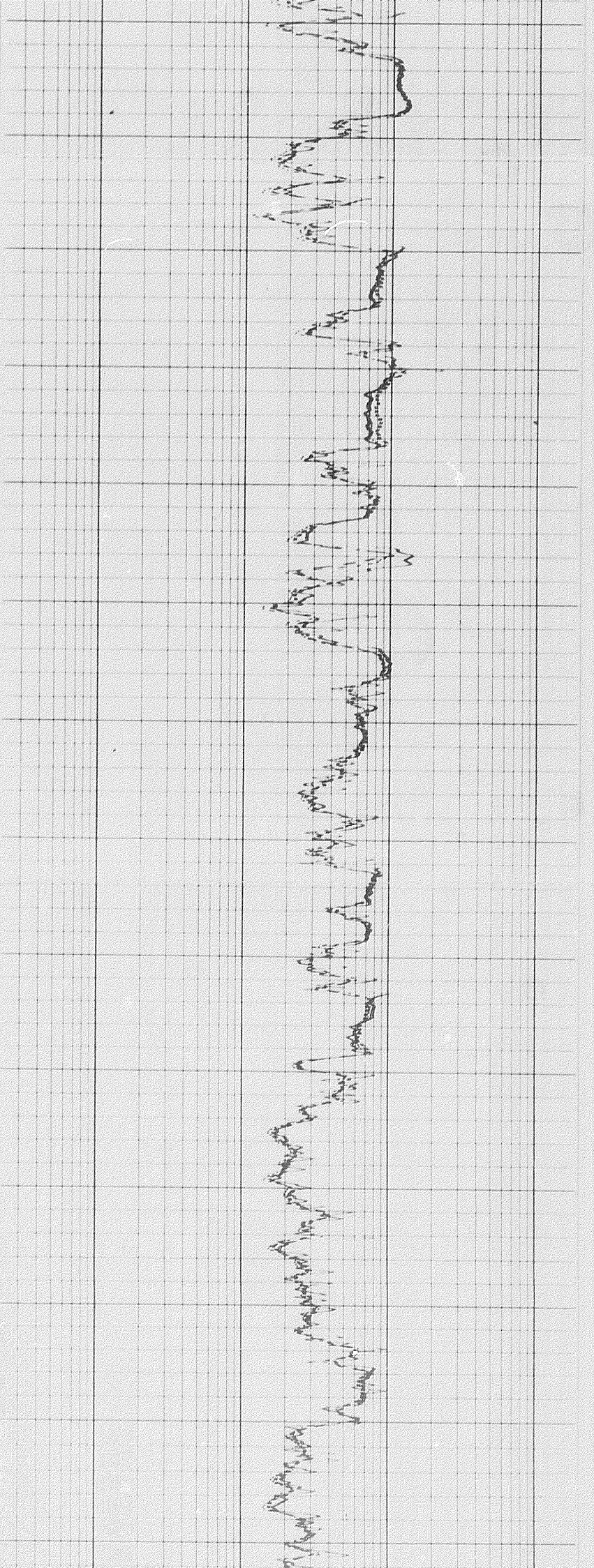
2000

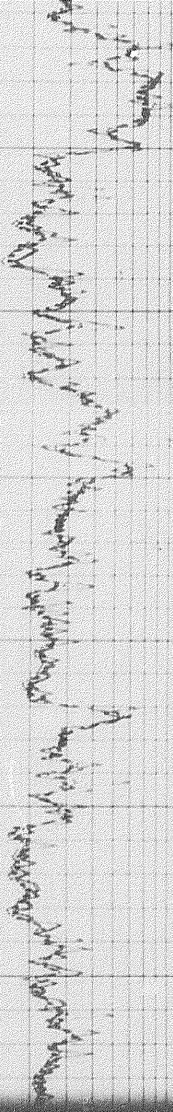
2100

2200

2300



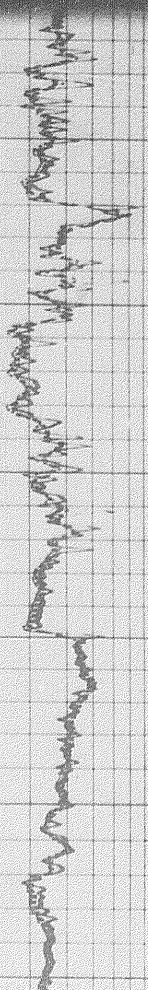
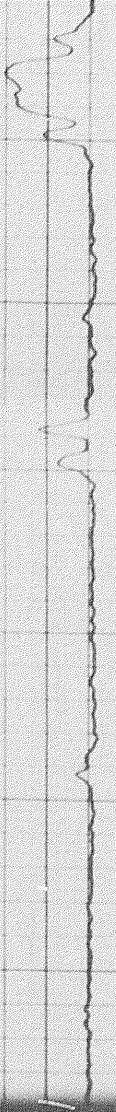




2900

3000

3100

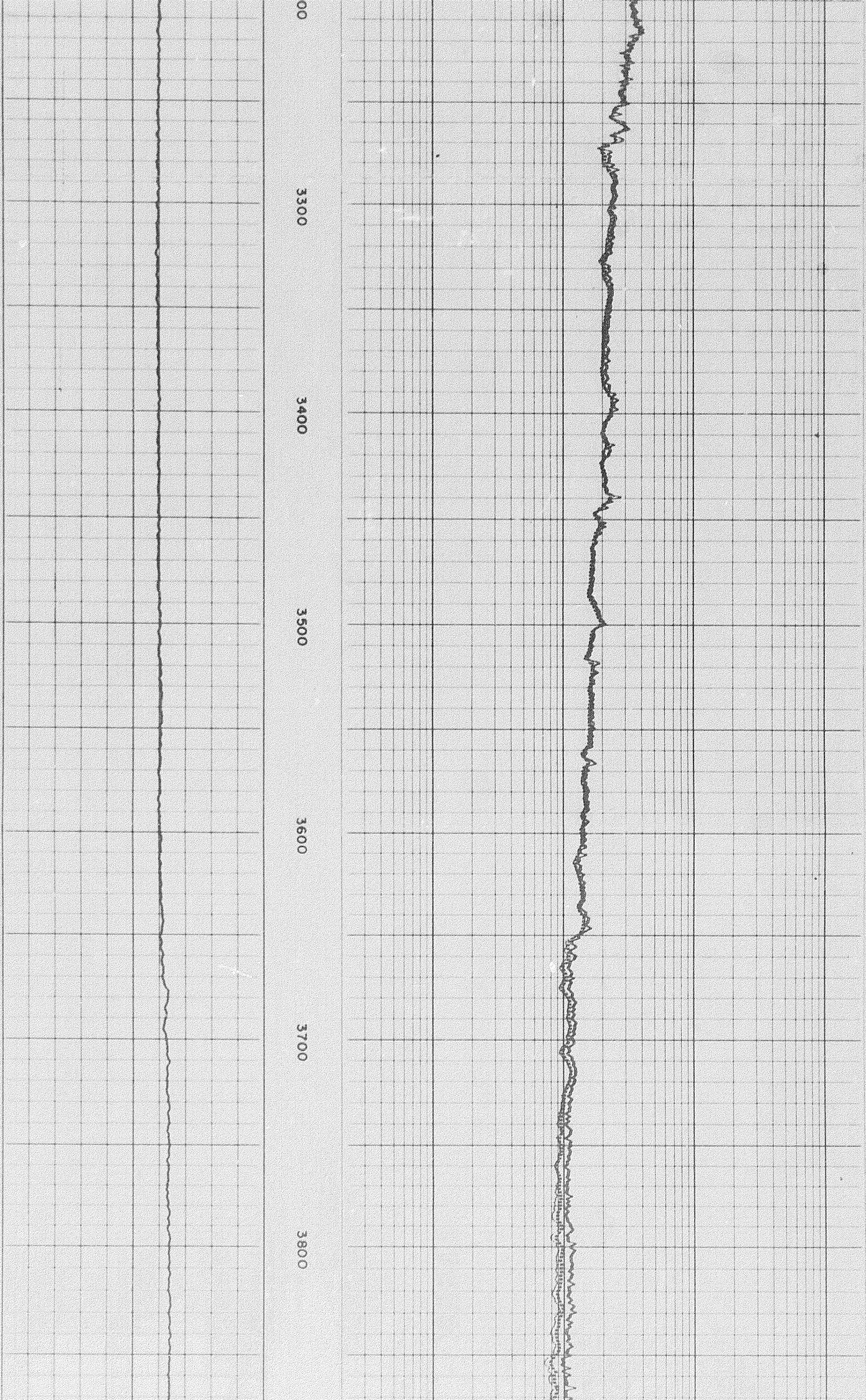


3100

3200

3300





00

3300

3400

3500

3600

3700

3800

3800

3900

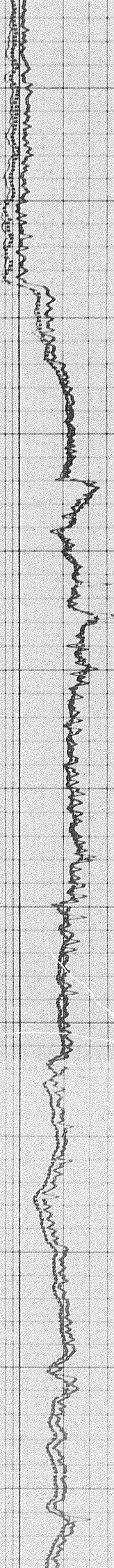
4000

4100

4200

4300

4400



4000 4100 4200 4300 4400 4500 4600

