

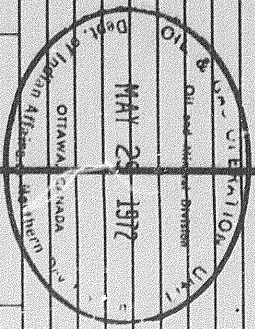
Schlumberger

COMPENSATED
FORMATION DENSITY LOG
SCHLUMBERGER OF CANADA, Calgary, Alberta

PROVINCE YUKON TERRITORIES
FIELD WILDCAT
WELL CHEVRON 509C WM WHITEFISH
YT 1-05
COMPANY CHEVRON STANDARD LIMITED

COMPANY CHEVRON STANDARD LIMITED
WELL CHEVRON 509C WM WHITEFISH YT
FIELD WILDCAT
PROVINCE YUKON TERRITORIES
LOCATION 67° 04' 37" N LAT
137° 15' 25" W LONG
Permanent Datum GL Elev. 1126
Log Measured from KB 16 Ft. Above Perm. Datum
Other Services: P.I.L.
SLC-GR, MLC, CST, ICS
ELEV. KB 1142
GL 1126
CIR

Date	25 MAR 72
Run No.	ONE
First Reading	4905
Last Reading	1500
Feet Measured	2205
Depth Reached	4906
Bottom Driller	4916
Cap. SOC	859
Cap. Driller	859
Mud Nature	RMKS
Dens. Visc.	9.5 115
App'd pH	9.5
Water Loss	8.2
• Rec.	4.50 ● 73 %
• Rad	3.40 ● 73 %
• BHT	● 99 %
• Rinc	5.64 ● 73 %
• ppm - Cl	
Bit Size	3 7/8"
Source to Detector	
Specials	
Equipment Type	PGT-E
Oper. Rig Time	3 HRS
Truck No.	05U-C 108 REM
Recorded By	CHADDOCK
Witness	LINKE & COLLIER



17 APR 72 CAL PK
REMARKS
Drilling Stopped 1400 / 24th : Circulation Stopped 1630 / 24th : Tool on Bottom 0510 / 25th : 1st Run Service Order # B.H.T. 99 %

Panel No. FA 169
Cartridge No. A 40
Sonde No. E 480
Detector No. D 345
MUD NATURE: GEL - RAPID DRILL - CAUSTIC

CALIBRATION:	Background CPS	Test Source CPS	Galvanometer Deflection Div.	Panel Sens. Tap for Cal.
Gamma Ray	30	440	10.0	PGP-D

<p>GAMMA RAY API UNITS</p> <p>Sens. 150 T.C. 2 Zero 0 div. to left</p> <p>Speed in FPM 0 150 150 300</p>	<p>DEPTHS</p>	<p>BULK DENSITY ρ_b - gm/cc</p> <p>2.0 2.5 3.0</p>	<p>DENSITY CORRECTION $\Delta\rho$ - gm/cc</p> <p>0.25 0 0.25 (-) (+)</p>
<p>CALIPER hole diameter in inches</p> <p>6 7 8 9 10 11 12 13 14</p>			

CALIPER
hole diameter in inches

DENSITY CORRECTION
 $\Delta\rho$ - gm/cc

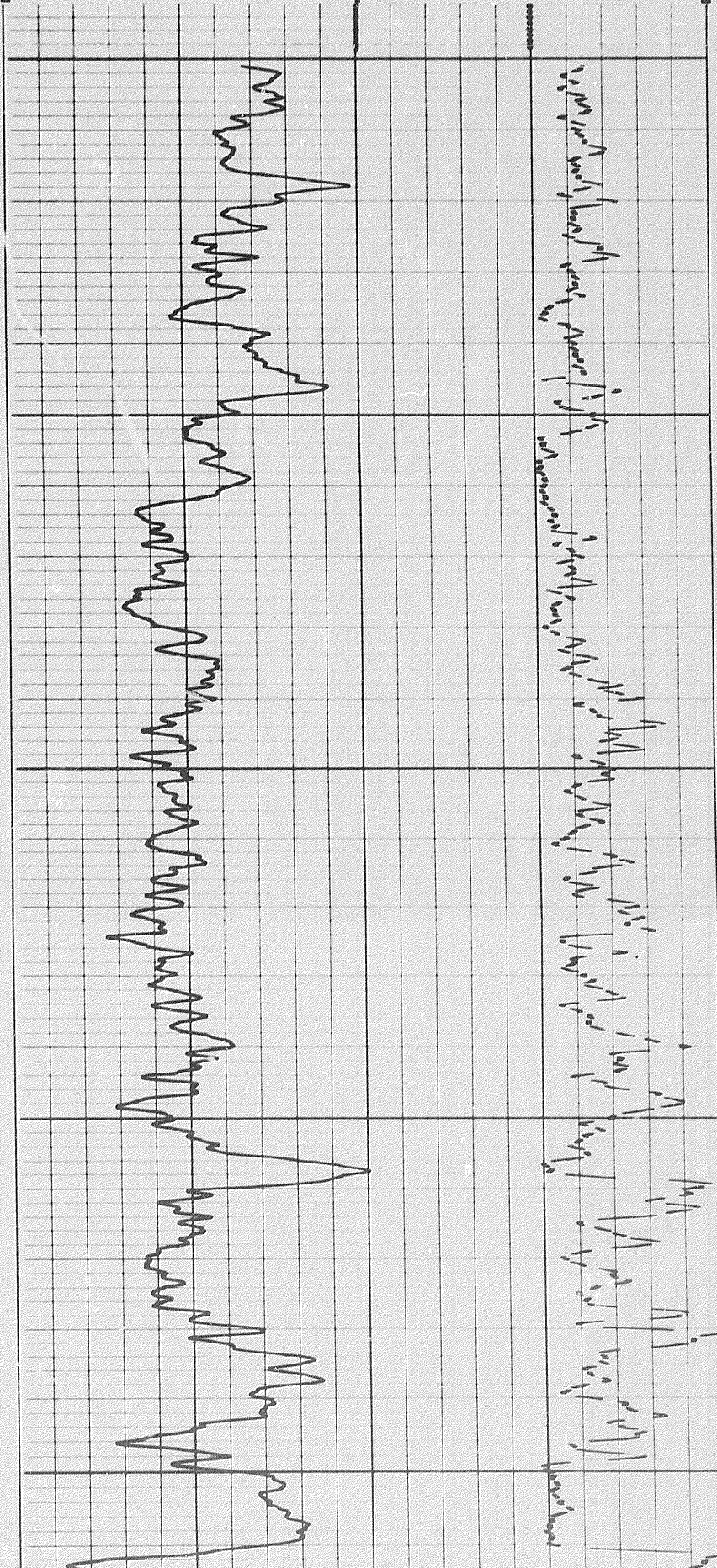
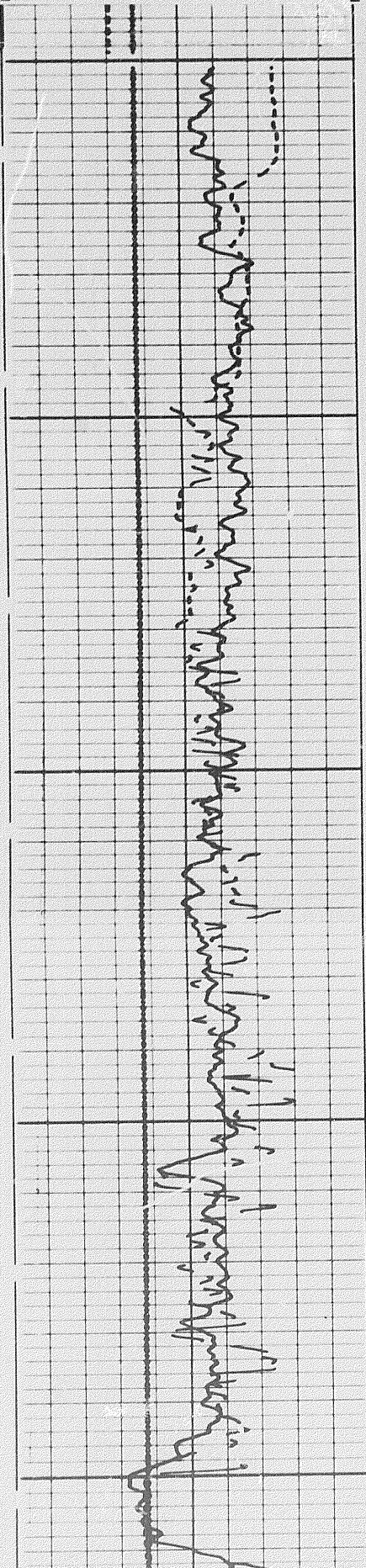
6 7 8 9 10 11 12 13 14

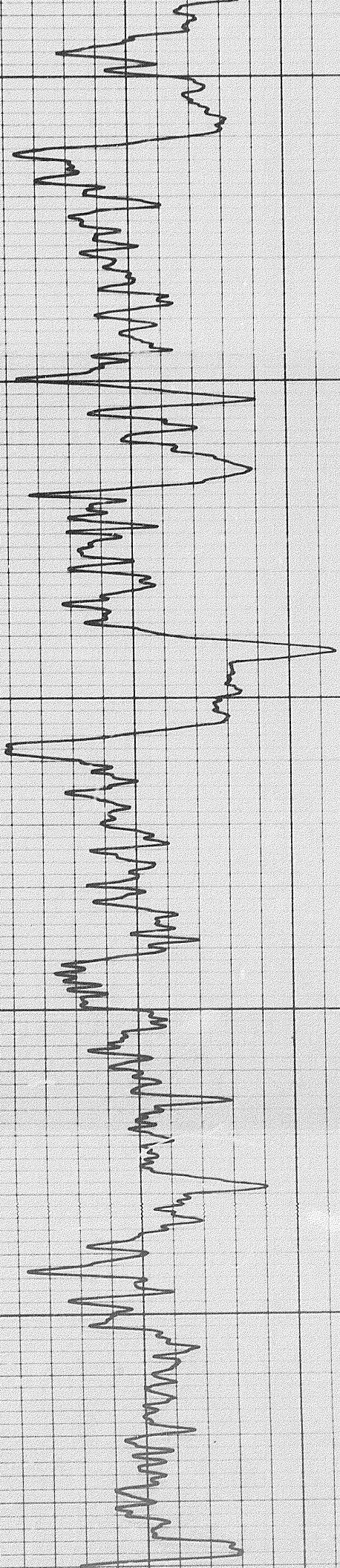
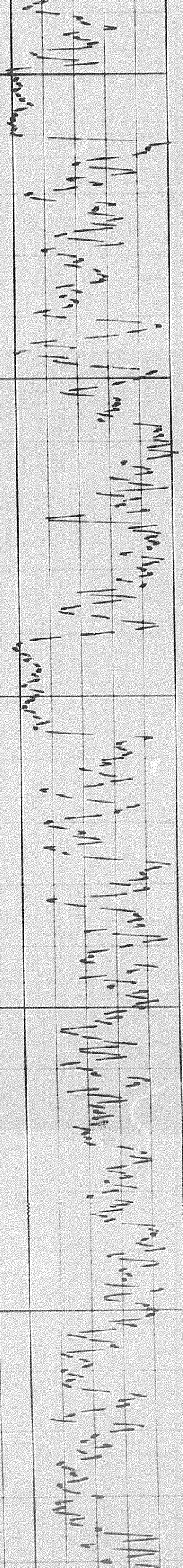
0.25 0 0.25
(-) (+)

1500

1600

1700

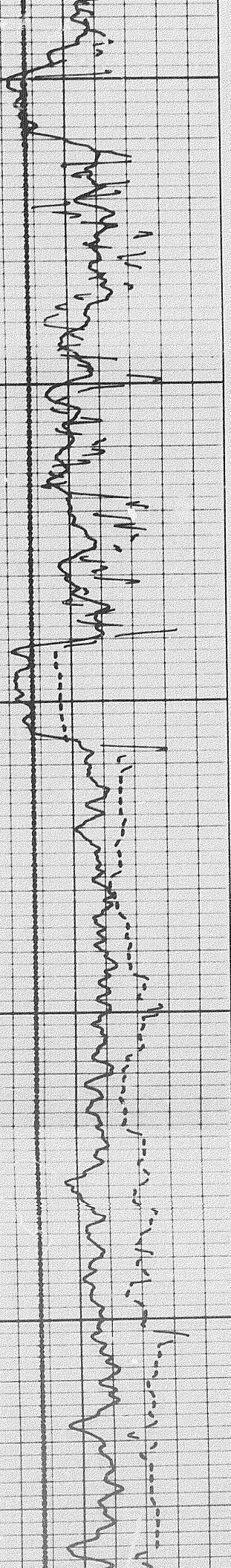


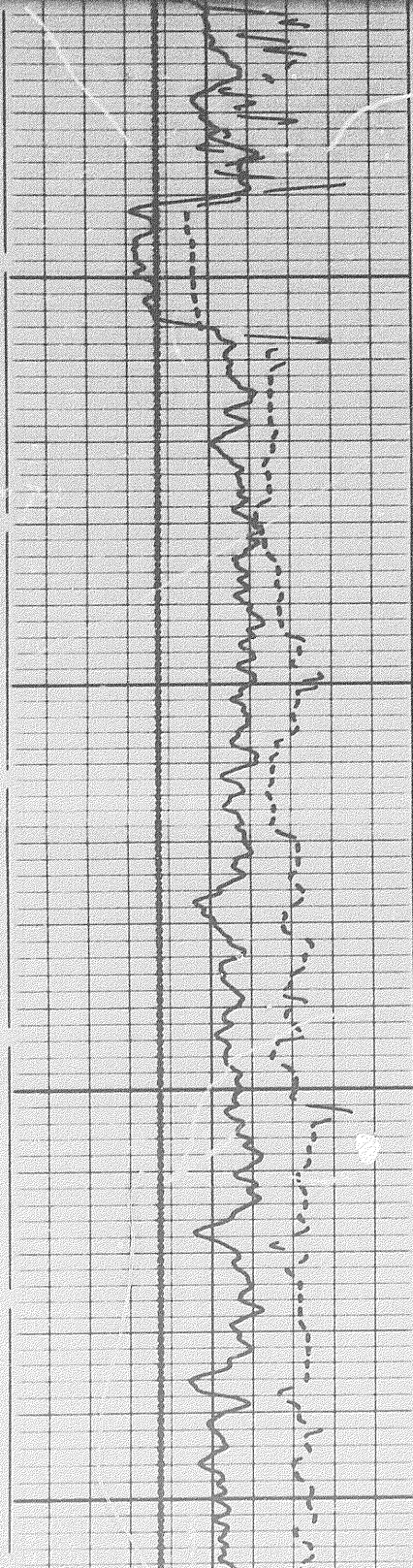


1700

1800

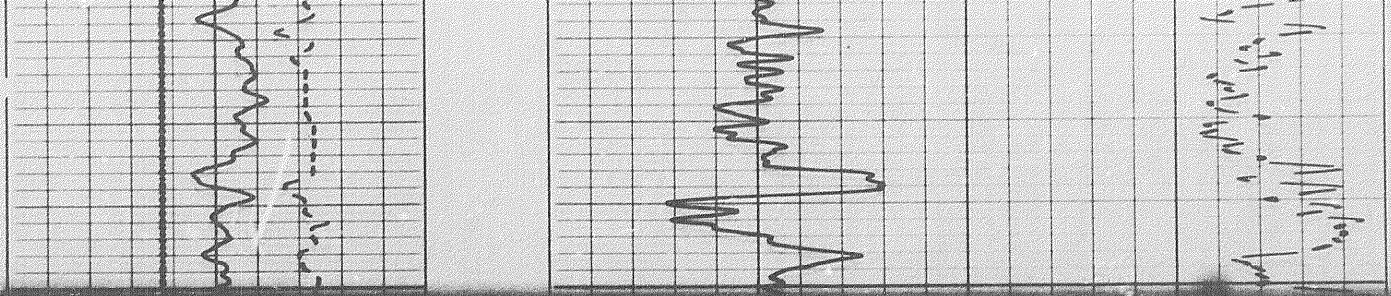
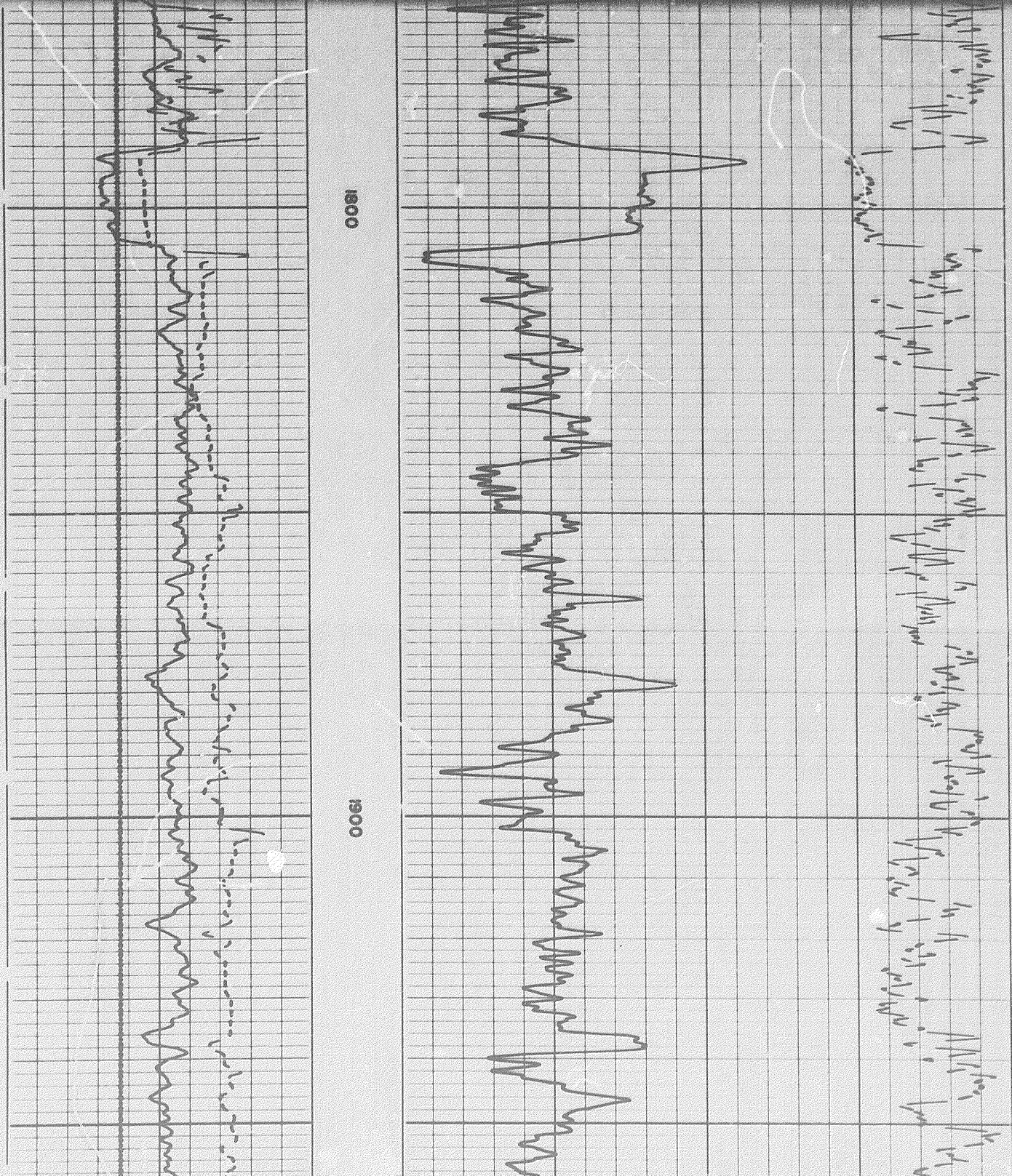
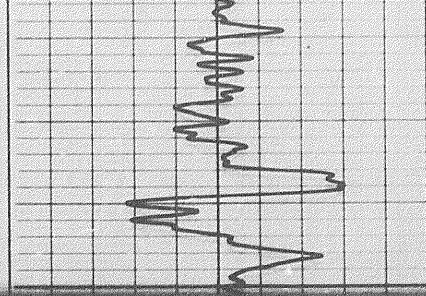
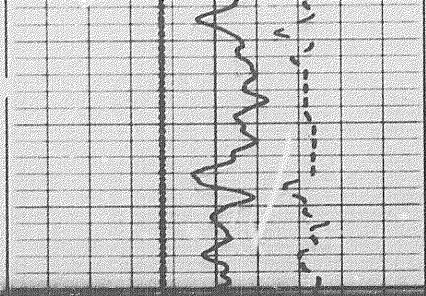
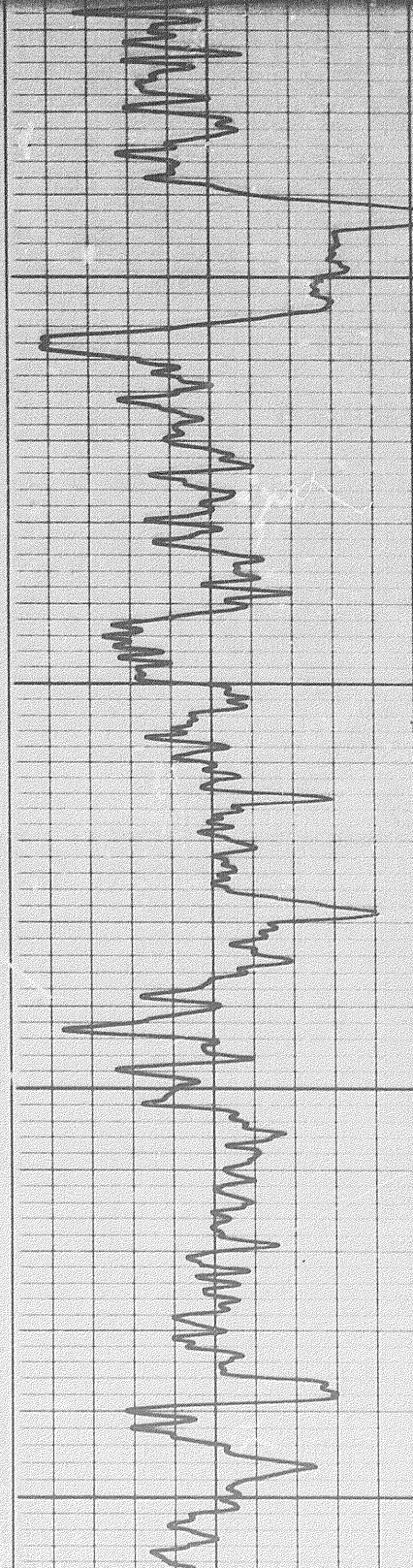
1900

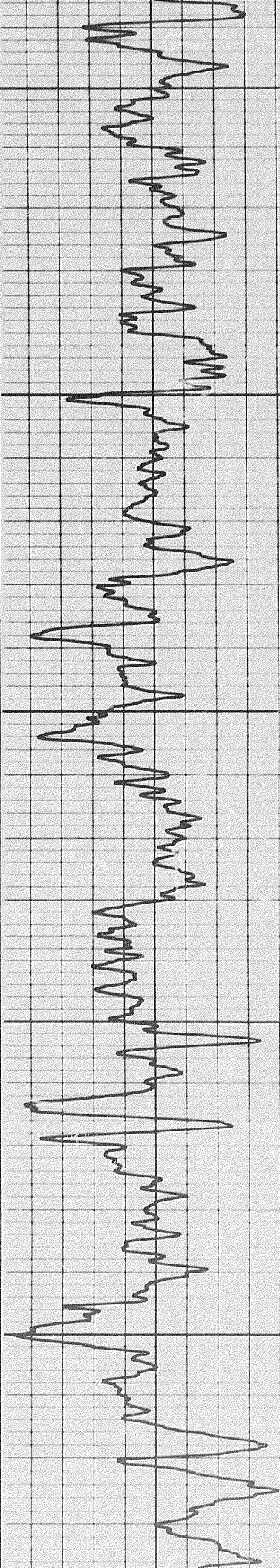
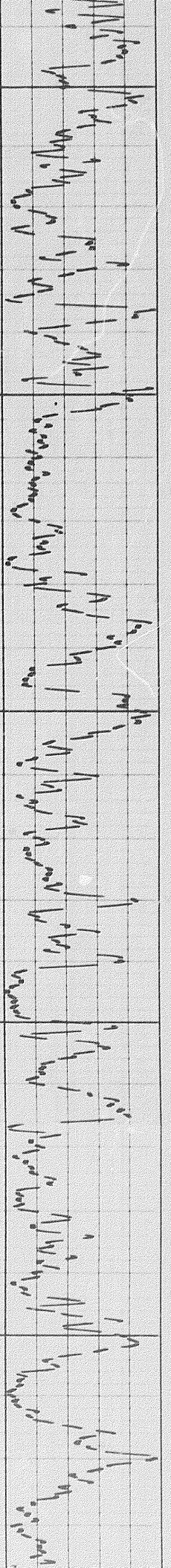




0061

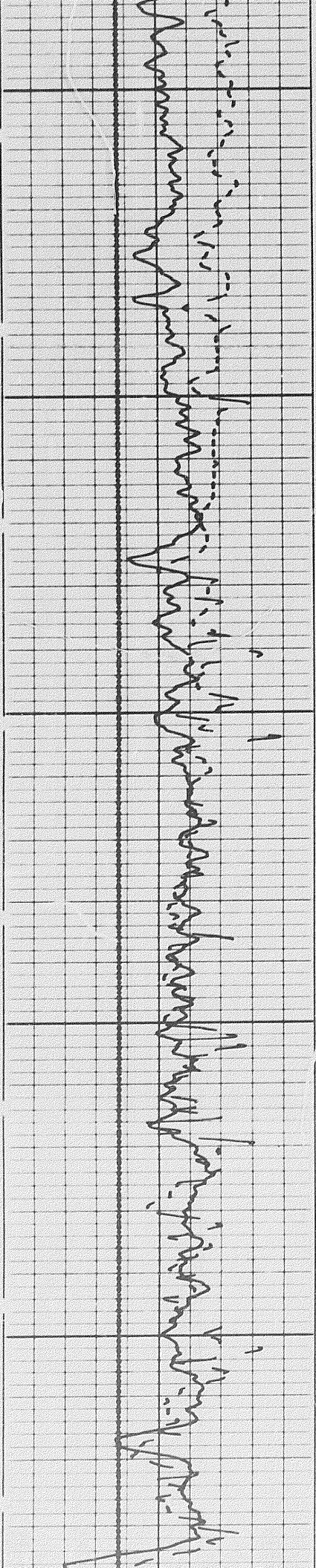
0081

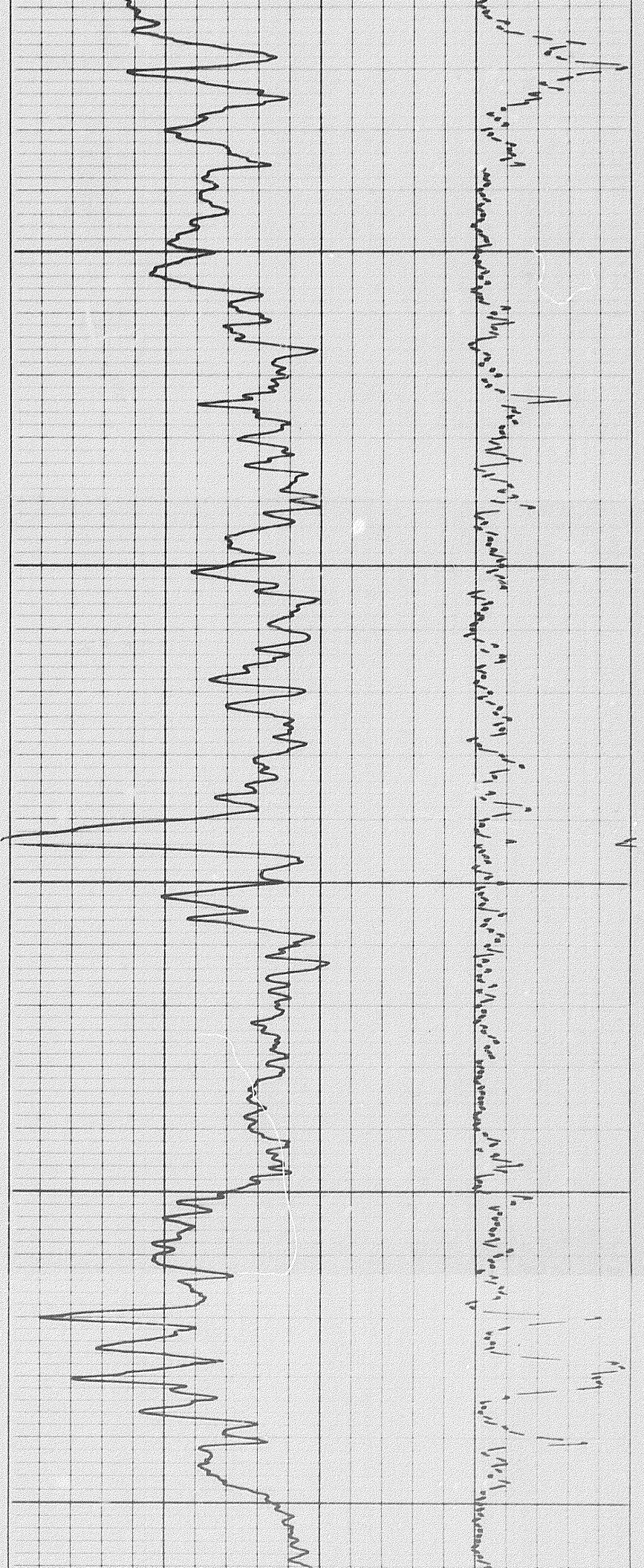




2000

2100

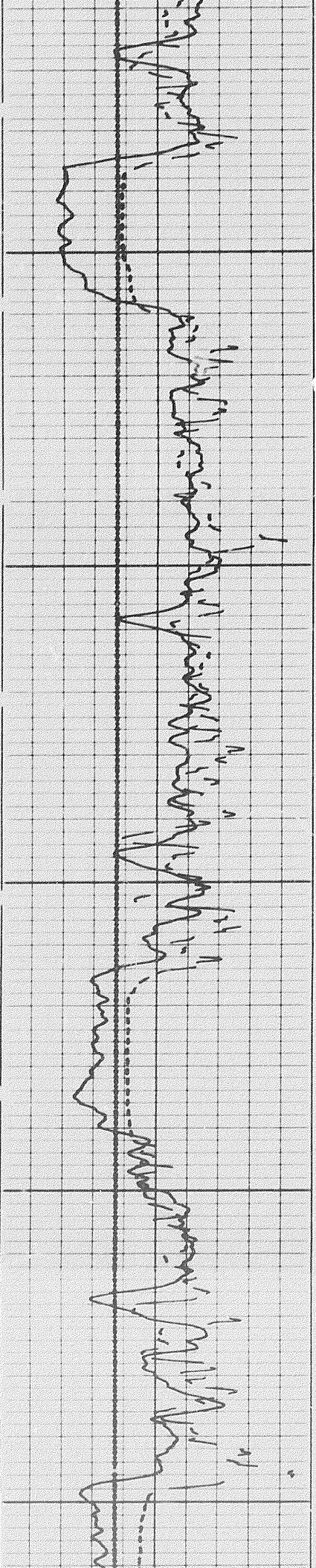


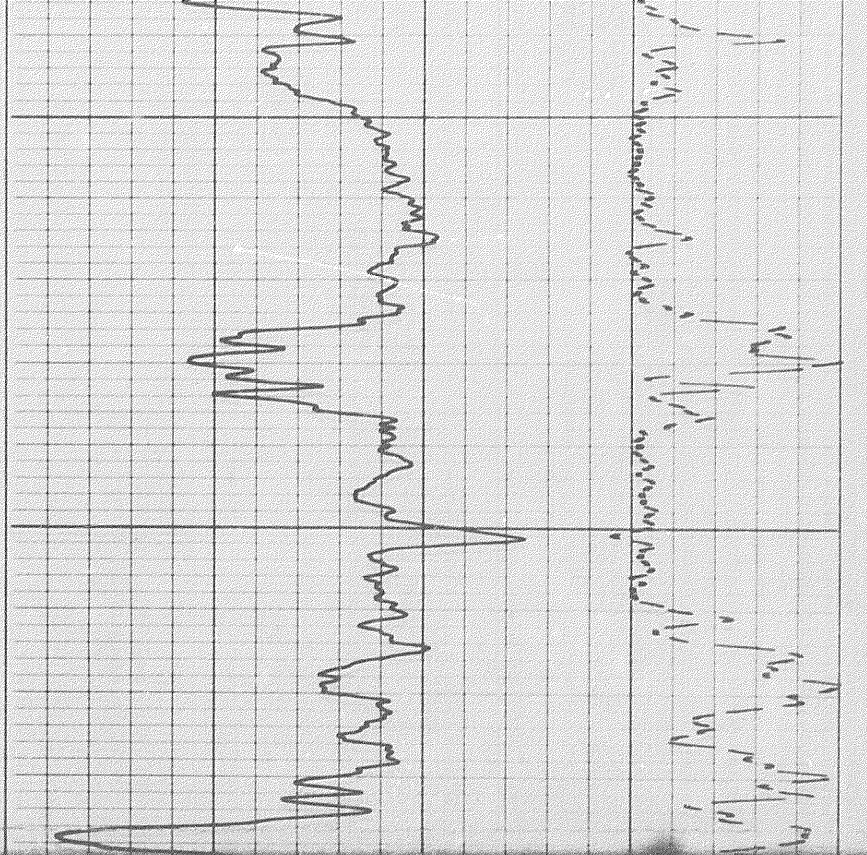


2200

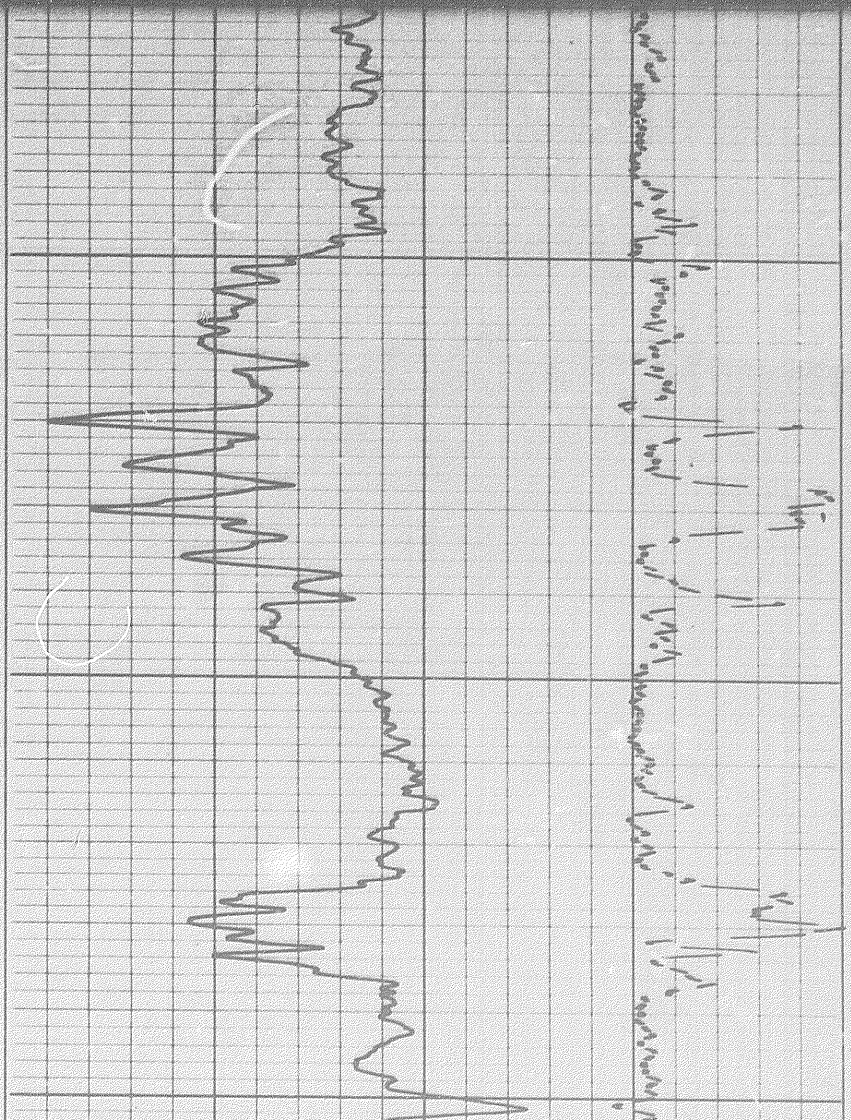
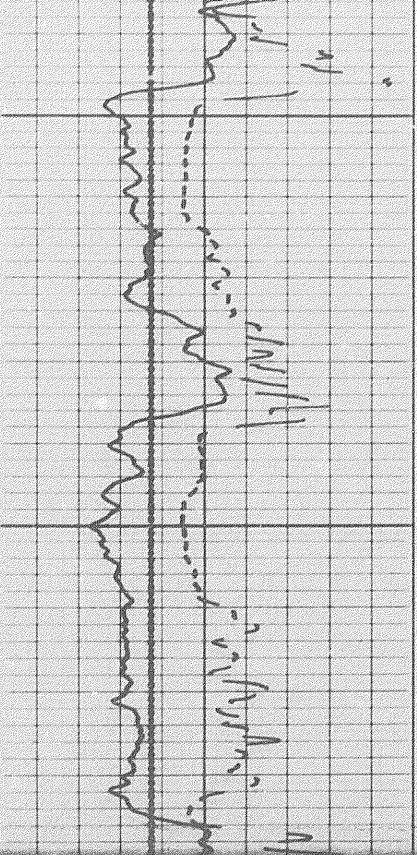
2300

2400

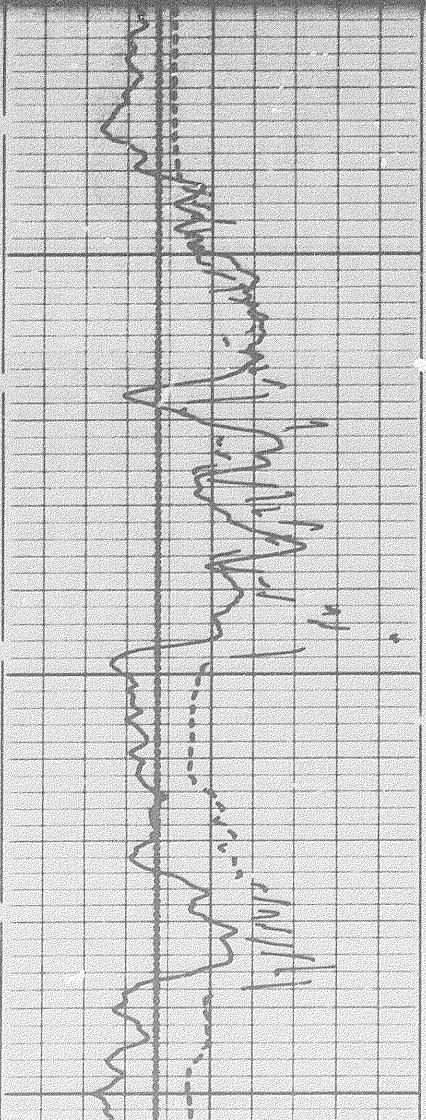


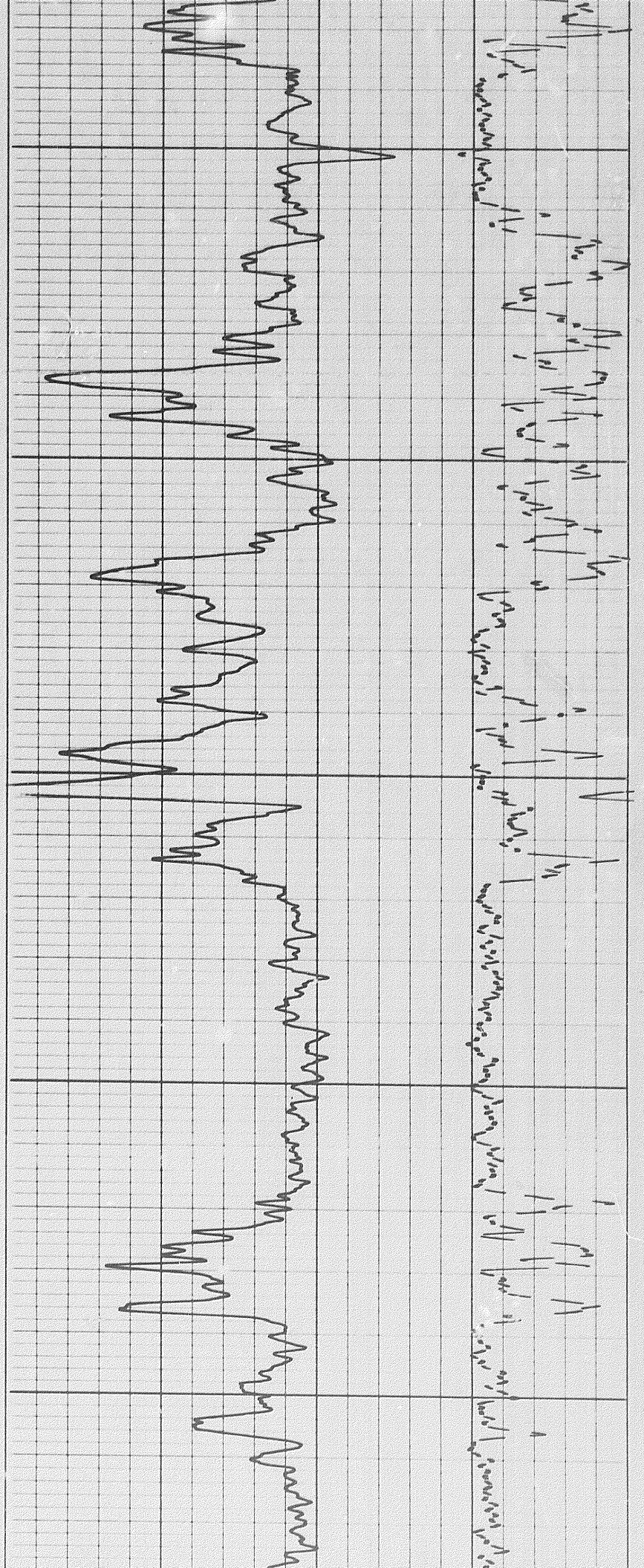


2400



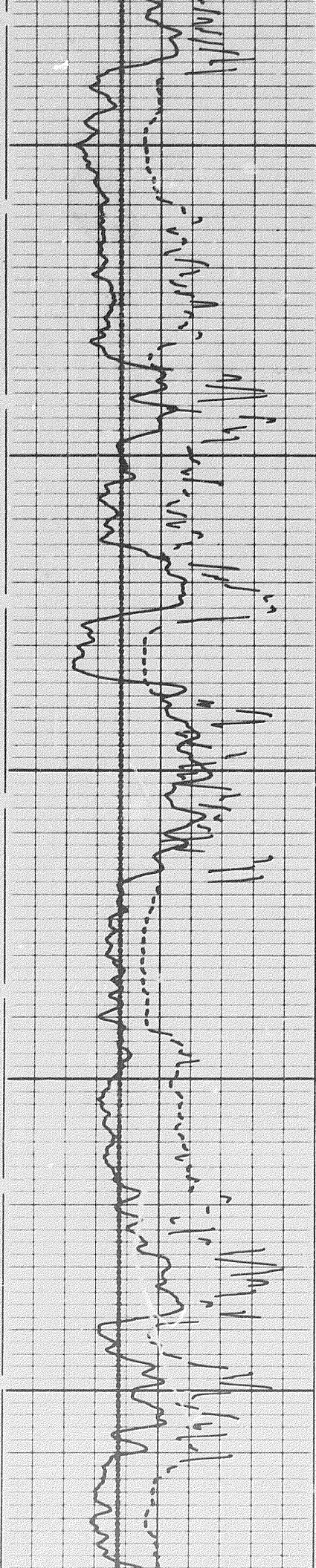
2400

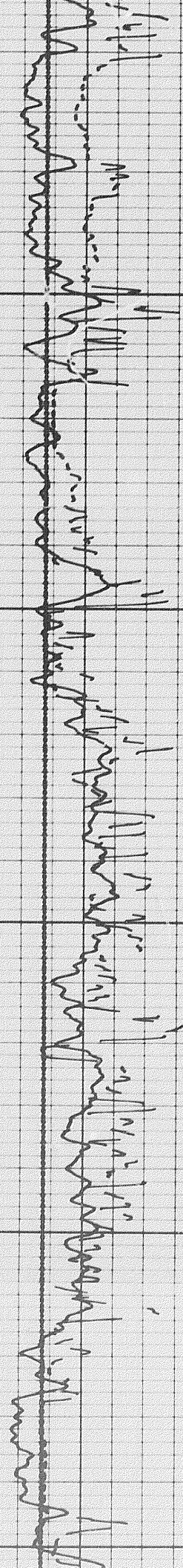
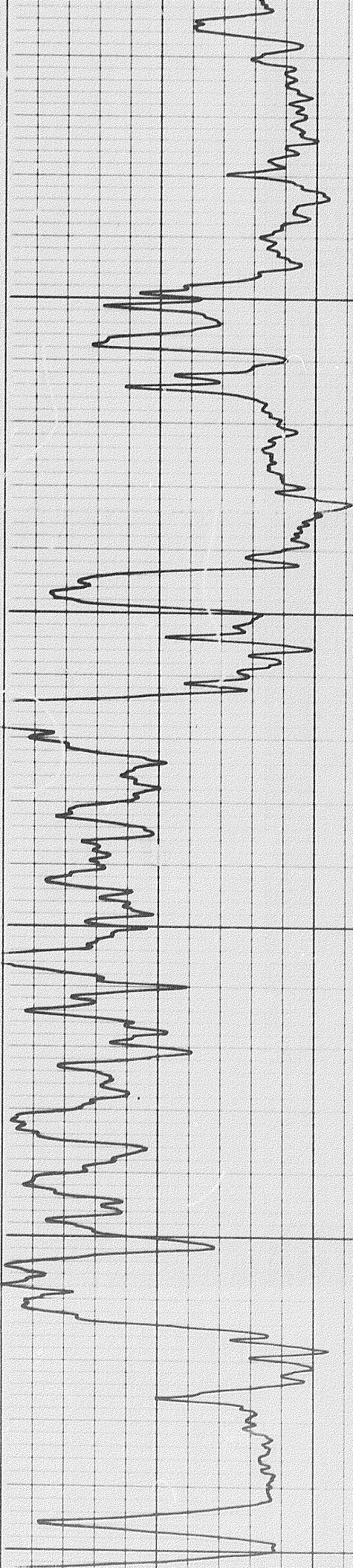
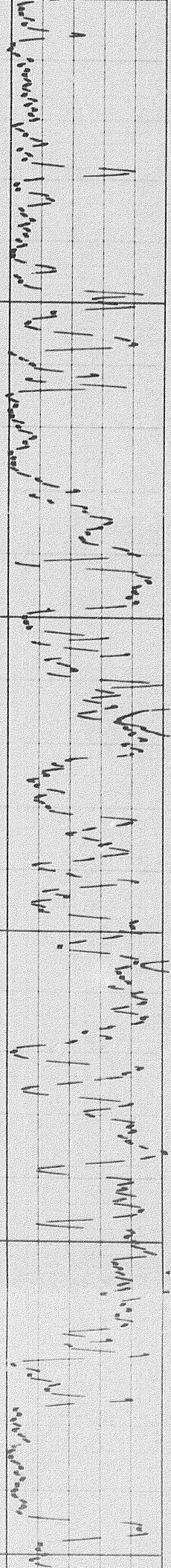




2500

2600

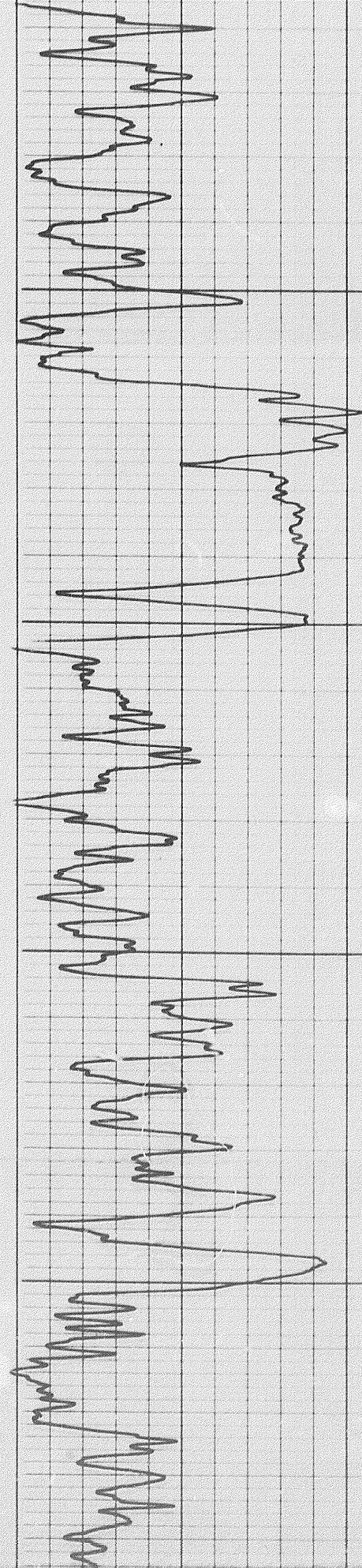
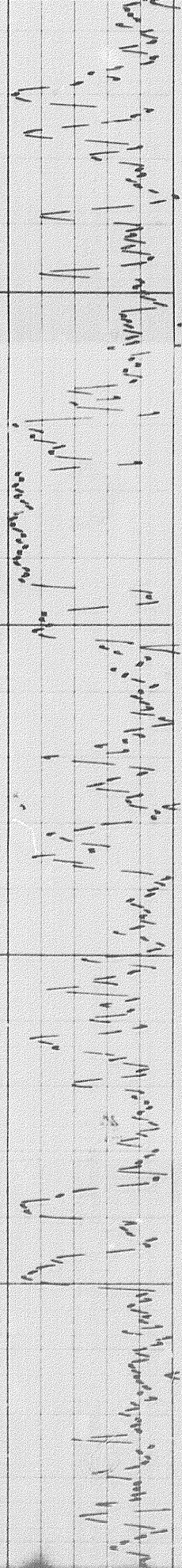




2700

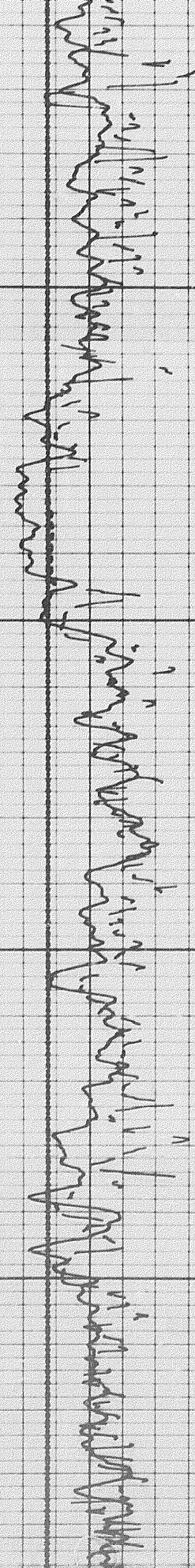
2800

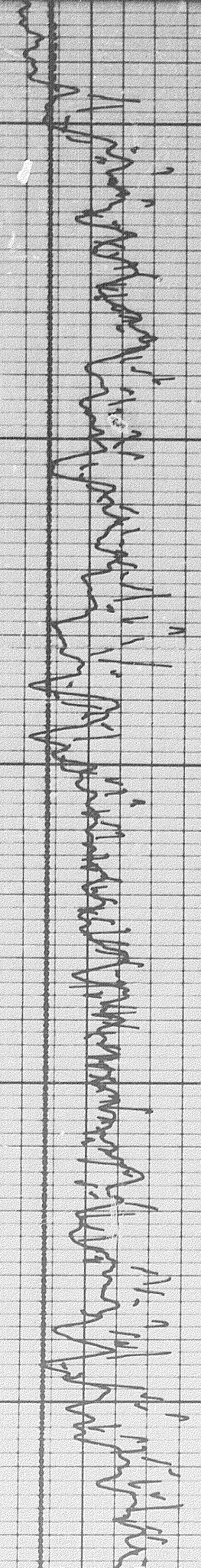
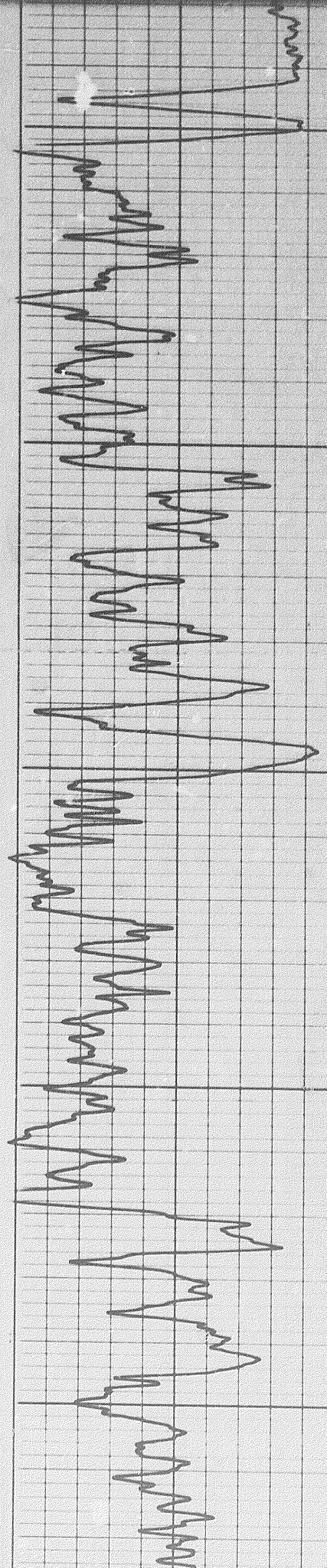
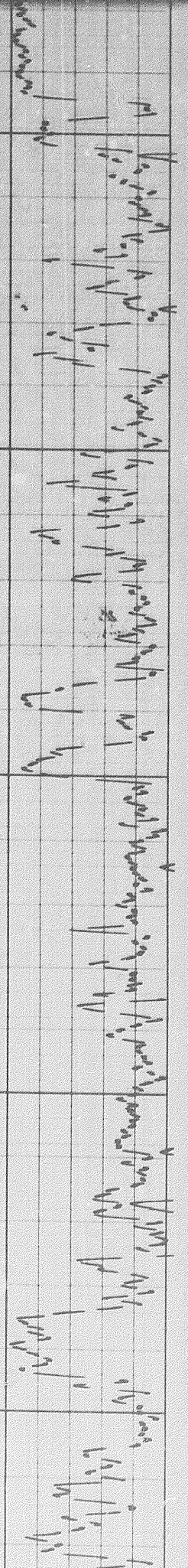
2900



2900

3000

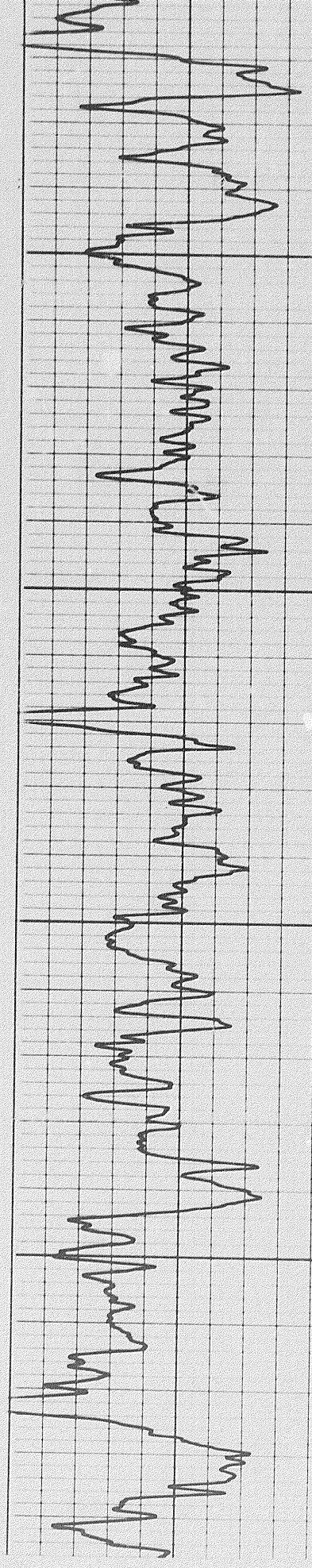
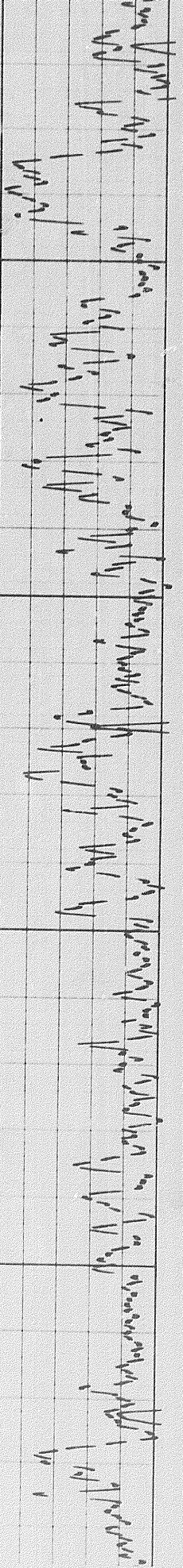




2900

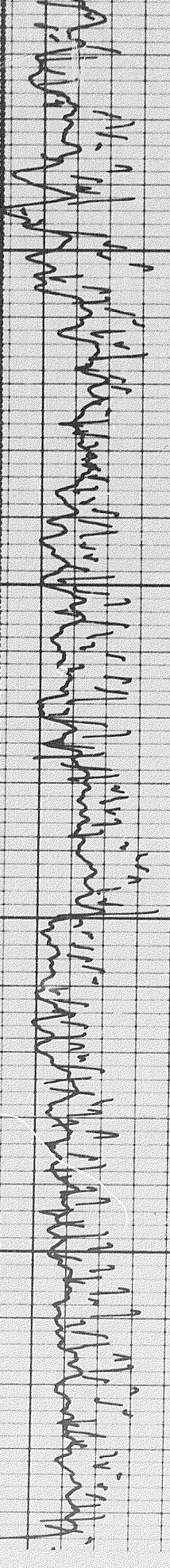
3000

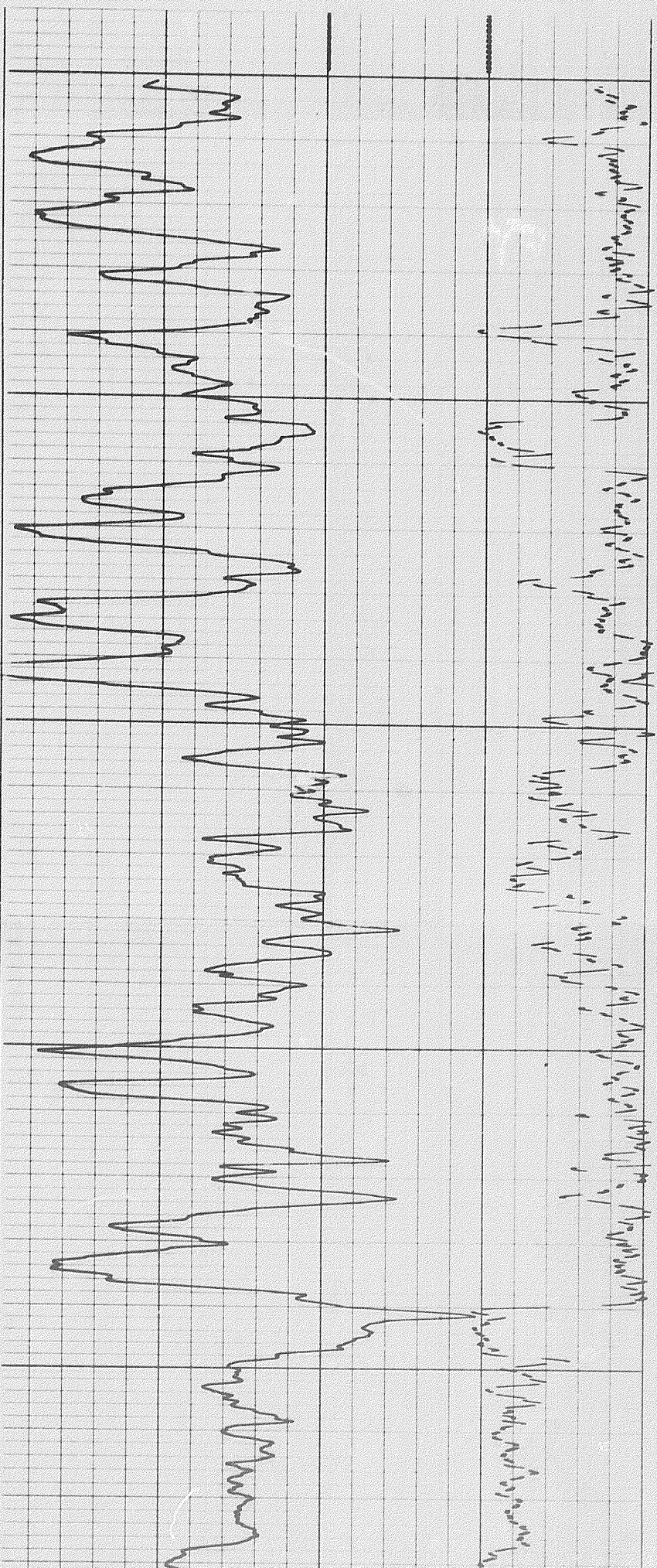
3100



3100

3200

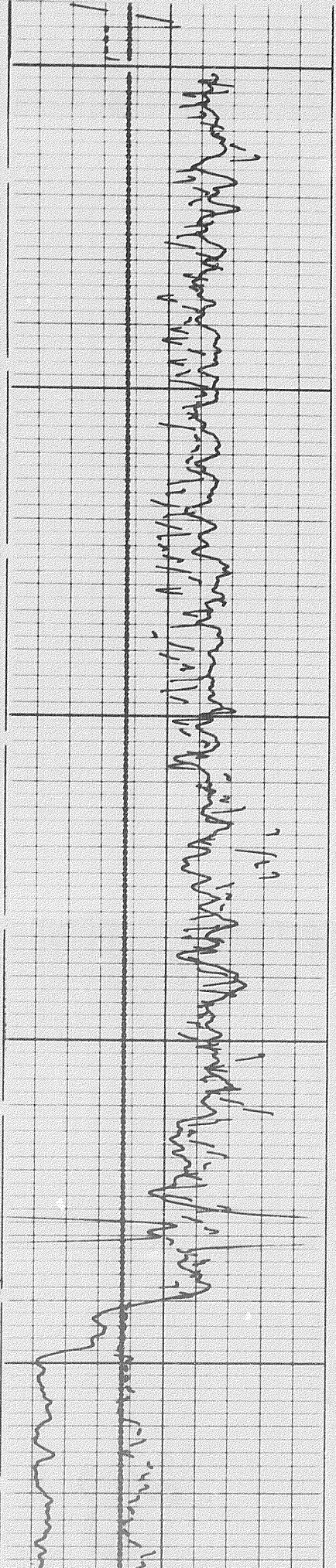




4500

4600

4700

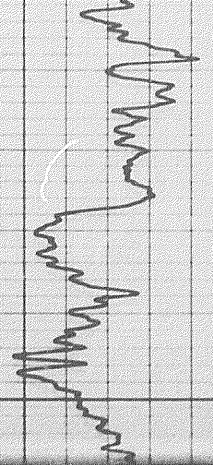


4500

4600

4700

Handwritten notes on the top-left page, including a vertical line and some illegible text.

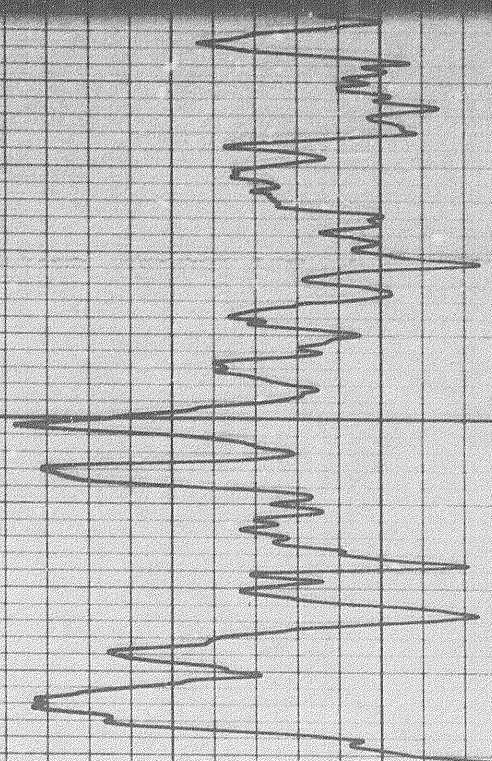


0

Handwritten notes on the top-right page, including a vertical line and some illegible text.

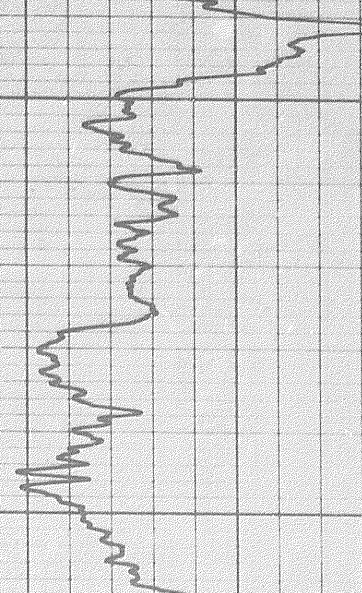


Handwritten notes on the middle-left page, including a vertical line and some illegible text.

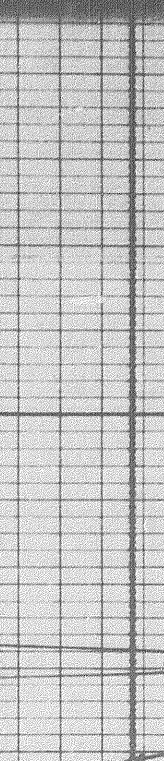


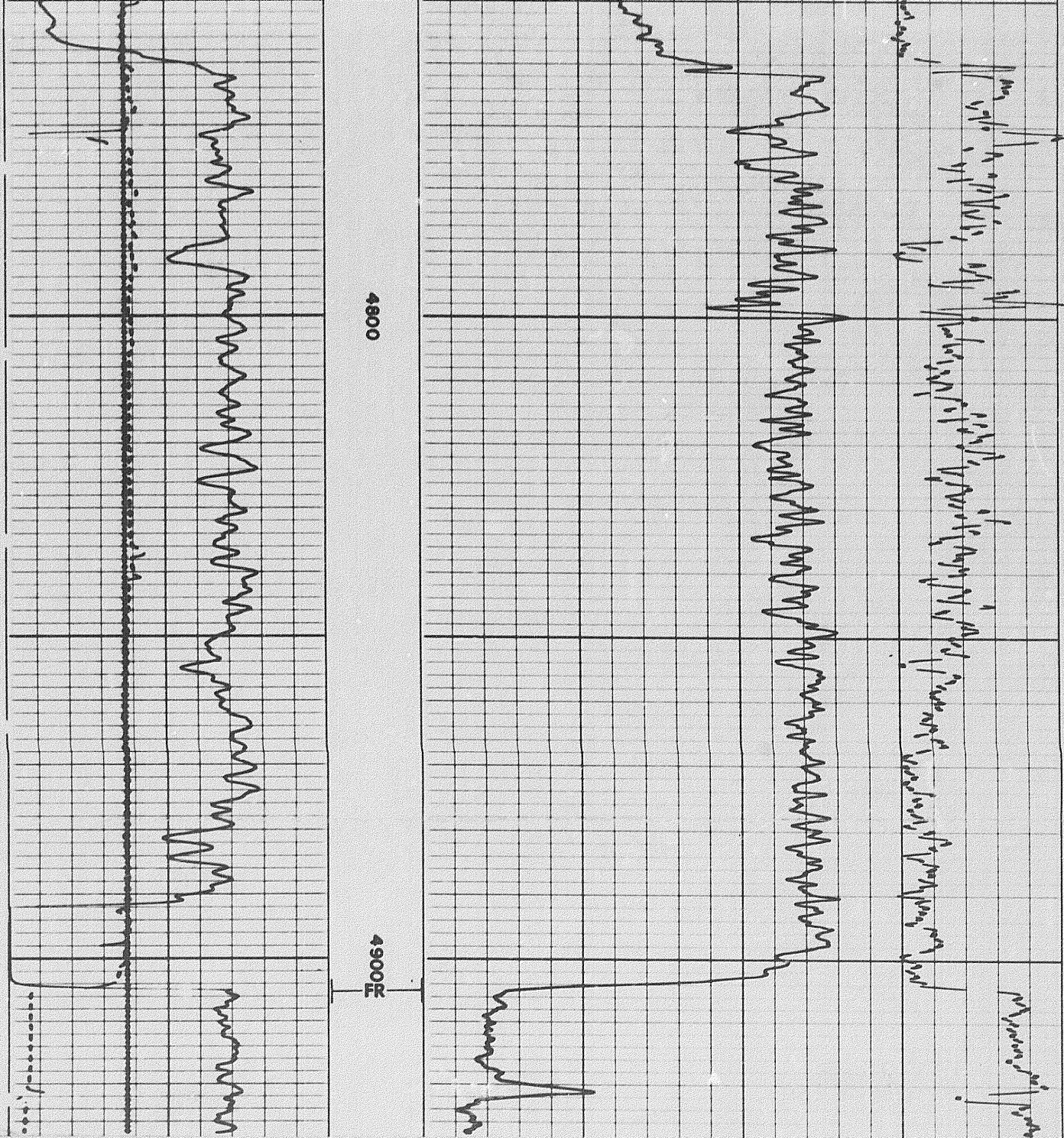
4700

Handwritten notes on the middle-right page, including a vertical line and some illegible text.

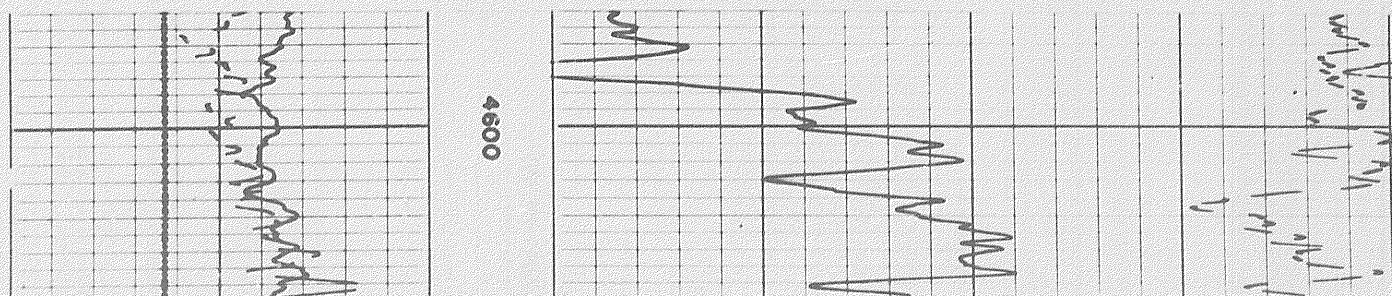


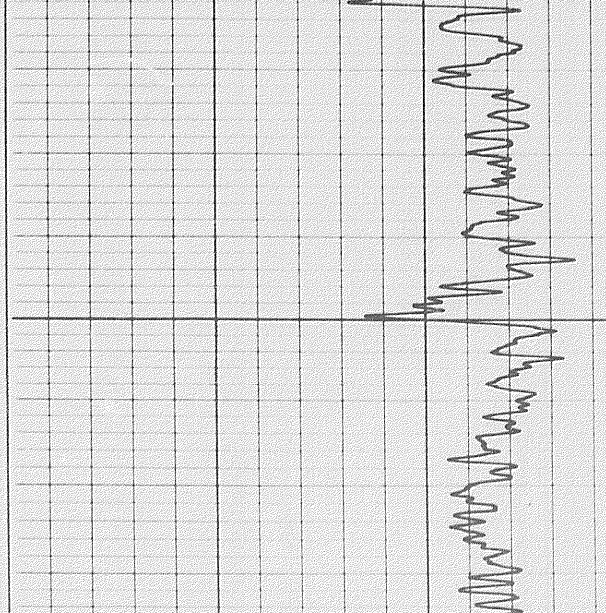
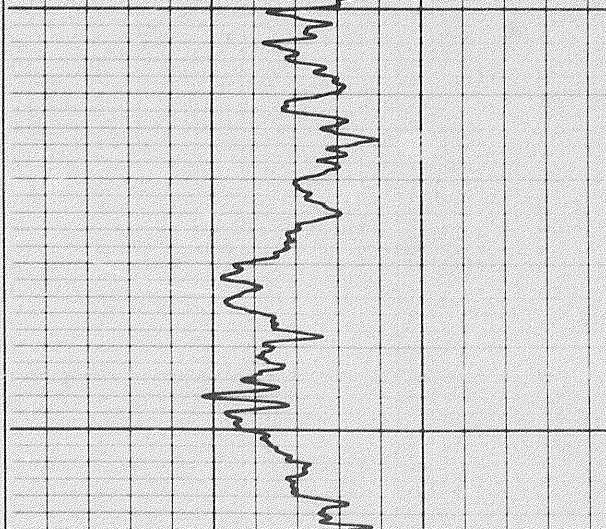
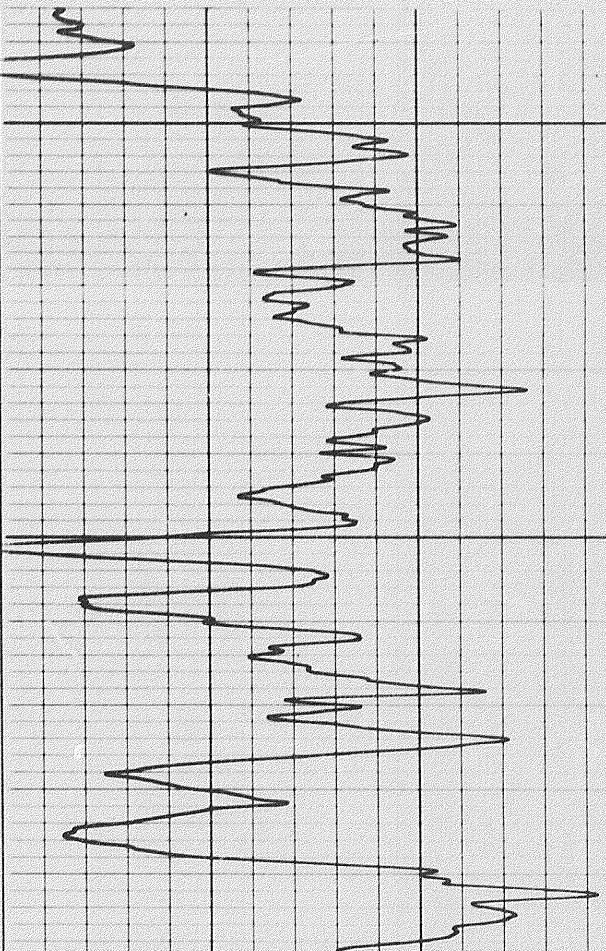
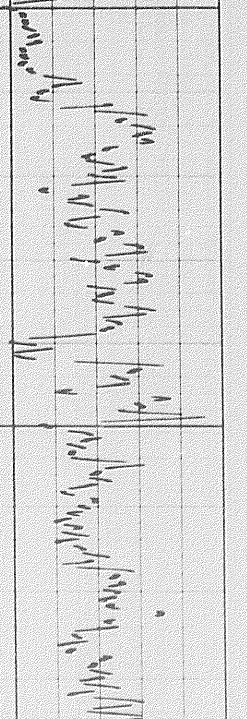
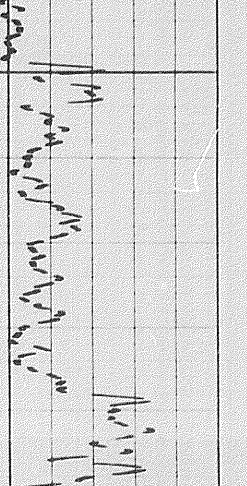
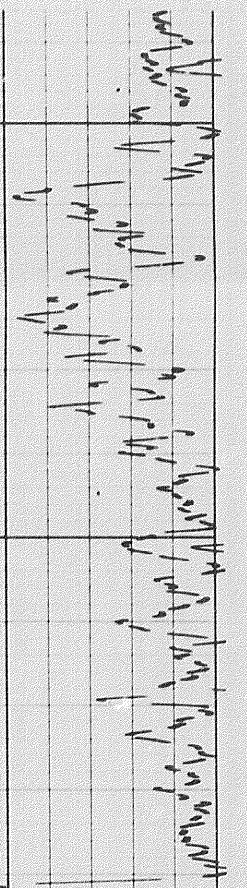
Handwritten notes on the bottom-left page, including a vertical line and some illegible text.





REPEAT SECTION

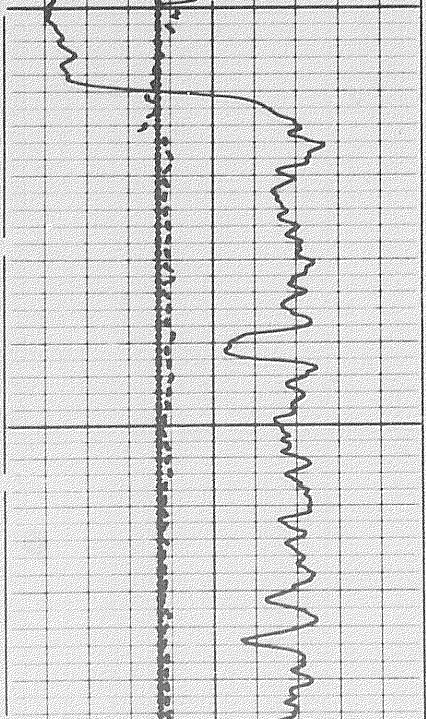
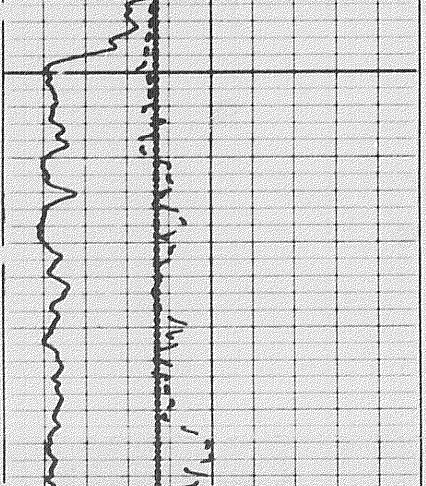
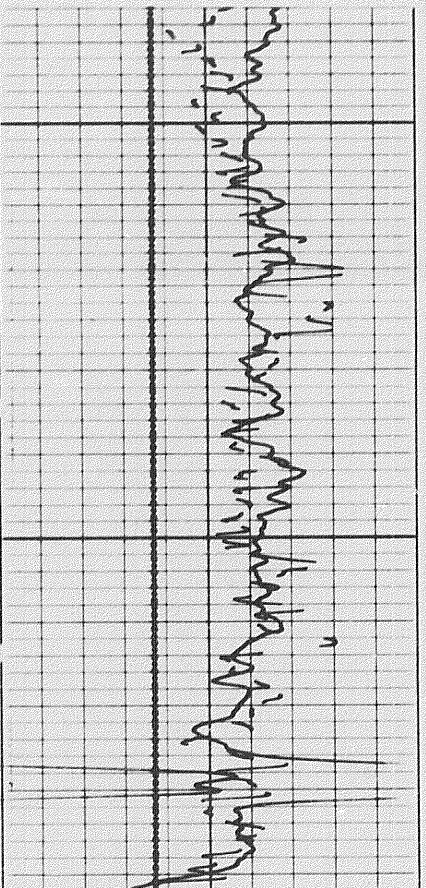


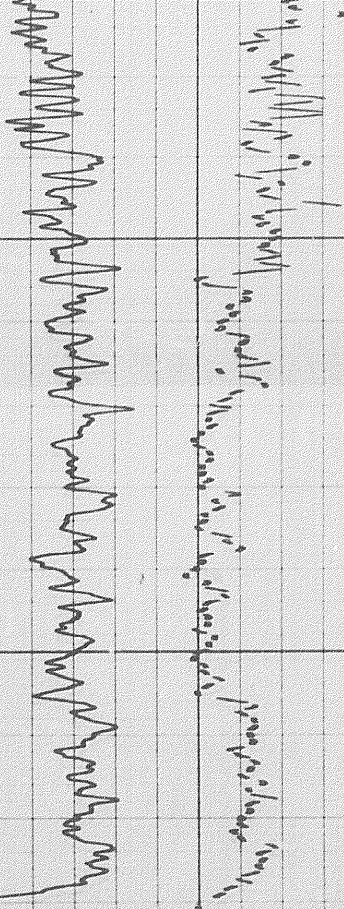


4600

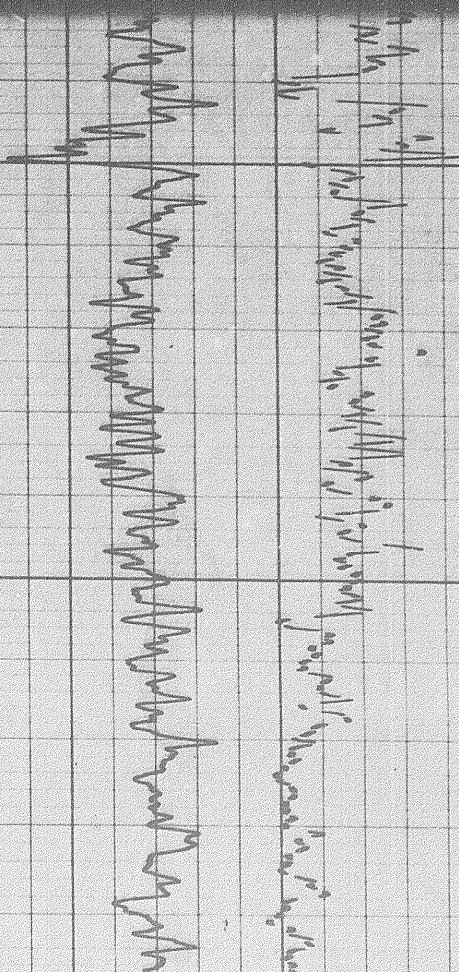
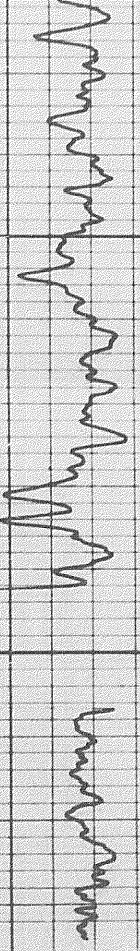
4700

4800

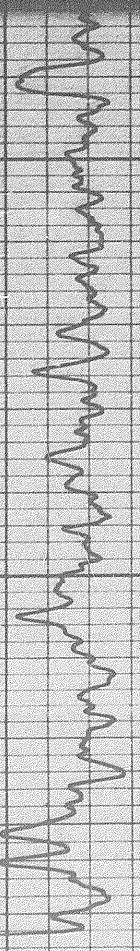


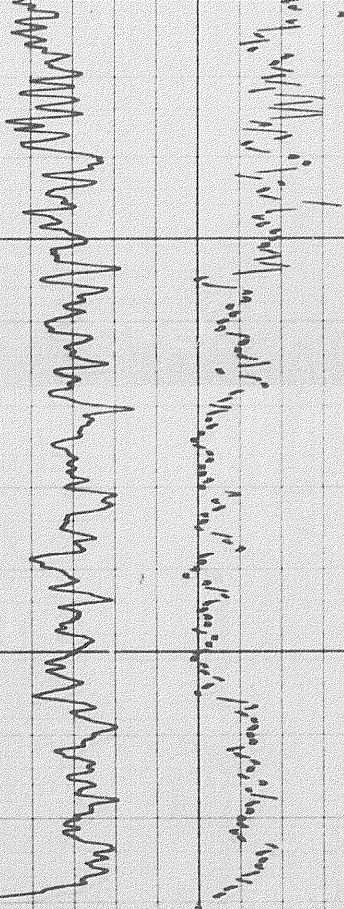


4900E

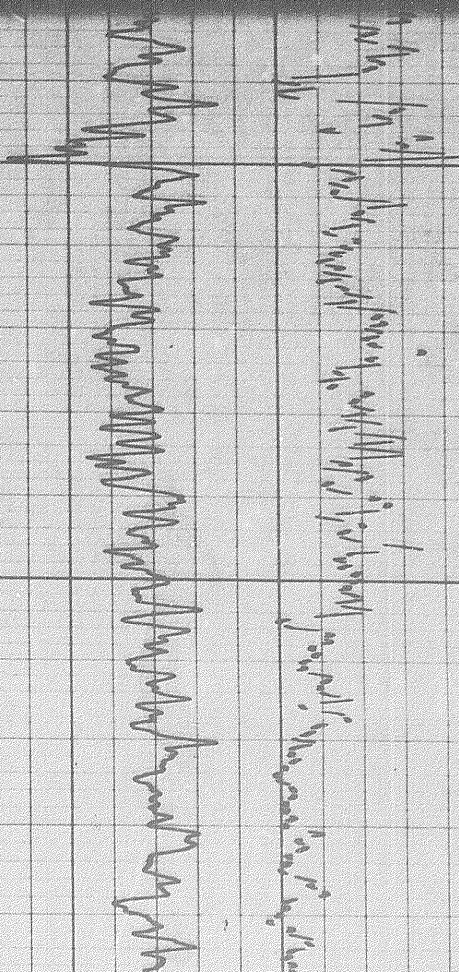
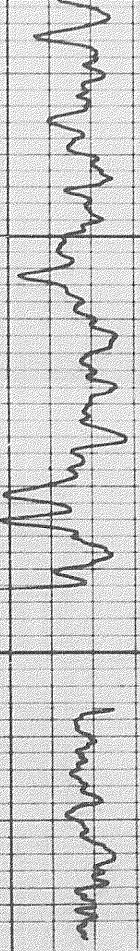


4800

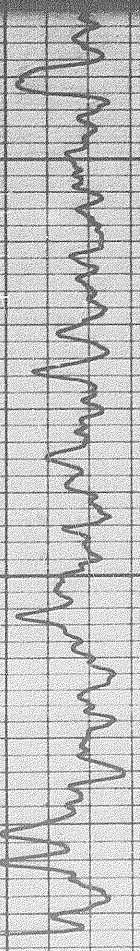




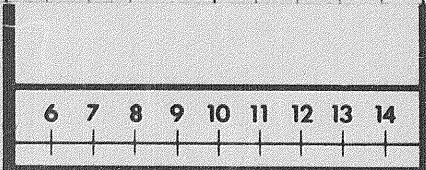
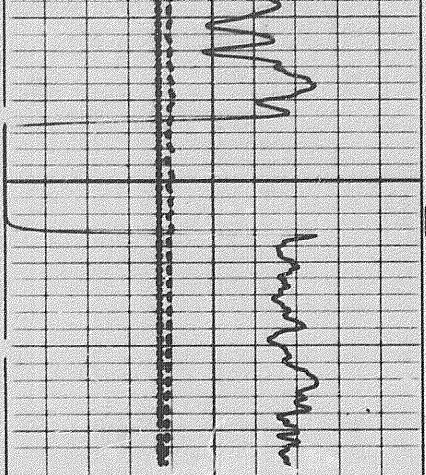
4900E



4800



4900



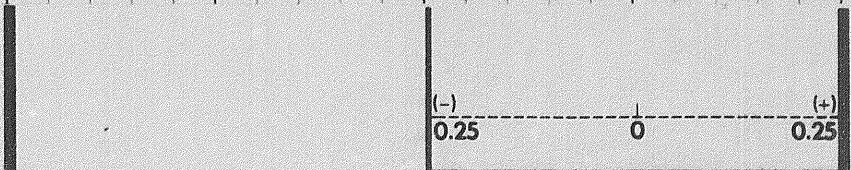
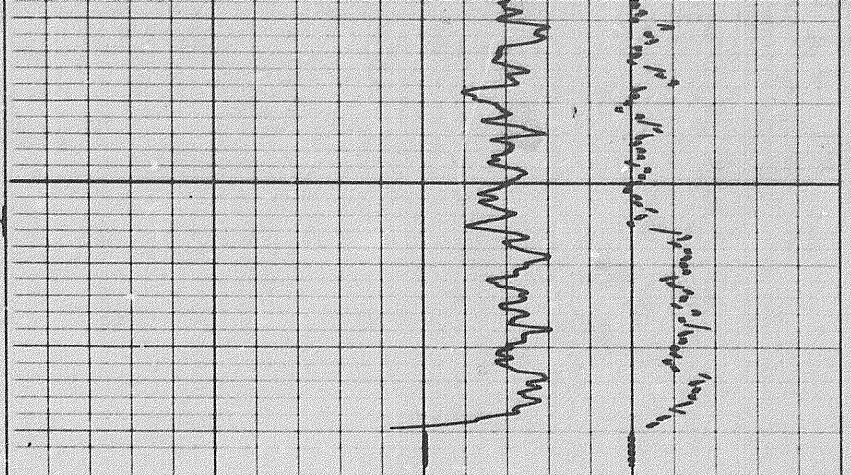
CALIPER
hole diameter in inches

Sens. 150 T.C. 2
Zero 0 div. to left

0 150
150 300

GAMMA RAY
API UNITS

DEPTHS



DENSITY CORRECTION
Δρ - gm/cc

2.0 2.5 3.0

BULK DENSITY
ρ_b - gm/cc

DETAIL LOG
5" = 100'

CALIPER
hole diameter in inches

Sens. 150 T.C. 2
Zero 0 div. to left

0 150
150 300

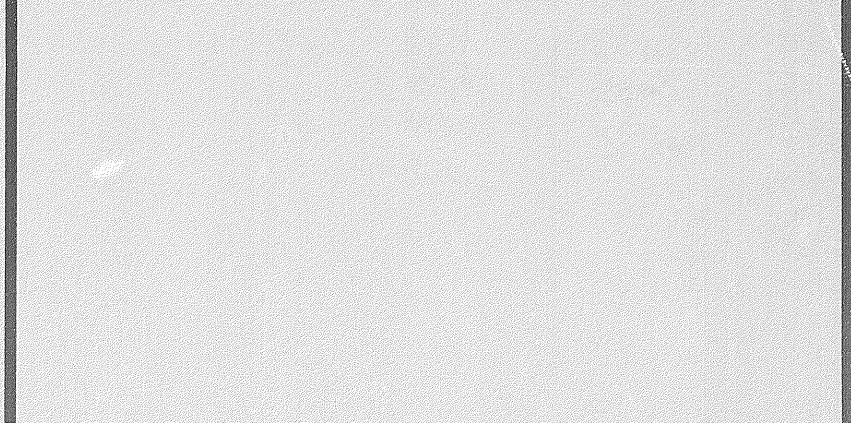
GAMMA RAY
API UNITS

DEPTHS

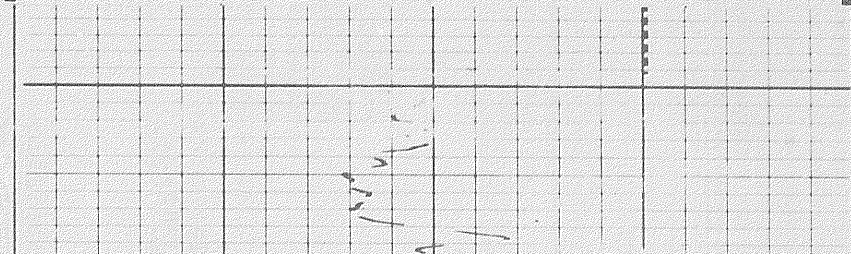
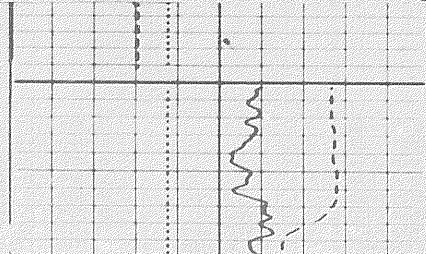
POROSITY (%)

SANDSTONE

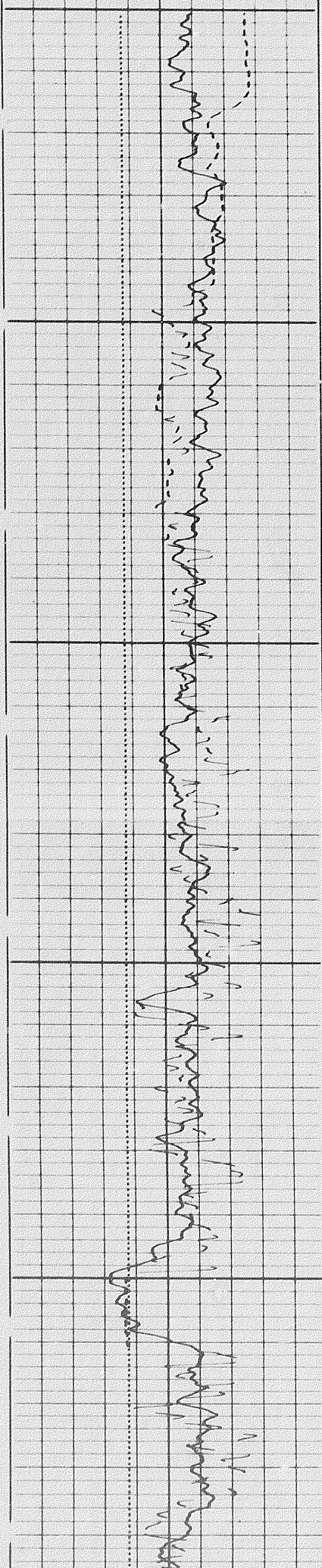
45 30 15 0 -15



1500



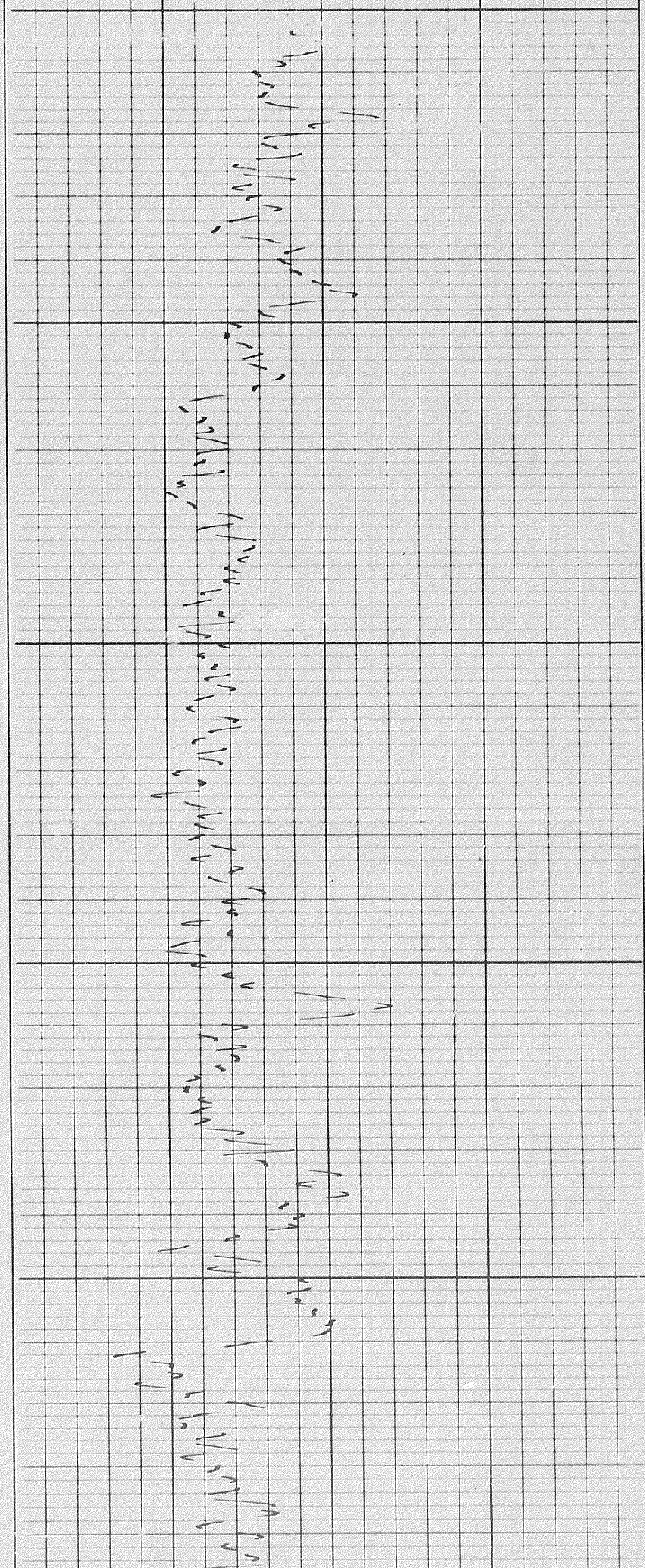
62

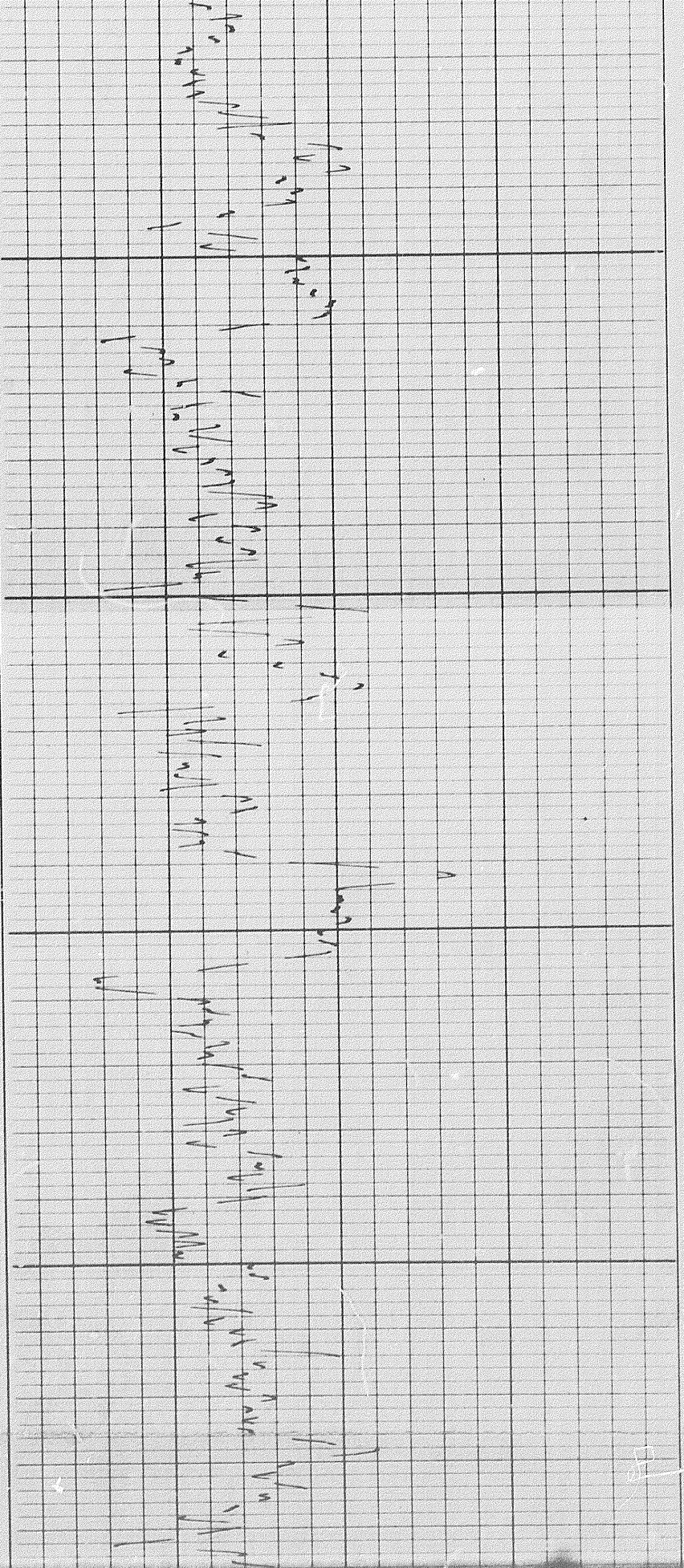


1500

1600

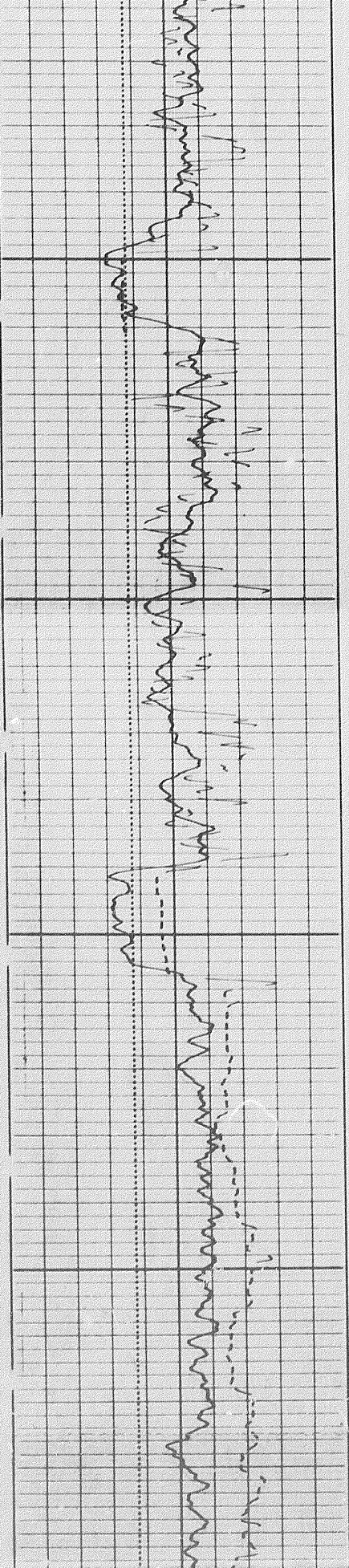
1700

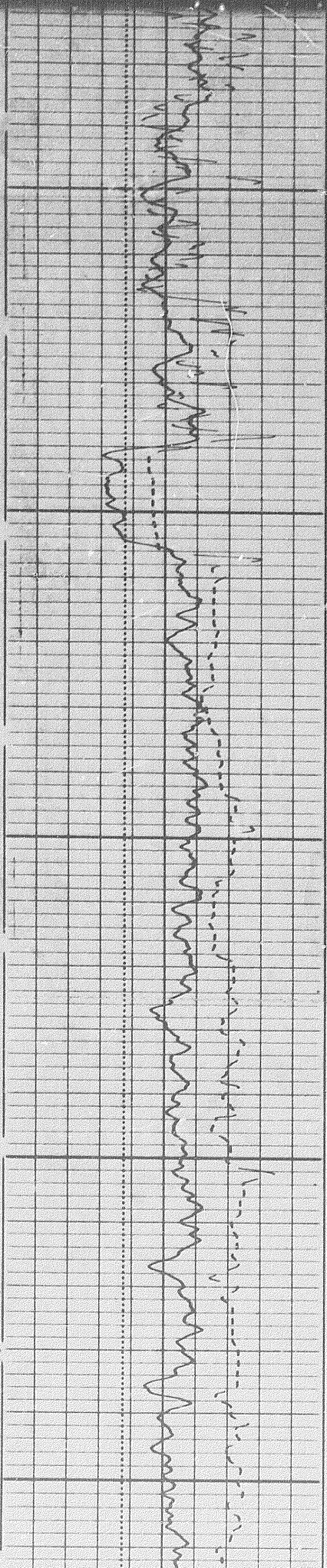




1700

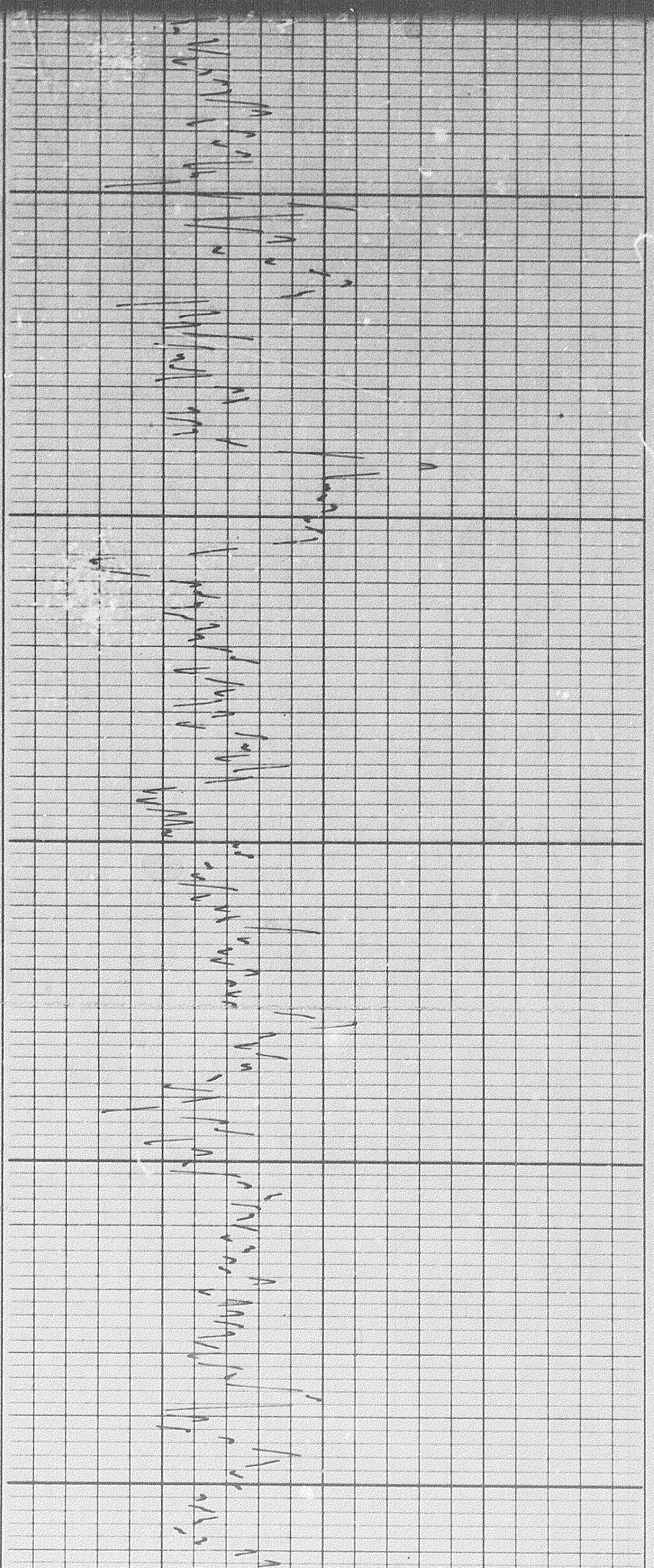
1800

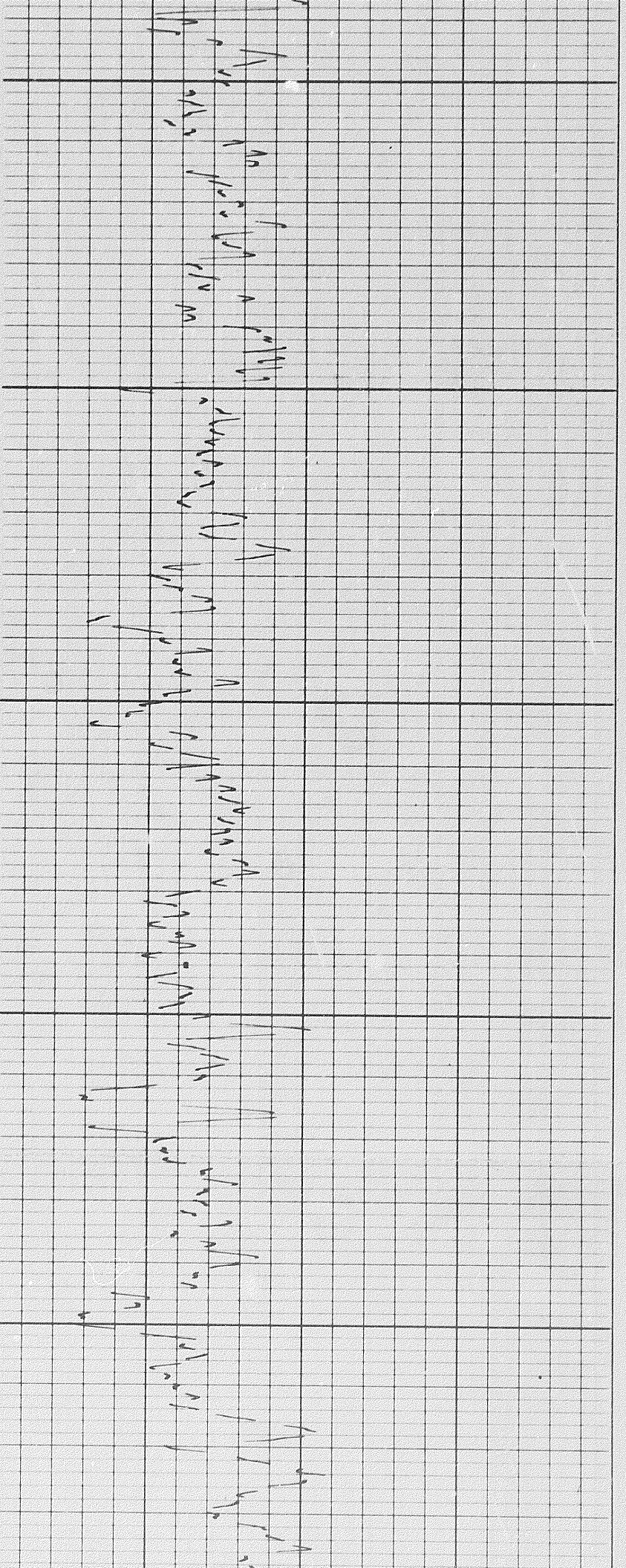




1500

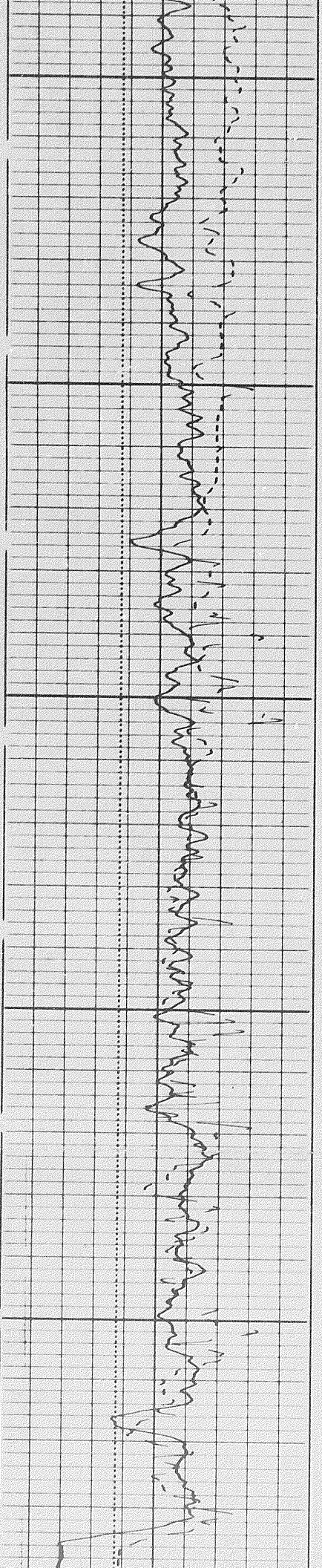
1900

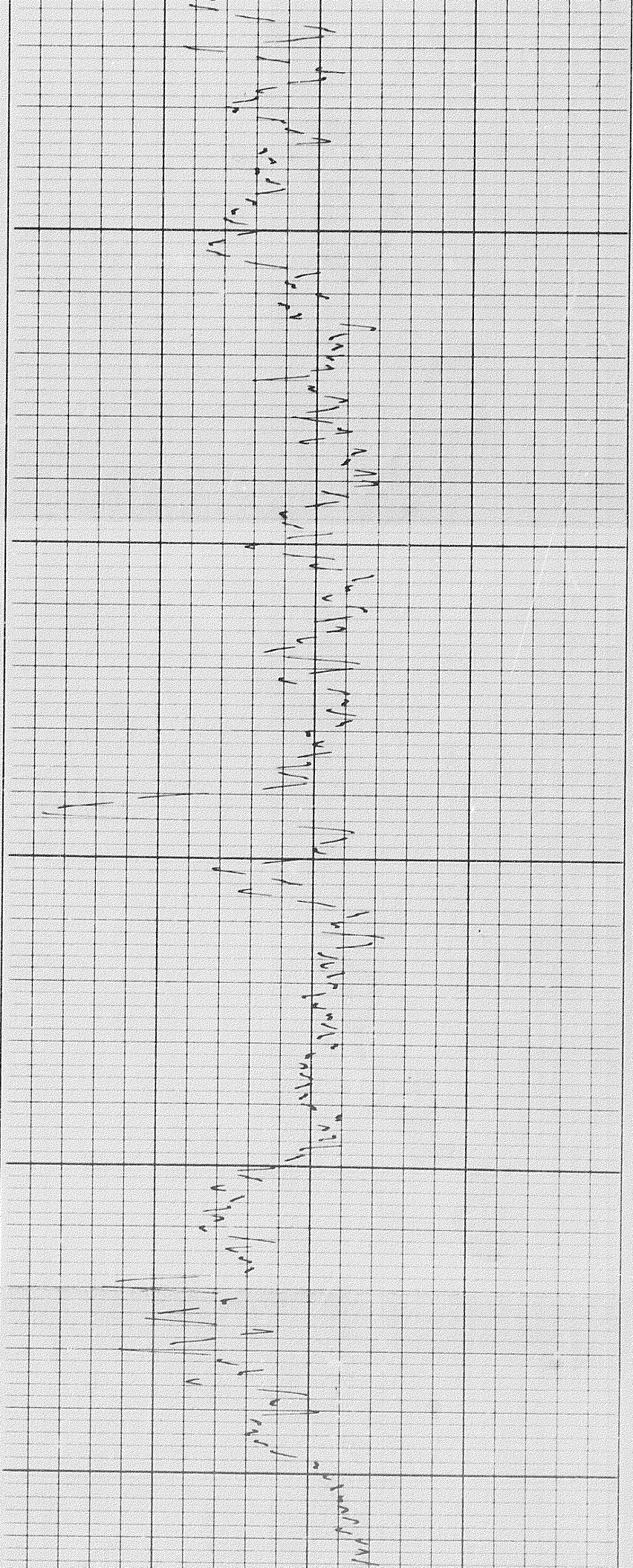




2000

2100



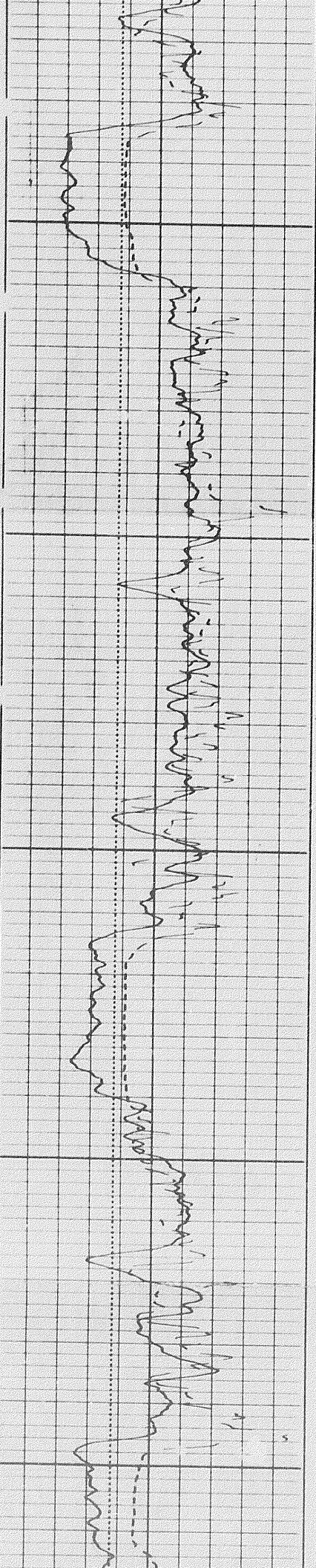


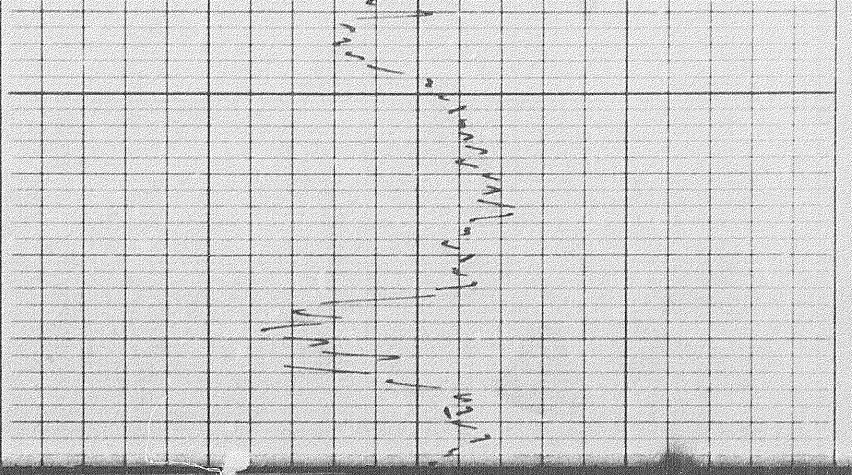
2200

2300

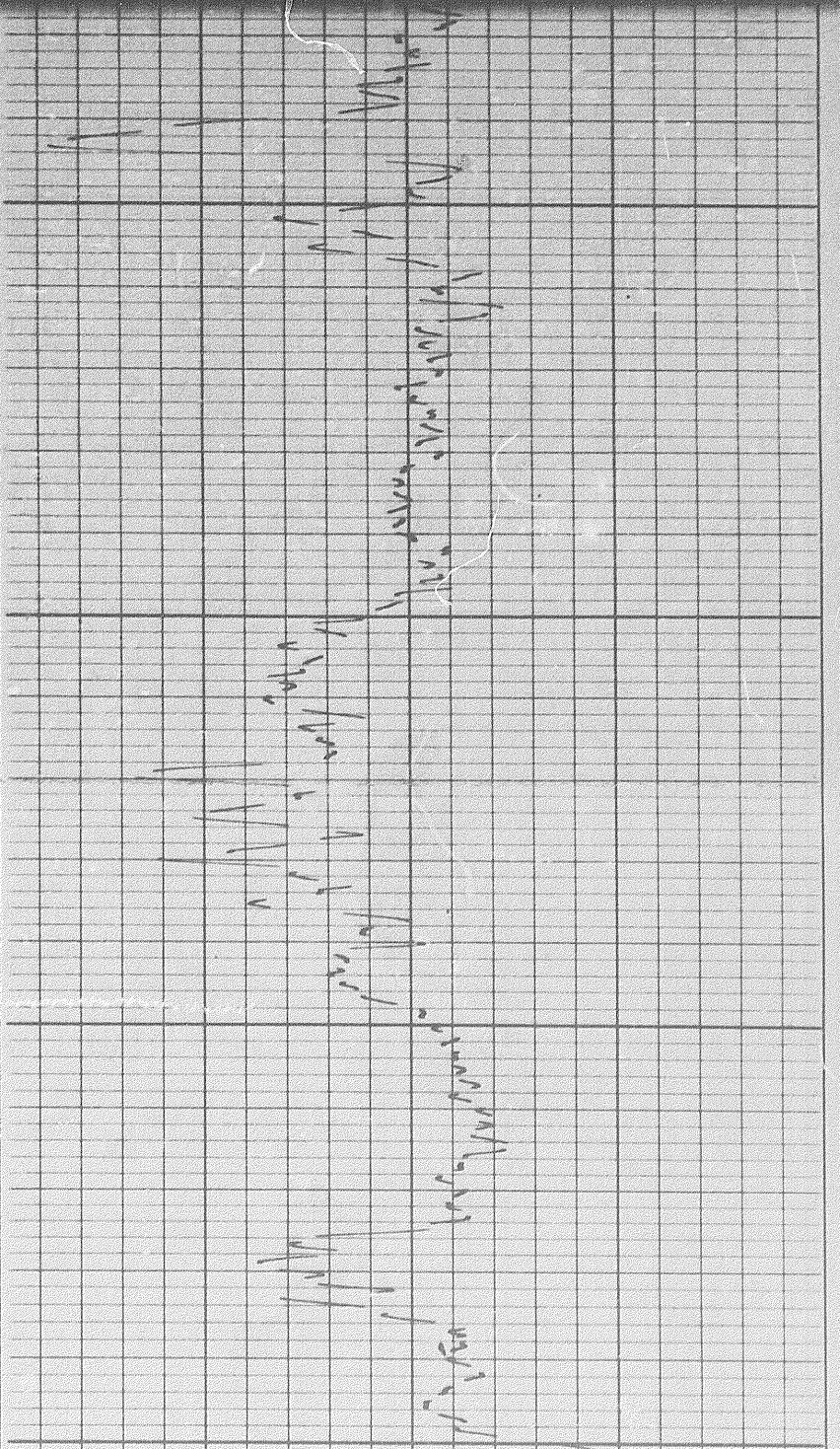
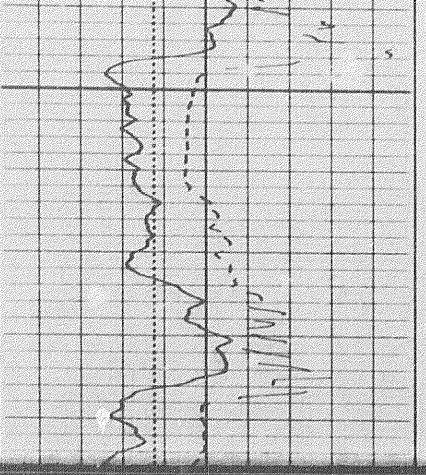
2

2400

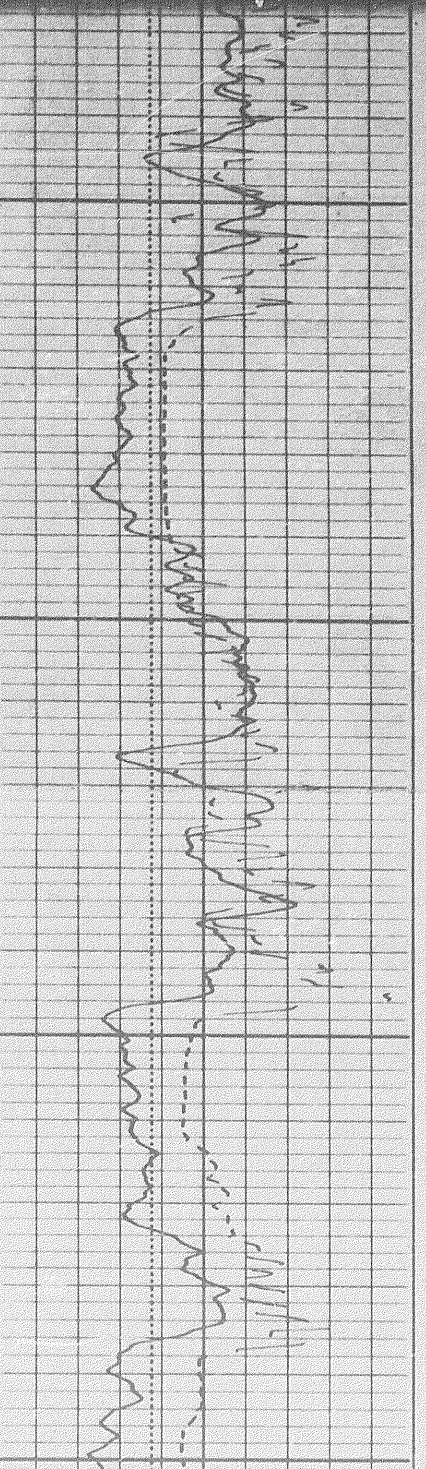


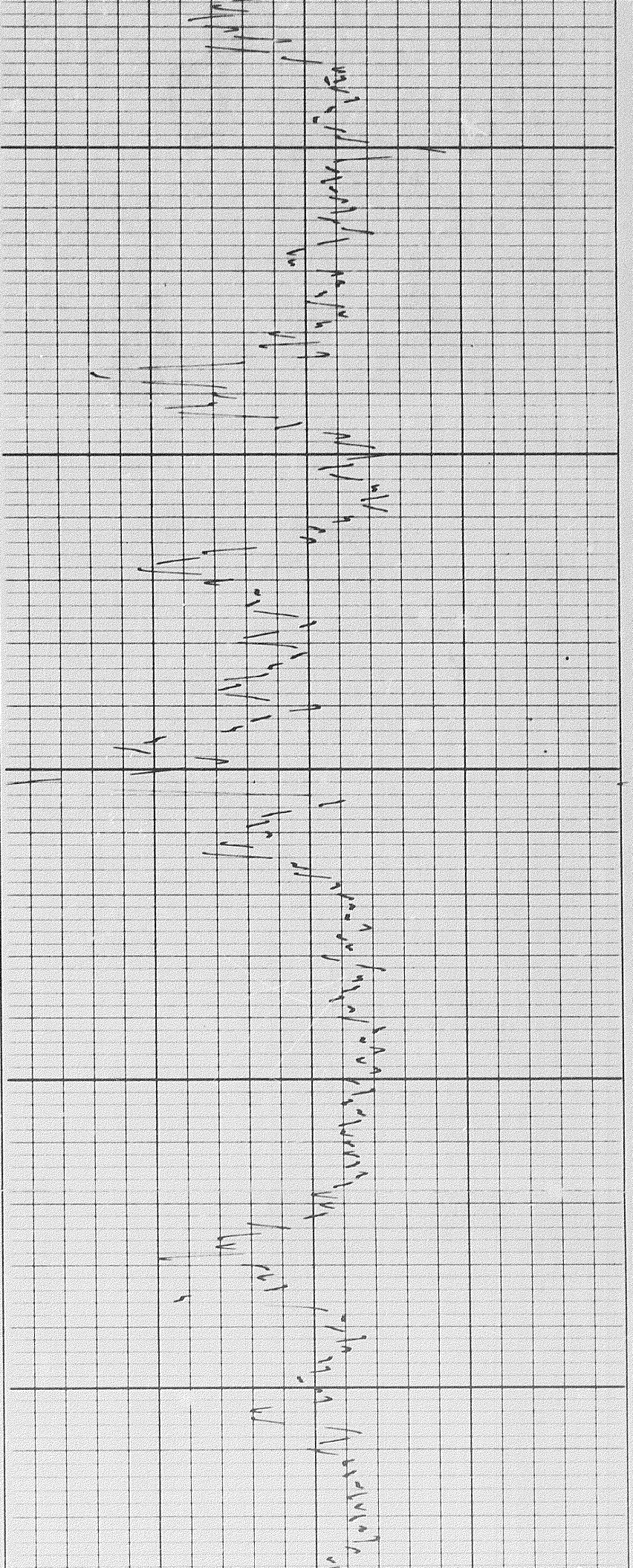


2400



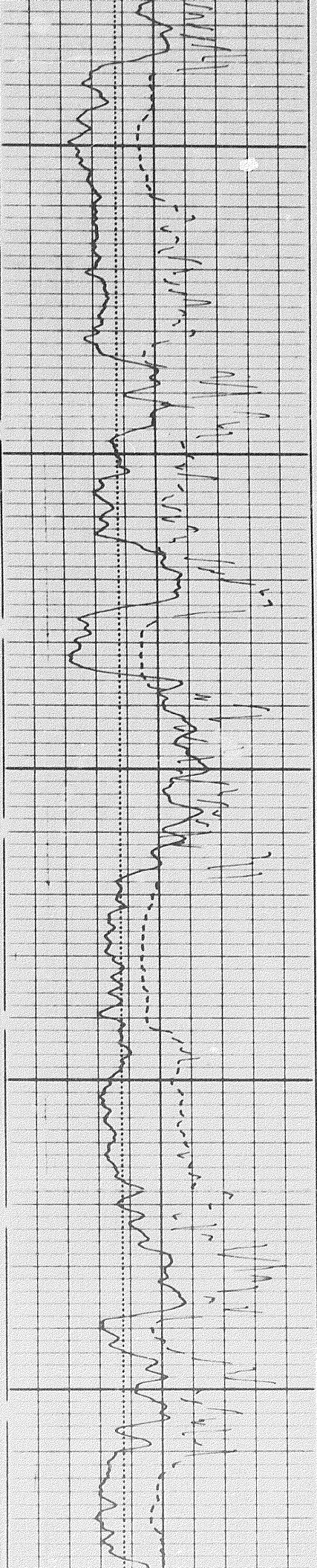
2300

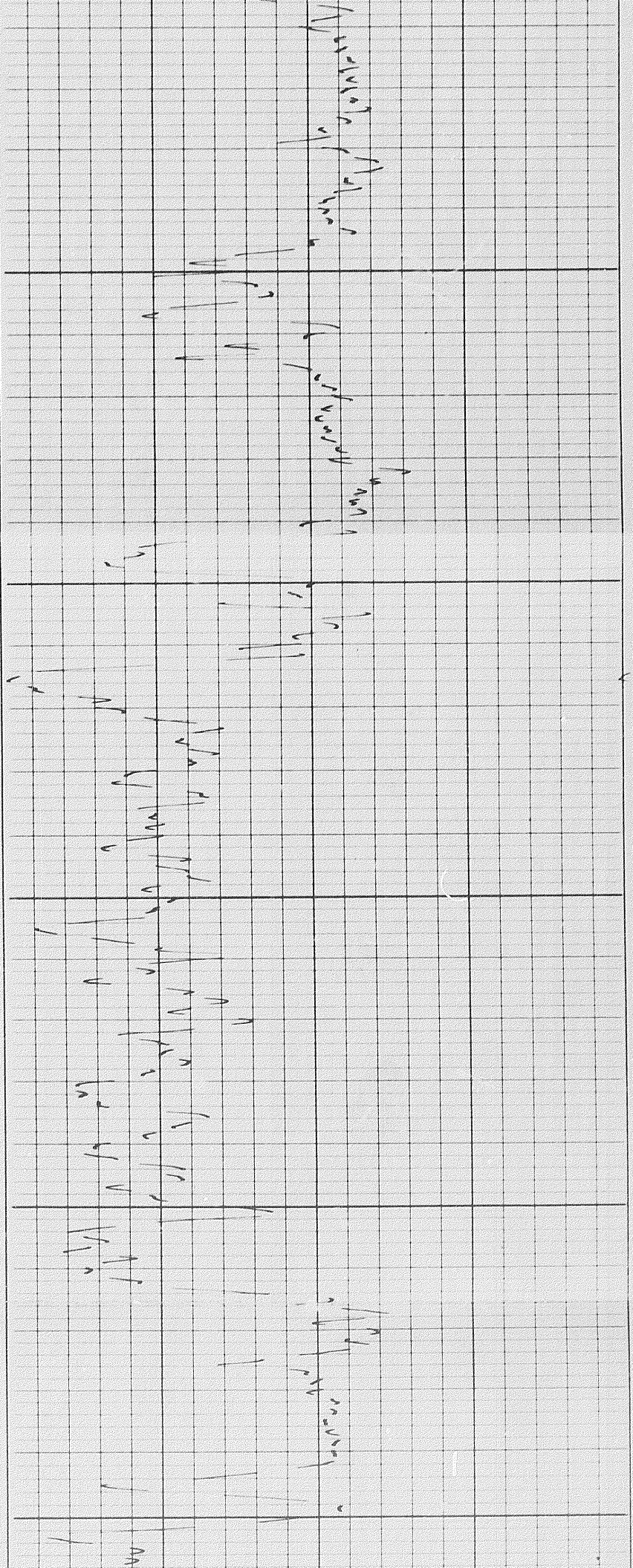




2500

2600

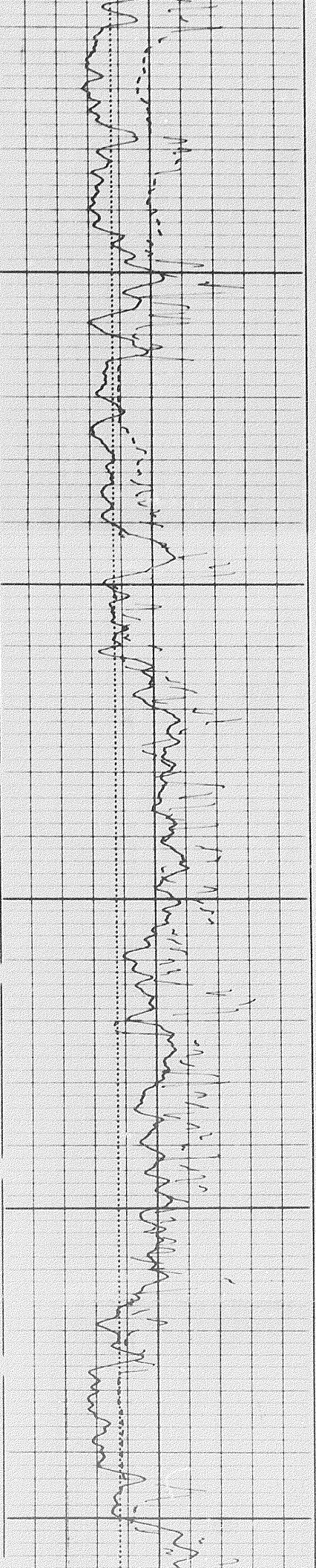


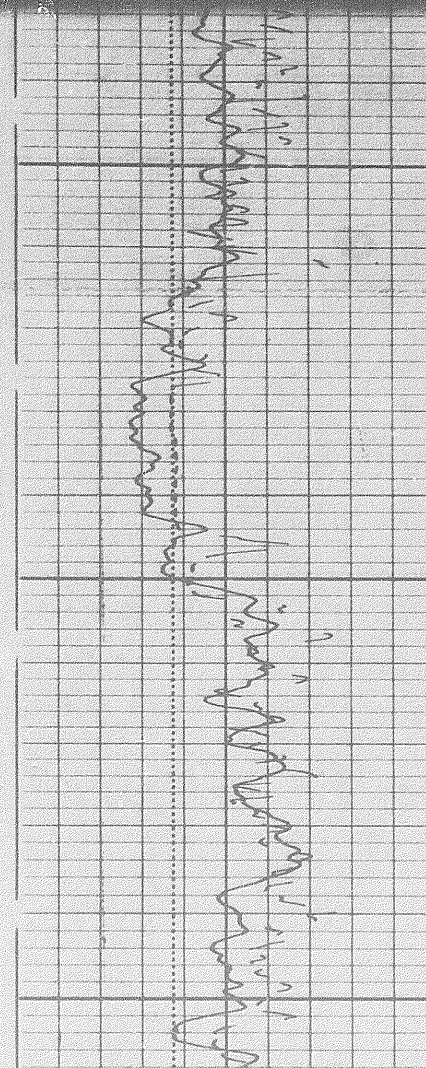
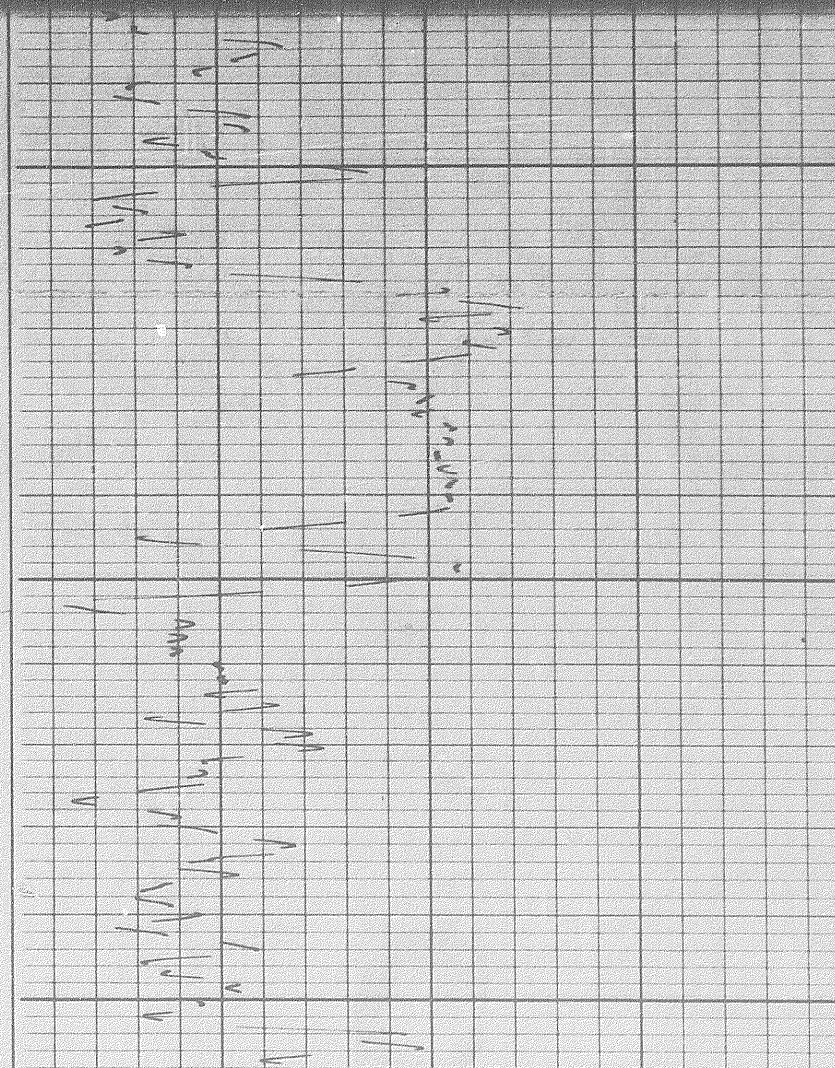
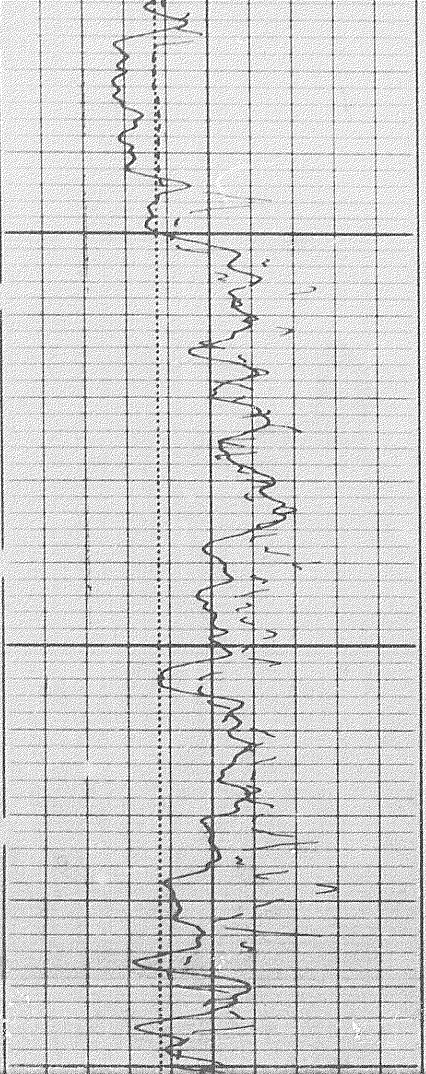
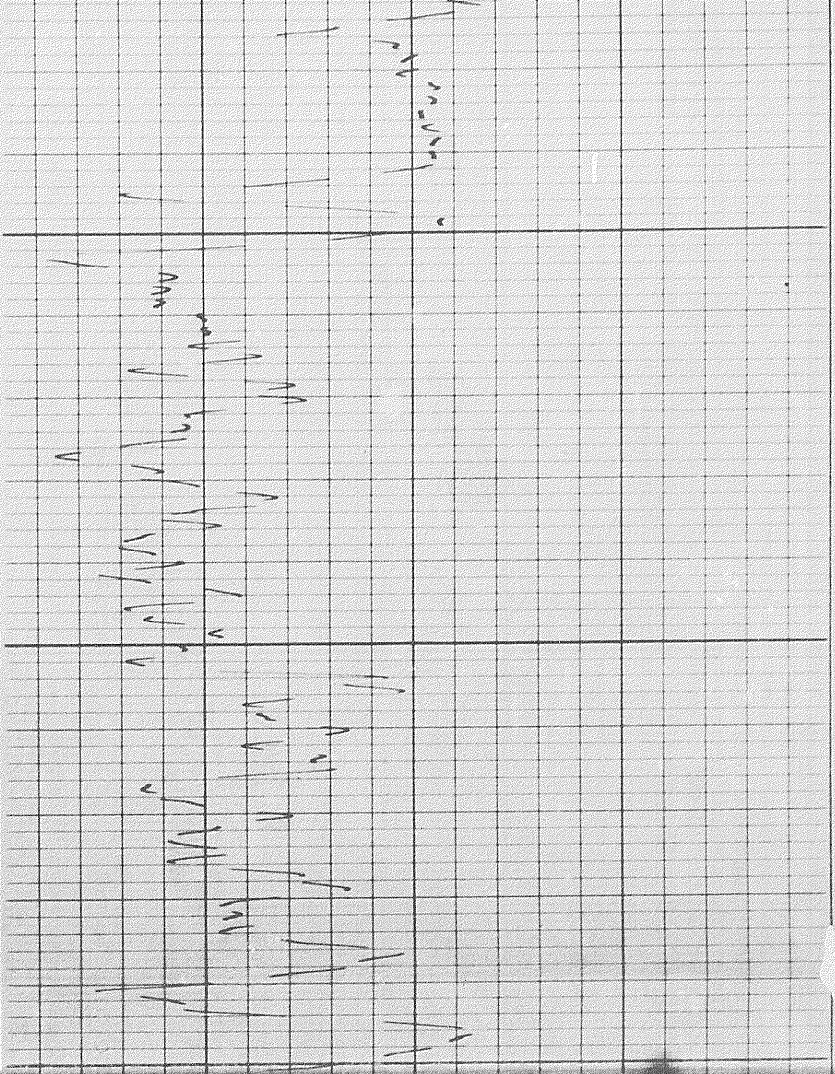


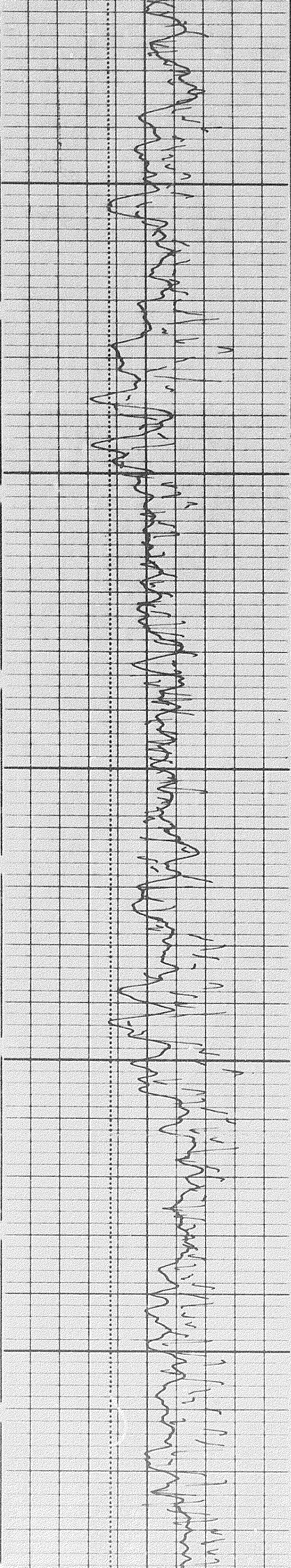
2700

2800

2900

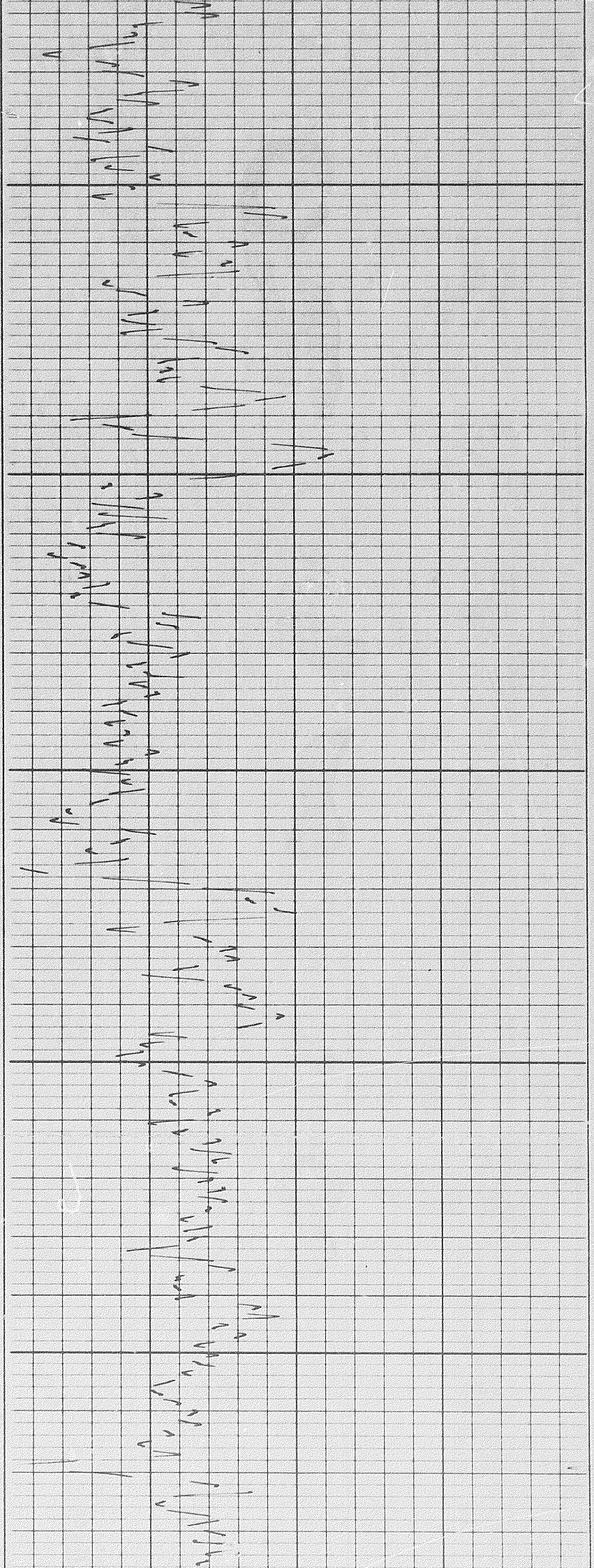


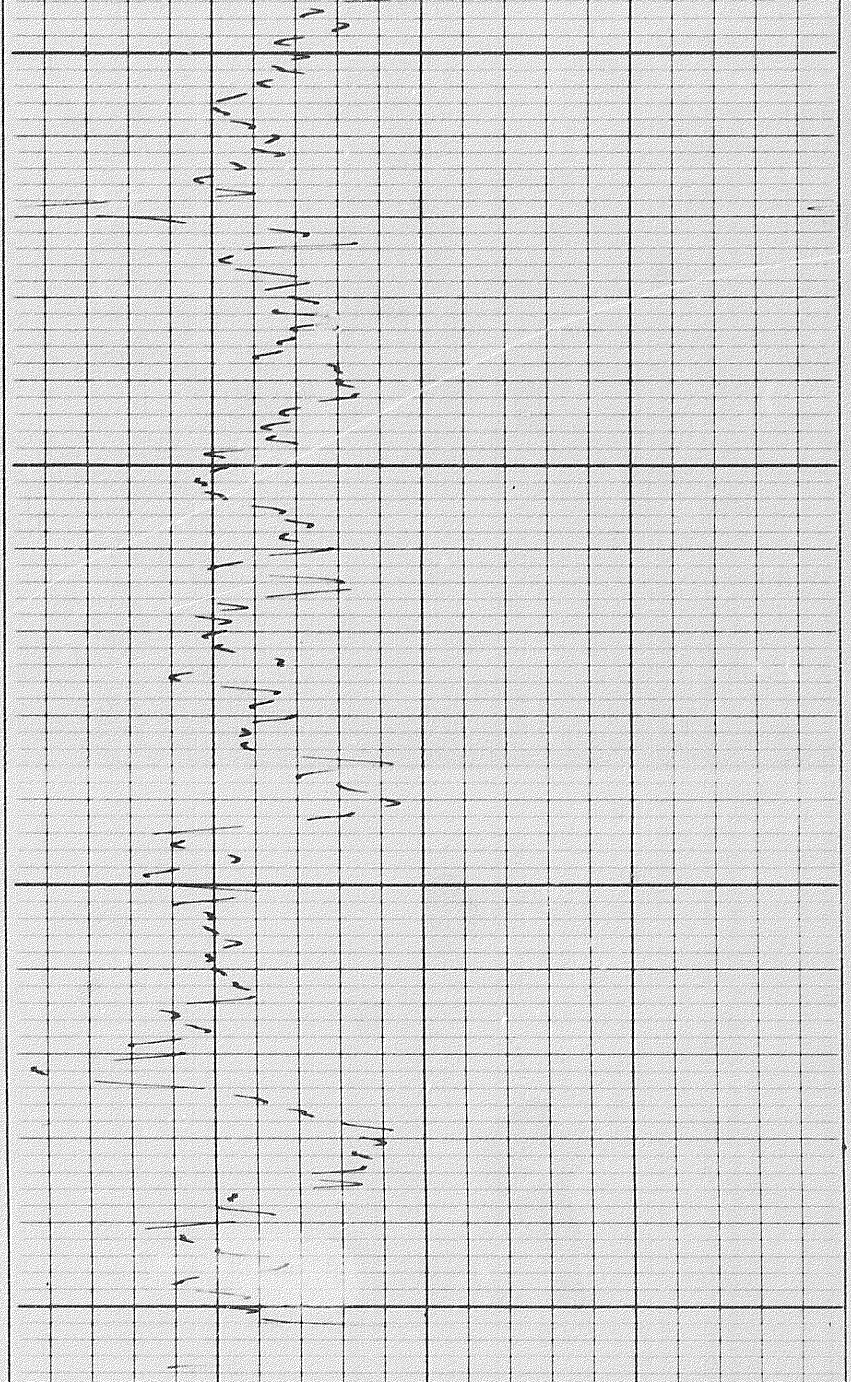




3000

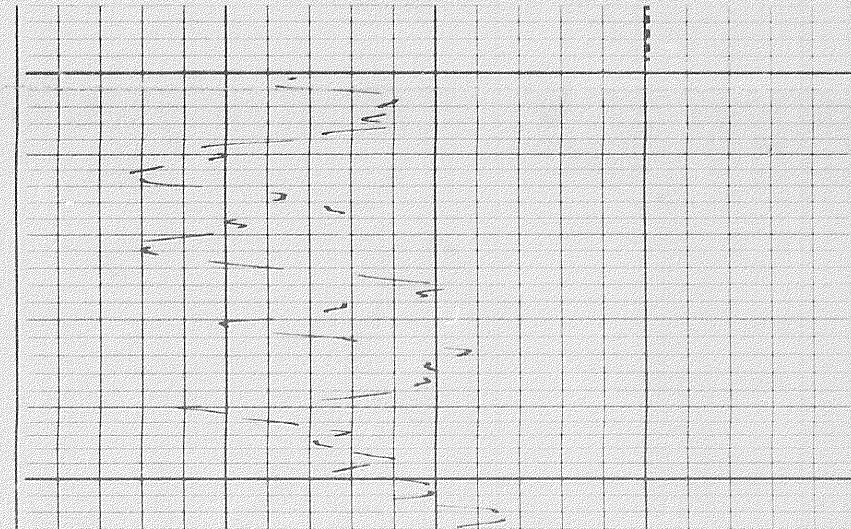
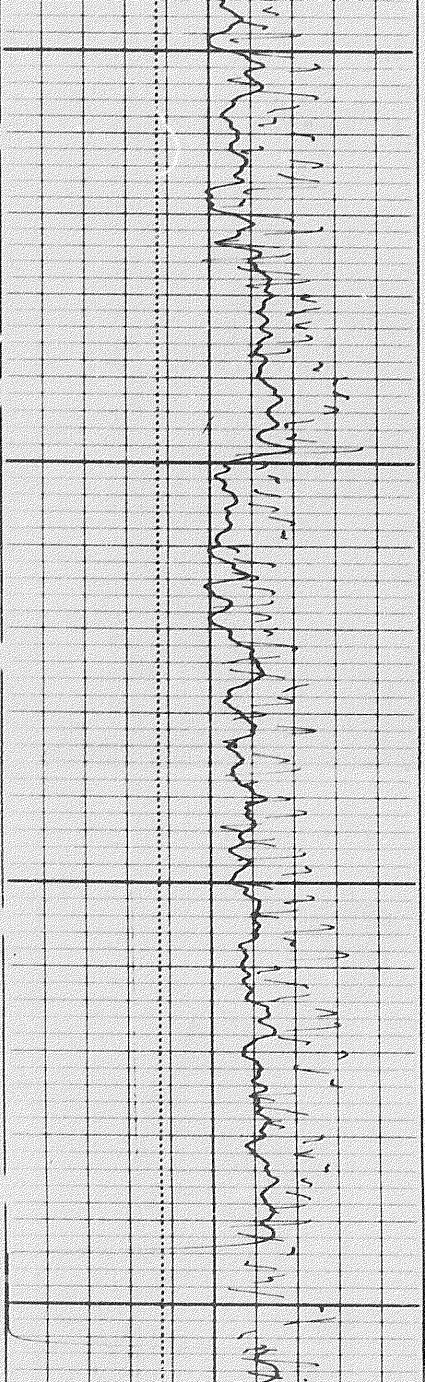
3100



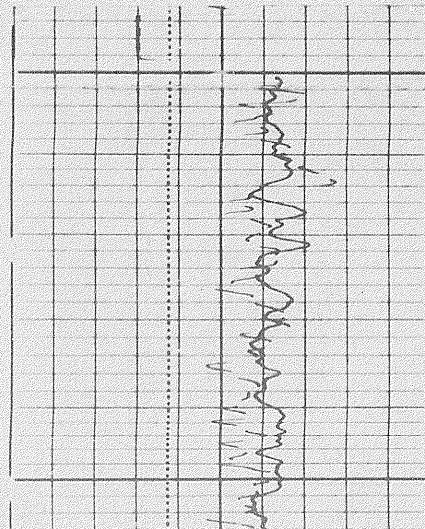


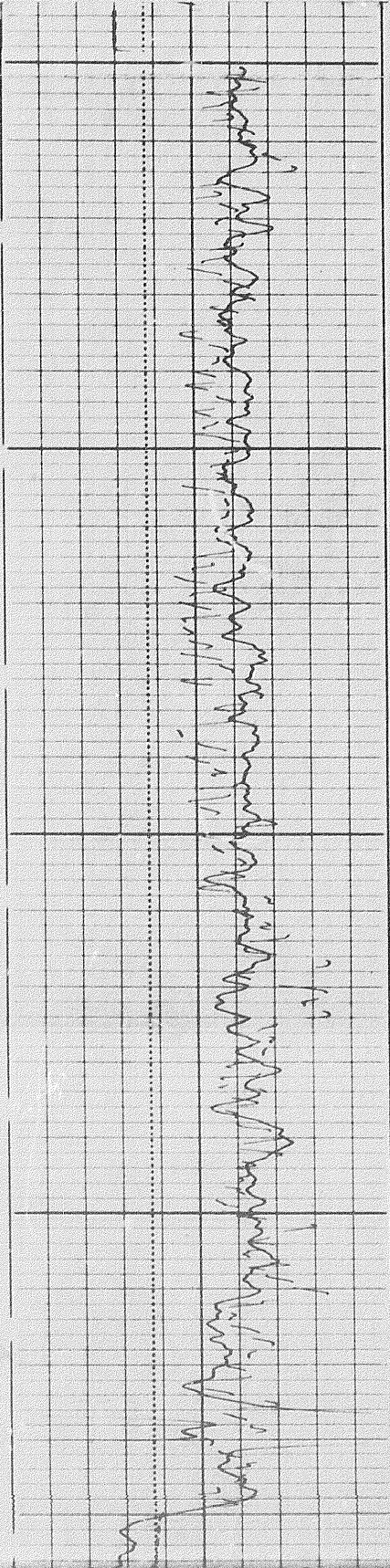
3200

3300



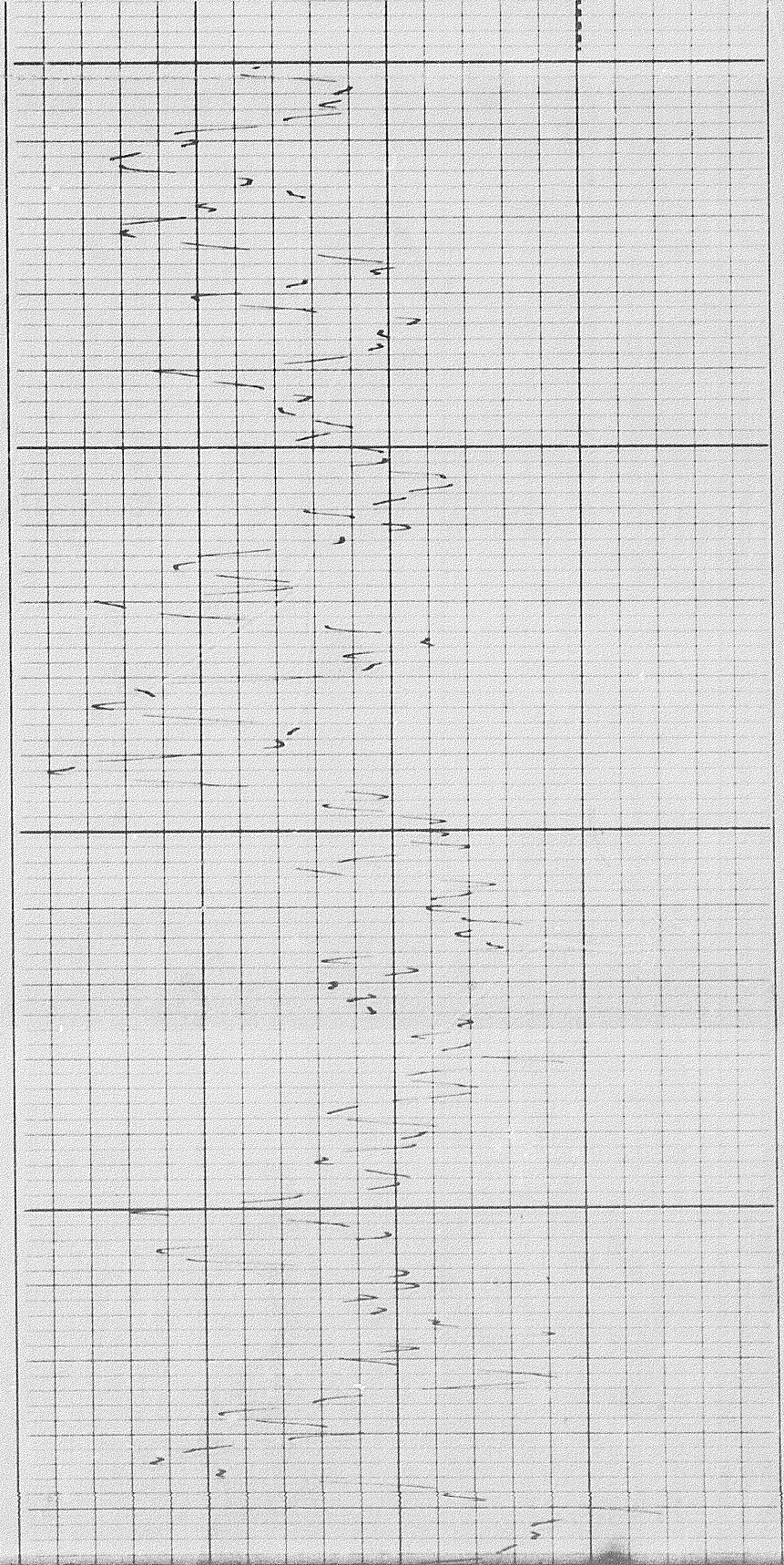
4500

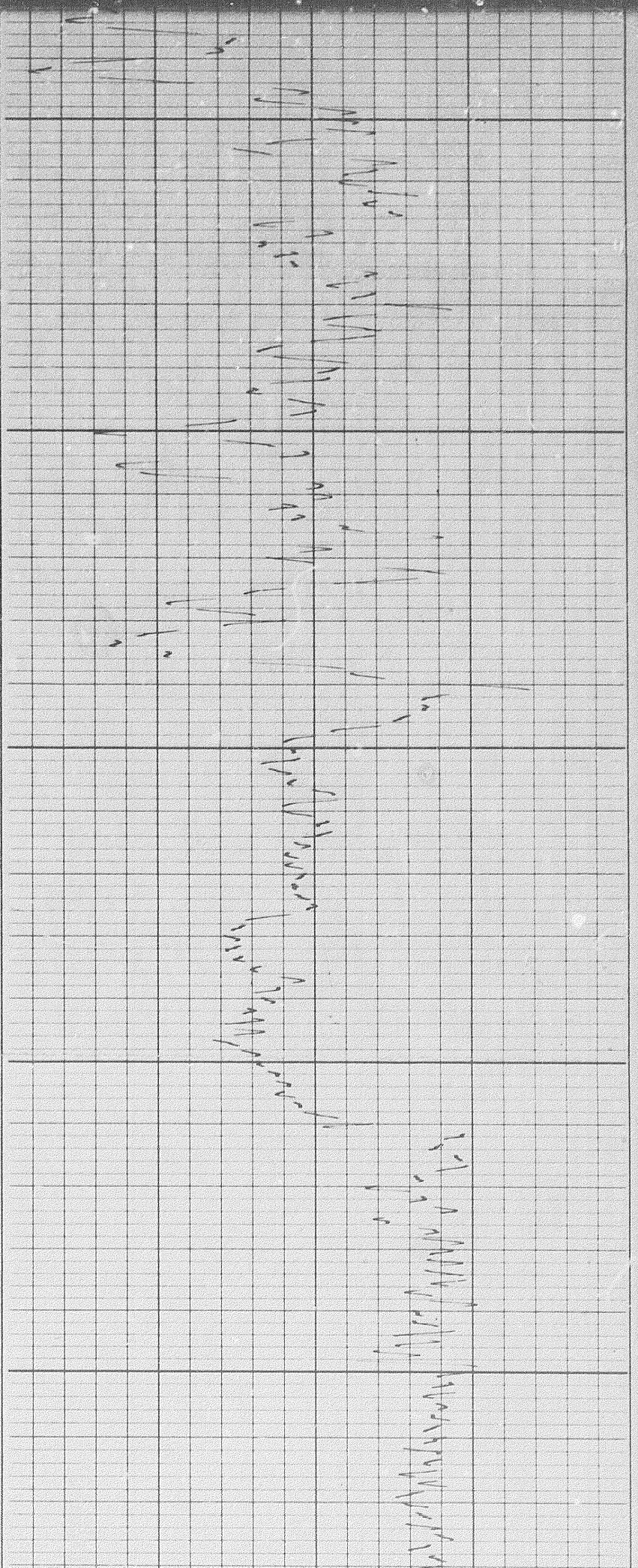




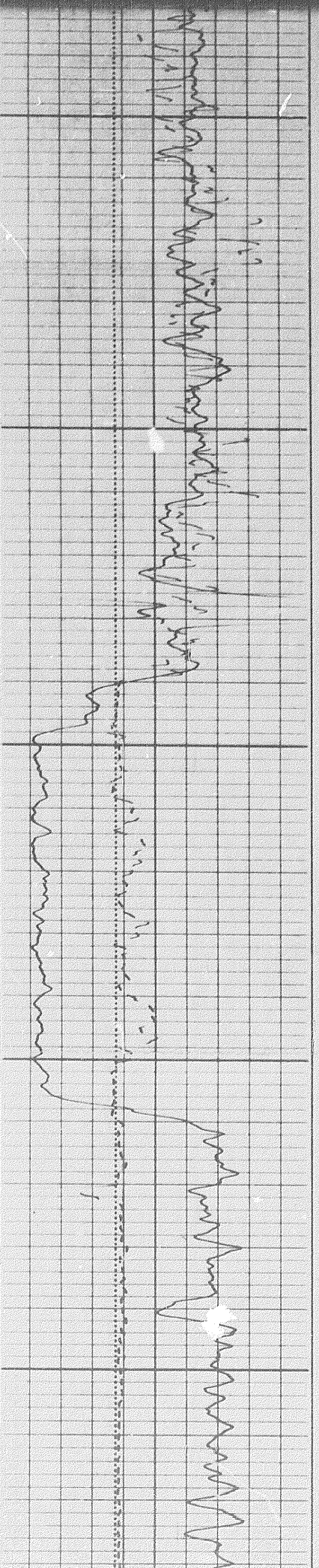
4500

4600





4600

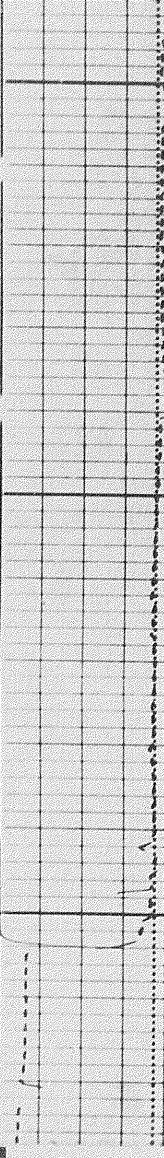
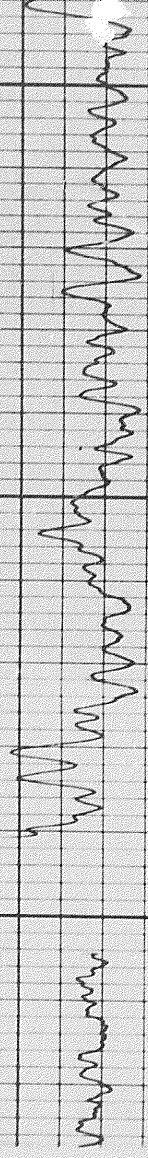
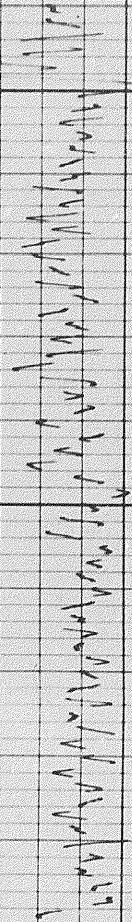


4700

4800

4800

4900



Handwritten notes on the grid, possibly indicating specific data points or observations related to the waveform above.

Sens.	150	T.C.	2
Zero	0	div. to left	
0		150	
150		300	

GAMMA RAY
API UNITS

6 7 8 9 10 11 12 13 14

Speed in fpm

45 30 15 0 -15
SANDSTONE

CALIPER
hole diameter in inches

DEPTHS

POROSITY (%)

Calibration after Survey



CALIPER
hole diameter in inches

DEPTHS

POROSITY (%)

Calibration after Survey

Calibration before Survey

COMPANY CHEVRON STANDARD LIMITED

WELL CHEVRON SOBC WM WHITEFISH YT 1-05

FIELD WILDCAT PROVINCE YUKON TERRITORIES

Schlumberger