

**LUMBERGER**

**MICROLOG CALIPER**

SCHLUMBERGER OF CANADA Calgary Alberta

COMPANY CHEVRON STANDARD LIMITED

WELL CHEVRON SOBC WM WHITEFISH YT

1-05

FIELD WILDCAT

PROVINCE YUKON TERRITORIES

LOCATION 67° 04' 37" N LAT  
137° 15' 25" W LONG

Other Services: SLC-GR,  
FDC-GR, DIL, CST,  
LCS

Permanent Datum GL ELEV 1126

ELEV: KB 1142

Log Measured From KB ELEV 16 f. Above Perm. Datum

GL 1126

25 MAR 72

CBF

ONE

4905

1500

2055

4906

4916

859

859

RPKS

9.5

115

9.5

8.2

4.50

2.40

5.64

8 3/4"

0.30

UPPER

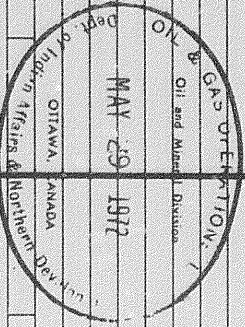
4550

4 HRS

OSU-C 108 REM

CHADDOCK

LINK & COLLIER

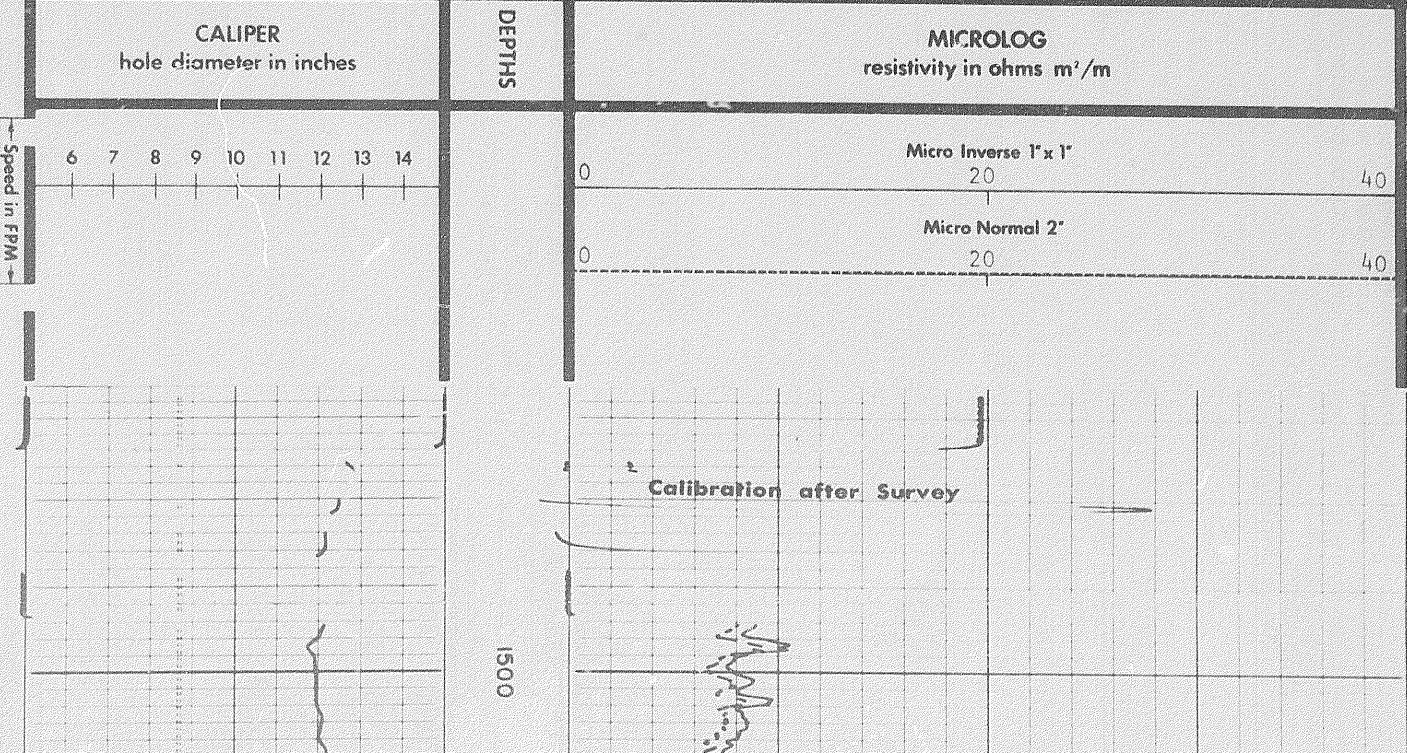


17 APR 72 CAL PK

REMARKS Drilling Stopped 1400 / 24th : Circulation Stopped 1630 / 24th : Tool on Bottom 0800 / 25th : 1st Run Service Order # B.H.T. 100 %

MCP # A 17  
PMS # A X3  
Pad Type - Hydraulic

MUD NATURE: GEL - RAPID DRILL - CAUSTIC

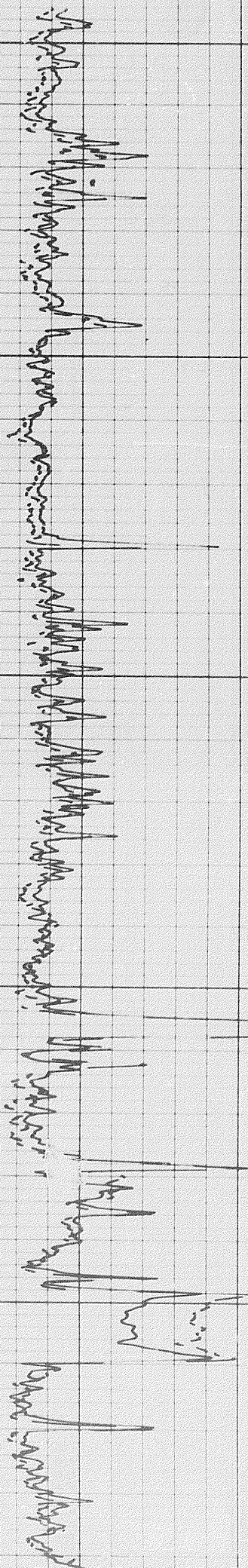
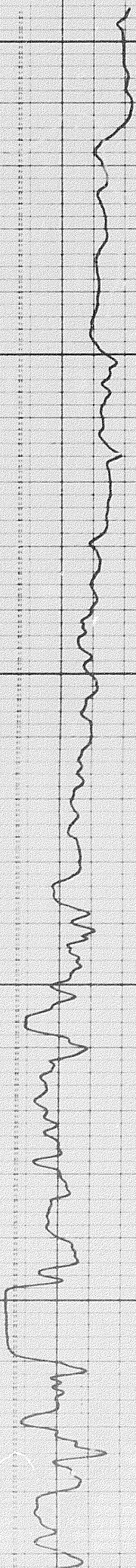


Calibration after Survey

1500

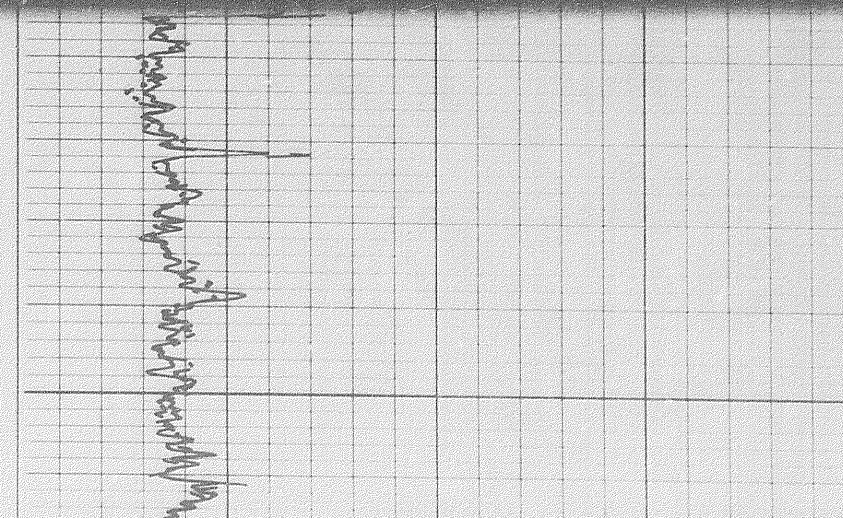
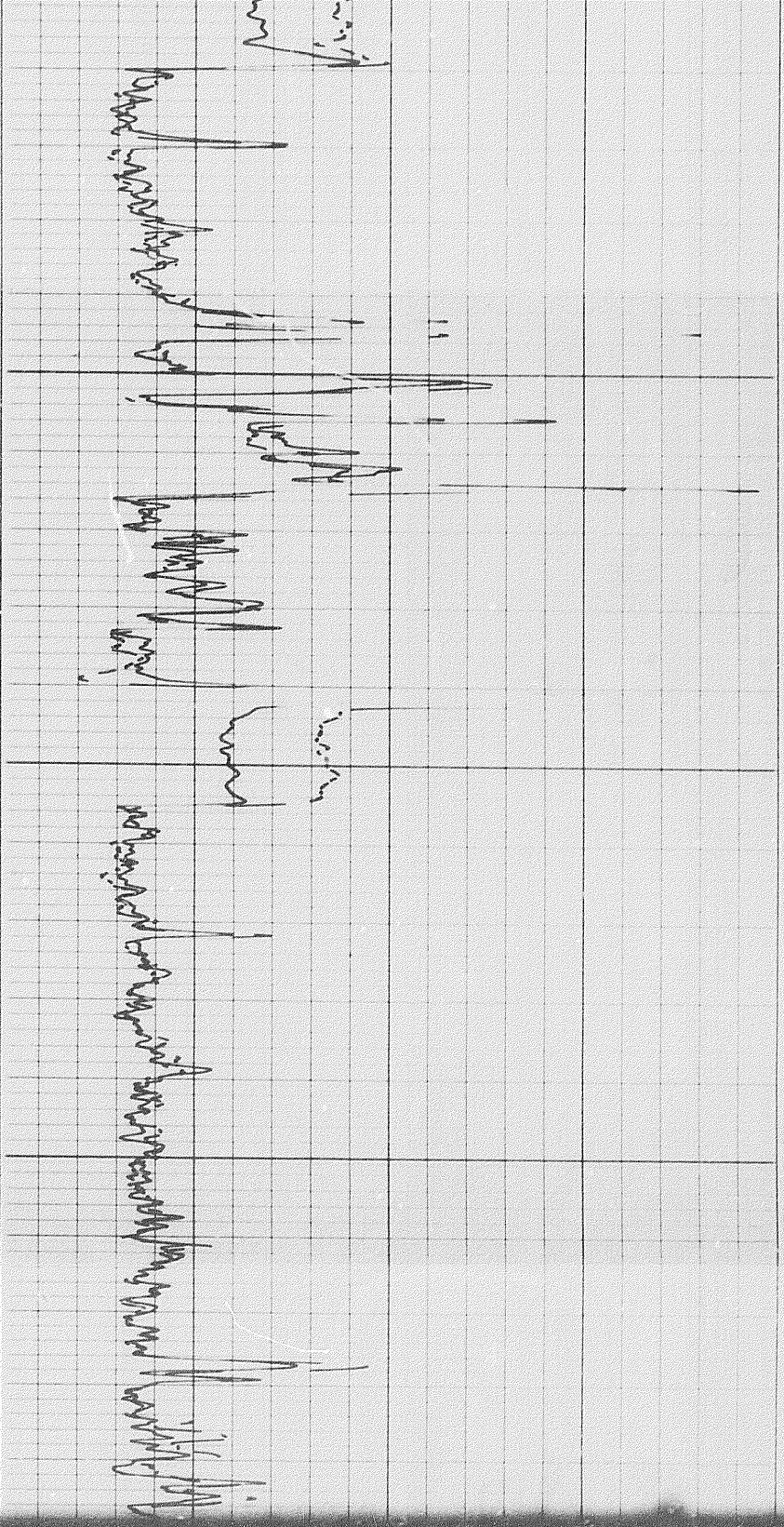
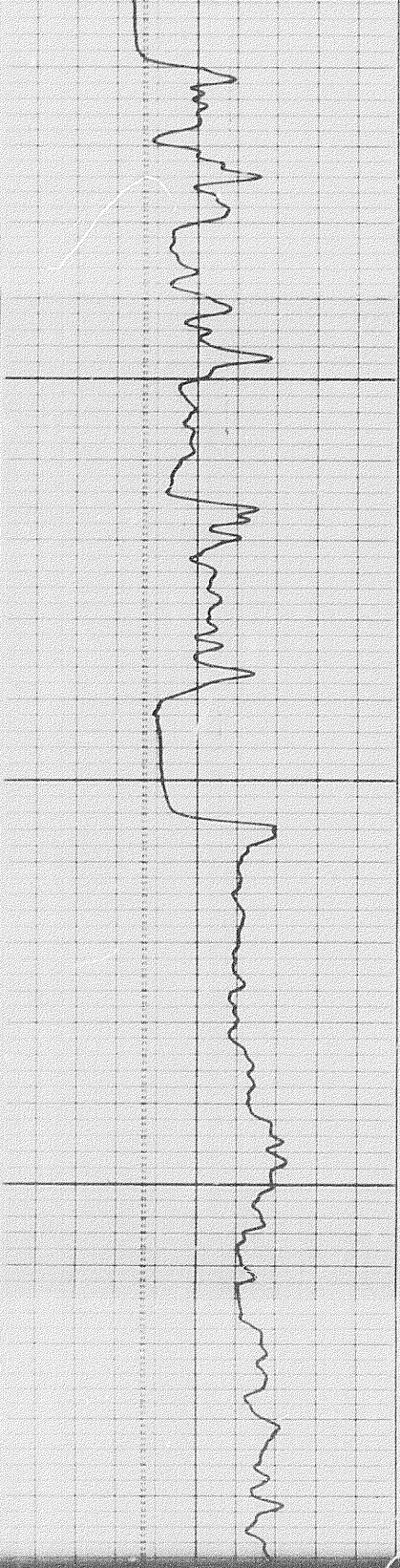
1600

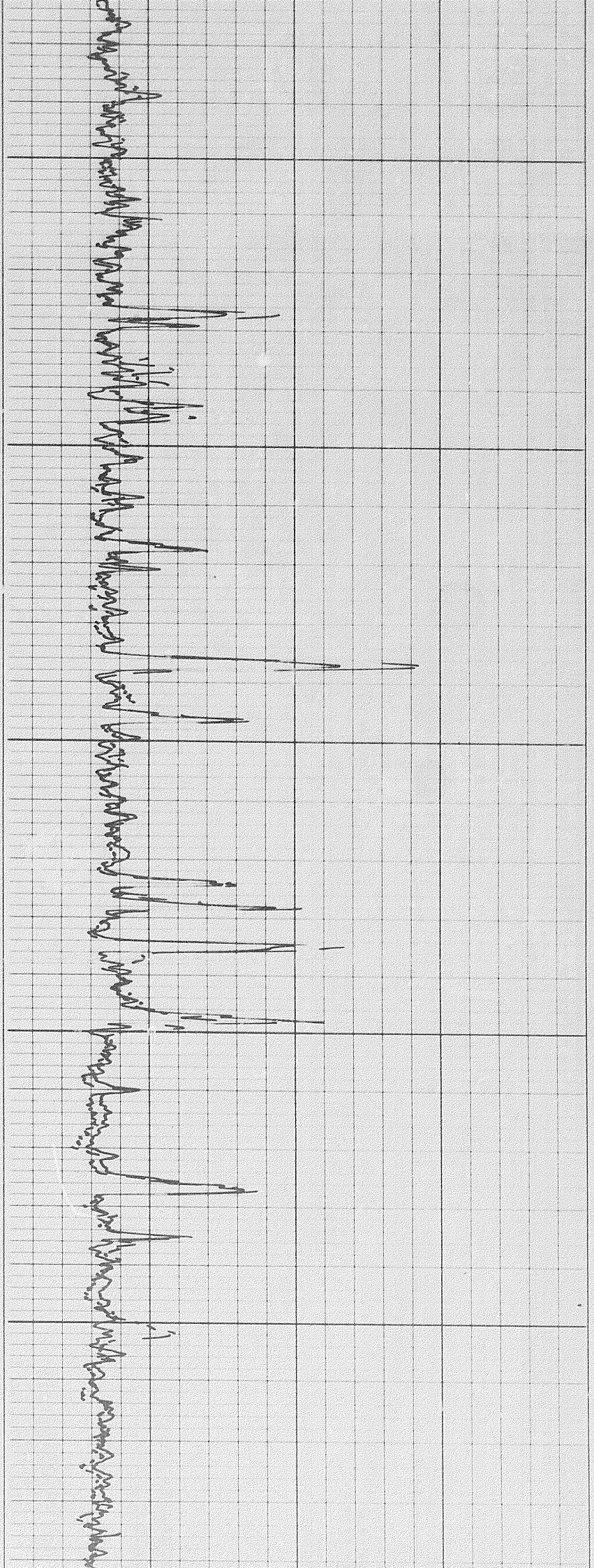
1700



1800

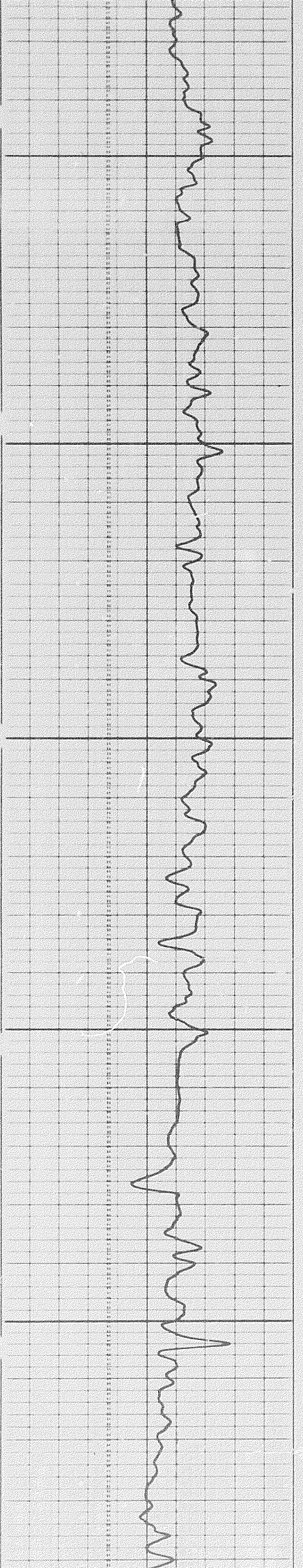
0

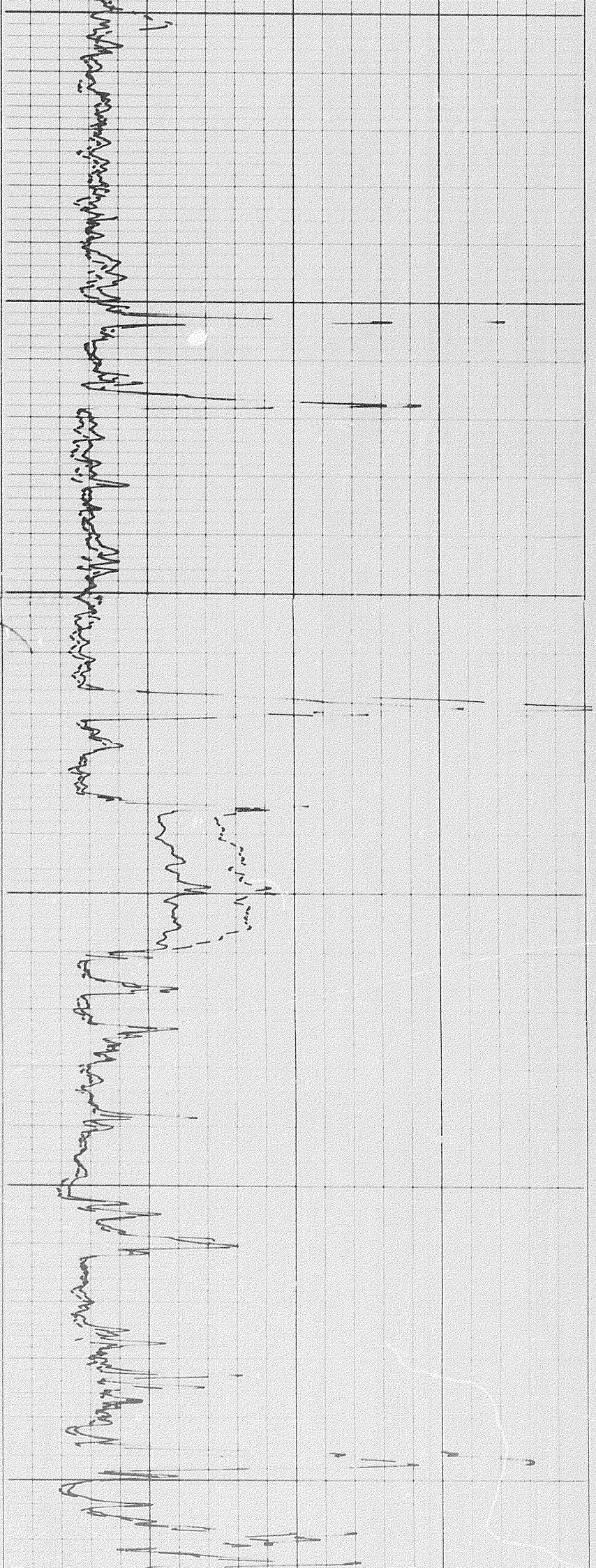




1900

2000

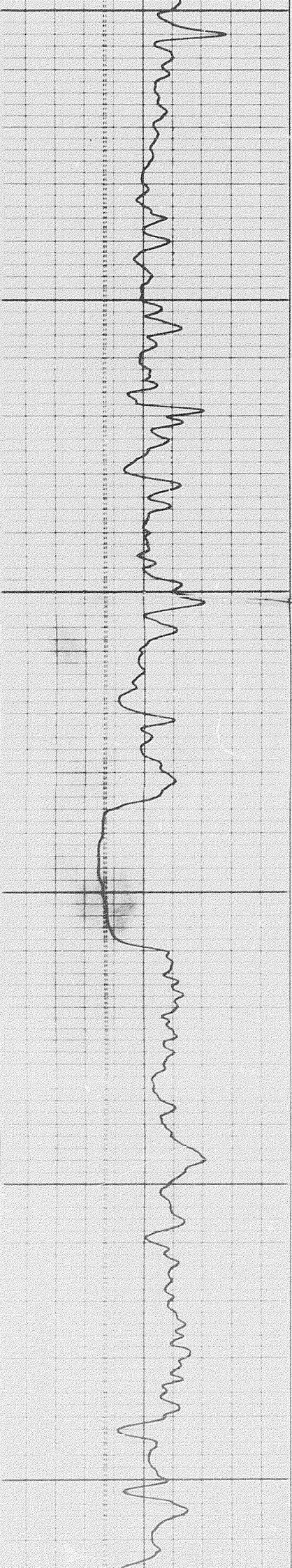


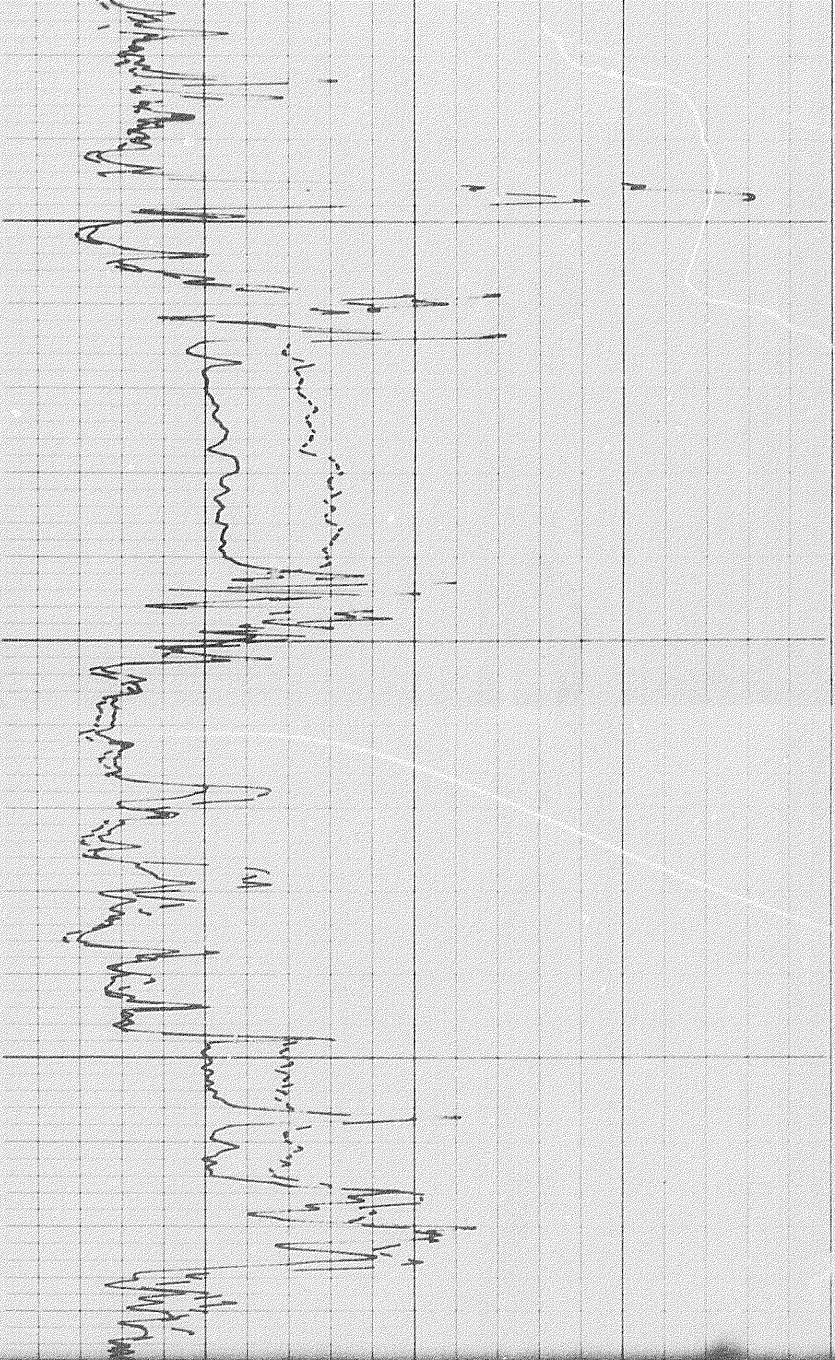


2100

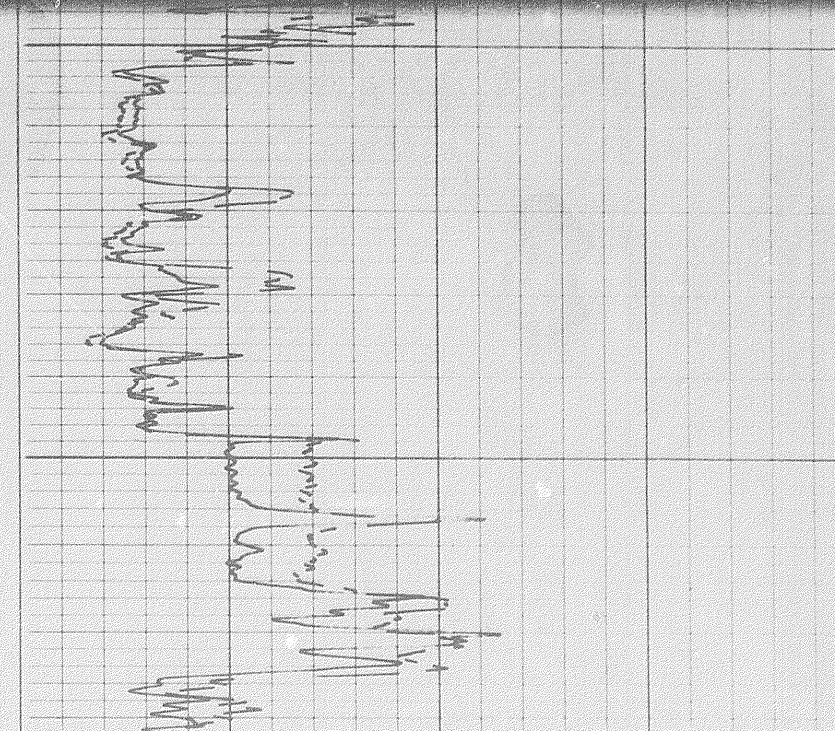
2200

2300

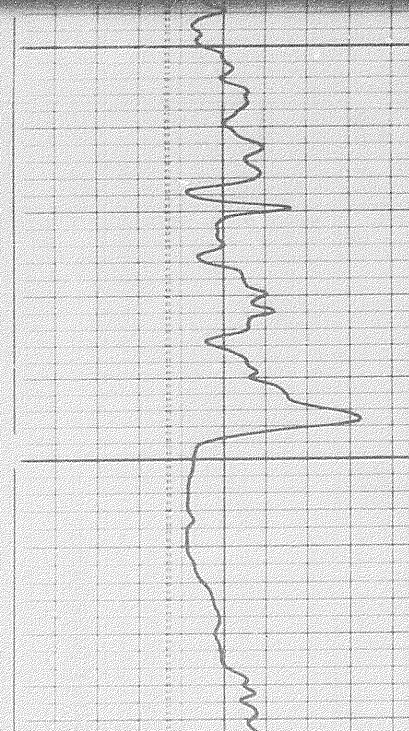
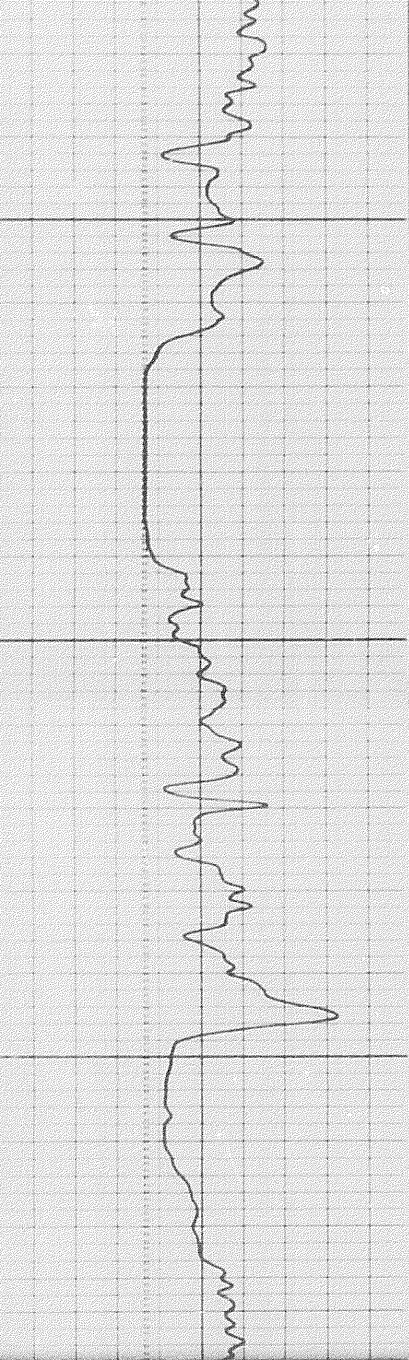




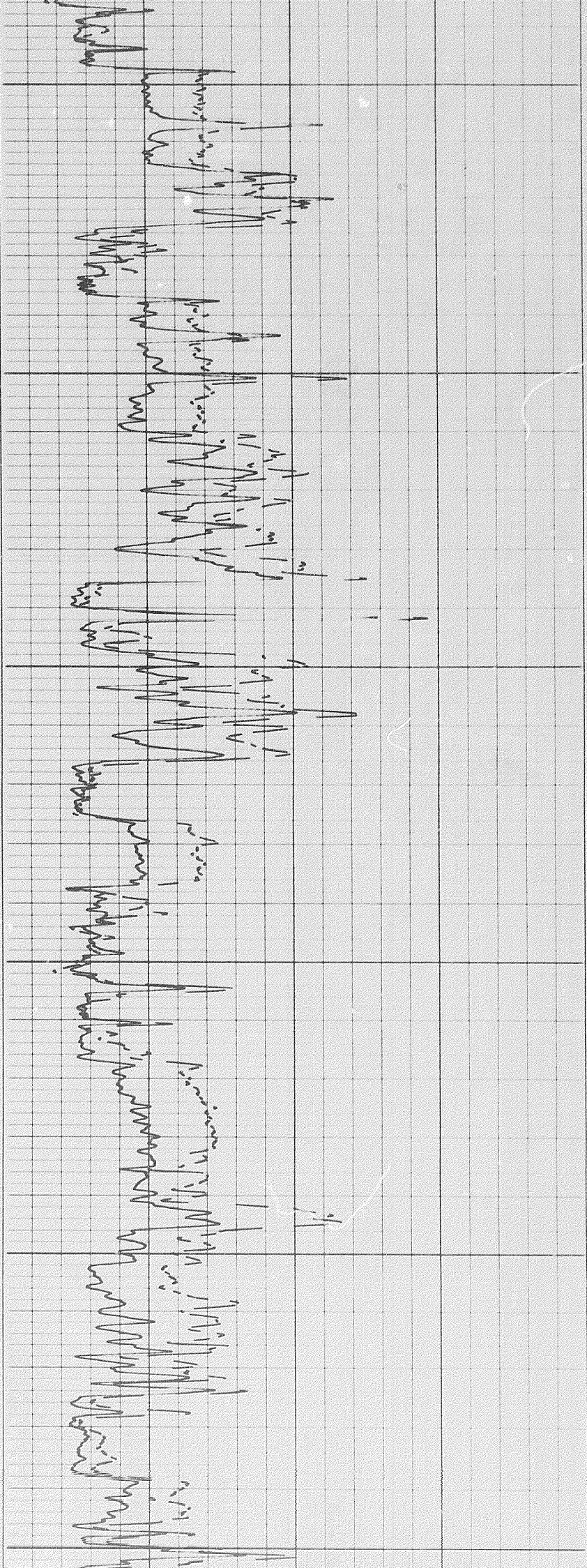
2300



2400



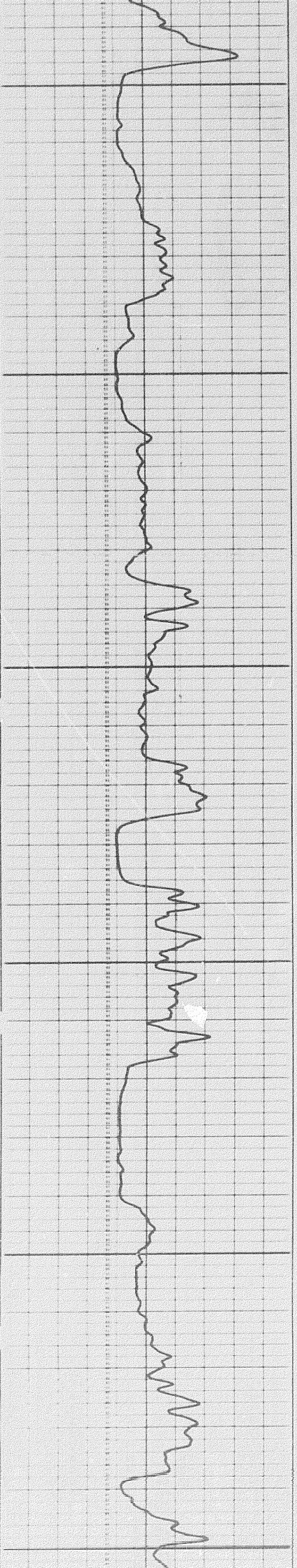
2400

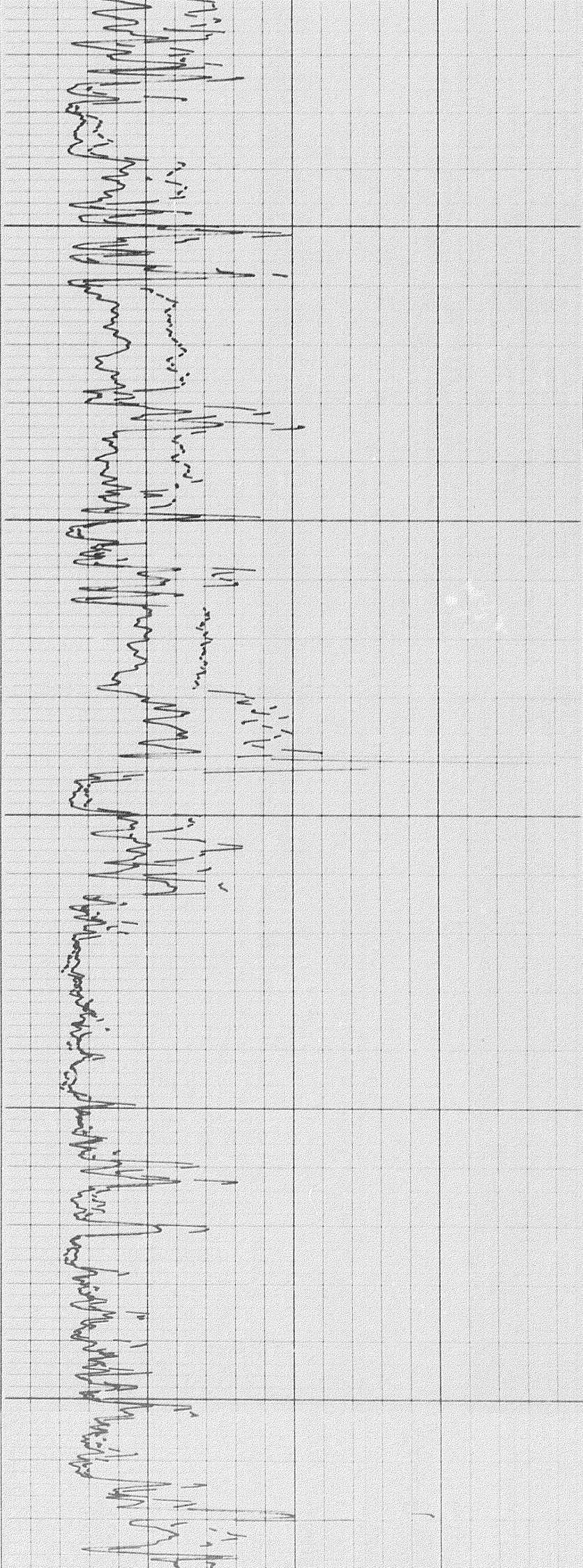


2400

2500

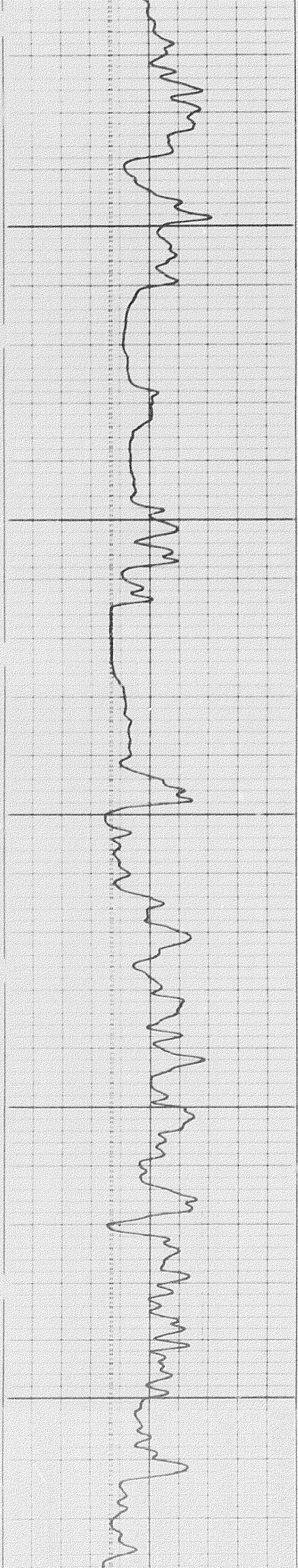
2600





2700

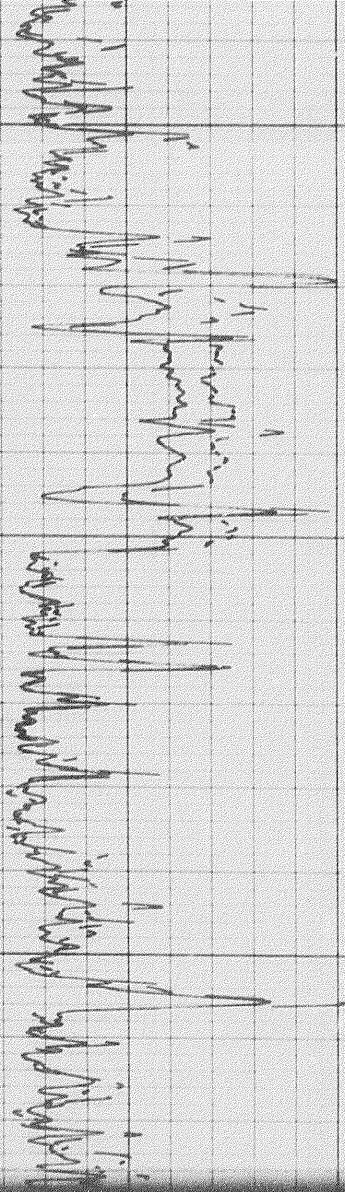
2800



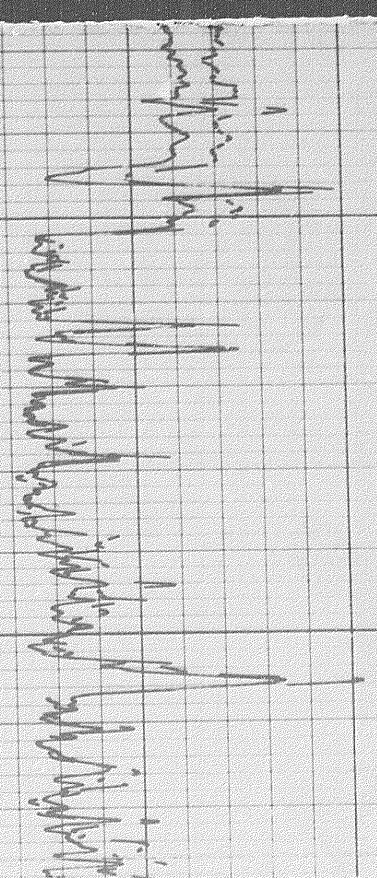
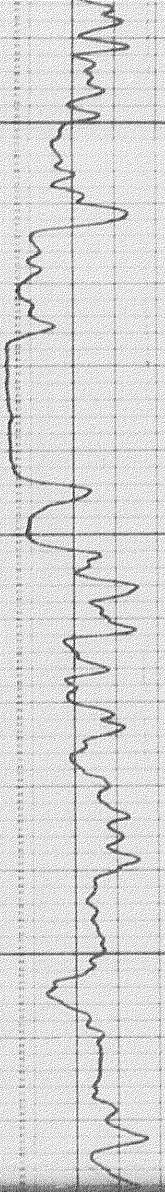
90

51

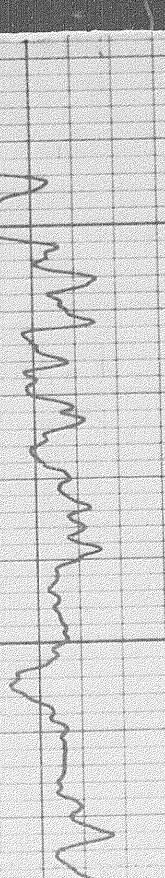


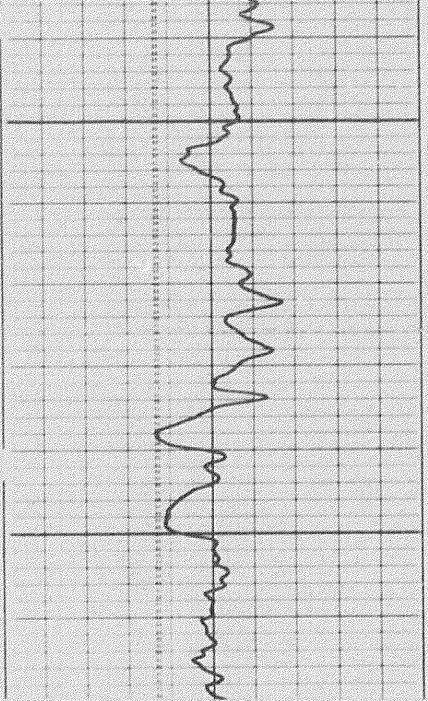


2900

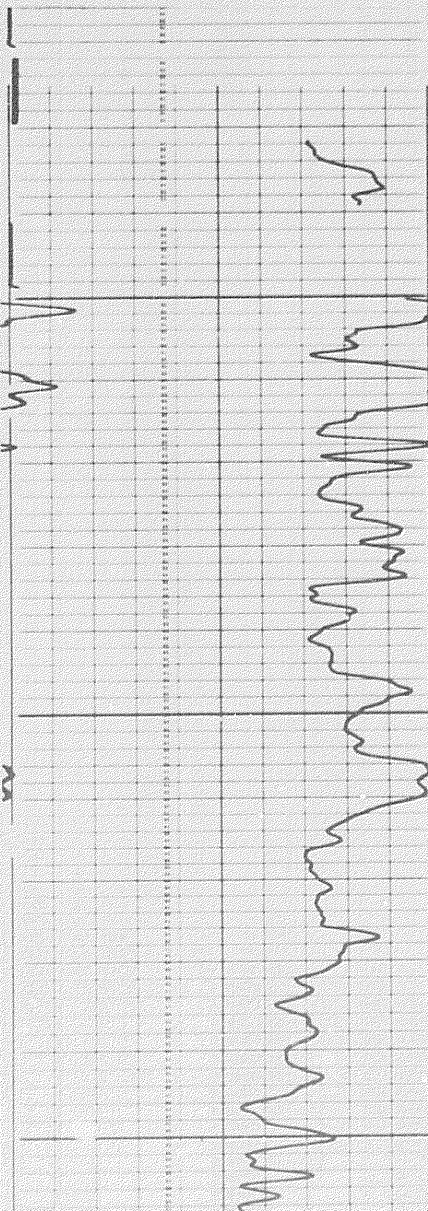
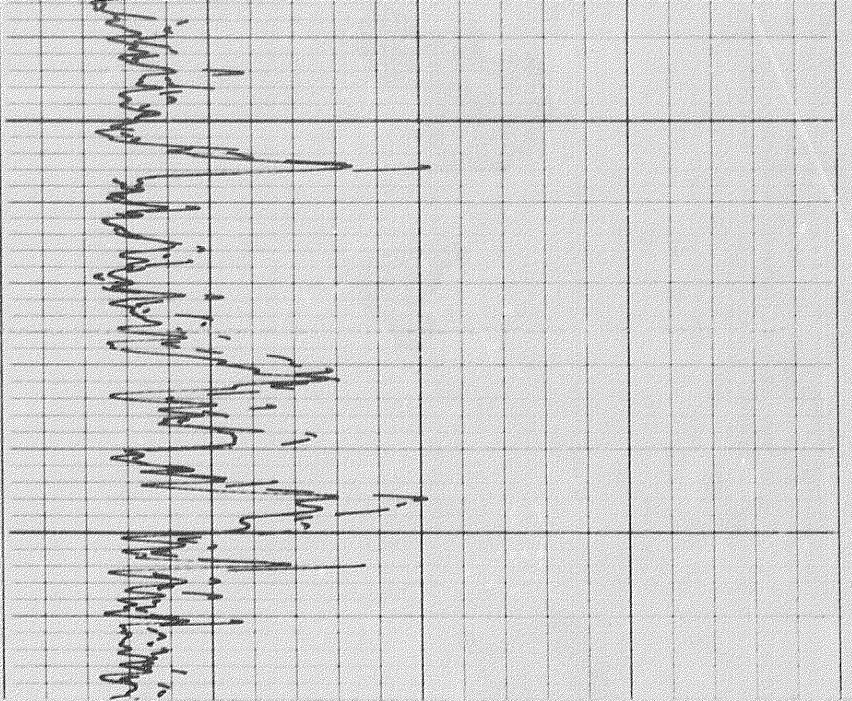


2900

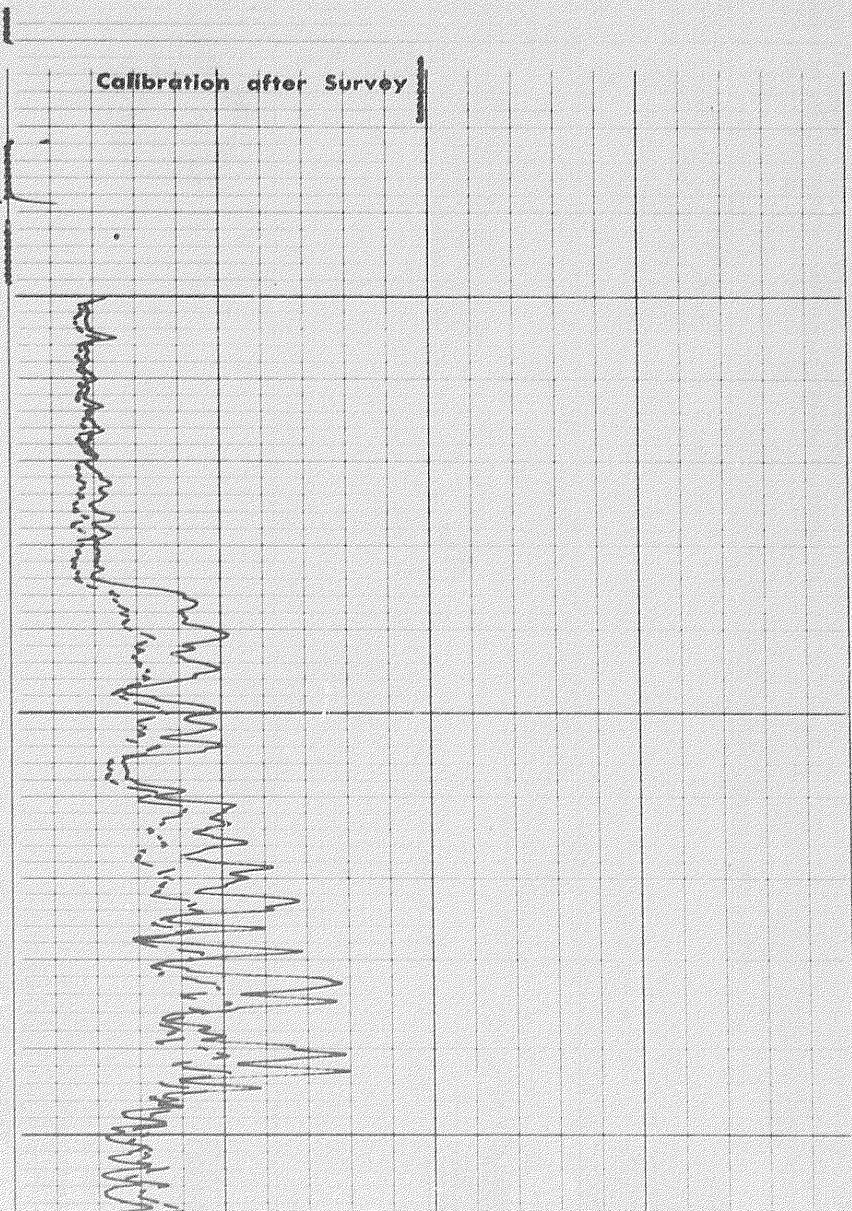


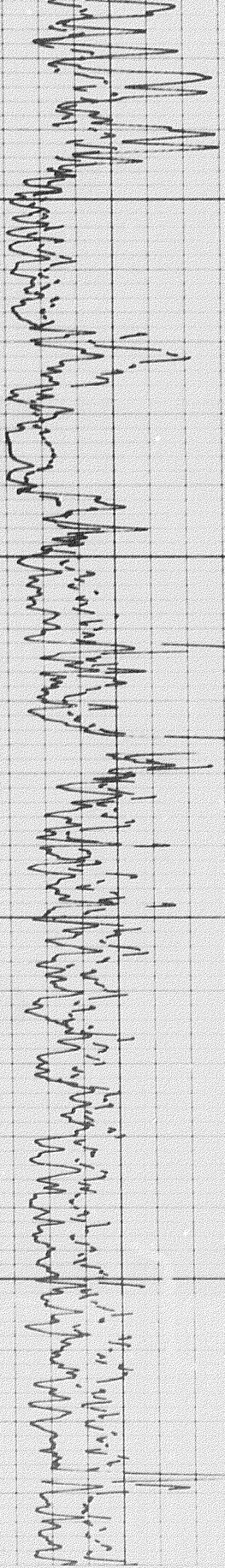


3000



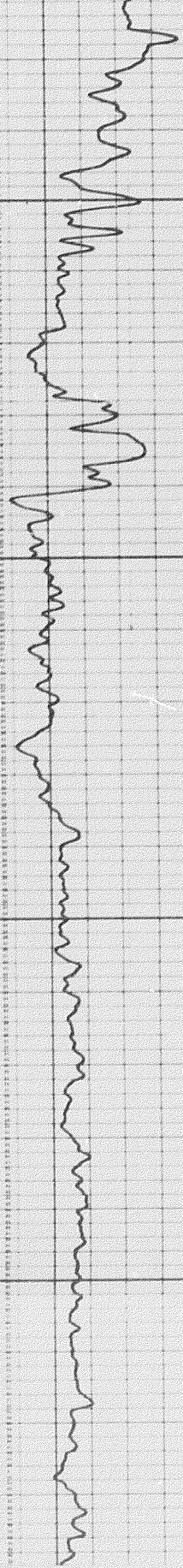
3900





4000

4100



*Handwritten notes on a grid background, possibly describing survey data or calibration details.*

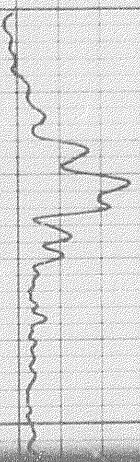
4100



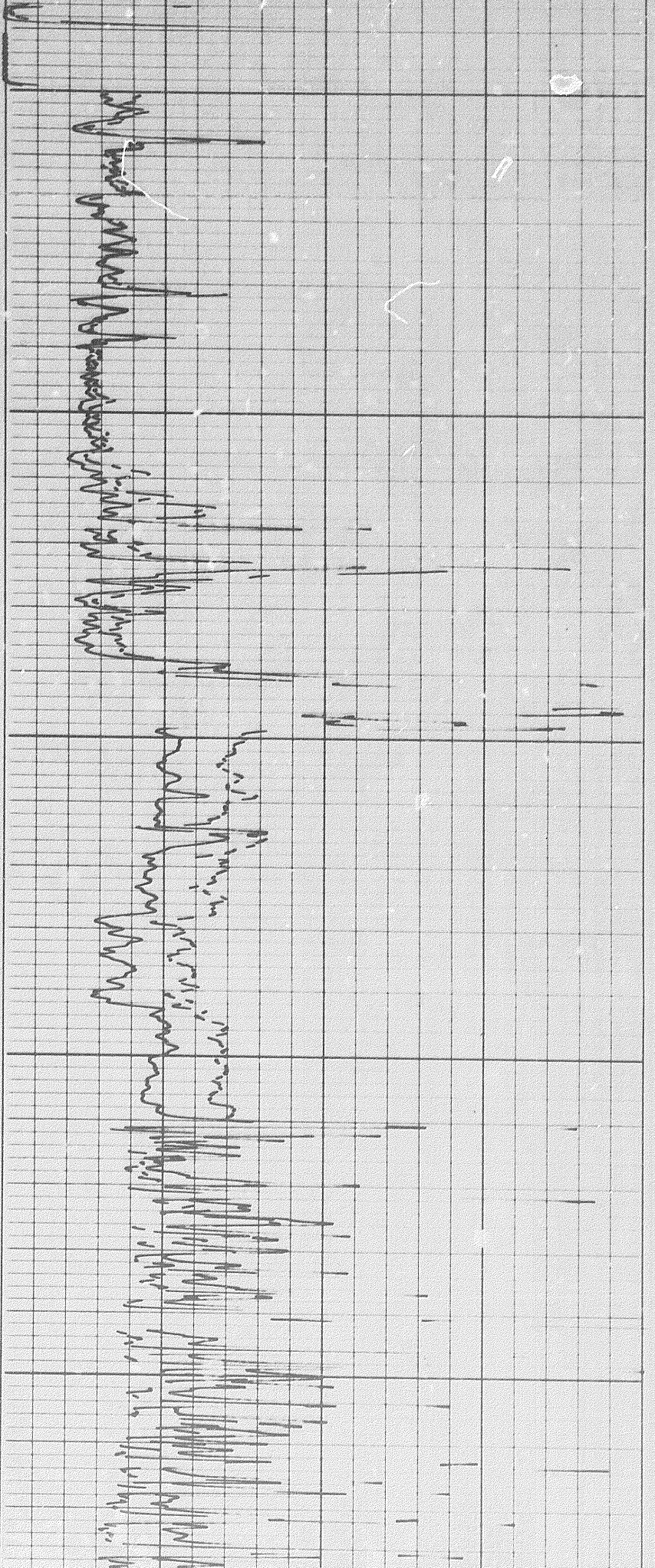
Calibration after Survey

*Handwritten notes on a grid background, likely related to the calibration process.*

4600



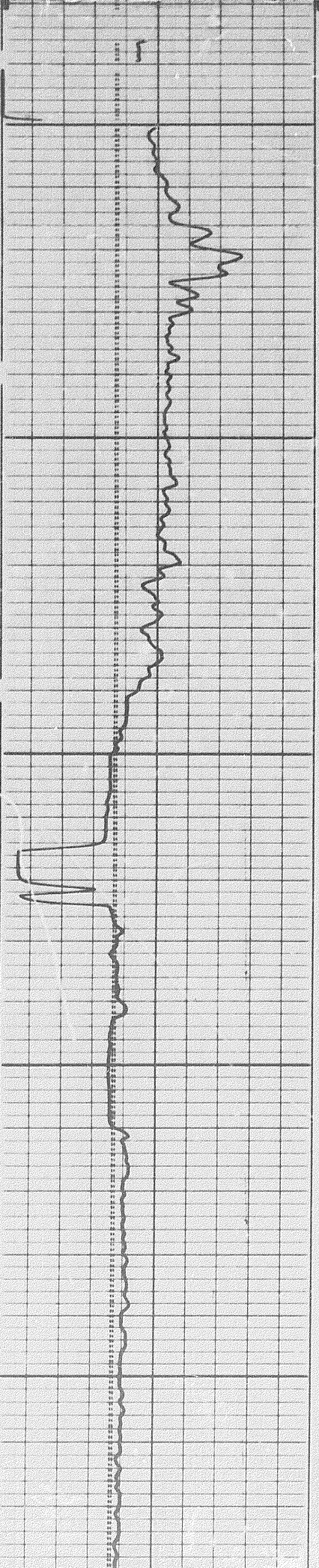
Calibration after Survey



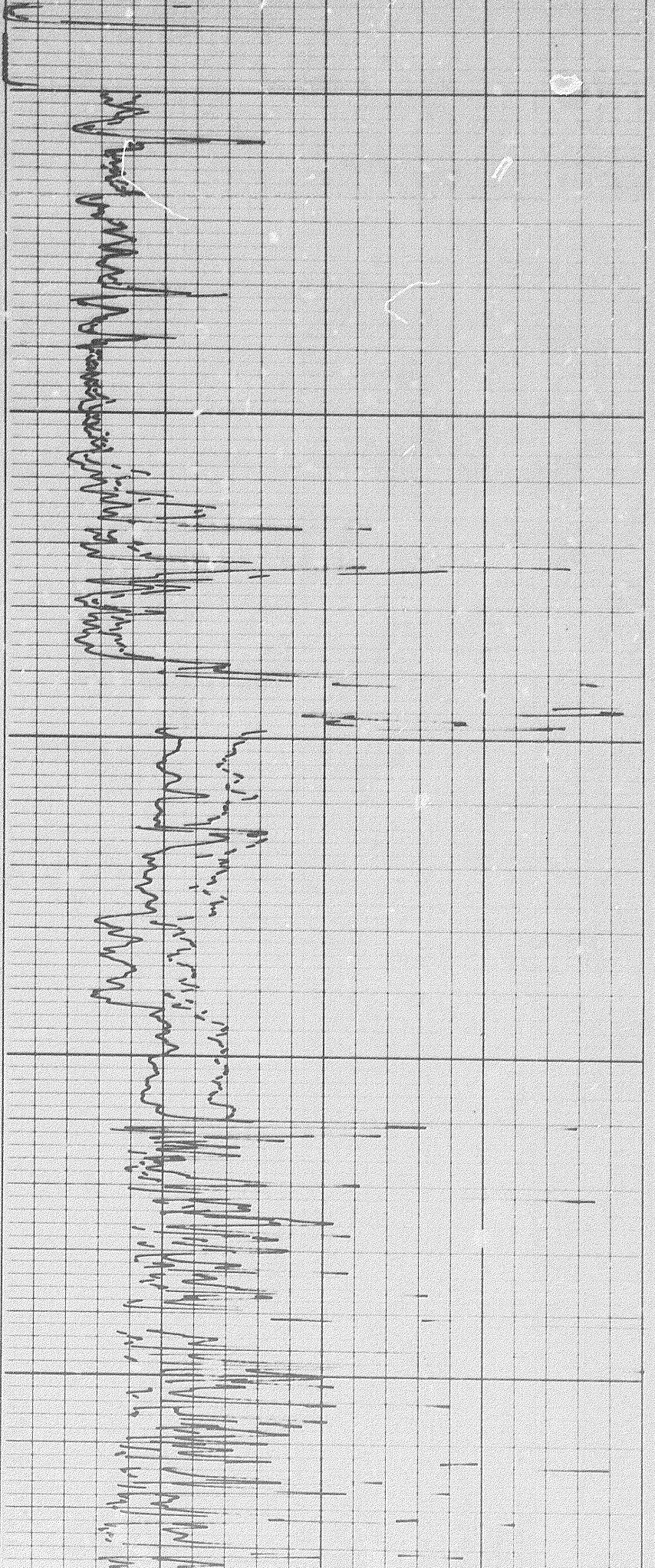
4600

4700

4800



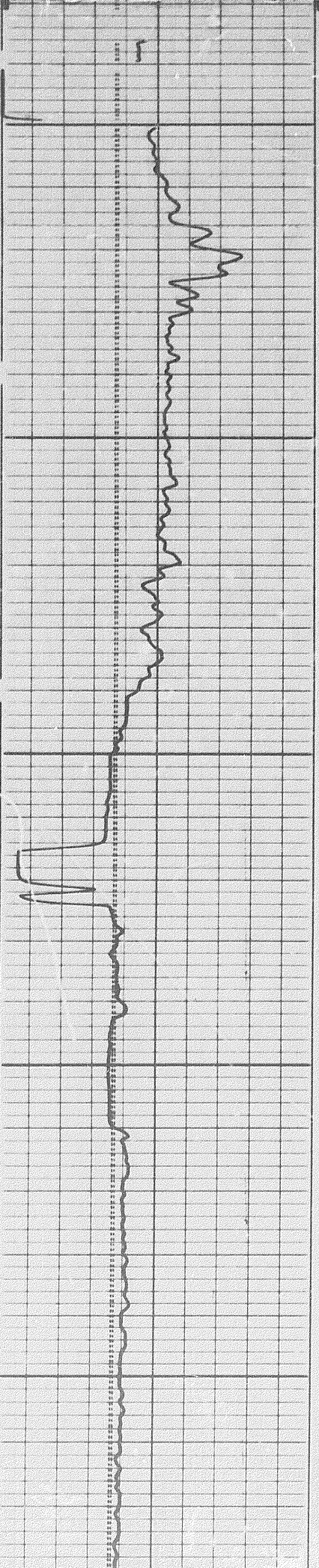
Calibration after Survey

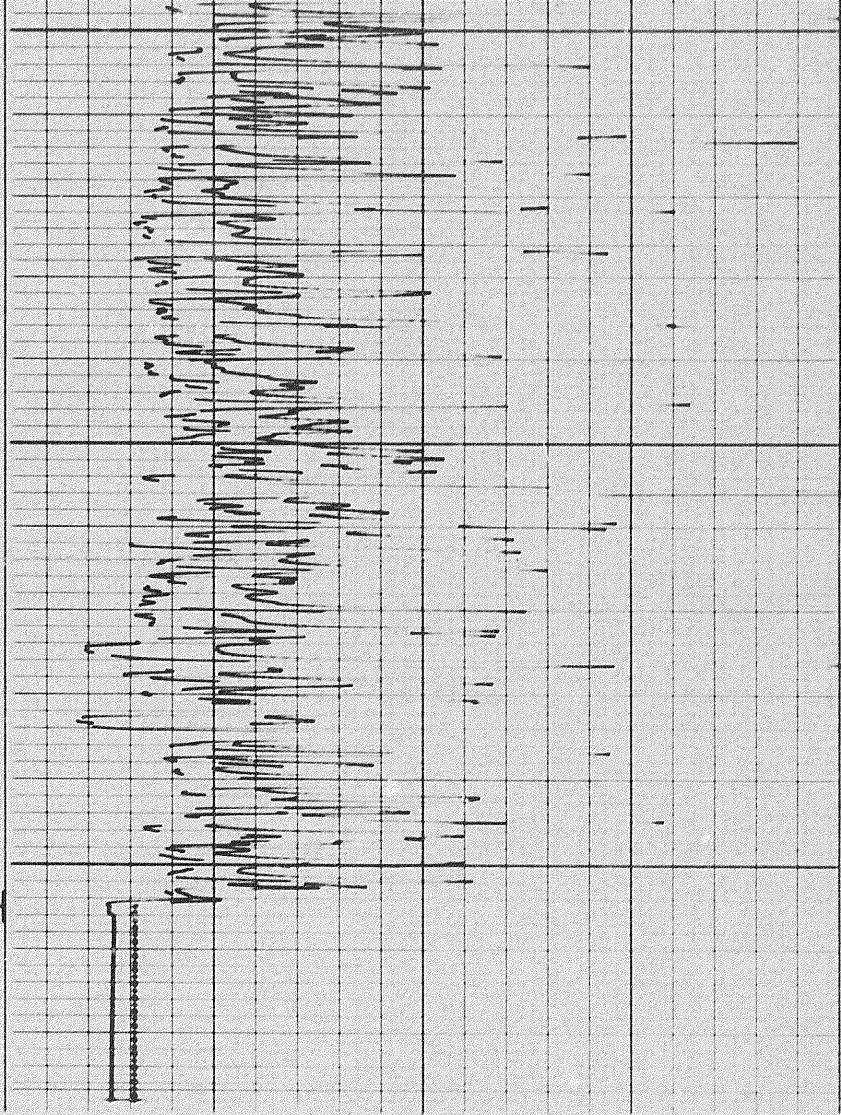
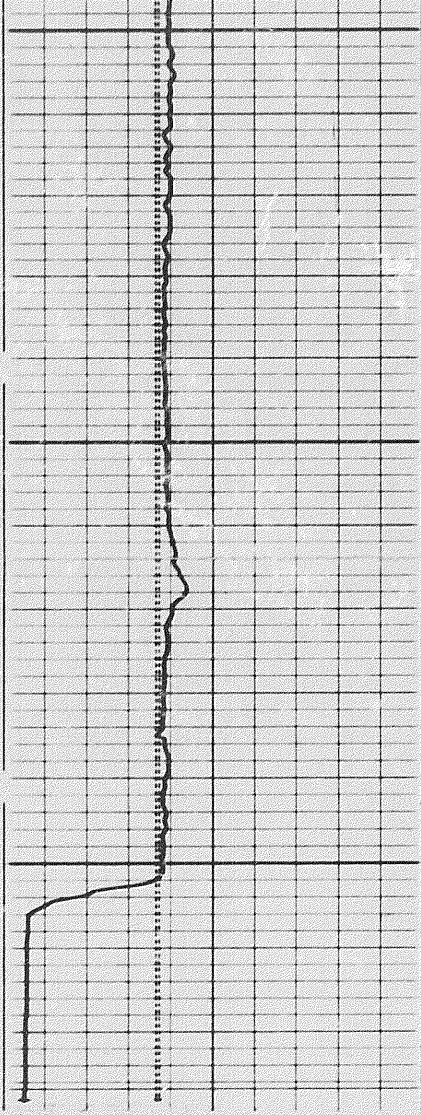


4600

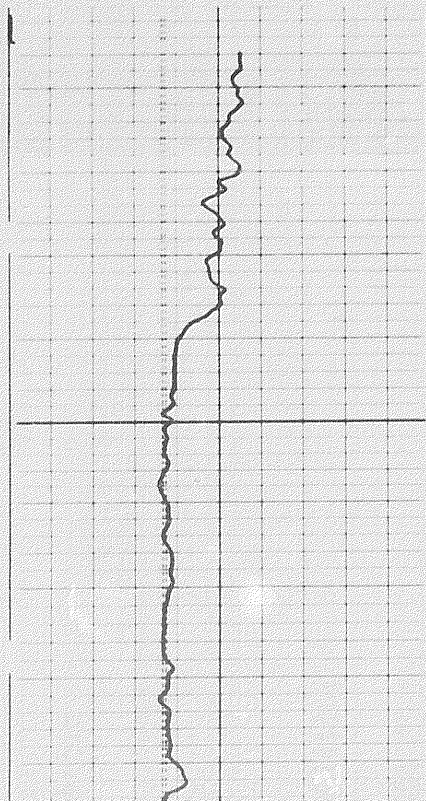
4700

4800

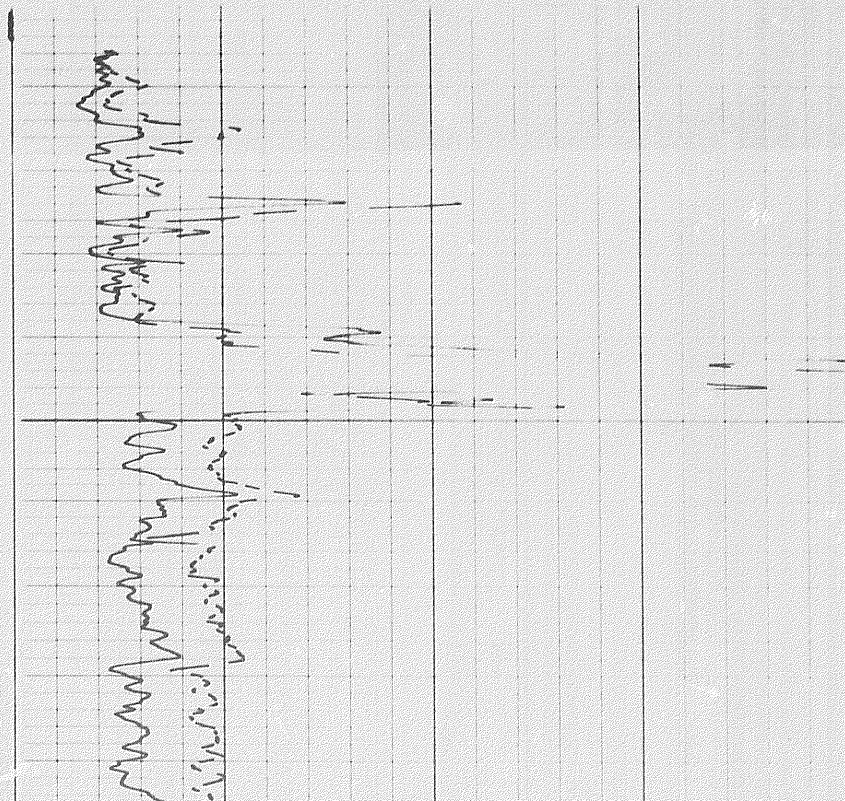


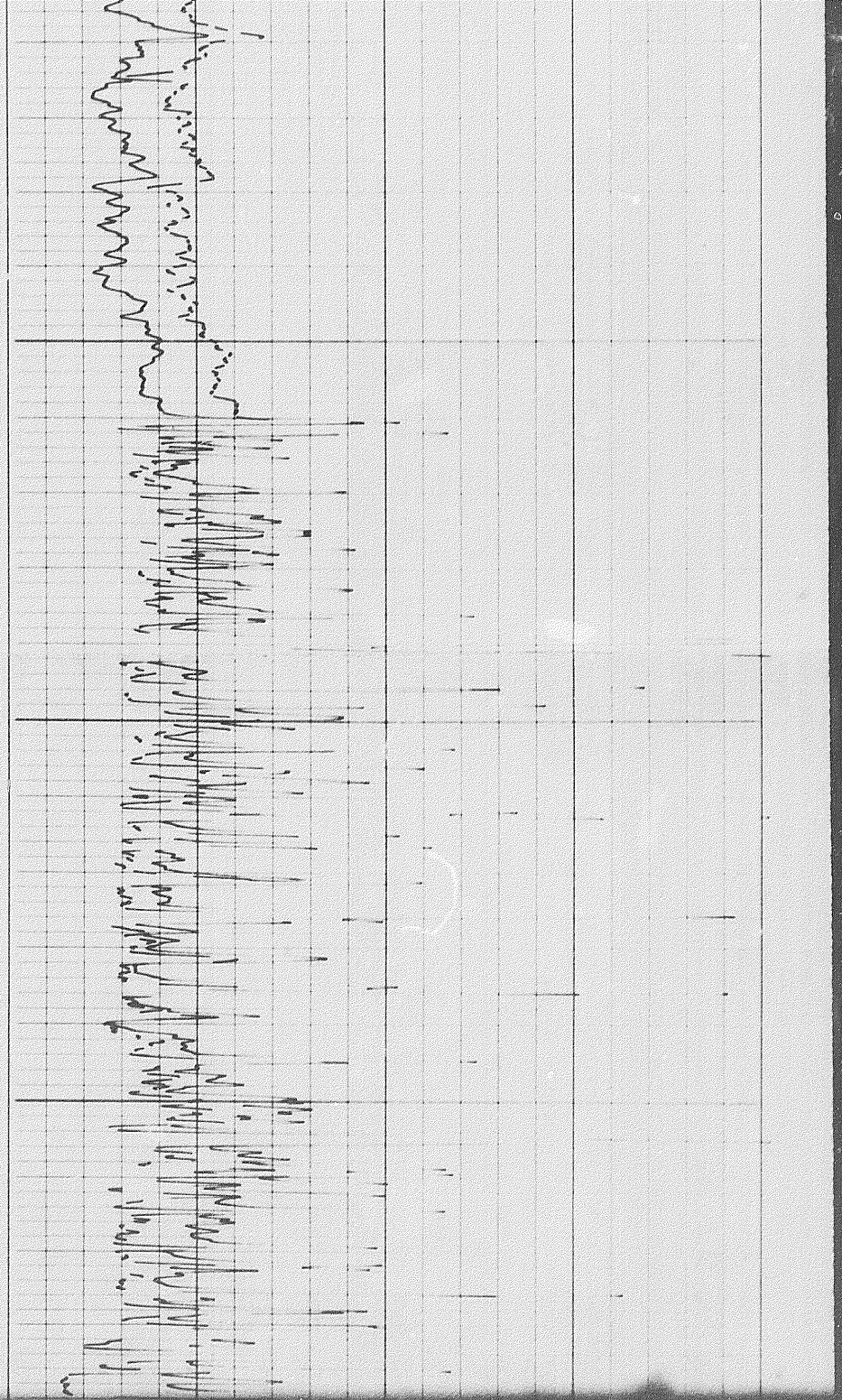


REPEAT SECTION

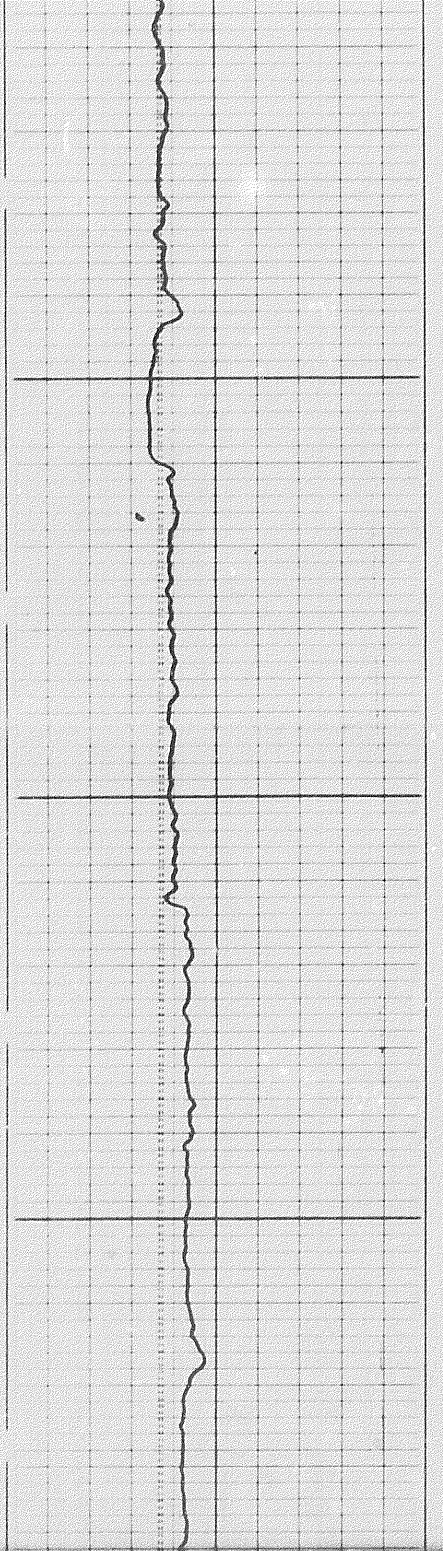
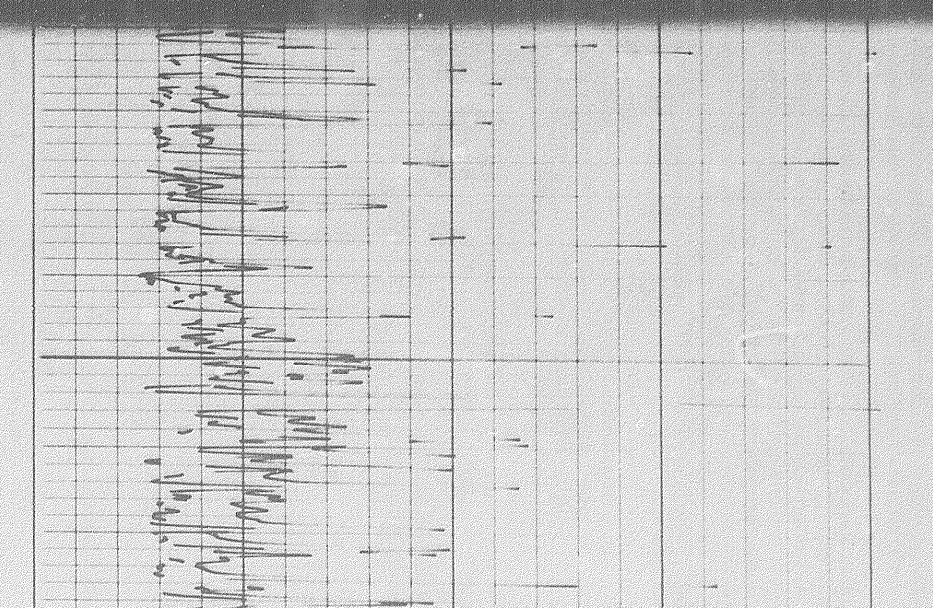


4700





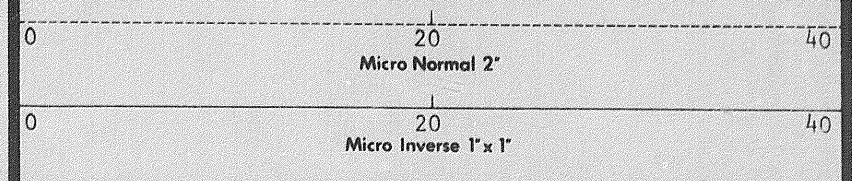
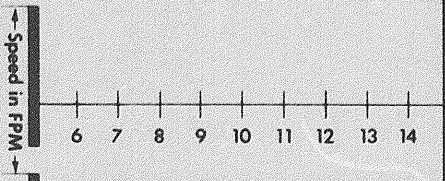
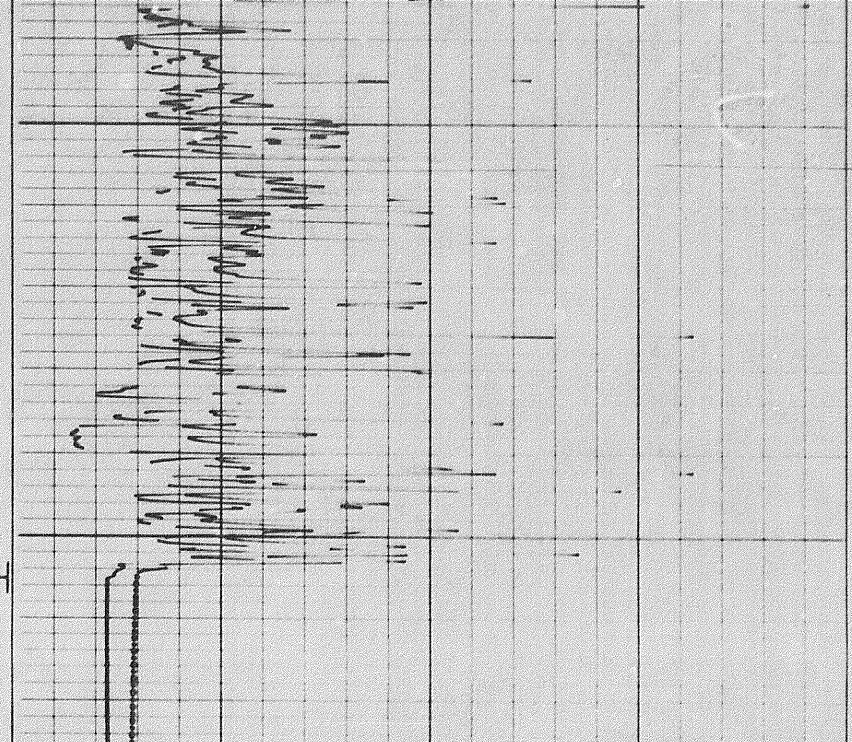
4800







4900



**CALIPER**  
hole diameter in inches

**DEPTHS**

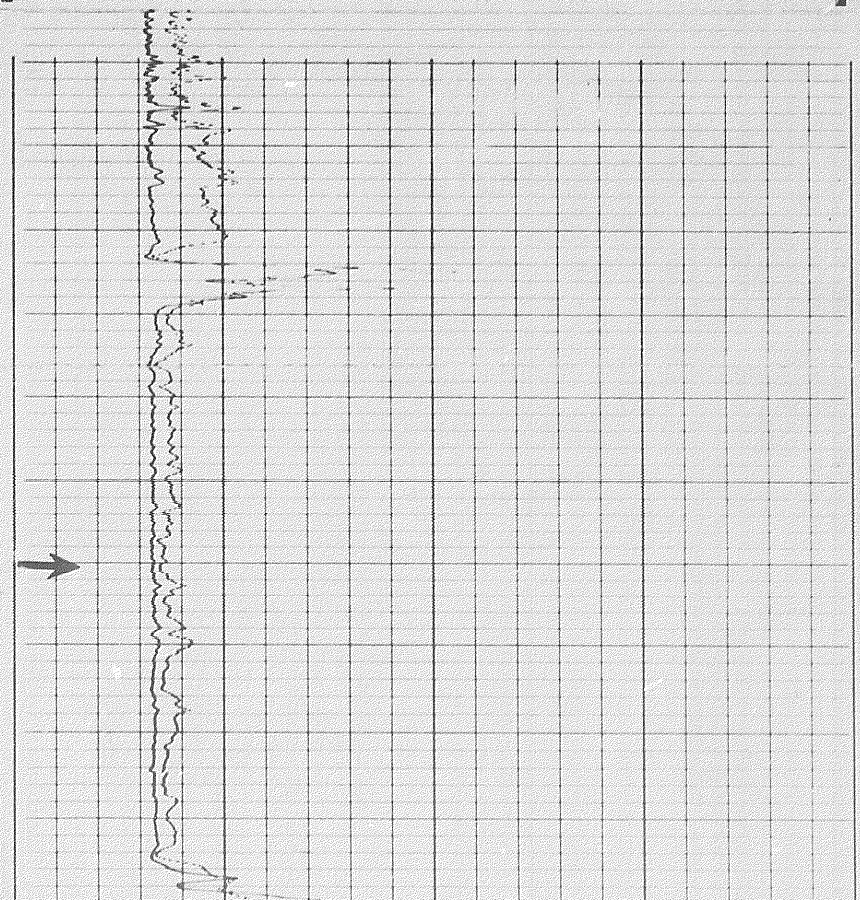
**MICROLOG**  
resistivity in ohms m<sup>2</sup>/m

**MUD LOG WITH SONDE COLLAPSED**

Apparent Rm 0.30 Ωm<sup>2</sup>/m  
Depth 4550 ft.

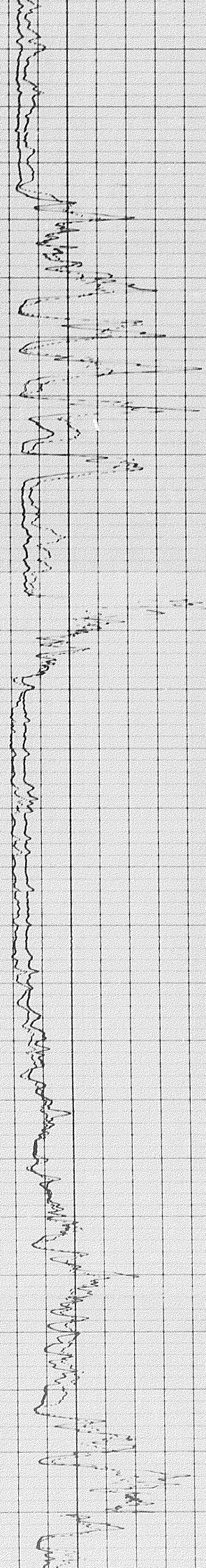
**RESISTIVITY**  
ohms m<sup>2</sup>/m

4800  
4700  
4600  
4500  
4400  
4300

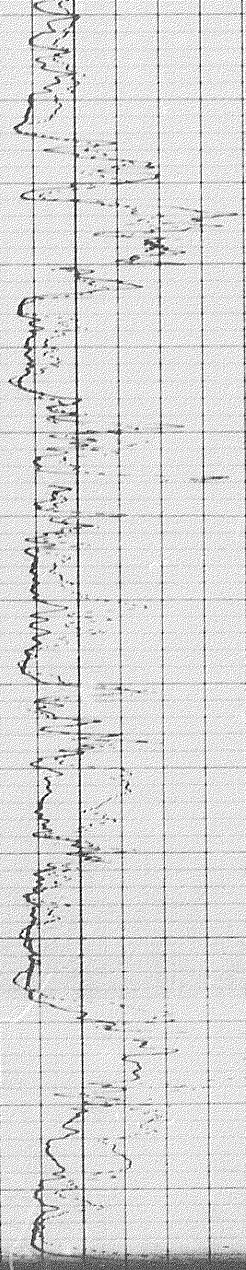


10

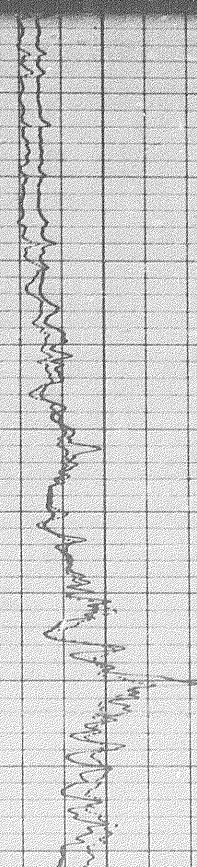
0 4400 4300 4200 4100 4000 3900 3800 3700 3600 3500 3400 3300 3200



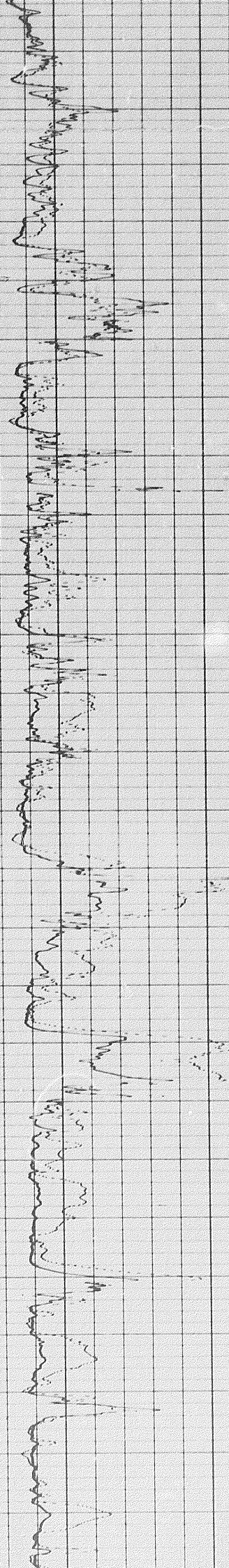
3300 3200 3100 3000 2900 2800 2700 2



3700 3600 3500 3400 3300



3500 3400 3300 3200 3100 3000 2900 2800 2700 2600 2500 2400 2300 2200



22

2300  
2200  
2100  
2000  
1900  
1800  
1700  
1600  
1500  
1400  
1300  
1200  
1100

