

SCHLUMBERGER

SIDEWALL NEUTRON POROSITY LOG

SCHLUMBERGER OF CANADA Calgary Alberta

PROVINCE YUKON TERRITORIES
 FIELD WILDCAT
 WELL CHEVRON SOBC IMP S CHANCE
 Y.T. D-63
 COMPANY CHEVRON STANDARD LIMITED

COMPANY CHEVRON STANDARD LIMITED
 WELL CHEVRON SOBC IMP S CHANCE
 Y.T. D-63
 FIELD WILDCAT
 YUKON TERRITORIES
 PROVINCE LOCATION
 65° 52' 09" N LAT
 137° 42' 35" W LONG
 Permanent Datum GL Elev. 2303
 Log Measured From KB 18 Ft. Above Perm. Datum
 Other Services: GST, ICS
 SLC-GR FDC DIL
 ELEV: KB 2321
 GL 2303
 CBF

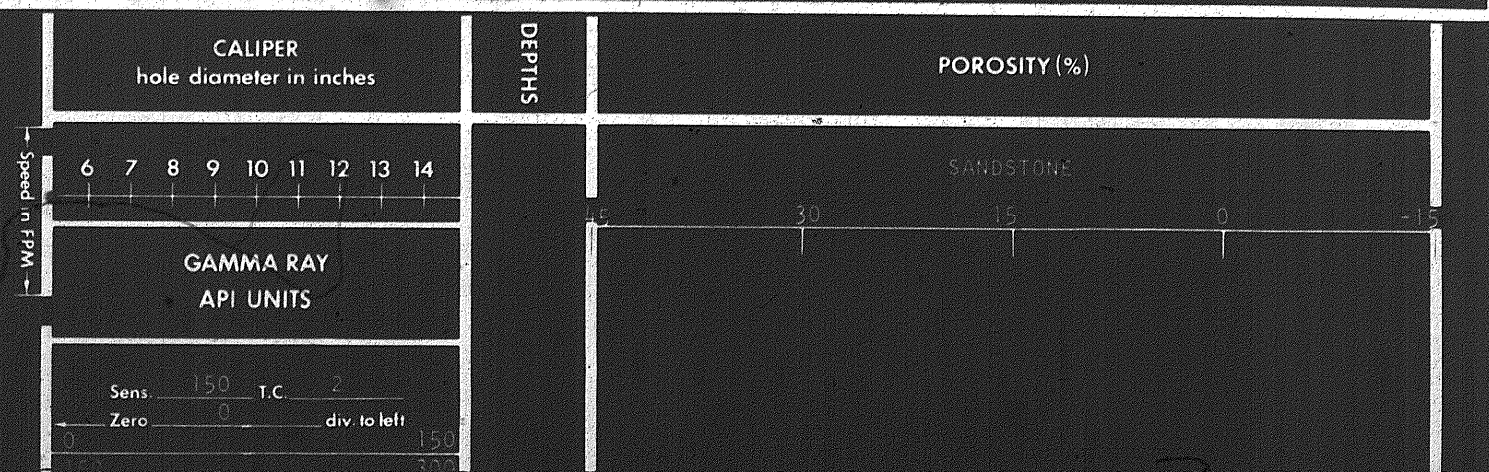
Date	24 APR 72
Run No.	ONE
First Reading	6628
Last Reading	1013
Feet Measured	5615
Depth Reached	6629
Bottom Driller	6630
Crg. SOC	1013
Crg. Driller	1014
Mud Nature	GEL
Dens. Visc.	9.5 150
Mud pH	9.0
Water Loss	6.2
Res.	RMKS
Rinf.	2.17 @ 66
@ BHT	@ 65
Rmc.	2.84 @ 65
ppm-Cl	
BH Size	8 3/4"
Equipment Type	PNT-A
Op. Rig Time	4 HRS
Truck No.	DSU-B 5
Recorded By	STUEHMER
Witness	POLLARD

REMARKS
 Drilling Stopped 1100 / 20th ; Circulation Stopped 0200 / 24th ; Tool on Bottom 1900 / 24th ; 1st Run Service Order # 3507
 B.H.T. 118 °F

Panel No. A234	MUD SAMPLES
Cartridge No. A341	Rm #1 = 2.65 - 65°F
Sonde No. E556	Rm #2 = 2.68 - 65°F
Detector No. A88	Rm #3 = 2.70 - 65°F
SFT-116 No.	

CALIBRATION: Gamma Ray			Neutron Environmental Cal.		
Background CPS	Test Source CPS	Galv. Deflection	Sens. Tap	Drawer In - CPS	Drawer Out - CPS
40	425	10.0		Before	
Panel Settings: Function Former			Temp. Comp. Setting	T.C.	Mud Wt./Salinity Comp. set as per recorded value
SANDSTONE			115	2	from 6628 to 1013
					from to
					from to
					from to
					from to

This interpretation represents our best judgment. Nevertheless since all interpretations are opinions based solely on inferences from electrical or other measurements, we cannot and do not guarantee the accuracy or correctness of any interpretation and shall not be liable or responsible for any loss, cost, damages, or expenses that may be incurred or sustained resulting from this or any other interpretation.

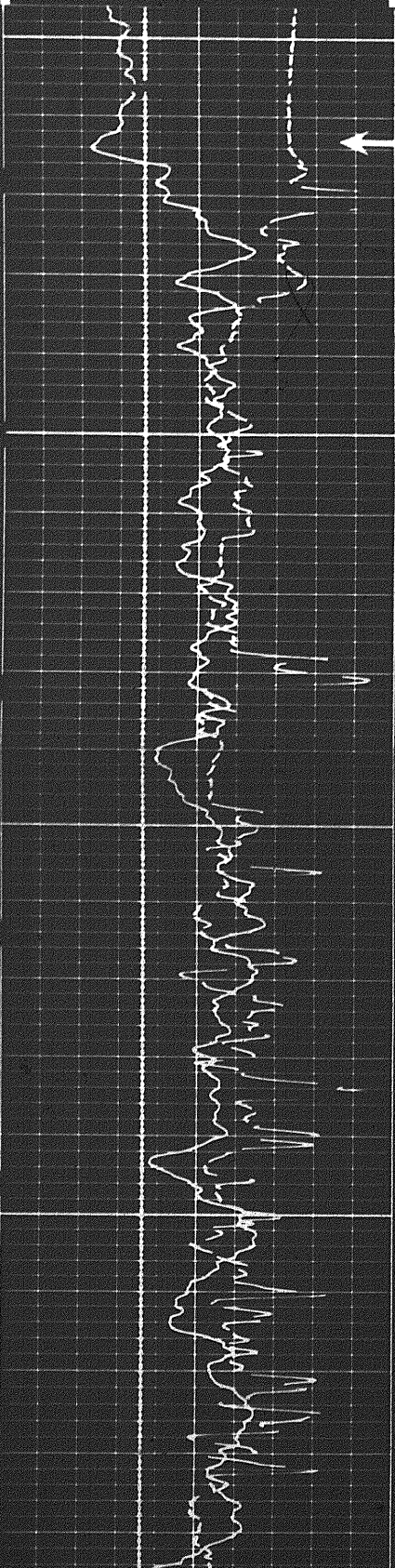


Speed in FPM →

6 7 8 9 10 11 12 13 14

GAMMA RAY API UNITS

Sens. 150 T.C. 2
 Zero 0 div. to left 150
 300



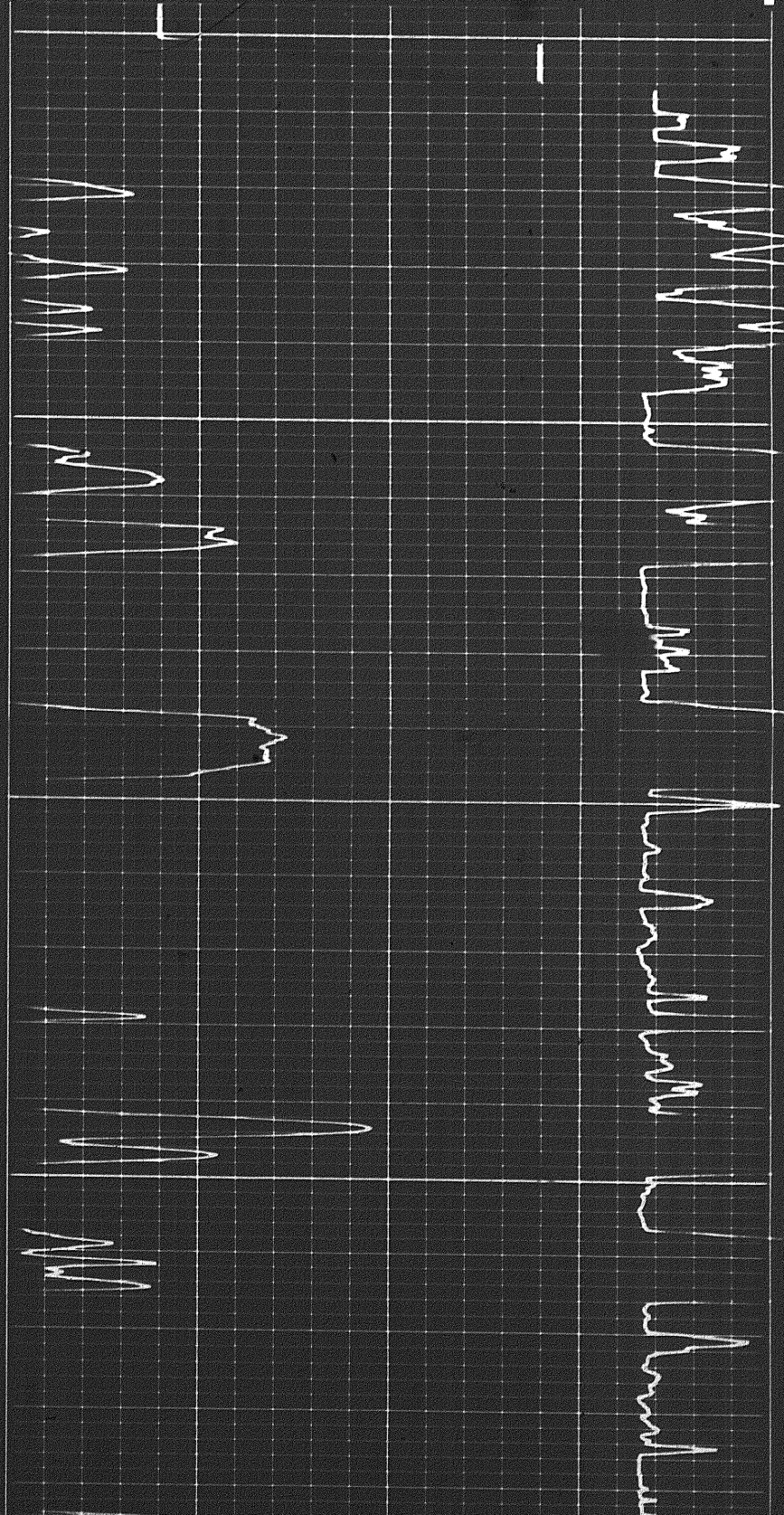
← Casing

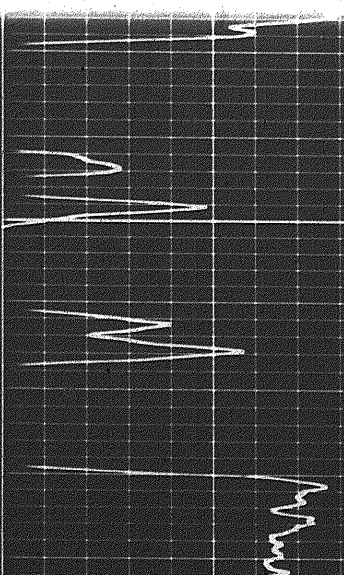
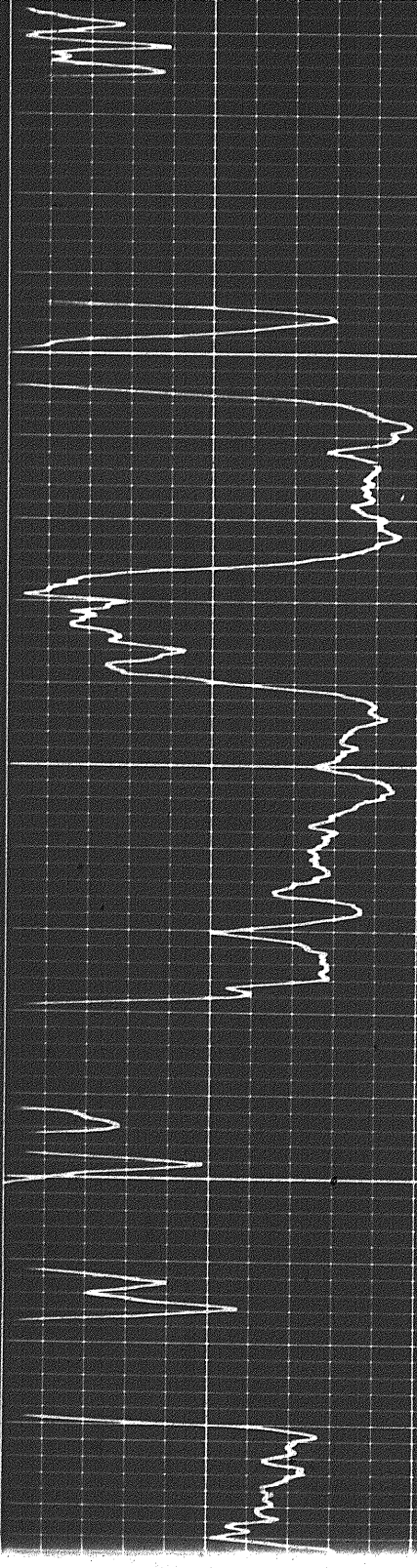
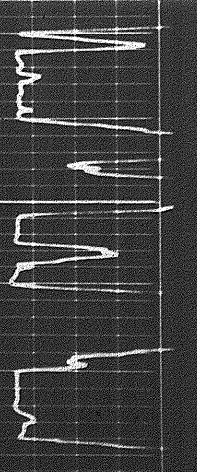
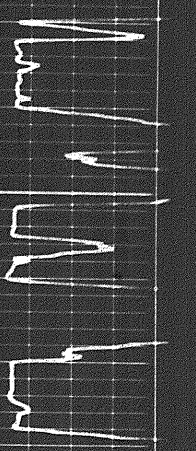
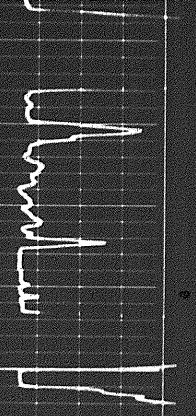
1000

1100

SANDSTONE

45 30 15 0 -15

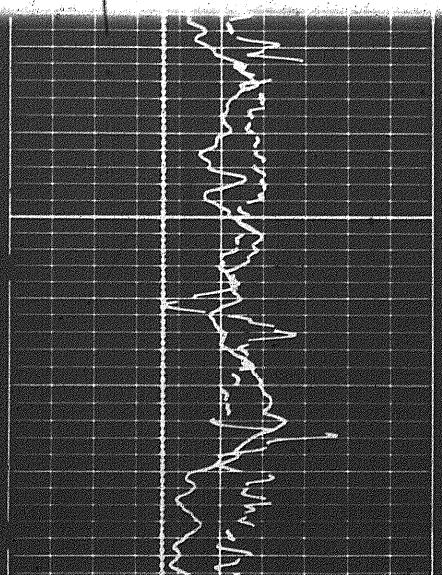
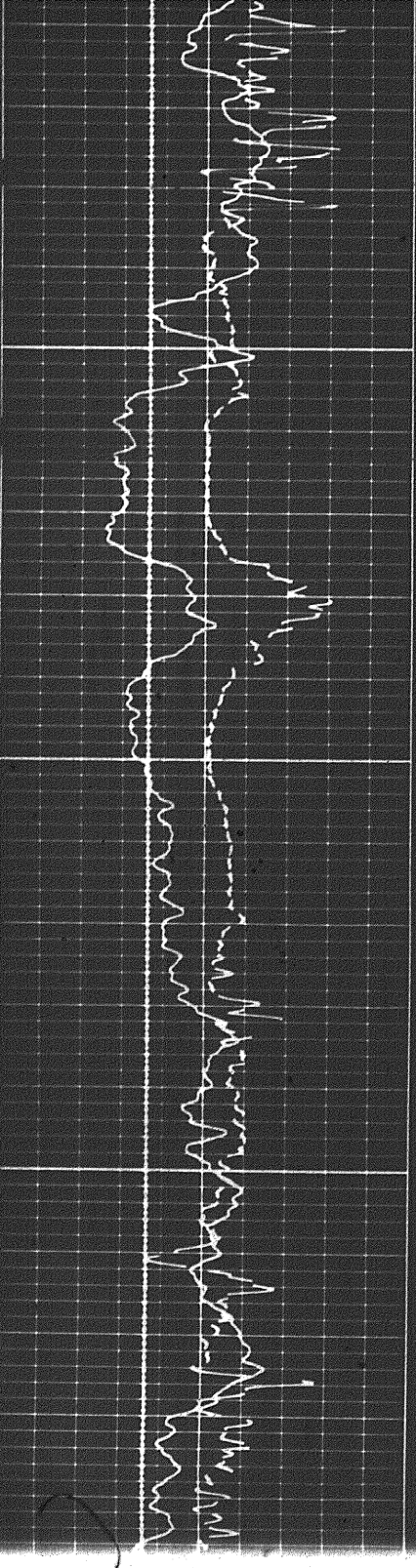


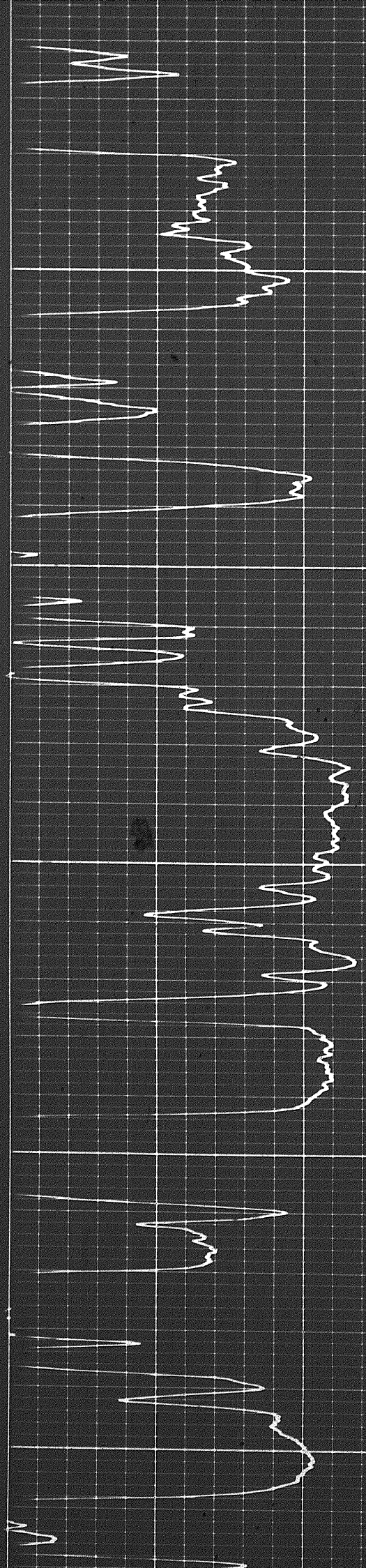
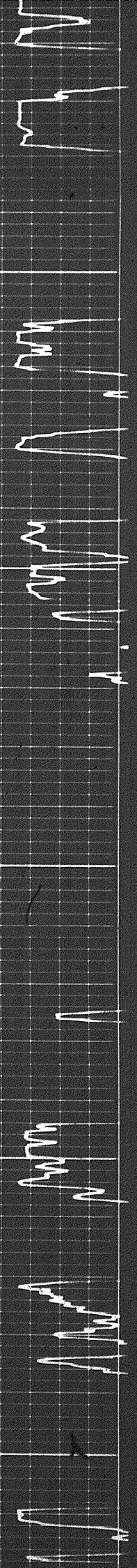


1200

1300

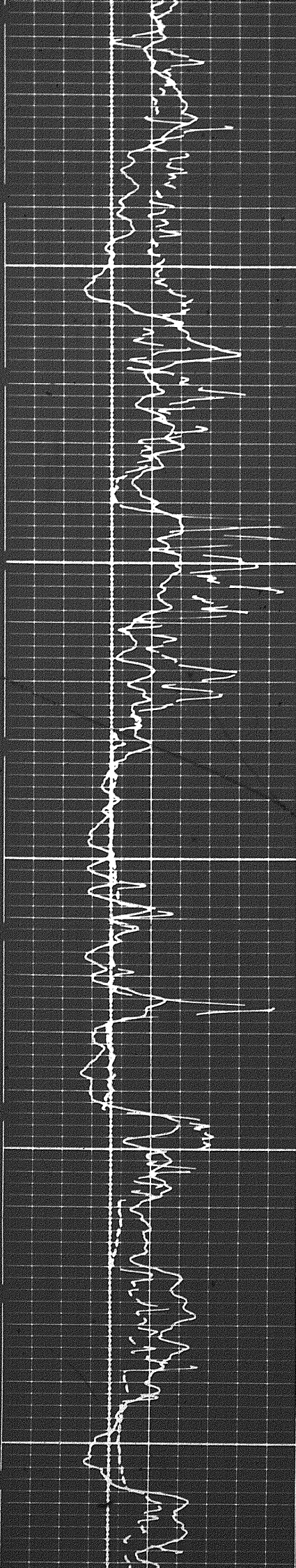
1300



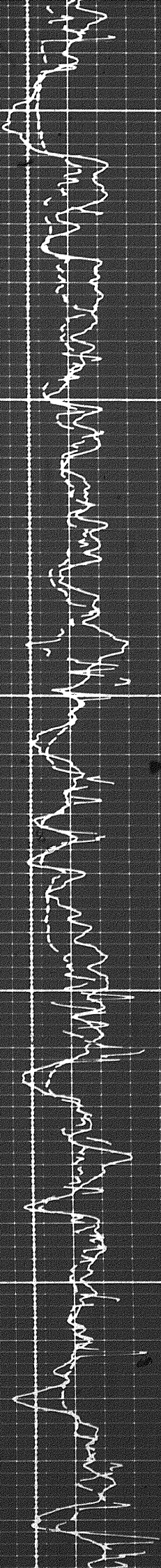


1400

1500

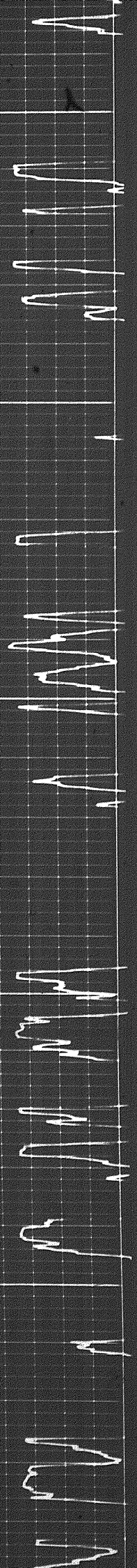
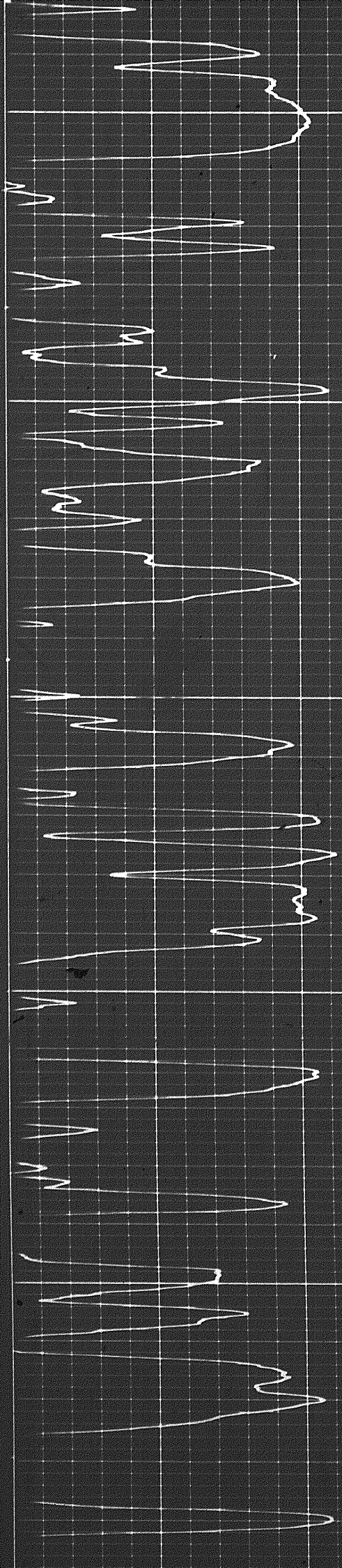


2 of

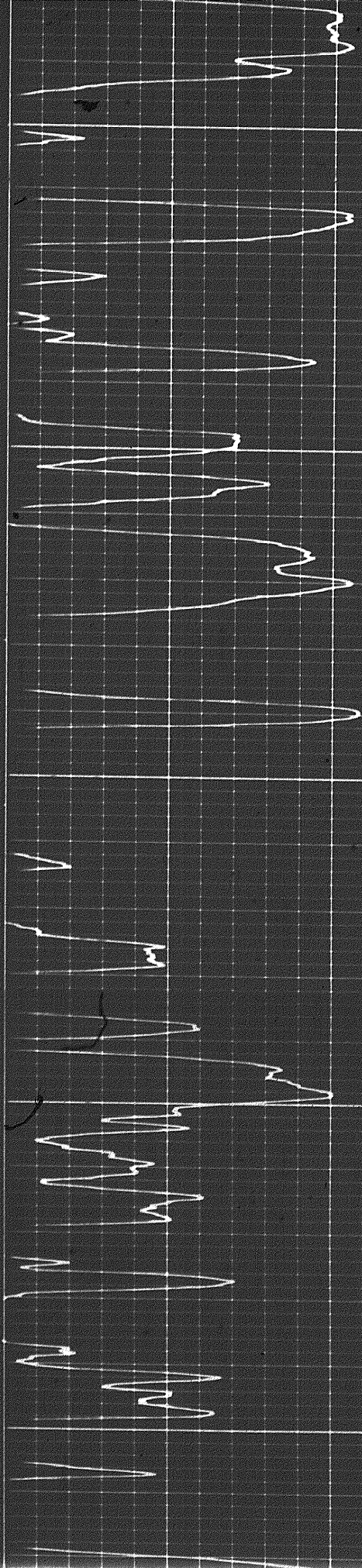


1600

1700



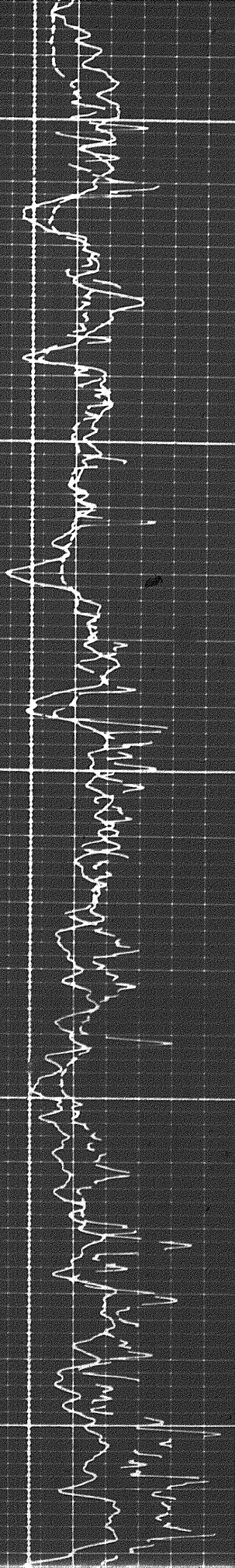
M... V... M... W... W... W...

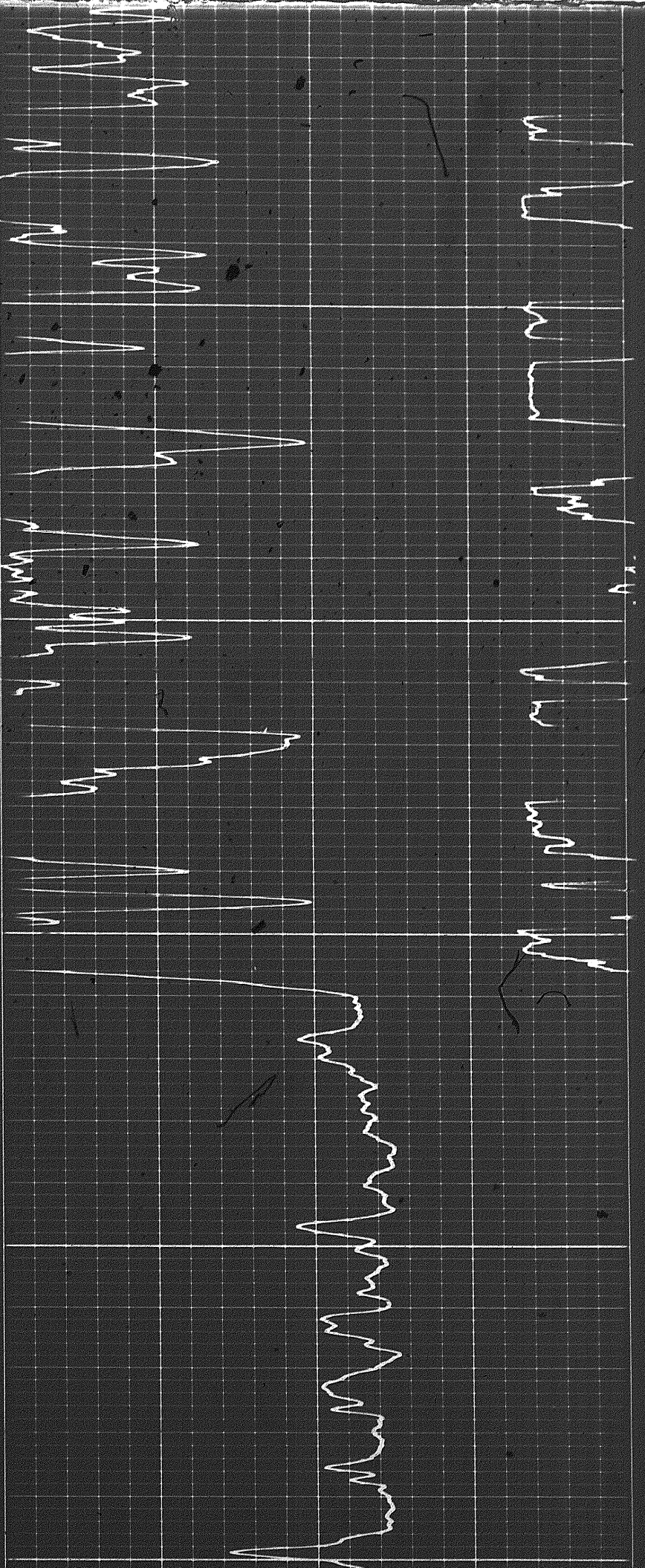


1700

1800

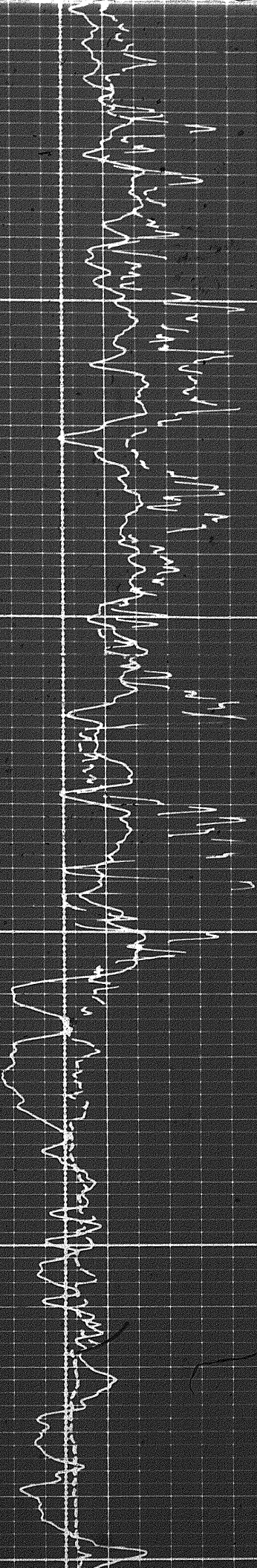
1900





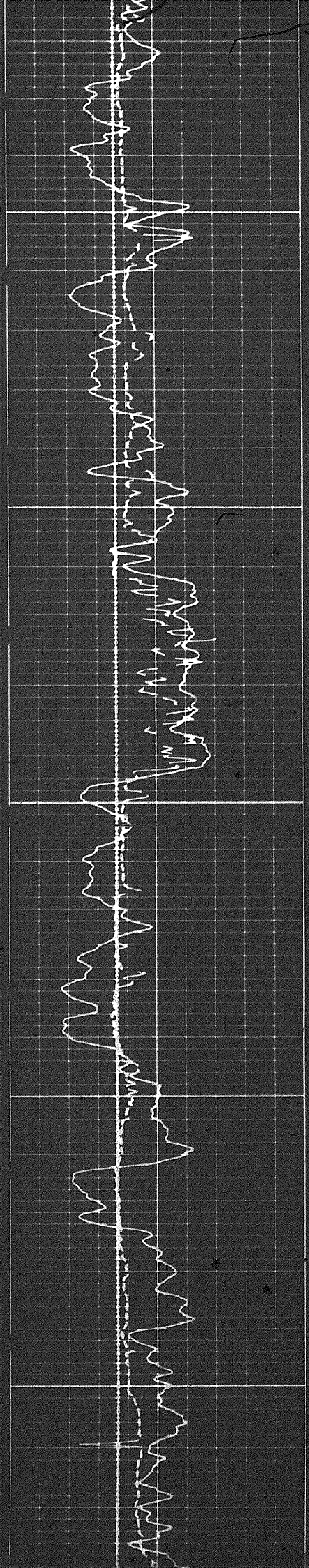
1900

2000



2100

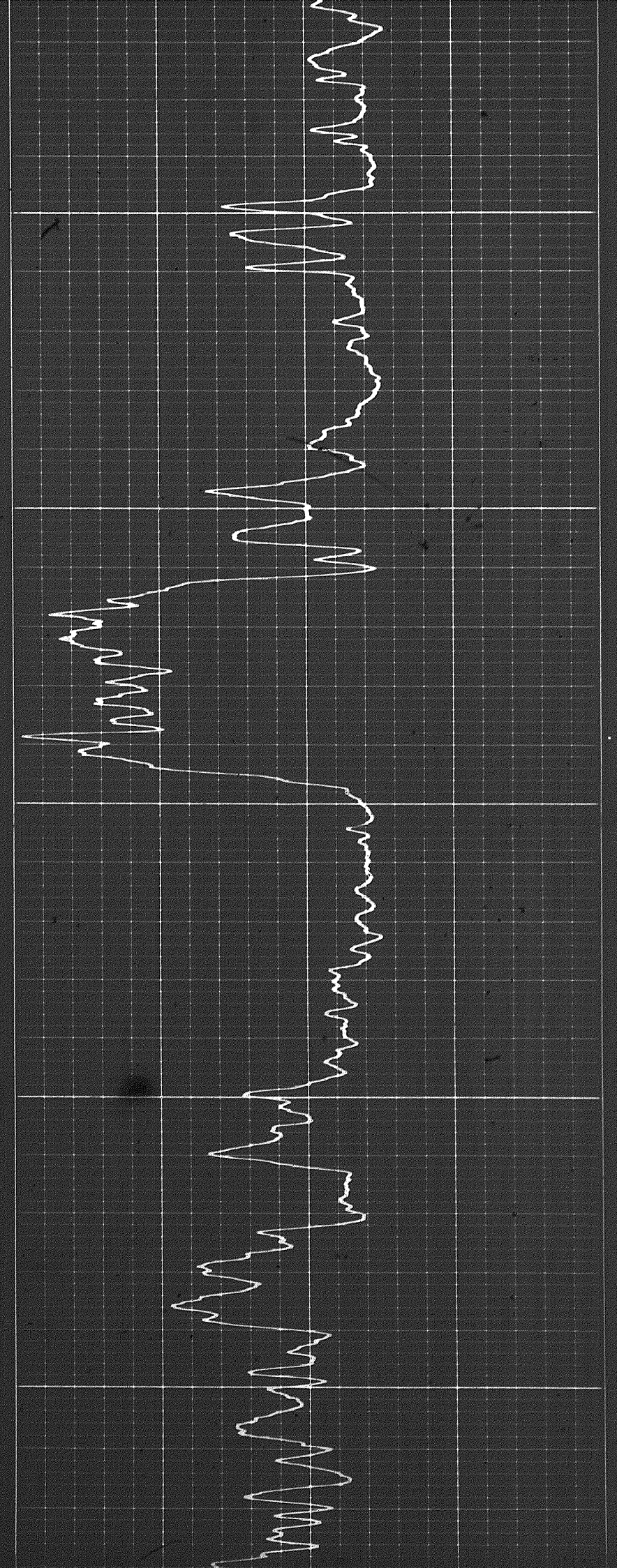
307

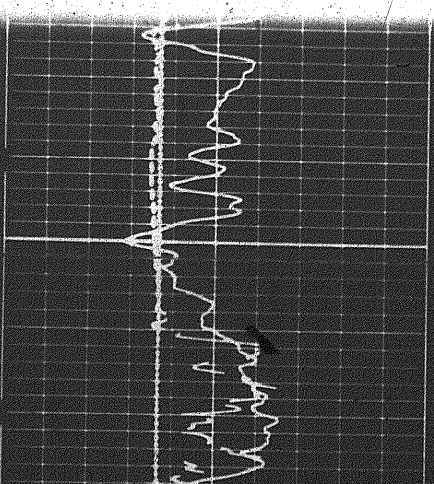
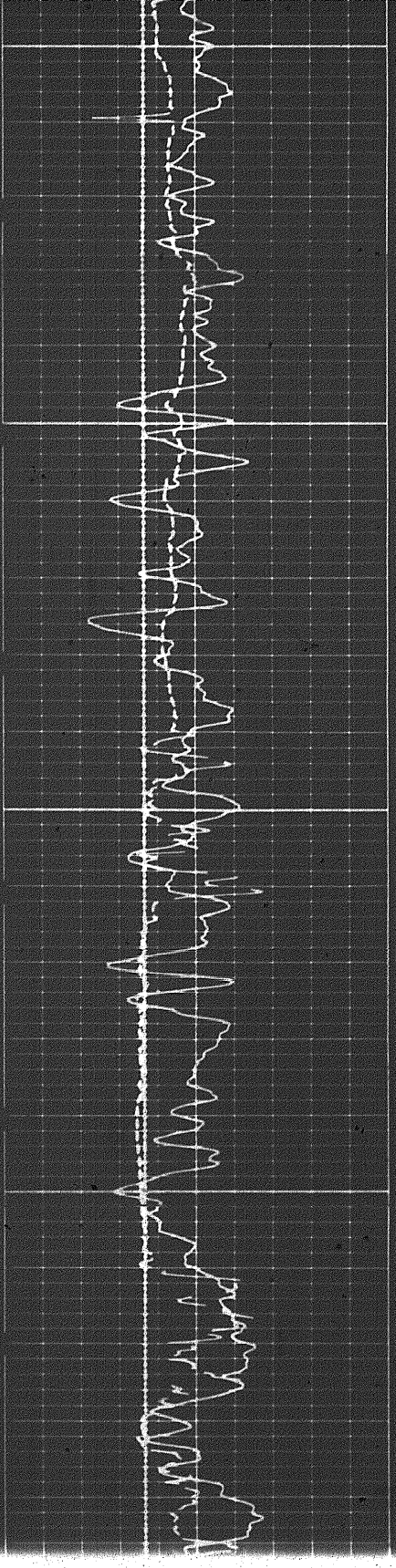
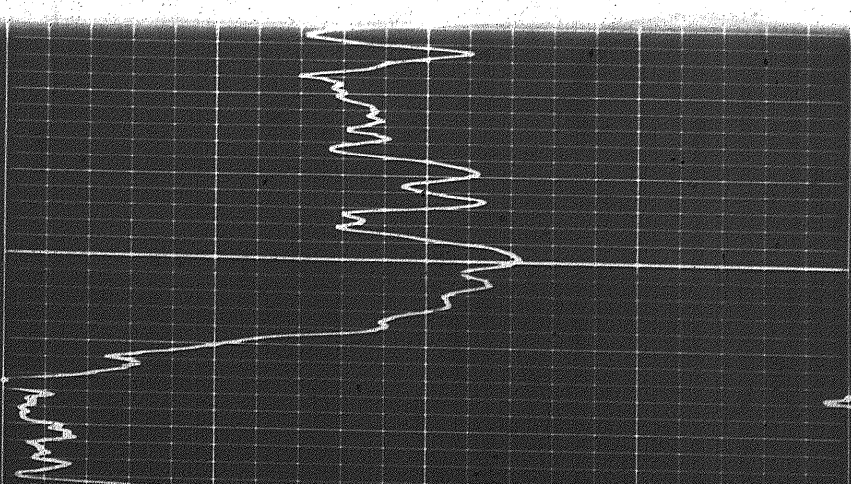
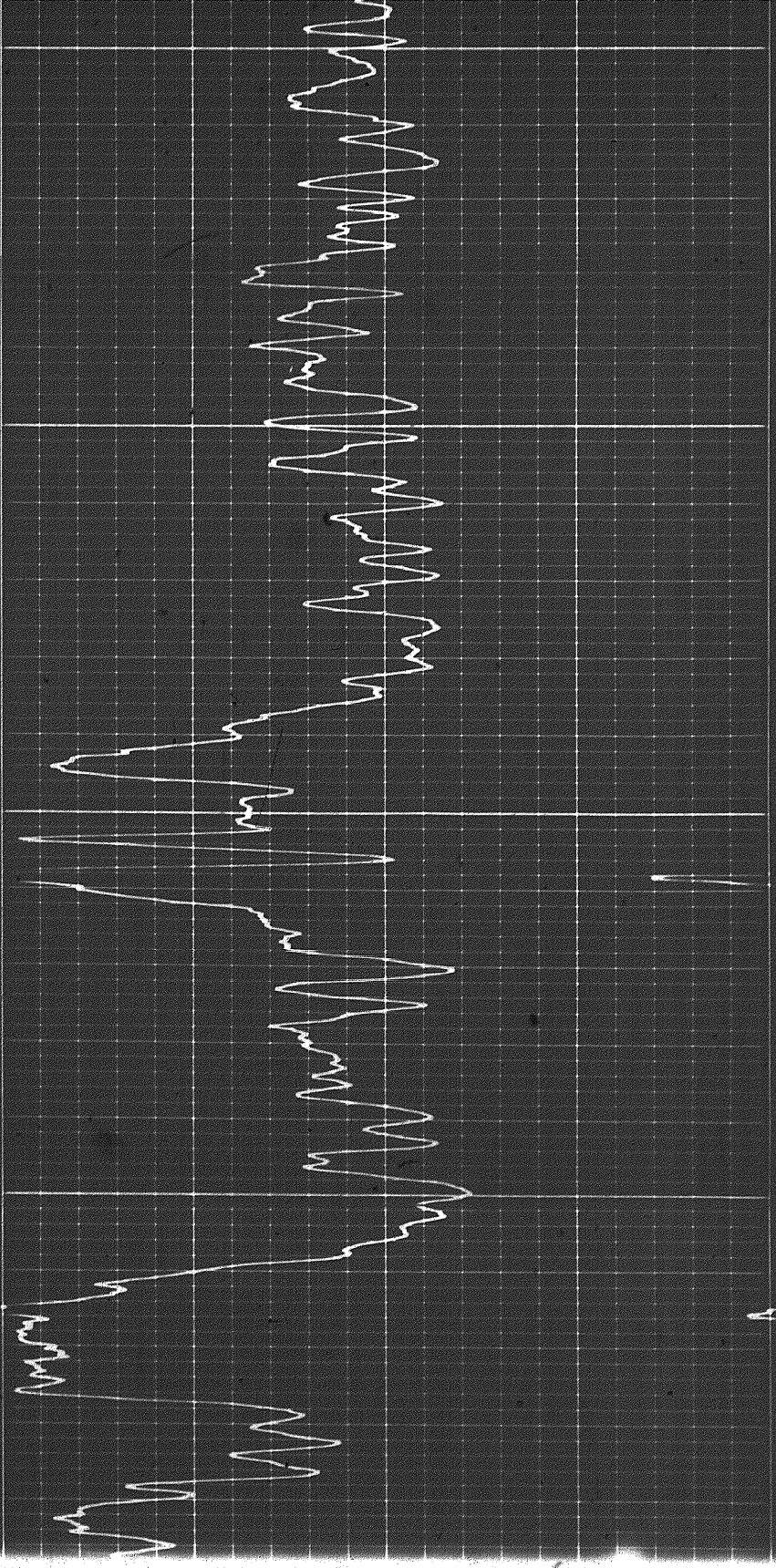


2000

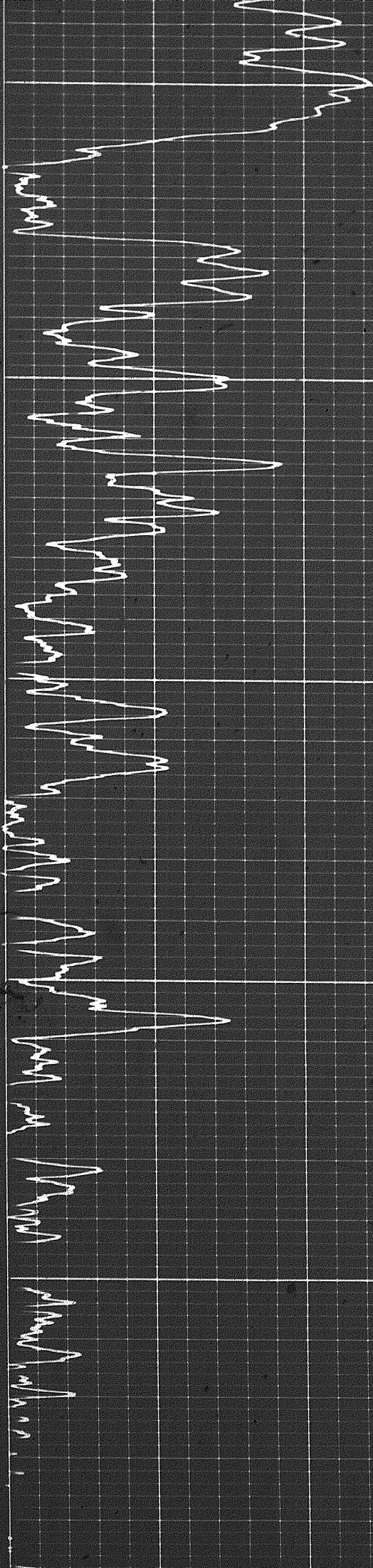
2200

2300





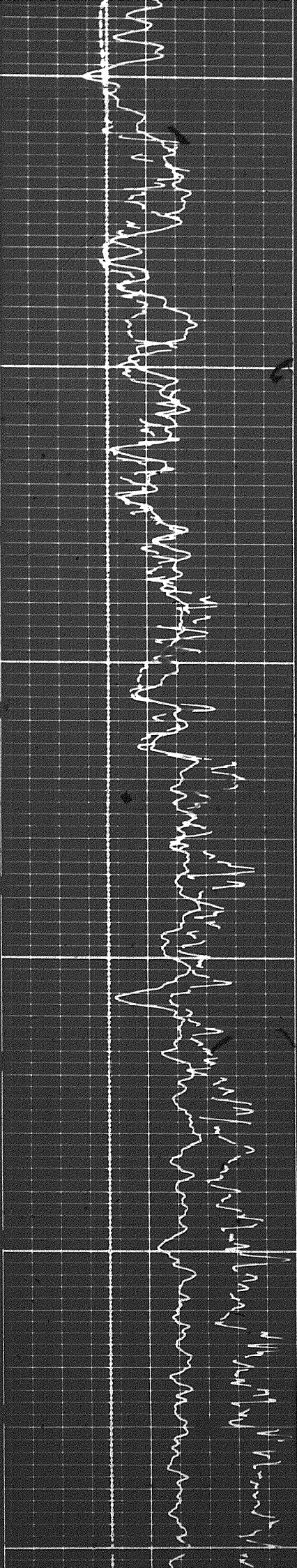
Handwritten notes on the right side of the page, including a vertical line and several lines of illegible text.



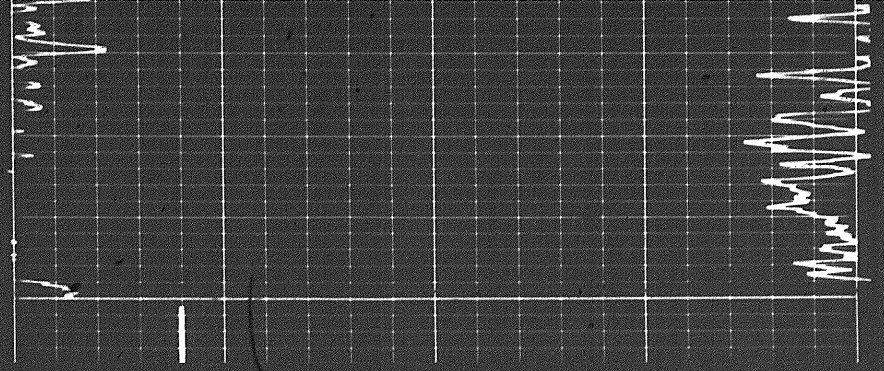
2500

2600

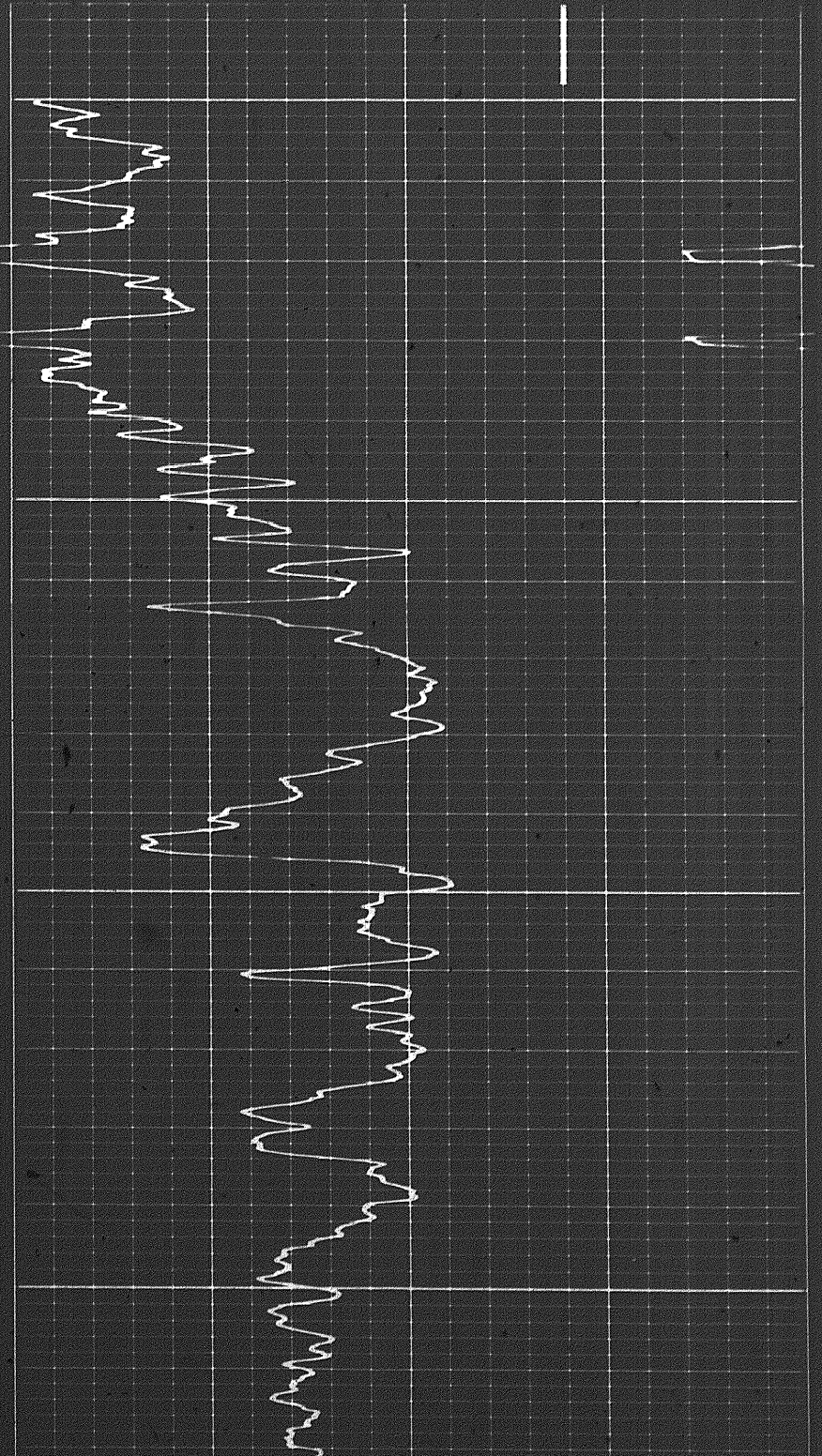
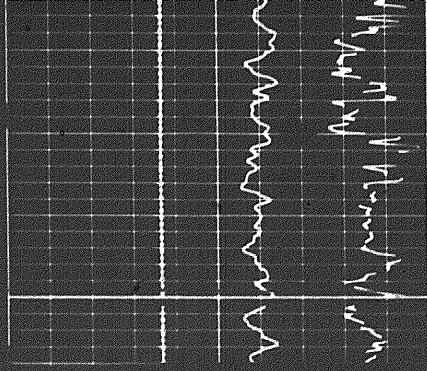
2700



Handwritten scribbles at the top of the page.

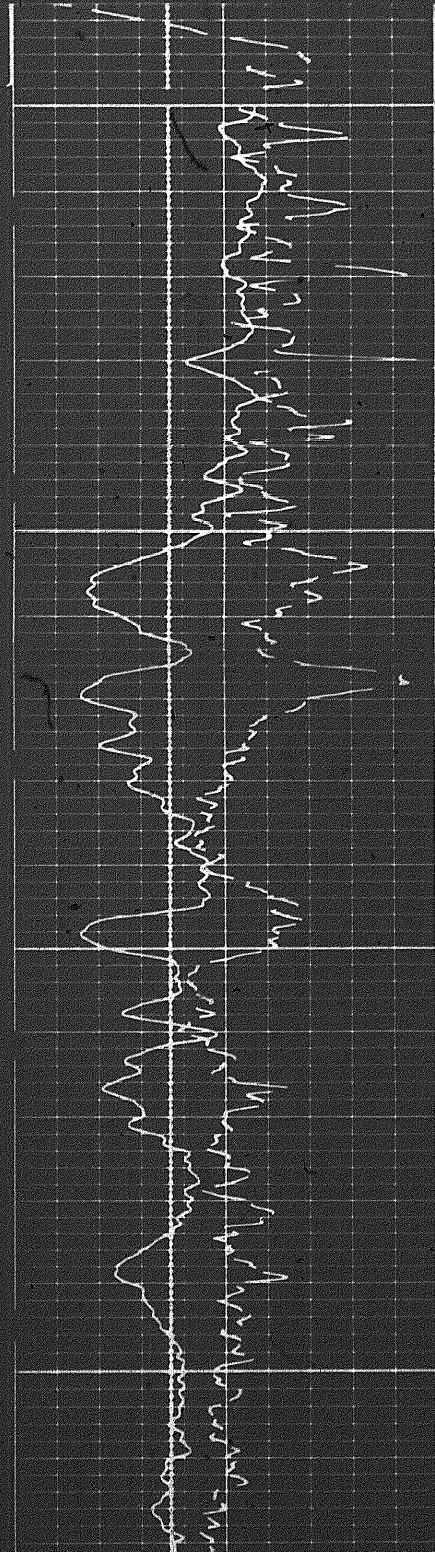


2700

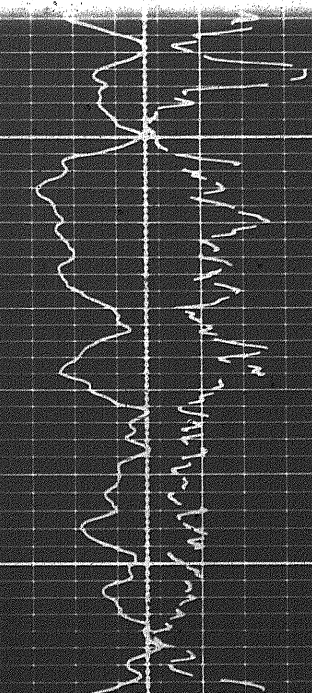


2700

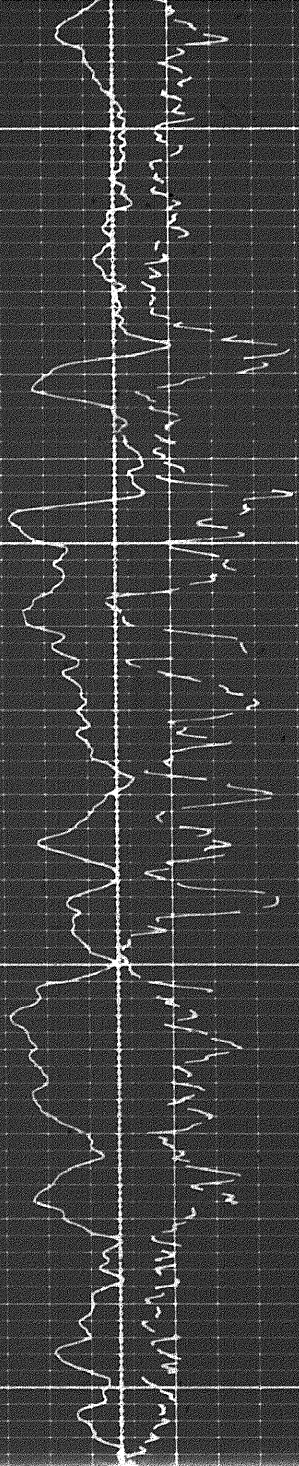
2700



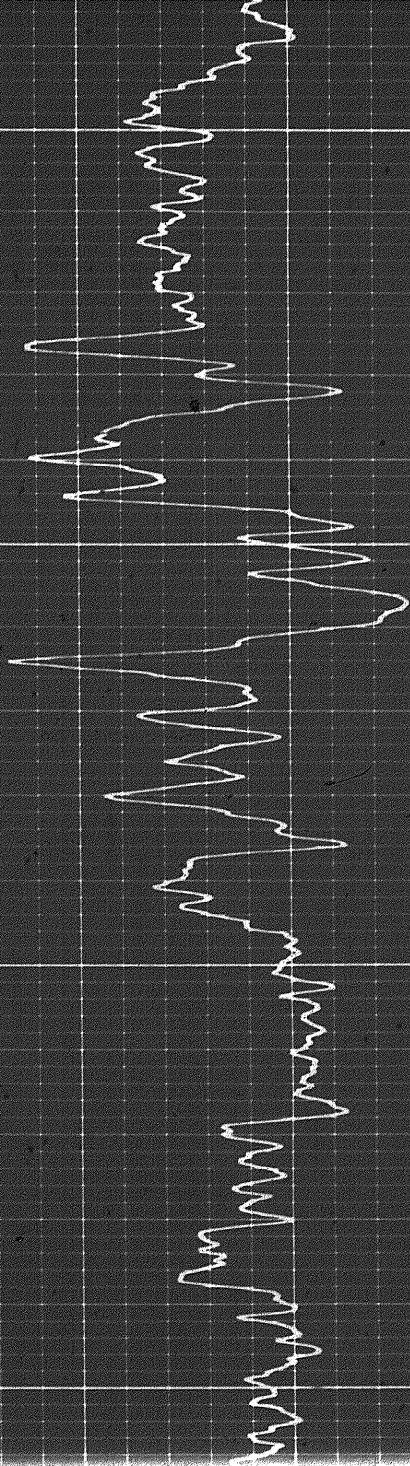
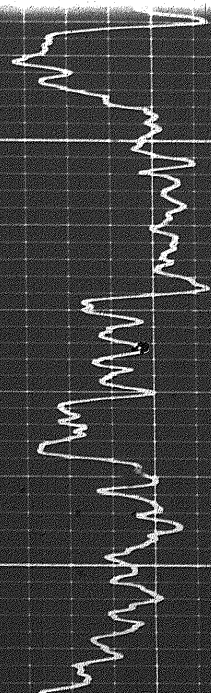
Handwritten scribbles on the left margin.



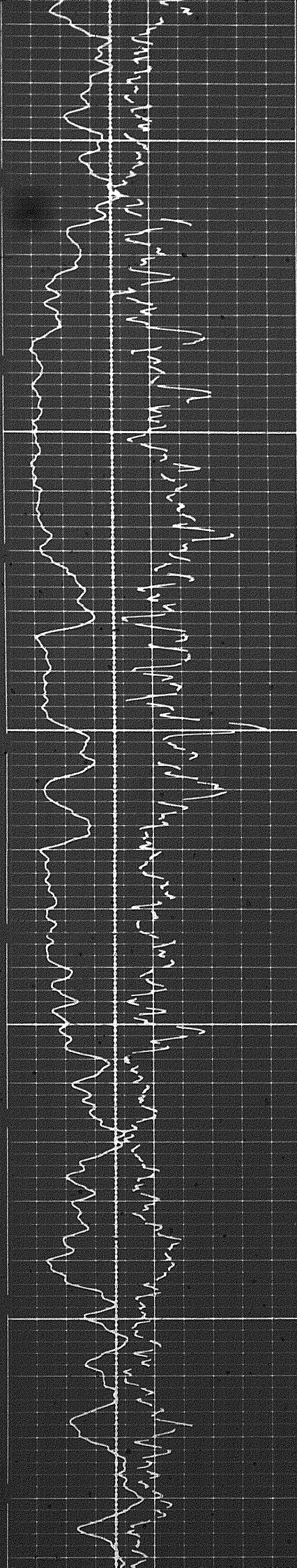
5900



5900



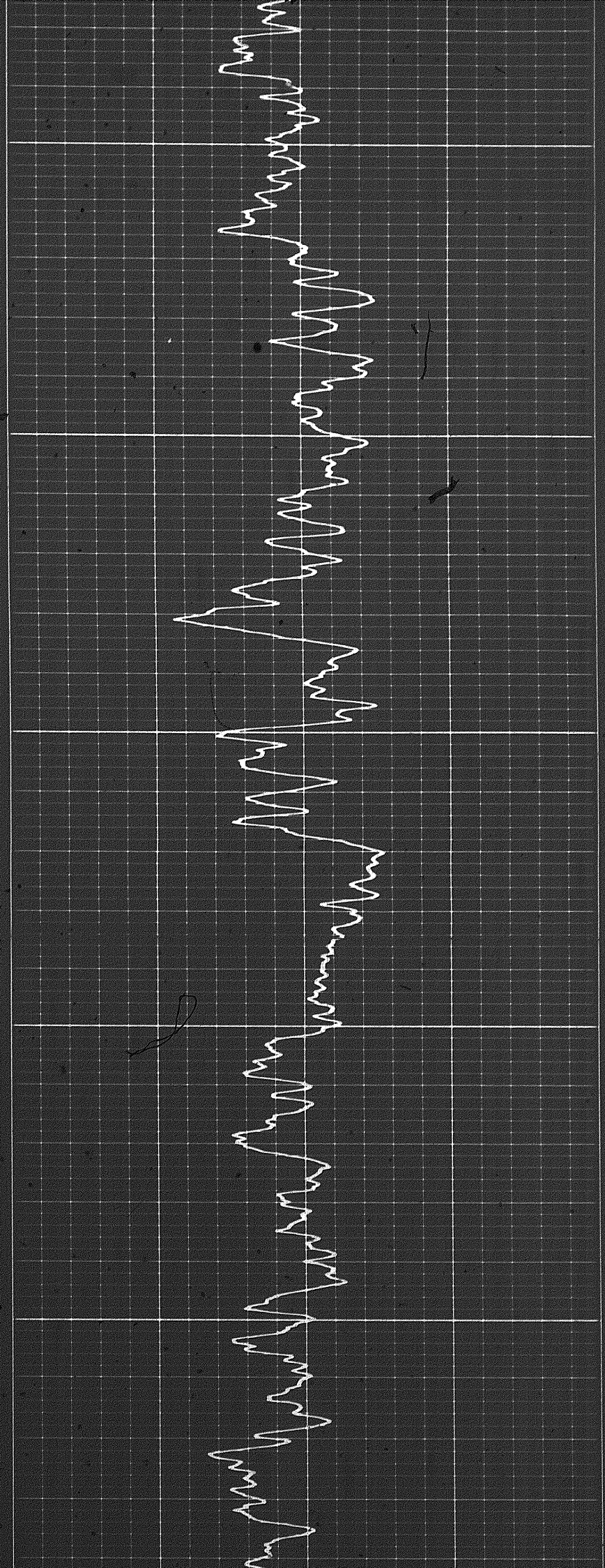
5 of



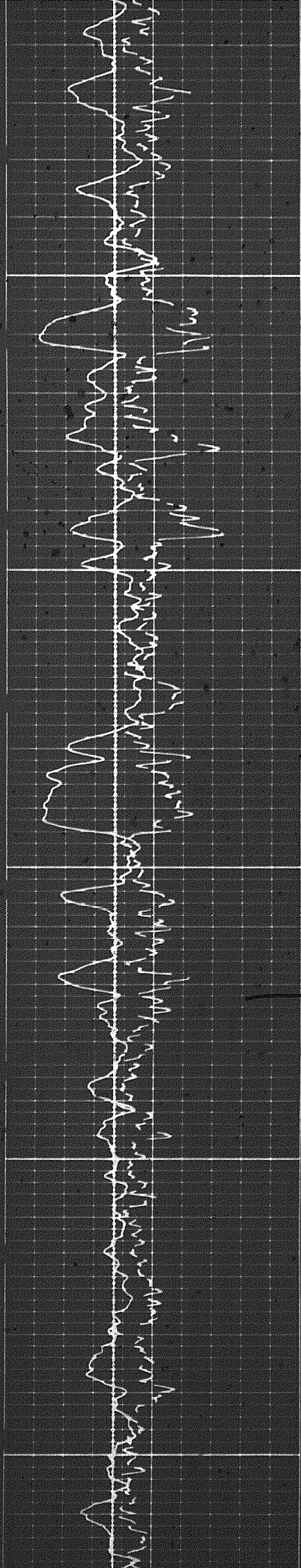
0075

0080

0085

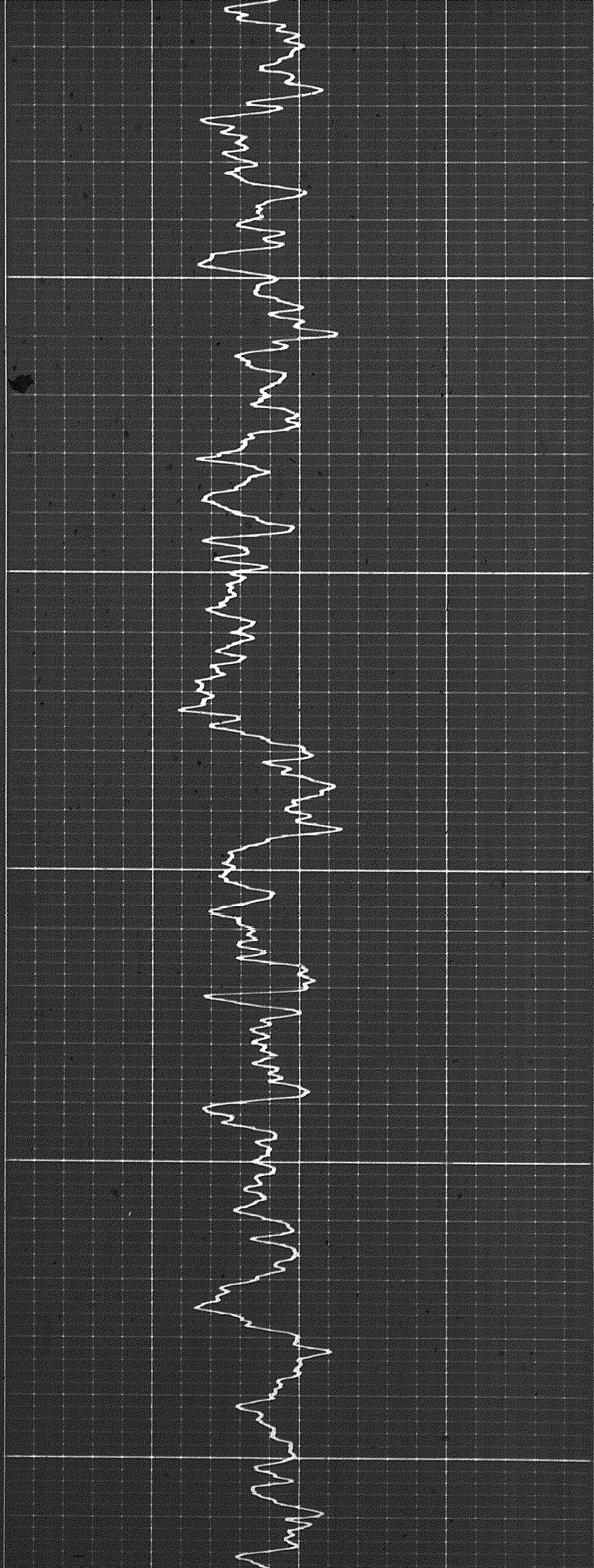


504



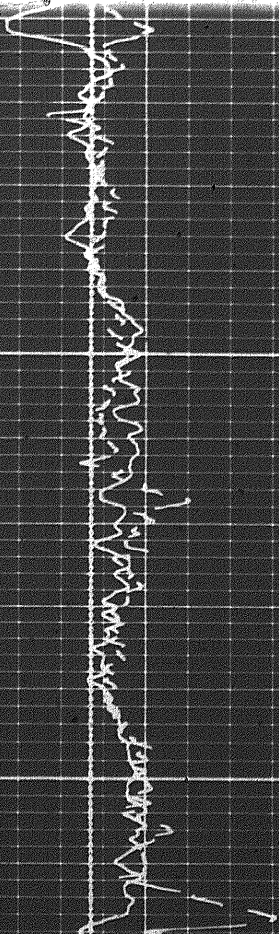
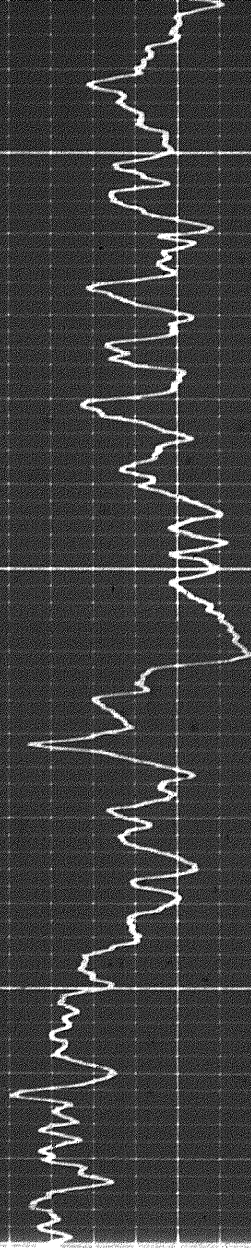
0085

0090

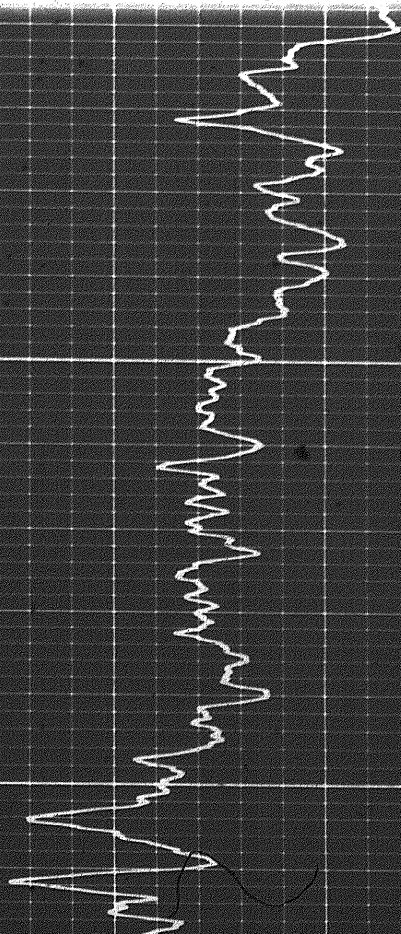


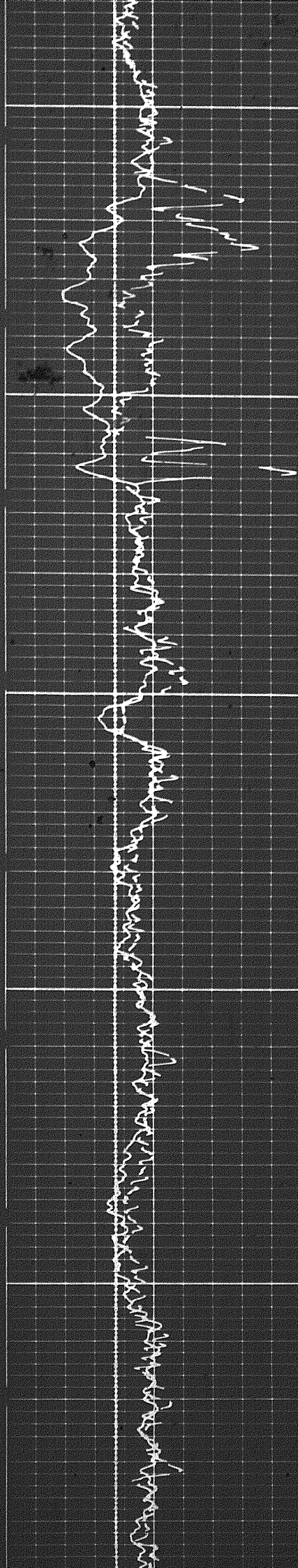


0009



0019

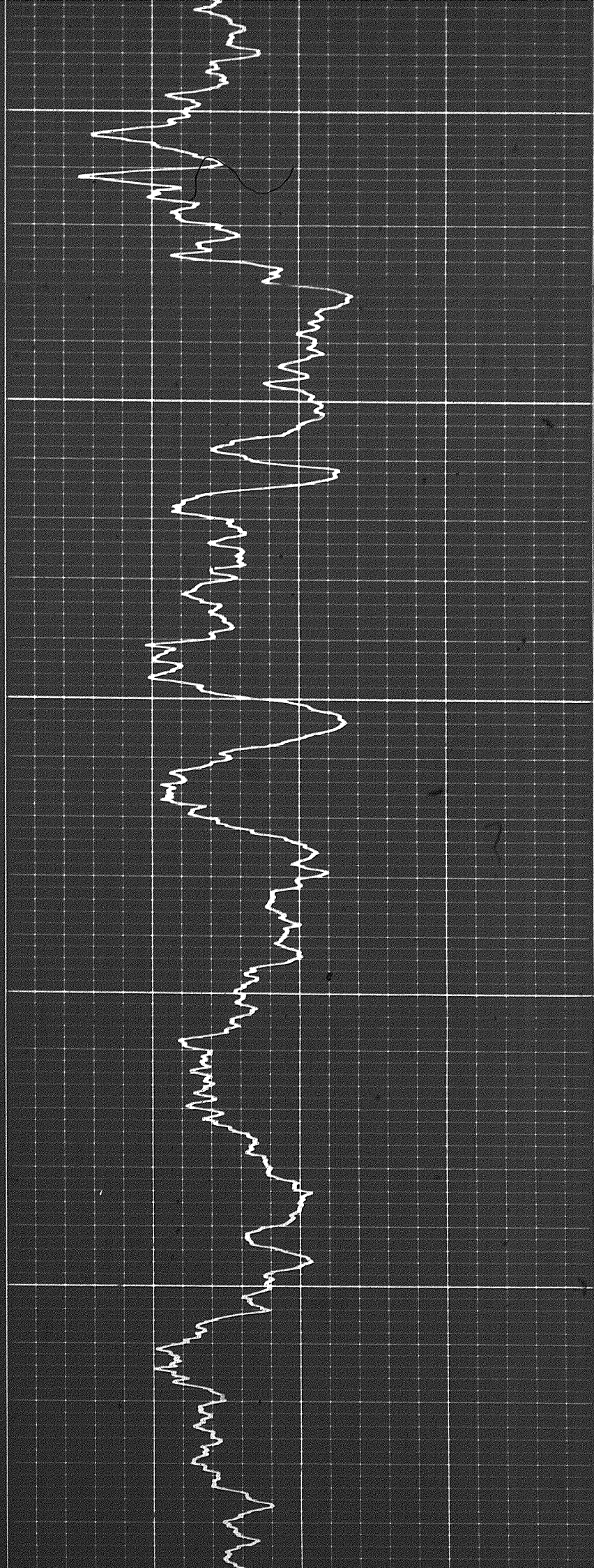


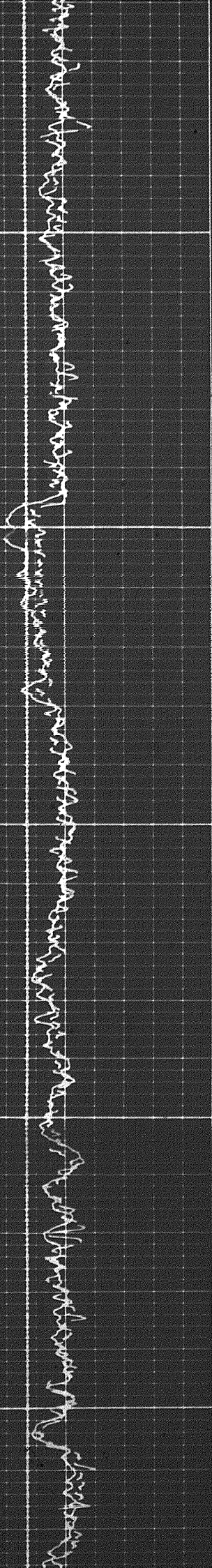


6100

6200

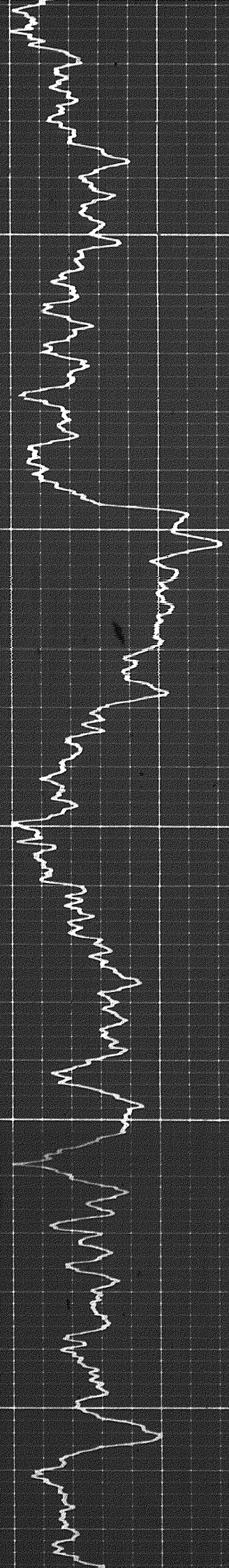
6300

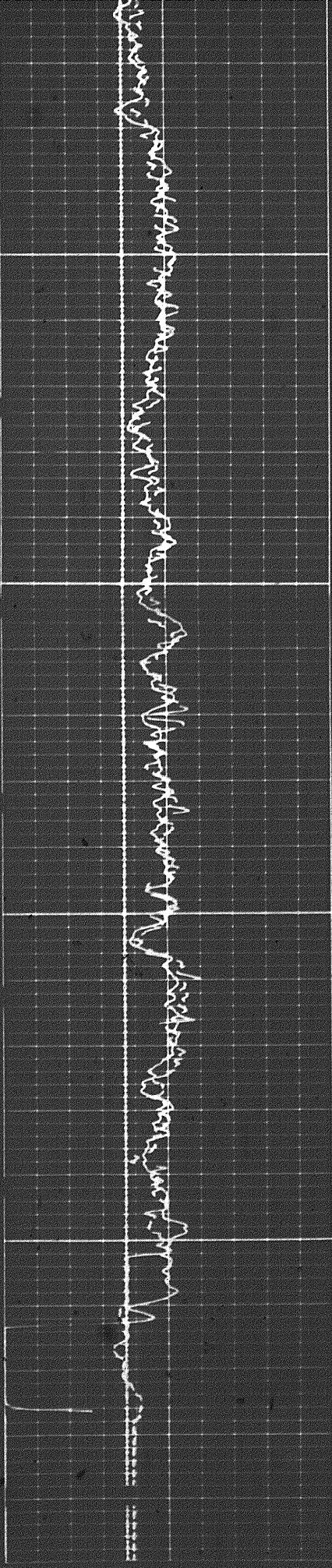




S400

S400

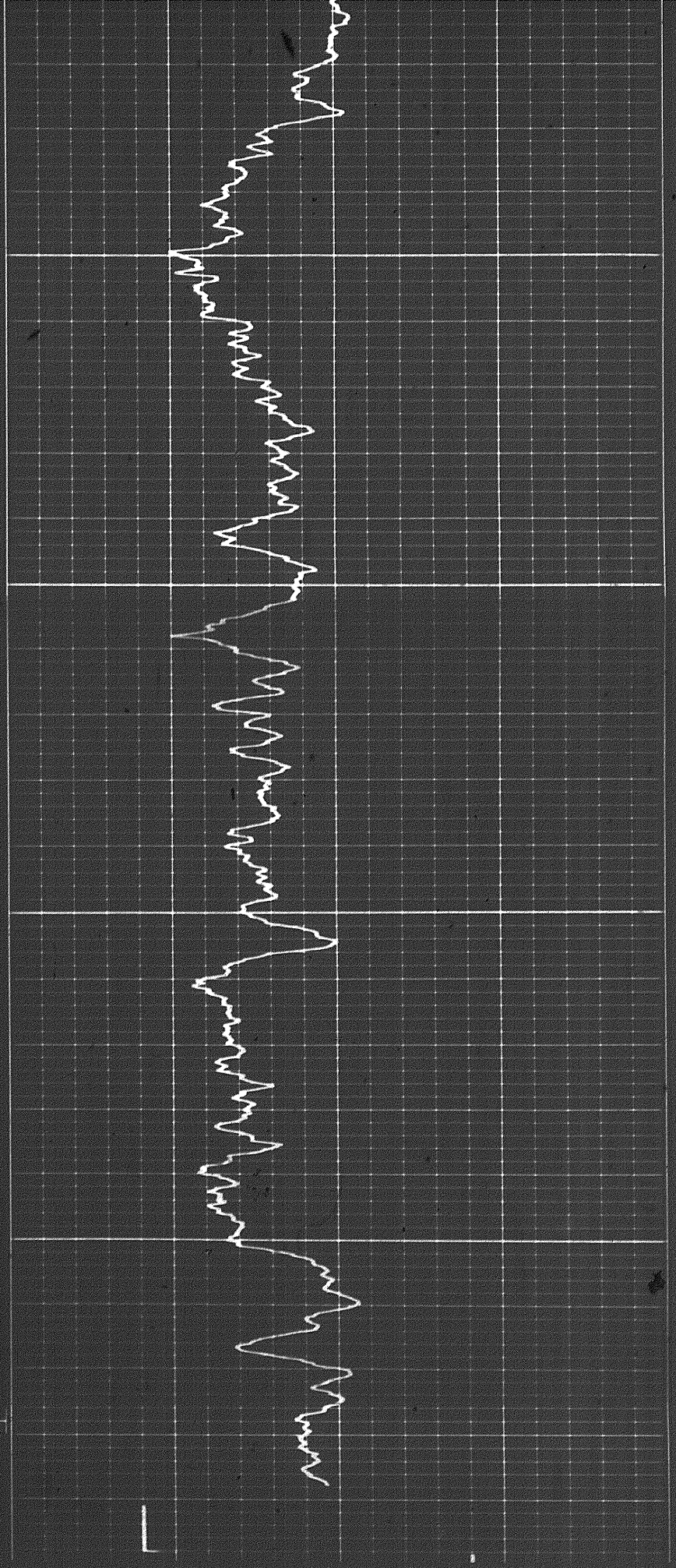


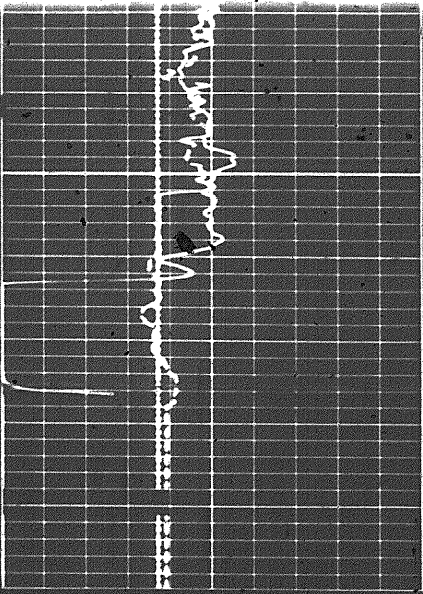


6500

6500

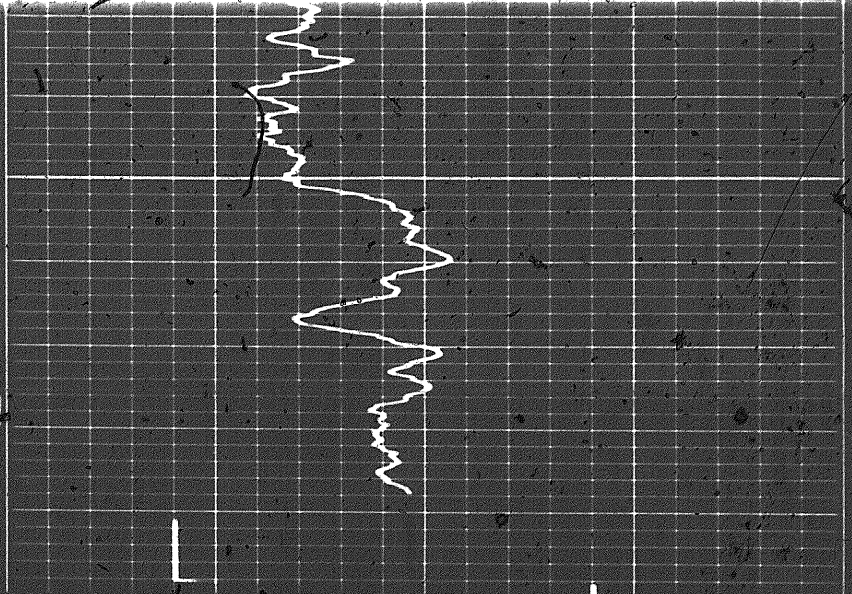
FR



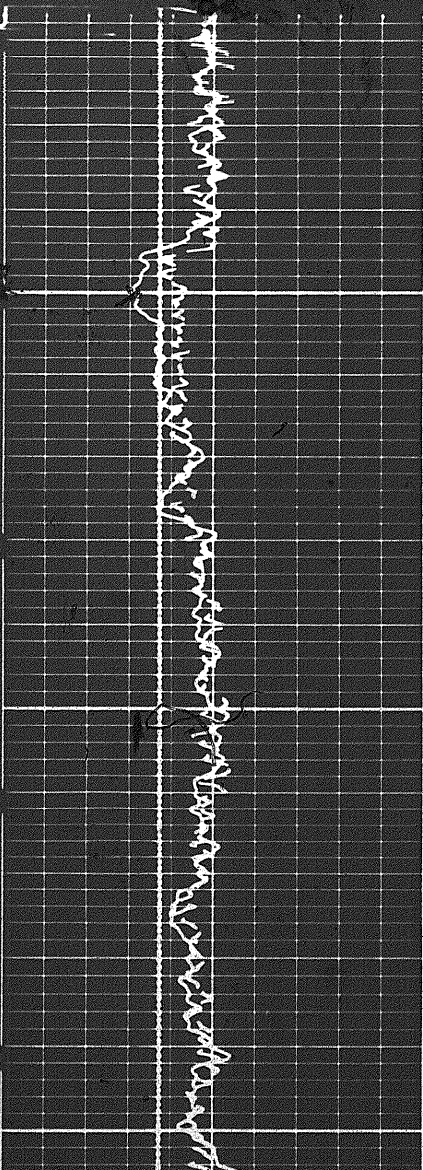


6600

FR

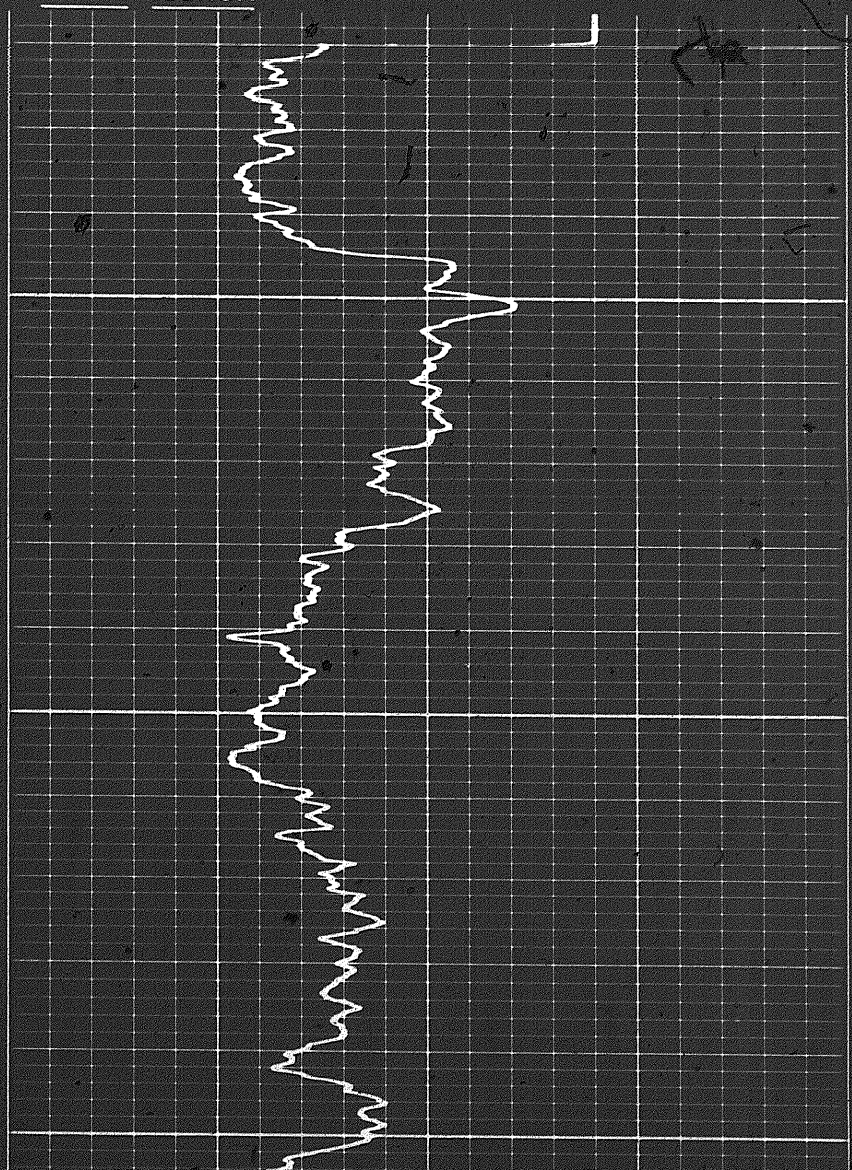


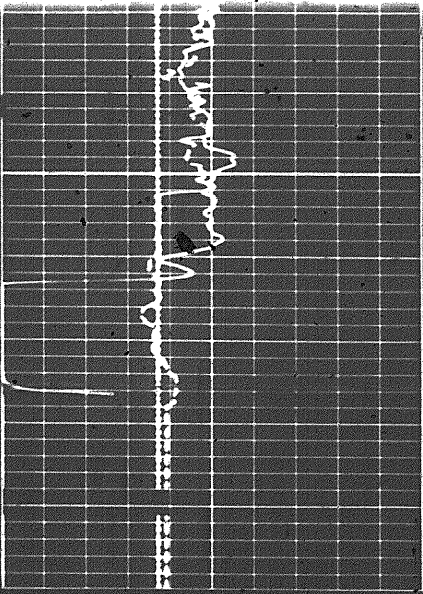
REPEAT SECTION



6400

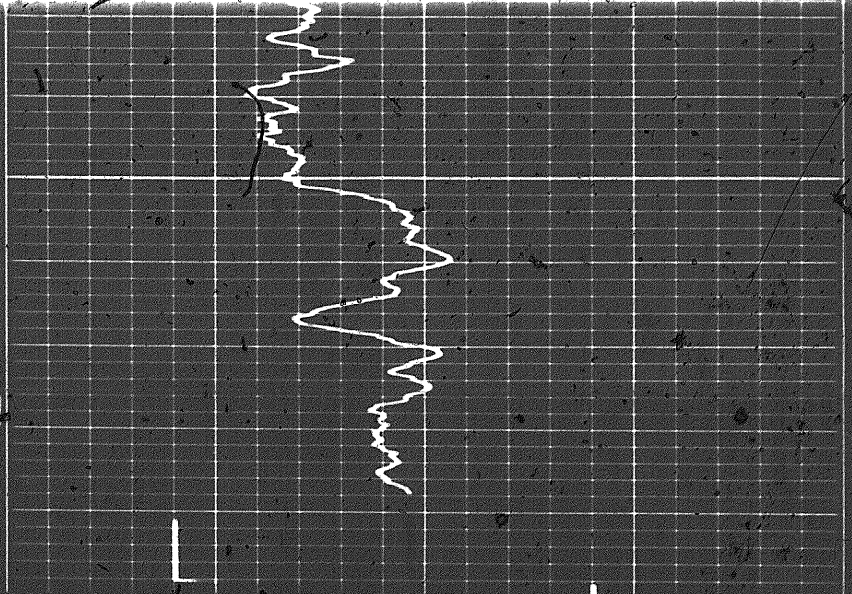
6500



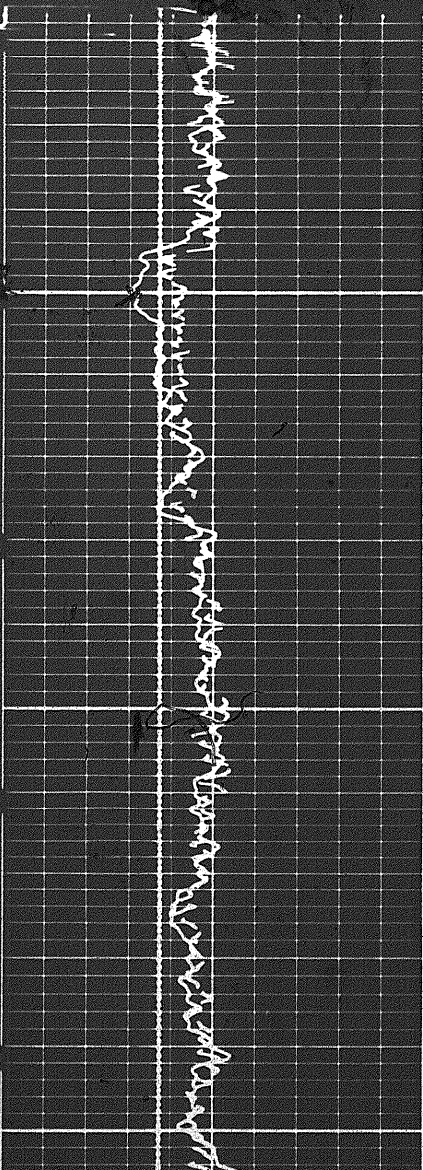


6600

FR

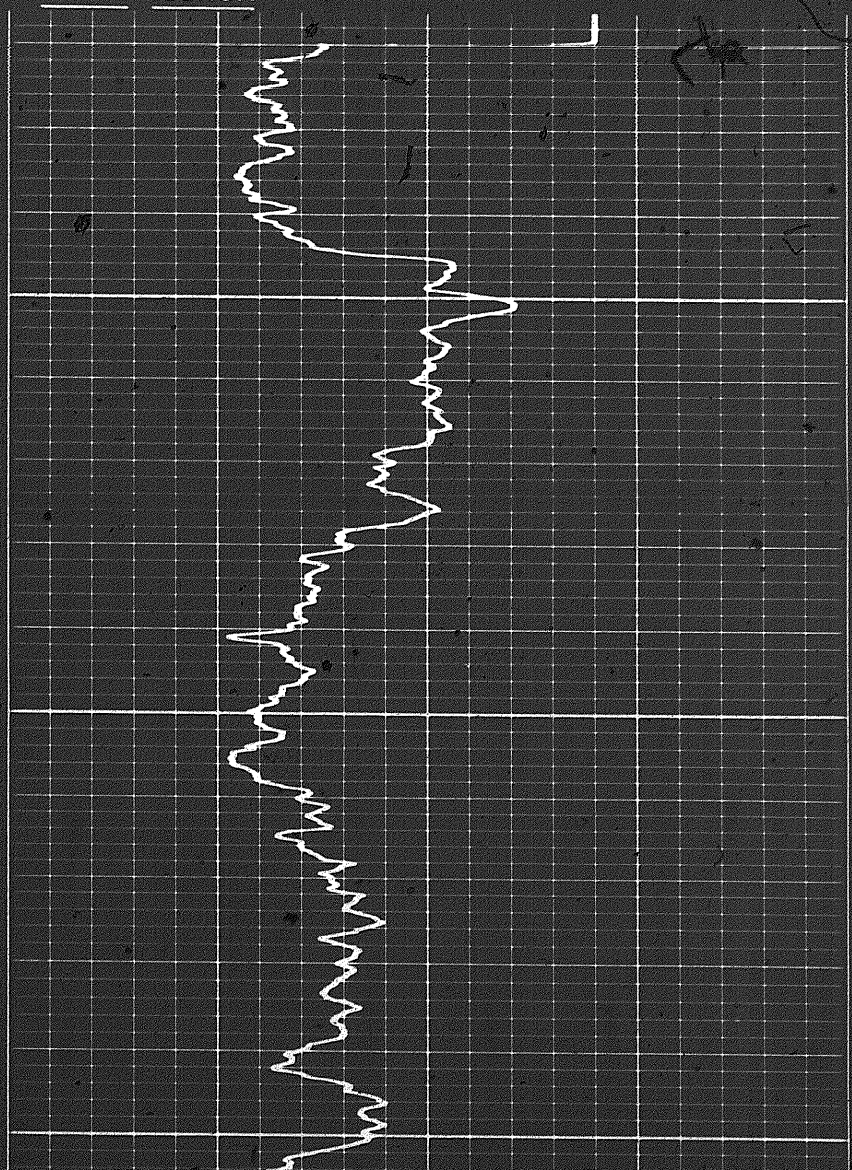


REPEAT SECTION

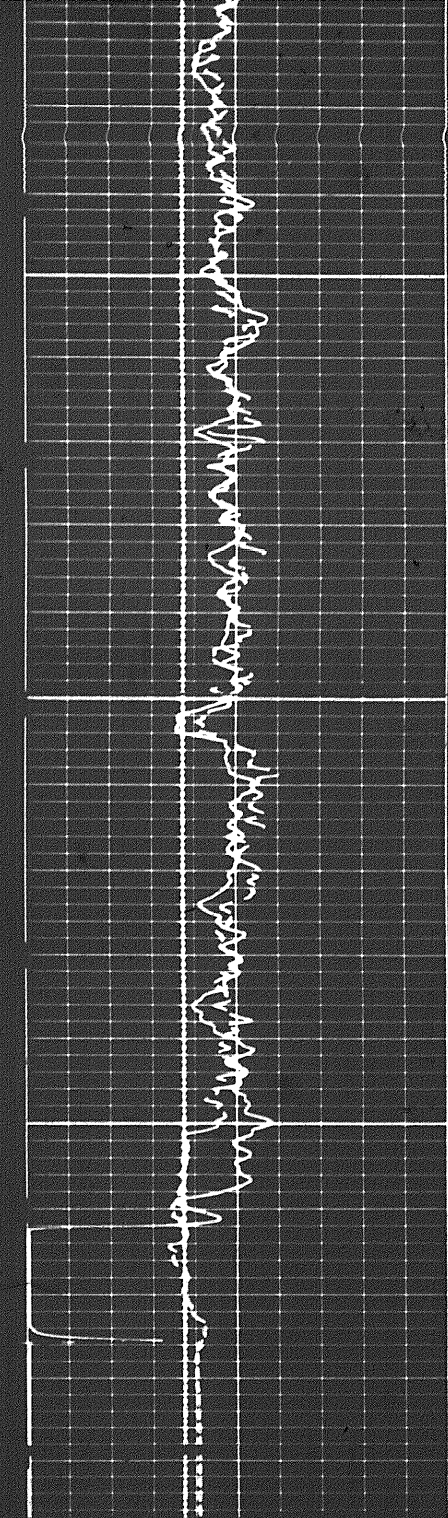


6400

6500



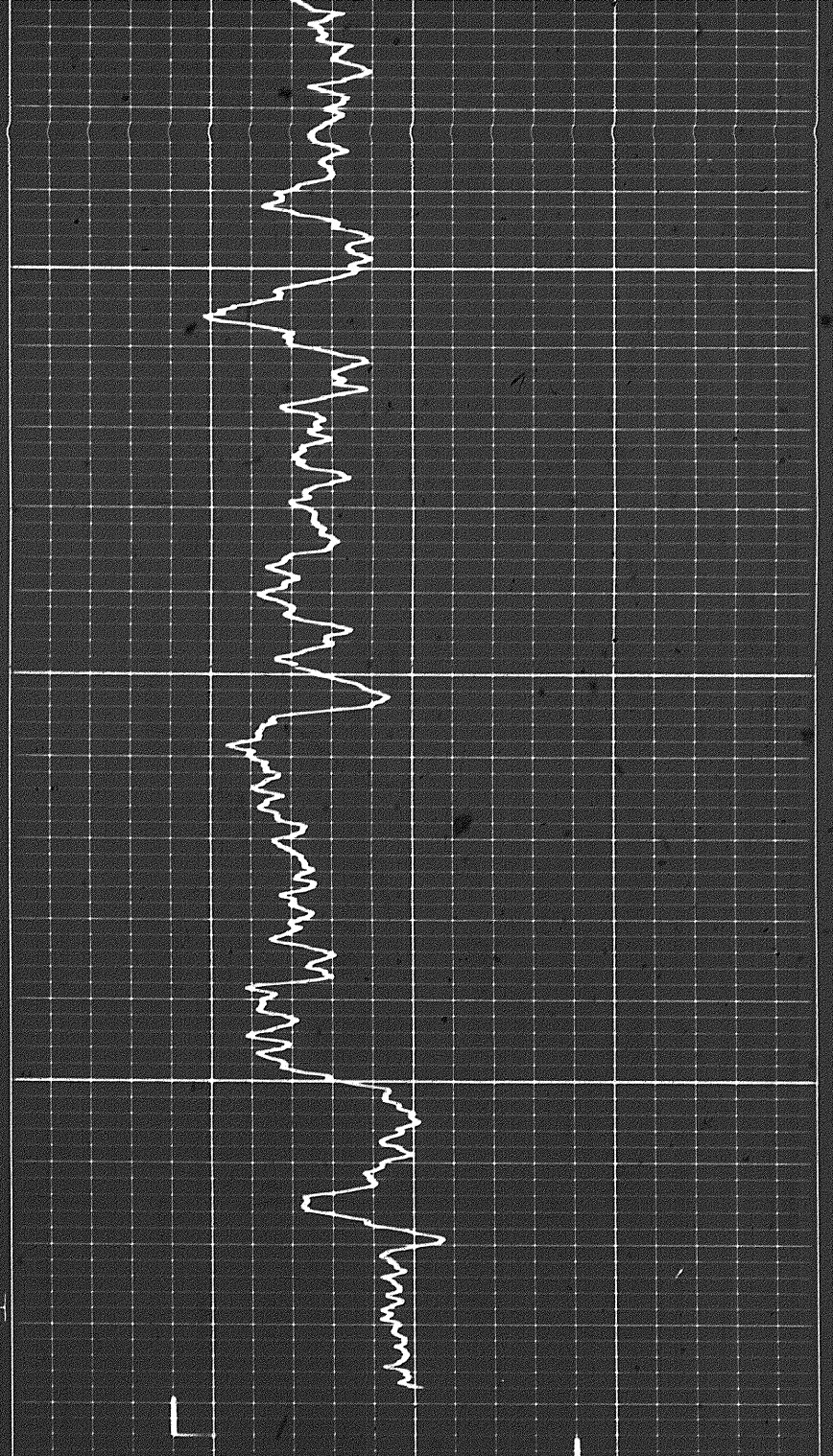
134



6500

6600

FR



Sens 150 T.C.
 Zero 0 div. to left 150
 150 300

GAMMA RAY
API UNITS

Speed in FPM

6 7 8 9 10 11 12 13 14

CALIPER
hole diameter in inches

DEPTHS

POROSITY (%)

SANDSTONE

Speed in fpm

GAMMA RAY
API UNITS

6 7 8 9 10 11 12 13 14

30

15

0

SANDSTONE

CALIPER
hole diameter in inches

DEPTHS

POROSITY (%)

Calibration after Survey

14

15

13

CALIPER
hole diameter in inches

DEPTHS

POROSITY (%)

Calibration after Survey

Calibration after Survey

14

15

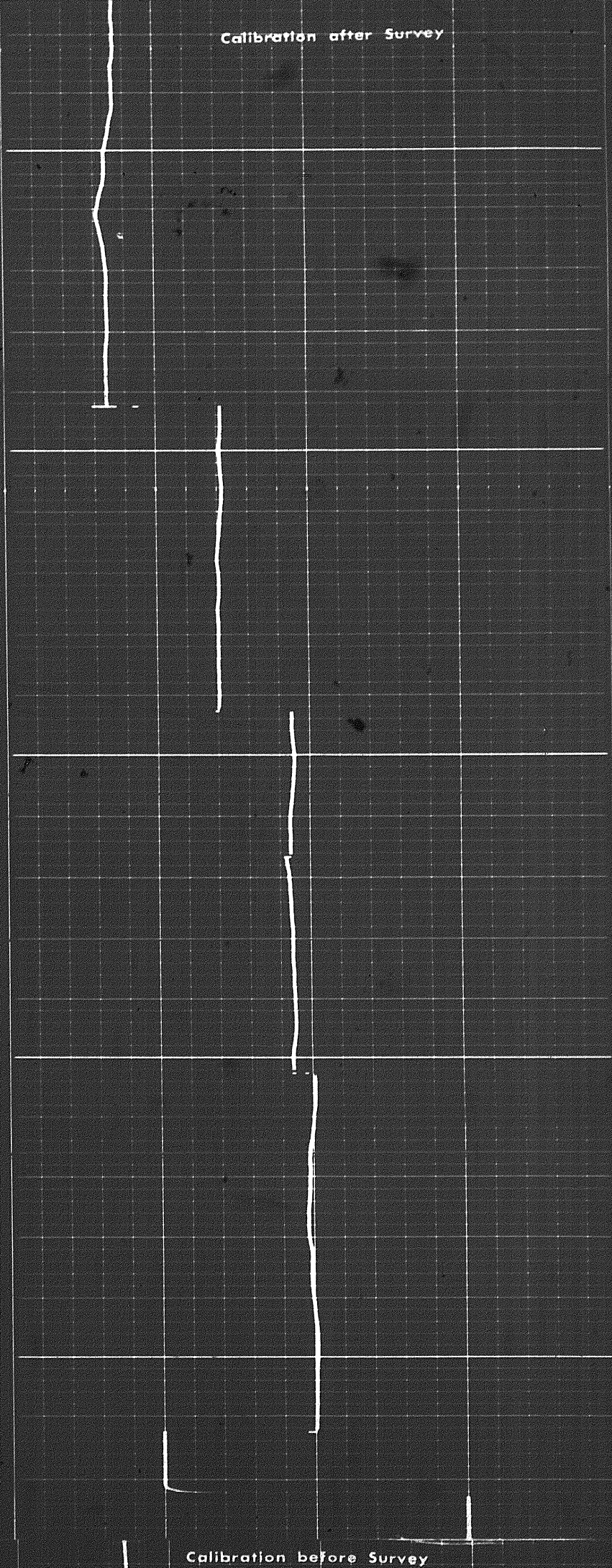
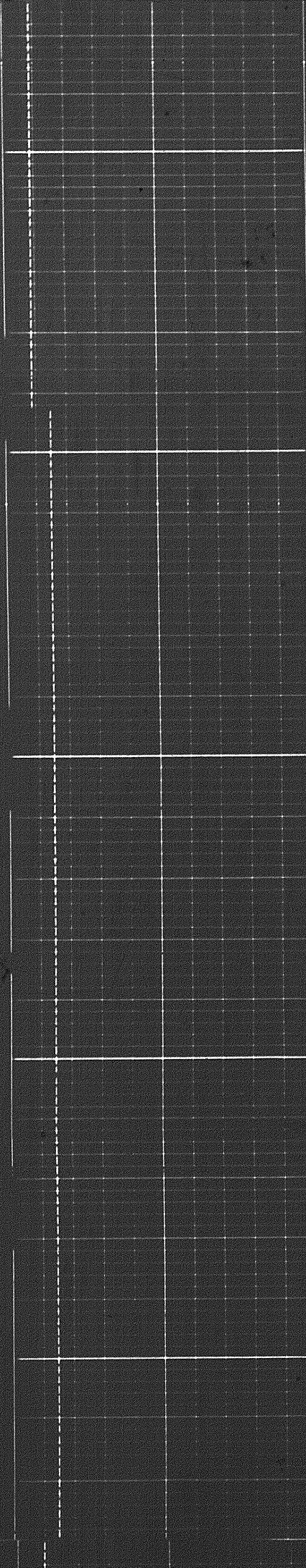
13

12

11

10

Calibration before Survey



870D

11

10

Calibration before Survey

14

9

8

7

6

5

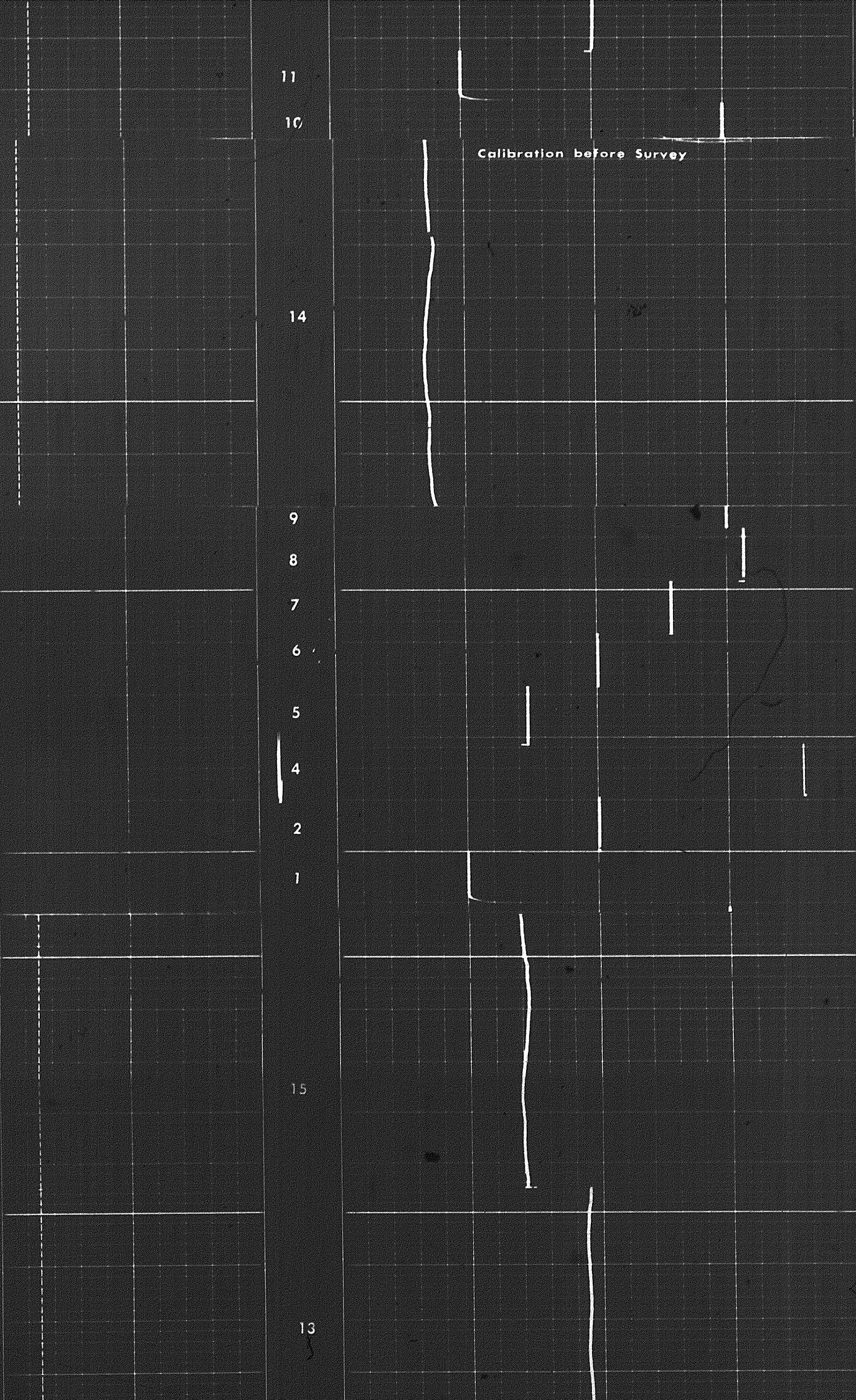
4

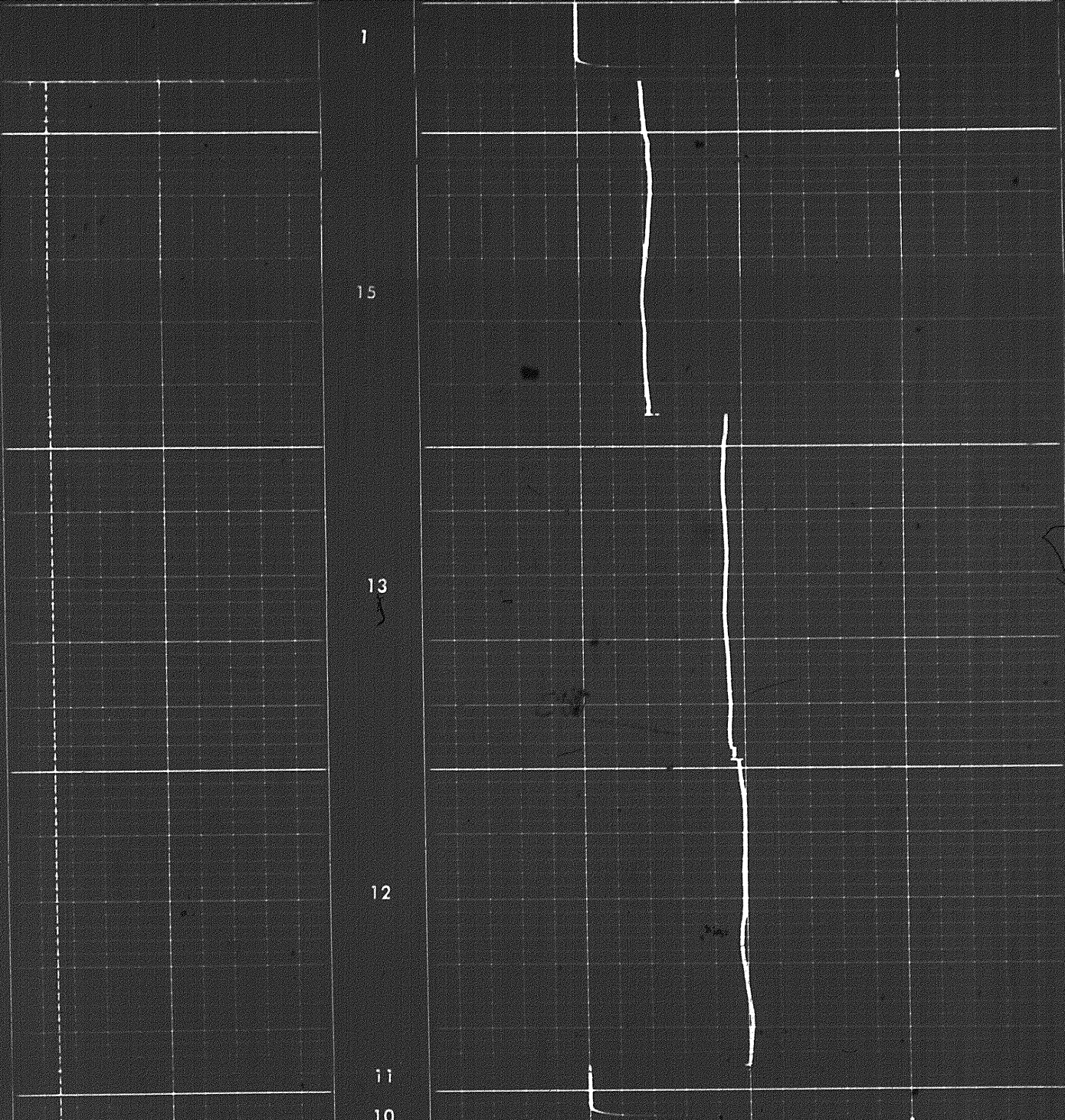
2

1

15

13





COMPANY

CHEVRON CANADA LIMITED

WELL

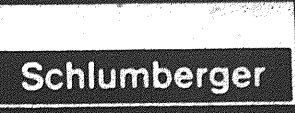
CHEVRON 5051 TRIP'S BLAND PT. B/63

FIELD

WILDCAT

PROVINCE

YUKON TERRITORIES



Schlumberger