

Schlumberger

SCHLUMBERGER OF CANADA Calgary Alberta

BOREHOLE COMPENSATED SONIC LOG

PROVINCE YUKON TERRITORIES
 FIELD WILDCAT
 WELL CHEVRON SOBC WM BIRCH YT
 E-53
 COMPANY CHEVRON STANDARD LIMITED

COMPANY CHEVRON STANDARD LIMITED
 WELL CHEVRON SOBC WM BIRCH YT
 E-53
 FIELD WILDCAT
 PROVINCE YUKON TERRITORIES
 LOCATION 66° 02' 21" N LAT
 136° 56' 05" W LONG
 Permanent Datum GL ELEV. 2025.4
 Log Measured From KB 13.1 Ft. Above Perm. Datum
 Other Services: SNP-GR,
 FDC-GR, GRN, DIL,
 CST
 ELEV. KB 2038.5
 GL 2025.4
 GRF

Date	15 FEB 72		
Run No.	ONE		
First Reading	224c		
Last Reading	732		
Feet Measured	1510		
Depth Reached	2244		
Bottom Driller	2245		
Cop. SOC	732		
Cop. Driller	732		
Mud Nature	GEL		
Dens. Visc.	9.2	160	
Mud pH	9.5		
Water Loss	6.0		
Res.	4.40	63	9f
BHT		81	9f
Rmf	3.91	65	9f
Rmc	5.04	65	9f
Bit Size	8 3/4"		
Spool	2'	2'	2'
Oper. Rig Time	2 HRS		
Truck No.	OSU-C-108 REM		
Recorded By	CHADDOCK		
Witness	POLLARD		

28 FEB 72 CAL JP

REMARKS
 Drilling Stopped 1930 / 14th : Circulation Stopped 0830 / 16th : Tool on Bottom 1315 / 16th : 1st Run Service Order # B.H.T. 81

Caliper No. D1065
 Cartridge No. A 197
 Panel No. GA 188
 Sonde No. A 68
 Centralizer Type STAND OFFS
 & CALIPER

GAMMA RAY CALIBRATION:

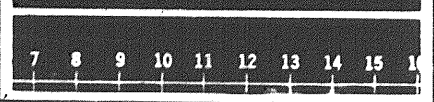
Background CPS.	Test Source CPS.	Galv. Increase Divisions	Panel Sens. Tap for Cal.
40	450	10.0	PGP-D

GAMMA RAY API UNITS	DEPTHS	SONIC INTERVAL TRANSIT TIME microseconds per foot
Sens. 150 T.C. 2 Zero 0 div. to left		
150	140	90
300	240	190
SCALE CHANGE @ 1560'		
CALIPER hole diameter in inches		
7 8 9 10 11 12 13 14 15 16		

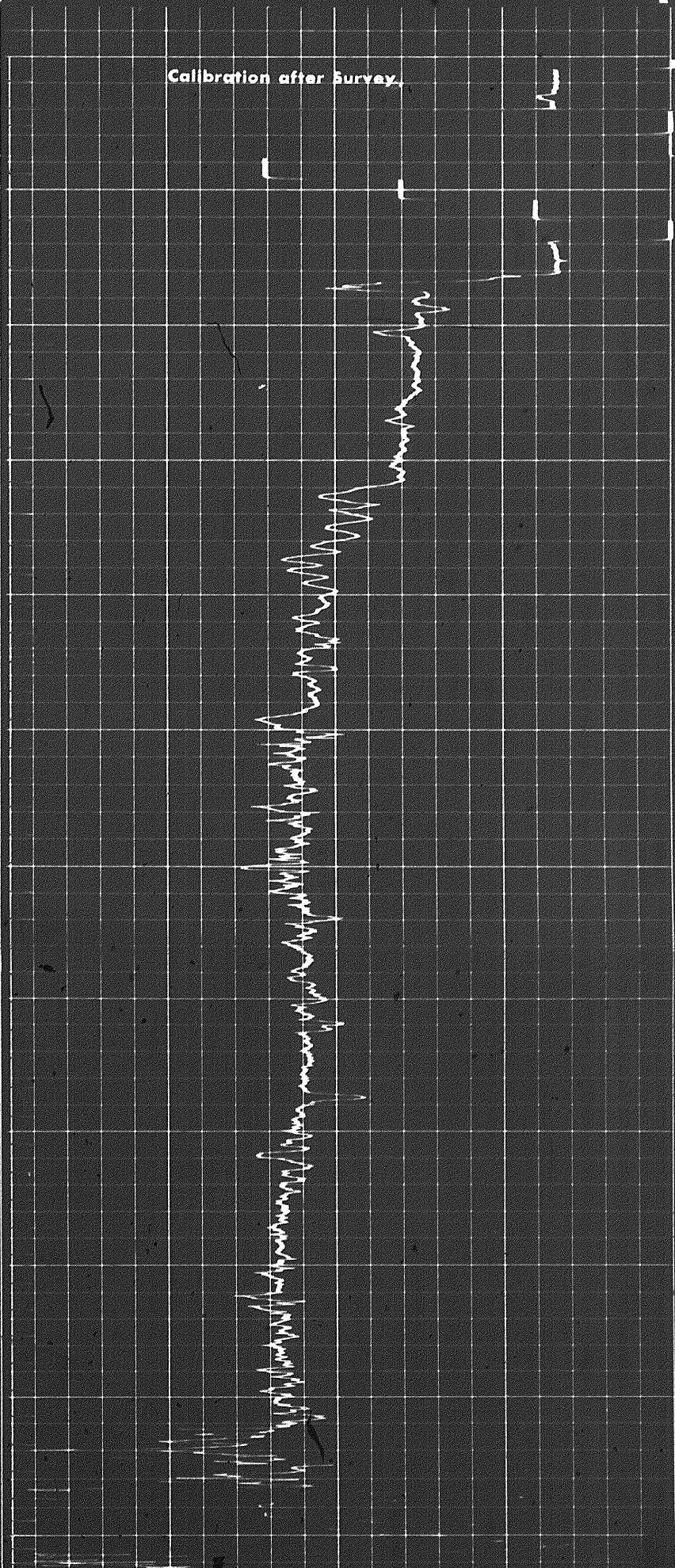
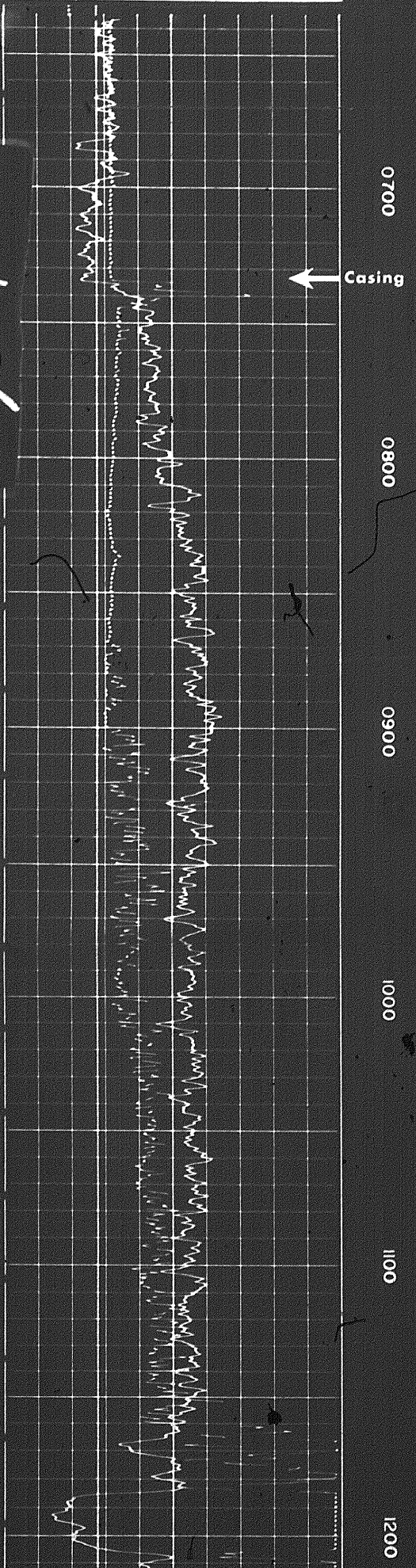
Speed in FPM

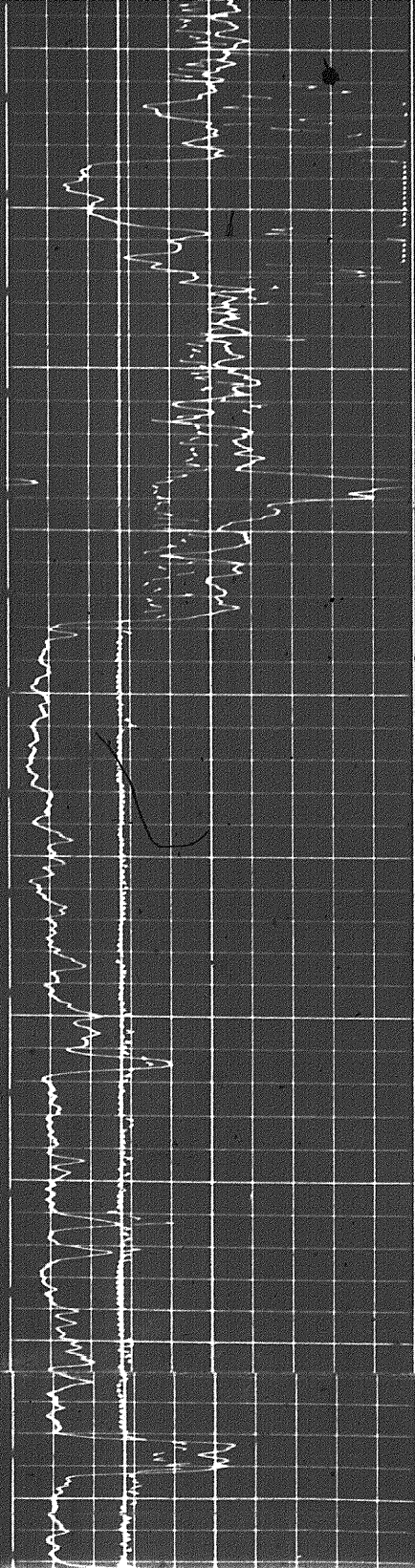
Calibration after Survey

CALIPER
hole diameter in inches



1 of





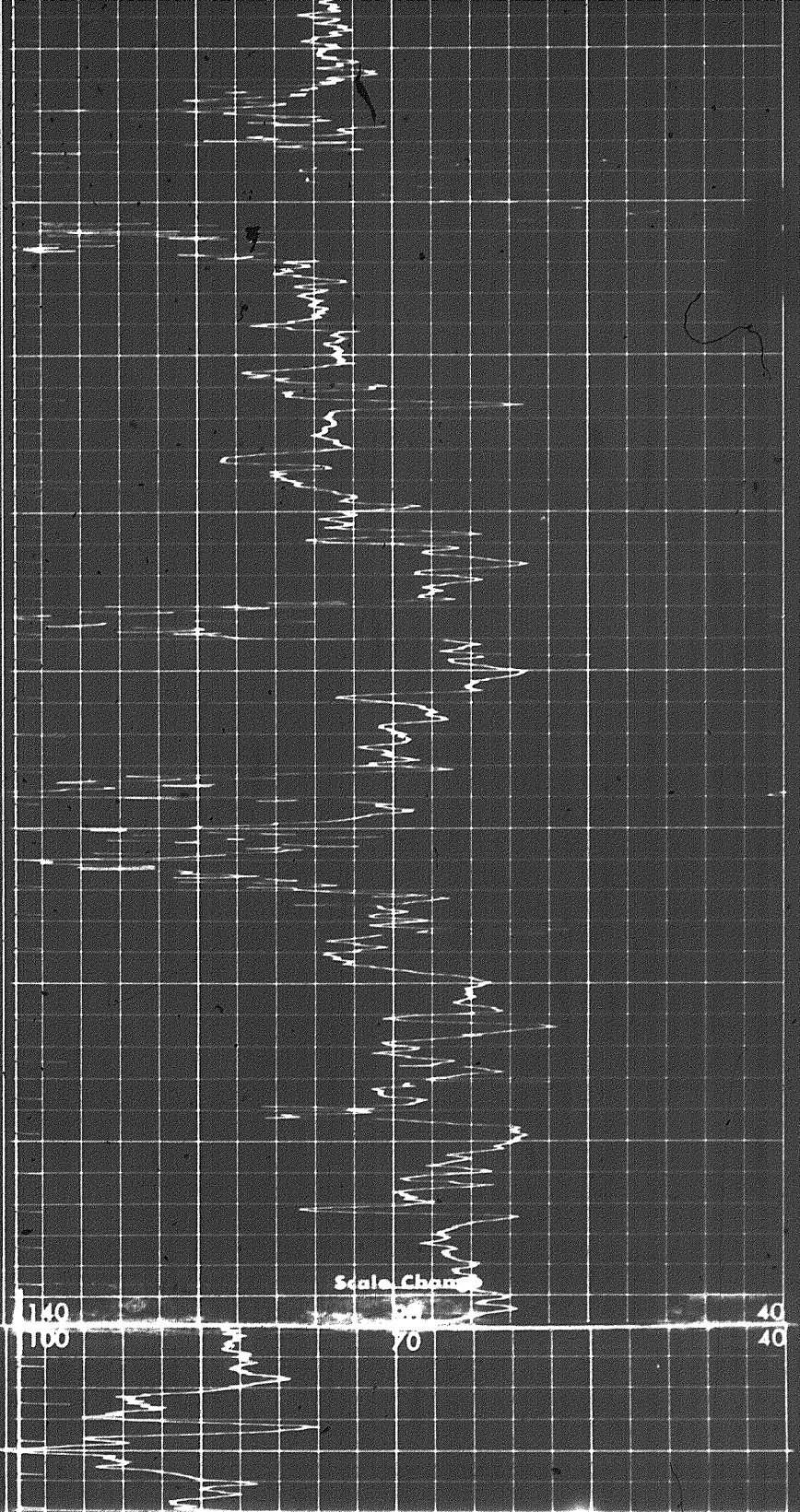
1200

1300

1400

1500

1600

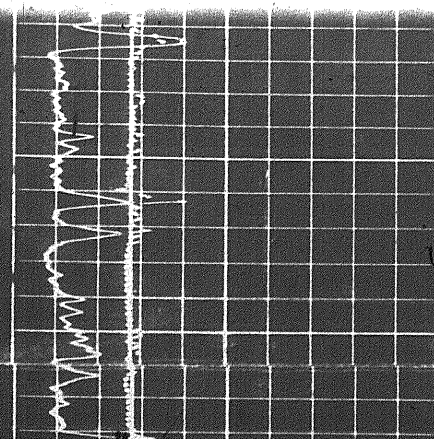


Scale Change

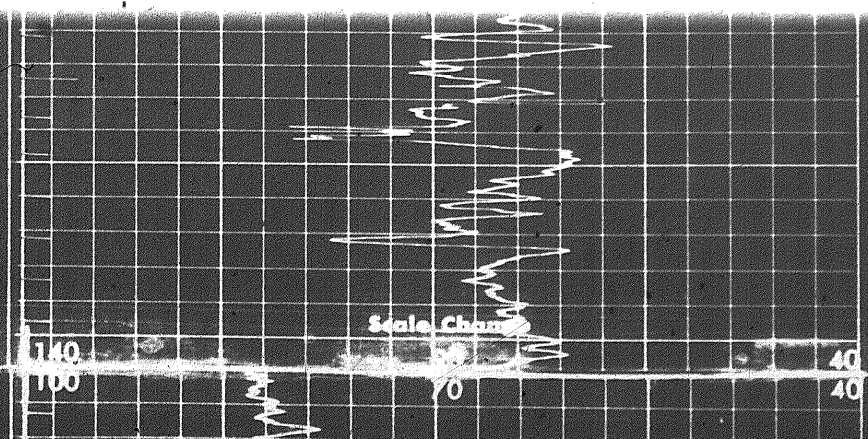
140
100

70

40
40



1500



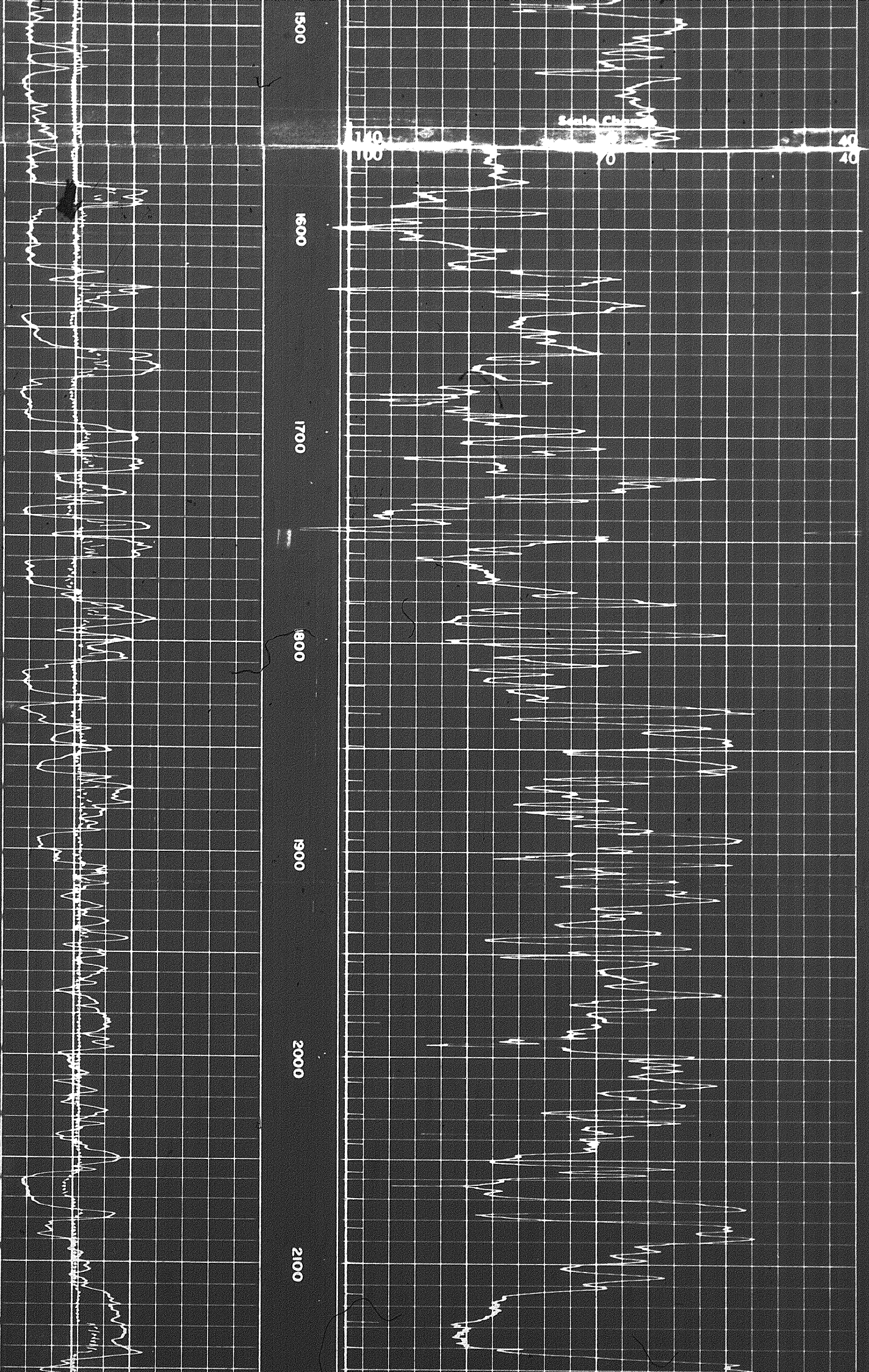
Scale Change

140
100

70

40
40

206



2100

2200

FR

Calibration before Survey

7 8 9 10 11 12 13 14 15 16

CALIPER
hole diameter in inches

Sens. 150 T.C. 2
Zero 0 div. to left

0 150
150 300

Speed in FPM

160 130 100
100 70 40

GAMMA RAY
API UNITS

DEPTHS

SONIC
INTERVAL TRANSIT TIME
microseconds per foot

DETAIL LOG
5" = 100'

GAMMA RAY
API UNITS

DEPTHS

SONIC
INTERVAL TRANSIT TIME
microseconds per foot

Sens. 150 T.C. 2
Zero 0 div. to left

0 150
150 300

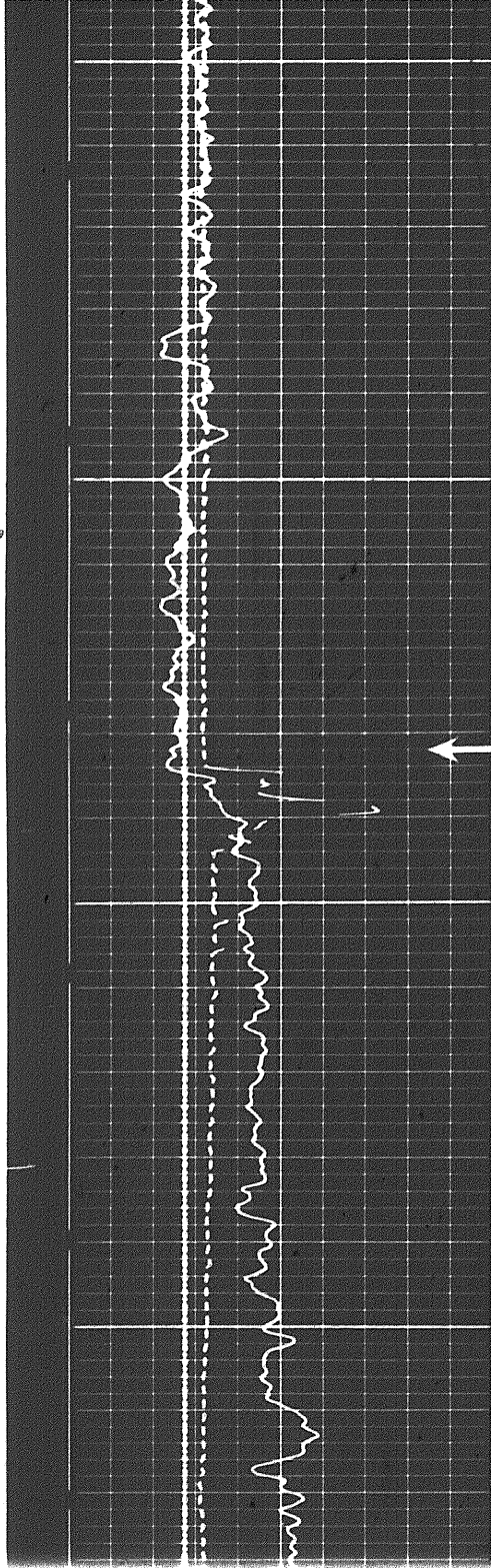
Speed in FPM

140 90 40
240 190 140

CALIPER
hole diameter in inches

7 8 9 10 11 12 13 14 15 16

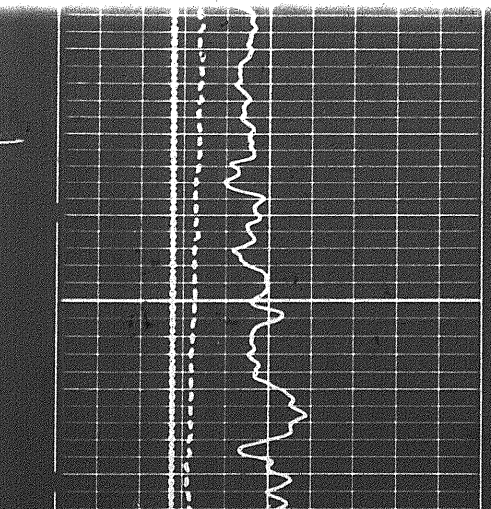
AT IN PIPE



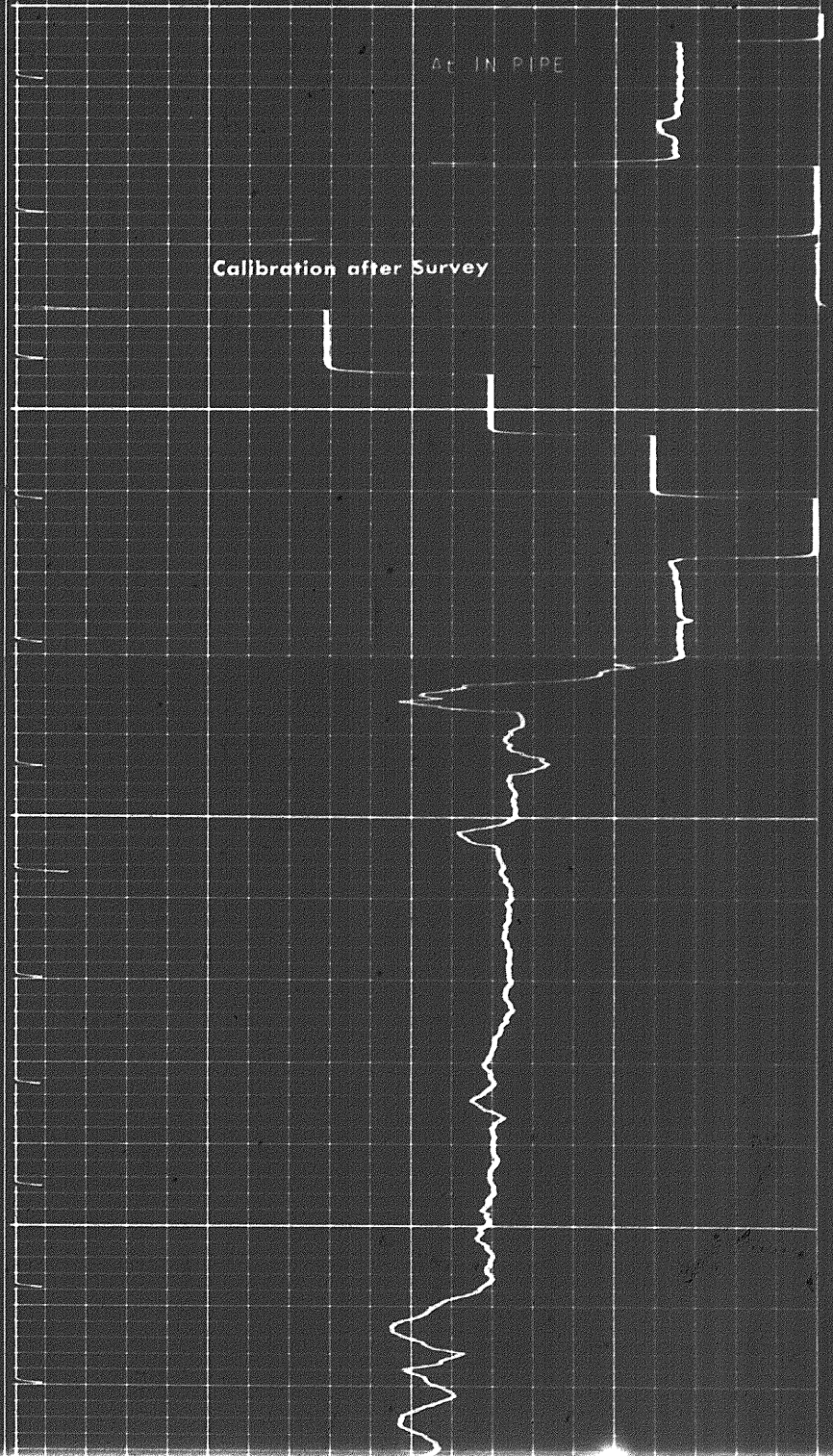
0700

Casing

0800

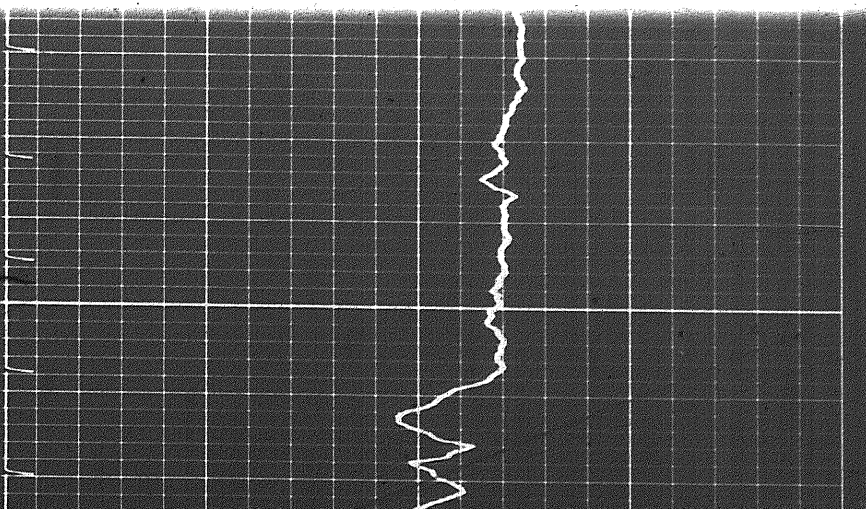


0800

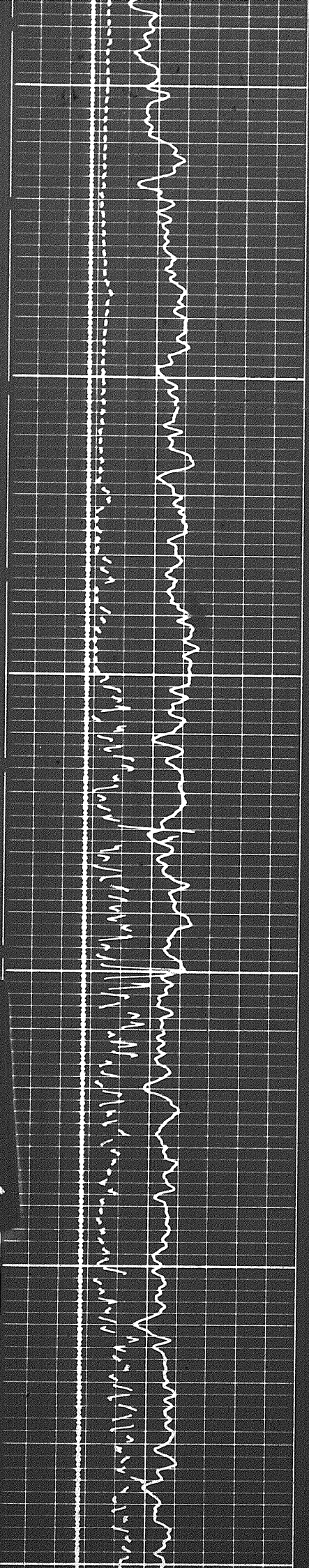


At IN PIPE

Calibration after Survey



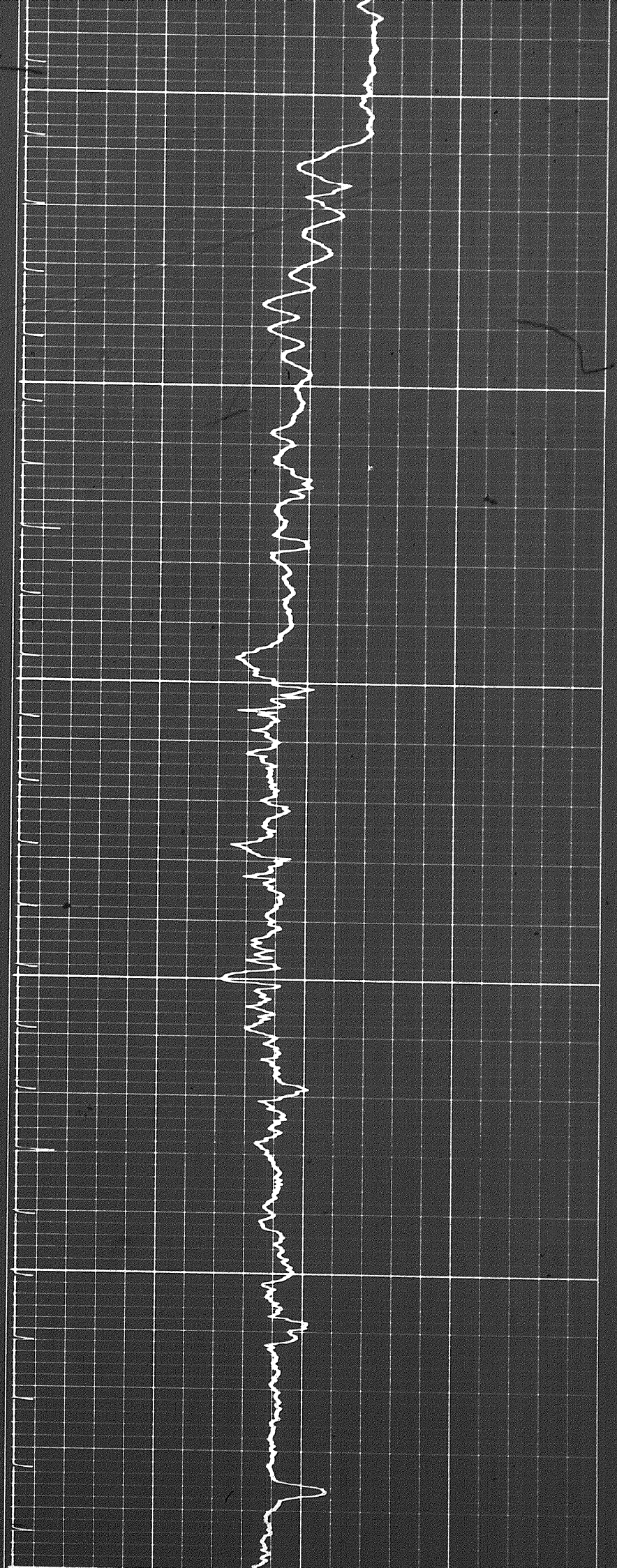
3 of

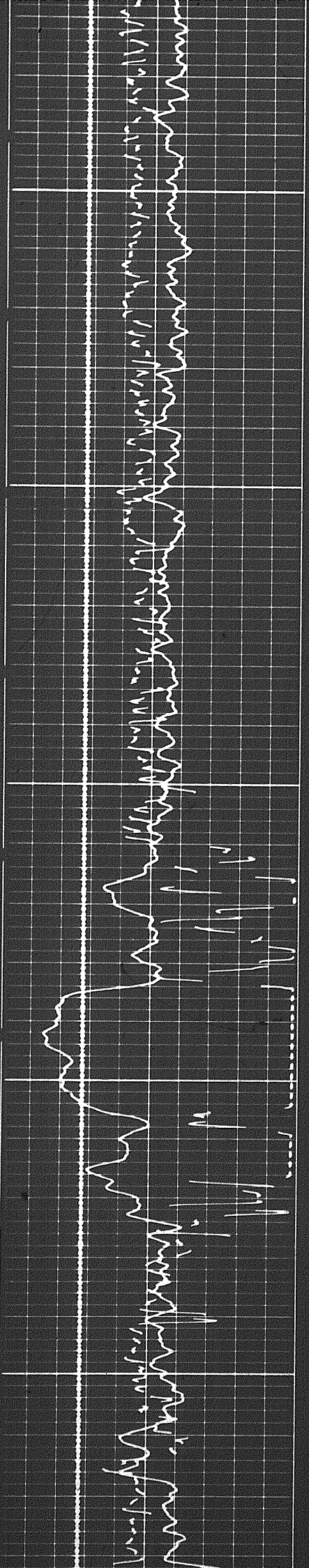


0080

0060

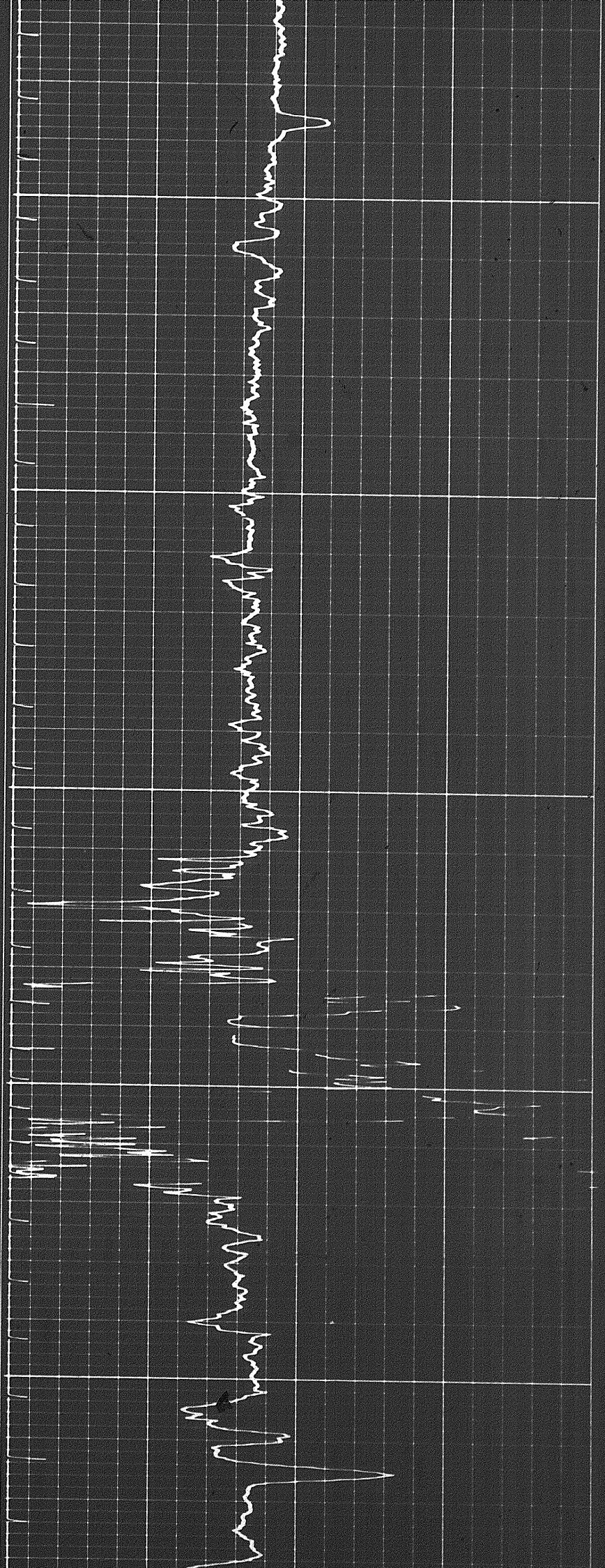
0001

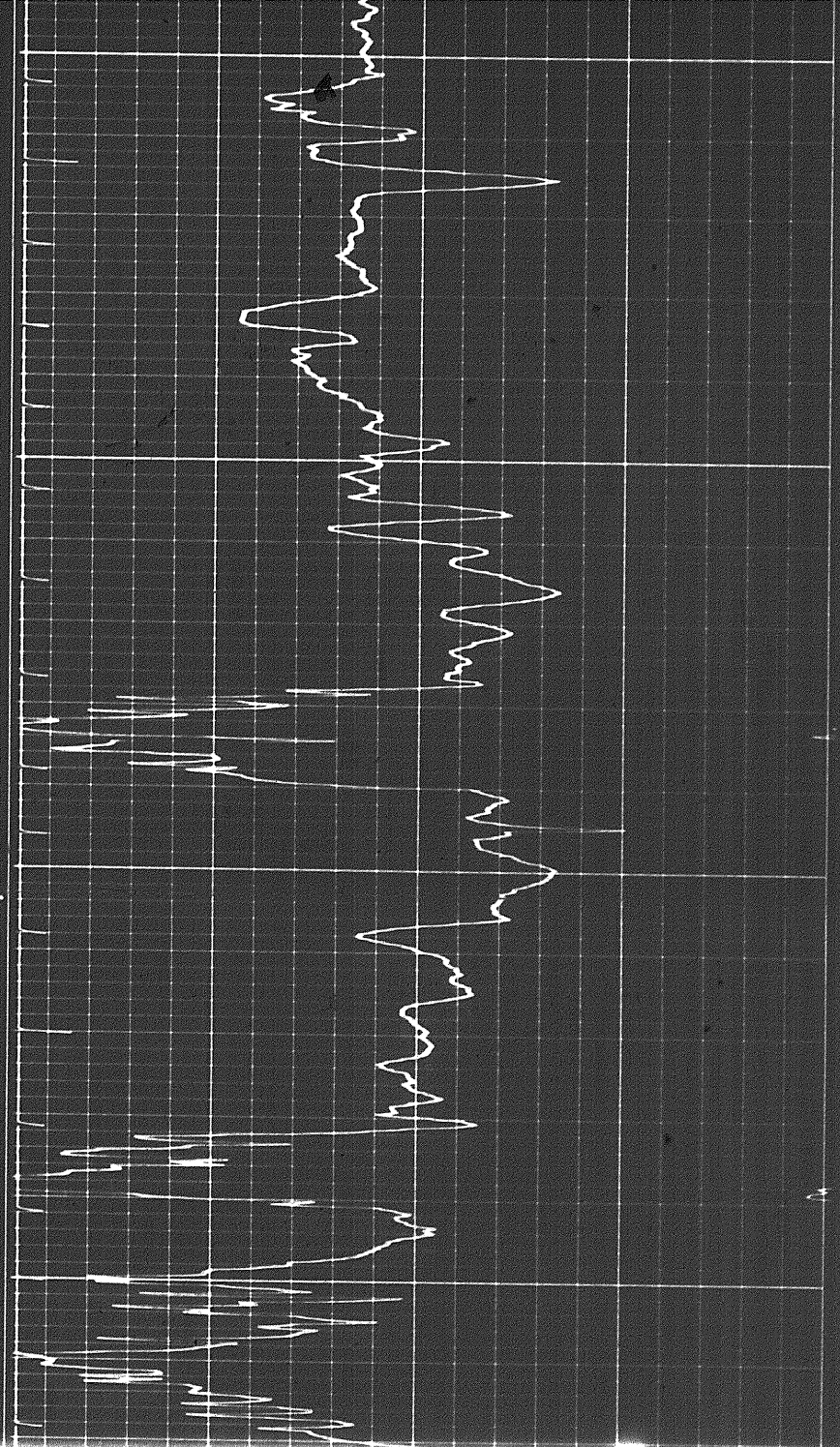




1100

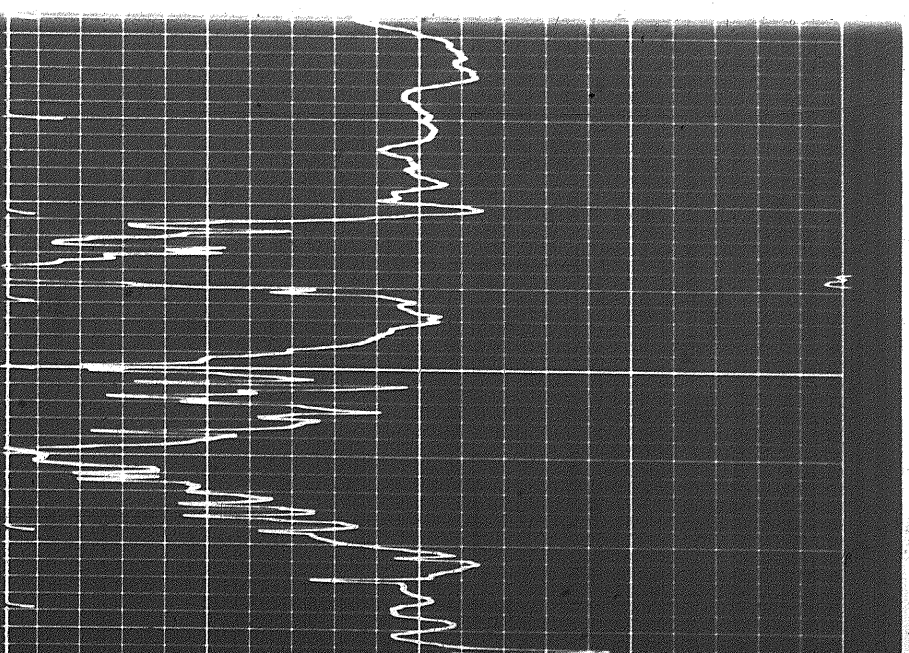
1200



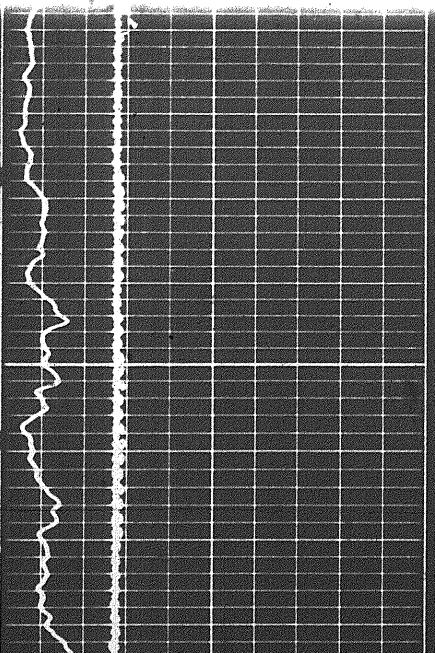
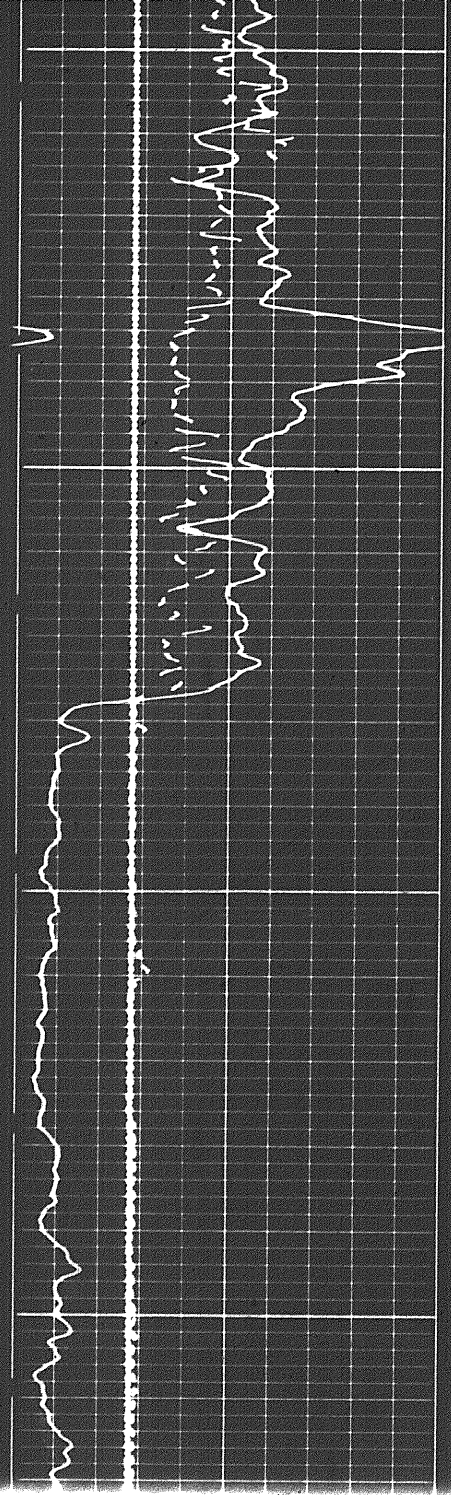


1300

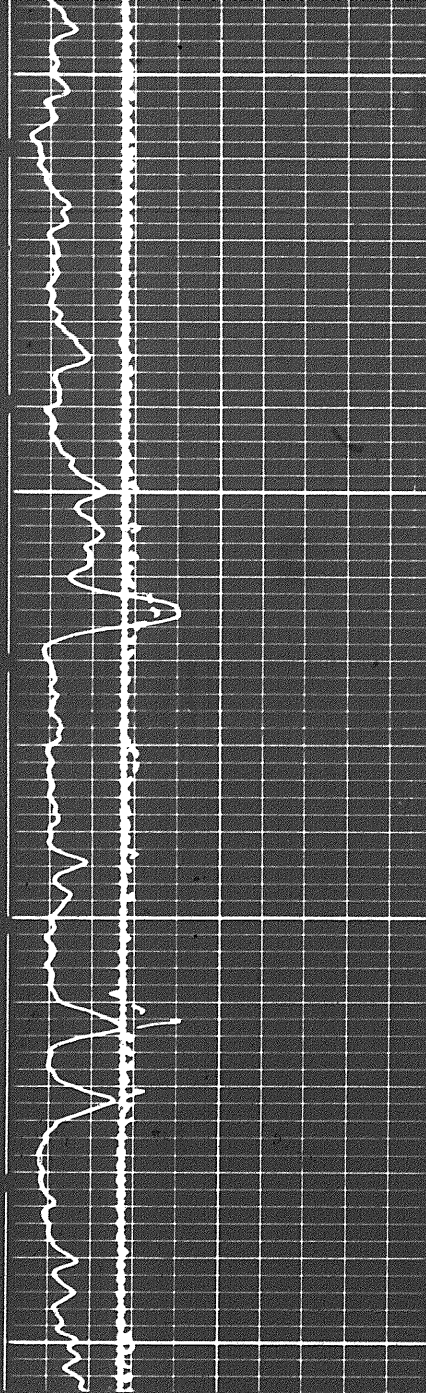
1400



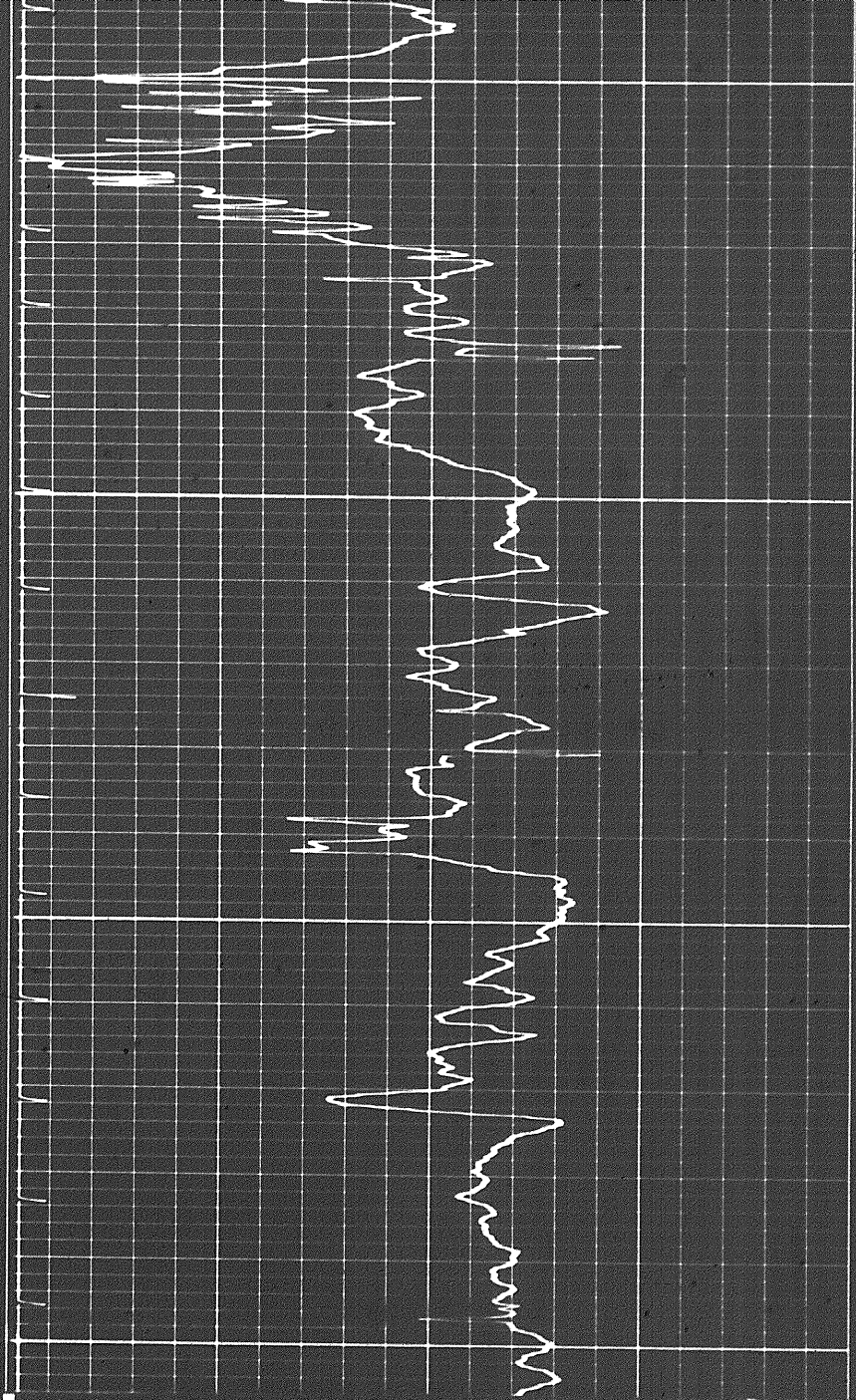
1400



4-07



1400
1500



7 8 9 10 11 12 13 14 15 16

CALIPER
hole diameter in inches

Sens. 150 T.C. 2
Zero 0 div. to left

0 150
150 300

Speed in FPM

240	190	140
140	90	40

GAMMA RAY
API UNITS

DEPTH

SONIC
INTERVAL TRANSIT TIME
microseconds per foot

DETAIL LOG
5" = 100'

GAMMA RAY
API UNITS

DEPTH

SONIC
INTERVAL TRANSIT TIME
microseconds per foot

Sens. 150 T.C. 2
Zero 0 div. to left

0 150
150 300

Speed in FPM

100	70	40
160	130	100

DETAIL LOG
5" = 100'

GAMMA RAY
API UNITS

DEPTHS

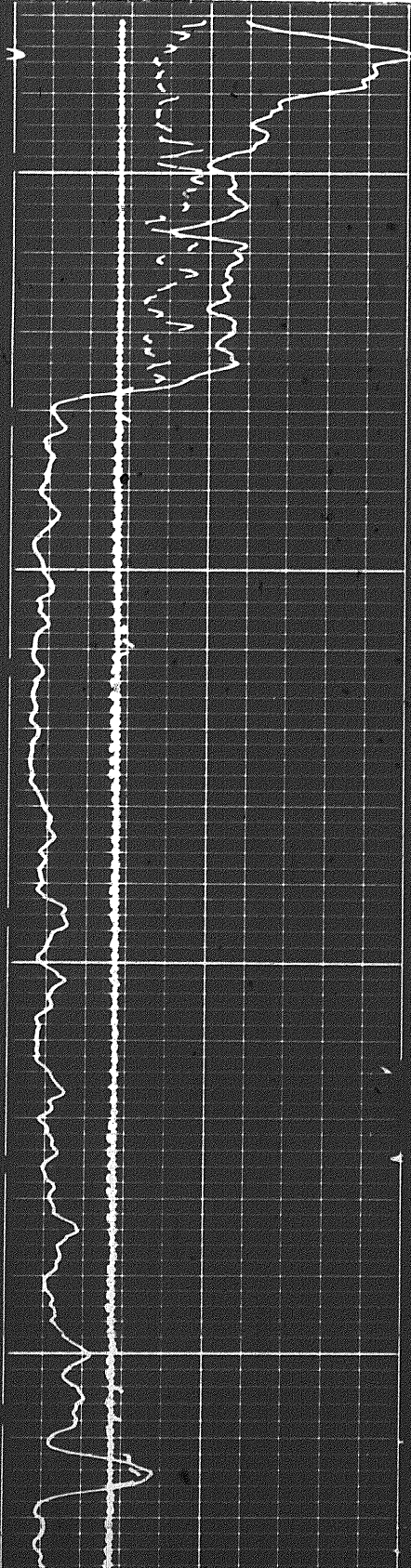
SONIC
INTERVAL TRANSIT TIME
microseconds per foot

Speed in FPM
Sens. 150 T.C. 2
Zero 0 div. to left
150
150 300

CALIPER
hole diameter in inches

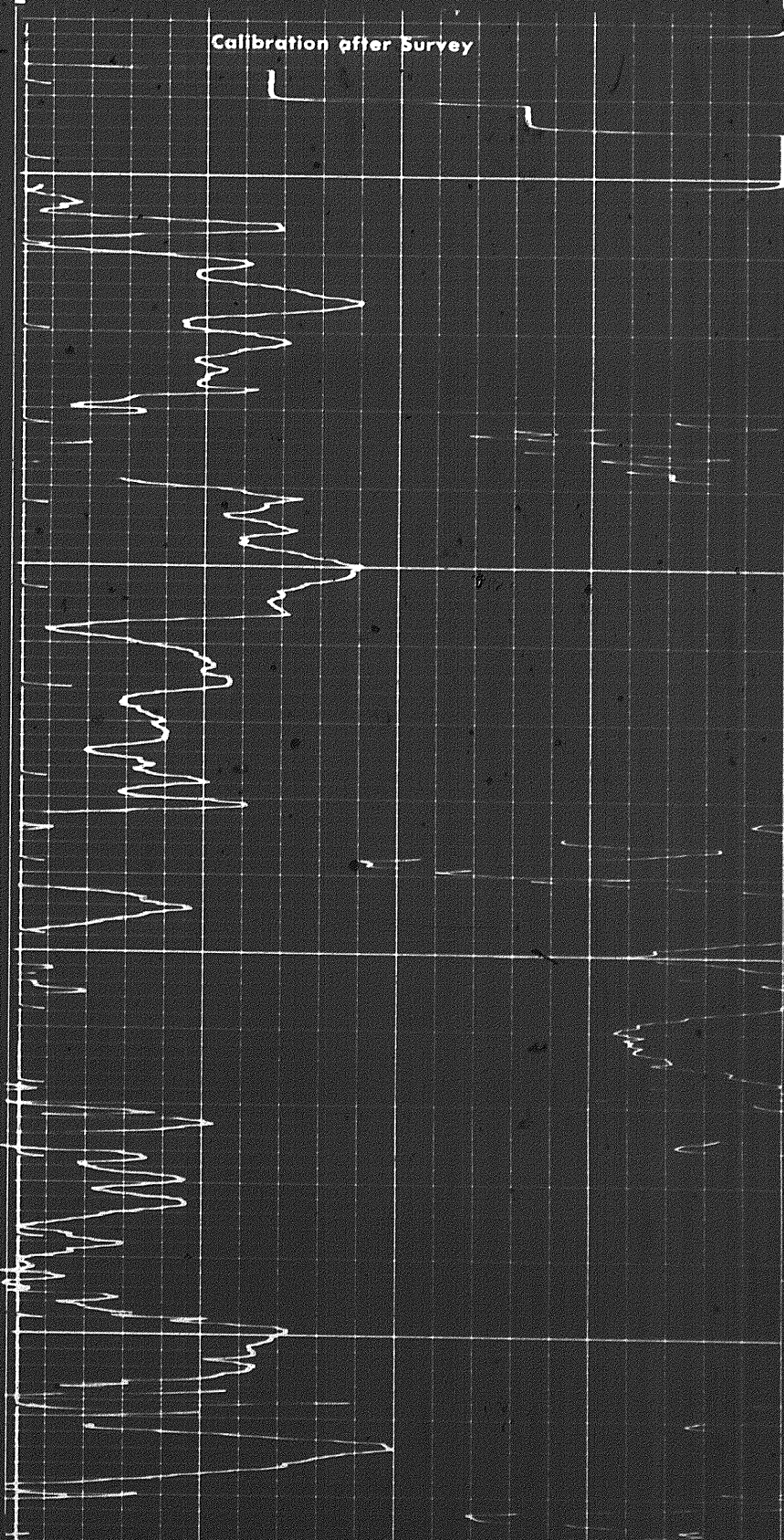
7 8 9 10 11 12 13 14 15 1

100	70	40
160	130	100

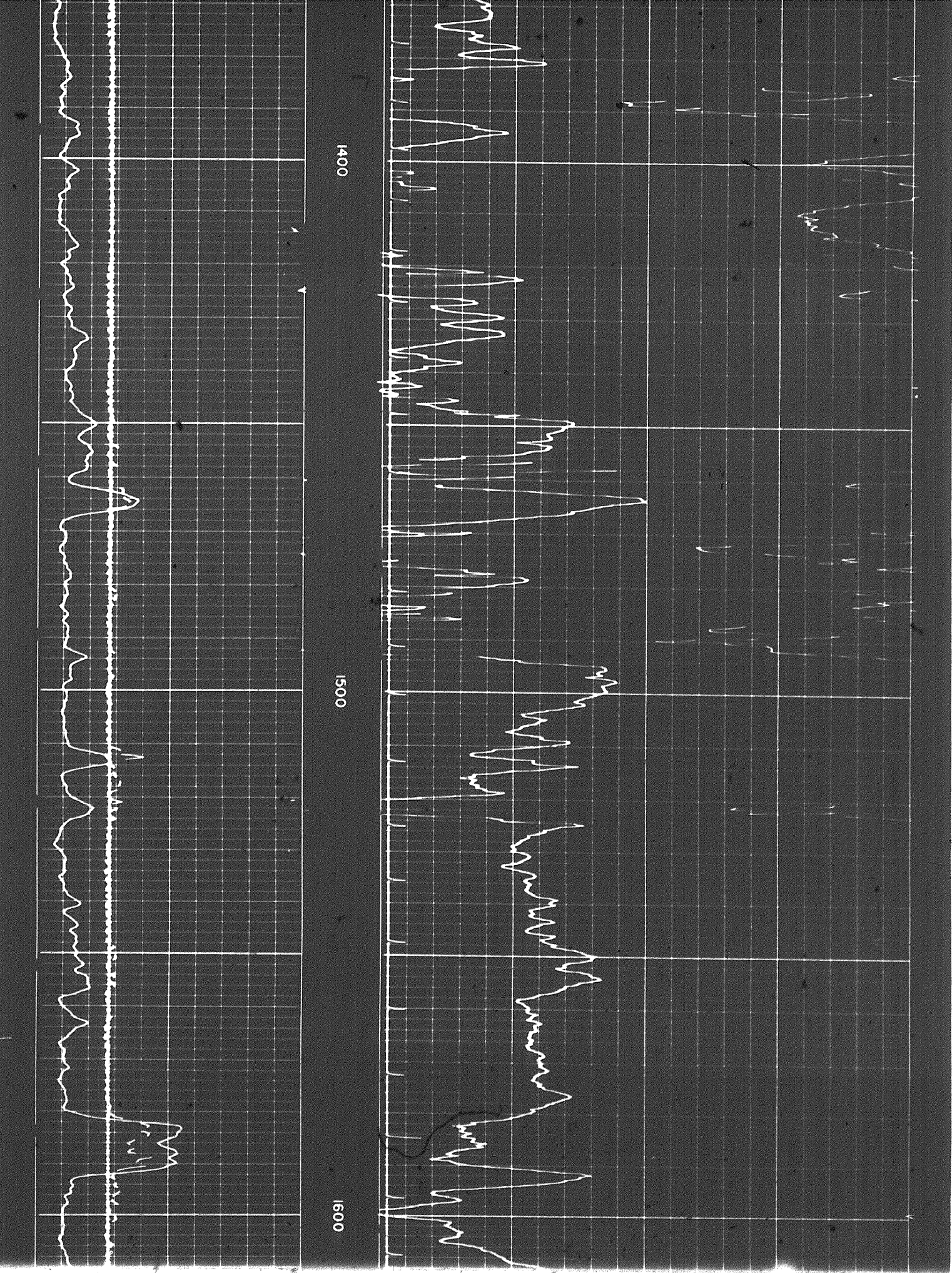


1300

1400



Calibration after Survey

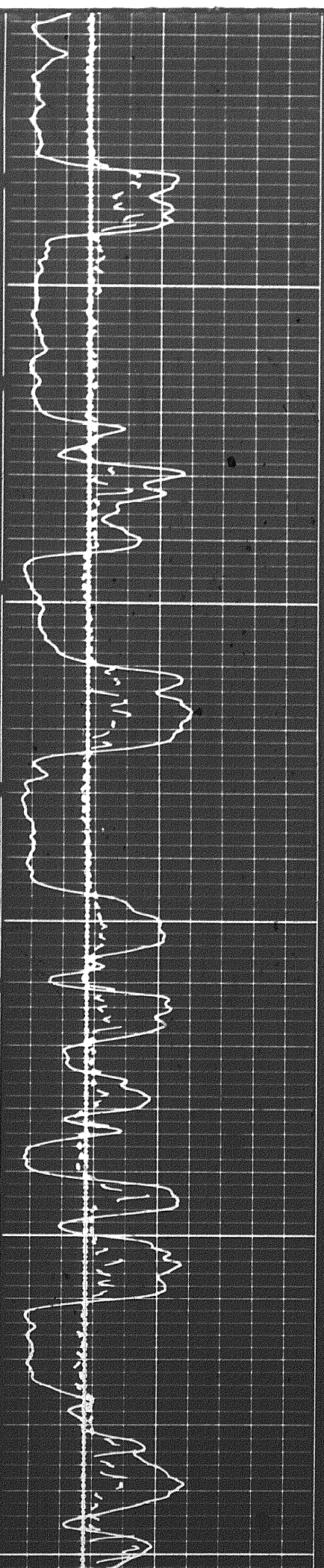


1400

1500

1600

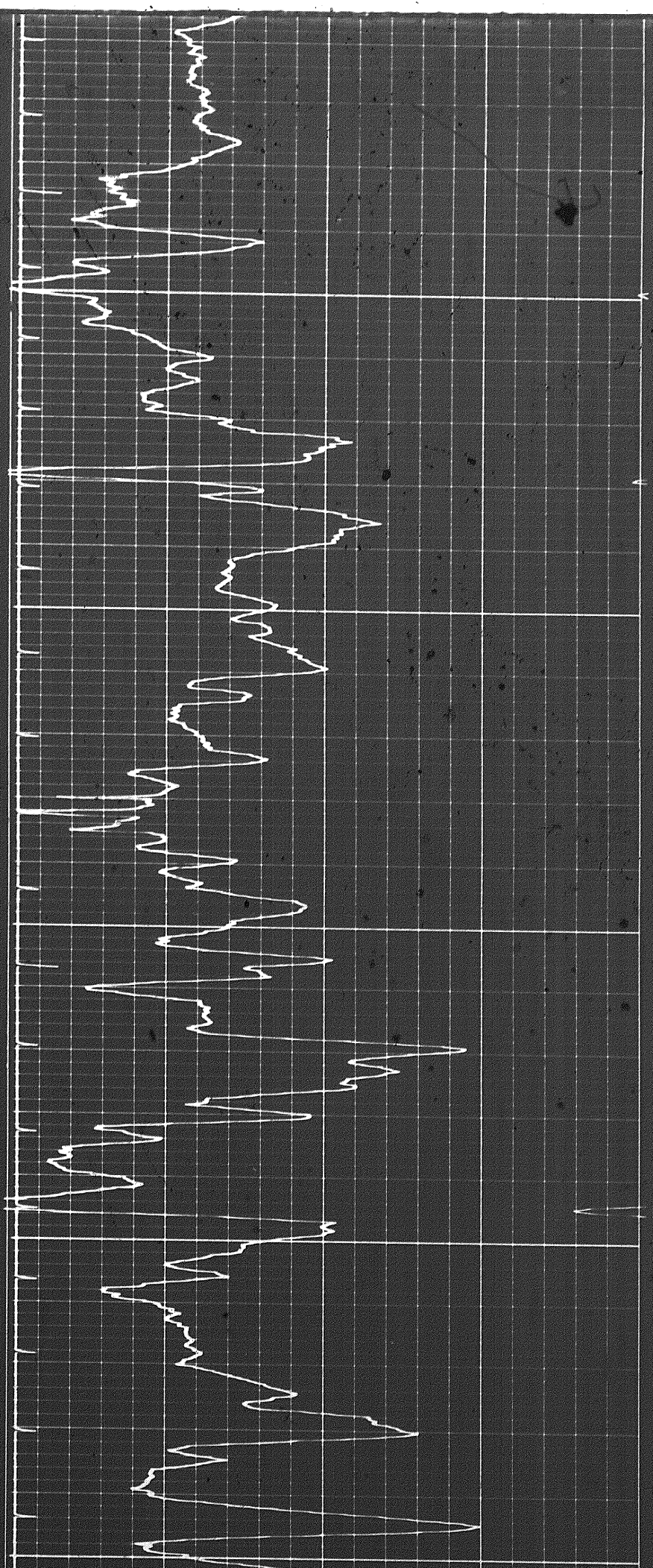
5 of

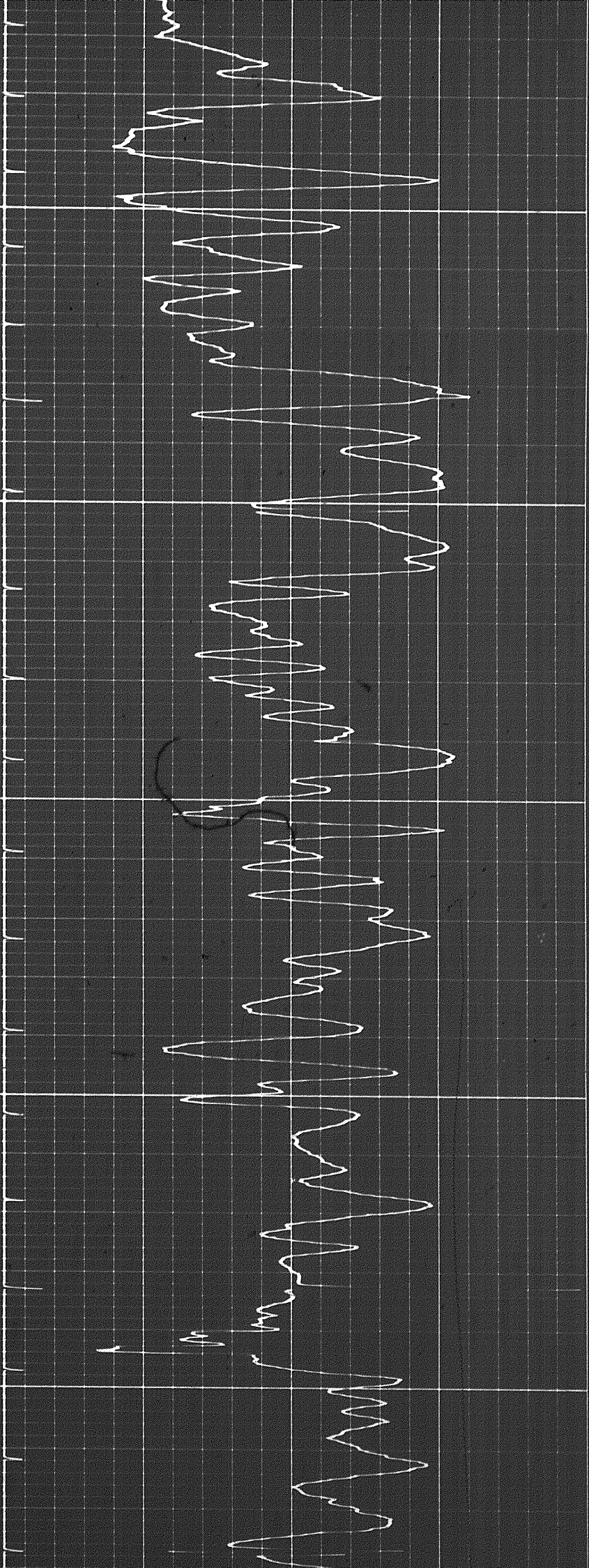


1600

1700

1800

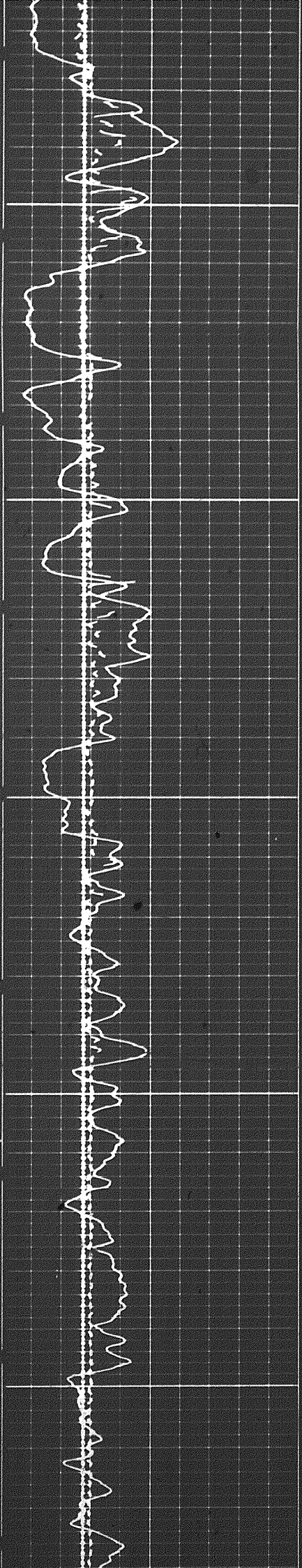


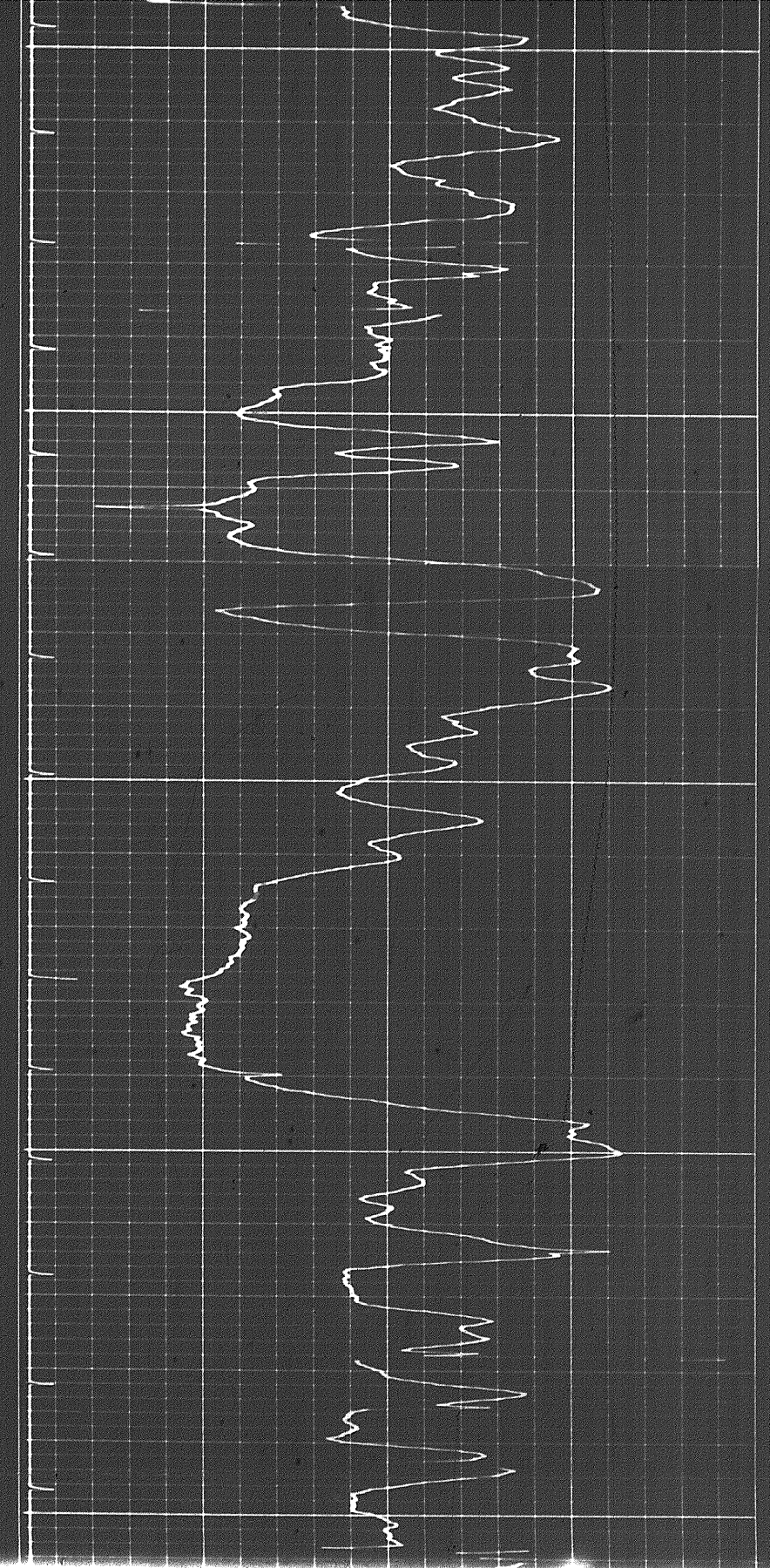


1800

1900

2000

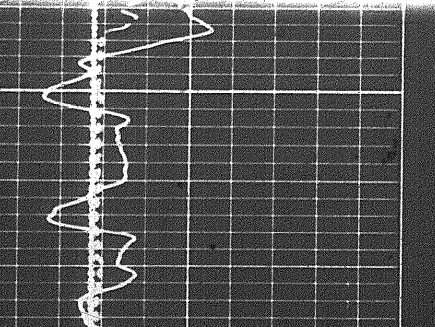
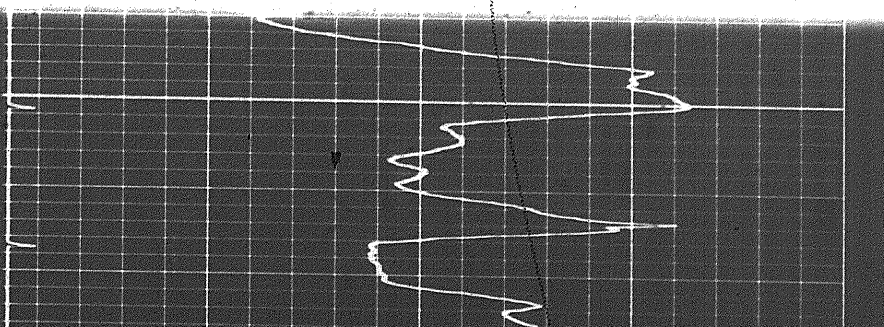
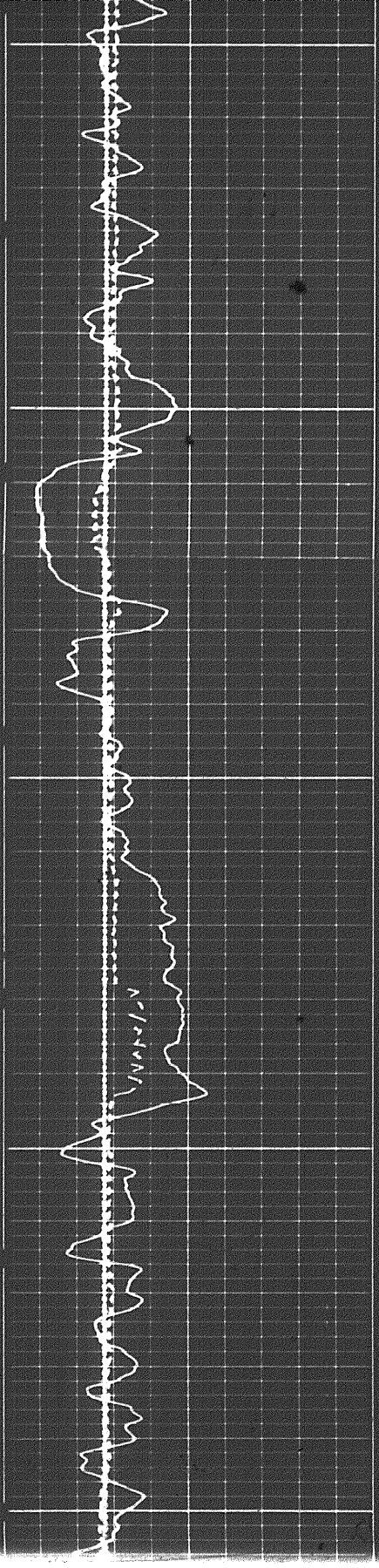




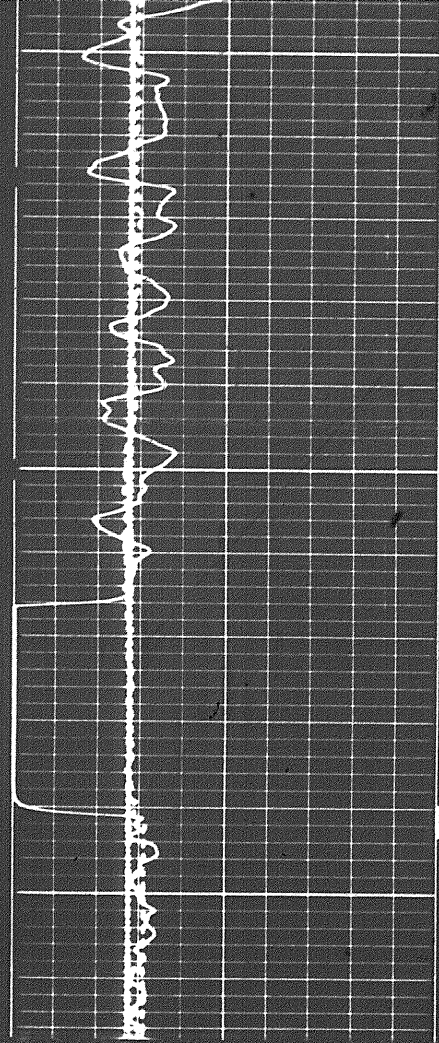
2000

2100

2200

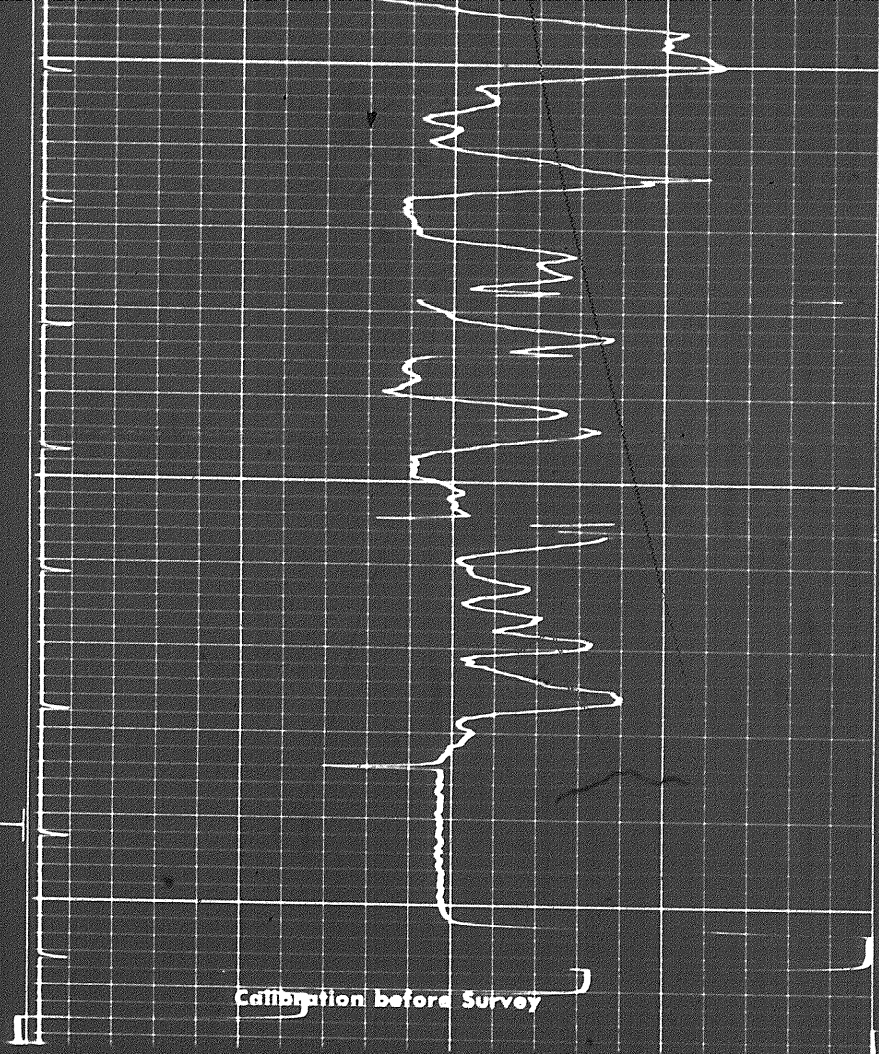


6 of



2200

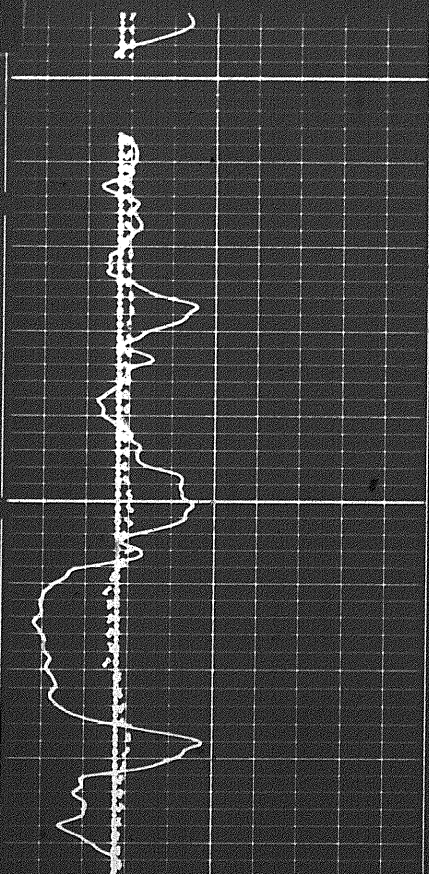
FR



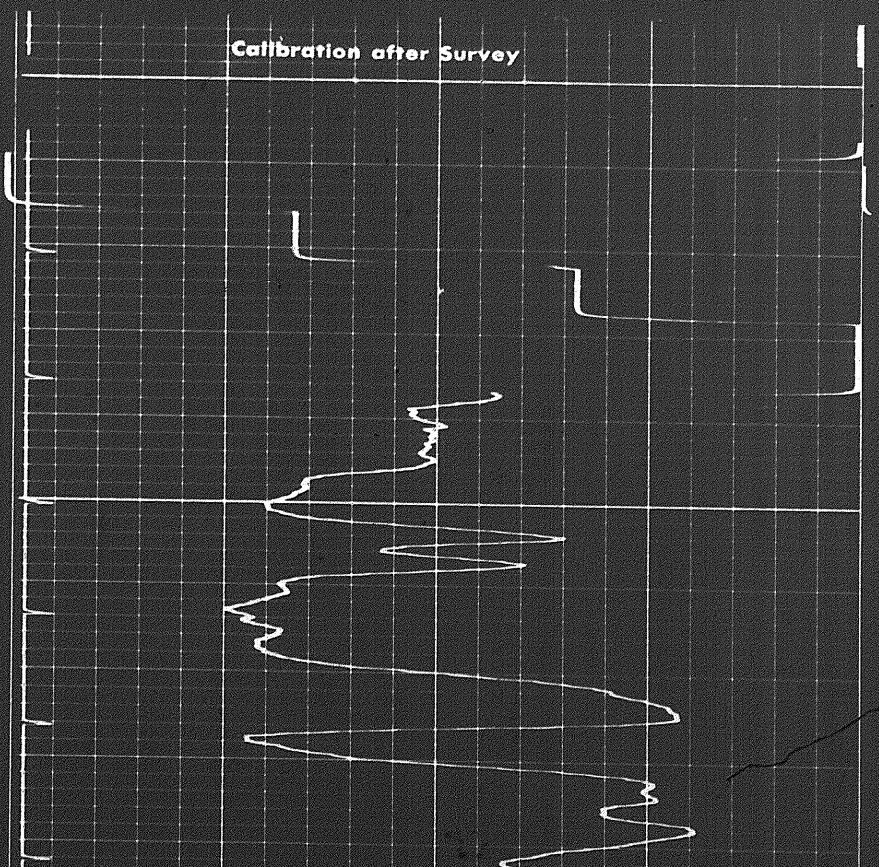
Calibration before Survey

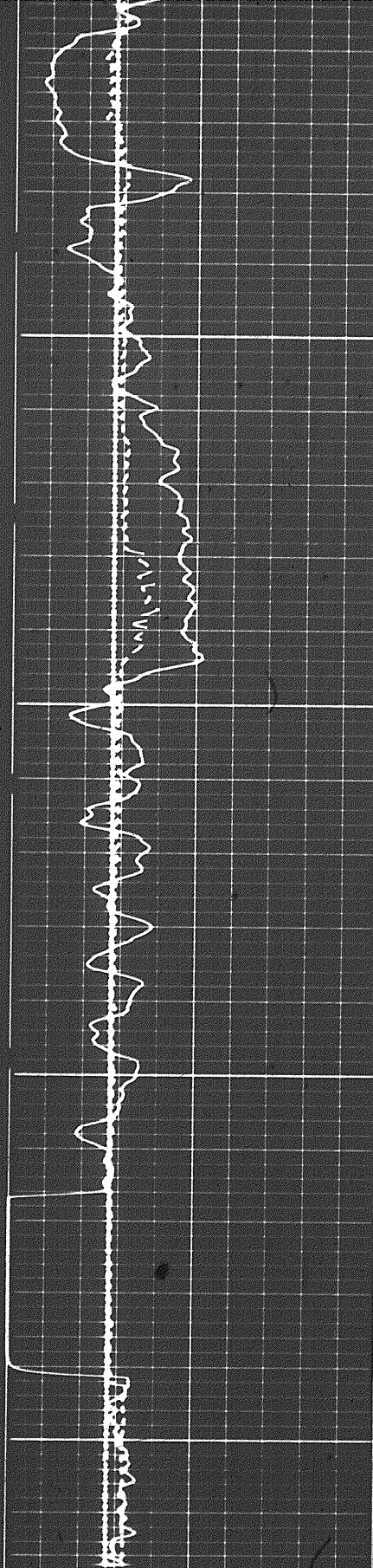
REPEAT SECTION

Calibration after Survey



0002

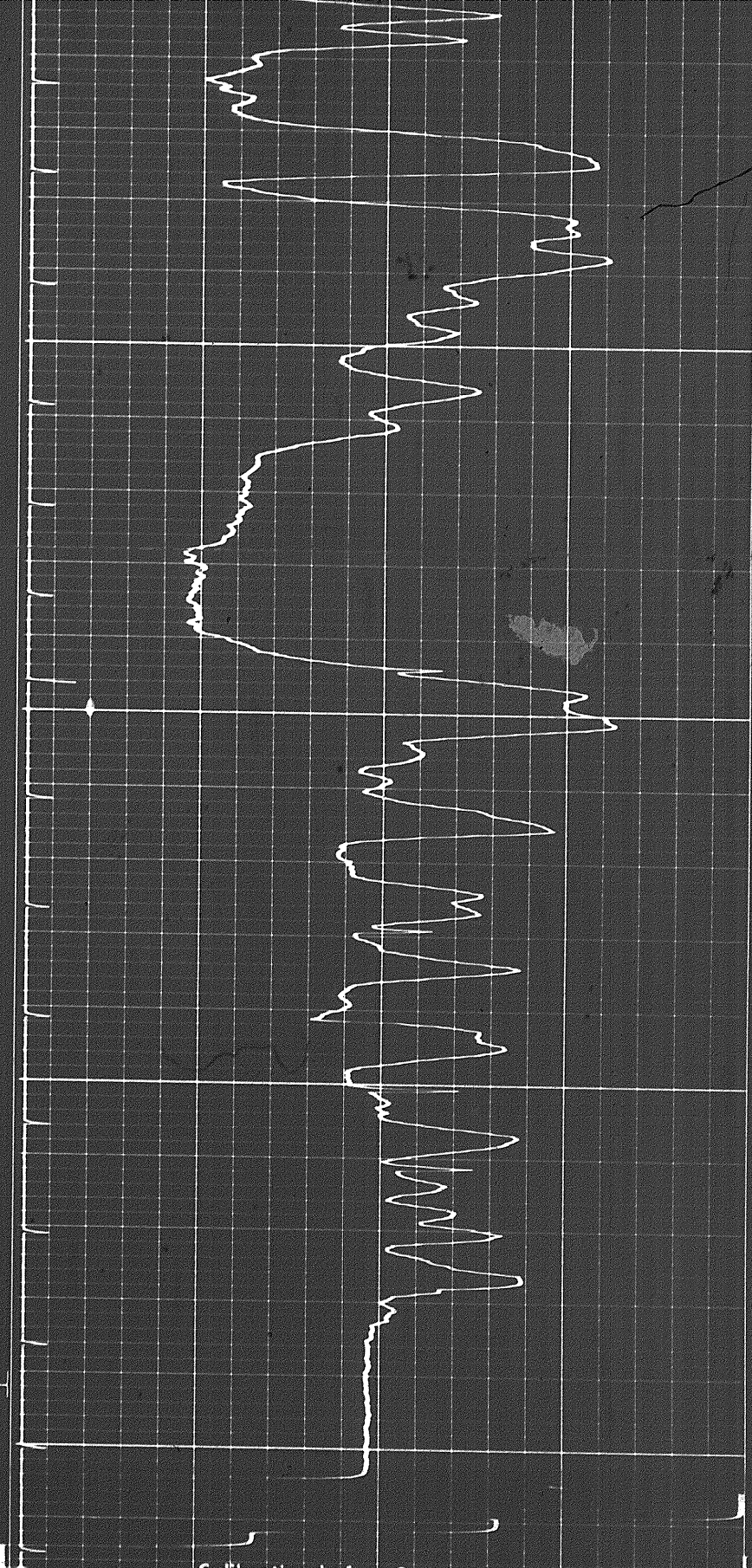




2100

2200

FR



Calibration before Survey

7 8 9 10 11 12 13 14 15 16

CALIPER
hole diameter in inches

Speed in FPM
Sens. 150 T.C. 2
Zero 0 div. to left
150 300

GAMMA RAY

DEF

SONIC

160 130 100
100 70 40

11-11-61

Calibration before Survey

7 8 9 10 11 12 13 14 15 16

CALIPER
hole diameter in inches

Sens. 150 T.C. 2
Zero 0 div. to left
150 300

Speed in FPM

160 130 100
100 70 40

GAMMA RAY
API UNITS

DEPTHS

SONIC
INTERVAL TRANSIT TIME
microseconds per foot

Calibration after Survey

Gamma Ray Cal
@ API Units

Gamma Ray Background

Calibration before Survey

Gamma Ray Background

CALIPER
hole diameter in inches

Sens. 150 T.C. 2
Zero 0 div. to left
150

Speed in FPM

160 130 100

CALIPER
hole diameter in inches

Sens. 150 T.C. 2
Zero 0 div. to left

150 300

Speed in FPM

160 130 100

100 70 40

GAMMA RAY
API UNITS

DEPTH

SONIC
INTERVAL TRANSIT TIME
microseconds per foot

Gamma Ray Cal
@ API Units

Gamma Ray Background

Gamma Ray Background

Gamma Ray Cal
@ API Units

Calibration after Survey

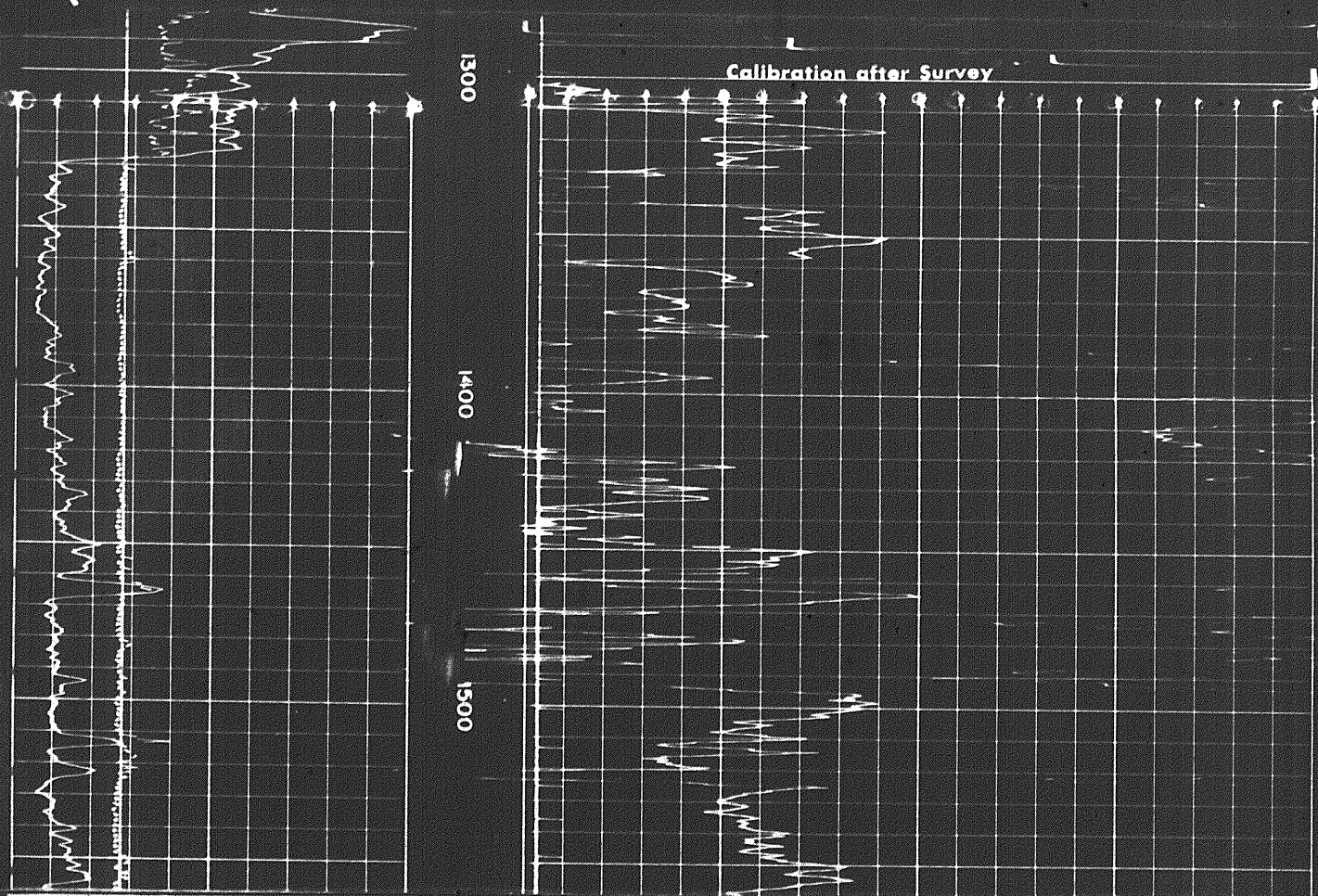
Calibration before Survey

Gamma Ray Cal

@ API Units

Handwritten signature

SCALE CHANGE OVERLAP



COMPANY CHEVRON STANDARD LIMITED

WELL CHEVRON SOBC WM BIRCH YT E-53

FIELD WILDCAT PROVINCE YUKON TERRITORIES

