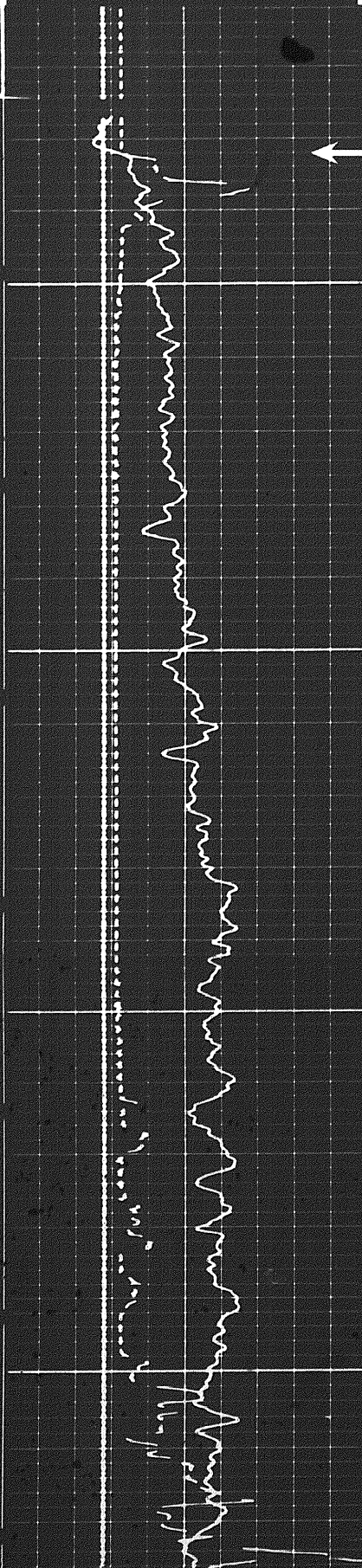




Speed in FPM  
 Sens. 150 T.C. 2  
 Zero 0 div. to left 150  
 150 300

CALIPER  
 hole diameter in inches

7 8 9 10 11 12 13 14 15 16



Casing

0080

0060

2.0 2.5 3.0

DENSITY CORRECTION  
 $\Delta\rho$  - gm/cc

0.25 0 0.25  
 (-) (+)

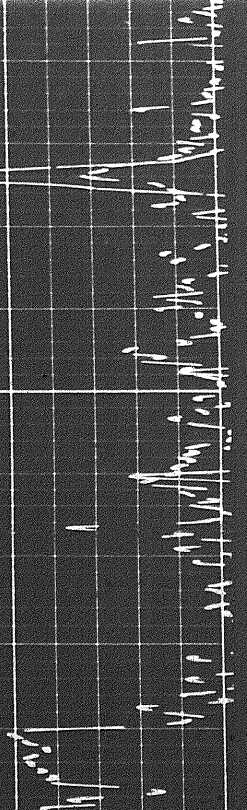
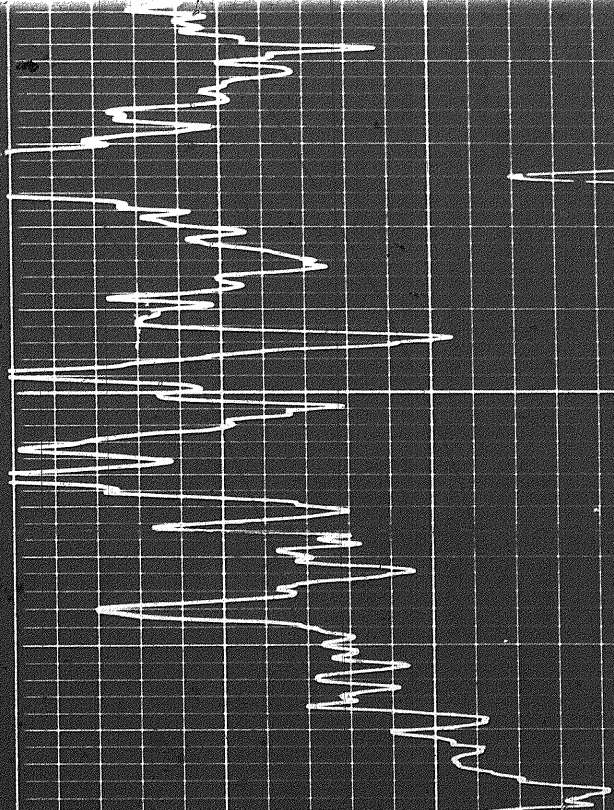
Calibration after Survey



88

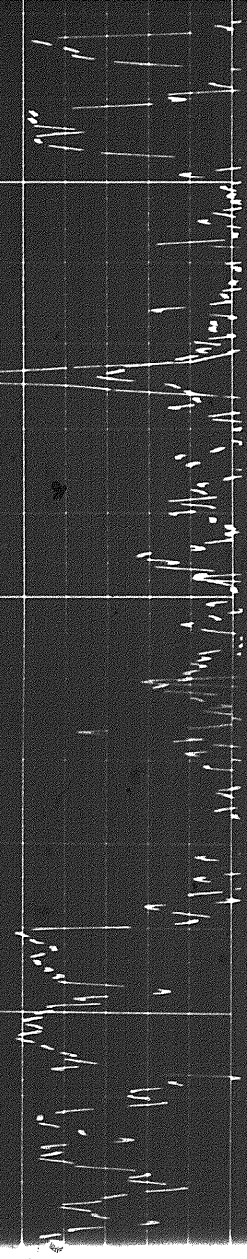
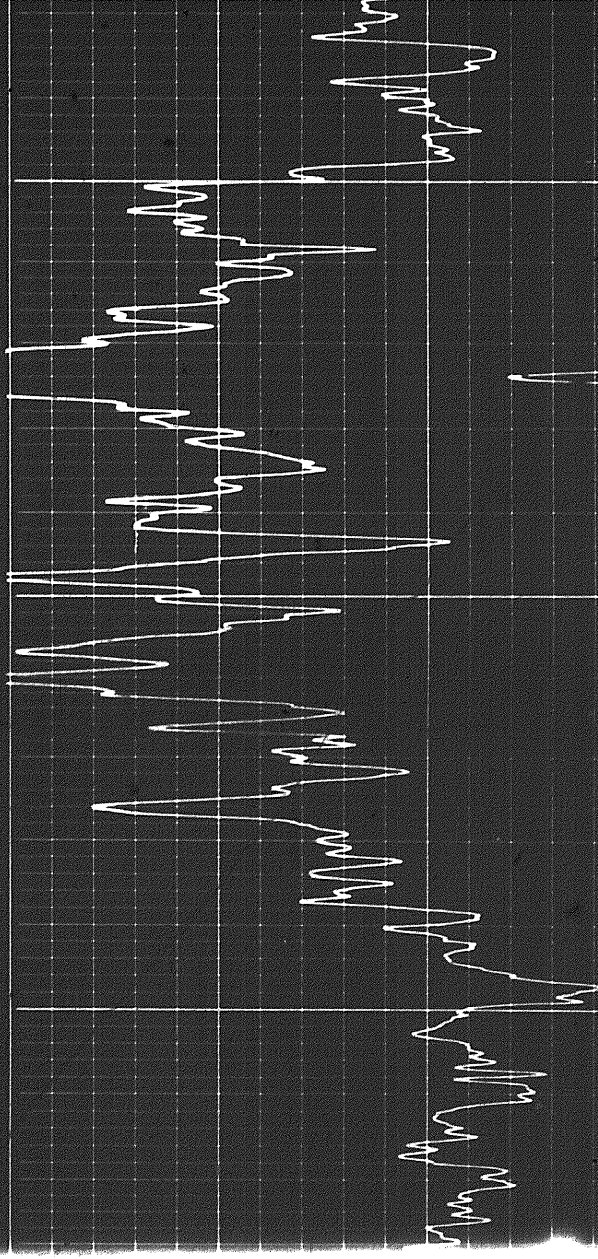


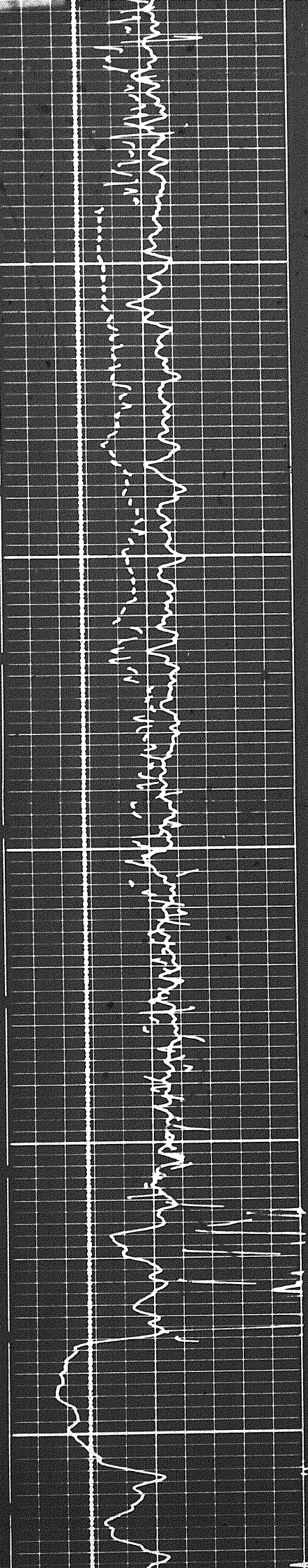
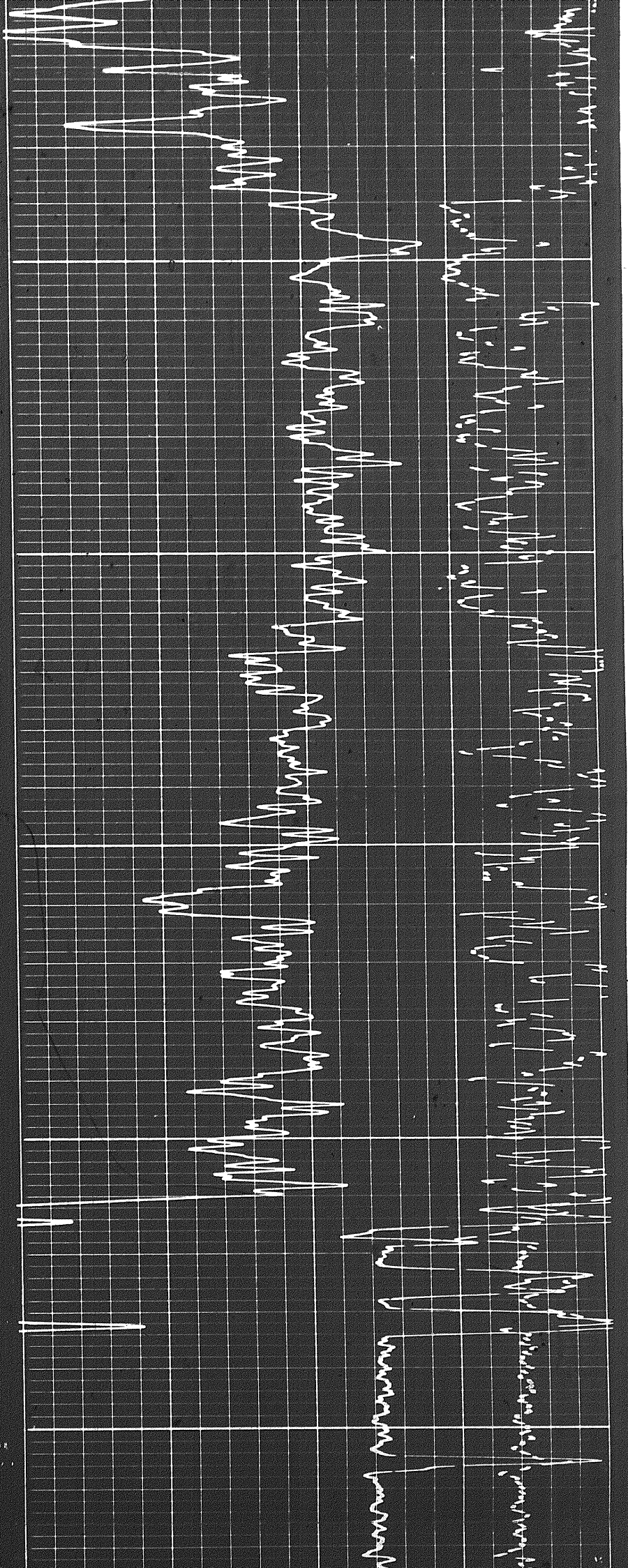
01

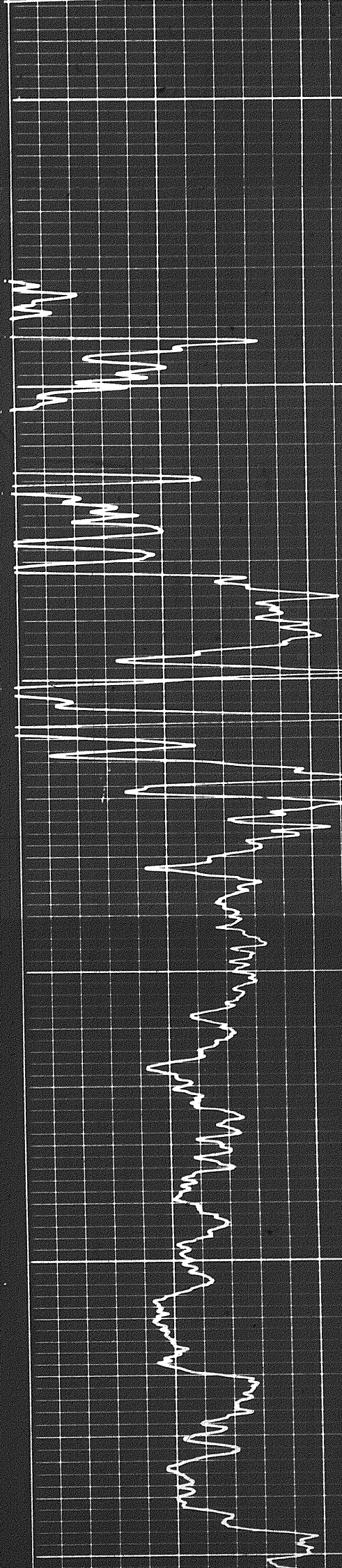
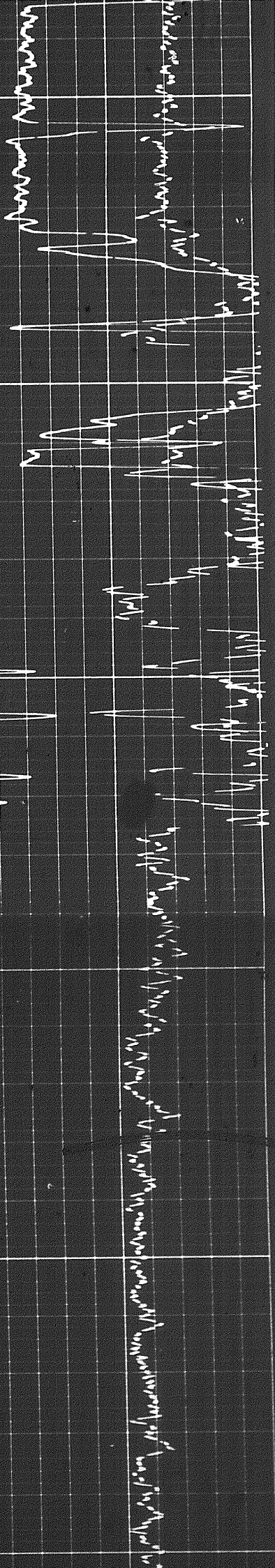


0001

0060



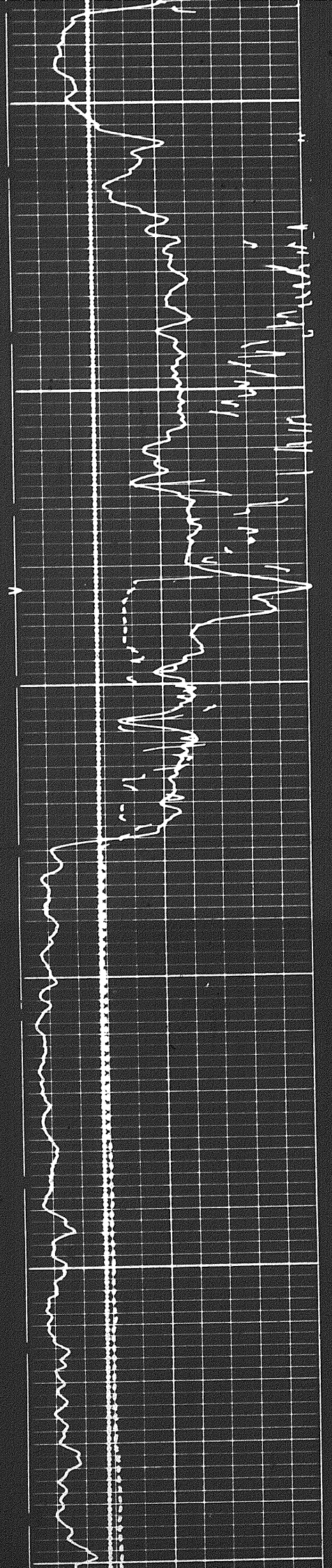




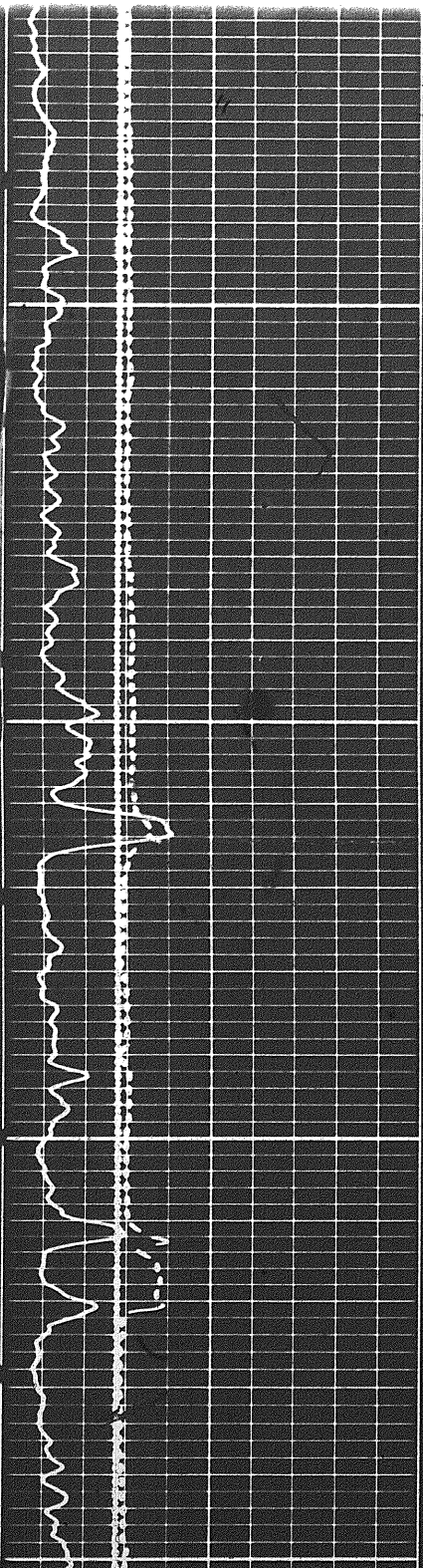
1200

1300

1400

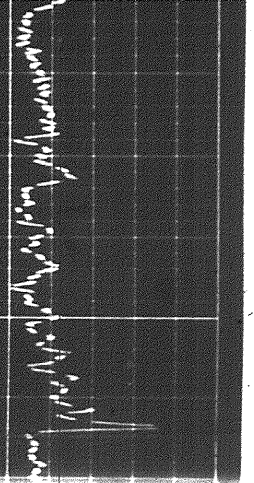
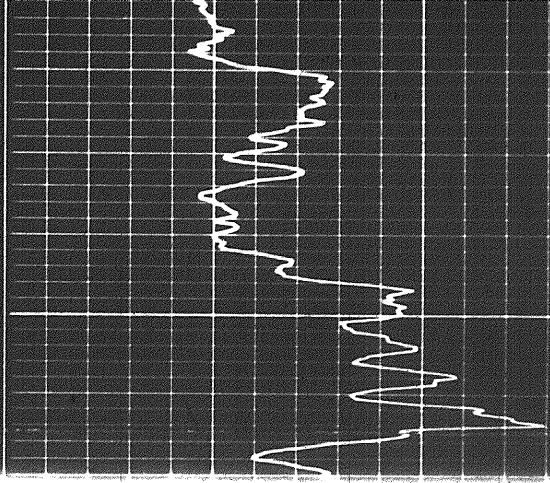
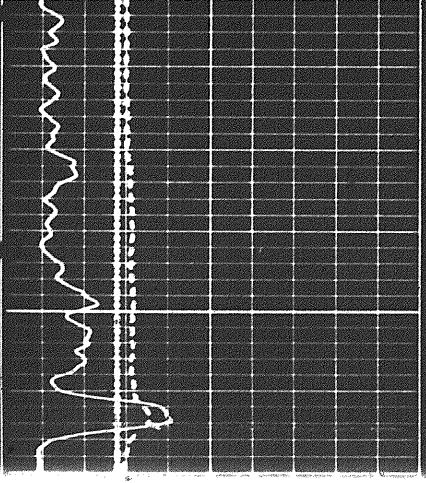
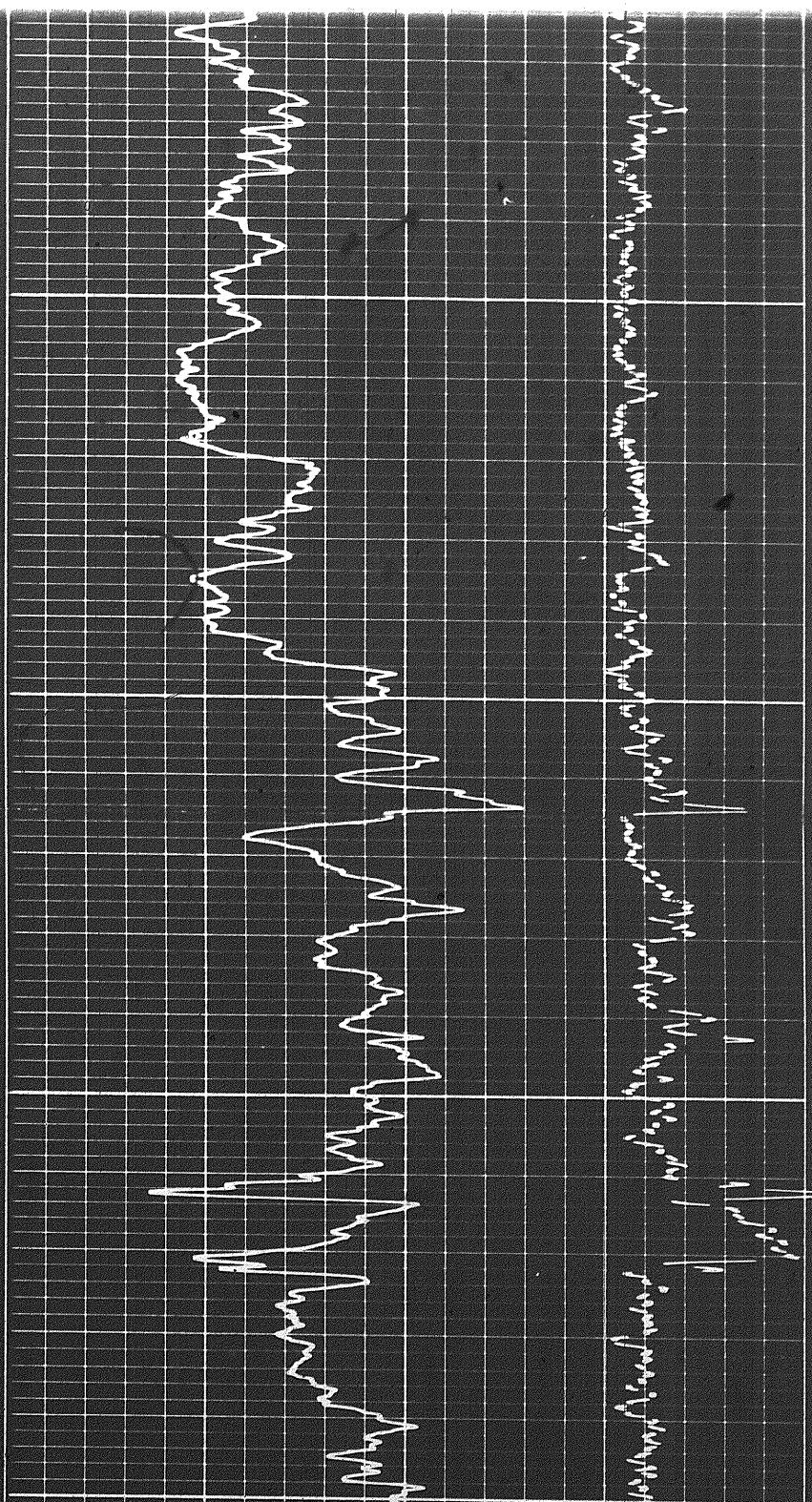


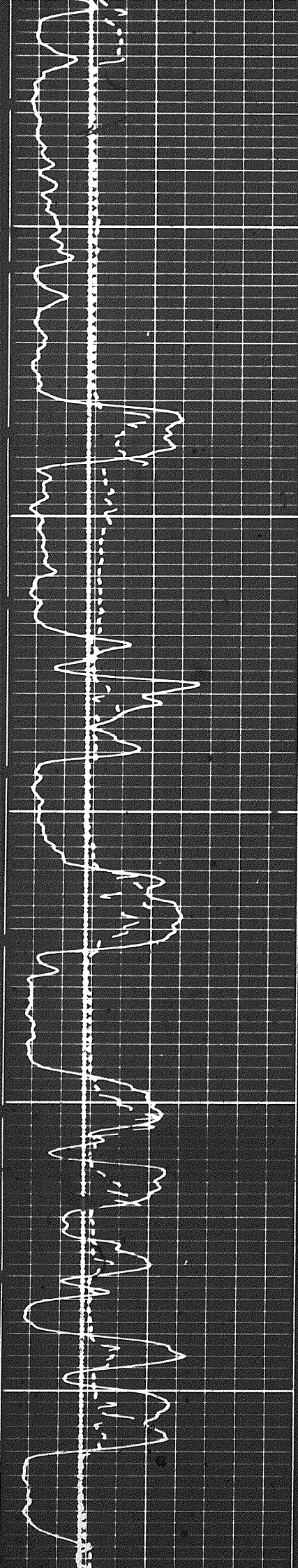
308



1400

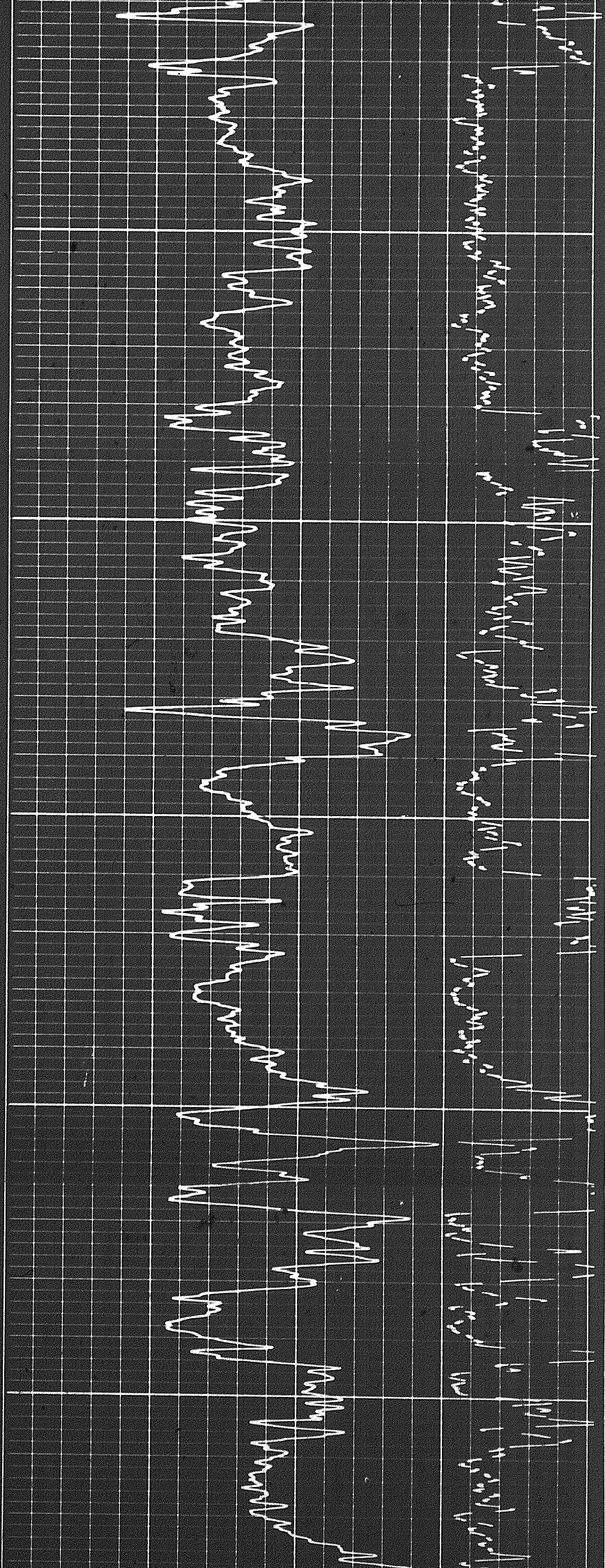
1500

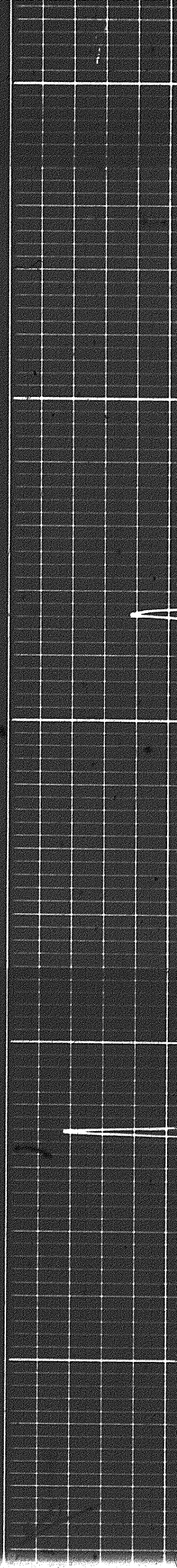
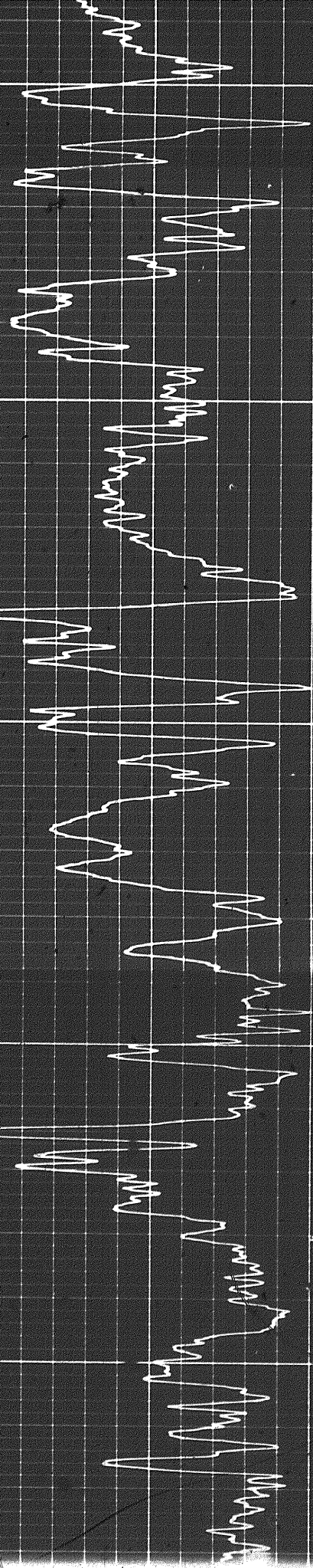
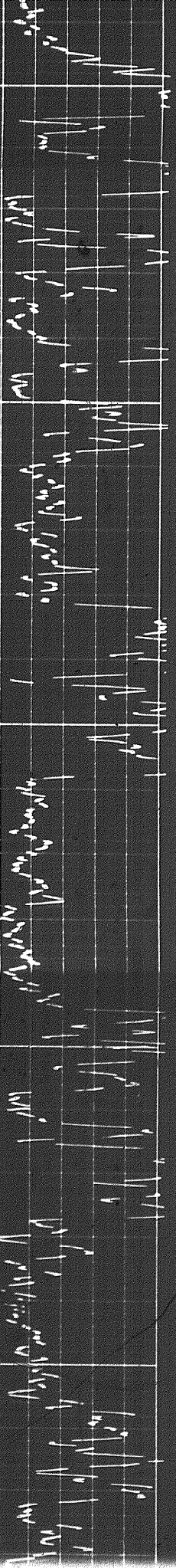




1600

1700

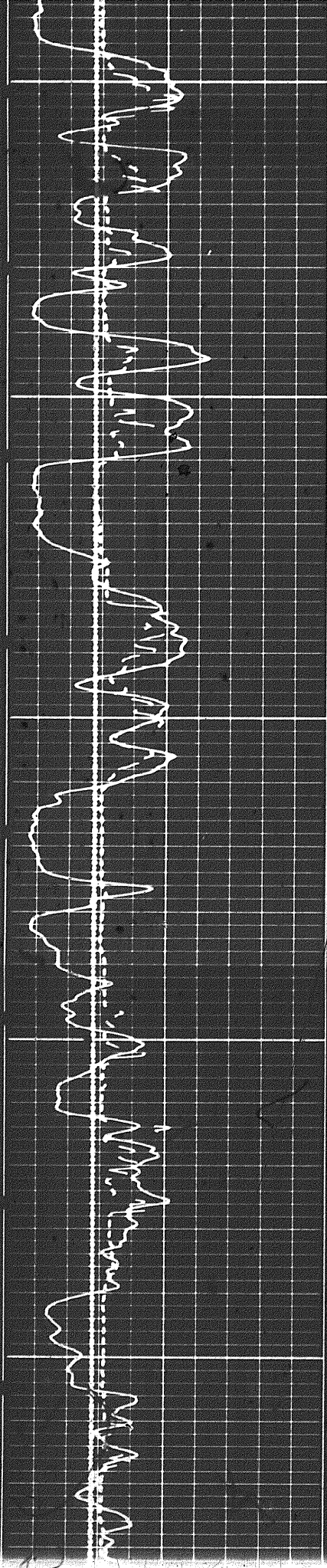




1700

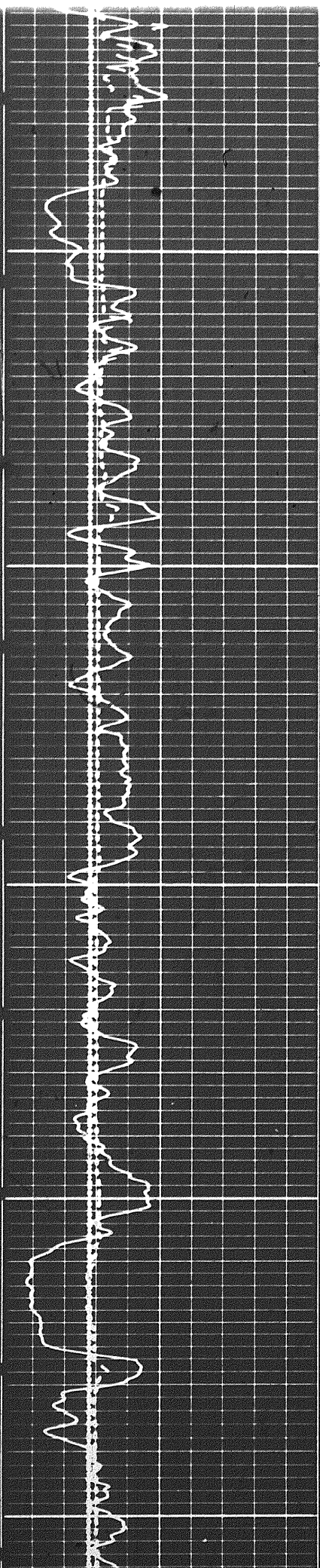
1800

1900





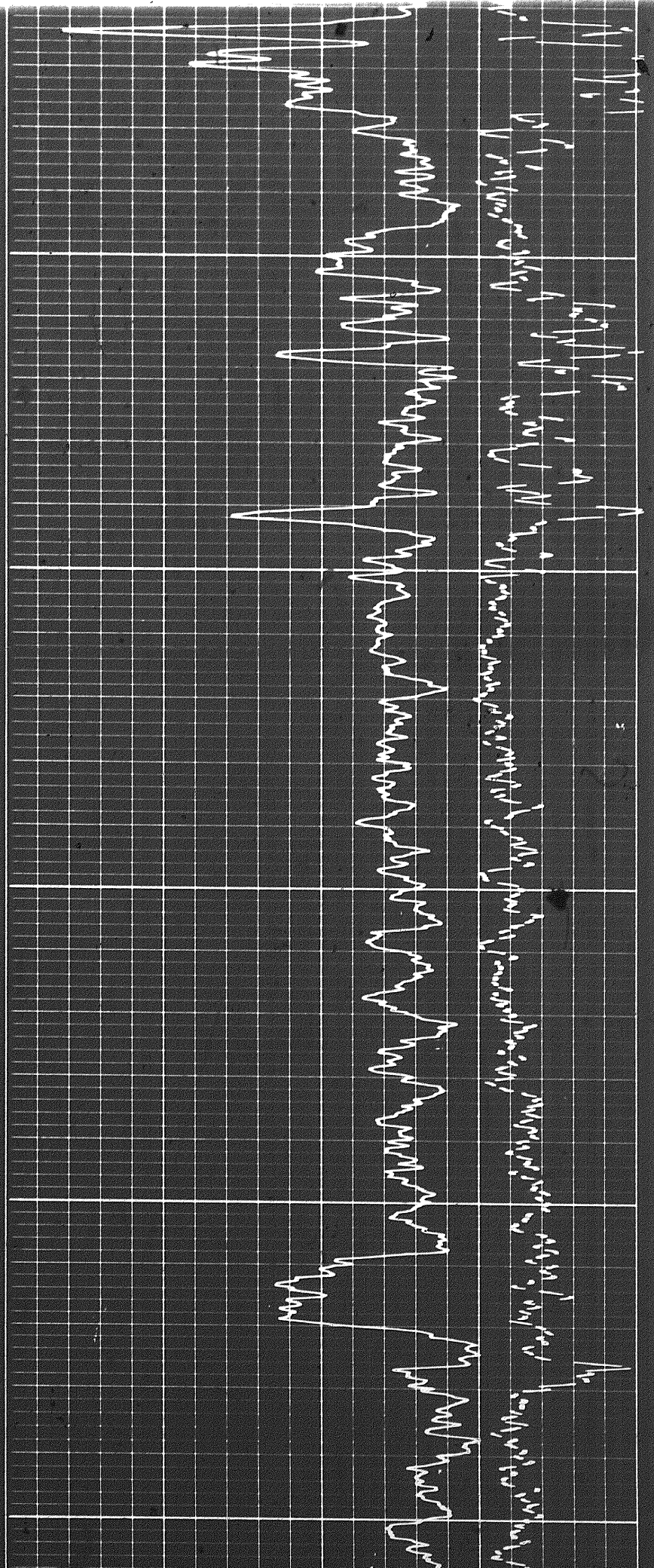
49

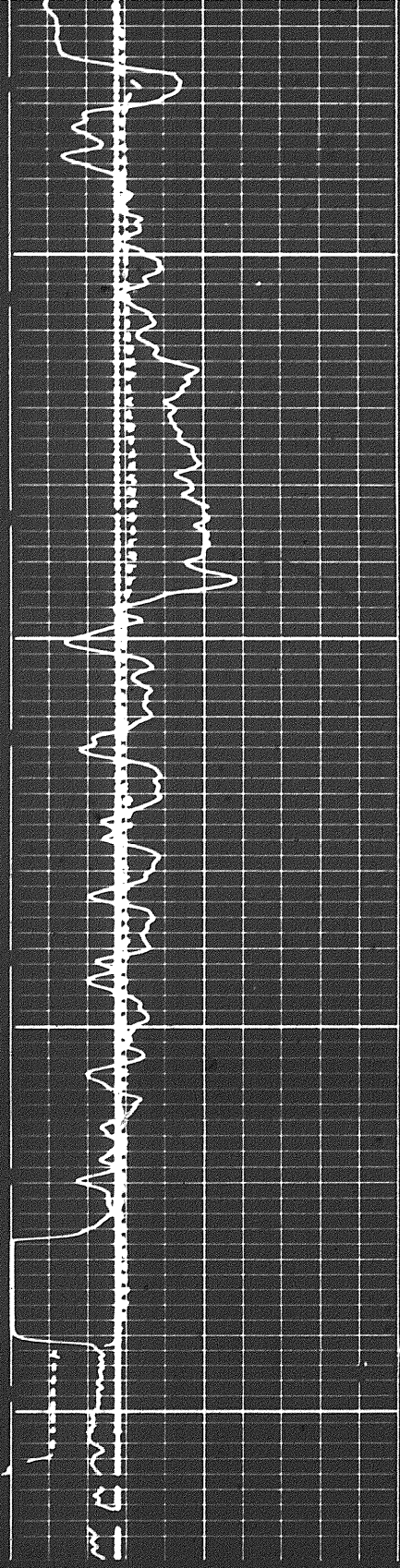


1900

2000

2100

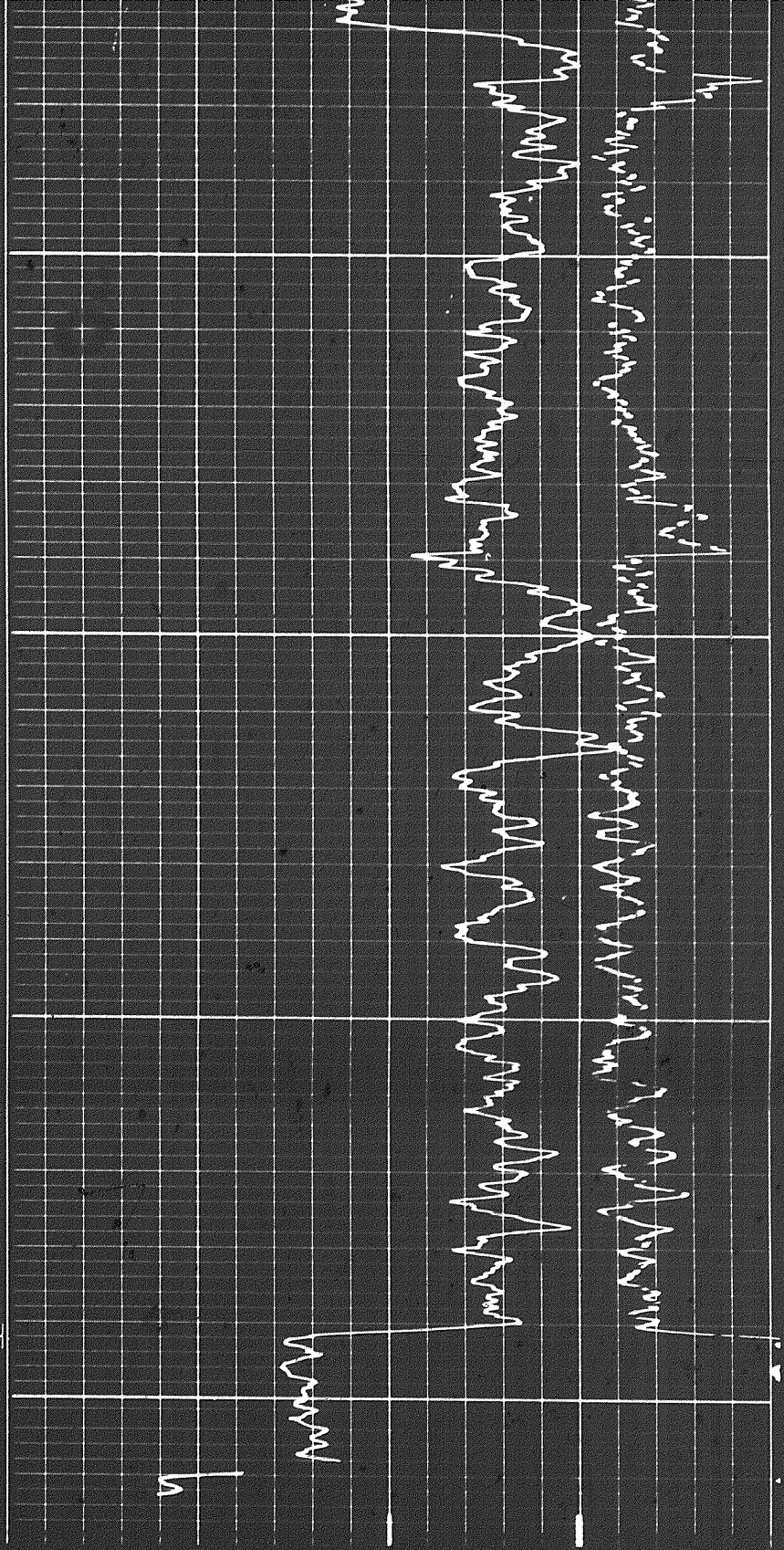




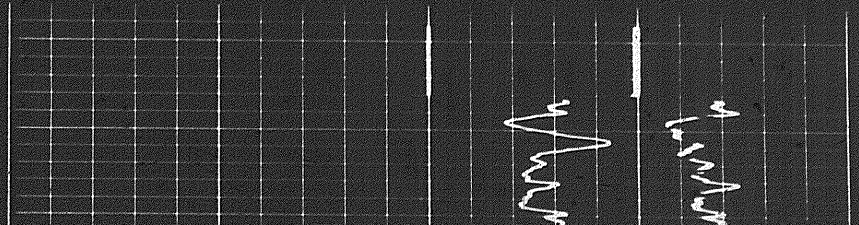
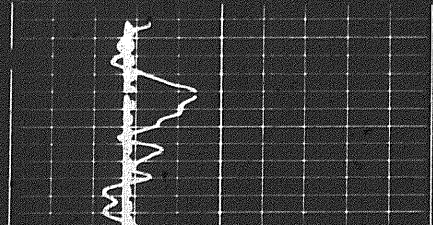
2100

2200

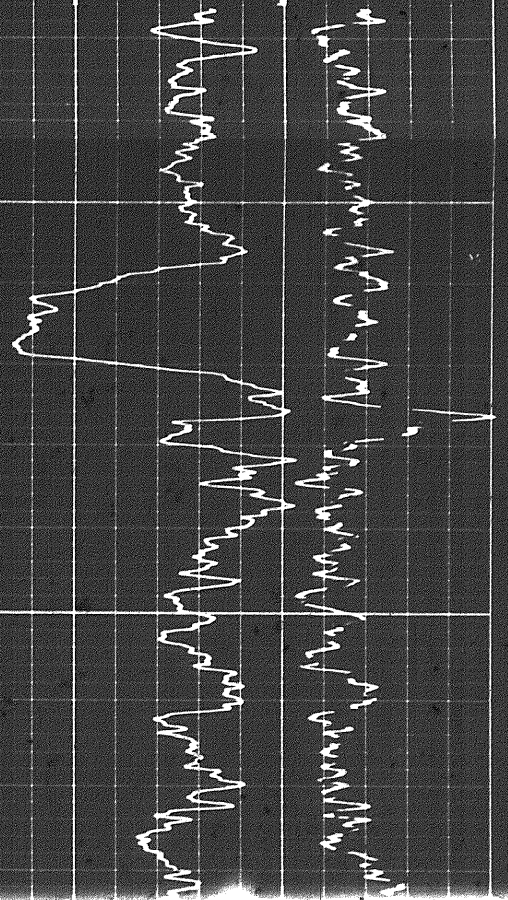
FR



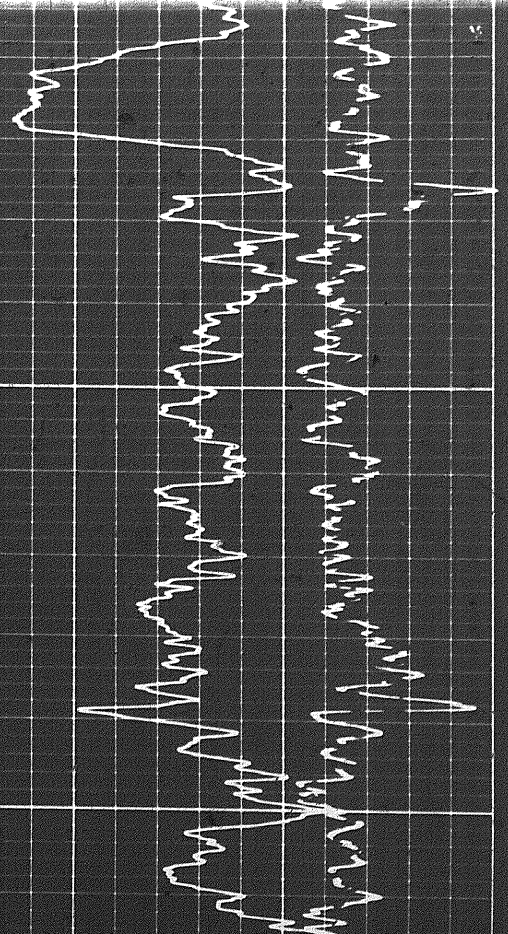
REPEAT SECTION



REPEAT SECTION

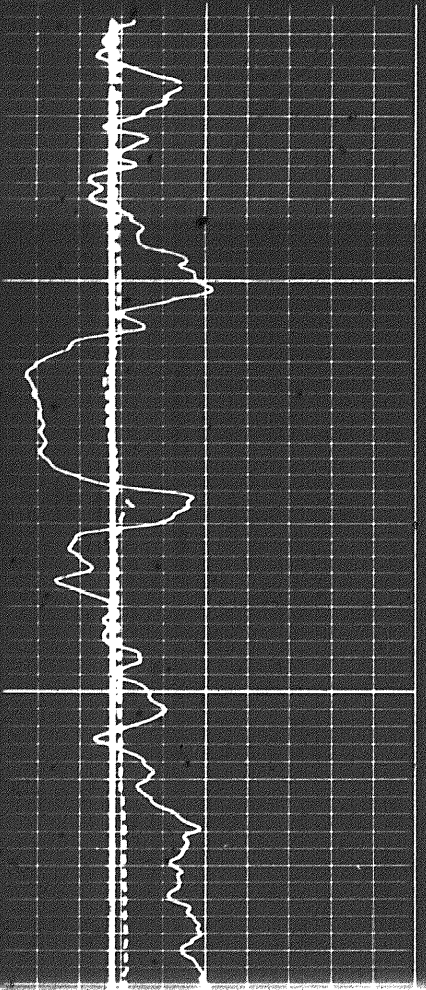
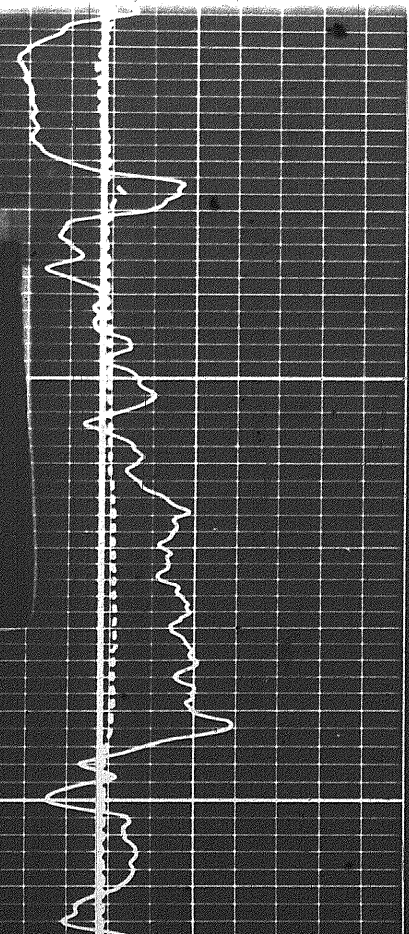


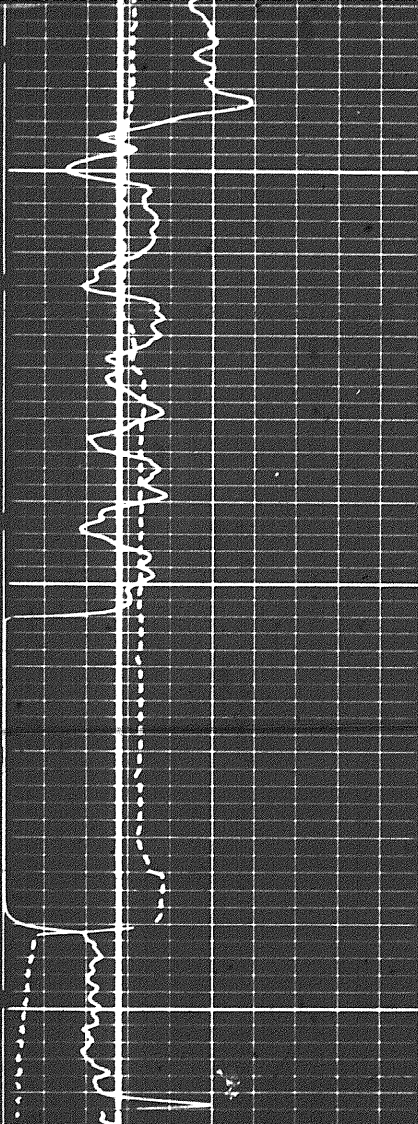
2100



2100

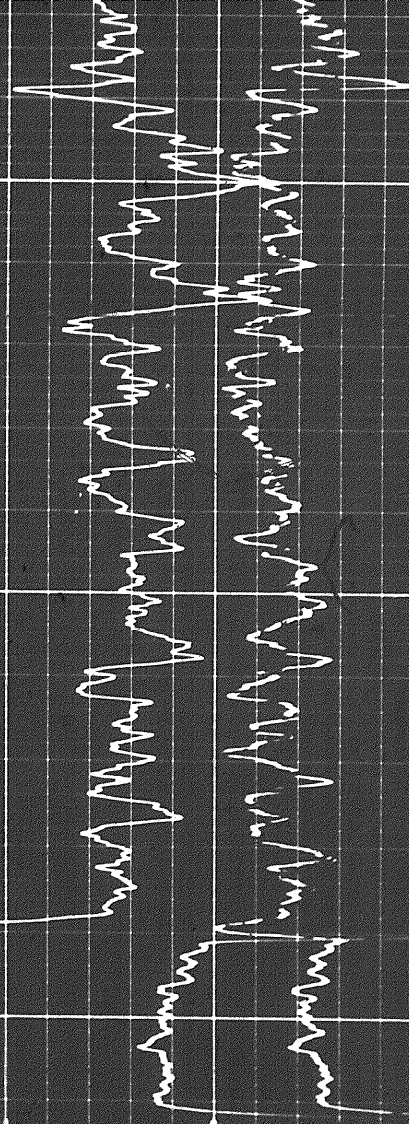
5-8





2200

FR



7 8 9 10 11 12 13 14 15 16

**CALIPER**  
hole diameter in inches

Speed in FPM  
Sens. 150 T.C. 2  
Zero 0 div. to left  
0 150  
150 300

(-) 0.25 0 0.25 (+)

**DENSITY CORRECTION**  
 $\Delta\rho$  - gm/cc

2.0 2.5 3.0

**GAMMA RAY**  
API UNITS

**DEPTHS**

**BULK DENSITY**  
 $\rho_b$  - gm/cc

**DETAIL LOG**  
5' = 100'

**CALIPER**  
hole diameter in inches

**DEPTHS**

**POROSITY (%)**

7 8 9 10 11 12 13 14 15 16

**GAMMA RAY**  
API UNITS

Speed in FPM  
Sens. 150 T.C. 2  
Zero 0 div. to left  
0 150  
150 300

SANDSTONE  
45 30 15 0 -15

Speed in FPM

7 8 9 10 11 12 13 14 15 16

### GAMMA RAY API UNITS

Sens. 150 T.C. 2

Zero 0 div. to left 150

150 300

SANDSTONE

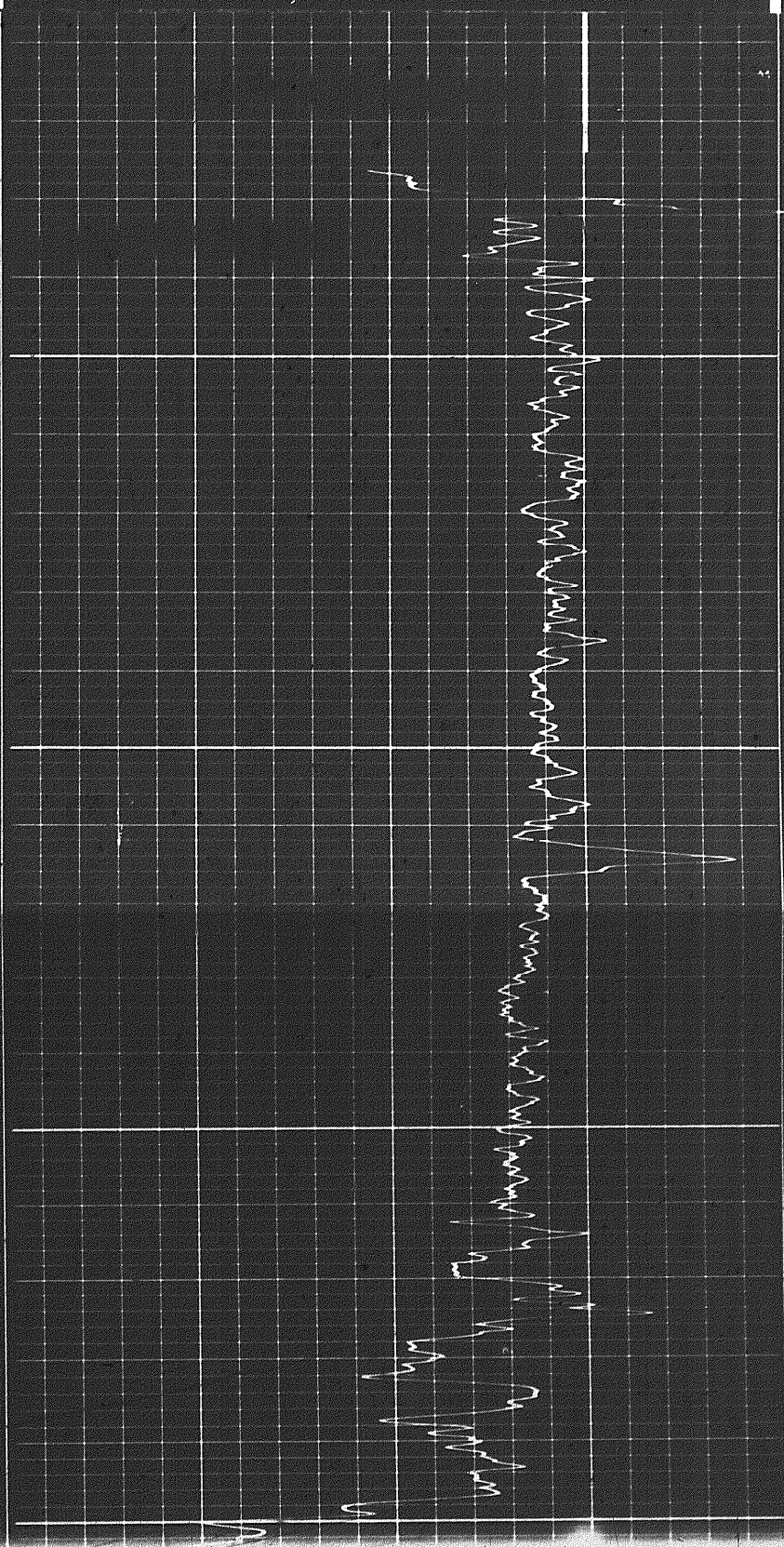
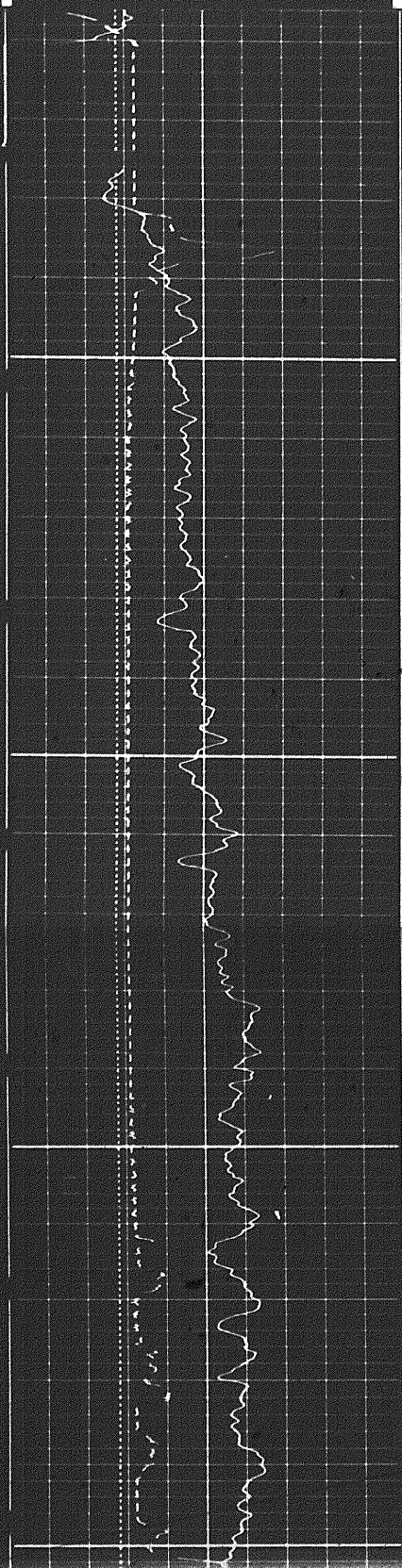
30

15

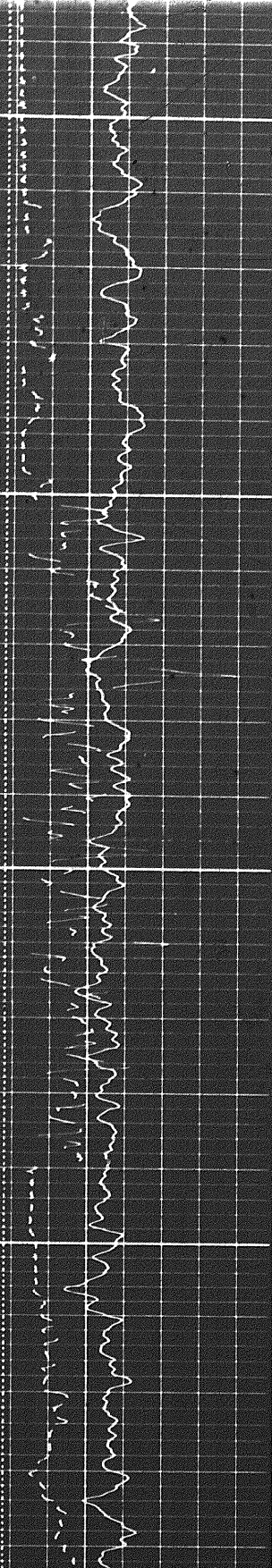
-15

0080

0060

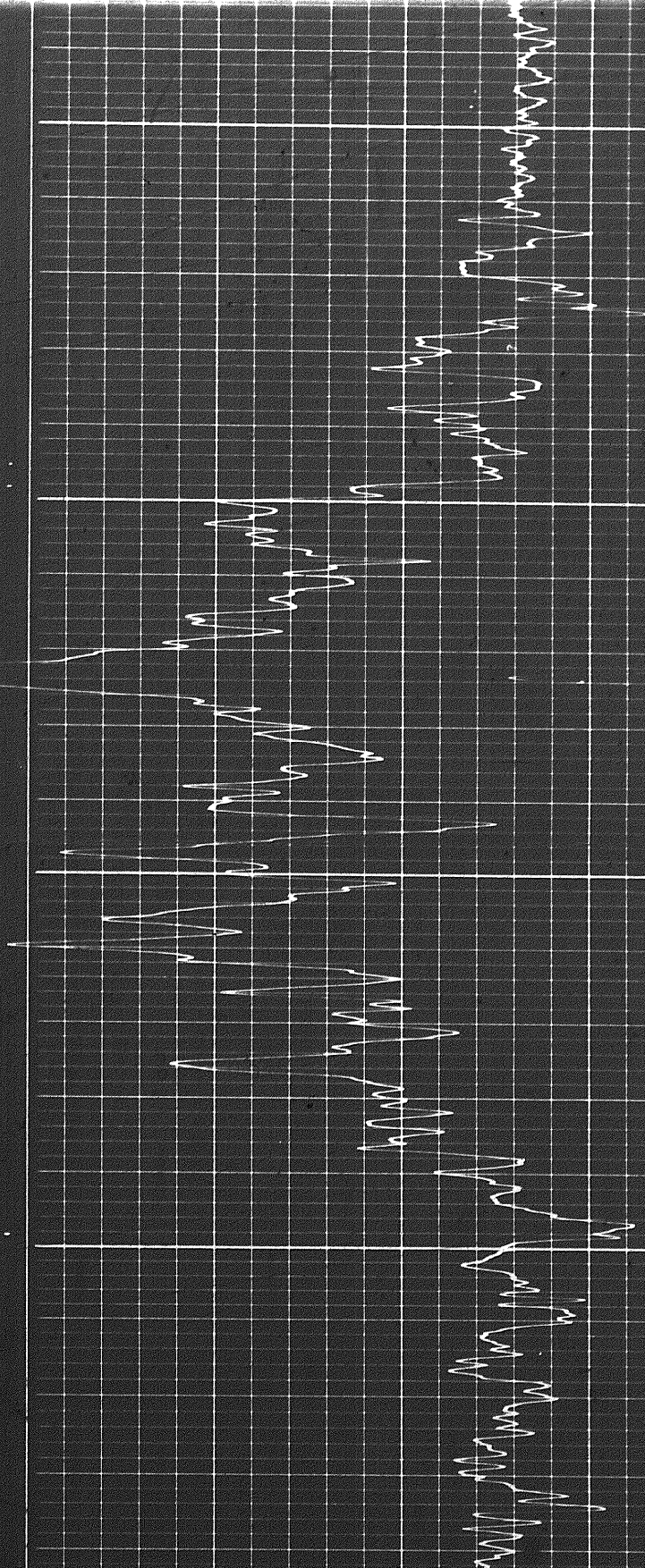


89

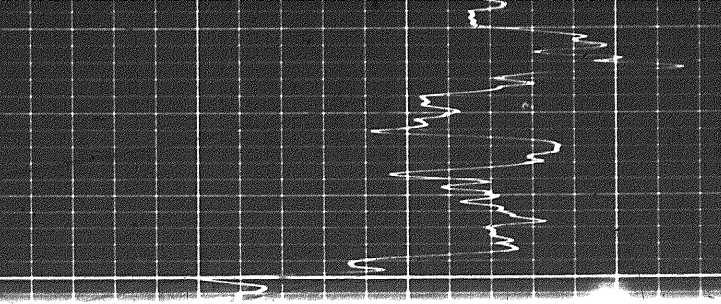


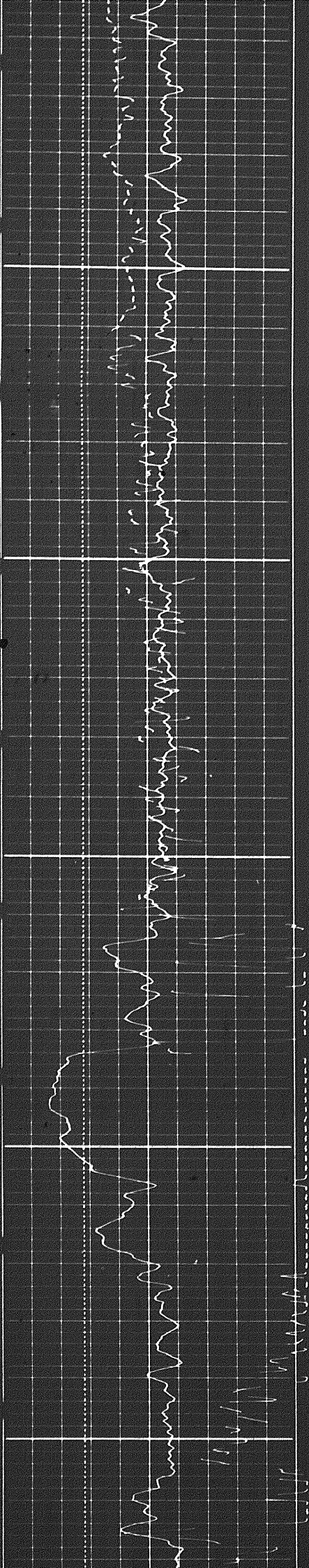
10001

0060



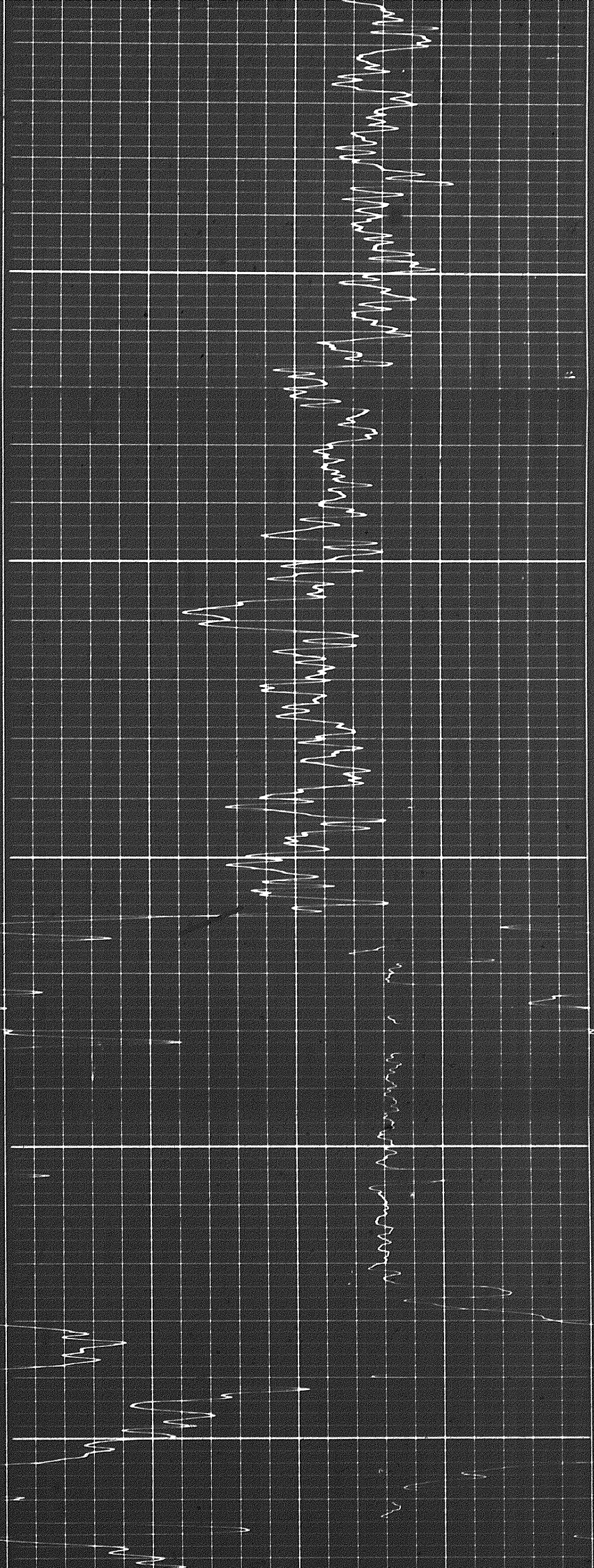
060



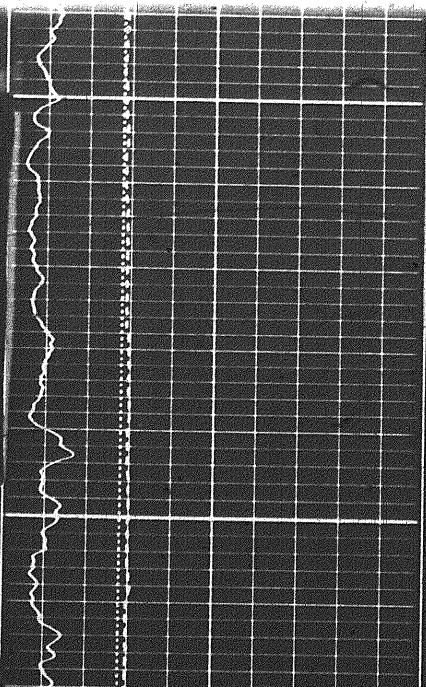


1100

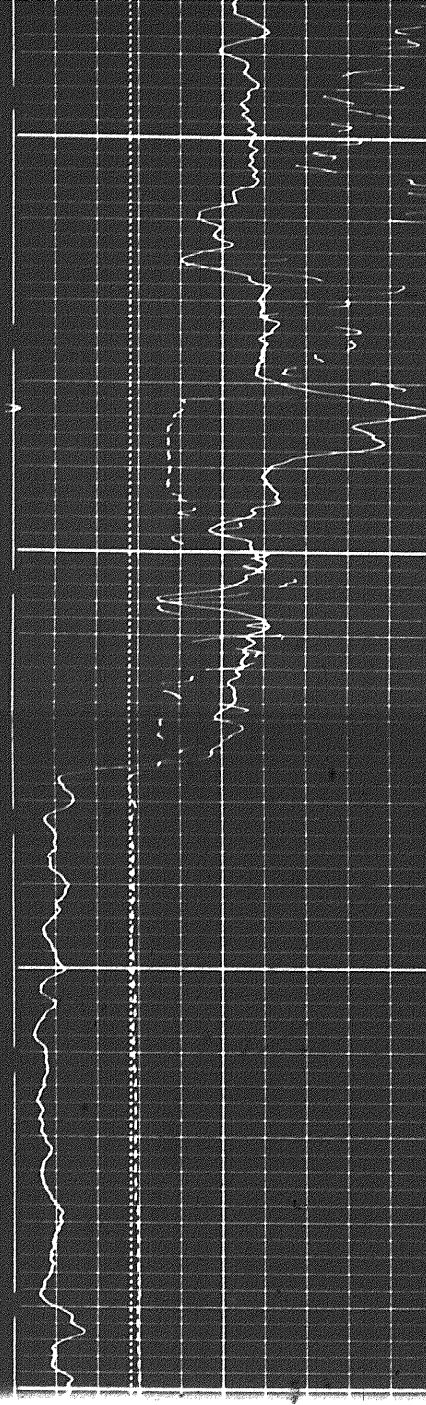
1200



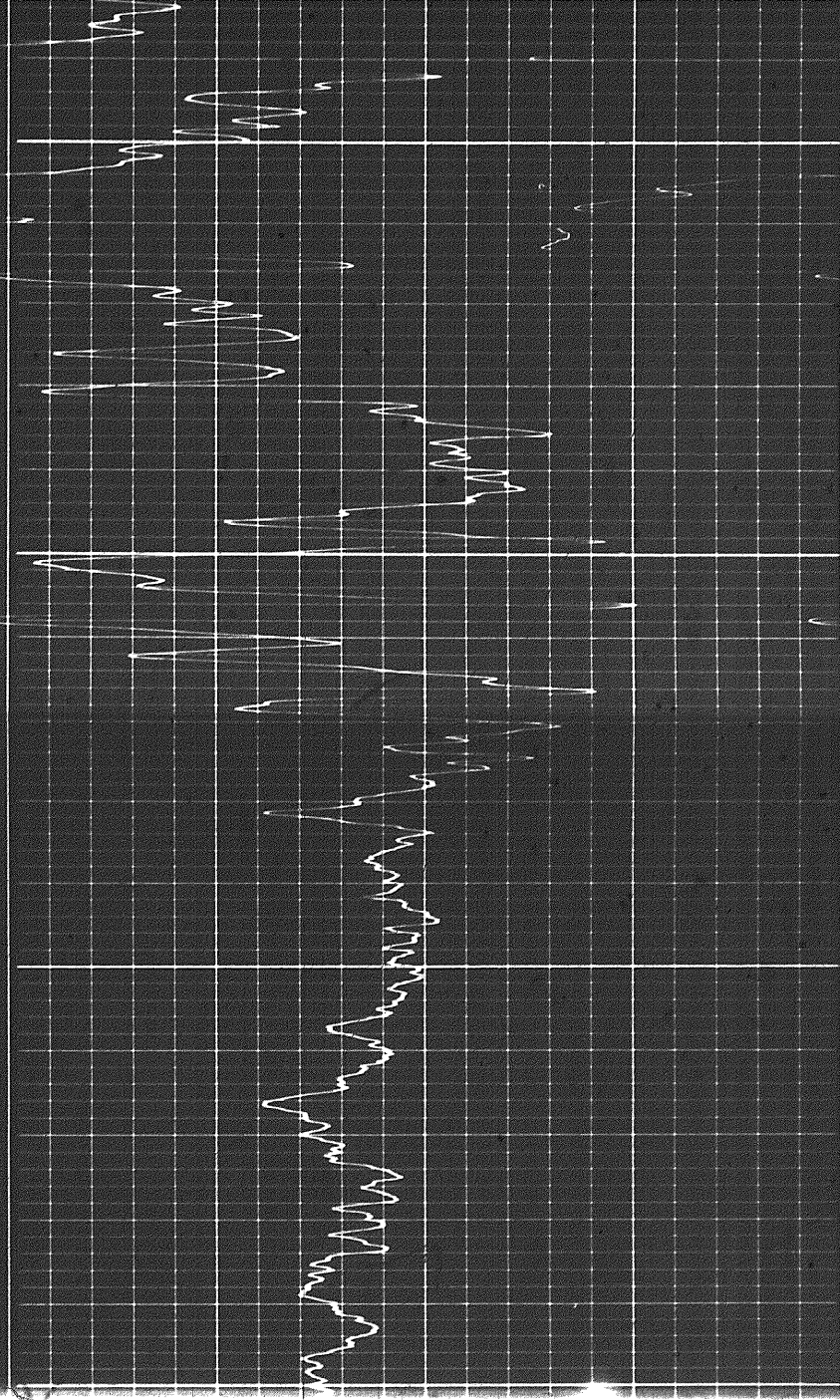
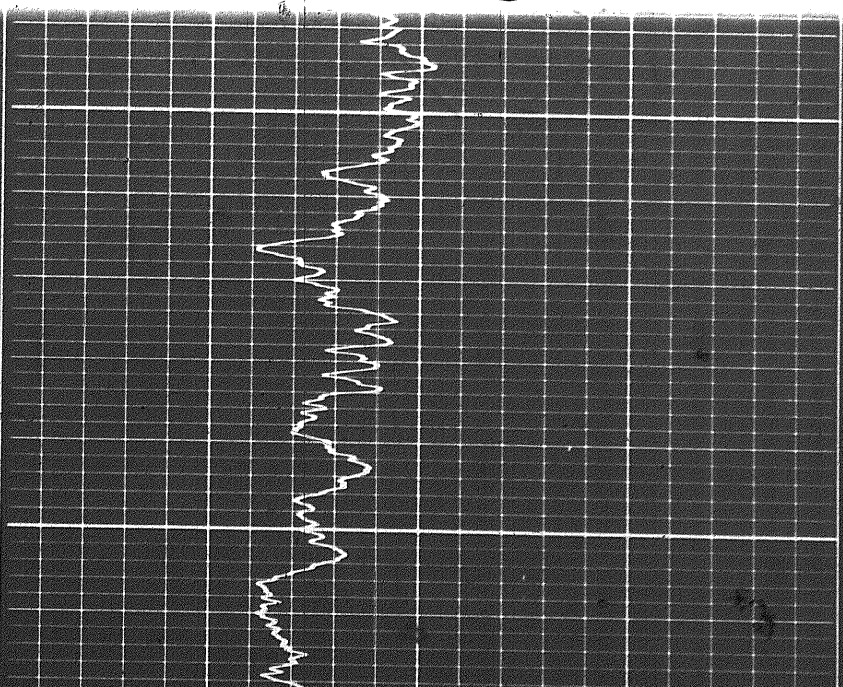
79



1400

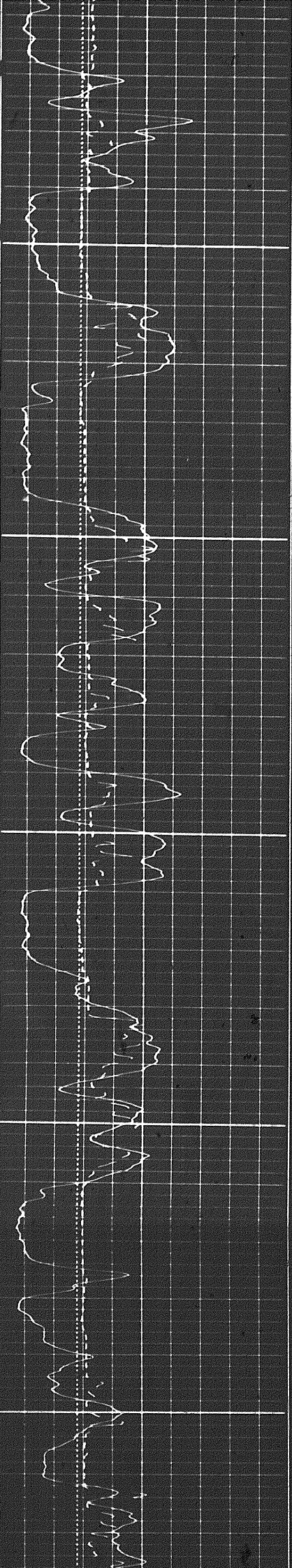


1300



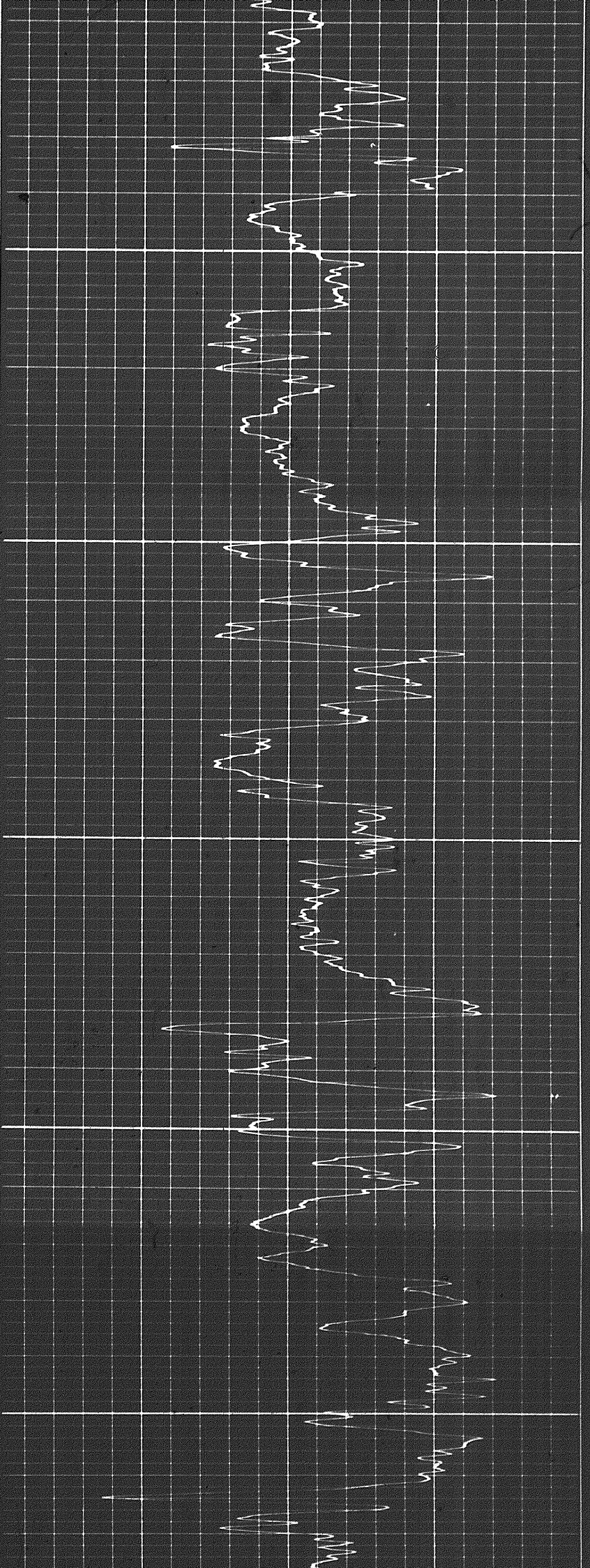
1400

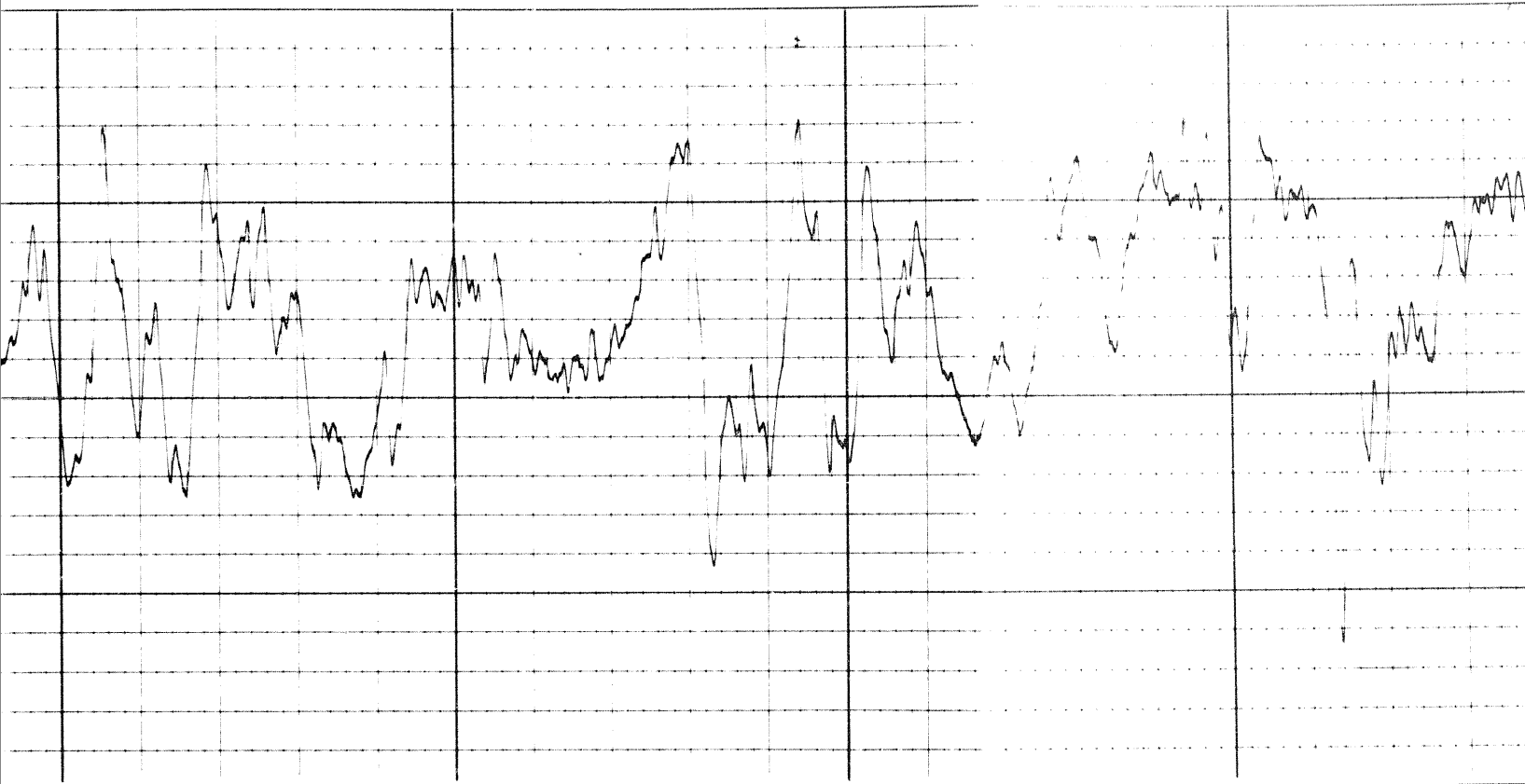




1700

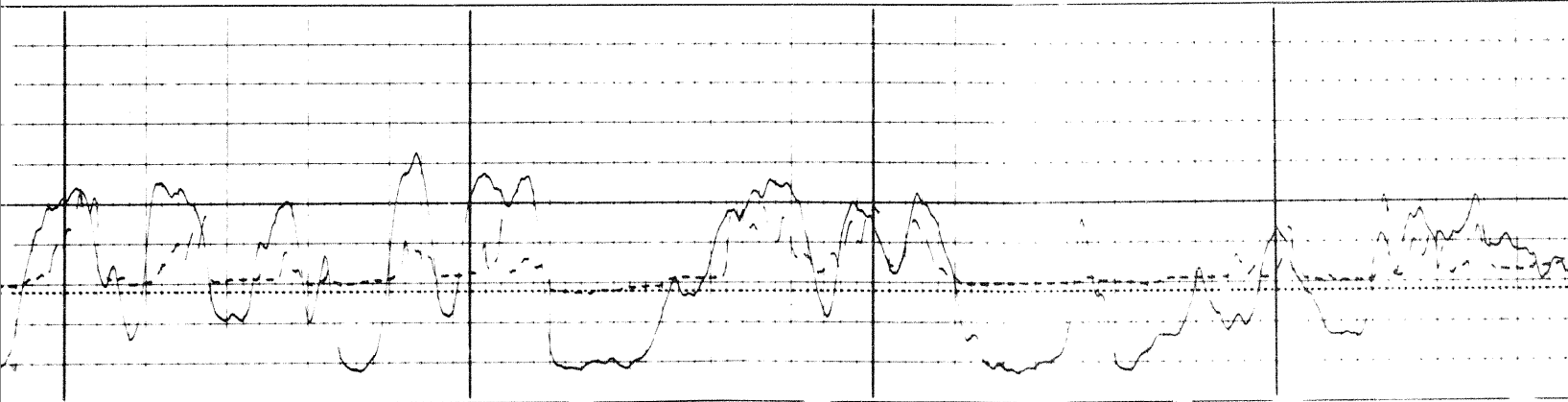
1800



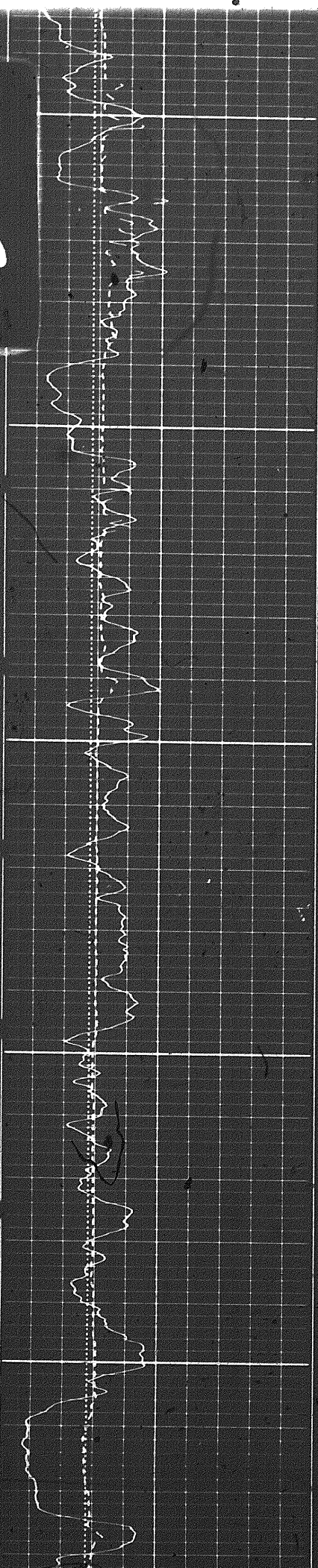


1700

1800

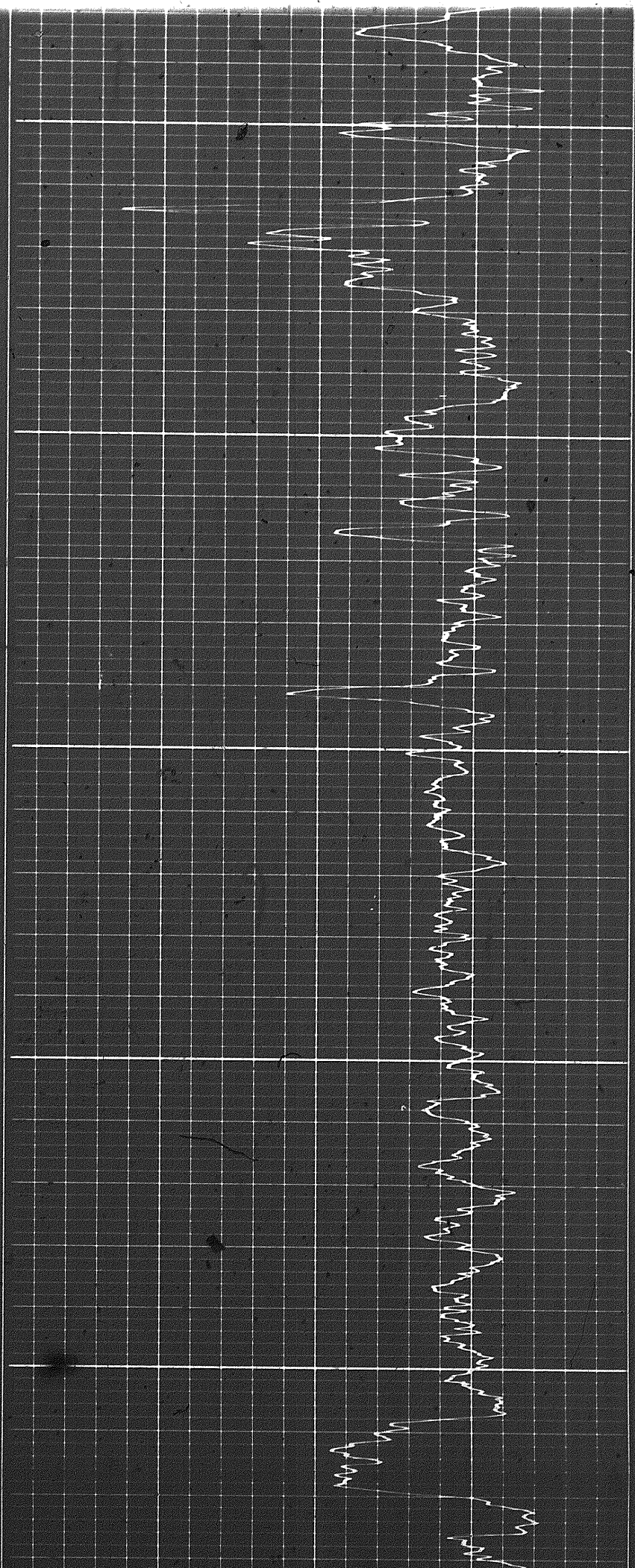


88

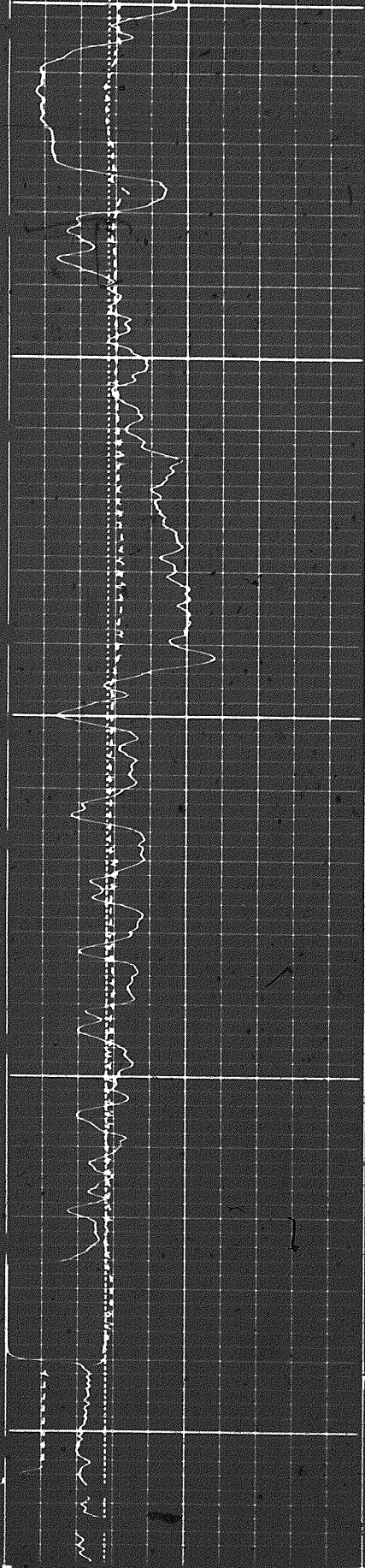


1900

2000



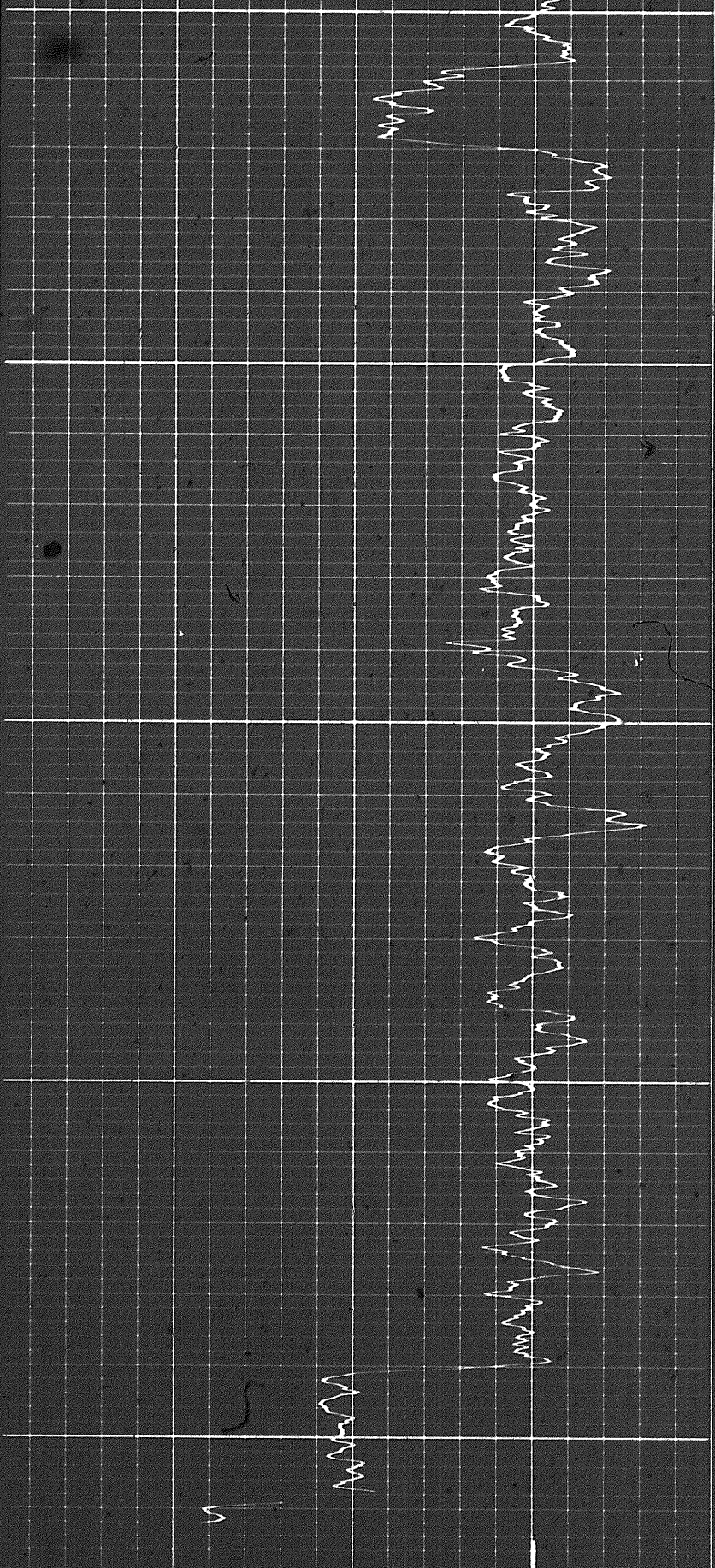
Sens. 150 T.C. 2  
Zero 0 div. to left



2100

2200

FR



Speed in FPM  
7 8 9 10 11 12 13 14 15 16

GAMMA RAY  
API UNITS

45 30 15 0

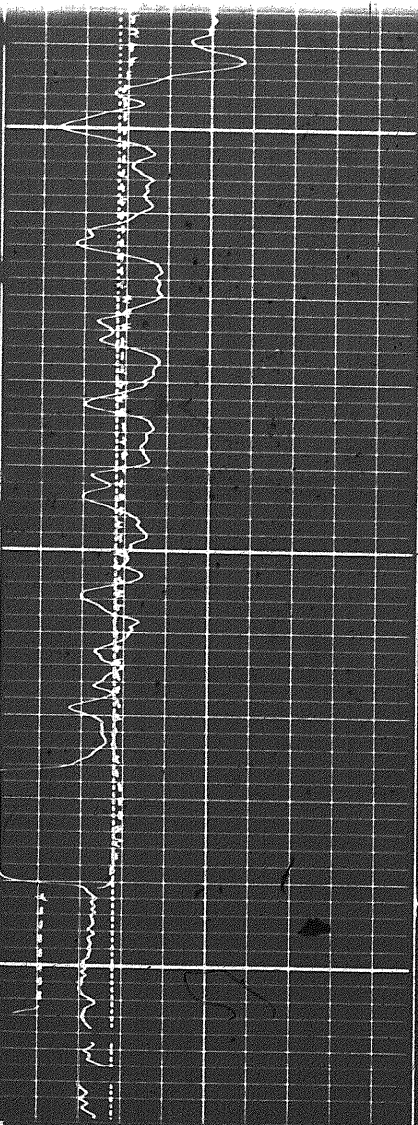
SANDSTONE

CALIPER  
hole diameter in inches

DEPTH

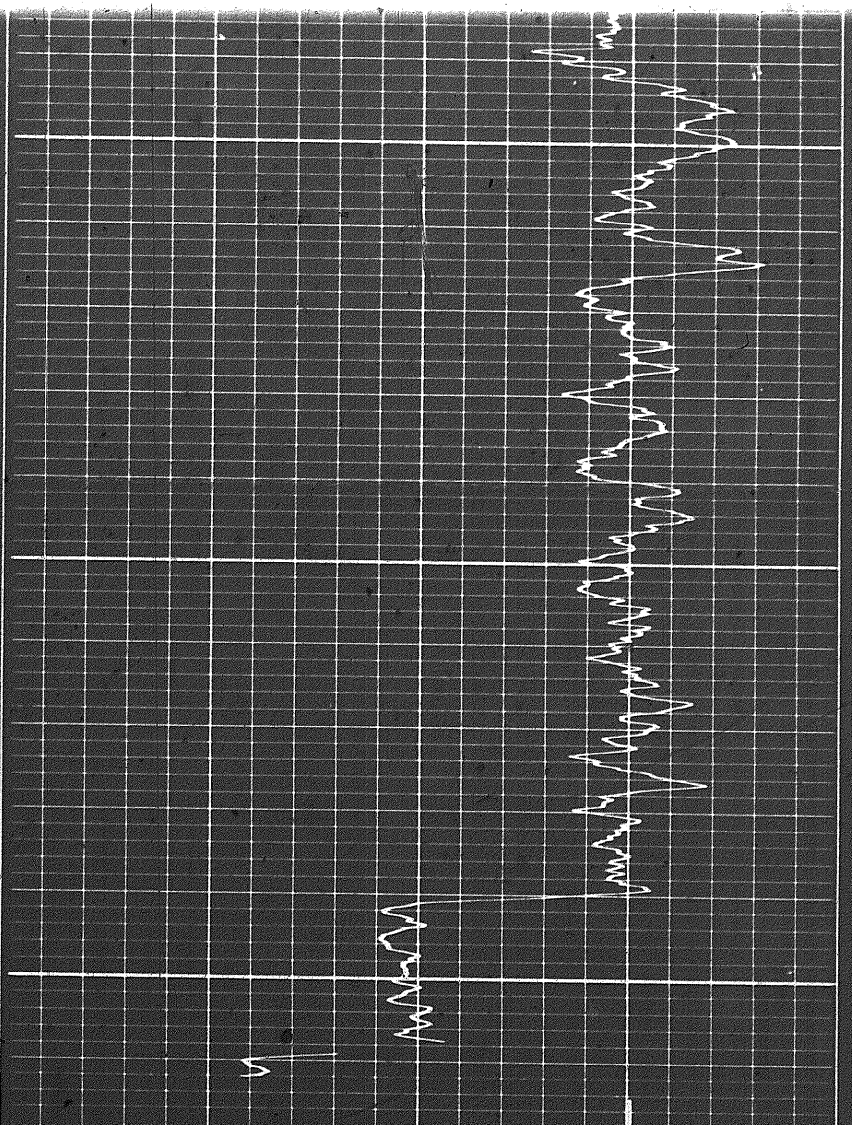
POROSITY (%)

Calibration after Survey



2200

FR



Sens. 150 T.C. 2  
Zero 0 div to left

Sens. 150 T.C. 2  
Zero 0 div. to left  
150 300

GAMMA RAY  
API UNITS

Speed in FPM

7 8 9 10 11 12 13 14 15 16

CALIPER  
hole diameter in inches

DEPTH

POROSITY (%)

45 30 15 0 -15  
SANDSTONE

999  
666

Calibration after Survey

Calibration before Survey

Calibration before Survey

COMPANY CHEVRON STANDARD LIMITED

WELL CHEVRON SOBC WM BIRCH YT E-53

FIELD WILDCAT PROVINCE YUKON TERRITORIES

