

SCHLUMBERGER

DUAL INDUCTION-LATEROLOG

SCHLUMBERGER OF CANADA Calgary Alberta

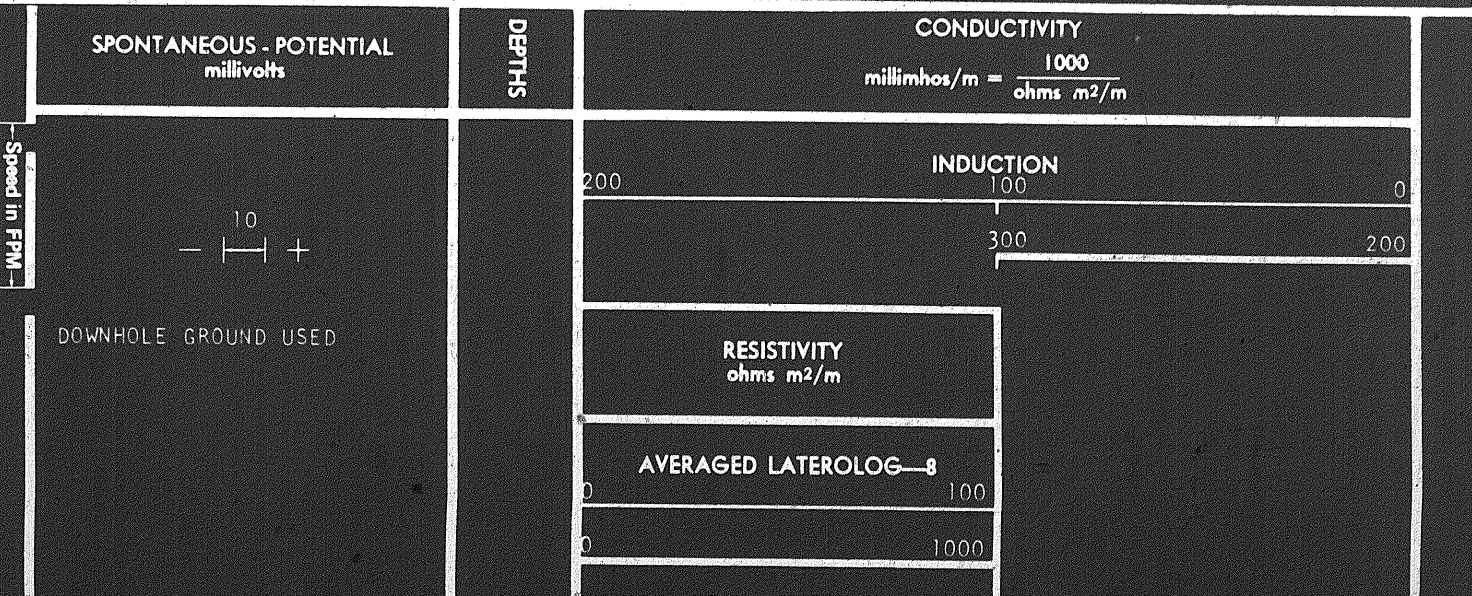
PROVINCE YUKON TERRITORIES
 FIELD WILDCAT
 WELL CHEVRON SOBC WM BIRCH TV E-53
 COMPANY CHEVRON STANDARD LIMITED

COMPANY CHEVRON STANDARD LIMITED
 WELL CHEVRON SOBC WM BIRCH TV E-53
 FIELD WILDCAT
 PROVINCE YUKON TERRITORIES
 LOCATION 66° 02' 21" N LAT 136° 56' 05" W LONG
 Permanent Datum GL Elev. 2025.4
 Log Measured From KB 13.1 Ft. Above Perm. Datum
 Other Services: SLC-GR, SNE-GR, FDC-GR, GRN, CST
 ELEV: KB 2038.5
 GL 2025.4
 CBF

Date	16 FEB 72
Run No.	ONE
First Reading	2236
Last Reading	732
Feet Measured	1504
Depth Reached	2244
Bottom Driller	2245
Csg. SOC	732
Csg. Driller	732
Mud Nature	GEI
Dens. Visc.	9.2 160
Mud pH	9.5
Water Loss	6.0
Res.	4.40 @ 63
Rinf	3.91 @ 65
BHT	80
Rmc	5.04 @ 65
Source of Sample	FLOWLINE
Bit Size	8 3/4"
Op. Rig Time	2 HRS
Truck No.	NSU-C-108 REM
Recorded By	CHADDOCK
Witness	POLLARD

REMARKS
 Drilling Stopped 1930 / 14th : Circulation Stopped 0830 / 16th : Tool on Bottom 1150 / 16th : 1st Run Service Order #
 B.H.T. 80 of

Stand Off = 1.5 inches
 Cartridge No. B 90
 Panel No. CB 226
 Sonde No. DB 109
 IAP-D No. MMP-B 223
 SBR 2



19

DOWNHOLE GROUND USED

RESISTIVITY
ohms m²/m

AVERAGED LATEROLOG—8

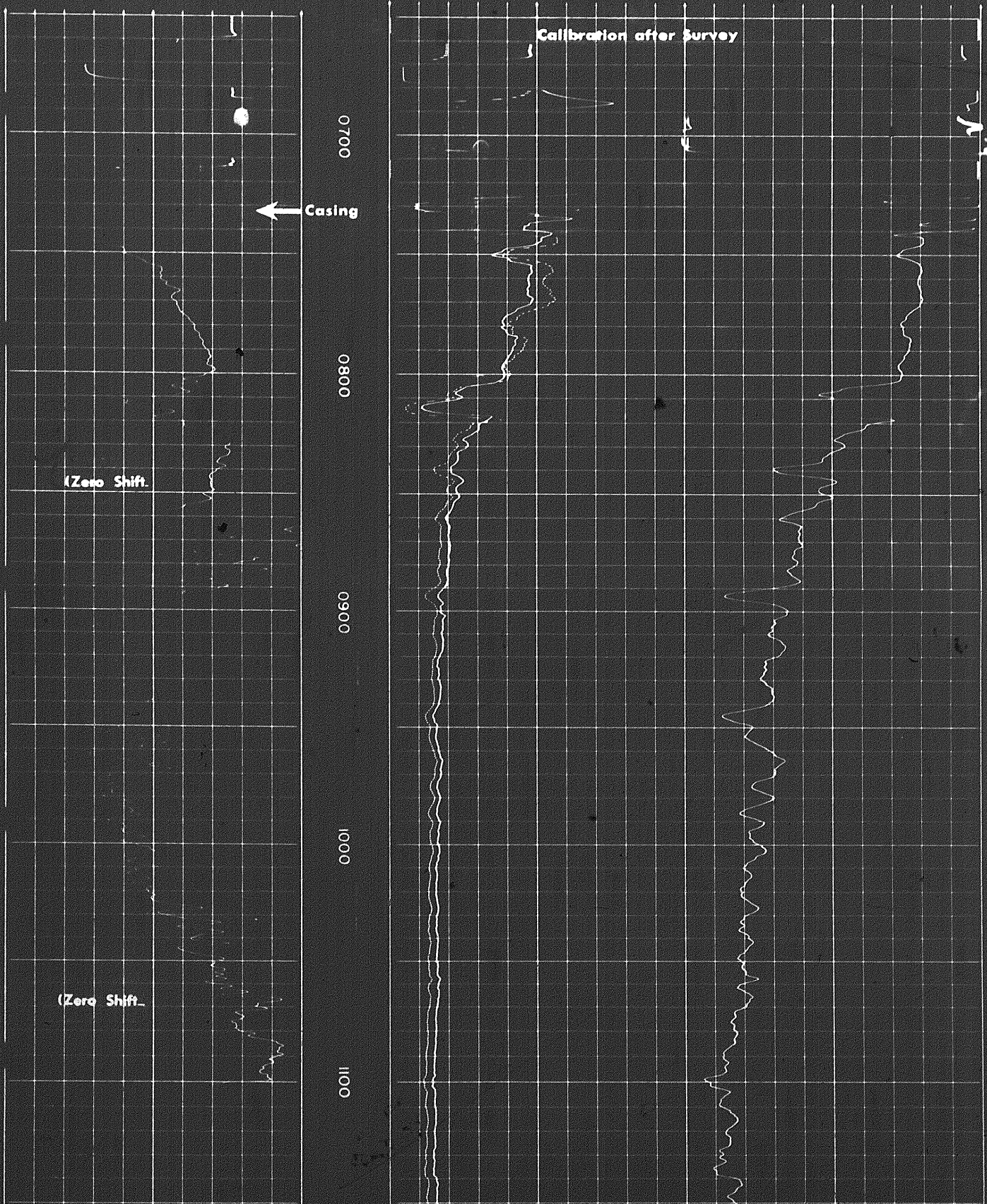
0 100

0 1000

DEEP INDUCTION

0 100

0 1000

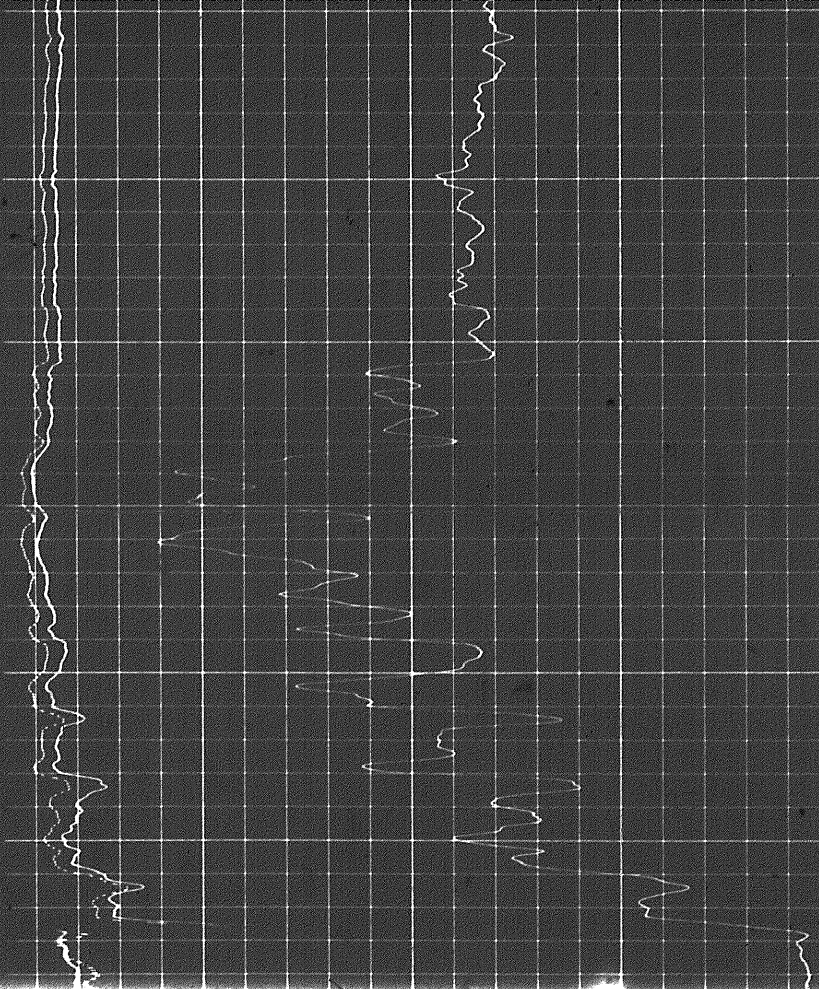


(Zero Shift)

1100

1200

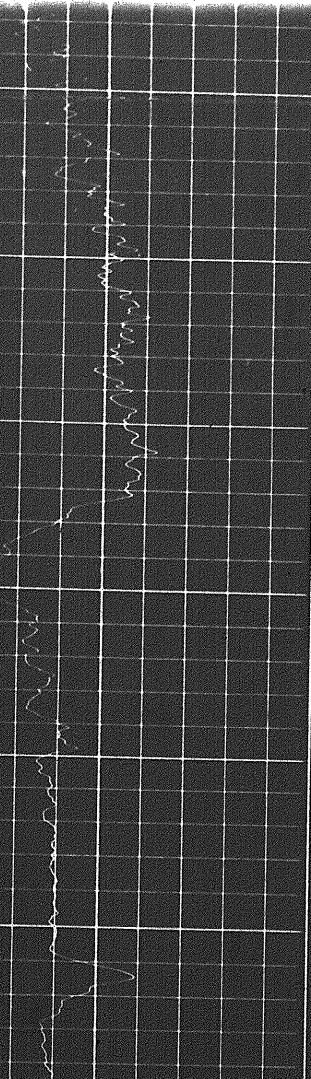
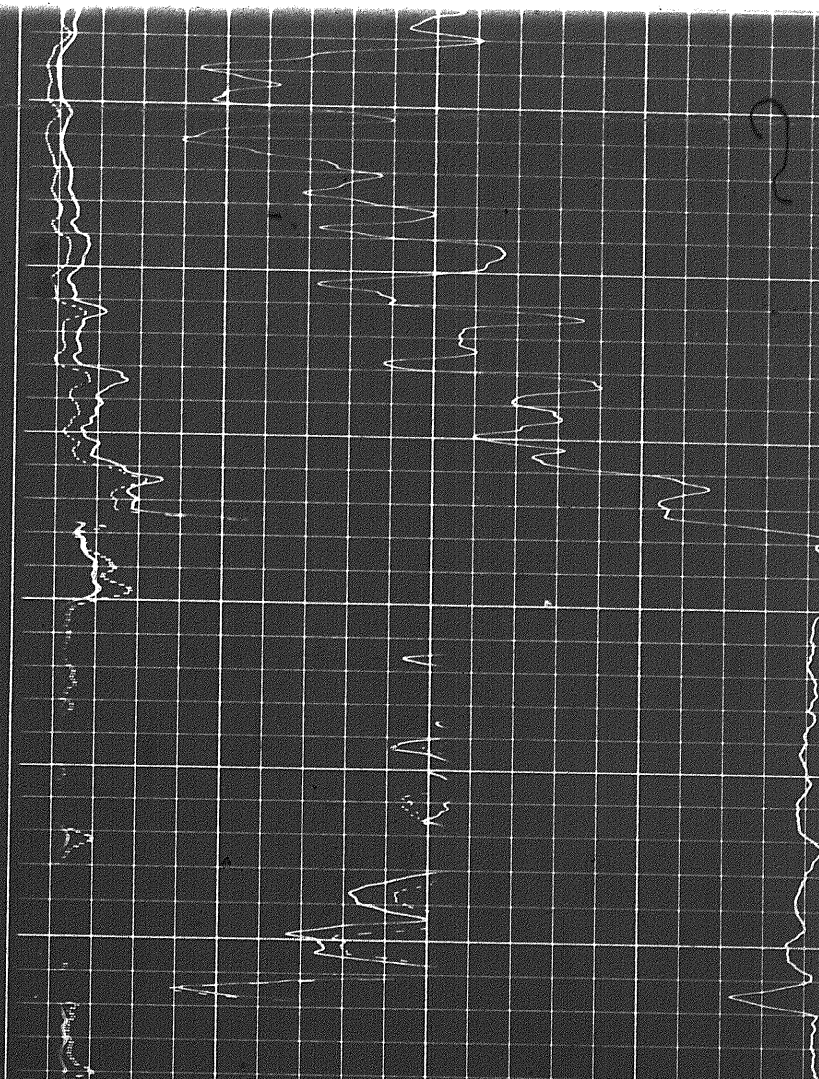
1300



1200

1300

1400



28

(Zero Shift)

1500

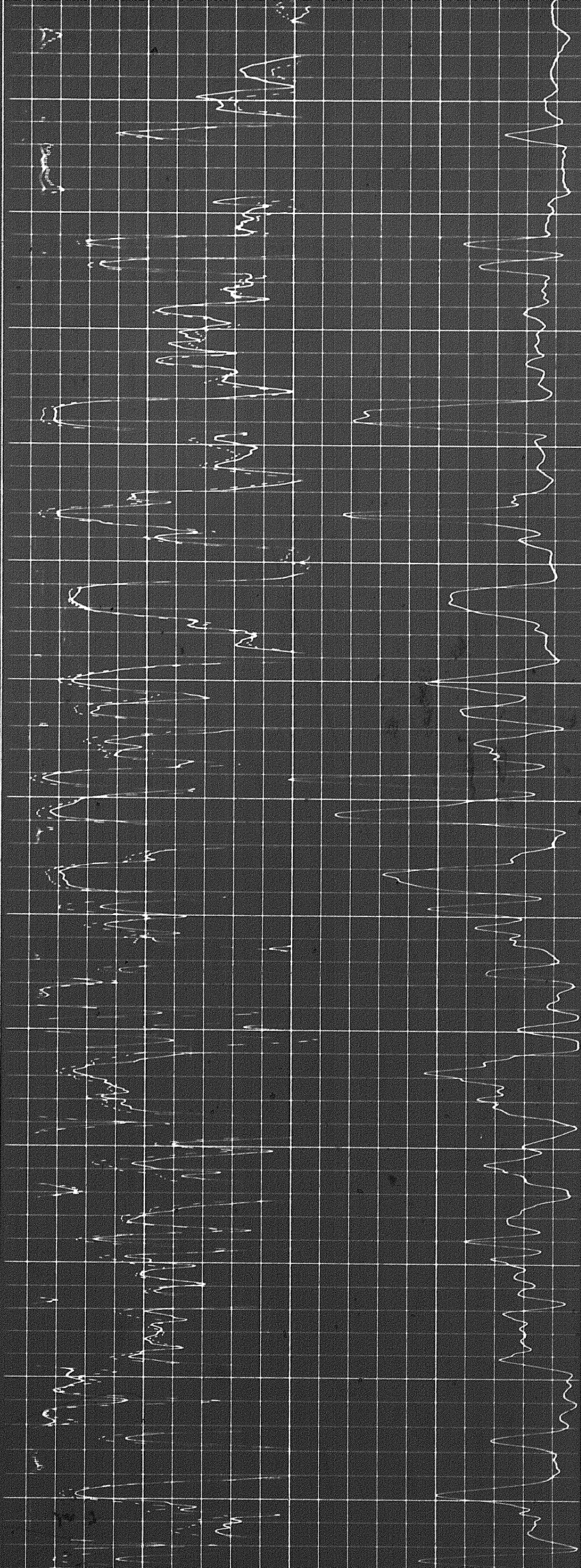
1600

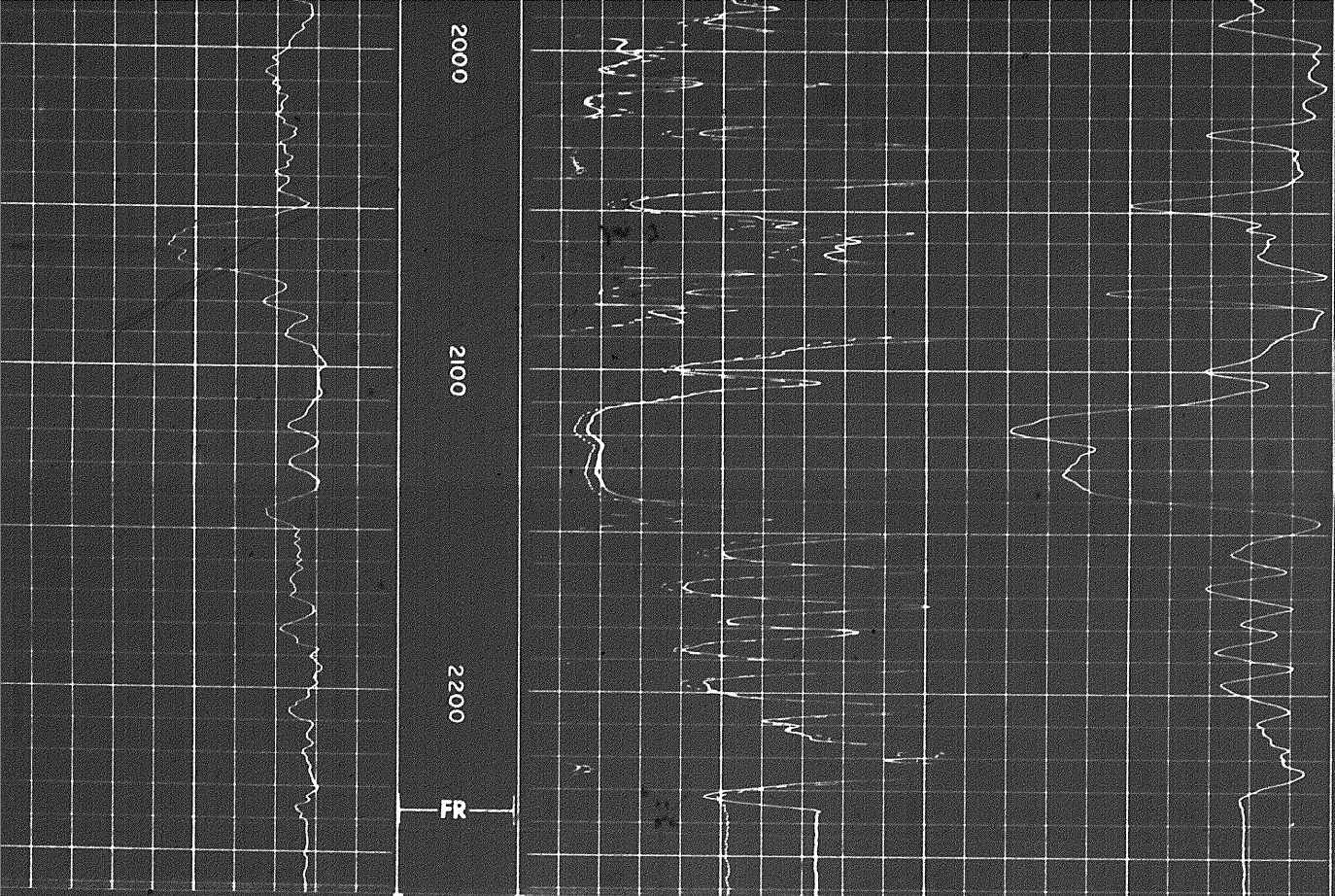
1700

1800

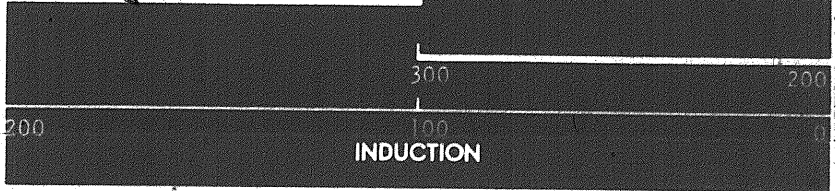
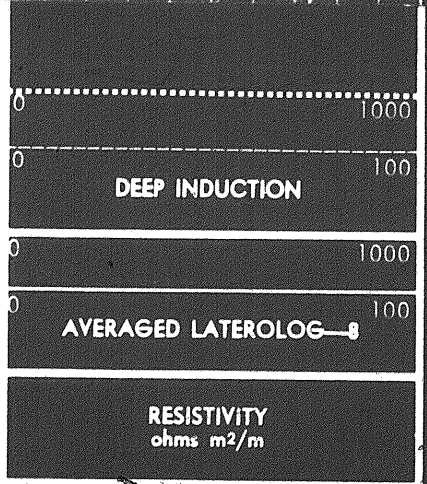
1900

2000





2000
2100
2200
FR



SPONTANEOUS - POTENTIAL
millivolts

DEPTHS

CONDUCTIVITY

$$\text{millimhos/m} = \frac{1000}{\text{ohms m}^2/\text{m}}$$

DETAIL LOG
5" = 100'

SPONTANEOUS - POTENTIAL
millivolts

DEPTHS

RESISTIVITY
ohms m / m

LATEROLOG - 8

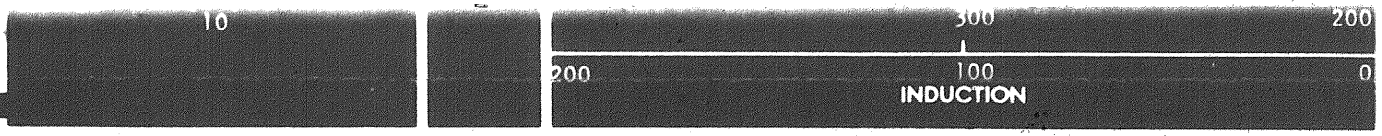
1 10 100 1000

10

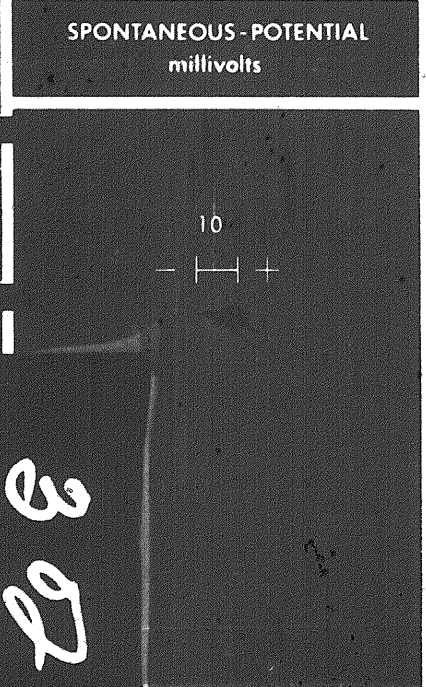
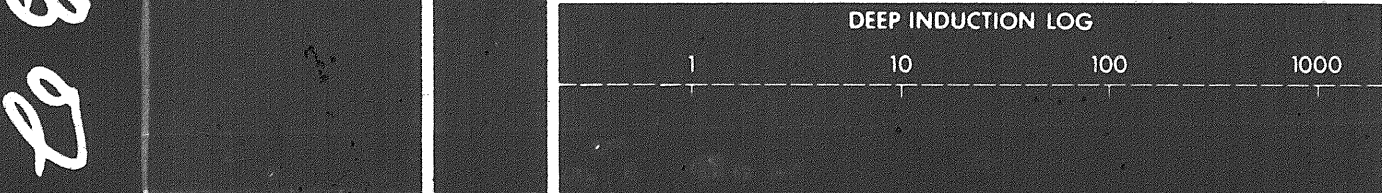
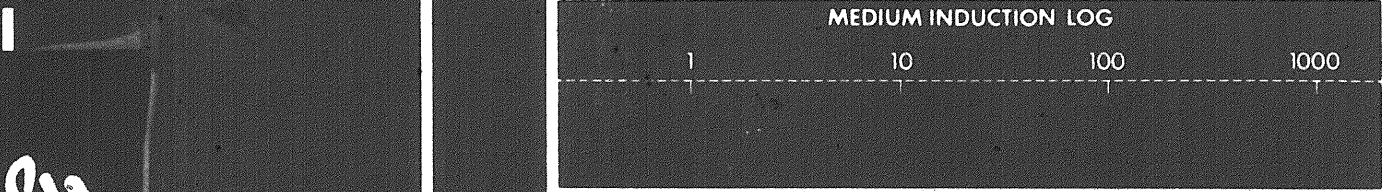
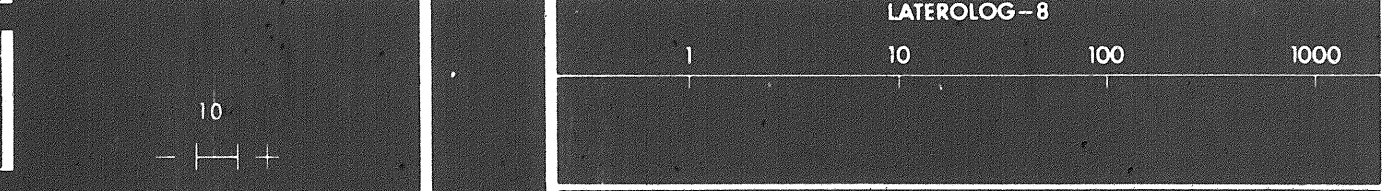
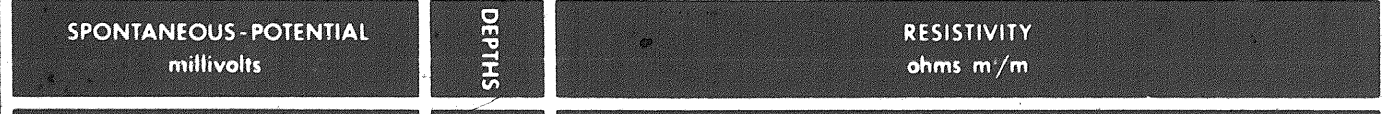
300

200

Speed in FPM



DETAIL LOG
5" = 100'



DEPTHS

Speed in FPM

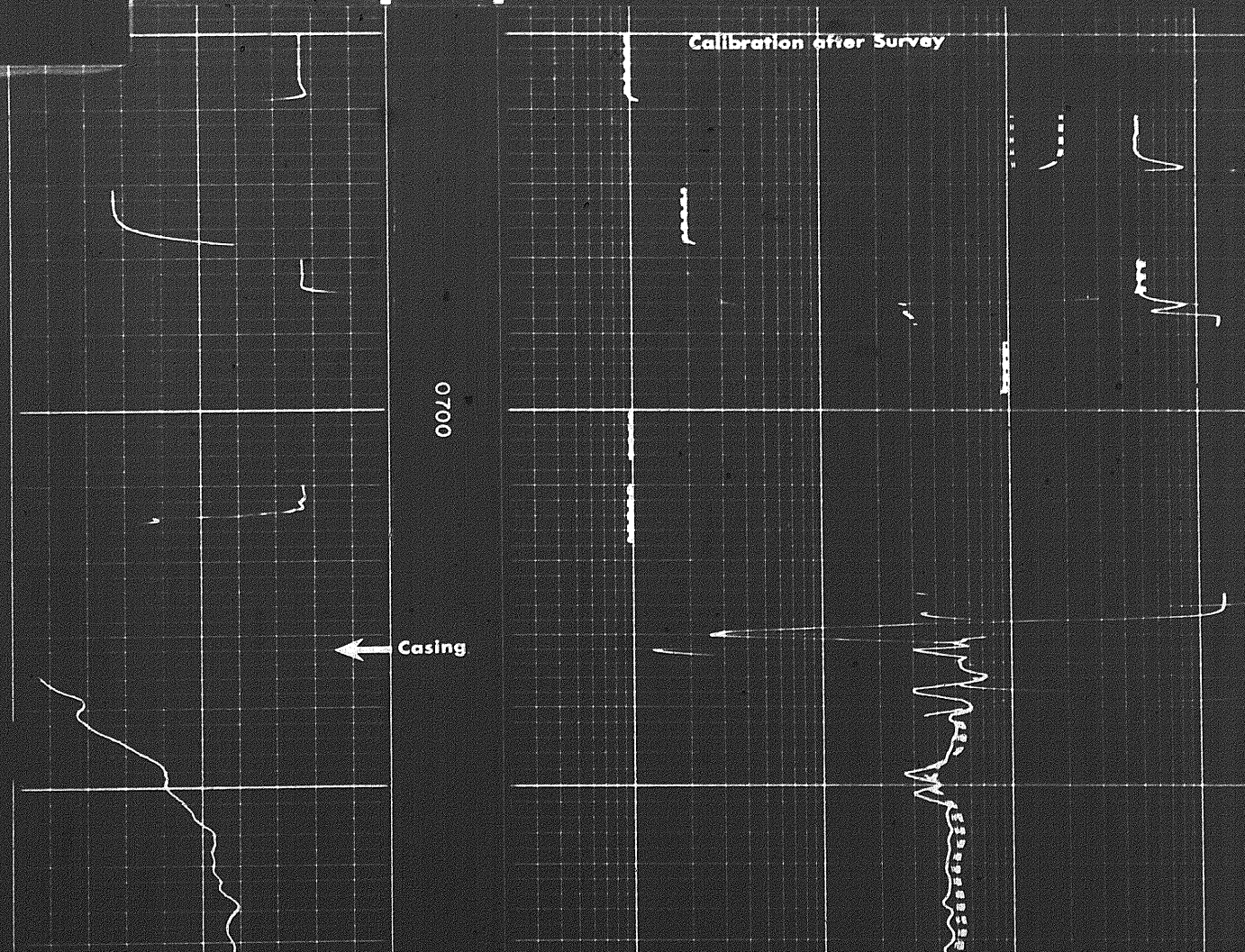
200

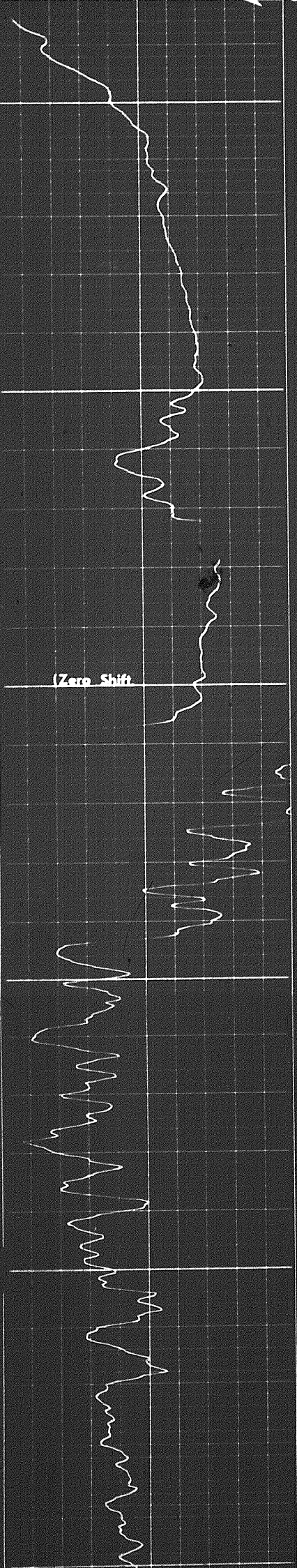


Calibration after Survey

0700

Casing

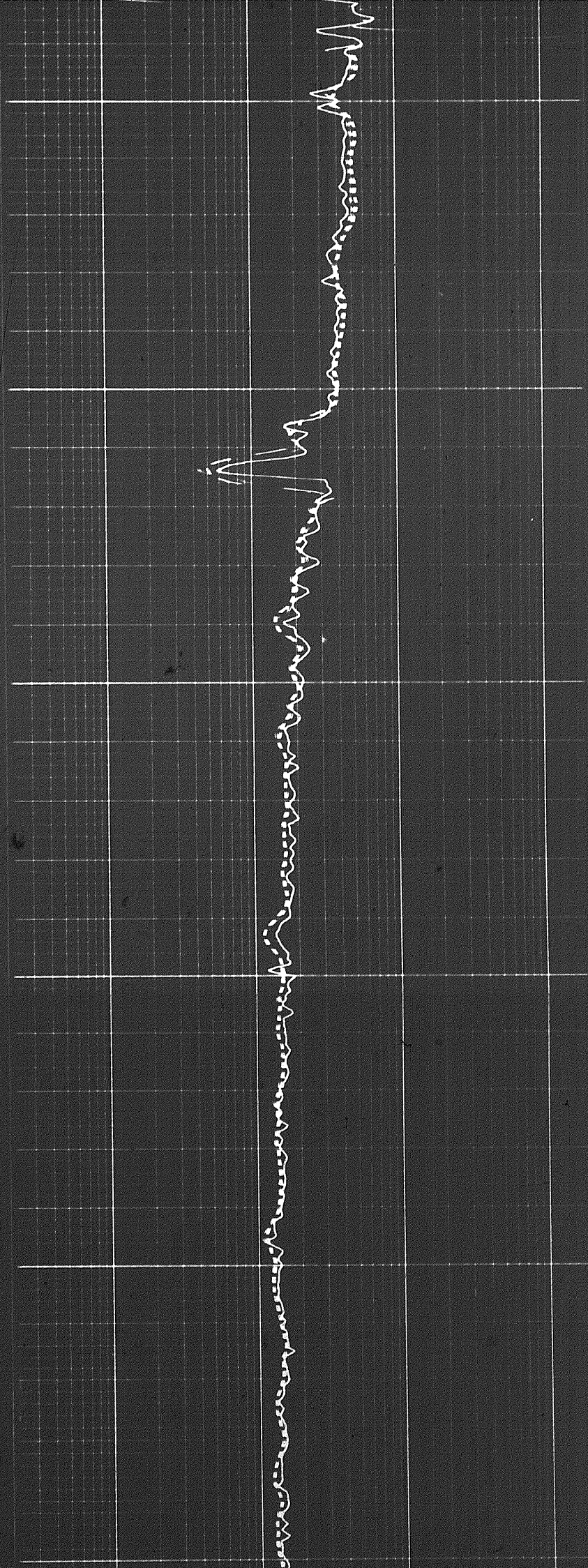




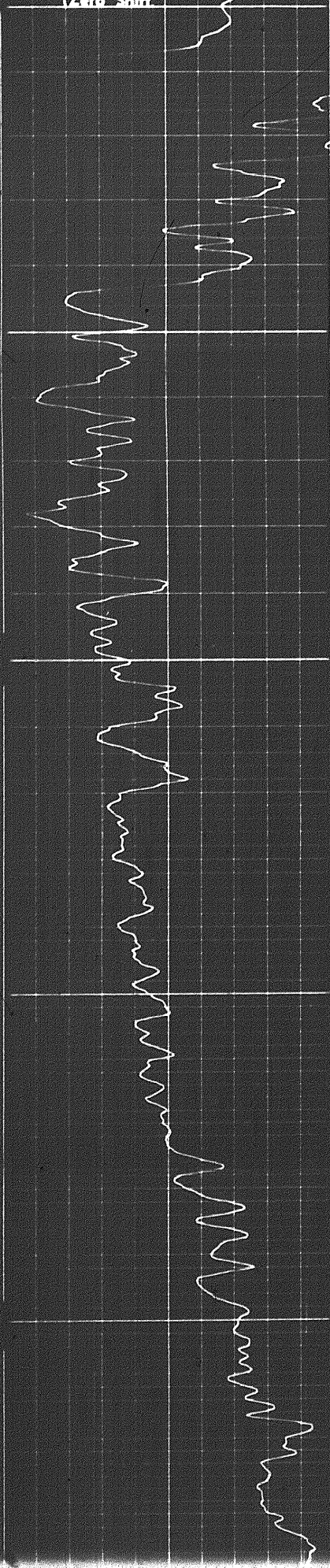
0080

0060

001

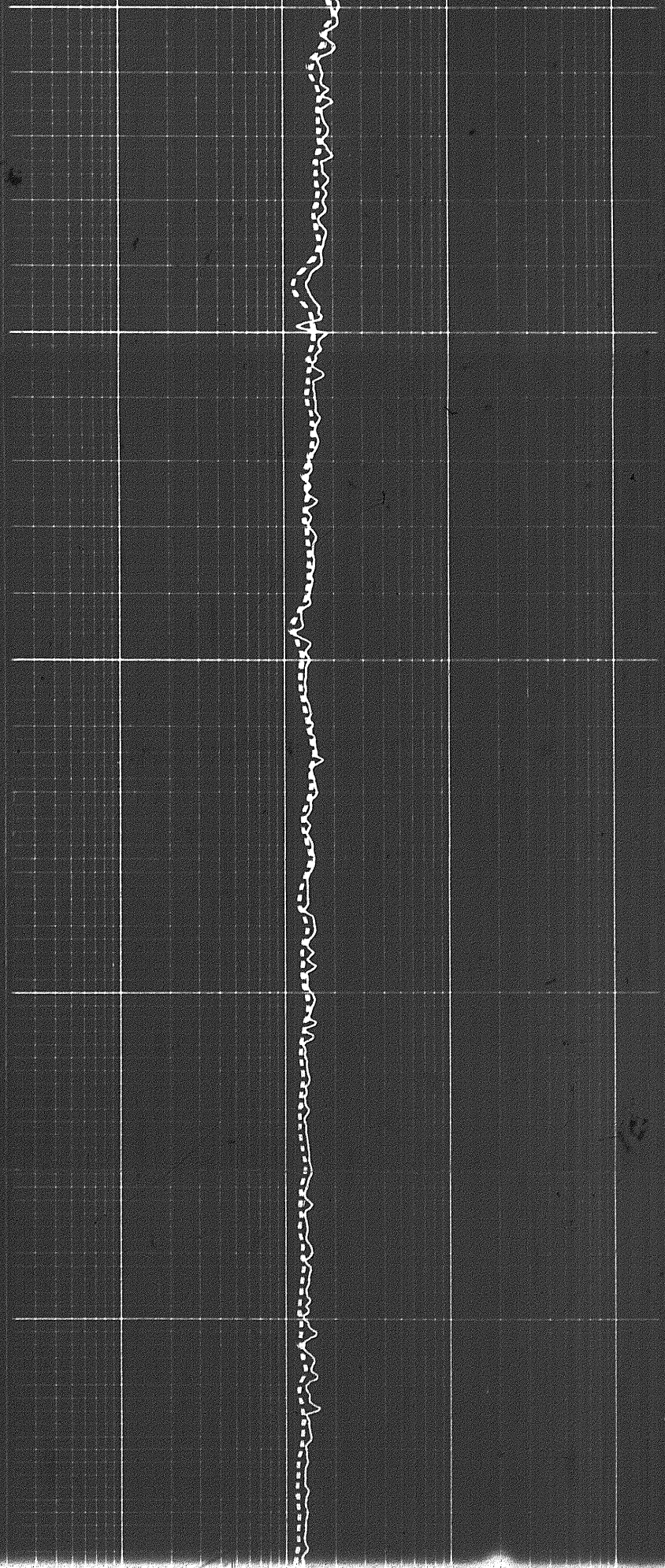


(Zero Shift)



0060

1000

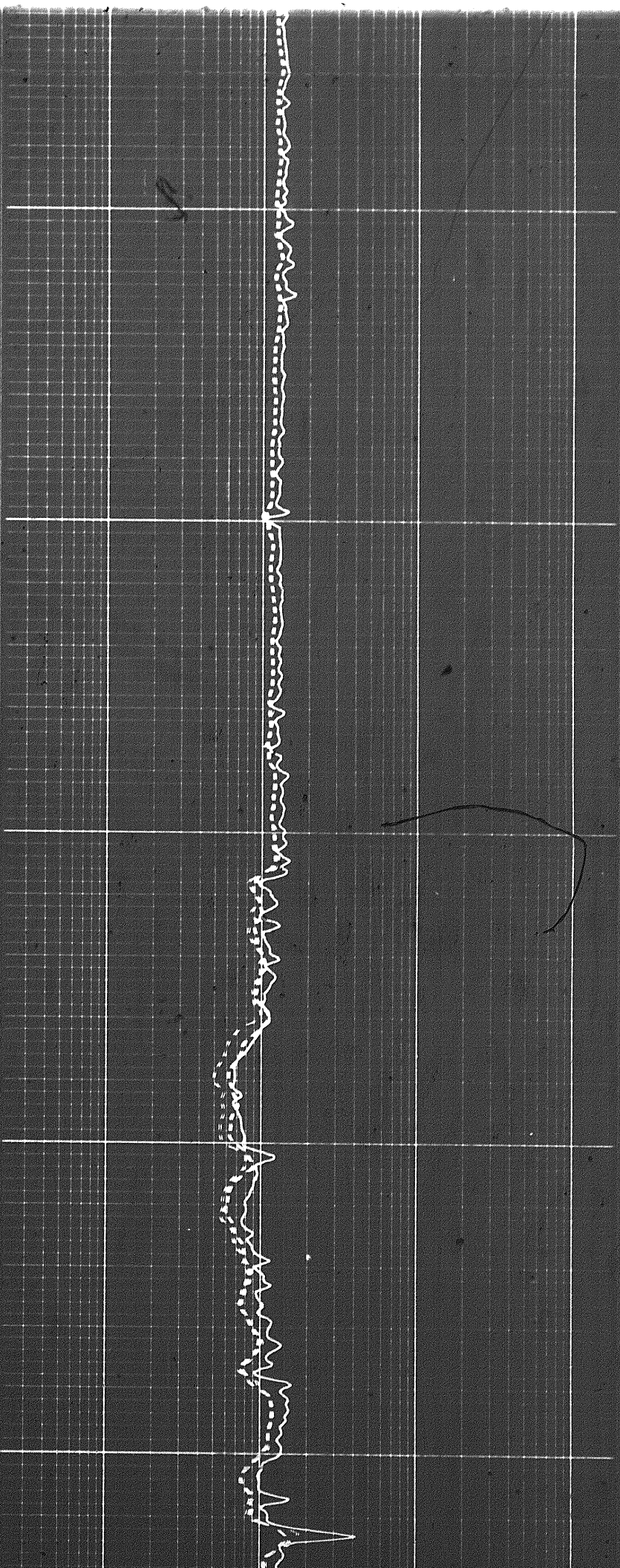
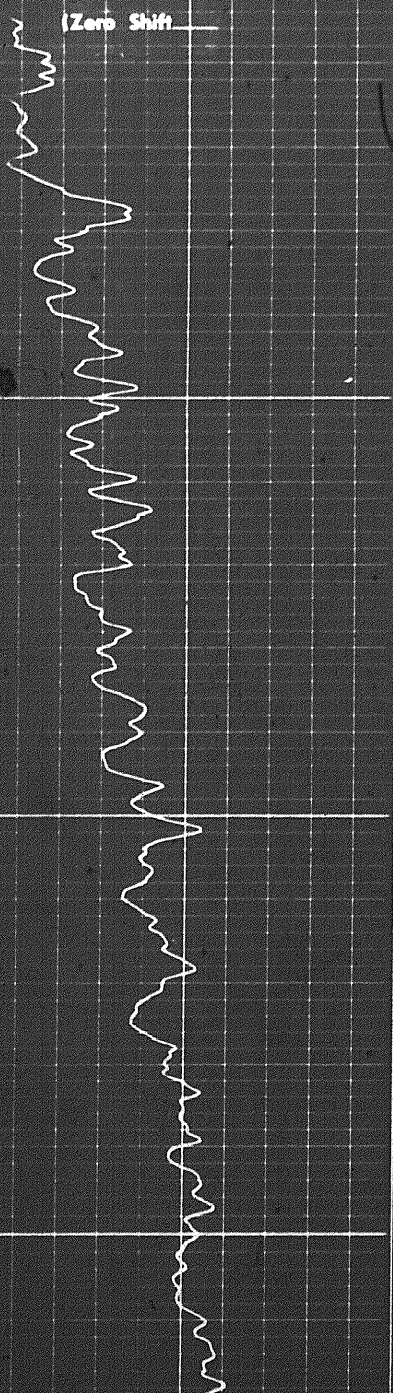
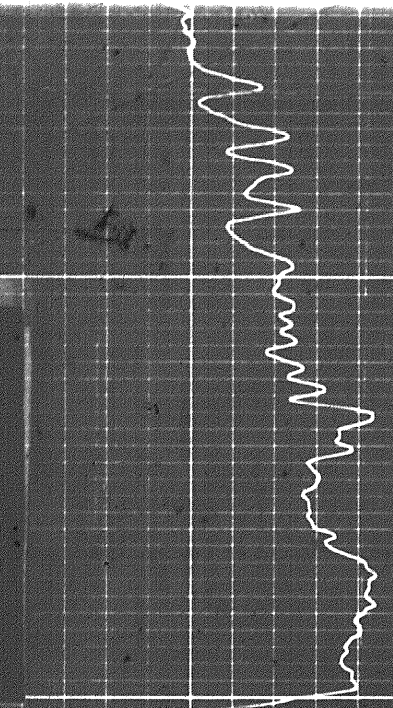


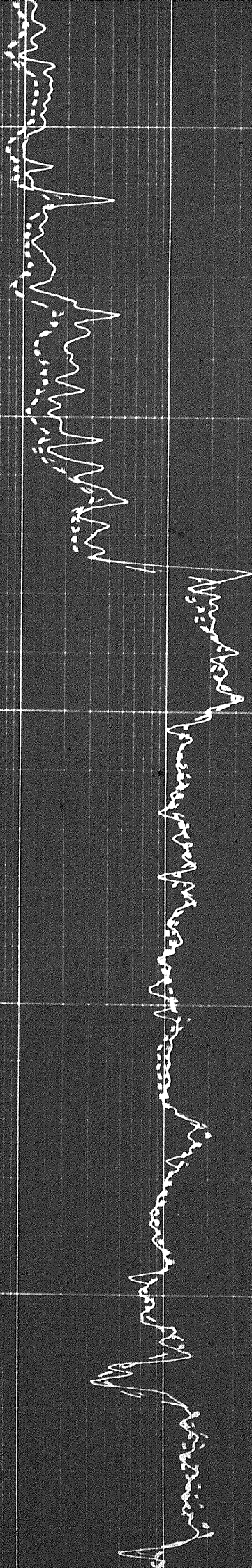
49

(Zero Shift)

1100

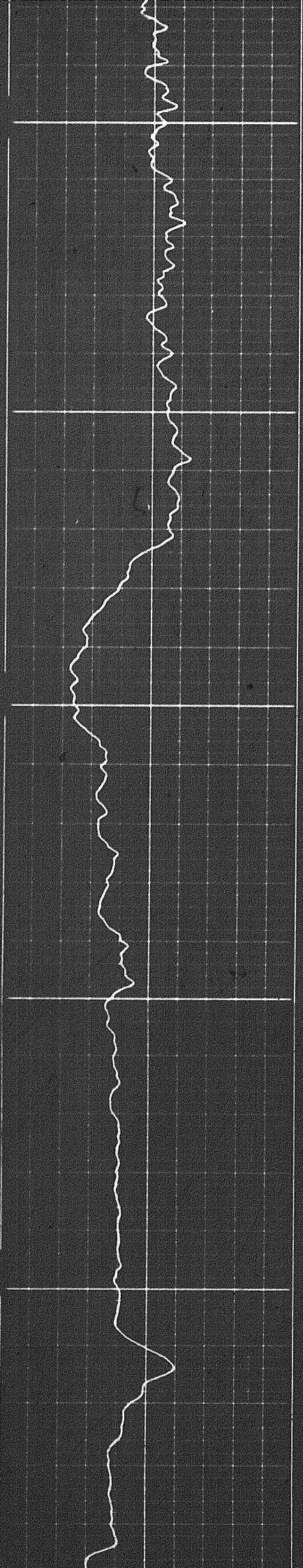
1200

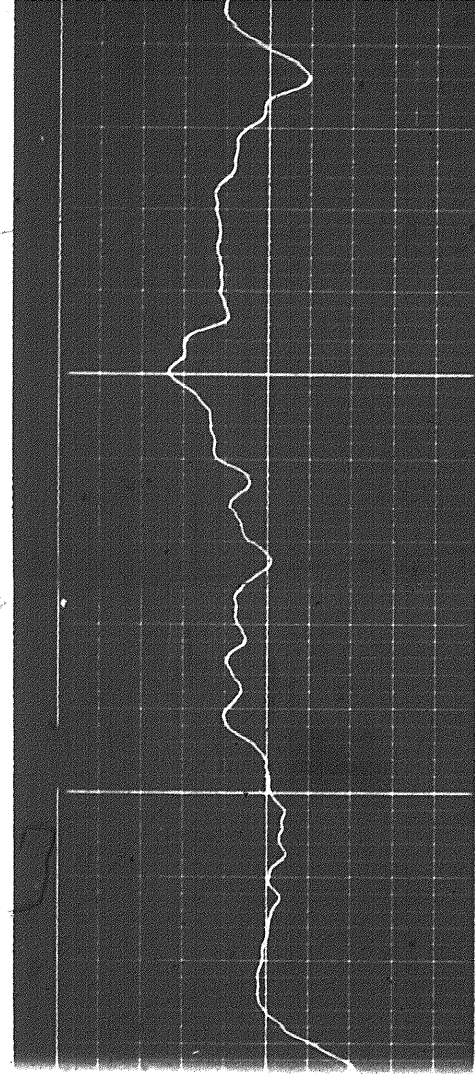




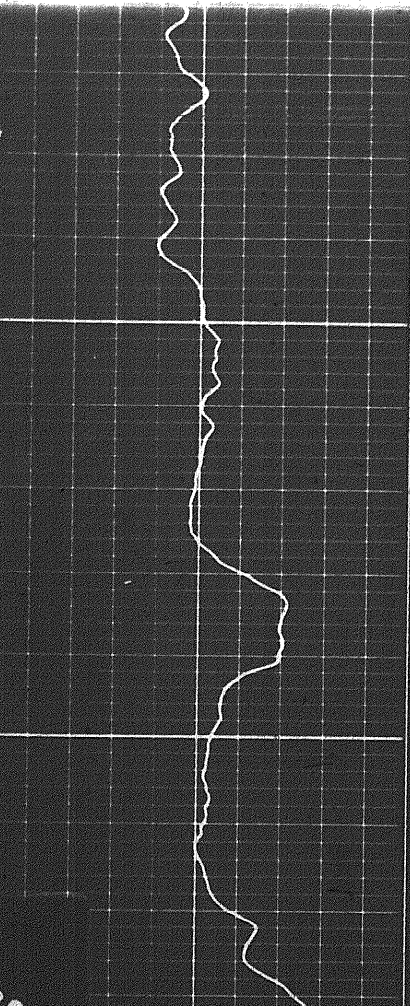
1300

1400

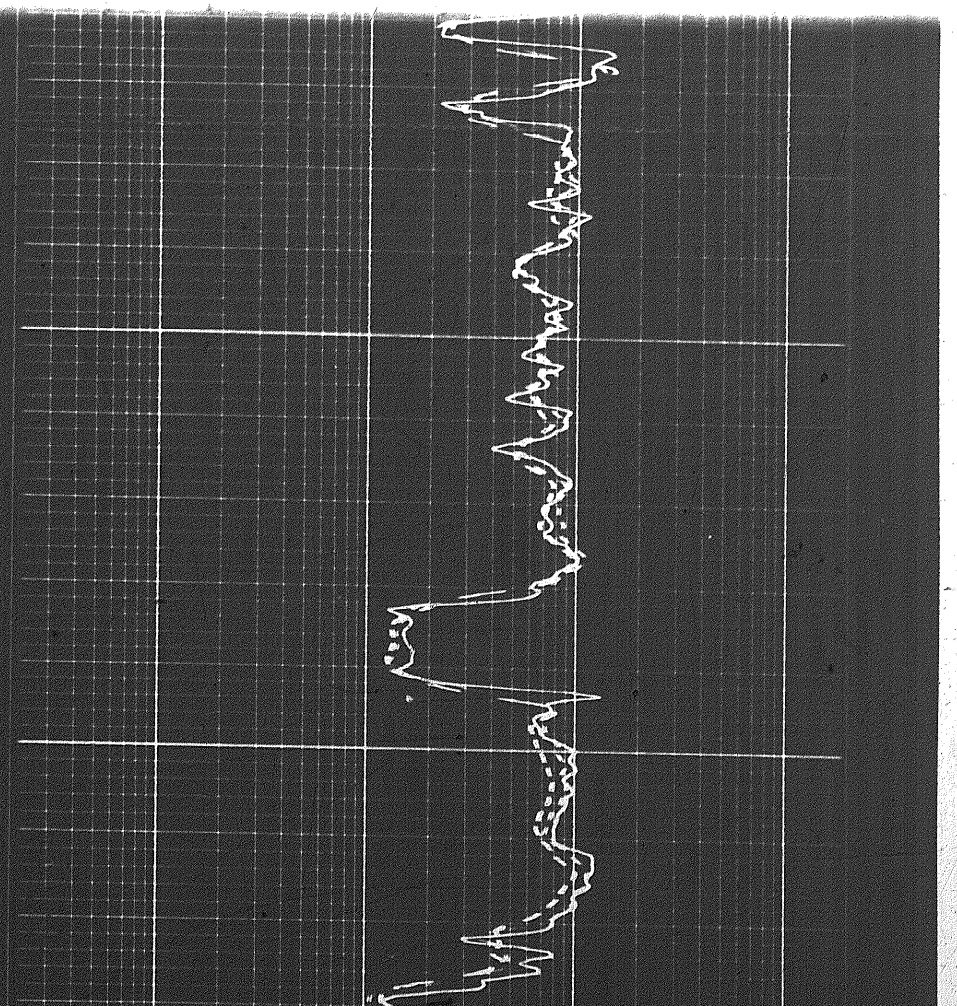




1500

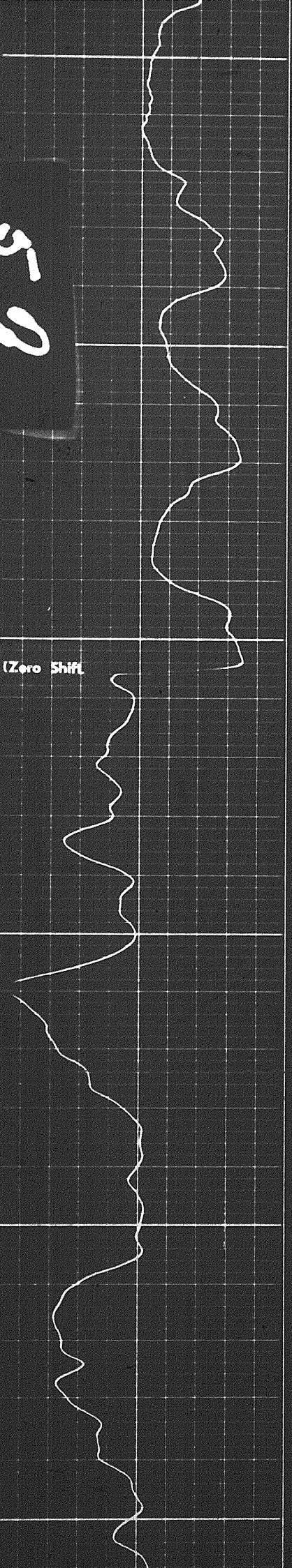


1600



5-9

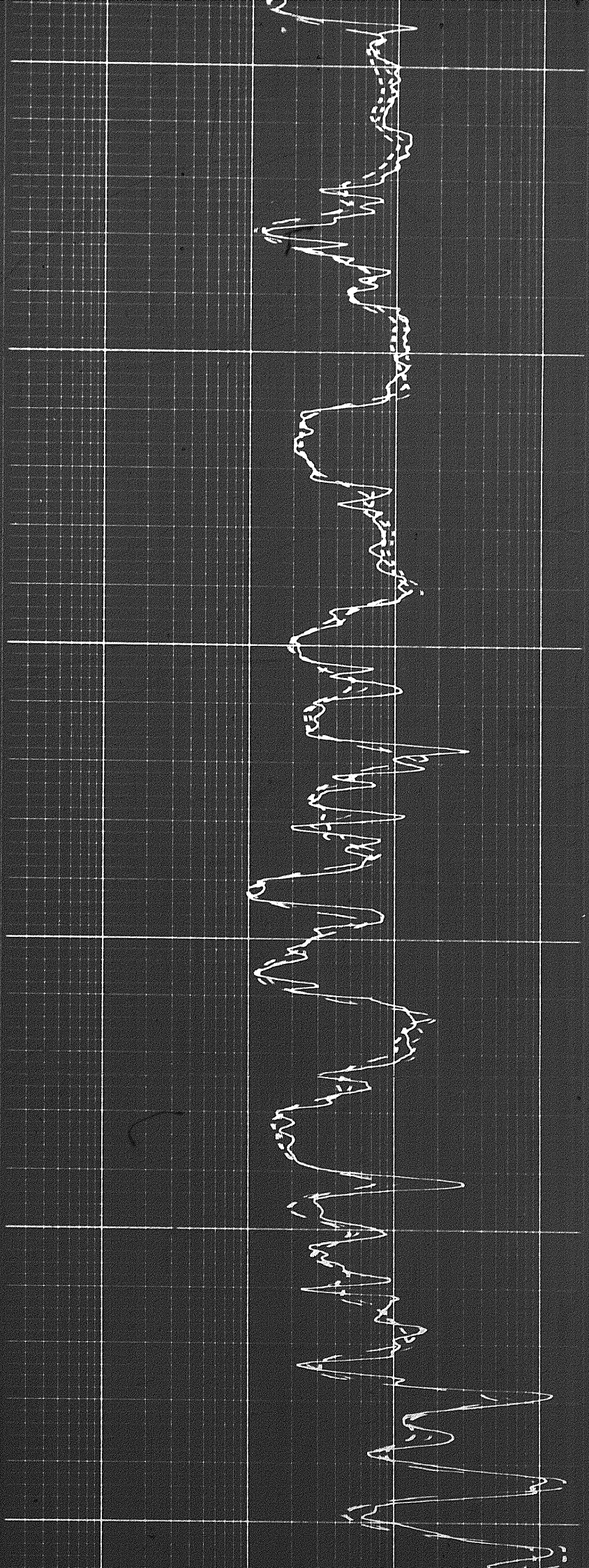
(Zero Shift)

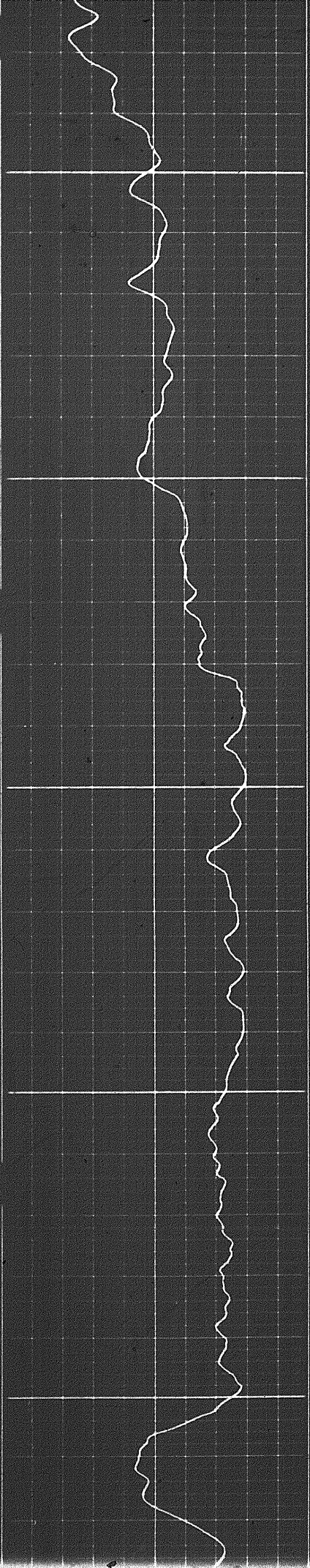


1600

1700

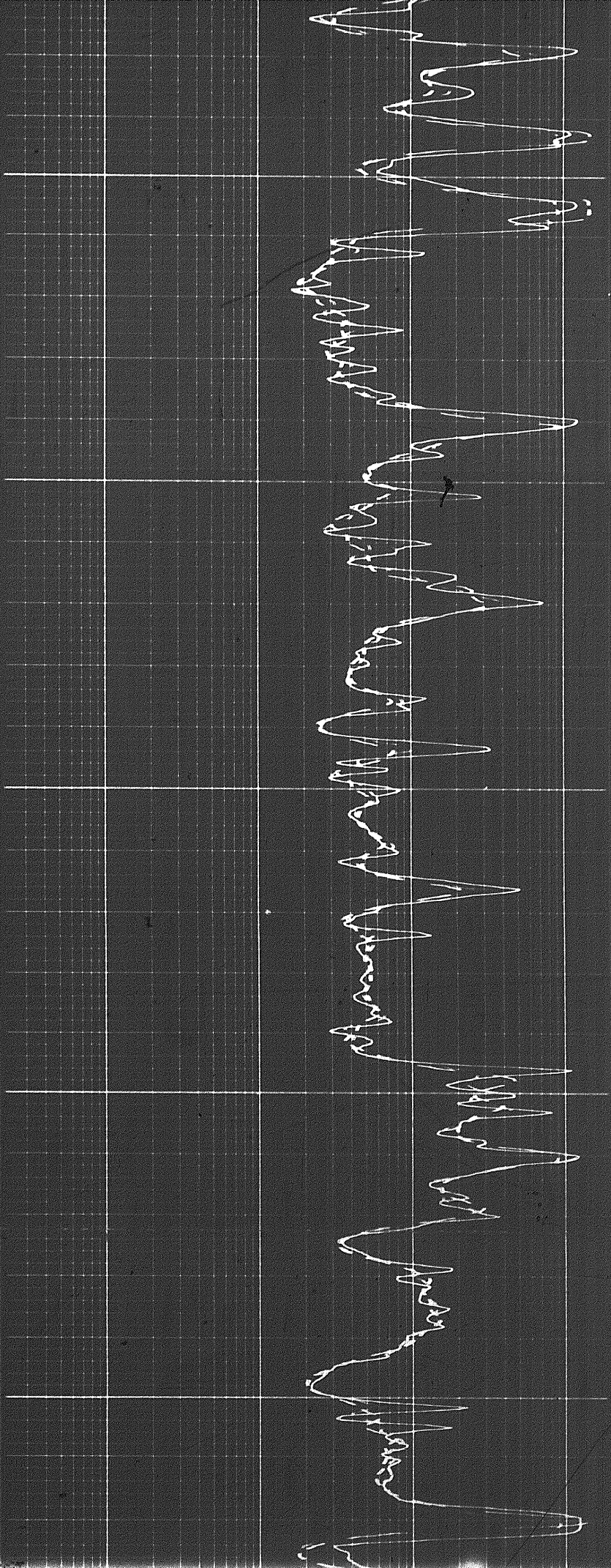
1800



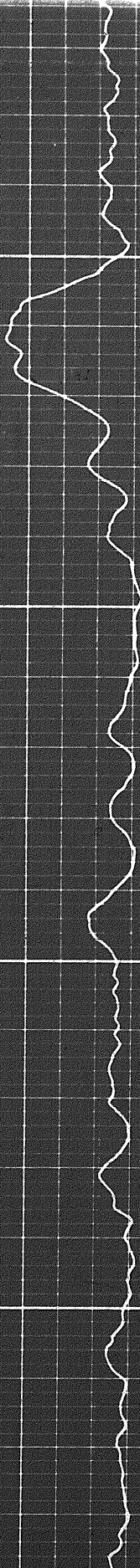


1900

2000



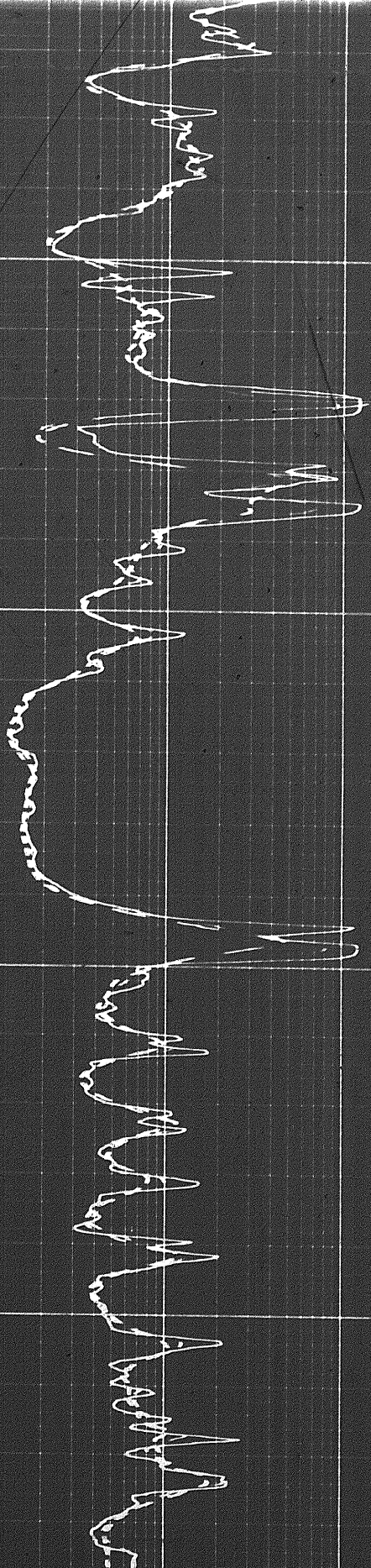
68



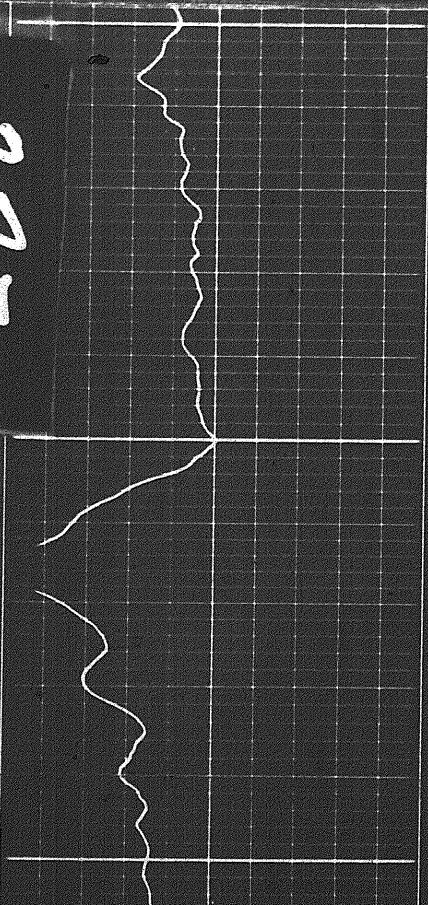
2100

2200

FR



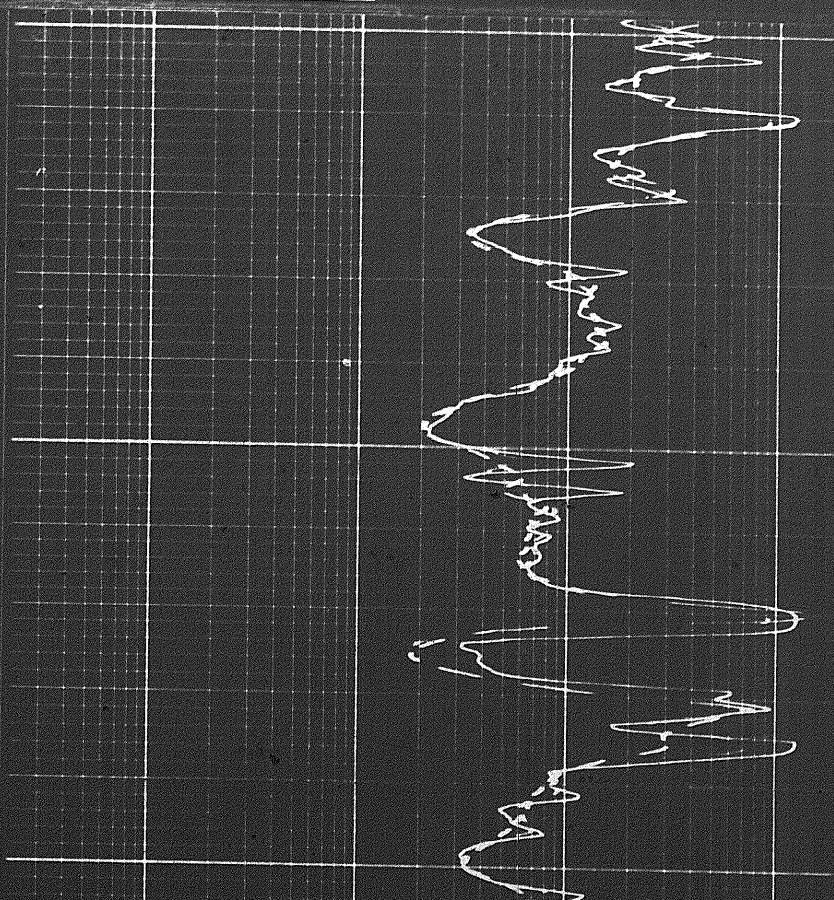
997



000

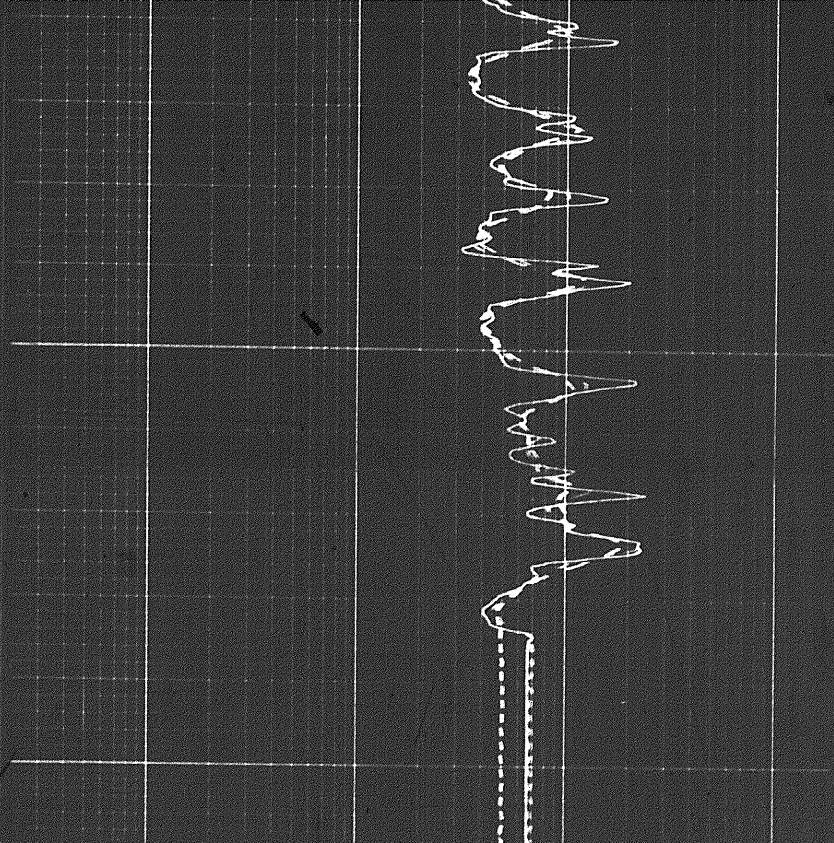
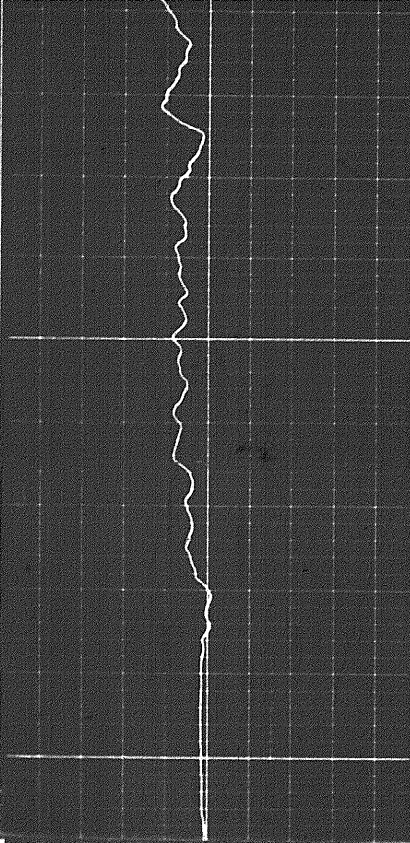
2100

REPEAT SECTION



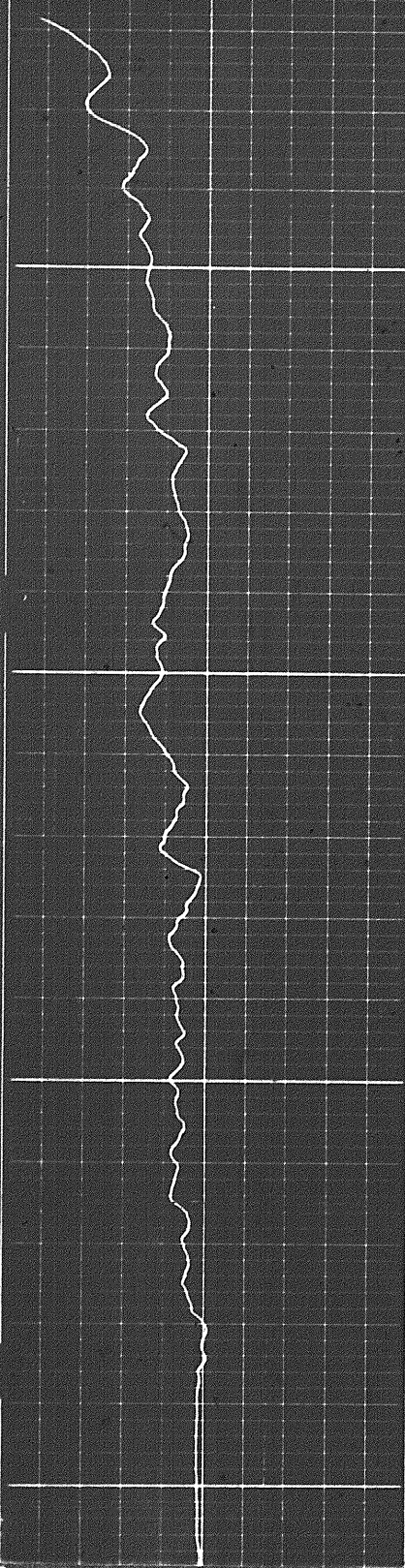
2200

FR



Speed in FPM

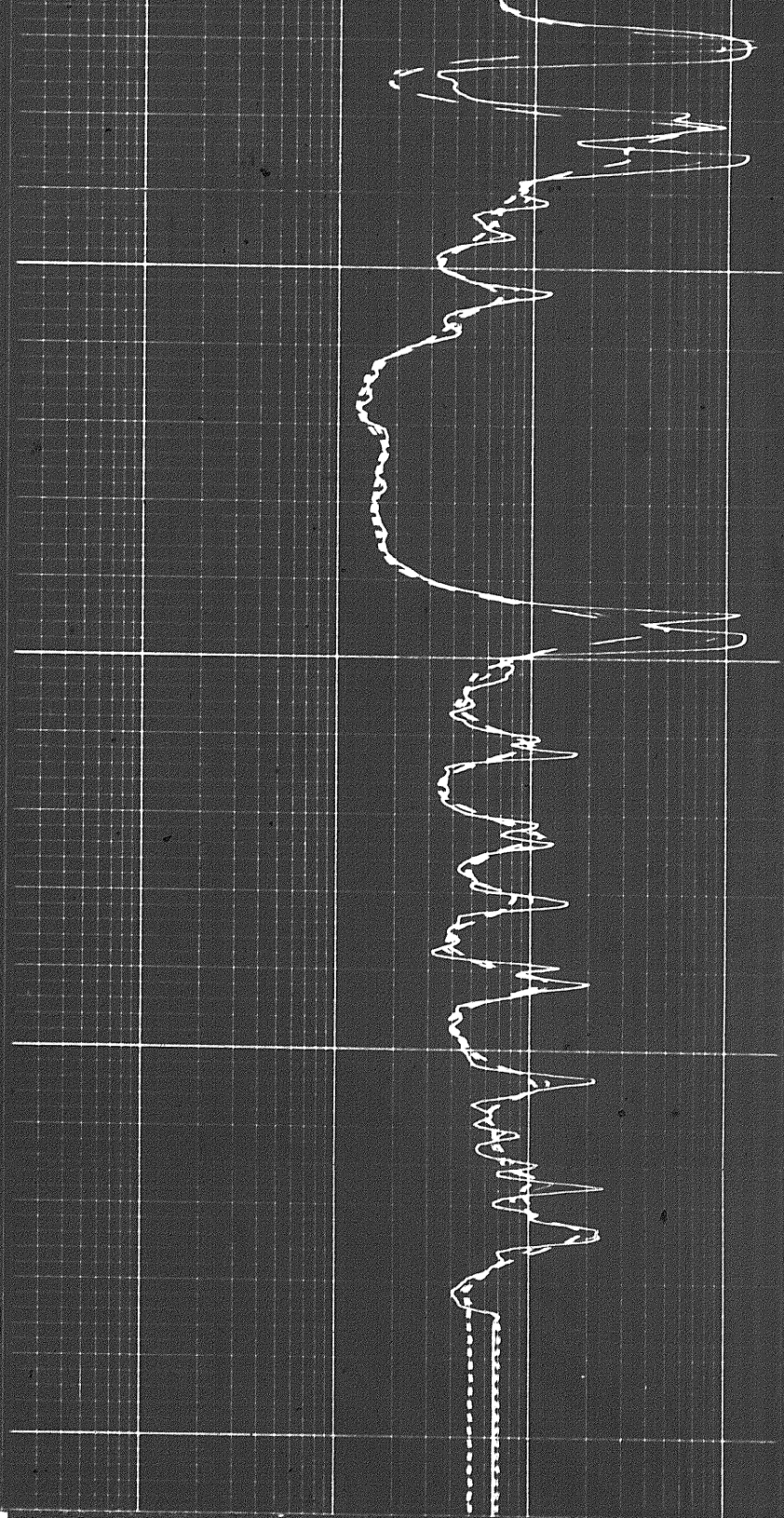
10



2100

2200

FR



1 10 100 1000

DEEP INDUCTION LOG

1 10 100 1000

MEDIUM INDUCTION LOG

1 10 100 1000

LATEROLOG - 8

FR

1 10 100 1000

DEEP INDUCTION LOG

1 10 100 1000

MEDIUM INDUCTION LOG

1 10 100 1000

LATEROLOG-8

Speed in FPM

10

SPONTANEOUS - POTENTIAL
millivolts

DEPTHS

RESISTIVITY
ohms m/m

Calibration before Survey

COMPANY CHEVRON STANDARD LIMITED

WELL CHEVRON SOBC WM BIRCH YT E-53

FIELD WILDCAT PROVINCE YUKON TERRITORIES

Schlumberger