

SCHLUMBERGER

GAMMA RAY - NEUTRON LOG

SCHLUMBERGER OF CANADA Calgary Alberta

PROVINCE YUKON TERRITORIES
 FIELD WILDCAT
 WELL CHEVRON SOBC WM BIRCH YT
 E-53
 COMPANY CHEVRON STANDARD LIMITED

COMPANY CHEVRON STANDARD LIMITED
 WELL CHEVRON SOBC WM BIRCH YT
 E-53
 FIELD WILDCAT
 PROVINCE YUKON TERRITORIES
 LOCATION
 Permanent Datum GL Elev. 2025.4
 Log Measured From KB 13.1 Ft. Above Perm. Datum
 Other Services: SLC-GR, SNP-GR, FDC-GR, DIL, CST
 ELEV: KB 2038.5
 GL 2025.4
 CBF:

Date	16 FEB 72		
Run No.	ONE		
First Reading	2240		
Last Reading	150		
Feet Measured	2090		
Depth Reached	2242		
Bottom Driller	2245		
Mud Nature	FEL		
Dens Visc.	9.2	160	
Mud pH	9.5		
Water Loss	6.0		
Res.	4.40 @ 63 %	@	%
Rmf @ 81-T	3.91 @ 65 %	@	%
Rmf	- @ 82 %	@	%
Rmc	5.04 @ 65 %	@	%
Bit Size	8 3/4"	to	to
Cg. Size - Inches	9 5/8" to 732	to	to
Cg. Weight - Pounds	36 to 732	to	to
Source to Detector	19.5 inches	inches	
Op. Rig Time	3 HRS		
Truck No.	OSU-C-108 REM		
Recorded By	CHADDOCK		
Witness	POLLARD		

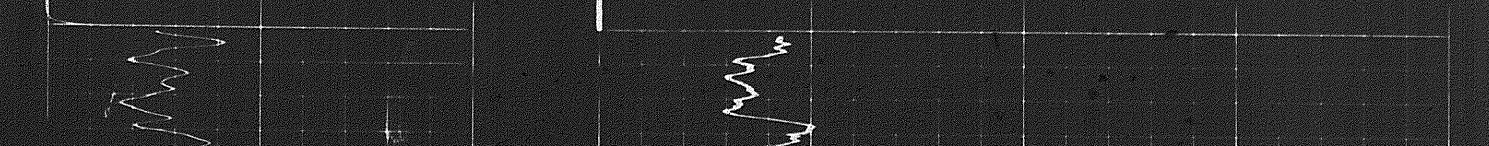
28 FEB 72 CAL JF

REMARKS
 Drilling Stopped 1930 / 14th : Circulation Stopped 0830 / 16th : Tool on Bottom 1925 / 16th : Run Service Order # : B.H.T. 82 %

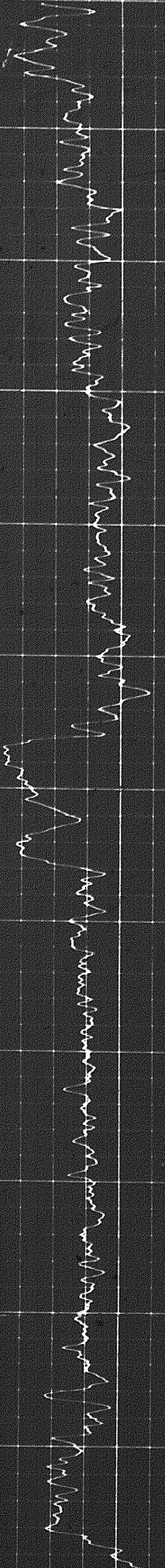
Panel No. D 69
 Cartridge No. F143
 Neutron Detector No. K32
 Gamma Ray Detector No.
 Equipment Designation

CALIBRATION:		Background CPS.	Test Source CPS.	Galv. Deflection Divisions	Panel Sens. Tap for Cal.
Gamma Ray	Before Survey	40	450	8.25	500
	After				
Neutron	Before Survey				
	After				

GAMMA RAY API UNITS	DEPTHS	NEUTRON API UNITS
Sens. 300 T.C. 2		Sensitivity 300 Time Constant 2
Zero 0 div. to left		Zero 0 divisions to left of this line
120		800
240		2400
		1600
		3200



1 of



0200

0300

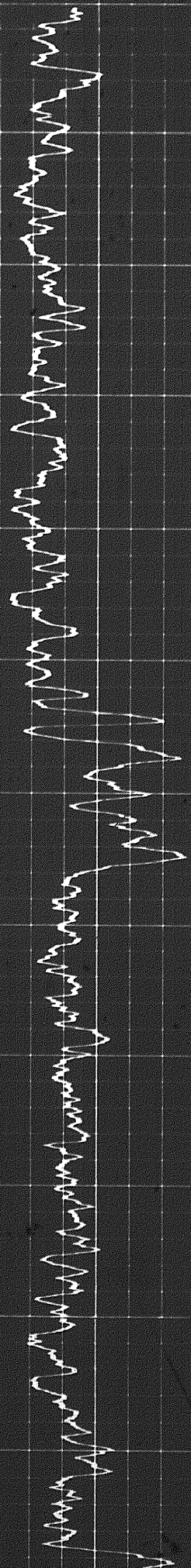
0400

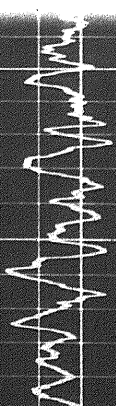
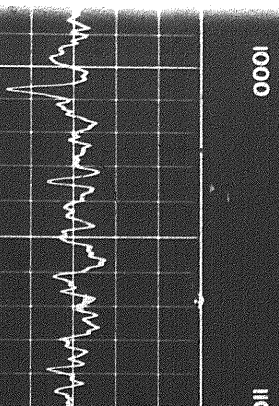
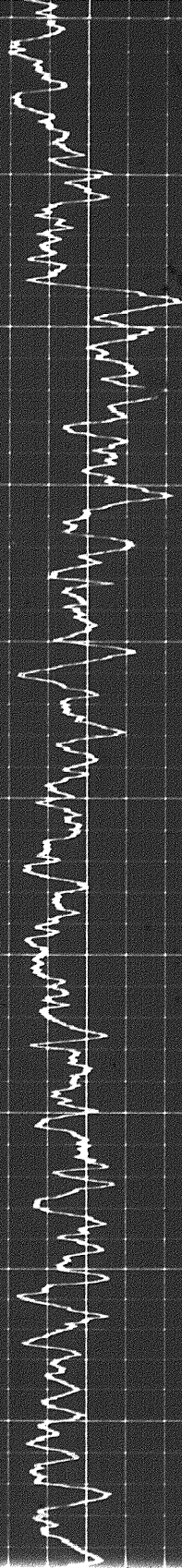
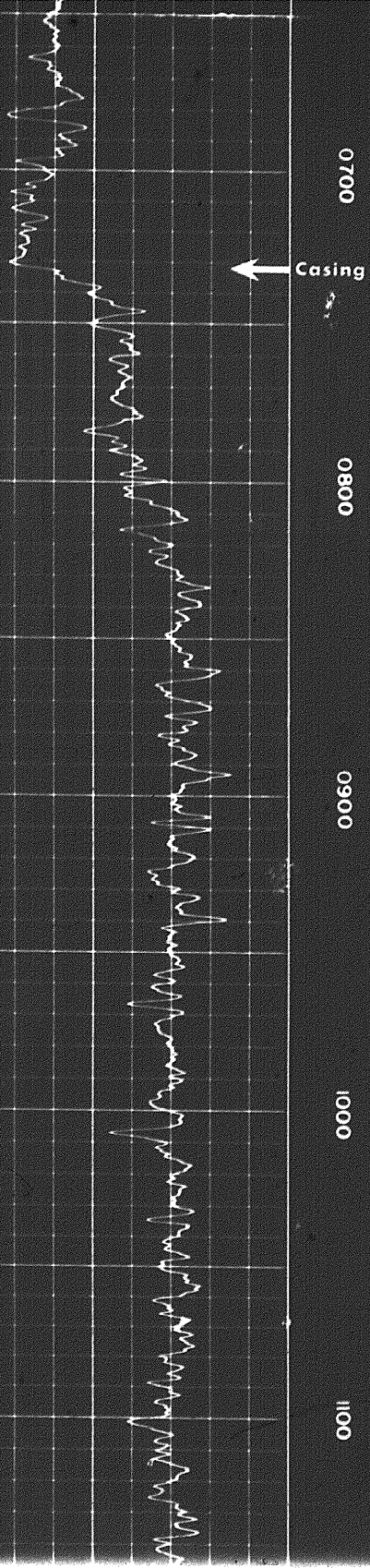
0500

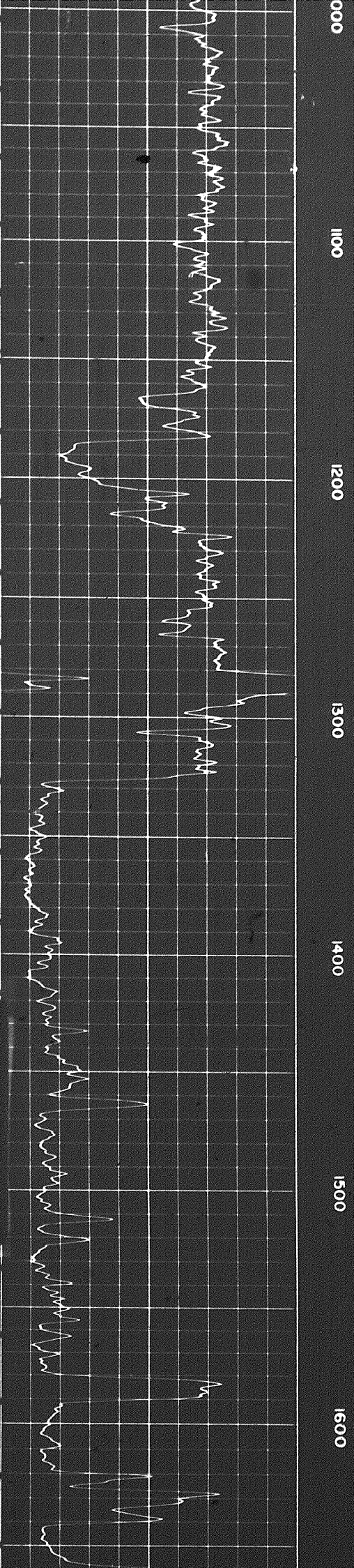
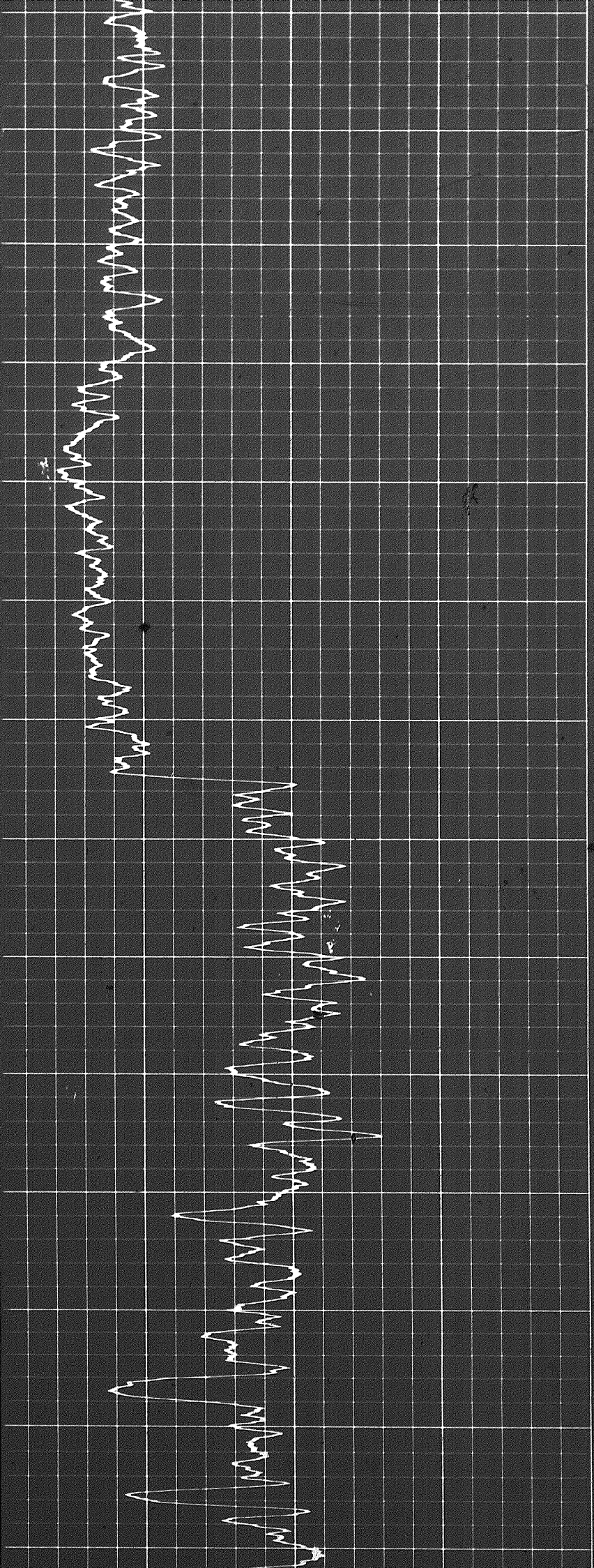
0600

0700

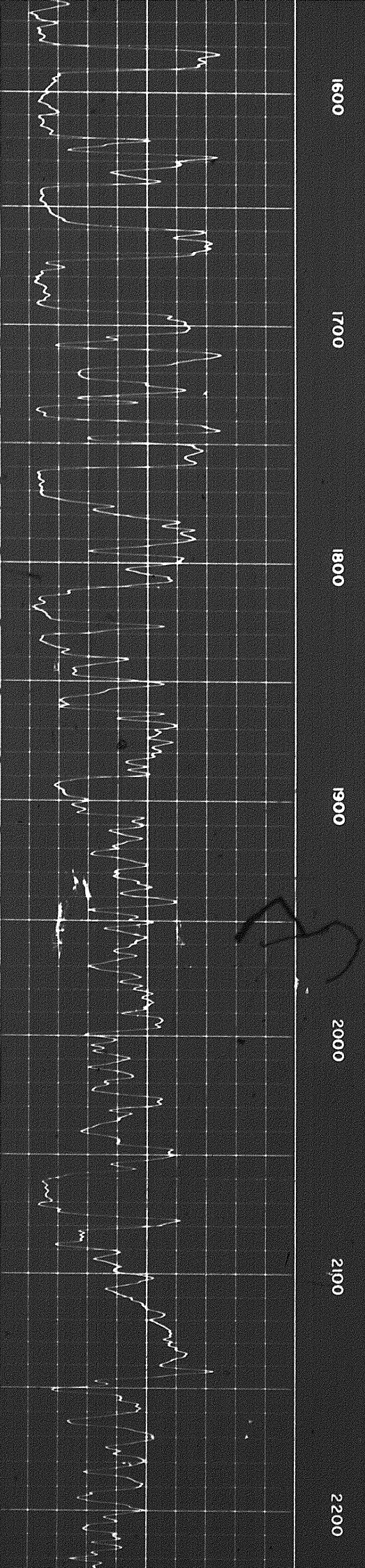
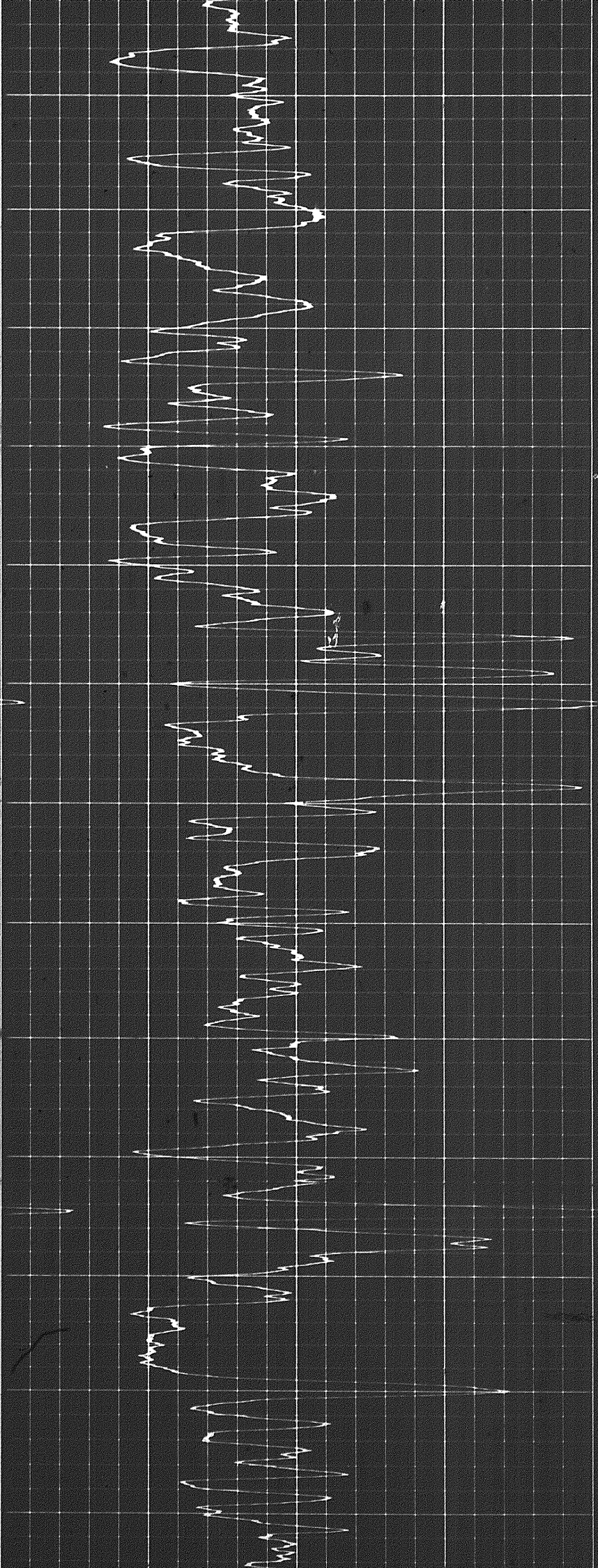
← Casing







29



1600

1700

1800

1900

2000

2100

2200

Speed in FPM

Sens. 300 T.C. 2
Zero 0 div. to left

120
240

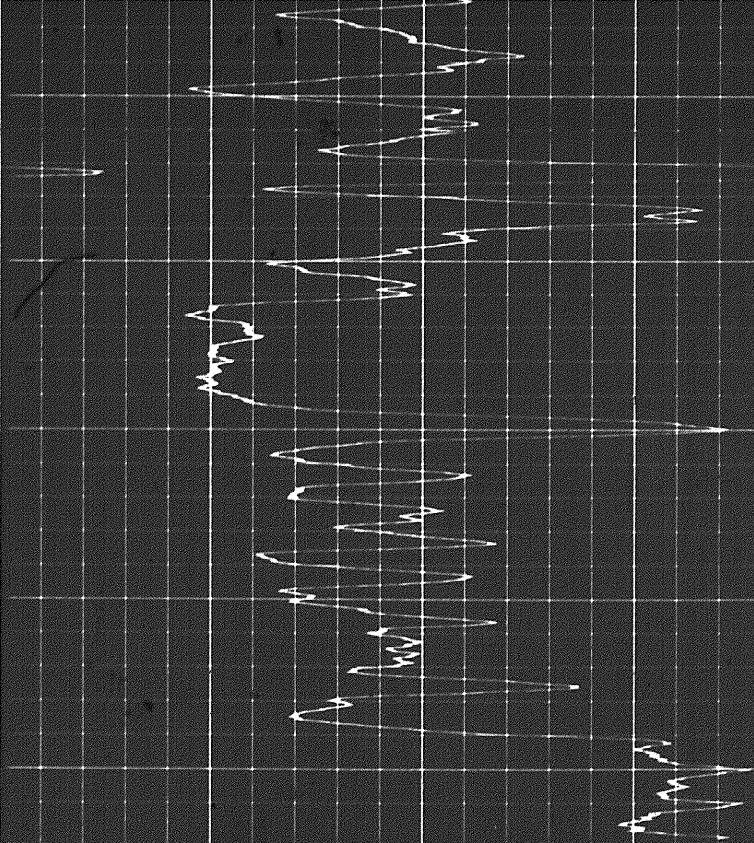
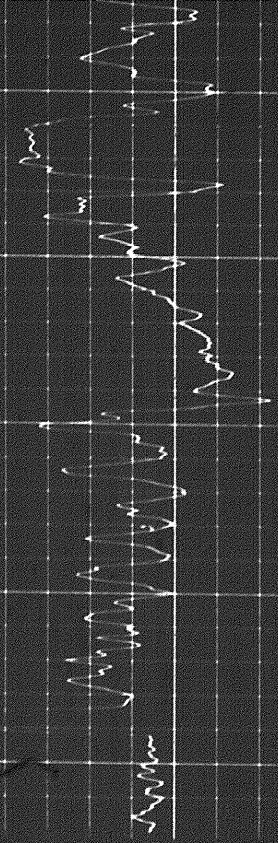
Sensitivity 300 Time Constant
Zero 0 divisions to left of this line

1600 2400 3200

2100

2200

FR



GAMMA RAY
API UNITS

DEPTH

NEUTRON
API UNITS

DETAIL LOG
5" = 100'

GAMMA RAY
API UNITS

DEPTH

NEUTRON
API UNITS

Sens. 300 T.C. 2
Zero 0 div. to left

120
240

Sensitivity 300 Time Constant
Zero 0 divisions to left of this line

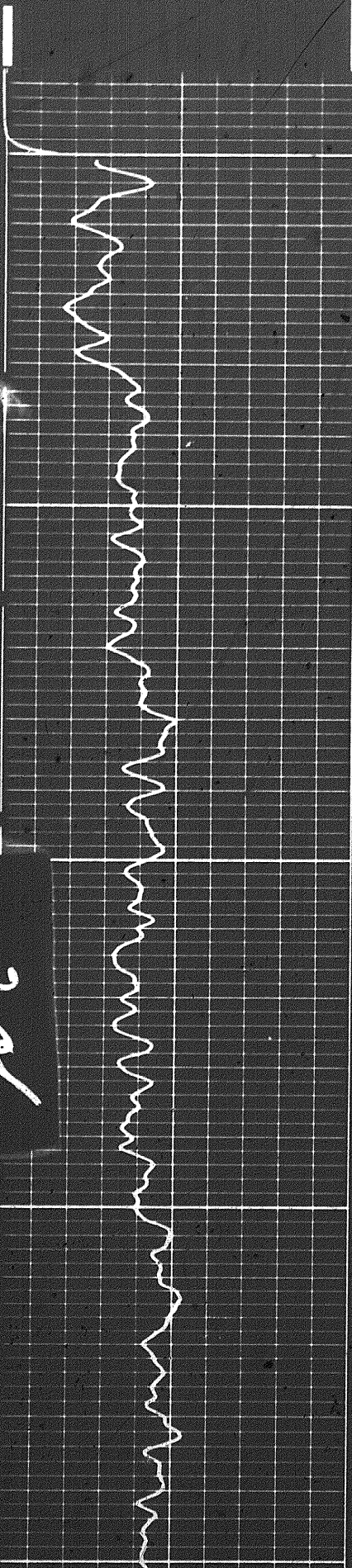
1600 2400 3200

Speed in FPM



Speed in FPM

Sens. 300 T.C. 2
Zero 0 div. to left 120
120 240



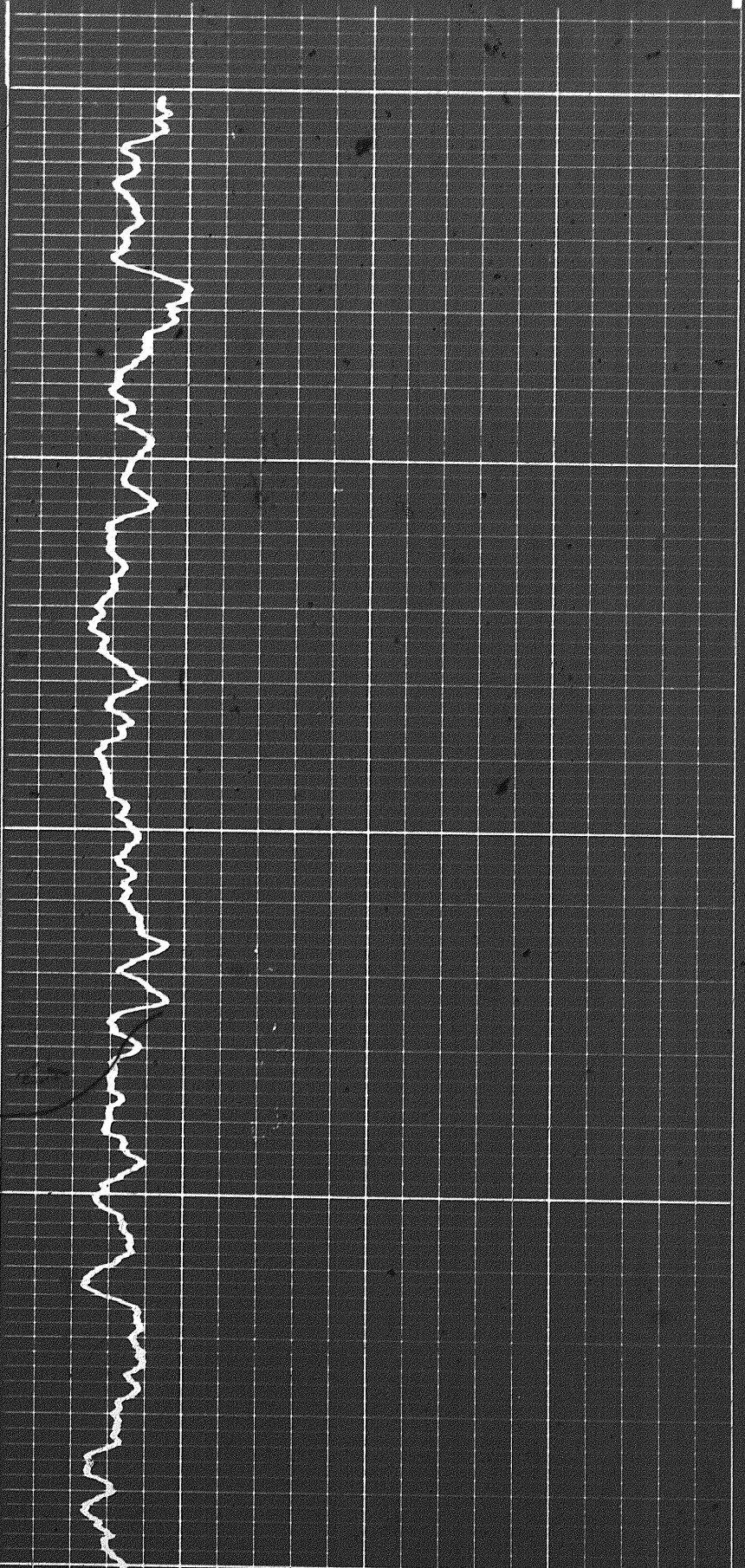
304

0200

0300

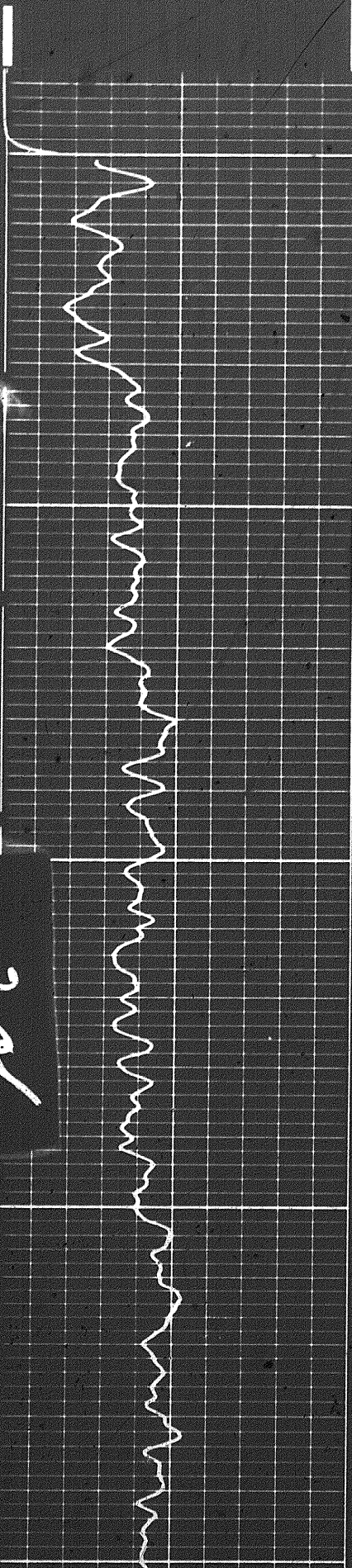
Sensitivity 300 Time Constant 2
Zero 0 divisions to left of this line

0 800 1600
1600 2400 3200



Speed in FPM

Sens. 300 T.C. 2
Zero 0 div. to left 120
120 240



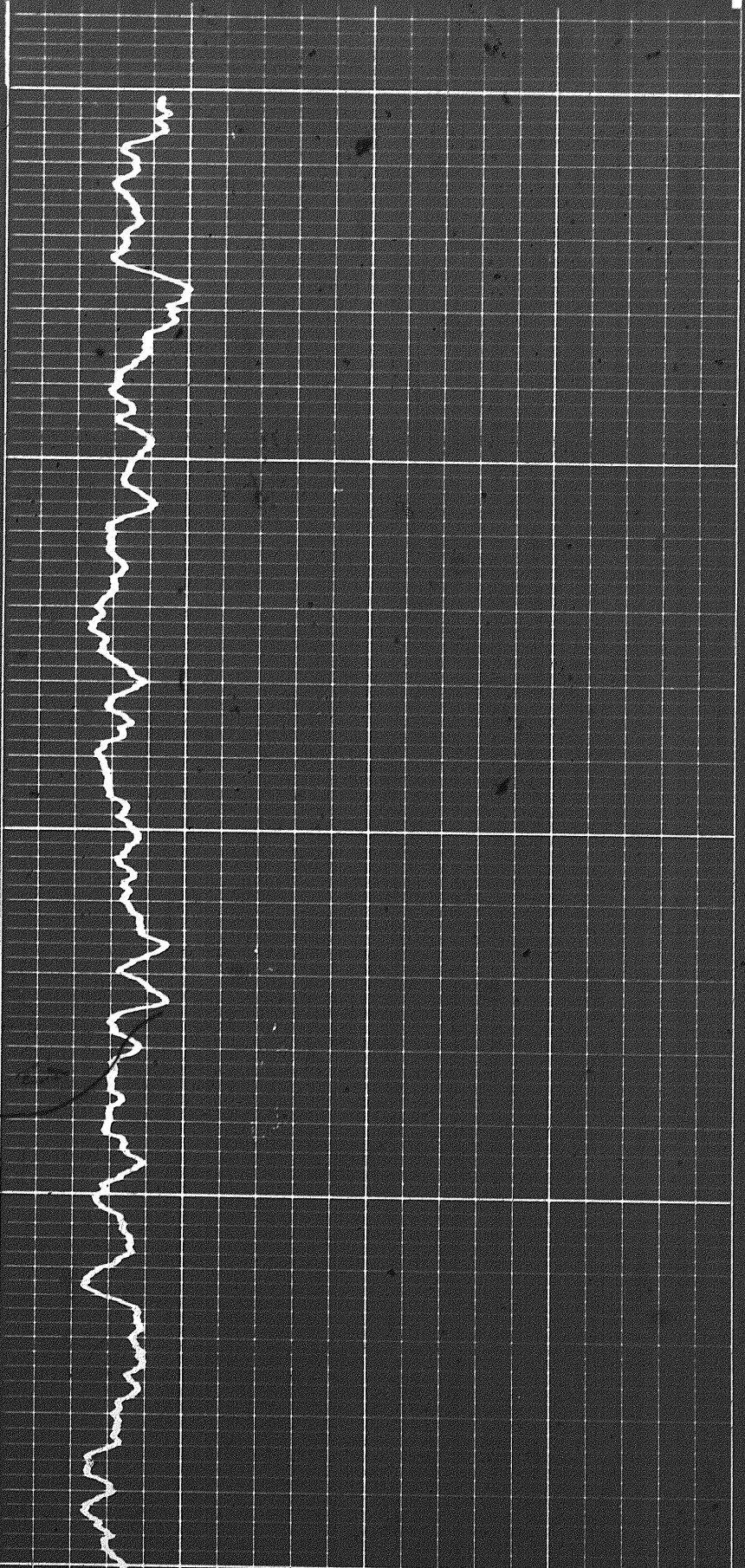
30

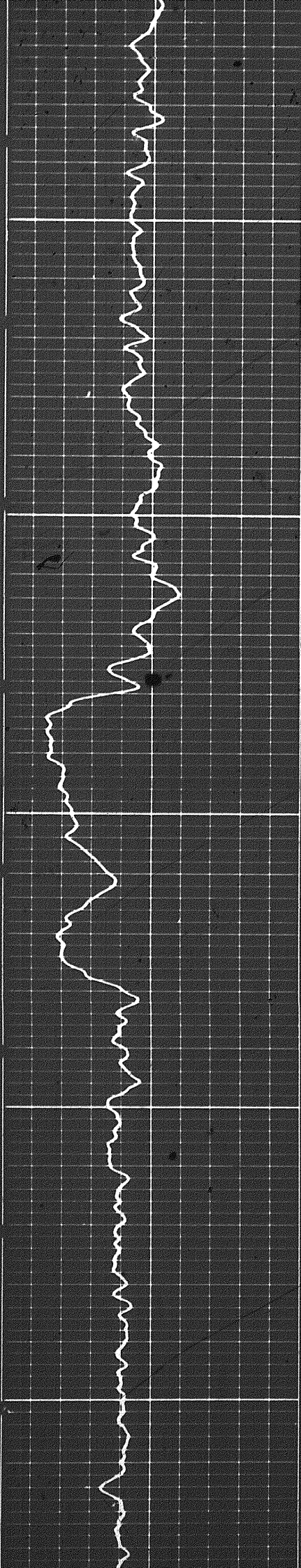
0200

0300

Sensitivity 300 Time Constant 2
Zero 0 divisions to left of this line

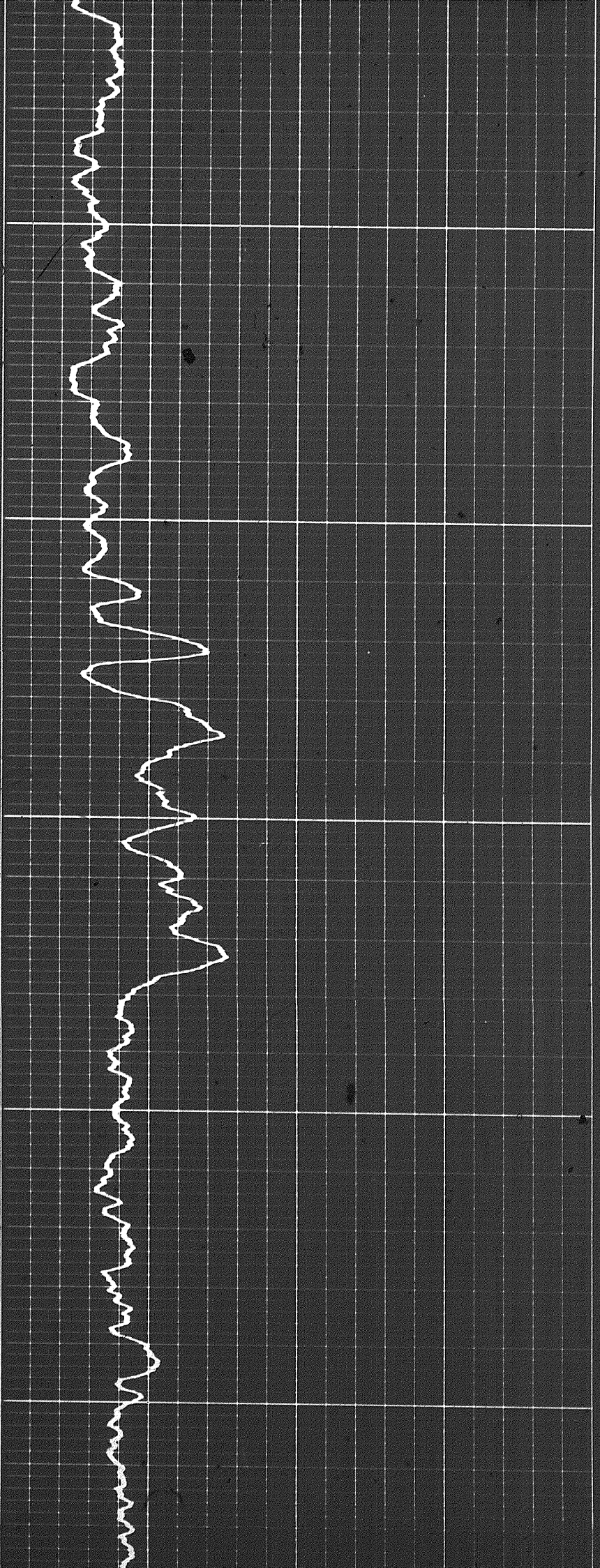
0 1600 3200
800 2400

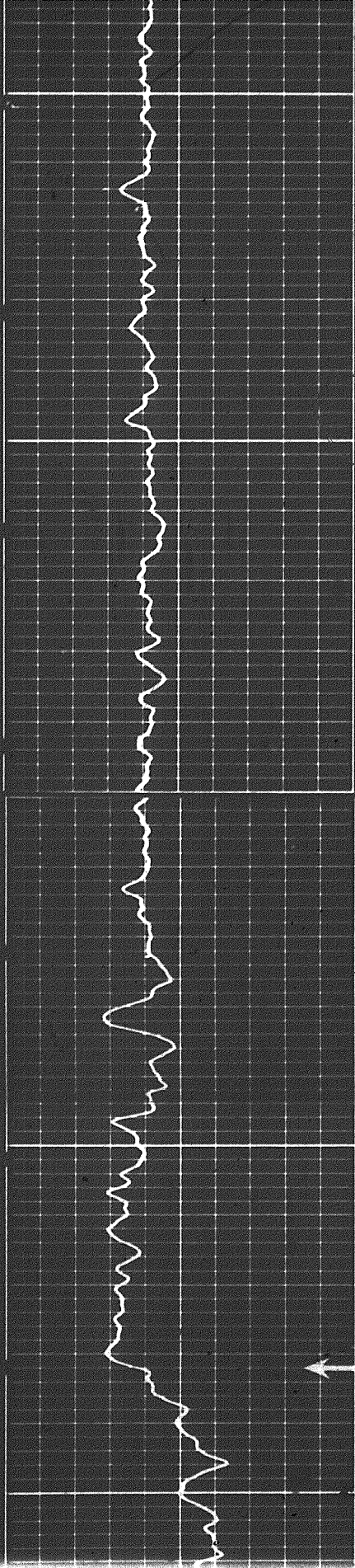




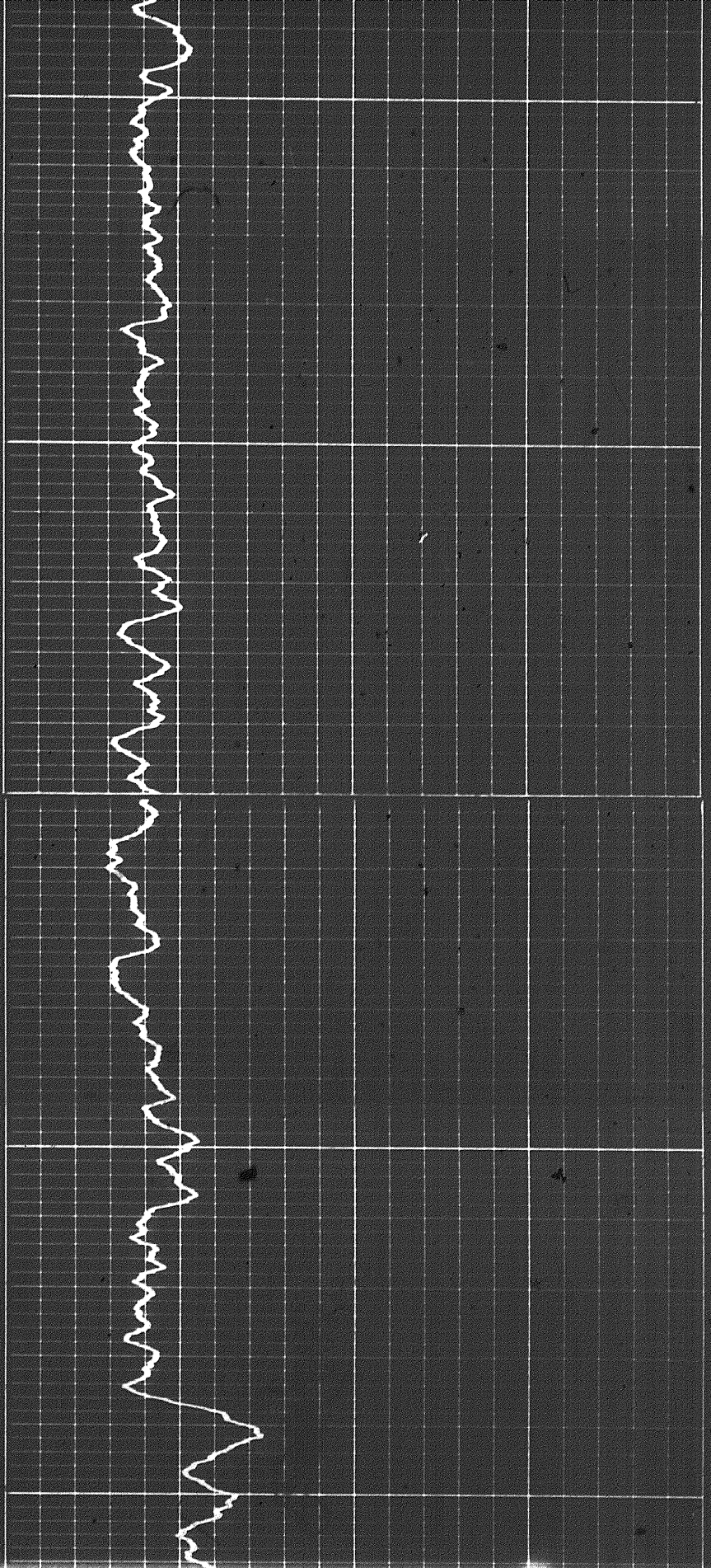
0400

0500



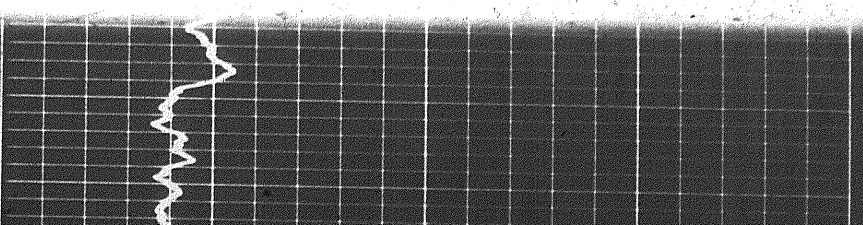
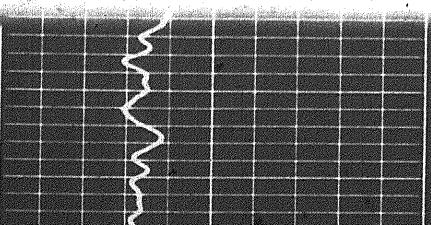


0090

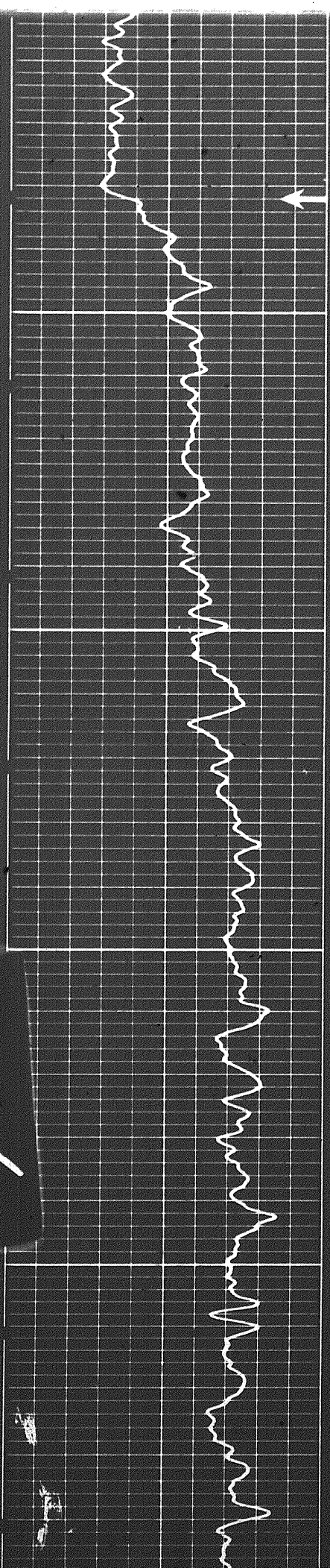


0070

← Casing



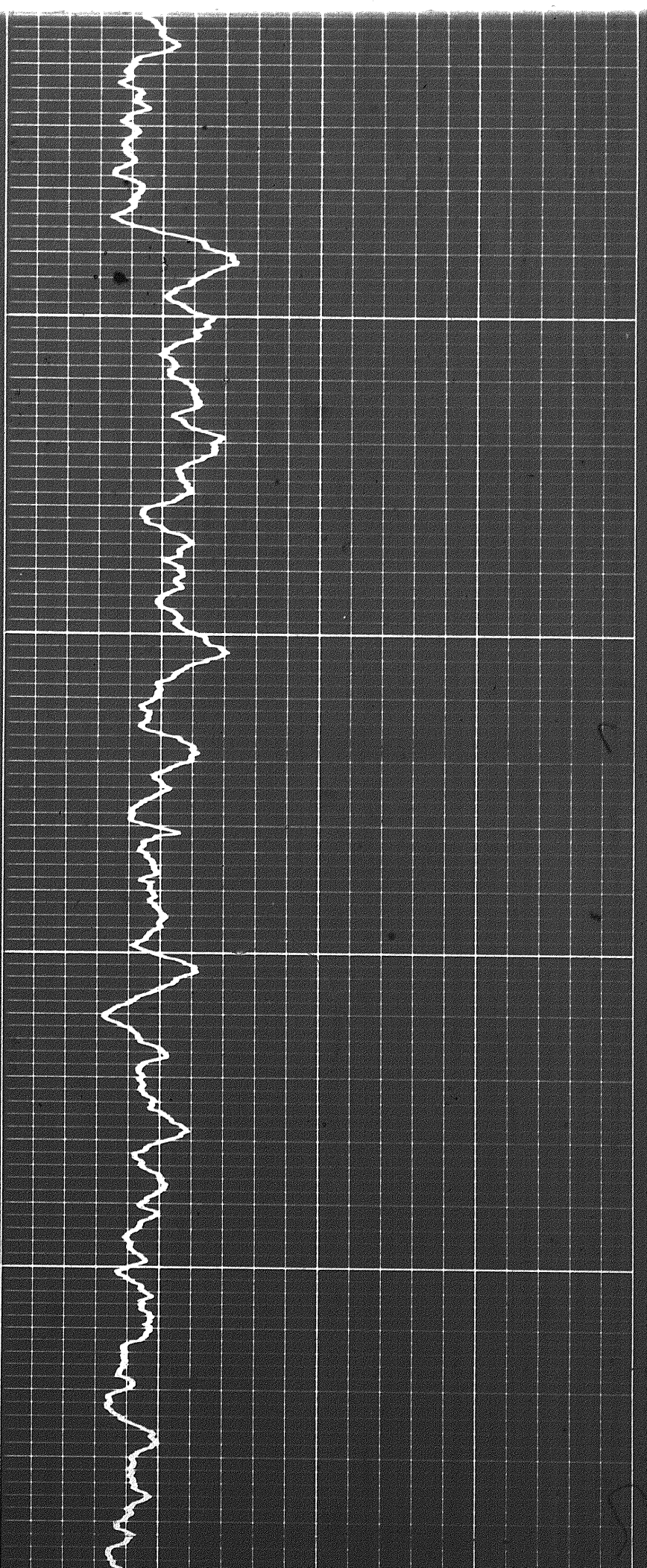
4 of

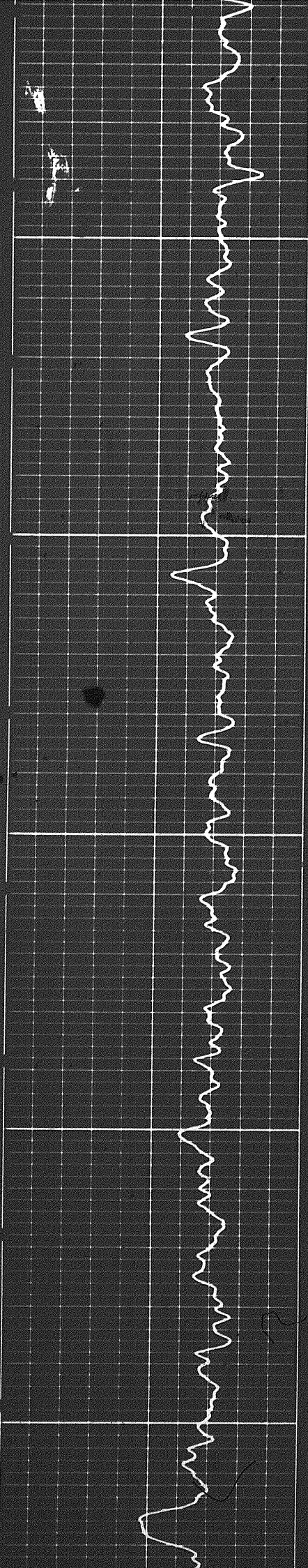


Casing

0080

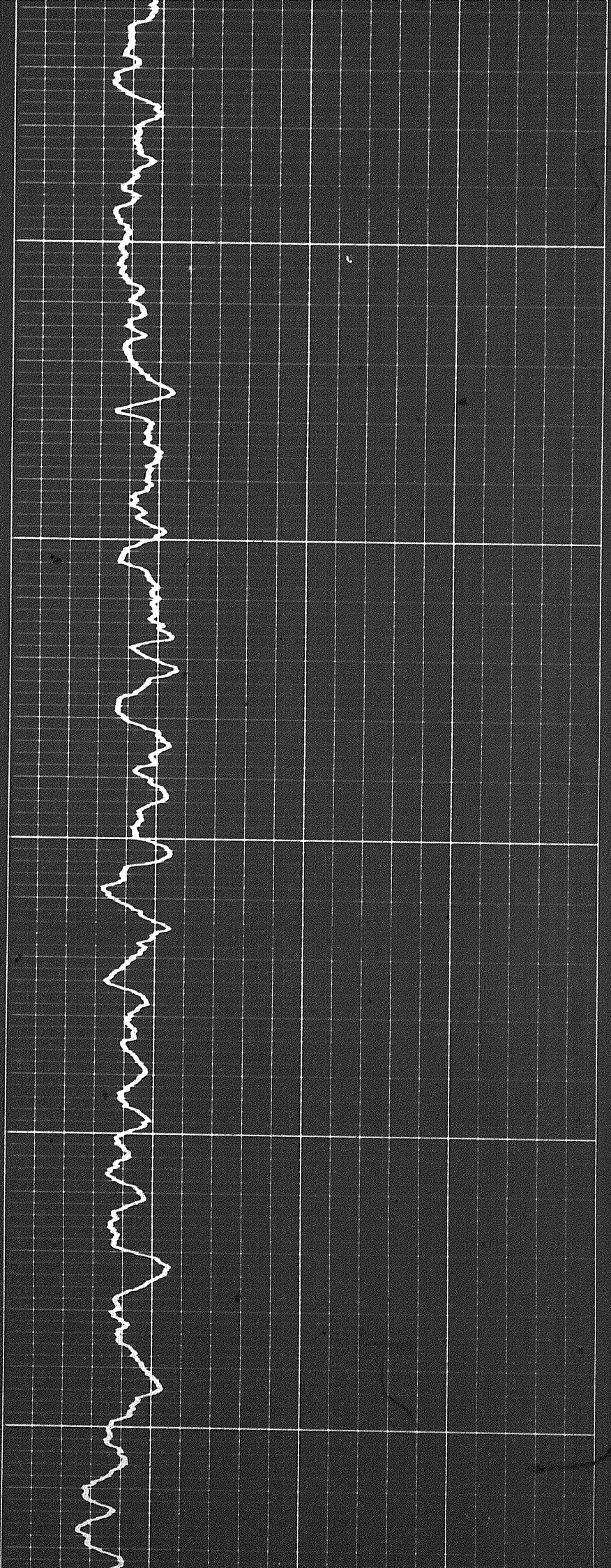
0060

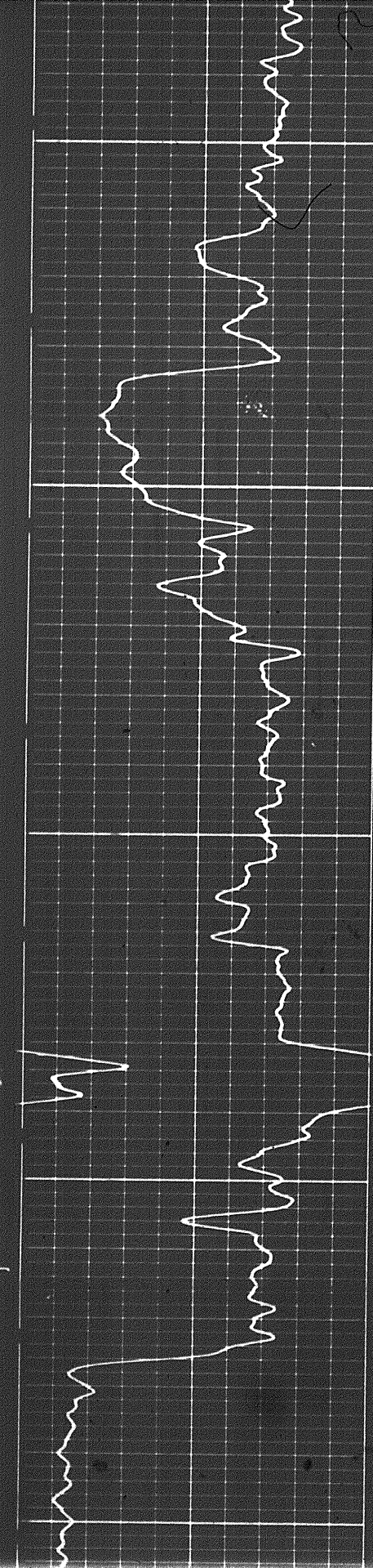




1000

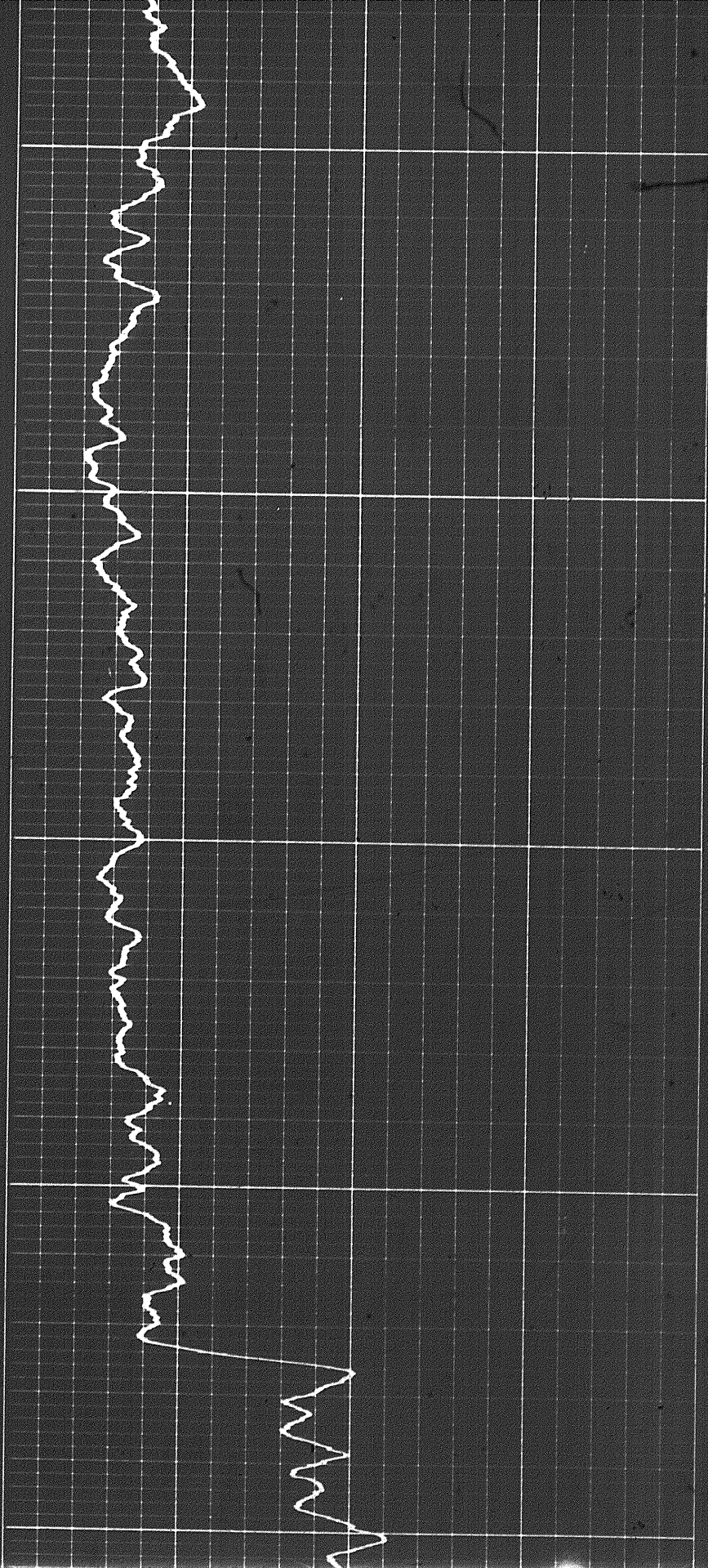
1100



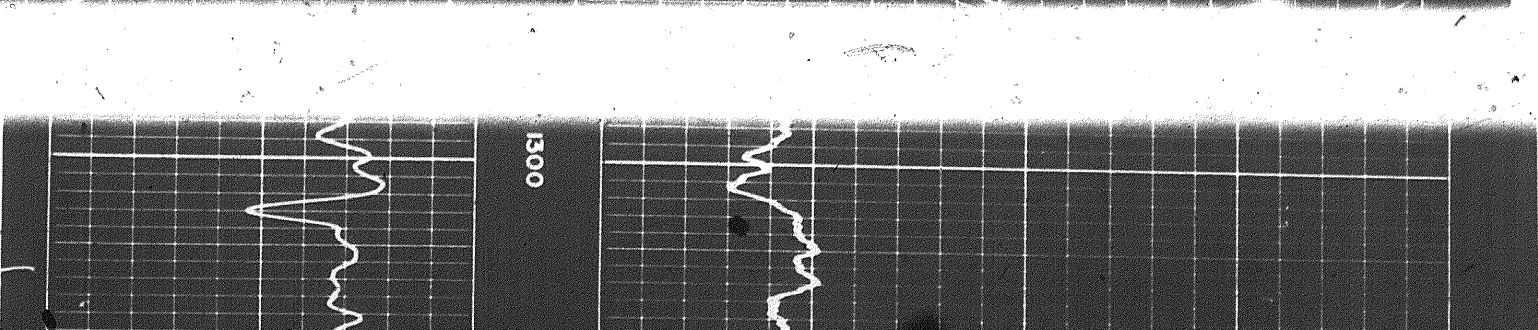


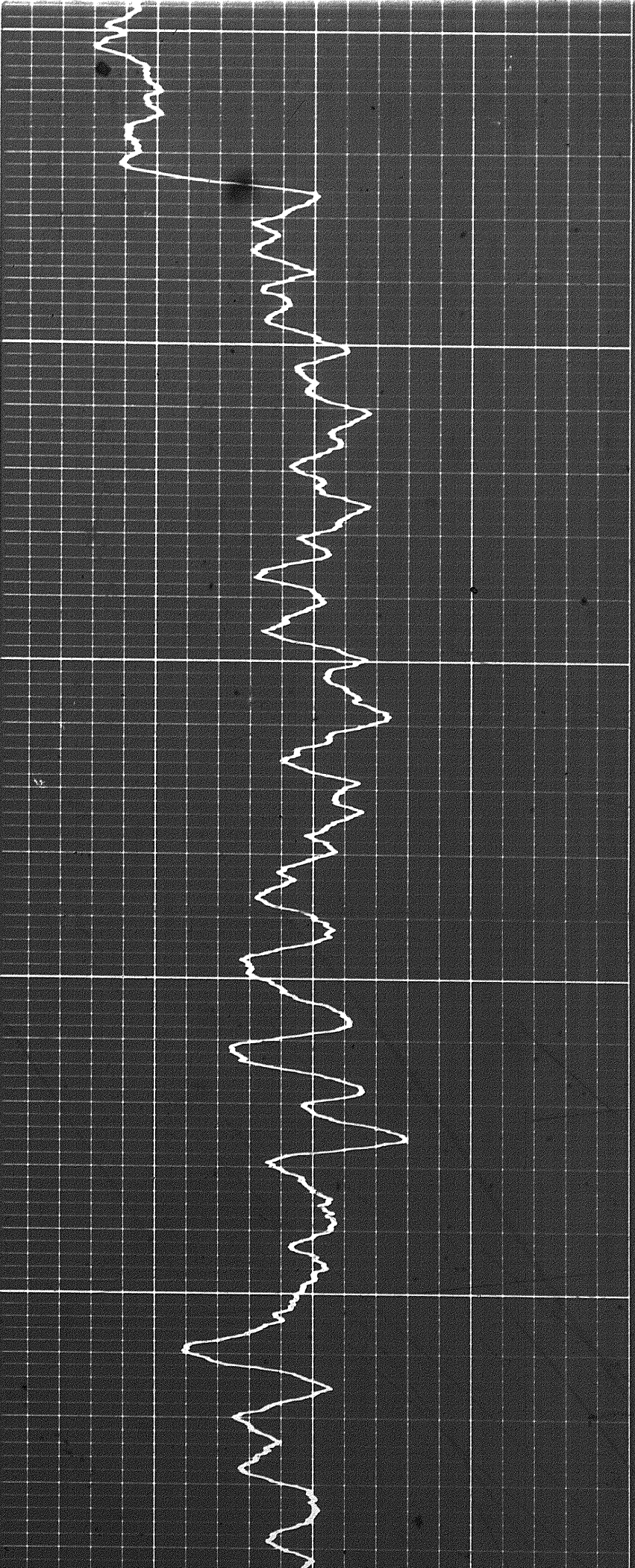
1200

1300



1300

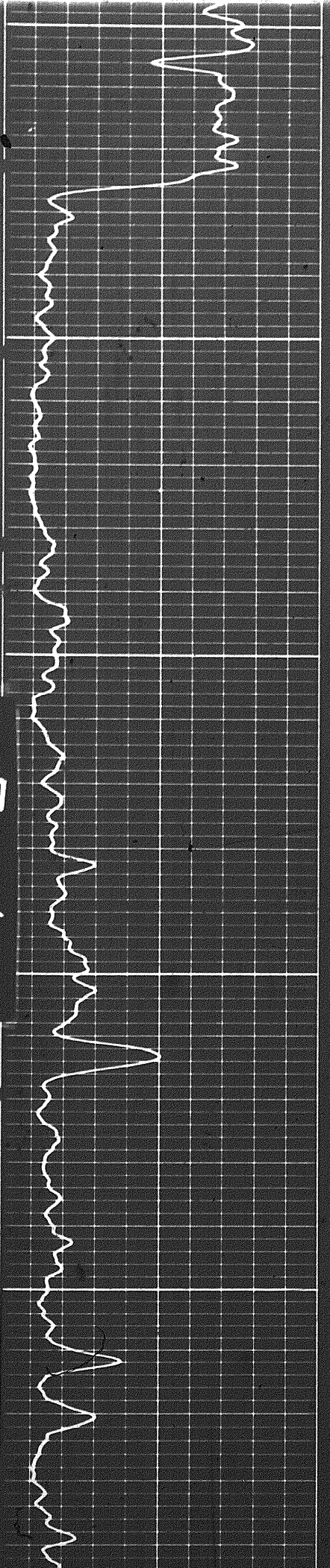




1300

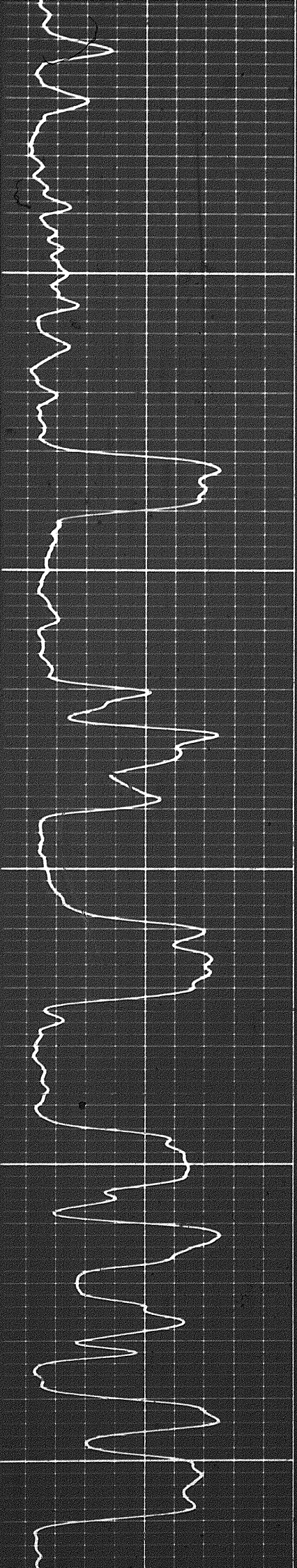
1400

1500



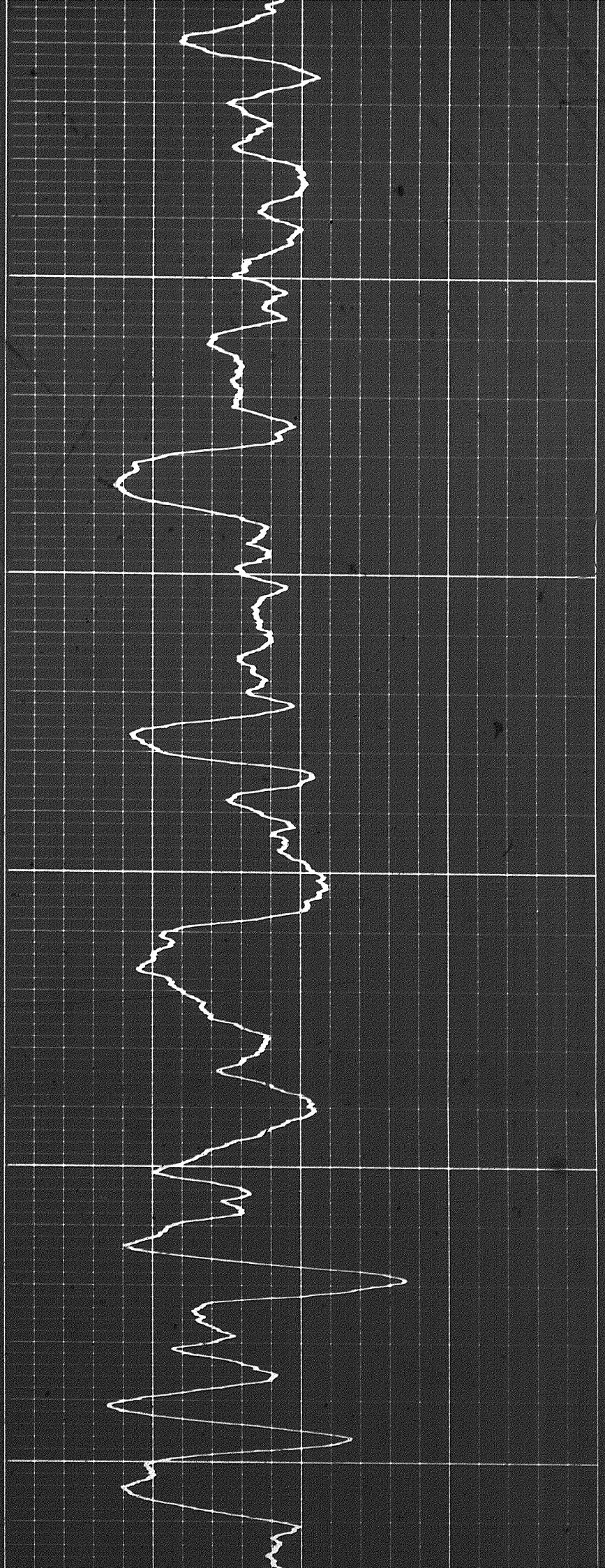
5 of

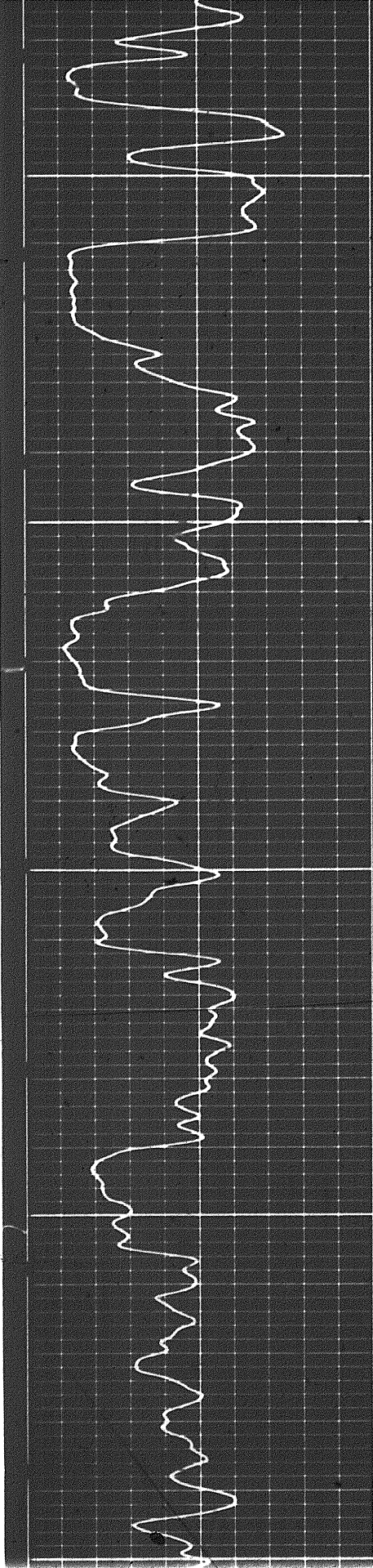
1



1600

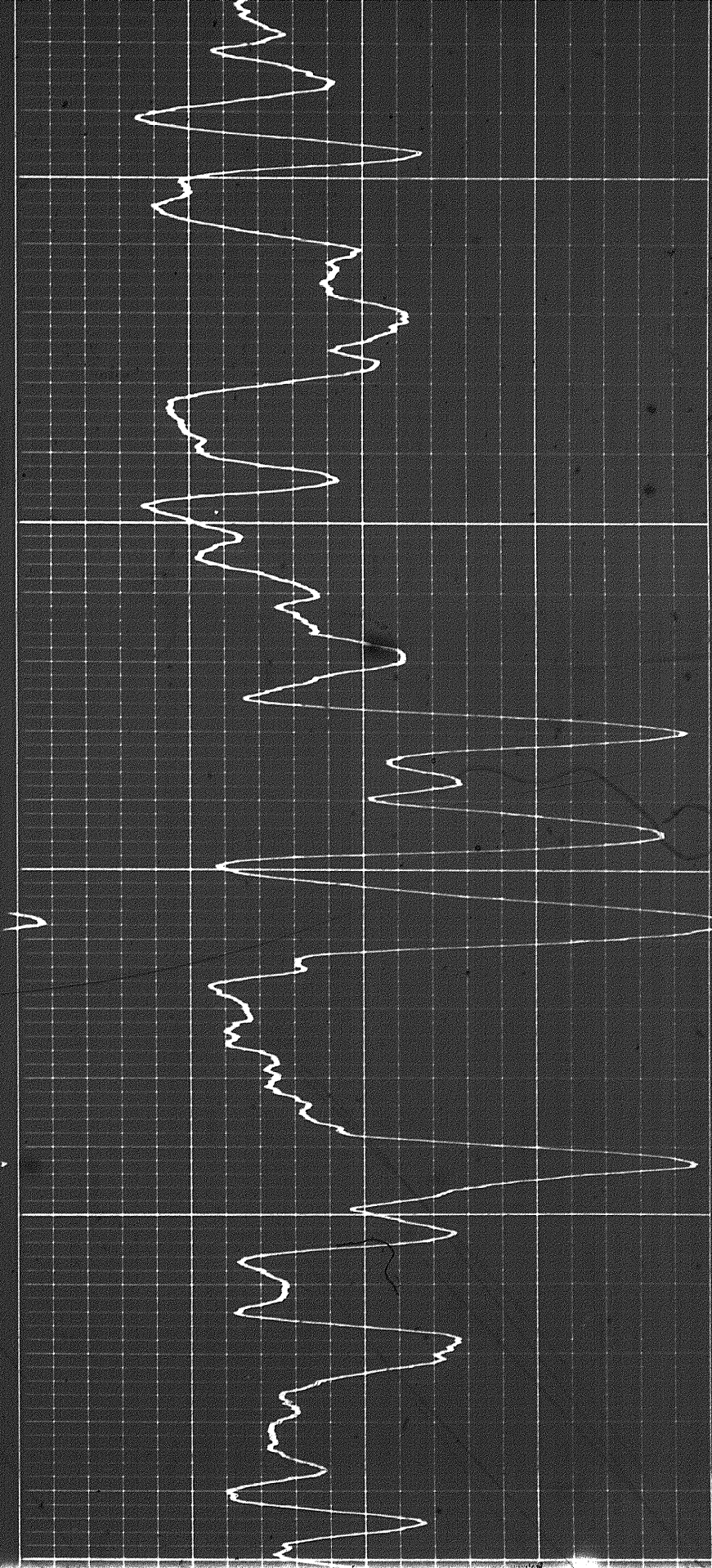
1700



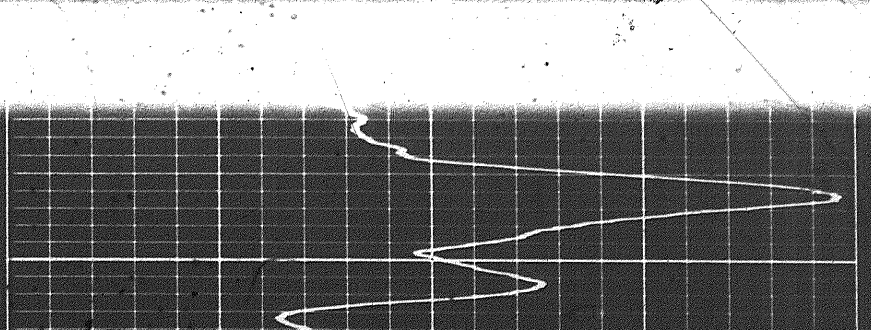


1800

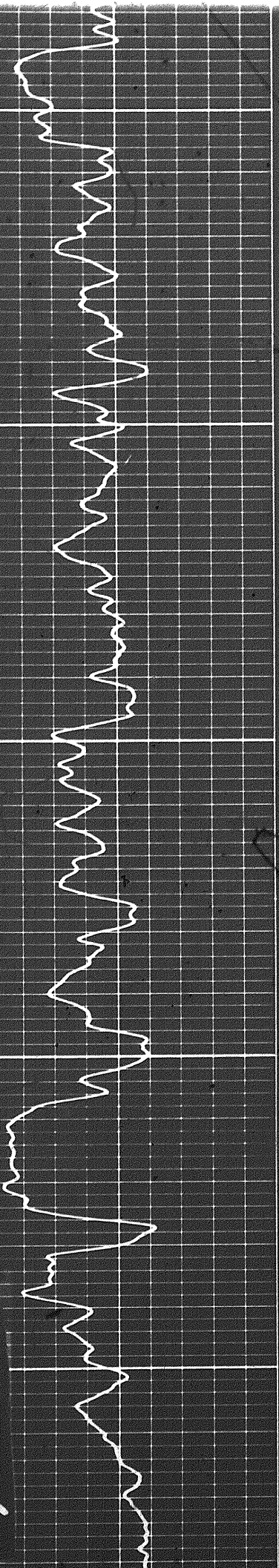
1900



1900



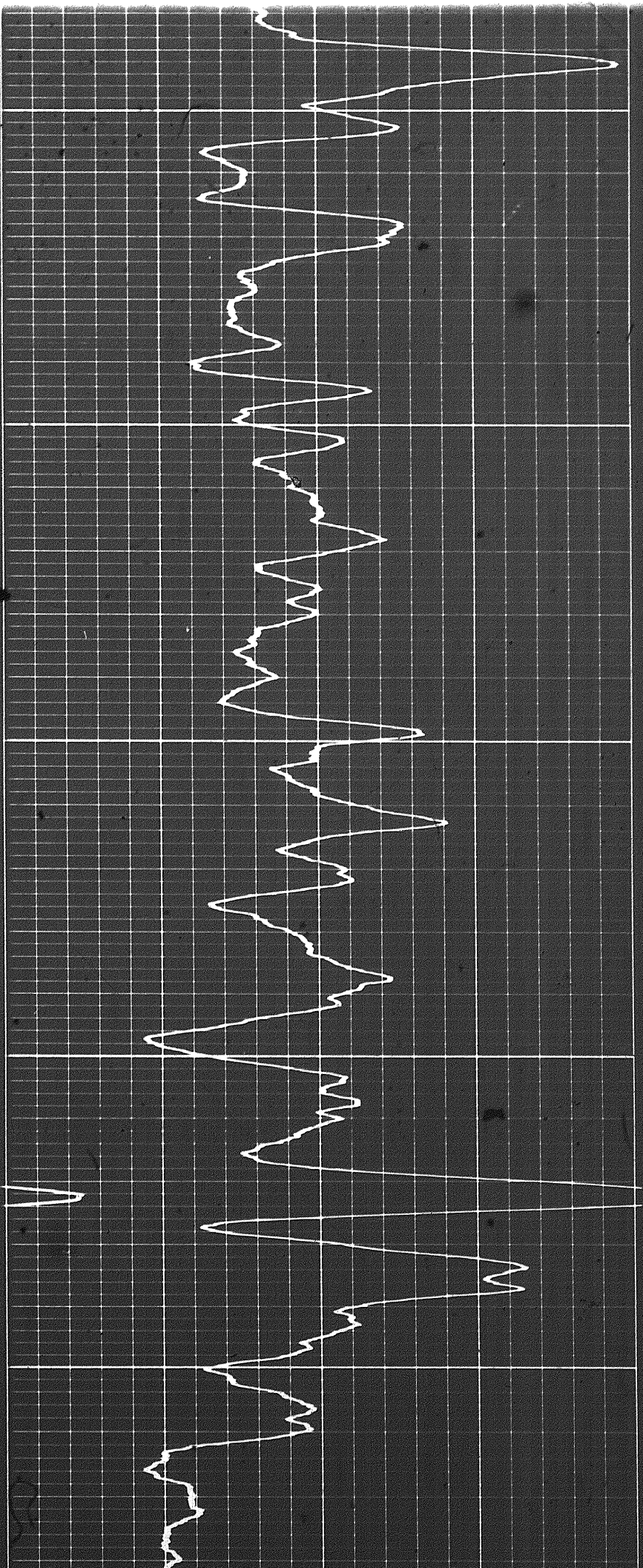
6 of



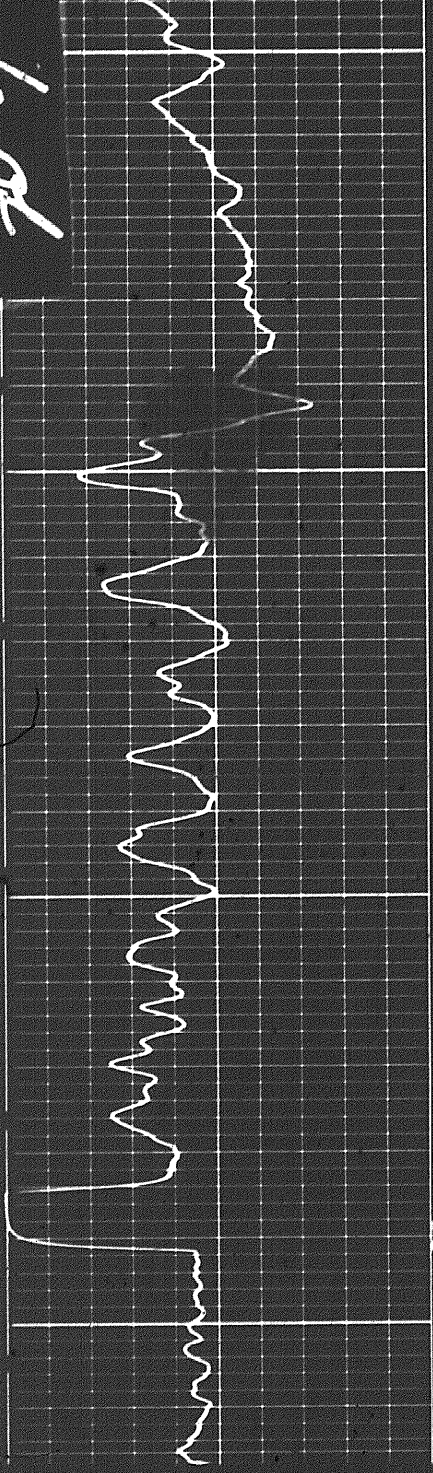
1900

2000

2100



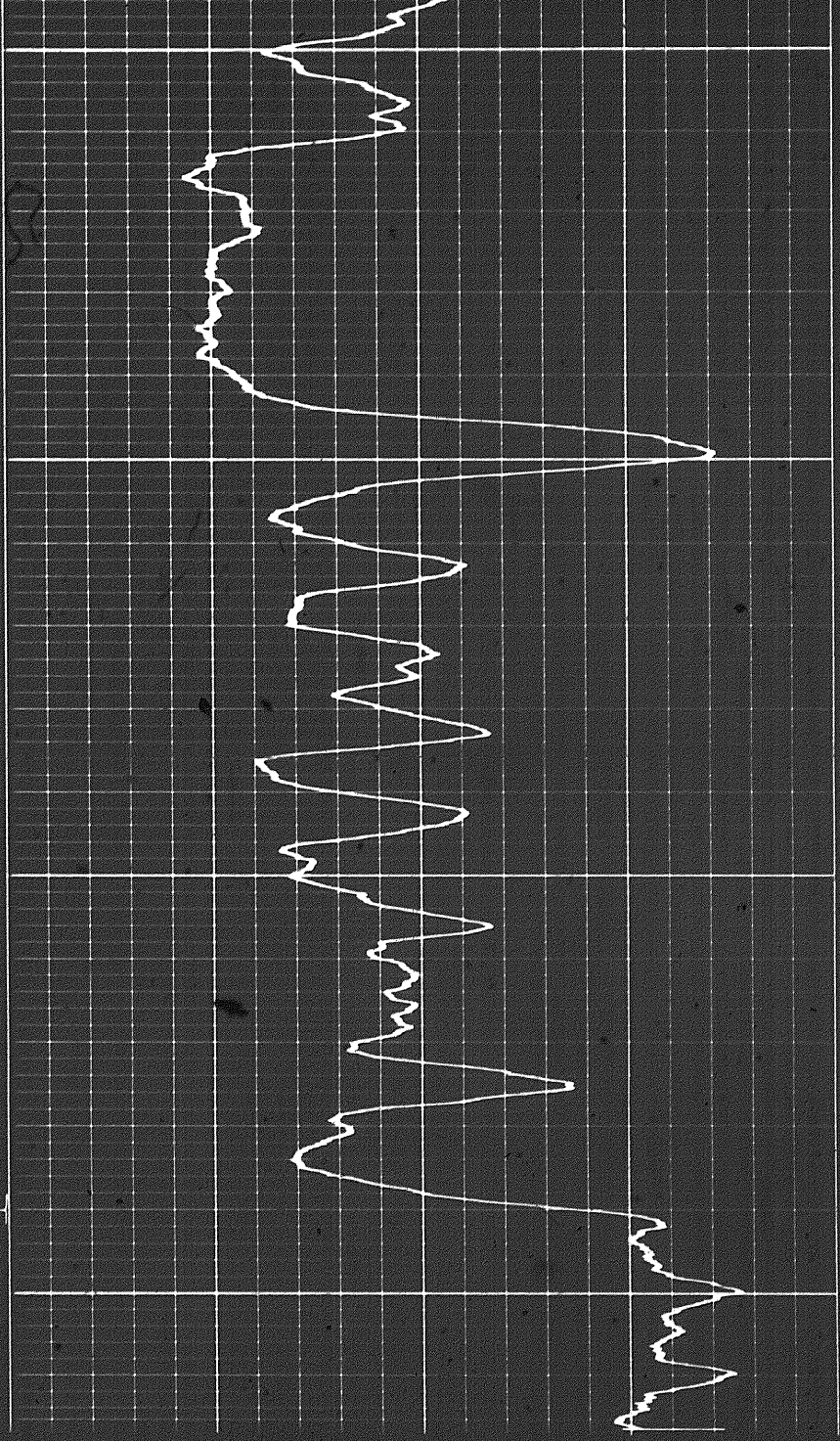
6 of



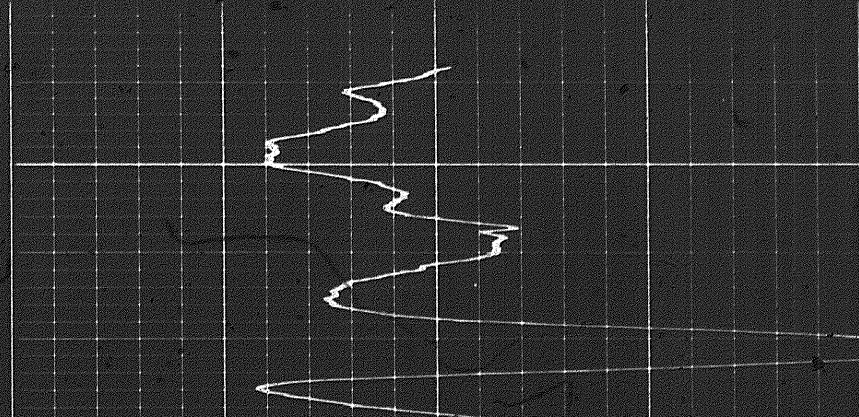
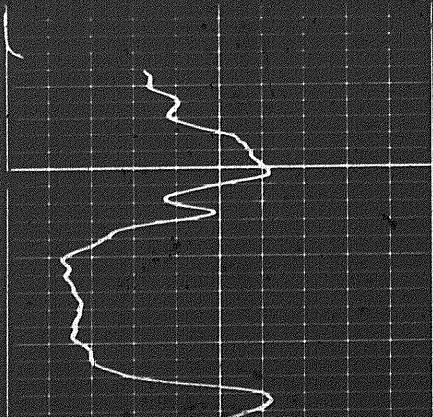
2100

2200

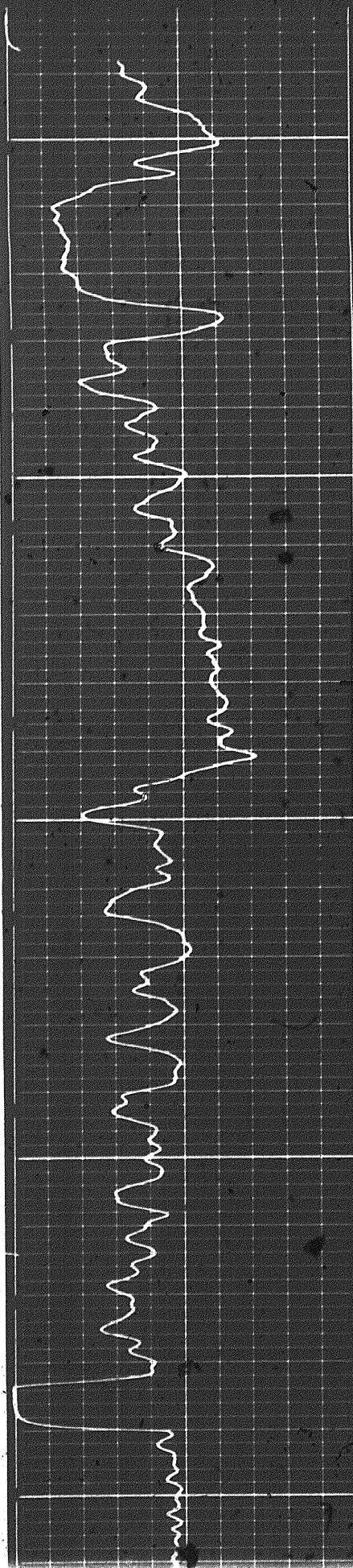
FR



REPEAT SECTION



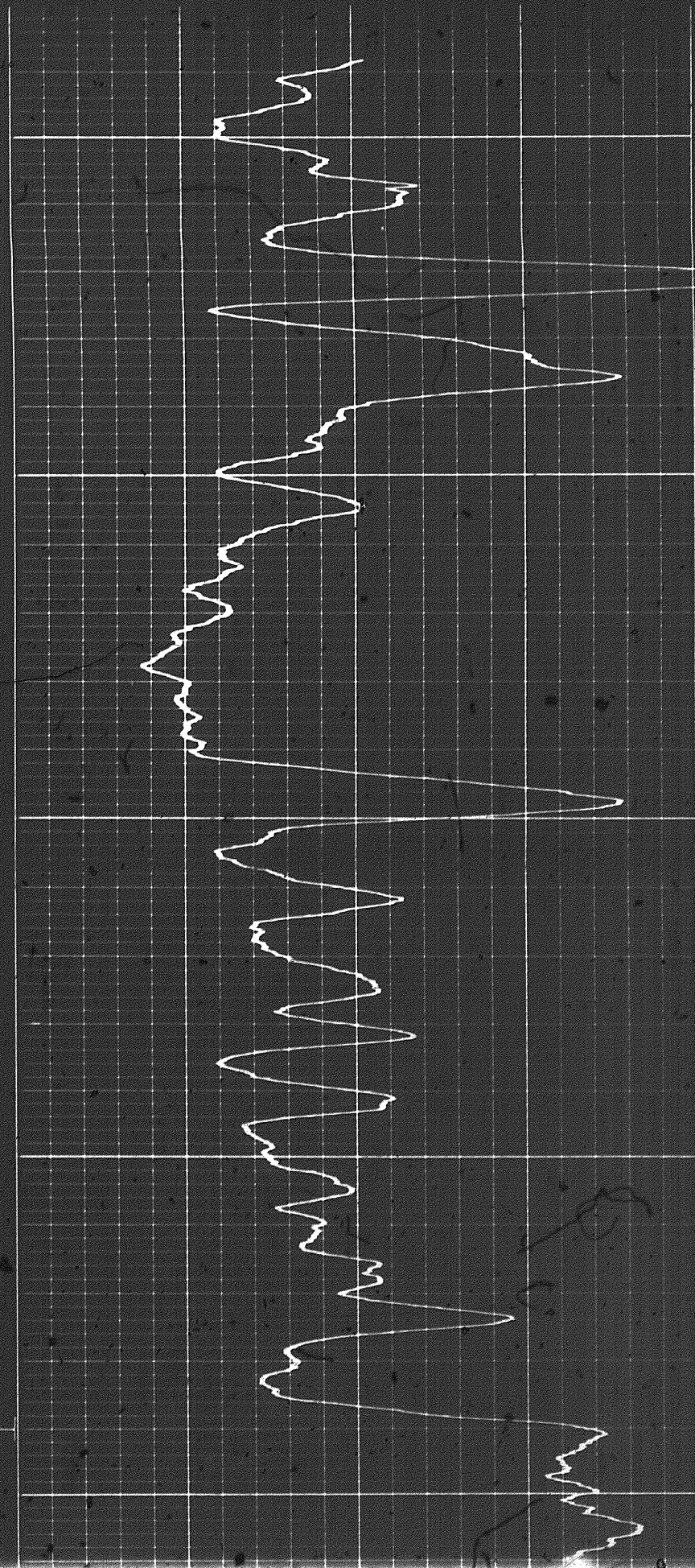
REPEAT SECTION



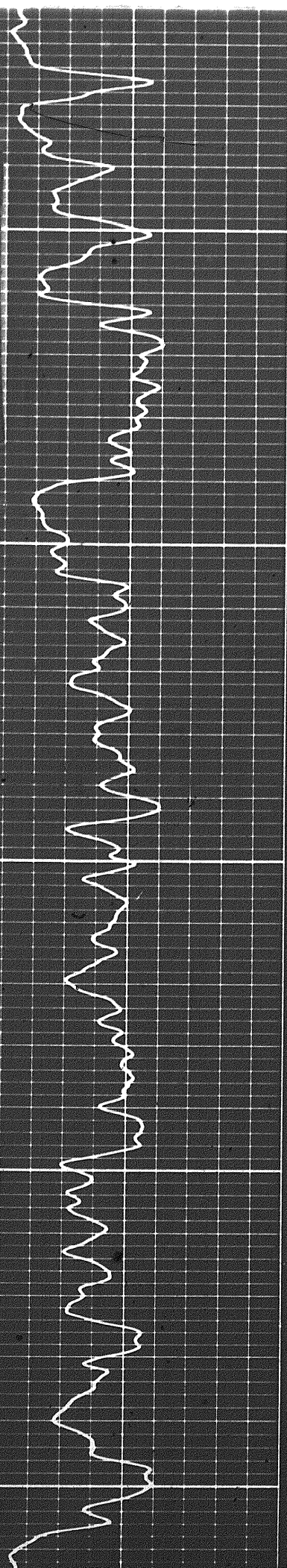
2100

2200

FR

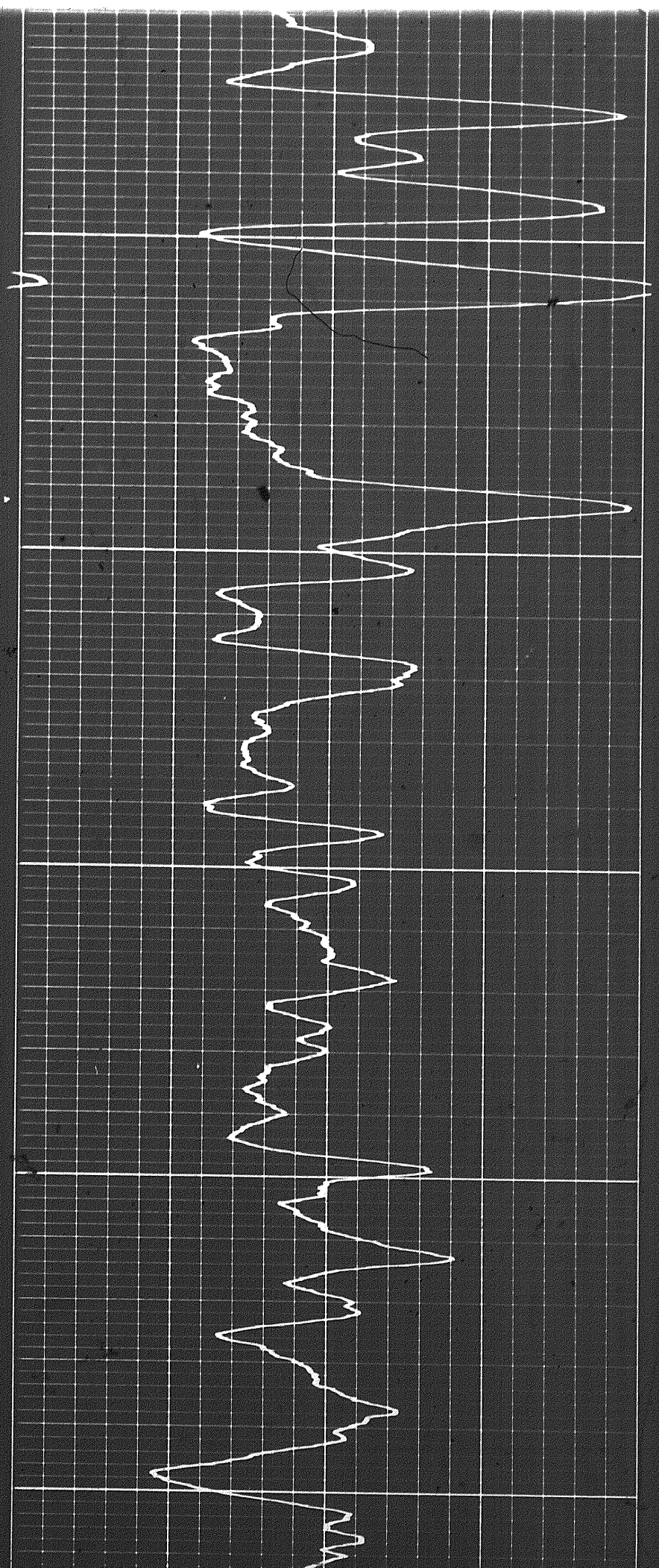


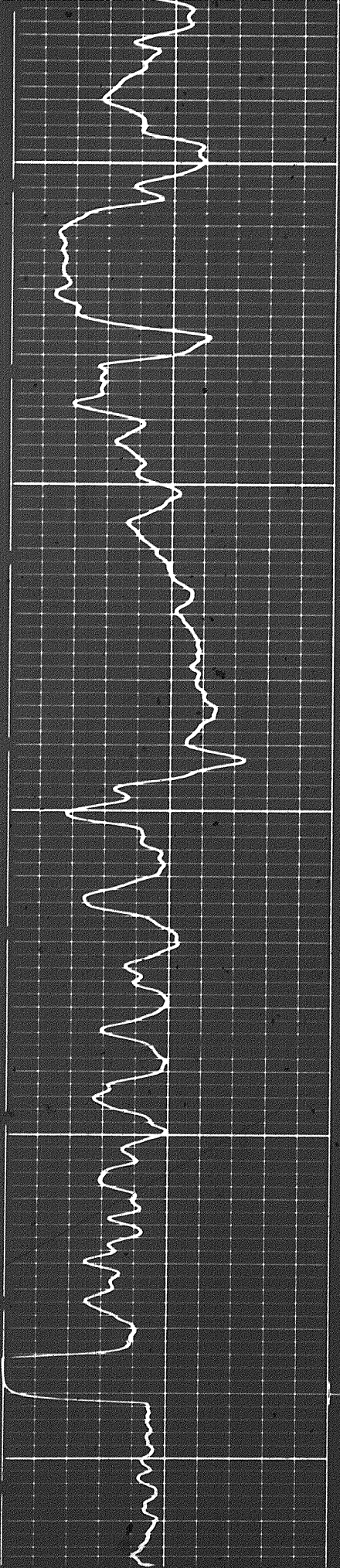
79



1500

2000

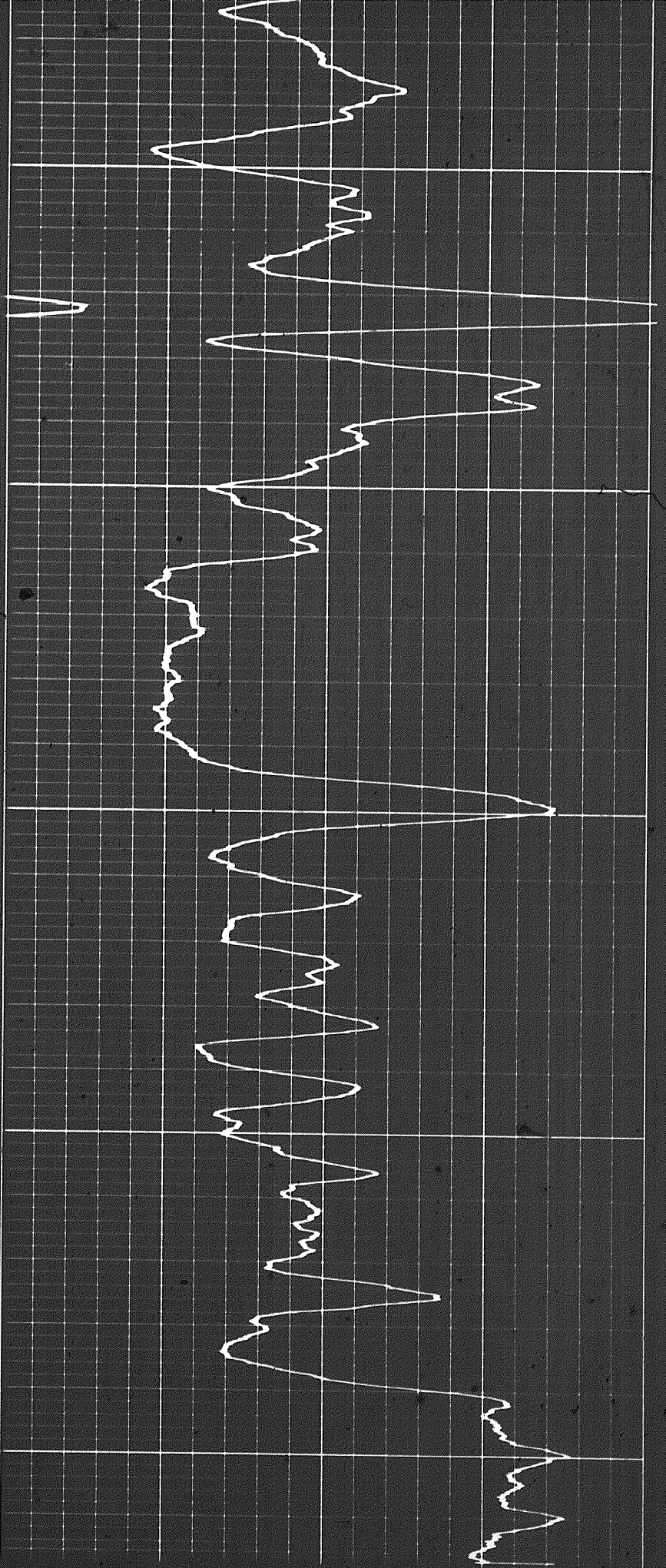




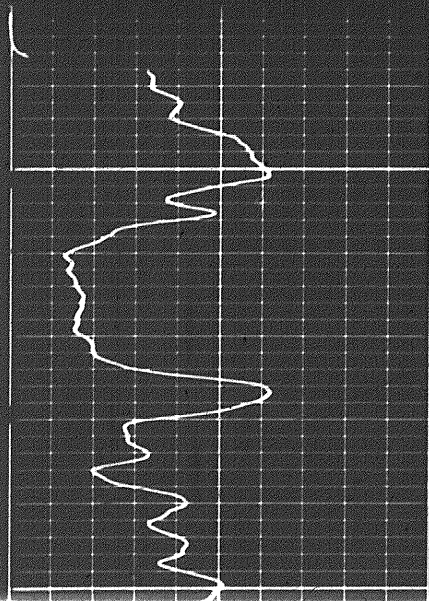
2100

2200

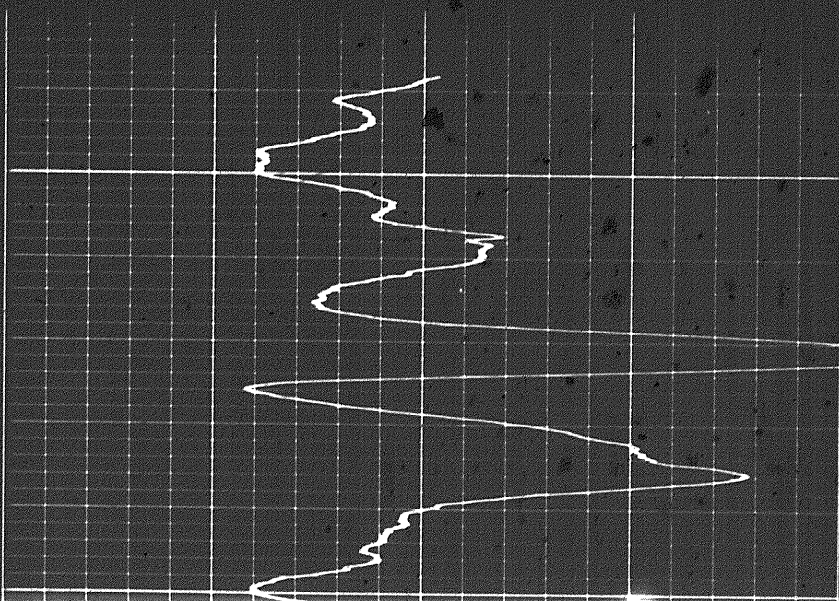
FR



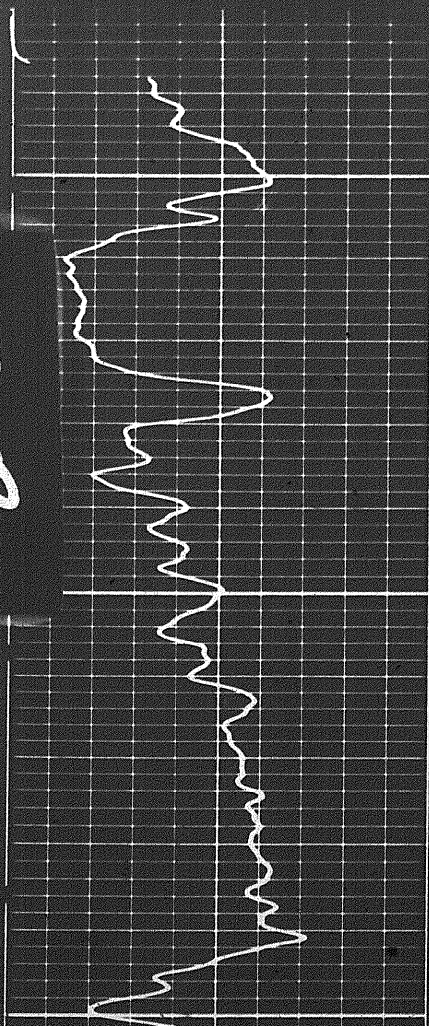
REPEAT SECTION



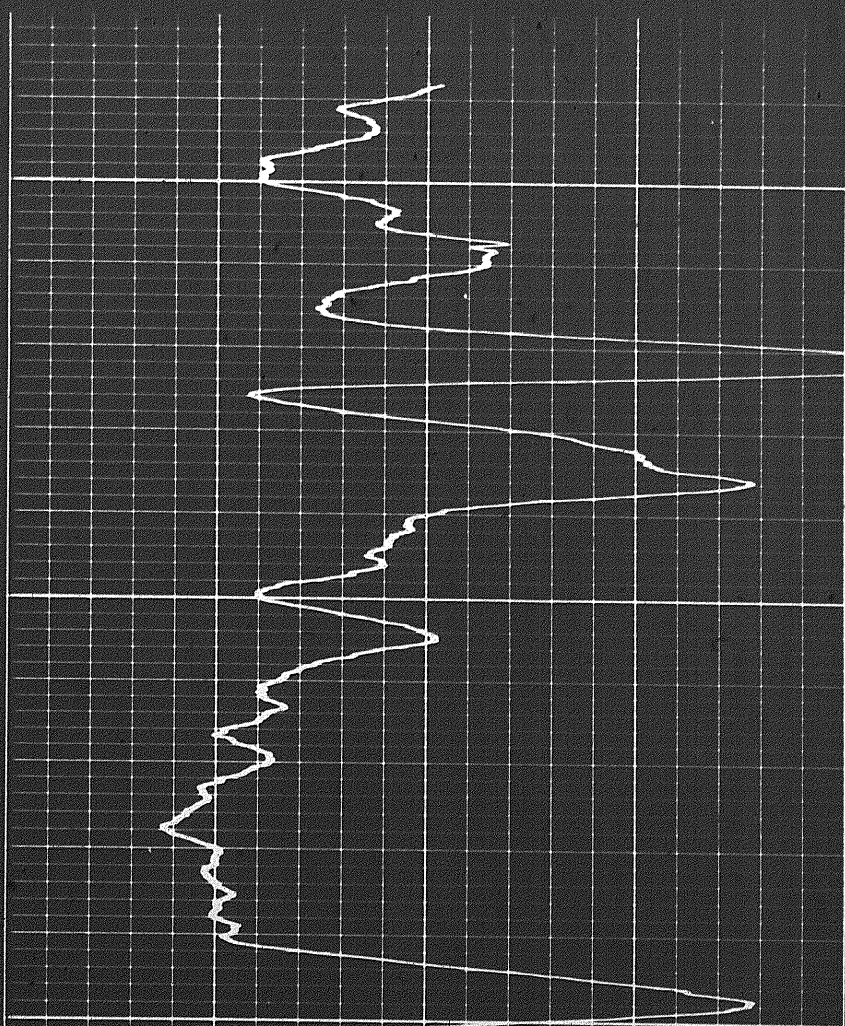
2100



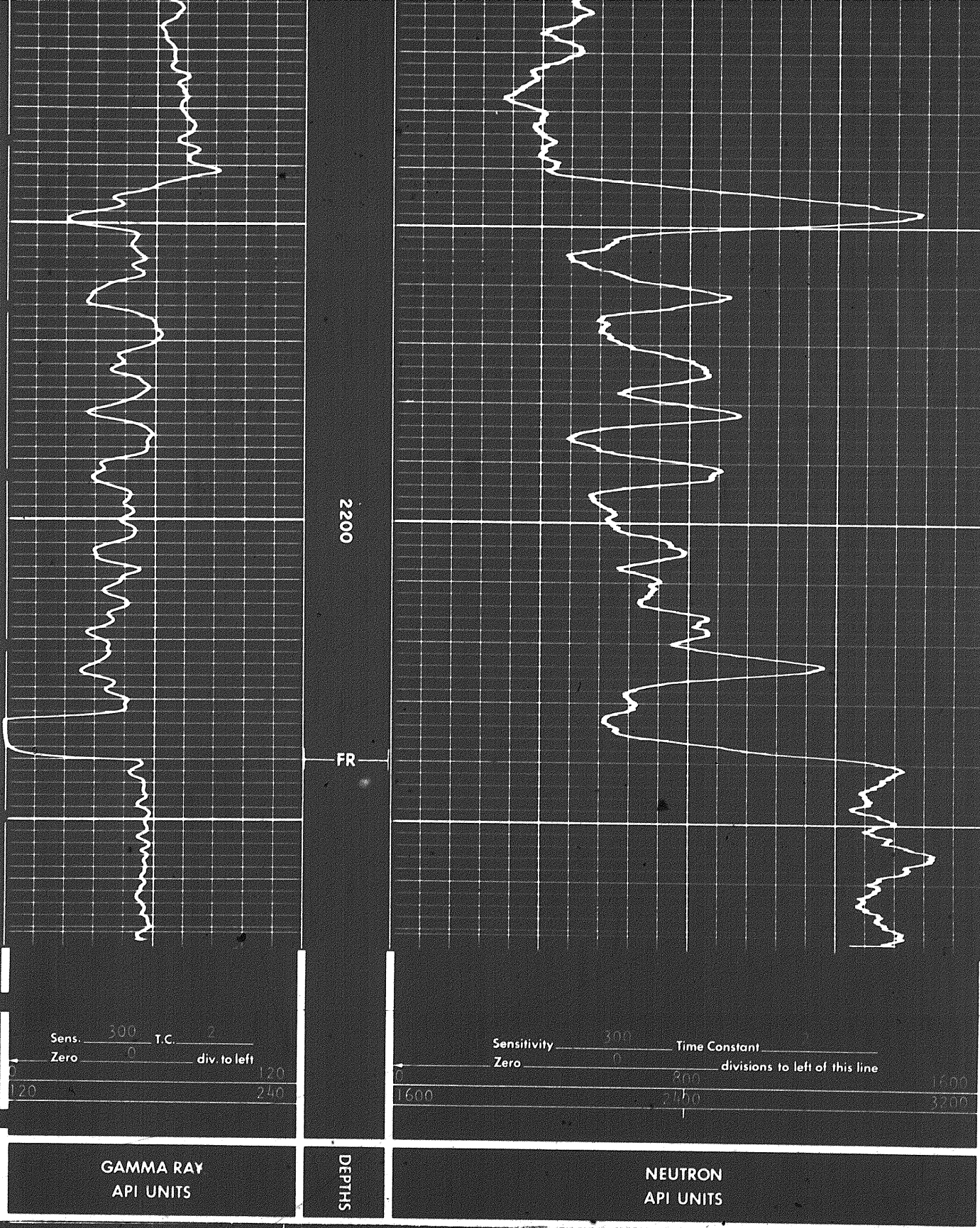
REPEAT SECTION



2100



89



Gamma Ray Cal
a API Units

Calibration after Survey

Gamma Ray Background

Gamma Ray Background

Calibration before Survey

Gamma Ray Background

Gamma Ray Cal
@ API Units

Calibration after Survey

Jig in Far Position

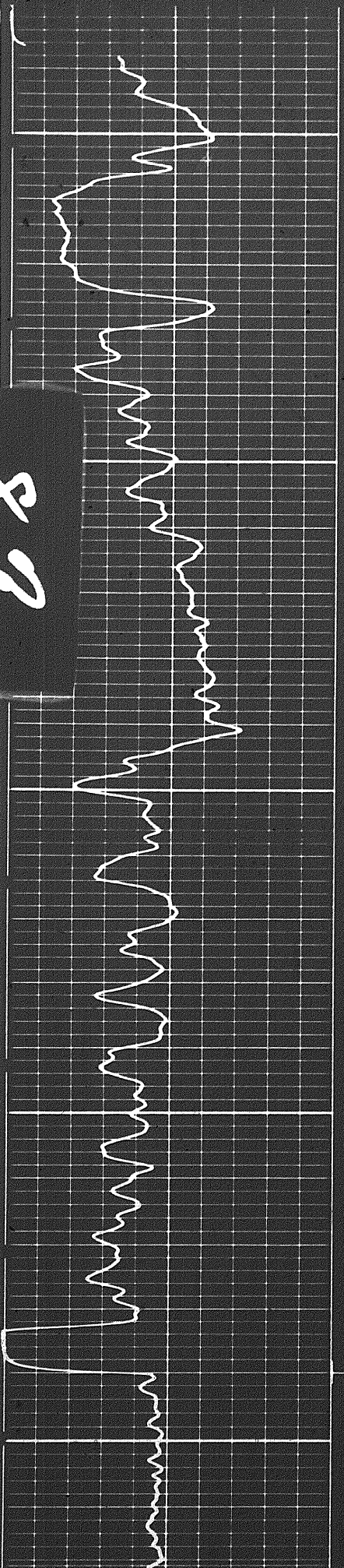
Jig in Near Position

Calibration before Survey

Jig in Far Position

REPEAT SECTION

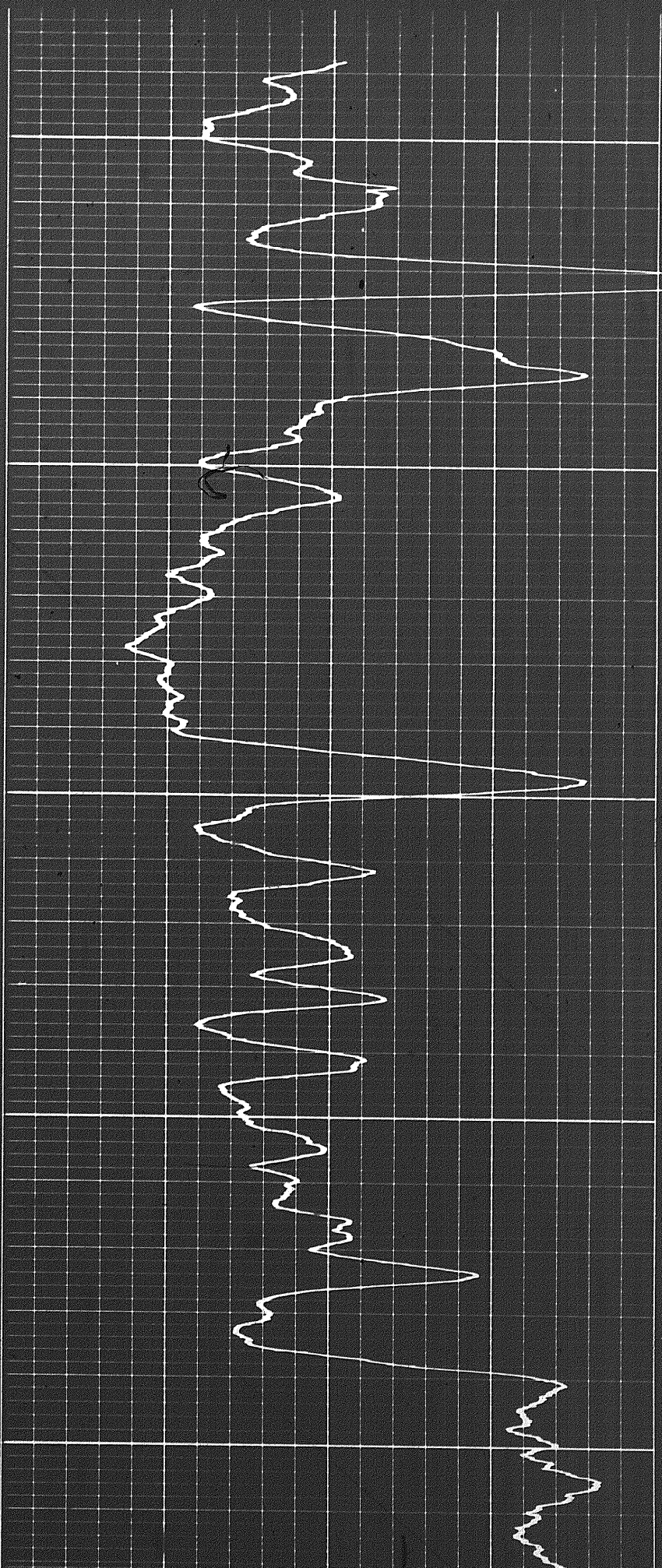
88

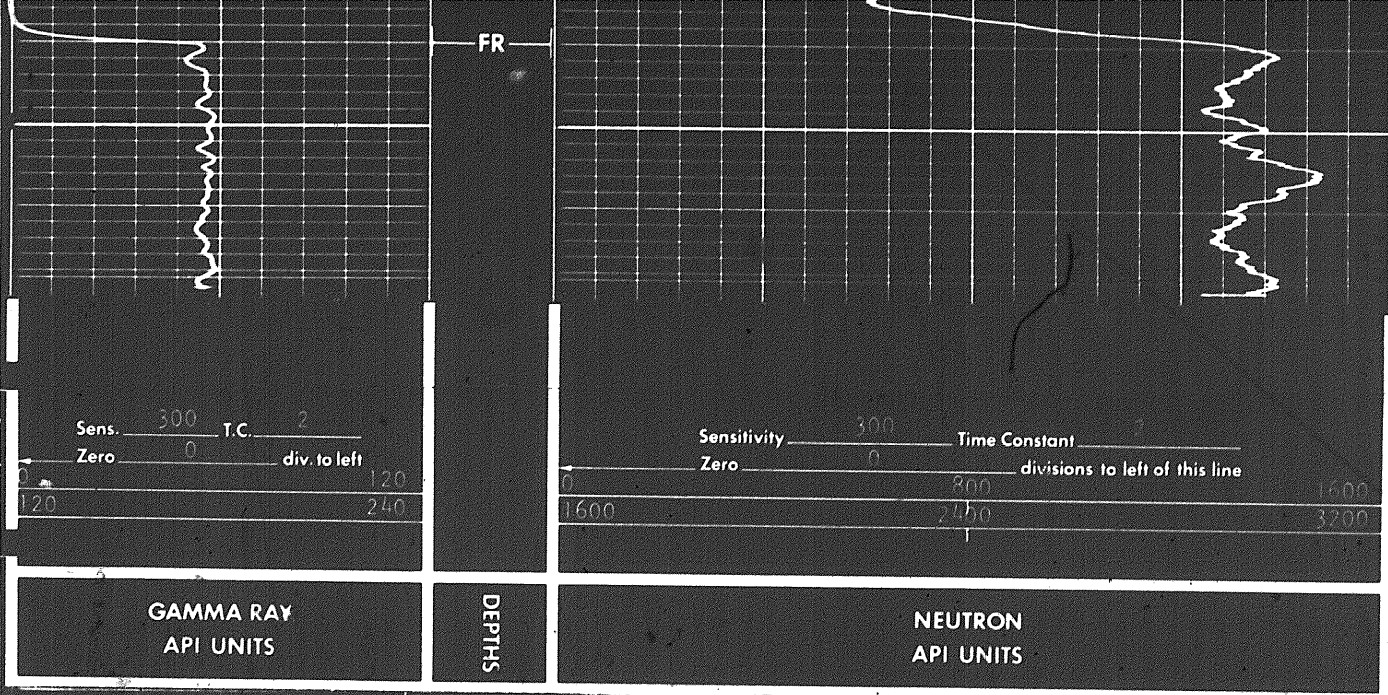


2100

2200

FR





Gamma Ray Cal
@ API Units

Calibration after Survey

Gamma Ray Background

Calibration before Survey

Gamma Ray Background

Gamma Ray Cal
@ API Units

Calibration after Survey

Jig in Far Position

Jig in Far Position

Jig in Near Position

Calibration before Survey

Jig in Far Position

<p>Sens. <u>300</u> T.C. <u>2</u> Zero <u>0</u> div. to left</p> <p>0 120 240</p>		<p>Sensitivity <u>300</u> Time Constant <u>2</u> Zero <u>0</u> divisions to left of this line</p> <p>0 800 1600 2400 3200</p>
<p>GAMMA RAY API UNITS</p>	<p>DEPTHS</p>	<p>NEUTRON API UNITS</p>

Gamma Ray Cal @ API Units

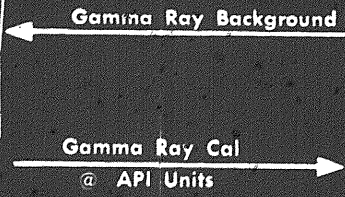
Calibration after Survey

Gamma Ray Background

Calibration before Survey

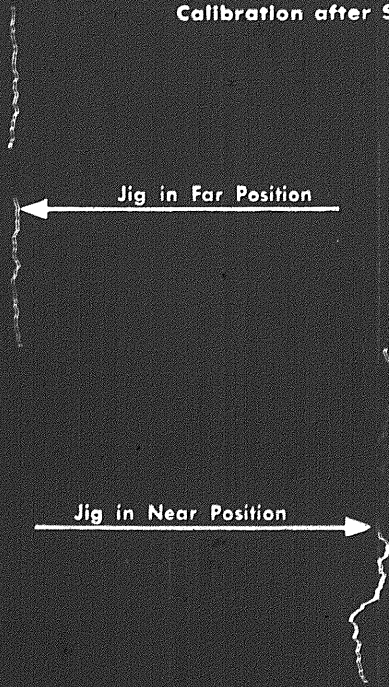
Gamma Ray Background

Calibration before Survey



666

Calibration after Survey



Calibration before Survey



666

Jig in Far Position

Jig in Near Position

Calibration before Survey

Jig in Far Position

Jig in Near Position

COMPANY

CHEVRON STANDARD LIMITED

WELL

CHEVRON SOBC WM BIRCH MT B-53

FIELD

WILDEAT

PROVINCE

YUKON TERRITORIES

Schlumberger