

Schlumberger

**BOREHOLE COMPENSATED
SONIC LOG**
SCHLUMBERGER OF CANADA Calgary Alberta

PROVINCE YUKON TERRITORIES
FIELD WILDCAT
WELL CHEVRON SOBC WM. E. PINE YT. 0-78
COMPANY CHEVRON STANDARD LIMITED

COMPANY CHEVRON STANDARD LIMITED
WELL CHEVRON SOBC WM. E. PINE YT. 0-78
FIELD WILDCAT
PROVINCE YUKON TERRITORIES
LOCATION 66° 57' 53" N LAT 137° 58' 58" W LONG
Permanent Datum G1 Elev. 1261.0
Log Measured From KB 15.6 Ft. Above Perm. Datum
Other Services: FDC GR, DIL, ICS
ELEV: KB 1276.6
G1 1261.0
CBF

Date	21 JAN 72
Run No.	ONE
First Reading	3102
Last Reading	0
Feet Measured	3102
Depth Reached	3105
Bottom Driller	3109
Csg. SOC	819
Csg. Driller	819
Mud Nature	FRESH GEL
Dens	9.4
Visc	68
Mud pH	9.0
Water Loss	8.0
Res. @ BHT	6.20 @ 70 of
Rmf	4.42 @ 99 of
Rmc	5.75 @ 72 of
Bit Size	5.13 @ 74 of
Span	8.374m
Op. Rig Time	2.5 HRS
Truck No.	DSU-C-108, BEW
Recorded By	WILSON
Witness	POLLARD

REMARKS
Drilling Stopped 1400 / 21st ; Circulation Stopped 1500 / 21st ; Tool on Bottom 2100 / 21st ; 1st Run Service Order # 7786
B.H.T. 99 of

Caliper No. D 865
Cartridge No. B 37
Panel No. D 594
Sonde No. H 672
Centralizer Type STAND OFF
D 63

GAMMA RAY CALIBRATION:

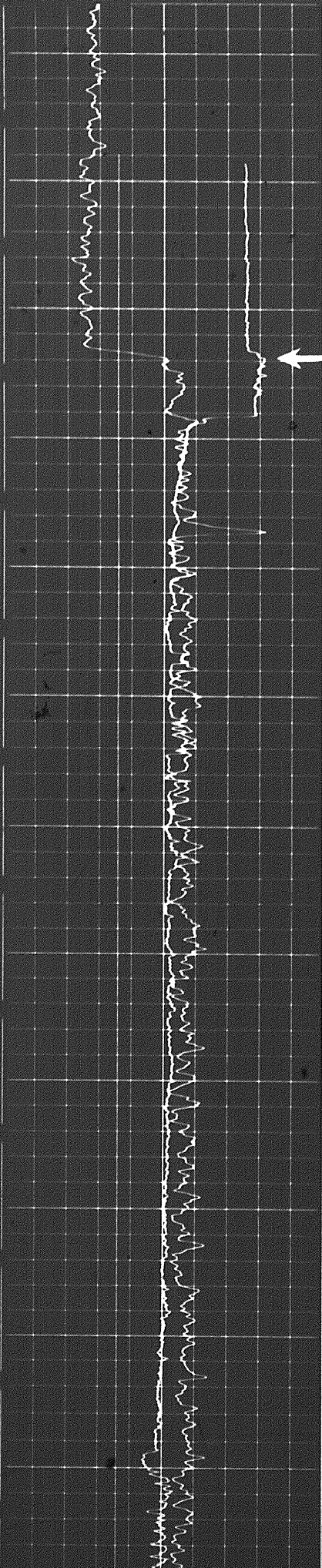
Background CPS	Test Source CPS	Galv. Increase Divisions	Panel Sens. Tap for Cal
40	420	10.0	165

<p>GAMMA RAY API UNITS</p> <p>Sens. 150 T.C. 2 Zero 0 div. to left</p> <p>CALIPER hole diameter in inches</p> <p>6 7 8 9 10 11 12 13 14</p>	<p>DEPTHS</p>	<p>SONIC INTERVAL TRANSIT TIME microseconds per foot</p>
		<p>Speed in FPM</p>

Calibration after Survey

CALIPER
hole diameter in inches

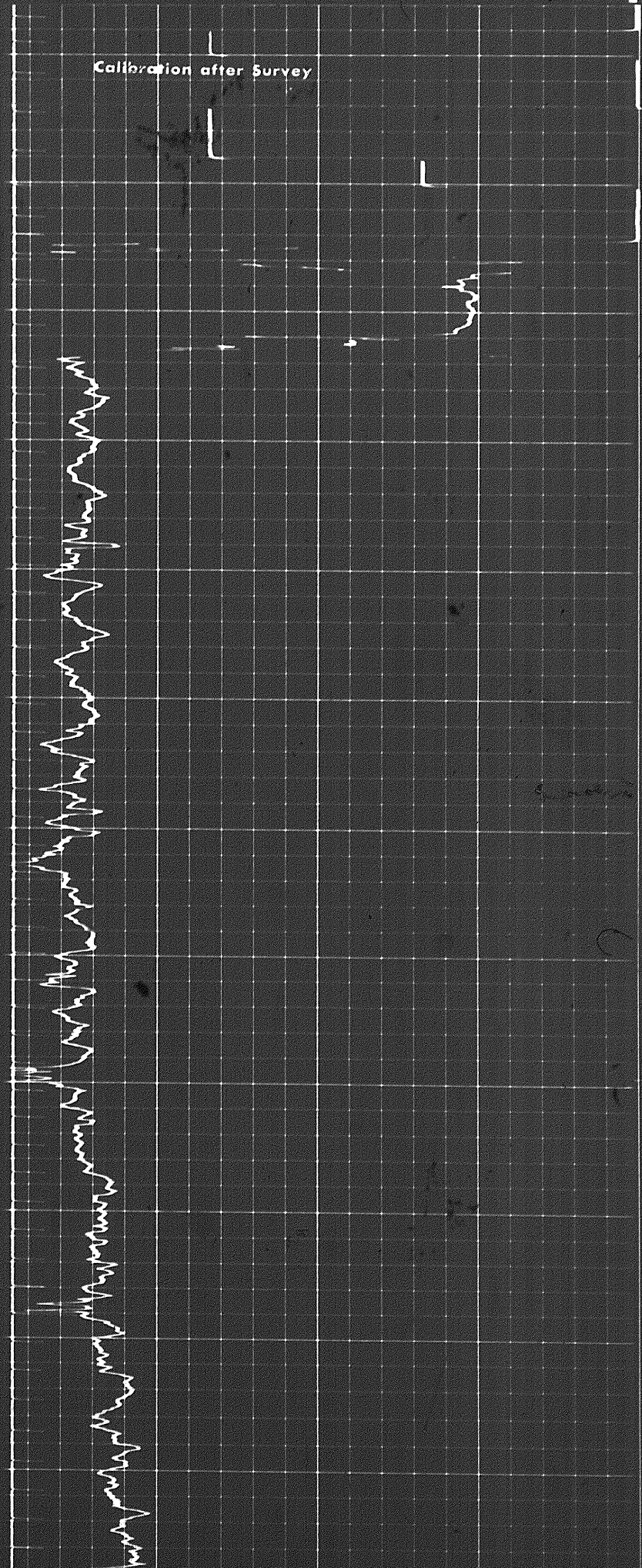
6 7 8 9 10 11 12 13 14



0700
0800
0900
1000
1100
1200

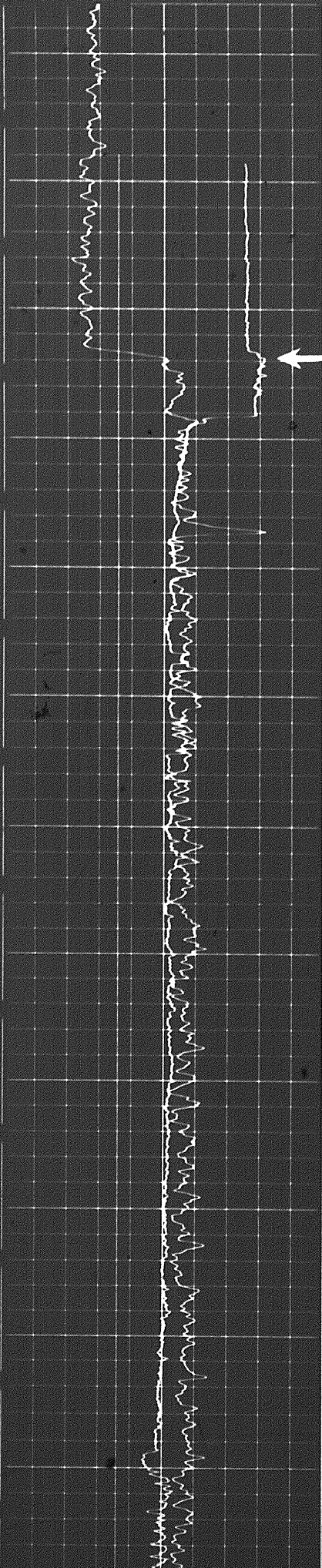
Casing

Calibration after Survey



CALIPER
hole diameter in inches

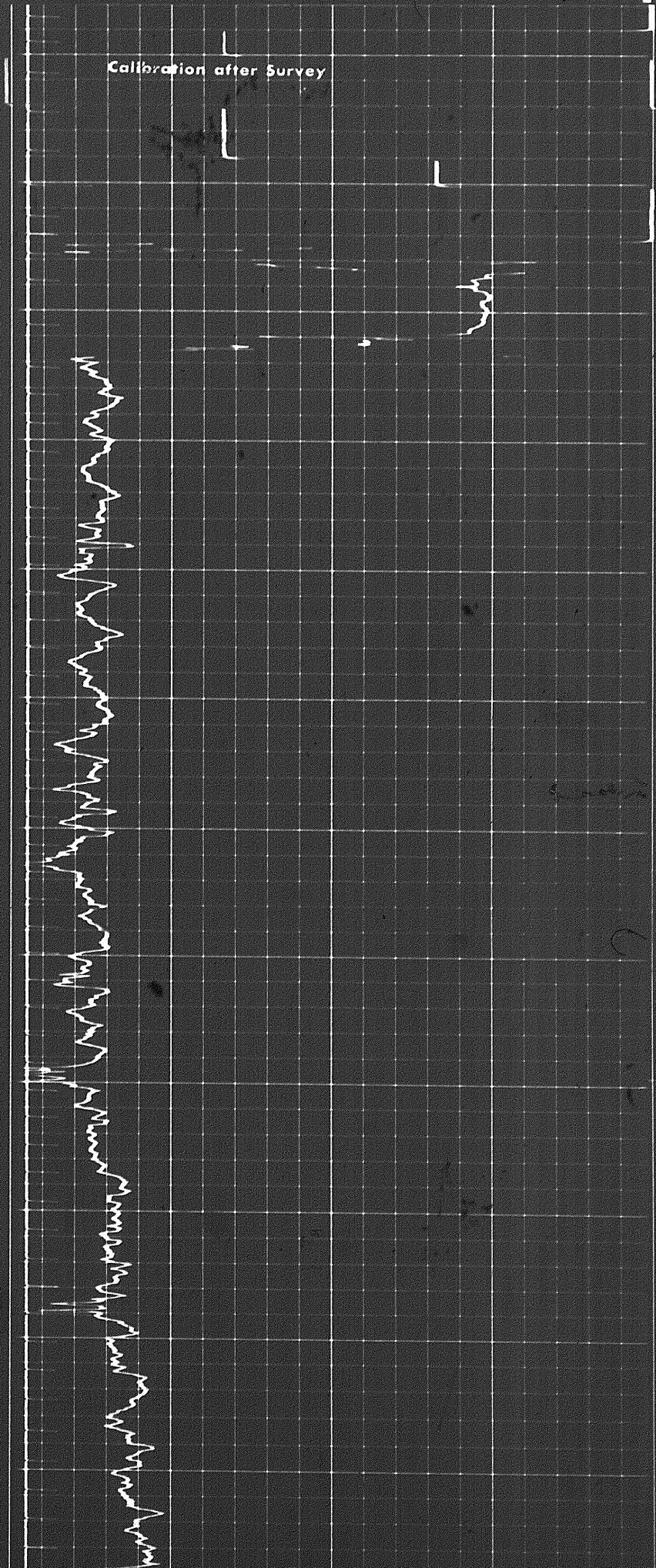
6 7 8 9 10 11 12 13 14

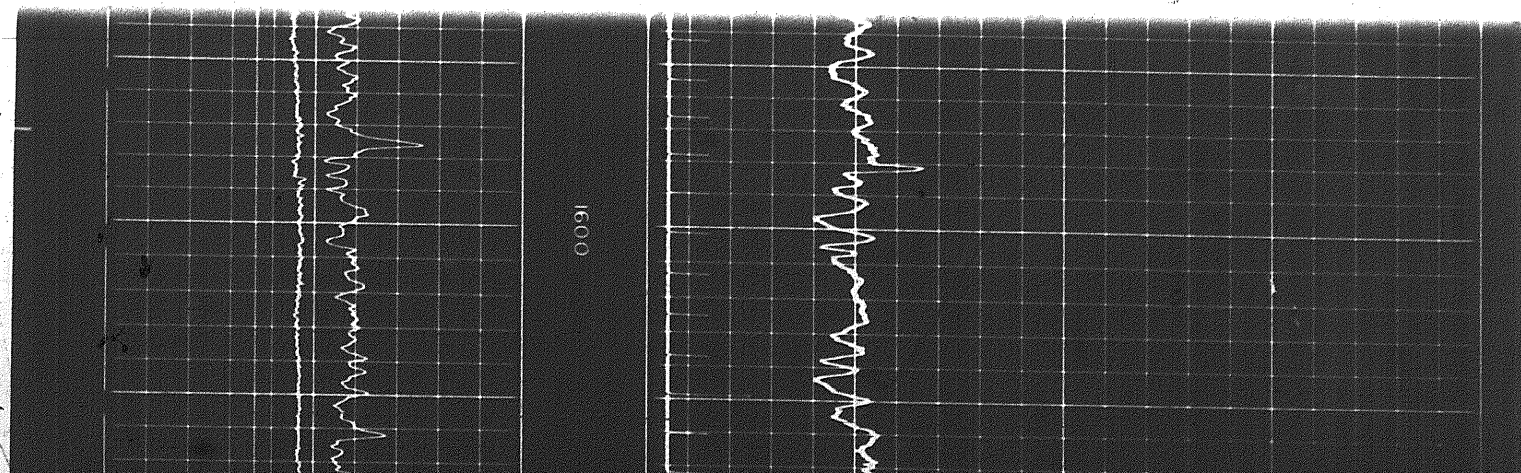
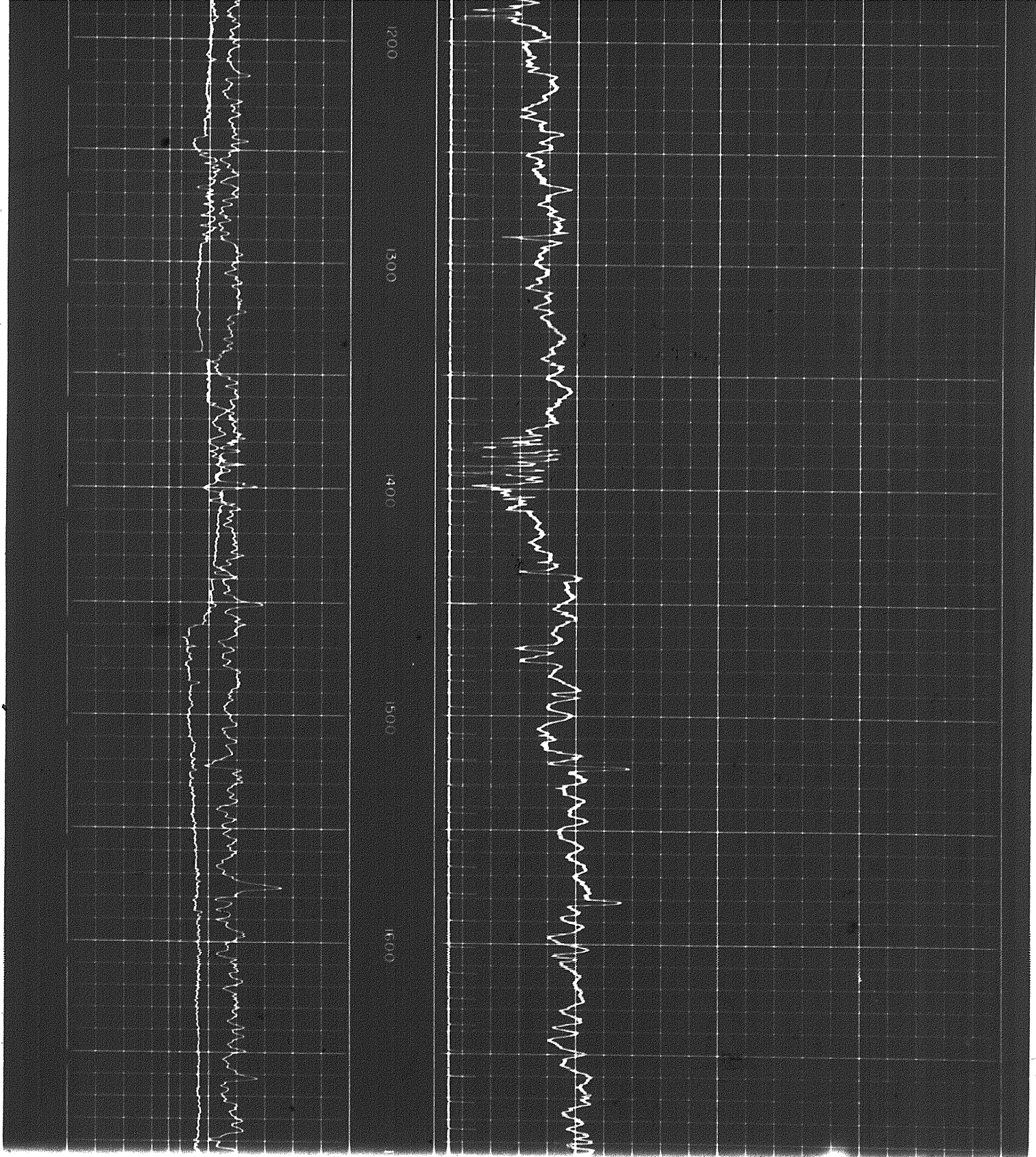


0.700
0.800
0.900
1.000
1.100
1.200

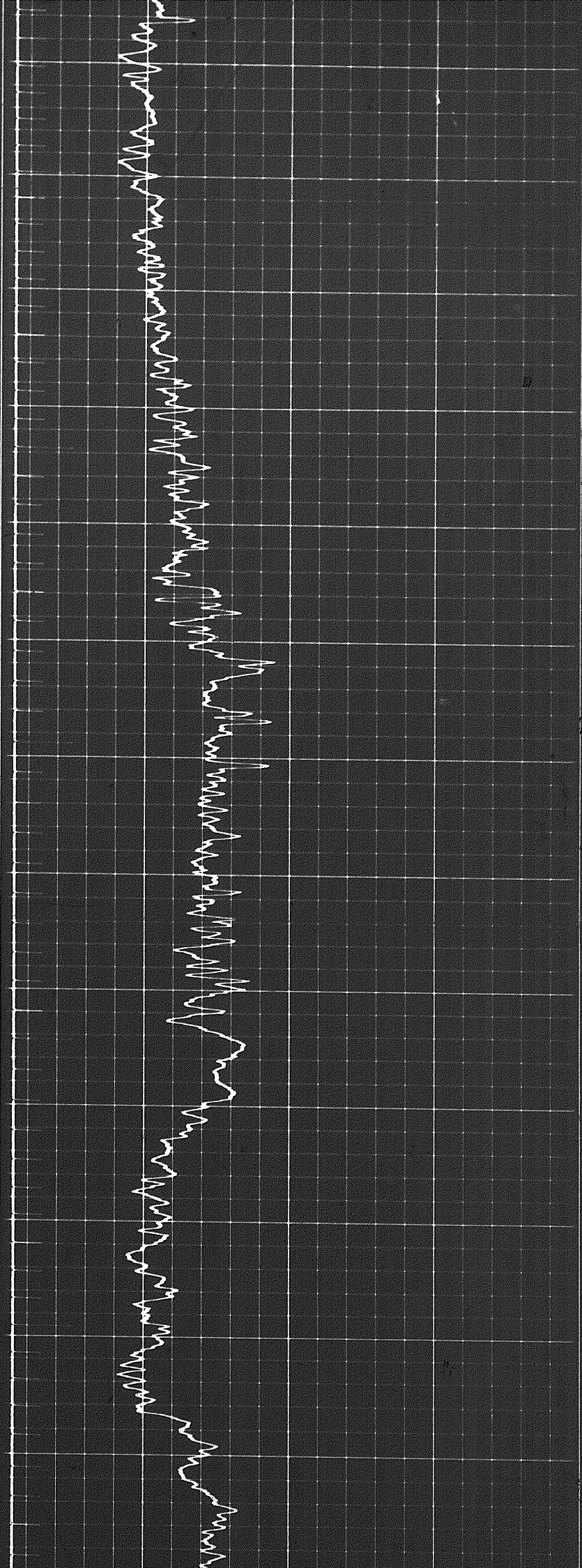
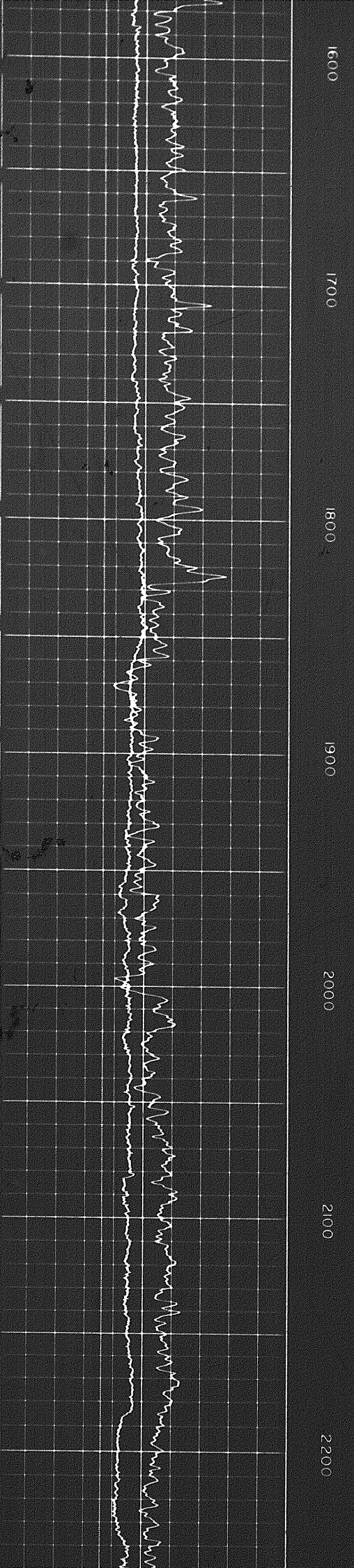
Casing

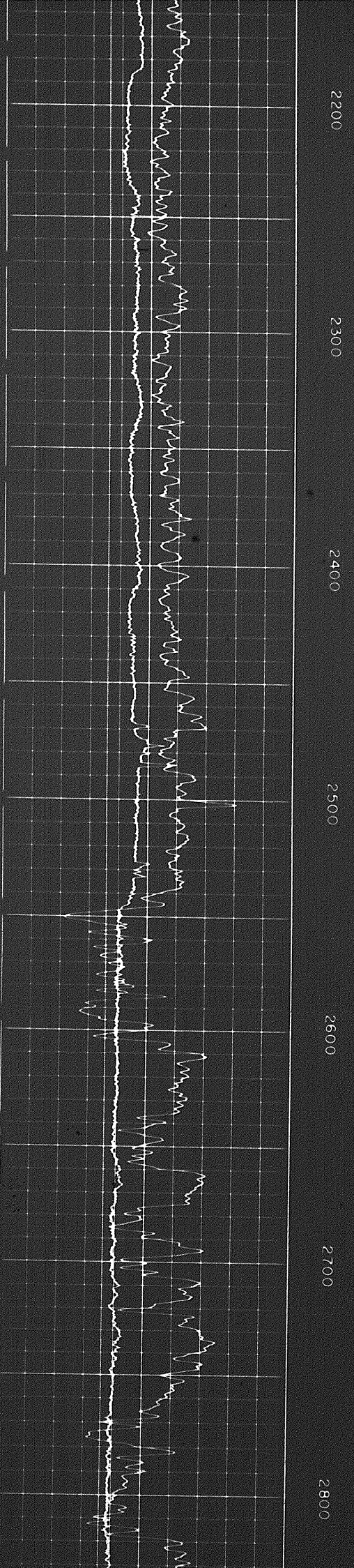
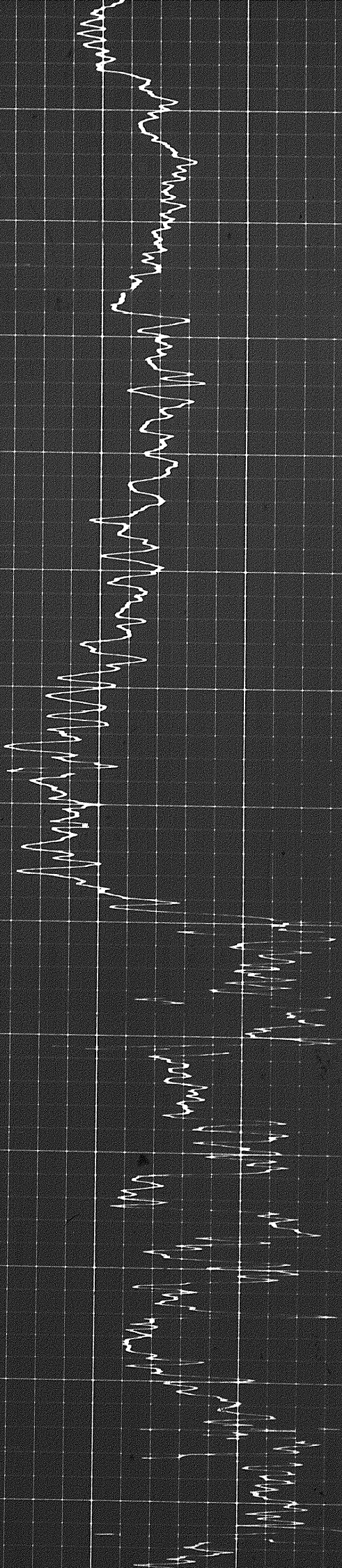
Calibration after Survey



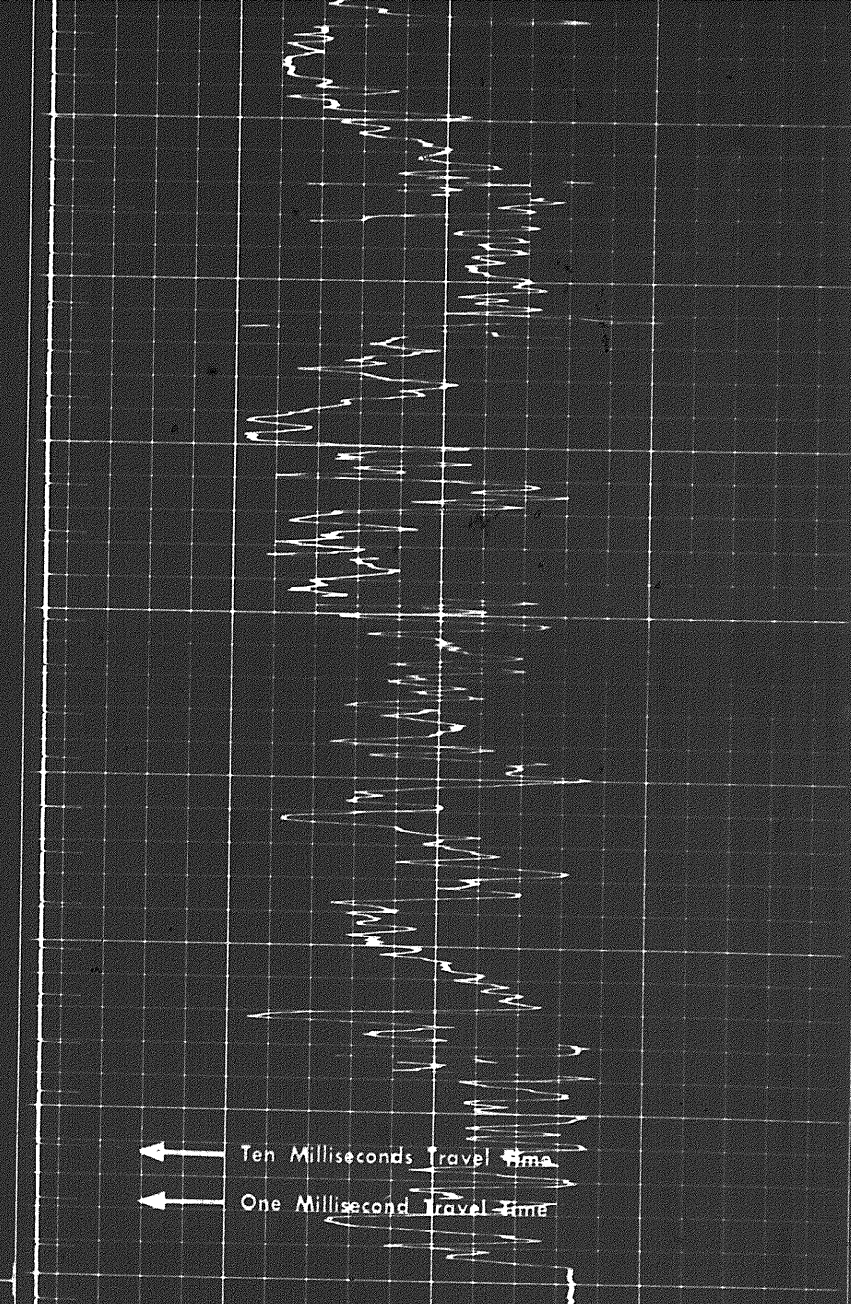
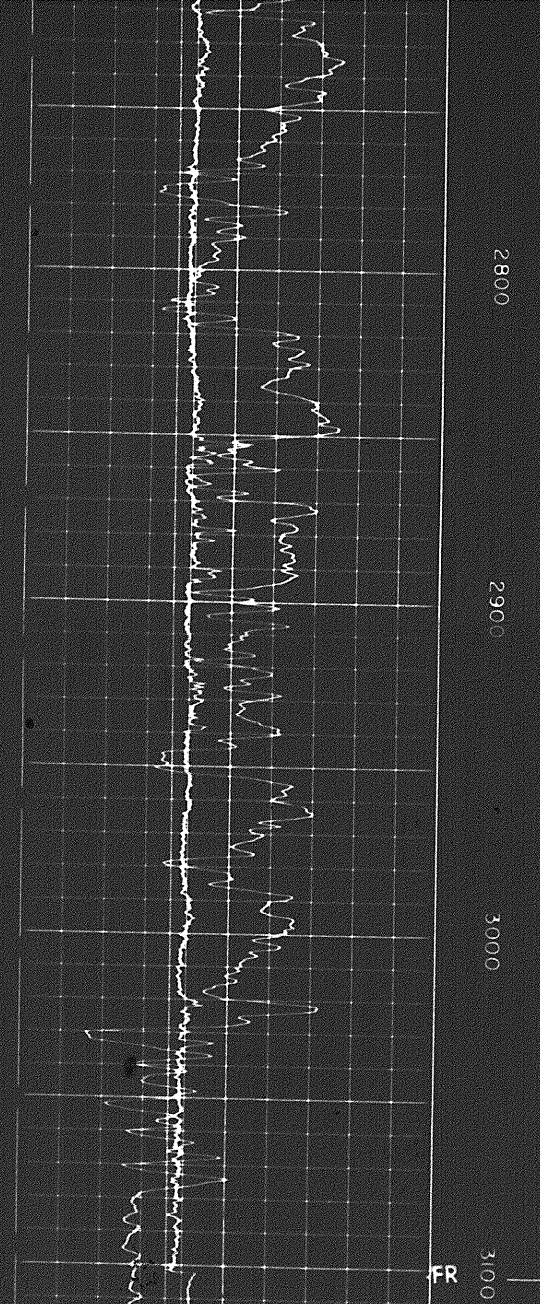


70 G

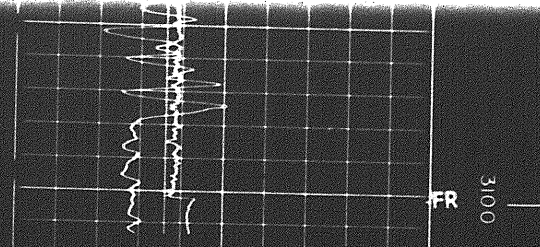




2200 2300 2400 2500 2600 2700 2800



6	7	8	9	10	11	12	13	14
CALIPER hole diameter in inches								
Sens. 150 T.C. 2								
Zero 0 div. to left								



6	7	8	9	10	11	12	13	14
CALIPER hole diameter in inches								
Sens. 150 T.C. 2								
Zero 0 div. to left								

Speed in Ft

160 130 100

6 7 8 9 10 11 12 13 14

CALIPER
hole diameter in inches

Speed in FPM
Sens. 150 T.C. 2
Zero 0 div. to left
150 300

GAMMA RAY
API UNITS

DEPTHS

SONIC
INTERVAL TRANSIT TIME
microseconds per foot



DETAIL LOG
5' = 100'

GAMMA RAY
API UNITS

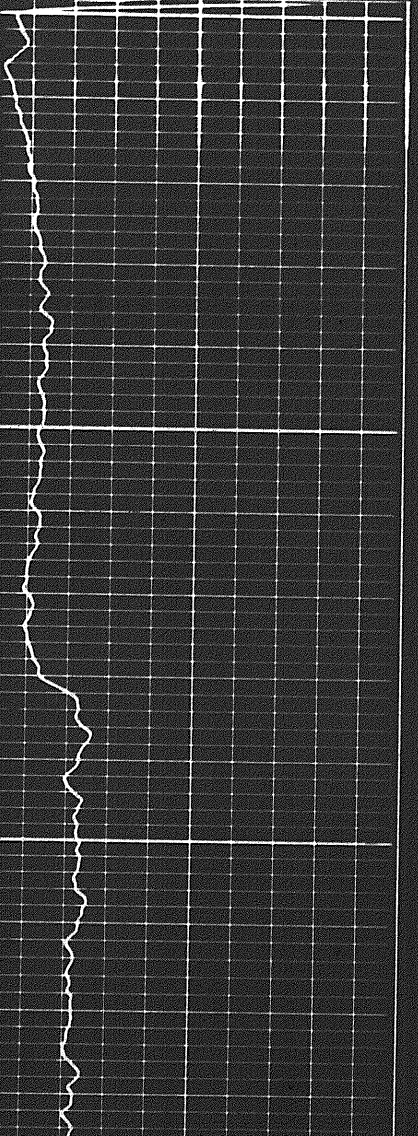
DEPTHS

SONIC
INTERVAL TRANSIT TIME
microseconds per foot

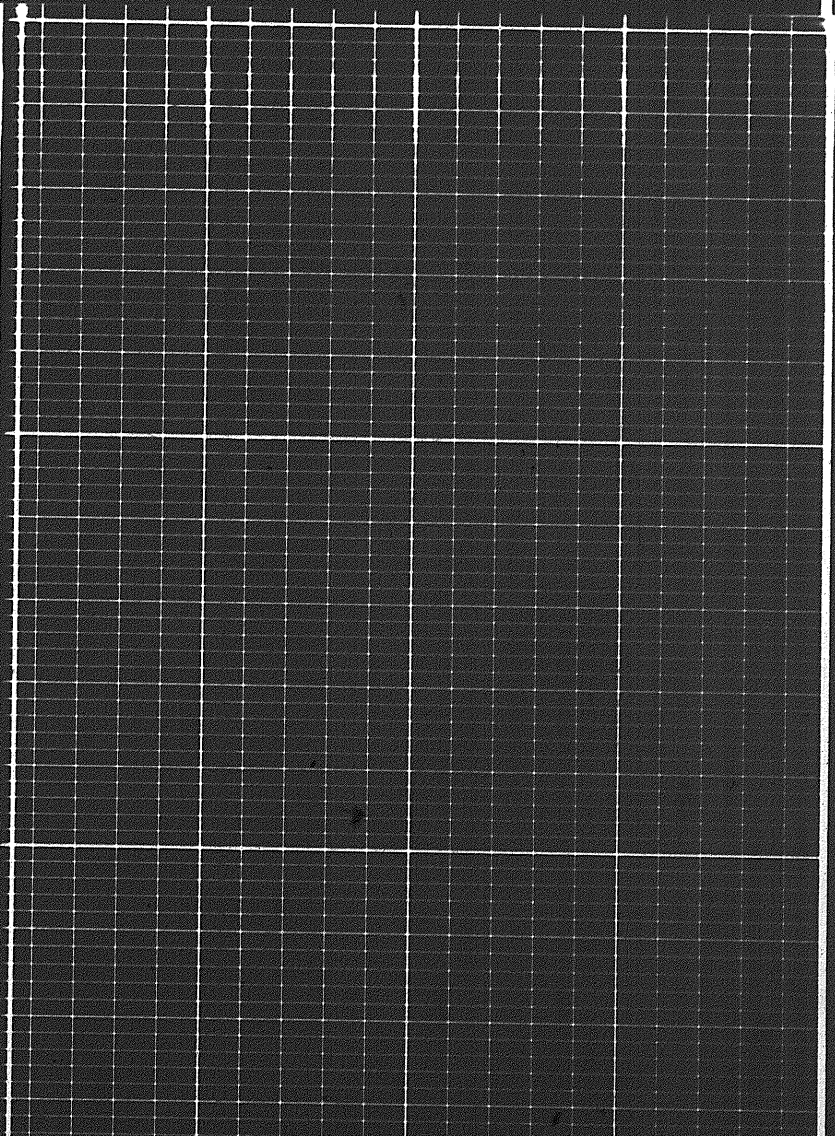
Speed in FPM
Sens. 150 T.C. 2
Zero 0 div. to left
150 300

CALIPER
hole diameter in ches

6 7 8 9 10 11 12 13 14



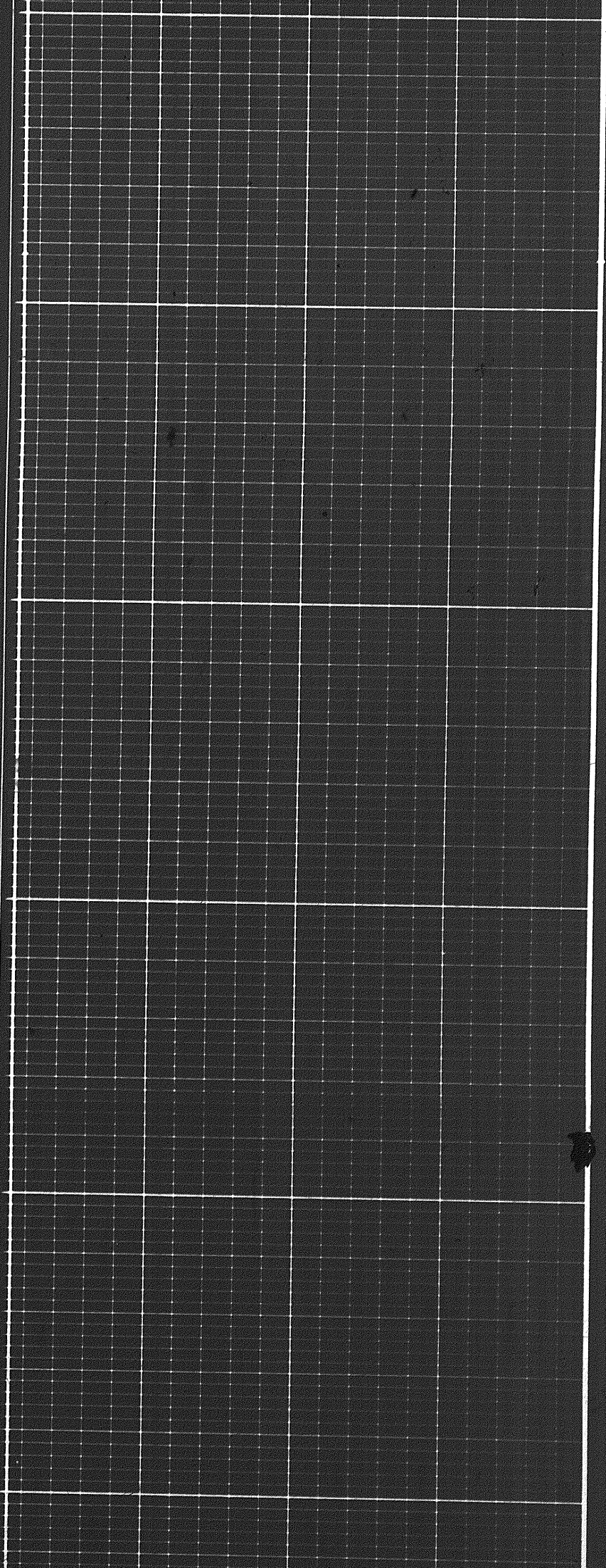
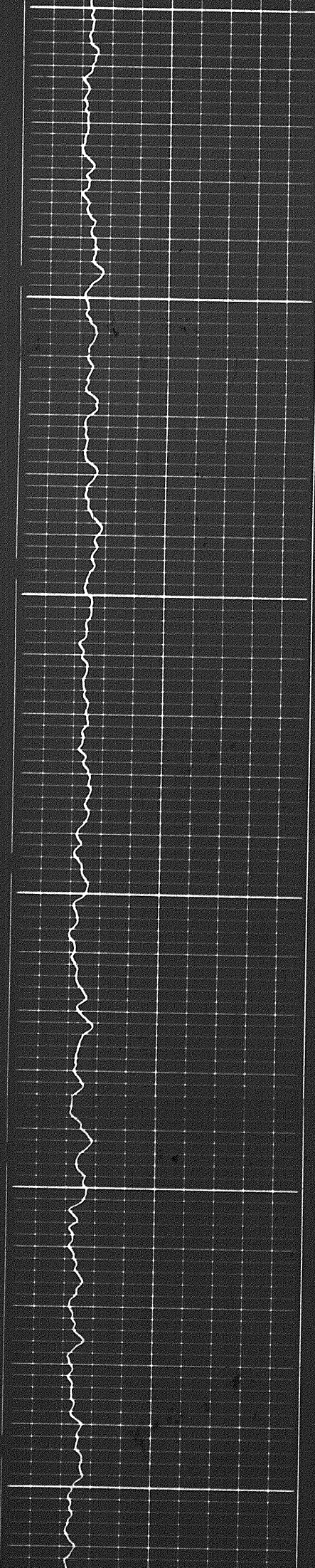
1000
0100

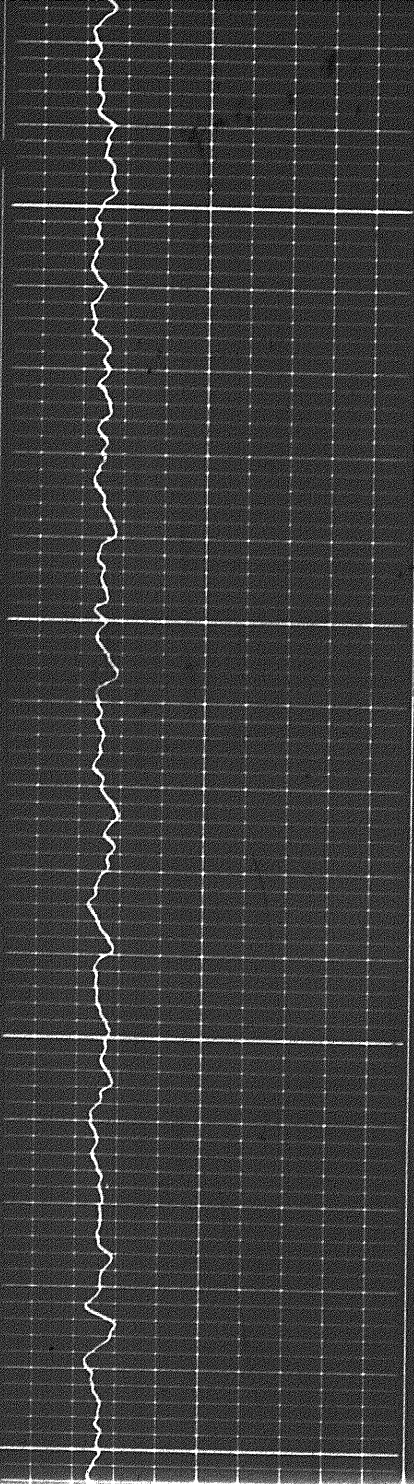


0100

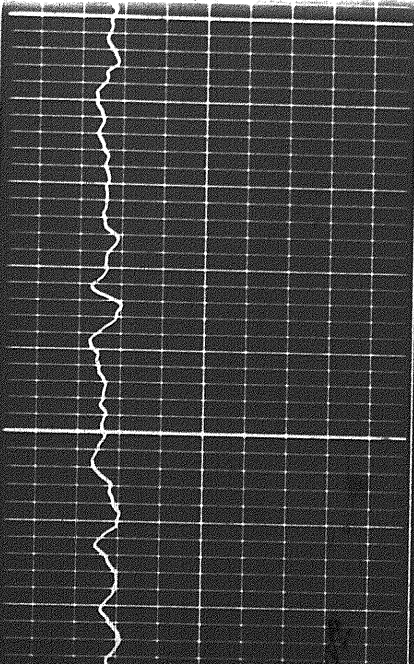
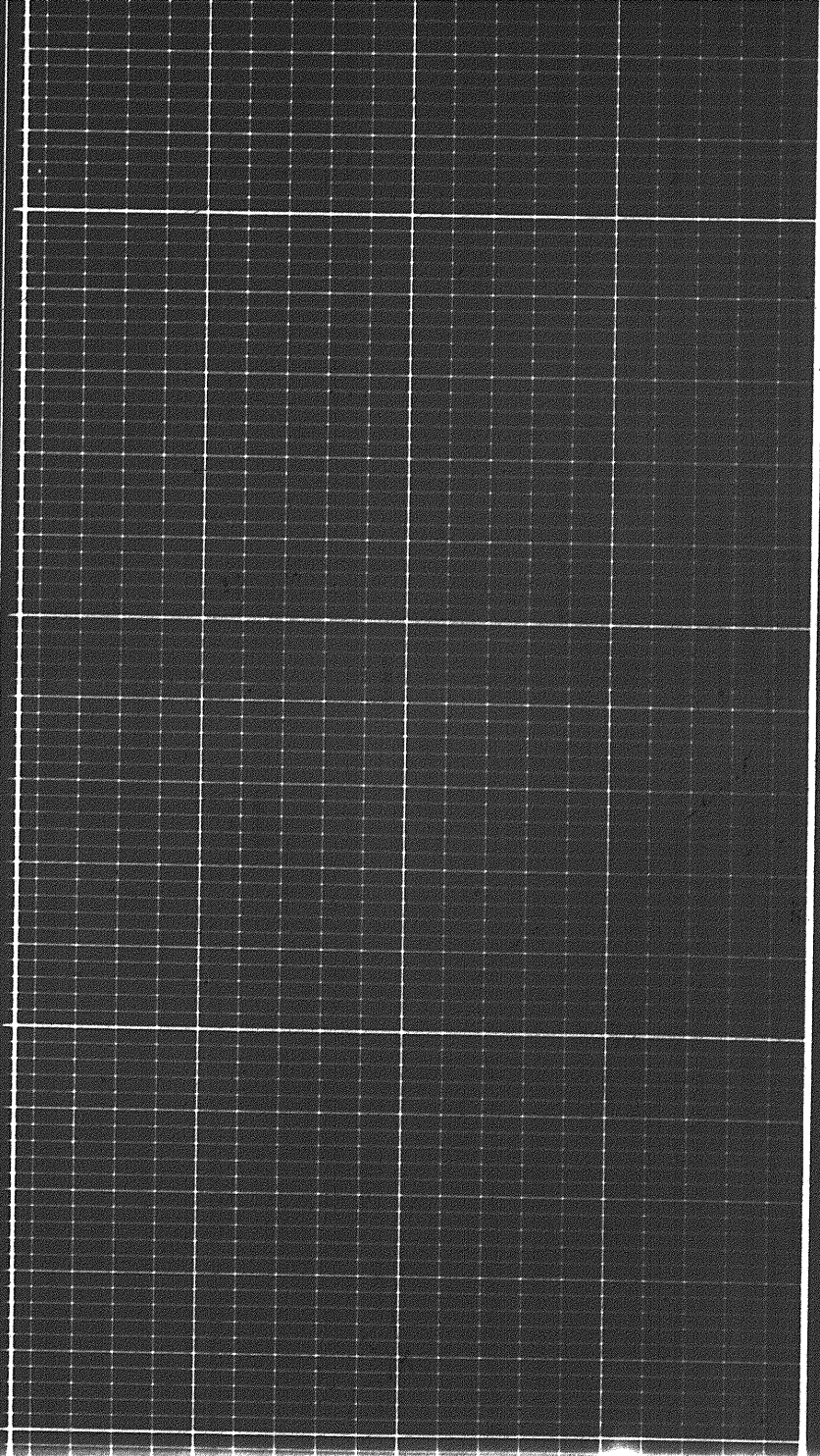
0200

0300

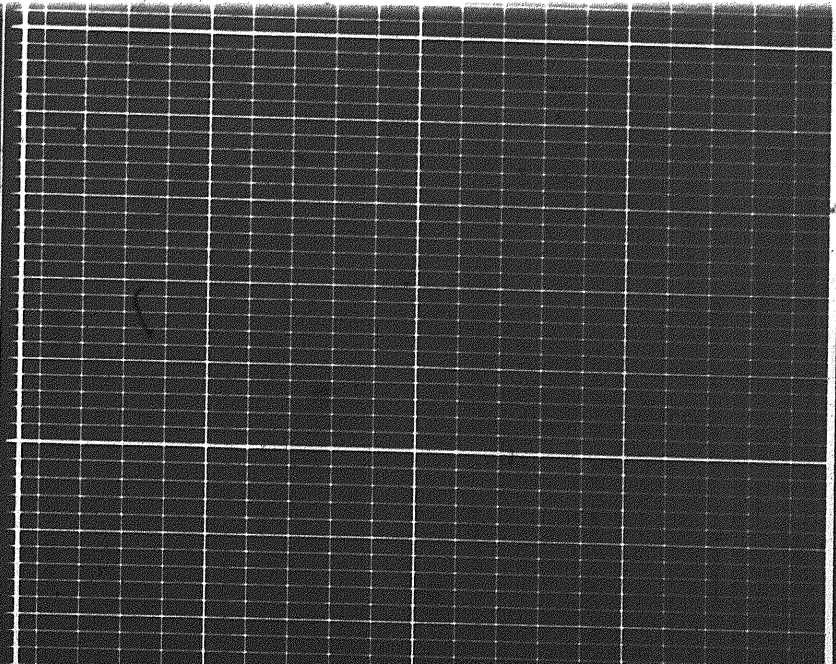


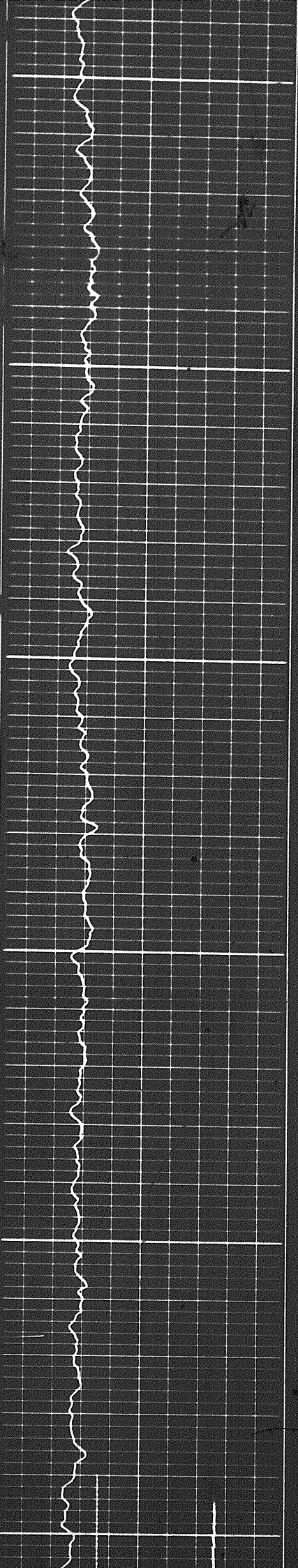


0400



0500

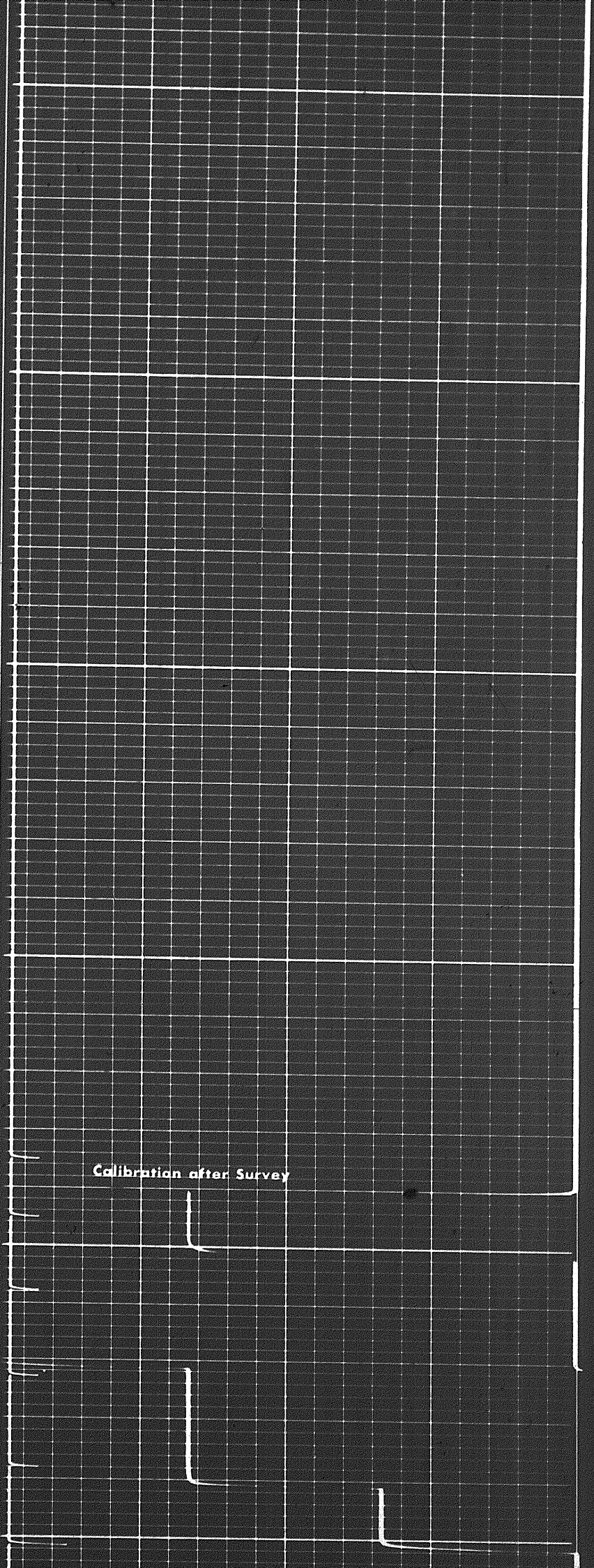




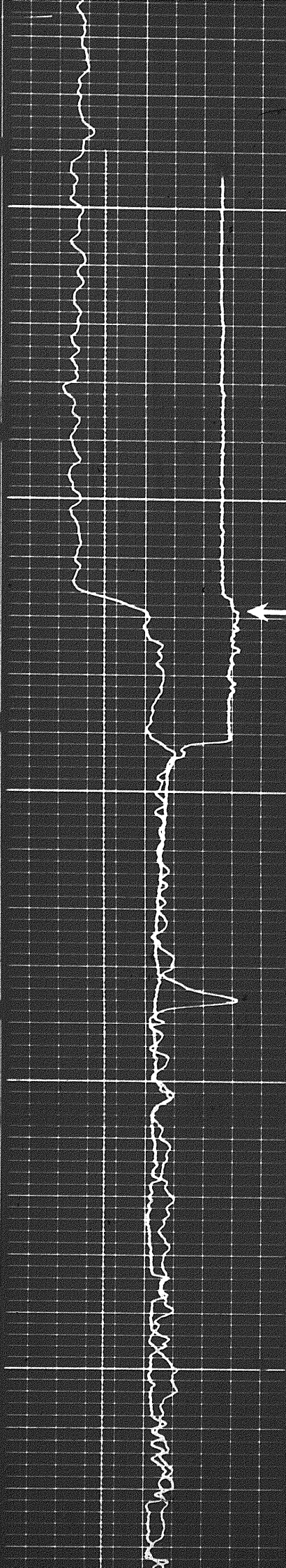
0.500

0.600

0.700



Calibration after Survey

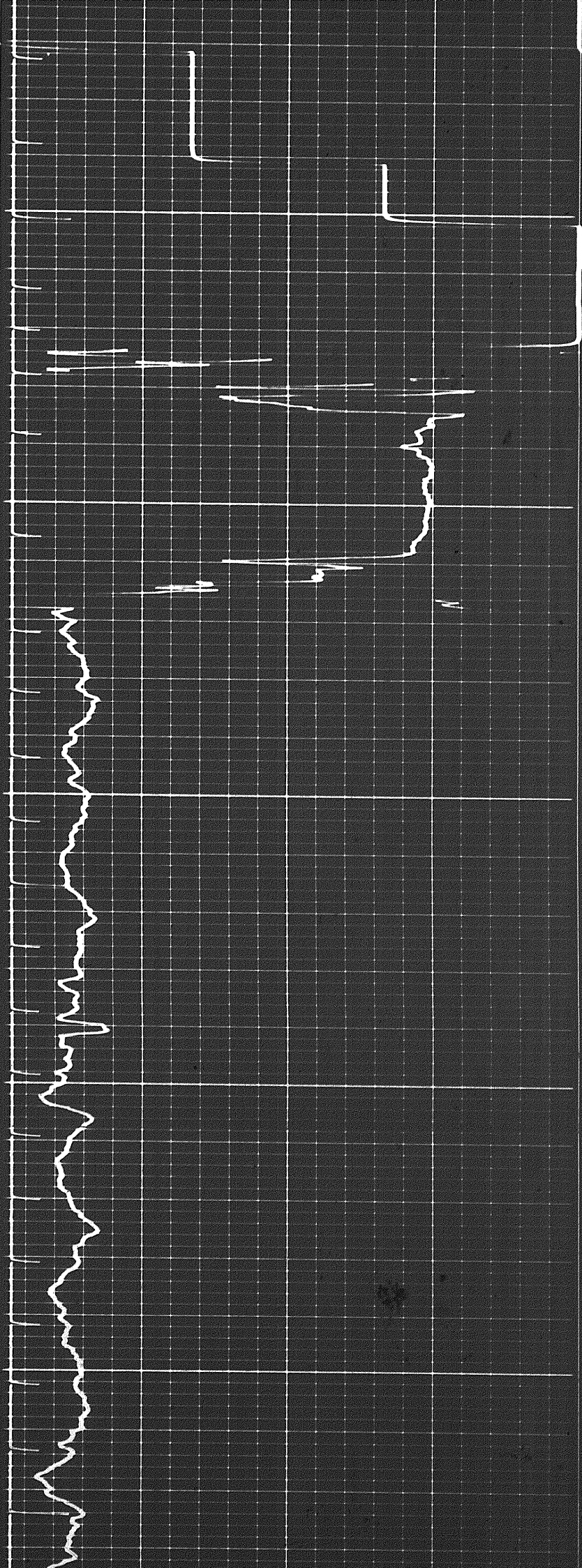


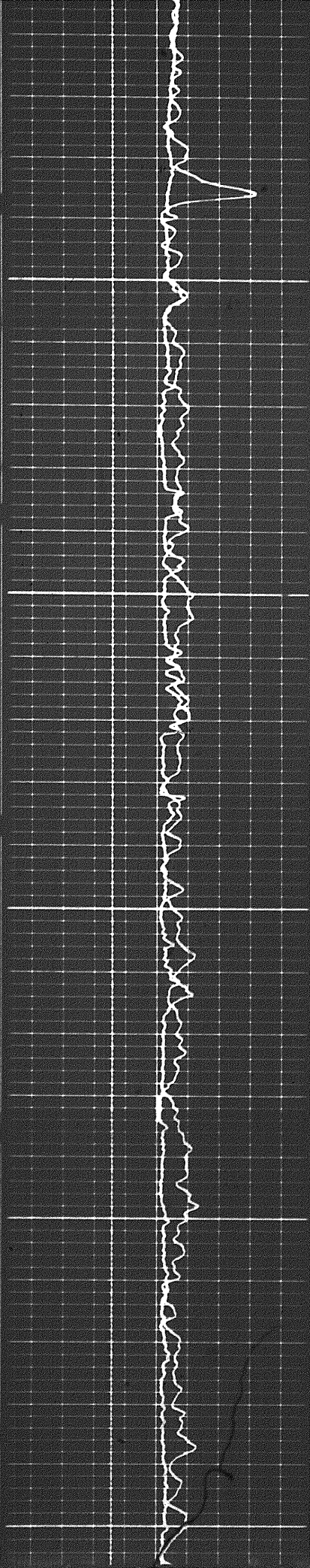
Casing



0080

0060

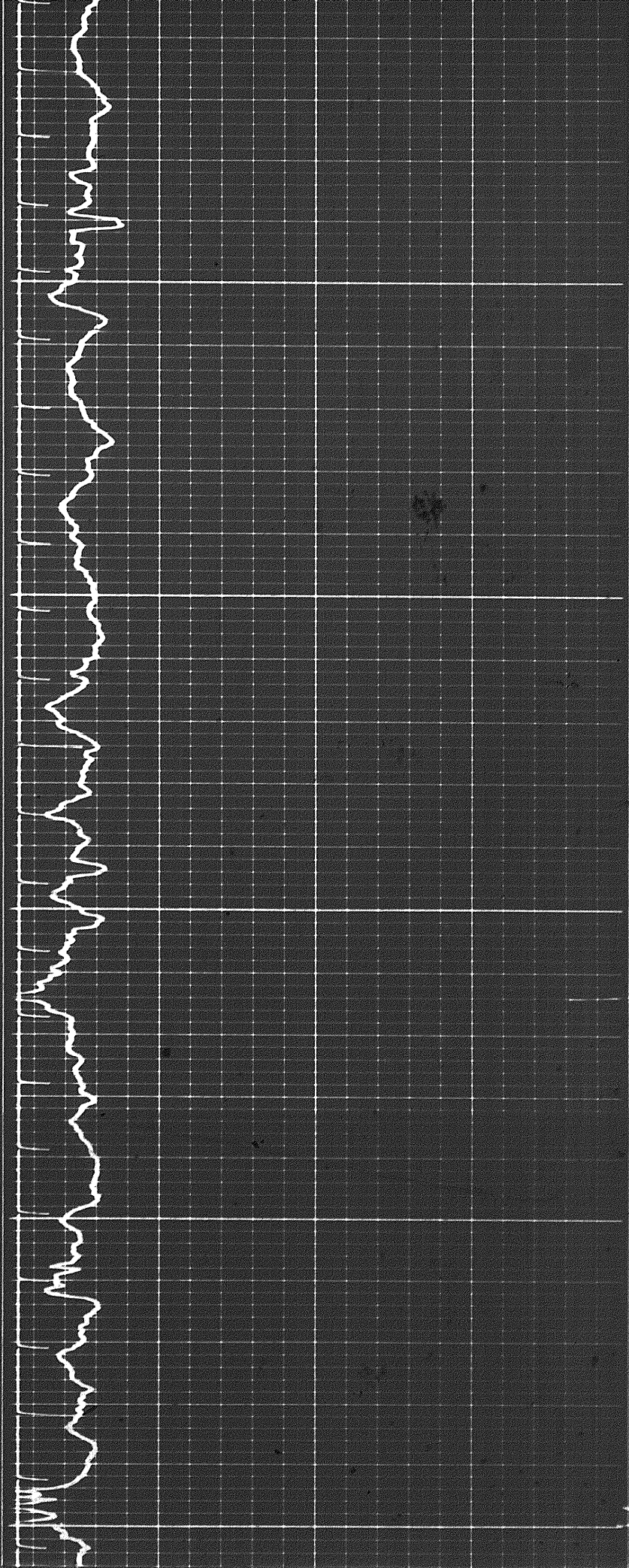




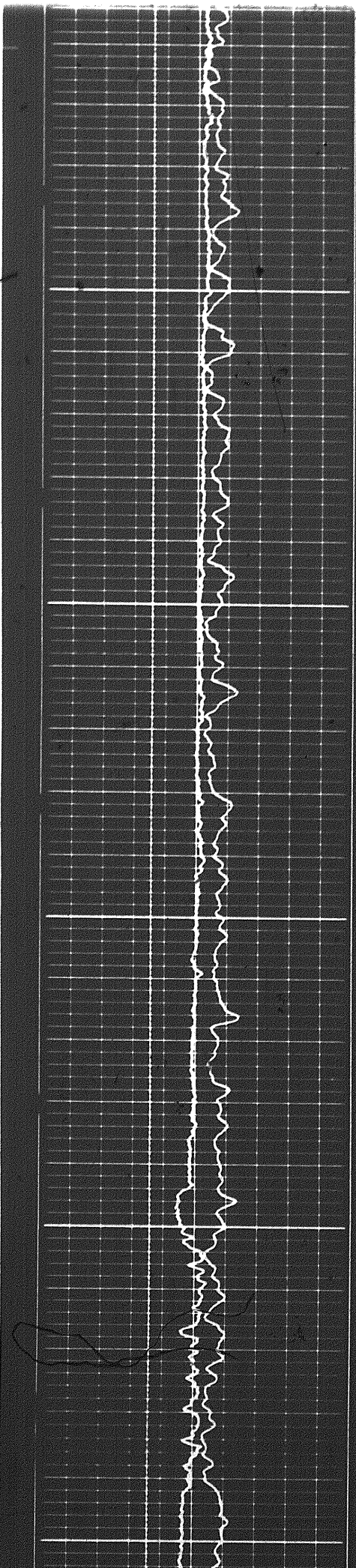
0.001

0.001

0.060



5 of



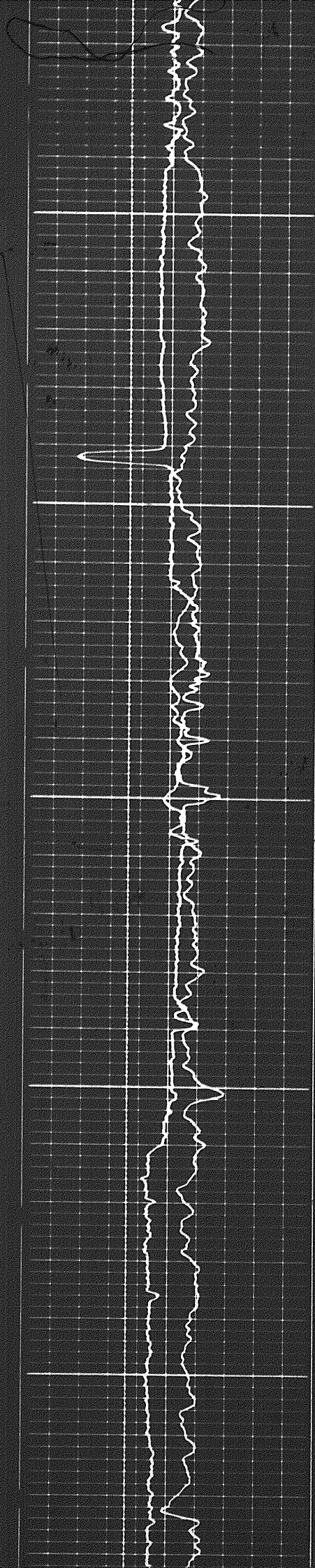
1100

1200

1300



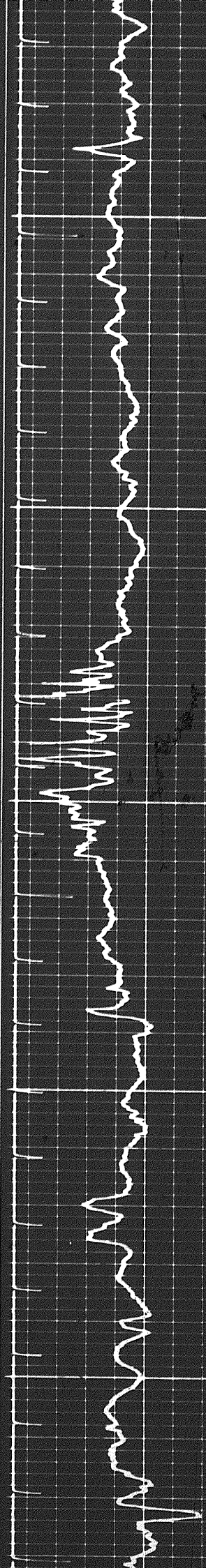
5 of

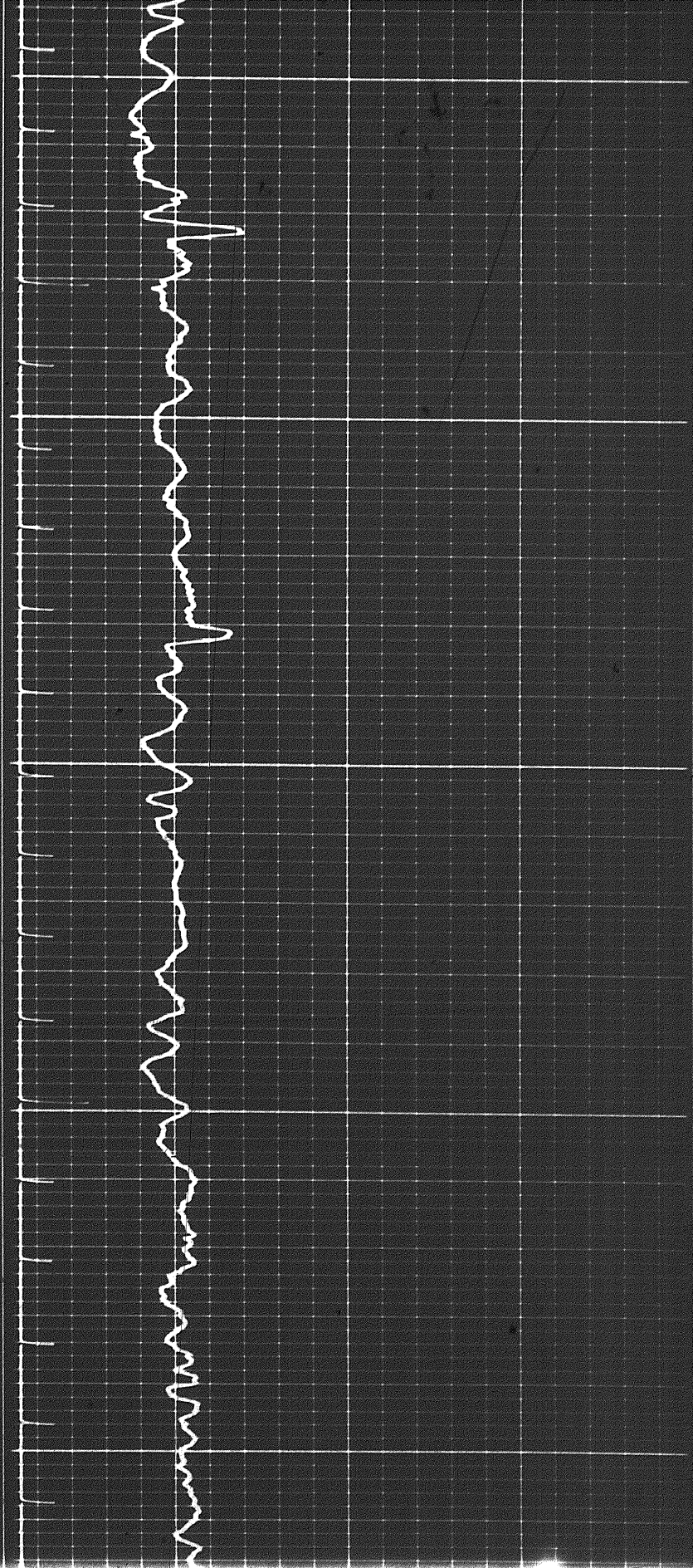


1300

1400

1500

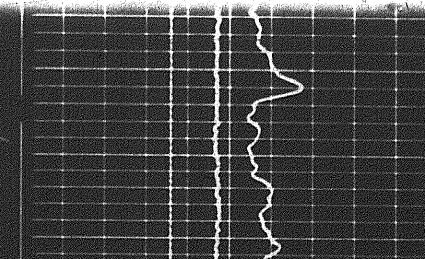
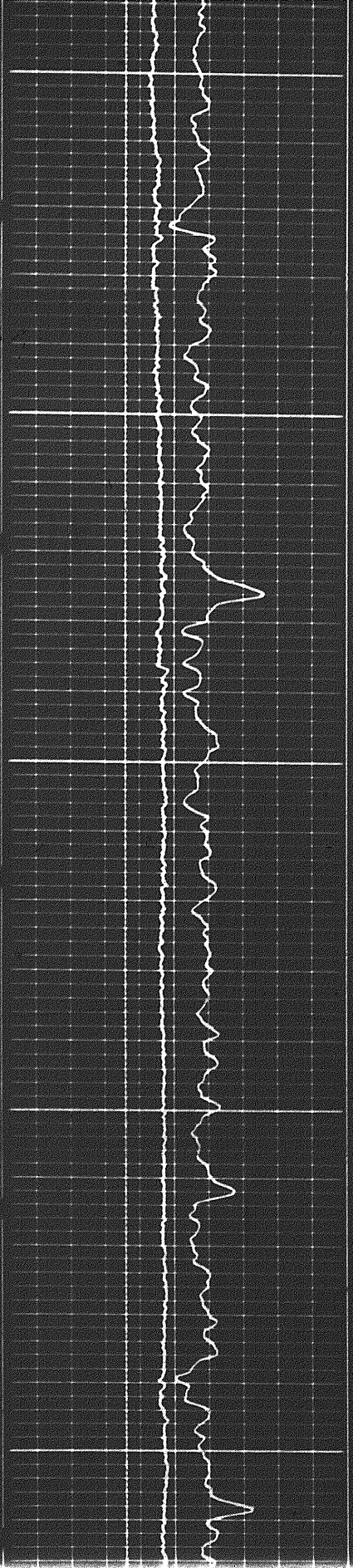




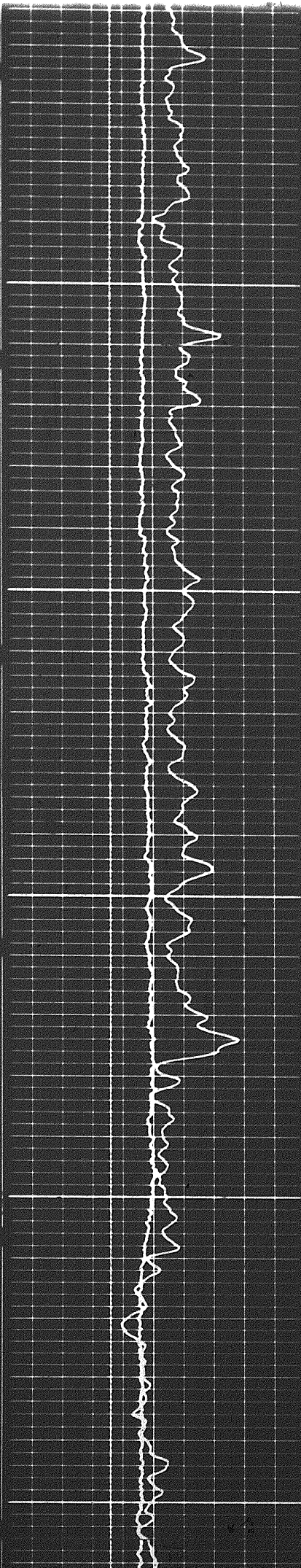
1500

1600

1700



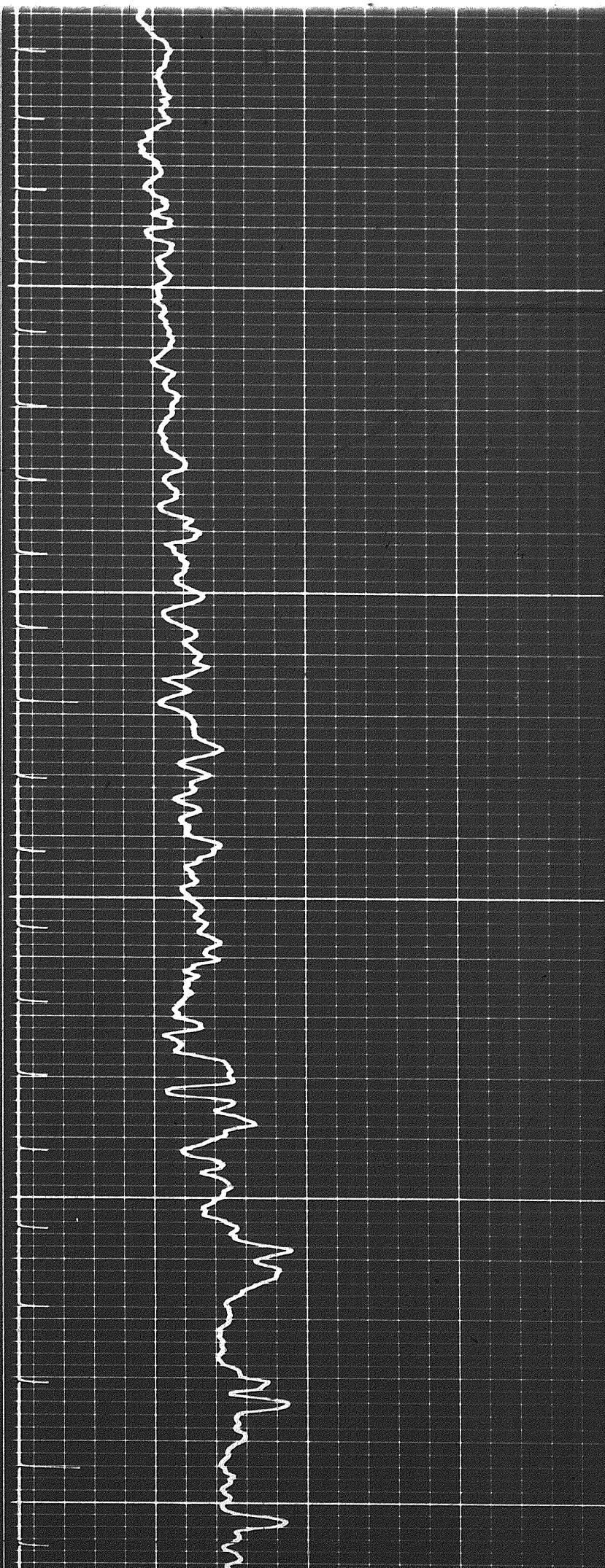
6 of

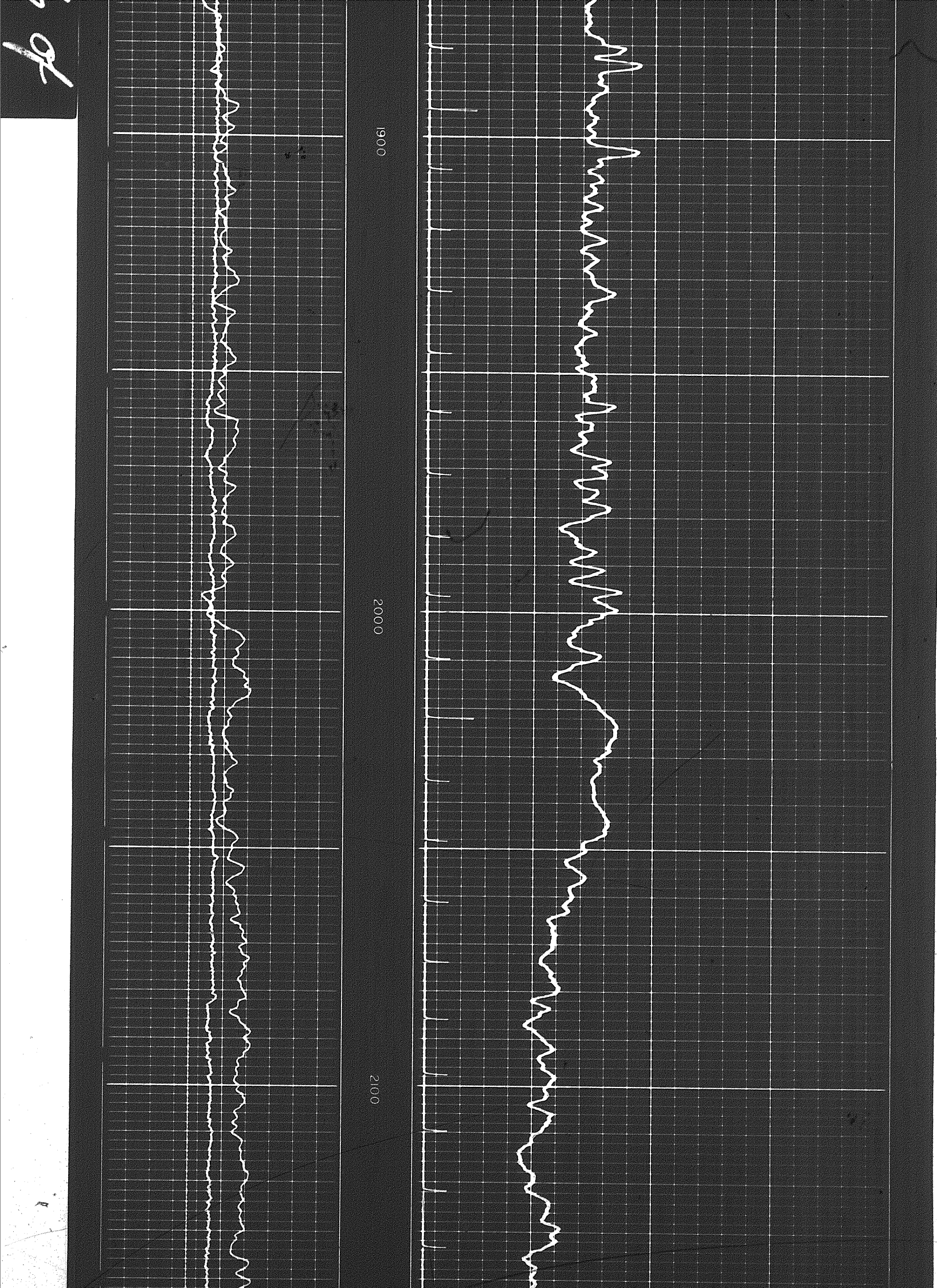


1700

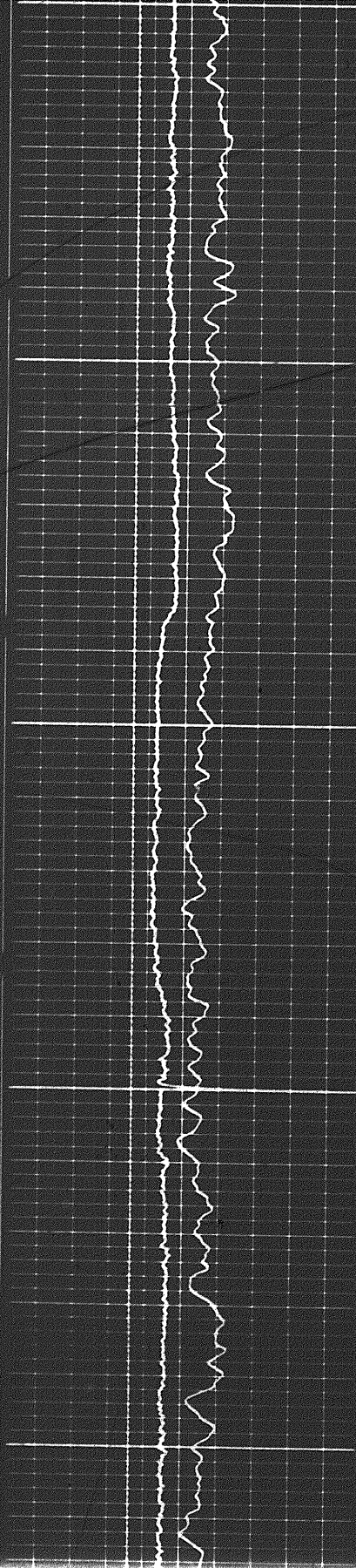
1800

1900





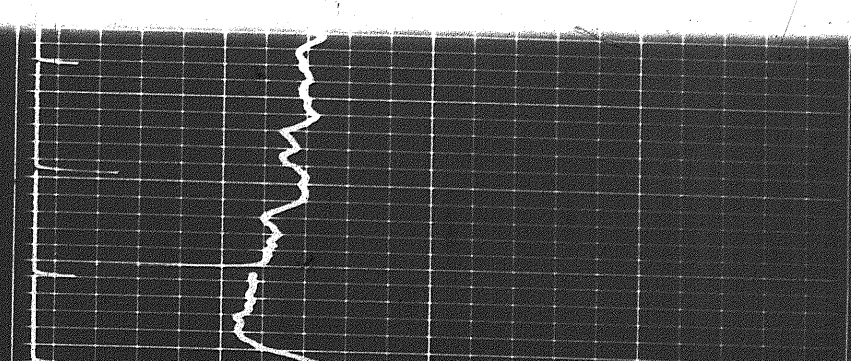
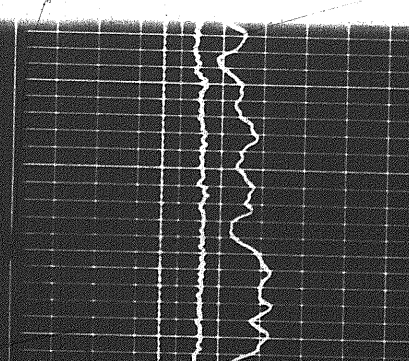
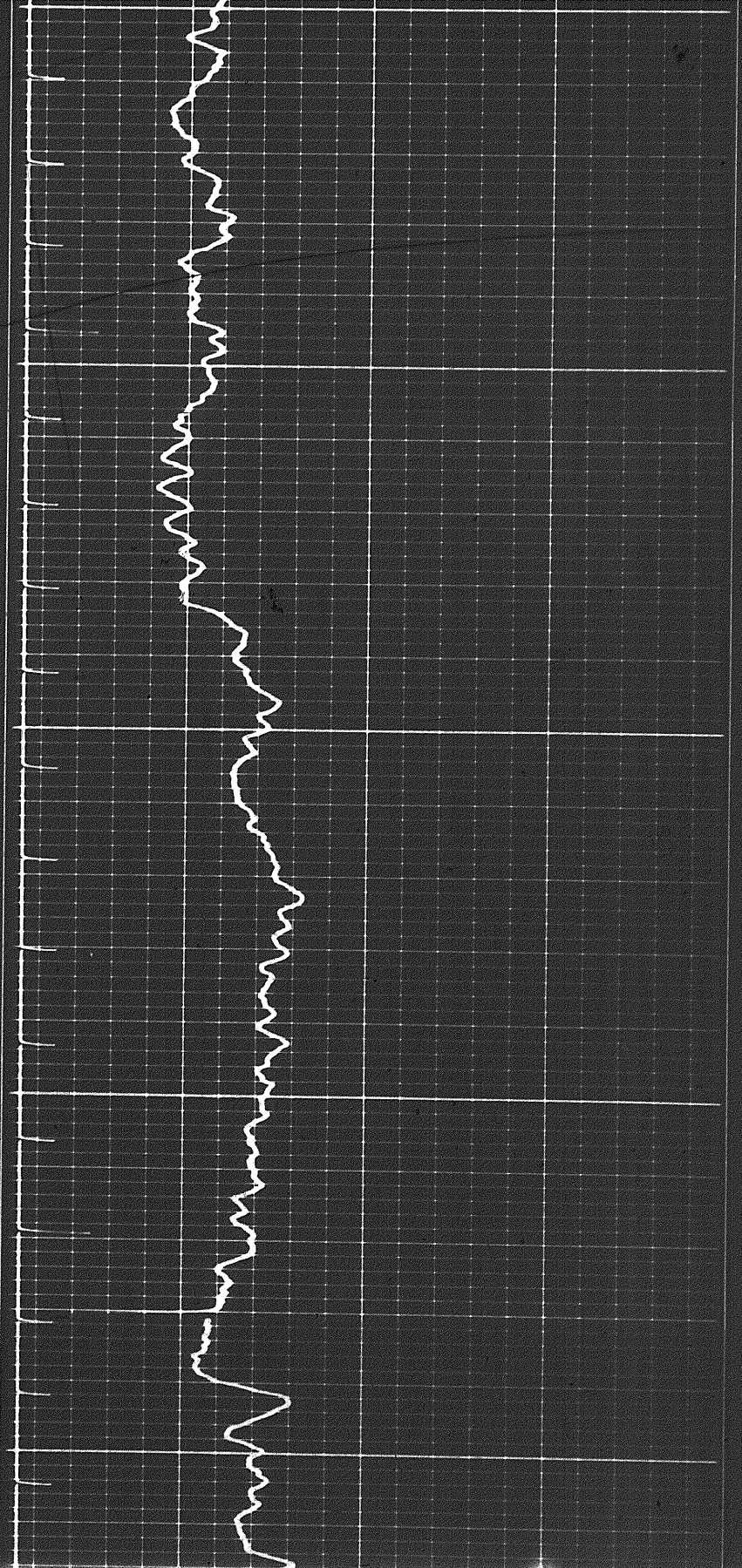
of



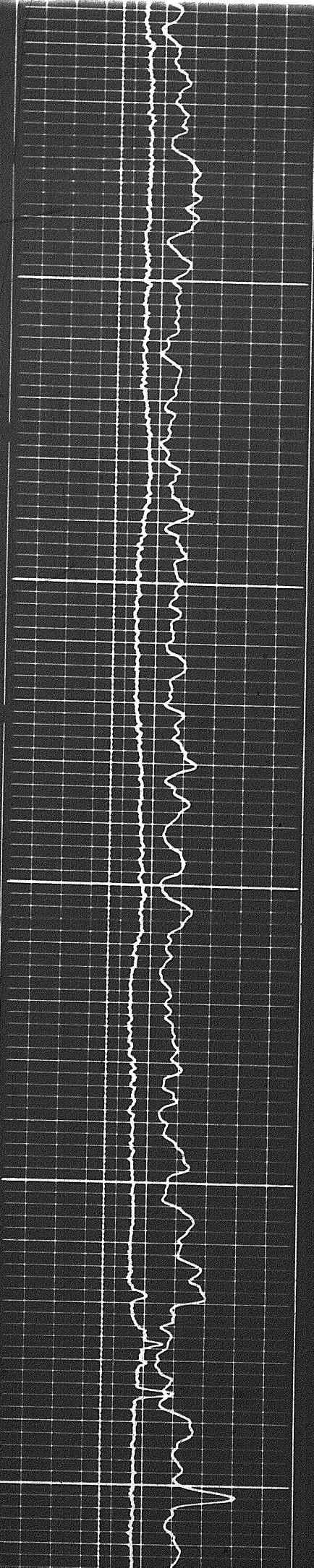
100

2200

2300



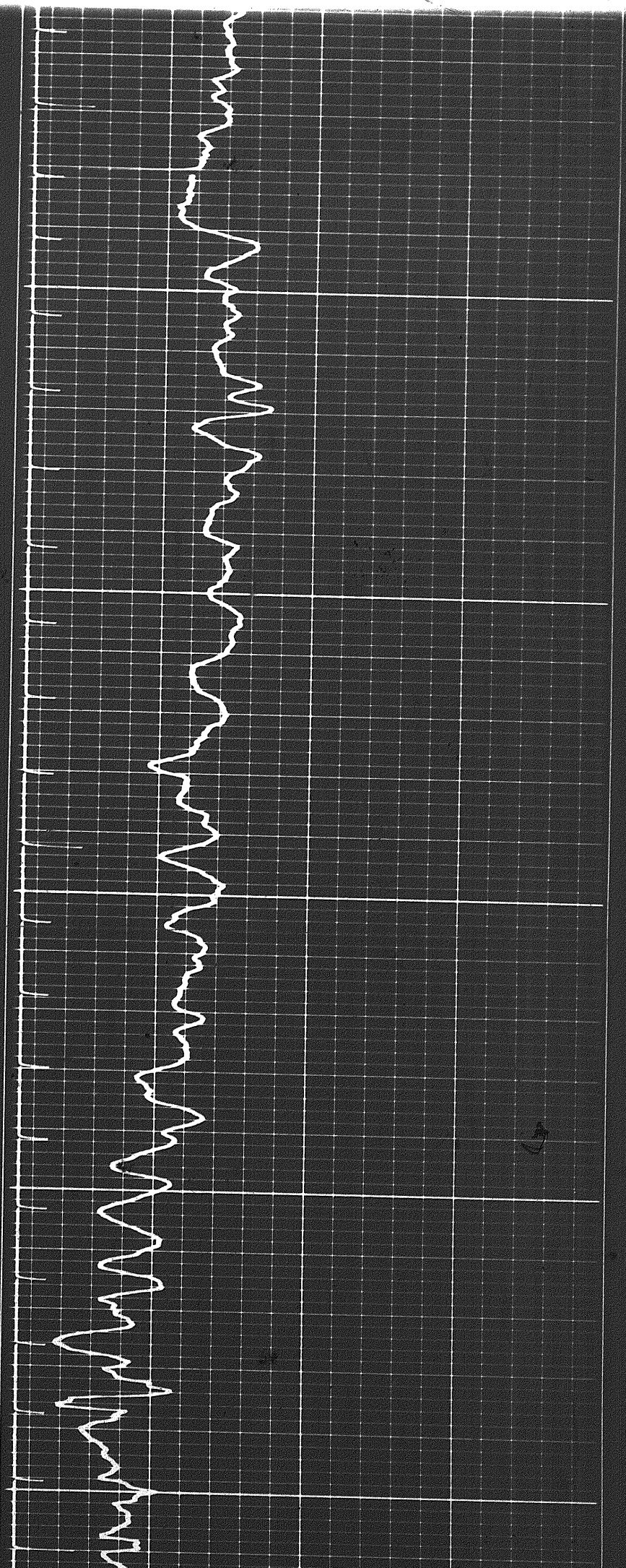
707



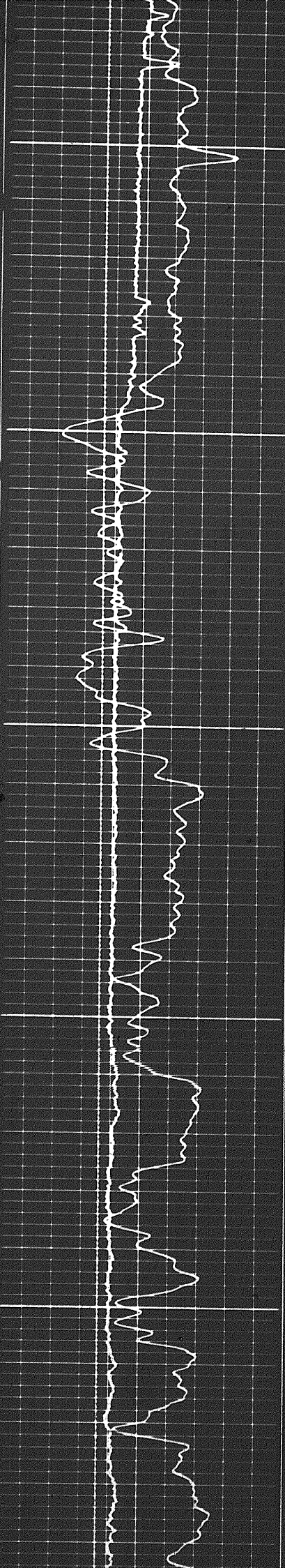
2300

2400

2500



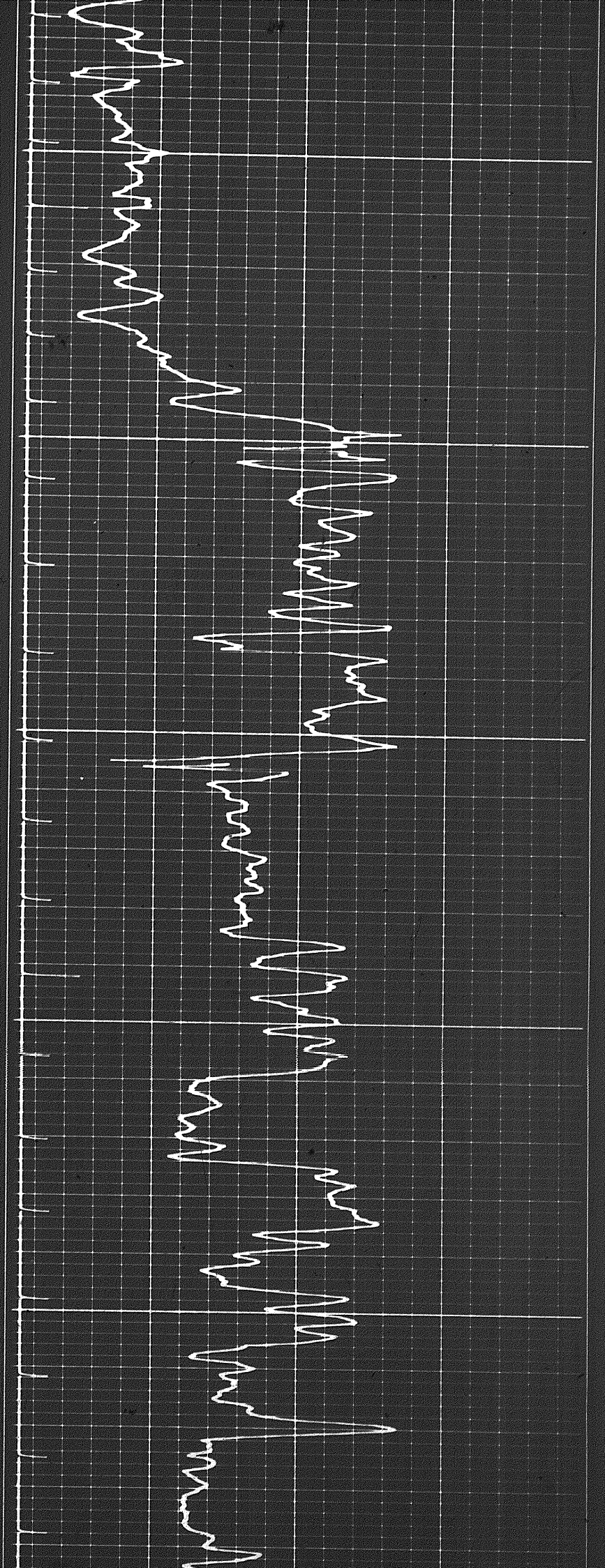
of

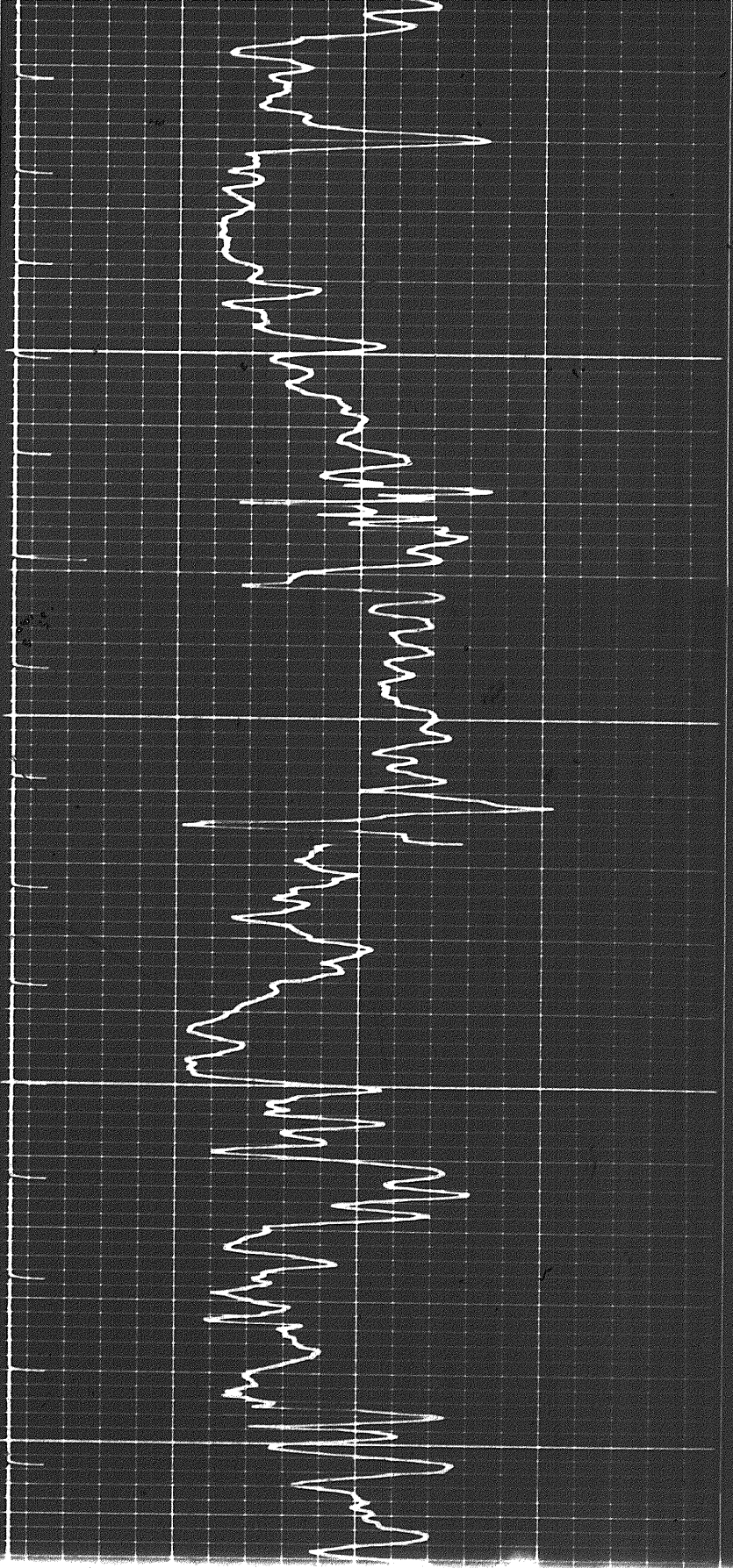


2500

2600

2700

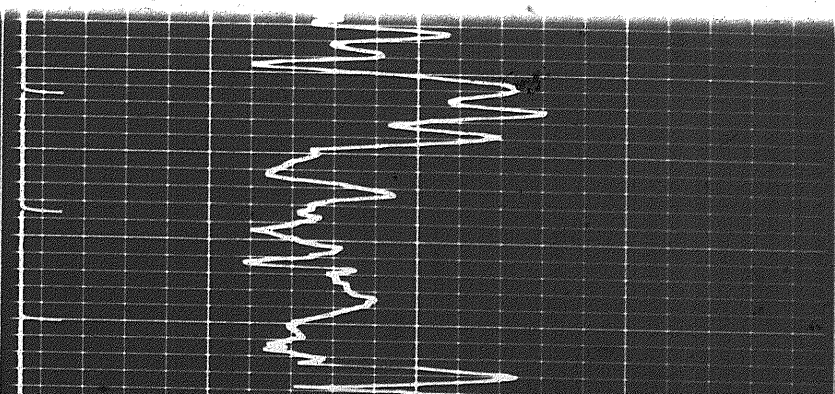
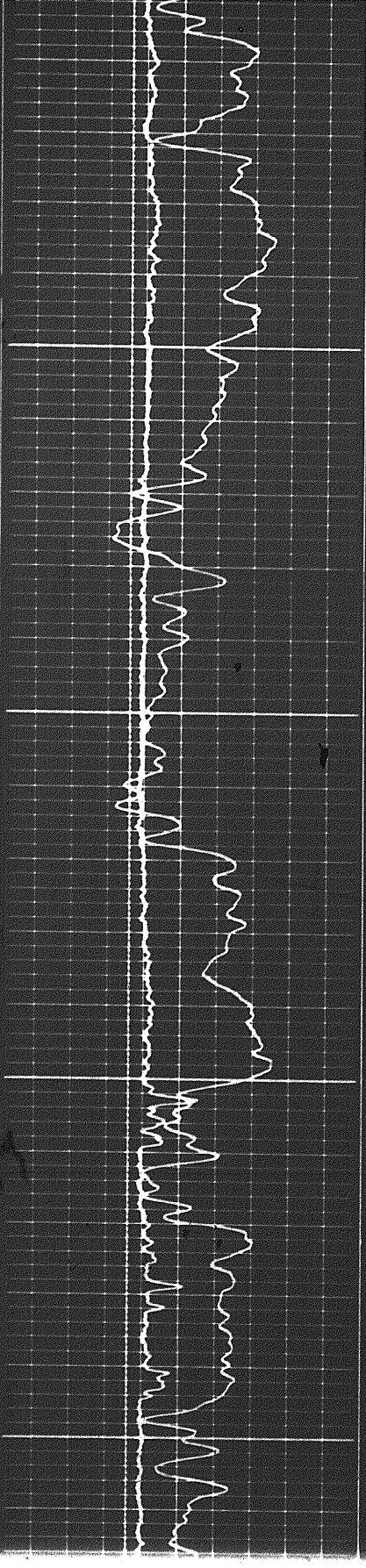




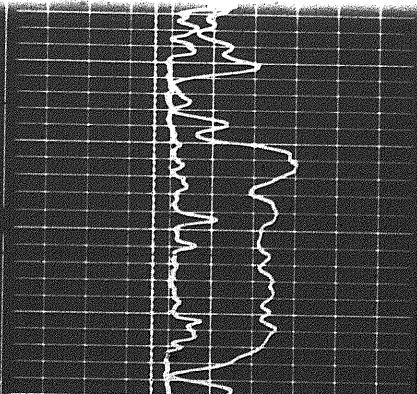
000

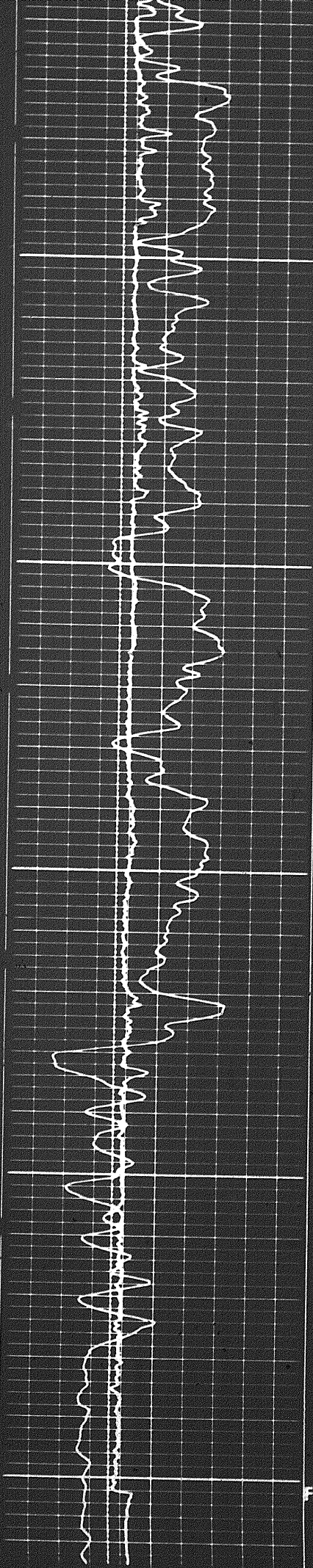
2800

2900



2

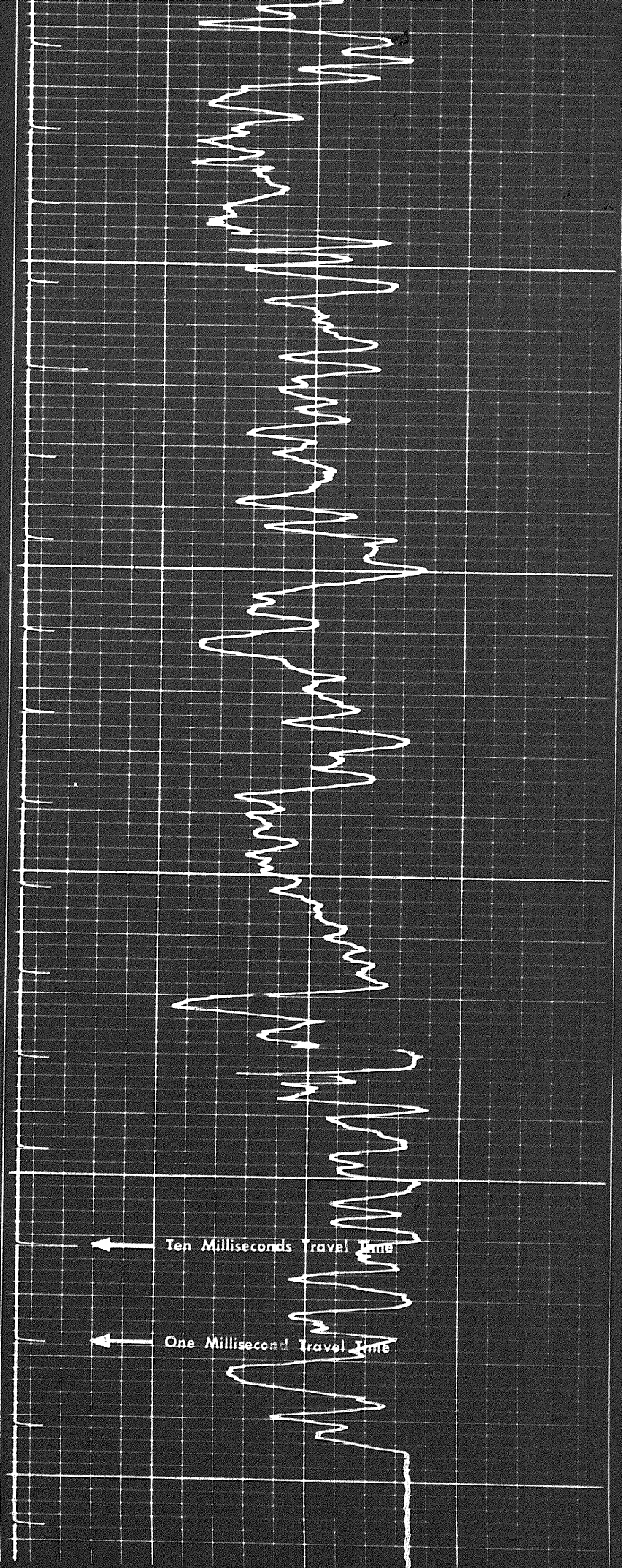




2900

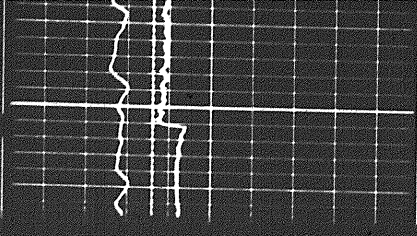
3000

FR 3100

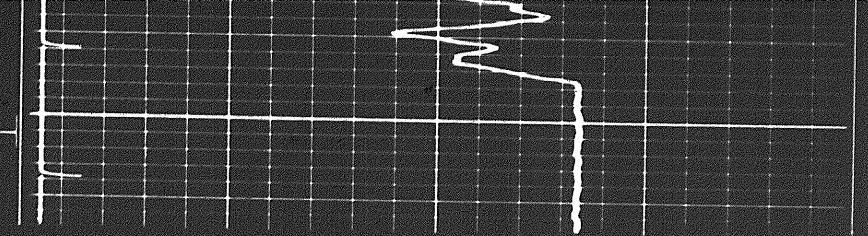


Ten Milliseconds Travel Time

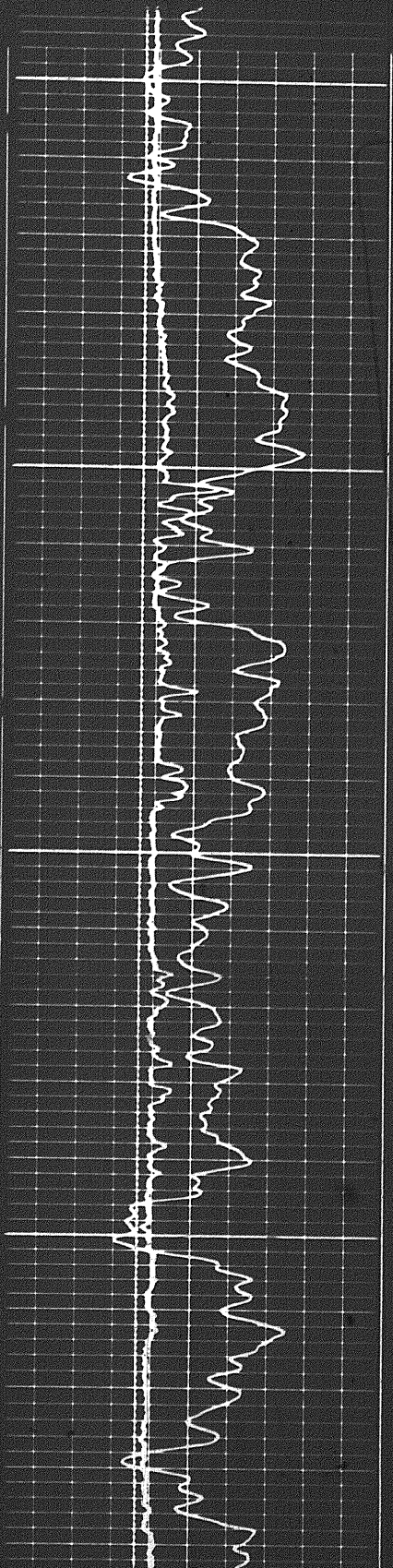
One Millisecond Travel Time



FR
3100

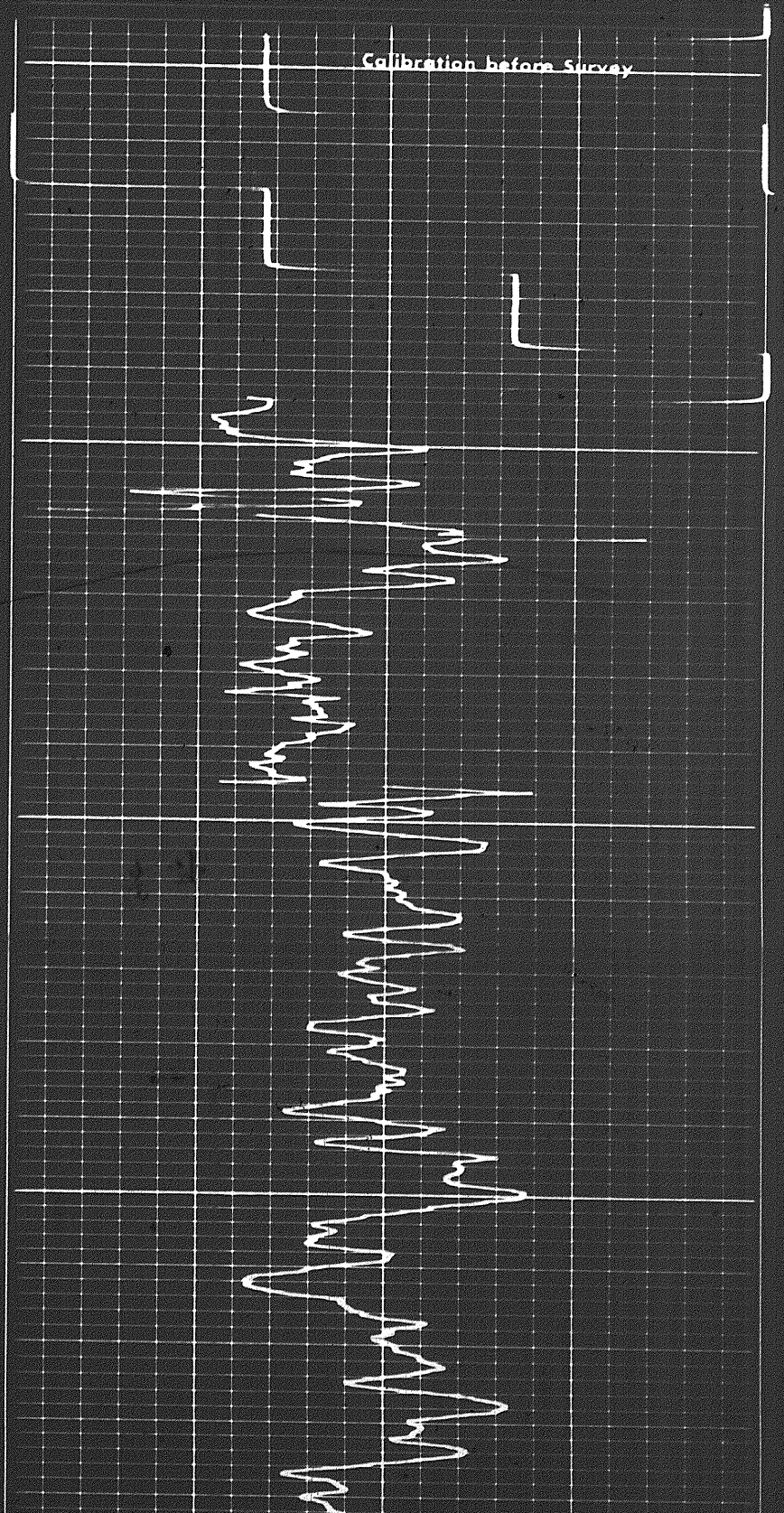


REPEAT SECTION

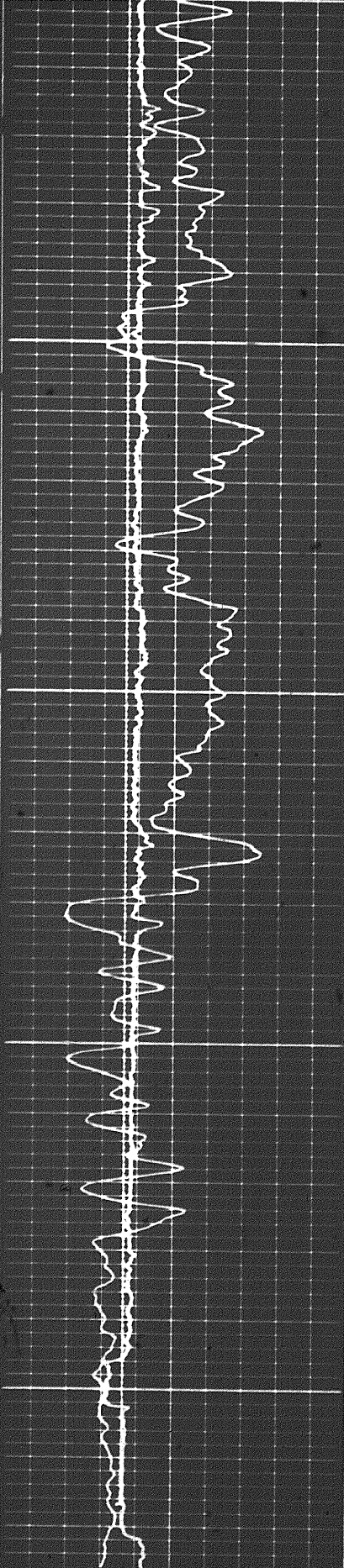


2800

2900



Calibration before Survey

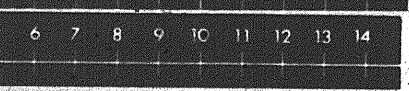


100

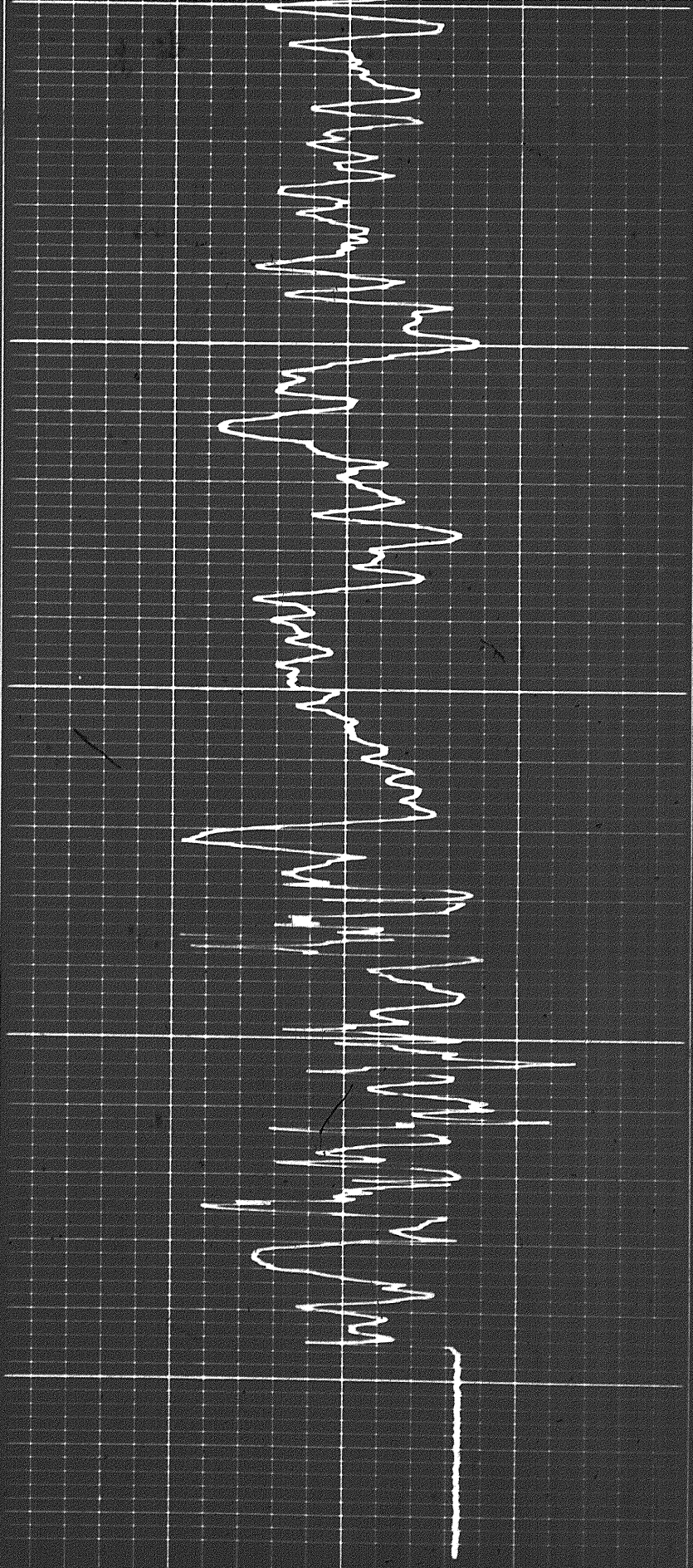
3000

3100

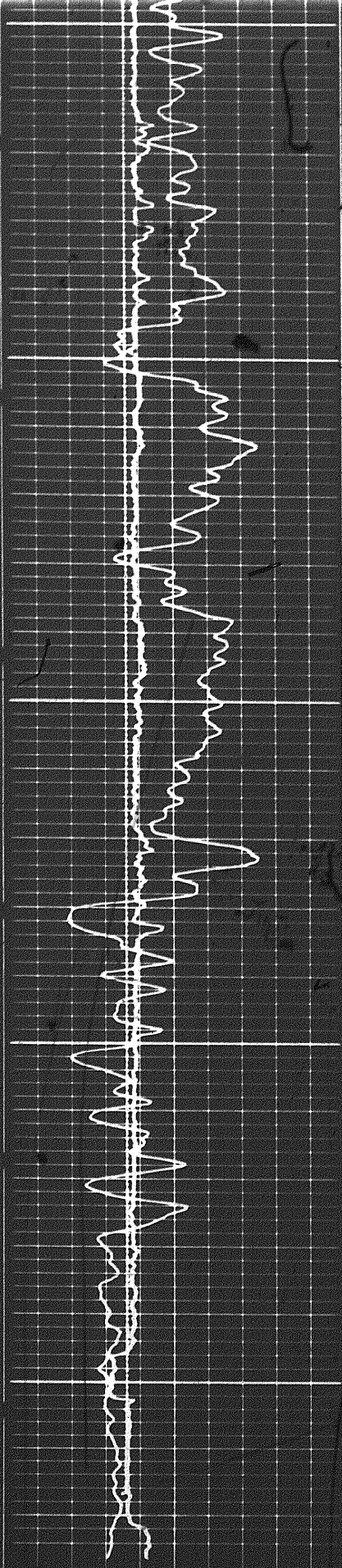
FR



CALIPER
hole diameter in inches



949

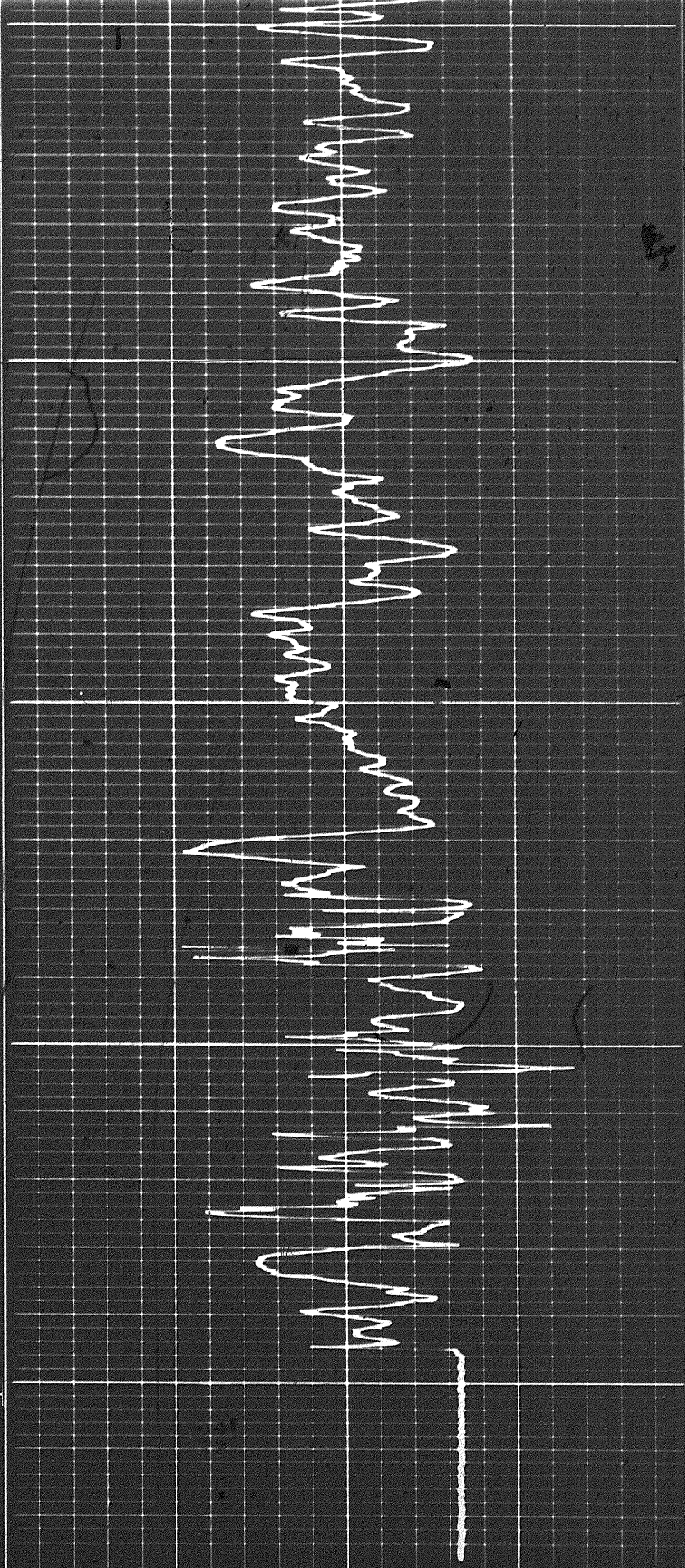


2900

3000

3100

FR



6 7 8 9 10 11 12 13 14

CALIPER
hole diameter in inches

D700

6 7 8 9 10 11 12 13 14

CALIPER
hole diameter in inches

Sens. 150 T.C. 2
Zero 0 div. to left

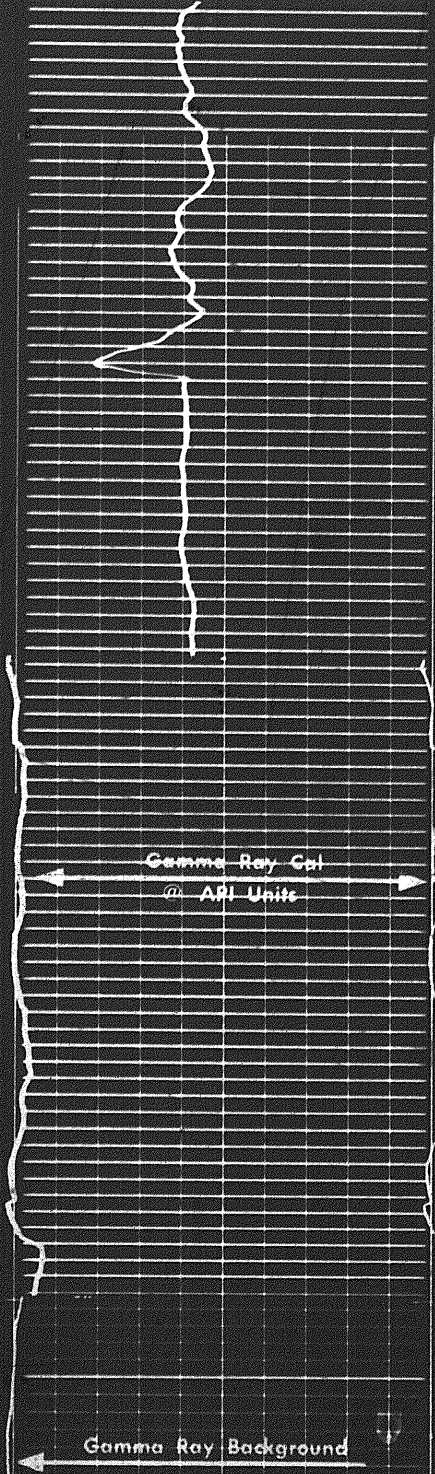
Speed in FPM
150 300

160 130 100
100 70

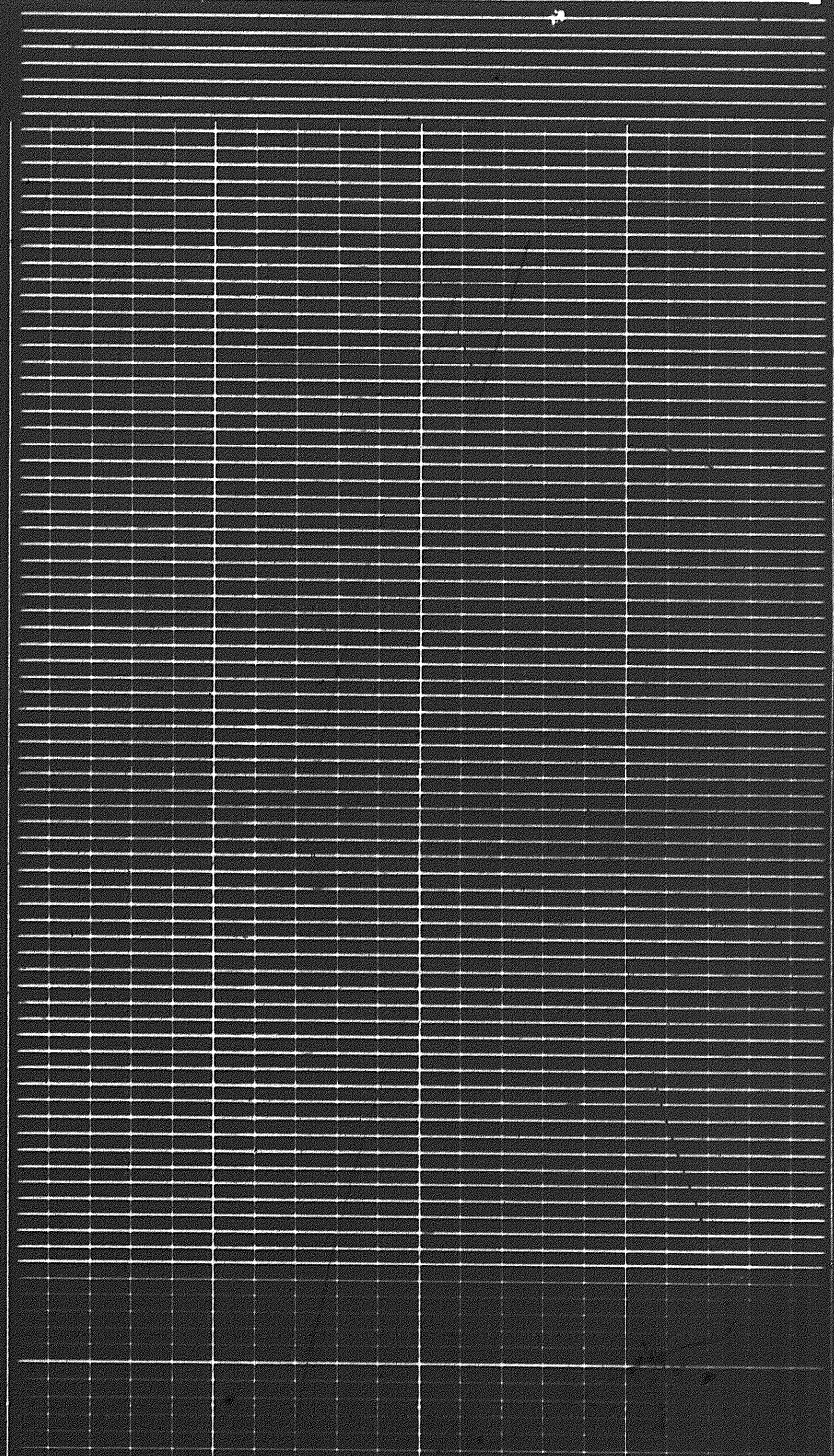
GAMMA RAY
API UNITS

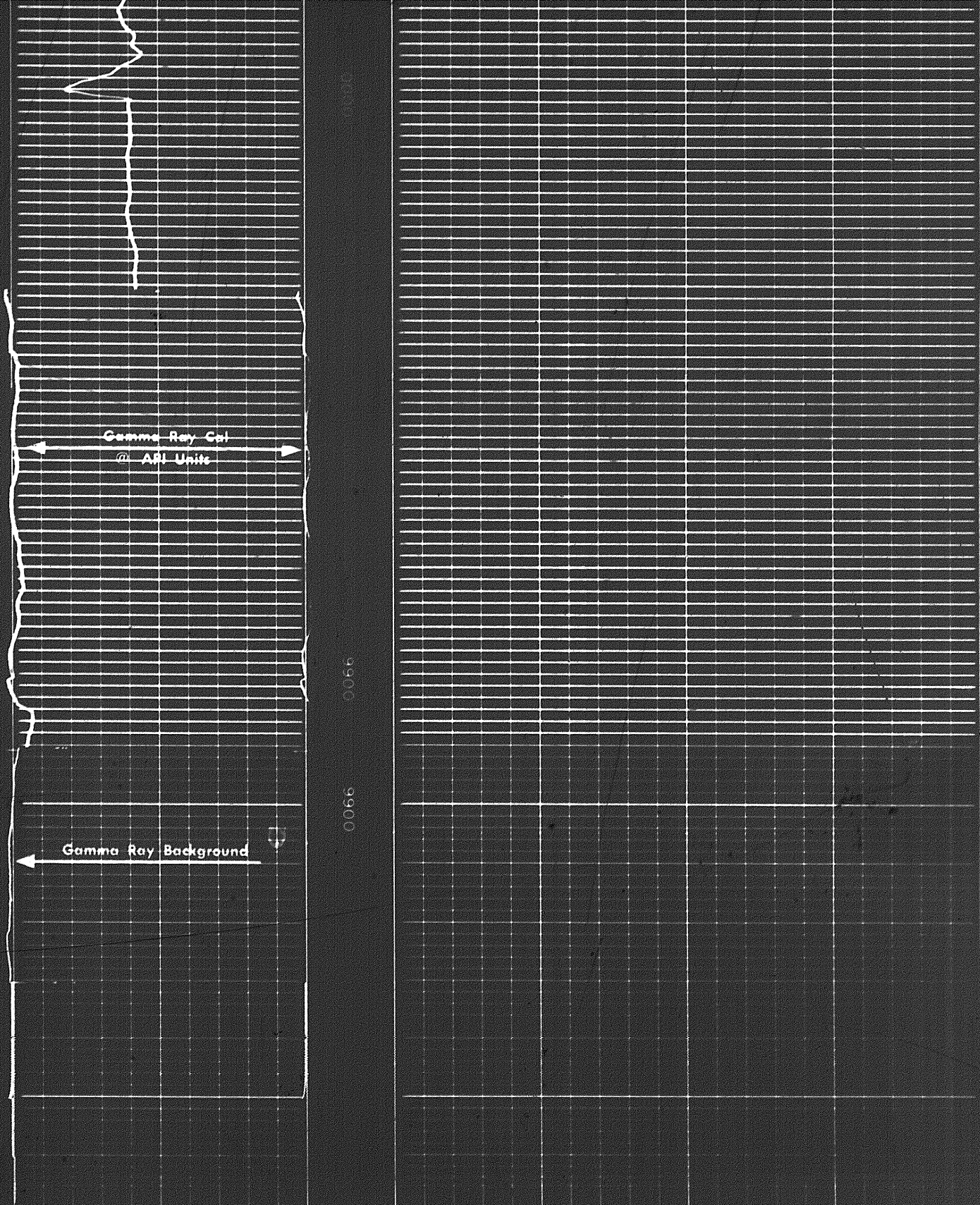
DEPTHS

SONIC
INTERVAL TRANSIT TIME
microseconds per foot



0056 0055





Gamma Ray Cal
@ API Units

Gamma Ray Background

0.056
0.056

COMPANY CHEVRON STANDARD LIMITED

WELL CHEVRON SOBC WM. E PINE YT 0.78

FIELD WILDCAT PROVINCE YUKON TERRITORIES

