

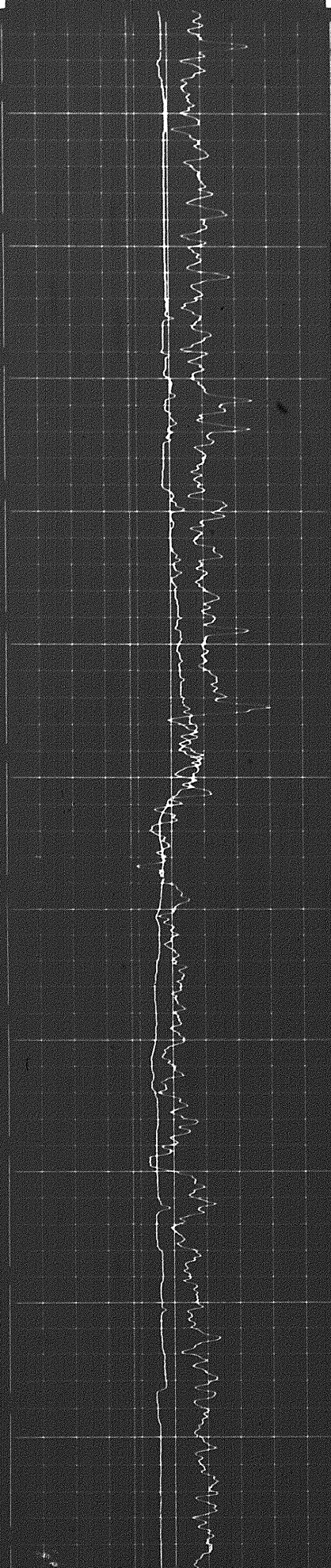


CALIPER  
hole diameter in inches

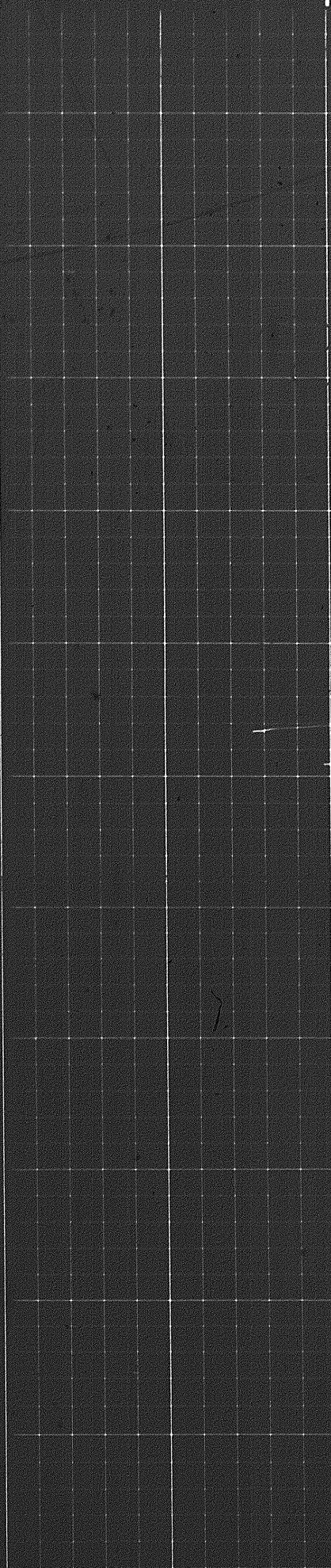
6 7 8 9 10 11 12 13 14

DENSITY CORRECTION  
 $\Delta\rho$  - gm/cc

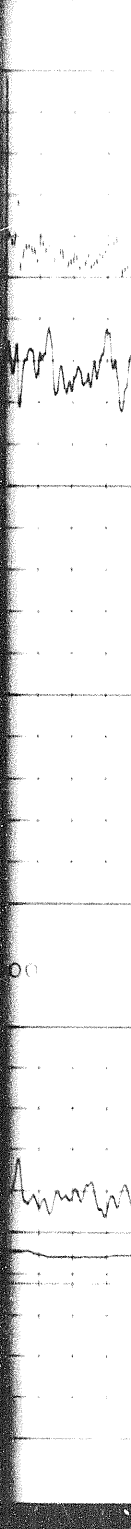
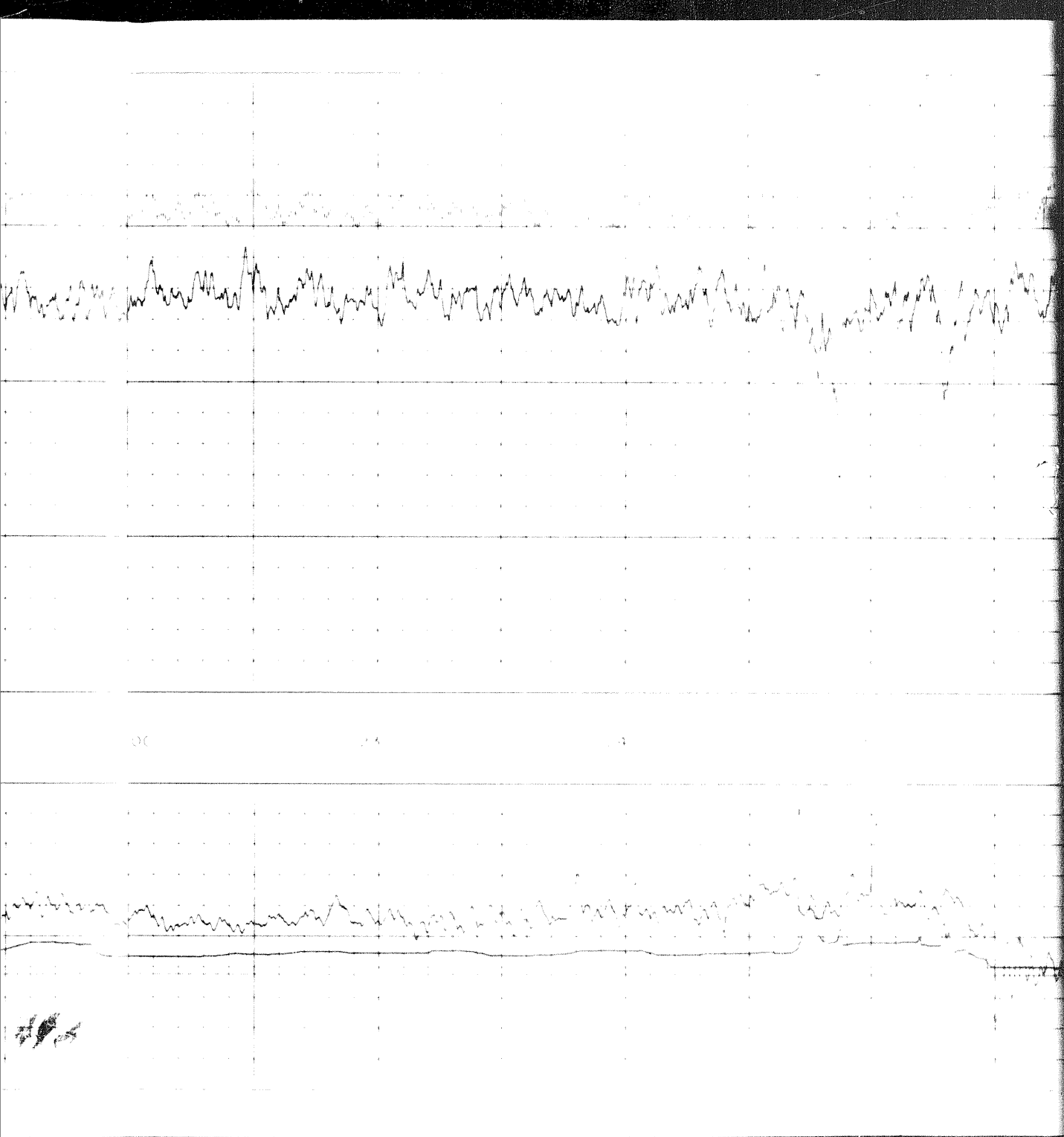
0.25 0 0.25  
(-) (-) (-)

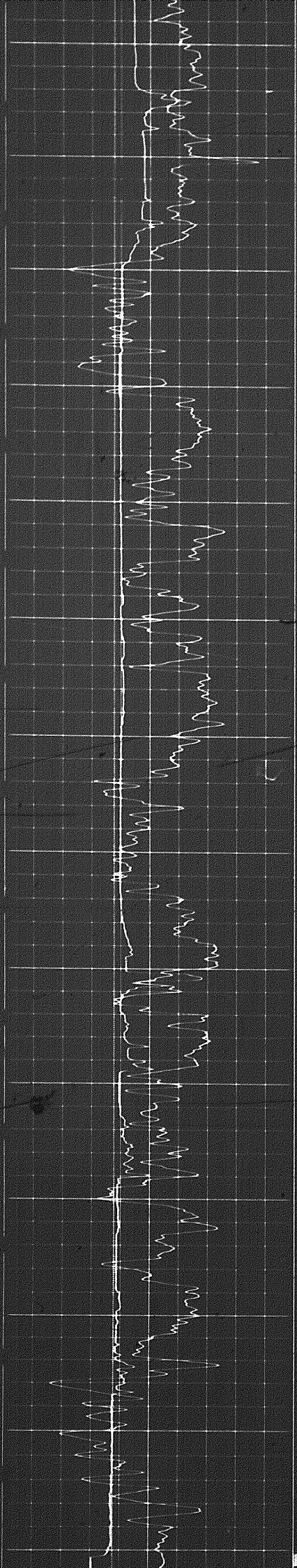


6000  
1700  
1800  
2000  
2100



0.25 0 0.25  
(-) (-) (-)





2500

2600

2700

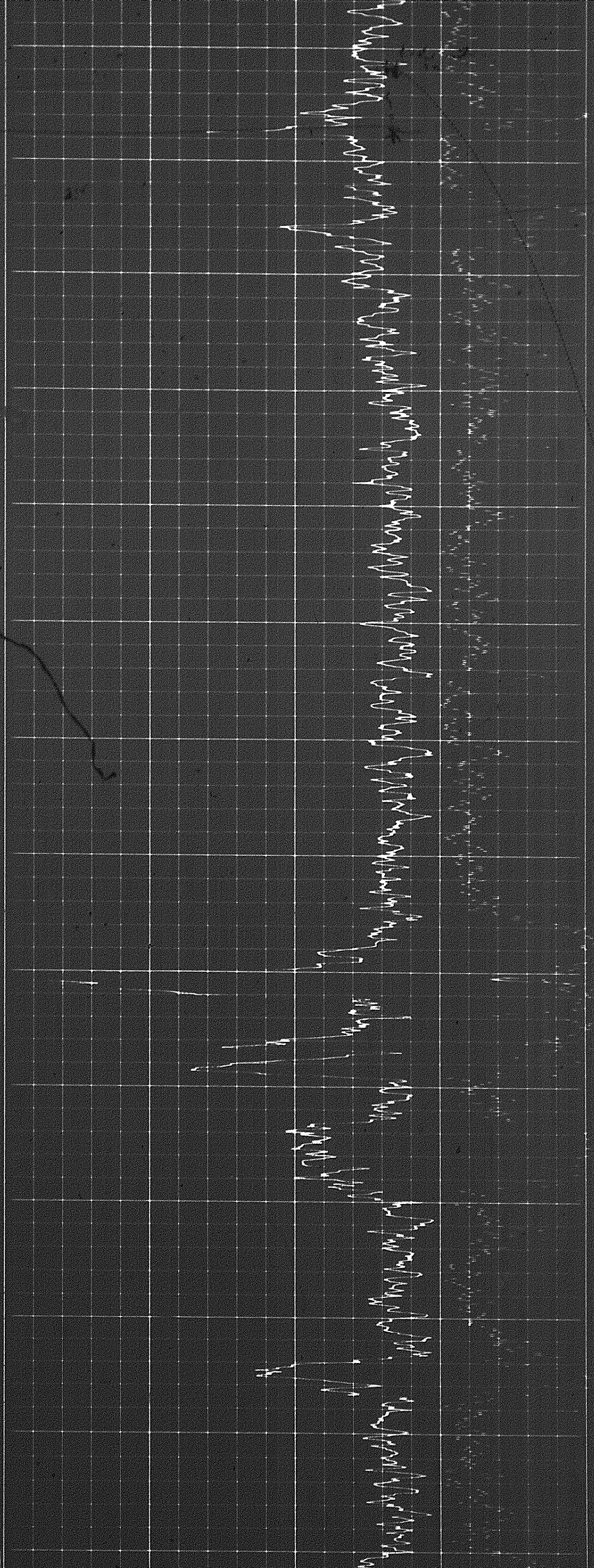
2800

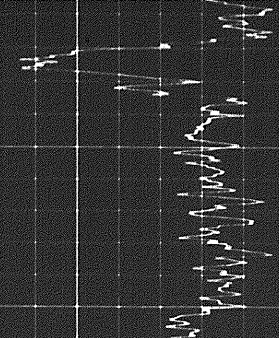
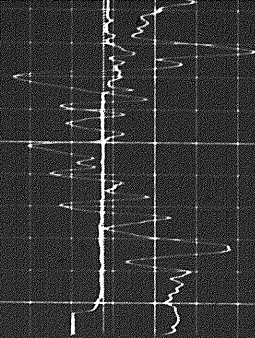
2900

3000

3100

FR





FR 3100

6 7 8 9 10 11 12 13 14

CALIPER  
hole diameter in inches

Sens. \_\_\_\_\_ T.C. \_\_\_\_\_  
Zero \_\_\_\_\_ div. to left

(-) 0.25 0 0.25 (+)

DENSITY CORRECTION  
 $\Delta\rho$  - gm/cc

Speed in FPM

2.0 2.5 3.0

GAMMA RAY  
API UNITS

DEPTH

BULK DENSITY  
 $\rho_b$  - gm/cc

DETAIL LOG  
5" = 100'

GAMMA RAY  
API UNITS

DEPTH

BULK DENSITY  
 $\rho_b$  - gm/cc

Sens. \_\_\_\_\_ T.C. \_\_\_\_\_  
Zero \_\_\_\_\_ div. to left

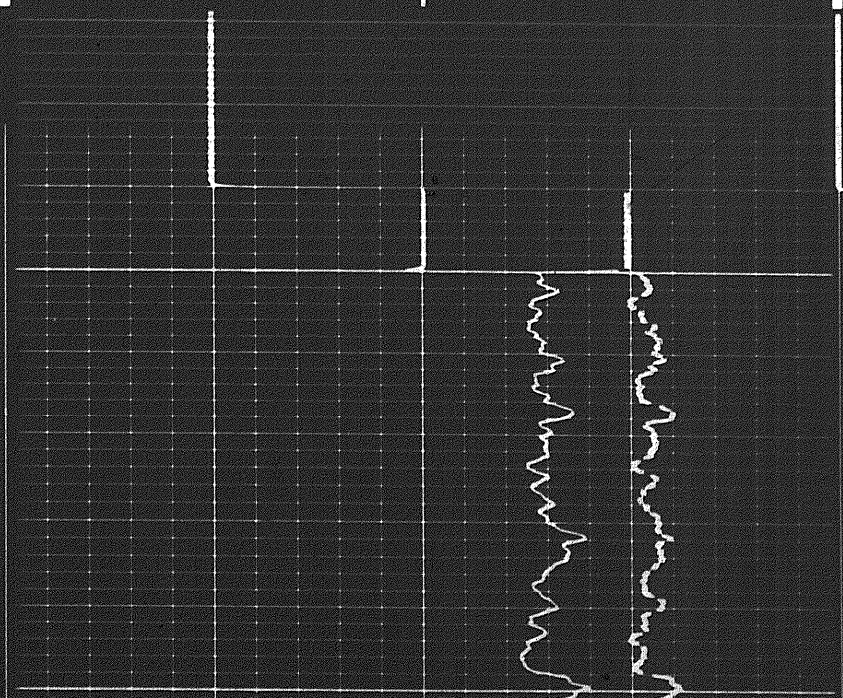
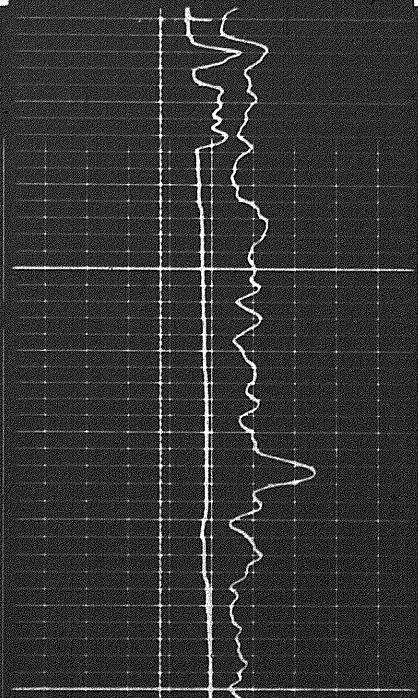
2.0 2.5 3.0

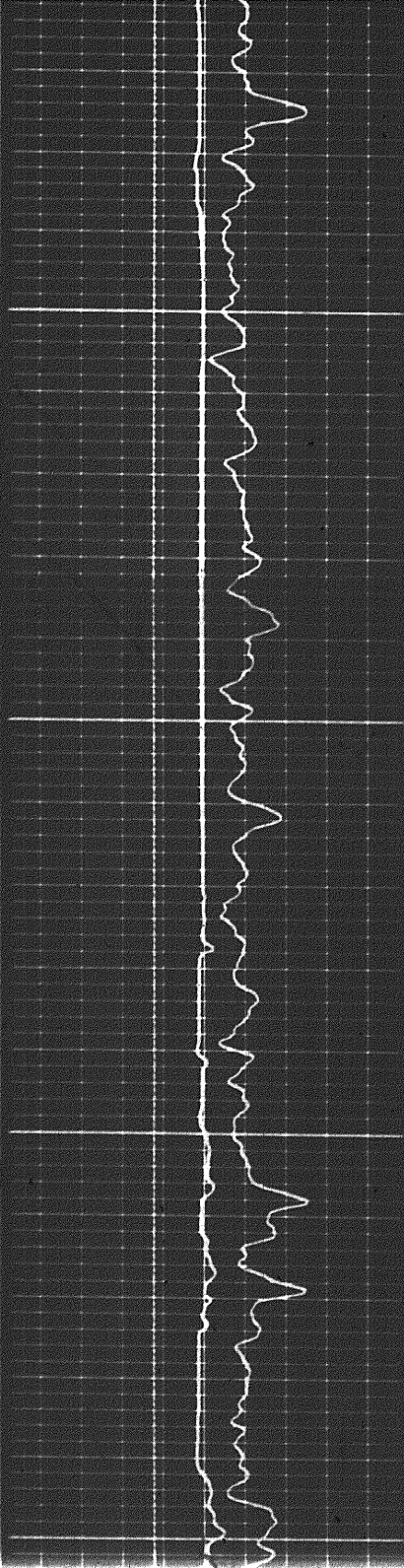
CALIPER  
hole diameter in inches

6 7 8 9 10 11 12 13 14

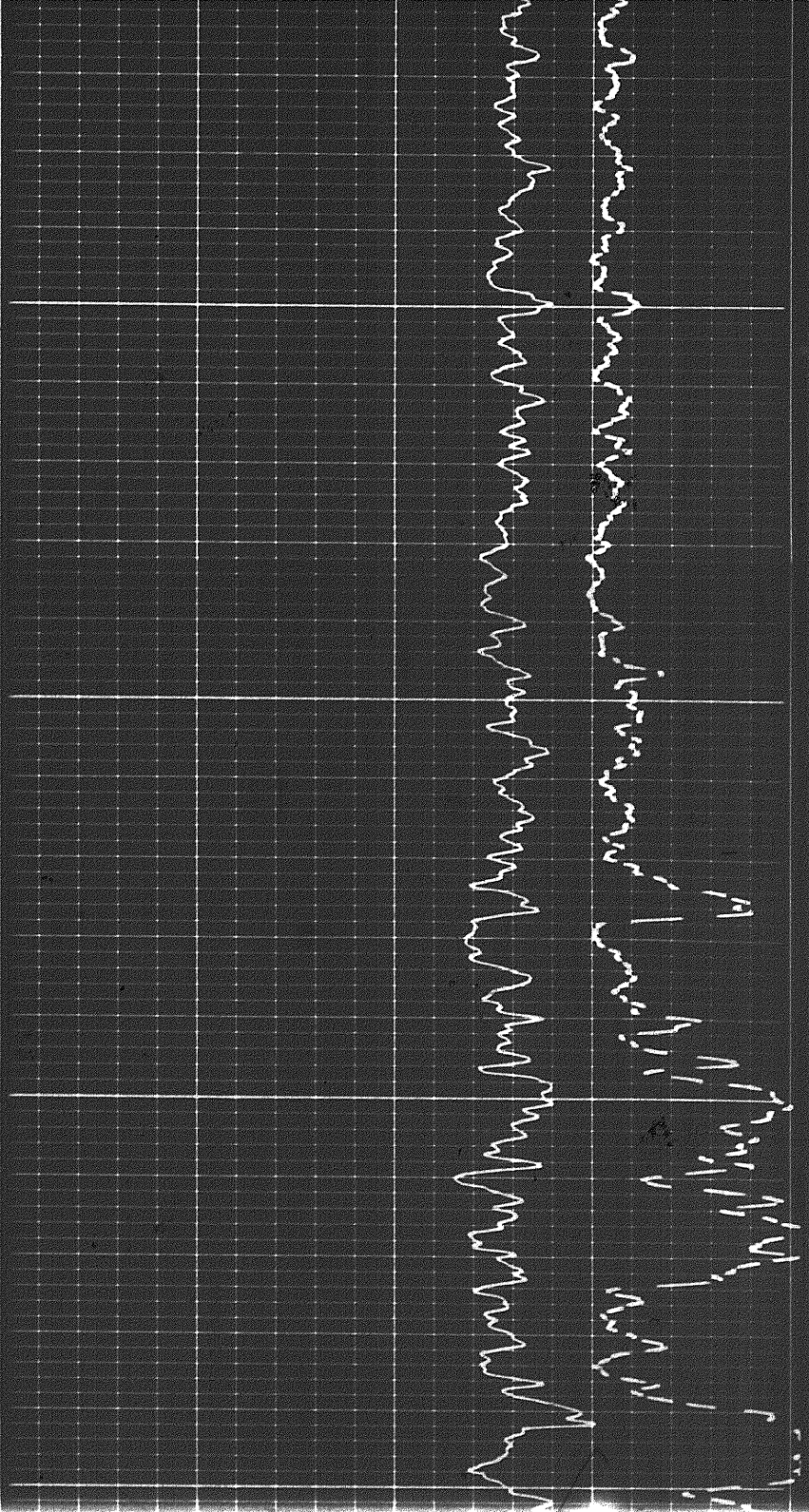
DENSITY CORRECTION  
 $\Delta\rho$  - gm/cc

(-) 0.25 0 0.25 (+)

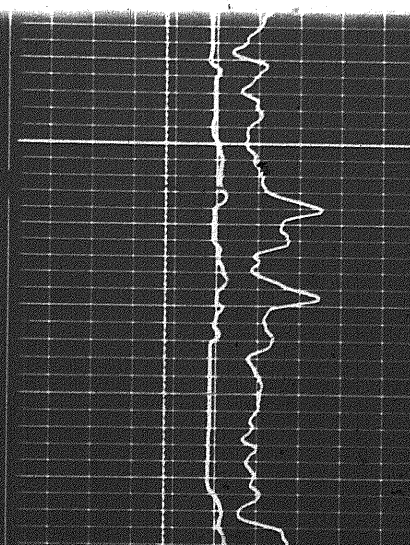




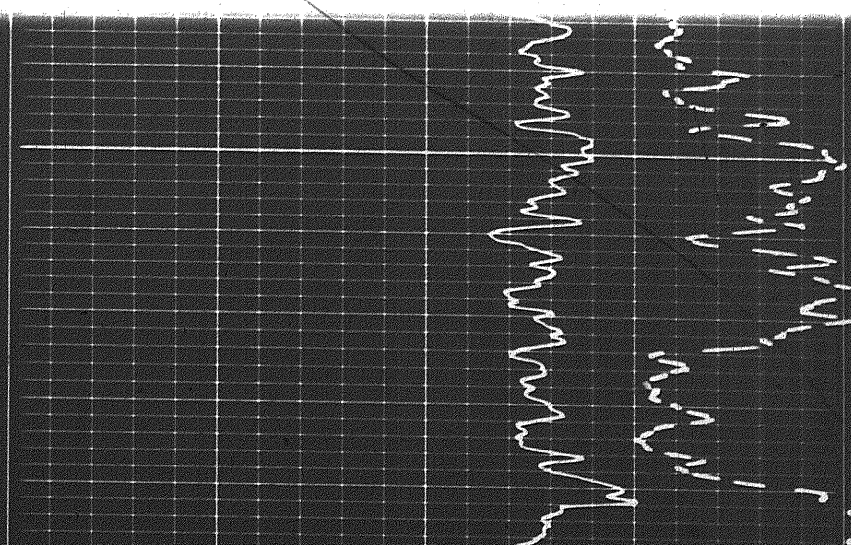
600

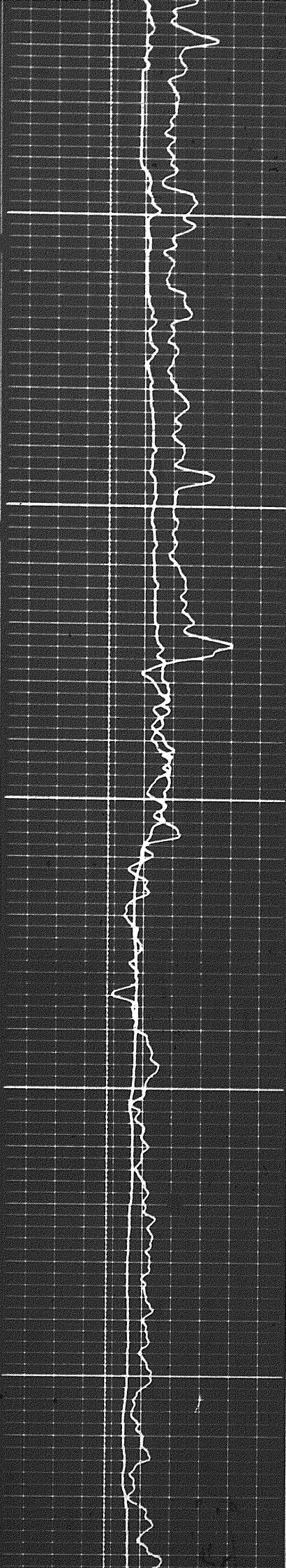


1700



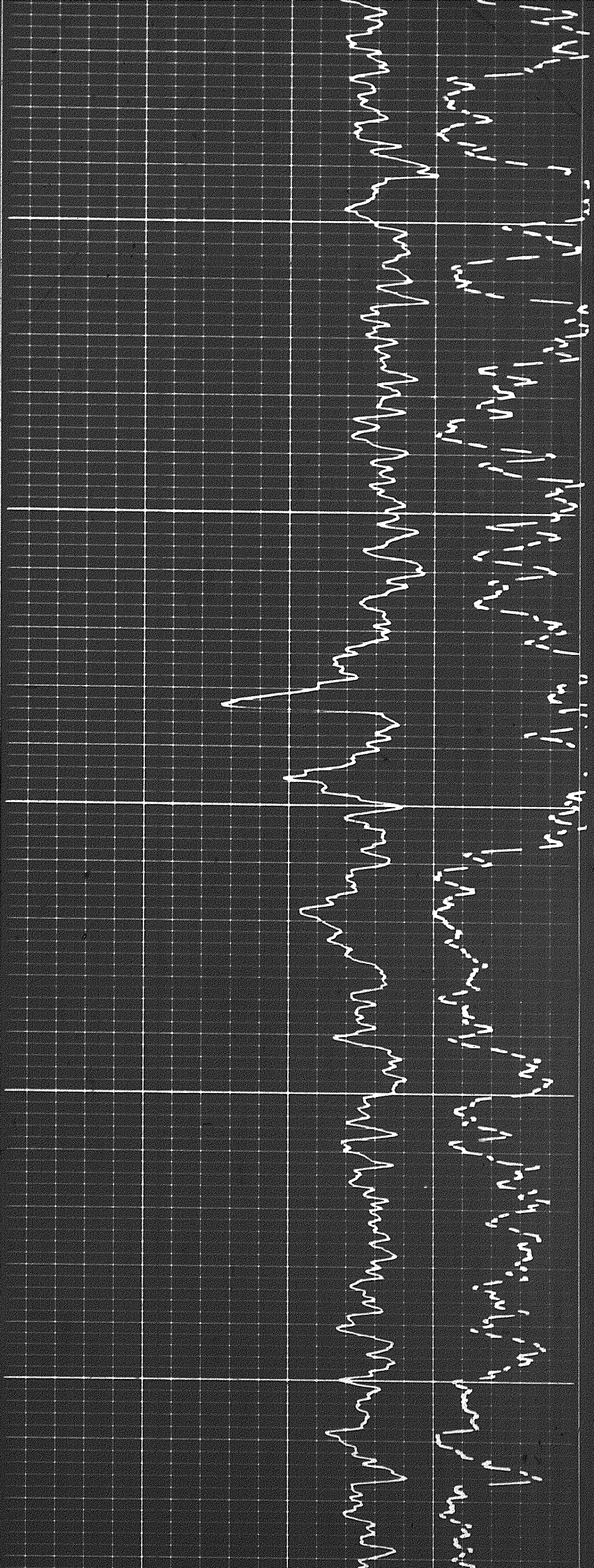
1700

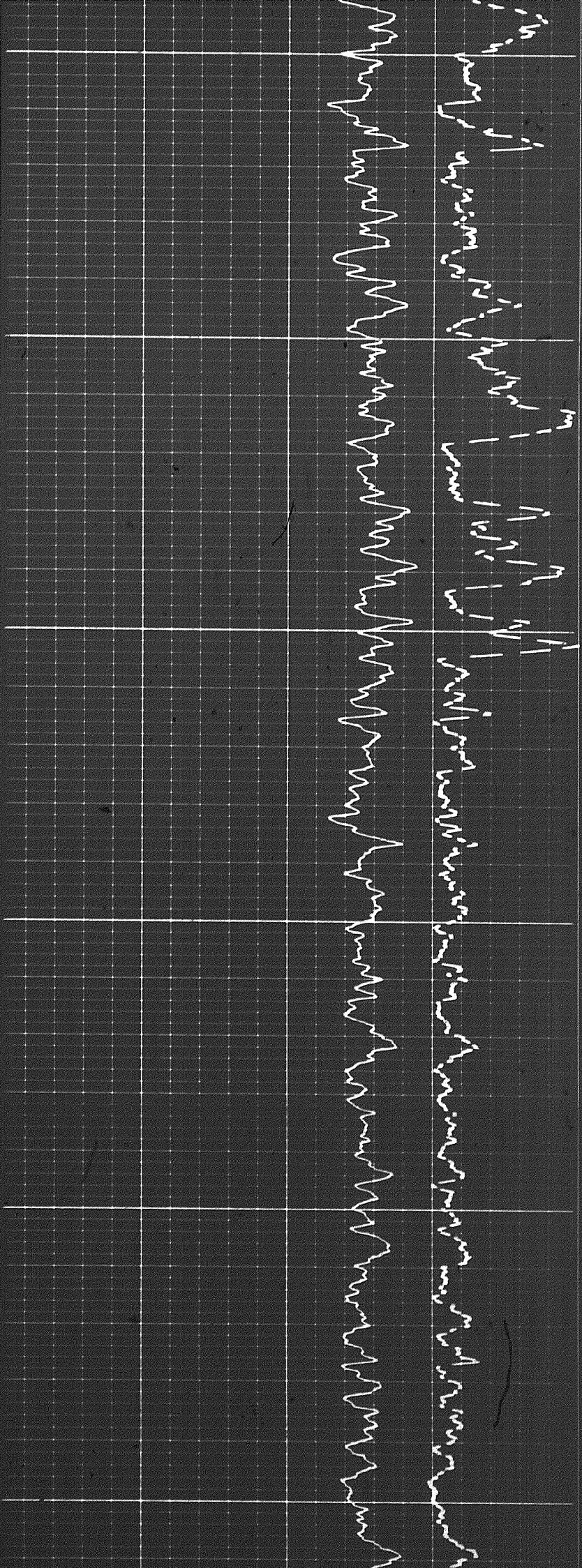




1800

1900

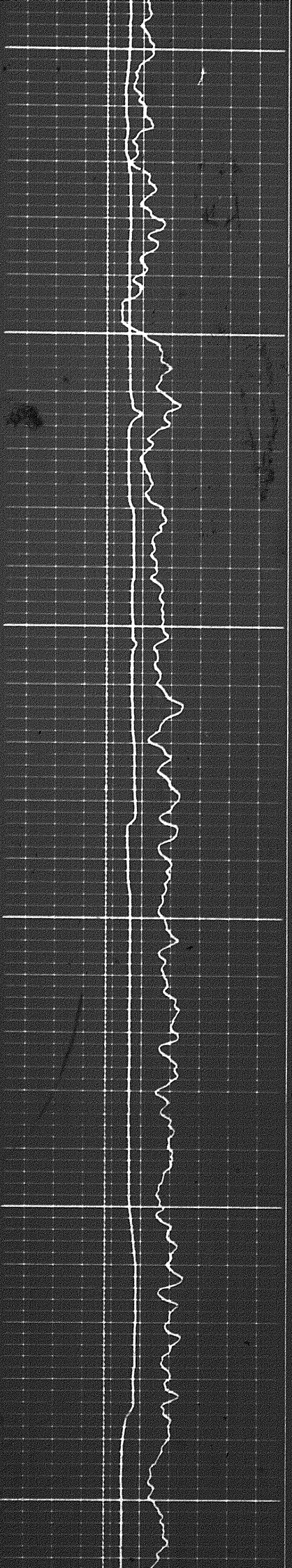




2000

2100

2200

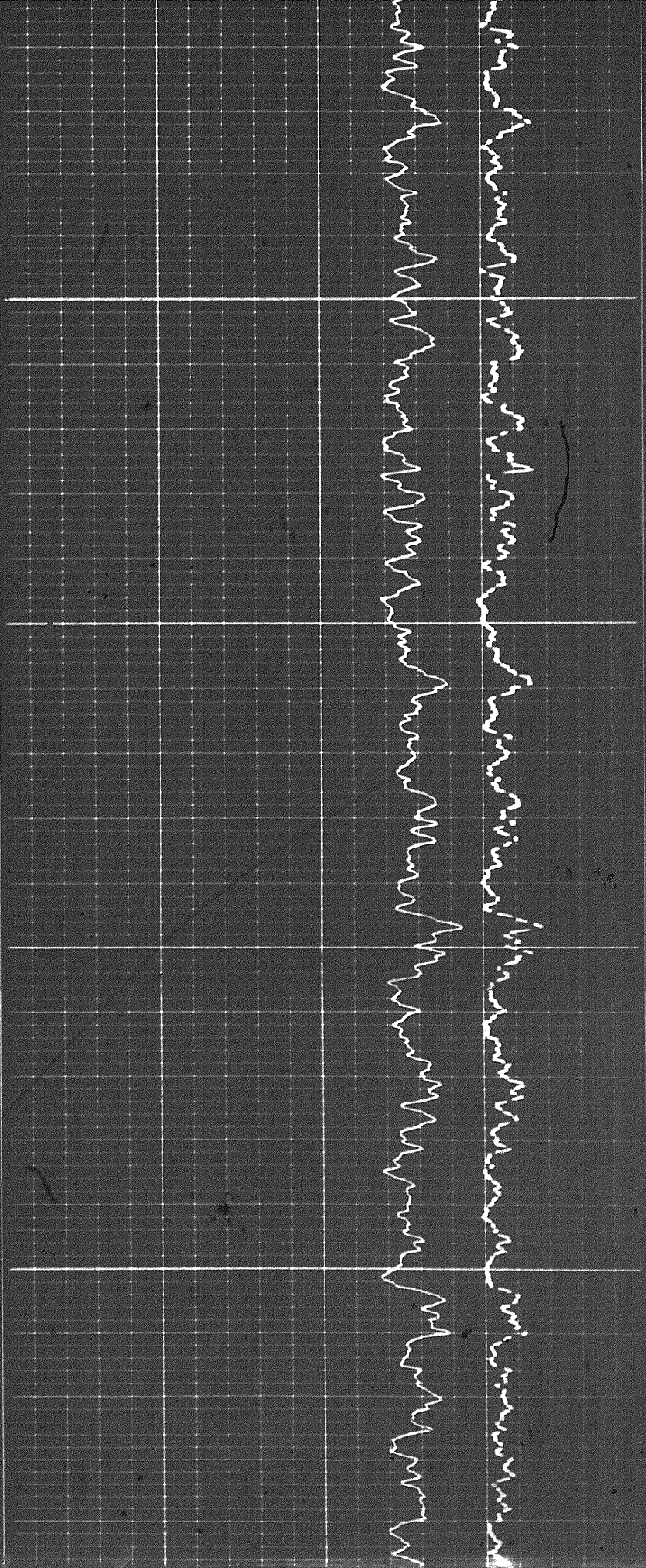
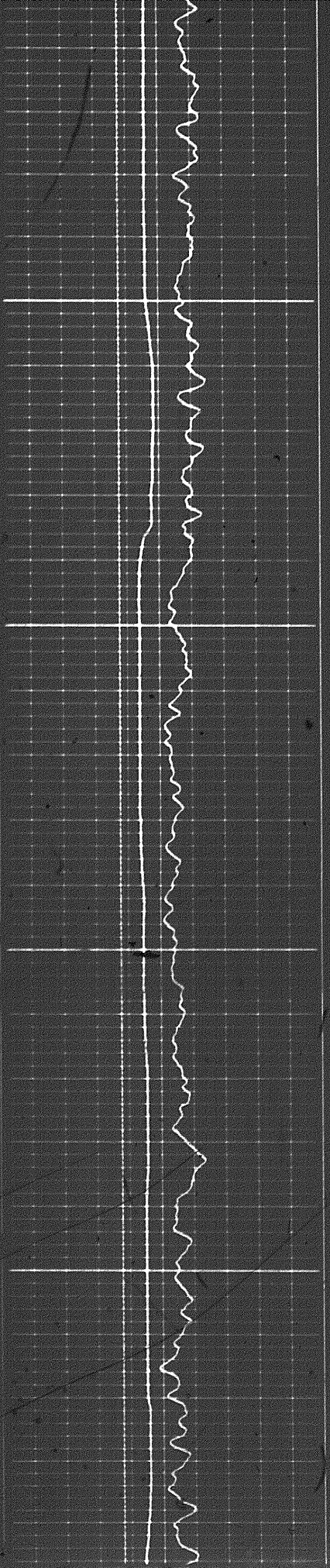


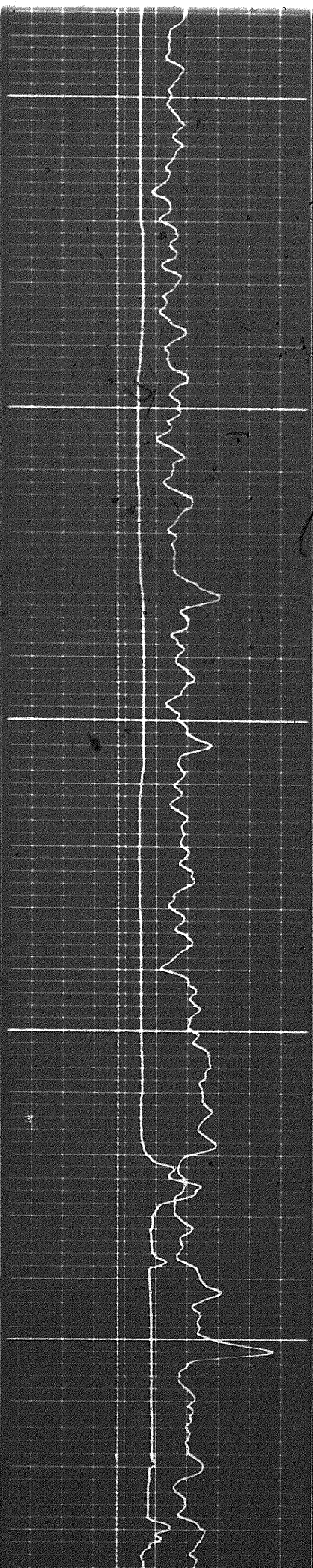


0

2200

2300

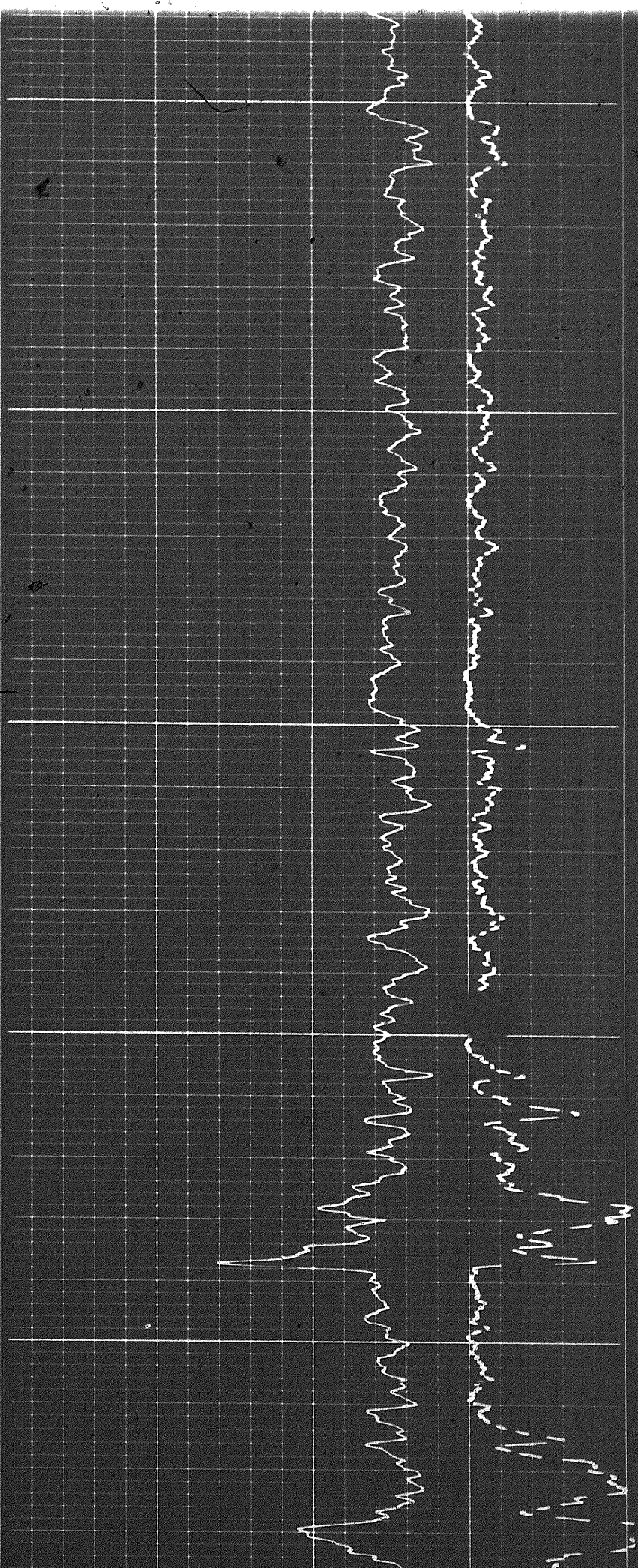




2400

2400

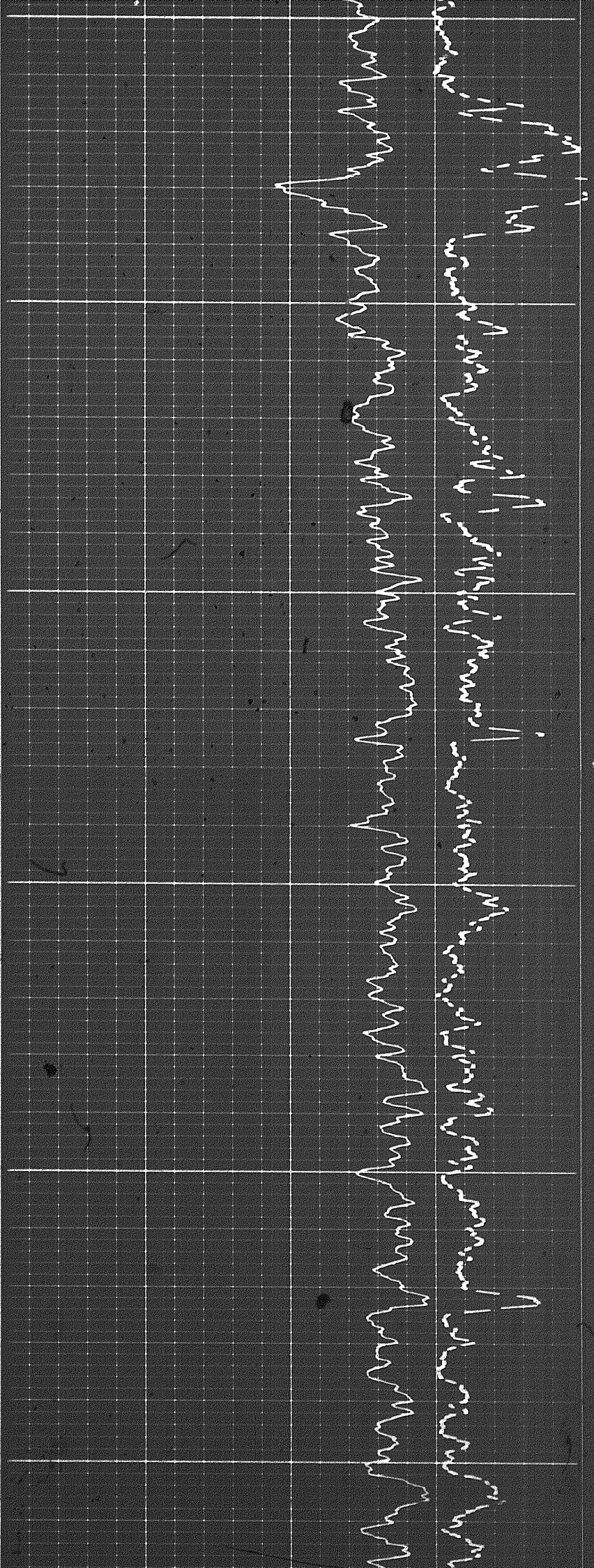
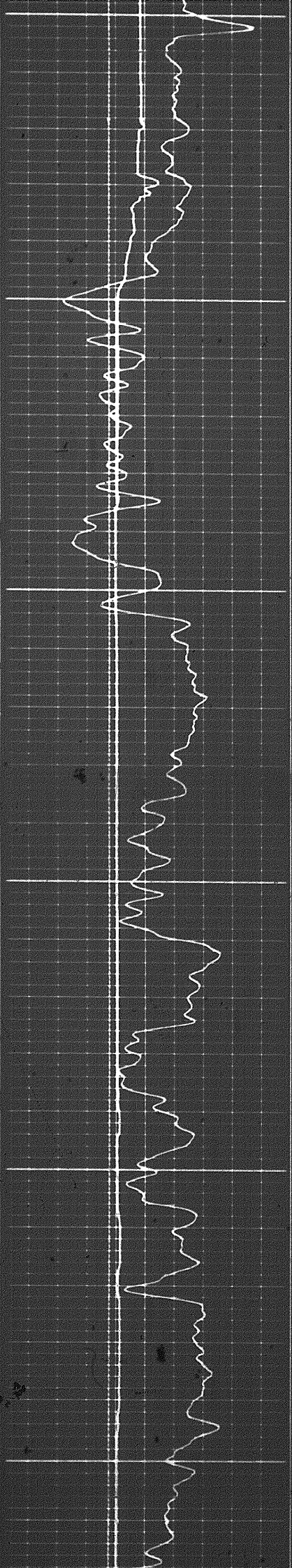
2500

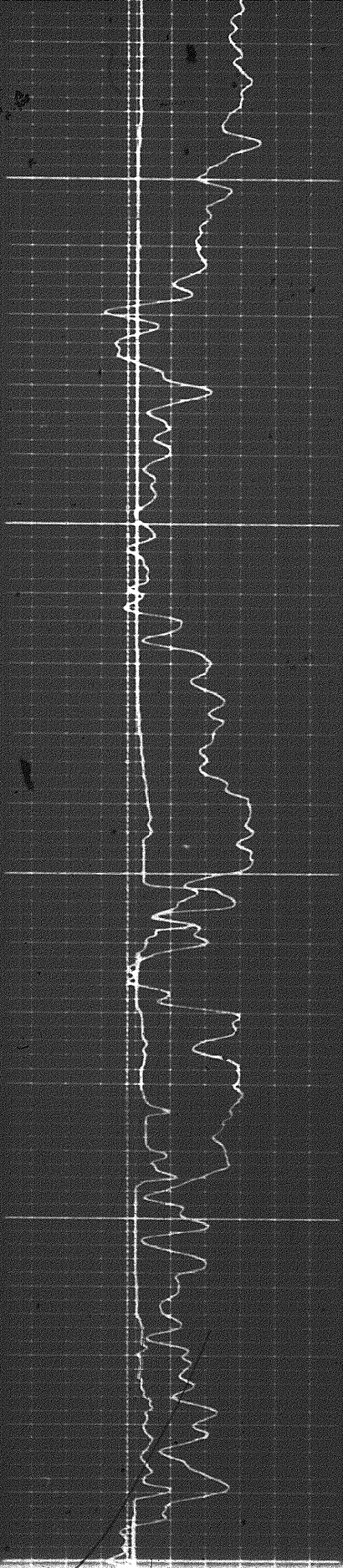


2500

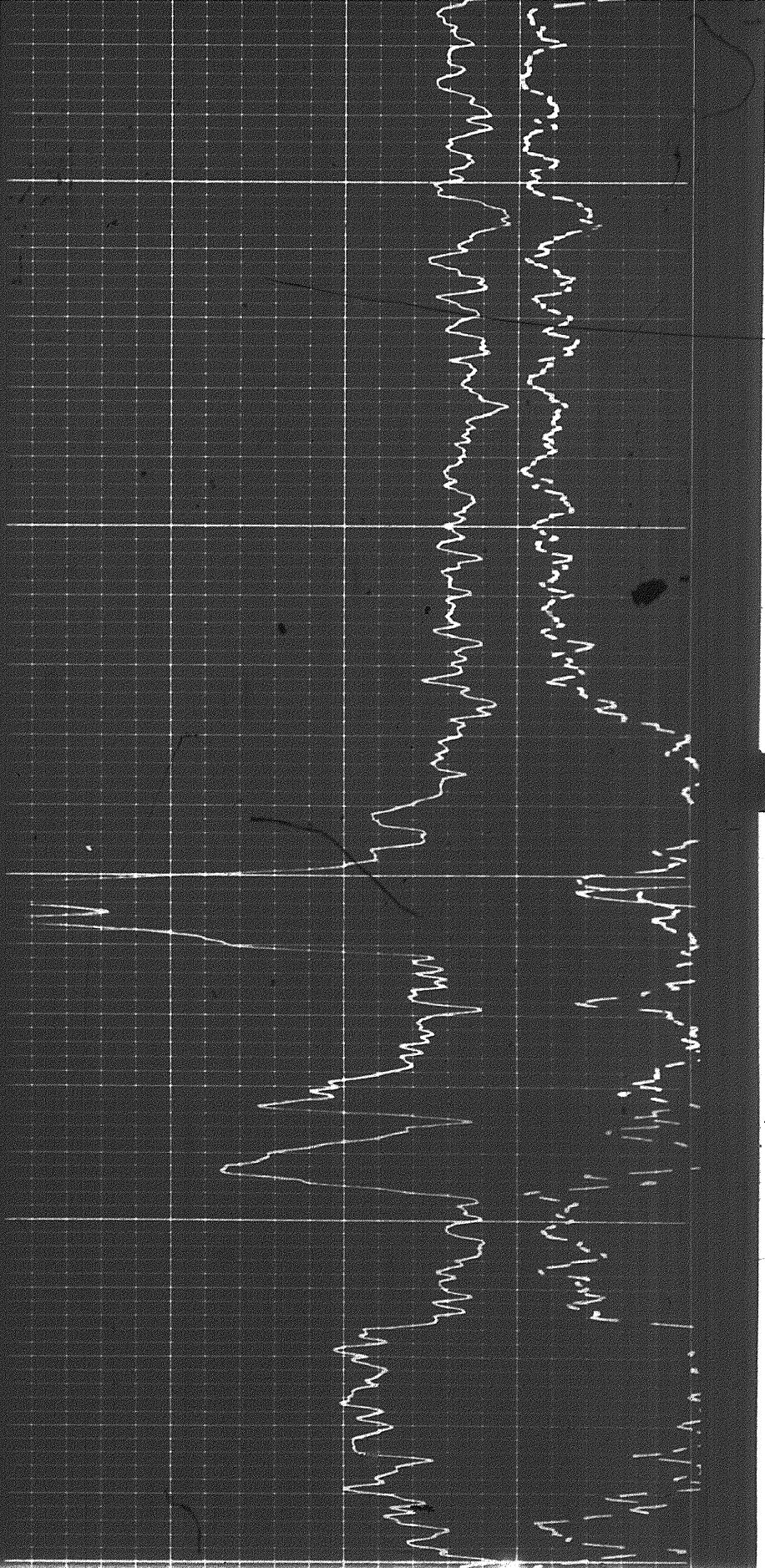
2600

2700

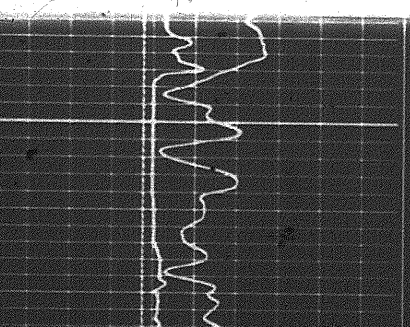




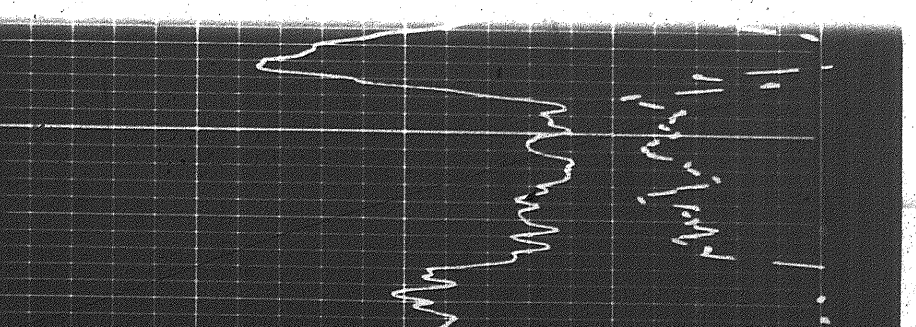
2800

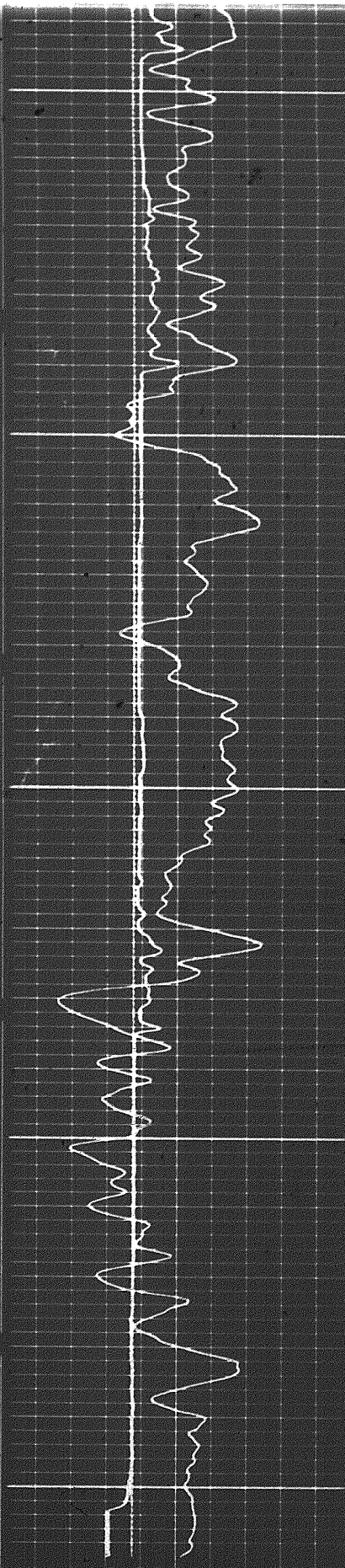


2900



2900



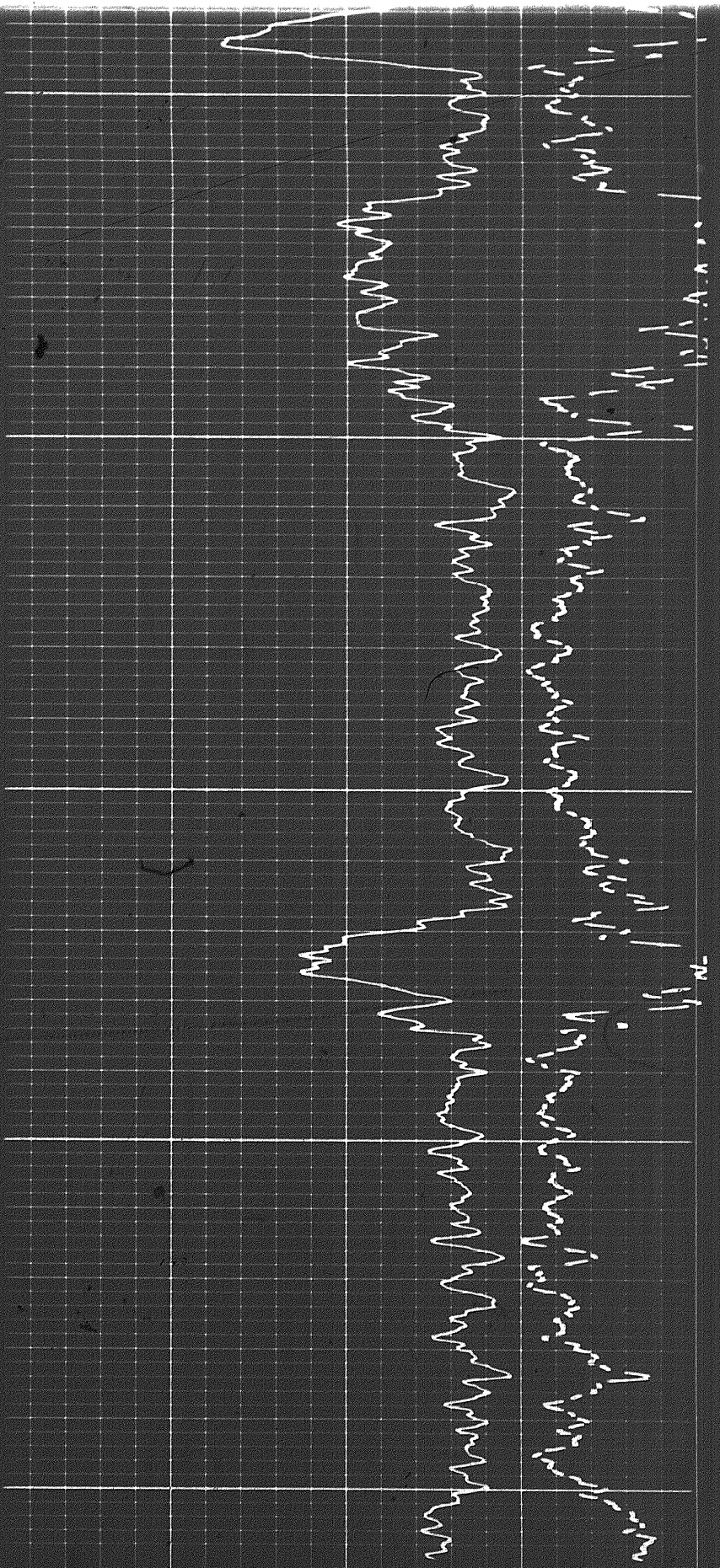


2900

3000

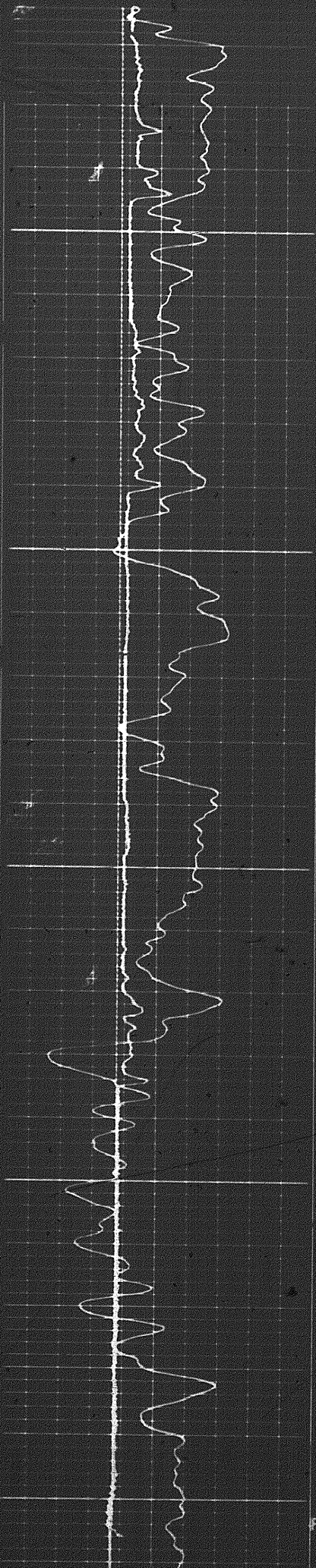
3100

FR



REPEAT SECTION

REPEAT SECTION

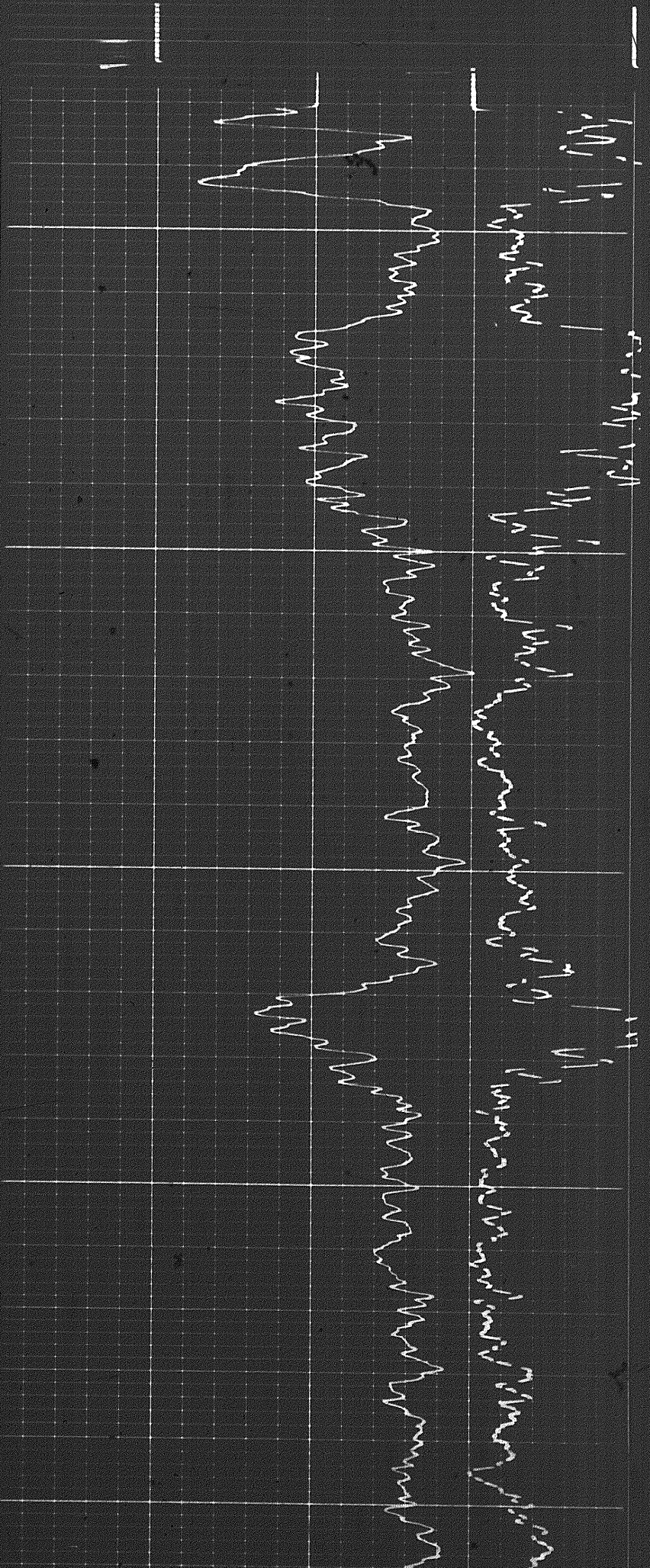


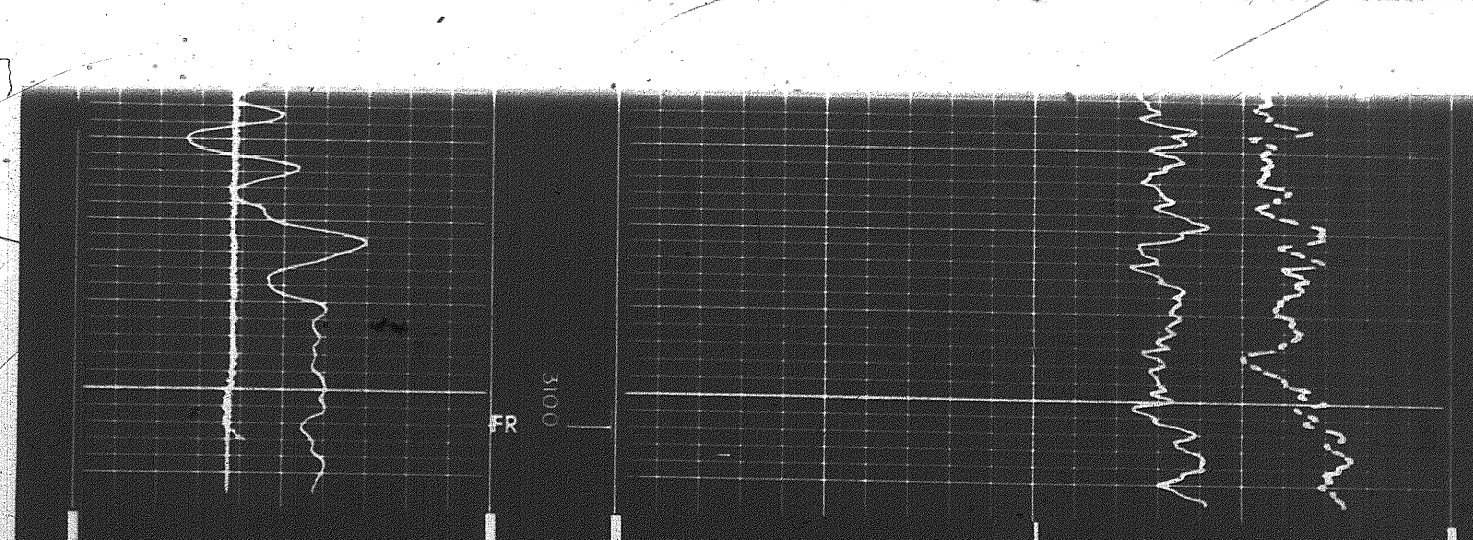
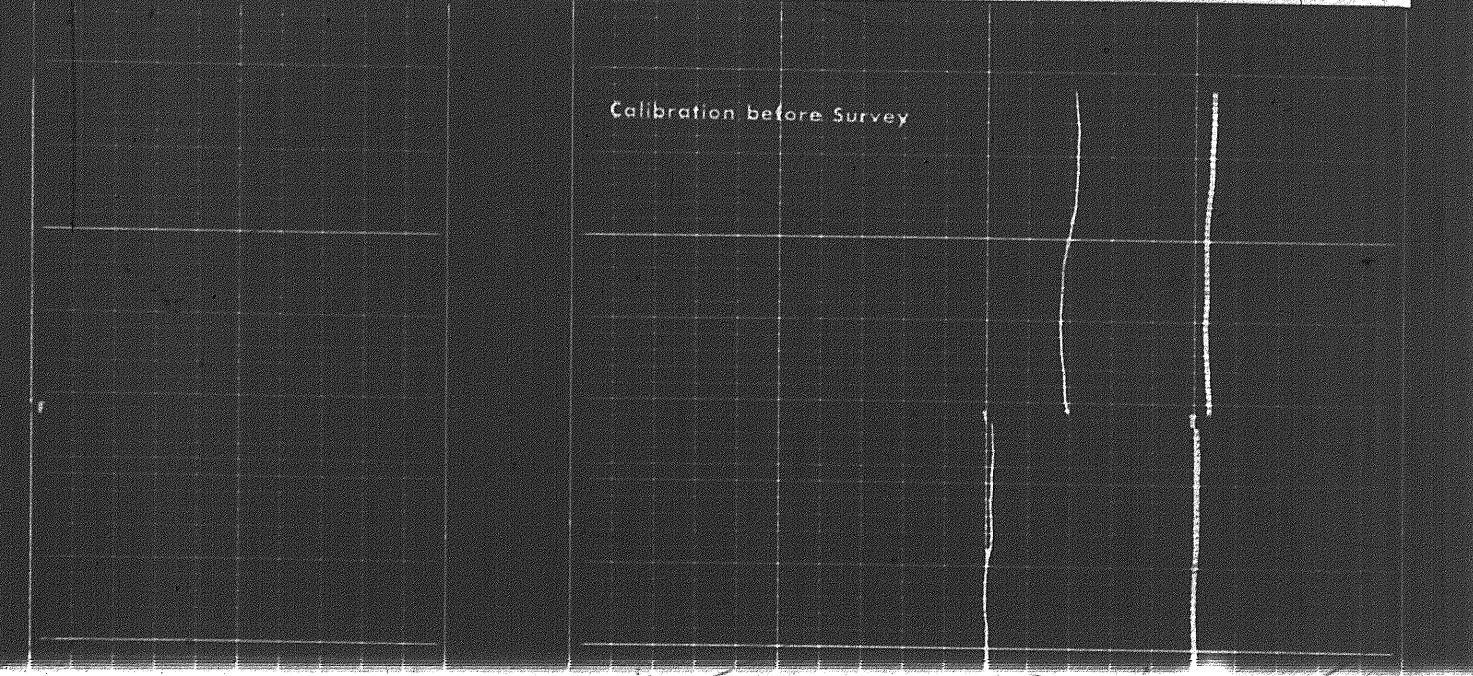
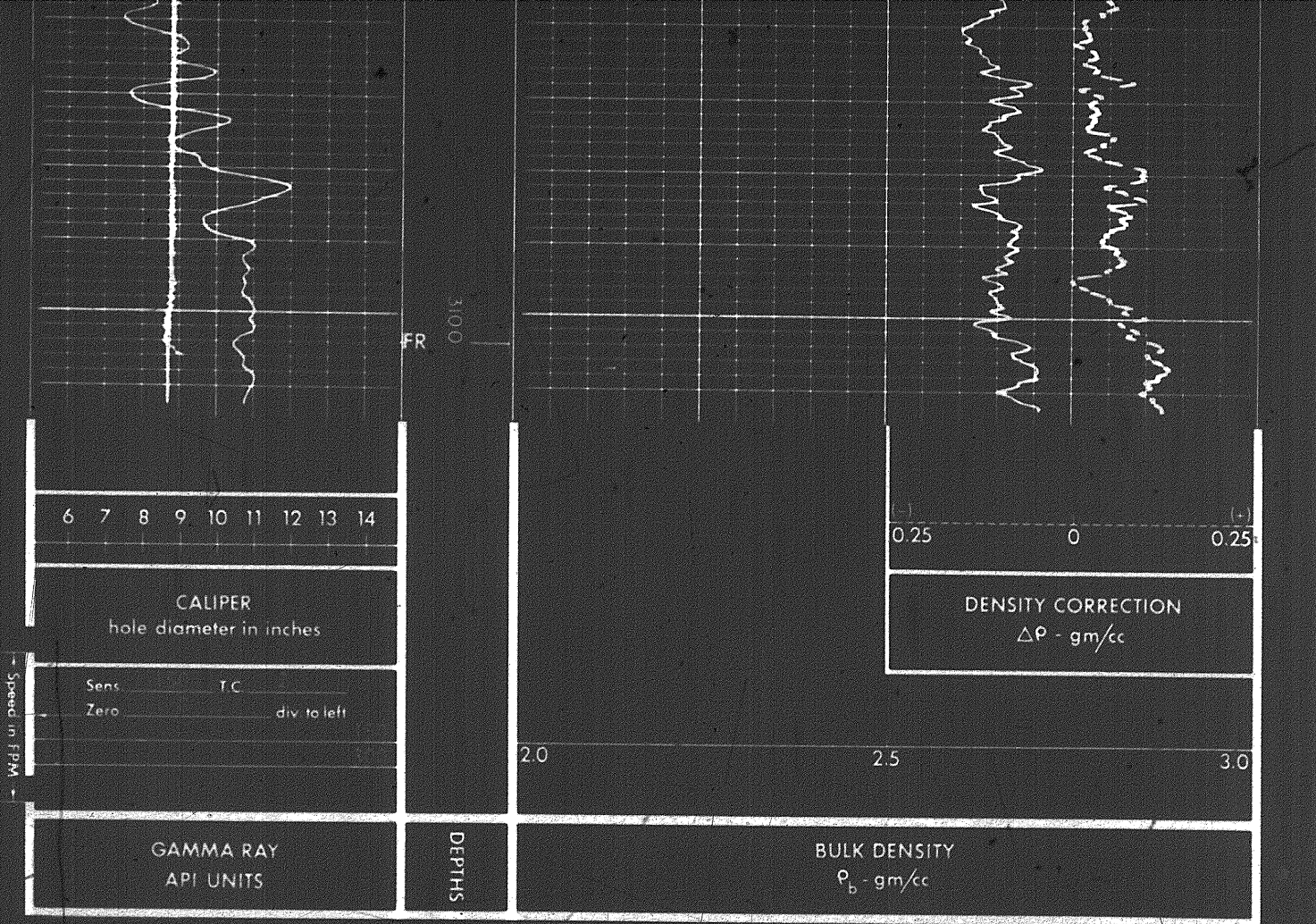
2900

3000

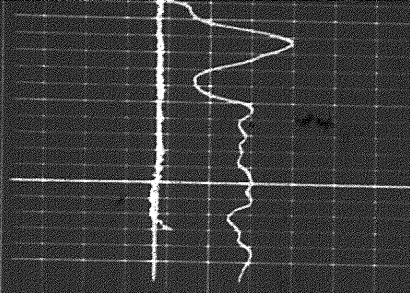
3100

FR





FR 3100



6 7 8 9 10 11 12 13 14

CALIPER  
hole diameter in inches

Sens \_\_\_\_\_ T.C \_\_\_\_\_  
Zero \_\_\_\_\_ div. to left \_\_\_\_\_

Speed in FPM

(-) 0.25 0 0.25 (+)

DENSITY CORRECTION  
 $\Delta\rho$  - gm/cc

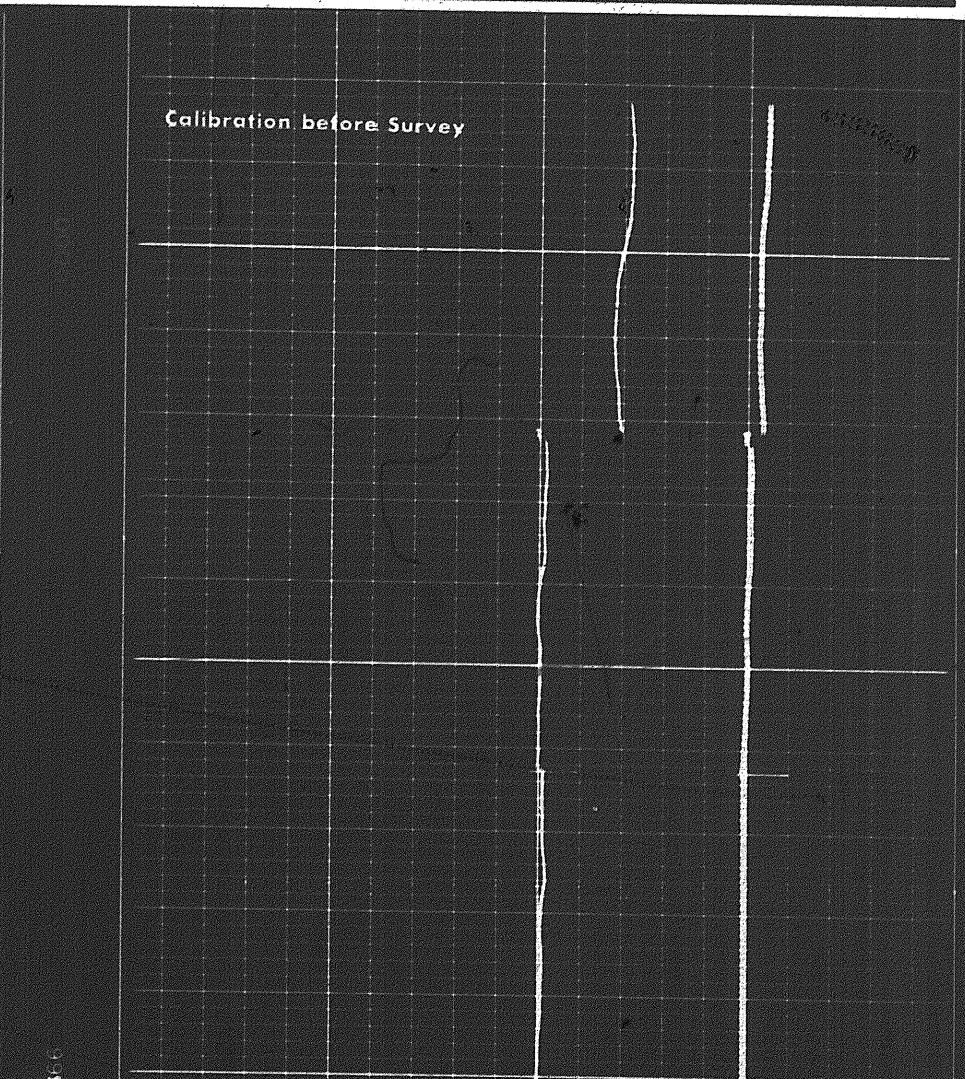
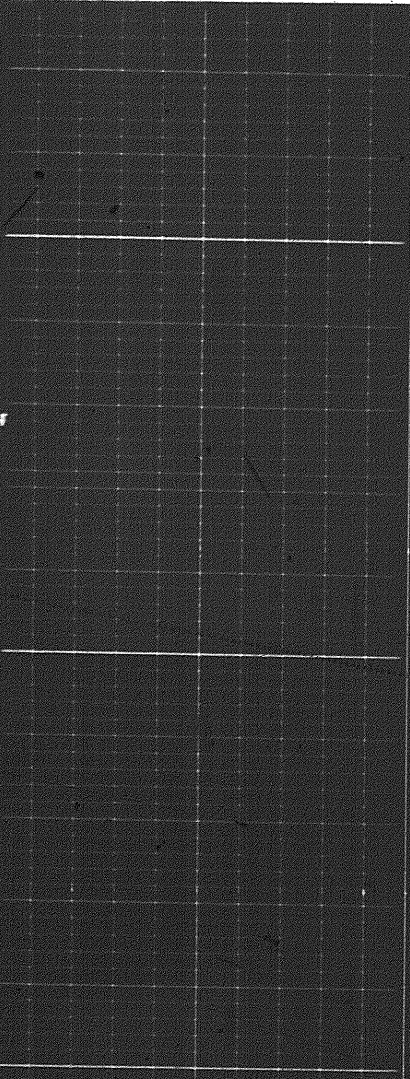
2.0 2.5 3.0

GAMMA RAY  
API UNITS

DEPTHS

BULK DENSITY  
 $\rho_b$  - gm/cc

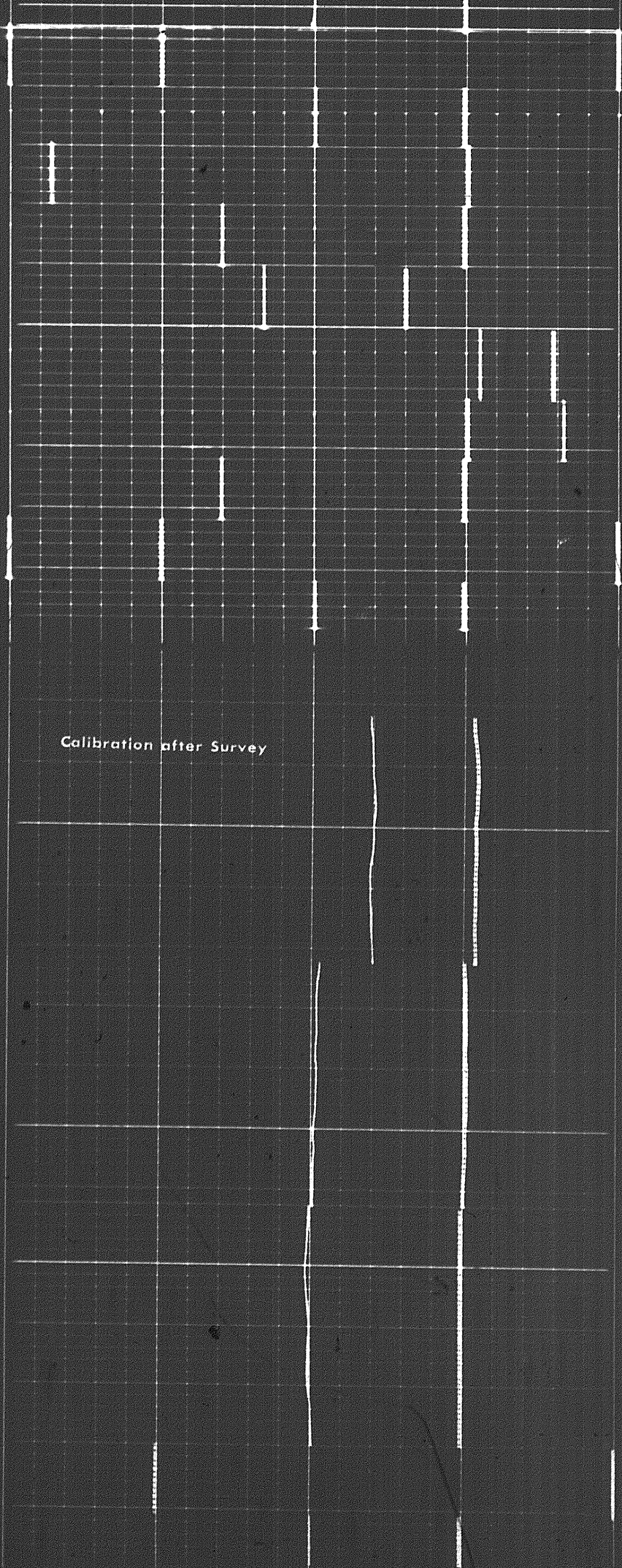
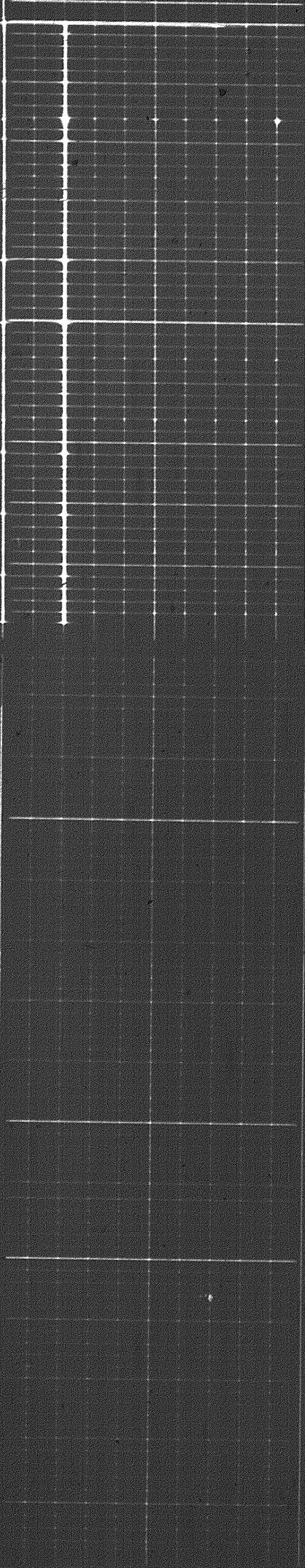
Calibration before Survey



0.05666



0058



Calibration after Survey