

Rw from Drill Stem Test

DST No. Rw = ohm m @ °F

DST No. Rw = ohm m @ °F

DST No. Rw = ohm m @ °F

LOG TAPED

Yes No

DEPTH

SONIC
INTERVAL TRANSIT TIME
microseconds per foot

Speed in FPM

CALIPER
hole diameter in inches

6 7 8 9 10 11 12 13 14

10800

Casing

10900

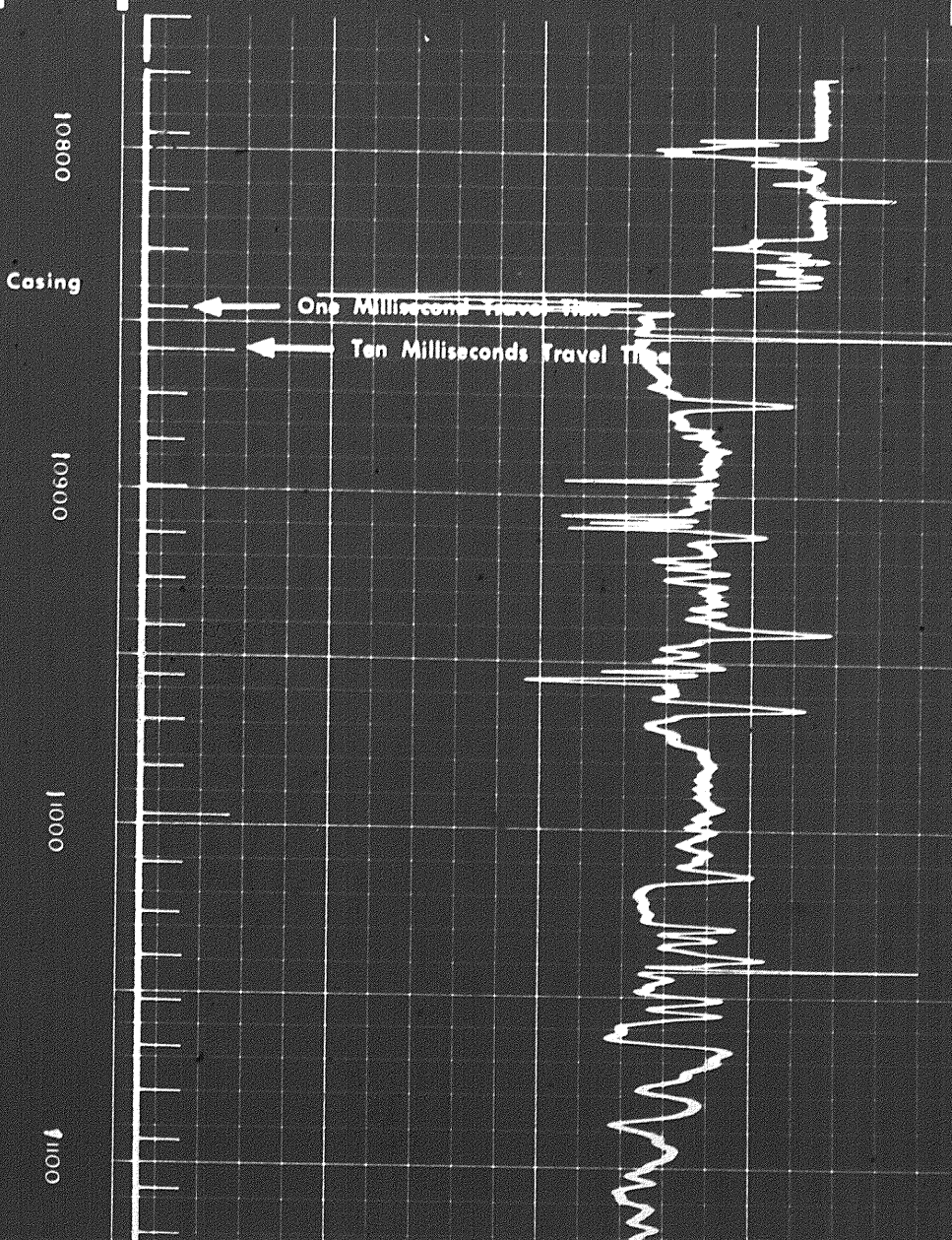
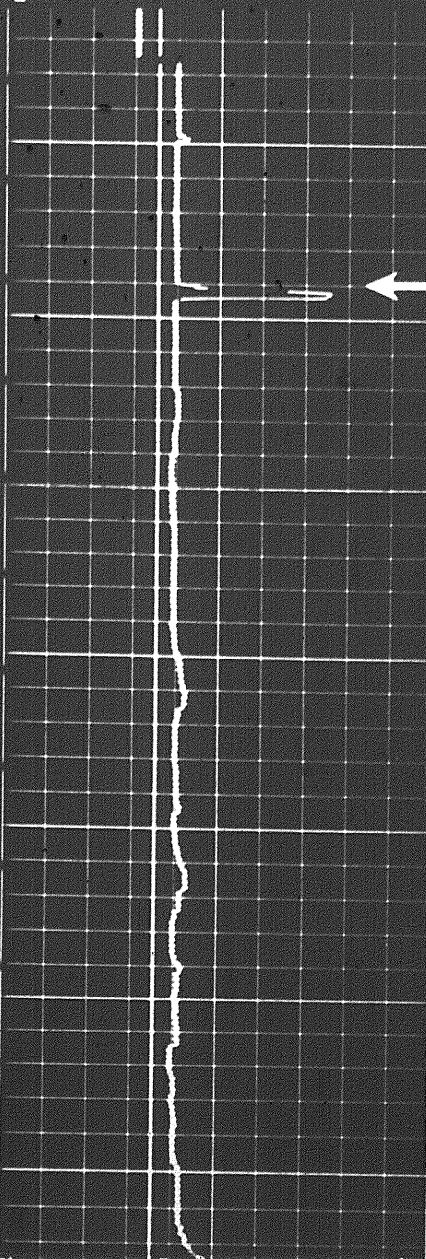
11000

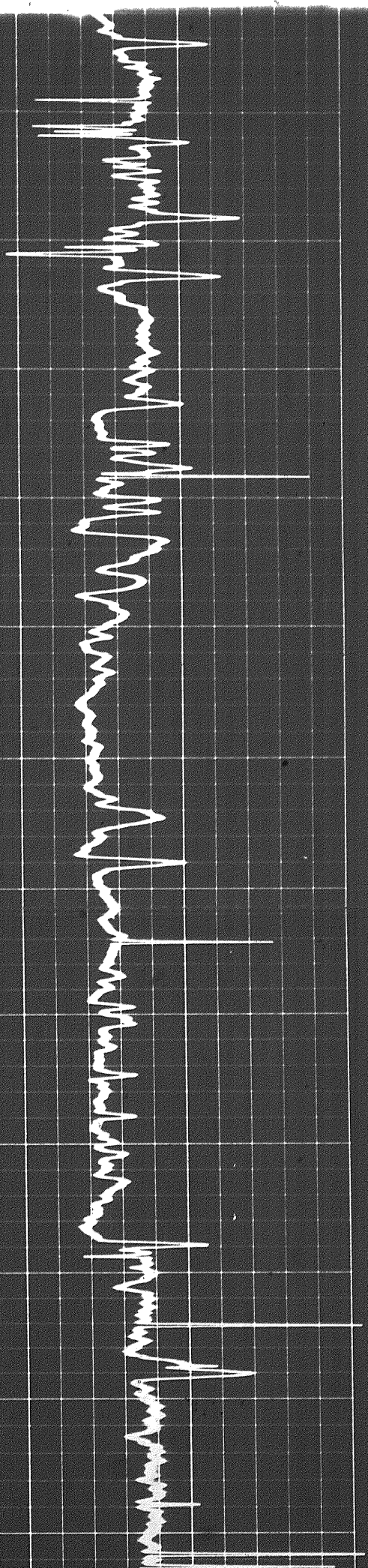
11100

One Millisecond Travel Time

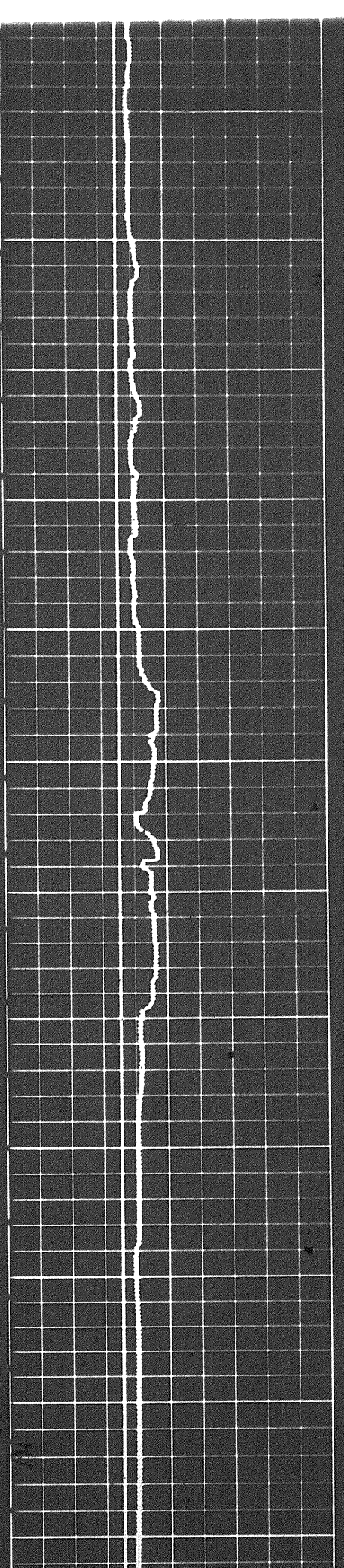
Ten Milliseconds Travel Time

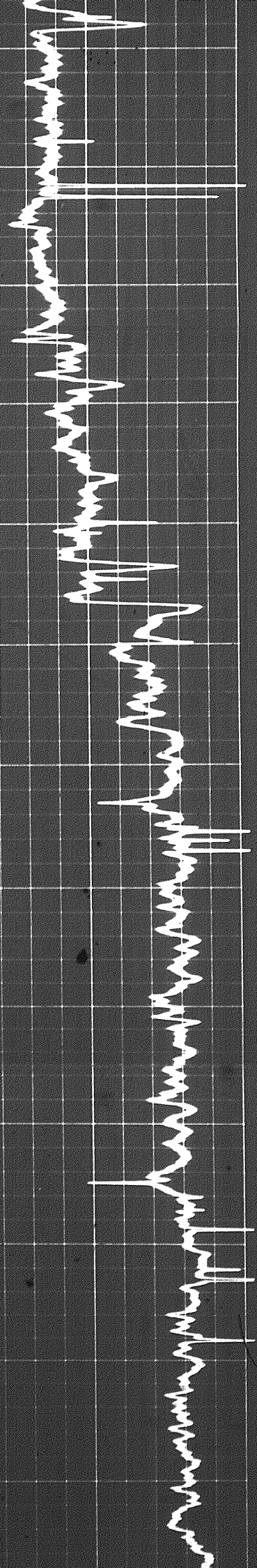
101



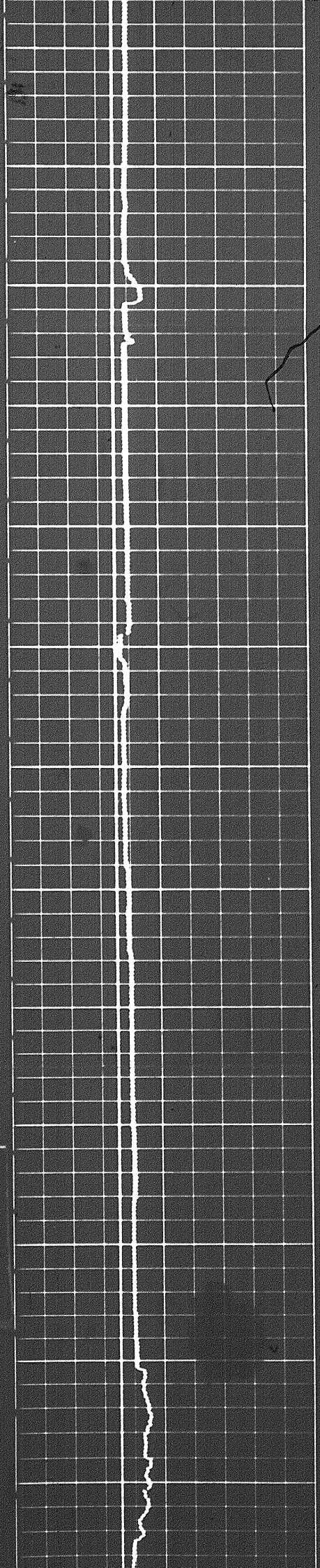


10900 11000 11100 11200 11300 11400

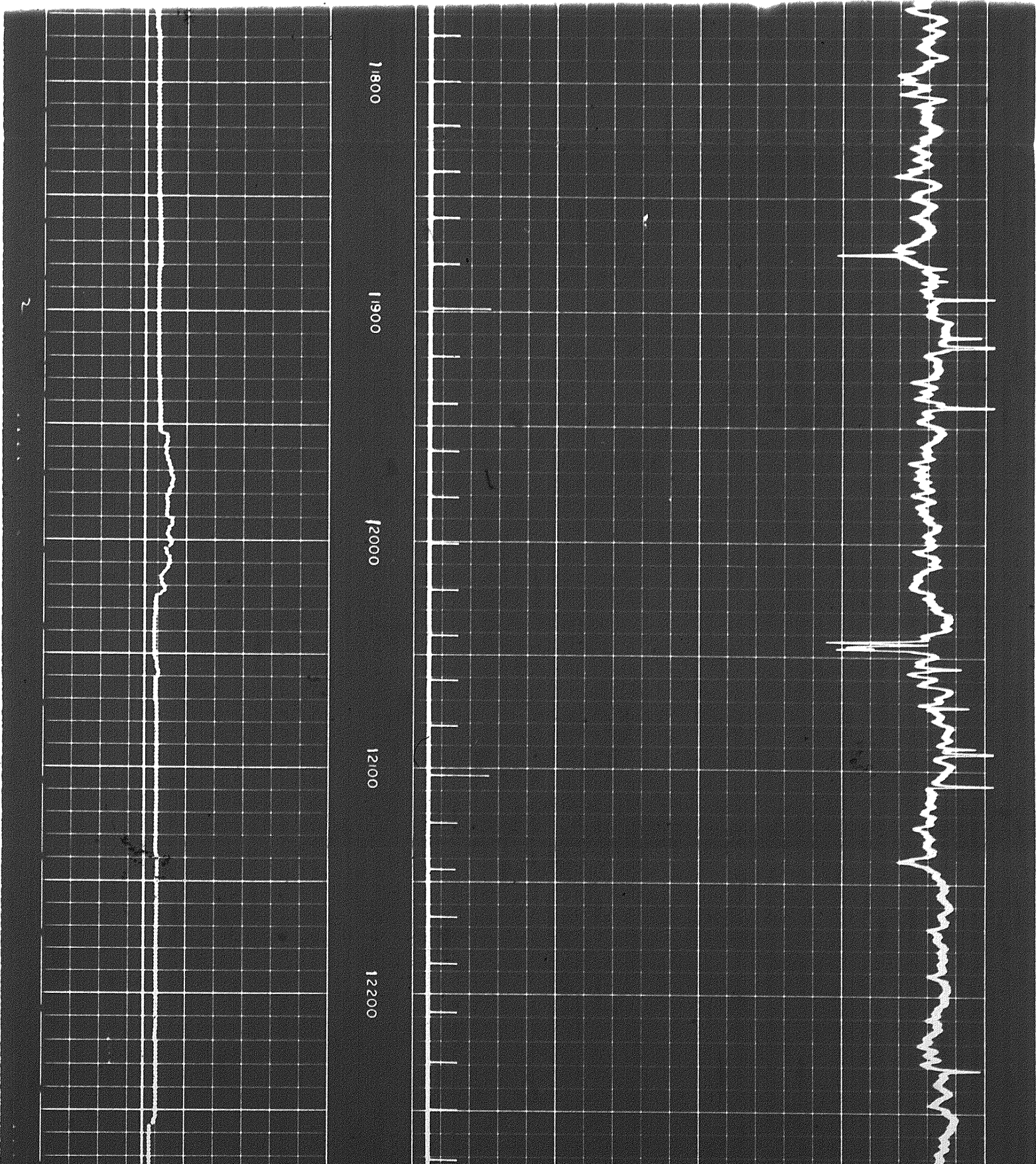
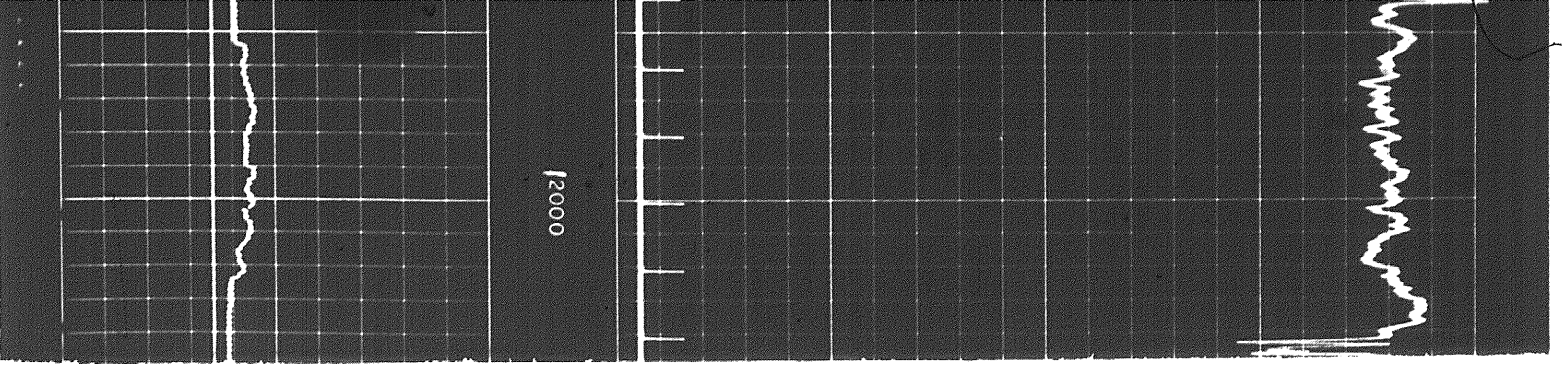


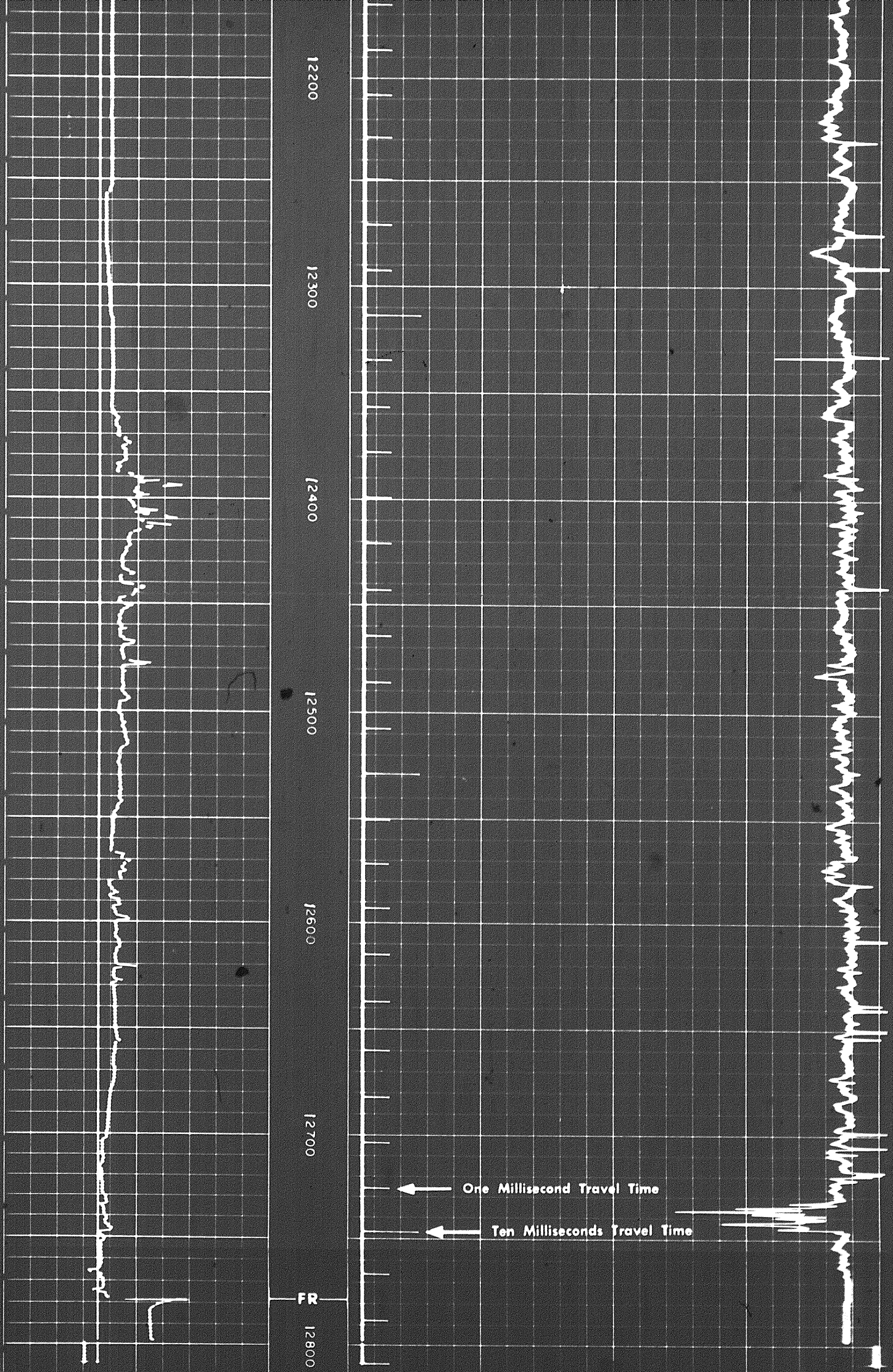


1400 1500 1600 1700 1800 1900 2000

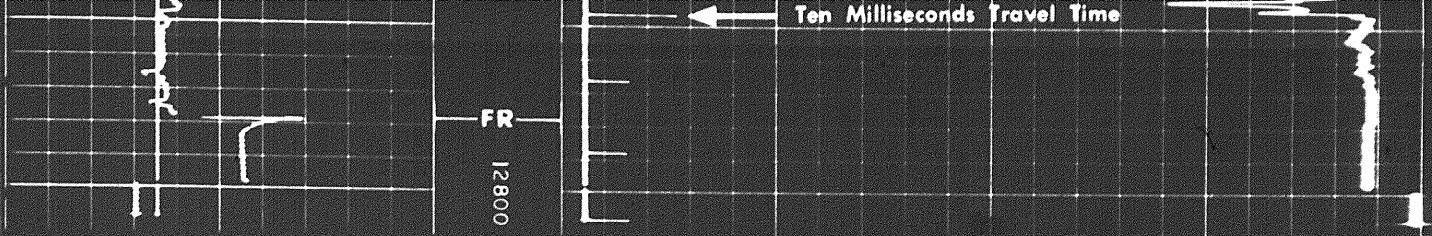


2 of 2

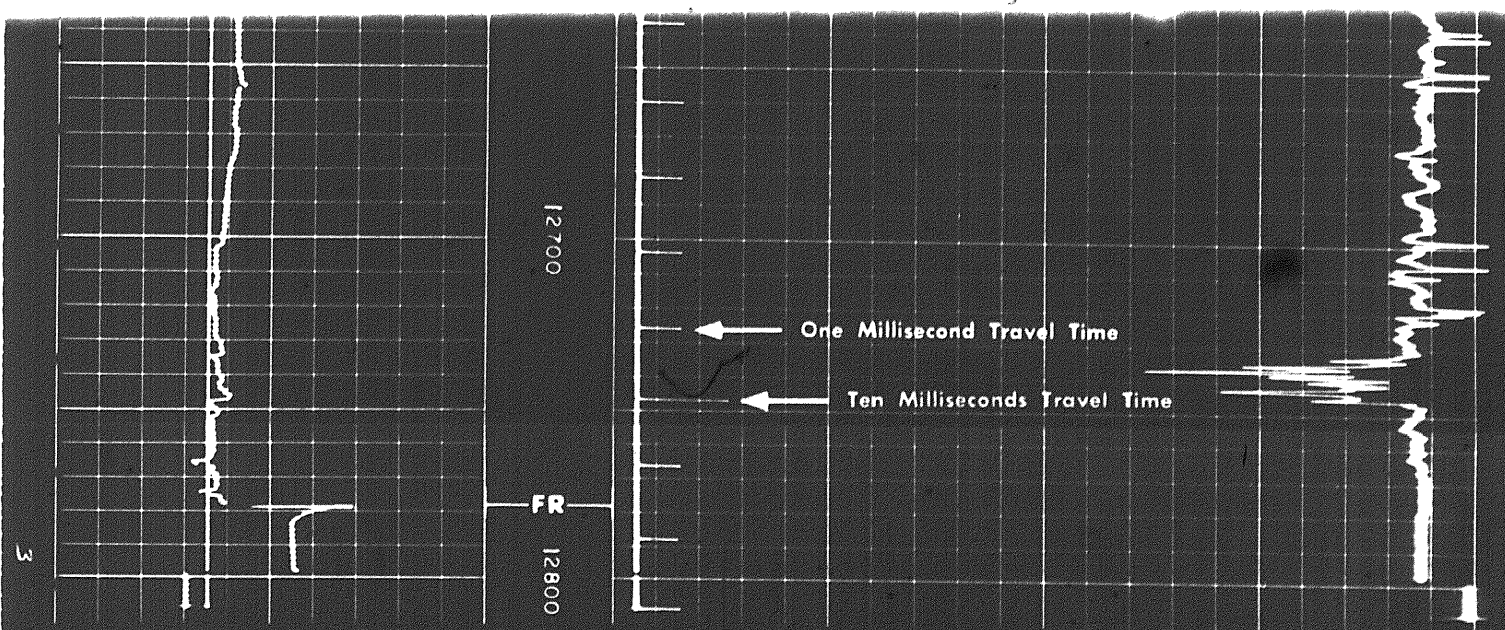




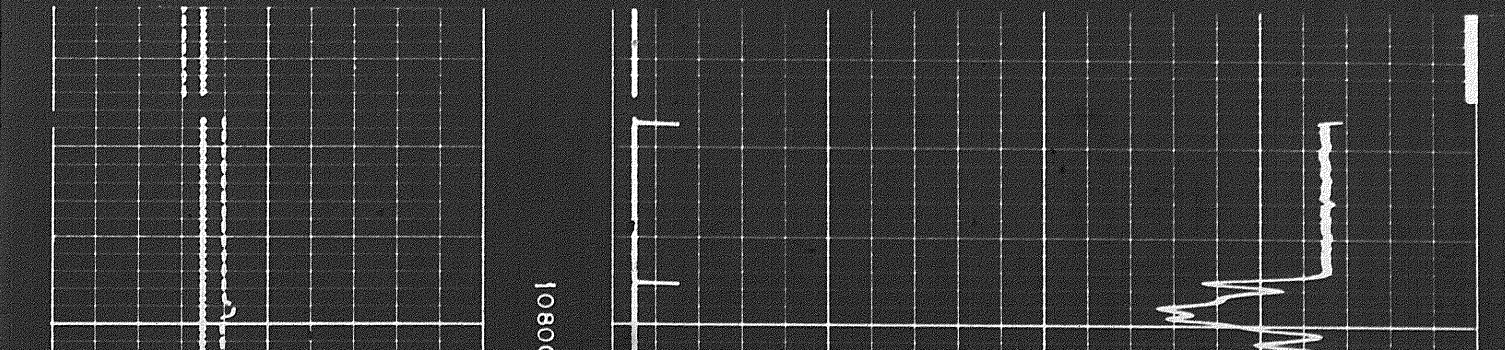
3 of



DETAIL LOG
5" = 100'



DETAIL LOG
5" = 100'



10800

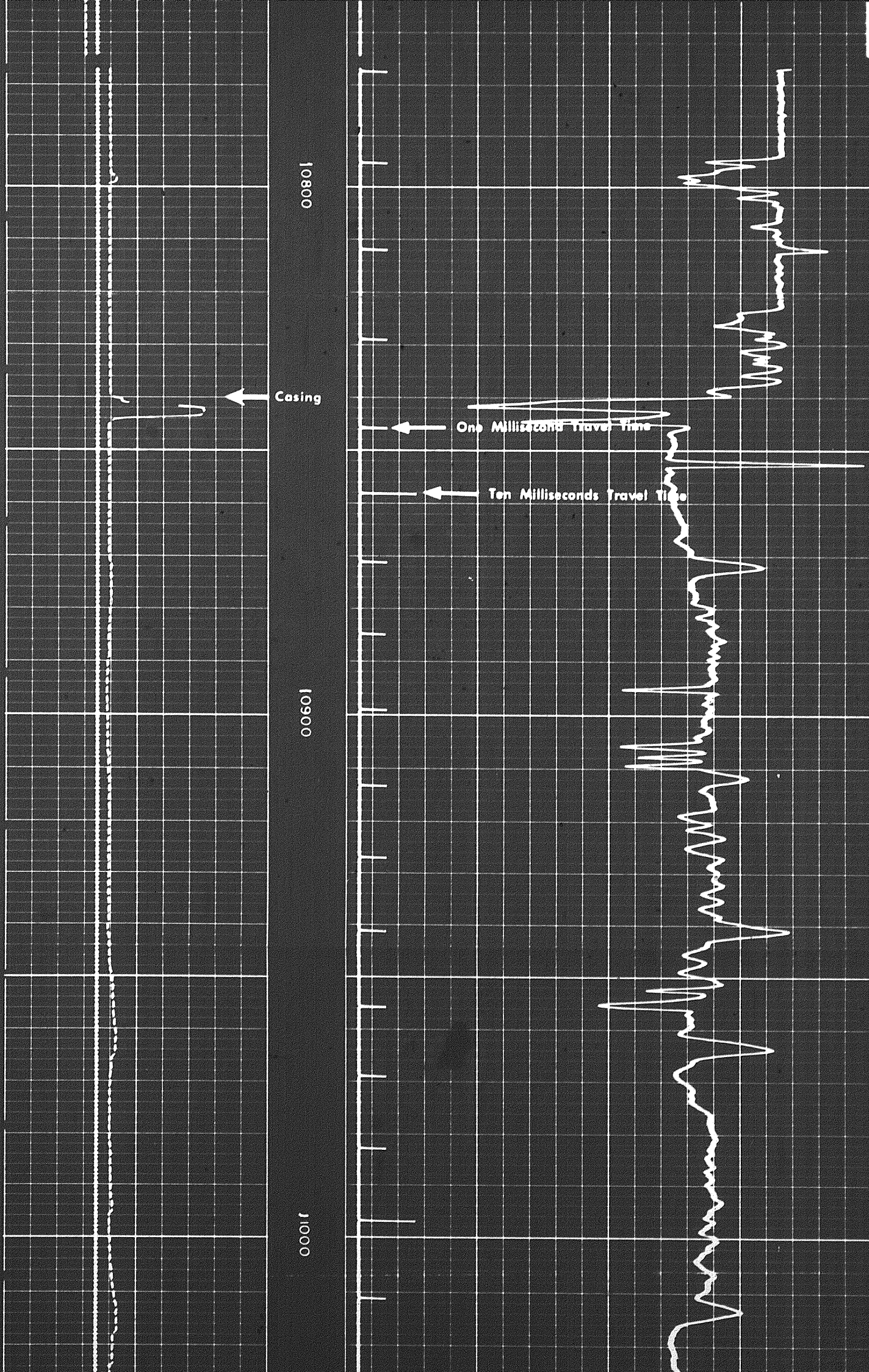
Casing

One Millisecond Travel Time

Ten Milliseconds Travel Time

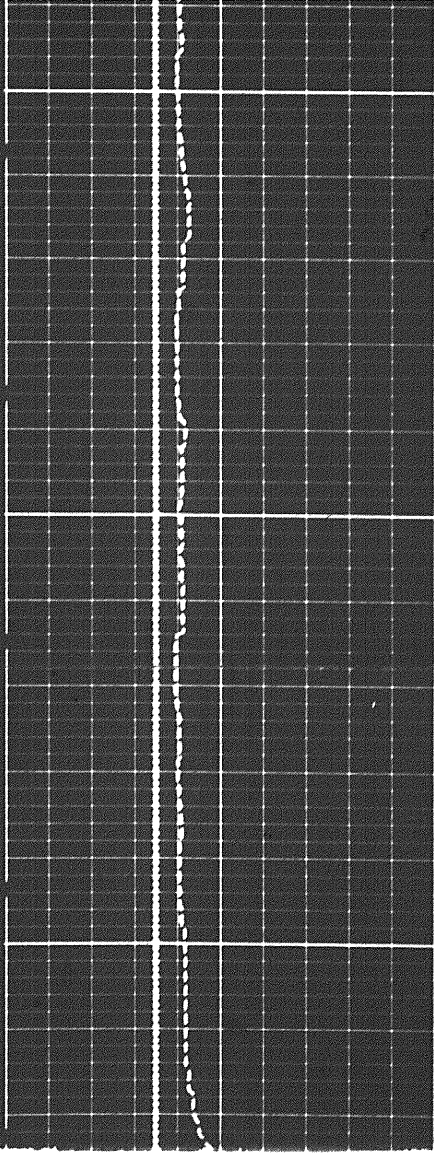
10900

0001



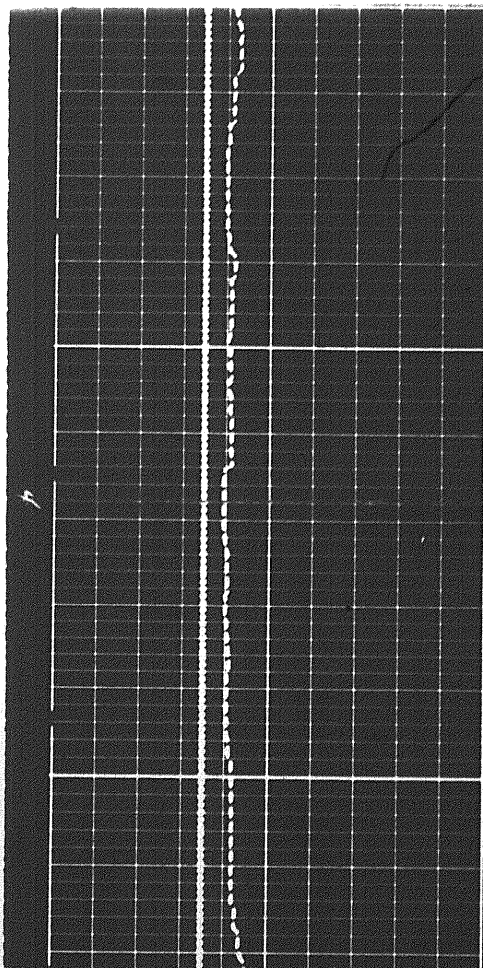
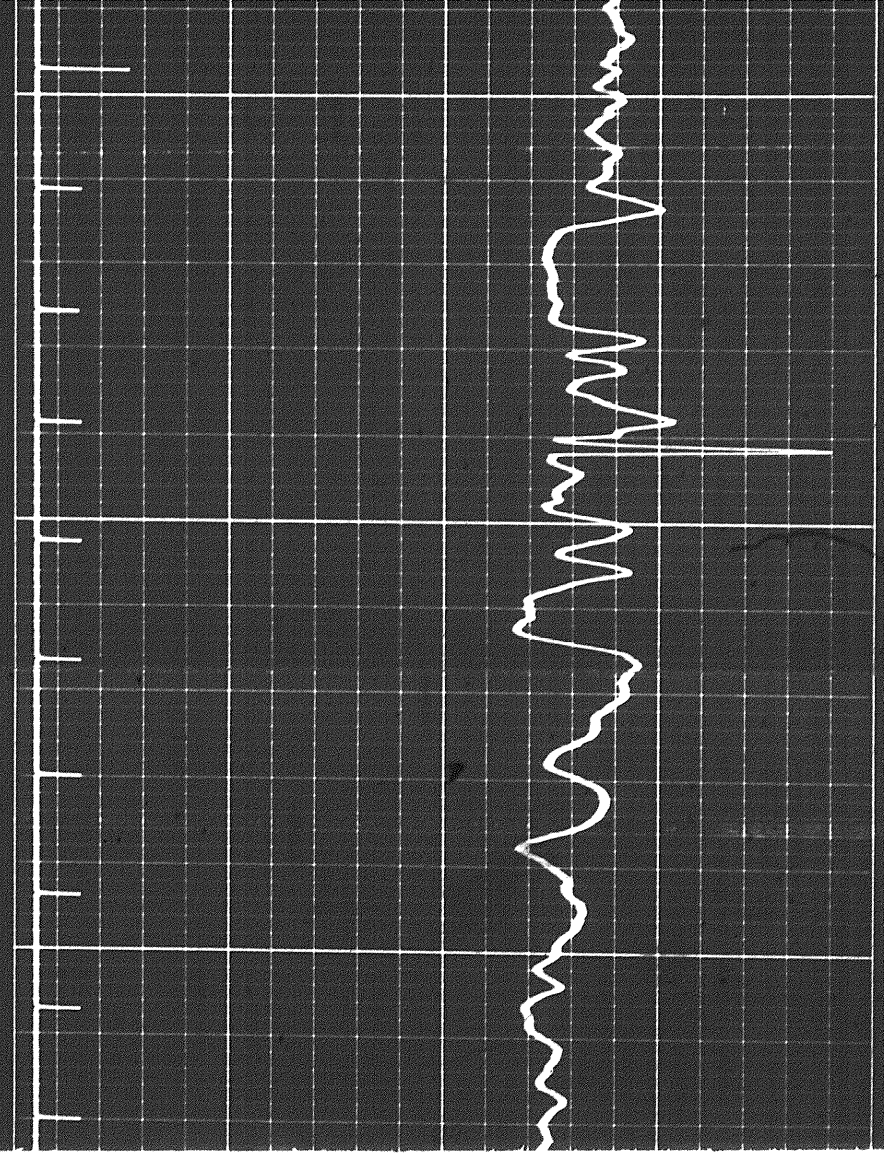
404

2



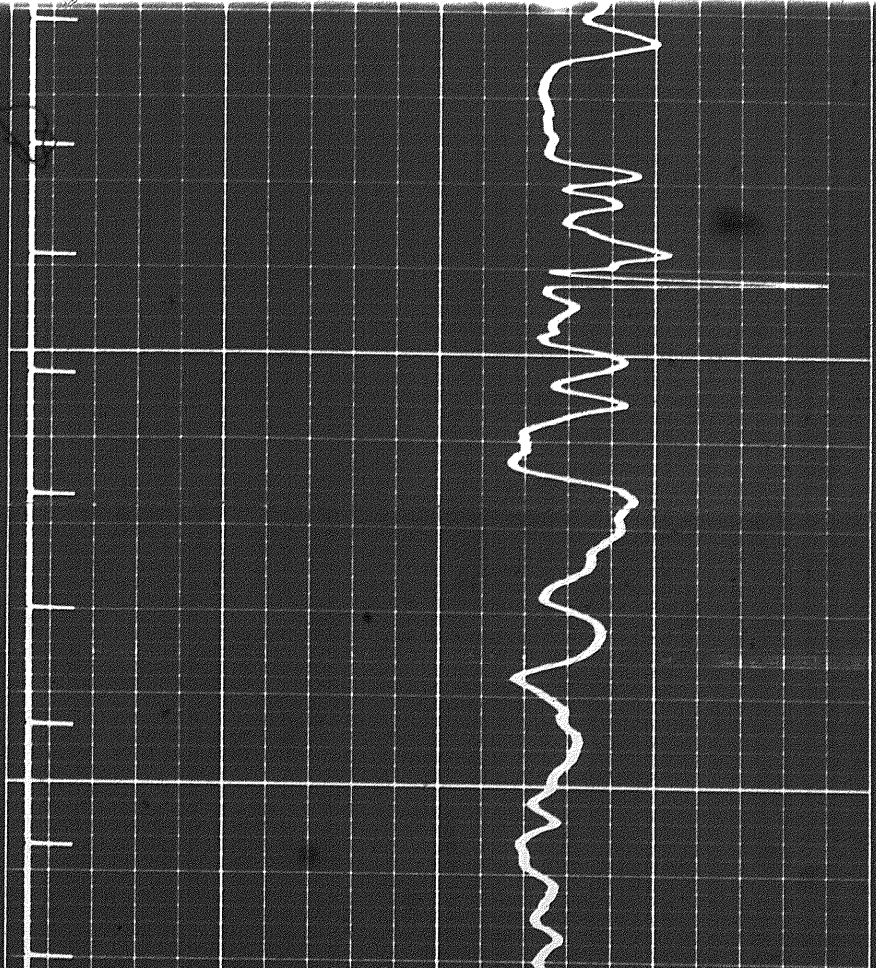
11000

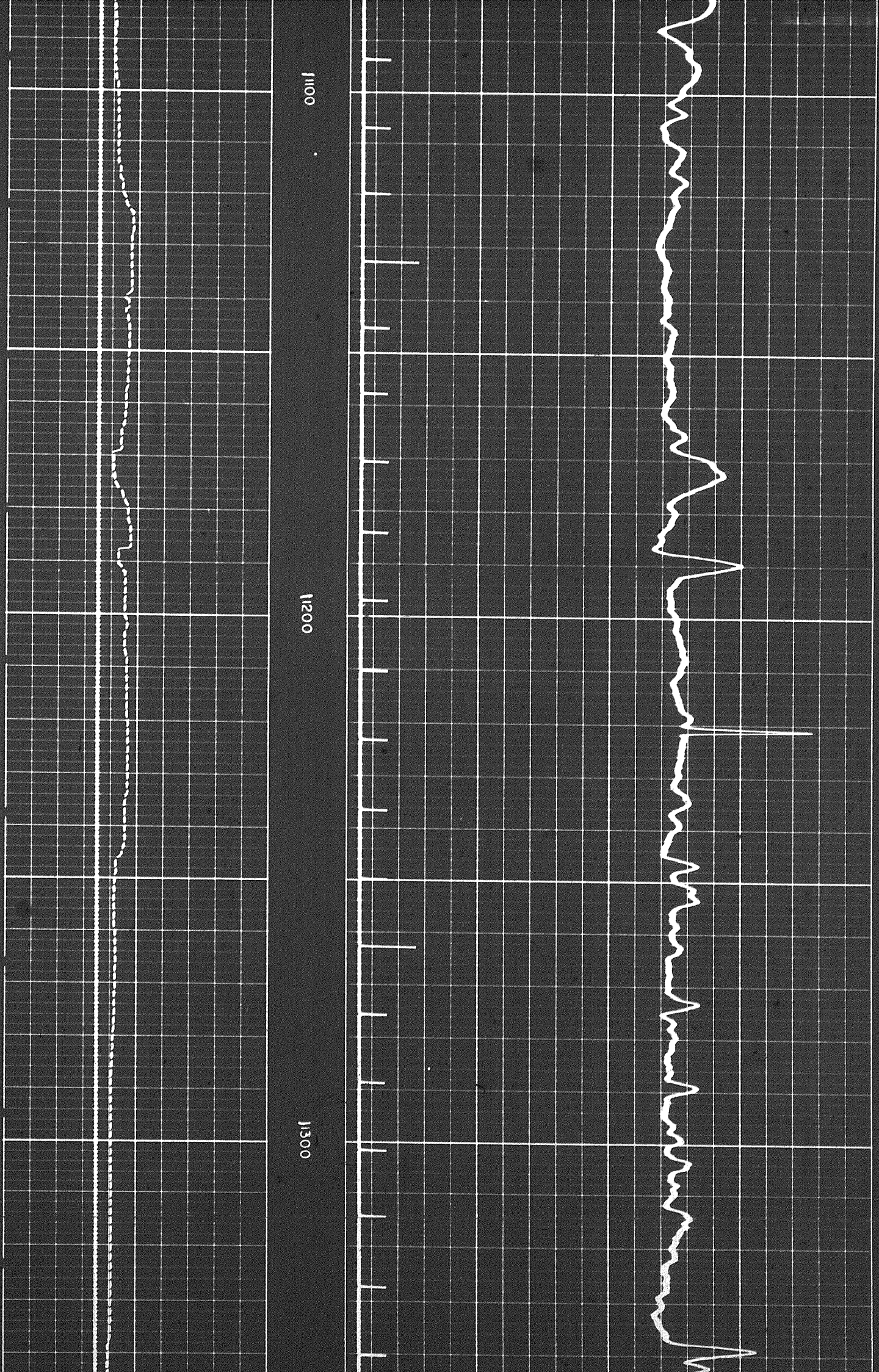
0011

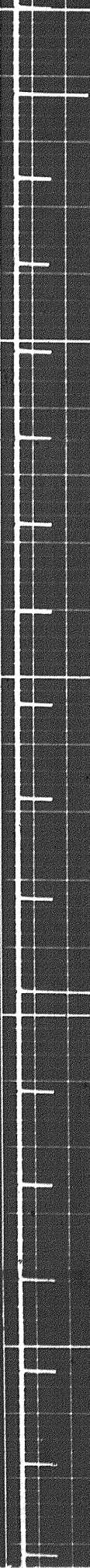
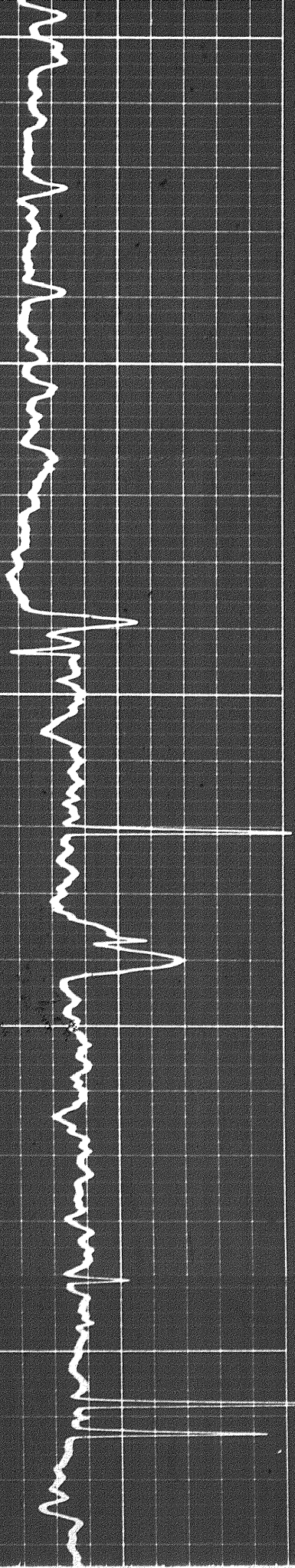


11100

0011



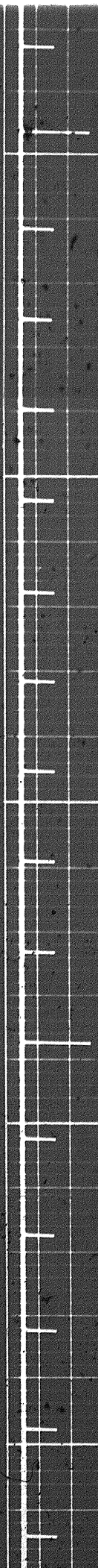
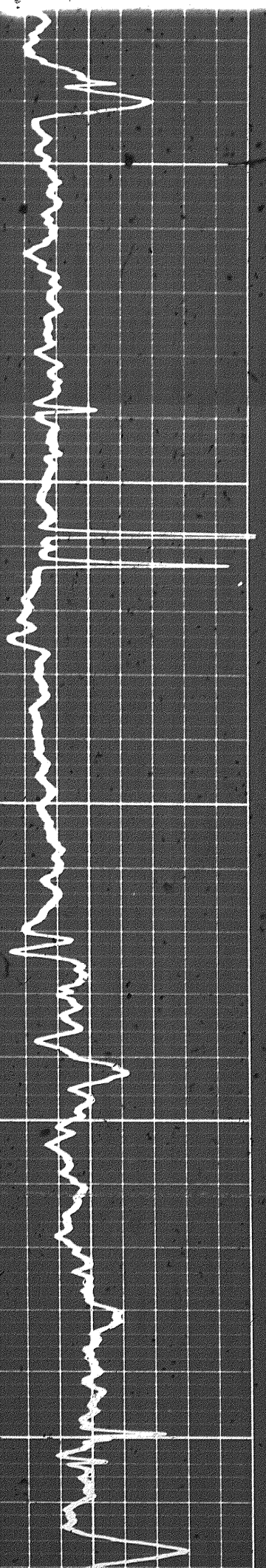




1300

1400

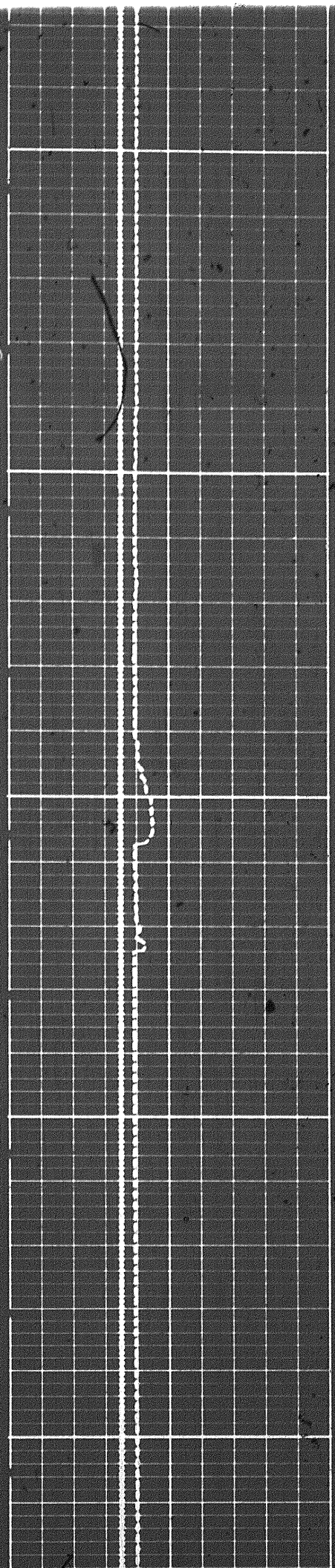
5 of



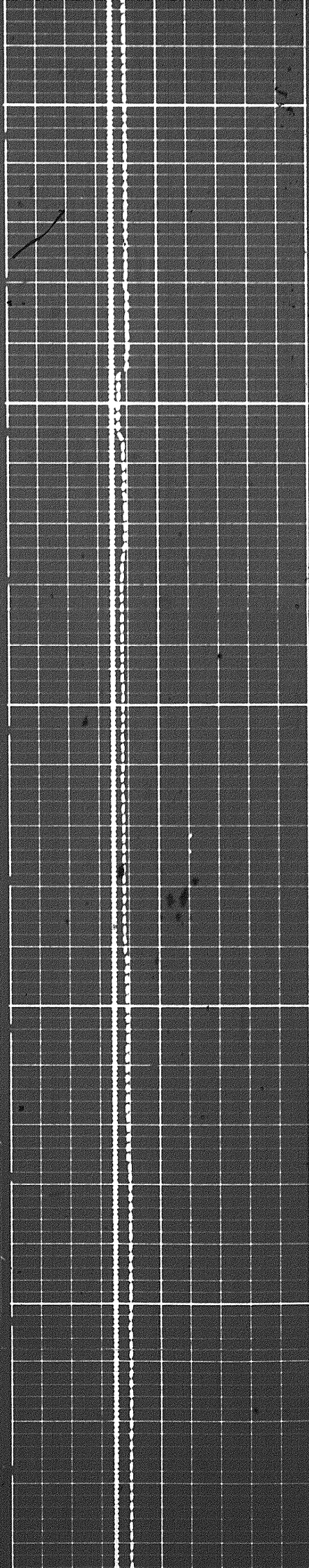
11400

11500

11600



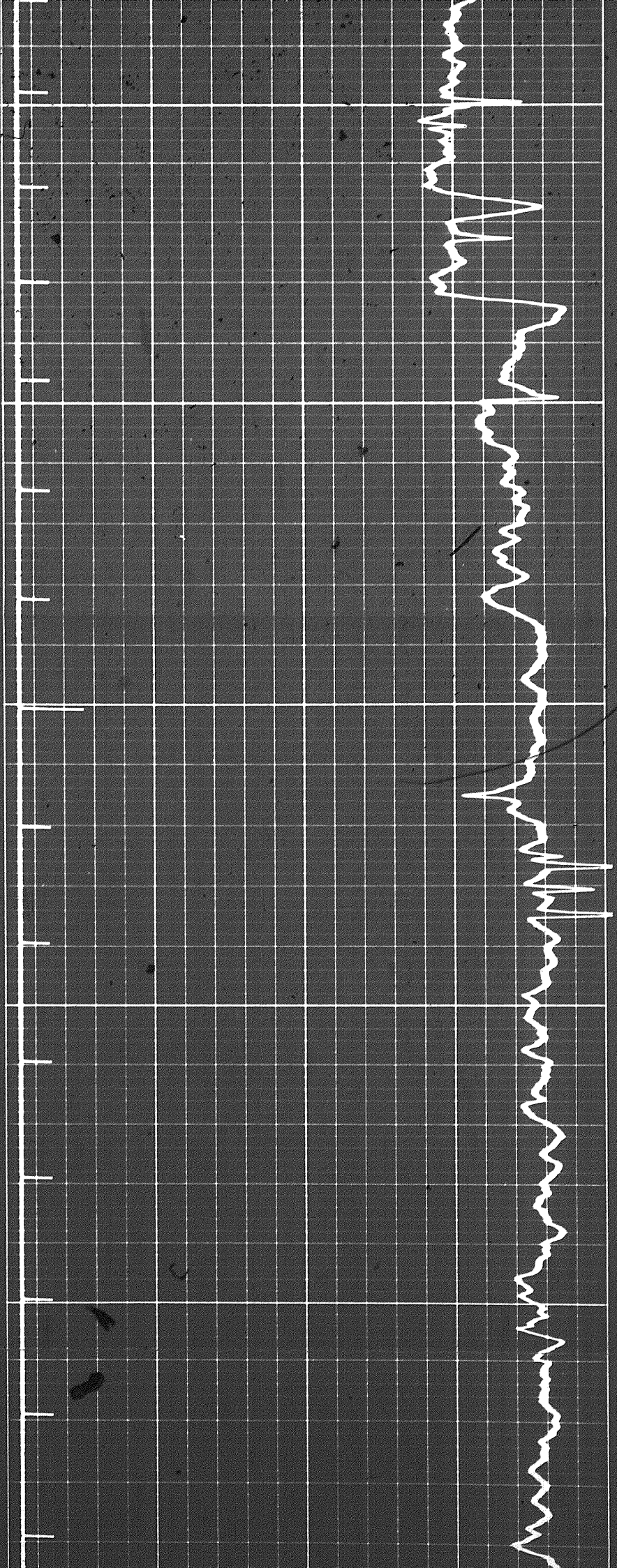
6 of

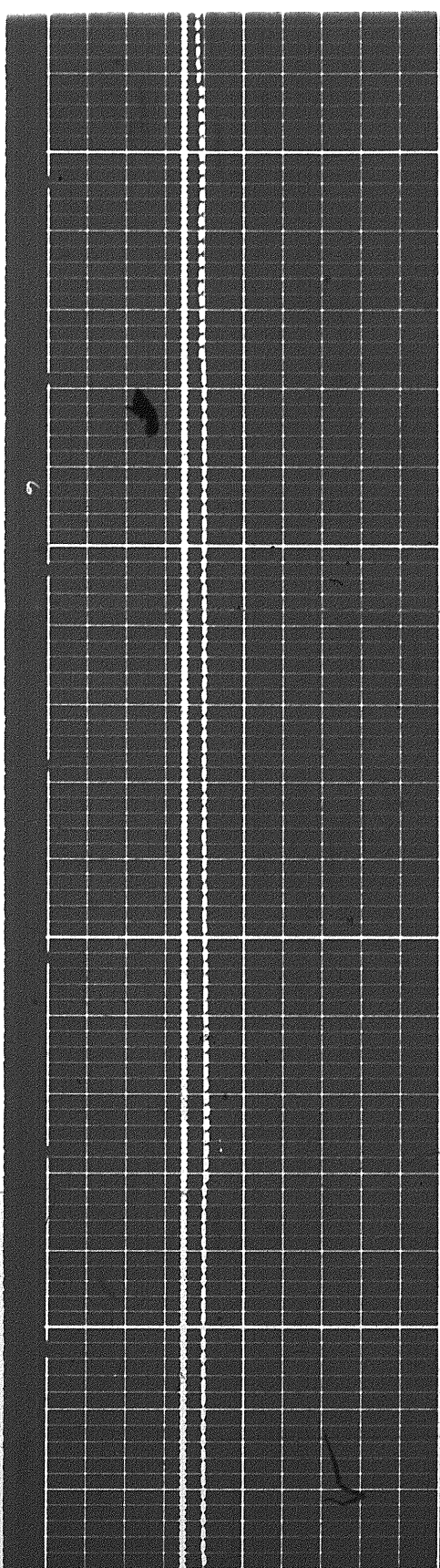
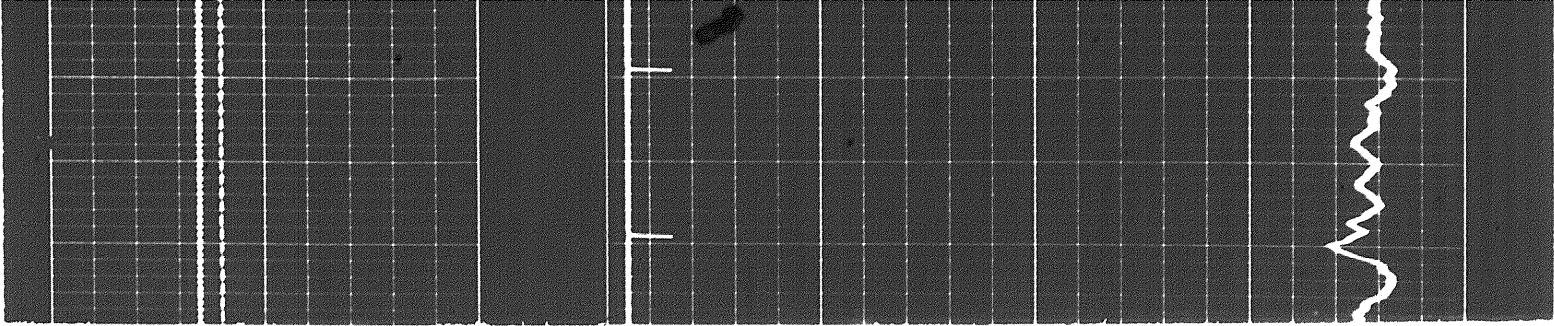


1600

1700

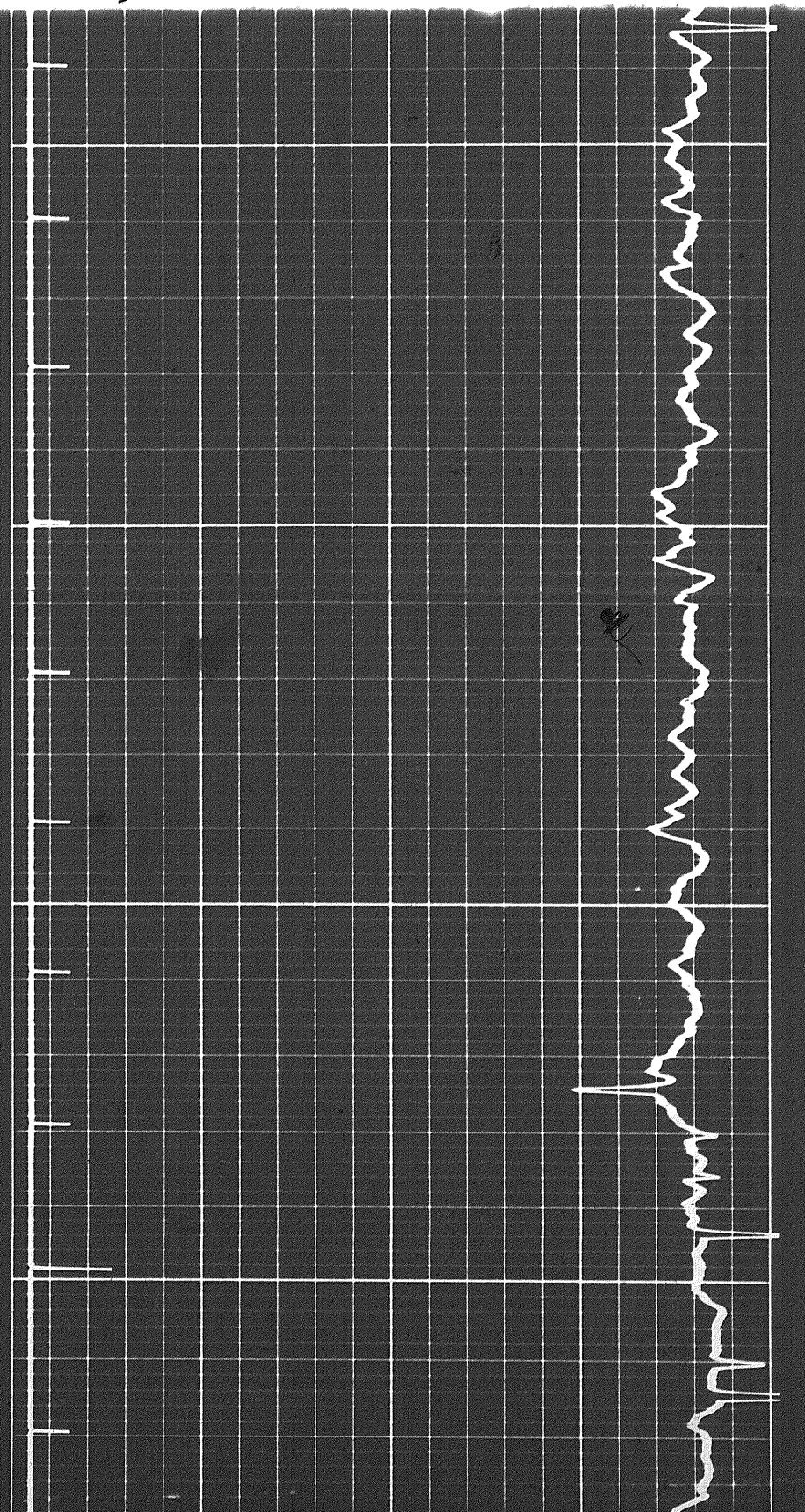
1800



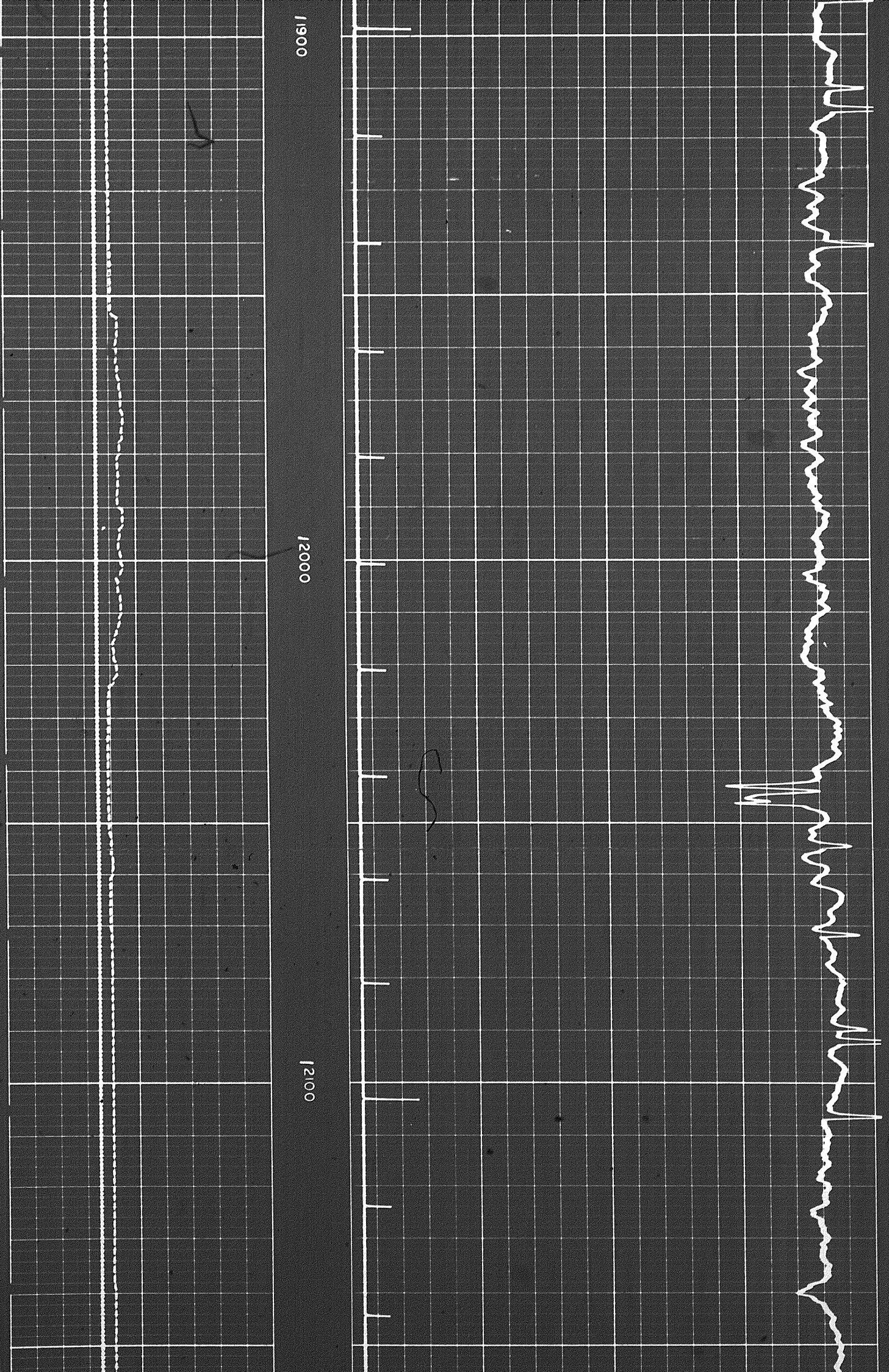


00811

1900



701

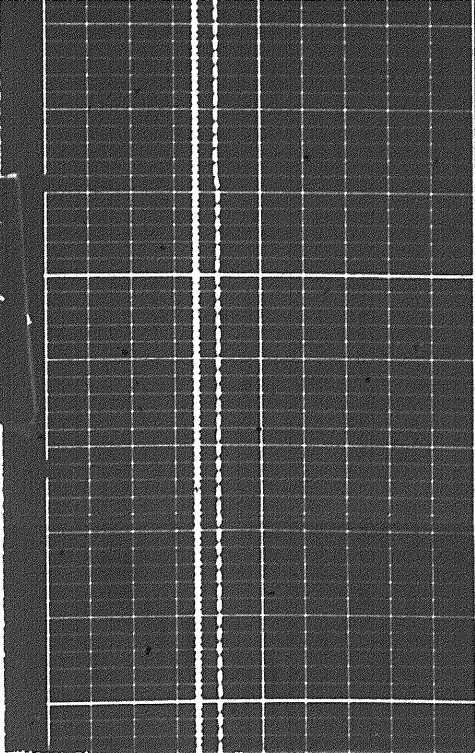


11900

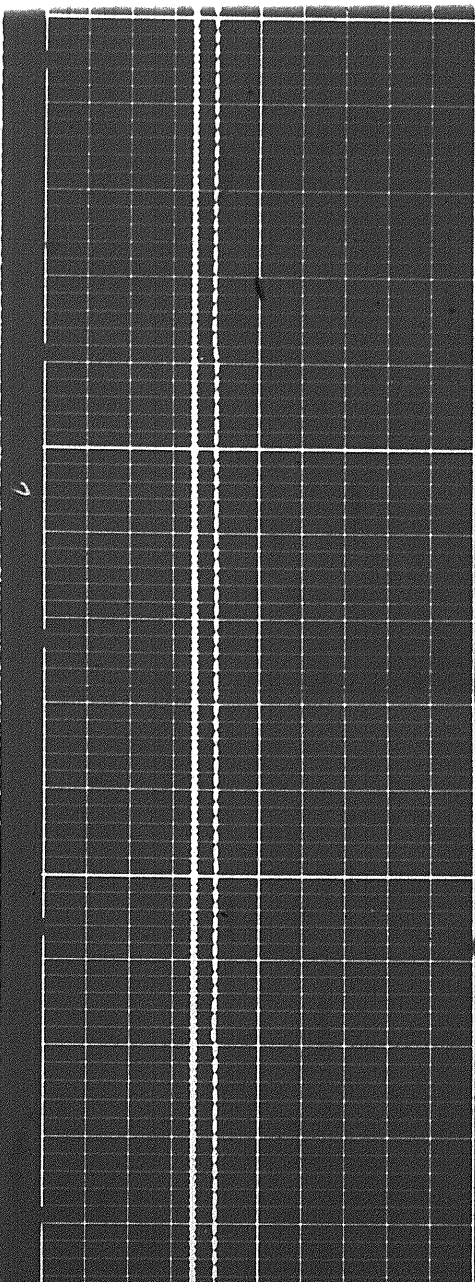
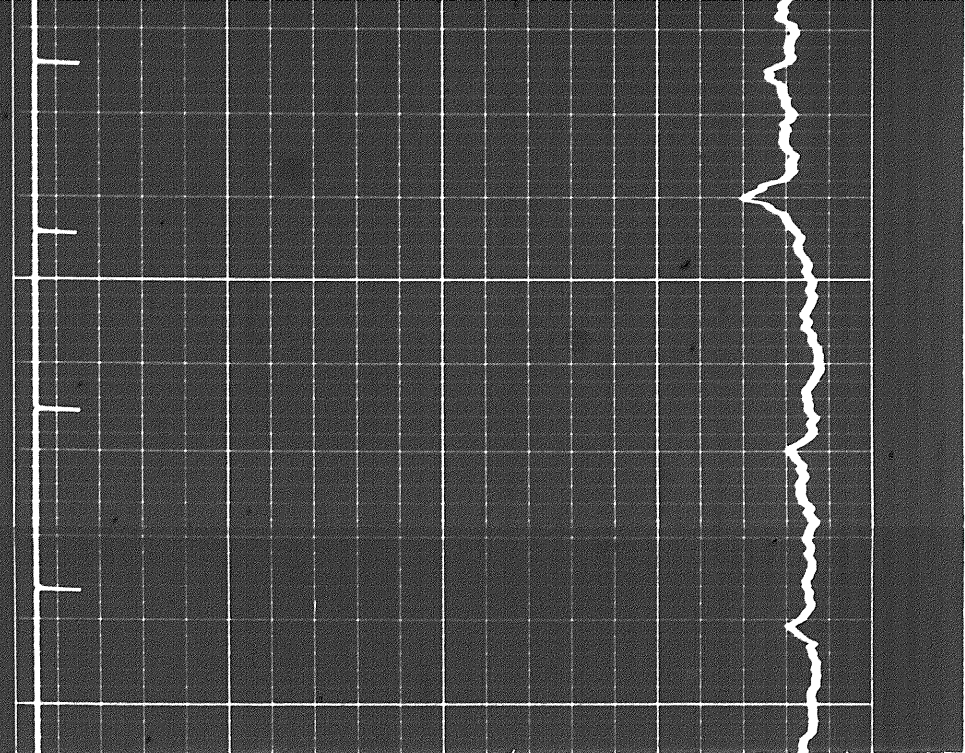
12000

12100

704

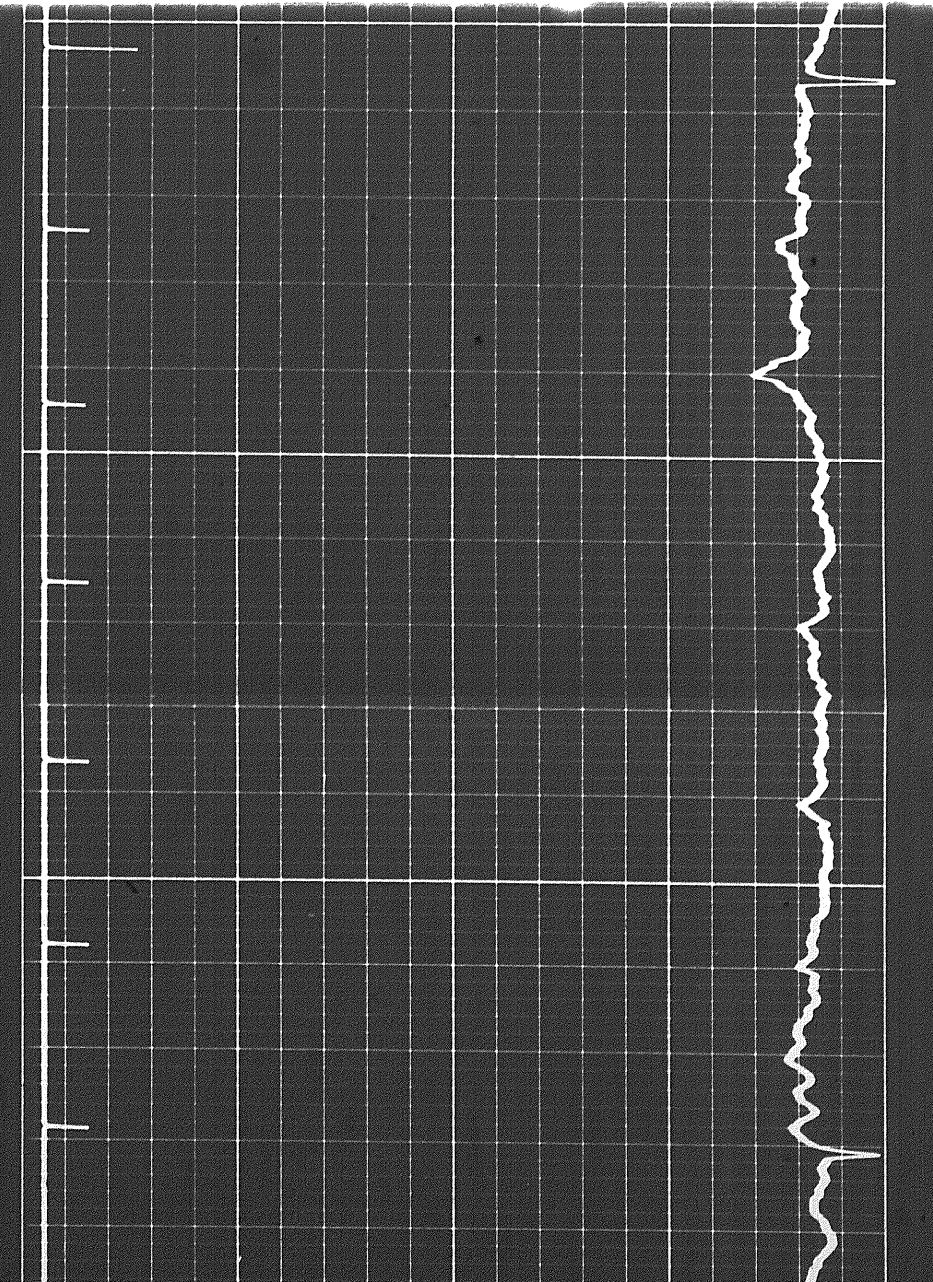


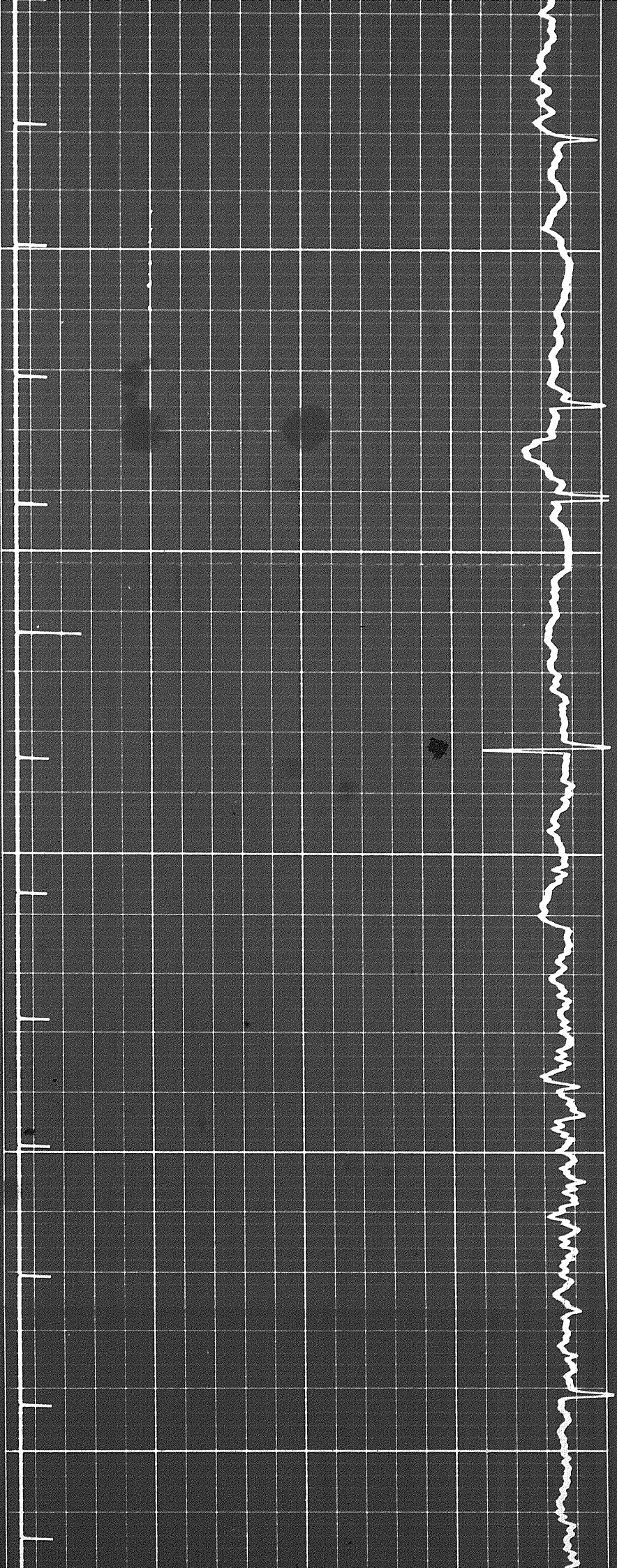
12200



100

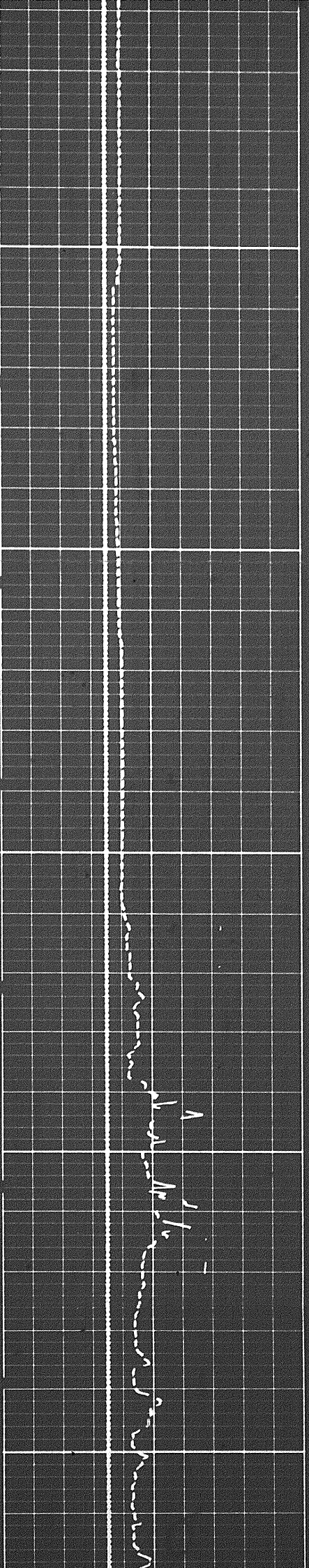
12200



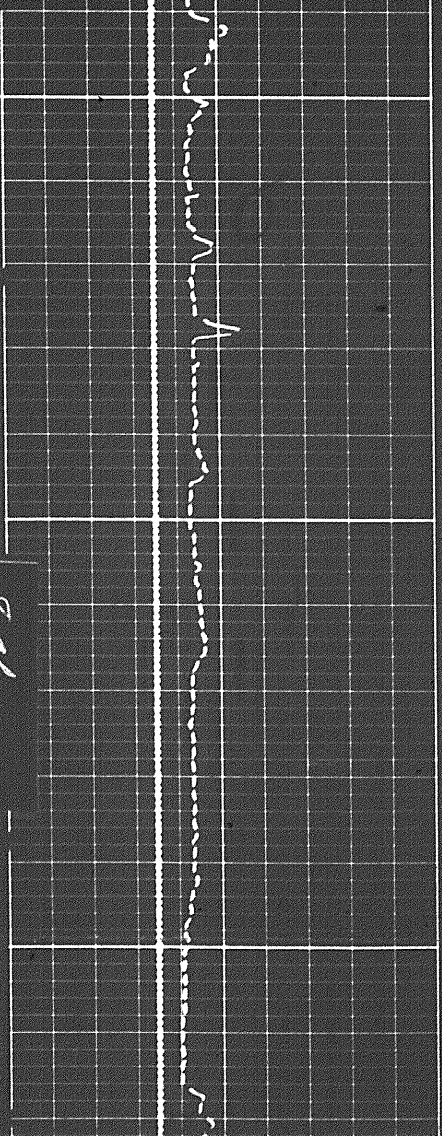


12300

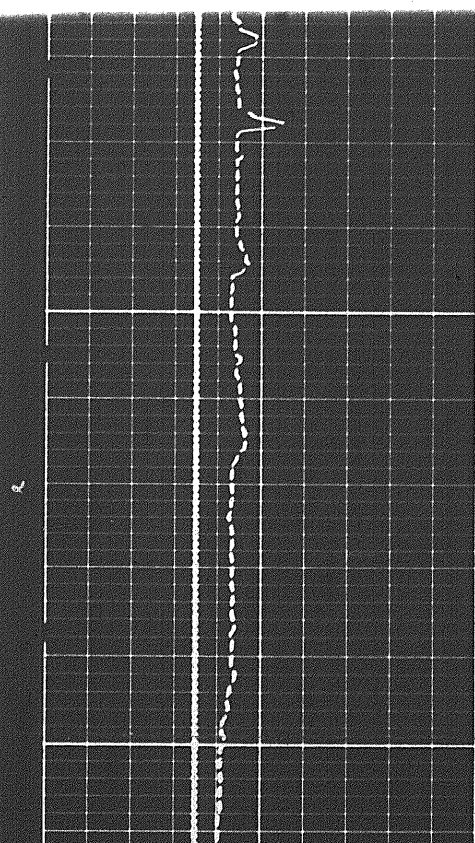
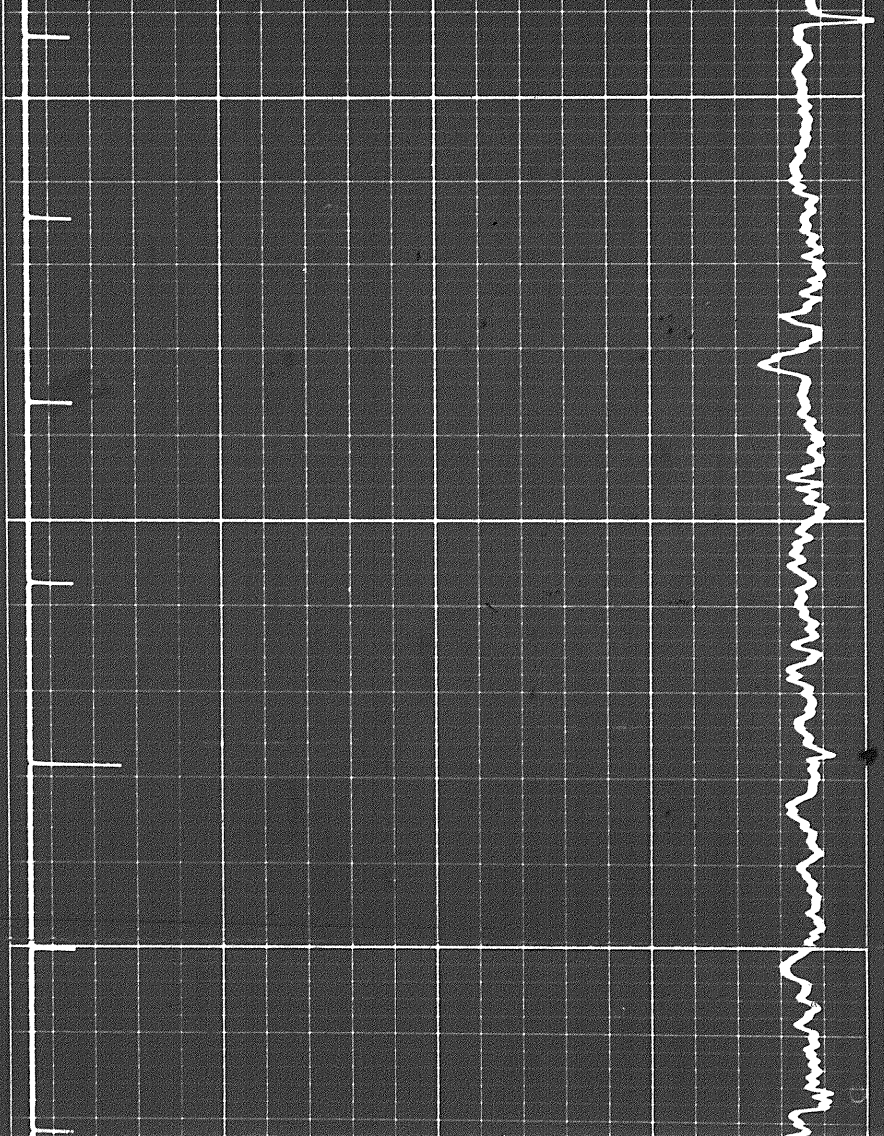
12400



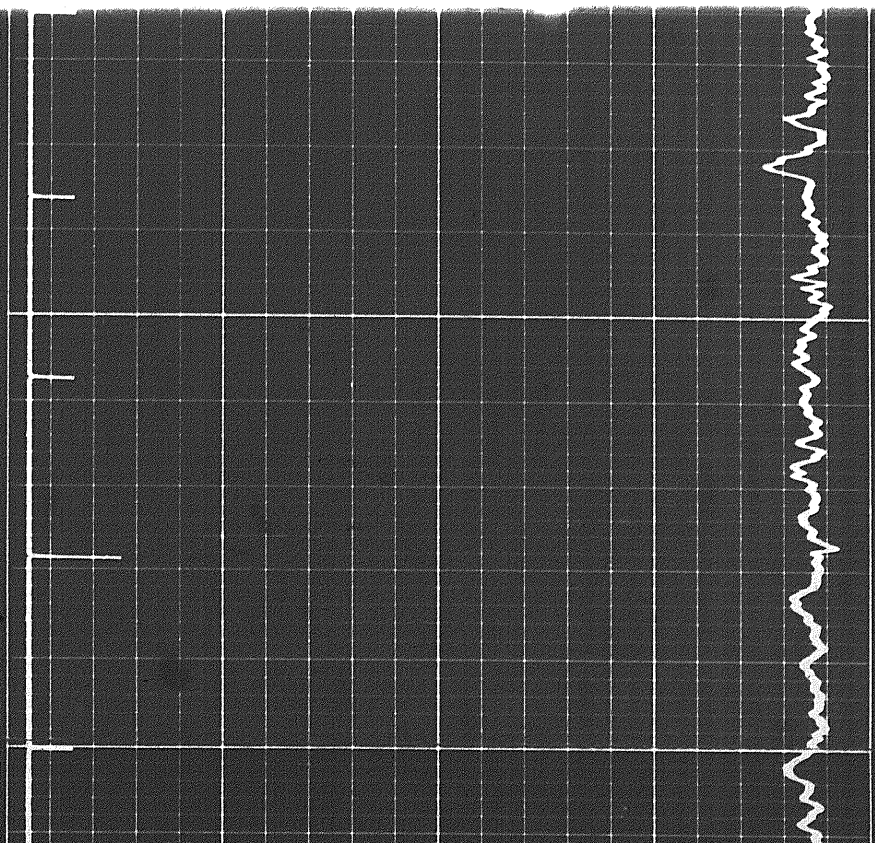
108

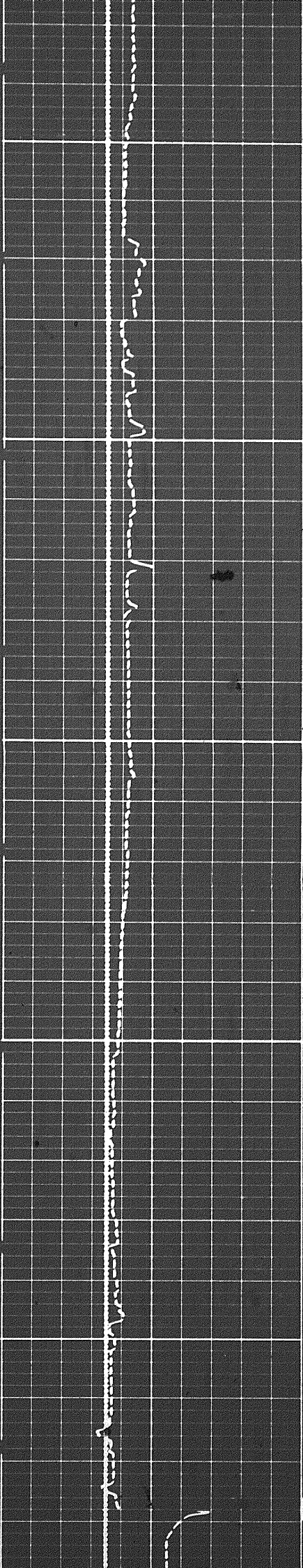


12500



12500

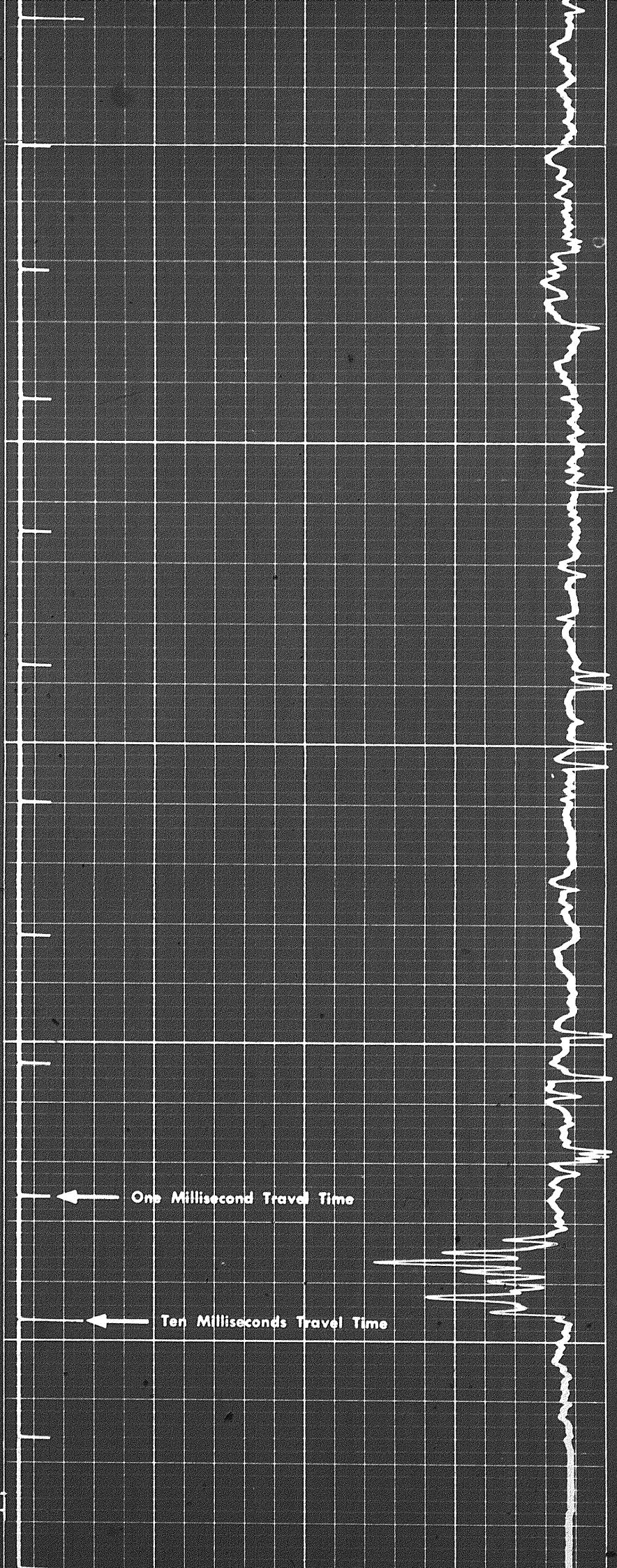




12600

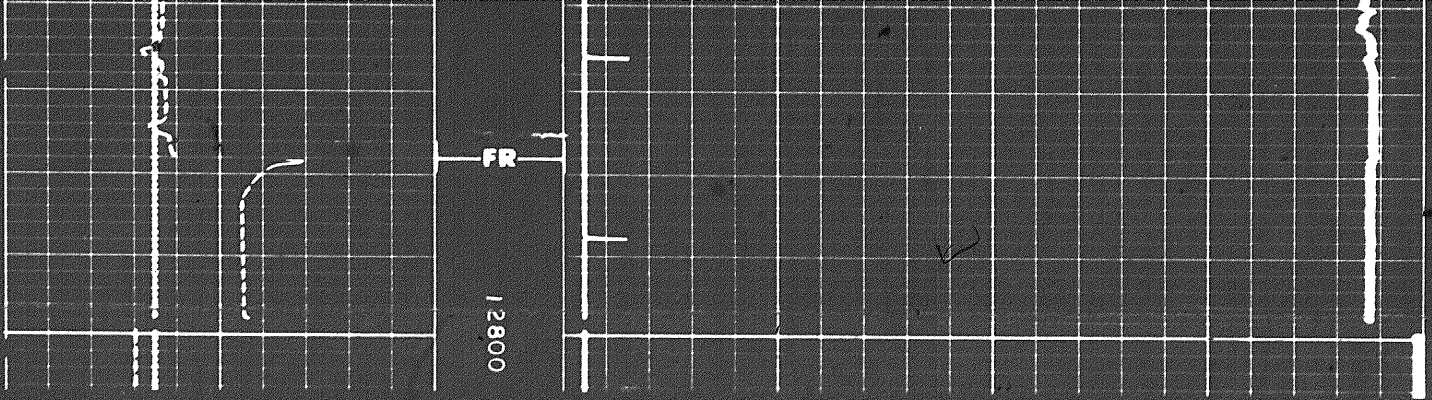
12700

FR

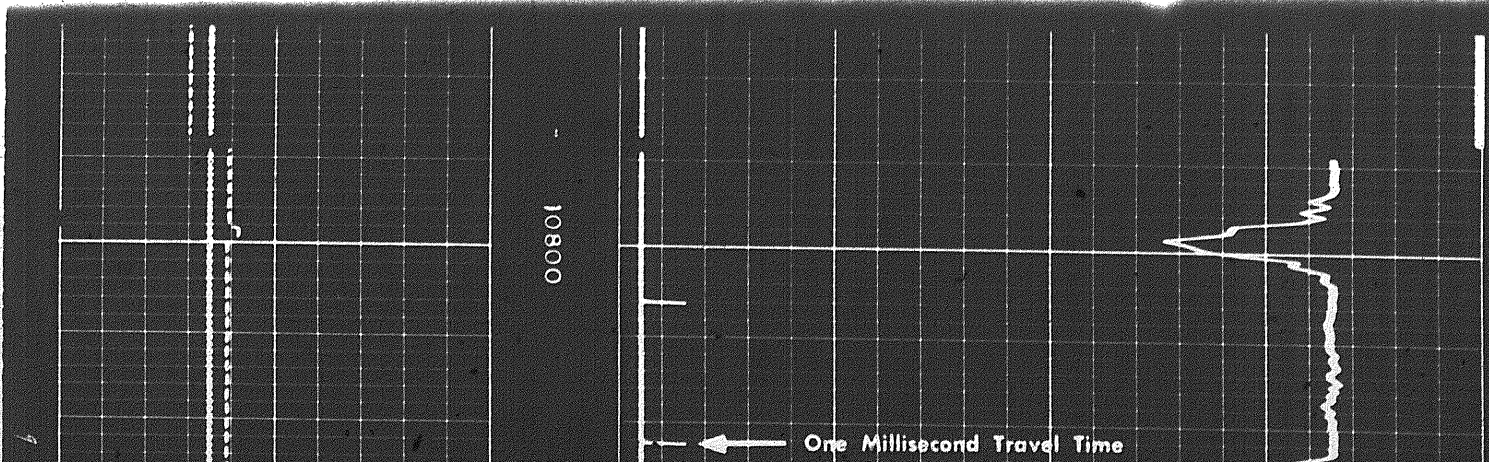
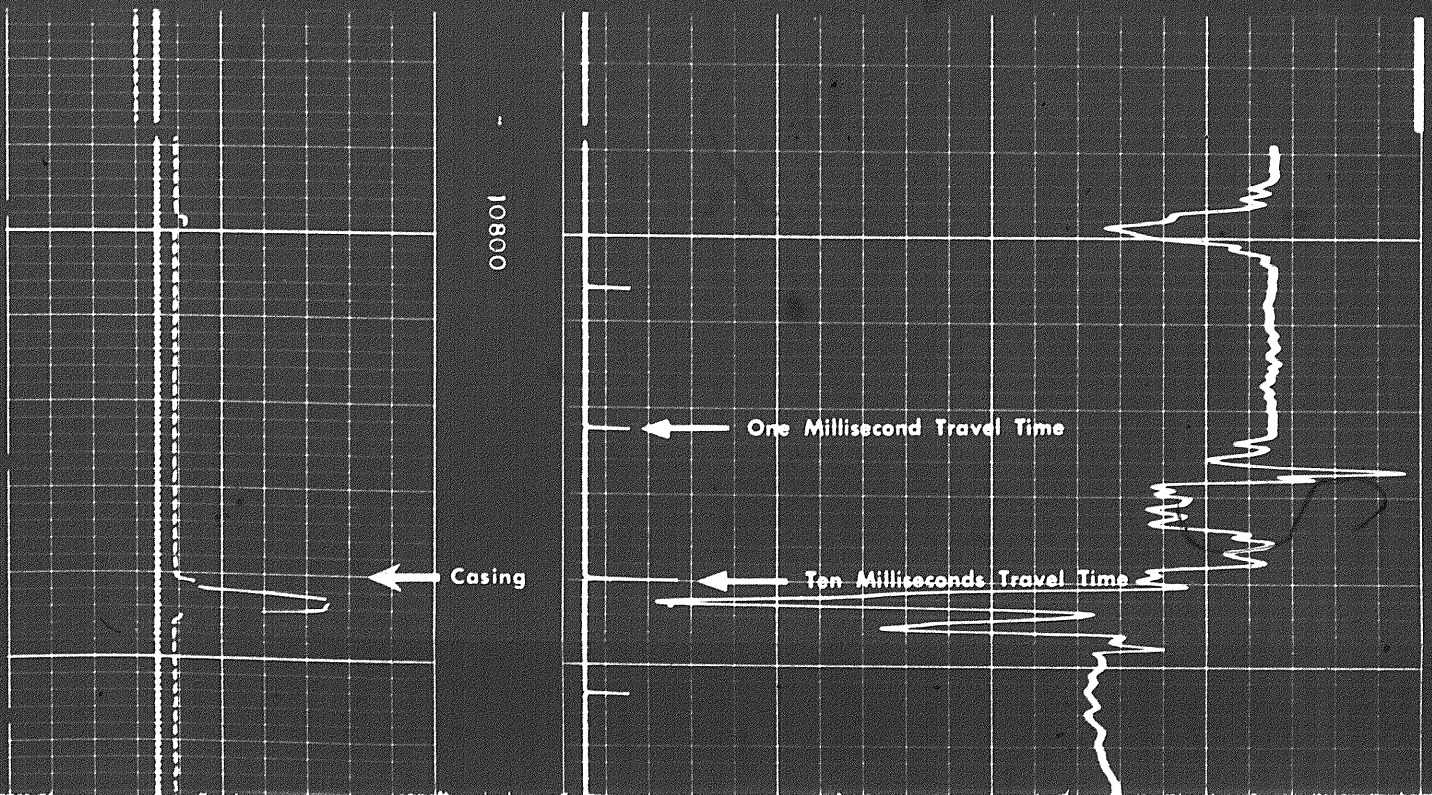


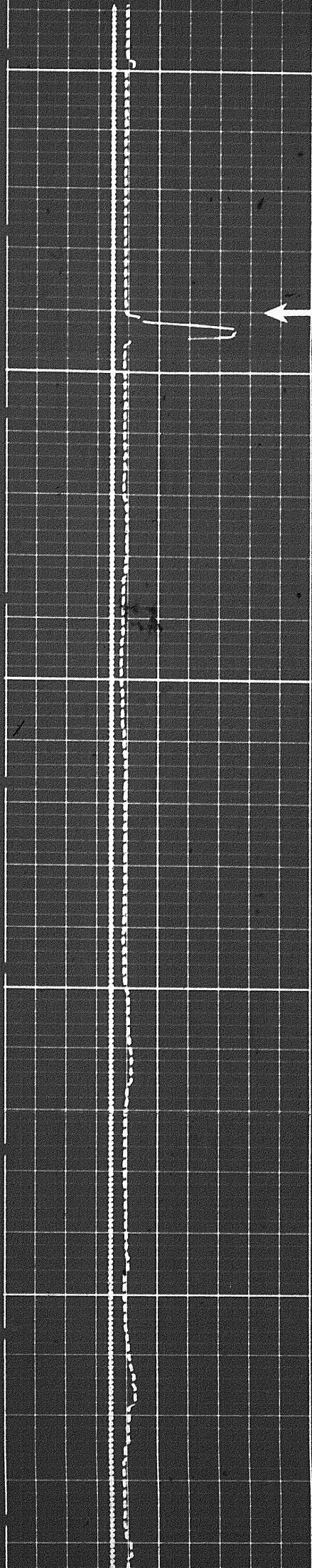
One Millisecond Travel Time

Ten Milliseconds Travel Time



REPEAT SECTION



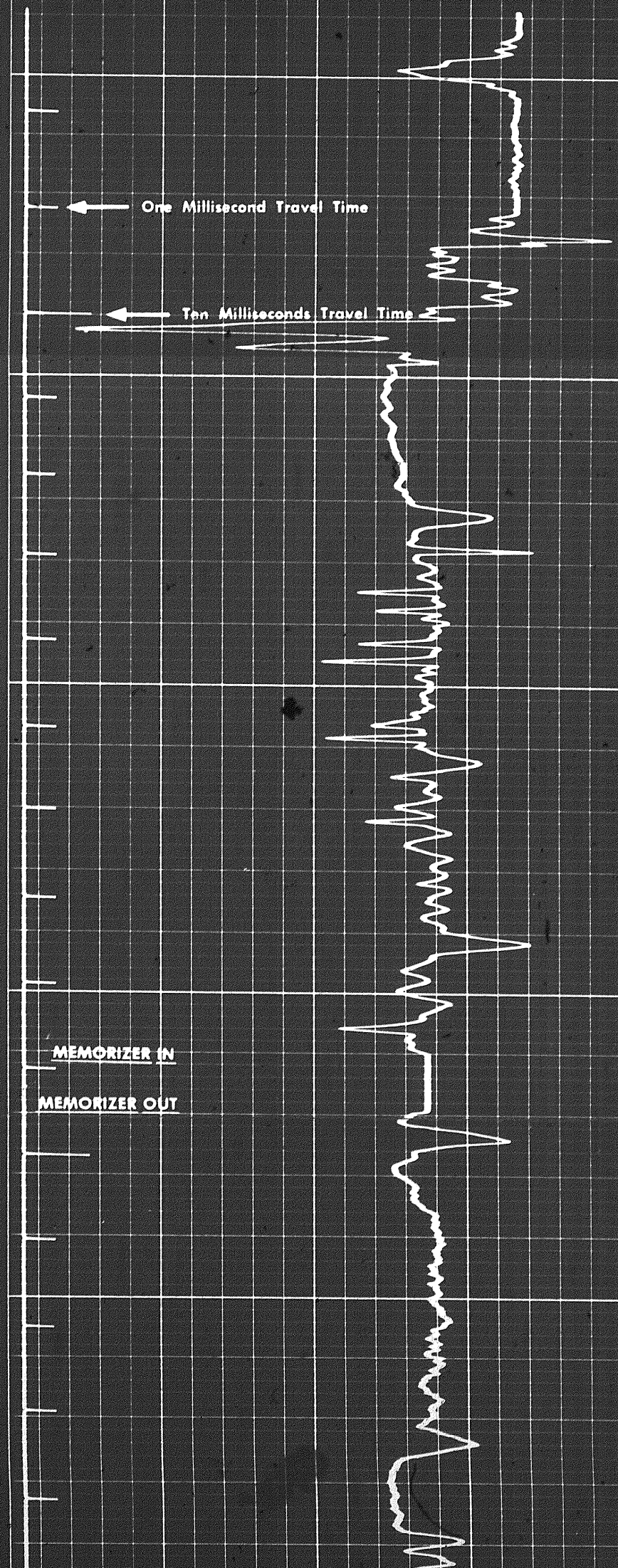


Casing

10801

10900

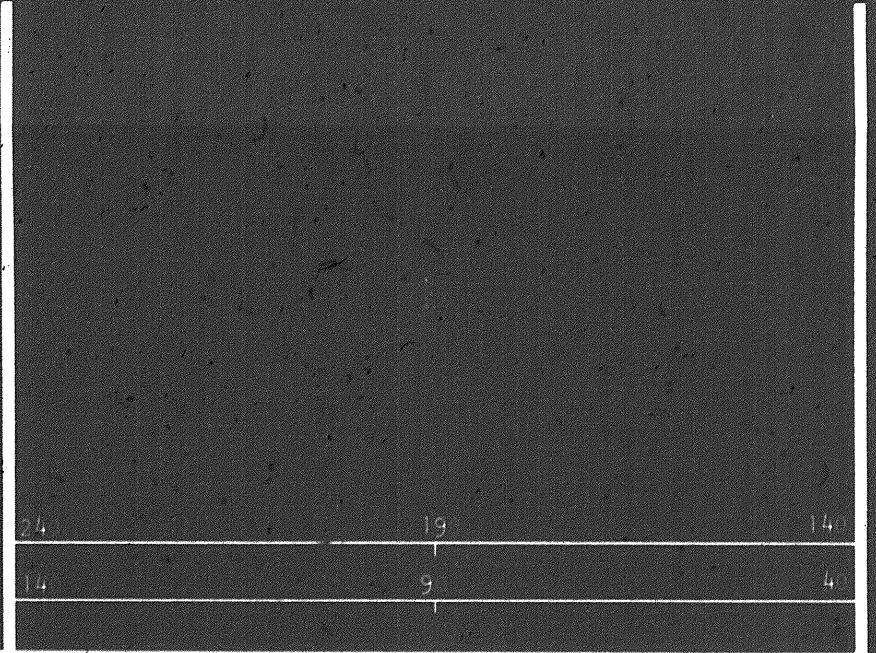
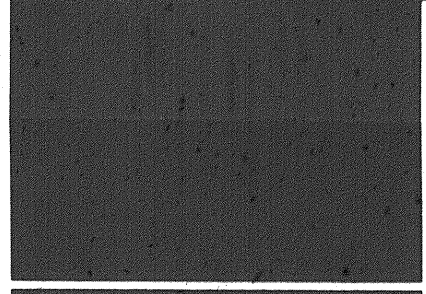
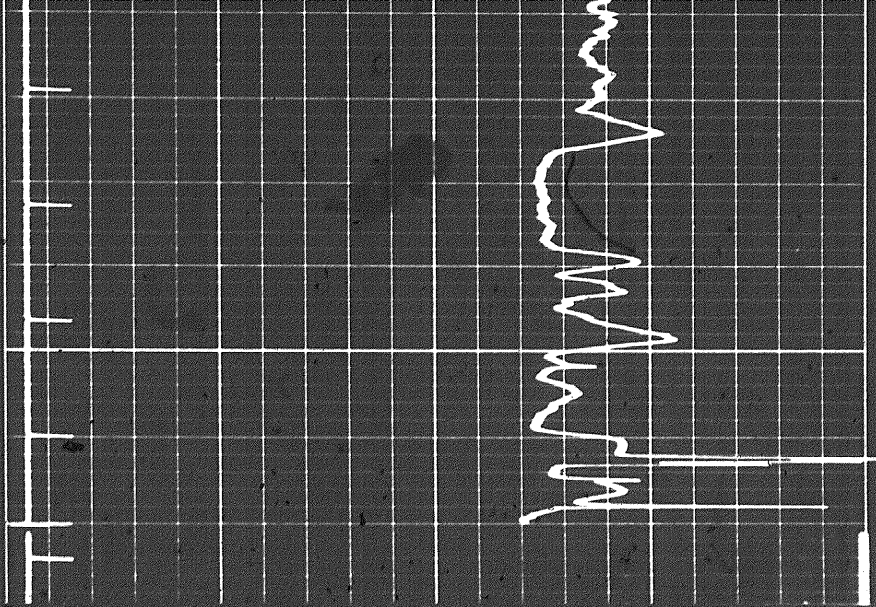
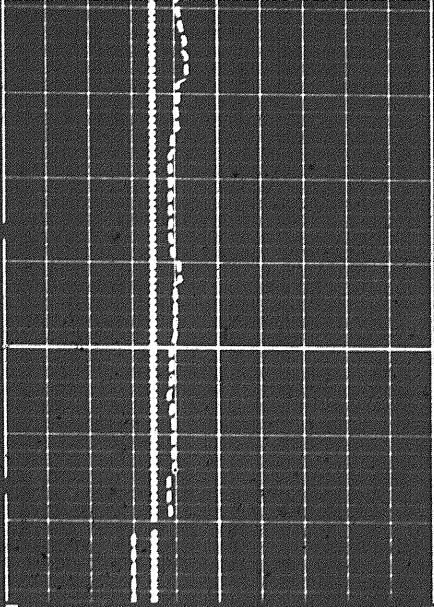
11000



One Millisecond Travel Time

Ten Milliseconds Travel Time

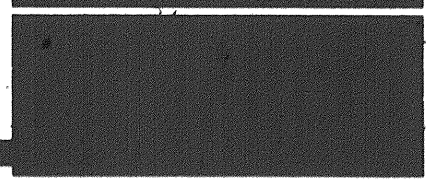
MEMORIZER IN
MEMORIZER OUT



6 7 8 9 10 11 12 13 14

CALIPER
hole diameter in inches

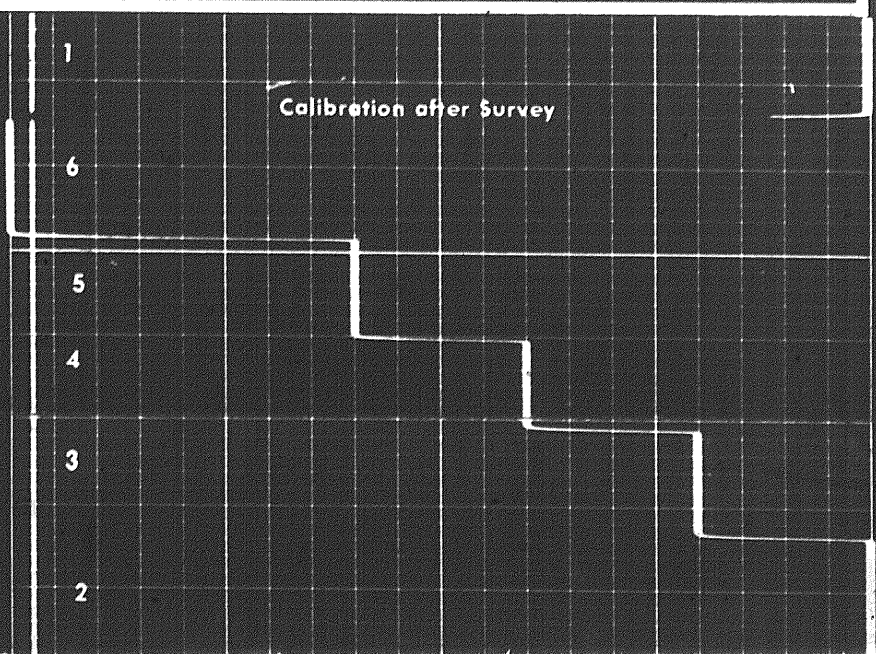
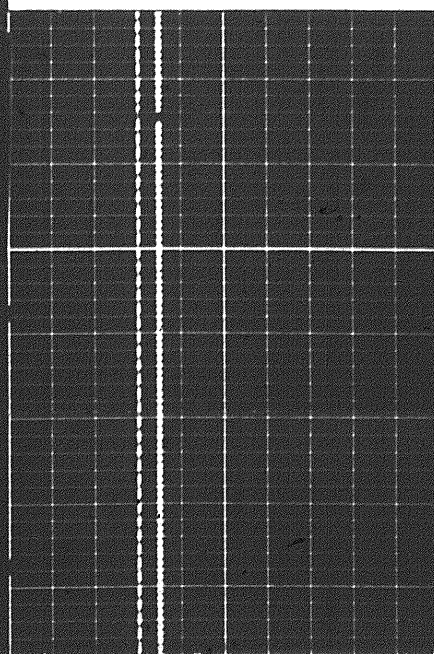
Speed in FPM

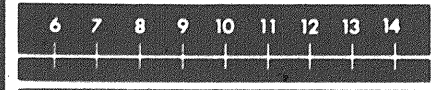
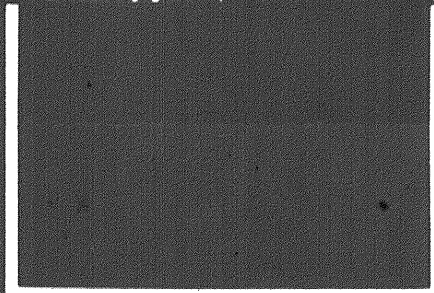
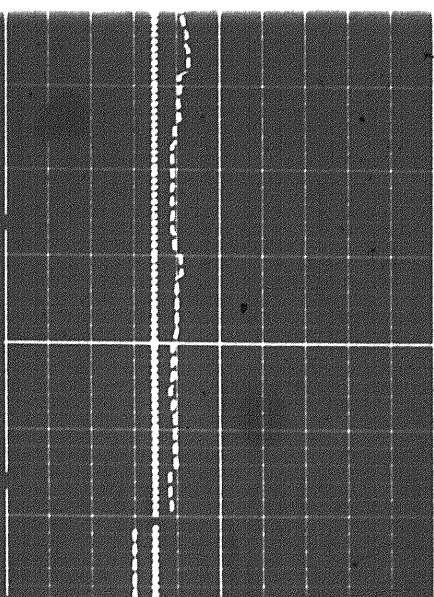


DEPTH

SONIC
INTERVAL TRANSIT TIME
microseconds per foot

1027

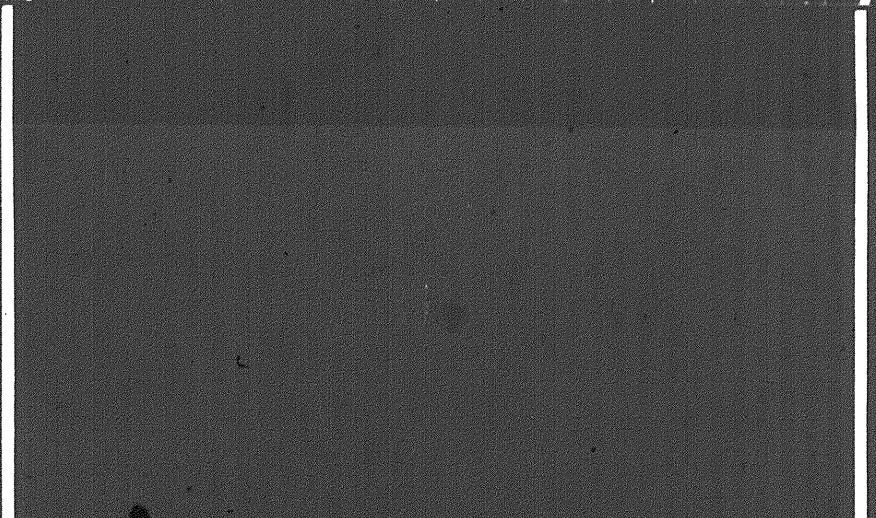
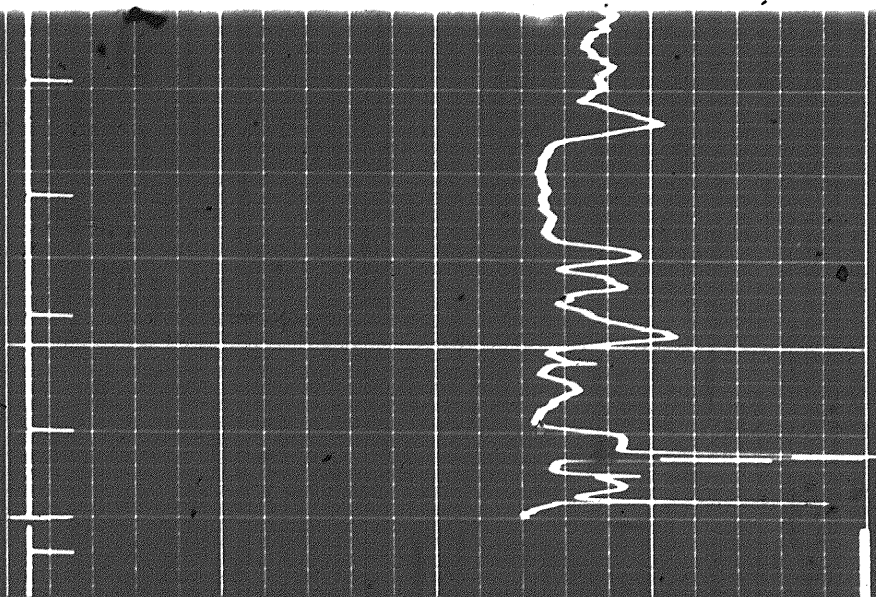




CALIPER
hole diameter in inches

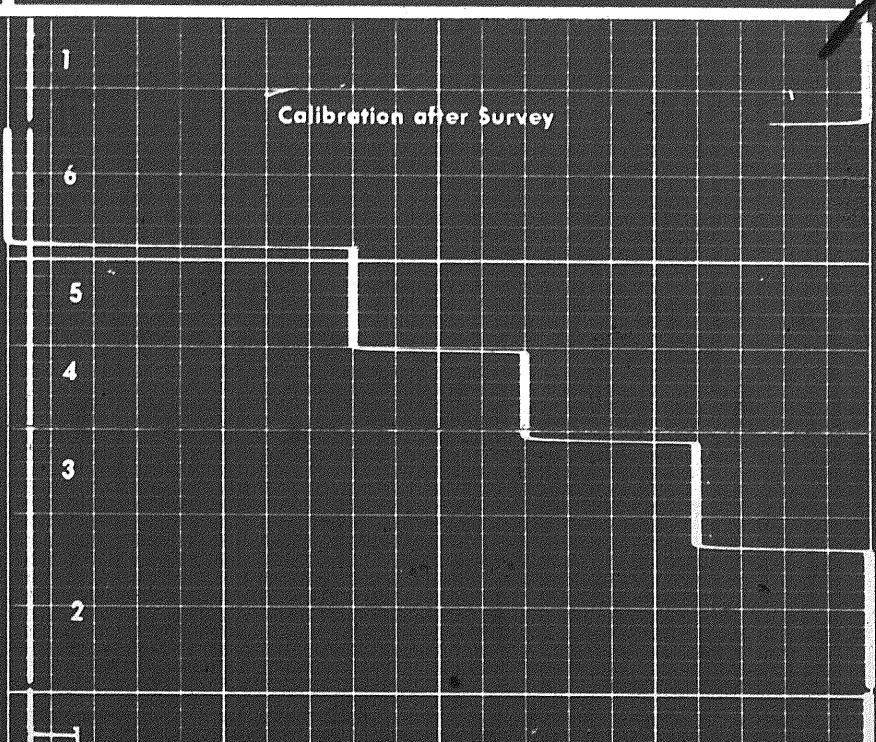
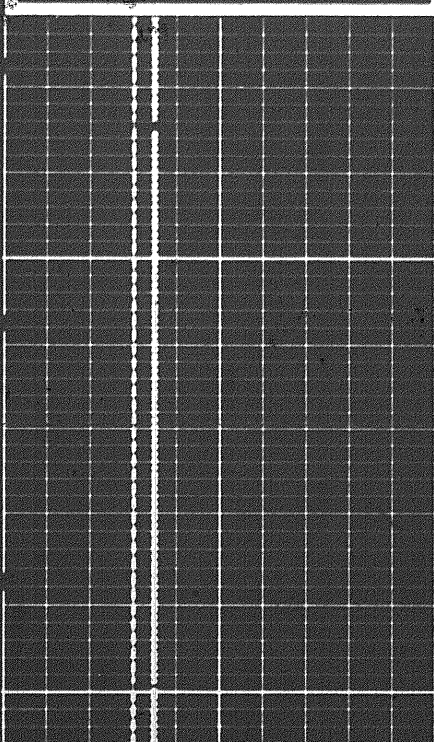
Speed in FPM

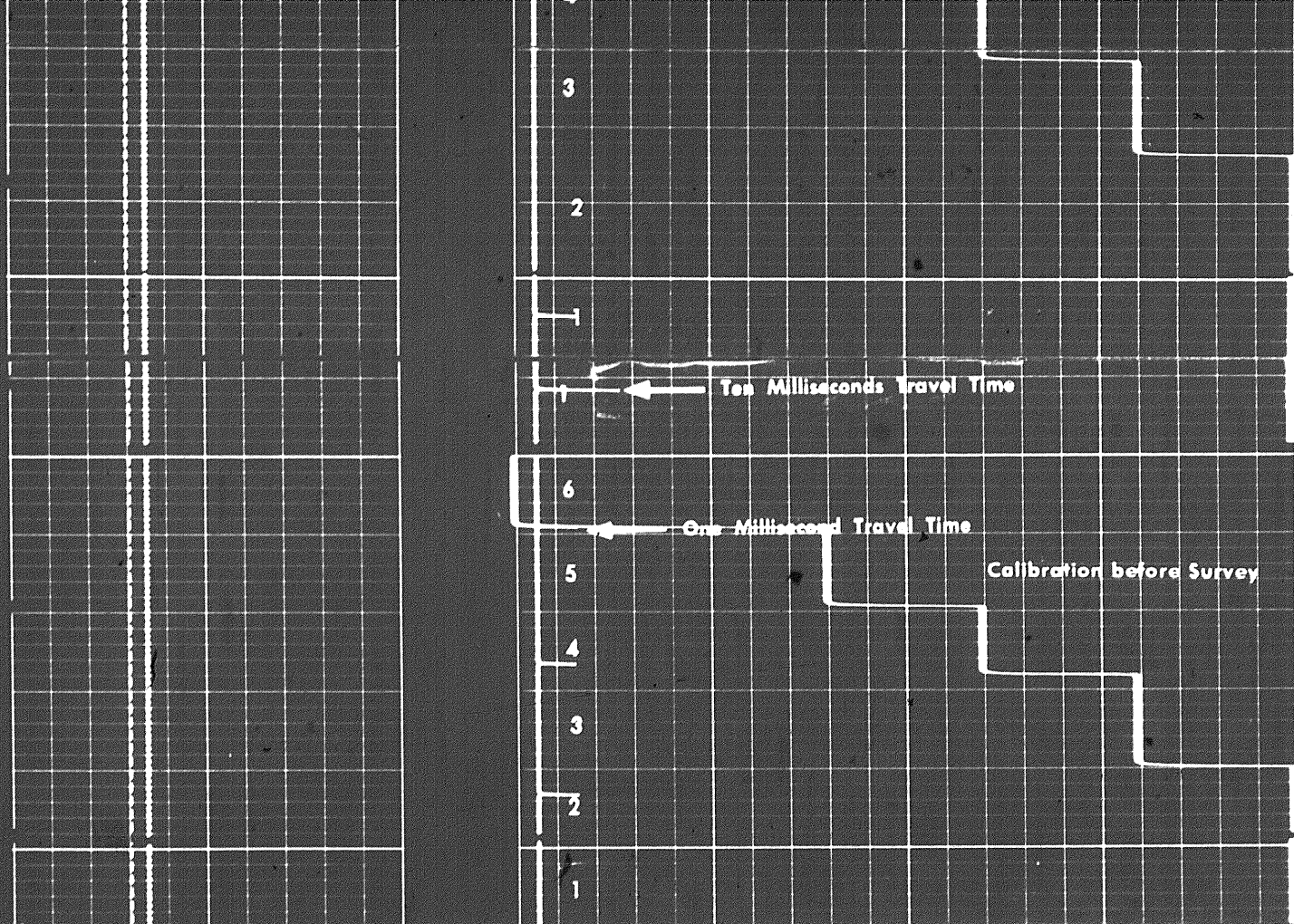
DEPTH



24	19	14
14	9	4

SONIC
INTERVAL TRANSIT TIME
microseconds per foot





BOREHOLE COMPENSATED SONIC CALIBRATION CODING

- 1. MECHANICAL ZERO
- 2. 40 μ SEC/FT
- 3. 60 μ SEC/FT
- 4. 80 μ SEC/FT
- 5. 100 μ SEC/FT
- 6. 140 μ SEC/FT

GAMMA RAY CALIBRATION CODING

- 1. MECHANICAL ZERO
- 2. ELECTRICAL ZERO
- 3. RECORDER SENSITIVITY
- 4. MEMORIZER SENSITIVITY
- 5. BACKGROUND
- 6. CALIBRATION

COMPANY COLUMBIA GAS DEVELOPMENT OF CANADA LTD.
 WELL COLUMBIA GAS ET AL KOTANEELLEE YT H-38
 FIELD WILDCAT
 PROVINCE YUKON TERRITORY

SCHL. FR 12778
 SCHL. TD 12782
 DRLR. TD 12789
 Elev.:
 KB 225
 DF
 GL 2225