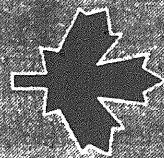


COMENT LTD
COMPUTER
ENTERPRISES



H-38

COMPUTERIZED
LOG
INTERPRETATION
FOR

COLUMBIA GAS ET AL KOTANELEE YI

H-38

60-07-16N-124-06-03W

24/01/79

FIRST FOLD HERE

ALL INTERPRETATIONS ARE OPINIONS BASED ON INFERENCES FROM ELECTRICAL OR OTHER MEASUREMENTS AND WE CANNOT, AND DO NOT, GUARANTEE THE ACCURACY OR CORRECTNESS OF ANY INTERPRETATIONS, AND WE SHALL NOT, EXCEPT IN THE CASE OF GROSS OR WILLFUL NEGLIGENCE ON OUR PART, BE LIABLE OR RESPONSIBLE FOR ANY LOSS, COSTS, DAMAGES OR EXPENSES INCURRED OR SUSTAINED BY ANYONE RESULTING FROM ANY INTERPRETATIONS MADE BY ANY OF OUR OFFICERS, AGENTS OR EMPLOYEES.

CARBONATE ANALYSIS

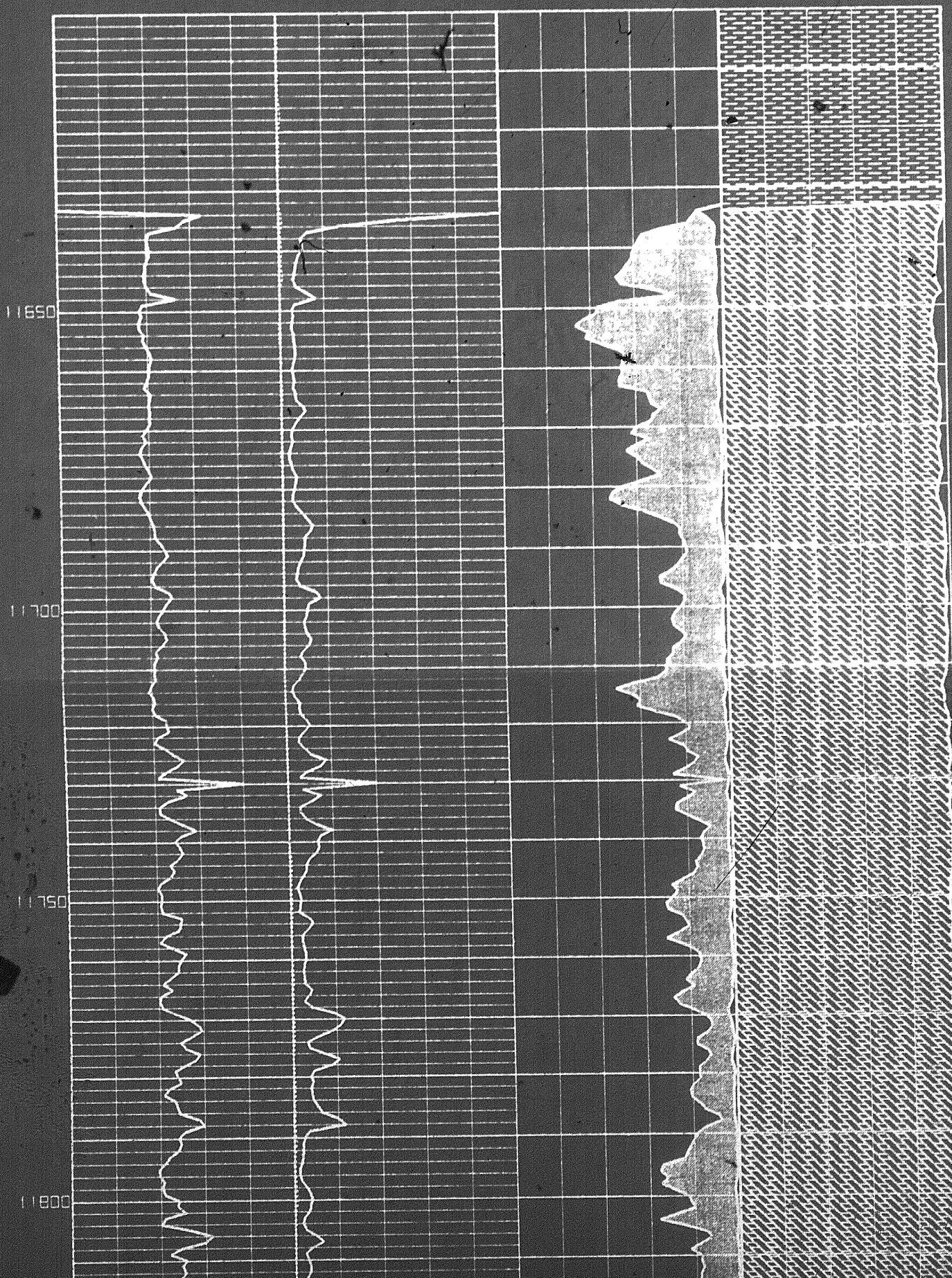
FACTORS USED IN THIS INTERPRETATION

TOP	BASE	A	M	N	RW	TEMP	GRAD	GMAX	GMIN	RSH	COR	C	G	I	PTYP	MAT	FLD	RHOS	PHIS	DTSH
11600.00	12800.00	1.00	2.00	2.00	0.020	320.0	1.25	60.0	39.0	500.0	2	2	2	5	-0.00	-0.0				

REMARKS
POROSITY DERIVED FROM NEUTRON/ACOUSTIC X PLOT
DATA STORED IN A6071612469A

DEPTH	GRAIN DENSITY	WATER SATURATION	POROSITY AND FLUID ANALYSIS	BULK VOLUME ANALYSIS
	2.5	3.00	100 10	0 100 0
	SECONDARY POROSITY	PERMEABILITY		
	0 25 1	----- 1000	HC H2O	SHALE MATRIX 0E

DEPTH	GRAIN DENSITY	WATER SATURATION	POROSITY AND FLUID ANALYSIS		BULK VOLUME ANALYSIS		
	2.5 3.0 0	100 10	0	100	0	100	0
	SECONDARY POROSITY	PERMEABILITY			SHALE	MATRIX	OE
	0 25 1	----- 1000	HC	H2O			
	DELTA HOLE						
	-8 -4 +4 +8						

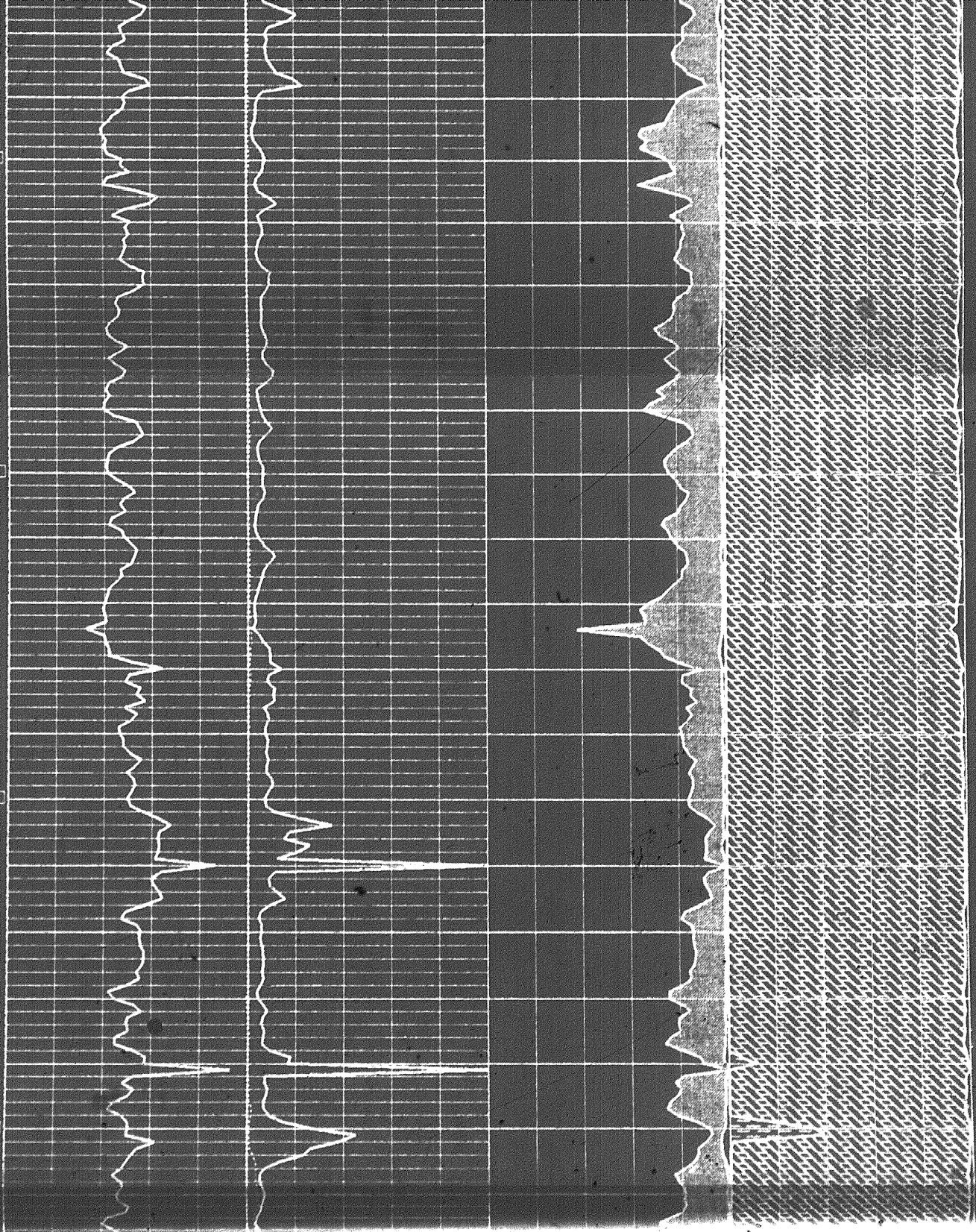


11800

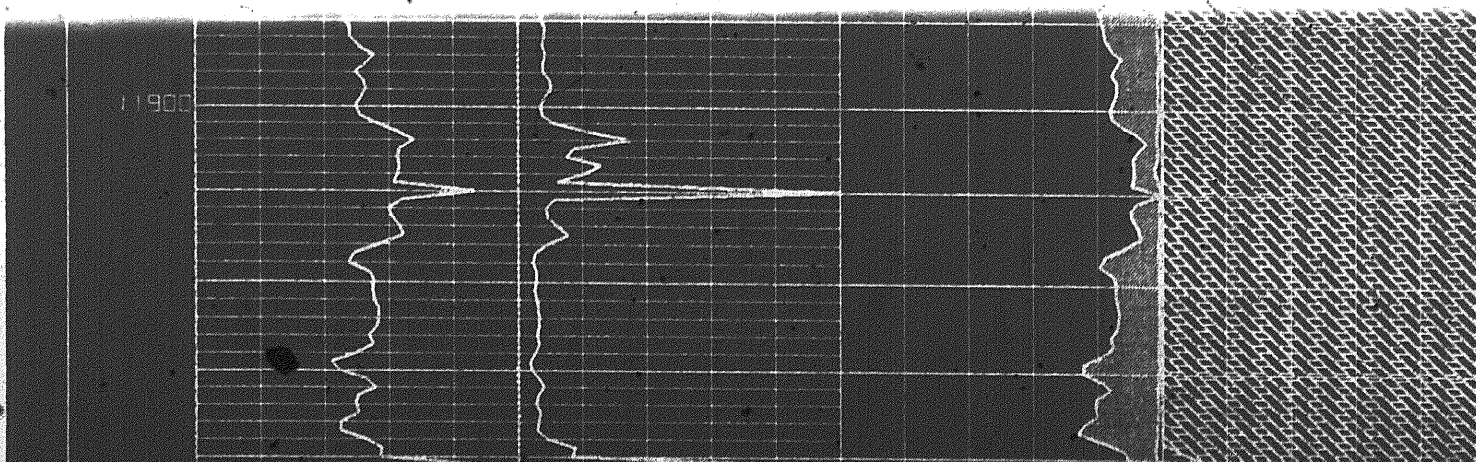
11850

11900

11950



11900



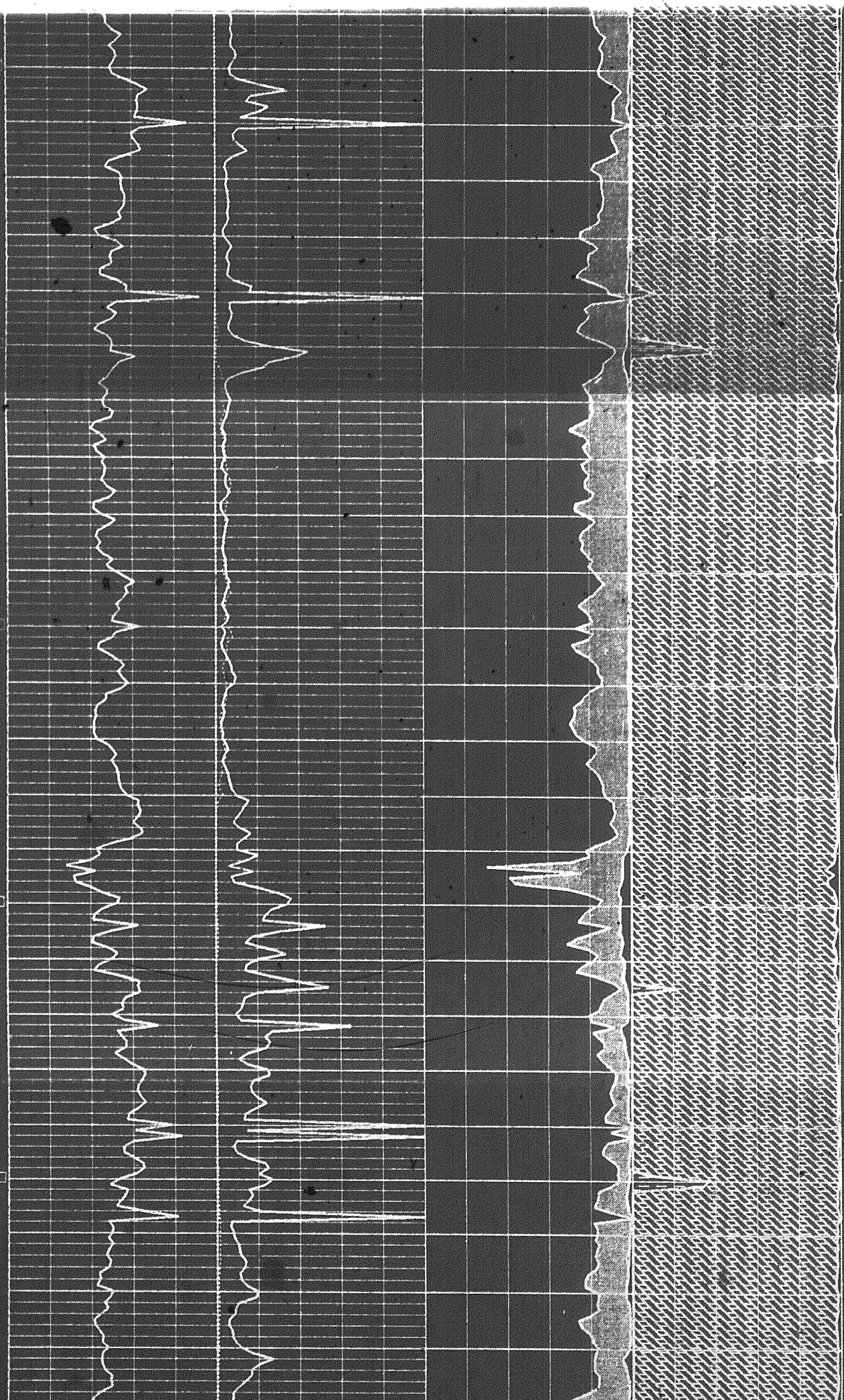
11900

11950

12000

12050

12100



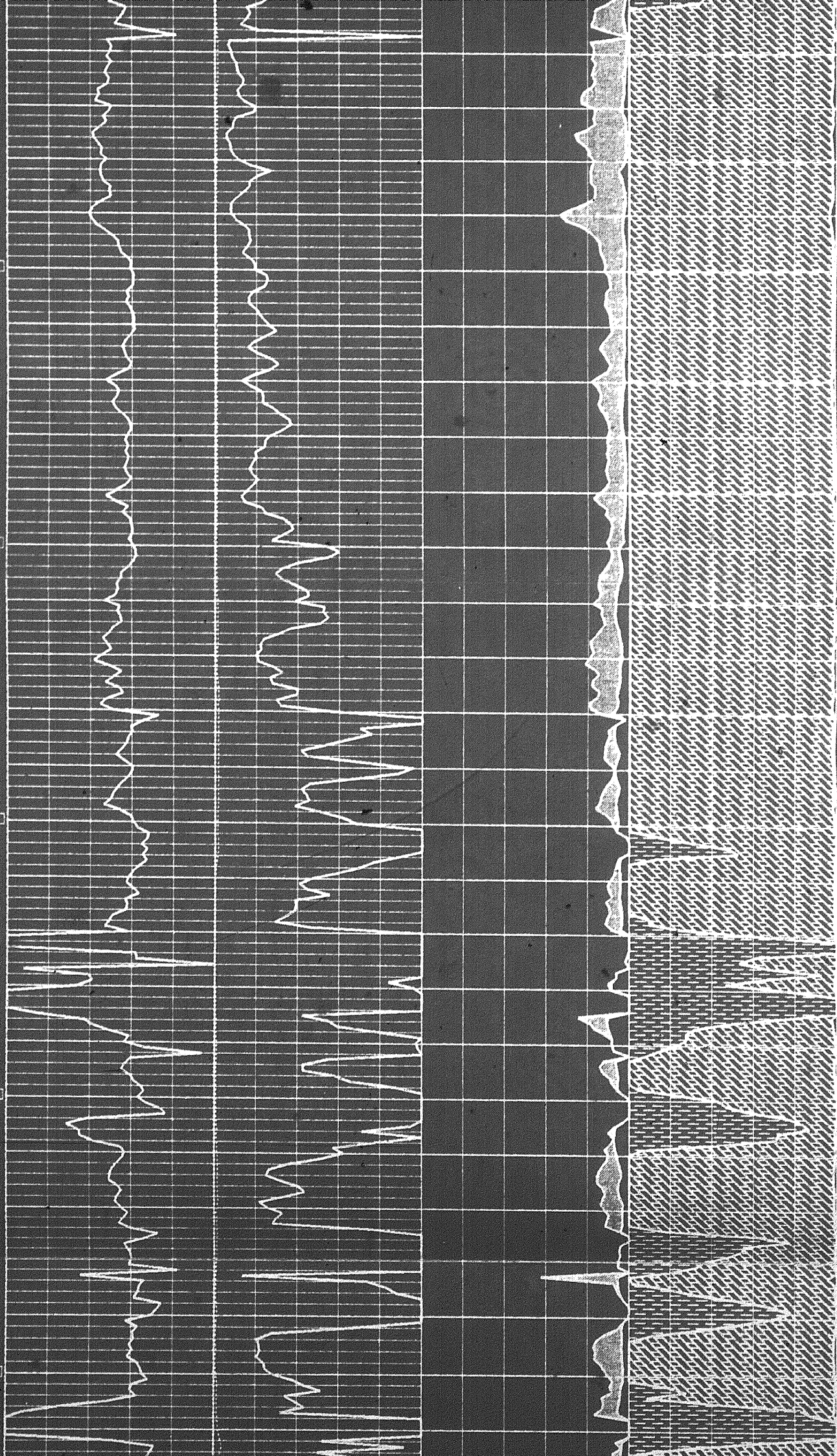
12150

12200

12250

12300

12350

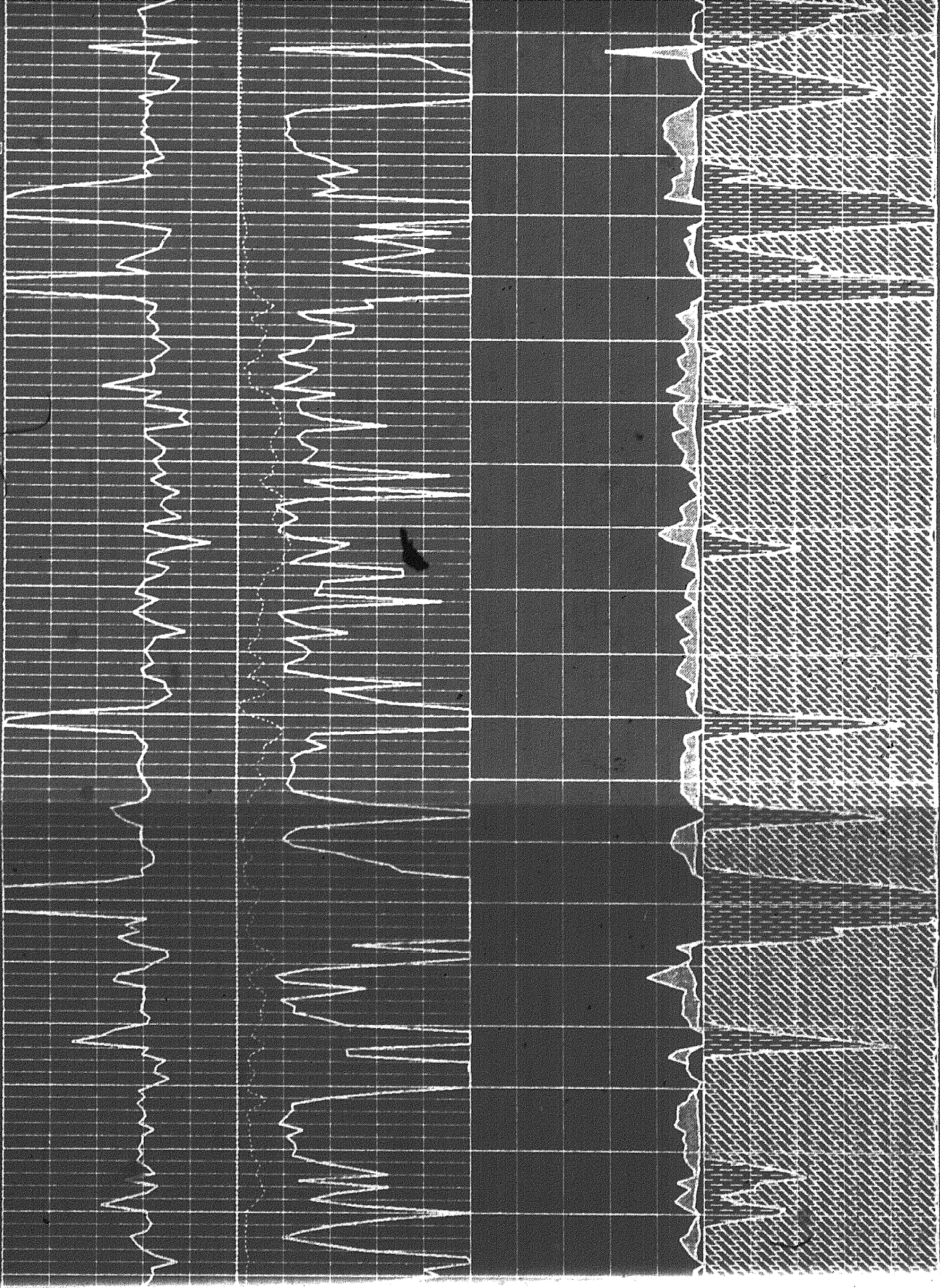


12350

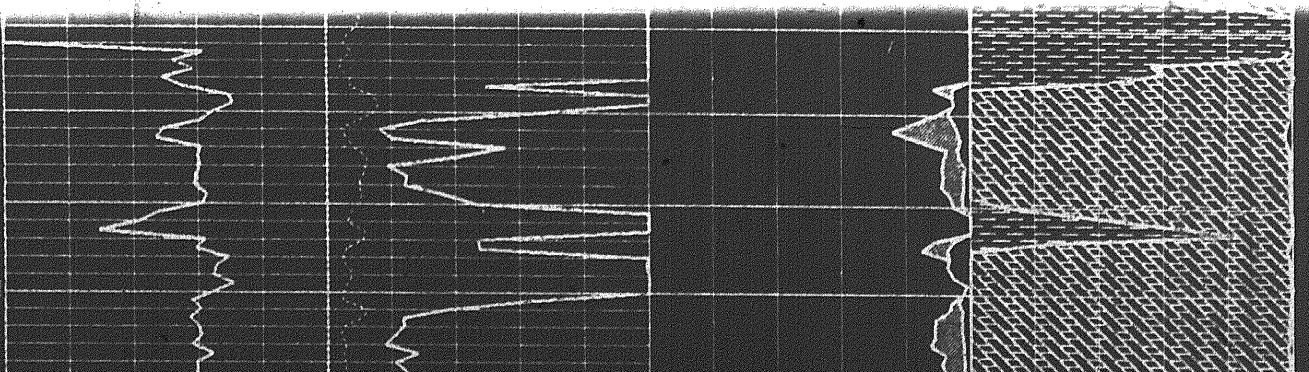
12400

12450

12500



12500



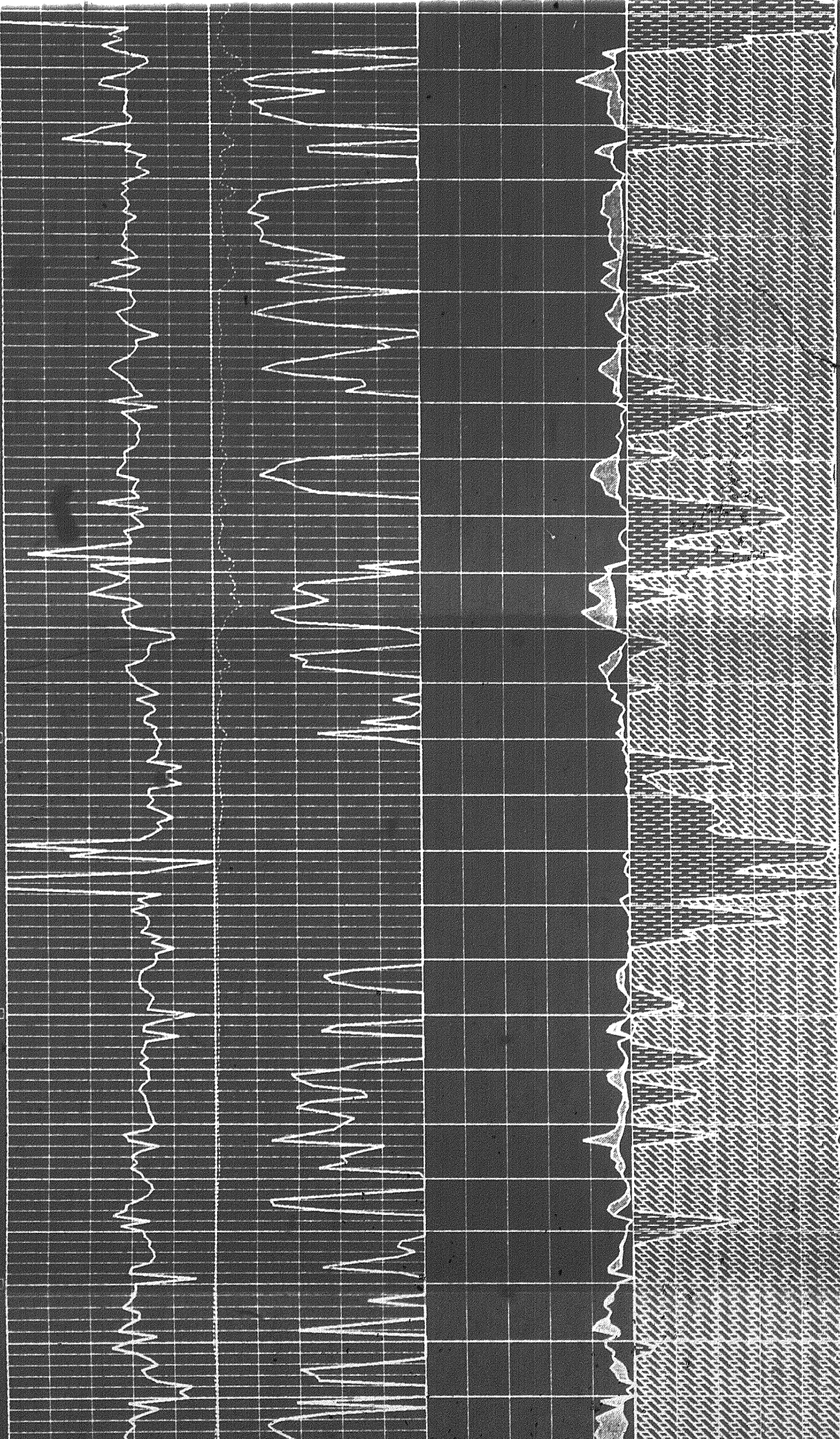
12500

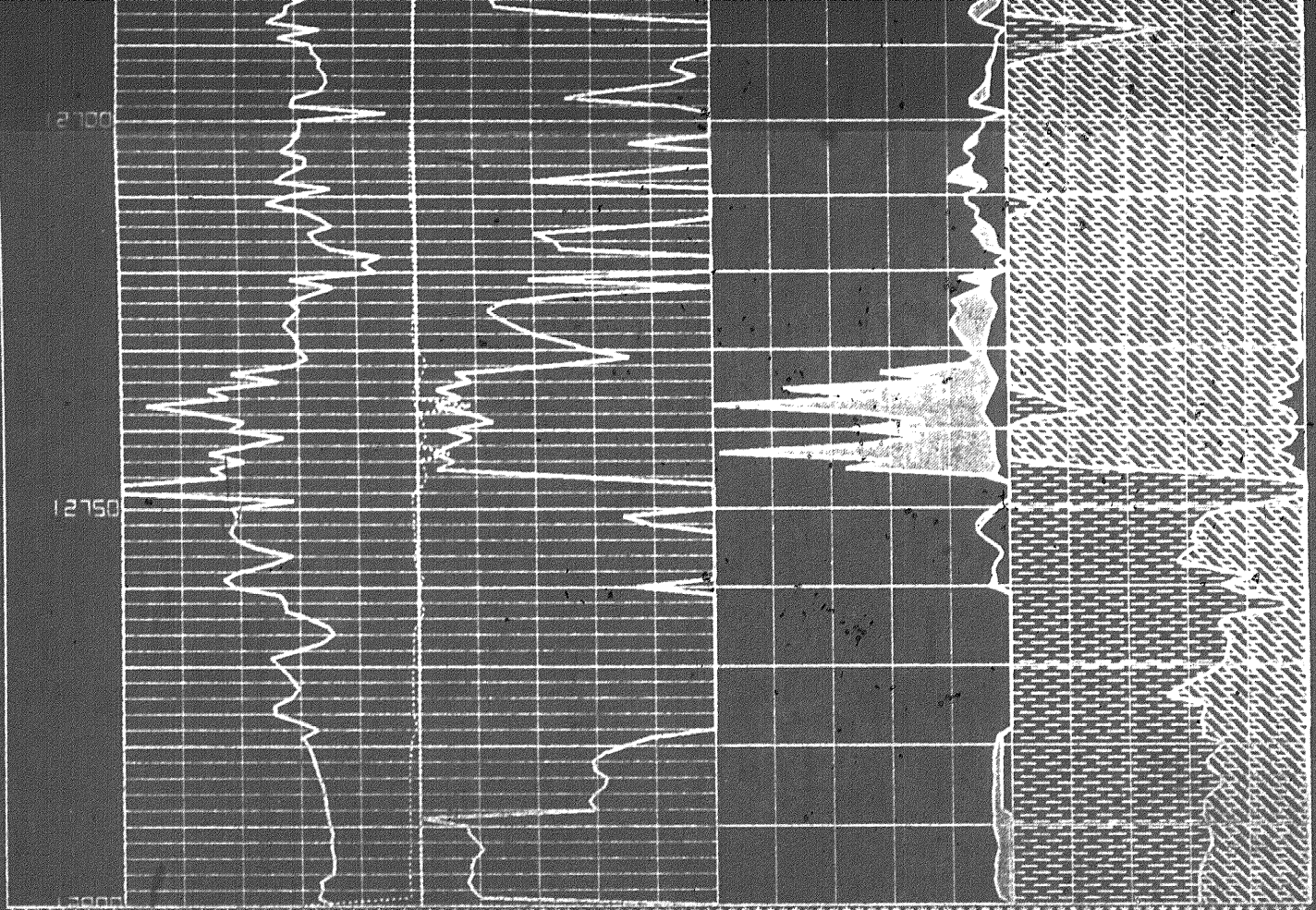
12550

12600

12650

12700





C O M E N T L T D .

C O L U M B I A G A S E T A L K O T A N F E L E E Y T

60-07-16N-124-06-03W

h/0h

2 of 2

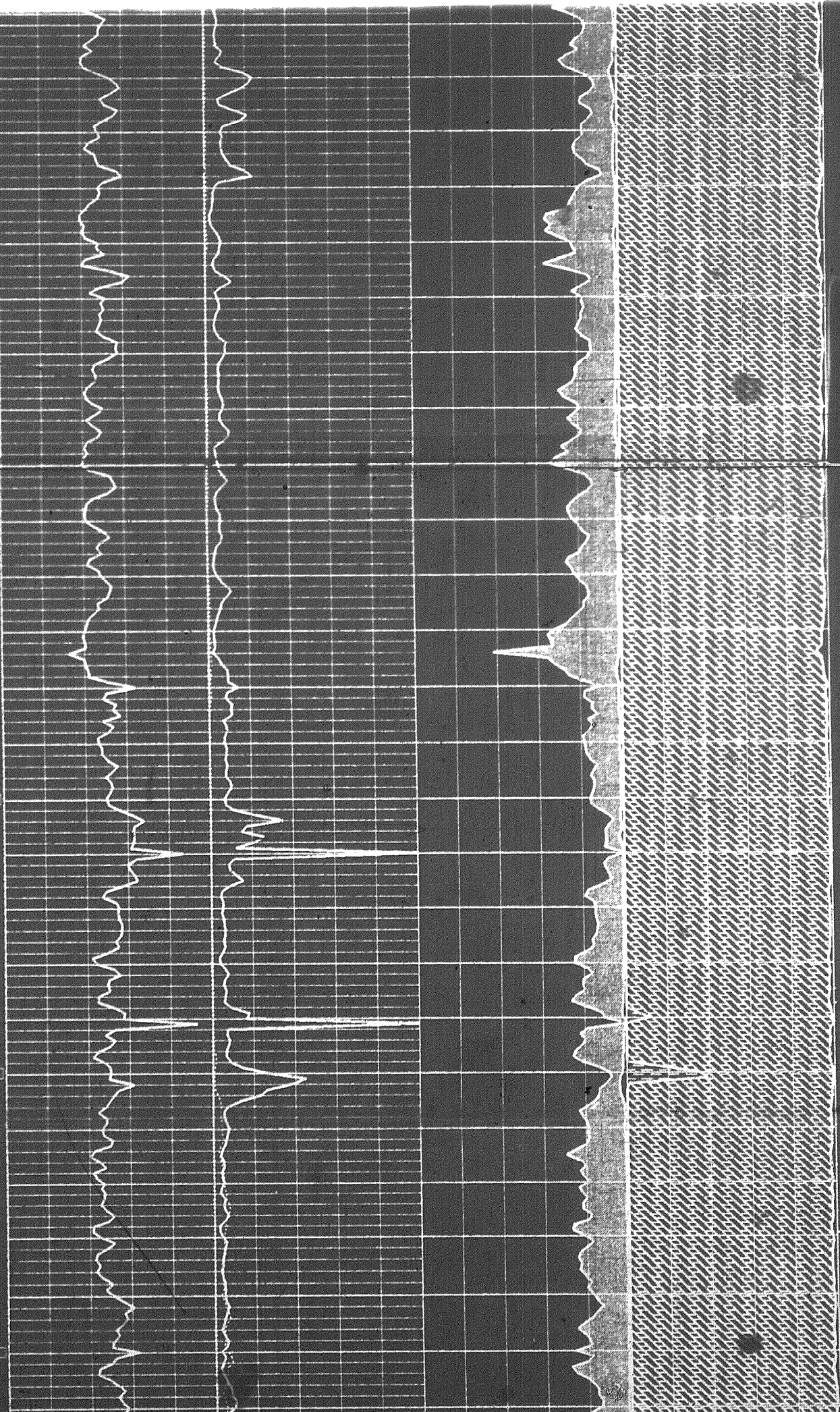
11800

11850

11900

11950

12000



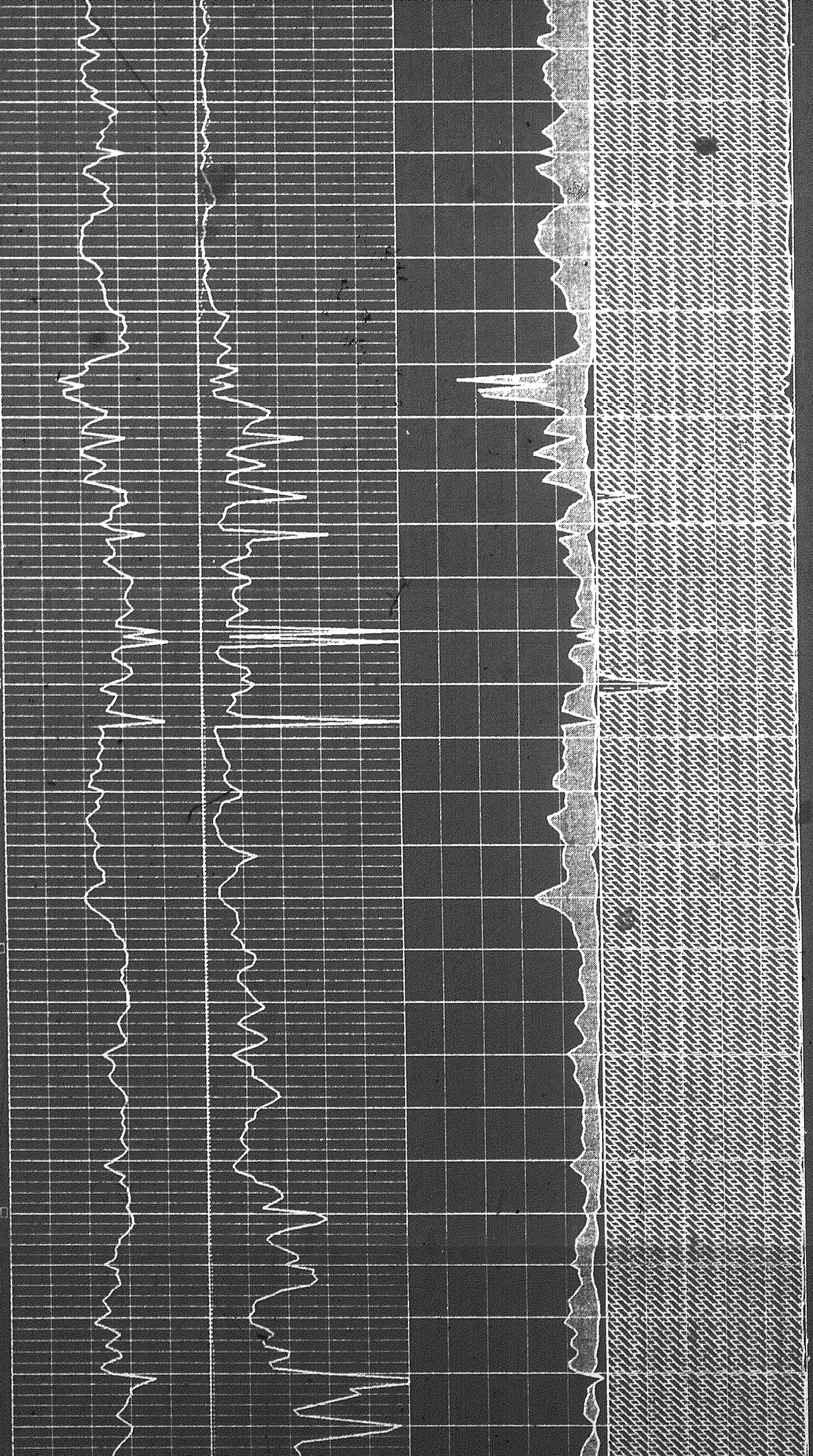
12000

12050

12100

12150

12200



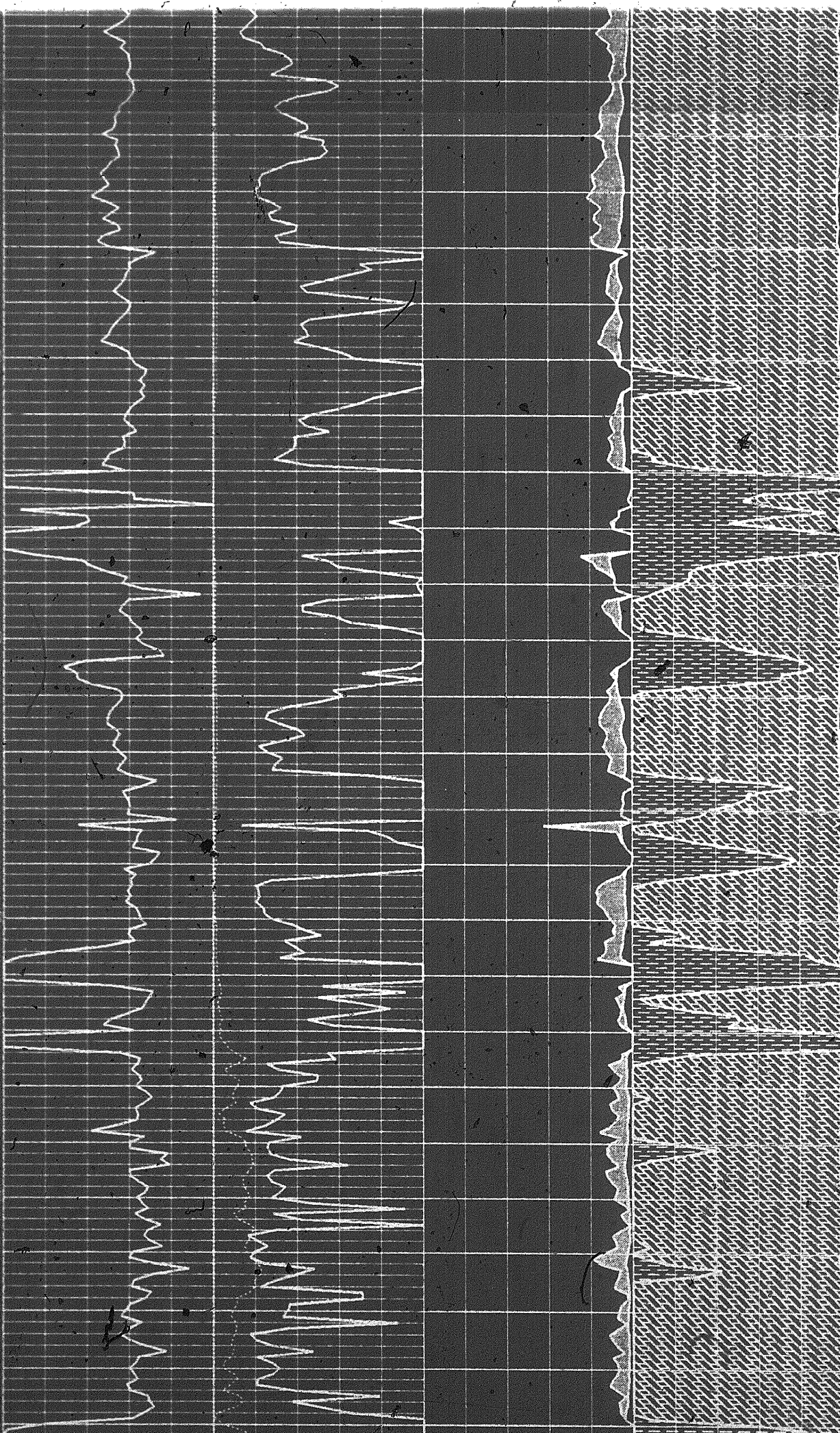
12270

12250

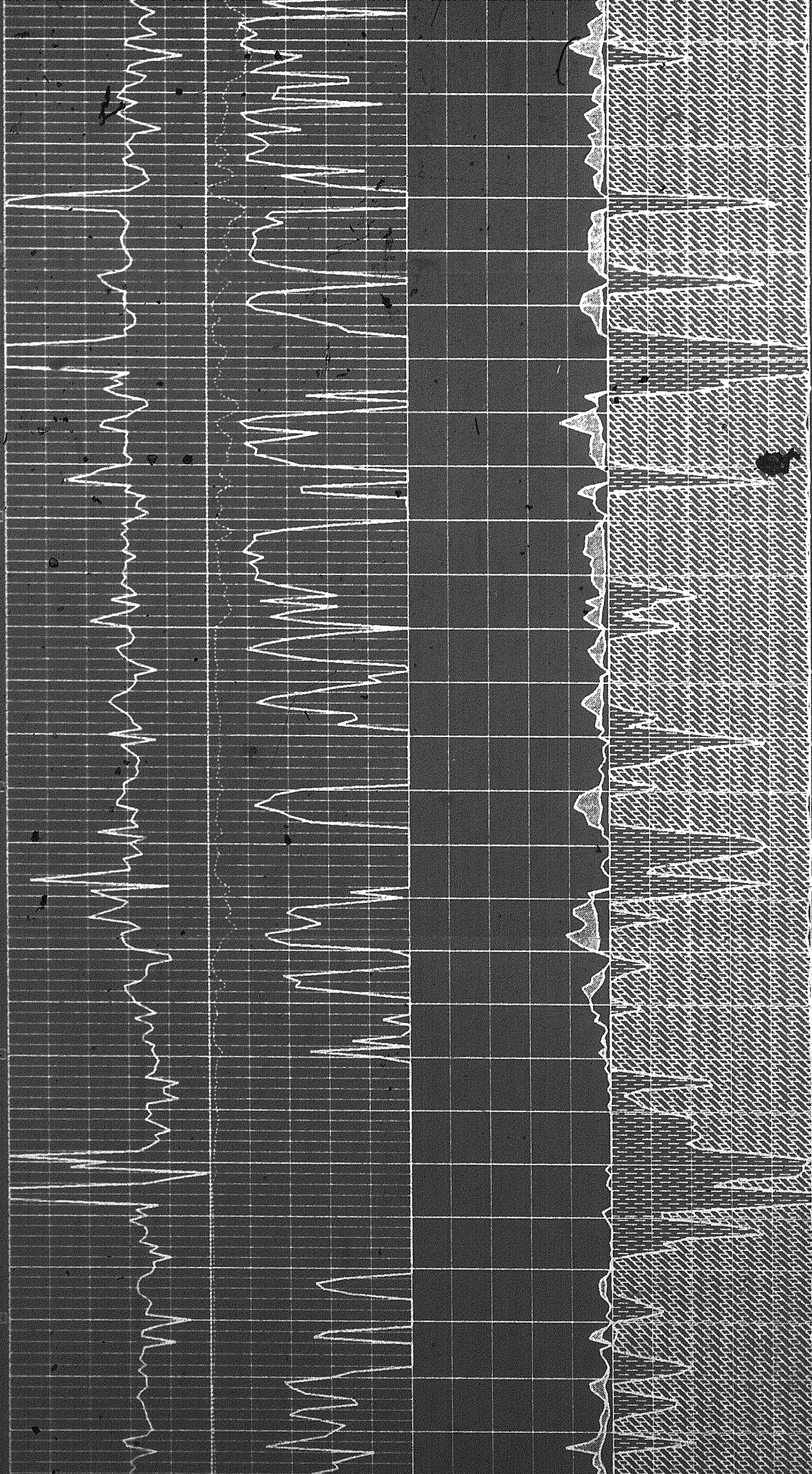
12300

12350

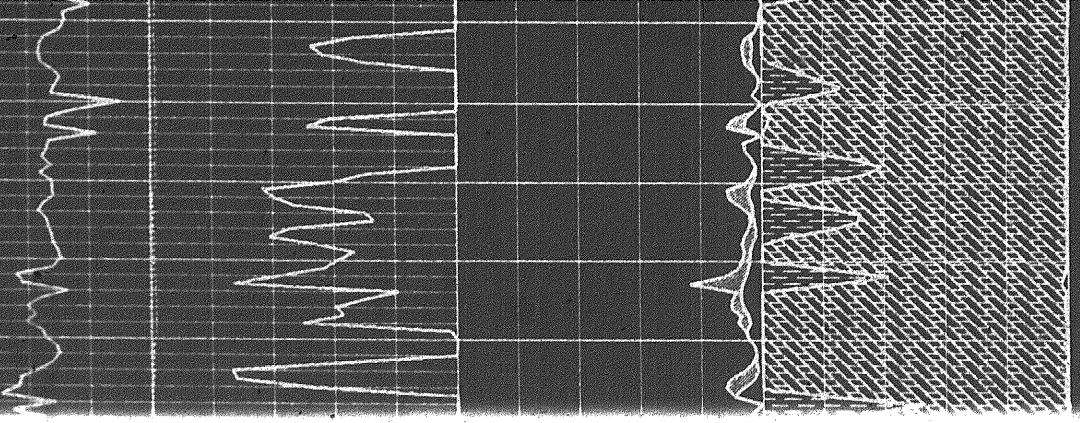
12400



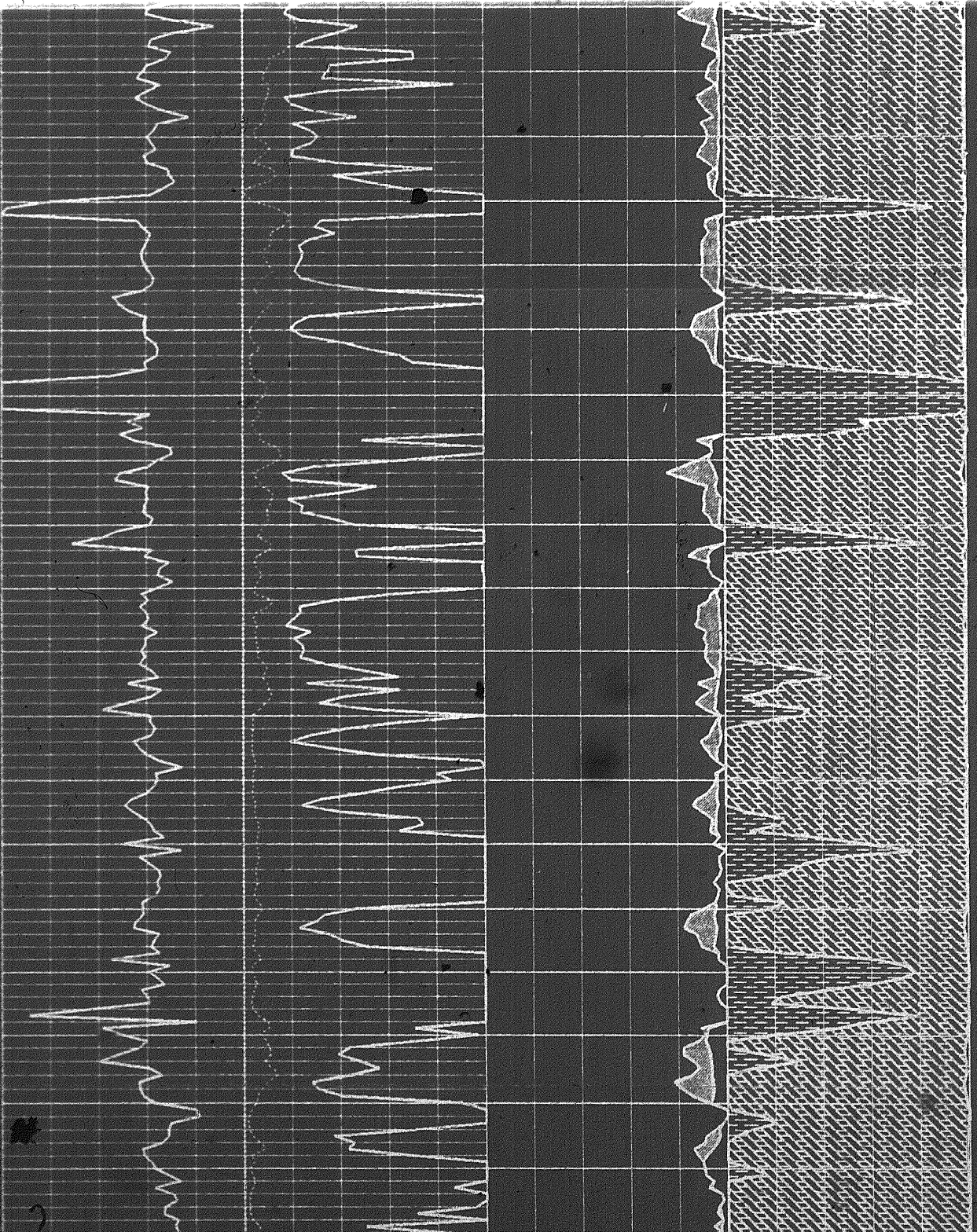
3 of



12550



12500



12550