

Schlumberger

VARIABLE DENSITY LOG
SCHLUMBERGER OF CANADA Calgary Alberta

PROVINCE YUKON TERRITORY
FIELD WILDCAT
WELL COLUMBIA GAS ET AL KOTANEELEE Y1 H-38
COMPANY COLUMBIA GAS DEVELOPMENT OF CANADA LTD.

COMPANY COLUMBIA GAS DEVELOPMENT OF CANADA LTD.
WELL COLUMBIA GAS ET AL KOTANEELEE Y1
FIELD WILDCAT
PROVINCE YUKON TERRITORY
LOCATION 67° 27' 16" N LAT
124° 06' 43" W LONG
Permanent Datum GL Elev 2225
Log Measured From KB 25 ft Above Perm. Datum
Other Services: DTL-GR
FDC-CNT-GR, HDT,
FIL, ICS, BHC, WF
ELEV: KB 2225
GL 2225
CRF

Date	15 OCT 77	Run No.	DNL
First Reading	14.76	Last Reading	14.5
Feet Measured	1276	Depth Reached	12785
Bottom Driller	12789	Cig. SOC	1.84
Cig. Driller	1.85	Mud Nature	KCL
Dens	1.1	Visc	37
Mud pH	15.1	Water Loss	15.1
Res	RMKS	BHT	RMKS
Rnd	176	Rmc	326
Source of Sample	CIRCULATED	Bit Size	8 1/2"
Op. Rig Time	4 HRS	Truck No.	OSU-C 339 FRONT
Recorded By	SUNDQUIST	Witness	LANE

14 NOVEMBER 77 CALCP
REMARKS
5.0 12456
DRILLING STOPPED 1715/13th ; CIRCULATION STOPPED 213 /13th ; TOOL ON BOTTOM 063 /15th ; BHT 31 F
CARTRIDGE NO. KR 122 CRP NO. AC 146 SONDE MODE: 2
PANEL NO. JH 492 LOGGING SPEED: 3 "/MIN DETECTION MODE: E2
SONDE NO. QA 1361 CENT TYPE: RUBBER FIN & CALIPER CARTRIDGE GAIN: 1/5"
CARTRIDGE TYPE FA CRE-AC-146 SPACING (ALL): 3"
NO. CENT 3

Time Entering Hole	03 /15th	Time Bottom Reached	63 /15th	Time Last Off Bottom	63 /15th	Distance TD to Thermometer	37	Time Out Of Hole	03 /15th		
RAN IN CONDUCTION WITH BHC-GR											
CARTRIDGE GAIN: 1/5"											
Mud Resistivities					Rm No 1	2.8	ohm · m @	9	*F =	6	ohm · m @ BHT
					Rm No 2	2.4	ohm · m @	89	*F =	59	ohm · m @ BHT
					Rm No 3		ohm · m @		*F =		ohm · m @ BHT
Rw from Drill Stem Test											
					DST No.	Rw =	ohm · m @		*F		
					DST No.	Rw =	ohm · m @		*F		LOG TAPED
					DST No.	Rw =	ohm · m @		*F		Yes No

SINGLE RECEIVER TOTAL TRAVEL TIME MICROSECONDS	DEPTH	AMPLITUDE MILLIVOLTS	VARIABLE DENSITY MICROSECONDS
SPACING 3		SPACING 3	SPACING 3

SINGLE RECEIVER
TOTAL TRAVEL TIME
MICROSECONDS

DEPTH

AMPLITUDE
MILLIVOLTS

VARIABLE DENSITY
MICROSECONDS

SPACING 3

SPACING 3

SPACING 3

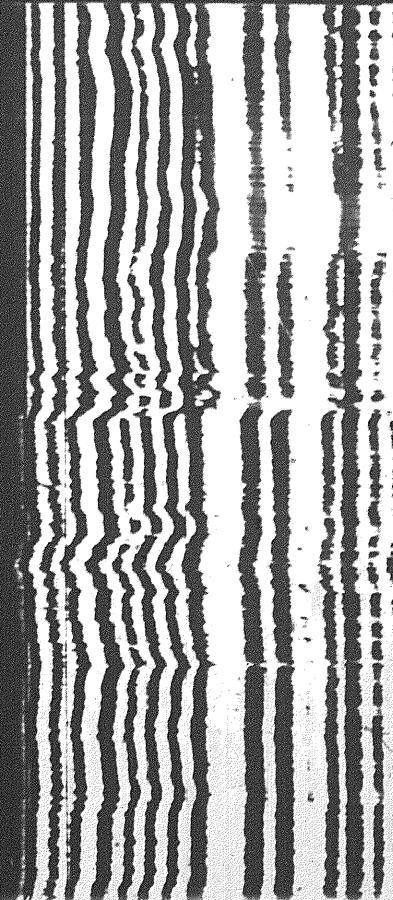
25 2

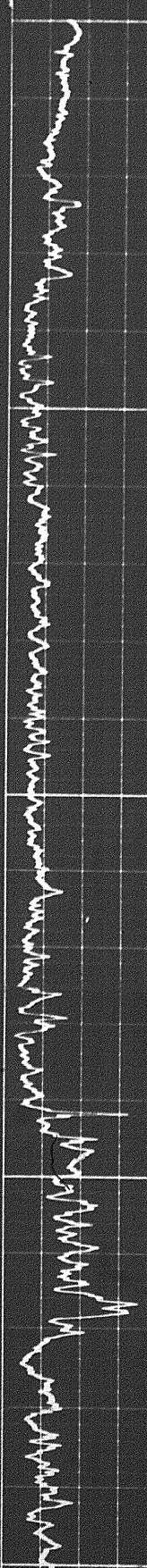
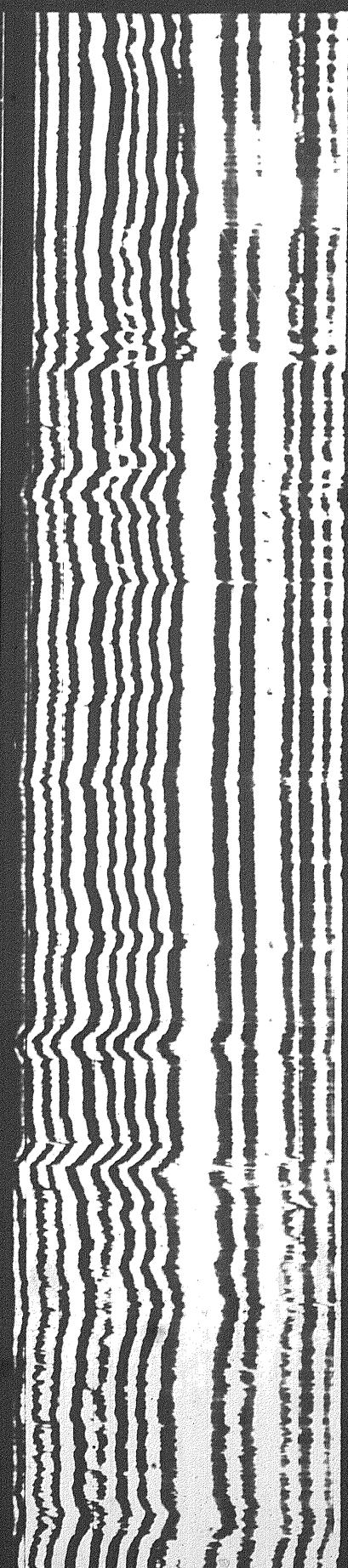
1200

Speed in FPM

CART. GAIN 1/5"

1500

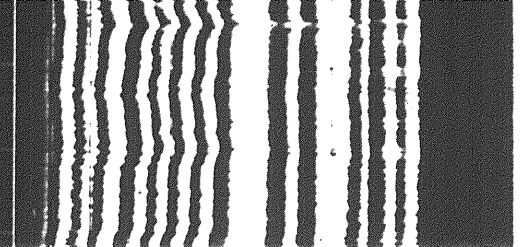
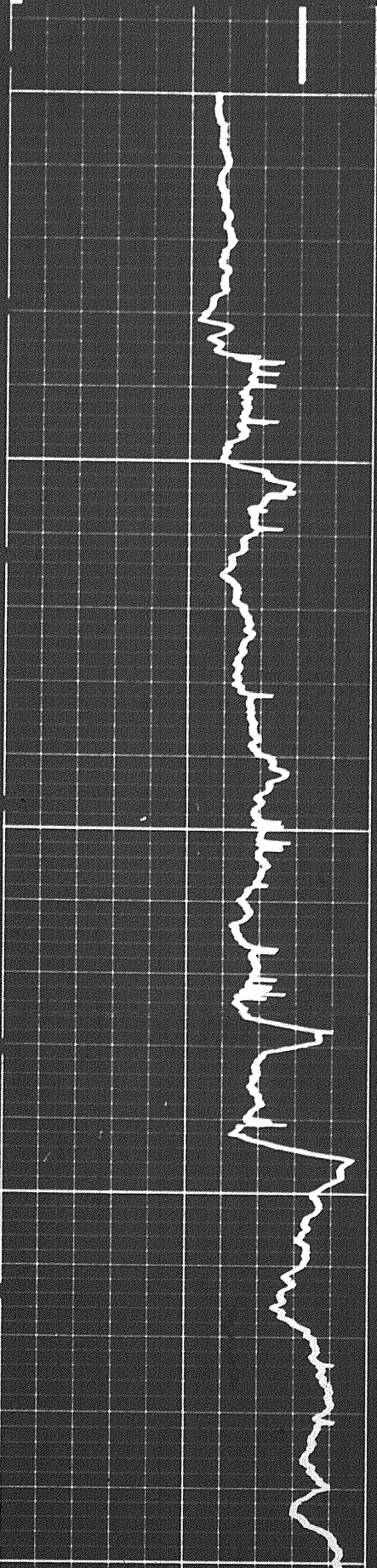


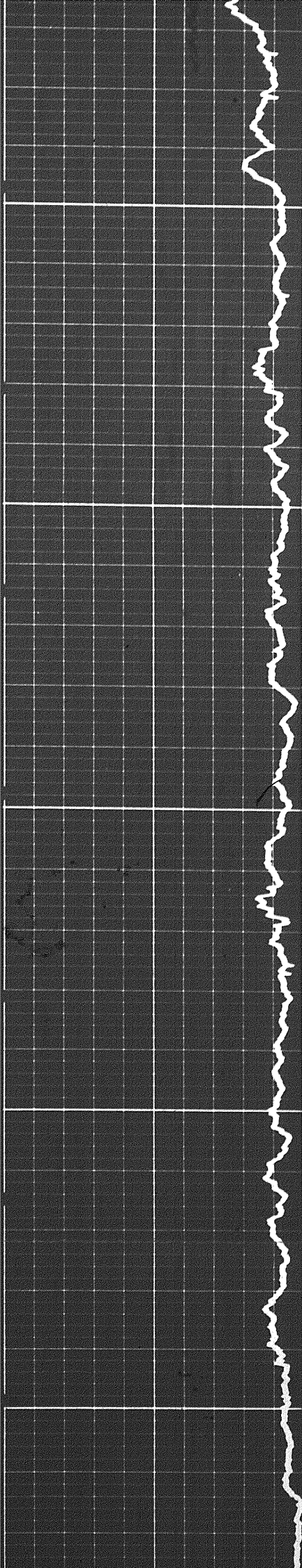


11500

11600

11700

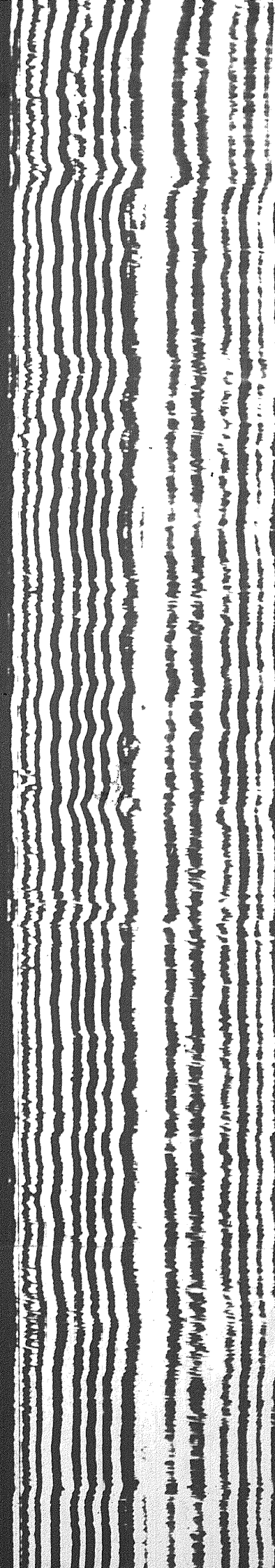
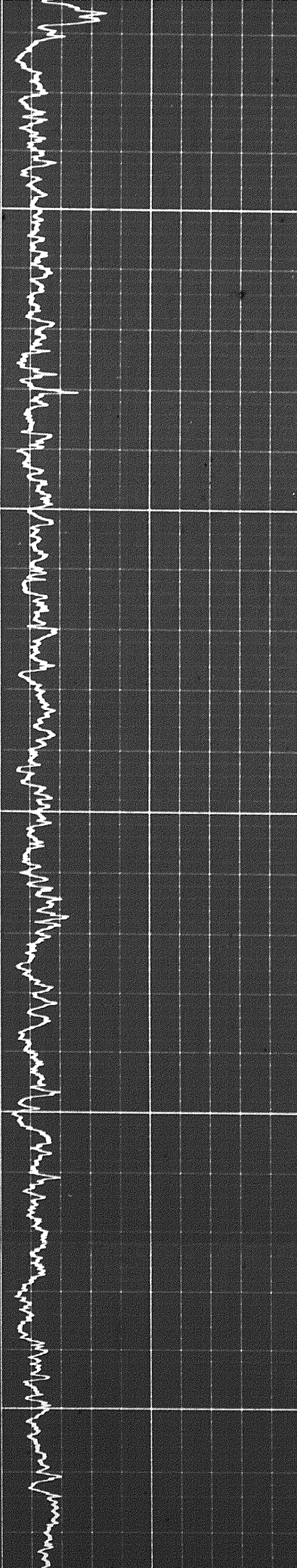




11700

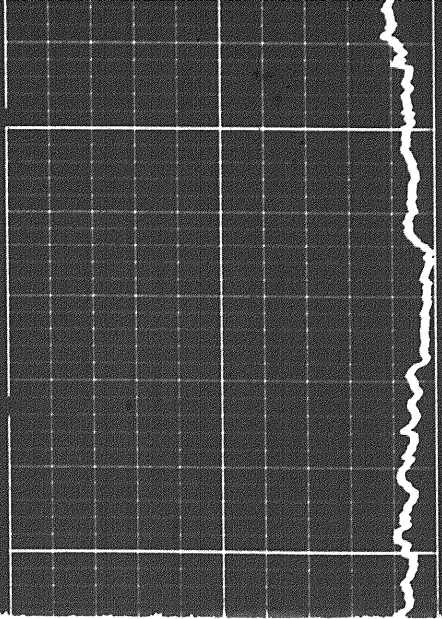
11800

11900

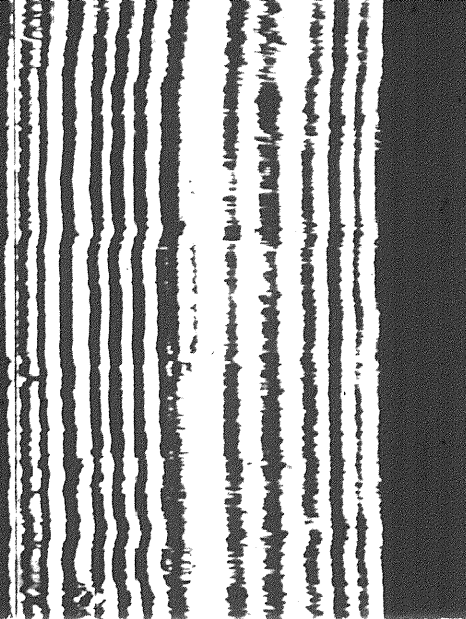
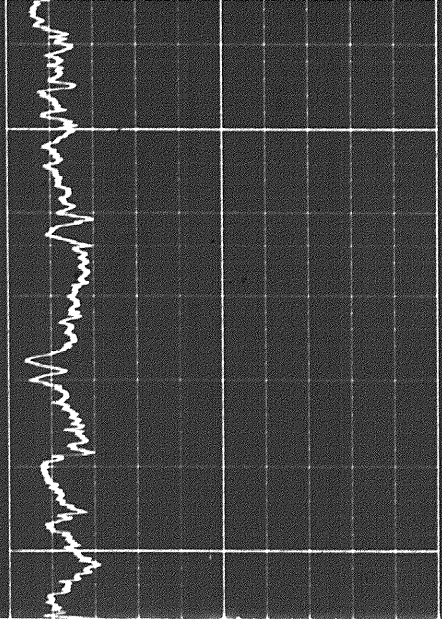


7

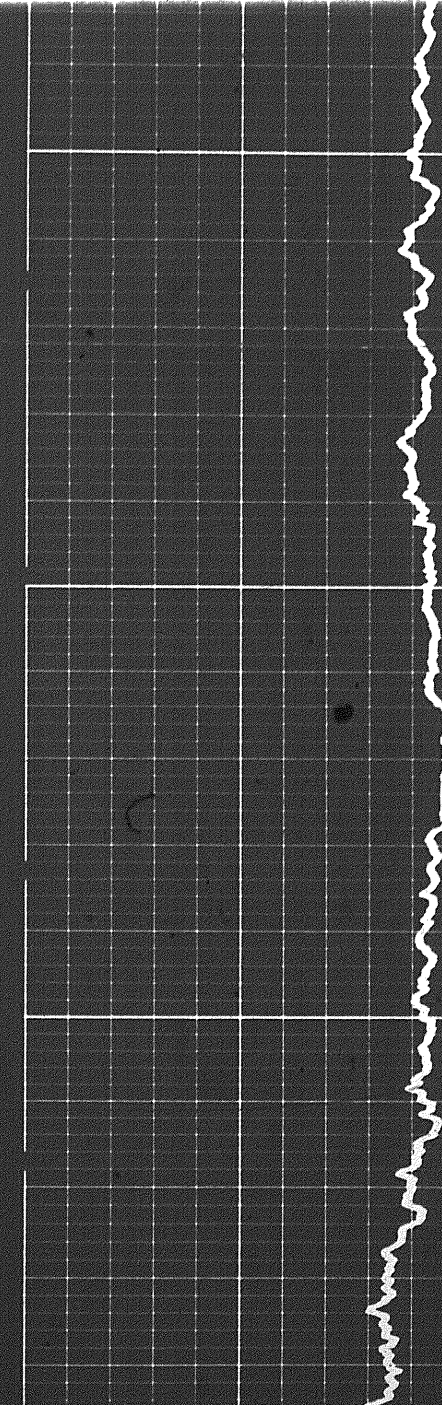
2



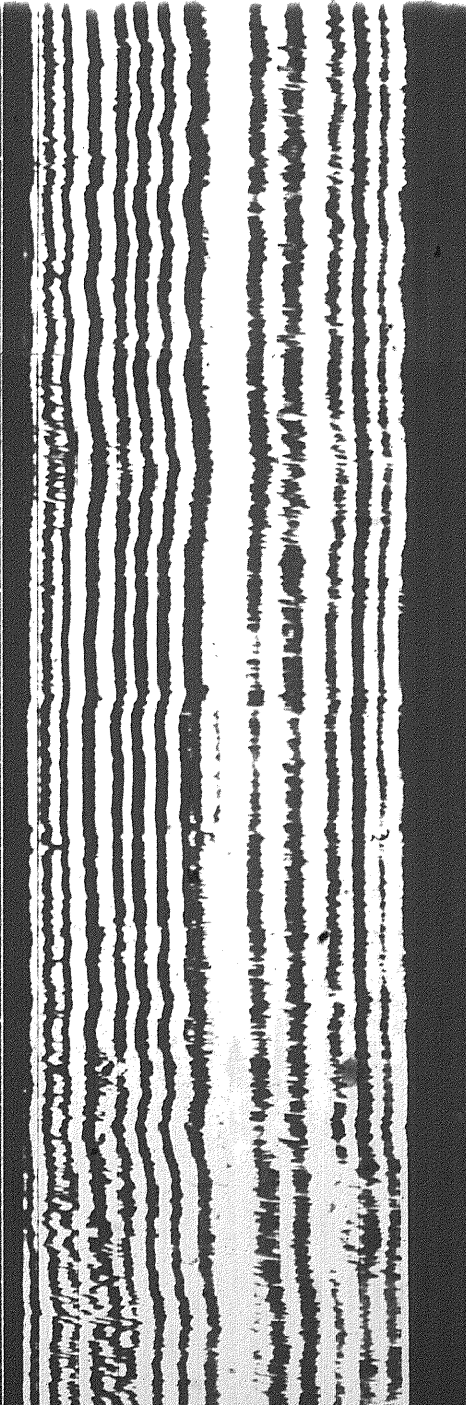
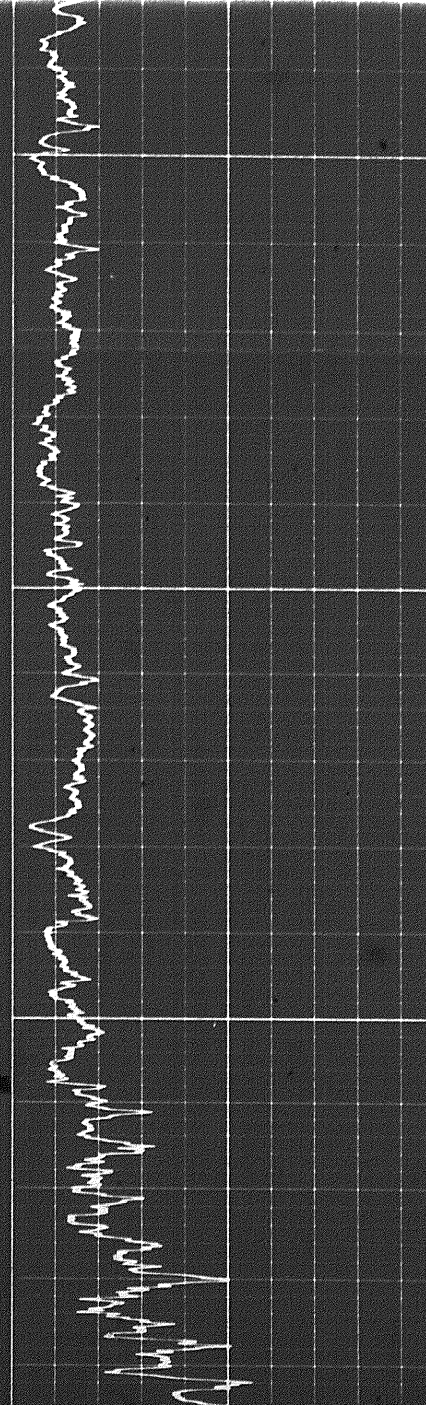
1900

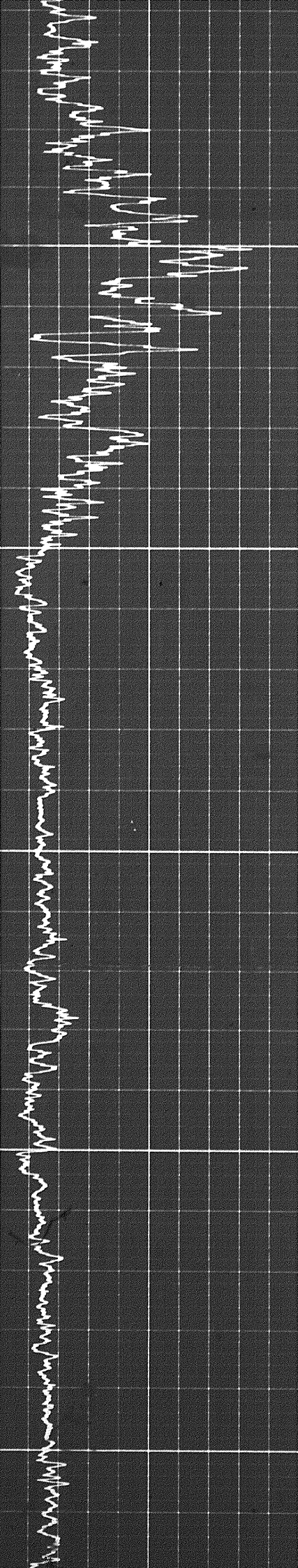
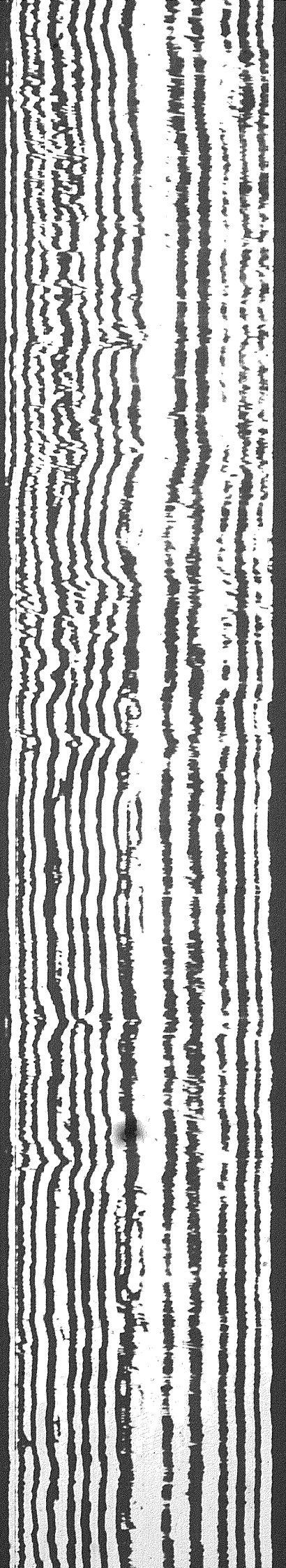


1



1900

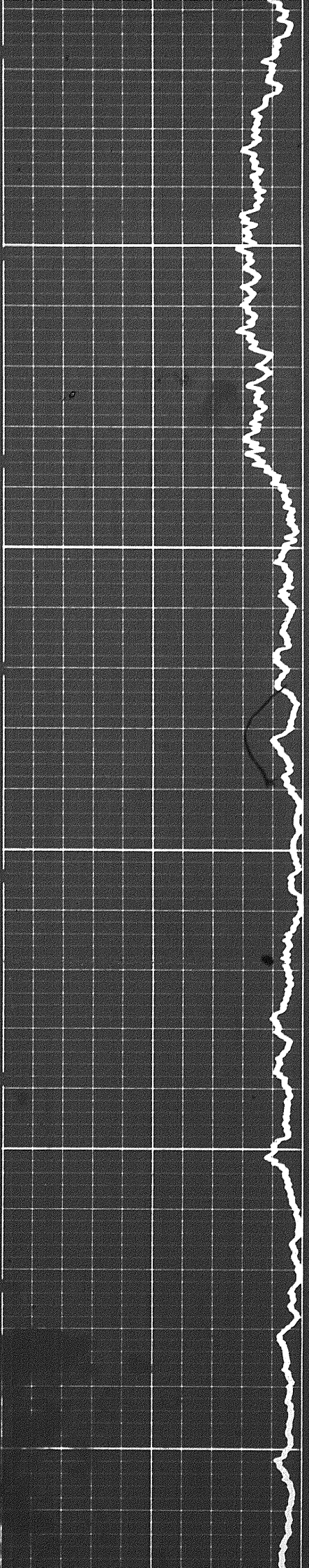


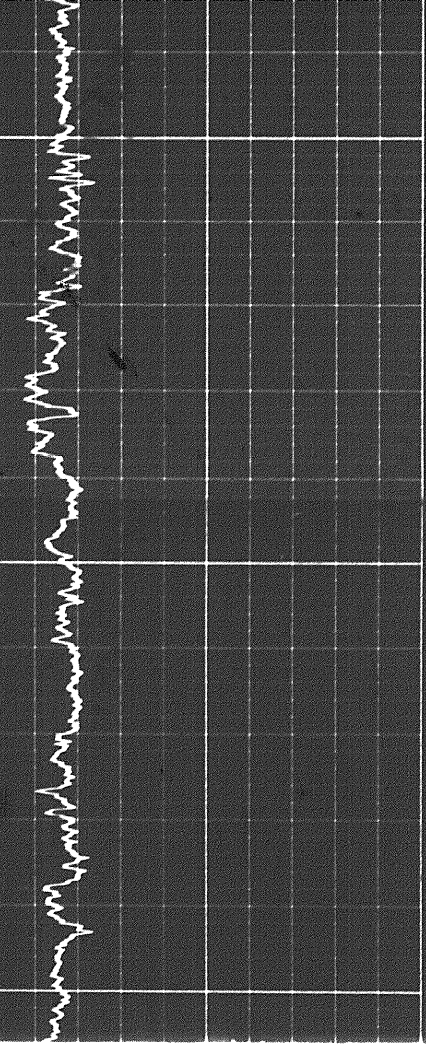
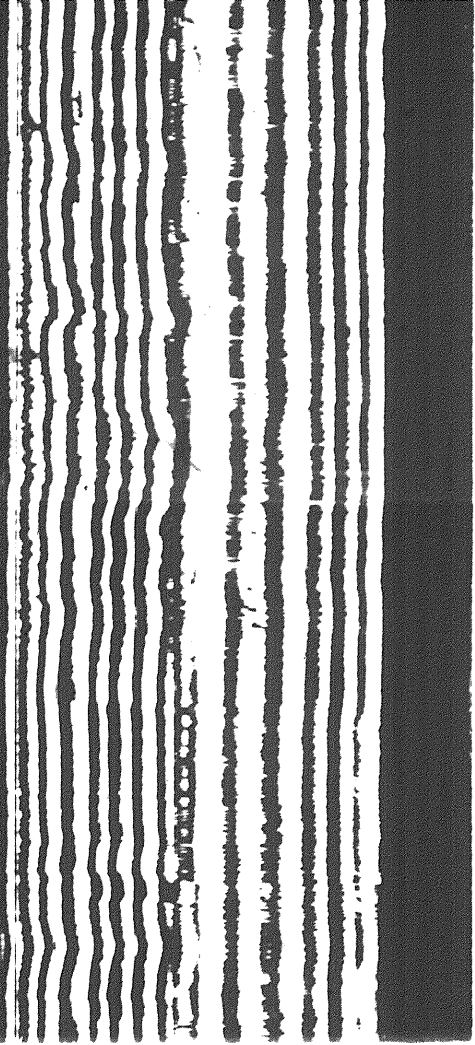


12000

12100

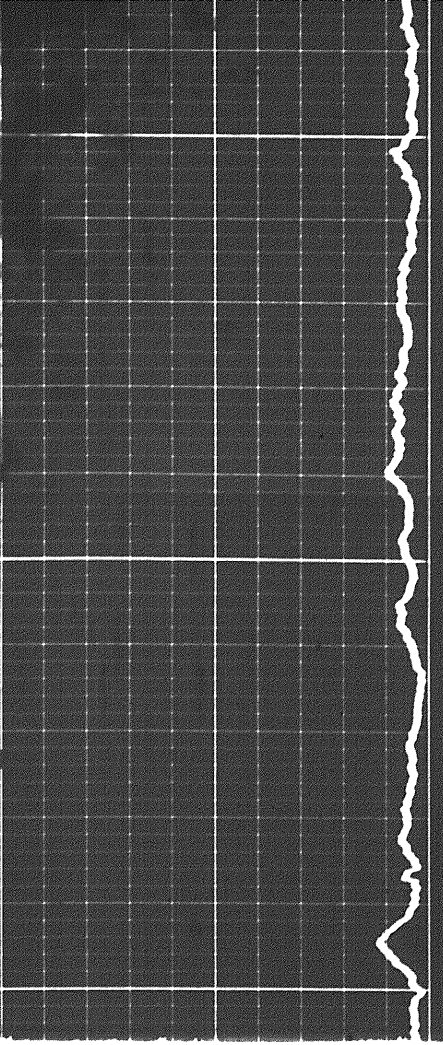
12200



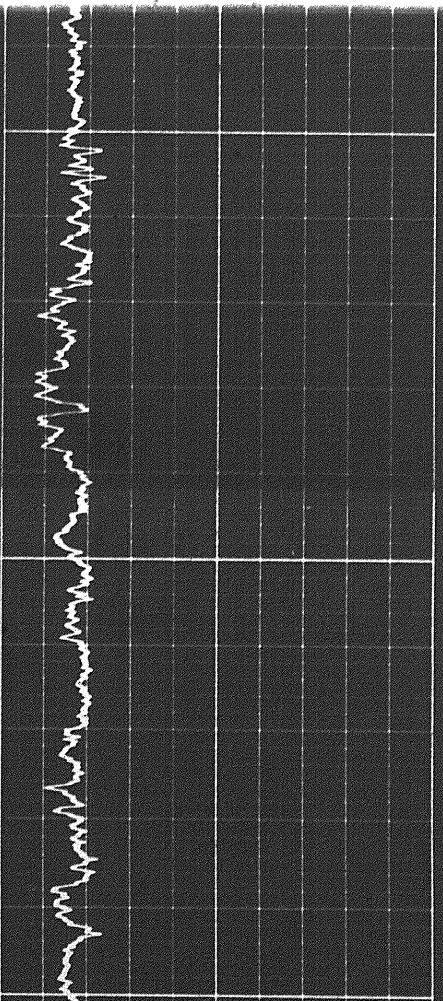
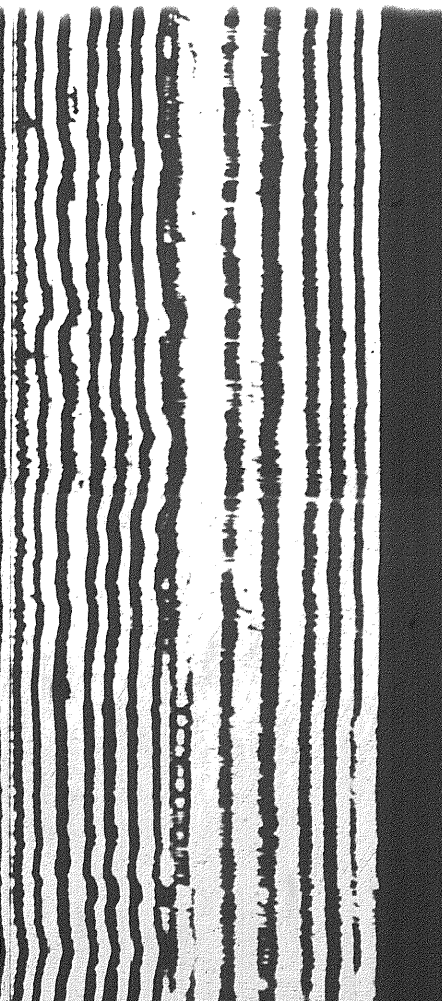


12200

12300

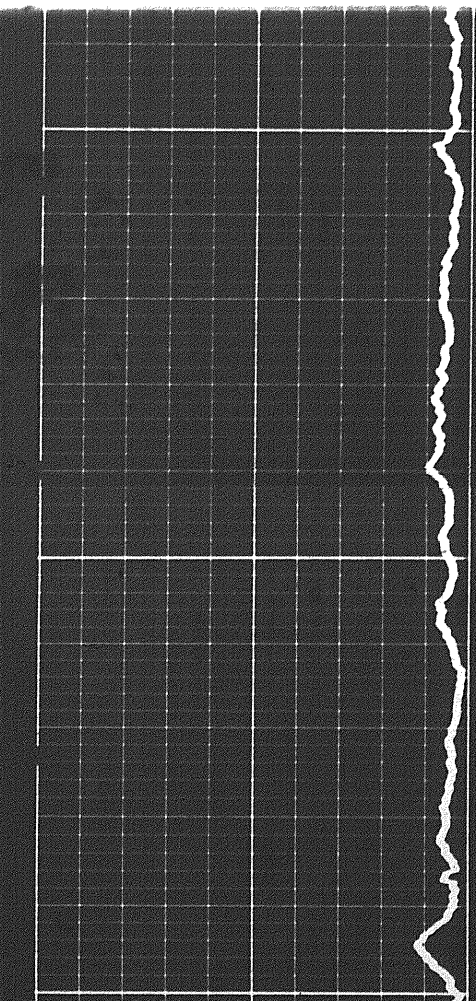


321

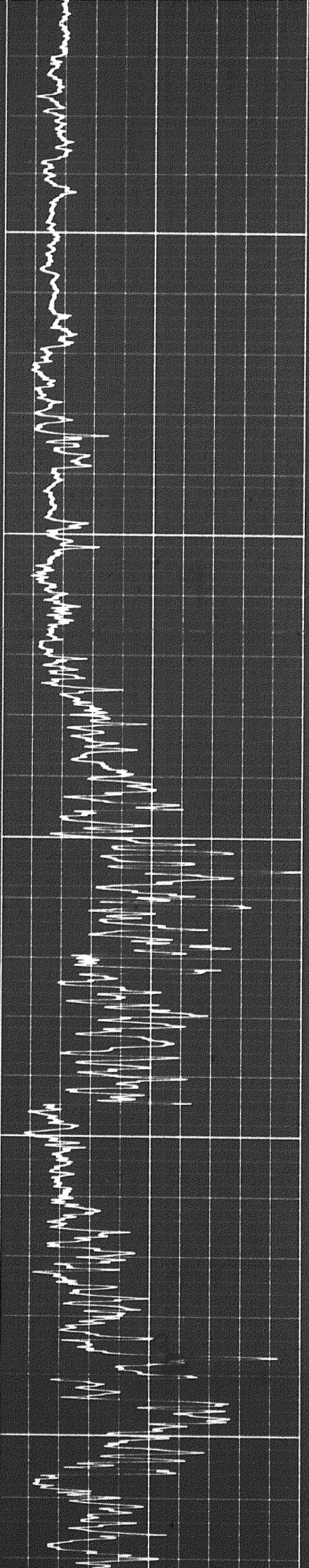
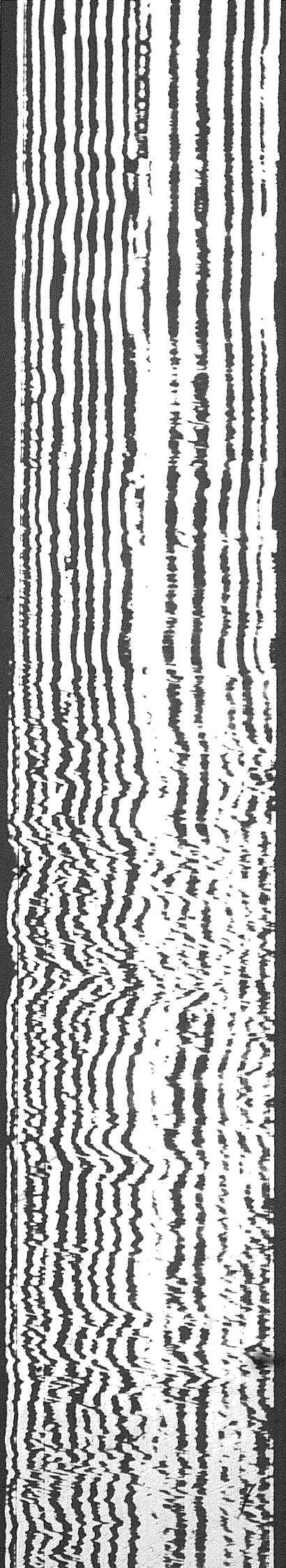


12200

123



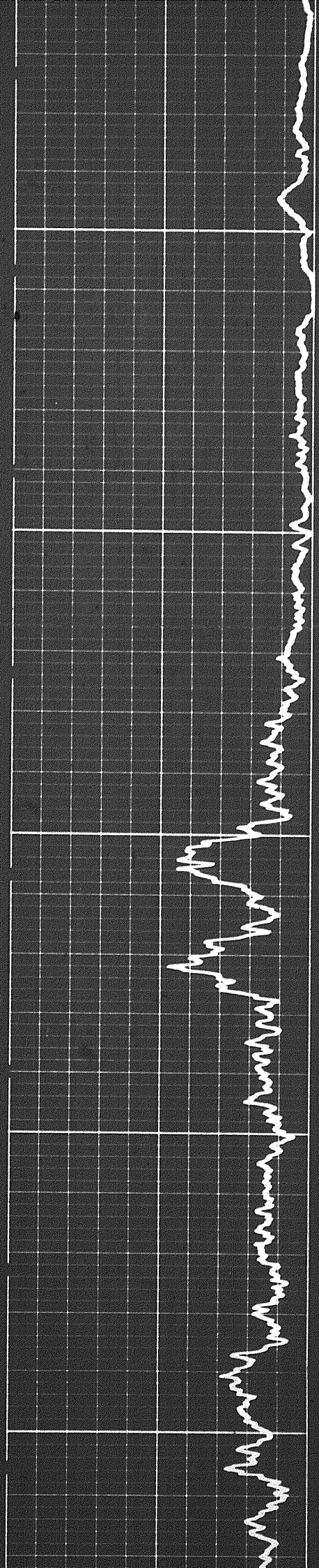
6

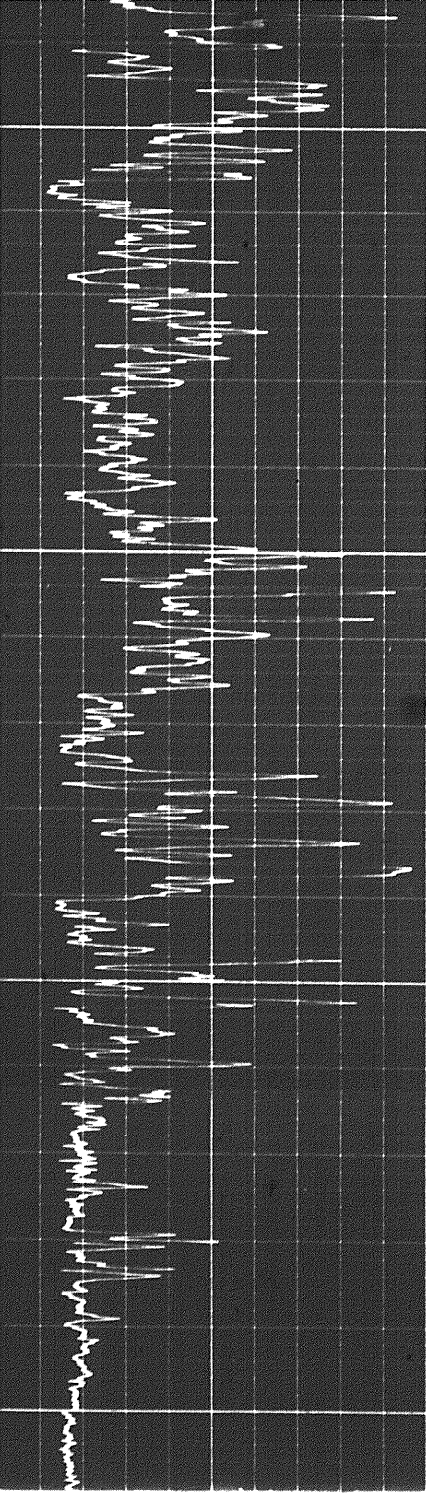
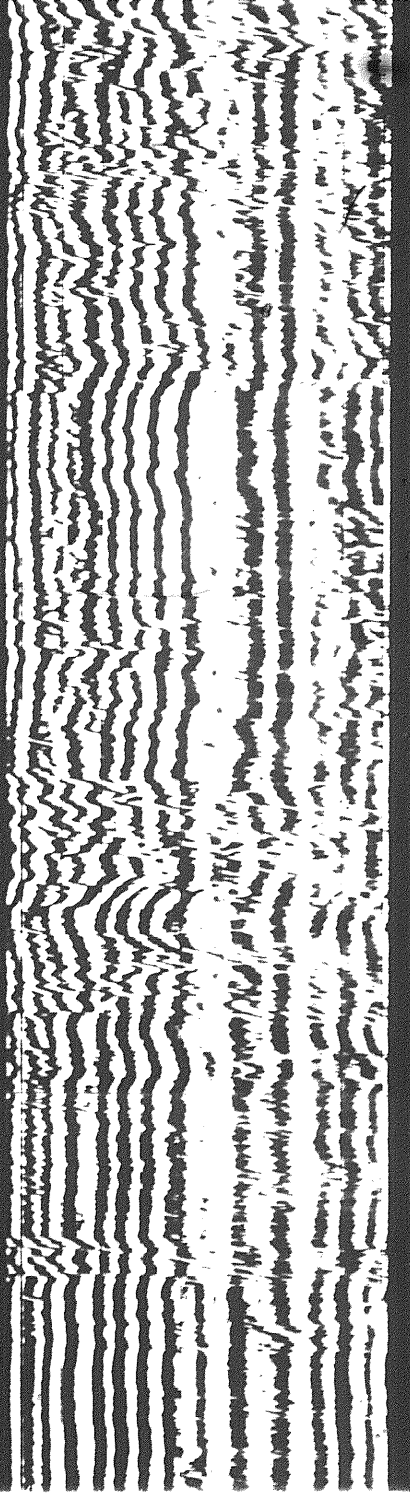


12300

12400

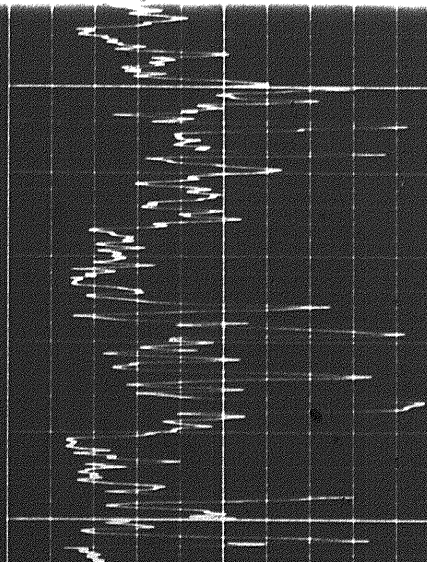
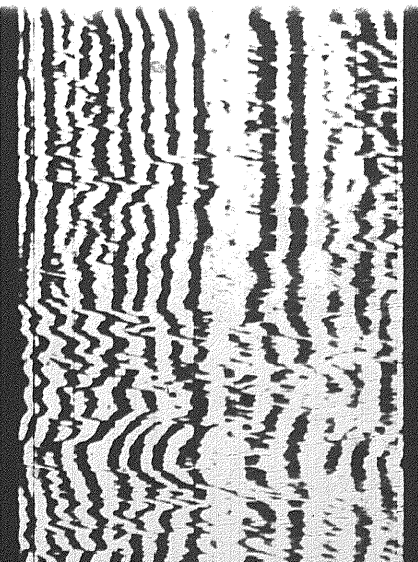
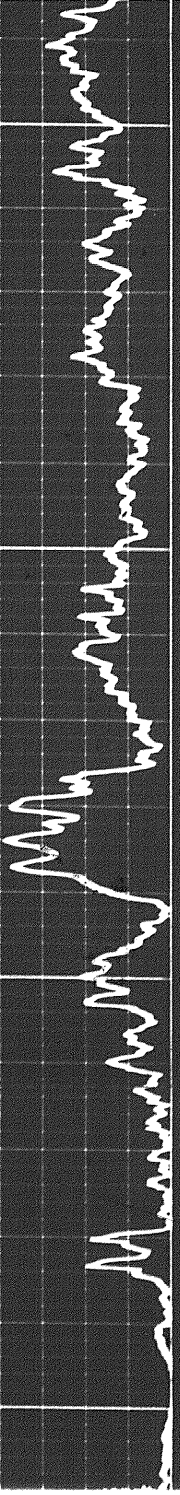
12500





12500

12600

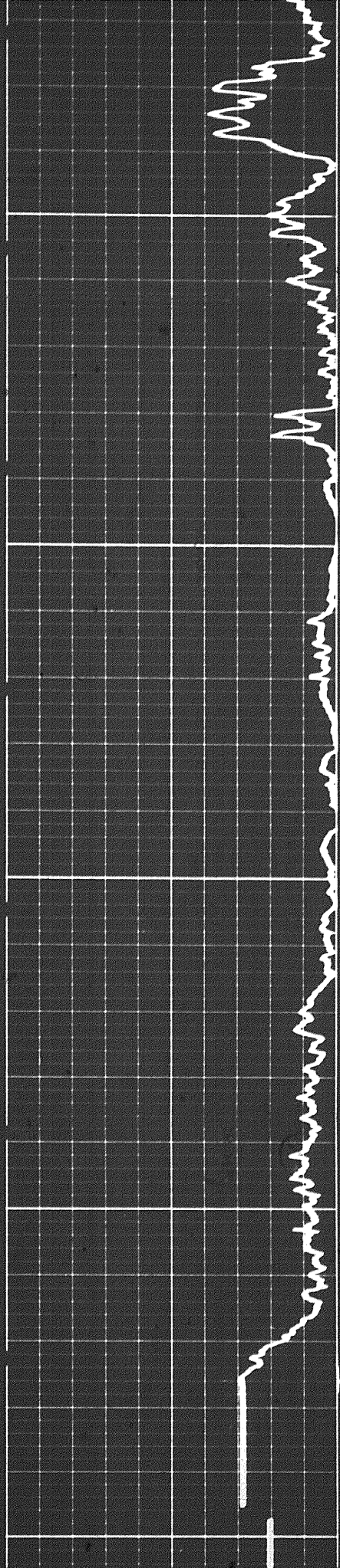


12600



12500

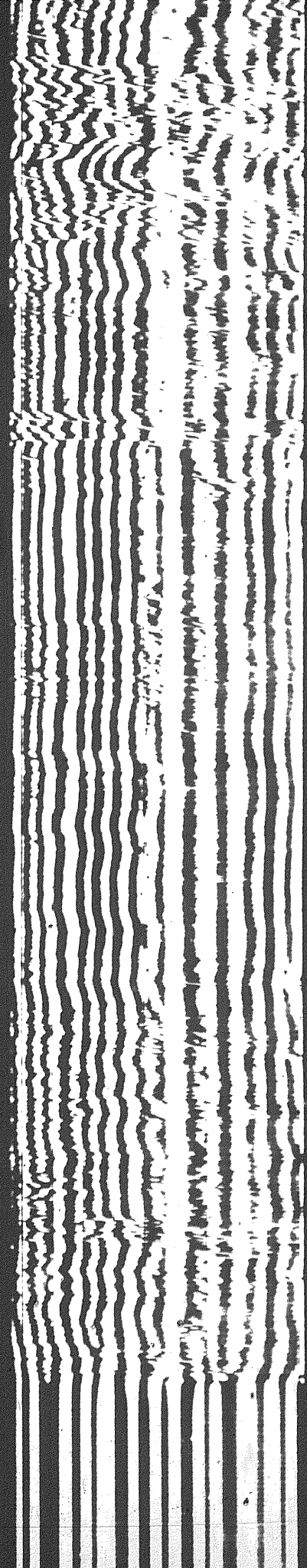
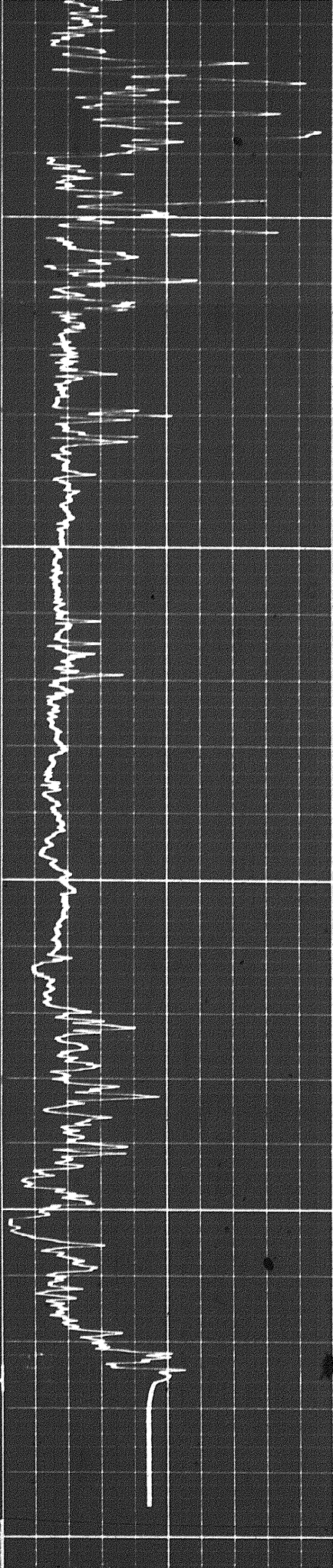
12600



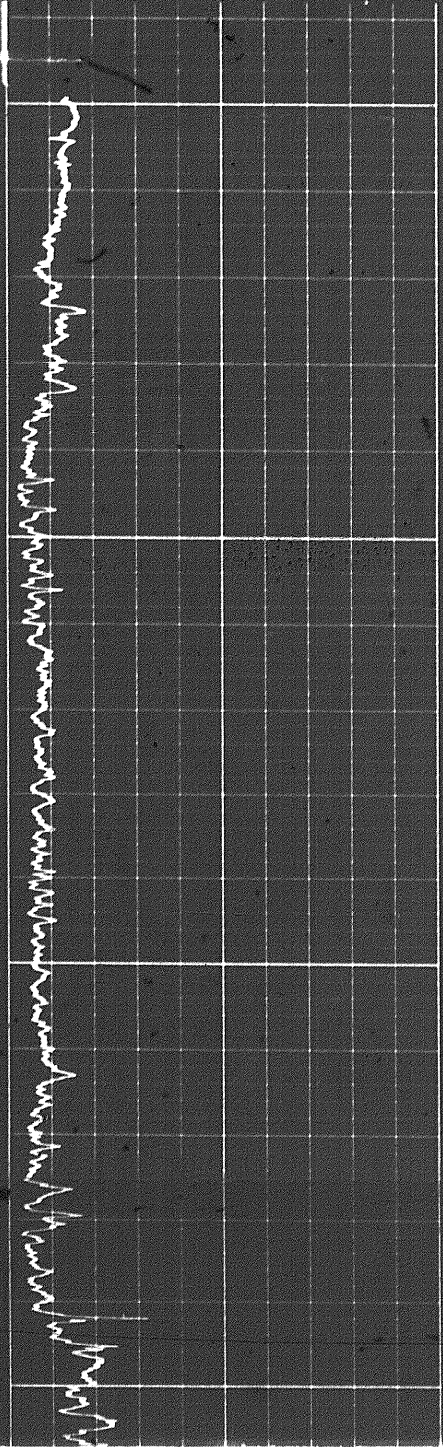
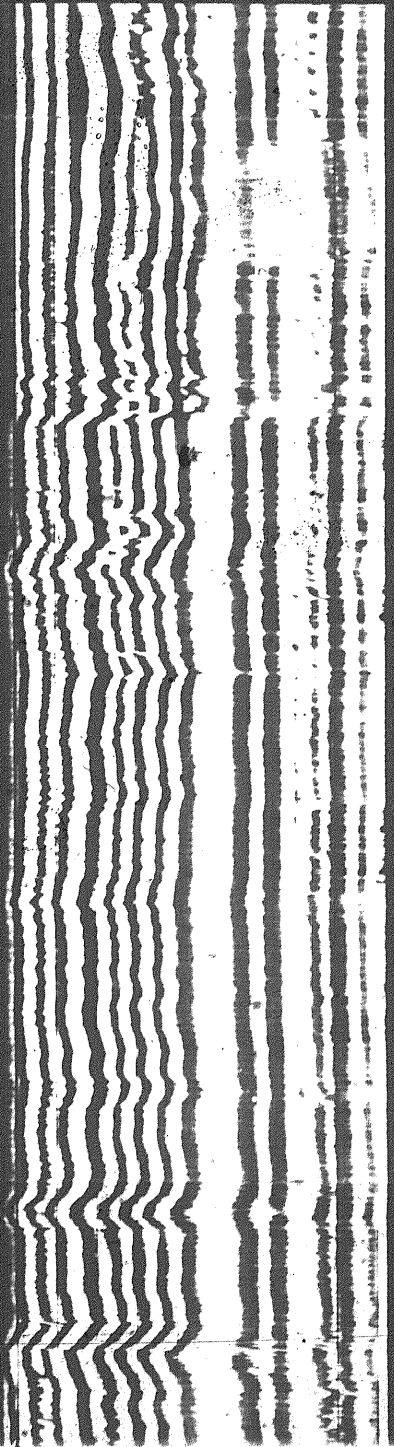
12600

12700

12800

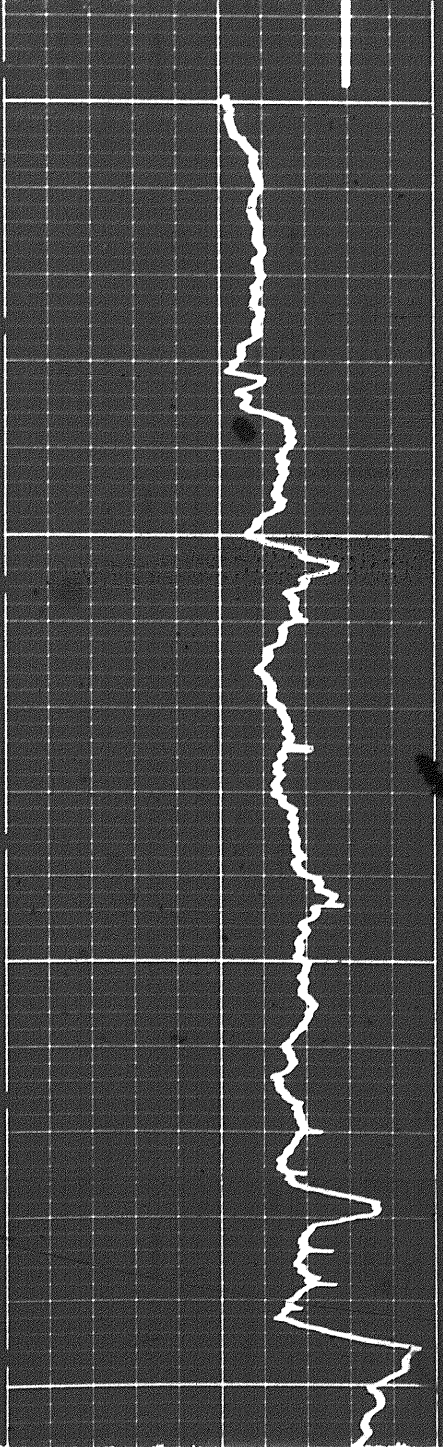


REPEAT SECTION



11500

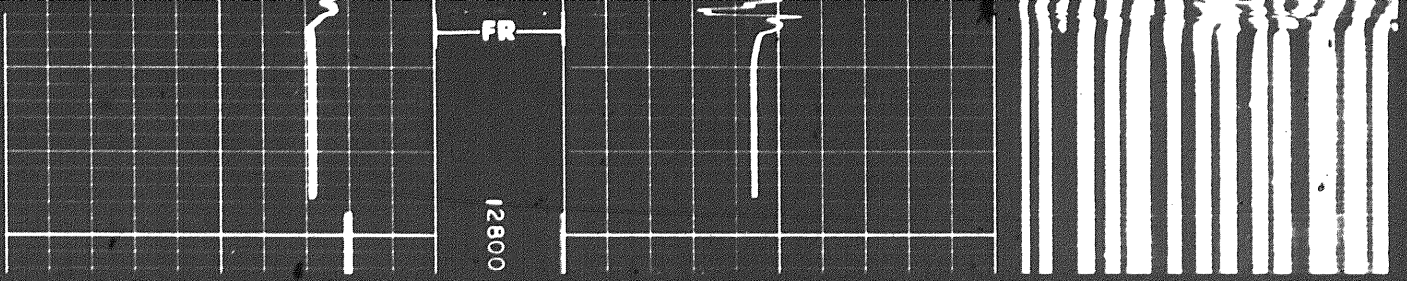
11600

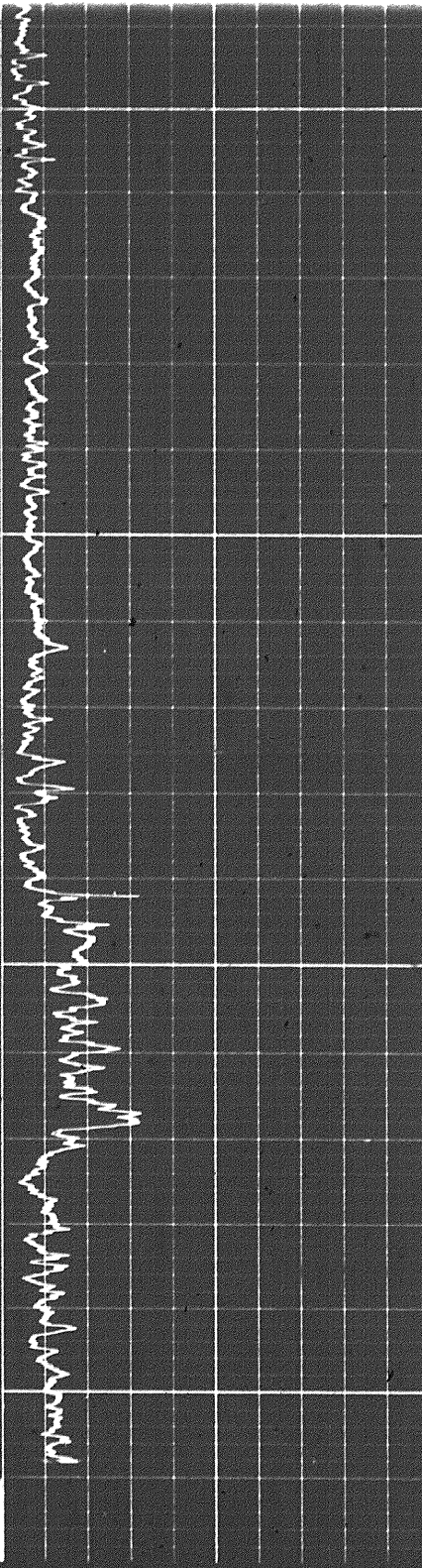
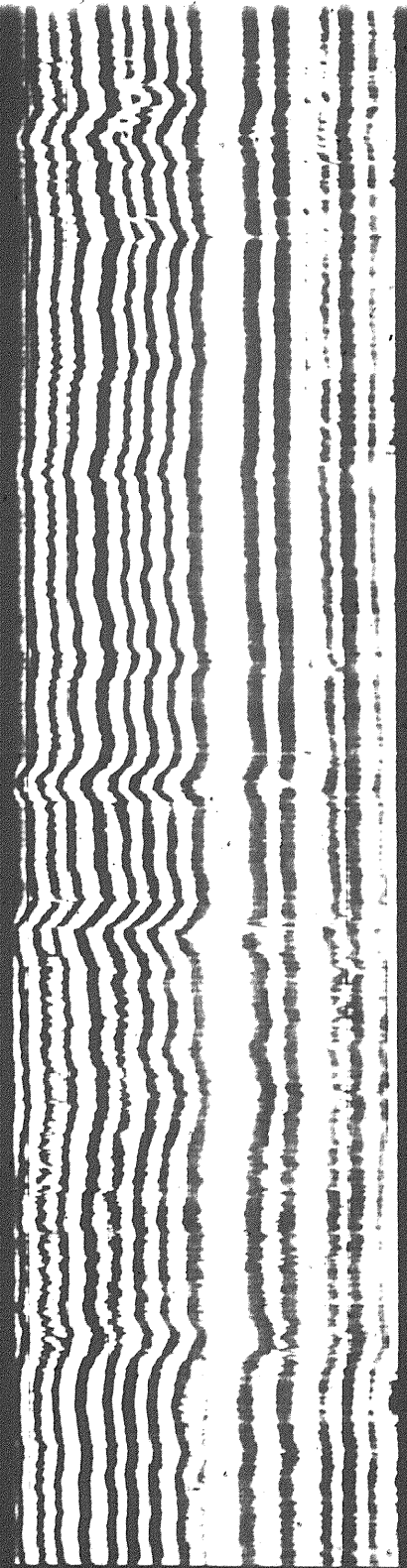


12800

FR

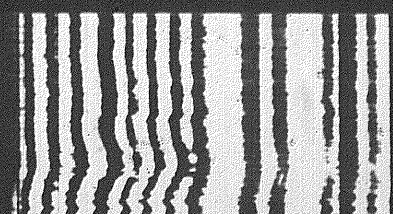
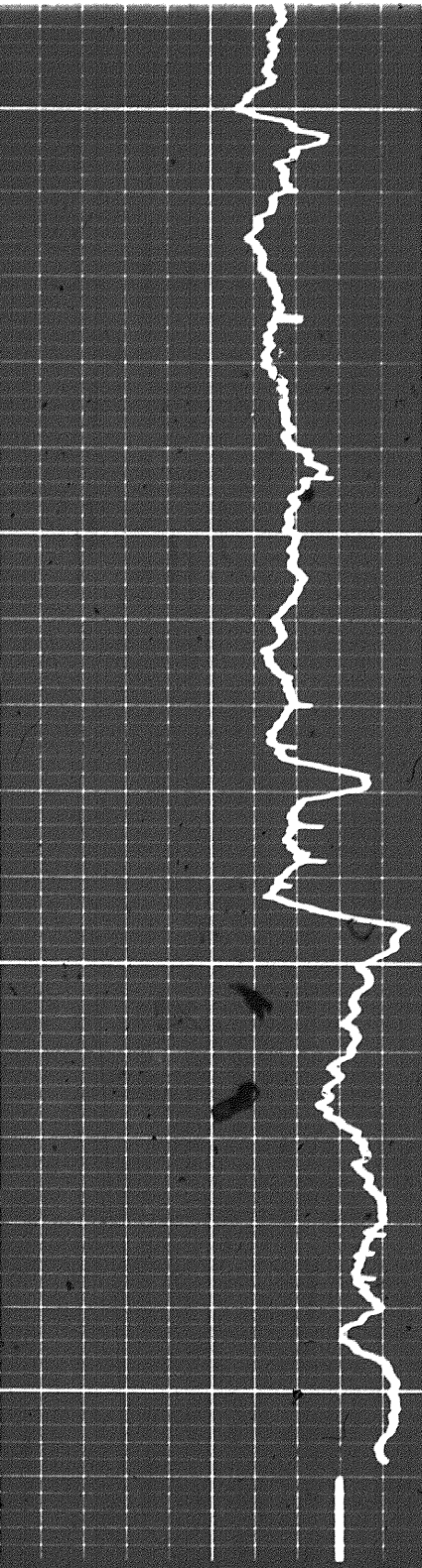
5 of 5





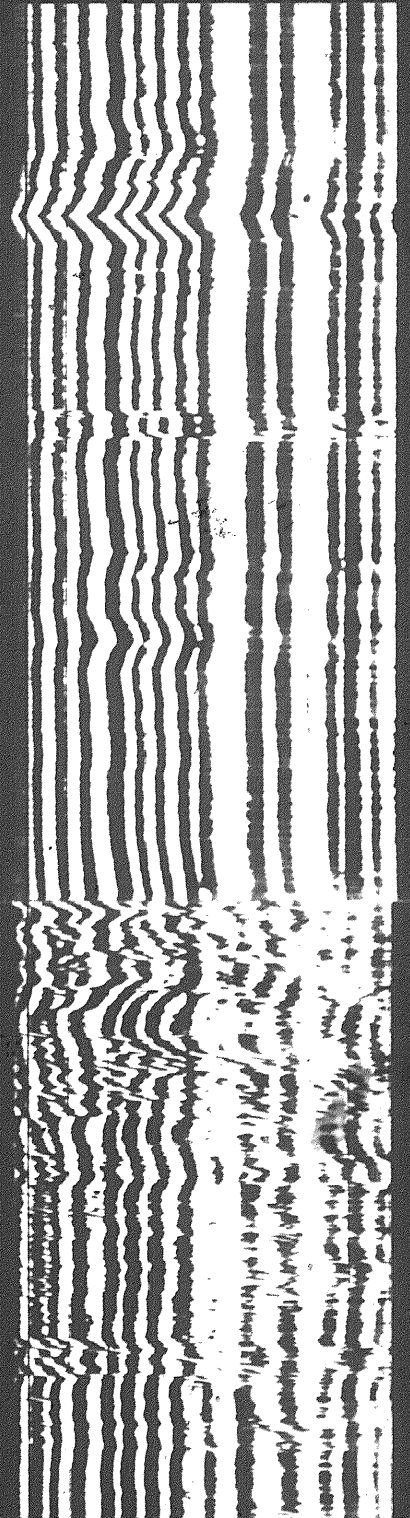
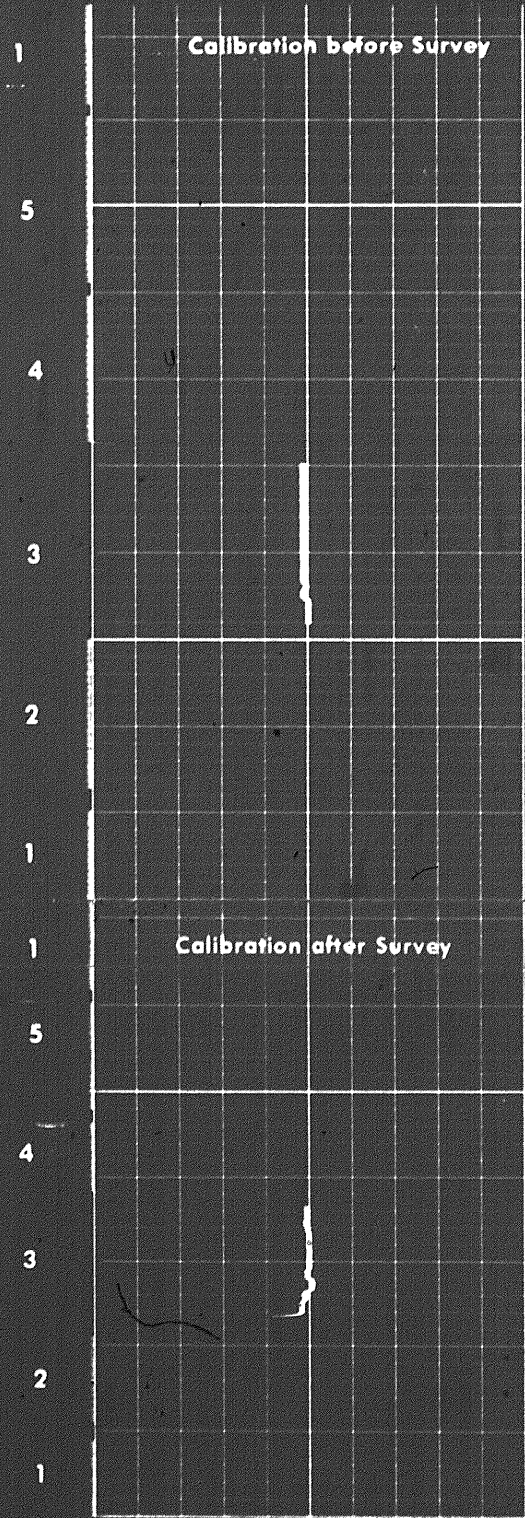
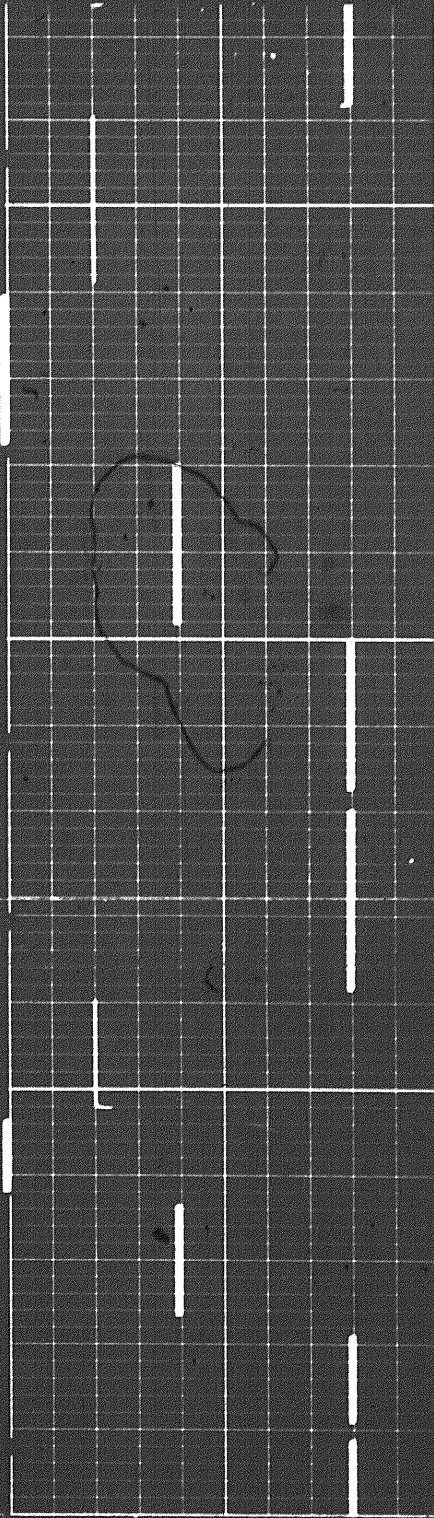
11600

11700



Calibration before Survey

1



6 of 6

COMPANY COLUMBIA GAS DEVELOPMENT OF CANADA LTD.
WELL COLUMBIA GAS ET AL KOTANEELLEE YT H-38
FIELD WILDGATE **PROVINCE** YUKON TERRITORY

