

# NORTHLAND

Energy Corporation

Calgary: (403) 264-9700  
 Red Deer: (403) 346-8840  
 Grand Prairie: (403) 539-3411

## FIELD DATA

**N.E.B. COPY**

JOB: 3285A  
 CUSTOMER: Anderson Exploration Ltd.  
 WELL: Columbia et al Kotancollee  
 OPERATION: Re-completion  
 CHOKE SIZE: ORIFICE PLATE SIZE:

REP. BY: H. Verstraete / R. Waldron  
 LSD: YTB-38  
 ZONE: Nahanni

GAS TO: FLARE  
 TEST OPERATOR(S): J. Knisely / J. Ryan  
 METER RUN: 154.05 mm  
 OR: CRITICAL FLOW PROVER  
 TEST UNIT NO. FS-23

Time	Elapsed Time	Well Head Data			H.P. Sep Gas Metering					Cond/Oil Prod.			Water Production		Intermediate Casing	Surface Casing
		Tubing Pressure	Flow Temp	Casing Pressure	Static Pressure	Diff.	Temp.	Q	Cum. Q Total	Cond/Oil Prod.	Cum. Cond/Oil Prod. Tot.	Cond. Sp Gr @ 60 F	Water Prod.	Cum. Water Prod. Tot.		
hh:mm	Hours	kPag	°C	kPag	kPag	kPa	°C	10 <sup>3</sup> m <sup>3</sup> /d	10 <sup>3</sup> m <sup>3</sup>	m <sup>3</sup>	m <sup>3</sup>	°API	m <sup>3</sup>	m <sup>3</sup>	kPa	kPa
98/06/05																
08:00	8.0	20935		2750											40	130
08:00		CONTINUED TO RIG IN														
11:00		ORIENTATION MEETING														
13:00		RIGGED UP WIRELINE														
14:30		CONDUCTED SAFETY MEETING														
15:00		RIGGED IN FLOWLINE TO BLEED OFF LUBRICATOR														
16:00		RUN IN HOLE WITH GAUGE RING														
16:30		UNABLE TO GET IN HOLE														
22:00		RUN IN WITH IMPRESSION BLOCK / HANGING UP ON BOTTOM MASTER VALVE														
24:00		RUN IN HOLE WITH NOGO DART														
Day Summary																
Cum. Prod. Since: 00:00 98/06/05																
Gas Production (24.0 Hrs) 0.00 10 <sup>3</sup> m <sup>3</sup>																
Cumulative (24.0 Hrs) 0.00 10 <sup>3</sup> m <sup>3</sup>																
Liquid Production (24.0 Hrs)																
Cond/Oil 0.00 m <sup>3</sup> Water 0.00 m <sup>3</sup>																
Liquid Production Cumulative (24.0 Hrs)																
Cond/Oil 0.00 m <sup>3</sup> Water 0.00 m <sup>3</sup>																

NATIONAL ENERGY BOARD  
 ENGINEERING BRANCH  
 SEP 18 1998



# NORTHLAND

Energy Corporation

Calgary: (403) 264-9700  
 Red Deer: (403) 346-8840  
 Grand Prairie: (403) 539-3411

## FIELD DATA

JOB: 3265A  
 CUSTOMER: Anderson Exploration Ltd.  
 WELL: Columbia et al Kotaneeloe  
 OPERATION: Re-completion  
 CHOKE SIZE:

REP. BY: H. Verstraete / R. Waldron  
 LSD: YTB-38  
 ZONE: Nahanni  
 ORIFICE PLATE SIZE:

GAS TO: FLARE  
 TEST OPERATOR(S): J. Knisely / J. Ryan  
 METER RUN: 154.05 mm  
 CR: DIFF. RANGE: 0-100 kPa  
 TEST UNIT NO. FS-23  
 CRITICAL FLOW PROVER

Time	Elapsed Time	Well Head Data			H.P. Sep Gas Metering					Cond/Oil Prod.			Water Production		Intermediate Casing	Surface Casing																
		Tubing Pressure	Flow Temp	Casing Pressure	Static Pressure	Diff.	Temp.	Q	Cum. Q Total	Cond/Oil Prod.	Cum. Cond/Oil Prod. Tot.	Cond. Sp Gr @ 60 F	Water Prod.	Cum. Water Prod. Tot.																		
hh:mm	Hours	kPag	°C	kPag	kPag	kPa	°C	10 <sup>3</sup> m <sup>3</sup> /d	10 <sup>3</sup> m <sup>3</sup>	m <sup>3</sup>	m <sup>3</sup>	°API	m <sup>3</sup>	m <sup>3</sup>	kPa	kPa																
98/06/05																																
98/06/06																																
02:15		OUT OF HOLE																														
02:50		RERUN NOGO DART																														
04:25		OUT OF HOLE WITH DART / UNABLE TO SHEAR OFF																														
04:50		RERUN NOGO DART																														
05:55		OUT OF HOLE																														
06:25		RUN IN WITH RECORDERS																														
07:46		RECORDERS ON BOTTCM AT 3252 cf																														
08:00	8.0	20938		2790											70	300																
<table border="1"> <thead> <tr> <th colspan="2">Day Summary</th> </tr> </thead> <tbody> <tr> <td>Cum. Prod. Since: 00:00 98/06/05</td> <td></td> </tr> <tr> <td>Gas Production (0.0 Hrs)</td> <td>0.00 10<sup>3</sup>m<sup>3</sup></td> </tr> <tr> <td>Cumulative (24.0 Hrs)</td> <td>0.00 10<sup>3</sup>m<sup>3</sup></td> </tr> <tr> <td>Liquid Production (0.0 Hrs)</td> <td></td> </tr> <tr> <td>Cond/Oil</td> <td>0.00 m<sup>3</sup> Water 0.00 m<sup>3</sup></td> </tr> <tr> <td>Liquid Production Cumulative (24.0 Hrs)</td> <td></td> </tr> <tr> <td>Cond/Oil</td> <td>0.00 m<sup>3</sup> Water 0.00 m<sup>3</sup></td> </tr> </tbody> </table>																	Day Summary		Cum. Prod. Since: 00:00 98/06/05		Gas Production (0.0 Hrs)	0.00 10 <sup>3</sup> m <sup>3</sup>	Cumulative (24.0 Hrs)	0.00 10 <sup>3</sup> m <sup>3</sup>	Liquid Production (0.0 Hrs)		Cond/Oil	0.00 m <sup>3</sup> Water 0.00 m <sup>3</sup>	Liquid Production Cumulative (24.0 Hrs)		Cond/Oil	0.00 m <sup>3</sup> Water 0.00 m <sup>3</sup>
Day Summary																																
Cum. Prod. Since: 00:00 98/06/05																																
Gas Production (0.0 Hrs)	0.00 10 <sup>3</sup> m <sup>3</sup>																															
Cumulative (24.0 Hrs)	0.00 10 <sup>3</sup> m <sup>3</sup>																															
Liquid Production (0.0 Hrs)																																
Cond/Oil	0.00 m <sup>3</sup> Water 0.00 m <sup>3</sup>																															
Liquid Production Cumulative (24.0 Hrs)																																
Cond/Oil	0.00 m <sup>3</sup> Water 0.00 m <sup>3</sup>																															



# NORTHLAND

Energy Corporation

Calgary: (403) 264-9700  
 Red Deer: (403) 348-8840  
 Grand Prairie: (403) 539-3411

## FIELD DATA

PAGE 3 OF 69

JOB: 3265A  
 CUSTOMER: Anderson Exploration Ltd.  
 WELL: Columbia et al Kobaneesee  
 OPERATION: Re-completion  
 CHUCK SIZE: ORIFICE PLATE SIZE:

REP. BY: H.Verstraete / R. Waldron  
 LSD: YTB-38  
 ZONE: Nahanni

GAS TO: FLARE  
 TEST OPERATOR(S): J.Kneisly / J. Ryan  
 METER RUN: 154.05 mm  
 OR: CRITICAL FLOW PROVER  
 TEST UNIT NO. FS-23

Time	Elapsed Time	Well Head Data			H.P. Sep Gas Metering				Cum. Q Total	Cond/Oil Prod.			Water Production		Intermediate Casing	Surface Casing
		Tubing Pressure	Flow Temp	Casing Pressure	Static Pressure	Diff.	Temp.	Q		Cond/Oil Prod.	Cum. Cond/Oil Prod. Tot.	Cond. Sp Gr @ 60 F	Water Prod.	Cum. Water Prod. Tot.		
hh:mm	Hours	kPag	°C	kPag	kPag	kPa	°C	10 <sup>3</sup> m <sup>3</sup> /d	10 <sup>3</sup> m <sup>3</sup>	m <sup>3</sup>	m <sup>3</sup>	°API	m <sup>3</sup>	m <sup>3</sup>	kPa	kPa
98/06/06																
98/06/07																
13:00	37.0														50	300
15:55		BLEED OFF SURFACE CASING TO ZERO														
15:56		BLEED OFF INTERMEDIATE CASING TO ZERO														
18:00	42.0	20935		2840											20	90
24:00	48.0	20935		2900											0	180
<b>Day Summary</b>																
Cum. Prod. Since: 00:00 98/06/05																
Gas Production (0.0 Hrs) 0.00 10 <sup>3</sup> m <sup>3</sup>																
Cumulative (24.0 Hrs) 0.00 10 <sup>3</sup> m <sup>3</sup>																
Liquid Production (0.0 Hrs)																
Cond/Oil 0.00 m <sup>3</sup> Water 0.00 m <sup>3</sup>																
Liquid Production Cumulative (24.0 Hrs)																
Cond/Oil 0.00 m <sup>3</sup> Water 0.00 m <sup>3</sup>																



# NORTHLAND

Energy Corporation

Calgary: (403) 284-9769  
 Red Deer: (403) 348-9940  
 Grand Prairie: (403) 539-3411

## FIELD DATA

JOB: 3286A REP. BY: H. Verstraete / R. Waldron GAS TO: FLARE  
 CUSTOMER: Anderson Exploration Ltd. TEST OPERATOR(S): J. Kraljick / J. Ryan  
 WELL: Columbia at al Kotanesice LSD: YTB-38 METER RUN: 154.85 mm DIFF. RANGE: 0-100 kPa  
 OPERATION: Re-completion ZONE: Nehanni OR: CRITICAL FLOW PROVER  
 CHOKE SIZE: ORIFICE PLATE SIZE: TEST UNIT NO. F8-23

Time	Elapsed Time	Well Head Data			H.P. Sep Gas Metering				Cond/Oil Prod.			Water Production		Intermediate Casing	Surface Casing	
		Tubing Pressure	Flow Temp	Casing Pressure	Static Pressure	DW.	Temp.	Q	Cum. Q Total	Cond/Oil Prod.	Cum. Cond/Oil Prod. Tot.	Cond. Sp Gr @ 60 F	Water Prod.			Cum. Water Prod. Tot.
hh:mm	Hours	kPaq	°C	kPaq	kPaq	kPa	°C	10 <sup>3</sup> m <sup>3</sup> /d	10 <sup>3</sup> m <sup>3</sup>	m <sup>3</sup>	m <sup>3</sup>	*API	m <sup>3</sup>	m <sup>3</sup>	kPa	kPa
98/06/07																
98/06/08																
06:00	54.0	20935		2900											0	260
12:00	60.0	20923		2890											10	340
16:50		SAMPLE TAKEN FROM SURFACE CASING / ONE STOCK WATER														
17:00		BLEED OFF WELLHEAD / RIGGED UP WIRELINE														
17:15		RUN IN TO RECOVER RECORDERS / RUN STATIC GRADIENT ON THE WAY OUT														
18:00	66.0	20923		2890											10	340
19:45		OUT OF HOLE / DOWNLOAD INFO.														
20:05		RUN IN TO RETRIEVE DART														
21:15		OUT OF HOLE / CHANGE TOOLS AND RAMS														
22:10		RUN IN FOR TEMPERATURE LOG														
24:00	72.0	20900		2800											10	400
<b>Day Summary</b>																
Cum. Prod. Since: 00:00 98/06/05																
Gas Production (0.0 Hrs) 0.00 10 <sup>3</sup> m <sup>3</sup>																
Cumulative (24.0 Hrs) 0.00 10 <sup>3</sup> m <sup>3</sup>																
Liquid Production (0.0 Hrs)																
Cond/Oil 0.00 m <sup>3</sup> Water 0.00 m <sup>3</sup>																
Liquid Production Cumulative (24.0 Hrs)																
Cond/Oil 0.00 m <sup>3</sup> Water 0.00 m <sup>3</sup>																



# NORTHLAND

Energy Corporation

Calgary: (403) 284-9700  
 Red Deer: (403) 346-8800  
 Grand Prairie: (403) 538-3411

## FIELD DATA

JOB: 3285A  
 CUSTOMER: Anderson Exploration Ltd.  
 WELL: Columbia et al Kotasnoles  
 OPERATION: Re-completion  
 CHOKE SIZE:

REP BY: H. Verstraete / R. Waldron

LSD: YTB-38  
 ZONE: Nahanni

ORIFICE PLATE SIZE:

GAS TO: FLARE  
 TEST OPERATOR(S): J. Kniesely / J. Ryan  
 METER RUN: 154.05 mm  
 OR: DIFF. RANGE: 0-100 kPa  
 CRITICAL FLOW PROVER  
 TEST UNIT NO: FS-23

Time	Elapsed Time	Well Head Data			H.P. Sep Gas Metering					Cond/Oil Prod.			Water Production		Intermediate Casing	Surface Casing
		Tubing Pressure	Flow Temp	Casing Pressure	Static Pressure	DWL	Temp.	Q	Cum. Q Total	Cond/Oil Prod.	Cum. Cond/Oil Prod. Tot.	Cond. Sp Gr @ 60 F	Water Prod.	Cum. Water Prod. Tot.		
hh:mm	Hours	kPag	°C	kPag	kPag	kPa	°C	10 <sup>3</sup> m <sup>3</sup> /d	10 <sup>3</sup> m <sup>3</sup>	m <sup>3</sup>	m <sup>3</sup>	*API	m <sup>3</sup>	m <sup>3</sup>	kPa	kPa
98/06/08																
98/06/09																
03:30		OUT OF HOLE / RIGGED OFF LUBRICATOR														
04:00		RIGGED OFF FLOWLINE / RIG PUMP LINE TO TUBING														
04:20		PRESSURE TEST PUMPLINE AND WELLHEAD TO 35 MPa														
04:30		STARTED TO PUMP CaCl <sub>2</sub> WATER DOWN TUBING														
04:30	0.0	20900		2800												
04:45	0.2			2700												
05:00	0.5			2500												
05:10		STOPPED PUMPING / 20 m <sup>3</sup> AWAY														
05:10	0.7	VAC		2400												
05:25		PUMP 4 m <sup>3</sup> FRESH WATER														
05:30	1.0			2400												
05:40		PUMP 5 m <sup>3</sup> PILL														
05:45	1.2			2300												
05:50		PUMP 4 m <sup>3</sup> FRESH WATER														
06:00	1.5			2300											VAC	40
<b>Day Summary</b>																
Cum. Prod. Since: 00:00 98/06/05																
Gas Production (1.5 Hrs) 0.00 10 <sup>3</sup> m <sup>3</sup>																
Cumulative (25.5 Hrs) 0.00 10 <sup>3</sup> m <sup>3</sup>																
Liquid Production (1.5 Hrs)																
Cond/Oil 0.00 m <sup>3</sup> Water 0.00 m <sup>3</sup>																
Liquid Production Cumulative (25.5 Hrs)																
Cond/Oil 0.00 m <sup>3</sup> Water 0.00 m <sup>3</sup>																







# NORTHLAND

Energy Corporation

Calgary: (403) 264-9700  
 Red Deer: (403) 348-8940  
 Grand Prairie: (403) 539-3411

## FIELD DATA

JOB: 3265A  
 CUSTOMER: Anderson Exploration Ltd.  
 WELL: Columbia et al Kotaneesee  
 OPERATION: Re-completion  
 CHOKE SIZE:

REP. BY: H. Verstraete / R. Waldron  
 LSD: YTB-38  
 ZONE: Nahanni  
 ORIFICE PLATE SIZE:

GAS TO: FLARE  
 TEST OPERATOR(S): J. Knisely / J. Ryan  
 METER RUN: 154.05 mm  
 OR: DIFF. RANGE: 0-100 kPa  
 TEST UNIT NO. FS-23  
 CRITICAL FLOW PROVER

Time	Elapsed Time	Well Head Data			H.P. Sep Gas Metering					Cond/Oil Prod.			Water Production		Intermediate Casing	Surface Casing
		Tubing Pressure	Flow Temp	Casing Pressure	Static Pressure	Diff.	Temp.	Q	Cum. Q Total	Cond/Oil Prod.	Cum. Cond/Oil Prod. Tot.	Cond. Sp Gr @ 60 F	Water Prod.	Cum. Water Prod. Tot.		
hh:mm	Hours	kPag	°C	kPag	kPag	kPa	°C	10³m³/d	10³m³	m³	m³	°API	m³	m³	kPa	kPa
98/06/09																
14:55		PRESSURE TEST PUMP LINE / STARTED TO PUMP DOWN CASING														
15:15		STOPPED PUMPING														
18:00	13.5	VAC		6250											10	75
19:40		RIG OUT PUMP LINE														
19:50	15.3			7400												
19:50		OPENED PRODUCTION CASING TO BLEED OFF														
19:55	15.4			10												
20:00	15.5			10												
20:30	16.0			10									0.64	13.69	20	350
20:32		RIGGED UP WIRELINE LUBRICATOR / RIG UP PUMP LINE TO TUBING														
20:48		RUN IN WITH GAUGE RING														
21:00	16.5			10											20	450
21:00		SHUT IN CASING / MONITOR WELL														
22:00	17.5	1400		10											45	410
23:00	18.5	2100		10											300	600
23:10		WIRELINE OUT OF HOLE														
23:20		RIGGED FLOWLINE OFF OF CASING AND UP TO TUBING														
23:25		BLEED OFF TUBING														
23:30		RIGGED OFF FLOWLINE / RIGGED OFF LUBRICATOR														
24:00	19.5			525											500	700



# NORTHLAND

Energy Corporation

Calgary: (403) 264-9700  
 Red Deer: (403) 346-8840  
 Grand Prairie: (403) 539-3411

## FIELD DATA

JOB: 3265A REP. BY: H.Verstraete / R. Waldron GAS TO: FLARE  
 CUSTOMER: Anderson Exploration Ltd. TEST OPERATOR(S): J.Knisely / J. Ryan  
 WELL: Columbia et al Kotaneesee LSD: YTB-38 METER RUN: 154.05 mm DIFF. RANGE: 0-100 kPa  
 OPERATION: Re-completion ZONE: Nahanni OR: CRITICAL FLOW PROVER  
 CHOKE SIZE: ORIFICE PLATE SIZE: TEST UNIT NO. FS-23

Time	Elapsed Time	Well Head Data			H.P. Sep Gas Metering					Cond/Oil Prod.			Water Production		Intermediate Casing	Surface Casing																
		Tubing Pressure	Flow Temp	Casing Pressure	Static Pressure	Diff.	Temp.	Q	Cum. Q Total	Cond/Oil Prod.	Cum. Cond/Oil Prod. Tot.	Cond. Sp Gr @ 60 F	Water Prod.	Cum. Water Prod. Tot.																		
hh:mm	Hours	kPag	°C	kPag	kPag	kPa	°C	10 <sup>3</sup> m <sup>3</sup> /d	10 <sup>3</sup> m <sup>3</sup>	m <sup>3</sup>	m <sup>3</sup>	°API	m <sup>3</sup>	m <sup>3</sup>	kPa	kPa																
98/06/09																																
<table border="1" style="width: 100%; border-collapse: collapse;"> <thead> <tr> <th colspan="2">Day Summary</th> </tr> </thead> <tbody> <tr> <td>Cum. Prod. Since: 00:00 98/06/05</td> <td></td> </tr> <tr> <td>Gas Production (18.0 Hrs)</td> <td style="text-align: right;">0.00 10<sup>3</sup>m<sup>3</sup></td> </tr> <tr> <td>Cumulative (43.5 Hrs)</td> <td style="text-align: right;">0.00 10<sup>3</sup>m<sup>3</sup></td> </tr> <tr> <td>Liquid Production (18.0 Hrs)</td> <td></td> </tr> <tr> <td>Cond/Oil</td> <td style="text-align: right;">0.00 m<sup>3</sup> Water 13.69 m<sup>3</sup></td> </tr> <tr> <td>Liquid Production Cumulative (43.5 Hrs)</td> <td></td> </tr> <tr> <td>Cond/Oil</td> <td style="text-align: right;">0.00 m<sup>3</sup> Water 13.69 m<sup>3</sup></td> </tr> </tbody> </table>																	Day Summary		Cum. Prod. Since: 00:00 98/06/05		Gas Production (18.0 Hrs)	0.00 10 <sup>3</sup> m <sup>3</sup>	Cumulative (43.5 Hrs)	0.00 10 <sup>3</sup> m <sup>3</sup>	Liquid Production (18.0 Hrs)		Cond/Oil	0.00 m <sup>3</sup> Water 13.69 m <sup>3</sup>	Liquid Production Cumulative (43.5 Hrs)		Cond/Oil	0.00 m <sup>3</sup> Water 13.69 m <sup>3</sup>
Day Summary																																
Cum. Prod. Since: 00:00 98/06/05																																
Gas Production (18.0 Hrs)	0.00 10 <sup>3</sup> m <sup>3</sup>																															
Cumulative (43.5 Hrs)	0.00 10 <sup>3</sup> m <sup>3</sup>																															
Liquid Production (18.0 Hrs)																																
Cond/Oil	0.00 m <sup>3</sup> Water 13.69 m <sup>3</sup>																															
Liquid Production Cumulative (43.5 Hrs)																																
Cond/Oil	0.00 m <sup>3</sup> Water 13.69 m <sup>3</sup>																															



# NORTHLAND

Energy Corporation

Calgary: (403) 264-9700  
 Red Deer: (403) 346-8840  
 Grand Prairie: (403) 530-3411

## FIELD DATA

JOB: 3285A  
 CUSTOMER: Anderson Exploration Ltd.  
 WELL: Columbia et al Kotaneslee  
 OPERATION: Re-completion  
 CHOKE SIZE:

REP. BY: H. Verstraete / R. Waldron  
 LSD: YTB-38  
 ZONE: Nahanni  
 ORIFICE PLATE SIZE:

GAS TO: FLARE  
 TEST OPERATOR(S): J. Kneale / J. Ryan  
 METER RUN: 154.05 mm  
 OR: CRITICAL FLOW PROVER  
 TEST UNIT NO. F8-23

Time	Elapsed Time	Well Head Data			H.P. Sep Gas Metering					Cond/Oil Prod.			Water Production		Intermediate Casing	Surface Casing
		Tubing Pressure	Flow Temp	Casing Pressure	Static Pressure	DW.	Temp.	Q	Cum. Q Total	Cond/Oil Prod.	Cum. Cond/Oil Prod. Tot.	Cond. Sp Gr @ 60 F	Water Prod.	Cum. Water Prod. Tot.		
hh:mm	Hours	kPag	°C	kPag	kPag	kPa	°C	10 <sup>3</sup> m <sup>3</sup> /d	10 <sup>3</sup> m <sup>3</sup>	m <sup>3</sup>	m <sup>3</sup>	*API	m <sup>3</sup>	m <sup>3</sup>	kPa	kPa
98/06/09																
98/06/10																
01:00	20.5	2500		580											550	750
02:00	21.5	2700		610											600	780
02:55		RIGGED FLOWLINE TO PRODUCTION CASING														
03:00	22.5	2800		620											720	810
03:02		OPENED CASING TO BLEED OFF														
03:10	22.7			10												
03:30	23.0			10												
04:00	23.5	2950		10											830	850
04:02		SHUT IN														
05:00	24.5	3000		10											895	875
06:00	25.5	3000		10											940	880
<b>Day Summary</b>																
Cum. Prod. Since: 00:00 98/06/05																
Gas Production (6.0 Hrs) 0.00 10 <sup>3</sup> m <sup>3</sup>																
Cumulative (49.5 Hrs) 0.00 10 <sup>3</sup> m <sup>3</sup>																
Liquid Production (6.0 Hrs)																
Cond/Oil 0.00 m <sup>3</sup> Water 0.00 m <sup>3</sup>																
Liquid Production Cumulative (49.5 Hrs)																
Cond/Oil 0.00 m <sup>3</sup> Water 13.69 m <sup>3</sup>																



# NORTHLAND

Energy Corporation

Calgary: (403) 264-9700  
 Red Deer: (403) 346-8940  
 Grand Prairie: (403) 539-3411

## FIELD DATA

JOB: 3286A  
 CUSTOMER: Anderson Exploration Ltd.  
 WELL: Columbia et al Kotaneesee  
 OPERATION: Re-completion  
 CHOKE SIZE:

REP. BY: H. Verstraete / R. Waldron  
 LSD: YTB-38  
 ZONE: Nahanni  
 ORIFICE PLATE SIZE:

GAS TO: FLARE  
 TEST OPERATOR(S): J. Kneely / J. Ryan  
 METER RUN: 154.95 mm  
 OR: DIFF. RANGE: 0-100 kPa  
 TEST UNIT NO. FS-23  
 CRITICAL FLOW PROVER

Time	Elapsed Time	Well Head Data			H.P. Sep Gas Metering					Cond/Oil Prod.			Water Production		Intermediate Casing	Surface Casing
		Tubing Pressure	Flow Temp	Casing Pressure	Static Pressure	DWI	Temp.	Q	Cum. Q Total	Cond/Oil Prod.	Cum. Cond/Oil Prod. Tot.	Cond. Sp Gr @ 60 F	Water Prod.	Cum. Water Prod. Tot.		
hh:mm	Hours	kPag	°C	kPag	kPag	kPa	°C	10 <sup>3</sup> m <sup>3</sup> /d	10 <sup>3</sup> m <sup>3</sup>	m <sup>3</sup>	m <sup>3</sup>	*API	m <sup>3</sup>	m <sup>3</sup>	kPa	kPa
98/06/10																
07:00	26.5	3000		10											1035	880
08:00	27.5	3000		10											1090	890
09:00	28.5	3000		10											1130	890
10:00	29.5	3000		10											1180	890
11:00	30.5	3000		10											1225	890
12:00	31.5	3000		10											1255	890
13:00	32.5	3200		10											1270	890
14:00	33.5	3400		10											1320	890
15:00	34.5	3500		10											1350	900
16:00	35.5	3600		10											1375	900
17:00	36.5	3750		10											1400	900
17:00		BLEED OFF PRODUCTION CASING														
18:00	37.5	3900		0											1425	910
18:02		SHUT IN CASING														
19:00	38.5	4000		0											1450	910
19:05		BLEED OFF PRODUCTION CASING / RIG PUMP LINE TO TUBING														
19:25		PUMP DOWN TUBING														
19:52		STOPPED PUMPING / RIGGED IN WIRELINE														
20:00	39.5	VAC		VAC											1200	VAC
20:10		CONDUCTED SAFETY MEETING														
20:30		WIRELINE STARTED IN HOLE TO CUT TUBING														
20:45		RIGGED FLOWLINE TO INTERMEDIATE CASING														
20:50		FLOW INTERMEDIATE TO BLEED OFF														
20:50		GAS SAMPLE & WATER SAMPLE TAKEN														
21:00	40.5	VAC		VAC											40	VAC
21:30		SHUT IN INTERMEDIATE														



# NORTHLAND

Energy Corporation

Calgary: (403) 264-9700  
 Red Deer: (403) 346-0000  
 Grand Prairie: (403) 539-3411

## FIELD DATA

JOB: 3286A  
 CUSTOMER: Anderson Exploration Ltd.  
 WELL: Columbia et al Kolaresko  
 OPERATION: Re-completion  
 CHOKE SIZE:

REP BY: H. Verbruggen / R. Waldron  
 LSD: YTB-38  
 ZONE: Mahanad  
 ORIFICE PLATE SIZE:

GAS TO: FLARE  
 TEST OPERATOR(S): J.Knisely / J. Ryan  
 METER RUN: 154.05 mm  
 OR: DIFF. RANGE: 0-100 kPa  
 TEST UNIT NO.: FS-23  
 CRITICAL FLOW PROVER

Time	Elapsed Time	Well Head Data			H.P. Sep Gas Metering					Cond/Oil Prod.			Water Production		Intermediate Casing	Surface Casing
		Tubing Pressure	Flow Temp	Casing Pressure	Static Pressure	Diff.	Temp.	Q	Cum. Q Total	Cond/Oil Prod.	Cum. Cond/Oil Prod. Tot.	Cond. Sp Gr @ 60 F	Water Prod.	Cum. Water Prod. Tot.		
hh:mm	Hours	kPag	°C	kPag	kPag	kPa	°C	10 <sup>3</sup> m <sup>3</sup> /d	10 <sup>3</sup> m <sup>3</sup>	m <sup>3</sup>	m <sup>3</sup>	°API	m <sup>3</sup>	m <sup>3</sup>	kPa	kPa
98/06/10																
21:55		CUT TUBING														
22:00	41.5	VAC		VAC											0	VAC
22:03		WIRELINE STARTED OUT OF HOLE														
22:28		RIGGED IN PUMP TO PRODUCTION CASING														
22:35		WIRELINE OUT OF HOLE														
23:00	42.5	VAC		VAC											0	VAC
23:05		RIGGED OFF WIRELINE														
24:00	43.5	VAC		VAC											0	VAC
98/06/11																
00:40		BLEED OFF INTERMEDIATE CASING														
00:50		PUMP 10 m <sup>3</sup> WATER DOWN PRODUCTION CASING														
01:00	44.5	VAC		VAC											0	VAC
06:00	49.5	VAC		VAC											150	VAC
Day Summary																
Cum. Prod. Since: 00:00 98/06/05																
Gas Production (24.0 Hrs) 0.00 10 <sup>3</sup> m <sup>3</sup>																
Cumulative (73.5 Hrs) 0.00 10 <sup>3</sup> m <sup>3</sup>																
Liquid Production (24.0 Hrs)																
Cond/Oil 0.00 m <sup>3</sup> Water 0.00 m <sup>3</sup>																
Liquid Production Cumulative (73.5 Hrs)																
Cond/Oil 0.00 m <sup>3</sup> Water 13.69 m <sup>3</sup>																







# NORTHLAND

Energy Corporation

Calgary: (403) 264-9700  
 Red Deer: (403) 346-8840  
 Grand Prairie: (403) 539-3411

## FIELD DATA

JOB: 3285A

REP. BY: H.Verstraete / R. Waldron

GAS TO: FLARE

CUSTOMER: Anderson Exploration Ltd.

TEST OPERATOR(S): J.Knisely / J. Ryan

WELL: Columbia et al Kotaneesee

LSD: YTB-38

METER RUN: 154.05 mm

DIFF. RANGE: 0-100 kPa

OPERATION: Re-completion

ZONE: Nahanni

OR:

CRITICAL FLOW PROVER

CHOKE SIZE:

ORIFICE PLATE SIZE:

TEST UNIT NO.

FS-23

Time	Elapsed Time	Well Head Data			H.P. Sep Gas Metering					Cond/Oil Prod.			Water Production		Intermediate Casing	Surface Casing
		Tubing Pressure	Flow Temp	Casing Pressure	Static Pressure	Diff.	Temp.	Q	Cum. Q Total	Cond/Oil Prod.	Cum. Cond/Oil Prod. Tot.	Cond. Sp Gr @ 60 F	Water Prod.	Cum. Water Prod. Tot.		
hh:mm	Hours	kPag	°C	kPag	kPag	kPa	°C	10 <sup>3</sup> m <sup>3</sup> /d	10 <sup>3</sup> m <sup>3</sup>	m <sup>3</sup>	m <sup>3</sup>	°API	m <sup>3</sup>	m <sup>3</sup>	kPa	kPa
98/06/11																
21:30	65.0	1750														
21:55		OPENED 2" BYPASS AT MANIFOLD														
22:00	65.5	600														
22:30	66.0	600														
22:50		PUMP OFF														
22:55		SHUT IN AT MANIFOLD														
22:55	66.4												62.37	76.06		
24:00	67.5	0		0											300	0
98/06/12																
06:00	73.5	0		0											480	0
Day Summary																
Cum. Prod. Since: 00:00 98/06/05																
Gas Production (24.0 Hrs) 0.00 10 <sup>3</sup> m <sup>3</sup>																
Cumulative (97.5 Hrs) 0.00 10 <sup>3</sup> m <sup>3</sup>																
Liquid Production (24.0 Hrs)																
Cond/Oil 0.00 m <sup>3</sup> Water 62.37 m <sup>3</sup>																
Liquid Production Cumulative (97.5 Hrs)																
Cond/Oil 0.00 m <sup>3</sup> Water 76.06 m <sup>3</sup>																



# NORTHLAND

Energy Corporation

Calgary: (403) 264-9700  
 Red Deer: (403) 346-8840  
 Grand Prairie: (403) 539-3411

## FIELD DATA

JOB: 3265A REP. BY: H.Verstraete / R. Waldron GAS TO: FLARE  
 CUSTOMER: Anderson Exploration Ltd. TEST OPERATOR(S): J.Knisely / J. Ryan  
 WELL: Columbia et al Kotaneoles LSD: YTB-38 METER RUN: 154.05 mm DIFF. RANGE: 0-100 kPa  
 OPERATION: Re-completion ZONE: Nahanni OR: CRITICAL FLOW PROVER  
 CHOKE SIZE: ORIFICE PLATE SIZE: TEST UNIT NO. FS-23

Time	Elapsed Time	Well Head Data			H.P. Sep Gas Metering					Cond/Oil Prod.			Water Production		Intermediate Casing	Surface Casing
		Tubing Pressure	Flow Temp	Casing Pressure	Static Pressure	DMF	Temp.	Q	Cum. Q Total	Cond/Oil Prod.	Cum. Cond/Oil Prod. Tot.	Cond. Sp Gr @ 60 F	Water Prod.	Cum. Water Prod. Tot.		
hh:mm	Hours	kPag	°C	kPag	kPag	kPa	°C	10 <sup>3</sup> m <sup>3</sup> /d	10 <sup>3</sup> m <sup>3</sup>	m <sup>3</sup>	m <sup>3</sup>	*API	m <sup>3</sup>	m <sup>3</sup>	kPa	kPa
98/06/12																
08:00	75.5														560	50
10:00		OUT OF HOLE														
10:00	77.5														640	150
10:15		RIGGED IN WIRELINE														
10:30		RUN IN WITH GAUGE RING														
12:00	79.5														680	240
13:35		FINISHED RUNNING IN WITH GAUGE RING														
14:00	81.5														730	340
14:05		STARTED TO RUN IN WITH PLUG														
15:05		PLUG SET AT 3250 m														
15:10		STARTED TO PULL OUT OF HOLE														
16:00	83.5														800	510
17:25		OUT OF HOLE RIG OFF WIRELINE														
17:40		FILL HOLE FOR PRESSURE TEST .27 m <sup>3</sup> USED														
17:55		PRESSURE TEST TO 10 mpa														
18:00	85.5														840	620
19:50		BLEED OFF INTERMEDIATE CASING														
20:00	87.5														0	750
22:00	89.5														950	820
22:10		TRIP IN HOLE WITH SCRAPER														
24:00	91.5														960	900
98/06/13																
02:00	93.5														970	950
04:00	95.5														980	1000
06:00	97.5														1000	1080



# NORTHLAND

Energy Corporation

Calgary: (403) 264-9700  
 Red Deer: (403) 346-8840  
 Grand Prairie: (403) 838-3411

## FIELD DATA

JOB: 3285A  
 CUSTOMER: Anderson Exploration Ltd.  
 WELL: Columbia et al Kotaneesee  
 OPERATION: 1st-completion  
 CHOKE SIZE:

REP. BY: H. Varstraete / R. Waldron  
 LSD: YTB-38  
 ZONE: Nahanni  
 ORIFICE PLATE SIZE:

GAS TO: FLARE  
 TEST OPERATOR(S): J. Kinsely / J. Ryan  
 METER RUN: 154.05 mm  
 OR: CRITICAL FLOW PROVER  
 TEST UNIT NO. FS-23

Time	Elapsed Time	Well Head Data			H.P. Sep Gas Metering				Cond/Oil Prod.			Water Production		Intermediate Casing	Surface Casing																	
		Tubing Pressure	Flow Temp	Casing Pressure	Static Pressure	DW.	Temp.	Q	Cum. Q Total	Cond/Oil Prod.	Cum. Cond/Oil Prod. Tot.	Cond. Sp Gr @ 60 F	Water Prod.			Cum. Water Prod. Tot.																
hh:mm	Hours	kPag	°C	kPag	kPag	kPa	°C	10 <sup>3</sup> m <sup>3</sup> /d	10 <sup>3</sup> m <sup>3</sup>	m <sup>3</sup>	m <sup>3</sup>	*API	m <sup>3</sup>	m <sup>3</sup>	kPa	kPa																
98/06/13																																
<table border="1" style="width: 100%;"> <thead> <tr> <th colspan="2">Day Summary</th> </tr> </thead> <tbody> <tr> <td>Cum. Prod. Since:</td> <td>00:00 98/06/05</td> </tr> <tr> <td>Gas Production (24.0 Hrs)</td> <td>0.00 10<sup>3</sup>m<sup>3</sup></td> </tr> <tr> <td>Cumulative (121.5 Hrs)</td> <td>0.00 10<sup>3</sup>m<sup>3</sup></td> </tr> <tr> <td>Liquid Production (24.0 Hrs)</td> <td></td> </tr> <tr> <td>Cond/Oil</td> <td>0.00 m<sup>3</sup> Water 0.00 m<sup>3</sup></td> </tr> <tr> <td>Liquid Production Cumulative (121.5 Hrs)</td> <td></td> </tr> <tr> <td>Cond/Oil</td> <td>0.00 m<sup>3</sup> Water 76.06 m<sup>3</sup></td> </tr> </tbody> </table>																	Day Summary		Cum. Prod. Since:	00:00 98/06/05	Gas Production (24.0 Hrs)	0.00 10 <sup>3</sup> m <sup>3</sup>	Cumulative (121.5 Hrs)	0.00 10 <sup>3</sup> m <sup>3</sup>	Liquid Production (24.0 Hrs)		Cond/Oil	0.00 m <sup>3</sup> Water 0.00 m <sup>3</sup>	Liquid Production Cumulative (121.5 Hrs)		Cond/Oil	0.00 m <sup>3</sup> Water 76.06 m <sup>3</sup>
Day Summary																																
Cum. Prod. Since:	00:00 98/06/05																															
Gas Production (24.0 Hrs)	0.00 10 <sup>3</sup> m <sup>3</sup>																															
Cumulative (121.5 Hrs)	0.00 10 <sup>3</sup> m <sup>3</sup>																															
Liquid Production (24.0 Hrs)																																
Cond/Oil	0.00 m <sup>3</sup> Water 0.00 m <sup>3</sup>																															
Liquid Production Cumulative (121.5 Hrs)																																
Cond/Oil	0.00 m <sup>3</sup> Water 76.06 m <sup>3</sup>																															



# NORTHLAND

Energy Corporation

Calgary: (403) 264-9700  
 Red Deer: (403) 346-8840  
 Grand Prairie: (403) 539-3411

# FIELD DATA

JOB: 3286A  
 CUSTOMER: Anderson Exploration Ltd.  
 WELL: Columbia et al Kotaneesee  
 OPERATION: Re-completion  
 CHOKE SIZE:

REP. BY: H. Verstraete / R. Waldron

LSD: YTB-38  
 ZONE: Nahanni

ORIFICE PLATE SIZE:

GAS TO: FLARE  
 TEST OPERATOR(S): J. Knealy / J. Ryan  
 METER RUN: 154.05 mm  
 OR: DIFF. RANGE: 0-100 kPa  
 TEST UNIT NO. FS-23  
 CRITICAL FLOW PROVER

Time	Elapsed Time	Well Head Data			H.P. Sep Gas Metering					Cond/Oil Prod.			Water Production		Intermediate Casing	Surface Casing
		Tubing Pressure	Flow Temp	Casing Pressure	Static Pressure	DW.	Temp.	Q	Cum. Q Total	Cond/Oil Prod.	Cum. Cond/Oil Prod. Tot.	Cond. Sp Gr @ 60 F	Water Prod.	Cum. Water Prod. Tot.		
hh:mm	Hours	kPag	°C	kPag	kPag	kPa	°C	10 <sup>3</sup> m <sup>3</sup> /d	10 <sup>3</sup> m <sup>3</sup>	m <sup>3</sup>	m <sup>3</sup>	°API	m <sup>3</sup>	m <sup>3</sup>	kPa	kPa
98/06/13															1000	1100
08:00	99.5														1050	1280
10:00	101.5														1000	1250
12:00	103.5															
12:45		ON BOTTOM / CIRCULATE WELL TO RIG TANK														
14:00	105.5														1000	
14:30		LOCATION I-29 TANKS #1 64.48 m <sup>3</sup> #2 30.05 m <sup>3</sup>														
14:50		STOPPED CIRCULATING / PREPARE TO TRIP OUT														
15:00	106.5														1000	1340
15:15		STARTED TO TRIP OUT														
16:00	107.5														1000	1480
18:00	109.5														940	1320
20:00	111.5														940	1200
20:01		OUT OF HOLE														
20:20		RIGGED IN WIRELINE FOR TEMP. / NOISE LOG														
20:25		RUN IN HOLE														
22:00	113.5														930	1180
24:00	115.5														930	1180
98/06/14															900	1160
02:00	117.5														915	1175
04:00	119.5															
05:25		OUT OF HOLE														
05:30	121.0														925	1150
05:35		BLEED OFF INTERMEDIATE AND SURFACE CASING														
05:36		RUN IN HOLE FOR PRODUCTION LOG														
06:00		FLUID SHIPPED (24hrs.) = 1.77 m <sup>3</sup>														
06:00		FLUID SHIPPED (TOTAL) = 66.27 m <sup>3</sup>														



JOB: 3265A REP. BY: H.Verstraete / R. Waldron GAS TO: FLARE  
 CUSTOMER: Anderson Exploration Ltd. TEST OPERATOR(S): J.Knisely / J. Ryan  
 WELL: Columbia et al Kotaneesee LSD: YTB-38 METER RUN: 154.05 mm DIFF. RANGE: 0-100 kPa  
 OPERATION: Re-completion ZONE: Nahanni OR: CRITICAL FLOW PROVER  
 CHOKE SIZE: ORIFICE PLATE SIZE: TEST UNIT NO. FS-23

Time	Elapsed Time	Well Head Data			H.P. Sep Gas Metering				Cond/Oil Prod.			Water Production		Intermediate Casing	Surface Casing																	
		Tubing Pressure	Flow Temp	Casing Pressure	Static Pressure	Diff.	Temp.	Q	Cum. Q Total	Cond/Oil Prod.	Cum. Cond/Oil Prod. Tot.	Cond. Sp Gr @ 60 F	Water Prod.			Cum. Water Prod. Tot.																
hh:mm	Hours	kPag	°C	kPag	kPag	kPa	°C	10 <sup>3</sup> m <sup>3</sup> /d	10 <sup>3</sup> m <sup>3</sup>	m <sup>3</sup>	m <sup>3</sup>	°API	m <sup>3</sup>	m <sup>3</sup>	kPa	kPa																
98/06/14	06:00	400BBL TANKS : TK#1=1.15 m <sup>3</sup> TK#2=1.46 m <sup>3</sup>																														
<table border="1"> <thead> <tr> <th colspan="2">Day Summary</th> </tr> </thead> <tbody> <tr> <td>Cum. Prod. Since: 00:00 98/06/05</td> <td></td> </tr> <tr> <td>Gas Production (24.0 Hrs)</td> <td>0.00 10<sup>3</sup>m<sup>3</sup></td> </tr> <tr> <td>Cumulative (145.5 Hrs)</td> <td>0.00 10<sup>3</sup>m<sup>3</sup></td> </tr> <tr> <td>Liquid Production (24.0 Hrs)</td> <td></td> </tr> <tr> <td>Cond/Oil</td> <td>0.00 m<sup>3</sup> Water 0.00 m<sup>3</sup></td> </tr> <tr> <td>Liquid Production Cumulative (145.5 Hrs)</td> <td></td> </tr> <tr> <td>Cond/Oil</td> <td>0.00 m<sup>3</sup> Water 76.06 m<sup>3</sup></td> </tr> </tbody> </table>																	Day Summary		Cum. Prod. Since: 00:00 98/06/05		Gas Production (24.0 Hrs)	0.00 10 <sup>3</sup> m <sup>3</sup>	Cumulative (145.5 Hrs)	0.00 10 <sup>3</sup> m <sup>3</sup>	Liquid Production (24.0 Hrs)		Cond/Oil	0.00 m <sup>3</sup> Water 0.00 m <sup>3</sup>	Liquid Production Cumulative (145.5 Hrs)		Cond/Oil	0.00 m <sup>3</sup> Water 76.06 m <sup>3</sup>
Day Summary																																
Cum. Prod. Since: 00:00 98/06/05																																
Gas Production (24.0 Hrs)	0.00 10 <sup>3</sup> m <sup>3</sup>																															
Cumulative (145.5 Hrs)	0.00 10 <sup>3</sup> m <sup>3</sup>																															
Liquid Production (24.0 Hrs)																																
Cond/Oil	0.00 m <sup>3</sup> Water 0.00 m <sup>3</sup>																															
Liquid Production Cumulative (145.5 Hrs)																																
Cond/Oil	0.00 m <sup>3</sup> Water 76.06 m <sup>3</sup>																															



# NORTHLAND

Energy Corporation

Calgary: (403) 264-9700  
 Red Deer: (403) 346-8840  
 Grand Prairie: (403) 539-3411

## FIELD DATA

JOB: 3285A REP. BY: H.Verstraete / R. Waldron GAS TO: FLARE  
 CUSTOMER: Anderson Exploration Ltd. TEST OPERATOR(S): J.Knisely / J. Ryan  
 WELL: Columbia et al Kotaneeloe LSD: YTB-38 METER RUN: 154.05 mm DIFF. RANGE: 0-100 kPa  
 OPERATION: Re-completion ZONE: Nahanni OR: CRITICAL FLOW PROVER  
 CHOKE SIZE: ORIFICE PLATE SIZE: TEST UNIT NO. FS-23

Time	Elapsed Time	Well Head Data			H.P. Sep Gas Metering				Cond/Oil Prod.			Water Production		Intermediate Casing	Surface Casing	
		Tubing Pressure	Flow Temp	Casing Pressure	Static Pressure	Diff.	Temp.	Q	Cum. Q Total	Cond/Oil Prod.	Cum. Cond/Oil Prod. Tot.	Cond. Sp Gr @ 60 F	Water Prod.			Cum. Water Prod. Tot.
hh:mm	Hours	kPag	°C	kPag	kPag	kPa	°C	10 <sup>3</sup> m <sup>3</sup> /d	10 <sup>3</sup> m <sup>3</sup>	m <sup>3</sup>	m <sup>3</sup>	°API	m <sup>3</sup>	m <sup>3</sup>	kPa	kPa
98/06/14																
07:00	122.5														TSTM	TSTM
08:00	123.5														TSTM	TSTM
09:00	124.5														TSTM	TSTM
10:00	125.5														TSTM	TSTM
11:00	126.5														TSTM	TSTM
12:00	127.5														TSTM	TSTM
12:15		OUT OF HOLE / RIGGED OUT LEE TOOL WIRELINE / RIGGED IN ATLAS WIRELINE														
12:35		SHUT IN INTERMEDIATE AND SURFACE CASING FOR BUILD-UP														
13:00	128.5														40	TSTM
13:20		RUN IN WITH WIRELINE / TO LOG HOLE														
14:00	129.5														100	40
15:00	130.5														120	70
16:00	131.5														160	100
16:05		OUT OF HOLE / RIGGED OUT ATLAS WIRELINE														
17:00	132.5														180	120
17:40		STARTED TO RUN IN WITH LEE TOOL / SCHLUMBERGER WIRELINE														
18:00	133.5														220	140
19:00	134.5														240	180
20:00	135.5														280	220
21:00	136.5														300	240
22:00	137.5														305	270
23:00	138.5														330	280
24:00	139.5														340	290
98/06/15																
01:00	140.5														360	320
02:00	141.5														390	340



# NORTHLAND

Energy Corporation

Calgary: (403) 264-9700  
 Red Deer: (403) 348-8840  
 Grand Prairie: (403) 539-3411

## FIELD DATA

JOB: 3268A  
 CUSTOMER: Anderson Exploration Ltd.  
 WELL: Columbia et al Kotaneetee  
 OPERATION: Re-completion  
 CHOKE SIZE:

REP. BY: H. Verstraete / R. Waldron

LSD: YTB-S8

ZONE: Mahant

ORIFICE PLATE SIZE:

GAS TO: FLARE  
 TEST OPERATOR(S): J. Knaeely / J. Ryan

METER RUN: 154.95 mm

OR:

TEST UNIT NO. FS-23

DIFF. RANGE: 0-100 kPa  
 CRITICAL FLOW PROVER

Time	Elapsed Time	Well Head Data			H.P. Sep Gas Metering				Cond/Oil Prod.			Water Production		Intermediate Casing	Surface Casing	
		Tubing Pressure	Flow Temp	Casing Pressure	Static Pressure	DI. Temp.	Q	Cum. Q Total	Cond/Oil Prod.	Cum. Cond/Oil Prod. Tot.	Cond. Sp Gr @ 60 F	Water Prod.	Cum. Water Prod. Tot.			
hh:mm	Hours	kPag	°C	kPag	kPag	kPa	°C	10 <sup>3</sup> m <sup>3</sup> /d	10 <sup>3</sup> m <sup>3</sup>	m <sup>3</sup>	m <sup>3</sup>	*API	m <sup>3</sup>	m <sup>3</sup>	kPa	kPa
98/06/15																
03:00	142.5														405	355
04:00	143.5														410	380
05:00	144.5														410	390
06:00	145.5														420	400
06:00		FLUID SHIPPED (24hrs.) = 0 m <sup>3</sup>														
06:00		FLUID SHIPPED (TOTAL) = 66.27 m <sup>3</sup>														
06:00		400BBL TANKS: #1=1.15 m <sup>3</sup> #2=1.46 m <sup>3</sup>														
<b>Day Summary</b>																
Cum. Prod. Since: 00:00 98/06/05																
Gas Production (24.0 Hrs) 0.00 10 <sup>3</sup> m <sup>3</sup>																
Cumulative (169.5 Hrs) 0.00 10 <sup>3</sup> m <sup>3</sup>																
Liquid Production (24.0 Hrs)																
Cond/Oil 0.00 m <sup>3</sup> Water 0.00 m <sup>3</sup>																
Liquid Production Cumulative (169.5 Hrs)																
Cond/Oil 0.00 m <sup>3</sup> Water 76.06 m <sup>3</sup>																







# NORTHLAND

Energy Corporation

Calgary: (403) 264-9700  
 Red Deer: (403) 346-8840  
 Grand Prairie: (403) 539-3411

## FIELD DATA

JOB: 3265A  
 CUSTOMER: Anderson Exploration Ltd.  
 WELL: Columbia et al Kotaneesee  
 OPERATION: Re-completion  
 CHOKE SIZE:

REP. BY: H.Verstraete / R. Waldron  
 LSD: YTB-38  
 ZONE: Nahanni  
 ORIFICE PLATE SIZE:

GAS TO: FLARE  
 TEST OPERATOR(S): J.Knieisy / J. Ryan  
 METER RUN: 154.05 mm  
 OR: DIFF. RANGE: 0-100 kPa  
 CRITICAL FLOW PROVER  
 TEST UNIT NO. FS-23

Time	Elapsed Time	Well Head Data			H.P. Sep Gas Metering				Cond/Oil Prod.			Water Production		Intermediate Casing	Surface Casing	
		Tubing Pressure	Flow Temp	Casing Pressure	Static Pressure	Diff.	Temp.	Q	Cum. Q Total	Cond/Oil Prod.	Cum. Cond/Oil Prod. Tot.	Cond. Sp Gr @ 60 F	Water Prod.			Cum. Water Prod. Tot.
hh:mm	Hours	kPag	°C	kPag	kPag	kPa	°C	10 <sup>3</sup> m <sup>3</sup> /d	10 <sup>3</sup> m <sup>3</sup>	m <sup>3</sup>	m <sup>3</sup>	°API	m <sup>3</sup>	m <sup>3</sup>	kPa	kPa
98/06/17																
01:00	188.5														1080	720
01:20		RUN IN HOLE														
02:00	189.5														1100	750
03:00	190.5														1100	770
04:00	191.5														1100	785
05:00	192.5														1110	795
06:00	193.5														1130	805
06:00		FLUID SHIPPED (24 hrs.) = 0 m <sup>3</sup>														
06:00		FLUID SHIPPED (TOTAL) = 66.27 m <sup>3</sup>														
06:00		400 BBL. TANKS: #1=1.15 m <sup>3</sup> #2=1.46 m <sup>3</sup>														
06:00		I-27 TANK FARM = #1=15.03 m <sup>3</sup> #2=41.22 m <sup>3</sup>														
Day Summary																
Cum. Prod. Since: 00:00 98/06/05																
Gas Production (24.0 Hrs) 0.00 10 <sup>3</sup> m <sup>3</sup>																
Cumulative (217.5 Hrs) 0.00 10 <sup>3</sup> m <sup>3</sup>																
Liquid Production (24.0 Hrs)																
Cond/Oil 0.00 m <sup>3</sup> Water 0.00 m <sup>3</sup>																
Liquid Production Cumulative (217.5 Hrs)																
Cond/Oil 0.00 m <sup>3</sup> Water 76.06 m <sup>3</sup>																



# NORTHLAND

Energy Corporation

Calgary: (403) 264-9700  
 Red Deer: (403) 346-8840  
 Grand Prairie: (403) 839-3411

## FIELD DATA

PAGE 24 OF 69

JOB: 3285A  
 CUSTOMER: Anderson Exploration Ltd.  
 WELL: Columbia et al Kotaneesee  
 OPERATION: Re-completion  
 CHOKE SIZE:

REP. BY: H. Verstraete / R. Waldron  
 LSD: YTB-38  
 ZONE: Nahanni  
 ORIFICE PLATE SIZE:

GAS TO: FLARE  
 TEST OPERATOR(S): J. Kneasty / J. Ryan  
 METER RUN: 184.05 mm  
 OR: DIFF. RANGE: 0-100 kPa  
 TEST UNIT NO.: FB-23  
 CRITICAL FLOW PROVER

Time	Elapsed Time	Well Head Data				H.P. Sep Gas Metering				Cond/Oil Prod.			Water Production		Intermediate Casing	Surface Casing
		Tubing Pressure	Flow Temp	Casing Pressure	Static Pressure	DW.	Temp.	Q	Cum. C Total	Cond/Oil Prod.	Cum. Cond/Oil Prod. Tot.	Cond. Sp Gr @ 60 F	Water Prod.	Cum. Water Prod. Tot.		
hh:mm	Hours	kPag	°C	kPag	kPag	kPa	°C	10 <sup>3</sup> m <sup>3</sup> /d	10 <sup>3</sup> m <sup>3</sup>	m <sup>3</sup>	m <sup>3</sup>	°API	m <sup>3</sup>	m <sup>3</sup>	kPa	kPa
98/06/17																
06:01		FINISHED RUNNING IN START TO CIRCULATE / CONTINUED TO FISH FOR PLUG														
07:00	194.5														1160	600
08:00	195.5														1200	500
09:00	196.5														1050	VAC
10:00	197.5														1020	VAC
10:20		PICK UP TOP DRIVE TO CIRCULATE														
10:40		STARTED TO CIRCULATE														
11:00	198.5														1000	VAC
11:20		STOPPED CIRCULATING / PREPARE TO TRIP OUT														
12:00	199.5														1000	VAC
12:30		STARTED TO TRIP OUT OF HOLE														
13:00	200.5														1000	VAC
14:00	201.5														990	VAC
15:00	202.5														970	VAC
16:00	203.5														950	VAC
17:00	204.5														930	VAC
18:00	205.5														930	VAC
19:00	206.5														940	VAC
20:00	207.5														940	VAC
20:25		STARTED TO RUN IN HOLE WITH TRASH BAIL														
21:00	208.5														955	VAC
22:00	209.5														965	VAC
23:00	210.5														940	VAC
24:00	211.5														940	VAC
98/06/18																
01:00	212.5														945	VAC



# NORTHLAND

Energy Corporation

Calgary: (403) 264-9700  
 Red Deer: (403) 369-8800  
 Grand Prairie: (403) 538-3411

## FIELD DATA

JOB: 2088A  
 CUSTOMER: Anderson Exploration Ltd.  
 WELL: Columbia et al Kabanecan  
 OPERATION: Re-completion  
 CHOKE SIZE:

REP BY: H.Verstraete / R. Waldron  
 LSD: YTB-38  
 ZONE: Mahanad  
 ORIFICE PLATE SIZE:

GAS TO: FLARE  
 TEST OPERATOR(S): J.J.Kinsley / J. Ryan  
 METER RUN: 154.85 mm  
 OR: CRITICAL FLOW PROVER  
 TEST UNIT NO: FB-23  
 DIFF. RANGE: 0-100 kPa

Time	Elapsed Time	Well Head Data				H.P. Sep Gas Metering				Cond/Oil Prod.			Water Production		Intermediate Casing	Surface Casing
		Tubing Pressure	Flow Temp	Casing Pressure	Static Pressure	Dist.	Temp.	Q	Cum. Q Total	Cond/Oil Prod.	Cum. Cond/Oil Prod. Tot.	Cond. Sp Gr @ 60 F	Water Prod.	Cum. Water Prod. Tot.		
hh:mm	Hours	kPa(g)	°C	kPa(g)	kPa(g)	kPa	°C	10 <sup>3</sup> m <sup>3</sup> /d	10 <sup>3</sup> m <sup>3</sup>	m <sup>3</sup>	m <sup>3</sup>	°API	m <sup>3</sup>	m <sup>3</sup>	kPa	kPa
98/06/18																
02:00	213.5														950	VAC
02:02		ON BOTTOM / PICK UP POWER SWIVEL														
02:35		DROPPED BAR														
02:38		CIRCULATE HOLE														
03:00	214.5														910	VAC
03:15		STOPPED CIRCULATING														
04:00	215.5														880	VAC
04:49		STARTING PULLING OUT OF HOLE														
05:00	216.5														905	VAC
06:00	217.5														935	VAC
06:00		FLUID SHIPPED (24 hrs.)=0 m <sup>3</sup>														
06:00		FLUID SHIPPED (TOTAL)=66.27 m <sup>3</sup>														
06:00		400 BBL. TANKS:#1=1.15 m <sup>3</sup> #2=1.46 m <sup>3</sup>														
06:00		1-27 TANK FARM=#1=15.03 m <sup>3</sup> #2=41.22 m <sup>3</sup>														
<b>Day Summary</b>																
Cum. Prod. Since: 00:00 98/06/05																
Gas Production (24.0 Hrs) 0.00 10 <sup>3</sup> m <sup>3</sup>																
Cumulative (241.5 Hrs) 0.00 10 <sup>3</sup> m <sup>3</sup>																
Liquid Production (24.0 Hrs)																
Cond/Oil 0.00 m <sup>3</sup> Water 0.00 m <sup>3</sup>																
Liquid Production Cumulative (241.5 Hrs)																
Cond/Oil 0.00 m <sup>3</sup> Water 76.06 m <sup>3</sup>																



# NORTHLAND

Energy Corporation

Calgary: (403) 284-9700  
 Red Deer: (403) 348-8840  
 Grand Prairie: (403) 538-3411

## FIELD DATA

JOB: 3285A  
 CUSTOMER: Anderson Exploration Ltd.  
 WELL: Columbia et al Kotasowalee  
 OPERATION: Re-completion  
 CHOKE SIZE:

REP. BY: H. Verstraete / R. Waldron  
 LSD: YTB-38  
 ZONE: Nahanni  
 ORIFICE PLATE SIZE:

GAS TO: FLARE  
 TEST OPERATOR(S): J. Kniesely / J. Ryan  
 METER RUN: 154.05 mm  
 OR: CRITICAL FLOW PROVER  
 TEST UNIT NO: F8-23

Time	Elapsed Time	Well Head Data			H.P. Sep Gas Metering					Cond/Oil Prod.			Water Production		Intermediate Casing	Surface Casing
		Tubing Pressure	Flow Temp	Casing Pressure	Static Pressure	DM	Temp	Q	Cum. O Total	Cond/Oil Prod.	Cum. Cond/Oil Prod. Tot.	Cond. Sp Gr @ 60 F	Water Prod.	Cum. Water Prod. Tot.		
hh:mm	Hours	kPaq	°C	kPaq	kPaq	kPa	°C	10 <sup>3</sup> m <sup>3</sup> /d	10 <sup>3</sup> m <sup>3</sup>	m <sup>3</sup>	m <sup>3</sup>	*API	m <sup>3</sup>	m <sup>3</sup>	kPa	kPa
98/06/18																
07:00	218.5														920	VAC
08:00	219.5														890	VAC
09:00	220.5														890	VAC
10:00	221.5														890	VAC
10:50		OUT OF HOLE / CHANGE B.H.A														
11:00	222.5														890	VAC
12:00	223.5														900	VAC
12:10		STARTED TO RUN IN WITH MILLING BIT AND OVERSHOT														
13:00	224.5														890	VAC
14:00	225.5														880	VAC
15:00	226.5														880	VAC
16:00	227.5														860	VAC
17:00	228.5														860	VAC
18:00	229.5														850	VAC
18:20		FINISHED RUNNING IN HOLE														
19:00	230.5														855	VAC
20:00	231.5														860	VAC
20:37		REMOVE POWER SWIVEL														
21:00	232.5														880	VAC
22:00	233.5														890	VAC
22:20		STARTED OUT OF HOLE														
23:00	234.5														910	TSTM
24:00	235.5														940	20
98/06/19																
01:00	236.5														950	25
02:00	237.5														955	35



# NORTHLAND

Energy Corporation

Calgary: (403) 264-9700  
 Red Deer: (403) 346-8840  
 Grand Prairie: (403) 539-3411

## FIELD DATA

JOB: 3265A REP. BY: H. Verstraete / R. Waldron GAS TO: FLARE  
 CUSTOMER: Anderson Exploration Ltd. TEST OPERATOR(S): J. Knisely / J. Ryan  
 WELL: Columbia et al Kotaneetee LSD: YTB-38 METER RUN: 154.05 mm DIFF. RANGE: 0-100 kPa  
 OPERATION: Re-completion ZONE: Nahanni OR: CRITICAL FLOW PROVER  
 CHOKE SIZE: ORIFICE PLATE SIZE: TEST UNIT NO. FS-23

Time	Elapsed Time	Well Head Data			H.P. Sep Gas Metering				Cond/Oil Prod.			Water Production		Intermediate Casing	Surface Casing																	
		Tubing Pressure	Flow Temp	Casing Pressure	Static Pressure	Diff.	Temp.	Q	Cum. Q Total	Cond/Oil Prod.	Cum. Cond/Oil Prod. Tot.	Cond. Sp Gr @ 60 F	Water Prod.			Cum. Water Prod. Tot.																
hh:mm	Hours	kPag	°C	kPag	kPag	kPa	°C	10 <sup>3</sup> m <sup>3</sup> /d	10 <sup>3</sup> m <sup>3</sup>	m <sup>3</sup>	m <sup>3</sup>	°API	m <sup>3</sup>	m <sup>3</sup>	kPa	kPa																
98/06/19																																
02:30		OUT OF HOLE / CHANGE TOOLS																														
03:00	238.5														975	40																
03:40		STARTED TO RUN IN HOLE																														
04:00	239.5														1040	40																
05:00	240.5														1075	45																
06:00	241.5														1085	50																
06:00		FLUID SHIPPED (24hrs.)=0 m <sup>3</sup>																														
06:00		FLUID SHIPPED (TOTAL)=66.27 m <sup>3</sup>																														
06:00		400 BBL. TANKS: #1=1.15 m <sup>3</sup> #2=1.46 m <sup>3</sup>																														
06:00		I-27 TANK FARM: #1=15.03 m <sup>3</sup> #2=41.22 m <sup>3</sup>																														
<table border="1"> <thead> <tr> <th colspan="2">Day Summary</th> </tr> </thead> <tbody> <tr> <td>Cum. Prod. Since: 00:00 98/06/05</td> <td></td> </tr> <tr> <td>Gas Production (24.0 Hrs)</td> <td>0.00 10<sup>3</sup>m<sup>3</sup></td> </tr> <tr> <td>Cumulative (265.5 Hrs)</td> <td>0.00 10<sup>3</sup>m<sup>3</sup></td> </tr> <tr> <td>Liquid Production (24.0 Hrs)</td> <td></td> </tr> <tr> <td>Cond/Oil</td> <td>0.00 m<sup>3</sup> Water 0.00 m<sup>3</sup></td> </tr> <tr> <td>Liquid Production Cumulative (265.5 Hrs)</td> <td></td> </tr> <tr> <td>Cond/Oil</td> <td>0.00 m<sup>3</sup> Water 76.06 m<sup>3</sup></td> </tr> </tbody> </table>																	Day Summary		Cum. Prod. Since: 00:00 98/06/05		Gas Production (24.0 Hrs)	0.00 10 <sup>3</sup> m <sup>3</sup>	Cumulative (265.5 Hrs)	0.00 10 <sup>3</sup> m <sup>3</sup>	Liquid Production (24.0 Hrs)		Cond/Oil	0.00 m <sup>3</sup> Water 0.00 m <sup>3</sup>	Liquid Production Cumulative (265.5 Hrs)		Cond/Oil	0.00 m <sup>3</sup> Water 76.06 m <sup>3</sup>
Day Summary																																
Cum. Prod. Since: 00:00 98/06/05																																
Gas Production (24.0 Hrs)	0.00 10 <sup>3</sup> m <sup>3</sup>																															
Cumulative (265.5 Hrs)	0.00 10 <sup>3</sup> m <sup>3</sup>																															
Liquid Production (24.0 Hrs)																																
Cond/Oil	0.00 m <sup>3</sup> Water 0.00 m <sup>3</sup>																															
Liquid Production Cumulative (265.5 Hrs)																																
Cond/Oil	0.00 m <sup>3</sup> Water 76.06 m <sup>3</sup>																															







# NORTHLAND

Energy Corporation

Calgary: (403) 264-9790  
 Red Deer: (403) 346-2640  
 Grand Prairie: (403) 538-3611

## FIELD DATA

JOB: 3266A  
 CUSTOMER: Anderson Exploration Ltd.  
 WELL: Columbia et al Kotasentia  
 OPERATION: Re-completion  
 CHOKER SIZE:

REP BY: H. Verstraete / R. Waldron  
 LSD: YTB-38  
 ZONE: Mahanad  
 ORIFICE PLATE SIZE:

GAS TO: FLARE  
 TEST OPERATOR(S): J. Kneely / J. Ryan  
 METER RUN: 154.05 mm  
 OR: CRITICAL FLOW PROVER  
 TEST UNIT NO: FS-23  
 DIFF. RANGE: 0-100 kPa

Time	Elapsed Time	Well Head Data			H.P. Sep Gas Metering					Cond/Oil Prod.			Water Production		Intermediate Casing	Surface Casing
		Tubing Pressure	Flow Temp	Casing Pressure	Static Pressure	DIM.	Temp.	Q	Cum. Q Total	Cond/Oil Prod.	Cum. Cond/Oil Prod. Tot.	Cond. Sp Gr @ 60 F	Water Prod.	Cum. Water Prod. Tot.		
hh:mm	Hours	kPag	°C	kPag	kPag	kPa	°C	10 <sup>3</sup> m <sup>3</sup> /d	10 <sup>3</sup> m <sup>3</sup>	m <sup>3</sup>	m <sup>3</sup>	*API	m <sup>3</sup>	m <sup>3</sup>	kPa	kPa
98/06/20																
01:00	260.5														1990	280
02:00	261.5														2000	300
03:00	262.5														2025	320
03:55		FINISHED RUNNING IN HOLE														
04:00	263.5														2050	330
05:00	264.5														2095	350
05:05		STARTED TO CIRCULATE														
06:00	265.5														2100	465
06:00		TOTAL FLUID SHIPPED (24hrs)=0.00 m <sup>3</sup>														
06:00		FLUID SHIPPED (TOTAL)=66.27 m <sup>3</sup>														
06:00		400bbl. TANKS #1-1.15 m <sup>3</sup> #2-1.46 m <sup>3</sup>														
06:00		I-27 TANK FARM #1-15.03 #2-41.22														
Day Summary																
Cum. Prod. Since: 00:00 98/06/05																
Gas Production (24.0 Hrs) 0.00 10 <sup>3</sup> m <sup>3</sup>																
Cumulative (289.5 Hrs) 0.00 10 <sup>3</sup> m <sup>3</sup>																
Liquid Production (24.0 Hrs)																
Cond/Oil 0.00 m <sup>3</sup> Water 0.00 m <sup>3</sup>																
Liquid Production Cumulative (289.5 Hrs)																
Cond/Oil 0.00 m <sup>3</sup> Water 76.06 m <sup>3</sup>																



# NORTHLAND

Energy Corporation

Calgary: (403) 294-9700  
 Red Deer: (403) 346-8840  
 Grand Prairie: (403) 539-3411

## FIELD DATA

JOB: 3286A  
 CUSTOMER: Anderson Exploration Ltd.  
 WELL: Columbia et al Kotaweskie  
 OPERATION: Re-completion  
 CHOKE SIZE:

REP. BY: H. Verstraete / R. Waldron  
 LSD: YTB-38  
 ZONE: Nahanni  
 ORIFICE PLATE SIZE:

GAS TO: FLARE  
 TEST OPERATOR(S): J. Krisely / J. Ryan  
 METER RUN: 154.05 mm  
 OR: DIFF. RANGE: 0-100 kPa  
 TEST UNIT NO.: F8-23  
 CRITICAL FLOW PROVER

Time	Elapsed Time	Well Head Data			H.P. Sep Gas Metering					Cond/Oil Prod.			Water Production		Intermediate Casing	Surface Casing
		Tubing Pressure	Flow Temp	Casing Pressure	Static Pressure	Diff.	Temp.	Q	Cum. Q Total	Cond/Oil Prod.	Cum. Cond/Oil Prod. Tot.	Cond. Sp Gr @ 60 F	Water Prod.	Cum. Water Prod. Tot.		
hh:mm	Hours	kPag	°C	kPag	kPag	kPa	°C	10 <sup>3</sup> m <sup>3</sup> /d	10 <sup>3</sup> m <sup>3</sup>	m <sup>3</sup>	m <sup>3</sup>	*API	m <sup>3</sup>	m <sup>3</sup>	kPa	kPa
98/06/20																
06:15		STARTED TO DRILL														
07:00	266.5														2300	810
08:00	267.5														2050	300
09:00	268.5														2025	140
10:00	269.5														2000	100
11:00	270.5														2000	70
11:15		TRIP OUT OF HOLE														
12:00	271.5														1950	20
13:00	272.5														1925	0
14:00	273.5														1925	0
15:00	274.5														1925	VAC
16:00	275.5														1925	VAC
17:00	276.5														1950	20
18:00	277.5														1950	30
19:00	278.5														1950	30
19:00		OUT OF THE HOLE														
20:00	279.5														1960	40
20:25		STARTED TO TRIP IN TO FISH														
21:00	280.5														1960	70
23:00	282.5														1900	20
24:00	283.5														1900	TSTM
98/06/21																
01:00	284.5														1900	TSTM
01:30		ON BOTTOM / STARTED TO FISH														
02:00	285.5														1900	VAC
02:26		STARTED TO TRIP OUT														



# NORTHLAND

Energy Corporation

Calgary: (403) 264-9700  
 Red Deer: (403) 348-8840  
 Grand Prairie: (403) 539-3411

## FIELD DATA

JOB: 3285A  
 CUSTOMER: Anderson Explorations Ltd.  
 WELL: Columbia et al Kananissee  
 OPERATION: Re-completion  
 CHOKE SIZE:

REP. BY: H. Verstraete / R. Waldron  
 LSD: YTB-38  
 ZONE: Mahanni  
 ORIFICE PLATE SIZE:

GAS TO: FLARE  
 TEST OPERATOR(S): J. Knisely / J. Ryan  
 METER RUN: 154.05 mm  
 OR: CRITICAL FLOW PROVER  
 TEST UNIT NO.: FS-23  
 DIFF. RANGE: 0-100 kPa

Time	Elapsed Time	Well Head Data			H.P. Sep Gas Metering				Cond/Oil Prod.			Water Production		Intermediate Casing	Surface Casing	
		Tubing Pressure	Flow Temp	Casing Pressure	Static Pressure	Dil.	Temp.	Q	Cum. O Total	Cond/Oil Prod.	Cum. Cond/Oil Prod. Tot.	Cond. Sp Gr @ 60 F	Water Prod.			Cum. Water Prod. Tot.
hh:mm	Hours	kPag	°C	kPag	kPag	kPa	°C	10 <sup>3</sup> m <sup>3</sup> /d	10 <sup>3</sup> m <sup>3</sup>	m <sup>3</sup>	m <sup>3</sup>	°API	m <sup>3</sup>	m <sup>3</sup>	kPa	kPa
98/06/21																
03:00	286.5														1900	TSTM
04:00	287.5														1900	TSTM
05:00	288.5														1940	30
06:00	289.5														1950	70
06:00		TOTAL FLUID SHIPPED = 66.27 m <sup>3</sup>														
06:00		400bbi TANKS TK-1=1.15 m <sup>3</sup> TK2=1.46 m <sup>3</sup>														
06:00		I-27 TANK FARM TK-1=15.03 m <sup>3</sup> TK-2=41.22 m <sup>3</sup>														
<b>Day Summary</b>																
Cum. Prod. Since: 00:00 98/06/05																
Gas Production (24.0 Hrs) 0.00 10 <sup>3</sup> m <sup>3</sup>																
Cumulative (313.5 Hrs) 0.00 10 <sup>3</sup> m <sup>3</sup>																
Liquid Production (24.0 Hrs)																
Cond/Oil 0.00 m <sup>3</sup> Water 0.00 m <sup>3</sup>																
Liquid Production Cumulative (313.5 Hrs)																
Cond/Oil 0.00 m <sup>3</sup> Water 76.06 m <sup>3</sup>																



# NORTHLAND

Energy Corporation

Calgary: (403) 264-9700  
 Red Deer: (403) 346-9840  
 Grand Prairie: (403) 539-3411

## FIELD DATA

JOB: 3265A  
 CUSTOMER: Anderson Exploration Ltd.  
 WELL: Columbia at al Kotaneesee  
 OPERATION: Re-completion  
 CHOKE SIZE:

REP. BY: H.Verstraete / R. Waldron  
 LSD: YTB-38  
 ZONE: Nahanni  
 ORIFICE PLATE SIZE:

GAS TO: FLARE  
 TEST OPERATOR(S): J.Knisely / J. Ryan  
 METER RUN: 154.05 mm  
 OR: DIFF. RANGE: 0-100 kPa  
 TEST UNIT NO.: FS-23  
 CRITICAL FLOW PROVER

Time	Elapsed Time	Well Head Data			H.P. Sep Gas Metering					Cond/Oil Prod.			Water Production		Intermediate Casing	Surface Casing
		Tubing Pressure	Flow Temp	Casing Pressure	Static Pressure	Diff.	Temp.	Q	Cum. Q Total	Cond/Oil Prod.	Cum. Cond/Oil Prod. Tot.	Cond. Sp Gr @ 60 F	Water Prod.	Cum. Water Prod. Tot.		
hh:mm	Hours	kPag	°C	kPag	kPag	kPa	°C	10 <sup>3</sup> m <sup>3</sup> /d	10 <sup>3</sup> m <sup>3</sup>	m <sup>3</sup>	°API	m <sup>3</sup>	m <sup>3</sup>	kPa	kPa	
98/06/21																
07:00	290.5													1975	120	
08:00	291.5													2000	180	
09:00	292.5													2000	240	
10:00	293.5													2000	340	
10:55		OUT OF HOLE														
11:00	294.5													1975	290	
12:00	295.5													1950	210	
13:00	296.5													1925	180	
13:30		STARTED TO RUN IN HOLE														
14:00	297.5													1925	140	
14:00		I-27 TANK FARM TK-1=15.03 m <sup>3</sup> TK-2=60.73 m <sup>3</sup>														
15:00	298.5													1925	120	
16:00	299.5													1925	80	
17:00	300.5													1925	80	
18:00	301.5													1900	20	
19:00	302.5													1900	20	
20:00	303.5													1900	20	
20:25		FINISHED RUNNING IN PICK UP TOP DRIVE														
21:00	304.5													1850	TSTM	
22:00	305.5													1800	VAC	
23:00	306.5													1760	VAC	
24:00	307.5													1740	VAC	
98/06/22																
00:10		STARTED TO DRILL														
01:00	308.5													1750	VAC	
01:49		RIGGED OUT TOP DRIVE / STARTED TO TRIP OUT														



# NORTHLAND

Energy Corporation

Calgary: (403) 264-9700  
 Red Deer: (403) 346-8840  
 Grand Prairie: (403) 539-3411

## FIELD DATA

JOB: 3265A  
 CUSTOMER: Anderson Exploration Ltd.  
 WELL: Columbia et al Kotaneelee  
 OPERATION: Re-completion  
 CHOKE SIZE:

REP. BY: H. Verstraete / R. Waldron  
 LSD: YTB-38  
 ZONE: Nahanni  
 ORIFICE PLATE SIZE:

GAS TO: FLARE  
 TEST OPERATOR(S): J. Knisely / J. Ryan  
 METER RUN: 154.05 mm  
 OR: DIFF. RANGE: 0-100 kPa  
 TEST UNIT NO. FS-23  
 CRITICAL FLOW PROVER

Time	Elapsed Time	Well Head Data			H.P. Sep Gas Metering					Cond/Oil Prod.			Water Production		Intermediate Casing	Surface Casing
		Tubing Pressure	Flow Temp	Casing Pressure	Static Pressure	Diff.	Temp.	Q	Cum. Q Total	Cond/Oil Prod.	Cum. Cond/Oil Prod. Tot.	Cond. Sp Gr @ 60 F	Water Prod.	Cum. Water Prod. Tot.		
hh:mm	Hours	kPag	°C	kPag	kPag	kPa	°C	10 <sup>3</sup> m <sup>3</sup> /d	10 <sup>3</sup> m <sup>3</sup>	m <sup>3</sup>	m <sup>3</sup>	°API	m <sup>3</sup>	m <sup>3</sup>	kPa	kPa
98/06/22																
02:00	309.5														1800	VAC
03:00	310.5														1800	VAC
04:00	311.5														1850	TSTM
05:00	312.5														1860	20
06:00	313.5														1900	50
06:00		TOTAL FLUID SHIPPED 66.27 m <sup>3</sup>														
06:00		400bbl TANKS TK-1=1.15 m <sup>3</sup> TK-2=1.46 m <sup>3</sup>														
06:00		I-27 TANK FARM TK-1=3.97 TK-2=23.27														
06:00		TOTAL FLUID SHIPPED FROM I-27 TANK FARM (24hrs) 48.52 m <sup>3</sup>														
<b>Day Summary</b>																
Cum. Prod. Since: 00:00 98/06/05																
Gas Production (24.0 Hrs) 0.00 10 <sup>3</sup> m <sup>3</sup>																
Cumulative (337.5 Hrs) 0.00 10 <sup>3</sup> m <sup>3</sup>																
Liquid Production (24.0 Hrs)																
Cond/Oil 0.00 m <sup>3</sup> Water 0.00 m <sup>3</sup>																
Liquid Production Cumulative (337.5 Hrs)																
Cond/Oil 0.00 m <sup>3</sup> Water 76.06 m <sup>3</sup>																



# NORTHLAND

Energy Corporation

Calgary: (403) 264-9700  
 Red Deer: (403) 346-8840  
 Grand Prairie: (403) 539-3411

## FIELD DATA

PAGE 34 OF 69

JOB: 3265A REP. BY: H.Verstraete / R. Waldron GAS TO: FLARE  
 CUSTOMER: Anderson Exploration Ltd. TEST OPERATOR(S): J.Knisely / J. Ryan  
 WELL: Columbia et al Kotzneelee LSD: YTB-38 METER RUN: 154.05 mm DIFF. RANGE: 0-100 kPa  
 OPERATION: Re-completion ZONE: Nahanni OR: CRITICAL FLOW PROVER  
 CHOKE SIZE: ORIFICE PLATE SIZE: TEST UNIT NO. FS-23

Time	Elapsed Time	Well Head Data			H.P. Sep Gas Metering					Cond/Oil Prod.			Water Production		Intermediate Casing	Surface Casing
		Tubing Pressure	Flow Temp	Casing Pressure	Static Pressure	Diff.	Temp.	Q	Cum. Q Total	Cond/Oil Prod.	Cum. Cond/Oil Prod. Tot.	Cond. Sp Gr @ 60 F	Water Prod.	Cum. Water Prod. Tot.		
hh:mm	Hours	kPag	°C	kPag	kPag	kPa	°C	10 <sup>3</sup> m <sup>3</sup> /d	10 <sup>3</sup> m <sup>3</sup>	m <sup>3</sup>	m <sup>3</sup>	°API	m <sup>3</sup>	m <sup>3</sup>	kPa	kPa
98/06/22																
06:35		OUT OF HOLE														
07:00	314.5														1900	70
07:05		RUN IN WIRELINE														
08:00	315.5														1900	90
09:00	316.5														1925	120
09:45		WIRELINE OUT OF HOLE														
10:00	317.5														1925	130
10:15		WAITING ON INSTRUCTIONS														
11:00	318.5														2000	190
12:00	319.5														2050	250
13:00	320.5														2375	330
13:45		RUN IN HOLE														
14:00	321.5														2375	390
15:00	322.5														2350	380
16:00	323.5														2325	160
17:00	324.5														2300	80
18:00	325.5														2250	40
19:00	326.5														2250	20
19:31		FINISHED RUNNING IN RIG IN TOP DRIVE														
20:00	327.5														2250	10
20:25		STARTED TO DRILL														
21:00	328.5														2225	TSTM
22:00	329.5														2225	TSTM
22:47		RIGGED OUT TOP DRIVE / STARTED TO TRIP OUT														
23:00	330.5														2250	TSTM
24:00	331.5														2300	30



# NORTHLAND

Energy Corporation

Calgary: (403) 264-9700  
 Red Deer: (403) 348-8840  
 Grand Prairie: (403) 539-3411

## FIELD DATA

JOB: 3286A  
 CUSTOMER: Anderson Exploration Ltd.  
 WELL: Columbia et al Kotaneesee  
 OPERATION: Re-completion  
 CHOKE SIZE:

REP. BY: H. Verstraete / R. Waldron  
 LSD: YTB-38  
 ZONE: Mahanni  
 ORIFICE PLATE SIZE:

GAS TO: FLARE  
 TEST OPERATOR(S): J. Kniesly / J. Ryan  
 METER RUN: 154.05 mm  
 OR: DIFF. RANGE: 0-100 kPa  
 TEST UNIT NO. FS-23  
 CRITICAL FLOW PROVER

Time	Elapsed Time	Well Head Data			H.P. Sep Gas Metering					Cond/Oil Prod.			Water Production		Intermediate Casing	Surface Casing
		Tubing Pressure	Flow Temp	Casing Pressure	Static Pressure	Diff.	Temp.	Q	Cum. Q Total	Cond/Oil Prod.	Cum. Cond/Oil Prod. Tot.	Cond. Sp Gr @ 60 F	Water Prod.	Cum. Water Prod. Tot.		
hh:mm	Hours	kPaq	°C	kPaq	kPaq	kPa	°C	10 <sup>3</sup> m <sup>3</sup> /d	10 <sup>3</sup> m <sup>3</sup>	m <sup>3</sup>	m <sup>3</sup>	°API	m <sup>3</sup>	m <sup>3</sup>	kPa	kPa
98/06/22																
98/06/23																
01:00	332.5														2300	50
02:00	333.5														2325	80
03:00	334.5														2350	110
04:00	335.5														2300	170
05:00	336.5														2350	200
05:01		OUT OF HOLE														
06:00	337.5														2350	210
06:00		TOTAL FLUID SHIPPED 66.27 m <sup>3</sup>														
06:00		400bbl TANKS TK-1=1.15 m <sup>3</sup> TK-2=23.27 m <sup>3</sup>														
06:00		I-27 TANK FARM TK-1=3.97 m <sup>3</sup> TK-2=23.27 m <sup>3</sup>														
Day Summary																
Cum. Prod. Since: 00:00 98/06/05																
Gas Production (24.0 Hrs) 0.00 10 <sup>3</sup> m <sup>3</sup>																
Cumulative (361.5 Hrs) 0.00 10 <sup>3</sup> m <sup>3</sup>																
Liquid Production (24.0 Hrs)																
Cond/Oil 0.00 m <sup>3</sup> Water 0.00 m <sup>3</sup>																
Liquid Production Cumulative (361.5 Hrs)																
Cond/Oil 0.00 m <sup>3</sup> Water 76.06 m <sup>3</sup>																



# NORTHLAND

Energy Corporation

Calgary: (403) 264-9700  
 Red Deer: (403) 346-8840  
 Grand Prairie: (403) 539-3411

## FIELD DATA

JOB: 3285A      REP. BY: H. Verstraete / R. Waldron      GAS TO: FLARE  
 CUSTOMER: Anderson Exploration Ltd.      TEST OPERATOR(S): J. Knisely / J. Ryan  
 WELL: Columbia et al Kotaneesee      LSD: YTB-38      METER RUN: 154.05 mm      DIFF. RANGE: 0-100 kPa  
 OPERATION: Re-completion      ZONE: Nahanni      OR:      CRITICAL FLOW PROVER  
 CHOKE SIZE:      ORIFICE PLATE SIZE:      TEST UNIT NO.: FS-23

Time	Elapsed Time	Well Head Data			H.P. Sep Gas Metering					Cond/Oil Prod.			Water Production		Intermediate Casing	Surface Casing
		Tubing Pressure	Flow Temp	Casing Pressure	Static Pressure	Dil.	Temp.	Q	Cum. Q	Cond/Oil Prod.	Cum. Cond/Oil Prod. Tot.	Cond. Sp Gr @ 60 F	Water Prod.	Cum. Water Prod. Tot.		
hh:mm	Hours	kPag	°C	kPag	kPag	kPa	°C	10 <sup>3</sup> m <sup>3</sup> /d	10 <sup>3</sup> m <sup>3</sup>	m <sup>3</sup>	m <sup>3</sup>	°API	m <sup>3</sup>	m <sup>3</sup>	kPa	kPa
98/06/23																
06:30		STARTED TO TRIP IN														
07:00	338.5														2350	210
08:00	339.5														2300	160
09:00	340.5														2300	110
10:00	341.5														2300	80
11:00	342.5														2300	70
12:00	343.5														2300	70
12:30		STARTED TO DRILL														
13:00	344.5														2300	60
14:00	345.5														2225	10
15:00	346.5														2200	10
16:00	347.5														2150	VAC
16:30		CIRCULATE DOWN CASING TO FREE FISH														
17:00	348.5														2250	VAC
18:00	349.5														2200	10
19:00	350.5														2260	TSTM
20:00	351.5														2300	30
21:00	352.5														2250	40
22:00	353.5														2275	60
23:00	354.5														2300	60
23:00		RIGGED OUT TOP DRIVE START TO JAR														
24:00	355.5														2250	40
98/06/24																
01:00	356.5														2275	40
02:00	357.5														2275	50
03:00	358.5														2300	60



# NORTHLAND

Energy Corporation

Calgary: (403) 264-9700  
 Red Deer: (403) 346-8840  
 Grand Prairie: (403) 539-3411

## FIELD DATA

JOB: 3265A  
 CUSTOMER: Anderson Exploration Ltd.  
 WELL: Columbia et al Kotzneeles  
 OPERATION: Re-completion  
 CHOKE SIZE:

REP. BY: H.Verstraete / R. Waldron  
 LSD: YTB-38  
 ZONE: Nahanni  
 ORIFICE PLATE SIZE:

GAS TO: FLARE  
 TEST OPERATOR(S): J.Knisely / J. Ryan  
 METER RUN: 154.05 mm  
 OR:  
 TEST UNIT NO. FS-23  
 DIFF. RANGE: 0-100 kPa  
 CRITICAL FLOW PROVER

Time	Elapsed Time	Well Head Data			H.P. Sep Gas Metering					Cond/Oil Prod.			Water Production		Intermediate Casing	Surface Casing
		Tubing Pressure	Flow Temp	Casing Pressure	Static Pressure	Diff.	Temp.	Q	Cum. Q Total	Cond/Oil Prod.	Cum. Cond/Oil Prod. Tot.	Cond. Sp Gr @ 60 F	Water Prod.	Cum. Water Prod. Tot.		
hh:mm	Hours	kPag	°C	kPag	kPag	kPa	°C	10 <sup>3</sup> m <sup>3</sup> /d	10 <sup>3</sup> m <sup>3</sup>	m <sup>3</sup>	m <sup>3</sup>	°API	m <sup>3</sup>	m <sup>3</sup>	kPa	kPa
98/06/24																
04:00	359.5														2300	90
05:00	360.5														2350	120
06:00	361.5														2350	130
06:00		TOTAL FLUID SHIPPED 66.27 m <sup>3</sup>														
06:00		400bbl TANKS TK-1=1.15 m <sup>3</sup> TK-2=23.27 m <sup>3</sup>														
06:00		I-27 TANK FARM TK-1=3.97 m <sup>3</sup> TK-2=23.27 m <sup>3</sup>														
Day Summary																
Cum. Prod. Since: 00:00 98/06/05																
Gas Production (24.0 Hrs) 0.00 10 <sup>3</sup> m <sup>3</sup>																
Cumulative (385.5 Hrs) 0.00 10 <sup>3</sup> m <sup>3</sup>																
Liquid Production (24.0 Hrs)																
Cond/Oil 0.00 m <sup>3</sup> Water 0.00 m <sup>3</sup>																
Liquid Production Cumulative (385.5 Hrs)																
Cond/Oil 0.00 m <sup>3</sup> Water 76.06 m <sup>3</sup>																



# NORTHLAND

Energy Corporation

Calgary: (403) 264-9700  
 Red Deer: (403) 346-8840  
 Grand Prairie: (403) 539-3411

## FIELD DATA

JOB: 3265A  
 CUSTOMER: Anderson Exploration Ltd.  
 WELL: Columbia et al Kotaneesee  
 OPERATION: Re-completion  
 CHOKE SIZE:

REP. BY: H. Verstraete / R. Waldron  
 LSD: YTB-38  
 ZONE: Nahanni  
 ORIFICE PLATE SIZE:

GAS TO: FLARE  
 TEST OPERATOR(S): J. Knisely / J. Ryan  
 METER RUN: 154.05 mm  
 OR: CRITICAL FLOW PROVER  
 TEST UNIT NO. FS-23  
 DIFF. RANGE: 0-100 kPa

Time	Elapsed Time	Well Head Data			H.P. Sep Gas Metering					Cond/Oil Prod.			Water Production		Intermediate Casing	Surface Casing
		Tubing Pressure	Flow Temp	Casing Pressure	Static Pressure	Diff.	Temp.	Q	Cum. Q Total	Cond/Oil Prod.	Cum. Cond/Oil Prod. Tot.	Cond. Sp Gr @ 60 F	Water Prod.	Cum. Water Prod. Tot.		
hh:mm	Hours	kPag	°C	kPag	kPag	kPa	°C	10 <sup>3</sup> m <sup>3</sup> /d	10 <sup>3</sup> m <sup>3</sup>	m <sup>3</sup>	m <sup>3</sup>	°API	m <sup>3</sup>	m <sup>3</sup>	kPa	kPa
98/06/24																
07:00	362.5														2350	130
08:00	363.5														2350	130
09:00	364.5														2400	230
10:00	365.5														2400	300
11:00	366.5														2400	280
12:00	367.5														2400	260
13:00	368.5														2400	240
13:15		RIGGED IN WIRELINE														
14:00	369.5														2360	240
15:00	370.5														2390	330
16:00	371.5														2350	280
17:00	372.5														2300	140
18:00	373.5														2300	140
19:00	374.5														2375	270
20:00	375.5														2400	340
20:22		RIGGED OUT WIRELINE														
21:00	376.5														2300	310
22:00	377.5														2275	275
22:00		STARTED TRIPPING OUT OF HOLE														
23:00	378.5														2300	320
24:00	379.5														2325	400
98/06/25																
01:00	380.5														2325	410
02:00	381.5														2350	510
02:55		OUT OF THE HOLE														
03:00	382.5														2350	540



# NORTHLAND

Energy Corporation

Calgary: (403) 264-9760  
 Red Deer: (403) 346-8840  
 Grand Prairie: (403) 539-3411

## FIELD DATA

JOB: 3265A  
 CUSTOMER: Anderson Exploration Ltd.  
 WELL: Columbia et al Kotznieles  
 OPERATION: Re-completion  
 CHOKE SIZE:

REP. BY: H.Verstraete / R. Waldron  
 LSD: YTB-38  
 ZONE: Nahanni  
 ORIFICE PLATE SIZE:

GAS TO: FLARE  
 TEST OPERATOR(S): J.Krisely / J. Ryan  
 METER RUN: 154.05 mm  
 OR: DIFF. RANGE: 0-100 kPa  
 TEST UNIT NO. FS-23  
 CRITICAL FLOW PROVER

Time	Elapsed Time	Well Head Data			H.P. Sep Gas Metering				Cond/Oil Prod.			Water Production		Intermediate Casing	Surface Casing	
		Tubing Pressure	Flow Temp	Casing Pressure	Static Pressure	Diff.	Temp.	Q	Cum. Q Total	Cond/Oil Prod.	Cum. Cond/Oil Prod. Tot.	Cond. Sp Gr @ 60 F	Water Prod.			Cum. Water Prod. Tot.
hh:mm	Hours	kPag	°C	kPag	kPag	kPa	°C	10 <sup>3</sup> m <sup>3</sup> /d	10 <sup>3</sup> m <sup>3</sup>	m <sup>3</sup>	m <sup>3</sup>	*API	m <sup>3</sup>	m <sup>3</sup>	kPa	kPa
98/06/25																
03:00		WAITED ON JARS														
04:00	383.5														2375	610
05:00	384.5														2400	710
06:00	385.5														2410	760
06:00		TOTAL FLUID SHIPPED 66.27 m <sup>3</sup>														
06:00		400bbl TANKS TK-1=1.15 m <sup>3</sup> TK-2=23.27 m <sup>3</sup>														
06:00		I-27 TANK FARM TK-1=3.97 TK-2=23.27 m <sup>3</sup>														
Day Summary																
Cum. Prod. Since: 00:00 98/06/05																
Gas Production (24.0 Hrs) 0.00 10 <sup>3</sup> m <sup>3</sup>																
Cumulative (409.5 Hrs) 0.00 10 <sup>3</sup> m <sup>3</sup>																
Liquid Production (24.0 Hrs)																
Cond/Oil 0.00 m <sup>3</sup> Water 0.00 m <sup>3</sup>																
Liquid Production Cumulative (409.5 Hrs)																
Cond/Oil 0.00 m <sup>3</sup> Water 76.06 m <sup>3</sup>																



# NORTHLAND

Energy Corporation

Calgary: (403) 264-9700  
 Red Deer: (403) 346-8840  
 Grand Prairie: (403) 539-3411

## FIELD DATA

JOB: 3265A      REP. BY: H. Verstraete / R. Waldron      GAS TO: FLARE  
 CUSTOMER: Anderson Exploration Ltd.      TEST OPERATOR(S): J. Knisely / J. Ryan  
 WELL: Columbia et al Kotaneelee      LSD: YTB-38      METER RUN: 154.05 mm      DIFF. RANGE: 0-100 kPa  
 OPERATION: Re-completion      ZONE: Nahanni      OR:      CRITICAL FLOW PROVER  
 CHOKE SIZE:      ORIFICE PLATE SIZE:      TEST UNIT NO. FS-23

Time	Elapsed Time	Well Head Data			H.P. Sep Gas Metering					Cond/Oil Prod.			Water Production		Intermediate Casing	Surface Casing
		Tubing Pressure	Flow Temp	Casing Pressure	Static Pressure	Diff.	Temp.	Q	Cum. Q Total	Cond/Oil Prod.	Cum. Cond/Oil Prod. Tot.	Cond. Sp Gr @ 60 F	Water Prod.	Cum. Water Prod. Tot.		
hh:mm	Hours	kPag	°C	kPag	kPag	kPa	°C	10 <sup>3</sup> m <sup>3</sup> /d	10 <sup>3</sup> m <sup>3</sup>	m <sup>3</sup>	m <sup>3</sup>	°API	m <sup>3</sup>	m <sup>3</sup>	kPa	kPa
98/06/25																
07:00	386.5														2390	760
08:00	387.5														2340	680
09:00	388.5														2300	130
10:00	389.5														2225	30
11:00	390.5														2200	20
12:00	391.5														2200	10
13:00	392.5														2200	VAC
13:30	STARTED TO TRIP IN HOLE															
14:00	393.5														2180	VAC
15:00	394.5														2150	VAC
16:00	395.5														2125	VAC
17:00	396.5														2150	VAC
18:00	397.5														2180	VAC
19:00	398.5														2200	VAC
19:00	FINISHED RUNNING IN HOLE / RIGGED IN POWER SWIVEL															
20:00	399.5														2025	10
21:00	400.5														2250	30
21:05	STARTED MILLING															
22:00	401.5														2250	VAC
23:00	402.5														2100	VAC
24:00	403.5														2060	VAC
98/06/26																
01:00	404.5														2050	VAC
01:10	RIGGED OUT POWER SWIVEL															
02:00	405.5														2100	VAC
02:00	STARTED TO TRIP OUT															



# NORTHLAND

Energy Corporation

Calgary: (403) 264-9700  
 Red Deer: (403) 346-8840  
 Grand Prairie: (403) 539-3411

## FIELD DATA

JOB: 3265A REP. BY: H.Verstraete / R. Waldron GAS TO: FLARE  
 CUSTOMER: Anderson Exploration Ltd. TEST OPERATOR(S): J.Knisely / J. Ryan  
 WELL: Columbia et al Kotaneelce LSD: YTB-38 METER RUN: 154.05 mm DIFF. RANGE: 0-100 kPa  
 OPERATION: Re-completion ZONE: Nahanni OR: CRITICAL FLOW PROVER  
 CHOKE SIZE: ORIFICE PLATE SIZE: TEST UNIT NO. FS-23

Time	Elapsed Time	Well Head Data			H.P. Sep Gas Metering					Cond/Oil Prod.			Water Production		Intermediate Casing	Surface Casing
		Tubing Pressure	Flow Temp	Casing Pressure	Static Pressure	Diff.	Temp.	Q	Cum. Q Total	Cond/Oil Prod.	Cum. Cond/Oil Prod. Tot.	Cond. Sp Gr @ 60 F	Water Prod.	Cum. Water Prod. Tot.		
hh:mm	Hours	kPag	°C	kPag	kPag	kPa	°C	10 <sup>3</sup> m <sup>3</sup> /d	10 <sup>3</sup> m <sup>3</sup>	m <sup>3</sup>	m <sup>3</sup>	°API	m <sup>3</sup>	m <sup>3</sup>	kPa	kPa
98/06/26																
03:00	406.5														2100	VAC
04:00	407.5														2100	VAC
05:00	408.5														2200	VAC
06:00	409.5														2150	VAC
06:00		TOTAL FLUID SHIPPED 66.27 m <sup>3</sup>														
06:00		400bbl TANKS TK-1=1.15 m <sup>3</sup> TK-2=23.27 m <sup>3</sup>														
06:00		I-27 TANK FARM TK-1=3.97 m <sup>3</sup> TK-2=23.27 m <sup>3</sup>														
<b>Day Summary</b>																
Cum. Prod. Since: 00:00 98/06/05																
Gas Production (24.0 Hrs) 0.00 10 <sup>3</sup> m <sup>3</sup>																
Cumulative (433.5 Hrs) 0.00 10 <sup>3</sup> m <sup>3</sup>																
Liquid Production (24.0 Hrs)																
Cond/Oil 0.00 m <sup>3</sup> Water 0.00 m <sup>3</sup>																
Liquid Production Cumulative (433.5 Hrs)																
Cond/Oil 0.00 m <sup>3</sup> Water 76.06 m <sup>3</sup>																



# NORTHLAND

Energy Corporation

Calgary: (403) 264-9700  
 Red Deer: (403) 346-8840  
 Grand Prairie: (403) 539-3411

## FIELD DATA

JOB: 3285A  
 CUSTOMER: Anderson Exploration Ltd.  
 WELL: Columbia et al Kotarosee  
 OPERATION: Re-completion  
 CHOKE SIZE:

REP BY: H. Verstraete / R. Waldron  
 LSD: YTB-38  
 ZONE: Nahanni  
 ORIFICE PLATE SIZE:

GAS TO: FLARE  
 TEST OPERATOR(S): J. Kniesly / J. Ryan  
 METER RUN: 154.05 mm  
 OR: CRITICAL FLOW PROVER  
 TEST UNIT NO. FS-23

Time	Elapsed Time	Well Head Data			H.P. Sep Gas Metering					Cond/Oil Prod.			Water Production		Intermediate Casing	Surface Casing
		Tubing Pressure	Flow Temp	Casing Pressure	Static Pressure	Diff.	Temp.	Q	Cum. Q Total	Cond/Oil Prod.	Cum. Cond/Oil Prod. Tot.	Cond. Sp Gr @ 60 F	Water Prod.	Cum. Water Prod. Tot.		
hh:mm	Hours	kPag	°C	kPag	kPag	kPa	°C	10 <sup>3</sup> m <sup>3</sup> /d	10 <sup>3</sup> m <sup>3</sup>	m <sup>3</sup>	m <sup>3</sup>	°API	m <sup>3</sup>	m <sup>3</sup>	kPa	kPa
98/06/26																
07:00	410.5														2150	VAC
07:15		OUT OF HOLE														
08:00	411.5														2150	10
08:30		STARTED TO TRIP IN THE HOLE														
09:00	412.5														2150	10
10:00	413.5														2200	15
11:00	414.5														2200	30
12:00	415.5														2225	40
13:00	416.5														2225	40
13:20		FINISHED RUNNING IN THE HOLE / STARTED TO JAR														
14:00	417.5														2250	30
15:00	418.5														2250	30
16:00	419.5														2250	60
17:00	420.5														2300	80
18:00	421.5														2300	80
19:00	422.5														2300	100
20:00	423.5														2300	115
21:00	424.5														2300	125
22:00	425.5														2300	140
23:00	426.5														2300	155
24:00	427.5														2300	160
98/06/27																
00:45		STARTED OUT OF HOLE														
01:00	428.5														2350	240
02:00	429.5														2375	320
03:00	430.5														2460	440



# NORTHLAND

Energy Corporation

Calgary: (403) 264-9700  
 Red Deer: (403) 346-8840  
 Grand Prairie: (403) 539-3411

## FIELD DATA

JOB: 3265A  
 CUSTOMER: Anderson Exploration Ltd.  
 WELL: Columbia et al Kotaneesee  
 OPERATION: Re-completion  
 CHOKE SIZE:

REP. BY: H. Verstraete / R. Waldron  
 LSD: YTB-38  
 ZONE: Nahanni  
 ORIFICE PLATE SIZE:

GAS TO: FLARE  
 TEST OPERATOR(S): J. Knisey / J. Goebel  
 METER RUN: 154.05 mm  
 OR: DIFF. RANGE: 0-100 kPa  
 TEST UNIT NO. FS-23  
 CRITICAL FLOW PROVER

Time	Elapsed Time	Well Head Data			H.P. Sep Gas Metering					Cond/Oil Prod.			Water Production		Intermediate Casing	Surface Casing																
		Tubing Pressure	Flow Temp	Casing Pressure	Static Pressure	Diff.	Temp.	Q	Cum. Q Total	Cond/Oil Prod.	Cum. Cond/Oil Prod. Tot.	Cond. Sp Gr @ 60 F	Water Prod.	Cum. Water Prod. Tot.																		
hh:mm	Hours	kPag	°C	kPag	kPag	kPa	°C	10 <sup>3</sup> m <sup>3</sup> /d	10 <sup>3</sup> m <sup>3</sup>	m <sup>3</sup>	m <sup>3</sup>	°API	m <sup>3</sup>	m <sup>3</sup>	kPa	kPa																
98/06/27																																
04:00	431.5														2550	590																
05:00	432.5														2680	710																
06:00	433.5														2775	850																
06:00		TOTAL FLUID SHIPPED = 66.27 m <sup>3</sup>																														
06:00		400BBL TANKS: #1=1.15 m <sup>3</sup> #2=1.46 m <sup>3</sup>																														
06:00		I-27 TANK FARM: #1=3.97 m <sup>3</sup> #2=23.27 m <sup>3</sup>																														
<table border="1"> <thead> <tr> <th colspan="2">Day Summary</th> </tr> </thead> <tbody> <tr> <td>Cum. Prod. Since:</td> <td>00:00 98/06/05</td> </tr> <tr> <td>Gas Production (24.0 Hrs)</td> <td>0.00 10<sup>3</sup>m<sup>3</sup></td> </tr> <tr> <td>Cumulative (457.5 Hrs)</td> <td>0.00 10<sup>3</sup>m<sup>3</sup></td> </tr> <tr> <td>Liquid Production (24.0 Hrs)</td> <td></td> </tr> <tr> <td>Cond/Oil</td> <td>0.00 m<sup>3</sup> Water 0.00 m<sup>3</sup></td> </tr> <tr> <td>Liquid Production Cumulative (457.5 Hrs)</td> <td></td> </tr> <tr> <td>Cond/Oil</td> <td>0.00 m<sup>3</sup> Water 76.06 m<sup>3</sup></td> </tr> </tbody> </table>																	Day Summary		Cum. Prod. Since:	00:00 98/06/05	Gas Production (24.0 Hrs)	0.00 10 <sup>3</sup> m <sup>3</sup>	Cumulative (457.5 Hrs)	0.00 10 <sup>3</sup> m <sup>3</sup>	Liquid Production (24.0 Hrs)		Cond/Oil	0.00 m <sup>3</sup> Water 0.00 m <sup>3</sup>	Liquid Production Cumulative (457.5 Hrs)		Cond/Oil	0.00 m <sup>3</sup> Water 76.06 m <sup>3</sup>
Day Summary																																
Cum. Prod. Since:	00:00 98/06/05																															
Gas Production (24.0 Hrs)	0.00 10 <sup>3</sup> m <sup>3</sup>																															
Cumulative (457.5 Hrs)	0.00 10 <sup>3</sup> m <sup>3</sup>																															
Liquid Production (24.0 Hrs)																																
Cond/Oil	0.00 m <sup>3</sup> Water 0.00 m <sup>3</sup>																															
Liquid Production Cumulative (457.5 Hrs)																																
Cond/Oil	0.00 m <sup>3</sup> Water 76.06 m <sup>3</sup>																															



# NORTHLAND

Calgary: (403) 264-9700  
 Red Deer: (403) 346-8880  
 Grand Prairie: (403) 539-3411

## FIELD DATA

JOB: 3265/A  
 CUSTOMER: Anderson Exploration Ltd.  
 WELL: Columbia et al Kolonnee  
 OPERATION: Re-completion  
 CHOKO SIZE: ORIFICE PLATE SIZE:

REP. BY: H.Verschuete / R. Waldron  
 GAS TO: FLARE  
 TEST OPERATOR(S): J.Krisley / J.Goebel  
 METER RUN: 154.05 mm  
 OR: CRITICAL FLOW PROVER  
 TEST UNIT NO. FS-23

Time	Elapsed Time	Well Head Data			H.P. Sep Gas Metering			Cond/Oil Prod.			Water Production		Intermediate Casing Pressure	Surface Casing Pressure		
		Tubing Pressure	Flow Temp	Casing Pressure	Static Pressure	DIF.	Temp.	Q	Cum. Q Total	Cond/Oil Prod.	Cum. Cond/Oil Prod. Tol.	Cond. Sp Gr @ 60 F			Water Prod.	Cum. Water Prod. Tol.
hh:mm	Hours	kPaq	°C	kPaq	kPaq	kPa	°C	10 <sup>3</sup> m <sup>3</sup> /d	10 <sup>3</sup> m <sup>3</sup>	m <sup>3</sup>	m <sup>3</sup>	%API	m <sup>3</sup>	m <sup>3</sup>	kPa	kPa
98/06/27																
04:00	431.5														2550	590
05:00	432.5														2680	710
06:00	433.5														2775	850
TOTAL FLUID SHIPPED = 66.27 m <sup>3</sup> 400BBL TANKS: #1=1.15 m <sup>3</sup> #2=1.46 m <sup>3</sup> I-27 TANK FARM: #1=3.97 m <sup>3</sup> #2=23.27 m <sup>3</sup>																
<b>Day Summary</b> Cum. Prod. Since: 00:00 98/06/05 Gas Production (24.0 Hrs) 0.00 10 <sup>3</sup> m <sup>3</sup> Cumulative (457.5 Hrs) 0.00 10 <sup>3</sup> m <sup>3</sup> Liquid Production (24.0 Hrs) 0.00 m <sup>3</sup> Cond/Oil 0.00 m <sup>3</sup> Water 0.00 m <sup>3</sup> Liquid Production Cumulative (457.5 Hrs) 76.06 m <sup>3</sup> Cond/Oil 0.00 m <sup>3</sup> Water 76.06 m <sup>3</sup>																







# NORTHLAND

Calgary: (403) 264-9700  
 Red Deer: (403) 346-1960  
 Grand Prairie: (403) 533-9411

# FIELD DATA

**JOB:** 3263A  
**CUSTOMER:** Anderson Exploration Ltd.  
**WELL:** Columbia et al Kosmos  
**OPERATION:** Re-completion  
**CHOKE SIZE:**

**REP. BY:** H. Verstraete / R. Wadron  
**GAS TO:** FLARE  
**TEST OPERATOR(S):** J. Kinley / J. Goebel  
**METER RUN:** 154.05 mm  
**OR:**  
**TEST UNIT NO:** FS-23  
**DIFF. RANGE:** 0-100 kPa  
**CRITICAL FLOW PROVER**

Time	Elapsed Time	Well Head Data			H.P. Sep Gas Metering			Conductivity Prod.				Water Production		Intermediate Casing	Surface Casing	
		Tubing Pressure	Flow Temp	Casing Pressure	Static Pressure	Diff.	Temp.	Q	Cum. Q Total	Conductivity Prod.	Cum. Conductivity Prod. Tol.	Cond. Sp. Gr @ 60 F	Water Prod.			Cum. Water Prod. Tol.
hh:mm	Hours	kPaq	°C	kPaq	kPaq	MPa	°C	10hp/d	10hp <sup>3</sup>	m <sup>3</sup>	m <sup>3</sup>	%API	m <sup>3</sup>	m <sup>3</sup>	kPa	kPa
98/06/27																
07:00	434.5														2950	1080
07:10																
08:00	435.5														3000	1110
09:00	436.5														3050	1130
10:00	437.5														3125	1050
11:00	438.5														3125	1000
12:00	439.5														3150	900
13:00	440.5														3150	840
14:00	441.5														3150	810
15:00	442.5														3150	760
16:00	443.5														3150	720
17:00	444.5														3150	760
18:00	445.5														3150	800
19:00	446.5														3150	965
19:25																
19:35																
20:00	447.5														3170	1030
21:00	448.5														3190	1110
21:05																
22:00	449.5														3200	1190
23:00	450.5														3210	1230
23:45																
24:00	451.5														3250	1280
98/06/28																
01:00	452.5														3275	1350

98/06/27  
 07:00 434.5  
 07:10  
 08:00 435.5  
 09:00 436.5  
 10:00 437.5  
 11:00 438.5  
 12:00 439.5  
 13:00 440.5  
 14:00 441.5  
 15:00 442.5  
 16:00 443.5  
 17:00 444.5  
 18:00 445.5  
 19:00 446.5  
 19:25  
 19:35  
 20:00 447.5  
 21:00 448.5  
 21:05  
 22:00 449.5  
 23:00 450.5  
 23:45  
 24:00 451.5  
 98/06/28  
 01:00 452.5

WELL HEAD DATA  
 TUBING PRESSURE  
 FLOW TEMP  
 CASING PRESSURE  
 STATIC PRESSURE  
 DIFF.  
 TEMP.  
 Q  
 CUM. Q TOTAL  
 CONDUCTIVITY PROD.  
 CUM. CONDUCTIVITY PROD. TOL.  
 COND. SP. GR @ 60 F  
 WATER PROD.  
 CUM. WATER PROD. TOL.

H.P. SEP GAS METERING  
 Q  
 CUM. Q TOTAL

CONDUCTIVITY PROD.  
 COND. SP. GR @ 60 F

WATER PRODUCTION  
 WATER PROD.  
 CUM. WATER PROD. TOL.

INTERMEDIATE CASING  
 SURFACE CASING

IN THE HOLE  
 RIGGED UP WIRELINE  
 WIRELINE RUN IN HOLE  
 WIRELINE OUT OF HOLE  
 STARTED TO TRIP OUT OF HOLE



# NORTHLAND

Energy Corporation  
 Calgary: (403) 264-9700  
 Red Deer: (403) 346-8840  
 Grand Prairie: (403) 539-3411

# FIELD DATA

JOB: 3265A  
 CUSTOMER: Anderson Exploration Ltd.  
 WELL: Columbia et al Kananisles  
 OPERATION: Re-completion  
 CHOKE SIZE: ORIFICE PLATE SIZE:  
 REP. BY: H. Verbruggen / R. Waldron  
 GAS TO: FLARE  
 TEST OPERATOR(S): J. Knisely / J. Goebel  
 METER RUN: 154.05 mm  
 OR: CRITICAL FLOW PROVER  
 TEST UNIT NO. FS-23  
 DIF. RANGE: 0-130 kPa  
 CRITICAL FLOW PROVER

Time	Elapsed Time	Well Head Data			H.P. Sep Gas Metering			Cond/Oil Prod.			Water Production		Intermediate Casing	Surface Casing		
		Tubing Pressure	Flow Temp	Casing Pressure	Static Pressure	Dif.	Temp.	Q	Cum. Q	Cond/Oil Prod.	Cum. Cond/Oil Prod. Tol.	Cond. Sp Gr @ 60 F			Water Prod.	Cum. Water Prod. Tol.
hh:mm	Hours	kPaq	°C	kPaq	kPaq	kPa	°C	10 <sup>3</sup> m <sup>3</sup> /d	10 <sup>3</sup> m <sup>3</sup>	m <sup>3</sup>	m <sup>3</sup>	SAPI	m <sup>3</sup>	m <sup>3</sup>	kPa	kPa
98/06/28																
07:00	458.5														3500	1950
08:00	459.5														3700	2150
09:00	460.5														3750	2125
09:10																
10:00	461.5														3750	2125
10:10																
11:00	462.5														3750	2125
12:00	463.5														3725	2025
13:00	464.5														3725	2025
14:00	465.5														3700	1975
15:00	466.5														3700	1950
15:20																
16:00	467.5														3725	1950
16:15																
17:00	468.5														3725	1950
18:00	469.5														3700	1900
19:00	470.5														3680	1750
20:00	471.5														3650	1600
21:00	472.5														3620	1480
22:00	473.5														3590	1350
22:02																
22:30																
23:00	474.5														3550	1300
23:05																
23:35																
24:00	475.5														3300	VAC



# NORTHLAND

Energy Corporation  
 Calgary: (403) 264-9700  
 Red Deer: (403) 346-8840  
 Grand Prairie: (403) 539-3411

# FIELD DATA

REP. BY: H. Verstraete / R. Waddron  
 GAS TO: FLARE  
 TEST OPERATOR(S): J. Kniesly / J. Goebel  
 METER RUN: 154.05 mm  
 OR: CRITICAL FLOW PROVER  
 TEST UNIT NO. FS-23  
 DIFF. RANGE: 0-100 KPa  
 CRITICAL FLOW PROVER

Time	Elapsed Time	Well Head Data			H.P. Sep Gas Metering			Cum. Q Total	Cond/Oil Prod.			Water Production		Intermediate Casing	Surface Casing
		Tubing Pressure	Flow Temp	Casing Pressure	Static Pressure	Diff. Pressure	Temp.		Q	Cond/Oil Prod.	Cum. Cond/Oil Prod.	Cond. Sp. Gr @ 60 F	Water Prod.		
hh:mm	Hours	KPaq	°C	KPaq	KPaq	KPa	°C	10 <sup>3</sup> m <sup>3</sup> /d	m <sup>3</sup>	m <sup>3</sup>	%API	m <sup>3</sup>	m <sup>3</sup>	KPa	KPa
98/06/28															
98/06/29															
01:00	476.5													3350	0
02:00	477.5													3400	0
03:00	478.5													3425	210
04:00	479.5													3450	370
05:00	480.5													3465	460
06:00	481.5													3480	560
06:00															
06:00															
06:00															

TOTAL FLUID SHIPPED = 66.27 m<sup>3</sup>  
 400BBL TANKS: TK#1=1.15 m<sup>3</sup> TK#2=1.46 m<sup>3</sup>  
 I-27 TANK FARM: TK#1=3.97 m<sup>3</sup> TK#2=23.27 m<sup>3</sup>

Day Summary	
Cum. Prod. Since: 00:00 98/06/05	
Gas Production (24.0 Hrs)	0.00 10 <sup>3</sup> m <sup>3</sup>
Cumulative (505.5 Hrs)	0.00 10 <sup>3</sup> m <sup>3</sup>
Liquid Production (24.0 Hrs)	
Cond/Oil 0.00 m <sup>3</sup> Water	0.00 m <sup>3</sup>
Liquid Production Cumulative (505.5 Hrs)	
Cond/Oil 0.00 m <sup>3</sup> Water	76.06 m <sup>3</sup>











# NORTHLAND

Calgary: (403) 264-9700  
 Red Deer: (403) 346-8840  
 Grand Prairie: (403) 535-3411

## FIELD DATA

JOB: 3265A  
 CUSTOMER: Anderson Exploration Ltd.  
 WELL: Columbia et al Kotsenwala  
 OPERATION: Re-completion  
 CHOKE SIZE:

REP. BY: H. Verstraete / R. Wadron  
 LSD: YTB-38  
 ZONE: Natsumi

GAS TO: FLARE  
 TEST OPERATOR(S): J. Knitsely / J. Goebel  
 METER RUN: 154.05 mm  
 OR: CRITICAL FLOW PROVER  
 TEST UNIT NO. FS-23

DIFF. RANGE: 0-100 kPa  
 CRITICAL FLOW PROVER

Time	Elapsed Time	Well Head Data			H.P. Spg Gas Metering				Cond/Oil Prod.			Water Production		Intermediate Casing Pressure	Surface Casing Pressure	
		Tubing Pressure	Flow Temp	Casing Pressure	Static Pressure	Diff. Pressure	Temp.	Q	Cum. Q	Cond/Oil Prod.	Cum. Cond/Oil Prod.	Cond. Sp Gr @ 60 F	Water Prod.			Cum. Water Prod. Tot.
hh:mm	Hours	kPa-g	°C	kPa-g	kPa-g	kPa	°C	10 <sup>3</sup> m <sup>3</sup> /d	10 <sup>3</sup> m <sup>3</sup>	m <sup>3</sup>	m <sup>3</sup>	%API	m <sup>3</sup>	m <sup>3</sup>	kPa	kPa
98/06/30																
07:00	506.5														4075	VAC
08:00	507.5														4050	VAC
08:45	508.5														4000	VAC
09:15	509.5														3950	VAC
11:00	510.5														3900	VAC
12:00	511.5														3900	VAC
13:00	512.5														3825	VAC
13:45	513.5														3825	VAC
14:00	513.5														3850	VAC
15:00	514.5														3850	VAC
16:00	515.5														3850	VAC
17:00	516.5														3850	VAC
18:00	517.5														3850	VAC
19:00	518.5														3850	VAC
20:00	519.5														3880	VAC
21:00	520.5														3900	VAC
21:10																
21:45																
22:00	521.5														4100	VAC
23:00	522.5														4300	VAC
24:00	523.5														4520	VAC
98/07/01																
01:00	524.5														4650	VAC
02:00	525.5														4800	VAC

ON BOTTOM / PICK UP SWIVEL  
 CIRCULATE / STARTED TO MILL

SHUT DOWN TO FIX HYDROMATIC

OUT OF HOLE  
 RUN IN HOLE



# NORTHLAND

Category: (403) 264-9700  
 Rod Deac: (403) 346-8840  
 Grand Prairie: (403) 339-3411

# FIELD DATA

JOB: 3265A  
 CUSTOMER: Anderson Exploration Ltd.  
 WELL: Columbia et al Kolmansee  
 OPERATION: Re-completion  
 CHOKE SIZE: ORIFICE PLATE SIZE:

REP BY: H.Verschuete / R. Waldron  
 GAS TO: FLARE  
 TEST OPERATOR(S): J.Knisely / J.Goebel  
 METER RUN: 154.05 mm  
 OR: CRITICAL FLOW PROVER  
 TEST UNIT NO. FS-23

Time	Elapsed Time	Well Head Data			H.P. Sep. Gas Metering			Cond/Oil Prod.			Water Production		Intermediate Casing	Surface Casing			
		Tubing Pressure	Flow Temp.	Casing Pressure	Static Pressure	DIT	Temp.	Q	Cum. Q Total	Cond/Oil Prod.	Cum. Cond/Oil Prod. Tol.	Cond. Sp Gr @ 60 F			Water Prod.	Cum. Water Prod. Tol.	
98/07/01	Hours	MPa	°C	MPa	MPa	MPa	°C	10 <sup>3</sup> m <sup>3</sup> /d	10 <sup>3</sup> m <sup>3</sup>	m <sup>3</sup>	m <sup>3</sup>	°API	m <sup>3</sup>	m <sup>3</sup>	KPa	KPa	
02:00																	
02:15																	
03:00	526.5																5000
04:00	527.5																5175
05:00	528.5																5275
06:00	529.5																5375
06:00																	VAC
06:00																	VAC
06:00																	VAC
<p>STOPPED MILLING / CONTINUED TO CIRCULATE                  MAKE CONNECTION / CONTINUED TO MILL</p> <p>TOTAL FLUID SHIPPED = 66.27 m<sup>3</sup>                  400BBL TANKS: TK#1=1.15 m<sup>3</sup> TK#2=1.46 m<sup>3</sup>                  1-27 TANK FARM: TK#1=13.77 m<sup>3</sup> TK#2=23.27 m<sup>3</sup></p>																	
<p>Day Summary</p> <p>Cum. Prod. Since: 00:00 98/06/05</p> <p>Gas Production (24.0 Hrs) 0.00 10<sup>3</sup>m<sup>3</sup></p> <p>Cumulative (553.5 Hrs) 0.00 10<sup>3</sup>m<sup>3</sup></p> <p>Liquid Production (24.0 Hrs)</p> <p>Cond/Oil 0.00 m<sup>3</sup> Water 0.00 m<sup>3</sup></p> <p>Liquid Production Cumulative (553.5 Hrs)</p> <p>Cond/Oil 0.00 m<sup>3</sup> Water 76.06 m<sup>3</sup></p>																	



# NORTHLAND

Energy Corporation  
 Calgary: (403) 264-9700  
 Red Deer: (403) 346-8840  
 Grand Prairie: (403) 539-3411

# FIELD DATA

JOB: 3265A  
 CUSTOMER: Anderson Exploration Ltd.  
 WELL: Columbia et al Kolonelle  
 OPERATION: Re-completion  
 CHOKE SIZE: ORIFICE PLATE SIZE:

REP. BY: H. Verstraete / R. Waldron  
 GAS TO: FLARE  
 TEST OPERATOR(S): J. Knitsky / J. Goebel  
 METER RUN: 154.05 mm  
 OR: TEST UNIT NO. FS-23

DIFF. RANGE: 0-100 kPa  
 CRITICAL FLOW PROVER

Time	Elapsed Time	Well Head Data				H.P. Sep Gas Metering				Condi/Oil Prod.			Water Production		Intermediate Casing	Surface Casing	
		Tubing Pressure	Flow Temp	Casing Pressure	Static Pressure	Diff.	Temp.	Q	Cum. Q Total	Condi/Oil Prod.	Cum. Condi/Oil Prod. Tol.	Condi. Sp Gr @ 60 F	Water Prod.	Cum. Water Prod. Tol.			
hh:mm	Hours	kPa-g	°C	kPa-g	kPa-g	kPa	°C	10 <sup>3</sup> m <sup>3</sup> /d	10 <sup>3</sup> m <sup>3</sup>	m <sup>3</sup>	m <sup>3</sup>	% API	m <sup>3</sup>	m <sup>3</sup>	kPa <sub>i</sub>	kPa <sub>s</sub>	
98/07/01																	
07:00	530.5															5475	VAC
08:00	531.5															5525	VAC
09:00	532.5															5625	VAC
10:00	533.5															5700	VAC
11:00	534.5															5750	VAC
12:00	535.5															5800	VAC
13:00	536.5															5825	VAC
14:00	537.5															6025	VAC
15:00	538.5															6025	VAC
16:00	539.5															6025	VAC
17:00	540.5															6000	VAC
18:00	541.5															6000	VAC
19:00	542.5															6050	VAC
20:00	543.5															6100	VAC
21:00	544.5															6175	VAC
22:00	545.5															6090	VAC
23:00	546.5															5950	VAC
23:00																	
23:50																	
24:00	547.5															5640	VAC
98/07/02																	
01:00	548.5															5375	VAC
02:00	549.5															5150	VAC
03:00	550.5															5050	VAC
04:00	551.5															4900	VAC
05:00	552.5															4850	VAC

STOPPED CIRCULATING / LAY DOWN SWIVEL  
 STARTED TO TRIP OUT OF HOLE



# NORTHLAND

Energy Corporation

**JOB:** 32634  
**CUSTOMER:** Anderson Exploration Ltd.  
**WELL:** Columbia et al Kotonete  
**OPERATION:** Re-completion  
**CHOKE SIZE:**

**Category:** (403) 264-9700  
**Rep Draw:** (403) 246-8440  
**Grand Prairie:** (403) 539-3411

**REP BY:** H. Verstraete / R. Waldron  
**LSD:** YTB-38  
**ZONE:** Nahanni  
**ORIFICE PLATE SIZE:**

# FIELD DATA

**GAS TO:** FLARE  
**TEST OPERATOR(S):** J. Kofsky / J. Goebel  
**METER RUN:** 154.06 mm  
**OR:**  
**TEST UNIT NO.:** FS-23  
**CRITICAL FLOW PROVER:**

Time	Elapsed Time	Well Head Data			H.P. Sep Gas Metering			Cond/Oil Prod.			Water Production		Intermediate Casing	Surface Casing		
		Tubing Pressure	Flow Temp	Casing Pressure	Static Pressure	DIR.	Temp.	Q	Cum. Q Total	Cond/Oil Prod.	Cum. Cond/Oil Prod. Tot.	Cond. Sp Gr @ 60 F			Water Prod.	Cum. Water Prod. Tot.
hh:mm	Hours	kPaq	°C	kPaq	kPaq	kPa	°C	10 <sup>3</sup> m <sup>3</sup> /d	10 <sup>3</sup> m <sup>3</sup>	m <sup>3</sup>	%API	m <sup>3</sup>	m <sup>3</sup>	kPa	kPa	
98/07/02																
06:00	553.5													4850		
06:00																VAC
06:00																
06:00																
<p><b>Day Summary</b></p> <p>Cum. Prod. Since: 00:00 98/06/05</p> <p>Gas Production (24.0 Hrs) 0.00 10<sup>3</sup>m<sup>3</sup></p> <p>Cumulative (577.5 Hrs) 0.00 10<sup>3</sup>m<sup>3</sup></p> <p>Liquid Production (24.0 Hrs) 0.00 m<sup>3</sup></p> <p>Cond/Oil 0.00 m<sup>3</sup> Water</p> <p>Liquid Production Cumulative (577.5 Hrs) 0.00 m<sup>3</sup></p> <p>Cond/Oil 0.00 m<sup>3</sup> Water 76.06 m<sup>3</sup></p>																
<p><b>TOTAL FLUID SHIPPED = 66,27 m<sup>3</sup></b></p> <p><b>400BBL TANKS: TK#1=1.15 m<sup>3</sup> TK#2=1.46 m<sup>3</sup></b></p> <p><b>1-27 TANK FARM: TK#1=13.77 m<sup>3</sup> TK#2=23.27 m<sup>3</sup></b></p>																







# NORTHLAND

Energy Corporation  
 Calgary: (403) 284-8700  
 Red Deer: (403) 246-8880  
 Grand Prairie: (403) 500-2411

# FIELD DATA

**JOB:** ZONE  
**CUSTOMER:** Anderson Exploration Ltd.  
**WELL:** Columbia et al Kosmos  
**OPERATION:** Re-completion  
**CHOKE SIZE:** ORIFICE PLATE SIZE

**REP. BY:** H. Verschuva / R. Wadson  
**GAS TO:** FLARE  
**TEST OPERATOR(S):** J. Krasny / J. Goebel  
**METER RUN:** 144.05 mm  
**OR:**  
**TEST UNIT NO:** F8-23  
**DIFF. RANGE:** 0-100 kPa  
**CRITICAL FLOW PROVER:**

Time	Elapsed Time	Well Head Data			H.P. Sep Gas Metering			Cum. O Total	Cond/Oil Prod.	Cond. Sp Gr	Water Production		Intermediate Casing	Surface Casing
		Tubing Pressure	Flow Temp	Casing Pressure	Static Pressure	DM	Temp.				O	Cum. O		
Hours	Hours	MPa	°C	MPa	MPa	MPa	°C	10 <sup>3</sup> m <sup>3</sup>	m <sup>3</sup>	%API	m <sup>3</sup>	m <sup>3</sup>	MPa	MPa
98/07/03														
01:00	572.5												4000	VAC
02:00	573.5												3900	VAC
03:00	574.5												4000	VAC
04:00	575.5												4175	VAC
05:00	576.5												4225	VAC
06:00	577.5												4275	VAC
06:00														
06:00														
06:00														

TOTAL FLUID SHIPPED = 86.27 m<sup>3</sup>  
 40098BL TANKS: TK#1=1.15 m<sup>3</sup> TK#2=1.46 m<sup>3</sup>  
 1-27 TANK FARM: TK#1=13.77 m<sup>3</sup> TK#2=23.27 m<sup>3</sup>

**Day Summary**

Cum. Prod. Since: 00:00 98/06/05  
 Gas Production (24.0 Hrs) 0.00 10<sup>3</sup>m<sup>3</sup>  
 Cumulative (601.5 Hrs) 0.00 10<sup>3</sup>m<sup>3</sup>  
 Liquid Production (24.0 Hrs)  
 Cond/Oil 0.00 m<sup>3</sup> Water 0.00 m<sup>3</sup>  
 Liquid Production Cumulative (601.5 Hrs)  
 Cond/Oil 0.00 m<sup>3</sup> Water 76.06 m<sup>3</sup>



# NORTHLAND

Energy Corporation  
 Calgary: (403) 294-9700  
 Red Deer: (403) 346-6900  
 Grand Prairie: (403) 539-3411

# FIELD DATA

REP BY: H. Verstraete / R. Wadston  
 GAS TO TEST OPERATOR(S): J. Kleesley / J. Goedel  
 LSD: YTR-38  
 ZONE: Midland  
 FLARE  
 154.05 mm  
 DIFF. RANGE: 0-100 kPa  
 CRITICAL FLOW PROVER

Time	Elapsed Time	Well Head Data			H.P. Sep Gas Metering			Condition Prod.			Water Production		Intermediate Casing	Surface Casing		
		Tubing Pressure	Flow Temp	Casing Pressure	Static Pressure	DWL	Temp.	Q	Cum. Q	Cond. Prod.	Cum. Cond. Prod. Tot.	Cond. Sp Gr @ 60 F			Water Prod.	Cum. Water Prod. Tot.
Min:m	Hours	kPaq	°C	kPaq	kPaq	kPa	°C	10m³/d	10m³	m³	m³	°API	m³	m³	kPa	kPa
98/07/03																
07:00	578.5														4200	VAC
08:00	579.5														4050	VAC
08:50	580.5														4025	VAC
10:00	581.5														4000	VAC
11:00	582.5														3900	VAC
12:00	583.5														3900	VAC
13:00	584.5														3850	VAC
14:00	585.5														3850	VAC
14:50	586.5														3750	VAC
15:00	586.5														3700	VAC
15:45	587.5														3600	VAC
16:00	588.5														3600	VAC
17:00	589.5														3625	VAC
18:00	590.5														3625	VAC
19:00	591.5														3550	VAC
20:00	592.5														3550	VAC
21:00	593.5														3475	VAC
22:00	593.5														3485	VAC
22:10	594.5														3500	VAC
23:00	595.5														3500	VAC
24:00	595.5														3475	VAC
98/07/04															3475	VAC
01:00	596.5														3475	VAC

STARTED TO TRIP OUT OF HOLE  
 STARTED TO TRIP IN HOLE  
 OUT OF HOLE  
 ON BOTTOM  
 PICK UP SWIVEL / STARTED TO CIRCULATE  
 STARTED TO MILL



# NORTHLAND

Calgary: (403) 264-9700  
 Red Deer: (403) 346-8840  
 Grand Prairie: (403) 533-9411

# FIELD DATA

JOB: 3285A  
 CUSTOMER: Anderson Exploration Ltd.  
 WELL: Columbia et al Kotasseele  
 OPERATION: Re-completion  
 CHOKE SIZE: ORIFICE PLATE SIZE:

REP. BY: H.Verstraete / R. Waldron  
 GAS TO: FLARE  
 TEST OPERATOR(S): J.Kniely / J.Goebel  
 METER RUN: 194.05 mm  
 OR: CRITICAL FLOW PROVER  
 TEST UNIT NO. FS-23

Time	Elapsed Time	Well Head Data			H.P. Sep Gas Metering			Cond/Oil Prod.			Water Production		Intermediate Casing	Surface Casing			
		Tubing Pressure	Flow Temp	Casing Pressure	Static Pressure	Diff.	Temp.	Q	Cum. Q Total	Cond/Oil Prod.	Cum. Cond/Oil Prod. Tot.	Cond. Sp Gr @ 60 F			Water Prod.	Cum. Water Prod. Tot.	
hh:mm	Hours	kPaq	°C	kPaq	kPaq	kPa	°C	10 <sup>3</sup> m <sup>3</sup> /d	10 <sup>3</sup> m <sup>3</sup>	m <sup>3</sup>	m <sup>3</sup>	% API	m <sup>3</sup>	m <sup>3</sup>	KPa	KPa	
98/07/04																	
02:00	597.5															3460	VAC
03:00	598.5															3540	VAC
04:00	599.5															3625	VAC
05:00	600.5															3635	VAC
06:00	601.5															3650	VAC
06:00		TOTAL FLUID SHIPPED = 61.27 m <sup>3</sup>															
06:00		400BBL TANKS: TK#1=1.15 m <sup>3</sup> TK#2=1.46 m <sup>3</sup>															
06:00		I-27 TANK FARM: TK#1=13.77 m <sup>3</sup> TK#2=23.27 m <sup>3</sup>															
Day Summary																	
Cum. Prod. Since: 00:00 98/06/05																	
Gas Production (24.0 Hrs) 0.00 10 <sup>3</sup> m <sup>3</sup>																	
Cumulative (625.5 Hrs) 0.00 10 <sup>3</sup> m <sup>3</sup>																	
Liquid Production (24.0 Hrs) 0.00 m <sup>3</sup>																	
Cond/Oil 0.00 m <sup>3</sup> Water 0.00 m <sup>3</sup>																	
Liquid Production Cumulative (625.5 Hrs) 76.06 m <sup>3</sup>																	
Cond/Oil 0.00 m <sup>3</sup> Water 76.06 m <sup>3</sup>																	



# NORTHLAND

Energy Corporation

Calgary: (403) 264-9700  
 Red Deer: (403) 346-8940  
 Grand Prairie: (403) 539-3411

# FIELD DATA

JOB: 3265A  
 CUSTOMER: Anderson Exploration Ltd.  
 WELL: Columbia et al Kolmansee  
 OPERATION: Re-completion  
 CHOKO SIZE: ORIFICE PLATE SIZE:

REP. BY: H. Verstraete / R. Waldron  
 GAS TO: FLARE  
 TEST OPERATOR(S): JKnisely / JGoebel  
 METER RUN: 154.05 mm  
 OR: CRITICAL FLOW PROVER  
 TEST UNIT NO: FS-23

DIFF. RANGE: 0-100 kPa  
 CRITICAL FLOW PROVER

Time	Elapsed Time	Well Head Data				H.P. Sep Gas Metering				Cond/Oil Prod.				Water Production		Intermediate Casing	Surface Casing
		Tubing Pressure	Flow Temp	Casing Pressure	Static Pressure	Diff.	Temp.	Q	Cum. Q	Cond/Oil Prod.	Cum. Cond/Oil Prod. Tol.	Cond. Sp. Gr @ 60 F	Water Prod.	Cum. Water Prod. Tol.			
hh:mm	Hours	kPaq	°C	kPaq	kPaq	kPa	°C	10 <sup>3</sup> m <sup>3</sup> /d	10 <sup>3</sup> m <sup>3</sup>	m <sup>3</sup>	m <sup>3</sup>	% API	m <sup>3</sup>	m <sup>3</sup>	kPa	kPa	
98/07/04																	
07:00	602.5															3650	VAC
08:00	603.5															3700	VAC
09:00	604.5															3750	VAC
10:00	605.5															3750	VAC
11:00	606.5															3775	VAC
12:00	607.5															3850	VAC
13:00	608.5															4000	VAC
13:30																	
13:55																	
14:00	609.5															3900	VAC
15:00	610.5															3850	VAC
16:00	611.5															3800	VAC
17:00	612.5															3750	VAC
18:00	613.5															3775	VAC
19:00	614.5															3790	VAC
19:50																	
19:55																	
20:00	615.5															3800	VAC
20:05																	
21:00	616.5															3700	VAC
21:28	617.0															3700	VAC
21:30																	
21:50																	
21:58																	
22:00	617.5															0	VAC
23:30																	







# NORTHLAND

Energy Corporation  
 JOB: 3266A  
 CUSTOMER: Anderson Exploration Ltd.  
 WELL: Columbia et al Koonradoo  
 OPERATION: Re-completion  
 CHOKER SIZE: ORIFICE PLATE SIZE:

Calgary: (403) 244-9700  
 Red Deer: (403) 248-9900  
 Grand Prairie: (403) 539-2411  
 REP. BY: H. Verstraete / R. Waddon  
 LSD: YTB-36  
 ZONE: Natural

FLARE  
 GAS TO: TEST OPERATOR(S): J. Kretschy / J. Goebel  
 METER RUN: 194.05 mm  
 CR: CRITICAL FLOW PROVER  
 TEST UNIT NO: FS-22  
 DIFF. RANGE: 0-100 kPa

## FIELD DATA

Time	Elapsed Time	Well Head Data			HP, Sep Gas Metering			Conduit Prod.			Water Production		Intermediate Casing	Surface Casing			
		Tubing Pressure	Fiber Temp	Casing Pressure	Static Pressure	DIM.	Temp.	Q	Cum. Q	Conduit Prod.	Cum. Conduit Prod. Tot.	Cond. Sp Gr @ 60 F			Water Prod.	Cum. Water Prod. Tot.	
Minimum	Hours	HPa	°C	HPa	HPa	kPa	°C	10 <sup>3</sup> m <sup>3</sup> /d	10 <sup>3</sup> m <sup>3</sup>	m <sup>3</sup>	m <sup>3</sup>	% API	m <sup>3</sup>	m <sup>3</sup>	HPa	HPa	
96/07/05																	
07:00	626.5																VAC
07:50																	VAC
08:00	627.5																VAC
08:05																	VAC
09:00	628.5																VAC
10:00	629.5																VAC
11:00	630.5																VAC
11:01																	VAC
12:00	631.5																VAC
13:00	632.5																VAC
14:00	633.5																VAC
15:00	634.5																VAC
16:00	635.5																VAC
17:00	636.5																VAC
17:30																	VAC
17:45																	VAC
18:00	637.5																VAC
19:00	638.5																VAC
20:15																	VAC
20:40																	VAC
21:12																	VAC
22:00	641.5																VAC
23:00	642.5																VAC
24:00	643.5																VAC

STOPPED CIRCULATING / STARTED TO TRIP OUT OF HOLE

STARTED TO CIRCULATE

IN THE HOLE

OUT OF HOLE  
 RIG UP ATLAS WIRELINE

WIRELINE OUT OF HOLE / RIG OFF  
 RIG UP SCHLUMBERGER  
 RUN IN WITH USIT TOOL



# NORTHLAND

Calgary: (403) 294-9700  
 Red Deer: (403) 296-6666  
 Grand Prairie: (403) 539-3411

# FIELD DATA

**Energy Corporation**  
 JOB: 22634  
 CUSTOMER: Anderson Exploration Ltd.  
 WELL: Columbia et al Koksnesko  
 OPERATION: Re-completion  
 CHOKER SIZE: ORIFICE PLATE SIZE

REP. BY: H. Verschuide / R. Waldron  
 GAS TO: FLARE  
 TEST OPERATOR(S): JKrisley / JGoebel  
 METER RUN: 194.05 mm  
 OR: CRITICAL FLOW PROVER  
 TEST UNIT NO. FS-23  
 DIFF. RANGE: 0-100 kPa  
 CRITICAL FLOW PROVER

Time	Elapsed Time	Well Head Data			H.P. Strip Gas Metering			Cond/Oil Prod.			Water Production		Intermediate Casing	Surface Casing	
		Tubing Pressure	Flow Temp	Casing Pressure	Static Pressure	DEL	Temp.	Q	Cum. Q Total	Cond/Oil Prod.	Cum. Cond/Oil Prod. Tol.	Cond. Sp Gr @ 60 F			Water Prod.
hr:mm	Hours	MPa	°C	MPa	MPa	MPa	°C	10 <sup>3</sup> m <sup>3</sup> /d	10 <sup>3</sup> m <sup>3</sup>	m <sup>3</sup>	°API	m <sup>3</sup>	m <sup>3</sup>	MPa	MPa
<b>Day Summary</b> Cum. Prod. Since: 00:00 98/06/05 Gas Production (18.0 Hrs) 0.00 10 <sup>3</sup> m <sup>3</sup> Cumulative (667.5 Hrs) 0.00 10 <sup>3</sup> m <sup>3</sup> Liquid Production (18.0 Hrs) Cond/Oil 0.00 m <sup>3</sup> Water 0.00 m <sup>3</sup> Liquid Production Cumulative (667.5 Hrs) Cond/Oil 0.00 m <sup>3</sup> Water 76.06 m <sup>3</sup>															
98/07/05															



# NORTHLAND

Calgary: (403) 244-9700  
 Red Deer: (403) 344-8940  
 Grand Prairie: (403) 538-3411

# FIELD DATA

**Energy Corporation**  
 JOB: 3283A  
 CUSTOMER: Anderson Engineering Ltd.  
 WELL: Columbia et al Kotsenake  
 OPERATION: Re-completion  
 REP. BY: H. Verstraete / R. Wadron  
 L.S.D.: YTB-39  
 ZONE: Nahrmani  
 ORIFICE PLATE SIZE:

**FLARE**  
 GAS TO: TEST OPERATOR(S): JK/Keisley / J. Goebel  
 METER RUN: 154.05 mm  
 OR: CRITICAL FLOW PROVER  
 TEST UNIT NO: FS-23  
 DIFF. RANGE: 0-100 KPa  
 CRITICAL FLOW PROVER

Time	Elapsed Time	Well Head Data			H.P. Sep Gas Metering			Cond/Oil Prod.			Water Production		Intermediate Casing	Surface Casing				
		Tubing Pressure	Flow Temp	Casing Pressure	Static Pressure	D.H.	Temp.	Q	Cum. Q Total	Cond/Oil Prod.	Cum. Cond/Oil Prod. Tol.	Cond. Sp Gr @ 60 F			% API	Water Prod.	Cum. Water Prod. Tol.	
98/07/05																		
98/07/06																		
01:00	644.5																10	VAC
01:35																	3500	VAC
01:45																	1100	VAC
02:00	645.5																1600	VAC
02:20																		
04:30																		
05:05																		
05:10																		
05:35																		
06:00	649.5																	
06:00																		
06:00																		
06:00																		
07:00	650.5																	

RUN IN WITH BRIDGE PLUG  
 LANDED BRIDGE PLUG AT 3530 m  
 TRICKLE FEED CASING TO FILL  
 WIRELINE OUT OF HOLE  
 PRESSURE TEST PLUG TO 7000 kPa  
 TOTAL FLUID SHIPPED = 66.27 m³  
 400BBL TANKS: TK#1=1.15 m³ TK#2=1.46 m³  
 I-27 TANK FARM: TK#1=21.39 m³ TK#2=31.72 m³

Day Summary	
Cum. Prod. Since: 00:00 98/06/05	
Gas Production (7.0 Hrs)	0.00 10³m³
Cumulative (674.5 Hrs)	0.00 10³m³
Liquid Production (7.0 Hrs)	0.00 m³
Cond/Oil 0.00 m³ Water	0.00 m³
Liquid Production Cumulative (674.5 Hrs)	76.06 m³
Cond/Oil 0.00 m³ Water	



# NORTHLAND

Company: (403) 264-9700  
 Red Deer: (403) 346-6940  
 Grand Prairie: (403) 359-3411

# FIELD DATA

Energy Corporation  
 JOB: 3265A  
 CUSTOMER: Anderson Exploration Ltd.  
 WELL: Columbia et al Kolomelec  
 OPERATION: Re-completion  
 CHOKER SIZE: ORIFICE PLATE SIZE:

REP. BY: H. Versteeg / R. Waldron  
 GAS TO: FLARE  
 TEST OPERATOR(S): J. Knisely / J. Goebel  
 METER RUN: 154.05 mm  
 OF: CRITICAL FLOW PROVER  
 TEST UNIT NO. FS-23

Time	Elapsed Time	Well Head Data			H.P. Sep Gas Metering			Cond/Oil Prod.			Water Production		Intermediate Casing	Surface Casing		
		Tubing Pressure	Flow Temp	Casing Pressure	Static Pressure	DIL.	Temp.	Q	Cum. Q	Cond/Oil Prod.	Cum. Cond/Oil Prod. Tot.	Sp Gr @ 60 F			Water Prod.	Cum. Water Prod. Tot.
hh:mm	Hours	kPaq	°C	kPaq	kPaq	Mpa	°C	10 <sup>3</sup> m <sup>3</sup> /d	10 <sup>3</sup> m <sup>3</sup>	m <sup>3</sup>	m <sup>3</sup>	%P	m <sup>3</sup>	m <sup>3</sup>	kPa	kPa
98/07/06																
08:00	651.5														1650	VAC
08:20															20	VAC
09:00	652.5														20	VAC
10:00	653.5														20	VAC
10:20															20	VAC
10:30	654.0														20	VAC
10:40															3100	VAC
11:00	654.5														20	VAC
11:15	654.8														20	VAC
11:15															20	VAC
11:15															20	VAC
11:20															3400	VAC
11:30	655.0														20	VAC
11:30															20	VAC
11:45	655.2														20	VAC
11:45															5200	VAC
11:50															20	VAC
12:00	655.5														20	VAC
12:00															20	VAC
12:15	655.8														20	VAC
12:15															8800	VAC
12:16															20	VAC
12:30	656.0														20	VAC
12:30															20	VAC
12:45	656.2														20	VAC
12:45															20	VAC







**NORTHLAND** Energy Corporation  
 Calgary: (403) 244-9700  
 Red Deer: (403) 246-8800  
 Grand Prairie: (403) 538-2411

JOB: 3288A  
 CUSTOMER: Anderson Exploration Ltd.  
 WELL: Columbia et al Kohnstede  
 OPERATION: Re-completion  
 CHOKER SIZE: ORIFICE PLATE SIZE:

**FIELD DATA**  
 REP BY: H. Verstraete / R. Waldron  
 GAS TO: FLARE  
 TEST OPERATOR(S): J. Kniesly / J. Goebel  
 METER RUN: 154.05 mm  
 OR: CRITICAL FLOW PROVER  
 TEST UNIT NO. FS-23  
 DIFF RANGE: 0-100 kPa

Time	Elapsed Time	Well Head Data			H.P. Sp Gas Metering			Cond/Oil Prod.			Water Production		Intermediate Casing	Surface Casing
		Tubing Pressure	Flow Temp	Casing Pressure	Static Pressure	Q	Temp.	Q	Cond/Oil Prod.	Cum. Cond/Oil Prod. Tot.	Cond. Sp Gr @ 60 F	Water Prod.		
hh:mm	Hours	kPa	°C	kPa	kPa	10m³/d	°C	10m³	m³	%PI	m³	m³	kPa	kPa
98/07/08														
07:30														
07:35														
08:00														
08:01														
09:10														
09:20														
10:00	2.5											54.05	133.86	0
10:30	3.0													0
11:00	3.5													0
11:10														0
11:30														0
13:00	5.5													0
15:00	7.5													0
17:00	9.5													0
19:00	11.5													0
19:00														

SAFETY MEETING  
 STARTED TO PULL 7" CASING

TOTAL FLUID SHIPPED 115.0 m³  
 400BBL TANKS TK#1=1.15 m³ TK#2=6.78 m³



# NORTHLAND

Energy Corporation

Calgary: (403) 261-9700  
 Red Deer: (403) 346-8940  
 Grand Prairie: (403) 539-3411

# FIELD DATA

JOB: 3235A  
 CUSTOMER: Anderson Exploration Ltd.  
 WELL: Columbia et al Koksneslee  
 OPERATION: Re-completion  
 CHOKE SIZE: ORIFICE PLATE SIZE:

REP BY: H. Verstraete / R. Wadron  
 LSD: YTB-38  
 ZONE: Nataniil

GAS TO: FLARE  
 TEST OPERATOR(S): J.Khlesly / J.Goebel  
 METER RUN: 154.05 mm  
 OR: TEST UNIT NO. FS-23

DIFF. RANGE: 0-100 kPa  
 CRITICAL FLOW PROVER

Time	Elapsed Time	Well Head Data			H.P. Sep Gas Metering			Cum. Q Total	Cond/Oil Prod.	Cum. Cond/Oil Prod. Tol.	Cond. Sp Gr @ 60 F	Water Production		Intermediate Casing	Surface Casing
		Tubing Pressure	Flow Temp	Casing Pressure	Static Pressure	DHF	Temp.					Q	Cond/Oil Prod.		
hh:mm	Hours	kPaq	°C	kPaq	kPaq	kPa	°C	10 <sup>3</sup> m <sup>3</sup> /d	10 <sup>3</sup> m <sup>3</sup>	m <sup>3</sup>	% API	m <sup>3</sup>	m <sup>3</sup>	kPa	kPa
<b>Day Summary</b> Cum. Prod. Since: 00:00 98/06/05 Gas Production (11.5 Hrs) 0.00 10 <sup>3</sup> m <sup>3</sup> Cumulative (698.0 Hrs) 0.00 10 <sup>3</sup> m <sup>3</sup> Liquid Production (11.5 Hrs) Cond/Oil 0.00 m <sup>3</sup> Water 54.05 m <sup>3</sup> Liquid Production Cumulative (698.0 Hrs) Cond/Oil 0.00 m <sup>3</sup> Water 133.86 m <sup>3</sup> Fluid Shipped (water) 48.7 m <sup>3</sup> Total Water Shipped To Date 48.7 m <sup>3</sup>															
98/07/08															



# NORTHLAND

Energy Corporation  
 JOB: 3265A  
 CUSTOMER: Anderson Exploration Ltd.  
 WELL: Columbia et al Kotsness  
 OPERATION: Re-completor  
 CHOKER SIZE: ORIFICE PLATE SIZE:

Category: (403) 264-5700  
 Rod Deer: (403) 346-8840  
 Grand Prairie: (403) 539-3411  
 REP. BY: H. Verstraete / R. Waldron  
 LSD: YTB-38  
 ZONE: Nahanni

## FIELD DATA

GAS TO: FLARE  
 TEST OPERATOR(S): J. Knisely / J. Goebel  
 METER RUN: 154.05 mm  
 OR: CRITICAL FLOW PROVER  
 TEST UNIT NO. FS-23  
 DIFE RANGE: 0-100 kPa

Time	Elapsed Time	Well Head Data			H.P. Sep Gas Metering			Cond/Oil Prod.			Water Production		Intermediate Casing	Surface Casing		
		Tubing Pressure	Flow Temp	Casing Pressure	Static Pressure	Diff.	Temp.	Q	Cum. Q Total	Cond/Oil Prod.	Cum. Cond/Oil Prod. Tol.	Cond. Sp Gr @ 60 F			Water Prod.	Cum. Water Prod. Tol.
h:mm	Hours	kPa-g	°C	kPa-g	kPa-g	kPa	°C	10 <sup>3</sup> m <sup>3</sup> /d	10 <sup>3</sup> m <sup>3</sup>	m <sup>3</sup>	%API	m <sup>3</sup>	m <sup>3</sup>	kPa	kPa	
98/07/08																
98/07/09																
00:01																
98/07/10																
08:00	37.0	70														260
08:15	37.2	70														260
08:30	37.5	60														250
08:45	37.8	60														250
09:00	38.0	60														260
09:15	38.2	80														250
09:30	38.5	70														250
09:45	38.8	70														250
09:50																
10:35																
11:00																
17:45																
18:00	47.0															VAC
19:00	48.0															VAC

RIGGED UP WIRELINE TO LOG HOLE  
 CIRCULATE HOLE  
 CONDUCTED SAFETY MEETING  
 STARTED CEMENT JOB  
 CEMENT JOB COMPLETE



**NORTHLAND** Calgary: (403) 244-9700  
 Energy Corporation Red Deer: (403) 246-8940  
 Grand Prairie: (403) 539-3411

JOB: 3295A REP. BY: H. Versteeg / R. Wadron  
 CUSTOMER: Anderson Exploration Ltd. LSD: YTB-38  
 WELL: Columbia et al Kolmenesee ZONE: Nohamni  
 OPERATION: Re-completion ORIFICE PLATE SIZE:  
 CHOKE SIZE:

**FIELD DATA**

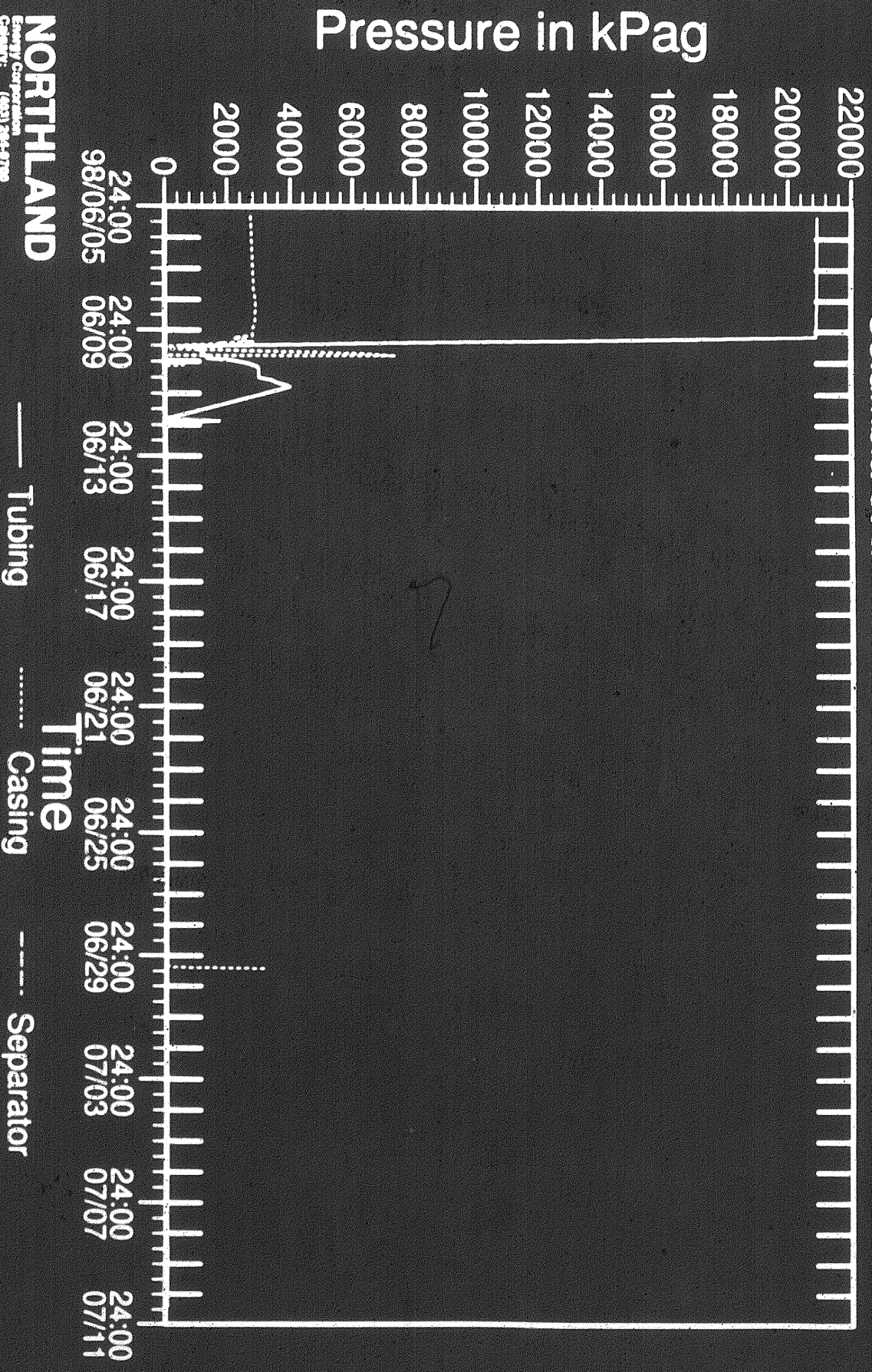
GAS TO: FLARE  
 TEST OPERATOR(S): J. Klosey / J. Goodal  
 METER RUN: 154.05 mm  
 OR: CRITICAL RANGE: 0-100 kPa  
 TEST UNIT NO. F9-23 CRITICAL FLOW PROVER

Time	Elapsed Time	Well Head Data			H.P. Sep Gas Metering			Cum. O Total	Cond/Oil Prod.			Water Production		Intermediate Casing	Surface Casing	
		Tubing Pressure	Flow Temp	Casing Pressure	Static Pressure	Diff.	Temp.		O	Cond/Oil Prod.	Cum. Cond/Oil Prod. Tot.	Cond. Sp. Gr @ 60 F	Water Prod.			Cum. Water Prod. Tot.
hh:mm	Hours	kPaq	°C	kPaq	kPaq	kPa	°C	10 <sup>3</sup> m <sup>3</sup> /d	10 <sup>3</sup> m <sup>3</sup>	m <sup>3</sup>	m <sup>3</sup>	% API	m <sup>3</sup>	m <sup>3</sup>	kPa	kPa
<b>Day Summary</b> Cum. Prod. Since: 00:00 98/06/05      0.00 10 <sup>3</sup> m <sup>3</sup> Gas Production (0.0 Hrs)              0.00 10 <sup>3</sup> m <sup>3</sup> Cumulative (698.0 Hrs) Liquid Production (0.0 Hrs) Cond/Oil      0.00 m <sup>3</sup> Water              0.00 m <sup>3</sup> Liquid Production Cumulative (698.0 Hrs) Cond/Oil      0.00 m <sup>3</sup> Water            133.86 m <sup>3</sup> Fluid Shipped (water)                    0.0 m <sup>3</sup> Total Water Shipped To Date            48.7 m <sup>3</sup>																
98/07/10																



# Tubing, Casing, and Separator Pressure

Re-completion LSD: YTB-38 Job: 3265A  
Columbia et al Kotaneelee Zone: Nahanni

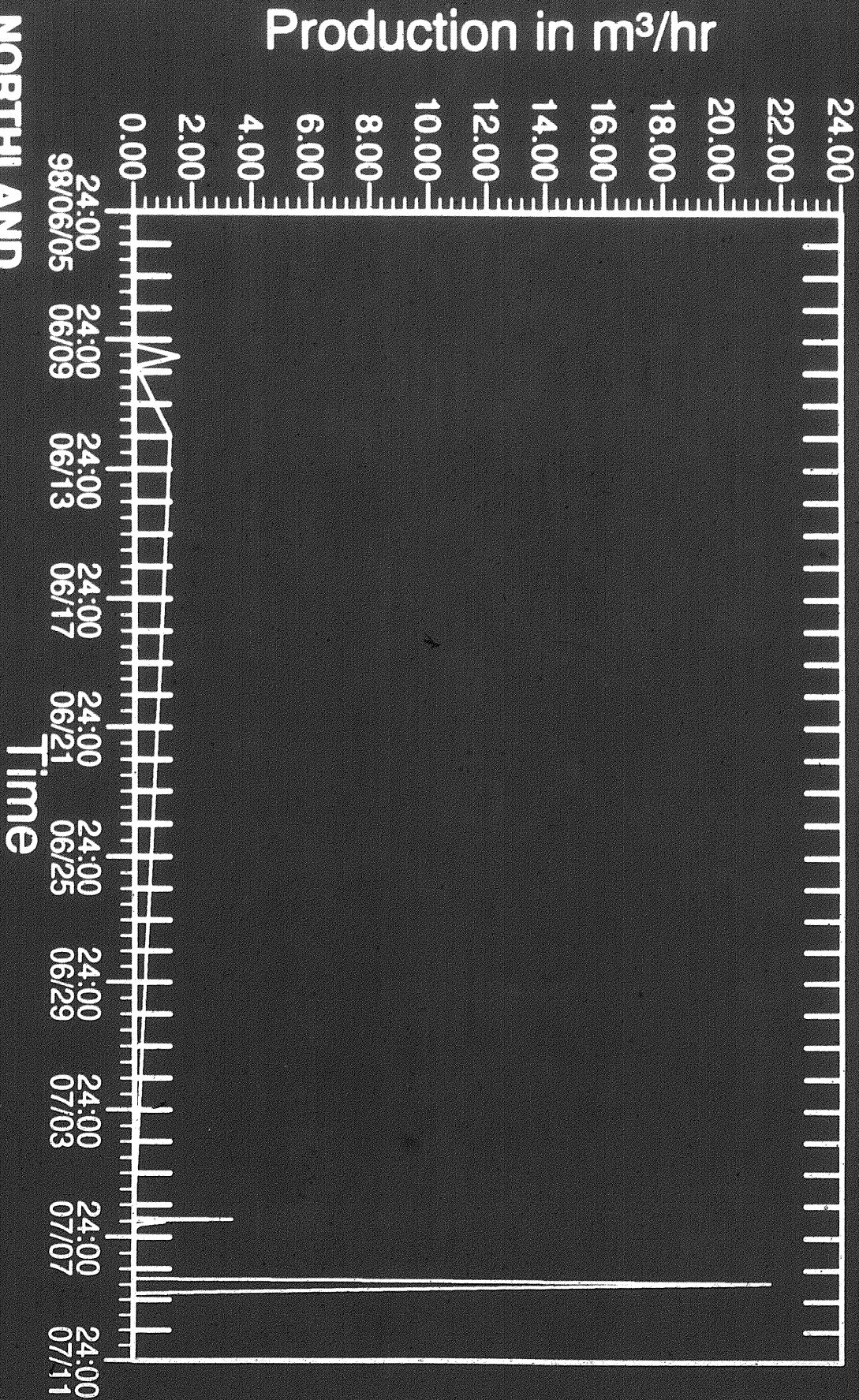


**NORTHLAND**  
Energy Corporation  
Calgary, Alberta  
Canada  
Tel: (403) 244-3700  
Fax: (403) 244-2444  
Cable: (403) 244-3411  
Grand Prairie: (403) 558-2411



# Hourly Water Rate

Re-completion LSD: YTB-38 Job: 3265A  
Columbia et al Kotaneelee Zone: Nahanni



**NORTHLAND**  
Sensory Corporation  
Company: (403) 264-8700  
Head Office: (403) 264-8700  
Grand Prairie: (403) 264-4111