

SCHLUMBERGER

DIRECTIONAL LOG

(COMPUTED)
SCHLUMBERGER OF CANADA
Calgary, Alberta

PROVINCE YUKON TERRITORY
FIELD WILDCAT
WELL NORTH BEAVER RIVER
YT 1-27
COMPANY CANADA SOUTHERN
PETROLEUM LIMITED

COMPANY CANADA SOUTHERN PETROLEUM LIMITED
WELL NORTH BEAVER RIVER
YT 1-27
FIELD WILDCAT
PROVINCE YUKON TERRITORY
LOCATION GRID 124° 0' 60" 10'
N. E. CORNER SEC 27 UNIT 1
Permanent Datum G.L. Elev. 1430
Log Measured From K.B. 16.1 Ft. Above Perm. Datum
Other Services: IES, SGR, ML-C
Elev. KB 1446.1
GL 1430.0
CBF

Date	Run No.	First Reading	Last Reading	Feet Measured	Depth Reached	Bottom Driller	Crg. Driller	Mud Nature	Dens. Visc.	Mud pH	Water Loss	Res.	BHT	Rmf	Rmc	BH Size	Magnetic Declination	Computation Interval	Computed By	Opr. Rig Time	Tuel No.	Recorded By	Witness
7 SEPTEMBER 1963	ONE	8096	11615	8099	3516	8099	1023	GEL-CHEM	11.8	9.5	3.9	0.85	0.39	0.90	1.52	12 1/4"	33° E	100 FT	GOETZ	4 HRS	2547	CHEENOSKY	EX
7 DECEMBER 1963	TWO	8099	11618	8099	1616	8099	1023	GEL-CHEM	14.1	10.0	2.2	1.50	0.37	0.68	1.69	8-3/8"	33° E	100 FT	SIPPOS	2547	CHEENOSKY	WRIGHT	
26 DECEMBER 1963	THREE	12204	11613	591	12207	12201	1025	GEL-CHEM	13.1	9.5	1.0	1.48	0.34	0.82	1.23	8-3/8"	33° E	100 FT	SIPPOS	2547	CHEENOSKY	MR	

REMARKS: BHT 160 F Measured Hours After Circulation

Panel DCP Continuous Directional Taken From CDM Photoclinometer

Sonde RDS RUNS TWO AND THREE WAS TAKEN FROM CDM

Weight DCW

Cartridge DCE

Cartridge DCM

Photoclinometer PC

Any directional computations made from the dipmeter log must be regarded as approximate only. This is because the dipmeter log indicates the orientation of the instrument itself, rather than the direction and amount of the wall drift. Therefore, we do not and cannot guarantee the accuracy of such directional computations, and we shall not be liable or responsible for any loss, costs, damages or expenses incurred or sustained that may result from any such computations.

Depth	Drift Angle	DEFLECTION			LATITUDE		DEPARTURE		COORDINATES				
		True Bearing	Horizontal Footage	True Vertical Depth	N	S	E	W	N	S	E	W	
1023	CSG.	S 00 E		1023.00									
1100	2-00	S 80 W	2.69	1099.96		0.47		2.64					
1200	0-30	S 52 W	0.87	1199.96		0.54		0.69		0.47			2.54
1300	0-45	S 63 W	1.31	1299.95		0.59		1.17		1.01			3.33
1400	2-30	WEST	4.36	1399.85		0.00		4.36		1.60			4.50
1500	2-45	N 85 W	4.80	1499.73		0.42		4.78		1.50			8.86
1600	2-30	S 85 W	4.36	1599.63		0.38		4.34		1.18			13.64
1700	3-15	N 75 W	5.67	1699.47		1.46		5.48		1.56			17.98
1800	3-15	N 70 W	5.67	1799.31		1.94		5.33		0.10			23.46
										1.84			28.79

1200	0-50	S 52 W	0.87	1199.96	0.54	0.69	1.01	3.33
	0-45	S 63 W	1.31		0.59	1.17		
1300				1299.95			1.60	4.50
	2-30	WEST	4.36		0.00	4.36		
1400				1399.85			1.60	8.86
	2-45	N 85 W	4.80		0.42	4.78		
1500				1499.73			1.18	13.64
	2-30	S 85 W	4.36		0.38	4.34		
1600				1599.63			1.56	17.98
	3-15	N 75 W	5.67		1.46	5.48		
1700				1699.47			0.10	23.46
	3-15	N 70 W	5.67		1.94	5.33		
1800				1799.31			1.84	28.79
	3-15	N 70 W	5.67		1.94	5.33		
1900				1899.15			3.78	34.12
	3-00	N 80 W	5.23		0.91	5.16		
2000				1999.01			4.69	39.28
	3-00	N 85 W	5.23		0.46	5.21		
2100				2098.87			5.15	44.49
	3-30	N 85 W	6.10		0.53	6.08		
2200				2198.68			5.68	50.57
	3-30	N 80 W	6.10		1.06	6.01		
2300				2298.49			6.74	56.58
	3-30	N 80 W	6.10		1.06	6.01		
2400				2398.30			7.80	62.59
	3-30	N 75 W	6.10		1.58	5.90		
2500				2498.11			9.38	68.49
	3-45	N 75 W	6.54		1.69	6.32		
2600				2597.90			11.07	74.81
	3-30	N 75 W	6.10		1.58	5.90		
2700				2697.71			12.65	80.71
	3-30	N 80 W	6.10		1.06	6.01		
2800				2797.52			13.71	86.72
	3-45	N 80 W	6.54		1.14	6.44		
2900				2897.31			14.85	93.16
	3-45	N 75 W	6.54		1.69	6.32		
3000				2997.10			16.54	99.48
	4-00	N 80 W	6.98		1.21	6.87		
3100				3096.86			17.75	106.35
	4-00	N 75 W	6.98		1.81	6.74		
3200				3196.62			19.56	113.09
	4-15	N 75 W	7.41		1.92	7.16		
3300				3296.34			21.48	120.25
	4-15	N 80 W	7.41		1.29	7.30		
3400				3396.06			22.77	127.55
	4-15	N 80 W	7.41		1.29	7.30		
3500				3495.78			24.06	134.85
	4-30	N 75 W	7.85		2.03	7.58		
3600				3595.47			26.09	142.43
	4-45	N 75 W	8.28		2.14	8.00		
3700				3695.13			28.23	150.43
	4-45	N 75 W	8.28		2.14	8.00		
3800				3794.79			30.37	158.43
	4-45	N 75 W	8.28		2.14	8.00		
3900				3894.45			32.51	166.43
	4-45	N 75 W	8.28		2.14	8.00		
4000				3994.11			34.65	174.43
	4-30	N 75 W	7.85		2.03	7.58		
4100				4093.80			36.68	182.01
	4-45	N 75 W	8.28		2.14	8.00		
4200				4193.46			38.82	190.01
	5-00	N 75 W	8.72		2.26	8.42		
4300				4293.08			41.08	198.43
	5-00	N 75 W	8.72		2.26	8.42		
4400				4392.70			43.34	206.85
	5-15	N 75 W	9.15		2.37	8.84		
4500				4492.28			45.71	215.69
	5-15	N 75 W	9.15		2.37	8.84		
4600				4591.86			48.08	224.53
	5-15	N 75 W	9.15		2.37	8.84		
4700				4691.44			50.45	233.37
	5-15	N 85 W	9.15		0.80	9.11		
4800				4791.02			51.25	242.48
	5-15	N 85 W	9.15		0.80	9.11		
4900				4890.60			52.05	251.59
	5-30	WEST	9.58		0.00	9.58		
5000				4990.14			52.05	261.17
	5-00	S 85 W	8.72		0.75	8.68		
5100				5089.76			51.29	269.85
	5-00	S 75 W	8.72		2.26	8.42		

4300	5-00	N 75 W	8.72	4293.08	2.26	8.42	41.08	198.43
4400	5-00	N 75 W	8.72	4392.70	2.26	8.42	43.34	206.85
4500	5-15	N 75 W	9.15	4492.28	2.37	8.84	45.71	215.69
4600	5-15	N 75 W	9.15	4591.86	2.37	8.84	48.08	224.53
4700	5-15	N 85 W	9.15	4691.44	0.80	9.11	50.45	233.37
4800	5-15	N 85 W	9.15	4791.02	0.80	9.11	51.25	242.48
4900	5-30	WEST	9.58	4890.60	0.00	9.58	52.05	251.59
5000	5-00	S 85 W	8.72	4990.14	0.75	8.68	52.05	261.17
5100	5-00	S 75 W	8.72	5089.75	2.26	8.42	51.29	269.85
5200	5-15	S 80 W	9.15	5189.38	1.59	9.01	49.03	278.27
5300	5-15	S 80 W	9.15	5288.95	1.59	9.01	47.44	287.28
5400	5-15	S 85 W	9.15	5388.54	0.80	9.11	45.85	296.29
5500	5-30	S 85 W	9.58	5488.12	0.84	9.54	45.05	305.40
5600	5-45	N 80 W	10.02	5587.63	1.74	9.87	44.21	314.94
5700	5-45	N 85 W	10.02	5687.15	0.87	9.98	45.35	324.81
5800	6-15	S 85 W	10.90	5786.55	0.95	10.84	46.82	334.79
5900	8-00	N 85 W	12.19	5885.07	1.06	12.14	45.87	345.63
6000	7-15	N 85 W	12.62	5985.32	1.10	12.57	46.93	357.77
6100	7-45	WEST	13.49	6084.52	0.00	13.49	48.03	370.34
6200	8-00	S 80 W	13.92	6183.61	2.42	13.71	48.03	383.83
6300	8-15	S 75 W	14.35	6282.64	3.71	13.85	45.61	397.54
6400	8-15	S 75 W	14.33	6381.61	3.71	13.85	41.90	411.40
6500	8-30	S 65 W	14.78	6480.58	6.25	13.40	38.19	425.26
6600	8-30	S 70 W	14.78	6579.48	5.05	13.89	31.94	438.66
6700	8-30	S 70 W	14.78	6678.38	5.05	13.89	26.89	452.55
6800	8-45	S 70 W	15.21	6777.28	5.20	14.29	21.84	465.44
6900	9-00	S 70 W		6876.12	5.35	14.70	16.64	480.73
7000	9-00	S 70 W	15.64	6974.89	5.35	14.70	11.29	495.43
7100	9-15	S 65 W	16.07	7073.66	6.79	14.57	5.94	510.13
7200	9-00	S 65 W	15.64	7172.36	6.61	14.18	0.85	524.70
7300	8-45	S 65 W	15.21	7271.13	6.43	13.78	7.46	538.88
7400	8-45	S 65 W	15.21	7369.97	6.43	13.78	13.89	552.66
7500	9-00	S 65 W	15.64	7468.81	6.61	14.18	20.32	566.44
7600	9-15	S 70 W	16.07	7567.58	5.50	15.11	26.93	580.62
7700	9-15	S 65 W	16.07	7666.28	6.79	14.57	32.43	595.73
7800	9-15	S 65 W	16.07	7764.98	6.79	14.57	39.22	610.30
7900				7863.68				624.87

7000	9-00	S 70 W		6974.89	5.35	14.70	11.29	495.43
7100	9-15	S 65 W	16.07	7073.66	6.79	14.57	5.94	510.13

7800				7754.98						
	9-15	S 65 W	16.07			6.79		14.57		39.22
7900				7863.68						46.01

7000	9-00	S 70 W		6974.89		5.35		14.70		
	9-00	S 70 W	15.64			5.35		14.70	11.29	495.43
7100				7073.66					5.94	510.13
	9-15	S 65 W	16.07			6.79		14.57		
7200				7172.36					0.85	524.70
	9-00	S 65 W	15.64			6.61		14.18		
7300				7271.13					7.46	538.88
	8-45	S 65 W	15.21			6.43		13.78		
7400				7369.97					13.89	552.66
	8-45	S 65 W	15.21			6.43		13.78		
7500				7468.81					20.32	565.44
	9-00	S 65 W	15.64			6.61		14.18		
7600				7567.58					26.93	580.62
	9-15	S 70 W	16.07			5.50		15.11		
7700				7666.28					32.43	595.73
	9-15	S 65 W	16.07			6.79		14.57		
7800				7764.98					39.22	610.30
	9-15	S 65 W	16.07			6.79		14.57		
7900				7863.68					46.01	624.87
	9-00	S 65 W	15.64			6.61		14.18		
8000				7962.45					52.62	639.05
	9-15	S 65 W	16.07			6.79		14.57		
8100				8061.15					59.41	653.62
					58.80	118.21		653.62		
						-58.80				
						59.41				
8100				8061.15		59.41		653.62	59.41	653.62
	8-30	S 73 W	14.78			4.32		14.13		
8200				8160.05					63.73	667.75
	8-00	S 78 W	13.92			2.89		13.62		
8300				8259.08					66.62	681.37
	7-30	S 73 W	13.05			3.82		12.48		
8400				8358.22					70.44	693.85
	7-15	S 75 W	12.62			3.26		12.19		
8500				8457.42					73.70	706.04
	7-00	S 73 W	12.19			3.56		11.66		
8600				8556.67					77.26	717.70
	6-00	S 71 W	10.45			3.40		9.88		
8700				8656.12					80.66	727.58
	5-30	S 73 W	9.58			2.80		9.17		
8800				8755.66					83.46	736.75
	5-30	S 68 W	9.58			3.59		8.89		
8900				8855.20					87.05	745.64
	5-30	S 73 W	9.58			2.80		9.17		
9000				8954.74					89.85	754.81
	5-15	S 80 W	9.15			1.59		9.01		
9100				9054.32					91.44	763.82
	5-00	S 88 W	8.72			0.30		8.71		
9200				9153.94					91.74	772.53
	4-30	S 83 W	7.85			0.96		7.79		
9300				9253.63					92.70	780.32
	3-00	N 89 W	5.23		0.09			5.23		
9400				9353.49					92.61	785.55
	1-45	S 87 W	3.05			0.16		3.05		
9500				9453.44					92.77	788.60
	2-00	N 79 W	3.49		0.67			3.43		
9600				9553.38					92.10	792.03
	2-00	N 59 W	3.49		1.80			2.99		
9700				9653.32					90.30	795.02
	2-00	N 54 W	3.49		2.05			2.82		
9800				9753.26					88.25	797.84
	1-45	N 52 W	3.05		1.88			2.41		
9900				9853.21					86.37	800.25
	1-30	N 37 W	2.62		2.09			1.58		
10000				9953.18					84.28	801.83
	1-15	N 19 W	2.18		2.06			0.71		
10100				10053.16					82.22	802.54
	1-15	N 18 W	2.18		2.07			0.67		
10200				10153.14					80.15	803.51
	1-00	N 27 W	1.75		1.56			0.80		
10300				10253.12					78.59	804.01
	1-00	N 16 W	1.75		1.68			0.48		
10400				10353.10					76.01	804.10

9700	2-00	N 55 W	3.49	9653.32	1.80	2.99	90.30	795.02
9800	2-00	N 54 W	3.49	9753.26	2.05	2.82	88.25	797.84
9900	1-45	N 52 W	3.05	9853.21	1.88	2.41	86.37	800.25
10000	1-30	N 37 W	2.62	9953.18	2.09	1.58	84.28	801.83
10100	1-15	N 19 W	2.18	10053.16	2.06	0.71	82.22	802.54
10200	1-15	N 18 W	2.18	10153.14	2.07	0.67	80.15	803.51
10300	1-00	N 27 W	1.75	10253.12	1.56	0.80	78.59	804.01
10400	1-00	N 16 W	1.75	10353.10	1.68	0.48	76.91	804.49
10500	1-30	N 27 W	2.62	10453.07	2.33	1.19	74.58	805.68
10600	2-00	N 28 W	3.49	10553.01	3.08	1.64	71.50	807.32
10700	2-00	N 30 W	3.49	10652.95	3.02	1.75	68.48	809.07
10800	1-30	N 25 W	2.62	10752.92	2.37	1.11	66.11	810.18
10900	1-30	N 31 W	2.62	10852.89	2.24	1.35	63.87	811.53
11000	1-15	N 27 W	2.18	10952.87	1.94	0.99	61.93	812.52
11100	1-00	N 29 W	1.75	11052.85	1.53	0.85	60.40	813.37
11200	0-30	N 47 W	0.87	11152.85	0.60	0.64	59.80	814.01
11300	0-45	N 60 W	1.31	11252.84	0.65	1.13	59.15	815.14
11400	1-45	N 70 W	3.05	11352.79	1.04	2.82	58.11	818.01
11500	1-45	N 77 W	3.05	11452.74	0.69	2.98	57.42	820.99
11600	1-30	N 77 W	2.62	11552.71	0.59	2.55	56.83	823.54
11700	1-00	N 76 W	1.75	11652.69	0.42	1.69	56.41	825.23
11800	1-00	N 57 W	1.75	11752.67	0.95	1.46	55.46	826.69
11900	1-00	N 54 W	1.75	11852.65	1.03	1.41	54.43	828.10
12000	1-15	N 47 W	2.18	11952.63	1.49	1.60	52.94	829.70
12100	1-15	N 76 W	2.18	12052.61	0.53	2.12	52.41	831.82
12204	1-00	S 53 W	1.82	12156.59	1.09	1.46	53.50	833.28
					40.45	93.95		833.28
						40.45		
						53.50		833.28

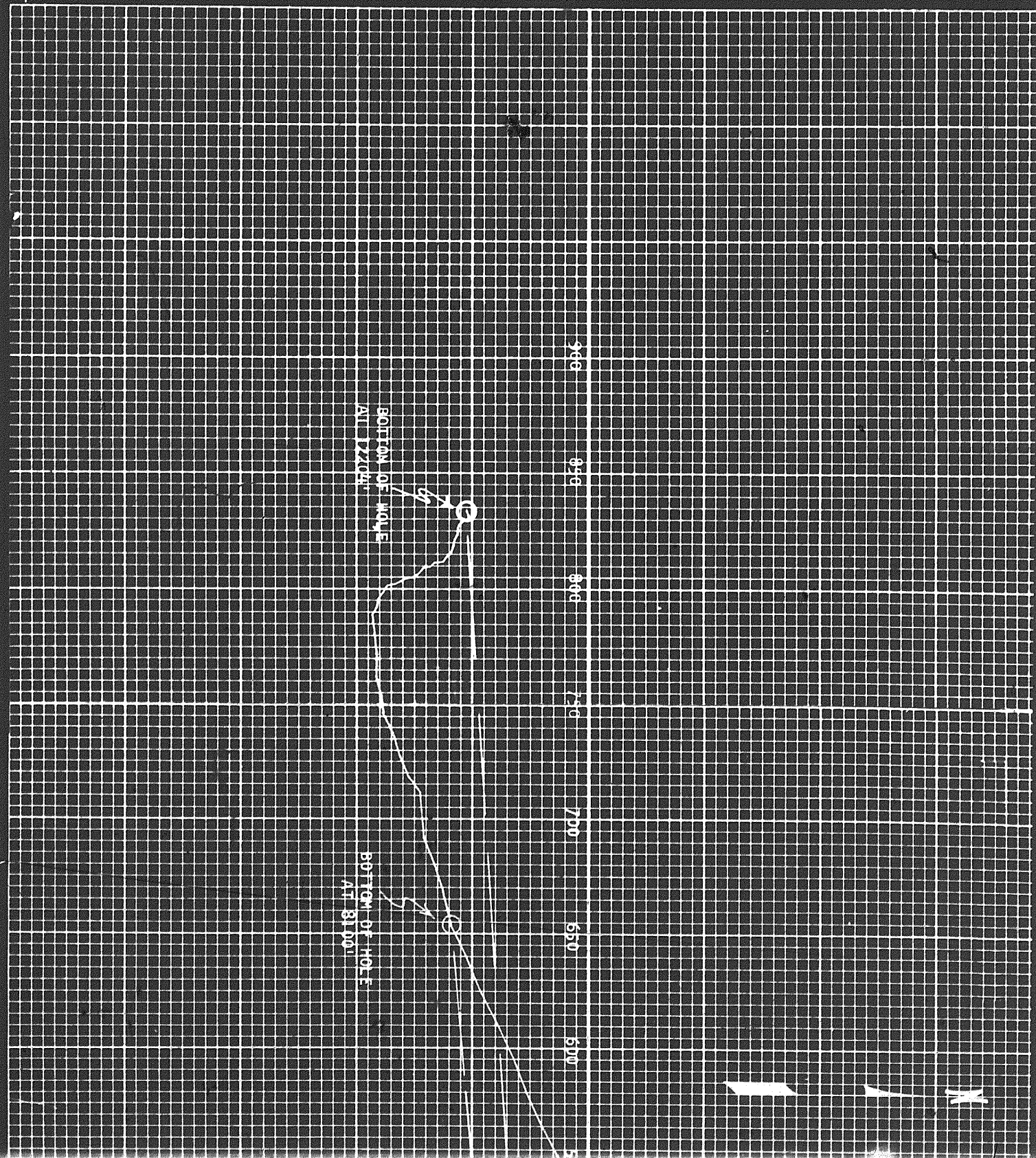
GRAPH OF DIRECTIONAL LOG
ALL DIRECTIONS ARE FROM TRUE NORTH

SCALE = 1" = 50'

Position of bottom of hole at	DEPTH	
Position of bottom of hole at	8100	IS 59.41 FT. SOUTH AND 653.62 FT. WEST OR IS 656.31 FT. S 84° 45' W IN RELATION TO CSG. SHOE AT 1023 FT.
Position of bottom of hole at		
Position of bottom of hole at		
Position of bottom of hole at	12204	IS 53.50 FT SOUTH AND 833.28 FT WEST OR IS 834.99 FT S 86° 25' W IN RELATION TO CSG SHOE AT 1023 FT
Position of bottom of hole at		
Position of bottom of hole at		

Position of bottom of hole at	8100	IS 59.41 FT. SOUTH AND 653.62 FT. WEST OR IS 656.31 FT.
Position of bottom of hole at		S 84° 45' W IN RELATION TO CSG. SHOE AT 1023 FT.
Position of bottom of hole at		
Position of bottom of hole at	12204	IS 53.50 FT SOUTH AND 833.28 FT WEST OR IS 834.99 FT
Position of bottom of hole at		S 86° 25' W IN RELATION TO CSG SHOE AT 1023 FT
Position of bottom of hole at		

GRAPH



BOTTOM OF HOLE
AT 81.001

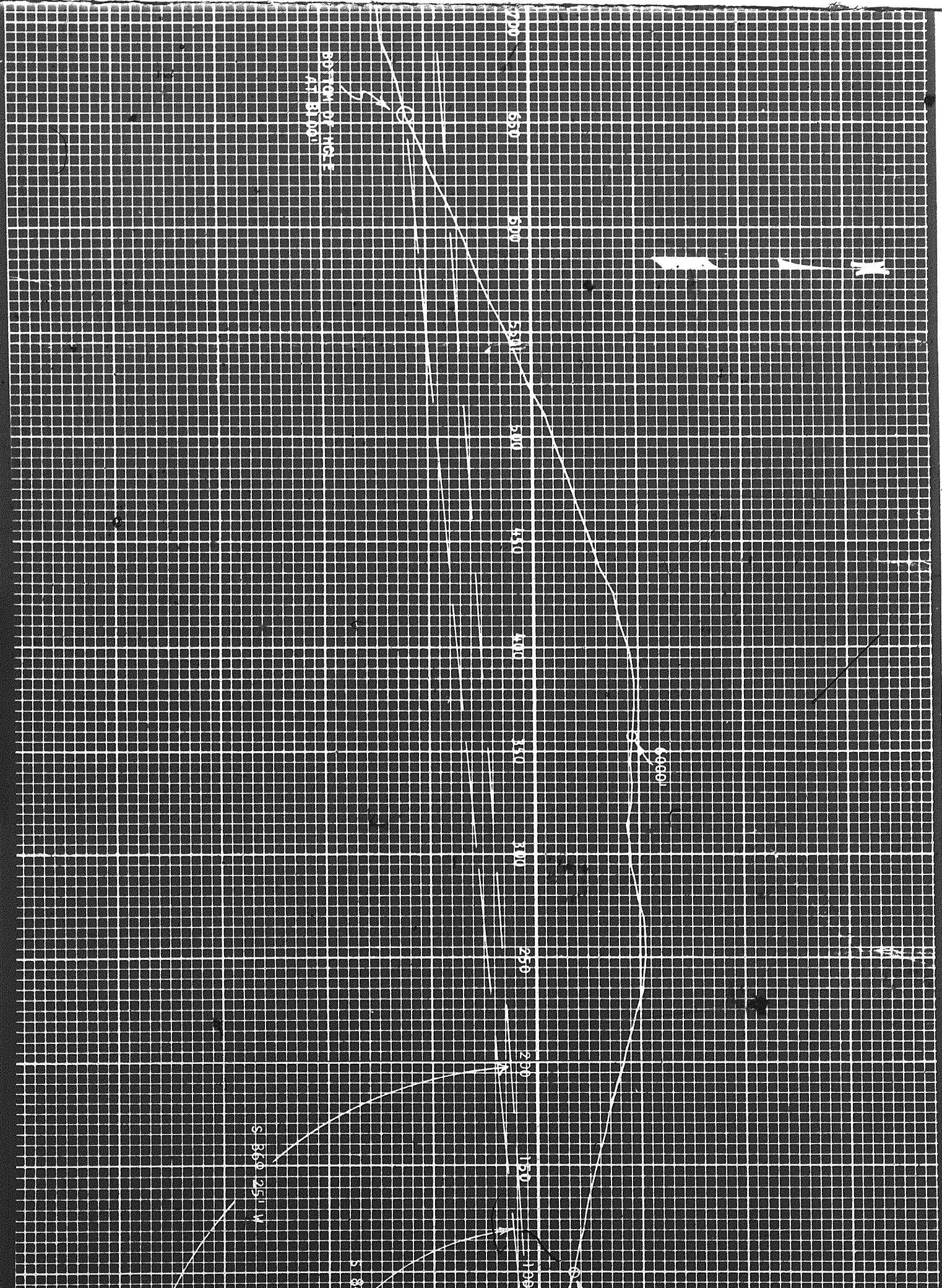
700
650
600
550
500
450
400
350
300
250
200
150
100

S 85.0 25.1 W

S 87.4

44001

20



AZIMUTH NO. 1 ELECTRODE
FROM MAGNETIC NORTH

0 120 240 360

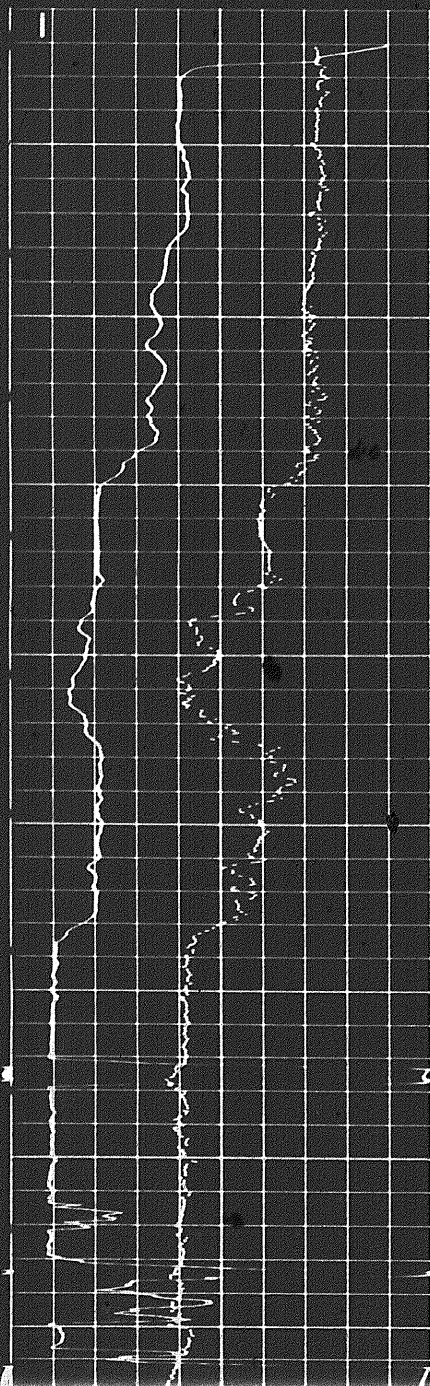
N E S W N

RELATIVE BEARING

0 120 240 360

DEVIATION

0 9



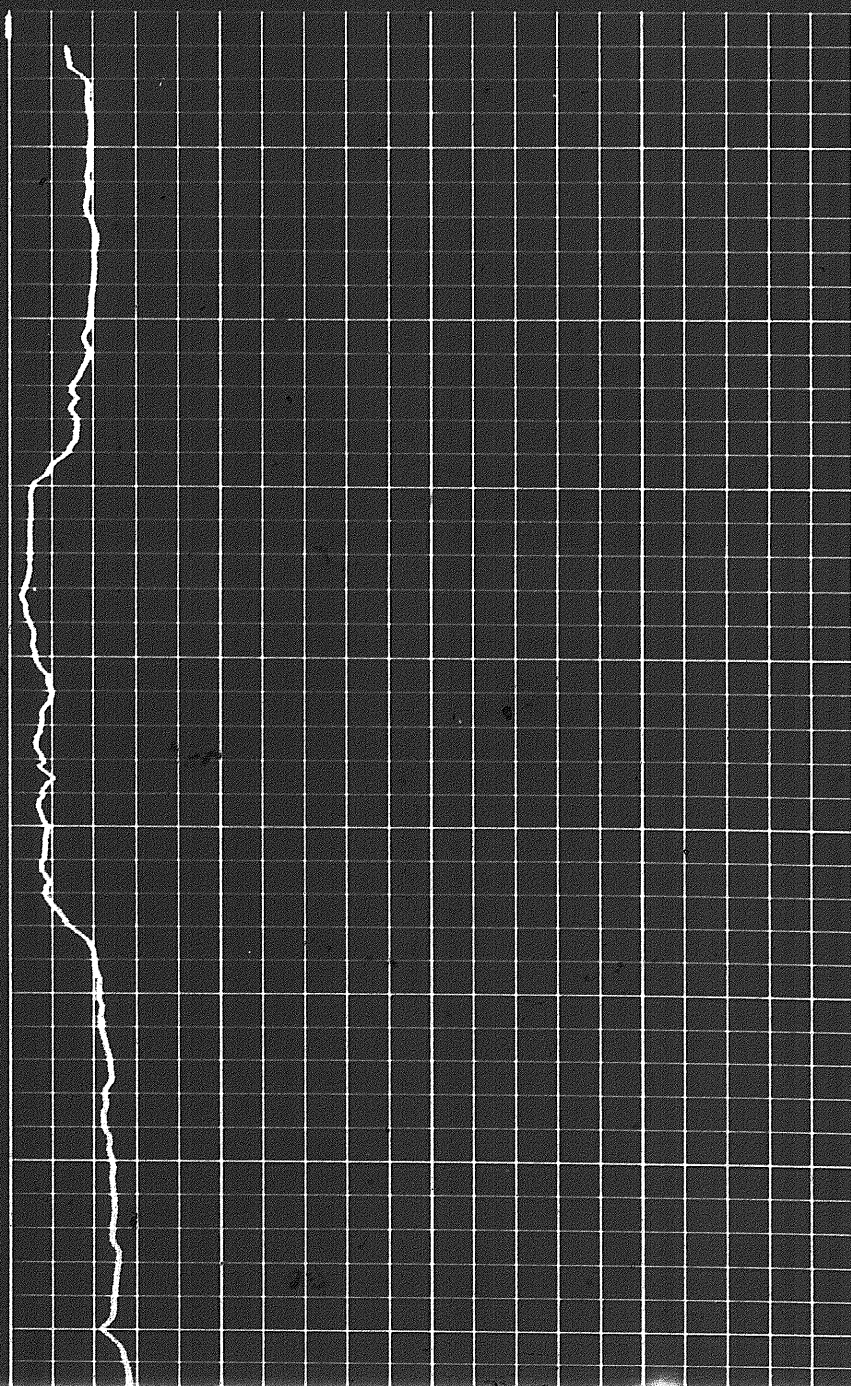
1000

1100

1200

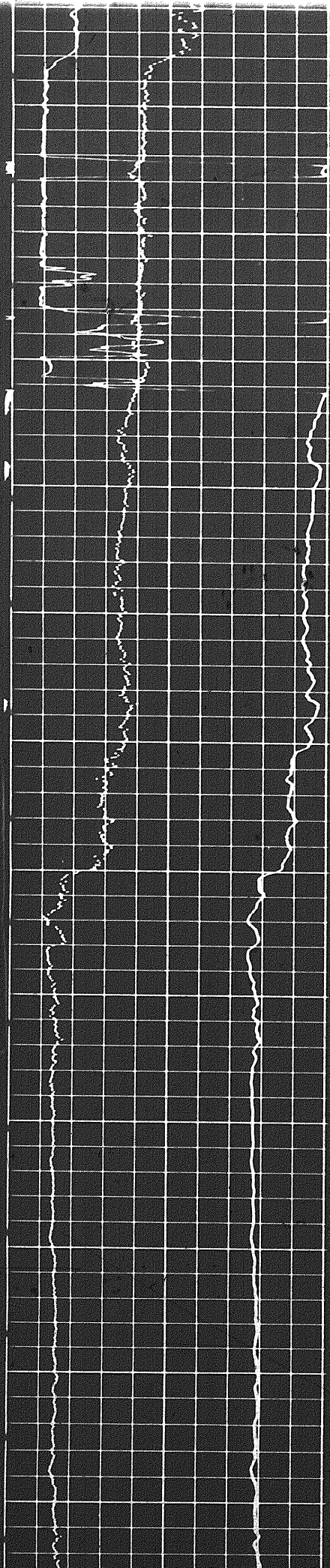
1300

1400



1300

4 of



1300

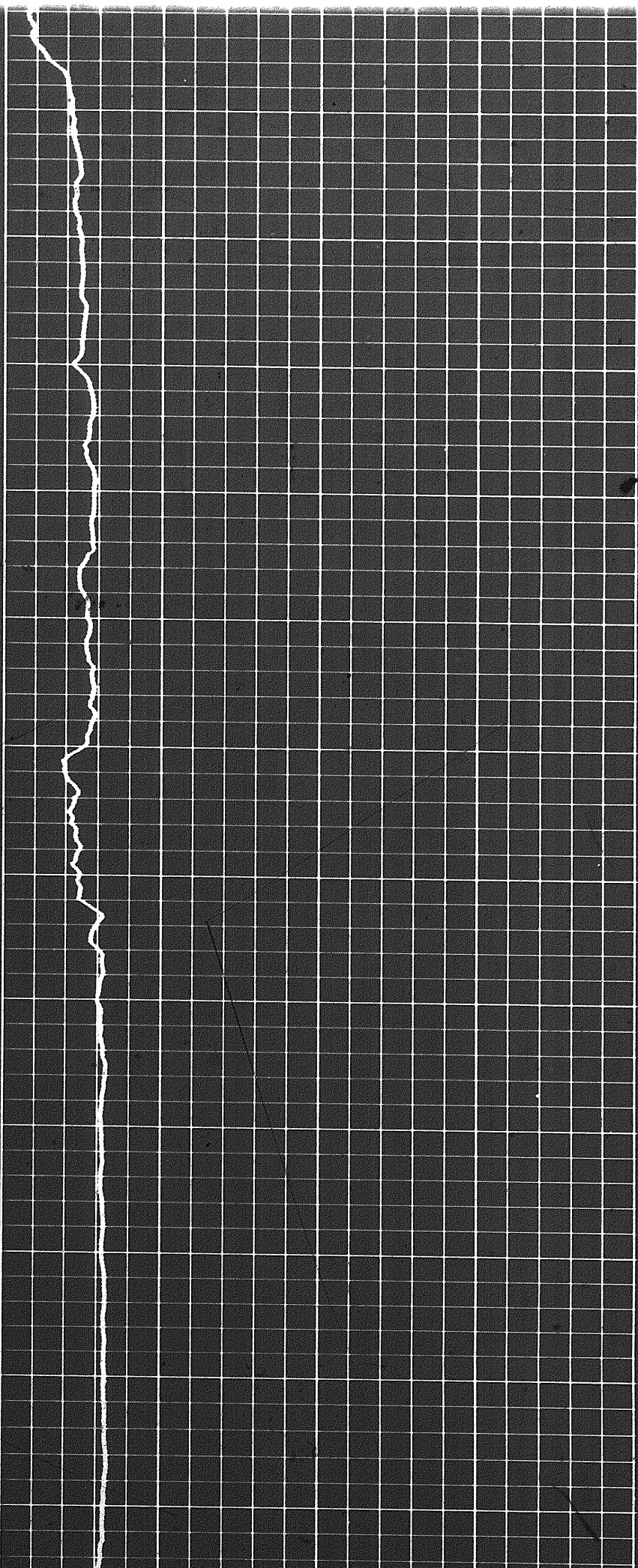
1400

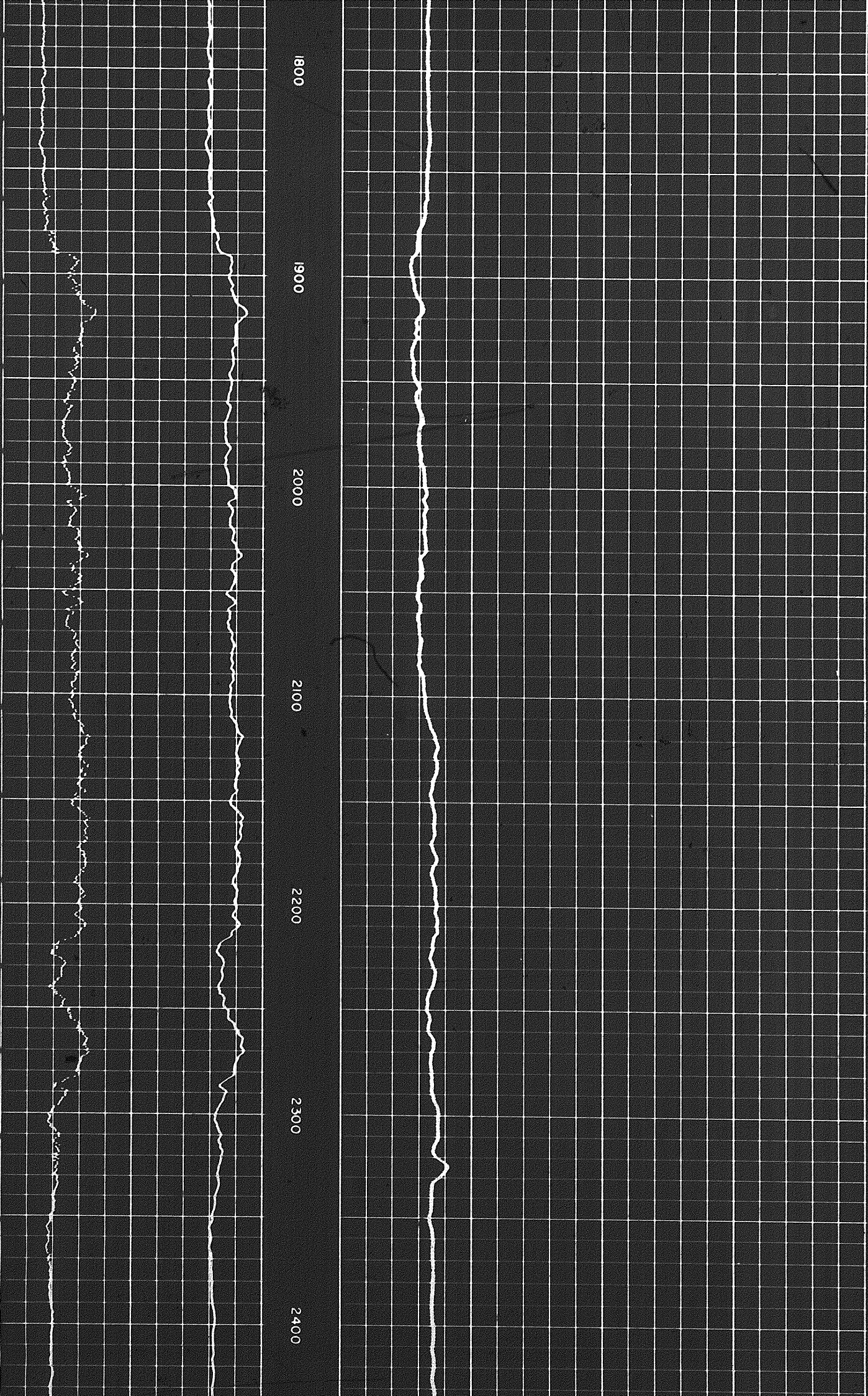
1500

1600

1700

1800





1800

1900

2000

2100

2200

2300

2400

2400

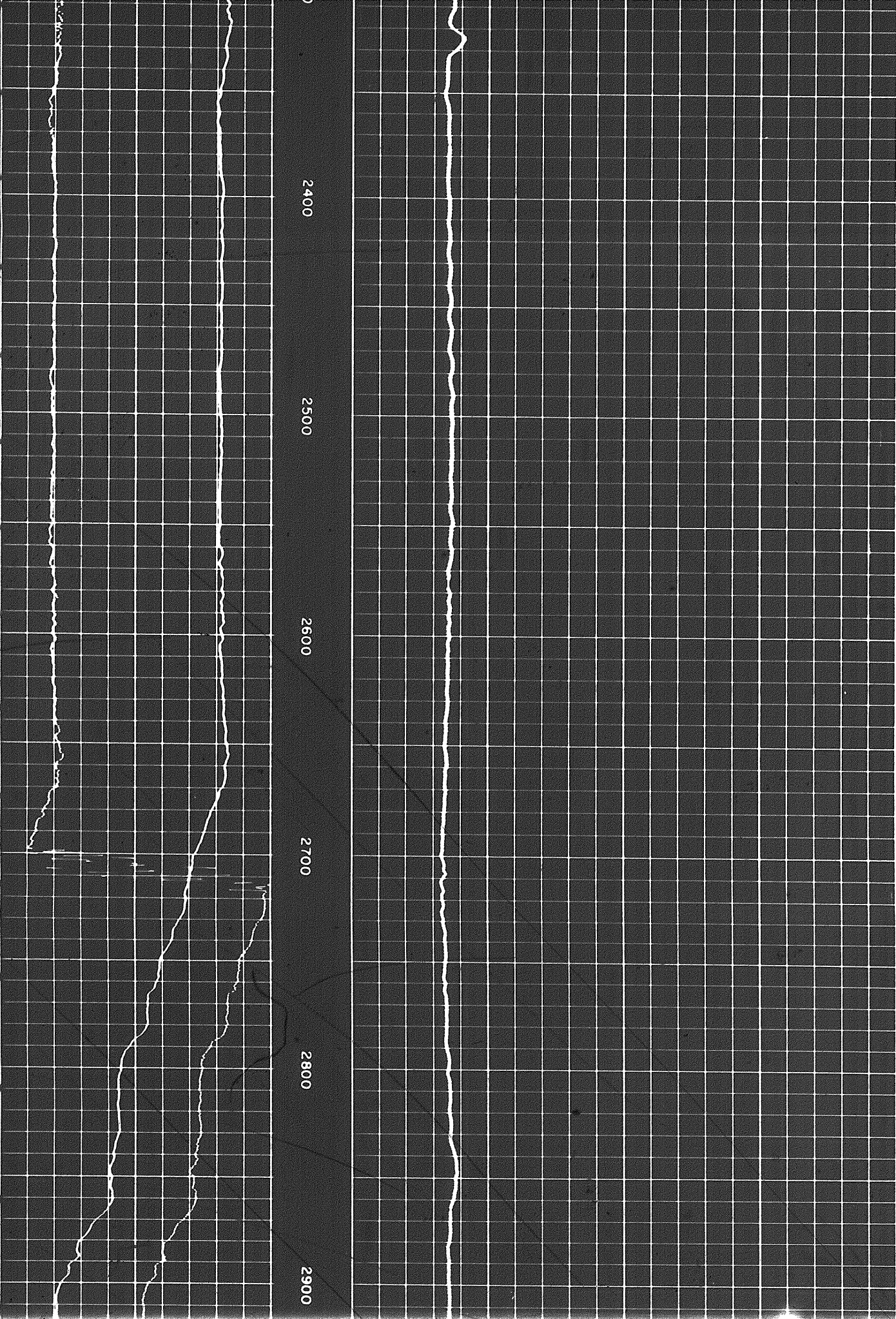
2500

2600

2700

2800

2900



900

2800

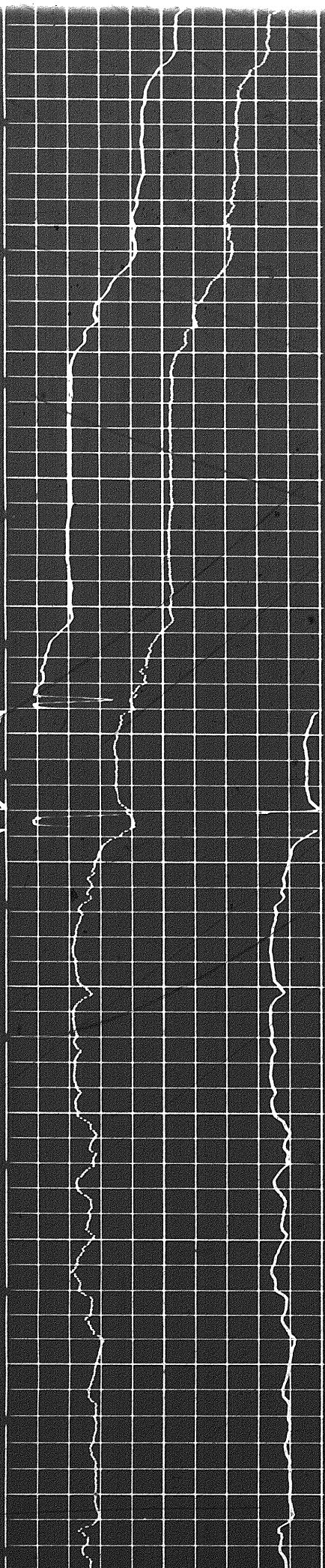
2900

3000

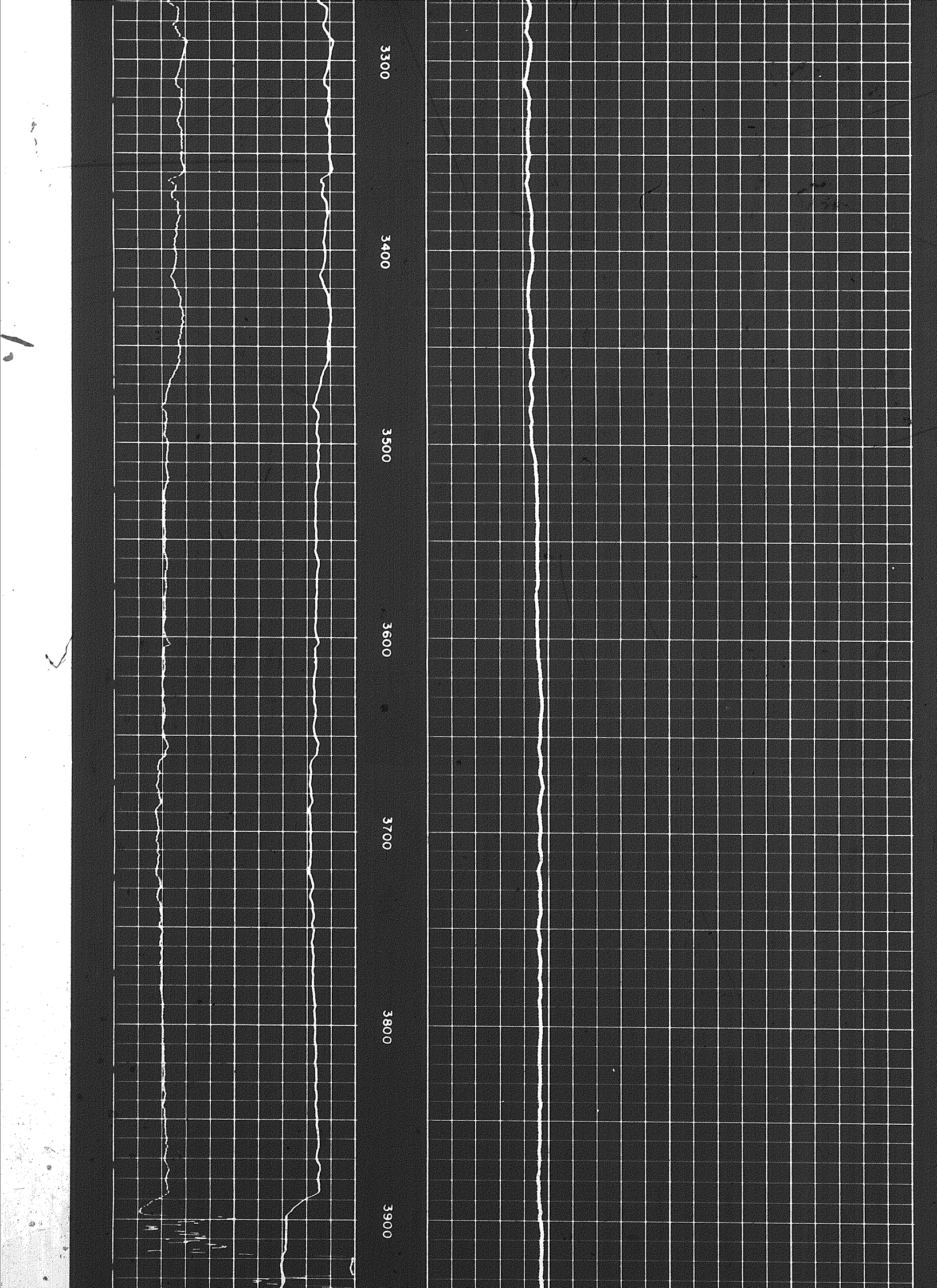
3100

3200

3300



5 of



3300

3400

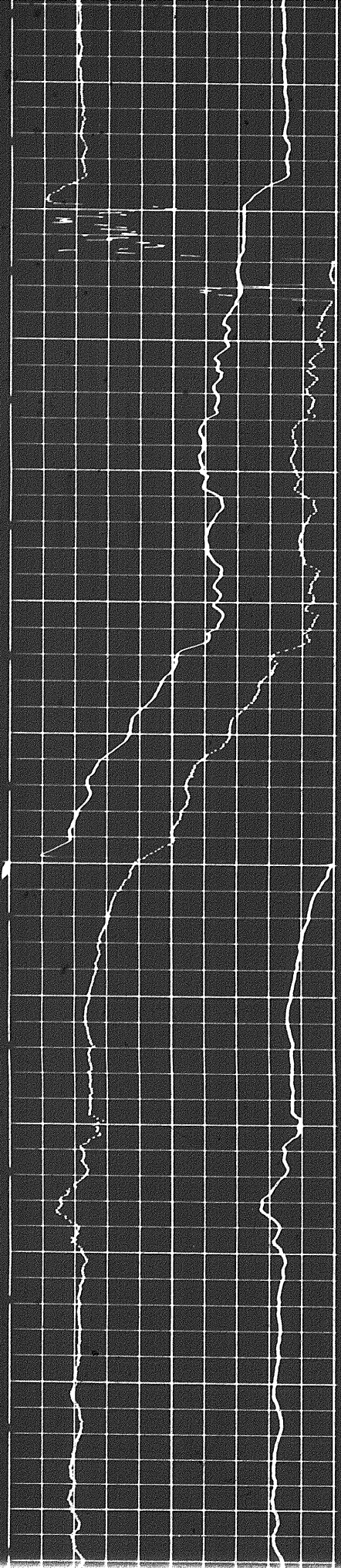
3500

3600

3700

3800

3900



3900

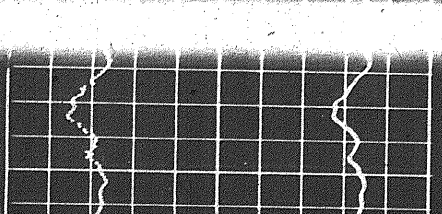
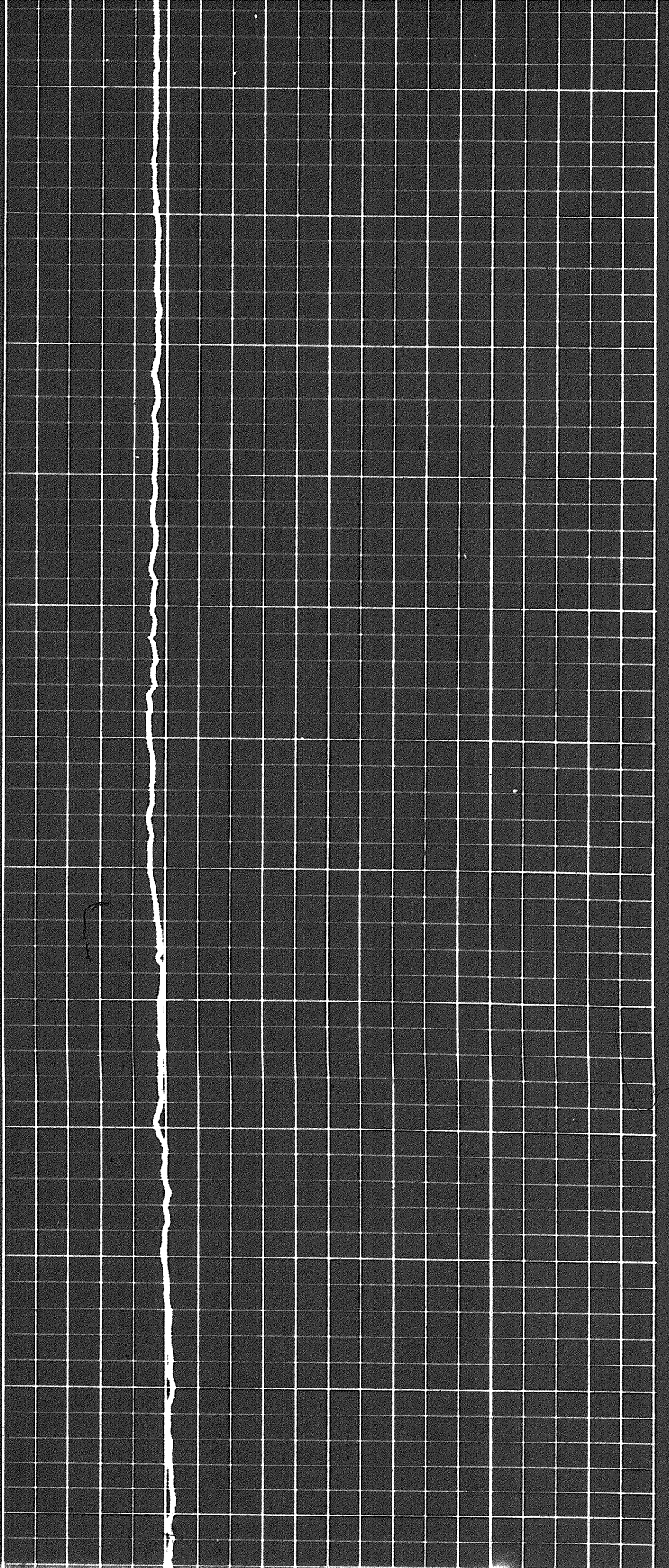
4000

4100

4200

4300

4400



4300

4400

4300

4400

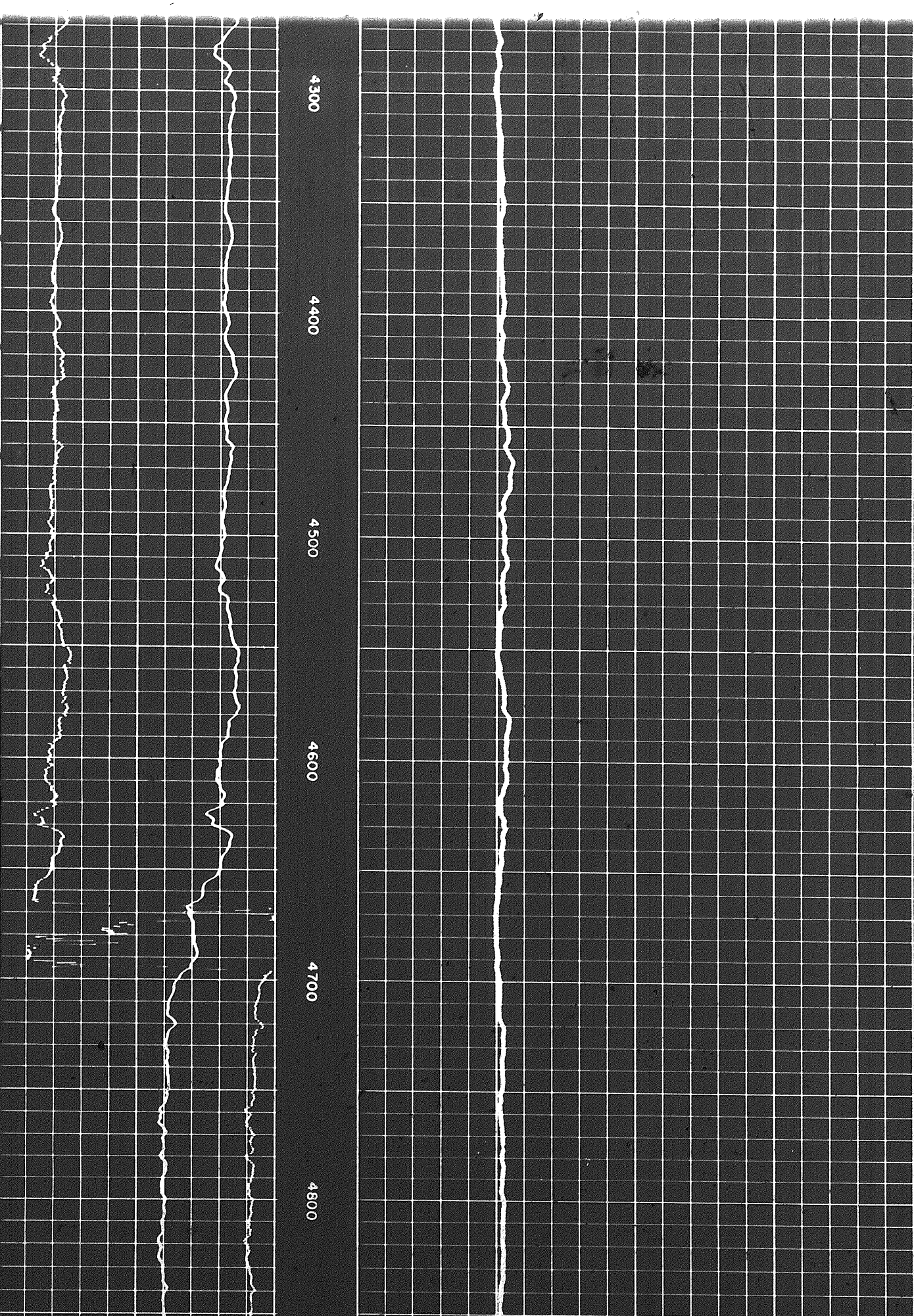
4500

4600

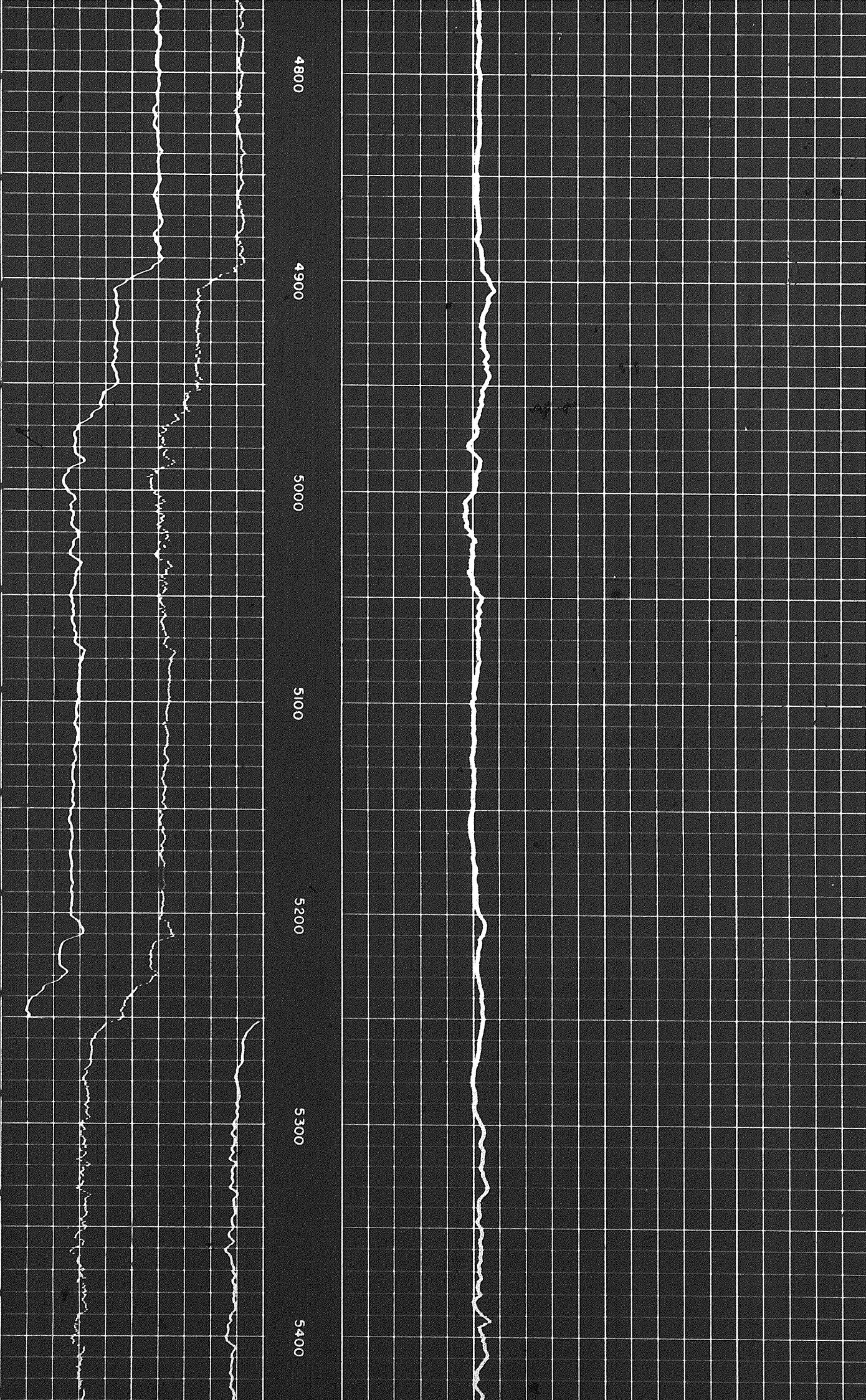
4700

4800

69



of



4800

4900

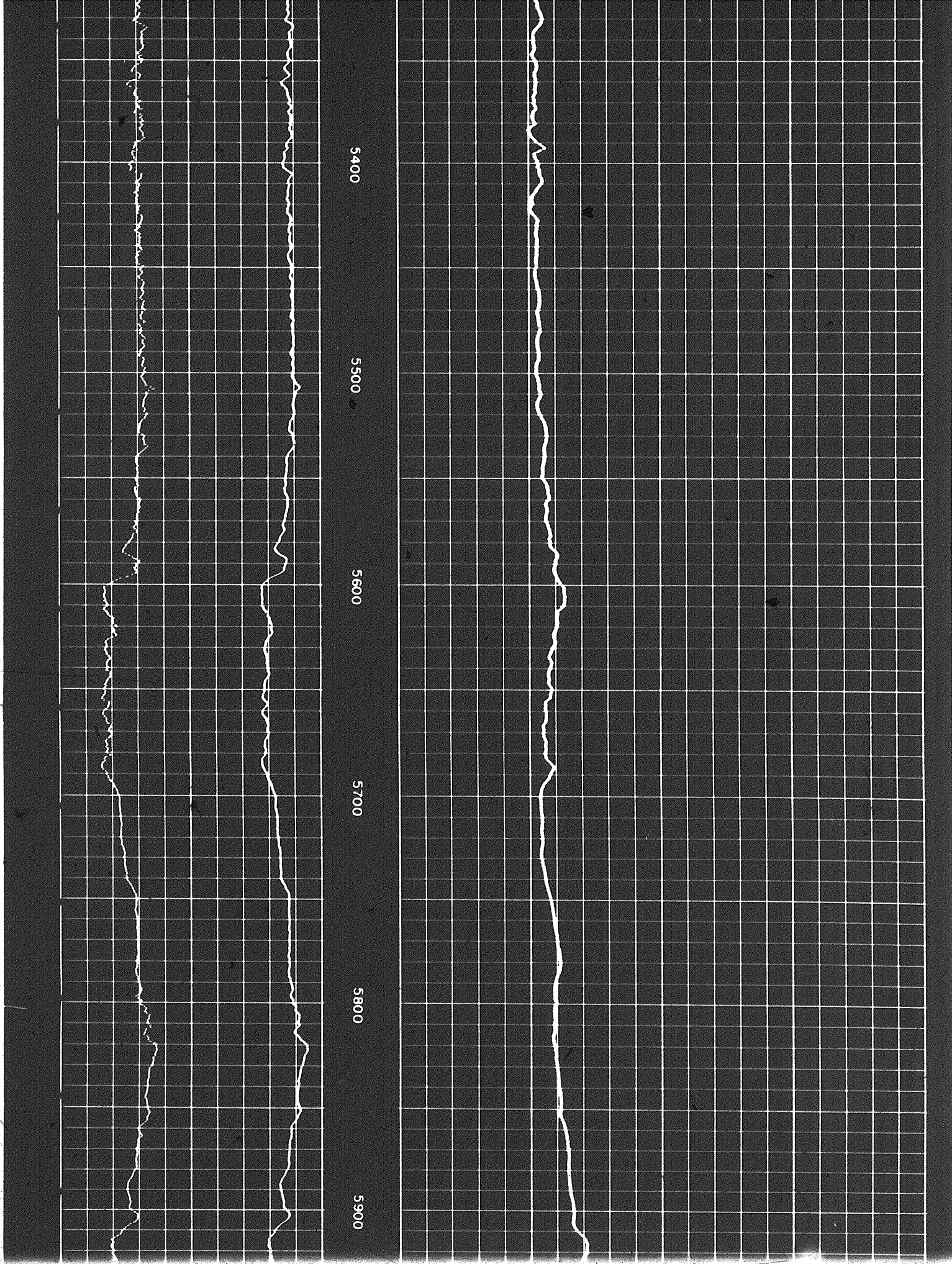
5000

5100

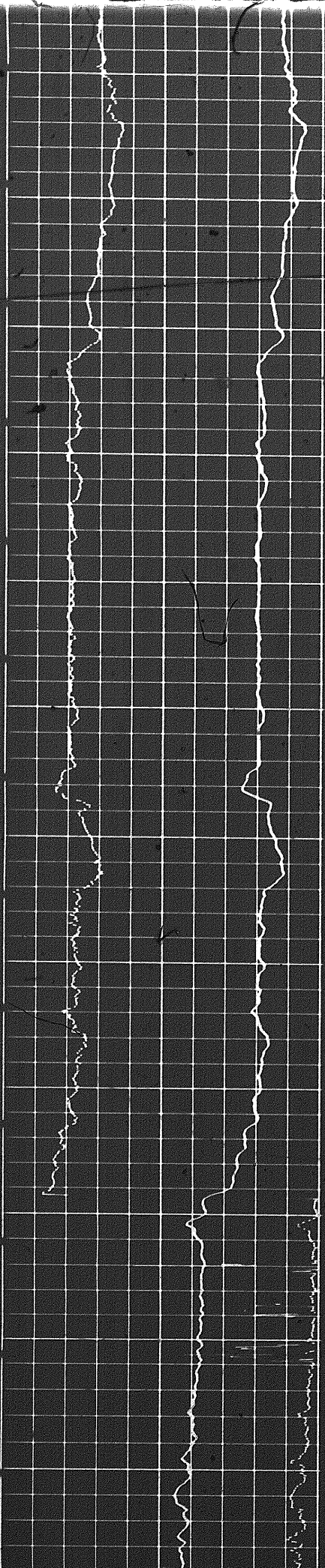
5200

5300

5400



707



5800

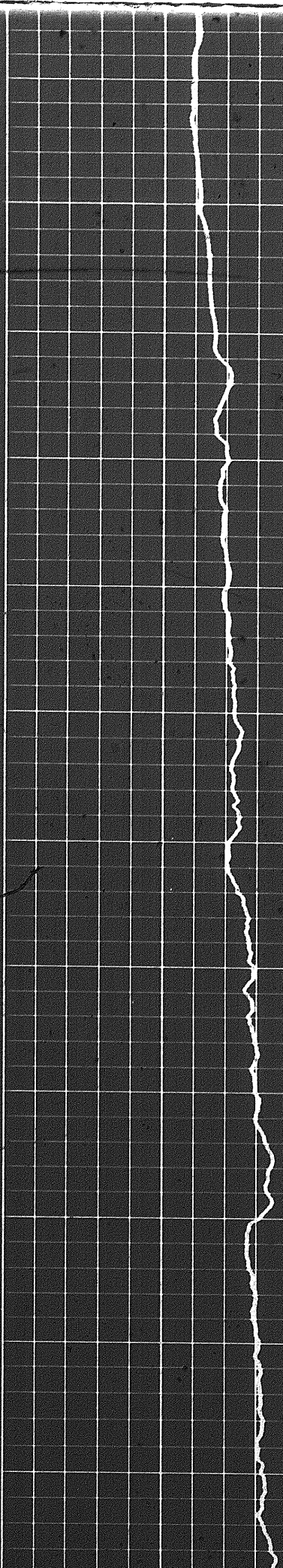
5900

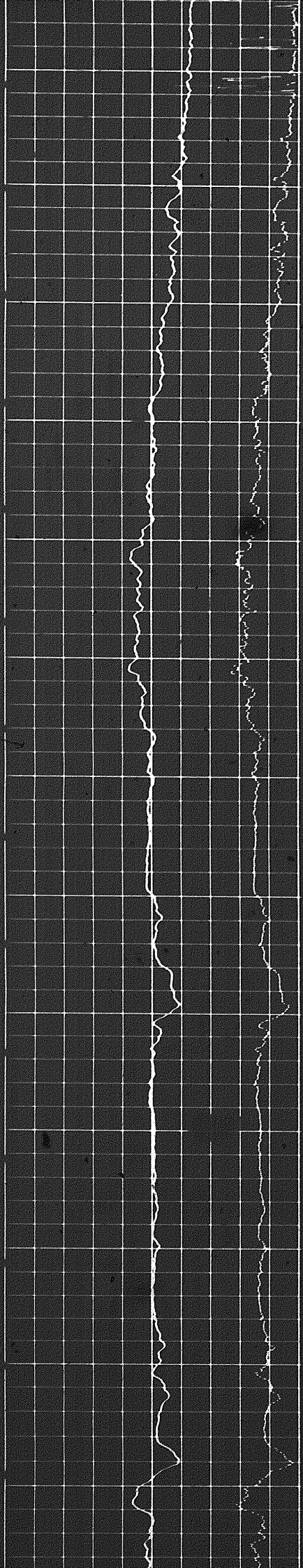
6000

6100

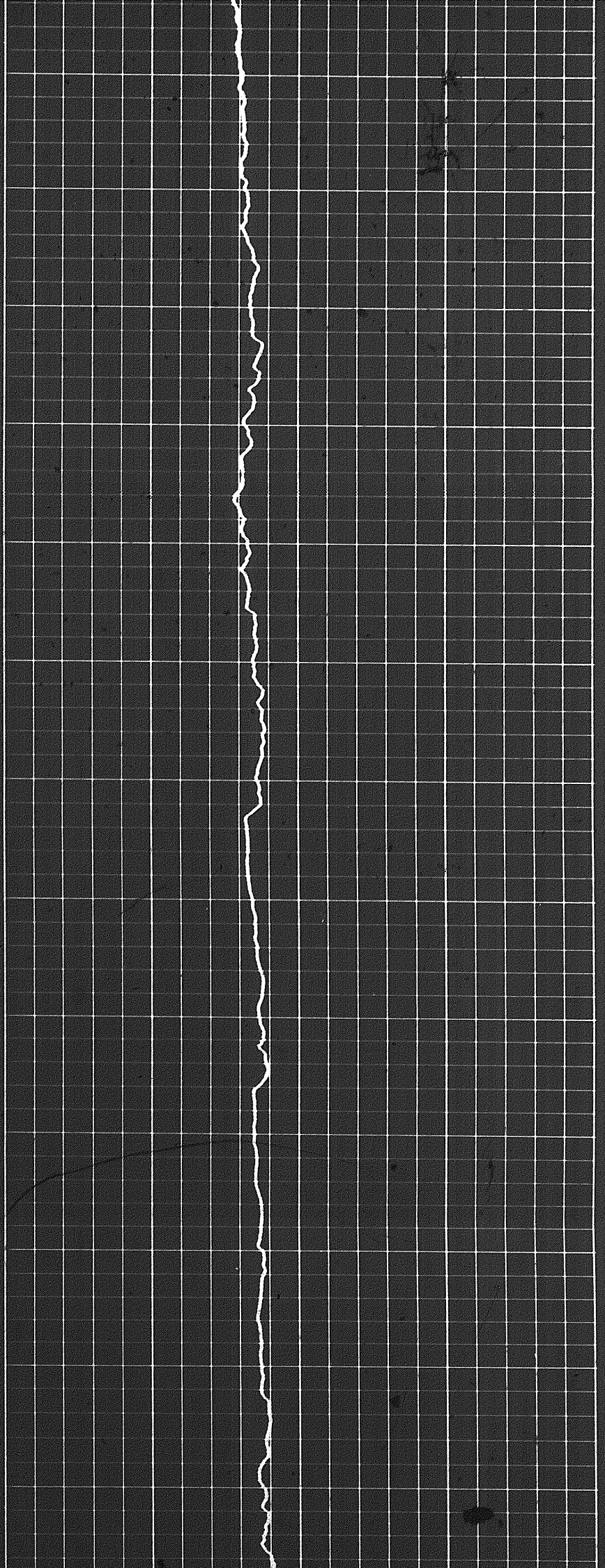
6200

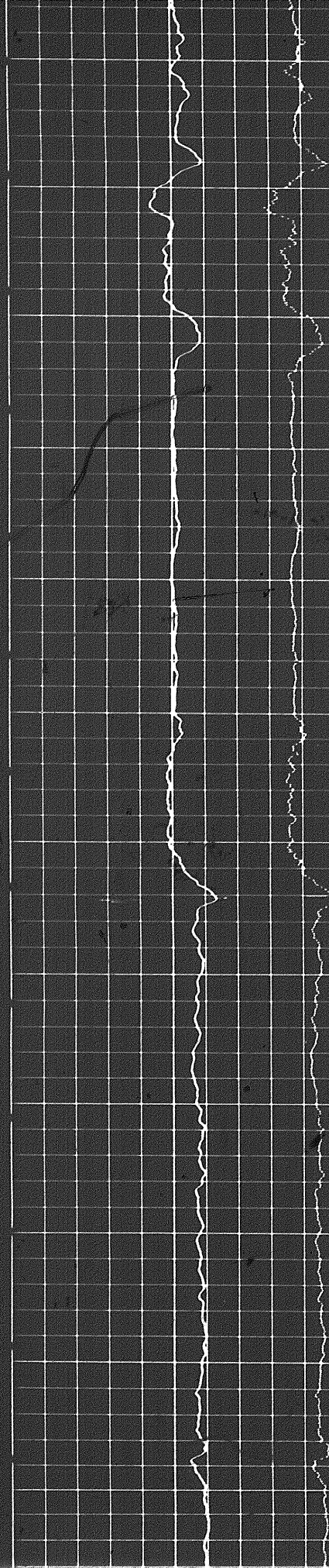
6300





6300
6400
6500
6600
6700
6800
6900





6900

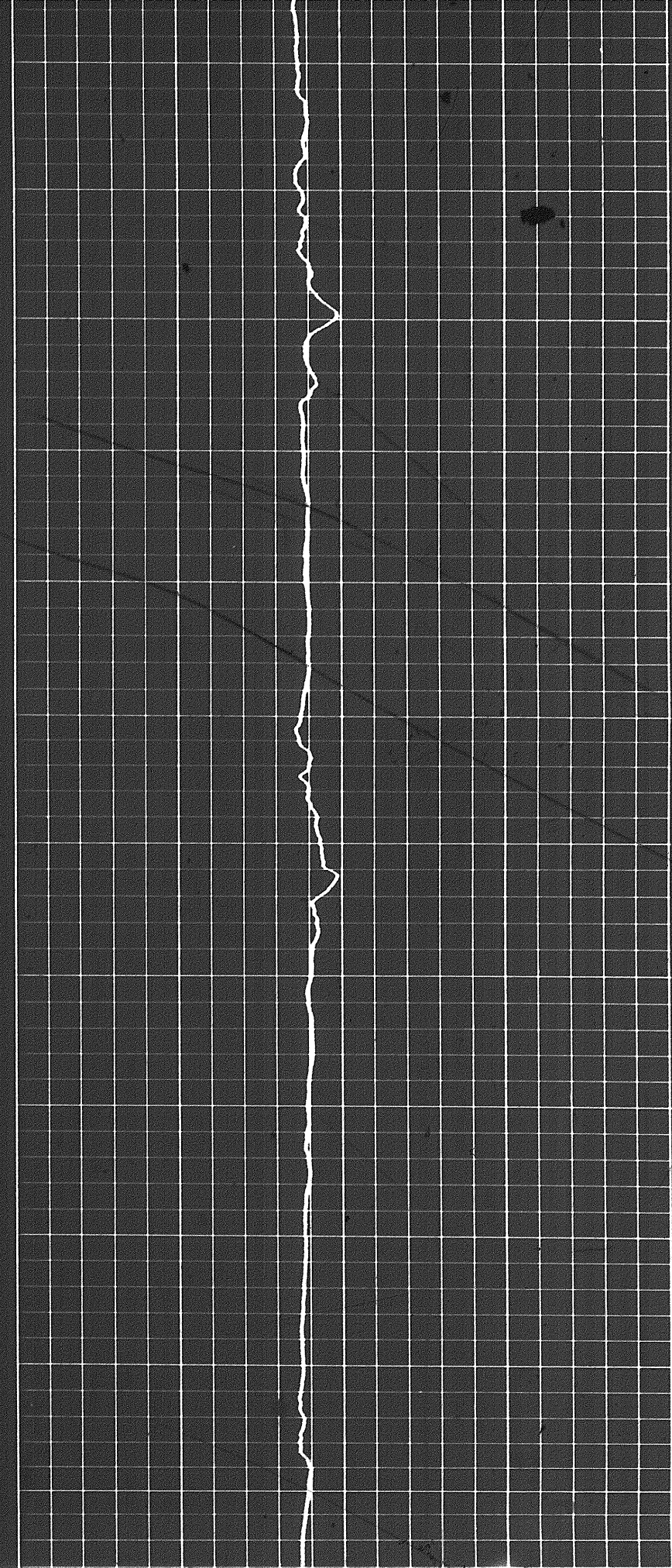
7000

7100

7200

7300

7400



7100

8 of 8

7100

7200

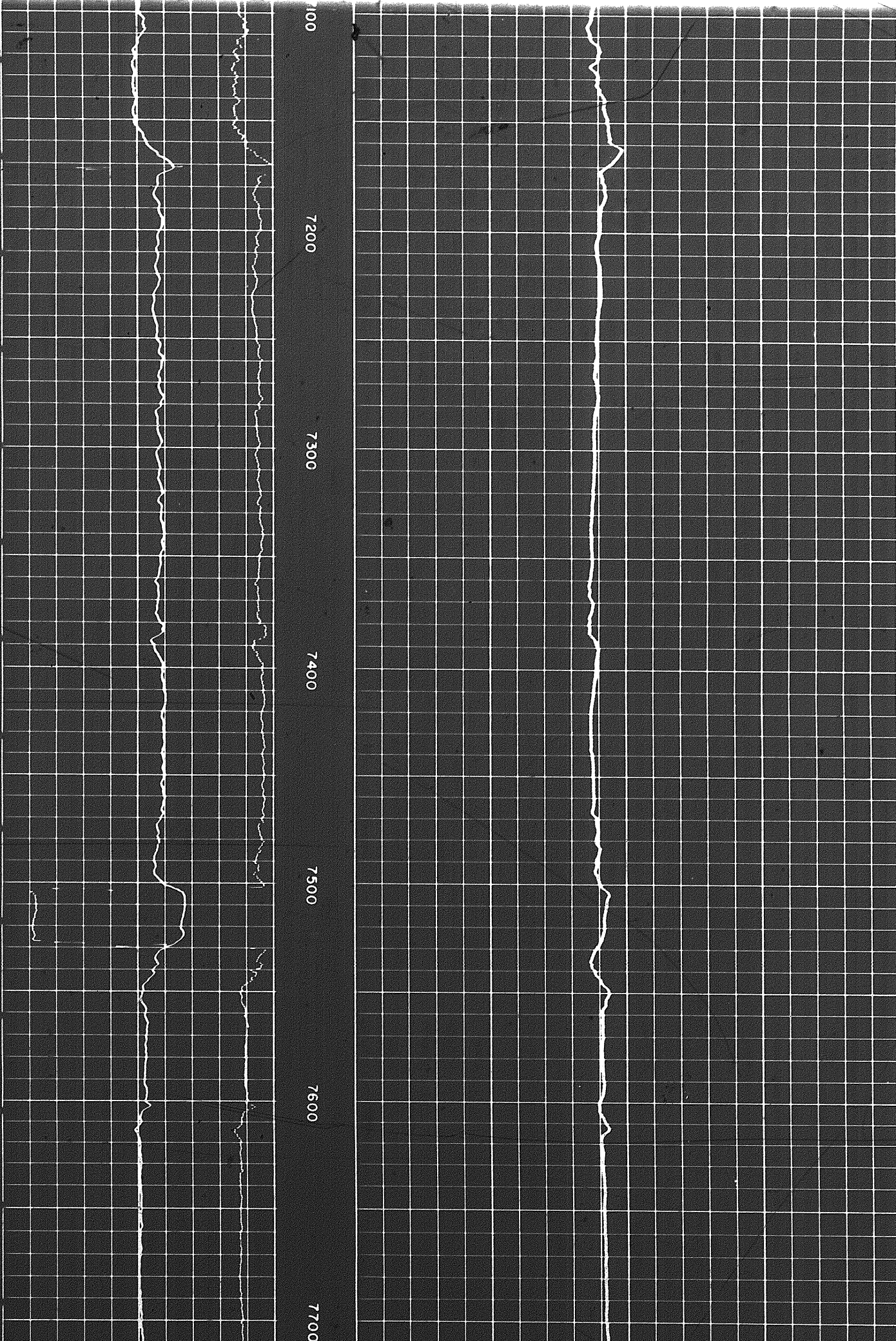
7300

7400

7500

7600

7700



00

7700

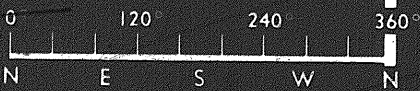
7800

7900

8000

8018

AZIMUTH NO. 1 ELECTRODE
FROM MAGNETIC NORTH

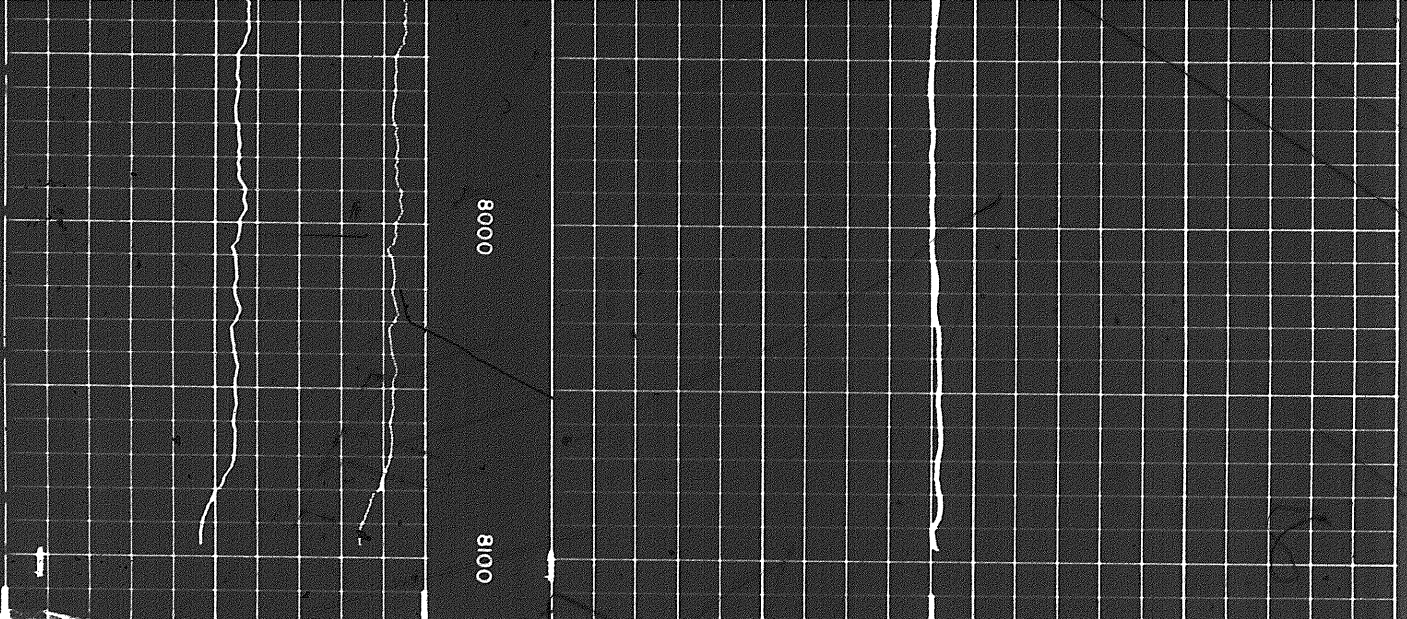


RELATIVE BEARING

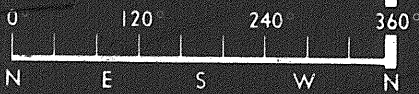


DEVIATION





AZIMUTH NO. 1 ELECTRODE
FROM MAGNETIC NORTH



RELATIVE BEARING



DEVIATION



ORIENTATION

DEPTHS

COMPANY CANADA SOUTHERN PETROLEUM LTD.

WELL NORTH BEAVER RIVER YT 1-27

FIELD WILDCAT

GRID 124° 0', 60° 10'

LOCATION NE CORNER SEC 27 UNIT 1 PROVINCE YUKON TERRITORY