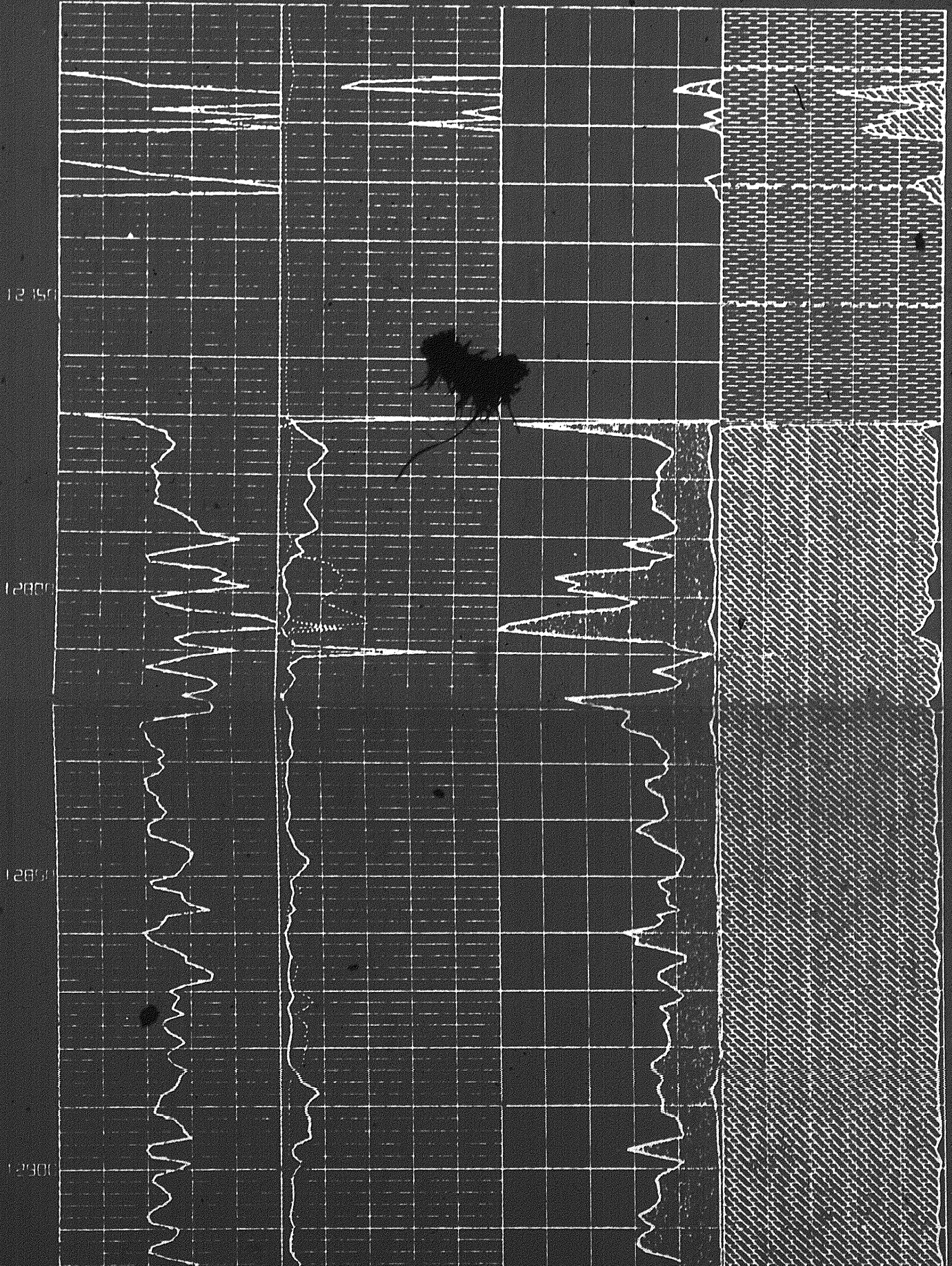
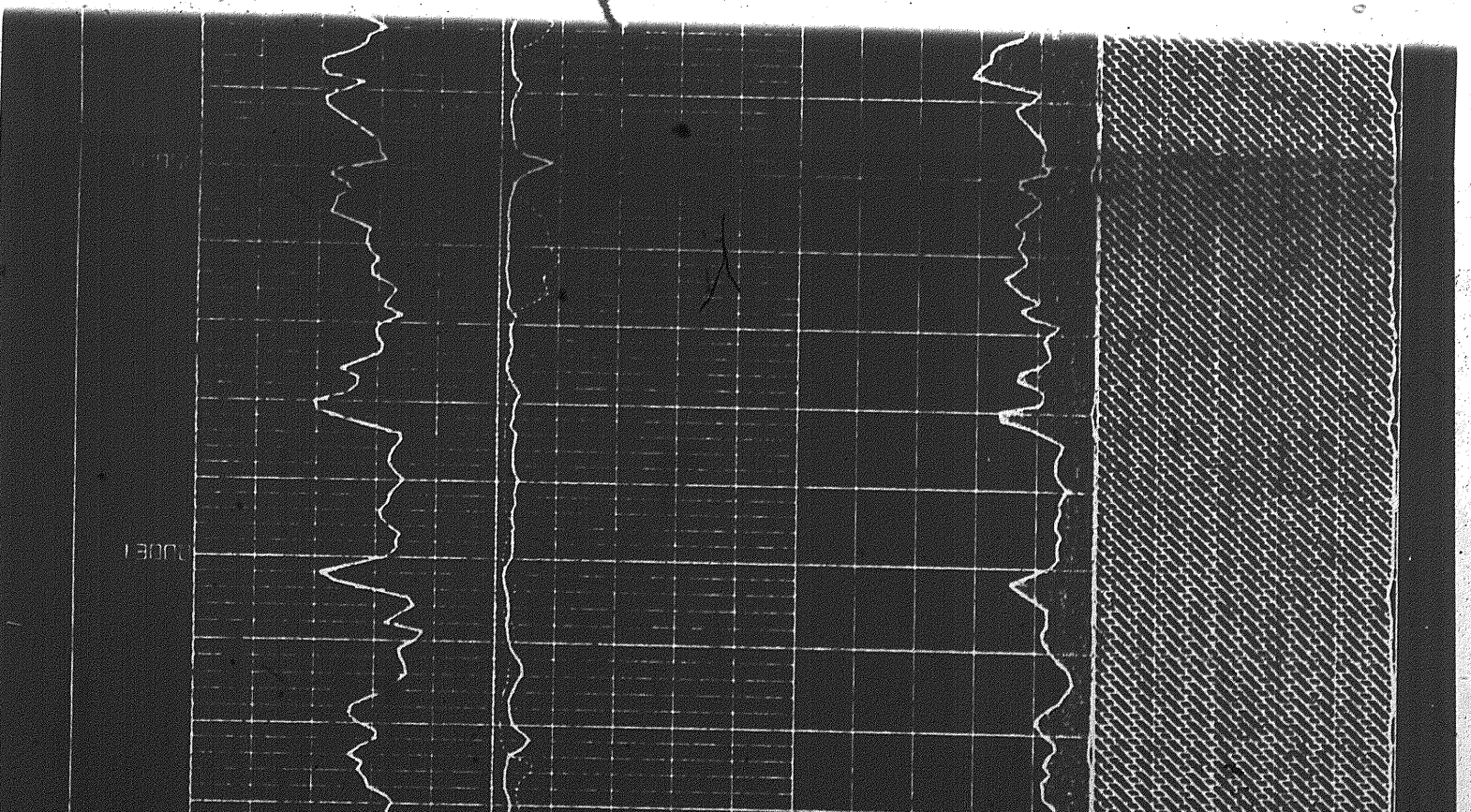
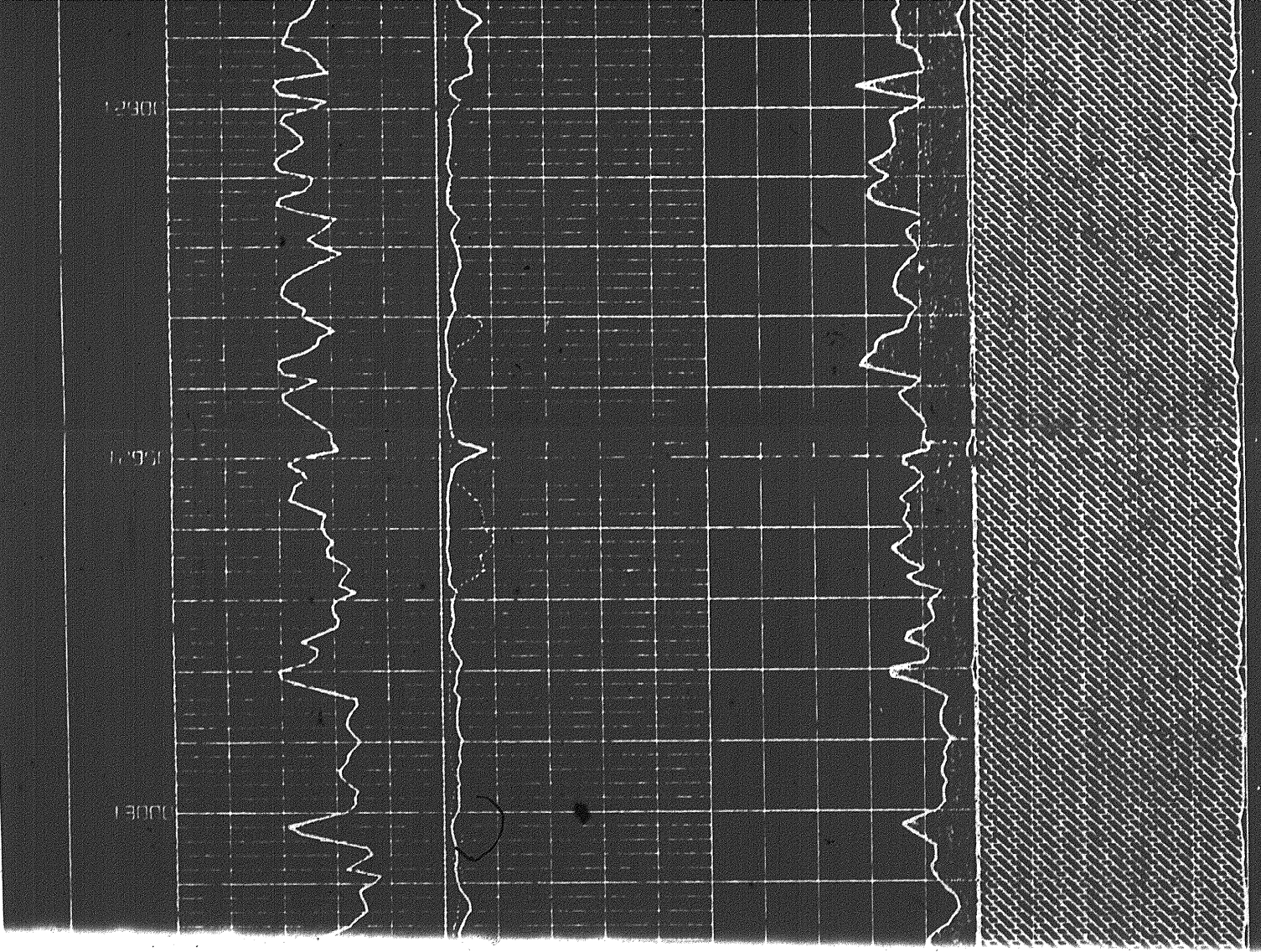




DEPTH	GRAIN DENSITY	WATER SATURATION	POROSITY AND FLUID ANALYSIS	BULK VOLUME ANALYSIS
	2.5 3.0 0	100 10	0 100 0	
	SECONDARY POROSITY	PERMEABILITY		
0 25 1	----- 1000	HC H2O	SHALE MATRIX OE	
	DELTA HOLE			
	-8 -4 +4 +8			



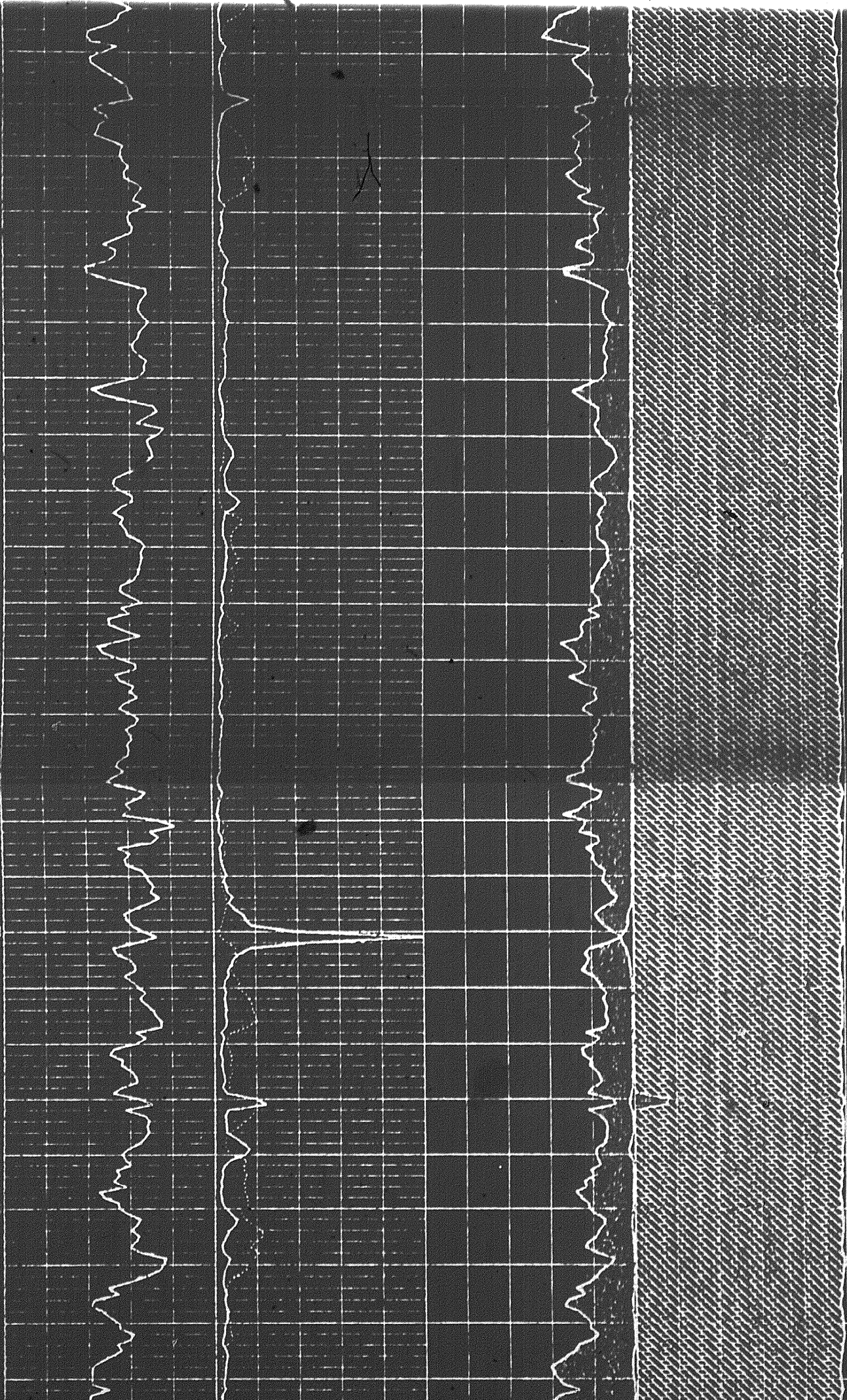


000E1

050E1

001E1

051E1



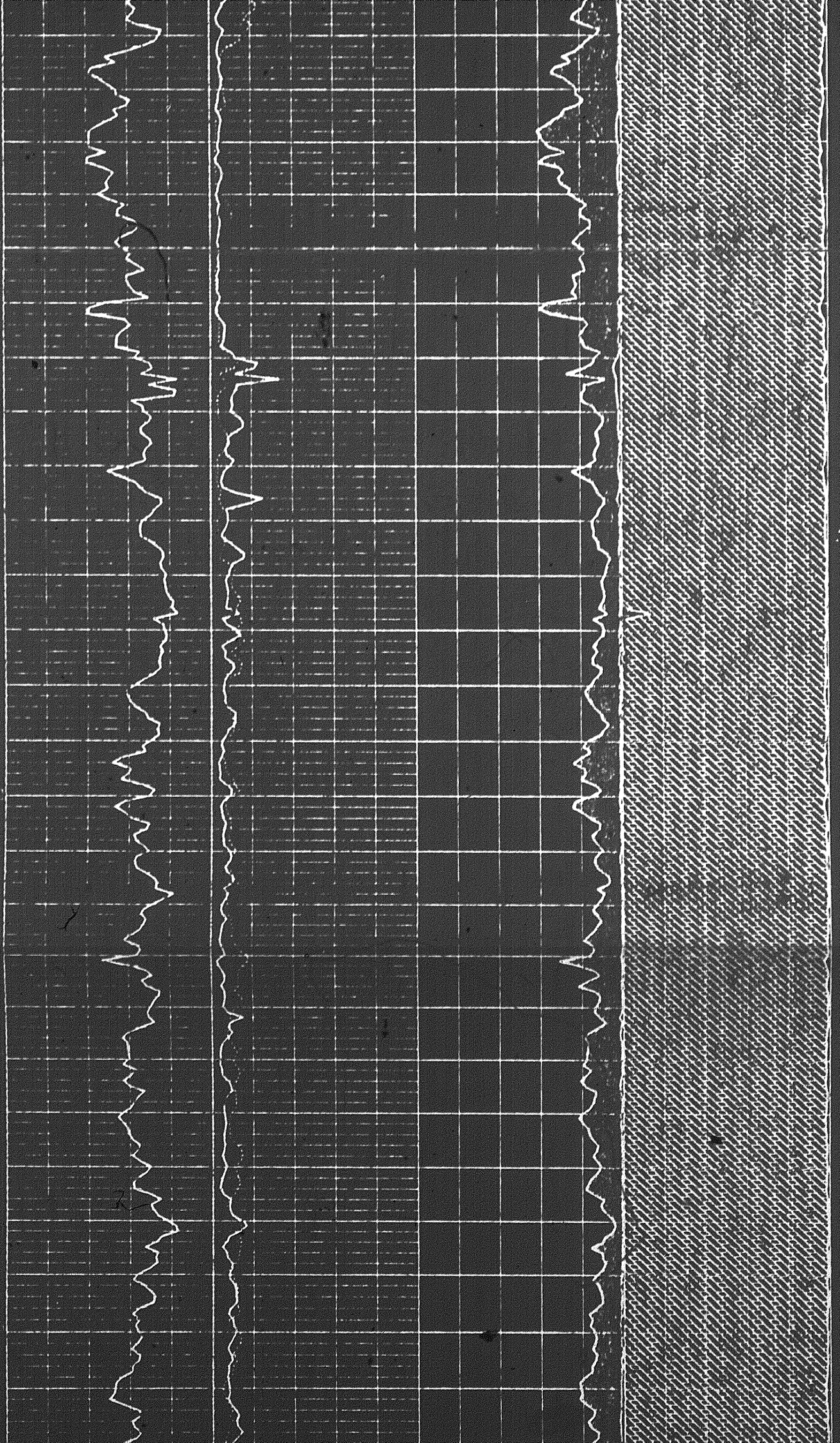
13400

13410

13420

13430

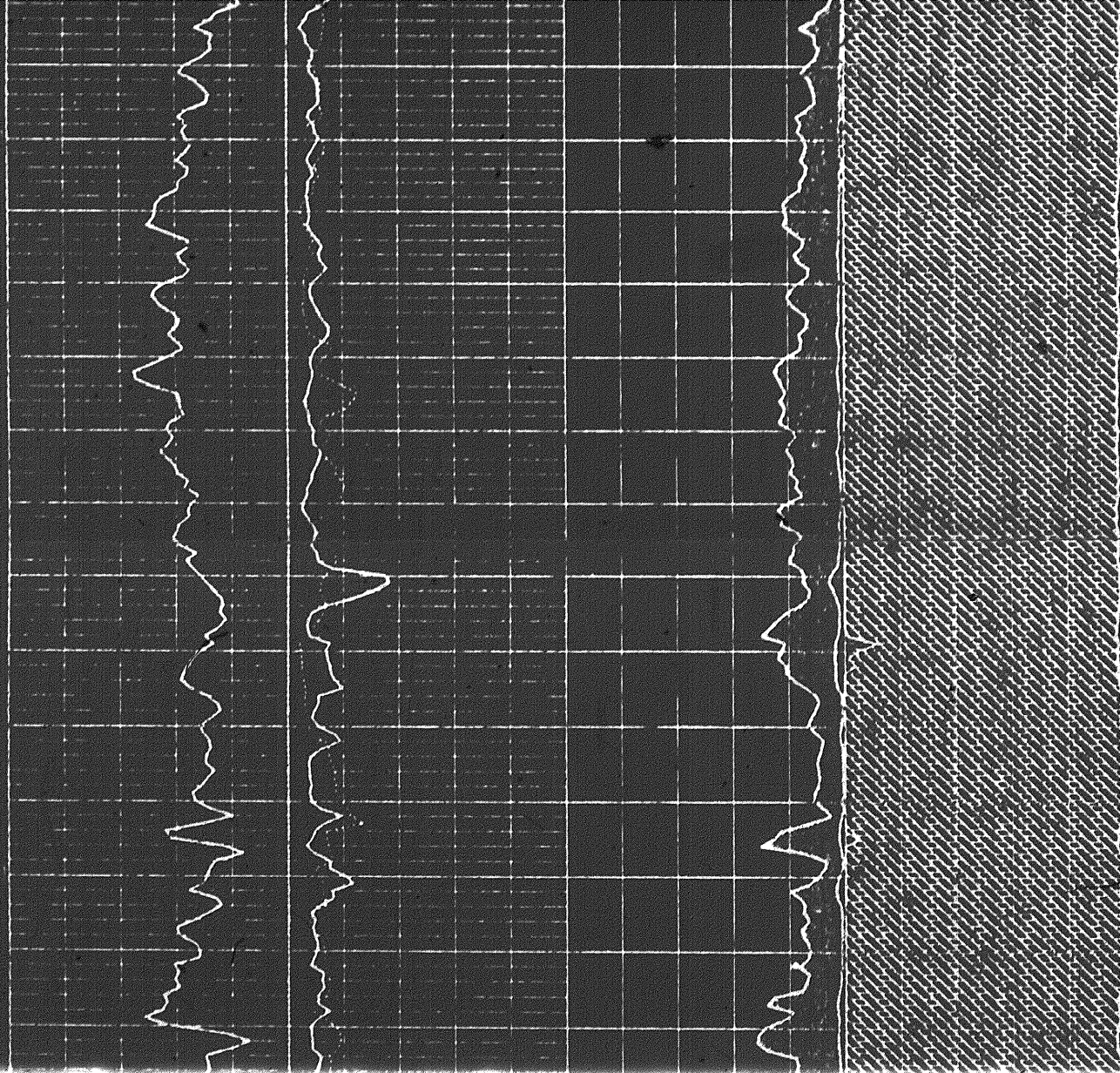
13440



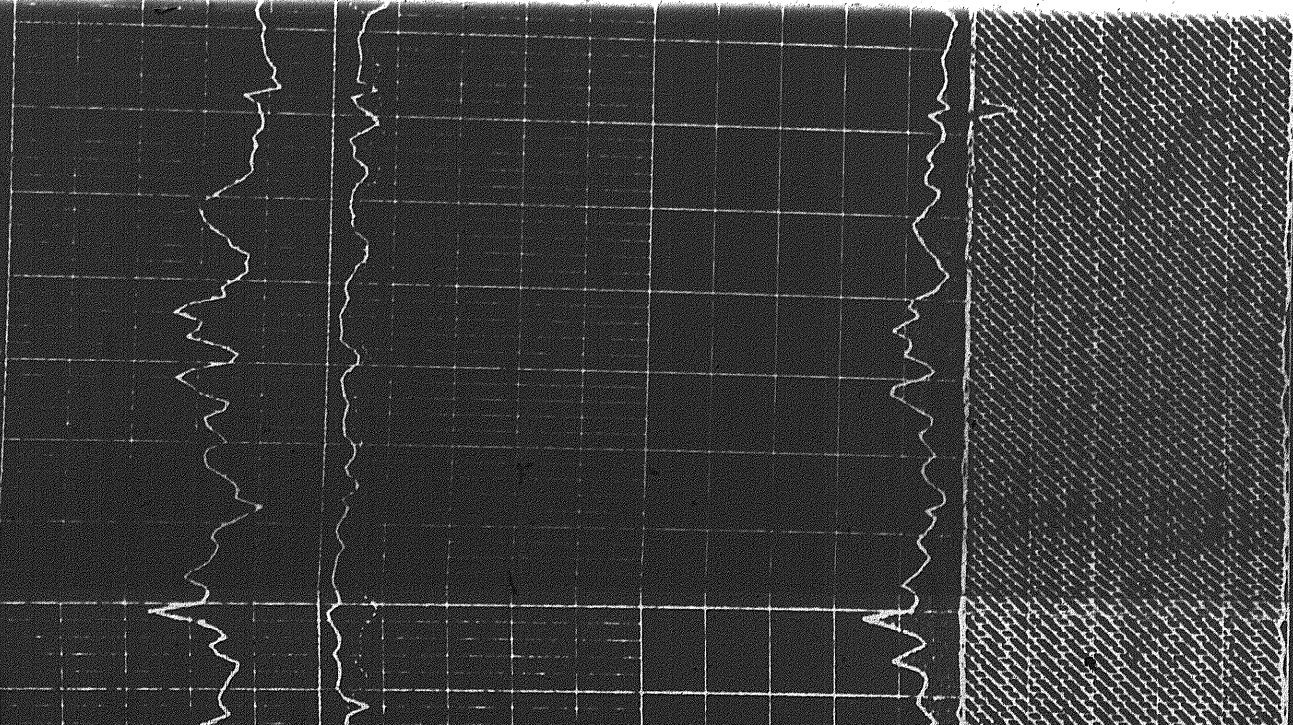
13400

13500

13500



13400



1335

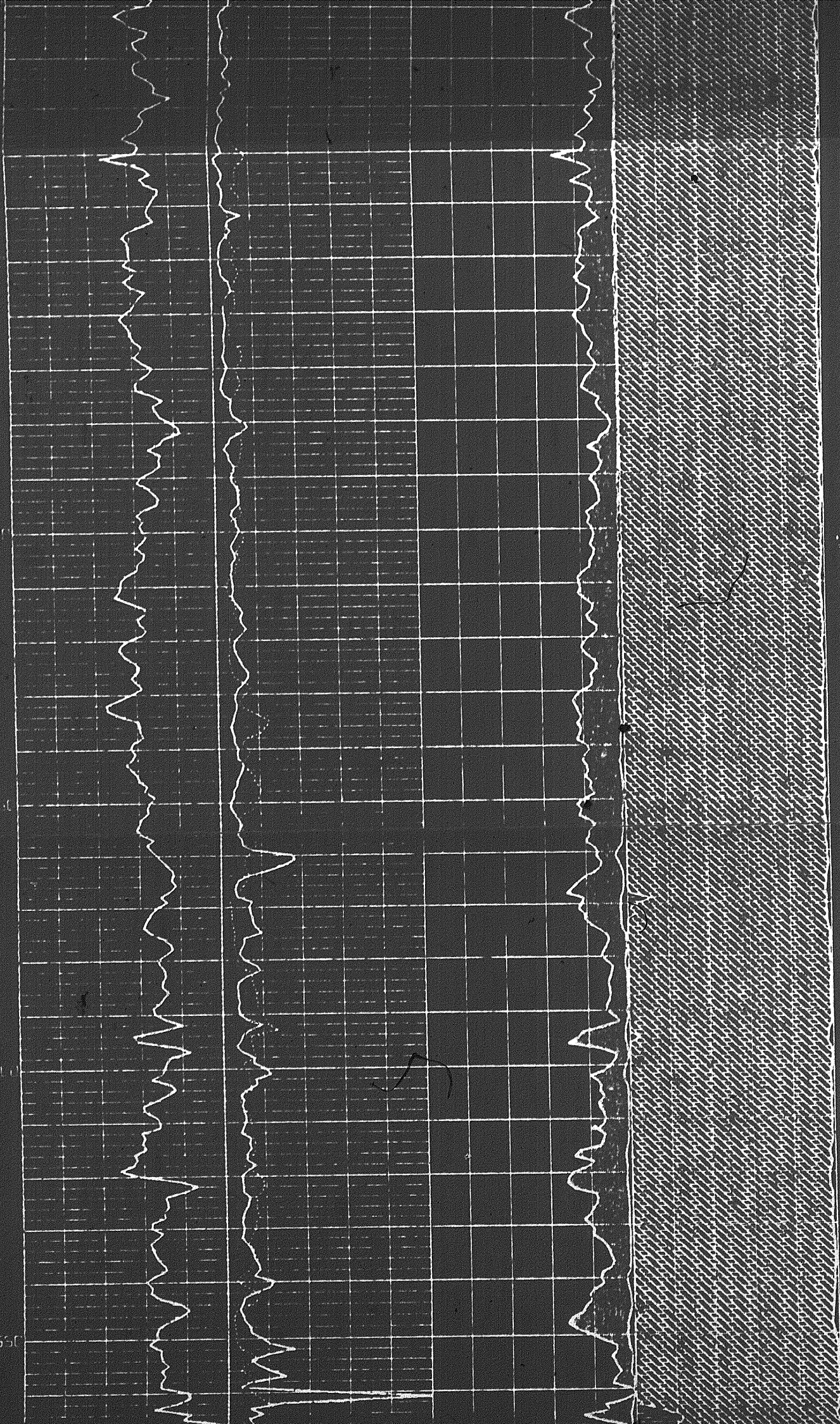
1340

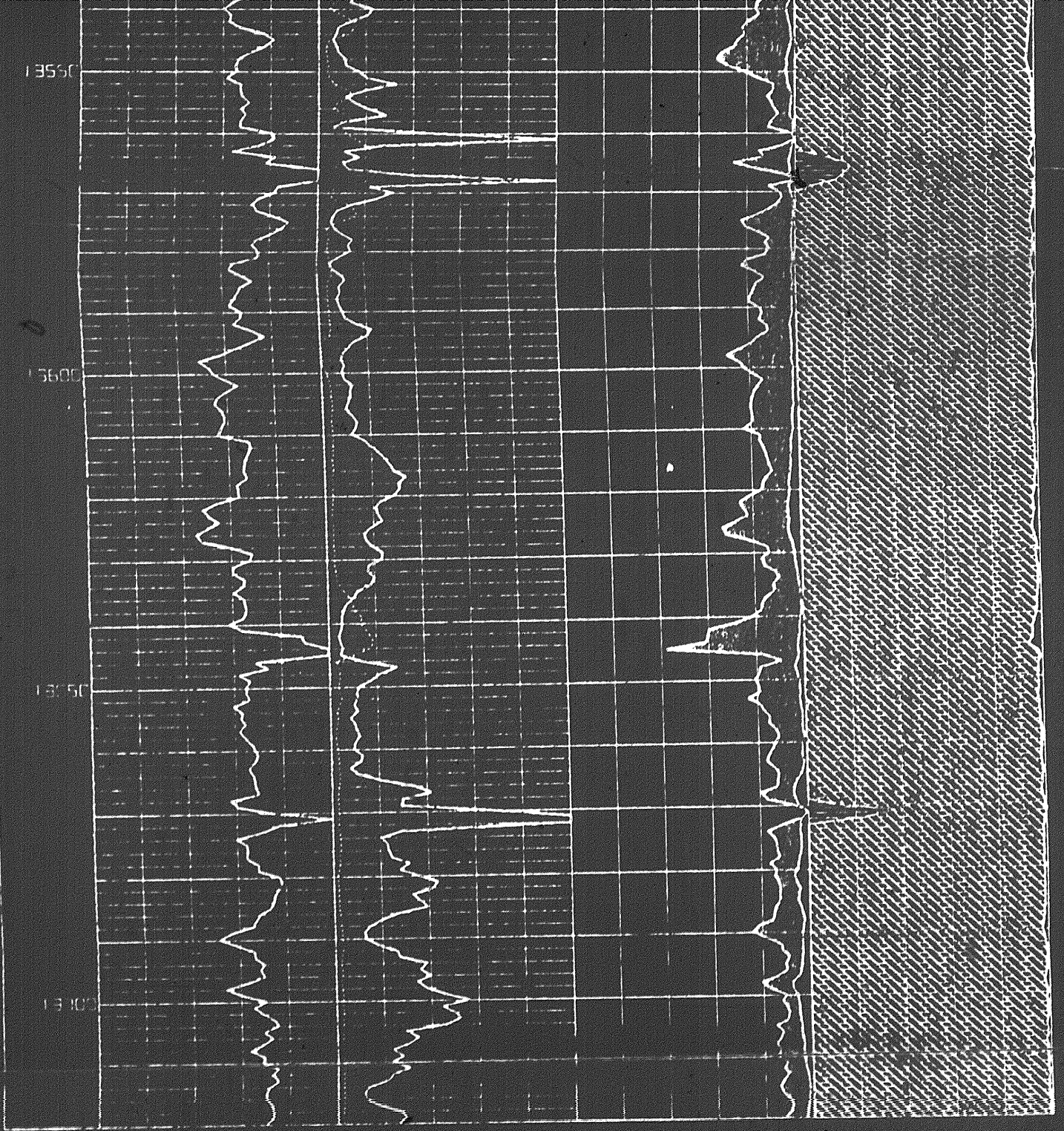
1345

1350

1355

8





COMENT LTD.

COLUMBIA ET AL KOTANEELEE

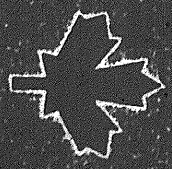
63-06-27N 124-87-16W



ofua file

E-37

COMENT  
COMPUTER  
ENTERPRISES LTD



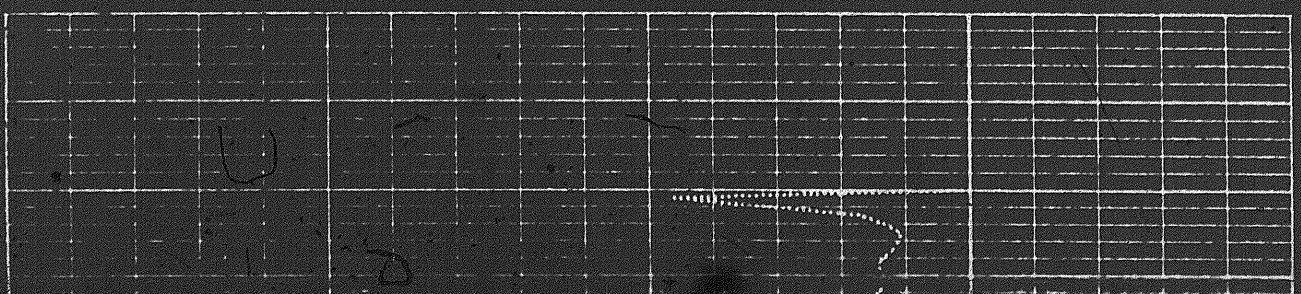
COMPUTERIZED  
LOG  
INTERPRETATION  
FOR

COLUMBIAT AL KOTANEELLE  
60-06-27N 124-07-16W

02/10/78

ALL INTERPRETATIONS ARE OBTAINED BASED ON INFERENCE FROM ELECTRICAL OR OTHER MEASUREMENTS AND WE CANNOT, AND DO NOT, GUARANTEE THE ACCURACY OR CORRECTNESS OF ANY INTERPRETATIONS, AND WE SHALL NOT, EXCEPT IN THE CASE OF GROSS OR WILLFUL NEGLIGENCE ON OUR PART, BE LIABLE OR RESPONSIBLE FOR ANY LOSS, COSTS, DAMAGES OR EXPENSES INCURRED OR SUSTAINED BY ANYONE RESULTING FROM ANY INTERPRETATIONS MADE BY ANY OF OUR OFFICERS, AGENTS OR EMPLOYEES.

Period by 5  
10



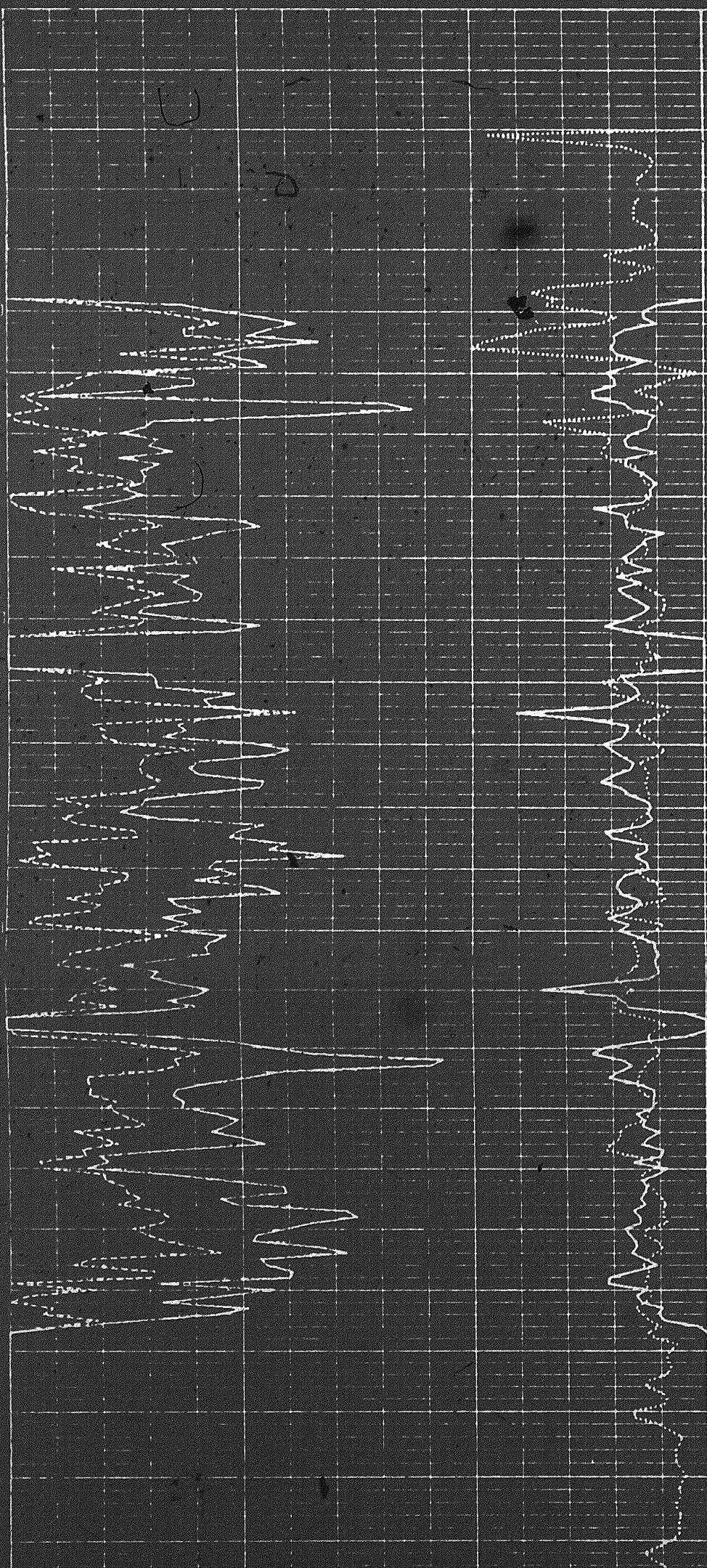
12800

12821

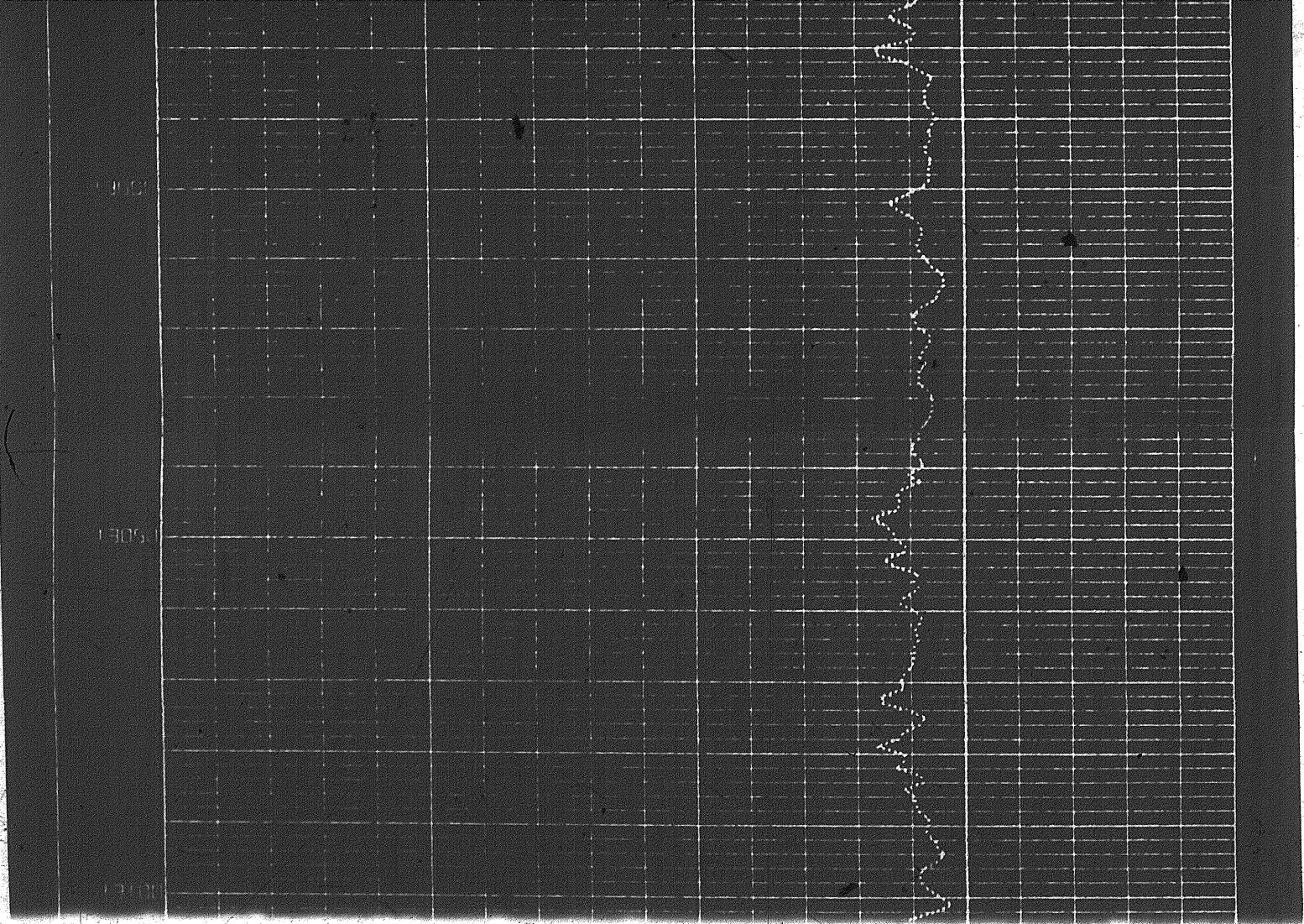
12841

12861

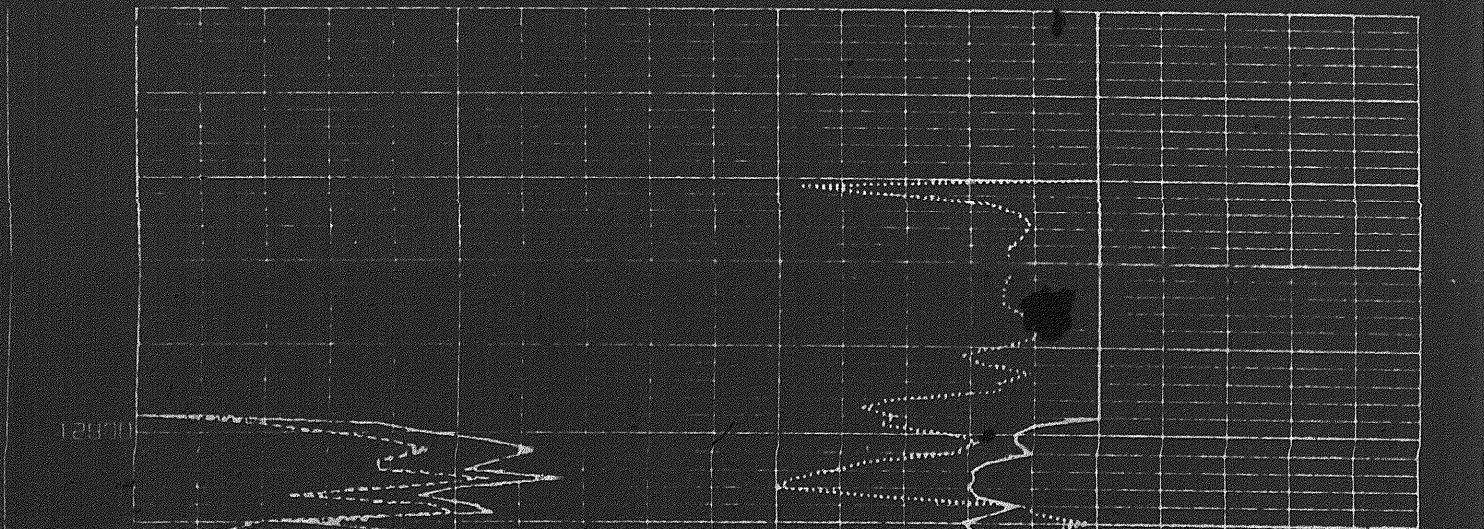
12881



Handwritten marks and symbols, including a large 'U' and other illegible characters.



Legend:  
——— No. 1  
- - - - - No. 2  
- · - · - No. 3



12970

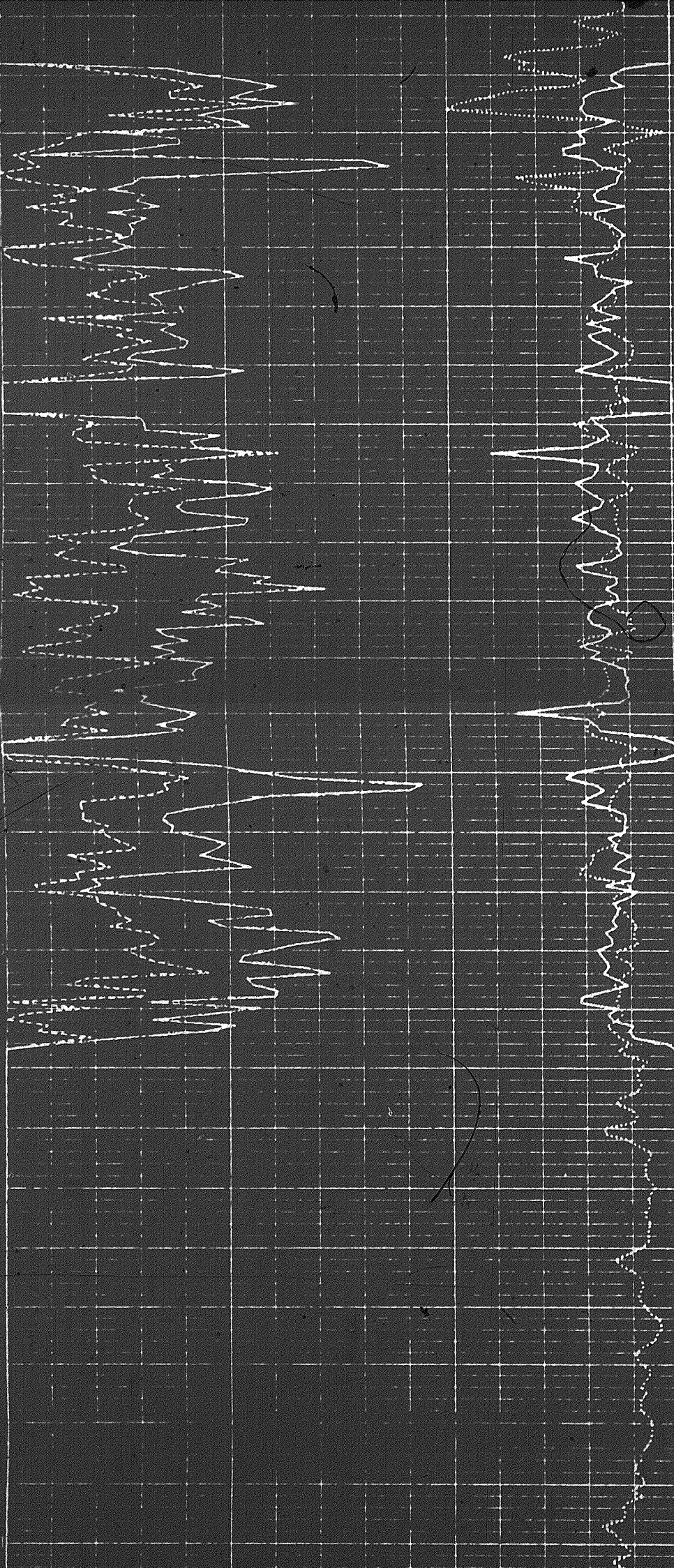
12971

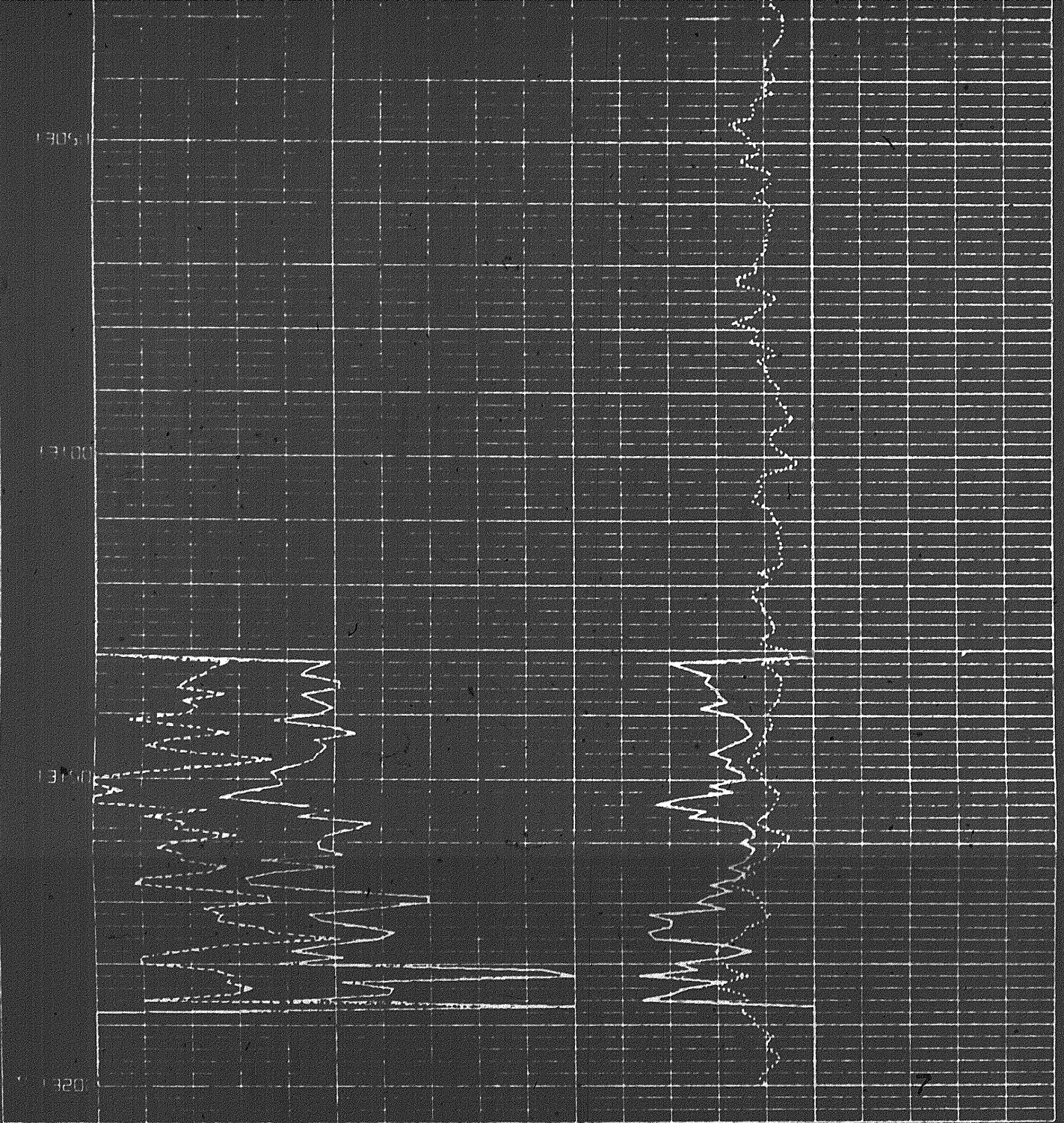
12972

12973

12974

12975





COMENT LTD.

COLUMBIA ET AL KOTANEELEE

68-06-27N 124-07-16W