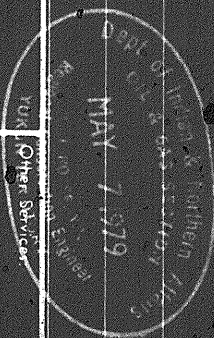


Schlumberger

SCHLUMBERGER OF CANADA
Calgary, Alberta

PROVINCE	FIELD	WELL	COMPANY
WELL	FIELD	PROVINCE	LOCATIONS
Permanent Datum	Elev. 4111.18	Above Perm. Datum	ELEV. KB 419.10
Log Measured From			GL 411.48
			CRF 411.48



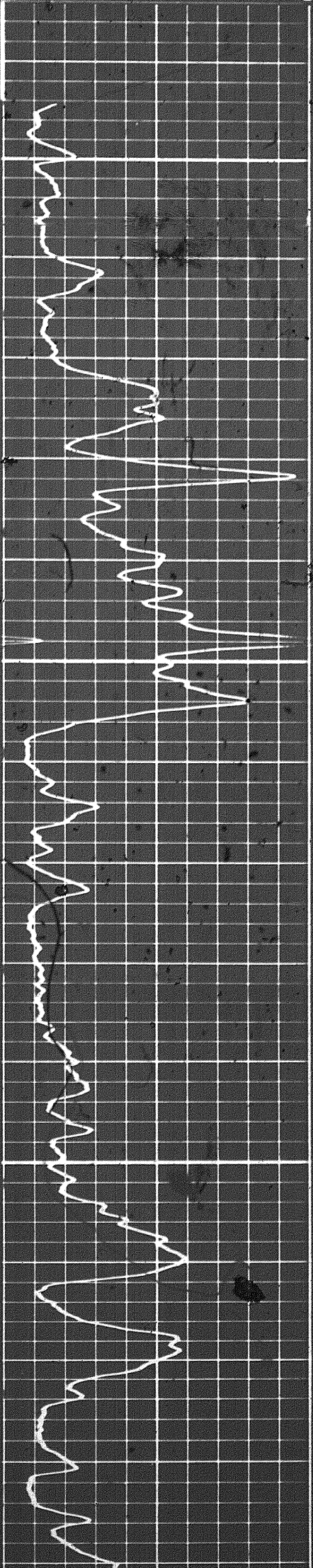
Date	24 FEB 79	Run No.	1195
First Reading	1100.0	Measured	119.5
Depth Reached	1219.0	Bottom Driller	
Csg. SOC		Csg. Ditch	
Dens. Visc.		Mid pH	
Water Loss		Ret.	
BHT		Rmf	
Rmc		Source of Sample	
BH Size		Op. Rig Time	
		Truck No.	
		Recorded By	
		Witness	

REMARKS: CORRELATION LOG RUN GR-COL CORRELATED TO BHC-GR RUN ON FEB. 15/79 BY SCHLUMBERGER
SM-FLR RUN WITH COL. COLLARS RECORDED 1.3 DEEP

Depth Control Log

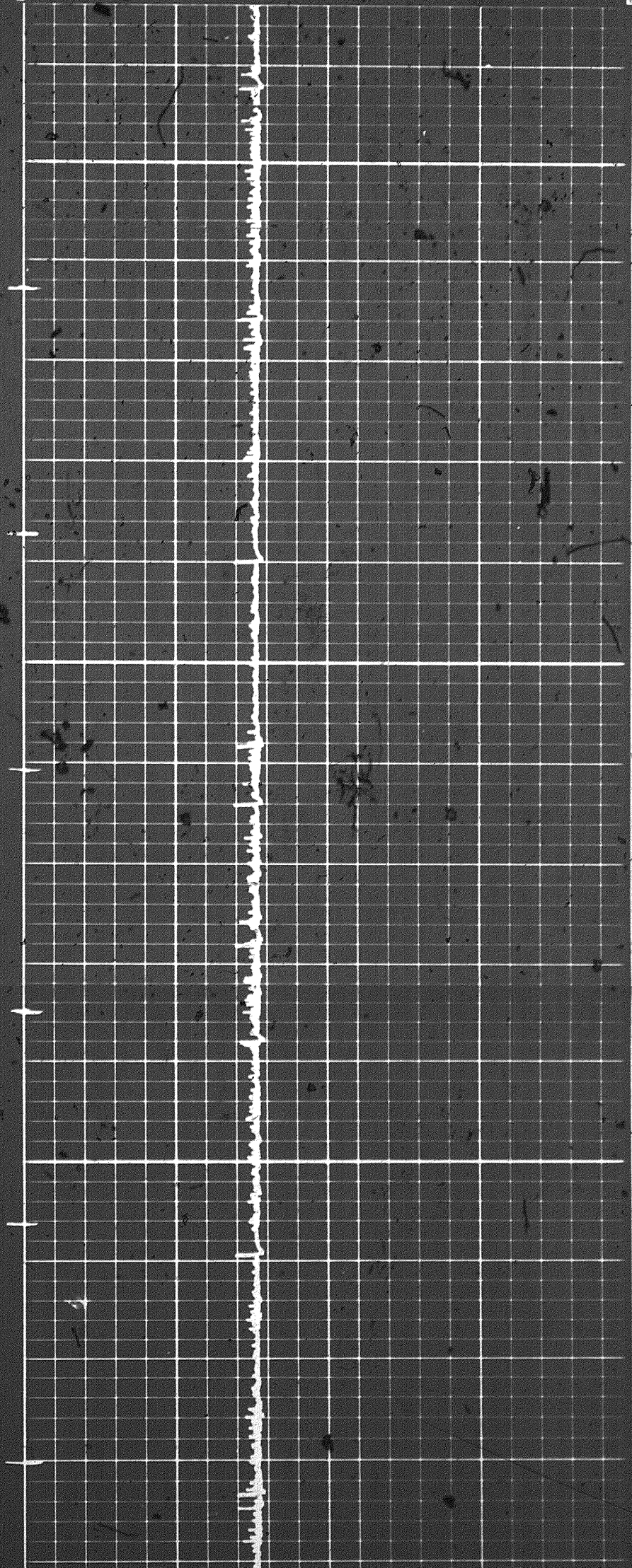


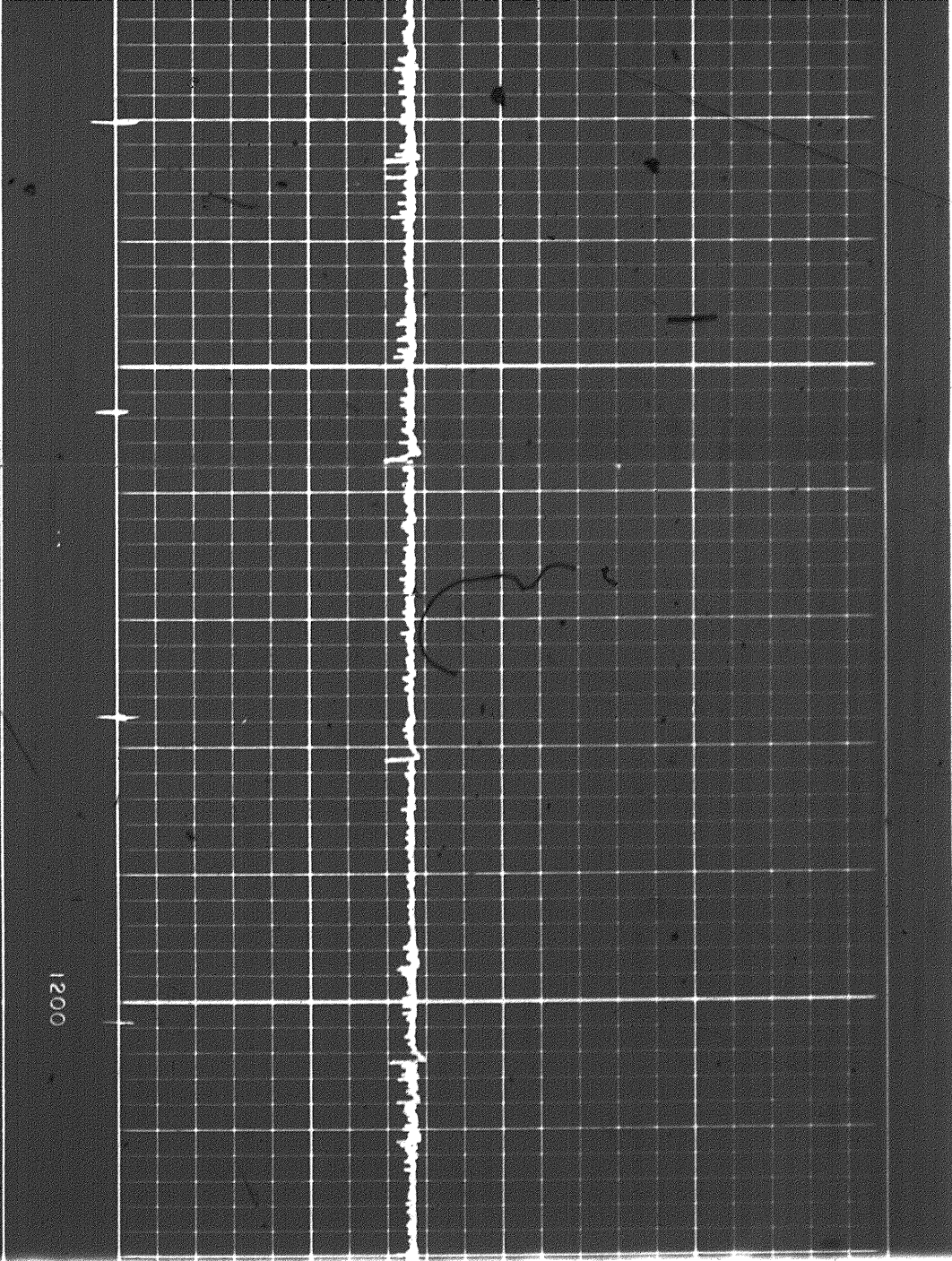
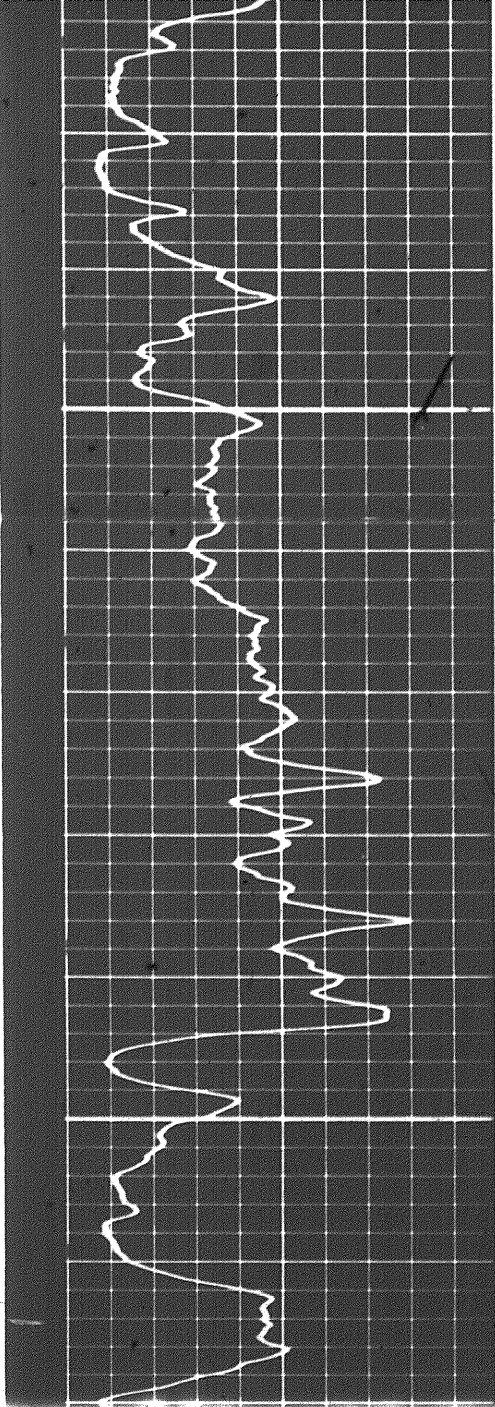
X41003A



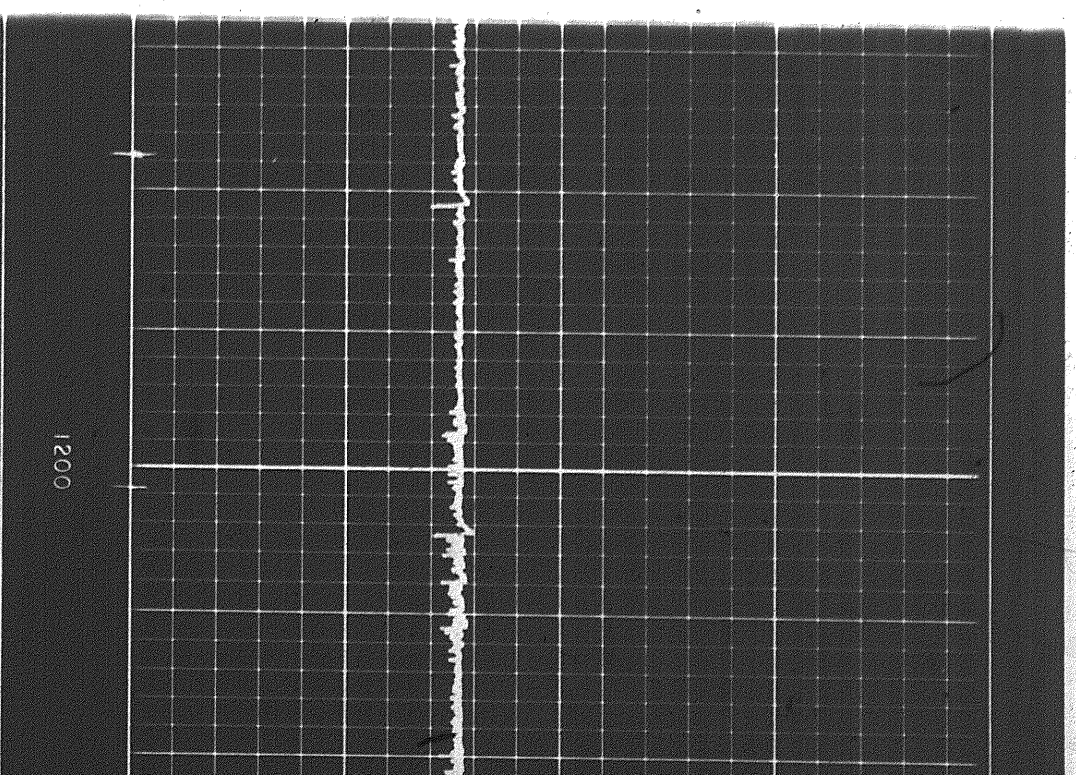
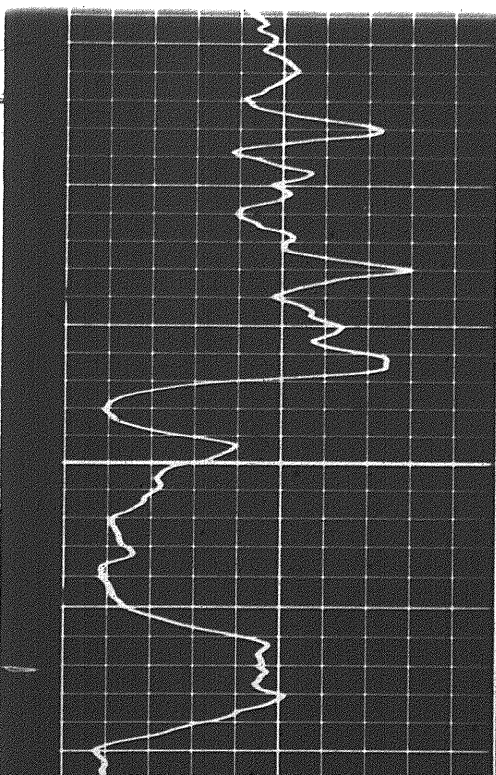
0011

0511

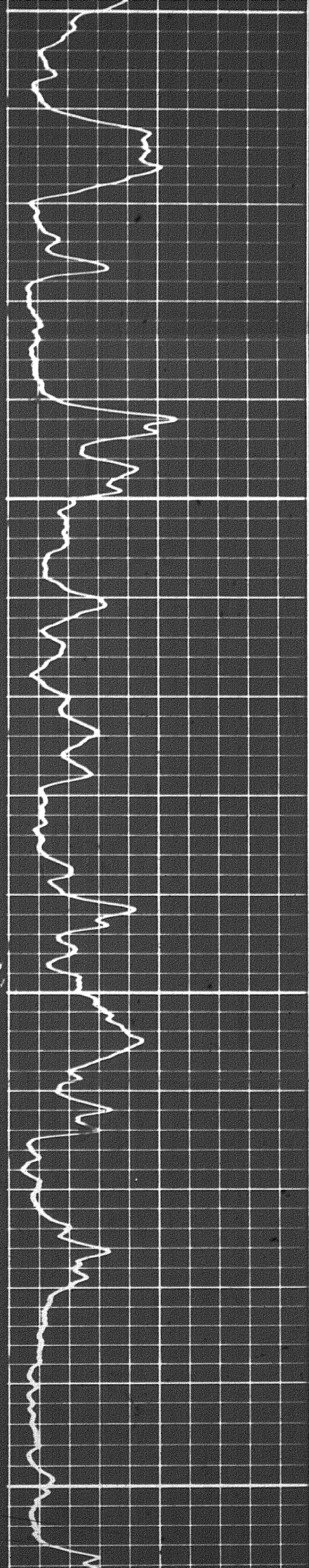




1200

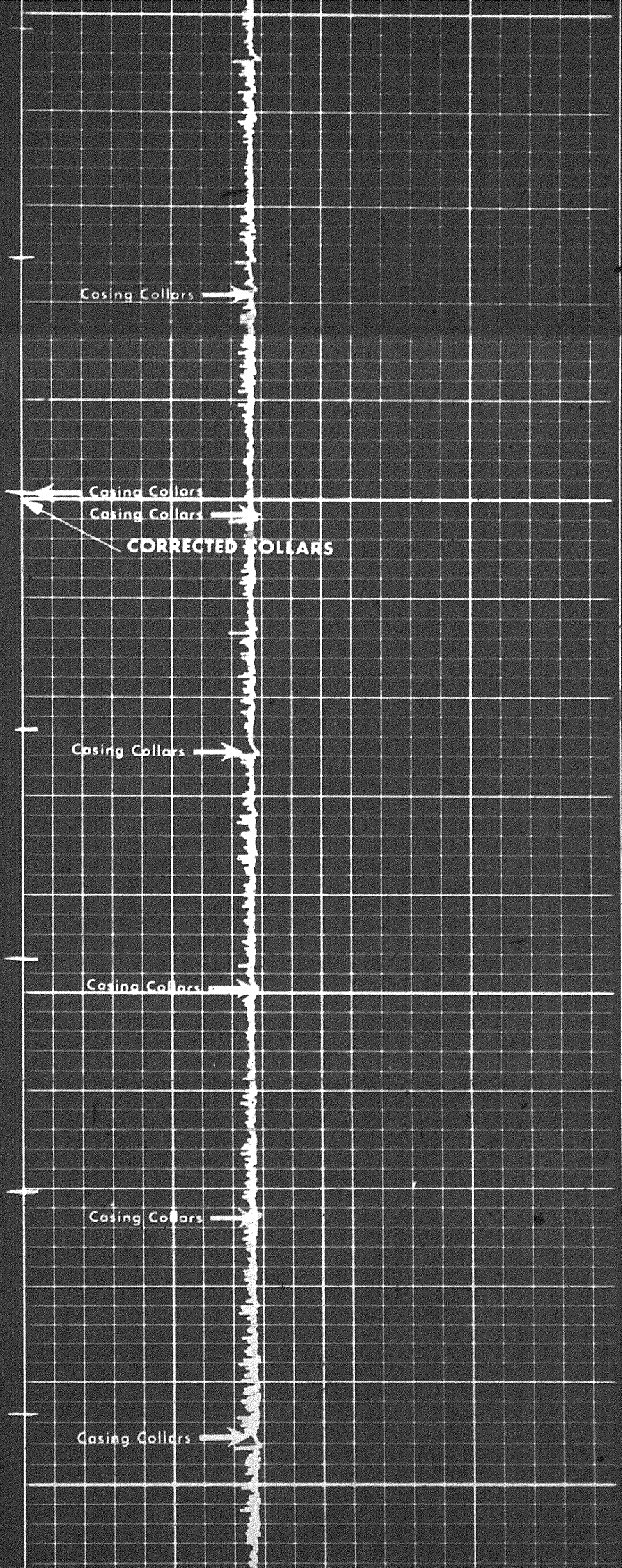


1200



200

1250



Casing Collars

Casing Collars

Casing Collars

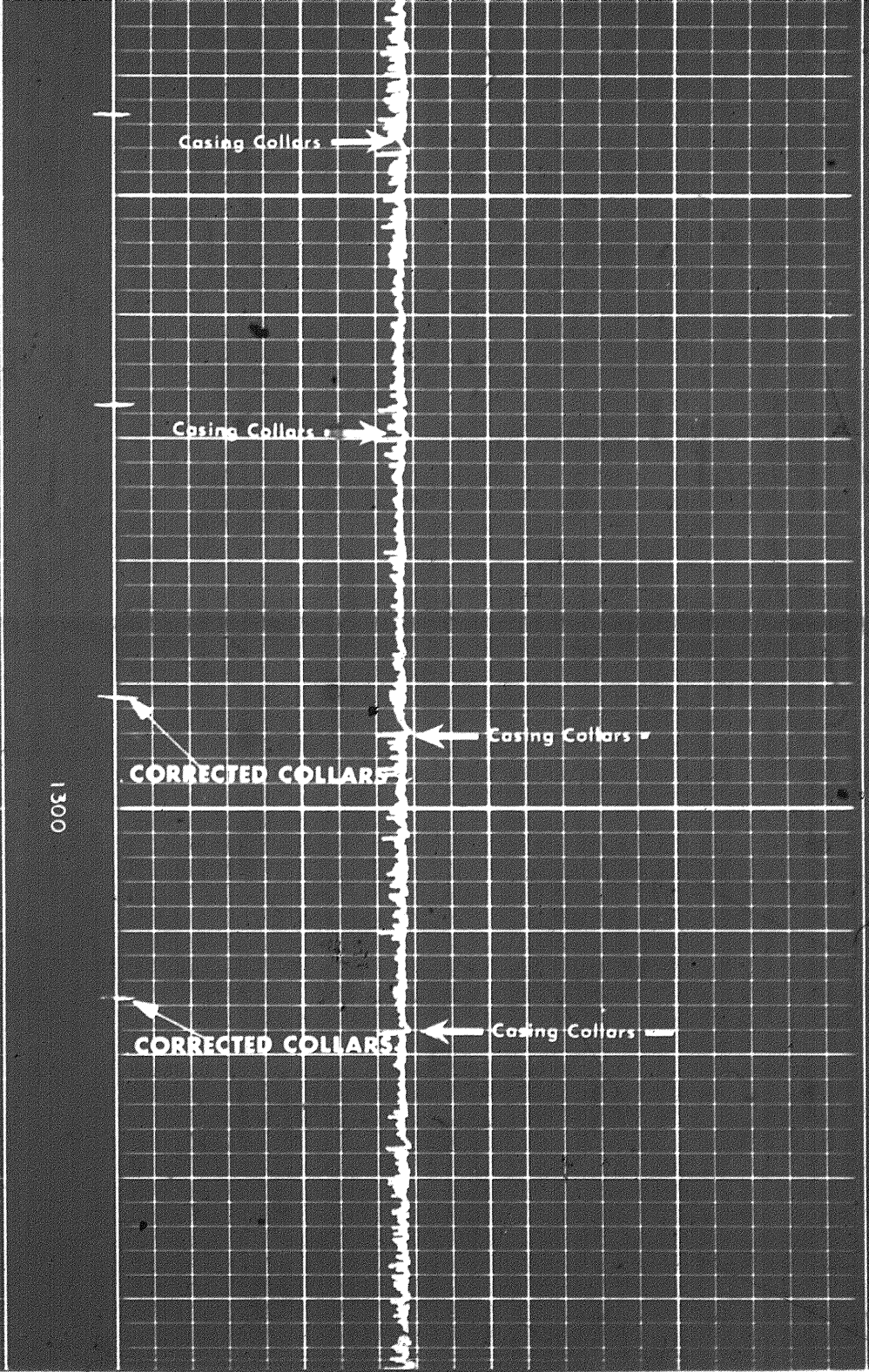
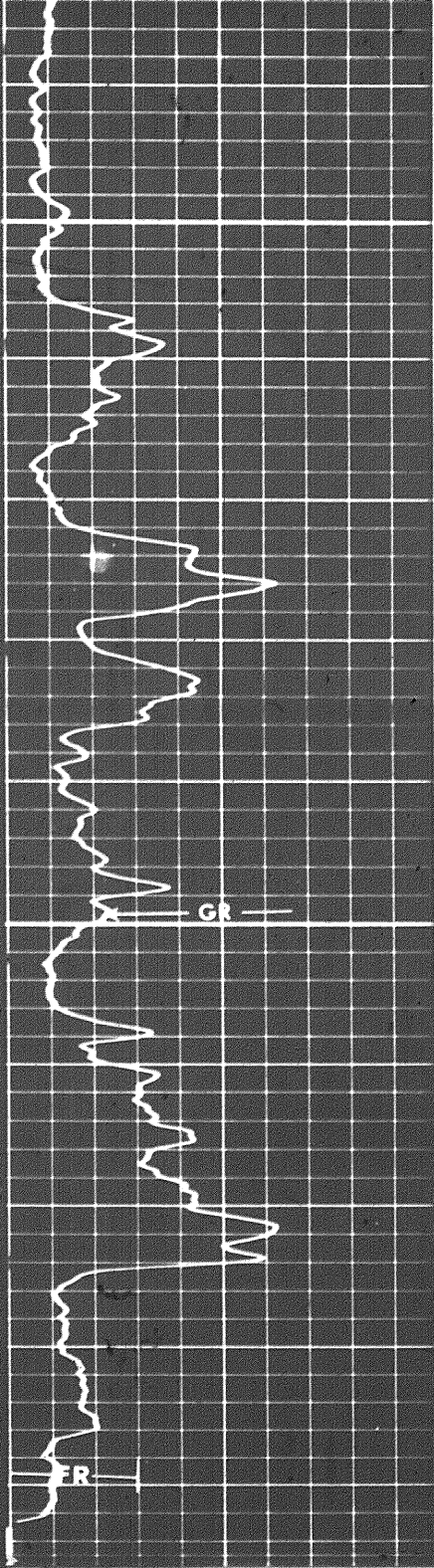
CORRECTED COLLARS

Casing Collars

Casing Collars

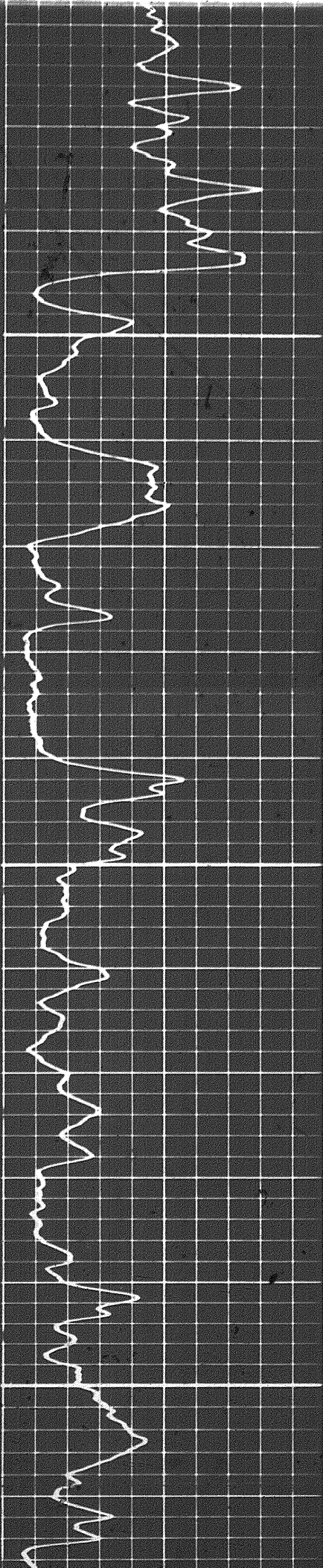
Casing Collars

Casing Collars



COMPANY COLUMBIA GAS DEVELOPMENT OF CANADA LTD
 WELL COLUMBIA ET AL KOTANEELEE XT M-17
 FIELD WILDGAT
 PROVINCE YUKON

SCHL FR _____ m
 SCHL TD _____ m
 DRLR TD _____ m
 Elev.: KB _____ m
 _____ m
 GL _____ m



1200

1250

Casing Collars

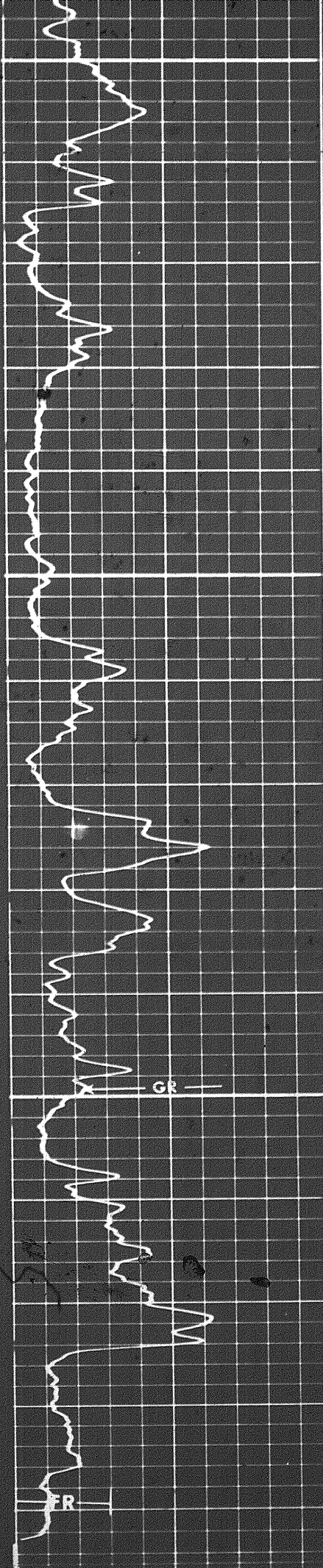
Casing Collars

Casing Collars

CORRECTED COLLARS

Casing Collars

Casing Collars



1250

Casing Collars

Casing Collars

Casing Collars

Casing Collars

CORRECTED COLLARS

Casing Collars

CORRECTED COLLARS

Casing Collars

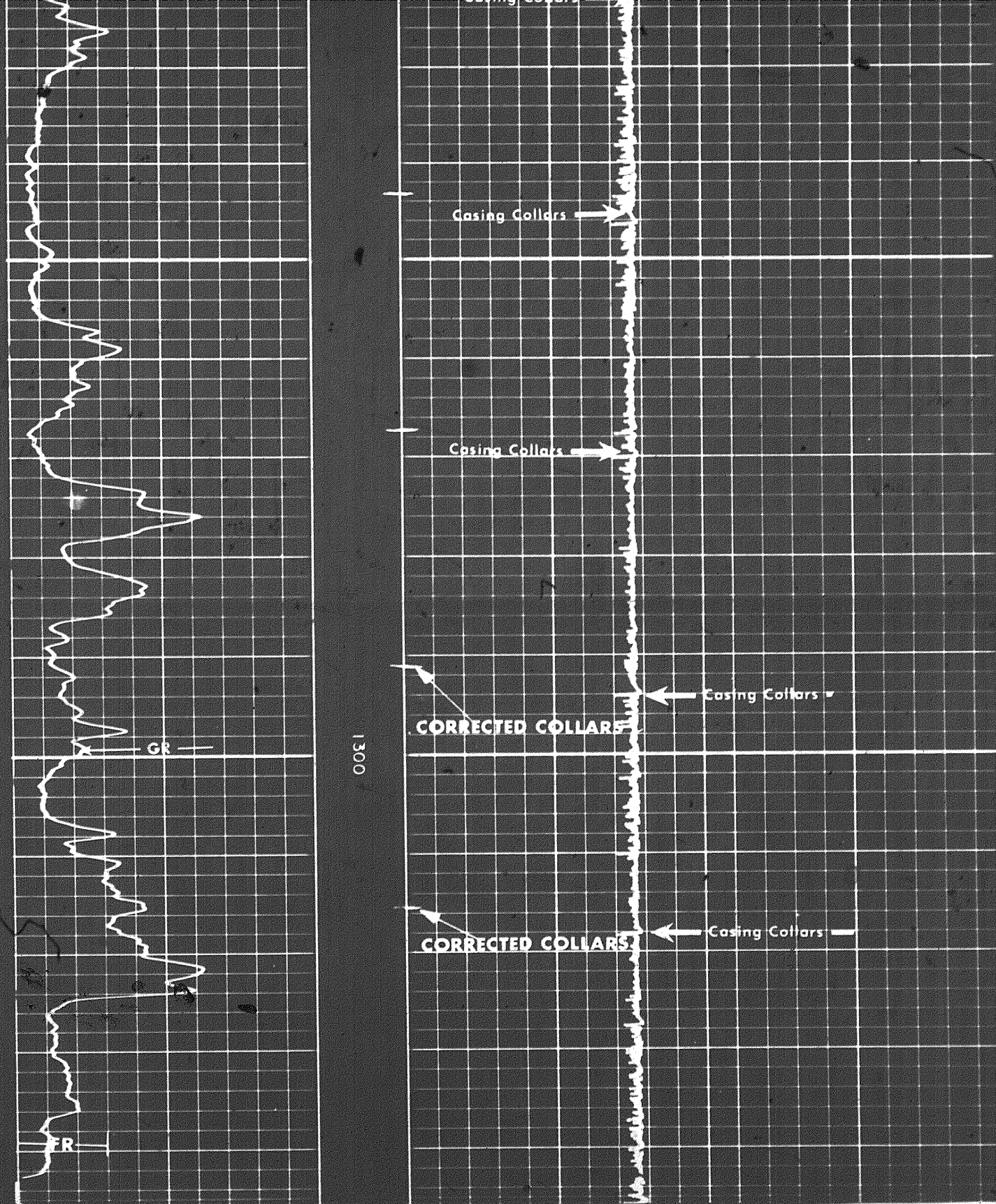
1300

COMPANY

COLUMBIA GAS DEVELOPMENT OF CANADA LTD

SCHL. FR _____ m

SCHL. TD _____ m



COMPANY	COLUMBIA GAS DEVELOPMENT OF CANADA LTD	SCHL.	FR	_____	m
WELL	COLUMBIA ET AL. KOTANEELEE YT M-17	SCHL.	TD	_____	m
FIELD	WILDEAT	DRLR	TD	_____	m
PROVINCE	YUKON	Elev.	KB	_____	m
			GL	_____	m