

Schlumberger

SCHLUMBERGER OF CANADA Calgary Alberta

**BOREHOLE COMPENSATED SONIC LOG**

PROVINCE \_\_\_\_\_  
 FIELD \_\_\_\_\_  
 WELL \_\_\_\_\_  
 COMPANY \_\_\_\_\_

LOCATION  
 LSD \_\_\_\_\_ SEC \_\_\_\_\_ TWP \_\_\_\_\_ RANGE \_\_\_\_\_  
 COMPANY \_\_\_\_\_  
 WELL \_\_\_\_\_  
 FIELD \_\_\_\_\_  
 PROVINCE \_\_\_\_\_

Other Services:  
 \_\_\_\_\_

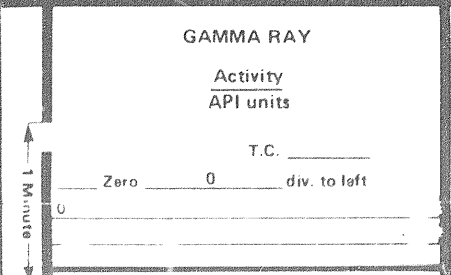
Permanent Datum: \_\_\_\_\_ Elev.: \_\_\_\_\_ m  
 Log Measured From: \_\_\_\_\_ m Above Perm. Datum \_\_\_\_\_  
 Drilling Measured From: \_\_\_\_\_ Elev.: \_\_\_\_\_ m  
 D.F. \_\_\_\_\_  
 G.L. \_\_\_\_\_

Date	Run No.	One	Two	Three	Four
Depth-Driller		m	m	m	m
Depth-Logger (Schl.)		m	m	m	m
Bitm. Log Interval		m	m	m	m
Top Log Interval		m	m	m	m
Casing-Driller		m	m	m	m
Casing-Logger		m	m	m	m
Bit Size		mm	mm	mm	mm
Type Fluid in Hole					
Dens (kg/m <sup>3</sup> ) Visc.					
pH Fluid Loss (cm <sup>3</sup> )					
Source of Sample					
Rmt @ Meas. Temp.		@	@	@	@
Rmtf @ Meas. Temp.		@	@	@	@
Source: Rmtf		@	@	@	@
Rmt @ BHT		@	@	@	@
TIME					
Tool Last on Bottom					
Max. Rec. Temp. #1 #2		C	C	C	C
Unit District					
Recorded By					
Witnessed By					

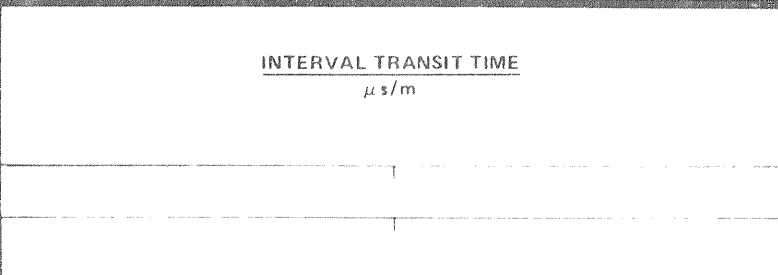
Run No.	One	Two	Three	Four	REMARKS
Service Order No.					
<b>EQUIPMENT DATA</b>					
Panel					
Cartridge					
Sonde					
Memorizer					
GR Cartridge					
Caliper					
TTR					
Centralizer Type					
<b>CALIBRATION DATA</b>					
Background CPS					
GR Source CPS					
API Scale	165	165	165	165	
Log Taped <input type="checkbox"/> Yes <input type="checkbox"/> No					

Run No.	Depth		Scale	GR Depth	φ Scale	φ Selectors		
	From	To				matrix	fluid	Cp

All interpretations are opinions based on inferences from electrical or other measurements and we cannot, and do not, guarantee the accuracy or correctness of any interpretations, and we shall not, except in the case of gross or willful negligence on our part, be liable or responsible for any loss, costs, damages or expenses incurred or sustained by anyone resulting from any interpretation made by any of our officers, agents or employees. These interpretations are also subject to Clause 4 of our General Terms and Conditions as set out in our current Price Schedule.



DEPTH  
METRES



**GAMMA RAY**  
Activity  
API units

T.C. \_\_\_\_\_  
Zero 0 div. to left

1 Minute

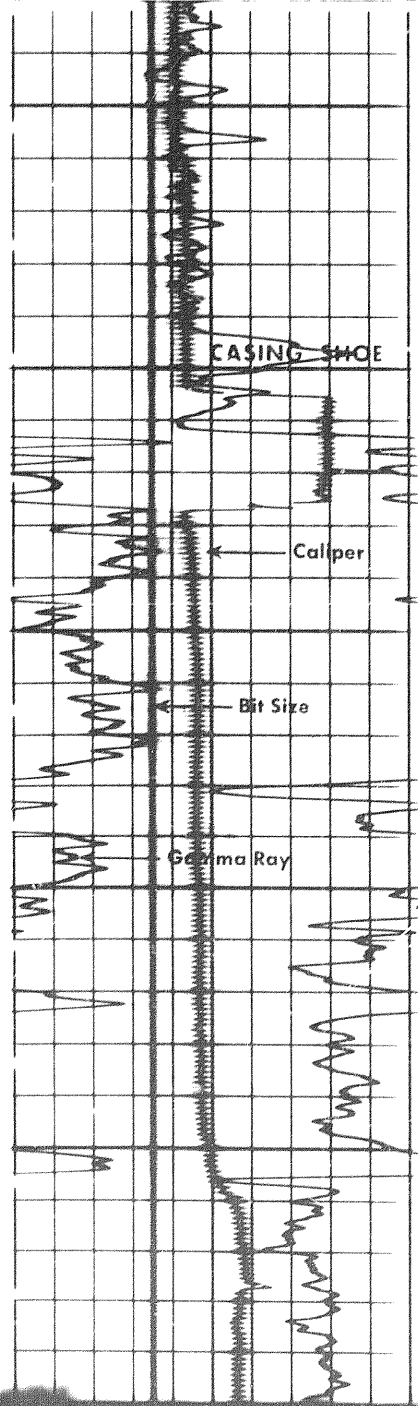
---

**CALIPER**  
hole diameter  
mm

125      250      375

DEPTH METRES

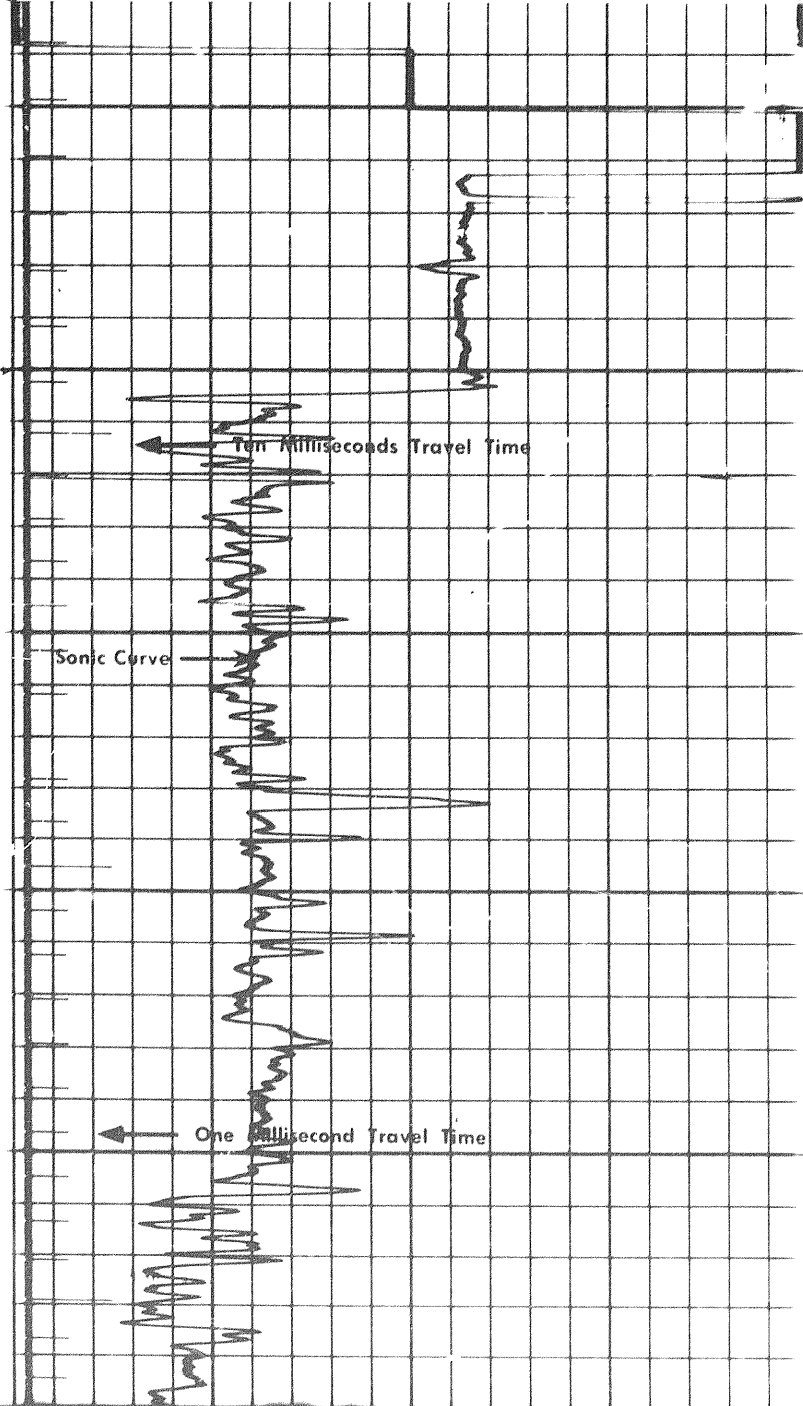
**INTERVAL TRANSIT TIME**  
 $\mu s/m$



3250

3300

3350



101

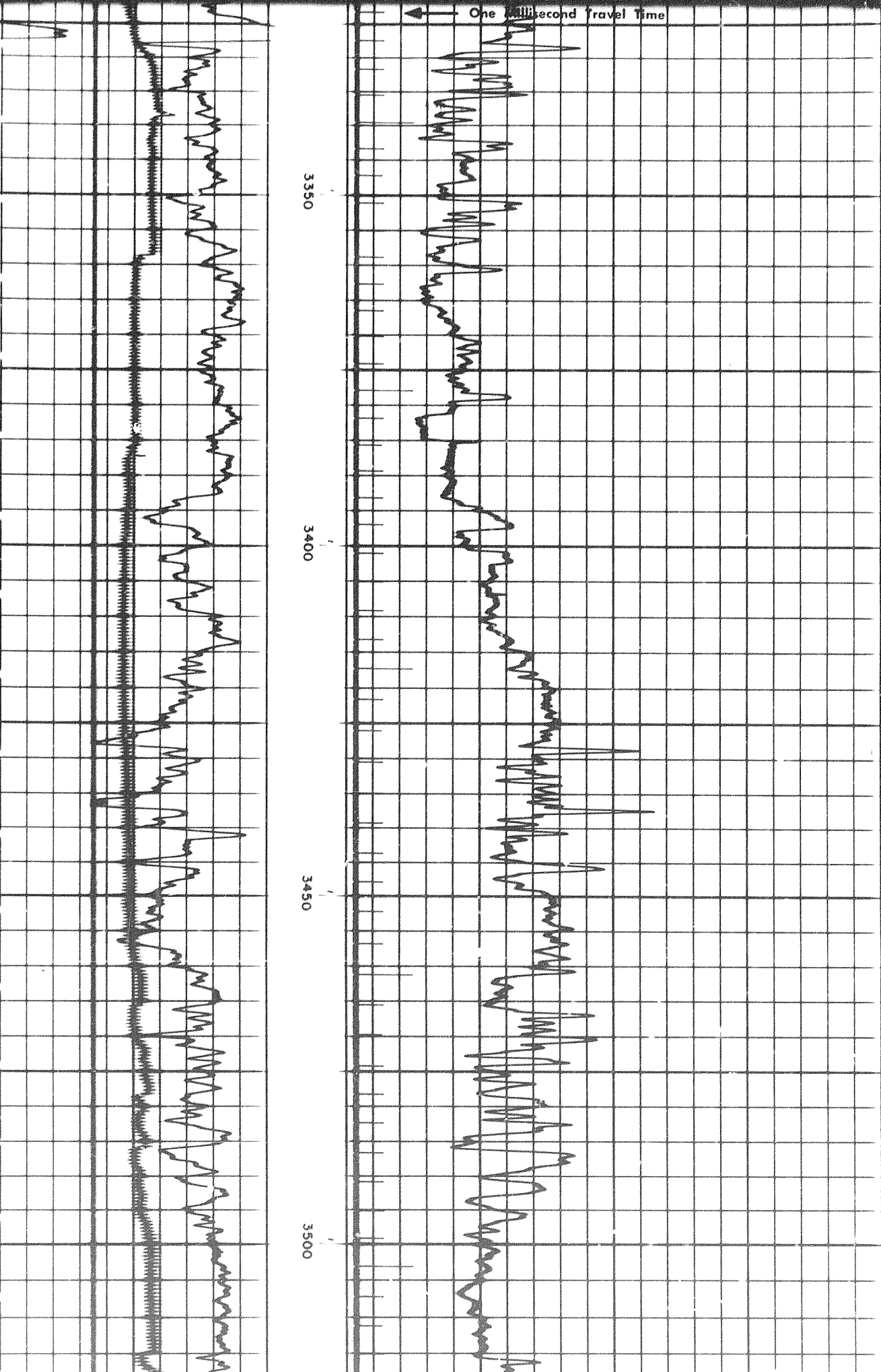
One Millisecond Travel Time

3350

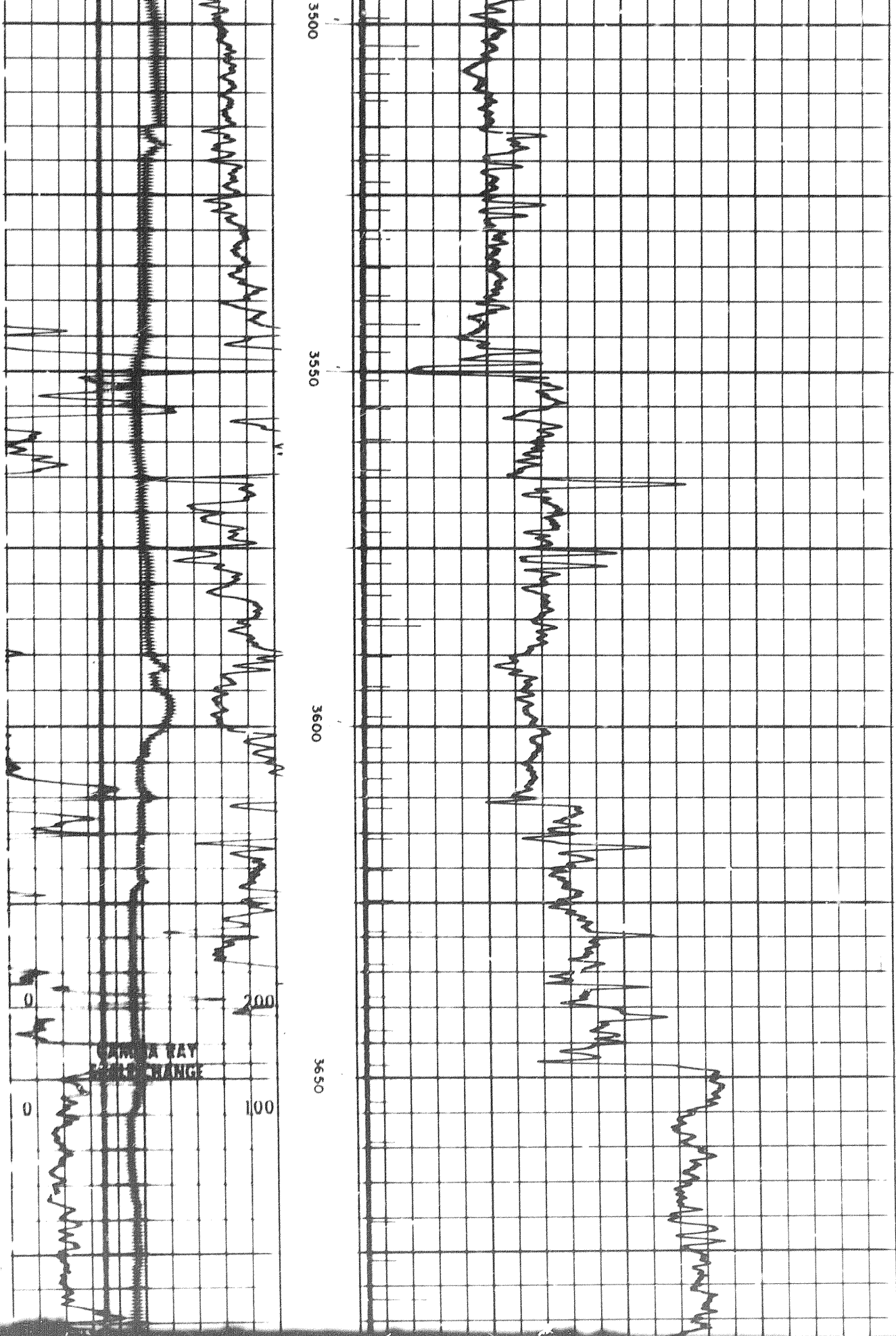
3400

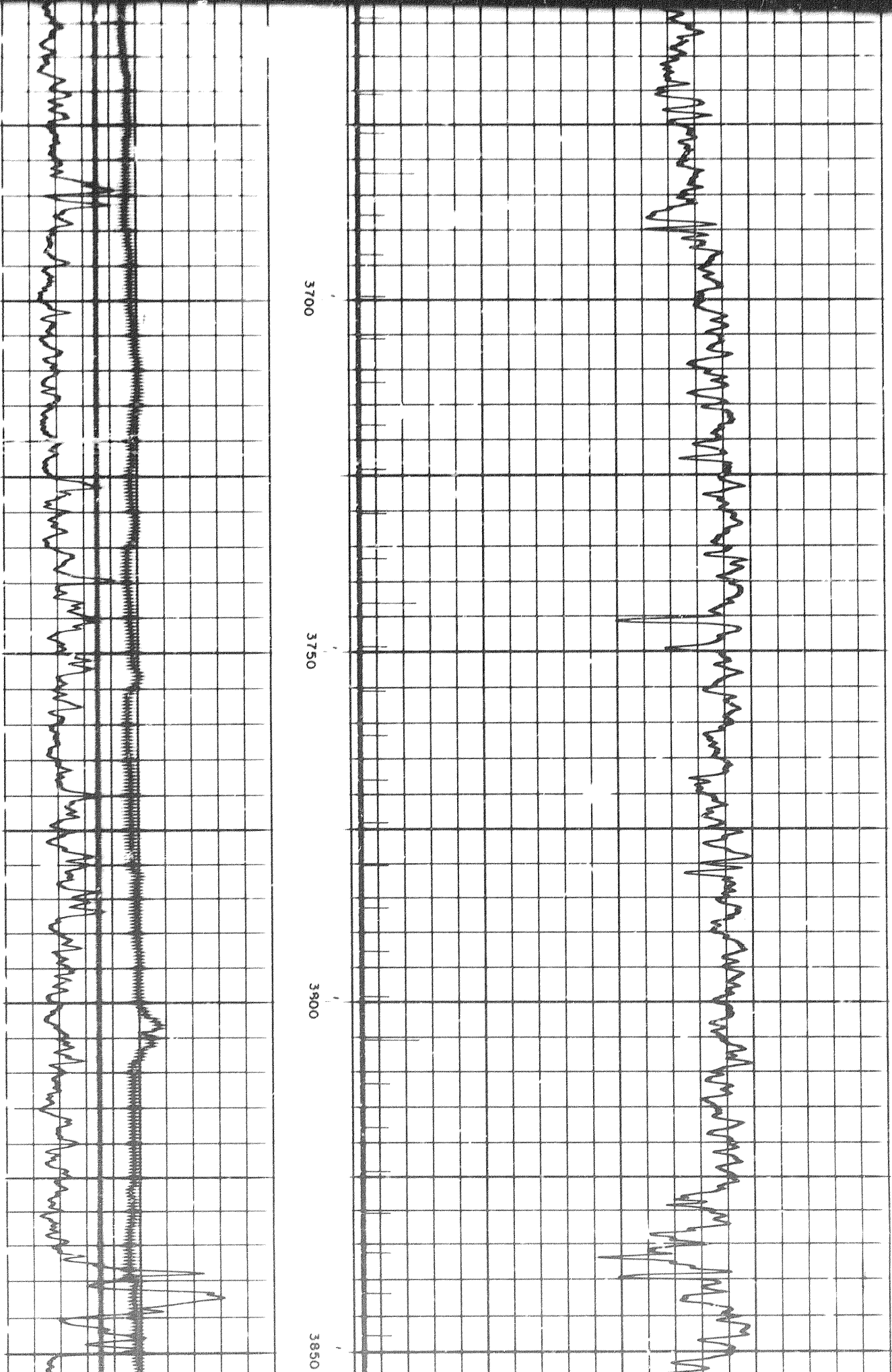
3450

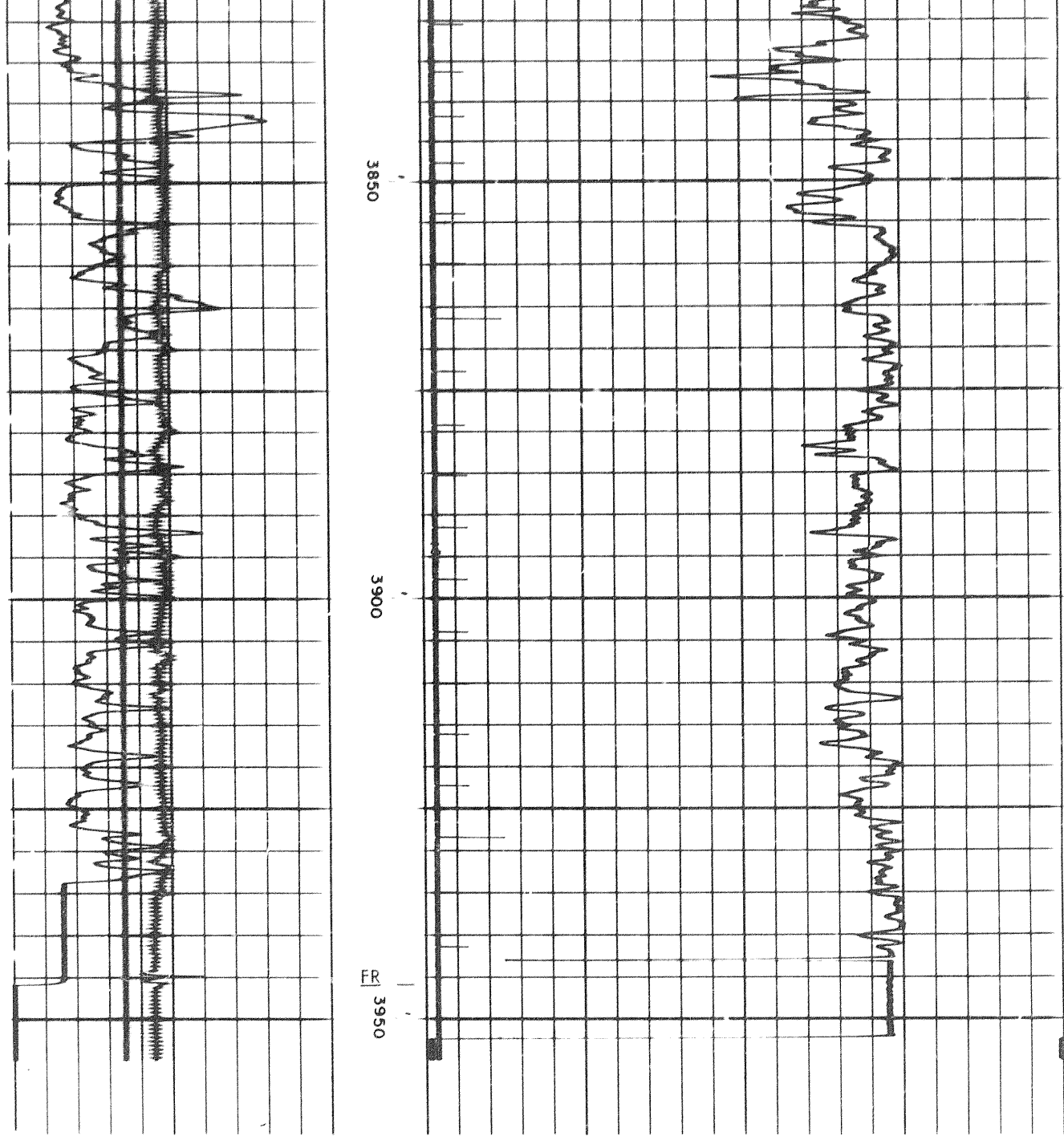
3500



2 of







GAMMA RAY

activity  
API units

T.C. \_\_\_\_\_

Zero 0 div. to left

0

CALIPER

hole diameter  
mm

125

250

375

300

200

100

500

400

300

DEPTH  
METRES

INTERVAL TRANSIT TIME

$\mu s/m$

GAMMA RAY

200

200

100

308

hole diameter mm	300	200	100
	500	400	300

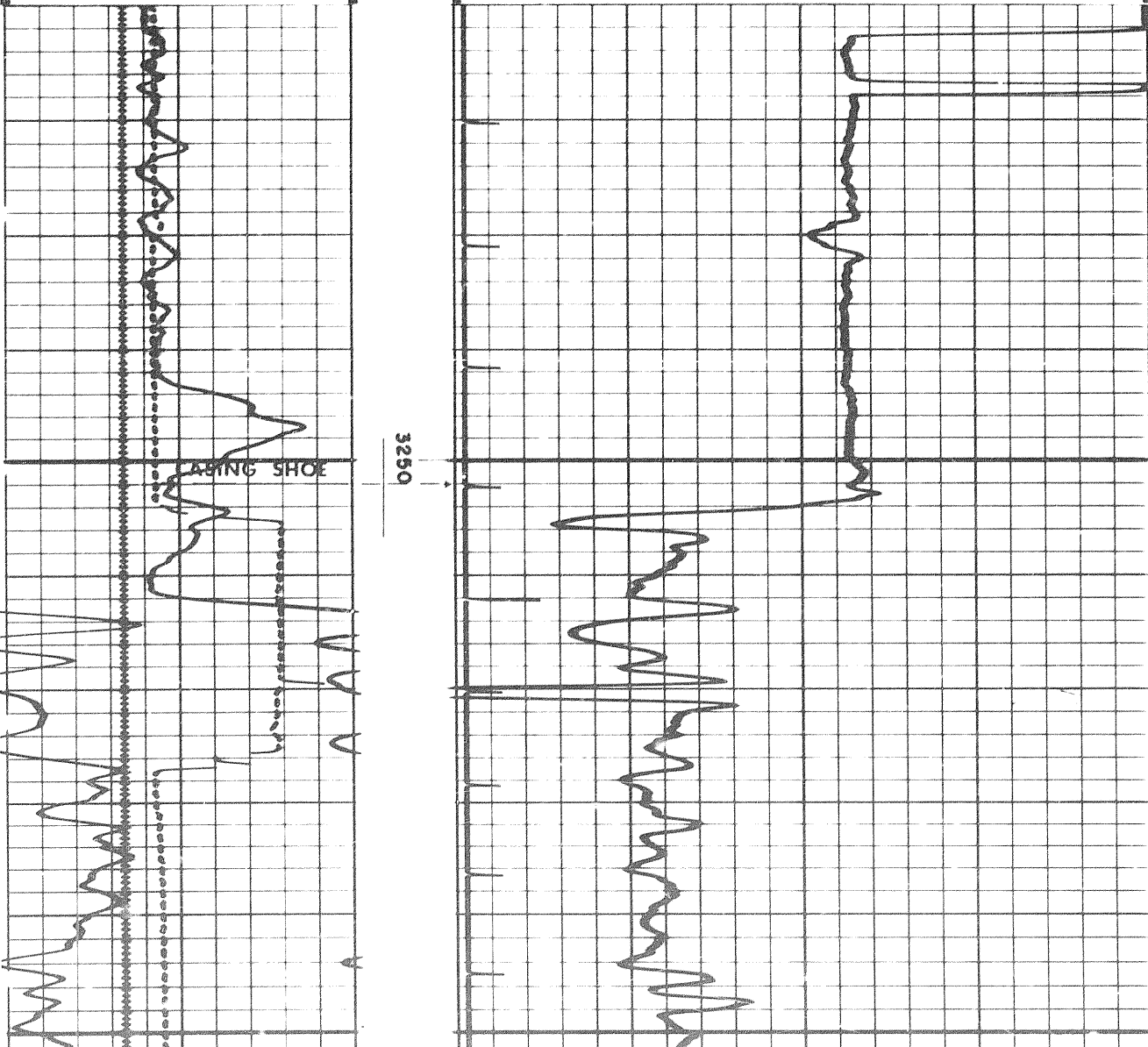
DEPTH METRES	INTERVAL TRANSIT TIME $\mu s/m$		
	300	200	100

GAMMA RAY activity API units	300	200	100
	500	400	300

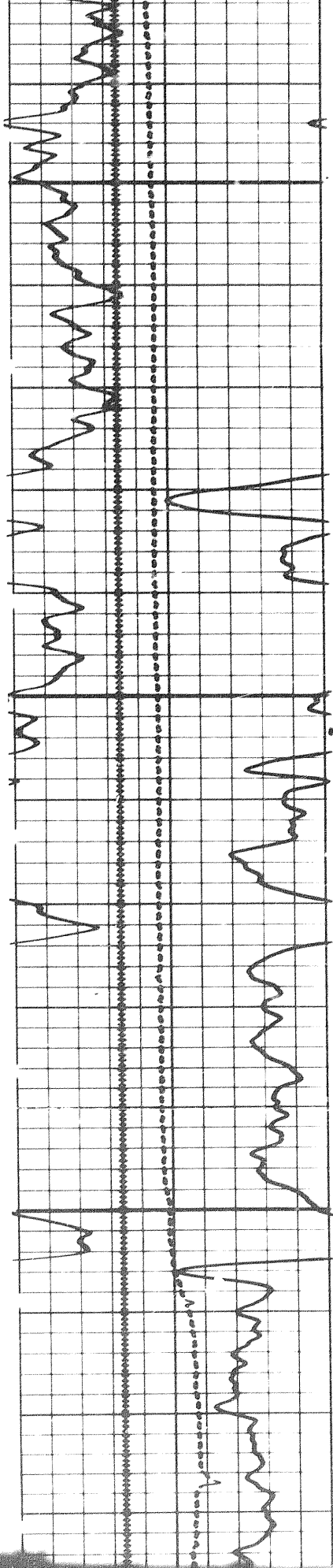
T.C. \_\_\_\_\_  
Zero 0 div. to left

CALIPER hole diameter mm	300	200	100
	500	400	300

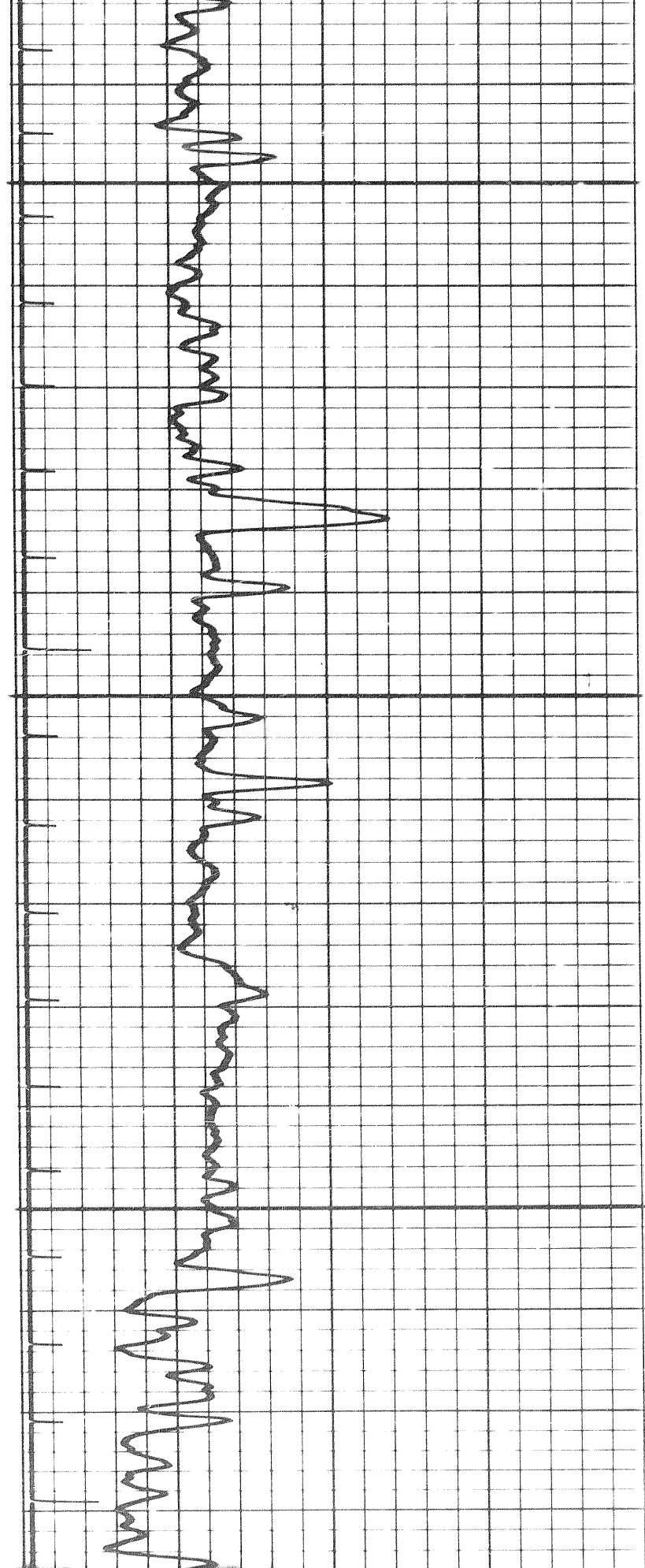
X2000F



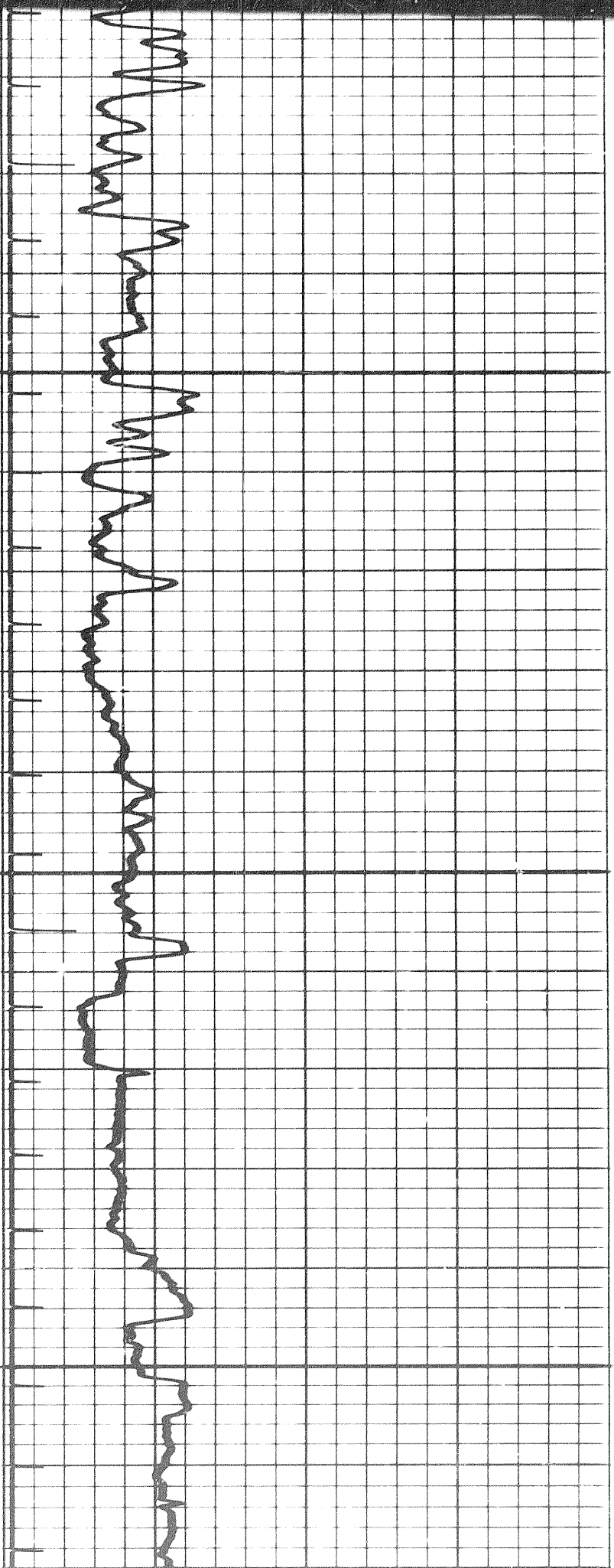
4 of 7



3300

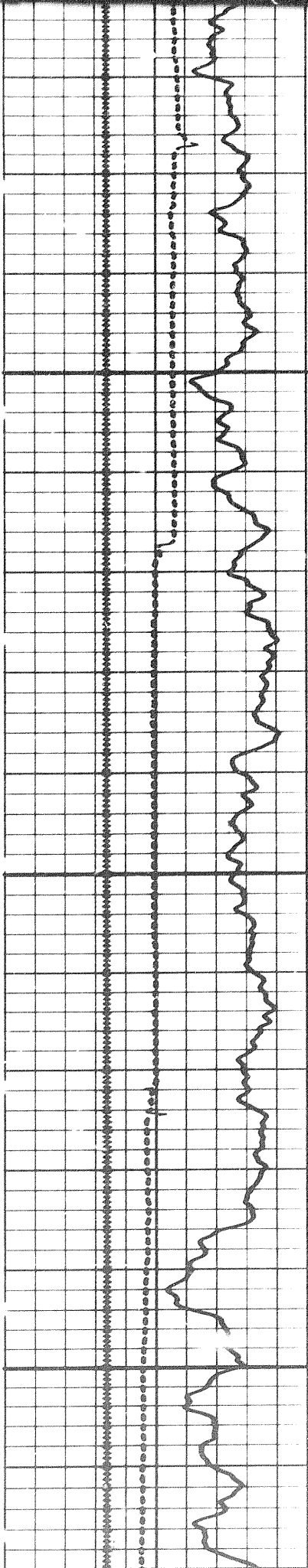




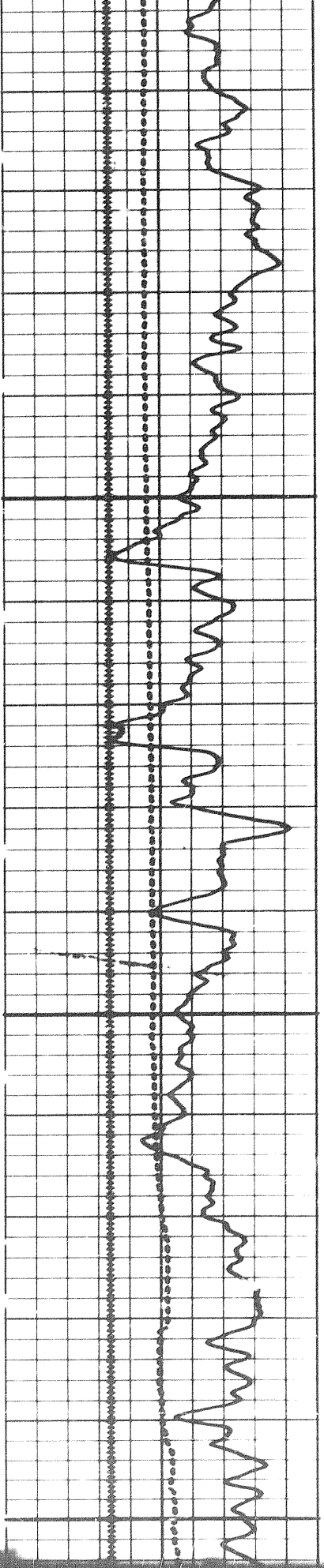


3350

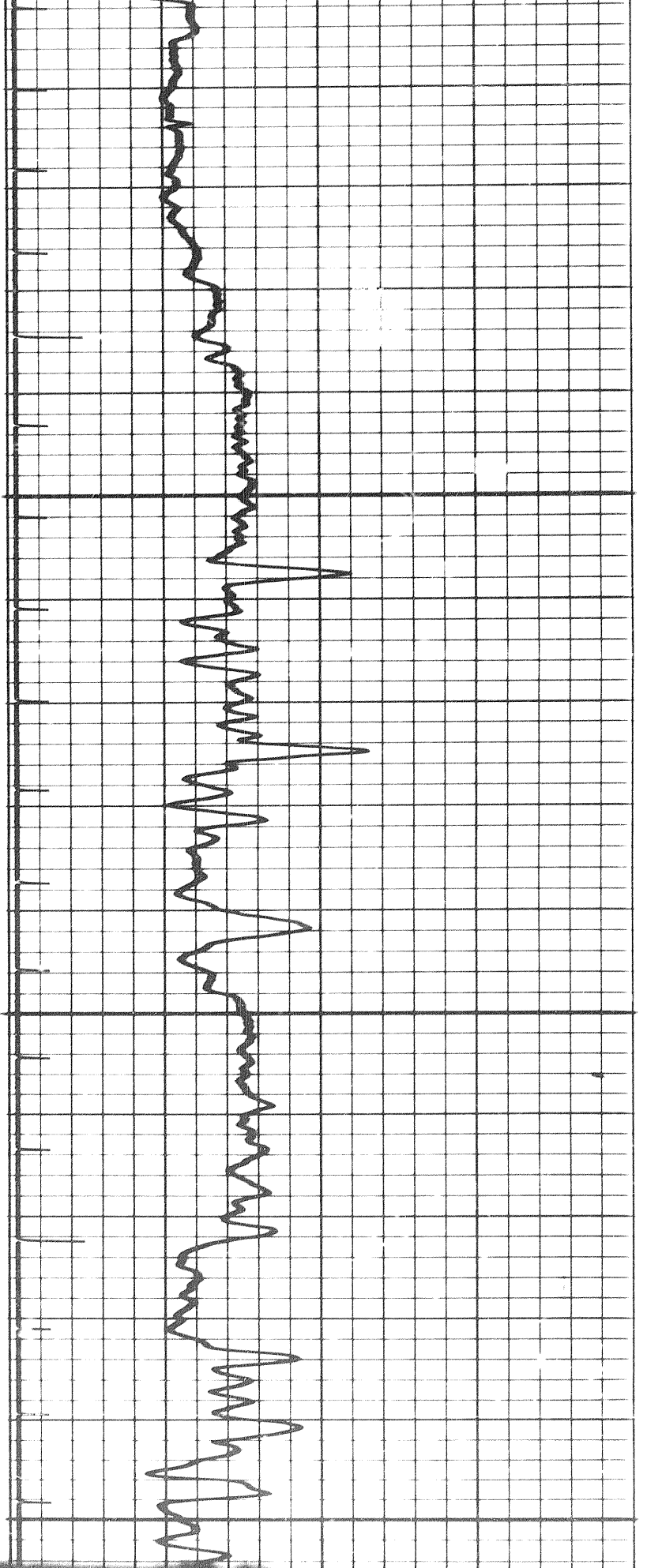
3400

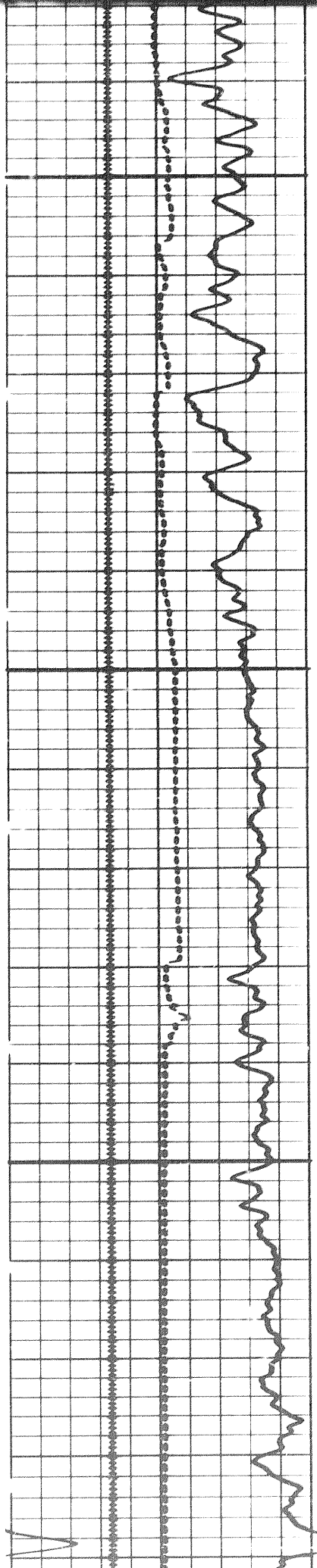


5 of

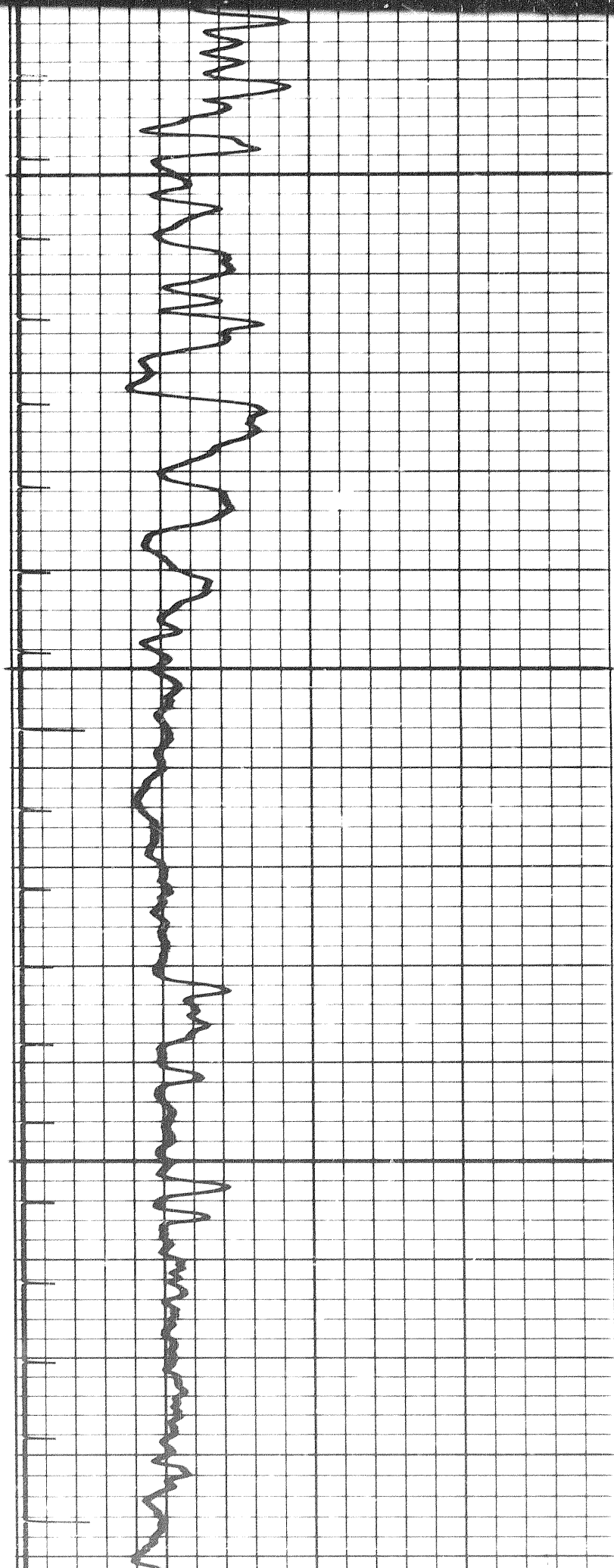


3450

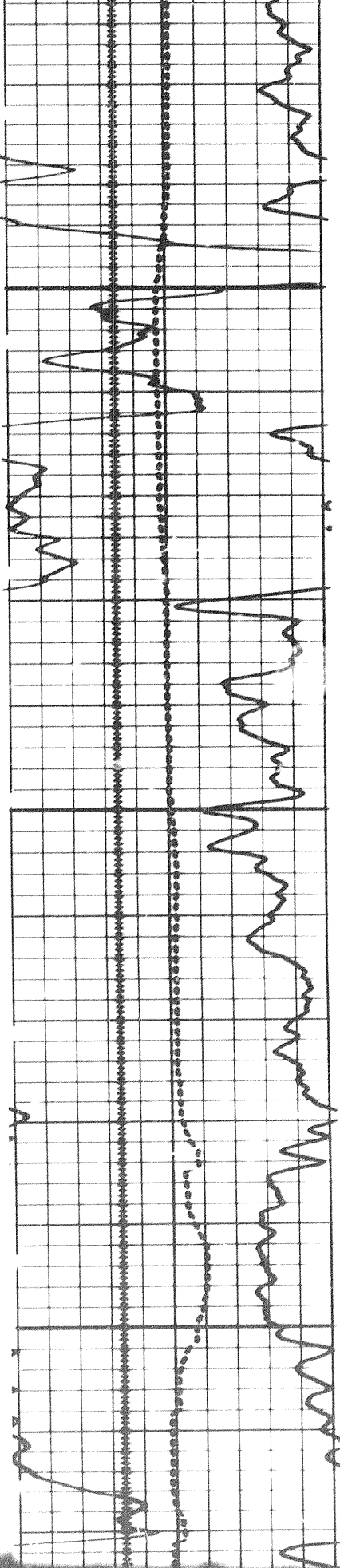




3500

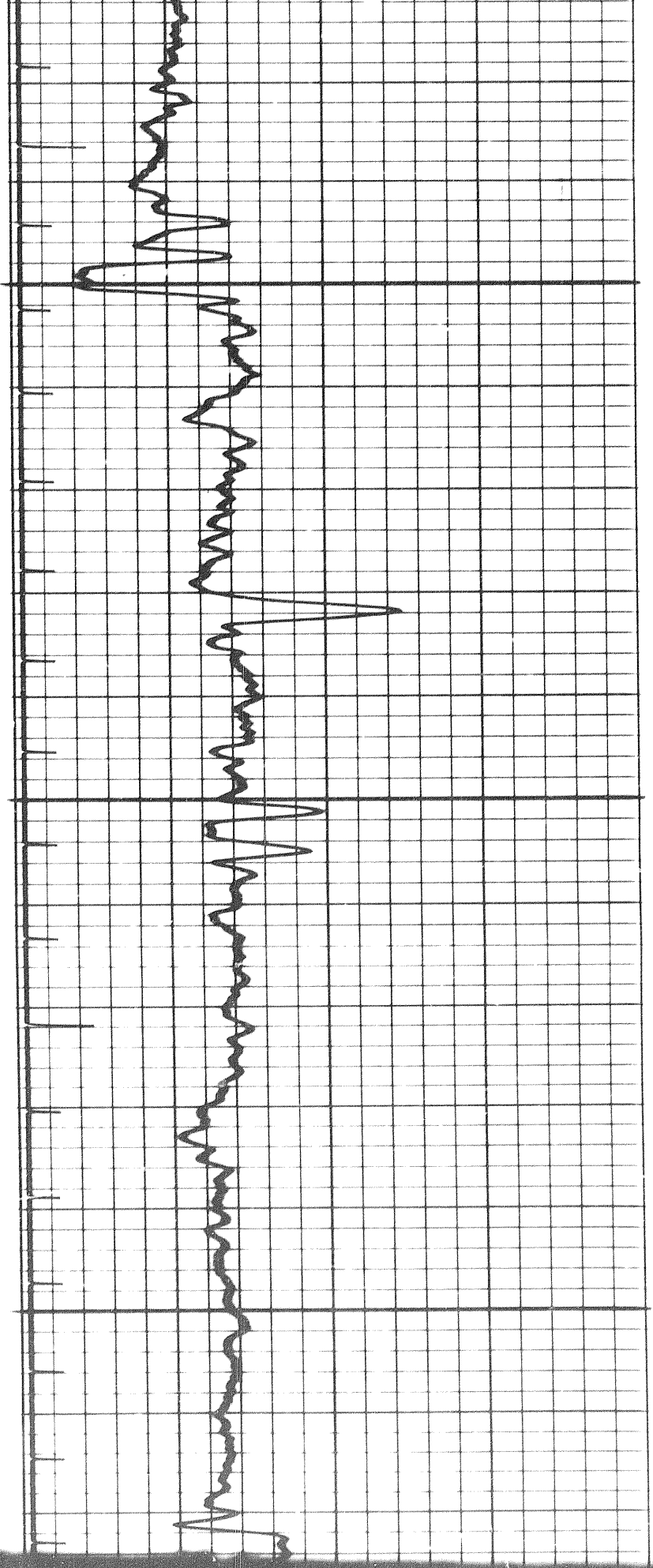


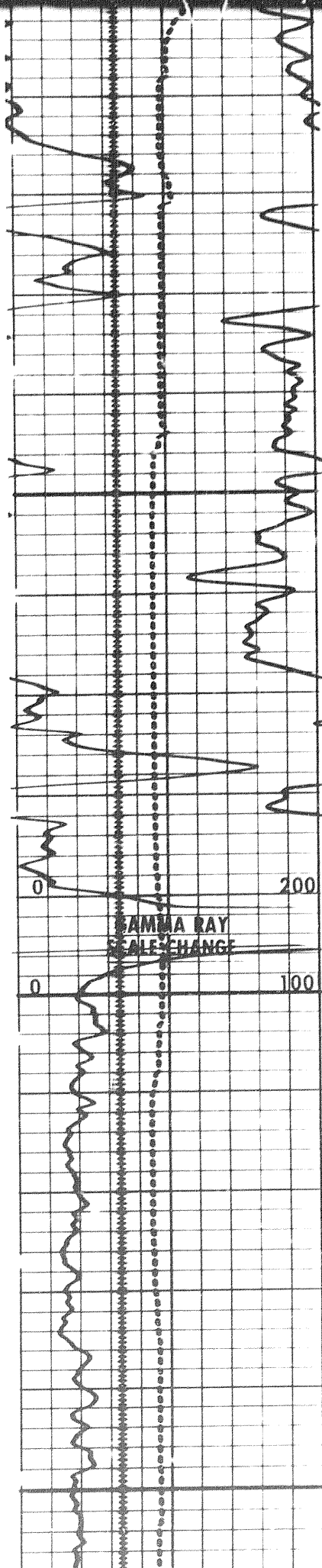
6 of 7



3550

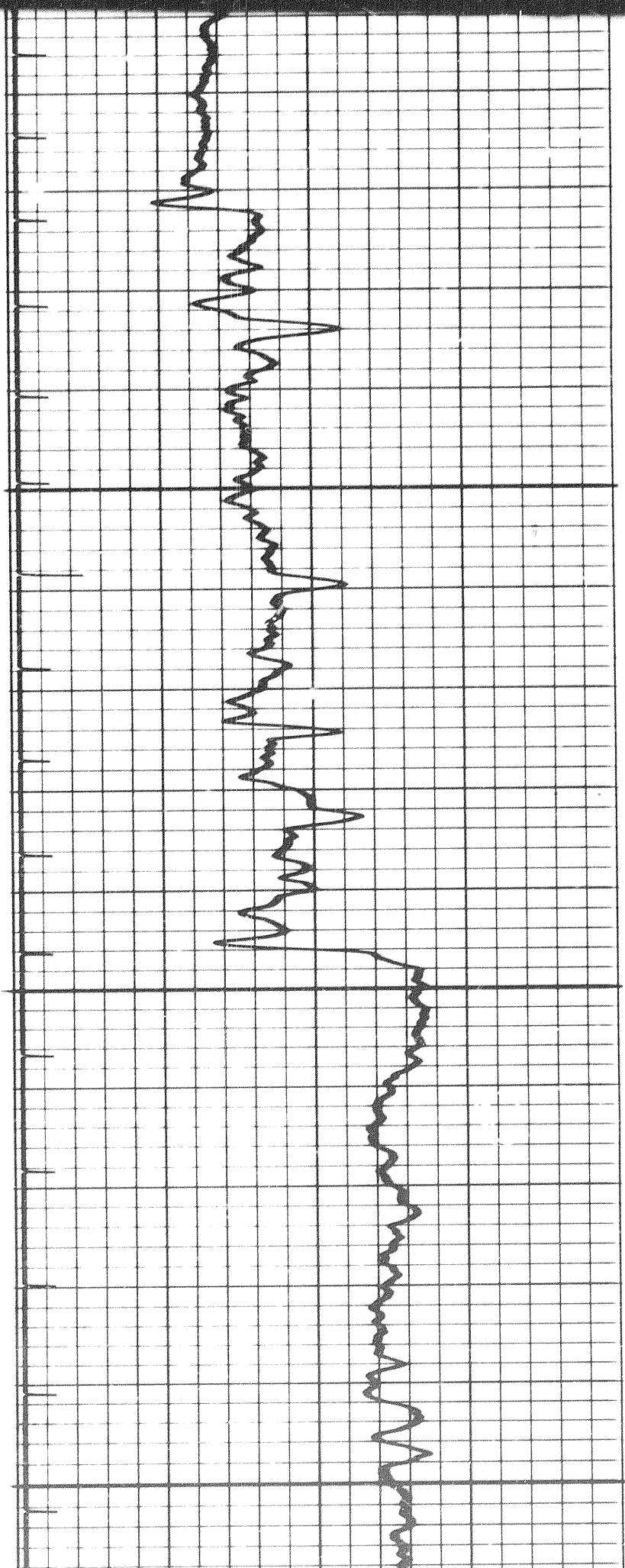
3600



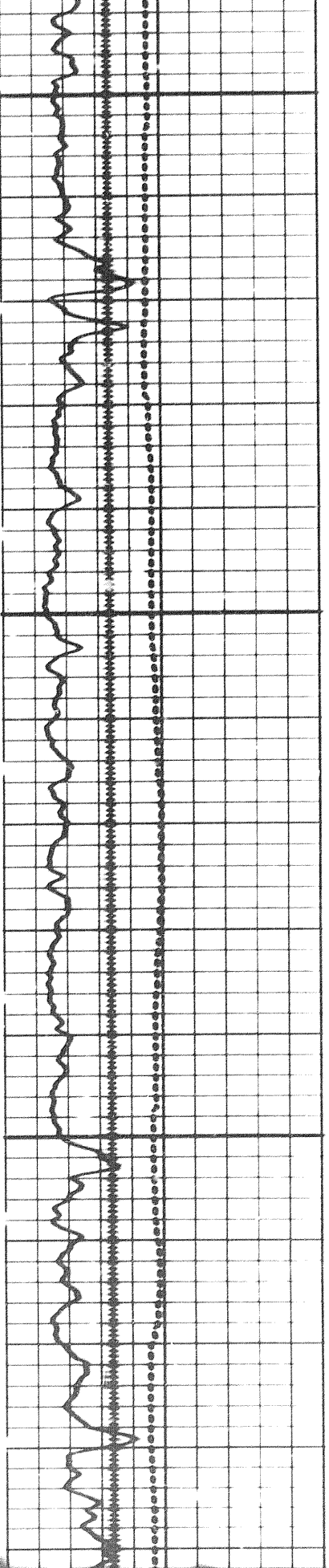


GAMMA RAY  
SCALE CHANGE

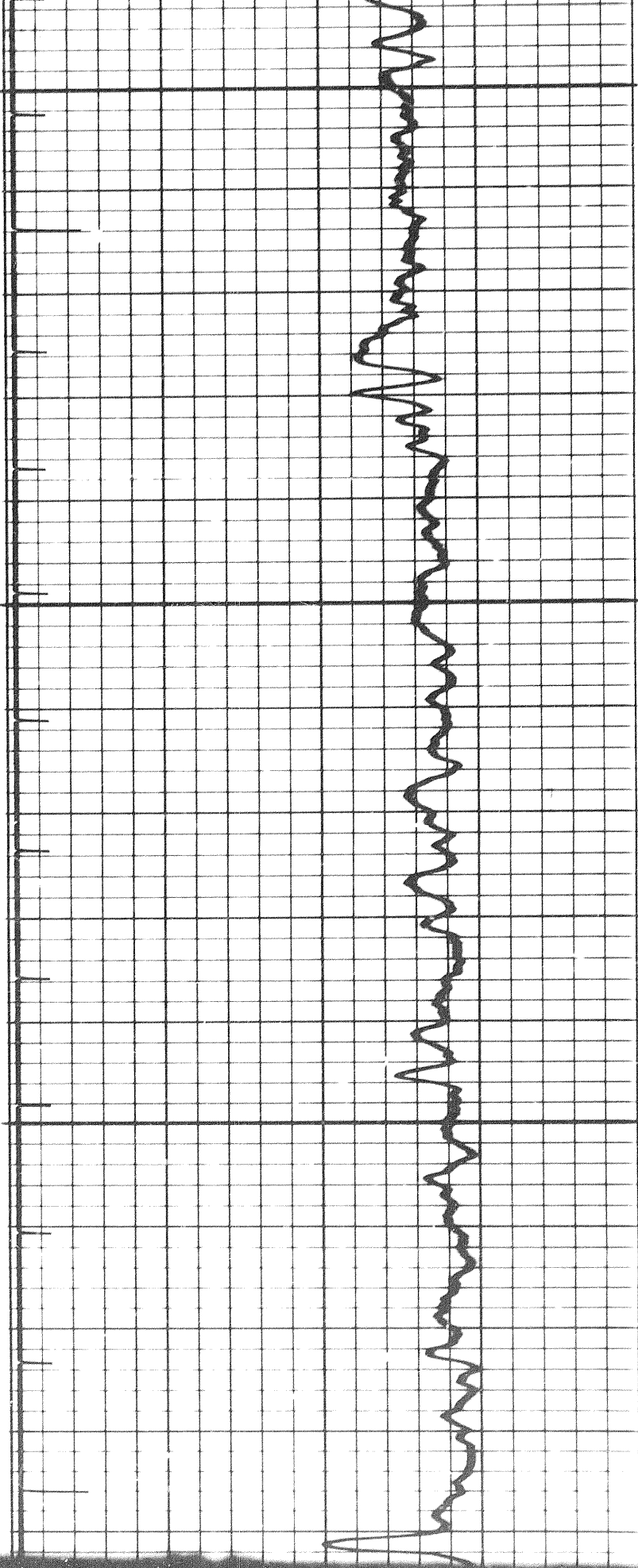
3650

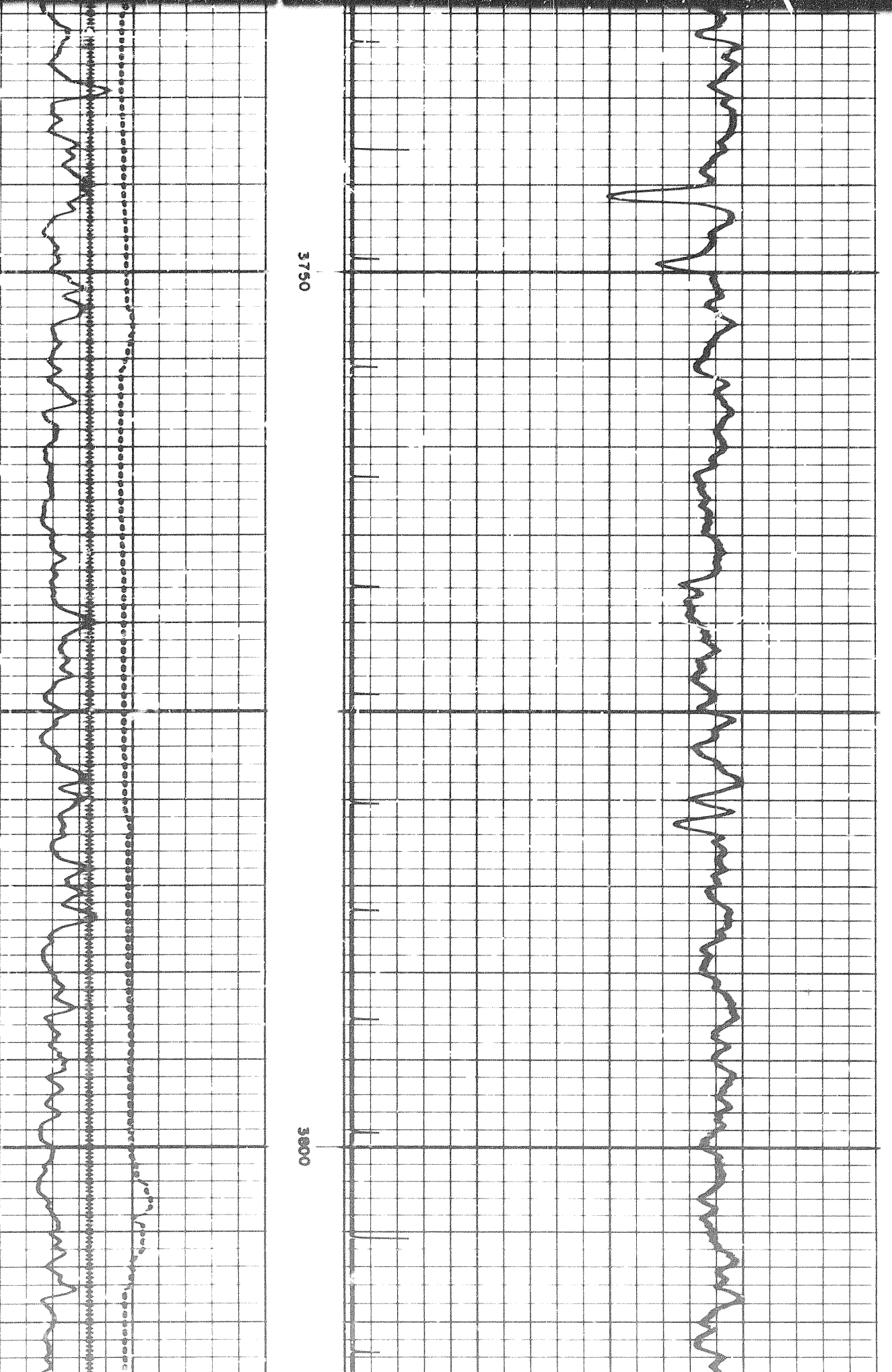


7 of



3700





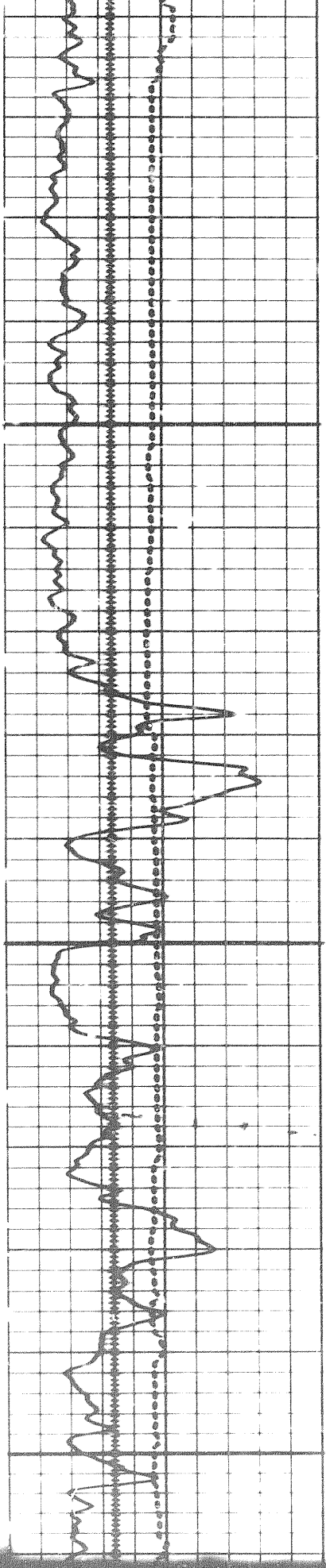
3750

3800

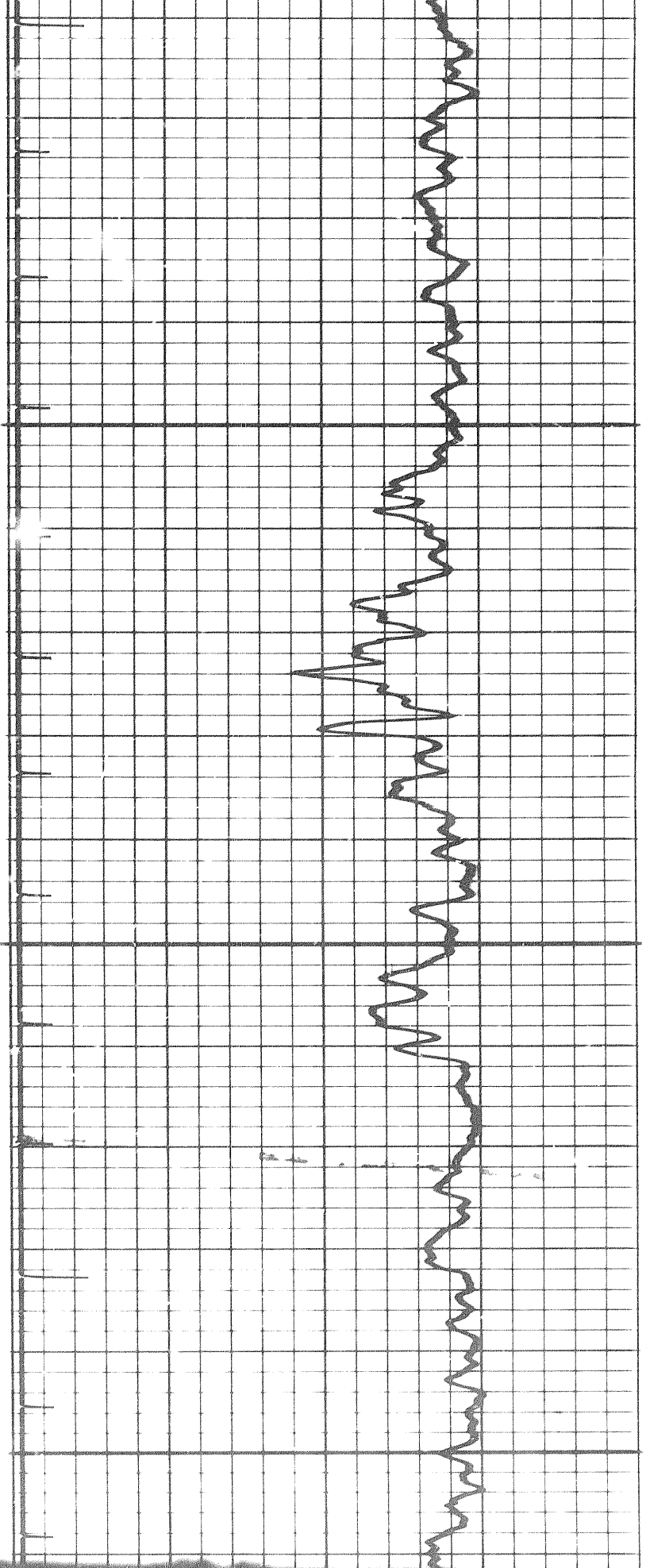
12-10-1961

12-10-1961

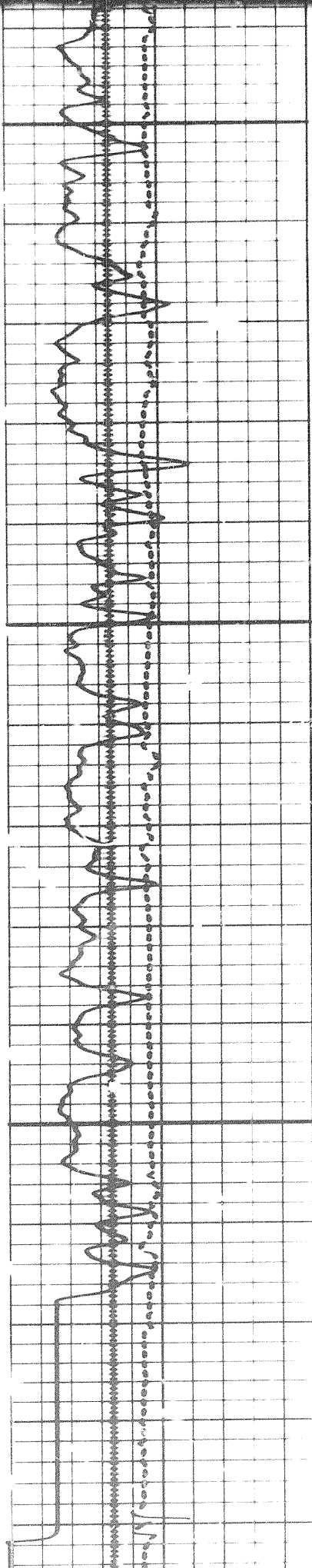
8 of



3850

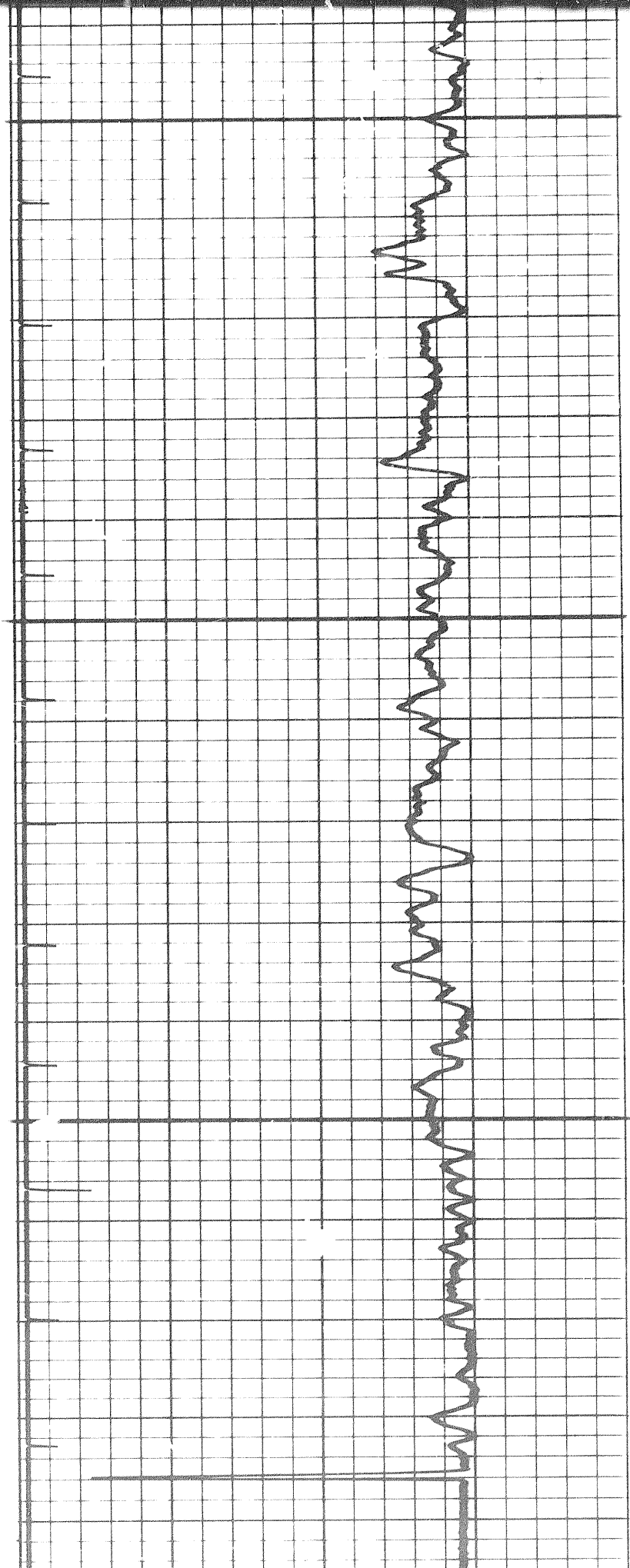


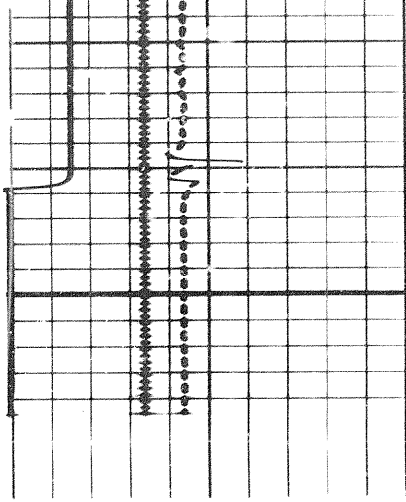




3900

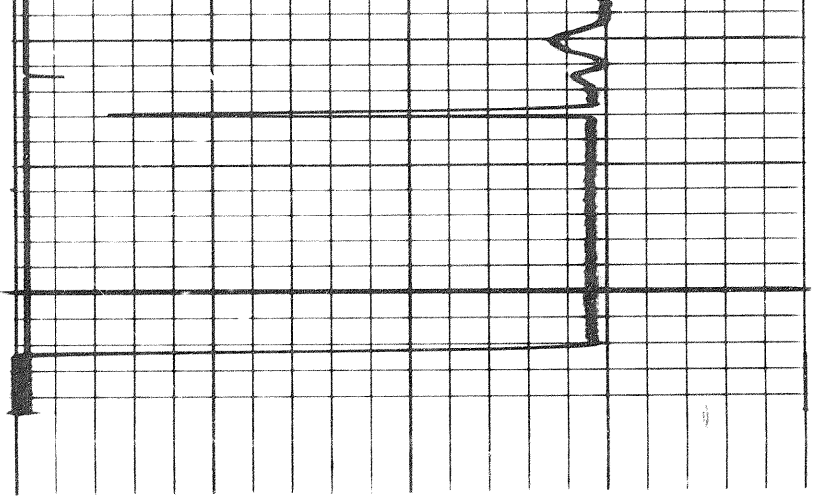
FR





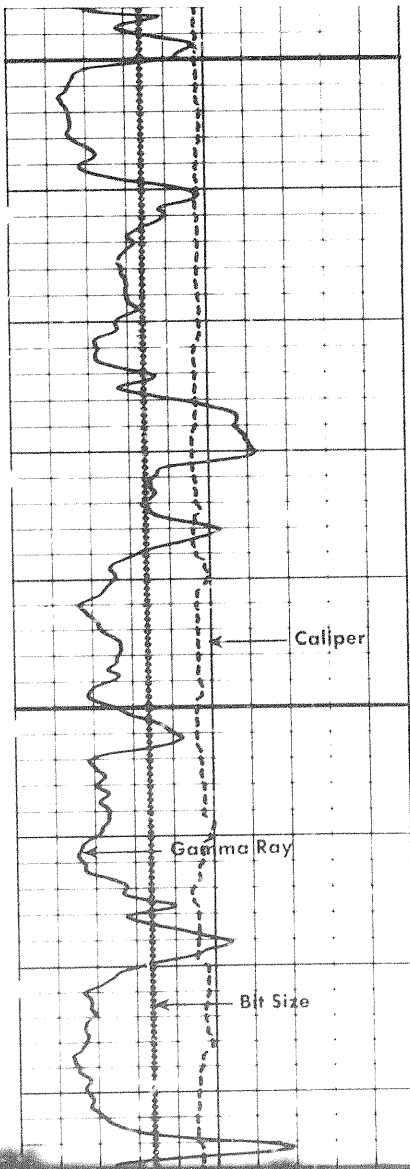
FR

3950

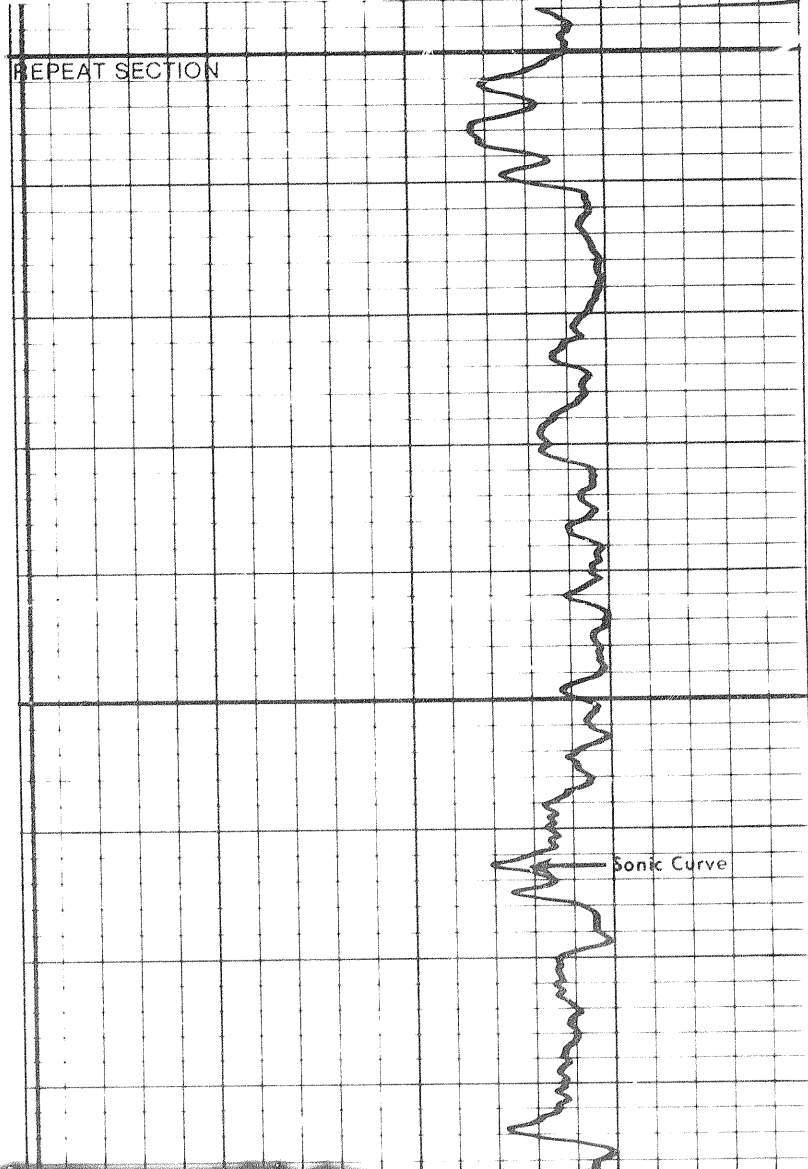


REPEAT SECTION

X3000

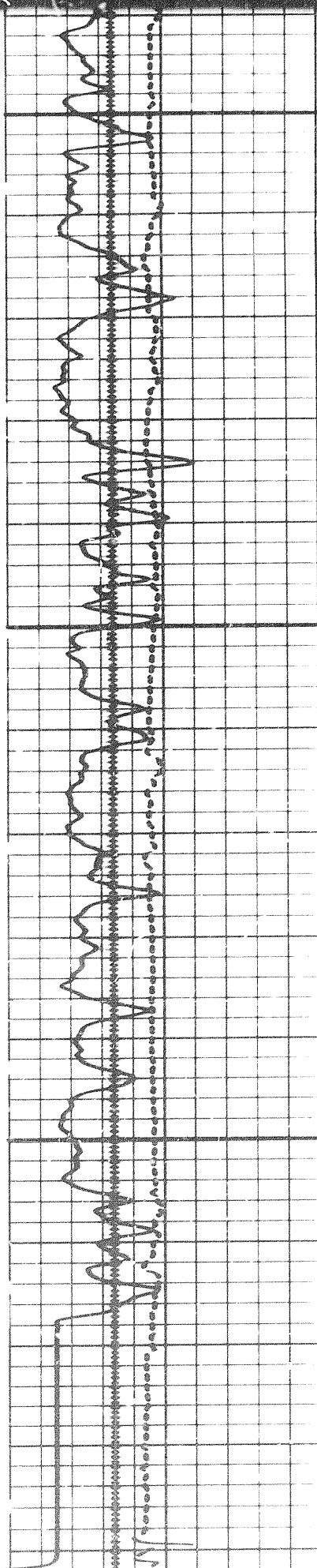


3850

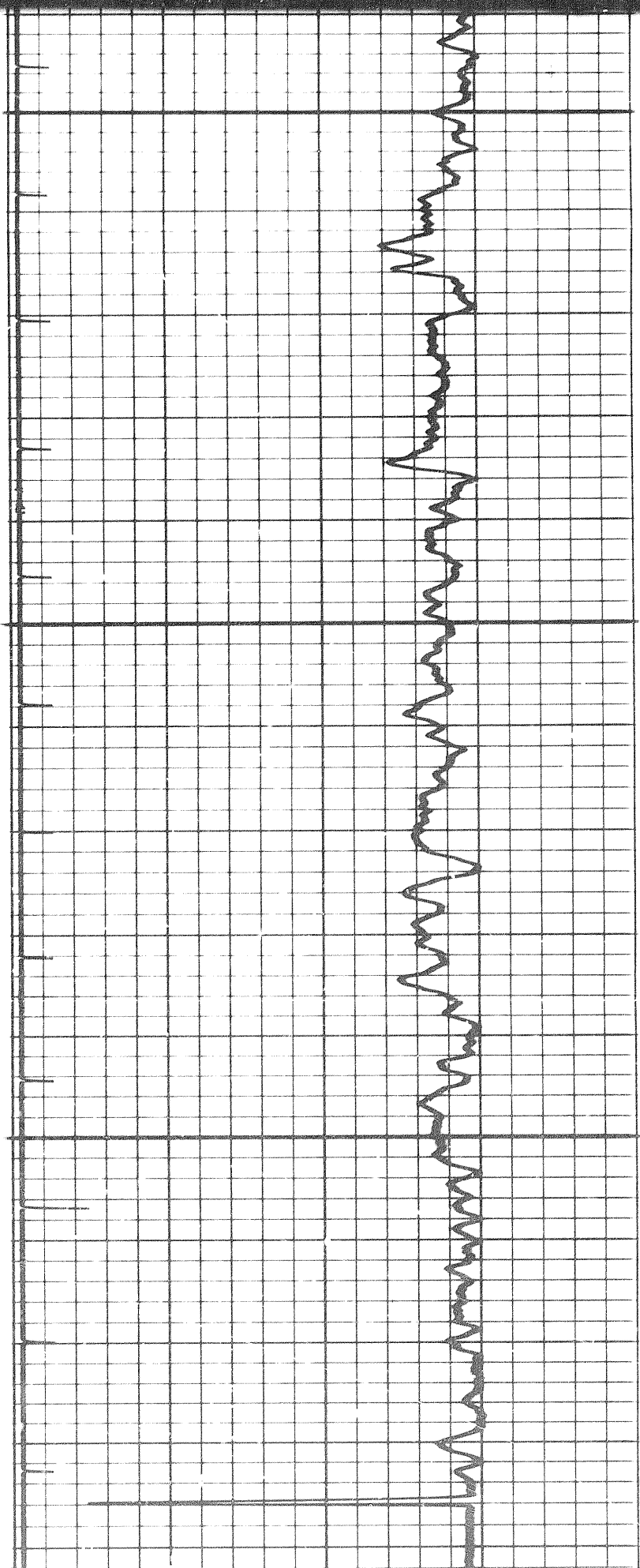


REPEAT SECTION

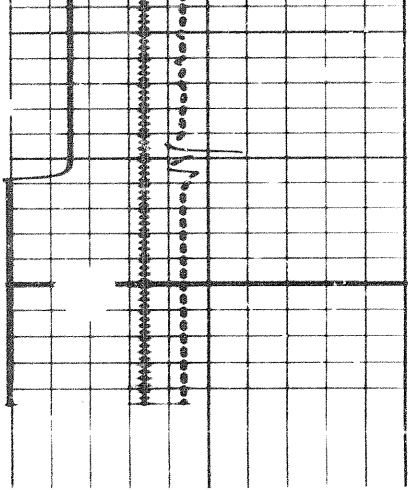
Sonic Curve



3900

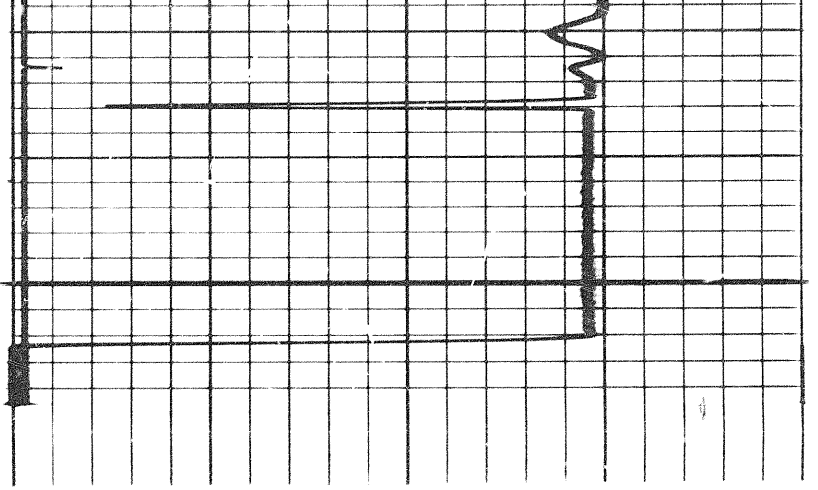


FR



FR

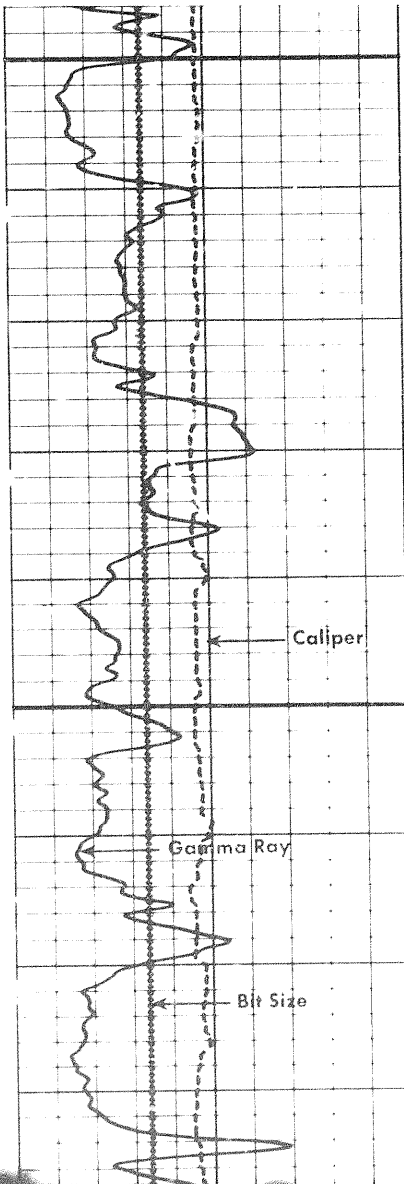
3950



REPEAT SECTION

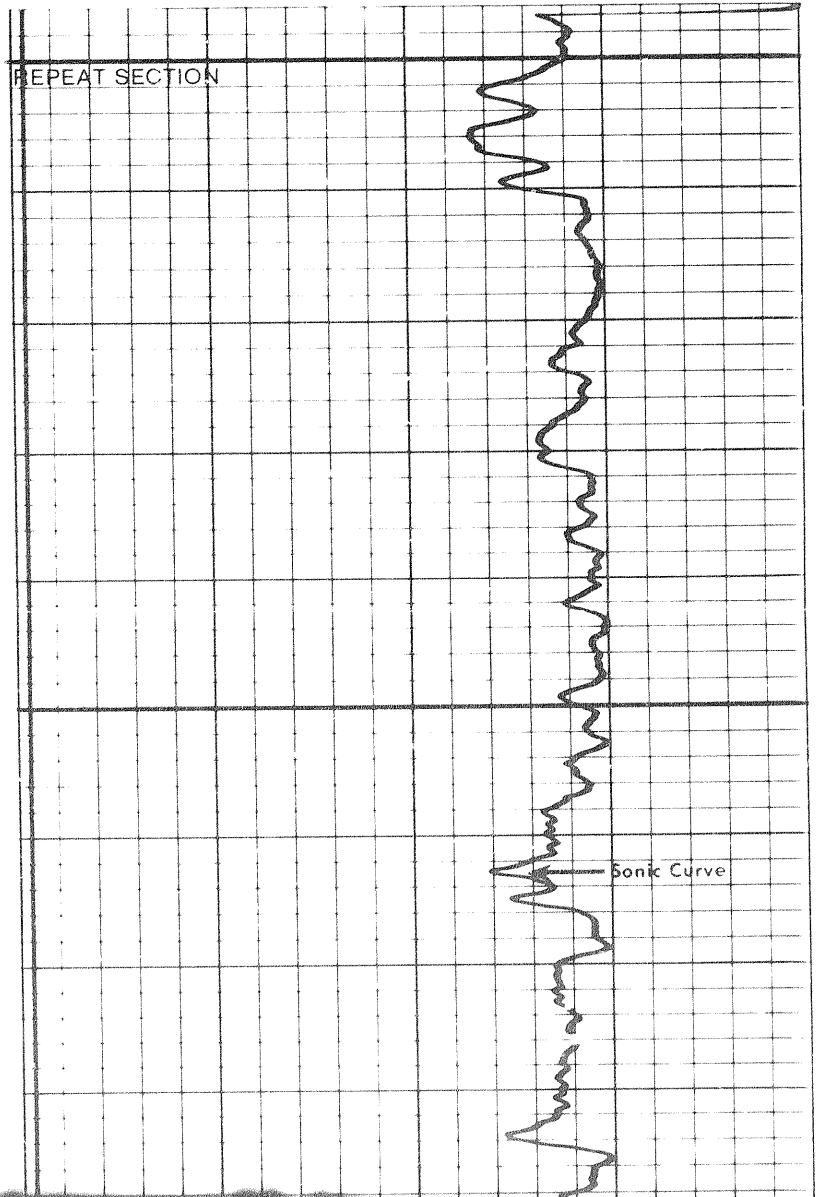
↓

X 3000

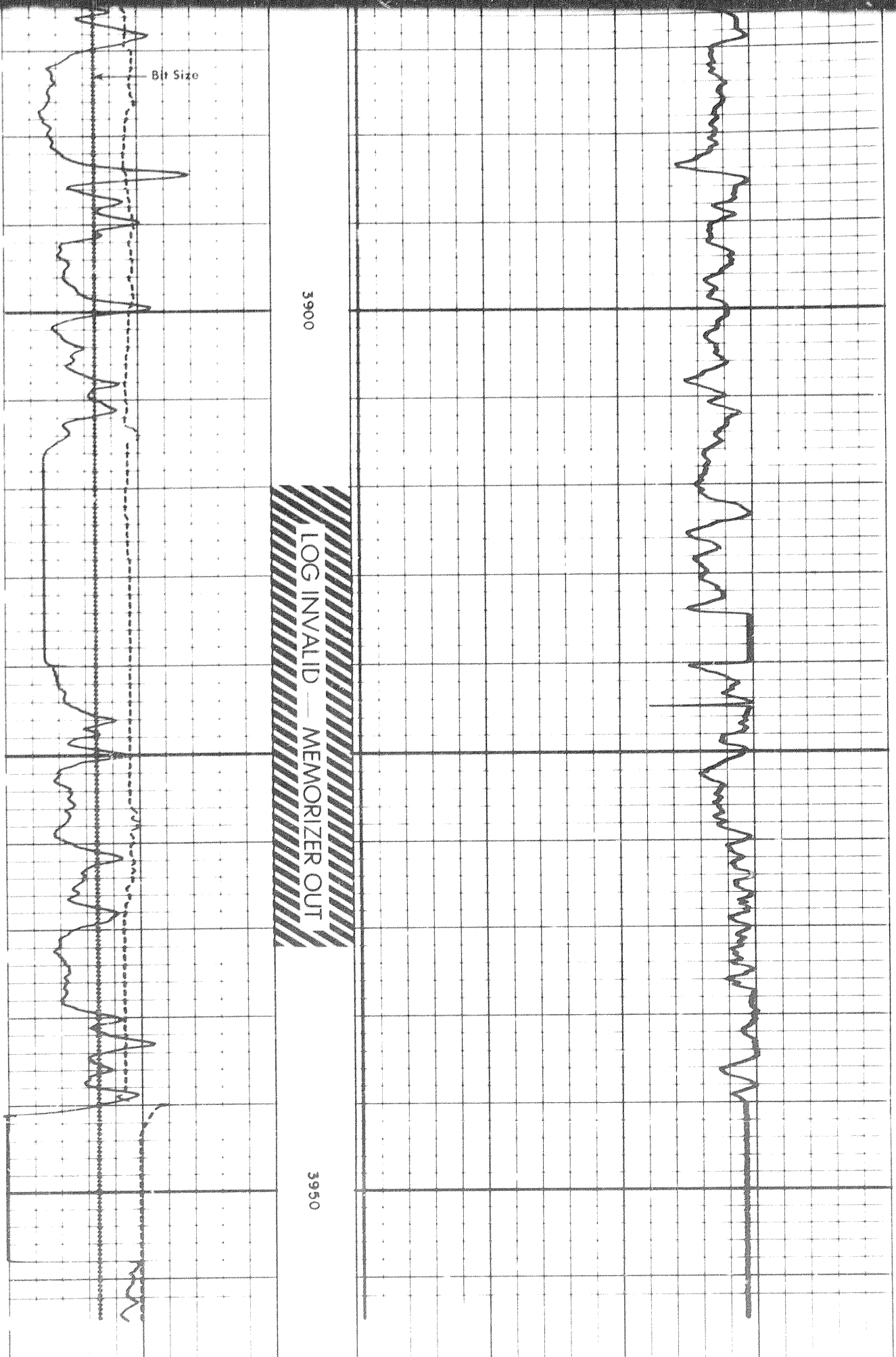


3850

REPEAT SECTION



706

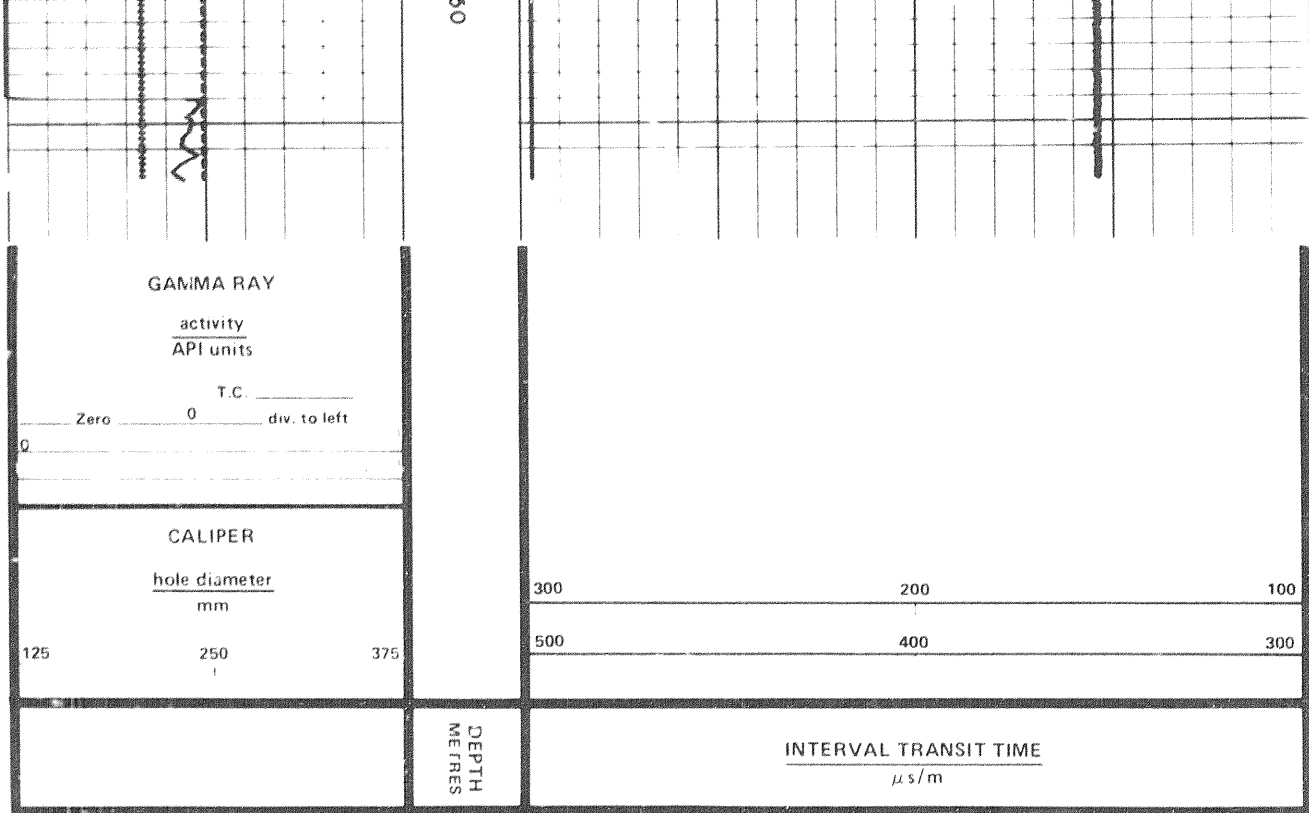


Bit Size

3900

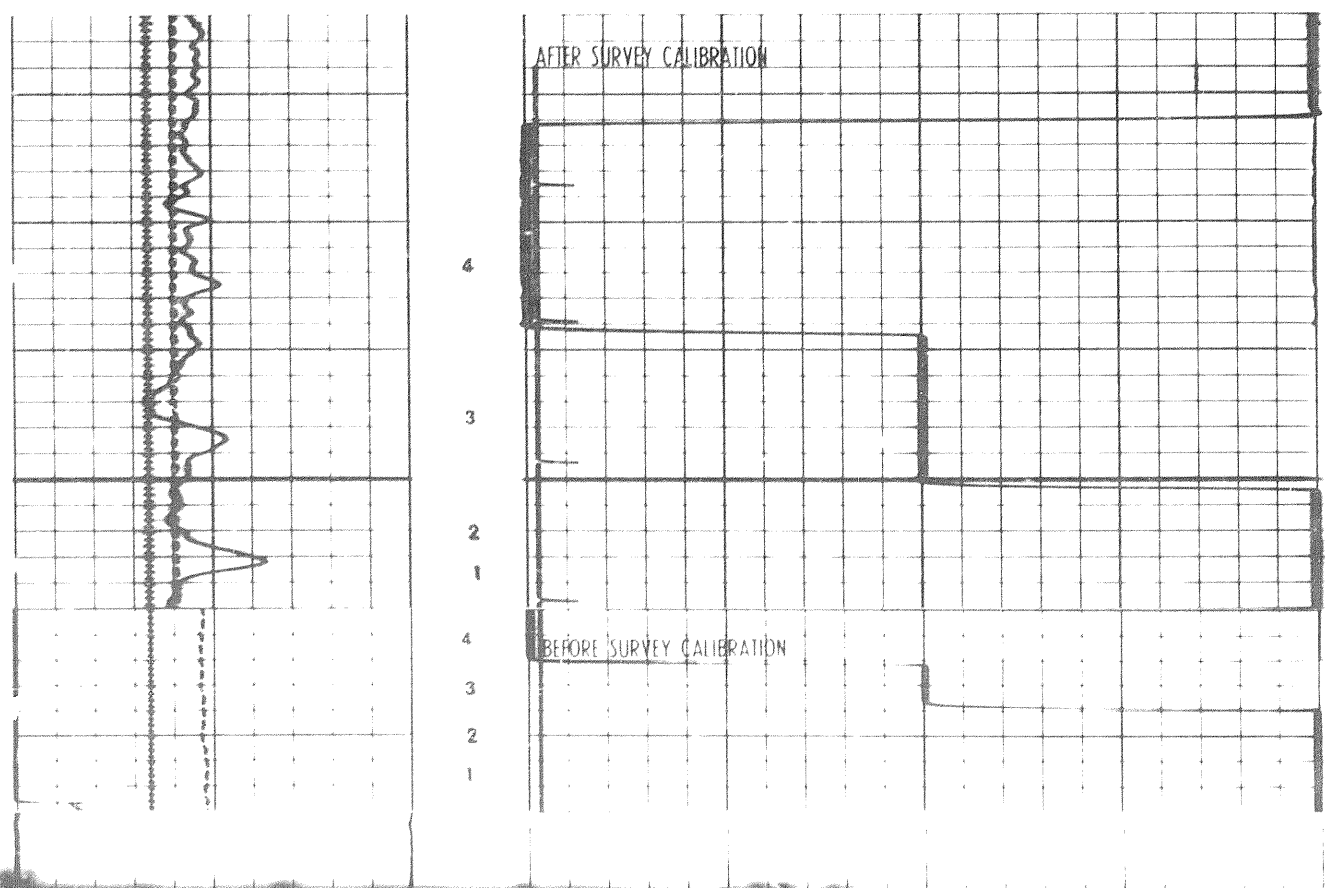
LOG INVALID - MEMORIZER OUT

3950



CALIBRATION RECORD

X20000

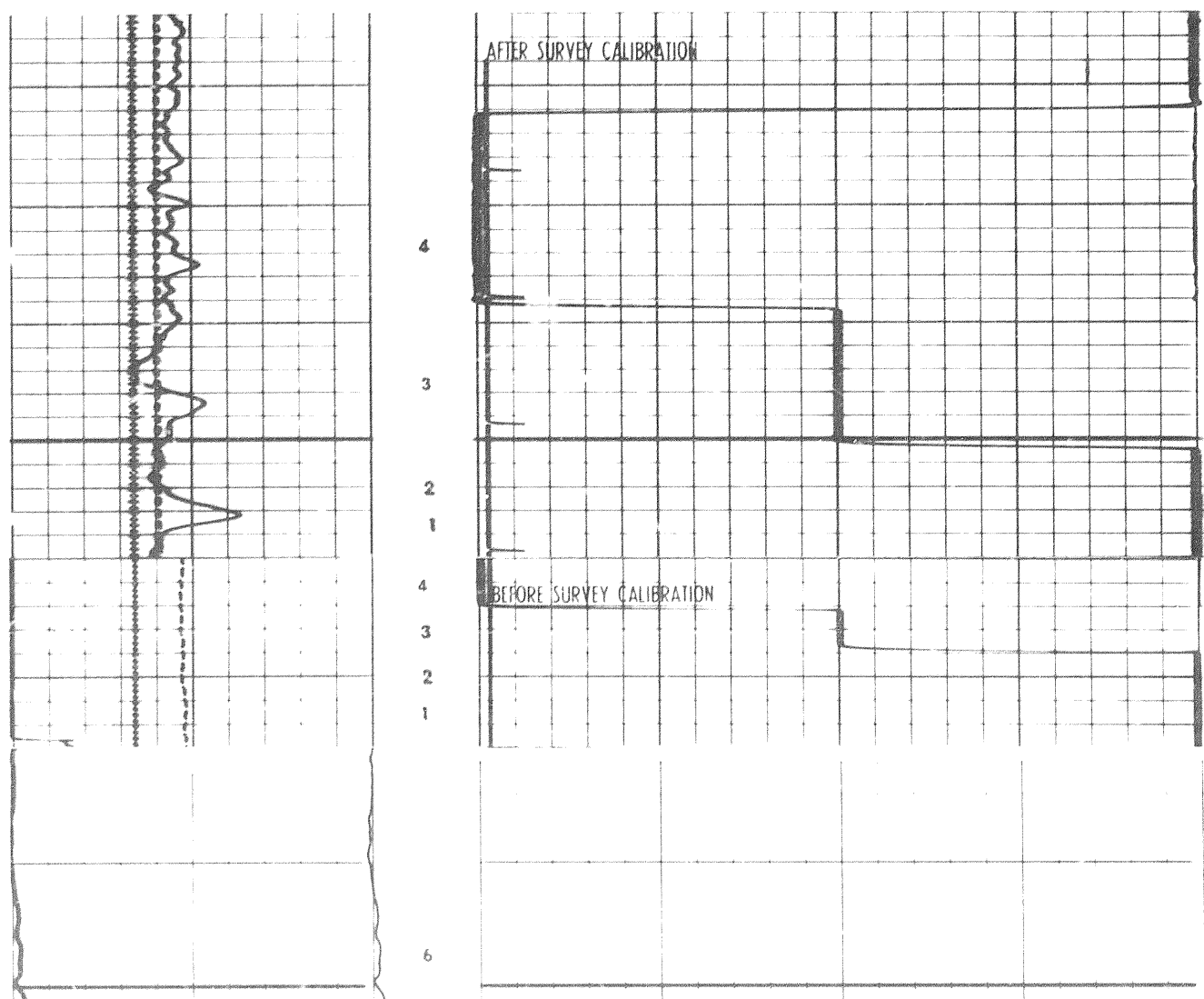


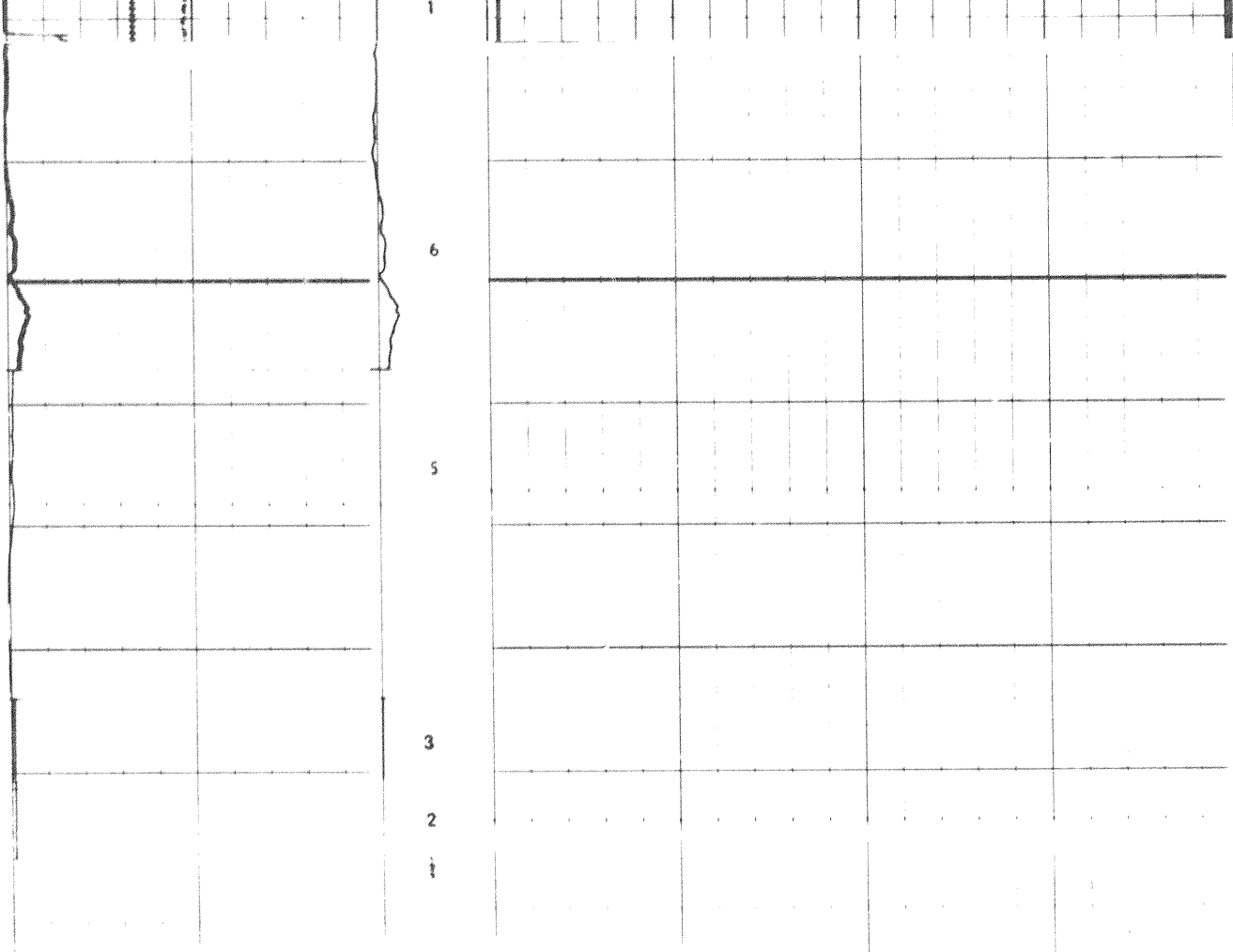
1000

<p style="text-align: center;"><b>GAMMA RAY</b></p> <p style="text-align: center;"><u>activity</u> API units</p> <p style="text-align: center;">TC</p> <p style="text-align: center;">Zero      0      div to left</p>		
<p style="text-align: center;"><b>CALIPER</b></p> <p style="text-align: center;"><u>hole diameter</u> mm</p> <p style="text-align: center;">125      250      375</p>	<p style="text-align: center;">300      200      100</p> <p style="text-align: center;">500      400      300</p>	
	<b>DEPTH METRES</b>	<p style="text-align: center;"><u>INTERVAL TRANSIT TIME</u> <math>\mu s/m</math></p>

## CALIBRATION RECORD

X20000D





**BOREHOLE COMPENSATED SONIC CALIBRATION CODING**

- 1. MECHANICAL ZERO
- 2. 100  $\mu s/m$
- 3. 200  $\mu s/m$
- 4. 300  $\mu s/m$
- 5. 400  $\mu s/m$
- 6. 500  $\mu s/m$

**GAMMA RAY CALIBRATION CODING**

- 1. MECHANICAL ZERO
- 2. ELECTRICAL ZERO
- 3. RECORDER SENSITIVITY
- 4. MEMORIZER SENSITIVITY
- 5. BACKGROUND
- 6. CALIBRATION

**CALIPER CALIBRATION CODING**

- 1. MECHANICAL ZERO CALIPER
- 2. 203 mm RING
- 3. 305 mm RING

COMPANY \_\_\_\_\_

WELL \_\_\_\_\_

FIELD \_\_\_\_\_

PROVINCE \_\_\_\_\_

SCHL FR \_\_\_\_\_ m

SCHL TD \_\_\_\_\_ m

DRLR TD \_\_\_\_\_ m

Elev: KB \_\_\_\_\_ m

GL \_\_\_\_\_ m