

Schlumberger

SCHLUMBERGER OF CANADA Calgary Alberta

**BOREHOLE COMPENSATED
SONIC-LOG**

PROVINCE YUKON
 FIELD WILDEAT
 WELL COLUMBIA #1-41
KOTANEELEE #1-1-48
 COMPANY COLUMBIA GAS
DEVELOPMENT OF CANADA LTD.

COMPANY COLUMBIA GAS DEVELOPMENT OF CANADA LTD.
 WELL COLUMBIA #1-41
 FIELD WILDEAT
 PROVINCE YUKON

LOCATION
 LSD _____ SEC. _____ TWP. _____ RANGE _____

Other Services:

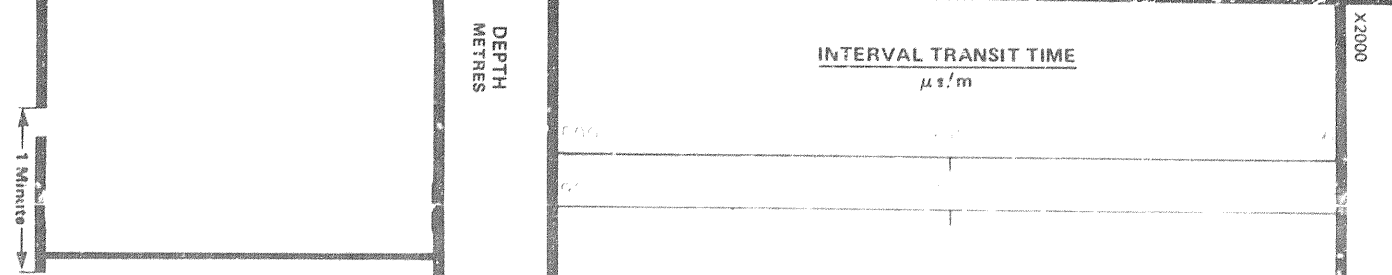
Permanent Datum: NA Elev.: 281 m
 Log Measured From NA Always Perm. Datum _____ m
 Drilling Measured From NA Elev.: 281 m
 D.F. _____ m
 G.L. _____ m

Run No.	One	Two	Three	Four
Depth-Driller	1074.0 m			
Depth-Logger (Schl.)	1074.0 m			
Bitm. Log Interval	10.000 m			
Top Log Interval	10.000 m			
Casing-Driller	115.0 m			
Casing-Logger	115.0 m			
Bit Size	44.2 mm			
Type Fluid in Hole	GEL			
Dens (kg/m ³) Visc.	1100 2.3			
pH Fluid Loss (cm ³)	9.2 2.0			
Source of Sample	WATER			
Rm @ Meas. Temp.	3.0 °C	°C	°C	°C
Rmf @ Meas. Temp.	1.0 °C	°C	°C	°C
Source: Rmf	MEAS			
Rm @ BHT	12.1 °C	°C	°C	°C
Circulation Stopped	14.7 19.4 °C			
Tool Last on Bottom	2100 19.4 °C			
Max. Rec. Temp. #1 #2	4.1 °C 4.6 °C	°C	°C	°C
Unit District	OSL FEONL			
Recorded By	DICKSON			
Witnessed By	GILBERTSON			

Run No.	One	Two	Three	Four	REMARKS
Service Order No.	41301				
EQUIPMENT DATA					
Panel	225				
Cartridge	XP				
Sonde	NA				
Memorizer	243				
GR Cartridge	104				
Caliper	101				
TTR	2753				
Centralizer Type					
CALIBRATION DATA					
GR	Background CPS				
	Source CPS				
	API Scale	165	165	165	165
Log Taped <input checked="" type="checkbox"/> Yes <input type="checkbox"/> No					

Run No.	Depth		Scale	GR Scale	φ Scale	φ Selectors		
	From	To				matrix	fluid	Cp
ONE	216	1055	100-300-100					

All interpretations are opinions based on inferences from electrical or other measurements and we cannot, and do not, guarantee the accuracy or correctness of any interpretations, and we shall not, except in the case of gross or willful negligence on our part, be liable or responsible for any loss, costs, damages or expenses incurred or sustained by anyone resulting from any interpretation made by any of our officers, agents or employees. These interpretations are also subject to Clause 4 of our General Terms and Conditions as set out in our current Price Schedule.



X2000

INTERVAL TRANSIT TIME

$\mu s/m$

DEPTH
METRES

500

500

600

600

CALIPER

hole diameter
mm

500 375 500

NOTE: CALIPER HEAD DIFFERENT
MAXIMUM VALUES -
PLUGGING

1 Minute

50

0200

0250

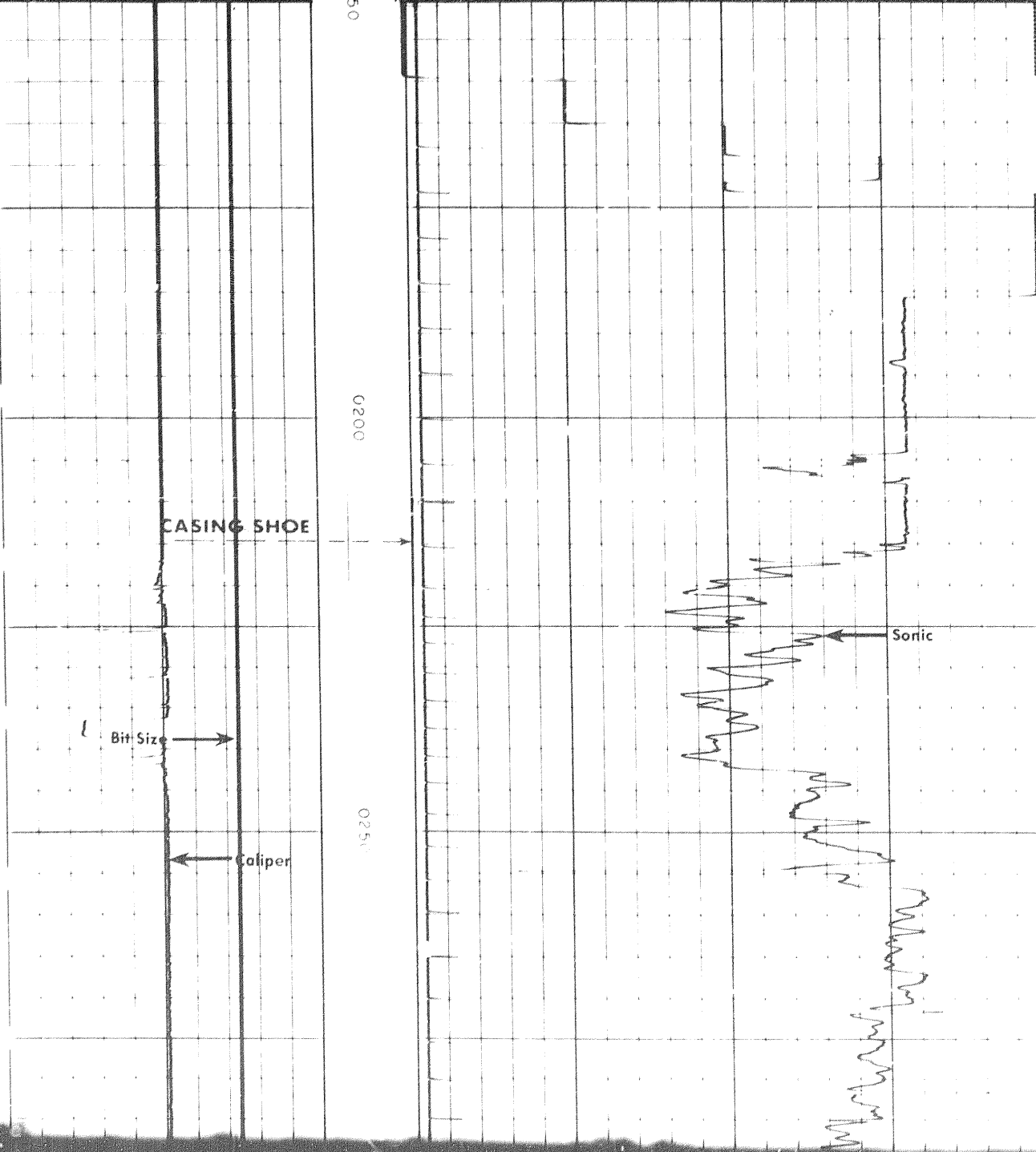
CASING SHOE

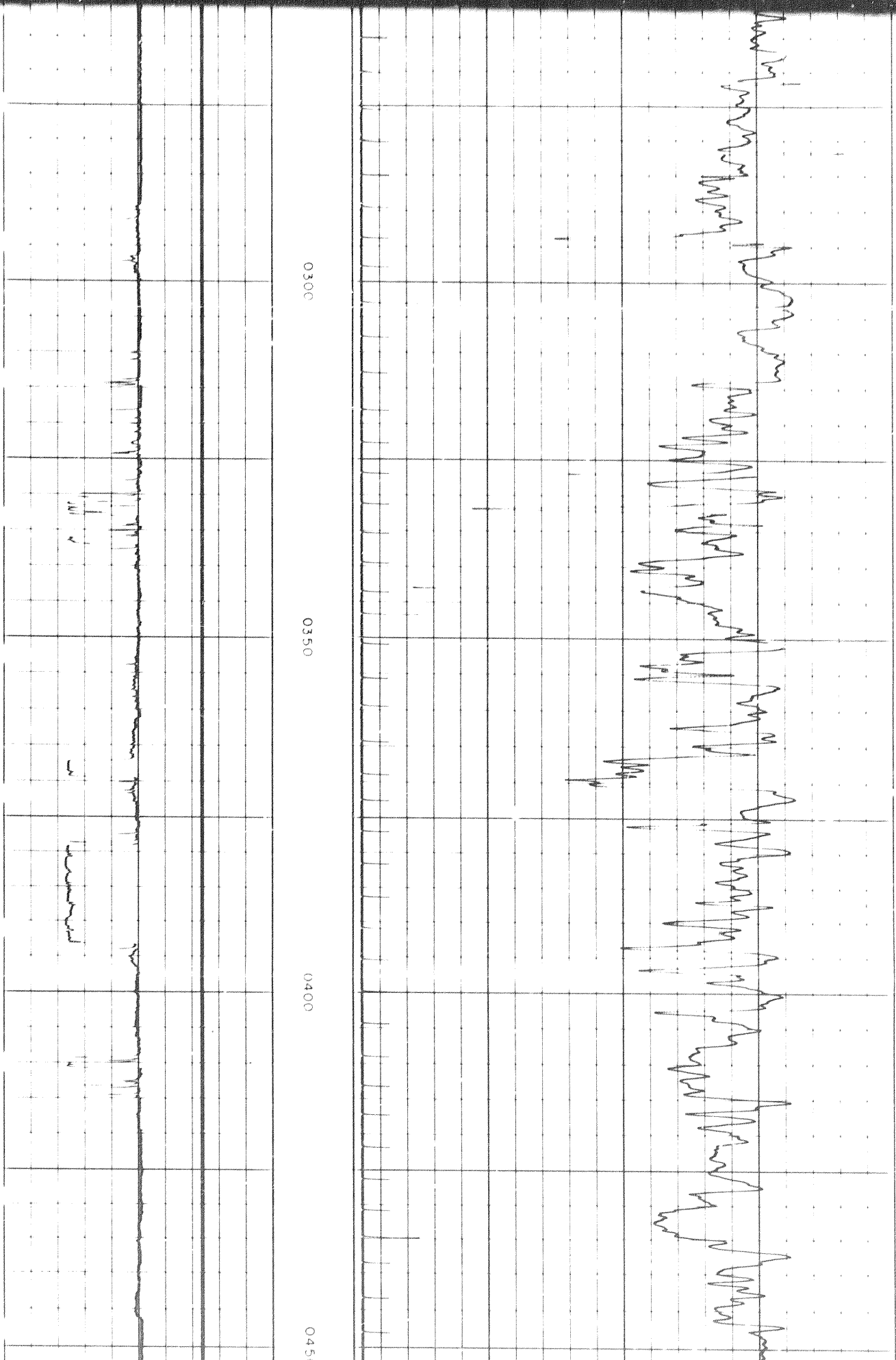
Bit Size

Caliper

Sonic

101





0300

0350

0400

0450

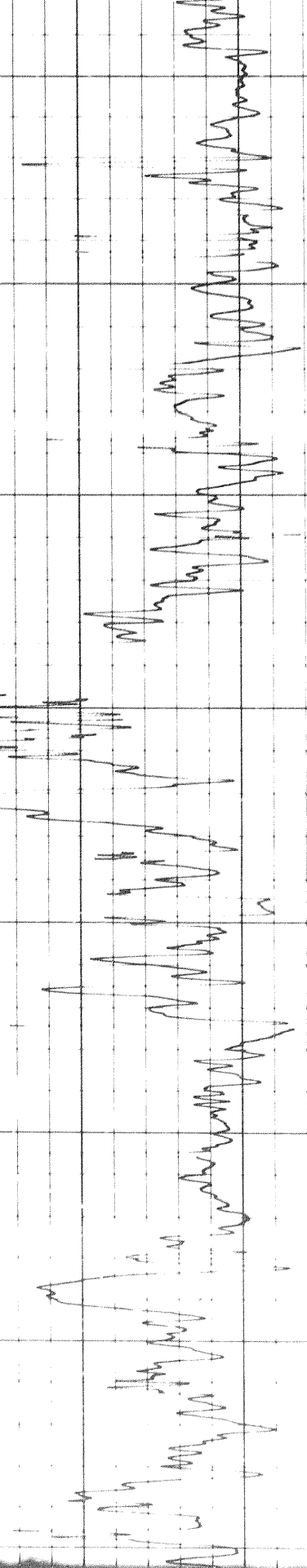
0450

0500

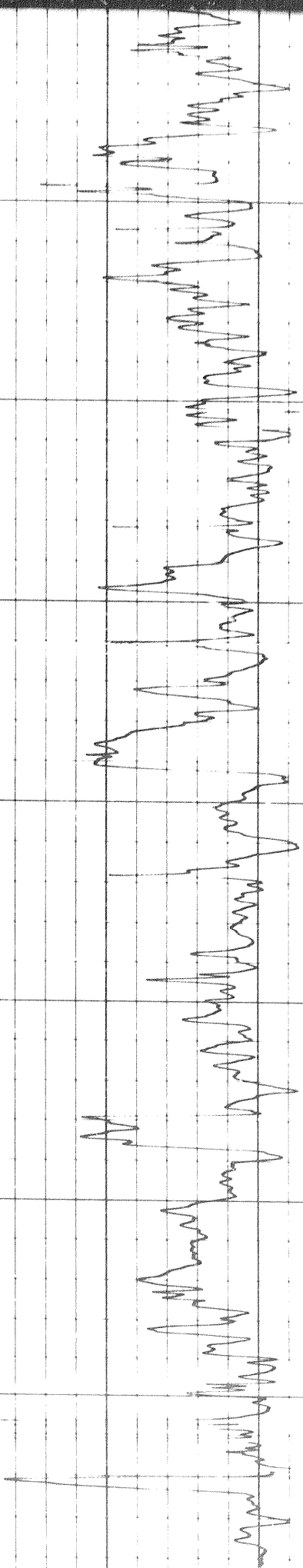
0550

0600

CALIFER PLUGGED
WITH MUD MAXIMUM
READING CHANGES



2 of

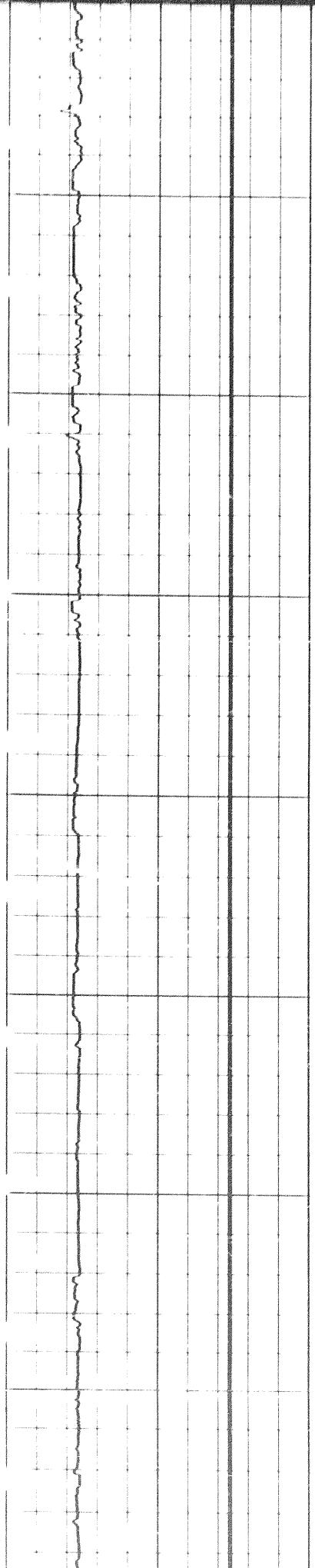


OC

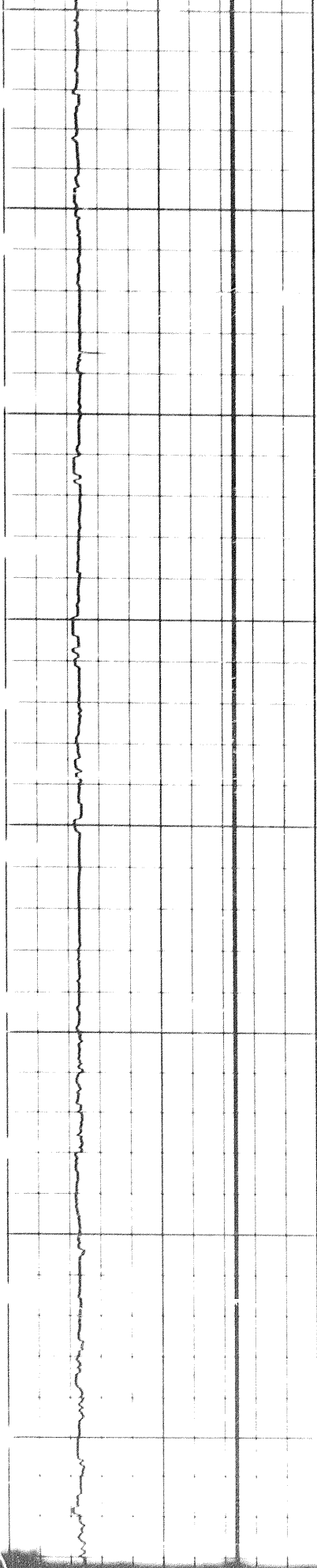
0650

0700

0750



302

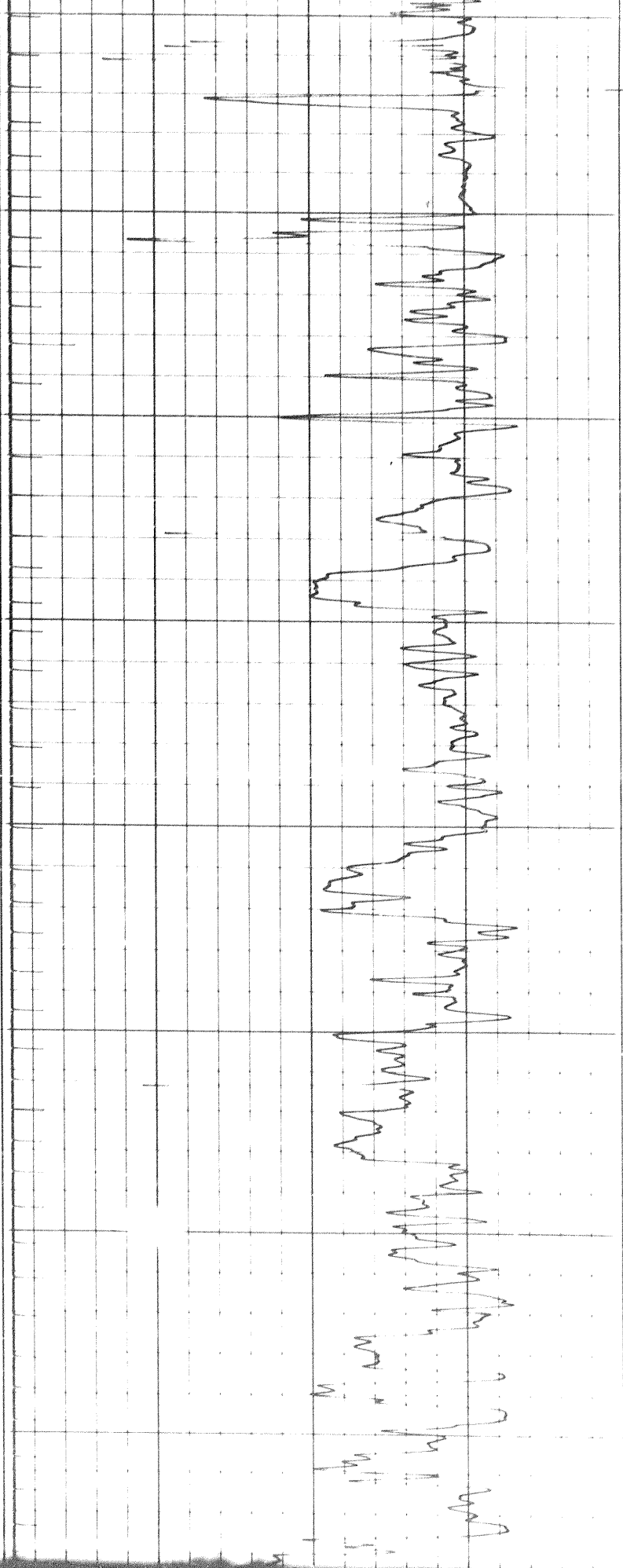


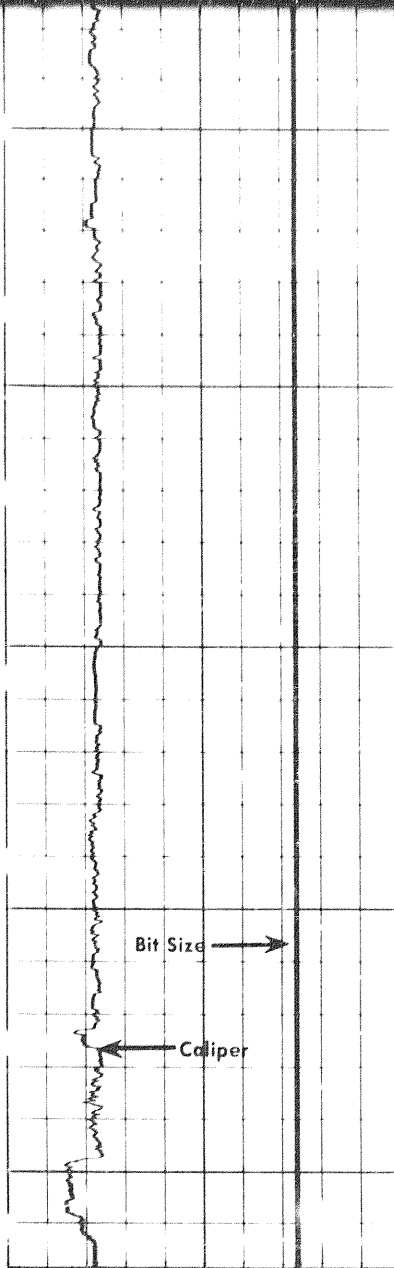
0800

0850

0900

0915

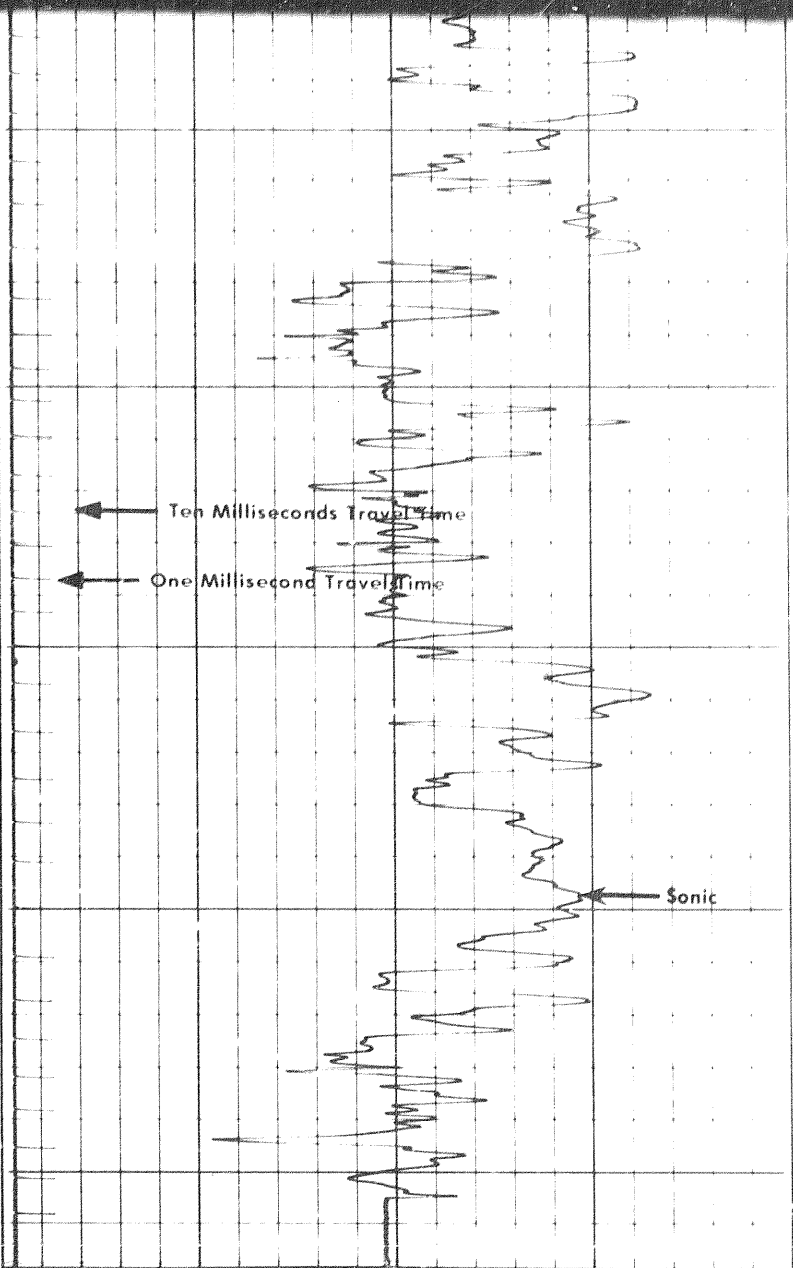




9950

1000

1050



NOTE: CALIPER READ
DIFFERENT MAXIMUM
W/ LITE-PLUGGING

CALIPER	
hole diameter	
mm	
200	500

500	300	100
900	700	500

DEPTH
METRES

INTERVAL TRANSIT TIME
 $\mu s/m$

NOTE: CALIPER READ
DIFFERENT MAXIMUM
W/ LITE-PLUGGING

500	300	100
900	700	500

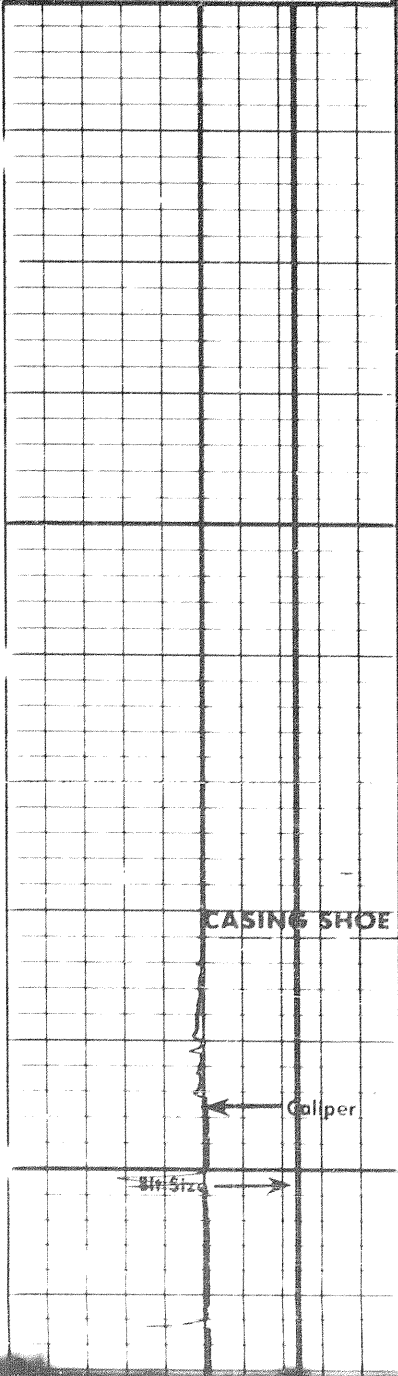
NOTE: CALIPER READ
DIFFERENT MAXIMUM
AND MINIMUM

CALIPER

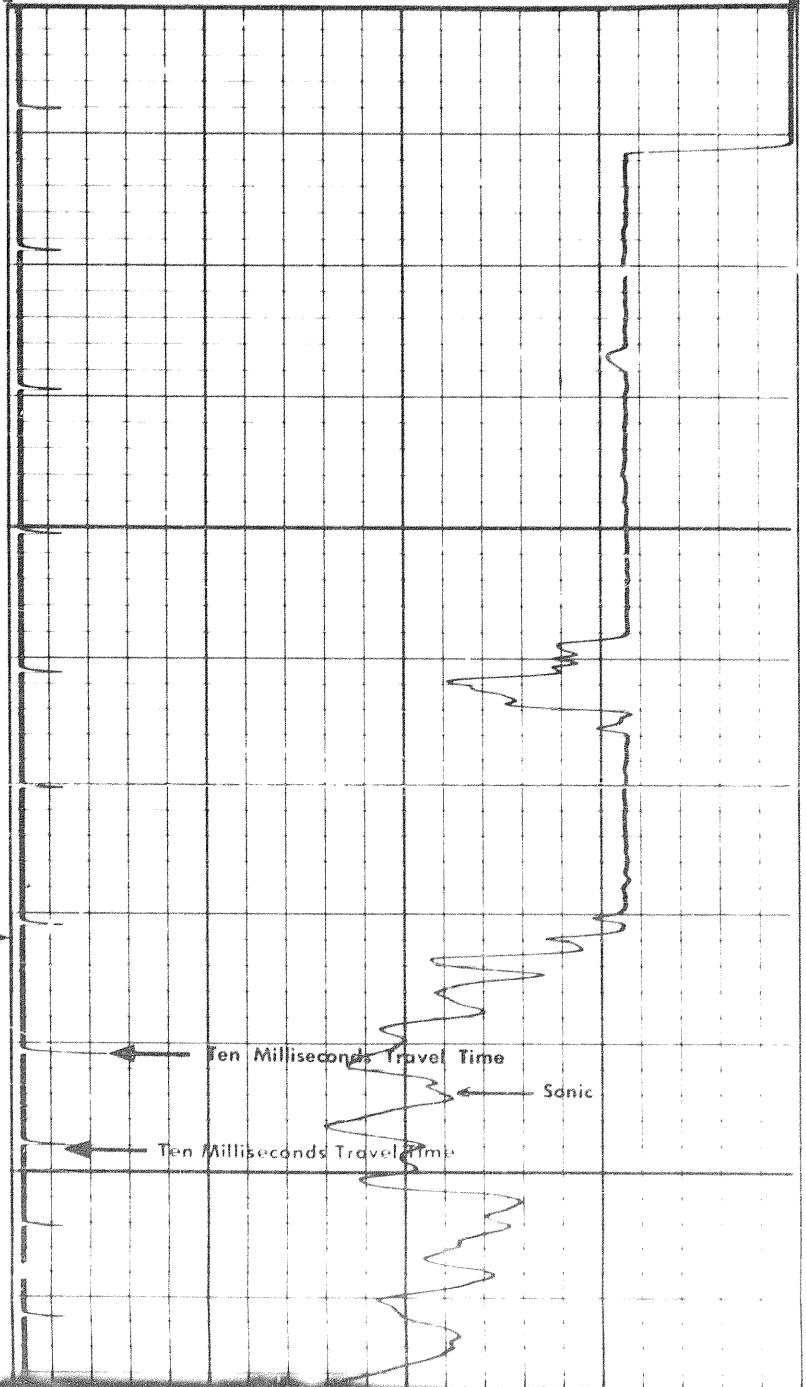
hole diameter
mm

X2000G

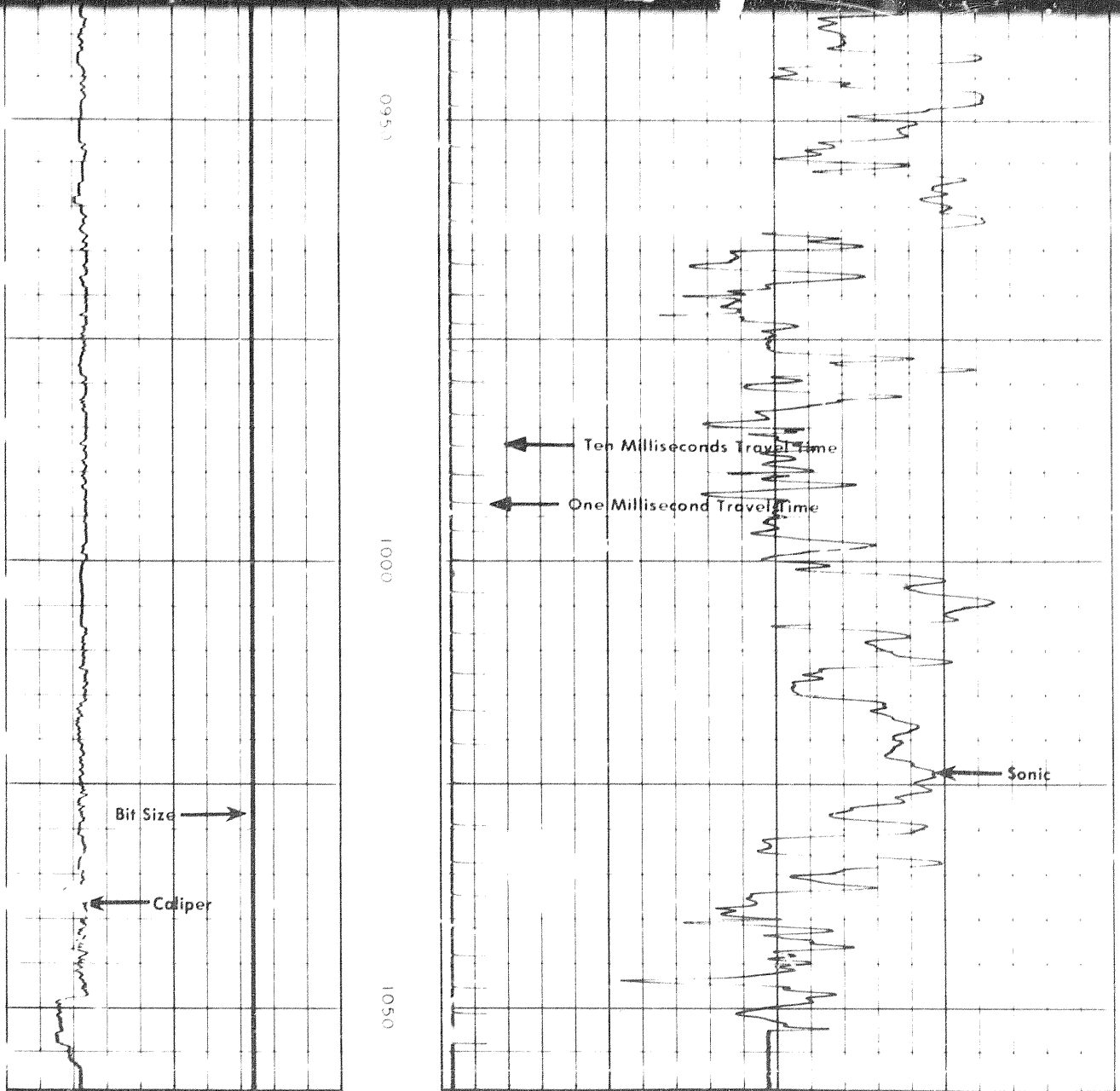
500	300	100
900	700	500



0200



4
to



NOTE: CALIPER READ
DIFFERENT MAXIMUM
WELL-PLACING

CALIPER

hole diameter
mm

500	300	100
900	700	500

DEPTH
METRES

INTERVAL TRANSIT TIME
 $\mu s/m$

500	300	100
900	700	500

NOTE: CALIPER READ
DIFFERENT MAXIMUM
DIFFERENTIAL

500 50 100

900 700 500

CALIPER

hole diameter
mm

X2000G

0200

CASING SHOE

Caliper

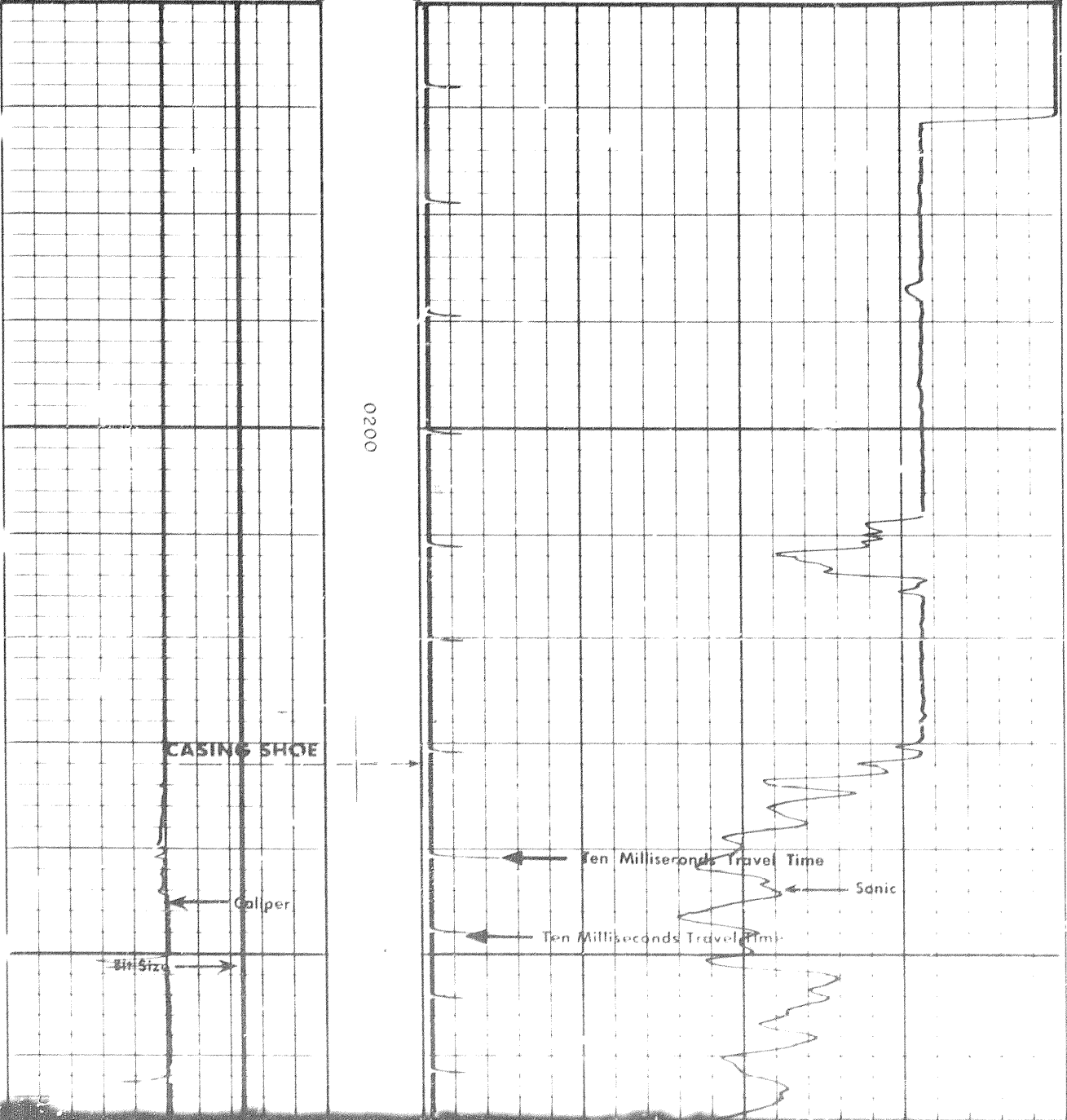
Bit Size

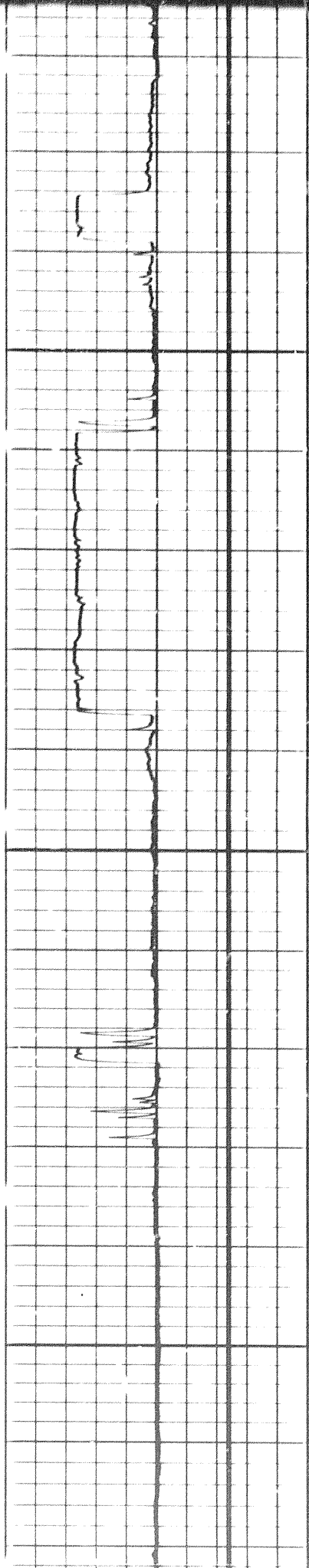
Ten Milliseconds Travel Time

Sonic

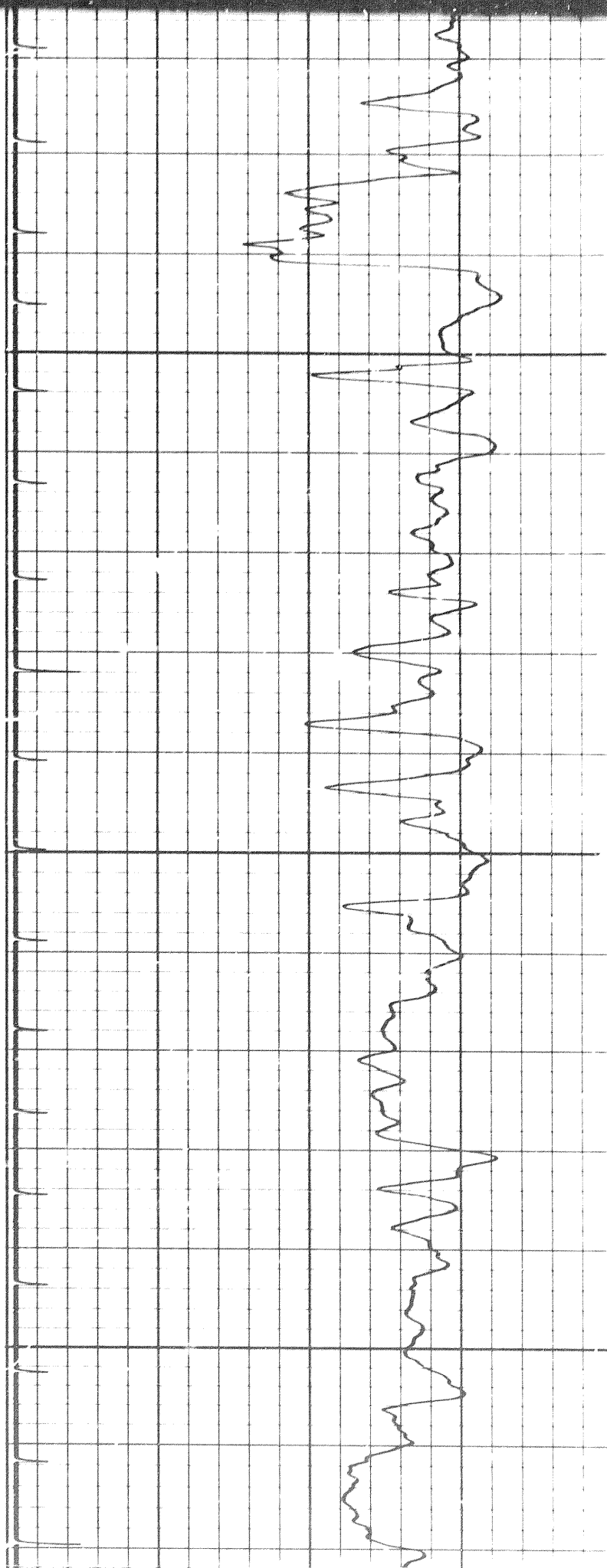
Ten Milliseconds Travel Time

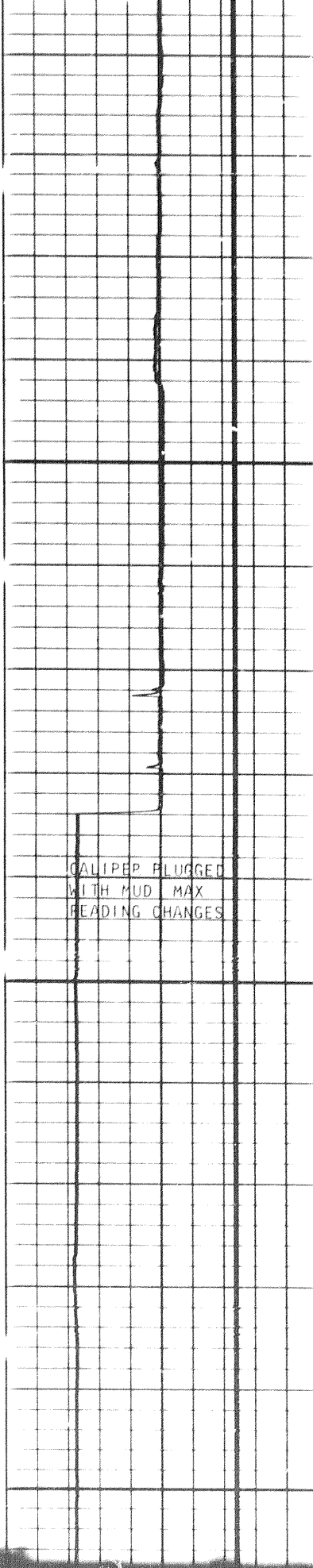
4
70





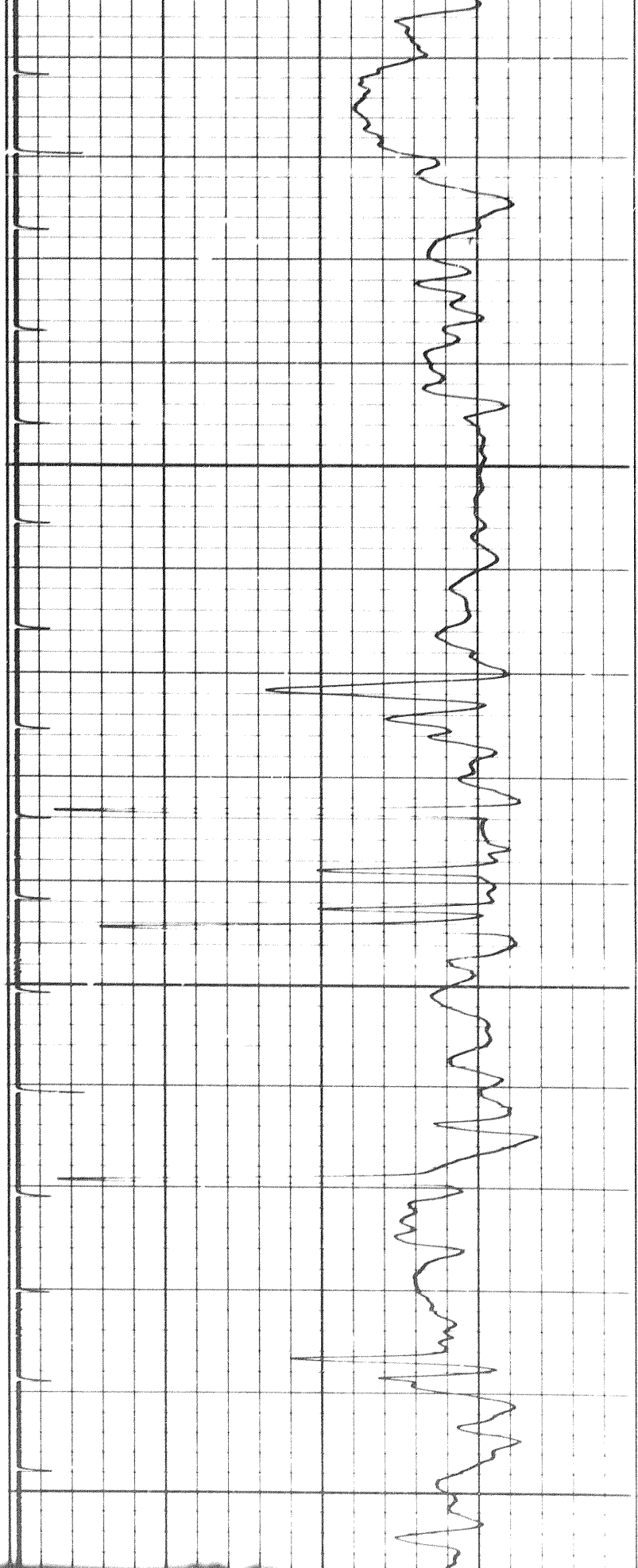
0400



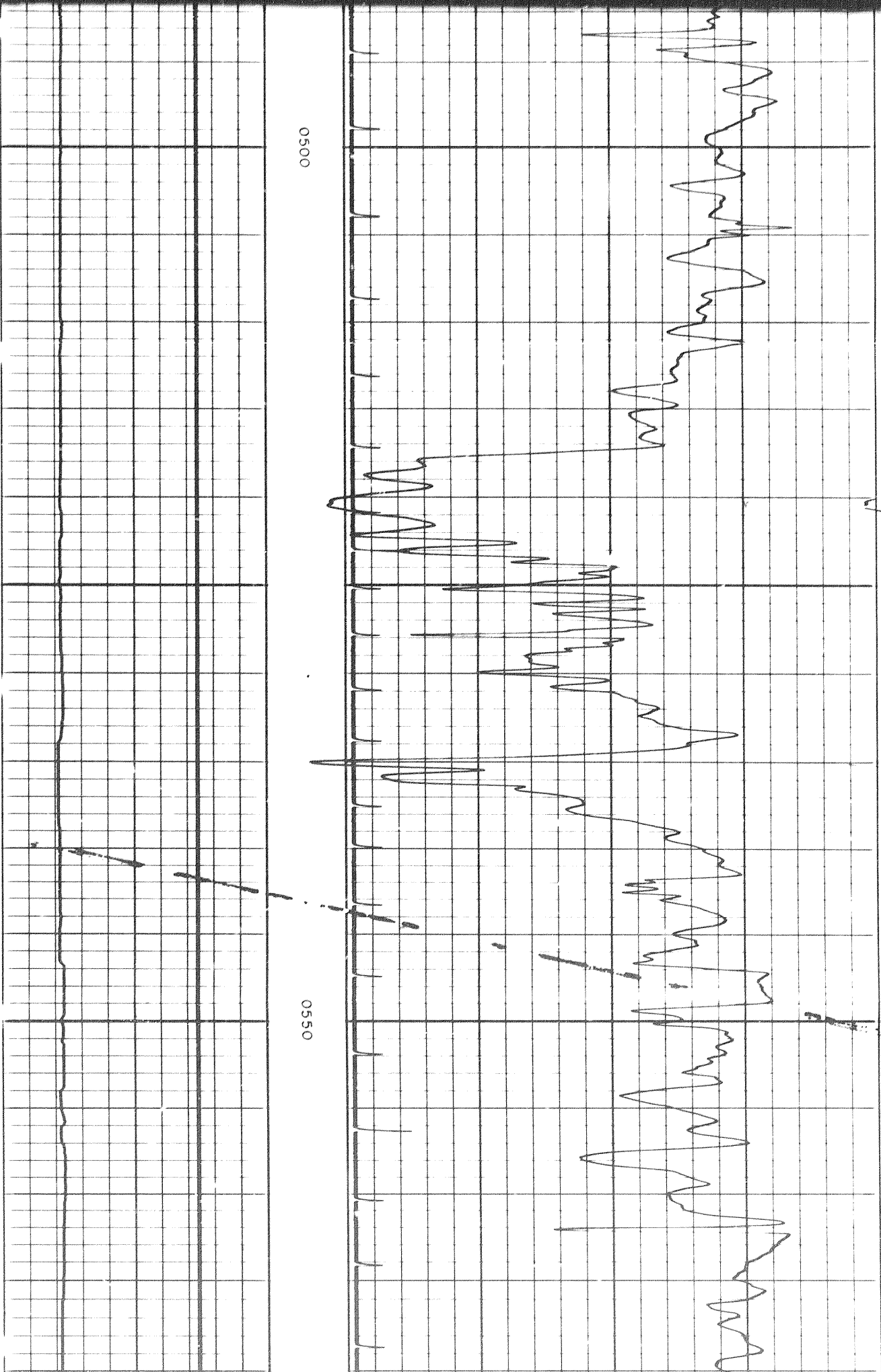


0450

0500

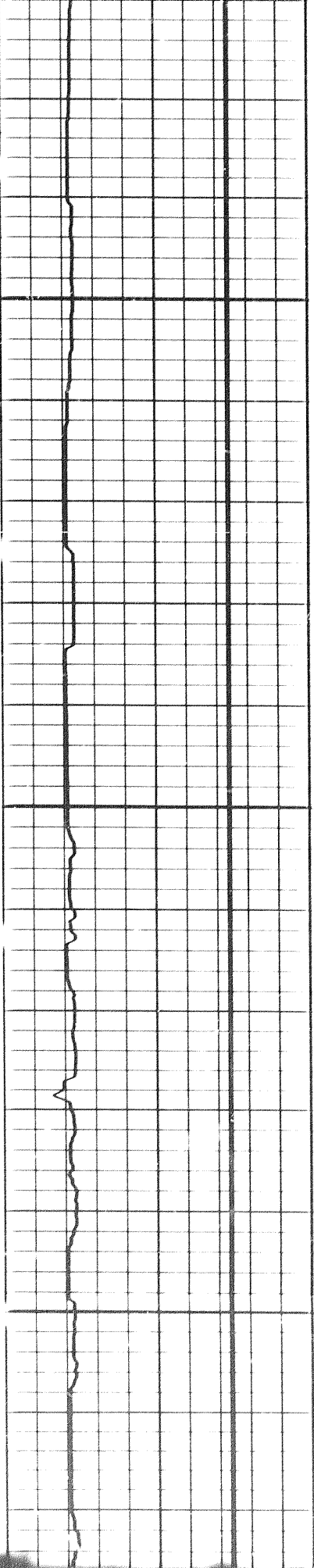


6/27

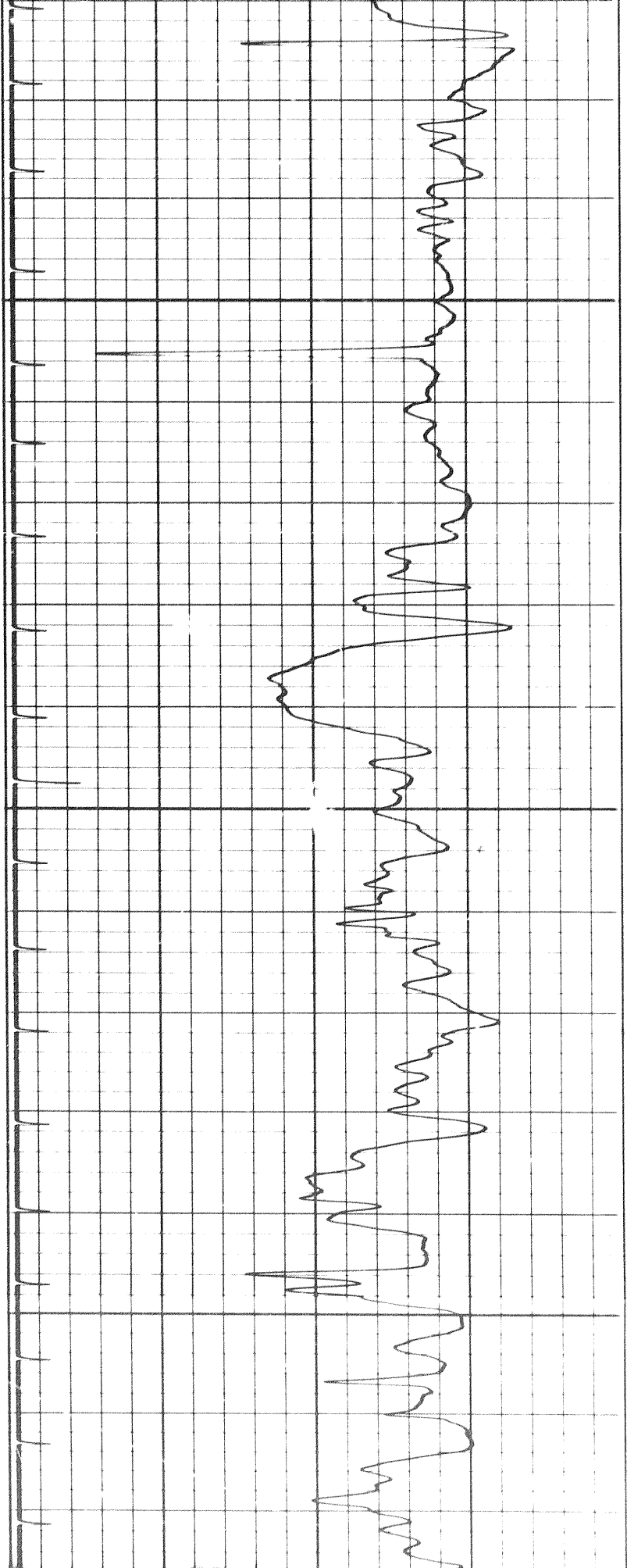


0500

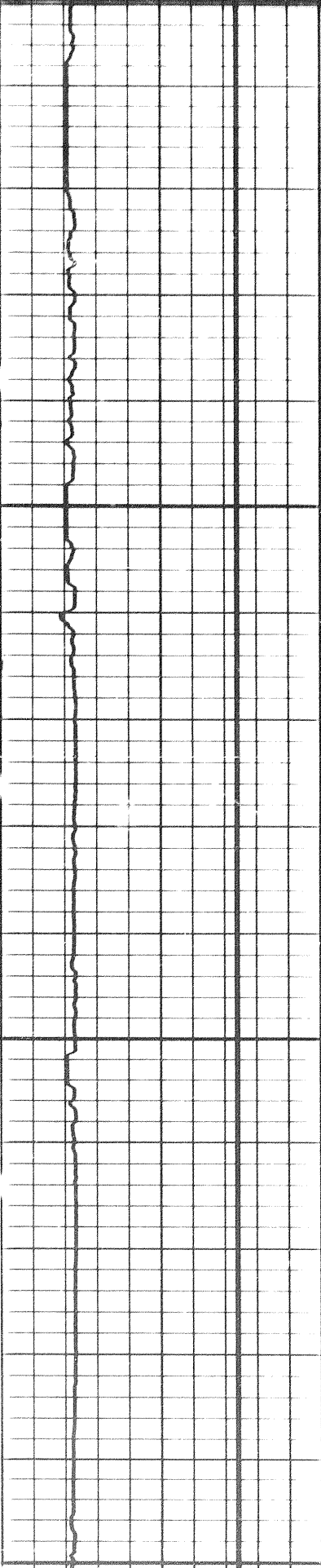
0550



0600

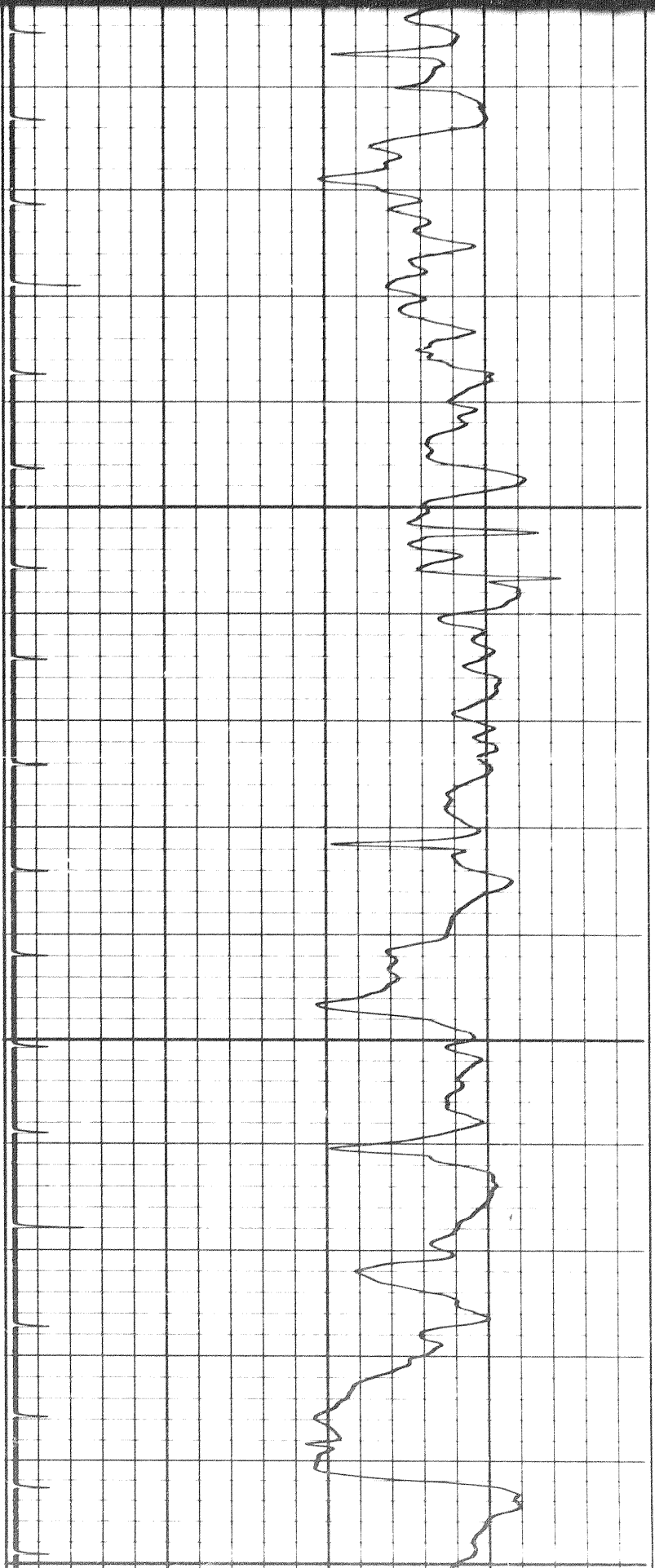


404

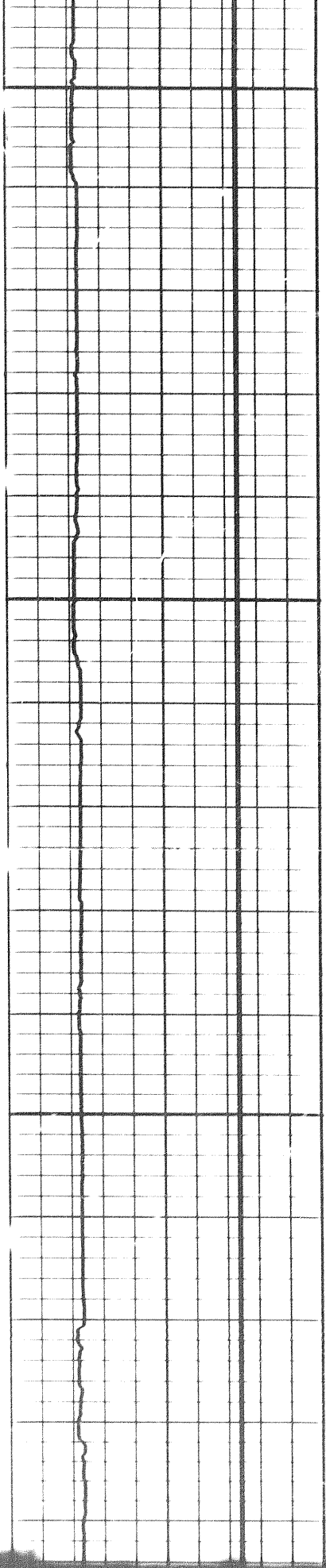


0650

0700

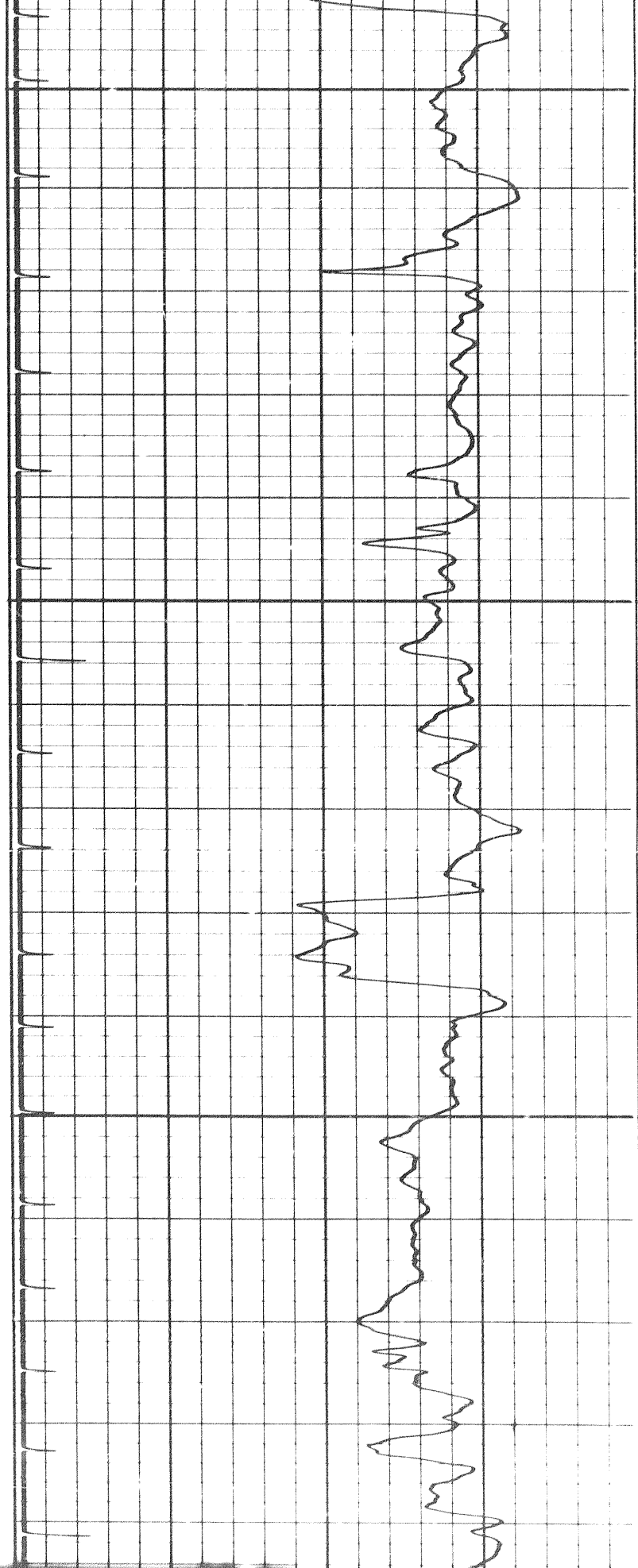


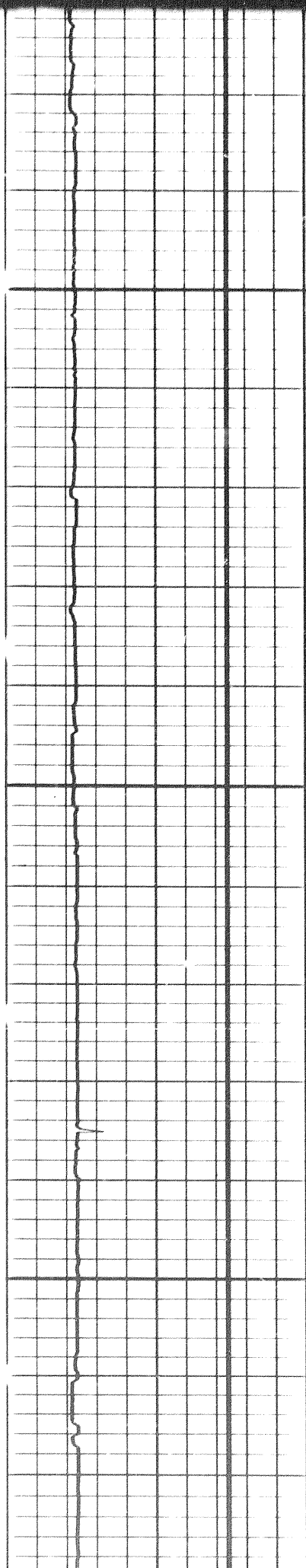
8 of



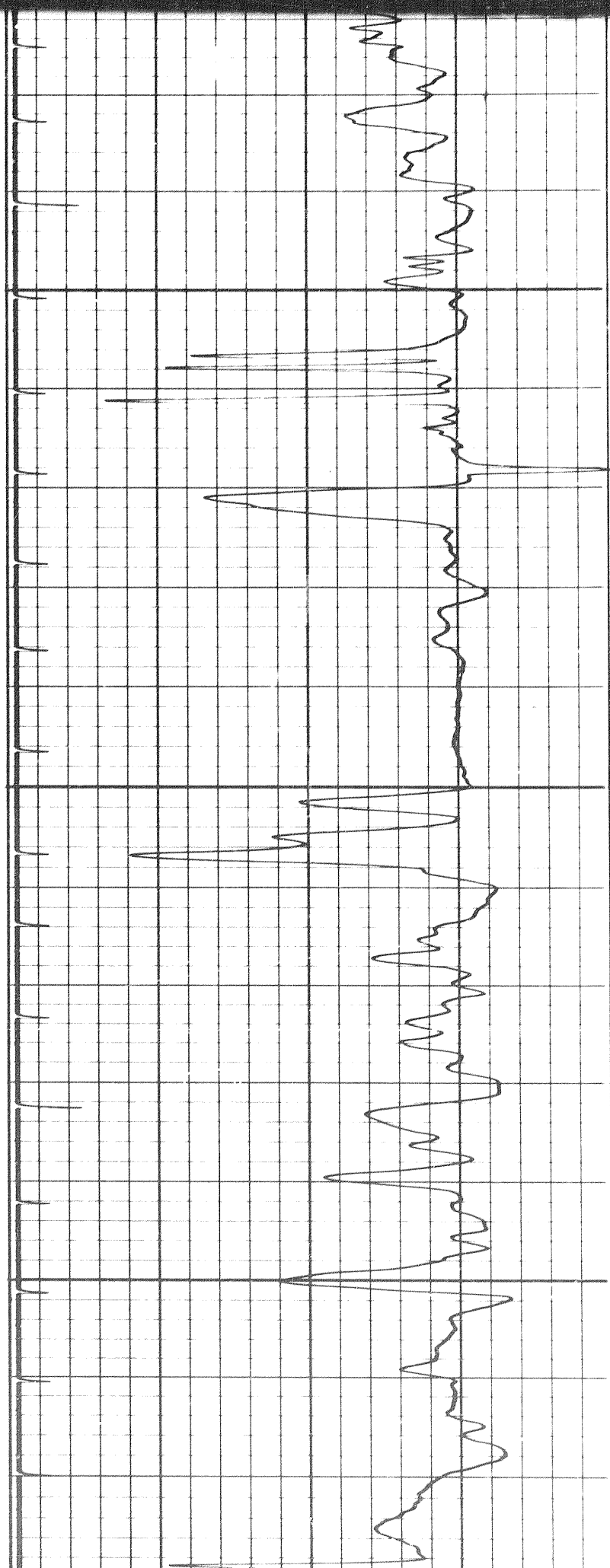
0700

0750

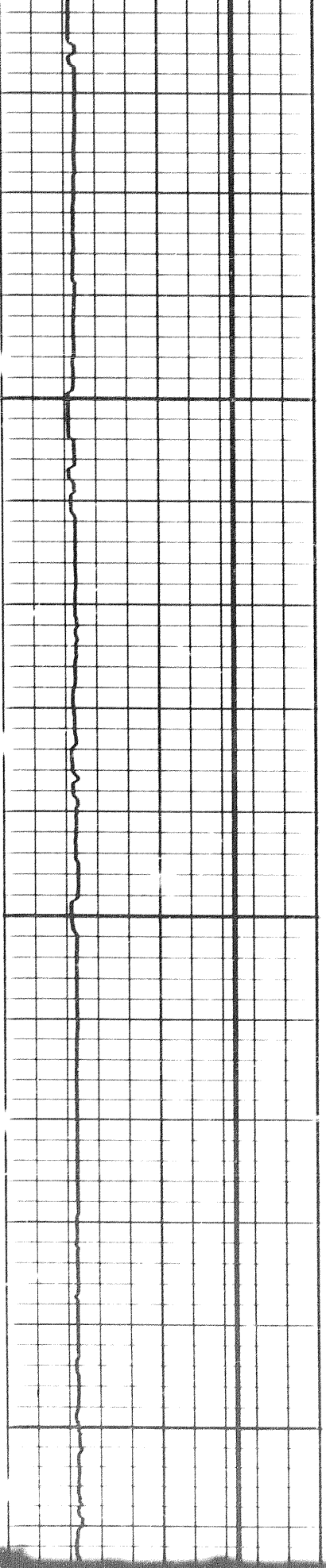




0080

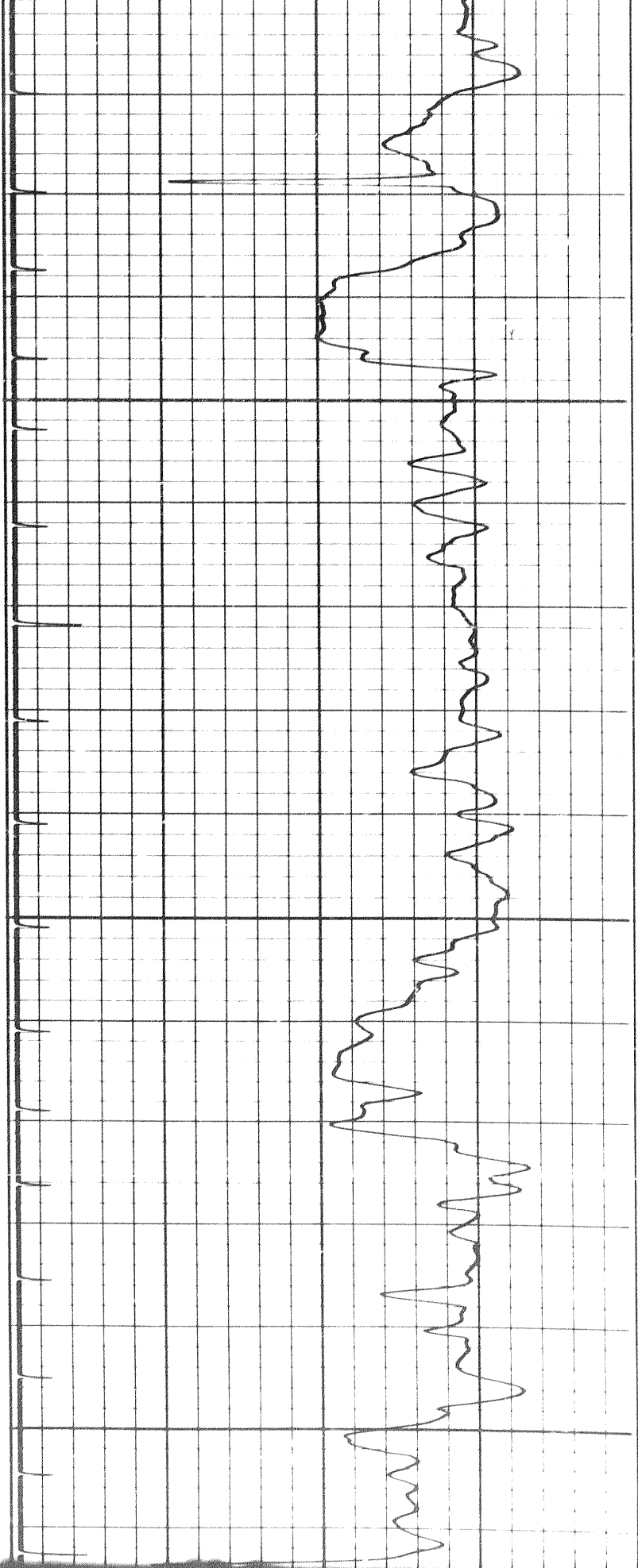


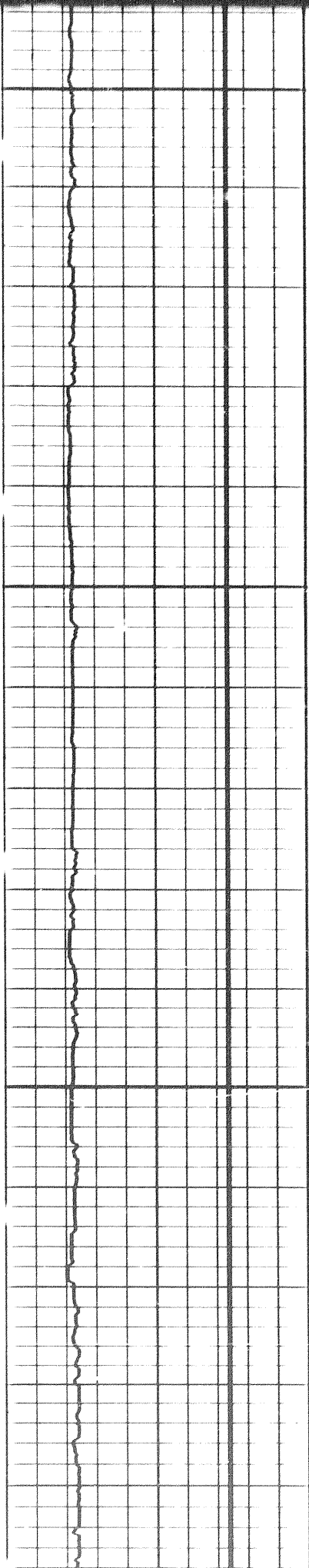
906



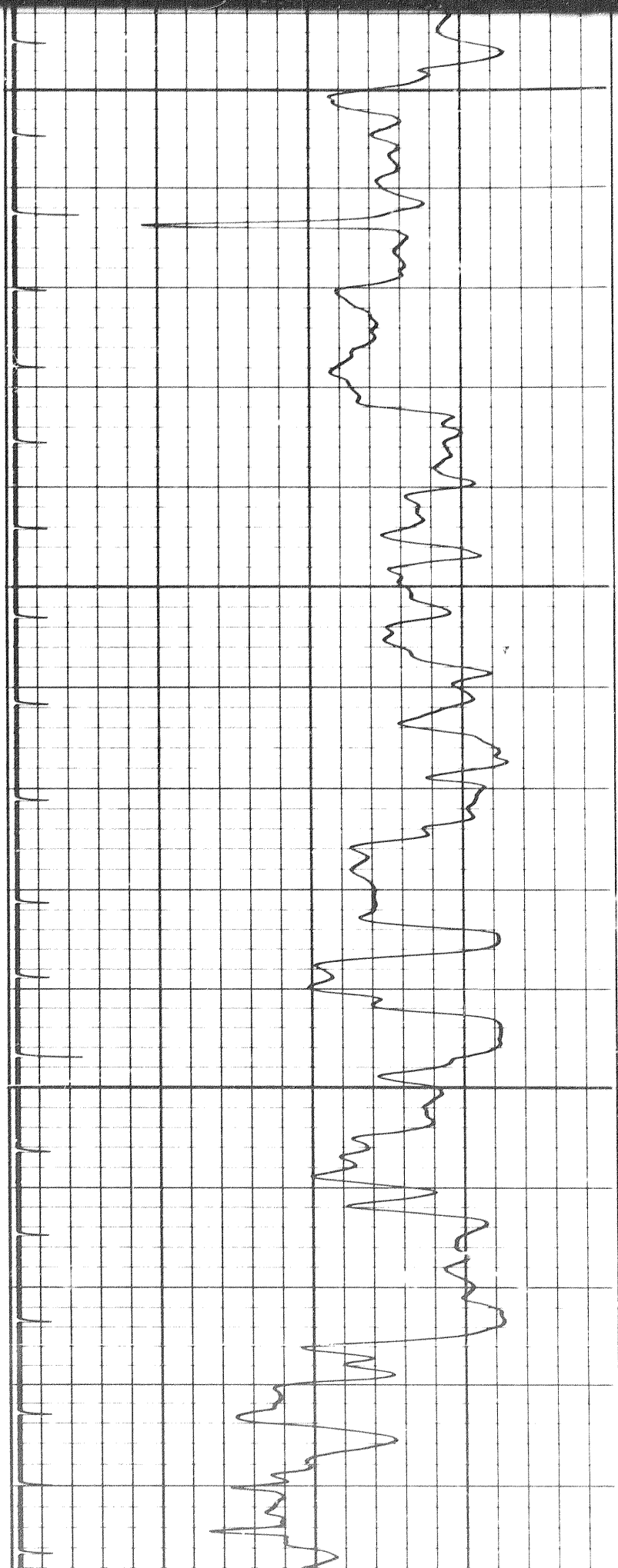
0850

0090



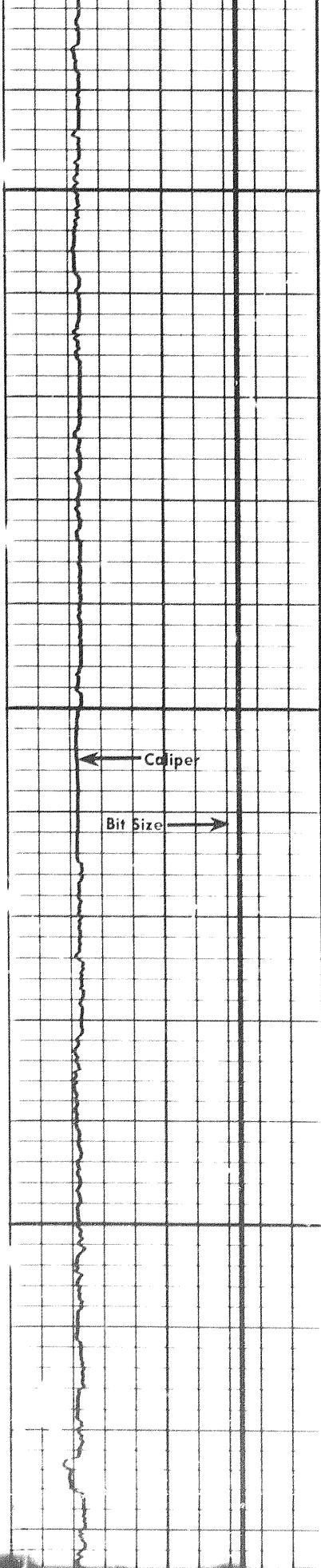


0900

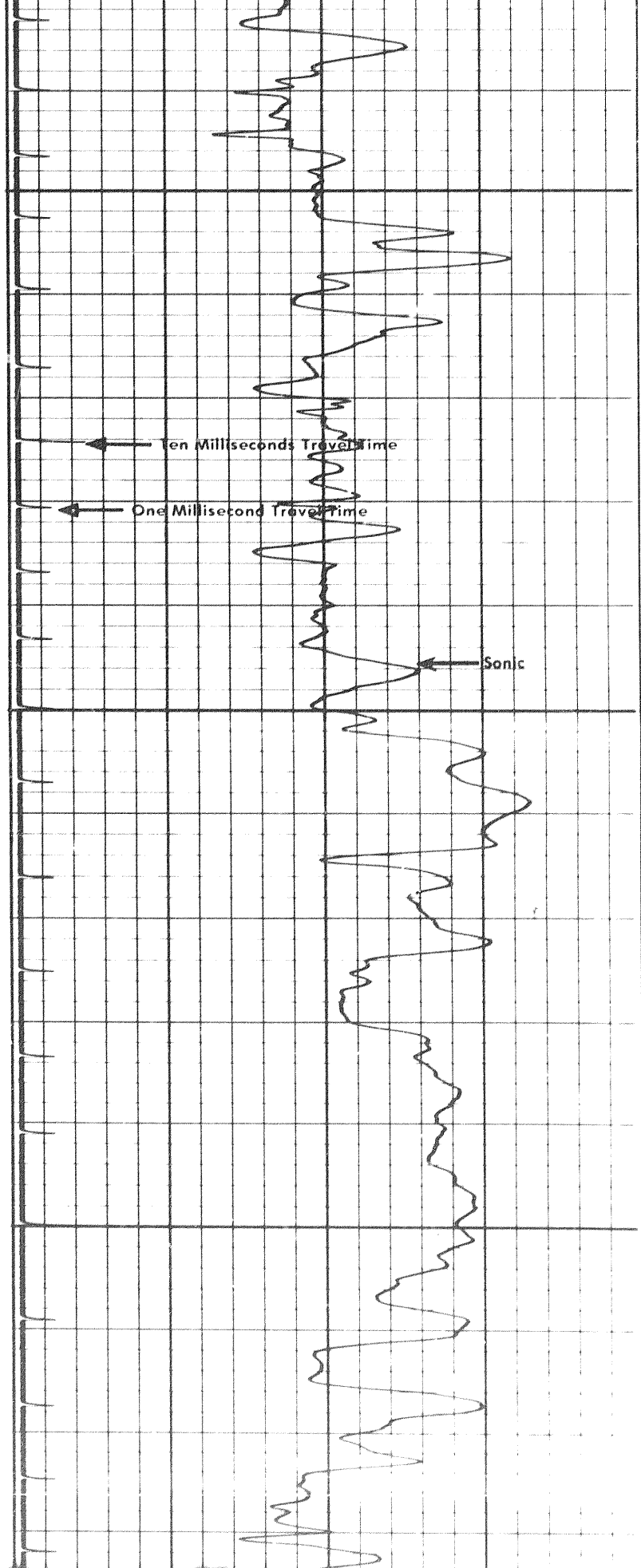


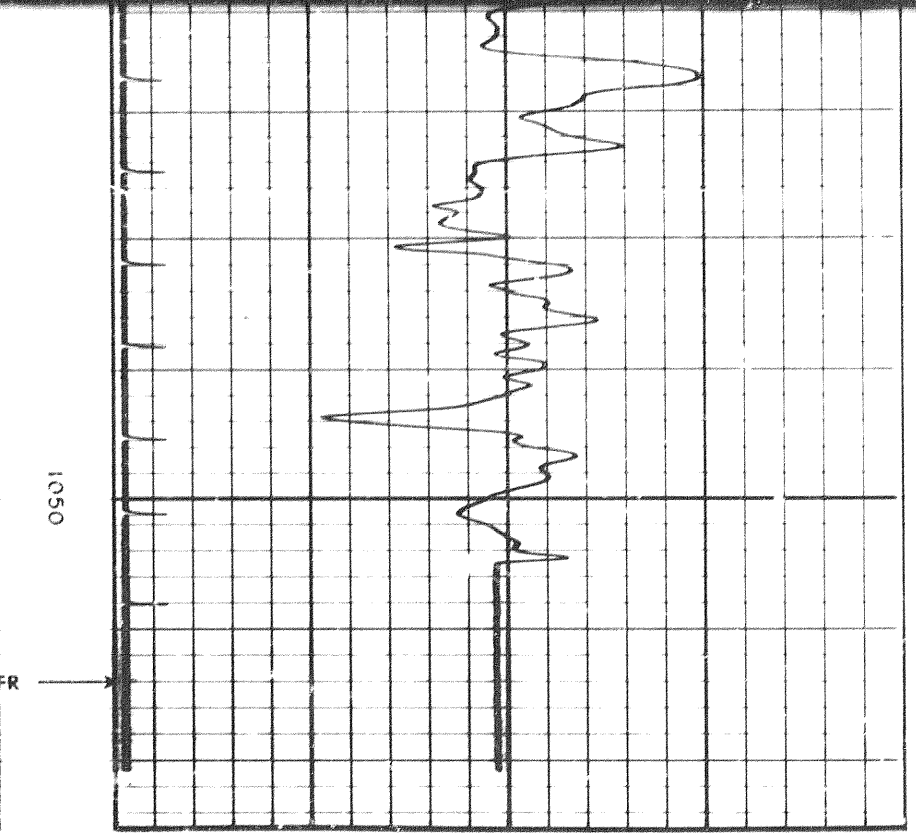
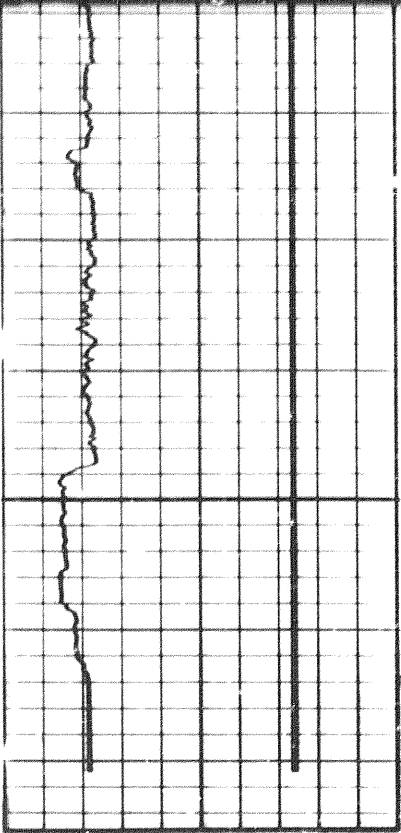
0950

1001



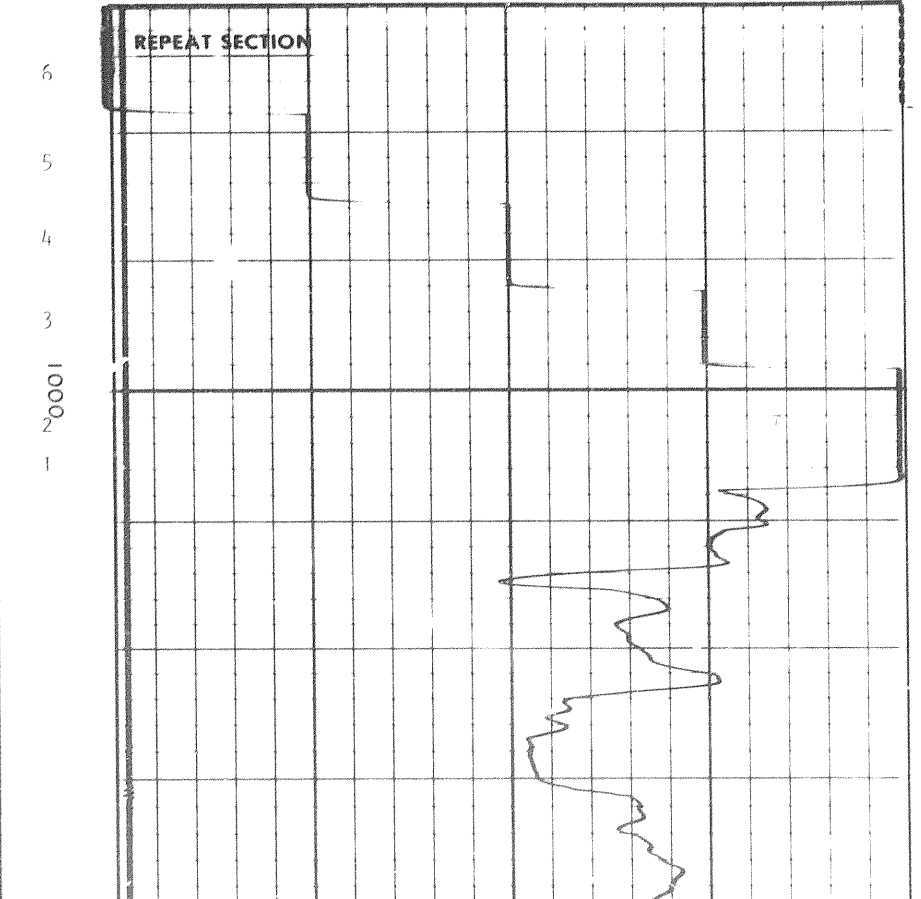
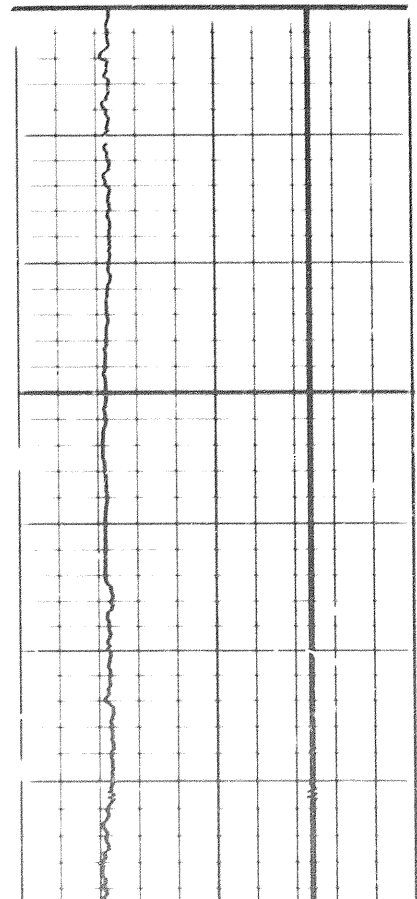
1001



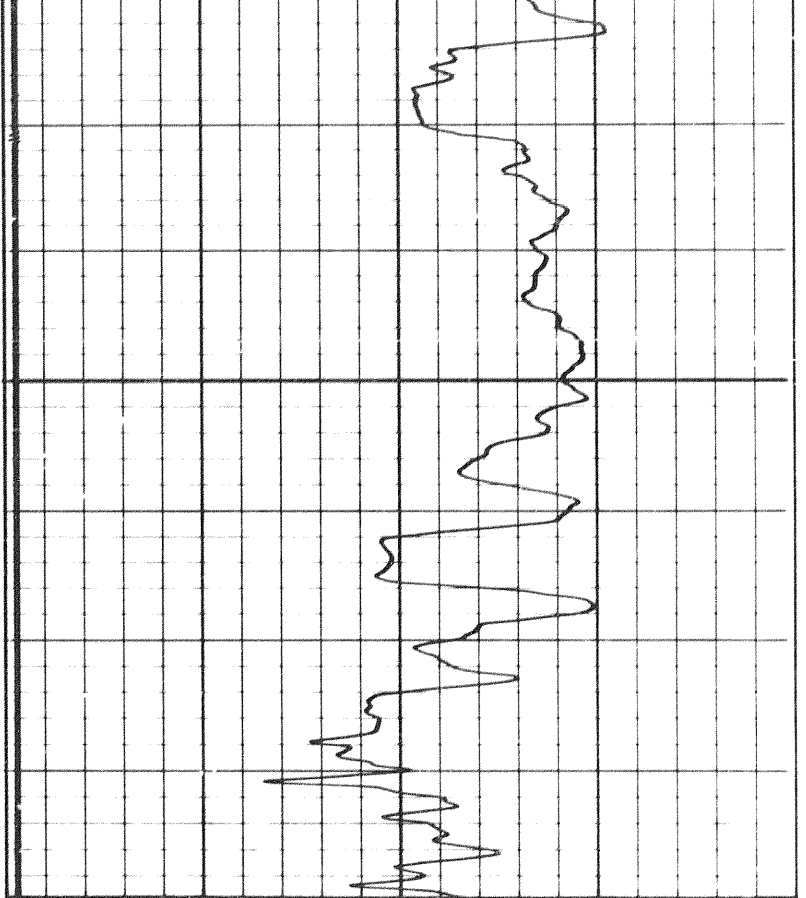
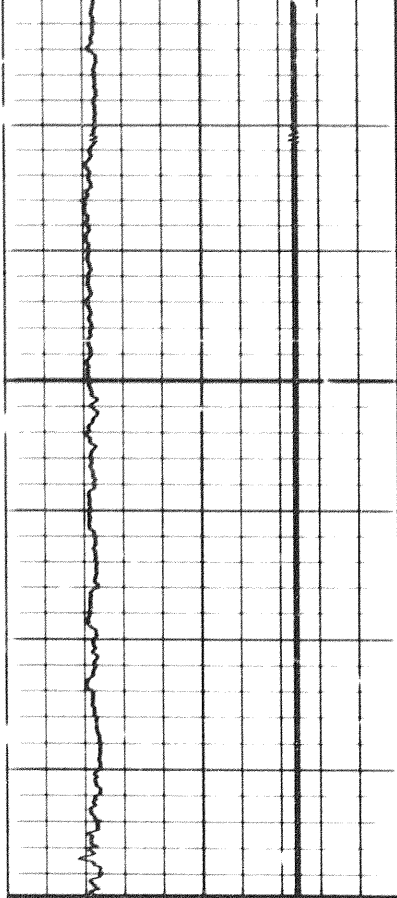


REPEAT SECTION

▼

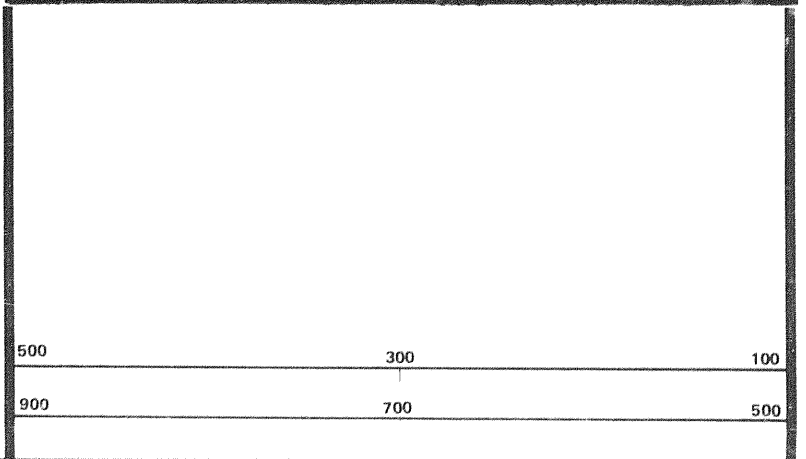


X3000



DATE: _____
 TIME: _____
 LOCATION: _____

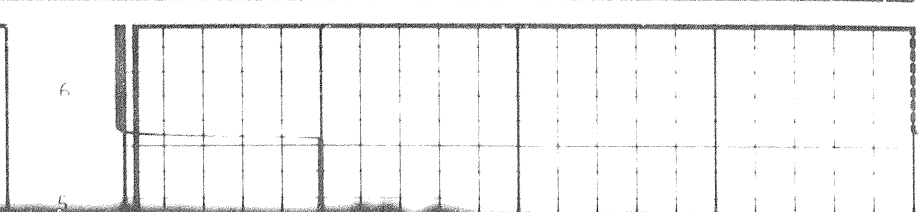
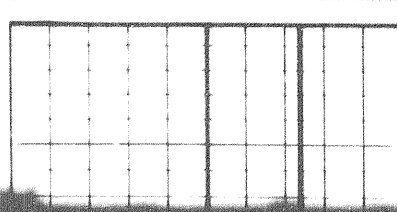
CALIPER
 hole diameter
 mm



DEPTH
 METRES

INTERVAL TRANSIT TIME
 $\mu s/m$

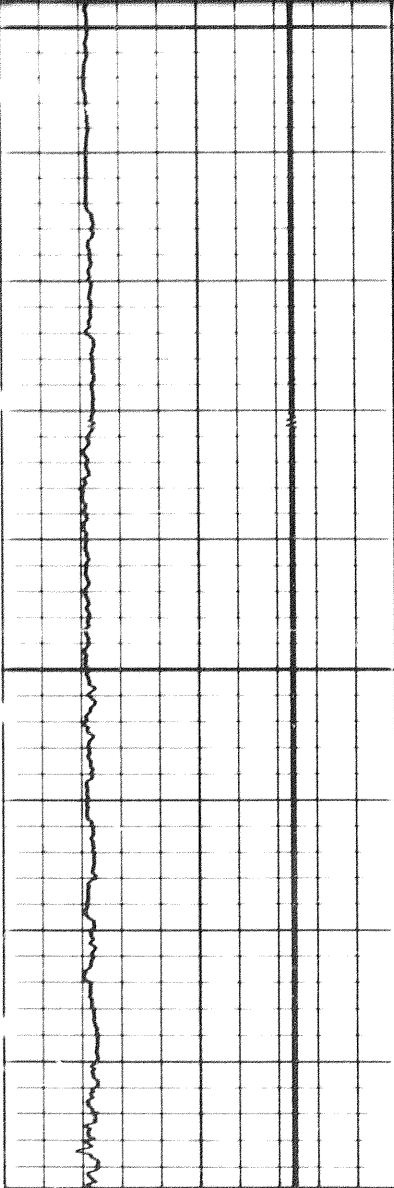
CALIBRATION RECORD



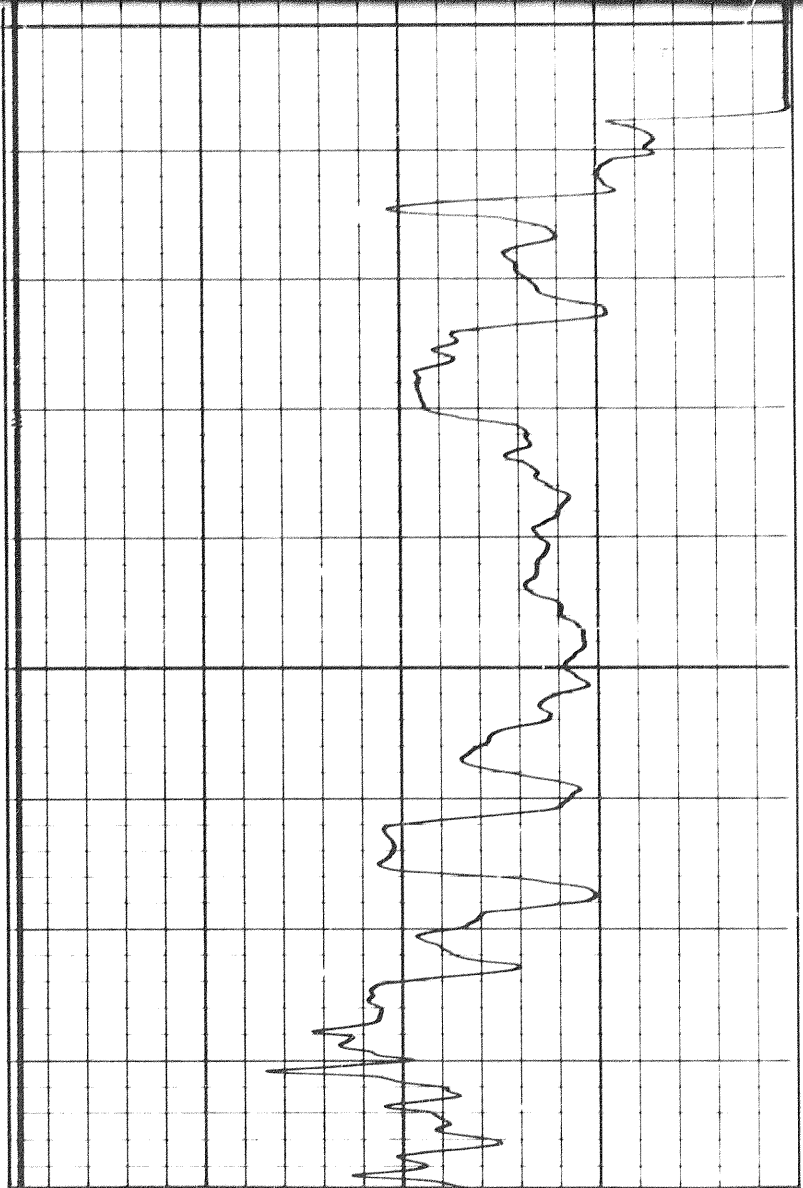
11

X2000E

6
5

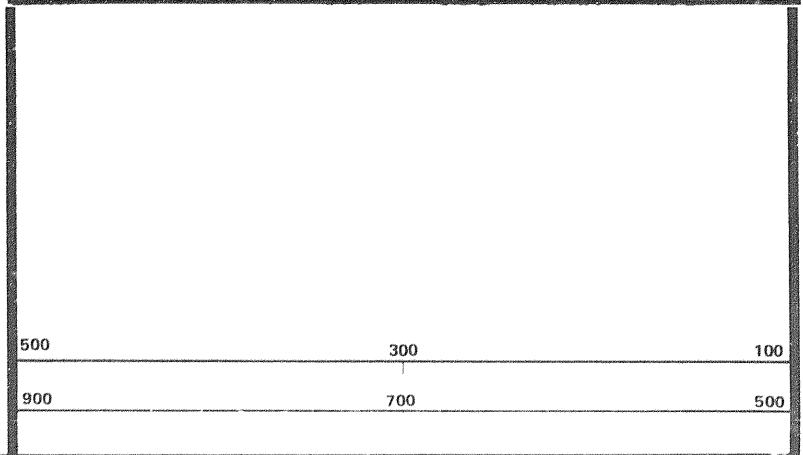


000



DATE: _____
 TIME: _____
 LOCATION: _____

CALIPER
 hole diameter
 mm



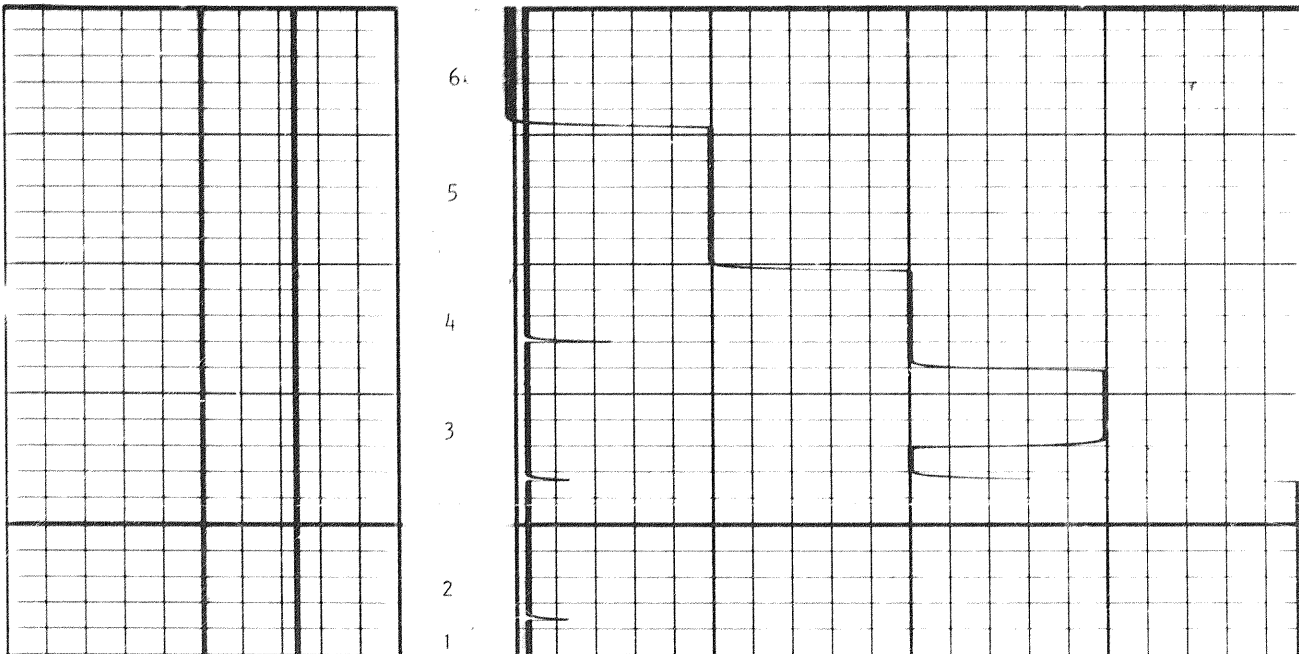
DEPTH
 METRES

INTERVAL TRANSIT TIME
 $\mu s/m$

CALIBRATION RECORD

CALIBRATION RECORD

X2000E



BOREHOLE COMPENSATED SONIC CALIBRATION CODING

- 1. MECHANICAL ZERO
- 2. 100 $\mu s/m$
- 3. 200 $\mu s/m$
- 4. 300 $\mu s/m$
- 5. 400 $\mu s/m$
- 6. 500 $\mu s/m$

GAMMA RAY CALIBRATION CODING

- 1. MECHANICAL ZERO
- 2. ELECTRICAL ZERO
- 3. RECORDER SENSITIVITY
- 4. MEMORIZER SENSITIVITY
- 5. BACKGROUND
- 6. CALIBRATION

CALIPER CALIBRATION CODING

- 1. MECHANICAL ZERO CALIPER
- 2. 203 mm RING
- 3. 305 mm RING

COMPANY _____

WELL _____

FIELD _____

PROVINCE _____

SCHL. FR 1011 m

SCHL. TD 1011 m

DRLR. TD 1011 m

Elev.: KB 2011 m

DF _____ m

GL _____ m

X2000C

7/12