

Schlumberger

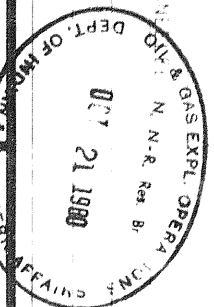
SCHLUMBERGER OF CANADA

Calgary, Alberta

CEMENT BOND - VARIABLE DENSITY LOG

PROVINCE YUKON TERRITORY
 FIELD WILKAT
 WELL COL MBEA 101 AL KOTANEE
 COMPANY COL MBEA 101 DEVELOPMENT OF CANADA LTD.

LOCATION
 LSD SEC TWP RANGE
 COMPANY COL MBEA 101 DEVELOPMENT OF CANADA LTD.
 WELL COL MBEA 101 AL KOTANEE
 FIELD WILKAT
 PROVINCE YUKON TERRITORY



Permanent Datum Elev. 221.30 m
 Log Measured From 1.1 m Above Perm. Datum
 Drilling Measured From 1.1 m Above Perm. Datum
 K B 230.10 m
 D F 230.10 m
 G L 230.10 m

Date 1980-02-21
 Run No. 001
 P.A.T.D. Driller
 Depth-Logger (Schl.)
 Btm. Log Interval
 Top Log Interval
 Open Hole Size
 Bottom Hole Temp.

TUBING & CASING RECORD
 Surface Casing Size (mm) Wt. (kg/m) Grade Type Joint Top (m) Bottom (m)
 Protection Casing N-50
 Production Casing
 Liner
 Tubing
 Tubing

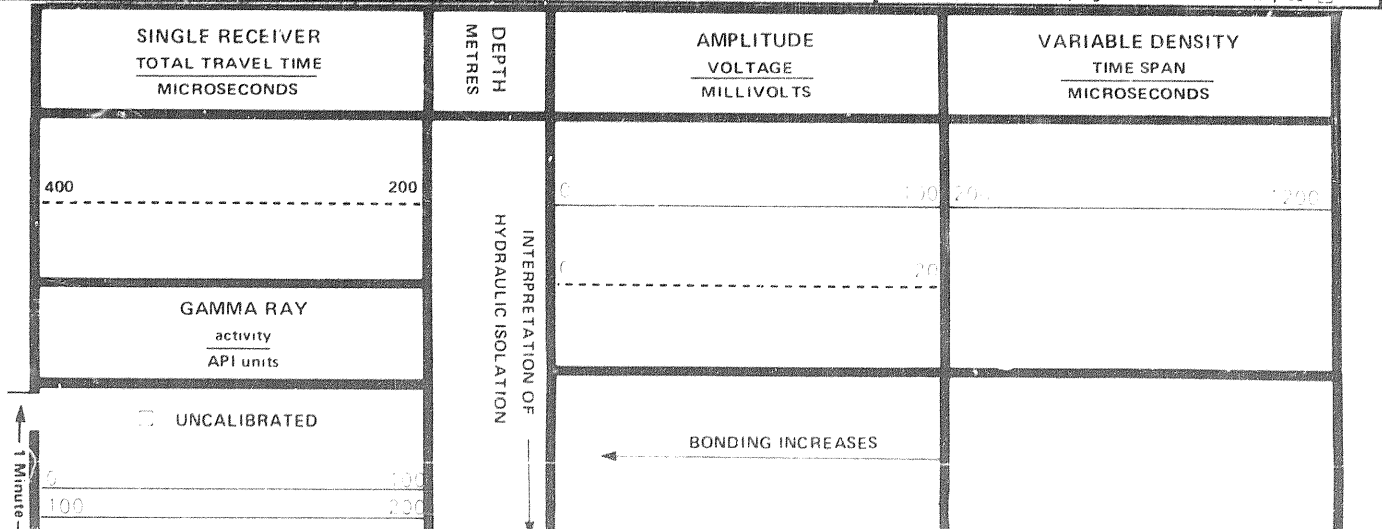
MISCELLANEOUS
 Production Packer @ FROM TO FROM TO
 Minimum I.D. = m m m m m m m m

Service Order No. 101673
 22 L780 EDM, LPAVR
 Collars Recorded m Deep
 OPEN HOLE LOG WITH 1X
 AMPLITUDE

CORRELATION LOG:
 Type: RHC-GR
 Curve: SR
 Service Co.: SCHLUMBERGER
 Date: 14 FEB 80
 Other:

PRIMARY CEMENTING PROCEDURE
 Hour - Date
 Started pumping cement
 Release pressure
 Start Cement Bond Log
 Finish Cement Bond Log

PRIMARY CEMENTING DATA
 STRING
 Volume of Cement
 Type of Cement
 Additive
 Retarder
 Wt. of Slurry
 Water loss
 Type fluid in csg.
 Fluid wt.
 Sonde Mode:
 Detection Mode: 1X
 Cartridge Gain: 1.20
 Spacing:
 Amplitude .4 m
 Variable Density .5 m
 Preceding fluid: Volume: 1-3
 Cement pumped @ m³/min
 Pipe reciprocated during pumping: Yes No
 Pipe reciprocated after plug down: Yes min, No



GAMMA RAY
activity
API units

□ UNCALIBRATED

← 1 Minute →

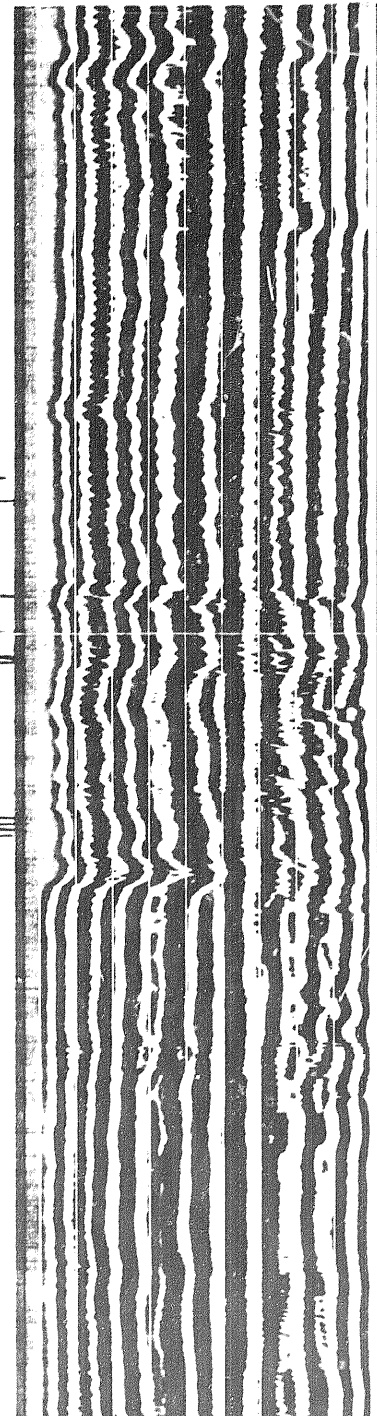
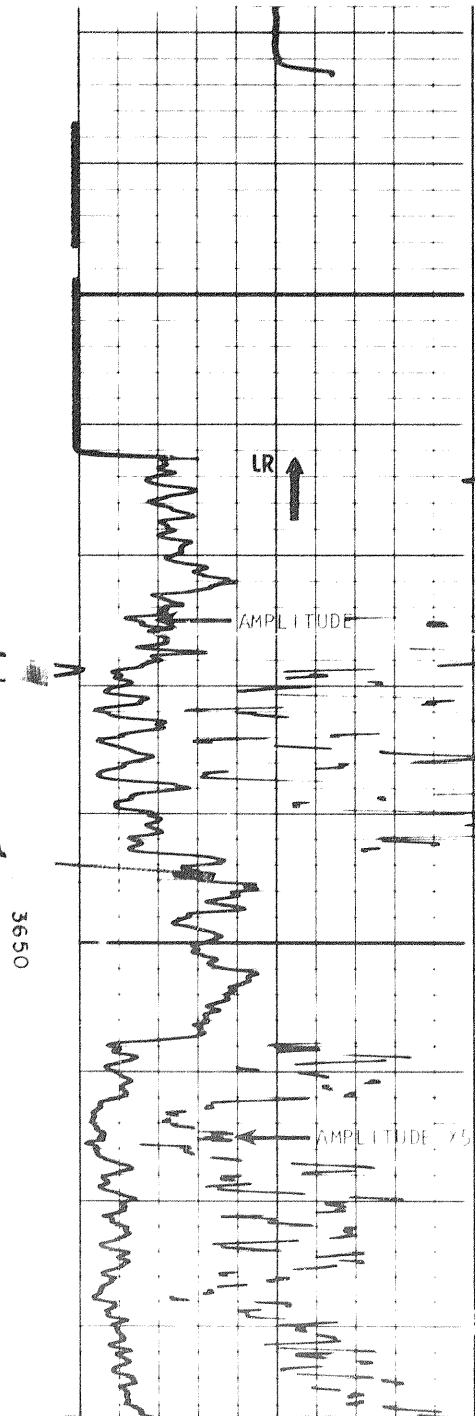
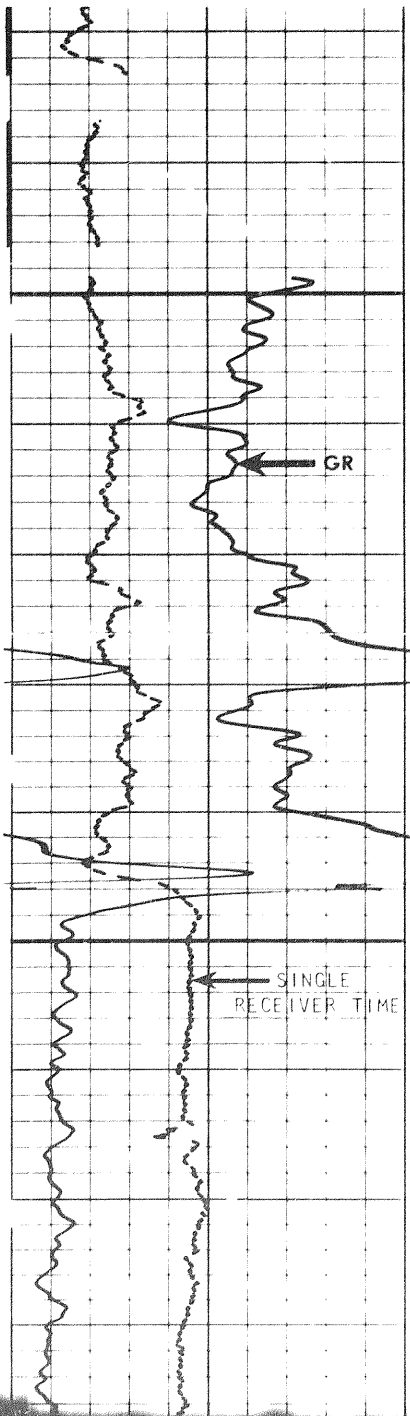
0 100
100 200

X4010A

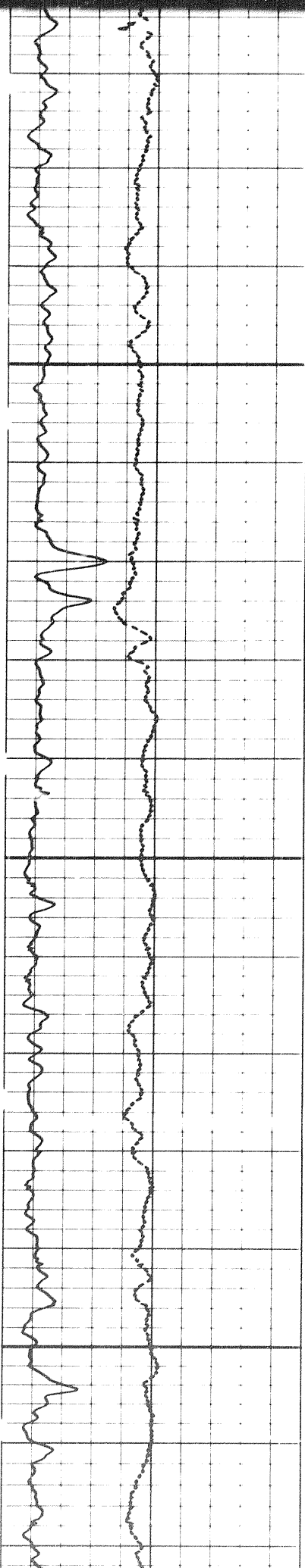
INTERPRETATION OF
HYDRAULIC ISOLATION

← BONDING INCREASES

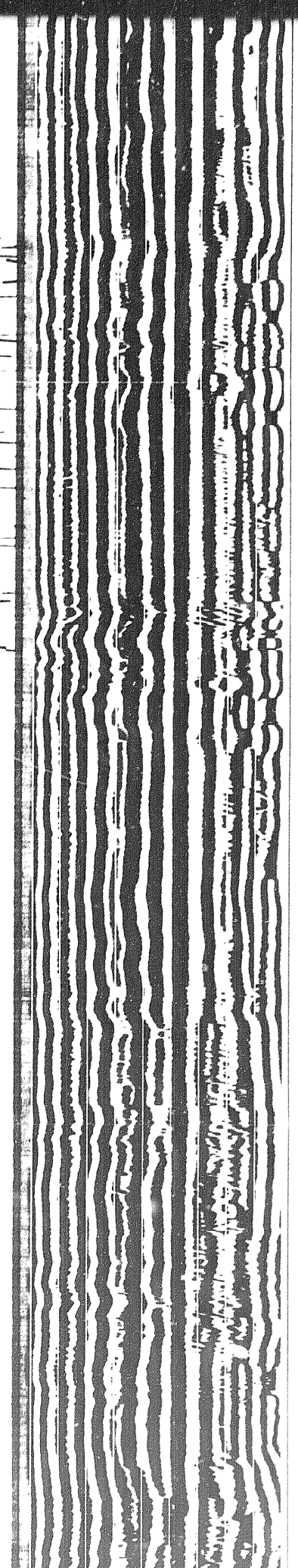
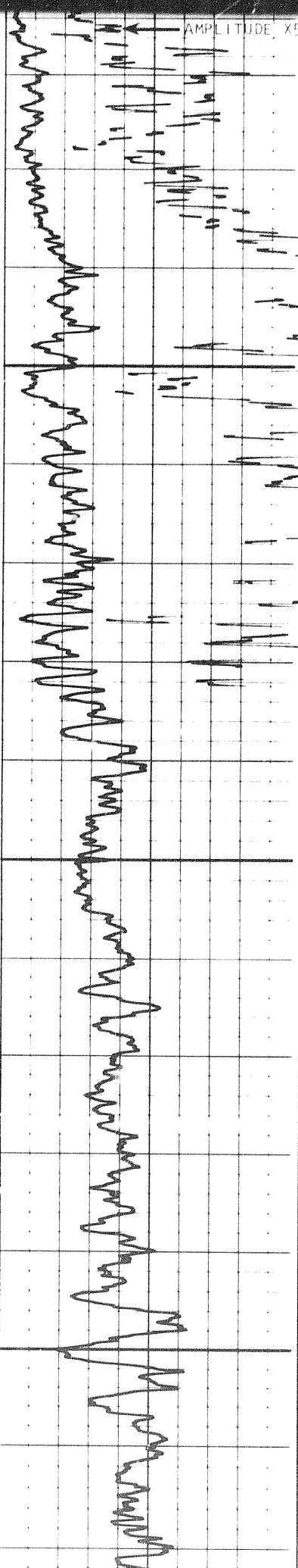
Sonde Mode: 1 20
 Detection Mode: 1
 Cartridge Gain: 1 20
 Wellhead Pressure = 0 kPa

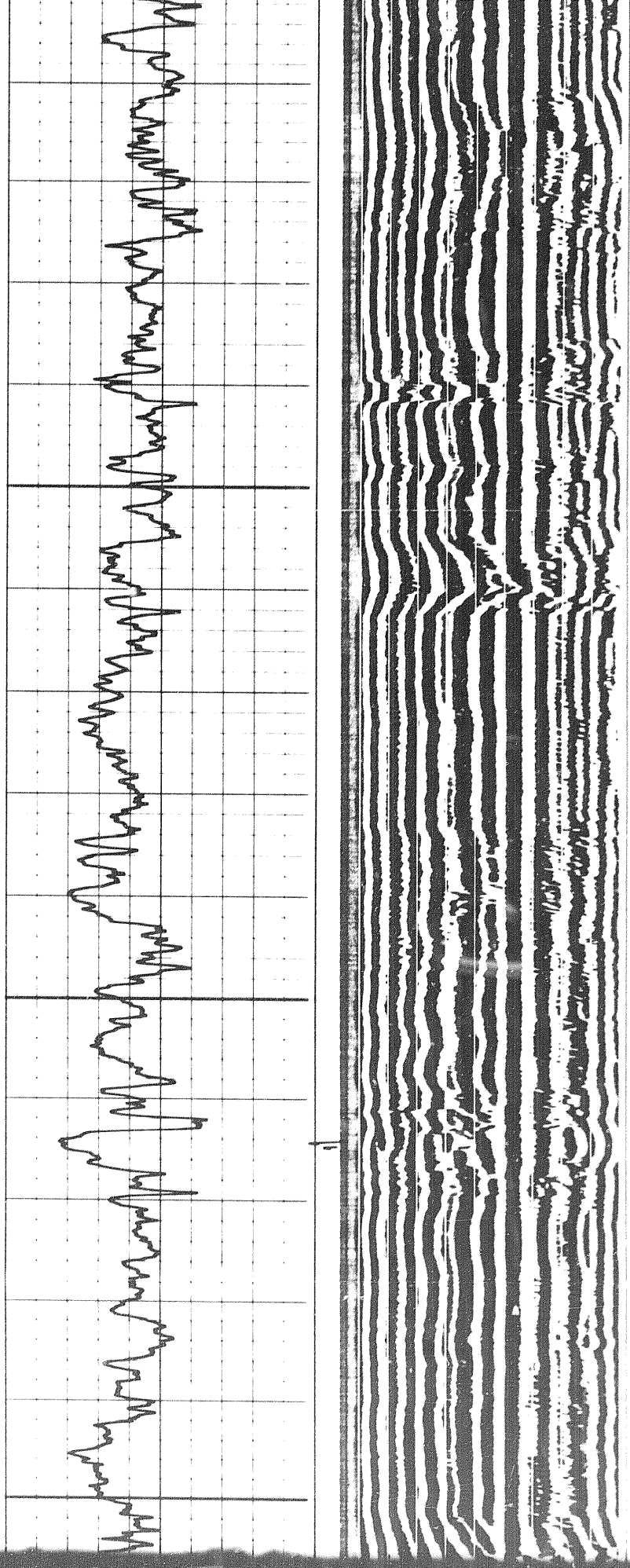


101



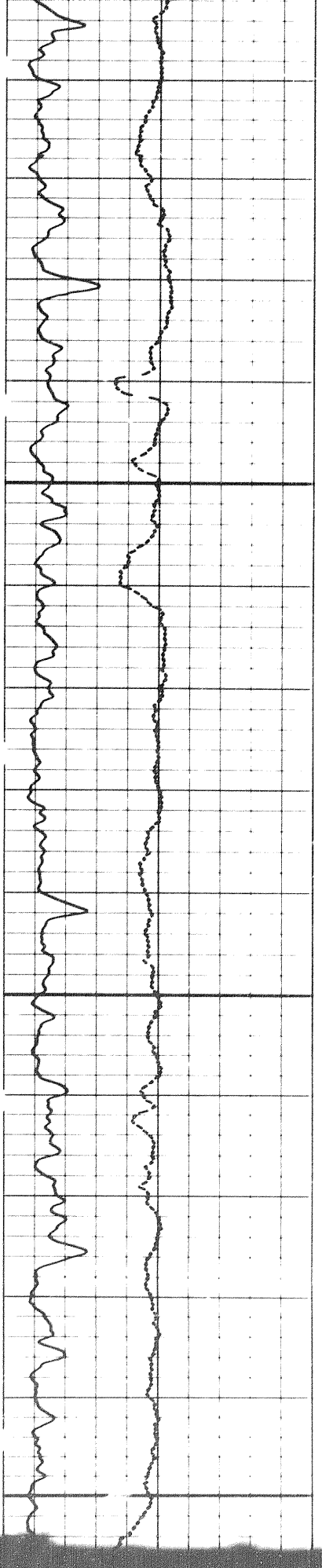
3700



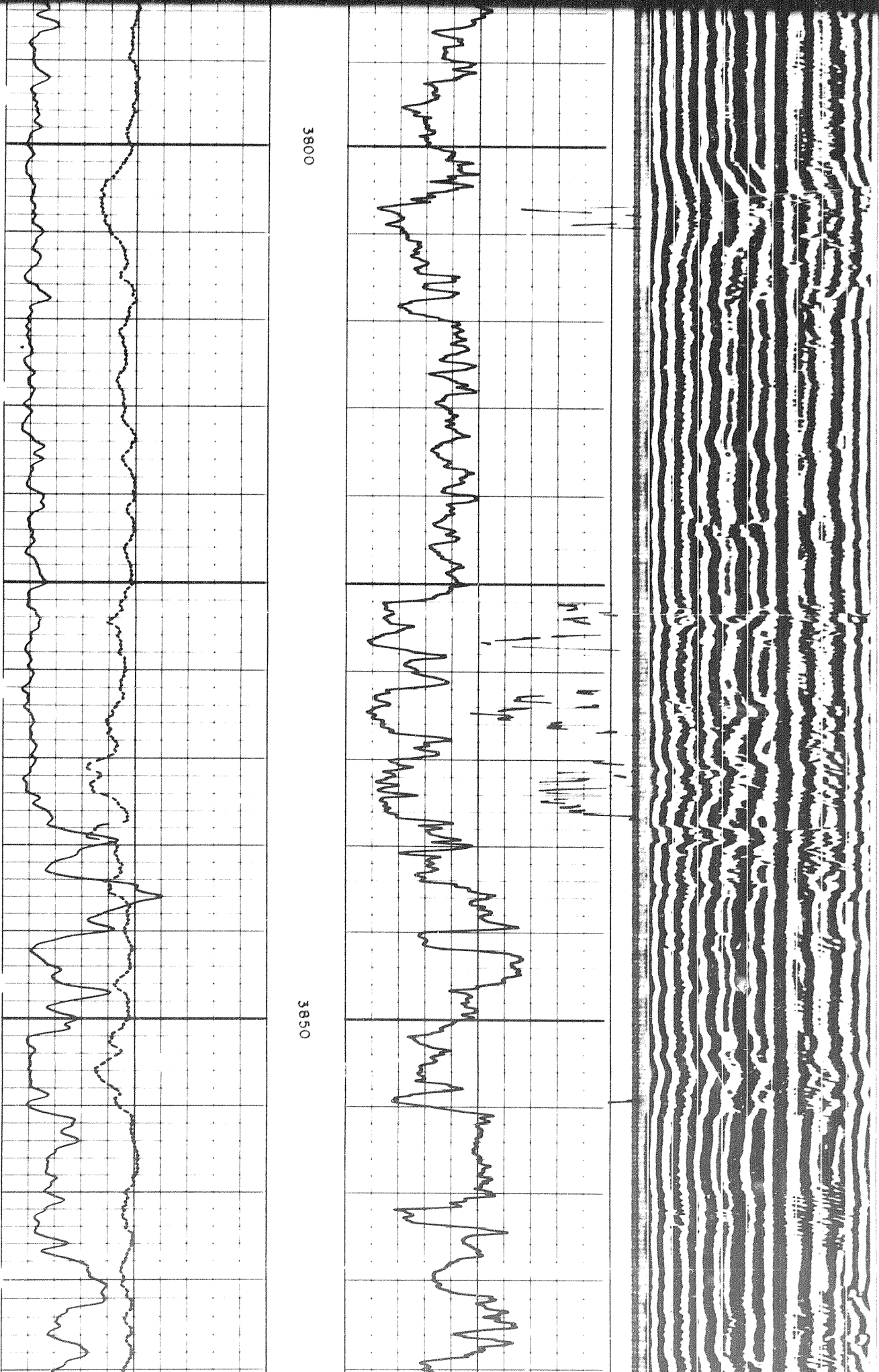


3750

3800



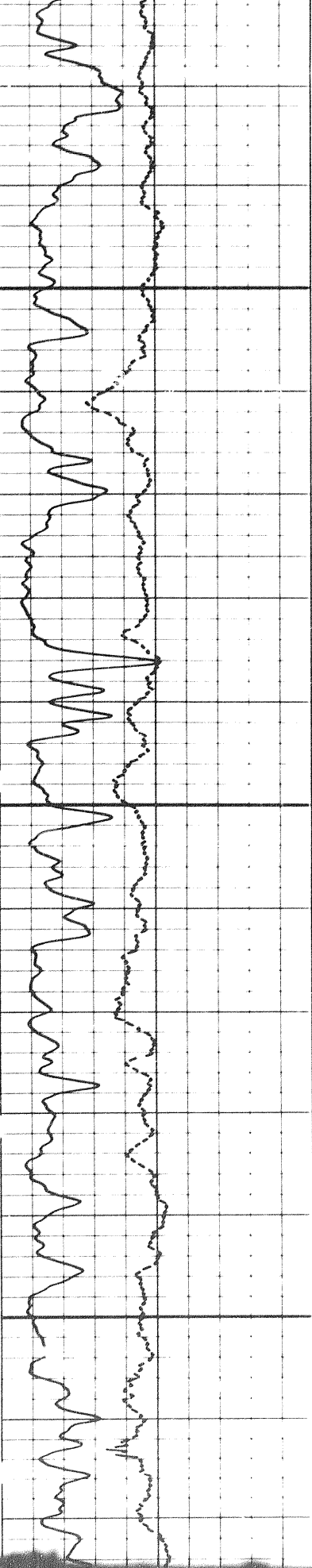
2 of



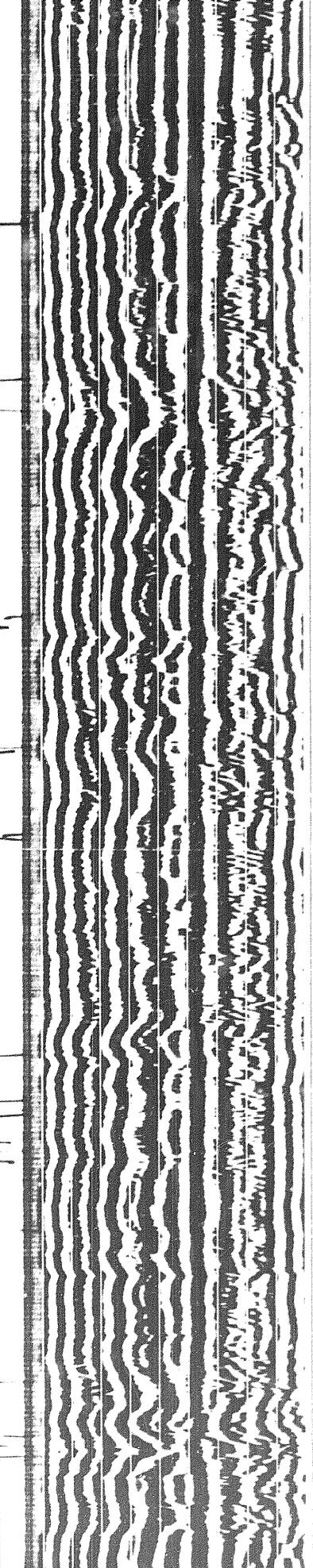
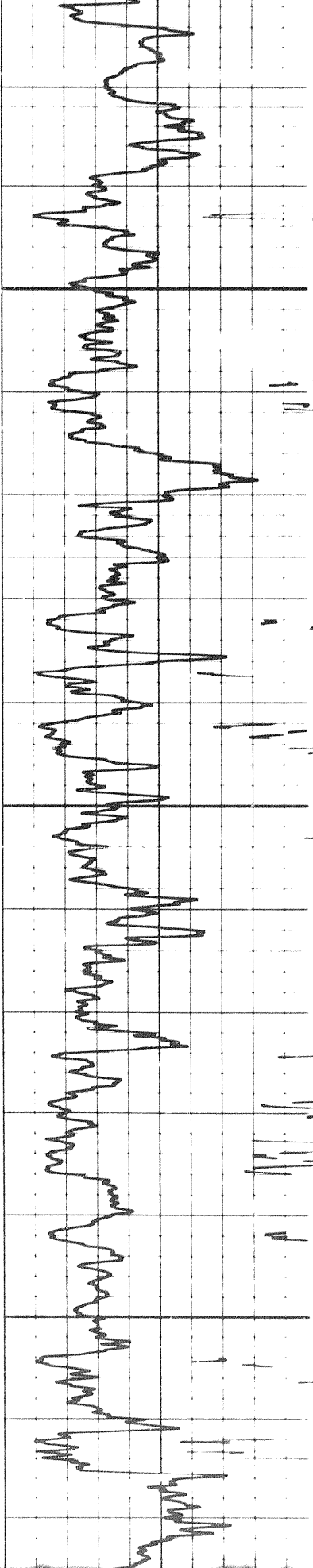
3800

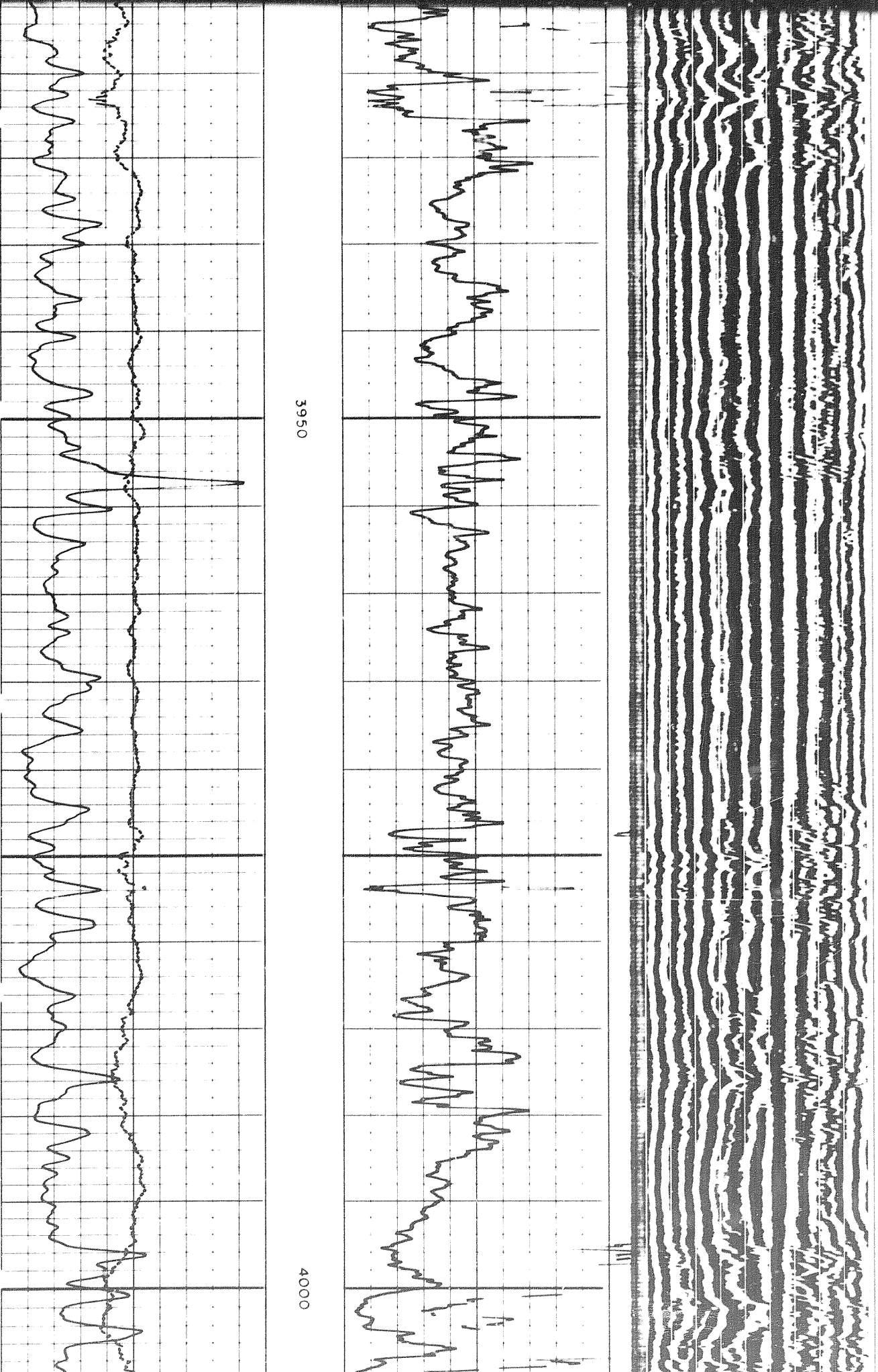
3850

3 of



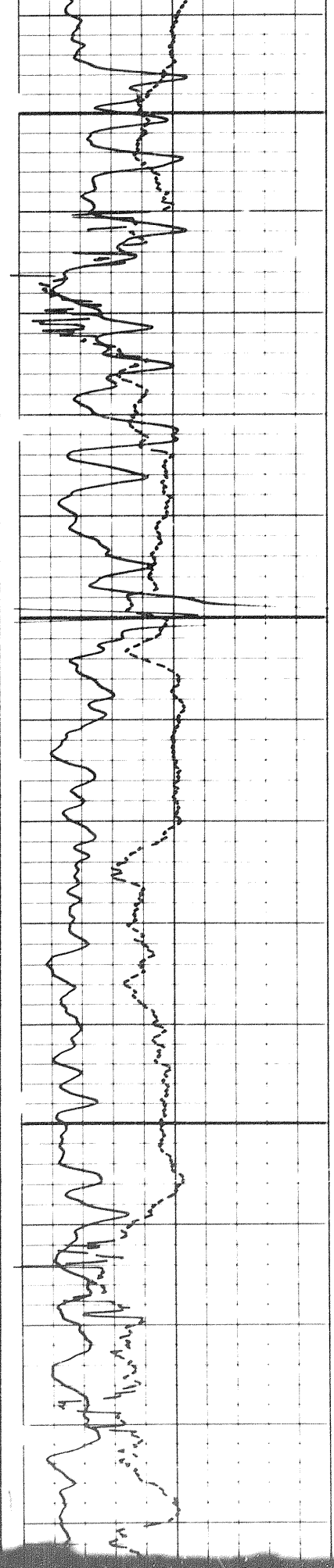
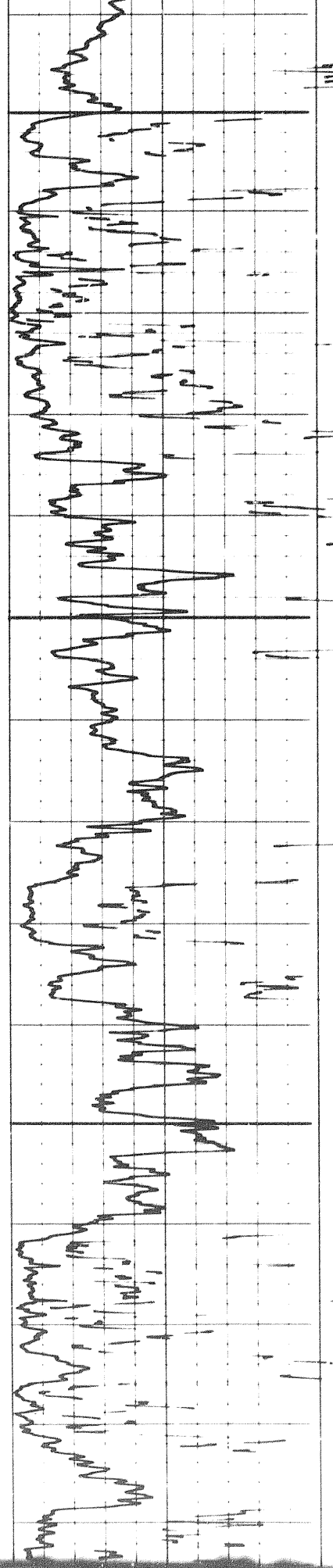
3900



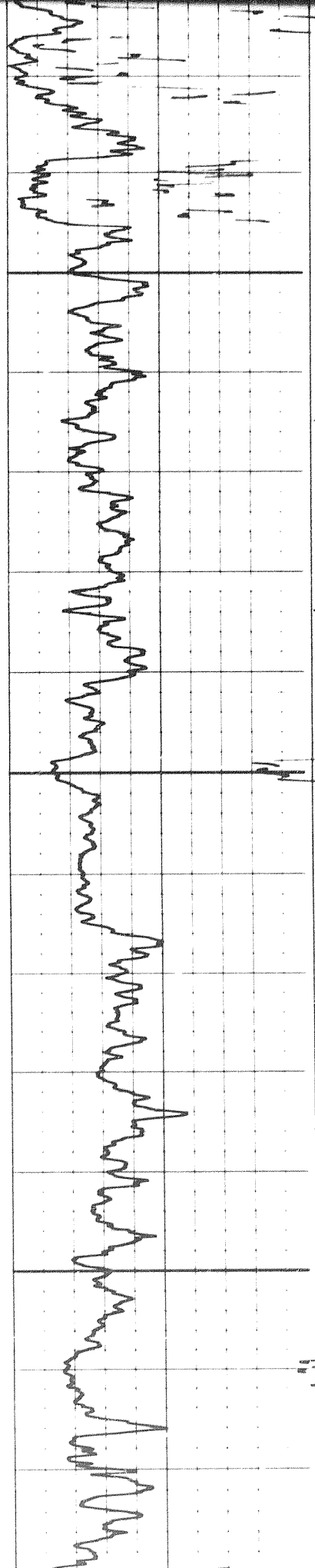


3950

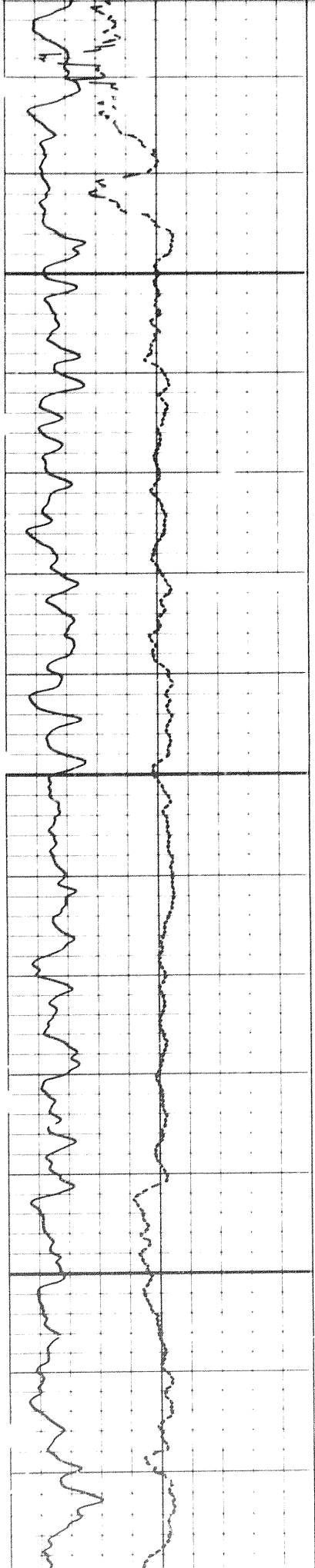
4000



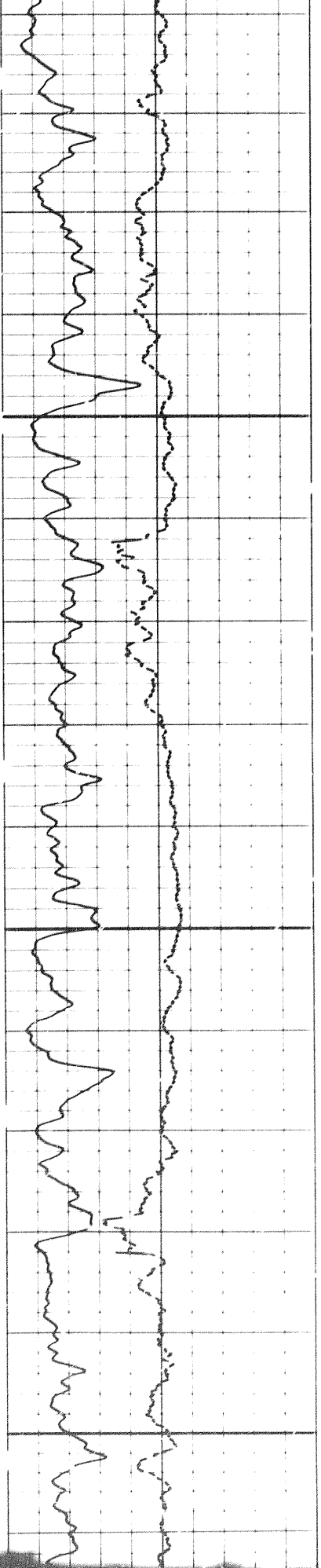
4 of



4100

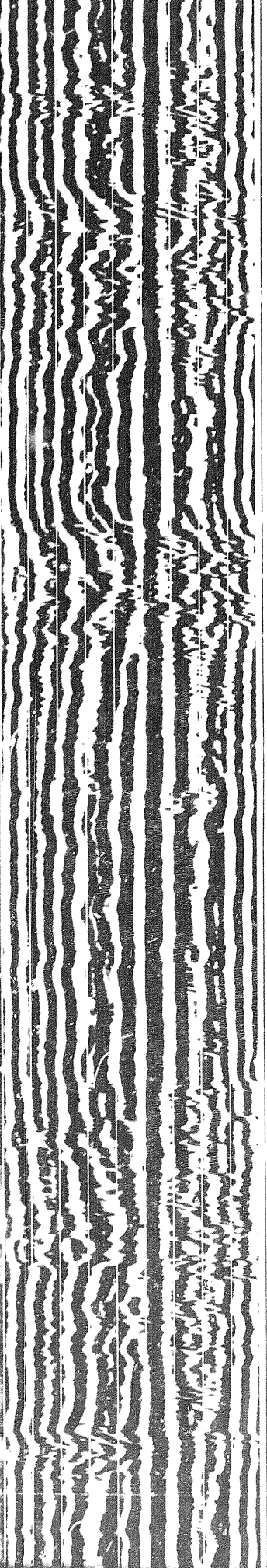
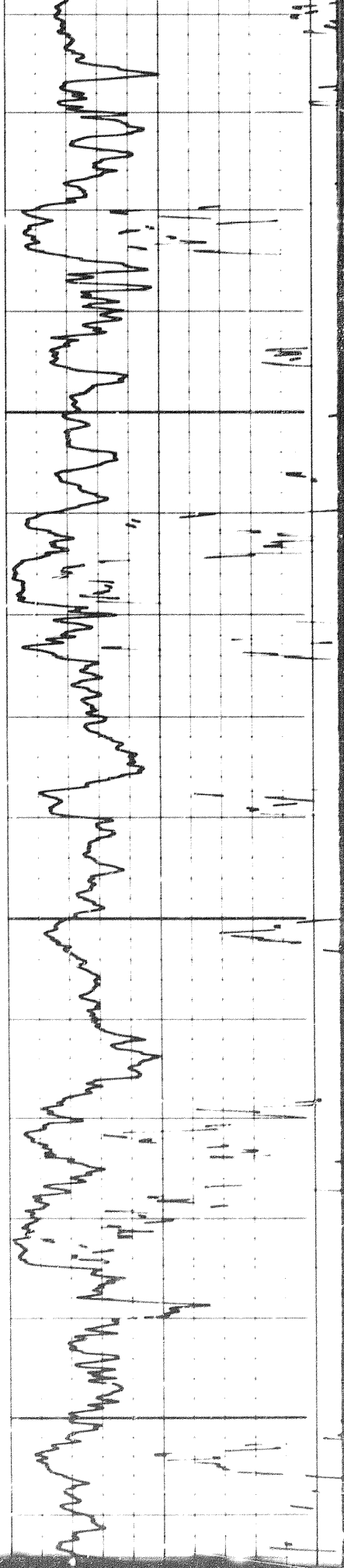


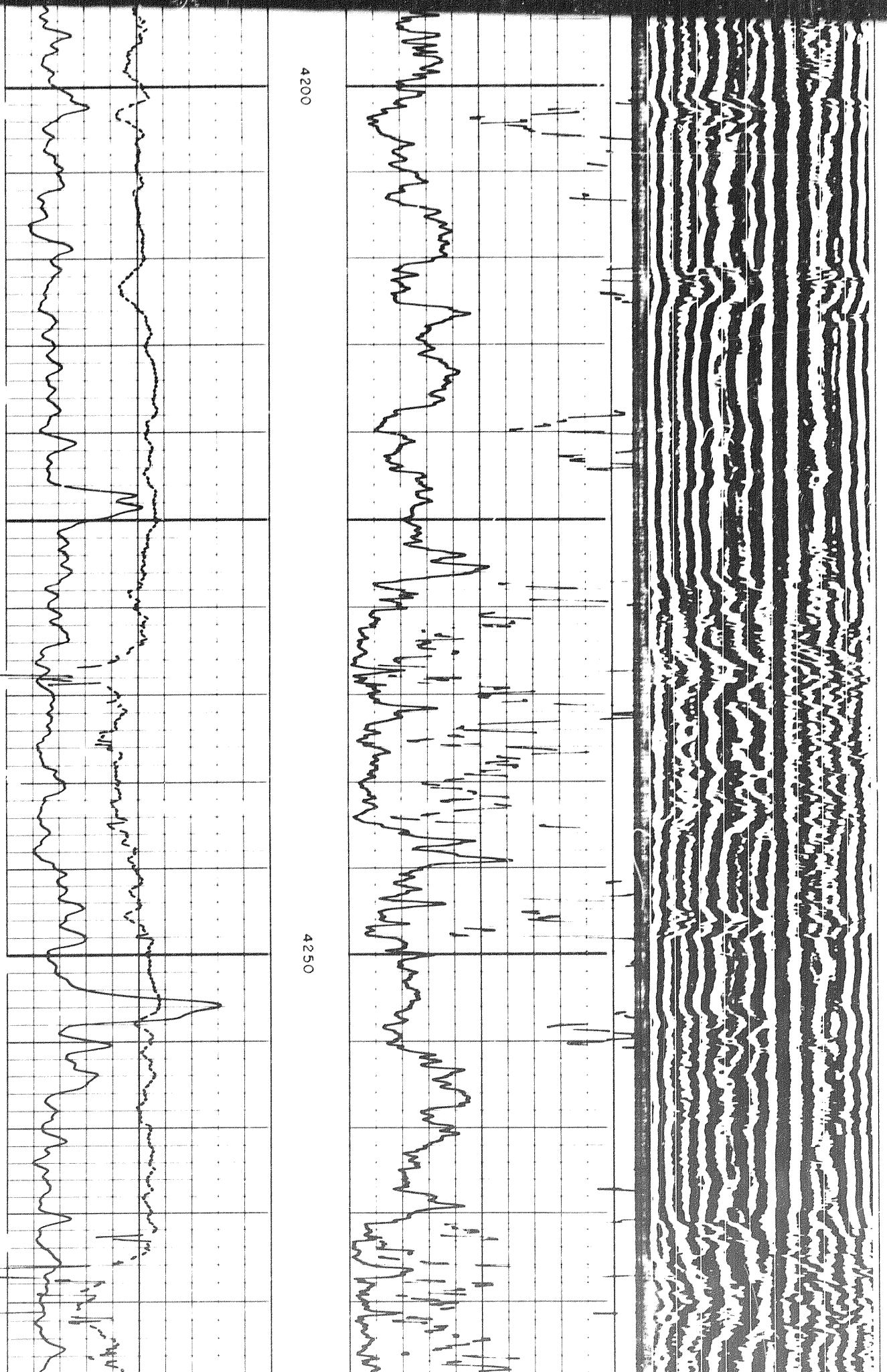
5 of



4150

4200

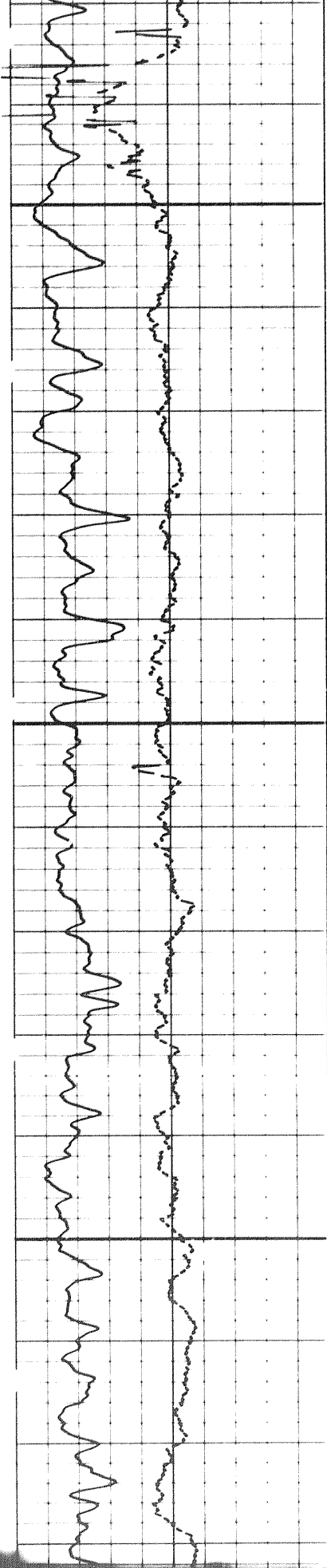




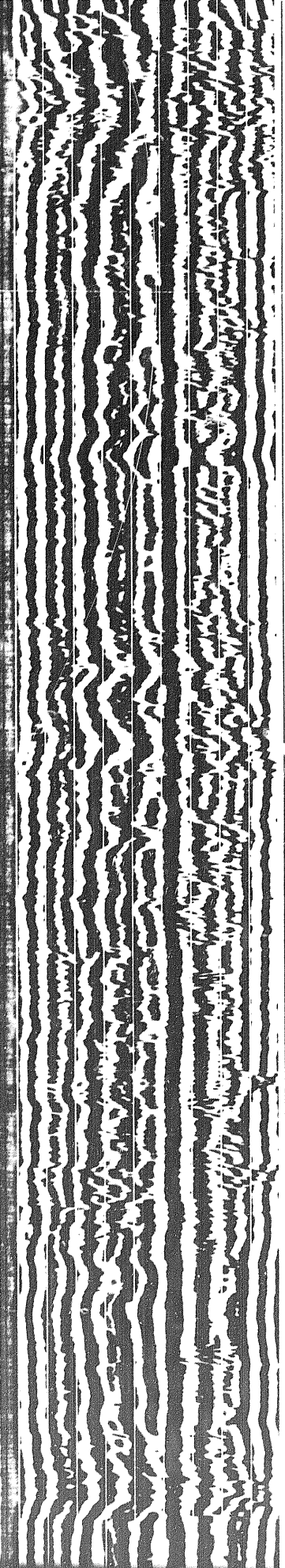
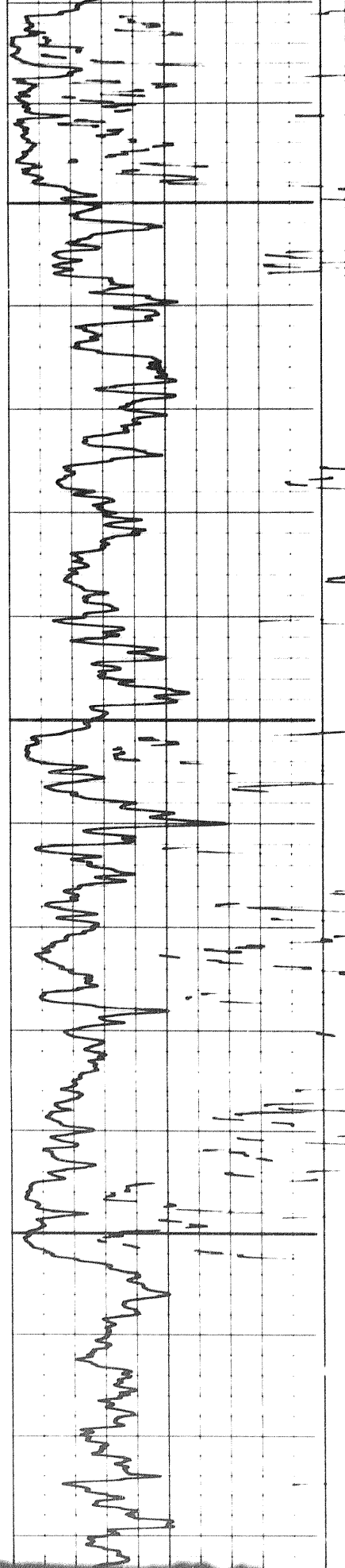
4200

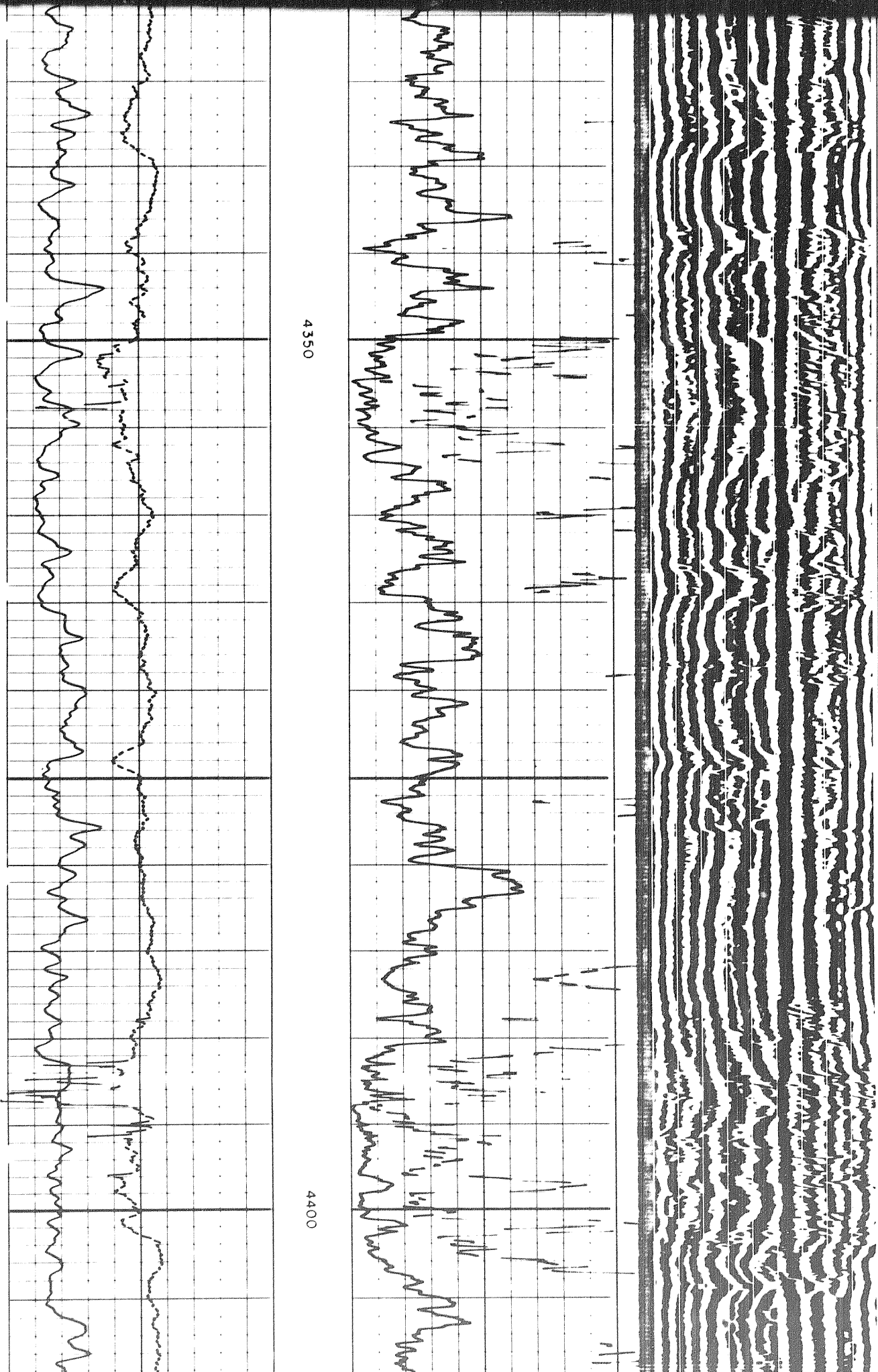
4250

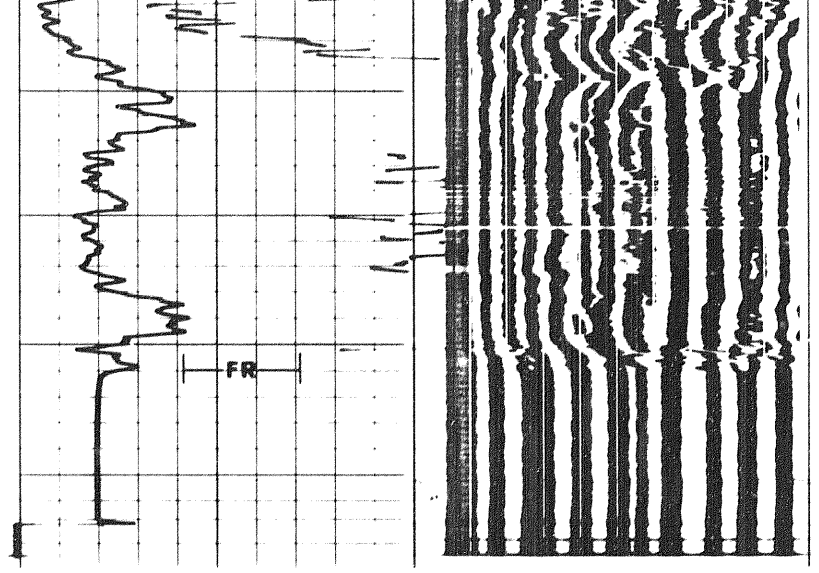
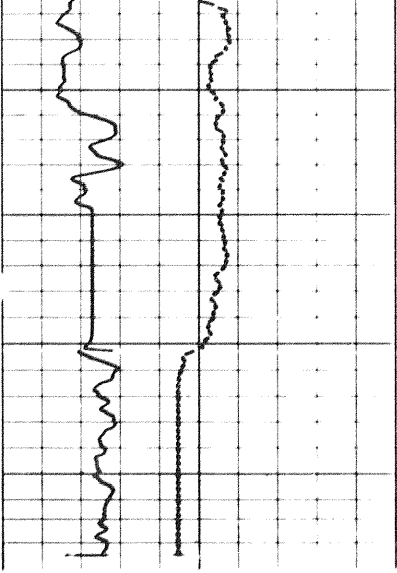
6/9




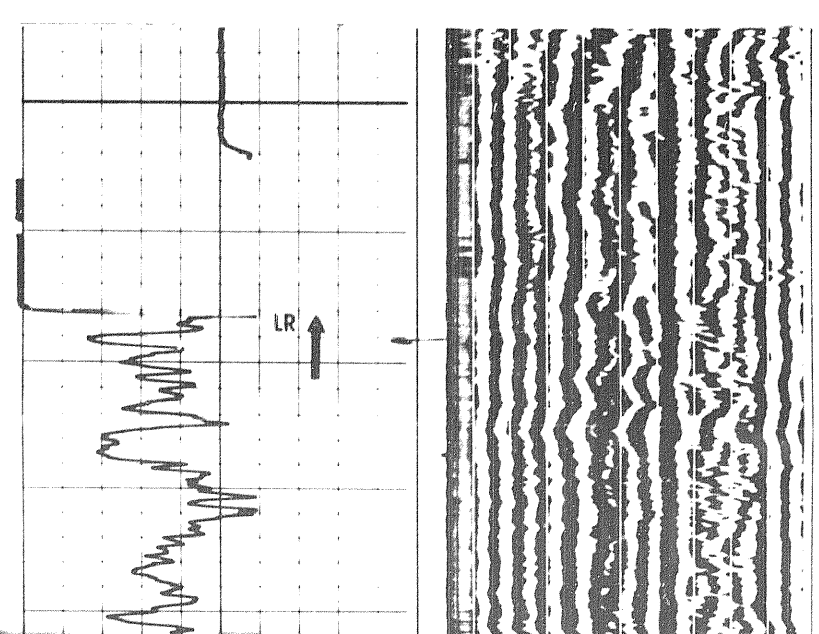
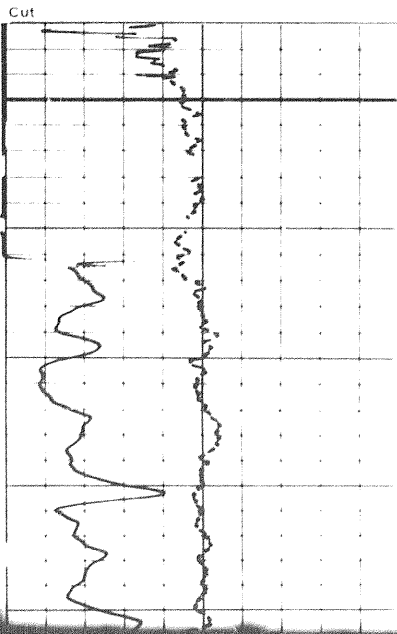
4300



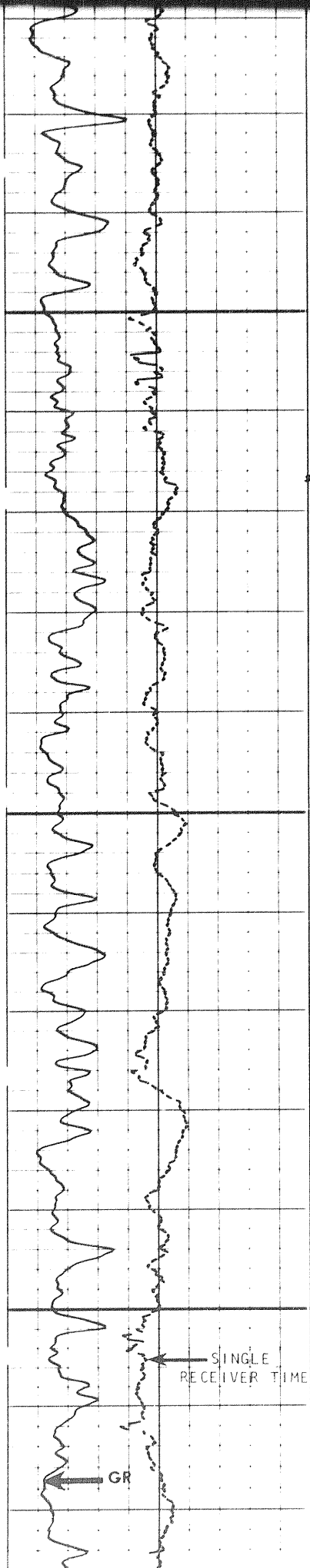




SINGLE RECEIVER TOTAL TRAVEL TIME MICROSECONDS	DEPTH METRES	AMPLITUDE VOLTAGE MILLIVOLTS	VARIABLE DENSITY TIME SPAN MICROSECONDS
400 _____ 200 ----- 0 _____ 100 100 _____ 200	INTERPRETATION OF HYDRAULIC ISOLATION ↓ 	0 _____ 100 200 _____ 1200 ----- 0 _____ 200	
GAMMA RAY activity API units □ UNCALIBRATED 1 Minute 0 _____ 100 100 _____ 200		← BONDING INCREASES Sonde Mode: _____ Detection Mode: _____ Cartridge Gain: _____ Wellhead Pressure = _____ kPa	

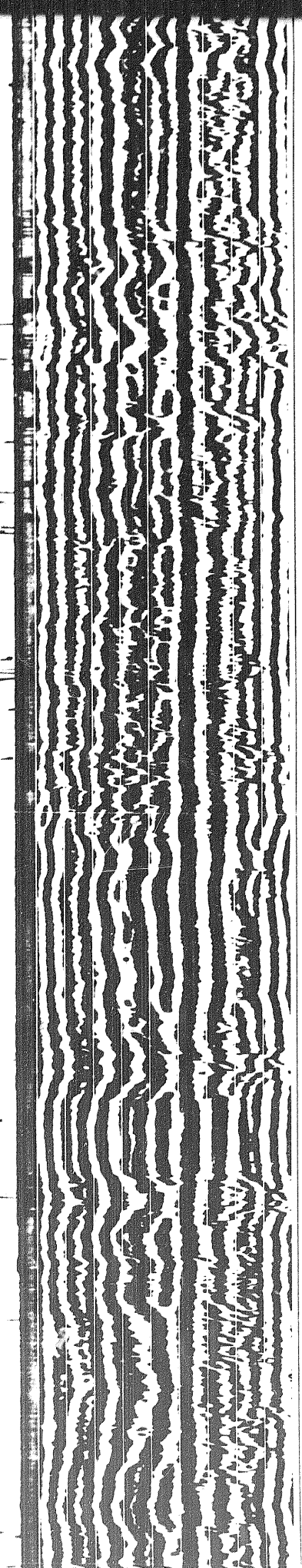
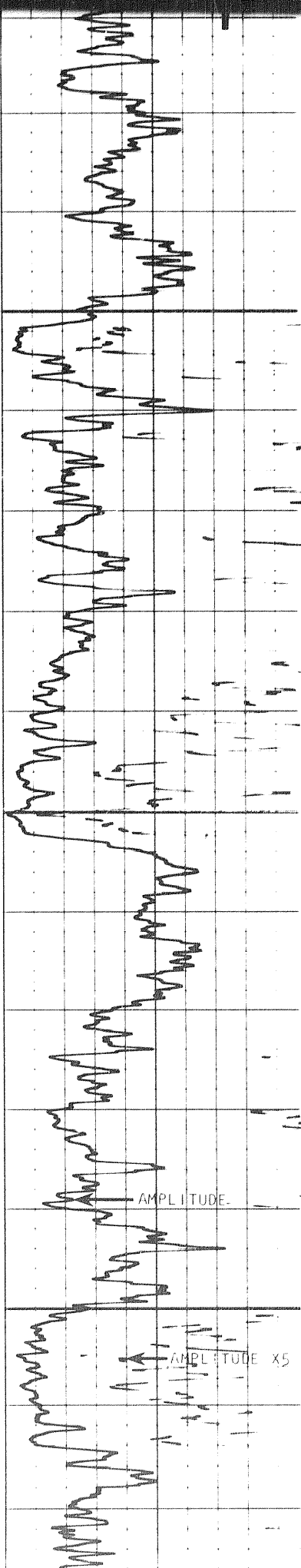


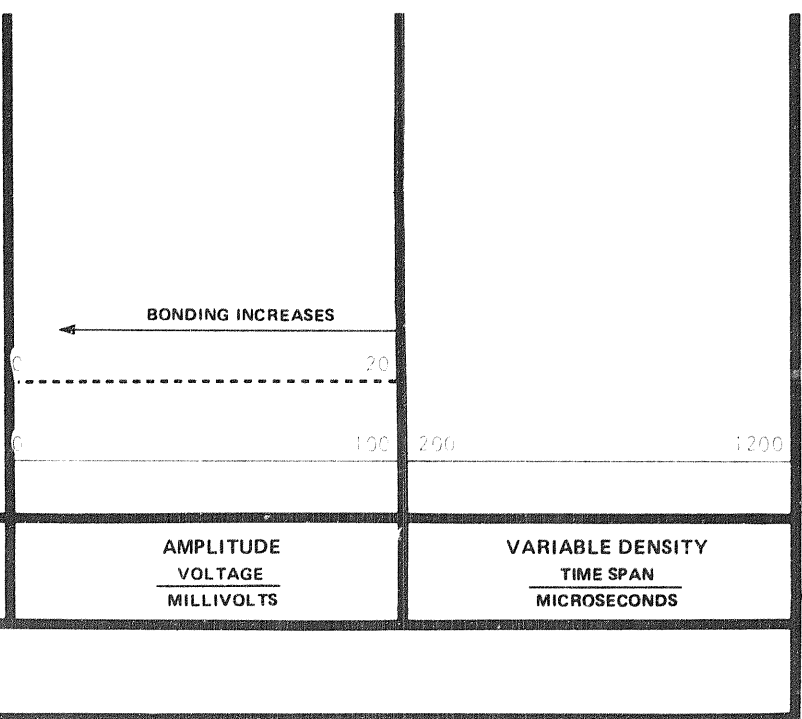
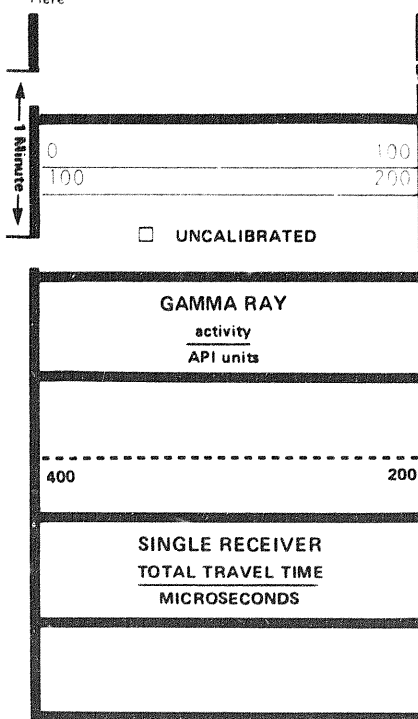
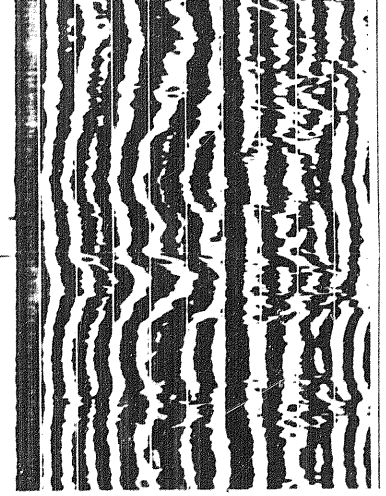
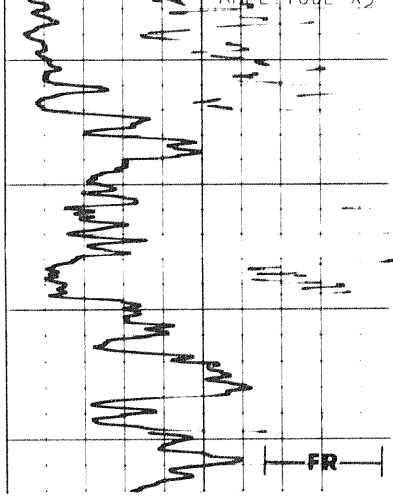
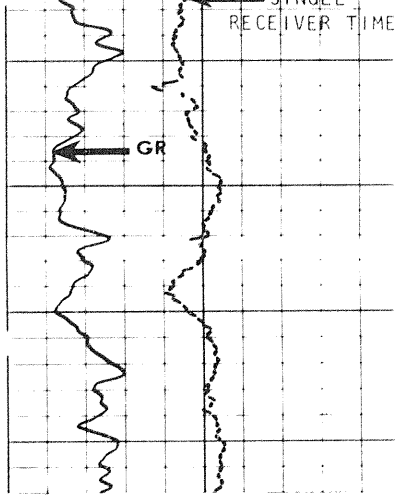
404



4300

4350





Cut Here

CALIBRATION RECORD

CEMENT BOND CALIBRATION CODING

	<u>TRANSIT TIME</u>	<u>AMPLITUDE</u>
1.	MECHANICAL ZERO	MECHANICAL ZERO
2.	240 μ s	ELECTRICAL ZERO
3.	320 μ s	CALIBRATE
4.	400 μ s	

COMPANY _____
 WELL _____
 FIELD _____
 PROVINCE _____

SCHL. FR _____ m
 SCHL. TD _____ m
 DRLR. TD _____ m
 Elev.: KB _____ m
 DF _____ m
 GL _____ m

X40108

848