

Schlumberger

DUAT INDUCTION - S.F.L.
SCHLUMBERGER OF CANADA Calgary Alberta

PROVINCE YUKON
FIELD WILDCAT
WELL COLUMBIA ET AL
KOTANEELEE YT-1 40
COMPANY COLUMBIA GAS
DEVELOPMENT OF CANADA LTD.

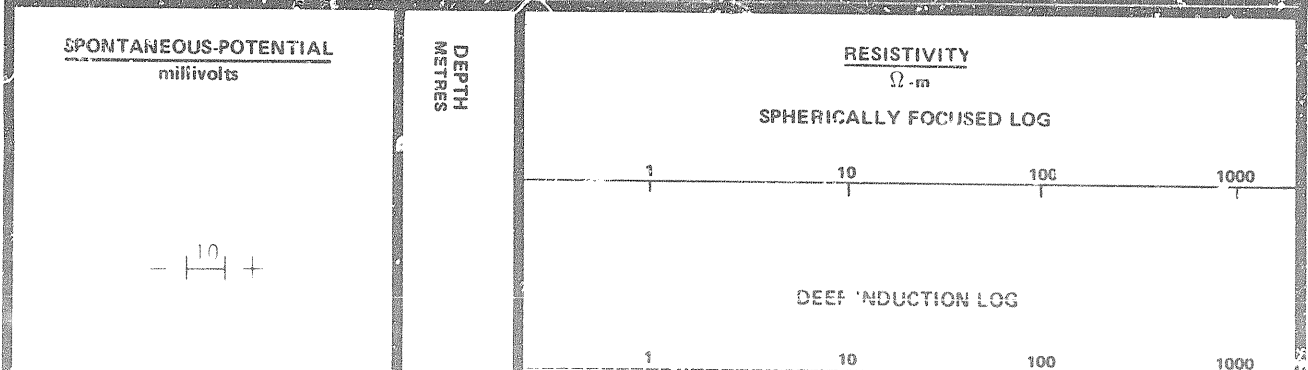
COMPANY COLUMBIA GAS DEVELOPMENT OF CANADA LTD.
WELL COLUMBIA ET AL KOTANEELEE
YT-1-48
FIELD WILDCAT
PROVINCE YUKON
60° 07' 35.917" N-LAT
124° 07' 36.451" W-LONG
Other Services:
BHC-GR
Elev.: K.B. 859.3 m
D.F. 851.7 m
G.L. 851.7 m

Permanent Datum: GL 7.6 m Above Perm. Datum
Log Measured From KB
Drilling Measured From KB
Date 19 JUNE 79
Elev.: 851.7 m
D.F. 851.7 m
G.L. 851.7 m

Run No.	One	Two	Three	Four
Depth-Driller	1054			
Depth-Logger (Schl.)	1055			
Bitm. Log Interval	1054			
Top Log Interval	216			
Casing-Driller	216			
Cast: 1 ogger	216			
Bit Size	44.5 mm			
Type Fluid in Hole	GEL			
Dens (g/cm ³)	1.100	4.3		
pH	9.5	10.5		
Source of Sample	FLOWLINE			
Rmf @ Mass. Temp.	0.308 @ 6 °C			
Rmf @ Mass. Temp.	0.236 @ 6 °C			
Source: Rmf	MEAS			
Rm @ BHT	0.42 @ 44 °C			
Tool Last on Bottom	1400 / 19th.			
Max. Rec. Temp. #1	44 °C	45 °C		
Max. Rec. Temp. #2				
Recorded By	PICKFORD			
Witnessed By	GILBERTSON			

Run No.	One	Two	Three	Four	REMARKS
Service Order No.	41301				19 JULY 79 EDM: RK
EQUIPMENT DATA					
Panel	518				
Cartridge	289				
Sonde	267				
Memorizer Panel	243				
T/R	2753				
Stand off mm:					
CALIBRATION DATA					
SBR	1.0				
Sonde Error	Enter "surface" or depth set	SURFACE			
LOGGING DATA					
Run No.	Depth	Resistivity Scale	Conductivity Scale		
ONE	From 1054 To 216				
Log Taped <input checked="" type="checkbox"/> Yes <input type="checkbox"/> No					

All interpretations are opinions based on inferences from electrical or other measurements and we cannot, and do not, guarantee the accuracy or correctness of any interpretations, and we shall not, except in the case of gross or willful negligence on our part, be liable or responsible for any loss, costs, damages or expenses incurred or sustained by anyone resulting from any interpretation made by any of our officers, agents or employees. These interpretations are also subject to Clause 4 of our General Terms and Conditions as set out in our current Price Schedule.



TH
RES

SPHERICALLY FOCUSED LOG

1 10 100 1000

DEEP INDUCTION LOG

1 10 100 1000

MEDIUM INDUCTION LOG

1 10 100 100

X2003A

CASING SHOE

SP Curve

0250

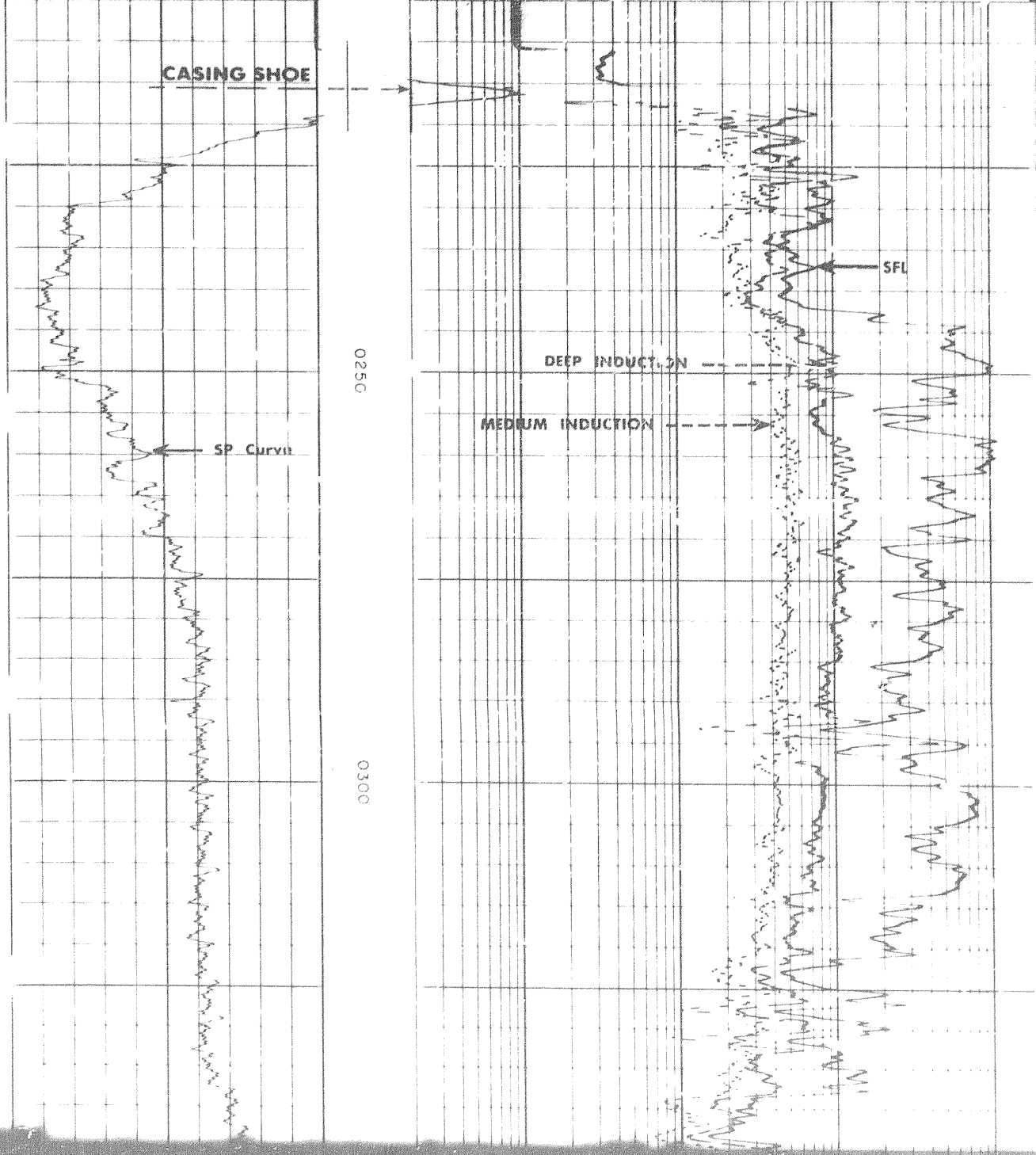
0300

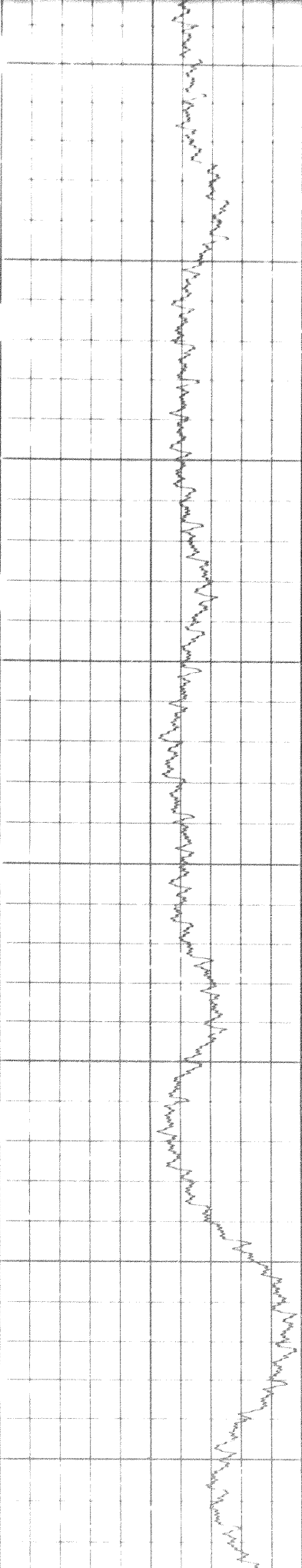
DEEP INDUCTION

MEDIUM INDUCTION

SFL

101



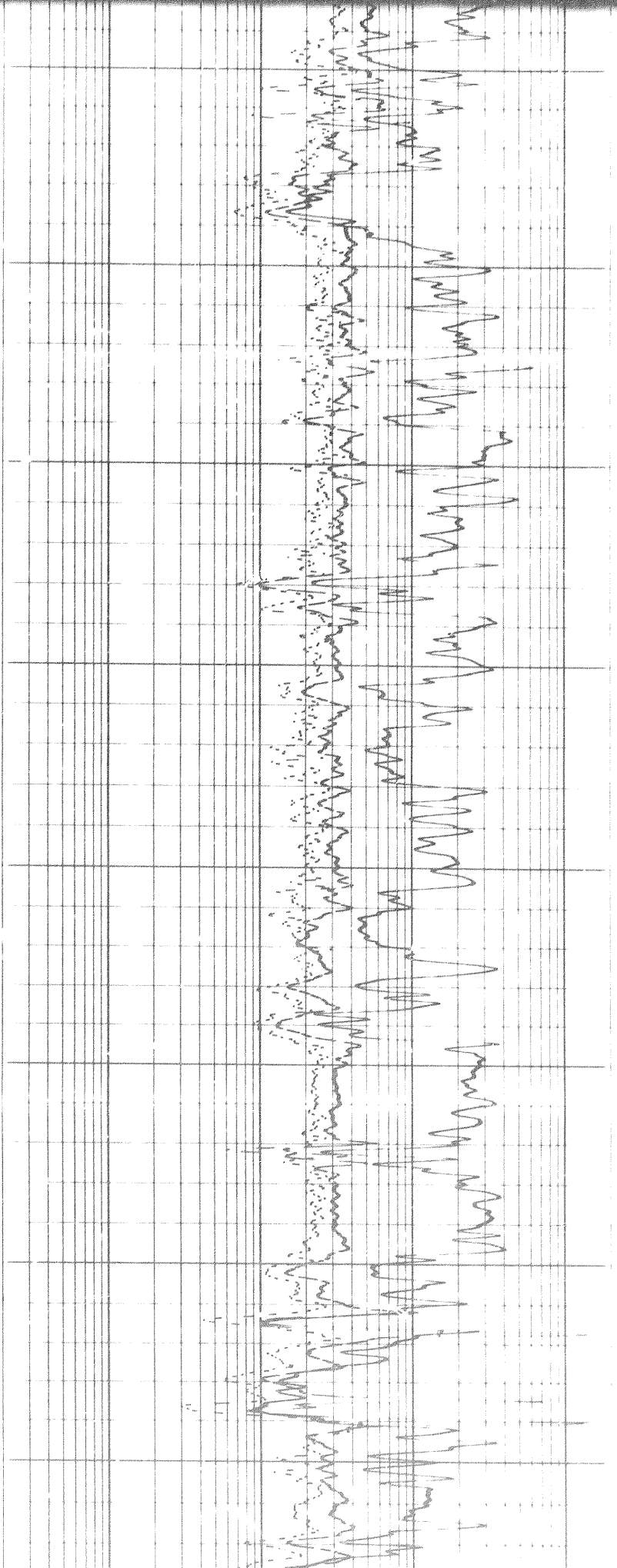


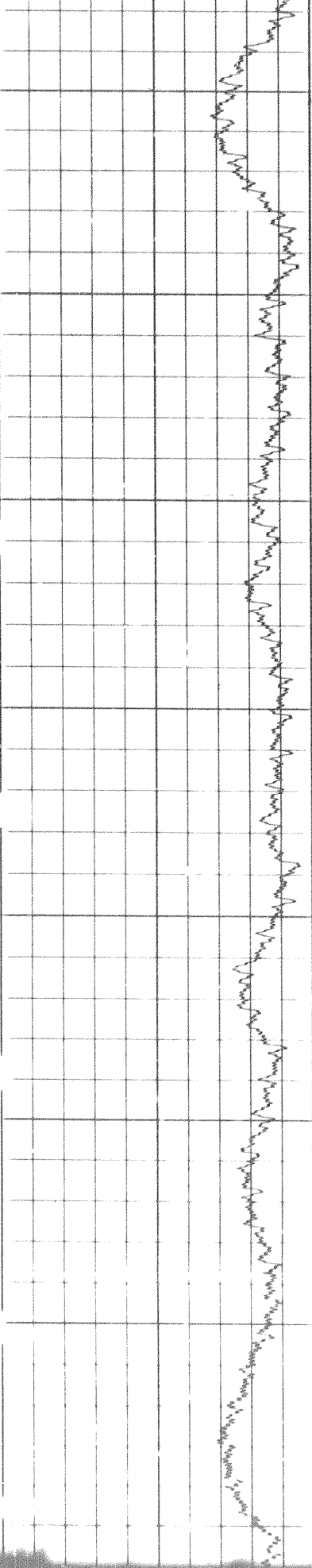
0350

0400

0450

0500



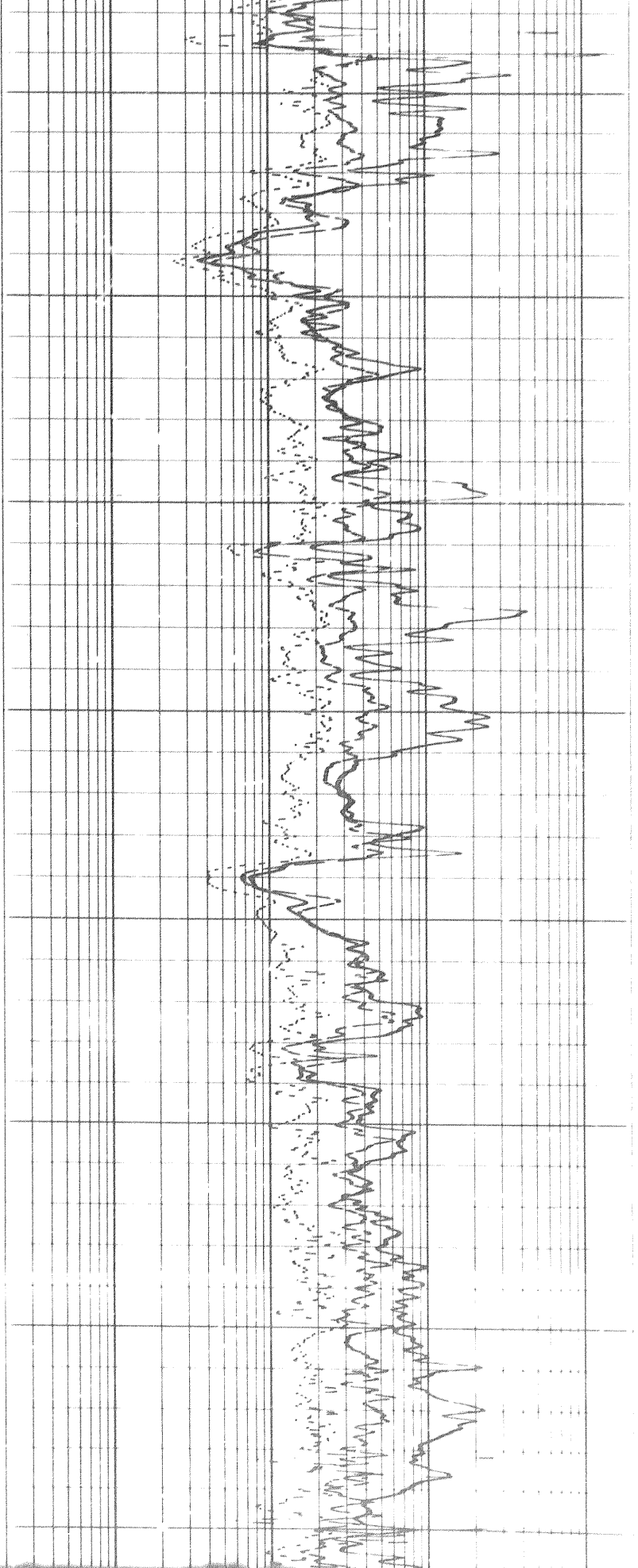


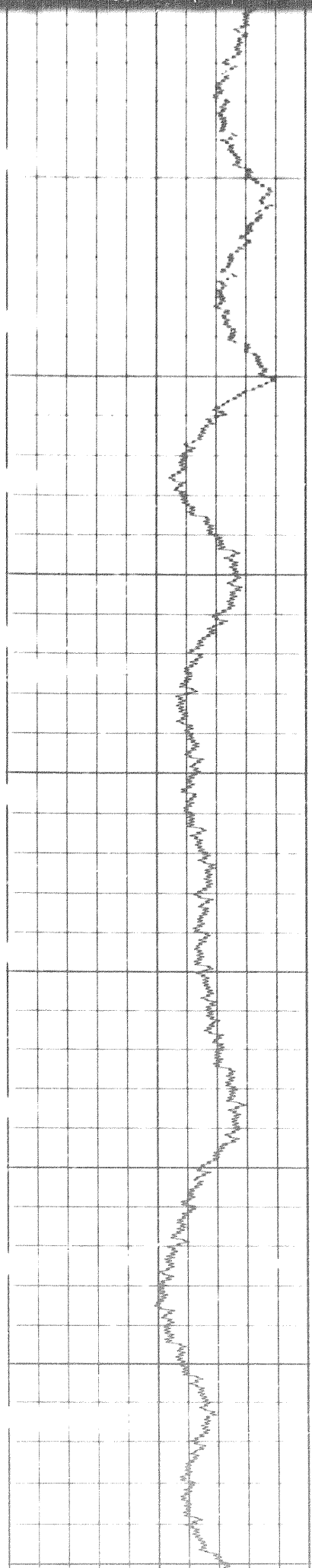
0500

0550

0600

0650



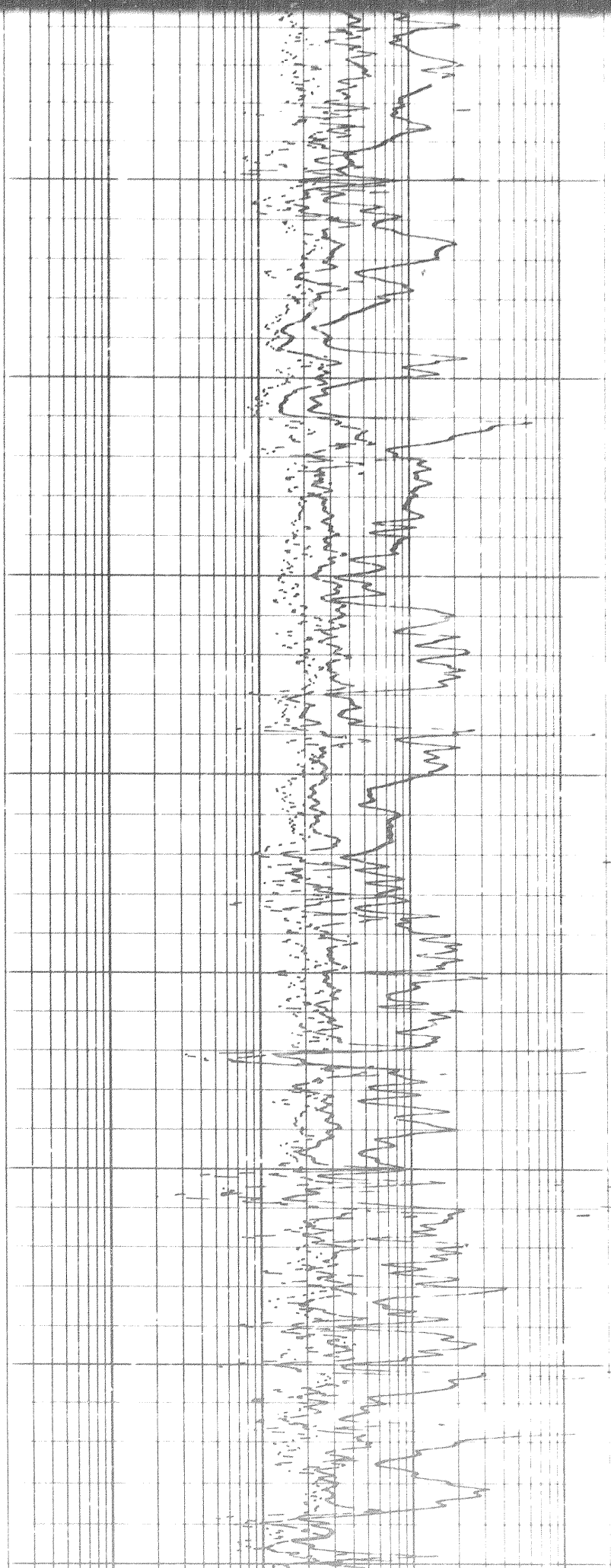


0700

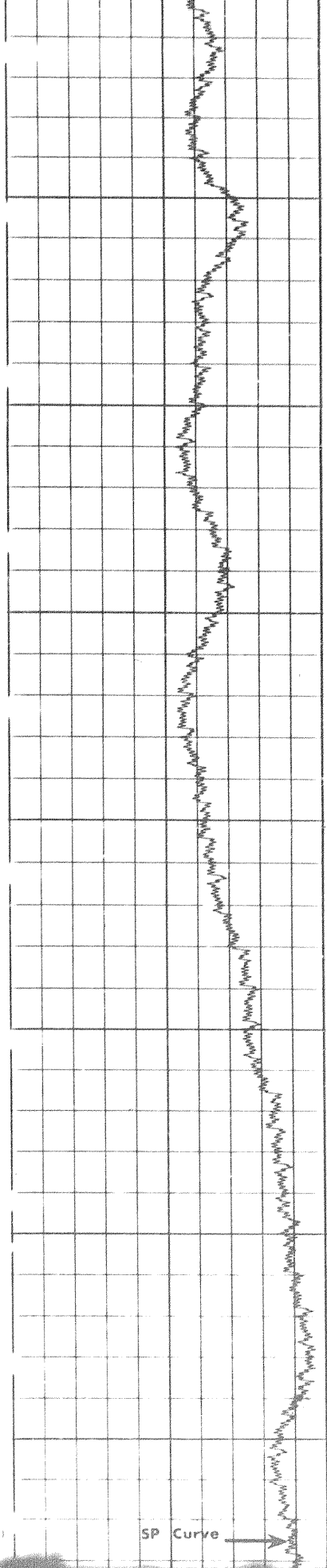
0750

0800

0850



304



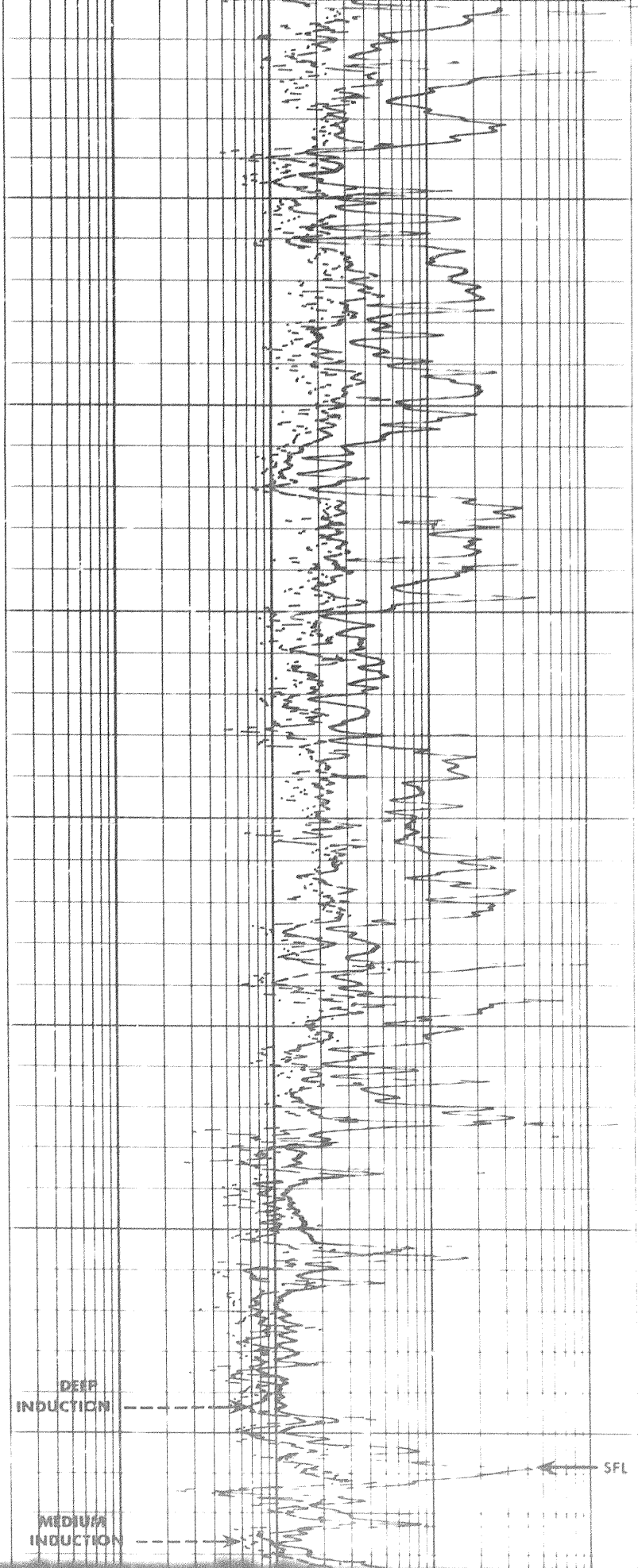
SP Curve

0850

0900

0950

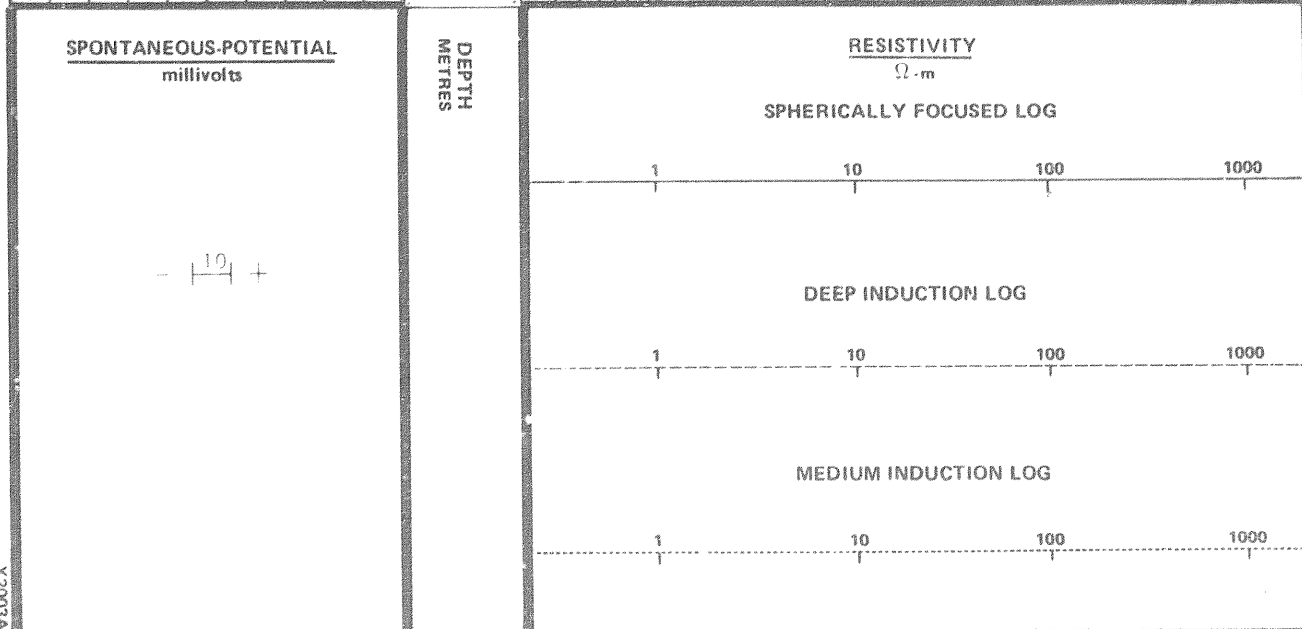
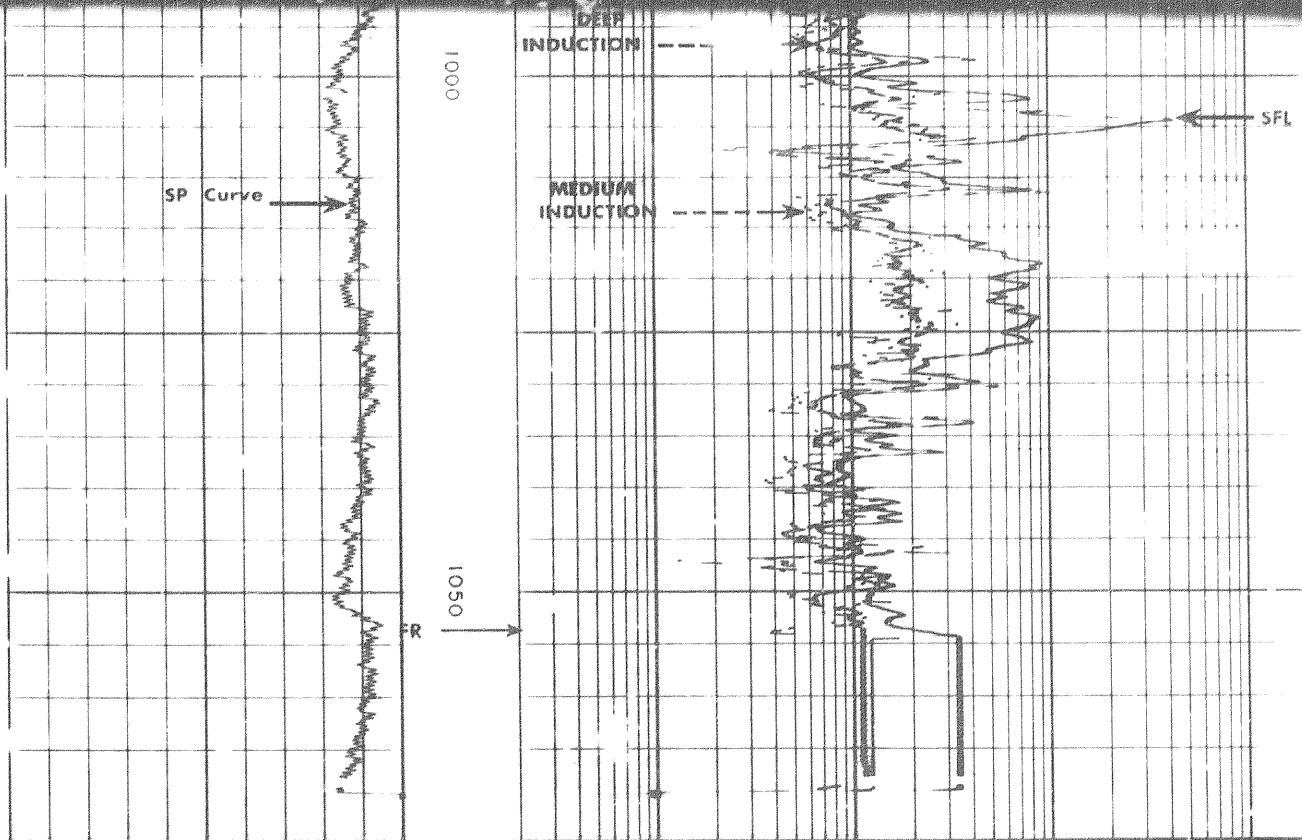
1000



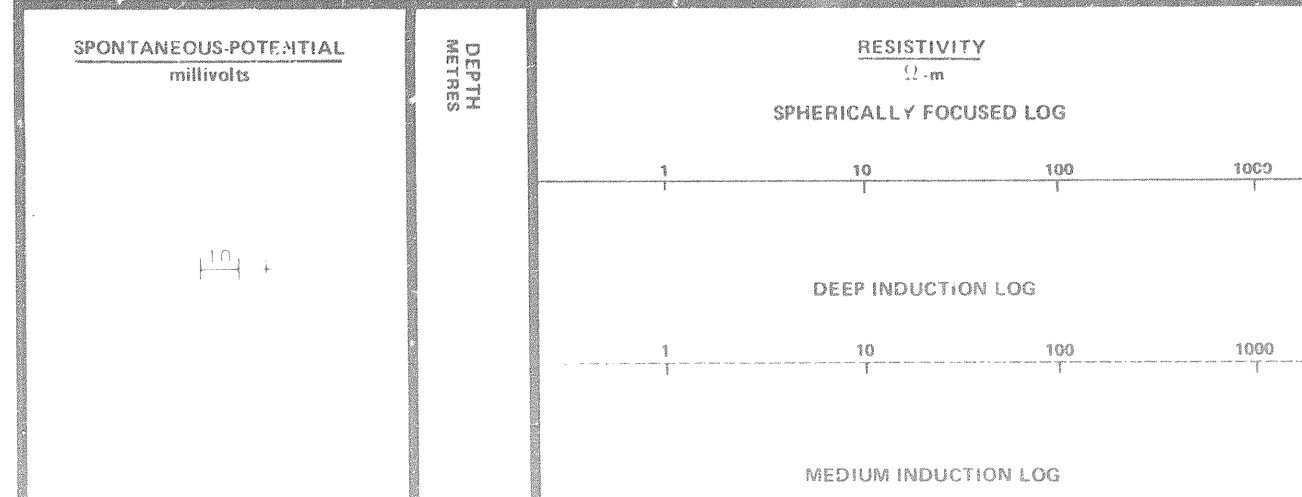
DEEP INDUCTION

MEDIUM INDUCTION

SFL



DETAIL LOG
1 : 240



X2003A

10

DEEP INDUCTION LOG

1 10 100 1000

MEDIUM INDUCTION LOG

1 10 100 1000

X2003A

CASING SHOE

SP Curve

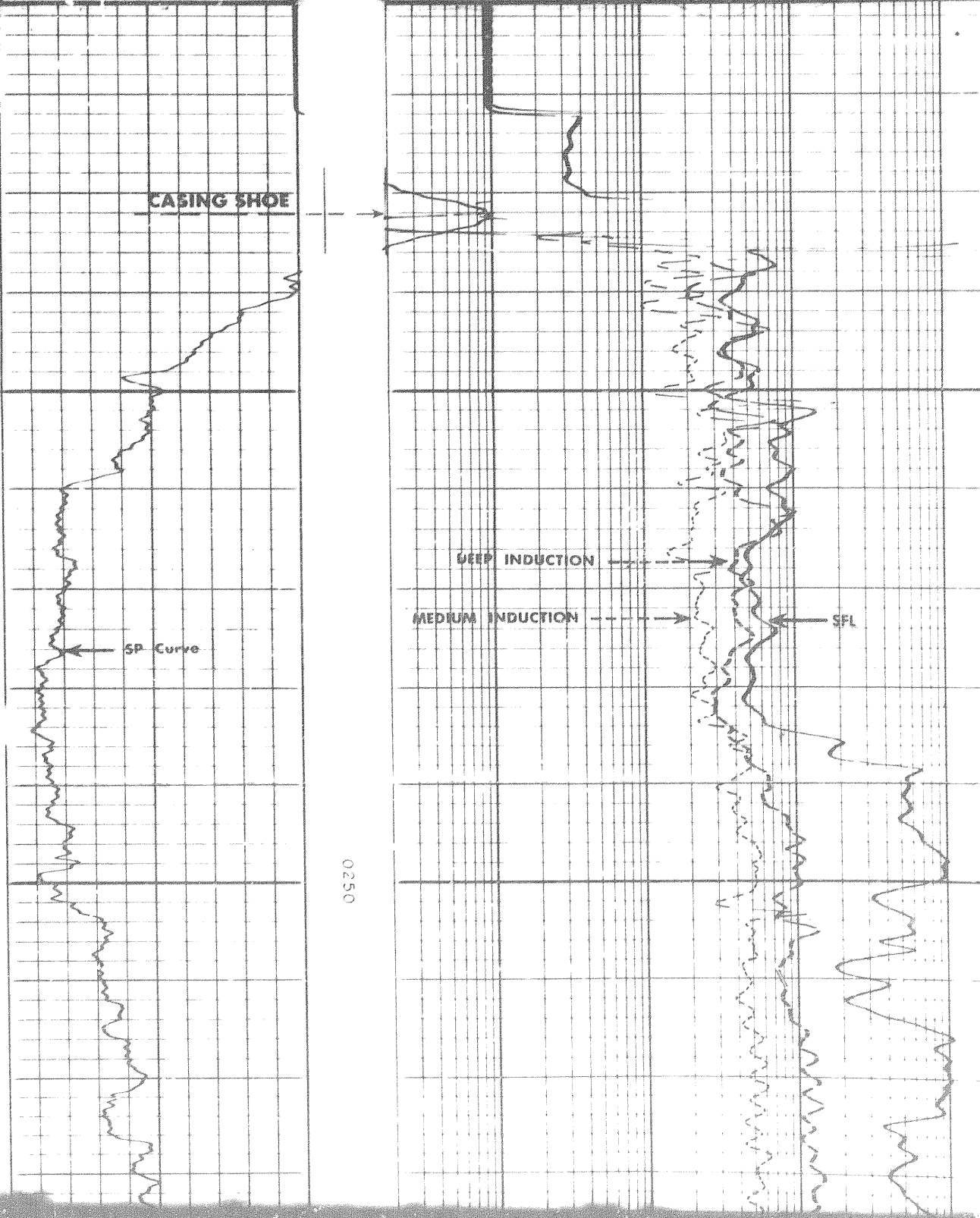
DEEP INDUCTION

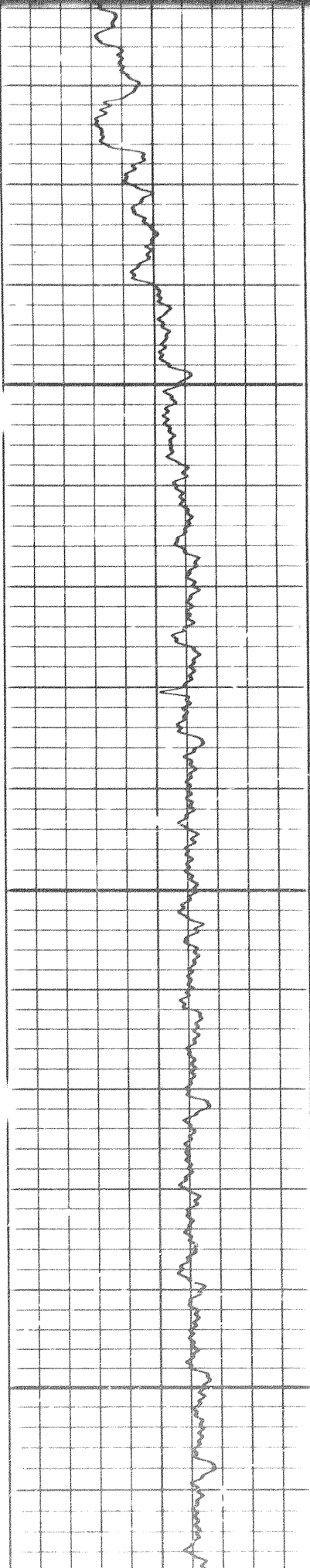
MEDIUM INDUCTION

SFL

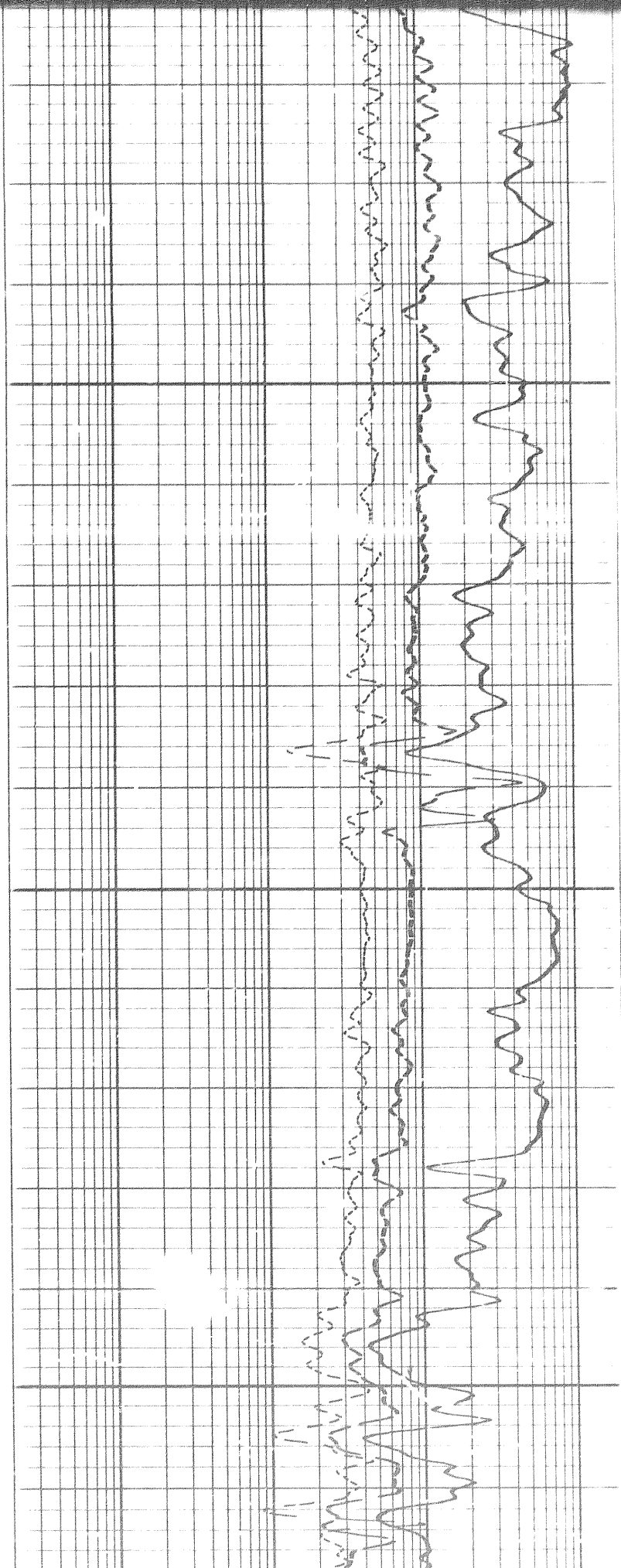
0250

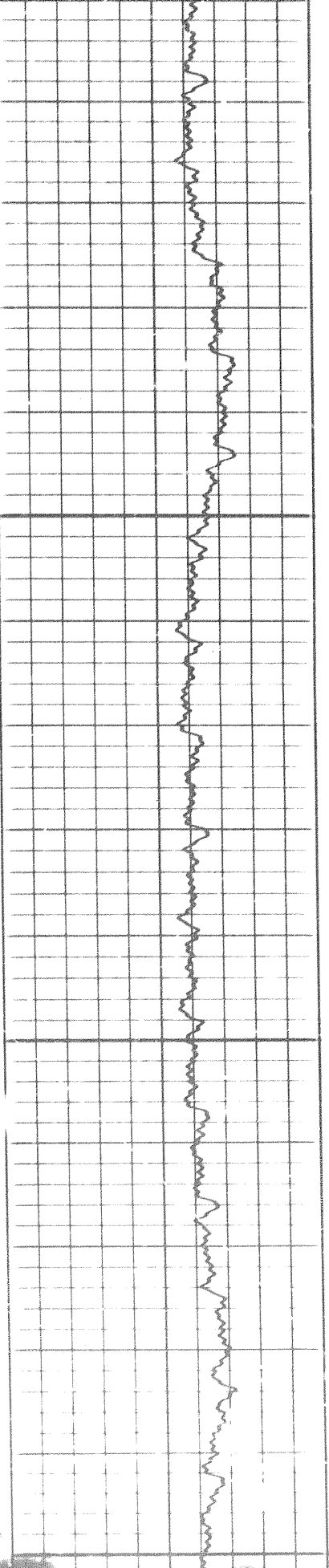
Handwritten notes on the left margin.



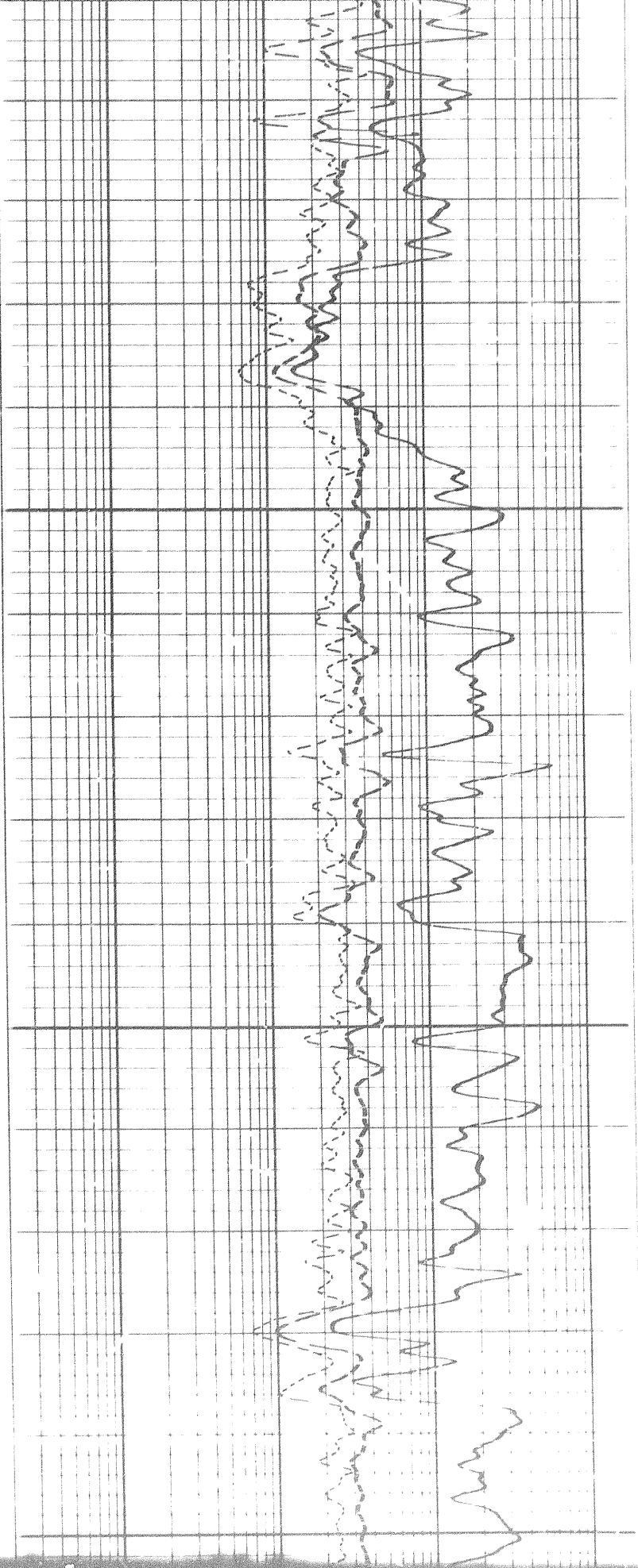


0300



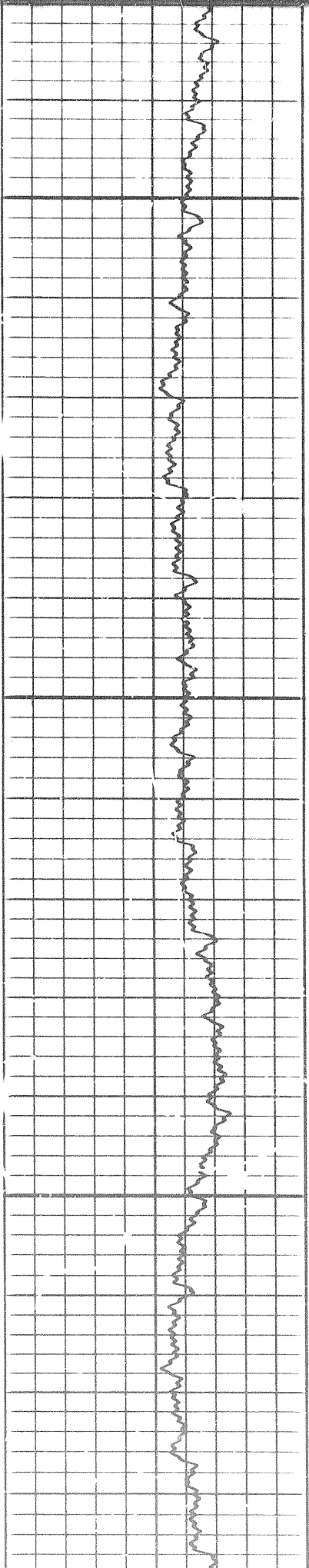


0350



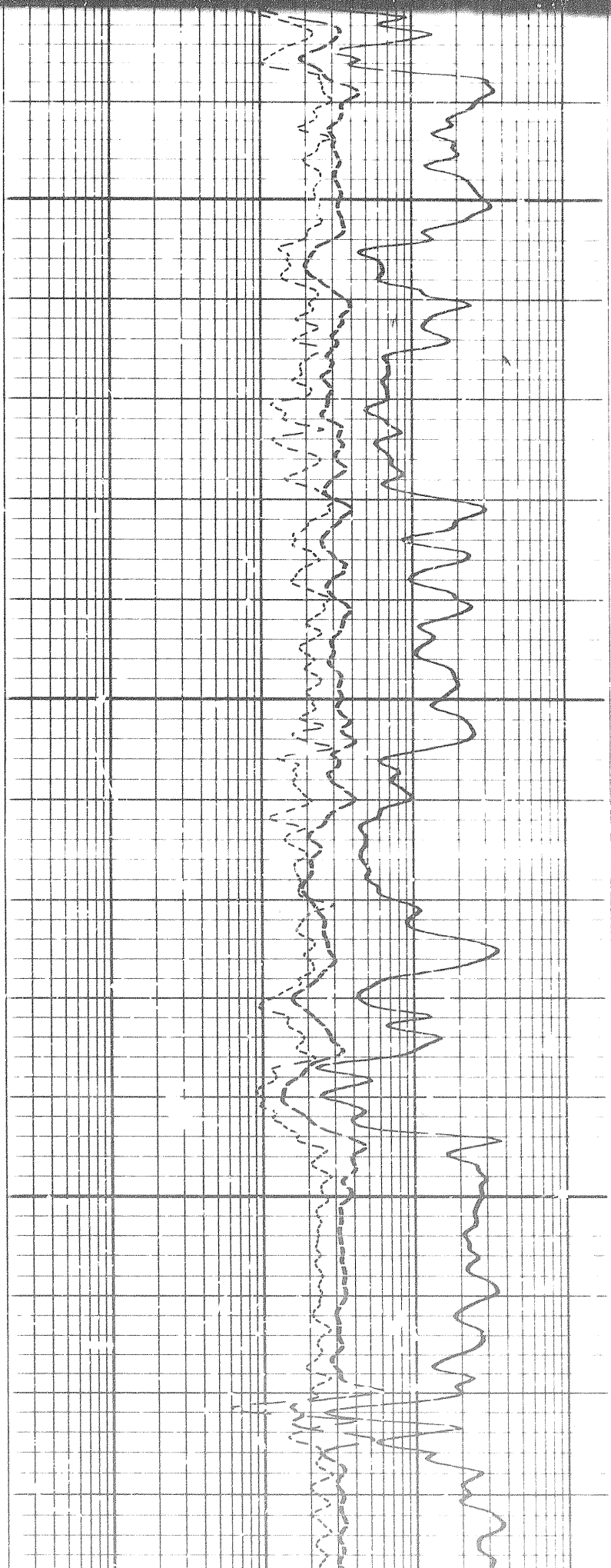
0400

5 of

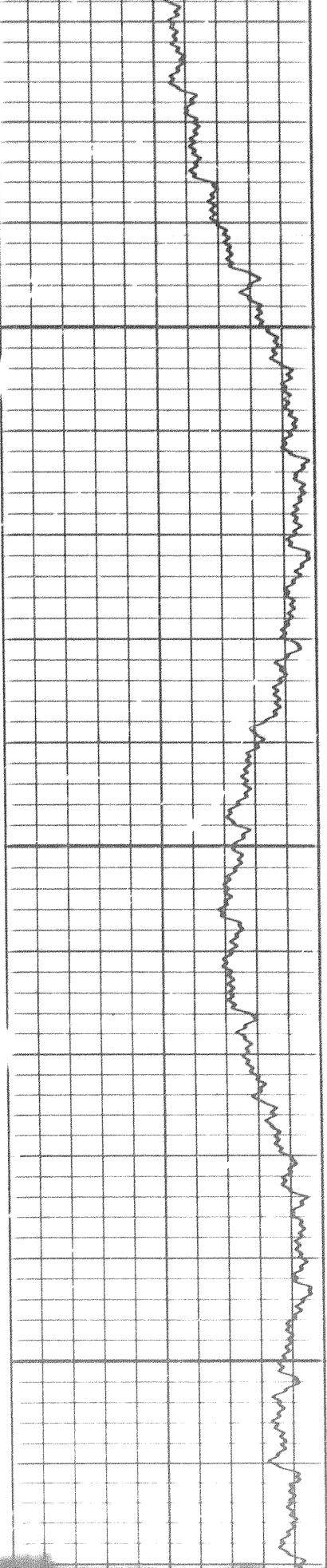


0400

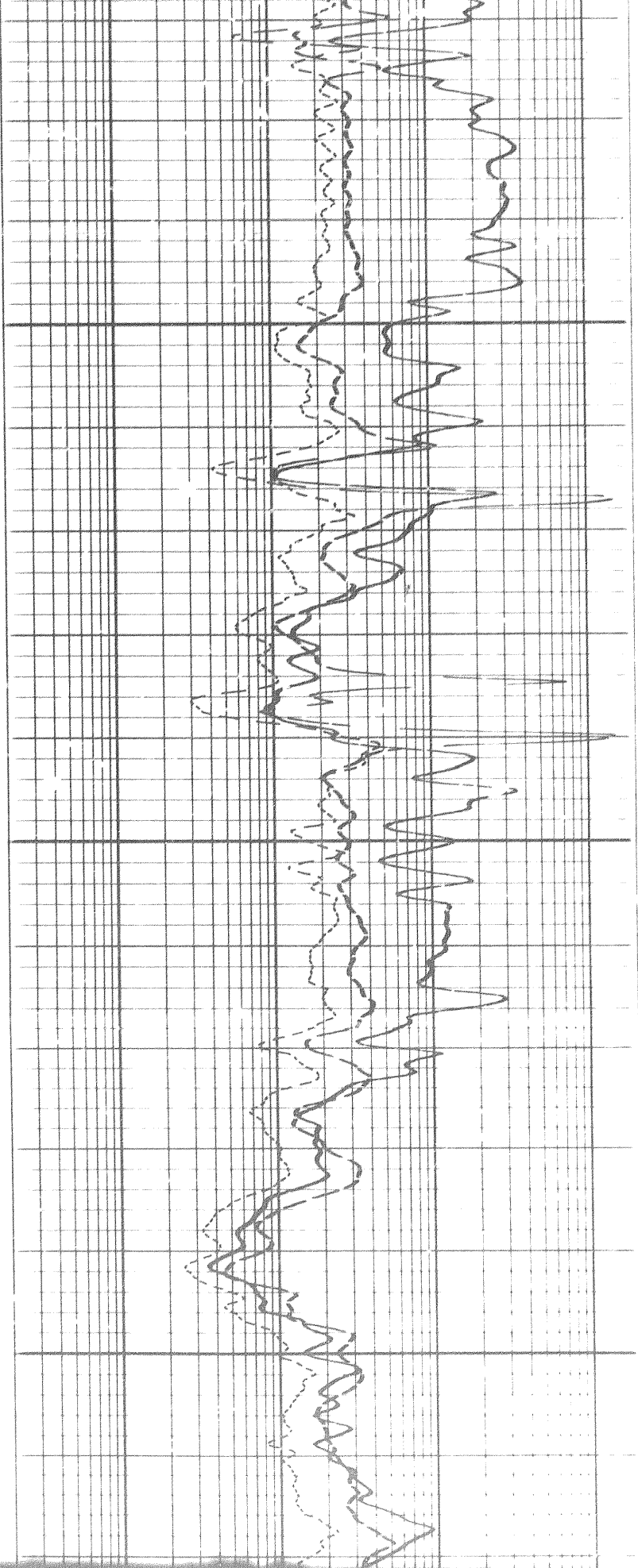
0450



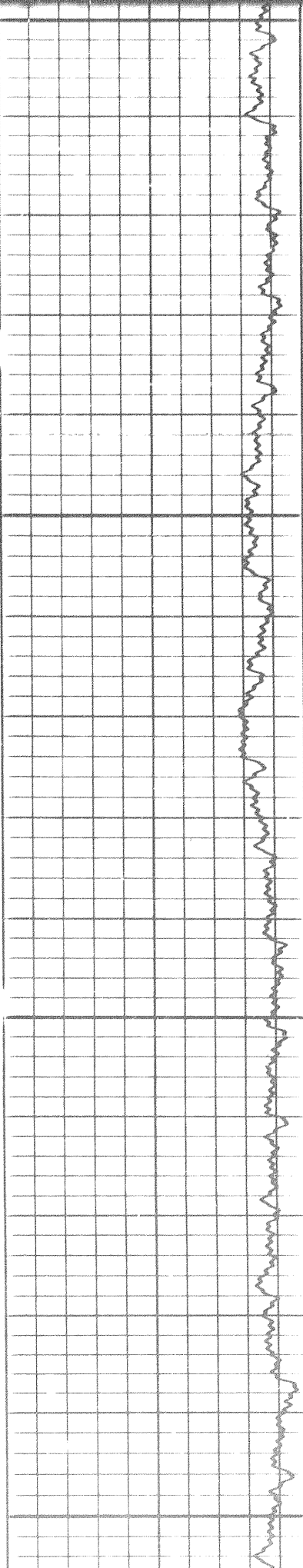
709



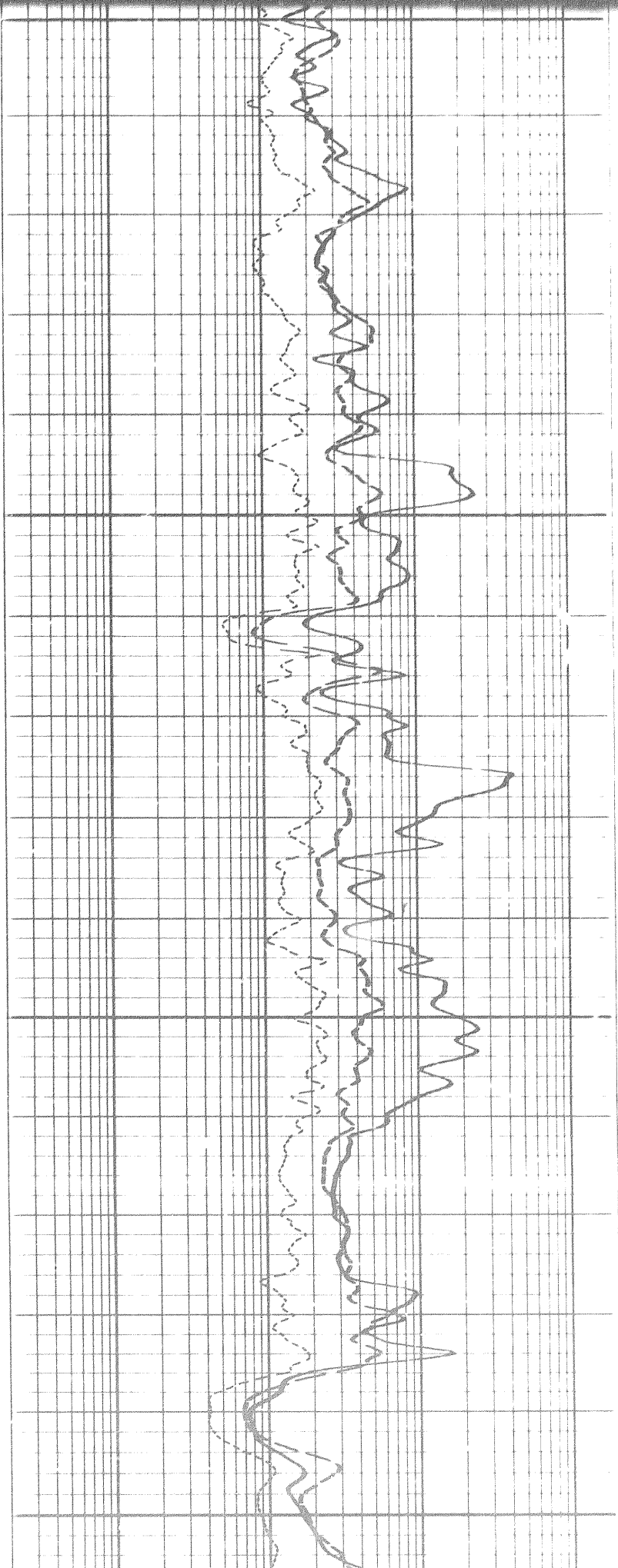
0500



5

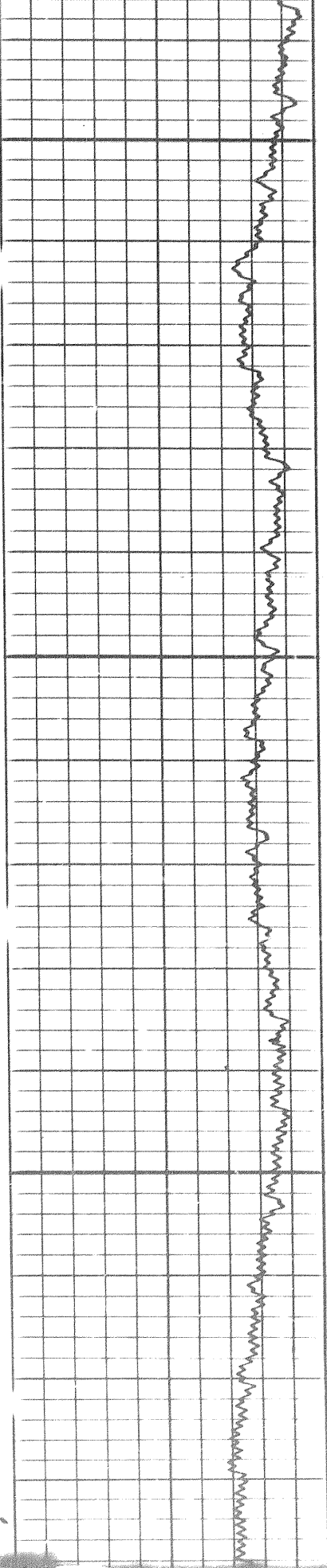


0550



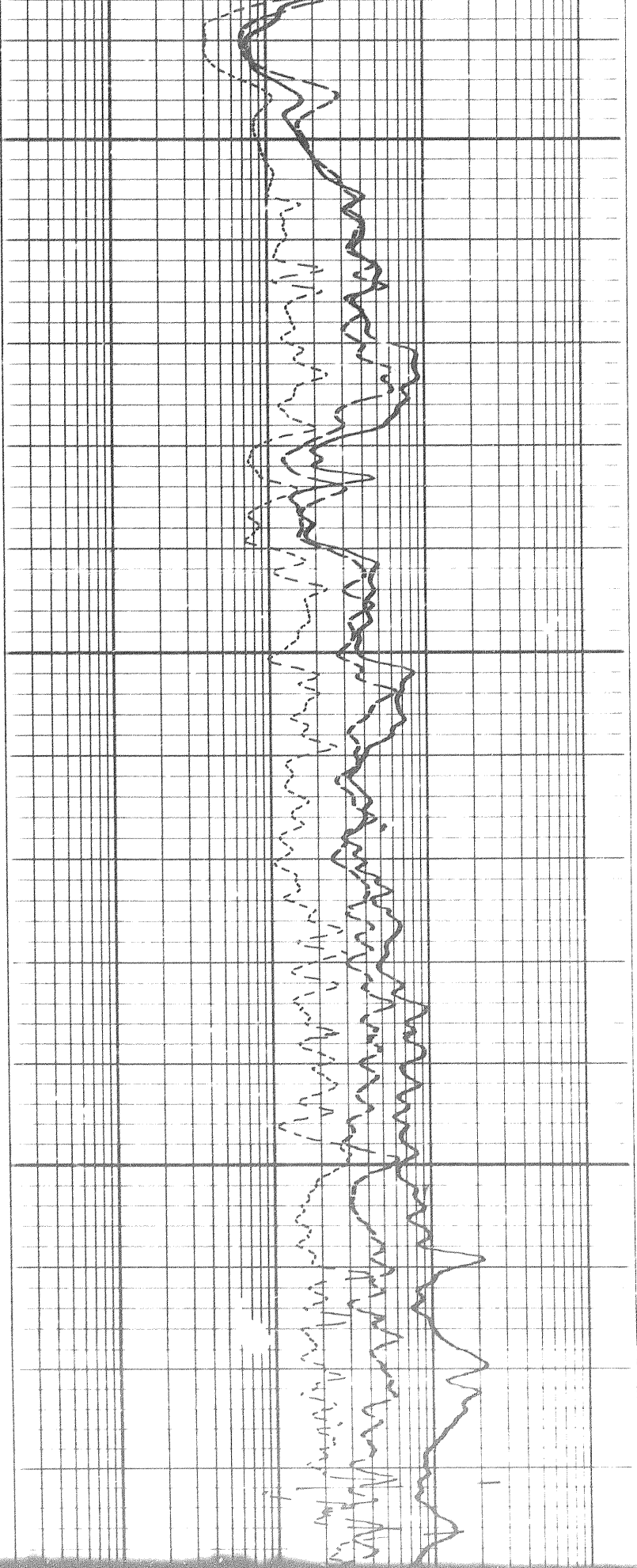
0600

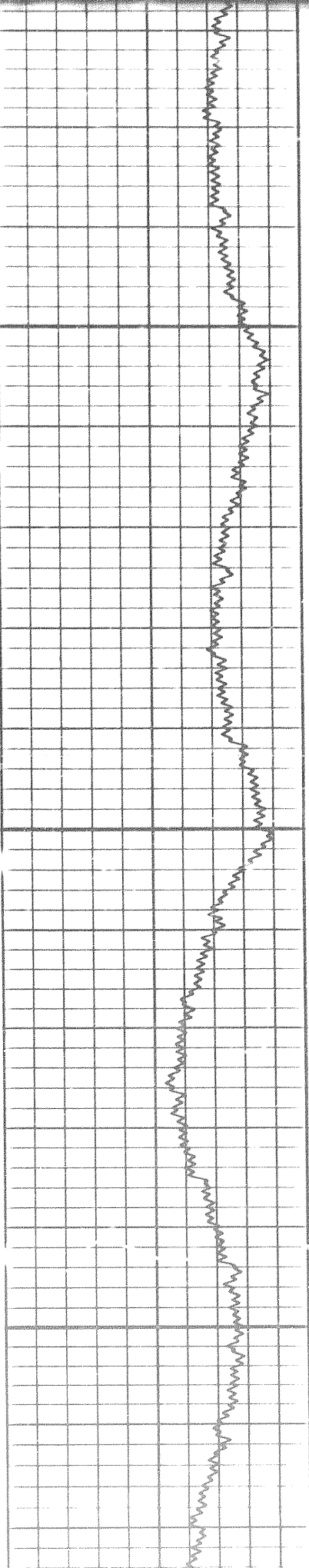
704



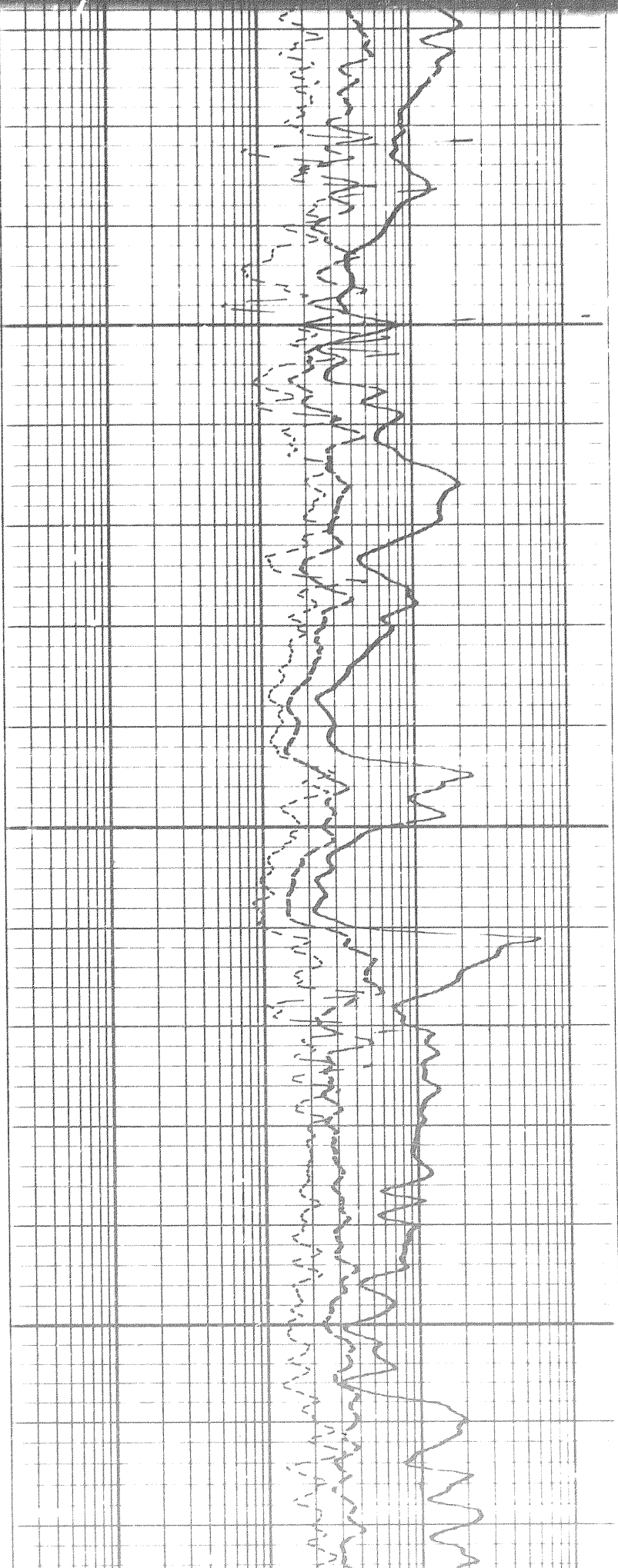
0090

0650

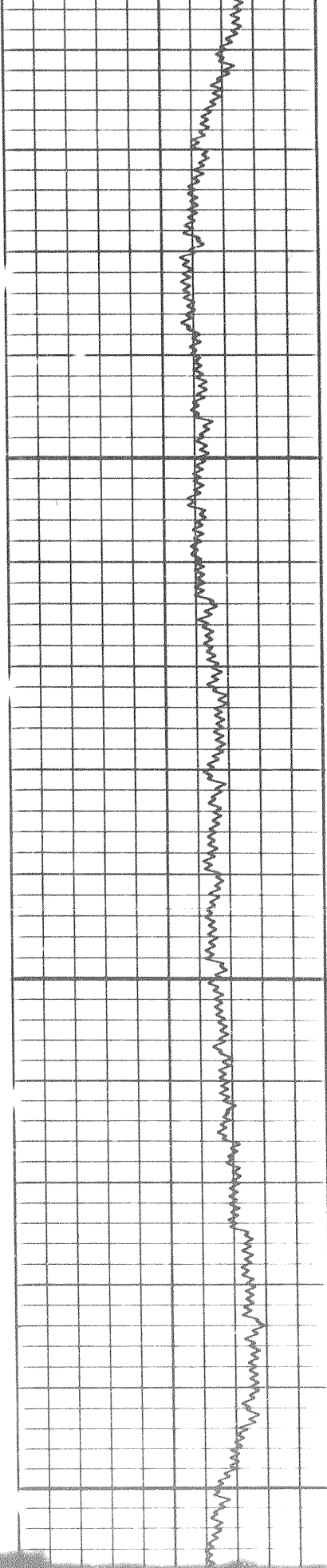




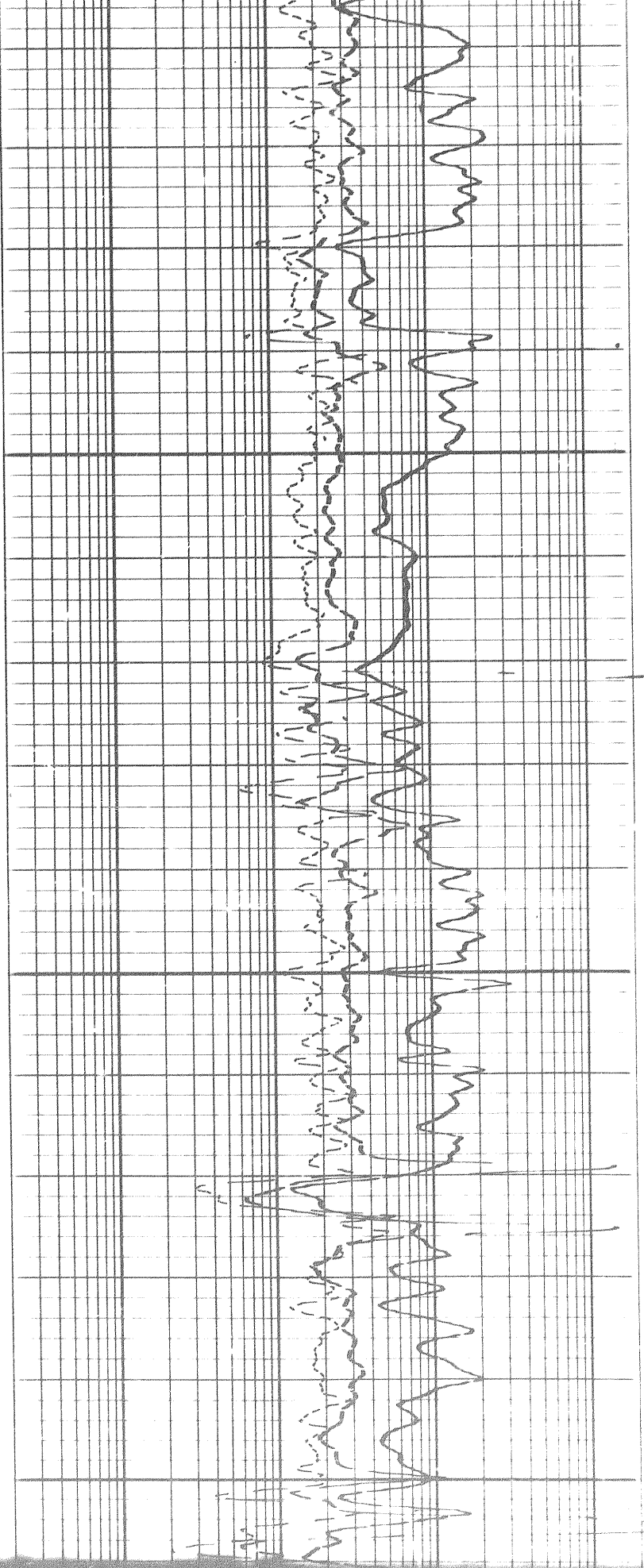
0700



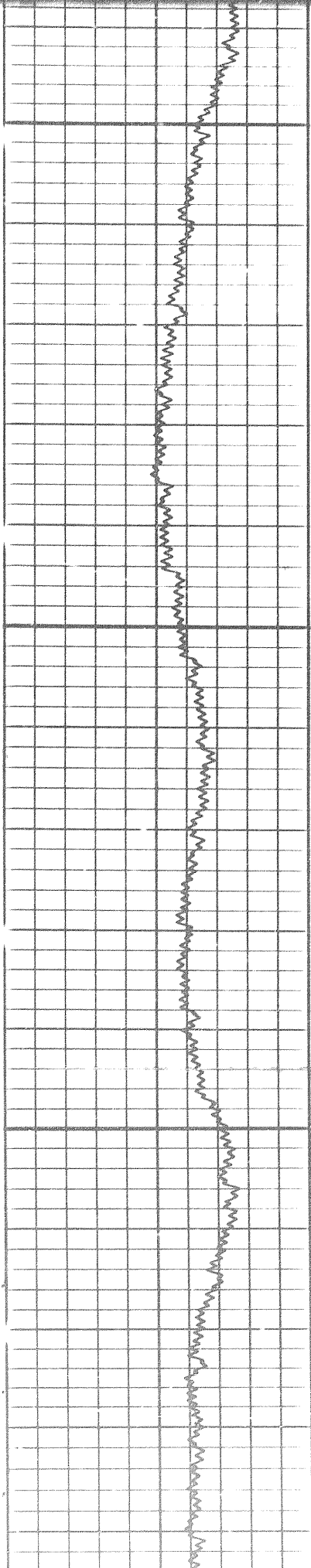
84



0750

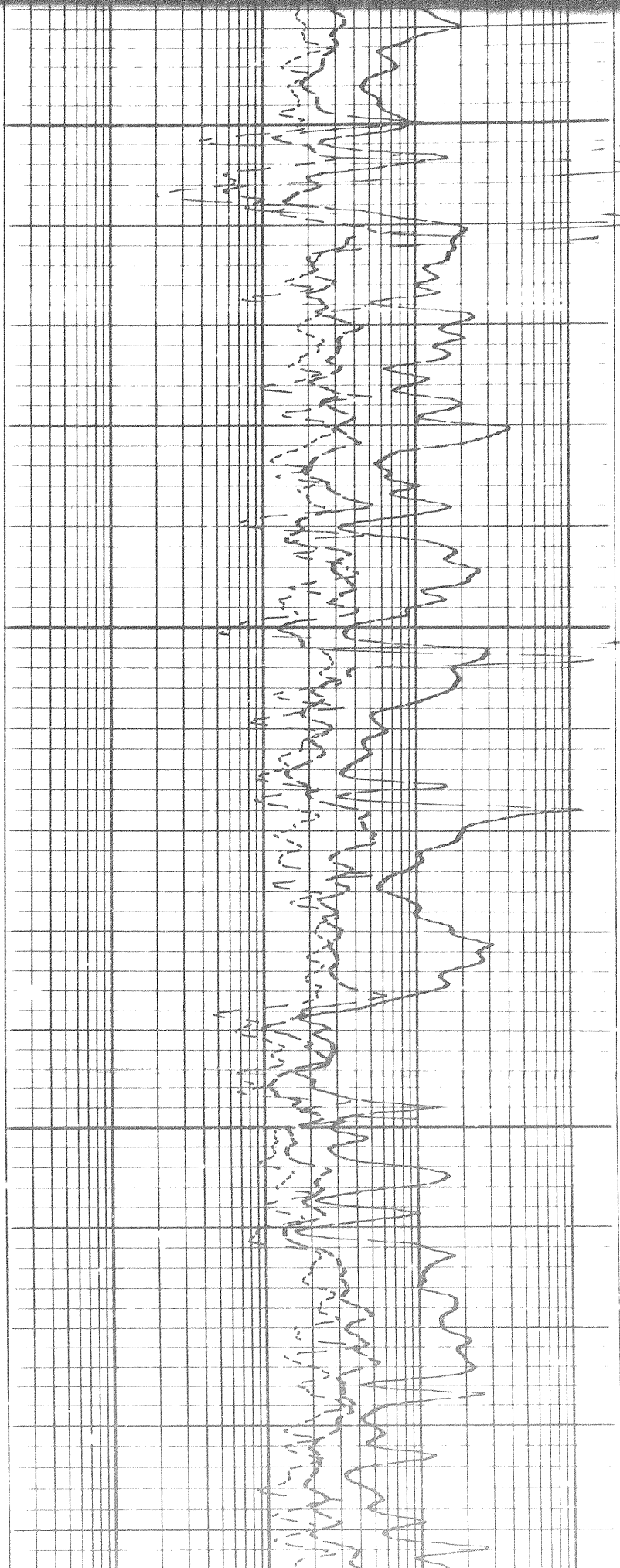


0800

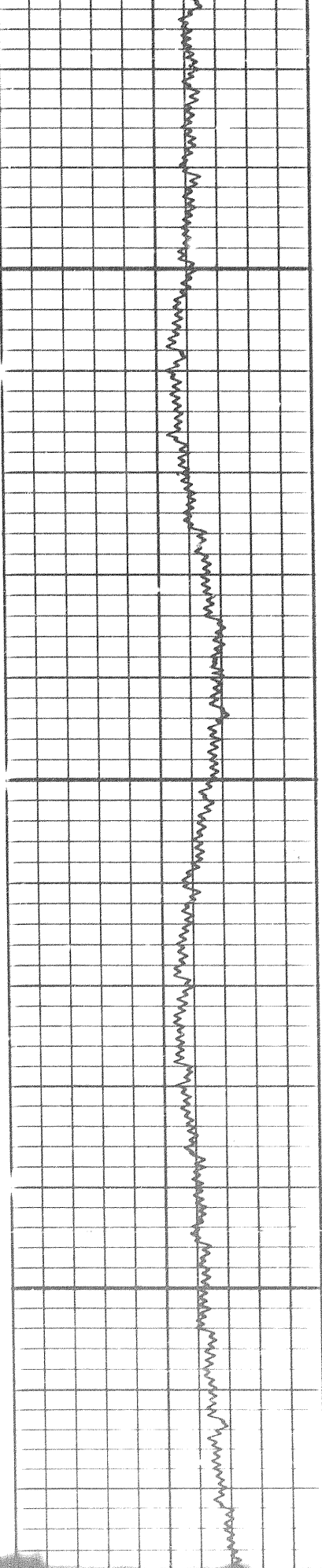


0850

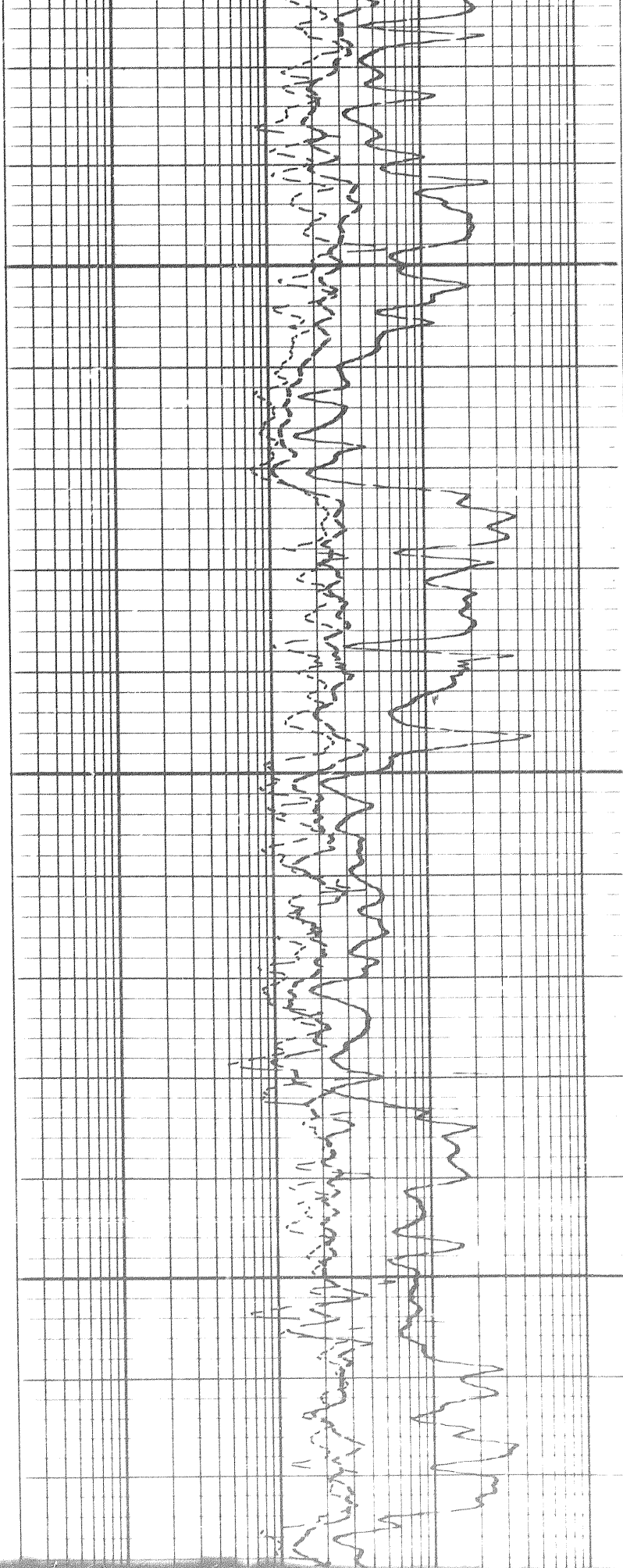
0080



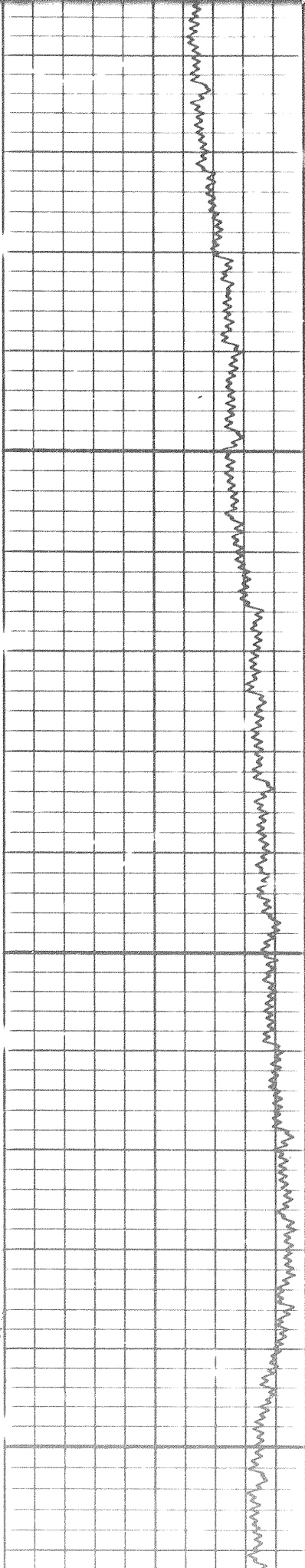
706



0060

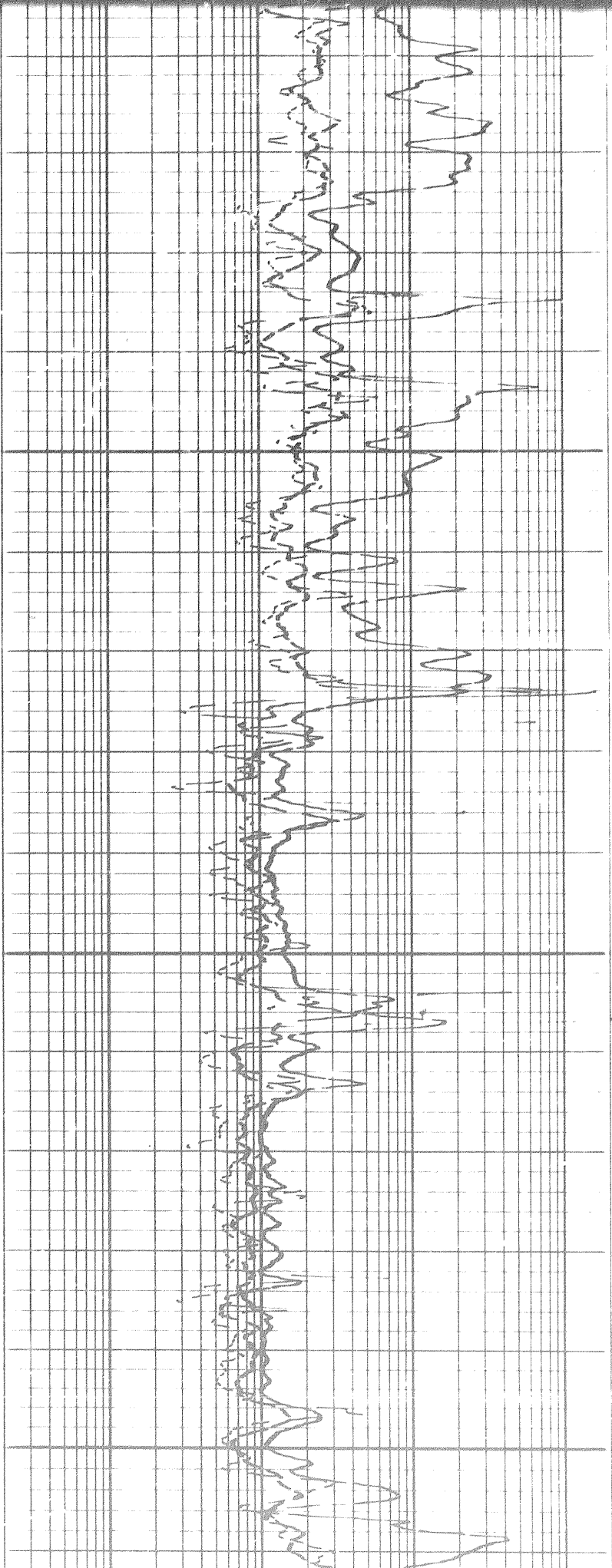


7

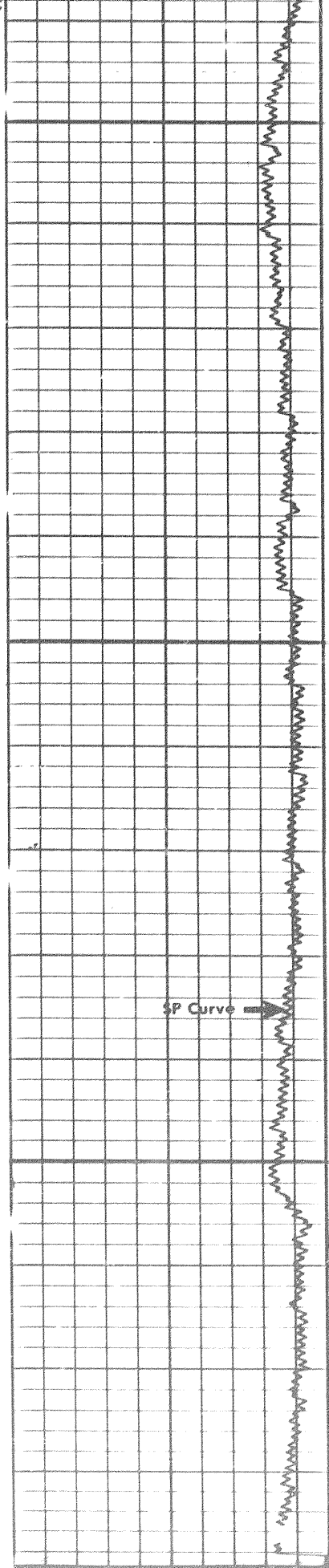


0950

1000

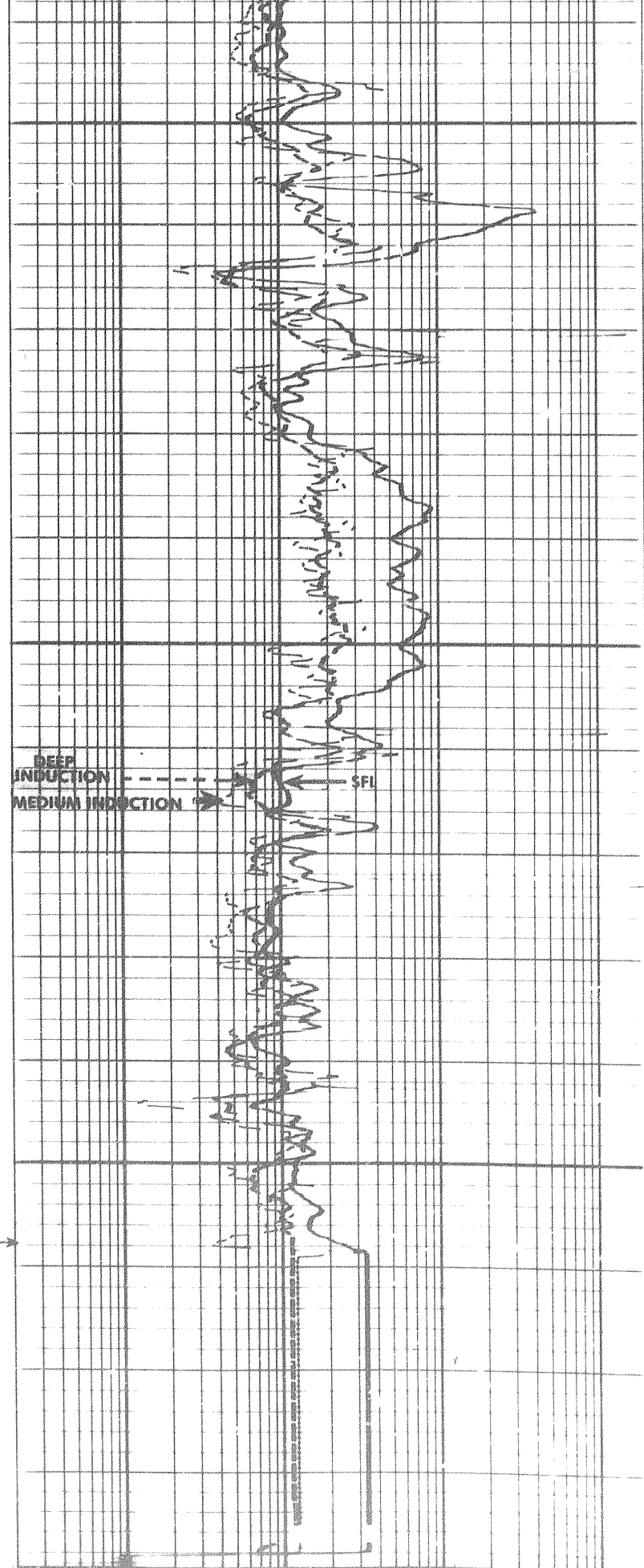


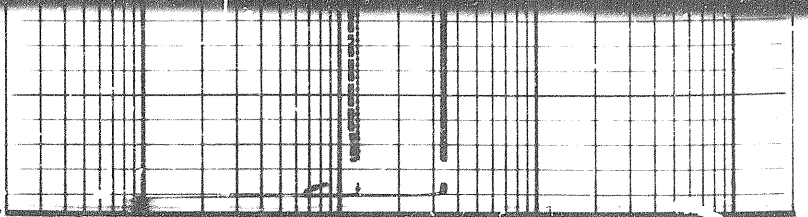
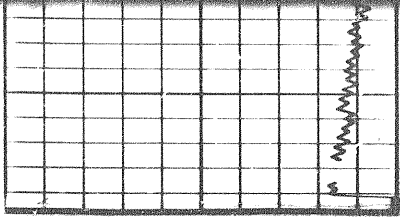
1001



1000

1050

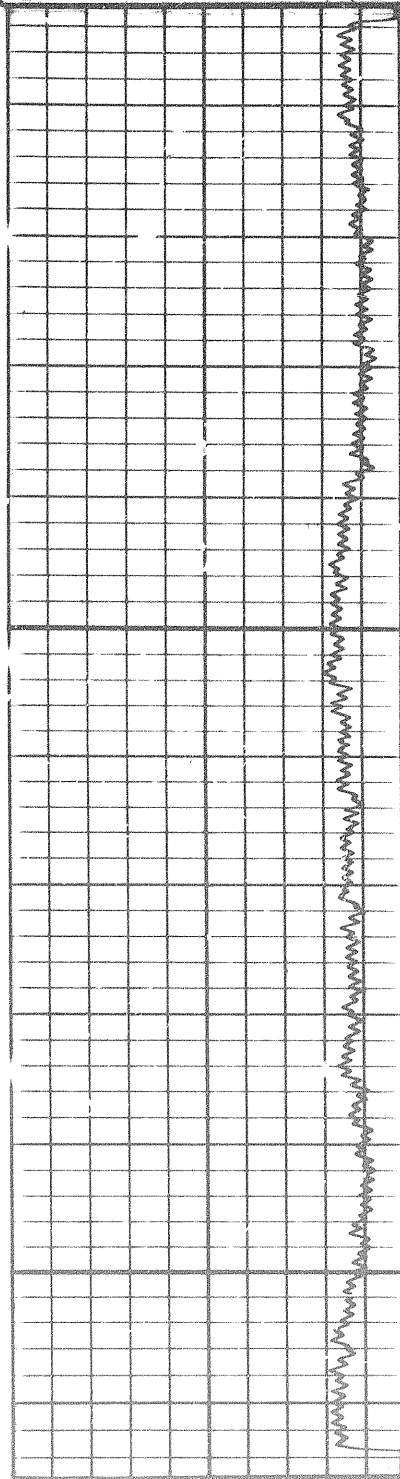




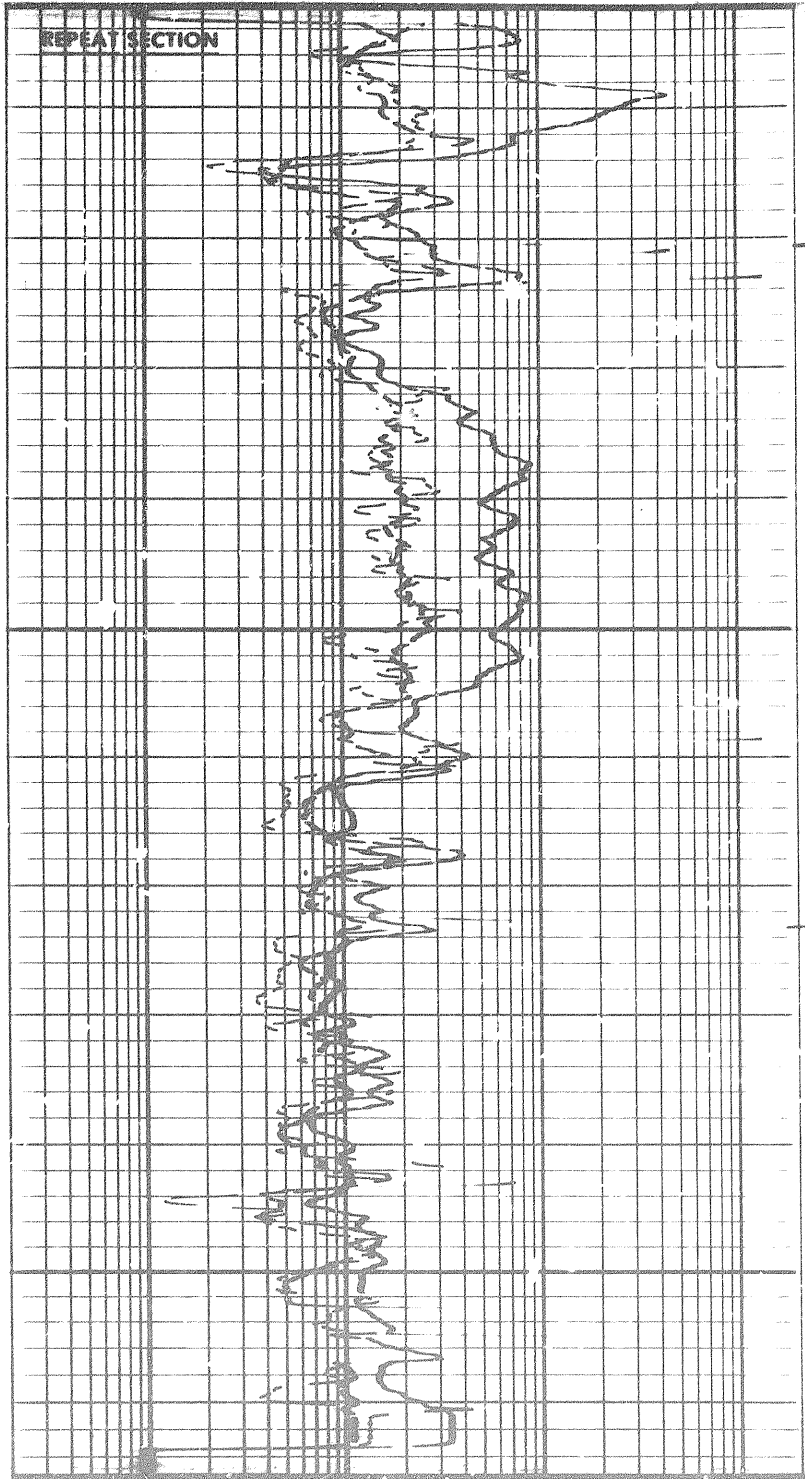
10

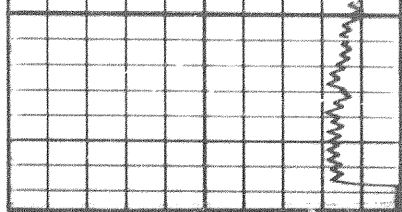
X3000

REPEAT SECTION

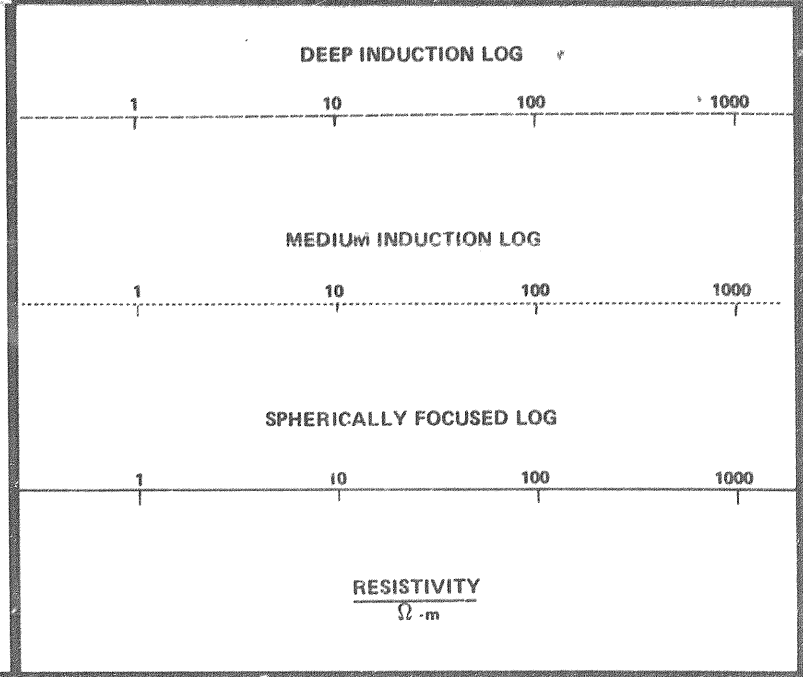
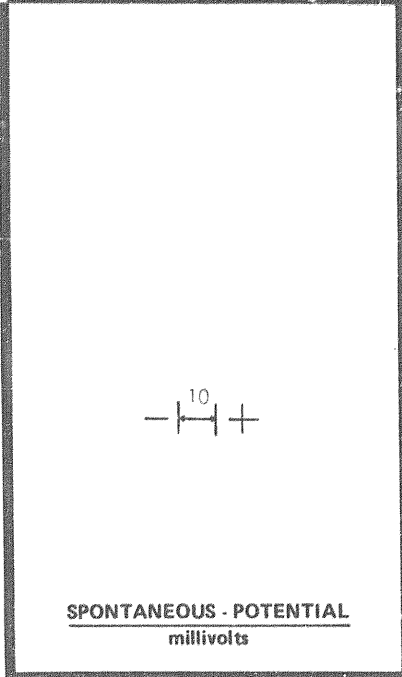
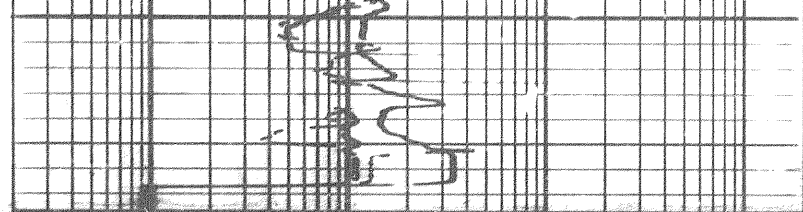


1050





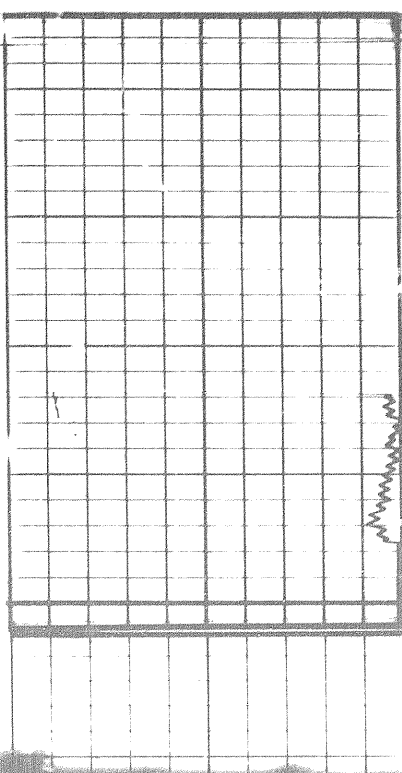
050



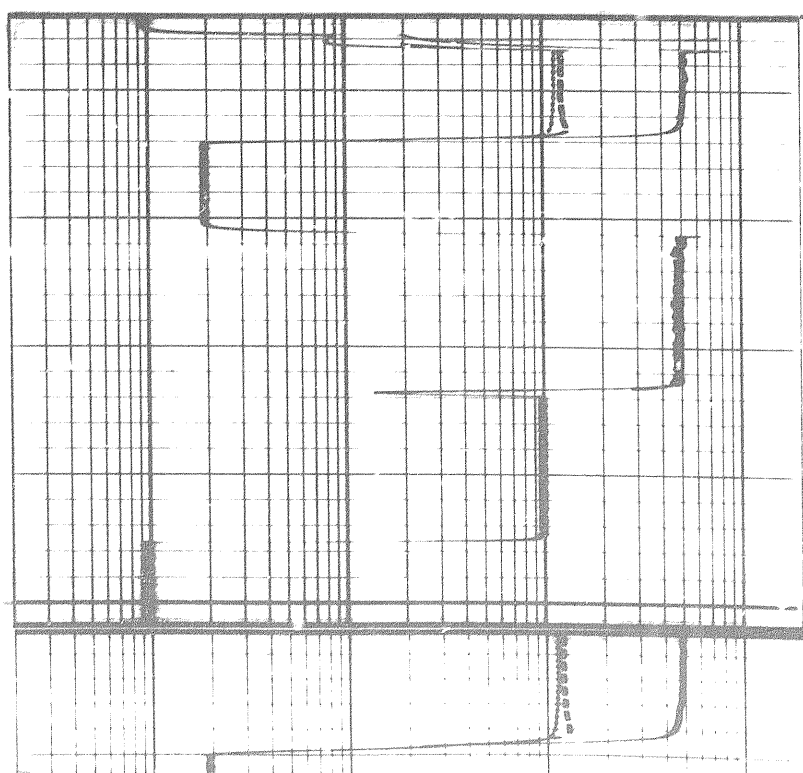
DEPTH
METRES

CALIBRATION RECORD

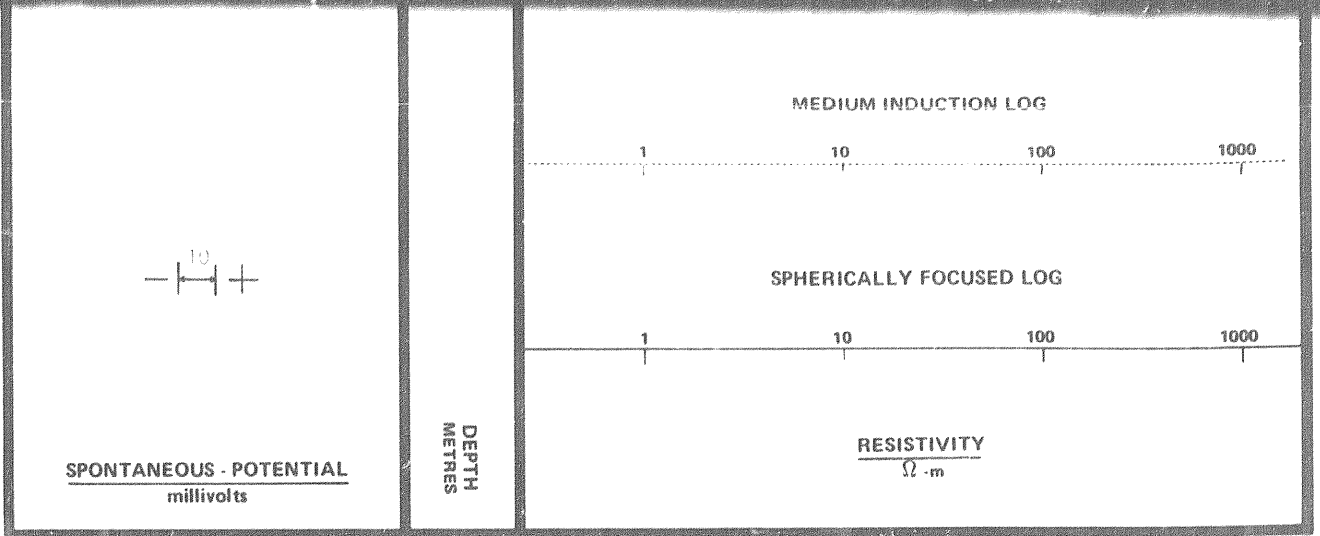
X2003B



6
5
4
3
2
1
1000
6



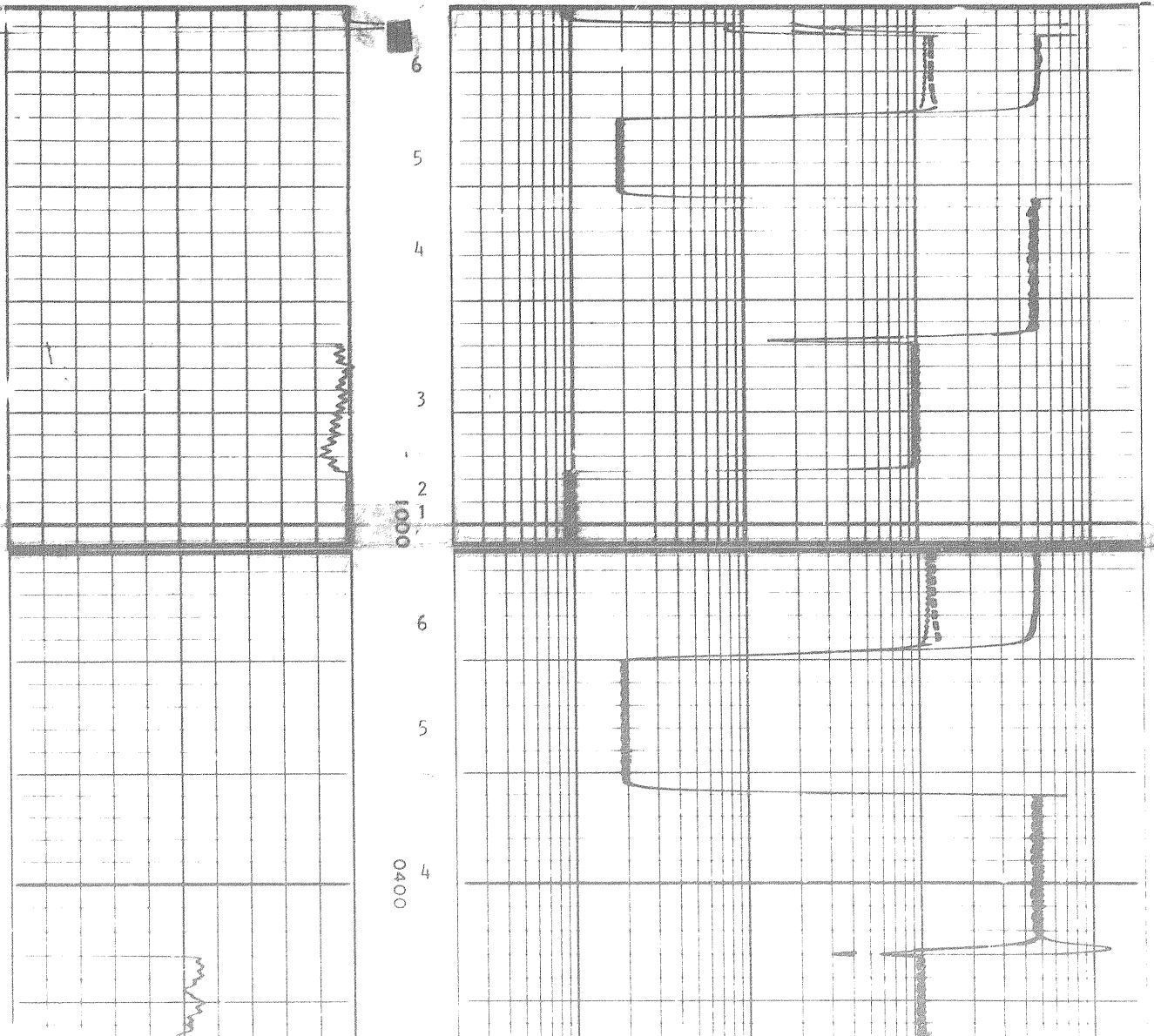
1101

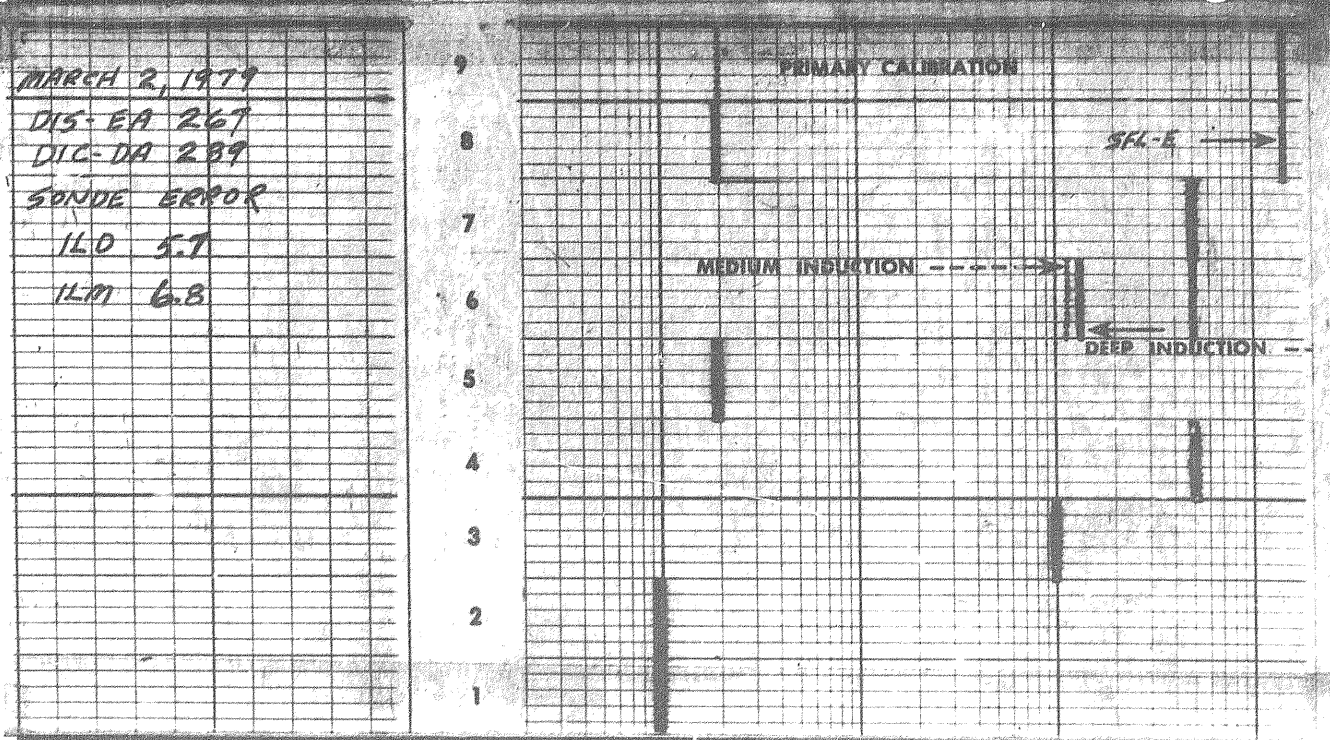
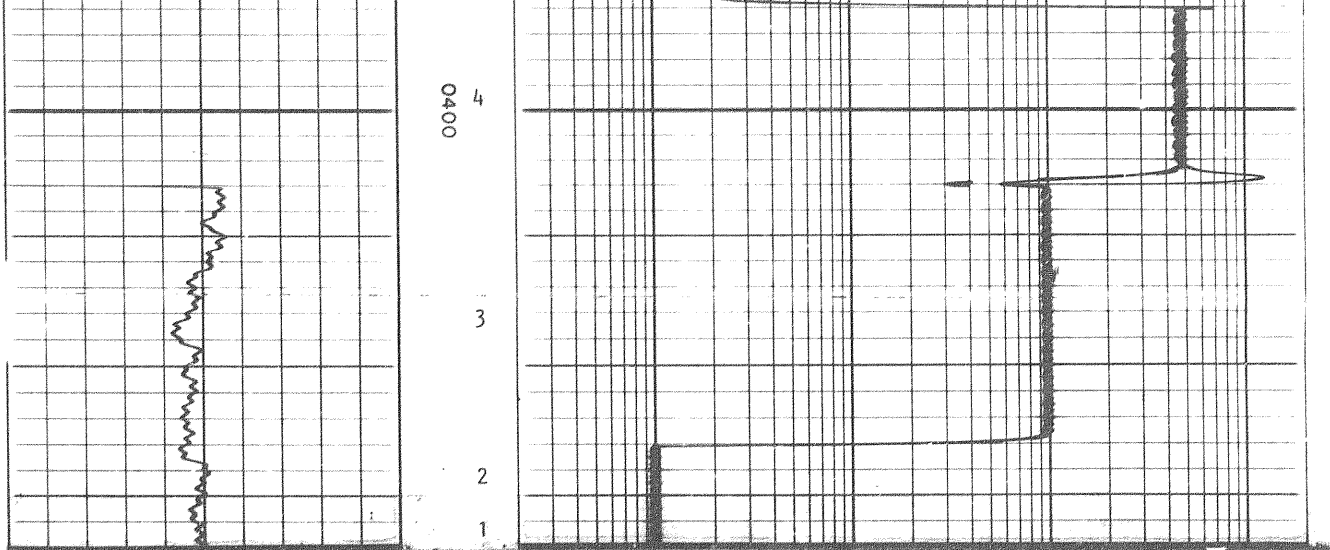


CALIBRATION RECORD

X20038

Detailed description: A large rectangular box labeled 'CALIBRATION RECORD' is positioned below the log scales. To its left, the alphanumeric code 'X20038' is printed vertically. A small downward-pointing arrow is located at the bottom center of the box.





MARCH 2, 1979
 DIS- EA 267
 DIC- DA 289
 SONDE ERROR
 ILD 5.7
 ILM 6.8

DUAL INDUCTION CALIBRATION FILM CODING

1. MECHANICAL ZERO
2. $1 \Omega \cdot m$
3. $100 \Omega \cdot m$
4. ELECTRICAL ZERO ($500 \Omega \cdot m$)
5. $2 \Omega \cdot m$
6. SONDE ERRORS (mS/m)
7. ZERO SIGNAL IN AIR
8. ILd TEST LOOP ($2 \Omega \cdot m$ SIGNAL)
9. ILM TEST LOOP ($2 \Omega \cdot m$ SIGNAL)
10. R_{xo}/R_f UNITY
11. R_{xo}/R_f CALIBRATE

COMPANY COLUMBIA GAS DEVELOPMENT OF CANADA LTD.
 WELL COLUMBIA ET AL KOTANEELEE YT-1-48
 FIELD WILDCAT
 PROVINCE YUKON

SCHL. FR 1054 m
 SCHL. TD 1055 m
 DRLR. TD 1054 m
 Elev.:
 KB 359.3 m
 DF _____ m
 GL 851.7 m

2.4/12

X2003D