

Schlumberger

SCHLUMBERGER OF CANADA Calgary Alberta

DUAL INDUCTION - SFL

PROVINCE YUKON TERRITORY
 FIELD WILDCAT
 WELL COLUMBIA ET AL
 KOTANEELEE YT 1-48
 COMPANY COLUMBIA GAS DEVELOPMENT OF CANADA LTD.

COMPANY COLUMBIA GAS DEVELOPMENT OF CANADA LTD.
 WELL COLUMBIA ET AL KOTANEELEE
 Y1 1-48
 FIELD WILDCAT
 PROVINCE YUKON TERRITORY

60 07 31.917" N. LAT.
 124 07 36.15" W. LONG.

LSD SEC. TWP. RANGE

Other Services:
 CBL - VPI - GP
 BHC - GP
 FDC - CNL - GR
 DLL - CNL - GR

Permanent Datum: KH : Elev.: 827.34 m
 Log Measured From: KB 7.61 m Above Perm. Datum
 Drilling Measured From: KH : Elev.: 834.95 m
 D.F.: 827.34 m
 G.L.: 827.34 m

Date	Run No.	One	Two	Three	Four
14. FEB. 80					
Depth - Driller		m	4430.0 m	m	m
Depth - Logger (Schl.)		m	4427.0 m	m	m
Stem Log Interval		m	4416.0 m	m	m
Top Log Interval		m	3252.0 m	m	m
Casing - Driller		m	241.5 @ 3259 m	m	m
Casing - Logger		m	3257.0 m	m	m
Bit Size		mm	216.0 mm	mm	mm
Type Fluid in Hole			KCL		
Dens (kg/m ³) / Visc.		1210	43		
pH / Fluid Loss (cm ³)		9.7			
Source of Sample			MID BANK		
Rm @ Meas. Temp.		@	1.04 @ 15.0 °C	@	@
Rmf @ Meas. Temp.		@	.756 @ 15.0 °C	@	@
Sources Rmf		@	.156 @ 15.0 °C	@	@
Rm @ BHT		@	.206 @ 15.0 °C	@	@
Calculation Stopped			0045 / 14th		
Tool Lost on Bottom			1215 / 14th		
Max. Rec. Temp. #1 #2		°C	°C	°C	°C
Unit District			339 FRONT		
Recorded By			LAPLIERRE		
Witnessed By			DOOLE/McDONALD		

Run No.	One	Two	Three	Four	REMARKS
Service Order No.			101673		27 JULY 80 EDM. LP&VR - RUN IN COMBINATION WITH BHC BUT RUN SEPARATE DOWNHOLE.
EQUIPMENT DATA					
Panel	DIP		DD 288		
Cartridge			DA 16		
Sonde			EA 162		
Memorizer Panel			CA 581		
TTR			2878		
Stand off mm			38		
CALIBRATION DATA					
SBR					
Sonde Error	Enter "surface" or depth set				
LOGGING DATA					
Run No.	Depth		Resistivity Scale	Conductivity Scale	
	From	To			

Log Taped Yes No

All interpretations are opinions based on inferences from electrical or other measurements and we cannot, and do not, guarantee the accuracy or correctness of any interpretations, and we shall not, except in the case of gross or willful negligence on our part, be liable or responsible for any loss, costs, damages or expenses incurred or sustained by anyone resulting from any interpretation made by any of our officers, agents or employees. These interpretations are also subject to Clause 4 of our General Terms and Conditions as set out in our current Price Schedule.

SPONTANEOUS-POTENTIAL
millivolts

DEPTH METRES

RESISTIVITY
 $\Omega \cdot m$
SPHERICALLY FOCUSED LOG

1 10 100 1000

DEEP INDUCTION LOG

1 10 100 1000

SPONTANEOUS POTENTIAL
millivolts

- 20 +

X2003A

DEPTH
METRES

3250

3300

SPHERICALLY FOCUSED LOG
 $\Omega \cdot m$

1 10 100 1000

DEEP INDUCTION LOG

1 10 100 1000

MEDIUM INDUCTION LOG

1 10 100 1000

CASING SHOE

SP

LR

SFL

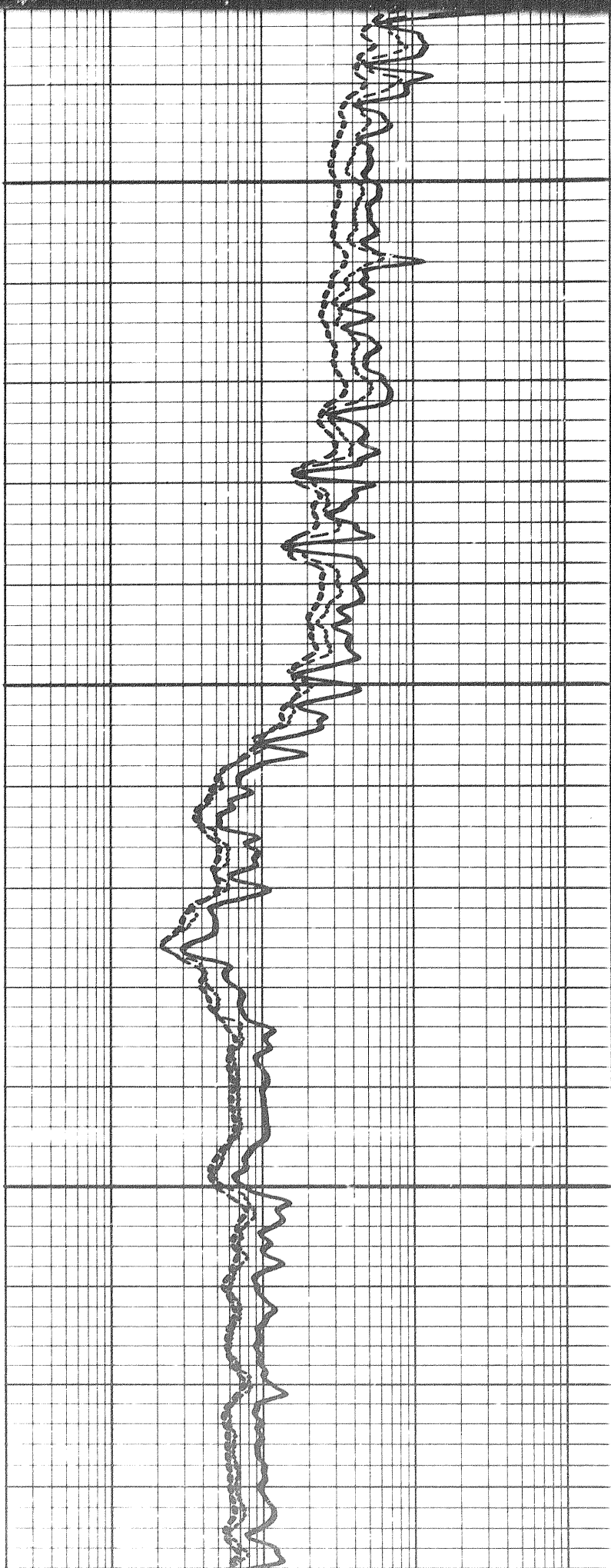
IID

IIM

101

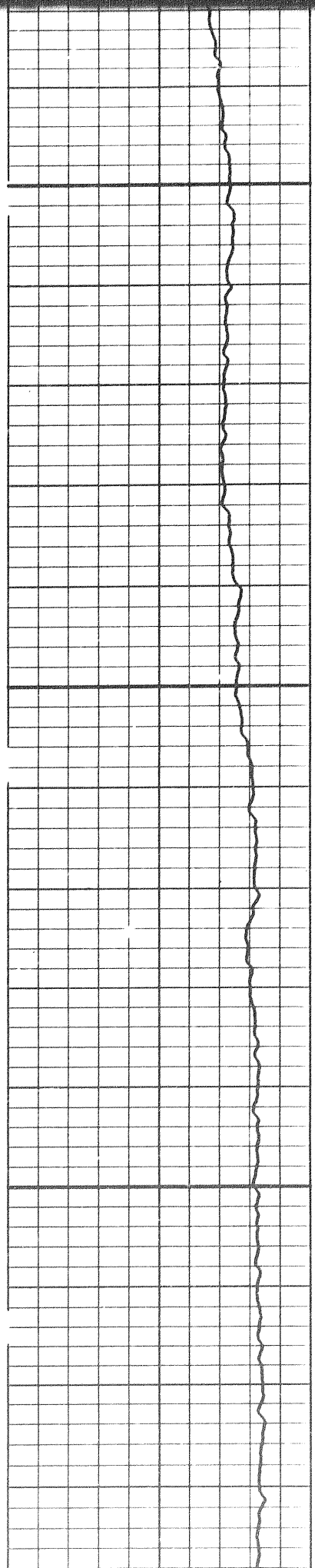
LOGS EASTING 100

LOGS EASTING 100

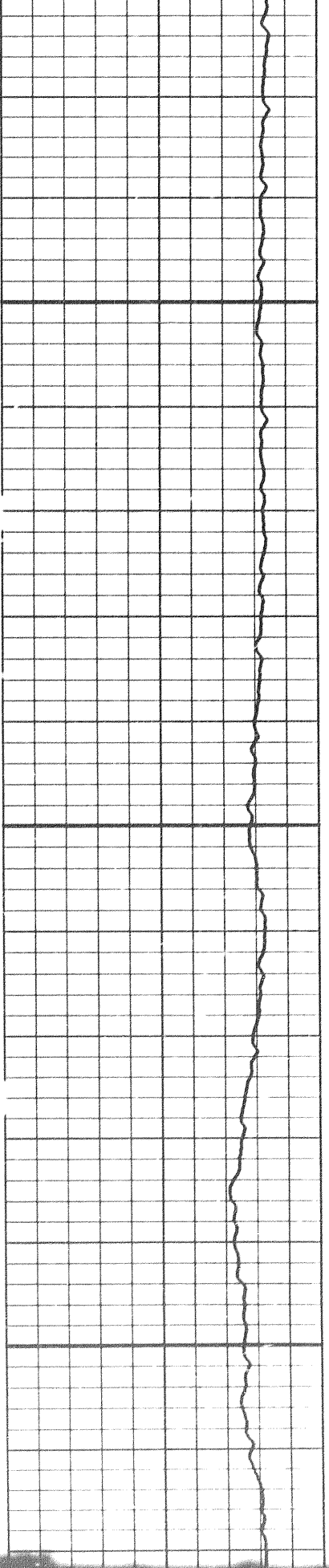


3300

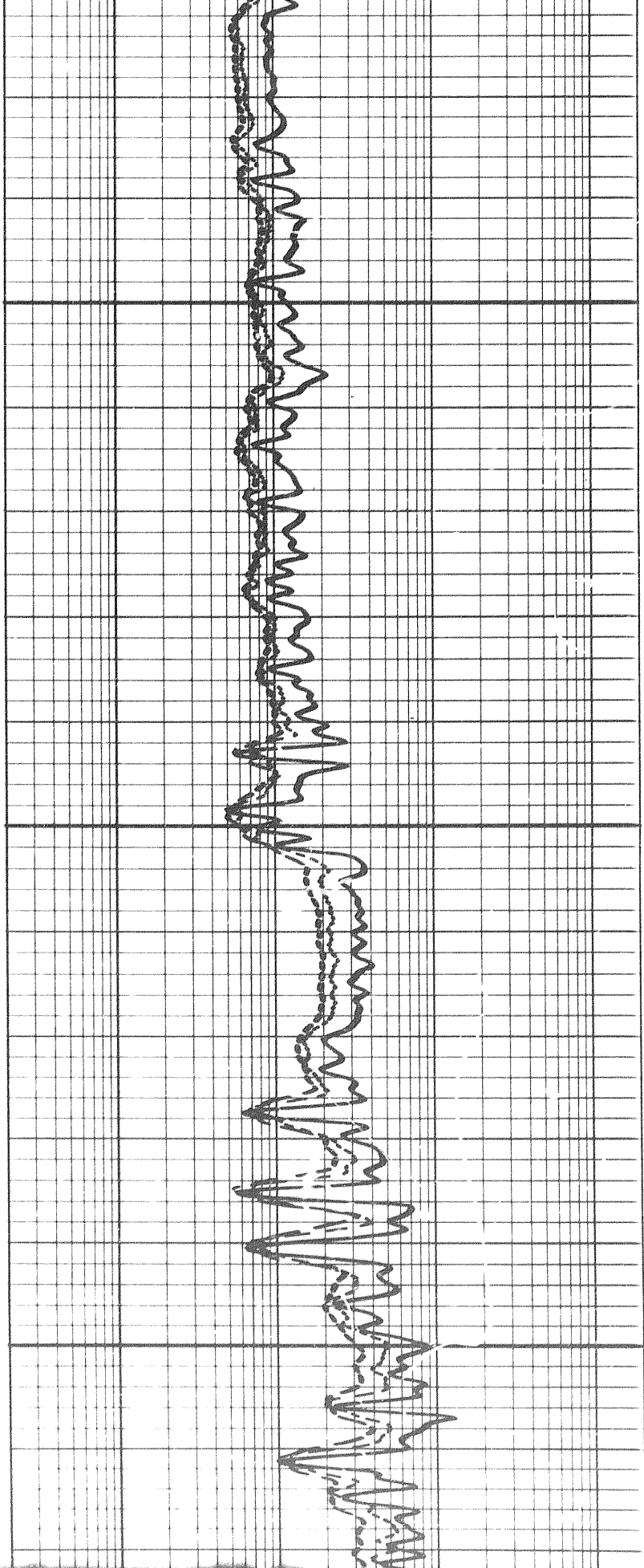
3350

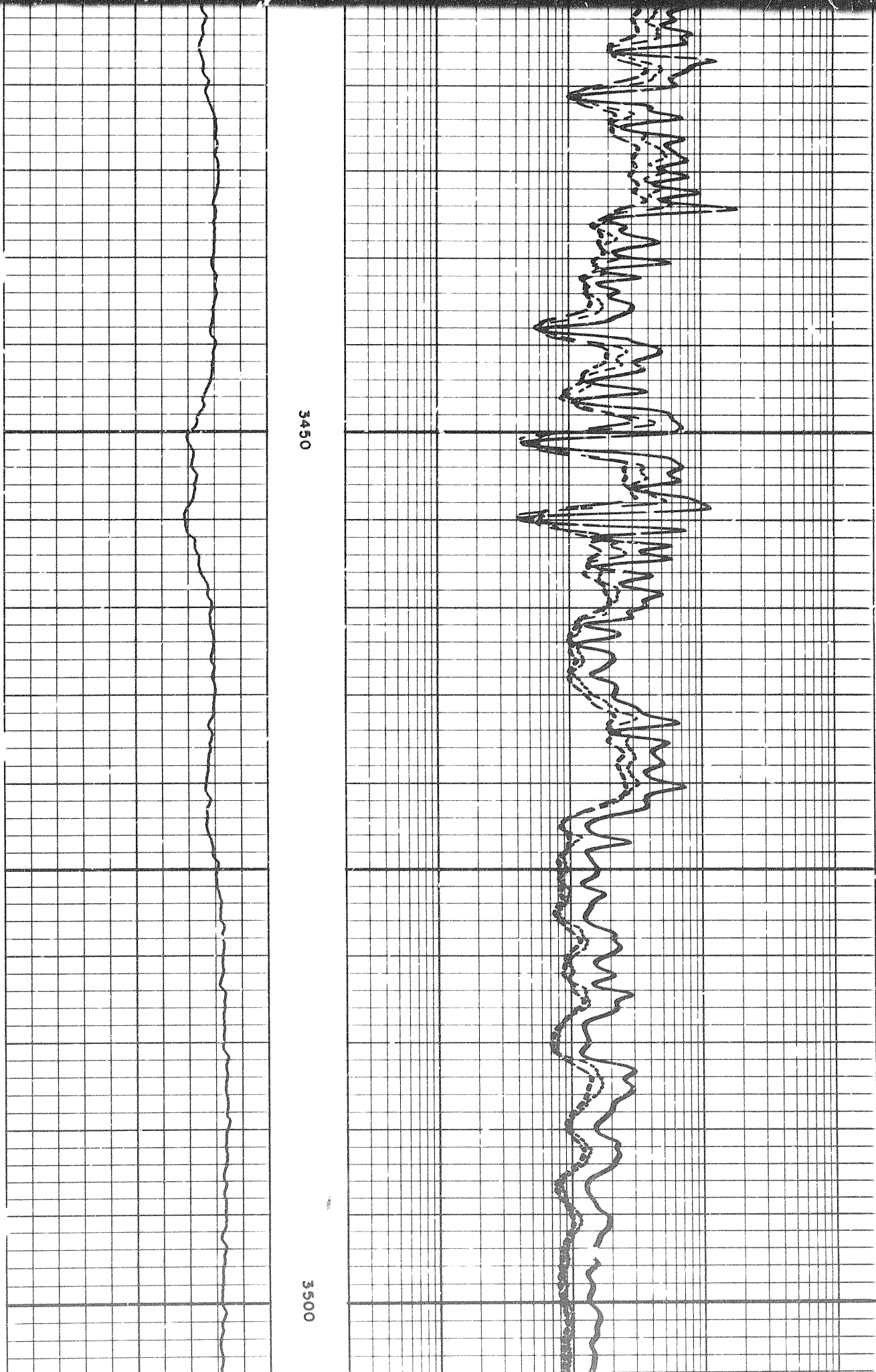


204



3400

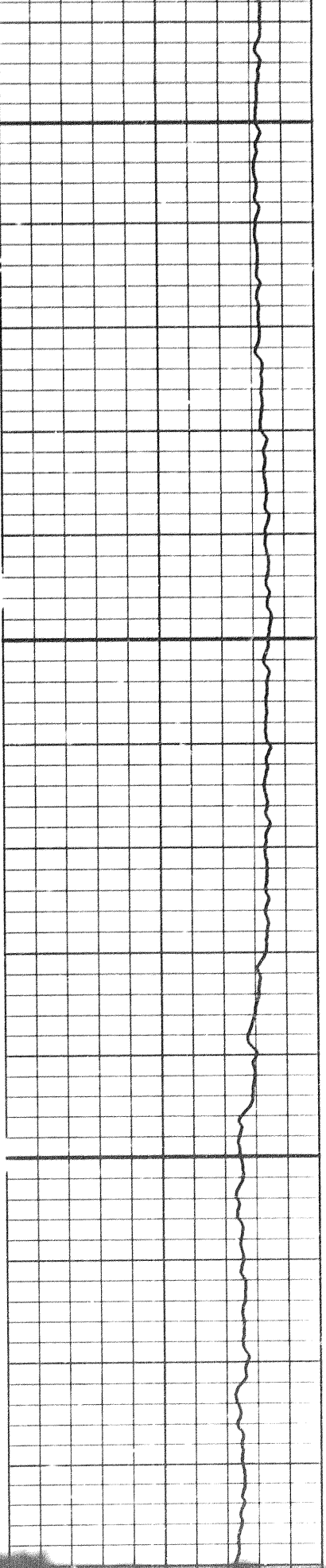




3450

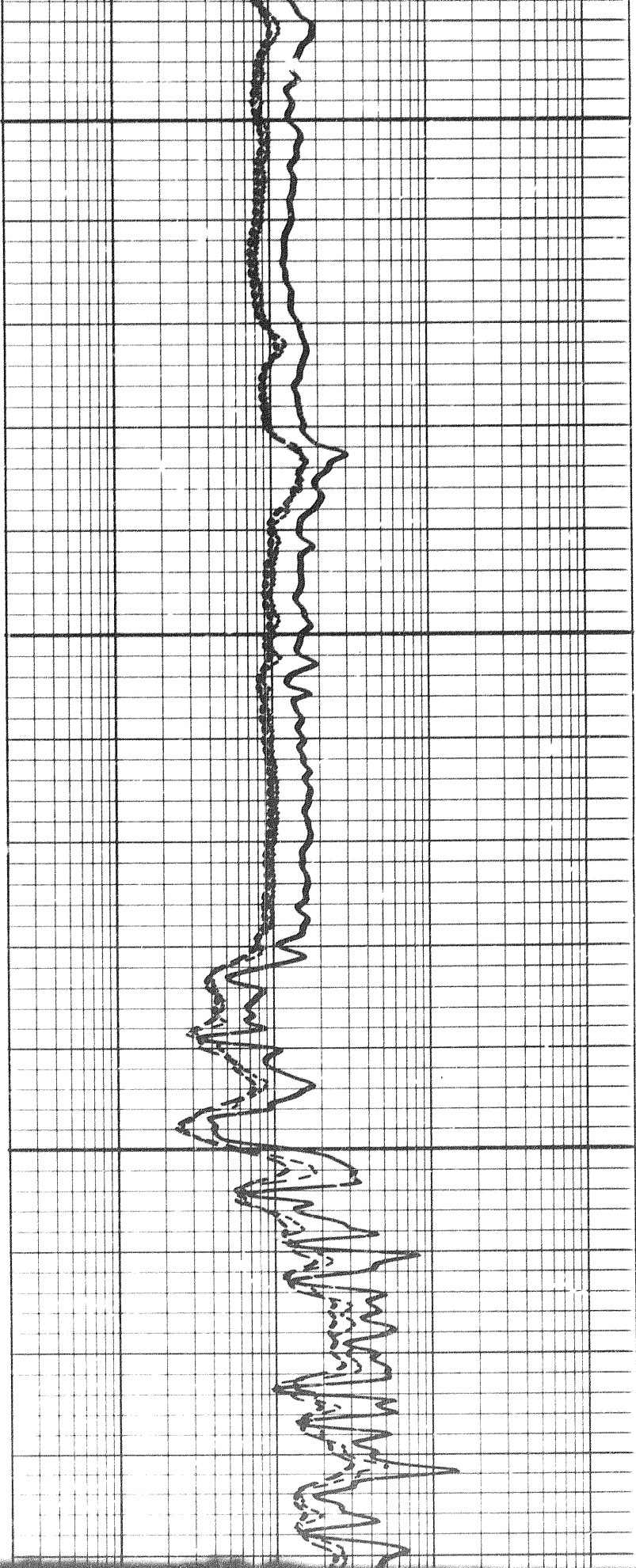
3500

3 of



3500

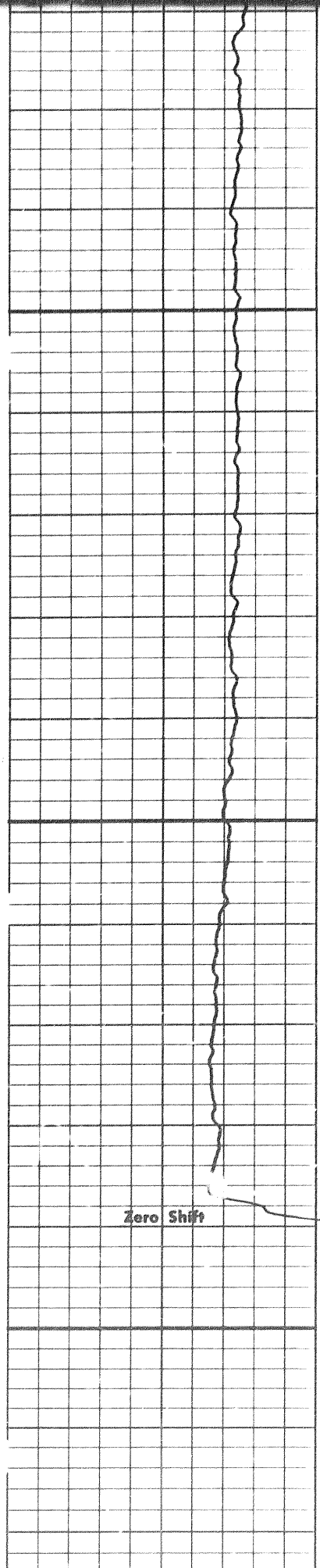
3550



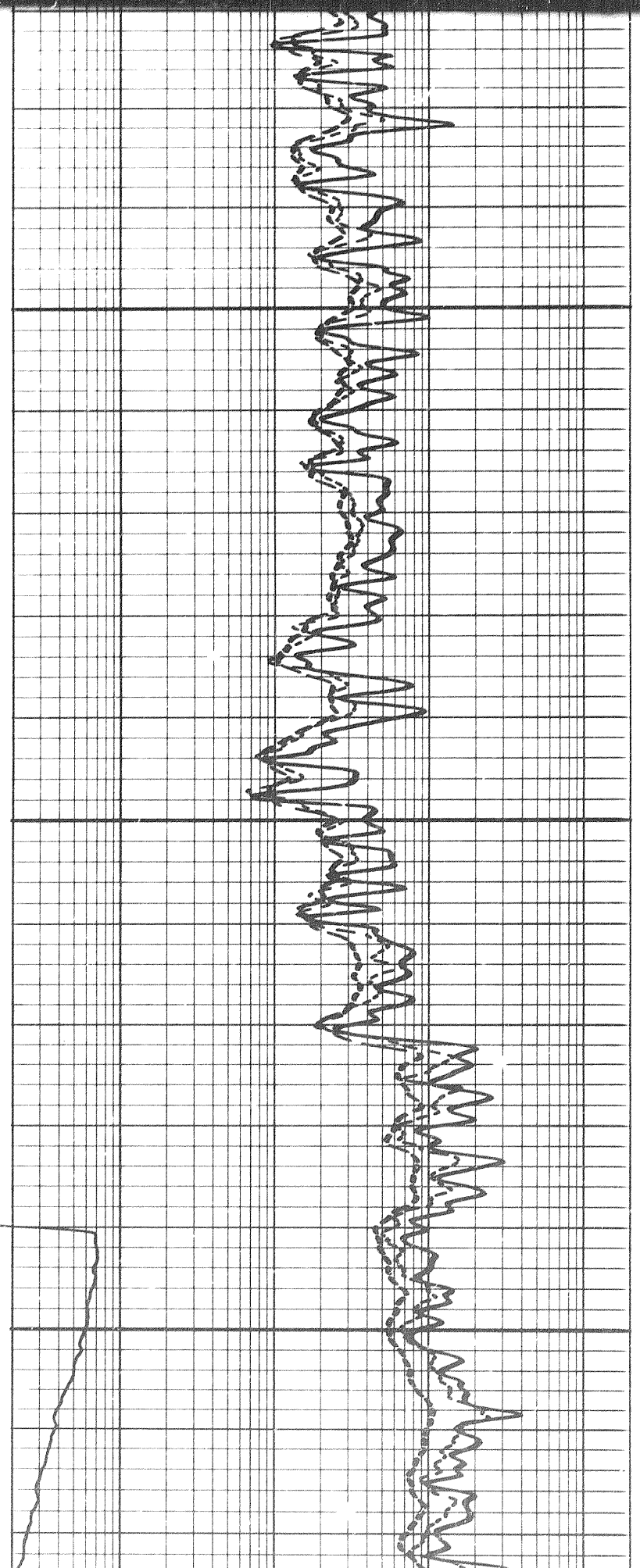
MPI TIME 3600

MPI TIME 3600

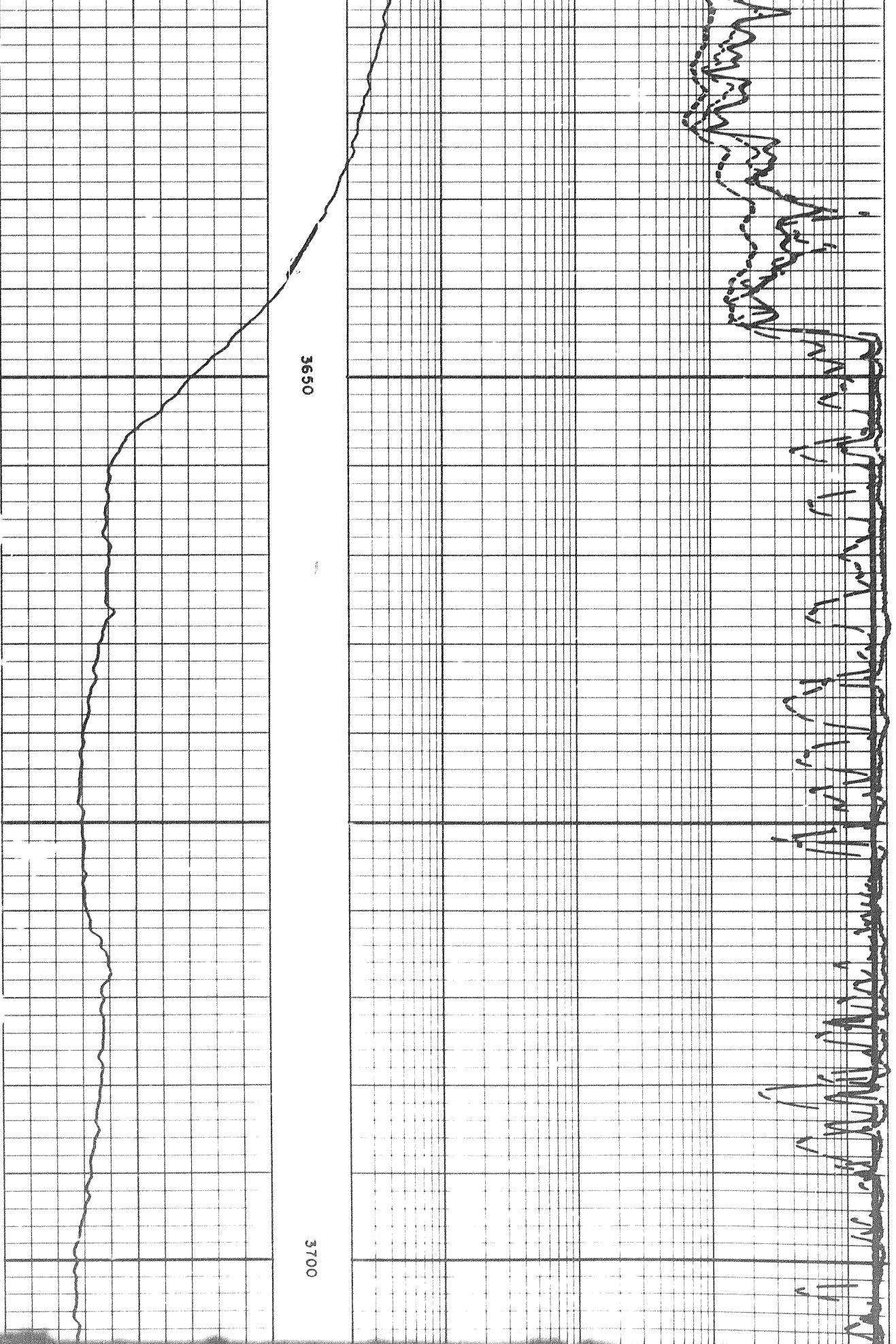
5



3600

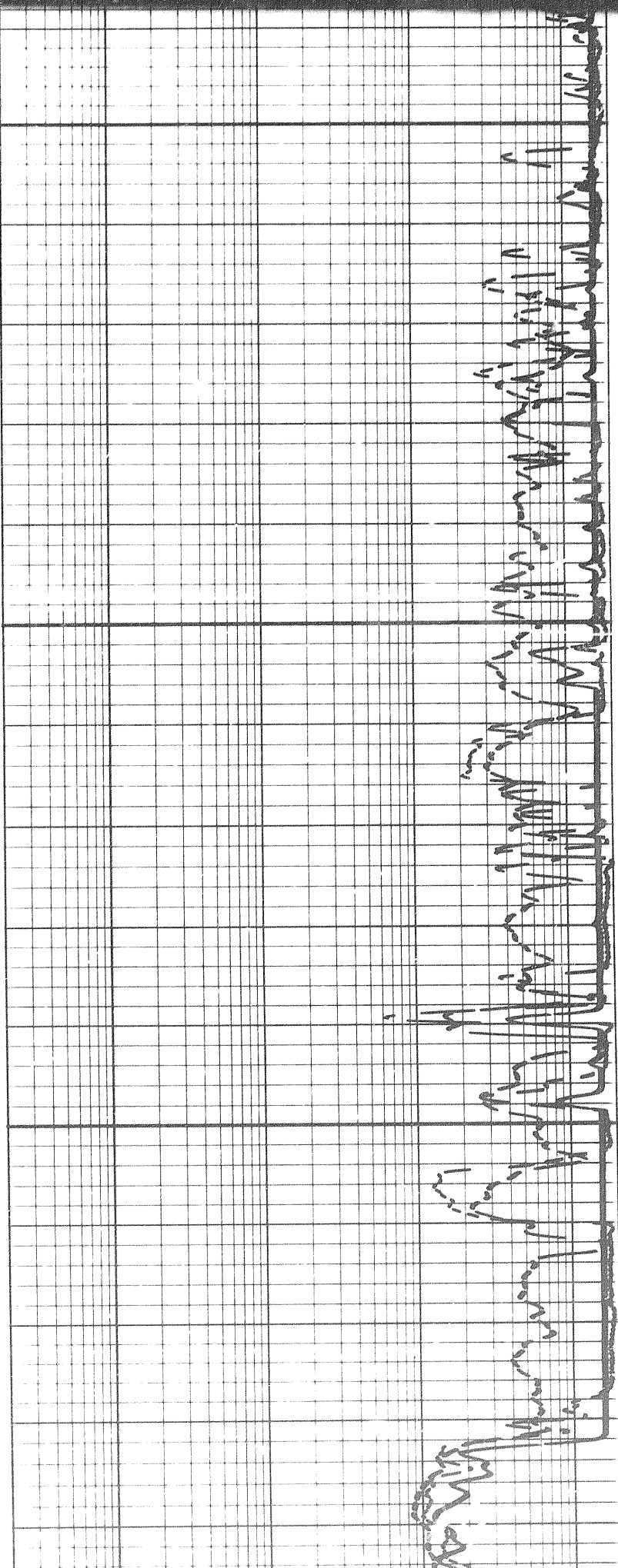


4



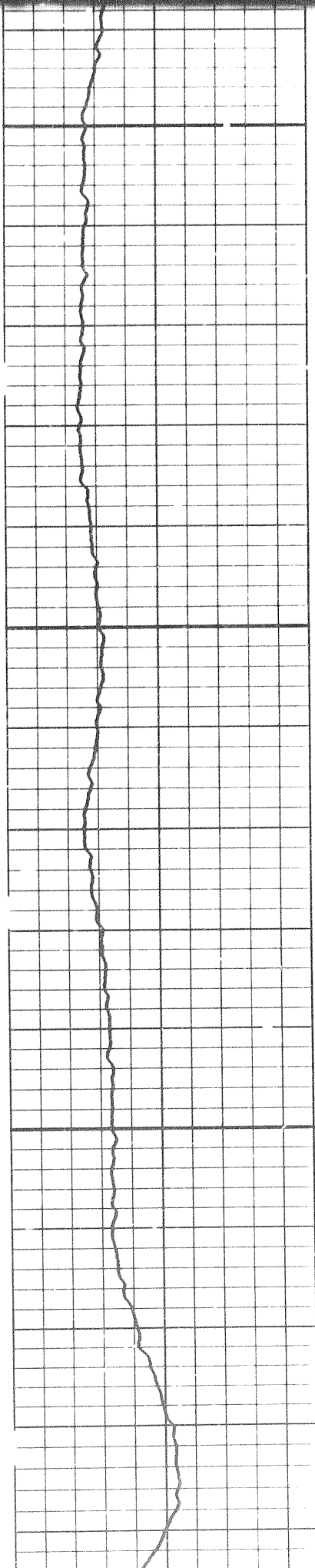
3650

3700



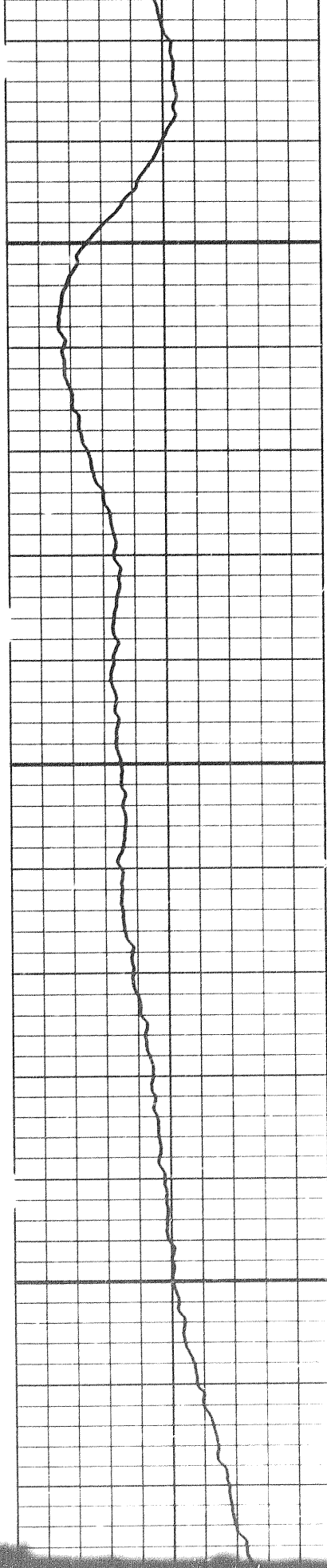
3700

3750

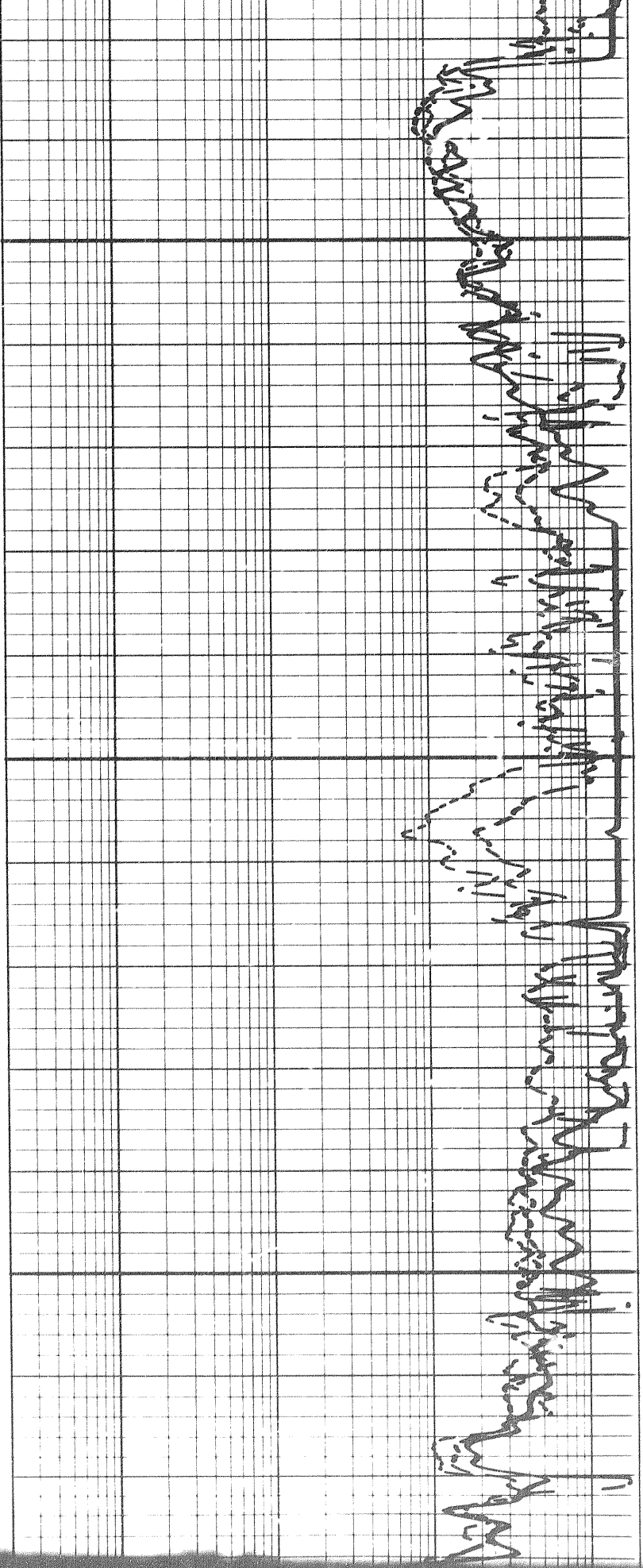


4

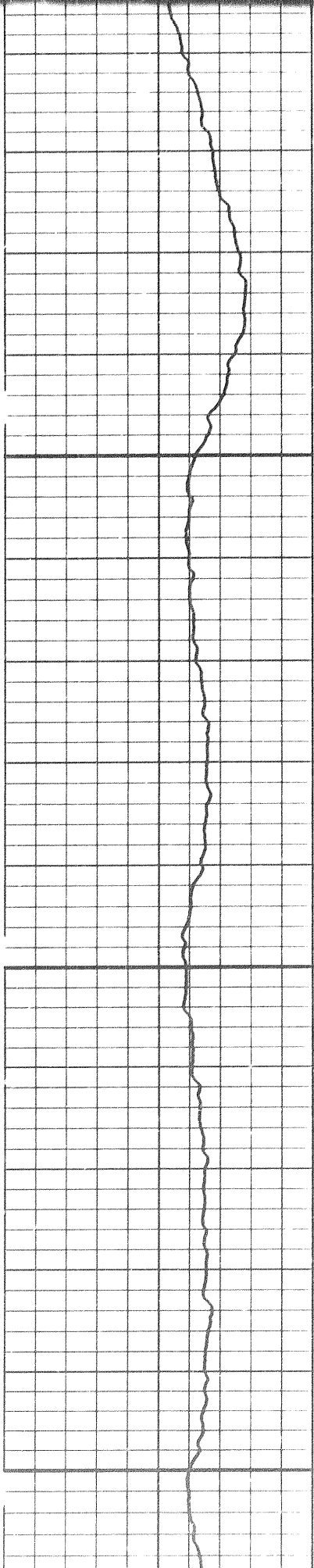
504



3800

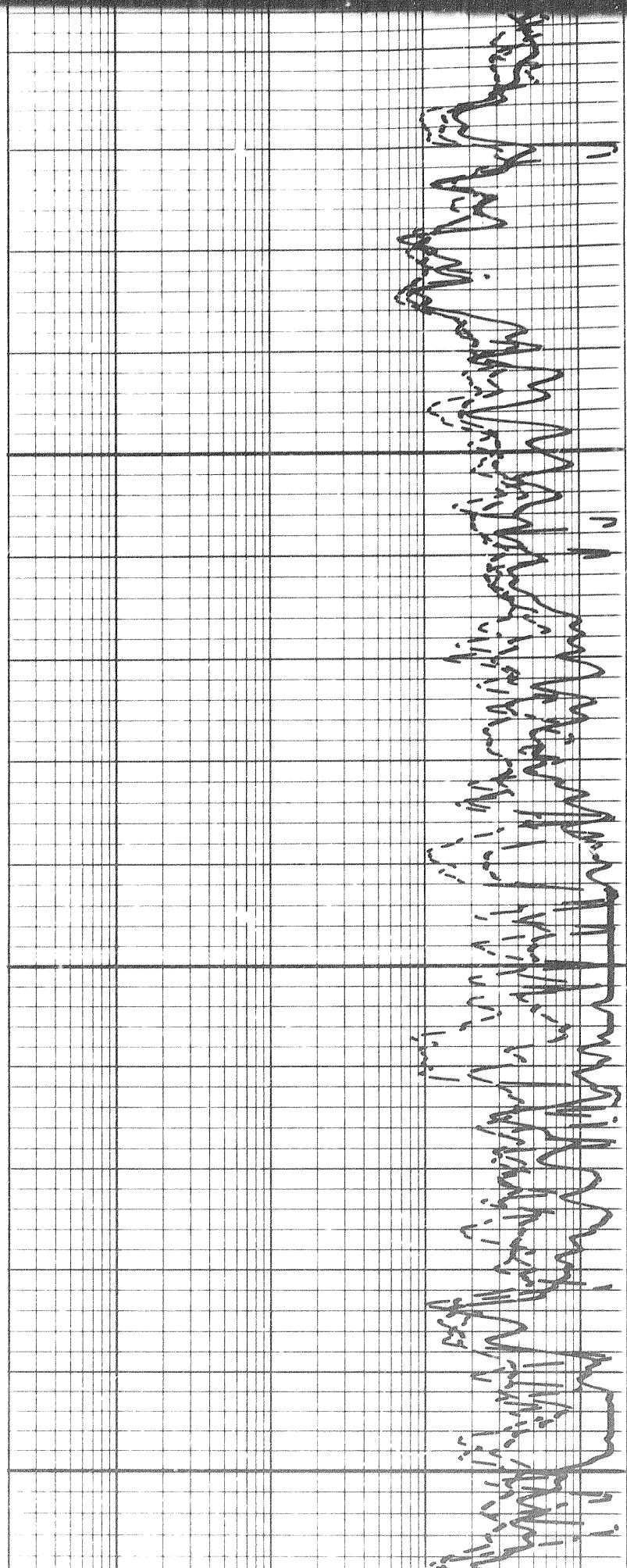


5

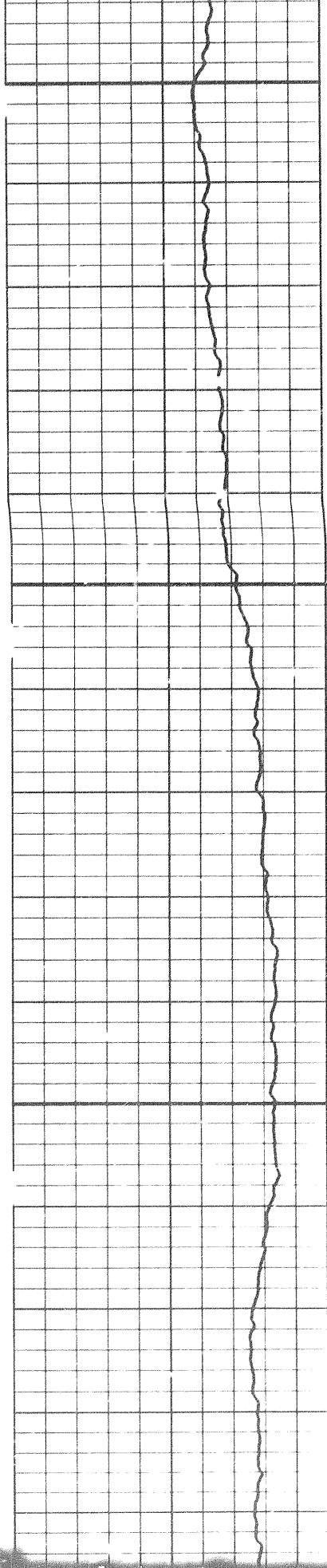


3850

3900

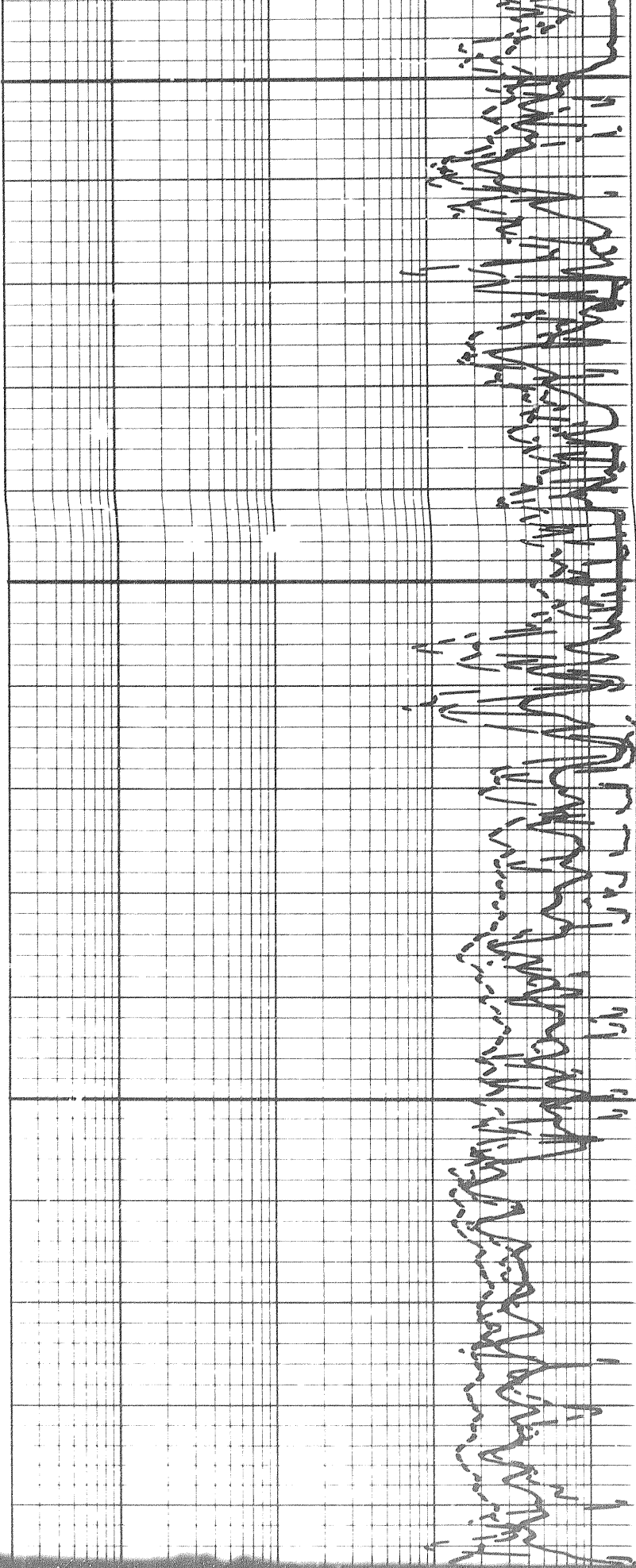


6 of



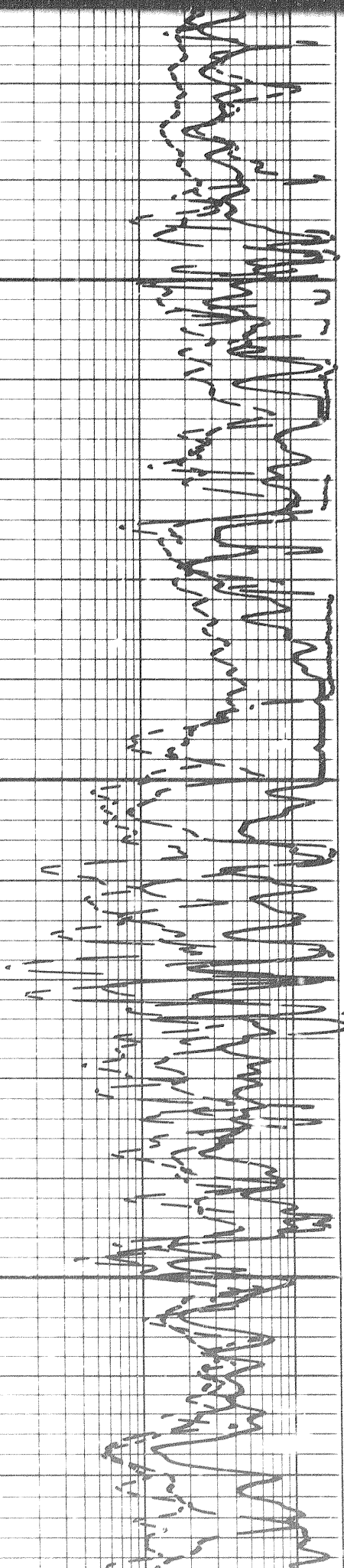
3900

3950

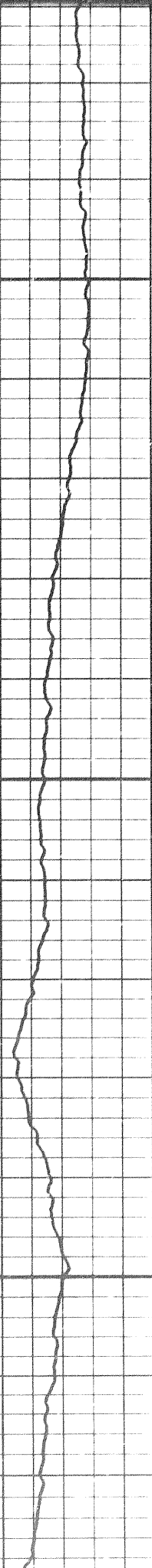


NEW TIME PACE

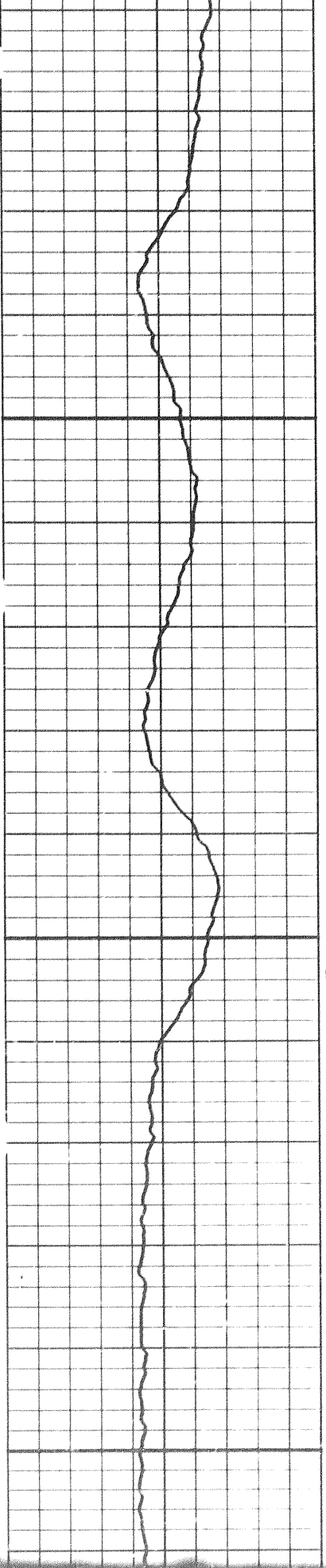
NEW TIME PACE



4000

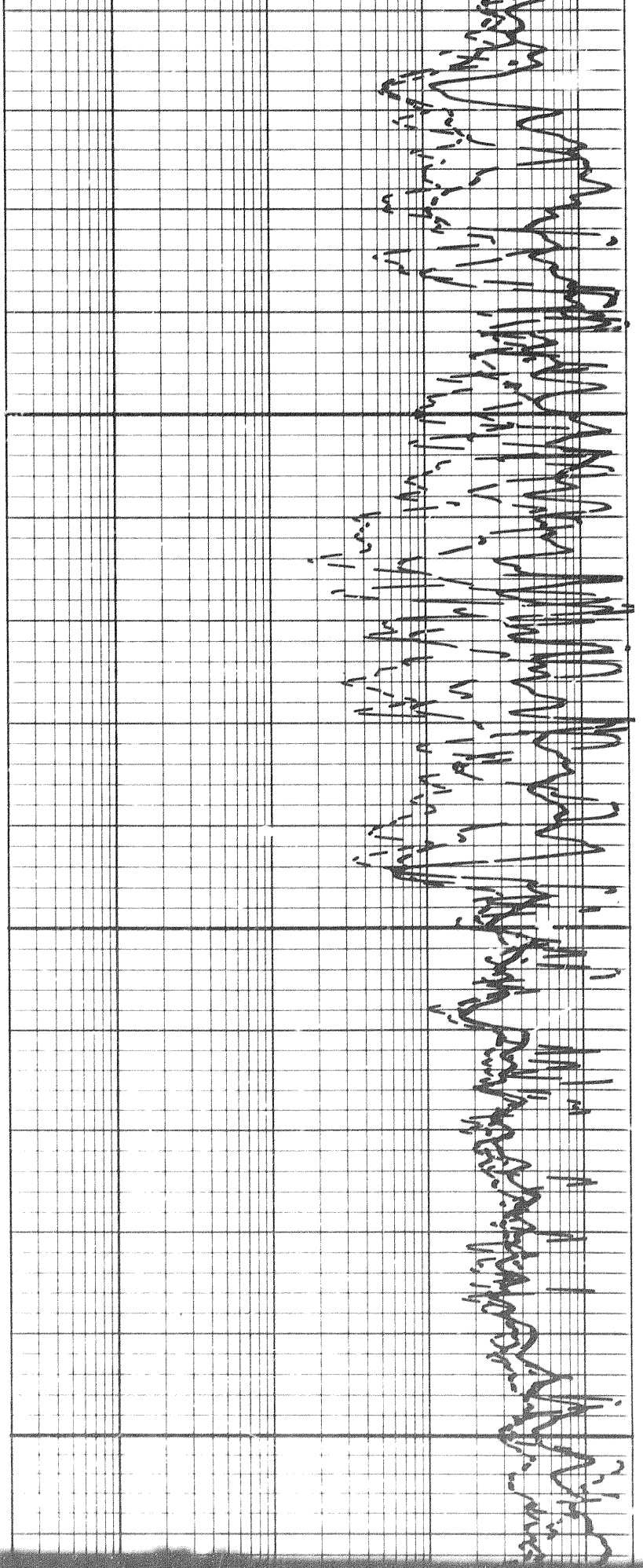


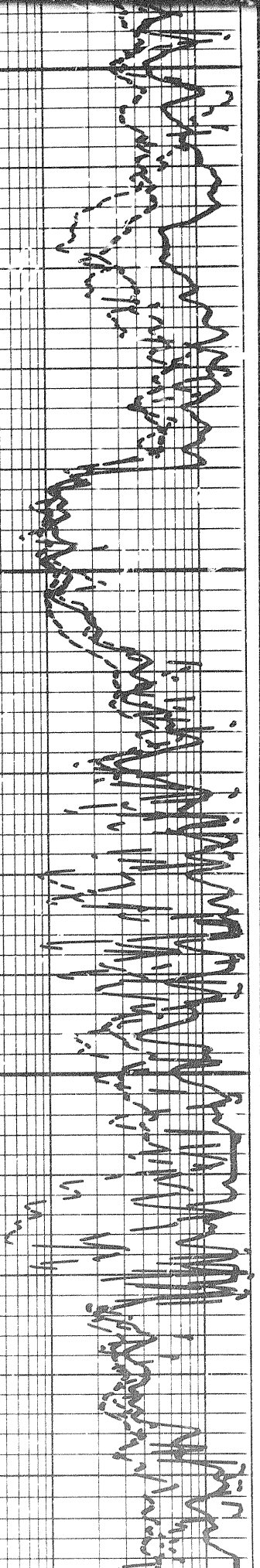
4 of



4050

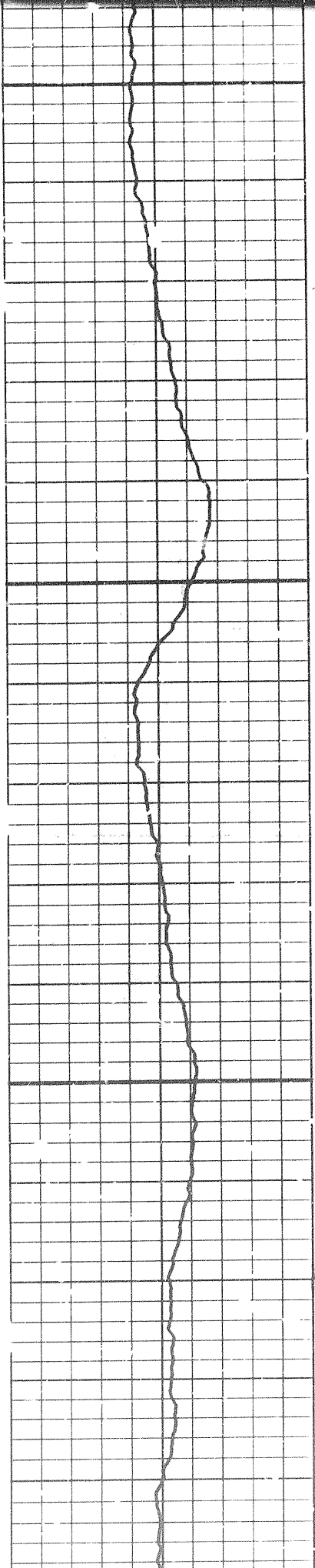
4100

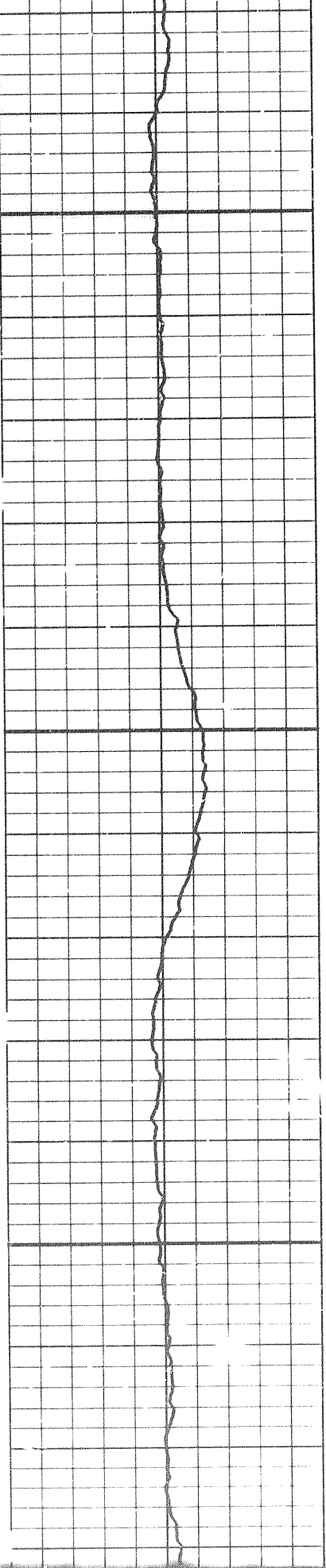




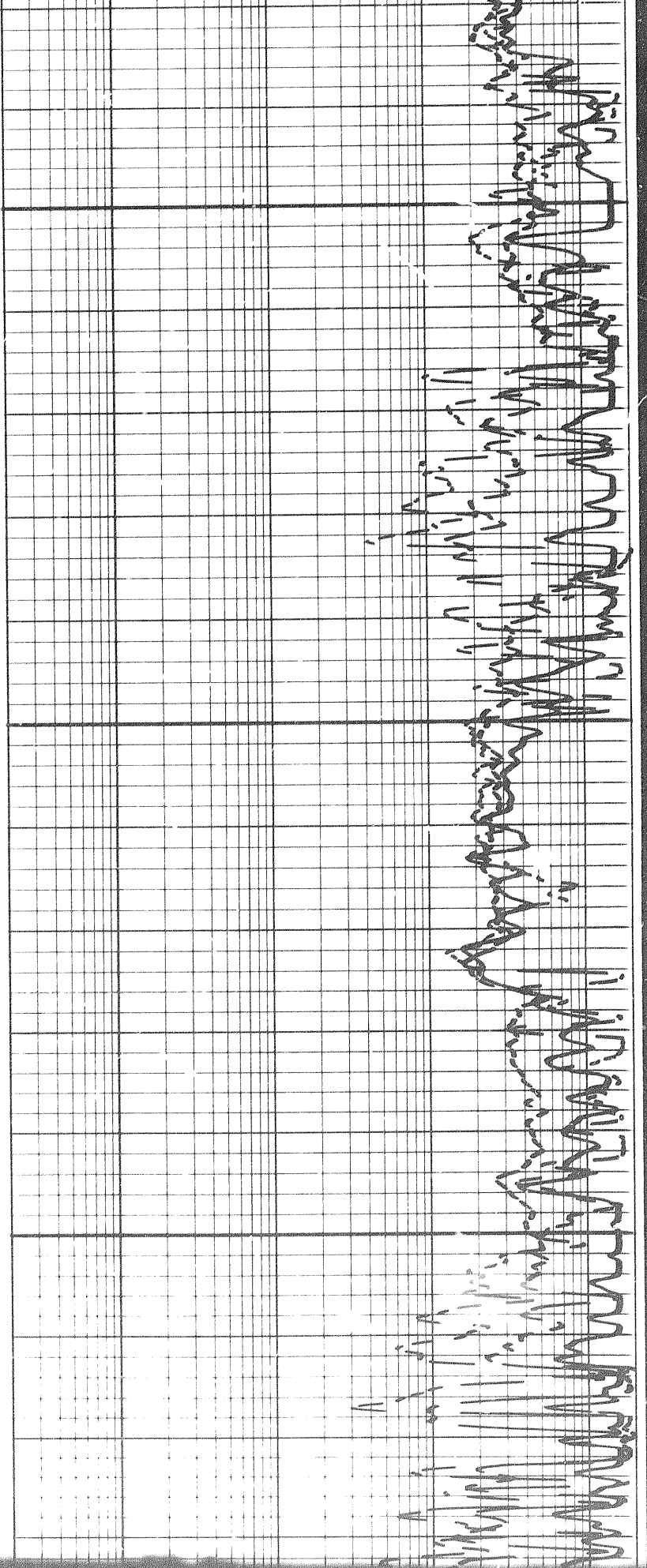
4100

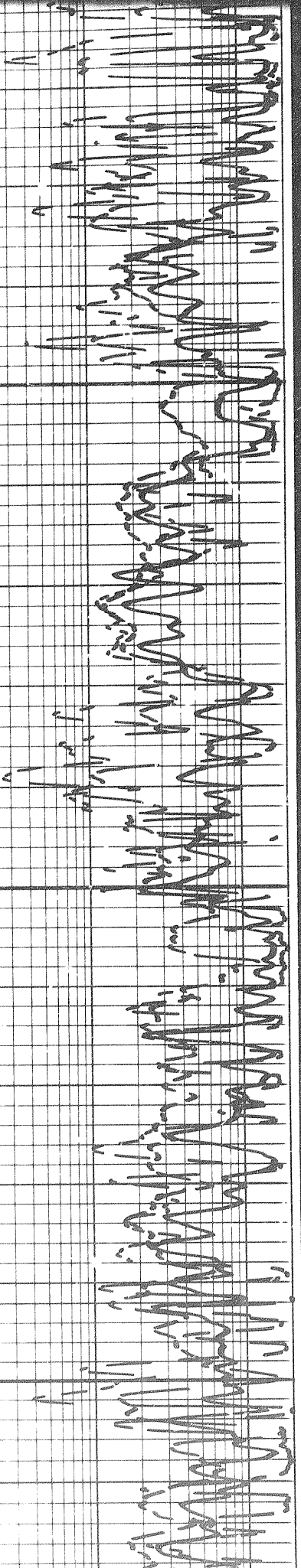
4150





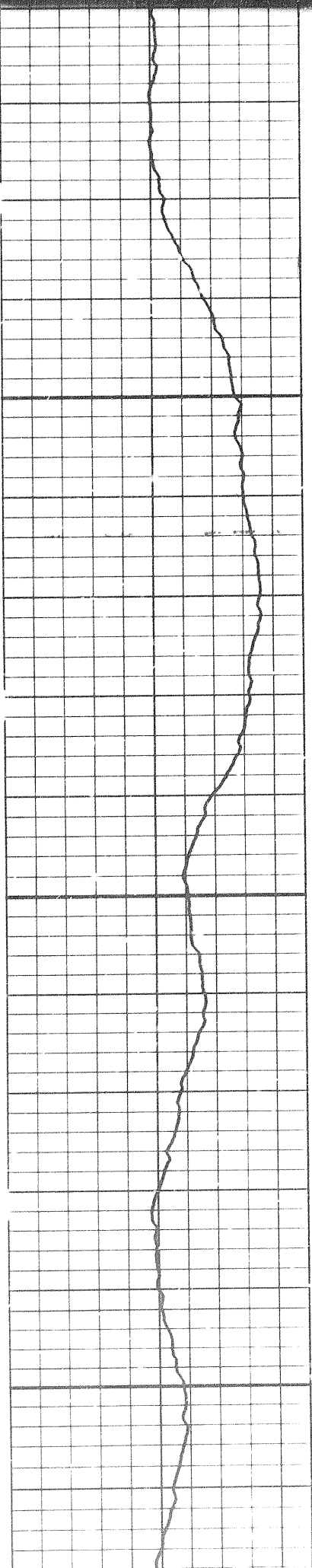
4200



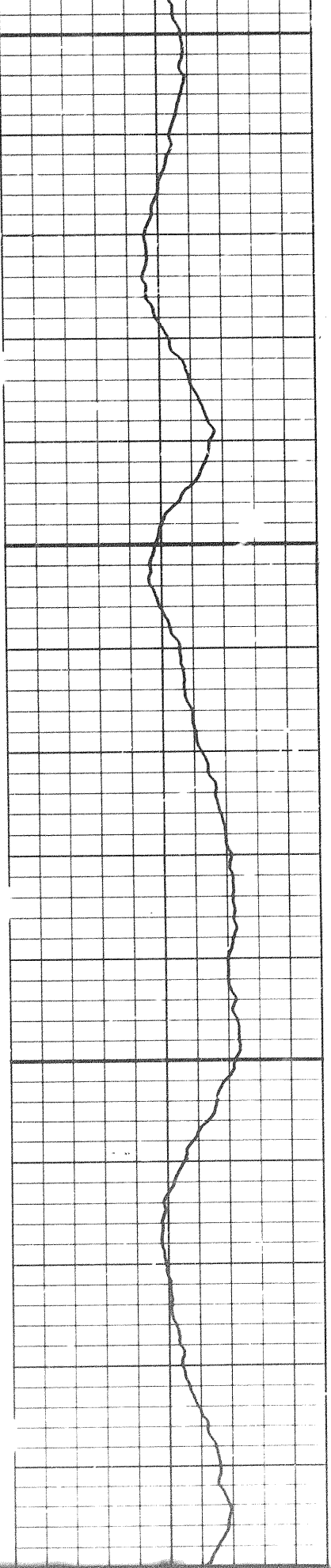


4250

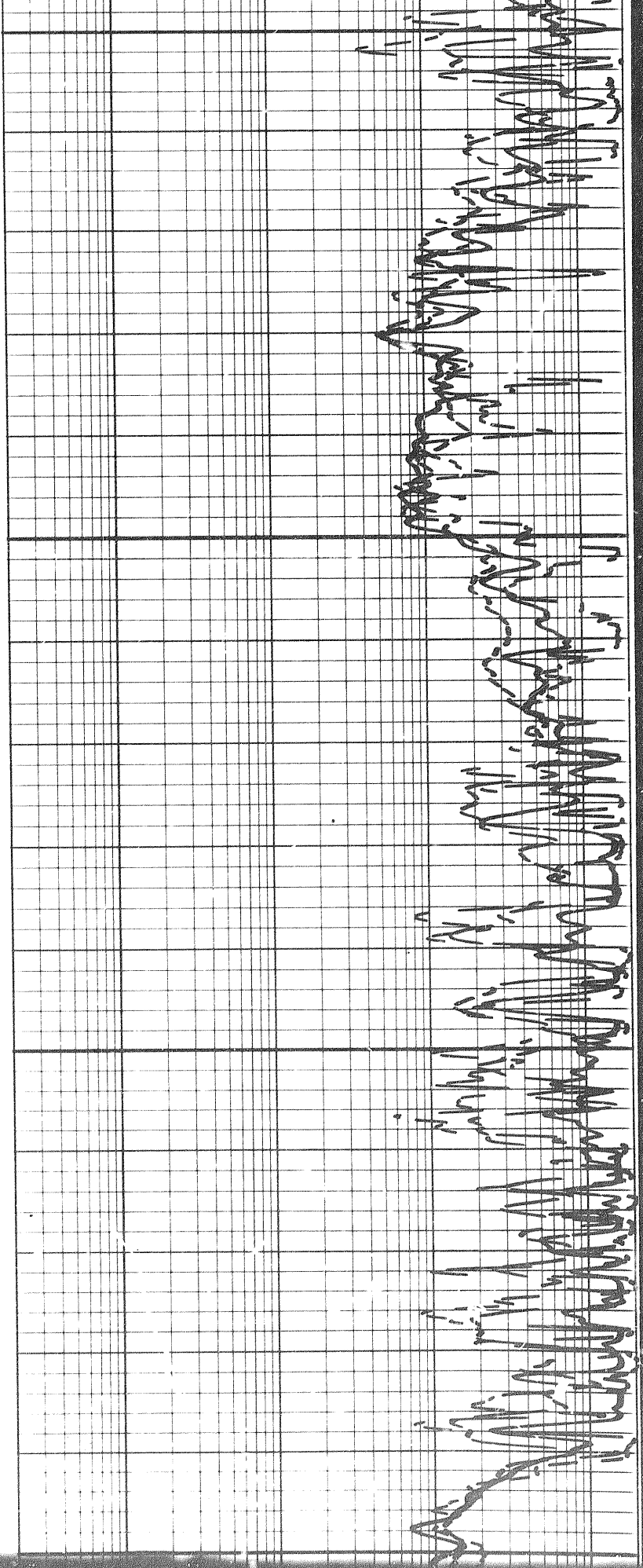
4300

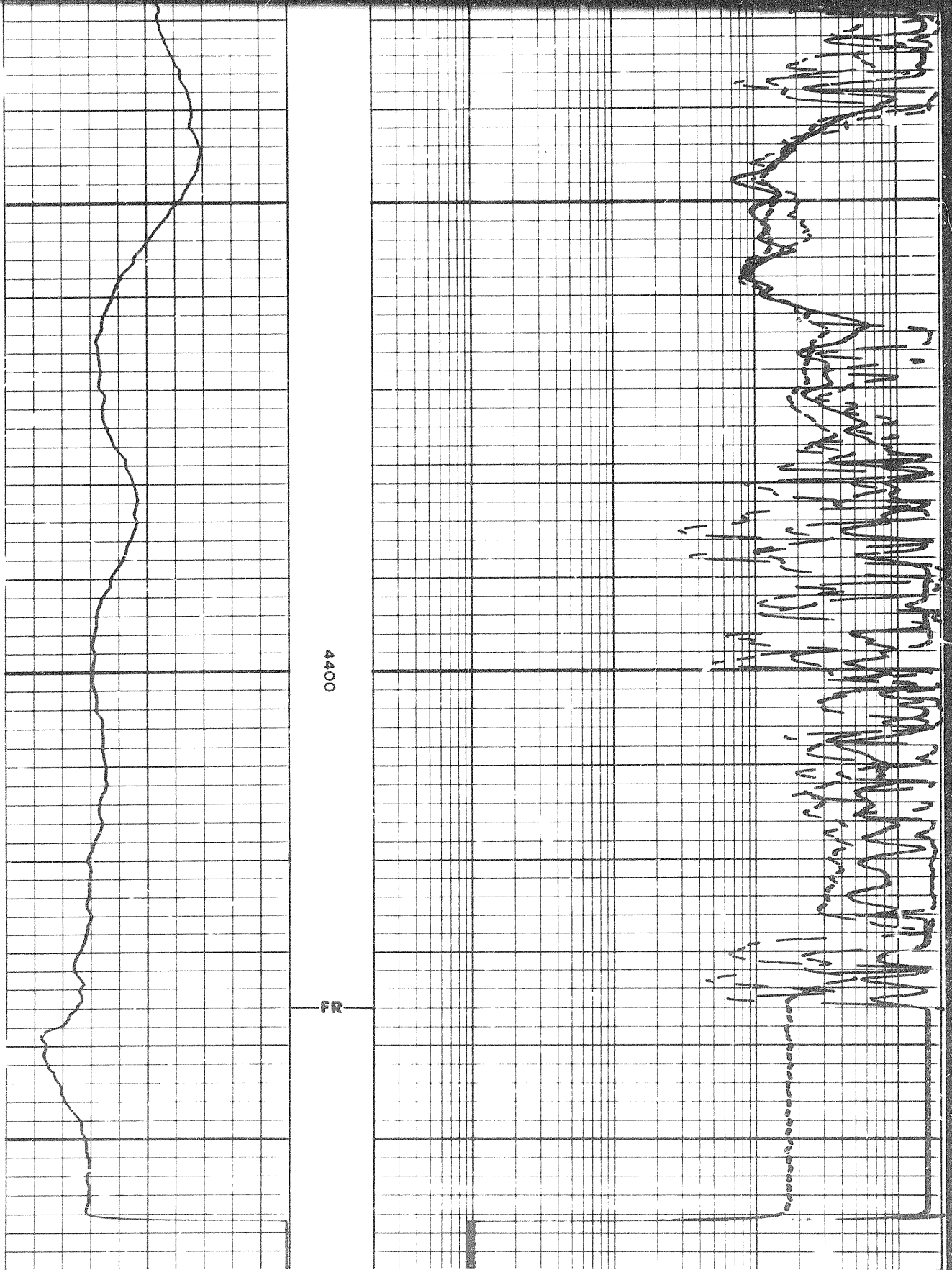


4300



4350

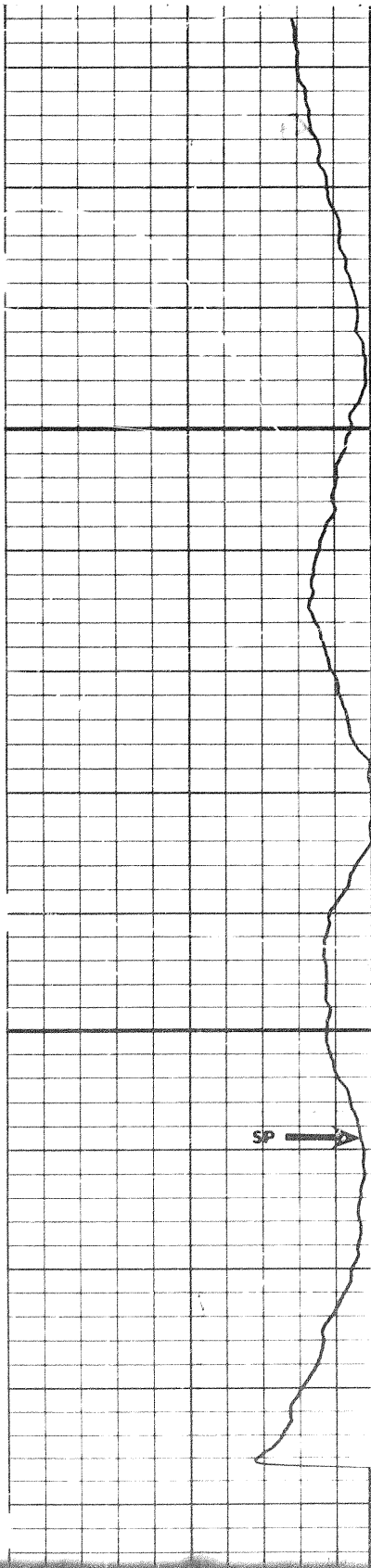




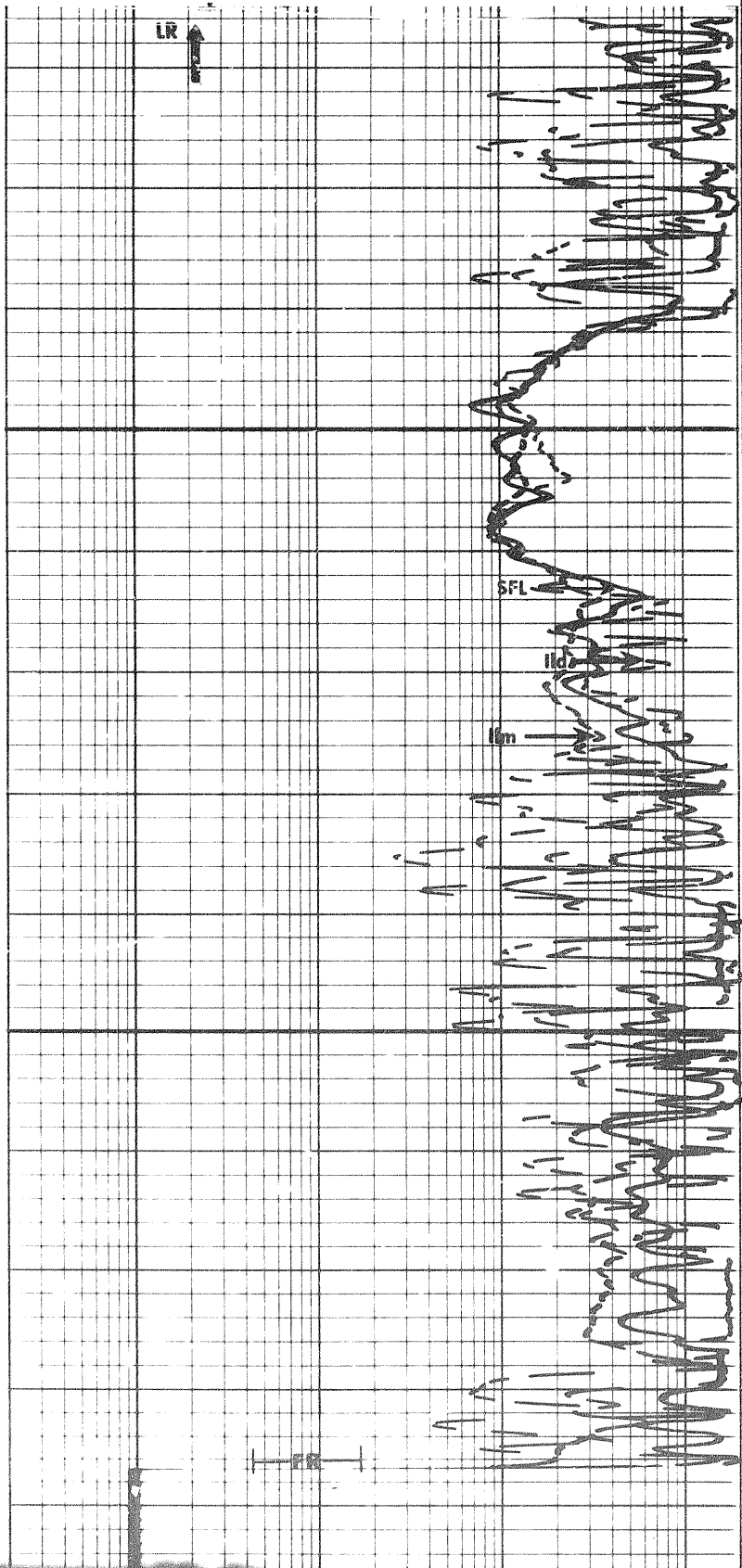
REPEAT SECTION

REPEAT SECTION

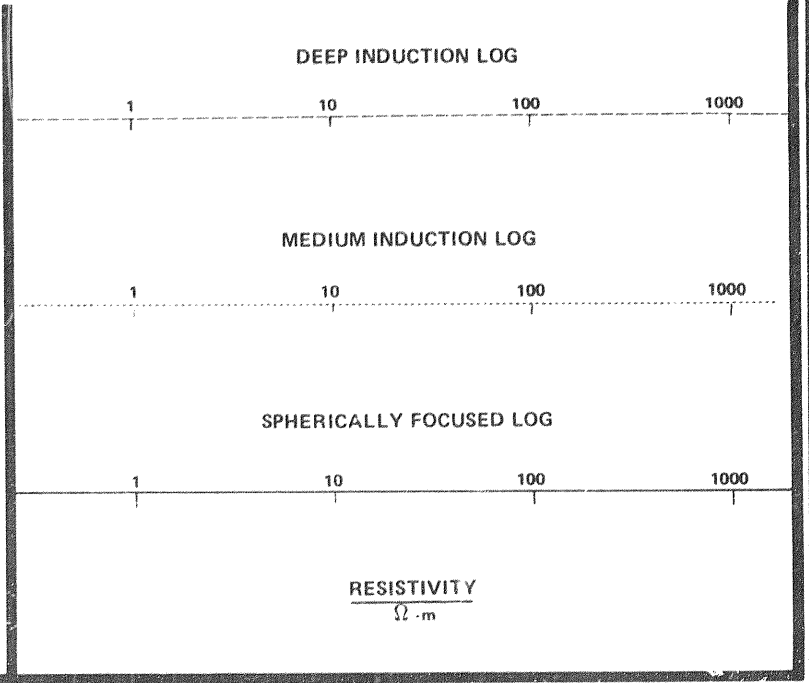
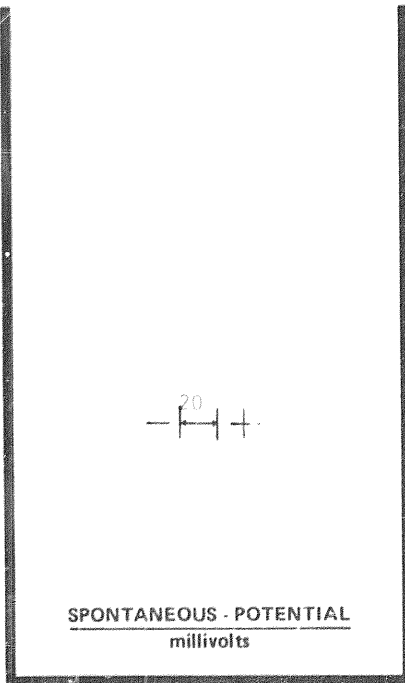
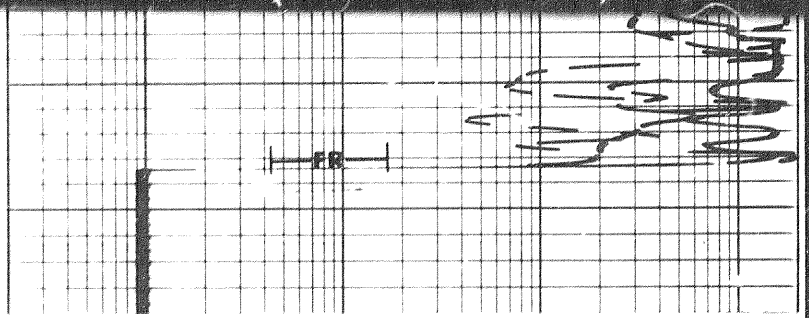
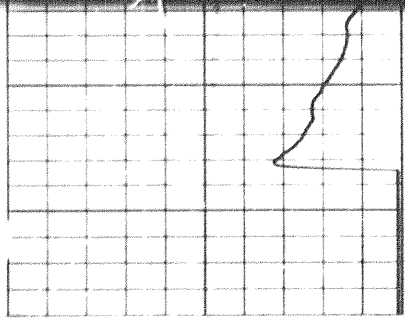
X 3000



4400



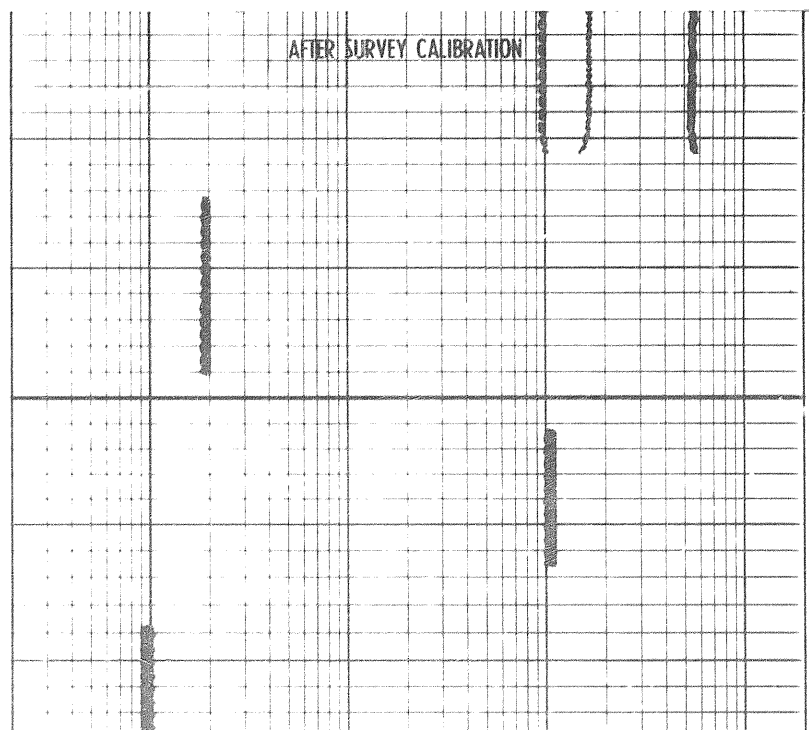
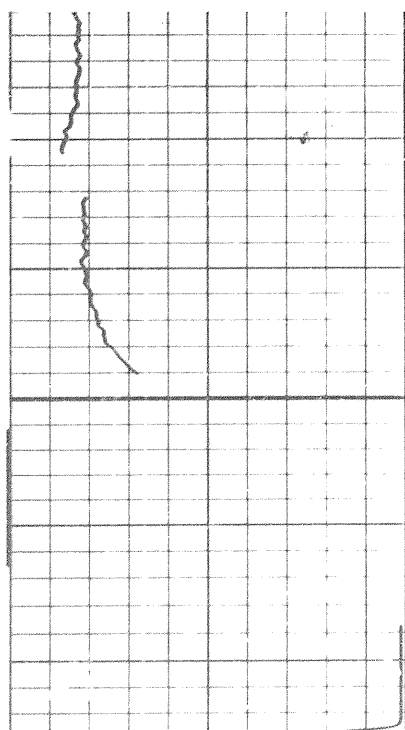
1000



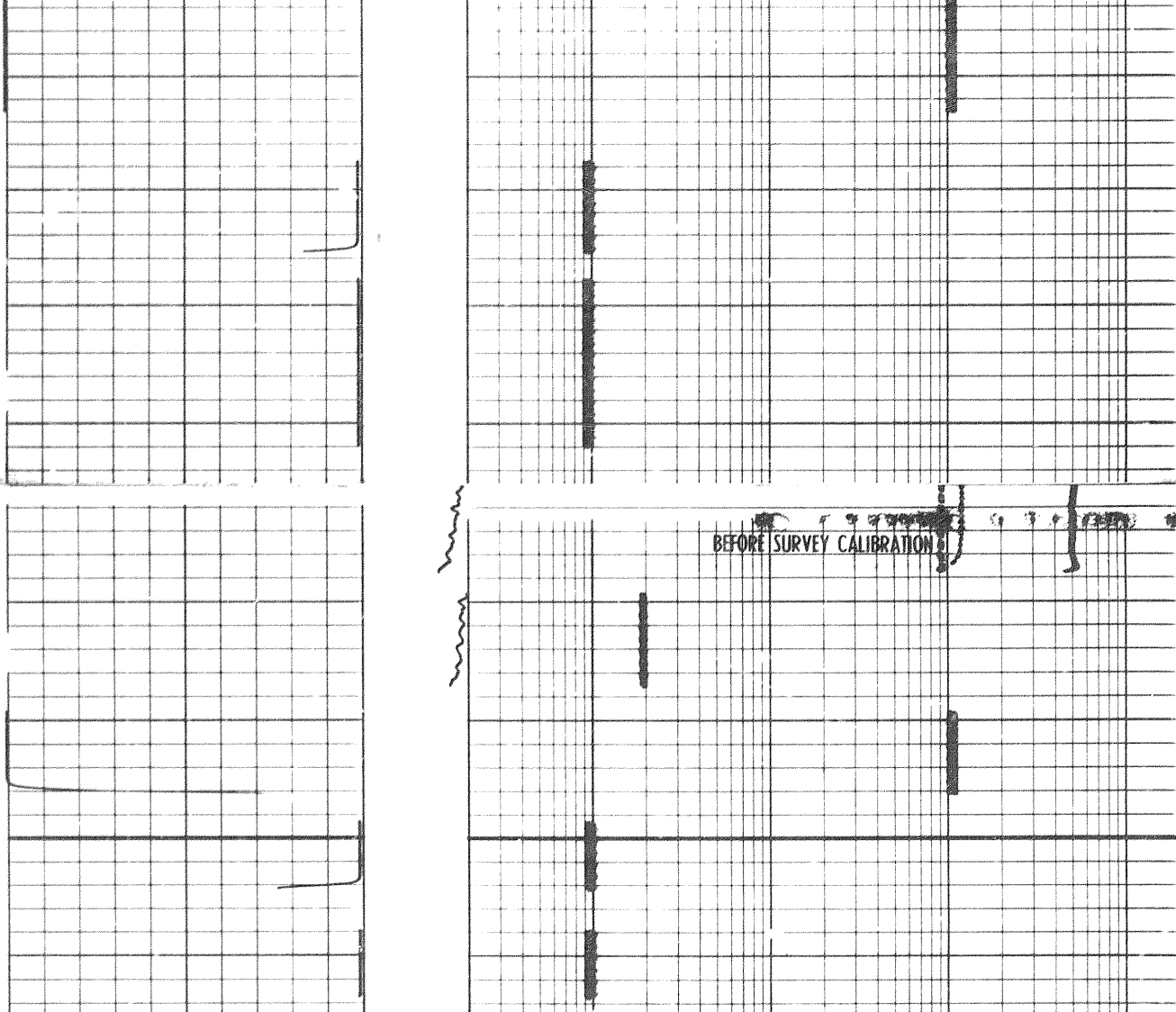
DEPTH
METRES

CALIBRATION RECORD

↓



X2003B



DUAL INDUCTION CALIBRATION FILM CODING

1. MECHANICAL ZERO
2. $1 \Omega \cdot m$
3. $100 \Omega \cdot m$
4. ELECTRICAL ZERO ($500 \Omega \cdot m$)
5. $2 \Omega \cdot m$
6. SONDE ERRORS (mS/m)
7. ZERO SIGNAL IN AIR
8. IL_d TEST LOOP ($2 \Omega \cdot m$ SIGNAL)
9. IL_m TEST LOOP ($2 \Omega \cdot m$ SIGNAL)
10. R_{xo}/R_f UNITY
11. R_{xo}/R_f CALIBRATE

COMPANY MINERAL DEVELOPMENT CORPORATION

WELL W-101

FIELD W-101

PROVINCE ALBERTA

SCHL. FR 4410.0 m

SCHL. TD 4420.0 m

DRLR. TD 4430.0 m

Elev.: 4430.0 m

KB 4430.0 m

DF 4430.0 m

GL 4430.0 m

X2003D