

Schlumberger

SCHLUMBERGER OF CANADA

Calgary, Alberta

NEUTRON LOG

PROVINCE YUKON TERRITORY
 FIELD
 WELL
 COMPANY

LOCATION
 LSD SEC TWP RANGE
 COMPANY
 WELL
 FIELD
 PROVINCE

Other Services
 Elevation: K B
 D F
 G L

Permanent Datum
 Log Measured From
 Drilling Measured From
 Elevation: m Above Perm Datum

Date
 Run No.
 P & T D Driller
 Depth Logger (Schl.)
 Btm. Log Interval
 Top Log Interval
 Open Hole Size
 Bottom Hole Temp

Surface Casing
 Protection Casing
 Production Casing
 Liner
 Tubing
 Tubing

MISCELLANEOUS
 Production Packer @
 Minimum ID =
 FROM TO FROM TO FROM TO FROM TO

EQUIPMENT DATA			CORRELATION LOG		
Run No.			Type:		
Tool Type			Curve:		
Cartridge No.			Service Company:		
Tool Diameter	mm	mm	Date:		
Source Serial No.			Other:		
Type			REMARKS	11 APR 20 EDM WES - VP	
Strength					
Spacing	cm	cm			

CALIBRATION DATA							Casing Collars Recorded	m Deep
Neutron	Before	After	Before	After	Before	After		
BKG CPS								
Source Near CPS								
Source Far CPS								
Time Constant	6 s	6 s	6 s	6 s	6 s	6 s		
Calibrate Sens.								

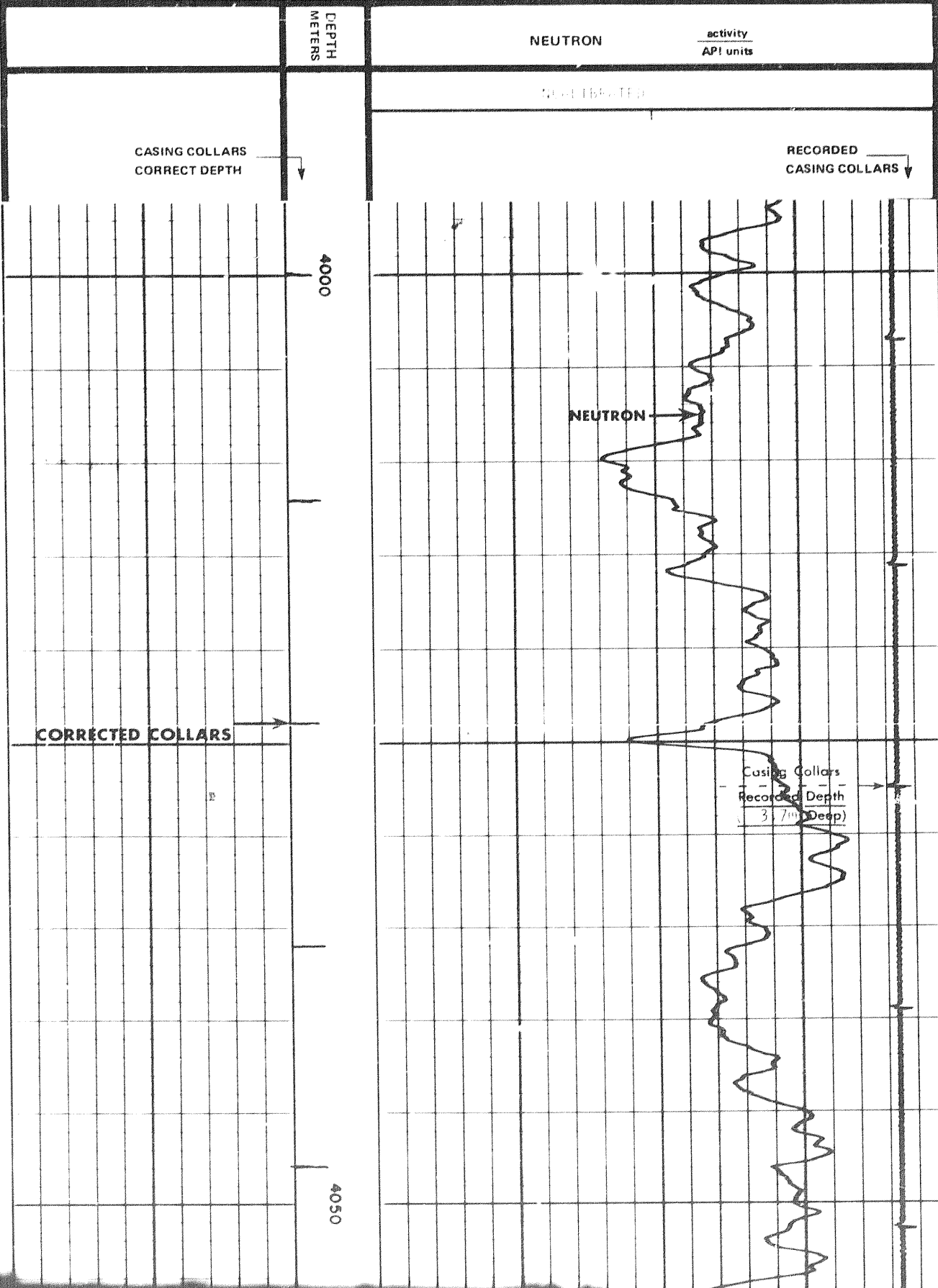
LOGGING DATA								
Run No.	Type Log	Depth		Speed m/min	T.C. s	Log Sens.	Zero LorR	Scale
		From	To					

All interpretations are opinions based on inferences from electrical or other measurements and we cannot, and do not, guarantee the accuracy or correctness of any interpretations, and we shall not, except in the case of gross or willful negligence on our part, be liable or responsible for any loss, costs, damages or expenses incurred or sustained by anyone resulting from any interpretation made by any of our officers, agents or employees. These interpretations are also subject to Clause 4 of our General Terms and Conditions as set out in our current Price Schedule

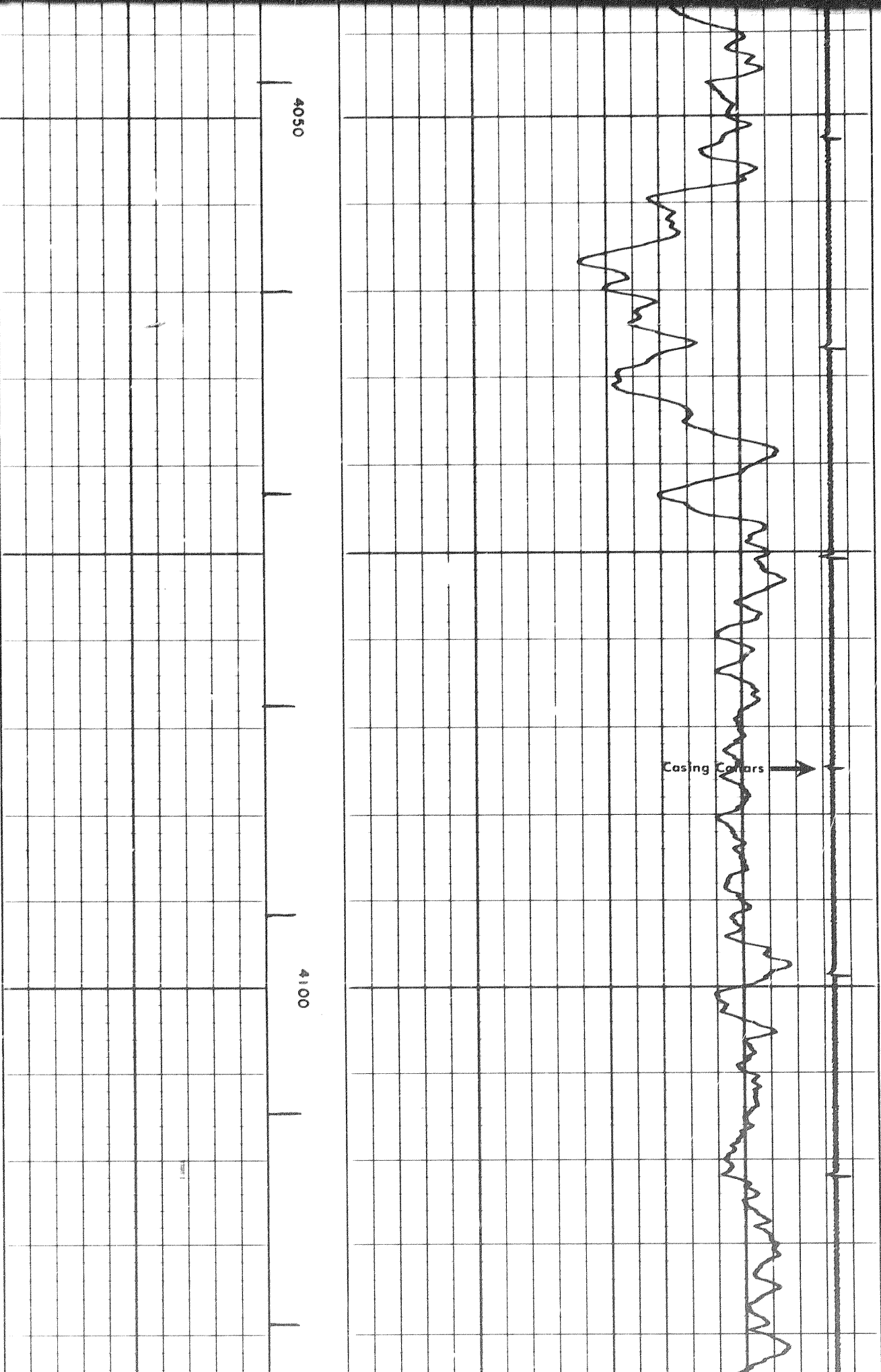
DETAIL LOG		
DEPTH METERS	NEUTRON	activity API units

All interpretations are opinions based on inferences from electrical or other measurements and we cannot, and do not, guarantee the accuracy or correctness of any interpretations, and we shall not, except in the case of gross or willful negligence on our part, be liable or responsible for any loss, costs, damages or expenses incurred or sustained by anyone resulting from any interpretation made by any of our officers, agents or employees. These interpretations are also subject to Clause 4 of our General Terms and Conditions as set out in our current Price Schedule.

DETAIL LOG



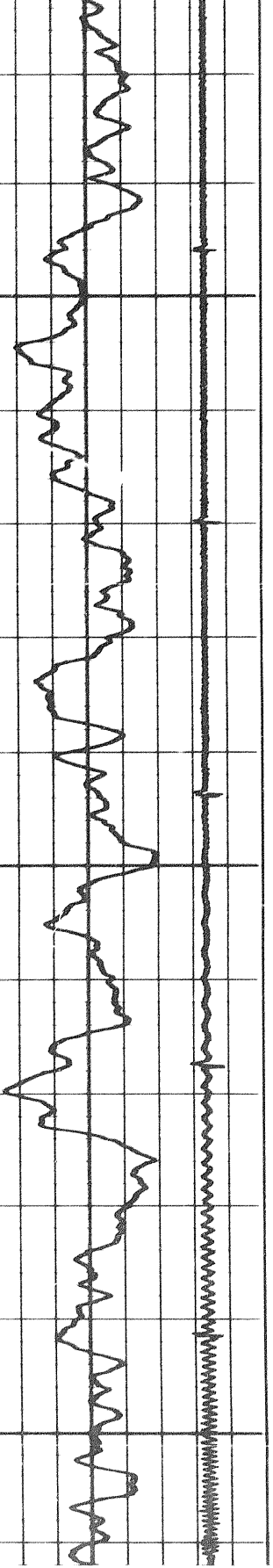
101



4050

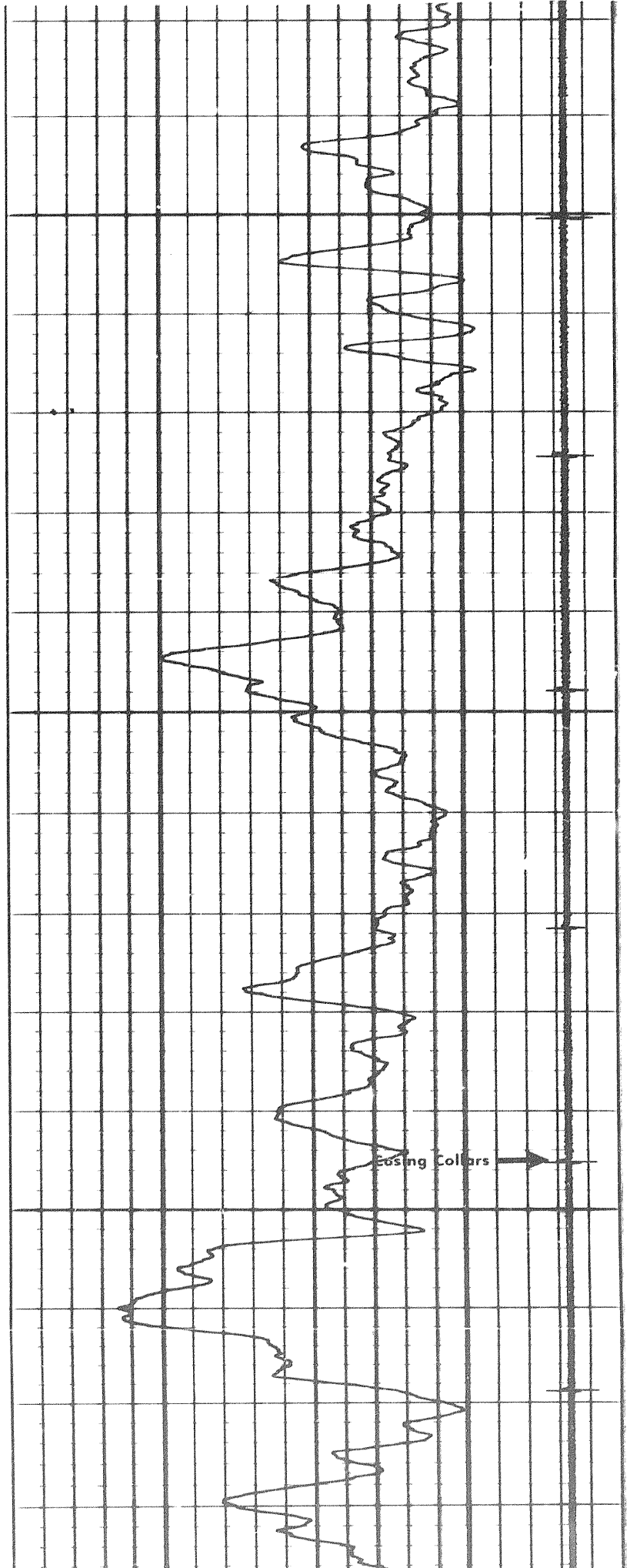
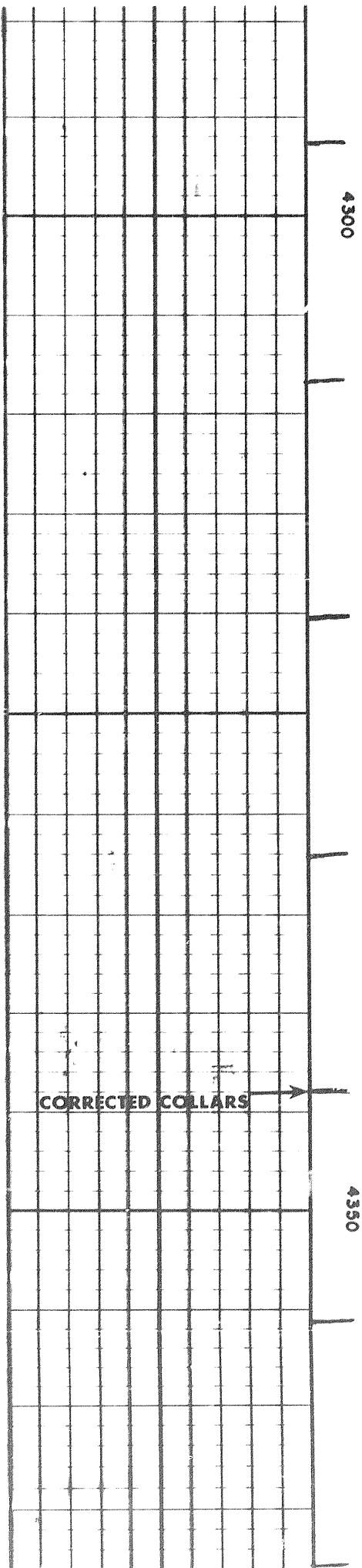
Casing Collars →

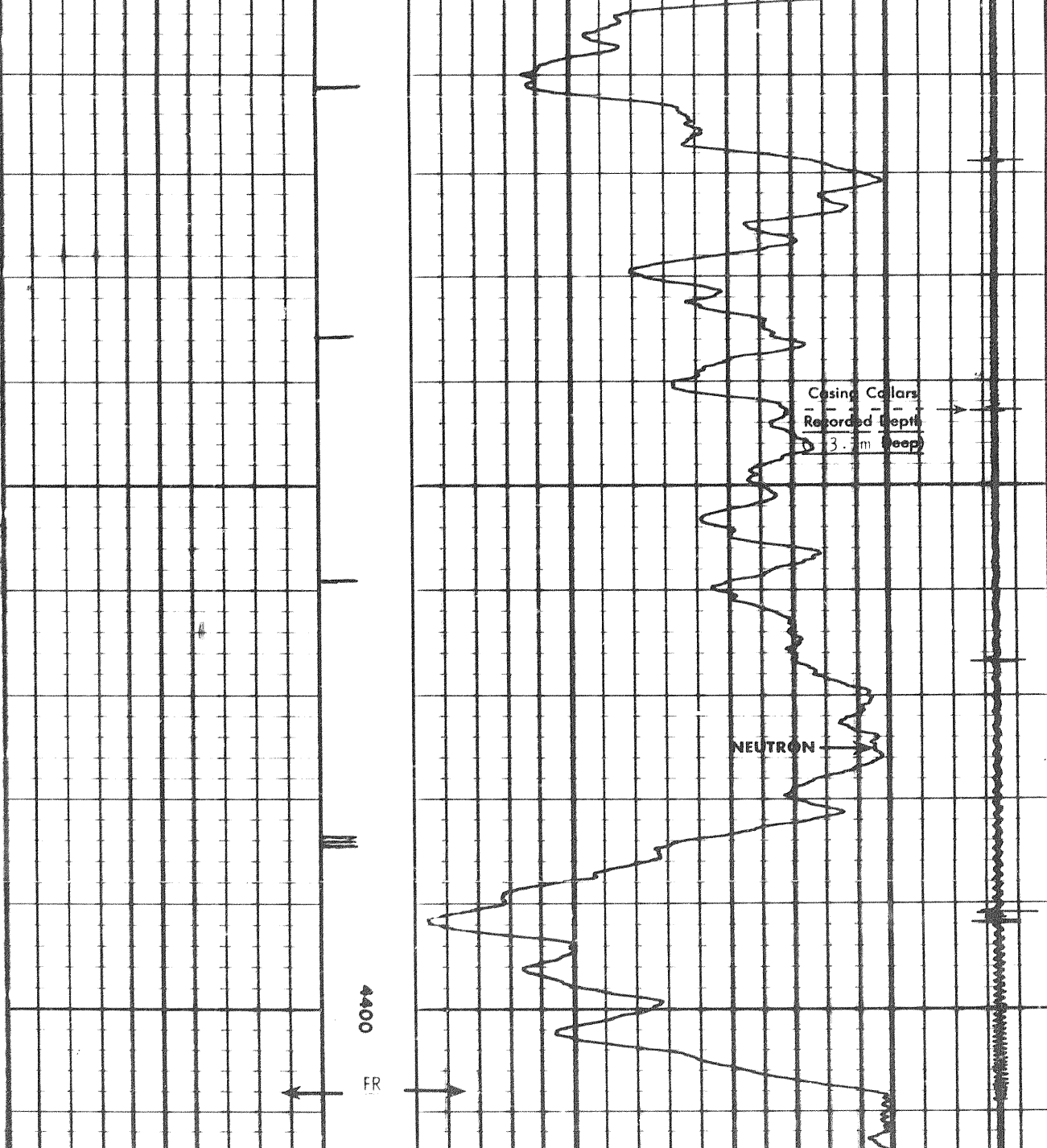
4100



41.50

2 of





CASING COLLARS
CORRECT DEPTH

NOT REPORTED

RECORDED
CASING COLLARS

DEPTH
METERS

NEUTRON

activity
API units

COMPANY _____

SCHL. FR _____ m

WELL _____

SCHL. TD _____ m

DRLR. TD _____ m

FIELD _____

Elev.: KB _____ m

PROVINCE _____

DF _____ m

GL _____ m

X4005A

3 of 3