

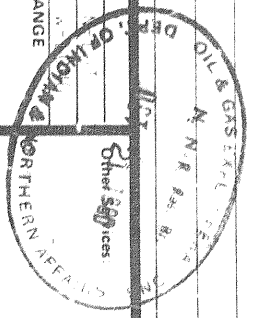
Schlumberger

SCHLUMBERGER OF CANADA
Calgary, Alberta

COMPLETION RECORD

PROVINCE ALBERTA
 FIELD WILDCAT
 WELL 100-10-10-10-10-10
 COMPANY WILDCAT DEVELOPMENT OF CANADA LTD.

LOCATION
 LSD _____ SEC. _____ TWP. _____ RANGE _____
 FIELD _____ PROVINCE _____
 COMPANY _____
 WELL _____



Permanent Datum _____ Elev _____ m
 Log Measured From _____ m Above Perm. Datum _____ m
 Drilling Measured From _____ m
 Date _____
 Run No. _____
 P.B.T.D. Driller _____
 Depth Logger (Sch.) _____
 Birm. Log Interval _____
 Top Log Interval _____
 Open Hole Size _____
 Bottom Hole Temp. _____
 Witnessed By _____

TUBING & CASING RECORD

Surface Casing	Size (mm)	Wt. (kg/m)	Grade	Type Joint	Top (m)	Bottom (m)
Production Casing	114.3	10.0	N-80	STANDARD	100.0	100.0
Protection Casing	114.3	10.0	N-80	STANDARD	100.0	100.0
Production Casing	114.3	10.0	N-80	STANDARD	100.0	100.0

MISCELLANEOUS

Production Packer	FROM	TO	FROM	TO
Minimum I.D. =	m	m	m	m
	m	m	m	m
	m	m	m	m
	m	m	m	m

EXISTING PERFORATIONS NONE

Service Order No. 7000

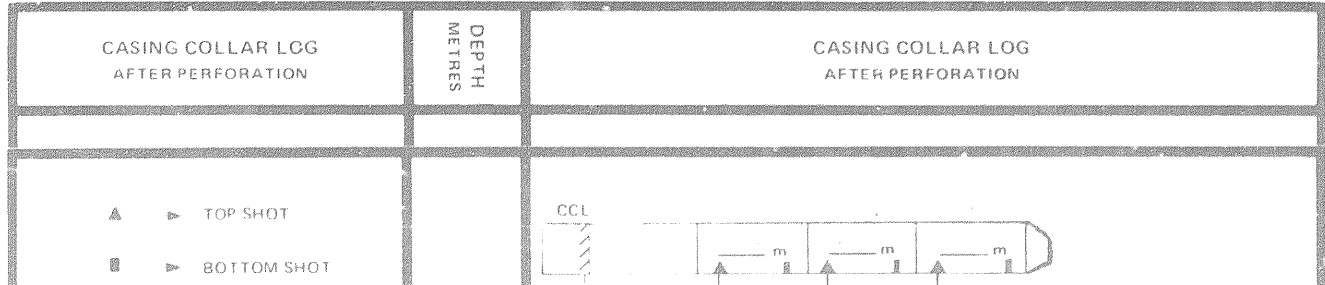
PERFORATING RECORD					OTHER SERVICES			
GUN SIZE (mm)	SHOTS/m	TOTAL SHOTS	FROM	TO	SERVICE	TYPE	SIZE	DEPTH
			m	m	Bridge Plug		mm	m
			m	m	Production Packer		mm	m
			m	m	Cement Retainer		mm	m
			m	m	Gauge Ring		mm	m
			m	m	Junk Basket		mm	m
			m	m	Dump Bailer		mm	m

REMARKS PERFORATED INTERVAL CORRELATION

CORRELATION LOG

Type: _____
 Curve: _____
 Service Company: _____
 Date: _____
 Other: _____

X4003

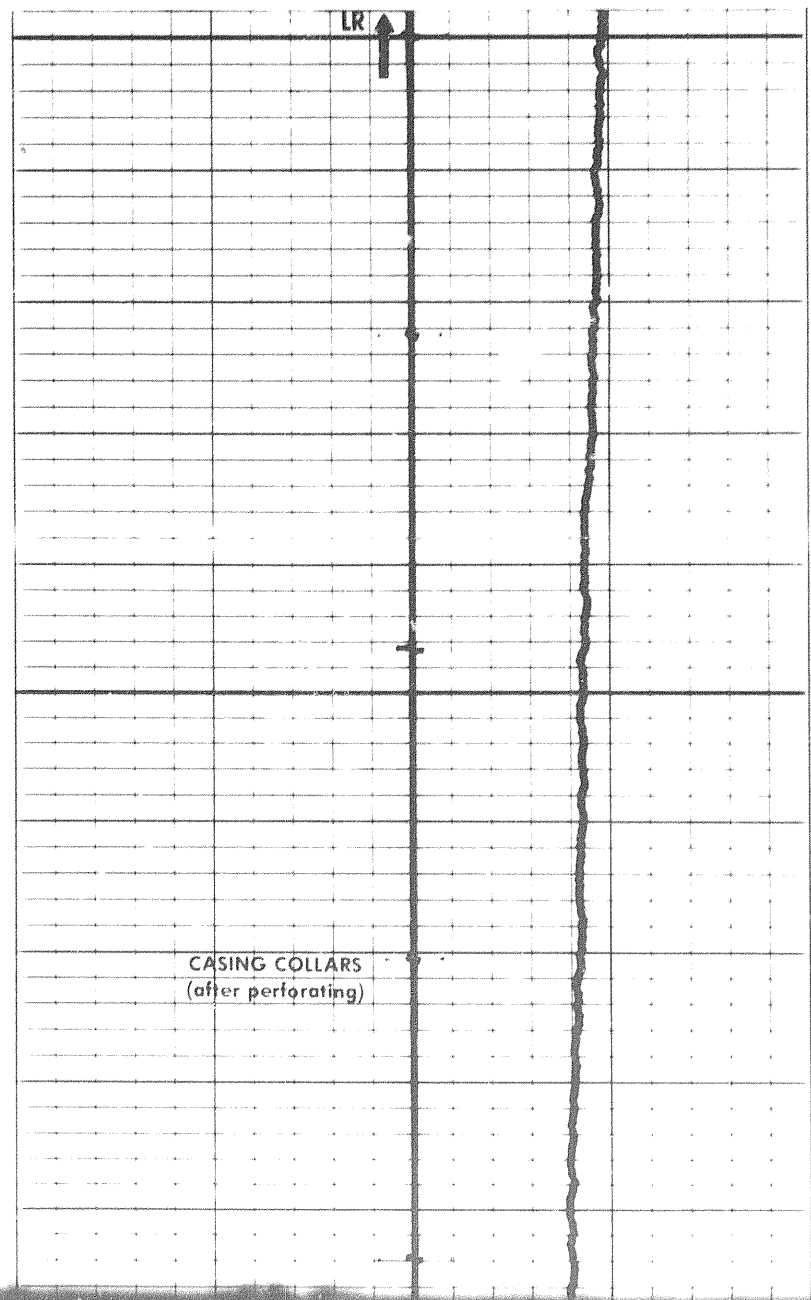
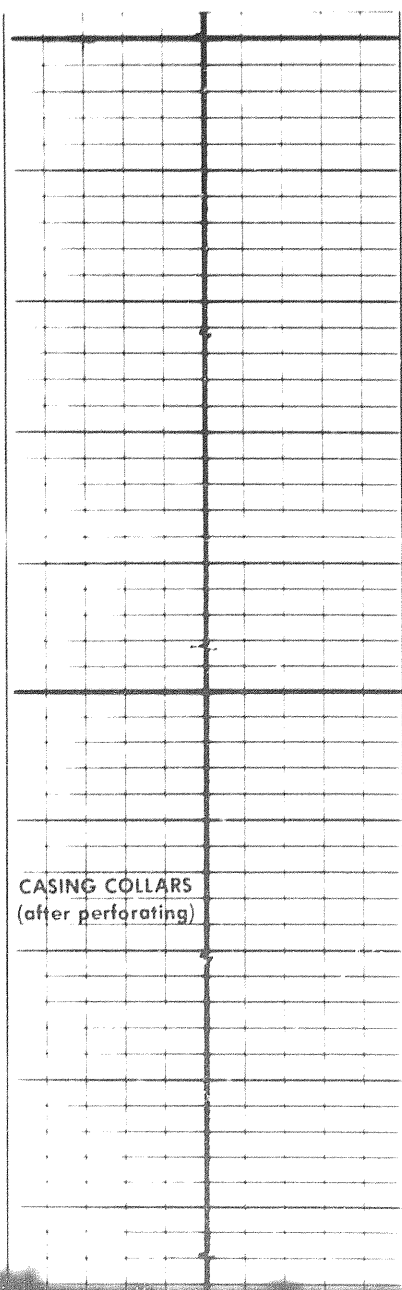
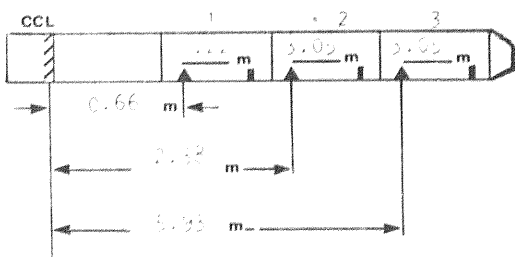


CASING COLLAR LOG
AFTER PERFORATION

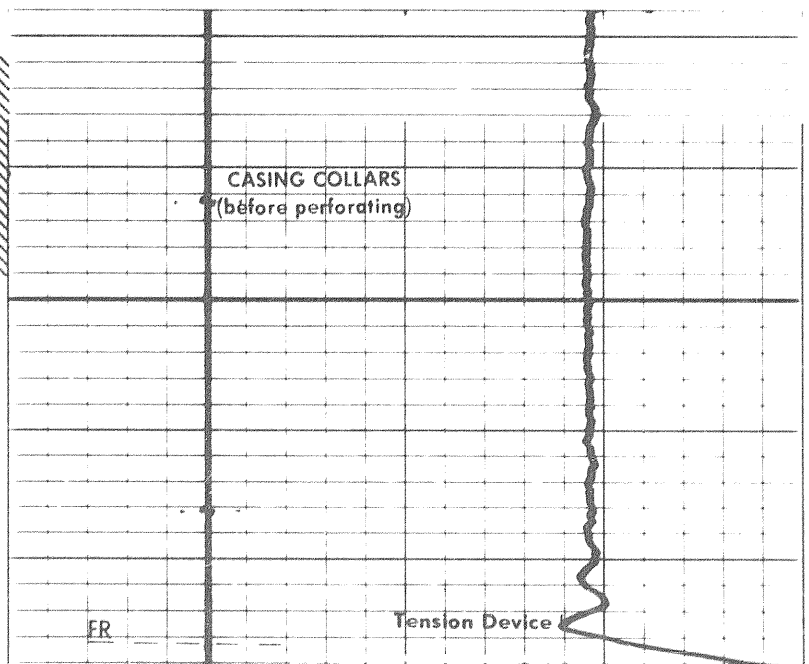
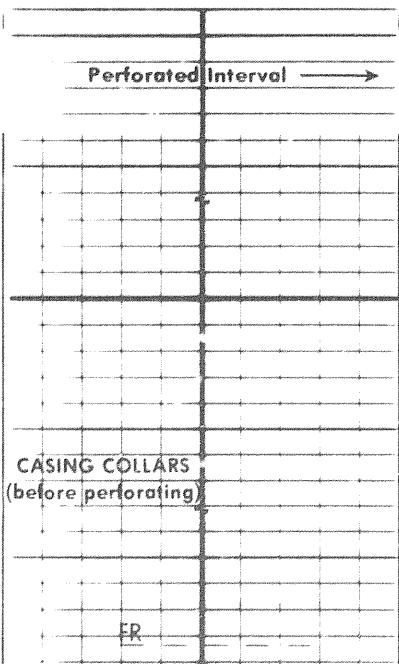
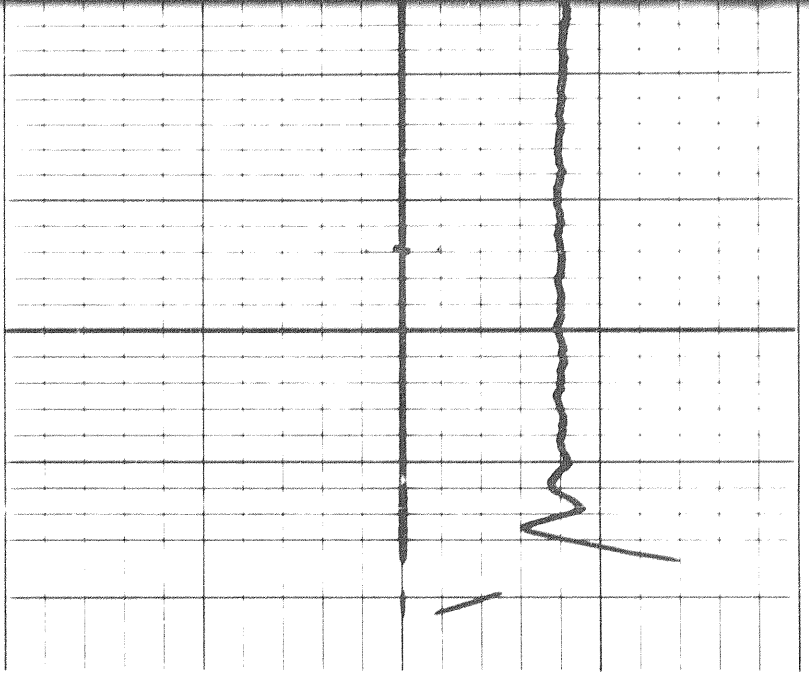
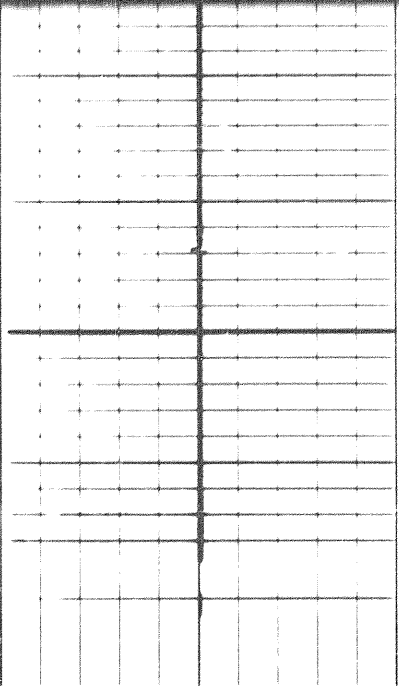
DEPTH
METRES

CASING COLLAR LOG
AFTER PERFORATION

▲ → TOP SHOT
■ → BOTTOM SHOT



101



CASING COLLAR LOG DURING PERFORATION

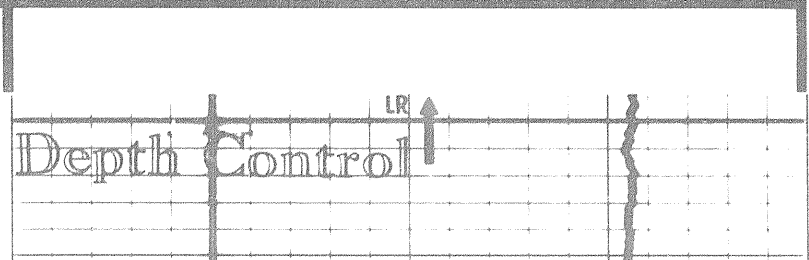
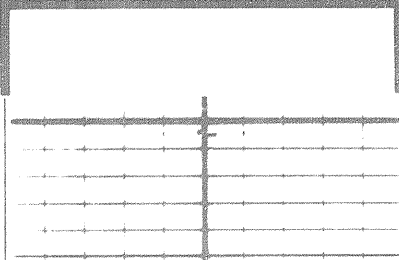
DEPTH METRES

CASING COLLAR LOG DURING PERFORATION

CASING COLLAR LOG BEFORE PERFORATION

DEPTH METRES

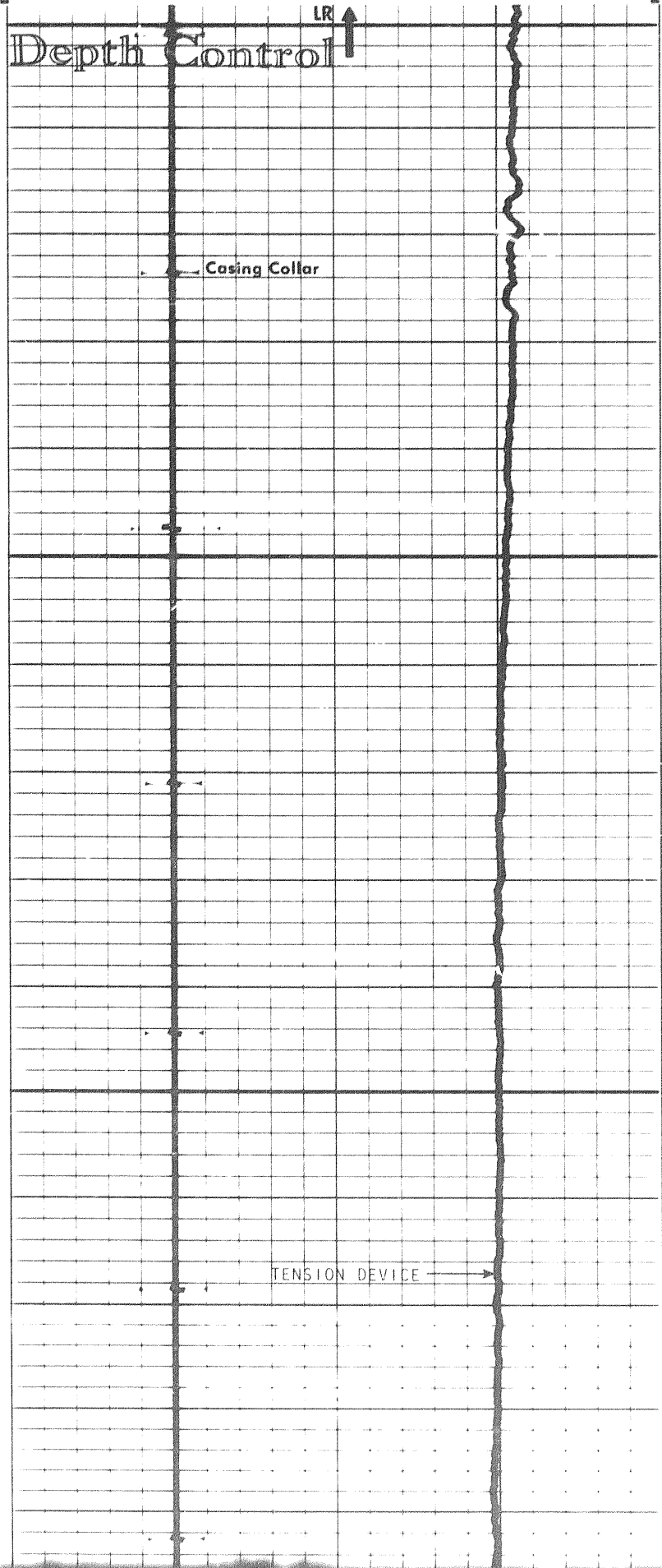
CASING COLLAR LOG BEFORE PERFORATION



Depth Control

LRI ↑

201



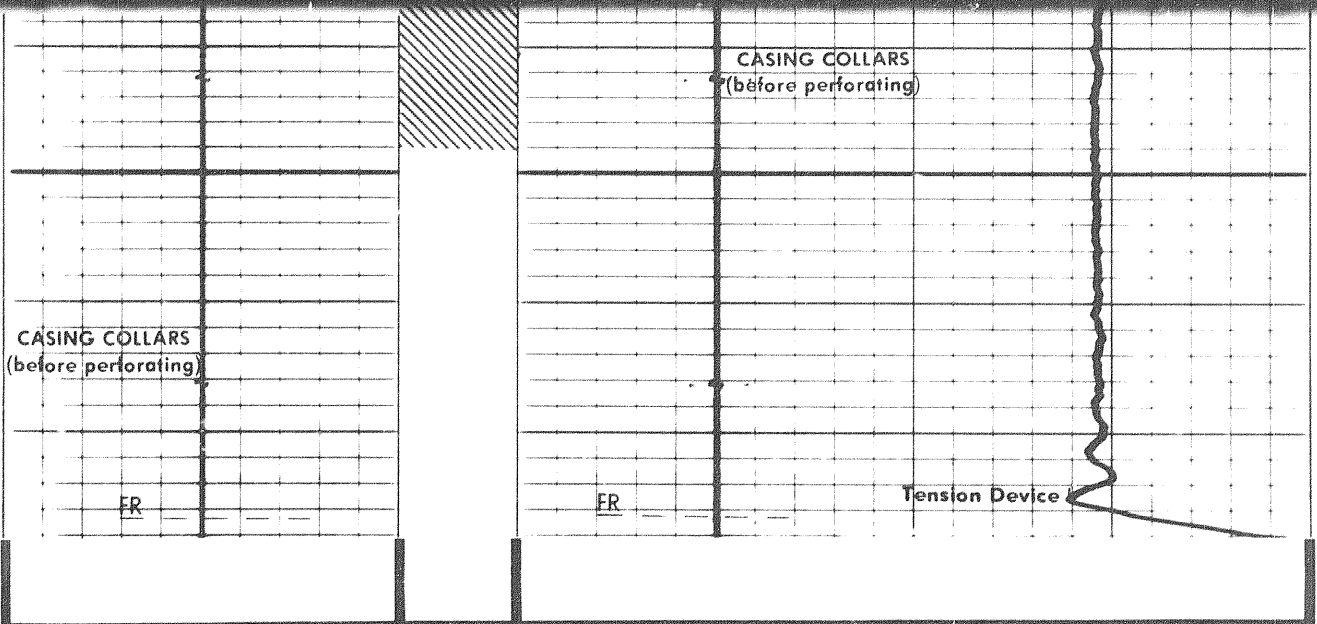
4250

Casing Collar

Casing Collar

TENSION DEVICE

202



CASING COLLAR LOG
DURING PERFORATION

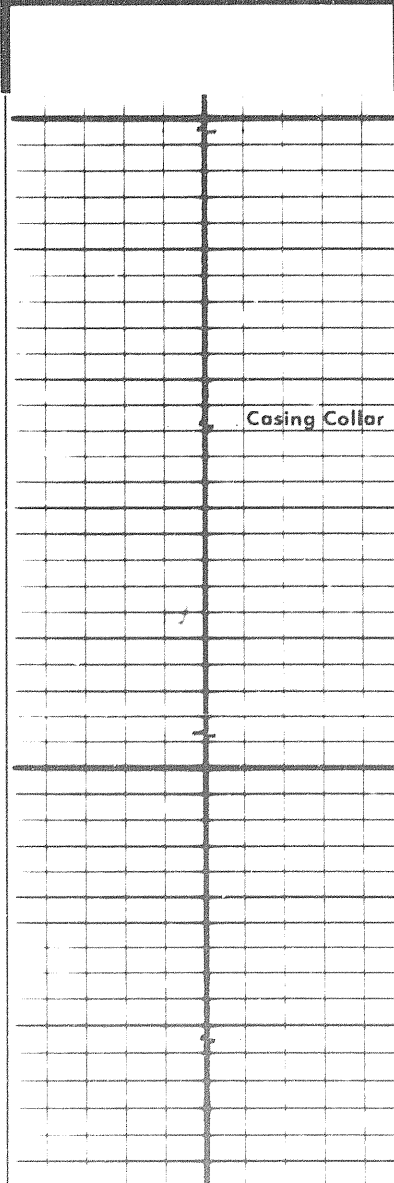
DEPTH
METRES

CASING COLLAR LOG
DURING PERFORATION

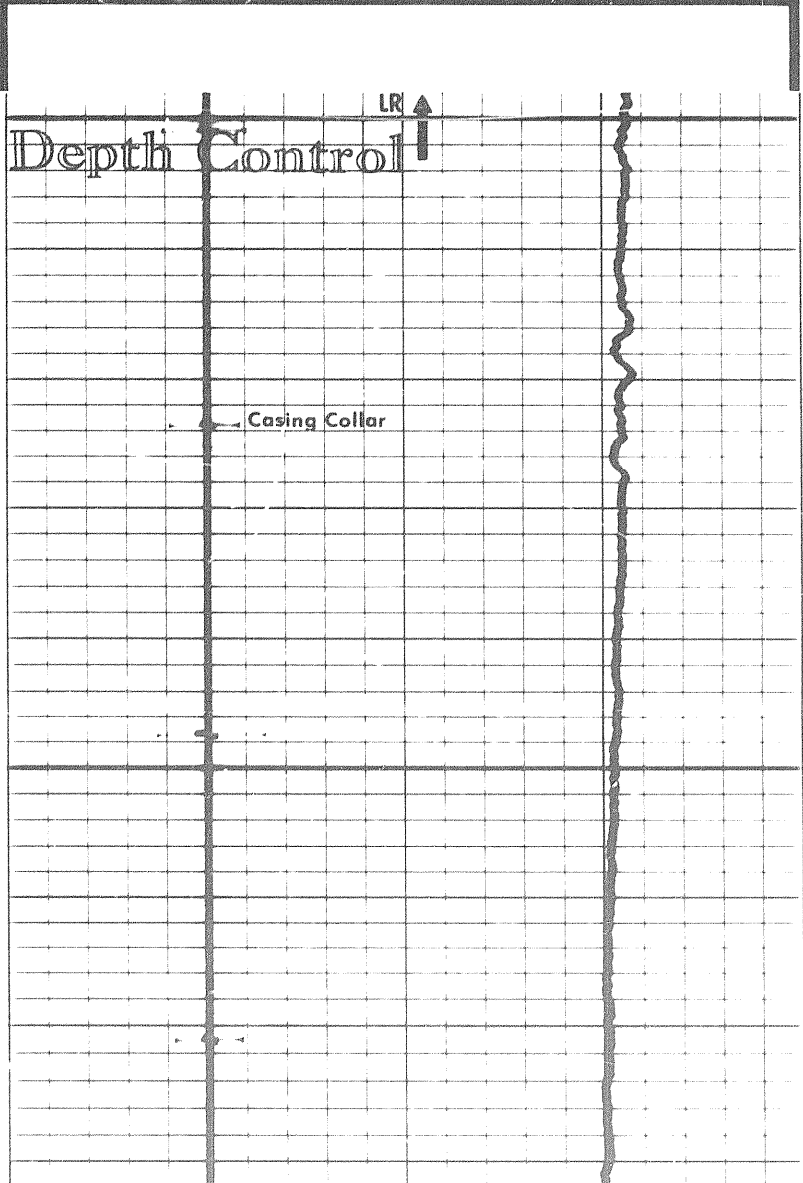
CASING COLLAR LOG
BEFORE PERFORATION

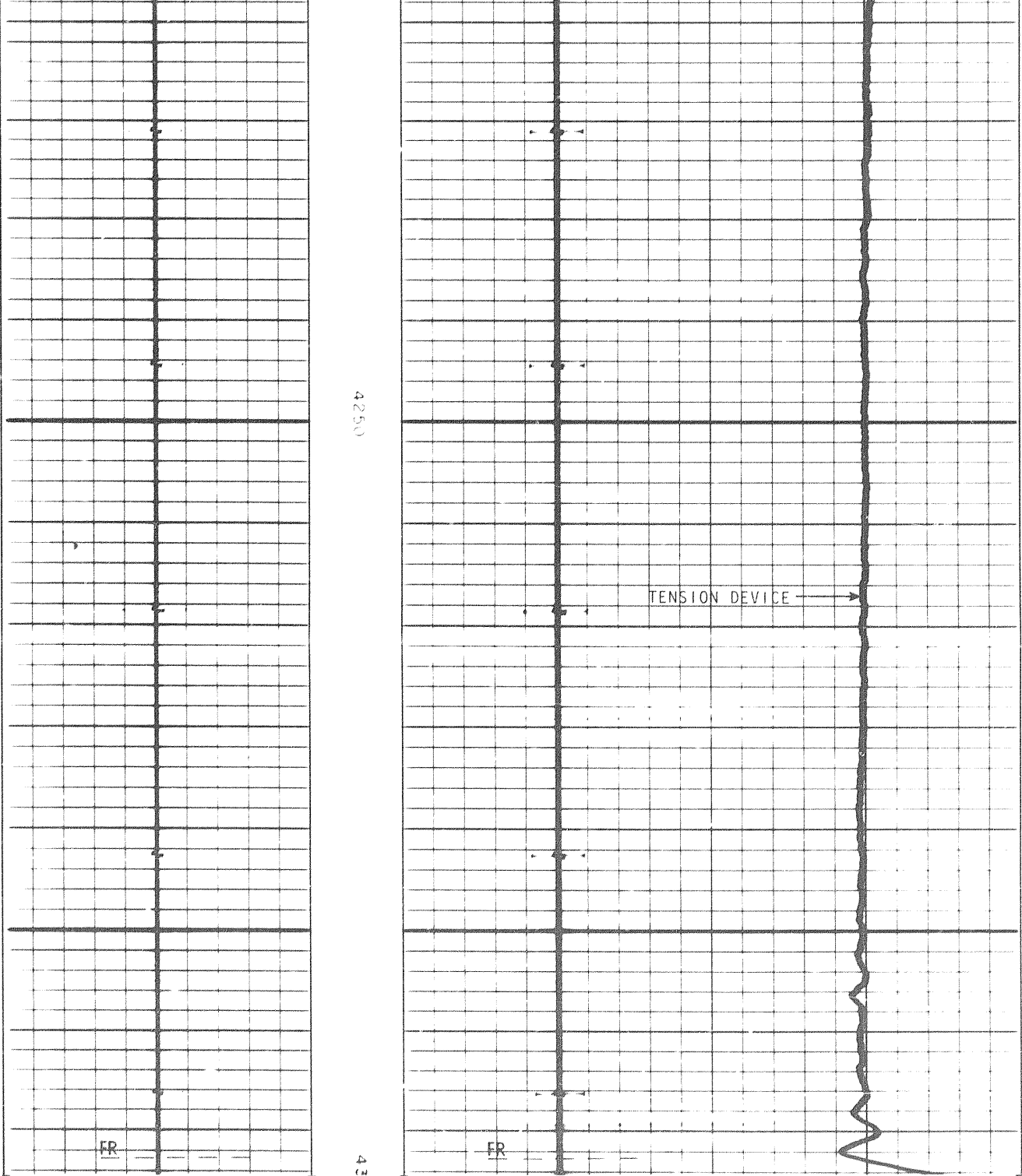
DEPTH
METRES

CASING COLLAR LOG
BEFORE PERFORATION



DEPTH
METRES





FR

4250

TENSION DEVICE

43

FR

CASING COLLAR LOG
BEFORE PERFORATION

DEPTH
METRES

CASING COLLAR LOG
BEFORE PERFORATION

COMPANY _____
 WELL _____
 FIELD _____
 PROVINCE _____

SCHL. FR _____ m
 SCHL. TD _____ m
 DRLR. TD _____ m
 Elev.: KB _____ m
 DF _____ m
 GL _____ m

343

43