

Genco Pressure Control Ltd 403-250-3800 Calgary, Canada

Gamma Ray

367

Company Northern Cross (Yukon) Ltd.
 Well Canoe River Chance YT J-19
 Field Eagle Plains
 LSD 300J196610137300
 Province Yukon Territories

Company Northern Cross (Yukon) Limited
 Well Canoe River Chance YT J-19
 Field Eagle Plains
 Province Yukon
 Country Canada

300J196610137300

Other Services
 CCL

Permanent Datum Log Measured From
 Drilling Measured From
 Ground Level Elevation 514.2 M
 K.B. 4.4 m above Permanent Datum
 Kelly Bushing
 Elevations
 K.B. 518.6 M
 D.F.
 G.L. 514.2 M

Date March 13, 1998

Perforated Intervals

Run Number	One	Gun Type	Grz Gun ERHSC	Gram	36
Depth Driller	1431.2 M	SPM	18	Plasing	(3) Deg.
Depth Logger	N/A	From	1357.9	To	1359.7
Bottom Log Interval	1366.0 M	From	1361.2	To	1363.7
Top Log Interval	1294.0 M	From		To	
Fluid Type	Dry	From		To	
Fluid Level	Zero	From		To	
Surface Pressure	Zero	From		To	
Log Type	GRKCL	From		To	
Tool Serial Number	003	From		To	
Equipment Number	Genco 3	Casing Record			
Unit Location	Calgary	Size(mm)	Weight(kg/m)	From	To
Recorded By	P Mulgrew	339.7	80.1	0	21.3 M
Witnessed By	D Grant	244.4	53.6	0	246.6 M
		177.8	34.2 & 38.7	0	1440.3 M
Services					
Bridge Plug	Type	Size	Depth	Tubing Record	
Packer		Size(mm)	Weight(kg/m)	From	To
Retainer		73.0	9.67	0	1357.55
Junk Basket		Cementing Data			
Gauge Ring					

All interpretations are opinions based on inferences from electrical or other measurements and we cannot and do not guarantee the accuracy or correctness of any interpretation, and we shall not, except in the case of gross or willful negligence on our part, be liable or responsible for any loss, costs, damages, or expenses incurred or sustained by anyone resulting from any interpretation made by any of our officers, agents or employees. These interpretations are also subject to our terms and conditions set out in our current Price Schedule.

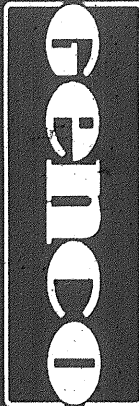
Comments:

Log Correlated to Schlumberger Borehole CS Log
 Dated February 5 & 13, 1968

Top Shot to Top Marker Pup 16.84 M. To have Top Shot @ 1357.9 M Top of Marker Pup must be @ 1341.06 M.
 Position Run Marker 12.24 M Deep. First Confirmation Run Marker 1.1 M Deep. Second Confirmation Run Marker @ 1341.02 M

Database File: mar13.db
 Dataset Pathname: pass3
 Presentation Format: cbg2 prs
 Dataset Creation Date: Fri Mar 13 14:53:57 1998
 Charted by: Depth in Meters scaled 1:240

0	NGT (GAPI)	120	500	DCL	-1000
---	------------	-----	-----	-----	-------



Genco Pressure Control Ltd 403-250-3800 Calgary, Canada

Gamma Ray

367

Company Northern Cross (Yukon) Ltd.
 Well Canoe River Chance YT J-19
 Field Eagle Plains
 LSD 300J196610137300
 Province Yukon Territories

Company Northern Cross (Yukon) Limited
 Well Canoe River Chance YT J-19
 Field Eagle Plains
 Province Yukon
 Country Canada

300J196610137300

Other Services
 CCL

Permanent Datum Log Measured From
 Drilling Measured From
 Ground Level Elevation 514.2 M
 K.B. 4.4 m above Permanent Datum
 Kelly Bushing
 Elevations
 K.B. 518.6 M
 D.F.
 G.L. 514.2 M

Date March 13, 1998

Perforated Intervals

Run Number	One	Gun Type	Grz Gun ERHSC	Gram	36
Depth Driller	1431.2 M	SPM	18	Plasing	(3) Deg. Size 127 mm
Depth Logger	N/A	From	1357.9	To	1359.7
Bottom Log Interval	1366.0 M	From	1361.2	To	1363.7
Top Log Interval	1294.0 M	From		To	
Fluid Type	Dry	From		To	
Fluid Level	Zero	From		To	
Surface Pressure	Zero	From		To	
Log Type	GRKCL	From		To	
Tool Serial Number	003	From		To	
Equipment Number	Genco 3	Casing Record			
Unit Location	Calgary	Size(mm)	Weight(kg/m)	From	To
Recorded By	P Mulgrew	339.7	80.1	0	21.3 M
Witnessed By	D Grant	244.4	53.6	0	246.6 M
		177.8	34.2 & 38.7	0	1440.3 M
Services					
Bridge Plug	Type	Size	Depth	Tubing Record	
Packer		Size(mm)	Weight(kg/m)	From	To
Retainer		73.0	9.67	0	1357.55
Junk Basket		Cementing Data			
Gauge Ring					

All interpretations are opinions based on inferences from electrical or other measurements and we cannot and do not guarantee the accuracy or correctness of any interpretation, and we shall not, except in the case of gross or willful negligence on our part, be liable or responsible for any loss, costs, damages, or expenses incurred or sustained by anyone resulting from any interpretation made by any of our officers, agents or employees. These interpretations are also subject to our terms and conditions set out in our current Price Schedule.

Comments:

Log Correlated to Schlumberger Borehole CS Log
 Dated February 5 & 13, 1968

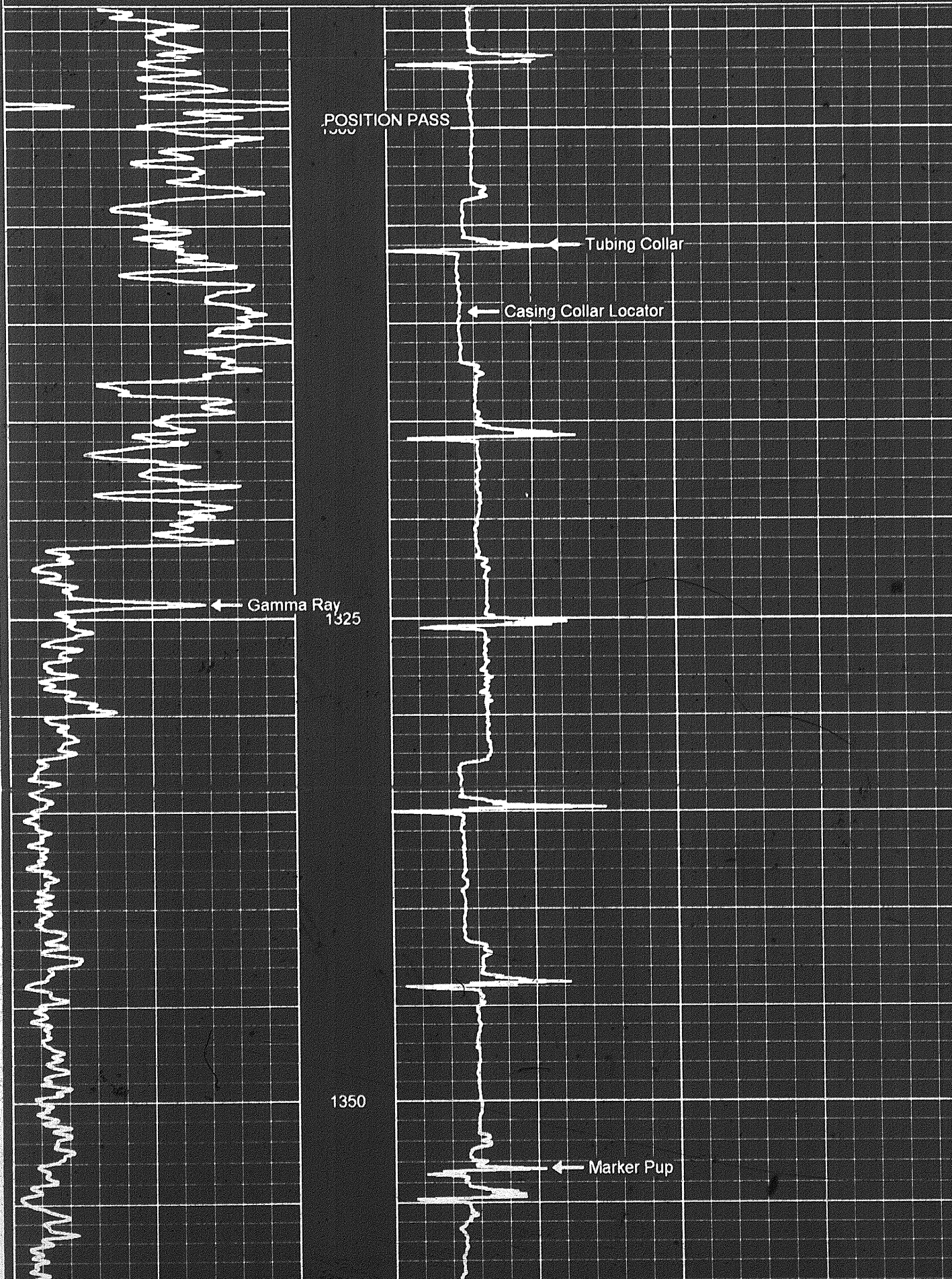
Top Shot to Top Marker Pup 16.84 M. To have Top Shot @ 1357.9 M Top of Marker Pup must be @ 1341.06 M.
 Position Run Marker 12.24 M Deep. First Confirmation Run Marker 1.1 M Deep. Second Confirmation Run Marker @ 1341.02 M

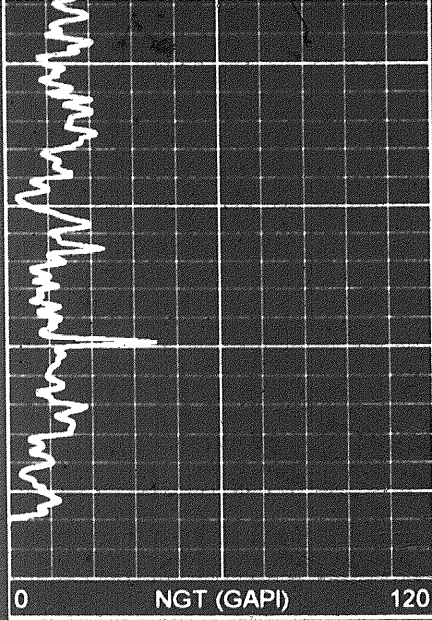
Database File: mar13.db
 Dataset Pathname: pass3
 Presentation Format: cbg2 prs
 Dataset Creation Date: Fri Mar 13 14:53:57 1998
 Charted by: Depth in Meters scaled 1:240

0	NGT (GAPI)	120	500	DCL	-1000
---	------------	-----	-----	-----	-------

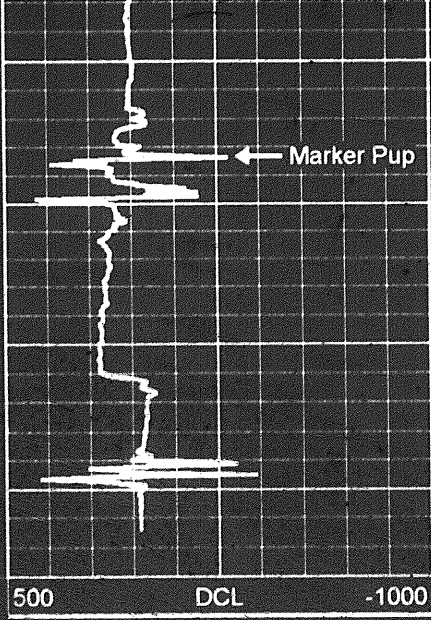
Database File: mar13.db
Dataset Pathname: pass3
Presentation Format: cbg2 prs
Dataset Creation Date: Fri Mar 13 14:53:57 1998
Charted by: Depth in Meters scaled 1:240

0 NGT (GAPI) 120 500 DCL -1000





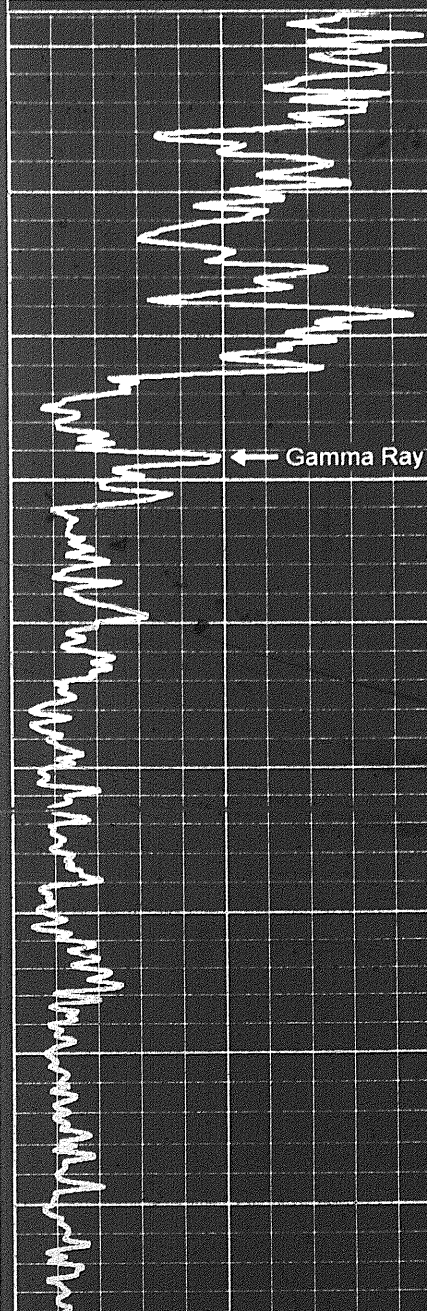
1350



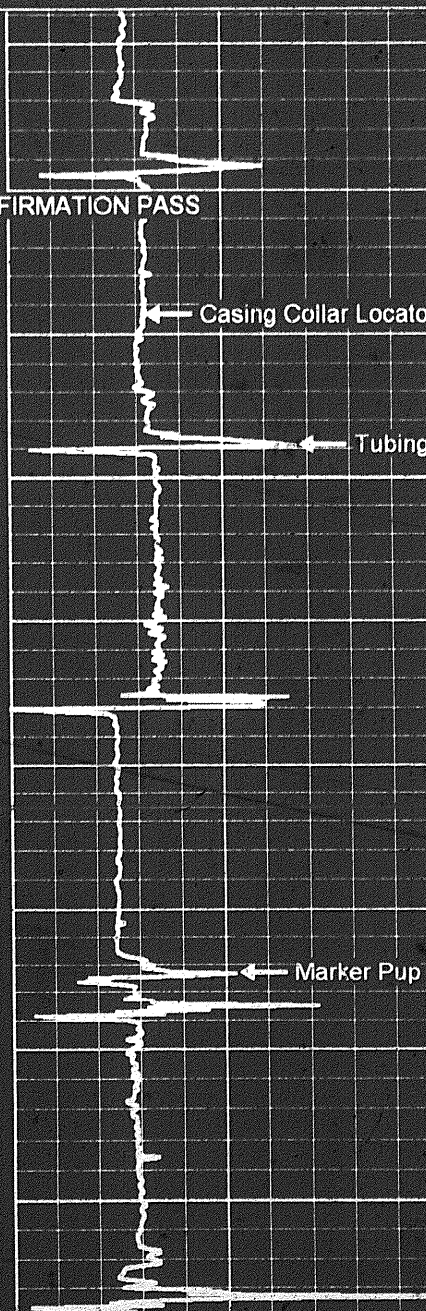
Database File: mar13.db
 Dataset Pathname: pass5
 Presentation Format: cbg2 prs
 Dataset Creation Date: Fri Mar 13 16:59:02 1998
 Charted by: Depth in Meters scaled 1:240

0 NGT (GAPI) 120

500 DCL -1000



FIRST CONFIRMATION PASS



← Gamma Ray

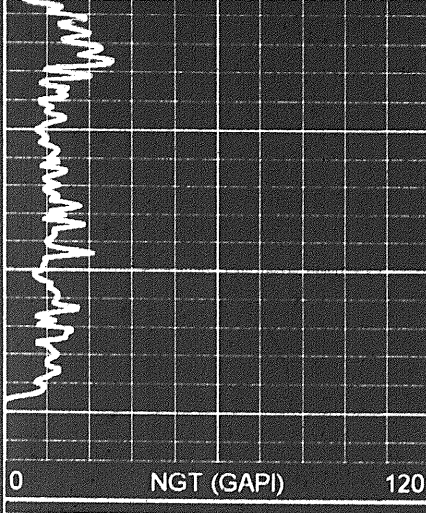
← Casing Collar Locator

← Tubing Collar

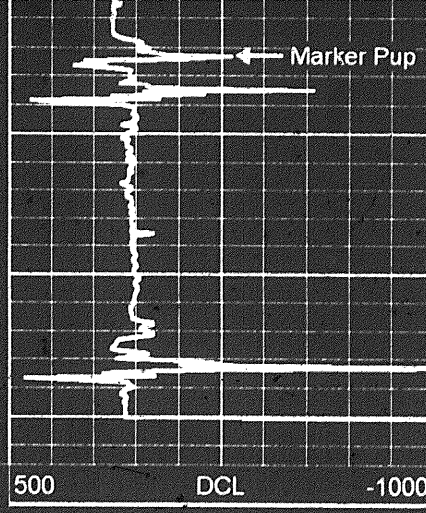
← Marker Pup

1325

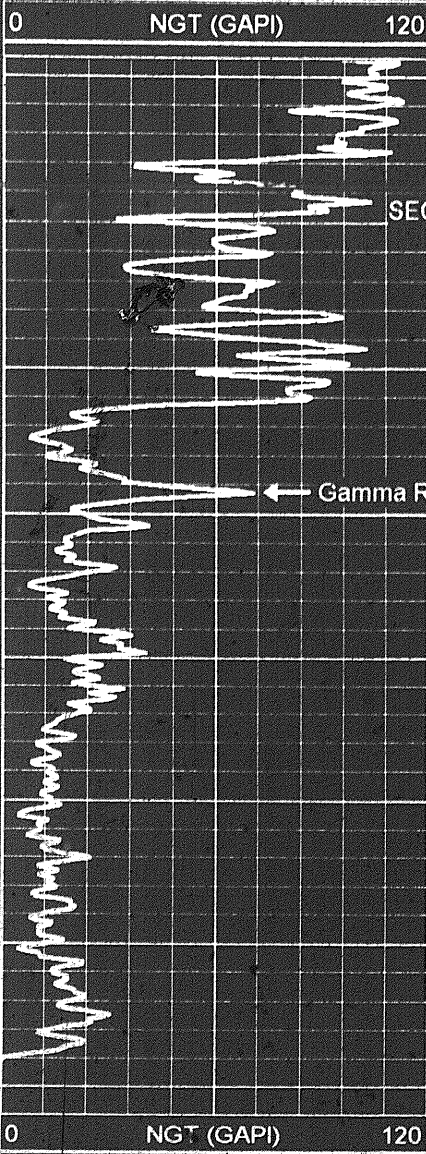
1350



1350



Database File: mar13.db
 Dataset Pathname: pass7
 Presentation Format: cbg2.prs
 Dataset Creation Date: Fri Mar 13 18:07:13 1998
 Charted by: Depth in Meters scaled 1.240



1325

SECOND CONFIRMATION PASS

