

LASERLOG

COMPUTALOG
HEARHART LTD

COMPUTED FROM
DIRECT DIGITAL WELL LOGS

OTTAWA COPY

Program
Using the following logs

COMPANY _____

WELL _____

FIELD _____

PROVINCE _____

DATE _____

LOCATION _____

NUMBER _____

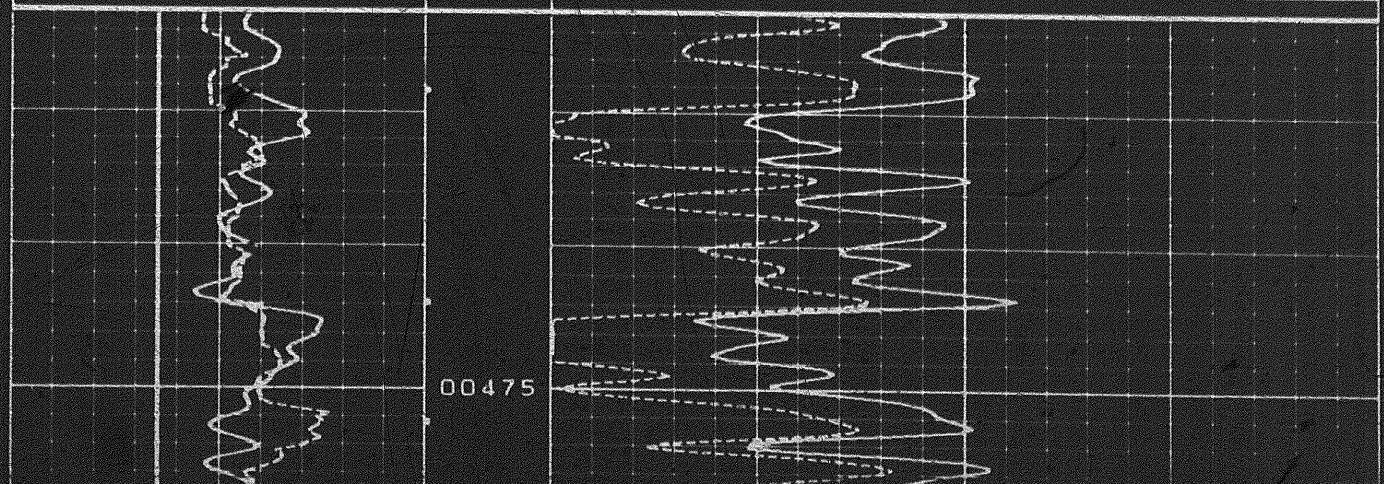
ELEV _____ NS _____ DF _____ GL _____

Laserlog presentations are computed using
Direct Digital Well Log data.

NOTICE: Log interpretations by our employees, often with the aid of computers, give Customer the benefit of their best judgment as to the correct interpretation. However, all interpretations are opinions and computations based on inferences from electrical or other measurements, we cannot, and do not, guarantee the accuracy or correctness of any interpretation, and we shall not be liable or responsible for any loss, costs, damages or expenses incurred or sustained by Customer resulting from any interpretation made by any of our officers, agents, or employees.

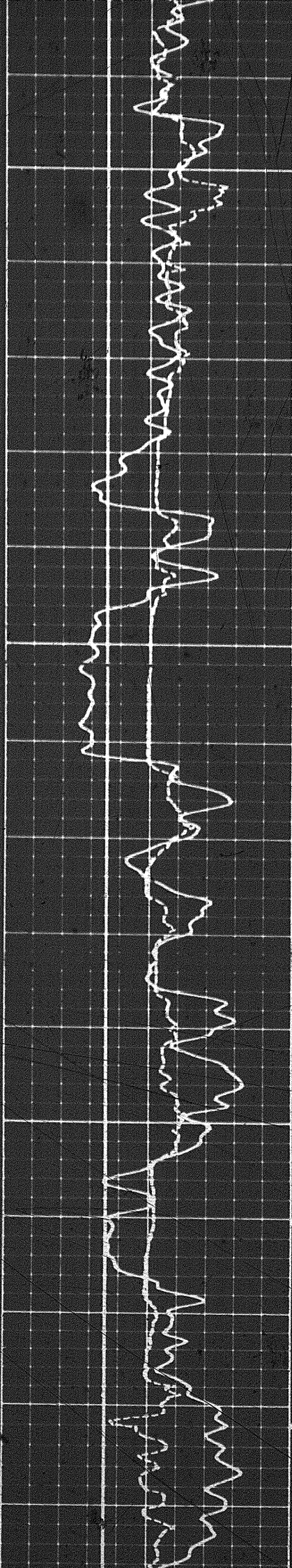
COMPUTATION PARAMETERS

85-04-02	07:19	461.2	214159	0008-99	0	0
5	Y - CAL	15	45	Ø (CNS)		-15
0	GR API	150	134.1	BCS ΔT		12.1



00475

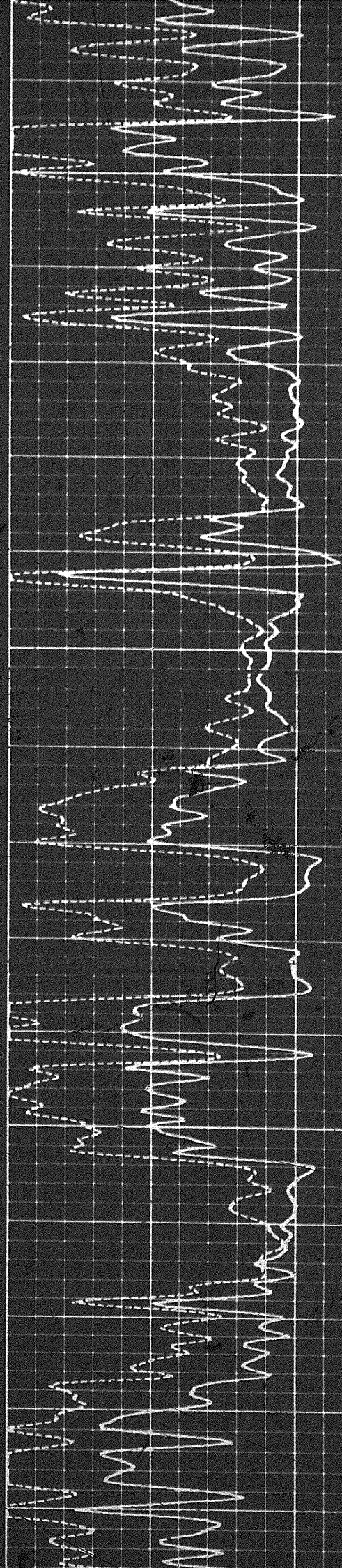
911-EQ-1-1

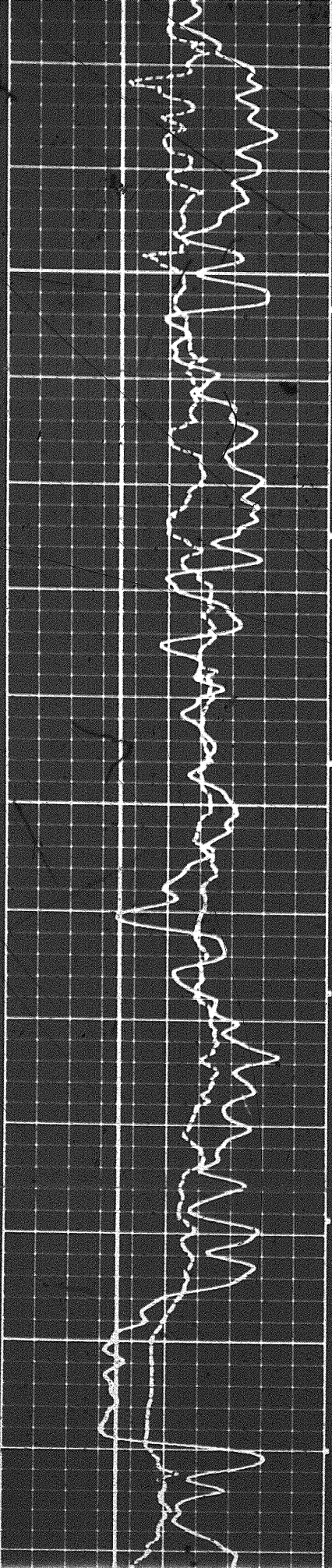


00475

00500

00525

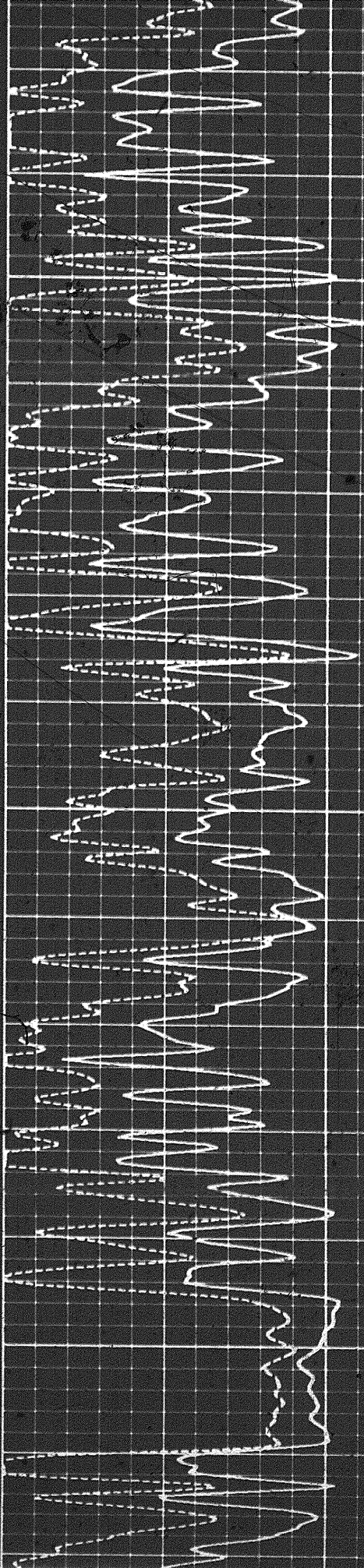




00550

00575

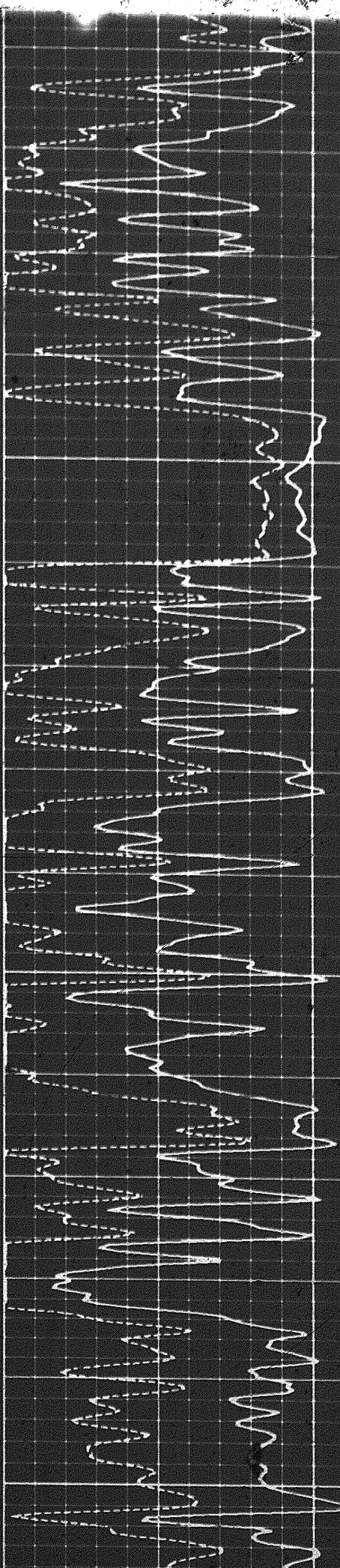
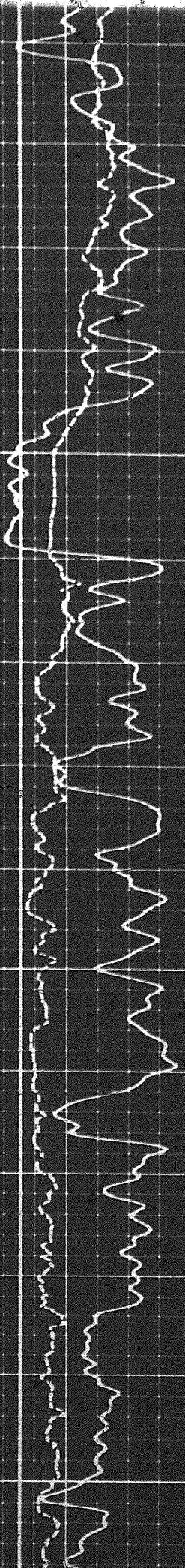
00600

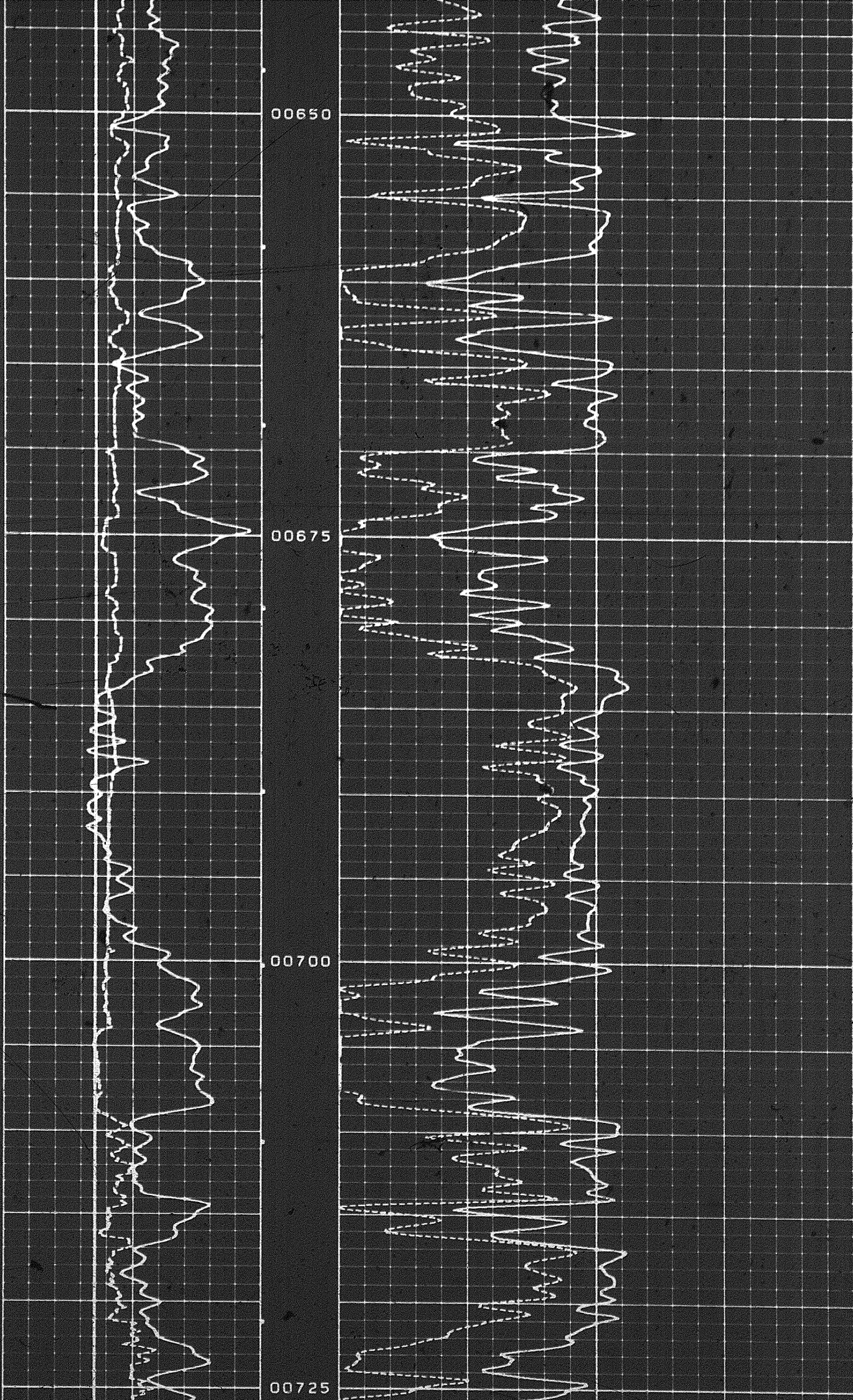


00600

00625

00650



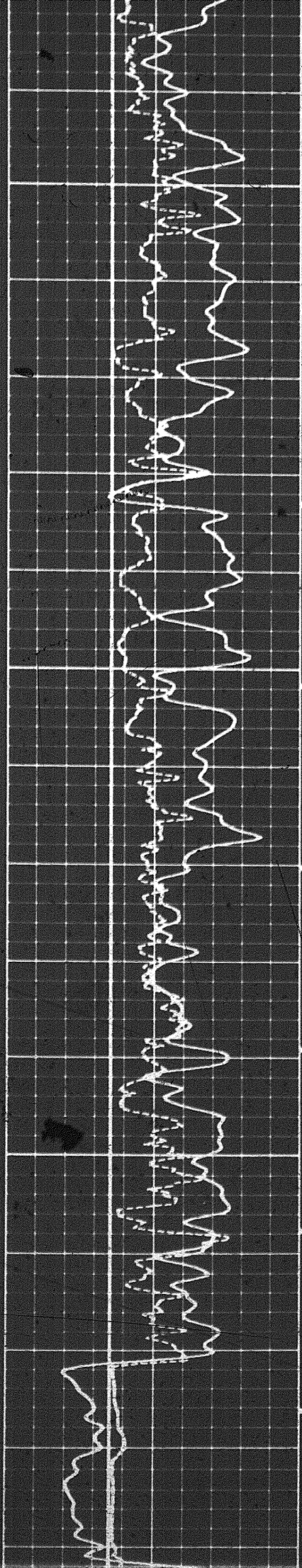


00650

00675

00700

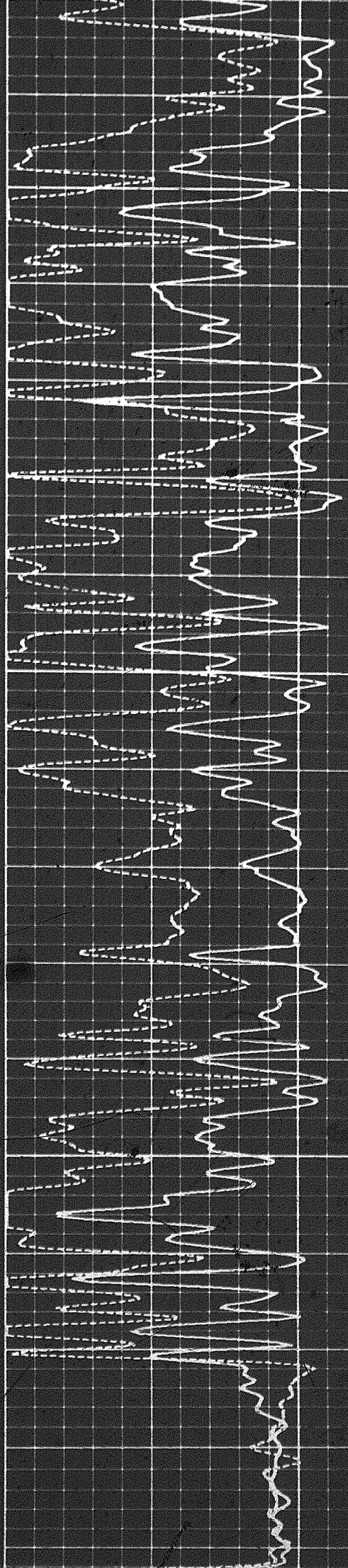
00725

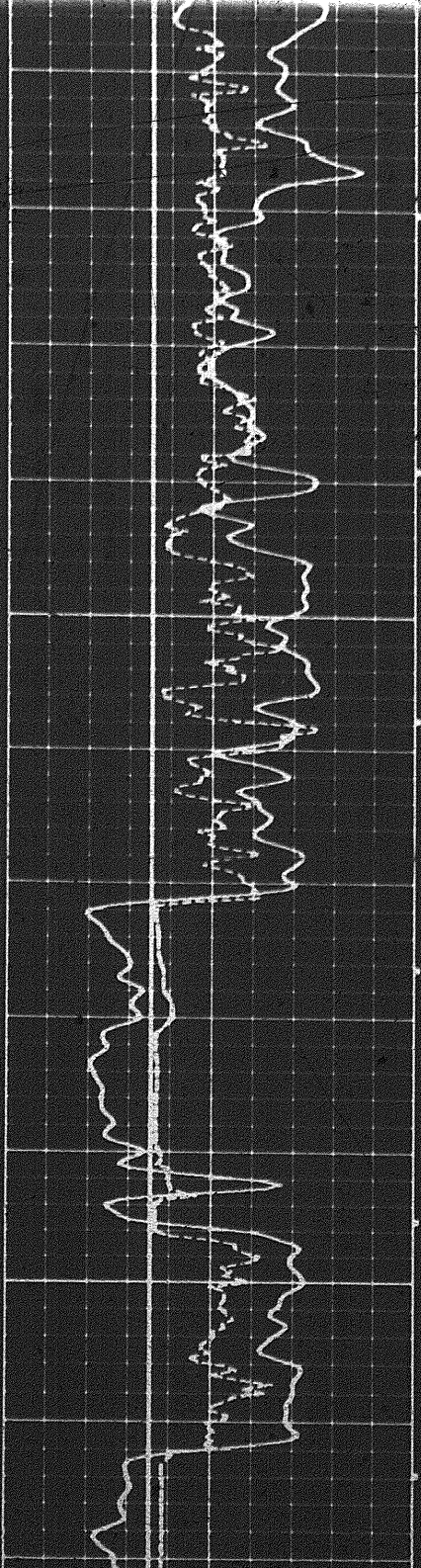
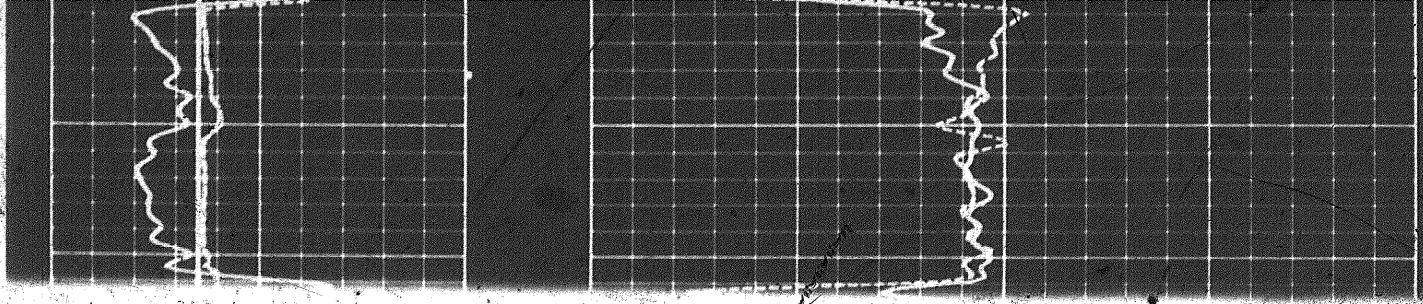


00725

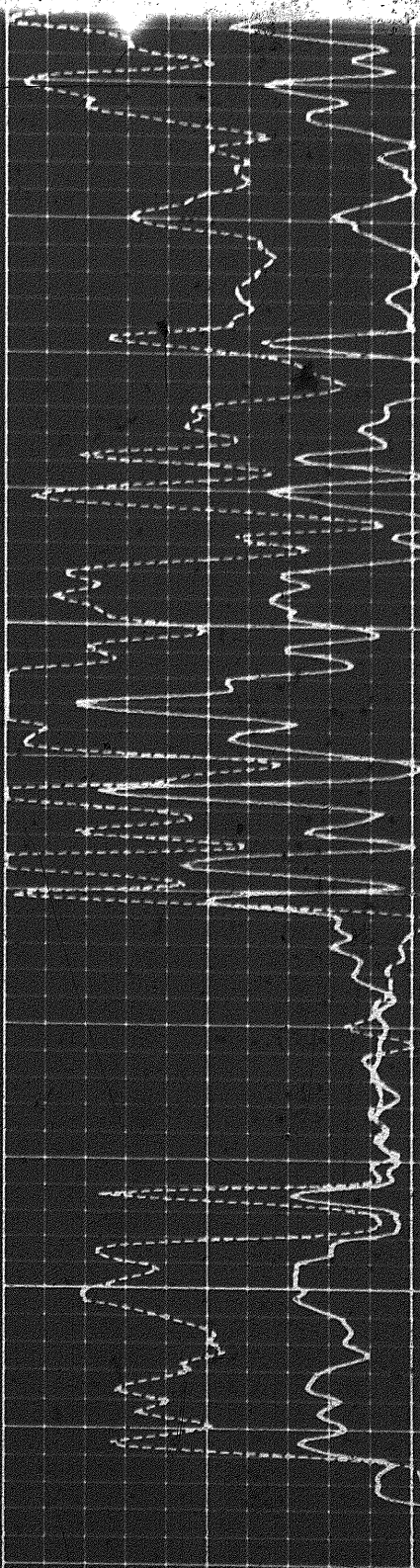
00750

00775

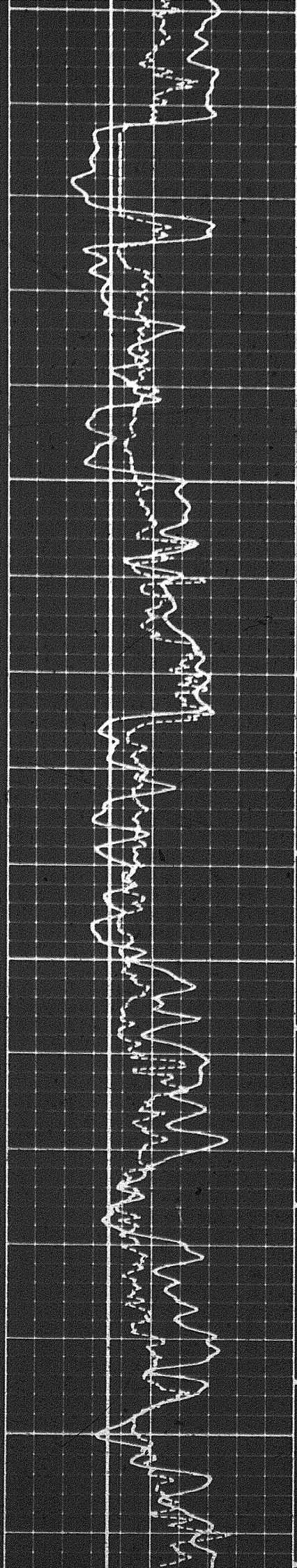




00775



00800

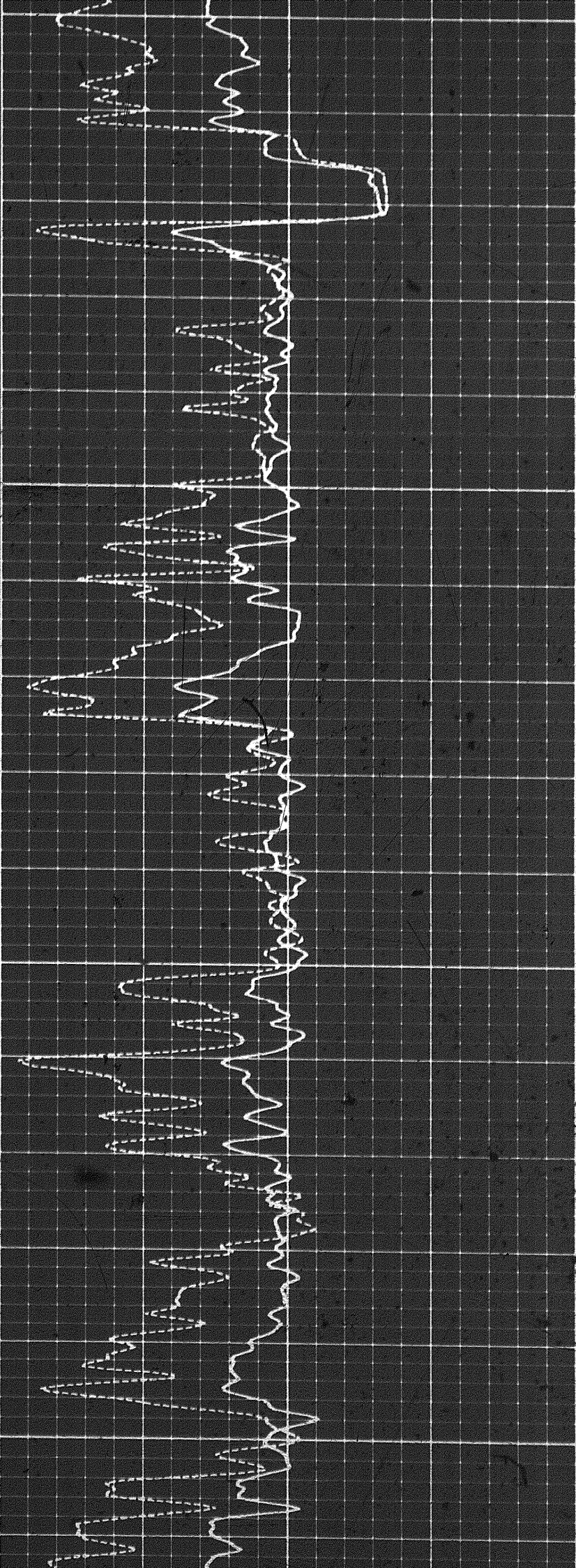


00800

00825

00850

00875

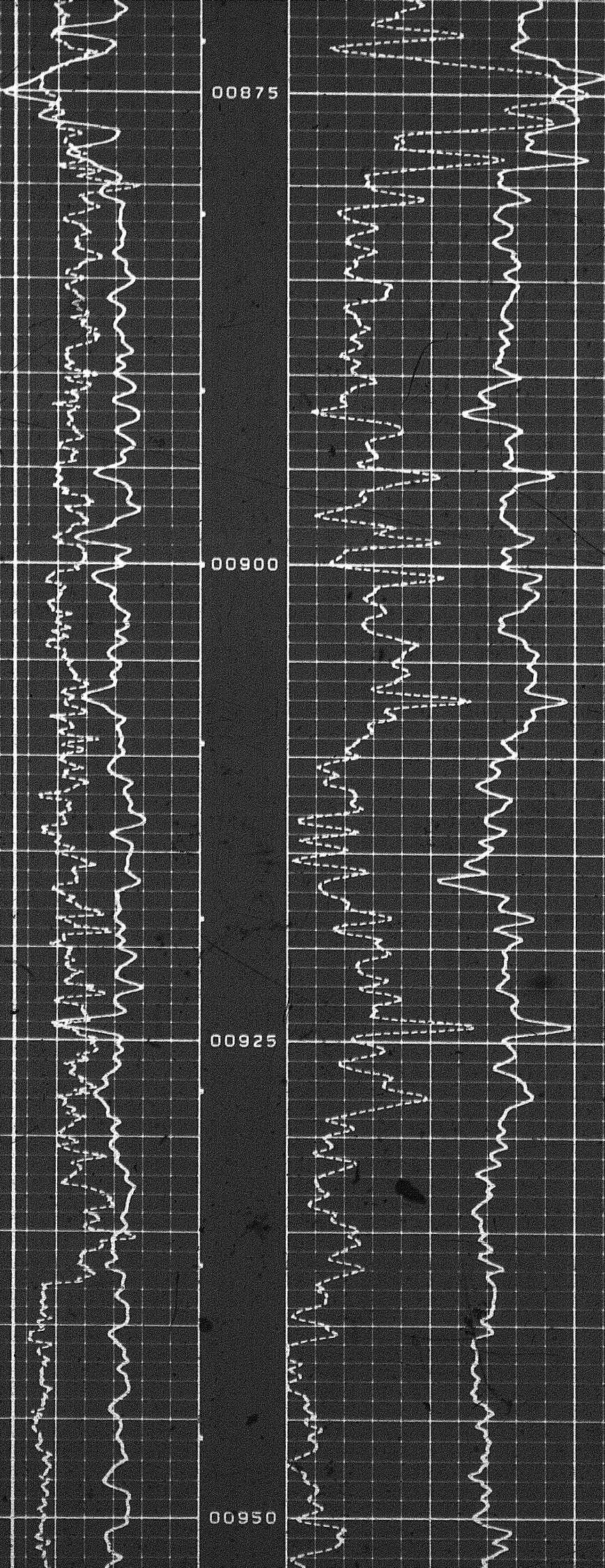


00875

00900

00925

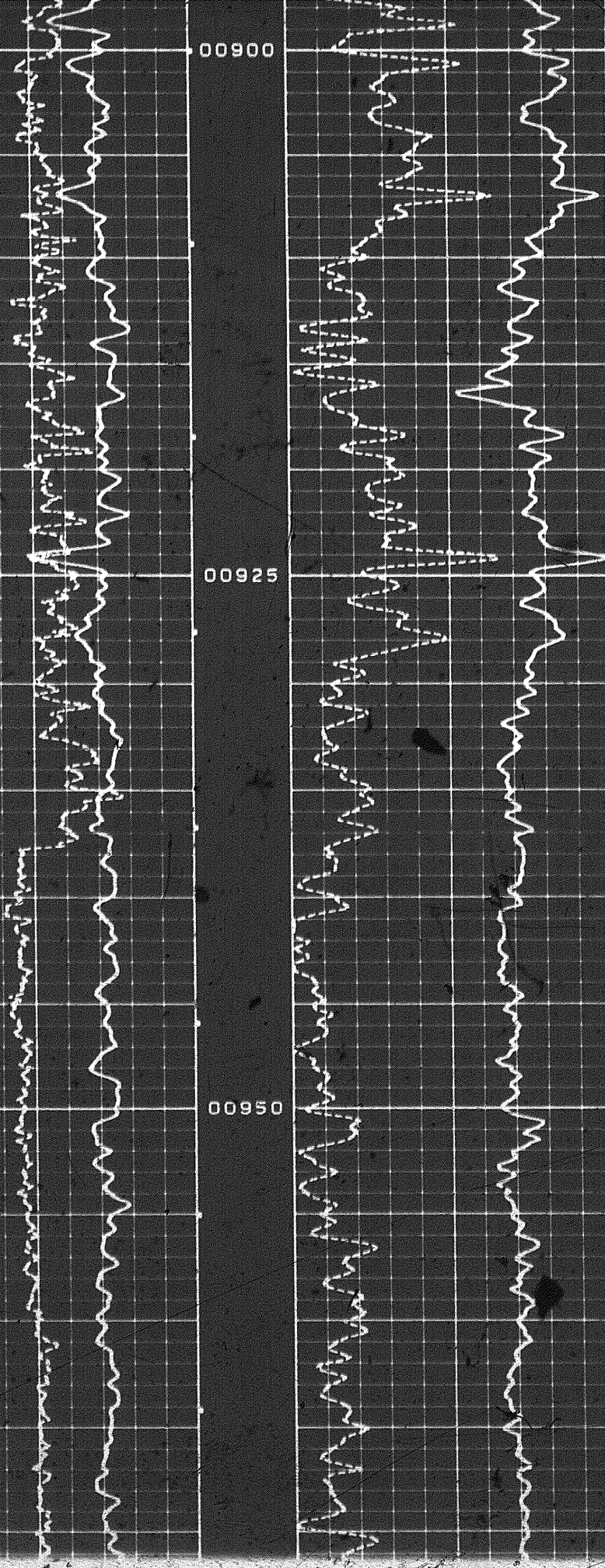
00950

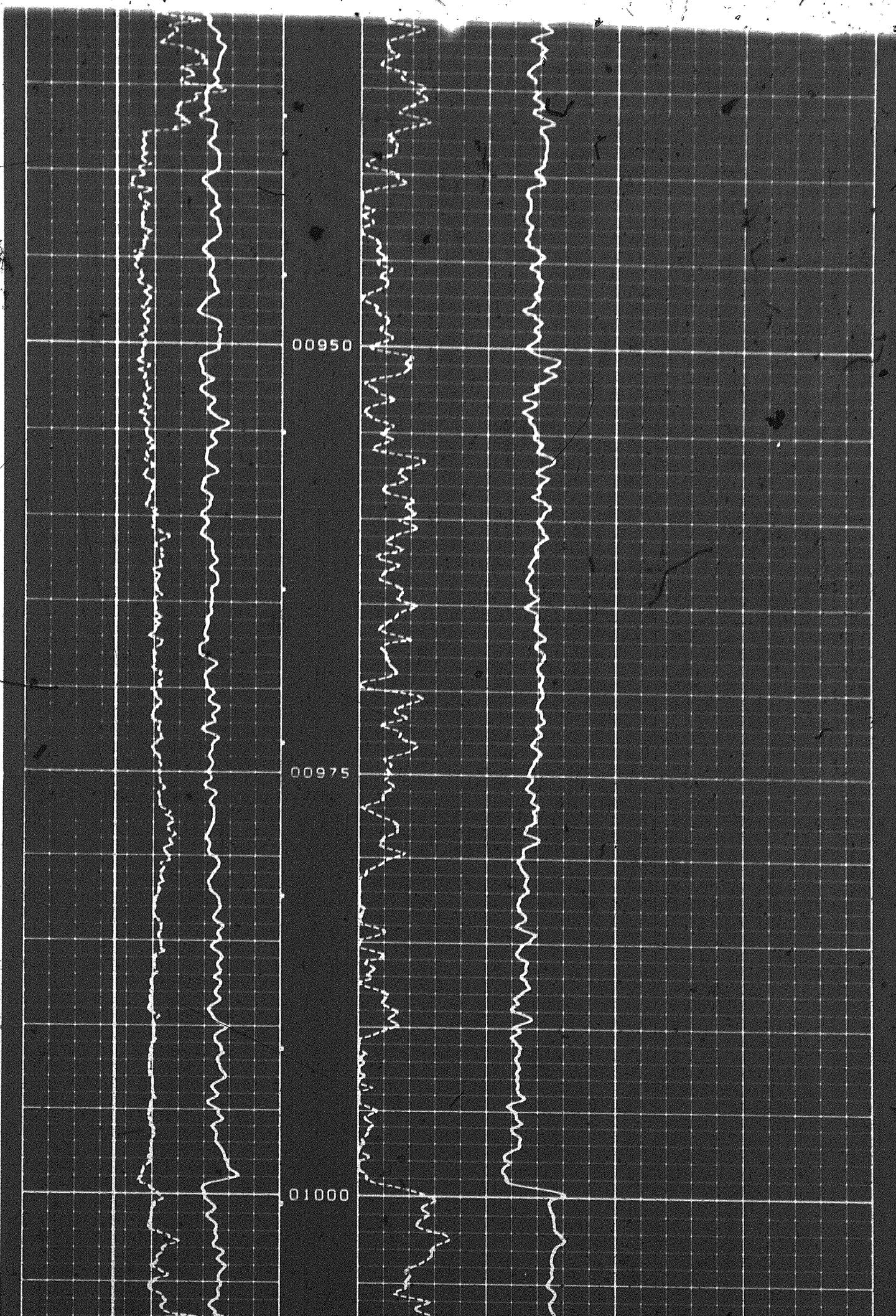


00900

00925

00950

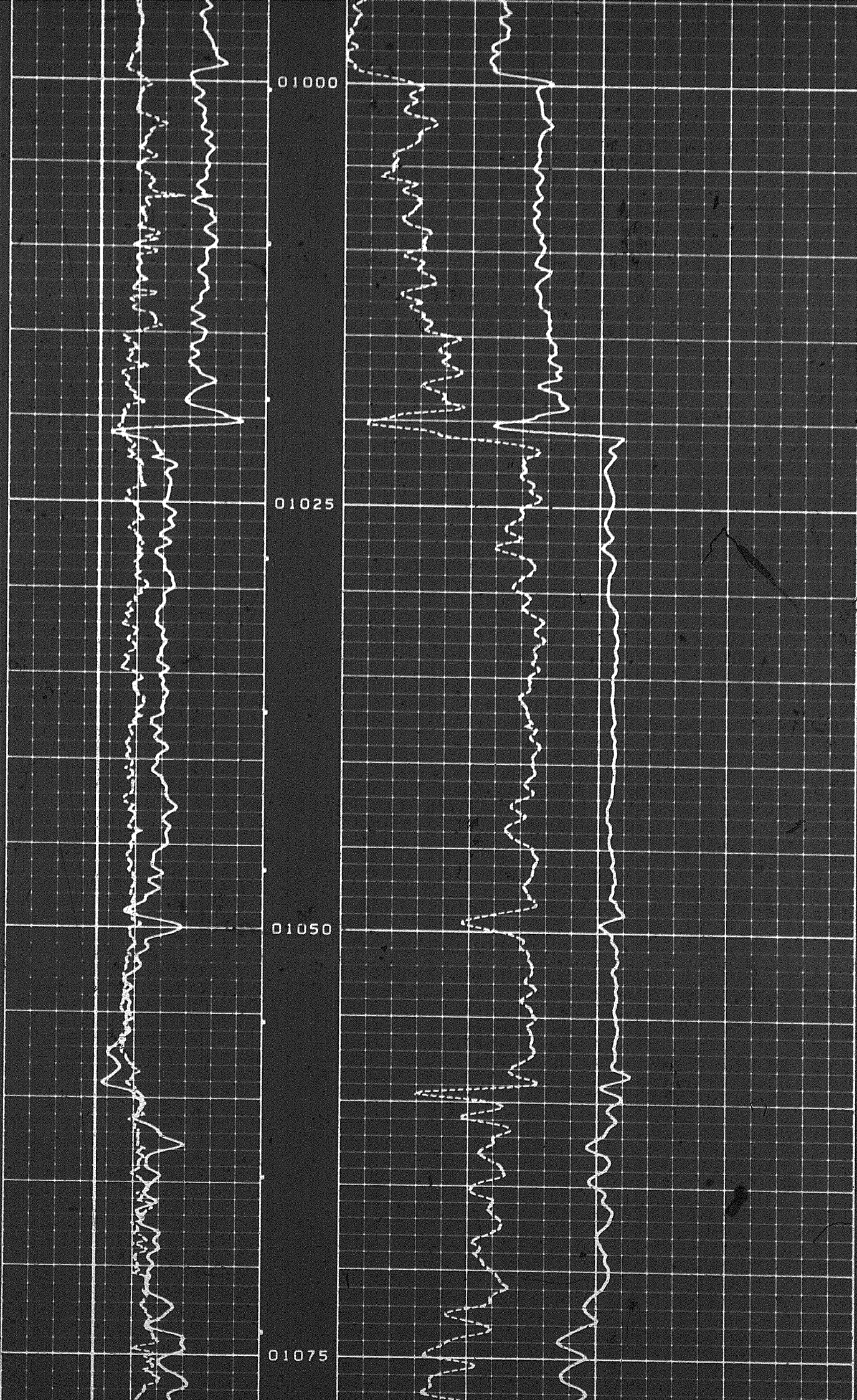




00950

00975

01000



01000

01025

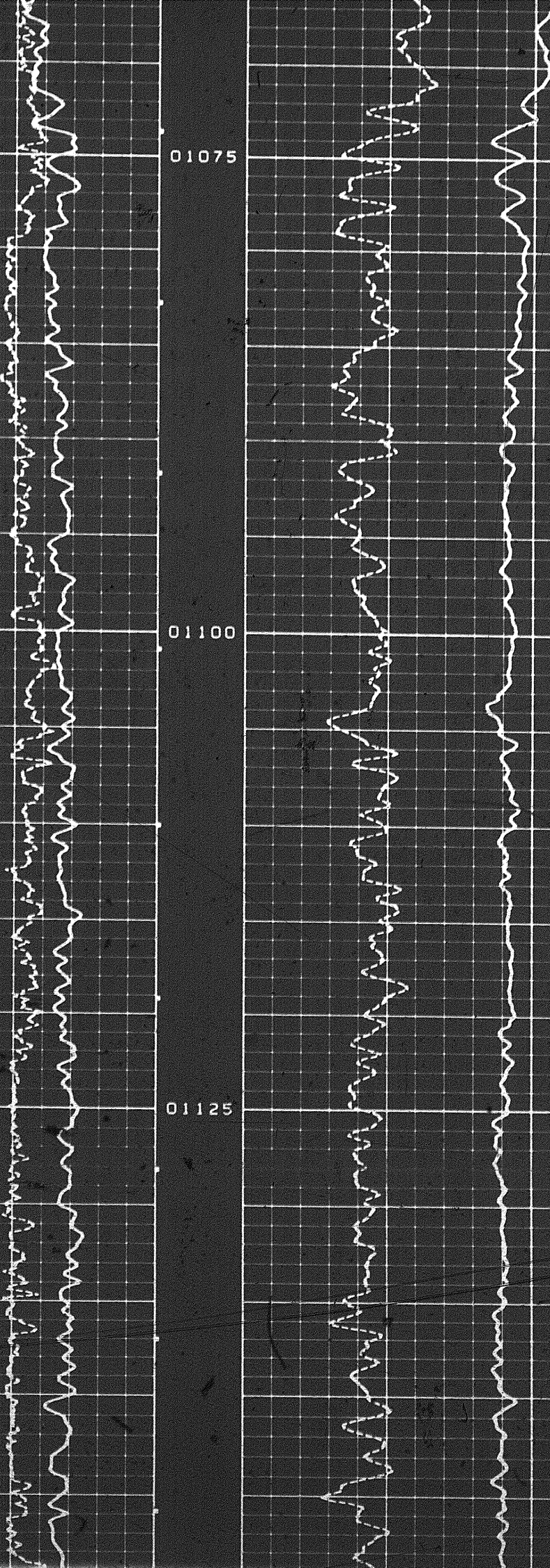
01050

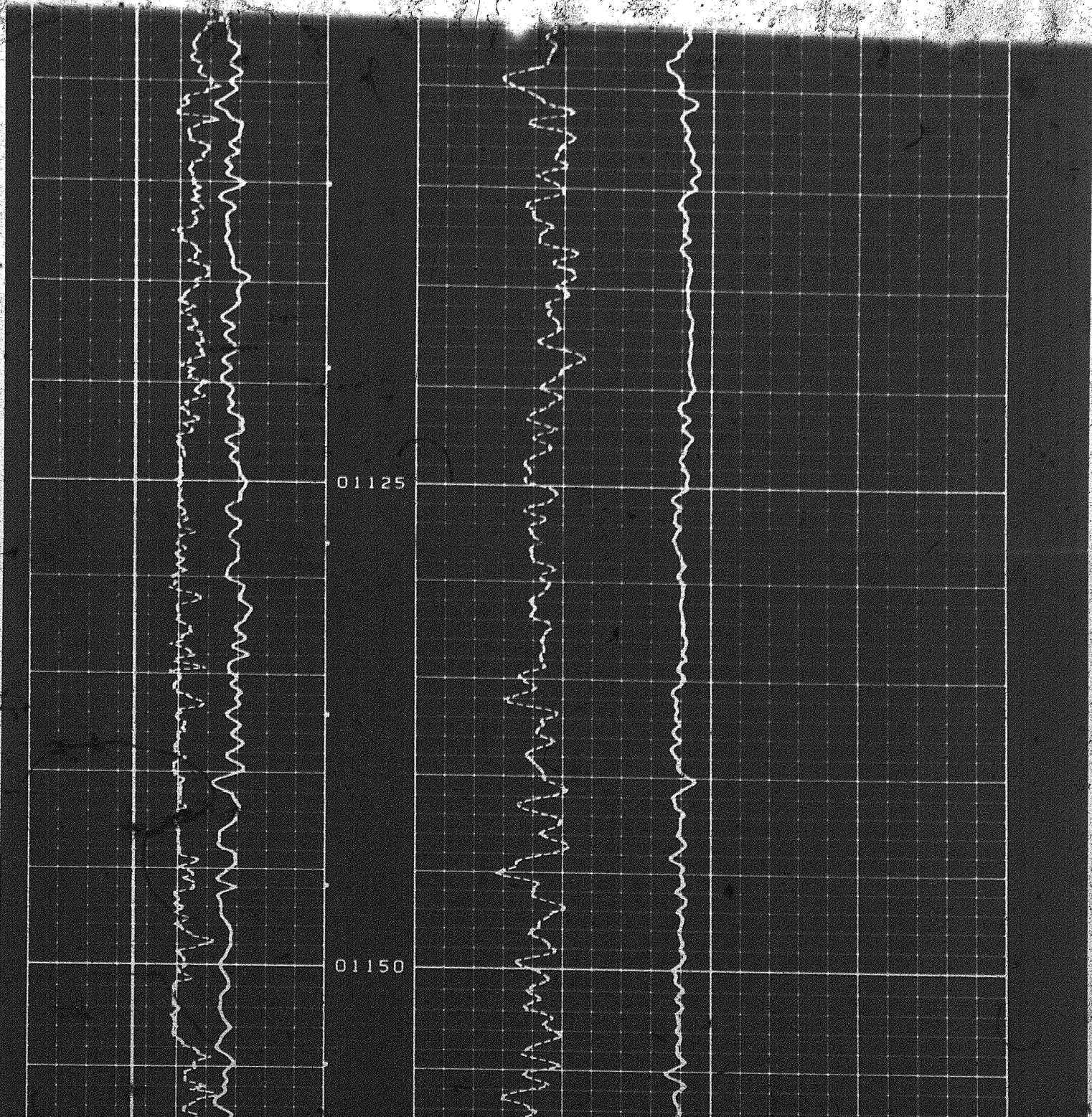
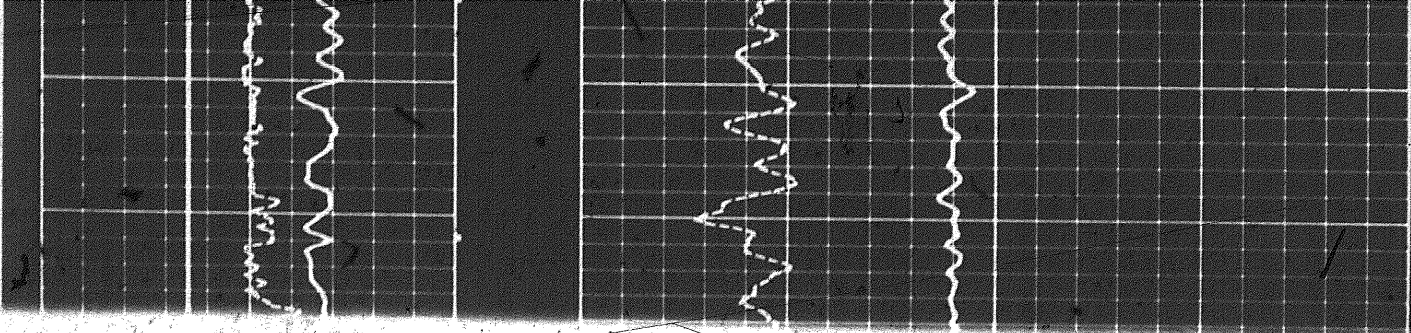
01075

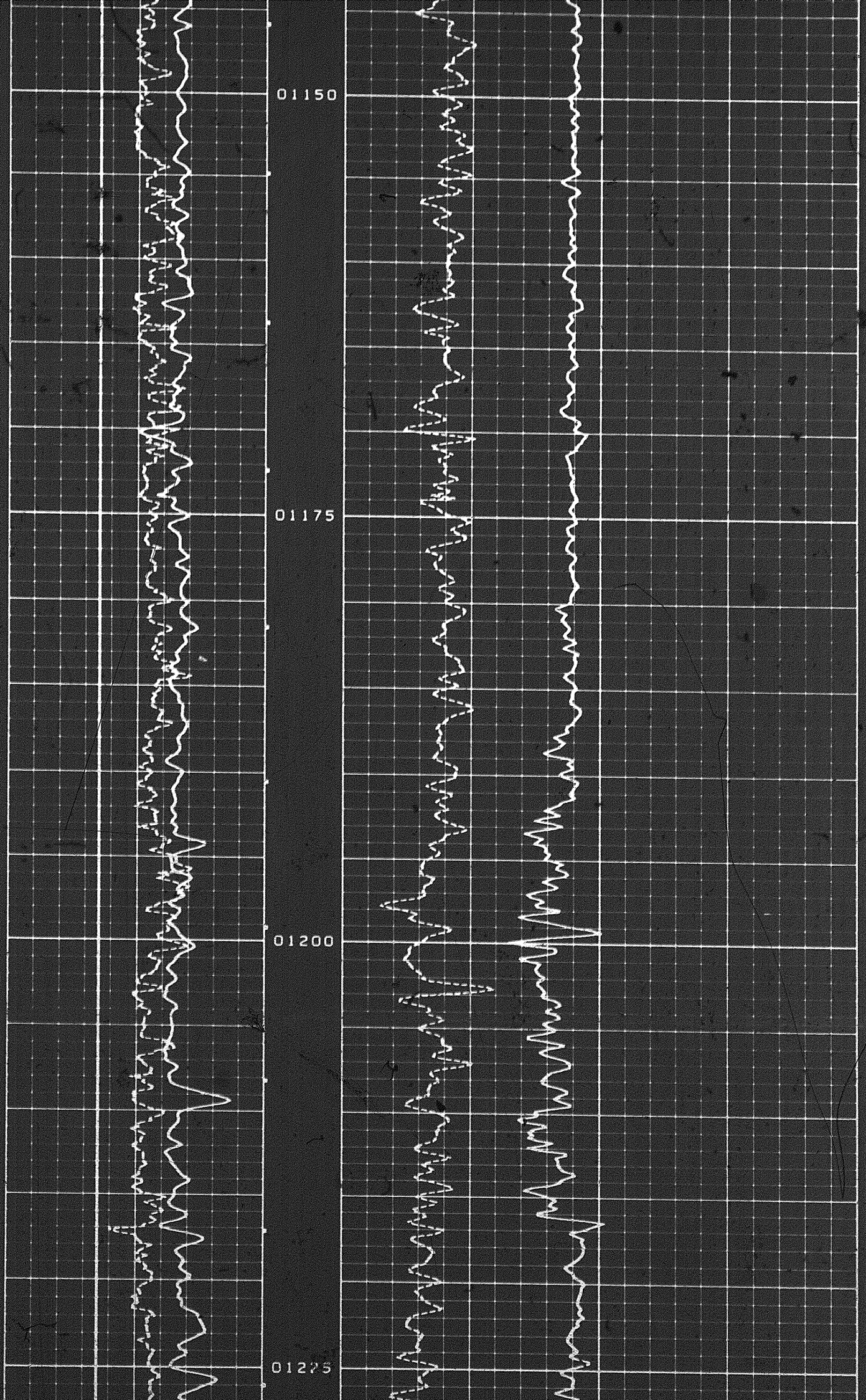
01075

01100

01125



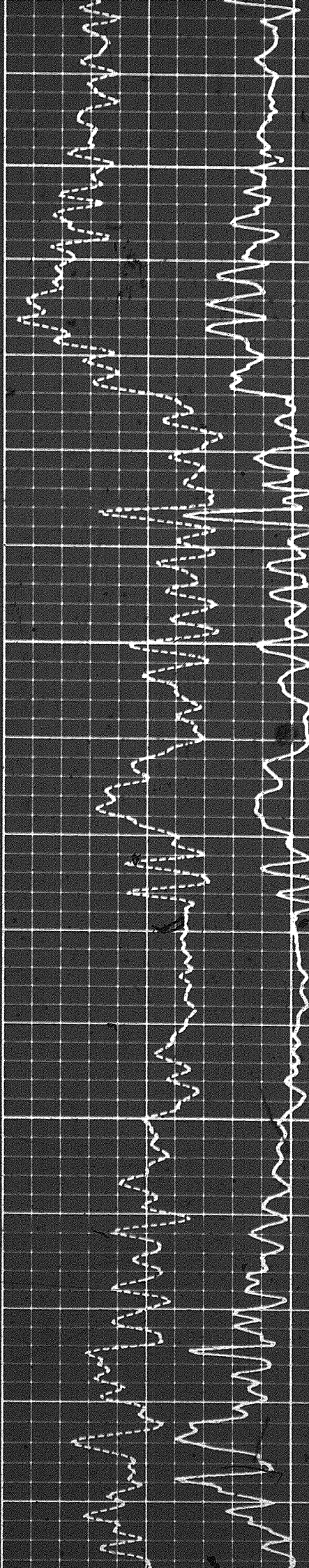
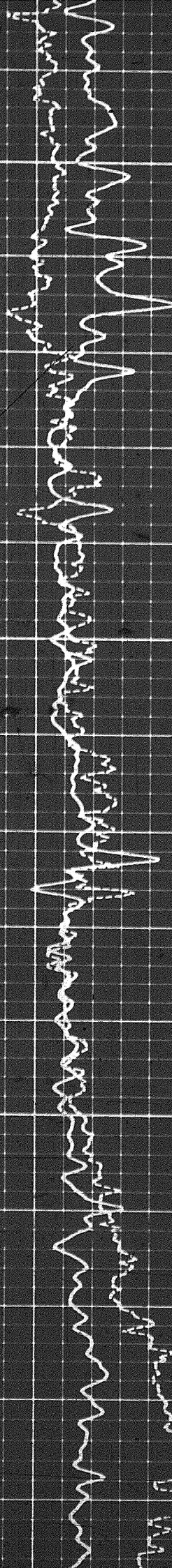


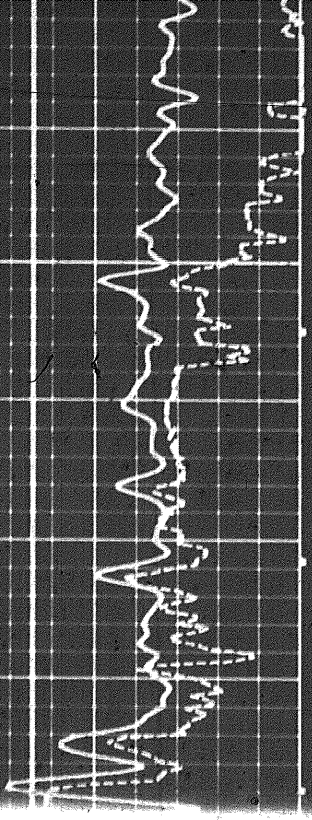


01223

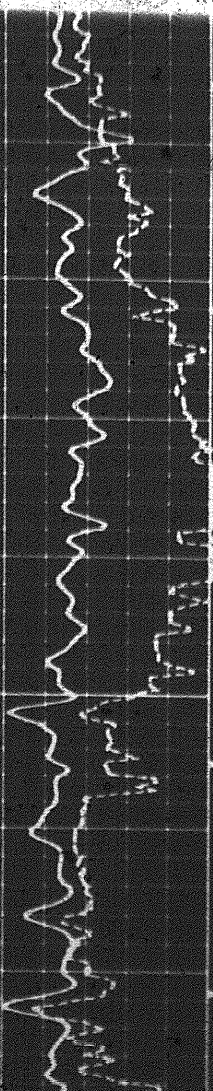
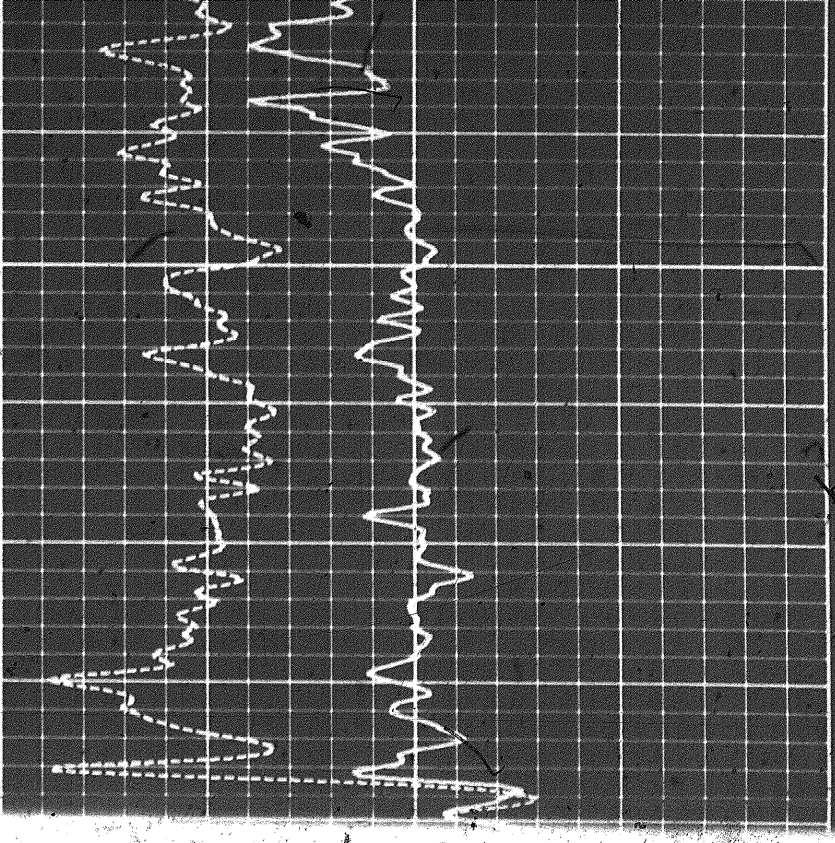
01250

01275

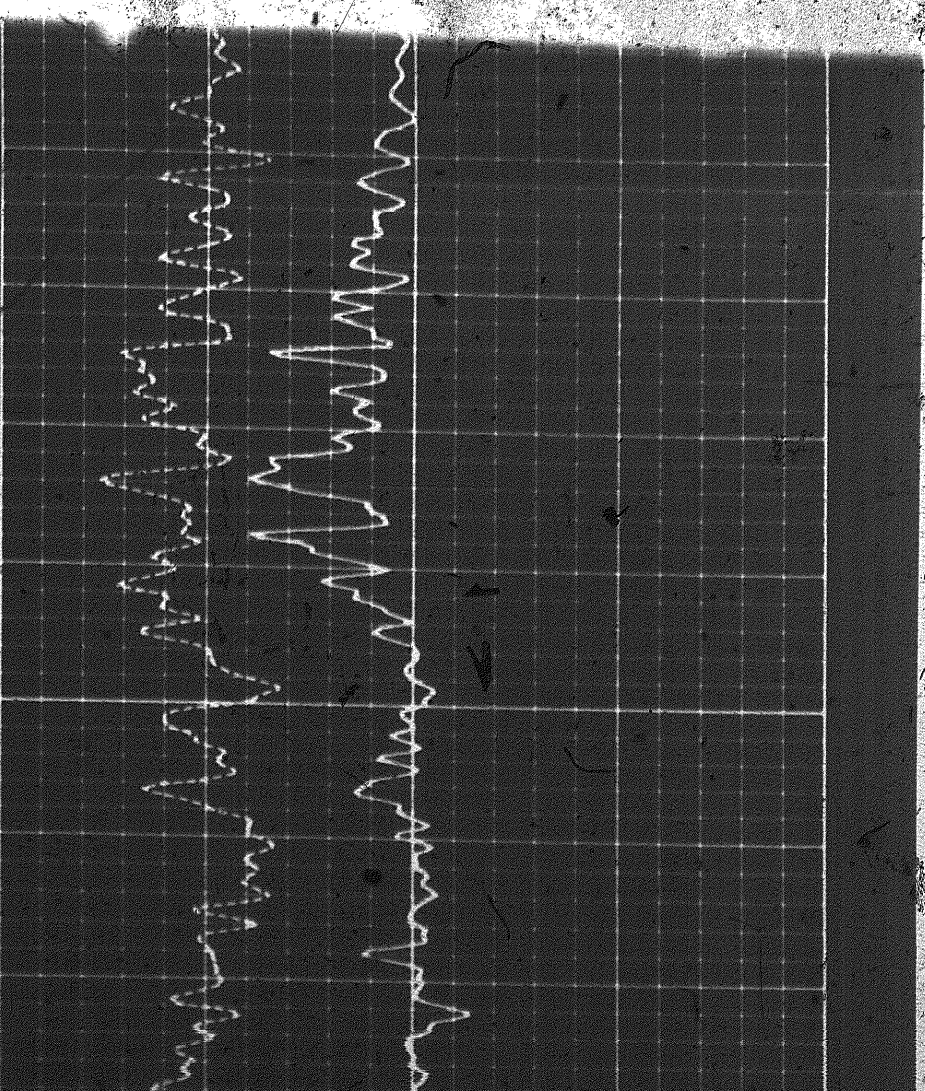


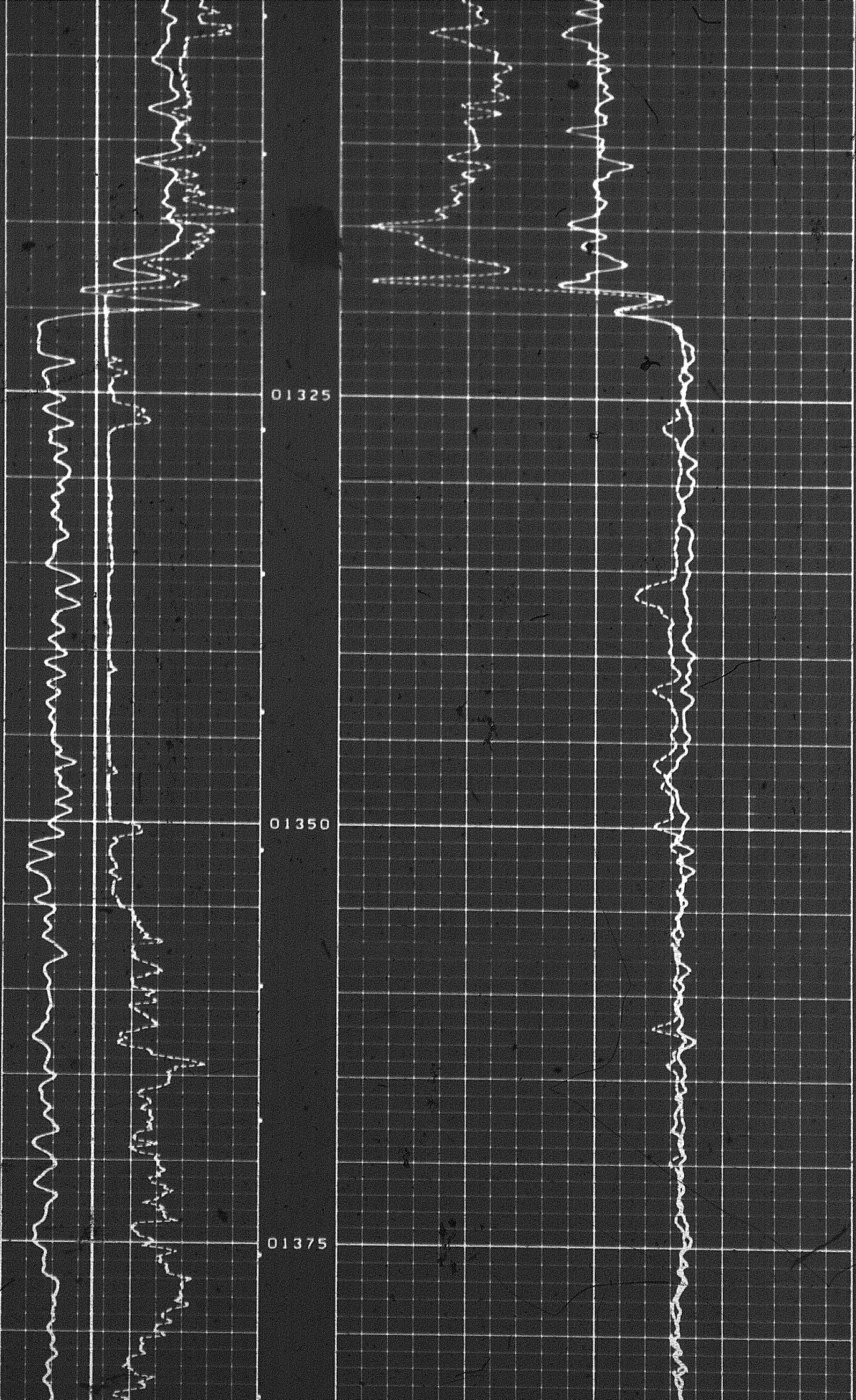


01300



01300





01325

01350

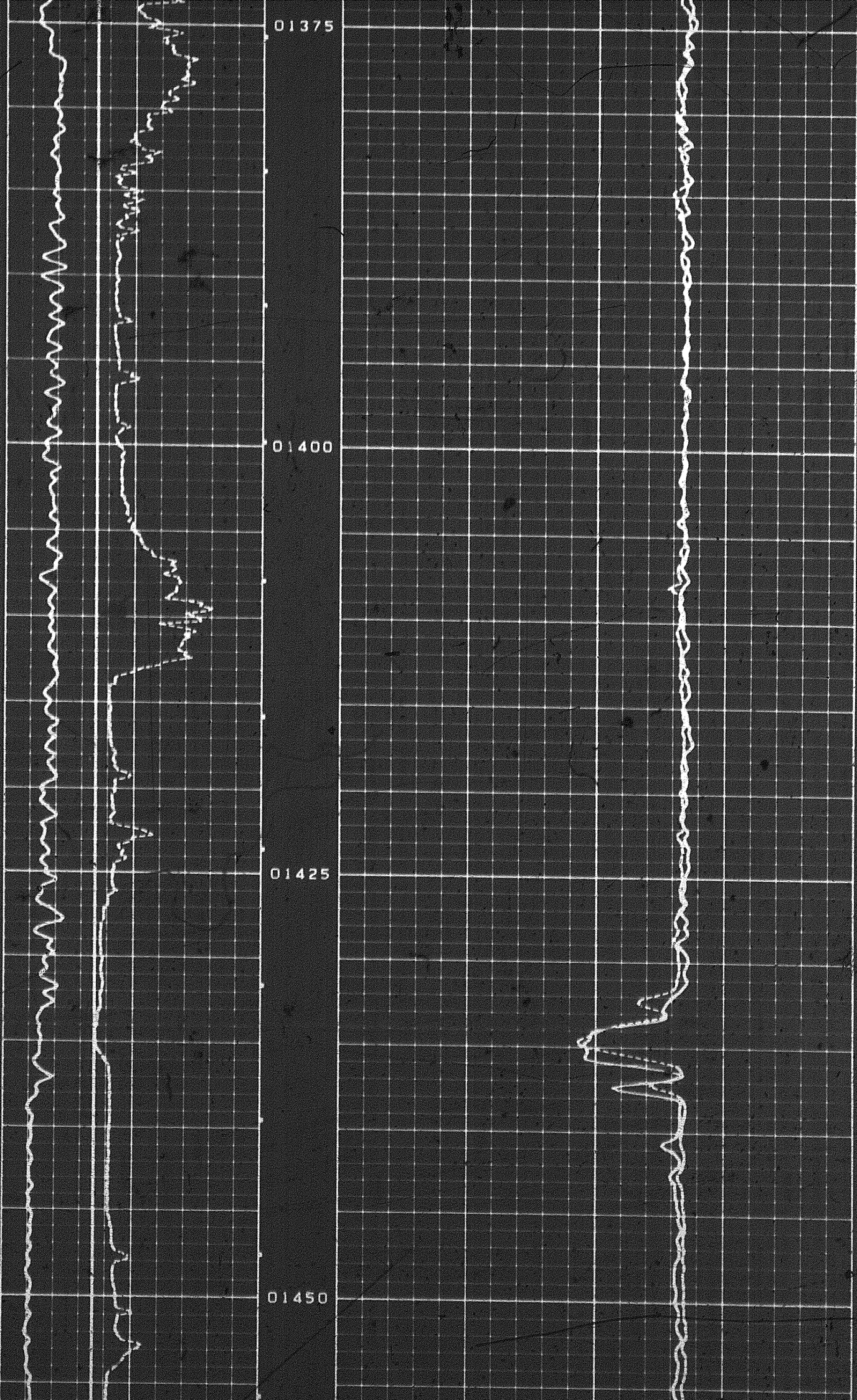
01375

01375

01400

01425

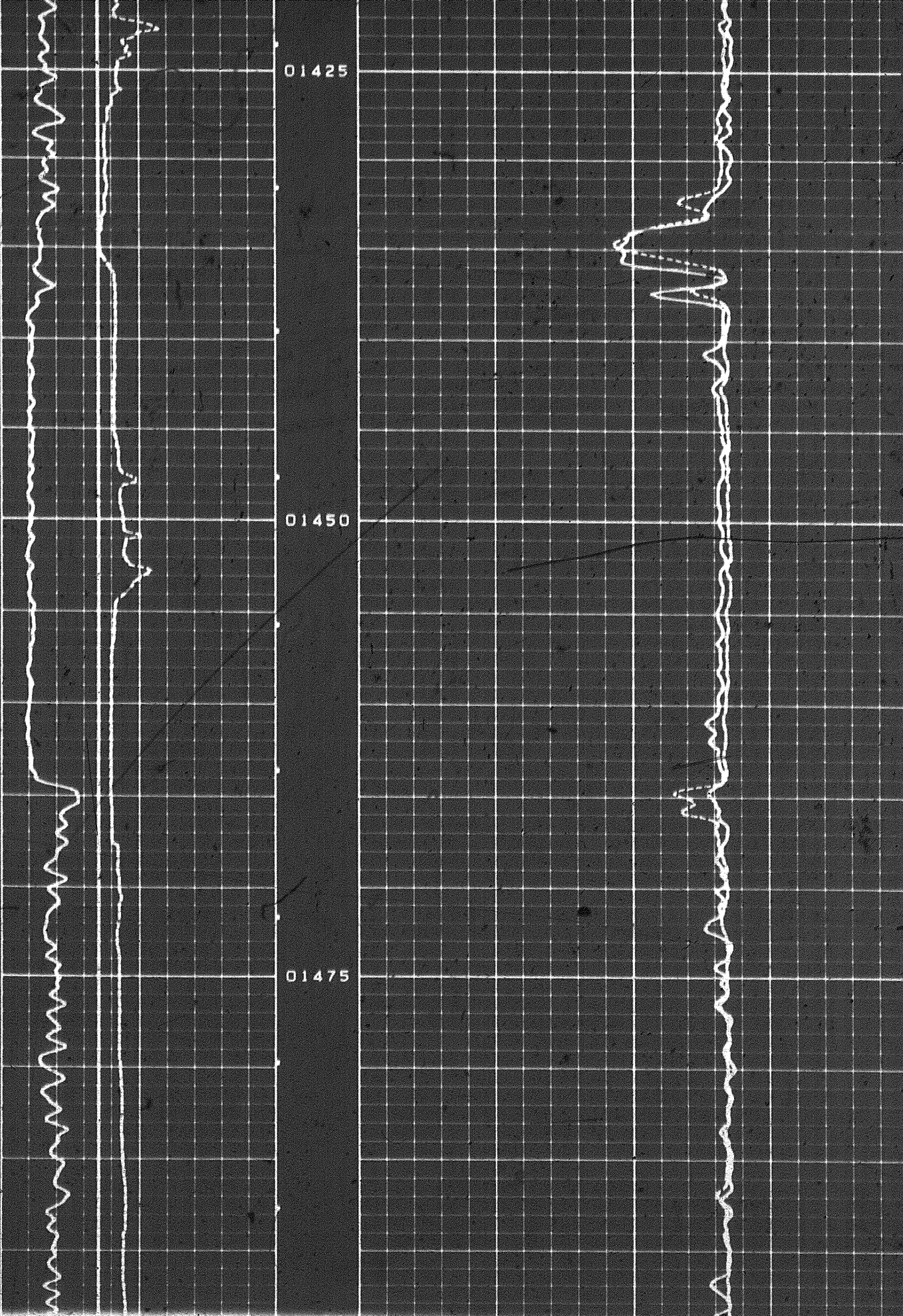
01450



01425

01450

01475

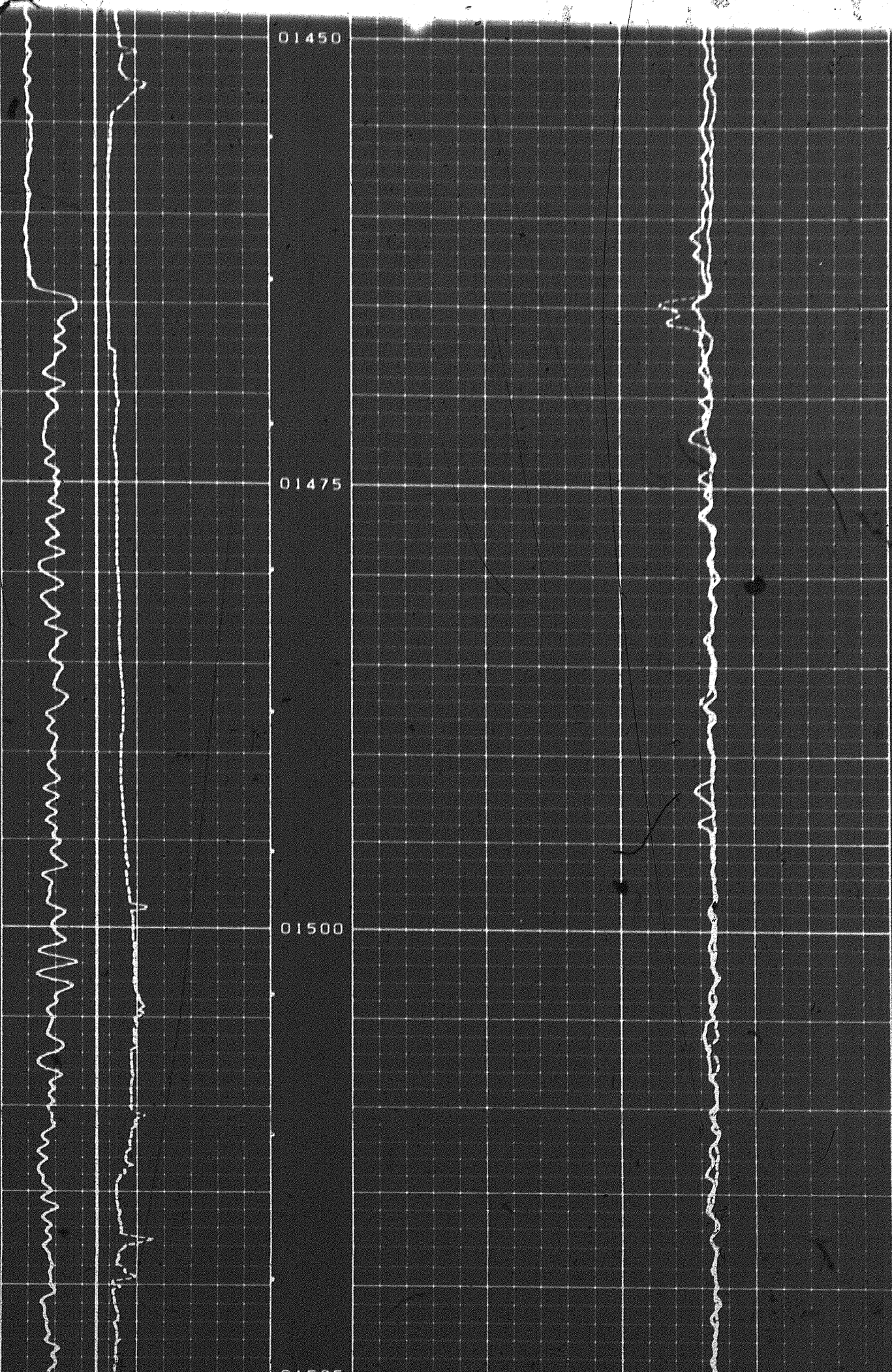


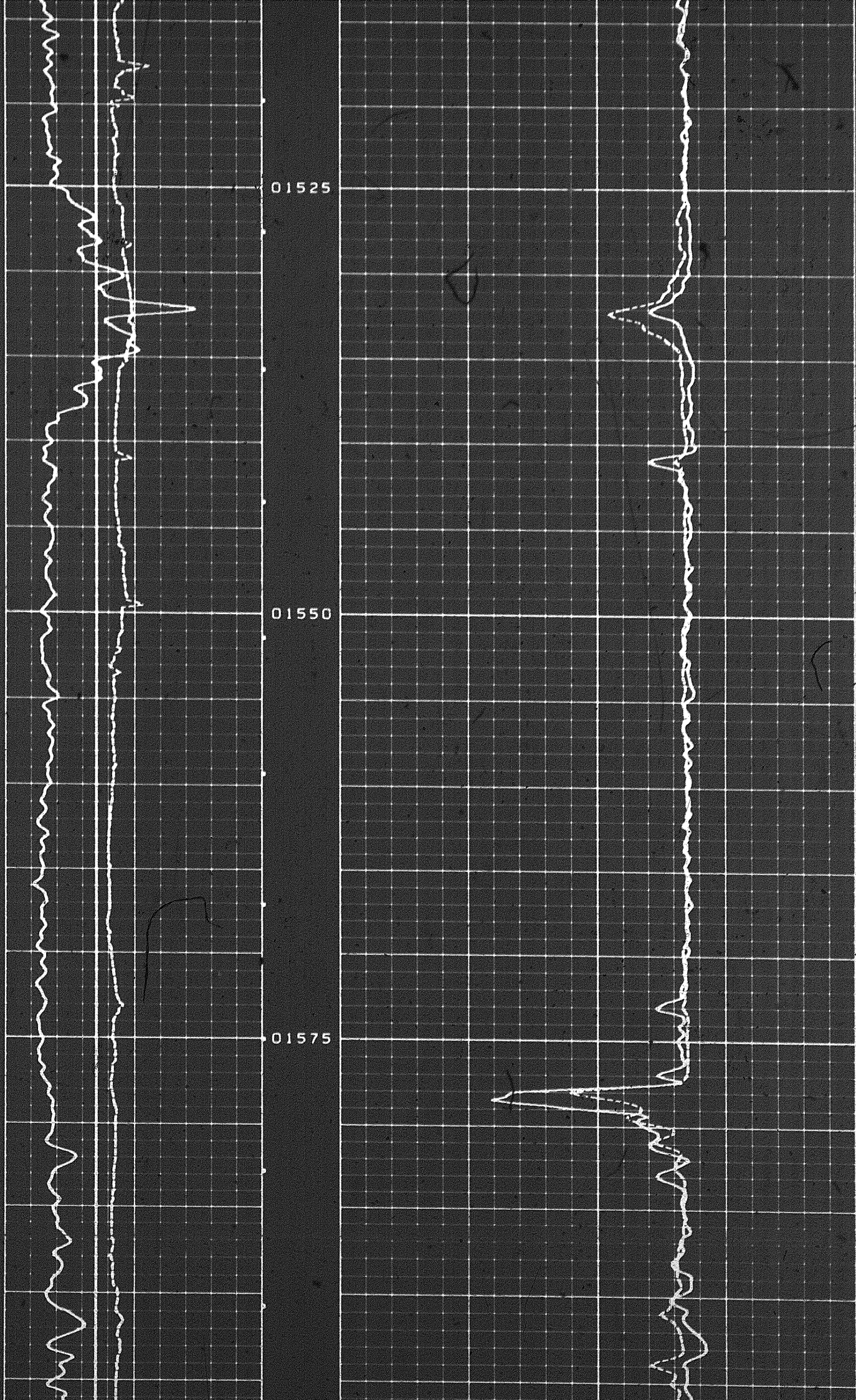
01450

01475

01500

01525

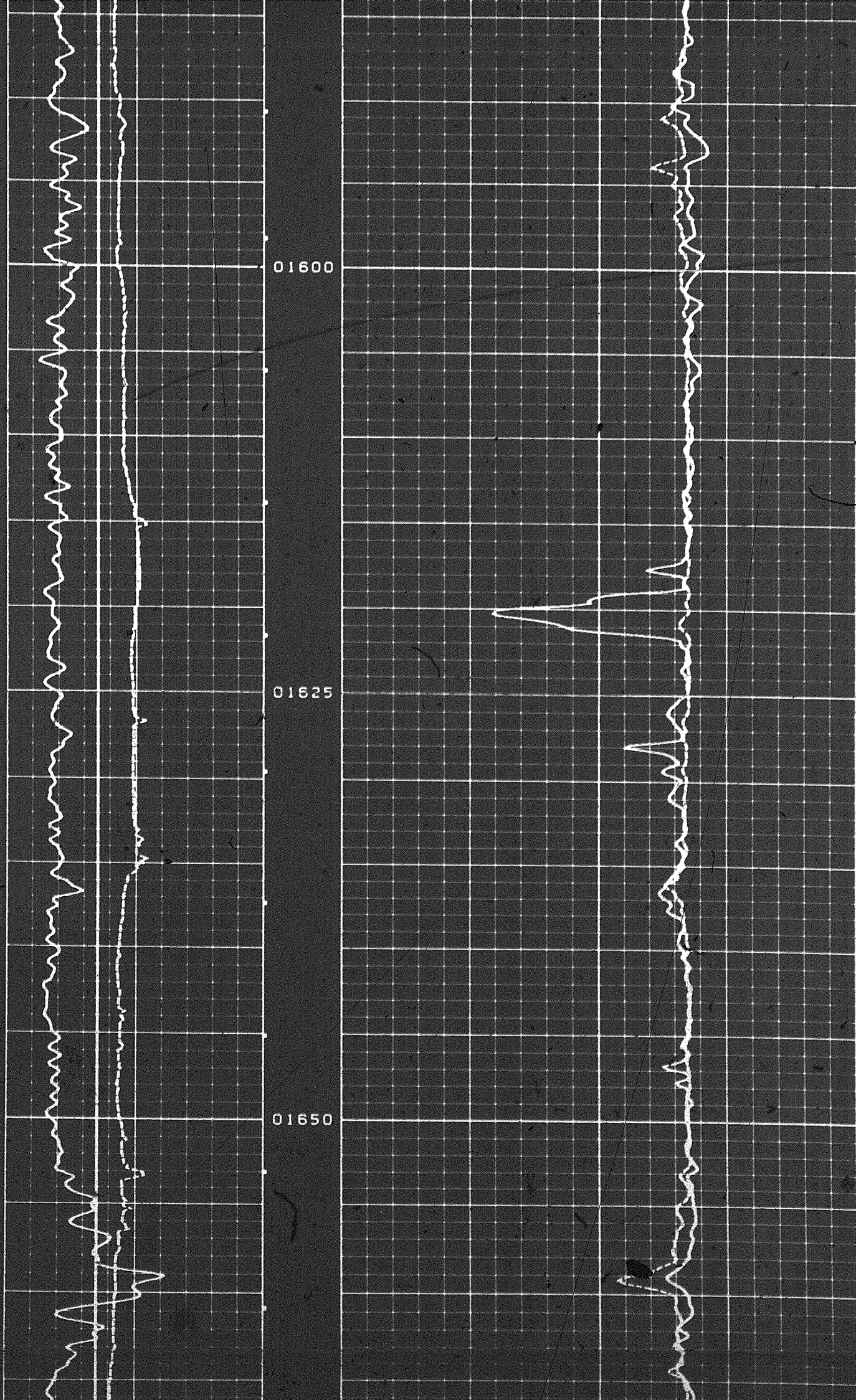




01525

01550

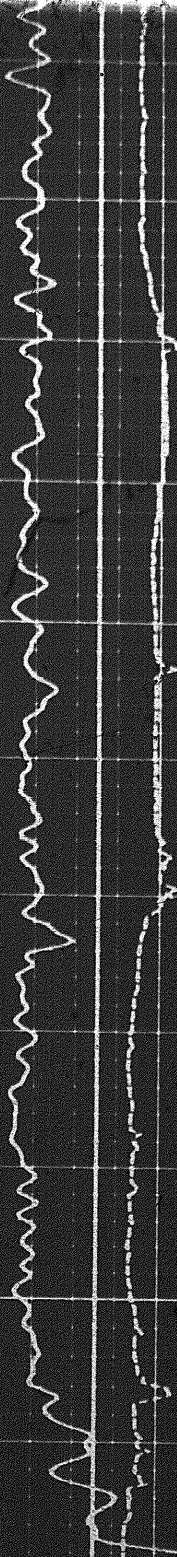
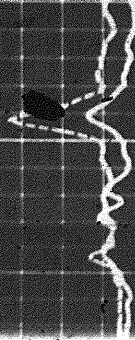
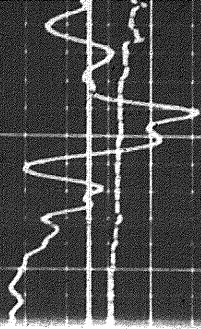
01575



01600

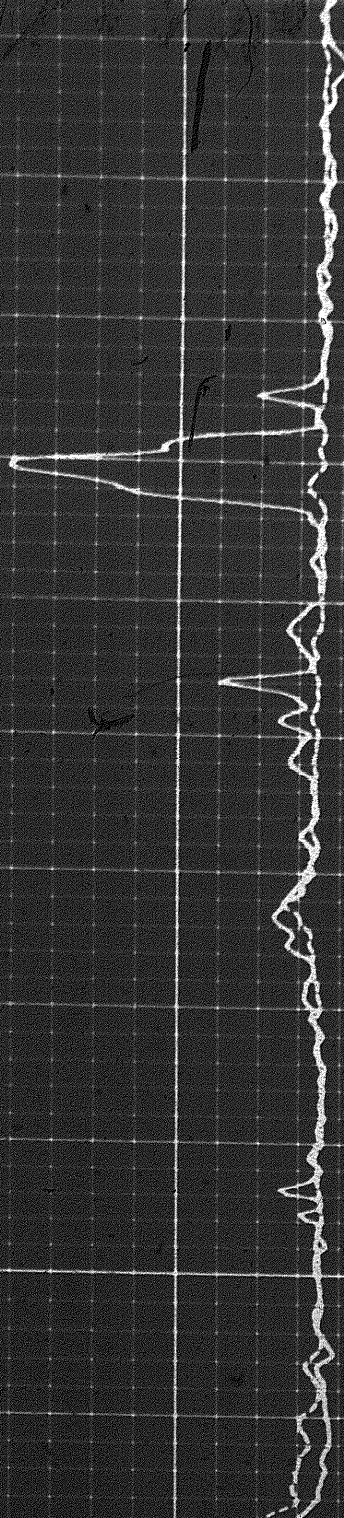
01625

01650



01625

01650



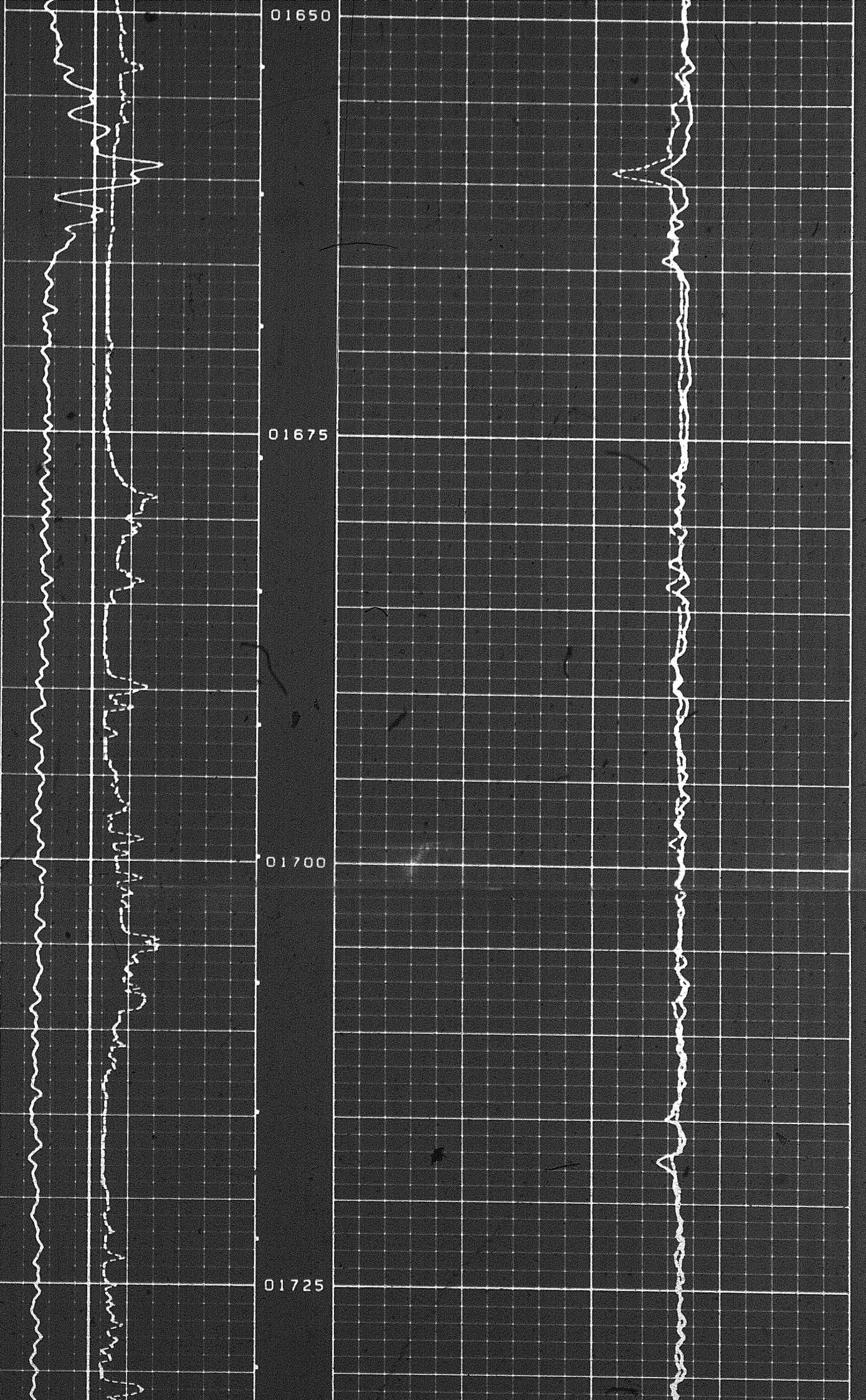
13

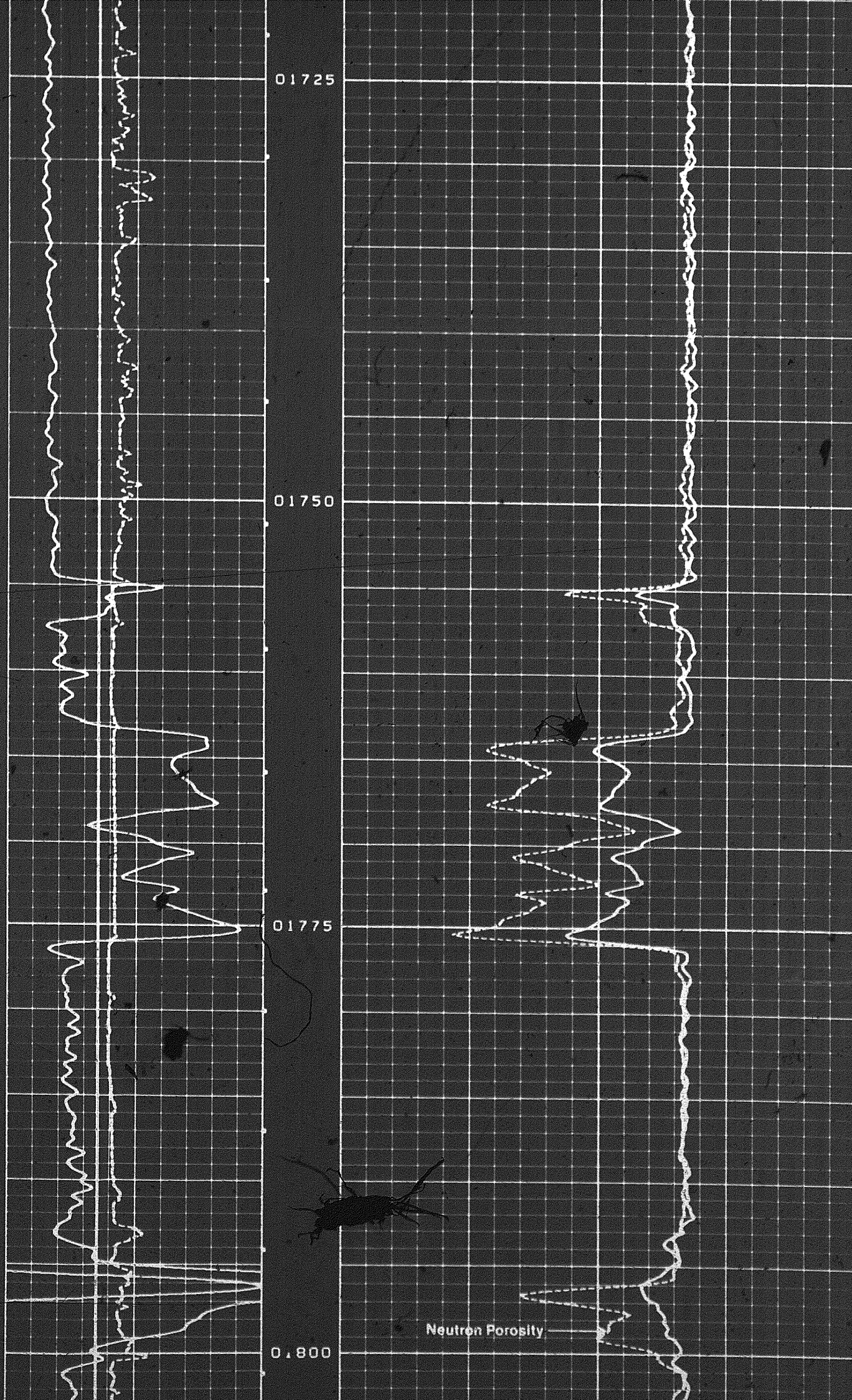
01650

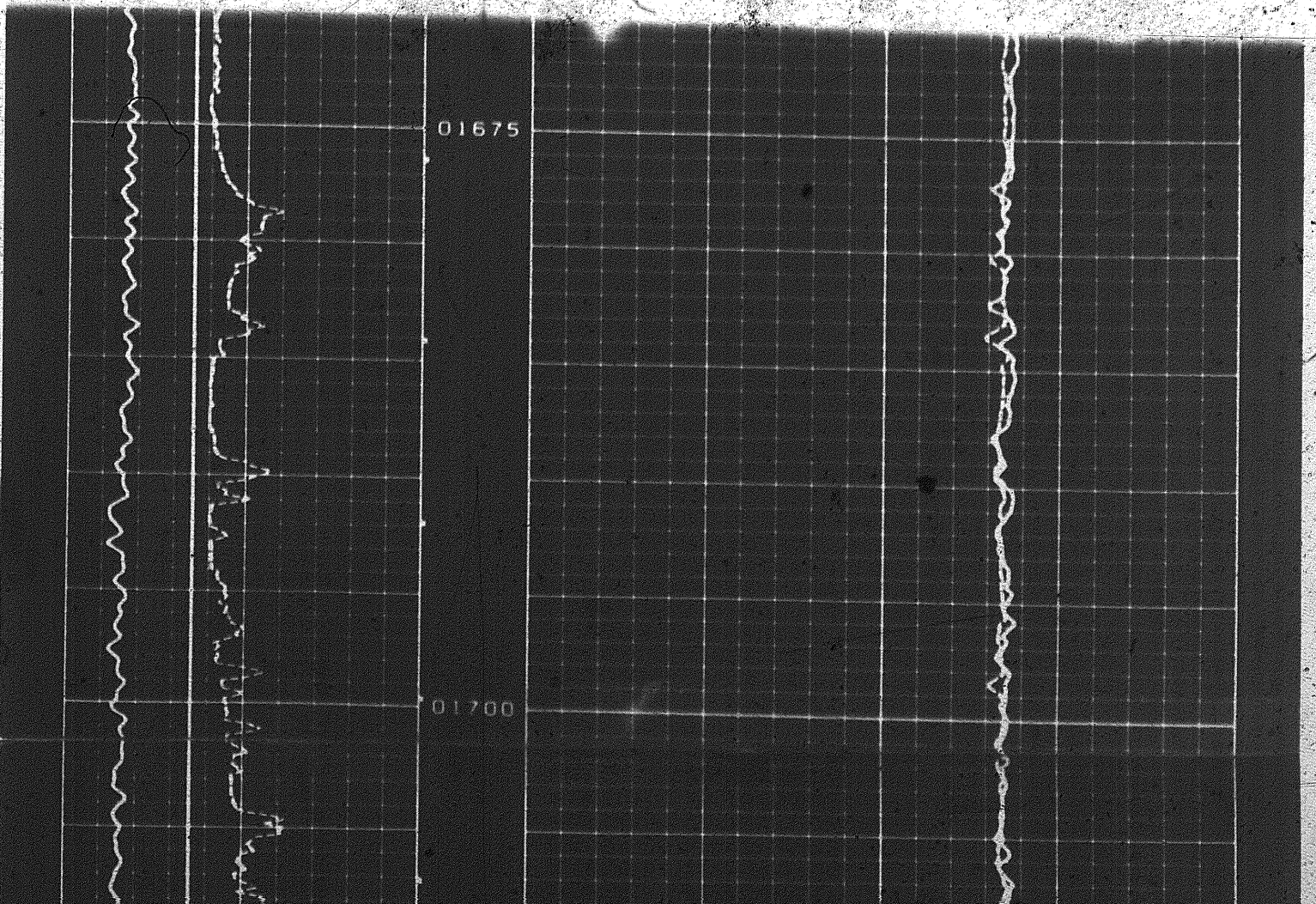
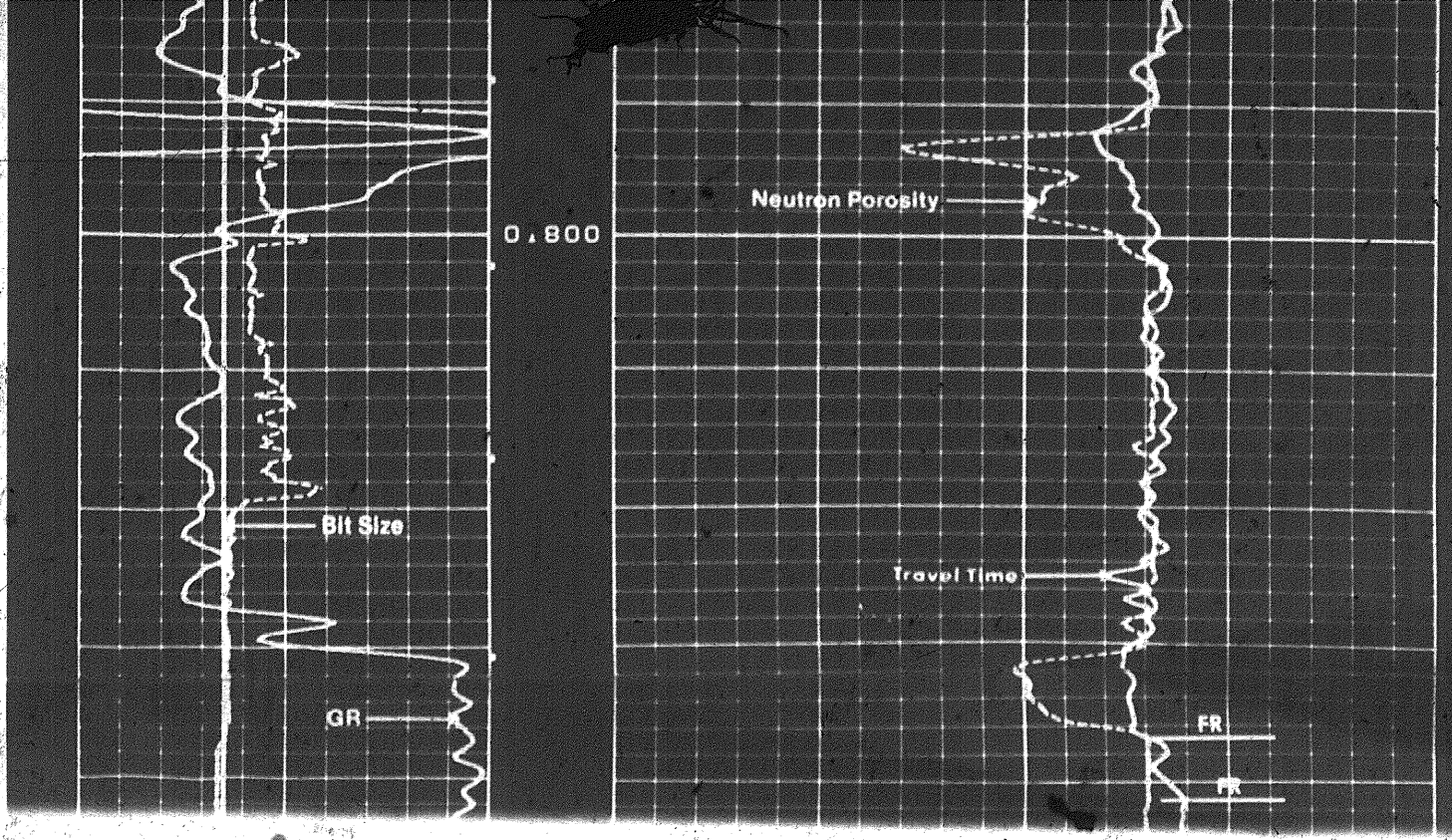
01675

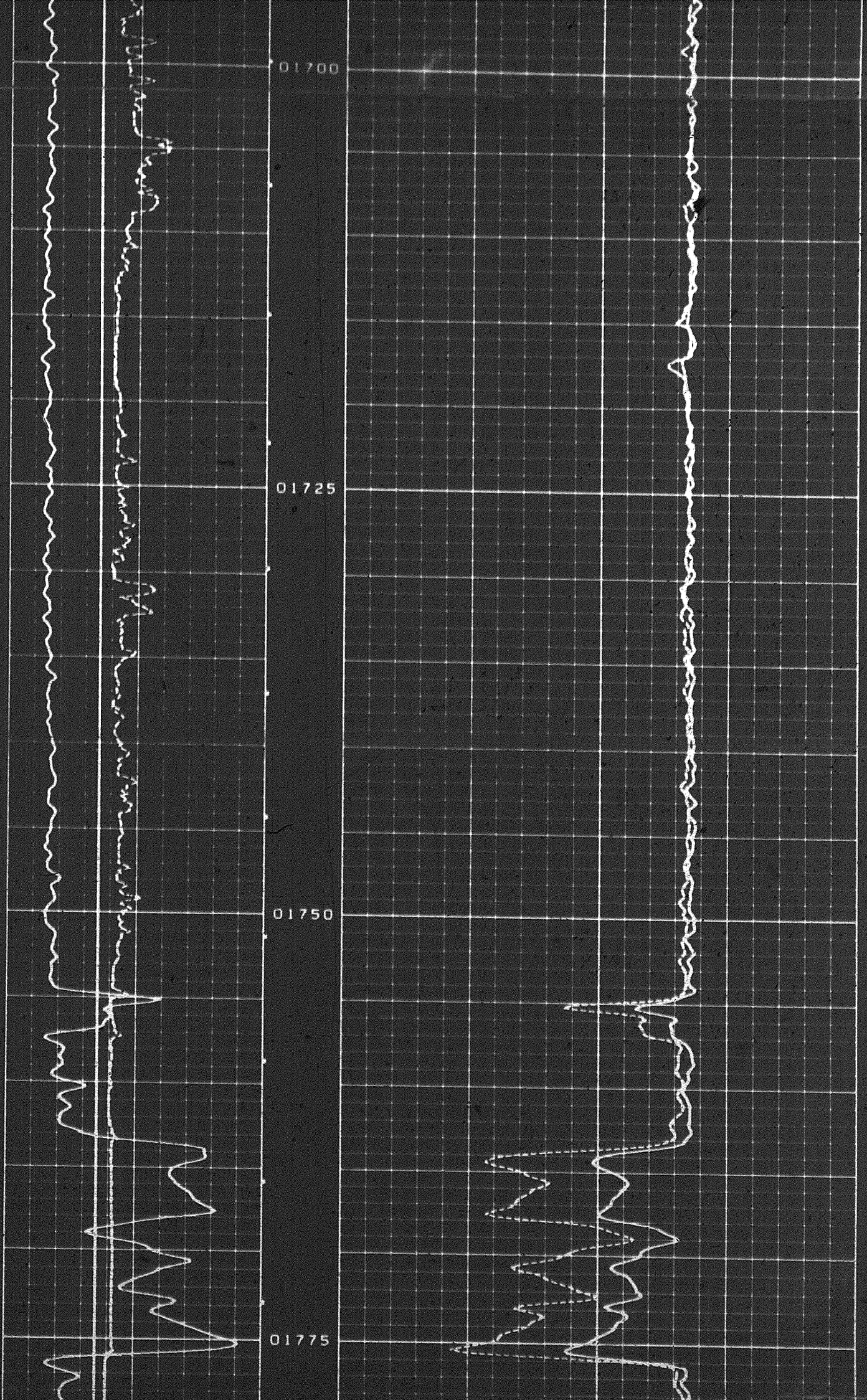
01700

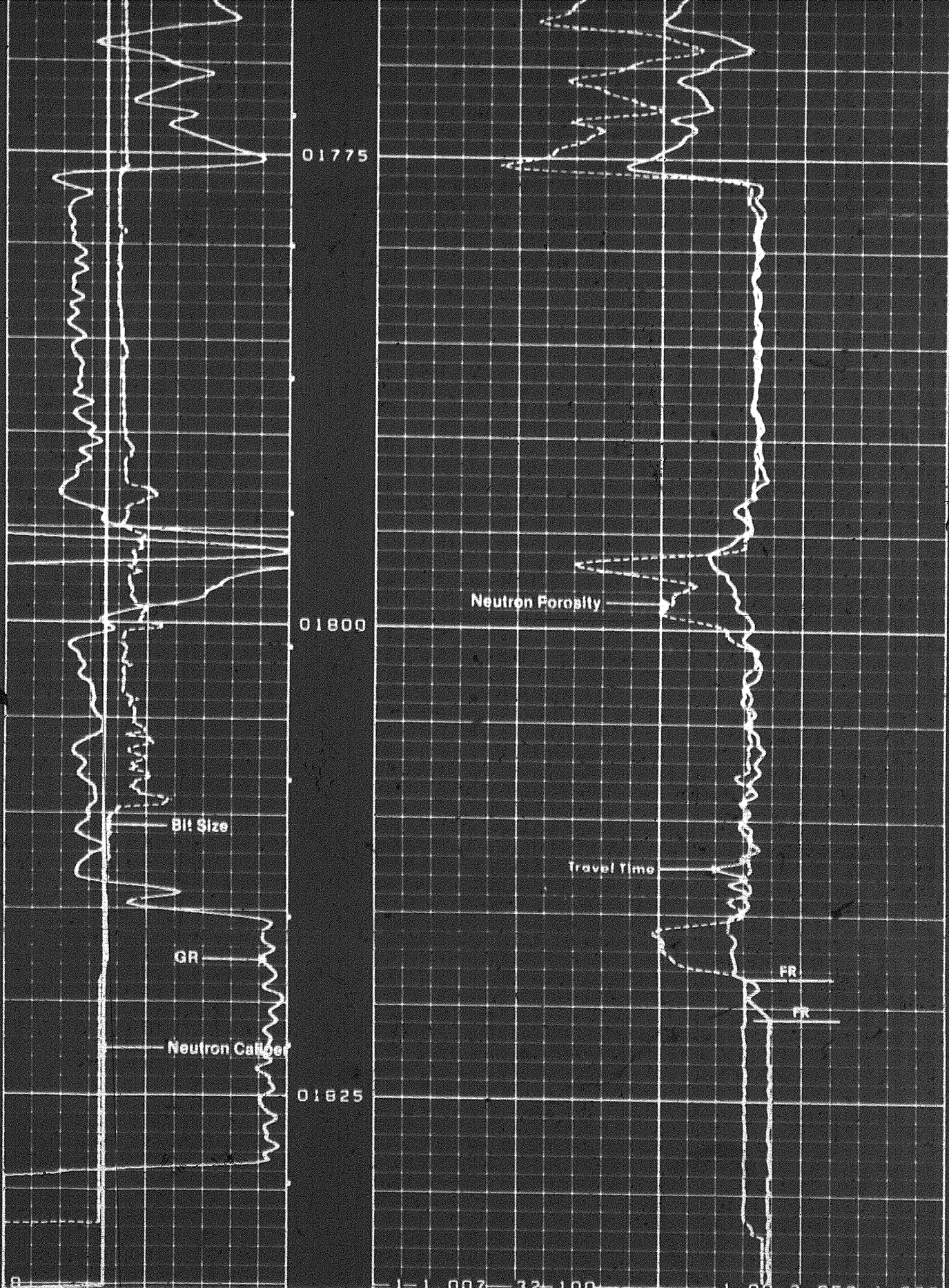
01725











5	Y - CAL	15	45	ϕ (CNS)	-15
0	GR API	150	134.1	BCS ΔT	12.1
85-04-02	04:37	1835.3	214159	0008-99	0 0

FORM 56A

COMPANY: EXCO ENERGY LIMITED

COMPUTALOG