

# SCHLUMBERGER

## INDUCTION ELECTRICAL LOG

SCHLUMBERGER OF CANADA Calgary, Alberta

PROVINCE YUKON TERRITORY  
 FIELD WILDCAT  
 WELL SOCONY MOBIL-WESTERN  
MINERALS CHANCE YT G-8  
 COMPANY SOCONY MOBIL OIL  
OF CANADA LIMITED

COMPANY SOCONY MOBIL OIL  
OF CANADA LIMITED  
 WELL SOCONY MOBIL-WESTERN MINERALS  
CHANCE YT G-8  
 FIELD WILDCAT (EAGLE PLAINS AREA)  
 PROVINCE YUKON TERRITORY  
 LOCATION LAT. 66° 7' 18.1" NORTH  
 LONG. 137° 30' 50.8" WEST  
 Permanent Datum GL Elev. 1702  
 Log Measured From KB 17.8 Ft. Above Perm. Datum  
 Other Services  
 BHC-GRC, ML-C  
 LDM, SRS  
 ELEV. KB 1719.73  
 GL 1702.00  
 CBF

Date	30 JAN 65	15 FEB 65	
Run No.	UNE	TWO	
First reading	4937	5181	
Last reading	810	4915	
Feet measured	4127	266	
Depth reached	4939	5182	
Bottom Driller	4944	5183	
Crg. SOC	810	4915	
Crg. Driller	9 5/8" @ 810'	4917	
Mud Nature	GEL-CAUSTIC	GEL-CAUSTIC	
Dens. Visc.	9.6 58	8.5 38	
Mud pH	8.5	10.0	
Water Loss		11.0	
" Res	1.42 @ 62 F	1.53 @ 65 F	
" " @ BHT	1.01 @ 92 F	0.78 @ 100 F	
" Rmf	1.13 @ 68 F	1.31 @ 72 F	
" Rmc	2.47 @ 68 F	1.79 @ 72 F	
BH Size	8 5/8"	6 1/8"	
Spacing - AM	16"	16"	
" MN	34 1/6"	34 1/6"	
Ind. Type	6FF40	6FF40	
Op. Rig Time	4 HOURS	4 HOURS	
Tract No.	1511 - DC	1511 - DC	
Recorded By	MOORE	MOORE	
Witness	WARDEN	WARDEN	

AV/18/2/65/DC

REMARKS  
 Drilling Stopped \_\_\_\_\_ Hrs. Circulation Stopped 6 Hrs. Tool on Bottom 2 Hrs. 1st Run Service Order # 24773  
 BHT. 89 °F

Stand Off = 1.5 Inches  
 Cartridge No MIH-D-46  
 Panel No. IRP-E-148  
 Sonde No. IRS-M-26  
 IAP-D No. 327  
 SBR 2 1930 - 4937  
25 810 - 1930

### Run 1

Drilling Stopped \_\_\_\_\_ Hrs. Circulation Stopped \_\_\_\_\_ Hrs. Bottom \_\_\_\_\_ Hrs. 1st Run Service Order # \_\_\_\_\_  
 BHT. 100 °F

Stand Off 1.5 Inches  
 Cartridge No \_\_\_\_\_  
 Panel No. IRPE  
 Sonde No. IRS-M  
 IAP-D No. 244  
 SBR 4

2 HR. SAMPLE 1.62 @ 63  
 1 HR. SAMPLE 1.53 @ 65

### Run 2

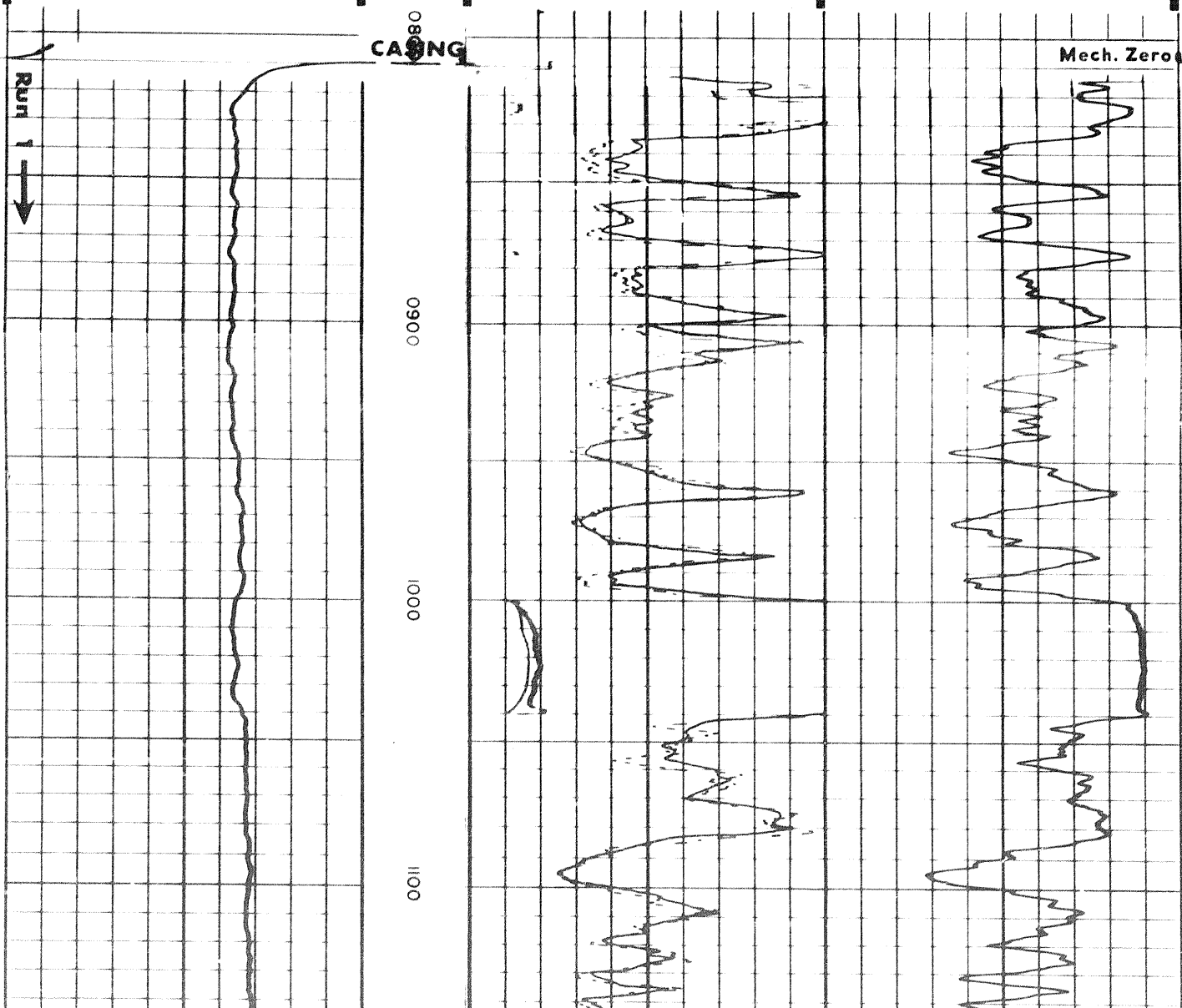
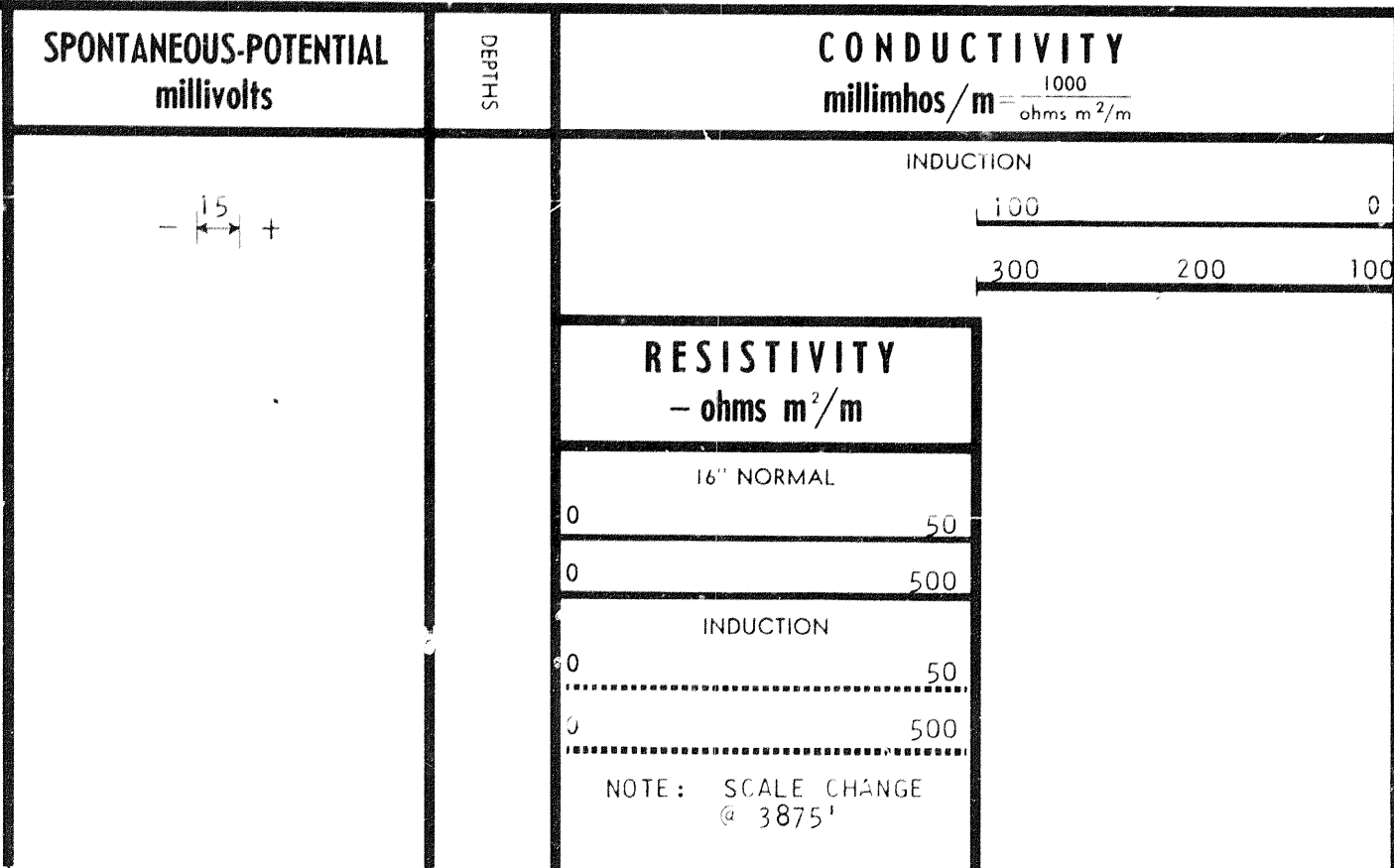
SPONTANEOUS-POTENTIAL  
millivolts

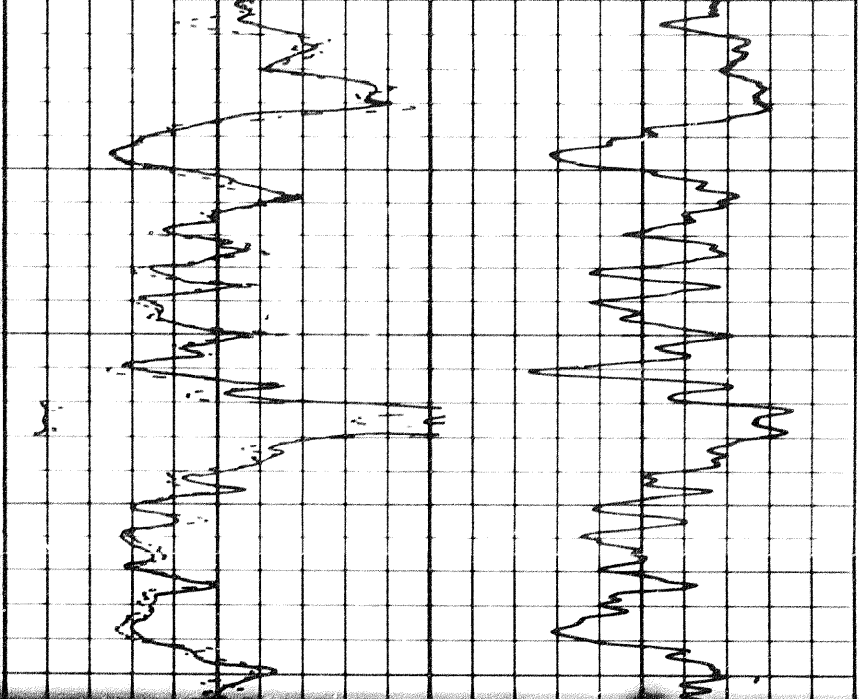
DEPTHS

CONDUCTIVITY  
millimhos/m  $\frac{1000}{\text{ohms m}^2/\text{m}}$

INDUCTION

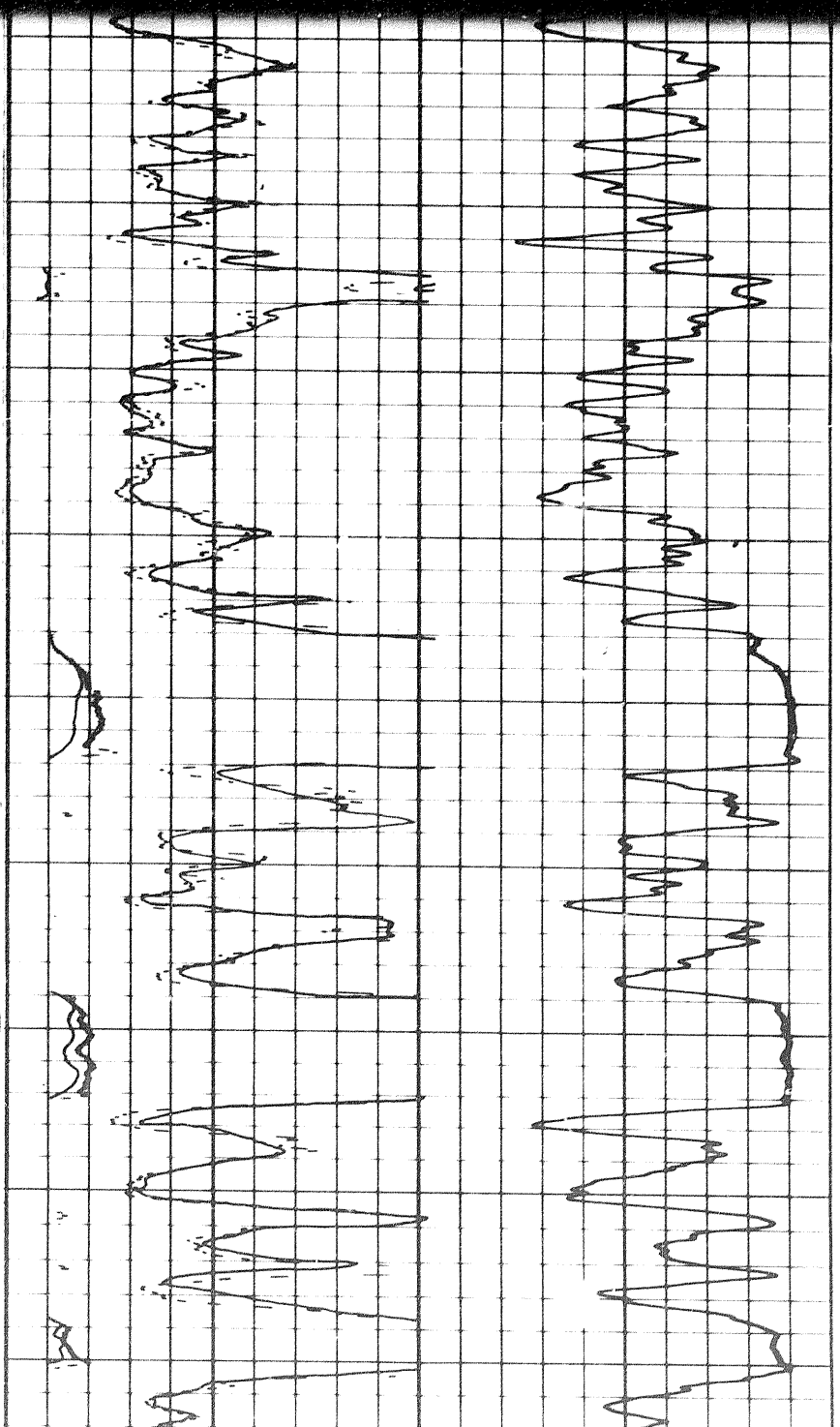
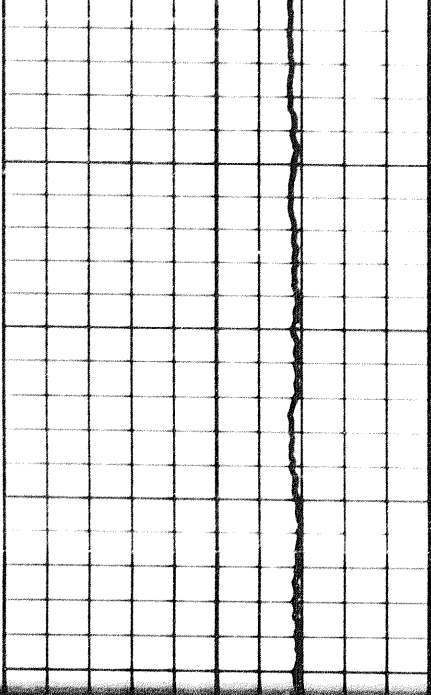
Run 2





000

1200



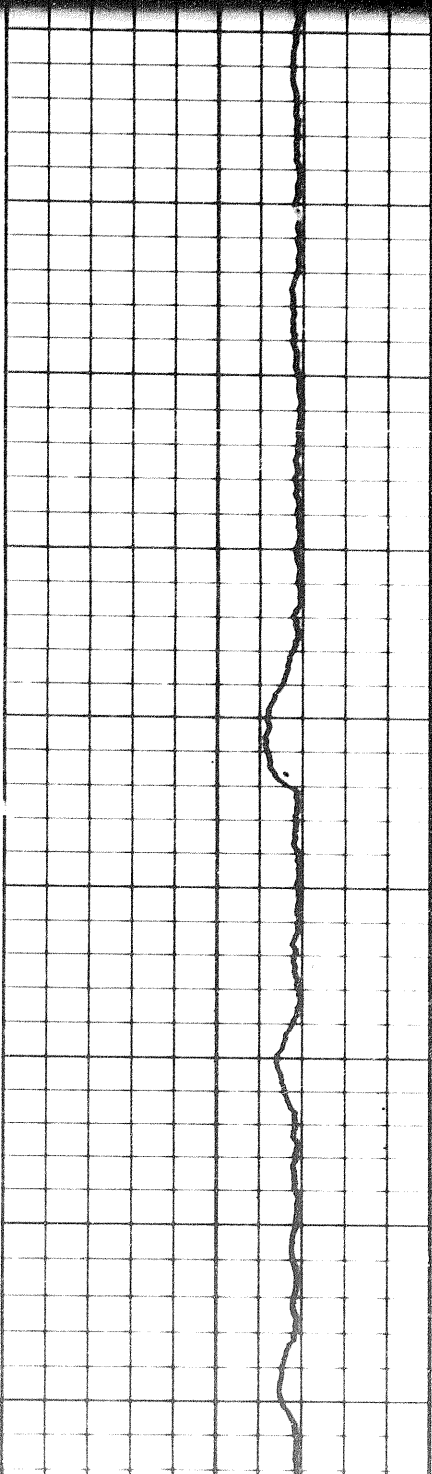
00

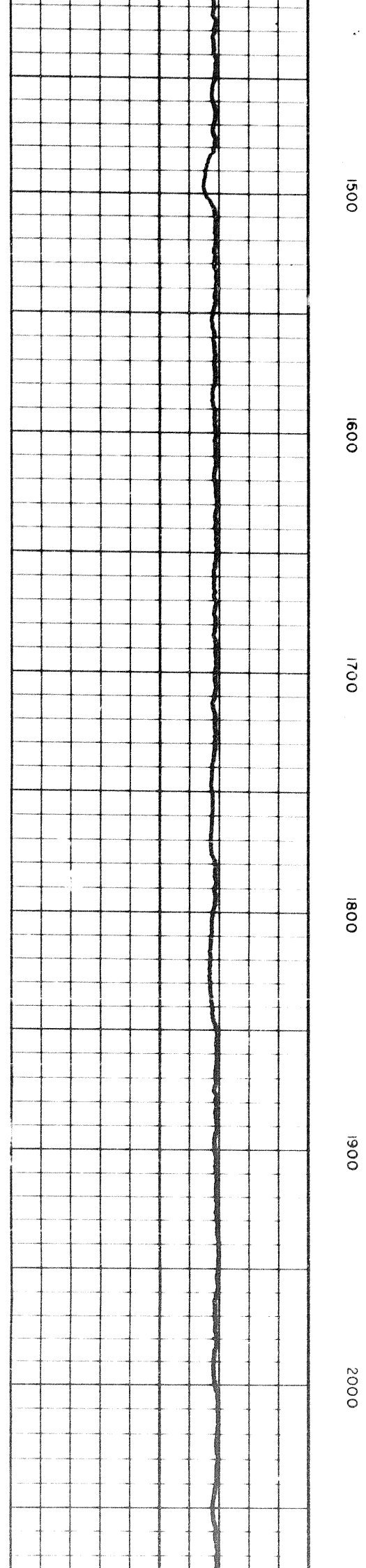
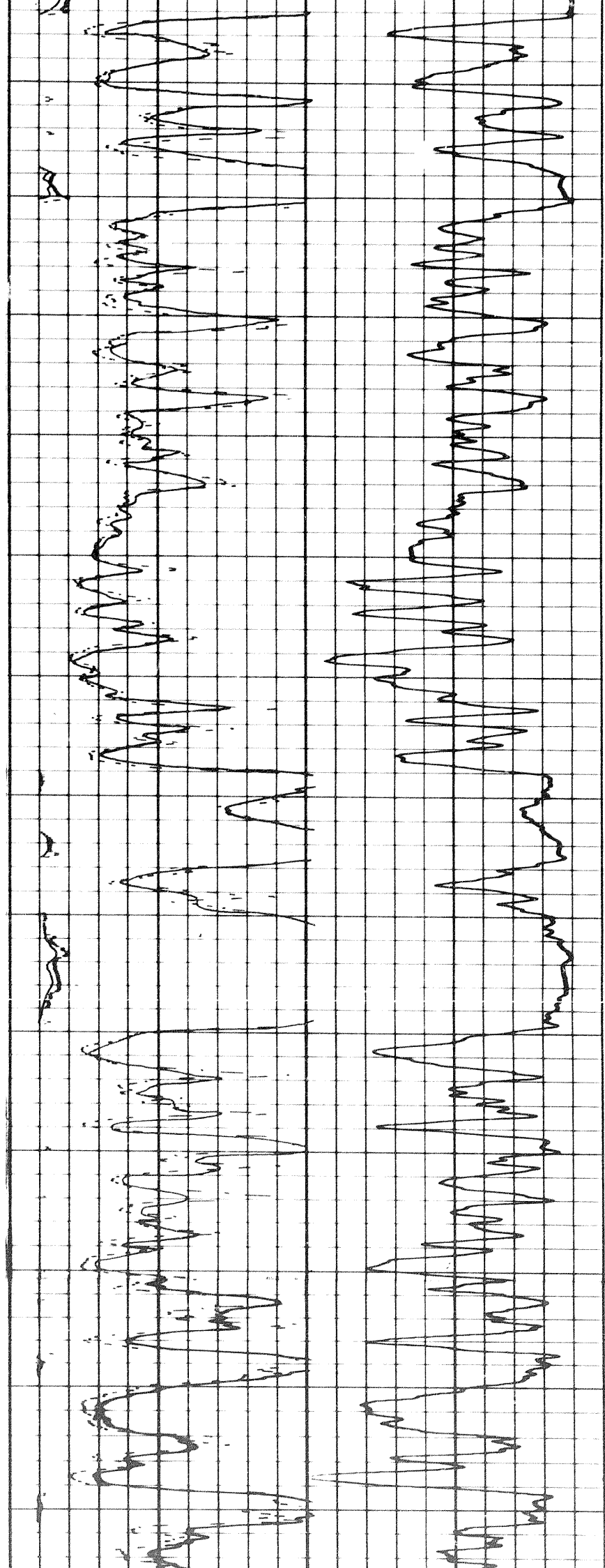
1200

1300

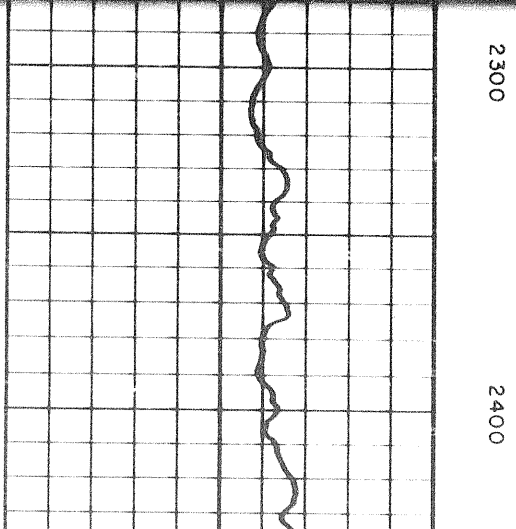
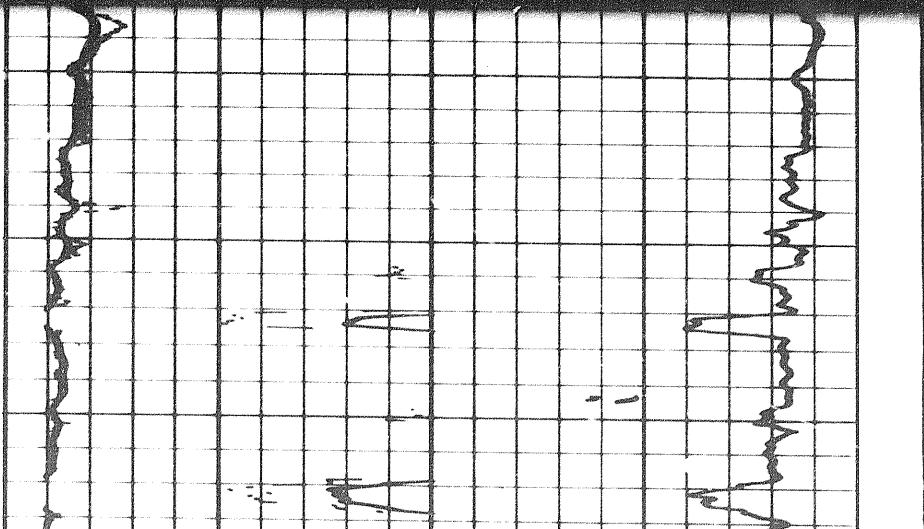
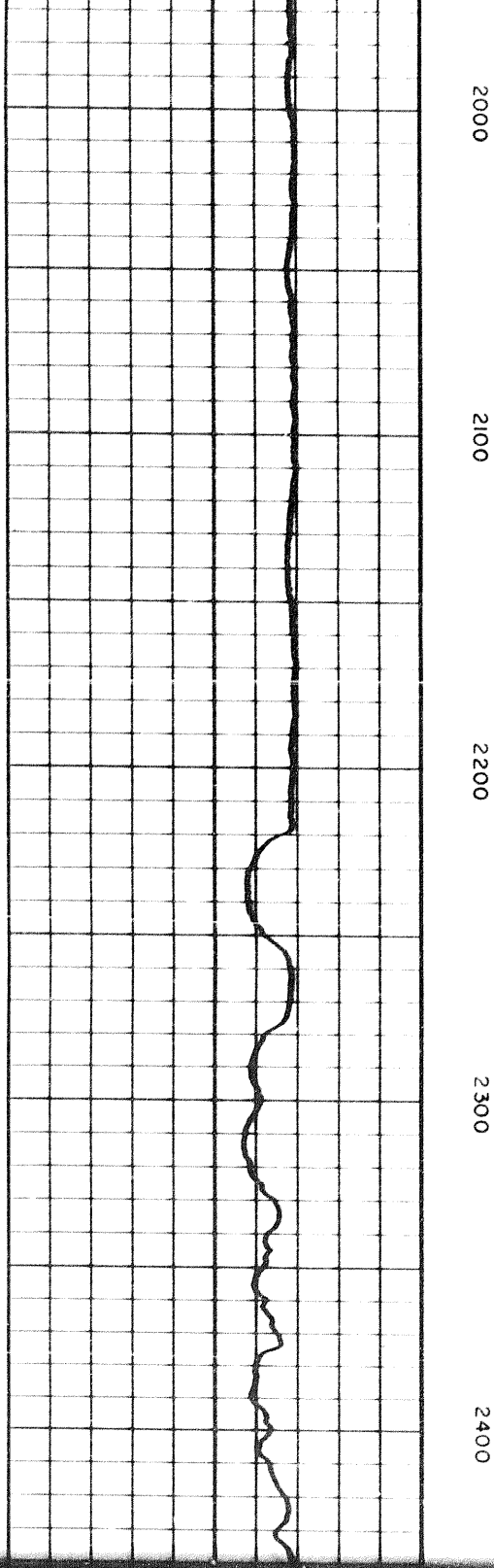
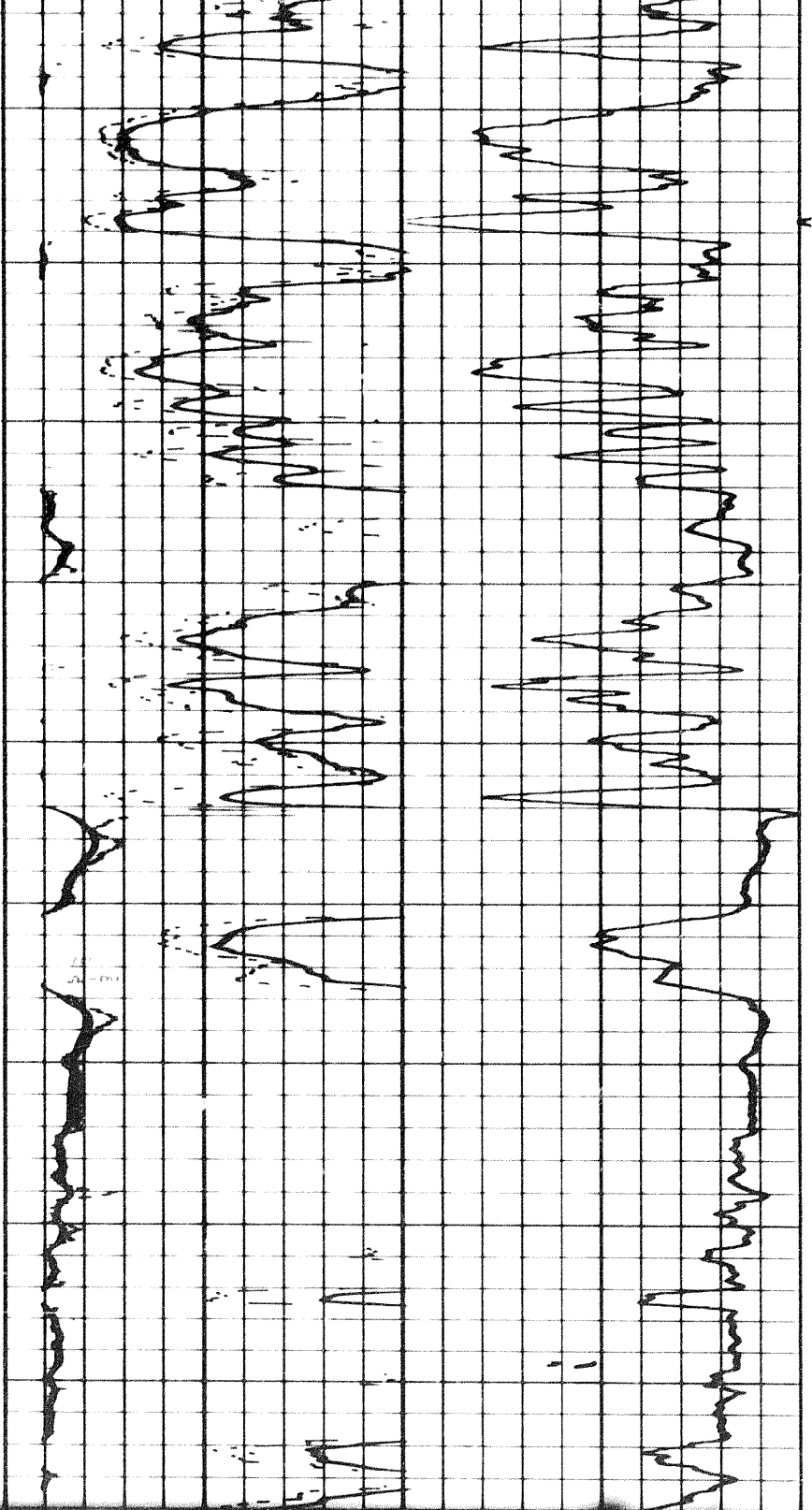
1400

1500

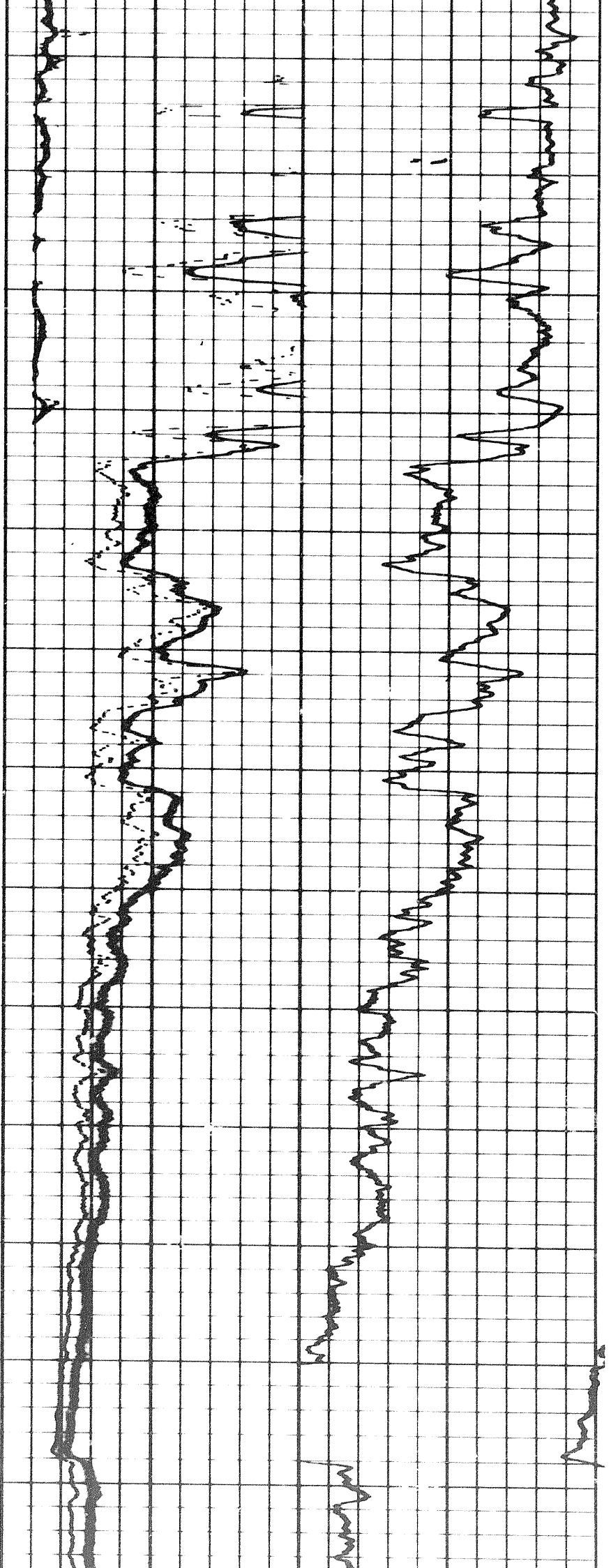








202



2400

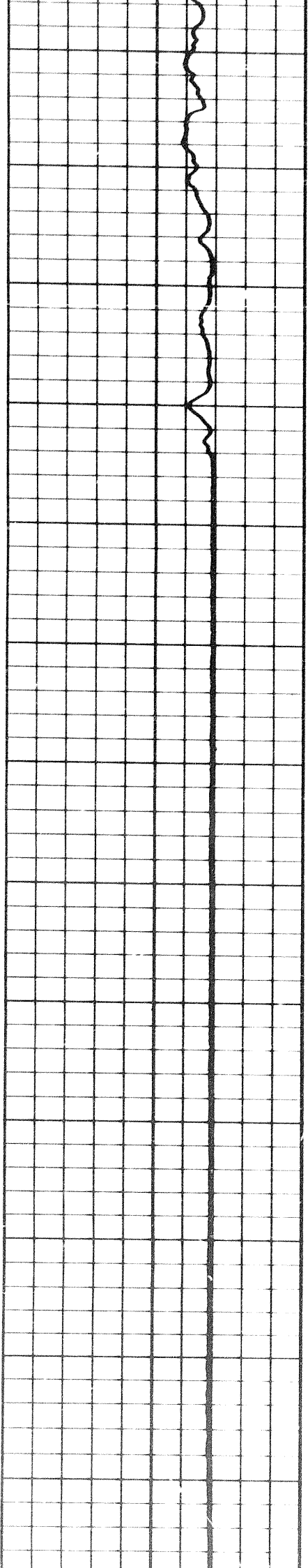
2500

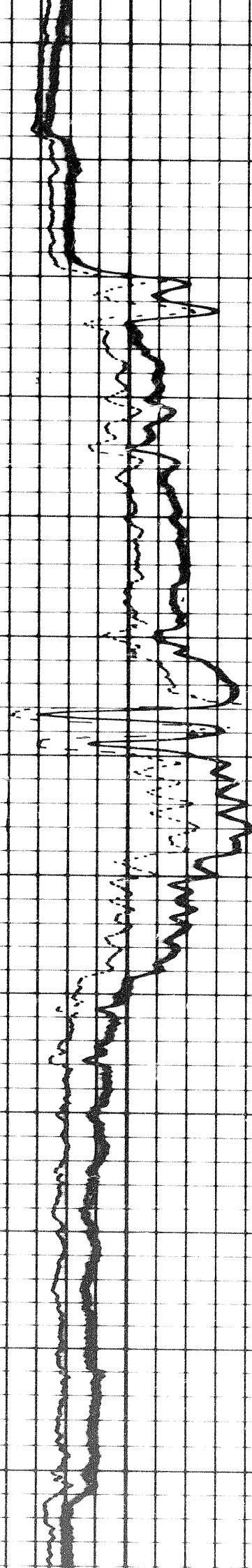
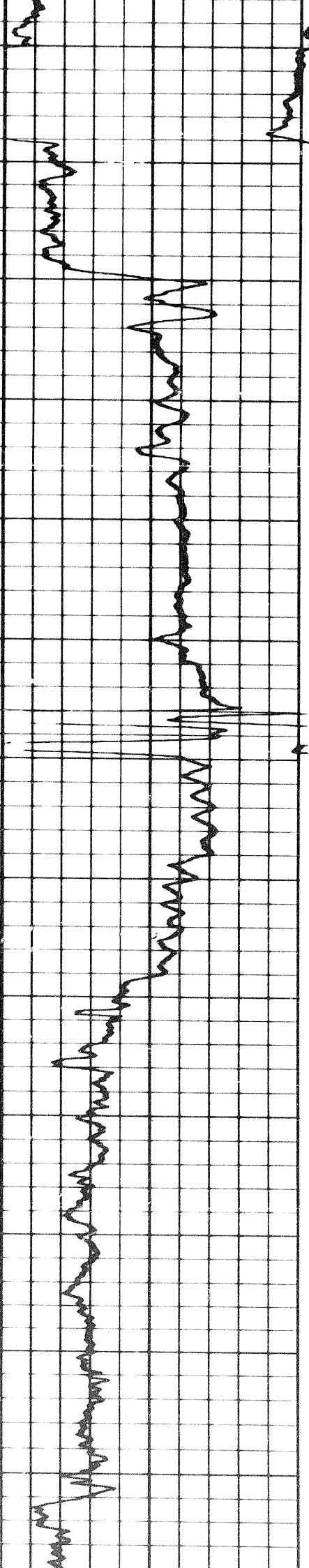
2600

2700

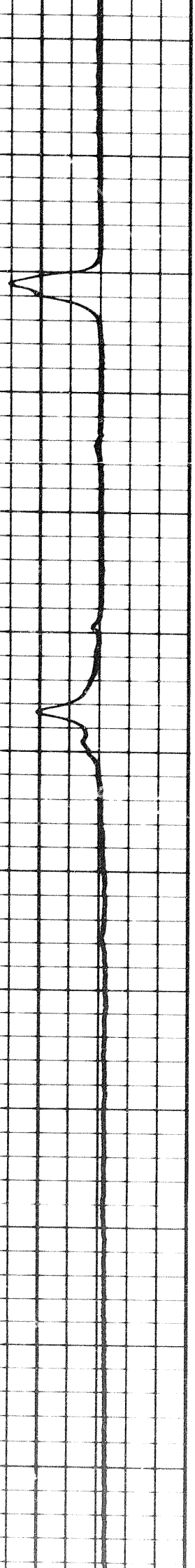
2800

2900





2900 3000 3100 3200 3300 3400 3500



3 of

3500

3600

3500

3600

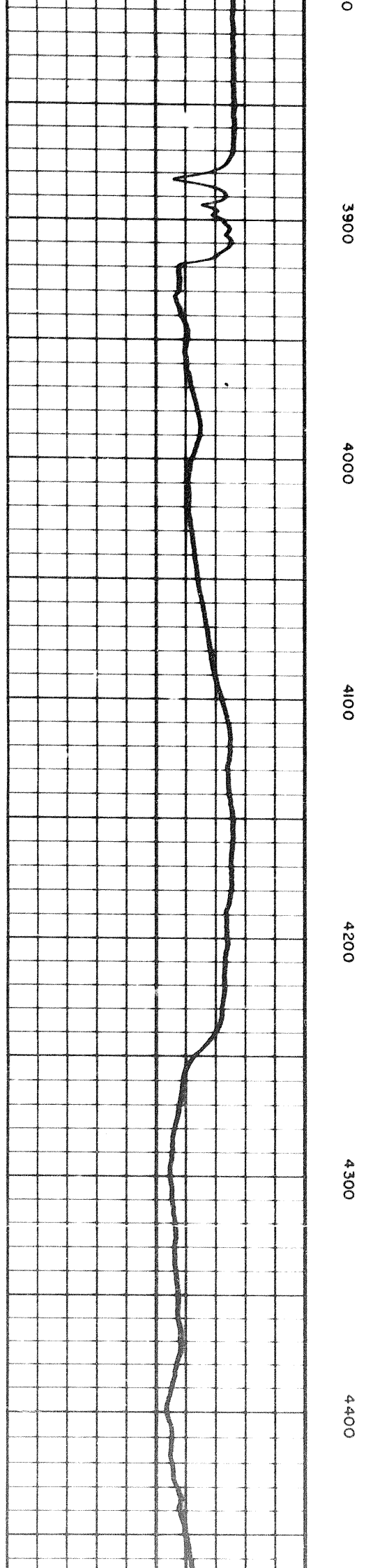
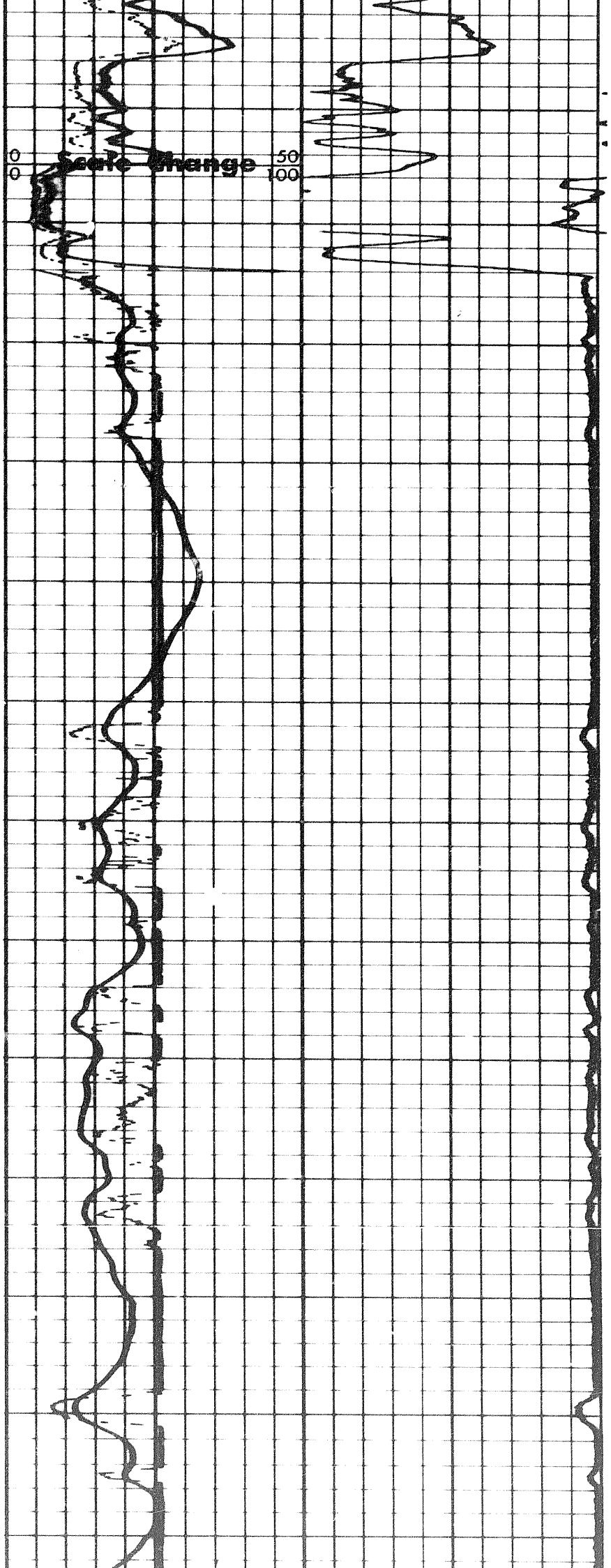
3700

3800

3900

Scale change 50 100





18-

4400

4500

4600

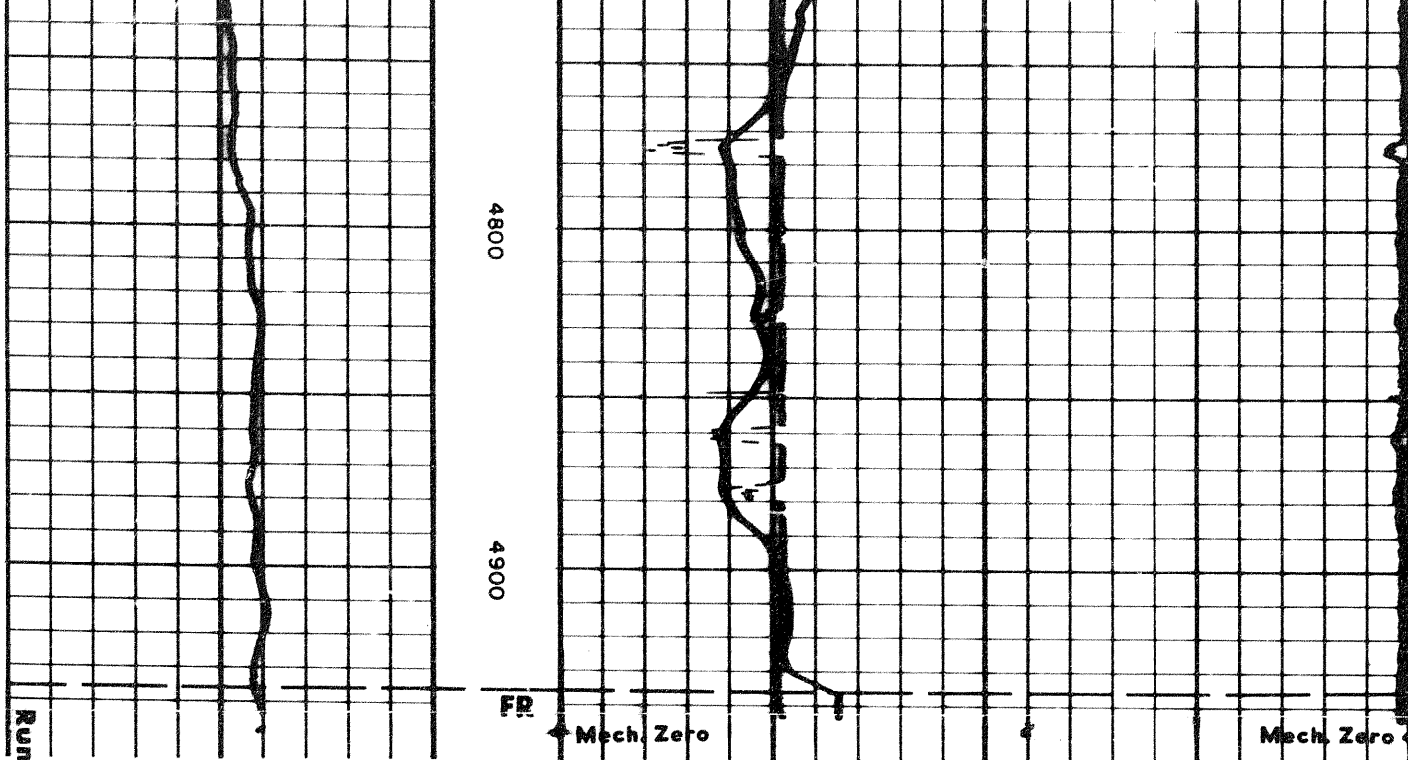
4700

4800

4 of

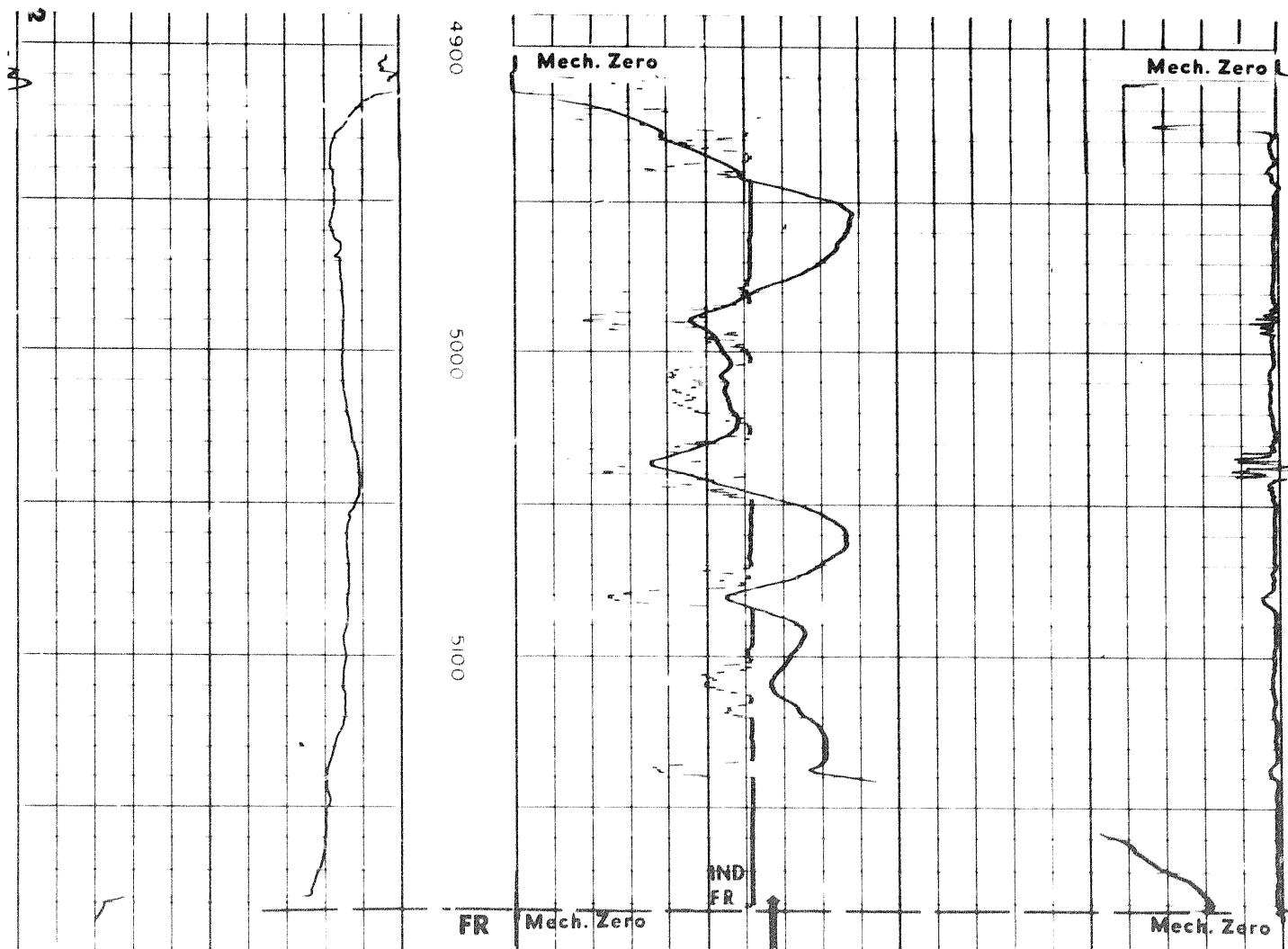
4700

4800



S P Scale Change

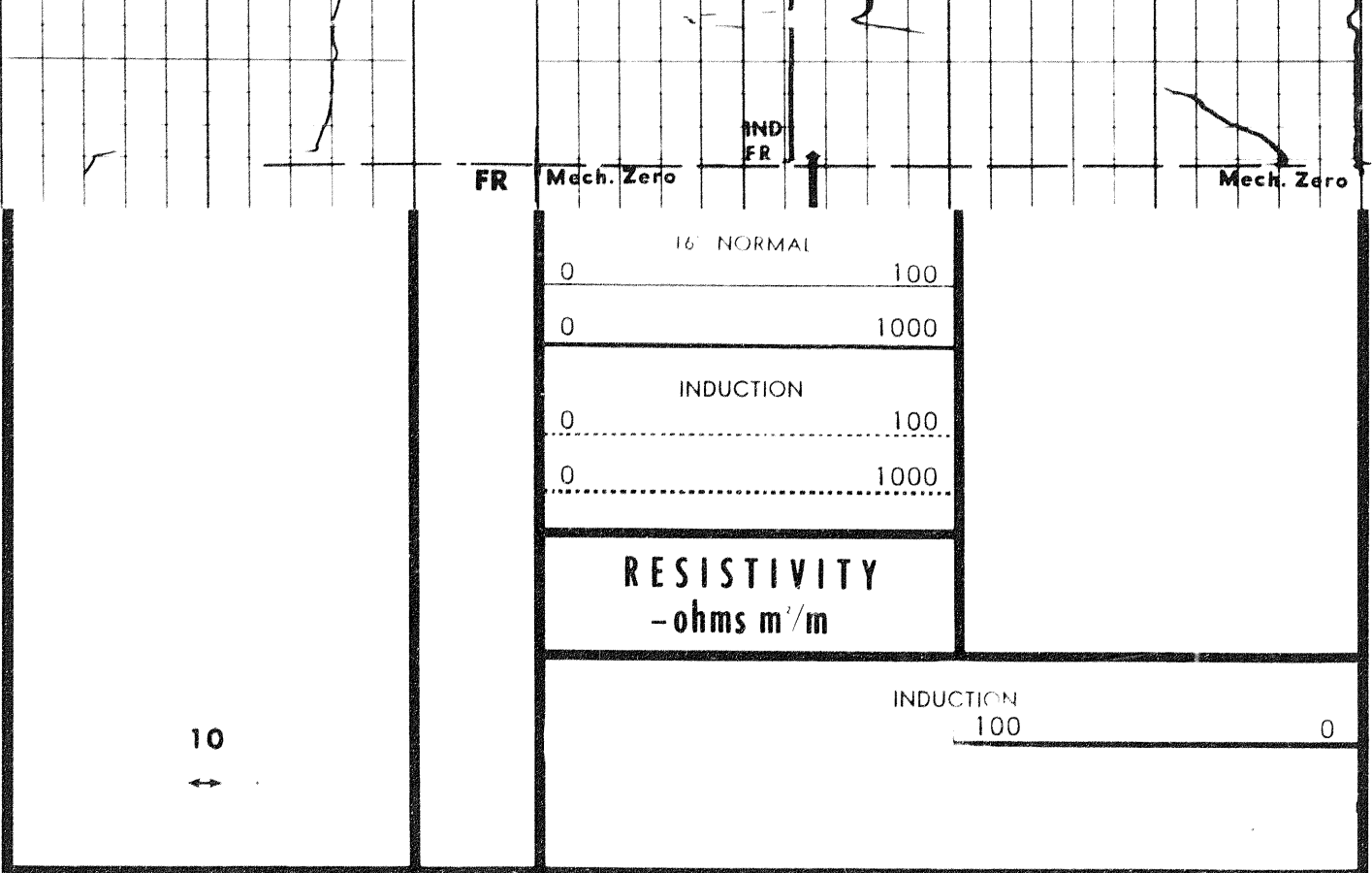
Run 2



16 NORMAL

0

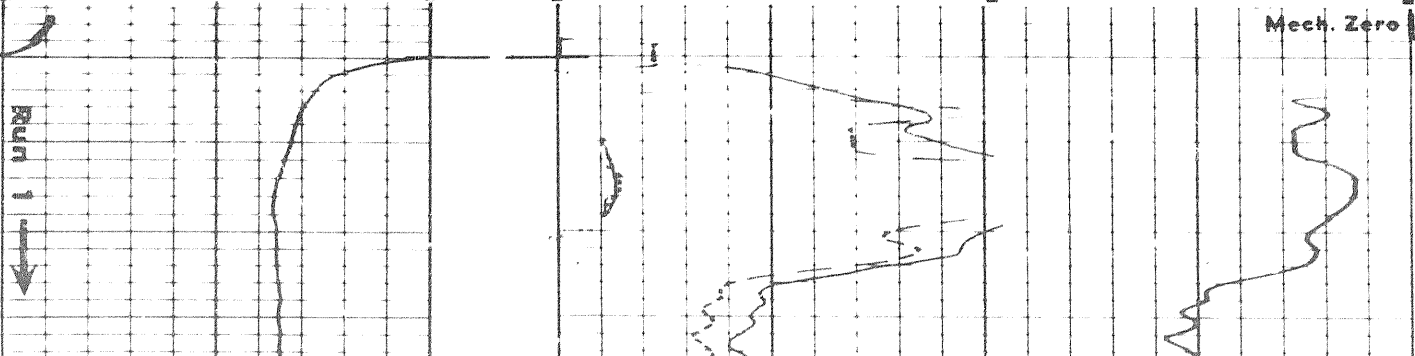
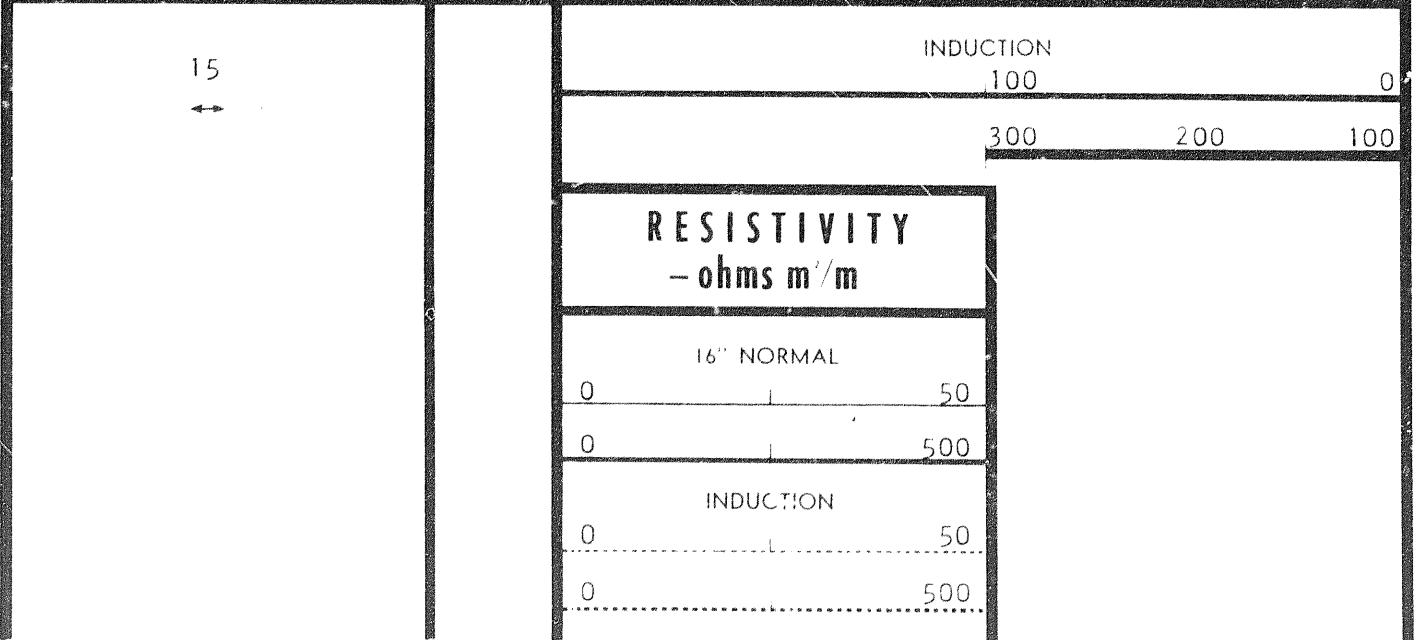
100



SPONTANEOUS-POTENTIAL millivolts	DEPTHS	CONDUCTIVITY millimhos / m = $\frac{1000}{\text{ohms m}^2/\text{m}}$
-------------------------------------	--------	---

DETAIL LOG  
5 " = 100'

SPONTANEOUS-POTENTIAL millivolts	DEPTHS	CONDUCTIVITY millimhos / m = $\frac{1000}{\text{ohms m}^2/\text{m}}$
-------------------------------------	--------	---



5 of 10



INDUCTION	
0	100
0	1000

RESISTIVITY  
- ohms m'/m

INDUCTION  
100

0

10



SPONTANEOUS-POTENTIAL  
millivolts

DEPTHS

CONDUCTIVITY

millimhos /m =  $\frac{1000}{\text{ohms m}^2/\text{m}}$

DETAIL LOG

5 " = 100'

SPONTANEOUS-POTENTIAL  
millivolts

DEPTHS

CONDUCTIVITY

millimhos /m =  $\frac{1000}{\text{ohms m}^2/\text{m}}$

15



INDUCTION  
100

0

300

200

100

RESISTIVITY  
- ohms m'/m

16" NORMAL

0 50

0 500

INDUCTION

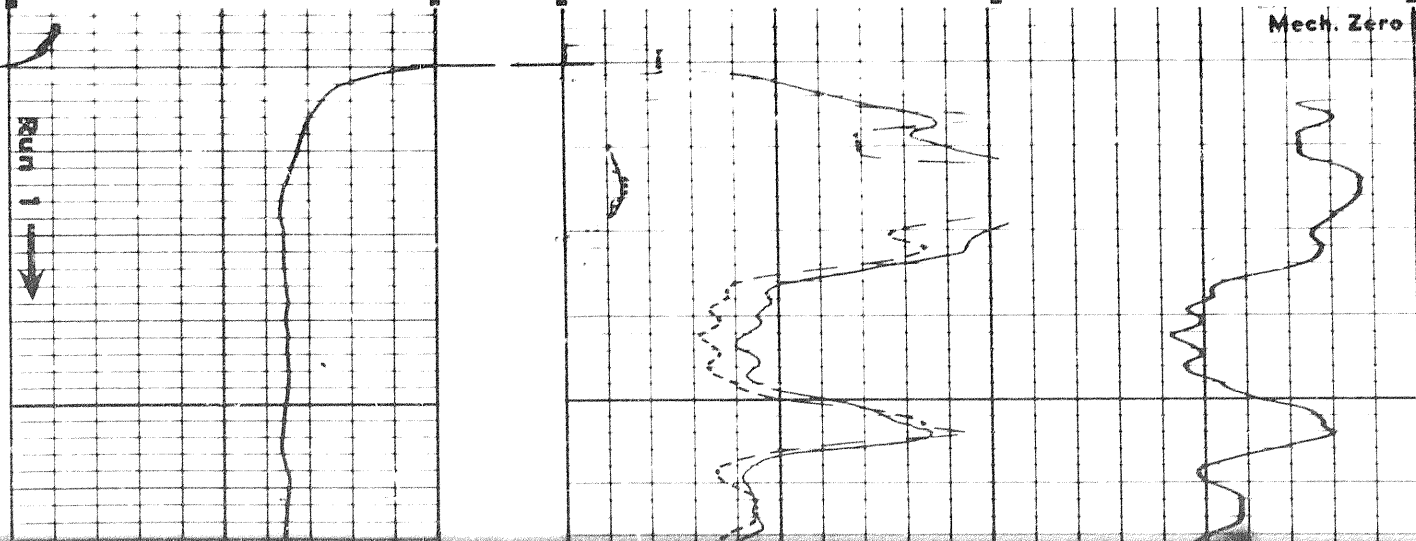
0 50

0 500

Mech. Zero

Run 1  
↓

Ed

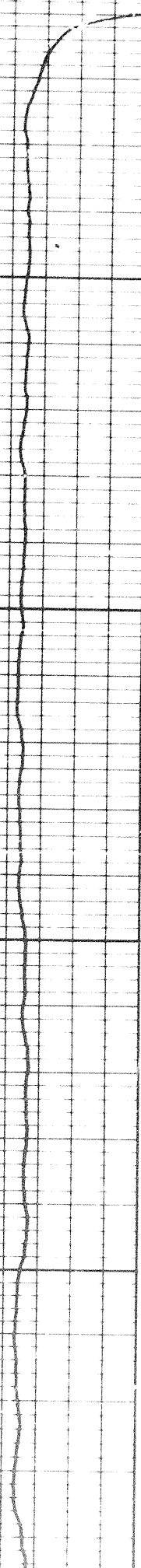
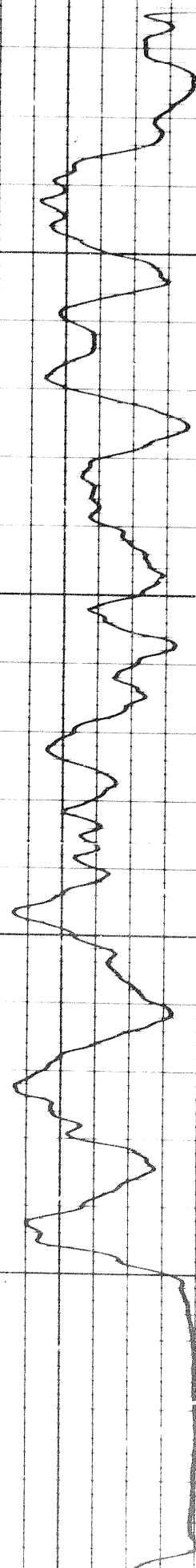
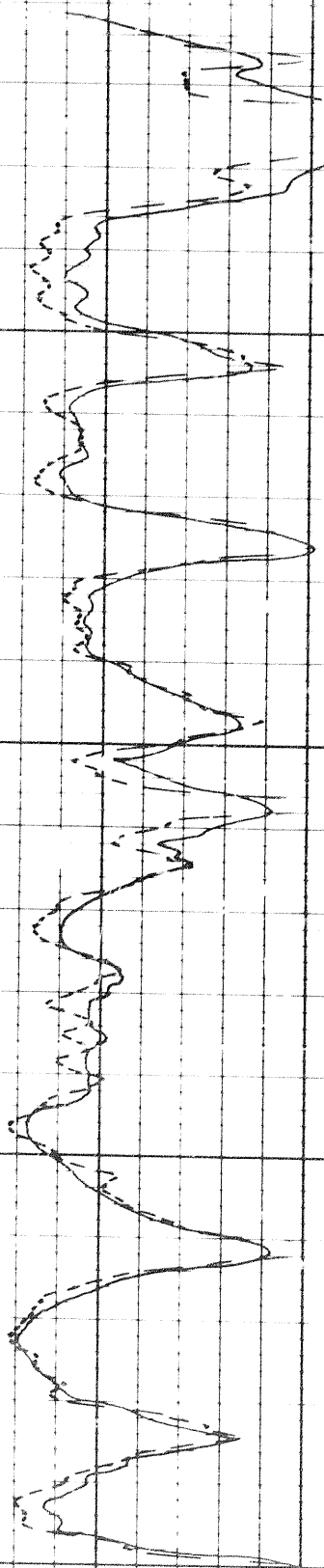


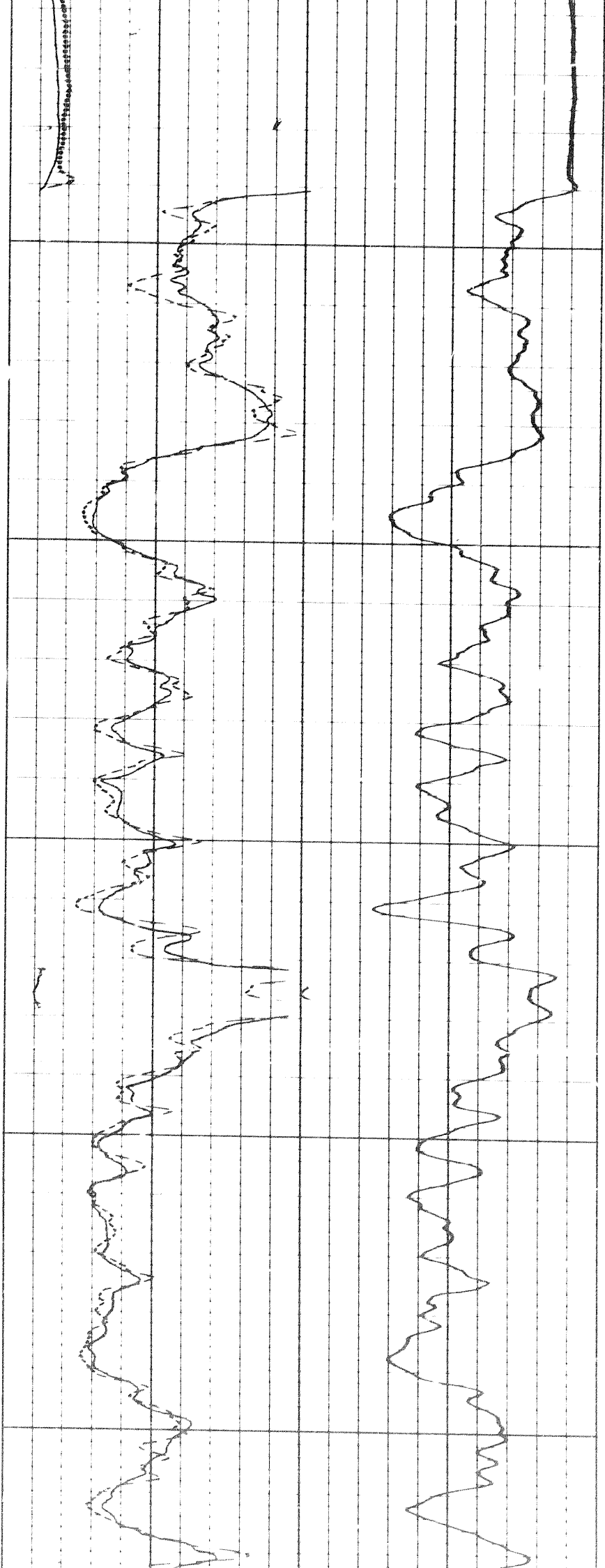
Mech. Zero

0060

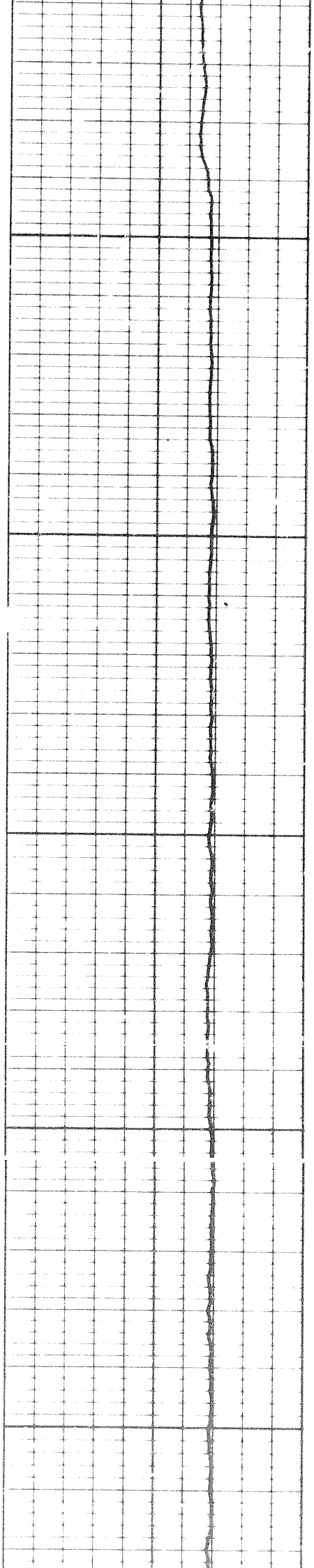
0000

Run 1 →

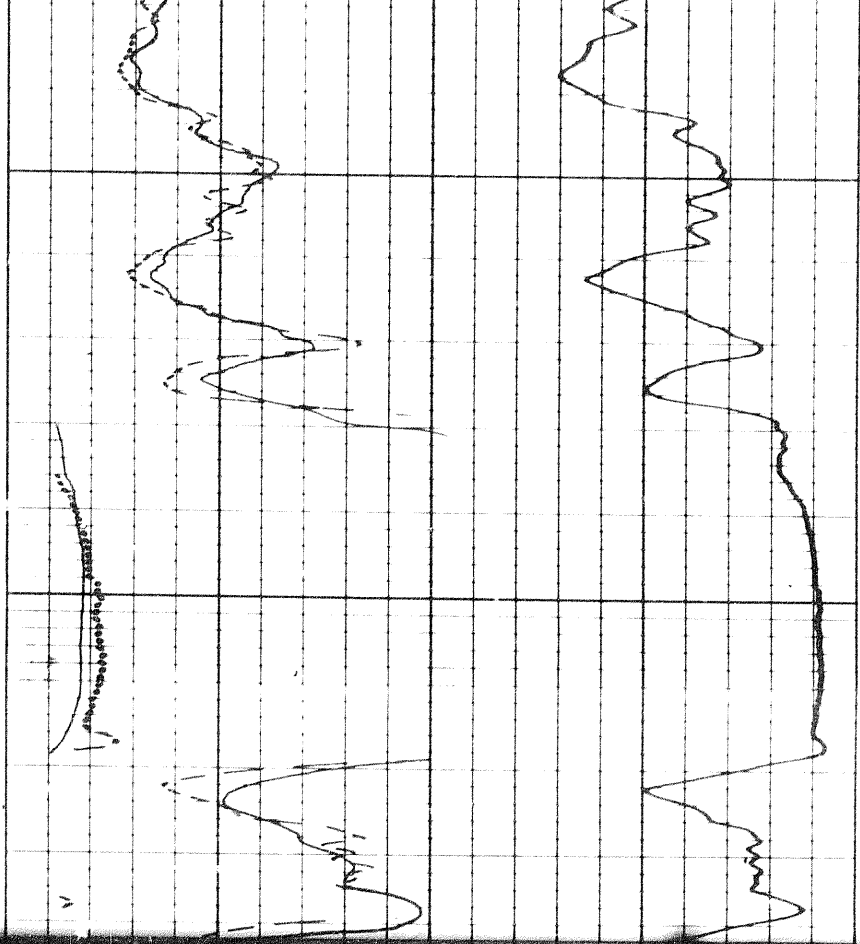




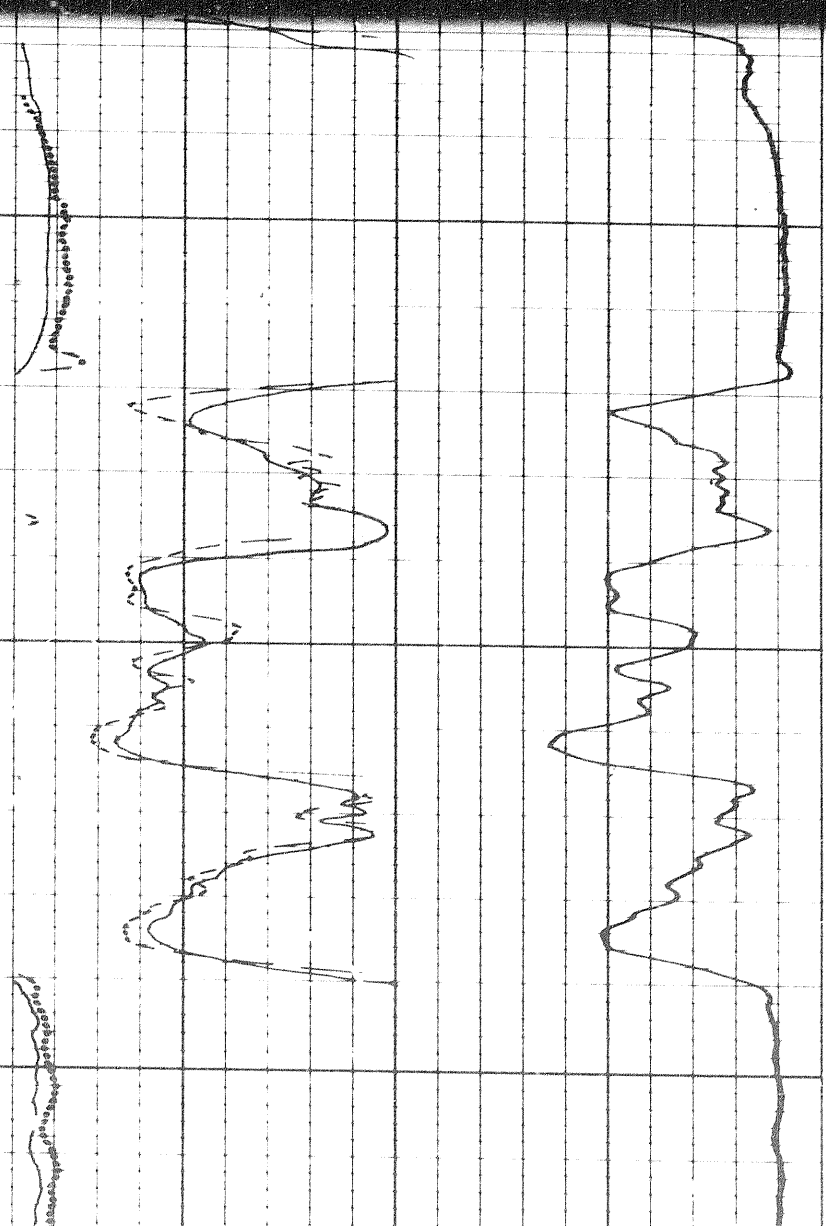
1100



1200

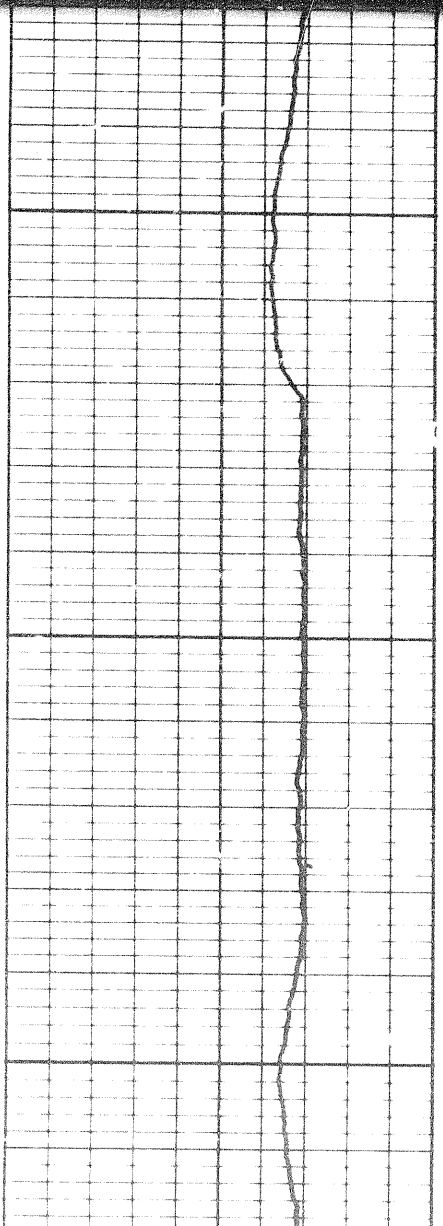
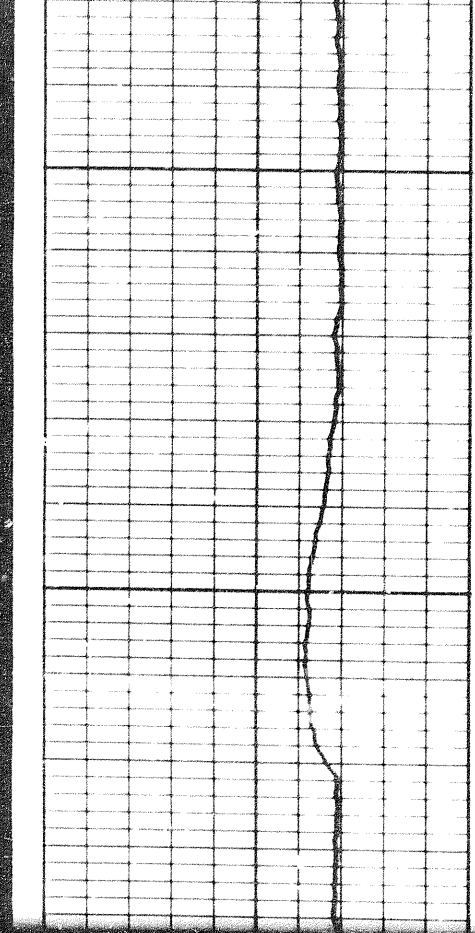


1300

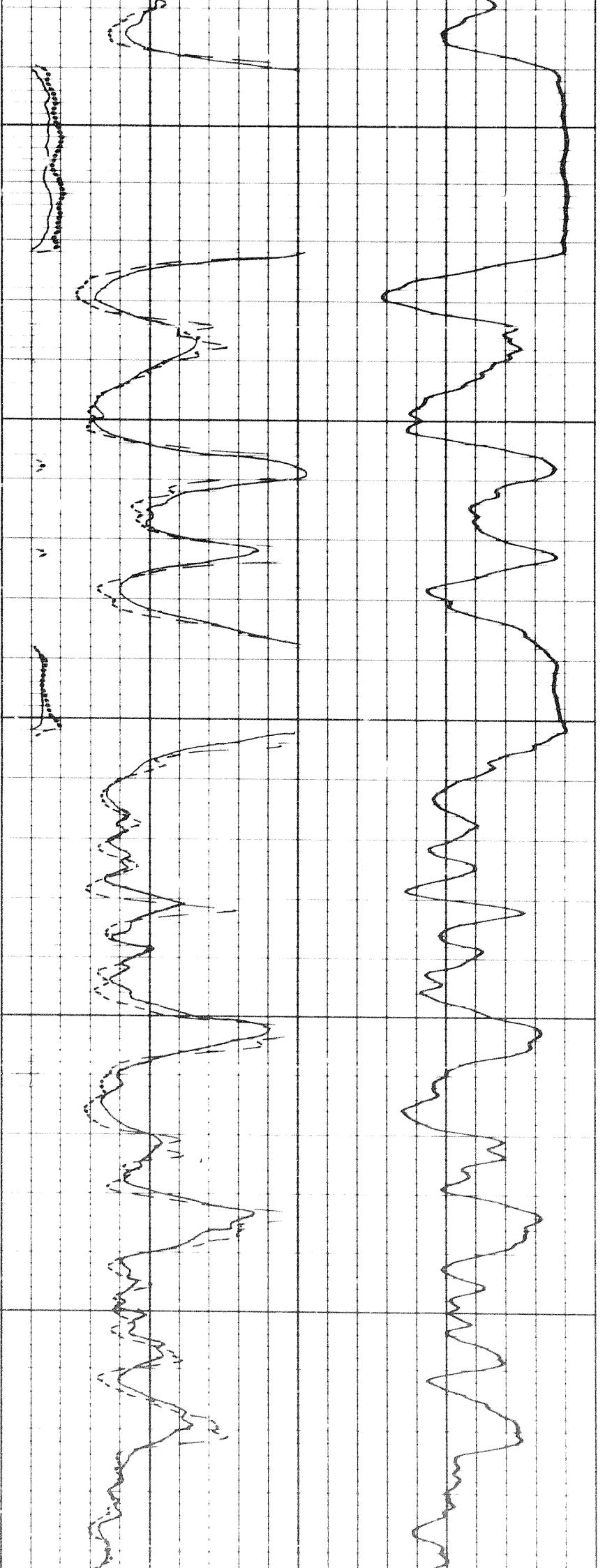


1300

1400







1400

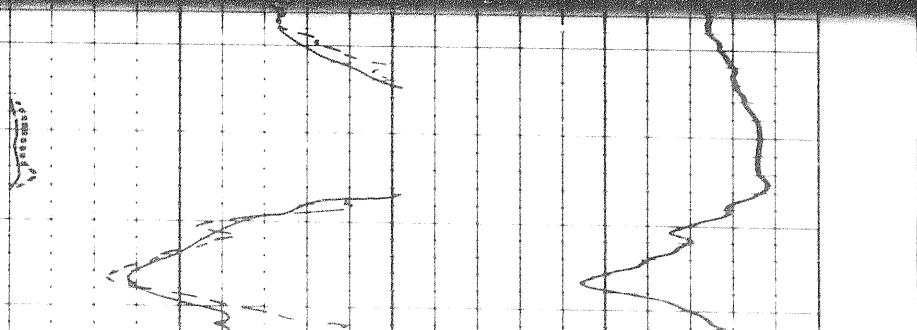
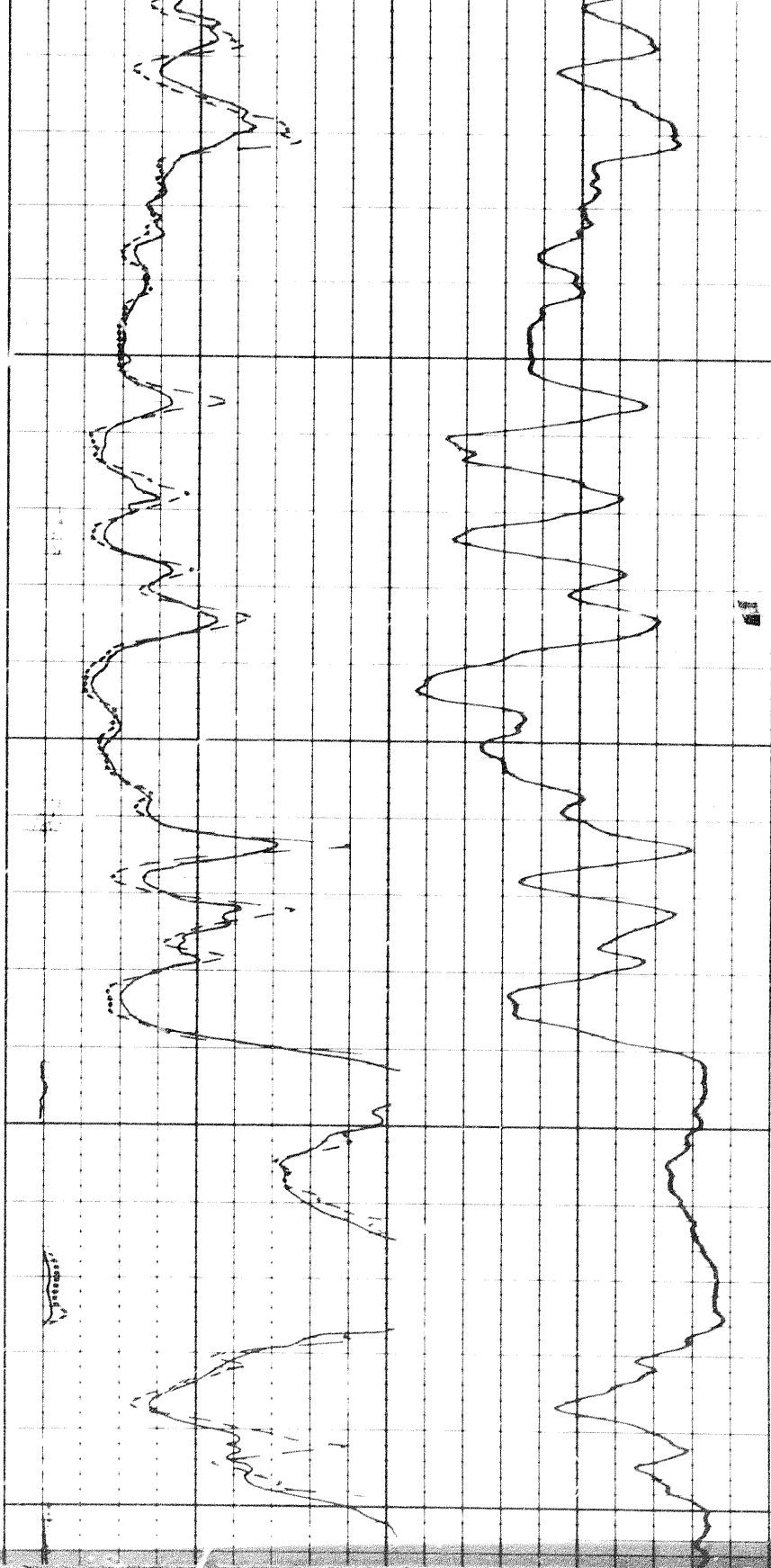
1500

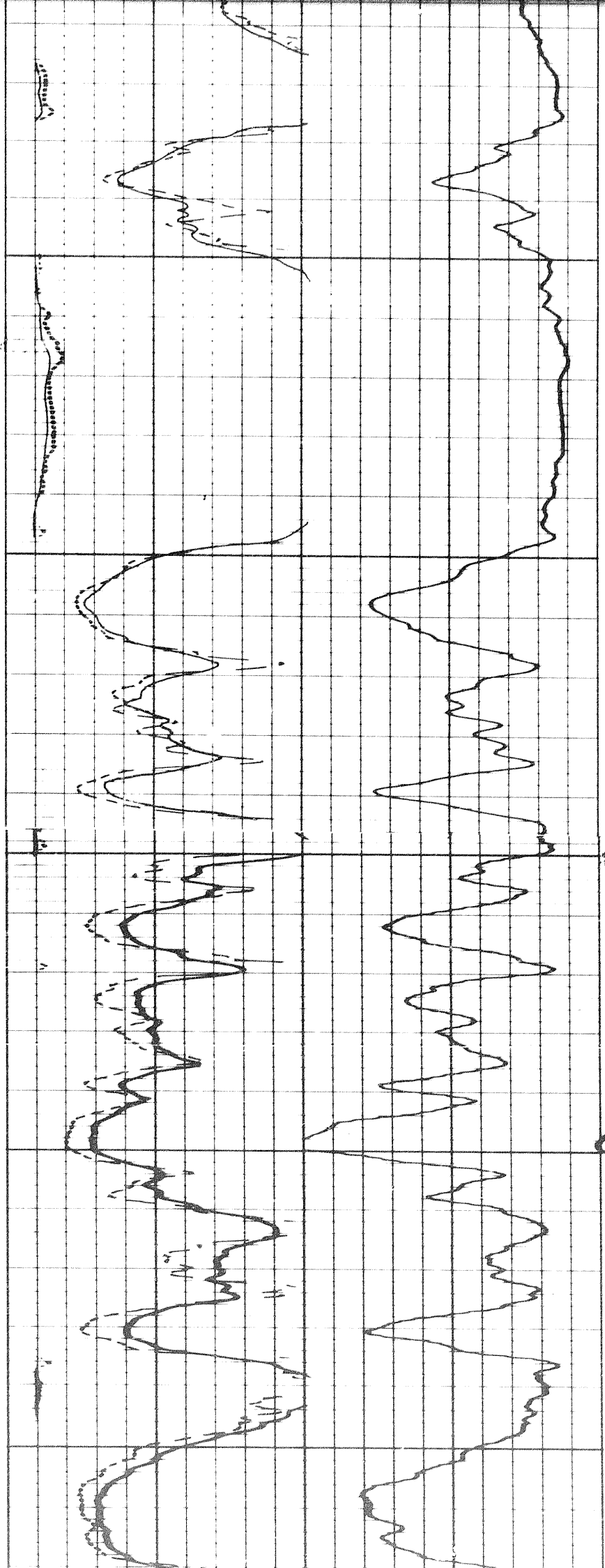
1600

3d

1700

1800

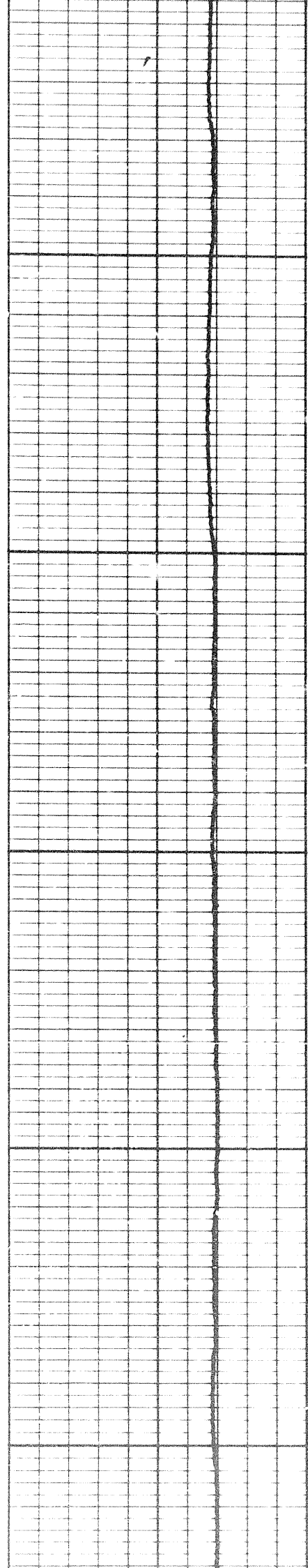


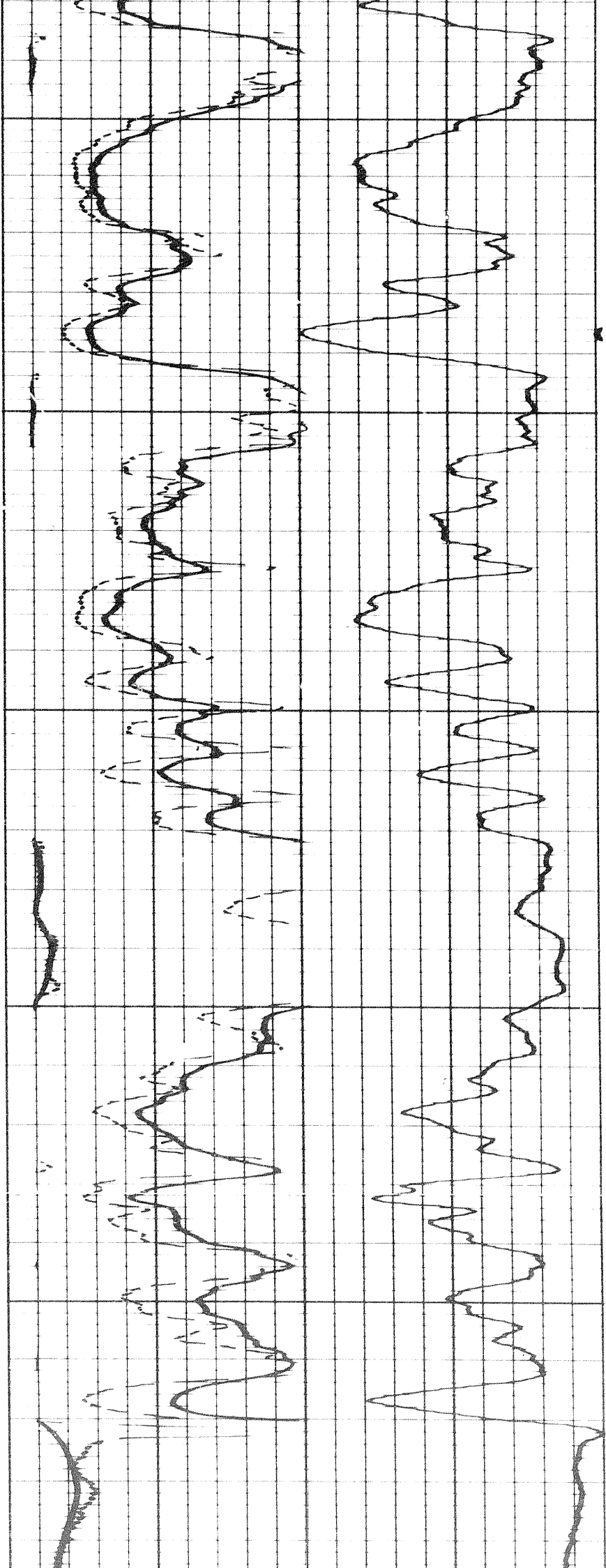


1800

1900

2000

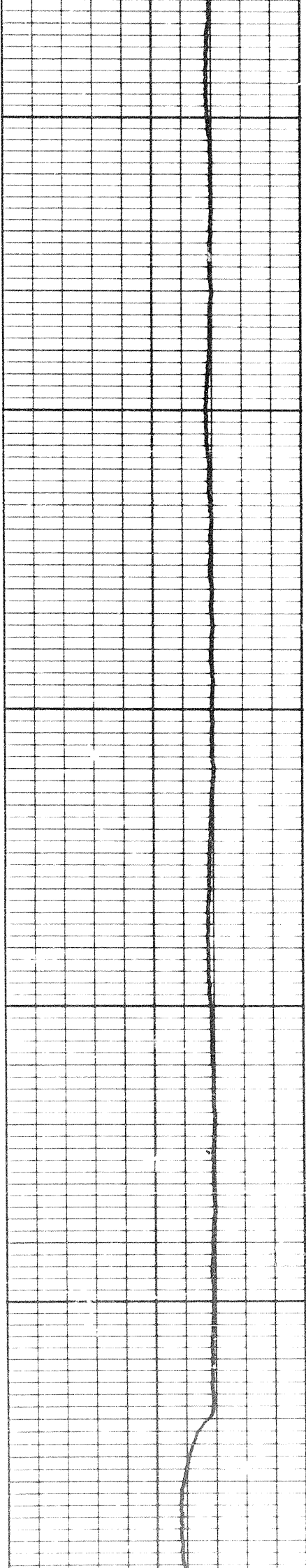




2000

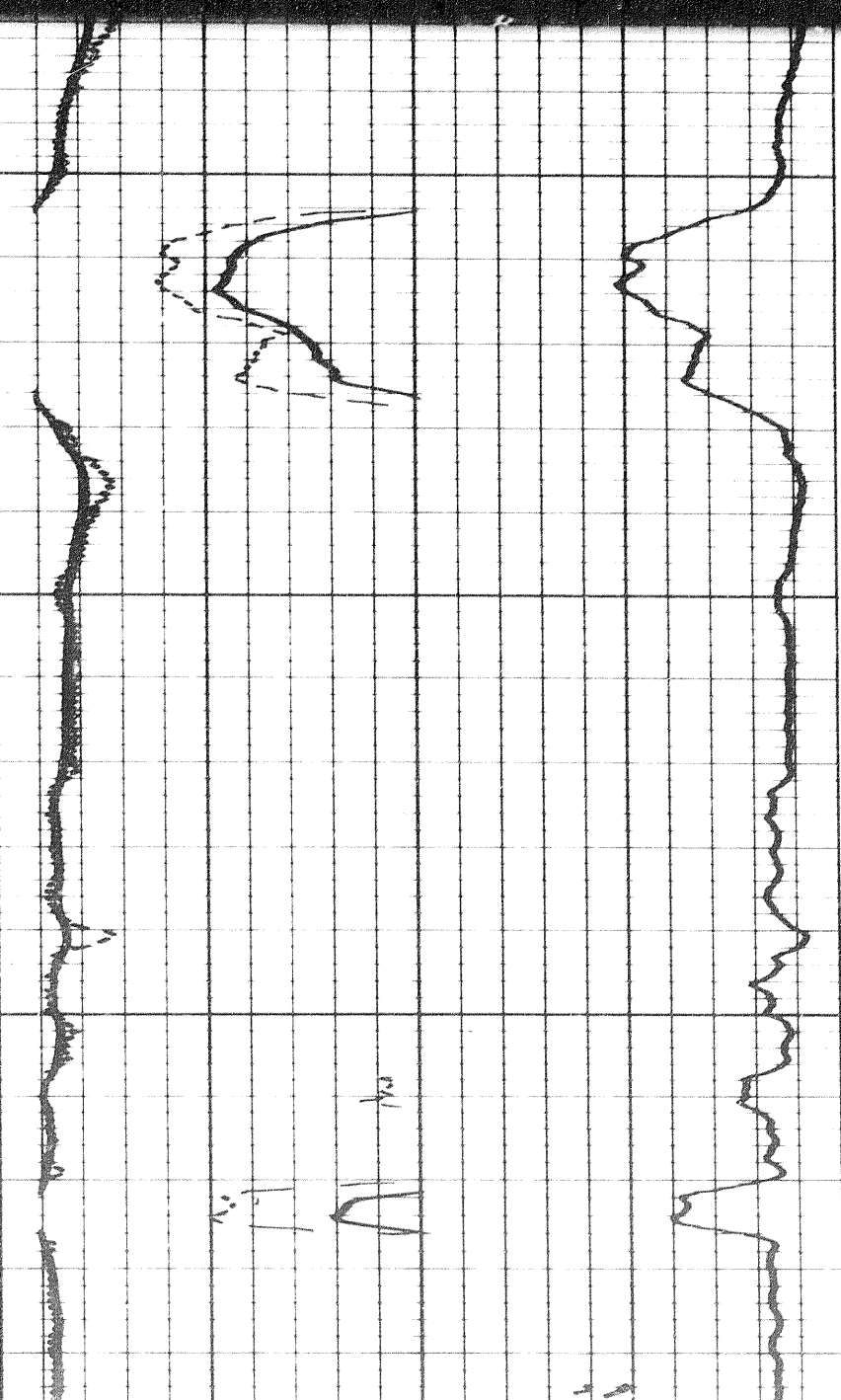
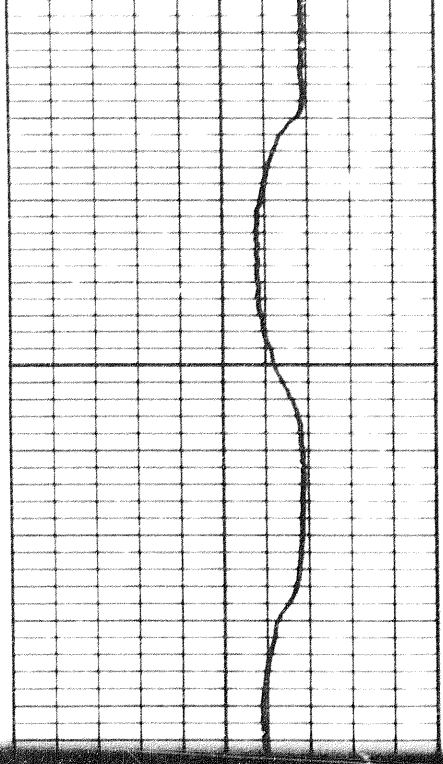
2100

2200

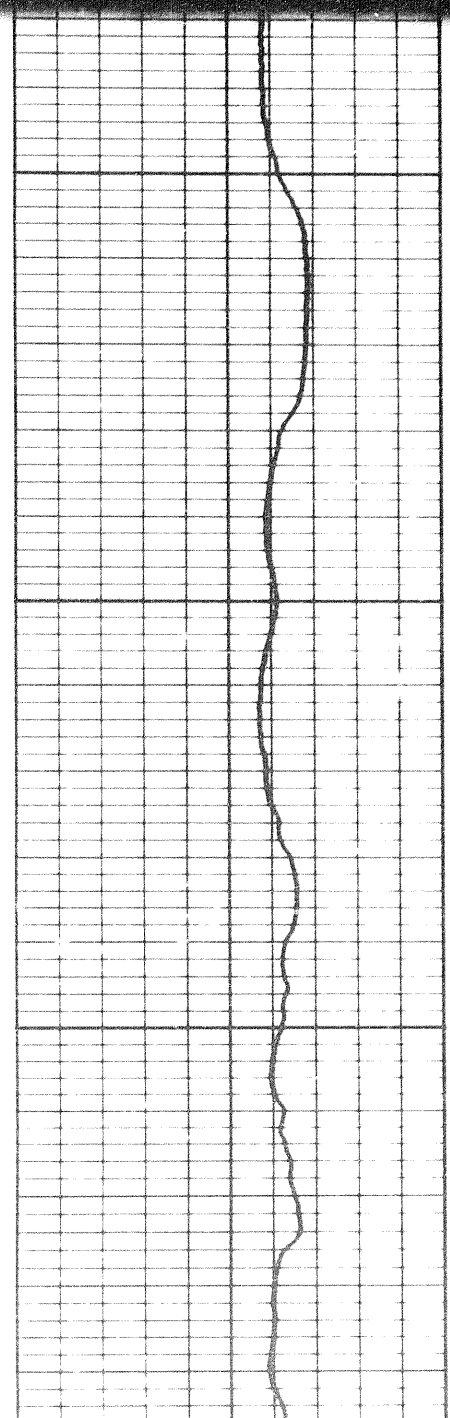


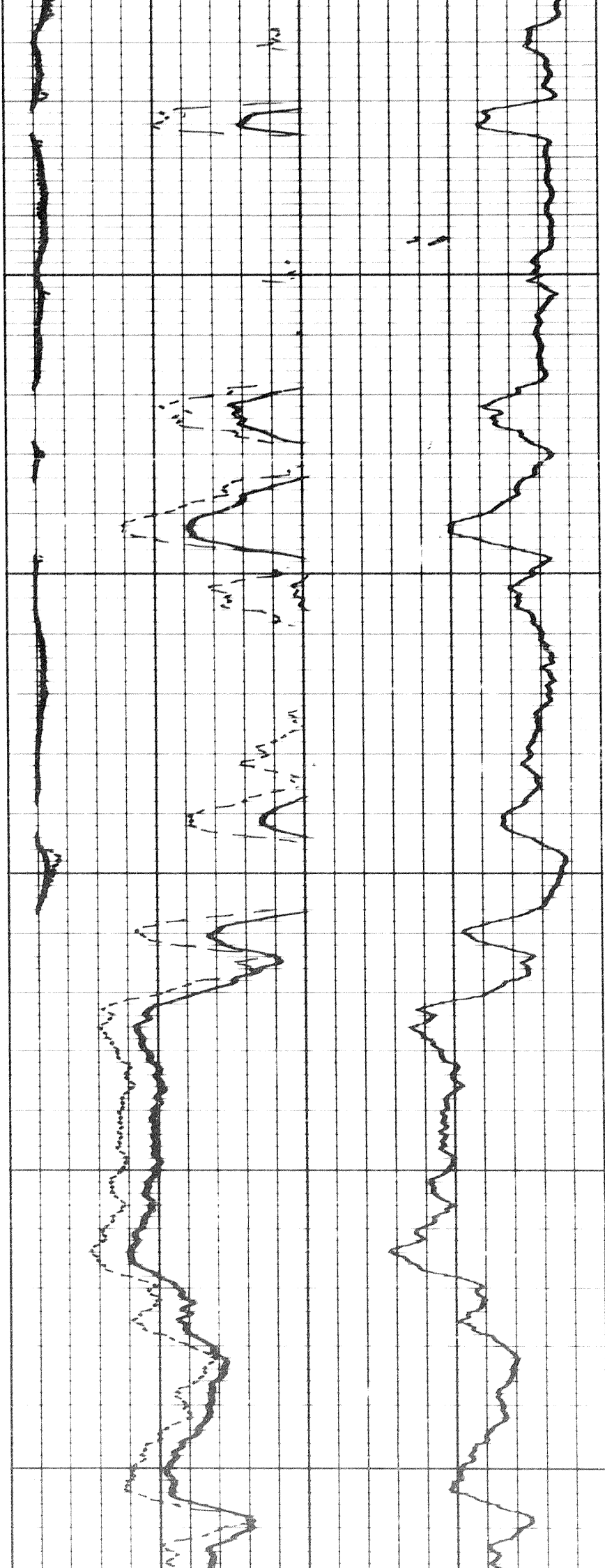


808



2300

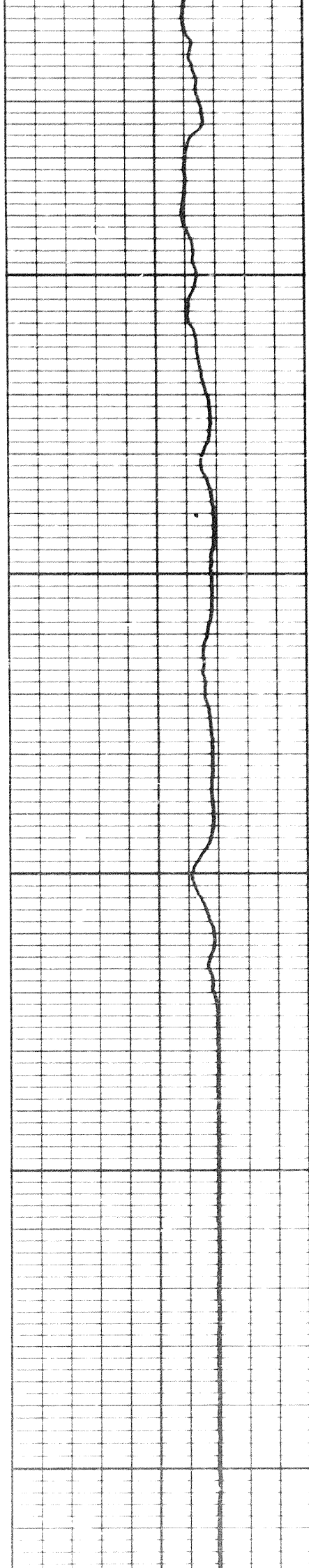


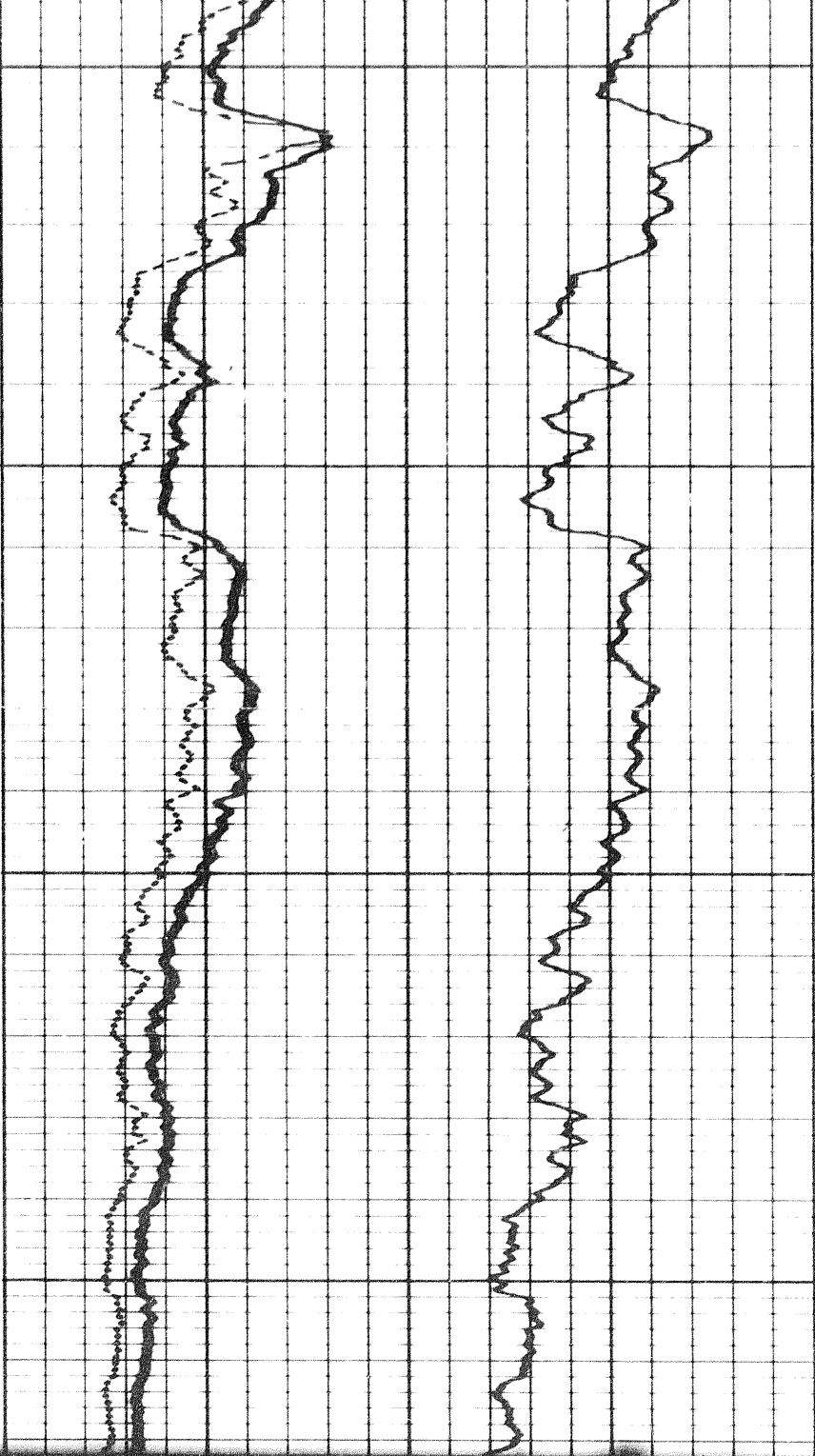


2400

2500

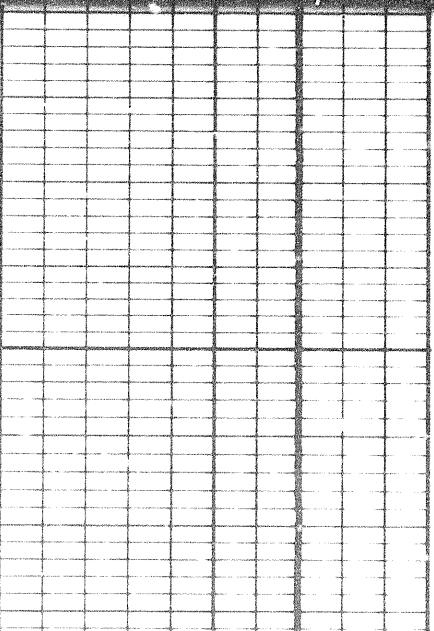
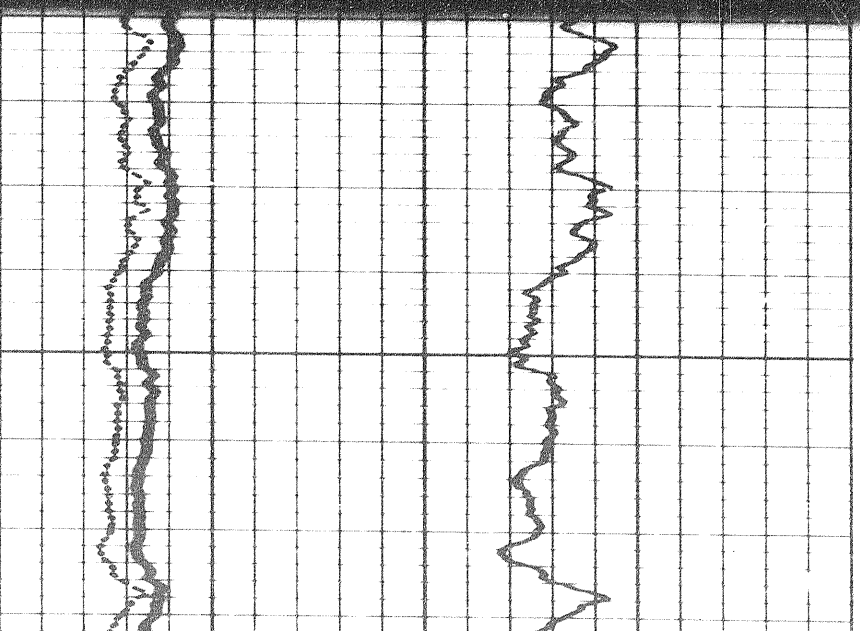
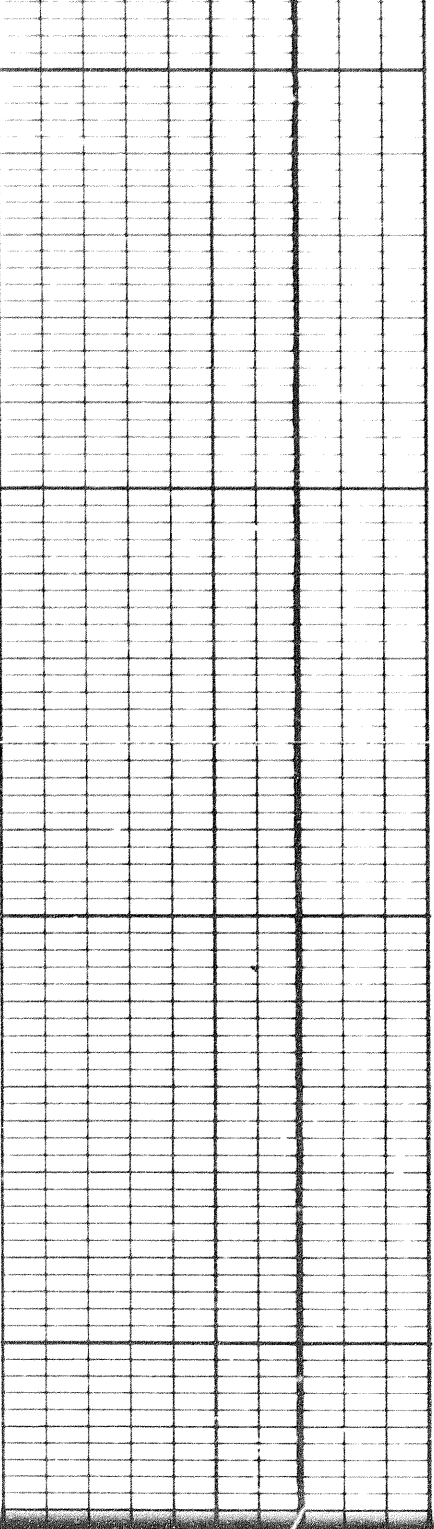
2600



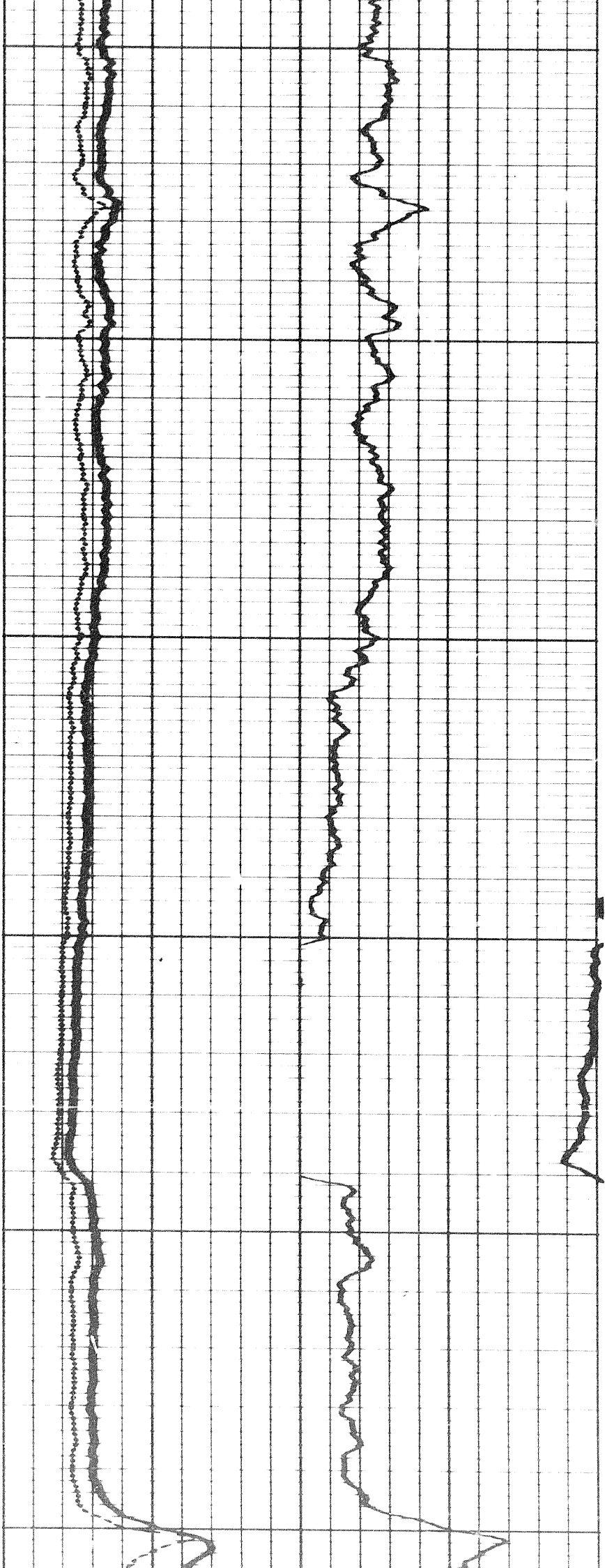


2600

2700



9 of 10



2800

2900

3000

